

1 Natural marine bromoform emissions in the fully coupled ocean- 2 atmosphere-model NorESM2 3

4 Dennis Booge^{1,2}, Jerry F. Tjiputra³, Dirk J. L. Olivié⁴, Birgit Quack¹ and Kirstin Krüger²

5 ¹GEOMAR Helmholtz Centre for Ocean Research Kiel, Kiel, 24148, Germany

6 ²Department of Geosciences, Section of Meteorology and Oceanography, University of Oslo, Oslo, 0371, Norway

7 ³NORCE Norwegian Research Centre and Bjerknes Centre for Climate Research, Bergen, 5007, Norway

8 ⁴Norwegian Meteorological Institute, Oslo, 0313, Norway

9 *Correspondence to:* Dennis Booge (dbooge@geomar.de) and Kirstin Krüger (kkrueger@geo.uio.no)

10 **Abstract.** Oceanic bromoform (CHBr₃) is an important precursor of atmospheric bromine. Although highly relevant for
11 the future halogen burden and ozone layer in the stratosphere, the global CHBr₃ production in the ocean and its emissions
12 are still poorly constrained in observations and are mostly neglected in climate models. Here, we newly implement marine
13 CHBr₃ in the state-of-the-art Norwegian Earth System Model (NorESM2) with fully coupled ocean-sea-ice-atmosphere
14 biogeochemistry interactions. Our results are validated with oceanic and atmospheric observations from the HalOcAt
15 (Halocarbons in the Ocean and Atmosphere) data base. The simulated mean oceanic concentrations (6.61 ± 3.43 pmol L⁻¹)
16 are in good agreement with observations in open ocean regions (5.02 ± 4.50 pmol L⁻¹), while the mean atmospheric
17 mixing ratios (0.76 ± 0.39 ppt) are lower than observed but within the range of uncertainty (1.45 ± 1.11 ppt). The NorESM2
18 ocean emissions of CHBr₃ (214 Gg yr⁻¹) are in the range of or higher than previously published estimates from bottom-
19 up approaches but lower than estimates from top-down approaches. Annual mean fluxes are mostly positive (sea-to-air),
20 driven by oceanic concentrations, sea surface temperature and wind speed, dependent on season and location. During
21 winter, model results imply some oceanic regions in high latitudes as sinks of atmospheric CHBr₃, because of its elevated
22 atmospheric mixing ratios. We further demonstrate that key drivers for the oceanic and atmospheric CHBr₃ variability
23 are spatially heterogeneous. In the tropical West Pacific, which is a hot spot for oceanic bromine delivery to the
24 stratosphere, wind speed is the main driver for CHBr₃ fluxes on annual basis. In the North Atlantic as well as in the
25 Southern Ocean region the atmospheric and oceanic CHBr₃ variabilities are interacting during most of the seasons except
26 for the winter months where sea surface temperature is the main driver. Our study provides improved process
27 understanding of the biogeochemical cycling of CHBr₃ and more reliable natural emission estimates especially on
28 seasonal and spatial scales compared to previously published model estimates.

29 1 Introduction

30 Bromoform (CHBr₃) from the ocean is one of the most important organic compounds for atmospheric bromine with an
31 atmospheric lifetime of ~2-4 weeks (Carpenter and Liss, 2000; Quack and Wallace, 2003; Salawitch, 2006; Papanastasiou
32 et al., 2014). As a reactive halogenated compound, it belongs to the very short-lived substances (VSLS) with lifetimes of
33 less than 6 months in the atmosphere (Law et al., 2007). In the tropics, VSLSs are rapidly lifted to the stratosphere by
34 deep convection (Sala et al., 2014; Navarro et al., 2015; Fuhlbrügge et al., 2016), where they contribute up to ~25% to
35 stratospheric bromine (Dorf et al., 2006 and following work). Bromine is ~60 times more efficient in depleting lower
36 stratospheric ozone than chlorine and significantly contributes to ozone depletion in the lower stratosphere (Daniel et al.,
37 1999; Sinnhuber et al., 2009; Montzka et al., 2011; Villamayor et al., 2023) with potential impacts on the radiation budget
38 of the atmosphere from -0.02 W m⁻² to -0.13 W m⁻² (Hossaini et al., 2015; Saiz-Lopez et al., 2023).
39 The oceanic air-sea gas exchange of CHBr₃ is parameterized based on the concentration gradient between surface water
40 and air and is related to wind speed and sea surface temperature via the transfer velocity (e.g., Nightingale et al., 2000).

41 Due to sparse measurements, marine CHBr₃ emission estimates are subject to large uncertainties (Laube et al., 2023).
42 CHBr₃ emission inventories from “bottom-up” approaches (e.g., Quack and Wallace, 2003; Butler et al., 2007; Ziska et
43 al., 2013; Lennartz et al., 2015; Stemmler et al., 2015; Fiehn et al., 2018) are based on in-situ oceanic data, whereas “top-
44 down” approaches (e.g., Warwick et al., 2006; Liang et al., 2010; Ordóñez et al., 2012) use in situ atmospheric mixing
45 ratio measurements. Resulting CHBr₃ emissions span a large range between 150 and 820 Gg Br yr⁻¹ (Laube et al., 2023).
46 The different methods cover e.g., statistical extrapolation of measurement-based data (Ziska et al., 2013; and update in
47 Fiehn et al., 2018), scaling of emissions to chlorophyll-a satellite observations (Ordóñez et al., 2012), modelling
48 atmospheric CHBr₃ with a modular flux in a chemistry climate model (Lennartz et al., 2015), and a data-oriented machine-
49 learning algorithm (Wang et al., 2019). These studies use limited spatial and temporal data coverage, underrepresenting
50 seasonal and interannual variations and spatial heterogeneity by averaging concentrations.

51 Oceanic CHBr₃ is mainly linked to primary production through natural processes such as marine organisms like
52 macroalgae and phytoplankton (Gschwend et al., 1985; Carpenter and Liss, 2000; Quack et al., 2004). Elevated surface
53 water concentrations are observed in coastal and shelf waters especially including the eastern boundary upwelling systems
54 (EBUS) (Quack and Wallace, 2003). Laboratory culture studies of phytoplankton production rates by Tokarczyk and
55 Moore (1994) and Moore et al. (1996) reported CHBr₃ increase during the exponential growth phase of phytoplankton.
56 Those specific growth rates and the corresponding temporal changes in CHBr₃ concentrations were first applied in a
57 physical biogeochemical water column model for the tropical Atlantic (Hense and Quack, 2009), and later implemented
58 in the global biogeochemical HAMburg Ocean Carbon Cycle model (HAMOCC; Stemmler et al., 2015). Stemmler et al.
59 (2015) explicitly implemented sources and sinks of marine CHBr₃ in the three-dimensional ocean biogeochemistry model
60 HAMOCC. However, they are not fully coupled with the atmosphere, and resulting fluxes rely on fixed, prescribed,
61 extrapolated, observed atmospheric data of Ziska et al. (2013). Since the atmospheric concentrations are regulated by the
62 oceanic emissions, accurate estimates of atmospheric and oceanic CHBr₃ variability require such coupling, which can be
63 achieved using an Earth System Model (ESM).

64 Here, we present the first global model simulation of CHBr₃ in the fully coupled Norwegian ESM (NorESM2), where
65 CHBr₃ production is prognostically related to the primary production in the ocean taking natural biological processes into
66 account. We present results from a historical experiment focusing on the period 1990 to 2014 and compare them with
67 HalOcAt observations (<https://halocat.geomar.de>). Furthermore, we evaluate oceanic CHBr₃ excess and deficit regions
68 and use multilinear regression analysis to identify drivers of oceanic and atmospheric CHBr₃, as well as CHBr₃ emission
69 variations on regional and temporal scales.

70 **2 Model and Methods**

71 We use the latest version of NorESM2 (NorESM2-LM; Seland et al., 2020; Tjiputra et al., 2020), which has participated
72 in the Coupled Model Intercomparison Project phase 6 (CMIP6) and contributed to the latest assessment report of the
73 IPCC-AR6 (Masson-Delmotte et al., 2023). The NorESM2 is a fully coupled ESM and is partly based on the Community
74 ESM Version 2 (Danabasoglu et al., 2020), which is developed by the National Center for Atmospheric Research (NCAR)
75 in the United States. NorESM2 is an updated version of its original version NorESM1 (Bentsen et al., 2013; Tjiputra et
76 al., 2013). It consists of a modified version of the Community Atmosphere Model version 6 (CAM6-Nor), the isopycnic
77 coordinate Bergen Layered Ocean Model (BLOM), the ocean biogeochemistry model isopycnic coordinate HAMOCC
78 (iHAMOCC), the sea ice model (Community Ice CodE version 5.1.2; CICE5.1.2), the Community Land Model version
79 5 (CLM5), and the river runoff model (MOdel for Scale Adaptive River Transport; MOSART). Both BLOM and
80 iHAMOCC apply a tripolar grid with a horizontal resolution of ~1° and 53 vertical isopycnic layers, while CAM6-Nor
81 and CLM5 share a common horizontal resolution of ~2° and 32 hybrid-pressure layers (lowest atmospheric layer

82 thickness: ~120 m) and a model top at 3.6 hPa (~40 km altitude). Here, we briefly highlight key features of iHAMOCC
 83 as well as the CHBr₃ implementation (Section 2.1). The iHAMOCC ocean biogeochemical module is based on the original
 84 work of Maier-Reimer (2012), has gone through several improvements and was later adapted to an isopycnic coordinate
 85 ocean model (Assmann et al., 2010; Tjiputra et al., 2010). The model prognostically simulates inorganic carbon chemistry
 86 following the standard Ocean Model Intercomparison Project (OMIP) protocol. It includes a Nutrient Phytoplankton
 87 Zooplankton Detritus (NPZD) type ecosystem module, where the phytoplankton growth rate is constrained by multi-
 88 nutrient limitation as well as ambient light and temperature. Particulate organic matters produced in the euphotic zone is
 89 exported to the interior with a sinking velocity that increases linearly with depth before it is remineralized back to
 90 inorganic carbon. The NorESM2 is able to simulate the observed large-scale pattern of surface primary productivity as
 91 well as the regional seasonal cycle (Tjiputra et al., 2020).

92 **2.1 Bromoform module in NorESM2**

93 **2.1.1 Oceanic bromoform**

94 The marine CHBr₃ processes implemented in iHAMOCC comprise of advection (*adv*), production (β), air-sea gas
 95 exchange (*F*), and three sink terms of: photolysis (*UV*), hydrolysis (*H*) and halogen substitution (*S*), as shown in Eq. (1).
 96 The production and photolysis occur in the euphotic layer (top 100 m depth) of the model, whereas the air-sea gas
 97 exchange is computed in the top-most layer of the ocean (upper 10 m). Advection and other sink terms are calculated
 98 throughout the water column. The change over time of the oceanic CHBr₃ concentration is modelled as:

$$\frac{[\text{CHBr}_3]}{dt} = adv + \beta - F - UV - H - S. \quad (1)$$

99
 100 The parameterizations for the different processes are largely based on Stemmler et al. (2015). CHBr₃ is produced during
 101 biological production as follows:

$$\beta = \beta_0 * \left(\frac{f_1 * Si(OH)_4}{K_{phy}^{Si(OH)_4} + Si(OH)_4} + \frac{f_2 * K_{phy}^{Si(OH)_4}}{K_{phy}^{Si(OH)_4} + Si(OH)_4} \right), \quad (2)$$

102
 103 where $K_{phy}^{Si(OH)_4}$ denotes the half-saturation constant for silicate (Si(OH)₄) uptake and diatom and non-diatom contributing
 104 factors, f_1 and f_2 , are set equally to 1. In contrast to Stemmler et al. (2015), the bulk CHBr₃ production ratio (β_0) is modified
 105 and set to 2.4×10^{-6} nmol CHBr₃ (mmol N)⁻¹, based on Kurihara et al. (2012) and Roy (2010).

106 The air-sea gas exchange is calculated as follows:

$$F = k_w * \left(C_w - \frac{C_a}{H_{bromo}} \right), \quad (3)$$

107
 108 where C_w and C_a are CHBr₃ concentrations in the surface ocean and CHBr₃ mixing ratios in the atmosphere, respectively.
 109 Emissions are defined as positive fluxes, which means outgassing to the atmosphere, negative fluxes are defined as fluxes
 110 from the atmosphere to the ocean. The temperature-dependent dimensionless Henry's law solubility constant (H_{bromo}) is
 111 defined in Moore et al. (1995):

$$H_{bromo} = e^{13.16 - \frac{4973}{SST}}, \quad (4)$$

112
 113 with SST the sea-surface temperature in Kelvin. k_w represents the gas transfer velocity calculated following Nightingale
 114 et al. (2000) using the 10 m surface wind speed (*u*):

$$k_w = (0.222u^2 + 0.33u) * \left(\frac{660}{Sc_{bromo}}\right)^{0.5}. \quad (5)$$

115

116 The Schmidt number (Sc_{bromo}) for $CHBr_3$ is defined in Quack and Wallace (2003) using the sea surface temperature SST
 117 in °C:

$$Sc_{bromo} = 4662.8 - 319.45 * SST + 9.9012 * SST^2 - 0.1159 * SST^3. \quad (6)$$

118

119 The loss term due to photolysis is computed as follows:

$$UV = I_{UV} * \frac{I_0}{I_{ref}} * e^{(-a_w * z)} * [CHBr_3], \quad (7)$$

120

121 where the decay time scale (I_{UV})⁻¹ is set to 30 days (Carpenter and Liss, 2000). I_0 and I_{ref} are the prognostic incoming UV
 122 radiation (i.e., 30% of shortwave radiation) and annual average irradiance at the surface layer, respectively. z is the depth
 123 and a_w is the attenuation coefficient of UV radiation, set to 0.33 m⁻¹.

124 The loss term related to hydrolysis is estimated following Stemmler et al. (2015):

$$H = A_1 * e^{\left(\frac{-E_A}{RT}\right)} * [OH^-] * [CHBr_3], \quad (8)$$

125

126 with A_1 , E_A , and R set to 1.23×10^{17} L mol⁻¹ min⁻¹, 107 300 J mol⁻¹, and 8.314 J K⁻¹ mol⁻¹, respectively (Washington, 1995).
 127 T is the seawater temperature in Kelvin.

128

129 Degradation due to halogen substitution (Eqs. 5-6 of Stemmler et al., 2015):

$$S = L_{ref} * e^{\left(A_2 * \left(\frac{1}{T_{ref}} - \frac{1}{T}\right)\right)} * [CHBr_3], \quad (9)$$

130

131 with L_{ref} and A_2 set to 7.33×10^{-10} s⁻¹ and 12507.13 K, respectively, and $T_{ref} = 298$ K.

132 2.1.2 Atmospheric $CHBr_3$

133 $CHBr_3$ is implemented as a 3-dimensional tracer in the atmospheric model and is transported by the large-scale
 134 atmospheric circulation and sub-grid scale processes (shallow and deep convection, and boundary layer turbulence). It is
 135 removed in the atmosphere by photolysis:



136

137 and by reaction with the OH radical:



138

139 The reaction rate k [cm³ molecules⁻¹ s⁻¹] for the removal of $CHBr_3$ by OH in

$$\frac{d[CHBr_3]}{dt} = -k * [CHBr_3] * [OH] \quad (12)$$

140

141 is defined as follows:

$$k = 9.0 * 10^{-13} \exp\left(-\frac{360}{T}\right), \quad (13)$$

142

143 with T the ambient temperature in Kelvin, and $[\text{CHBr}_3]$ and $[\text{OH}]$ in molecules cm^{-3} . The loss rate of CHBr_3 by photolysis
144 can be expressed by

$$\frac{d[\text{CHBr}_3]}{dt} = -I [\text{CHBr}_3], \quad (14)$$

145

146 where $I [\text{s}^{-1}]$ depends on the intensity of solar radiation and photo-physical properties of CHBr_3 . The OH concentration is
147 a monthly-varying climatology obtained from a Whole Atmosphere Community Climate Model (WACCM) historical
148 simulation with full tropospheric and stratospheric chemistry (Gettelman et al., 2019).

149 CHBr_3 in the atmosphere has no other sinks than reaction with OH (annual mean CHBr_3 lifetime: ~46 days) and photolysis
150 (CHBr_3 lifetime: ~23 days) and is not affected by dry or wet deposition.

151 **2.2 Model setup**

152 A historical transient model run from 1850-2014, based on the CMIP6 protocol, was performed following a 500-year
153 preindustrial spin-up. The coupling of CHBr_3 between the ocean and the atmosphere is carried out with an hourly time
154 frequency exchanging the air-sea gas transfer. For analysis of the model climatology as well as for analysis of the model
155 validation with observations and further analysis of the driving CHBr_3 factors, daily model output data was averaged over
156 a period of 25 years (1990-2014) resulting in one mean value for each day of the year. The standard deviation of each
157 day reflects the variability within this time period. The 1990 to 2014 interval was chosen as most of the observations for
158 the model validation are within that time period, as compiled in the HalOcAt database (<https://halocat.geomar.de>, last
159 access: 13.10.2023).

160 **2.3 Observations: HalOcAt database**

161 The HalOcAt database, compiled by Ziska et al. (2013), updated by Fiehn et al. (2018) and by this study, is an observation-
162 based database for global oceanic and atmospheric data of short-lived halogenated compounds, such as CHBr_3 . To date,
163 there are 9369 oceanic and 65179 atmospheric CHBr_3 measurements listed in 68 oceanic and 156 atmospheric datasets
164 (campaigns), respectively. The following criteria were applied to the observations in order to be used for model validation:

- 165 - Sampling locations with an ocean bottom depth less than 200 m or closer than 100 km to land were excluded.
- 166 - Sampling depth of oceanic CHBr_3 measurements had to be within the first 10 m of the water column in order to
167 be comparable to the CHBr_3 output of the upper surface ocean model layer (10 m depth).
- 168 - Maximum sampling height of atmospheric CHBr_3 measurements was set to 30 m altitude.
- 169 - Wherever applicable, individual measurements throughout one day were averaged to result in a daily averaged
170 surface ocean concentration or atmospheric mixing ratio in order to consider the same temporal resolution as the
171 daily model output. The coordinates of the respective averaged data points throughout a day were also equally
172 averaged. These locations were used to compare the observation with the closest grid point of the model output.

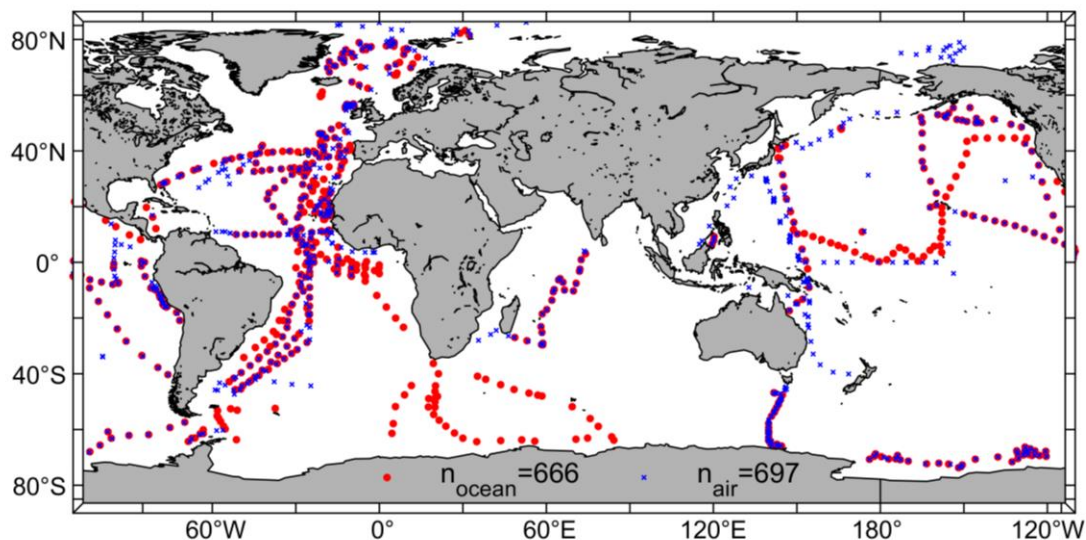


Figure 1: Locations of oceanic (red, n=666) and atmospheric (blue, n=697) daily mean CHBr₃ observations from the HalOcat database used to compare to daily mean NorESM2 model output.

174 After screening the HalOcat data base with the above-mentioned criteria, the individual oceanic and atmospheric datasets
 175 (including the remaining datapoints) were tested for outliers. The mean from each dataset was calculated and the group
 176 of all average values was tested for outliers. An outlier was defined as an element with more than three standard deviations
 177 from the mean. According to the outlier test for oceanic and atmospheric datasets the corresponding dataset was removed
 178 and not used for further validation of the model.

179 By addressing the mentioned criteria and datasets, we were able to validate the model with 666 daily mean oceanic (5154
 180 individual) and 697 daily mean atmospheric (8411 individual) CHBr₃ observations from the HalOcat database covering
 181 both hemispheres (northern hemisphere (NH): 61%, southern hemisphere (SH): 39%), from the tropics (0-20°N/S; 36%)
 182 to the polar regions (60-90°N/S; 18%) with most observations in or above the Atlantic Ocean (44%) (Figure 1).

183 2.4 Bromoform excess/deficit calculation

184 The CHBr₃ excess/deficit (balance) rate (k_{bal} , Eq. (15), $\text{pmol m}^{-2} \text{h}^{-1}$) is the difference between the CHBr₃ production rate
 185 and the sum of different CHBr₃ loss rates, with all rates integrated over the upper 100 m depth):

$$k_{bal} = \sum \text{production rate} - \sum \text{loss rate} = k_{\beta} - (k_{UV} + k_F). \quad (15)$$

186
 187 The production term is described as the biological oceanic CHBr₃ production rate (k_{β} , Eq. (2)) and the loss term includes
 188 the two fastest loss processes, i.e., photolysis due to UV radiation (k_{UV} , Eq. (7)) and the loss to the atmosphere via air-sea
 189 gas exchange (k_F , Eq. (3)). We define a positive k_{bal} as CHBr₃ excess rate and a negative k_{bal} as CHBr₃ deficit rate. The
 190 loss terms related to hydrolysis and to halogen substitution are not included as they are several orders of magnitude
 191 smaller than k_{UV} and k_F , in the surface ocean.

192 2.5 Calculation of drivers for oceanic and atmospheric CHBr₃ and its emissions

193 Different parameters impact the variations of oceanic and atmospheric CHBr₃ values and influence the air-sea gas
 194 exchange. These impacts can vary in magnitude and frequency dependent on local and seasonal conditions. Daily mean
 195 average model output values from 1990-2014 were used to calculate annual and seasonally resolved (DJF, MAM, JJA,
 196 SON) driving factors for oceanic CHBr₃ concentrations ($Bromo_{oce}$), atmospheric CHBr₃ mixing ratios ($Bromo_{air}$) and
 197 CHBr₃ fluxes ($Bromo_{flux}$) in three different specific areas (North Atlantic, tropical West Pacific, Southern Ocean), which

198 are presented in Section 3.4. Driving factors for each area, parameter and season were derived using multilinear regression
199 (MLR) analyses.

200 In order to compare parameters with different magnitudes, input data of each parameter was standardized prior to MLR
201 analysis by centering to have a mean of 0 and scaled to have a standard deviation of 1. Input data for each parameter
202 consisted of daily mean averages over the specific area, providing 365 values as basis for annually and ~ 90 values for
203 seasonally resolved MLR.

204 A schematic summarizing the relationships between the different parameters in Eqs. (S1-S3) is shown in Fig. 2 including
205 CHBr₃ production (*Bromo_{prod}*), the 10 m surface wind speed (*wind*), the sea surface temperature (*SST*) and the derived

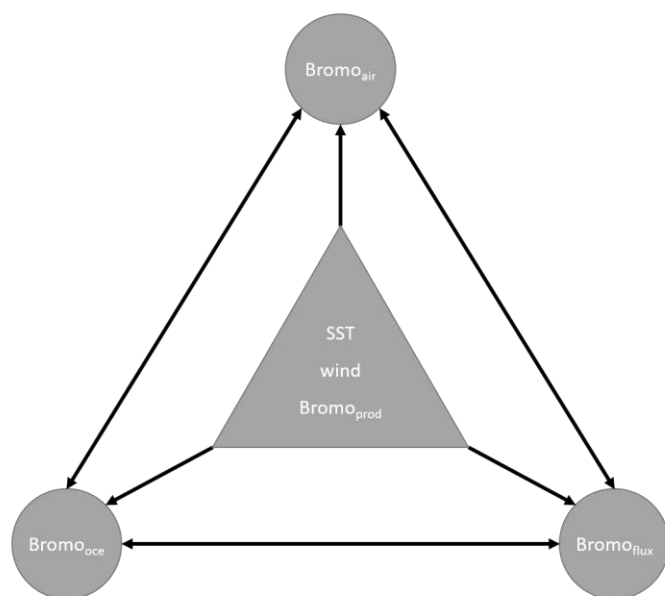


Figure 2: Schematic illustration of relationships between different parameters influencing each other. Generic parameters in triangle influence the derived parameters in circles. Each derived parameter in a circle is influenced by all other five parameters. Relationships are the basis for the multilinear regression analysis using Eqs. (S1-S3).

206 parameters *Bromo_{oce}*, *Bromo_{air}* and
207 *Bromo_{flux}*. Other oceanic CHBr₃ loss
208 processes (e.g., photolysis) were neglected
209 in these calculations as the loss due to gas
210 exchange is ~70 times higher than the loss
211 due to photolysis (data not shown). If the
212 highest resulting coefficient for each season
213 and MLR is significantly higher than all
214 other coefficients, the corresponding
215 parameter is presented as the main driver for
216 either *Bromo_{oce}*, *Bromo_{air}* or *Bromo_{flux}*. If the
217 highest resulting coefficient is not
218 significantly different from the second or
219 third highest coefficient, more than one
220 coefficient and corresponding parameters
221 are presented as main drivers. Table 1 lists
222 the annual mean coefficients, Table S1 lists
223 the seasonally resolved main drivers.

224

225 3 Results and Discussion

226 3.1 Model climatology

227 The annual and seasonal CHBr₃ oceanic concentrations, atmospheric mixing ratios and emissions reveal significant
228 spatial variations (Figure 3, S1). The annual global average surface CHBr₃ concentrations are 5.04 pmol L⁻¹ (DJF:
229 5.36 pmol L⁻¹, JJA: 4.86 pmol L⁻¹) with highest annual mean concentrations of 28.37 pmol L⁻¹ in the upwelling region off
230 the coast of Peru and lowest annual mean concentrations of 1.37 pmol L⁻¹ in the Gulf of Boothia (71°N, 91°W) north of
231 Canada. The areas with the lowest oceanic CHBr₃ concentrations are the central parts of the North and the South Pacific
232 Gyres. Concentrations of surface ocean CHBr₃ in the entire NH (JJA: 5.9 pmol L⁻¹ > DJF: 4.3 pmol L⁻¹) and SH (DJF:
233 6.1 pmol L⁻¹ > JJA: 4.1 pmol L⁻¹) are generally higher during the respective summer than during the respective winter.
234 These distinct differences of oceanic CHBr₃ concentrations are also due to the higher biological production in summer
235 (NH: 335 pmol m⁻² h⁻¹; SH: 371 pmol m⁻² h⁻¹) than in winter (NH: 235 pmol m⁻² h⁻¹; SH: 173 pmol m⁻² h⁻¹) as shown in
236 Fig. S3 and discussed in Section 3.4. The direct link of CHBr₃ to the biological production applies to the low oceanic
237 CHBr₃ concentrations in the North and South Pacific Gyres and to the high oceanic concentrations in the areas of the
238 EBUS.

239 Variations in annual mean atmospheric CHBr_3 mixing ratios mainly follow the surface ocean concentrations with highest
240 mixing ratios in the tropics, especially in the EBUS. Global annual average mixing ratios over the ocean are 0.67 ppt
241 (DJF: 0.70 ppt, JJA: 0.69 ppt) with highest annual mean mixing ratios of 2.21 ppt in the south-eastern Pacific upwelling
242 region off the coast of Peru and lowest annual mean mixing ratios of 0.13 ppt over the Persian Gulf. On a global average,
243 the variability of atmospheric mixing ratios is lower than the variability of CHBr_3 concentrations in the surface ocean
244 (Figure 3, S2). During austral winter (JJA), mostly dark and cold conditions increase the lifetime of atmospheric CHBr_3 ,
245 which leads to a uniform mixing ratio (0.67 ± 0.05 ppt) over the entire Southern Ocean. Similar to oceanic CHBr_3
246 concentrations, central parts of the North and South Pacific Gyre have low atmospheric CHBr_3 mixing ratios
247 (0.46 ± 0.05 ppt). During austral summer (DJF) atmospheric mixing ratios increase further as strong biological activity
248 increases surface ocean concentrations, which enhance the oceanic emissions. Further seasonal dependent driving factors
249 for specific regions are discussed in Section 3.4.

250 Generally, supersaturation of CHBr_3 in the world's ocean leads to emissions from the ocean to the atmosphere (defined
251 as positive fluxes). Global annual mean fluxes are $268 \text{ pmol m}^{-2} \text{ h}^{-1}$ (DJF: $294 \text{ pmol m}^{-2} \text{ h}^{-1}$, JJA: $253 \text{ pmol m}^{-2} \text{ h}^{-1}$) with
252 highest annual mean fluxes of $953 \text{ pmol m}^{-2} \text{ h}^{-1}$ in the upwelling region off the coast of Peru. In the tropical regions,
253 annual mean fluxes of $427 \text{ pmol m}^{-2} \text{ h}^{-1}$ between 10°N and 10°S , add to atmospheric entrainment of oceanic CHBr_3 up
254 into the stratosphere (Fiehn et al., 2018; Tegtmeier et al., 2020). Lowest annual mean fluxes of $-1 \text{ pmol m}^{-2} \text{ h}^{-1}$ are
255 modelled under ice free conditions in the Gulf of Boothia (71°N , 91°W) north of Canada (white regions in Figure 3) with
256 very low oceanic CHBr_3 production and low seawater temperatures. However, the atmospheric mixing ratios are
257 comparably high under these conditions. These conditions favour negative fluxes, which, according to the results of our
258 fully coupled ESM, can be seen in the Arctic and Antarctic during winter, confirming the results by Stemmler et al. (2015)
259 and Ziska et al. (2013) although with a lower magnitude.

260 Generally, the modelled CHBr_3 emissions are high, where the ocean concentration is high and the elevated emissions lead
261 to elevated atmospheric mixing ratios. However, due to oceanic transport processes, locations of high oceanic CHBr_3
262 emissions do not always coincide with locations of high oceanic CHBr_3 production (compare Figure 3 and Fig. S3). In
263 the northern part of the Bay of Bengal ($>18^\circ\text{N}$) e.g., ocean concentrations during DJF are very high (average:
264 $21.64 \text{ pmol L}^{-1}$), while the emissions are not as high compared to other ocean regions, due to low wind speeds. This leads
265 to a lower atmospheric mixing ratio than expected from the oceanic concentrations and shows that oceanic CHBr_3
266 concentrations and emissions as well as atmospheric mixing ratios show regionally different interdependencies, which is
267 addressed in detail in Section 3.4.

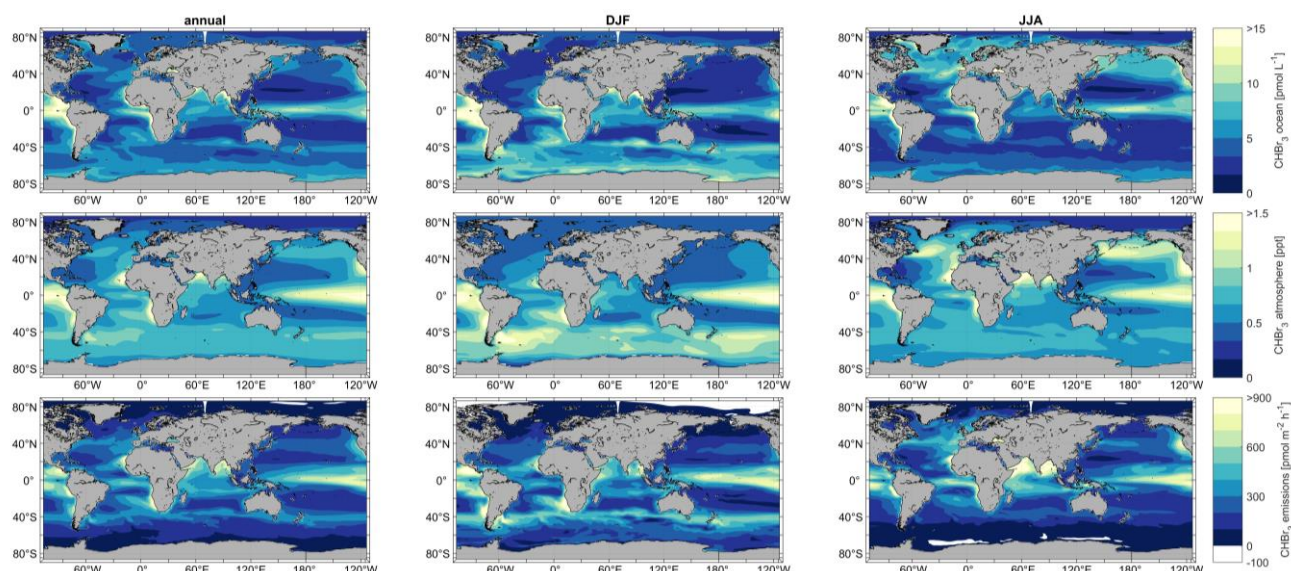


Figure 3: Simulated annual (left), DJF (middle) and JJA (right) mean oceanic surface CHBr_3 concentrations (upper panel), atmospheric mixing ratios (middle panel) and CHBr_3 emissions (lower panel) for the period 1990-2014.

269 3.2 Model validation with observations

270 The annual mean surface oceanic CHBr_3 concentration (Figure 4a) from the 666 daily mean observations is $5.02_{0.05}^{28.21}$
 271 (mean $_{\min}^{\max}$) pmol L^{-1} . The global annual mean surface oceanic CHBr_3 concentration from the model using only locations
 272 corresponding with an existing observation is $6.61_{1.39}^{24.25}$ pmol L^{-1} . These results indicate that the model values are in the
 273 range with observed concentrations of oceanic CHBr_3 . While the mean concentration of the model is higher than the mean
 274 of the observations, all validated model data points fall within the full range of the observations. The model data cover a
 275 grid of ~ 100 km resolution, which leads to a smoothing of the values, whereas observational data is local daily mean
 276 point data.

277 The mean CHBr_3 atmospheric mixing ratio (Figure 4b) from the 697 daily mean observations is $1.45_{0.03}^{9.80}$ ppt. The global
 278 mean atmospheric mixing ratio of CHBr_3 from the model at locations with observations is $0.76_{0.22}^{2.70}$ ppt. This comparison
 279 shows that the observed atmospheric mixing ratios of CHBr_3 are in the same magnitude but generally higher than those
 280 from the model output. While our model experiment focuses on natural CHBr_3 production by phytoplankton, other
 281 sources as coastal macroalgae (Carpenter and Liss, 2000) and anthropogenic sources, such as power plant cooling (Maas
 282 et al., 2021) or desalination plants (Agus et al., 2009), may explain parts of the higher global annual median observational
 283 data of 41%. Jia et al. (2023) calculated an increase of global CHBr_3 emissions of 31.5% when including anthropogenic
 284 emissions, which partly can also explain the lower observed atmospheric mixing ratios in the model compared to the
 285 observations.

286 Figure 4 also shows a more detailed comparison between observations and model data in 5° meridional binned averages
 287 (shaded areas) for oceanic (Figure 4c) and atmospheric (Figure 4d) CHBr_3 on annual basis as well as in JJA and DJF.
 288 The modelled data compare well with observations of oceanic CHBr_3 (Figure 4c) on annual basis over the 5° latitudinal
 289 bins. In the HalOcAt database, there are no oceanic and atmospheric observations available north of 50°N and south of
 290 30°S during boreal (DJF) and austral winter (JJA), respectively, which highlights the need of model data to entirely
 291 describe spatially and temporally resolved CHBr_3 (see also Fiehn et al., 2018). During DJF, the model overestimates the
 292 measured concentrations between 20°N and 5°S . During JJA, averaged model concentrations in the NH ($10^\circ\text{N} - 60^\circ\text{N}$)
 293 are slightly higher than the averaged observations. These discrepancies could indicate a missing process understanding,
 294 revealing lower oceanic production or additional loss processes.

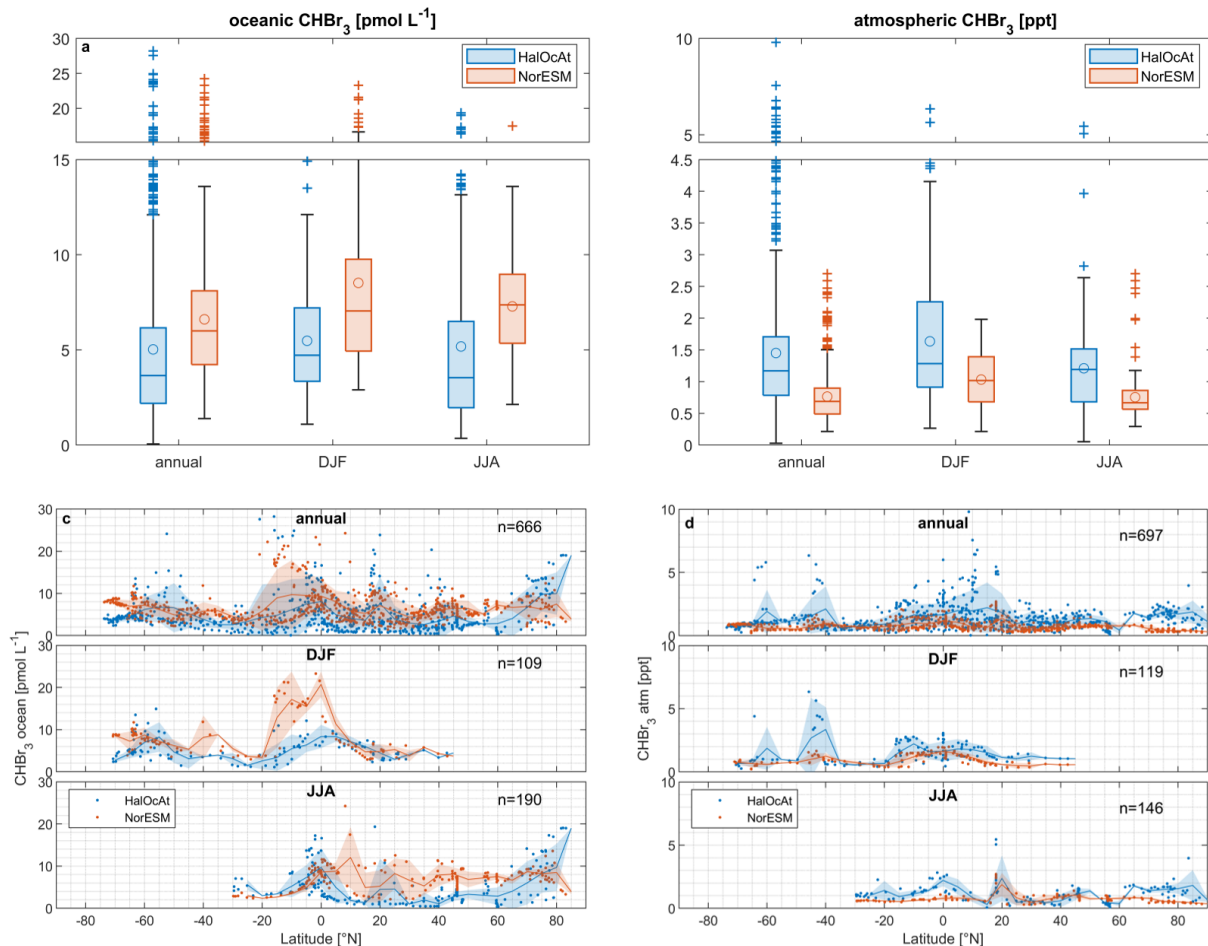


Figure 4: Boxplot comparison of NorESM2 model results with HalOcat observations for oceanic (a) and atmospheric CHBr₃ (b), c: zonal mean oceanic CHBr₃ comparison annually and in DJF and JJA, d: zonal mean atmospheric CHBr₃ comparison annually and in DJF and JJA. Shaded areas are standard deviations from 5° zonal bin averages. Boxplots (left) have a break in the y axis to increase readability of the figure. The line inside the box represents the median value, the circle the mean value, the boxes show the first to third quartile, and the whiskers illustrate the highest and lowest values that are not outliers. The plus signs represent outliers.

295 With all data available, the 5° latitudinal averaged atmospheric CHBr₃ observations have a large spread in the tropics
 296 resulting in a high standard deviation (Figure 4d). The model results in this region are uniform with a much lower standard
 297 deviation. During boreal winter (DJF) atmospheric CHBr₃ observations and model results show a good agreement, with
 298 an exception at 40-50°S. In this latitude range, observational atmospheric CHBr₃ mixing ratios (>3 ppt, Figure 4d) were
 299 recorded between 24° and 60° W in the South Atlantic in 2007 (Gebhardt, 2008). Gebhardt (2008) reports enhanced
 300 biological production in the Argentinian shelf-break zone (55°-60° W) with elevated chlorophyll-*a* concentration up to
 301 4.5 μg L⁻¹. These values suggest also a high production of CHBr₃ and subsequent high emissions to the atmosphere. The
 302 prevailing westerly winds, transported the CHBr₃ enriched air masses eastward to the remote South Atlantic region in
 303 2007, while in the model lower biological production entails lower atmospheric mixing ratios compared to the
 304 observations. During boreal summer (JJA) very good agreement between atmospheric observations and model results is
 305 obtained between 10°N and 60°N. North of 60°N, the model underestimates the measured atmospheric mixing ratios in
 306 the polar region. Local meteorological and biological conditions (e.g., high wind speed, distinct phytoplankton blooms)
 307 are averaged by the model to a resolution of ~100 km. Averaging data over time or space leads to lower mean values (i.e.,
 308 gas emissions, Bates and Merlivat, 2001) in the model. This explains lower modelled atmospheric mixing ratios compared
 309 to the observations on a global scale together with anthropogenic CHBr₃ sources (Jia et al., 2023). Furthermore,
 310 discrepancies between model results and observations also point to missing process understanding, which helps to
 311 improve our understanding of the biogeochemical cycling of CHBr₃. For our CHBr₃ production rate, we used the highest
 312 production rate, which we could retrieve from the published data (Roy, 2010; Kurihara et al., 2012). Therefore, we likely

313 do not underestimate the oceanic planktonic source in general, and either the production rates are too high or the sink
314 rates are too low in some regions, e.g., the equatorial Pacific. Furthermore, the resulting model bias does not follow a
315 spatial pattern (Fig. S4). We claim, that currently not enough observational or experimental information is available to
316 narrow down on the answer. As pointed out, the underestimation of atmospheric CHBr₃, despite the maximum of the
317 planktonic CHBr₃ source is likely due to averaging, a missing source for the atmosphere or even the parameterization of
318 marine CHBr₃ fluxes yielding too low emission values. Despite the named uncertainties, which deserve further studies,
319 the model reflects very well the data and therewith the current status of knowledge.

320 **3.3 Excess and deficit regions of oceanic bromoform**

321 In most of the world's surface oceans (e.g., North and South Pacific) CHBr₃ production and loss rates are balanced on an
322 annual average with a k_{bal} close to zero (top panel of Figure 5). The equator region experiences a strong excess rate
323 (positive k_{bal}) on annual average with values up to 300 pmol m⁻² h⁻¹ showing higher CHBr₃ production than loss of CHBr₃
324 in the upper ocean, caused by strong primary production (Fig. S3) in the equatorial upwelling. Surface currents transport
325 the CHBr₃ enriched surface water masses away from the equator, while experiencing loss of CHBr₃ to the atmosphere.
326 Therefore, adjacent marine areas north and south of the equator experience a deficit rate (negative k_{bal}) of CHBr₃ (blue
327 areas, Figure 5), as no production balances the loss. The seasonality of k_{bal} is pronounced in the extratropics (bottom
328 panels of Figure 5). In these regions, a CHBr₃ excess rate is observed mainly during summer and a CHBr₃ deficit rate
329 mainly during winter in the respective hemispheres. A high k_{β} (elevated biological production) and a low k_F (weak
330 emissions to the atmosphere) caused by lower winds during summer, lead to a higher CHBr₃ surface ocean concentration
331 in summer compared to winter time (Figure 3). During winter in both hemispheres, lower biological activity (low k_{β}) and
332 elevated wind speed (high k_F) decrease the CHBr₃ production and increase the emissions to the atmosphere, which leads
333 to a CHBr₃ deficit rate. These results reveal seasonal as well as spatial differences in parameters (driving factors), which
334 influence CHBr₃ concentrations in the world's ocean.

335 In the following subsection, we selected three different case study areas, indicated in Figure 5, in order to contrast the
336 driving factors of the variations of oceanic and atmospheric CHBr₃ on regional and temporal scales:

- 337 - North Atlantic, with an annual mean CHBr₃ deficit rate ($k_{bal} = -33$ pmol m⁻² h⁻¹)
- 338 - Tropical West Pacific, with an annual mean CHBr₃ excess rate ($k_{bal} = +32$ pmol m⁻² h⁻¹)
- 339 - Southern Ocean, with negative fluxes during the respective winter ($k_{bal} = +15$ pmol m⁻² h⁻¹)

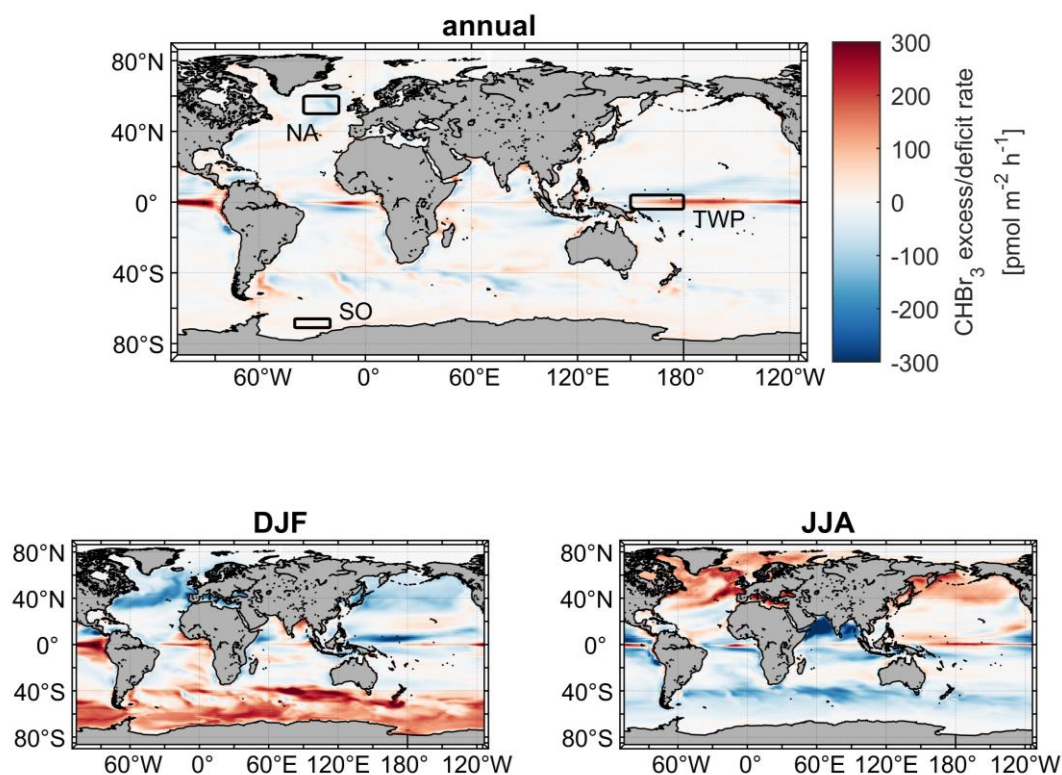


Figure 5: Mean CHBr₃ excess/deficit rates on annual (top) and seasonal (DJF: bottom left; JJA: bottom right) basis. Three rectangles in the top figure illustrate locations of case studies. NA: North Atlantic; TWP: Tropical West Pacific; SO: Southern Ocean.

340 **3.4 Driving factors of bromoform on regional and temporal scales**

341 This section investigates the seasonal changes of oceanic and atmospheric CHBr₃ and other parameters in three
 342 contrasting regions. Daily means of oceanic CHBr₃ concentrations, production, fluxes, balance (as defined in Eq. (15)),
 343 atmospheric mixing ratios as well as SST and wind speed, over an entire year reveal large differences between the North
 344 Atlantic, tropical West Pacific, and Southern Ocean (Figure 6). With MLR analysis, the main driving factors of oceanic
 345 and atmospheric CHBr₃ variability and its fluxes in each region and season are investigated.

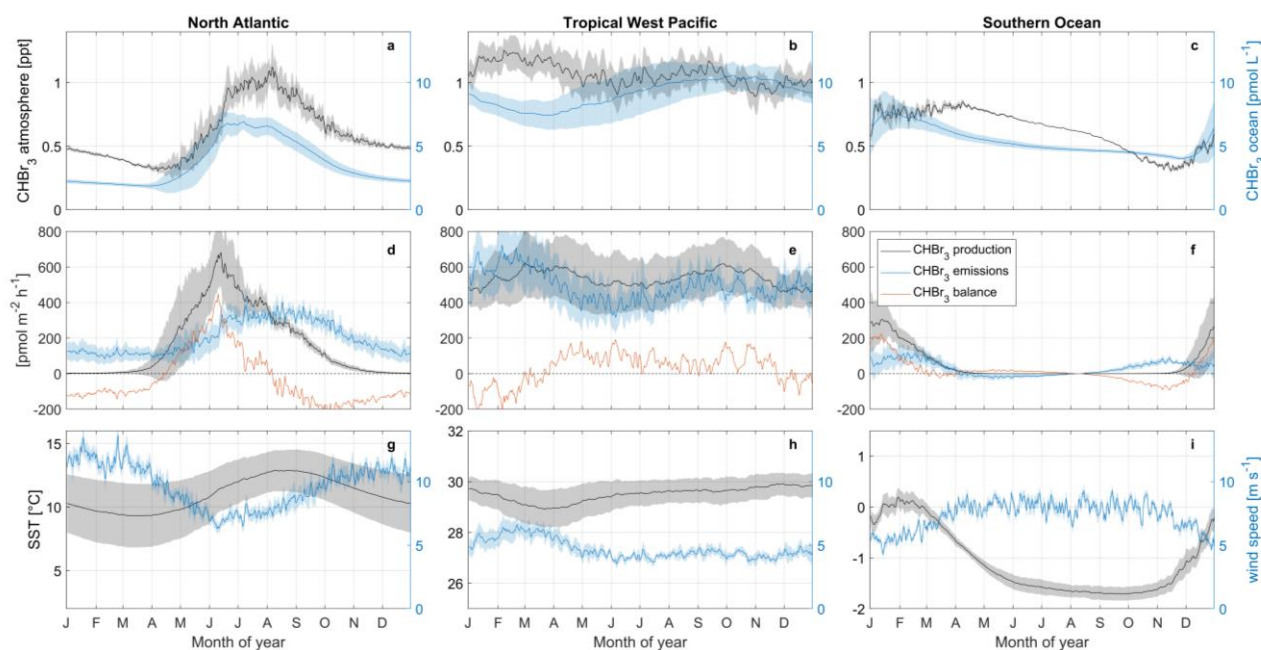


Figure 6: Seasonal changes of oceanic and atmospheric CHBr₃ (upper panel, a-c), CHBr₃ production, emissions and balance (middle panel, d-f), SST and wind speed (bottom panel, g-i), in the North Atlantic (left), tropical west Pacific (middle) and Southern Ocean (right). Shaded area is one standard deviation of the average value in the corresponding area. Note: y-limits for SST are not similar in between the three regions in order to increase readability of the figure.

347

348 North Atlantic

349 The North Atlantic region (50°N – 60°N, 15°W – 35°W) is characterized by a strong seasonal cycle of both oceanic
 350 CHBr₃ concentrations and atmospheric mixing ratios (Figure 6a). The magnitude of the cycle is strongest among the three
 351 investigated regions (compare with Figure 6b,c). Oceanic CHBr₃ concentrations are on average 3.64 pmol L⁻¹
 352 (min:1.87 pmol L⁻¹ during end of March; max: 6.93 pmol L⁻¹ during July). Atmospheric mixing ratios show a similar
 353 seasonal cycle, shifted by one month, with average values of 0.60 ppt, a minimum mixing ratio of 0.30 ppt during April
 354 and a maximum mixing ratio of 1.12 ppt during August. The CHBr₃ emissions (199±91 pmol m⁻² h⁻¹) follow the pattern
 355 of both oceanic and atmospheric values (Figure 6d). The seasonal cycle of CHBr₃ production (171±191 pmol m⁻² h⁻¹) is
 356 similar to the cycle of CHBr₃ concentration, while the sharp peak in May/June when the spring phytoplankton bloom
 357 evolves in the North Atlantic, is not reflected in the oceanic concentrations. The strong production leads to a CHBr₃
 358 excess rate during summer (JJA: 103 pmol m⁻² h⁻¹) and a CHBr₃ deficit rate in winter time (DJF: -114 pmol m⁻² h⁻¹),
 359 respectively (Figure 6d).

360 The MLR analysis indicates, that on an annual basis, variations in atmospheric mixing ratios are mainly associated with
 361 CHBr₃ ocean concentrations (Table 1,) and vice versa (Figure 7a,d). A higher surface water CHBr₃ concentration
 362 increases the emissions to the atmosphere resulting in increasing atmospheric mixing ratios. According to the MLR
 363 analysis on a seasonal basis, oceanic CHBr₃ concentrations are mainly driven by the oceanic production during MAM
 364 and SON (Table S1), which increases from March to June sharply to 680 pmol m⁻² h⁻¹ before gradually decreasing in
 365 SON (Figure 6d). Atmospheric mixing ratios are mainly driven by the oceanic concentration (Figure 7d, Table 1, R²=0.89,
 366 p-value<0.05). Only in winter (DJF), where hardly any production occurs, low SSTs, which increase the solubility of
 367 CHBr₃ drive the atmospheric mixing ratio variations (Table S1, R²=0.95, p-value<0.05). Thus, the emissions decrease,
 368 even during high wind speeds, which leads to lower atmospheric CHBr₃. The emissions are mainly driven by the oceanic
 369 concentrations (Figure 7g, Table 1, R²=0.81, p-value<0.05) over the course of a year, while during spring (MAM) wind
 370 speed, SST, and CHBr₃ production drive the emissions equally (Table S1). While CHBr₃ production and SSTs increase,

371 surface wind speed decreases and emissions are pretty constant at 130 ± 29 $\text{pmol m}^{-2} \text{h}^{-1}$ (Figure 6d). During summer
372 (JJA), low winds and a high oceanic CHBr_3 concentration equally increase the emissions (Table S1). In contrast to spring,
373 higher SSTs (lower solubility) are only of minor importance during JJA, while in autumn and winter the decreasing SSTs
374 are the main drivers again together with high atmospheric mixing ratios, which additionally dampen the emissions (Table
375 S1).

376 **Tropical West Pacific**

377 Figure 5 shows that the equatorial regions of the Atlantic and Pacific Oceans are a source of oceanic CHBr_3 , which is
378 transported to other oceanic regions by ocean currents. CHBr_3 ocean concentrations in the tropical West Pacific ($4^\circ\text{S} -$
379 4°N , $150^\circ\text{E} - 180^\circ\text{E}$) show a reduced seasonal cycle in comparison to the above discussed North Atlantic region (Figure
380 6b), while the average of 9.11 pmol L^{-1} is significantly higher than in the North Atlantic. Also, CHBr_3 production
381 (536 ± 42 $\text{pmol m}^{-2} \text{h}^{-1}$), CHBr_3 fluxes (492 ± 84 $\text{pmol m}^{-2} \text{h}^{-1}$) and atmospheric mixing ratios (1.07 ± 0.08 ppt) show hardly
382 any seasonality (Figure 6b, e). The same is true for SST (29.50 ± 0.28 $^\circ\text{C}$) and wind speed (4.71 ± 0.76 m s^{-1}) (Figure 6h).
383 The CHBr_3 balance is positive throughout the whole year except for DJF (Figure 6e). During this period high wind speed
384 entails higher emission. Production rates are lower and induce a CHBr_3 deficit. However, this deficit does not compensate
385 for the CHBr_3 excess during the rest of the year leading to an overall excess of 32 $\text{pmol m}^{-2} \text{h}^{-1}$.

386 MLR analysis shows that the wind speed is the main factor influencing the variations of oceanic CHBr_3 concentrations,
387 CHBr_3 atmospheric mixing ratios, and CHBr_3 fluxes on an annual basis (Figure 7b,e,h, Table 1). During JJA and SON
388 CHBr_3 production drives the CHBr_3 concentrations (Table S1) which increases from 477 $\text{pmol m}^{-2} \text{h}^{-1}$ in July to
389 618 $\text{pmol m}^{-2} \text{h}^{-1}$ by the end of September. This results in an increase of oceanic CHBr_3 concentrations as all other
390 parameters stay constant during that period.

391 **Southern Ocean**

392 The selected Southern Ocean region ($71^\circ\text{S} - 66^\circ\text{S}$, $40^\circ\text{W} - 20^\circ\text{W}$) experiences generally negative water temperatures
393 (mean: -1.08°C) around the year (Figure 6i). The minimum of -1.71°C is reached in September and the maximum of
394 $+0.19^\circ\text{C}$ in January/February. Wind speed is nearly constant throughout the year (7.33 m s^{-1}) decreasing only during
395 austral summer (DJF, Figure 6h) to 5.76 m s^{-1} . Oceanic CHBr_3 concentrations are on average higher (5.38 pmol L^{-1}) than
396 in the North Atlantic region. Maximum concentrations of 7.74 pmol L^{-1} are reached in January and lowest concentrations
397 of 4.04 pmol L^{-1} end of December. Due to low SSTs as well as a short daylength, CHBr_3 production rates are almost zero
398 from May to October and increase to 306 $\text{pmol m}^{-2} \text{h}^{-1}$ in January (Figure 6f). Atmospheric mixing ratios are highest
399 (0.85 ppt) from January to beginning of April and decline very slowly (Figure 6c) under the following low light levels
400 until they reach their minimum of 0.31 ppt in November. Constant high atmospheric mixing ratios, very low SST, and
401 decreasing oceanic CHBr_3 concentrations after the short summer bloom in DJF, influence the switch from emissions to
402 negative fluxes between April and July (Figure 6f). CHBr_3 is in excess during times of production (DJF), almost balanced
403 during the autumn and wintertime from April to September (Figure 6f), with a slight excess of 15 $\text{pmol m}^{-2} \text{h}^{-1}$ annually.

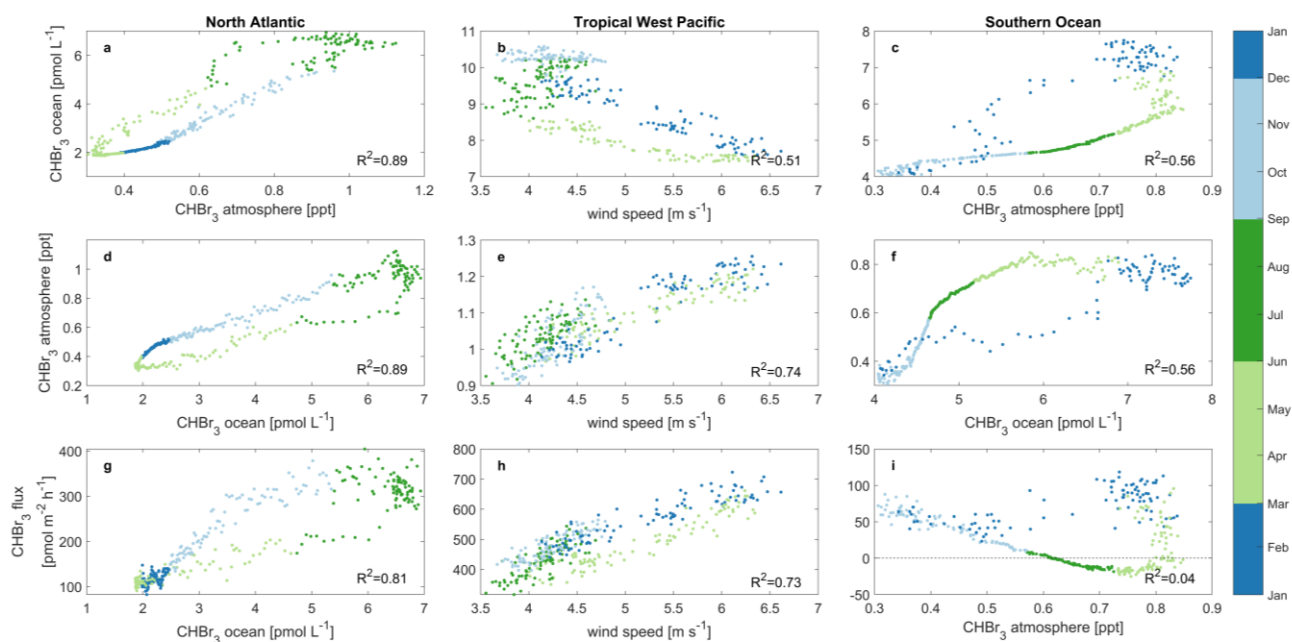


Figure 7: Main drivers of oceanic CHBr₃ concentrations (a, b, c), atmospheric mixing ratios (d, e, f) and CHBr₃ emissions (g, h, i) in the North Atlantic (a, d, g), tropical West Pacific (b, e, h) and Southern Ocean (c, f, i). Different colours denote different seasons of the year. Each data point represents a daily mean average over the specific case study area. Statistical analysis for each of the nine datasets indicates significant correlation (p-value<0.05) with coefficient of determination (R²) listed in bottom right of each subplot. Please be aware that subplots a and d as well as c and f contain the same information only with interchanged x and y axes, as both parameters, oceanic and atmospheric bromoform, are interdependent in the two regions.

404 Atmospheric mixing ratios are the main factor influencing the variations of oceanic concentrations (Figure 7c, Table 1,
 405 R²=0.56, p-value<0.05), while during autumn (MAM, Table S1) CHBr₃ production is its driving factor. During this time
 406 CHBr₃ production decreases and so does the ocean concentration (Figure 6c,f). The atmospheric mixing ratio is mainly
 407 driven by high oceanic CHBr₃ concentrations in DJF: R²=0.88, p-value<0.05 and by SST during the cold JJA: R²=0.95,
 408 p-value<0.05) (Table S1). Low light levels increase the lifetime of atmospheric CHBr₃ in JJA and the low SSTs increase
 409 the solubility of oceanic CHBr₃, both leading to decreased emissions during winter (JJA). CHBr₃ emissions are mainly
 410 driven by SST in summer (DJF) (Table S1, R²=0.60, p-value<0.05), as the solubility of CHBr₃ in the ocean decreases due
 411 to the increasing SSTs. After this short summer period, temperatures decline in autumn (MAM) and increase the solubility
 412 of oceanic CHBr₃, which results in decreased emissions (Figure 6f,i). During winter (JJA) and spring (SON), SSTs and
 413 oceanic CHBr₃ concentrations stay low and therefore, increasing emissions are mainly driven by decreasing atmospheric
 414 mixing ratios.

415
 416 In summary, the three different regions clearly indicate that driving factors for atmospheric and oceanic bromoform as
 417 well as for bromoform fluxes are dependent on local conditions. Planktonic production, which is the only source for
 418 CHBr₃ in the model set-up impacts the variability of oceanic CHBr₃ concentrations only in regions with a distinct
 419 seasonality (i.e., North Atlantic, Southern Ocean) in biological production. During times of lower productivity,
 420 atmospheric mixing ratios influence the oceanic CHBr₃ concentration. In subpolar and polar regions (i.e., Southern
 421 Ocean), oceanic CHBr₃ and its subsequent fluxes are driven by its solubility related to the low SST in late winter and
 422 spring (i.e., sea-ice melt). Although wind speed is an important parameter for the air-sea gas flux, this study reveals that
 423 wind speed is only the main driver for oceanic and atmospheric CHBr₃ variability in areas with low seasonality (i.e.,
 424 Tropical West Pacific).

425 These results demonstrate the benefits of simulating CHBr₃ in a fully coupled ESM configuration to calculate driving
 426 factors for different parameters on temporal and spatial basis. Studying the influence of one or more parameters on the
 427 variability of other parameters in the model is not realistic when using prescribed oceanic concentrations or atmospheric

428 mixing ratios. Investigating the CHBr₃ cycling in different locations and different time scales helps to understand their
 429 interconnection and to better integrate their results in today's as well as in a future climate.

430
 431

432

433 **Table 1: Annual coefficients of predictors for each MLR in the different case studies. Bold coefficients are the highest value**
 434 **within a MLR analysis of one parameter and region and act as indicator for the driving factors of the predicted parameter**
 435 **(Eqs. S1-S3).**

	Predictor parameter	North Atlantic	Tropical West Pacific	Southern Ocean
CHBr ₃ ocean concentration	Wind speed	-0.02	-0.96	-0.10
	SST	<0.01	<0.01	<0.01
	Atm. mixing ratio	0.68	0.19	0.60
	CHBr ₃ production	0.39	0.13	0.53
	CHBr ₃ fluxes	<0.01	<0.01	<0.01
CHBr ₃ atmospheric mixing ratio	Wind speed	0.29	0.94	0.55
	SST	0.32	<0.01	<0.01
	Ocean concentration	0.93	0.12	1.07
	CHBr ₃ production	<0.01	0.02	<0.01
	CHBr ₃ fluxes	<0.01	<0.01	<0.01
CHBr ₃ fluxes	Wind speed	0.20	1.27	0.21
	SST	0.67	0.50	0.53
	Ocean concentration	0.83	0.16	1.00
	CHBr ₃ production	<0.01	0.10	<0.01
	Atm. mixing ratio	-0.32	-0.02	-1.22

436
 437

438 3.5 Global bromoform emission inventories

439 A comparison of our modelled versus published global CHBr₃ emissions are presented in Figure 8. Global annual CHBr₃
 440 emissions from top-down approaches are 449 Gg yr⁻¹, 528 Gg yr⁻¹ and 592 Gg yr⁻¹ based on calculations from Liang et
 441 al. (2010), Ordóñez et al. (2012) and Warwick et al. (2006), respectively. These inventories are about two to eight times
 442 higher than calculated annual emissions from bottom-up approaches, which are in the range of 76 Gg yr⁻¹ (Stemmler et
 443 al., 2015) to 238 Gg yr⁻¹ (Lennartz et al., 2015). Our results (214 Gg yr⁻¹) are similar to emission estimates published by
 444 Ziska et al. (2013) of 215 Gg yr⁻¹ but significantly higher than the 76 Gg yr⁻¹ estimate by Stemmler et al. (2015), which
 445 is based on the oceanic CHBr₃ observations from HalOcat.

446 As we apply a 2.38 higher CHBr₃ production rate in the ocean as Stemmler et al. (2015), we simulate a production rate
 447 of 0.88 Gmol yr⁻¹ compared to 0.37 Gmol yr⁻¹ by Stemmler et al. (2015). Our emissions (214 Gg yr⁻¹) are 2.82 times
 448 higher (Figure 8, global values) compared to the emission estimate (76 Gg yr⁻¹) from Stemmler et al. (2015). Our model

449 adaption is based on the higher bulk CHBr_3 production ratio (β_0) according to Kurihara et al. (2012) and Roy (2010) (see
 450 Section 2.1.1). This production rate is at the higher end of published values. Therefore, the resulting CHBr_3 production
 451 can be seen as an upper limit. Moreover, the ratio of bromoform emissions (ratio: 2.82) is higher compared to the ratio of
 452 bromoform production (ratio: 2.38) and indicates an excess of 18%. This is caused by the prescribed mean atmospheric
 453 values without any seasonality used in Stemmler et al. (2015) and gets more significant with higher latitudes where
 454 seasonality of bromoform emissions becomes more important (Fiehn et al., 2018). Especially during winter times annually
 455 mean prescribed atmospheric values are too high and artificially dampen the bromoform emissions. This results in a
 456 higher emission estimate using our fully coupled model approach.
 457 Comparing bottom-up and top-down approaches, the annual CHBr_3 emissions from the tropics ($20^\circ\text{S} - 20^\circ\text{N}$, Figure 8)
 458 account for $\sim 47\%$ (105 Gg yr^{-1}) and $\sim 66\%$ (351 Gg yr^{-1}) of global emissions, respectively. The tropics only account for
 459 $\sim 37\%$ of global oceanic surface though, underlining this region as the most important source region of CHBr_3 of the earth.
 460 Emissions in the middle latitudes (20 to 50°N/S) of the NH and SH show a similar distinction between top-down and
 461 bottom-up approaches. However, the annual CHBr_3 emissions are only half that of the tropics. Natural open ocean
 462 emission estimates from our study are proportional to the surface area between NH and SH in the middle latitudes. This
 463 relationship is reversed for the top-down approach estimates. Top-down emission estimates are higher in the NH
 464 compared to the SH although the oceanic surface area is lower in the NH (17%) compared to the SH (26%). This indicates
 465 the strong influence of coastal emissions on observational atmospheric mixing ratios used in top-down approaches.
 466 In the high latitudes ($50\text{-}90^\circ\text{N/S}$), emissions of bottom-up approaches are in the same range (SH) and even higher (NH)

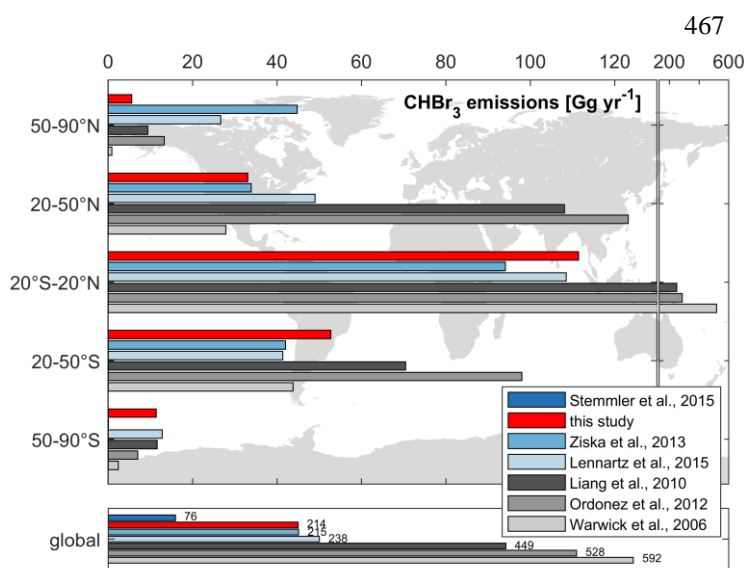


Figure 8: Comparison of global and latitudinally binned annual CHBr_3 emissions from different studies. Grey and blue bars denote top-down and bottom-up approaches, respectively.

482 Stemmler et al. (2015) are biased to the ice-free summer months, with higher atmospheric mixing ratios, thus artificially
 483 dampening the winter emissions. Due to the influence of the annually fixed prescribed atmospheric mixing ratios in
 484 Stemmler et al. (2015), negative fluxes are more pronounced between 50°N/S and 70°N/S up to $-100 \text{ pmol m}^{-2} \text{ h}^{-1}$ at \sim
 485 60°N/S . Our lesser negative fluxes in the coupled ESM approach appear more realistic as they are not based on summer
 486 biased prescribed values.

487

488 Our global CHBr_3 emission inventory indicates distinct differences to the top-down approaches reflecting only 40%-50%
 489 of global emissions calculated by Liang et al. (2010), Ordóñez et al. (2012) and Warwick et al. (2006). Atmospheric
 490 CHBr_3 values in the top-down approaches are higher than the calculated atmospheric mixing ratios from our fully coupled

467 compared to top-down approaches (Figure 8). In the northern polar region (8% of global oceanic surface area), CHBr_3 emissions from our study account for 3% (6 Gg yr^{-1}) of global emissions and are significantly lower than the other two bottom-up approaches from Lennartz et al. (2015) (11%, 27 Gg yr^{-1}) and Ziska et al. (2013) (21%, 45 Gg yr^{-1}), which appears mainly due to the resolved seasonality within our study. According to the HalOcAt database, no measurements are recorded from November to February and from May to September north of 50°N in the NH and south of 50°S in the SH, respectively. Therefore, the prescribed atmospheric values in Ziska et al. (2013) and in

491 model analysis. Those include elevated coastal sources (Scenario A and C, Liang et al., 2010), which may partly explain
492 the discrepancy.

493 An additional explanation for the overall higher atmospheric mixing ratios of CHBr_3 from observations could be that
494 observations from coastal areas (100 km within the coastline) were excluded from this study and are not represented in
495 the model, as they are difficult to quantify (i.e., tide-dependent CHBr_3 emissions of macroalgae) with a horizontal model
496 resolution of 1° . However, coastal emissions lead to higher atmospheric mixing ratios of CHBr_3 (Fuhlbrügge et al., 2013;
497 Fuhlbrügge et al., 2016; Hepach et al., 2016), which can be transported to remote open ocean regions, while these higher
498 observational values are not included in the model results (Figure 4).

499 Another explanation for the underestimation of the modelled atmospheric mixing ratios compared to observations is the
500 use of air-sea gas exchange parameterizations, whose uncertainty is estimated to be 25% (Wanninkhof, 2007) and may
501 be underestimated up to 75% (Yang et al., 2022) at low wind speeds.

502 **4 Conclusions and Outlook**

503 Our study is the first one to derive oceanic and atmospheric CHBr_3 concentrations, as well as fluxes, from a fully coupled
504 ESM simulation. The model prognostically simulates oceanic CHBr_3 production by phytoplankton and includes oceanic
505 CHBr_3 loss due to air-sea gas exchange, photolysis, hydrolysis and halogen substitution. Atmospheric loss of CHBr_3 is
506 described by photolysis and the reaction with OH. We validate the model results with more than 5,100 oceanic and 8,400
507 atmospheric observations from the HalOcAt database. The simulated global mean CHBr_3 emission rate (214 Gg yr^{-1}) is
508 in the range of previously published bottom-up approaches ($76\text{-}238 \text{ Gg yr}^{-1}$), but significantly lower than top-down
509 approaches ($449\text{-}592 \text{ Gg yr}^{-1}$). The model allows to realistically resolve seasonal and spatial variations and to identify
510 different drivers of oceanic and atmospheric CHBr_3 variability on regional and seasonal scales. Our results indicate that
511 only during high productive seasons a consequently high CHBr_3 production drives high oceanic CHBr_3 concentrations.
512 During low productive seasons, relatively high atmospheric mixing ratios suppress the gas exchange and consequently
513 influence variations in oceanic CHBr_3 concentrations. In tropical regions (e.g., tropical West Pacific) with a small
514 seasonal cycle, but high oceanic concentrations and atmospheric mixing ratios, wind speed is the main factor driving the
515 variability of oceanic and atmospheric CHBr_3 and its fluxes. The results clearly indicate the benefit of a fully coupled
516 ocean-atmosphere-biogeochemistry ESM. In earlier modelling studies, prescribed, fixed atmospheric or oceanic values
517 were applied, which bias the seasonal impact of different factors on oceanic and atmospheric CHBr_3 and subsequently
518 induce additional uncertainties to the magnitude of CHBr_3 emissions.

519 Our fully coupled ocean atmosphere approach resolves natural biogenic oceanic and atmospheric CHBr_3 including their
520 fluxes at relatively high temporal and spatial model resolution. Validation with observational data shows good agreement
521 for large scale spatial patterns and we attribute the remaining model-data differences to missing coastal, both natural and
522 anthropogenic, sources, which are not implemented in the model. Comparison with other published CHBr_3 inventories
523 indicates that approaches without seasonality lack to resolve CHBr_3 fluxes especially in high latitudes.

524 Our results demonstrate the potential for applying a fully coupled ESM to elucidate the primary drivers of the observed
525 CHBr_3 concentrations and fluxes variability across spatial and temporal scales. Moreover, this model set-up allows to
526 implement additional oceanic derived VLS in order to further investigate their influence on the atmospheric chemistry.
527 The dissociation of open ocean natural derived CHBr_3 from coastal area derived CHBr_3 in this study reveal that coastal
528 derived CHBr_3 influences open ocean atmospheric mixing ratios. Therefore, implementing natural coastal next to
529 anthropogenic sources and concurrent model resolution increase in these areas will help to further close the gap of
530 published CHBr_3 emission estimates between bottom-up and top-down approaches. Long-term future changes in CHBr_3
531 dynamics under various scenarios should be investigated with a fully coupled ESM, to study the impact of climate change

532 on CHBr₃ dynamics, i.a., in the Arctic, associated with loss of sea-ice and its climate feedback through interaction with
533 ozone chemistry.

534

535 **Data availability.** Observational data can be made accessible by contacting the principal investigator of HalOcAt through
536 <https://halocat.geomar.de>. Model data will be archived and will be made available upon request.

537

538 **Author contributions.**

539 DB wrote the manuscript and led the discussion with contributions from all authors. DB analysed the model simulations
540 and prepared the graphics. JFT and DJLO implemented the CHBr₃ model code changes in NorESM2 in discussion with
541 BQ and all other authors. JFT carried out the model runs. KK led this project and initiated the research idea for this study.

542

543 **Competing interests.** The authors declare that they have no conflict of interest.

544

545 **Acknowledgements.** This work was financed by the Research Council of Norway through the KeyCLIM project
546 (295046) within the KLIMAFORSK/POLARFORSK program. Resources for the model simulations and data storage
547 were provided by Sigma2 - the National Infrastructure for High Performance Computing and Data Storage in Norway.

548

549 **References**

550 Agus, E., Voutchkov, N., and Sedlak, D. L.: Disinfection by-products and their potential impact on the quality of water
551 produced by desalination systems: A literature review, *Desalination*, 237, 214-237, 10.1016/j.desal.2007.11.059, 2009.

552 Assmann, K. M., Bentsen, M., Segschneider, J., and Heinze, C.: An isopycnic ocean carbon cycle model, *Geoscientific*
553 *Model Development*, 3, 143-167, DOI 10.5194/gmd-3-143-2010, 2010.

554 Bates, N. R. and Merlivat, L.: The influence of short-term wind variability on air-sea CO
555 exchange, *Geophysical Research Letters*, 28, 3281-3284, Doi 10.1029/2001gl012897, 2001.

556 Butler, J. H., King, D. B., Lobert, J. M., Montzka, S. A., Yvon-Lewis, S. A., Hall, B. D., Warwick, N. J., Mondeel, D. J.,
557 Aydin, M., and Elkins, J. W.: Oceanic distributions and emissions of short-lived halocarbons, *Global Biogeochemical*
558 *Cycles*, 21, Artn Gb1023
559 10.1029/2006gb002732, 2007.

560 Carpenter, L. J. and Liss, P. S.: On temperate sources of bromoform and other reactive organic bromine gases, *Journal of*
561 *Geophysical Research-Atmospheres*, 105, 20539-20547, Doi 10.1029/2000jd900242, 2000.

562 Danabasoglu, G., Lamarque, J. F., Bacmeister, J., Bailey, D. A., DuVivier, A. K., Edwards, J., Emmons, L. K., Fasullo,
563 J., Garcia, R., Gettelman, A., Hannay, C., Holland, M. M., Large, W. G., Lauritzen, P. H., Lawrence, D. M., Lenaerts, J.
564 T. M., Lindsay, K., Lipscomb, W. H., Mills, M. J., Neale, R., Oleson, K. W., Otto-Bliesner, B., Phillips, A. S., Sacks,
565 W., Tilmes, S., van Kampenhout, L., Vertenstein, M., Bertini, A., Dennis, J., Deser, C., Fischer, C., Fox-Kemper, B.,
566 Kay, J. E., Kinnison, D., Kushner, P. J., Larson, V. E., Long, M. C., Mickelson, S., Moore, J. K., Nienhouse, E., Polvani,
567 L., Rasch, P. J., and Strand, W. G.: The Community Earth System Model Version 2 (CESM2), *Journal of Advances in*
568 *Modeling Earth Systems*, 12, e2019MS001916, ARTN e2019MS001916
569 10.1029/2019MS001916, 2020.

570 Daniel, J. S., Solomon, S., Portmann, R. W., and Garcia, R. R.: Stratospheric ozone destruction: The importance of
571 bromine relative to chlorine, *Journal of Geophysical Research-Atmospheres*, 104, 23871-23880, Doi
572 10.1029/1999jd900381, 1999.

573 Dorf, M., Butler, J. H., Butz, A., Camy-Peyret, C., Chipperfield, M. P., Kritten, L., Montzka, S. A., Simmes, B., Weidner,
574 F., and Pfeilsticker, K.: Long-term observations of stratospheric bromine reveal slow down in growth, *Geophysical*
575 *Research Letters*, 33, ArtN L24803
576 10.1029/2006gl027714, 2006.

577 Fiehn, A., Quack, B., Stemmler, I., Ziska, F., and Krüger, K.: Importance of seasonally resolved oceanic emissions for
578 bromoform delivery from the tropical Indian Ocean and west Pacific to the stratosphere, *Atmospheric Chemistry and*
579 *Physics*, 18, 11973-11990, 10.5194/acp-18-11973-2018, 2018.

580 Fuhlbrügge, S., Krüger, K., Quack, B., Atlas, E., Hepach, H., and Ziska, F.: Impact of the marine atmospheric boundary
581 layer conditions on VLSL abundances in the eastern tropical and subtropical North Atlantic Ocean, *Atmospheric*
582 *Chemistry and Physics*, 13, 6345-6357, 10.5194/acp-13-6345-2013, 2013.

583 Fuhlbrügge, S., Quack, B., Tegtmeier, S., Atlas, E., Hepach, H., Shi, Q., Raimund, S., and Krüger, K.: The contribution
584 of oceanic halocarbons to marine and free tropospheric air over the tropical West Pacific, *Atmospheric Chemistry and*
585 *Physics*, 16, 7569-7585, 10.5194/acp-16-7569-2016, 2016.

586 Gebhardt, S.: Biogenic emission of halocarbons, Mainz, Univ., Diss., 2008, 10.25358/openscience-2211, 2008.

587 Gettelman, A., Mills, M. J., Kinnison, D. E., Garcia, R. R., Smith, A. K., Marsh, D. R., Tilmes, S., Vitt, F., Bardeen, C.
588 G., McInerny, J., Liu, H. L., Solomon, S. C., Polvani, L. M., Emmons, L. K., Lamarque, J. F., Richter, J. H., Glanville,
589 A. S., Bacmeister, J. T., Phillips, A. S., Neale, R. B., Simpson, I. R., DuVivier, A. K., Hodzic, A., and Randel, W. J.: The
590 Whole Atmosphere Community Climate Model Version 6 (WACCM6), *Journal of Geophysical Research-Atmospheres*,
591 124, 12380-12403, 10.1029/2019jd030943, 2019.

592 Gschwend, P. M., Macfarlane, J. K., and Newman, K. A.: Volatile halogenated organic compounds released to seawater
593 from temperate marine macroalgae, *Science*, 227, 1033-1035, 10.1126/science.227.4690.1033, 1985.

594 Hense, I. and Quack, B.: Modelling the vertical distribution of bromoform in the upper water column of the tropical
595 Atlantic Ocean, *Biogeosciences*, 6, 535-544, DOI 10.5194/bg-6-535-2009, 2009.

596 Hepach, H., Quack, B., Tegtmeier, S., Engel, A., Bracher, A., Fuhlbrügge, S., Galgani, L., Atlas, E. L., Lampel, J., Friess,
597 U., and Krüger, K.: Biogenic halocarbons from the Peruvian upwelling region as tropospheric halogen source,
598 *Atmospheric Chemistry and Physics*, 16, 12219-12237, 10.5194/acp-16-12219-2016, 2016.

599 Hossaini, R., Chipperfield, M. P., Montzka, S. A., Rap, A., Dhomse, S., and Feng, W.: Efficiency of short-lived halogens
600 at influencing climate through depletion of stratospheric ozone, *Nature Geoscience*, 8, 186-190, 10.1038/Ngeo2363,
601 2015.

602 Jia, Y., Hahn, J., Quack, B., Jones, E., Brehon, M., and Tegtmeier, S.: Anthropogenic Bromoform at the Extratropical
603 Tropopause, *Geophysical Research Letters*, 50, e2023GL102894, ARTN e2023GL102894
604 10.1029/2023GL102894, 2023.

605 Kurihara, M., Iseda, M., Ioriya, T., Horimoto, N., Kanda, J., Ishimaru, T., Yamaguchi, Y., and Hashimoto, S.: Brominated
606 methane compounds and isoprene in surface seawater of Sagami Bay: Concentrations, fluxes, and relationships with
607 phytoplankton assemblages, *Marine Chemistry*, 134, 71-79, 10.1016/j.marchem.2012.04.001, 2012.

608 Laube, J. C., Tegtmeier, S., Fernandez, R. P., Harrison, J., Hu, L., Krummel, P., Mahieu, E., Park, S., and Western, L.:
609 Update on Ozone-Depleting Substances (ODSs) and Other Gases of Interest to the Montreal Protocol, 978-9914-733-97-
610 6, 2023.

611 Law, K., Sturges, W., Blake, D., Blake, N., Burkholder, J., Butler, J., Cox, R., Haynes, P., Ko, M., and Kreher, K.:
612 Halogenated very short-lived substances, Chapter 2 in: *Scientific Assessment of Ozone Depletion: 2006*, Global Ozone
613 Research and Monitoring Project–Report No. 50, World Meteorological Organization, Geneva, Switzerland, 572, 2007.

614 Lennartz, S. T., Krysztofiak, G., Marandino, C. A., Sinnhuber, B. M., Tegtmeier, S., Ziska, F., Hossaini, R., Krüger, K.,
615 Montzka, S. A., Atlas, E., Oram, D. E., Keber, T., Bönisch, H., and Quack, B.: Modelling marine emissions and
616 atmospheric distributions of halocarbons and dimethyl sulfide: the influence of prescribed water concentration vs.
617 prescribed emissions, *Atmospheric Chemistry and Physics*, 15, 11753-11772, 10.5194/acp-15-11753-2015, 2015.

618 Liang, Q., Stolarski, R. S., Kawa, S. R., Nielsen, J. E., Douglass, A. R., Rodriguez, J. M., Blake, D. R., Atlas, E. L., and
619 Ott, L. E.: Finding the missing stratospheric Br: a global modeling study of CHBr₃ and CH₂Br₂, *Atmospheric Chemistry*
620 *and Physics*, 10, 2269-2286, DOI 10.5194/acp-10-2269-2010, 2010.

621 Maas, J., Tegtmeier, S., Jia, Y., Quack, B., Durgadoo, J. V., and Biastoch, A.: Simulations of anthropogenic bromoform
622 indicate high emissions at the coast of East Asia, *Atmospheric Chemistry and Physics*, 21, 4103-4121, 10.5194/acp-21-
623 4103-2021, 2021.

- 624 Maier-Reimer, E.: Geochemical cycles in an ocean general circulation model. Preindustrial tracer distributions, *Global*
625 *Biogeochemical Cycles*, 7, 645-677, 10.1029/93gb01355, 2012.
- 626 Masson-Delmotte, V., Zhai, P., Pirani, A., Connors, S. L., Péan, C., Berger, S., Caud, N., Chen, Y., Goldfarb, L., Gomis,
627 M. I., Huang, M., Leitzell, K., Lonnoy, E., Matthews, J. B. R., Maycock, T. K., Waterfield, T., Yelekçi, O., Yu, R., Zhou,
628 B., and Ipc: Annex I: Observational Products, in: *Climate Change 2021 – The Physical Science Basis*, Cambridge
629 University Press, Cambridge, United Kingdom and New York, NY, USA, 2061-2086, 10.1017/9781009157896.015,
630 2023.
- 631 Montzka, S. A., Reimann, S., Engel, A., Kruger, K., Sturges, W. T., Blake, D., Dorf, M., Fraser, P., Froidevaux, L., and
632 Jucks, K.: Ozone-depleting substances (ODSs) and related chemicals (chapter 1), 2011.
- 633 Moore, R. M., Geen, C. E., and Tait, V. K.: Determination of Henry's Law constants for a suite of naturally occurring
634 halogenated methanes in seawater, *Chemosphere*, 30, 1183-1191, 10.1016/0045-6535(95)00009-w, 1995.
- 635 Moore, R. M., Webb, M., Tokarczyk, R., and Wever, R.: Bromoperoxidase and iodoperoxidase enzymes and production
636 of halogenated methanes in marine diatom cultures, *Journal of Geophysical Research-Oceans*, 101, 20899-20908, Doi
637 10.1029/96jc01248, 1996.
- 638 Navarro, M. A., Atlas, E. L., Saiz-Lopez, A., Rodriguez-Lloveras, X., Kinnison, D. E., Lamarque, J. F., Tilmes, S., Filus,
639 M., Harris, N. R., Meneguz, E., Ashfold, M. J., Manning, A. J., Cuevas, C. A., Schauffler, S. M., and Donets, V.: Airborne
640 measurements of organic bromine compounds in the Pacific tropical tropopause layer, *Proc Natl Acad Sci U S A*, 112,
641 13789-13793, 10.1073/pnas.1511463112, 2015.
- 642 Nightingale, P. D., Malin, G., Law, C. S., Watson, A. J., Liss, P. S., Liddicoat, M. I., Boutin, J., and Upstill-Goddard, R.
643 C.: In situ evaluation of air-sea gas exchange parameterizations using novel conservative and volatile tracers, *Global*
644 *Biogeochemical Cycles*, 14, 373-387, Doi 10.1029/1999gb900091, 2000.
- 645 Ordóñez, C., Lamarque, J. F., Tilmes, S., Kinnison, D. E., Atlas, E. L., Blake, D. R., Sousa Santos, G., Brasseur, G., and
646 Saiz-Lopez, A.: Bromine and iodine chemistry in a global chemistry-climate model: description and evaluation of very
647 short-lived oceanic sources, *Atmospheric Chemistry and Physics*, 12, 1423-1447, 10.5194/acp-12-1423-2012, 2012.
- 648 Papanastasiou, D. K., McKeen, S. A., and Burkholder, J. B.: The very short-lived ozone depleting substance CHBr
649 (bromoform): revised UV absorption spectrum, atmospheric lifetime and ozone depletion potential, *Atmospheric*
650 *Chemistry and Physics*, 14, 3017-3025, 10.5194/acp-14-3017-2014, 2014.
- 651 Quack, B. and Wallace, D. W. R.: Air-sea flux of bromoform: Controls, rates, and implications, *Global Biogeochemical*
652 *Cycles*, 17, 10.1029/2002gb001890, 2003.
- 653 Quack, B., Atlas, E., Petrick, G., Stroud, V., Schauffler, S., and Wallace, D. W. R.: Oceanic bromoform sources for the
654 tropical atmosphere, *Geophysical Research Letters*, 31, Artn L23s05
655 10.1029/2004gl020597, 2004.
- 656 Roy, R.: Short-term variability in halocarbons in relation to phytoplankton pigments in coastal waters of the central
657 eastern Arabian Sea, *Estuarine Coastal and Shelf Science*, 88, 311-321, 10.1016/j.ecss.2010.04.011, 2010.
- 658 Saiz-Lopez, A., Fernandez, R. P., Li, Q., Cuevas, C. A., Fu, X., Kinnison, D. E., Tilmes, S., Mahajan, A. S., Gomez
659 Martin, J. C., Iglesias-Suarez, F., Hossaini, R., Plane, J. M. C., Myhre, G., and Lamarque, J. F.: Natural short-lived
660 halogens exert an indirect cooling effect on climate, *Nature*, 618, 967-973, 10.1038/s41586-023-06119-z, 2023.
- 661 Sala, S., Bönisch, H., Keber, T., Oram, D. E., Mills, G., and Engel, A.: Deriving an atmospheric budget of total organic
662 bromine using airborne in situ measurements from the western Pacific area during SHIVA, *Atmospheric Chemistry and*
663 *Physics*, 14, 6903-6923, 10.5194/acp-14-6903-2014, 2014.
- 664 Salawitch, R. J.: Atmospheric chemistry: biogenic bromine, *Nature*, 439, 275-277, 10.1038/439275a, 2006.
- 665 Sinnhuber, B. M., Sheode, N., Sinnhuber, M., Chipperfield, M. P., and Feng, W.: The contribution of anthropogenic
666 bromine emissions to past stratospheric ozone trends: a modelling study, *Atmospheric Chemistry and Physics*, 9, 2863-
667 2871, DOI 10.5194/acp-9-2863-2009, 2009.
- 668 Stemmler, I., Hense, I., and Quack, B.: Marine sources of bromoform in the global open ocean - global patterns and
669 emissions, *Biogeosciences*, 12, 1967-1981, 10.5194/bg-12-1967-2015, 2015.

670 Tegtmeier, S., Atlas, E., Quack, B., Ziska, F., and Krüger, K.: Variability and past long-term changes of brominated very
671 short-lived substances at the tropical tropopause, *Atmospheric Chemistry and Physics*, 20, 7103-7123, 10.5194/acp-20-
672 7103-2020, 2020.

673 Tjiputra, J. F., Assmann, K., Bentsen, M., Bethke, I., Otterå, O. H., Sturm, C., and Heinze, C.: Bergen Earth system model
674 (BCM-C): model description and regional climate-carbon cycle feedbacks assessment, *Geoscientific Model
675 Development*, 3, 123-141, DOI 10.5194/gmd-3-123-2010, 2010.

676 Tjiputra, J. F., Schwinger, J., Bentsen, M., Morée, A. L., Gao, S., Bethke, I., Heinze, C., Goris, N., Gupta, A., He, Y. C.,
677 Olivié, D., Seland, O., and Schulz, M.: Ocean biogeochemistry in the Norwegian Earth System Model version 2
678 (NorESM2), *Geoscientific Model Development*, 13, 2393-2431, 10.5194/gmd-13-2393-2020, 2020.

679 Tokarczyk, R. and Moore, R. M.: Production of Volatile Organohalogenes by Phytoplankton Cultures, *Geophysical
680 Research Letters*, 21, 285-288, Doi 10.1029/94gl00009, 1994.

681 Villamayor, J., Iglesias-Suarez, F., Cuevas, C. A., Fernandez, R. P., Li, Q. Y., Abalos, M., Hossaini, R., Chipperfield, M.
682 P., Kinnison, D. E., Tilmes, S., Lamarque, J. F., and Saiz-Lopez, A.: Very short-lived halogens amplify ozone depletion
683 trends in the tropical lower stratosphere, *Nature Climate Change*, 13, 554-+, 10.1038/s41558-023-01671-y, 2023.

684 Wang, S. Y., Kinnison, D., Montzka, S. A., Apel, E. C., Hornbrook, R. S., Hills, A. J., Blake, D. R., Barletta, B., Meinardi,
685 S., Sweeney, C., Moore, F., Long, M., Saiz-Lopez, A., Fernandez, R. P., Tilmes, S., Emmons, L. K., and Lamarque, J.
686 F.: Ocean Biogeochemistry Control on the Marine Emissions of Brominated Very Short-Lived Ozone-Depleting
687 Substances: A Machine-Learning Approach, *Journal of Geophysical Research-Atmospheres*, 124, 12319-12339,
688 10.1029/2019jd031288, 2019.

689 Wanninkhof, R.: The Impact of Different Gas Exchange Formulations and Wind Speed Products on Global Air-Sea CO₂
690 Fluxes, in: *Transport at the Air-Sea Interface*, edited by: Garbe, C. S., Handler, R. A., and Jähne, B., *Environmental
691 Science and Engineering*, Springer Berlin Heidelberg, Berlin, Heidelberg, 1-23, 10.1007/978-3-540-36906-6_1, 2007.

692 Warwick, N. J., Pyle, J. A., Carver, G. D., Yang, X., Savage, N. H., O'Connor, F. M., and Cox, R. A.: Global modeling
693 of biogenic bromocarbons, *Journal of Geophysical Research-Atmospheres*, 111, Artn D24305
694 10.1029/2006jd007264, 2006.

695 Washington, J. W.: Hydrolysis Rates of Dissolved Volatile Organic-Compounds - Principles, Temperature Effects and
696 Literature-Review, *Ground Water*, 33, 415-424, DOI 10.1111/j.1745-6584.1995.tb00298.x, 1995.

697 Yang, M. X., Bell, T. G., Bidlot, J. R., Blomquist, B. W., Butterworth, B. J., Dong, Y. X., Fairall, C. W., Landwehr, S.,
698 Marandino, C. A., Miller, S. D., Saltzman, E. S., and Zavarisky, A.: Global Synthesis of Air-Sea CO
699 Transfer Velocity Estimates From Ship-Based Eddy Covariance Measurements, *Front. Mar. Sci.*, 9, ARTN 826421
700 10.3389/fmars.2022.826421, 2022.

701 Ziska, F., Quack, B., Abrahamsson, K., Archer, S. D., Atlas, E., Bell, T., Butler, J. H., Carpenter, L. J., Jones, C. E.,
702 Harris, N. R. P., Hepach, H., Heumann, K. G., Hughes, C., Kuss, J., Krüger, K., Liss, P., Moore, R. M., Orlikowska, A.,
703 Raimund, S., Reeves, C. E., Reifenhäuser, W., Robinson, A. D., Schall, C., Tanhua, T., Tegtmeier, S., Turner, S., Wang,
704 L., Wallace, D., Williams, J., Yamamoto, H., Yvon-Lewis, S., and Yokouchi, Y.: Global sea-to-air flux climatology for
705 bromoform, dibromomethane and methyl iodide, *Atmospheric Chemistry and Physics*, 13, 8915-8934, 10.5194/acp-13-
706 8915-2013, 2013.

707