

Absence of causality between seismic activity and global warming

Mikhail Y. Verbitsky^{1,2}, Michael E. Mann³, and Dmitry Volobuev⁴

¹Gen5 Group, LLC, Newton, MA, USA

²UCLouvain, Earth and Life Institute, Louvain-la-Neuve, Belgium

³University of Pennsylvania, Department of Earth and Environmental Science, Philadelphia, PA, USA

⁴The Central Astronomical Observatory of the Russian Academy of Sciences at Pulkovo, Saint Petersburg, Russia

Correspondence: Mikhail Y. Verbitsky (verbitskys@gmail.com)

Abstract. There is no more consequential scientific matter today than global warming. The societal and policy implications, however, hinge upon the attribution of that warming to human activity, and specifically, continued societal reliance on the burning of fossil fuels. It was recently suggested that this warming can be explained by the non-anthropogenic factor of seismic activity. If that were the case, it would have profound implications. We have accessed the validity of the claim using a statistical technique (the method of conditional dispersion) that evaluates the existence of causal connections between variables, finding no evidence for any causal relationship between seismic activity and global warming.

The anthropogenic cause of planetary warming during the industrial era is well established (e.g., Stocker et al, 2014). That does not mean, however, that alternative hypotheses challenging an anthropogenic cause of observed warming shouldn't be evaluated on their merit. It has been recently proposed that the warming (particularly in polar regions) can be attributed to tectonic waves caused by large earthquakes and by the subsequent destruction of the microstructure of gas hydrates and release of the methane (Lobkovsky et al, 2022). To test this hypothesis, we apply the method of conditional dispersion (Čenys et al., 1991, Verbitsky et al, 2019) to explore a potential causal relationship between temperature and global seismic activity. The method has been proved to be less noise-sensitive than convergent-cross-mapping algorithms and more universal than prediction-improvement approaches. Briefly, the method assumes that if two variables are dependent (or in other words, the causality in Wiener's definition exists), then they belong to the same dynamical system and therefore if points of the first variable (e.g., seismicity index) are close, the synchronous points of the second variable (e.g., temperature) should also be close. Thus, the dependence of the conditional dispersion $\sigma(\varepsilon)$ of the temperature variable upon the distance ε between synchronous points of the seismic-activity variable becomes a signature of causal relationship between the temperature and the seismic activity. Specifically, if the seismic activity is the cause of warming, then the conditional dispersion $\sigma(\varepsilon)$ of the temperature variable should decrease when the distance ε between synchronous points of the seismic-activity variable decreases.

In Figure 1 we present the results of the conditional dispersion calculations together with the data. Specifically, we use the earthquake magnitude data (Ammon et al, 2010) supplemented by the most recent fragment from the IRIS DMC database (https://ds.iris.edu/wilber3/find_event). We defined the seismicity index as expected maximum values of crustal deformation, described by the empirical law of Okada (1995), i.e., $\lg(U_{max}) = 1.5M - 2\lg R - 6.0$, where U_{max} (cm) are expected maximum values of crustal deformation, M is earthquake magnitude, and R (km) is hypocentral distance to the region of interest. Based on this law, we created three seismicity indexes: (a) in the first one, only the earthquake magnitude M is taking into account, and the hypocentral distance R is used only as a scaling constant; (b) in the second index, both earthquake magnitude M and the hypocentral distance R to the North Pole are accounted for, and (c) the third index accounts for both earthquake magnitude M and the hypocentral distance R to the South Pole. The Global Land-Ocean Temperature Index (Hansen et al, 2010, Lenssen et al, 2019, <https://data.giss.nasa.gov/gistemp/>) has been used as the global temperature data T_{GI} .

49 It can be seen that for all three seismicity indexes, the conditional dispersion of global temperature
50 anomalies $\sigma(\varepsilon)$ is independent of ε where ε is the distance between synchronous points of a seismicity
51 index. In other words, *there is no causal relationship between seismic activity and global warming*. For
52 comparison, we show in Figure 1 the conditional dispersions of global temperature anomalies where ε is
53 the distance between synchronous points of atmospheric CO₂ concentration. The causality between
54 atmospheric carbon dioxide concentration and temperature anomalies, by contrast, is clear.

55 In conclusion, there is no statistical support for the proposition that seismic activity is a cause of
56 large-scale warming in recent decades. A parallel analysis of CO₂ and temperature supports the prevailing
57 hypothesis that this warming is substantially caused by an increase in greenhouse gas concentrations from
58 fossil fuel burning.

59 **Code availability**

60 The MATLAB R2021b code and data to reproduce the results as they are presented in Fig. 1 are available
61 at <https://zenodo.org/records/11233609> (Volobuev, 2024).

62 **Data availability**

63 This paper refers exclusively to published research articles and their data. We refer the reader to the cited
64 literature for access to data.

65 **Author contributions**

66 MYV conceived the research, DV performed the computations. MYV, MEM, and DV jointly discussed
67 the findings and contributed equally to writing of the manuscript.

68 **Competing interests**

69 The contact author has declared that the authors have no conflict of interest.

70 **Acknowledgements**

71 We are grateful to our two anonymous reviewers for their helpful suggestions.

72 **References**

73 Ammon, C.J., Lay, T. and Simpson, D.W.: Great earthquakes and global seismic networks. *Seismological*
74 *Research Letters*, 81(6), 965-971, 2010.

75 Čenys, A., Lasiene, G., and Pyragas, K.: Estimation of interrelation between chaotic observables, *Physica*
76 *D*, 52, 332–337, 1991.

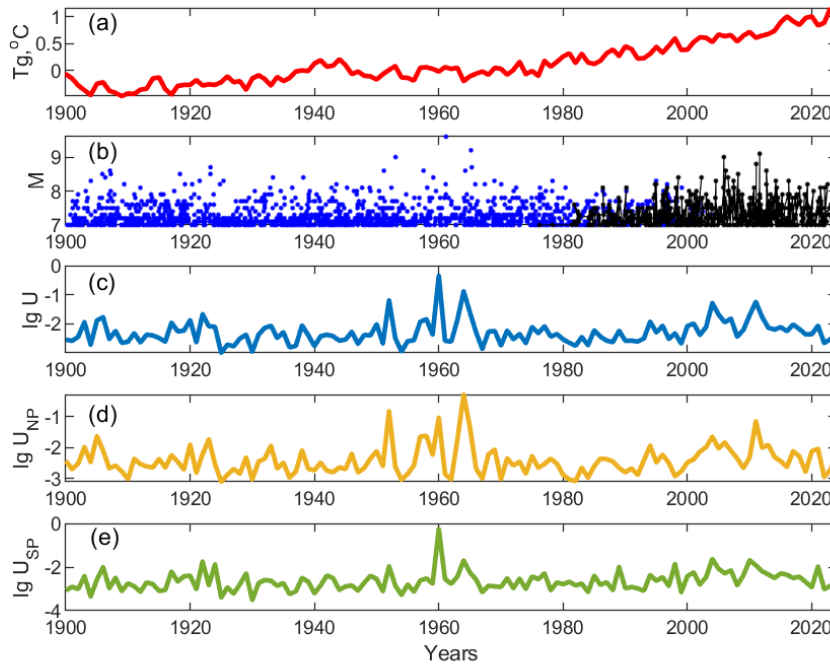
77 Hansen, J., Ruedy, R., Sato, M. and Lo, K.: Global surface temperature change. *Reviews of Geophysics*,
78 48(4), doi.org/10.1029/2010RG000345, 2010.

79 Lenssen, N.J., Schmidt, G.A., Hansen, J.E., Menne, M.J., Persin, A., Ruedy, R. and Zyss, D.:
80 Improvements in the GISTEMP uncertainty model. *Journal of Geophysical Research: Atmospheres*,
81 124(12), 6307-6326, doi:10.1029/2018JD029522, 2019.

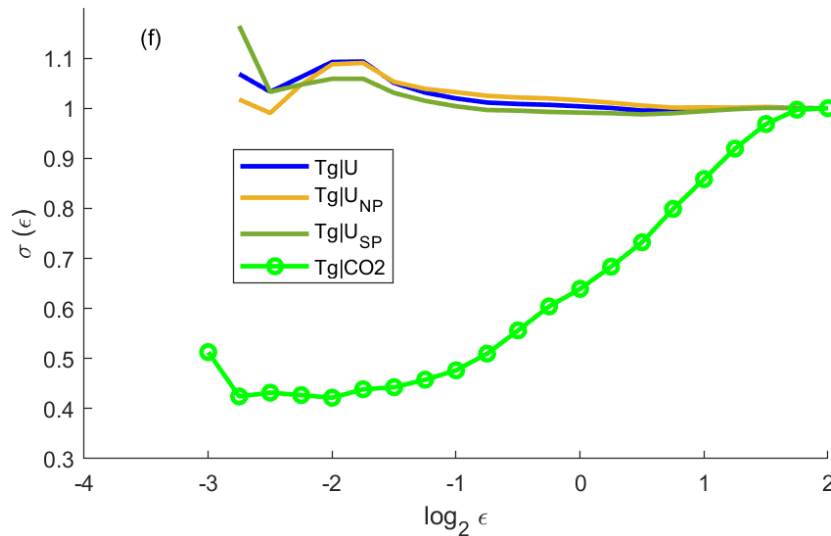
82 Lobkovsky, L.I., Baranov, A.A., Ramazanov, M.M., Vladimirova, I.S., Gabsatarov, Y.V., Semiletov, I.P.
83 and Alekseev, D.A.: Trigger mechanisms of gas hydrate decomposition, methane emissions, and glacier
84 breakups in polar regions as a result of tectonic wave deformation. *Geosciences*, 12(10), 372, 2022.

85 Okada, Y.: Simulated empirical law of coseismic crustal deformation. *Journal of Physics of the Earth* 43,
86 6, 697-713, 1995.

99 Stocker, T. (Ed.): Climate change 2013: the physical science basis: Working Group I contribution to the
100 Fifth assessment report of the Intergovernmental Panel on Climate Change, Cambridge University Press,
101 Chapter 10: Detection and Attribution of Climate Change: from Global to Regional, 867–952, 2014.
102
103 Verbitsky, M. Y., Mann, M. E., Steinman, B. A., and Volobuev, D. M.: Detecting causality signal in
104 instrumental measurements and climate model simulations: global warming case study, *Geosci. Model*
105 *Dev.*, 12, 4053–4060, <https://doi.org/10.5194/gmd-12-4053-2019>, 2019.
106
107 Volobuev, D.: Supplementary code and data to Earth System Dynamics paper "Absence of causality
108 between seismic activity and global warming" by Mikhail Y. Verbitsky, Michael E. Mann, and Dmitry
109 Volobuev (V.1). Zenodo. <https://doi.org/10.5281/zenodo.11233609>, 2024.
110



111
112



113
114
115
116
117
118
119
120
121
122
123

Figure 1. (a) Global temperature anomalies data; (b) Earthquake magnitude data of Ammon et al (2010), **dark blue**, supplemented by the most recent fragment from the IRIS DMC database (https://ds.iris.edu/wilber3/find_event, **black**); (c) The seismicity index with only earthquake magnitudes M taken into account, **blue**; (d) The seismicity index where earthquake magnitudes M and the hypocentral distance R to the North Pole are accounted for, **yellow**; (e) The seismicity index where earthquake magnitudes M and the hypocentral distance R to the South Pole are accounted for, **dark green**; (f) Conditional dispersions of global temperature anomalies $\sigma(\epsilon)$, where ϵ is the distance between synchronous points of a seismicity index of a corresponding color and conditional dispersion of global temperature anomalies $\sigma(\epsilon)$, where ϵ is the distance between synchronous points of atmospheric CO_2 concentration, **green circled line**.