

# Nonlinear Time Series Analysis of Coastal Temperatures and El Niño–Southern Oscillation Events in the Eastern South Pacific

Berenice Rojo-Garibaldi<sup>1</sup>, Manuel Contreras-López<sup>2</sup>, Simone Giannerini<sup>3</sup>, David Alberto Salas-de-León<sup>4</sup>, Verónica Vázquez-Guerra<sup>5</sup>, and Julyan H. E. Cartwright<sup>6,7</sup>

<sup>1</sup>Instituto de Ciencias Físicas, Universidad Nacional Autónoma de México, Av. Universidad s/n, Col. Chamilpa, Cuernavaca, Morelos, 62210

<sup>2</sup>Facultad de Ingeniería y Centro de Estudios Avanzados, Universidad de Playa Ancha, Playa Ancha 850, Valparaíso, Chile

<sup>3</sup>Dipartimento di Scienze Statistiche “Paolo Fortunati”, Università di Bologna, Via delle Belle Arti 41, Bologna, 40126, Italy

<sup>4</sup>Instituto de Ciencias del Mar y Limnología, Universidad Nacional Autónoma de México, Av. Universidad 3000, Col. Copilco, México, 04510, México

<sup>5</sup>Posgrado de Ciencias del Mar y Limnología, Universidad Nacional Autónoma de México, Av. Universidad 3000, Col. Copilco, México, 04510, México

<sup>6</sup>Instituto Andaluz de Ciencias de la Tierra, CSIC–Universidad de Granada, Armilla, Granada, 18100, Spain

<sup>7</sup>Instituto Carlos I de Física Teórica y Computacional, Universidad de Granada, Armilla, 18071, Spain

**Correspondence:** Berenice Rojo-Garibaldi(berenice@icf.unam.mx)

**Abstract.** ~~We investigate whether there are correlations between temperatures on the eastern South Pacific coast~~ We carry out a nonlinear time series analysis motivated by dynamical systems theory to investigate the links between temperatures on the eastern South Pacific coast, influenced by the Humboldt Current System, and El Niño–Southern Oscillation (ENSO) events ~~using a set of 16.~~ To this aim, we use a set of 16 oceanic and atmospheric temperature time series from Chilean coastal stations distributed between 18° and 45° S. The spectral analysis indicates periodicities that can be related to both internal and external forcing, involving not only ENSO, but also the Pacific Decadal Oscillation, the Southern Annual Mode, the Quasi-Biennial Oscillation and the lunar nodal cycle. ~~We carry out a nonlinear time series analysis. An asymptotic neural network test for chaos based on the largest global Lyapunov exponent indicates that the temperature dynamics along the Chilean coast is not chaotic. We calculate local Lyapunov exponents that characterize the short-term stability of the series. Using a cross-entropy test, we find that just two stations in northern Chile, one oceanic, Iquique, and one atmospheric, Arica, present a significant positive correlation of local Lyapunov exponents with ENSO, with Iquique being the station that displays very particular regional characteristics.~~ The asymptotic neural network test for chaos based on the largest global Lyapunov exponent indicates that the temperature dynamics along the Chilean coast is not chaotic. We use local Lyapunov exponents to characterize the short-term stability of the series. Using a cross-entropy test, we find that two stations in northern Chile, one oceanic, Iquique, and one atmospheric, Arica, present a significant positive cross-dependence between local Lyapunov exponents and ENSO. Iquique is the station that presents the greater number of regional characteristics and correlates with ENSO differently from the rest. The unique large-scale study area combined with time series from hitherto unused sources (Chilean naval records), reveals the nonlinear dynamics of climate variability in Chile.

## 1 Introduction

20 The Peru–Chile or Humboldt Current System (HCS) is a notable phenomenon of the eastern South Pacific coast. It is one of the most biologically productive eastern border oceanic currents in the world (Pauly and Christensen, 1995) as a consequence of wind-driven coastal upwellings occurring at different intensity and frequency in the south-east Pacific (Daneri et al., 2000). Such oceanic upwelling processes also impact atmospheric temperatures (Sobarzo et al., 2007), through either local or remote effects (Hormazabal et al., 2001). Atmospheric temperatures are further affected in this region by the warm (El Niño) and cold (La Niña) phases of El Niño–Southern Oscillation (ENSO) events (Vargas et al., 2007; Enfield and Allen, 1980; Pizarro and Montecinos, 2004), and there is great interest in the possible influence of anthropogenic climate change (Sydeman et al., 2014).

A notable attempt to characterize the spatial and temporal patterns of atmospheric temperatures along the Pacific coast of South America was by Falvey and Garreaud (2009). They used in situ temperature records and satellite data for the period 1979–2006, and found that in northern and central Chile at latitudes 17°–37° S atmospheric temperatures were cooling by about 0.20 °C per decade. They ascribed this cooling to a long-term La Niña phenomenon, which is consistent with the negative temperature trend observed in the Pacific Decadal Oscillation (PDO) for the same period. However, their analysis is limited to the period after satellite data became available in the mid-1970s; that is, just when two major El Niño events, of 1982–83 and 1997–98, took place. The effects of these large disturbances on temperature trends are not clear and have to be accounted for to provide reliable, unbiased conclusions. This is especially true for studies conducted in highly dynamic regions like the eastern South Pacific, where complex physical land–sea–atmosphere interactions suggest nonlinear relationships between coastal upwelling, interdecadal variability of El Niño-type events, and global warming (Vargas et al., 2007).

~~In a context of global warming, it is important to understand the spatial and temporal patterns of atmospheric temperatures in complex systems like the eastern South Pacific region. Gaining knowledge on temperature changes, and in the phenomena behind them, is essential for understanding both scientific and societal issues.~~  
In a context of global warming, it is important to understand the spatial and temporal patterns of atmospheric temperatures in complex systems like the eastern South Pacific region, since El Niño events have great impacts on human life (Glantz, 2022), and, in particular, on human health (Kovats et al., 2003) far beyond the eastern South Pacific (Fan et al., 2017). The nonlinear approach allows us to overcome many of the limitations of the linear framework. Its foundations were laid in the early 1980s, when deterministic chaos became a very active field of research (Bradley and Kantz, 2015), including in the geosciences (see e.g., Zeng et al., 2015; Nicolis and Nicolis, 1984; Grassberger, 1986; Pierrehumbert, 1990; Vassiliadis et al., 1991; Lorenz, 1991; Cuculeanu and Lupu, 2001; Petkov et al., 2015). Elsner and Tsonis (1992) and Tsonis et al. (1993) proposed that the atmosphere can be seen as a weakly coupled system and that the finite dimension of the attractor found by some of these aforementioned studies could correspond to the size of a subsystem. The dynamics of the atmosphere and the climate system are characterized by sensitivity to initial conditions (Kalnay, 2003), namely, a small error in observing the initial conditions is exponentially amplified and this implies the impossibility of mid- and long-term forecasting. This property was already recognized in the first developments of weather forecasting (Thompson, 1963) and was associated with the nonlinear nature of deterministic dynamical systems by Lorenz (1963).

In this work we study the dynamics that governs the climatic variability of the south-eastern Pacific coast, its stabilities and instabilities. We discuss its consequences and its relationship with the HCS, the Pacific anticyclone, upwelling zones and the climatic phenomena that impact this region, thereby achieving a better understanding of the system's dynamics, impossible to achieve using linear methods. To accomplish this task, we perform a nonlinear analysis of a unique set of daily series of ambient coastal and sea surface temperatures, distributed between 18° and 45° S and spaced every 3 to 4 degrees of latitude. We test in a mathematically rigorous fashion for the presence of chaotic dynamics through the largest Lyapunov exponent. In addition, we characterize the local stability of the systems using Local Lyapunov Exponents (LLEs), which quantify the state-dependent predictability over finite time horizons. Also, we study how the dynamics are affected by ENSO events by comparing LLEs and the Oceanic Niño Index in different latitudes of the Chilean coast. Finally we discuss the periodicities of the time series, the type of dynamics involved and the bioclimatic characteristics found by latitude, in order to understand the role played by both internal and external forcing in the climatic variability of the eastern South Pacific.

## 2 Data and Methods

### 2.1 Data pre-processing

Sea surface temperature (SST) data were obtained from the Hydrographic and Oceanographic Service of the Chilean Navy (SHOA), which has kept records for the main ports of the country since the mid 20th century. Data of atmospheric surface temperature (AST) begin from the first half of the 20th century and were provided by the Meteorological Directorate of Chile (DMC). Since the DMC weather stations are associated with the presence of airports in major cities, they usually coincide with the main ports. For all stations, the daily data were converted to weekly average temperature time series. In case of missing data, we applied Kalman filtering for imputation using the R package *imputeTS* (Moritz and Bartz-Beielstein, 2017). Tables 1 and 2 list the oceanic and atmospheric stations used in this study. The first column contains the location names that range from the northern to the southern regions of Chile and the second column indicates the time range; the third and fourth columns report the sample sizes.

#### 2.1.1 Study area

Along the south eastern Pacific littoral between 18° and 45° S there is a marked climatic gradient from an arid zone to a rainy Mediterranean zone. Three major divisions are identifiable along the coast: the north, 18°–30° S, centre, 30°–37° S and south, 37°–45° S, of Chile (Sarricolea et al., 2017). Figure 1 shows the study area and the time series of both SST and AST used in this work.

Northern Chile is characterized by a narrow continental shelf, approximately 4–5 km wide, and an arid to semi-arid climate. Coastal upwelling is permanent in this region. Antofagasta stands out, as its orientation allows the presence of a pool of persistent hot water: a full-time El Niño (Piñones et al., 2007). La Serena, 30° S, presents a medium-sized continental shelf, approximately 20–30 km wide, where the surroundings show characteristics of persistent upwelling. Central Chile has a wider

**Table 1.** Daily and weekly data for oceanic stations.

Station	Time Period	Daily Data	Weekly Data
	1951–1970		1015
Arica <sup>1</sup>	1982–1999	25566	904
	2004–2020		845
Iquique	1984–2020	13376	1910
Antofagasta	1946–2020	27392	3913
Coquimbo	1982–2020	14154	2022
Valparaíso	1961–2020	21914	3130
	1949–1974		1356
Talcahuano <sup>1</sup>	1976–1989	26297	730
	1991–2020		1543
Corral	1985–2020	13027	1861
Puerto Montt	1982–2020	14154	2022

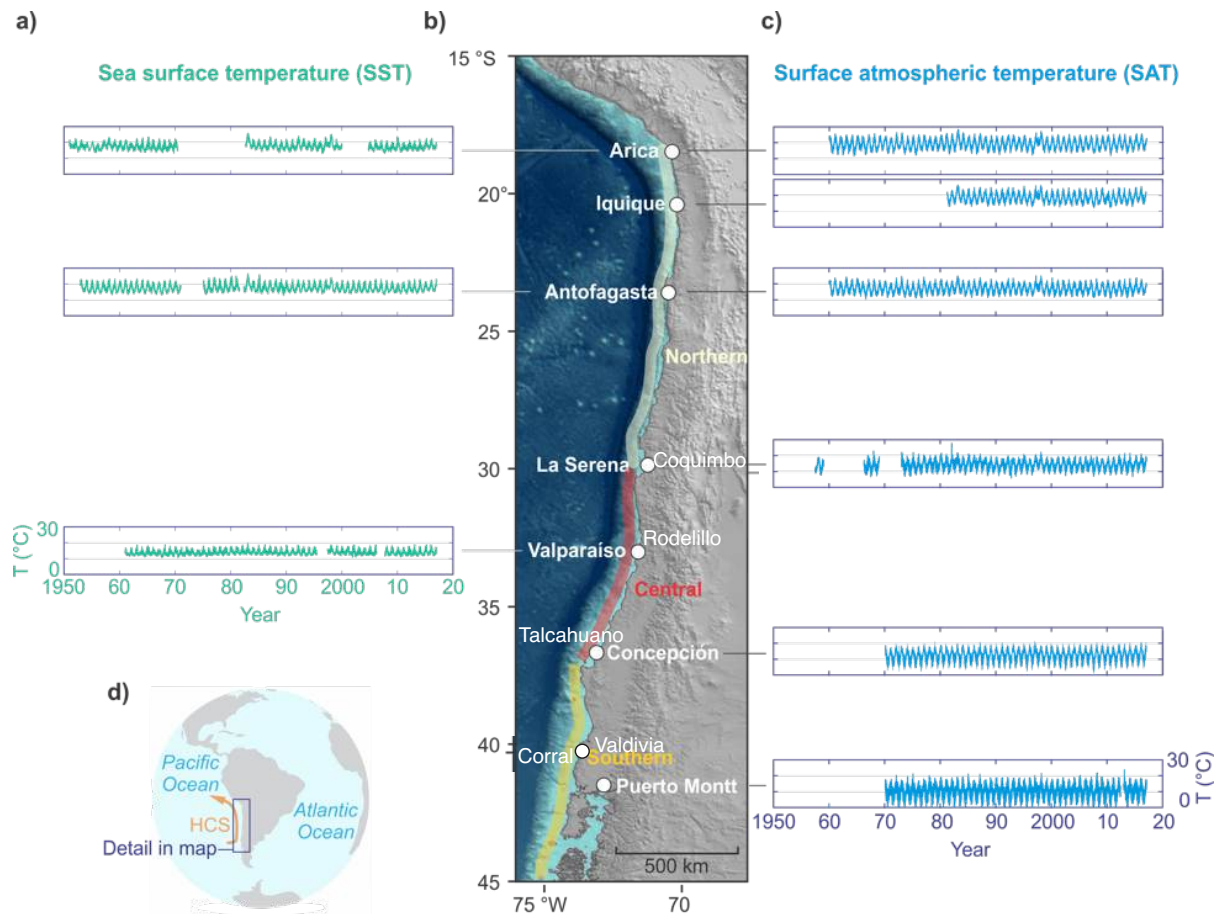
<sup>1</sup> The data are split into three series, due to the presence of gaps.

**Table 2.** Daily and weekly data for atmospheric stations

Station	Time Period	Daily Data	Weekly Data
Arica	1960–2020	22281	3183
Iquique	1981–2020	14520	2074
Antofagasta	1960–2020	22281	3183
Serena	1973–2020	17461	2494
Rodelillo <sup>2</sup>	1971–1995		1300
	2002–2020	18232	991
Concepción	1970–2020	18597	2656
Valdivia	1968–2020	19268	2752
Puerto Montt	1970–2020	18597	2656

<sup>2</sup> The data are split into two series, due to the presence of gaps.

continental shelf that extends about 40 km from the coast. It is characterized by a Mediterranean climate with four well-marked  
85 seasons. This system is under the influence of a coastal upwelling driven by the wind with a strong seasonal pattern and is one  
of the most productive regions of the ocean (Montero et al., 2007), with more than 50% of the fish catch of Chile and 4% of the  
world catch. Its hydrographical structure is strongly affected by the runoff of several rivers, whose discharges vary seasonally  
with a maximum during winter off Concepción, 36°49' S. Southern Chile includes the northern limit of Chilean Patagonia, one  
the most extensive fjord regions in the world. The climate is rainy. It covers almost 240 000 km<sup>2</sup> with an extremely complex  
90 geomorphology in one of the least densely populated areas of the country. Water circulation essentially follows a two-layered  
estuarine flow pattern. One superficial layer of brackish water is fed by rivers and glaciers and another marine layer, mainly  
Subantarctic Surface Water (SAAW), enters predominantly through a subsurface layer (Sievers and Silva, 2008).



**Figure 1.** Study area and examples of time series used in this work. a) Sea surface temperature for stations from northern to southern Chile. b) Study area. c) Atmospheric surface temperature for the same region. d) Study area relative to the Humboldt Current System (HCS). For comparative purposes, all the time series plots here use the same temperature and time scales.

## 2.1.2 Trend estimation

One recurring issue with trend estimation is that, in most situations, the detrended series is both dependent and possibly heteroskedastic; moreover, missing data are very common and disregarding these aspects leads to invalid confidence bands. Here, we follow Friedrich et al. (2020), who solve the problem by proposing a novel autoregressive wild bootstrap scheme that does not need adjustments in the presence of missing data and is particularly suitable for climatological applications. We

assume that the series  $X_t$ ,  $t = 1, \dots, n$  admits the following decomposition:

$$X_t = m(t/n) + z_t, \quad (1)$$

$$z_t = \sigma_t u_t,$$

$$u_t = \sum_{j=0}^{\infty} \psi_j \varepsilon_{t-j}, \quad \psi_0 = 1,$$

where  $\{\varepsilon_t\}$  is a zero-mean i.i.d. sequence with constant variance and finite fourth moments,  $m(\cdot)$  is a smooth deterministic trend function,  $z_t = \sigma_t u_t$  is a stochastic process with  $\sigma_t$  accounting for (unconditional) heteroskedasticity and  $u_t$  is a stationary linear process. We estimate  $m(\cdot)$  by means of a local polynomial smoother (loess). For the estimation of the long-run trend the degree of the smoother has been set to one to mitigate boundary effects, otherwise the order is two. The confidence bands for the nonparametric estimator of the trend have been derived using the following autoregressive wild bootstrap scheme:

1. obtain the estimate of the trend  $\hat{m}(t)$  using the bandwidth  $\tilde{h}$  and derive the residuals  $\hat{z}_t = X_t - \hat{m}(t)$ ;
2. derive the bootstrap errors  $z_t^* = \xi_t^* \hat{z}_t$ , where  $\xi_t^* = \gamma \xi_{t-1}^* + \nu_t^*$ ,  $\nu_t^* \sim \text{i.i.d. } N(0, 1 - \gamma^2)$  and  $\gamma = \theta^{1/l}$ , with  $\theta = 0.1$  and  $l = 1.75 \sqrt[3]{n}$ ;
3. build the bootstrap series  $X_t^* = \hat{m}(t/n) + z_t^*$  for  $t = 1, \dots, n$  and estimate the trend  $\hat{m}^*(t)$  upon it using the same bandwidth  $\tilde{h}$  as in step 1.

The scheme provides valid confidence intervals under the assumptions as in Eq. (1) where the detrended series is dependent. For more details see Friedrich et al. (2020).

## 2.2 Chaos and the largest Lyapunov exponent

The largest global Lyapunov exponent quantifies the sensitivity to initial conditions and is one of the hallmarks of the presence of chaos. Assume that the series is generated by the following dynamical system in  $\mathbb{R}^m$ :

$$\mathbf{X}_t = F(\mathbf{X}_{t-1}) + \mathbf{E}_t, \quad \mathbf{X}_t \in \mathbb{R}^d, \quad (2)$$

where  $\mathbf{E}_t$  is an error process in  $\mathbb{R}^d$ , which can be disregarded as far the following definition is concerned; we will comment on its role later on (see Chan and Tong, 2001, for more details). Let  $\mathbf{X}_0$  and  $\mathbf{X}'_0$  be two close initial conditions and  $\mathbf{X}_n$  and  $\mathbf{X}'_n$

their value after  $n$  time steps, respectively. Then

$$\|\mathbf{X}_n - \mathbf{X}'_n\| \approx \exp(n \lambda_1) \|\mathbf{X}_0 - \mathbf{X}'_0\|$$

where  $\|\cdot\|$  is a suitable norm and  $\delta = \|\mathbf{X}_0 - \mathbf{X}'_0\|$  is a small perturbation and  $\delta = (\mathbf{X}_0 - \mathbf{X}'_0)$  is a small perturbation. In other words, as  $n$  grows, the growth factor is governed by  $\lambda_1$  as other terms become negligible. Hence,

$$\lambda_1 = \lim_{n \rightarrow \infty} \lim_{\delta \rightarrow 0} \frac{1}{n} \ln \left( \frac{\|\mathbf{X}_n - \mathbf{X}'_n\|}{\|\mathbf{X}_0 - \mathbf{X}'_0\|} \right) \quad (3)$$

is the global largest Lyapunov exponent. Note that

$$\mathbf{X}_n - \mathbf{X}'_n \approx \delta \cdot DF^{(n)}(\mathbf{X}_0) = \delta \prod_{t=0}^{n-1} DF(\mathbf{X}_t) = \delta \prod_{t=0}^{n-1} \mathbf{J}_{n-t},$$

125 where  $F^{(n)}(\mathbf{X}_0)$  is the  $n$ -fold iteration of the map  $F$  and  $\mathbf{J}_t$  is the Jacobian of the map  $F$  evaluated at  $\mathbf{X}_t$ . Hence

$$\lambda_1 = \lim_{n \rightarrow \infty} \frac{1}{2n} \ln \nu_1(\mathbf{T}'_n \mathbf{T}_n), \quad (4)$$

where  $\mathbf{T}_n = \prod_{t=0}^{n-1} \mathbf{J}_{n-t}$  and  $\nu_1(A)$  is the largest eigenvalue of the matrix  $A$ .  $\lambda_1$  measures the average rate of divergence of nearby starting trajectories and chaotic dynamics implies  $\lambda_1 > 0$ . The two equivalent definitions of the largest Lyapunov exponent given in Eq. (3) and Eq. (4) are reflected in the two approaches to estimating it in finite samples. The first approach  
130 refers to Eq. (3) and is called *direct* since it finds close pairs of state vectors and measures the average divergence of trajectories over time (Rosenstein et al., 1993; Kantz, 1994; Giannerini and Rosa, 2001). The logarithm of such a divergence is plotted over time and, if it is possible to identify a linear scaling region, its slope is the direct estimator of  $\lambda_1$ . Typically, the exercise is repeated for a range of embedding dimensions and time delays to assess the reliability of the estimate. One problem with this approach is that it is sensitive to noise: it cannot distinguish between divergence due to noise and exponential divergence due to  
135 the chaotic dynamics (Giannerini and Rosa, 2004). Moreover, there are no results on the asymptotic distribution of the estimator so that it is not possible to build a proper statistical test for the hypothesis of chaos. In Giannerini and Rosa (2001) a bootstrap solution for continuous time processes was proposed, but the intrinsic sensitivity to noise of the direct estimator remains, so that we only use it to cross-check the result from [the second approach](#), the Jacobian based estimator, which relies upon a neural network model of the map  $F$  and its Jacobian  $\mathbf{J}$ . [The estimated largest global Lyapunov exponent  \$\hat{\lambda}\_1\$  is obtained by plugging the estimated quantities into Eq. \(4\). We use a feed-forward neural network with a single layer of "hidden units" \(analogue neurons\). The number of units determines the model complexity \(i.e., a complicated  \$\hat{F}\$  that comes close to interpolating the data, versus a simpler  \$\hat{F}\$  that smooths the data\)](#)(Ellner et al., 1992). [The crucial step is the selection of the neural network model, which also provides a rigorous solution to the state space reconstruction problem](#)(Chan and Tong, 2001). [The idea is to select the embedding parameters that provide the best fit over a grid, according to the generalized Bayesian Information](#)  
145 [Criterion \(BIC\):](#)

$$\text{BIC} = \log(\text{RSS}) + \frac{\log(n)}{n} [1 + k(d+2)], \quad (5)$$

[where RSS is the residual sum of squares,  \$n\$  is the sample size,  \$d\$  is the embedding dimension, and  \$k\$  is the number of units \(or nodes\) of the hidden layer. The generalized BIC is consistent in that it selects the true model \(if it exists\) with probability](#)

one as the sample size diverges. See Appendix C for more details on the neural network approach. The modelling step allows us to filter out the effect of noise, obtain a consistent estimator for  $\lambda_1$ , and perform a proper statistical test for chaos (Shintani and Linton, 2004). The null hypothesis tests  $H_0 : \lambda_1 \leq 0$  against the alternative hypothesis of a positive exponent  $H_1 : \lambda_1 > 0$ . This asymptotic, one sided, test is based upon the asymptotically Gaussian standardized statistic

$$Z = \frac{\hat{\lambda}_M}{\sqrt{\hat{\Phi}/M}} \xrightarrow{M \rightarrow \infty} N(0, 1), \quad (6)$$

where  $M$  is the number of steps ahead and  $\hat{\Phi}$  is a heteroskedasticity and autocorrelation consistent (HAC) estimator of the asymptotic variance of the  $M$ -step local Lyapunov exponent estimator  $\hat{\lambda}_M$  (see next section). The null hypothesis is rejected at level  $\alpha$  if the value of the statistic exceeds the corresponding critical value of the standard Gaussian random variable.

### 2.3 Local Lyapunov exponents

A positive largest global Lyapunov exponent indicates sensitive dependence on initial conditions and is an important theoretical, global indicator of the presence of chaos. However, it is defined in the double limit of infinitesimal perturbations and infinite time steps ahead; hence it poses no practical limit to the predictability of a dynamical system (Ziehmann et al., 2000), which may typically have state space regions of enhanced predictability, coupled with zones of instability. Nonlinear dynamical systems, be they chaotic or not, are characterized by this non-uniform predictability and one way of quantifying it is through local (finite-time) Lyapunov exponents (LLEs). In this respect, local Lyapunov exponents can be used as a time-series tool that provide different, complementary, information with respect to global Lyapunov exponents (Bailey et al., 1997; Abarbanel et al., 1992; Smith, 1992; Wolff, 1992). ~~The analysis involves examining the short term predictability, or unpredictability, of a system and identifying the regions in state space where they occur~~ (Abarbanel et al., 1992; Smith, 1992; Wolff, 1992). ~~Suppose that the data  $\{x_t\}$  are from a time series generated by a nonlinear autoregressive model~~ We assume that the data  $\{X_t\}$  are from a time series generated by a nonlinear autoregressive model

$$X_{t+1} = f_d(X_t, X_{t-1}, \dots, X_{t-d+1}) + \varepsilon_t, \quad (7)$$

where  $X_t \in \mathbb{R}$  and  $\{\varepsilon_t\}$  is a sequence of independent random variables or perturbations with  $E(\varepsilon_t) = 0$  and  $\text{Var}(\varepsilon_t) = \sigma^2$ . It is important to note that the error in Eq. (7) is not measurement error, but dynamical noise, an inherent part of the dynamics of the system. The state-space representation of the system is

$$\mathbf{X}_{t+1} = F(\mathbf{X}_t) + \underline{+e_t}, \mathbf{E}_t, \quad (8)$$

where  $\mathbf{X}_t = (X_t, X_{t-1}, \dots, X_{t-d+1})$  and  $\underline{+e_t} = (\varepsilon_t, 0, 0, \dots, 0)$  are in  $\mathbb{R}^d$ . and  $\mathbf{E}_t = (\varepsilon_t, 0, 0, \dots, 0)$  are in  $\mathbb{R}^d$ .  
 175 ~~The LLE is defined by making a small perturbation of  $X_t$  to  $X_t^*$  and following forward the perturbed and unperturbed trajectories. The LLE measures the difference between the two trajectories after  $m$  time steps~~



The local exponent (LLE) is defined by taking a small perturbation of  $\mathbf{X}_t$  to  $\mathbf{X}_t^*$  and following forward the perturbed and unperturbed trajectories after  $M$  time steps

$$\lambda_M(\mathbf{X}_t) = \frac{1}{M} \log \frac{\|\mathbf{X}_{t+M} - \mathbf{X}_{t+M}^*\|}{\|\mathbf{X}_t - \mathbf{X}_t^*\|}. \quad (9)$$

180 If we choose to perturb only the first component of  $\mathbf{X}_t$  and follow the growth of that perturbation along the actual sample path, this corresponds to a perturbation of Eq. (7) at time  $t$ , i.e., perturbing  $x_t$  and the following the growth of that single perturbation along the actual sample path. This definition of the LLE is related to noise amplification by the system, and thus to predictability (Yao and Tong, 1994). ~~Let  $\sigma_M^2(x) = \text{Var}(X_{t+M} | X_t = x)$ . In a scalar system with small additive noise, This is best shown in a scalar system with small additive noise:~~

185  $X_t = f(X_{t-1}) + \varepsilon_t.$

Now let  $\sigma_M^2(x) = \text{Var}(X_{t+M} | X_t = x)$ . It results

$$\sigma_M^2(x) = \sigma^2 \mu_M(x)(1 + o(1)), \text{ where } \sigma^2 = \text{Var}(\varepsilon_t), \text{ and}$$

$$\mu_M(x) = 1 + \sum_{j=1}^{M-1} \left\{ \prod_{k=j}^{M-1} Df(f^{(k)}(x)) \right\}^2. \quad (10)$$

190 This can be re-written as

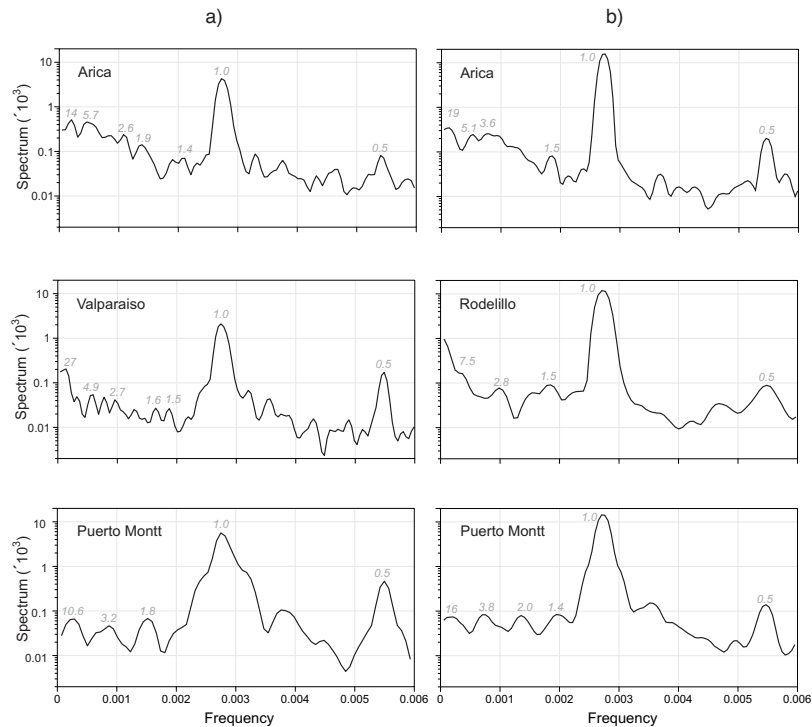
$$\mu_M(x) = 1 + \sum_{j=1}^{M-1} \exp \left\{ 2(M-j) \lambda_{M-j}(f^{(j)}(x)) \right\} \quad (11)$$

where  $\lambda_j$  are LLEs along the “skeleton” system with the noise deleted (Yao and Tong, 1994). However, up to the leading order of  $\sigma$  in the previous expansion, the skeleton LLEs agree with those along the sample path for any fixed finite  $M$ . For a system with dynamical noise the values of  $\mu_M$  set the limits to large-sample forecasting accuracy (Tong, 1995). Thus Eq. (11) shows  
195 a close link — for small noise — between LLEs and local unpredictability.

~~As perturbations become small,  $\lambda_M(t)$  will depend on derivatives of the map  $F$ . Then~~  
In the general  $d$ -dimensional scenario, as perturbations become small,  $\lambda_M(\mathbf{X}_t)$  will depend on the derivatives of the map  $F$ . Then

$$\lambda_M(\mathbf{X}_t) = \frac{1}{M} \ln \|\mathbf{J}_{M+t-1} \mathbf{J}_{M+t-2} \dots \mathbf{J}_t U_0\|, \quad (12)$$

where  $\mathbf{J}_t$  (~~sometimes written  $J(X_t)$~~ ) is the Jacobian matrix of  $F$  evaluated at  $\mathbf{X}_t$ ,  $U_0$  is a unit vector and  $\|\cdot\|$  ~~is the Euclidean~~  
200 some vector norm. Since ~~( $\lambda_m(t)$ )~~  $\lambda_M(\mathbf{X}_t)$  is a function of the state space location, the LLE depends on the trajectory and can be thought of as an  $M$ -step ahead local Lyapunov exponent process. If  $U_0$  is chosen at random with respect to the uniform measure on the unit sphere, then with probability 1 as  $M \rightarrow \infty$ ,  $\lambda_M(\mathbf{X}_t)$  converges to the global Lyapunov exponent  $\lambda_1$  because  $U_0$  has zero probability of falling into a subspace corresponding to subdominant exponents. In practice, we usually take  $U_0 = (1, 0, 0, \dots, 0)$  and the estimators for local exponents are the same as for global ones, with the notable difference that the former  
205 depend upon the state space location and measure the state-dependent instability of the system.

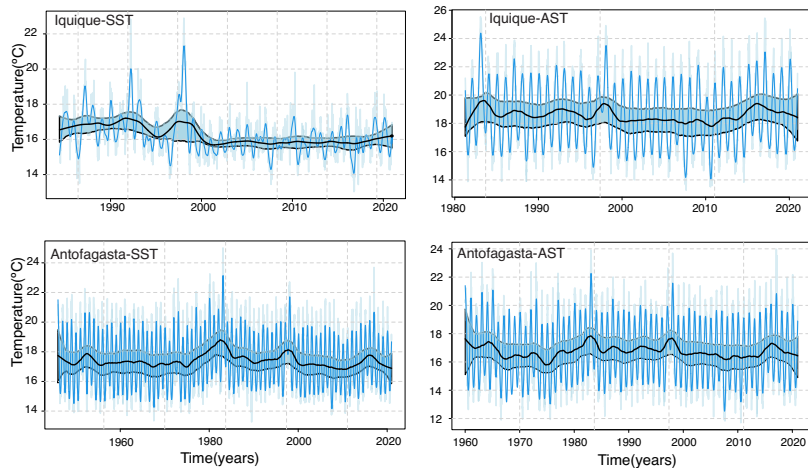


**Figure 2.** Spectral analysis for three representative stations from the northern, central and southern regions of Chile. Column a) corresponds to sea surface temperature time series (oceanic stations) and column b) to atmospheric surface temperature time series (atmospheric stations). Dominant peaks are indicated together with their associated periods in years.

### 3 Results

We carry out the univariate spectral analysis for the 16 stations. In Figure 2, we show the results for three atmospheric and three oceanic stations, which represent the northern, central and southern regions of Chile. The complete set of results is in Appendix B. The oceanic stations that show spectral peaks with the longest periodicities are Valparaíso with 27 years; Talcahuano with 20 years; Antofagasta with 18 years; and Arica with 14 years. Four stations have periodicities with an intermediate value, 6 to 10.6 years. Three stations (Antofagasta, Valparaíso and Talcahuano) present a 4-year periodicity. Two stations have peaks around 3 years, and six stations present 2 year periods. In the eight stations, periodicities between 1.3 and 2 years were also found: most stations show periods of around 1.5 years.

The atmospheric stations that show spectral peaks with the longest periodicities are Antofagasta and Serena with 20 years; Arica with 19 years; Iquique with 18.8 years; Concepción with 16.4 years and Puerto Montt with 16 years. Furthermore, Arica and Antofagasta share a periodicity of 5.1 years. There are 3 stations with periodicity around 4 years, and 5 stations with periodicity around 3 years. Periodicities around 1.5 years were also found, as in the oceanic case. In general, longer



**Figure 3.** Temperature time series of Antofagasta and Iquique. Top left: Antofagasta sea surface temperature; top right: Antofagasta atmospheric surface temperature. Bottom left: Iquique sea surface temperature; bottom right: Iquique atmospheric surface temperature. Interpolated original (light blue), trend-cycle (blue) and long-term trend (black), together with confidence bands at 95 % (light blue).

periodicities can be observed for atmospheric surface temperature time series than for sea surface temperature. Possible causes for these periodicities can be found in the discussion in Section 4.1.

220 We estimate the trend by means of the local polynomial smoother as detailed in Section 2.1.2. For the estimation of the long-term trend the degree of the polynomial was set to one to mitigate boundary effects, otherwise the order is two. The confidence bands at level 95 % for the non-parametric estimator of the trend were derived using an autoregressive wild bootstrap scheme, which is robust against the presence of missing data, serial dependence and heteroskedasticity. We show the results for Antofagasta (SST, AST) and Iquique (SST, AST) in Fig. 3. The estimated long-term trend for Antofagasta and Iquique  
 225 might seem to indicate a tendency, but this is ruled out if we take into account the uncertainty (confidence bands in light blue). This suggests that the process that has generated the time series for both stations is mean-stationary and this holds for all the stations. For more details, see Appendix B1.

~~We estimated the largest Lyapunov exponent of the series by means of a single-layer, feed forward, neural network model of the map and used it to test the null hypothesis of no chaos ( $H_0 : \lambda_1 \leq 0$ ). We chose the best model by means of the generalized Bayesian Information Criterion (BIC), where the global minimum is searched on a grid of embedding dimensions from  $d = 3$  to  $d = 20$  and time delays from  $\tau = 1$  to  $\tau = 4$~~   
 230 We estimate the largest Lyapunov exponent of the series and derive a rigorous (asymptotic) statistical test for chaos by following Shintani and Linton (2004). The approach is based upon a single-layer, feed forward, neural network model of the map and its Jacobian. More details on the procedure are reported in Section 2.2 and Appendix C. The null hypothesis of no chaos ( $H_0 : \lambda_1 \leq 0$ ) is tested against the alternative hypothesis of a positive exponent  
 235 ( $H_1 : \lambda_1 > 0$ ). One of the critical issues is the selection of the best neural network model, which we solve by means of the generalized Bayesian Information Criterion (BIC), where the global minimum is searched on a grid of embedding dimensions from  $d = 3$  to  $d = 20$  and time delays from  $\tau = 1$  to  $\tau = 4$ . The results are presented in Tables 3 and 4 for the oceanic and

**Table 3.** Output from the best neural network fit from the grid search test for chaos of the time series of the oceanic stations. The table reports the embedding dimension  $d$ , the time delay  $\tau$ , the number of hidden units  $k$ , the value of the minimized BIC, the global Lyapunov exponent  $\hat{\lambda}_1$  together with the value of the test statistic  $Z^*$  and the  $p$ -value of the test.

Station	Time period	$d$	$\tau$	$k$	BIC	$\hat{\lambda}_1$	$Z^*$	$p$ -value
Arica	1951–1970	10	1	1	-811.84	-0.045	-22.05	1
Arica	1982–1999	11	4	11	-21.33	-0.027	-28.45	1
Arica	2004–2020	8	1	8	-509.49	-0.114	-22.79	1
Iquique	1984–2020	3	1	3	-2094.32	-0.083	-34.38	1
Antofagasta	1946–2020	12	1	1	-4298.17	-0.017	-25.81	1
Coquimbo	1982–2020	11	1	11	-1281.49	-0.041	-28.06	1
Valparaíso	1961–2020	12	1	12	-2918.70	-0.056	-37.36	1
Talcahuano	1949–1974	12	1	3	-853.68	-0.040	-12.79	1
Talcahuano	1976–1989	12	1	1	-215.38	-0.050	-33.62	1
Talcahuano	1991–2020	12	4	12	165.70	-0.054	-12.36	1
Corral	1985–2020	12	1	12	-668.83	-0.035	-15.95	1
Puerto Montt	1982–2020	11	1	59	-364.38	-0.032	-19.92	1

atmospheric stations respectively. Besides the station name and the time period, the tables report the values of the embedding dimension  $d$ , time delay  $\tau$  and number of hidden units  $k$  of the network that produce the minimized BIC criterion over the parameter grid. The last two columns contain the value of the test statistic  $Z^*$  and the  $p$ -value of the test based on the asymptotic Gaussian null distribution, respectively. All the estimated exponents are negative and the test never rejects the null hypothesis of absence of chaos, both for the oceanic and the atmospheric stations.

This result is an important indication that the dynamics behind temperature in Chile is most probably nonlinear but not chaotic (Lorenz, 1963). We use local Lyapunov exponents (LLEs) to characterize local predictability throughout the stations. We varied the number of steps ahead,  $M$ , from 4 to 52 (i.e., from 1 month to 1 year) for oceanic stations and up to 260 steps ahead (5 years) for atmospheric stations. In order to uncover any association with El Niño, we chose three specific windows corresponding to the short (0 to 3 months), medium (6 to 9 months) and long term (12 to 22 months) and paid particular attention to the results obtained for the 1, 6 and 12 month windows. In Figures D1 to D3 of the Appendix we show the time series of the oceanic stations where the information on the 1 month, 6 months and 1 year LLEs, respectively, is superimposed: red corresponds to a positive LLE whereas green indicates a negative LLE. The same information for the atmospheric stations is reported in Fig. D4 to D6. Likewise, in Fig. 4 and 5, we present the phase space portraits of the attractors for the stations with superimposed information on the LLEs in red and green.

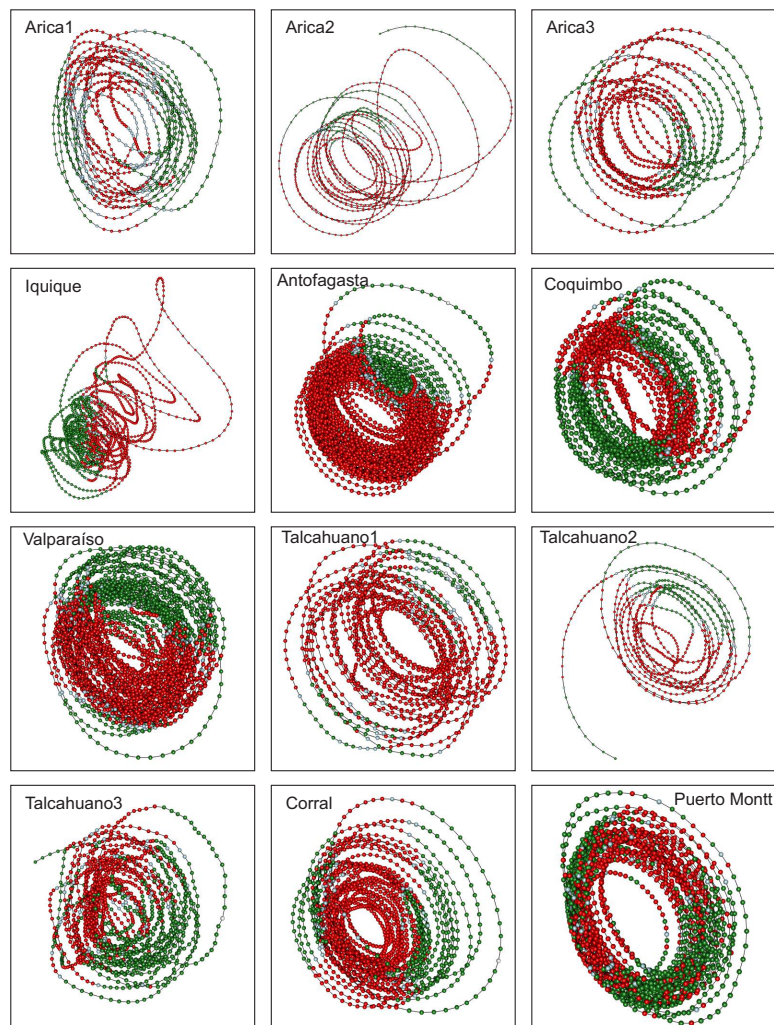
Comparing the LLEs of the oceanic stations with their atmospheric counterparts for the different windows, we found that for the 1 month window, both classes of stations showed unstable behaviour throughout the record, except for Iquique-SST that shows patterns of both stability and instability. For the 6 month window in SST and AST, mixed stability/instability is

**Table 4.** Output from the best neural network fit from the grid search test for chaos of the time series of the atmospheric stations. The table reports the embedding dimension  $d$ , the time delay  $\tau$ , the number of hidden units  $k$ , the value of the minimized BIC, the global Lyapunov exponent  $\hat{\lambda}_1$  together with the value of the test statistic  $Z^*$  and the  $p$ -value of the test.

Station	Time period	$d$	$\tau$	$k$	BIC	$\hat{\lambda}_1$	$Z^*$	$p$ -value
Arica	1960–2020	12	1	12	-3170.93	-0.014	-15.46	1
Iquique	1981–2020	12	1	12	-1685.18	-0.013	-13.21	1
Antofagasta	1960–2020	13	1	12	-2804.60	-0.014	-13.05	1
Serena	1973–2020	17	1	17	-871.98	-0.013	-9.53	1
Rodelillo	1971–1995	19	4	79	1325.28	-0.016	-13.73	1
Rodelillo	1973–2020	18	3	58	1065.62	-0.012	-8.42	1
Concepción	1970–2020	20	1	20	1373.17	-0.010	-12.06	1
Valdivia	1968–2020	18	1	18	2950.07	-0.007	-7.81	1
PuertoMontt	1970–2020	19	4	79	2337.82	-0.012	-8.09	1

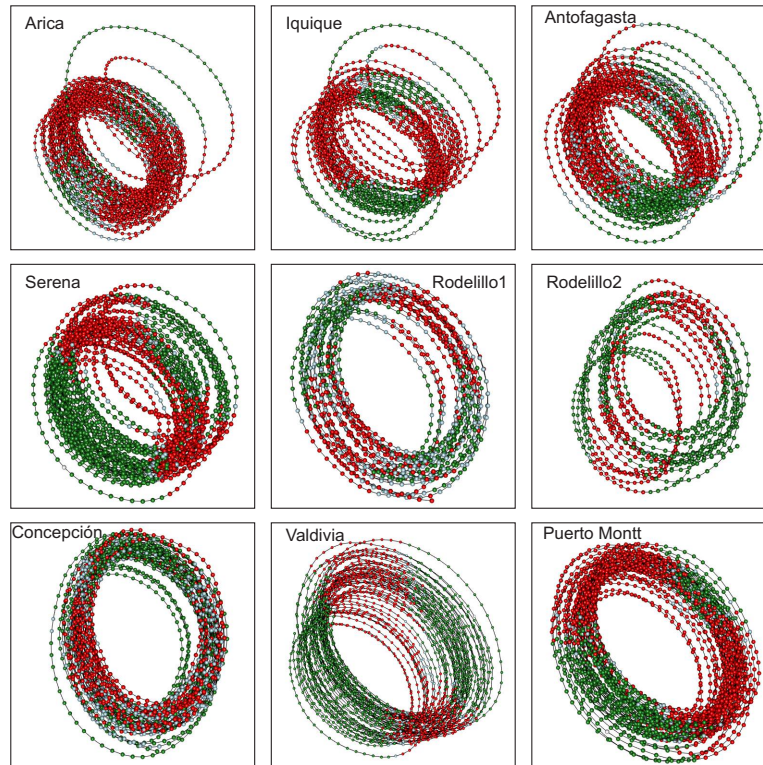
observed, except for Iquique, where there is stability throughout the record. In the Antofagasta and Puerto Montt SSTs similar behaviour can be observed, showing instability at the extremes and stability in the middle part. Finally, for the 1 year window, all oceanic stations showed stability throughout the record, except for Talcahuano and Puerto Montt, that is, the southern region. Of the atmospheric stations, Arica, Iquique and Antofagasta showed instability in the extremes and stability in the middle part of the record; Rodelillo behaves totally stably, while Serena, Concepción and Valdivia present totally stable or unstable parts throughout the series; this is not the case for Puerto Montt, which presents very little instability. The boxplots of the LLEs versus steps ahead ( $M$ ) are shown in Fig. 6 and 7. Clearly, the sea surface temperature series approach the global exponent faster than the atmospheric series. For instance, for  $M = 28$  steps ahead, the boxplots of the LLEs are already negative for all the SST series, with the exception of Puerto Montt, Fig. 6. **On the contrary, this does not happen for any of the AST series. On the contrary, for  $M = 28$  all AST time series still have positive LLEs,** Fig. 7. Overall, the results indicate a qualitative difference in the temperature dynamics of the two types of series. This can be explained by considering that, on average,  $\hat{\lambda}_1 \approx -0.05$  for the sea surface series but  $\hat{\lambda}_1 \approx -0.01$  for the atmospheric series, so the latter are globally more stable. The presence of the ocean and its exchanges of heat and momentum with the atmosphere can easily reduce the instability properties of the atmospheric flow (Vannitsem et al., 2015).

In the following, we compare the information conveyed by local Lyapunov exponents with the Oceanic Niño Index (ONI). El Niño is characterized by a positive ONI greater than or equal to  $+0.5$  °C. La Niña is characterized by a negative ONI, less than or equal to  $-0.5$  °C. To be classified as a fully-fledged El Niño or La Niña episode, these thresholds must be exceeded for a period of at least 5 consecutive overlapping 3 month seasons. The Climate Prediction Center of the US National Oceanic and Atmospheric Administration (NOAA) considers El Niño or La Niña conditions to occur when the monthly Niño 3.4 SST departures meet or exceed  $\pm 0.5$  °C along with consistent atmospheric features. These anomalies must also be forecast and



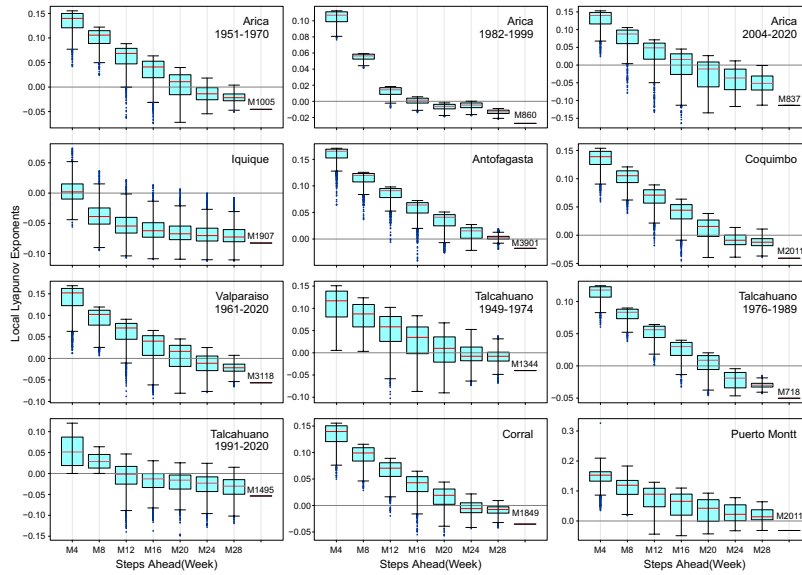
**Figure 4.** Attractors for sea surface temperature with superimposed information on the local Lyapunov exponents. Red corresponds to a positive LLE whereas green indicates a negative LLE. The subsections indicate the latitudinal order of the stations. In the case of Arica and Talcahuano there are three courts, which are numbered from 1 to 3. The temporal windows are 1 month for Iquique; 4 months for Arica; 5 months for Coquimbo, Valparaíso and Talcahuano and 6 months for Antofagasta, Corral and Puerto Montt.

should persist for 3 consecutive months. In the case of the oceanic stations, we note the following ~~by a visual comparison:~~ in Antofagasta the expected behaviour is observed, that is, the whole series shows persistent instability for the 1 and 6 month windows throughout the record ([Fig. D1c](#)). This might be due to the warm water pool that is always found here simulating an El Niño. The same pattern is observed for the 1 year window, but, in this case, the behaviour is consistently stable ([Fig. D3c](#)). Arica shows instability throughout the record for the 1 month window, where instability decreases ~~markedly~~ during El Niño events

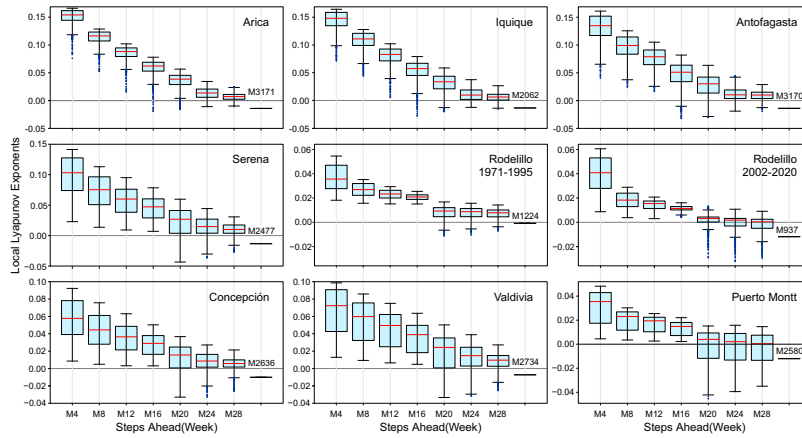


**Figure 5.** Attractors for atmospheric surface temperature with superimposed information on the local Lyapunov exponents. Red corresponds to a positive LLE whereas green indicates a negative LLE. The subsections indicate the latitudinal order of the stations. For the case of Rodelillo, there are two courts. The temporal windows are 5 months for Serena, Rodelillo, Concepción and Valdivia and 6 months for Arica, Iquique, Antofagasta and Puerto Montt.

of 1953–54, 1958–59, 1963–64, 1965–66, 2009–10 and 2014–16 ([Fig. D1a](#)). During the 6 month and 1 year windows, it becomes more stable than unstable and shares the same behaviour with Talcahuano, where the third cut can be located lower than the other two and a very marked variability in the LLE can be seen ([Fig. D2a, f](#) and [D3a, f](#)). In these two stations the trajectory of the phase space for the second cut is interrupted ([Fig. 4](#)). In Talcahuano, interesting behaviour, with respect to the ONI, is only observed for the 1 month window, where the instability for the first cut, 1949–1974, decreases during El Niño events of 1953–54, 1958–59, 1963–64, 1965–66, 1968–69 and 1972–73, to show rising behaviour in the third cut of 1991–2020 during El Niño events of 1991–92, 1994–95, 1997–98; 2002–03, 2004–05, 2009–10 and 2015–16 ([Fig. D1f](#)). In the case of Iquique, the 1 month and 1 year windows have stable/unstable behaviour; it is the only series in which the peaks of both the stable and unstable part coincide with several El Niño events of 1987–88, 1991–92, 1994–95, 1997–98, 2002–03, 2004–05, 2006–07, 2009–10, 2014–16, 2018–19, 2019–20 ([Fig. D1b and D3b](#)). For the 6 month window, the behaviour is stable throughout the record, but the stability peaks continue to coincide with the same El Niño events, with the exception of



**Figure 6.** Boxplots of the local Lyapunov exponents  $\hat{\lambda}_M$  versus steps ahead ( $M$  in weeks) for the sea surface temperature series. The series are arranged latitudinally.



**Figure 7.** Boxplots of the local Lyapunov exponents  $\hat{\lambda}_M$  versus steps ahead ( $M$  in weeks) for the atmospheric surface temperature series. The series are arranged latitudinally.

2002–03, 2004–05, 2006–07, 2018–19 and 2019–20 (Fig. D2b). Finally, Valparaíso, in the 1 month window, shows a decrease in the unstable part that corresponds to El Niño events of 1968–69, 1972–73, 1982–83, 1997–98 and 2014–16 (Fig. D1e).

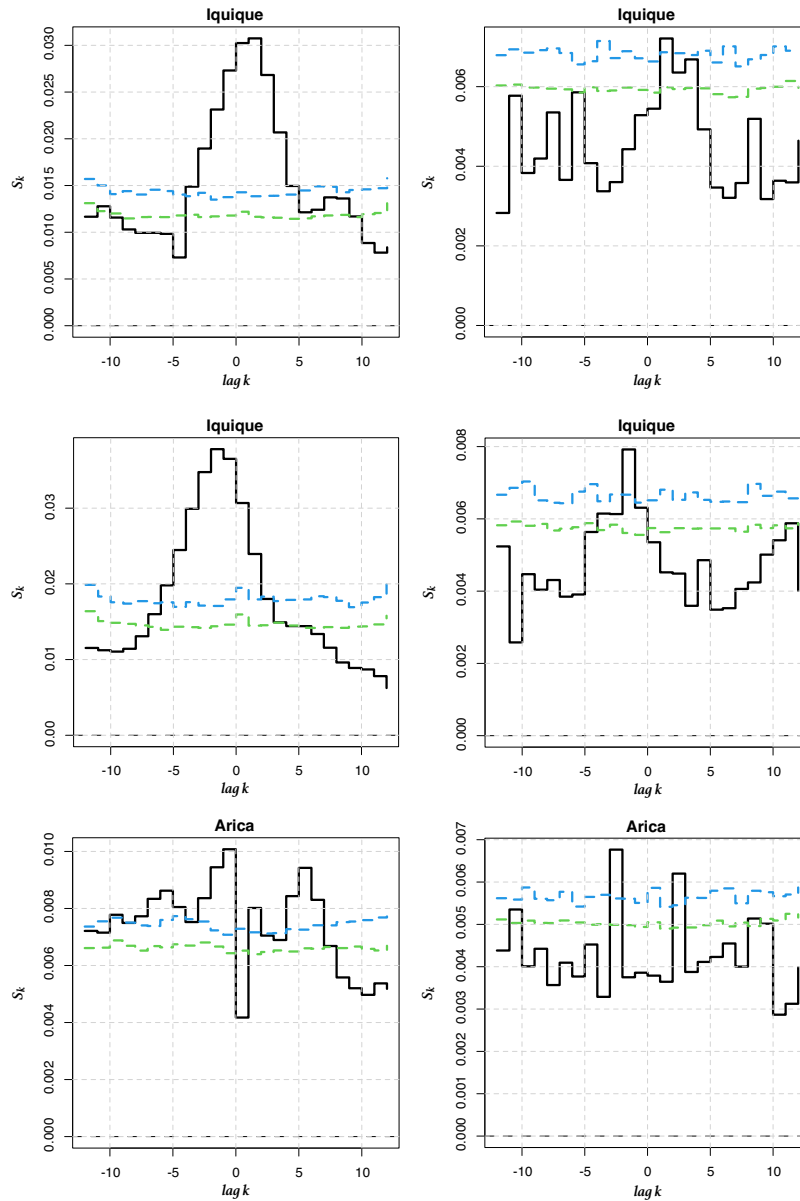
In the case of the atmospheric stations As concerns atmospheric stations, in Antofagasta the 1 month window shows unstable behaviour throughout the entire record and shows a marked decrease a temperature decrease during the 1972–73, 1982–83 and 1997–98 El Niño events see the highest temperature peaks in Fig. D4c). In the case of Arica, for the same window, a decrease in



the unstable part is observed for the same El Niño events plus that of 2014–16 ([see the highest temperature peaks in Fig. D4a](#)). Puerto Montt behaves in the same way as Antofagasta in its oceanic record, that is, it shows continuous [unstable](#) behaviour throughout the entire time span ([Fig. D1h and D4h](#)). The same occurs with Rodelillo for the 1 month window ([Fig. D4e](#)); its behaviour is similar to that of Antofagasta and Puerto Montt. Finally, for the 1 year window in Serena, instability increases from 1971 to 1982–83, which is where it coincides with the El Niño event of that year, the behaviour decreases and increases again to coincide with El Niño of 1987–88 and likewise, a peak of instability coincides with El Niño of 2014–16 ([Fig. D6d](#)).

In summary, in the case of the oceanic stations, in Arica, Valparaíso and Talcahuano, the unstable part decreases significantly during various El Niño events, while for Antofagasta the behaviour is persistent throughout the record, both for the stable and the unstable part; on the other hand, in Iquique the unstable behaviour increases during El Niño events and the stability decreases after them. For the atmospheric stations, it is in Arica, Iquique and Antofagasta where a decrease in instability during several El Niño events can be seen, contrary to what Serena shows with an increase in instability, only that the latter shows this for the 1 year window, while the previous stations show an interesting behaviour of decrease for the 1 month window.

In order to go beyond this visual comparison and to corroborate whether there is a relationship between the ONI index and the dynamics of climate variability in Chile seen through the LLEs, we compute the cross entropy measure proposed in Giannerini et al. (2015) and Giannerini and Goracci (2023); see Appendix D. ~~Rejection bands were calculated with a moving block bootstrap and series were pre-whitened — otherwise serial correlation will create false positive rejection — using an autoregressive filter. The test was performed for all stations before and after pre-whitening. The results of this test for the stations with a significant cross-correlation are shown in Fig. 8; for the results of the rest of the stations see Appendix E.~~ [Rejection bands under the null hypothesis of cross-independence are derived through the moving block bootstrap and the series have been pre-whitened using an autoregressive filter in order avoid spurious rejections due to serial dependence. The test was performed for all stations before and after pre-whitening. The most significant results are shown in Fig. 8, whereas the full set of results can be found in Appendix E. The cross-entropy test indicates a significant dependence at lag +1 for Iquique–SST with a 1 month time horizon; in the case of 6 months for the same station the lag was –2 and for the atmospheric stations only Arica–AST showed a significant dependence on lags +2 and –3. This implies that the ONI index at time  \$t\$  is correlated with the LLE at times  \$t + 1\$ ,  \$t - 2\$ ,  \$t + 2\$  and  \$t - 3\$ , respectively, for the aforementioned stations. For the 6-month time horizon, Corral also presented a significant autocorrelation, which is likely a false positive; see Fig. E4. We also applied the test to correlate the ONI index and 1 year-ahead LLEs for Serena. The results in Fig. E7 do not present any significant correlations. We discuss the positive results for Iquique–SST and Arica–AST below.](#) [For Iquique-SST, the cross-entropy test indicates a significant dependence at lag +1 and –2 with 1-month and 6-month LLEs, respectively. For the atmospheric stations, only Arica-AST showed a significant dependence at lags +2 and –3. This implies that the ONI index at time  \$t\$  is correlated with the LLE at times  \$t + 1\$ ,  \$t - 2\$ ,  \$t + 2\$  and  \$t - 3\$ , respectively, for the aforementioned stations. For the 6-month time horizon, Corral also presents a significant dependence, which could be a false positive; see Fig. E4. We also applied the test to correlate the ONI index and 1 year ahead LLEs for Serena. The results in Fig. E7 do not show any significant cross-dependence. We offer further discussion in Section 4.2.3 below.](#)



**Figure 8.** Cross entropy  $S_k$  for  $k = -12, \dots, 12$  between the 1 month and 6 month LLEs (Iquique-SST) and 1 month LLEs (Arica-AST) and the ONI index. Left column: original time series. Right column: pre-whitened time series. Iquique 1 month and 6 months correspond to the first two upper graphs and the two central ones; while Arica 1 month corresponds to the lower two graphs.

## 4 Discussion

## 4.1 Spectral Analysis

The periods of 18, 18.8 and 19 years found for Antofagasta-SST, Iquique-AST and Arica-AST could be linked to the PDO. They might also be associated with the lunar nodal cycle of 18.61 years, popularly known as “lunar wobble” — this low-  
335 frequency tidal cycle is due to the oscillation of the maximum lunar declination with respect to the equator (Rossiter, 1962; Black et al., 2009) —, since the variations of the lunar cycle influence the movement of ocean currents. The 4-year periods found in Antofagasta, Valparaíso and Talcahuano might be linked to the lunar perigee subharmonic of 4.4 years. The external forcing caused by the Moon is important, not only because of the changes caused in interannual time scales to the variability of the tidal range, but also because it influences the hydrodynamic energy of the ocean, altering sedimentation patterns (Oost  
340 et al., 1993; Gratiot et al., 2008) and coastal erosion (Smith et al., 2007), water level and coastal flood risk (Thompson et al., 2021), as well as ocean stratification (Devlin et al., 2017b, a, 2019).

Interannual periods can also be observed in the oceanic stations, 2.7 years for Iquique and Valparaíso; 2.6 for Arica; 2.5 for Coquimbo and Talcahuano; 2.4 for Antofagasta; 2.0 for Corral and 1.8 for Puerto Montt. In the case of atmospheric stations, 2.7 years was found for Serena; 2.8 for Rodelillo; 2.3 for Valdivia and 2.0 for Puerto Montt. These periods could be related to  
345 the Quasi-Biennial Oscillation (QBO), a climatic alteration located in the Pacific Ocean that consists of zonally symmetrical easterly and westerly wind regimes that regularly alternate with a period that varies between 24 and 30 months and is manifested through hydroclimatological variables such as wind and temperature. Its eastern phases appear to be alternately related to the warm component of ENSO (Riveros et al., 2020). The QBO has already been seen in other records from the Chilean region, between 39° and 43° S (Villalba et al., 1998). Fagel et al. (2008), when analysing layered sediments from Lake Peyuhue, 40°  
350 S, 72° W, found that the frequency bands of the thickness of the layers were mainly related to QBO periodicities. In our case, we found this oscillation in oceanic and atmospheric surface temperature records. For the oceanic records it was found in all the stations, something that did not happen with the atmospheric records, where it is only seen for the stations in the central and southern parts of Chile. Similarly, periods related to ENSO and PDO were obtained, as well as some others that we believe may be related to local events, however, it should be noted that QBO has also been related to ENSO.

355 Regarding the periodicity of 1.5 years found in both classes of station, Jiang et al. (2020), [have noted this periodicity in modes of tropical Pacific surface wind anomalies, also referred to as the so-called combination mode \(C-mode\). This C-mode emerges from nonlinear interactions between the warm pool annual cycle and ENSO variability](#)(Stuecker et al., 2013). Sakova et al. (2006) [likewise found an 18-month signal in altimeter sea surface height over the whole Indian Ocean, which they associate with Indian Ocean dipole events, similar to ENSO, and statistically linked to it](#)(Stuecker et al., 2017), [but taking place in the equatorial Indian Ocean.](#)  
360

## 4.2 Nonlinear Analysis and ONI index

The effects of changes in the SST and AST on biota range from the redistribution of species (Lubchenco et al., 1993; Ihlow et al., 2015), to the increase in vulnerability as occurs in the HCS due to the expansion of oxygen minima associated with the increase in SST (Mayol et al., 2012; Stramma et al., 2008), to increases in extreme events (Harris et al., 2018; Garreaud,

365 2018), up to subtle changes in biological–climatic feedbacks (Bradford et al., 2019; Bardgett et al., 2008), all of which invite discussions about the contribution of the oceans in these feedbacks (Joos, 2015). For these reasons, understanding the effects of climate variabilities such as El Niño on the behaviour of long time series of coastal temperature records can contribute to improving forecasts and understanding the effects of climate change and climate variability in systems such as the HCS (Harris et al., 2018). ~~If we divide the region into northern, central, and southern segments in our wide study area of 18°–45° S based on the latitudinal climatic gradient, we can offer the following bioclimatic interpretations. The results point to a globally non-chaotic dynamics for both oceanic and atmospheric stations. LLE analysis highlights patterns of reduced and enhanced stability and predictability in the phase space. As expected, the LLEs approach the global negative Lyapunov exponent as the number of steps ahead increases, but the asymptotic behavior of the LLEs towards the global exponent differs in oceanic versus atmospheric stations; stability is reached faster in oceanic stations. This may be expected, since the oceanic environment is less~~  
370 ~~perturbable than the atmosphere owing to the large heat capacity of water. The results indicate consistently the presence of nonlinear, non-chaotic, oscillators for both oceanic and atmospheric stations. LLE analysis highlights patterns of reduced and enhanced stability and predictability in the phase space. Where the asymptotic behaviour of the LLEs towards the negative global Lyapunov exponent differs in oceanic versus atmospheric stations, since stability is reached faster in oceanic stations, where the oceanic environment is less perturbable than the atmosphere due to the great heat capacity of water.~~

#### 380 4.2.1 Oceanic stations

In both oceanic and atmospheric stations, Antofagasta shows the slowest speed of convergence; in the oceanic case, accompanied by Corral. Antofagasta is characterized by the constant presence of warm water inside its bay (Piñones et al., 2007), so its climate possesses a type of local permanent El Niño, keeping the bay in a state of external forcing. This makes the dynamics of the Antofagasta system look unstable in the LLEs, and when comparing with ONI it is not possible to distinguish different behaviour when a general El Niño event occurs. Regarding Corral, there is a cooling trend in the coastal upwelling regime along  
385 northern Chile and southern Peru, which contrasts with the warming trend in the last 350 years in an offshore area of the Humboldt Current system at 36° S (Vargas et al., 2007). Such El Niño-type conditions found also in Corral might explain its reduced speed of convergence. ~~The climatic effects of El Niño, as well as the forcings induced by it, are part of a complex system, since interactions between different factors are necessary for certain processes to occur, such as primary production and variability in the region's climate. A linear analysis cannot decipher the behaviour of the climate system in any region; likewise, the results of linear methods are usually ambiguous and inadequate, since natural processes are complex, show non-stationarity and are recorded mainly as short and noisy series (Marwan et al., 2003). The relationship between climate forcing and temperature change is not expected to be linear in this type of data, owing to the nonlinear relationships between coastal upwelling, the interdecadal variability of El Niño and global warming in the Chile/Peru margin (Vargas et al., 2007). The regional effects of~~  
390 ~~El Niño in this arid zone interfere with the effects caused by the Humboldt Current, not only within it, but also in the entire Pacific subtropical anticyclone, since during El Niño conditions it undergoes a large-scale weakening (Rutllant et al., 2003). This decrease is seen to be gradual, as the behaviour of the stations changes considerably with the different windows. The case of Iquique-SST is peculiar due not only to its attractor, which shows an abrupt change and then returns to the same behaviour,~~

but also because, of all the oceanic stations in terms of neural network analysis, it is the one that requires a lower embedding dimension ( $d=3$ ) than the rest of the stations, likewise, it is the only station that presents mixed behaviour very early, that is, in the 1-month window. Also, it shows a positive correlation between the ONI index and LLEs. This indicates a strong relationship between the climatic variability of this region and the El Niño phenomenon.

The case of Iquique-SST is peculiar due not only to its attractor, which shows an abrupt change, but also because of the estimated embedding dimension ( $d=3$ ), much lower than that of the other stations, a mixed dynamics for the window of 1 month and a positive cross-dependence between the ONI index and the LLE. This indicates a strong relationship between the climate variability of this region and the El Niño phenomenon. Fuenzalida (1985), through an analysis for El Niño 1982–83, showed that an increase in temperature in Iquique is associated with this phenomenon. In our case, the cross-dependence test showed a significant correlation at lag +1 for the 1-month LLEs and at lag -2 for the 6-month LLEs. The difference between the two is that the record observed at 1 month presents stabilities and instabilities which, together with other factors discussed below, favour a leading effect and could be associated with the warm phase of ENSO. As for the 6-month LLEs, the behaviour of the area is completely stable; perhaps for this reason there is a lagging effect associated with the cold phase of ENSO. Notably, like La Serena and Valdivia, where a similar dynamics occurs between them — discussed below —, Iquique is also in a transition zone, the faunal transition zone, located south of the subtropical and north of the subantarctic zone (Bé and Tolderlund, 1971). ~~where it is possible to observe a mixture of planktonic species formed by foraminifera from both cold and~~ warm waters. In addition, the northern part of Chile, in which Iquique is located, is an area with wind-driven coastal upwelling throughout the year. Barbieri et al. (1995) analyzed the northern region and found four sources of upwelling in Iquique. The upwelling south of Iquique is the most important due to its latitudinal extension. For this area the highest correlation between wind and SST is observed.

Due to the peculiar oceanic and environmental characteristics of the Iquique area, we can hypothesize that the abrupt change observed in the trajectory of the SST transition could be due to the climate of 1976–77, which, according to Namias (1978); Houghton et al. (2001) and Solomon et al. (2007) was a coupled global variation of the atmosphere–ocean system that links the variability of the sea surface temperature of the Pacific and climatic parameters in most of the world. ~~In addition to the strong influence of ENSO on the interannual time scale, the most notable feature is the abrupt upward shift in air and ocean temperature regimes in the mid-1970s.~~ Although this was a global variation, ~~probably due to all the aforementioned characteristics, it is possible in Iquique to observe this abrupt change in its trajectory, something that does not happen with the other stations, where the shape of the attractors indicates the presence of nonlinear oscillators, possibly forced. On the other hand, it is these same characteristics that probably make Iquique's dynamics more consistent with ENSO events and favour that its stability/instability characteristics are different from the rest of the oceanic stations.~~ this abrupt trajectory change is present in Iquique, contrarily to the other stations, where the shape of the attractors indicates the presence of nonlinear oscillators, possibly forced. Likely, these peculiar features associate Iquique's dynamics with ENSO events. ~~In the same way~~ Also, we found similarity between the dynamics of Arica — upwelling throughout the year — and Talcahuano — seasonal upwelling. This could be the result of large-scale oceanic processes that occur simultaneously in both places. In Castro et al. (2020), similar variations of  $\delta^{13}\text{C}$  of particulate organic matter were noted in Iquique and Talcahuano, despite being two totally different areas;

435 this was hypothesized to be influenced by coastal outcrop. In our case, since Arica is not very far from Iquique, we can think  
of this outcrop as part of the explanation for the similarity of the dynamics that we found. On the other hand, we have the  
northward currents that carry subantarctic water, as well as the intrusion of subtropical waters to the south, which during El  
Niño conditions can approach the coastal zone, the propagation of trapped waves to the coast and a poleward subsurface flow.  
From a dynamical point of view, this variability can affect currents, the mixing of the water column, the intensity of upwelling,  
as well as the temperature and sea level on the continental shelf and slope throughout the Humboldt Current system (Shaffer  
440 et al., 1997, 1999). In addition to this, the Chilean continental shelf is extremely narrow compared to the Atlantic coast, with a  
maximum width close to 45 km in the Talcahuano area and a maximum depth in general of 150 m, except for the Valparaíso  
area, where it reaches up to 800 m (Camus, 2001). So, these may be other possible explanations for the similarity in dynamics  
found in these two regions. However, something else must be happening between the two stations to maintain this dynamics in  
the three study windows.

#### 445 4.2.2 Atmospheric stations

~~In the atmospheric stations it is also possible to observe similar dynamics between~~Rodelillo, Puerto Montt and Antofagasta-  
AST present similarities with Antofagasta-SST. The former three stations present persistent behaviour throughout the time  
span, for both northern and southern regions of Chile. Therefore, we can conjecture the presence of teleconnection processes  
throughout the zone. Gómez (2008) made hydrographic and meteorological observations during the period 1996–2005, finding  
450 for the central-southern zone of Chile, an interannual and decadal modulation of the beginning of the upwelling season during  
the period 1968–2005. This modulation would be linked to changes in atmospheric circulation patterns, associated with tele-  
connections triggered during El Niño. ~~For this study, it is also necessary to add the presence of teleconnections in oceanographic  
processes. According to this study, the presence of teleconnections in oceanographic processes is needed.~~Finally, for the at-  
mospheric stations of Arica, Iquique and Antofagasta, a decrease in unstable behaviour can be seen during El Niño events,  
455 possibly due to the effects of the Pacific anticyclone. Regarding Arica, the cross entropy test showed a significant cross-  
dependence between ENSO and 1-month LLEs, at lags +2 and –3. ~~The values are larger than in Iquique; however, Iquique is  
oceanic, while Arica is an atmospheric station and the latter is easier to perturb, which could cause these values. The oceanic  
and atmospheric stations not only are arranged latitudinally, but one forms the counterpart of the other, that is, the oceanic  
part has its atmospheric counterpart, for example, Antofagasta-SST with Antofagasta-AST, Iquique-SST with Iquique-AST,  
460 Coquimbo-SST with Serena-AST, and so on. This is important since when observing the behaviour of the stations in the  
different windows, it was noticeable that for the three windows the behaviour of Corral and Valdivia, its counterpart, were  
similar.~~

~~For the AST stations, it can be noted by eye that Rodelillo behaves differently from the rest of the series. For the 6 month  
window it has more stable behaviour, most noticeably in the first part of the series, than the rest of the stations, and for the 1  
465 year window it is the only one that behaves in a stable manner in its entirety.~~

Puerto Montt is the southernmost station, on the northern border of Patagonia (Garreaud et al., 2013). This station is located  
well inside the continent, on the coast of an inland sea, with greater thermal amplitudes due to the continental effect. ~~As this~~

station is located south of the southern limit recognized by the influence of El Niño, it is possible to assume that El Niño is not responsible for the climate variability that may occur in this station, since we can see an unstable dynamics also in the oceanic part (Puerto Montt-SST), but rather Southern Annual Mode (SAM) As this station is located south of the southern limit recognized for the influence of El Niño, it is possible that El Niño is not responsible for the climate variability in this station, but rather Southern Annual Mode (SAM)(González-Reyes, 2013), ~~However, ENSO periods can generate waves capable of interacting with the region~~ (Karstensen and Ulloa, 2009), ~~thus contributing to unstable dynamics, since we can see an unstable dynamics also in the oceanic part (Puerto Montt-SST).~~ However, for this region there is already a high degree of disturbance, so what could be happening here are further intensifications induced by El Niño. This may be the reason why a behaviour similar to that of Antofagasta-SST is also observed when we compare the ONI index and the LLE-AST of both stations.

In the case of Rodelillo, we can hypothesize that the local climate is greatly influencing the results obtained; this series was divided into two parts, which showed homogeneous results for the three different types of windows, that is, if the first segment of Rodelillo for the 1 year window was stable, the second was, too. This area is in the central zone of Chile and both the central and central-southern zones of Chile (32°–43° S) concentrate most of the wildfire activity in the country (Soto et al., 2015; Urrutia-Jalabert et al., 2018), where ENSO and the Antarctic Oscillation (AAO) have significant influence(Urrutia-Jalabert et al., 2018). This may be what maintains homogeneous results in Rodelillo's dynamics. ~~Data from Rodelillo Meteorological Station located in the Valparaiso region reported daily maximum temperatures and thresholds (90 %) of heat waves in Chile during 2017, 2018, and 2019~~(Guerrero et al., 2021). ~~It has been shown that phenomena such as ENSO and the Antarctic Oscillation AAO have a significant influence on fire dynamics — anomalies in rainfall occur during the year prior to the fire season~~(Urrutia-Jalabert et al., 2018) ~~— and on vegetation, primarily through their influence on regional climate and fuel conditions~~(Swetnam and Betancourt, 1998, 1990; Kitzberger and Veblen, 1997; Veblen et al., 2000; Holz et al., 2012; Mariani et al., 2016). ~~Fire history studies over several centuries have linked wildfire activity in southern Chile and Argentina to hot, dry conditions associated with the positive phase of the AAO, as well as to below-average precipitation conditions associated with negative deviations of ENSO and the Pacific Decadal Oscillation~~(Holz and Veblen, 2012; Mundo et al., 2013; Holz et al., 2017).

For their part, La Serena and Valdivia show a similar dynamics for the 6 months windows. La Serena, in a transition zone between the hyperarid northern Atacama Desert and the more mesic Mediterranean region of southern central Chile, is strongly affected by ENSO, which is the primary driver underlying the high interannual variability in precipitation, and which promotes higher average rainfall during the warm phase (Rutllant and Fuenzalida, 1991). On the other hand, Valdivia is located within a transitional area between the influence of ENSO and SAM. ~~This area, the Valdivian ecoregion, is considered a site of high biodiversity and importance for biological conservation.~~The dynamics of both seasons are influenced by ENSO; however, the effect of the Tropical South Pacific Anticyclone also plays an important role in this similarity, as the effects of this semi-permanent high pressure system change from 35° S, 90° W in January to 25° S, 90° W in July (Kalthoff et al., 2002; Montecinos et al., 2015), that is, in a period of 6 months, which is one of the windows that we use and in which important changes in the dynamics of the systems can be seen. The influence of the anticyclone is permanent to the north of 30° S, maintaining dry conditions, and weak south of 40° S (Camus, 2001), where there is rain throughout the year, which is why it has important

effects in Valdivia. ? and ? ~~recognized two areas of high productivity on the Chilean coast: 1) in the northern area (24° S and between 30°–33° S) and 2) south of 39° S. These two areas encompass both La Serena and Valdivia, thus indicating the~~  
505 ~~important contribution of the anticyclone to climate variability in Chile.~~

In the cross-entropy test for the time horizons of 1 month and 1 year performed at La Serena, Fig. E7, ~~where important correspondences between ONI and LLE could be observed,~~ it was possible to verify that there is no significant correlation. For La Serena, the cross-entropy test did not show significance; Fig. E7. This indicates that, although the instability of the dynamics in Serena is influenced by ENSO, it is not this phenomenon that contributes the most to the instabilities. We found  
510 similar results for Valdivia. This was expected because this area is also influenced by SAM and it is likely that the latter has a greater influence on the area.

### 4.2.3 ONI index

~~Only Iquique-SST, for time horizons of 1 and 6 months, presented a significant correlation with ENSO, while for the atmospheric stations, it was Arica with a time horizon of 1 month that showed a significant correlation. That is, it is only~~  
515 ~~for the northern part of Chile that we obtained correlations between the dynamics of climate variability in Chile seen through the LLE and the ENSO. A possible explanation for this correlation found in both places may be the disturbances coming from the equator that only influence the northern part of Chile and that can affect the physical environment (Pizarro et al., 1994). This favours the circumstances for there to be a correlation between ENSO and the LLE in this area; on the other hand, the initial conditions are important for the influence of westerly winds: during the beginning of a warm event, a westerly wind can~~  
520 ~~accelerate the development of the event, while one after the peak of El Niño will simply prolong its duration (Fedorov, 2002; Fedorov et al., 2003). The majority of the published studies on ENSO in Chile report findings for the northern and central regions (Gutiérrez and Meserve, 2003; Holmgren et al., 2001; Guera and Portflitt, 1991; Vilina et al., 2002; Ulloa et al., 2001; Acosta-Jamett et al., 2016); although ENSO is a phenomenon that affects the climate globally, it has a greater influence on the northern part of our study region.~~

~~Each El Niño event will affect different areas of the Chilean region differently, since each one is unique. This can be seen in the study by Barbieri et al. (1995), who observed that during the 1987 El Niño the mean SST showed values above 1.5 °C throughout the year, while during the 1992 El Niño these anomalies occurred from March to May and from September to November. It is a fact that El Niño influences the regional climate, as well as the PDO and the SAM. That is why for future studies it is proposed to analyze in greater detail the influence of the last two, as well as the level of impact that~~  
530 ~~regional characteristics have, in such a way that great improvements are achieved in the predictability of these climatological phenomena.~~

Of all the oceanic stations tested, only Iquique-SST (1- and 6-month LLEs) showed a significant cross-dependence with ENSO. For the atmospheric stations, only Arica (1-month LLEs) resulted significant. This indicates that the association between LLEs and the ENSO holds only in the northern part of Chile. A possible explanation for this may be the disturbances coming from the equator that only influence the northern part of Chile and that can affect the physical environment (Pizarro et al., 1994). Also, the initial conditions are important for the influence of westerly winds: during the beginning of a warm



event, a westerly wind can accelerate the development of the event, while one after the peak of El Niño will simply prolong its duration (Fedorov, 2002; Fedorov et al., 2003). The majority of the published studies on ENSO in Chile report findings for the northern and central regions (Gutiérrez and Meserve, 2003; Holmgren et al., 2001; Guera and Portflitt, 1991; Vilina et al., 2002; Ulloa et al., 2001; Acosta-Jamett et al., 2016); although ENSO is a phenomenon that affects the climate globally, it has a greater influence on the northern part of our study region. Each El Niño event it is likely to affect the various areas of the Chilean region differently. This can be seen in Barbieri et al. (1995), who observed that during the 1987 El Niño the mean SST showed values above 1.5°C throughout the year, while during the 1992 El Niño these anomalies occurred from March to May and from September to November. It is a fact that El Niño influences the regional climate, as well as the PDO and the SAM.

## 5 Conclusions

We examined with a LLE analysis the patterns of local instability for the 16 stations, and these correlate on some occasions with ENSO events. However, it is only for the northern stations, specifically Iquique-SST and Arica-AST that a significant correlation can be observed. ENSO, despite being a phenomenon that affects the climate globally, has greater influence in the northern part of Chile.

Teleconnections are noted throughout the entire region that may be associated with ENSO, PDO, SAM, the Pacific Anticyclone, upwelling zones, ~~and QBO~~ QBO and C-mode. A link can be seen between the climate variability of the region and different internal forcings (PDO, ENSO, SAM, C-mode and Pacific Anticyclone) and external ones (QBO, Lunar Cycle) that contribute to the complexity of the system and favour a change in the variability as we move in latitude, which is due, in part, to the fact that it is necessary to take regional characteristics into account if one wants to understand the response of the different study systems, oceanic and atmospheric, to the different forcings.

Previously unused Chilean naval temperature data from a large latitudinal spread of stations have helped us to uncover a great variety of factors involved in the temperature dynamics of the Chilean region. We find a non-chaotic climate variability, but with a nonlinear behaviour; reinforcing what has been mentioned in the literature. Our study invites more detailed work on the northern part of Chile, especially on Iquique and its sea surface temperature, where the behaviour of the system was very peculiar both in its low embedding dimension, and in the shape of the attractor and the significant correlation with ENSO for time horizons of 1 and 6 months.

*Data availability.* We obtained access to Chilean naval temperature data; the rights to those data remain with the navy.

## Appendix A: The Humboldt Current system, El Niño–Southern Oscillation, and Southern Annual Mode

565 The Humboldt Current System (HCS) that brings water from the tropical and sub-polar regions is characterized by evident interannual and seasonal variabilities (Mayol et al., 2012). The system is composed of: (i) the Humboldt Current predominantly away from the equatorial coast that moves at an average surface velocity of  $6 \text{ cm s}^{-1}$ ; (ii) coastal currents formed by the Peru–Chile current and countercurrent; and (iii) the Peru–Chile equatorial coastal current. The currents towards the Pole are responsible for transporting equatorial and subtropical subsurface waters to the Chilean coasts, while the flow towards the

570 equator brings cold Antarctic and Antarctic intermediate waters. The HCS is controlled to a large extent by the equatorial coastal winds linked to the Pacific subtropical anticyclone, which promotes the coastal upwelling associated with the primary productivity in the north and centre of Chile, extending its influence to the south of Chile in summer (Montecino et al., 2006). Around the western tropical zone of the Pacific there are ocean–atmosphere interactions that have effects at the planetary level (Enfield and Allen, 1980). In particular there is the El Niño–Southern Oscillation (ENSO) phenomenon, characterized by two

575 opposite phases: one of warming and rainfall in the Eastern Pacific, known as El Niño, and a second of cooling and dry years called La Niña (Pizarro and Montecinos, 2004). The redistribution of temperature in the water column can be associated with the passage of low-frequency coastal trapped waves (CTW) (days at the intra-seasonal scale) and cool and warm interannual anomalies produced by equatorial waves due to the Southern Oscillation of El Niño (Shaffer et al., 1997; Montecinos and Gomez, 2010). In addition to ENSO, there is the Pacific Decadal Oscillation (PDO), which develops in the northern Pacific

580 Ocean. It may be described as a long period ENSO (Núñez et al., 2013), since it also has a positive or warm phase and a negative or cold phase, but a different time scale. The PDO can intensify or diminish the impact of ENSO, depending on the relative phase in which these two oscillations are found. When ENOS and PDO are in phase, the impacts induced by El Niño or La Niña will be magnified with respect to normal patterns. Conversely, if ENSO and PDO are in opposite phases, the effects on global climate variability will be weaker (Wang et al., 2014). The Southern Annual Mode (SAM) or Antarctic Oscillation

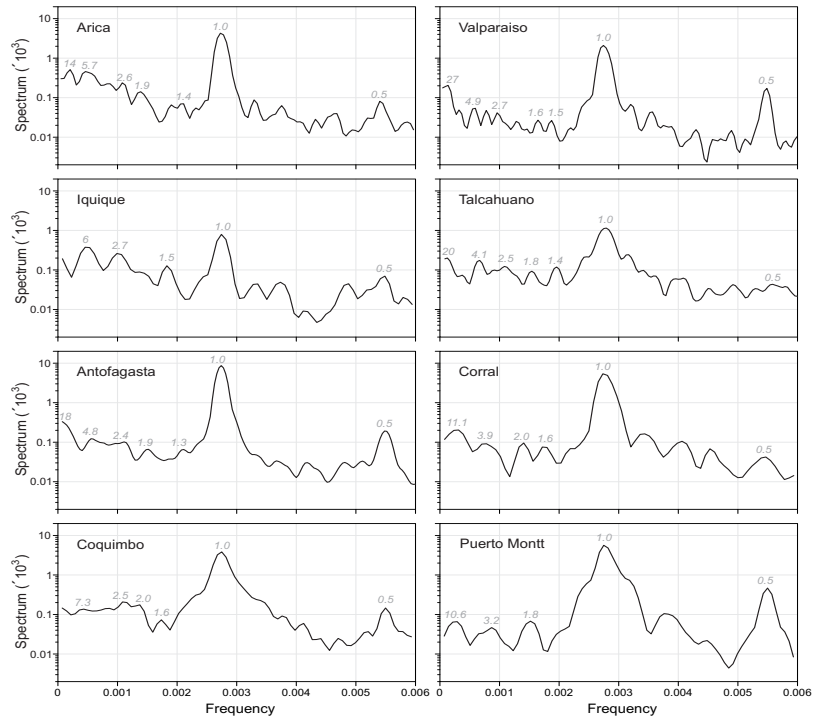
585 defines the changes in the westerly winds that are driven by atmospheric pressure contrasts, which in turn generate pressure differences between the tropics and the southern polar areas. The change of position of the western wind band, produced from west to east in latitudes between  $30^\circ$  and  $60^\circ$  of both hemispheres, influences the strength and position of cold fronts and mid-latitude storm systems. In the positive phases of SAM, a belt of strong westerly winds contracts towards Antarctica. This results in weaker than normal westerly winds and high pressures in southern Australia, restricting the entry of colds fronts.

590 SAM differentially affects the surface temperature of the four continental masses of the Southern Hemisphere, including part of the area influenced by the HCS at mid latitudes (Gillett et al., 2006). In conjunction with ENSO, SAM also explains part of the coastal temperature anomalies at high (Fogt and Bromwich, 2006), and also at mid latitudes (Yeo and Kim, 1992).

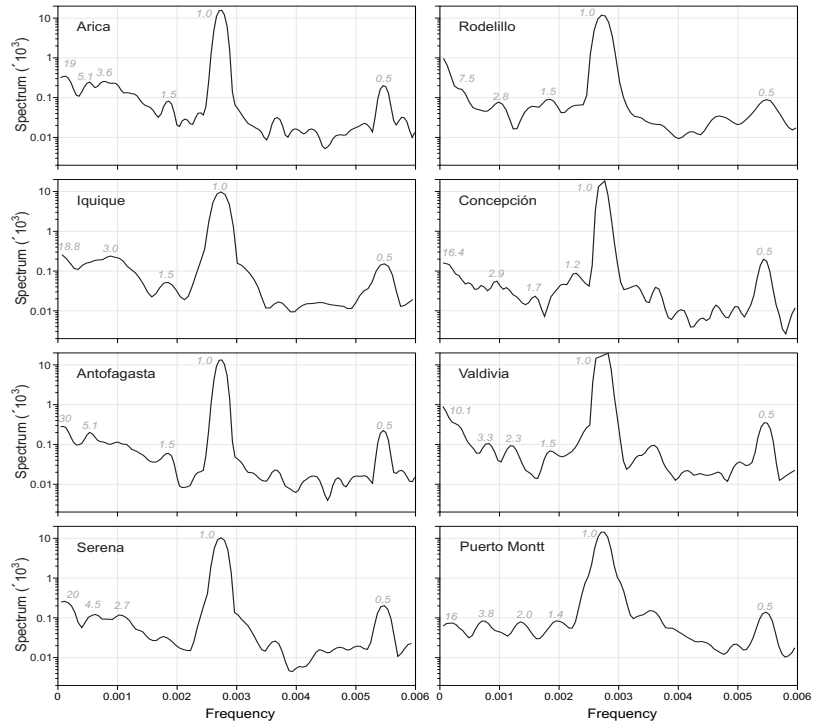
## Appendix B: Spectral Analysis

Figures B1 and B2 show spectral analyses performed for the oceanic and atmospheric stations. Numbers are given for the

595 spectral peaks with the highest energies.



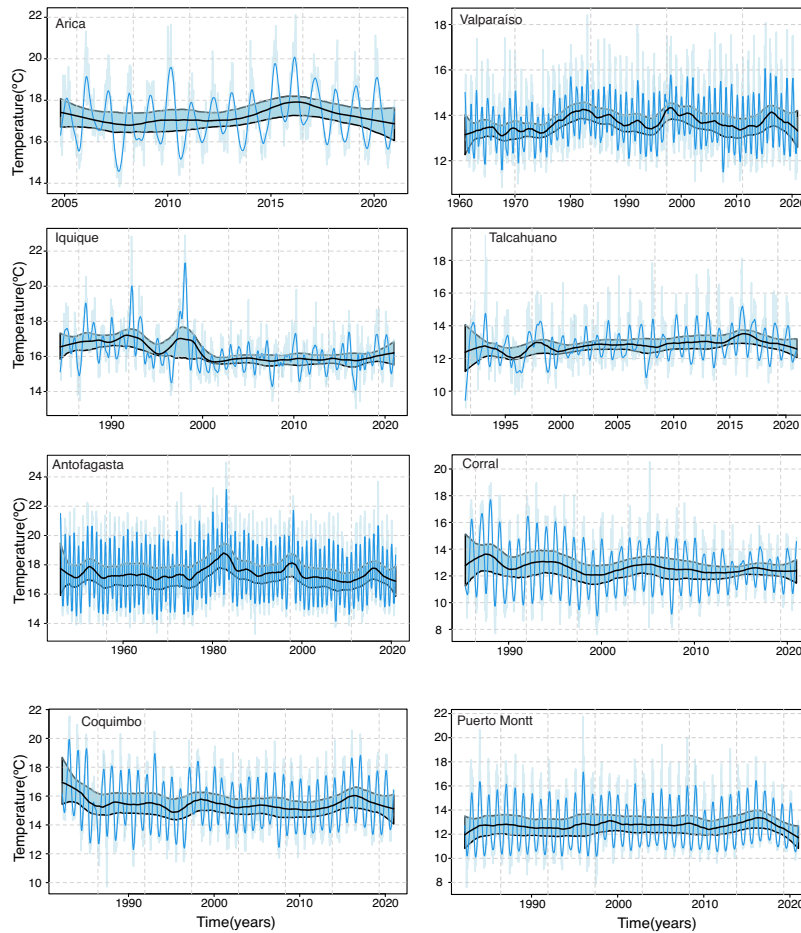
**Figure B1.** Spectral analyses for oceanic stations. The numbers indicate the spectral peaks with the highest energy.



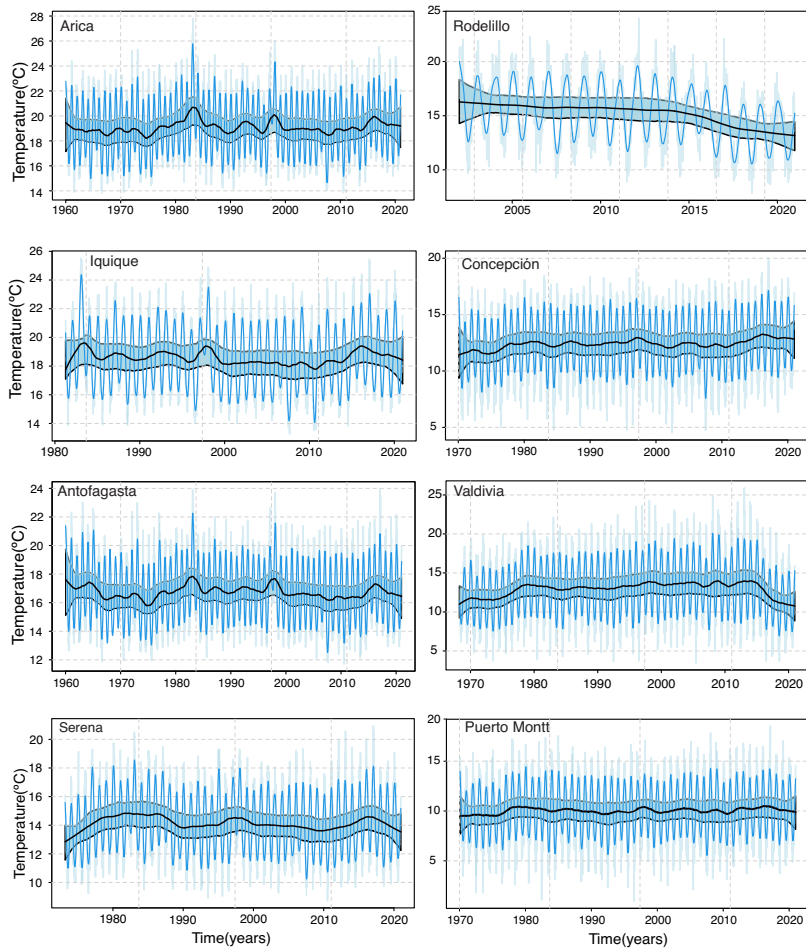
**Figure B2.** Spectral analyses for atmospheric stations. The numbers indicate the spectral peaks with the highest energy.

## B1 Trend Estimation

In Figures B3 and B4 trend estimations are given for the 16 stations in a latitudinal manner, north to south.



**Figure B3.** Trend estimation for oceanic stations. Interpolated original (light blue), trend-cycle (blue) and long-term trend (black), together with confidence bands at 95 % (light blue).



**Figure B4.** Trend estimation for atmospheric stations. Interpolated original (light blue), trend-cycle (blue) and long-term trend (black), together with confidence bands at 95 % (light blue).

## Appendix C: Neural Network Models for Random Dynamical Systems

As in Section 2.2, the dynamical system has the following representation:

$$600 \quad \mathbf{X}_{t+1} = F(\mathbf{X}_t) + \mathbf{E}_{t+1}, \quad \mathbf{X}_t \in \mathbb{R}^d, \quad (\text{C1})$$

where  $\mathbf{E}_t$  is an error process in  $\mathbb{R}^d$ . We assume that the data  $\{X_t\}$  are generated by the nonlinear autoregressive model

$$X_{t+1} = f_d(X_t, X_{t-1}, \dots, X_{t-d+1}) + \varepsilon_t, \quad (\text{C2})$$

where  $X_t \in \mathbb{R}$  and  $\{\varepsilon_t\}$  is a sequence of independent random variables with  $E(\varepsilon_t) = 0$  and  $\text{Var}(\varepsilon_t) = \sigma^2$ . Also, we denote with  $\mathbf{J}_t$  the Jacobian of the map, evaluated at  $\mathbf{X}_t$ . The model of Eq. (C1) can be seen as the state-space representation of the

605 system of Eq. (C2), where  $\mathbf{X}_t = (X_t, X_{t-1}, \dots, X_{t-d+1})$  and  $\mathbf{E}_t = (\varepsilon_t, 0, 0, \dots, 0)$ . We derive a consistent estimator for the  
map  $F$  and its Jacobian through a neural-network estimator of  $f_d$ . Neural networks are a class of nonlinear models inspired by  
the neural architecture of the brain (Nychka et al., 1992). These are made up of layers that in turn have connected “neurons”,  
which send messages and share information with each other. Layers are classified into three groups: 1) input, 2) hidden, and 3)  
610 output. The input values  $\mathbf{X}_t$  are received by the *input units*, which simply pass the input forward to the hidden units  $u_j$ . Each  
connection (indicated by an arrow) performs a linear transformation determined by the *connection strength*  $\omega_{ij}$  so that the total  
input to unit  $u_j$  is

$$\sum_{i=1}^d \omega_{ij} X_{t-i+1} + \omega_{0j} \quad (\text{C3})$$

and each unit performs a nonlinear transformation on its total input:

$$u_j = \psi \left( \sum_{i=1}^d \omega_{ij} X_{t-i+1} + \omega_{0j} \right). \quad (\text{C4})$$

615 The *activation function*  $\psi$  is a sigmoidal function with limiting values 0 and 1 as  $x \rightarrow -\infty$  and  $+\infty$ , respectively. Here we use

$$\psi(x) = \frac{x(1 + |\frac{x}{2}|)}{2 + |x| + \frac{x^2}{2}}. \quad (\text{C5})$$

Other choices of the activation function are possible even if it does not have a major impact upon the final output. The hidden  
layer outputs  $u_j$  are passed along to the *single output unit*, which performs an affine transformation on its total input. Therefore,  
the network output  $f_d$ , for  $d$  inputs and  $k$  units in the hidden layer can be represented as

$$620 \quad f_d(\mathbf{X}_t) = f_d(X_t, X_{t-1}, \dots, X_{t-d+1}) = \beta_0 + \sum_{j=1}^k \beta_j u_j = \beta_0 + \sum_{j=1}^k \beta_j \psi \left( \sum_{i=1}^d \omega_{ij} X_{t-i+1} + \omega_{0j} \right).$$

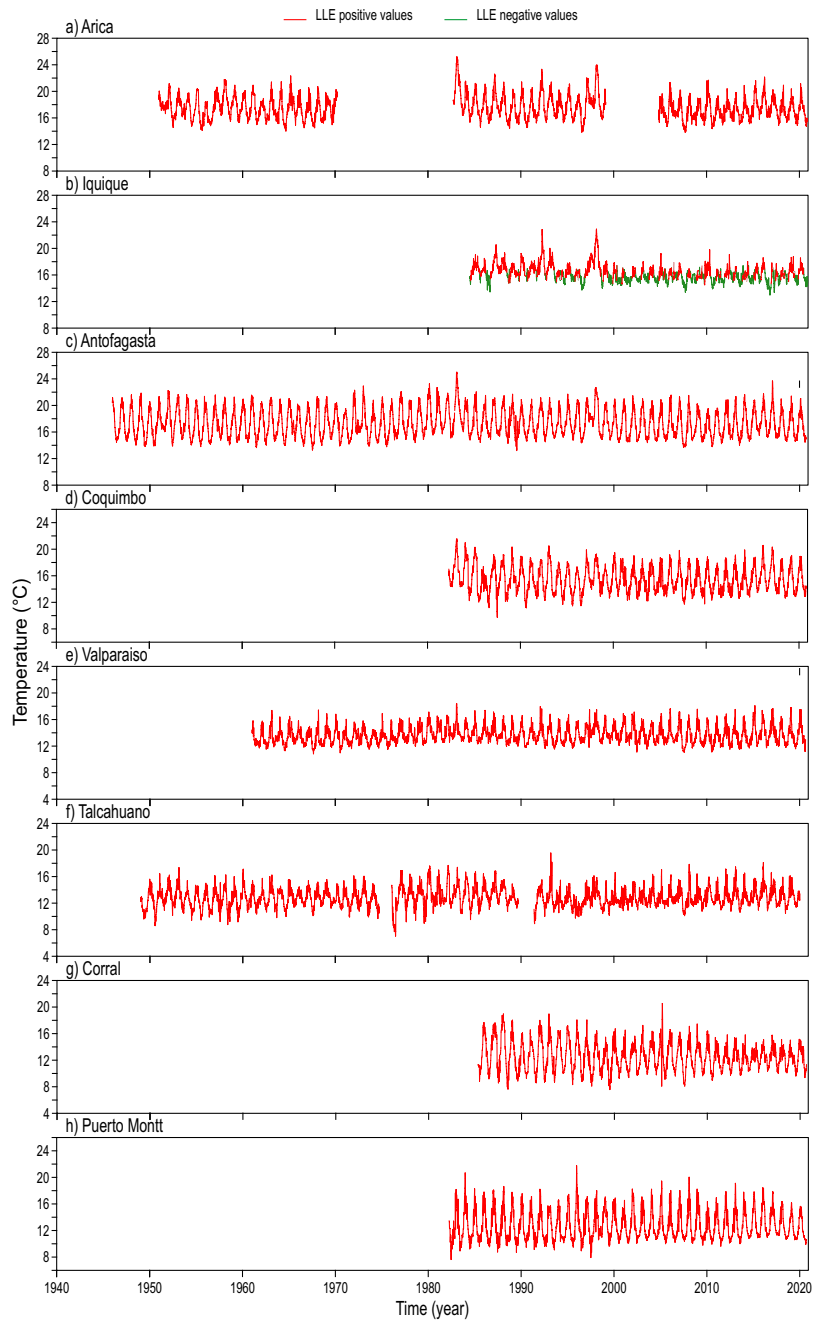
We made use of the R `nnet` package to implement the estimator and we used least squares minimization (Venables and  
Ripley, 2002). We also experimented with conditional maximum likelihood without noticing major discrepancies in the results.  
The major challenge in regression with neural network models is selecting among the many possible combinations of  $d$  and  $k$ .  
Here we choose the best model that minimizes the BIC defined as

$$625 \quad \text{BIC} = \log(\hat{\sigma}^2) + \frac{\log(n)}{n} [1 + k(d+2)], \quad (\text{C6})$$

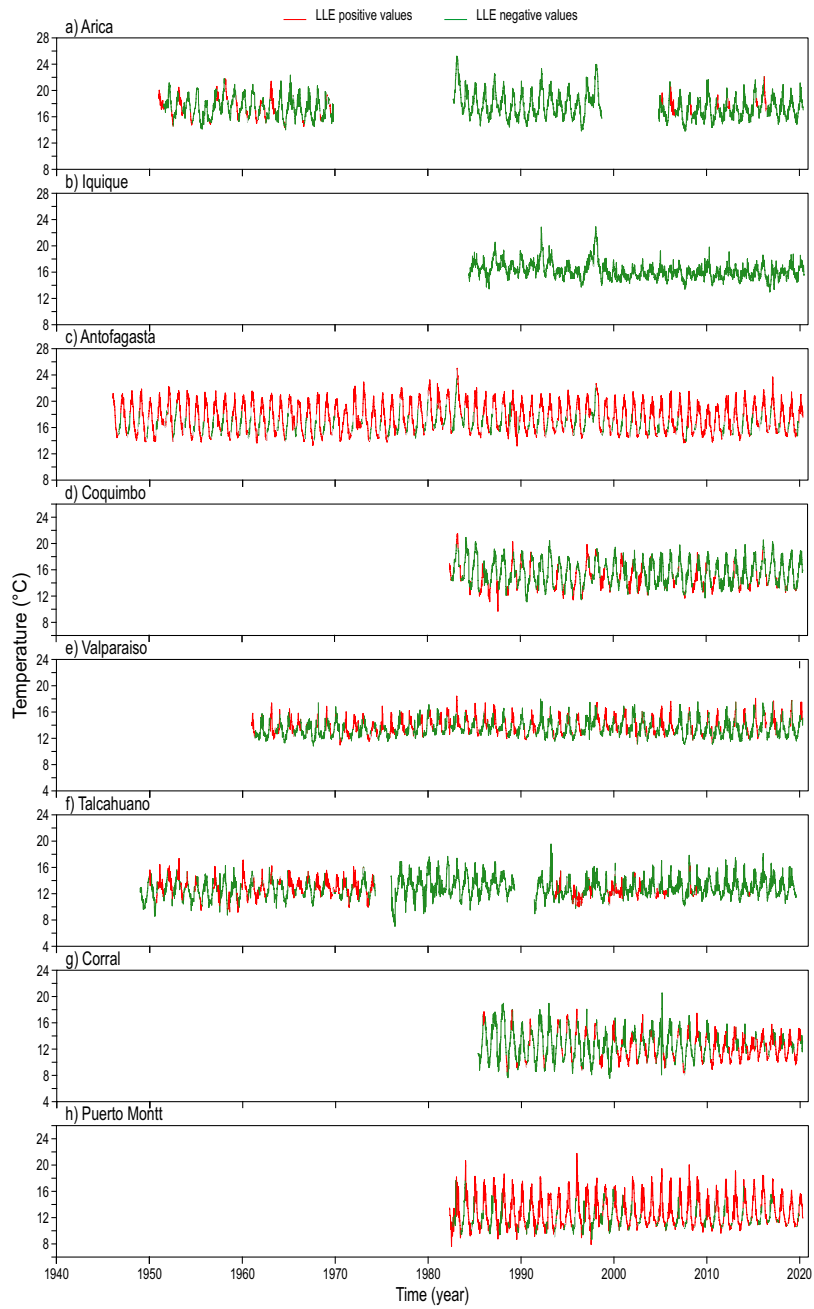
where the error variance is estimated through the residual sum of squares  $\text{RSS} = n^{-1} \sum_{t=1}^n (X_t - \hat{f}_d(\mathbf{X}_{t-1}))^2$ . Once the  
estimator  $\hat{f}_d$  is obtained, a consistent estimator for the map  $F$  and its Jacobian  $\mathbf{J}$  can be derived with plug-in methods, as  
described in Shintani and Linton (2004).

## Appendix D: Local Lyapunov Exponents

630 In Figures D1 to D6 local Lyapunov exponents are shown for all 16 stations for 1 month, 6 month and 1 year windows.

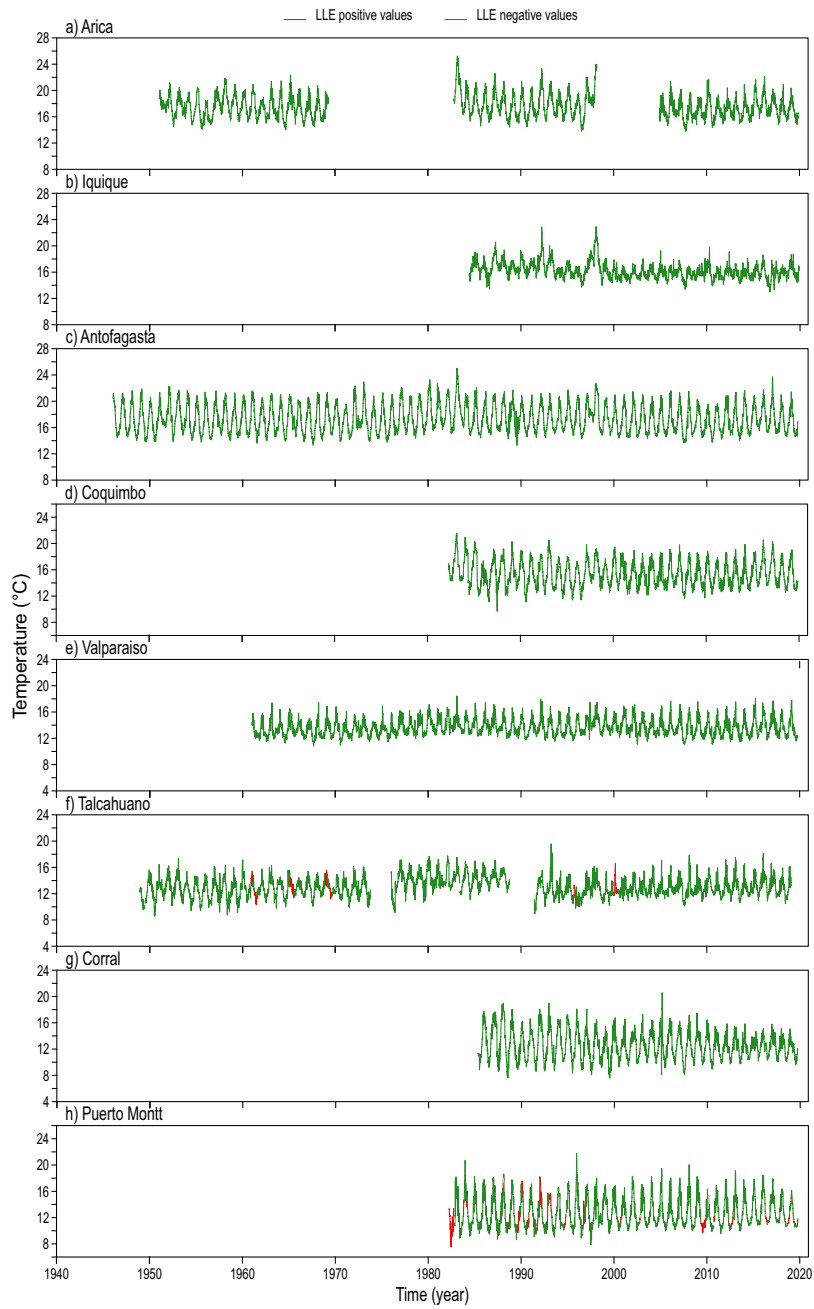


**Figure D1.** Temperature record for ocean stations with superimposed information on 1 month local Lyapunov exponents: positive values for the LLEs are shown in red, negative values are shown in green. Stations are given in a latitudinal arrangement.

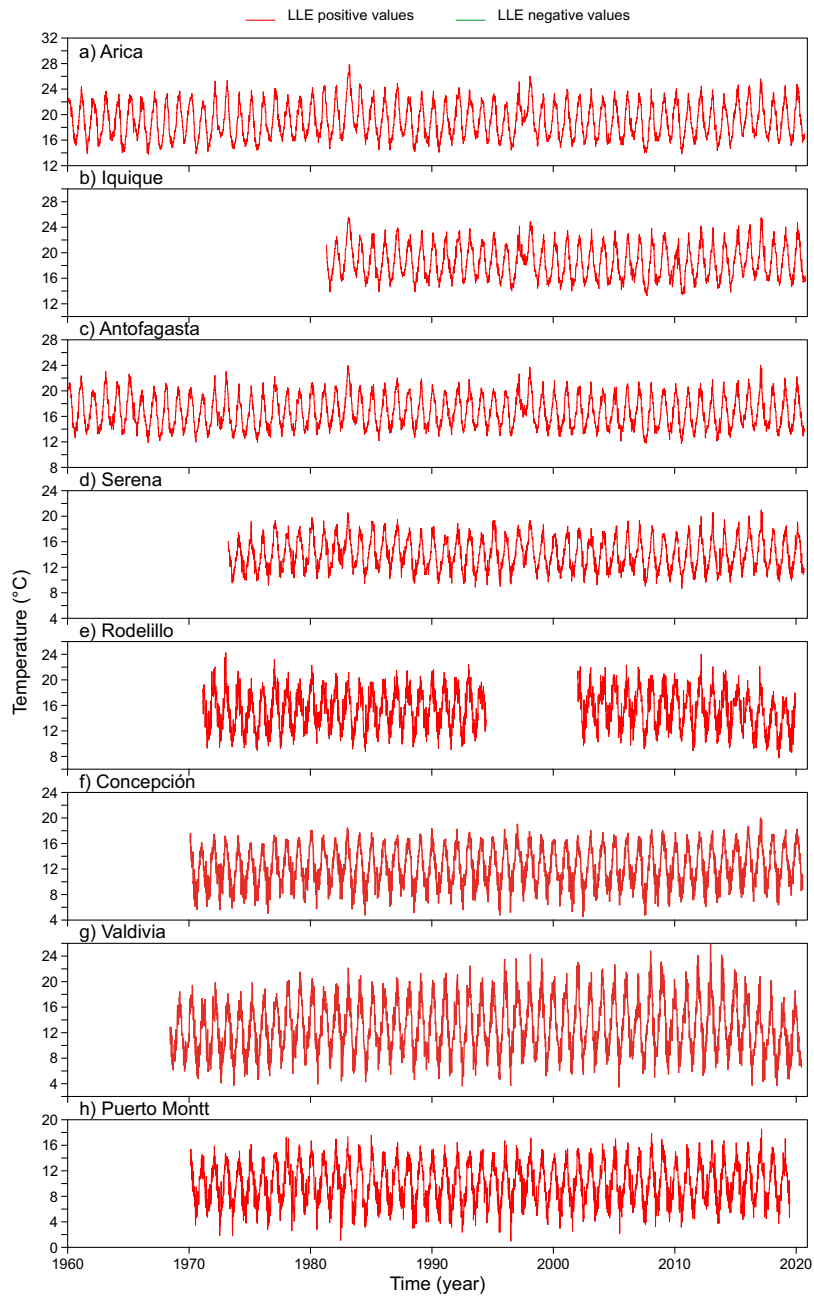


**Figure D2.** Temperature record for ocean stations with superimposed information on 6 month local Lyapunov exponents: positive values for the LLEs are shown in red, negative values are shown in green. Stations are given in a latitudinal arrangement.

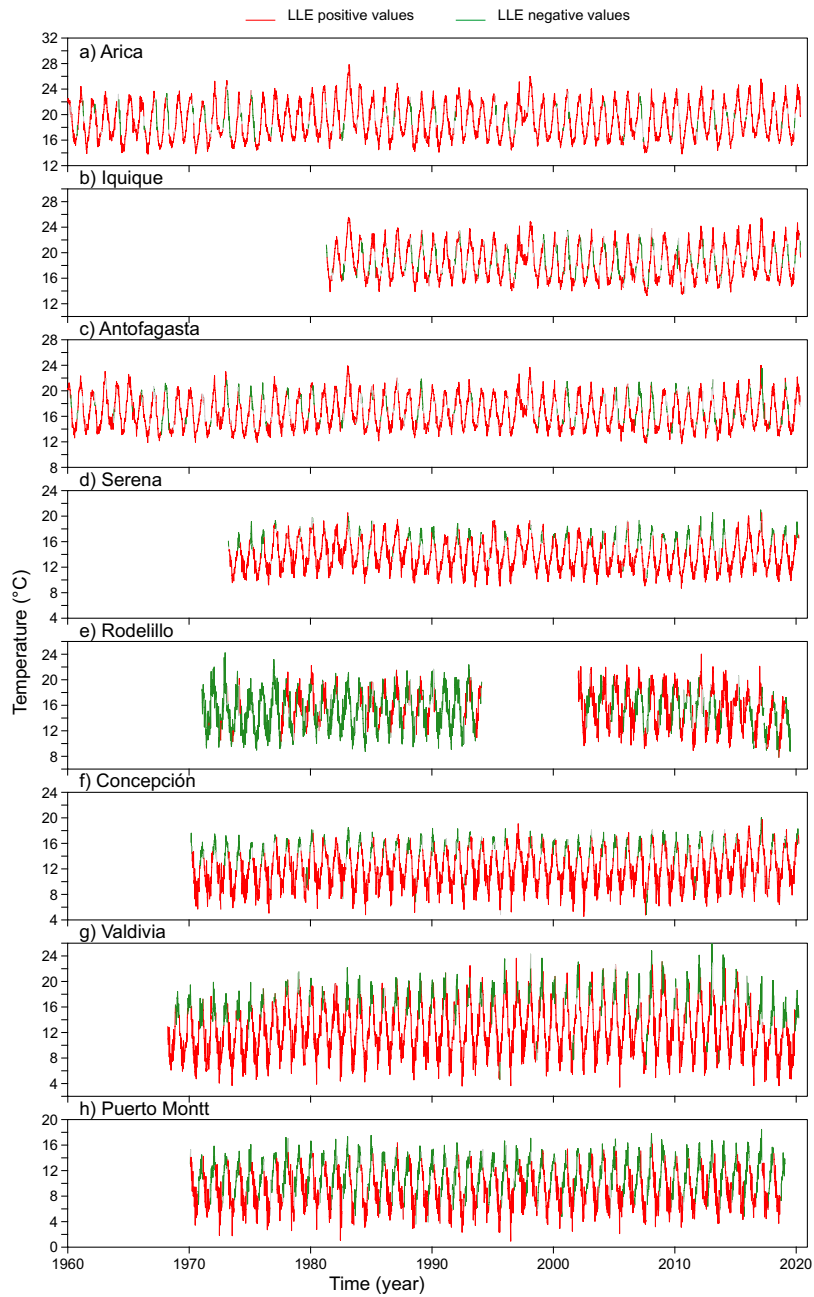




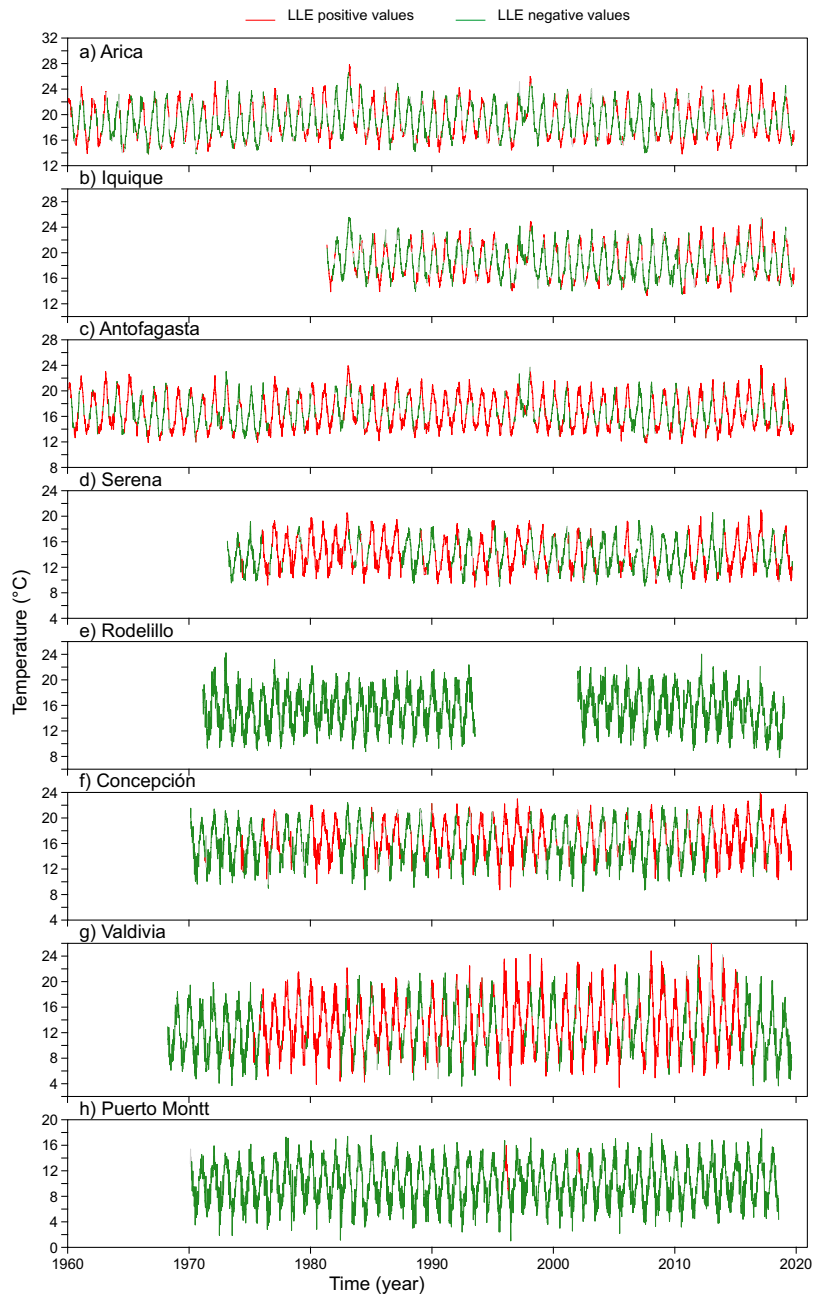
**Figure D3.** Temperature record for ocean stations with superimposed information on 1 year local Lyapunov exponents: positive values for the LLEs are shown in red, negative values are shown in green. Stations are given in a latitudinal arrangement.



**Figure D4.** Temperature record for atmospheric stations with superimposed information on 1 month local Lyapunov exponents: positive values for the LLEs are shown in red, negative values are shown in green. Stations are given in a latitudinal arrangement.



**Figure D5.** Temperature record for atmospheric stations with superimposed information on 6 month local Lyapunov exponents: positive values for the LLEs are shown in red, negative values are shown in green. Stations are given in a latitudinal arrangement.



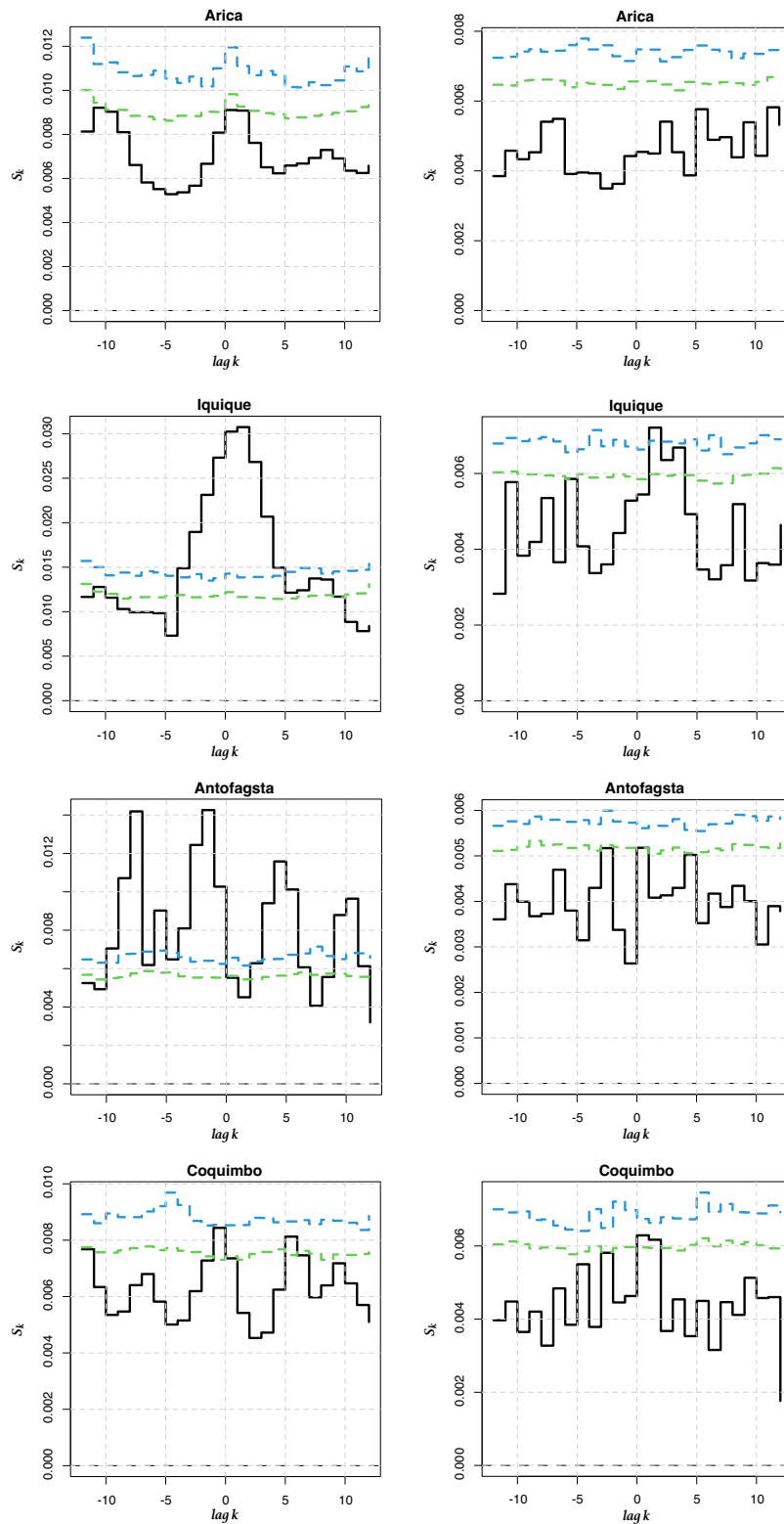
**Figure D6.** Temperature record for atmospheric stations with superimposed information on 1 year local Lyapunov exponents: positive values for the LLEs are shown in red, negative values are shown in green. Stations are given in a latitudinal arrangement.

## Appendix E: Cross entropy tests with the measure $S_k$

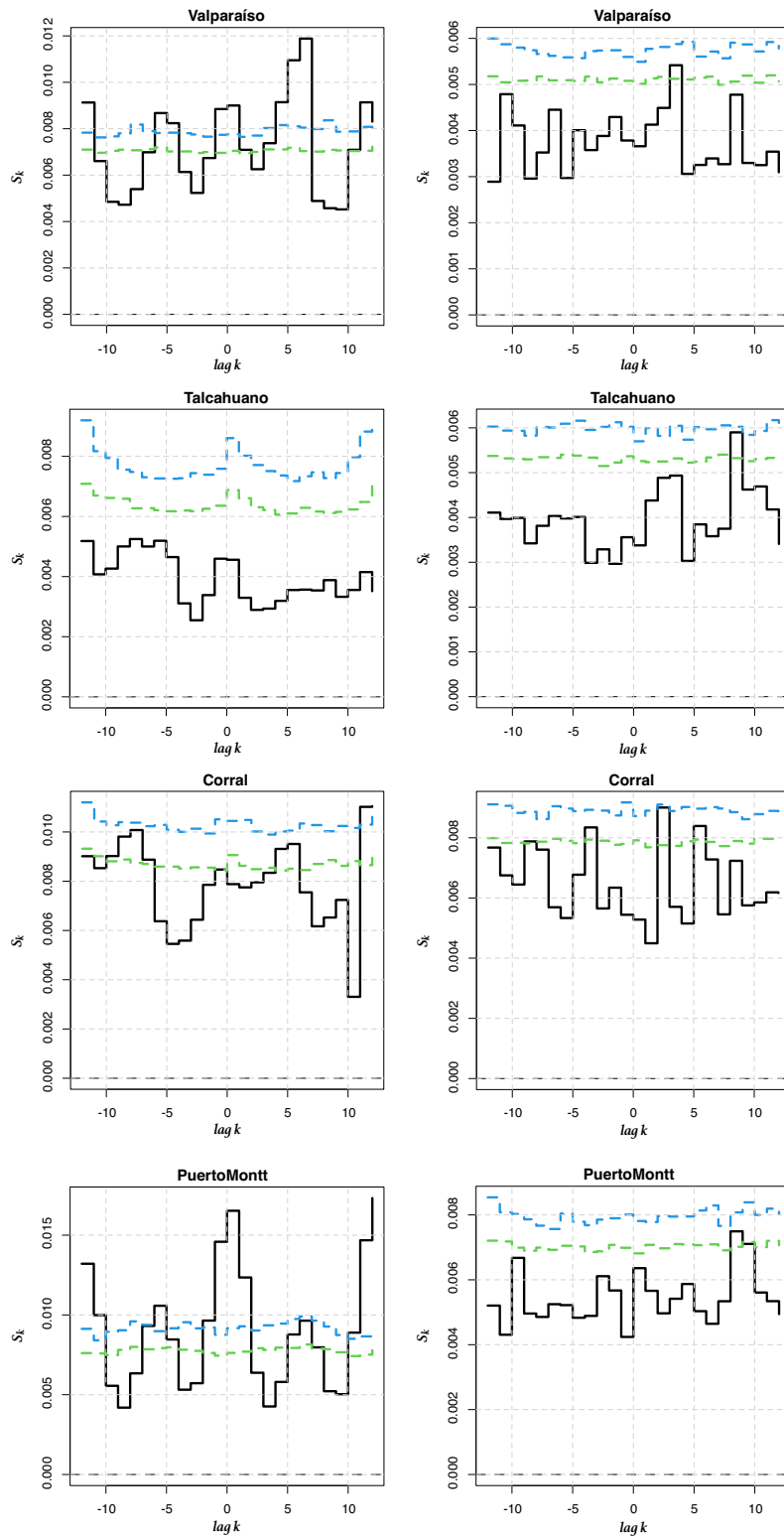
Let  $\{X_t\}$  and  $\{Y_t\}$ ,  $t \in \mathbb{N}$ , be two stationary random processes, where  $F_{X_t, Y_t}(x, y) = P(X_t \leq x, Y_t \leq y)$ ,  $F_{X_t}(x) = P(X_t \leq x)$ ,  $F_{Y_t}(y) = P(Y_t \leq y)$ . Then, the metric entropy  $S_\rho$  at lag  $k$  is a normalized version of the Bhattacharya–Hellinger–Matusita distance, defined as

$$635 \quad S_k = \frac{1}{2} \int \int \left( \sqrt{dF_{(X_t, Y_{t+k})}(x, y)} - \sqrt{dF_{X_t}(x) dF_{Y_{t+k}}(y)} \right)^2 = 1 - \int \int \sqrt{dF_{(X_t, Y_{t+k})}(x, y) dF_{X_t}(x) dF_{Y_{t+k}}(y)}. \quad (\text{E1})$$

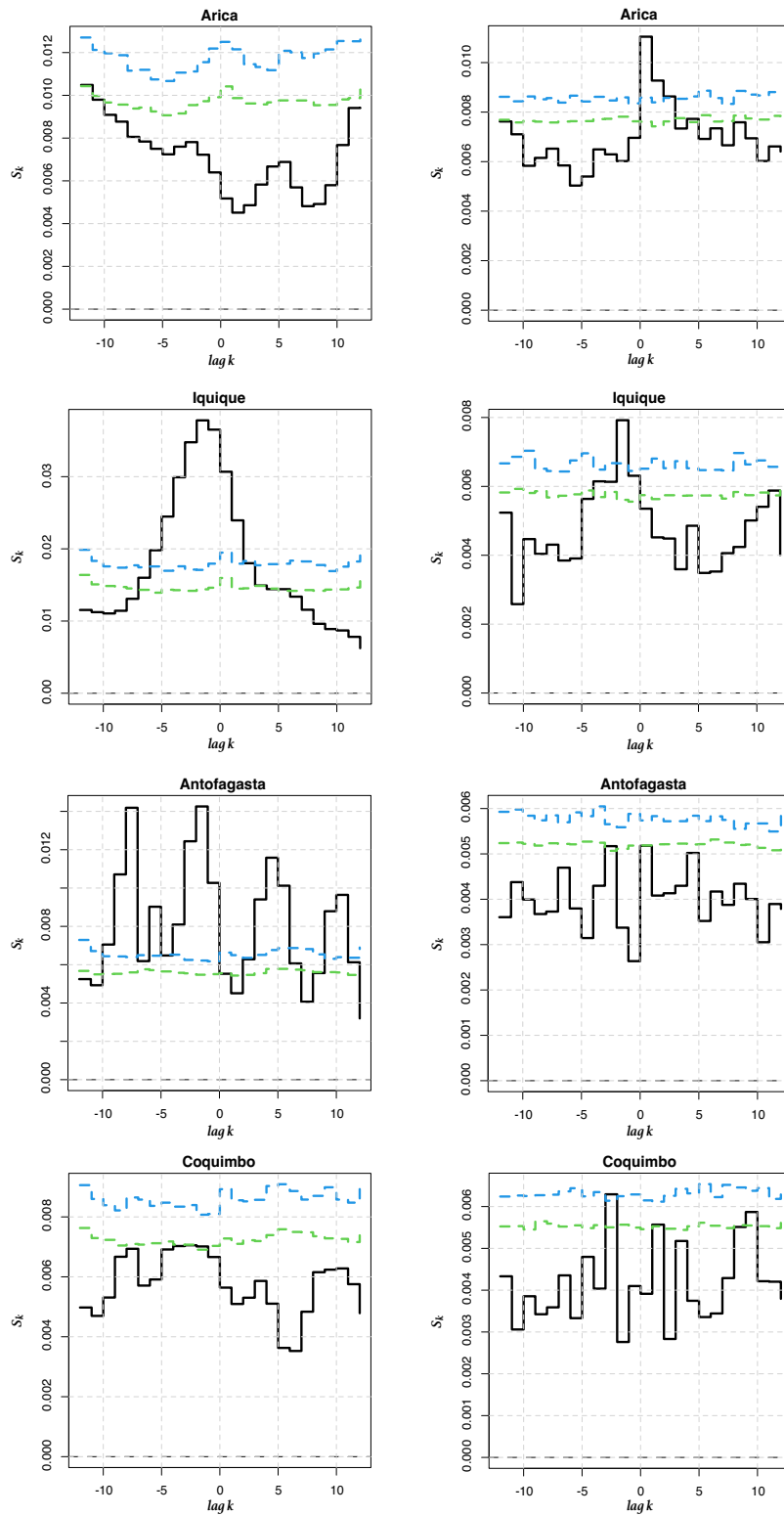
In the case where  $Y_t = X_t$  for all  $t$ ,  $S_k$  measures the serial dependence of  $\{X_t\}$  at lag  $k$  and can be interpreted as a nonlinear auto/cross-correlation function that overcomes the limits of Pearson’s correlation coefficient. As pointed out in Maasoumi (1993); Granger et al. (2004), and Giannerini et al. (2015),  $S_\rho$  satisfies many desirable properties, including the seven Rényi axioms and the additional properties described in Maasoumi (1993). We compute the cross entropy tests for dependence as  
640 detailed in Giannerini and Goracci (2023). The estimator of  $S_k$  is based on univariate and bivariate nonparametric kernel density estimation and numerical integration. The confidence bands are derived under the null hypothesis of mutual independence between series. In Figures E1–E6 we show the results of the cross-entropy test between the ONI and LLEs for the oceanic stations with a time horizon of 1 and 6 months, and for the atmospheric stations with a time horizon of 1 month. For Serena we also tested the 1 year-ahead LLEs, see Fig. E7. For the atmospheric stations, only 1 month LLEs are shown, since no  
645 relationship was found between the ONI index and 6 month-ahead LLEs.



**Figure E1.** Cross entropy  $S_k$  for  $k = -12, \dots, 12$  between the 1 month LLEs (SST) and the ONI index for the first 4 stations. Left: original time series. Right: pre-whitened time series.

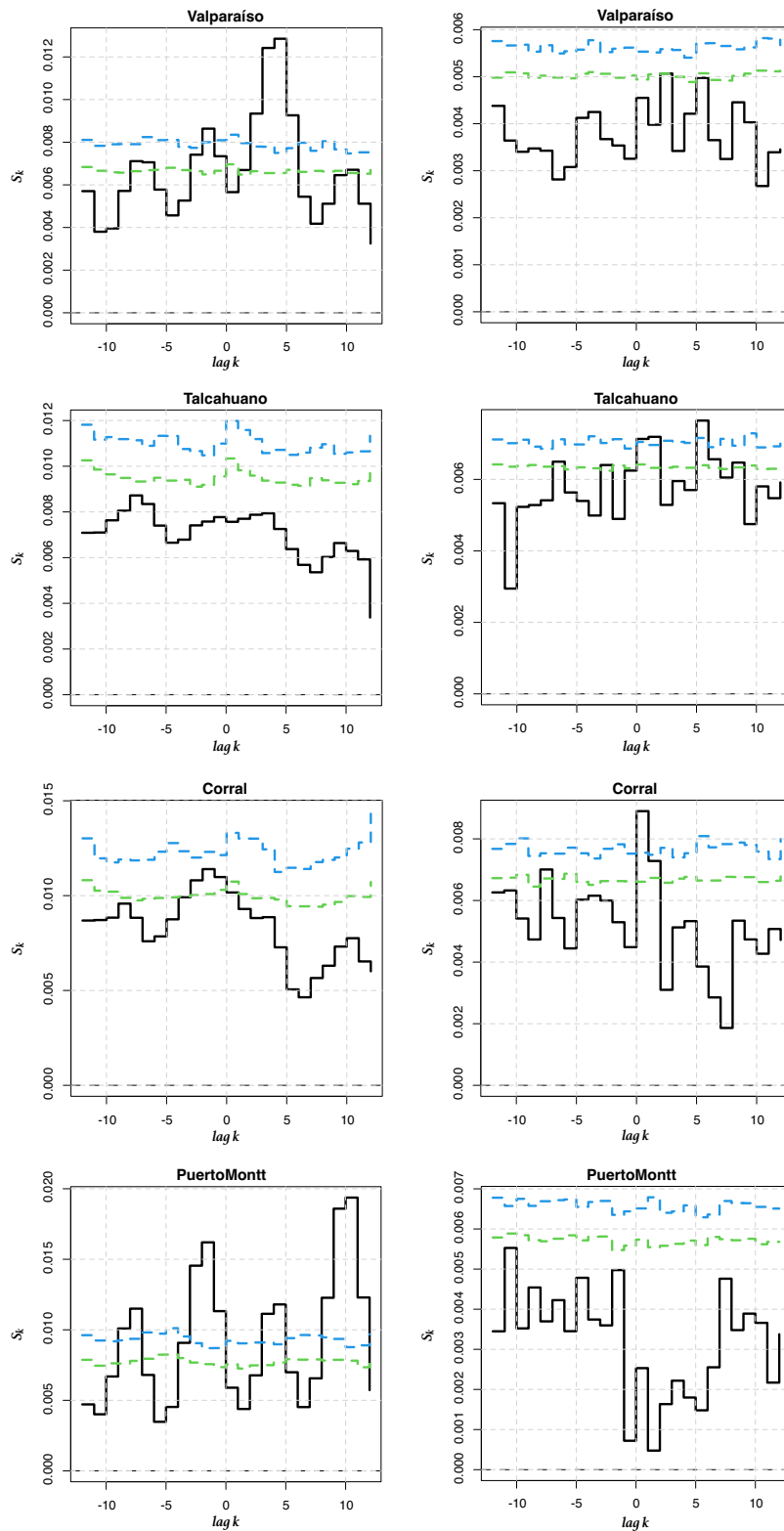


**Figure E2.** Cross entropy  $S_k$  for  $k = -12, \dots, 12$  between the 1 month LLEs (SST) and the ONI index or the last 4 stations. Left: original time series. Right: pre-whitened time series.

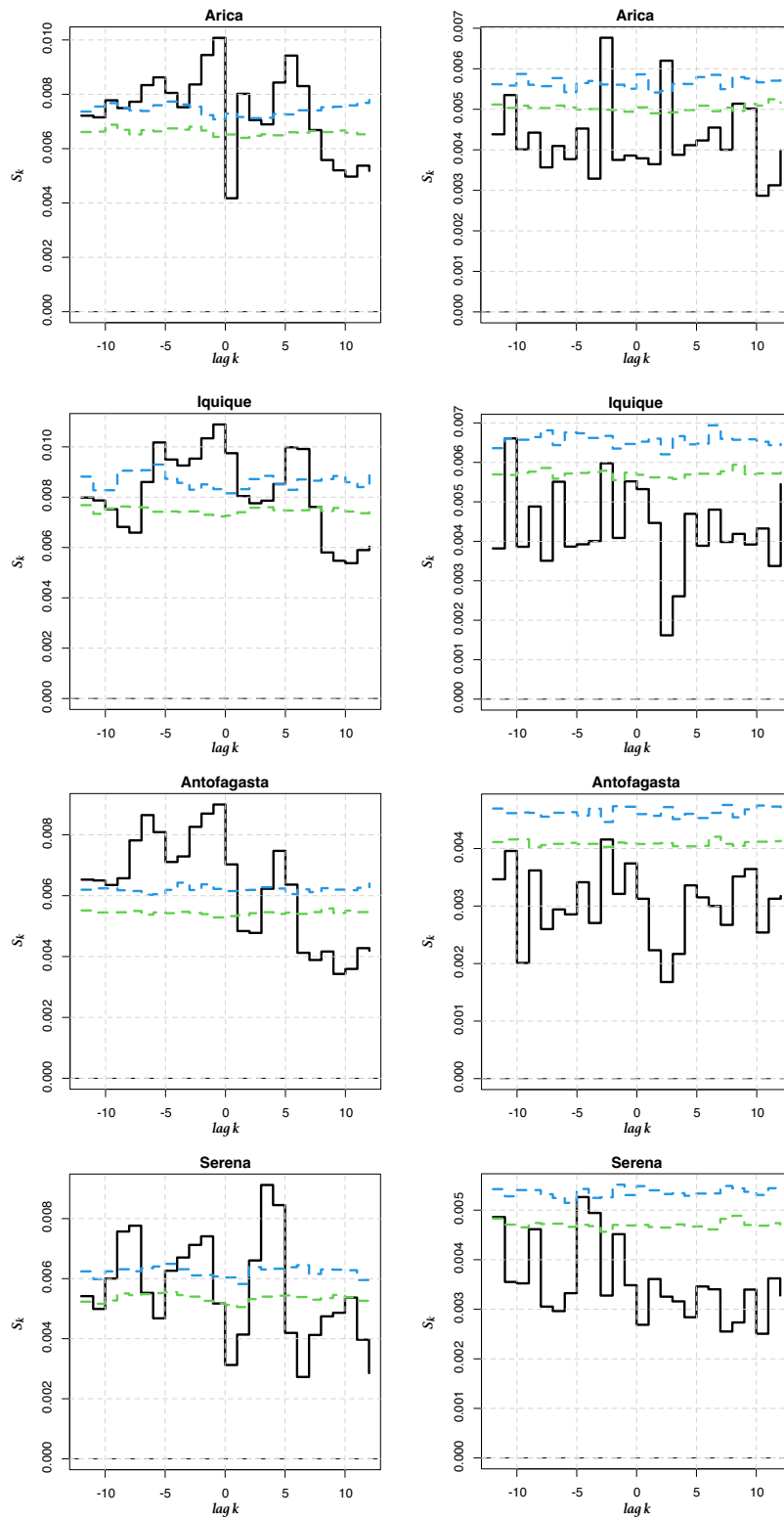


**Figure E3.** Cross entropy  $S_k$  for  $k = -12, \dots, 12$  between the 6 months LLEs (SST) and the ONI index for the first 4 stations. Left: original time series. Right: pre-whitened time series.

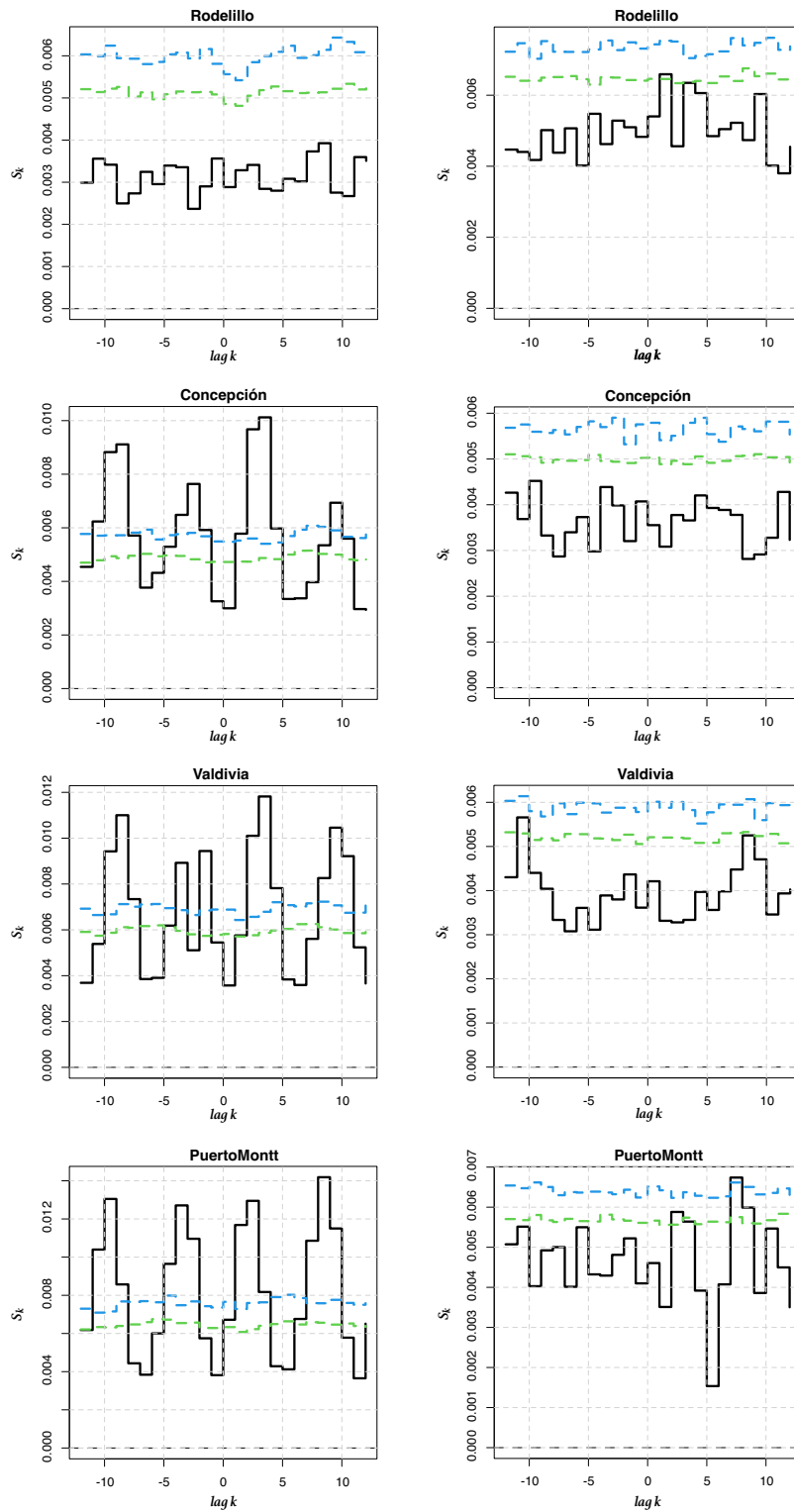




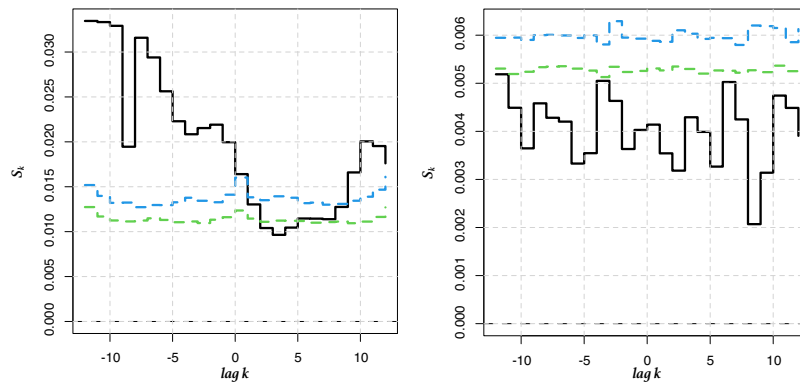
**Figure E4.** Cross entropy  $S_k$  for  $k = -12, \dots, 12$  between the 6 months LLEs (SST) and the ONI index for the last 4 stations. Left: original time series. Right: pre-whitened time series.



**Figure E5.** Cross entropy  $S_k$  for  $k = -12, \dots, 12$  between the 1 month LLEs (AST) and the ONI index for the first 4 stations. Left: original time series. Right: pre-whitened time series.



**Figure E6.** Cross entropy  $S_k$  for  $k = -12, \dots, 12$  between the 1 month LLEs (AST) and the ONI index for the last 4 stations. Left: original time series. Right: pre-whitened time series.



**Figure E7.** Cross entropy  $S_k$  for  $k = -12, \dots, 12$  between the 1 year LLEs for La Serena and the ONI index. Left: original time series. Right: pre-whitened time series.

*Author contributions.* Berenice Rojo-Garibaldi, Simone Giannerini and Julyan Cartwright participated in the development, design, calculations, elaboration of figures and the first draft of the article. David Alberto Salas-de-León, Verónica Vázquez-Guerra and Berenice Rojo-Garibaldi participated in the elaboration of the results and discussion. Manuel Contreras provided all the data and helped with the development of the first ideas. All authors read and approved the final manuscript.

650 *Competing interests.* All authors declare that they have no conflict of interest.

*Acknowledgements.* Berenice Rojo-Garibaldi would like to thank Dr. Christof Jung and Dr. Thomas Seligman of the Institute of Physical Sciences, UNAM, Campus Cuernavaca, Mexico, for their helpful comments during the course of this work.

## References

- Abarbanel, H., Brown, R., and Kennel, M.: Local Lyapunov exponents computed from observed data, *J. Nonlinear Sci.*, 2, 343–365, 1992.
- 655 Acosta-Jamett, G., Gutiérrez, J., Kelt, D., Meserve, P., and Previtali, M.: El Niño Southern Oscillation drives conflict between wild carnivores and livestock farmers in a semiarid area in Chile, *Journal of Arid Environments*, 126, 76–80, <https://doi.org/10.1016/j.jaridenv.2015.08.021>, 2016.
- Bailey, A., Ellner, S., and Nychka, W.: Chaos with confidence : Asymptotics and Applications of local Lyapunov exponents, *Fields Institute Communications*, 00, 1997.
- 660 Barbieri, B., Bravo, M., Farías, M., González, A., Pizarro, O., and Yáñez, E.: Phenomena associated with the sea surface thermal structure observed through satellite images in the north of Chile, *Invest. Mar. Valparaíso*, 23, 99–122, <https://doi.org/10.4067/S0717-71781995002300007>, 1995.
- Bardgett, R., Freeman, C., and Ostle, N.: Microbial contributions to climate change through carbon cycle feedbacks, *The ISME Journal*, 2, 805–814, <https://doi.org/10.1038/ismej.2008.58>, 2008.
- 665 Bé, A. and Tolderlund, D.: Distribution and ecology of living planktonic foraminifera in surface waters of the Atlantic and Indian oceans., in: *The micropaleontology of the oceans*, edited by Furnell, B. and Riedel, W., pp. 105–149., Cambridge University Press, 1971.
- Black, D., Hameed, S., and Peterson, L.: Long-term tidal cycle influences on a Late-Holocene clay mineralogy record from the Cariaco Basin, *Earth and Planetary Science Letters*, 279, 139–146, <https://doi.org/10.1016/j.epsl.2008.12.040>, 2009.
- Bradford, A., McCulley, L., Crowther, W., Oldfield, E., Wood, A., and Fierer, N.: Cross-biome patterns in soil microbial respiration predictable from evolutionary theory on thermal adaptation, *Nature Ecology and Evolution*, 3, 223–231, <https://doi.org/10.1038/s41559-018-0771-4>, 2019.
- 670 Bradley, E. and Kantz, H.: Nonlinear time-series analysis revisited, *Chaos: An Interdisciplinary Journal of Nonlinear Science*, 25(9), <https://doi.org/10.1063/1.4917289>, 2015.
- Camus, P.: Marine biogeography of continental Chile, *Revista Chilena de Historia Natural*, 74, 587–617, 2001.
- 675 Castro, R., González, V., Claramunt, G., Barrientos, P., and Soto, S.: Stable isotopes ( $\Delta^{13}C$ ,  $\Delta^{15}N$ ) seasonal changes in particulate organic matter and in different life stages of anchoveta (*Engraulis ringens*) in response to local and large scale oceanographic variations in north and central Chile, *Progress in Oceanography*, 186, 1–2, <https://doi.org/10.1016/j.pocean.2020.102342>, 2020.
- Chan, K. and Tong, H.: *Chaos: a statistical perspective*, Springer-Verlag, <https://doi.org/10.1007/978-1-4757-3464-5>, 2001.
- Cuculeanu, V. and Lupu, A.: Deterministic chaos in Atmospheric radon dynamics, *Journal of Geophysical Research: Atmospheres*, 106(D16), 17 961–17 968, <https://doi.org/10.1029/2001JD900148>, 2001.
- 680 Daneri, G., Dellarossa, V., Quiñones, R., Jacob, B., Montero, P., and Ulloa, O.: Primary production and community respiration in the Humboldt Current System off Chile and associated oceanic areas, *Marine Ecology Progress Series*, 197, 41–49, <https://doi.org/doi:10.3354/meps197041>, 2000.
- Devlin, A., Jay, D., Talke, S., Zaron, E., Pan, J., and Lin, H.: Coupling of sea level and tidal range changes, with implications for future water levels, *Sci. Rep.*, 7(1), <https://doi.org/10.1038/s41598-017-17056-z>, 2017a.
- 685 Devlin, A., Jay, D., Zaron, E., Talke, S., Pan, J., and Lin, H.: Tidal variability related to sea level variability in the Pacific Ocean, *J. Geophys. Res. Oceans*, 122(11), 8445–8463, <https://doi.org/10.1002/2017JC013165>, 2017b.
- Devlin, A., Pan, J., and Lin, H.: Extended spectral analysis of tidal variability in the North Atlantic Ocean, *J. Geophys. Res. Oceans*, 124, 506–526, <https://doi.org/10.1029/2018JC014694>, 2019.

- 690 Ellner, S., Nychka, D., and Gallant, A.: LENNS, a program to estimate the dominant Lyapunov exponent of noisy nonlinear systems from time series data, *Institute of Statistics Mimeo Series, BMA Series 39*, 2235, 1992.
- Elsner, J. and Tsonis, A.: Nonlinear prediction, chaos, and noise, *Bulletin of the American Meteorological Society*, 73(1), 49–60, [https://doi.org/10.1175/1520-0477\(1992\)073<0049:NPCAN>2.0.CO;2](https://doi.org/10.1175/1520-0477(1992)073<0049:NPCAN>2.0.CO;2), 1992.
- Enfield, D. and Allen, J.: On the structure and dynamics of monthly mean sea level anomalies along the Pacific coast of north and south  
695 America, *Journal of Physical Oceanography*, 10(4), 557–578, [https://doi.org/10.1175/1520-0485\(1980\)010<0557:OTSADO>2.0.CO;2](https://doi.org/10.1175/1520-0485(1980)010<0557:OTSADO>2.0.CO;2), 1980.
- Fagel, N., Boës, X., and Loutre, M.: Climate oscillations evidenced by spectral analysis of Southern Chilean lacustrine sediments: the assessment of ENSO over the last 600 years, *J.Paleolimnol.*, 39(2), 253–266, 2008.
- Falvey, M. and Garreaud, R.: Regional cooling in a warming world: recent temperature trends in the southeast Pacific and along  
700 the west coast of subtropical South America (1979–2006), *Journal of Geophysical Research: Atmospheres*, 114(D04102), 1–16, <https://doi.org/10.1029/2008JD010519>, 2009.
- Fan, J., Meng, J., Ashkenazy, Y., Havlin, S., and Schellnhuber, J.: Network analysis reveals strongly localized impacts of El Niño, *PNAS*, 114(29), 7543–7548, <https://doi.org/10.1073/pnas.1701214114>, 2017.
- Fedorov, A.: The response of the coupled tropical ocean-atmosphere to westerly wind bursts, *Q. J. R. Meteorol. Soc.*, 128, 1–23, 2002.
- 705 Fedorov, A., Harper, S., Philander, S., Winter, B., and Wittenberg, A.: How predictable is El Niño?, *Bulletin of the American Meteorological Society*, 84(7), 911–920, <https://doi.org/10.1175/BAMS-84-7-911>, 2003.
- Fogt, R. and Bromwich, D.: Decadal variability of the ENSO teleconnection to the high-latitude South Pacific governed by coupling with the southern annular mode, *J. Clim.*, 19(6), 979–997, <https://doi.org/10.1175/JCLI3671.1>, 2006.
- Friedrich, M., Smeekes, S., and Urbain, J.: Autoregressive wild bootstrap inference for nonparametric trends, *Journal of Econometrics*,  
710 214(1), 81–109, <https://doi.org/10.1016/j.jeconom.2019.05.006>, 2020.
- Fuenzalida, R.: Aspectos oceanográficos y meteorológicos de El Niño 1982–83 en la zona costera de Iquique, *Invest. Pesq.*, 32, 47–52, 1985.
- Garreaud, R.: Record-breaking climate anomalies lead to severe drought and environmental disruption in western Patagonia in 2016, *Climate Research*, 74(3), 217–229, <https://doi.org/10.3354/cr01505>, 2018.
- Garreaud, R., Lopez, P., Minvielle, M., and Rojas, M.: Large-scale control on the Patagonian climate, *Journal of Climate*, 26(1), 215–230,  
715 <https://doi.org/10.1175/JCLI-D-12-00001.1>, 2013.
- Giannerini, S. and Goracci, G.: Entropy-Based Tests for Complex Dependence in Economic and Financial Time Series with the R Package `tseriesEntropy`, *Mathematics*, 11, <https://doi.org/10.3390/math11030757>, 2023.
- Giannerini, S. and Rosa, R.: New resampling method to assess the accuracy of the maximal Lyapunov exponent estimation, *Physica D: Nonlinear Phenomena*, 155, 101–111, 2001.
- 720 Giannerini, S. and Rosa, R.: Assessing chaos in time series: Statistical aspects and perspectives, *Studies in Nonlinear Dynamics & Econometrics*, 8, 2004.
- Giannerini, S., Maasoumi, E., and Dagum, E.: Entropy Testing for Nonlinear Serial Dependence in Time Series, *Biometrika*, 102, 661–675, <https://doi.org/10.1093/biomet/asv007>, 2015.
- Gillett, N., Kell, T., and Jones, P.: Regional climate impacts of the Southern Annular Mode, *Geophys. Res. Lett.*, 33(23),  
725 <https://doi.org/10.1029/2006GL027721>, 2006.
- Glantz, M.: Introduction to El Niño, p. 375, Springer Nature, <https://doi.org/10.1007/978-3-030-86503-0>, 2022.

- Gómez, R.: Variabilidad Ambiental y pequeños pelágicos de la zona norte y centro-sur de Chile, Master's thesis, Universidad de Concepción, 2008.
- 730 González-Reyes, Á and. Muñoz, A.: Precipitation changes of Valdivia city (Chile) during the past 150 years, *Bosque (Valdivia)*, 34(2), 200–213, <https://doi.org/10.4067/S0717-92002013000200008>, 2013.
- Granger, C., Maasoumi, E., and Racine, J.: A Dependence Metric for Possibly Nonlinear Processes, *Journal of Time Series Analysis*, 25, 649–669, 2004.
- Grassberger, P.: Is there a climatic attractor?, *Nature*, 323(16), 609–612, <https://doi.org/10.1038/323609a0>, 1986.
- 735 Gratiot, N., Anthony, E., Gardel, A., Gaucherel, C., Proisy, C., and Wells, J.: Significant contribution of the 18.6 year tidal cycle to regional coastal changes, *Nat. Geosci.*, 1, 169–172, <https://doi.org/10.1038/ngeo127>, 2008.
- Guera, C. and Portflitt, G.: El Niño effects on pinnipeds in northern Chile, vol. 88, pp. 47–54, Springer Berlin Heidelberg, [https://doi.org/10.1007/978-3-642-76398-4\\_5](https://doi.org/10.1007/978-3-642-76398-4_5), 1991.
- 740 Guerrero, F., Hernández, C., Toledo, M., Espinoza, M., Carrasco, Y., Arriagada, A., Muñoz, A., Taborga, L., Bergmann, J., and Carmona, C.: Leaf Thermal and Chemical Properties as Natural Drivers of Plant Flammability of Native and Exotic Tree Species of the Valparaíso Region, Chile, *International Journal of Environmental Research and Public Health*, 18(13), 2–24, <https://doi.org/10.3390/ijerph18137191>, 2021.
- Gutiérrez, J. and Meserve, P.: El Niño effects on soil seed bank dynamics in north-central Chile, *Oecologia*, 134, 511–517, <https://doi.org/10.1007/s00442-002-1156-5>, 2003.
- 745 Harris, R., Beaumont, L., Vance, T., Tozer, C., Remenyi, T., Perkins-Kirkpatrick, S., Mitchell, P. J., Nicotra, A., McGregor, S., Andrew, N., Letnic, M., Kearney, M., Wernberg, T., Hutley, L., Chambers, L., Fletcher, M., Keatley, M., Woodward, C., Williamson, G., Duke, N., and Bowman, D.: Biological responses to the press and pulse of climate trends and extreme events, *Nature Climate Change*, 8(7), 579–587, <https://doi.org/10.1038/s41558-018-0187-9>, 2018.
- Holmgren, M., Scheffer, M., Ezcurra, E., Gutiérrez, J., and Mohren, G.: El Niño effects on the dynamics of terrestrial ecosystems., *Trends in Ecology and Evolution*, 16(2), 89–94, [https://doi.org/10.1016/S0169-5347\(00\)02052-8](https://doi.org/10.1016/S0169-5347(00)02052-8), 2001.
- 750 Holz, A. and Veblen, T.: Wild fire activity in rainforests in western Patagonia linked to the Southern Annular Mode, *International Journal of Wildland Fire*, 21, 114–126, <https://doi.org/10.1071/WF10121>, 2012.
- Holz, A., Kitzberger, T., Paritsis, J., and Veblen, T.: Ecological and climatic controls of modern wild fire activity patterns across southwestern South America, *Ecosphere*, 3(11), 1–25, <https://doi.org/10.1890/ES12-00234.1>, 2012.
- 755 Holz, A., Paritsis, J., I.A., M., Veblen, T., Kitzberger, T., Williamson, G., Aráoz, E., Bustos-Schindler, C., González, M., Grau, H., and Quezada, J.: Proceedings of the National Academy of Sciences of the United States of America, *International Journal of Wildland Fire*, 114, 9552–9557, <https://doi.org/10.1073/pnas.1705168114>, 2017.
- Hormazabal, S., Shaffer, G., Letelier, J., and Ulloa, O.: Local and remote forcing of sea surface temperature in the coastal upwelling system off Chile, *Journal of Geophysical Research: Oceans*, 106(C8), 16 657–16 671, <https://doi.org/10.1029/2001JC900008>, 2001.
- 760 Houghton, J., Ding, Y., Griggs, D., Noguer, M., van der Linden, P., Dai, X., Maskell, K., and Johnson, C., eds.: IPCC, 2001: Climate Change 2001: The Scientific Basis: Contribution of Working Group I to the Third Assessment Report of the Intergovernmental Panel on Climate Change, <https://doi.org/10.1002/joc.763>, 2001.
- Ihlow, F., Courant, J., Secondi, J., Herrel, A., Rebelo, R., Measey, G., Lillo, F., De Villers, F., Vogt, S., De Busschere, C., Backeljau, T., and Rodder, D.: Impacts of Climate Change on the Global Invasion Potential of the African Clawed Frog *Xenopus laevis*, *PLoS ONE*, 11(6), <https://doi.org/10.1371/journal.pone.0154869>, 2015.

- 765 Jiang, F., Zhang, W., Stuecker, M., and Jin, F.: Decadal change of combination mode spatiotemporal characteristics due to an ENSO regime shift, *Journal of Climate*, 33, 5239–5251, 2020.
- Joos, F.: Growing feedback from ocean carbon to climate, *Nature*, 522(7556), 295–296, <https://doi.org/10.1038/522295a>, 2015.
- Kalnay, E.: *Atmospheric Modeling, Data Assimilation, and Predictability*, Cambridge University Press, 2003.
- Kalthoff, N., BischoffeGauß, I., FiebigWittmaack, M., Fiedler, F., Thuerauf, J., Novoa, E., Pizarro, C., Castillo, R., Gallardo, L., Ron-  
770 danelli, R., and Kohler, M.: Mesoscale wind regimes in Chile at 30°S, *J. Appl. Meteorol.*, 41, 953–970, [https://doi.org/10.1175/1520-0450\(2002\)041<0953:MWRICA>2.0.CO;2](https://doi.org/10.1175/1520-0450(2002)041<0953:MWRICA>2.0.CO;2), 2002.
- Kantz, H.: A robust method to estimate the maximal Lyapunov exponent of a time series, *Physics letters A*, 185, 77–87, 1994.
- Karstensen, J. and Ulloa, O.: Peru–Chile Current System, in: *Encyclopedia of Ocean Sciences*, edited by Steele, J., Thorpe, S., and Turekian, K., pp. 385–392, Academic Press, <https://doi.org/10.1016/b978-012374473-9.00599-3>, 2009.
- 775 Kitzberger, T. and Veblen, T.: In fluences of humans and ENSO on fire history of *Austrocedrus chilensis* woodlands in northern Patagonia, Argentina, *Ecoscience*, 4, 508–520, <https://doi.org/10.1080/11956860.1997.11682430>, 1997.
- Kovats, R., Bouma, M., Hajat, S., Worrall, E., and Haines, A.: El Niño and health, *The Lancet*, 362(9394), 1481–9, [https://doi.org/10.1016/S0140-6736\(03\)14695-8](https://doi.org/10.1016/S0140-6736(03)14695-8), 2003.
- Lorenz, E.: Deterministic Nonperiodic Flow, *J. Atmos. Sci.*, 20, 130–141, [https://doi.org/10.1175/1520-0469\(1963\)020<0130:DNF>2.0.CO;2](https://doi.org/10.1175/1520-0469(1963)020<0130:DNF>2.0.CO;2), 1963.  
780
- Lorenz, E.: Dimension of weather and climate attractors, *Nature*, 353, 241–244, <https://doi.org/10.1038/353241a0>, 1991.
- Lubchenco, J., Navarrete, S., Tissol, B., and Castilla, J.: Possible ecological responses to global climate change Nearshore benthic biota of northeastern Pacific coastal ecosystems, *Contrasts between North and South America*, pp. 147–166, 1993.
- Maasoumi, E.: A Compendium to Information Theory in Economics and Econometrics, *Econometric Reviews*, 12, 137–181, 1993.
- 785 Mariani, M., Fletcher, M., Holz, A., and Nyman, P.: ENSO controls interannual fire activity in southeast Australia, *Geophysical Research Letters*, 43, 10 891–10 900, <https://doi.org/10.1002/2016GL070572>, 2016.
- Marwan, N., Trauth, M., Vuille, M., and Kurths, J.: Comparing modern and Pleistocene ENSO-like influences in NW Argentina using nonlinear time series analysis methods, *Climate Dynamics*, 21(3–4), 317–326, <https://doi.org/10.1007/s00382-003-0335-3>, 2003.
- Mayol, E., Ruiz-Halpern, S., Duarte, C., Castilla, J., and Pelegrí, J.: Coupled CO<sub>2</sub> and O<sub>2</sub>-driven compromises to marine life in summer  
790 along the Chilean sector of the Humboldt Current System, *Biogeosciences*, 9, 1183–1194, <https://doi.org/10.5194/bg-9-1183-2012>, 2012.
- Montecino, V., Strub, T., Chavez, F., Thomas, A., Tarazona, J., and Baumgartner, T.: Bio-physical interactions off Western South-America, in: *The sea. The Global Coastal Ocean: Interdisciplinary Regional Studies and Synthesis*, edited by Robinson, A. and Brink, K., vol. 14A, pp. 1–49, Harvard Press, 2006.
- Montecinos, A. and Gomez, F.: ENSO modulation of the upwelling season off southern-central Chile, *Geophys. Res. Lett.*, 37(2),  
795 <https://doi.org/10.1029/2009GL041739>, 2010.
- Montecinos, S., Gutierrez, J., Lopez-Cortes, F., and Lopez, D.: Climatic characteristics of the semi-arid Coquimbo Region in Chile, *Journal of Arid Enviroments*, pp. 1–5, <https://doi.org/10.1016/j.jaridenv.2015.09.018>, 2015.
- Montero, P., Daneri, G., Cuevas, L., González, H., Jacob, B., Lizárraga, L., and Menschel, E.: Productivity cycles in the coastal upwelling area off Concepción: the importance of diatoms and bacterioplankton in the organic carbon flux, *Progress in Oceanography*, 75(3), 518–530,  
800 <https://doi.org/10.1016/j.poccean.2007.08.013>, 2007.
- Moritz, S. and Bartz-Beielstein, T.: imputeTS: Time Series Missing Value Imputation in R, *The R Journal*, 9, 207–218, <https://doi.org/10.32614/RJ-2017-009>, 2017.



- Mundo, I., Kitzberger, T., Roig, F., Villalba, R., and Barrera, M.: Fire history in the *Araucaria araucana* forests of Argentina: human and climate in fluences, *International Journal of Wildland Fire*, 22, 194–226, <https://doi.org/10.1071/WF11164>, 2013.
- 805 Namias, J.: Multiple causes of the North American abnormal winter 1976–1977, *Mon. Wea. Rev.*, 106, 279–295, 1978.
- Nicolis, C. and Nicolis, G.: Do climatic attractor exist?, *Nature*, 331, 529–532, <https://doi.org/10.1038/311529a0>, 1984.
- Núñez, J., Rivera, D., Oyarzún, R., and Arumí, J.: Influence of Pacific Ocean multidecadal variability on the distributional properties of hydrological variables in north-central Chile, *J. hydrol.*, 501, 227–240, <https://doi.org/10.1016/j.jhydrol.2013.07.035>, 2013.
- Nychka, D., Ellner, S., McCaffrey, D., and Gallant, A.: Finding Chaos in Noisy Systems, *Journal of the Royal Statistical Society: Series B* (Methodological), 54(2), 399–426, 1992.
- 810 Oost, A., De Haas, H., Ijnsen, F., Van den Boogert, J., and De Boer, P.: The 18.6 yr nodal cycle and its impact on tidal sedimentation, *Sediment. Geol.*, 87, 1–11, [https://doi.org/10.1016/0037-0738\(93\)90032-Z](https://doi.org/10.1016/0037-0738(93)90032-Z), 1993.
- Pauly, D. and Christensen, V.: Primary production required to sustain global fisheries, *Nature*, 374(6519), 255–257, <https://doi.org/10.1038/374255a0>, 1995.
- 815 Petkov, B., Vitale, V., Mazzola, M., Lanconelli, C., and Lupi, A.: Chaotic behaviour of the short-term variations in ozone column observed in Arctic, *Journal of Geophysical Research: Atmospheres*, 26(1–3), 238–249, <https://doi.org/doi:10.1016/j.cnsns.2015.02.020>, 2015.
- Pierrehumbert, R.: Dimensions of Atmospheric variability, in: *Beyond Belief: randomness, Prediction and Explanation in Science*, edited by Casti, J. L. and Karlqvist, A., pp. 110–142, CRC Press, 1990.
- Piñones, A., Castilla, J., Guíñez, R., and Largier, J.: Nearshore surface temperatures in Antofagasta Bay (Chile) and adjacent upwelling centers, *Ciencias Marinas*, 33(1), 37–48, <https://doi.org/10.7773/cm.v33i1.1226>, 2007.
- 820 Pizarro, A., Hormazabal, F., González, C., and Yanez, R.: Variabilidad del viento, nivel del mar y temperatura en la costa norte de Chile, *Investigaciones marinas*, 22, 85–101, <https://doi.org/10.4067/S0717-71781994002200007>, 1994.
- Pizarro, O. and Montecinos, A.: El Niño y la Oscilación Sur, in: *Biología Marina y Oceanografía: Conceptos y Procesos*, edited by C., W., Alveal, K., and Romo, H., vol. 1, pp. 197–224, Universidad de Concepción, 2004.
- 825 Riveros, Z., Yustres, Q., and Ivanova, Y.: Efecto del fenómeno de la Oscilación Cuasi-Bienal en los afluentes del embalse de Betania, *Revista EIA*, 17(34), 1–9, <https://doi.org/10.24050/reia.v17i34.1246>, 2020.
- Rosenstein, M., Collins, J., and De Luca, C.: A practical method for calculating largest Lyapunov exponents from small data sets, *Physica D*, 65, 117–134, 1993.
- Rossiter, J.: Long term variations in sea level, vol. 1, Interscience, 1962.
- 830 Rutllant, J. and Fuenzalida, H.: Synoptic aspects of central rainfall variability associated with the Southern Oscillation, *Int. J. Climatol.*, 11, 63–76, <https://doi.org/10.1002/joc.3370110105>, 1991.
- Rutllant, J., Fuenzalida, H., and Aceituno, P.: Climate dynamics along the arid northern coast of Chile: The 1997–1998 Dinámica del Clima de la Región de Antofagasta (DICLIMA) experiment, *Journal of Geophysical Research: Atmospheres*, 108(D17), <https://doi.org/10.1029/2002JD003357>, 2003.
- 835 Sakova, I., Meyers, G., and Coleman, R.: Interannual variability in the Indian Ocean using altimeter and IX1-expendable bathy-thermograph (XBT) data: Does the 18-month signal exist?, *Geophysical research letters*, 33, 2006.
- Sarricolea, P., Herrera-Ossandon, M., and Meseguer-Ruiz, Ó.: Climatic regionalisation of continental Chile, *Journal of Maps*, 13(2), 66–73, <https://doi.org/10.1080/17445647.2016.1259592>, 2017.

- Shaffer, G., Pizarro, O., Djurfeldt, L., Salinas, S., and Rutland, J.: Circulation and low frequency variability near the Chilean coast: remotely forced fluctuations during the 1991–1992 El Niño, *J. Phys. Oceanogr.*, 27(2), 217–234, <https://doi.org/10.1175/1520-0485027<0217:CALFVN>2.0.CO;2>, 1997.
- Shaffer, G., Hormazábal, S., Pizarro, O., and Salinas, S.: Seasonal and interannual variability of current and temperature off center Chile, *J. Geophys. Res.*, 104, 29 951–29 961, <https://doi.org/10.1029/1999JC900253>, 1999.
- Shintani, M. and Linton, O.: Nonparametric neural network estimation of Lyapunov exponents and a direct test for chaos, *Journal of Econometrics*, 120, 1–33, 2004.
- Sievers, A. and Silva, N.: Water masses and circulation in austral Chilean channels and fjords, *Progress in the Oceanographic Knowledge of Chilean Inner Waters, from Puerto Montt to Cape Horn*, pp. 53–58, 2008.
- Smith, A., Guastella, L., Bundy, S., and Mather, A.: Combined marine storm and Saros spring high tide erosion events along the KwaZulu–Natal coast in March 2007: News and views, *S. Afr. J. Sci.*, 103, 274–276, 2007.
- Smith, L. A.: Identification and prediction of low dimensional dynamics, *Physica D*, 58, 50–76, 1992.
- Sobarzo, M., Bravo, L., Donoso, D., Garcés-Vargas, J., and Schneider, W.: Coastal upwelling and seasonal cycles that influence the water column over the continental shelf off central Chile, *J. Progress in Oceanography*, 75(3), 363–382, <https://doi.org/10.1016/j.pocean.2007.08.022>, 2007.
- Solomon, S., Qin, D., Manning, M., Chen, Z., Marquis, M., Averyt, K., Tignor, M., and Miller, H., eds.: IPCC, 2007a. *Climate Change 2007: The Physical Science Basis. Contribution of Working Group I to the Fourth Assessment Report of the Intergovernmental Panel on Climate Change*, Cambridge University Press, 2007.
- Soto, M., Julio-Alvear, G., and Salinas, R.: Current Wildfire Risk Status and Forecast in Chile: Progress and Future Challenges, in: *Wildfire Hazards, Risks, and Disasters*, edited by Shroder, J. and Paton, D., chap. 4, Elsevier, <https://doi.org/10.1016/B978-0-12-410434-1.00004-X>, 2015.
- Stramma, L., Johnson, G., Sprintall, J., and Mohrholz, V.: Expanding oxygen-minimum zones in the tropical oceans, *Science*, 320(5876), 655–658, <https://doi.org/10.1126/science.1153847>, 2008.
- Stuecker, M., Timmermann, A., Jin, F., McGregor, S., and Ren, H.: A combination mode of the annual cycle and the El Niño/Southern Oscillation, *Nature Geoscience*, 6, 540–544, 2013.
- Stuecker, M., Timmermann, A., Jin, F., Chikamoto, Y., Zhang, W., Wittenberg, A., Widiasih, E., and Zhao, S.: Revisiting ENSO/Indian Ocean dipole phase relationships, *Geophysical Research Letters*, 44, 2481–2492, 2017.
- Swetnam, T. and Betancourt, J.: Fire Southern Oscillation relations in the southwestern United States, *Science*, 249, 017–1020, 1990.
- Swetnam, T. and Betancourt, J.: Mesoscale disturbance and ecological response to decadal variability in the American Southwest, *Journal of Climate*, 11, 3128–3147, 1998.
- Sydean, W., Garcia-Reyes, M., Schoeman, D., Rykaczewski, R., Thompson, S., Black, B., and Bograd, S.: Climate change and wind intensification in coastal upwelling ecosystems, *Science*, 345(6192), 77–80, <https://doi.org/10.1126/science.1251635>, 2014.
- Thompson, P.: Uncertainty of initial state as a factor in the predictability of large scale atmospheric patterns, *Tellus*, 9, 275–295, <https://doi.org/10.3402/tellusa.v9i3.9111>, 1963.
- Thompson, P., Widlansky, M., Hamlington, B., Merrifield, M., Marra, J., Mitchum, G., and Sweet, W.: Rapid increases and extreme months in projections of United States high-tide flooding, *Nat. Clim. Chang.*, 11, 584–590, <https://doi.org/10.1038/s41558-021-01077-8>, 2021.
- Tong, H.: A personal overview of nonlinear time series analysis from a chaos perspective, *Scand. J. Statist.*, 22, 399–445, 1995.

- Tsonis, A., Elsner, J., and Georgakakos, K.: Estimating the Dimension of the Weather and Climate Attractors: Important Issues about the Procedure and Interpretation, *American Meteorological Society*, 50(15), 2549–2555, [https://doi.org/10.1175/1520-0469\(1993\)050<2549:ETDOWA>2.0.CO;2](https://doi.org/10.1175/1520-0469(1993)050<2549:ETDOWA>2.0.CO;2), 1993.
- 880 Ulloa, O., Escribano, R., Hormazabal, S., Quiñones, R., and González, R.: Evolution and biological effects of the 1997–1998 El Niño in the upwelling ecosystem off northern Chile, *Geophysical Research Letters*, 28(8), 1591–1594, <https://doi.org/10.1029/2000GL011548>, 2001.
- Urrutia-Jalabert, R., González, M., González-Reyes, A., Lara, A., and Garreaud, R.: Climate variability and forest fires in central and south-central Chile, *Ecosphere*, 9(4), <https://doi.org/10.1002/ecs2.2171>, 2018.
- Vannitsem, S., Demaeyer, J., De Cruz, L., and Ghil, M.: Low-frequency variability and heat transport in a low-order nonlinear coupled ocean-atmosphere model, *Physica D*, 309, 71–85, 2015.
- 885 Vargas, G., Pantoja, S., Rutllant, J., Lange, C., and Ortlieb, L.: Enhancement of coastal upwelling and interdecadal ENSO-like variability in the Peru-Chile Current since late 19th century, *Geophysical Research Letters*, 34(13), <https://doi.org/10.1029/2006GL028812>, 2007.
- Vassiliadis, D., Sharma, A., Eastman, T., and Papadopoulos, K.: Lyapunov exponent of magnetospheric activity from all time series, *Geophysical Research Letters*, 18(8), 1841–1844, <https://doi.org/10.1029/91GL01378>, 1991.
- Veblen, T., Kitzberger, T., and J., D.: Climatic and human influences on fire regimes in Ponderosa pine forests in the Colorado Front Range, 890 *Ecological Applications*, 10, 1178–1195, <https://doi.org/10.2307/2641025>, 2000.
- Venables, W. and Ripley, B.: *Modern Applied Statistics with S*, Springer, New York, fourth edn., <https://www.stats.ox.ac.uk/pub/MASS4/>, ISBN 0-387-95457-0, 2002.
- Vilina, Y., Cofré, H., Silva-García, C., García, M., and Pérez-Friedenthal, C.: Effects of El Niño on Abundance and Breeding of Black-Necked Swans on El Yali Wetland in Chile, *Waterbird Society*, 25, 123–127, 2002.
- 895 Villalba, R., Cook, E., Jacoby, G., D’Arrigo, R., Veblen, T., and Jones, P.: Tree-ring based reconstructions of northern Patagonia precipitation since AD 1600, *The Holocene*, 8(6), 659–674, 1998.
- Wang, S., Huang, J., He, Y., and Guan, Y.: Combined effects of the Pacific Decadal Oscillation and El Niño-Southern Oscillation on Global and Dry-Wet Changes, *Sci. Rep.*, 4(1), <https://doi.org/10.1038/srep06651>, 2014.
- Wolff, R.: Local Lyapunov exponents: looking closely at chaos, *J. R. Statist. Soc. B.*, 54, 353–371, 1992.
- 900 Yao, Q. and Tong, H.: A personal overview of nonlinear time series analysis from a chaos perspective, *J. R. Statist. Soc. B.*, 56, 701–725, 1994.
- Yeo, S. and Kim, K.: Decadal changes in the Southern Hemisphere sea surface temperature in association with El Niño-Southern Oscillation and Southern Annular Mode, *Clim. Dyn.*, 45(11–12), 3227–3242, <https://doi.org/10.1007/s00382-015-2535-z>, 1992.
- Zeng, X., Pielke, A., and Eykholt, R.: Estimating the Fractal Dimension and the Predictability of the Atmosphere, *Journal of the Atmospheric Sciences*, 49(8), 649–659, [https://doi.org/10.1175/1520-0469\(1992\)049<0649:ETFDAT>2.0.CO;2](https://doi.org/10.1175/1520-0469(1992)049<0649:ETFDAT>2.0.CO;2), 2015.
- 905 Ziehmann, C., Smith, L., and Kurths, J.: Localized Lyapunov exponents and the prediction of predictability, *Physics Letters A*, 271, 237–251, [https://doi.org/https://doi.org/10.1016/S0375-9601\(00\)00336-4](https://doi.org/https://doi.org/10.1016/S0375-9601(00)00336-4), 2000.