

# 1 Considerations for determining warm-water coral reef tipping points.

2  
3 Paul Pearce-Kelly<sup>1</sup>, Andrew H. Altier<sup>2</sup>, John F. Bruno<sup>3</sup>, Christopher E. Cornwall<sup>4</sup>, Melanie McField<sup>5</sup>,  
4 Aarón Israel Muñoz-Castillo<sup>5</sup>, Juan Rocha<sup>6</sup>, Renee O. Setter<sup>7</sup>, Charles Sheppard<sup>8</sup> Rosa Maria Roman-  
5 Cuesta<sup>9</sup>, Chris Yesson<sup>10</sup>

6  
7 <sup>1</sup> Zoological Society of London, Regent's Park, London NW1 4RY, UK [paul.pearce-kelly@zsl.org](mailto:paul.pearce-kelly@zsl.org)

8 <sup>2</sup> Department of Environmental Engineering Sciences, Engineering School of Sustainable Infrastructure & Environment,  
9 University of Florida, USA. [andrew.altieri@essie.ufl.edu](mailto:andrew.altieri@essie.ufl.edu)

10 <sup>3</sup> Department of Biology, The University of North Carolina at Chapel Hill, Chapel Hill, NC, USA [jbruno@unc.edu](mailto:jbruno@unc.edu)

11 <sup>4</sup> School of Biological Sciences and Coastal People Southern Skies Centre of Research Excellence, Victoria University of  
12 Wellington, Kelburn, Wellington, New Zealand. [christopher.cornwall@vuw.ac.nz](mailto:christopher.cornwall@vuw.ac.nz)

13 <sup>5</sup> Healthy Reefs for Healthy People Initiative, Mexico, Belize, Guatemala, Honduras, and the USA. Fort Lauderdale, FL 33312,  
14 USA. [mmcfield@gmail.com](mailto:mmcfield@gmail.com) [israbios.muca@gmail.com](mailto:israbios.muca@gmail.com)

15 <sup>6</sup> Stockholm Resilience Centre, Stockholm University, Stockholm, Sweden, [juan.rocha@su.se](mailto:juan.rocha@su.se)

16 <sup>7</sup> Department of Geography and Environment, University of Hawai'i at Mānoa, Honolulu, Hawai'i, USA. [rsetter@hawaii.edu](mailto:rsetter@hawaii.edu)

17 <sup>8</sup> University of Warwick, University Road, Coventry, CV4 7AL, UK.

18 <sup>9</sup> Technical University of Munich, School of Life Sciences, Freising, Germany. [rosa.roman@tum.de](mailto:rosa.roman@tum.de)

19 <sup>10</sup> Institute of Zoology, Zoological Society of London, Regent's Park, London NW1 4RY, UK. [chris.yesson@ioz.ac.uk](mailto:chris.yesson@ioz.ac.uk)

20  
21 *Correspondence to:* Paul Pearce-Kelly ([paul.pearce-kelly@zsl.org](mailto:paul.pearce-kelly@zsl.org))

22  
23 **Abstract.** Warm-water coral reefs are facing unprecedented human driven threats to their continued existence as biodiverse,  
24 functional ecosystems upon which hundreds of millions of people rely. These impacts may drive coral ecosystems past critical  
25 thresholds, beyond which the system reorganises, often abruptly and potentially irreversibly, this is what the IPCC (2022)  
26 define as a tipping point. Determining tipping point thresholds for coral reef ecosystems requires robust assessment of multiple  
27 stressors and their interactive effects. In this perspective piece we draw upon the recent Global Tipping Points Revision  
28 initiative (Lenton et al., 2023) and a literature search to identify and summarise the diverse range of interacting stressors that  
29 need to be considered for determining tipping point thresholds for warm-water coral reef ecosystems. Considering observed  
30 and projected stressor impacts we endorse the Global Tipping Points Revision conclusion of a global mean surface temperature  
31 (relative to pre-industrial) tipping point threshold of 1.2°C (range 1-1.5°C) and the long-term impacts of atmospheric CO<sub>2</sub>  
32 concentrations above 350 ppm, whilst acknowledging that comprehensive assessment of stressors, including ocean warming  
33 response dynamics, overshoot and cascading impacts, have yet to be sufficiently realised. These tipping point thresholds have  
34 already been exceeded and therefore these systems are in an overshoot state and are reliant on policy actions bringing threshold  
35 levels back within tipping point limits. Fuller assessment of interacting stressors is likely to further lower tipping point  
36 thresholds in most cases. Uncertainties around tipping points for such crucially important ecosystems underlines the imperative  
37 of robust assessment and, in the case of knowledge gaps, employing a precautionary principle favouring lower range tipping  
38 point values.

## 39 1. Introduction

40 Warm-water coral reefs (tropical and subtropical) support one quarter to one third of marine biodiversity (Plaisance et al.,  
41 2011), including over 25% of marine fish species (Laffoley and Baxter, 2016). The estimated annual economic value of coral  
42 reef ecosystem services ranges from US\$29.8 billion (Cesar, Burke & Pet-Soede, 2003) up to US\$2.7 trillion (Souter et al.,  
43 2021), upon which at least 500 million people are reliant (IPBS 2019). They are also among the most sensitive ecosystems to  
44 anthropogenic driven stressors with approximately 50% of global live coral cover lost over the last 50 years (Souter et al.,  
45 2021), primarily due to ocean warming, but other factors have contributed locally such as fishing, pollution, disease, nutrient  
46 enrichment and predation by crown of thorns starfish (IPCC 2022). IPBES (2019) states that over 80% of the world's coral  
47 reefs are severely over-fished or have degraded habitats (McClanahan et al., 2015). Eddy et al., (2021) estimate coral reef  
48 ecosystem services have halved since the 1950s. Although local stressors continue to impact coral reef health, climate driven  
49 stressors have become the dominant threat to the functional viability of these ecosystems (IPBES 2019; IPCC 2022).

50  
51 It is well established that coral reef ecosystems are vulnerable to multiple interacting tipping points (TPs) (Norström et al.,  
52 2016; Heinze et al., 2021; Armstrong-McKay et al., 2022; IPCC 2022). IPCC (2022) defines a TP as “*a critical threshold*  
53 *beyond which a system reorganises, often abruptly and/or irreversibly*”. Coral reefs are prone to TPs that can produce coral  
54 die offs and replacement by other ecological communities such as macroalgae, soft corals, or urchin barrens (Norström  
55 et al., 2016), with reductions in biodiversity and degradation of ecosystem services (IPBES 2019). Warm water coral reefs  
56 cross a threshold of ecosystem collapse (Bland et al., 2018) when they cease to have sufficient live coral cover (typically ~  
57 10%) necessary for supporting the wide diversity of taxa, ecological interactions and positive carbonate production state typical  
58 of a coral reef (Perry et al., 2013; Darling et al., 2019; Sheppard et al., 2020; Vercelloni et al., 2020; Armstrong-McKay et al.,  
59 2022). Coral mortality may take weeks or a few months for acute events (e.g. bleaching), or years for chronic threats (e.g.  
60 diseases), but prolonged failure to recover over a decade is necessary to qualify a coral reef as ‘collapsed’.

61  
62 Coral reef losses have accelerated in recent decades due to climate change and other stressors (IPBS 2019; Souter et al.,  
63 2021), with high variability among regions, but some localised recovery and resilience observed (e.g. Richards et al., 2021).  
64 Localised responses of corals to increasing scales and intensities of stressors are aggregating at scales now exceeding 1000 km  
65 and manifesting as regional die-offs (e.g. Western and Central Indian Ocean, Great Barrier Reef, Mesoamerican Reefs) (Le  
66 Nohaïc et al., 2017; Muñoz-Castillo et al., 2019; Sheppard et al., 2020; Obura et al., 2022; Amir 2022), with most regions  
67 experiencing multiple die-off events (Darling et al., 2019; Cramer et al., 2020; IPCC 2022). Coral reef bleaching TPs have  
68 already been reached in seven ocean systems (IPCC 2022).

69

## 70 **2. Considerations for assessing coral reef TPs.**

71 Direct and indirect local human activities are increasingly degrading coral reef ecosystems through a combination of coastal  
72 development, water quality reduction, over-harvesting, invasive species and disease spread. At the local level, these stressors  
73 have already tipped some areas from coral to macroalgae dominated ecosystems (Bruno et al., 2009; IPBES 2019; Souter et  
74 al., 2021). Local stressor impacts are increasingly exacerbated by anthropogenic climate change, for example, high abundance  
75 of macroalgae or urchins exacerbating coral loss after bleaching (Donovan et al., 2021).

76  
77 It's important to consider the combined impact of multiple stressors. Doing so can significantly alter assessments of coral reef  
78 futures (Setter et al., 2022; Lenton et al., 2023). Interactions between different stressors can be antagonistic (the combined  
79 effect is less than the additive), additive (the combined effect is equal to the sum of their individual effects) or synergistic (the  
80 combined effects exceed their individual effects) (Good and Bahr 2020). Some studies find antagonistic interactions between  
81 multiple stressors (Darling et al., 2010; Johnson et al., 2022). However, a wide variety of interacting and synergistic stressors  
82 also occur (ICRS 2021; IPCC 2022; Setter et al., 2022; Lenton et al., 2023), generally lowering the thermal threshold for  
83 bleaching and/or mortality, accelerating collapse, or even surpassing thermal stress in local importance (Ban et al., 2013;  
84 Edmunds et al., 2014; Rocha et al., 2015; Anthony 2016; Darling et al., 2019; IPBS 2019; Cramer et al., 2020; Setter et al.,  
85 2022; Lenton et al., 2023). Stressor onset rate can have a major effect on significance, for example for reef fish mortality  
86 (Genin et al., 2020). Depending on onset rate and magnitude, the same interacting stressors may initially have antagonistic  
87 effects but may transition to additive or synergistic (e.g., Fisher et al., 2019).

88  
89 Increasing atmospheric greenhouse gas (GHG) concentrations, especially carbon dioxide (CO<sub>2</sub>), are disrupting Earth Energy  
90 Balance. The resultant Earth Energy Imbalance (EEI) is increasing atmospheric and ocean temperatures (IPCC 2021; Loeb et  
91 al., 2021; Von Schuckmann et al., 2023). CO<sub>2</sub> concentrations are the dominant driver of rate and magnitude of ocean warming  
92 and acidification (Meinshausen et al., 2020). Because of its large thermal inertia the ocean takes hundreds of years to fully  
93 respond to the atmospheric temperature increases that human driven GHG concentrations are causing (IPCC, 2021; Abraham  
94 et al., 2022; Cheng et al.; 2022). The resultant *committed* heating and sea level rise (SLR) needs to be calculated for any given  
95 GHG/temperature level. Although both ocean heat uptake and SLR take centuries to fully respond, it takes approximately 25-  
96 50 years for the majority of committed ocean warming to be realised (Hansen et al; 2005; Abrams et al., 2023), with the upper  
97 ocean level having the shortest response time. Due to these inertia considerations, TP thresholds can be exceeded decades  
98 before the full physical impacts are observed.

99  
100 Overshoot describes warming pathways that temporarily increase global mean temperature over a specific temperature target  
101 (IPCC 2022). Overshoot of multiple decades implies severe risks and irreversible impacts in many ecosystems (Meyer et al.,  
102 2022; Wunderling et al., 2022; Schleussener et al., 2024), including coral reefs from heat-related mortality and associated  
103 ecosystem transitions (high confidence) (IPCC 2022). Overshoot is an urgent consideration for coral reefs as in two key and

104 highly connected areas (CO<sub>2</sub> levels and global mean surface temperature) we have already exceeded recommended thresholds  
105 and so as such we are already in overshoot, and this problem is compounded by stressor rate and magnitude (Lenton et al.,  
106 2023).

107 TP cascades describe a TP in one system triggering, or stabilising, subsequent TPs in other systems (Rocha et al., 2018;  
108 Armstrong-McKay et al., 2022; IPCC 2022; Wunderling et al., 2022). Here we summarise the most important stressors relevant  
109 to TP sensitivity for coral reefs and explore interactions between them.

### 110 **3. Ocean warming and heatwaves**

111 Warmer ocean temperatures, driven by Anthropogenic climate change, compounded by El Niño heating events, is the primary  
112 stressor of regional- and ocean-basin- scale mortality of scleractinian corals. Heat stress, in combination with irradiance, results  
113 from small increases in seawater temperature above the summer maxima to which corals are acclimatised, destabilising the  
114 symbiosis between host corals and their symbiotic algae, commonly referred to as coral bleaching (Hughes et al., 2017; Houk  
115 et al., 2020; UNEP 2020; IPCC 2022).

116  
117 Mass bleaching occurs when sea temperatures persist at more than 1 degree above established summer maxima for 8-12 weeks  
118 (known as 8-12 Degree Heating Weeks or DHW). Although mass bleaching has resulted in significant coral mortality, we note  
119 that with the loss of sensitive corals, acclimation and adaptation, the definition of DHW may require adjustment (Lenton et al.,  
120 2023).

121  
122 Previous assessments have highlighted consequences of different levels of warming:

123 **0.7°C** - “In the late 1990s when global warming was around 0.7°C large-scale coral reef bleaching also became apparent ...  
124 supporting the lower boundary for this transition in respect of coral reefs” (Veron et al., 2009; IPCC, 2022)

125 **1.0°C** - “temperatures of just 1°C above the long-term summer maximum ... over 4–6 weeks are enough to cause mass coral  
126 bleaching ... and mortality (very high confidence)” (Hoegh-Guldberg et al., 2018; Skirving et al., 2019).

127 **1.2°C** - “Warm water (tropical) coral reefs are projected to reach a very high risk of impact at 1.2°C ..., with most available  
128 evidence suggesting that coral-dominated ecosystems will be non-existent at this temperature or higher (high confidence). At  
129 this point, coral abundance will be near zero at many locations and storms will contribute to ‘flattening’ the three-dimensional  
130 structure of reefs without recovery, as already observed for some coral reefs (Alvarez-Filip et al., 2009).” (Hoegh-Guldberg et  
131 al., 2018). Coral reef bleaching TPs have already been passed in seven ocean systems (IPCC 2022; Lenton et al., 2023).

132 **1.5°C** - “...coral reefs... will undergo irreversible phase shifts due to marine heatwaves with global warming levels >1.5°C  
133 and are at high risk this century even in <1.5°C scenarios that include periods of temperature overshoot beyond 1.5°C (high  
134 confidence).” (IPCC 2022). Projections predict 70-90% coral loss at 1.5°C (Hoegh-Guldberg et al., 2018; IPBS 2019; Souter

135 et al., 2021; Armstrong McKay et al., 2022), whereas finer scale modelling projects a 95-98% loss (Kalmus et al., (2022) and  
136 suggest 99% loss (Dixon et al., 2022).

137 **2.0°C** - “literature since AR5 has provided a closer focus on the comparative levels of risk to coral reefs at 1.5°C versus 2°C  
138 of global warming ... reaching 2°C will increase the frequency of mass coral bleaching and mortality to a point at which it  
139 will result in the total loss of coral reefs from the world’s tropical and subtropical regions.” (IPCC 2018). Predictions show  
140 99% coral loss at 2.0C (Frieler et al., 2013; Hoegh-Guldberg et al., 2018; IPBS 2019; Knowlton et al., 2021; Souter et al.,  
141 2021; Armstrong McKay et al., 2022; Wang et al., 2023). Finer scale modelling projects 100% loss at 2.0°C. (Dixon et al.,  
142 2022; Kalmus et al., 2022).

143

144 Since the first global bleaching event of 1998, up to 71% of the world’s reefs have experienced three further global mass  
145 bleaching events, with a fourth event being experienced in 2023/2024 ([https://www.noaa.gov/news-release/noaa-confirms-  
146 4th-global-coral-bleaching-event](https://www.noaa.gov/news-release/noaa-confirms-4th-global-coral-bleaching-event)).

147

148 Assessments of risk to corals from heating typically don’t consider co-occurring or interacting stressors or the delayed heating  
149 response to atmospheric greenhouse gas concentrations. Ocean warming inertia may mask the impact severity of stated  
150 greenhouse gas and temperature levels. When emissions-driven temperature overshoot is considered, lower target temperatures  
151 can have similar impacts to higher, with little difference in coral survival between an overshoot scenario that peaks at 2°C and  
152 subsequently reduces temperatures to 1.5°C versus a 2°C scenario without a subsequent reduction in temperatures (Tachiiri et  
153 al., 2019).

154

155 Tanaka and Van Houtan (2022) confirm the normalisation of extreme heating events. The frequency and duration of bleaching  
156 events are likely to increase, occurring earlier in the year and potentially overlapping with critical spawning periods (Mellin et  
157 al., 2024). The compounding heat stress of El Niño events (Claar et al., 2018; Hughes et al., 2018b; Lough et al., 2018) may  
158 increase with projected Arctic and Antarctic sea ice loss (England et al., 2020; Liu et al., 2022). Real world observations from  
159 the NOAA coral reef watch program demonstrate that coral reef damage is accelerating and underscores the threat  
160 anthropogenic climate change poses for the irreversible transformation of these essential ecosystems (Eakin et al., 2022).

161

### 162 **Interactions of ocean warming and heatwaves with other stressors**

163 Warming effects are so far reaching in their impacts that they can adversely impact many other coral stressors, these stressors,  
164 in turn, can increase vulnerability to thermal stress. For example, heating-induced bleaching increases disease risk and lowers  
165 calcification which increases the impact of ocean acidification (Rosenberg and Ben-Haim, 2002; Marshall and Clode, 2004;  
166 Ward et al., 2007; Eakin et al., 2008; Bak et al., 2009; Miller et al., 2009; Veron et al., 2009; Chan et al., 2019; Davis et al.,  
167 2021; Burke et al., 2023). Corals that survive bleaching can have compromised growth rates and reproduction (Rodrigues and

168 Padilla-Gamino, 2022; Speare et al., 2022; Briggs et al., 2024). Furthermore, warming oceans and heatwaves increase storm  
169 intensity and raise sea-level through thermal expansion and cryosphere melting.

#### 170 **4. Stratification**

171 Ocean stratification is the layering of water masses, based on density. Stratified water layers are a barrier to mixing, which  
172 impacts the exchange of heat, oxygen, nutrients and carbon between shallow and deep water. This impacts marine organisms  
173 in a number of significant ways, including impacting primary productivity and potentially the entire marine food chain.  
174 Stratification has increased globally by 5.3% in recent decades (Li et al., 2020).

175

#### 176 **Interactions**

177 Stratification is strongly linked with warming oceans. Stratification magnifies the warming effect at the upper layers, thus  
178 increasing thermal stress to warm water reefs, this is a vicious circle as warming oceans further increase stratification.  
179 Additionally, stratification reduces CO<sub>2</sub> uptake, further exacerbating anthropogenic warming. Stratification impedes ocean  
180 mixing impacting nutrient flows. Stratification is strongly linked with deoxygenation. Stratification is also linked with melting  
181 of Antarctic ice shelves and sea-level rise (Reed and Harrison 2016; Li et al., 2020; Auger et al., 2021). Stratification is  
182 increasing which has dramatic consequences for sea temperature and CO<sub>2</sub> concentrations (Goreau and Hayes, 2024)

#### 183 **5. Ocean acidification**

184 Ocean acidification (OA) is the process of the increasing absorption of atmospheric CO<sub>2</sub> by the surface seawaters of the oceans  
185 (Raven 2005), which in turn reduces the calcification rates of most scleractinian tropical and subtropical corals (Comeau et al.,  
186 2014; Kornder et al., 2018), and can alter the photo-physiology and calcification physiology of some corals (Comeau et al.,  
187 2018). OA causes a change in the speciation of dissolved inorganic carbon and an increase in protons (Caldeira and Wickett  
188 2003; Feely et al., 2004; Sabine et al., 2004; Raven et al., 2005). This results in increased dissolution of exposed calcareous  
189 material due to decreased saturation state of CaCO<sub>3</sub>, and also inhibition of calcification through increasing proton concentration  
190 with the calcifying space in corals and calcareous algae (Comeau et al., 2018; Comeau et al., 2019).

191

192 OA causes declines in coral calcification rates (Comeau et al., 2018). Early work predicted large-scale loss of coral calcification  
193 at catastrophic levels, whereby OA was projected to result in coral bleaching and in some cases net dissolution of corals (see  
194 data within Leung et al., 2022). Contemporary research demonstrates that some corals are resistant to OA (Comeau et al.,  
195 2018; Kornder et al., 2018). The most comprehensive modelling estimates are that by year 2100 coral calcification would  
196 decline by 1% under RCP2.6, 4% under RCP4.5 and 15% at RCP8.5 (Cornwall et al., 2021). When combined solely with the  
197 metabolic effects of temperature increases, this decline would be 1% (RCP2.6), 8% (RCP4.5), and 33% (RCP8.5). However,

198 the calcification rates of susceptible coral taxa (e.g., *Acropora* spp.) would decline by much more, and resistant species (e.g.,  
199 *Pocillopora* spp. or *Porites* spp. generally) could be unaffected.

200

201 The direct metabolic impacts of OA do not manifest a TP, but TPs at ecological levels are likely. Recent evidence  
202 indicates that ecological TPs within coral reefs caused solely by ocean acidification would occur around 550  
203 ppm, roughly the same concentration of atmospheric CO<sub>2</sub> that would cause detectable declines in both coral and  
204 coralline algal calcification (Cornwall et al., 2024). However, ecosystem trajectories are uncertain, and much  
205 more future research is required to determine the generality of these findings.

206 The adverse impacts on coral and coralline algal calcification are direct negative effects, when combined with the  
207 direct positive effects on other taxa (such as opportunistic turfing algae). Susceptible species would start to give  
208 way to tolerant species over time (as generally occurs at natural analogues in the field (Fabricius et al., 2011;  
209 Comeau et al., 2022), and other non-coral taxa would start to dominate space on what once were traditional coral  
210 reefs. Species that are capable of maintaining stable internal carbonate chemistry or compensate for these changes  
211 tend to be more tolerant to OA.

212

### 213 **Interactions**

214 Reduced calcification increases disease risk and weakened skeletons are vulnerable to storms (Suwa et al., 2010; Anthony et  
215 al., 2011; Steffen et al., 2015; Setter et al., 2022). There is also some evidence that elevated CO<sub>2</sub> will exacerbate heat stress  
216 induced declines in coral calcification and physiological performance, though the strength and direction of these interactions  
217 varies widely by coral reef taxa, and even within different coral genera (Kornder et al., 2018). However, of greater immediate  
218 importance to the majority of corals will be successive marine heatwaves that will reduce the coral cover of less heat tolerant  
219 species, populations and genotypes over the majority of the oceans in the near future (van Hooidonk et al., 2014; Cornwall et  
220 al., 2021; Logan et al., 2021; Cornwall et al., 2023). Survivors of this human-driven evolutionary force will not necessarily be  
221 those that are tolerant to OA also, and thus numerous TPs in time could occur.

### 222 **6. Deoxygenation**

223 Deoxygenation on coral reefs is perhaps the least studied of the major threats directly linked to climate change such as warming  
224 and acidification (Hughes et al., 2020). However, there is sufficient evidence to say that dissolved oxygen is a critical resource  
225 on coral reefs, and that oxygen limitation (i.e. hypoxia) results in non-linearities and feedbacks that contribute to ecological  
226 tipping points (Nelson and Altieri 2019). The consequences of crossing these TPs are perhaps most dramatically evident in  
227 sudden mass mortality events, which has led to calls to accelerate the research agenda on deoxygenation on coral reefs (Altieri  
228 et al., 2017). The oxygen concentration threshold at which corals lose their ability to maintain homeostasis is 2 mg/L with

229 lethal doses between 0.5-2 mg/L (Hughes et al., 2020; Johnson et al., 2021a). Previous mass extinctions have been linked to  
230 deoxygenation, indicating the potential severity of this threat (Liu et al., 2019).

231  
232 The problem of deoxygenation on coral reefs is becoming more prevalent and severe in the Anthropocene from a combination  
233 of global climate change (Altieri and Gedan 2015; Pezner et al., 2023), as well as local pollution in the form of excess nutrient  
234 and organic matter (Diaz and Rosenberg 2008), that are magnified by local oceanographic patterns (Adelson et al., 2022).  
235 Around 13% of coral reefs are at risk of deoxygenation, and this is likely to increase with continued climate change (Altieri et  
236 al., 2017; Pezner et al., 2023).

237  
238 We suggest that evidence to date for feedbacks and non-linear thresholds indicates that a TP framework should be used to  
239 guide future research on deoxygenation in coral reefs, and that hypoxia should be considered in studies of thermal stress and  
240 acidification.

#### 241 242 **Interactions**

243 Climate-related variables of temperature and acidification are also likely to exacerbate deoxygenation by affecting the  
244 physiological responses of corals and other reef organisms. It is widely recognized that increased temperatures lead to increased  
245 metabolic demand and decreased tolerance thresholds in marine organisms including corals (Vaquer-Sunyer and Duarte, 2011;  
246 Alderdice et al., 2022; Weber et al., 2012). Given the prevalence, co-occurrence, and synergistic effects of these co-stressors  
247 with deoxygenation, a multi-stressor perspective is essential, and many of the assumed thresholds for TPs on coral reefs based  
248 on single or even double stressor treatments under laboratory experiments are likely overly conservative estimates. Coral reefs  
249 are vulnerable to a number of feedbacks that exacerbate deoxygenation events, these include: bleaching (Altieri et al., 2017;  
250 Alderdice 2021; Johnson et al., 2021a,b;), excessive dead material from mass mortality events (Simpson et al., 1993), coral  
251 disease and algal growth (Dinsdale and Rohwer, 2011), and shifts in the coral microbiome (Howard et al., 2023).

#### 252 **7. Storm intensity**

253 The direct force of wind and waves, along with changes in storm direction, increase risks of physical damage and exposure to  
254 reduced water quality and sediment runoff (IPCC 2018). Storms contribute to unstable rubble substrate, compromising coral  
255 settlement (Sheppard et al., 2020). Furthermore, frequent intense storms can hinder reef recovery (Puotinen et al., 2020). Setter  
256 et al., (2022) ascribe a threshold value of storm strength category <4 with a return time of >5 years.

#### 257 258 **Interactions**



259 Ocean warming may increase the severity of cyclones (IPCC 2021; Setter et al., 2022) and coral bleaching has likely reduced  
260 the ability of reefs to recover from cyclone damage (Laffoley and Baxter 2016). The likelihood of more intense cyclones within  
261 time frames of coral recovery by mid-century poses a global threat to coral reefs and dependent societies (Cheal et al., 2017).  
262 Storms can have an antagonistic interaction with heat stress, reducing bleaching severity, but also generate sediment  
263 resuspension (Gardner et al., 2005; Manzello et al., 2007; Carrigan and Puotinen, 2014; Puotinen et al., 2020; Setter et al.,  
264 2022). Reduced calcification increases susceptibility to storm impacts (Suwa et al., 2010; Anthony et al., 2011; Steffen et al.,  
265 2015; Setter et al., 2022).

## 266 **8. Sea level rise**

267 Sea-level rise (SLR) can cause ‘reef drowning’ from exceeding *Darwin Point* thresholds (Grigg 2008). Saunders et al., (2016)  
268 note that while individual corals may keep pace with SLR, likely maximum reef framework accretion rate on reef flats is only  
269 3 mm yr<sup>-1</sup>. Saintilan et al., (2023) estimate likely vulnerability to relative SLR at 7 mm yr<sup>-1</sup> for coral reef islands. Global mean  
270 sea level between 2006 and 2018 increased to 3.7 mm yr<sup>-1</sup> (IPCC 2021). Under SSP1-2.6, due to the risk of loss of reef  
271 structural integrity and transitioning to net erosion by mid-century the rate of sea level rise is very likely to exceed that of reef  
272 growth by 2050, absent adaptation (IPCC 2022). Depending on reef type and location suggested SLR threshold rates range  
273 from 4-9 mm yr<sup>-1</sup>.

274  
275 Closely connected seagrass and mangrove ecosystems (Guannel et al., 2016) are very vulnerable to projected SLR (Saunders  
276 et al., 2014; Törnqvist et al., 2021; Saintilan et al., 2023) which will further compromise coral reef resilience and functionality.  
277 In summary, SLR rate and magnitude looks increasingly likely to overwhelm the accretion ability of coral reefs which will be  
278 further challenged by increased wave energy, sedimentation, turbidity and resultant compromised light conditions for symbiont  
279 photosynthesis (Saunders et al., 2014; Woodroffe and Webster 2014; Törnqvist et al., 2021; Saintilan et al., 2023).

## 281 **Interactions**

282 Moderate rates of sea level rise may potentially provide cooling for some reefs contending with thermal stress and thus have  
283 an antagonistic effect (Baldock et al., 2014; Cinner et al., 2015; Brown et al., 2019; Zuo et al., 2021). However, SLR rate and  
284 magnitude predictions (eg. Ciraci et al., 2023; Vernimmen and Hooijer 2023) imply increasingly synergistic impacts,  
285 especially in the tropics (Spada et al., 2013; Hooiler and Vernimmen 2021; Cazenave et al., 2022). High SLR rate and  
286 magnitude can change the interactions from antagonistic to synergistic, for example: reducing light availability, increasing  
287 sedimentation and turbidity (Laffoley and Baxter, 2016; Perry et al., 2018; IPCC 2022).

288

## 289 **9. Pollution & disruption**

290 Here we use pollution as an all-encompassing term covering sediment, eutrophication, turbidity and chemicals, while  
291 disruption as a term covering local land use change, human population density and overfishing. Sedimentation reduces water  
292 clarity and hence solar energy supply, furthermore sediments settling on corals require greater energy to remove. It is caused  
293 mainly by land-based activities such as coastal urbanisation, with plumes in large tropical river systems travelling many km  
294 (Brodie et al., 2012). Organic pollution from sewage and agricultural run-off (e.g. fertiliser) are the main causes of  
295 eutrophication (increase in nutrient content in water), which reduce light, actively poison invertebrates, introduce pathogens  
296 and reduce resistance to disease with direct impact on corals being decreased colony sizes, growth anomalies, and reduced  
297 growth and survival (Setter et al. 2022). Metals and organic chemicals can rupture cell membranes, disrupt enzyme pathways  
298 reducing corals' ability to resist other stressors. Plastics have also been identified as a major cause of coral reef stress due to  
299 light interference, toxin release, physical damage, anoxia and increasing the likelihood of pathogen disease 20-fold (Lamb et  
300 al., 2018). Land use can be used as a proxy for quantifying land-based pollution and other human stressors on coral reefs  
301 (Packett et al., 2008; Cinner et al., 2012; Setter et al., 2022). Setter et al., (2022) use human population density as the closest  
302 indicator available to quantify local human stressors, involving coral growth anomalies and disease, low biodiversity and fish  
303 biomass and reduced growth and survival. To calculate reef change threshold exceedance, Setter et al., (2022) use an ideal  
304 value of summed proportion agricultural/urban land use <0.5 in a 50 km radius around a reef. Perhaps the most direct disruptive  
305 impact is overfishing with IPBS (2019) stating that more than 80% of the world's coral reefs are severely over-fished or have  
306 degraded habitats (McClanahan et al., 2015).

307

### 308 **Interactions**

309 Under certain circumstances poorer water quality can mediate bleaching resilience through a shading effect. Pollution  
310 exacerbates stress and increases disease risk, both of which are exacerbated by thermal stress. Eutrophication increases  
311 deoxygenation and exacerbates crown-of-thorn-seastar (COTS) outbreaks (De'ath and Fabricius 2010; Redding et al., 2013;  
312 Laffoley and Baxter 2019; MacNeil et al., 2019), while overfishing is also linked with COTS outbreaks (Babcock et al.,  
313 2016). Sites with historic disturbance may recover more slowly from heat stress and storms (Walker et al., 2024).  
314 Overfishing can lead to algae overgrowth inducing disease and lowering calcification (Fabricius 2005; Packett et al., 2009;  
315 Maina et al., 2013; Kroon et al., 2014; Prouty et al., 2017).

## 316 **10. Disease**

317 Diseases are major drivers of the deterioration of coral reefs and are linked to major declines in coral abundance, reef  
318 functionality, and ecosystem services (Alvarez-Filip et al., 2022). Disease outbreaks have severe consequences for coral reef  
319 ecosystems, resulting in extensive coral mortality and endangering long-term survival. Noteworthy events include the rapid  
320 proliferation of diseases like Stony Coral Tissue Loss Disease (SCTLD), Black Band Disease, and various forms of White

321 Syndrome (Alvarez-Filip et al., 2022). Coral diseases are driven largely by a changing environment and are contributing to  
322 whole ecosystem regime shifts (Thurber et al., 2020). Although diseases are becoming increasingly prevalent with temperature  
323 rise and pollution, these, by themselves, have had relatively little overall impact outside of the Caribbean Sea, to date. In the  
324 Caribbean SCTLD is a major present source of coral mortality, impacting more than a third of all reef-building coral species  
325 present, and potentially driving the extinction of Pillar coral *Dendrogyra cylindrus* (among others). The relative impact of  
326 diseases elsewhere is likely to change in the future, becoming more prevalent and interacting with heatwaves and other stressors  
327 (Estrada-Saldívar et al., 2021; Cavada-Blanco et al., 2022).

328

### 329 **Interactions**

330 Some coral diseases (but not all) have been linked to both marine heatwaves and the longer-term warming trend (Bruno et al.,  
331 2007; Randall and van Woesik, 2015). For example, viral infections of coral symbiotic dinoflagellate partners  
332 (Symbiodiniaceae) will likely increase as ocean temperatures continue to rise, potentially impacting the foundational symbiosis  
333 underpinning coral reef ecosystems (Howe-Kerr et al., 2023). Furthermore, predation scars leave corals susceptible to disease  
334 (Nicolet et al., 2018). Invasive species can directly cause or increase the risk of disease spread.

## 335 **11. Invasive and other problem species**

336 Increased native and invasive coral predators and competitors can have severe impacts on reefs. One example is the impact of  
337 COTS on the Great Barrier Reef (Uthicke et al., 2015). The coral-killing sponge, *Terpios hoshinota*, is a global invasive species  
338 which has led to a significant decline in living coral cover at various geographical locations (Thinesh et al., 2017).

339

### 340 **Interactions**

341 Warming is a driving factor in the increased impact of invasive and problem species. Studies on Mexican Pacific coast coral  
342 reefs confirmed that post bleached corals are increasingly vulnerable to boring sponge impacts (Carballoe et al., 2012). COTS  
343 outbreaks appear to be significantly influenced by a combination of heat stress resiliency (Byren et al., 2024) and increased  
344 larval survivorship due to higher food availability, linked with anthropogenic runoff and warmer sea temperature facilitating  
345 faster settlement of larvae (Uthicke et al., 2015). Predation scars can leave corals susceptible to disease (Nicolet et al., 2018).

## 346 **12. Reef impact example**

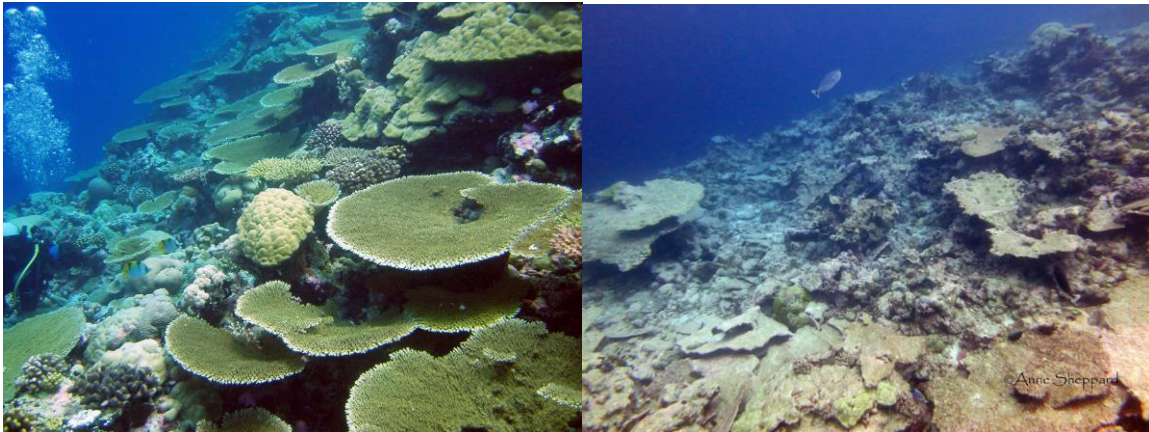
### 347 **Chagos Archipelago demonstrates positive feedback (TPs).**

348 Observations from the Chagos Archipelago, central Indian Ocean, reveal several related lessons. Coral cover collapsed 90%  
349 after heatwaves in 2015-2016. Very few adults capable of spawning survived, with new growth not observed for 3 years  
350 (Sheppard and Sheppard, 2019).

351 Settlement of larvae, when it occurred, was compromised by disintegrating substrates. In many shallow areas, where wave  
352 energy had already swept the substrate clear of rubble, large areas are becoming covered by the encrusting and bioeroding  
353 sponge *Cliona* spp (Sheppard et al., 2020) and almost no coral settlers were seen in these areas. These sponges are clearly  
354 increasing; with one reef showing over 80% *Cliona* cover preventing coral larvae settlement.

355 On at least one lagoon floor, the former foliaceous coral dominance was also killed with skeletons disintegrating resulting in  
356 fine sediment covering all surfaces. Both sedimented surfaces and turbid water are not preferred conditions for larval  
357 settlement, with no juvenile corals recorded in such areas over many hectares.

358 The scenario of fewer corals producing fewer larvae, more turbid water in some areas and less substrate available for settlement  
359 is a classical positive feedback or TP situation. These factors all act synergistically in a direction that inevitably leads to an  
360 ever more impoverished reef system. Recovery from this will require a prolonged period without heat stress and a gradual  
361 removal of the vast volumes of sediment and rubble left from previous bleaching events (Sheppard and Sheppard, 2019).



362

363 **Figure 1: Reef slope on Salomon atoll, Chagos Archipelago, before and after the mass mortality caused by warming in**  
364 **2015**

### 365 **13. Cascade effects contributing to coral reef TP threshold sensitivity**

366 The cascading effects of well-researched TPs in other globally important systems have not been sufficiently assessed for their  
367 potential impact on coral reef systems. Accelerating West Antarctic Ice Sheet melt (Naughten et al., 2023), increasing methane  
368 emissions (Zhang et al., 2023) and Arctic sea ice decline have the potential to increase rate and magnitude of coral reef stressor  
369 impacts, including temperature and SLR. For example, Liu et al., (2022) predict that 37–48% of the increase of strong El Niño  
370 near the end of the 21st century is associated specifically with Arctic sea-ice loss. Many climate impact predictions make  
371 assumptions of the stability of the wider earth system, but this may not hold true and lead to dramatic cascading impacts, for

372 example, Ke et al., (2024) show dramatic decline in land carbon sinks in 2023 which will have wider implications on CO<sub>2</sub>  
373 levels and associated stressors.

#### 374 **14. Resilience, adaptation and refugia**

375 Lenton et al., (2023) state ‘The potential for coral adaptation to warming is a critical but poorly known factor, and subject to  
376 high levels of variation locally. The potential effectiveness of restoration for coral reefs at scale, and with enhanced capacity  
377 to resist future threats, are both currently poor. The effect of climate migration on coral recovery is poorly known, with  
378 potentially positive effects at higher latitude (with in-migration), but negative at lower latitudes (with out-migration, but no  
379 replacement; Herbert-Read et al., 2023).’ IPCCs AR6 “Impacts and vulnerability” report states that ‘impacts of climate change  
380 may overwhelm attempts at restoration/conservation, particularly when the ecosystem is already near its TP, as is the case with  
381 tropical coral reefs (Bates et al., 2019; Bruno et al., 2019).’

382  
383 Mass coral mortality repeated more than twice per decade and over local, regional and ocean scale, and by aggregation to  
384 global scales, is increasingly recognized as giving insufficient time for recovery of impacted populations and ecological  
385 function (Hughes et al., 2018a,b; Obura et al., 2022; Lenton et al., 2023; Venegas et al., 2023). Ecological and biogeographical  
386 (spatial) feedback loops prevent recovery through failure of reproduction, dispersal, recruitment and growth of corals  
387 (Sheppard et al., 2020). Other stressors reduce the ability of corals to resist thermal stress thus lowering tipping thresholds.  
388 Increasing frequency and intensity of regional scale coral mortality events (1+ °C warming) are suggestive of the majority of  
389 coral reefs already having reached their bleaching TP (IPCC 2022). The potential for thermal refuges for corals under likely  
390 future scenarios is doubtful (Beyer et al., 2018; Dixon et al., 2022; Setter et al., 2022; Lenton et al., 2023) as very few or no  
391 reef areas are predicted to remain below tipping thresholds of all key stressors. The existence of putative refuges at greater  
392 depths (Bongaerts and Smith, 2019) or higher latitudes (Setter et al., 2022) are not strongly supported by recent work (Hoegh-  
393 Guldberg et al., 2017; Hoegh-Guldberg et al., 2018; Rocha et al., 2018; Montgomery et al., 2021; IPCC 2022).

394  
395 There is evidence of the persistence of heat adapted genotypes but the loss of poorly adapted corals leads to a loss of diversity  
396 (Fox et al., 2021). Although potential for adaptation exists, stronger warming rates may outpace adaptive processes and limit  
397 coral persistence (Logan et al., 2021; Venegas et al., 2023). Historical and paleo evidence suggests fringe distributions are  
398 likely to be compromised by increasing frequency and intensity of extreme-weather (Toth et al., 2021). Donovan et al., (2021)  
399 show that local stressors act synergistically with climate change to kill corals. Local factors such as high abundance of  
400 macroalgae or urchins have magnified coral loss in the year after bleaching. Notably, the combined effects of increasing heat  
401 stress and macroalgae intensified coral loss, suggesting that effective local management, alongside global efforts to mitigate  
402 climate change, could aid coral survival. Agostini et al., (2021) suggest that ocean acidification will reshape coral communities  
403 around the world, selecting species that have an inherent resistance to elevated pCO<sub>2</sub>.

404

405 Kleypas et al., (2021) provide a blueprint for coral reef survival and state that existing conservation measures such as marine  
406 protected areas and fisheries management are no longer sufficient to sustain reef ecosystems, indicating a need for many  
407 additional and innovative actions to increase reef resilience. Anthony et al., (2020) discuss new interventions and provide a  
408 conceptual model to guide effective strategy choices. They also state that warm-adapted coral traits may not spread fast enough  
409 in most coral species to keep up with the rate of global warming, even under strong carbon mitigation. Hughes et al., (2023)  
410 provide recommendations and a conceptual framework to guide restoration projects and state that coral restoration is likely to  
411 continue to fail unless climate change and other anthropogenic impacts are urgently reduced.

412

413 **15. Conclusions**

414 Robust inclusion of multiple, interacting stressors into vulnerability assessments will lead to a greater understanding of coral  
415 reef futures and address concerns that assessments have been too reliant on temperature thresholds (McClanahan 2022; Klein  
416 et al., 2024). Stressor onset rate, magnitude and overshoot factors are important considerations for determining stressor  
417 interactions and their significance.

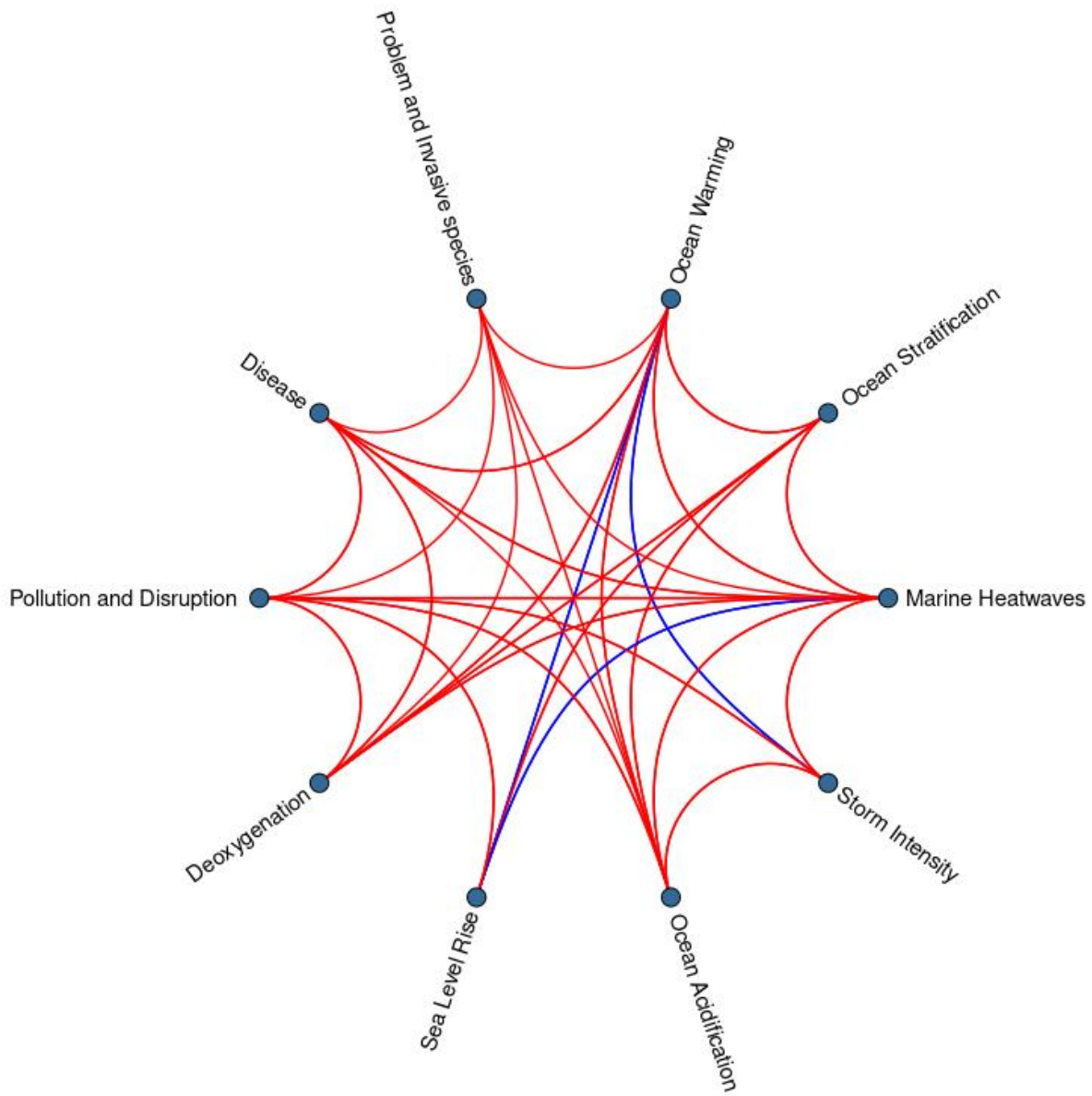
418

419 Veron et al., (2009) argue that to ensure long-term viability of coral reefs, atmospheric CO<sub>2</sub> levels must be reduced significantly  
420 below 350 ppm. Lenton et al., (2023) recognise the long term consequences of >350 ppm as a critical TP threshold, along with  
421 a global mean surface temperature (relative to pre-industrial) threshold of 1.2°C (range 1-1.5°C), whilst acknowledging that  
422 the “combined effects of long-term warming, sea level rise, ocean acidification, deoxygenation, and other stressors, bears more  
423 investigation.” The significance of both these TP thresholds is highlighted by the fact that global warming has already reached  
424 1.2°C and CO<sub>2</sub> levels have exceeded 420 ppm. Considering the calculations of von Schuckmann et al., (2020) that CO<sub>2</sub> levels  
425 would need to be reduced to 353 ppm to realise the Paris temperature target, 350 ppm is likely to be insufficient for realising  
426 a 1.2°C TP threshold, especially as other significant greenhouse gases are still increasing.

427

428 We note that interacting stressors, ocean response dynamics, GHG emissions overshoot and cascade considerations have yet  
429 to be sufficiently evaluated. These and other uncertainties around TP sensitivities for such a crucially important ecosystem  
430 underlines the imperative of robust assessment (Aronson and Precht, 2016; Dixon, Forster and Beger, 2021; Heinze et al.,  
431 2021; Laffoley et al., 2022; Lenton et al., 2023) and, in the case of knowledge gaps and uncertainties, employing a  
432 precautionary principle (Rockström et al., 2021; OECD 2022; Deutloff et al., 2023; Lenton et al., 2023b; Ripple et al., 2023;  
433 Fletcher et al., 2024) favouring lower range threshold values. Recognising threat severity is essential if the necessary  
434 response actions are to be realised.

435



436

437 **Figure 2: Visualisation of stressor interactions. Red links denote synergistic associations and blue links denote both**  
 438 **synergistic and antagonistic associations depending on magnitude and other factors.**



439 **Acknowledgements**

440 We are grateful to Richard Betts for advice on atmospheric CO<sub>2</sub> and temperature associations and ocean warming response  
441 times and would also like to thank Katja Frieler, Malte Meinshausen and Ove Hoegh-Guldberg. We thank our reviewers  
442 (including Lyndon DeVantier) for their valuable and constructive comments. We would like to record our condolences for the  
443 loss of our fellow author Prof Charles Sheppard, who sadly passed away during the production of this manuscript, and  
444 recognise his remarkable contributions to coral biology and conservation.

445 **Competing interests**

446 The contact author declares that none of the authors have any competing interests.

447 **Author contribution**

448 All authors contributed to writing and revising the text.

449 **Code/Data availability**

450 No new code or data was generated for this manuscript

451

452 **References**

453

454 Abraham, J., Cheng, L., Mann, M. E., Trenberth, K., & von Schuckmann, K. The ocean response to climate change guides  
455 both adaptation and mitigation efforts. *Atmospheric and Oceanic Science Letters*, 15(4), 100221. 2022.

456 Abrams, J. F., Huntingford, C., Williamson, M. S., Armstrong McKay, D. I., Boulton, C. A., Buxton, J. E., ... & Lenton,  
457 T. M. Committed global warming risks triggering multiple climate tipping points. *Earth's Future*, 11 (11), e2022EF003250.  
458 2023.

459 Adelson, A. E., Altieri, A. H., Boza, X., Collin, R., Davis, K. A., Gaul, A., Giddings, S. N., Reed, V., and Pawlak, G.:  
460 Seasonal hypoxia and temperature inversions in a tropical bay. *Limnology and Oceanography*, 67, 2174-2189, 2022.

461 Agostini S, Houlbrèque F, Biscéré T, Harvey BP, Heitzman JM, Takimoto R, Yamazaki W, Milazzo M & Rodolfo-Metalpa  
462 R (2021) [Greater Mitochondrial Energy Production Provides Resistance to Ocean Acidification in “Winning” Hermatypic  
463 Corals](https://doi.org/10.3389/fmars.2020.600836). *Front. Mar. Sci.* 7:600836. <https://doi.org/10.3389/fmars.2020.600836>

464 Alderdice, R., Perna, G., Cárdenas, A., Hume, B. C., Wolf, M., Kühl, M., Pernice, M., Suggett, D. J., and Woolstra, C. R.:  
465 Deoxygenation lowers the thermal threshold of coral bleaching. *Sci. Rep.*, 12, 18273, 2022.

466 Alderdice, R., Suggett, D. J., Cárdenas, A., Hughes, D. J., Kühl, M., Pernice, M., and Woolstra, C. R.: Divergent expression  
467 of hypoxia response systems under deoxygenation in reef-forming corals aligns with bleaching susceptibility. *Glob. Change  
468 Biol.*, 27, 312-326, 2021.

469 Altieri, A. H. and Gedan, K. B.: Climate change and dead zones. *Glob. Chang. Biol.*, 21, 1395-1406, 2015.

470 Altieri, A. H., Harrison, S. B., Seemann, J., Collin, R., Diaz, R. J., and Knowlton, N.: Tropical dead zones and mass  
471 mortalities on coral reefs. *Proc. Natl. Acad. Sci. USA*, 114, 3660-3665, 2017.

472 Alvarez-Filip, L., Dulvy, N. K., Gill, J. A., Côté, I. M., & Watkinson, A. R. : Flattening of Caribbean coral reefs: region-  
473 wide declines in architectural complexity. *Proc. Roy. Soc. B: Biol. Sci.*, 276(1669), 3019-3025,  
474 <https://doi.org/10.1098/rspb.2009.0339> 2009.

475 Alvarez-Filip, L., González-Barríos, F. J., Pérez-Cervantes, E., Molina-Hernández, A., and Estrada-Saldíva, N.: Stony  
476 coral tissue loss disease decimated Caribbean coral populations and reshaped reef functionality. *Commun. Biol.*, 5, 440,  
477 <https://doi.org/10.1038/s42003-022-03398-6>, 2022

478 Amir, H.: Status and trends of hard coral cover derived from long-term monitoring sites in the Maldives: 1998-2021.  
479 Maldives Marine Research Institute, Male', Republic of Maldives. 2022.

480 Anthony KRN, Helmstedt KJ, Bay LK, Fidelman P, Hussey KE, Lundgren P, Mead, D., McLeod, I.M., Mumby, P.J.,  
481 Newlands, M. and Schaffelke, B. : Interventions to help coral reefs under global change—A complex decision challenge.  
482 *PLoS ONE* 15(8): e0236399. <https://doi.org/10.1371/journal.pone.0236399>, 2020

483 Anthony, K. R. N.: Coral Reefs Under Climate Change and Ocean Acidification: Challenges and Opportunities for  
484 Management and Policy. *Ann. Rev. Env. Res.* 41, 59-81, <https://doi.org/10.1146/annurev-environ-110615-085610>, 2016

485 Anthony, K. R. N., Maynard, J. A., Diaz-Pulido, G., Mumby, P. J., Marshall, P. A., Cao, L., and Hoegh- Guldberg, O.:  
486 Ocean acidification and warming will lower coral reef resilience. *Glob. Change Biol.*, 17, 1798–1808,  
487 <https://doi.org/10.1111/j.1365-2486.2010.02364.x>, 2011.

488 Armstrong-McKay, D. I., Staal, A., Abrams, J. F., Winkelmann, R., Sakschewski, B., Loriani, S., Fetzer, I., Cornell, S. E.,  
489 Rockström, J., and Lenton, T. M.: Exceeding 1.5°C global warming could trigger multiple climate tipping points. *Science*,  
490 377, <https://doi.org/10.1126/science.abn7950>, 2022.

491 Aronson, R. B. and Precht, W. F.: Physical and biological drivers of coral reef dynamics. In book: *Coral Reefs at the*  
492 *Crossroads Volume 6* ISBN : 978-94-017-7565-6 Publisher: Springer. Edited by: Hubbard, D. K., Rogers, C. S., Lipps, J.  
493 H. and Stanley, Jr, G. D. pp261-275, 2016.

494 Auger, M., Morrow, R., Kestenare, E., Sallée, J. B., & Cowley, R. : Southern Ocean in-situ temperature trends over 25  
495 years emerge from interannual variability. *Nat. Comm.*, 12(1), 514, <https://doi.org/10.1038/s41467-020-20781-1> 2021.

496 Babcock, R. C., Dambacher, J. M., Morello, E. B., Plagányi, É. E., Hayes, K. R., Sweatman, H. P., & Pratchett, M. S.:  
497 Assessing different causes of crown-of-thorns starfish outbreaks and appropriate responses for management on the Great  
498 Barrier Reef. *PloS one*, 11(12), e0169048, <https://doi.org/10.1371/journal.pone.0169048>, 2016.

499 Bak, R. P. M., Nieuwland, G., and Meesters, E. H.: Coral growth rates revisited after 31 years: what is causing lower  
500 extension rates in *Acropora palmata*? *Bull. Mar. Sci.*, 84, 287–294, 2009.

501 Baldock, T. E., Golshani, A., Callaghan, D. P., Saunders, M. I., and Mumby, P. J.: Impact of sea-level rise and coral  
502 mortality on the wave dynamics and wave forces on barrier reefs. *Mar. Pollut. Bull.*, 83,155-164, 2014.

503 Ban, S., Graham, N., and Connolly, S.: Evidence for multiple stressor interactions and effects on coral reefs. *Glob. Change*  
504 *Biol.*, 20, 681–697, <https://doi.org/10.1111/gcb.12453>, 2013.

505 Bates, A. E., Cooke, R. S., Duncan, M. I., Edgar, G. J., Bruno, J. F., Benedetti-Cecchi, L., ... & Stuart-Smith, R. D. :  
506 Climate resilience in marine protected areas and the ‘Protection Paradox’. *Biol. Cons.*, 236, 305-314,  
507 <https://doi.org/10.1016/j.biocon.2019.05.005> 2019.

508 Beyer, H. L., Kennedy, E. V., Beger, M., Chen, C. A., Cinner, J. E., Darling, E. S., Eakin, C. M., Gates, R. D., Heron, S.  
509 F., Knowlton, N., Obura, D., Palumbi, S. R., Possingham, H. P., Puotinen, M., Runting, R. K., Skirving, W. J., Spalding,  
510 M., Wilson, K. A. Wood, S., Veron, J. E., and Hoegh-Guldberg, O.: Risk-sensitive planning for conserving coral reefs  
511 under rapid climate change. *Cons. Lett.*, 11, e12587. ISSN 1755-263X, 2018.

512 Bland, L. M., Rowland, J. A., Regan, T. J., Keith, D. A., Murray, N. J., Lester, R. E., Linn, M., Rodriguez, J. P., and  
513 Nicholson, E.: Developing a standardized definition of ecosystem collapse for risk assessment. *Front Ecol. Environ.*, 16,  
514 29–36, <https://doi.org/10.1002/fee.1747>, 2018.

515 Bongaerts, P. and Smith, T.: Beyond the “Deep Reef Refuge” Hypothesis: A Conceptual Framework to Characterize  
516 Persistence at Depth. In *Mesophotic Coral Ecosystems Volume 12* (Edited by: Loya, Y., Puglise, K.A., and Bridge, T. C.  
517 L.) ISBN : 978-3-319-92734-3, 2019.

518 Briggs, N. D., Page, C. A., Giuliano, C., Alessi, C., Hoogenboom, M., Bay, L. K., & Randall, C. J.. Dissecting coral  
519 recovery: bleaching reduces reproductive output in *Acropora millepora*. *Coral Reefs*, 43(3), 557-569. (2024).

520 Brodie, J.E., Kroon, F.J., Schaffelke, B., Wolanski, E.C., Lewis, S.E., Devlin, M.J., Bohnet, I.C., Bainbridge, Z.T.,  
521 Waterhouse, J. and Davis, A.M., 2012. Terrestrial pollutant runoff to the Great Barrier Reef: an update of issues, priorities  
522 and management responses. *Mar. Poll. Bull.*, 65(4-9), pp.81-100.

523 Brown, B. E., Dunne, R. P., Somerfield, P. J., Edwards, A. J., Simons, W. J. F., Phongsuwan, N., Putschim, L., Anderson,  
524 L., and Naeije, M. C.: Long-term impacts of rising sea temperature and sea level on shallow water coral communities over  
525 a ~40 year period. *Sci. Rep.*, 9, 8826, <https://doi.org/10.1038/s41598-019-45188-x>, 2019.

526 Bruno, J. F., Côté, I. M., & Toth, L. T. : Climate change, coral loss, and the curious case of the parrotfish paradigm: why  
527 don't marine protected areas improve reef resilience?. *Ann. Rev. Mar. Sci.*, 11(1), 307-334,  
528 <https://doi.org/10.1146/annurev-marine-010318-095300> 2019.

529 Bruno, J., Selig, E., Casey, K., Page, C., Willis, B., Harvell, C., Sweatman, H. and Melendy, A.: Thermal stress and coral  
530 cover as drivers of coral disease outbreaks. *PLoS Biol.*, 5, e124, 2007.

531 Bruno, J. F., Sweatman, H., Precht, W. F., Selig, E. R., and Schutte, V. G. W.: Assessing evidence of phase shifts from  
532 coral to macroalgal dominance on coral reefs. *Ecology* 90,1478-1484, 2009.

533 Byrne, M., Deaker, D. J., Gibbs, M., Selvakumaraswamy, P., & Clements, M. Juvenile waiting stage crown-of-thorns sea  
534 stars are resilient in heatwave conditions that bleach and kill corals. *Glob. Chang. Biol.*, 29(23), 6493-6502. 2023.

535 Burke, S., Pottier, P., Lagisz, M., Macartney, E. L., Ainsworth, T., Drobniak, S. M., and Nakagawa, S.: The impact of  
536 rising temperatures on the prevalence of coral diseases and its predictability: A global meta-analysis. *Ecol. Lett.* 26, 1466–  
537 1481, <https://doi.org/10.1111/ele.14266>, 2023.

538 Caldeira, K., & Wickett, M. E.: Anthropogenic carbon and ocean pH. *Nature*, 425(6956), 365-365. 2003.

539 Carrigan, A. D. and Puotinen, M.: Tropical cyclone cooling combats region-wide coral bleaching. *Glob. Change Biol.*, 20,  
540 1604–1613, 2014.

541 Cavada-Blanco F, Croquer A, Vermeij M, et al.: *Dendrogyra cylindrus*. The IUCN Red List of Threatened Species 2022:  
542 e.T133124A129721366. 2022.

543 Cazenave, A. and Moreira, L.: Contemporary sea-level changes from global to local scales: a review. *Proc. R. Soc.*  
544 A478:20220049. <https://doi.org/10.1098/rspa.2022.0049>, 2022.

545 Cesar, H., Burke, L., & Pet-Soede, L. The economics of worldwide coral reef degradation. International Coral Reef Action  
546 Network. <https://www.icran.org/wp-content/uploads/2022/11/cesardegradationreport.pdf>. 2003.

547 Chan AN, Lewis CL, Neely KL and Baums IB : [Fallen Pillars: The Past, Present, and Future Population Dynamics of a](#)  
548 [Rare, Specialist Coral–Algal Symbiosis](#) *Front. Mar. Sci.* 6:218. <https://doi.org/10.3389/fmars.2019.00218>, 2019.

549 Cheal, A. J., MacNeil, M. A., Emslie, M. J., and Sweatman, H.: The threat to coral reefs from more intense cyclones under  
550 climate change. *Glob. Change Biol.*, 23, 1511–1524. <https://doi.org/10.1111/gcb.13593>, 2017.

551 Cheng, L., von Schuckmann, K., Abraham, J. P., Trenberth, K. E., Mann, M. E., Zanna, L., ... & Lin, X.: Past and future  
552 ocean warming. *Nat. Rev. Earth Environ.*, 3(11), 776-794, 2022.

553 Ciraci, E., Rignot, E., Scheuchl, B., Tolpekin, V., Wollersheim, M., An, L., Milillo, P., Bueso-Bello, J., Rizzoli, P., and  
554 Dini, L.: Melt rates in the kilometer-size grounding zone of Petermann Glacier, Greenland, before and during a retreat.  
555 *Proc. Natl. Acad. Sci. USA*, 120, e2220924120, <https://doi.org/10.1073/pnas.2220924120>, 2023.

556 Claar, D. C., Szostek, L., McDevitt-Irwin, J. M., Schanze, J. J., and Baum, J. K.: Global patterns and impacts of El Niño  
557 events on coral reefs: A metaanalysis. *PLoS* 13, 1-22, <https://doi.org/10.1371/journal.pone.0190957>, 2018.

558 Comeau, S., Cornwall, C. E., DeCarlo, T. M., Krieger, E., and McCulloch, M. T.: Similar controls on calcification under  
559 ocean acidification across unrelated coral reef taxa. *Glob. Change Biol.*, 24, 4857-4868, 2018.

560 Comeau, S., Cornwall, C. E., Shlesinger, T., Hoogenboom, M., Mana, R., McCulloch, M.T., and Rodolfo-Metalpa, R.: pH  
561 variability at volcanic CO<sub>2</sub> seeps regulates coral calcifying fluid chemistry. *Glob. Change Biol.*, 28, 2751-2763, 2022.

562 Comeau, S., Edmunds, P. J., Spindel, N. B., and Carpenter, R. C.: Fast coral reef calcifiers are more sensitive to ocean  
563 acidification in short-term laboratory incubations. *Limnol. Oceanog.* 59, 1081-1091, 2014.

564 Compilation, A. G.: Economic values of coral reefs, mangroves, and seagrasses. *Center for applied biodiversity science.*  
565 *Conservation International, Arlington, VA, USA*, 2008.

566 Cornwall, C. E., Comeau, S., Donner, S. D., Perry, C., Dunne, J., van Hooidonk, R., Ryan, J. S., and Logan, C. A.: Coral  
567 adaptive capacity insufficient to halt global transition of coral reefs into net erosion under climate change. *Glob. Change*  
568 *Biol.*, 29, 3010-3018, 2023.

569 Cornwall, C. E., Comeau, S., & Harvey, B. P.: Are physiological and ecosystem-level tipping points caused by ocean  
570 acidification? A critical evaluation. *Earth Syst. Dynam.*, 15(3), 671-687. 2024.

571 Cornwall, C. E., Comeau, S., Kornder, N. A., Perry, C. T., van Hooidonk, R., DeCarlo, T. M., Pratchett, M. S., Anderson,  
572 K. D., Browne, N., Carpenter, R., Diaz-Pulido, G., D'Olivo, J. P., Doo, S. S., Figueiredo, J., Fortunato, S. A. V., Kennedy,  
573 E., Lantz, C. A., McCulloch, M. T., González-Rivero, M., Schoepf, V., Smithers, S. G., and Lowe, R. J.: Global declines  
574 in coral reef calcium carbonate production under ocean acidification and warming. *Proc. Nat. Acad. Sci.*, 118,  
575 e2015265118, 2021

576 Cinner, J. E., Huchery, C., Hicks, C. C., Daw, T. M., Marshall, N., Wamukota, A., & Allison, E. H. : Changes in adaptive  
577 capacity of Kenyan fishing communities. *Nat. Clim. Chang.*, 5(9), 872-876, <https://doi.org/10.1038/nclimate2690> 2015.

578 Cinner, J. E., McClanahan, T. R., MacNeil, M. A., Graham, N. A., Daw, T. M., Mukminin, A., ... & Kuange, J. :  
579 Comanagement of coral reef social-ecological systems. *Proc. Nat. Acad. Sci.*, 109(14), 5219-5222,  
580 <https://doi.org/10.1073/pnas.1121215109> 2012.

581 Cramer, K., Jackson, J., Donovan, M., Greenstein B., Korpany, C., Cook, J., and Pandolfi, J.: Widespread loss of Caribbean  
582 acroporid corals was underway before coral bleaching and disease outbreaks. *Sci. Adv.*,  
583 <https://doi.org/10.1126/sciadv.aax939>, 2020.

584 Comeau, S., Cornwall, C. E., DeCarlo, T. M., Doo, S. S., Carpenter, R. C., & McCulloch, M. T. : Resistance to ocean  
585 acidification in coral reef taxa is not gained by acclimatization. *Nature Climate Change* 9(6), 477-483, 2019.

586 Darling, E. S., McClanahan, T. R., & Côté, I. M. : Combined effects of two stressors on Kenyan coral reefs are additive or  
587 antagonistic, not synergistic. *Cons. Lett.*, 3(2), 122-130, <https://doi.org/10.1111/j.1755-263X.2009.00089.x> 2010.

588 Darling, E. S., McClanahan, T. R., Maina, J., Gurney, G.G., Graham, N. A. J., Januchowski-Hartley, F., Cinner, J. E.,  
589 Mora, C., Hicks, C. C., Maire, E., Puotinen, M., Skirving, W. J., Adjeroud, M., Ahmadi, G., Arthur, R., Bauman, A. G.,  
590 Beger, M., Berumen, M. L., Bigot, L., Bouwmeester, J., Brenier, A., Bridge, T. C. L., Brown, E., Campbell, S. J., Cannon,  
591 S., Cauvin, B., Chen, C. A., Claudet, J., Denis, V., Donner, S., Estradivari, Fadli, N., Feary, D. A., Fenner, D., Fox, H.,  
592 Franklin, E. C., Friedlander, A., Gilmour, J., Goiran, C., Guest, J., Hobbs, J. A., Hoey, A. S., Houk, P., Johnson, S., Jupiter,  
593 S. D., Kayal, M., Kuo, C., Lamb, J., Lee, M. A. C., Low, J., Muthiga, N., Muttaqin, E., Nand, Y., Nash, K. L., Nedlic, O.,  
594 Pandolfi, J. M., Pardede, S., Patankar, V., Penin, L., Ribas-Deulofeu, L., Richards, Z., Roberts, T. E., Rodgers, K. S.,  
595 Saufuan, C. D. M., Sala, E., Shedrawi, G., Sin, T. M., Smallhorn-West, P., Smith, J. E., Sommer, B., Steinberg, P. D.,  
596 Sutthacheep, M., Tan, C. H. J., Williams, G. J., Willson, S., Yeemin, T., Bruno, J. F., Fortin, M., Krkosek, M., and Mouillot,  
597 D.: Social–environmental drivers inform strategic management of coral reefs in the Anthropocene. *Nat. Ecol. Evol.*, 3,  
598 1341–1350, <https://doi.org/10.1038/s41559-019-0953-8>, 2019.

599 Davis, K.,L., Colefax, A.,P., Tucker, J.,P. Kelaher B. P., and Santos, I. R.: Global coral reef ecosystems exhibit declining  
600 calcification and increasing primary productivity. *Commun. Earth Environ.*, 2, 105, [https://doi.org/10.1038/s43247-021-](https://doi.org/10.1038/s43247-021-00168-w)  
601 00168-w, 2021.

602 De'ath, G. and Fabricius, K.: Water quality as a regional driver of coral biodiversity and macroalgae on the Great Barrier  
603 Reef. *Ecol. App.*, 20, 840-850. doi:10.1890/08-2023.1, 2010

604 Deutloff, J. E., Held, H., & Lenton, T. M.: The risky middle of the road—probabilities of triggering climate tipping points  
605 and how they increase due to tipping points within the Earth's carbon cycle. *EGUsphere*, 2023, 1-28. 2023.

606 Diaz, R. J. and Rosenberg, R.: Spreading dead zones and consequences for marine ecosystems. *Science*, 321, 926-929,  
607 2008.

608 Dinsdale, E. A. and Rohwer, F.: Fish or germs? Microbial dynamics associated with changing trophic structures on coral  
609 reefs. *Coral reefs: an ecosystem in transition*, 231-240, Dordrecht: Springer Netherlands, 2010.

610 Dixon, A. M., Forster, P. M., & Beger, M. : Coral conservation requires ecological climate-change vulnerability  
611 assessments. *Front. Ecol. Environ.*, 19(4), 243-250, <https://doi.org/10.1002/fee.2312> 2021.

612 Dixon, A. M., Puotinen, M., Ramsay, H. A., and Beger, M.: Coral reef exposure to damaging tropical cyclone waves in a  
613 warming climate. *Earth's Future*, 10, e2021EF002600, <https://doi.org/10.1029/2021EF002600>, 2022.

614 Donovan, M. K., Burkepile, D. E., Kratochwill, C., Shlesinger., Sully, S., Oliver, T. A. Hodgson, G., Freiwald, J., and van  
615 Woesil, R.: Local conditions magnify coral loss after marine heatwaves. *Science*, 372, 977-980,  
616 <https://doi.org/10.1126/science.abd9464>, 2021.

617 Deutloff, J. E., Held, H., & Lenton, T. M. The risky middle of the road—probabilities of triggering climate tipping points  
618 and how they increase due to tipping points within the Earth's carbon cycle. *EGUsphere*, 2023, 1-28.2023.

619 Eakin C, M., Devotta D, Heron S, et al., The 2014-17 Global Coral Bleaching Event: The Most Severe and Widespread  
620 Coral Reef Destruction. *Research Square*, <https://doi.org/10.21203/rs.3.rs-1555992/v1>, 2022.

621 Eakin, C. M., Kleypas, J., and Hoegh-Guldberg, O.: Global climate change and coral reefs: rising temperatures,  
622 acidification and the need for resilient reefs. *Status of the Coral Reefs of the World*, 29-34, 2008.

623 Eddy, T. D., Lam, V. W. Y., Reygondeau, G., Cisneros-Montemayor, A. M., Greer, K., Palomares, M. L. D., Bruno, J. F.,  
624 Ota, Y., and Cheung, W. W. L.: Global decline in capacity of coral reefs to provide ecosystem services, *One Earth*, 4, 1278-  
625 1285, ISSN 2590-3322, <https://doi.org/10.1016/j.oneear.2021.08.016>, 2021

626 Edmunds, P. J. and Gray, S. C.: The effects of storms, heavy rain, and sedimentation on the shallow coral reefs of St. John,  
627 US Virgin Islands. *Hydrobiologia* 734, 143–158, <https://doi.org/10.1007/s10750-014-1876-7>, 2014

628 England, M. R., Polvani, L. M., Sun, L., and Deser, C.: Tropical climate responses to projected Arctic and Antarctic sea-  
629 ice loss. *Nat. Geosci.*, 13, 275–281, <https://doi.org/10.1038/s41561-020-0546-9>, 2020.

630 Estrada-Saldívar N, Quiroga-García BA, Pérez-Cervantes E, et al.; Effects of the Stony Coral Tissue Loss Disease outbreak  
631 on coral communities and the benthic composition of Cozumel reefs. *Front. Mar. Sci.* 8: 632777.  
632 <https://doi.org/10.3389/fmars.2021.632777> 2021.

633 Fabricius, K. E.: Effects of terrestrial runoff on the ecology of corals and coral reefs: review and synthesis. *Mar. Pollut.*  
634 *Bull.*, 50, 125–146, <https://doi.org/10.1016/j.marpolbul.2004.11.028>, 2005.

635 Fabricius, K. E., Langdon, C., Uthicke, S., Humphrey, C., Noonan, S., De'ath, G., Okazaki, R., Muehllehner, N., Glas, M.  
636 S., and Lough, J. M.: Losers and winners in coral reefs acclimatized to elevated carbon dioxide concentrations. *Nat. Clim.*  
637 *Change*,1,165-169, 2011.

638 Feely, R. A., Sabine, C. L., Lee, K., Berelson, W., Kleypas, J., Fabry, V. J., & Millero, F. J.: Impact of anthropogenic CO<sub>2</sub>  
639 on the CaCO<sub>3</sub> system in the oceans. *Science*, 305(5682), 362-366. 2004.

640 Fisher, R., Bessell-Browne, P., & Jones, R. : Synergistic and antagonistic impacts of suspended sediments and thermal  
641 stress on corals. *Nat. Comm.*, 10(1), 2346, <https://doi.org/10.1038/s41467-019-10288-9> 2019.

642 Fletcher, C., Ripple, W. J., Newsome, T., Barnard, P., Beamer, K., Behl, A., ... & Wilson, M. Earth at risk: An urgent call  
643 to end the age of destruction and forge a just and sustainable future. *PNAS nexus*, 3(4), page 106. 2024.

644 Fox, M. D., Cohen, A. L., Rotjan, R. D., Mangubhai, S., Sandin, S. A., Smith, J. E., ... & Obura, D. Increasing coral reef  
645 resilience through successive marine heatwaves. *Geophys. Res. Lett.*, 48(17), e2021GL094128. 2021.

646 Frieler, K., Meinshausen, M., Golly, A., Mengel, M., Lebek, K., Donner, S. D., and Hoegh-Guldberg, O.: Limiting global  
647 warming to 2 degrees C is unlikely to save most coral reefs. *Nat. Clim. Change*, 3, 165-170,  
648 <https://doi.org/10.1038/nclimate1674>, 2013.

649 Gardner, T.A., Côté, I. M., Gill, J.A., Grant, A., and Watkinson, A. R.: Hurricanes and Caribbean coral reefs: impacts,  
650 recovery patterns, and role in long-term decline. *Ecology* 86, 174–184, <https://doi.org/10.1890/04-0141> 2005.

651 Genin, A., Levy, L., Sharon, G., and Diamant, A.: Rapid onsets of warming events trigger mass mortality of coral reef  
652 fish. *Proc. Natl. Acad. Sci. USA*, 117, <https://doi.org/10.1073/pnas.2009748117>, 2020

653 Good, A. M. and Bahr, K. D: The coral conservation crisis: interacting local and global stressors reduce reef resiliency and  
654 create challenges for conservation solutions. *SN Appl. Sci.*, 3, 312, <https://doi.org/10.1007/s42452-021-04319-8>, 2021.

655 Guannel, G., Arkema, K., Ruggiero, P., and Verutes, G.: The Power of Three: Coral Reefs, Seagrasses and Mangroves  
656 Protect Coastal Regions and Increase Their Resilience. *PLoS One*, 11, e0158094.  
657 <https://doi.org/10.1371/journal.pone.0158094>, 2016.

658 Goreau, T. J., & Hayes, R. L. : 2023 Record marine heat waves: coral reef bleaching HotSpot maps reveal global sea  
659 surface temperature extremes, coral mortality, and ocean circulation changes. *Oxf. Open Clim. Chang.*, 4(1), kgae005,  
660 <https://doi.org/10.1093/oxfclm/kgae005> 2024

661 Grigg, R.: The Darwin Point: a conceptual and historical review. *Environmental Science*  
662 [http://www.pelagicos.net/BIOL3010/readings/Grigg\\_2008.pdf](http://www.pelagicos.net/BIOL3010/readings/Grigg_2008.pdf), 2008.

663 Hansen, J., Nazarenko, L., Ruedy, R., Sato, M., Willis, J., Del Genio, A., ... & Tausnev, N.: Earth's energy imbalance:  
664 Confirmation and implications. *Science*, 308(5727), 1431-1435. 2005.

665 Heinze, C., Blenckner, T., Martins, H., and Wilson, S.: The quiet crossing of ocean tipping points. *Proc. Natl. Acad. Sci.*  
666 *USA*, 118, e2008478118, <https://doi.org/10.1073/pnas.2008478118>, 2021.

667 Herbert-Read, J. E., Thornton, A., Amon, D. J., Birchenough, S. N., Côté, I. M., Dias, M. P., ... & Sutherland, W. J. A  
668 global horizon scan of issues impacting marine and coastal biodiversity conservation. *Nat. Ecol. Evol.* 6(9), 1262-1270.  
669 2022

670 Hoegh-Guldberg, O., Jacob, D., Taylor, M., Bindi, M., Brown, S., Camilloni, I., Diedhiou, A., Djalante, R., Ebi, K. L.,  
671 Engelbrecht, F., Guiot, J., Hijioka, Y., Mehrotra, S., Payne, A., Seneviratne, S. I., Thomas, A., Warren, R., and Zhou, G.:  
672 Impacts of 1.5°C Global Warming on Natural and Human Systems. In: *Global Warming of 1.5°C. An IPCC Special Report*  
673 *on the impacts of global warming of 1.5°C above pre-industrial levels and related global greenhouse gas emission*  
674 *pathways, in the context of strengthening the global response to the threat of climate change, sustainable development, and*  
675 *efforts to eradicate poverty.* [Edited by: Masson-Delmotte, V., Zhai, P., Pörtner, H.-O., Roberts, D., Skea, J., Shukla, P. R.,  
676 Pirani, A., Moufouma-Okia, W., Péan, C., Pidcock, R., Connors, S., Matthews, J.B.R., Chen, Y., Zhou, X., Gomis, M.I.  
677 Lonnoy, E., Maycock, T., Tignor, M., and Waterfield, T (Eds.)]. Cambridge University Press, Cambridge, UK and New  
678 York, NY, USA, 175-312, <https://doi.org/10.1017/9781009157940.005>, 2018.

679 Hoegh-Guldberg, O., Poloczanska, E. S., Skirving, W., and Dove, S.: Coral Reef Ecosystems Under Climate Change and  
680 Ocean Acidification. *Front. Mar. Sci.*, 4, <https://doi.org/10.3389/fmars.2017.00158>, 2017

681 Hooijer, A. and Vernimmen, R.: Global LiDAR land elevation data reveal greatest sea-level rise vulnerability in the tropics.  
682 *Nat. Commun.*, 12, 3592, <https://doi.org/10.1038/s41467-021-23810-9>, 2021

683 Houk, P., Yalon, A., Maxin, S., Starsinic, C., McInnis, A., Gouezo, M., Golbuu, Y., and van Woesik, R.: Predicting coral-  
684 reef futures from El Niño and Pacific Decadal Oscillation events. *Sci. Rep.*, 10, 7735, [https://doi.org/10.1038/s41598-020-](https://doi.org/10.1038/s41598-020-64411-8U)  
685 [64411-8U](https://doi.org/10.1038/s41598-020-64411-8U), 2020

686 Howard, Rachel D., Monica D. Schul, Lucia M. Rodriguez Bravo, Andrew H. Altieri, and Julie L. Meyer. "Shifts in the  
687 coral microbiome in response to in situ experimental deoxygenation." *App. Environ. Microbiol.* 89, no. 11 : e00577-23,  
688 2023

689 Howe-Kerr, L. I., Grupstra, C. G. B., Rabbitt, K. M. Conetta, D., Coy, S. R., Klinges, J. G., Maher, R. L., McConnell, K.  
690 M., Meiling, S. S., Messyasz, A., Schmeltzer, E. R., Seabrook, S., Sims, J. A., Veglia, A. J., Thurber, A. R., Vega Thurber  
691 R. L., and Correa, A. M. S.: Viruses of a key coral symbiont exhibit temperature-driven productivity across a reefscape.  
692 *ISME Commun.*, 3, 27, <https://doi.org/10.1038/s43705-023-00227-72023>, 2023.

693 Hughes, D.J., Alexander, J., Cobbs, G., Kühl, M., Cooney, C., Pernice, M., Varkey, D., Voolstra, C.R. and Suggett, D.J. :  
694 Widespread oxyregulation in tropical corals under hypoxia. *Mar. Poll. Bull.*, 179, p.113722,  
695 <https://doi.org/10.1016/j.marpolbul.2022.113722> 2022.

696 Hughes, T. P., Kerry, J. T., Álvarez-Noriega, M., Álvarez-Romero, J. G., Anderson, K. D., Baird, A. H., Babcock, R.C.,  
697 Beger, M., Bellwood, D. R., Berkemans, R., Bridge, T. C., Butler, I. R., Byrne, M., Cantin, N. E., Comeau, S., Connolly,  
698 S. R., Cumming, G. S., Dalton, S. J. Diaz-Pulido, G., Eakin, C. M., Figueira, W. F., Gilmour, J. P., Harrison, H. B., Heron,  
699 S. F., Hoey, A. S., Hobbs, J-P. A., Hoogenboom, M. O., Kennedy, E. V., Kuo, C., Lough, J. M., Lowe, R. J., Liu, G.,  
700 McCulloch, M. T., Malcolm, H. A., McWilliam, M. J., Pandolfi, J. M., Pears, R. J., Pratchett, M. S., Schoepf, V., Simpson,



701 T., Skirving, W. J., Sommer, B., Torda, G. Wachenfeld, D. R., Willis, B. L., and Wilson, S. K.: Global warming and  
702 recurrent mass bleaching of corals. *Nature*, 543, 373–377, <https://doi.org/10.1038/nature21707>, 2017.

703 Hughes, T.P, Anderson, K. D., Connolly, S. R., Heron, S. F., Kerry, J. T., Lough, J. M., Baird, A. H., Baum, J. K., Berumen,  
704 M. L., Bridge, T. C., Claar, D. C., Eakin, C. M., Gilmour, J. P., Graham, N. A. J., Harrison, H, Hobbs, J-P. A., Hoey, A.  
705 S., Hoogenboom, M., Lowe, R. J., McCulloch, M. T., Pandolfi, J. M., Pratchett, M., Schoepf, V., Torda, G., and Wilson,  
706 S. K.: Spatial and temporal patterns of mass bleaching of corals in the Anthropocene. *Science*, 359, 80-83,  
707 <https://doi.org/10.1126/science.aan8048>, 2018a.

708 Hughes, T.P., Kerry, J.T., Baird, A.H., Connolly, S. R., Dietzel, A., Eakin, C. M., Heron, S. F., Hoey, A. S., Hoogenboom,  
709 M. O., Liu, G., McWilliam, M. J., Pears, R. J., Pratchett, M S., Skirving, W. J., Stella, J. S., and Torda, G.: Global warming  
710 transforms coral reef assemblages. *Nature* 556, 492–496, 2018b

711 Hughes, D.J., Alderdice, R., Cooney, C., Köhl, M., Pernice, M., Voolstra, C.R., and Suggett, D.J.: Coral reef survival  
712 under accelerating ocean deoxygenation. *Nat. Clim. Change*, 10, 296-307, 2020.

713 Hughes, T. P., Baird, A. H., Morrison, T. H., & Torda, G.. Principles for coral reef restoration in the anthropocene. *One*  
714 *Earth*, 6(6), 656-665. 2023

715 IPBES (2019): Global assessment report on biodiversity and ecosystem services of the Intergovernmental Science-Policy  
716 Platform on Biodiversity and Ecosystem Services. E. S. Brondizio, J. Settele, S. Díaz, and H. T. Ngo (editors). IPBES  
717 secretariat, Bonn, Germany. 1148 pages. <https://doi.org/10.5281/zenodo.3831673>

718 IPCC: Global Warming of 1.5°C. An IPCC Special Report on the impacts of global warming of 1.5°C above pre-industrial  
719 levels and related global greenhouse gas emission pathways, in the context of strengthening the global response to the  
720 threat of climate change, sustainable development, and efforts to eradicate poverty, edited by: Masson-Delmotte, V., Zhai,  
721 P., Pörtner, H.-O., Roberts, D., Skea, J., Shukla, P. R., Pirani, A., Moufouma-Okia, W., Péan, C., Pidcock, R., Connors,  
722 S., Matthews, J. B. R., Chen, Y., Zhou, X., Gomis, M. I., Lonnoy, E., Maycock, T., Tignor, M., and Waterfield, T.  
723 Cambridge University Press, Cambridge, UK and New York, NY, USA, 616 pp. <https://doi.org/10.1017/9781009157940>,  
724 2018.

725 IPCC: Climate Change 2021: The Physical Science Basis. Contribution of Working Group I to the Sixth Assessment Report  
726 of the Intergovernmental Panel on Climate Change, edited by: Masson-Delmotte, V., Zhai, P., Pirani, A., S.L. Connors, S.  
727 L., Péan, C., Berger, S., Caud, N., Chen, Y. Goldfarb, L., Gomis, M. I., Huang, M., Leitzell, K., Lonnoy, E., Matthews,  
728 J.B.R., Maycock, T.K., Waterfield, T., Yelekçi, O., Yu, R., and Zhou, B. Cambridge University Press, Cambridge, United  
729 Kingdom and New York, NY, USA, 2391 pp. <https://doi.org/10.1017/9781009157896>, 2021.

730 IPCC: Climate Change 2022: Impacts, Adaptation and Vulnerability. Contribution of Working Group II to the Sixth  
731 Assessment Report of the Intergovernmental Panel on Climate Change, editd by: Pörtner, H.-O., Roberts, D. C., Tignor,  
732 M., Poloczanska, E. S., Mintenbeck, K., Alegría, A., Craig, M., Langsdorf, S., Löschke, S., Möller, V., Okem, A., and  
733 Rama B. Cambridge University Press. Cambridge University Press, Cambridge, UK and New York, NY, USA, 3056 pp.,  
734 <https://doi.org/10.1017/9781009325844>, 2022.

735 IPCC, 2022: *Climate Change 2022: Impacts, Adaptation, and Vulnerability*. Contribution of Working Group II to the Sixth  
736 Assessment Report of the Intergovernmental Panel on Climate Change [H.-O. Pörtner, D.C. Roberts, M. Tignor, E.S.  
737 Poloczanska, K. Mintenbeck, A. Alegría, M. Craig, S. Langsdorf, S. Löschke, V. Möller, A. Okem, B. Rama (eds.)].  
738 Cambridge University Press. Cambridge University Press, Cambridge, UK and New York, NY, USA, 3056 pp.,  
739 <https://doi.org/10.1017/9781009325844>.

740 Johnson, M.D., Swaminathan, S.D., Nixon, E.N., Paul, V.J., and Altieri, A.H.: Differential susceptibility of reef-building  
741 corals to deoxygenation reveals remarkable hypoxia tolerance. *Sci. Rep.*, 11, 23168, 2021a.

742 Johnson, M. D., Scott, J. J., Leray, M., Lucey, N., Bravo, L. M. R., Wied, W. L., and Altieri, A. H.: Rapid ecosystem-scale  
743 consequences of acute deoxygenation on a Caribbean coral reef. *Nat. Commun.*, 12, 4522, 2021b.

744 Johnson, J.V., Dick, J.T.A., Pincheira-Donoso, D. and Bates, A.E.: Local anthropogenic stress does not exacerbate coral  
745 bleaching under global climate change. *Glob. Ecol. Biogeog.*, <https://doi.org/10.1111/gcb.13506>, 2022.

746 Kalmus, P., Ekanayaka, A., Kang, E., Baird, M., and Gierach, M.: Past the precipice? Projected coral habitability under  
747 global heating. *Earth's Future*, 10, e2021EF002608, <https://doi.org/10.1029/2021EF002608>, 2022.

748 Ke, P., Ciais, P., Sitch, S., Li, W., Bastos, A., Liu, Z., ... & Chevallier, F.: Low latency carbon budget analysis reveals a  
749 large decline of the land carbon sink in 2023. *arXiv preprint arXiv:2407.12447*. 2024.

750 Klein, S. G., Roch, C., & Duarte, C. M. : Systematic review of the uncertainty of coral reef futures under climate change.  
751 *Nat. Comm.*, 15(1), 2224, <https://doi.org/10.1038/s41467-024-46255-2> 2024.

752 Kleypas, J., Allemand, D., Anthony, K., Baker, A. C., Beck, M. W., Hale, L. Z., ... & Gattuso, J. P. Designing a blueprint  
753 for coral reef survival. *Biol. Cons.*, 257, 109107. 2021.

754 Knowlton, N., Grottoli, A. G., Kleypas, J., Obura, D., Corcoran, E., de Goeij, J. M., Felis, T., Harding, S., Mayfield, A.,  
755 Miller, M., Osuka, K., Peixoto, R., Randall, C. J., Voolstra, C. R., Wells, S., Wild, C., and Ferse, S.: Rebuilding Coral  
756 Reefs: A Decadal Grand Challenge. *International Coral Reef Society and Future Earth Coasts* 56 pp. 2021.

757 Kornder, N. A., Riegl, B. M., and Figueiredo, J.: Thresholds and drivers of coral calcification responses to climate change.  
758 *Glob. Change Biol.*, 24, 5084-5095, <https://doi.org/10.1111/gcb.14431>, 2018.

759 Kroon, F.J., Schaffelke, B. and Bartley, R.: Informing policy to protect coastal coral reefs: Insight from a global review of  
760 reducing agricultural pollution to coastal ecosystems. *Mar. Poll. Bull.*, 85(1), pp.33-41, 2014.

761 Laffoley, D., and Baxter, J. M.: IUCN: Explaining ocean warming: causes, scale, effects and consequences. 3.8 Impacts  
762 and effects of ocean warming on coral reefs. 2016. <https://doi.org/10.2305/IUCN.CH.2016.08.en>

763 Laffoley, D. and Baxter, J. M.: Ocean deoxygenation: everyone's problem—causes, impacts, consequences and solutions,  
764 IUCN, 2019. <https://doi.org/10.2305/IUCN.CH.2019.13.en>

765 Laffoley, D., Baxter, J. M., Amon, D. J., Claudet, J., Downs, C. A., Earle, S. A., ... & Woodall, L. C. The forgotten ocean:  
766 Why COP26 must call for vastly greater ambition and urgency to address ocean change. *Aq. Cons.: Mar. Fresh. Eco.*,  
767 32(1), 217-228.(2022).

768 Lamb, J. B., Willis, B. L., Fiorenza, E. A., Couch, C. S., Howard, R., Rader, D. N., ... & Harvell, C. D. : Plastic waste  
769 associated with disease on coral reefs. *Science*, 359(6374), 460-462, <https://doi.org/10.1126/science.aar3320> 2018.

770 Le Nohaïc, M., Ross, C. L., Cornwall, C. E., Comeau, S., Lowe, R., McCulloch, M. T. and Schoepf, V.: Marine heatwave  
771 causes unprecedented regional mass bleaching of thermally resistant corals in northwestern Australia. *Sci. Rep.*, 7, 14999,  
772 <https://doi.org/10.1038/s41598-017-14794-y>, 2017.

773 Lenton, T.M., Armstrong McKay, D.I., Loriani, S., Abrams, J.F., Lade, S.J., Donges, J.F., Milkoreit, M., Powell, T.,  
774 Smith, S.R., Zimm, C., Buxton, J.E., Bailey, E., Laybourn, L., Ghadiali, A., Dyke, J.G.(eds), *The Global Tipping Points*  
775 *Report*, University of Exeter, Exeter, UK., 2023.

776 Lenton, T. M., Xu, C., Abrams, J. F., Ghadiali, A., Loriani, S., Sakschewski, B., ... & Scheffer, M. : Quantifying the human  
777 cost of global warming. *Nat. Sustain.*, 6(10), 1237-1247, <https://doi.org/10.1038/s41893-023-01132-6> 2023b.

778 Leung, J. Y. S., Zhang, S., and Connell, S. D.: Is Ocean Acidification Really a Threat to Marine Calcifiers? A Systematic  
779 Review and Meta-Analysis of 980+ Studies Spanning Two Decades. *Small* 18, 2107407, 2022

780 Li, G., Cheng, L., Zhu, J., Trenberth, K. E., Mann, M. E., & Abraham, J. P. Increasing ocean stratification over the past  
781 half-century. *Nat. Clim. Chang.*, 10(12), 1116-1123. 2020.

782 Li, G., Cheng, L., Zhu, J. *et al.*, Increasing ocean stratification over the past half-century. *Nat. Clim. Chang.* 10, 1116–  
783 1123 (2020). <https://doi.org/10.1038/s41558-020-00918-2>

784 Liu, J., Luo, G., Lu, Z., Lu, W., Qie, W., Zhang, F., ... & Xie, S.: Intensified ocean deoxygenation during the end Devonian  
785 mass extinction. *Geochemistry, Geophysics, Geosystems*, 20(12), 6187-6198, <https://doi.org/10.1029/2019GC008614>,  
786 2019.

787 Liu, J., Song, M., Zhu, Z., Horton, R. M., Hu, Y., and Xie, S-P.: Arctic sea-ice loss is projected to lead to more frequent  
788 strong El Niño events. *Nat. Commun.*, 13, 4952, <https://doi.org/10.1038/s41467-022-32705-2>, 2022.

789 Liu, G., Strong, A. E., & Skirving, W. : Remote sensing of sea surface temperatures during 2002 Barrier Reef coral  
790 bleaching. *Eos, Trans. Am. Geophys. Union*, 84(15), 137-141, <https://doi.org/10.1029/2003EO150001> 2003.

791 Loeb, N. G., Johnson, G. C., Thorsen, T. J., Lyman, J. M., Rose, F. G., & Kato, S. : Satellite and ocean data reveal marked  
792 increase in Earth's heating rate. *Geophys. Res. Lett.*, 48(13), e2021GL093047, <https://doi.org/10.1029/2021GL093047>  
793 2021.

794 Logan, C. A., Dunne, J. P., Ryan, J.S., Baskett, M. L., and Donner, S. D.: Quantifying global potential for coral evolutionary  
795 response to climate change. *Nat. Clim. Change* 11, 537-542, 2021.

796 Lough, J.M., Anderson, K.D., and Hughes, T.P.: Increasing thermal stress for tropical coral reefs: 1871–2017. *Sci. Rep.*,  
797 8, 6079, <https://doi.org/10.1038/s41598-018-24530-9>, 2018.

798 MacNeil, M. A., Mellin, C., Matthews, S., Wolff, N. H., McClanahan, T. R., Devlin, M., ... & Graham, N. A. : Water  
799 quality mediates resilience on the Great Barrier Reef. *Nat. Ecol. Evol.*, 3(4), 620-627, <https://doi.org/10.1038/s41559-019-0832-3>  
800 2019.

801 Maina, J., De Moel, H., Zinke, J., Madin, J., McClanahan, T. and Vermaat, J.E.: Human deforestation outweighs future  
802 climate change impacts of sedimentation on coral reefs. *Nat. comm.*, 4(1), pp.1-7, 2013

803 Manzello, D. P., Brandt, M., Smith, T. B., Lirman, D., Hendee, J. C., and Nemeth, R. S.: Hurricanes benefit bleached  
804 corals. *Proc. Natl. Acad. Sci. USA*, 104, 12035–12039, 2007.

805 Marshall, A.T. and Clode, P.: Calcification rate and the effect of temperature in a zooxanthellate and an azooxanthellate  
806 scleractinian reef coral. *Coral Reefs* 23, 218–224, 2004

807 McClanahan, T. R. : Fisheries yields and species declines in coral reefs. *Env. Res. Lett.*, 17(4), 044023,  
808 <https://doi.org/10.1088/1748-9326/ac5bb4> 2022.

809 McClanahan, T.R., Graham, N.A.J., MacNeil, M.A. and Cinner, J.E., : Biomass-based targets and the management of  
810 multispecies coral reef fisheries. *Cons. Biol.*, 29(2), pp.409-417, <https://doi.org/10.1111/cobi.12430> 2015.

811 Meinshausen, M., Nicholls, Z. R. J., Lewis, J., Gidden, M. J., Vogel, E., Freund, M., Beyerle, U., Gessner, C., Nauels, A.,  
812 Bauer, N., Canadell, J. G., Daniel, J. S., John, A., Krummel, P. B., Luderer, G., Meinshausen, N., Montzka, S. A., Rayner,  
813 P. J., Reimann, S., Smith, S. J., van den Berg, M., Velders, G. J. M., Vollmer, M. K., and Wang, R. H. J.: The shared socio-  
814 economic pathway (SSP) greenhouse gas concentrations and their extensions to 2500, *Geosci. Model Dev.*, 13, 3571–3605,  
815 <https://doi.org/10.5194/gmd-13-3571-2020>, 2020K.

816 Mellin, C., Brown, S., Cantin, N., Klein-Salas, E., Mouillot, D., Heron, S. F., & Fordham, D. A. : Cumulative risk of future  
817 bleaching for the world’s coral reefs. *Sci. Adv.*, 10(26), eadn9660, <https://doi.org/10.1126/sciadv.adn9660> 2024.

818 Meyer, A. L. S., Bentley, J., Odoulami, R. C., Pigot, A. L., and Trisos, C. H.: Risks to biodiversity from temperature  
819 overshoot. *Phil. Trans. R. Soc.* B3772021039420210394, <https://doi.org/10.1098/rstb.2021.0394>, 2022

820 Miller, J., Muller, E., Rogers, C., Waara, R., Atkinson, A., Whelan, K. R. T., Patterson, M., and Witcher, B.: Coral disease  
821 following massive bleaching in 2005 causes 60% decline in coral cover on reefs in the US Virgin Islands. *Coral Reefs* 28,  
822 925–937, 2009

823 Montgomery, A. D., Fenner, D., Donahue, M. J., & Toonen, R. J. : Community similarity and species overlap between  
824 habitats provide insight into the deep reef refuge hypothesis. *Sci. Rep.*, 11(1), 23787, [https://doi.org/10.1038/s41598-021-](https://doi.org/10.1038/s41598-021-03128-8)  
825 [03128-8](https://doi.org/10.1038/s41598-021-03128-8) 2021.

826 Muñoz-Castillo, A.I., Rivera-Sosa, A., Chollett, I., Eakin, C. M., Andrade- Gómez, L., McField, M., and Arias-González,  
827 J.E.: Three decades of heat stress exposure in Caribbean coral reefs: a new regional delineation to enhance conservation.  
828 *Sci. Rep.*, 9, 11013, <https://doi.org/10.1038/s41598-019-47307-0>, 2019.

829 Nelson, H. R., & Altieri, A. H. : Oxygen: the universal currency on coral reefs. *Coral Reefs*, 38(2), 177-198,  
830 <https://doi.org/10.1007/s00338-019-01765-0> 2019.

831 Naughten, K.A., Holland, P.R. & De Rydt, J. : Unavoidable future increase in West Antarctic ice-shelf melting over the  
832 twenty-first century. *Nat. Clim. Chang.* 13, 1222–1228. <https://doi.org/10.1038/s41558-023-01818-x>. 2023.

833 Nicolet, K.J., Chong-Seng, K.M., Pratchett, M.S., Willis, B.L., and Hoogenboom, M.O.: Predation scars may influence  
834 host susceptibility to pathogens: evaluating the role of corallivores as vectors of coral disease. *Sci. Rep.*, 8, 5258, 2018.

835 Norström, A.V., Nyström, M., Jouffray, J.B, Folke, C., Graham, N., Moberg, A.J., Frederik, O., and Williams, G. Guiding  
836 coral reef futures in the Anthropocene. *Front. Ecol. Environ.* 14. 490-498 <https://doi.org/10.1002/fee.1427> 2016.

837 Obura, D., Gudka, M., Samoilys, M., Osuka, K., Mbugua, J, Keith, D. A., Porter, S., Roche, R., van Hooidonk, R.,  
838 Ahamada, S., Araman, A., Karisa, J., Komakoma, J., Madi, M., Ravinia, I., Razafindrainibe, H., Yahya, S., and Zivane,  
839 F.: Vulnerability to collapse of coral reef ecosystems in the Western Indian Ocean. *Nat. Sustain.*, 5, 104-113,  
840 <https://doi.org/10.1038/s41893-021-00817-0>, 2022.

841 OECD: *Climate Tipping Points: Insights for Effective Policy Action*, OECD Publishing, Paris,  
842 <https://doi.org/10.1787/abc5a69e-en>, 2022.

843 Packett, R., Dougall, C., Rohde, K., and Noble, R.: Agricultural lands are hot-spots for annual runoff polluting the southern  
844 Great Barrier Reef lagoon. *Mar. Pollut. Bull.*, 58, 976–986, <https://doi.org/10.1016/j.marpolbul.2009.02.017>, 2009.

845 Perry, C., Murphy, G., Kench, P. et al.; Caribbean-wide decline in carbonate production threatens coral reef growth. *Nat.*  
846 *Commun.* 4, 1402 <https://doi.org/10.1038/ncomms2409>, 2013

847 Perry, C. T., Alvarez-Filip, L., Graham, N. A., Mumby, P. J., Wilson, S. K., Kench, P. S., Manzello, D. P., Morgan, K. M.,  
848 Slangen, A., Thomson, D. P., Januchowski-Hartley, F., Smithers, S. G., Steneck, R. S., Carlton, R., Edinger, E. N., Enochs,  
849 I. C., Estrada-Saldívar, N., Haywood, M. D. E., Kolodziej, G., Murphy, G. N., Pérez-Cervantes, E., Suchley, A., Valentino,  
850 L., Boenish, R., Wilson, M., and Macdonald, C.: Loss of coral reef growth capacity to track future increases in sea level.  
851 *Nature*, 558, 396-400, <https://doi.org/10.1038/s41586-018-0194-z>, 2018.

852 Pezner, A. K., Courtney, T. A., Barkley, H. C., Chou, W. C., Chu, H. C., Clements, S. M., Cyronak, T., DeGrandpre, M.  
853 D., Kekuewa, S. A., Kline, D. I. and Liang, Y. B.: Increasing hypoxia on global coral reefs under ocean warming. *Nat.*  
854 *Clim. Change*, 13, 403-409, 2023.

855 Plaisance, L., Caley M. J., Brainard R. E., Knowlton, N.: The Diversity of Coral Reefs: What Are We Missing? *PLoS One*  
856 6, e25026, <https://doi.org/10.1371/journal.pone.0025026>, 2011.

857 Pörtner, H-O.: Ecosystem effects of ocean acidification in times of ocean warming: a physiologist's view. *Mar. Ecol. Prog.*  
858 *Ser.*, 373, 203-217, <https://doi.org/10.3354/meps07768>, 2008.

859 Prouty, N.G., Cohen, A., Yates, K.K., Storlazzi, C.D., Swarzenski, P.W. and White, D.: Vulnerability of coral reefs to  
860 bioerosion from land-based sources of pollution. *Journal of Geophysical Research: Oceans*, 122(12), pp.9319-9331, 2017.

861 Puotinen, M., Drost, E., Lowe, R., Depczynski, M., Radford, B., Heyward, A. and Gilmour, J.: Towards modelling the  
862 future risk of cyclone wave damage to the world's coral reefs. *Glob. Change Biol.*, 26(8), pp.4302-4315, 2020.

863 Randall, C. J., & van Woesik, R. : Contemporary white-band disease in Caribbean corals driven by climate change. *Nature*  
864 *Climate Change*, 5(4), 375-379, <https://doi.org/10.1038/nclimate2530> 2015.

865 Raven, J., Caldeira, K., Elderfield, H., Hoegh-Guldberg, O., Liss, P., Riebesell, U., ... & Watson, A.: Ocean acidification  
866 due to increasing atmospheric carbon dioxide. *The Royal Society*. 2005

867 Reed, D. C., & Harrison, J. A. : Linking nutrient loading and oxygen in the coastal ocean: A new global scale model.  
868 *Global Biogeochemical Cycles*, 30(3), 447-459, <https://doi.org/10.1002/2015GB005303> 2016.

869 Redding, J. E., Myers-Miller, R. L., Baker, D. M., Fogel, M., Raymundo, L. J. and Kim, K.: Link between sewage-derived  
870 nitrogen pollution and coral disease severity in Guam. *Mar. Pollut. Bull.*, 73, 57-63, 2013.

871 Richards, Z. T., Juskiewicz, D. J., & Hoggett, A.: Spatio-temporal persistence of scleractinian coral species at Lizard  
872 Island, Great Barrier Reef. *Coral Reefs*, 40(4), 1369-1378. <https://doi.org/10.1007/s00338-021-02144-4> 2021

873 Ripple, W. J., Wolf, C., Lenton, T. M., Gregg, J. W., Natali, S. M., Duffy, P. B., Rockström, J., and Schellnhuber, H.  
874 J.: Many risky feedback loops amplify the need for climate action. *One Earth*, 6, 86-91, 2023.

875 Rocha J., Yletyinen J., Biggs R., Blenckner T., and Peterson G.: Marine regime shifts: drivers and impacts on ecosystems  
876 services *Phil. Trans. R. Soc. B*. 370, 20130273, <https://doi.org/10.1098/rstb.2013.0273>, 2015.

877 Rocha, J.C., Peterson, G. D., Bodin, O., and Levin, S.: Cascading regime shifts within and across scales. *Science*, 362,  
878 1379-1383, <https://doi.org/10.1126/science.aat7850>, 2018.

879 Rockström, J., Gupta, J., Lenton, T. M., Qin, D., Lade, S. J., Abrams, J. F., ... & Winkelmann, R. Identifying a safe and  
880 just corridor for people and the planet. *Earth's Future*, 9(4), e2020EF001866. 2021.

881 Rodrigues, L. J., & Padilla-Gamiño, J. L. : Trophic provisioning and parental trade-offs lead to successful reproductive  
882 performance in corals after a bleaching event. *Sci. Rep.*, 12(1), 18702, <https://doi.org/10.1038/s41598-022-21998-4> 2022.

883 Rosenberg, E. and Ben-Haim, Y.: Microbial diseases of corals and global warming. *Environ. Microbiol.*, 4, 318–326, 2002.

884 Sabine, C. L., Feely, R. A., Gruber, N., Key, R. M., Lee, K., Bullister, J. L., ... & Rios, A. F.: The oceanic sink for  
885 anthropogenic CO<sub>2</sub>. *Science*, 305(5682), 367-371. 2004.

886 Saintilan, N., Horton, B., Törnqvist, T. E., Ashe, E. L., Khan, N. S., Schuerch, M., Perry, C., Kopp, R. E., Garner, G. G.,  
887 Murray, N., Rogers, K., Albert, S., Kelleway, J., Shaw, T. A., Woodroffe, C. D., Lovelock, C. E., Goddard, M. M., Hutley,  
888 L. B., Kovalenko, K., Feher, L., and Guntenspergen, G.: Widespread retreat of coastal habitat is likely at warming levels  
889 above 1.5 °C. *Nature* 621, 112–119, <https://doi.org/10.1038/s41586-023-06448-z>, 2023.

890 Saunders, M. I., Albert, S., Roelfsema, C. M., Leon, J. X., Woodroffe, C. D., Phinn, S. R., & Mumby, P. J. : Tectonic  
891 subsidence provides insight into possible coral reef futures under rapid sea-level rise. *Coral Reefs*, 35, 155-167,  
892 <https://doi.org/10.1007/s00338-015-1365-0> 2016.

893 Saunders, M., Leon, J., Callaghan, D. et al., Interdependency of tropical marine ecosystems in response to climate change.  
894 *Nature Clim. Change* 4, 724–729, <https://doi.org/10.1038/nclimate2274>, 2014.

895 Schleussner, C. F., Ganti, G., Lejeune, Q., Zhu, B., Pflleiderer, P., Prütz, R., ... & Rogelj, J. Overconfidence in climate  
896 overshoot. *Nature*, 634(8033), 366-373, 2024.

897 Setter, R. O., Franklin E. C., and Mora, C.: Co-occurring anthropogenic stressors reduce the timeframe of environmental  
898 viability for the world's coral reefs. *PLoS Biol.*, 20, e3001821, <https://doi.org/10.1371/journal.pbio.3001821>, 2022.

899 Sheppard, C., Sheppard, A., and Fenner, D.: Coral mass mortalities in the Chagos Archipelago over 40 years: Regional  
900 species and assemblage extinctions and indications of positive feedbacks. *Mar. Pollut. Bull.*, 154, 111075, 2020.

901 Sheppard, C. R. C, and Sheppard, A. L. S.: British Indian Ocean Territory (Chagos Archipelago). In: Sheppard CRC (ed)  
902 2019. *World Seas: An environmental assessment*. Academic Press, Volume 3, 237-252, 2019.

903 Skirving, W. J., Heron, S. F., Marsh, B. L., Liu, G., De La Cour, J. L., Geiger, E. F., and Eakin, C. M.: The relentless march  
904 of mass coral bleaching: a global perspective of changing heat stress. *Coral Reefs* 38, 547–557,  
905 <https://doi.org/10.1007/s00338-019-01799-4>, 2019.

906 Simpson, C. J., Cary, J. L., and Masini, R. J.: Destruction of corals and other reef animals by coral spawn slicks on Ningaloo  
907 Reef, Western Australia. *Coral Reefs*, 12, 185-191, 1993.

908 Souter, D., Planes, S., Wicquart, J., Logan, M., Obura, D., and Staub, F. (Eds) Status of coral reefs of the world: 2020  
909 report. Global Coral Reef Monitoring Network (GCRMN) and International Coral Reef Initiative (ICRI).  
910 <https://doi.org/10.59387/WOTJ9184>, 2021.

911 Spada, G., Bamber., and Hurkmans, R.T.W.L.: The gravitationally consistent sea-level fingerprint of future terrestrial ice  
912 loss. *Geophysical Research Letters*, 40, 482-486, <https://doi.org/10.1029/2012GL053000>, 2013.

913 Speare, K. E., Adam, T. C., Winslow, E. M., Lenihan, H. S., & Burkepile, D. E. : Size-dependent mortality of corals during  
914 marine heatwave erodes recovery capacity of a coral reef. *Glob. Change Biol.*, 28(4), 1342-1358,  
915 <https://doi.org/10.1111/gcb.16000> 2022.

916 Steffen, W., Broadgate, W., Deutsch, L., Gaffney, O., and Ludwig, C.: The trajectory of the Anthropocene: The Great  
917 Acceleration. *The Anthropocene Review*, 2, 81–98, <https://doi.org/10.1177/2053019614564785>, 2015.

918 Steffen, W., Richardson, K., Rockström, J., Cornell, S. E., Fetzer, I., Bennett, E. M., Biggs, R., Carpenter, S. R., De Vries,  
919 W., De Wit, C. A., Folke, C., Gerten, D., Heinke, J., Mace, G. M., Persson, L. M., Ramanathan, V., Reyers, B., and Sörlin,  
920 S.: Planetary boundaries: Guiding human development on a changing planet. *Science* 347,  
921 <https://doi.org/10.1126/science.1259855>, 2015.

922 Suwa, R., Nakamura, M., Morita, M., Shimada, K., Iguchi, A., Sakai, K., and Suzuki, A.: Effects of acidified seawater on  
923 early life stages of scleractinian corals (Genus *Acropora*). *Fish. Sci.*, 76, 93–99, 2010.

924 Tachiiri, K., Herran, D. S., Su, X., and Kawamiya, M.: Effect on the Earth system of realizing a 1.5 °C warming climate  
925 target after overshooting to the 2 °C level. *Environ. Res. Lett.*, 14, 124063,doi:10.1088/1748-9326/ab5199, 2019

926 Tanaka K.R. and Van Houtan K. S.: The recent normalization of historical marine heat extremes. *PLOS Clim* 1, e0000007,  
927 <https://doi.org/10.1371/journal.pclm.0000007>, 2022.

928 Thurber, R.V., Mydlarz, L. D., Brandt, M., Harvell, D., Weil, E., Raymundo, L., Willis, B. L., Langevin, S., Tracy, A. M.,  
929 Littman, R., Kemp, K. M., Dawkins, P., Prager, K. C., Garren, M., and Lamb, J.: Deciphering coral disease dynamics:  
930 Integrating host, microbiome, and the changing environment. *Front. Ecol. Evol.*, 30  
931 <https://doi.org/10.3389/fevo.2020.575927>, 2020.

932 Toth, L. T., Precht, W. F., Modys, A. B., Stathakopoulos, A., Robbart, M. L., Hudson, J. H., ... & Aronson, R. B. : Climate  
933 and the latitudinal limits of subtropical reef development. *Sci. Rep.*, 11(1), 13044, [https://doi.org/10.1038/s41598-021-](https://doi.org/10.1038/s41598-021-87883-8)  
934 [87883-8](https://doi.org/10.1038/s41598-021-87883-8) 2021.

935 Törnqvist, T. E., Cahoon, D. R., Morris, J. T., and Day, J. W. Coastal wetland resilience, accelerated sea-level rise, and the  
936 importance of timescale. *AGU Advances*, 2, e2020AV000334. <https://doi.org/10.1029/2020AV000334>, 2021.

937 UNEP: Projections of future coral bleaching conditions using IPCC CMIP6 models: climate policy implications,  
938 management applications, and Regional Seas summaries. United Nations Environment Programme, Nairobi, Kenya. 2020.

939 Uthicke, S., Logan, M., Liddy, M., Francis, D., Hardy, N., and Lamare, M.: Climate change as an unexpected co-factor  
940 promoting coral eating seastar (*Acanthaster planci*) outbreaks. *Sci. Rep.*, 2015; 5: 8402. <https://doi.org/10.1038/srep08402>,  
941 2015.

942 Van Hooidonk, R., Maynard, J. A., Manzello, D., & Planes, S. : Opposite latitudinal gradients in projected ocean  
943 acidification and bleaching impacts on coral reefs. *Glob. Change Biol.*, 20(1), 103-112, <https://doi.org/10.1111/gcb.12394>  
944 2014.

945 Vaquer-Sunyer, R. and Duarte, C. M.: Temperature effects on oxygen thresholds for hypoxia in marine benthic organisms.  
946 *Glob. Change Biol.*, 17, 1788-1797, 2011.

947 Vercelloni, J., Caley, M. J., and Mengersen, K. L.: Thresholds of Coral Cover that Support Coral Reef Biodiversity. In:  
948 Mengersen, K., Pudlo, P. and Robert, C. (Eds) Case Studies in Applied Bayesian Data Science. *Lect. Notes Math.*, vol  
949 2259. Springer, Cham. [https://doi.org/10.1007/978-3-030-42553-1\\_16](https://doi.org/10.1007/978-3-030-42553-1_16), 2020.

950 Venegas, R. M., Acevedo, J., & Treml, E. A.; Three decades of ocean warming impacts on marine ecosystems: A review  
951 and perspective. *Deep Sea Res. II: Topic. Stud. Oceanog.*, 212, 105318. 2022.

952 Vernimmen, R. and Hooijer, A.: New LiDAR-Based Elevation Model Shows Greatest Increase in Global Coastal Exposure  
953 to Flooding to Be Caused by Early-Stage Sea-Level Rise. *Earth's Future* 11, <https://doi.org/10.1029/2022EF002880>, 2023.

954 Veron, J. E. N., Hoegh-Guldberg, O., Lenton, T. M., Lough, J.M., Obura, D. O., Pearce-Kelly, P., Sheppard, C. R. C.,  
955 Spalding, M., Stafford-Smith, M. G., and Rogers, A. D.: The coral reef crisis: The critical importance of <350 ppm CO<sub>2</sub>,  
956 *Mar. Pollut. Bull.*, 58, 1428-1436, 2009.

957 Virgen-Urcelay, A. and Donner, S. D.: Increase in the extent of mass coral bleaching over the past half-century, based on  
958 an updated global database. *PLoS One*18, e0281719. <https://doi.org/10.1371/journal.pone.0281719>, 2023.

959 von Schuckmann, K., Cheng, L., Palmer, M. D., Tassone, C., Aich, V., Adusumilli, S., ... & Wijffels, S. E.: Heat stored in  
960 the earth system: Where does the energy go? The GCOS earth heat inventory team. *Earth Syst. Sci. Data Discus.*, 2020, 1-  
961 45. 2020.

962 von Schuckmann, K., Cheng, L., Palmer, M. D., Tassone, C., Aich, V., Adusumilli, S., ... & Wijffels, S. E.: Heat stored in  
963 the earth system: Where does the energy go? The GCOS earth heat inventory team. *Earth Syst. Sci. Data Discus.*, 2020, 1-  
964 45. 2020.

965 von Schuckmann, K., Minière, A., Gues, F., Cuesta-Valero, F. J., Kirchengast, G., Adusumilli, S., Straneo, F., Ablain, M.,  
966 Allan, R. P., Barker, P. M., Beltrami, H., Blazquez, A., Boyer, T., Cheng, L., Church, J., Desbruyeres, D., Dolman, H.,  
967 Domingues, C. M., García-García, A., Giglio, D., Gilson, J. E., Gorfer, M., Haimberger, L., Hakuba, M. Z., Hendricks, S.,  
968 Hosoda, S., Johnson, G. C., Killick, R., King, B., Kolodziejczyk, N., Korosov, A., Krinner, G., Kuusela, M., Landerer, F.  
969 W., Langer, M., Lavergne, T., Lawrence, I., Li, Y., Lyman, J., Marti, F., Marzeion, B., Mayer, M., MacDougall, A. H.,  
970 McDougall, T., Monselesan, D. P., Nitzbon, J., Otosaka, I., Peng, J., Purkey, S., Roemmich, D., Sato, K., Sato, K., Savita,



971 A., Schweiger, A., Shepherd, A., Seneviratne, S. I., Simons, L., Slater, D. A., Slater, T., Steiner, A. K., Suga, T., Szekely,  
972 T., Thiery, W., Timmermans, M.-L., Vanderkelen, I., Wjiffels, S. E., Wu, T., and Zemp, M.: Heat stored in the Earth system  
973 1960–2020: where does the energy go?, *Earth Syst. Sci. Data*, 15, 1675–1709, <https://doi.org/10.5194/essd-15-1675-2023>,  
974 2023.

975 Walker, A. S., Kratochwill, C. A., & van Woesik, R. : Past disturbances and local conditions influence the recovery rates  
976 of coral reefs. *Global Change Biology*, 30(1), e17112, <https://doi.org/10.1111/gcb.17112> 2024.

977 Wang, S., Foster, A., Lenz, E. A., Kessler, J. D., Stroeve, J. C., Anderson, L. O., ... & Hausfather, Z. Mechanisms and  
978 impacts of Earth system tipping elements. *Rev. Geophys.*, 61(1), e2021RG000757. (2023).

979 Ward, J. R., Kim, K., and Harvell, C.D.: Temperature affects coral disease resistance and pathogen growth. *Mar. Ecol.*  
980 *Prog. Ser.*, 329, 115-121, <https://doi.org/10.3354/meps329115>, 2007.

981 Weber, M., De Beer, D., Lott, C., Polerecky, L., Kohls, K., Abed, R. M., Ferdelman, T. G., and Fabricius, K. E.:  
982 Mechanisms of damage to corals exposed to sedimentation. *Proc. Natl. Acad. Sci. USA*, 109, 1558-1567, 2012.

983 Wilkinson, C.: Global and local threats to coral reef functioning and existence: review and predictions. *Mar. Freshw. Res.*,  
984 50, 867-878, <https://doi.org/10.1071/MF99121>, 1999.

985 Woodroffe, C. D., & Webster, J. M. : Coral reefs and sea-level change. *Mar. Geolog.*, 352, 248-267  
986 <https://doi.org/10.1016/j.margeo.2013.12.006> 2014.

987 Wunderling, N., Winkelmann, R., Rockström, J., Loriani, S., Armstrong-McKay, D., Ritchie, P., Sakschewski, B., and  
988 Donges, J.: Global warming overshoots increase risks of climate tipping cascades in a network model. *Nat. Clim. Chang.*,  
989 13, 75–82, <https://doi.org/10.1038/s41558-022-01545-9>, 2023.

990 Zhang, Z., Poulter, B., Feldman, A.F. et al.: Recent intensification of wetland methane feedback. *Nat. Clim. Chang.* 13,  
991 430–433. <https://doi.org/10.1038/s41558-023-01629-0>. 2022.

992 Zuo, X.; Su, F.; Yu, K.; Wang, Y.; Wang, Q.; Wu, H.: Spatially Modeling the Synergistic Impacts of Global Warming and  
993 Sea-Level Rise on Coral Reefs in the South China Sea. *Remote Sens.* 2021, 13, 2626. <https://doi.org/10.3390/rs13132626>