

The ~~counter-intuitive~~ link between European ~~heatwaves~~ warm temperature extremes and atmospheric persistence

Emma Holmberg¹, Gabriele Messori^{1,2}, Rodrigo Caballero², and Davide Faranda^{3,4,5}

¹Department of Earth Sciences and Centre of Natural Hazards and Disaster Science (CNDS), Uppsala University, Uppsala, Sweden

²Department of Meteorology and Bolin Centre for Climate Research, Stockholm University, Stockholm, Sweden

³Laboratoire des Sciences du Climat et de l'Environnement LSCE-IPSL, CEA Saclay l'Orme des Merisiers, UMR 8212 CEA-CNRS-UVSQ, Université Paris-Saclay, 91191 Gif-sur-Yvette, France

⁴London Mathematical Laboratory, London, UK

⁵Laboratoire de Météorologie Dynamique/IPSL, École Normale Supérieure, PSL Research University, Sorbonne Université, École Polytechnique, IP Paris, CNRS, 75005, Paris, France

Correspondence: Emma Holmberg (emma.allwright@geo.uu.se)

Abstract. ~~Warm temperature extremes can lead to devastating societal impacts, thus, the ability to understand and predict these events is vital to minimising their potential impact on society.~~ We investigate the link between warm temperature extremes in Europe and ~~anomalously persistent~~ the persistence of large-scale atmospheric circulation patterns for both winter and summer, along with some possible ~~driving mechanisms~~ physical mechanisms connecting the two. We assess atmospheric persistence leveraging concepts from dynamical systems theory, ~~with this more mathematical approach being reconciled with the conventional meteorological view~~ and reconcile this approach with the more conventional meteorological views of persistence. We find that wintertime warm spells are ~~typically partly~~ typically partly associated with persistent zonal advection ~~Contrary to intuition at the surface level, but display no clear persistence signal in the mid troposphere. For summertime heatwaves, we find neither evidence of a weak yet significant link to anomalously persistent circulation patterns, nor a strong signal for in the mid troposphere, while the surface signal is very weak. We further find no evidence of a strong warm temperature advection for summertime heatwaves. We thus argue that atmospheric persistence is not a necessary requirement for summertime heatwaves, and that local effects~~ signal suggesting that other radiative and dynamical processes, as well as local effects, could play a ~~much~~ more important role than large-scale warm temperature advection for these events. We thus argue that persistent atmospheric configurations are not a necessary requirement for warm temperature extremes, and that the results depend to a considerable extent on region and tropospheric level.

1 Introduction

Heatwaves routinely exact a heavy toll on society, including increased mortality, aggravation of droughts, crop failure, damages to infrastructure and power outages (Muthers et al., 2017; Ouzeau et al., 2016; Adélaïde et al., 2021). A notable example was the 2003 European heatwave, which led to an estimated approximately 40,000 excess deaths, and economic damages of roughly 13 billion EUR (Garcia-Herrera et al., 2010; De Bono et al., 2004). Moreover, in most areas of the world these events

are expected to become increasingly severe under anthropogenically-forced climate change (Seneviratne et al., 2012; Perkins-Kirkpatrick and Gibson, 2017; Seneviratne et al., 2014). For example, extremely hot summers, where the temperature exceeds a fixed threshold, are expected to become increasingly likely throughout this century (Christidis et al., 2015). In Europe, the Mediterranean region is projected to experience an increase in the frequency and duration of heatwaves, whilst south-central Europe is expected to experience a pronounced increase in the amplitude of heatwaves (Fischer and Schär, 2010). Furthermore, heatwaves are expected to be associated with a dramatic rise in damages to infrastructure over the next century (Forzieri et al., 2018). Uncommonly high temperatures can also have widespread impacts during the winter season. Wintertime warm spells can lead to significant disruptions in ecological systems, for example by causing plants to exit dormancy too early in the season, potentially leaving them vulnerable to subsequent cold spells (Ladwig et al., 2019). Some livestock are also highly sensitive to changes in the freeze-thaw cycle (Furberg et al., 2011). ~~Consequently, understanding and predicting~~ This underscores the importance of furthering our understanding of summertime heatwaves and wintertime warm spells ~~is critical to minimising their potential societal impacts.~~

Wintertime European warm spells are often associated with a large-scale zonal flow (Slonosky and Yiou, 2002). ~~A wintertime zonal flow~~, which results in warm and moist air from the North Atlantic being transported to Europe. Summertime heatwaves are instead typically associated with atmospheric blocking over the Euro-Atlantic sector (Rousi et al., 2022; Lupo, 2021; Schaller et al., 2018). A summertime blocked flow over the North Atlantic leads to weakened zonal flow and more pronounced meridional flow, favouring the southerly advection of very hot airmasses to Europe, for example during the 2003 and 2010 heatwaves as discussed in Miralles et al. (2014). Cassou et al. (2005) notes that another atmospheric circulation regime, namely the Atlantic low with an associated ridge over southern continental Europe, can also be correlated with heatwaves. Following the same principle as for blocking, this configuration leads to weakened zonal and strengthened meridional flow over southern Europe. In addition to the advection of warm air, other physical mechanisms can lead to heatwaves, including radiative forcing and subsidence (~~Zschenderlein et al., 2019~~) (Zschenderlein et al., 2019; Bieli et al., 2015). Indeed, the latter study finds the effect of temperature advection to be almost negligible for summertime European heatwaves, in contrast with earlier literature. Soil moisture anomalies have also been linked to European heatwaves (e.g. Fischer et al., 2007; Hirschi et al., 2011; Zschenderlein et al., 2019), however, soil moisture has a characteristic time scale which is much longer than that of the atmosphere. Including effects from both the atmosphere and soil moisture in a persistence perspective would thus require two largely distinct analyses and here we choose to focus on the former.

Both 500 hPa geopotential height and sea-level pressure (SLP) fields have been used to analyse circulation patterns associated with temperature extremes. Geopotential height fields were for example used by Messori et al. (2017) to analyse wintertime temperature extremes, and by Quesada et al. (2012) to analyse summertime heatwaves, the associated weather regimes and wet or dry winter/spring conditions. Similarly, Jézéquel et al. (2018) argued that geopotential height fields are better suited than SLP fields to simulate temperature anomalies, as the latter can be subject to a blurring of the signal due to heat lows. Nonetheless, a number of studies successfully used SLP fields to investigate heatwaves. For example Alvarez-Castro et al. (2018)

and Cassou and Cattiaux (2016) used SLP to analyse the atmospheric dynamics of heatwaves, and the seasonal relationship between temperature and circulation patterns in a warming world, respectively.

60 Regardless of the variable used for analysis, based on the above literature one may make the hypothesis that the occurrence of persistent blocked (zonal) flows in summer (winter) may favour the occurrence of warm temperature extremes, since short-lived circulation anomalies are unlikely to lead to the build-up of large temperature anomalies. Blocking has been diagnosed both as a localised atmospheric feature (Davini et al., 2012; Tibaldi and Molteni, 1990; Sousa et al., 2021), and as a weather regime representing one of the recurrent states of the North Atlantic atmospheric circulation (~~Hannachi et al., 2017~~) (e.g. Hannachi et al., 2017; Hochman et al., 2021). In both cases, blocks are typically often regarded as very persistent atmospheric flow patterns, which can last for several days up to a few weeks (Drouard et al., 2021). ~~Current understanding of the link between blocks and summertime heatwaves intuitively suggests that the more persistent the block, the longer the heatwave lasts and the more intense it can potentially become (Schaller et al., 2018)~~ Summertime blocks are typically associated with adiabatic warming of air due to subsidence and clear sky conditions allowing for radiative warming near the surface. Intuition would suggest that the probability of a heatwave occurring would be increased with an increased duration of these atmospheric
70 conditions which allow air to be warmed, and many studies imply as much. However, we are not aware of any studies explicitly relating the duration of a blocked flow pattern to the probability of heatwave occurrence.

The persistence of a block as diagnosed using feature-based detection algorithms is often imposed by the algorithm itself (e.g. by requiring a minimum persistence to define a feature as a block (Schwierz et al., 2004; Davini et al., 2012)). Moreover,
75 it focuses on the feature itself as opposed to the larger-scale atmospheric flow pattern, and often allows for the center of the block to move a significant distance over the block's lifetime and for the block's intensity to vary, provided it stays above a given threshold. The persistence of blocking as diagnosed by weather regimes provides an indication of the larger-scale atmospheric persistence, as the whole Euro-Atlantic region is typically considered. However, weather regimes provide a very coarse-grained partitioning of atmospheric variability, most often into four reference states (Michelangeli et al., 1995). Different
80 timesteps assigned to the 'blocked' regime can therefore display relatively large differences in the atmospheric flow pattern.

More recently, the persistence of blocking has been considered from the angles of Rossby wave activity or ~~fixed points~~ non-equilibrium quasi-stationary states in a dynamical system. The former approach considers blocking as a manifestation of planetary wave breaking (Pelly and Hoskins, 2003; Masato et al., 2012; Barnes and Hartmann, 2012) ~~or resonance of specific phase-locked waves (Petoukhov et al., 2013; Kornhuber et al., 2020). Two notable heatwaves, the 2003 European heatwave and the 2010 Russian heatwave, were associated with anomalously persistent circulation patterns associated with phase-locked Rossby waves leading to persistent blocks (Kornhuber et al., 2017).~~ The latter approach applies mathematical tools from dynamical systems theory to ~~the atmosphere~~ atmospheric fields, and interprets North Atlantic atmospheric variability as having a number of ~~stationary states, or fixed points~~ non-equilibrium quasi-stationary states with specific dynamical characteristics.
90 The conventional view considers two such states, namely blocked and zonal flows (Legras and Ghil, 1985), with this approach

being further developed by Mo and Ghil (1987). The dynamical properties and transitions between these two states can then be used to infer their persistence.

95 A further development stemming from dynamical systems theory leverages the concept of atmospheric recurrences, or analogues – namely the fact that the atmosphere displays configurations similar to ones it has displayed in the past. Unlike weather regimes where a very large number of ~~timesteps–flow states~~ is assigned to a given regime, analogues are typically defined quite stringently, such that each ~~timestep–state~~ only has a limited number of analogues. Leveraging the notion of the extremal index, namely a measure of clustering in extreme value theory (Section 3.2.2 Lucarini et al., 2016; Moloney et al., 2019), it is possible to use analogues to estimate the persistence of a given atmospheric configuration. This definition of persistence can
100 be intuitively understood as the length of time a map is expected to remain similar to itself. In the present case where we use daily data, the persistence corresponds in other words to the expected number of consecutive days for which the atmospheric circulation in a chosen geographical domain displays a ‘similar’ structure of high and low pressure systems. A key aspect of this approach is that it does not categorise circulation patterns like a regime-based approach. The persistence of the atmosphere on each day in the data is calculated for that specific day, based on its (in practice) unique set of analogues. When applied
105 to the North Atlantic in previous work, this approach has highlighted zonal flows as being highly persistent – more so than blocked flows. This was shown by Faranda et al. (2017) and Faranda et al. (2016) for the full year, and Messori et al. (2017), for the winter season. A similar conclusion was drawn by Hochman et al. (2021), who, using the extremal index, identified the zonal weather regime as ~~one of the most persistent~~ being more persistent than some of the blocked weather regimes in a 7-regime classification (albeit with Greenland blocking being the most persistent amongst all regimes). There is therefore
110 an apparent discrepancy between blocking as a persistent atmospheric feature ~~(Petoukhov et al., 2013; Legras and Ghil, 1985)~~ (Legras and Ghil, 1985; Drouard et al., 2021) and blocking as a transient feature of an atmosphere whose persistent state is one of zonal flow ~~(Faranda et al., 2016, 2017; Messori et al., 2017; Hochman et al., 2021)~~ (Faranda et al., 2016, 2017; Messori et al., 2017)
.

115 In this study, we adopt ~~a this~~ dynamical systems viewpoint to ~~illustrate the link between both~~ explore whether summertime heatwaves and wintertime warm spells in Europe ~~, and atmospheric persistence in the Euro-Atlantic sector are related to circulation patterns which display above-average persistence.~~ In doing so, we will attempt to reconcile the different views highlighted above on the persistence of blocked and zonal flows, and explore the strengths and limitations of the dynamical systems view of atmospheric persistence. The remainder of the paper is structured as follows: Section 2 details the datasets
120 and methods used for the analysis, Section 3 shows composites of the atmospheric configurations associated with ~~heatwaves, the warm temperature extremes, and~~ an analysis of the persistence of these configurations and ~~composites~~ of possible driving mechanisms for heatwaves, namely temperature advection and radiative forcing. Section 4 discusses these results and finally Section 5 presents the conclusion of this paper.

2 Data and methods

125 2.1 Data

We use the ERA5 reanalysis dataset from the European Centre for Medium Range Weather Forecasts (ECMWF) (Hersbach et al., 2020) over ~~1978–2018~~ 1979–2018. The specific variables used were temperature at 2m (t_{2m}), meridional and zonal wind components at 10m (v_{surf} and u_{surf} respectively), geopotential at 500 hPa (Z500), temperature at 500 hPa (T_{500}), meridional and zonal wind components at 500 hPa (v_{500} and u_{500} respectively), surface sensible heat flux (SSHF) ~~and mean sea level pressure (SLP)~~, surface pressure (p_{surf}) and SLP, all at a horizontal spatial resolution of 0.250.5°. ~~The SSHF was selected for the noon time step and the accumulated values divided by the accumulation period as per ECMWF's online data documentation.~~ Daily means were calculated from hourly data, ~~except for Z500, which was calculated for surface variables, and~~ from 6-hourly data for variables considered at 500 hPa, due to the much larger size of pressure-level variables. Our Euro-Atlantic domain spans ~~30–70–25–75 °N, 345–45–345–50 °WE~~, similar to that of Messori et al. (2017) but with a reduced westerly extension ~~so as to ensure the signal is directly relevant to Europe~~. The anomalies for each variable were computed relative to a daily calendar day climatology smoothed with a 31 day running mean.

2.2 Definitions

We define heatwaves at single gridboxes following Alvarez-Castro et al. (2018), that is 5 or more consecutive days with temperature anomalies above the 90th percentile of the local distribution, namely the distribution at a given grid box. We also ~~define regional heatwaves over the British Isles, Scandinavia, central Europe (Germany), western Russia (Russia), Iberia and the central Mediterranean (Mediterranean) (Zschenderlein et al., 2019) (following Zschenderlein et al., 2019)~~, by requiring that at least five percent of the land grid boxes in the region must experience a heatwave, as defined above, for a given day. The regions are shown by black boxes in Fig. 1. The summer season is defined as June–September (JJAS) and the winter season is defined as December–March (DJFM). For the remainder of this paper we will use the term warm spell to refer to a set of days ~~which satisfy the above definition for a heatwave and which occur during the winter season.~~ The surface potential temperature advection was ~~investigated using the baroclinic vector, \mathbf{B}~~ , defined as follows:

$$\text{potential temperature advection} = \nabla SLP - \mathbf{v}_{surf} \times \nabla t_{2m} T_{potential}, \quad (1)$$

with units ~~$[hPa K (\circ lat \times \circ lon)^{-1} K (day)^{-1}]$~~ , ~~as in Faranda et al. (2020a). We define reference directions of north, east and downwards for the cross product, thus \mathbf{B} is oriented in the downwards direction. If we consider the magnitude of \mathbf{B} , namely B , and define positive values as corresponding to the downwards direction and negative values corresponding to the upwards direction, these then correspond to warm and cold air advection, respectively (Faranda et al., 2020a) and where where $\mathbf{v}_{surf} = (u_{surf}, v_{surf})$ is the vector surface wind, and the potential temperature, $T_{potential}$ is defined as:~~

$$T_{potential} = t_{2m} \times (p_{surf}/p_0)^{-R/C_p}, \quad (2)$$

where p_{surf} is surface pressure, $p_0 = 1000$ hPa and $R/C_p \approx 2/7$. Temperature advection at 500 hPa was defined as follows:

$$155 \quad \text{temperature advection} = v_{500} \times \nabla T_{500}, \quad (3)$$

with units $[K(day)^{-1}]$ and where v_{500} denotes the vector form of u_{500} and v_{500} .

Statistical significance at a level of $p = 0.05$ was tested for each grid box in the composite plots in Sections 3.1 and 3.2 using a two-sided test to assess the uncertainty of the location of the true mean using a cluster bootstrap method (Cameron et al., 2008). This method was used because we want to study the entire duration of the heatwave, yet the days within a given heatwave are highly correlated. The same cluster bootstrap method was used to assess significance for the box plots in Section 3, however this time a one-sided test was used to test for negative θ anomalies. Sensitivity tests for the definition of heatwaves and warm spells can be found in the Appendix A. Furthermore, the correction detailed in Wilks (2016) has been applied to account for the multiple simultaneous significance tests.

165 2.3 Atmospheric persistence computation

We calculate atmospheric persistence ~~based on the SLP field separately for the SLP and Z500 fields~~ over the full Euro-Atlantic domain considered here. ~~SLP was chosen as opposed to Z500 due to the long term trend in Z500 fields related to the trend in surface temperature (Faranda et al., 2020b)~~ This enables us to capture both surface and mid-level flow patterns. The computation of persistence relies on the dataset being analysed including good analogues for all its timesteps. We show in Fig. A4 in the Appendix A analogue quality tests, which demonstrate that the analogues we find in our data are of sufficient quality to perform this analysis, and are not severely impacted by the non-stationarity of the atmosphere due to the atmospheric warming trend. We define persistence as θ^{-1} , where θ is the extremal index (Moloney et al., 2019) and persistence is in units of timesteps. Persistence is an estimate of the average number of consecutive recurrences, or analogues, for a given atmospheric state. In other words, it quantifies how long a given state of the atmospheric circulation ~~will~~ is expected to remain similar to itself. The computation of θ depends on the definition of recurrences, which we identify here as follows:

- 1) The Euclidean distance between the SLP ~~or Z500~~ maps for each day and all others in the data set is computed. Thus, for any given day we can quantify how ‘similar’ it is to any other day.
- 2) Of these distances, the smallest 5 percent ($q = 0.95$), as recommended by Süveges (2007) are selected as analogues, that is the days that are most similar to the given day.
- 180 3) A generalised Pareto distribution is ~~fit~~ fitted to the negative log of the analogue distances to ensure that the distribution of negative log distances converges (Ferro and Segers, 2003). ~~By applying this requirement we ensure that we have a sufficiently large data set and analogues of sufficient quality.~~

After this requirement is satisfied, θ can be estimated using the methodology of Süveges (2007), ~~which improves estimates of the extremal index compared to the earlier method of Ferro and Segers (2003). In practice this.~~ Specifically, we apply Equation 2 from Süveges (2007), where they have derived the maximum likelihood estimator for θ . Indeed, the naïve estimator involving simply counting the average number of consecutive analogues for a given day provides biased results. The inverse of θ is the

190 expected length of sequences, or clusters, of similar maps. In our case, this corresponds to the expected number of temporally consecutive atmospheric analogues in days. Since we consider a fixed number of analogues for each day, the quantity is also related to the average time between clusters of analogues. This connects to our intuitive perception of persistence, as a low θ value (high persistence) would correspond to a map which typically remains similar to itself for more days than average, and has a longer time between clusters of similar days. In practice, the calculation of θ is performed using the package CDSK by Robin (2021). Sensitivity tests for both the ~~domain~~-geographical domain on which θ is computed and the threshold for analogue selection (q) can be found in the Appendix A.

3 Results

195 3.1 Characterising Atmospheric Persistence during ~~European Heatwaves~~ Warm Temperature Extremes

We first examine the atmospheric configurations associated with regional European warm temperature extremes in the extended winter and summer seasons (Fig. 1).

In winter (panels a – f) ~~we see that~~, the warm spell regions are typically located on the northern edges of areas of positive ~~geopotential~~ Z500 anomalies, with anticyclonic structures located so as to favour advection from the warm/wet southern flank of a zonal flow towards the regions of interest. During summer, in the more northern regions, namely Scandinavia, Germany, Russia and the British Isles (panels g – j), the Z500 anomalies are reminiscent of canonical blocked configurations, with an anticyclonic structure located so as to block zonal flow towards the areas of interest. In the Iberian and Mediterranean regions (panels k, l) the Z500 anomalies show a high pressure core located in the vicinity of the respective region, albeit with a smaller magnitude than in the northern regions. These configurations are consistent with those discussed in Zschenderlein et al. (2019) for the summer season. We show composites of SLP in the Appendix A (Fig. A10), which show structures well in agreement with Fig. 1, except for the Mediterranean region (panel j) during summer, which shows a very weak signal relative to the other regions (panels g–i).

Next, we examine the persistence of the surface and mid-level atmospheric configurations associated with heatwaves by considering ~~first a composite~~ composites of θ anomalies for heatwaves on a grid box by grid box basis, ~~then followed by~~ the anomalies of θ during heatwaves on a regional scale (Figs. 2 and 3 respectively).

~~Negative Significant negative~~ θ anomalies ~~dominate are present across much of Europe~~ during winter (Fig. 2a) ~~. In other words, when temperatures are anomalously high at most European locations, the concurrent atmospheric configuration is anomalously persistent. The exceptions are the British Isles, which show at the surface level. At the mid level, negative anomalies are mostly limited to northern Scandinavia, whilst a region of weak positive θ anomalies, and Iberia which shows near-zero anomalies, is present over southern Scandinavia and Russia (Fig. 2b).~~ In summer, negative surface θ anomalies are ~~only~~ present over Scandinavia and the northern part of the British Isles, ~~with the remaining regions showing weak and mostly non-significant anomalies~~ albeit with limited significance (Fig. 2b) ~~. c,d). There is a clearer signal for Z500, with significant negative anomalies over parts of western and northern Europe. In winter, SLP shows in general θ anomalies of a larger magnitude than Z500, whilst in summer we see the opposite.~~ Focusing on regional heatwaves, Fig. 3a shows that wintertime ~~heatwaves are~~ warm spells appear to be associated with significantly enhanced surface level atmospheric persistence in ~~all regions except the British Isles and Iberia. Scandinavia and Germany, and non-significant negative θ anomalies in all other regions. No anomalous persistence signal is seen at the mid-level (Fig. 3b).~~ In summer, ~~only~~ heatwaves in the British Isles and Scandinavia ~~match significant negative theta anomalies, while display weak yet significant negative θ anomalies at the surface level whilst all other regions show near-zero or weakly positive theta anomalies. θ anomalies (Fig. 3c). At the mid-level in Summer, comparatively small yet significant negative θ anomalies can be seen for Germany, Scandinavia, the British Isles, Iberia and the Mediterranean (Fig. 3d), suggesting a heightened persistence of the associated atmospheric flow configurations.~~

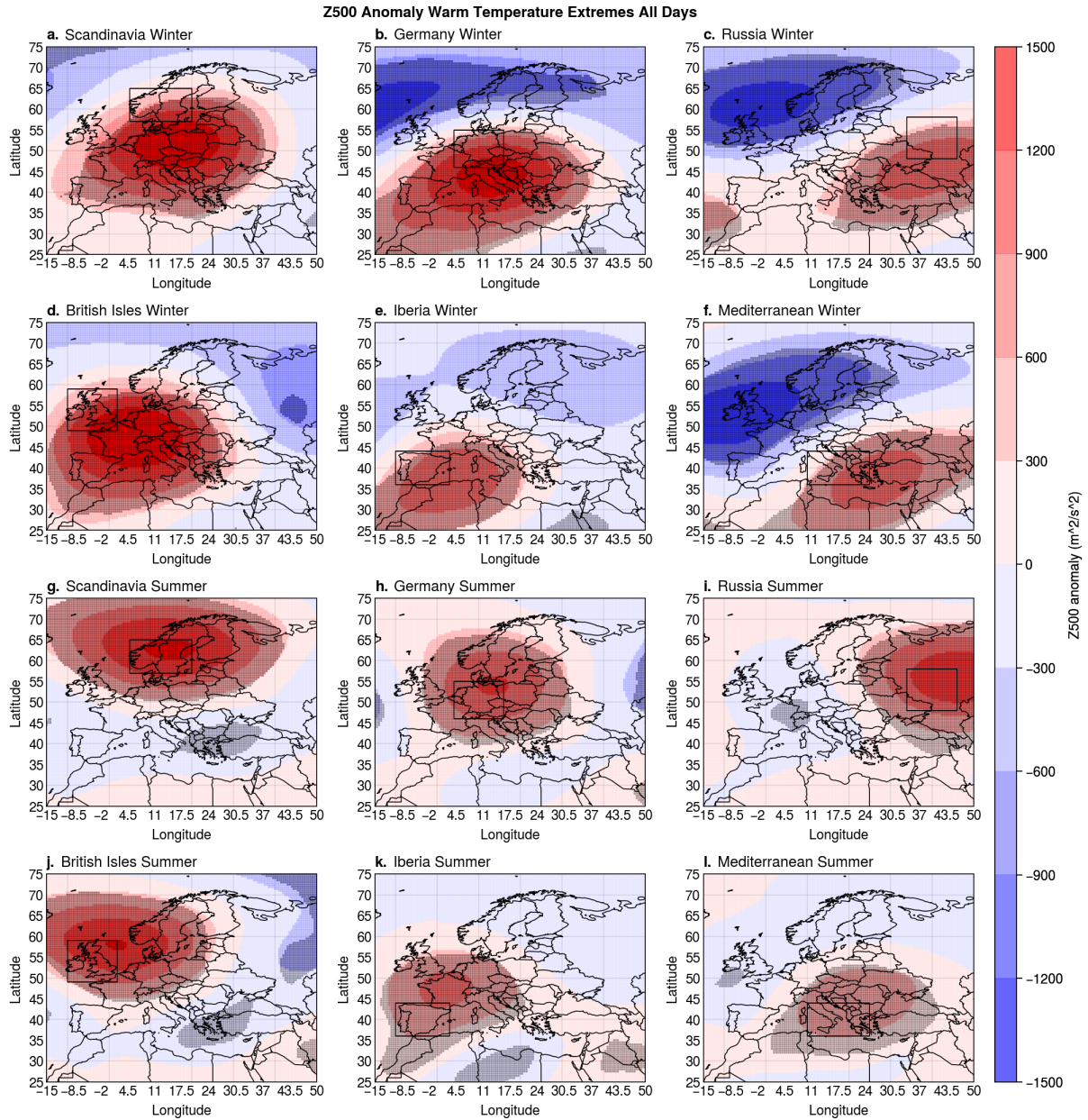


Figure 1. Composite Z500 [$m^2 s^{-2}$] anomalies during warm spell (top) / heatwave (bottom) days in (a,g) Scandinavia, (b, h) Germany, (c, i) Russia, (d, j) British Isles, (e, k) Iberia, (f, l) Mediterranean, during winter (a–f) and summer (g–l). Statistical significance is assessed as described in Section 2 and shown with grey stippling.

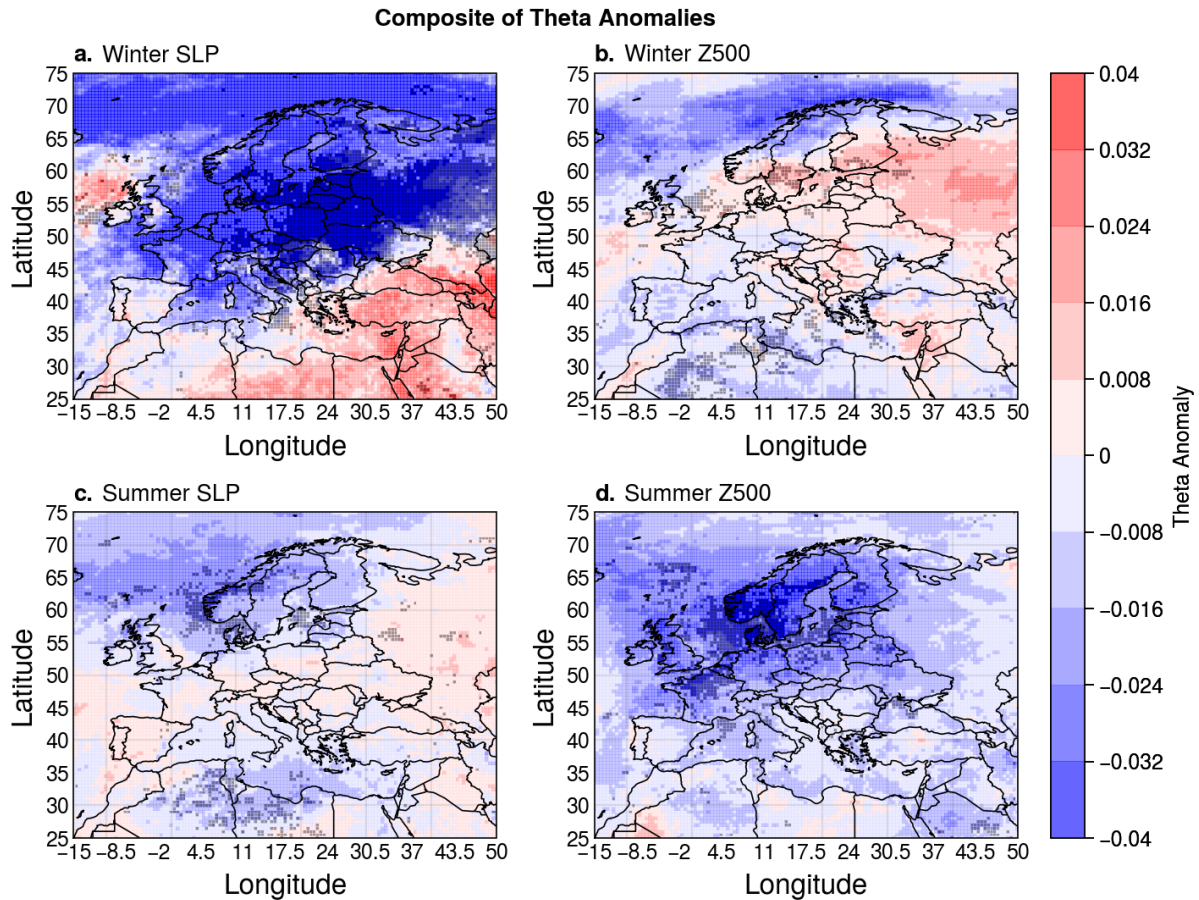


Figure 2. θ [$days^{-1}$] anomalies for all warm spell or heatwave days for each grid box, during winter (a,b) and summer (c,d), where θ has been calculated using SLP fields in (a,c) and Z500 fields in (b,d). Statistical significance is assessed as described in Section 2 and shown with grey stippling.

3.2 Characterising summertime heatwaves and wintertime warm spells in Europe

The results presented in Section 3.1 above are somewhat counter-intuitive, and appear in contrast with the conventional view of summertime heatwaves being driven by persistent blocks. Above results for wintertime warm spells (Section 3.1) are partly consistent with previous literature which has found zonal flow configurations in SLP, in turn connected to warm wintertime temperatures, to be highly persistent. The results for summertime heatwaves highlight a link with mid tropospheric persistence, consistent with the widely discussed link with atmospheric blocks. We do however note that the mid tropospheric persistence anomalies are relatively weak. To better understand this discrepancy these features, we investigate further the physical characteristics of heatwaves and warm spells during summer and winter warm temperature extremes.

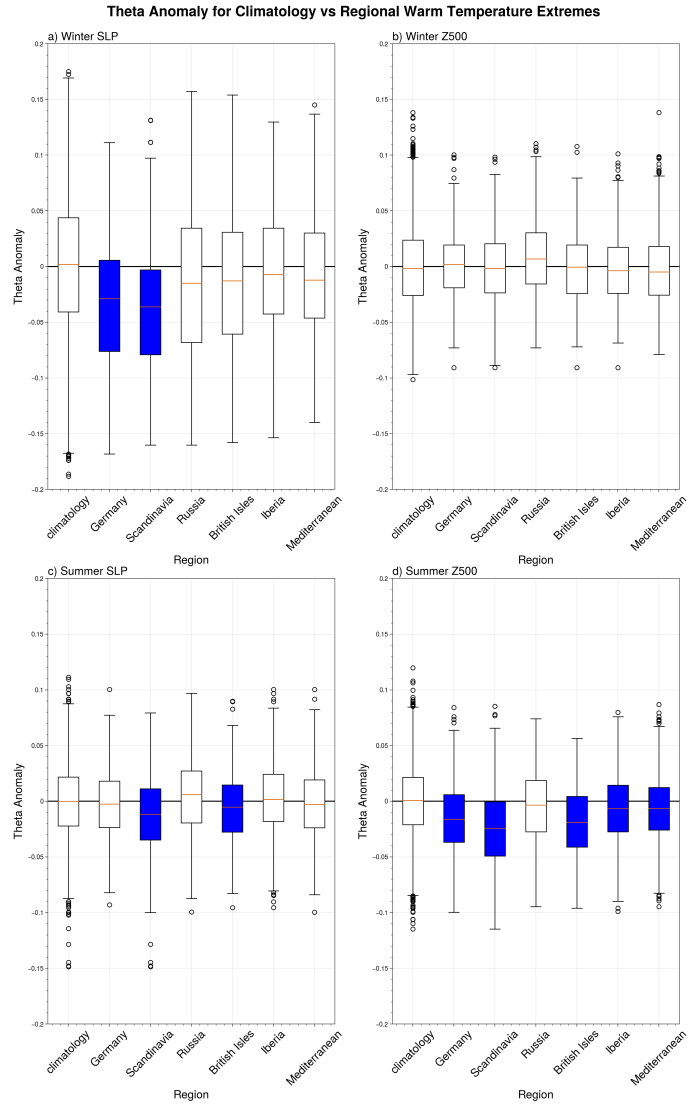


Figure 3. Box plots of θ [$days^{-1}$] anomalies for all heatwave (c,d) or warm spell (a,b) days in the considered regions, at both surface (a,c) and mid (b,d) levels. Blue boxes indicate statistical significance, assessed as described in Section 2.

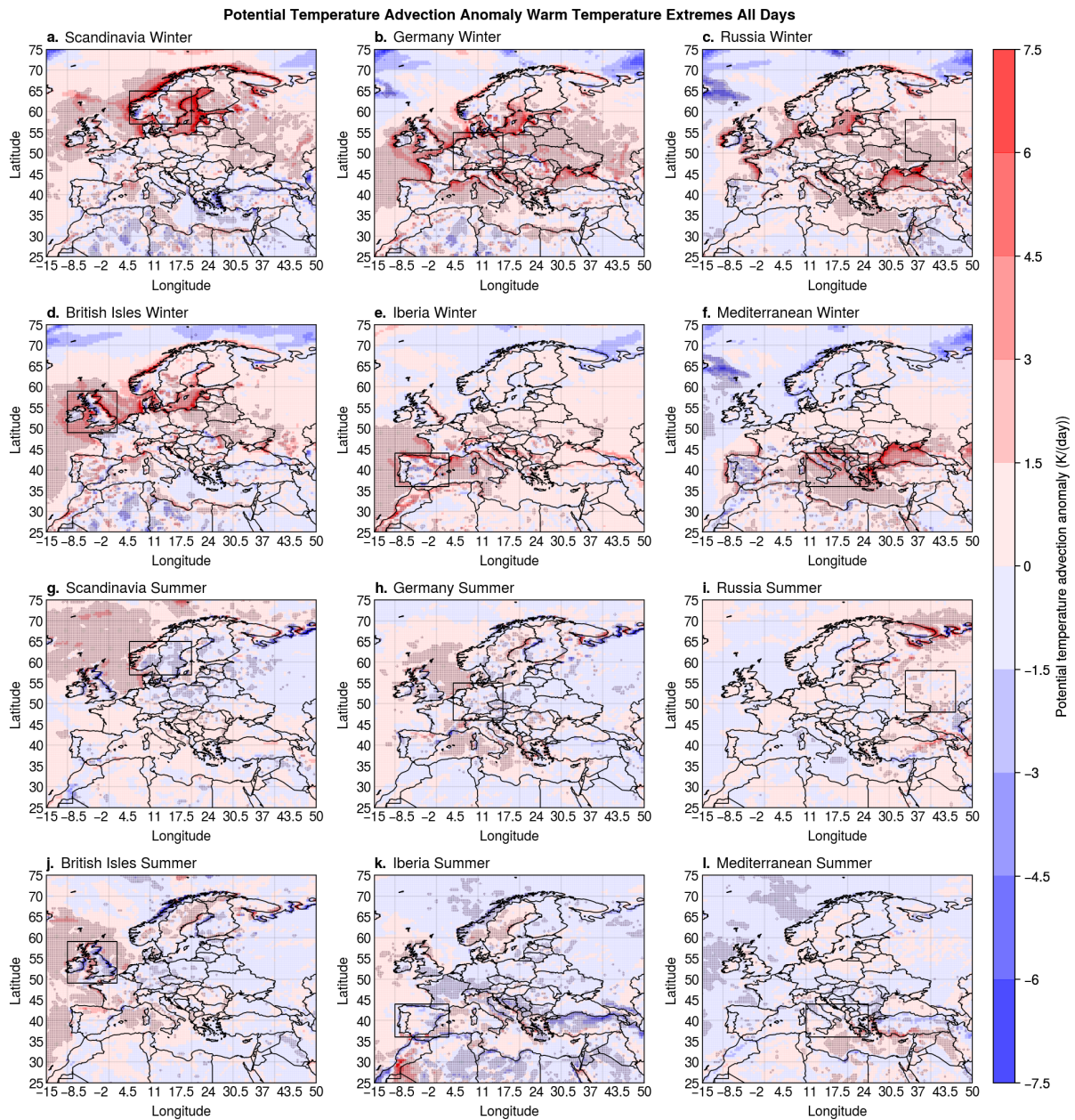


Figure 4. B -Potential temperature advection [$\text{hPaK}(\text{°lat} \times \text{°lon})^{-1} \text{K/day}$] composite anomaly, corresponding to anomalies at the surface temperature advection level, during warm spell and heatwave days in (a, g) Scandinavia, (b, h) Germany, (c, i) Russia, (d, j) British Isles, (e, k) Iberia, (f, l) Mediterranean, during winter (a–f) and summer (g–l). Positive anomalies, denoted by the colour red, represent warm advection, whilst the colour blue corresponds to cold air advection. Statistical significance is denoted with grey stippling and assessed as described in Section 2.

235 Panels a–f in Fig. 4 show composites of ~~B -(surface temperature advection)-~~surface potential temperature advection during wintertime warm spells, generally pointing to a dominant role of maritime warm air advection towards the region of interest ~~during warm spells~~. This is consistent with the zonal flows highlighted in Fig. 1, which correspond to advection of comparatively warm oceanic air towards the continent. Panels g–l in Fig. 4 show a weaker signal for surface potential temperature advection during summertime heatwaves in the regions of interest, suggesting that in many cases the advective component
240 can only explain part of the observed large temperature anomalies. ~~We also note that especially Iberia and the Mediterranean show a clear orographic signal in both seasons Fig. 4 e, f, k and l. This could suggest the possible importance of advection over topography for engendering large temperature anomalies.~~

Panels a–f in Fig. 5 show composites of mid level potential temperature advection during wintertime warm spells, again pointing to a dominant role of warm air advection for many of the regions. Panels g–l in Fig. 5 show a weaker but significant signal for mid-level temperature advection during summertime heatwaves.

245

Fig. 6 shows composite SSHF anomalies during heatwaves. Positive anomalies imply an upward flux – in other words the surface heats the air above it whilst negative anomalies imply the air above the surface is warmer than the surface itself. During
250 wintertime warm spells (Fig. 6a–f), the widespread negative anomalies indicate that a relatively warm atmosphere helps warm the surface, consistent with a large role for temperature advection. ~~The one exception is Russia, although we observe warm air in the Black Sea and Baltic Sea regions during warm spells in the Russian region. Anomalies over land are comparatively weak. Iberia, the Mediterranean and Russia show less clear pictures, with weak anomalies over land and noisier significance stippling in the Iberia and the Mediterranean regions.~~ During summertime heatwaves (Fig. 6g–l), there are widespread positive
255 anomalies in ~~Scandinavia~~Scandinavia, Germany and the British Isles, while weaker yet positive signals are found over the Mediterranean and the western part of Iberia, and no clear positive signal is found over Russia. ~~We interpret the~~ To summarise, we observe negative winter and positive summer SSHF signals ~~shown in~~ (Fig. 6), in combination with ~~the a~~ strong advective signal at the surface in winter and comparatively weak signal in summer (Fig. 4), ~~as providing evidence that, whilst. We interpret this as evidence that~~ warm temperature advection is critical for wintertime warm spells, ~~radiative forcing plays whilst~~
260 radiative forcing and other dynamical or local factors play an important role in European summertime heatwaves.

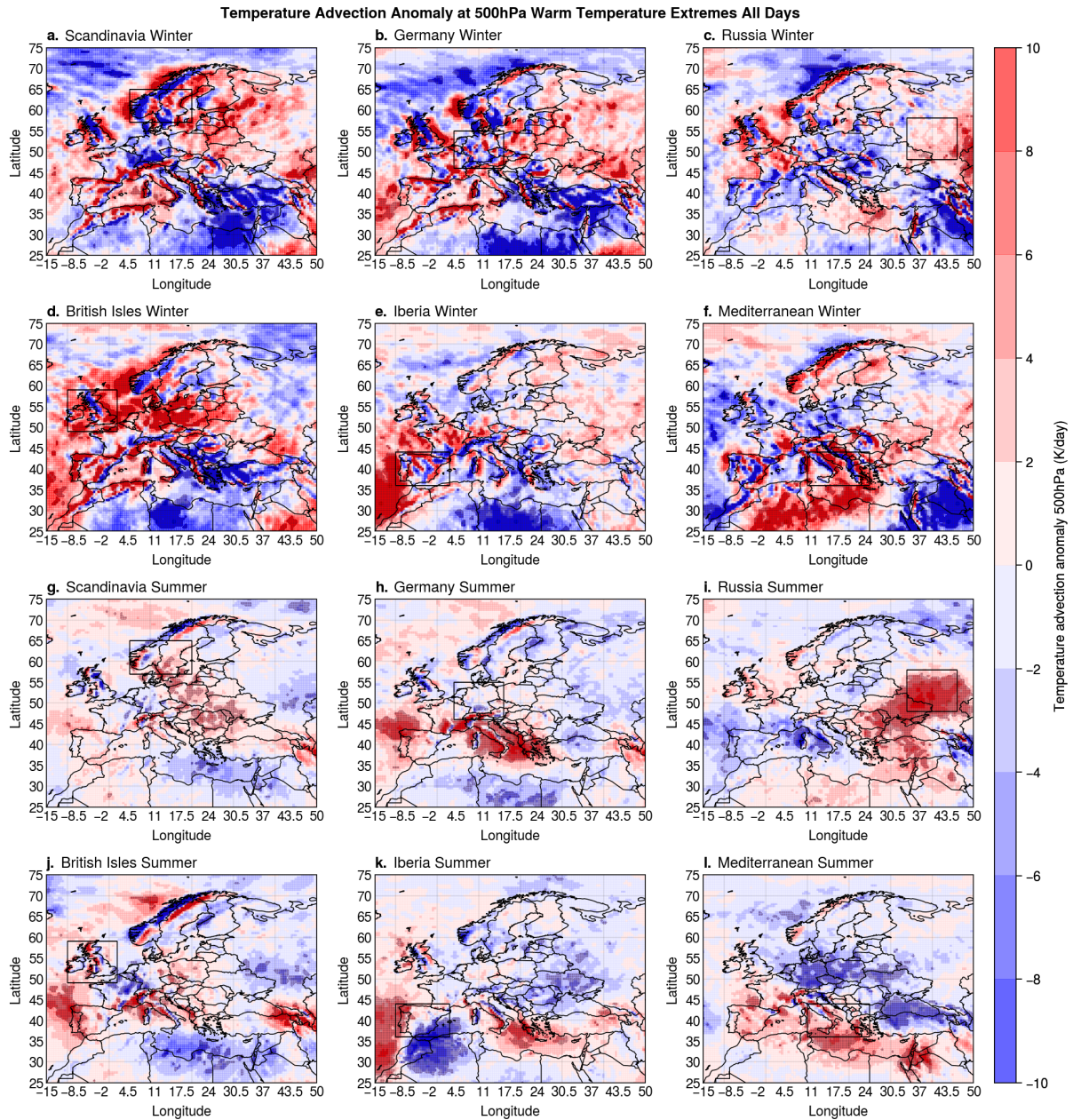


Figure 5. Temperature advection [K/day] composite anomalies at 500 hPa, during warm spell and heatwave days in (a, g) Scandinavia, (b, h) Germany, (c, i) Russia, (d, j) British Isles, (e, k) Iberia, (f, l) Mediterranean, during winter (a–f) and summer (g–l). Positive anomalies, denoted by the colour red, represent warm advection, whilst the colour blue corresponds to cold air advection. Statistical significance is denoted with grey stippling and assessed as described in Section 2.

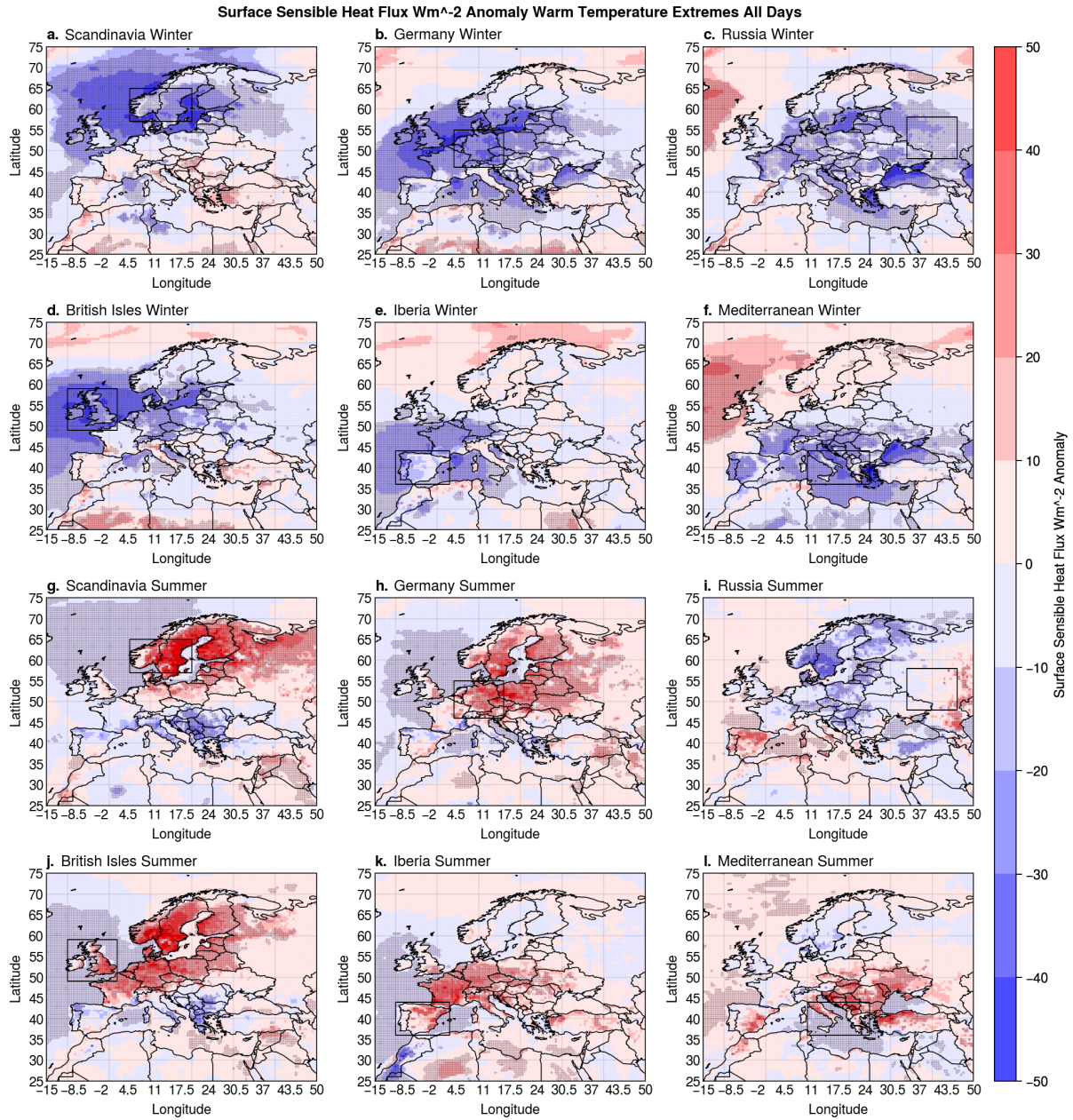


Figure 6. SSHf-Surface sensible heat flux [Wm^{-2}] composite anomalies during during warm spell and heatwave days in (a, g) Scandinavia, (b, h) Germany, (c, i) Russia, (d, j) British Isles, (e, k) Iberia, (f, l) Mediterranean, during winter (a–f) and summer (g–l). Statistical significance is denoted with grey stippling and assessed as described in Section 2.

4 Discussion

~~We find that the conventional view of summertime European heatwaves being associated with persistent blocking (Petoukhov et al., 2013; L~~
~~appears at odds with~~ Both SLP and Z500 have been widely used to analyse circulation patterns associated with temperature
extremes. Using a quantification of atmospheric persistence based on dynamical systems theory (Faranda et al., 2017) ~~we~~
265 ~~investigate the regional persistence of these fields during European warm temperature extremes.~~

~~We consider both summertime heatwaves and wintertime warm spells. Conventionally, summertime European heatwaves~~
~~have been associated with persistent blocking (Legras and Ghil, 1985; Mo and Ghil, 1987), typically lasting several days to~~
~~a few weeks (e.g. Drouard et al., 2021). Our results show a link between summertime heatwaves and persistent atmospheric~~
270 ~~configurations only in primarily in the mid-troposphere. Only heatwaves in Scandinavia and the British Isles ,and even then~~
~~with modest persistence anomalies up to approximately 3 hours for the median θ anomaly in these regions. Thus, we argue~~
~~that heatwaves can occur under persistent atmospheric conditions, but this is not a requirement. also show a clear link to~~
~~anomalously high persistence in SLP.~~ This is consistent with the findings of Faranda et al. (2017), who presented evidence
that blocking is not associated with high persistence when considering the full year ~~, whilst Faranda et al. (2016) argues for~~
275 ~~zonal flows being more persistent than blocked flows in winter. and surface-level circulation patterns. Whilst five of the six~~
~~considered regions appear to show at least some link between heatwaves and mid level persistent atmospheric configurations,~~
~~we note that the median negative θ anomalies for regional heatwaves attain at most magnitudes around 0.02. An anomaly in θ~~
~~of -0.02 would correspond to an anomaly in persistence of less than five hours, relative to a mean summertime value of θ of~~
~~approximately 0.33, when calculating θ using the Z500 field. Thus, we argue that heatwaves are to some extent favoured by~~
280 ~~persistent atmospheric conditions, but this is far from a necessary condition.~~ Our work also connects to that of Lucarini and
Gritsun (2020), who show that the onset and decay of blocking corresponds to structurally unstable states. In the context of
dynamical systems, structural instability means that the entire system is highly sensitive to perturbations, and a small perturba-
tion can lead to instantaneous qualitative changes between states. In the current analysis, the system would be the atmosphere
and the mathematical equations which govern it, and a state would correspond to an instantaneous map of some representative
285 variable. This means that the persistence of a state, which is analogous to the expected time between qualitative changes in
atmospheric states, is also highly sensitive to perturbations, and thus a clear link between blocking, heatwaves and anomalously
persistent atmospheric configurations is not necessarily expected.

~~There is thus a clear discrepancy between the analytical, quantitative definition of persistence used here and the conventional~~
290 ~~view we have referred to numerous times. When blocking is defined using feature detection algorithms, persistence is defined as~~
~~the duration of a coherent structure (often a reversal of the meridional gradient in~~ Wintertime warm spells are often associated
~~with large-scale zonal flows (Slonosky and Yiou, 2002), which have been previously highlighted as persistent atmospheric~~
~~configurations (e.g. Faranda et al., 2016; Messori et al., 2017). We find partial support for the link between wintertime warm~~
~~spells and atmospheric persistence. When looking at Z500 (or some other atmospheric variable). However, this structure may~~

295 ~~to some extent move and /or change in intensity. When a weather regime perspective is taken, a relatively wide range of~~
~~different atmospheric patterns may be clustered into the same regime. The feature-based view of blocking thus allows for~~
~~changes in the location and/or intensity of the block, and additionally potentially overlooks other atmospheric structures in the~~
~~region of interest, which may still be very relevant for the overall dynamics.~~, atmospheric persistence during warm spells is
close to climatology in all the regions we consider here, with a weak, non-significant signal of increased persistence in Iberia
300 and the Mediterranean. These are indeed two of the regions that Messori et al. (2017) found showed the closest link between
persistent zonal flows and high wintertime temperatures. A clearer signal of increased persistence is visible at the surface,
albeit being significant only for Germany and Scandinavia. This is consistent with the notion of zonal positive North Atlantic
Oscillation (NAO)-type flows being more persistent than average, as previously noted by Faranda et al. (2017), and of the
NAO+ influencing warm wintertime temperatures in Northern Europe (Vihma et al., 2020). An investigation of atmospheric
305 persistence during local temperature extremes for both warm spells and heatwaves provides consistent results, with SLP for
wintertime warm spells and Z500 for summertime heatwaves being the two cases showing the most widespread signal of
increased persistence.

We thus find qualitatively different results depending on whether SLP or Z500 is used as a proxy for atmospheric flow
310 patterns. We further find a seemingly only partial agreement with conventional notions of persistence in the meteorological
literature, and in particular at the offset of ~~particular with the connection between highly persistent blocking, on timescales~~
~~of several days to weeks, and European heatwaves. Concerning the first point, we argue that this is because the two fields~~
~~we analyse provide different information, which has seldom been analysed jointly in the block when the system is sensitive~~
~~to small perturbations. Conversely, the weather regime view may define relatively different regional atmospheric patterns as~~
315 ~~belonging to the same continuous succession of blocked regime days. Our analytical view of persistence considers the whole~~
~~regional atmospheric variability — like the weather regimes approach — yet is based on a small number of analogues (5% of~~
~~all days in the data set). We thus suggest that the approach we adopt here could provide a more robust view of atmospheric~~
~~persistence. Indeed, it allows for a more nuanced view of atmospheric variability and provides a rigorous and mathematically~~
~~precise definition of persistence, supported by well-established mathematical theories~~context of atmospheric persistence in the
320 literature. Mid-tropospheric flows reflect closely the dynamics of blocking, while the surface field may reflect features such as
lows upstream of blocking (e.g. Shutts, 1983; Pfahl et al., 2015) or heat lows (e.g. Fischer et al., 2007). The dynamical systems
based persistence metric reflects these differences and allows for a nuanced analysis of the persistence of the atmospheric
circulation at different atmospheric levels.

325 A limitation of this study is that the dynamical systems analysis approach assumes a stationary system. Whilst our analysis
of the analogue quality in Fig. A4 suggests that we still have high analogue quality, a recent study by Faranda et al. (2023)
found that the frequency of some circulation patterns has changed over the time period 1950–2021, although the study did not
separate anthropogenic effects and those from natural variability. We could thus conjecture that we may soon approaching a
point where anthropogenic warming will have a sufficiently strong signal such that atmospheric analogues no longer follow

330 the theoretical limit distribution, and that warm extremes may thus exhibit new dynamical behaviours.

~~The One can also consider the~~ criterion of persistence and its link or lack thereof to heatwaves and warm spells ~~can perhaps be better understood when one considers in terms of~~ the underlying dynamics and their relevant spatial scales. Wintertime warm spells have previously been associated with ~~persistent atmospheric configurations leading to oceanic~~ warm air advection (Messori et al., 2017), ~~which our findings partly support~~ (Slonosky and Yiou, 2002; Messori et al., 2017). Figs. 3 and 4 indeed show anomalously persistent surface level configurations and advection being linked to warm spells in Scandinavia and ~~the Mediterranean~~ Germany, whilst in the ~~British Isles and Iberia~~ Mediterranean, Iberia and the British Isles we detect anomalous surface level advection, but ~~not no significant signal for~~ anomalously persistent configurations being linked with warm spells. We suggest that this could be because warm oceanic air does not need to travel far to lead to warm advection in these regions. Our results ~~provide further provide no~~ evidence that warm spells in ~~Germany and~~ Russia are linked with persistent surface level atmospheric configurations, ~~but showed only a moderate to weak advection signal and show only weak surface advection signals~~, suggesting that other mechanisms could contribute to wintertime warm spells ~~there in this region.~~

Literature discussing the drivers of heatwaves during summer mentions ~~both radiative forcing radiative forcing, subsidence~~ and soil moisture as ~~two key factors (Pfahl, 2014)~~ key factors (Pfahl, 2014; Zschenderlein et al., 2019). Our results show a clear radiative signal (implied by upward sensible heat flux anomalies) associated with summertime heatwaves, while surface temperature advection appears to play a smaller role than during wintertime warm spells. This is supported by Zschenderlein et al. (2019), who also claim that warm temperature advection plays a weak role in summertime heatwaves. We ~~conjecture that summertime heatwaves have multiple driving and trigger mechanisms with local effects, for example adiabatic and diabatic processes as discussed in Zschenderlein et al. (2019) and Bieli et al. (2015), who investigated summer and the full year respectively. These mechanisms play a greater role than in winter, where the persistent advection of warm oceanic air appears to be a leading process. We suggest that, for heatwaves predominantly driven by radiative or local effects, it is not a necessary requirement to have~~ see warm temperature advection at the mid-level in Fig. 5, suggesting that warm air is possibly being transported higher up in the atmosphere before descending to the location of the heatwave while likely undergoing adiabatic warming. The effect of subsidence in generating large positive temperature anomalies was investigated by de Villiers (2020), who focused on on the late July 2019 European heatwave. Domeisen et al. (2023) also note the contributing role of subsidence in driving heatwaves, with Röthlisberger and Papritz (2023) highlighting the dominating role of adiabatic warming of air due to subsidence in driving heatwaves in southern Europe and the Mediterranean. This is consistent with our results showing a closer link of heatwaves to the persistence of mid-level rather than surface circulation patterns. We thus suggest that heatwaves do not require highly persistent large-scale ~~atmospheric configurations~~ surface level atmospheric configurations, while there appears to be a significant association at the mid level. We contrast this to ~~advectively driven warm spells~~ warm spells driven by surface advection, such as in Germany or Scandinavia, where warm air must be transported large distances from the ocean, for which the large-scale structure of the atmosphere must remain qualitatively similar for longer periods of time. The investigation of the relationship with soil moisture, whilst interesting, may prove to be a rather complex undertaking in a dynamical sys-

365 tems framework due to the different time scale on which it operates relative to atmospheric motions, and is left to future studies.

We ~~illustrate our argument~~ conclude our discussion by considering two case studies, namely the ~~September 2002 and June 2015~~ July 1991 and July 1992 heatwaves in Germany. These were selected as they displayed the single days with some of the most negative and positive θ anomalies for both Z500 and SLP respectively, for heatwaves in the region, and thus make for a visually immediate example. ~~Fig. ?? shows~~ Figs. 7 and 8 show the Z500 ~~configurations~~ and SLP anomaly configurations, respectively, for the two identified days in the top row, ~~and two days and one day~~ later in the bottom row. ~~We have calculated the~~ For the persistent case, the large-scale positive Z500 anomaly and smaller negative cores remain stable over the period considered. For the non-persistent case, there is a considerable spatial evolution of the negative Z500 anomaly features in the southern part of the domain. A similar visual appraisal holds for SLP anomalies. To support this quantitatively, we note that the Euclidean norm for each pair of days ~~to empirically illustrate that after two days, the high θ (low persistence) case has a is lower for the high persistence cases than for the low persistence ones, for both Z500 configuration further away from the initial day than the low θ (high persistence) case. Nonetheless~~ and SLP. Notwithstanding the differences in persistence, a visual appraisal suggests that ~~in both cases for both heatwaves~~ a blocking algorithm would likely detect a blocked flow ~~persisting for several days, as there is a clear perturbation pattern, namely a reversal~~ of the meridional Z500 gradient in all four panels. Fig. A12.

These two case studies highlight that it is possible for heatwaves to occur during either high or low persistence atmospheric configurations, and that the persistence as quantified using dynamical systems theory can be partly related to the intuitive concept of ‘similarity’ of spatial atmospheric configurations. This supports our conclusion that highly persistent configurations are not a necessary criterion for European summertime heatwaves to occur.

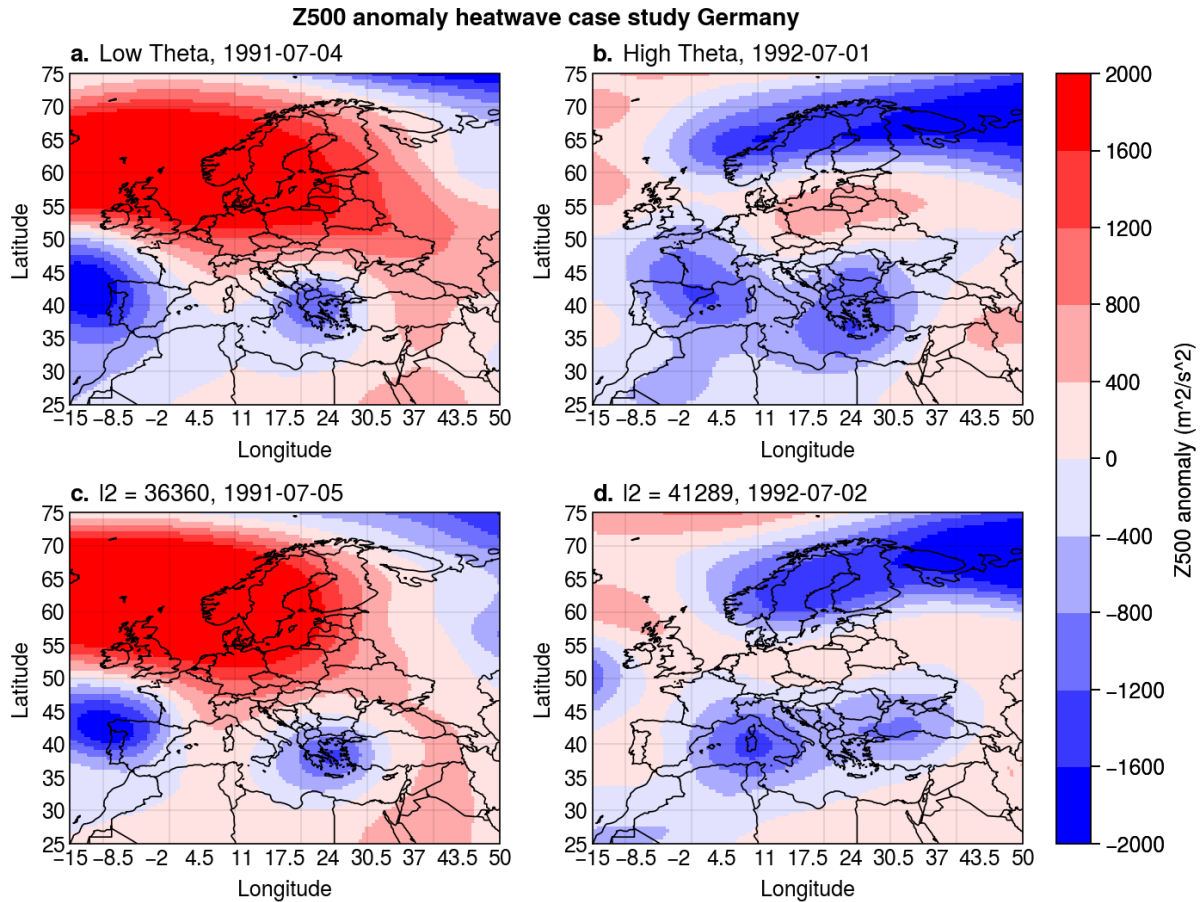


Figure 7. Z500 [m^2/s^2] anomaly maps corresponding to the days with some of the highest and lowest θ anomalies within all days which are classified as days where there is a heatwave in the region Germany. Panel titles in (c), (d) show a lead time of 2 days-1 day to the respective high and low θ heatwave days, with the values corresponding to the euclidean distance between the initial and 2-1 day lead SLP-Z500 maps for each case.

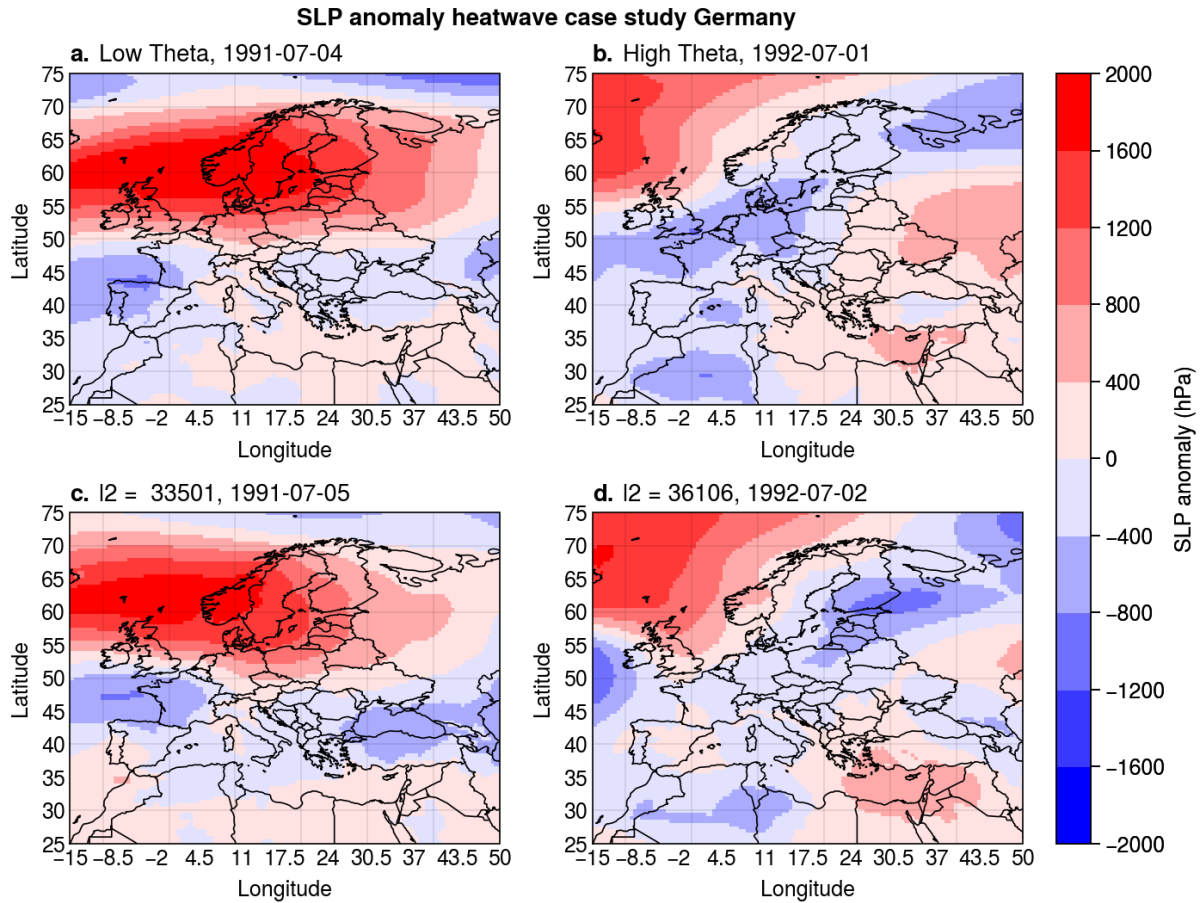


Figure 8. SLP [hPa] anomaly maps corresponding to the days with some of the highest and lowest θ anomalies within all days which are classified as days where there is a heatwave in the region Germany. Panel titles in (c), (d) show a lead time of 1 day to the respective high and low θ heatwave days, with the values corresponding to the euclidean distance between the initial and 1 day lead SLP maps for each case.

5 Conclusions

We have analysed ~~atmospheric persistence~~ the persistence of the atmospheric circulation patterns at surface and mid-levels associated with European summertime heatwaves and wintertime warm spells. We define atmospheric persistence using a robust
390 quantitative approach issued from dynamical systems theory. Our results point to wintertime warm spells being associated with anomalously persistent surface level atmospheric configurations, ~~supporting previous investigations~~ although the anomalies are mostly not statistically significant when aggregated at regional level. This partly supports a previous investigation on the topic (Messori et al., 2017). During summer, ~~however, our results appear to contrast the conventional view of heatwaves being associated with very persistent blocked configurations in the Euro-Atlantic sector. We find that atmospheric configurations~~
395 ~~associated with~~ we find that heatwaves, on average, ~~do not correspond to anomalously persistent configurations. show almost no link to surface persistence, while most regions show a significant link to enhanced mid-level atmospheric persistence. Nonetheless, the magnitude of the mid-level persistence anomalies is weak and appears at odds with the notion of heatwaves driven by atmospheric blocks persisting over several days to weeks.~~ Our findings are consistent with recent work by Lucarini and Gritsun (2020) who also identified blocking as ~~a structurally unstable state and thus not necessarily~~ not necessarily being
400 a persistent configuration.

We ascribe the different atmospheric persistence characteristics of summertime versus wintertime warm temperature extremes to their different driving mechanisms. We found a far weaker signal for surface temperature advection in summer than in winter. This is consistent with the results of Zschenderlein et al. (2019) and Bieli et al. (2015), who investigated summer and
405 the full year respectively, and suggested that advection ~~may play a role~~ driving is not a dominating driver of heatwaves in summer, ~~yet is likely only one of several driving mechanisms.~~ We indeed found a strong radiative signal for summertime heatwaves.

We have further attempted to ~~reconcile~~ clarify the discrepancy between the dynamical systems and conventional views of atmospheric persistence associated with heatwaves. The dynamical systems persistence considers a fixed spatial domain, and
410 has a relatively stringent definition of what ‘similar’ means in terms of atmospheric configurations. Such a dynamical systems definition is thus more sensitive than ~~the~~ alternative definitions to changes in the regional atmospheric configuration, ~~and additionally rests on a mathematically rigorous and precise definition of persistence.~~

Appendix A: Sensitivity Analysis

415 ~~The sensitivity of the~~ We report here sensitivity tests of our results to the ~~domain used to calculate θ was tested by investigating~~
~~a westward-shifted domain, see Fig. A5. Here the only notable differences were for the Iberia region during winter and~~
~~Mediterranean region during summer, with a westward-shifted domain resulting in a significant negative θ anomaly.~~ choice
of definition of warm temperature extremes, geographical domain, and definition of atmospheric analogues.

Sensitivity to heatwave/ warm spell duration was tested by considering 3 and 7 day minimum duration requirements, see
420 Figs. A1, A2. ~~Here we find that the~~ For the three day minimum duration we find no notable change in persistence at the surface
level during summer and the mid level during winter. At the surface level during winter the Iberia and British Isles regions
show negative significant anomalies in θ , whilst Germany, Iberia and the Mediterranean no longer ~~shows a significant negative~~
~~show significant negative anomalies at the mid level in Summer. For the seven day minimum duration we see no change at~~
~~the mid level during winter, whilst Russia and the British Isles show significant negative θ anomaly during wintertime warm~~
425 ~~spells in both cases, and Russia no longer anomalies at the surface level. During summer, Russia shows a significant negative~~
 ~~θ anomaly for the 3 day warm spell definition. We also note that~~ anomaly at the mid level whilst the British Isles no longer
show a significant ~~negative θ anomaly during both summertime cases~~ anomaly, although the quantitative difference is small.
The sensitivity to the temperature threshold was tested by considering temperatures above the 95th percentile, see Fig. A3. The
only qualitative ~~differences was found for Russia and the Mediterranean~~ persistence differences were found for Iberia at the
430 mid level and the British Isles at the surface level in winter, ~~and the British Isles where negative θ anomalies could be seen, and~~
~~Iberia and Russia at the mid level~~ in summer, where ~~clear, significant negative theta anomalies were no longer seen. Sensitivity~~
~~to the significant negative θ anomalies could and could no longer be seen respectively. We note that the quantitative differences~~
appear quite small also in this case.

435 The sensitivity of the results to the geographical domain used to calculate θ was tested. For a westward-shifted domain (Fig.
A5) significant negative θ anomalies emerged for Iberia during winter at both surface and mid levels and for the Mediterranean
at the surface level. Moreover, during summer the British Isles and Mediterranean no longer displayed significant negative
anomalies at surface and mid levels respectively. When considering a smaller domain (Fig. A6) Russia and the Mediterranean
showed significant θ anomalies at surface level during winter. When considering a larger domain (Fig. A7) Russia and the
440 Mediterranean showed significant anomalies at surface level and Iberia displayed a significant anomaly at the mid level, during
winter.

A time series of the shape factor of the fit for the Z500 analogues can be seen in Fig. A4. This shows values very close to 0,
suggesting that trends due to warming do not have a major effect on the overall quality of the analogues. We further investigate
445 sensitivity to the definition of analogues – or in other words to the number of recurrences selected during the computation of
 θ . This was tested by considering $q = 0.97$ and $q = 0.99$, shown in ~~the upper and lower panels of~~ Figs. A8 and A9 respec-

tively. ~~Here, Russia and Germany no longer show~~ For $q = 0.97$, Russia shows a statistically significant negative θ anomalies anomaly during wintertime warm spells ~~for both q values. In summary, wintertime warm spells appear to show some, albeit small, sensitivity in all tests, whilst the results for summertime heatwaves appear quite robust~~ at the surface level, whilst Iberia
450 ~~no longer shows a significant anomaly at the mid level during Summer. For $q = 0.99$, Germany no longer shows a significant anomaly at the surface level during winter, although it does show a significant negative anomaly during summer at the surface level. In addition, Iberia and the Mediterranean no longer show significant anomalies at the mid level.~~

In summary, we find some sensitivity of our results to our methodological choices. None of the sensitivity tests, however,
455 ~~affect our qualitative conclusion that anomalously high atmospheric persistence is more closely associated with winter warm spells than with summertime heatwaves.~~ not a necessary requirement for summertime heatwaves. We show a composite of the variance of Z500 anomalies for days during heatwaves/ warm spells in Fig. A11. This provides some indication of local persistence, although we highlight that this figure should be interpreted with care due to the local nature of this analysis in contrast to the analysis conducted in the body of this paper, which considers atmospheric variability across the entire domain.

460

Theta Anomaly for Climatology vs Regional Warm Temperature Extremes 3 Day Minimum Duration

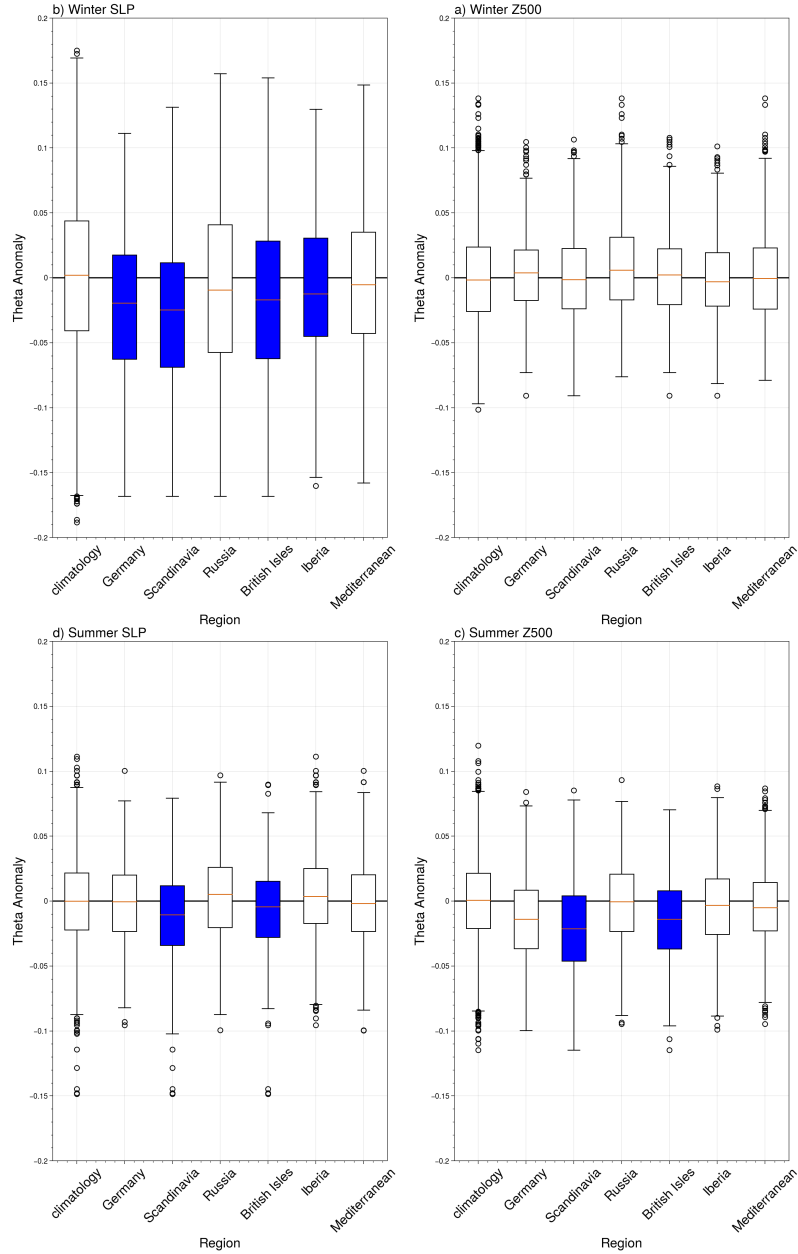


Figure A1. θ anomaly box plots comparing as in Fig. 3 but for a West shifted domain from 310W to 35W to the standard domain from 345W to 45W heat wave or warm spell of at least 3 days in duration.

Theta anomaly box-plots for a heat wave 25 warm spell of at least 3 days in duration.

Theta Anomaly for Climatology vs Regional Warm Temperature Extremes 7 Day Minimum Duration

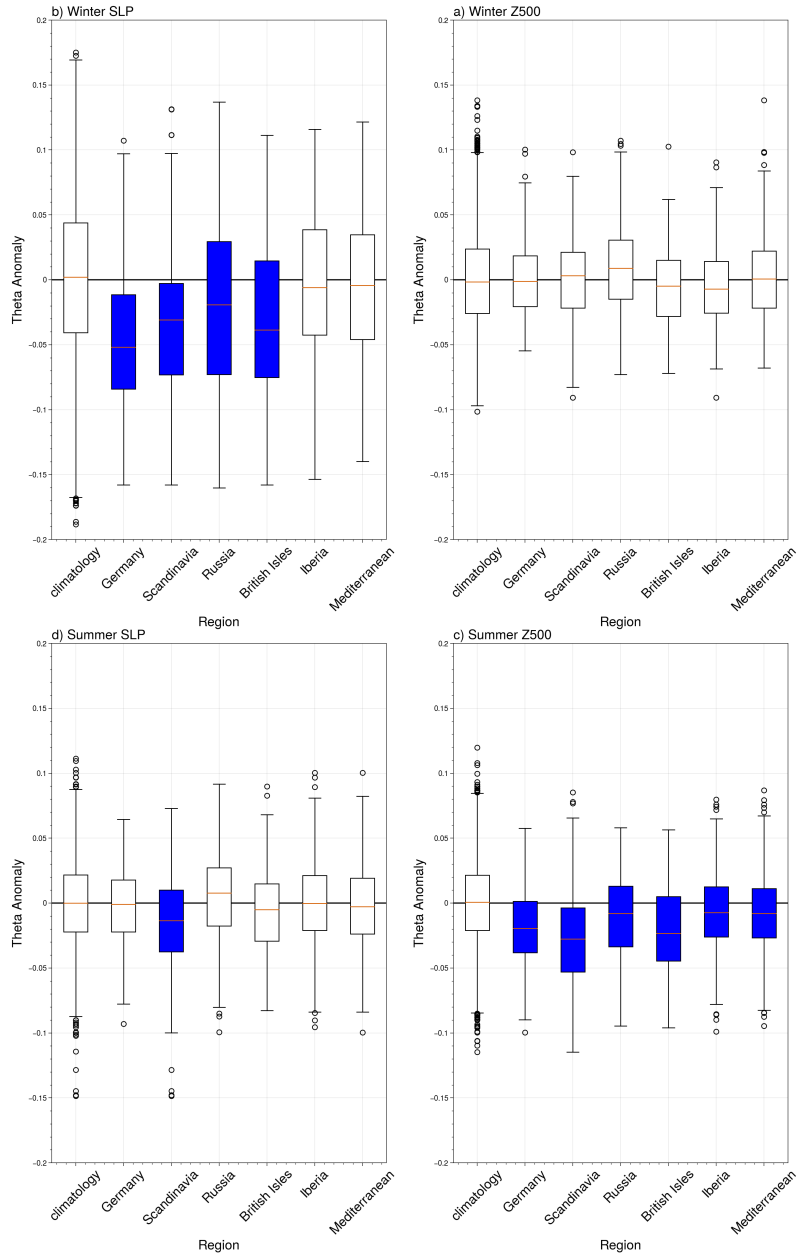


Figure A2. Θ anomaly box plots as in Fig. 3 but for a heat wave or warm spell of at least 7 days in duration. grey indicates a small sample size insufficient for significance testing.

Theta Anomaly for Climatology vs Regional Warm Temperature Extremes 95th Percentile Temperature Threshold

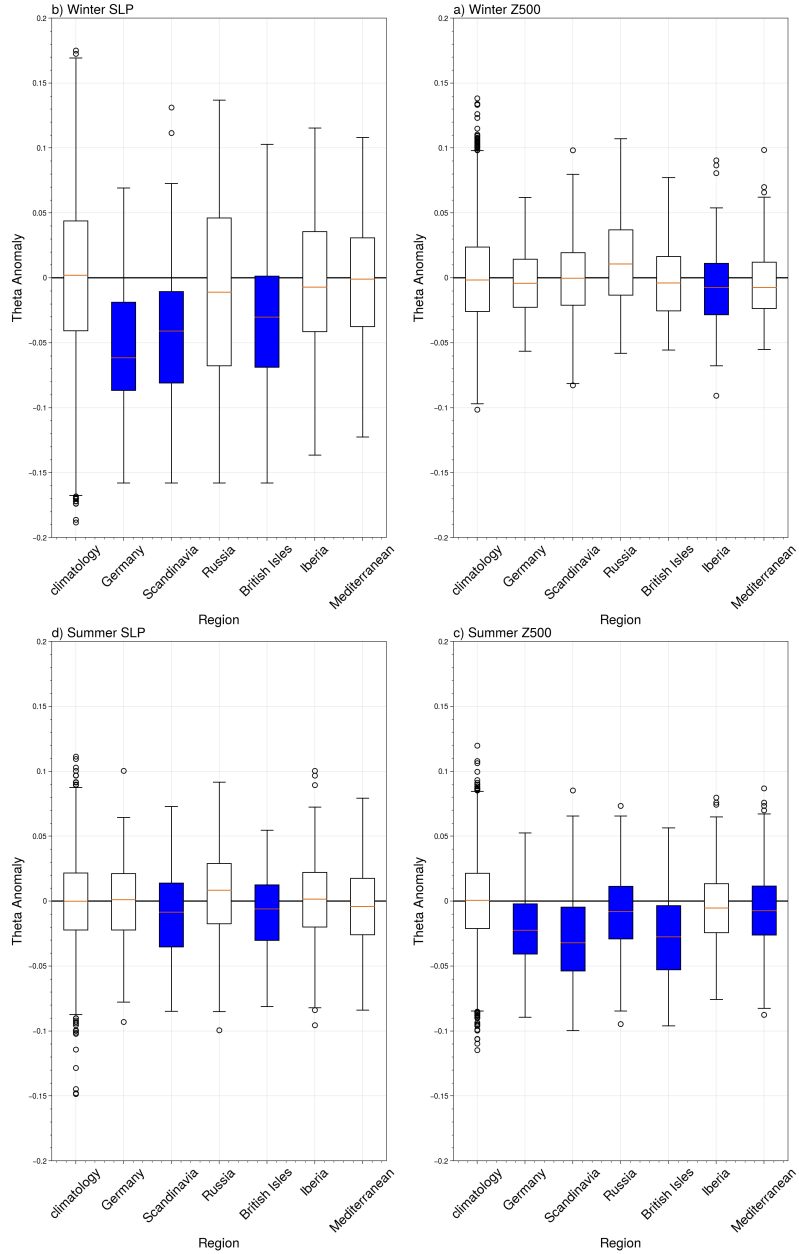


Figure A3. Θ anomaly box plots as in Fig. 3 but for a heatwave or warm spell with temperature extremes defined using temperatures above the 95th local 95th percentile.

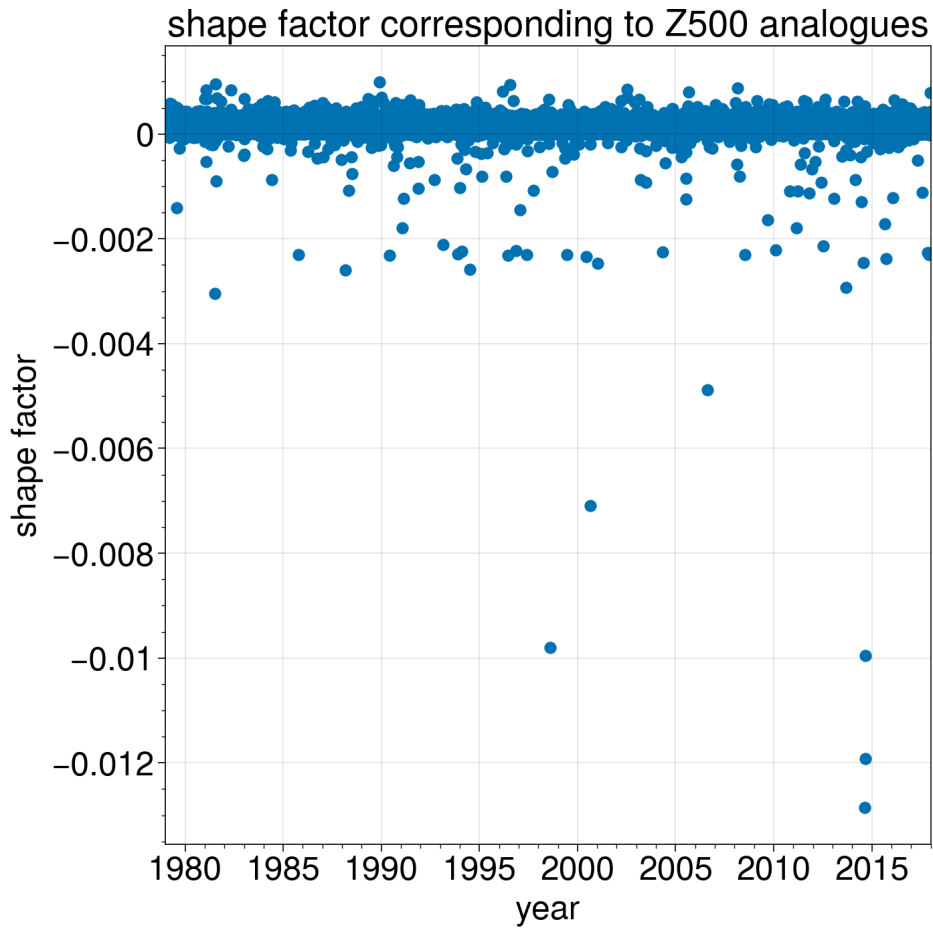


Figure A4. Shape factor of the distribution fitted to the analogues. Values approximately equal to 0 indicate that the analogues are distributed according to the statistical assumptions of our analysis method or, in other words, that the analogues are of good quality.

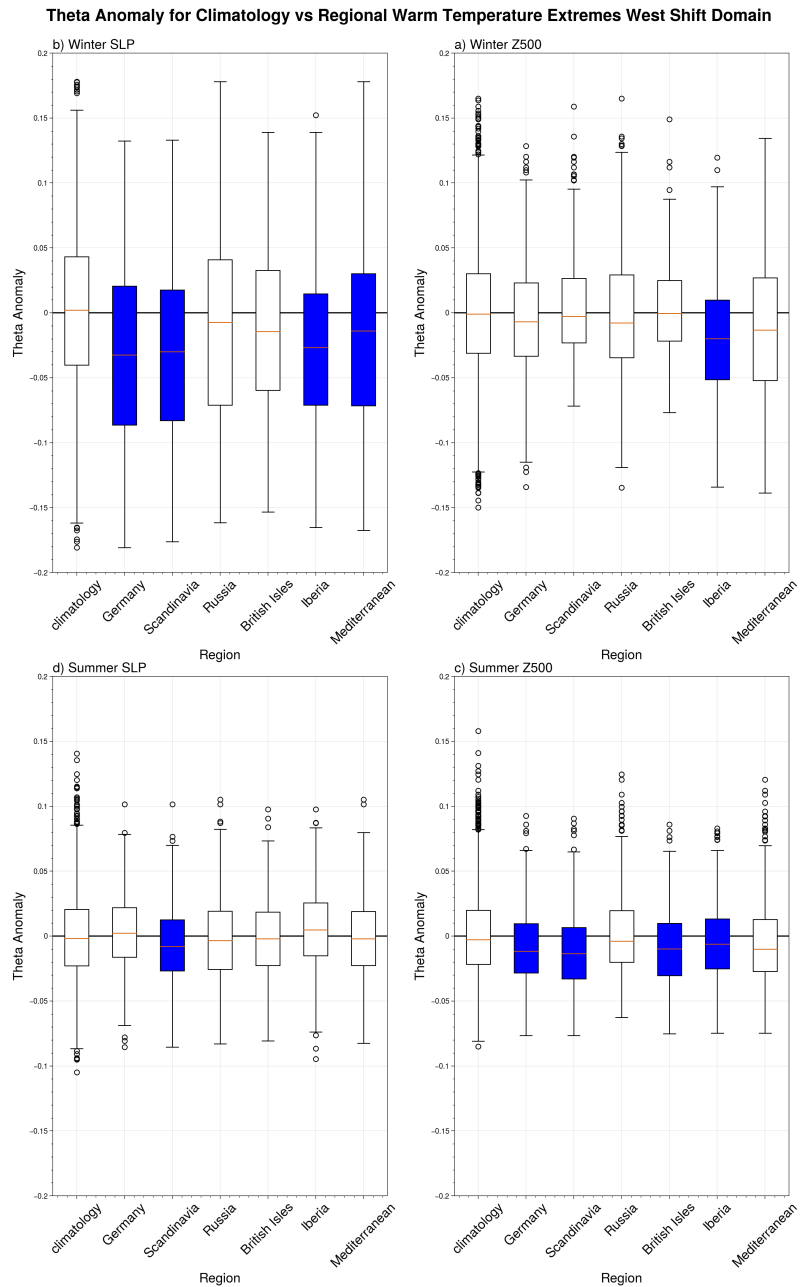


Figure A5. Θ anomaly box plots for different theta threshold values, namely the 97th percentile, which corresponds to as in Fig. 3 but with a different number of analogues considered westward shifted domain covering -50° – 35° E.

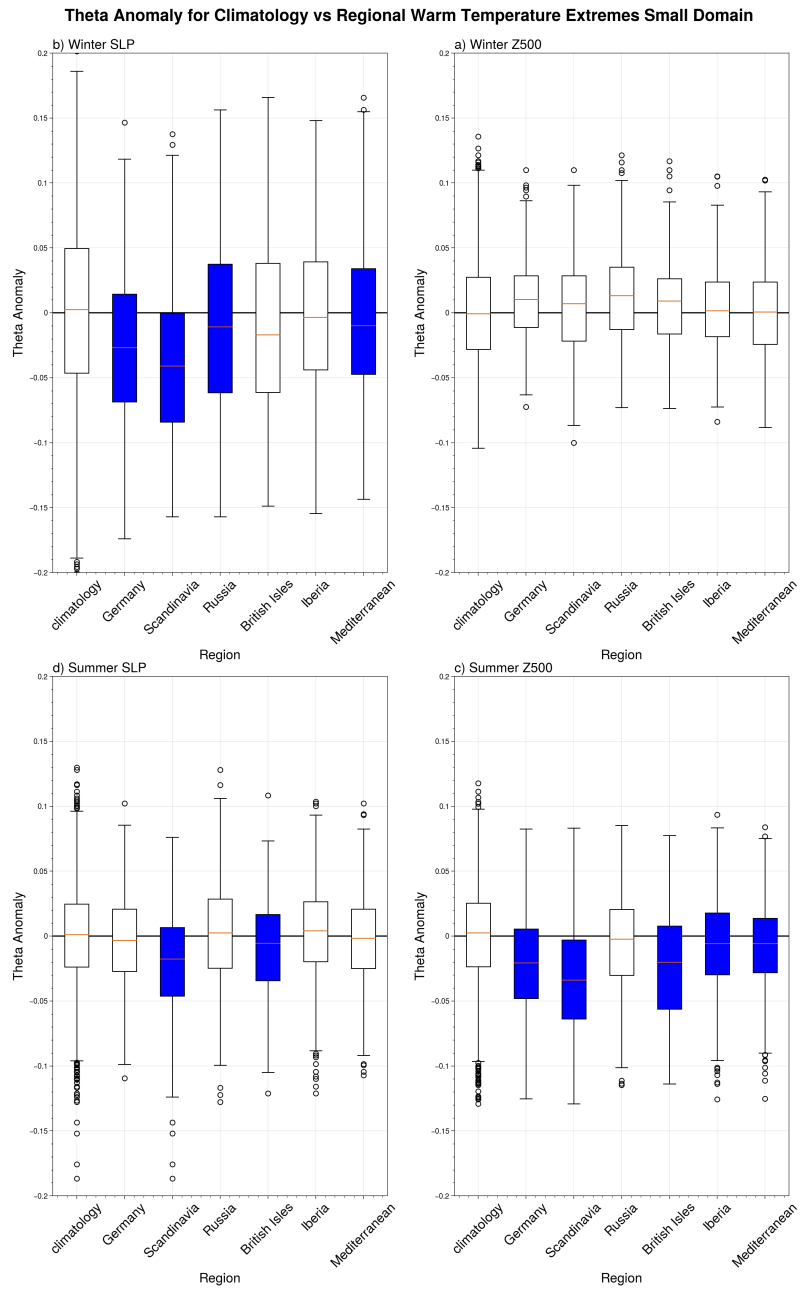


Figure A6. θ anomaly box plots as in Fig. 3 but with a smaller domain covering -10° – 45° E.

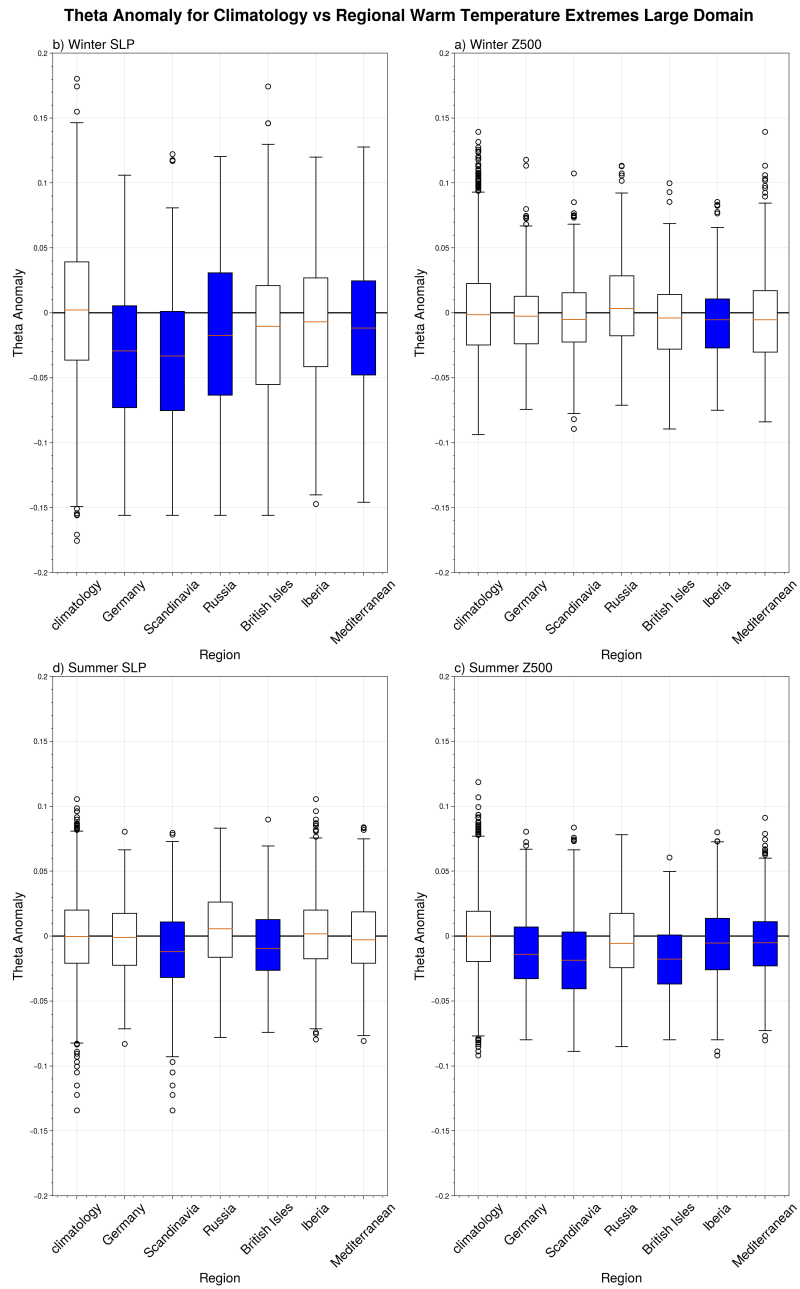


Figure A7. θ anomaly box plots as in Fig. 3 but with a larger domain covering -20°E - 55°E .

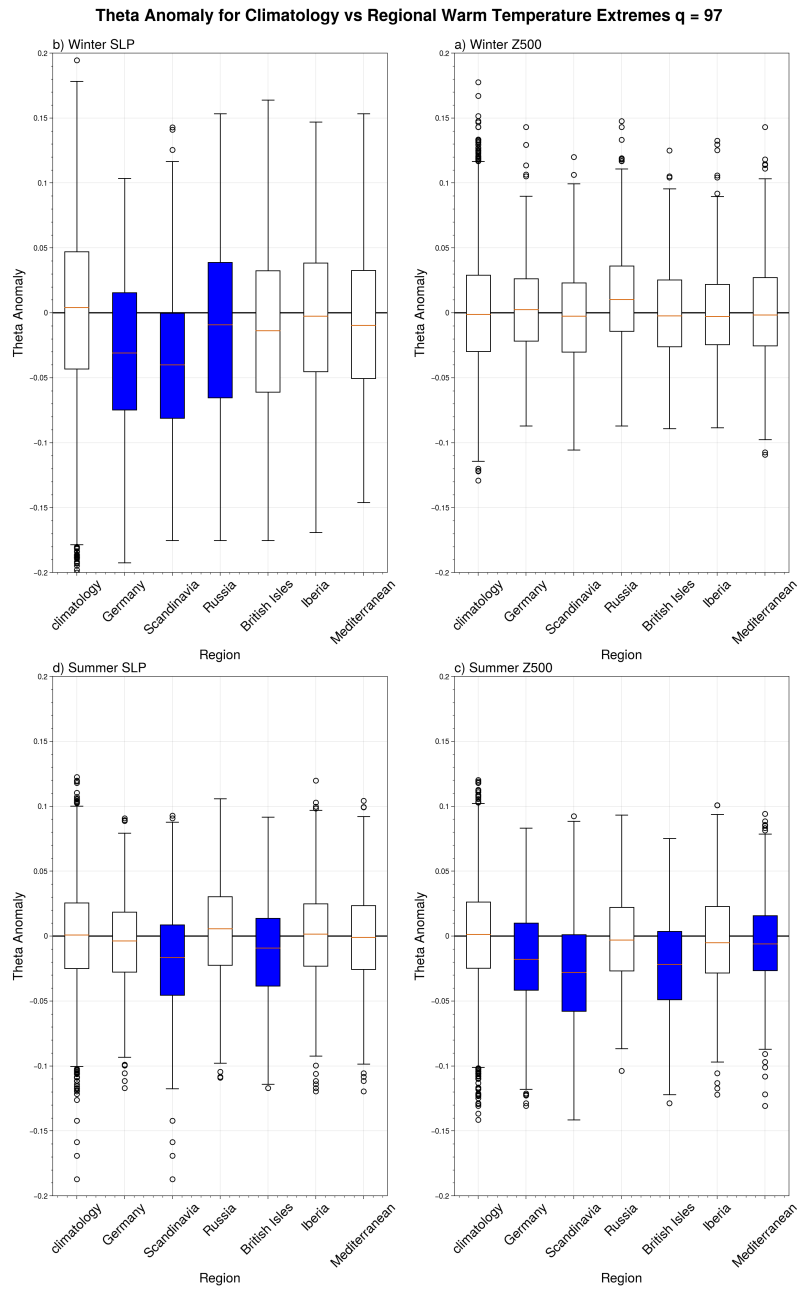


Figure A8. θ anomaly box plots as in Fig. 3 but using the 97th percentile of the distribution of $-\log$ distances to define analogues.

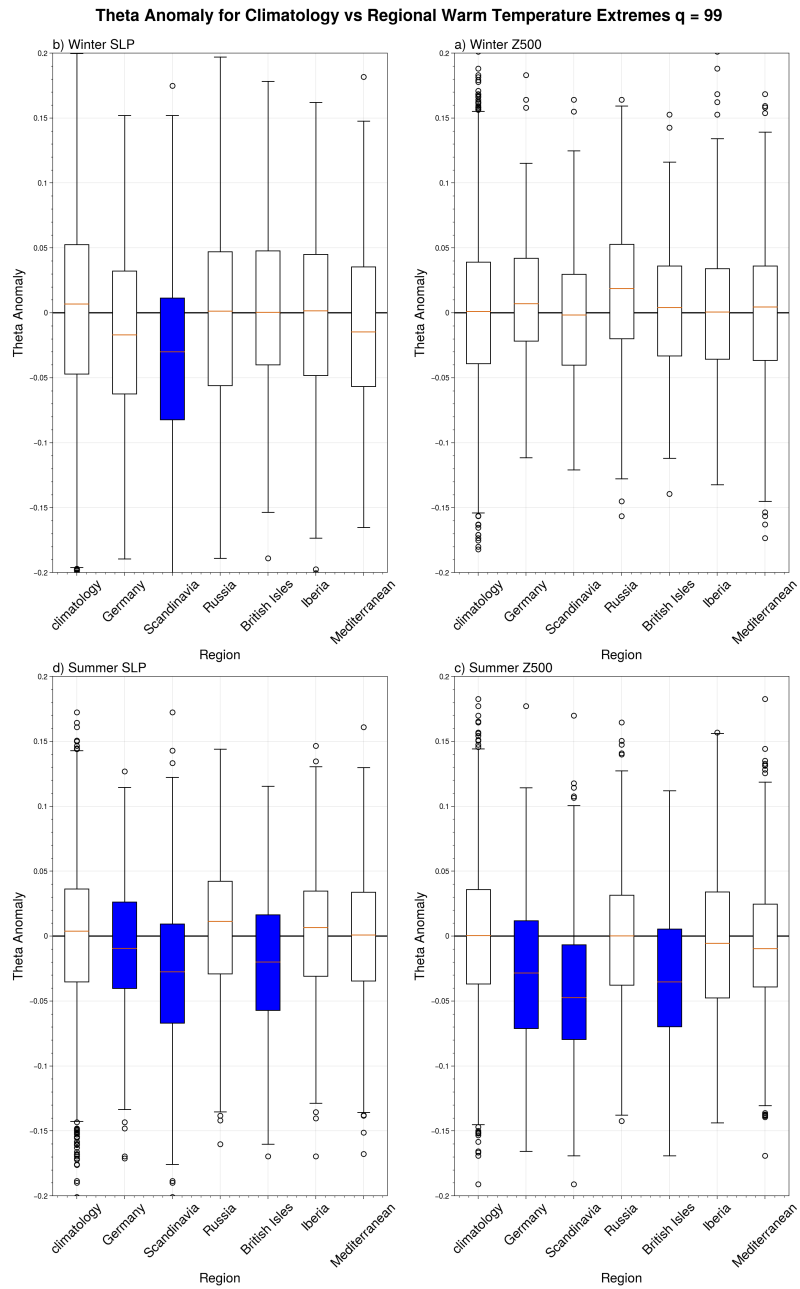


Figure A9. Θ -anomaly box plots for different theta-threshold values, namely as in Fig. 3 but using the 99th-99th percentile of the distribution of $-\log$ distances to define analogues.

SLP Anomaly Warm Temperature Extremes All Days

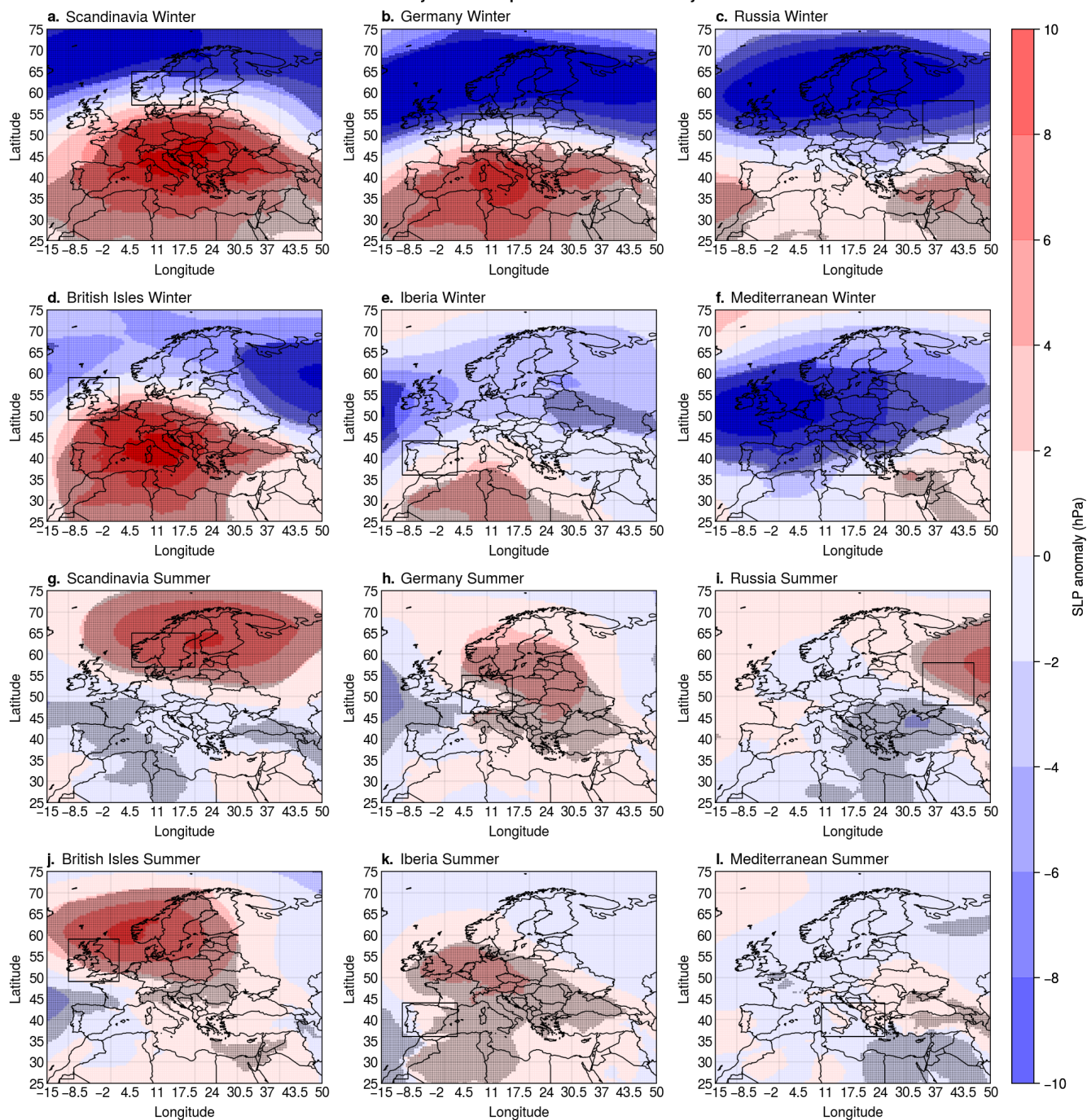


Figure A10. Composite SLP [hPa] anomalies during warm spell/ heatwave days in (a,g) Scandinavia, (b, h) Germany, (c, i) Russia, (d, j) British Isles, (e, k) Iberia, (f, l) Mediterranean, during winter (a-f) and summer (g-l). Statistical significance is assessed as described in Section 2 and shown with grey stippling.

Z500 anomaly variance Warm Temperature Extremes All Days

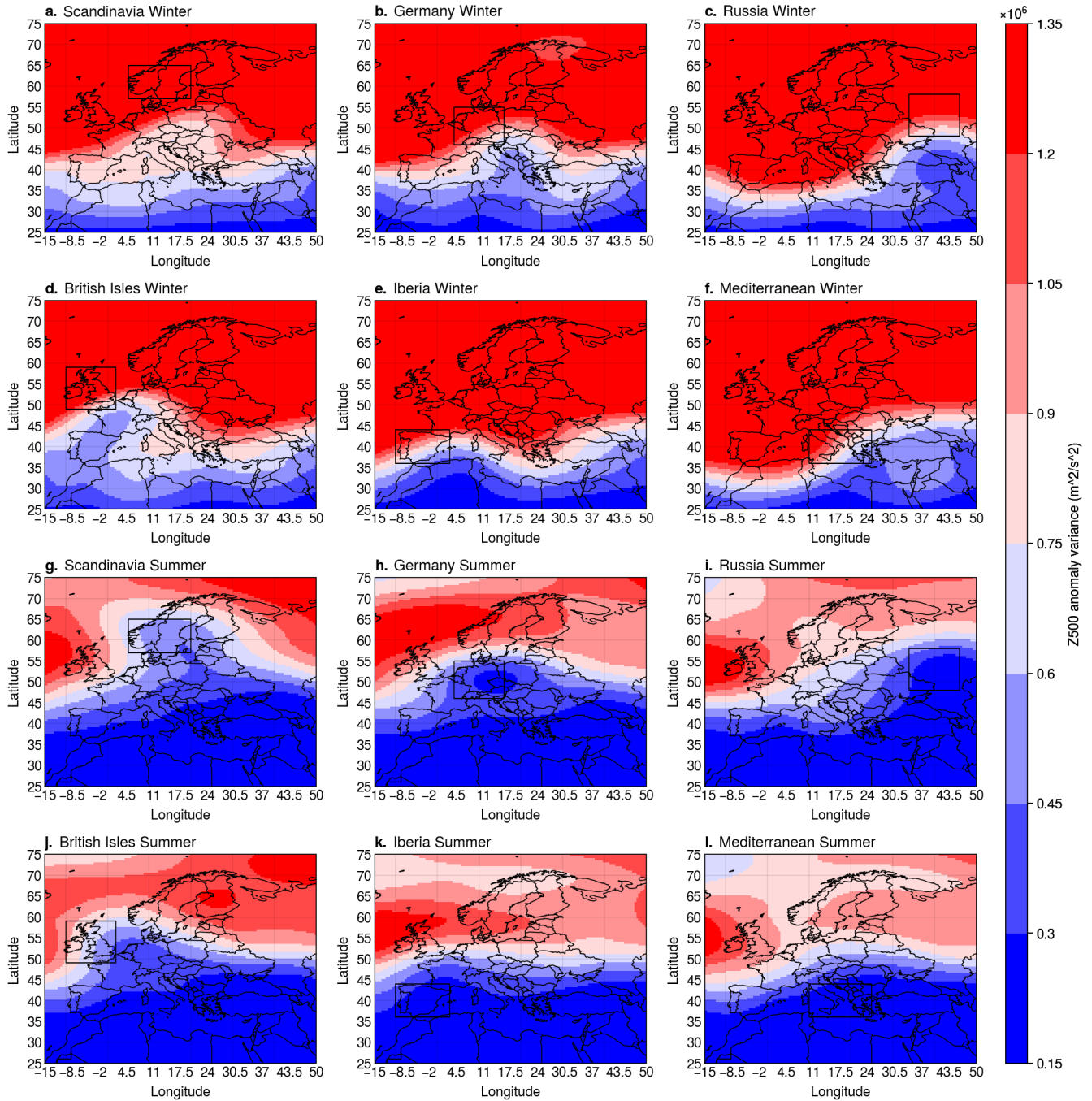


Figure A11. Composite Z500 [$m^4 s^{-4}$] variance during warm spell/ heatwave days in (a,g) Scandinavia, (b, h) Germany, (c, i) Russia, (d, j) British Isles, (e, k) Iberia, (f, l) Mediterranean, during winter (a–f) and summer (g–l).

Z500 heatwave case study Germany

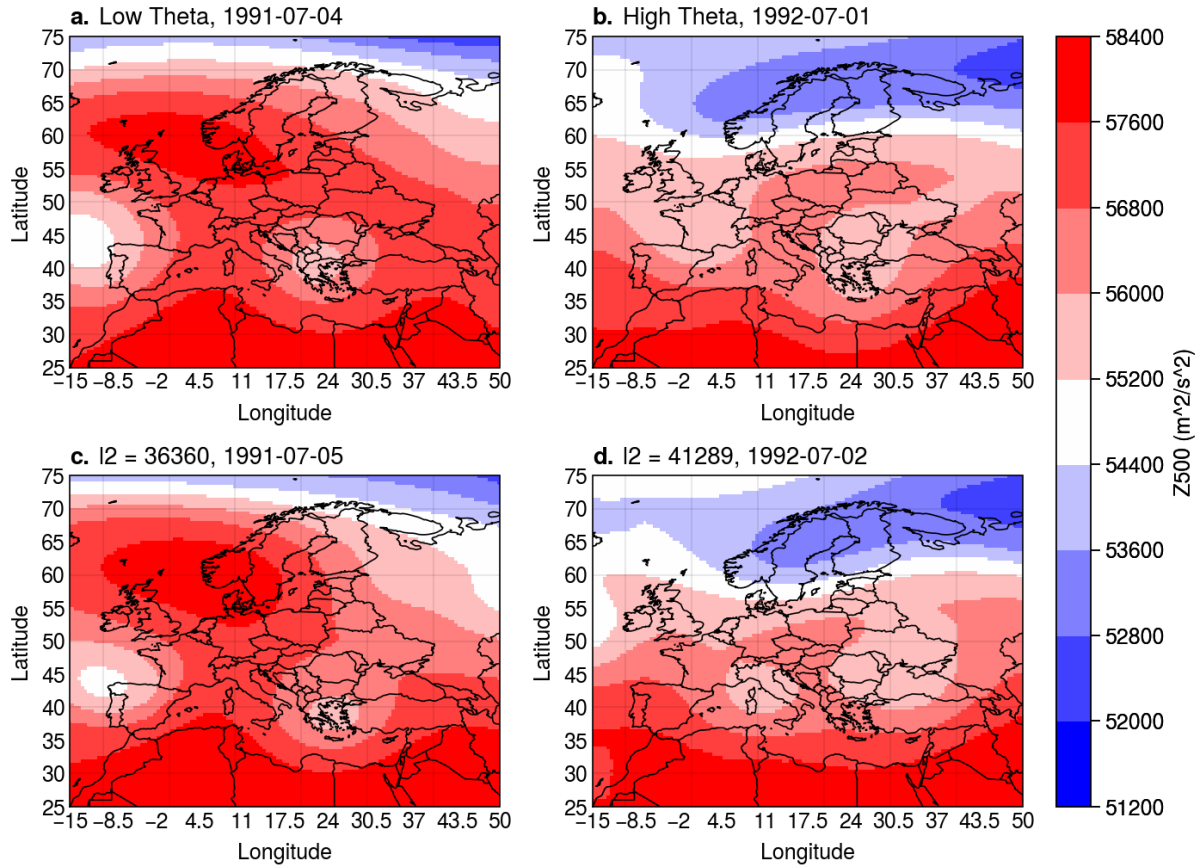


Figure A12. $Z500 [m^2/s^2]$ maps corresponding to the days with some of the highest and lowest θ anomalies within all days which are classified as days where there is a heatwave in the region Germany. Panel titles in (c), (d) show a lead time of 1 days to the respective high and low θ heatwave days, with the values corresponding to the euclidean distance between the initial and 1 day lead SLP maps for each case.

Author contributions. EH and GM designed the study. EH carried out the analysis and drafted the first version of the manuscript. All authors contributed to structuring the analysis and reviewing the manuscript.

Competing interests. One author is a member of the editorial board of this journal, Earth System Dynamics. The peer-review process was guided by an independent editor, and the authors have no other competing interests to declare.

465 *Acknowledgements.* This work was supported by the ~~EU International Training Network (ITN) European weather extremes: drivers, predictability and impacts (EDIPI) project. This project has received funding from the European~~ European Union's Horizon 2020 research and innovation programme under the Marie Skłodowska-Curie grant agreement No. ~~956396~~ 956396 (ITN project EDIPI – European weather extremes: drivers, predictability and impacts).

References

- 470 Adélaïde, L., Chanel, O., and Pascal, M.: Health effects from heat waves in France : an economic evaluation, *The European Journal of Health Economics*, 23, 119–131, <https://doi.org/10.1007/s10198-021-01357-2>, 2021.
- Alvarez-Castro, C., Faranda, D., and Yiou, P.: Atmospheric Dynamics Leading to West European Summer Hot Temperatures since 1851, *Complexity*, 2018, <https://doi.org/10.1155/2018/2494509>, 2018.
- Barnes, E. A. and Hartmann, D. L.: Detection of Rossby wave breaking and its response to shifts of the midlatitude jet with climate change, *Journal of Geophysical Research Atmospheres*, 117, 2467–2481, <https://doi.org/10.1029/2012JD017469>, 2012.
- 475 Bieli, M., Pfahl, S., and Wernli, H.: A lagrangian investigation of hot and cold temperature extremes in europe, *Quarterly Journal of the Royal Meteorological Society*, 141, 98–108, <https://doi.org/10.1002/qj.2339>, 2015.
- Cameron, A. C., Gelbach, J. B., and Miller, D. L.: Bootstrap-Based Improvements for Inference with Clustered Errors, *The Review of Economics and Statistics*, 90, 414–427, <https://doi.org/10.1162/rest.90.3.414>, 2008.
- 480 Cassou, C. and Cattiaux, J.: Disruption of the European climate seasonal clock in a warming world, *Nature Climate Change*, 6, 589–594, <https://doi.org/10.1038/nclimate2969>, 2016.
- Cassou, C., Terray, L., and Phillips, A.: Tropical Atlantic influence on European heat waves, *Journal of Climate*, 18, 2805–2811, <https://doi.org/10.1175/JCLI3506.1>, 2005.
- Christidis, N., Jones, G. S., and Stott, P. A.: Dramatically increasing chance of extremely hot summers since the 2003 European heatwave, *Nature Climate Change*, 5, 46–50, <https://doi.org/10.1038/nclimate2468>, 2015.
- 485 Davini, P., Cagnazzo, C., Gualdi, S., and Navarra, A.: Bidimensional diagnostics, variability, and trends of northern hemisphere blocking, *Journal of Climate*, 25, 6496–6509, <https://doi.org/10.1175/JCLI-D-12-00032.1>, 2012.
- De Bono, A., Giuliani, G., Kluser, S., and Peduzzi, P.: Impacts of summer 2003 heat wave in Europe, *Tech. Rep. March*, 2004.
- de Villiers, M. P.: Europe extreme heat 22–26 July 2019: was it caused by subsidence or advection?, *Weather*, 75, 228–235, <https://doi.org/10.1002/wea.3717>, 2020.
- 490 Domeisen, D. I., Eltahir, E. A., Fischer, E. M., Knutti, R., Perkins-Kirkpatrick, S. E., Schär, C., Seneviratne, S. I., Weisheimer, A., and Wernli, H.: Prediction and projection of heatwaves, *Nature Reviews Earth and Environment*, 4, 36–50, <https://doi.org/10.1038/s43017-022-00371-z>, 2023.
- Drouard, M., Woollings, T., Sexton, D., and McSweeney, C.: Dynamical Differences Between Short and Long Blocks in the Northern Hemisphere, *Journal of Geophysical Research: Atmospheres*, 126, 1–18, <https://doi.org/10.1029/2020JD034082>, 2021.
- 495 Faranda, D., Masato, G., Moloney, N., Sato, Y., Daviaud, F., Dubrulle, B., and Yiou, P.: The switching between zonal and blocked mid-latitude atmospheric circulation: a dynamical system perspective, *Climate Dynamics*, 47, 1587–1599, <https://doi.org/10.1007/s00382-015-2921-6>, 2016.
- Faranda, D., Messori, G., and Yiou, P.: Dynamical proxies of North Atlantic predictability and extremes, *Scientific Reports*, 7, 1–10, <https://doi.org/10.1038/srep41278>, 2017.
- 500 Faranda, D., Messori, G., and Yiou, P.: Diagnosing concurrent drivers of weather extremes: application to warm and cold days in North America, *Climate Dynamics*, 54, 2187–2201, <https://doi.org/10.1007/s00382-019-05106-3>, 2020a.
- Faranda, D., Vrac, M., Yiou, P., Jézéquel, A., and Thao, S.: Changes in Future Synoptic Circulation Patterns: Consequences for Extreme Event Attribution, *Geophysical Research Letters*, 47, e2020GL088002, <https://doi.org/https://doi.org/10.1029/2020GL088002>, e2020GL088002
- 505 10.1029/2020GL088002, 2020b.

- Faranda, D., Messori, G., Jezequel, A., Vrac, M., and Yiou, P.: Atmospheric circulation compounds anthropogenic warming and impacts of climate extremes in Europe, *Proceedings of the National Academy of Sciences of the United States of America*, 120, 1–8, <https://doi.org/10.1073/pnas.2214525120>, 2023.
- 510 Ferro, C. and Segers, J.: Inference for clusters of extreme values, *Journal of the Royal Statistical Society. Series B: Statistical Methodology*, 65, 545–556, <https://doi.org/10.1111/1467-9868.00401>, 2003.
- Fischer, E., Seneviratne, S., Vidale, P., Lüthi, D., and Schär, C.: Soil moisture-atmosphere interactions during the 2003 European summer heat wave, *Journal of Climate*, 20, 5081–5099, <https://doi.org/10.1175/JCLI4288.1>, 2007.
- Fischer, E. M. and Schär, C.: Consistent geographical patterns of changes in high-impact European heatwaves, *Nature Geoscience*, 3, 398–403, <https://doi.org/10.1038/ngeo866>, 2010.
- 515 Forzieri, G., Bianchi, A., Silva, F. B. e., Marin Herrera, M. A., Leblois, A., Lavalle, C., Aerts, J. C., and Feyen, L.: Escalating impacts of climate extremes on critical infrastructures in Europe, *Global Environmental Change*, 48, 97–107, <https://doi.org/10.1016/j.gloenvcha.2017.11.007>, 2018.
- Furberg, M., Evengård, B., and Nilsson, M.: Facing the limit of resilience: perceptions of climate change among reindeer herding Sami in Sweden, *Global Health Action*, 4, 1–11, <https://doi.org/10.3402/gha.v4i0.8417>, PMID: 22043218, 2011.
- 520 Garcia-Herrera, R., Díaz, J., Trigo, R. M., Luterbacher, J., and Fischer, E. M.: A review of the european summer heat wave of 2003, *Critical Reviews in Environmental Science and Technology*, 40, 267–306, <https://doi.org/10.1080/10643380802238137>, 2010.
- Hannachi, A., Straus, D. M., Franzke, C. L., Corti, S., and Woollings, T.: Low-frequency nonlinearity and regime behavior in the Northern Hemisphere extratropical atmosphere, *Reviews of Geophysics*, 55, 199–234, <https://doi.org/10.1002/2015RG000509>, 2017.
- Hersbach, H., Bell, B., Berrisford, P., Hirahara, S., Horányi, A., Muñoz-Sabater, J., Nicolas, J., Peubey, C., Radu, R., Schepers, D., Simons, A., Soci, C., Abdalla, S., Abellan, X., Balsamo, G., Bechtold, P., Biavati, G., Bidlot, J., Bonavita, M., De Chiara, G., Dahlgren, P., Dee, D., Diamantakis, M., Dragani, R., Flemming, J., Forbes, R., Fuentes, M., Geer, A., Haimberger, L., Healy, S., Hogan, R. J., Hólm, E., Janisková, M., Keeley, S., Laloyaux, P., Lopez, P., Lupu, C., Radnoti, G., de Rosnay, P., Rozum, I., Vamborg, F., Villaume, S., and Thépaut, J.-N.: The ERA5 global reanalysis, *Quarterly Journal of the Royal Meteorological Society*, 146, 1999–2049, <https://doi.org/https://doi.org/10.1002/qj.3803>, 2020.
- 525 Hirschi, M., Seneviratne, S. I., Alexandrov, V., Boberg, F., Boroneant, C., Christensen, O. B., Formayer, H., Orłowsky, B., and Stepanek, P.: Observational evidence for soil-moisture impact on hot extremes in southeastern Europe, *Nature Geoscience*, 4, 17–21, <https://doi.org/10.1038/ngeo1032>, 2011.
- Hochman, A., Messori, G., Quinting, J. F., Pinto, J. G., and Grams, C. M.: Do Atlantic-European Weather Regimes Physically Exist?, *Geophysical Research Letters*, 48, e2021GL095574, 2021.
- 535 Jézéquel, A., Yiou, P., and Radanovics, S.: Role of circulation in European heatwaves using flow analogues, *Climate Dynamics*, 50, 1145–1159, <https://doi.org/10.1007/s00382-017-3667-0>, 2018.
- Kornhuber, K., Petoukhov, V., Petri, S., Rahmstorf, S., and Coumou, D.: Evidence for wave resonance as a key mechanism for generating high - amplitude quasi - stationary waves in boreal summer, *Climate Dynamics*, 49, 1961–1979, <https://doi.org/10.1007/s00382-016-3399-6>, 2017.
- 540 Kornhuber, K., Coumou, D., Vogel, E., Lesk, C., Donges, J., Lehmann, J., and Horton, R.: Amplified Rossby waves enhance risk of concurrent heatwaves in major breadbasket regions, *Nature Climate Change*, 10, 48–55, <https://doi.org/10.1038/s41558-019-0637-z>, 2020.
- Ladwig, L. M., Chandler, J. L., Guiden, P. W., and Henn, J. J.: Extreme winter warm event causes exceptionally early bud break for many woody species, *Ecosphere*, 10, e02542, <https://doi.org/https://doi.org/10.1002/ecs2.2542>, 2019.

- Legras, B. and Ghil, M.: Persistent Anomalies, Blocking and Variations in Atmospheric Predictability, *Journal of the Atmospheric Sciences*, 42, 433–471, 1985.
- 545 Lucarini, V. and Gritsun, A.: A new mathematical framework for atmospheric blocking events, *Climate Dynamics*, 54, 575–598, <https://doi.org/10.1007/s00382-019-05018-2>, 2020.
- Lucarini, V., Faranda, D., Freitas, A., Freitas, J., Holland, M., Kuna, T., Nicol, M., Todd, M., and Vaienti, S.: *Extremes and Recurrence in Dynamical Systems*, John Wiley and Sons, Inc., Hoboken, New Jersey, 2016.
- 550 Lupo, A.: Atmospheric blocking events: a review, *Annals of the New York Academy of Sciences*, 1504, 5–24, <https://doi.org/10.1111/nyas.14557>, 2021.
- Masato, G., Hoskins, B. J., and Woollings, T. J.: Wave-breaking characteristics of midlatitude blocking, *Quarterly Journal of the Royal Meteorological Society*, 138, 1285–1296, <https://doi.org/10.1002/qj.990>, 2012.
- Messori, G., Caballero, R., and Faranda, D.: A dynamical systems approach to studying midlatitude weather extremes, *Geophysical Research Letters*, 44, 3346–3354, <https://doi.org/10.1002/2017GL072879>, 2017.
- 555 Michelangeli, P., Vautard, R., and Legras, B.: Weather Regimes: Recurrence and Quasi Stationarity, *Journal of the Atmospheric Sciences*, 52, 1237–1256, 1995.
- Miralles, D., Teuling, A., Van Heerwaarden, C. C., and Vilà Guerau De Arellano, J.: Mega-heatwave temperatures due to combined soil desiccation and atmospheric heat accumulation, *Nature Geoscience*, 7, 345–349, <https://doi.org/10.1038/ngeo2141>, 2014.
- 560 Mo, K. and Ghil, M.: Statistics and Dynamics of Persistent Anomalies, *Journal of Atmospheric Sciences*, 44, 877–901, 1987.
- Moloney, N., Faranda, D., and Sato, Y.: An overview of the extremal index, *Chaos*, 29, 1–11, <https://doi.org/10.1063/1.5079656>, 2019.
- Muthers, S., Laschewski, G., and Matzarakis, A.: The summers 2003 and 2015 in South-West Germany: Heat waves and heat-related mortality in the context of climate change, *Atmosphere*, 8, 1–13, <https://doi.org/10.3390/atmos8110224>, 2017.
- Ouzeau, G., Soubeyroux, J., Schneider, M., Vautard, R., and Planton, S.: Heat waves analysis over France in present and future climate : Application of a new method on the EURO-CORDEX ensemble, *Climate Services*, 4, 1–12, <https://doi.org/10.1016/j.cliser.2016.09.002>, 2016.
- 565 Pelly, J. and Hoskins, B.: A new perspective on blocking, *Journal of the Atmospheric Sciences*, 60, 743–755, [https://doi.org/10.1175/1520-0469\(2003\)060<0743:ANPOB>2.0.CO;2](https://doi.org/10.1175/1520-0469(2003)060<0743:ANPOB>2.0.CO;2), 2003.
- Perkins-Kirkpatrick, S. and Gibson, P.: Changes in regional heatwave characteristics as a function of increasing global temperature, *Scientific Reports*, 7, 1–12, <https://doi.org/10.1038/s41598-017-12520-2>, 2017.
- 570 Petoukhov, V., Rahmstorf, S., Petri, S., and Joachim, H.: Quasiresonant amplification of planetary waves and recent Northern Hemisphere weather extremes, *PNAS*, 110, 5336–5341, <https://doi.org/10.1073/pnas.1222000110>, 2013.
- Pfahl, S.: Characterising the relationship between weather extremes in Europe and synoptic circulation features, *Natural Hazards and Earth System Sciences*, 14, 1461–1475, <https://doi.org/10.5194/nhess-14-1461-2014>, 2014.
- 575 Pfahl, S., Schwierz, C., Croci-Maspoli, M., Grams, C. M., and Wernli, H.: Importance of latent heat release in ascending air streams for atmospheric blocking, *Nature Geoscience*, 8, 610–614, 2015.
- Quesada, B., Vautard, R., Yiou, P., Hirschi, M., and Seneviratne, S.: Asymmetric European summer heat predictability from wet and dry southern winters and springs, *Nature Climate Change*, 2, 736–741, <https://doi.org/10.1038/nclimate1536>, 2012.
- Robin, Y.: CDSK (Chaotic Dynamical System Kit), <https://github.com/yrobink/CDSK>, 2021.
- 580 Röthlisberger, M. and Papritz, L.: Quantifying the physical processes leading to atmospheric hot extremes at a global scale, *Nature Geoscience*, 16, <https://doi.org/10.1038/s41561-023-01126-1>, 2023.

- Rousi, E., Kornhuber, K., Beobide-Arsuaga, G., Fei, L., and Coumou, D.: Accelerated western European heatwave trends linked to more-persistent double jets over Eurasia, *Nature Communications*, 3851, 1–11, <https://doi.org/10.1038/s41467-022-31432-y>, 2022.
- Schaller, N., Sillmann, J., Anstey, J., Fischer, E., Grams, C., and Russo, S.: Influence of blocking on Northern European and Western Russian
585 heatwaves in large climate model ensembles, *Environmental Research Letters*, 13, 1–8, <https://doi.org/10.1088/1748-9326/aaba55>, 2018.
- Schwierz, C., Croci-Maspoli, M., and Davies, H.: Perspicacious indicators of atmospheric blocking, *Geophysical Research Letters*, 31, 1–4, <https://doi.org/10.1029/2003gl019341>, 2004.
- Seneviratne, S., Nicholls, N., Easterling, D., Goodess, C., Kanae, S., Kossin, J., Luo, Y., Marengo, J., Mc Innes, K., Rahimi, M., Reichstein, M., Sorteberg, A., Vera, C., and Zhang, X.: Changes in climate extremes and their impacts on the natural physical environment, Tech. rep.,
590 Cambridge University Press, Cambridge, UK and New York, NY, USA, <https://doi.org/10.1017/CBO9781139177245.006>, 2012.
- Seneviratne, S., Donat, M., Mueller, B., and Alexander, L.: No pause in the increase of hot temperature extremes, *Nature Climate Change*, 4, 161–163, <https://doi.org/10.1038/nclimate2145>, 2014.
- Shutts, G.: The propagation of eddies in diffluent jetstreams: Eddy vorticity forcing of ‘blocking’ flow fields, *Quarterly Journal of the Royal Meteorological Society*, 109, 737–761, 1983.
- 595 Slonosky, V. and Yiou, P.: Does the NAO index represent zonal flow? The influence of the NAO on North Atlantic surface temperature, *Climate Dynamics*, 19, 17–30, <https://doi.org/10.1007/s00382-001-0211-y>, 2002.
- Sousa, P., Barriopedro, D., García-Herrera, R., Woollings, T., and Trigo, R.: A new combined detection algorithm for blocking and subtropical ridges, *Journal of Climate*, 34, 7735–7758, <https://doi.org/10.1175/jcli-d-20-0658.1>, 2021.
- Süveges, M.: Likelihood estimation of the extremal index, *Extremes*, 10, 41–55, <https://doi.org/10.1007/s10687-007-0034-2>, 2007.
- 600 Tibaldi, S. and Molteni, F.: Dynamic Meteorology and Oceanography On the operational predictability of blocking, *Tellus A: Dynamic Meteorology and Oceanography*, 42, 343–365, <https://doi.org/10.3402/tellusa.v42i3.11882>, 1990.
- Vihma, T., Graversen, R., Chen, L., Handorf, D., Skific, N., Francis, J. A., Tyrrell, N., Hall, R., Hanna, E., Uotila, P., Dethloff, K., Karpechko, A. Y., Björnsson, H., and Overland, J. E.: Effects of the tropospheric large-scale circulation on European winter temperatures during the period of amplified Arctic warming, *International Journal of Climatology*, 40, 509–529, <https://doi.org/10.1002/joc.6225>, 2020.
- 605 Wilks, D. S.: “The Stippling Shows Statistically Significant Grid Points”, *Bulletin of the American Meteorological Society*, 97, 2263–2274, <https://doi.org/10.1175/BAMS-D-15-00267.1>, 2016.
- Zschenderlein, P., Fink, A., Pfahl, S., and Wernli, H.: Processes determining heat waves across different European climates, *Quarterly Journal of the Royal Meteorological Society*, 145, 2973–2989, <https://doi.org/10.1002/qj.3599>, 2019.