

# Past and future response of the North Atlantic warming hole to anthropogenic forcing

Saïd Qasmi

CNRM, Université de Toulouse, Météo-France, CNRS, Toulouse, France

**Correspondence:** Saïd Qasmi (said.qasmi@meteo.fr)

## Abstract.

Most of the North Atlantic ocean has warmed over the last decades, except a region located over the subpolar gyre, known as the North Atlantic warming hole, where sea surface temperature (SST) has in contrast decreased. Previous assessments have attributed part of this cooling to the anthropogenic forcings (aerosols and greenhouse gases) modulated by decadal internal variability. Here I use an innovative and proven statistical method which combines climate models and observations to confirm the anthropogenic role in the **cooling of the warming hole. The impact of the aerosols is an increase in SST which is opposed to the effect of GHGs. The latter largely contribute to the cooling of the warming hole over the historical period. Yet, large uncertainties remain in the quantification of the impact of each anthropogenic forcing. The statistical method is able to reduce the model uncertainty in SST over the warming hole, both over the historical and future periods** with a decrease of 65% in the short term, up to 50% in the long term. A model evaluation validates the reliability of the obtained projections. In particular, the projections associated with a strong temperature increase over the warming hole are now excluded from the likely range obtained after applying the method.

## 1 Introduction

The increase of global surface air temperature over the 1850-2021 period is unequivocally attributed to human activities (Lee et al., 2021). This increase is spatially heterogeneous, with some regions warming less rapidly than others, or even cooling. Noticeably, sea surface temperature (SST) over the so-called North Atlantic “warming hole” (hereafter WH) region, which is located over the subpolar gyre, has decreased over the 1901-2021 period relative to the 1870-1900 period (Gutiérrez et al., 2021). This long-term decrease is often associated with modifications in the meridional transport of oceanic heat content in the North Atlantic (Gervais et al., 2018; Hu and Fedorov, 2020), **and with** a slowing down of the Atlantic Meridional Overturning Circulation (AMOC) (Rahmstorf et al., 2015; Caesar et al., 2018). **Melting of the Arctic sea ice and the Greenland ice cap may has contributed to this cooling (Allan and Allan, 2019; Gervais et al., 2018; Keil et al., 2020; Liu et al., 2019), but atmospheric** processes have also been proposed (Li et al., 2022; Keil et al., 2020). Although internal variability strongly influences interannual to decadal variability in the North Atlantic SST (Robson et al., 2016; Hodson et al., 2014; Moffa-Sánchez et al., 2019), several detection and attribution studies indicate a contribution of anthropogenic greenhouse gases (GHG) to explain the long-term cooling of the **warming hole** over the historical period (Chemke et al., 2020; Dagan et al.,

2020). Concomitantly, natural and especially anthropogenic aerosols may have played a role in shaping the temporal evolution of the **SST over this region** (Booth et al., 2012; Fiedler and Putrasahan, 2021), by delaying the **cooling of the warming hole** through an acceleration of the AMOC **leading to** a warming of the **subpolar region** (Dagan et al., 2020; Menary et al., 2020). Climate projections from the fifth Coupled Model Intercomparison Project (CMIP5) and from CMIP6 (Eyring et al., 2016) corroborate the contribution of GHGs, with some models projecting an enhanced cooling **of the warming hole** (Dagan et al., 2020; Sigmond et al., 2020; Marshall et al., 2015), but with large uncertainties in the spatio-temporal structure and intensity of the cooling (Menary and Wood, 2018; Bellomo et al., 2021). Given the potential impact of the North Atlantic SSTs on the North hemisphere climate (Qasmi et al., 2021; Ren and Liu, 2021; Gervais et al., 2019, 2020; Karnauskas et al., 2021), it is important to investigate to what extent it is possible to reduce the uncertainty in the SST projections over the **warming hole**.

35 So far, the impact of external forcings and internal variability on the observed **warming hole** over the historical period has been qualitatively estimated by using dedicated sensitivity model experiments (Sigmond et al., 2020) or initial-condition large ensembles (Dagan et al., 2020). **Regardless of the various mechanisms that have been suggested to explain the warming hole, few studies have attempted to quantify in a strictly statistical sense the anthropogenic contribution to changes in SST over the historical period over this region.** A recent detection and attribution study based on a statistical method derived from optimal fingerprinting provides a quantitative statement regarding an anthropogenic signal in the SST time series **over the warming hole** (Chemke et al., 2020), but without quantifying the influence of each external forcing. In this paper, **In this paper**, I estimate (i) the contribution of each of the main external forcings in the evolution of the observed **warming hole** over the historical period, and (ii) the uncertainty on the evolution of the **SST** response to external forcings (hereafter forced response) both over the historical and future periods. These estimates come from the Kriging for Climate Change (**hereafter** 45 **KCC**) method, an innovative and proven statistical method, which combines observations and climate models. **These different estimates are not based on any mechanistic assumptions or physical processes, and are based solely on the SST averaged over the warming hole.**

## 2 Data and Methods

### 2.1 Observations

50 SST observations from the HadSST4 data set (Kennedy et al., 2019) are used. These observations have the advantage of providing an estimate of the measurement uncertainty, which encompasses the treatment of incomplete data coverage, homogenization uncertainty etc. through an ensemble of 200 equiprobable realisations over the 1870-2021 period. Compared to other datasets, this ensemble allows a more comprehensive estimation of the measurement error with the possibility of calculating the temporal covariance of uncertainty with the 200 members. Note that I do not consider other datasets because they usually 55 fall within the uncertainty of HadSST4. The median of the 200-member ensemble will be considered as the best-estimate, while all realisations are used to estimate the measurement uncertainty. Observations of global surface air temperature (GSAT) used by the KCC method are taken from the HadCRUT5 ensemble of 200 members (Morice et al., 2021).

## 2.2 Climate Models

Historical and ScenarioMIP simulations from the CMIP6 ensemble (Eyring et al., 2016; O'Neill et al., 2016) are used to estimate the forced response of temperature to all external forcings over the 1850-2100 period (the 3 scenarios SSP1-2.6, SSP2-4.5 and SSP5-8.5 are used). The contribution of each external forcing during the 1850-2020 period is estimated from the DAMIP ensemble (Gillett et al., 2016), especially from the hist-GHG and hist-AER simulations, in which GHGs and anthropogenic aerosols follow their historical concentrations, respectively, while other forcings are kept constant. The list of the models, the simulations used, and the number of members is provided in Table A1. A particular feature of some of the CMIP6 models, on which the sixth assessment report (AR6) from the IPCC is based, is their high equilibrium climate sensitivities (ECS) (Lee et al., 2021). In the AR6, ECS and GSAT projections from the CMIP6 ensemble have been assessed by using statistical methods (including the one used in this study) and observations to provide GSAT estimates consistent with the observational record (Ribes et al., 2021). The statistical method used here takes these likely estimates of ECS and GSAT future ranges results into account, by including an observational constraint based on both GSAT and SST over the WH region.

## 2.3 Statistical method

To assess past and future forced response of the **warming hole**, I use **the KCC** observational constraint method that has been previously applied to global mean warming (Ribes et al., 2021) and regional warming (Qasmi and Ribes, 2022; Ribes et al., 2022). This technique works in 3 steps. First, the forced response of each climate model is estimated over the historical period. In order to also get attribution statements, the responses to ALL (all external forcings), NAT (natural forcings only) and anthropogenic GHG forcings are estimated separately. Second, the sample (or the probability distribution) of the forced responses from the CMIP6 models is used as a prior of the real-world forced response. This is done assuming that "models are statistically indistinguishable from the truth". Third, observations are used to derive a posterior distribution of the past and future forced response given observations, in a Bayesian way. The procedure can be summarized using the following equations:

$$\mathbf{y} = \mathbf{H}\mathbf{x} + \boldsymbol{\epsilon}, \quad (1)$$

where  $\mathbf{y}$  is the time-series of observations (a vector) **over the observed period**,  $\mathbf{x}$  is the time-series of the forced response (a vector) **over the historical and projected periods**,  $\mathbf{H}$  is an observational operator (matrix),  $\boldsymbol{\epsilon}$  is the random noise associated with internal variability and measurement errors (a vector), and  $\boldsymbol{\epsilon} \sim \mathcal{N}(0, \boldsymbol{\Sigma}_y)$ , where  $\mathcal{N}$  stands for the multivariate Gaussian distribution. The observational operator  $\mathbf{H}$  is a matrix which extracts the components of  $\mathbf{x}$  that are observed in  $\mathbf{y}$ , thus all  $\mathbf{H}$  coefficients are equal to 0 or 1 (see Eq. (B1) and Appendix B). Climate models are used to construct a prior on  $\mathbf{x}$ :  $\Pi(\mathbf{x}) = \mathcal{N}(\boldsymbol{\mu}_x, \boldsymbol{\Sigma}_x)$ . Then the posterior distribution given observations  $\mathbf{y}$  can be derived as  $p(\mathbf{x}|\mathbf{y}) = \mathcal{N}(\boldsymbol{\mu}_p, \boldsymbol{\Sigma}_p)$ . In the following, I am interested in assessing the forced response of annual mean SST over the **warming hole** (projections), as well as the annual mean response to specific subsets of forcings (attribution) **over the historical period**. These forced responses could be constrained by various observations. Here, I consider constraints by both GSAT observations and regional annual mean SST averaged over the **warming hole** – the rationale behind this choice is discussed below. Therefore,

$$90 \quad \mathbf{x} = (\mathbf{T}_{\text{glo}}^{\text{all}}, \mathbf{T}_{\text{reg}}^{\text{all}}, \mathbf{T}_{\text{reg}}^{\text{ghg}}, \mathbf{T}_{\text{reg}}^{\text{nat}}), \quad (2)$$

where each element is the annual forced response over the 1850–2100 period (except  $\mathbf{T}_{\text{reg}}^{\text{ghg}}$  which only covers 1850–2020).  $T$  stands for temperature, “all”, “ghg” or “nat” are the subsets of external forcings considered, “glo” and “reg” refer to GSAT and regional SST, respectively. The length of  $\mathbf{x}$  is thus  $n_x = 924$ . Similarly,

$$\mathbf{y} = (\mathbf{T}_{\text{glo}}^{\text{obs}}, \mathbf{T}_{\text{reg}}^{\text{obs}}), \quad (3)$$

95 i.e., only observed time-series are used in  $\mathbf{y}$ . The length of these time-series varies: 1850-2021 for GSAT, 1870-2021 for the **regional SST**. As a result,  $\mathbf{y}$  has a length of  $n_y = 322$ . All attribution or projection diagnoses presented below can be derived from the posterior distribution  $p(\mathbf{x}|\mathbf{y})$ . Accounting for GSAT is important because various recent studies argued that the observational constraint on this variable is robust (eg, to the choice of the statistical method), with the high-end of simulated GSAT model responses not consistent with observed GSAT changes (Lee et al. (2021), and references therein). As there is a  
100 some dependence (between CMIP models) between future GSAT changes and regional changes over most regions including the **warming hole**, a reduced GSAT response is expected to imply a reduced regional warming. This is confirmed by **Qasmi and Ribes (2022)**, who found that accounting for the global constraint clearly improves the accuracy of regional projections. Accounting for regional observations is also relevant, especially over regions where long observational records are available and the climate change signal has already emerged. **Qasmi and Ribes (2022)** also report a significant added-value in doing  
105 so. The data to be included in the observational constraint represent a key element of the proposed method which is further discussed.

Implementing this methodology requires to compute the values of  $\mu_x$ ,  $\Sigma_x$ , and  $\Sigma_y$ . Following **Qasmi and Ribes (2022)**,  $\mu_x$  and  $\Sigma_x$  are estimated as the sample mean and covariance of the CMIP6 model forced responses. **For each CMIP6 model considered, the forced response of each element of  $x$  is estimated (the forced response in GSAT, in SST over the warming hole, and also the response to specific forcings, i.e. NAT-only or GHG-only, see Eq. 2 and Appendix C). All available members are used to make this calculation. As a result,  $x$  is built from a sample of  $N_{\text{mod}}$  estimates – 1 for each model ( $N_{\text{mod}} = 12$  for the DAMIP ensemble, or  $N_{\text{mod}} = 27$  for the full CMIP6 ensemble).**  $\Sigma_y$  requires statistical modelling of internal variability and measurement uncertainty. HadSST4 and HadCRUT5 ensembles are to estimate measurement uncertainty. For internal variability within the GSAT and **regional SST** time series, I follow **Qasmi and Ribes (2022)** in using a mixture  
115 of Auto-Regressive processes of order 1 (MAR). This model allows to capture interannual to decadal internal variations within the observed time series. In order to assess internal variability, a usual technique is to consider the residuals of the difference between the CMIP6 multimodel mean (the forced response estimate) and the observation time series. However, these residuals are likely biased at the regional scale as the forced response estimated by the multimodel mean is not necessarily consistent with the observations. Instead, in order to obtain a robust estimate of the internal variability, an iterative algorithm is applied so  
120 that internal variability before and after the constraint remains consistent with the forced response (see Eq. D3). In addition, the

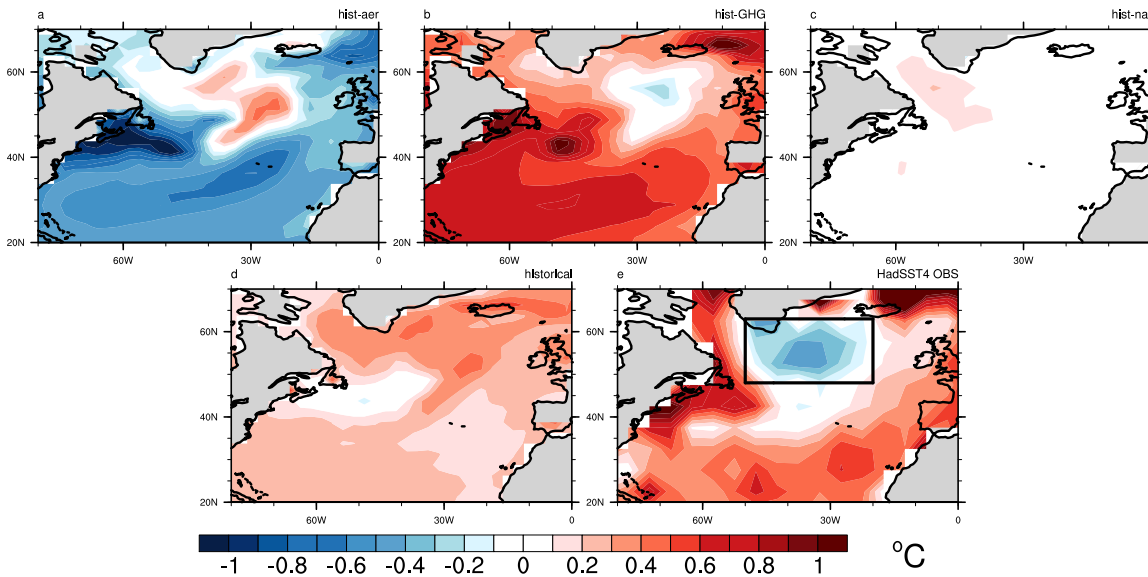
**dependence** between global and regional internal variability is taken into account by accounting for the covariance between the regional vs global residuals in the MAR modelling. Further details and discussion about the structure of  $\mathbf{H}$ , the estimation of the inputs parameters  $\Sigma_x$  and  $\Sigma_y$ , are provided in the Appendices.

### 3 Results and discussion

#### 125 3.1 Attribution of the observed warming hole

Historical simulations and single-forcing experiments from the DAMIP ensemble give a first characterization of the **warming hole** and an estimate of the contribution of each external forcing. Over the 1951-2014 period, anthropogenic aerosols have contributed to warm the subpolar gyre, with a mean increase of  $+0.5^\circ\text{C}$  (Fig. 1a) compared to the 1870-1900 period. Concomitantly, the effect of the GHGs is a cooling over the same region, with a mean decrease of about  $-0.2^\circ\text{C}$  (Fig. 1b).  
130 Note that similar anomaly patterns are obtained when using the pre-industrial control simulations as a reference (Fig. S1). These anomalies support the conclusions of several studies (Chemke et al., 2020; Marshall et al., 2015) and may reflect the signature of a modification of the oceanic heat transport (Dagan et al., 2020), rather than a direct radiative impact from the aerosols (via a parasol effect) or from the GHGs (warming the surface). The impact of the natural forcings on SST is weak in the models, with a slight warming over the Labrador Sea (Fig. 1c). Historical simulations from models which have contributed  
135 to the DAMIP ensemble show a partial compensation of the effects induced by anthropogenic aerosols and GHGs, resulting in a warming over the subpolar gyre and a slight cooling over the Gulf Stream region (Fig. 1d). A similar pattern is found when historical simulations from all CMIP6 models are considered (Fig. S2). This result from the historical simulations is not consistent with the observations, which indicate a  $-0.4^\circ\text{C}$  cooling over a large area of the subpolar gyre (Fig. 1e) and resembles more closely the GHG multi-model mean. This difference between historical simulations and observations could be explained  
140 by non-exclusive factors : (i) biases in the simulation of the physical processes driving the SST variability over the subpolar gyre, (ii) an overestimated impact of aerosols in the models, as pointed out by some studies, (iii) an underestimated impact of GHGs, (iv) internal variability. In any case, the CMIP6 multi-model mean does not reflect the diversity of the SST variability in the North Atlantic since the location and the intensity of the anomalies over the historical period varies considerably in this ensemble (Fig. S3), a feature also existing in previous generations of models (Ba et al., 2014; Menary and Wood, 2018).

## Average over 1951-2014 wrt 1870-1900

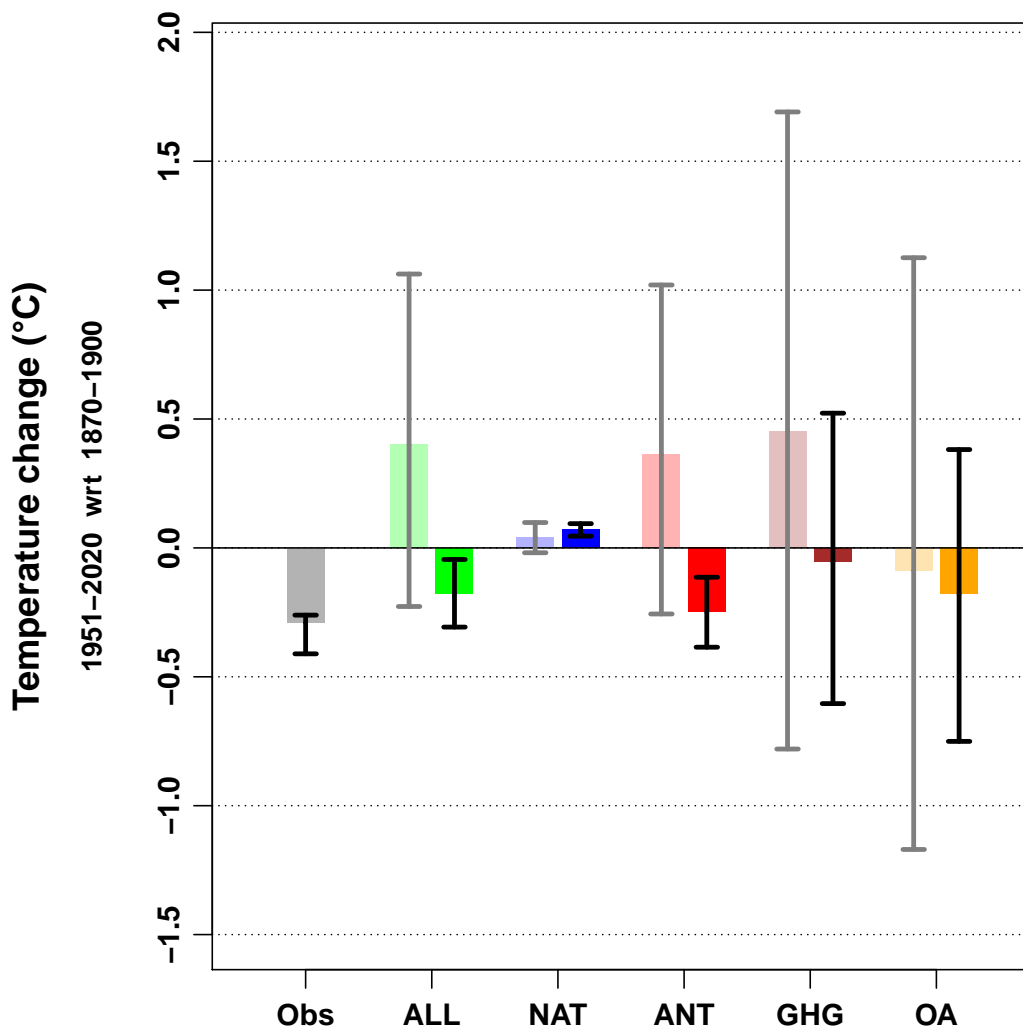


**Figure 1.** (a) Annual SST multi-model mean difference between the 1951-2014 and 1870-1900 periods for the CMIP6 hist-aer simulations. (b) Same as (a) but for hist-GHG. (c) Same as (a) but hist-nat. (d) Same as (a) but for historical. (e) HadSST4 SST annual anomalies over the 1951-2014 period relative to the 1870-1900 period.

145 The combination of CMIP6 models and observations via the KCC statistical method provides estimates of the SST forced responses to different external forcings with uncertainties that are consistent with the available observations and internal variability. Here, I apply the KCC method to the DAMIP ensemble by using **the observed SST annual time series over the warming hole**, defined as the spatial average over  $48^{\circ}\text{N};63^{\circ}\text{N}$  and  $-50^{\circ}\text{W};-20^{\circ}\text{W}$  (see black domain in Fig. 1e), **over the 1870-2021 period**. As a first step, this domain is common to all models.

150 Figure 2 shows the attribution results over the 1951-2020 period compared to the 1870-1900 period. The contribution of all external (ALL) forcings is a cooling of the **warming hole**, with a best estimate of  $-0.14 \pm 0.12^{\circ}\text{C}$ , which is half of the observed cooling ( $-0.3 \pm 0.12^{\circ}\text{C}$ ). The constrained ALL response is opposite in sign to the unconstrained response from the CMIP6 ensemble, which indicates an underestimation of the cooling, consistent with Fig. 1d. The uncertainty in the ALL response is reduced by about 70% compared to the unconstrained response. The contributions from natural (NAT) and anthropogenic (ANT) forcings (contributing to ALL) are examined. The response due to natural NAT forcings has a very small contribution, with a slight warming of  $+0.06 \pm 0.02^{\circ}\text{C}$ . Note that this estimate is consistent with the hist-nat simulations. The major contribution of the ALL-induced cooling comes from the ANT component, with a cooling of  $-0.24 \pm 0.12^{\circ}\text{C}$  and a reduction of 70% in the uncertainty, which now excludes positive values. This decrease in uncertainty is almost equally distributed between the GHG response and the response to other anthropogenic (OA, **which includes** aerosols, ozone...) forcings, with a  
 155  
 160 decrease in uncertainty of about 65% in both components. Note that the unconstrained OA response (estimated as the ANT minus GHG difference) is consistent with the hist-aer ensemble (Fig. S4). As the uncertainty in the constrained GHG and OA

terms is still sampling both positive and negative values, it is not possible to provide a clear contribution of these forcings over the historical period.



**Figure 2.** Changes induced by various subsets of external forcings over the historical period [1951–2020 with respect to (wrt) 1870–1900] **over the warming hole**. Observed (Obs) changes (gray, left) are deduced from HadSST4 observations; uncertainty only includes observational uncertainty (i.e., measurement and processing; internal variability is ignored). For all other contributions, the left handside bar and gray confidence interval describe the DAMIP model range, assuming a Gaussian distribution. The right handside bar and black confidence interval correspond to results constrained by observations. All ranges shown are 5 to 95% confidence ranges. The SSP2-4.5 scenario is used to extend historical simulations after 2014.

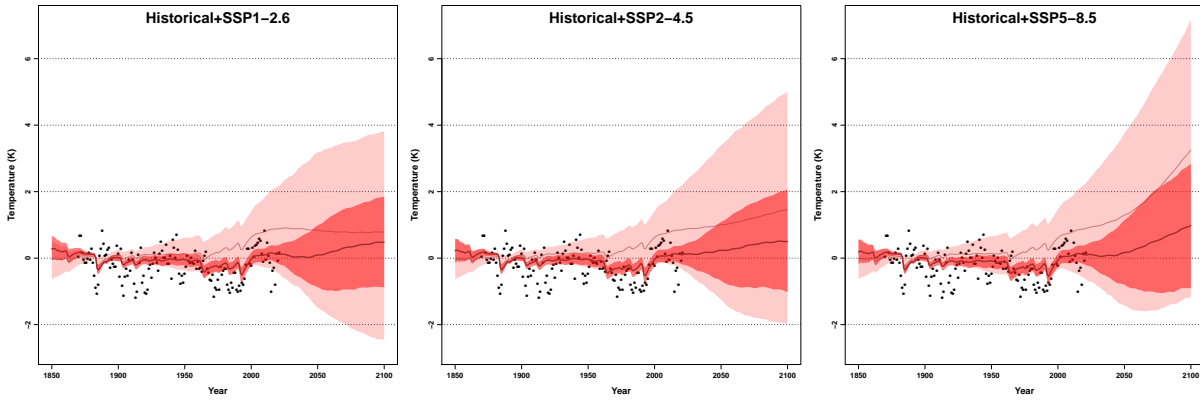
The sensitivity of these attribution results to methodological factors is quantified by considering several aspects. First, to  
165 take into account the diversity of the CMIP6 models in the spatial structure of the simulated **warming hole, the SST spatial  
average** is defined for each model over a specific domain, to ensure a consistent comparison with observations. As done by  
Menary and Wood (2018), **in each model, the warming hole** is based on a domain where a noticeable warming over the  
subpolar gyre in the hist-aer simulations is colocated with a non-warming (or cooling) area in the hist-GHG simulation over  
the 1951-2021 period (see black boxes in figures S5-S6). Note that this ad hoc selection is relevant since for all models, the  
170 anomalies are co-located with the climatology estimated from the piControl simulations for most models (Fig. S7). Figure S8  
shows that considering this adaptive definition of the **warming hole** changes the best-estimate values of the GHG and OA  
response **compared to Fig. 2 with refined estimations. The impact of the aerosols is an increase in SST which is opposed  
to the effect of GHGs. The latter largely contribute to the cooling of the warming hole**, with an uncertainty **almost reduced  
by half**.

175 The second sensitivity test is to consider the full set of CMIP6 models available to estimate the forced responses, such that a  
sample of 27 models is considered instead of the only 12 models that contributed to the DAMIP ensemble, **which may under-  
sample internal variability and model uncertainty**. Using the KCC method, hist-GHG-like simulations for the models that  
did not contribute to the DAMIP ensemble are reconstructed through the 1%-CO<sub>2</sub> simulations (in which the CO<sub>2</sub> concentration  
increases by 1% each year for 150 years), as done by Ribes et al. (2021) (see their Supplementary Material 1.4). The inclusion  
180 of all CMIP6 models slightly **affect** the uncertainty ranges, but does not change the main conclusions about the attribution of  
the observed **cooling of the warming hole** (Fig. S9).

### 3.2 Constraining projections

The KCC method is also used to constrain the SST projections associated with the CMIP6 SSPs simulations over the **warming  
hole**. Since DAMIP simulations are not required to perform the calculations based only on the ALL component, all available  
185 CMIP6 models are used to estimate the past and future forced responses, using a fixed **warmig hole** domain as in Fig. 2. Figure  
3 shows that the uncertainty in the three selected scenarios is reduced by 65% for a mid-time period (2041-2060), and by 50%  
at the end of the 21st century compared to the unconstrained projections. The lower bound of the projections distributions is  
less affected than the upper bound. For example, in 2100 for the SSP2-4.5 simulation, the constrained lower bound of -0.76°C  
is revised upwards compared to the unconstrained bound (-2.08°C), while the upper bound is revised downwards considerably  
190 (+2.34°C and +4.59°C for the constrained and unconstrained values, respectively). Consequently, trajectories associated with  
a very strong warming of the **warming hole** are excluded from the posterior distribution (i.e. after the constraint). Note that  
this posterior distribution over the projected period largely surrounds the 0°C value. This indicates that even if a considerable  
warming of the **warming hole** is less likely in the future, projections remain uncertain about the sign relative to the future SST  
changes.





**Figure 3.** The observational constraint is applied to concatenated historical and SSP scenarios simulations (SSP1-2.6, SSP2-4.5, or SSP5-8.5). Annually observed values of SST **over the warming hole** (black points) are compared to the unconstrained (pink) and constrained (red) 5 to 95% confidence ranges of forced response as estimated from 27 CMIP6 models. All temperatures are anomalies with respect to the period 1870–1900.

195 In order to evaluate the confidence these results, the KCC method is applied within a perfect model framework, following a leave-one-out cross-validation:

- for a given model, a single member is considered as pseudo-observations  $\mathbf{y}$  over the 1850–2021 period (the historical simulation is extended by the SSP2-4.5 simulation over the 2015-2021 period).
- the other 26 models are used to derive the prior distribution  $\Pi(\mathbf{x}) \sim \mathcal{N}(\boldsymbol{\mu}_x, \boldsymbol{\Sigma}_x)$ .
- 200 – as done with the real observations, internal variability within the pseudo-observations is estimated from the difference between the pseudo-observations time series and the forced temperature response estimated by the ensemble mean of the 26 other models.  $\boldsymbol{\Sigma}_y$  is then derived from the MAR fitted on the obtained residuals.
- the KCC method is applied using the inputs  $\mathbf{y}$ ,  $\boldsymbol{\Sigma}_y$ ,  $\boldsymbol{\mu}_x$ ,  $\boldsymbol{\Sigma}_x$  to calculate projected changes constrained by the pseudo-observations, extracted from the SSP2-4.5 simulation.
- 205 – these 4 steps are repeated for each available member of the considered model, and for all available models.

I use the confusion matrix to estimate the reliability of the method for the short (2021-2040), mid (2041-2060) and long term (2081-2100) periods (Table 1). **This matrix aims to quantify the coverage probabilities, derived from the number of cases for which the true value (from the pseudo-obs) :**

- **is included in both the constrained range  $p(x|y)$  and the unconstrained range  $\Pi(x)$  (true positive rate),**
- 210 – **not included in both the constrained and unconstrained ranges (true negative rate),**
- **is included in the constrained range, but not in the unconstrained range (false positive rate),**

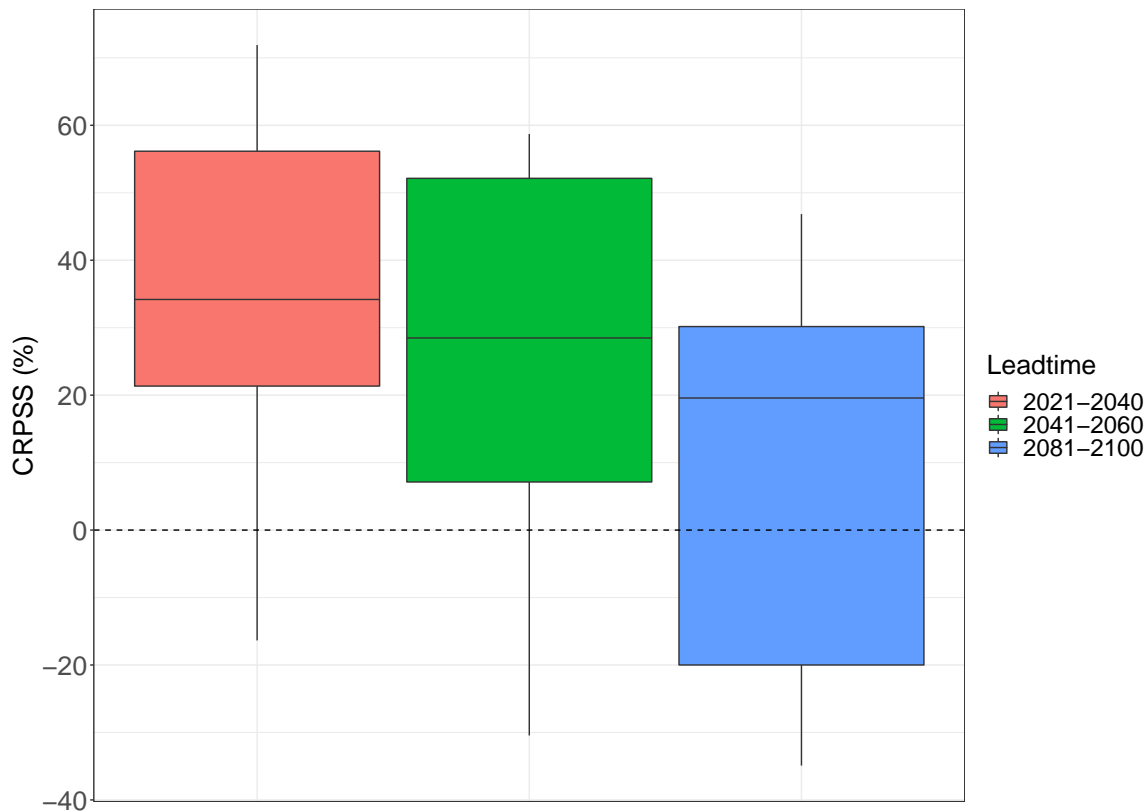
– is included in the unconstrained range, but not in the constrained range (false negative rate).

The constrained distributions contain the true values from the pseudo-observations in 80% up to 84% of the cases, **which is close to the expected value of 90%**. The rate of false prediction (i.e. when the constrained distribution does not contain the true value while the unconstrained distribution do) remains very low, especially over the 2021-2040 period. Note that in about 10% of the cases, the true value is not contained in both the constrained and unconstrained distributions. This could be explained by a high/low sensitivity of some models to external forcings in the projections compared to what is predicted by the other (unconstrained) models.

**Table 1.** Confusion matrix relating the temperature projection constrained by the KCC method and the true value from pseudo-observations. Rates (in %) are computed from 249 members (from 27 models) **for the SSP2-4.5 simulation**. Each rate is normalized by the number of ensemble members for each model to avoid giving too much weight to models with a large ensemble.

Leadtime	2021-2040		2041-2060		2081-2100	
	in $p(\mathbf{x} \mathbf{y})$	not in $p(\mathbf{x} \mathbf{y})$	in $p(\mathbf{x} \mathbf{y})$	not in $p(\mathbf{x} \mathbf{y})$	in $p(\mathbf{x} \mathbf{y})$	not in $p(\mathbf{x} \mathbf{y})$
in $\Pi(\mathbf{x})$	78	2	81	6	76	11
not in $\Pi(\mathbf{x})$	4	16	3	10	4	10

As a second performance criterion to assess the error on the amplitude of the constrained **SST projections**, I use the continuous ranked probability skill score (CRPSS), defined as the relative error between the constrained distribution  $p(\mathbf{x}|\mathbf{y})$  and a given reference (Hersbach, 2000). Here, I quantify the added value of the constraint by considering the unconstrained projections as a benchmark. Figure 4 shows positive CRPSS values, associated with a reduction in error of 35%, 30% and 20% on average for the constrained projections compared to the raw CMIP6 projections for the short, mid and long term period, respectively. The added value of the method is stronger for the short term than for the long term period, as observations are temporally closer for the former. Overall, these results demonstrate that the results from the method are not overconfident and that the constrained uncertainty ranges are reliable.



**Figure 4.** CRPSS for the constrained SST projections **over the warming hole** within the perfect model framework. The red, green and blue boxplots indicate the CRPSS distributions for different leadtimes. Calculation is made for all CMIP6 ensemble members (see Table A1). The top (bottom) of the box represents the 25th (75th) percentile of the distribution and the upper (lower) whisker represents the 95th (5th) percentile. Values are normalised by the number of members in each model. A CRPSS of 0 (dashed line) indicates the absence of added value of the method.

#### 4 Conclusions

The temperature response to external forcings on the North Atlantic warming hole over the past and future period is estimated by the KCC statistical method based on kriging techniques, which combines climate models and observations. Consistent with the observations, an anthropogenic cooling is diagnosed by the method over the last decades (1951-2021) compared to the pre-industrial period. **The impact of the aerosols is an increase in SST which is opposed to the effect of GHGs. The latter largely contribute to the cooling of the warming hole over the historical period.** Although the anthropogenic response is clear, the respective contribution of **each anthropogenic forcing is associated with large uncertainties, especially for the aerosols.** The quantification is in line with previous studies (Dagan et al., 2020; Chemke et al., 2020) that suggest that GHGs

235 and aerosols have had compensating effects on the evolution of the **warming hole**. In the present study, the attribution of the temperature changes is based on only 12 models. Although the CMIP6 ensemble shows qualitatively consistent results, this large uncertainty points to the crucial need to increase the number of models running single forcing experiments as done in DAMIP to better sample the model uncertainty. The method is also applied to CMIP6 projections, and is able to reduce the model uncertainty in the anthropogenic response by a factor of 3 over the historical period, and by a factor of 2 in the long-term  
240 projections. In particular, models projecting strong SST increase over the **warming hole** are excluded from the likely range constrained by the method.

This result has important implications for the estimation of the future changes in terms of teleconnection processes between the North Atlantic and the continental climate, eg over Europe, North America, or the Sahelian monsoon. It would be interesting to re-evaluate the climate impacts of the North Atlantic SST variability in light of the constrained temperature ranges obtained  
245 in this study, for example in terms of the occurrence of extreme events or changes in atmospheric circulation.

A relevant perspective of these results is the potential constraint of the Atlantic Meridional Overturning Circulation (AMOC). Using the same approach as in this paper and to constrain directly future AMOC changes is challenging, due to the limited number of observations monitored via the RAPID program (Frajka-Williams et al., 2021). Instead, taking advantage of the covariance between the AMOC and proxies based on SST and salinity over the North Atlantic (Zhang, 2017; Caesar et al.,  
250 2018) and applying the kriging method to these proxies is possible. This approach will allow to better estimate the uncertainty in the forced response included in these proxies, which could lead to revised estimates of the AMOC forced response over the past and future periods.

*Code and data availability.* The datasets generated and analysed during the current study are available at: <https://doi.org/10.5281/zenodo.6952546>. The HadCRUT5 dataset is available at <https://www.metoffice.gov.uk/hadobs/hadcrut5/index.html>. The HadSST4 dataset is available at <https://www.metoffice.gov.uk/hadobs/hadsst4/index.html>. The CMIP6 datasets are available at <https://esgf-node.llnl.gov/projects/esgf-llnl/>. All required programs to run the statistical method are in the associated KCC R package, which is available under a GNU General Public License, version 3 (GPLv3), at <https://doi.org/10.5281/zenodo.5233947>.  
255

## Appendix A: List of the CMIP6 models

**Table A1.** List of the available CMIP6 Models and the associated number of members in the simulations used to constrain the temperature time series.

Model	Historical	Hist-nat	Hist-ghg	Hist-aer	SSP1-2.6	SSP2-4.5	SSP5-8.5
ACCESS-CM2	3	3	3	3	3	3	3
ACCESS-ESM1-5	20		3	3	19	9	9
BCC-CSM2-MR	1	3	3	3	1	1	1
CAMS-CSM1-0	2				2	2	2
CanESM5-CanOE	3				3	3	3
CanESM5	50	50	50	50	50	50	50
CESM2	6	3	3	2	5	6	5
CESM2-WACCM	3				1	3	3
CNRM-CM6-1	6	10	10	10	6	6	6
CNRM-CM6-1-HR	1				1	1	1
CNRM-ESM2-1	6				5	6	5
EC-Earth3	22				7	22	8
EC-Earth3-Veg	5				5	5	5
FGOALS-f3-L	3				3	1	3
FGOALS-g3	4	3	3	3	4	2	4
FIO-ESM-2-0	3				3	3	3
HadGEM3-GC31-LL	4	5	10	5	1	1	4
INM-CM4-8	1				1	1	1
IPSL-CM6A-LR	11	10	10	10	6	11	6
MIROC6	50	50	3	10	50	3	50
MIROC-ES2L	10				10	10	10
MPI-ESM1-2-HR	2				2	2	2
MPI-ESM1-2-LR	10				10	10	10
MRI-ESM2-0	5	5	5	5	5	1	2
NorESM2-LM	3	3	3	3	1	3	1
NorESM2-MM	2				1	2	1
UKESM1-0-LL	13				13	5	5
Total: 27 Models	249	148	106	107	218	172	203

## Appendix B: Structure of the observation operator $H$

260 The observation operator  $H$  is a matrix of size  $n_y \times n_x$ . The constraint by both **GSAT** and regional observations consists in setting the submatrices  $H_{\text{reg}} = I_{1870:2021}$  and  $H_{\text{glo}} = I_{1850:2021}$  and all other coefficients equal to zero (see block matrices in Eq. (B1)). This structure allows to extract the appropriate years from the vector  $\mathbf{x}$  (see Eq. (2)). **As an example, the vector of the GSAT forced response from 1850 to 2100 is of size  $n_{x,\text{glo}} = 251$ , while the vector of the GSAT observations from 1850 to 2021 is of size  $n_{y,\text{glo}} = 172$ . hence the operator  $H_{\text{glo}}$  is of size  $n_{y,\text{glo}} \times n_{x,\text{glo}}$ , which extracts the part of GSAT**  
 265 **forced response that matches the GSAT observations, i.e., the GSAT forced response from 1850 to 2021. The same is done for the SST over the warming hole through the operator  $H_{\text{reg}}$ .**

$$H = \left[ \begin{array}{c|c|c|c|c|c} H_{\text{glo}} & 0 & 0 & 0 & 0 & 0 \\ \hline 0 & H_{\text{reg}} & 0 & 0 & 0 & 0 \end{array} \right], \quad (\text{B1})$$

## Appendix C: Modelling of $\Sigma_x$

The DAMIP (or CMIP6) multimodel ensemble is used to derive a distribution of  $\mathbf{x}$ , noted  $\Pi(\mathbf{x}) \sim \mathcal{N}(\boldsymbol{\mu}_x, \Sigma_x)$ .  $\boldsymbol{\mu}_x$  is the concatenated forced responses to all and specific external forcings mentioned in Eq. (2). From each model, I derive the forced responses following Ribes et al. (2021), i.e. 12 (27) vectors, from the DAMIP (CMIP6) ensemble.  $\Sigma_x$  is a variance-covariance matrix of size  $n_x \times n_x$  that describes the model spread. Using a sample covariance estimate has the side effect of producing a highly degenerated estimate for  $\Sigma_x$ : while  $\Sigma_x$  is a  $n_x \times n_x$  matrix, the rank of  $\Sigma_x$  is equal to 26 (since 27 CMIP6 models are being considered). While this choice could be debated, the KCC method can be run in this way, as  $\Sigma_x$  does not need being  
 275 inverted to derive the parameters  $\boldsymbol{\mu}_p$  and  $\Sigma_p$  of the posterior distribution.

In the Bayesian framework,  $\Pi(\mathbf{x})$  is a first (probabilistic) estimate of  $\mathbf{x}$ , which makes no use of observations, and is only based on climate models. I update this estimate by incorporating the observational evidence provided by  $\mathbf{y}$ . Following the Bayesian theory, the calculation of the posterior distribution  $p(\mathbf{x}|\mathbf{y})$  is required. A pre-requisite is to define the observational uncertainty, i.e., the covariance matrix associated with  $\mathbf{y}$ .

## 280 Appendix D: Modelling of $\Sigma_y$

$\Sigma_y$  is estimated by using observed annual time series of GSAT and SST temperature over the historical period. First, I compute the global observational residuals by subtracting the CMIP6 GSAT response (multimodel mean) to all external forcings from the observations  $\mathbf{T}_{\text{glo}}^{\text{obs}}$ . Similarly, I derive regional residuals over the WH by subtracting the CMIP6 SST response from  $\mathbf{T}_{\text{reg}}^{\text{obs}}$ . These residuals constitute a first estimate of global and regional internal variability, noted  $\hat{\boldsymbol{\epsilon}}_{y,\text{glo},1}, \hat{\boldsymbol{\epsilon}}_{y,\text{reg},1}$ , respectively.

285 I define  $\Sigma_y$  as a matrix of size  $n_y \times n_y$  of the following form:

$$\Sigma_y = \left[ \begin{array}{c|c} \Sigma_{y,\text{reg}} & \Sigma_{y,\text{dep}} \\ \hline \Sigma_{y,\text{dep}} & \Sigma_{y,\text{glo}} \end{array} \right], \quad (\text{D1})$$

where  $\Sigma_{y,\text{reg}}$  and  $\Sigma_{y,\text{glo}}$  are the covariance matrices modelling regional and global internal variability within  $T_{\text{reg}}^{\text{obs}}$  and  $T_{\text{glo}}^{\text{obs}}$ , respectively.  $\Sigma_{y,\text{dep}}$  is the covariance matrix modelling the dependence between regional and global internal variability, i.e.  $\epsilon_{y,\text{reg}}$  and  $\epsilon_{y,\text{glo}}$ .

290 To compute  $\Sigma_y$ , I take into account decadal internal variability that may exist in the global (Parsons et al., 2020) and regional (Qasmi et al., 2017) observations, by using a mixture of two autoregressive processes or order 1 (AR1), hereafter MAR, as done by [Qasmi and Ribes \(2022\)](#). The MAR formulation includes a fast (f) and a slow (s) components such that global internal variability  $\epsilon_{y,\text{glo}}$  within the **GSAT** residuals writes at a time  $t$ :

$$\begin{cases} \epsilon_{y,\text{glo}}(t) &= \epsilon_{y,\text{f,glo}}(t) + \epsilon_{y,\text{s,glo}}(t), \\ \epsilon_{y,\text{f,glo}}(t) &= \alpha_{\text{f,glo}} \epsilon_{y,\text{f,glo}}(t-1) + Z_{\text{f,glo}}(t), \\ \epsilon_{y,\text{s,glo}}(t) &= \alpha_{\text{s,glo}} \epsilon_{y,\text{s,glo}}(t-1) + Z_{\text{s,glo}}(t), \end{cases} \quad (\text{D2})$$

295 where the parameters  $\alpha_{\text{s,glo}}$  and  $\alpha_{\text{f,glo}}$  are the lag 1 coefficients of the AR1 processes, and  $\alpha_{\text{s,glo}} \geq \alpha_{\text{f,glo}}$  by convention.  $Z_{\text{s,glo}}(t) \sim \mathcal{N}(0, \sigma_{\text{s,glo}}^2)$  and  $Z_{\text{f,glo}}(t) \sim \mathcal{N}(0, \sigma_{\text{f,glo}}^2)$  are white noises associated with the two AR1. The slow component is able to generate a dependence on time scales of typically one decade, while the fast component accounts for interannual variability. The covariance matrix  $\Sigma_{y,\text{glo}}$  is filled according D2. The same assumptions are adopted to estimate the regional parameters and to compute  $\Sigma_{y,\text{reg}}$ .

300 The initial estimate of  $\Sigma_y$ , noted  $\hat{\Sigma}_{y,1}$  is solely based on the residuals  $\hat{\epsilon}_{y,\text{reg},1}$  and  $\hat{\epsilon}_{y,\text{glo},1}$  derived from the unconstrained forced response. This first estimate is likely flawed as the real (and unknown) forced response is not necessarily consistent with the unconstrained forced response estimated by  $\mu_x$ . In addition, as  $\mu_x$  can be by construction different from the best estimate of the constrained forced response  $\hat{\mu}_{x,1}$  (the mean of the posterior distribution  $p(x|y)$ ), the residuals  $\hat{\epsilon}_{y,\text{reg},1}, \hat{\epsilon}_{y,\text{glo},1}$  before constraint are not always coherent with the residuals  $\hat{\epsilon}_{y,\text{reg},2}, \hat{\epsilon}_{y,\text{glo},2}$  computed as the  $y - \hat{\mu}_{x,1}$  difference.

305 Hence, in order to ensure an accurate estimation of internal variability in the constraint procedure, an iterative algorithm is applied to find the MAR parameters that fit the residuals from the constrained forced response:

$$\begin{aligned} y - \mu &\xrightarrow{\text{residuals}} \hat{\epsilon}_{y,1} \xrightarrow{\text{constraint}} \hat{\mu}_1 \\ y - \hat{\mu}_1 &\xrightarrow{\text{residuals}} \hat{\epsilon}_{y,2} \xrightarrow{\text{constraint}} \hat{\mu}_2 \\ &\dots \end{aligned} \quad (\text{D3})$$

$$310 \quad y - \hat{\mu}_{n-1} \xrightarrow{\text{residuals}} \hat{\epsilon}_{y,n} \xrightarrow{\text{constraint}} \hat{\mu}_n$$

where, for each iteration  $n$ ,  $\hat{\mu}_n$  and  $\hat{\epsilon}_{y,n}$  are estimates of the forced response and internal variability, respectively. The termination criterion is based on the Frobenius norm  $\|\cdot\|_F$ . Hence, I consider that the algorithm converges at the iteration  $n$ ,

i.e. that  $\hat{\epsilon}_{y,n} \rightarrow \epsilon_y$ , when the relative difference between  $\|\hat{\Sigma}_{y,n}\|_F$  and  $\|\hat{\Sigma}_{y,n-1}\|_F$  is inferior to 1 %, meaning also the MAR parameters values have converged. In practice, only 2 iterations are necessary in this study.

315 Initial condition large ensembles and long piControl simulations provide a nice sampling of internal variability, and could also be used to estimate this variability. However, I choose to not directly rely on it because of the huge discrepancies between models in terms of their simulated internal variability (Parsons et al., 2020). **Qasmi and Ribes (2022)** have illustrated this aspect with the piControl simulations from the CMIP6 models, including those used to build large ensembles. In all cases, the models do not converge to a consistent estimate of internal variability over the WH.

320 *Author contributions.* SQ developed the model code and wrote the manuscript.

*Competing interests.* The author declares that he has no conflict of interest.

*Acknowledgements.* This work was supported by the European Union’s Horizon 2020 Research and Innovation Programme in the framework of the EUCP project (Grant Agreement 776613), the CONSTRAIN project (Grant Agreement 820829) and Météo-France. I thank Hervé Douville, Aurélien Ribes for fruitful discussions about this work. I thank the climate modeling groups involved in CMIP6 exercises for  
325 producing and making available their simulations. I thank the ETH Zurich for providing CMIP6 data through their cmip6-ng interface (<http://dx.doi.org/10.5281/zenodo.3734128>). The analyses and figures were produced with the R software (<https://www.R-project.org/>) and the NCAR Command Language Software (<http://dx.doi.org/10.5065/D6WD3XH5>).



## References

- Allan, D. and Allan, R. P.: Seasonal Changes in the North Atlantic Cold Anomaly: The Influence of Cold Surface Waters From Coastal Greenland and Warming Trends Associated With Variations in Subarctic Sea Ice Cover, *Journal of Geophysical Research: Oceans*, 124, 9040–9052, <https://doi.org/10.1029/2019JC015379>, \_eprint: <https://agupubs.onlinelibrary.wiley.com/doi/pdf/10.1029/2019JC015379>, 2019.
- Ba, J., Keenlyside, N. S., Latif, M., Park, W., Ding, H., Lohmann, K., Mignot, J., Menary, M., Otterå, O. H., Wouters, B., Melia, D. S. y., Oka, A., Bellucci, A., and Volodin, E.: A multi-model comparison of Atlantic multidecadal variability, *Climate Dynamics*, 43, 2333–2348, <https://doi.org/10.1007/s00382-014-2056-1>, 2014.
- Bellomo, K., Angeloni, M., Corti, S., and von Hardenberg, J.: Future climate change shaped by inter-model differences in Atlantic meridional overturning circulation response, *Nature Communications*, 12, 3659, <https://doi.org/10.1038/s41467-021-24015-w>, number: 1 Publisher: Nature Publishing Group, 2021.
- Booth, B. B. B., Dunstone, N. J., Halloran, P. R., Andrews, T., and Bellouin, N.: Aerosols implicated as a prime driver of twentieth-century North Atlantic climate variability, *Nature*, 484, 228–232, <https://doi.org/10.1038/nature10946>, number: 7393 Publisher: Nature Publishing Group, 2012.
- Caesar, L., Rahmstorf, S., Robinson, A., Feulner, G., and Saba, V.: Observed fingerprint of a weakening Atlantic Ocean overturning circulation, *Nature*, 556, 191–196, <https://doi.org/10.1038/s41586-018-0006-5>, number: 7700 Publisher: Nature Publishing Group, 2018.
- Chemke, R., Zanna, L., and Polvani, L. M.: Identifying a human signal in the North Atlantic warming hole, *Nature Communications*, 11, 1540, <https://doi.org/10.1038/s41467-020-15285-x>, number: 1 Publisher: Nature Publishing Group, 2020.
- Dagan, G., Stier, P., and Watson-Parris, D.: Aerosol Forcing Masks and Delays the Formation of the North Atlantic Warming Hole by Three Decades, *Geophysical Research Letters*, 47, e2020GL090778, <https://doi.org/10.1029/2020GL090778>, \_eprint: <https://agupubs.onlinelibrary.wiley.com/doi/pdf/10.1029/2020GL090778>, 2020.
- Eyring, V., Bony, S., Meehl, G. A., Senior, C. A., Stevens, B., Stouffer, R. J., and Taylor, K. E.: Overview of the Coupled Model Intercomparison Project Phase 6 (CMIP6) experimental design and organization, *Geoscientific Model Development*, 9, 1937–1958, <https://doi.org/https://doi.org/10.5194/gmd-9-1937-2016>, publisher: Copernicus GmbH, 2016.
- Fiedler, S. and Putrasahan, D.: How Does the North Atlantic SST Pattern Respond to Anthropogenic Aerosols in the 1970s and 2000s?, *Geophysical Research Letters*, 48, e2020GL092142, <https://doi.org/10.1029/2020GL092142>, \_eprint: <https://agupubs.onlinelibrary.wiley.com/doi/pdf/10.1029/2020GL092142>, 2021.
- Frajka-Williams, E., Moat, B. I., Smeed, D., Rayner, D., Johns, W. E., Baringer, M. O., Volkov, D. L., and Collins, J.: Atlantic meridional overturning circulation observed by the RAPID-MOCHA-WBTS (RAPID-Meridional Overturning Circulation and Heatflux Array-Western Boundary Time Series) array at 26N from 2004 to 2020 (v2020.1), <https://doi.org/10.5285/CC1E34B3-3385-662B-E053-6C86ABC03444>, medium: Network Common Data Form,Text or Plaintext Version Number: 6 Type: dataset, 2021.
- Gervais, M., Shaman, J., and Kushnir, Y.: Mechanisms Governing the Development of the North Atlantic Warming Hole in the CESM-LE Future Climate Simulations, *Journal of Climate*, 31, 5927–5946, <https://doi.org/10.1175/JCLI-D-17-0635.1>, publisher: American Meteorological Society Section: Journal of Climate, 2018.
- Gervais, M., Shaman, J., and Kushnir, Y.: Impacts of the North Atlantic Warming Hole in Future Climate Projections: Mean Atmospheric Circulation and the North Atlantic Jet, *Journal of Climate*, 32, 2673–2689, <https://doi.org/10.1175/JCLI-D-18-0647.1>, publisher: American Meteorological Society Section: Journal of Climate, 2019.

- Gervais, M., Shaman, J., and Kushnir, Y.: Impact of the North Atlantic Warming Hole on Sensible Weather, *Journal of Climate*, 33, 4255–4271, <https://doi.org/10.1175/JCLI-D-19-0636.1>, publisher: American Meteorological Society Section: Journal of Climate, 2020.
- 365 Gillett, N. P., Shiogama, H., Funke, B., Hegerl, G., Knutti, R., Matthes, K., Santer, B. D., Stone, D., and Tebaldi, C.: The Detection and Attribution Model Intercomparison Project (DAMIP v1.0) contribution to CMIP6, *Geoscientific Model Development*, 9, 3685–3697, <https://doi.org/10.5194/gmd-9-3685-2016>, publisher: Copernicus GmbH, 2016.
- Gutiérrez, J., Jones, R., Narisma, G., Alves, L., Amjad, M., Gorodetskaya, I., Grose, M., Klutse, N., Krakovska, S., Li, J., Martínez-Castro, D., Mearns, L., Mernild, S., Ngo-Duc, T., van den Hurk, B., and Yoon, J.-H.: Atlas, in: *Climate Change 2021: The Physical Science Basis. Contribution of Working Group I to the Sixth Assessment Report of the Intergovernmental Panel on Climate Change*, edited by Masson-Delmotte, V., Zhai, P., Pirani, A., Connors, S. L., Péan, C., Berger, S., Caud, N., Chen, Y., Goldfarb, L., Gomis, M. I., Huang, M., Leitzell, K., Lonnoy, E., Matthews, J. B. R., Maycock, T. K., Waterfield, T., Yelekçi, O., Yu, R., and Zhou, B., book section Atlas, Cambridge University Press, Cambridge, United Kingdom and New York, NY, USA, 2021.
- 370
- Hodson, D. L. R., Robson, J. I., and Sutton, R. T.: An Anatomy of the Cooling of the North Atlantic Ocean in the 1960s and 1970s, *Journal of Climate*, 27, 8229–8243, <https://doi.org/10.1175/JCLI-D-14-00301.1>, publisher: American Meteorological Society Section: Journal of Climate, 2014.
- 375
- Hu, S. and Fedorov, A. V.: Indian Ocean warming as a driver of the North Atlantic warming hole, *Nature Communications*, 11, 4785, <https://doi.org/10.1038/s41467-020-18522-5>, number: 1 Publisher: Nature Publishing Group, 2020.
- 380
- Karnauskas, K. B., Zhang, L., and Amaya, D. J.: The Atmospheric Response to North Atlantic SST Trends, 1870–2019, *Geophysical Research Letters*, 48, e2020GL090677, <https://doi.org/10.1029/2020GL090677>, eprint: <https://agupubs.onlinelibrary.wiley.com/doi/pdf/10.1029/2020GL090677>, 2021.
- Keil, P., Mauritsen, T., Jungclaus, J., Hedemann, C., Olonscheck, D., and Ghosh, R.: Multiple drivers of the North Atlantic warming hole, *Nature Climate Change*, 10, 667–671, <https://doi.org/10.1038/s41558-020-0819-8>, number: 7 Publisher: Nature Publishing Group, 2020.
- 385
- Kennedy, J. J., Rayner, N. A., Atkinson, C. P., and Killick, R. E.: An Ensemble Data Set of Sea Surface Temperature Change From 1850: The Met Office Hadley Centre HadSST.4.0.0.0 Data Set, *Journal of Geophysical Research: Atmospheres*, 124, 7719–7763, <https://doi.org/10.1029/2018JD029867>, eprint: <https://agupubs.onlinelibrary.wiley.com/doi/pdf/10.1029/2018JD029867>, 2019.
- Lee, J., Marotzke, J., Bala, G., Cao, L., and Corti, S.: Chapter 4 - Future Global Climate: Scenario-Based Projections and Near-Term Information, in: *Climate Change 2021: The Physical Science Basis. Contribution of Working Group I to the Sixth Assessment Report of the Intergovernmental Panel on Climate Change*, Cambridge University Press, Cambridge, 2021.
- 390
- Li, L., Lozier, M. S., and Li, F.: Century-long cooling trend in subpolar North Atlantic forced by atmosphere: an alternative explanation, *Climate Dynamics*, 58, 2249–2267, <https://doi.org/10.1007/s00382-021-06003-4>, 2022.
- Liu, W., Fedorov, A., and Sévellec, F.: The Mechanisms of the Atlantic Meridional Overturning Circulation Slowdown Induced by Arctic Sea Ice Decline, *Journal of Climate*, 32, 977–996, <https://doi.org/10.1175/JCLI-D-18-0231.1>, publisher: American Meteorological Society Section: Journal of Climate, 2019.
- 395
- Marshall, J., Scott, J. R., Armour, K. C., Campin, J.-M., Kelley, M., and Romanou, A.: The ocean’s role in the transient response of climate to abrupt greenhouse gas forcing, *Climate Dynamics*, 44, 2287–2299, <https://doi.org/10.1007/s00382-014-2308-0>, 2015.
- Menary, M. B. and Wood, R. A.: An anatomy of the projected North Atlantic warming hole in CMIP5 models, *Climate Dynamics*, 50, 3063–3080, <https://doi.org/10.1007/s00382-017-3793-8>, 2018.
- 400
- Menary, M. B., Robson, J., Allan, R. P., Booth, B. B. B., Cassou, C., Gastineau, G., Gregory, J., Hodson, D., Jones, C., Mignot, J., Ringer, M., Sutton, R., Wilcox, L., and Zhang, R.: Aerosol-Forced AMOC Changes in CMIP6 His-

- torical Simulations, *Geophysical Research Letters*, 47, e2020GL088166, <https://doi.org/10.1029/2020GL088166>, \_eprint: <https://agupubs.onlinelibrary.wiley.com/doi/pdf/10.1029/2020GL088166>, 2020.
- 405 Moffa-Sánchez, P., Moreno-Chamarro, E., Reynolds, D. J., Ortega, P., Cunningham, L., Swingedouw, D., Amrhein, D. E., Halfar, J., Jonkers, L., Jungclaus, J. H., Perner, K., Wanamaker, A., and Yeager, S.: Variability in the Northern North Atlantic and Arctic Oceans Across the Last Two Millennia: A Review, *Paleoceanography and Paleoclimatology*, 34, 1399–1436, <https://doi.org/10.1029/2018PA003508>, \_eprint: <https://agupubs.onlinelibrary.wiley.com/doi/pdf/10.1029/2018PA003508>, 2019.
- Morice, C. P., Kennedy, J. J., Rayner, N. A., Winn, J. P., Hogan, E., Killick, R. E., Dunn, R. J. H., Osborn, T. J., Jones, P. D., and Simpson, I. R.: An Updated Assessment of Near-Surface Temperature Change From 1850: The HadCRUT5  
410 Data Set, *Journal of Geophysical Research: Atmospheres*, 126, e2019JD032361, <https://doi.org/10.1029/2019JD032361>, \_eprint: <https://agupubs.onlinelibrary.wiley.com/doi/pdf/10.1029/2019JD032361>, 2021.
- O'Neill, B. C., Tebaldi, C., van Vuuren, D. P., Eyring, V., Friedlingstein, P., Hurtt, G., Knutti, R., Kriegler, E., Lamarque, J.-F., Lowe, J., Meehl, G. A., Moss, R., Riahi, K., and Sanderson, B. M.: The Scenario Model Intercomparison Project (ScenarioMIP) for CMIP6, *Geoscientific Model Development*, 9, 3461–3482, <https://doi.org/10.5194/gmd-9-3461-2016>, 2016.
- 415 Parsons, L. A., Brennan, M. K., Wills, R. C. J., and Proistosescu, C.: Magnitudes and Spatial Patterns of Interdecadal Temperature Variability in CMIP6, *Geophysical Research Letters*, 47, e2019GL086588, <https://doi.org/https://doi.org/10.1029/2019GL086588>, \_eprint: <https://agupubs.onlinelibrary.wiley.com/doi/pdf/10.1029/2019GL086588>, 2020.
- Qasmi, S. and Ribes, A.: Reducing uncertainty in local temperature projections, *Science Advances*, 8, eabo6872, <https://doi.org/10.1126/sciadv.abo6872>, publisher: American Association for the Advancement of Science, 2022.
- 420 Qasmi, S., Cassou, C., and Boé, J.: Teleconnection Between Atlantic Multidecadal Variability and European Temperature: Diversity and Evaluation of the Coupled Model Intercomparison Project Phase 5 Models, *Geophysical Research Letters*, 44, 11,140–11,149, <https://doi.org/10.1002/2017GL074886>, 2017.
- Qasmi, S., Sanchez-Gomez, E., Ruprich-Robert, Y., Boé, J., and Cassou, C.: Modulation of the Occurrence of Heatwaves over the Euro-Mediterranean Region by the Intensity of the Atlantic Multidecadal Variability, *Journal of Climate*, 34, 1099–1114,  
425 <https://doi.org/10.1175/JCLI-D-19-0982.1>, publisher: American Meteorological Society Section: Journal of Climate, 2021.
- Rahmstorf, S., Box, J. E., Feulner, G., Mann, M. E., Robinson, A., Rutherford, S., and Schaffernicht, E. J.: Exceptional twentieth-century slowdown in Atlantic Ocean overturning circulation, *Nature Climate Change*, 5, 475–480, <https://doi.org/10.1038/nclimate2554>, number: 5 Publisher: Nature Publishing Group, 2015.
- Ren, X. and Liu, W.: The Role of a Weakened Atlantic Meridional Overturning Circulation in Modulating Marine Heat-  
430 waves in a Warming Climate, *Geophysical Research Letters*, 48, e2021GL095941, <https://doi.org/10.1029/2021GL095941>, \_eprint: <https://agupubs.onlinelibrary.wiley.com/doi/pdf/10.1029/2021GL095941>, 2021.
- Ribes, A., Qasmi, S., and Gillett, N. P.: Making climate projections conditional on historical observations, *Science Advances*, 7, eabc0671, <https://doi.org/10.1126/sciadv.abc0671>, publisher: American Association for the Advancement of Science Section: Research Article, 2021.
- Ribes, A., Boé, J., Qasmi, S., Dubuisson, B., Douville, H., and Terray, L.: An updated assessment of past and future warming over France  
435 based on a regional observational constraint, *Earth System Dynamics Discussions*, pp. 1–29, <https://doi.org/10.5194/esd-2022-7>, publisher: Copernicus GmbH, 2022.
- Robson, J., Ortega, P., and Sutton, R.: A reversal of climatic trends in the North Atlantic since 2005, *Nature Geoscience*, 9, 513–517, <https://doi.org/10.1038/ngeo2727>, number: 7 Publisher: Nature Publishing Group, 2016.

- 440 Sigmond, M., Fyfe, J. C., Saenko, O. A., and Swart, N. C.: Ongoing AMOC and related sea-level and temperature changes after achieving the Paris targets, *Nature Climate Change*, 10, 672–677, <https://doi.org/10.1038/s41558-020-0786-0>, number: 7 Publisher: Nature Publishing Group, 2020.
- Zhang, R.: On the persistence and coherence of subpolar sea surface temperature and salinity anomalies associated with the Atlantic multidecadal variability, *Geophysical Research Letters*, 44, 7865–7875, <https://doi.org/10.1002/2017GL074342>, \_eprint: <https://agupubs.onlinelibrary.wiley.com/doi/pdf/10.1002/2017GL074342>, 2017.