

The future of the El Niño-Southern Oscillation: Using large ensembles to illuminate time-varying responses and inter-model differences

Nicola Maher^{1,2}, Robert C. Jnglin Wills³, Pedro DiNezio², Jeremy Klavans², Sebastian Milinski^{4,5}, Sara C. Sanchez², Samantha Stevenson⁶, Malte F. Stuecker⁷, and Xian Wu⁸

¹Cooperative Institute for Research in Environmental Sciences (CIRES), University of Colorado at Boulder, Boulder, CO 80309, USA

²Department of Atmospheric and Oceanic Sciences (ATOC), University of Colorado at Boulder, Boulder, CO 80309, USA

³Department of Atmospheric Sciences, University of Washington, Seattle, WA 98195, USA

⁴Climate and Global Dynamics Division, National Center for Atmospheric Research, Boulder, CO 80307, USA

⁵Cooperative Programs for the Advancement of Earth System Science, University Corporation for Atmospheric Research, Boulder, CO 80307, USA

⁶Bren School of Environmental Science and Management, University of California, Santa Barbara, Santa Barbara, CA 93106, USA

⁷Department of Oceanography International Pacific Research Center (IPRC), School of Ocean and Earth Science and Technology (SOEST), University of Hawai'i at Mānoa, Honolulu, HI, USA

⁸Climate and Global Dynamics Division, National Center for Atmospheric Research, Boulder, CO 80305, USA

Correspondence: Nicola Maher (nicola.maher@colorado.edu)

Abstract. Future changes in the El Niño–Southern Oscillation (ENSO) are uncertain, both because future projections differ between climate models and because the large internal variability of ENSO clouds the diagnosis of forced changes in observations and individual climate model simulations. By leveraging 14 single model initial-condition large ensembles (SMILEs), we robustly isolate the time evolving response of ENSO sea surface temperature (SST) variability to anthropogenic forcing from internal variability in each SMILE. We find non-linear changes in time in many models and considerable inter-model differences in projected changes in ENSO and the mean-state tropical Pacific zonal SST gradient. We demonstrate a linear relationship between the change in ENSO SST variability and the tropical Pacific zonal SST gradient although forced changes in the tropical Pacific SST gradient often occur later in the 21st century than changes in ENSO SST variability, which can lead to departures from the linear relationship. Single forcing SMILEs show a potential contribution of anthropogenic forcing (aerosols and greenhouse gases) to historical changes in ENSO SST variability, while the observed historical strengthening of the tropical Pacific SST gradient sits on the edge of the model spread for those models for which single forcing SMILEs are available. Our results highlight the value of SMILEs for investigating time-dependent forced responses and inter-model differences in ENSO projections. The non-linear changes in ENSO SST variability found in many models demonstrate the importance of characterising this time-dependent behaviour, as it implies that ENSO impacts may vary dramatically throughout the 21st century.

1 Introduction

Understanding how the El Niño–Southern Oscillation (ENSO) will change under increasing greenhouse gas emissions is critical due to ENSO’s widespread impacts, which include changes to floods, droughts, and fisheries production (e.g. [McPhaden et al., 2006](#); [Taschetto et al., 2020](#); [Cai et al., 2012, 2014](#); [Cai et al., 2021](#)). While previous work demonstrates model agreement on future intensification of ENSO’s atmospheric impacts (e.g. precipitation; Yun et al., 2021; Power et al., 2013; Fasullo et al., 2018), there remains debate as to whether ENSO-driven sea surface temperature (SST) variability will increase or decrease in the future as disparities between projections from different climate models persist (e.g. [Cai et al., 2022](#); [Wengel et al., 2021](#); [Cai et al., 2022](#); [Beobide-Arsuaga et al., 2021](#); [Stevenson et al., 2021](#)). In this study we present ENSO SST projections for the first time from 14 individual single model initial-condition large ensembles (SMILEs) where the time-evolving forced response is cleanly separated from internal variability.

Previous work finds a diverse range of projections of ENSO variability in multi-model ensembles (CMIP; coupled model intercomparison projects). In CMIP3 a range of ENSO variability projections were found leading to a review stating that it was not yet possible to determine whether ENSO would change in the future (Collins et al., 2010). In CMIP5 the models again demonstrate a variety of responses with the multi-model mean change indistinguishable from zero (Stevenson, 2012; Beobide-Arsuaga et al., 2021). Other studies have further investigated ENSO projections by excluding models that have strong ENSO biases in the historical period. When selecting for models that correctly represent ENSO skewness, Cai et al. (2018) find an increase in Eastern Pacific ENSO SST variability. This result is supported by the recent release of CMIP6 wherein Cai et al. (2022) demonstrate that 34 of 43 models show an increase in ENSO SST variability in SSP585 (27 of 39 in SSP126) in agreement with another early CMIP6 assessment (Fredriksen et al., 2020).

There is also some evidence for an increase in ENSO variability in the observational record, with paleoclimate data suggesting that ENSO variability strengthened post-1950 (Cai et al., 2021). Coral records indicate that ENSO variability has been 25% larger over the last 5 decades compared to the pre-industrial (Grothe et al., 2020; Cobb et al., 2013). This agrees with tree ring records, which show a strengthening of ENSO variance in the late 20th Century (Li et al., 2013). A study using linear inverse modelling based on instrumental data agrees that ENSO SST variance has increased since 1976 (Capotondi and Sardeshmukh, 2017). The authors, however, note that such differences could be due to multi-decadal variability or to the impact of climate change, and the cause of this observed change remains unclear.

While consensus between multi-model ensembles and paleoclimate records suggests that ENSO variability may increase with increasing greenhouse gas emissions, other studies [contest that look at stronger stabilised forcing complicate](#) this result. A recent study using a very high-resolution climate model (0.1 degree ocean; 0.25 degree atmosphere) finds that ENSO SST variability decreases substantially under strong ($4\times\text{CO}_2$) forcing (Wengel et al., 2021). This study further argues that CMIP class models are too low in horizontal resolution to correctly capture some important aspects of ENSO ocean dynamics, which could lead to an artificial increase in SST variance in these models. On longer time-scales, ENSO amplitude is also found to decrease in CMIP class standard (1 to 2 degree) resolution models (Callahan et al., 2021). Using output from the Long Run Model Intercomparison Project, Callahan et al. (2021) find diverging transient ENSO variability projections, but a consistent

50 decrease in SST variability across models when the response has stabilized. Indeed Kim et al. (2014) suggest that ENSO variability in CMIP5 models is not linear in time, implying an important role for analysing multiple time periods. Collectively, these studies demonstrate the importance of further research to reconcile these discrepancies.

Differences between the projections of ENSO variability in individual models have been linked to the pattern of mean-state warming across the tropical Pacific (e.g. Jin and Neelin, 1993; Fedorov and Philander, 2000; Jin et al., 2006; DiNezio et al., 2012). For instance, in CMIP5/6 models there is a weak negative correlation between the magnitude of the tropical Pacific SST gradient and ENSO SST variability (Beobide-Arsuaga et al., 2021). In this case, an increase in ENSO SST variability is linked to a weakening of the tropical Pacific SST gradient. This relationship varies between models (Fredriksen et al., 2020) and is found to be more robust in models that have more realistic subsurface nonlinear dynamical heating and ENSO asymmetry when compared to observations (Hayashi et al., 2020). Periods of weaker tropical Pacific SST gradient are also linked to higher ENSO variability, with periods with a stronger gradient linked to periods of smaller ENSO SST variability (Capotondi and Sardeshmukh, 2017; Rodgers et al., 2004; Ogata et al., 2013; Choi et al., 2013; McPhaden et al., 2011). Models that show reduced ENSO variability in response to anthropogenic forcing also show a strengthening of the tropical Pacific SST gradient (Kohyama and Hartmann, 2017; Kohyama et al., 2017). ~~Additionally, the~~ This relationship between ENSO amplitude and the mean-state tropical Pacific SST gradient is identified in PMIP models, although it is not constant through time (Wyman et al., 2020). Additionally, paleoclimatic proxies suggest that there is no relationship between mean zonal SST gradient and ENSO variability (Cai et al., 2021), demonstrating that this link is either not found in our observations or as in the PMIP models is not constant in time. We emphasize that east-west Pacific SST gradient is only one of many mean state metrics that are potentially important to influence (and vice versa be influenced by) ENSO variability. In fact, different aspects of the climate mean state affect ENSO feedbacks in multiple ways, leading to a potentially high sensitivity of the linear ENSO growth rate (and hence SST variability) to these factors (Jin et al., 2006).

How the tropical Pacific SST gradient itself will change in the future is also a point of contention. Most CMIP class models agree on a projected weakening of the SST gradient (El Niño-like warming; Kociuba and Power, 2015; Meehl and Washington, 1996; Fredriksen et al., 2020; Cai et al., 2021). This, however, must be reconciled with the recent observed increase in the SST gradient (La Niña-like warming; Kosaka and Xie, 2013; England et al., 2014; McGregor et al., 2014). Some studies suggest that the inconsistencies between models and observations can be explained by internal variability and observational uncertainty (Watanabe et al., 2021; Chung et al., 2019; Coats and Karnauskas, 2017), while others argue that the observations are truly outside the model range (Kociuba and Power, 2015; Seager et al., 2022). One hypothesis is that under transient forcing the ocean thermostat mechanism, where upwelling waters delay warming in the eastern equatorial Pacific, overwhelms the long-term weakening of the Walker circulation and SST gradient (Clement et al., 1996; Heede and Fedorov, 2021), leading to temporary La Niña-like warming. Another study concludes that a more accurate representation of ENSO nonlinearity leads to La Niña-like warming in at least one realistic climate model (Kohyama and Hartmann, 2017; Kohyama et al., 2017). As such, while most models project an El Niño-like warming, this is not the only possible future response. Alternatively, realistic ENSO nonlinearity does not necessarily lead to a La Niña-like warming pattern. While realistic representations of ENSO nonlinearities are a necessary condition for the simulation of rectified mean state changes via nonlinear dynamical heating,

85 diverging projected changes in future ENSO SST variability among models with largely realistic ENSO nonlinear dynamic heating can lead to either ENSO-induced damped or amplified eastern tropical Pacific mean-state warming (Hayashi et al., 2020). Additionally, it has been hypothesized that SST mean state biases in the Atlantic Ocean are responsible for low biased interbasin connectivity (and hence also low-biased SST variability) between the Atlantic and Pacific (McGregor et al., 2018). This suite of studies highlights the need for further research and continued observations to reduce uncertainties in how the
90 tropical Pacific SST gradient will change in the future.

A primary reason for uncertainty in future changes in ENSO variability and the mean-state tropical Pacific SST gradient is that ENSO itself experiences large multi-decadal variability (Wittenberg, 2009), meaning that long averaging periods or large ensembles are needed to identify robust forced changes (e.g. Stevenson et al., 2010; Milinski et al., 2020; Maher et al., 2018; Deser et al., 2020; Ng et al., 2021). Projections using multi-model ensembles can be difficult to interpret because the spread
95 due to internal variability is comparable to the spread due to inter-model differences (Maher et al., 2018; Ng et al., 2021). With this in mind, large ensembles are needed to quantify the time-varying ENSO response (Stevenson, 2012; Milinski et al., 2020). Without large ensembles, previous studies were forced to rely on long time averages to robustly evaluate changes in ENSO variability (e.g., 2000-2099 compared to 1900-1999).

In this study, we present ENSO projections from 14 SMILEs, where the time-dependent response of ENSO to external
100 forcing can be isolated from internal variability through ensemble averaging. The unprecedented number of SMILEs used allows a detailed examination of the model-dependence of future ENSO projections. In particular, this paper aims to:

- Isolate the forced response of ENSO in individual models
- Evaluate the time evolution of projected changes in ENSO statistics
- Investigate the time-dependent mean-state response of the tropical Pacific (tropical Pacific SST gradient) to greenhouse
105 gas forcing
- Determine whether there is a relationship between projected changes in ENSO variability and the tropical Pacific SST gradient in climate models
- Investigate the role of greenhouse gases, aerosol, and natural forcing in historical ENSO variability changes using single forcing SMILEs

110 2 Datasets

The 14 SMILEs used in this study include both CMIP5 and CMIP6 class models and use one of three external forcing scenarios (Table 2). Models used in this study have between 10 and 100 ensemble members for the historical and future scenarios. For those with single forcing we allow as few as 3 members due to the limited availability of models with any more than a single ensemble member. Previous work has investigated how many ensemble members are needed to investigate ENSO characteristics and find that this depends on the metric used, the length of time averaging, the level of acceptable error and
115

the model itself (Maher et al., 2018; Milinski et al., 2020; Lee et al., 2021). Lee et al. (2021) find, for example, that for ENSO amplitude 10-47 members are sufficient depending on which model is used to make the estimate, while this range widens to 1-45 members for ENSO seasonality. Maher et al. (2018) determine that to look at ENSO variance over 30-year periods 10 members are sufficient for a 20% level of acceptable error, while 30-40 are needed to reduce this to 10%, with 12-20 sufficient for a 15% error (Milinski et al., 2020). Less members are needed to estimate mean state ENSO metrics, than its variability (Milinski et al., 2020; Lee et al., 2021). In this study we accept models with a minimum of 10 ensemble members as to include as many models as possible, however, we note that there are larger errors associated with estimates of ENSO variability for the smaller ensemble sizes.

While the purpose of this study is to provide a detailed overview of ENSO projections in all available SMILEs, it is useful to provide some observational context. ~~We note that a~~ detailed comparison of ENSO characteristics in both CMIP models and SMILEs can be found in the following studies for a large range of ENSO metrics, and we do not repeat this here, although we note that in general CMIP6 models outperform CMIP5 in 8 out of 24 metrics and are only degraded in one (Planton et al., 2021; Lee et al., 2021). We do, however, compare model-simulated and observed El Niño and La Niña composites (Figure S1 & S2). We find diverse errors in ENSO patterns, amplitude, and transitions. All models overestimate the westward extension of ENSO SST anomalies and either overestimate/underestimate the ENSO amplitude, and some models overestimate the duration of ENSO events (e.g., MIROC6 MIROC-ES2L).

When considering ENSO SST variability we find that only some models capture the observed variability within the ensemble spread (Figure 11), but note that this is not a reliable predictor for future change. For example, both MPI-GE and EC-EARTH3 compare favourably with the observed magnitude of ENSO SST variability, but have different future responses (Figure 11). MPI-GE shows no change in ENSO SST variability, while EC-EARTH3 has strongly increasing ENSO SST variability. We additionally note that there is large multi-decadal variability in the amplitude of ENSO variability in individual ensemble members. This indicates that we need a SMILE to robustly detect a forced change, but also that an actual forced change in the real world might be masked by this large multi-decadal variability.

3 ENSO Projections

In this section we evaluate the response of ENSO variability in each individual SMILE in one of three future scenarios dependent on availability (RCP8.5, SSP370, SSP585).

3.1 Amplitude

Projections of ENSO amplitude are non-linear in time and differ between models (Figure 11). A large proportion of the models demonstrate an increase in ENSO amplitude as characterized by December-January-February (DJF) SST variability of three ENSO indices (Niño3, Niño3.4 Niño4; ACCESS-ESM1.5, CESM1-LE, CSIRO-Mk36, EC-EARTH, IPSL-CM6A-LR, MIROC6, MIROC-ES2L). This increase is often non-linear in time, and there is a large spread across models in the magnitude of the increase. Other models show a decrease (CanESM2) or limited change (MPI-GE) in ENSO amplitude. Finally, five

models display non-monotonic behaviour (CESM2-LE, GFDL-CM3, GFDL-ESM2M, CanESM5, GFDL-SPEAR-MED). In these models, ENSO amplitude first increases, then plateaus, and lastly decreases. These results are consistent for all three ENSO indices, with subtle differences for some models (e.g., CSIRO-Mk36 IPSL-CM6A-LR). Given the time-dependent response of ENSO amplitude exhibited in these time-series plots, we consider projections for two future time periods (2021-2050 2070-2099) in the following sections.

3.2 Pattern

Forced changes in the spatial pattern of ENSO-related SST variability differ between models (Figures 12 & S3). While the multi-ensemble mean (MEM) shows an increase in variability in the central Pacific, each model has its own unique pattern of change (Figure 12). Some models demonstrate a general decrease in SST variability along the equator (CanESM2, CESM2, MPI-GE) while others show a general increase in this region (CESM1, EC-EARTH, MIROC6, MIROC-ESL2L, GFDL-SPEAR-MED). There are also differences in the zonal pattern of variability changes. A group of models has large increases in variability in the central Pacific (ACCESS-ESM1.5, CanESM5, IPSL-CM6A-LR), while another group shows a clear increase across the Pacific (CESM1-LE, EC-EARTH, GFDL-SPEAR-MED, MIROC-ES2L). These diverse patterns are generally similar between the two time periods considered, but smaller in magnitude for the earlier period (Figure S1; 2021-2050) compared to the later period (Figure 12; 2071-2100), with the MEM pattern consistent between time periods. This result is, however, not true for all models. CESM2 has a central equatorial Pacific response of opposite sign between the two periods considered, while GFDL-CM3 and CSIRO-Mk36 have very different patterns of spatial change in the two periods considered. These figures give the pattern of overall change in ENSO SST variability, however, El Niño and La Niña are not symmetric and may evolve in different ways. Due to this we next consider changes in El Niño and La Niña events individually.

3.3 ENSO Event Evolution

Composites of El Niño events in each period show increased El Niño SST amplitude relative to the baseline period 1951-1980 in most models and the MEM (Figure 13; 2070-2099, Figure S4; 2021-2050). In the baseline period, most models have maximum SST anomalies in the eastern equatorial Pacific sometime between November and February followed by a westward propagation of warm anomalies and then a switch to cold anomalies in the following year. In the MEM, the longitudinal location of the maximum SST anomaly shifts westward by approximately 15° in 2070-2099 compared to that in 1951-1980, indicating that El Niño SST variability gets stronger over the central Pacific in the future period, consistent with results shown in Figure 12. In models where the amplitude of El Niño increases, the amplitude of the subsequent La Niña also tends to increase (Figures S5 & S6), presumably due to a stronger heat content discharge, and vica versa for models where the amplitude of El Niño decreases. When considering the asymmetry between El Niño and La Niña event composites, the MEM shows that the amplitude of La Niña intensifies more than El Niño in the western-central equatorial Pacific, and the duration of La Niña becomes longer following the amplitude intensification, highlighting the non-linearity of their responses (Figure S5). The individual model responses, however, demonstrate strong inter-model differences, which might be related to the diverse model biases in simulating ENSO (Figures S1 & S2). Overall, ENSO SST changes in the period 2021-2050 show similar patterns,

albeit weaker amplitude, to those in the periods in 2070-2099 (Figures S4 & S6). CESM2 is an exception that has opposite changes in El Niño SST amplitude and La Niña duration between the two periods.

3.4 Seasonal Synchronisation

We next investigate the seasonal synchronization of projected changes in ENSO SST variability (Figures 14 & 15). We aim to
185 determine during which seasons ENSO SST variability changes in each SMILE and determine whether the ENSO seasonality
is likely to increase or decrease. We find that models demonstrate different magnitudes of change for different months (Figure
14). Most models show the largest change (generally an increase) in boreal winter with limited changes in boreal summer.
Individual models have opposite signed changes between the two seasons. Overall, there is an increase in ENSO seasonality
(Figure 15), i.e., increases in ENSO variability are concentrated in the season where ENSO SST variability is climatologically
190 largest. These changes are largely consistent across models, with an overall increase in ENSO SST variability found in boreal
fall and winter and a decrease in the variability in spring and summer.

4 Mean-state projections

The warming rate over the equatorial Pacific varies seasonally and as a function of longitude (Figure 16). While some mod-
els have larger warming trends in the east Pacific (El-Niño-like warming) for all months (MIROC6, CESM1, EC-EARTH,
195 CESM2), others demonstrate a more complicated seasonal cycle of warming rate, with the location of largest warming de-
pendent on which month is considered. In the MEM, the eastern Pacific warms more in all seasons, however, from December
to June the strong warming trend extends into the central Pacific, which warms with almost equal magnitude to the east. The
MEM warming rate is larger over the eastern equatorial Pacific during late boreal spring (the climatological warm season of
the equatorial Pacific) compared to boreal autumn (the cold season), but the season of strongest warming is model-dependent.
200 For example, GFDL-CM3 has the largest eastern equatorial Pacific warming in boreal summer, while CESM1 has the largest
warming in boreal fall and winter.

The time evolution of tropical Pacific SST gradient changes is investigated by considering the SST difference between
the eastern and western equatorial Pacific (Figure 17). A decrease in this gradient indicates stronger warming in the east
Pacific, i.e., El Niño-like warming (red colours in Figure 17), while a strengthening of the gradient corresponds to La Niña-like
205 warming (blue colours in Figure 17). We find El Niño-like warming in most models, which is evident in the MEM. This is,
however, not the case for CSIRO-Mk36 and is seasonally dependent for GFDL-CM3, GFDL-ESM2M, IPSL-CM5A-LR, and
MPI-GE. The season during which projected changes are strongest is again model dependent, but SST gradient changes are
often concentrated in the season during which the climatological SST gradient is strongest in the specific model considered.
The following section relates the projected changes in ENSO variability to the changes in the tropical Pacific SST gradient to
210 investigate whether these changes are linked.

5 Relationship between ENSO variability and mean-state changes

The projected change in ENSO SST variability is linearly related to the projected change in the tropical Pacific SST gradient across ensemble members from all models in the period 2021-2050 (Figure 18). This relationship breaks down in the later period (2070-2099) for models that have large SST gradient changes (e.g. CESM2; CSIRO-Mk3.6; CanESM2). In general, an ensemble member that experiences El Niño-like warming is most likely to see an increase in ENSO variability, while a La Niña-like warming is associated with the opposite response. While this does not occur for all ensemble members, the larger the response in either the tropical Pacific SST gradient or ENSO SST variability the more likely that a concurrent change in the other variable will be seen.

We further investigate the relationship between changes in ENSO SST variability and the change in the tropical Pacific SST gradient by plotting the evolving relationship between the two variables over time (Figure 19). Many models have a hook-shaped ensemble-mean (forced) response that corresponds to the following time-dependent response. First, there is an increase in ENSO SST variability concurrent with uniform warming across the Pacific (i.e., no change in tropical Pacific SST gradient) or weak El Niño-like warming. Then there is El Niño-like warming concurrent with a plateau in ENSO SST variability. In some models, this is followed by a decrease in ENSO SST variability as the mean state continues to warm in an El Niño-like fashion. This behavior is seen in seven models (CESM1-LE, GFDL-SPEAR, MIROC6, MIROC-ES2L, CanESM5, CESM2-LE, IPSL-CM6A-LR), with an additional four that demonstrate a portion of the hook-shaped response (EC-EARTH3, ACCESS-ESM1-6, CanESM2, MPI-GE). The three outliers are GFDL-ESM2M, which exhibits an increase then a decrease in both ENSO SST variability and the mean-state tropical Pacific SST gradient, GFDL-CM3, which shows an increase then a decrease in ENSO SST variability without much change in the mean-state tropical Pacific SST gradient, and CSIRO-Mk36, which has strong La Niña-like warming and an increase in ENSO SST variability.

The time evolution of ENSO SST variability and the tropical Pacific SST gradient (Figure 19) provide context for the results in Figure 18. ~~While projections of ENSO variability and the tropical Pacific SST gradient are linearly related as shown in Figure 18, some models show a forced response with the opposite relationship, and the time evolution reveals that ENSO variability changes precede the mean-state SST gradient changes in most models, supportive of the hypothesis that ENSO nonlinear dynamical heating can rectify.~~ The internal variability relationship (Figure 18a) clearly shows the role of rectification into the mean state (e.g. Hayashi et al., 2020), but for the forced changes this is only one of several mechanisms going on, so the forced changes can depart from this linear relationship. This highlights the value of using SMILEs to analyse the time-dependent response of the tropical Pacific in climate models. We additionally note that the individual ensemble member spread is much larger for ENSO SST variability projections than the tropical Pacific SST gradient (Figure 19). This means that more ensemble members are needed to retrieve the forced change in ENSO SST variability under warming (as well as higher order moments of other Earth system variables; Rodgers et al., 2021), but somewhat fewer are needed to isolate the forced change in the tropical Pacific SST gradient (e.g. Wills et al., 2020; Rodgers et al., 2021).

6 A single forcing perspective

Using two SMILEs (CanESM5 and MIROC6) that have single forcing simulations available, we separate the contribution of aerosols, greenhouse gases, and natural forcing to historical changes in both ENSO SST variability and the tropical Pacific SST gradient (Figure 10). Both models have forced increases in ENSO variability over this time period (1985-2014 compared to 1951-1980) although this is not evident in all ensemble members. This increase is consistent with observations and is driven by anthropogenic forcing (greenhouse gases and aerosols), not natural forcing. The larger ensemble (MIROC6) has strong variability across ensemble members in the natural forcing ensemble, where large increases or decreases could be observed in a single realization (or observations) due to this variability alone. This indicates that ENSO SST variability changes have not yet emerged from internal variability, consistent with previous work (e.g. Ying et al., 2022).

Over the historical period, the tropical Pacific SST gradient weakens in MIROC6 and does not change in CanESM5 in response to all forcings. This is a result of the combination of greenhouse gas and aerosol forcing, which generally oppose each other (Figure 10). Specifically, greenhouse gases act to weaken the gradient in both models, while aerosols strengthen the gradient in CanESM2 and have minimal effect in MIROC6. The observed change in the tropical Pacific SST gradient sits right at the edge of the ensemble spread in the all-forcing historical scenario. This suggests that the observed gradient could be due to internal variability, however, it would be an extreme event. Differences between these models and observations could also be due to an incorrect model response to external forcing.

7 Discussion

While the MEM change in ENSO SST variability in this study compares well with previous literature, the SMILEs add information by allowing for the isolation of the time-dependent ENSO response in individual models. In most models, although not all, ENSO amplitude is projected to increase, in agreement with Cai et al. (2018, 2022); Fredriksen et al. (2020). However, while previous work used the differences between long time periods (i.e., 2000-2099 compared to 1900-1999) to isolate the projected change, we leveraged SMILEs to separate the time-dependent response of ENSO amplitude to external forcing from internal variability. Individual SMILEs have a range of projected evolutions of ENSO amplitude that are not linear in time. Additionally, in CESM2-LE, GFDL-CM3, and GFDL-ESM2M ENSO amplitude first increases, then decreases. In these models, the response captured using long time averaging is dependent on the specific period used. Here, SMILEs add value as an important new tool to fully capture the time-dependent ENSO variability projections.

The spatial pattern of projected changes in ENSO variability also differs between models. In the MEM, we find a general shift toward more variability in the central Pacific. However, the individual model patterns that make up the MEM are diverse, and more work is needed to understand the model differences that we find. The MEM increase in the central Pacific variability is also clear in the MEM composite of El Niño event evolution. Additionally, La Niña events appear to strengthen in the MEM more than El Niño events, highlighting non-linear behaviour. In general, for both pattern and event evolution changes, the individual model responses are similar between the two time periods considered (2021-2050 2070-2099), albeit smaller in magnitude for the earlier period. However, this is not true for all models, with CESM2-LE a clear outlier showing opposite changes in

the earlier and later periods. [Model differences could be related to different climatological biases, different patterns of transient mean-state warming and different ENSO feedbacks and dynamics \(e.g. Bellenger et al., 2014; Capotondi et al., 2015; Planton et al., 2021; with additional work needed to diagnose why individual models behave the way they do.](#)

We find that the seasonal synchronisation of ENSO SST variability increases in most models investigated in this study. This manifests in an increase in ENSO SST variability in boreal fall and winter and a decrease in spring and early summer. These changes have implications for understanding ENSO's intrinsic dynamics (e.g. Stuecker et al., 2013; Stein et al., 2014; Chen and Jin, 2022), changes to remote ENSO impacts (e.g., potentially amplifying the ENSO impact in one season for a given region and reducing it in a different season), and potential changes to ENSO predictability (e.g. Balmaseda et al., 1995; Timmermann et al., 2018). Thus, changes in variability should be assessed seasonally and not by using annual averages. [We note that determining the dynamical cause for the increased ENSO seasonal synchronization in most of the models will require a detailed ENSO feedback analysis \(e.g. Chen and Jin, 2022\), including assessing potential future changes in the southward wind shift mechanism \(e.g. McGregor et al., 2012; Stuecker et al., 2013\).](#)

The tropical Pacific SST gradient response also agrees with previous work showing an El Niño-like warming in most models and the MEM (e.g Kociuba and Power, 2015; Fredriksen et al., 2020; Lian et al., 2018; Cai et al., 2021). However, again the individual model responses that go into the MEM are diverse, with the warming varying both seasonally and longitudinally. In general, the season of strongest SST gradient weakens the most, however, this is again not consistent across all models. In most models, weakening of the SST gradient intensifies in the second half of the twentieth century, consistent with a weakening of the Walker circulation gradually overwhelming the ocean thermostat mechanism (Heede et al., 2020; Heede and Fedorov, 2021).

Similar to the previous hypotheses, we find a link between the projected tropical Pacific SST gradient and the change in ENSO SST variability (DiNezio et al., 2012; Beobide-Arsuaga et al., 2021; Fredriksen et al., 2020; Hayashi et al., 2020; Wyman et al., 2020; Capotondi and Sardeshmukh, 2017; Rodgers et al., 2004; Ogata et al., 2013; Choi et al., 2013). However, the SMILEs provide a much clearer picture of the time evolution of anomalies. We find a large subset of models that have an increase in ENSO SST variability that precedes the mean state change, with ENSO SST variability plateauing, and in some models decreasing as the mean state warms in an El Niño-like fashion. This result begins to conceptually link together previous work that found an increase in ENSO SST variability over the coming century (e.g. Cai et al., 2022) and a decrease in the longer-term equilibrated state (e.g. Callahan et al., 2021). The individual model responses may also put into context a recent high-resolution study (Wengel et al., 2021) that finds a decrease in ENSO SST variability and argues that CMIP class models cannot capture all aspects of ENSO ocean dynamics correctly, leading to a potentially incorrect projected increase in ENSO SST variability. Based on our study, their model could be capturing a longer-term decrease in ENSO SST variability due to the strong forcing used ($4xCO_2$). Alternatively, we do find CMIP class SMILEs that show a decrease in ENSO SST variability, highlighting the need to use multiple models for robustness. Based on these results, high-resolution modelling studies that use multiple models are needed to reconcile projections and determine the robustness of the higher-resolution result as compared to standard resolution CMIP class models.

310 In the two models that have single forcing SMILE experiments, greenhouse gas and aerosol forcing contribute to a historical increase in ENSO SST variability, ~~however~~. While one might expect aerosol forcing to have the opposite effect of greenhouse gas increases, aerosols are hemispherically asymmetric unlike greenhouse gas forcing leading to shifts in the intertropical convergence zone that can also influence ENSO (Kang et al., 2020; Pausata et al., 2020). In contrast, greenhouse gas and aerosol forcing have competing influences on historical trends in the tropical Pacific SST gradient. The observed change in the tropical Pacific SST gradient sits right at the edge of all ensemble members of the all-forcing historical scenario (consistent with McGregor et al., 2014; Seager et al., 2019, 2022; Wills et al., submitted 2022). This suggests that the modelled SST gradient response to greenhouse gas forcing could be too strong or incorrect, the modelled SST gradient response to aerosol forcing could be too weak, the observed change could be an extreme event caused by internal variability, or the modelled internal variability could be too small, or some combination of the above. Further investigation is needed as more single forcing ensembles are released to determine the relative roles of these possibilities.

8 Summary and Conclusions

In this study we highlight the value of SMILEs for investigating ENSO projections. SMILEs allow the isolation of the time-dependent response of ENSO SST variability to increasing greenhouse gases. By using SMILEs we can better understand projected changes in ENSO variability and the tropical Pacific SST gradient and isolate inter-model differences in their response to anthropogenic forcing.

Our results show the following:

1. ENSO SST Projections

- (a) Projections of ENSO amplitude are not linear in time.
- (b) Models differ in their projections of the pattern and time-evolution of ENSO SST variability and El Niño and La Niña event evolution.
- (c) The MEM projects an increase in ENSO SST variability, El Niño-like warming, and more variability in the central Pacific.
- (d) The seasonality of ENSO SST variability increases. ENSO SST variability increases in boreal fall and winter with a decrease in spring and early summer. This is qualitatively consistent across all models.

2. Mean-state projections

- (a) Most models project El Niño-like warming, although some models project the opposite.
- (b) Individual models are different in their longitude and season of maximum warming in the tropical Pacific.

3. Relationship between ENSO SST variability and the tropical Pacific SST gradient

- 340 (a) When considering individual ensemble members, tropical Pacific SST gradient changes are linearly related to changes in ENSO SST variability in most models.
- (b) This response is time-dependent. In many but not all models, ENSO variability first increases, then the tropical Pacific SST gradient weakens as ENSO variability plateaus or decreases.

4. A single forcing perspective

- 345 (a) Increases in ENSO SST variability in the two single forced SMILEs result from anthropogenic (aerosol and greenhouse gas) forcing.
- (b) More single forced SMILEs are needed to understand the tropical Pacific SST gradient change.

These results present an extensive picture of future changes in ENSO in 14 SMILEs. The use of SMILEs means that the diverse responses across models can be truly attributed to model differences, rather than including contributions from internal variability. These diverse responses demonstrate a need for further investigation into the processes causing model differences in ENSO projections and provide a baseline for future research. Additionally, our results highlight time-dependent behaviour including non-linear changes in ENSO SST variability and changes in the tropical Pacific SST gradient that intensify near the end of the 21st century. This has important implications for ENSO's teleconnections and impacts, as a non-linear change in ENSO SST variability likely has non-linear time-dependent changes in its impacts as well. Our results may also help to reconcile previous work that suggests a transient increase in ENSO SST variability, but a long-term equilibrated decrease by isolating the time-dependent behaviour of ENSO SST variability projections. While many models agree on the trajectory of projected changes, not all models behave the same way. This highlights the need for further research on the mechanisms of inter-model differences in ENSO projections. There is a rich diversity of future ENSO changes projected by climate models and more work is needed to understand which aspects of these projections are robust.

350

355

Data availability. Large ensemble data is available as follows:

- 360 – CanESM2, CESM1-LE, CSIRO-Mk36 & GFDL-CM3 are available from the multi-model large ensemble archive <https://www.cesm.ucar.edu/projects/community-projects/MMLEA/>
- ACCESS-ESM1-5, CanESM5, EC-EARTH3, IPSL-CM6-LR, MIROC6 & MIROC-ES2L are available from the CMIP6 archive at <https://esgf-node.llnl.gov/projects/cmip6/>
- CESM2-LE is available at <https://www.cesm.ucar.edu/projects/community-projects/LENS2/>
- 365 – GFDL-SPEAR-MED is available at https://www.gfdl.noaa.gov/spear_large_ensembles/
- GFDL-ESM2M data was provided by Prof. Thomas Frölicher at the University of Bern
- MPI-GE is available at <https://mpimet.mpg.de/en/grand-ensemble/>

Author contributions. This paper is a result of the ENSO in large ensembles workshop held at CU Boulder in August 2021. All authors contributed to the analysis of data and conception of the paper at the workshop. NM wrote the manuscript with contributions from all
370 authors. RCJW made Figures 7 & 9. JK made Figure 10. SM and MFS made Figures 1, 4 & 5. SCS made Figures 2 & S3. SS made Figure 8. XW made Figures 3, 6, S1, S2, S4, S5, S6 & S7.

Competing interests. The authors declare no competing interests

Acknowledgements. This paper is a result of the ENSO in large ensembles workshop held at CU Boulder in August 2021. NM was partially funded by NSF AGS 1554659 in part by the CIRES Visiting Fellows Program and the NOAA Cooperative Agreement with CIRES,
375 NA17OAR4320101. R.C.J.W. acknowledges support from the National Science Foundation (Grant AGS-1929775) and computing support from the Computational and Information Systems Laboratory at the National Center for Atmospheric Research (Casper Data Analysis Cluster; Project UWAS0094). M.F.S. was supported by NSF grant AGS-2141728, NOAA's Climate Program Office's Modeling, Analysis, Predictions, and Projections (MAPP) program grant NA20OAR4310445, and NOAA's Ocean Acidification Program (OAP) grant NA21OAR0170191. SS was supported by the U.S. Department of Energy, DE-SC0019418 and by an NSF CAREER award, OCE-2142953.
380 This is IPRC publication X and SOEST contribution Y (numbers updated on acceptance). X. Wu is supported by an Advanced Study Program postdoctoral fellowship from the National Center for Atmospheric Research (NCAR). S.C.S is supported by the University of Colorado Chancellor's Postdoctoral Fellowship program. CMIP6 data were obtained from the CMIP6 next-generation archive at ETH Zurich (Brunner et al. 2020). We acknowledge the World Climate Research Programme, which, through its Working Group on Coupled Modelling, coordinated and promoted CMIP5 and CMIP6. We thank the climate modeling groups for producing and making available their model output, the
385 Earth System Grid Federation (ESGF) for archiving the data and providing access, and the multiple funding agencies who support CMIP5, CMIP6, and ESGF.

References

- Balmaseda, M. A., Davey, M. K., and Anderson, D. L. T.: Decadal and Seasonal Dependence of ENSO Prediction Skill, *Journal of Climate*, 8, 2705 – 2715, [https://doi.org/10.1175/1520-0442\(1995\)008<2705:DASDOE>2.0.CO;2](https://doi.org/10.1175/1520-0442(1995)008<2705:DASDOE>2.0.CO;2), 1995.
- 390 Bellenger, H., Guilyardi, E., Leloup, J., Lengaigne, M., and Vialard, J.: ENSO representation in climate models: from CMIP3 to CMIP5, *Climate Dynamics*, 42, 1999–2018, <https://doi.org/10.1007/s00382-013-1783-z>, 2014.
- Beobide-Arsuaga, G., Bayr, T., Reintges, A., and Latif, M.: Uncertainty of ENSO-amplitude projections in CMIP5 and CMIP6 models, *Climate Dynamics*, <https://doi.org/10.1007/s00382-021-05673-4>, 2021.
- Boucher, O., Servonnat, J., Albright, A. L., Aumont, O., Balkanski, Y., Bastrikov, V., Bekki, S., Bonnet, R., Bony, S., Bopp, L., Braconnot, P., Brockmann, P., Cadule, P., Caubel, A., Cheruy, F., Codron, F., Cozic, A., Cugnet, D., D’Andrea, F., Davini, P., de Lavergne, C., Denvil, S., Deshayes, J., Devilliers, M., Ducharne, A., Dufresne, J.-L., Dupont, E., Éthé, C., Fairhead, L., Falletti, L., Flavoni, S., Foujols, M.-A., Gardoll, S., Gastineau, G., Ghattas, J., Grandpeix, J.-Y., Guenet, B., Guez, Lionel, E., Guilyardi, E., Guimberteau, M., Hauglustaine, D., Hourdin, F., Idelkadi, A., Joussaume, S., Kageyama, M., Khodri, M., Krinner, G., Lebas, N., Levvasseur, G., Lévy, C., Li, L., Lott, F., Lurton, T., Luysaert, S., Madec, G., Madeleine, J.-B., Maignan, F., Marchand, M., Marti, O., Mellul, L., Meurdesoif, Y., Mignot, J., Musat, I., Ottlé, C., Peylin, P., Planton, Y., Polcher, J., Rio, C., Rochetin, N., Rousset, C., Sepulchre, P., Sima, A., Swingedouw, D., Thiéblemont, R., Traore, A. K., Vancoppenolle, M., Vial, J., Vialard, J., Viovy, N., and Vuichard, N.: Presentation and Evaluation of the IPSL-CM6A-LR Climate Model, *Journal of Advances in Modeling Earth Systems*, 12, e2019MS002010, <https://doi.org/https://doi.org/10.1029/2019MS002010>, e2019MS002010 10.1029/2019MS002010, 2020.
- Burger, F. J., Terhaar, and Frölicher, T. L.: Compound marine heatwaves and ocean acidity extremes, *Nature Geosciences*, In review 2021.
- 405 Cai, W., Lengaigne, M., Borlace, S., Collins, M., Cowan, T., McPhaden, M. J., Timmermann, A., Power, S., Brown, J., Menkes, C., Ngari, A., Vincent, E. M., and Widlansky, M. J.: More extreme swings of the South Pacific convergence zone due to greenhouse warming, *Nature*, 488, 365–369, <https://doi.org/10.1038/nature11358>, 2012.
- Cai, W., Borlace, S., Lengaigne, M., van Rensch, P., Collins, M., Vecchi, G., Timmermann, A., Santoso, A., McPhaden, M. J., Wu, L., England, M. H., Wang, G., Guilyardi, E., and Jin, F.-F.: Increasing frequency of extreme El Niño events due to greenhouse warming, *Nature Climate Change*, 4, 111–116, <https://doi.org/10.1038/nclimate2100>, 2014.
- 410 Cai, W., Wang, G., Dewitte, B., Wu, L., Santoso, A., Takahashi, K., Yang, Y., Carréric, A., and McPhaden, M. J.: Increased variability of eastern Pacific El Niño under greenhouse warming, *Nature*, 564, 201–206, <https://doi.org/10.1038/s41586-018-0776-9>, 2018.
- Cai, W., Santoso, A., Collins, M., Dewitte, B., Karamperidou, C., Kug, J.-S., Lengaigne, M., McPhaden, M. J., Stuecker, M. F., Taschetto, A. S., Timmermann, A., Wu, L., Yeh, S.-W., Wang, G., Ng, B., Jia, F., Yang, Y., Ying, J., Zheng, X.-T., Bayr, T., Brown, J. R., Capotondi, A., Cobb, K. M., Gan, B., Geng, T., Ham, Y.-G., Jin, F.-F., Jo, H.-S., Li, X., Lin, X., McGregor, S., Park, J.-H., Stein, K., Yang, K., Zhang, L., and Zhong, W.: Changing El Niño-Southern Oscillation in a warming climate, *Nature Reviews Earth Environment*, 2, 628–644, <https://doi.org/10.1038/s43017-021-00199-z>, 2021.
- 415 Cai, W., Ng, B., Wang, G., Santoso, A., Wu, L., and Yang, K.: Increased ENSO sea surface temperature variability under four IPCC emission scenarios, *Nature Climate Change*, 12, 228–231, <https://doi.org/10.1038/s41558-022-01282-z>, 2022.
- 420 Callahan, C. W., Chen, C., Rugenstein, M., Bloch-Johnson, J., Yang, S., and Moyer, E. J.: Robust decrease in El Niño/Southern Oscillation amplitude under long-term warming, *Nature Climate Change*, 11, 752–757, <https://doi.org/10.1038/s41558-021-01099-2>, 2021.
- Capotondi, A. and Sardeshmukh, P. D.: Is El Niño really changing?, *Geophysical Research Letters*, 44, 8548–8556, <https://doi.org/https://doi.org/10.1002/2017GL074515>, 2017.

- Capotondi, A., Ham, Y., Wittenberg, A., and Kug, J.: Climate model biases and El Niño Southern Oscillation (ENSO) simulation, <https://repository.library.noaa.gov/view/noaa/31041>, 2015.
- 425
- Chen, H.-C. and Jin, F.-F.: Dynamics of ENSO Phase-Locking and Its Biases in Climate Models, *Geophysical Research Letters*, 49, e2021GL097603, <https://doi.org/https://doi.org/10.1029/2021GL097603>, e2021GL097603 2021GL097603, 2022.
- Choi, K.-Y., Vecchi, G. A., and Wittenberg, A. T.: ENSO Transition, Duration, and Amplitude Asymmetries: Role of the Nonlinear Wind Stress Coupling in a Conceptual Model, *Journal of Climate*, 26, 9462 – 9476, <https://doi.org/10.1175/JCLI-D-13-00045.1>, 2013.
- 430
- Chung, C. T. Y., Power, S. B., Sullivan, A., and Delage, F.: The role of the South Pacific in modulating Tropical Pacific variability, *Scientific Reports*, 9, 18 311, <https://doi.org/10.1038/s41598-019-52805-2>, 2019.
- Clement, A. C., Seager, R., Cane, M. A., and Zebiak, S. E.: An Ocean Dynamical Thermostat, *Journal of Climate*, 9, 2190 – 2196, [https://doi.org/10.1175/1520-0442\(1996\)009<2190:AODT>2.0.CO;2](https://doi.org/10.1175/1520-0442(1996)009<2190:AODT>2.0.CO;2), 1996.
- Coats, S. and Karnauskas, K. B.: Are Simulated and Observed Twentieth Century Tropical Pacific Sea Surface Temperature Trends Significant Relative to Internal Variability?, *Geophysical Research Letters*, 44, 9928–9937, <https://doi.org/https://doi.org/10.1002/2017GL074622>, 2017.
- 435
- Cobb, K. M., Westphal, N., Sayani, H. R., Watson, J. T., Lorenzo, E. D., Cheng, H., Edwards, R. L., and Charles, C. D.: Highly Variable El Niño Southern Oscillation Throughout the Holocene, *Science*, 339, 67–70, <https://doi.org/10.1126/science.1228246>, 2013.
- Collins, M., An, S.-I., Cai, W., Ganachaud, A., Guilyardi, E., Jin, F.-F., Jochum, M., Lengaigne, M., Power, S., Timmermann, A., Vecchi, G., and Wittenberg, A.: The impact of global warming on the tropical Pacific Ocean and El Niño, *Nature Geoscience*, 3, 391–397, <https://doi.org/10.1038/ngeo868>, 2010.
- 440
- Delworth, T. L., Cooke, W. F., Adcroft, A., Bushuk, M., Chen, J.-H., Dunne, K. A., Ginoux, P., Gudgel, R., Hallberg, R. W., Harris, L., Harrison, M. J., Johnson, N., Kapnick, S. B., Lin, S.-J., Lu, F., Malyshev, S., Milly, P. C., Murakami, H., Naik, V., Pascale, S., Paynter, D., Rosati, A., Schwarzkopf, M., Shevliakova, E., Underwood, S., Wittenberg, A. T., Xiang, B., Yang, X., Zeng, F., Zhang, H., Zhang, L., and Zhao, M.: SPEAR: The Next Generation GFDL Modeling System for Seasonal to Multidecadal Prediction and Projection, *Journal of Advances in Modeling Earth Systems*, 12, e2019MS001 895, <https://doi.org/https://doi.org/10.1029/2019MS001895>, 2020.
- 445
- Deser, C., Lehner, F., Rodgers, K. B., Ault, T., Delworth, T. L., DiNezio, P. N., Fiore, A., Frankignoul, C., Fyfe, J. C., Horton, D. E., Kay, J. E., Knutti, R., Lovenduski, N. S., Marotzke, J., McKinnon, K. A., Minobe, S., Randerson, J., Screen, J. A., Simpson, I. R., and Ting, M.: Insights from Earth system model initial-condition large ensembles and future prospects, *Nature Climate Change*, 10, 277–286, <https://doi.org/10.1038/s41558-020-0731-2>, 2020.
- 450
- DiNezio, P. N., Kirtman, B. P., Clement, A. C., Lee, S.-K., Vecchi, G. A., and Wittenberg, A.: Mean Climate Controls on the Simulated Response of ENSO to Increasing Greenhouse Gases, *Journal of Climate*, 25, 7399 – 7420, <https://doi.org/10.1175/JCLI-D-11-00494.1>, 2012.
- Döscher, R., Acosta, M., Alessandri, A., Anthoni, P., Arsouze, T., Bergman, T., Bernardello, R., Boussetta, S., Caron, L.-P., Carver, G., Castrillo, M., Catalano, F., Cvijanovic, I., Davini, P., Dekker, E., Doblus-Reyes, F. J., Docquier, D., Echevarria, P., Fladrich, U., Fuentes-Franco, R., Gröger, M., v. Hardenberg, J., Hieronymus, J., Karami, M. P., Keskinen, J.-P., Koenigk, T., Makkonen, R., Massonnet, F., Ménégos, M., Miller, P. A., Moreno-Chamarro, E., Nieradzik, L., van Noije, T., Nolan, P., O'Donnell, D., Ollinaho, P., van den Oord, G., Ortega, P., Prims, O. T., Ramos, A., Reerink, T., Rousset, C., Ruprich-Robert, Y., Le Sager, P., Schmith, T., Schrödner, R., Serva, F., Sicardi, V., Sloth Madsen, M., Smith, B., Tian, T., Tourigny, E., Uotila, P., Vancoppenolle, M., Wang, S., Wårlind, D., Willén, U., Wyser, K., Yang, S., Yepes-Arbós, X., and Zhang, Q.: The EC-Earth3 Earth system model for the Coupled Model Intercomparison Project 6, *Geoscientific Model Development*, 15, 2973–3020, <https://doi.org/10.5194/gmd-15-2973-2022>, 2022.
- 460

- England, M. H., McGregor, S., Spence, P., Meehl, G. A., Timmermann, A., Cai, W., Gupta, A. S., McPhaden, M. J., Purich, A., and Santoso, A.: Recent intensification of wind-driven circulation in the Pacific and the ongoing warming hiatus, *Nature Climate Change*, 4, 222–227, <https://doi.org/10.1038/nclimate2106>, 2014.
- 465 Fasullo, J. T., Otto-Bliesner, B. L., and Stevenson, S.: ENSO's Changing Influence on Temperature, Precipitation, and Wildfire in a Warming Climate, *Geophys. Res. Lett.*, 45, 9216–9225, <https://doi.org/10.1029/2018GL079022>, 2018.
- Fedorov, A. V. and Philander, S. G.: Is El Niño Changing?, *Science*, 288, 1997–2002, <https://doi.org/10.1126/science.288.5473.1997>, 2000.
- Fredriksen, H.-B., Berner, J., Subramanian, A. C., and Capotondi, A.: How Does El Niño–Southern Oscillation Change Under Global Warming—A First Look at CMIP6, *Geophysical Research Letters*, 47, e2020GL090640, <https://doi.org/https://doi.org/10.1029/2020GL090640>,
 470 e2020GL090640 2020GL090640, 2020.
- Grothe, P. R., Cobb, K. M., Liguori, G., Di Lorenzo, E., Capotondi, A., Lu, Y., Cheng, H., Edwards, R. L., Southon, J. R., Santos, G. M., Deocampo, D. M., Lynch-Stieglitz, J., Chen, T., Sayani, H. R., Thompson, D. M., Conroy, J. L., Moore, A. L., Townsend, K., Hagos, M., O'Connor, G., and Toth, L. T.: Enhanced El Niño–Southern Oscillation Variability in Recent Decades, *Geophysical Research Letters*, 47, e2019GL083906, <https://doi.org/https://doi.org/10.1029/2019GL083906>, e2019GL083906 2019GL083906, 2020.
- 475 Hajima, T., Watanabe, M., Yamamoto, A., Tatebe, H., Noguchi, M. A., Abe, M., Ohgaito, R., Ito, A., Yamazaki, D., Okajima, H., Ito, A., Takata, K., Ogochi, K., Watanabe, S., and Kawamiya, M.: Development of the MIROC-ES2L Earth system model and the evaluation of biogeochemical processes and feedbacks, *Geoscientific Model Development*, 13, 2197–2244, <https://doi.org/10.5194/gmd-13-2197-2020>, 2020.
- Hayashi, M., Jin, F.-F., and Stuecker, M. F.: Dynamics for El Niño–La Niña asymmetry constrain equatorial-Pacific warming pattern, *Nature*
 480 *Communications*, 11, 4230, <https://doi.org/10.1038/s41467-020-17983-y>, 2020.
- Heede, U. K. and Fedorov, A. V.: Eastern equatorial Pacific warming delayed by aerosols and thermostat response to CO₂ increase, *Nature Climate Change*, 11, 696–703, <https://doi.org/10.1038/s41558-021-01101-x>, 2021.
- Heede, U. K., Fedorov, A. V., and Burls, N. J.: Time Scales and Mechanisms for the Tropical Pacific Response to Global Warming: A Tug of War between the Ocean Thermostat and Weaker Walker, *Journal of Climate*, 33, 6101 – 6118, <https://doi.org/10.1175/JCLI-D-19-0690.1>,
 485 2020.
- Jeffrey, S., Rotstayn, L., Collier, M., Dravitzki, S., Hamalainen, C., Moeseneder, C., Wong, K., and Syktus, J.: Australia's CMIP5 submission using the CSIRO-Mk3.6 model, *Australian Meteorological and Oceanographic Journal*, 63, 1–13, 2012.
- Jin, F.-F. and Neelin, J. D.: Modes of Interannual Tropical Ocean–Atmosphere Interaction—a Unified View. Part I: Numerical Results, *Journal of Atmospheric Sciences*, 50, 3477 – 3503, [https://doi.org/10.1175/1520-0469\(1993\)050<3477:MOITOI>2.0.CO;2](https://doi.org/10.1175/1520-0469(1993)050<3477:MOITOI>2.0.CO;2), 1993.
- 490 Jin, F.-F., Kim, S. T., and Bejarano, L.: A coupled-stability index for ENSO, *Geophysical Research Letters*, 33, <https://doi.org/https://doi.org/10.1029/2006GL027221>, 2006.
- Kang, S. M., Xie, S.-P., Shin, Y., Kim, H., Hwang, Y.-T., Stuecker, M. F., Xiang, B., and Hawcroft, M.: Walker circulation response to extratropical radiative forcing, *Science Advances*, 6, eabd3021, <https://doi.org/10.1126/sciadv.abd3021>, 2020.
- Kay, J. E., Deser, C., Phillips, A., Mai, A., Hannay, C., Strand, G., Arblaster, J. M., Bates, S. C., Danabasoglu, G., Edwards, J., Holland, M.,
 495 Kushner, P., Lamarque, J.-F., Lawrence, D., Lindsay, K., Middleton, A., Munoz, E., Neale, R., Oleson, K., Polvani, L., and Vertenstein, M.: The Community Earth System Model (CESM) Large Ensemble Project: A Community Resource for Studying Climate Change in the Presence of Internal Climate Variability, *Bulletin of American Meteorological Society*, 96, 1333–1349, <https://doi.org/10.1175/BAMS-D-13-00255.1>, 2015.

- Kim, S. T., Cai, W., Jin, F.-F., Santoso, A., Wu, L., Guilyardi, E., and An, S.-I.: Response of El Niño sea surface temperature variability to
500 greenhouse warming, *Nature Climate Change*, 4, 786–790, <https://doi.org/10.1038/nclimate2326>, 2014.
- Kirchmeier-Young, M., Zwiers, F., and Gillett, N.: Attribution of Extreme Events in Arctic Sea Ice Extent, *Journal of Climate*, 30, 553–571,
<https://doi.org/10.1175/JCLI-D-16-0412.1>, 2017.
- Kociuba, G. and Power, S. B.: Inability of CMIP5 Models to Simulate Recent Strengthening of the Walker Circulation: Implications for
Projections, *Journal of Climate*, 28, 20 – 35, <https://doi.org/10.1175/JCLI-D-13-00752.1>, 2015.
- 505 Kohyama, T. and Hartmann, D. L.: Nonlinear ENSO Warming Suppression (NEWS), *Journal of Climate*, 30, 4227 – 4251,
<https://doi.org/10.1175/JCLI-D-16-0541.1>, 2017.
- Kohyama, T., Hartmann, D. L., and Battisti, D. S.: La Niña-like Mean-State Response to Global Warming and Potential Oceanic Roles,
Journal of Climate, 30, 4207 – 4225, <https://doi.org/10.1175/JCLI-D-16-0441.1>, 2017.
- Kosaka, Y. and Xie, S.-P.: Recent global-warming hiatus tied to equatorial Pacific surface cooling, *Nature*, 501, 403–407,
510 <https://doi.org/10.1038/nature12534>, 2013.
- Lee, J., Planton, Y. Y., Gleckler, P. J., Sperber, K. R., Guilyardi, E., Wittenberg, A. T., McPhaden, M. J., and Pallotta, G.: Robust Evalu-
ation of ENSO in Climate Models: How Many Ensemble Members Are Needed?, *Geophysical Research Letters*, 48, e2021GL095041,
<https://doi.org/https://doi.org/10.1029/2021GL095041>, e2021GL095041 2021GL095041, 2021.
- Li, J., Xie, S.-P., Cook, E. R., Morales, M. S., Christie, D. A., Johnson, N. C., Chen, F., D'Arrigo, R., Fowler, A. M., Gou, X., and Fang, K.:
515 El Niño modulations over the past seven centuries, *Nature Climate Change*, 3, 822–826, <https://doi.org/10.1038/nclimate1936>, 2013.
- Lian, T., Chen, D., Ying, J., Huang, P., and Tang, Y.: Tropical Pacific trends under global warming: El Niño-like or La Niña-like?, *National
Science Review*, 5, 810–812, <https://doi.org/10.1093/nsr/nwy134>, 2018.
- Maher, N., Matei, D., Milinski, S., and Marotzke, J.: ENSO Change in Climate Projections: Forced Response or Internal Variability?,
Geophysical Research Letters, 45, 11,390–11,398, <https://doi.org/10.1029/2018GL079764>, 2018.
- 520 Maher, N., Milinski, S., Suarez-Gutierrez, L., Botzet, M., Dobrynin, M., Kornbluh, L., Kröger, J., Takano, Y., Ghosh, R., Hedemann, C.,
Li, C., Li, H., Manzini, E., Notz, D., Putrasahan, D., Boysen, L., Claussen, M., Ilyina, T., Olonscheck, D., Raddatz, T., Stevens, B., and
Marotzke, J.: The Max Planck Institute Grand Ensemble: Enabling the Exploration of Climate System Variability, *Journal of Advances in
Modeling Earth Systems*, 11, 2050–2069, <https://doi.org/10.1029/2019MS001639>, 2019.
- McGregor, S., Timmermann, A., Schneider, N., Stuecker, M. F., and England, M. H.: The Effect of the South Pacific Convergence
525 Zone on the Termination of El Niño Events and the Meridional Asymmetry of ENSO, *Journal of Climate*, 25, 5566 – 5586,
<https://doi.org/10.1175/JCLI-D-11-00332.1>, 2012.
- McGregor, S., Timmermann, A., Stuecker, M. F., England, M. H., Merrifield, M., Jin, F.-F., and Chikamoto, Y.: Recent
Walker circulation strengthening and Pacific cooling amplified by Atlantic warming, *Nature Climate Change*, 4, 888–892,
<https://doi.org/10.1038/nclimate2330>, 2014.
- 530 McGregor, S., Stuecker, M. F., Kajtar, J. B., England, M. H., and Collins, M.: Model tropical Atlantic biases underpin diminished Pacific
decadal variability, *Nature Climate Change*, 8, 493–498, <https://doi.org/10.1038/s41558-018-0163-4>, 2018.
- McPhaden, M. J., Zebiak, S. E., and Glantz, M. H.: ENSO as an integrating concept in earth science., *Science (New York, N.Y.)*, 314, 1740–5,
2006.
- McPhaden, M. J., Lee, T., and McClurg, D.: El Niño and its relationship to changing background conditions in the tropical Pacific Ocean,
535 *Geophysical Research Letters*, 38, <https://doi.org/https://doi.org/10.1029/2011GL048275>, 2011.

- Meehl, G. A. and Washington, W. M.: El Niño-like climate change in a model with increased atmospheric CO₂ concentrations, *Nature*, 382, 56–60, <https://doi.org/10.1038/382056a0>, 1996.
- Milinski, S., Maher, N., and Olonscheck, D.: How large does a large ensemble need to be?, *Earth System Dynamics*, 11, 885–901, <https://doi.org/10.5194/esd-11-885-2020>, 2020, 2020.
- 540 Ng, B., Cai, W., Cowan, T., and Bi, D.: Impacts of Low-Frequency Internal Climate Variability and Greenhouse Warming on El Niño–Southern Oscillation, *Journal of Climate*, 34, 2205 – 2218, <https://doi.org/10.1175/JCLI-D-20-0232.1>, 2021.
- Ogata, T., Xie, S.-P., Wittenberg, A., and Sun, D.-Z.: Interdecadal Amplitude Modulation of El Niño–Southern Oscillation and Its Impact on Tropical Pacific Decadal Variability, *Journal of Climate*, 26, 7280–7297, <http://www.jstor.org/stable/26192853>, 2013.
- Pausata, F. S. R., Zanchettin, D., Karamperidou, C., Caballero, R., and Battisti, D. S.: ITCZ shift and extratropical teleconnections drive ENSO response to volcanic eruptions, *Science Advances*, 6, eaaz5006, <https://doi.org/10.1126/sciadv.aaz5006>, 2020.
- 545 Planton, Y. Y., Guilyardi, E., Wittenberg, A. T., Lee, J., Gleckler, P. J., Bayr, T., McGregor, S., McPhaden, M. J., Power, S., Roehrig, R., Vialard, J., and Voltaire, A.: Evaluating Climate Models with the CLIVAR 2020 ENSO Metrics Package, *Bulletin of the American Meteorological Society*, 102, E193 – E217, <https://doi.org/10.1175/BAMS-D-19-0337.1>, 2021.
- Power, S., Delage, F., Chung, C., Kociuba, G., and Keay, K.: Robust twenty-first-century projections of El Niño and related precipitation variability, *Nature*, 502, 541–545, <https://doi.org/10.1038/nature12580>, 2013.
- 550 Rodgers, K. B., Friederichs, P., and Latif, M.: Tropical Pacific Decadal Variability and Its Relation to Decadal Modulations of ENSO, *Journal of Climate*, 17, 3761 – 3774, [https://doi.org/10.1175/1520-0442\(2004\)017<3761:TPDVAI>2.0.CO;2](https://doi.org/10.1175/1520-0442(2004)017<3761:TPDVAI>2.0.CO;2), 2004.
- Rodgers, K. B., Lee, S.-S., Rosenbloom, N., Timmermann, A., Danabasoglu, G., Deser, C., Edwards, J., Kim, J.-E., Simpson, I. R., Stein, K., Stuecker, M. F., Yamaguchi, R., Bódi, T., Chung, E.-S., Huang, L., Kim, W. M., Lamarque, J.-F., Lombardozzi, D. L., Wieder, W. R., and Yeager, S. G.: Ubiquity of human-induced changes in climate variability, *Earth System Dynamics*, 12, 1393–1411, <https://doi.org/10.5194/esd-12-1393-2021>, 2021.
- 555 Seager, R., Cane, M., Henderson, N., Lee, D.-E., Abernathey, R., and Zhang, H.: Strengthening tropical Pacific zonal sea surface temperature gradient consistent with rising greenhouse gases, *Nature Climate Change*, 9, 517–522, <https://doi.org/10.1038/s41558-019-0505-x>, 2019.
- Seager, R., Henderson, N., and Cane, M.: Persistent discrepancies between observed and modeled trends in the tropical Pacific Ocean, *Journal of Climate*, pp. 1 – 41, <https://doi.org/10.1175/JCLI-D-21-0648.1>, 2022.
- 560 Stein, K., Timmermann, A., Schneider, N., Jin, F.-F., and Stuecker, M. F.: ENSO Seasonal Synchronization Theory, *Journal of Climate*, 27, 5285 – 5310, <https://doi.org/10.1175/JCLI-D-13-00525.1>, 2014.
- Stevenson, S., Fox-Kemper, B., Jochum, M., Rajagopalan, B., and Yeager, S. G.: ENSO Model Validation Using Wavelet Probability Analysis, *Journal of Climate*, 23, 5540 – 5547, <https://doi.org/10.1175/2010JCLI3609.1>, 2010.
- 565 Stevenson, S., Wittenberg, A. T., Fasullo, J., Coats, S., and Otto-Bliesner, B.: Understanding Diverse Model Projections of Future Extreme El Niño, *Journal of Climate*, 34, 449 – 464, <https://doi.org/10.1175/JCLI-D-19-0969.1>, 2021.
- Stevenson, S. L.: Significant changes to ENSO strength and impacts in the twenty-first century: Results from CMIP5, *Geophys. Res. Lett.*, 39, <https://doi.org/10.1029/2012GL052759>, 2012.
- 570 Stuecker, M. F., Timmermann, A., Jin, F.-F., McGregor, S., and Ren, H.-L.: A combination mode of the annual cycle and the El Niño/Southern Oscillation, *Nature Geoscience*, 6, 540–544, <https://doi.org/10.1038/ngeo1826>, 2013.
- Sun, L., Alexander, M., and Deser, C.: Evolution of the Global Coupled Climate Response to Arctic Sea Ice Loss during 1990–2090 and Its Contribution to Climate Change, *Journal of Climate*, 31, 7823–7843, 2018.

- Swart, N. C., Cole, J. N. S., Kharin, V. V., Lazare, M., Scinocca, J. F., Gillett, N. P., Anstey, J., Arora, V., Christian, J. R., Hanna, S., Jiao, Y., Lee, W. G., Majaess, F., Saenko, O. A., Seiler, C., Seinen, C., Shao, A., Sigmond, M., Solheim, L., von Salzen, K., Yang, D., and Winter, B.: The Canadian Earth System Model version 5 (CanESM5.0.3), *Geoscientific Model Development*, 12, 4823–4873, <https://doi.org/10.5194/gmd-12-4823-2019>, 2019.
- 575 Taschetto, A. S., Ummerhofer, C. C., Stuecker, M. F., Dommenges, D., Ashok, K., Rodrigues, R. R., and Yeh, S.-W.: ENSO Atmospheric Teleconnections, chap. 14, pp. 309–335, American Geophysical Union (AGU), <https://doi.org/https://doi.org/10.1002/9781119548164.ch14>, 2020.
- 580 Tatebe, H., Ogura, T., Nitta, T., Komuro, Y., Ogochi, K., Takemura, T., Sudo, K., Sekiguchi, M., Abe, M., Saito, F., Chikira, M., Watanabe, S., Mori, M., Hirota, N., Kawatani, Y., Mochizuki, T., Yoshimura, K., Takata, K., Oishi, R., Yamazaki, D., Suzuki, T., Kurogi, M., Kataoka, T., Watanabe, M., and Kimoto, M.: Description and basic evaluation of simulated mean state, internal variability, and climate sensitivity in MIROC6, *Geoscientific Model Development*, 12, 2727–2765, <https://doi.org/10.5194/gmd-12-2727-2019>, 2019.
- 585 Timmermann, A., An, S.-I., Kug, J.-S., Jin, F.-F., Cai, W., Capotondi, A., Cobb, K. M., Lengaigne, M., McPhaden, M. J., Stuecker, M. F., Stein, K., Wittenberg, A. T., Yun, K.-S., Bayr, T., Chen, H.-C., Chikamoto, Y., Dewitte, B., Dommenges, D., Grothe, P., Guilyardi, E., Ham, Y.-G., Hayashi, M., Ineson, S., Kang, D., Kim, S., Kim, W., Lee, J.-Y., Li, T., Luo, J.-J., McGregor, S., Planton, Y., Power, S., Rashid, H., Ren, H.-L., Santoso, A., Takahashi, K., Todd, A., Wang, G., Wang, G., Xie, R., Yang, W.-H., Yeh, S.-W., Yoon, J., Zeller, E., and Zhang, X.: El Niño-Southern Oscillation complexity, *Nature*, 559, 535–545, <https://doi.org/10.1038/s41586-018-0252-6>, 2018.
- Watanabe, M., Dufresne, J.-L., Kosaka, Y., Mauritsen, T., and Tatebe, H.: Enhanced warming constrained by past trends in equatorial Pacific sea surface temperature gradient, *Nature Climate Change*, 11, 33–37, <https://doi.org/10.1038/s41558-020-00933-3>, 2021.
- 590 Wengel, C., Lee, S.-S., Stuecker, M. F., Timmermann, A., Chu, J.-E., and Schloesser, F.: Future high-resolution El Niño/Southern Oscillation dynamics, *Nature Climate Change*, 11, 758–765, <https://doi.org/10.1038/s41558-021-01132-4>, 2021.
- Wills, R., Dong, Y., Proistosescu, C., Armour, K., and Battisti, D.: Systematic climate model biases in the large-scale pattern of recent sea-surface temperature and sea-level pressure change, *Geophysical Research Letters*, submitted 2022.
- 595 Wills, R. C. J., Battisti, D. S., Armour, K. C., Schneider, T., and Deser, C.: Pattern Recognition Methods to Separate Forced Responses from Internal Variability in Climate Model Ensembles and Observations, *Journal of Climate*, 33, 8693 – 8719, <https://doi.org/10.1175/JCLI-D-19-0855.1>, 2020.
- Wittenberg, A. T.: Are historical records sufficient to constrain ENSO simulations?, *Geophysical Research Letters*, 36, <https://doi.org/10.1029/2009GL038710>, 2009.
- 600 Wyman, D. A., Conroy, J. L., and Karamperidou, C.: The Tropical Pacific ENSO–Mean State Relationship in Climate Models over the Last Millennium, *Journal of Climate*, 33, 7539 – 7551, <https://doi.org/10.1175/JCLI-D-19-0673.1>, 2020.
- Wyser, K., Koenigk, T., Fladrich, U., Fuentes-Franco, R., Karami, M. P., and Kruschke, T.: The SMHI Large Ensemble (SMHI-LENS) with EC-Earth3.3.1, *Geoscientific Model Development*, 14, 4781–4796, <https://doi.org/10.5194/gmd-14-4781-2021>, 2021.
- Ying, J., Collins, M., Cai, W., Timmermann, A., Huang, P., Chen, D., and Stein, K.: Emergence of climate change in the tropical Pacific, *Nature Climate Change*, 12, 356–364, <https://doi.org/10.1038/s41558-022-01301-z>, 2022.
- 605 Yun, K.-S., Lee, J.-Y., Timmermann, A., Stein, K., Stuecker, M. F., Fyfe, J. C., and Chung, E.-S.: Increasing ENSO-rainfall variability due to changes in future tropical temperature-rainfall relationship, *Communications Earth Environment*, 2, 43, <https://doi.org/10.1038/s43247-021-00108-8>, 2021.
- Ziehn, T., Chamberlain, M. A., Law, R. M., Lenton, A., Bodman, R. W., Dix, M., Stevens, L., Wang, Y.-P., and Srbinovsky, J.: The Australian Earth System Model: ACCESS-ESM1.5, *JSHESS*, 70, 193–214, <https://doi.org/10.1071/ES19035>, 2020.
- 610

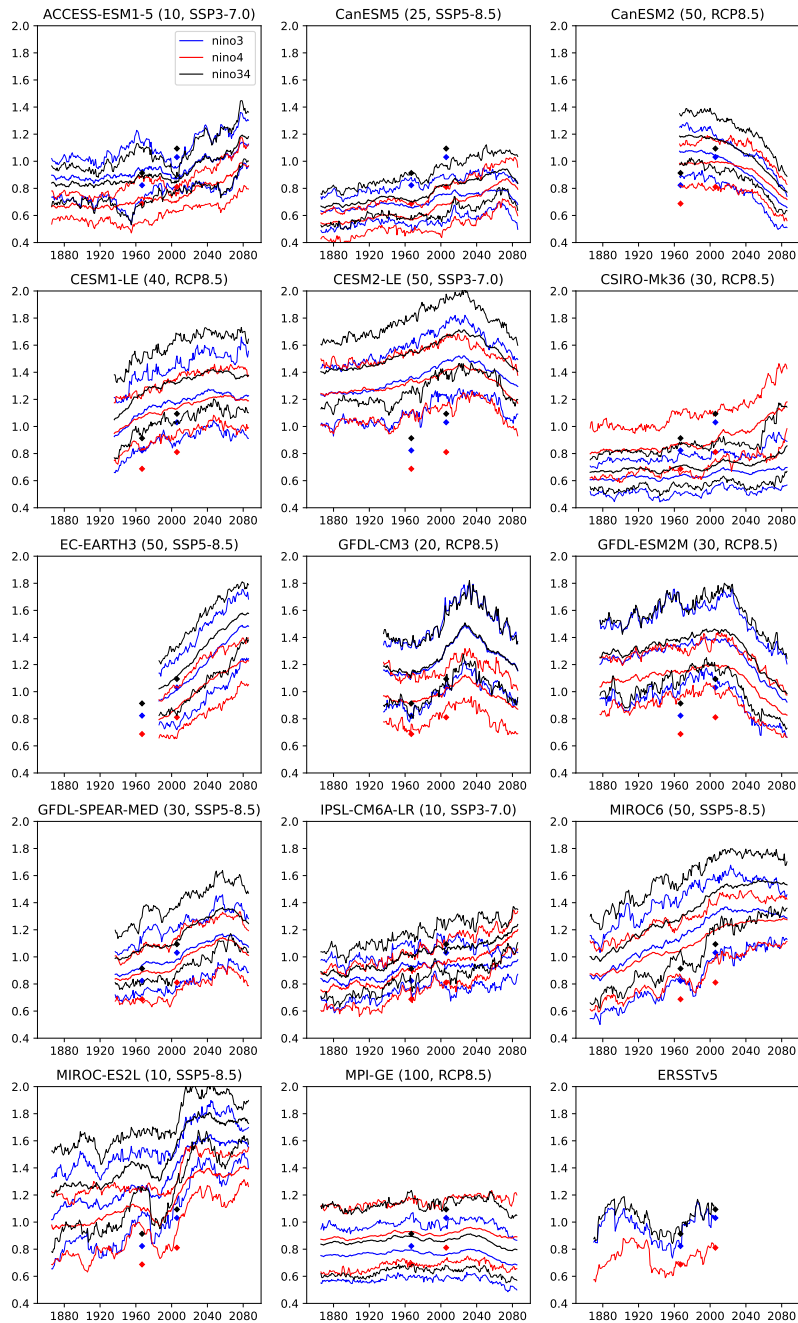


Figure 1. Time series of Niño3 (blue), Niño3.4 (green), and Niño4 variability for the December, January, February average (DJF) in each model. Variability is computed as the running 30-year standard deviation for each ensemble member after detrending each member by removing the ensemble mean. The solid line shows the ensemble mean of the running standard deviation, the thin dotted lines show the 5-95% range across the ensemble. The bottom right panel shows the running standard deviation for ERSSTv5 observations. The diamond symbols in each panel show the observed variability for the periods 1951–1980 and 1990–2019. Model name, ensemble size and scenario used are shown in the title of each panel for all Figures.

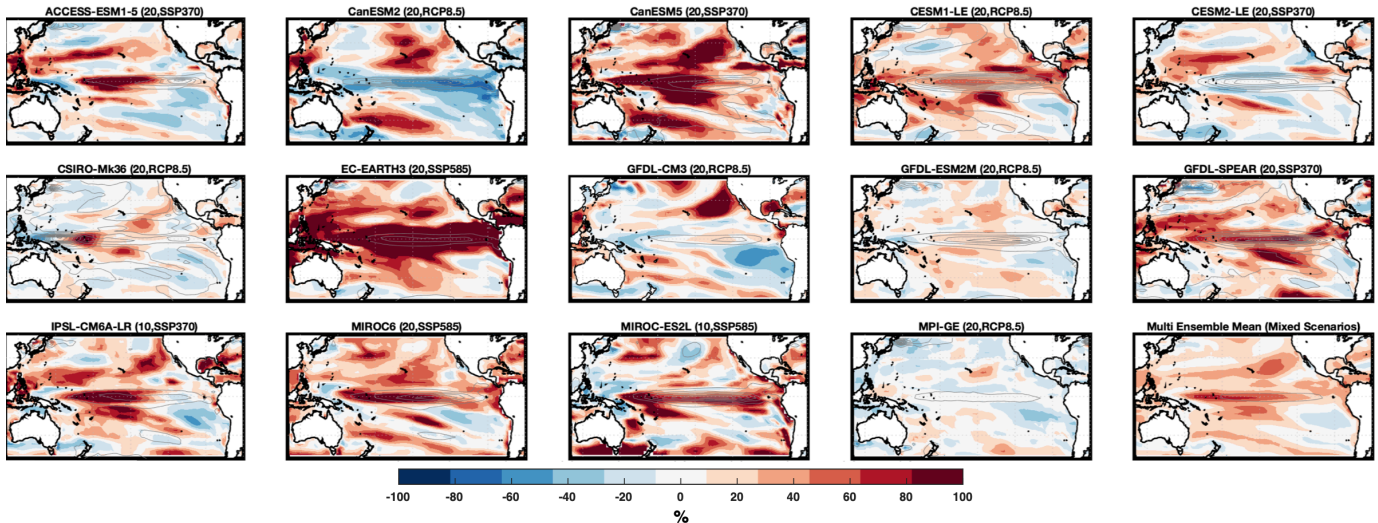


Figure 2. Spatial pattern of relative change in DJF SST variance in the (2-7 yr) ENSO band between the late 21st century(2070-2099) simulations and the historical (1951-1980) period. The difference in variances have been normalized by the variance of the historical (1951-1980) period (contours). The multi ensemble mean of the individual model ensemble means can be found in the last panel. Red colors indicate heightened variability, cool colors indicate dampened variability. For this and following Figures using DJF, 30 years are used in the calculations, e.g. for 1951-1980 we include 30 DJFs starting with December 1950 and DJF variance is computed as the variance of the DJF means. We note that a maximum ensemble size of the first 20 members is used in this analysis, with all members of models with 20 or less members used.

[jesd, manuscript]copernicus

[normalem]ulem color listings color

Abstract. Future changes in the El Niño–Southern Oscillation (ENSO) are uncertain, both because future projections differ between climate models and because the large internal variability of ENSO clouds the diagnosis of forced changes in observations and individual climate model simulations. By leveraging 14 single model initial-condition large ensembles (SMILEs), we robustly isolate the time evolving response of ENSO sea surface temperature (SST) variability to anthropogenic forcing from internal variability in each SMILE. We find non-linear changes in time in many models and considerable inter-model differences in projected changes in ENSO and the mean-state tropical Pacific zonal SST gradient. We demonstrate a linear relationship between the change in ENSO SST variability and the tropical Pacific zonal SST gradient although forced changes in the tropical Pacific SST gradient often occur later in the 21st century than changes in ENSO SST variability, which can lead to departures from the linear relationship. Single forcing SMILEs show a potential contribution of anthropogenic forcing (aerosols and greenhouse gases) to historical changes in ENSO SST variability, while the observed historical strengthening of the tropical Pacific SST gradient sits on the edge of the model spread for those models for which single forcing SMILEs are available. Our results highlight the value of SMILEs for investigating time-dependent forced responses and inter-model differences in ENSO projections. The non-linear changes in ENSO SST variability found in many models demonstrate the im-

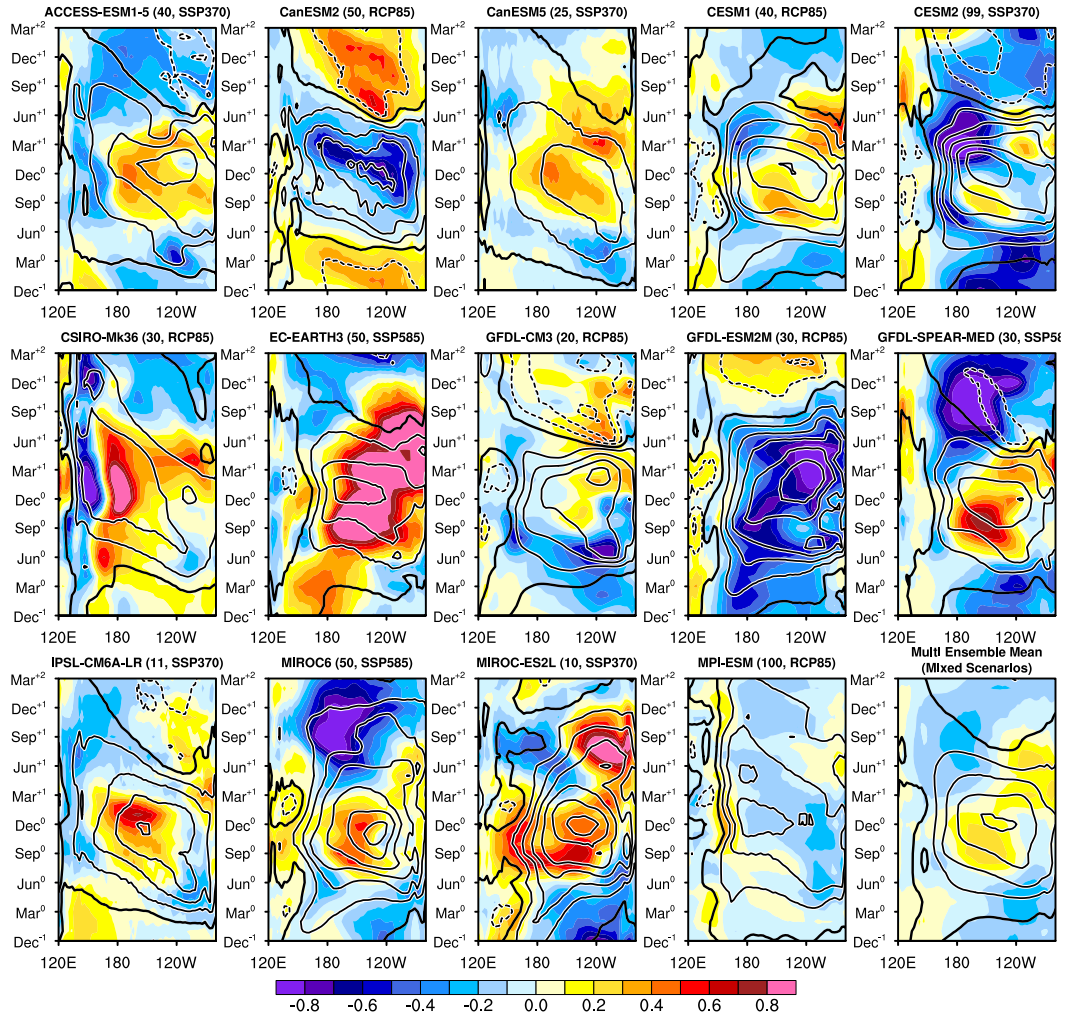


Figure 3. Longitude-time sections of the difference of equatorial Pacific (5°S-5°N) SST anomalies (°C; shading) composited for El Niño events during 2070-2099 compared to 1951-1980 in 14 SMILES and the multi-ensemble mean. The SST anomalies for El Niño events during 1951-1980 are overlaid (°C; contours at intervals of 0.4°C; zero contours thickened and negative contours dashed). El Niño events are defined when the Niño3.4 index exceeds 0.75 standard deviations in Dec0 but not in Dec-1, where the standard deviation of Niño3.4 is calculated separately for each calendar month from October to February.

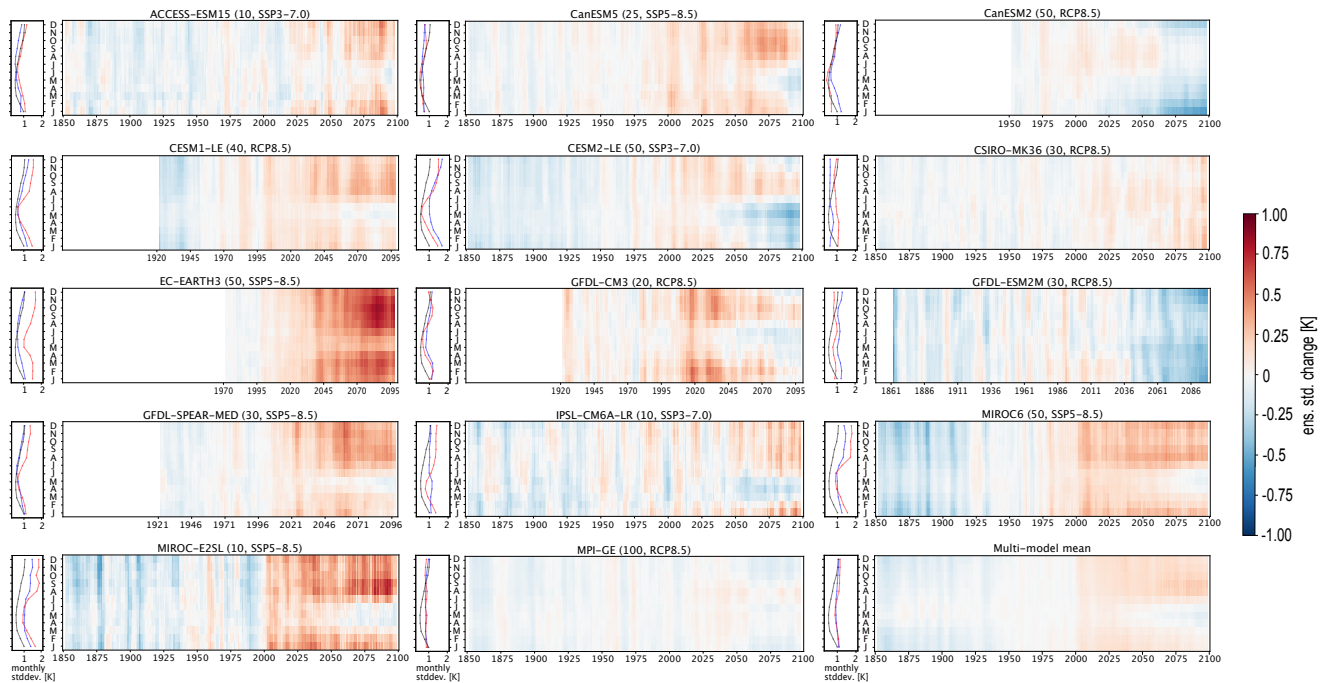


Figure 4. Change in ENSO SST variability, taken as the ensemble standard deviation in the nino3.4 region for each large ensemble and the multi ensemble mean. Blue lines show the climatology in 1951-1980, shading shows the 5-year-running-mean anomalies with respect to 1951-1980, and red lines show the climatology in 2070-2099. Black lines show the observational climatology based on ERSST5 in the period 1951-1980. We note that the climatology is computed as 1970-1999 for EC-Earth in blue and will be updated upon revision.

portance of characterising this time-dependent behaviour, as it implies that ENSO impacts may vary dramatically throughout the 21st century.

Introduction

Understanding how the El Niño–Southern Oscillation (ENSO) will change under increasing greenhouse gas emissions is critical due to ENSO’s widespread impacts, which include changes to floods, droughts, and fisheries production (e.g. McPhaden et al., 2006; Tas 630 (e.g. McPhaden et al., 2006; Cai et al., 2012, 2014; Taschetto et al., 2020; Cai et al., 2021). While previous work demonstrates model agreement on future intensification of ENSO’s atmospheric impacts (e.g. precipitation; Yun et al., 2021; Power et al., 2013; Fasullo et al., 2018), there remains debate as to whether ENSO-driven sea surface temperature (SST) variability will increase or decrease in the future as disparities between projections from different climate models persist (e.g. Cai et al., 2022; Wengel et al., 2021; 635 (e.g. Cai et al., 2022; Beobide-Arsuaga et al., 2021; Stevenson et al., 2021). In this study we present ENSO SST projections

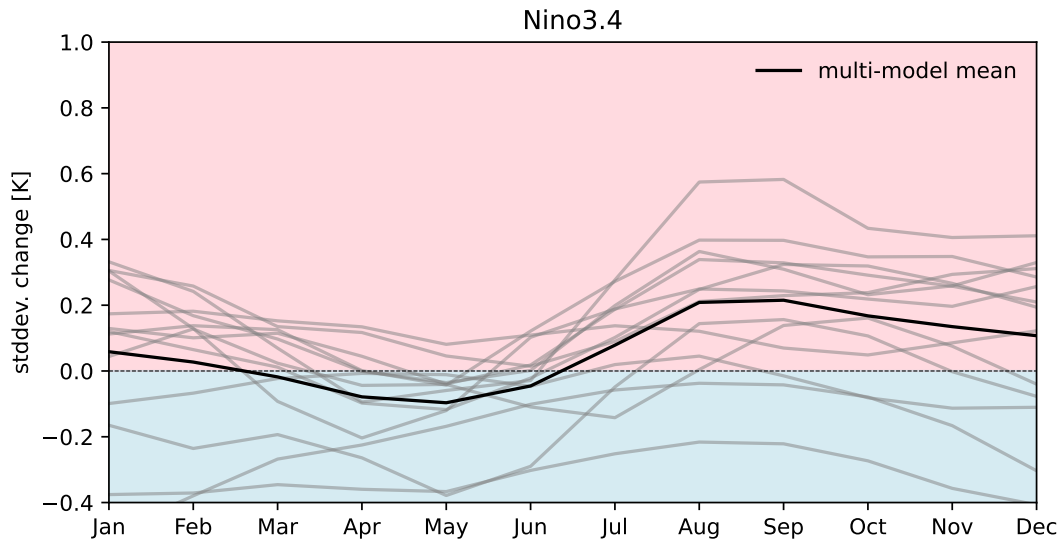


Figure 5. Change in ENSO SST variability taken as the ensemble standard deviation in the nino3.4 region for the period 2070-2099 as compared to 1951-1980. The grey lines are individual large ensembles, while the black line is the multi ensemble mean. Red shading indicates an increase in this metric, while blue indicates a decrease.

for the first time from 14 individual single model initial-condition large ensembles (SMILEs) where the time-evolving forced response is cleanly separated from internal variability.

Previous work finds a diverse range of projections of ENSO variability in multi-model ensembles (CMIP; coupled model intercomparison projects). In CMIP3 a range of ENSO variability projections were found leading to a review stating that it was not yet possible to determine whether ENSO would change in the future (Collins et al., 2010). In CMIP5 the models again demonstrate a variety of responses with the multi-model mean change indistinguishable from zero (Stevenson, 2012; Beobide-Arsuaga et al., 2021). Other studies have further investigated ENSO projections by excluding models that have strong ENSO biases in the historical period. When selecting for models that correctly represent ENSO skewness, Cai et al. (2018) find an increase in Eastern Pacific ENSO SST variability. This result is supported by the recent release of CMIP6 wherein Cai et al. (2022) demonstrate that 34 of 43 models show an increase in ENSO SST variability in SSP585 (27 of 39 in SSP126) in agreement with another early CMIP6 assessment (Fredriksen et al., 2020).

There is also some evidence for an increase in ENSO variability in the observational record, with paleoclimate data suggesting that ENSO variability strengthened post-1950 (Cai et al., 2021). Coral records indicate that ENSO variability has been 25% larger over the last 5 decades compared to the pre-industrial (Grothe et al., 2020; Cobb et al., 2013). This agrees with tree ring records, which show a strengthening of ENSO variance in the late 20th Century (Li et al., 2013). A study using linear inverse modelling based on instrumental data agrees that ENSO SST variance has increased since 1976 (Capotondi and Sardeshmukh, 2017). The authors, however, note that such differences could be due to multi-decadal variability or to the impact of climate change, and the cause of this observed change remains unclear.

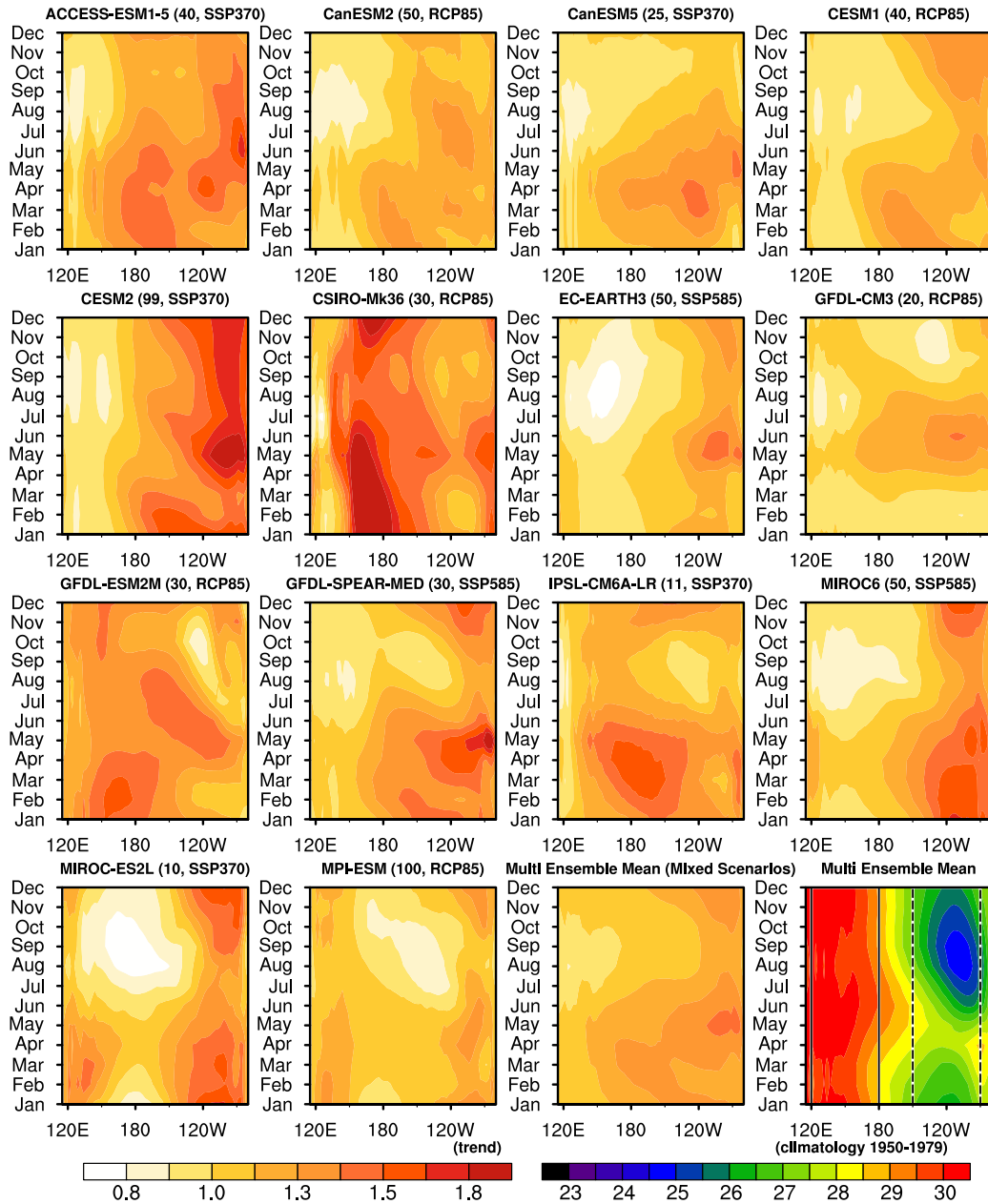


Figure 6. Longitude-time sections of the ensemble-mean linear trend of SST over the equatorial Pacific (5°S - 5°N) during 2015-2099 normalized by global mean SST trend. The bottom right panel shows the multi-ensemble-mean climatological seasonal cycle of SST in the equatorial Pacific over 1950-1979. Vertical black lines delineate the averaging regions used in Figures 7-10 with the solid lines indicating the western Pacific region and the dashed lines indicating the eastern Pacific region.

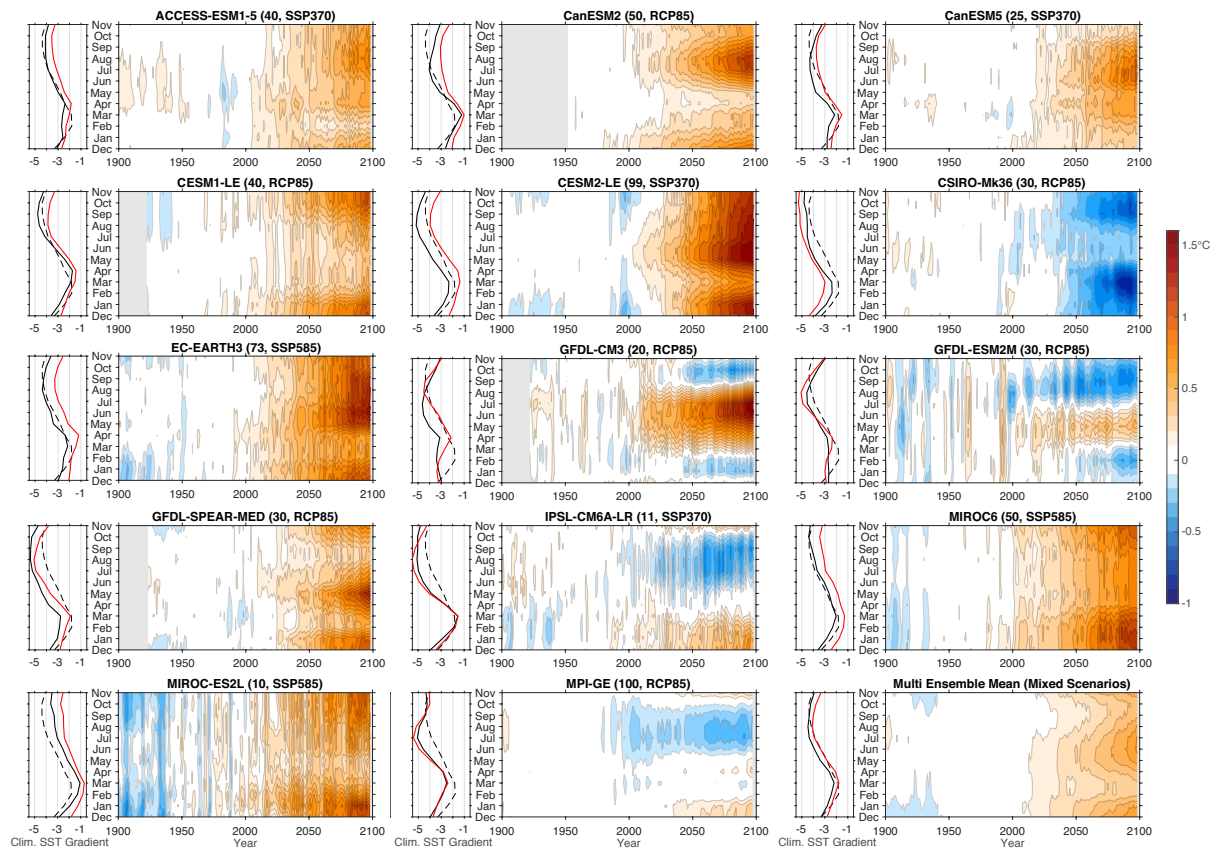


Figure 7. Tropical Pacific SST gradient climatology and mean-state changes, taken as the ensemble-mean difference between the eastern equatorial Pacific (90–150W, 5S–5N) and the western equatorial Pacific (120E–180, 5S–5N) for each large ensemble and the multi ensemble mean. Black lines show the climatology in 1951-1980, shading shows the 5-year-running-mean anomalies with respect to 1951-1980, and red lines show the climatology in 2070-2099. Black dashed lines show the observational climatology based on ERSST5 in the period 1951-1980. Red anomalies show El Niño-like changes and blue anomalies show La Niña-like changes.

While consensus between multi-model ensembles and paleoclimate records suggests that ENSO variability may increase with increasing greenhouse gas emissions, other studies [contest that look at the equilibration to strong greenhouse gas forcing complicate](#) this result. A recent study using a very high-resolution climate model (0.1 degree ocean; 0.25 degree atmosphere) finds that ENSO SST variability decreases substantially under strong (4xCO₂) forcing (Wengel et al., 2021). This study further argues that CMIP class models are too low in horizontal resolution to correctly capture some important aspects of ENSO ocean dynamics, which could lead to an artificial increase in SST variance in these models. On longer time-scales, ENSO amplitude is also found to decrease in CMIP class standard (1 to 2 degree) resolution models (Callahan et al., 2021). Using output from the Long Run Model Intercomparison Project, Callahan et al. (2021) find diverging transient ENSO variability projections, but a consistent decrease in SST variability across models when the response has stabilized. Indeed Kim et al. (2014) suggest

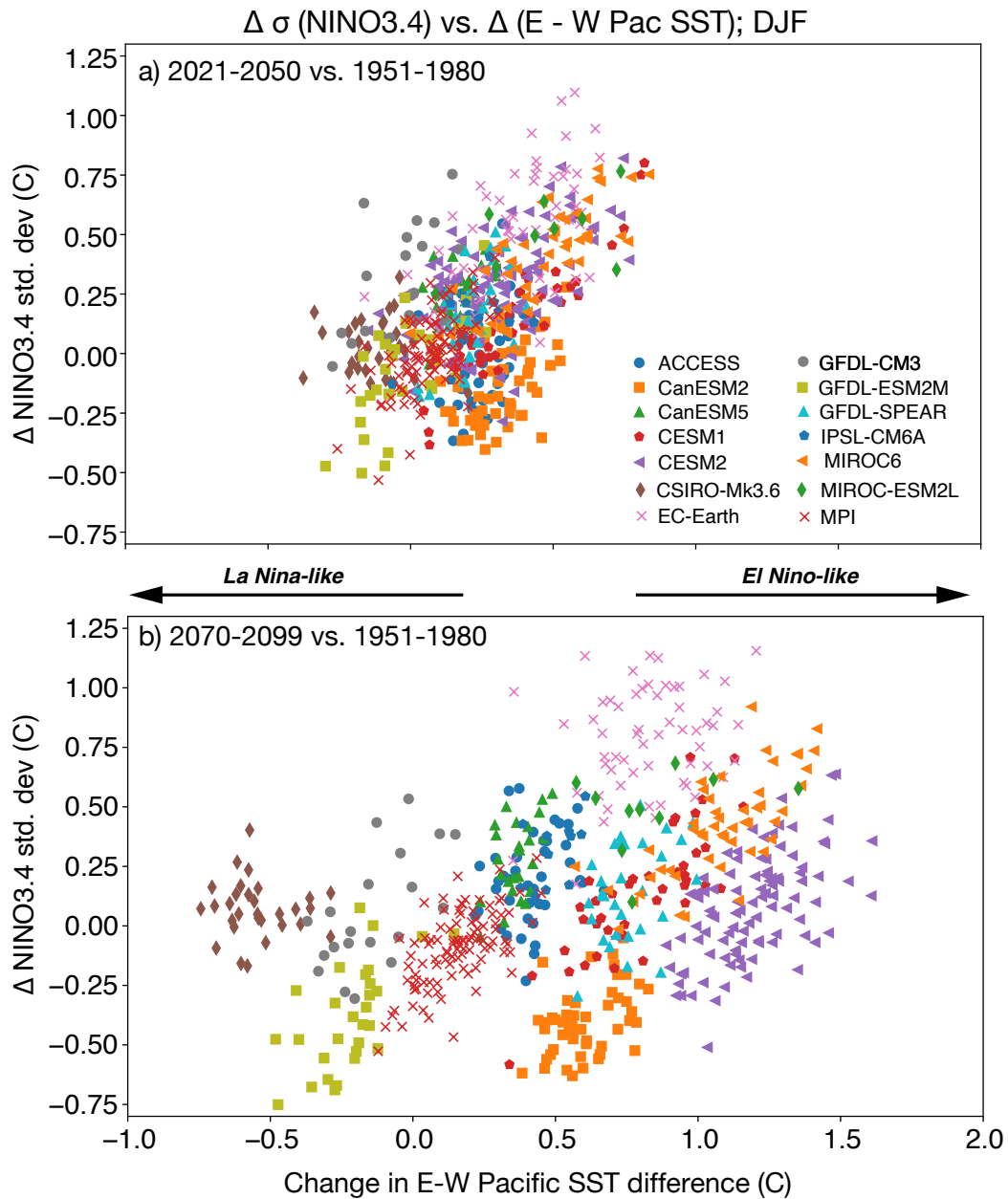


Figure 8. Time differences of the Niño3.4 standard deviation (y-axis) and the difference in SST between the east and west equatorial Pacific (defined as in Figure 7; x-axis) for each ensemble member of the 14 ensembles, indicated by colored symbols. a) Difference between 2021-2050 and 1950-1980; b) Difference between 2071-2099 and 1950-1980. Niño3.4 time series are detrended by subtraction of the time-varying ensemble mean prior to computation of standard deviation.

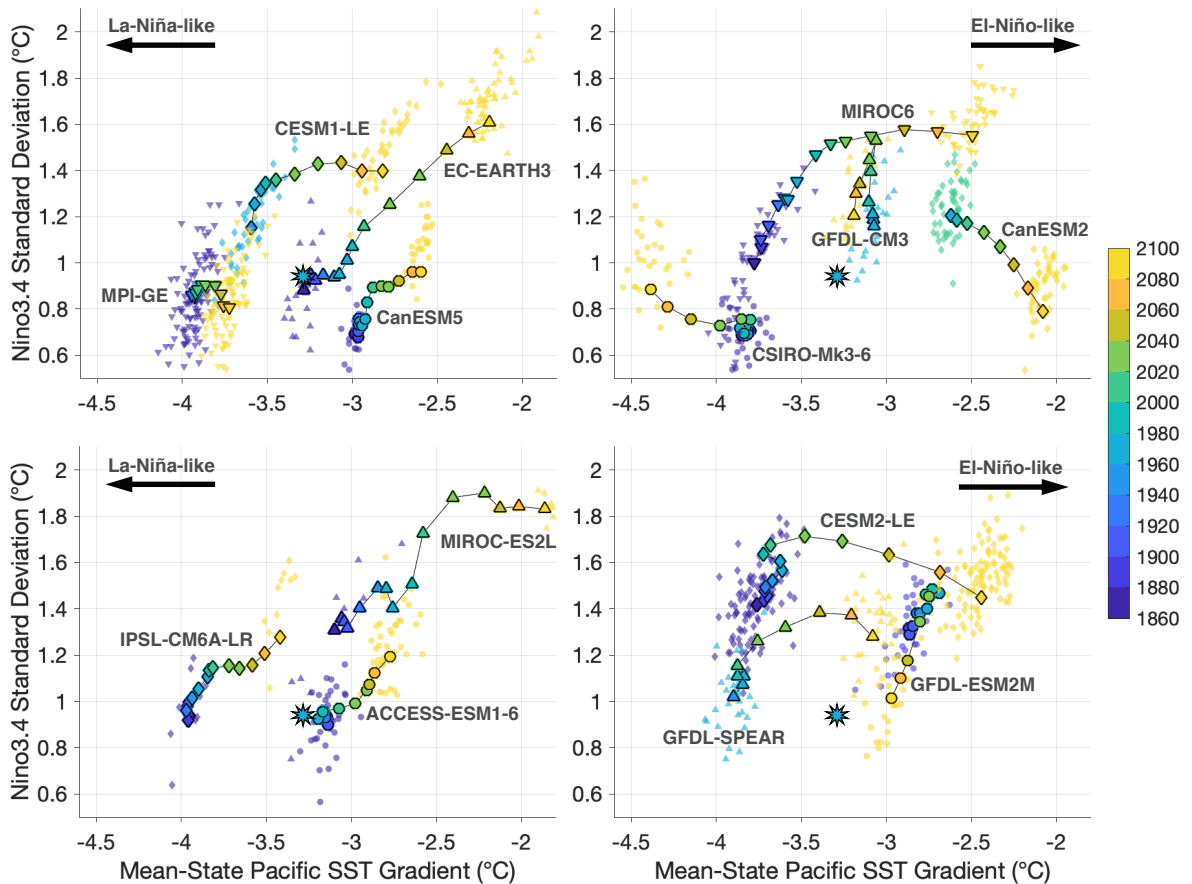


Figure 9. Time evolution of the 30-year-running-mean DJF tropical Pacific SST gradient (defined as in Figure 7; x-axis) and 30-year running standard deviation of DJF Niño3.4 variance (y-axis) in each SMILE. Symbols with black edges show the ensemble mean for overlapping 30 year periods every 15 years between 1850 and 2100, where the center year of the averaging period is computed is indicated by the fill color. The observational values for ERSST5 during the period 1951-1980 are shown with a light blue star. The 30-year -running-mean DJF tropical Pacific SST gradient and 30-year running standard deviation of DJF Niño3.4 in each ensemble member are shown for the first and last averaging periods (symbols without black edges).

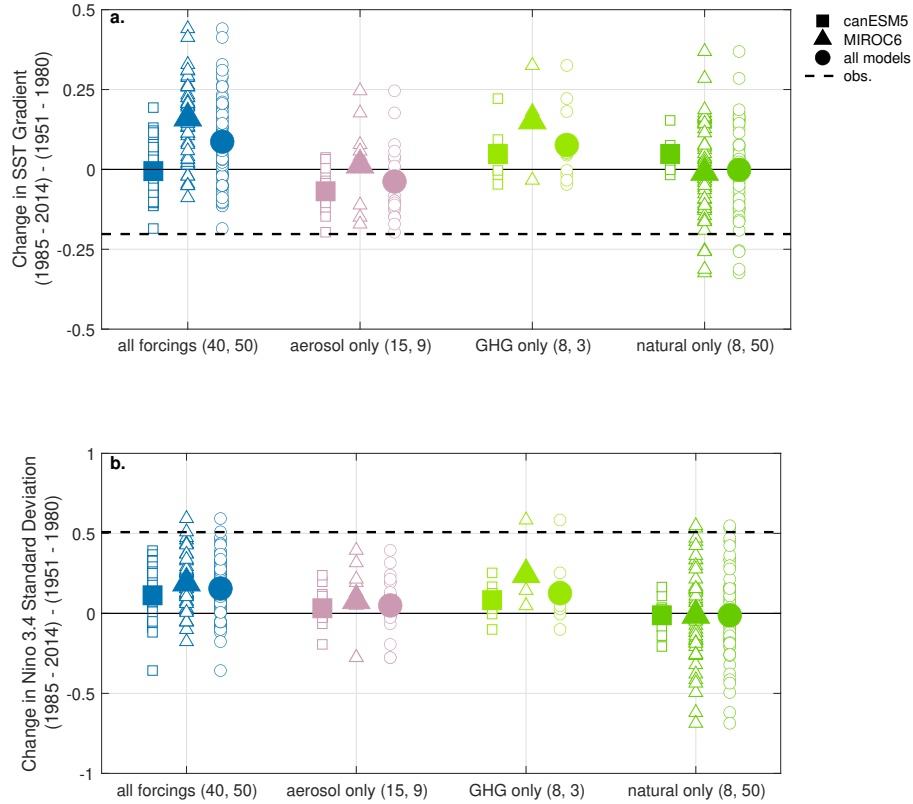


Figure 10. Change in the tropical Pacific SST gradient and Niño 3.4 index standard deviation in DJF in the two available single-forcing ensembles. (a) Change in the tropical Pacific SST gradient (west - east; defined as in Figure 7) over the second half of the 20th century (1985 - 2014 minus 1951 - 1980). Individual ensemble members from CanESM5 (squares), MIROC6 (triangles), and the combination of the two ensembles (circles) are shown with open symbols. The average change in gradient is shown with a filled marker. Observed changes (ERSSTv5) are shown in the dashed black line. (b) Change in the Niño3.4 index standard deviation over the same time period. We use the same visual conventions. Note that the sum of individual forcings may not add to the all-forcings, particularly in relatively small ensembles.

Table 1. SMILEs used in this study. CMIP6 models are highlighted in bold font.

Model	Time period	Forcing (ensemble size)	Reference
ACCESS-ESM1-5	1850-2100	hist(40), ssp370(40)	Ziehn et al. (2020)
CanESM2	1950-2100	Hist+rcp85(50)	Kirchmeier-Young et al. (2017)
CanESM5	1850-2100	hist(40), ssp370(25), hist-aer(15), hist-nat(8), hist-GHG(8)	Swart et al. (2019)
CESM1-LE	1920-2100	hist+rcp85(40)	Kay et al. (2015)
CESM2-LE	1850-2100	hist(100), ssp370(99)	Rodgers et al. (2021)
CSIRO-Mk36	1850-2100	hist+rcp85(30)	Jeffrey et al. (2012)
EC-EARTH3	1850(1970)-2100	hist(1850; 23), hist(1970; 50), ssp585(58)	Döscher et al. (2022); Wyser et al. (2021)
GFDL-CM3	1920-2100	hist+rcp85(20)	Sun et al. (2018)
GFDL-ESM2M	1861-2100	hist+rcp85(30)	Burger et al. (In review 2021)
GFDL-SPEAR-MED	1921-2100	hist+ssp585(30)	Delworth et al. (2020)
IPSL-CM6A-LR	1850-2100	hist(32), ssp370(10)	Boucher et al. (2020)
MIROC6	1850-2100	hist(50),ssp585(50), hist-nat(50), hist-aer(9), hist-GHG(3)	Tatebe et al. (2019)
MIROC-ES2L	1850-2100	hist(30), ssp585(10)	Hajima et al. (2020)
MPI-GE	1850-2099	hist+rcp85(100)	Maher et al. (2019)

that ENSO variability in CMIP5 models is not linear in time, implying an important role for analysing multiple time periods. Collectively, these studies demonstrate the importance of further research to reconcile these discrepancies.

665 Differences between the projections of ENSO variability in individual models have been linked to the pattern of mean-state warming across the tropical Pacific (e.g. Jin and Neelin, 1993; Fedorov and Philander, 2000; Jin et al., 2006; DiNezio et al., 2012). For instance, in CMIP5/6 models there is a weak negative correlation between the magnitude of the tropical Pacific SST gradient and ENSO SST variability (Beobide-Arsuaga et al., 2021). In this case, an increase in ENSO SST variability is linked to a weakening of the tropical Pacific SST gradient. This relationship varies between models (Fredriksen et al., 2020) and is
670 found to be more robust in models that have more realistic subsurface nonlinear dynamical heating and ENSO asymmetry when compared to observations (Hayashi et al., 2020). Periods of weaker tropical Pacific SST gradient are also linked to higher ENSO variability, with periods with a stronger gradient linked to periods of smaller ENSO SST variability (Capotondi and Sardeshmukh, 2017; Rodgers et al., 2004; Ogata et al., 2013; Choi et al., 2013; McPhaden et al., 2011). Models that show reduced ENSO variability in response to anthropogenic forcing also show a strengthening of the tropical Pacific SST gradient
675 (Kohyama and Hartmann, 2017; Kohyama et al., 2017). ~~Additionally, the~~ This relationship between ENSO amplitude and the mean-state tropical Pacific SST gradient is identified in PMIP models, although it is not constant through time (Wyman et al., 2020). However, paleoclimatic proxies suggest that there is no relationship between mean zonal SST gradient and ENSO variability (Cai et al., 2021), demonstrating that this link is either not found in our observations or, as in the PMIP models, is not constant in time. We emphasize that east-west Pacific SST gradient is only one of many mean state metrics that are

680 potentially important to influence (and vice versa be influenced by) ENSO variability. In fact, different aspects of the climate mean state affect ENSO feedbacks in multiple ways, leading to a potentially high sensitivity of the linear ENSO growth rate (and hence SST variability) to these factors (Jin et al., 2006).

How the tropical Pacific SST gradient itself will change in the future is also a point of contention. Most CMIP class models agree on a projected weakening of the SST gradient (El Niño-like warming; Kociuba and Power, 2015; Meehl and Washington, 685 1996; Fredriksen et al., 2020; Cai et al., 2021). This, however, must be reconciled with the recent observed increase in the SST gradient (La Niña-like warming; Kosaka and Xie, 2013; England et al., 2014; McGregor et al., 2014). Some studies suggest that the inconsistencies between models and observations can be explained by internal variability and observational uncertainty (Watanabe et al., 2021; Chung et al., 2019; Coats and Karnauskas, 2017), while others argue that the observations are truly outside the model range (Kociuba and Power, 2015; Seager et al., 2022). One hypothesis is that under transient forcing the 690 ocean thermostat mechanism, where upwelling waters delay warming in the eastern equatorial Pacific, overwhelms the long-term weakening of the Walker circulation and SST gradient (Clement et al., 1996; Heede and Fedorov, 2021), leading to temporary La-Niña-like warming. Another study concludes that a more accurate representation of ENSO nonlinearity leads to La Niña-like warming in at least one realistic climate model (Kohyama and Hartmann, 2017; Kohyama et al., 2017). As such, while most models project an El Niño-like warming, this is not the only possible future response. Alternatively, realistic 695 ENSO nonlinearity does not necessarily lead to a La Niña-like warming pattern. While realistic representations of ENSO nonlinearities are a necessary condition for the simulation of rectified mean state changes via nonlinear dynamical heating, diverging projected changes in future ENSO SST variability among models with largely realistic ENSO nonlinear dynamic heating can lead to either ENSO-induced damped or amplified eastern tropical Pacific mean-state warming (Hayashi et al., 2020). Additionally, it has been hypothesized that SST mean state biases in the Atlantic Ocean are responsible for low biased 700 interbasin connectivity (and hence also low-biased SST variability) between the Atlantic and Pacific (McGregor et al., 2018). This suite of studies highlights the need for further research and continued observations to reduce uncertainties in how the tropical Pacific SST gradient will change in the future.

A primary reason for uncertainty in future changes in ENSO variability and the mean-state tropical Pacific SST gradient is that ENSO itself experiences large multi-decadal variability (Wittenberg, 2009), meaning that long averaging periods or large 705 ensembles are needed to identify robust forced changes (e.g. Stevenson et al., 2010; Milinski et al., 2020; Maher et al., 2018; Deser et al., 2020; Ng et al., 2021). Projections using multi-model ensembles can be difficult to interpret because the spread due to internal variability is comparable to the spread due to inter-model differences (Maher et al., 2018; Ng et al., 2021). With this in mind, large ensembles are needed to quantify the time-varying ENSO response (Stevenson, 2012; Milinski et al., 2020). Without large ensembles, previous studies were forced to rely on long time averages to robustly evaluate changes in ENSO 710 variability (e.g., 2000-2099 compared to 1900-1999).

In this study, we present ENSO projections from 14 SMILEs, where the time-dependent response of ENSO to external forcing can be isolated from internal variability through ensemble averaging. The unprecedented number of SMILEs used allows a detailed examination of the model-dependence of future ENSO projections. In particular, this paper aims to:

- Isolate the forced response of ENSO in individual models

- 715 – Evaluate the time evolution of projected changes in ENSO statistics
- Investigate the time-dependent mean-state response of the tropical Pacific (tropical Pacific SST gradient) to greenhouse gas forcing
- Determine whether there is a relationship between projected changes in ENSO variability and the tropical Pacific SST gradient in climate models
- 720 – Investigate the role of greenhouse gases, aerosol, and natural forcing in historical ENSO variability changes using single forcing SMILEs

Datasets

The 14 SMILEs used in this study include both CMIP5 and CMIP6 class models and use one of three external forcing scenarios (Table 2). Models used in this study have between 10 and 100 ensemble members for the historical and future scenarios.

725 For those with single forcing we allow as few as 3 members due to the limited availability of models with any more than a single ensemble member. Previous work has investigated how many ensemble members are needed to investigate ENSO characteristics and find that this depends on the metric used, the length of time averaging, the level of acceptable error and the model itself (Maher et al., 2018; Milinski et al., 2020; Lee et al., 2021). Lee et al. (2021) find, for example, that for ENSO amplitude 10-47 members are sufficient depending on which model is used to make the estimate, while this range widens to

730 1-45 members for ENSO seasonality. Maher et al. (2018) determine that to look at ENSO variance over 30-year periods 10 members are sufficient for a 20% level of acceptable error, while 30-40 are needed to reduce this to 10%, with 12-20 sufficient for a 15% error (Milinski et al., 2020). Less members are needed to estimate mean state ENSO metrics, than its variability (Milinski et al., 2020; Lee et al., 2021). In this study we accept models with a minimum of 10 ensemble members as to include as many models as possible, however, we note that there are larger errors associated with estimates of ENSO variability for

735 the smaller ensemble sizes. We additionally show the timeseries of ENSO indices in Figure 11 as is acts to demonstrate the inherent variability due to different ensemble sizes.

While the purpose of this study is to provide a detailed overview of ENSO projections in all available SMILEs, it is useful to provide some observational context. ~~We note that a~~ detailed comparison of ENSO characteristics in both CMIP models and SMILEs can be found in the following studies for a large range of ENSO metrics, and we do not repeat this

740 here (Planton et al., 2021; Lee et al., 2021), although we note that in general CMIP6 models outperform CMIP5 in 8 out of 24 metrics and are only degraded in one (Planton et al., 2021; Lee et al., 2021) and that ENSO related SST biases and its teleconnections are also improved (?). We do, however, compare model-simulated and observed El Niño and La Niña composites (Figure S1 & S2 & S3). We find diverse errors in ENSO patterns, amplitude, and transitions. All models overestimate the westward extension of ENSO SST anomalies and either overestimate/underestimate the ENSO amplitude, and some models

745 overestimate the duration of ENSO events (e.g., MIROC6 MIROC-ES2L).

When considering ENSO SST variability we find that only some models capture the observed variability within the ensemble spread (Figure 11 [S1](#)), but note that this is not a reliable predictor for future change. For example, both MPI-GE and EC-EARTH3 compare favourably with the observed magnitude of ENSO SST variability, but have different future responses (Figure 11). MPI-GE shows no change in ENSO SST variability, while EC-EARTH3 has strongly increasing ENSO SST variability. We additionally note that there is large multi-decadal variability in the amplitude of ENSO variability in individual ensemble members. This indicates that we need a SMILE to robustly detect a forced change, but also that an actual forced change in the real world might be masked by this large multi-decadal variability.

ENSO Projections

In this section we evaluate the response of ENSO variability in each individual SMILE in one of three future scenarios dependent on availability (RCP8.5, SSP370, SSP585). [We note that there may be differences between SSP370 and RCP85/SSP585 particularly regarding to early 21st sulfate aerosols which has potential consequences for the evolution of ENSO \(??\).](#)

Amplitude

Projections of ENSO amplitude are non-linear in time and differ between models (Figure 11). A large proportion of the models demonstrate an increase in ENSO amplitude as characterized by December-January-February (DJF) SST variability of three ENSO indices (Niño3, Niño3.4 Niño4; ACCESS-ESM1.5, CESM1-LE, CSIRO-Mk36, EC-EARTH, IPSL-CM6A-LR, MIROC6, MIROC-ES2L). This increase is often non-linear in time, and there is a large spread across models in the magnitude of the increase. Other models show a decrease (CanESM2) or limited change (MPI-GE) in ENSO amplitude. Finally, five models display non-monotonic behaviour (CESM2-LE, GFDL-CM3, GFDL-ESM2M, CanESM5, GFDL-SPEAR-MED). In these models, ENSO amplitude first increases, then plateaus, and lastly decreases. These results are consistent for all three ENSO indices, with subtle differences for some models (e.g., CSIRO-Mk36 IPSL-CM6A-LR). Given the time-dependent response of ENSO amplitude exhibited in these time-series plots, we consider projections for two future time periods (2021-2050 2070-2099) in the following sections.

Pattern

Forced changes in the spatial pattern of ENSO-related SST variability differ between models (Figures 12 & [S3S4](#)). While the multi-ensemble mean (MEM; [used for ease of comparison to CMIP multi-model mean results](#)) shows an increase in variability in the central Pacific, each model has its own unique pattern of change (Figure 12). Some models demonstrate a general decrease in SST variability along the equator (CanESM2, CESM2, MPI-GE) while others show a general increase in this region (CESM1, EC-EARTH, MIROC6, MIROC-ESL2L, GFDL-SPEAR-MED). There are also differences in the zonal pattern of variability changes. A group of models has large increases in variability in the central Pacific (ACCESS-ESM1.5, CanESM5, IPSL-CM6A-LR), while another group shows a clear increase across the Pacific (CESM1-LE, EC-EARTH, GFDL-SPEAR-MED, MIROC-ES2L). These diverse patterns are generally similar between the two time periods considered, but

smaller in magnitude for the earlier period (Figure S4S2; 2021-2050) compared to the later period (Figure 12; 2071-2100), with the MEM pattern consistent between time periods. This result is, however, not true for all models. CESM2 has a central equatorial Pacific response of opposite sign between the two periods considered, while GFDL-CM3 and CSIRO-Mk36 have very different patterns of spatial change in the two periods considered. These figures give the pattern of overall change in ENSO SST variability, however, El Niño and La Niña are not symmetric and may evolve in different ways. Due to this we next consider changes in El Niño and La Niña events individually.

ENSO Event Evolution

Composites of El Niño events in each period show increased El Niño SST amplitude relative to the baseline period 1951-1980 in most models and the MEM (Figure 13; 2070-2099, Figure S4S5; 2021-2050). In the baseline period, most models have maximum SST anomalies in the eastern equatorial Pacific sometime between November and February followed by a westward propagation of warm anomalies and then a switch to cold anomalies in the following year. In the MEM, the longitudinal location of the maximum SST anomaly shifts westward by approximately 15° in 2070-2099 compared to that in 1951-1980, indicating that El Niño SST variability gets stronger over the central Pacific in the future period, consistent with results shown in Figure 12. In models where the amplitude of El Niño increases, the amplitude of the subsequent La Niña also tends to increase (Figures S5 & S6 & S7), presumably due to a stronger heat content discharge, and vice versa for models where the amplitude of El Niño decreases. When considering the asymmetry between El Niño and La Niña event composites, the MEM shows that the amplitude of La Niña intensifies more than El Niño in the western-central equatorial Pacific, and the duration of La Niña becomes longer following the amplitude intensification, highlighting the non-linearity of their responses (Figure S5S6). The individual model responses, however, demonstrate strong inter-model differences, which might be related to the diverse model biases in simulating ENSO (Figures S1 & S2 & S3). Overall, ENSO SST changes in the period 2021-2050 show similar patterns, albeit weaker amplitude, to those in the periods in 2070-2099 (Figures S4 & S6S5 & S7). CESM2 is an exception that has opposite changes in El Niño SST amplitude and La Niña duration between the two periods.

Seasonal Synchronisation

We next investigate the seasonal synchronization of projected changes in ENSO SST variability (Figures 14 & 15). We aim to determine during which seasons ENSO SST variability changes in each SMILE and determine whether the ENSO seasonality is likely to increase or decrease. We find that models demonstrate different magnitudes of change for different months (Figure 14). Most models show the largest change (generally an increase) in boreal winter with limited changes in boreal summer. Individual models have opposite signed changes between the two seasons. Overall, there is an increase in ENSO seasonality (Figure 15), i.e., increases in ENSO variability are concentrated in the season where ENSO SST variability is climatologically largest. These changes are largely consistent across models, with an overall increase in ENSO SST variability found in boreal fall and winter and a decrease in the variability in spring and summer.

Mean-state projections

810 The warming rate over the equatorial Pacific varies seasonally and as a function of longitude (Figure 16). While some models have larger warming trends in the east Pacific (El-Niño-like warming) for all months (MIROC6, CESM1, EC-EARTH, CESM2), others demonstrate a more complicated seasonal cycle of warming rate, with the location of largest warming dependent on which month is considered. In the MEM, the eastern Pacific warms more in all seasons, however, from December to June the strong warming trend extends into the central Pacific, which warms with almost equal magnitude to the east. The MEM warming rate is larger over the eastern equatorial Pacific during late boreal spring (the climatological warm season of the equatorial Pacific) compared to boreal autumn (the cold season), but the season of strongest warming is model-dependent. 815 For example, GFDL-CM3 has the largest eastern equatorial Pacific warming in boreal summer, while CESM1 has the largest warming in boreal fall and winter.

The time evolution of tropical Pacific SST gradient changes is investigated by considering the SST difference between the eastern and western equatorial Pacific (Figure 17). A decrease in this gradient indicates stronger warming in the east Pacific, i.e., 820 El Niño-like warming (red colours in Figure 17), while a strengthening of the gradient corresponds to La Niña-like warming (blue colours in Figure 17). We find El Niño-like warming in most models, which is evident in the MEM. This is, however, not the case for CSIRO-Mk36 and is seasonally dependent for GFDL-CM3, GFDL-ESM2M, IPSL-CM5A-LR, and MPI-GE. With the exception of CSIRO-Mk36, models with a stronger climatological gradient tend to have stronger El-Niño-like warming (Figure S1b), though the correlation between the gradient climatology and the gradient change is not significant. The season 825 during which projected changes are strongest is again model dependent, but SST gradient changes are often concentrated in the season during which the climatological SST gradient is strongest in the specific model considered. The following section relates the projected changes in ENSO variability to the changes in the tropical Pacific SST gradient to investigate whether these changes are linked.

Relationship between ENSO variability and mean-state changes

830 The projected change in ENSO SST variability is linearly related to the projected change in the tropical Pacific SST gradient across ensemble members from all models in the period 2021-2050 (Figure 18). This relationship breaks down in the later period (2070-2099) for models that have large SST gradient changes (e.g. CESM2; CSIRO-Mk3.6; CanESM2). In general, an ensemble member that experiences El Niño-like warming is most likely to see an increase in ENSO variability, while a La Niña-like warming is associated with the opposite response. While this does not occur for all ensemble members, the larger 835 the response in either the tropical Pacific SST gradient or ENSO SST variability the more likely that a concurrent change in the other variable will be seen.

We further investigate the relationship between changes in ENSO SST variability and the change in the tropical Pacific SST gradient by plotting the evolving relationship between the two variables over time (Figure 19). Many models have a hook-shaped ensemble-mean (forced) response that corresponds to the following time-dependent response. First, there is an increase 840 in ENSO SST variability concurrent with uniform warming across the Pacific (i.e., no change in tropical Pacific SST gradient)

or weak El Niño-like warming. Then there is El Niño-like warming concurrent with a plateau in ENSO SST variability. In some models, this is followed by a decrease in ENSO SST variability as the mean state continues to warm in an El Niño-like fashion. This behavior is seen in seven models (CESM1-LE, GFDL-SPEAR, MIROC6, MIROC-ES2L, CanESM5, CESM2-LE, IPSL-CM6A-LR), with an additional four that demonstrate a portion of the hook-shaped response (EC-EARTH3, ACCESS-ESM1-6, 845 CanESM2, MPI-GE). The three outliers are GFDL-ESM2M, which exhibits an increase then a decrease in both ENSO SST variability and the mean-state tropical Pacific SST gradient, GFDL-CM3, which shows an increase then a decrease in ENSO SST variability without much change in the mean-state tropical Pacific SST gradient, and CSIRO-Mk36, which has strong La Niña-like warming and an increase in ENSO SST variability.

The time evolution of ENSO SST variability and the tropical Pacific SST gradient (Figure 19) provide context for the 850 results in Figure 18. ~~While projections of ENSO variability and the tropical Pacific SST gradient are linearly related as shown in Figure 18, some models show a forced response with the opposite relationship, and the time evolution reveals that ENSO variability changes precede the~~ The internal variability relationship that is the primary contribution to Figure 18a clearly shows the role of rectification into the mean state (e.g. Hayashi et al., 2020), but for the forced changes this is only one of several mechanisms at play, so the forced changes can depart from this linear relationship (Figures 18b & 19). 855 The observational changes between 1951-1980 and 1990-2019 also show a notable departure from this linear relationship, with a strong La-Niña-like mean state trend together with a weak increase in Niño3.4 variance (Figure 19). The multi-decadal La-Niña-like mean state change in observations is near the edge of what could result from the internal variability found in models (z-score = -1.88), suggesting that this mean-state ~~SST gradient changes in most models, supportive of the hypothesis that ENSO nonlinear dynamical heating can rectify into the mean state (e.g. Hayashi et al., 2020). This highlights is likely~~ 860 partially forced (c.f. Seager et al., 2022; Wills et al., submitted 2022). Our results highlight the value of using SMILEs to analyse the time-dependent response of the tropical Pacific in climate models. We additionally note that the individual ensemble member spread is much larger for ENSO SST variability projections than the tropical Pacific SST gradient (Figure 19). This means that more ensemble members are needed to retrieve the forced change in ENSO SST variability under warming (as well as higher order moments of other Earth system variables; Rodgers et al., 2021), but somewhat fewer are needed to isolate the 865 forced change in the tropical Pacific SST gradient (e.g. Wills et al., 2020; Rodgers et al., 2021).

A single forcing perspective

Using two SMILEs (CanESM5 and MIROC6) that have single forcing simulations available, we separate the contribution of aerosols, greenhouse gases, and natural forcing to historical changes in both ENSO SST variability and the tropical Pacific SST gradient (Figure 10). Both models have forced increases in ENSO variability over this time period (1985-2014 compared 870 to 1951-1980) although this is not evident in all ensemble members. This increase is consistent with observations and is driven by anthropogenic forcing (greenhouse gases and aerosols), not natural forcing. The larger ensemble (MIROC6) has strong variability across ensemble members in the natural forcing ensemble, where large increases or decreases could be observed in

a single realization (or observations) due to this variability alone. This indicates that ENSO SST variability changes have not yet emerged from internal variability, consistent with previous work (e.g. Ying et al., 2022).

875 Over the historical period, the tropical Pacific SST gradient weakens in MIROC6 and does not change in CanESM5 in response to all forcings. This is a result of the combination of greenhouse gas and aerosol forcing, which generally oppose each other (Figure 10). Specifically, greenhouse gases act to weaken the gradient in both models, while aerosols strengthen the gradient in CanESM2 and have minimal effect in MIROC6. The observed change in the tropical Pacific SST gradient sits right at the edge of the ensemble spread in the all-forcing historical scenario. This suggests that the observed gradient could be due
880 to internal variability, however, it would be an extreme event. Differences between these models and observations could also be due to an incorrect model response to external forcing.

Discussion

While the MEM change in ENSO SST variability in this study compares well with previous literature, the SMILEs add information by allowing for the isolation of the time-dependent ENSO response in individual models. In most models, although
885 not all, ENSO amplitude is projected to increase, in agreement with Cai et al. (2018, 2022); Fredriksen et al. (2020). However, while previous work used the differences between long time periods (i.e., 2000-2099 compared to 1900-1999) to isolate the projected change, we leveraged SMILEs to separate the time-dependent response of ENSO amplitude to external forcing from internal variability. Individual SMILEs have a range of projected evolutions of ENSO amplitude that are not linear in time. Additionally, in CESM2-LE, GFDL-CM3, and GFDL-ESM2M ENSO amplitude first increases, then decreases. In these mod-
890 els, the response captured using long time averaging is dependent on the specific period used. Here, SMILEs add value as an important new tool to fully capture the time-dependent ENSO variability projections.

The spatial pattern of projected changes in ENSO variability also differs between models. In the MEM, we find a general shift toward more variability in the central Pacific. However, the individual model patterns that make up the MEM are diverse, and more work is needed to understand the model differences that we find. The MEM increase in the central Pacific variability
895 is also clear in the MEM composite of El Niño event evolution. Additionally, La Niña events appear to strengthen in the MEM more than El Niño events, highlighting non-linear behaviour. In general, for both pattern and event evolution changes, the individual model responses are similar between the two time periods considered (2021-2050 2070-2099), albeit smaller in magnitude for the earlier period. However, this is not true for all models, with CESM2-LE a clear outlier showing opposite changes in the earlier and later periods. [Model differences could be related to different climatological biases, different patterns of transient mean-state warming and different ENSO feedbacks and dynamics \(e.g. Bellenger et al., 2014; Capotondi et al., 2015; Planton et al., 2021; with additional work needed to diagnose why individual models behave the way they do.](#)
900

We find that the seasonal synchronisation of ENSO SST variability increases in most models investigated in this study. This manifests in an increase in ENSO SST variability in boreal fall and winter and a decrease in spring and early summer. These changes have implications for understanding ENSO's intrinsic dynamics (e.g. Stuecker et al., 2013; Stein et al., 2014; Chen and Jin, 2022), changes to remote ENSO impacts (e.g., potentially amplifying the ENSO impact in one season for a
905

given region and reducing it in a different season), and potential changes to ENSO predictability (e.g. Balmaseda et al., 1995; Timmermann et al., 2018). Thus, changes in variability should be assessed seasonally and not by using annual averages. We note that determining the dynamical cause for the increased ENSO seasonal synchronization in most of the models will require a detailed ENSO feedback analysis (e.g. Chen and Jin, 2022), including assessing potential future changes in the southward wind shift mechanism (e.g. McGregor et al., 2012; Stuecker et al., 2013).

910 The tropical Pacific SST gradient response also agrees with previous work showing an El Niño-like warming in most models and the MEM (e.g Kociuba and Power, 2015; Fredriksen et al., 2020; Lian et al., 2018; Cai et al., 2021). However, again the individual model responses that go into the MEM are diverse, with the warming varying both seasonally and longitudinally. In general, the season of strongest SST gradient weakens the most, however, this is again not consistent across all models. In most
915 models, weakening of the SST gradient intensifies in the second half of the twentieth century, consistent with a weakening of the Walker circulation gradually overwhelming the ocean thermostat mechanism (Heede et al., 2020; Heede and Fedorov, 2021).

Similar to the previous hypotheses, we find a link between the projected tropical Pacific SST gradient and the change in ENSO SST variability (DiNezio et al., 2012; Beobide-Arsuaga et al., 2021; Fredriksen et al., 2020; Hayashi et al., 2020; Wyman et al., 2020; Capotondi and Sardeshmukh, 2017; Rodgers et al., 2004; Ogata et al., 2013; Choi et al., 2013). However, the SMILEs provide a much clearer picture of the time evolution of anomalies. We find a large subset of models that have
920 an increase in ENSO SST variability that precedes the mean state change, with ENSO SST variability plateauing, and in some models decreasing as the mean state warms in an El Niño-like fashion. This result begins to conceptually link together previous work that found an increase in ENSO SST variability over the coming century (e.g. Cai et al., 2022) and a decrease in
925 the longer-term equilibrated state (e.g. Callahan et al., 2021). The individual model responses may also put into context a recent high-resolution study (Wengel et al., 2021) that finds a decrease in ENSO SST variability and argues that CMIP class models cannot capture all aspects of ENSO ocean dynamics correctly, leading to a potentially incorrect projected increase in ENSO SST variability. Based on our study, their model could be capturing a longer-term decrease in ENSO SST variability due to the strong forcing used (4xCO₂). Alternatively, we do find CMIP class SMILEs that show a decrease in ENSO SST variability,
930 highlighting the need to use multiple models for robustness. Based on these results, high-resolution modelling studies that use multiple models are needed to reconcile projections and determine the robustness of the higher-resolution result as compared to standard resolution CMIP class models.

In the two models that have single forcing SMILE experiments, greenhouse gas and aerosol forcing contribute to a historical increase in ENSO SST variability, ~~however~~. While one might expect aerosol forcing to have the opposite effect of greenhouse gas increases, aerosols are hemispherically asymmetric unlike greenhouse gas forcing leading to shifts in the intertropical convergence zone that can also influence ENSO (Kang et al., 2020; Pausata et al., 2020). In contrast, greenhouse gas and aerosol forcing have competing influences on historical trends in the tropical Pacific SST gradient. The observed change in the tropical Pacific SST gradient sits right at the edge of all ensemble members of the all-forcing historical scenario (consistent with McGregor et al., 2014; Seager et al., 2019, 2022; Wills et al., submitted 2022). This suggests that the modelled SST
940 gradient response to greenhouse gas forcing could be too strong or incorrect, the modelled SST gradient response to aerosol

forcing could be too weak, the observed change could be an extreme event caused by internal variability, or the modelled internal variability could be too small, or some combination of the above. Further investigation is needed as more single forcing ensembles are released to determine the relative roles of these possibilities.

Summary and Conclusions

945 In this study we highlight the value of SMILEs for investigating ENSO projections. SMILEs allow the isolation of the time-dependent response of ENSO SST variability to increasing greenhouse gases. By using SMILEs we can better understand projected changes in ENSO variability and the tropical Pacific SST gradient and isolate inter-model differences in their response to anthropogenic forcing.

Our results show the following:

950 1. ENSO SST Projections

(a) Projections of ENSO amplitude are not linear in time.

(b) Models differ in their projections of the pattern and time-evolution of ENSO SST variability and El Niño and La Niña event evolution.

955 (c) The MEM projects an increase in ENSO SST variability, El Niño-like warming, and more variability in the central Pacific.

(d) The seasonality of ENSO SST variability increases. ENSO SST variability increases in boreal fall and winter with a decrease in spring and early summer. This is qualitatively consistent across all models.

2. Mean-state projections

(a) Most models project El Niño-like warming, although some models project the opposite.

960 (b) Individual models are different in their longitude and season of maximum warming in the tropical Pacific.

3. Relationship between ENSO SST variability and the tropical Pacific SST gradient

(a) When considering individual ensemble members, tropical Pacific SST gradient changes are linearly related to changes in ENSO SST variability in most models.

965 (b) This response is time-dependent. In many but not all models, ENSO variability first increases, then the tropical Pacific SST gradient weakens as ENSO variability plateaus or decreases.

4. A single forcing perspective

(a) Increases in ENSO SST variability in the two single forced SMILEs result from anthropogenic (aerosol and greenhouse gas) forcing.

(b) More single forced SMILEs are needed to understand the tropical Pacific SST gradient change.

970 These results present an extensive picture of future changes in ENSO in 14 SMILEs. The use of SMILEs means that the diverse responses across models can be truly attributed to model differences, rather than including contributions from internal variability. These diverse responses demonstrate a need for further investigation into the processes causing model differences in ENSO projections and provide a baseline for future research. Additionally, our results highlight time-dependent behaviour including non-linear changes in ENSO SST variability and changes in the tropical Pacific SST gradient that intensify near
975 the end of the 21st century. This has important implications for ENSO's teleconnections and impacts, as a non-linear change in ENSO SST variability likely has non-linear time-dependent changes in its impacts as well. Our results may also help to reconcile previous work that suggests a transient increase in ENSO SST variability, but a long-term equilibrated decrease by isolating the time-dependent behaviour of ENSO SST variability projections. While many models agree on the trajectory of projected changes, not all models behave the same way. This highlights the need for further research on the mechanisms of
980 inter-model differences in ENSO projections. There is a rich diversity of future ENSO changes projected by climate models and more work is needed to understand which aspects of these projections are robust.

Data availability. Large ensemble data is available as follows:

- CanESM2, CESM1-LE, CSIRO-Mk36 & GFDL-CM3 are available from the multi-model large ensemble archive <https://www.cesm.ucar.edu/projects/community-projects/MMLEA/>
- 985 – ACCESS-ESM1-5, CanESM5, EC-EARTH3, IPSL-CM6-LR, MIROC6 & MIROC-ES2L are available from the CMIP6 archive at <https://esgf-node.llnl.gov/projects/cmip6/>
- CESM2-LE is available at <https://www.cesm.ucar.edu/projects/community-projects/LENS2/>
- GFDL-SPEAR-MED is available at https://www.gfdl.noaa.gov/spear_large_ensembles/
- GFDL-ESM2M data was provided by Prof. Thomas Frölicher at the University of Bern
- 990 – MPI-GE is available at <https://mpimet.mpg.de/en/grand-ensemble/>

Author contributions. This paper is a result of the ENSO in large ensembles workshop held at CU Boulder in August 2021. All authors contributed to the analysis of data and conception of the paper at the workshop. NM wrote the manuscript with contributions from all authors. RCJW made Figures 7, 9 & S1. JK made Figure 10. SM and MFS made Figures 1, 4 & 5. SCS made Figures 2 & S4. SS made Figure 8. XW made Figures 3, 6, S2, S3, S5, S6, S7 & S8.

995 *Competing interests.* The authors declare no competing interests

Acknowledgements. This paper is a result of the ENSO in large ensembles workshop held at CU Boulder in August 2021. NM was partially funded by NSF AGS 1554659 in part by the CIRES Visiting Fellows Program and the NOAA Cooperative Agreement with CIRES, NA17OAR4320101. R.C.J.W. acknowledges support from the National Science Foundation (Grant AGS-1929775) and computing support from the Computational and Information Systems Laboratory at the National Center for Atmospheric Research (Casper Data Analysis Cluster; Project UWAS0094). M.F.S. was supported by NSF grant AGS-2141728, NOAA's Climate Program Office's Modeling, Analysis, Predictions, and Projections (MAPP) program grant NA20OAR4310445, and NOAA's Ocean Acidification Program (OAP) grant NA21OAR0170191. SS was supported by the U.S. Department of Energy, DE-SC0019418 and by an NSF CAREER award, OCE-2142953. This is IPRC publication X and SOEST contribution Y (numbers updated on acceptance). X. Wu is supported by an Advanced Study Program postdoctoral fellowship from the National Center for Atmospheric Research (NCAR). S.C.S is supported by the University of Colorado Chancellor's Postdoctoral Fellowship program. CMIP6 data were obtained from the CMIP6 next-generation archive at ETH Zurich (Brunner et al. 2020). We acknowledge the World Climate Research Programme, which, through its Working Group on Coupled Modelling, coordinated and promoted CMIP5 and CMIP6. We thank the climate modeling groups for producing and making available their model output, the Earth System Grid Federation (ESGF) for archiving the data and providing access, and the multiple funding agencies who support CMIP5, CMIP6, and ESGF.

1010 References

- Balmaseda, M. A., Davey, M. K., and Anderson, D. L. T.: Decadal and Seasonal Dependence of ENSO Prediction Skill, *Journal of Climate*, 8, 2705 – 2715, [https://doi.org/10.1175/1520-0442\(1995\)008<2705:DASDOE>2.0.CO;2](https://doi.org/10.1175/1520-0442(1995)008<2705:DASDOE>2.0.CO;2), 1995.
- Bellenger, H., Guilyardi, E., Leloup, J., Lengaigne, M., and Vialard, J.: ENSO representation in climate models: from CMIP3 to CMIP5, *Climate Dynamics*, 42, 1999–2018, <https://doi.org/10.1007/s00382-013-1783-z>, 2014.
- 1015 Beobide-Arsuaga, G., Bayr, T., Reintges, A., and Latif, M.: Uncertainty of ENSO-amplitude projections in CMIP5 and CMIP6 models, *Climate Dynamics*, <https://doi.org/10.1007/s00382-021-05673-4>, 2021.
- Boucher, O., Servonnat, J., Albright, A. L., Aumont, O., Balkanski, Y., Bastrikov, V., Bekki, S., Bonnet, R., Bony, S., Bopp, L., Braconnot, P., Brockmann, P., Cadule, P., Caubel, A., Cheruy, F., Codron, F., Cozic, A., Cugnet, D., D’Andrea, F., Davini, P., de Lavergne, C., Denvil, S., Deshayes, J., Devilliers, M., Ducharne, A., Dufresne, J.-L., Dupont, E., Éthé, C., Fairhead, L., Falletti, L., Flavoni, S.,
- 1020 Foujols, M.-A., Gardoll, S., Gastineau, G., Ghattas, J., Grandpeix, J.-Y., Guenet, B., Guez, Lionel, E., Guilyardi, E., Guimberteau, M., Hauglustaine, D., Hourdin, F., Idelkadi, A., Joussaume, S., Kageyama, M., Khodri, M., Krinner, G., Lebas, N., Levvasseur, G., Lévy, C., Li, L., Lott, F., Lurton, T., Luysaert, S., Madec, G., Madeleine, J.-B., Maignan, F., Marchand, M., Marti, O., Mellul, L., Meurdesoif, Y., Mignot, J., Musat, I., Ottlé, C., Peylin, P., Planton, Y., Polcher, J., Rio, C., Rochetin, N., Rousset, C., Sepulchre, P., Sima, A., Swingedouw, D., Thiéblemont, R., Traore, A. K., Vancoppenolle, M., Vial, J., Vialard, J., Viovy, N., and Vuichard, N.: Presentation and Evaluation of the IPSL-CM6A-LR Climate Model, *Journal of Advances in Modeling Earth Systems*, 12, e2019MS002010, <https://doi.org/https://doi.org/10.1029/2019MS002010>, e2019MS002010 10.1029/2019MS002010, 2020.
- 1025 Burger, F. J., Terhaar, and Frölicher, T. L.: Compound marine heatwaves and ocean acidity extremes, *Nature Geosciences*, In review 2021.
- Cai, W., Lengaigne, M., Borlace, S., Collins, M., Cowan, T., McPhaden, M. J., Timmermann, A., Power, S., Brown, J., Menkes, C., Ngari, A., Vincent, E. M., and Widlansky, M. J.: More extreme swings of the South Pacific convergence zone due to greenhouse warming, *Nature*, 488, 365–369, <https://doi.org/10.1038/nature11358>, 2012.
- 1030 Cai, W., Borlace, S., Lengaigne, M., van Rensch, P., Collins, M., Vecchi, G., Timmermann, A., Santoso, A., McPhaden, M. J., Wu, L., England, M. H., Wang, G., Guilyardi, E., and Jin, F.-F.: Increasing frequency of extreme El Niño events due to greenhouse warming, *Nature Climate Change*, 4, 111–116, <https://doi.org/10.1038/nclimate2100>, 2014.
- Cai, W., Wang, G., Dewitte, B., Wu, L., Santoso, A., Takahashi, K., Yang, Y., Carréric, A., and McPhaden, M. J.: Increased variability of eastern Pacific El Niño under greenhouse warming, *Nature*, 564, 201–206, <https://doi.org/10.1038/s41586-018-0776-9>, 2018.
- 1035 Cai, W., Santoso, A., Collins, M., Dewitte, B., Karamperidou, C., Kug, J.-S., Lengaigne, M., McPhaden, M. J., Stuecker, M. F., Taschetto, A. S., Timmermann, A., Wu, L., Yeh, S.-W., Wang, G., Ng, B., Jia, F., Yang, Y., Ying, J., Zheng, X.-T., Bayr, T., Brown, J. R., Capotondi, A., Cobb, K. M., Gan, B., Geng, T., Ham, Y.-G., Jin, F.-F., Jo, H.-S., Li, X., Lin, X., McGregor, S., Park, J.-H., Stein, K., Yang, K., Zhang, L., and Zhong, W.: Changing El Niño-Southern Oscillation in a warming climate, *Nature Reviews Earth Environment*, 2, 628–644, <https://doi.org/10.1038/s43017-021-00199-z>, 2021.
- 1040 Cai, W., Ng, B., Wang, G., Santoso, A., Wu, L., and Yang, K.: Increased ENSO sea surface temperature variability under four IPCC emission scenarios, *Nature Climate Change*, 12, 228–231, <https://doi.org/10.1038/s41558-022-01282-z>, 2022.
- Callahan, C. W., Chen, C., Rugenstein, M., Bloch-Johnson, J., Yang, S., and Moyer, E. J.: Robust decrease in El Niño/Southern Oscillation amplitude under long-term warming, *Nature Climate Change*, 11, 752–757, <https://doi.org/10.1038/s41558-021-01099-2>, 2021.
- 1045 Capotondi, A. and Sardeshmukh, P. D.: Is El Niño really changing?, *Geophysical Research Letters*, 44, 8548–8556, <https://doi.org/https://doi.org/10.1002/2017GL074515>, 2017.

- Capotondi, A., Ham, Y., Wittenberg, A., and Kug, J.: Climate model biases and El Niño Southern Oscillation (ENSO) simulation, <https://repository.library.noaa.gov/view/noaa/31041>, 2015.
- Chen, H.-C. and Jin, F.-F.: Dynamics of ENSO Phase-Locking and Its Biases in Climate Models, *Geophysical Research Letters*, 49, e2021GL097603, <https://doi.org/10.1029/2021GL097603>, e2021GL097603 2021GL097603, 2022.
- 1050 Choi, K.-Y., Vecchi, G. A., and Wittenberg, A. T.: ENSO Transition, Duration, and Amplitude Asymmetries: Role of the Nonlinear Wind Stress Coupling in a Conceptual Model, *Journal of Climate*, 26, 9462 – 9476, <https://doi.org/10.1175/JCLI-D-13-00045.1>, 2013.
- Chung, C. T. Y., Power, S. B., Sullivan, A., and Delage, F.: The role of the South Pacific in modulating Tropical Pacific variability, *Scientific Reports*, 9, 18311, <https://doi.org/10.1038/s41598-019-52805-2>, 2019.
- 1055 Clement, A. C., Seager, R., Cane, M. A., and Zebiak, S. E.: An Ocean Dynamical Thermostat, *Journal of Climate*, 9, 2190 – 2196, [https://doi.org/10.1175/1520-0442\(1996\)009<2190:AODT>2.0.CO;2](https://doi.org/10.1175/1520-0442(1996)009<2190:AODT>2.0.CO;2), 1996.
- Coats, S. and Karnauskas, K. B.: Are Simulated and Observed Twentieth Century Tropical Pacific Sea Surface Temperature Trends Significant Relative to Internal Variability?, *Geophysical Research Letters*, 44, 9928–9937, <https://doi.org/10.1002/2017GL074622>, 2017.
- 1060 Cobb, K. M., Westphal, N., Sayani, H. R., Watson, J. T., Lorenzo, E. D., Cheng, H., Edwards, R. L., and Charles, C. D.: Highly Variable El Niño Southern Oscillation Throughout the Holocene, *Science*, 339, 67–70, <https://doi.org/10.1126/science.1228246>, 2013.
- Collins, M., An, S.-I., Cai, W., Ganachaud, A., Guilyardi, E., Jin, F.-F., Jochum, M., Lengaigne, M., Power, S., Timmermann, A., Vecchi, G., and Wittenberg, A.: The impact of global warming on the tropical Pacific Ocean and El Niño, *Nature Geoscience*, 3, 391–397, <https://doi.org/10.1038/ngeo868>, 2010.
- 1065 Delworth, T. L., Cooke, W. F., Adcroft, A., Bushuk, M., Chen, J.-H., Dunne, K. A., Ginoux, P., Gudgel, R., Hallberg, R. W., Harris, L., Harrison, M. J., Johnson, N., Kapnick, S. B., Lin, S.-J., Lu, F., Malyshev, S., Milly, P. C., Murakami, H., Naik, V., Pascale, S., Paynter, D., Rosati, A., Schwarzkopf, M., Shevliakova, E., Underwood, S., Wittenberg, A. T., Xiang, B., Yang, X., Zeng, F., Zhang, H., Zhang, L., and Zhao, M.: SPEAR: The Next Generation GFDL Modeling System for Seasonal to Multidecadal Prediction and Projection, *Journal of Advances in Modeling Earth Systems*, 12, e2019MS001895, <https://doi.org/10.1029/2019MS001895>, 2020.
- 1070 Deser, C., Lehner, F., Rodgers, K. B., Ault, T., Delworth, T. L., DiNezio, P. N., Fiore, A., Frankignoul, C., Fyfe, J. C., Horton, D. E., Kay, J. E., Knutti, R., Lovenduski, N. S., Marotzke, J., McKinnon, K. A., Minobe, S., Randerson, J., Screen, J. A., Simpson, I. R., and Ting, M.: Insights from Earth system model initial-condition large ensembles and future prospects, *Nature Climate Change*, 10, 277–286, <https://doi.org/10.1038/s41558-020-0731-2>, 2020.
- DiNezio, P. N., Kirtman, B. P., Clement, A. C., Lee, S.-K., Vecchi, G. A., and Wittenberg, A.: Mean Climate Controls on the Simulated Response of ENSO to Increasing Greenhouse Gases, *Journal of Climate*, 25, 7399 – 7420, <https://doi.org/10.1175/JCLI-D-11-00494.1>, 2012.
- 1075 Döscher, R., Acosta, M., Alessandri, A., Anthoni, P., Arsouze, T., Bergman, T., Bernardello, R., Boussetta, S., Caron, L.-P., Carver, G., Castrillo, M., Catalano, F., Cvijanovic, I., Davini, P., Dekker, E., Doblus-Reyes, F. J., Docquier, D., Echevarria, P., Fladrich, U., Fuentes-Franco, R., Gröger, M., v. Hardenberg, J., Hieronymus, J., Karami, M. P., Keskinen, J.-P., Koenigk, T., Makkonen, R., Massonnet, F., 1080 Ménégos, M., Miller, P. A., Moreno-Chamarro, E., Nieradzik, L., van Noije, T., Nolan, P., O'Donnell, D., Ollinaho, P., van den Oord, G., Ortega, P., Prims, O. T., Ramos, A., Reerink, T., Rousset, C., Ruprich-Robert, Y., Le Sager, P., Schmith, T., Schrödner, R., Serva, F., Sicardi, V., Sloth Madsen, M., Smith, B., Tian, T., Tourigny, E., Uotila, P., Vancoppenolle, M., Wang, S., Wårlind, D., Willén, U., Wyser, K., Yang, S., Yepes-Arbós, X., and Zhang, Q.: The EC-Earth3 Earth system model for the Coupled Model Intercomparison Project 6, *Geoscientific Model Development*, 15, 2973–3020, <https://doi.org/10.5194/gmd-15-2973-2022>, 2022.

- 1085 England, M. H., McGregor, S., Spence, P., Meehl, G. A., Timmermann, A., Cai, W., Gupta, A. S., McPhaden, M. J., Purich, A., and Santoso, A.: Recent intensification of wind-driven circulation in the Pacific and the ongoing warming hiatus, *Nature Climate Change*, 4, 222–227, <https://doi.org/10.1038/nclimate2106>, 2014.
- Fasullo, J. T., Otto-Bliesner, B. L., and Stevenson, S.: ENSO's Changing Influence on Temperature, Precipitation, and Wildfire in a Warming Climate, *Geophys. Res. Lett.*, 45, 9216–9225, <https://doi.org/10.1029/2018GL079022>, 2018.
- 1090 Fedorov, A. V. and Philander, S. G.: Is El Niño Changing?, *Science*, 288, 1997–2002, <https://doi.org/10.1126/science.288.5473.1997>, 2000.
- Fredriksen, H.-B., Berner, J., Subramanian, A. C., and Capotondi, A.: How Does El Niño–Southern Oscillation Change Under Global Warming—A First Look at CMIP6, *Geophysical Research Letters*, 47, e2020GL090640, <https://doi.org/https://doi.org/10.1029/2020GL090640>, e2020GL090640 2020GL090640, 2020.
- Grothe, P. R., Cobb, K. M., Liguori, G., Di Lorenzo, E., Capotondi, A., Lu, Y., Cheng, H., Edwards, R. L., Southon, J. R., Santos, G. M.,
1095 Deocampo, D. M., Lynch-Stieglitz, J., Chen, T., Sayani, H. R., Thompson, D. M., Conroy, J. L., Moore, A. L., Townsend, K., Hagos, M., O'Connor, G., and Toth, L. T.: Enhanced El Niño–Southern Oscillation Variability in Recent Decades, *Geophysical Research Letters*, 47, e2019GL083906, <https://doi.org/https://doi.org/10.1029/2019GL083906>, e2019GL083906 2019GL083906, 2020.
- Hajima, T., Watanabe, M., Yamamoto, A., Tatebe, H., Noguchi, M. A., Abe, M., Ohgaito, R., Ito, A., Yamazaki, D., Okajima, H., Ito, A., Takata, K., Ogochi, K., Watanabe, S., and Kawamiya, M.: Development of the MIROC-ES2L Earth system model and the evaluation of
1100 biogeochemical processes and feedbacks, *Geoscientific Model Development*, 13, 2197–2244, <https://doi.org/10.5194/gmd-13-2197-2020>, 2020.
- Hayashi, M., Jin, F.-F., and Stuecker, M. F.: Dynamics for El Niño–La Niña asymmetry constrain equatorial-Pacific warming pattern, *Nature Communications*, 11, 4230, <https://doi.org/10.1038/s41467-020-17983-y>, 2020.
- Heede, U. K. and Fedorov, A. V.: Eastern equatorial Pacific warming delayed by aerosols and thermostat response to CO₂ increase, *Nature
1105 Climate Change*, 11, 696–703, <https://doi.org/10.1038/s41558-021-01101-x>, 2021.
- Heede, U. K., Fedorov, A. V., and Burls, N. J.: Time Scales and Mechanisms for the Tropical Pacific Response to Global Warming: A Tug of War between the Ocean Thermostat and Weaker Walker, *Journal of Climate*, 33, 6101 – 6118, <https://doi.org/10.1175/JCLI-D-19-0690.1>, 2020.
- Jeffrey, S., Rotstayn, L., Collier, M., Dravitzki, S., Hamalainen, C., Moeseneder, C., Wong, K., and Syktus, J.: Australia's CMIP5 submission
1110 using the CSIRO-Mk3.6 model, *Australian Meteorological and Oceanographic Journal*, 63, 1–13, 2012.
- Jin, F.-F. and Neelin, J. D.: Modes of Interannual Tropical Ocean–Atmosphere Interaction—a Unified View. Part I: Numerical Results, *Journal of Atmospheric Sciences*, 50, 3477 – 3503, [https://doi.org/10.1175/1520-0469\(1993\)050<3477:MOITOI>2.0.CO;2](https://doi.org/10.1175/1520-0469(1993)050<3477:MOITOI>2.0.CO;2), 1993.
- Jin, F.-F., Kim, S. T., and Bejarano, L.: A coupled-stability index for ENSO, *Geophysical Research Letters*, 33, <https://doi.org/https://doi.org/10.1029/2006GL027221>, 2006.
- 1115 Kang, S. M., Xie, S.-P., Shin, Y., Kim, H., Hwang, Y.-T., Stuecker, M. F., Xiang, B., and Hawcroft, M.: Walker circulation response to extratropical radiative forcing, *Science Advances*, 6, eabd3021, <https://doi.org/10.1126/sciadv.abd3021>, 2020.
- Kay, J. E., Deser, C., Phillips, A., Mai, A., Hannay, C., Strand, G., Arblaster, J. M., Bates, S. C., Danabasoglu, G., Edwards, J., Holland, M., Kushner, P., Lamarque, J.-F., Lawrence, D., Lindsay, K., Middleton, A., Munoz, E., Neale, R., Oleson, K., Polvani, L., and Vertenstein, M.: The Community Earth System Model (CESM) Large Ensemble Project: A Community Resource for Studying Climate Change in the
1120 Presence of Internal Climate Variability, *Bulletin of American Meteorological Society*, 96, 1333–1349, <https://doi.org/10.1175/BAMS-D-13-00255.1>, 2015.

- Kim, S. T., Cai, W., Jin, F.-F., Santoso, A., Wu, L., Guilyardi, E., and An, S.-I.: Response of El Niño sea surface temperature variability to greenhouse warming, *Nature Climate Change*, 4, 786–790, <https://doi.org/10.1038/nclimate2326>, 2014.
- 1125 Kirchmeier-Young, M., Zwiers, F., and Gillett, N.: Attribution of Extreme Events in Arctic Sea Ice Extent, *Journal of Climate*, 30, 553–571, <https://doi.org/10.1175/JCLI-D-16-0412.1>, 2017.
- Kociuba, G. and Power, S. B.: Inability of CMIP5 Models to Simulate Recent Strengthening of the Walker Circulation: Implications for Projections, *Journal of Climate*, 28, 20 – 35, <https://doi.org/10.1175/JCLI-D-13-00752.1>, 2015.
- Kohyama, T. and Hartmann, D. L.: Nonlinear ENSO Warming Suppression (NEWS), *Journal of Climate*, 30, 4227 – 4251, <https://doi.org/10.1175/JCLI-D-16-0541.1>, 2017.
- 1130 Kohyama, T., Hartmann, D. L., and Battisti, D. S.: La Niña-like Mean-State Response to Global Warming and Potential Oceanic Roles, *Journal of Climate*, 30, 4207 – 4225, <https://doi.org/10.1175/JCLI-D-16-0441.1>, 2017.
- Kosaka, Y. and Xie, S.-P.: Recent global-warming hiatus tied to equatorial Pacific surface cooling, *Nature*, 501, 403–407, <https://doi.org/10.1038/nature12534>, 2013.
- Lee, J., Planton, Y. Y., Gleckler, P. J., Sperber, K. R., Guilyardi, E., Wittenberg, A. T., McPhaden, M. J., and Pallotta, G.: Robust Evaluation of ENSO in Climate Models: How Many Ensemble Members Are Needed?, *Geophysical Research Letters*, 48, e2021GL095041, <https://doi.org/https://doi.org/10.1029/2021GL095041>, e2021GL095041 2021GL095041, 2021.
- 1135 Li, J., Xie, S.-P., Cook, E. R., Morales, M. S., Christie, D. A., Johnson, N. C., Chen, F., D’Arrigo, R., Fowler, A. M., Gou, X., and Fang, K.: El Niño modulations over the past seven centuries, *Nature Climate Change*, 3, 822–826, <https://doi.org/10.1038/nclimate1936>, 2013.
- Lian, T., Chen, D., Ying, J., Huang, P., and Tang, Y.: Tropical Pacific trends under global warming: El Niño-like or La Niña-like?, *National Science Review*, 5, 810–812, <https://doi.org/10.1093/nsr/nwy134>, 2018.
- 1140 Maher, N., Matei, D., Milinski, S., and Marotzke, J.: ENSO Change in Climate Projections: Forced Response or Internal Variability?, *Geophysical Research Letters*, 45, 11,390–11,398, <https://doi.org/10.1029/2018GL079764>, 2018.
- Maher, N., Milinski, S., Suarez-Gutierrez, L., Botzet, M., Dobrynin, M., Kornbluh, L., Kröger, J., Takano, Y., Ghosh, R., Hedemann, C., Li, C., Li, H., Manzini, E., Notz, D., Putrasahan, D., Boysen, L., Claussen, M., Ilyina, T., Olonscheck, D., Raddatz, T., Stevens, B., and Marotzke, J.: The Max Planck Institute Grand Ensemble: Enabling the Exploration of Climate System Variability, *Journal of Advances in Modeling Earth Systems*, 11, 2050–2069, <https://doi.org/10.1029/2019MS001639>, 2019.
- 1145 McGregor, S., Timmermann, A., Schneider, N., Stuecker, M. F., and England, M. H.: The Effect of the South Pacific Convergence Zone on the Termination of El Niño Events and the Meridional Asymmetry of ENSO, *Journal of Climate*, 25, 5566 – 5586, <https://doi.org/10.1175/JCLI-D-11-00332.1>, 2012.
- 1150 McGregor, S., Timmermann, A., Stuecker, M. F., England, M. H., Merrifield, M., Jin, F.-F., and Chikamoto, Y.: Recent Walker circulation strengthening and Pacific cooling amplified by Atlantic warming, *Nature Climate Change*, 4, 888–892, <https://doi.org/10.1038/nclimate2330>, 2014.
- McGregor, S., Stuecker, M. F., Kajtar, J. B., England, M. H., and Collins, M.: Model tropical Atlantic biases underpin diminished Pacific decadal variability, *Nature Climate Change*, 8, 493–498, <https://doi.org/10.1038/s41558-018-0163-4>, 2018.
- 1155 McPhaden, M. J., Zebiak, S. E., and Glantz, M. H.: ENSO as an integrating concept in earth science., *Science (New York, N.Y.)*, 314, 1740–5, 2006.
- McPhaden, M. J., Lee, T., and McClurg, D.: El Niño and its relationship to changing background conditions in the tropical Pacific Ocean, *Geophysical Research Letters*, 38, <https://doi.org/https://doi.org/10.1029/2011GL048275>, 2011.

- Meehl, G. A. and Washington, W. M.: El Niño-like climate change in a model with increased atmospheric CO₂ concentrations, *Nature*, 382, 56–60, <https://doi.org/10.1038/382056a0>, 1996.
- 1160 Milinski, S., Maher, N., and Olonscheck, D.: How large does a large ensemble need to be?, *Earth System Dynamics*, 11, 885–901, <https://doi.org/10.5194/esd-11-885-2020>, 2020, 2020.
- Ng, B., Cai, W., Cowan, T., and Bi, D.: Impacts of Low-Frequency Internal Climate Variability and Greenhouse Warming on El Niño–Southern Oscillation, *Journal of Climate*, 34, 2205 – 2218, <https://doi.org/10.1175/JCLI-D-20-0232.1>, 2021.
- 1165 Ogata, T., Xie, S.-P., Wittenberg, A., and Sun, D.-Z.: Interdecadal Amplitude Modulation of El Niño–Southern Oscillation and Its Impact on Tropical Pacific Decadal Variability, *Journal of Climate*, 26, 7280–7297, <http://www.jstor.org/stable/26192853>, 2013.
- Pausata, F. S. R., Zanchettin, D., Karamperidou, C., Caballero, R., and Battisti, D. S.: ITCZ shift and extratropical teleconnections drive ENSO response to volcanic eruptions, *Science Advances*, 6, eaaz5006, <https://doi.org/10.1126/sciadv.aaz5006>, 2020.
- Planton, Y. Y., Guilyardi, E., Wittenberg, A. T., Lee, J., Gleckler, P. J., Bayr, T., McGregor, S., McPhaden, M. J., Power, S., Roehrig, R., 1170 Vialard, J., and Voltaire, A.: Evaluating Climate Models with the CLIVAR 2020 ENSO Metrics Package, *Bulletin of the American Meteorological Society*, 102, E193 – E217, <https://doi.org/10.1175/BAMS-D-19-0337.1>, 2021.
- Power, S., Delage, F., Chung, C., Kociuba, G., and Keay, K.: Robust twenty-first-century projections of El Niño and related precipitation variability, *Nature*, 502, 541–545, <https://doi.org/10.1038/nature12580>, 2013.
- Rodgers, K. B., Friederichs, P., and Latif, M.: Tropical Pacific Decadal Variability and Its Relation to Decadal Modulations of ENSO, *Journal of Climate*, 17, 3761 – 3774, [https://doi.org/10.1175/1520-0442\(2004\)017<3761:TPDVAI>2.0.CO;2](https://doi.org/10.1175/1520-0442(2004)017<3761:TPDVAI>2.0.CO;2), 2004.
- 1175 Rodgers, K. B., Lee, S.-S., Rosenbloom, N., Timmermann, A., Danabasoglu, G., Deser, C., Edwards, J., Kim, J.-E., Simpson, I. R., Stein, K., Stuecker, M. F., Yamaguchi, R., Bódi, T., Chung, E.-S., Huang, L., Kim, W. M., Lamarque, J.-F., Lombardozzi, D. L., Wieder, W. R., and Yeager, S. G.: Ubiquity of human-induced changes in climate variability, *Earth System Dynamics*, 12, 1393–1411, <https://doi.org/10.5194/esd-12-1393-2021>, 2021.
- 1180 Seager, R., Cane, M., Henderson, N., Lee, D.-E., Abernathey, R., and Zhang, H.: Strengthening tropical Pacific zonal sea surface temperature gradient consistent with rising greenhouse gases, *Nature Climate Change*, 9, 517–522, <https://doi.org/10.1038/s41558-019-0505-x>, 2019.
- Seager, R., Henderson, N., and Cane, M.: Persistent discrepancies between observed and modeled trends in the tropical Pacific Ocean, *Journal of Climate*, pp. 1 – 41, <https://doi.org/10.1175/JCLI-D-21-0648.1>, 2022.
- Stein, K., Timmermann, A., Schneider, N., Jin, F.-F., and Stuecker, M. F.: ENSO Seasonal Synchronization Theory, *Journal of Climate*, 27, 1185 5285 – 5310, <https://doi.org/10.1175/JCLI-D-13-00525.1>, 2014.
- Stevenson, S., Fox-Kemper, B., Jochum, M., Rajagopalan, B., and Yeager, S. G.: ENSO Model Validation Using Wavelet Probability Analysis, *Journal of Climate*, 23, 5540 – 5547, <https://doi.org/10.1175/2010JCLI3609.1>, 2010.
- Stevenson, S., Wittenberg, A. T., Fasullo, J., Coats, S., and Otto-Bliesner, B.: Understanding Diverse Model Projections of Future Extreme El Niño, *Journal of Climate*, 34, 449 – 464, <https://doi.org/10.1175/JCLI-D-19-0969.1>, 2021.
- 1190 Stevenson, S. L.: Significant changes to ENSO strength and impacts in the twenty-first century: Results from CMIP5, *Geophys. Res. Lett.*, 39, <https://doi.org/10.1029/2012GL052759>, 2012.
- Stuecker, M. F., Timmermann, A., Jin, F.-F., McGregor, S., and Ren, H.-L.: A combination mode of the annual cycle and the El Niño/Southern Oscillation, *Nature Geoscience*, 6, 540–544, <https://doi.org/10.1038/ngeo1826>, 2013.
- Sun, L., Alexander, M., and Deser, C.: Evolution of the Global Coupled Climate Response to Arctic Sea Ice Loss during 1990–2090 and Its 1195 Contribution to Climate Change, *Journal of Climate*, 31, 7823–7843, 2018.

- Swart, N. C., Cole, J. N. S., Kharin, V. V., Lazare, M., Scinocca, J. F., Gillett, N. P., Anstey, J., Arora, V., Christian, J. R., Hanna, S., Jiao, Y., Lee, W. G., Majaess, F., Saenko, O. A., Seiler, C., Seinen, C., Shao, A., Sigmond, M., Solheim, L., von Salzen, K., Yang, D., and Winter, B.: The Canadian Earth System Model version 5 (CanESM5.0.3), *Geoscientific Model Development*, 12, 4823–4873, <https://doi.org/10.5194/gmd-12-4823-2019>, 2019.
- 1200 Taschetto, A. S., Ummerhofer, C. C., Stuecker, M. F., Dommenges, D., Ashok, K., Rodrigues, R. R., and Yeh, S.-W.: ENSO Atmospheric Teleconnections, chap. 14, pp. 309–335, American Geophysical Union (AGU), <https://doi.org/https://doi.org/10.1002/9781119548164.ch14>, 2020.
- Tatebe, H., Ogura, T., Nitta, T., Komuro, Y., Ogochi, K., Takemura, T., Sudo, K., Sekiguchi, M., Abe, M., Saito, F., Chikira, M., Watanabe, S., Mori, M., Hirota, N., Kawatani, Y., Mochizuki, T., Yoshimura, K., Takata, K., Oishi, R., Yamazaki, D., Suzuki, T., Kurogi, M., Kataoka, T., Watanabe, M., and Kimoto, M.: Description and basic evaluation of simulated mean state, internal variability, and climate sensitivity in MIROC6, *Geoscientific Model Development*, 12, 2727–2765, <https://doi.org/10.5194/gmd-12-2727-2019>, 2019.
- 1205 Timmermann, A., An, S.-I., Kug, J.-S., Jin, F.-F., Cai, W., Capotondi, A., Cobb, K. M., Lengaigne, M., McPhaden, M. J., Stuecker, M. F., Stein, K., Wittenberg, A. T., Yun, K.-S., Bayr, T., Chen, H.-C., Chikamoto, Y., Dewitte, B., Dommenges, D., Grothe, P., Guilyardi, E., Ham, Y.-G., Hayashi, M., Ineson, S., Kang, D., Kim, S., Kim, W., Lee, J.-Y., Li, T., Luo, J.-J., McGregor, S., Planton, Y., Power, S., Rashid, H., Ren, H.-L., Santoso, A., Takahashi, K., Todd, A., Wang, G., Wang, G., Xie, R., Yang, W.-H., Yeh, S.-W., Yoon, J., Zeller, E., and Zhang, X.: El Niño-Southern Oscillation complexity, *Nature*, 559, 535–545, <https://doi.org/10.1038/s41586-018-0252-6>, 2018.
- Watanabe, M., Dufresne, J.-L., Kosaka, Y., Mauritsen, T., and Tatebe, H.: Enhanced warming constrained by past trends in equatorial Pacific sea surface temperature gradient, *Nature Climate Change*, 11, 33–37, <https://doi.org/10.1038/s41558-020-00933-3>, 2021.
- Wengel, C., Lee, S.-S., Stuecker, M. F., Timmermann, A., Chu, J.-E., and Schloesser, F.: Future high-resolution El Niño/Southern Oscillation dynamics, *Nature Climate Change*, 11, 758–765, <https://doi.org/10.1038/s41558-021-01132-4>, 2021.
- 1215 Wills, R., Dong, Y., Proistosescu, C., Armour, K., and Battisti, D.: Systematic climate model biases in the large-scale pattern of recent sea-surface temperature and sea-level pressure change, *Geophysical Research Letters*, submitted 2022.
- Wills, R. C. J., Battisti, D. S., Armour, K. C., Schneider, T., and Deser, C.: Pattern Recognition Methods to Separate Forced Responses from Internal Variability in Climate Model Ensembles and Observations, *Journal of Climate*, 33, 8693 – 8719, <https://doi.org/10.1175/JCLI-D-19-0855.1>, 2020.
- 1220 Wittenberg, A. T.: Are historical records sufficient to constrain ENSO simulations?, *Geophysical Research Letters*, 36, <https://doi.org/10.1029/2009GL038710>, 2009.
- Wyman, D. A., Conroy, J. L., and Karamperidou, C.: The Tropical Pacific ENSO–Mean State Relationship in Climate Models over the Last Millennium, *Journal of Climate*, 33, 7539 – 7551, <https://doi.org/10.1175/JCLI-D-19-0673.1>, 2020.
- 1225 Wyser, K., Koenigk, T., Fladrich, U., Fuentes-Franco, R., Karami, M. P., and Kruschke, T.: The SMHI Large Ensemble (SMHI-LENS) with EC-Earth3.3.1, *Geoscientific Model Development*, 14, 4781–4796, <https://doi.org/10.5194/gmd-14-4781-2021>, 2021.
- Ying, J., Collins, M., Cai, W., Timmermann, A., Huang, P., Chen, D., and Stein, K.: Emergence of climate change in the tropical Pacific, *Nature Climate Change*, 12, 356–364, <https://doi.org/10.1038/s41558-022-01301-z>, 2022.
- Yun, K.-S., Lee, J.-Y., Timmermann, A., Stein, K., Stuecker, M. F., Fyfe, J. C., and Chung, E.-S.: Increasing ENSO-rainfall variability due to changes in future tropical temperature-rainfall relationship, *Communications Earth Environment*, 2, 43, <https://doi.org/10.1038/s43247-021-00108-8>, 2021.
- 1230 Ziehn, T., Chamberlain, M. A., Law, R. M., Lenton, A., Bodman, R. W., Dix, M., Stevens, L., Wang, Y.-P., and Srbinovsky, J.: The Australian Earth System Model: ACCESS-ESM1.5, *JSHESS*, 70, 193–214, <https://doi.org/10.1071/ES19035>, 2020.

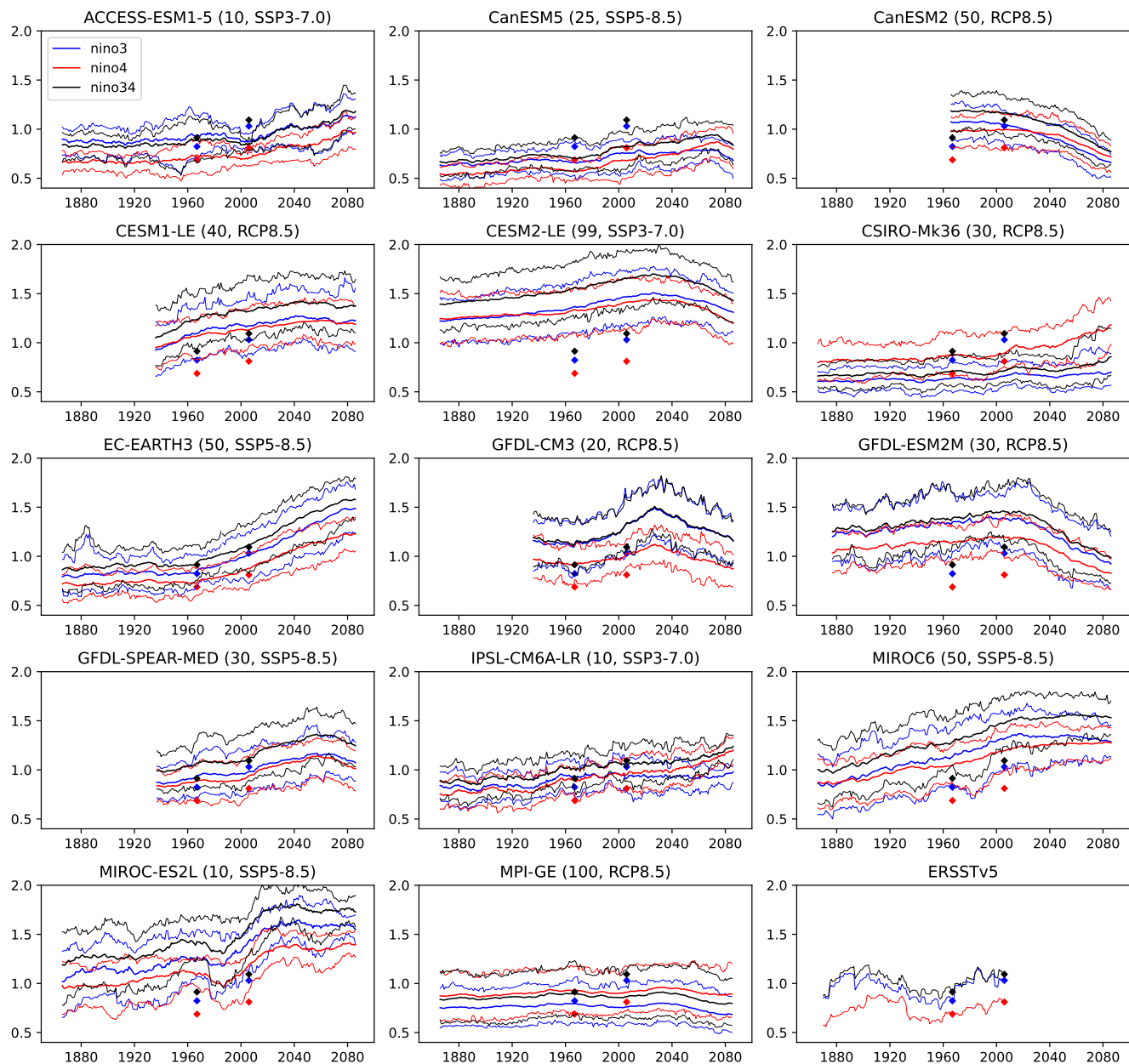


Figure 11. Time series of Niño3 (blue), Niño3.4 (green/black), and Niño4 (red) variability for the December, January, February–February average (DJF) in each model. Variability is computed as the running 30-year standard deviation for each ensemble member after detrending each member by removing the ensemble mean. The DJF mean is taken prior to computing the variability for this and all subsequent figures. The solid line shows the ensemble mean of the running standard deviation, the thin dotted lines show the 5-95% range across the ensemble. The bottom right panel shows the running standard deviation for ERSSTv5 observations. The diamond symbols in each panel show the observed variability for the periods 1951–1980 and 1990–2019. Model name, ensemble size and scenario used are shown in the title of each panel for all Figures.

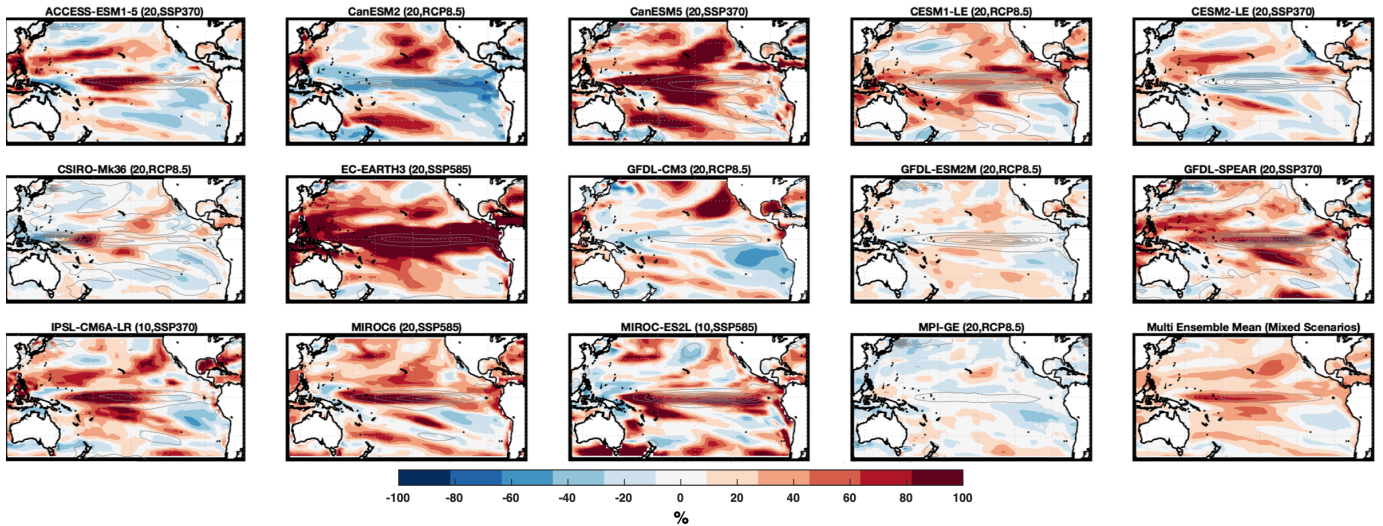


Figure 12. Spatial pattern of relative change in DJF SST variance in the (2-7 yr) ENSO band between the late 21st century (2070-2099) simulations and the historical (1951-1980) period. The difference in variances have been normalized by the variance of the historical (1951-1980) period (contours). The multi ensemble mean of the individual model ensemble means can be found in the last panel. Red colors indicate heightened variability, cool colors indicate dampened variability. For this and following Figures using DJF, 30 years are used in the calculations, e.g. for 1951-1980 we include 30 DJFs starting with December 1950 and DJF variance is computed as the variance of the DJF means. We note that a maximum ensemble size of the first 20 members is used in this analysis, with all members of models with 20 or less members used.

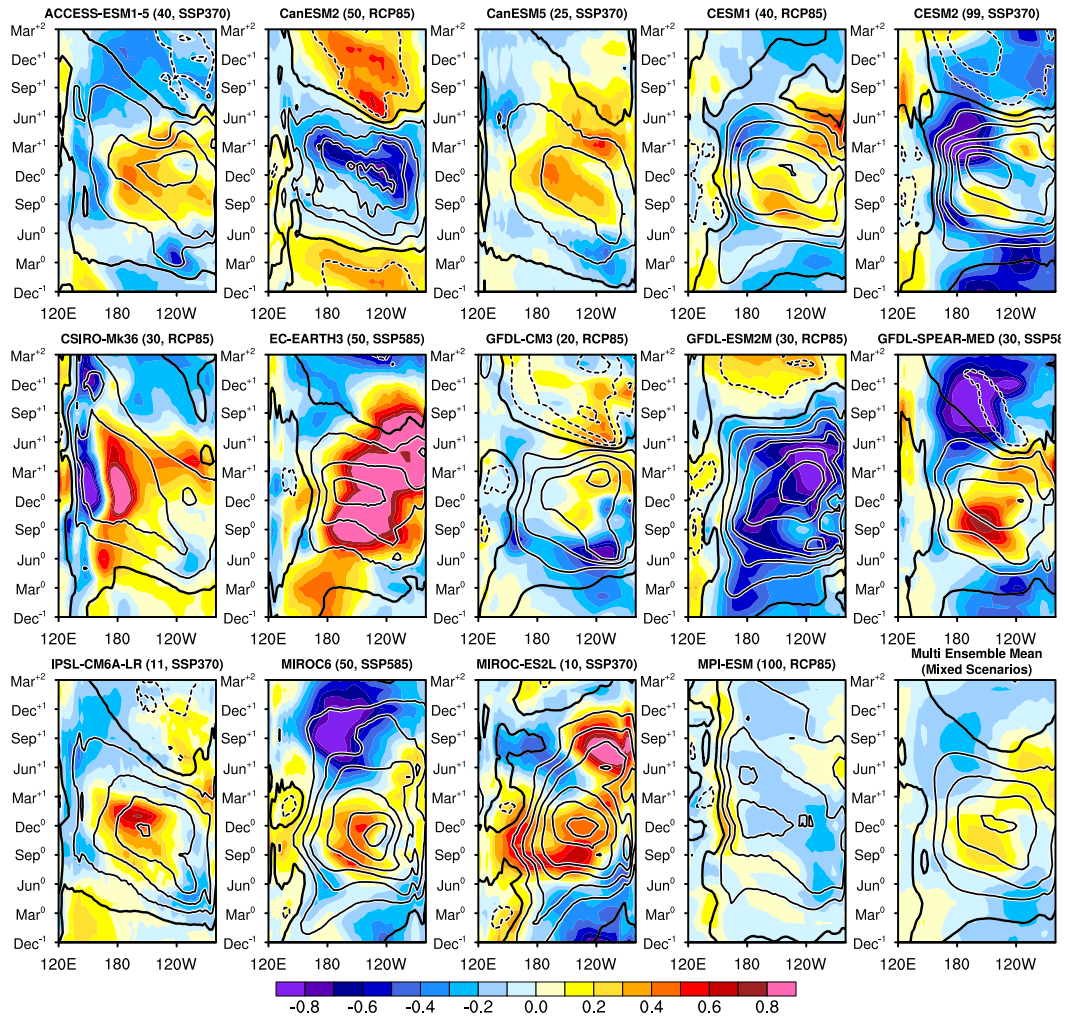


Figure 13. Longitude-time sections of the difference of equatorial Pacific (5°S - 5°N) SST anomalies ($^{\circ}\text{C}$; shading) composited for El Niño events during 2070-2099 compared to 1951-1980 in 14 SMILEs and the multi-ensemble mean. The SST anomalies for El Niño events during 1951-1980 are overlaid ($^{\circ}\text{C}$; contours at intervals of 0.4°C ; zero contours thickened and negative contours dashed). El Niño events are defined when the Niño3.4 index exceeds 0.75 standard deviations in Dec0 but not in Dec-1, where the standard deviation of Niño3.4 is. Monthly SST anomalies are calculated separately for each calendar month by removing the ensemble mean from October to February individual ensemble members.

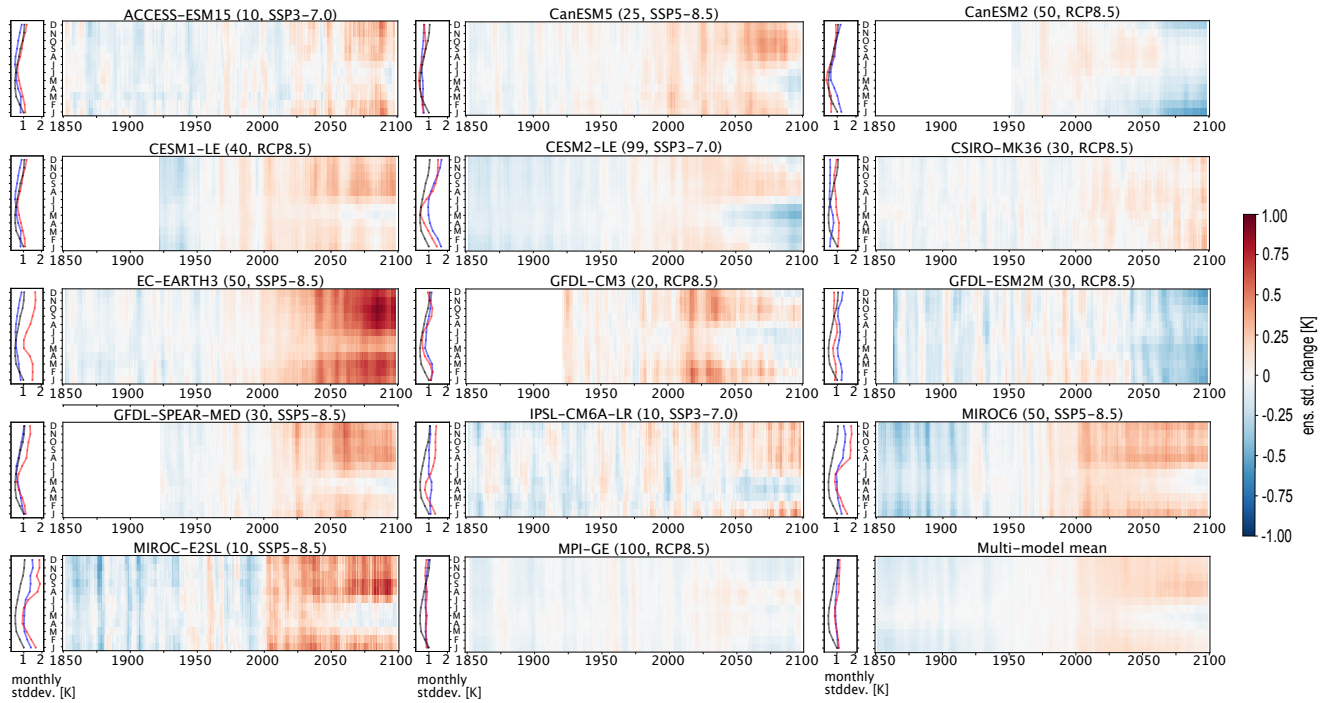


Figure 14. Change in ENSO SST variability, taken as the ensemble standard deviation in the [Niño-3.4](#) region for each [large-ensemble SMILE](#) and the multi ensemble mean. Blue lines show the climatology in 1951-1980, shading shows the 5-year-running-mean anomalies with respect to 1951-1980, and red lines show the climatology in 2070-2099. Black lines show the observational climatology based on ERSST5 in the period 1951-1980. We note that the climatology is computed as 1970-1999 for EC-Earth in blue and will be updated upon revision.

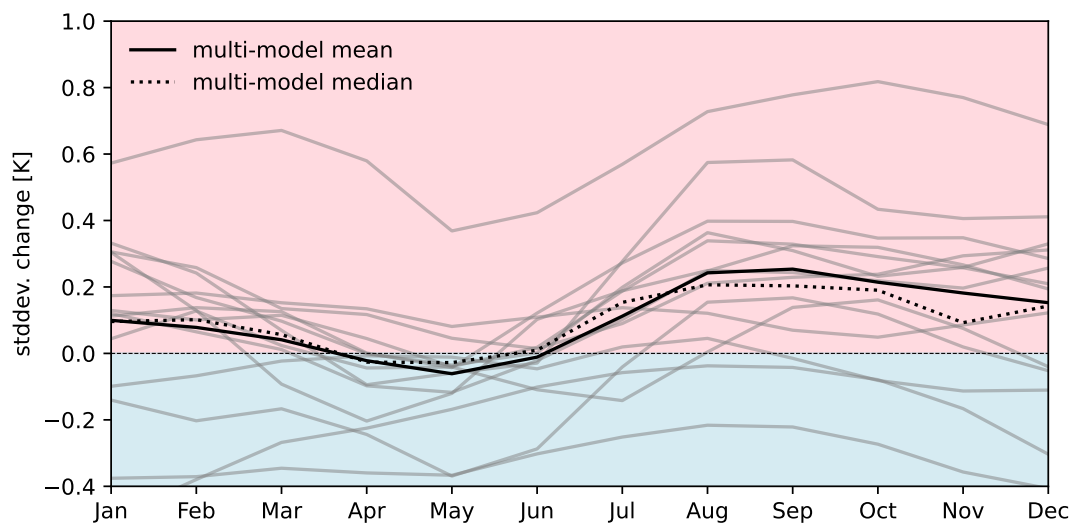


Figure 15. Change in ENSO SST variability taken as the ensemble standard deviation in the nino3.4 region for the period 2070-2099 as compared to 1951-1980. The grey lines are individual large ensembles, while the black line is the multi ensemble mean [and the black dashed line is the multi ensemble median](#). Red shading indicates an increase in this metric, while blue indicates a decrease.

Table 2. SMILES used in this study. CMIP6 models are highlighted in bold font.

Model	Time period	Forcing (ensemble size)	Reference
ACCESS-ESM1-5	1850-2100	hist(40), ssp370(40)	Ziehn et al. (2020)
CanESM2	1950-2100	Hist+rcp85(50)	Kirchmeier-Young et al. (2017)
CanESM5	1850-2100	hist(40), ssp370(25), hist-aer(15), hist-nat(8), hist-GHG(8)	Swart et al. (2019)
CESM1-LE	1920-2100	hist+rcp85(40)	Kay et al. (2015)
CESM2-LE	1850-2100	hist(100), ssp370(99)	Rodgers et al. (2021)
CSIRO-Mk36	1850-2100	hist+rcp85(30)	Jeffrey et al. (2012)
EC-EARTH3	1850(1970)-2100	hist(1850; 23), hist(1970; 50), ssp585(58)	Döscher et al. (2022); Wyser et al. (2021)
GFDL-CM3	1920-2100	hist+rcp85(20)	Sun et al. (2018)
GFDL-ESM2M	1861-2100	hist+rcp85(30)	Burger et al. (In review 2021)
GFDL-SPEAR-MED	1921-2100	hist+ssp585(30)	Delworth et al. (2020)
IPSL-CM6A-LR	1850-2100	hist(32), ssp370(10)	Boucher et al. (2020)
MIROC6	1850-2100	hist(50),ssp585(50), hist-nat(50), hist-aer(9), hist-GHG(3)	Tatebe et al. (2019)
MIROC-ES2L	1850-2100	hist(30), ssp585(10)	Hajima et al. (2020)
MPI-GE	1850-2099	hist+rcp85(100)	Maher et al. (2019)

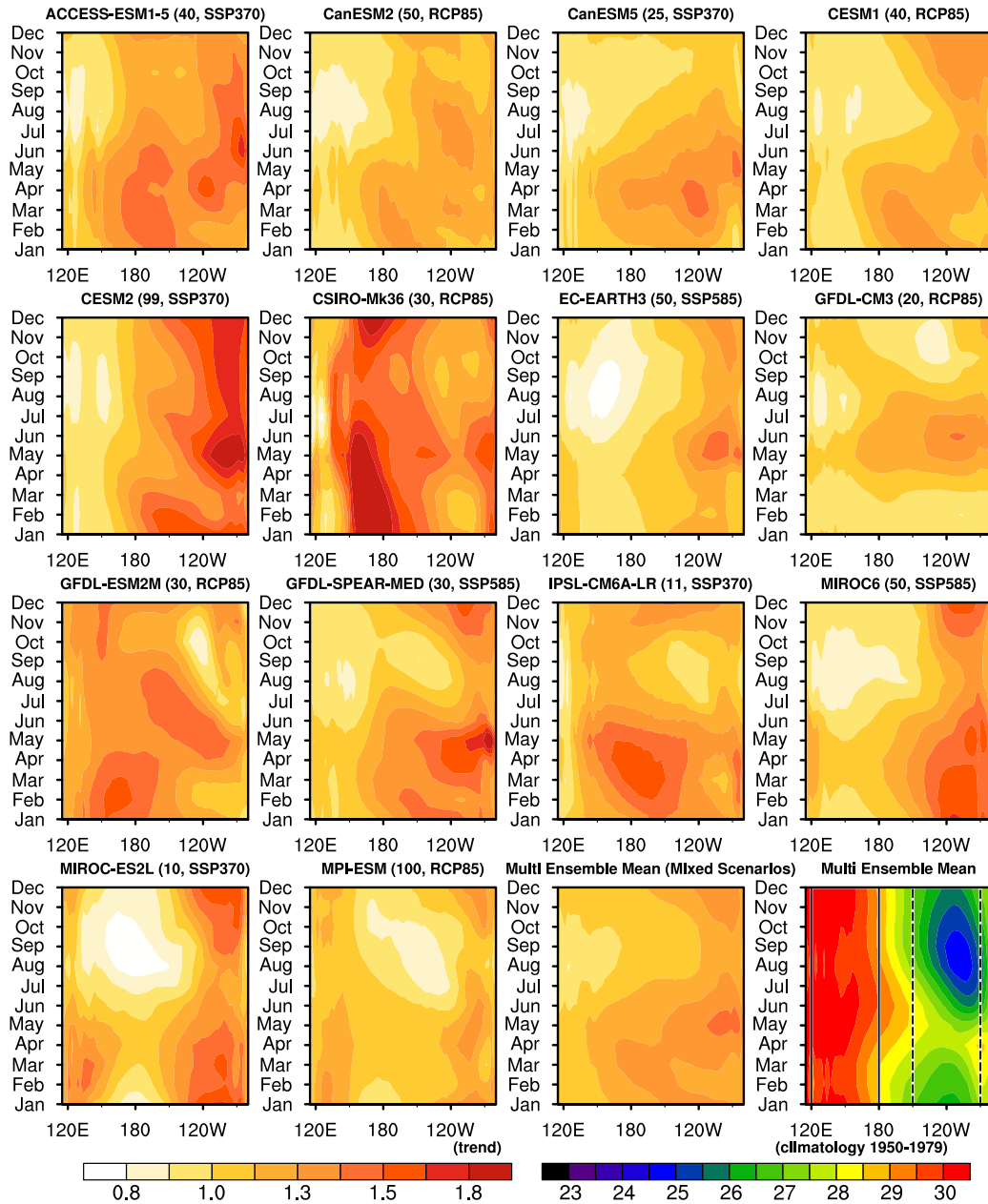


Figure 16. Longitude-time sections of the ensemble-mean linear trend of SST over the equatorial Pacific (5°S - 5°N) during 2015-2099 normalized by global mean SST trend. The bottom right panel shows the multi-ensemble-mean climatological seasonal cycle of SST in the equatorial Pacific over 1950-1979. Vertical black lines delineate the averaging regions used in Figures 7-10 with the solid lines indicating the western Pacific region and the dashed lines indicating the eastern Pacific region.

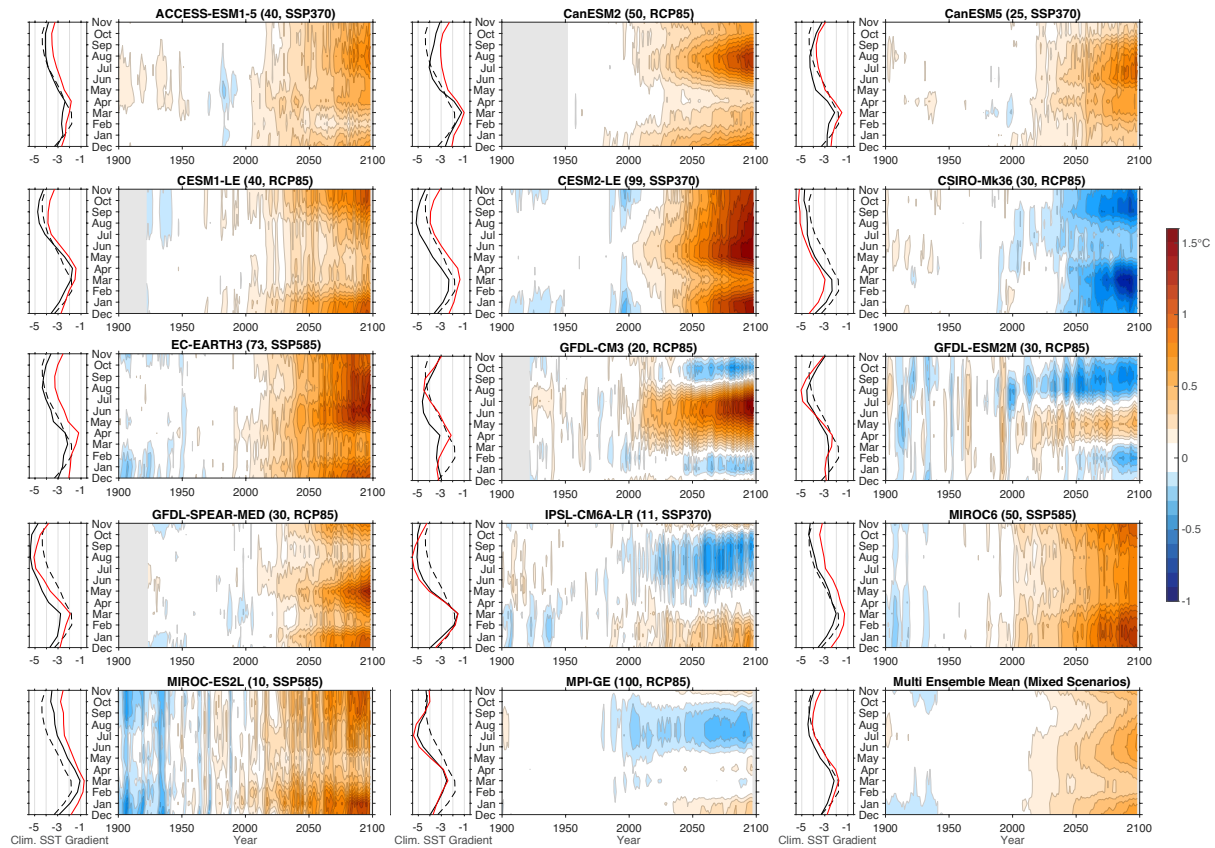


Figure 17. Tropical Pacific SST gradient climatology and mean-state changes, taken as the ensemble-mean difference between the eastern equatorial Pacific (90–150W, 5S–5N) and the western equatorial Pacific (120E–180, 5S–5N) for each large ensemble and the multi ensemble mean. Black lines show the climatology in 1951-1980, shading shows the 5-year-running-mean anomalies with respect to 1951-1980, and red lines show the climatology in 2070-2099. Black dashed lines show the observational climatology based on ERSST5 in the period 1951-1980. Red anomalies show El Niño-like changes and blue anomalies show La Niña-like changes.

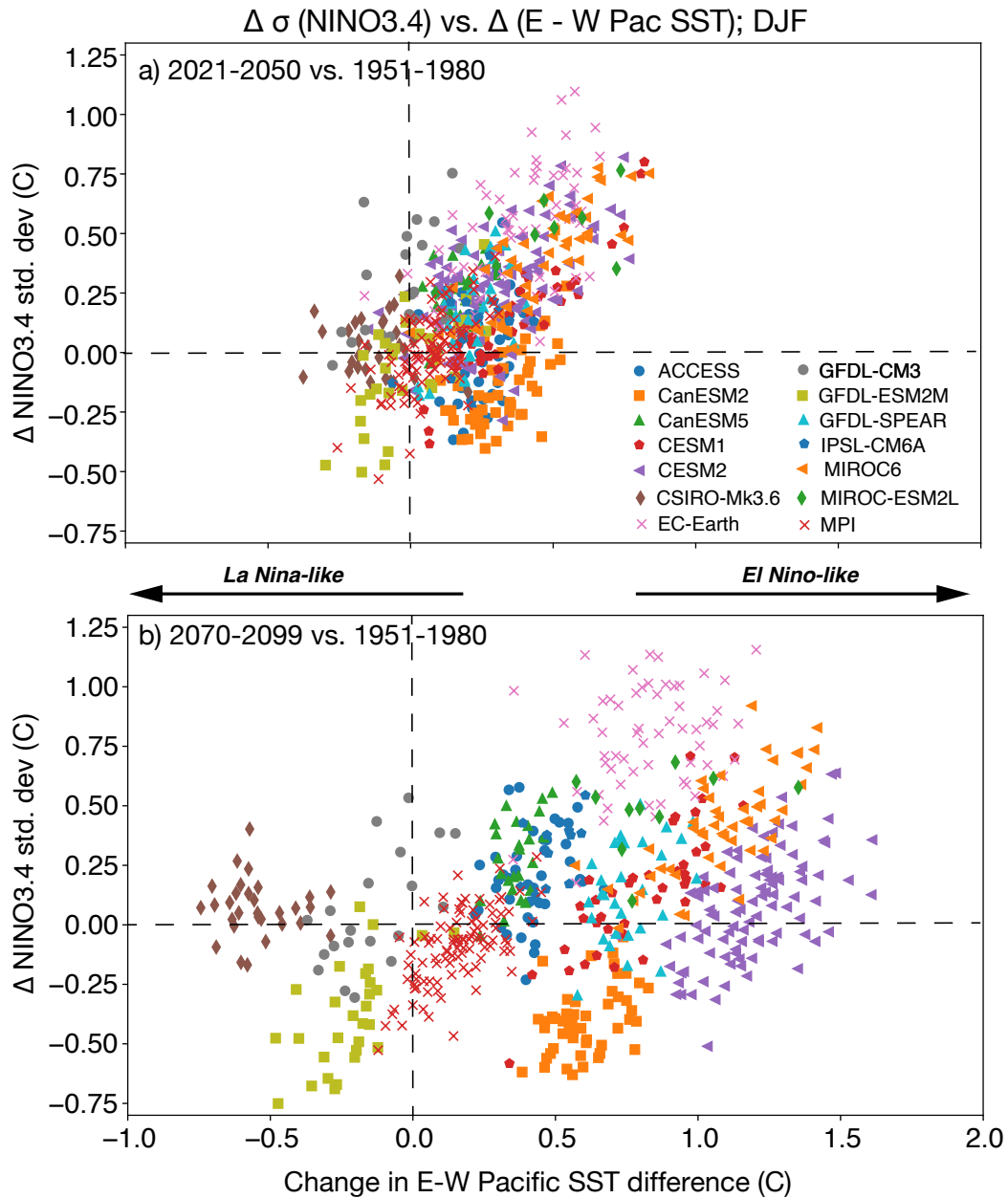


Figure 18. Time differences of the Niño3.4 standard deviation (y-axis) and the difference in SST between the east and west equatorial Pacific (defined as in Figure 7; x-axis) for each ensemble member of the 14 [ensembles SMILES](#), indicated by colored symbols. a) Difference between 2021-2050 and 1950-1980; b) Difference between 2071-2099 and 1950-1980. Niño3.4 time series are detrended by subtraction of the time-varying ensemble mean prior to computation of [the](#) standard deviation.

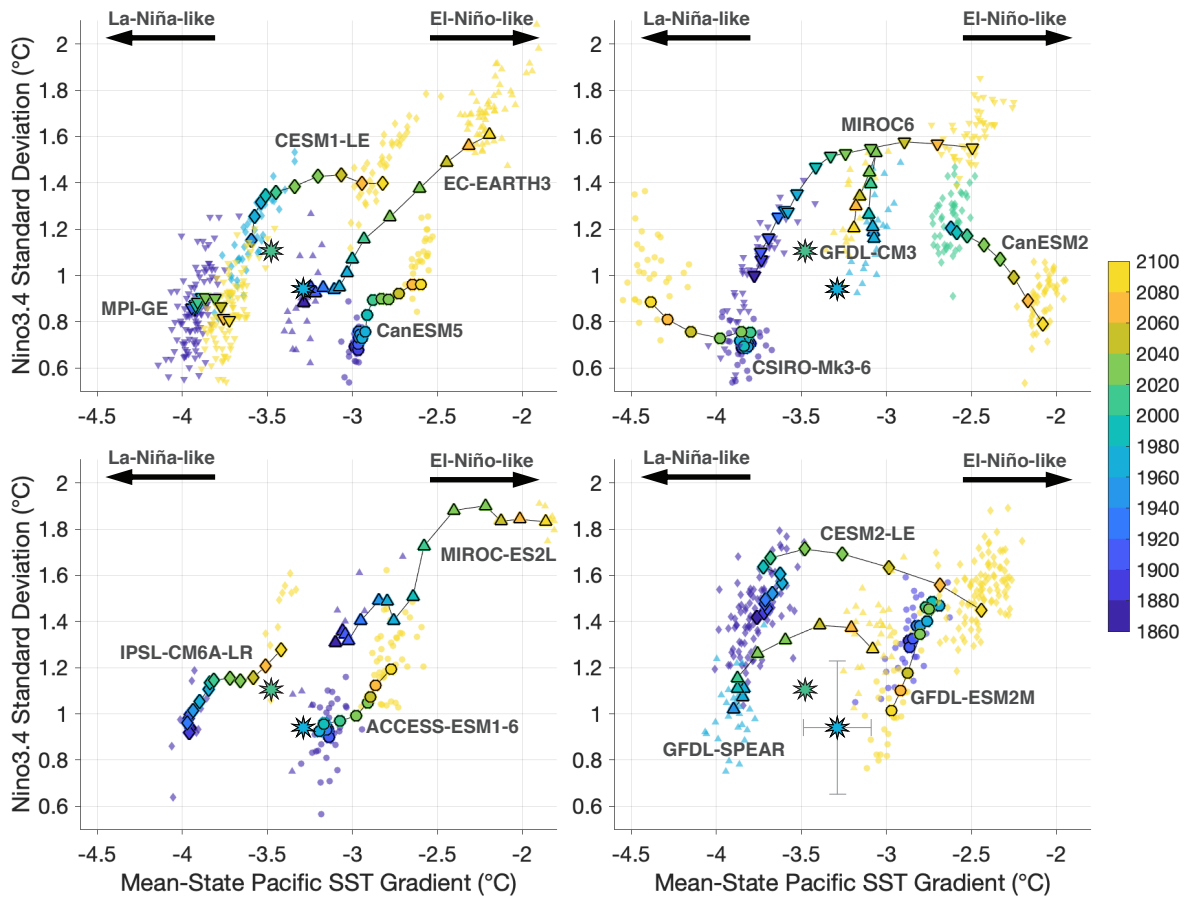


Figure 19. Time evolution of the 30-year-running-mean DJF tropical Pacific SST gradient (defined as in Figure 7; x-axis) and 30-year running standard deviation of DJF $Ni\tilde{no}3Ni\tilde{no}3.4$ variance (y-axis) in each SMILE. Symbols with black edges show the ensemble mean for overlapping 30 year periods every 15 years between 1850 and 2100, where the center year of the averaging period is computed is indicated by the fill color. The observational values for ERSST5 during the period 1951-1980 are shown with a light blue star. The 30-year -running-mean DJF tropical Pacific SST gradient and 30-year running standard deviation of DJF $Ni\tilde{no}3Ni\tilde{no}3.4$ in each ensemble member are shown for the first and last averaging periods (symbols without black edges). The observational values for ERSST5 during the period 1951-1980 and 1990-2019 are shown with light blue and light green stars, respectively. The internal variability in each quantity expected in a single 30-year period, estimated from the multi-model-mean of the ensemble-mean variance in each quantity, is depicted with a 95% confidence interval behind the light blue star in the bottom right panel.

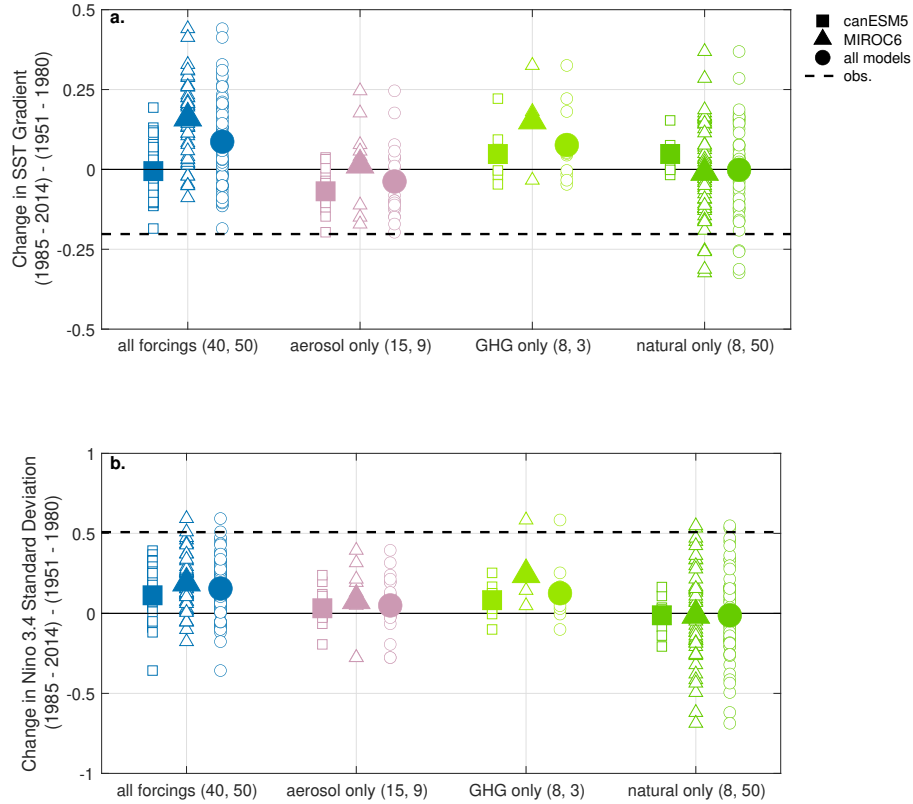


Figure 20. Change in the tropical Pacific SST gradient and Niño 3.4 index standard deviation in DJF in the two available single-forcing ensembles. (a) Change in the tropical Pacific SST gradient (west - east; defined as in Figure 7) over the second half of the 20th century (1985 - 2014 minus 1951 - 1980). Individual ensemble members from CanESM5 (squares), MIROC6 (triangles), and the combination of the two ensembles (circles) are shown with open symbols. The average change in gradient is shown with a filled marker. Observed changes (ERSSTv5) are shown in the dashed black line. (b) Change in the Niño3.4 index standard deviation over the same time period. We use the same visual conventions. Note that the sum of individual forcings may not add to the all-forcings, particularly in relatively small ensembles.