

# Governing Change: A Dynamical Systems Approach to Understanding the Stability of Environmental Governance

Nusrat Molla<sup>1</sup>, John DeIunno<sup>2</sup>, Thilo Gross<sup>3</sup>, and Jonathan Herman<sup>2</sup>

<sup>1</sup>Land, Air, and Water Resources, University of California, Davis

<sup>2</sup>Civil and Environmental Engineering, University of California, Davis

<sup>3</sup>Helmholtz Institute for Functional Marine Biodiversity (HIFMB), Oldenburg and Alfred Wegener Institut, Helmholtz Center for Marine and Polar Research and University of Oldenburg, Oldenburg

**Correspondence:** Nusrat Molla (njmolla@ucdavis.edu)

**Abstract.** The ability to adapt to social and environmental change is an increasingly critical feature of environmental governance. Yet, an understanding of how specific features of governance systems influence how they respond to change is still limited. Here we focus on how system features like diversity, heterogeneity and connectedness impact stability, which indicates the system’s capacity to recover from perturbations. Through a framework that combines agent-based modeling with “generalized” dynamical systems modeling, we model the stability of thousands of governance structures consisting of groups of resource users and non-government organizations interacting strategically with the decision centers that mediate their access to a shared resource. Stabilizing factors include greater effort dedicated to venue shopping, and a greater fraction of non-government organizations in the system. Destabilizing factors include greater heterogeneity among actors, a greater diversity of decision centers, and greater interdependence between actors. The results suggest that while complexity tends to be destabilizing, there are mitigating factors that may help balance adaptivity and stability in complex governance. This study demonstrates the potential in applying the insights of complex systems theory to managing complex and highly uncertain human-natural systems in the face of rapid social and environmental change.

## 1 Introduction

Social-ecological outcomes such as sustainability, resilience, and equity, are ultimately the product of a complex set of interactions among networks of autonomous actors self-organizing to address interconnected issues – or in short, governance (Carlisle and Gruby, 2019; Klijin and Snellen, 2009; Koppenjan and Klijin, 2004; Pahl-Wostl, 2009; Stephan et al., 2019). A diverse literature has emerged to explore governance as a complex system, which breaks with the traditional notion of governance as a linear and centrally managed process of planning and execution (van Buuren et al., 2012; Klijin and Snellen, 2009; Pahl-Wostl, 2009). Instead, complex governance emphasizes interactions among mutually dependent actors, a structure that is at least partially self-organized rather than externally imposed (Pahl-Wostl, 2009; Lubell and Morrison, 2021; Stephan et al., 2019), and cross-scale feedbacks. Evolution in the structure and function of governance is understood to be the norm rather than the exception (Thiel et al., 2019). This conceptualization of governance has been explored from various perspectives, including adaptive governance (Folke et al., 2005), collaborative governance (Ansell and Gash, 2008; Ansell, 2012; Gerlak et al., 2012),

multi-level governance (Bache et al., 2016; Hooghe and Marks, 2002; Liesbet and Gary, 2003; Newig and Fritsch, 2009), and  
25 polycentric governance (Ostrom et al., 1961; Ostrom, 2010; McGinnis and Ostrom, 2012; Carlisle and Gruby, 2019).

A central question regarding complex governance is how its structure impacts its function. For example, multiple autonomous  
but interdependent decision centers, a defining feature of polycentric governance (Ostrom et al., 1961; Ostrom, 2010; McGin-  
nis and Ostrom, 2012), has been ascribed numerous benefits, such as effective production and provision of diverse public  
goods (Ostrom et al., 1961; Pahl-Wostl, 2009), and greater ability to adapt to a changing environment (Folke et al., 2005;  
30 Bixler et al., 2016; Pahl-Wostl, 2009; da Silveira and Richards, 2013). In Ostrom's institutional design principles, multi-level,  
nested governance is associated with robust institutions for maintaining the commons (Ostrom, 1990). A greater diversity of  
stakeholders is thought to yield better environmental outcomes (Newig and Fritsch, 2009) and more flexible and responsive  
governance processes that are better able to navigate external complexity and change (Craig et al., 2017; Koppenjan and Klijn,  
2004). However, much of the focus has been on associating system outcomes with collaborative or polycentric governance  
35 as a whole rather than with specific factors, such as diversity in institutions and decision centers, heterogeneity among stake-  
holders, or connectivity among policy actors. This is perhaps because case studies make it challenging to independently test  
the effect of these different features. Understanding how these features relate to different governance outcomes with greater  
specificity is important in diagnosing cases in which the expected benefits associated with complex governance do not mate-  
rialize (Carlisle and Gruby, 2019; McGinnis and Ostrom, 2012). This study disentangles the effect of these different features  
40 of complex governance systems by developing a modeling approach that allows for generating and analyzing the system-level  
outcomes associated with ensembles of resource governance systems with different configurations.

Given that constant change is a central feature of complex systems, a system-level outcome of particular interest is stability.  
Mathematically, a steady state with local asymptotic stability is one for which trajectories near the steady state will approach  
the steady state. Conceptually, local asymptotic stability, hereafter referred to as stability, is an indication of the system's  
45 ability to retain its structure and function in the face of local perturbations in the variables controlled by the governance system  
(Guckenheimer and Holmes, 1983). In addition to being well-defined mathematically, stability is considered an important  
feature in the context of governance systems, if not a universally desirable one. On the one hand, stability in governance  
arrangements allows people and organizations to learn about one another, experiment, and make long-term investments (Craig  
et al., 2017; Pahl-Wostl, 2009). It allows for the accumulation of wellbeing and resources when external change is slow and  
50 predictable, and reduces transaction costs and increases returns from cooperation (North, 1990, 2005). On the other hand,  
stability can correspond to rigidity, in which governance systems fail to respond to internal changes (Carpenter and Brock,  
2008; Craig et al., 2017). Stability also serves as a prerequisite for ecological resilience, which emphasizes the ability of a  
system to absorb perturbations without changing structurally (Holling, 1973), but may conflict with adaptive capacity, which  
emphasizes transformation (Folke et al., 2002; Carpenter and Brock, 2008). Understanding stabilizing factors in resource  
55 governance systems therefore also gives insight into their resilience and adaptive capacity.

While the question of how features of governance correspond to stability has not yet been addressed with much specificity or  
precision, the factors that lead to stability in complex systems has long been debated in the complexity literature, particularly in  
the context of ecosystems. For example, increased complexity in food webs, in terms of species diversity and their connectivity,

has been shown to lead to decreased robustness (May, 1972; May et al., 2008), while certain predator-prey ratios have been found to be stabilizing (Bambach et al., 2002). Therefore, in addition to a better understanding of complex governance, this study provides insight into whether the principles for stability that have been discovered in other complex systems generalize to social-ecological systems.

## 2 Modeling Approach

This study focuses on common-pool resource governance with a resource that is subtractible, such as a groundwater aquifer, though the model could be parameterized for public goods instead. The overall modeling approach consists of defining the structure of the dynamical system in terms the different components of the governance system and their interactions, using generalized modeling to analyze stability without specifying functional forms. This method is particularly suited to gaining general insights about a system despite the large uncertainties that may exist, particularly in social systems, by allowing for studying an ensemble containing several thousand realizations of variants of the system structure. Computing the stability of the diverse system realizations in the ensemble thus allows us to identify underlying principles for stability.

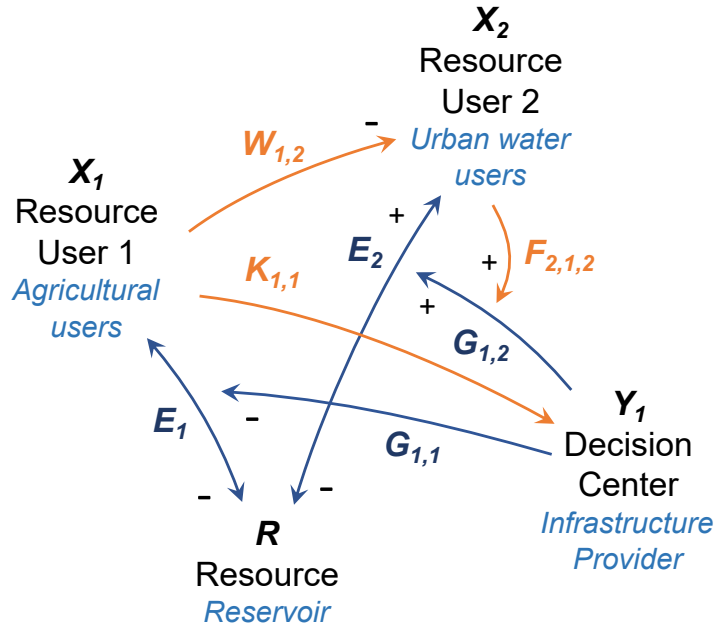
The modeling framework consists of state variables representing the state of the shared resource and the organizational capacity of three types of entities: 1) resource user organizations or interest groups, which directly impact or are impacted by the resource state, and can represent both extractive and non-extractive users, 2) non-government organizations, which do not directly impact and are not directly impacted by the resource state but still have interests in the system (e.g. nonprofits, advocacy and education groups not directly tied to a particular resource use), and 3) decision centers, which have the ability to directly mediate resource users' interactions with the resource. Organizational capacity refers to resources like volunteer or staff labor, access to legal, technical, or administrative expertise, funds, or grassroots engagement. Resource users and non-government organizations will be referred to collectively as "actors" since they have an inherent stake in the system and are being modeled as strategic and self-organizing agents.

This model focuses on the processes that take place among the stakeholders themselves, such as collaboration and undermining, resistance and support, and lobbying (Table 1). This bottom-up perspective is chosen because of the under-representation of actors' agency in making and influencing decisions and pursuing their goals in the polycentric governance literature, which tends to focus solely on structure and exclude entities that lack the authority to create policies, though this is changing with concepts like institutional navigation (Lubell and Morrison, 2021), commoning (Dobbin, 2021; Villamayor-Tomas and García-López, 2018), and the sustainability transitions literature, which emphasize actors and the dynamic power relations among them as a driving force behind governance transitions (Avelino and Wittmayer, 2016). Modeling actors' ability to influence the effectiveness of policies or the capacity of other actors or decision centers to fulfill their missions captures the informal arenas and resistance of various sorts that can be pivotal in determining outcomes in resource governance, especially where state capacity and coherence is lacking (McCarthy, 2002). A complex systems approach is therefore complementary to existing social theories on how often informal interactions among different types of actors drive change in governance systems. The next few sections will outline the processes that are modeled for each type of state variable.

Process	Target	Drivers	Example Parameters
Resource Natural Gain/Loss	Resource state	Resource state	Sensitivity of natural gain to current resource state
Recruitment or External Support/Attrition	Actor or Decision Center capacity	Actor or Decision Center capacity	Sensitivity of capacity gain to current capacity
Extraction/Access	Resource	Policies supporting or reducing extraction, Actors' policy support/resistance	Share of extraction by each user, sensitivity of extraction/access to current state
Policies supporting or reducing extraction	Extraction	Decision center capacity, Actors' policy support/resistance	Sensitivity of extraction to policy
Actor Policy Support/Resistance	Policies supporting or reducing extraction	Actor capacity, Actor strategy	Sensitivity of policy effectiveness to Actor efforts to resist/support it
Collaboration/Undermining	Actor capacity	Actor capacity, Actor strategy	Share of actor capacity gain from collaborating with others, sensitivity of actor capacity to efforts to support them
Decision Center Support/Resistance	Decision Center capacity	Decision center capacity, Actor capacity, Actor strategy	Sensitivity of Decision Center to efforts to support them

**Table 1.** Summary of modeled processes, the variables or sub-processes linked through these processes, and example scale or exponent parameters associated with the processes. The scale parameters represent the significance of certain processes in driving changes to the state variables, while the exponent parameters represent the sensitivity of the processes to the drivers. The last three processes are driven in part by actors' strategies, which are represented though how they allocate their capacity to maximize their resource access.

Example Parameter	Type	Meaning
$\frac{\sum_n E_n}{R}$	Scale	Extraction rate of resource (i.e. inverse of characteristic time scale of resource)
$\frac{E_1}{E_1 + E_2}$	Scale	Share of total extraction extracted by Resource User1
$\frac{\partial E_1}{\partial R}$	Exponent	Sensitivity of Resource User1's extraction to resource level



**Figure 1.** Example System Diagram. The nodes ( $R$ ,  $X_1$ ,  $X_2$ , and  $Y_1$ ) are the state variables in the model, while the linkages represent functions (in blue) or parameters (orange) describing how the variables interact. In this example water governance system, there are two types of water users, agricultural users and urban users, withdrawing water from a reservoir. The governance intervention  $G_{1,1}$  in this example can be interpreted as infrastructure managed by the infrastructure provider, or Decision Center, that delivers water to the city, supporting urban extraction while reducing agricultural extraction. The orange linkages represent possible Nash Equilibrium strategies that may result from this setup. In this example, urban users allocate all of their effort to supporting the infrastructure that allows for their extraction ( $F_{2,1,2}$ ), while agricultural users split their effort between undermining the organizational capacity of urban users ( $W_{1,2}$ ) and of the Decision Center ( $K_{1,1}$ ).

## Resource

The dynamics of the resource  $R$  follows a differential equation of the form

$$\dot{R} = S(R) - \sum_n E_n(R, G_{1,n}, \dots, G_{M,n}),$$

95 where  $S$  represents the reproduction/recharge and  $E_n$  the rate of loss from extraction/exploitation by resource user  $n$ , which is itself a function of  $R$  and interventions (e.g. regulations, subsidies, infrastructure)  $G_{m,n}$  by decision center  $m$  to either support or reduce each user's extraction. In the example system,  $S$  represents the natural net gain to the reservoir after natural inflows and outflows that are not delivered to any users, and  $E_1$  the total amount that agricultural users are able to extract. The effect of the intervention

$$100 \quad G_{m,n} = G_{m,n}(Y_m, F_{1,m,n}X_1, \dots, F_{N,m,n}X_N)$$

is then a function of the capacity of corresponding decision center and of efforts  $F_{k,m,n}X_k$  by each actor  $k$  to influence policies or the enforcement of these policies (see the section on Actors' Strategies for more details). In Figure 1,  $F_{1,2}$  is an example of such an effort that could represent urban users advocating for increasing the conveyance efficiency of the infrastructure delivering their water. These nested functions integrate the resource state, actors' ability to access the resource, decision centers' efforts to intervene in their access, and, in turn, actors' efforts to influence these interventions.

### Resource Users

The resource users' organizational capacity  $X_n$  is modeled by

$$\begin{aligned} \dot{X}_n &= B_n(E_n(R, G_{1,n}, \dots, G_{M,n})) \\ &\quad + Q_n(A_n(R, P_{1,n}, \dots, P_{M,n})) \\ 110 \quad &\quad + \sum_k C_{k,n}^+(W_{k,n}^+ X_k) - \sum_k C_{k,n}^-(W_{k,n}^- X_k) - L_n(X_n), \end{aligned}$$

where  $B_n$  represents user  $n$ 's gain in capacity motivated by their ability to extract  $E_n$ . The function  $Q_n$  is the analogous gain in capacity based on their non-extractive access to the resource,  $A_n$ . Depending on how these relationships to the resource are parameterized, these gain terms can represent different responses to resource access. This gain can represent actors becoming more agitated due to lack of access to the resource, and thus more motivated to dedicate time and resources towards engaging with the institutions that determine their access. It can also represent actors becoming more invested in ensuring access to the resource as their use of the resource, and the value associated with it, increases. This parameter therefore encapsulates the importance of the resource to the users and the productivity of the system in determining their likelihood to self-organize, as described by Ostrom's social-ecological systems framework (Ostrom, 2009). The function  $P_{m,n}$  is analogous to  $G_{m,n}$ , representing interventions in their resource access and similarly affected by actors' efforts  $H_{k,m,n}X_k$ .

120  $C_{k,n}^+$  represents their gain in capacity from collaboration with or support from other actors that may, for example, provide information or resources about the institutions affecting their resource access or help connect them to these institutions (Barnes and van Laerhoven, 2015). They experience loss in capacity based on other actors' efforts to undermine them ( $C_{k,n}^-$ ), through, for example, intimidation, misinformation, or demobilizing messaging and framing ( $W_{1,2}$  in Figure 1). Actors also experience a loss in capacity from attrition or turnover ( $L_n$ ) due to a gradual loss in interest and participation among actors, or their switching attention to issues external to the model domain.

## Non-Government Organizations

Non-government organizations includes non-profits, outreach, advocacy organizations, and other non-government organizations that typically are more public-facing and formal than resource user groups and may receive funding or grants from external actors (e.g. donations or grants). These organizations play an important role in fostering and supporting collective action (Dobbin, 2021; Barnes et al., 2016; Barnes and van Laerhoven, 2015). Non-government organizations are modeled similarly to resource users by an equation of the form

$$\dot{X}_n = U_n(X_n) + \sum_k C_{k,n}^+(W_{k,n}^+ X_k) - \sum_k C_{k,n}^-(W_{k,n}^- X_k) - L_n(X_n),$$

where  $U_n$  represents a gain in capacity from external sources.

Like resource users, these organizations have an objective related to the resource and are strategic, but have a gain term based on their own capacity, which allows them to secure external support, and do not have a gain term dependent on the resource, reflecting their more established and less reactionary nature.

## Decision Centers

Decision centers, which can also be thought of as public infrastructure providers or venues for decisionmaking, intervene in resource users' ability to extract or access the resource, whether through provision of infrastructure, funding, or regulation. Their capacity  $Y_m$  is modeled by

$$\dot{Y}_m = I_m^+(Y_m, K_{1,m}^+ X_1, \dots, K_{N,m}^+ X_N) - I_m^-(Y_m, K_{1,m}^- X_1, \dots, K_{N,m}^- X_N),$$

where  $I_m^+$  represents their gain in capacity and  $I_m^-$  represents their loss in capacity. Both of these terms are functions of a decision center's existing capacity as well as actors' efforts at venue shopping, in which actors attempt to move decision-making authority to venues that are more favorable to them. These efforts are represented by  $K_{k,m}^+ X_k$  for supporting a venue, and  $K_{k,m}^- X_k$ , to undermine a venue.  $K_{1,1}$  in Figure 1, for example, may represent agricultural users' efforts to undermine the authority of the Infrastructure Provider to withdraw water to deliver to urban water users.

## Generalized Modeling Approach to Computing Stability

In typical dynamical systems analysis, the functions in the equations above would then be assigned specific functional forms. However, generalized modeling is based on the recognition that computing steady states is computationally expensive, while determining stability around a given steady state is far less costly. Determining stability around a given steady state requires only the ability to parameterize the Jacobian, which is a linearization of the system at the steady state, and thus requires less information than specifying particular functional forms that would describe the system's evolution throughout its entire trajectory. Bypassing the need for functional forms is particularly useful in modeling social systems, where the functional forms of processes are difficult to quantify and highly uncertain. This approach allows for analyzing system with a great degree of generality and without the computational constraints involved in modeling many different specific dynamical systems, and

has been used to analyze a wide variety of systems (Gross et al., 2009; Gross and Feudel, 2006; Lade and Niiranen, 2017).  
 155 Therefore, rather than assign specific functional forms and compute the steady state, the functions are normalized by the unknown steady state. For example, the normalized resource dynamics would be represented by

$$\dot{r} = \frac{S^*}{R^*} s(r) - \sum_n \frac{E_n^*}{R^*} e_n(r, g_{1,n}, \dots, g_{M,n})$$

where  $S^*$ ,  $R^*$ , etc. are the values of the corresponding functions or state variables at equilibrium, and  $s$ ,  $x_k$ , etc. represent the normalized functions or state variables. The normalization leads to the introduction of unknown factors  $S^*/R^*$  and  $E_n^*/R^*$ .  
 160 However, these factors are constants and are treated as parameters, namely scale parameters. Scale parameters denote the magnitude of fluxes, such as turnover rates or the relative importance of different processes, while (Figure 1). We define  $\phi := S^*/R^* = \sum_n E_n^*/R^*$ , which represents the overall turnover rate of the resource, and  $\psi_n := (1/\phi)(E_n^*/R^*)$ , which represents the fraction of losses by each particular extractor at the steady state. The normalized resource dynamics can then be written as

$$\dot{r} = \phi \left( s(r) - \sum_n \psi_n e_n(r, g_{1,n}, \dots, g_{M,n}) \right).$$

165 An example of an entry of the Jacobian based on this equation can then be computed as

$$\frac{\partial \dot{r}}{\partial r} = \phi \left( \frac{\partial s}{\partial r} - \sum_n \psi_n \frac{\partial e_n}{\partial r} \right).$$

The derivatives  $\partial s/\partial r$  and  $\partial e_n/\partial r$  are unknowns that are also treated as parameters, namely exponent parameters. These parameters are an indication of the sensitivity of the growth rate and the extraction rate to the resource state, respectively. In general, exponent parameters indicate the non-linearity of a process at equilibrium. Once the Jacobian is parameterized, the  
 170 stability can be determined by checking whether the real part of all eigenvalues is negative. Conceptually, this means that perturbations in the state variables close to the steady state will return to that steady state. Local stability therefore indicates that the system will return to a steady state under short-term shocks (e.g. a sudden change to an actor's political influence), but does not necessarily indicate how the system will respond to large perturbations from the steady state or long-term drivers that fundamentally change the system's functioning (e.g. altering how resource users benefit from or impact the resource).

175 A full derivation and description of all model parameters can be found in the Supplementary Methods.

### Actors' Effort Allocation

Recognizing that actors in a governance system are strategic and self-organized, a quality that is unique among the complex systems for which stability has been studied in a systematic manner, the generalized model is coupled with an agent-based modeling component. Each actor allocates their limited organizational capacity among different actions in order to maximize  
 180 their equilibrium extraction or access to the resource (or for non-government organizations, the access or extraction of another actor). Their strategies are thus subject to the constraint:

$$\left( \sum_k \sum_m |F_{n,m,k}| + |H_{n,m,k}| \right) + \left( \sum_k |W_{n,k}| \right) + \left( \sum_m |K_{n,m}| \right) = 1$$



where  $F$ ,  $H$ ,  $W$ , and  $K$  represent the proportion of their effort dedicated to lobbying or otherwise directly supporting or resisting policies, collaborating with or undermining other actors, or directly influencing the capacity of a decision center, respectively. In Figure 1, for example, farmers divide their effort between undermining urban users' capacity ( $W_{1,2}$ ) and  
185 undermining the capacity of the infrastructure provider that conveys water to urban users and away from farmers ( $K_{1,1}$ ). The way actors allocate their effort among these actions is their strategy, which is calculated by finding a Nash equilibrium, in which no actor will want to unilaterally change their strategy.

While the generalized modeling approach means that the equilibrium extraction or access cannot be computed, the gradient of their extraction or access at the steady state can be calculated. As a simplified example of the method, take  $\dot{X} = F(X, p)$ ,  
190 where  $p$  is a strategy parameter. To find how the steady state  $X^*$  depends on the strategy parameter, we can write this equation at the steady state with  $X^*$  as a function of  $p$ :

$$0 = F(X^*(p), p).$$

Taking the total derivative of both sides with respect to the strategy parameter gives

$$0 = \frac{\partial F}{\partial X} \frac{dX^*}{dp} + \frac{\partial F}{\partial p}.$$

We can then solve for:

$$\frac{dX^*}{dp} = - \left( \frac{\partial F}{\partial X} \right)^{-1} \frac{\partial F}{\partial p}.$$

In the full system,  $\left( \frac{\partial F}{\partial X} \right)^{-1}$  is the inverse of the Jacobian. Once we know how the steady state depends on the strategy parame-  
195 ters, it is straightforward to compute how the extraction or access depends on each strategy parameter. See the Supplementary Methods for the full calculation of the gradient.

A Nash equilibrium is calculated by computing the gradient of the equilibrium extraction or resource access and performing iterative steps of gradient descent for each actor in turn until the strategies converge. While there is no guarantee of a Nash equilibrium since the strategy space is not necessarily convex, the strategy optimization process ensures that even if optimality  
200 is not reached, actors are behaving in ways that are self-consistent and compatible with their goal of increasing their resource access. Modeling actors as behaving reasonably, if not necessarily rationally, ensures that the systems that are analyzed are feasible governance systems.

The strategy parameters computed by the agent-based modeling component and the sampled generalized parameters collectively provide all of the information needed to compute the stability of the system. Varying the generalized modeling parame-  
205 ters, as well as meta-parameters defining the number of each type of state variable and how densely connected they are, allows for exploring the stability of a wide variety of topological configurations and feedbacks among actors and decision centers.

## Experimental Methods

We investigate how three types of features of complex governance correspond with stability: 1) the scale and exponent parameters, to understand the importance of different processes and functional forms, as well as the importance of variance in these

210 processes, representing, for example, heterogeneity in actors' response to resource access conditions, diversity in interventions, or inequity in actors' abilities to influence different governance processes, 2) the diversity of the system, indicated by the total number of actors and decision centers, and how densely connected they are, and 3) the relative number of decision centers and actors, to understand, for example, whether diverse stakeholder interests may have a different effect on stability than diversity in decision centers.

## 215 **Parameter Correlations with Stability**

To understand the impact of the scale and exponent parameters on stability, the size and composition of the system is held fixed and the scale and exponent parameters are sampled independently (see Supplementary Information for the parameter ranges). The small system has a total size of 5, with one extractor, one accessor, one non-resource user actor, and two decision centers. The large system has a total size of 15, with three of each type of resource user (extractors, accessors, and combined extractors  
220 and accessors), three non-resource user actors, and three decision centers. The decision center-resource user connectance (i.e., the probability that a given decision center will intervene in a particular resource user's extraction or access) is fixed at 0.4. The experiment consisted of 28,800 samples. The sample size was chosen to sufficiently narrow the 95% confidence intervals so that statistically significant correlations were distinguishable.

Stability is treated as a binary value. The correlation of a given parameter,  $x$ , averaged across all actors, with stability is  
225 given by

$$R = \frac{\sum_{i=1}^{v_s} x_{s,i} - \frac{v_s}{v} \sum_{i=1}^v x_i}{v\sigma_x\sigma_s},$$

where  $x_{s,i}$  is the set of parameter values leading to stable systems,  $x_i$  is the ensemble of parameter values,  $v$  is the number of systems in the ensemble,  $\sigma_x$  is the standard deviation of the parameter values, and  $\sigma_s$  is the standard deviation of stability (0 for unstable systems, 1 for stable systems).

## 230 **Colormaps**

To explore the effect of polycentricity or diversity of actors, the exponent parameters are held fixed and assigned the values in Supplementary Table 1 to eliminate variation across exponent parameters as the decision center-resource user connectance and the total size of the system is varied. Connectance represents the proportion of possible interactions in the network that are realized. Since the final system connectance is determined by the strategies actors pursue, it is computed after optimization of  
235 actors' strategies rather than fixed a priori.

For each system, the composition is randomly sampled, with a minimum of two resource users, at least one of which is an extractor, and one decision center. In the ternary colormaps (Figure 3), the total size of the system is held fixed at 10, and the decision center-resource user connectance is held fixed at 0.4. There are 600 systems sampled for each combination of connectance and size, and 900 for each system composition in the ternary colormaps. Sample sizes were chosen such that  
240 additional samples do not significantly change the trends in the colormaps.

## Results and Discussion

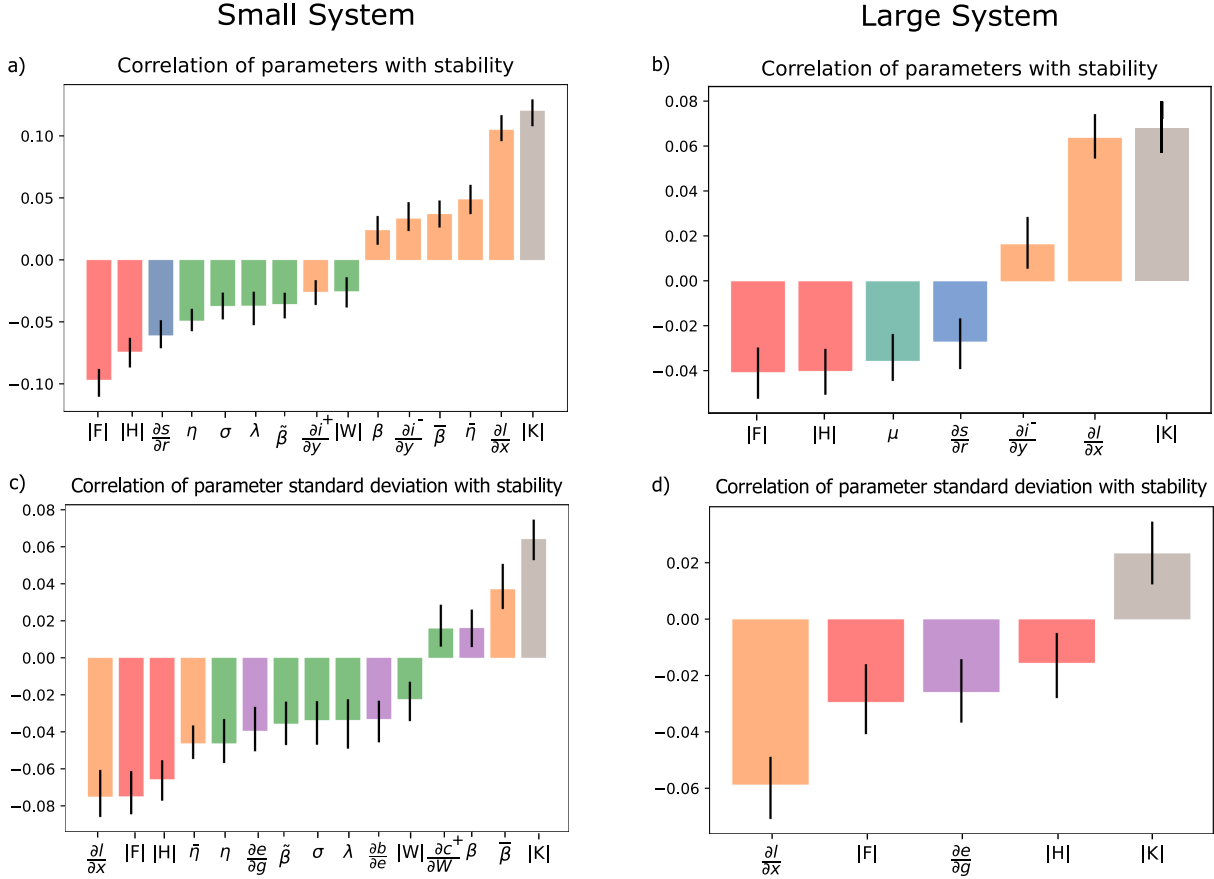
### Parameter Correlations with Stability

The parameter correlations results reveal that for a smaller system (Figure 2a), stabilizing factors include greater capacity gains from external support and gains motivated by resource access conditions, as opposed to gains from collaboration, and greater losses based on attrition rather than being undermined. Conversely, a greater capacity gain from collaboration and capacity loss from undermining by other actors, as well as a greater proportion of actors' efforts spent on collaboration or undermining are destabilizing. This suggests that stronger interactions and greater interdependence among actors is destabilizing, while greater autonomy is stabilizing.

In both the smaller and larger systems (Figure 2b), the strategy parameters emerge as important in determining stability. Since the strategies are computed rather than sampled as the other parameters are, the causal effect of the strategies on stability is not clear. However, the results suggest that a greater effort put toward influencing the capacity of decision centers, or venue shopping, corresponds with stability, while greater effort put into the other strategies corresponds with reduced stability. In the example system, agricultural users are engaging in venue shopping by reducing the infrastructure provider's influence over the infrastructure ( $K_{1,1}$ ); if there were other decision centers in the system, they may try to move that authority to a venue that favors agricultural interests. Venue shopping has gained interest as a possible mechanism through which less powerful actors can enact fundamental policy changes (Pralle, 2003). This distinction suggests that venue shopping may arise as a desirable strategy in a different context than other political strategies, or that it changes the system in a fundamentally different manner from other strategies, and that it does so in a lasting manner.

Bar color indicates the associated process

- Resource natural gain or loss (S)
- Actor or Decision Center natural gain or loss (L or I)
- Extraction (E) or Access (A)
- Policy Support/Resistance (F)
- Collaboration/Undermining (W)
- Decision Center Support/Resistance (K)
- Not associated with a particular process (e.g. overall turnover)

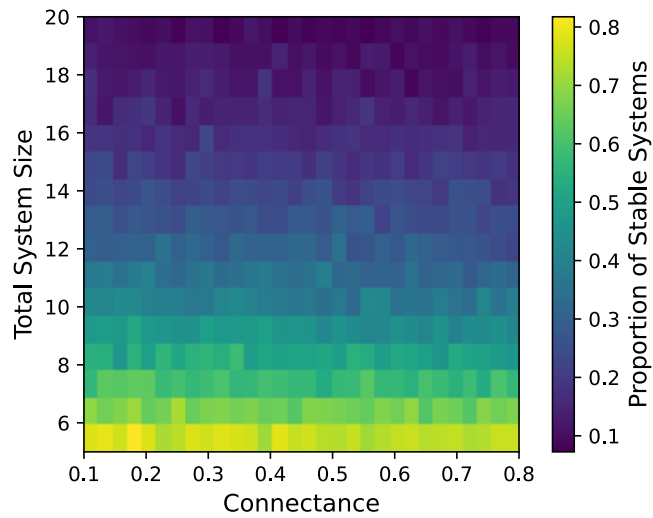


**Figure 2.** Correlation of mean (top) and standard deviation (bottom) of parameters with stability in small (left) and large (right) systems. Only parameters with a statistically significant effect on stability and with a correlation greater than 0.01 are shown. Stabilizing factors include the proportion of effort put into influencing the capacity of decision centers ( $|K|$ ), sensitivity of attrition to the current organizational capacity ( $\partial l / \partial x$ ), the share of loss in capacity due to attrition ( $\bar{\eta}$ ), share of gain in capacity from organization self-growth efforts ( $\bar{\beta}$ ), the sensitivity of decision center loss in capacity to their capacity ( $\partial i / \partial y_n$ ), and the gain in capacity motivated by resource access conditions ( $\beta$ ). Destabilizing factors consist of the proportion of effort put into spent on influencing effectiveness of policies ( $|F|$  and  $|H|$ ) and on collaborating or undermining ( $|W|$ ), the sensitivity of resource regeneration to the resource state ( $\partial s / \partial r$ ), share of loss in capacity from undermining by other actors ( $\eta$  and  $\lambda$ ), share of gain from collaboration ( $\tilde{\beta}$  and  $\sigma$ ), and the sensitivity of decision center growth in capacity to their own capacity ( $\partial i / \partial y_p$ ). The standard deviation results reveal that in addition to these parameters, variation in the sensitivity of extraction to the intervention ( $\partial e / \partial g$ ) and the sensitivity of gain in capacity to the ability to extract ( $\partial b / \partial e$ ) is destabilizing.

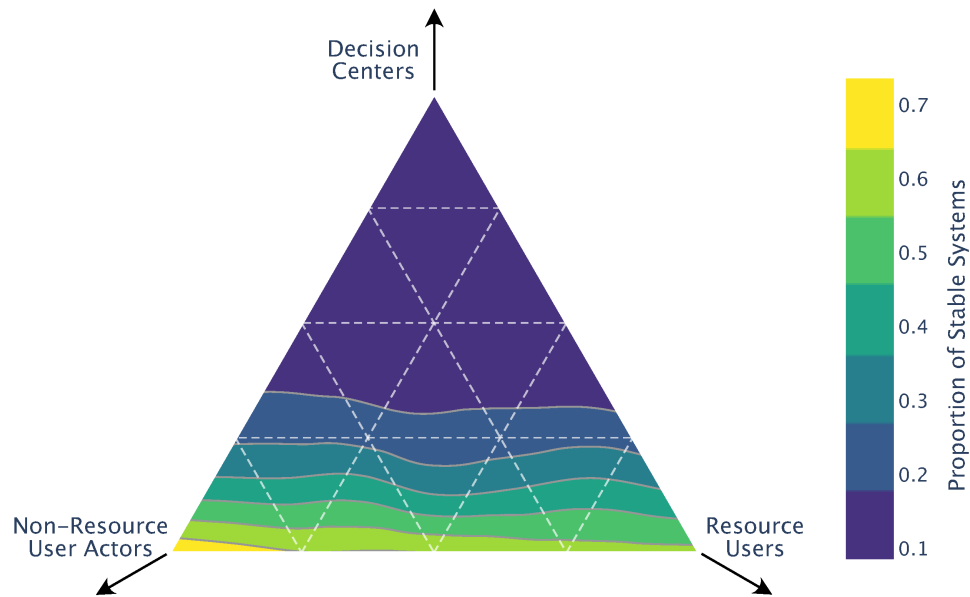
To understand the effect of heterogeneity among actors' relationships to the resource or to institutions on stability, we look at the variation in the parameters that define, for example, their sensitivity to changes in resource accessibility, or their share of total resource extraction. We find that higher variation in the sensitivity of actors' extraction to governance is destabilizing. This variation corresponds with heterogeneity among resource users in terms of the ease with which their extraction or access can be monitored or regulated. It can also represent institutional diversity, in which decision centers pursue a variety of policies or approaches, which has been hypothesized to increase adaptive capacity (Carlisle and Gruby, 2019). A higher variation in the sensitivity of actors' gain in organizing capacity to their resource access is also destabilizing. Differences in this parameter correspond to different relationships with resource use: actors with low resource requirements, particularly if they are not involved in a profit-driven activity, may experience the largest capacity gains when their ability to extract is low. In contrast, some actors may become more invested and gain greater resources with which to mobilize as their extraction increases. In the example system, for example, urban interests will likely become less engaged once they have sufficient access to water (an inverse relationship between capacity and resource access), whereas agricultural users, particularly industrial agriculture operations, might become less engaged once the available water, and thus profitability of farming, drops below a certain threshold. The presence of both of these relationships to the resource similarly signify heterogeneity and potentially inequity among actors, leading to a greater tendency for contestation and change.

### **Effect of Polycentrism and Diversity on Stability**

The number of different groups in the system, whether actors or decision centers, has a strong effect on stability, while connectance has no noticeable effect on stability (Figure 3). This suggests that diversity in actors, a feature of complex and polycentric governance systems, is a destabilizing force. This is consistent with the idea that the inclusion of a greater diversity of actors in governance processes leads to greater flexibility and adaptability, as well as with findings for other complex systems such as ecosystems (May, 1972). The absence of an effect of connectance on stability, however, is in contrast to other complex systems where connectance is destabilizing (May, 1972). This may be because each of the interactions in these systems can influence processes by either increasing or decreasing their effect, unlike in natural systems, where interactions may all push the system in the same direction, leading to greater potential for destabilizing feedbacks. Thus, while greater connectivity in the form of stronger interactions is a destabilizing force, as found in the parameter correlation experiments (Figure 2), the presence or absence of interactions is not as important for determining stability in governance systems.



**Figure 3.** Effect of system size (number of actors and decision centers) and connectance on stability. The color represents the proportion of stable systems (out of 600 samples) for each connectance and system size. The connectance shown here is the proportion of links between decision centers and resource users' extraction or access ( $G_{1,1}$  and  $G_{1,2}$  in Figure 1); the same result holds for the total connectance as well (see Figure S2).



**Figure 4.** Effect of the number of resource users, non-government organizations, and decision centers on stability. The color represents the proportion of stable systems for a given system composition. The total system size is 10, with a minimum of 2 resource users and 1 decision center.

### 285 Effect of System Composition on Stability

Finally, looking at the effect of the relative proportions of different entities reveals that stability is determined not just by total diversity, but the diversity in decision centers in particular (Figure 3). A greater number of decision centers is destabilizing, while a greater proportion of non-government organizations is stabilizing. The proportion of resource users does not have a strong effect on stability. Whether the resource users are extractive users of the resource also does not have an effect on stability (Figure S3). This result thus supports that polycentrism causes governance systems to be more prone to change, likely because they offer more opportunities for actors to influence the system (Pralle, 2003). Non-government organizations may have a stabilizing effect because of their role in supporting, and thus having aligning goals, with other actors in the system, reducing contestation and helping other actors develop longer-lasting, more durable institutions (Barnes and van Laerhoven, 2015).

### 3 Conclusions

295 In this study, we propose a modeling framework for resource governance that couples dynamical systems modeling with an agent based model representing actors' strategic interactions with each other and the institutions and organizations mediating their access to a shared resource. By formulating this system as a generalized model, we are able to explore a variety of structures for these relationships, with varying system compositions, types of relationships, connectances, and sizes to identify

the factors that influence stability. This approach reveals that greater interdependence and heterogeneity in actors' responses to resource access conditions, as well as in the institutions affecting their resource access, are destabilizing. Additionally, a greater number of different entities, especially a greater number of decision centers, is destabilizing, while greater diversity in non-government organizations is stabilizing. Finally, the strategy of venue shopping corresponds with stability, while strategies such as supporting or undermining other actors or policies correspond with instability.

The applicability of the results are ultimately contingent on whether the modeled processes, such as actor's attempts to navigate governance and support or resist institutions to increase their resource access, are indeed the driving forces in the governance system. Therefore, they may not necessarily apply to governance driven mainly by top-down bureaucratic processes with little stakeholder engagement or with very high capacity to monitor, implement, and enforce policies. Additionally, even though the generalized modeling approach requires fewer assumptions than traditional dynamical systems analysis, there are still assumptions regarding the structure of interactions among different model components. For example, the change in capacity of non-government organizations and decision centers does not directly depend on the resource state, but rather is affected by the resource state only indirectly through its influence on resource users' capacities and actions. Ultimately, we aimed to achieve a balance between a more general model that would make few assumptions about the structure of interactions, but would be challenging to interpret in the context of resource governance systems, and a more structured model, which limits the variety of ways in which variables are linked but provides more precise insight into governance dynamics. Finally, the model assumes a Nash equilibrium in actors' strategies, representing actors as rational and having perfect knowledge of the system and others' actions, rather than the often heuristic and myopic manner in which they actually form their strategies for navigating governance (Pralle, 2003). However, this assumption is more reasonable in stable systems, where repeated interactions in a stable environment allow actors' greater opportunity to learn about the system and fine-tune their strategies (Craig et al., 2017; Pahl-Wostl, 2009).

Despite these limitations, this study provides new insight into the factors that determine how governance systems respond to change, as well as independent support for previously observed benefits of complex governance. Many of the factors commonly associated with complex governance, namely greater interdependence and diversity in actors and decision centers, are destabilizing. This suggests that, similar to other complex systems, complexity in governance systems is destabilizing (May, 1972). It may be this courting of instability that allows for complex governance to be more responsive to external change (Zumsande et al., 2011). However, some results, such as the lack of effect of connectance on stability, contrast with findings for ecosystems, while the stabilizing effect of factors such as a greater number of non-government organizations and venue shopping have not previously been explored systematically. These differences suggest that there is a benefit to modeling the dynamics of governance systems specifically, rather than extending ecological theories to social systems. These results also suggest some concrete strategies to strike a balance between adaptivity and extreme instability in complex governance by, for example, introducing mitigating factors like non-government organizations to help stabilize systems with many different actors.

While modeling is not a replacement for case studies in understanding complex governance, it is complementary by suggesting new theories, such as the stabilizing effect of non-government organizations or of venue shopping, along with providing



more detailed insight into existing theories. These results, for example, provide greater insight into the greater adaptivity of polycentric governance by elucidating which factors – such as a greater number and diversity of decision centers as opposed to all entities, and greater interdependence among actors rather than simply the density of connections – lead to greater instability. As suggested by numerous studies (McGinnis and Ostrom, 2012; Stephan et al., 2019; Thiel et al., 2019; Carlisle and Gruby, 2019), this level of detail is necessary in understanding when or why the many benefits ascribed to multi-level, complex, and polycentric systems actually materialize. Additionally, while this study focuses on analyzing theoretical systems, the ability to model the different ways that actors exercise power and the dynamic power relations among them allows for exploring questions relating to the interaction between governance transitions and power relations in empirical systems as well (Avelino and Wittmayer, 2016; Avelino, 2021). This study demonstrates a way forward in combining the insights of complex systems theory with theories on governance to managing complex and highly uncertain human-natural systems in the face of rapid social and environmental change.

*Code availability.* All code used in this study is available at <https://github.com/njmolla/Gen-Modeling-Governance>.

*Author contributions.* N.M., J.D., and T.G. developed the model, N.M. designed and conducted experiments, and N.M. wrote the paper with feedback from J.D., T.G., and J.H.

*Competing interests.* The authors declare that they have no competing interests.

*Acknowledgements.* NM received support from the Gates Millennium Scholars Program. JH received partial support from the U.S. National Science Foundation, grant CNH-1716130. Conclusions are those of the authors and do not necessarily reflect the views or policies of the NSF.

## References

- Ansell, C.: Collaborative Governance, in: *The Oxford Handbook of Governance*, edited by David Levi-Faur, Oxford University Press, <https://doi.org/10.1093/oxfordhb/9780199560530.013.0035>, 2012.
- 355 Ansell, C. and Gash, A.: Collaborative Governance in Theory and Practice, *Journal of Public Administration Research and Theory*, 18, 543–571, <https://doi.org/10.1093/jopart/mum032>, 2008.
- Avelino, F.: Theories of Power and Social Change. Power Contestations and Their Implications for Research on Social Change and Innovation, *Journal of Political Power*, 14, 425–448, <https://doi.org/10.1080/2158379X.2021.1875307>, 2021.
- Avelino, F. and Wittmayer, J. M.: Shifting Power Relations in Sustainability Transitions: A Multi-actor Perspective, *Journal of Environmental*  
360 *Policy & Planning*, 18, 628–649, <https://doi.org/10.1080/1523908X.2015.1112259>, 2016.
- Bache, I., Bartle, I., and Flinders, M.: Multi-Level Governance, *Handbook on Theories of Governance*, 2016.
- Bambach, R. K., Knoll, A. H., and Sepkoski, J. J.: Anatomical and Ecological Constraints on Phanerozoic Animal Diversity in the Marine  
Realm, *Proceedings of the National Academy of Sciences*, 99, 6854–6859, <https://doi.org/10.1073/pnas.092150999>, 2002.
- Barnes, C. and van Laerhoven, F.: Making It Last? Analysing the Role of NGO Interventions in the Development of In-  
365 stitutions for Durable Collective Action in Indian Community Forestry, *Environmental Science & Policy*, 53, 192–205,  
<https://doi.org/10.1016/j.envsci.2014.06.008>, 2015.
- Barnes, C., van Laerhoven, F., and Driessen, P. P. J.: Advocating for Change? How a Civil Society-led Coalition Influences the Implementa-  
tion of the Forest Rights Act in India, *World Development*, 84, 162–175, <https://doi.org/10.1016/j.worlddev.2016.03.013>, 2016.
- Bixler, R. P., Wald, D. M., Ogden, L. A., Leong, K. M., Johnston, E. W., and Romolini, M.: Network Governance for Large-  
370 Scale Natural Resource Conservation and the Challenge of Capture, *Frontiers in Ecology and the Environment*, 14, 165–171,  
<https://doi.org/10.1002/fee.1252>, 2016.
- Carlisle, K. and Gruby, R. L.: Polycentric Systems of Governance: A Theoretical Model for the Commons, *Policy Studies Journal*, 47,  
927–952, <https://doi.org/10.1111/psj.12212>, 2019.
- Carpenter, S. and Brock, W.: Adaptive Capacity and Traps, *Ecology and Society*, 13, <https://doi.org/10.5751/ES-02716-130240>, 2008.
- 375 Craig, R. K., Garmestani, A. S., Allen, C. R., Arnold, C. A. T., Birgé, H., DeCaro, D. A., Fremier, A. K., Gosnell, H., and Schlager, E.:  
Balancing Stability and Flexibility in Adaptive Governance: An Analysis of Tools Available in U.S. Environmental Law, *Ecology and*  
*Society*, 22, 2017.
- da Silveira, A. R. and Richards, K. S.: The Link Between Polycentrism and Adaptive Capacity in River Basin Governance Systems: In-  
sights from the River Rhine and the Zhujiang (Pearl River) Basin, *Annals of the Association of American Geographers*, 103, 319–329,  
380 <https://doi.org/10.1080/00045608.2013.754687>, 2013.
- Dobbin, K. B.: Environmental Justice Organizing as Commoning Practice in Groundwater Reform: Linking Movement and  
Management in the Quest for More Just and Sustainable Rural Futures, *Elementa: Science of the Anthropocene*, 9,  
<https://doi.org/10.1525/elementa.2020.00173>, 2021.
- Folke, C., Carpenter, S., Elmqvist, T., Gunderson, L., Holling, C. S., and Walker, B.: Resilience and Sustainable Development:  
385 Building Adaptive Capacity in a World of Transformations, *AMBIO: A Journal of the Human Environment*, 31, 437–440,  
<https://doi.org/10.1579/0044-7447-31.5.437>, 2002.
- Folke, C., Hahn, T., Olsson, P., and Norberg, J.: Adaptive Governance of Social-Ecological Systems, *Annual Review of Environment and*  
*Resources*, 30, 441–473, <https://doi.org/10.1146/annurev.energy.30.050504.144511>, 2005.

- Gerlak, A. K., Heikkila, T., and Lubell, M.: The Promise and Performance of Collaborative Governance, in: *The Oxford Handbook of U.S. Environmental Policy*, edited by Michael Kraft and Sheldon Kamieniecki, <https://doi.org/10.1093/oxfordhb/9780199744671.013.0019>, 2012.
- Gross, T. and Feudel, U.: Generalized Models as a Universal Approach to the Analysis of Nonlinear Dynamical Systems, *Physical Review E*, 73, 016 205, <https://doi.org/10.1103/PhysRevE.73.016205>, 2006.
- Gross, T., Rudolf, L., Levin, S. A., and Dieckmann, U.: Generalized Models Reveal Stabilizing Factors in Food Webs, *Science*, 325, 747–750, <https://doi.org/10.1126/science.1173536>, 2009.
- Guckenheimer, J. and Holmes, P. J.: *Nonlinear Oscillations, Dynamical Systems, and Bifurcations of Vector Fields*, Applied Mathematical Sciences, Springer-Verlag, New York, <https://doi.org/10.1007/978-1-4612-1140-2>, 1983.
- Holling, C. S.: Resilience and Stability of Ecological Systems, *Annual Review of Ecology and Systematics*, 4, 1–23, <https://doi.org/10.1146/annurev.es.04.110173.000245>, 1973.
- Hooghe, L. and Marks, G.: Types of Multi-Level Governance, SSRN Scholarly Paper ID 302786, Social Science Research Network, Rochester, NY, <https://doi.org/10.2139/ssrn.302786>, 2002.
- Klijin, E.-H. and Snellen, I.: Complexity Theory and Public Administration: A Critical Appraisal, in: *Managing Complex Governance Systems*, Routledge, 2009.
- Koppenjan, J. and Klijin, E.-H.: *Managing Uncertainties in Networks: Public Private Controversies*, Routledge, London, <https://doi.org/10.4324/9780203643457>, 2004.
- Lade, S. J. and Niiranen, S.: Generalized Modeling of Empirical Social-Ecological Systems, *Natural Resource Modeling*, 30, e12 129, <https://doi.org/10.1111/nrm.12129>, 2017.
- Liesbet, H. and Gary, M.: Unraveling the Central State, but How? Types of Multi-level Governance, *American Political Science Review*, 97, 233–243, <https://doi.org/10.1017/S0003055403000649>, 2003.
- Lubell, M. and Morrison, T. H.: Institutional Navigation for Polycentric Sustainability Governance, *Nature Sustainability*, pp. 1–8, <https://doi.org/10.1038/s41893-021-00707-5>, 2021.
- May, R. M.: Will a Large Complex System Be Stable?, *Nature*, 238, 413–414, <https://doi.org/10.1038/238413a0>, 1972.
- May, R. M., Levin, S. A., and Sugihara, G.: Ecology for Bankers, *Nature*, 451, 893–894, <https://doi.org/10.1038/451893a>, 2008.
- McCarthy, J.: First World Political Ecology: Lessons from the Wise Use Movement, *Environment and Planning A: Economy and Space*, 34, 1281–1302, <https://doi.org/10.1068/a3526>, 2002.
- McGinnis, M. D. and Ostrom, E.: Reflections on Vincent Ostrom, Public Administration, and Polycentricity, *Public Administration Review*, 72, 15–25, 2012.
- Newig, J. and Fritsch, O.: Environmental Governance: Participatory, Multi-Level – and Effective?, *Environmental Policy and Governance*, 19, 197–214, <https://doi.org/10.1002/eet.509>, 2009.
- North, D.: Introduction, in: *Understanding the Process of Economic Change*, Princeton University Press, 2005.
- North, D. C.: *Institutions, Institutional Change and Economic Performance*, Political Economy of Institutions and Decisions, Cambridge University Press, Cambridge, <https://doi.org/10.1017/CBO9780511808678>, 1990.
- Ostrom, E.: *Governing the Commons: The Evolution of Institutions for Collective Action*, Political Economy of Institutions and Decisions, Cambridge Univ. Press, Cambridge, 29 auf edn., 1990.
- Ostrom, E.: A General Framework for Analyzing Sustainability of Social-Ecological Systems, *Science*, 325, 419–422, <https://doi.org/10.1126/science.1172133>, 2009.

- Ostrom, E.: Beyond Markets and States: Polycentric Governance of Complex Economic Systems, *American Economic Review*, 100, 641–672, <https://doi.org/10.1257/aer.100.3.641>, 2010.
- Ostrom, V., Tiebout, C. M., and Warren, R.: The Organization of Government in Metropolitan Areas: A Theoretical Inquiry, *The American Political Science Review*, 55, 831–842, <https://doi.org/10.2307/1952530>, 1961.
- 430 Pahl-Wostl, C.: A Conceptual Framework for Analysing Adaptive Capacity and Multi-Level Learning Processes in Resource Governance Regimes, *Global Environmental Change*, 19, 354–365, <https://doi.org/10.1016/j.gloenvcha.2009.06.001>, 2009.
- Pralle, S. B.: Venue Shopping, Political Strategy, and Policy Change: The Internationalization of Canadian Forest Advocacy, *Journal of Public Policy*, 23, 233–260, 2003.
- 435 Stephan, M., Marshall, G., and McGinnis, M.: An Introduction to Polycentricity and Governance, in: *Governing Complexity*, edited by Thiel, A., Blomquist, W. A., and Garrick, D. E., pp. 21–44, Cambridge University Press, first edn., <https://doi.org/10.1017/9781108325721.002>, 2019.
- Thiel, A., Pacheco-Vega, R., and Baldwin, E.: Evolutionary Institutional Change and Performance in Polycentric Governance, in: *Governing Complexity: Analyzing and Applying Polycentricity*, edited by Thiel, A., Garrick, D. E., and Blomquist, W. A., Cambridge Studies in Economics, Choice, and Society, pp. 91–110, Cambridge University Press, Cambridge, <https://doi.org/10.1017/9781108325721.005>, 440 2019.
- van Buuren, A., Boons, F., and Teisman, G.: Collaborative Problem Solving in a Complex Governance System: Amsterdam Airport Schiphol and the Challenge to Break Path Dependency, *Systems Research and Behavioral Science*, 29, 116–130, <https://doi.org/10.1002/sres.2101>, 2012.
- 445 Villamayor-Tomas, S. and García-López, G.: Social Movements as Key Actors in Governing the Commons: Evidence from Community-Based Resource Management Cases across the World, *Global Environmental Change*, 53, 114–126, <https://doi.org/10.1016/j.gloenvcha.2018.09.005>, 2018.
- Zumsande, M., Stiefs, D., Siegmund, S., and Gross, T.: General Analysis of Mathematical Models for Bone Remodeling, *Bone*, 48, 910–917, <https://doi.org/10.1016/j.bone.2010.12.010>, 2011.