

Supplementary material for:

ESD Reviews: Extreme Weather and Societal Impacts over the Eastern Mediterranean

Assaf Hochman^{1, 2}, Francesco Marra³, Gabriele Messori^{4, 5}, Joaquim G. Pinto¹, Shira Raveh-Rubin⁶, Yizhak Yosef⁷, Georgios Zittis⁸

¹ Department of Tropospheric Research, Institute of Meteorology and Climate Research (IMK-TRO), Karlsruhe Institute of Technology, Karlsruhe, Germany.

² Freddy and Nadine Hermann Institute of Earth Sciences, The Hebrew University of Jerusalem (HUJI), Jerusalem, Israel.

³ Institute of Atmospheric Sciences and Climate, National Research Council of Italy (CNR-ISAC), Bologna, Italy.

⁴ Department of Earth Sciences and Centre of Natural Hazards and Disaster Science (CNDS), Uppsala University, Uppsala, Sweden.

⁵ Department of Meteorology and Bolin Centre for Climate Research, Stockholm University, Stockholm, Sweden.

⁶ Department of earth and Planetary Sciences, Weizmann Institute of Science, Rehovot, Israel.

⁷ Israel Meteorological Service, Bet-Dagan, Israel.

⁸ Climate and Atmosphere Research Center (CARE-C), The Cyprus Institute, Nicosia, Cyprus.

Correspondence to: Assaf Hochman (assaf.hochman@kit.edu)

Table S1 The 23 CMIP5 models used for computing the annual extreme indices in Fig. 3 with the following listing columns; Modeling center, Institute ID, model name, and horizontal resolution (°) following Taylor et al., (2012).

Modeling Center	Institute ID	Model Name	Resolution (°)
Commonwealth Scientific and Industrial Research Organization (CSIRO) and Bureau of Meteorology (BOM), Australia	CSIRO-BOM	ACCESS1.0	1.25 X 1.88
Beijing Climate Center, China Meteorological Administration	BCC	BCC-CSM1.1	2.79 X 2.81
College of Global Change and Earth System Science, Beijing Normal University	GCESS	BNU-ESM	2.79 X 2.81
Canadian Centre for Climate Modelling and Analysis	CCCMA	CanESM2	2.79 X 2.81
National Center for Atmospheric Research	NCAR	CCSM4	0.94 X 1.25
Community Earth System Model Contributors	NSF-DOE-NCAR	CESM1(BGC)	0.94 X 1.25
Centro Euro-Mediterraneo per I Cambiamenti Climatici	CMCC	CMCC-CMS	3.71 X 3.75
Centre National de Recherches Météorologiques / Centre Européen de Recherche et Formation Avancée en Calcul Scientifique	CNRM-CERFACS	CNRM-CM5	1.40X 1.41
NOAA Geophysical Fluid Dynamics Laboratory	NOAA GFDL	GFDL-ESM2G	2.02 X 2
		GFDL-ESM2M	2.02 X 2.5
		GFDL-CM3	2 X 2.5
Met Office Hadley Centre (additional HadGEM2-ES realizations contributed by Instituto Nacional de Pesquisas Espaciais)	MOHC	HadCM3	3.75 X 2.5
		HadGEM2-CC	1.25 X 1.88
		HadGEM2-ES	1.25 X 1.875
Institute for Numerical Mathematics, Spain	INM	INM-CM4	1.5 X 2
Institut Pierre-Simon Laplace, France	IPSL	IPSL-CM5A-LR	1.89 X 3.75
		IPSL-CM5B-LR	1.89 X 3.75
Japan Agency for Marine-Earth Science and Technology, Atmosphere and Ocean Research Institute (The University of Tokyo), and National Institute for Environmental Studies	MIROC	MIROC-ESM	2.79 X 2.81
Atmosphere and Ocean Research Institute (The University of Tokyo), National Institute for Environmental Studies, and Japan Agency for Marine-Earth Science and Technology	MIROC	MIROC4h	0.56 X 0.56
		MIROC5	1.40 X 1.41
Max-Planck-Institut für Meteorologie (Max Planck Institute for Meteorology)	MPI-M	MPI-ESM-MR	1.87 X 1.88
		MPI-ESM-LR	1.87 X 1.88
Meteorological Research Institute, Japan	MRI	MRI-CGCM3	1.12 X 1.13

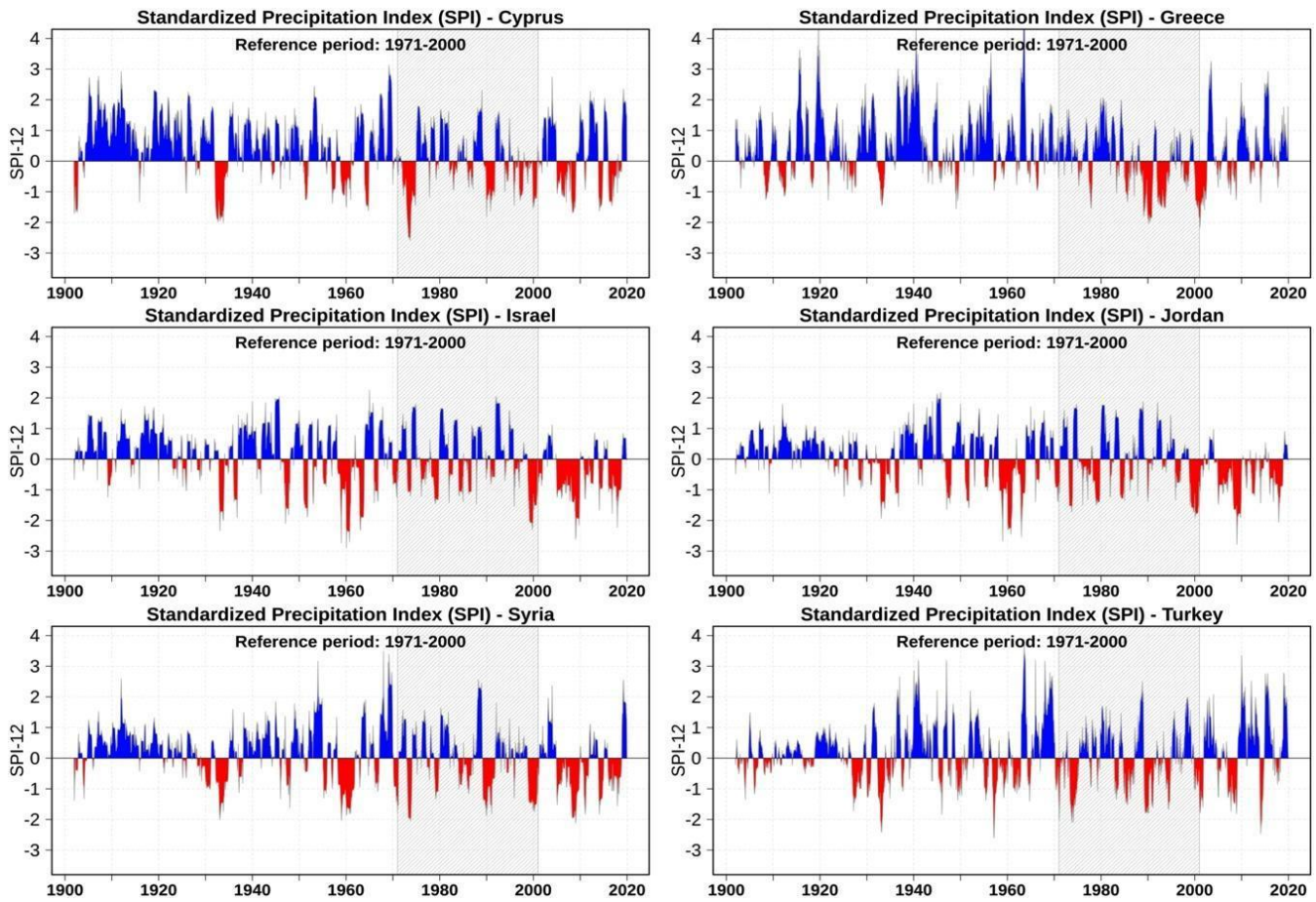


Figure S1 Same as Fig. 4 but for the Standardized Precipitation index (SPI).