

# Atmospheric regional climate projections for the Baltic Sea Region until 2100

Ole B. Christensen<sup>1</sup>, Erik Kjellström<sup>2</sup>, Christian Dieterich<sup>2,†</sup>, Matthias Gröger<sup>3</sup>, H.E. Markus Meier<sup>3,2</sup>

<sup>1</sup>Danish Meteorological Institute, Copenhagen, Denmark

5 <sup>2</sup>Swedish Meteorological and Hydrological Institute, Norrköping, Sweden

<sup>3</sup>Leibniz Institute for Baltic Sea Research Warnemünde, Rostock, Germany

<sup>†</sup>Deceased

*Correspondence to:* Ole B. Christensen ([obc@dmi.dk](mailto:obc@dmi.dk))

**Abstract.** The Baltic Sea Region is very sensitive to climate change; it is a region with spatially varying climate and diverse ecosystems, but it is also under pressure due to a high population in large parts of the area. Climate change impacts could easily exacerbate other anthropogenic stressors such as biodiversity stress from society and eutrophication of the Baltic Sea considerably. Therefore, there has been a focus on estimations of future climate change and its impacts in recent research. In this overview paper, we will concentrate on a presentation of recent climate projections from 12.5 km horizontal resolution atmosphere-only regional climate models from EURO-CORDEX. Comparison will also be done with corresponding prior results as well as with coupled atmosphere-ocean regional climate models. The recent regional climate model projections strengthen the conclusions from previous assessments. This includes a strong warming, in particular in the north in winter. Precipitation is projected to increase in the whole region apart from the southern half during summer. Consequently, the new results lend more credibility to estimates of uncertainties and robust features of future climate change. Furthermore, the larger number of scenarios gives opportunities to better address impacts of mitigation measures. In simulations with a coupled atmosphere-ocean model, the climate change signal is locally modified relative to the corresponding stand-alone atmosphere regional climate model. Differences are largest in areas where the coupled system arrives at different sea-surface temperatures and sea-ice conditions.

## 1 Introduction

For many years, hundreds of global climate projections have been produced according to various scenarios of future greenhouse gas emissions and other forcing factors including changes in aerosols and land use. This has been coordinated in model inter-comparison projects (MIPs), that have provided fundamental input to the Working Group I assessment reports of the Intergovernmental Panel on Climate Change (IPCC; IPCC 2001, 2007, 2013, 2021). The fifth IPCC assessment report (AR5; IPCC 2013) was built on the World Climate Research Programme's (WCRP) Coupled Model Intercomparison Project phase 5 (CMIP5) multi-model data (Taylor et al., 2012). Many general circulation models (GCMs) participated in

30 simulations according to several Representative Concentration Pathway (RCP) scenarios (van Vuuren et al., 2011). The most recent, sixth, assessment report (IPCC 2021; AR6) builds on the successor CMIP6 (Eyring et al., 2016) that involves a new set of Shared Socioeconomic Pathway (SSP) scenarios (O'Neill et al., 2017). This has, however, not been addressed here as, at this point, downscaling activities based on CMIP6 projections are still lacking.

The Baltic Sea Region is highly diverse with considerable spatial variability over small distances compared to typical GCM  
35 resolutions. Consequently, GCMs do not represent all relevant processes at adequate scales and results are often biased (e.g. Graham et al., 2008). High-resolution regional climate models, nested in the GCMs, have been shown to add value to the GCM results and to promote detailed analysis on regional to local scales (e.g., Giorgi and Gao, 2018). At the European level, considerable efforts have therefore been undertaken to downscale GCM simulations to a higher horizontal resolution with RCMs. The history of coordinated RCM simulations started in the PRUDENCE project with RCMs mostly operated at 50  
40 km spatial resolution (Christensen and Christensen 2007), continued with the ENSEMBLES project (van der Linden and Mitchell 2009; Hanel and Buishand 2011; Kyselý et al. 2011; Räisänen and Eklund 2011; Déqué et al. 2012; Kjellström et al. 2013) and more recently in the EURO-CORDEX initiative, which forms part of the Coordinated Regional climate Downscaling EXperiment (CORDEX, [www.cordex.org](http://www.cordex.org); e.g. Jacob et al., 2013; Kotlarski et al., 2014; Keuler et al., 2016; Kjellström et al., 2018). Most recently, the European Copernicus Climate Change Services has supported an extension of the  
45 available CMIP5-driven RCM downscaling simulations in the EURO-CORDEX setup with around 12 km spatial resolution (Vautard et al., 2021; Coppola et al., 2021). This has led to the public availability of a large amount, currently 127, different simulations following the RCP2.6, RCP4.5, and RCP8.5 scenarios (some simulations with known errors are not counted).

Regional climate models have been used not only for downscaling of climate change scenarios. Also, observation-based reanalysis datasets have been extensively downscaled with RCMs in recent years (e.g. Feser et al. 2001; Hagemann et al.  
50 2004; Christensen et al. 2010; Samuelsson et al. 2011; Kotlarski et al., 2014; Prein et al., 2015). These experiments are useful for comparing RCM results and observational data for recent decades, and thereby for evaluation of RCM models. The RCMs are found to capture many features of the climate in a realistic way albeit with some systematic errors and biases (Wibig et al., 2015; Kjellström and Christensen, 2020). As a remedy, bias-correction is sometimes applied to the results (e.g. Dosio et al., 2016). Biases are generally larger when GCMs are downscaled instead of reanalysis data as these show  
55 systematic biases in their representation of the atmospheric circulation at large scales, of temperature, humidity and sea surface conditions. For an area like the Baltic Sea region, this implies that sea surface temperatures (SSTs) and sea ice from the coarse-scale driving GCM may not be completely adequate as input to an RCM; this constitutes an additional source of potential uncertainty of the downscaled regional scenarios (Kjellström and Ruosteenoja, 2007).

During the past decades a number of regional coupled atmosphere-ocean-sea-ice models with focus on the Baltic Sea and  
60 adjacent marginal seas have therefore been developed for climate studies (e.g. Gustafsson et al., 1998; Döscher et al., 2002; Wang et al., 2015; Dieterich et al., 2019; Primo et al., 2019; Kelemen et al., 2019; Akhtar et al., 2019; Sein et al., 2020). In

these models, prescribed boundary conditions at the sea surface (i.e. sea ice and SST) were replaced by online coupled ocean models allowing for a direct and more realistic representation of air-sea thermal feedback mechanisms (see review by Gröger et al., 2021b). These coupled models exhibit a different model solution for many climate variables compared to their  
65 atmosphere stand-alone counterparts, especially over the coupled region (Gröger et al., 2015; Ho-Hagemann et al., 2017; Primo et al., 2019; Gröger et al., 2019, 2021a). The most recent and largest ensemble of regional coupled climate change simulations was provided by Dieterich et al. (2019) and Gröger et al. (2019, 2021a) and is based on the regional climate model RCA4 coupled interactively to the ocean model NEMO.

Available RCM literature describes extensive studies of possible future climate conditions for many areas, including the  
70 Baltic Sea basin (see, e.g., Lind and Kjellström 2008; Kjellström and Lind 2009; Benestad 2011; Kjellström et al. 2011a; Nikulin et al. 2011; Christensen et al. 2015a; Christensen and Kjellström 2018; Coppola et al., 2021). Ensembles of climate projection simulations have been used to obtain probabilistic climate change information, both GCM (Lind and Kjellström 2008; Räisänen 2010) and RCM ensembles (Buser et al. 2010; Donat et al. 2011). In addition, the wider range of GCM scenarios has been used to set regional scenarios in a broader context (Lind and Kjellström 2008; Kjellström et al., 2016 and  
75 2018).

This work aims at presenting climate change in the area around the Baltic Sea, as it is projected by the very large ensemble of EURO-CORDEX RCMs at 12 km resolution. The spread in results between the projections is used to discuss uncertainties in future climate change. In addition to the uncoupled atmosphere-only EURO-CORDEX RCM ensemble, we will also assess changes in an ensemble with the atmospheric regional model RCA4 coupled to the NEMO ocean model. A  
80 comparison between results from the stand-alone atmospheric model and the coupled model provides input to the assessment of uncertainties in future climate change projections for the area.

## 2. Data and methods

We will focus on data of the most commonly studied fields: surface air temperature, average total precipitation, mean wind speed at 10 m height, incoming short-wave radiation, and average winter snow and sea-ice cover. The consequences of  
85 extreme weather events impact many aspects of society. Extreme precipitation often results in flooding, which often causes extensive damage as do extreme winds in connection with low-pressure systems. Changes in these extremes as a result of anthropogenic climate change have received considerable attention. We will therefore also report on extremes of daily precipitation and 10 m wind speed.

The main results of this study build on seasonal means from the publicly available and accessible EURO-CORDEX data,  
90 which at the time of writing consisted of the 124 simulations indicated in Tab. 1 out of a current total of 127. Three different emission scenarios have been widely used for downscaling within CORDEX. The RCP2.6 scenario is the most moderate and

will require a targeted emission reduction worldwide. The RCP8.5 scenario, in contrast, is consistent with large future increases in emissions, little emission mitigation, and a continued reliance on fossil fuels for many decades. In the middle, the RCP4.5 scenario requires a considerable amount of mitigation, but is very unlikely to achieve the 2-degree warming limit relative to pre-industrial conditions, which the Paris agreement targets.

In this study we will concentrate on the warmer RCP8.5 scenario. In the analysis we will analyse three periods: 1981-2010, 2041-2070 and 2071-2100. Plots corresponding to the other scenarios can be found in the supplementary material. In general, the amplitude of regional climate change for varying scenarios scale with temperature change, while the spatial pattern is similar (see, e.g., Christensen et al., 2015b). This means that the RCP8.5 scenario will show expected patterns of climate change with a relative minimum of noise from interannual variability of the simulations. Furthermore, the largest of all three RCP ensembles is the RCP8.5 one (Table 1) and, hence, the analysis of these scenario simulations allows the best estimate of model uncertainties and internal variability.

Not all EURO-CORDEX simulations have been analysed for every variable considered here; two WRF361H simulations do not contain solar radiation; and snow and sea ice from several simulations either do not exist in the archive or have not been downloaded. Some simulations with crCLIM are missing DJF 2005-2006 due to a problem when handling the transition between historical and scenario simulations; we have repeated DJF 2004-2005 in its place. All simulations driven by HadGEM2-ES are missing the year 2100; for these simulations we have used 2070-2099 as the end-of-century period.

The second BACC report from 2015 (BACC II Author Team, 2015) showed similar maps to those presented here. These results were based on the ENSEMBLES database (van der Linden and Mitchell, 2009), consisting of simulations following the SRES (Nakićenović et al., 2000) A1B scenario performed in 25 km grid resolution. The periods compared were 1961-1990 and 2071-2100. The mean GCM global temperature change weighted with the number of RCM simulations in the ensemble, for the EURO-CORDEX and ENSEMBLES simulations can be seen in Tab. 2. Note that the first reference period differs between ENSEMBLES (1961-1990) and EURO-CORDEX (1981-2010).

To a high extent, maps over the Baltic Sea catchment of climate change for the weaker emission scenarios exhibit the same patterns as the RCP8.5 climate change normalized by global temperature change; maps are available in the Supplementary Material.

RCP8.5	RCA4	CCLM4-B-17	ccCLM	REMO 09_15	RAfMO22E	HIRHAM5	WRF361H	WRF381P	ALADIN63	RegCM4.6.1	HadREM3-GA7.05	Total by GCM
MOHC-HadGEM2-ES	1	1	1	1	1	1	1	1	1	1	1	11
ICHEC-EC-EARTH	1	1	1	1	1	1	1	1	1	1	1	11
CNRM-CERFACS-CNRM-CM5			1	1	1	1		1	1	1	1	7
NCC-NorESM1-M	1		1	1	1	1		1	1	1	1	9
MPI-M-MPI-ESM-LR	1	1	1	1	1	1	1	1	1	1	1	17
IPSL-IPSL-CM5A-MR	1			1	1	1	1					5
CCCma-CanESM2		1		1								2
MIROC-MIROC3		1		1			1					3
<b>Total by RCM</b>	<b>9</b>	<b>5</b>	<b>9</b>	<b>10</b>	<b>8</b>	<b>8</b>	<b>4</b>	<b>6</b>	<b>4</b>	<b>4</b>	<b>5</b>	<b>72</b>
RCP4.5	RCA4	CCLM4-B-17	ccCLM	REMO 09_15	RAfMO22E	HIRHAM5	WRF361H	WRF381P	ALADIN63	RegCM4.6.1	HadREM3-GA7.05	Total now
MOHC-HadGEM2-ES	1	1		1	1	1						5
ICHEC-EC-EARTH	1	1		1	2	1						6
CNRM-CERFACS-CNRM-CM5					1				1			2
NCC-NorESM1-M	1			1		1						3
MPI-M-MPI-ESM-LR	1	1		2								4
IPSL-IPSL-CM5A-MR	1						1					2
<b>Total by RCM</b>	<b>5</b>	<b>3</b>		<b>5</b>	<b>4</b>	<b>3</b>		<b>1</b>	<b>1</b>			<b>22</b>
RCP2.6	RCA4	CCLM4-B-17	ccCLM	REMO 09_15	RAfMO22E	HIRHAM5	WRF361H	WRF381P	ALADIN63	RegCM4.6.1	HadREM3-GA7.05	Total now
MOHC-HadGEM2-ES	1			1	1	1				1	1	6
ICHEC-EC-EARTH	1	1		1	1	1					1	6
CNRM-CERFACS-CNRM-CM5				1	1				1			3
NCC-NorESM1-M	1			1	1					1		4
MPI-M-MPI-ESM-LR	1	1		2	1		1			1		7
IPSL-IPSL-CM5A-LR				1								1
NOAA-GFDL-ESM2G				1								1
MIROC-MIROC3		1		1								2
<b>Total by RCM</b>	<b>4</b>	<b>3</b>		<b>9</b>	<b>5</b>	<b>3</b>	<b>1</b>		<b>1</b>	<b>3</b>	<b>3</b>	<b>30</b>
<b>Grand total by GCM</b>	<b>18</b>	<b>11</b>	<b>9</b>	<b>24</b>	<b>17</b>	<b>13</b>	<b>5</b>	<b>7</b>	<b>6</b>	<b>7</b>	<b>7</b>	<b>124</b>

**Table 1.** Model simulations of the study. These constitute the entire set of seasonal-average fields available from the Earth System Grid Federation archive (ESGF; <http://esgf-data.dkrz.de>) in May 2021. There are 72 ensemble members following RCP8.5, 22 following RCP4.5, and 30 following RCP2.6.

Project	Scenario	Ensemble size	Mid-century warming	End-century warming
ENSEMBLES	SRES A1B	13	-	3.00
EURO-CORDEX	RCP8.5	72	2.21	3.71
EURO-CORDEX	RCP4.5	22	1.67	2.13
EURO-CORDEX	RCP2.6	30	1.22	1.19

**Table 2** Average global warming from driving GCMs in each scenario, weighted by the number of downscaling simulations of each. The warming is presented relative to the reference period 1981-2010 for mid-century (2041-2070) and end-of-century (2071-2100) conditions.

125 The maps below show results based on 72 regional climate change simulations from the RCP8.5 EURO-CORDEX  
simulations listed in Tab. 1. Corresponding plots for other scenarios and periods can be found in the Supplementary  
Material. For each location, the median among ensemble members of the change is shown together with the first and third  
quartiles. In the maps showing the median we only display grid points where 75% of models agree on the sign, i.e., where  
both quartile plots show the same sign, elsewhere we indicate by white colour that the changes are not robust. We will  
130 discuss only winter (DJF) and summer (JJA) in this study. The scatter plots below show results for all simulations following  
the three commonly used scenarios (Tab. 1). Where possible we also include results from the ENSEMBLES project, which  
were the basis of BACC II (Christensen et al., 2015a). In addition to the average over the entire Baltic Sea catchment region  
including the Baltic Sea, we divide the region into sea points and land points north and south of 60N. In the Supplementary  
Material, Tab. S1-S20, tables of ensemble means and ensemble standard deviations can be found for temperature and  
135 precipitation, for both periods, all scenarios (including the BACC II/ENSEMBLES SRES A1B scenario), and all five areas.

We will also investigate the coupled model ensemble with RCA4-NEMO. RCA4 is set up for the EURO-CORDEX domain  
with a horizontal resolution of ~25 km and 40 vertical levels. NEMO simulates the hydrodynamics of the Baltic Sea as well  
as the North Sea at ~3.7 km resolution and 56 vertical levels (Gröger et al., 2015; Dieterich et al., 2019). Air-sea fluxes are  
exchanged every three hours between the ocean and the atmosphere. The RCA4-NEMO ensemble consists of 22 downscaled

140 GCM simulations based on 8 different global models for the historical period and the RCP2.6, RCP4.5, and RCP8.5 scenarios. In addition, there is also a reanalysis-driven simulation for the historical period.

These results will be compared to the corresponding RCA4 atmosphere-only simulations at 12.5 km resolution, which can be found in the EURO-CORDEX archive. When possible, these simulations are included into the scatter plots below.

### 3. Results and discussion

#### 145 3.1. Temperature

According to the analysed EURO-CORDEX ensemble, we will see increasing air temperature in the Baltic Sea area during the present century. According to this ensemble it is a robust result for all seasons, locations, simulations and scenarios.

For both seasons analysed (winter and summer), the temperature change shows spatial gradients with the strongest warming in the north-east (Figure 1). Winter warming is larger than summer warming, and larger than the global average warming of  
150 about 3.7 degrees (Tab. 2); in the north-east it approaches twice the global average warming. Larger warming than the global average is generally expected for land areas, since land heats more quickly than sea areas where also enhanced evaporation tends to reduce warming (e.g. Sutton et al., 2007); it is most clearly seen in winter in the eastern part of the area. The strong winter increase is also influenced by the feedback mechanisms involving retreating snow and sea-ice. There is a general pattern of higher warming in the north than in the south, but there is a spread in the magnitude of the change. This is  
155 illustrated in the columns of the figures below. As only 8 GCMs have been used for these RCP8.5 RCM experiments, the spread between quartiles could be lower than what would have come from an exhaustive downscaling of all CMIP5 global simulations; Kjellström et al. (2016) compared 9 GCMs, including the 8 GCMs analysed here, to 25 other CMIP5 GCMs and found the 9-member-ensemble spread over Sweden to be comparable in summer, but smaller than that in the larger GCM ensemble in winter.

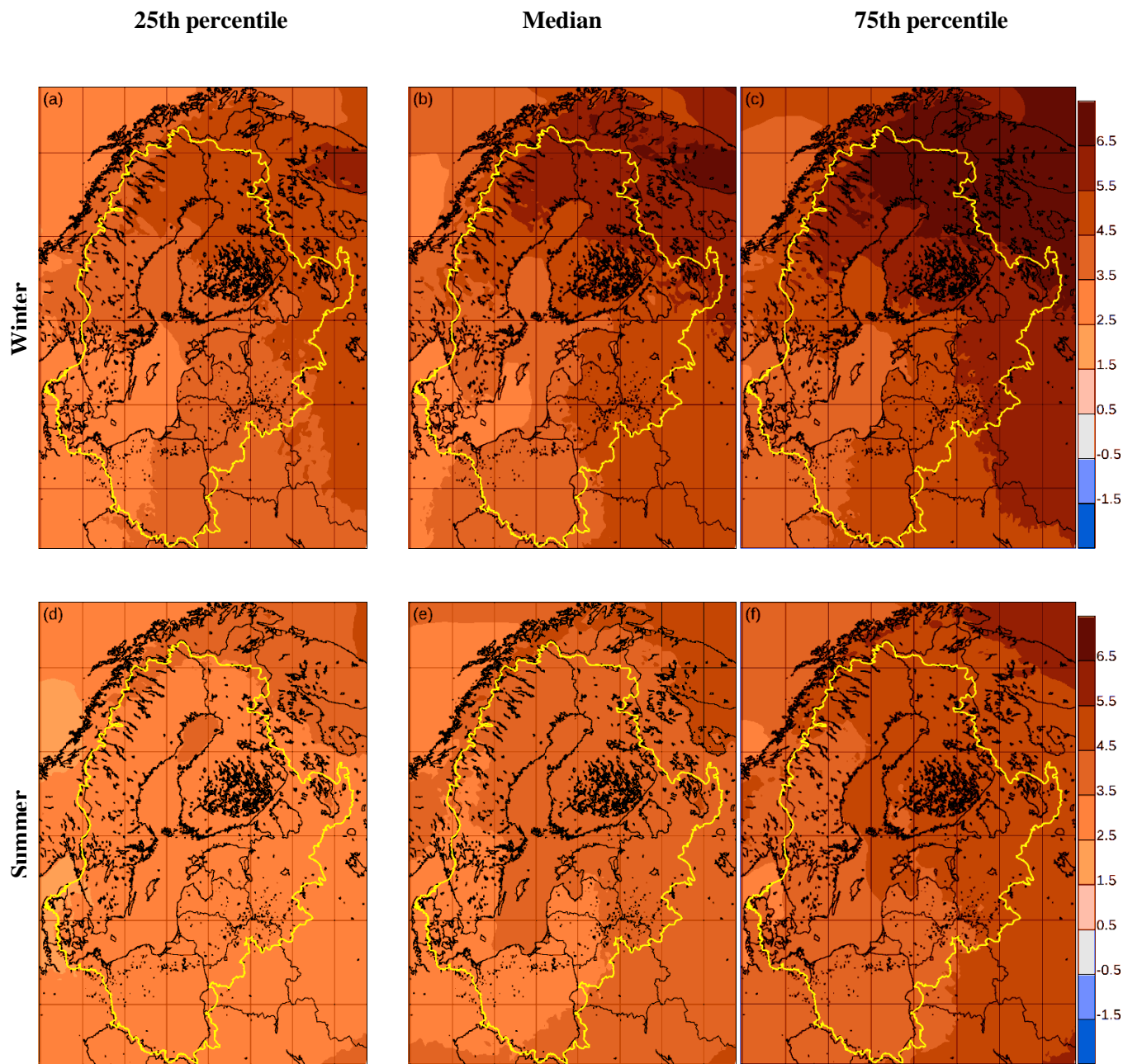
160 Earlier studies have shown that the increase in winter temperatures is strongest for the coldest episodes (Kjellström 2004) as well as for extreme daily maximum and minimum temperatures (Kjellström et al. 2007; Nikulin et al. 2011). There is a significant decrease in the probability of cold temperatures (Benestad 2011). Warm summer extremes are projected to become more pronounced; for example, Nikulin et al. (2011) used an ensemble of six RCM simulations, all downscaling GCMs under the SRES A1B scenario; the data indicate that warm extremes with a present-day (1961–1990) return period of  
165 20 years will be reached four times as often in Scandinavia by 2071–2100, with a frequency around once every five years in Scandinavia by 2071–2100..

Summer warming in the Baltic Sea basin is smaller than winter warming, and it is relatively homogeneous across the area. A tendency is seen for larger warming over land areas in the northernmost parts of the Baltic Sea basin. These areas are closest

to the northern rim of Scandinavia and the Kola Peninsula where warming in summer is as high as that projected for parts of southernmost Europe (Kjellström et al., 2018). In the north-eastern part of the region, a large warming may be related to the larger temperature increases further to the north in the Arctic, potentially connected with the ice-albedo and other feedback mechanisms (IPCC, 2021). The strong warming in the south-eastern part of the Baltic Sea basin is related to the large-scale pattern of warming in Europe, where the strongest summer warming is seen in southern Europe. Similar results for other GCM/RCM combinations have been reached in, e.g., Christensen and Christensen (2007), Kjellström et al. (2011a), and Vautard et al. (2014). A potential source of difference between GCMs and RCMs is the different treatment of aerosols in these models. Many of the RCMs do not include time-varying anthropogenic aerosols leading to weaker future warming compared to GCMs (Boé et al., 2020). The EURO-CORDEX-based results are consistent with the RCM-results for 2021–2050 in Déqué et al. (2012). This study found that there is a significant temperature response, even for the relatively short-term 2021–2050 time frame, even though the total uncertainty related to the choice of model combination (GCM/RCM) and sampling (natural variability) is large. Similarly, Kjellström et al. (2013) showed early emergence already in the first few decades of the 21st century of trends in both winter and summer temperature despite large natural variability as represented in the ENSEMBLES RCM projections used in BACCII.

Corresponding changes in the daily minimum temperature and daily maximum temperature (not shown) have the same patterns as the average temperature change, with the expected larger magnitude of warming for minimum temperature. A range of factors may be responsible for this decrease in difference between minimum and maximum temperatures. This could involve changes in the diurnal temperature range (e.g. Lindvall and Svensson, 2015) or changes in the synoptic weather variability in combination with reduced large-scale temperature gradients between the Atlantic Ocean and the Eurasian continent (IPCC, 2021).





**Figure 1.** Temperature change between 1981-2010 and 2071-2100 for 72 simulations from EURO-CORDEX according to the RCP8.5 scenario. Panels a-c: winter. Panels d-e: summer. Panels a,d: lowest quartile; Panels b,e: median value; Panels c,f: higher quartile. In all following figures, the mid column depicting pointwise median values is only coloured when 75% of the simulations agree on the sign of the change. The Baltic Sea Catchment is indicated in yellow.

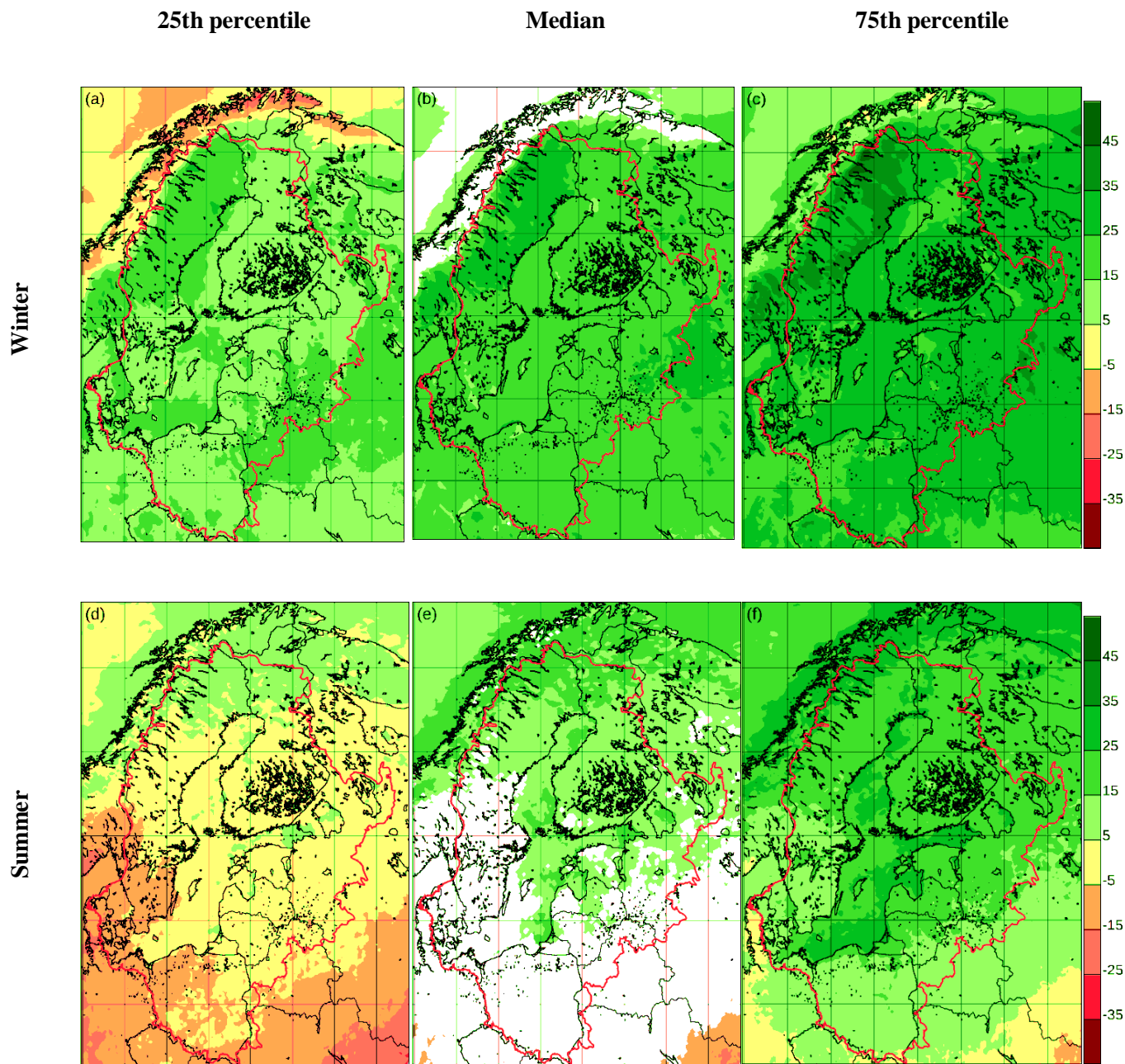
## 3.2 Precipitation

The multi-model EURO-CORDEX ensemble relative precipitation change for winter and summer is shown in Fig. 2. The ensemble is the same as in Fig 1.

During winter, the relative increases are quite homogeneous, although there are large differences between the lower and upper quartiles. These differences are largest west of the Baltic Sea catchment (Norway) where the amount of precipitation is particularly sensitive to different changes in the large-scale circulation. For summer there is a clear pattern of more positive change in the north versus less positive change in the south. As expected, winter increases are projected to be larger than in summer. Roughly, the winter increase is 25-35% over most of the area in the median, and the summer increase is 15-25% for the northern part of the area. This is consistent with the AR5 Climate Atlas, where median increases of precipitation in the area are 10-20% for the winter half year and 5-10% for summer, as these results correspond to the RCP4.5 scenario with around 2.5 degrees of warming for the periods mapped, whereas the EURO-CORDEX results correspond to a global warming of 3.8 degrees.

For summer there is disagreement on the sign of climate change for most of the southern half of the area, indicated by the masked-out area defined as regions where at least 25% of the models disagree on the sign with the majority. Since the period mapped here consists of the three summer months June-August, whereas the AR5 Climate Atlas maps April-September, a comparison of the position of the no-change area is difficult. In an analysis of the older ENSEMBLES simulations (Déqué et al., 2012) almost all land points in the Baltic Sea region showed significantly positive summer precipitation signals.

This general picture of change is not surprising. Climate models generally project the global hydrological cycle to become more intense (e.g. Held and Soden 2006). For Europe this corresponds to increasing precipitation in northern Europe and decreasing precipitation in southern Europe, both in winter and summer (Christensen et al. 2007). Between these areas of projected increase and projected decrease, only small changes or changes in different directions are projected (see e.g. Kjellström et al. 2011a). The location of the transition zone depends on the season and is located farther to the south in winter than in summer. In summer, this zone shifts into the Baltic Basin: winter precipitation is projected to increase over the entire Baltic Sea catchment, while summer precipitation is mostly projected to only increase in the northern half of the basin. In the south, precipitation change is small for the ensemble mean, and there is a large spread between different models with both increases and decreases. Basically, both increases and decreases are possible in the future.

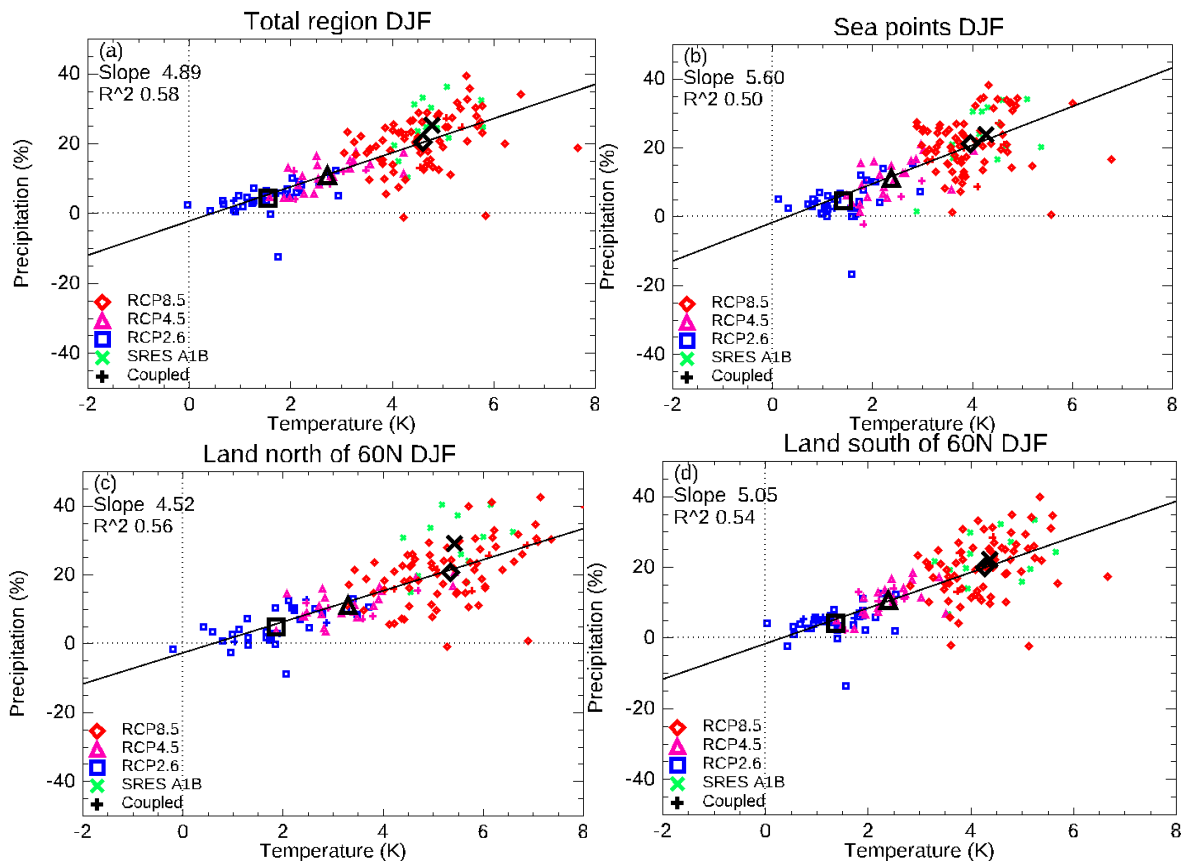


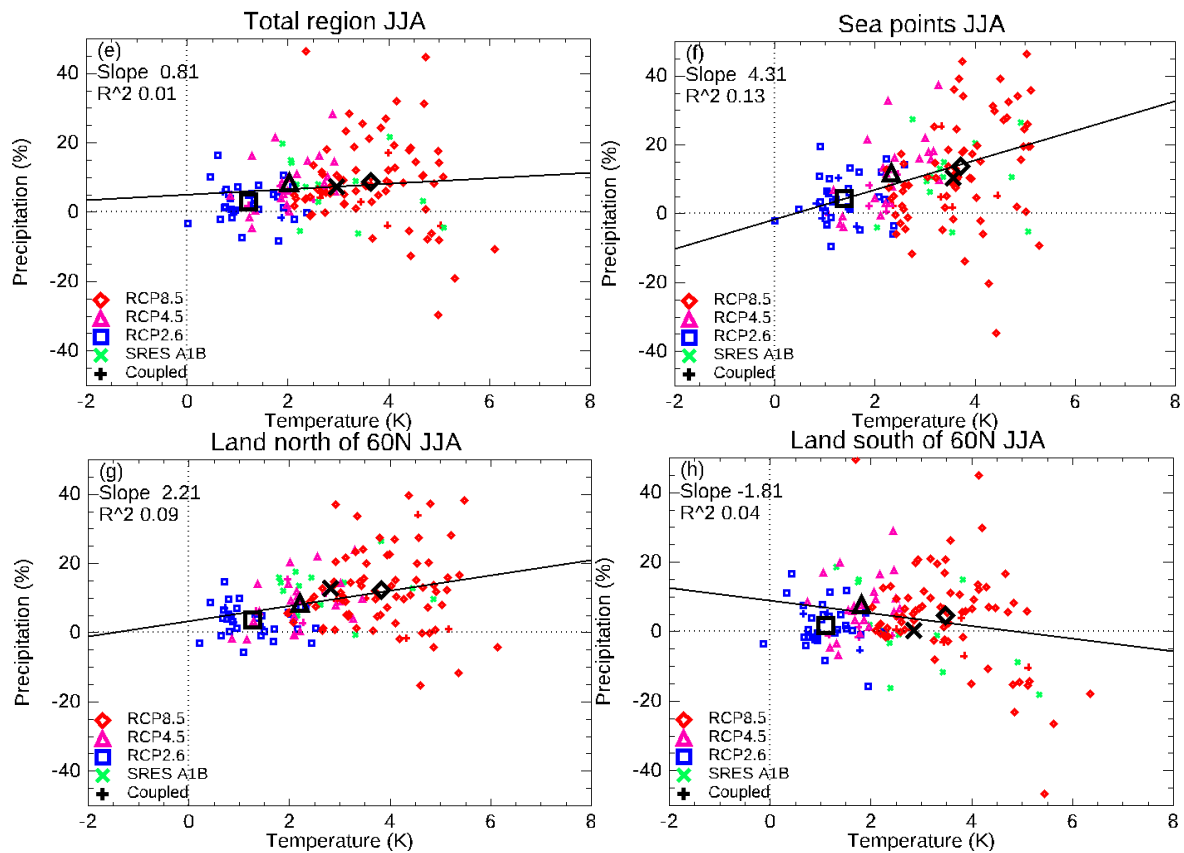
**Figure 2.** Precipitation relative change (%) between 1981-2010 and 2071-2100 for 72 simulations from EURO-CORDEX according to the RCP8.5 scenario. a-c: winter; d-e: summer. a,d: lowest quartile; b,e: median value; c,f: higher quartile. In all following figures, the mid column depicting pointwise median values is only coloured when 75% of simulations agree on the sign of the change. The Baltic Sea catchment is indicated in red.

In Fig. 3 we show scatter plots, where the change between 1981-2010 and 2071-2100 of precipitation is plotted against the corresponding relative change of temperature for each model and each scenario. Ensemble means for the three scenarios are indicated by the three larger symbols. This calculation has been performed for various subsets of the Baltic Sea catchment (see Fig. 1): The entire region; only land points; only sea points; only land points north and south of 60 degrees north, respectively.

There is a strong correlation between temperature and precipitation in winter with significant regression slopes of around 5 percentage points per degree and squared correlation coefficients of 0.5 to 0.6 depending on the sub-area. This is an indication of an approximate common sensitivity of precipitation change to local temperature change. This correspondence breaks down for summer, where the plots contain much more noise, indicating large model-dependent influences on the precipitation signal. The north-south gradient in summer precipitation change is apparent in the model averages (compare the northern and southern land point plots), but the inter-model spread is large.

Due to the roughly 20% higher average global warming in the current RCP8.5 ensemble than in the GCMs underlying BACC II (see Tab. 2), we would have expected general climate change to be around 20% larger for EURO-CORDEX RCP8.5 than those presented in BACC II. It is noteworthy that this difference is not generally seen in Fig. 3, where we have plotted temperature and precipitation change for the BACC II simulations (BACC II Author Team, 2015) along with the three scenarios of the present analysis. The BACC II results correspond to the RCP8.5 results both with respect to temperature and precipitation change apart from land areas in summer where the BACC II change is only about 80% of the RCP8.5 result (+6.5% vs. +8.2%).





245 **Figure 3** Relative change 1981-2010 to 2071-2100 of precipitation against temperature change for individual models and all scenarios. Scenario means are indicated by larger black symbols. Blue squares: RCP2.6; Pink triangles: RCP4.5; Red diamonds: RCP8.5; Green crosses: The ENSEMBLES simulations analysed in BACC II (2015). Plus signs in colours corresponding to the scenario: The RCA4-NEMO atmosphere-ocean coupled simulations. Calculation performed for subsets of the Baltic Catchment: The entire catchment; sea points; land points north and south of 60 degrees north, respectively.

250 Panels a-d show winter; panels e-h show summer. The lines, with quoted slope and squared correlation coefficient, are best fits to all EURO-CORDEX and ENSEMBLES data, but do not include coupled-model results.

In Christensen et al. (2019) a thorough comparison of change patterns of mean temperature and precipitation has been performed for the PRUDENCE simulations behind the first BACC report (BACC Author Team, 2008), the ENSEMBLES simulations behind the second report (BACC II Author Team, 2015), and the EURO-CORDEX data behind the present

255 report. This analysis used patterns of change scaled with global temperature change and is therefore useful for pinpointing differences between the BACC reports extraneous to the variations of general scenario strength, i.e., differences in local sensitivity and/or change patterns apart from those due to differences in emission scenarios. The most important differences between BACC II and the current simulations are a slightly reduced winter warming per unit of global warming in EURO-

CORDEX compared to BACC II; a smaller wintertime precipitation increase, but a slightly larger increase of summer precipitation over the Baltic Sea. These conclusions do not contradict the results from Fig. 3, since a scaling with global warming would increase both local precipitation and local temperature changes for the BACC II ENSEMBLES results relative to RCP8.5.

### 3.3 Extreme precipitation

The water-holding capacity of the atmosphere increases with increasing temperature. Therefore precipitation extremes are projected to increase with climate warming (e.g. Lenderink and van Meijgaard 2010). Several studies, some of which are described in the following, indicate that extreme precipitation is likely to increase in the future, even in areas and seasons, where the average precipitation does not increase. One example is the IPCC Special Report on Extreme events (Seneviratne et al., 2012) where it was shown that higher extremes of precipitation consistently show larger increases than lower extremes, and higher increases than averages.

Already simulations from the PRUDENCE project (Christensen and Christensen, 2003) showing a considerable decrease in average summer precipitation in large parts of southern Europe at the same time showed an increased probability of very extreme precipitation in that area as well as in the north, where average precipitation was not projected to decrease. Quite generally, more intense precipitation can be expected on all time scales, from single rain showers to synoptic-scale precipitation.

Nikulin et al. (2011) investigated an ensemble of RCM simulations following the SRES A1B scenario with the RCA model; they showed that the 20-year return value of precipitation extremes in Scandinavia in the period 1961–1990 was projected to decrease to 6–10 years in 2071–2100 for summer over northern Europe and to 2–4 years in winter. Similarly, Larsen et al. (2009) analysed a high-resolution RCM integration and reported that the return period for 20-year rainfall events at hourly duration decreased to about 4 years for Sweden.

Collected results from 90 of the models from the EURO-CORDEX project are illustrated in Fig. 4, along with results from the coupled models discussed below. For data availability reasons at the time of writing, not all simulations have been analysed for extreme precipitation. We will here use the 10-year return value as representative of extreme precipitation. This is defined as the daily precipitation amount, which is only exceeded once every 10 years on average. The model-median signal has a consistently positive sign across the domain for the areas where more than 75% of the model results have the same sign. The temperature dependence of the increases in the Baltic Sea basin (slopes in Fig. 4) are generally larger in summer than in winter with the southern land points as an exception, the same area where the average precipitation (Figs 2-3) decreases. The inter-model spread is considerably larger in summer than in winter, illustrating the greater influence of local processes in this season; it should be noted that the increase in the number of models analysed, compared to

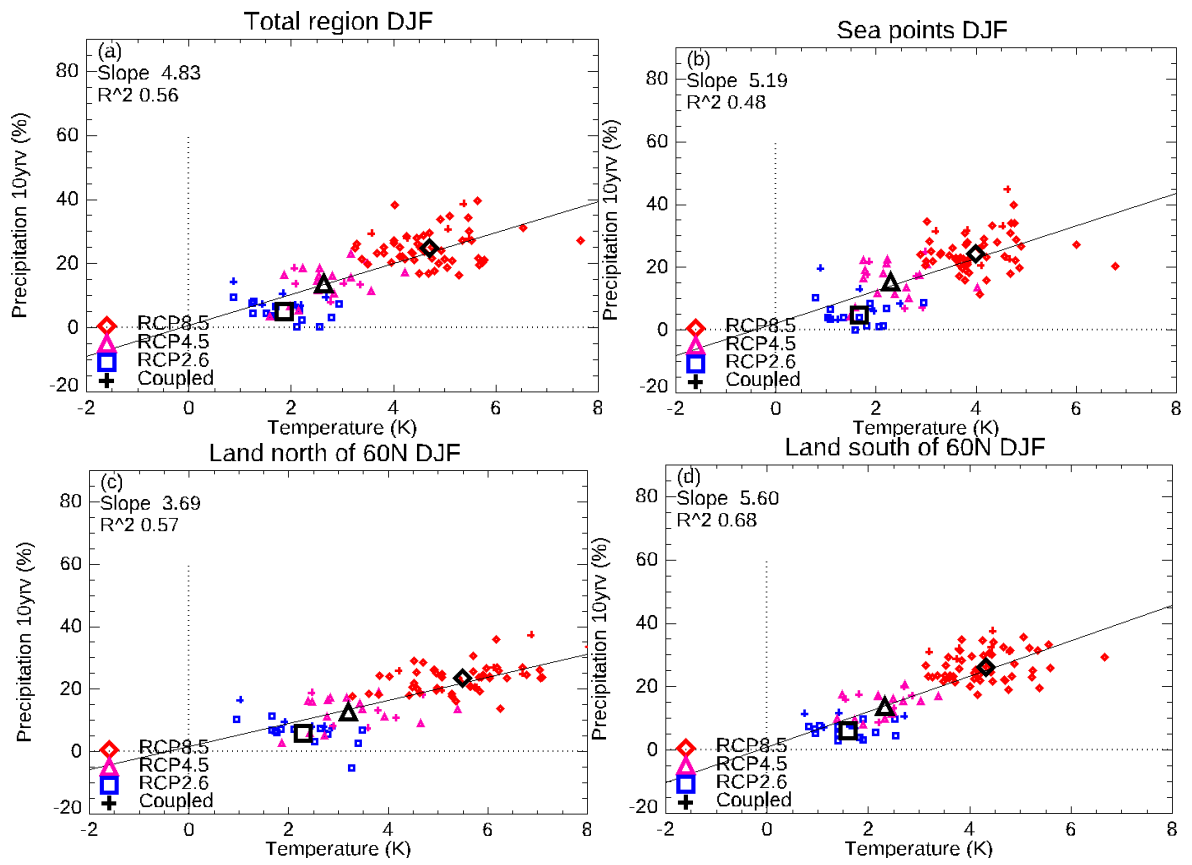
Christensen and Kjellström (2018) from 19 to 90 results in a considerably more robust positive signal in the summer 10-year  
290 return value.

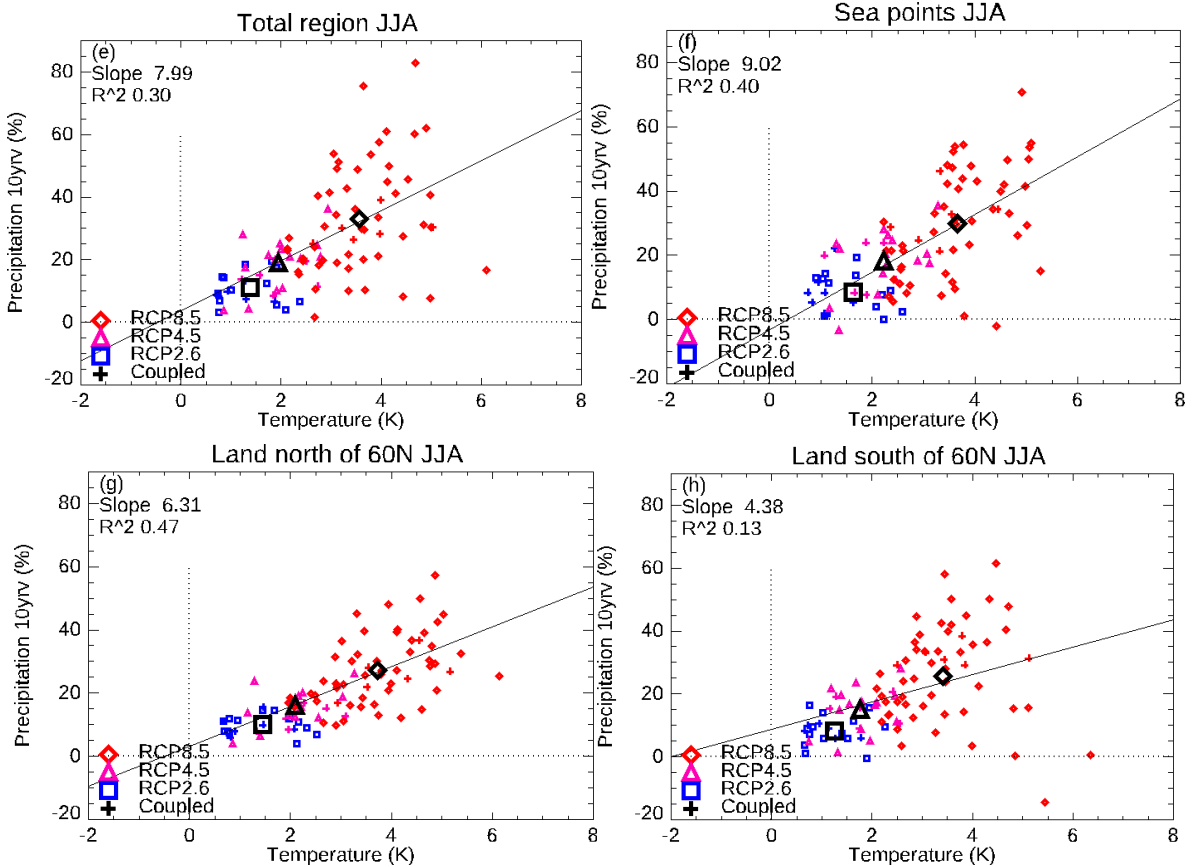
The relative change of extreme precipitation in winter (Fig. 4 upper panels) are quite similar to the relative change in average  
precipitation (Fig. 2), indicating no change in the shape of the intensity distribution function. For summer, however, the  
projected change in extreme precipitation is consistently more positive than the change in average precipitation. While the  
temperature sensitivity (slopes in Figs 3 and 4) for winter average precipitation and winter extreme precipitation are almost  
295 identical, the sensitivity of extremes in summer is larger than for winter, while it is insignificant for the average precipitation  
in summer. This feature is, however, less apparent in the EURO-CORDEX results than in the PRUDENCE results of BACC  
(BACC Author Team, 2008) and the ENSEMBLES results described in BACC II (BACC II Author Team, 2015). It is not  
clear if this difference is due to the fact that the RCMs are run at different horizontal resolutions in the three projects (i.e. 50,  
25 and 12.5 km, respectively) or if it is a consequence of different model formulations in the projects, or of the large-scale  
300 climate change signal as imposed by the underlying GCMs that also differs between the experiments.

Recently, several research institutes have started employing convection permitting regional models (CPMs). Such models are  
able to run in much higher resolution, where traditional hydrostatic RCMs with fully parameterized convective precipitation  
release may produce convective precipitation explicitly as well as parameterized, CPMs avoid this possible double counting  
at high resolution,. With CPMs grid distances below the “grey zone” of 3-5 km are possible. In Lind et al. (2020) results are  
305 presented with the CPM HARMONIE-Climate (HCLIM), produced in a common Nordic model collaboration (NorCP) with  
participation from Sweden, Norway, Denmark, and Finland. Comparing a CPM version of HCLIM in 3 km resolution with a  
non-CPM version in 12 km, it was concluded that the high-resolution model showed better results for precipitation intensity  
distribution, including extreme precipitation at sub-daily time scales, for the summer precipitation diurnal cycle, and for  
snow in mountains. Such better agreement now shown for the Nordic region, have previously been shown for other regions  
310 in Europe and elsewhere (e.g. Kendon et al. (2012), Lind et al. (2016), Gao et al. (2020)).

Based on convection-permitting models it has been argued that changes in precipitation extremes of a shorter duration may  
be larger than those for longer time scales (e.g. Kendon et al. (2014), Lenderink and van Meijgaard (2010)). However, other  
results indicate (Ban et al., 2014) that convection-permitting models may give roughly the same increase also for shorter  
durations, consistent with the Clausius-Clapeyron scaling of around 6-7% per degree of warming. In a study of idealized  
315 warming experiments repeating present-day observed weather under warmer and moister conditions with the HCLIM model,  
Lenderink et al (2019) showed that the increase in precipitation extremes is strongly dependent on moisture availability.







320

**Figure 4** Relative change 1981-2010 to 2071-2100 of the 10-year return value of daily precipitation against temperature change for individual models and all scenarios. Scenario means are indicated by larger black symbols. Blue squares: RCP2.6; Pink triangles: RCP4.5; Red diamonds: RCP8.5; Green crosses: The ENSEMBLES simulations analysed in BACC II (2015). Plus signs in colours corresponding to the scenario: The RCA4-NEMO atmosphere-ocean coupled simulations. Calculation performed for subsets of the Baltic Catchment: The entire catchment; sea points; land points north and south of 60 degrees north, respectively. Panels a-d show winter; panels e-h show summer. The lines, with quoted slope and squared correlation coefficient, are best fits to all EURO-CORDEX and ENSEMBLES data, but do not include coupled-model results.

325

### 3.4 Wind speed

330

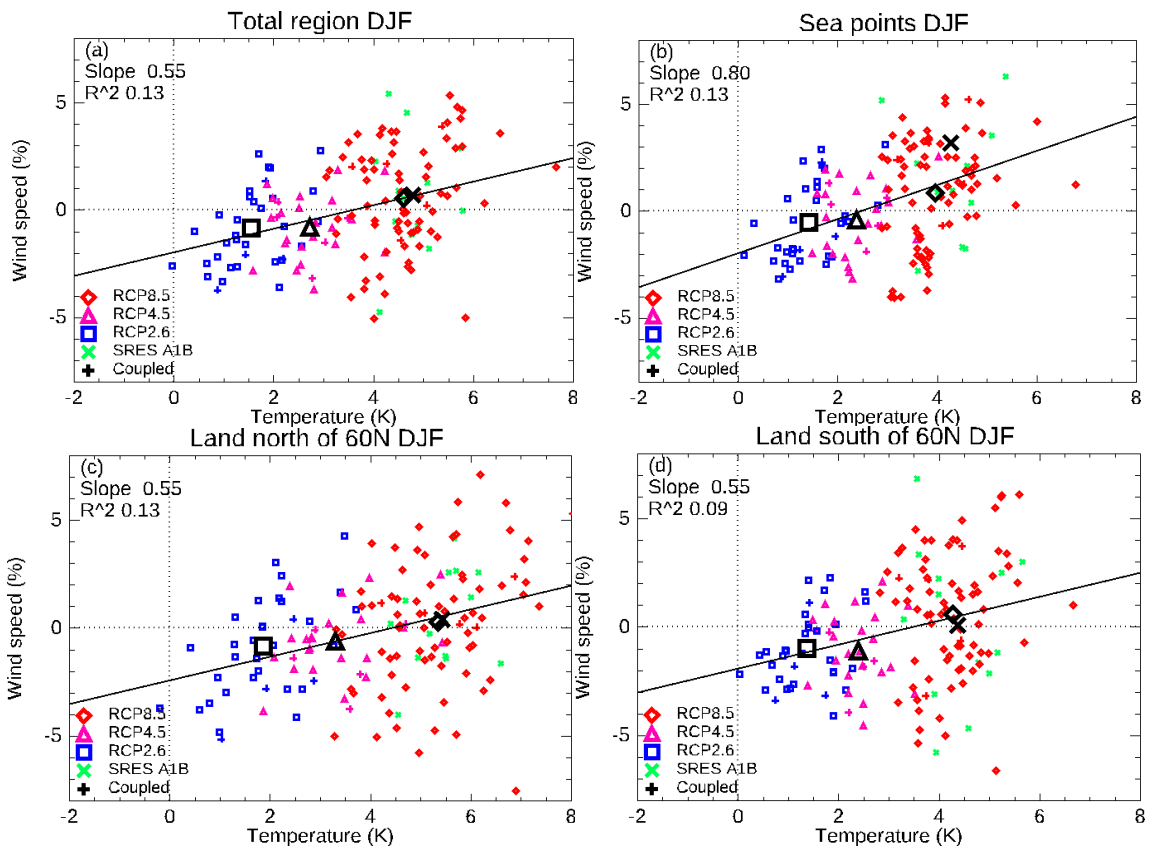
Changes in the climatology of 10-metre wind speed is even more uncertain than it is the case for the precipitation climate, both for seasonal mean conditions and for extremes on shorter time scales (e.g. Kjellström et al. 2011a; Kjellström et al. 2018; Nikulin et al. 2011).

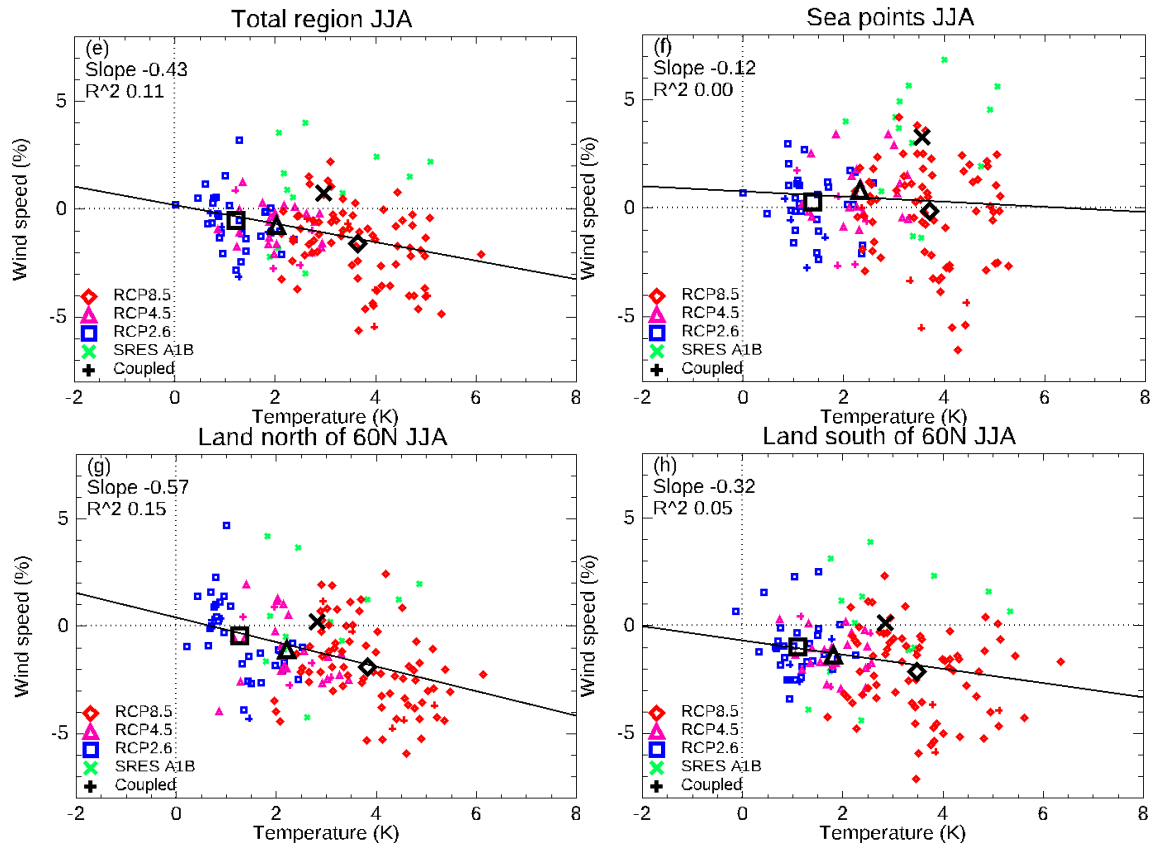
335 In a study by Donat et al. (2011) annual 98th percentile daily maximum wind speed change in RCM simulations from the ENSEMBLES project were analysed, for the middle of the century as well as the end of the century. The ensemble average, like the driving GCMs, increased in a region from the British Isles to the Baltic Sea, and a decreased in the Mediterranean area. Nikulin et al. (2011) found increasing wind speed extremes (20-year return periods of annual maximum 10-metre wind speed) over the Baltic Sea in five out of six simulations, based on an ensemble of one RCM downscaling six different GCMs under the A1B scenario,.

340 In BACC II (BACC II Author Team, 2015), an analysis of 13 ENSEMBLES simulations showed a very small insignificant median increase in the southern part of the Baltic Sea area; the signal is consistent with the findings by Donat et al. (2011), but with a large spread between models.

Figure 5 show average changes over the Baltic Sea for the 72 EURO-CORDEX RCP8.5 simulations, the 22 RCP4.5 simulations, and the 30 RCP2.6 simulations, which are used (Tab. 1) In Figs S13-S18 we show median and quartile maps for summer and winter for each of the three RCP scenarios. There is very little agreement between the models about even the direction of change for winter in the Baltic Sea area unlike the tendency for reduced average wind speed outside of the study area over the North Atlantic (not shown). Over the northernmost parts of the Baltic Sea basin, the Bothnian Bay, there is an indication of larger wind speed increase (or less decrease) over the sea than over surrounding land areas. This feature has previously been pointed out by Kjellström et al. (2011a), Meier et al. (2011) and Tobin et al (2016) and has been related to decreases in sea-ice in the future warmer climate leading to consequent changes in stability conditions of the lower atmosphere. See also the comparison between regional coupled and uncoupled simulations in Fig. 12 where the probably more consistent treatment of ice-albedo feedback leads to a slightly larger increase in winter. As seen in Fig. 5 panel 2, the slight increase in mean wind over the southern part of the Baltic Sea in BACC II is not projected in the current simulations.

355 Summer results show consistent but small reductions of wind over land of about 2-6%. Again, in summer, there are differences between land and ocean areas with generally larger increases, or smaller decreases, over the Baltic Sea than its surrounding land areas.



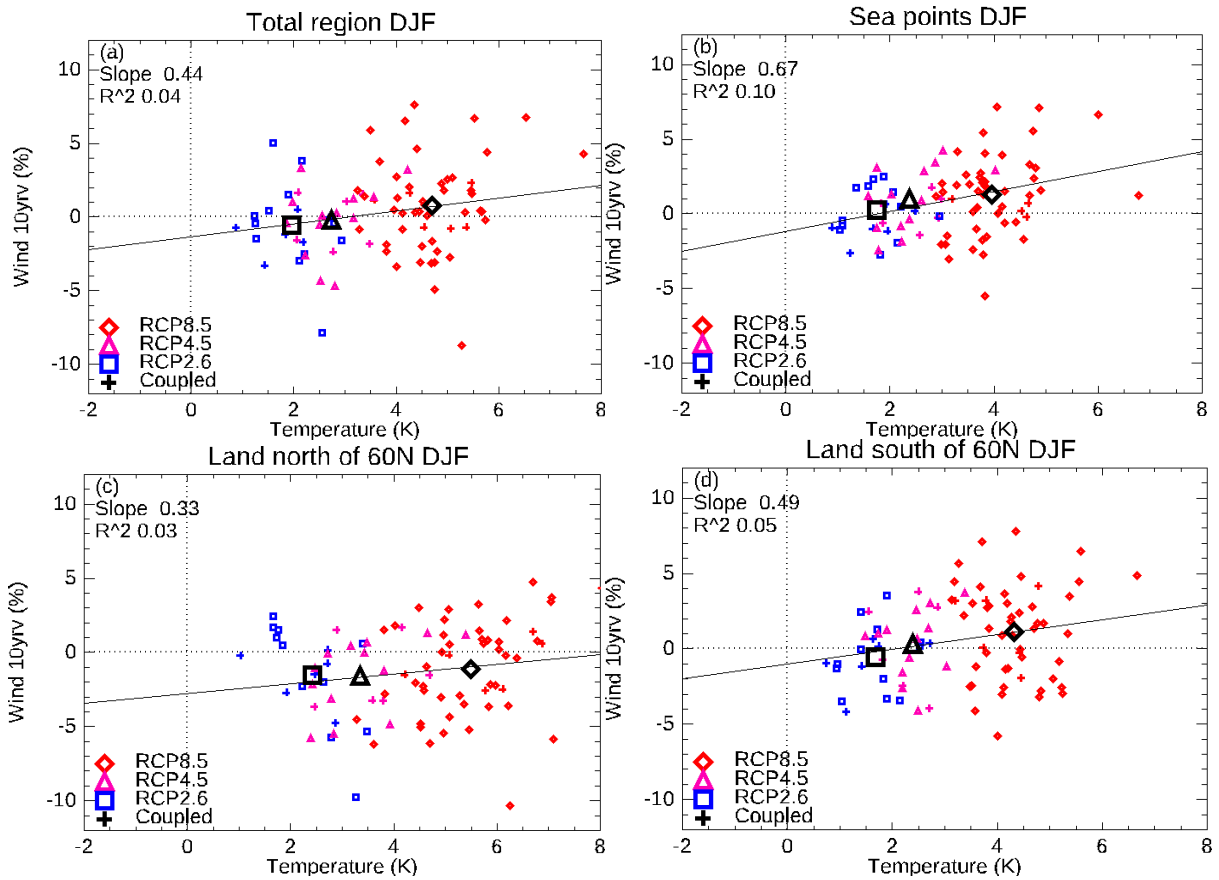


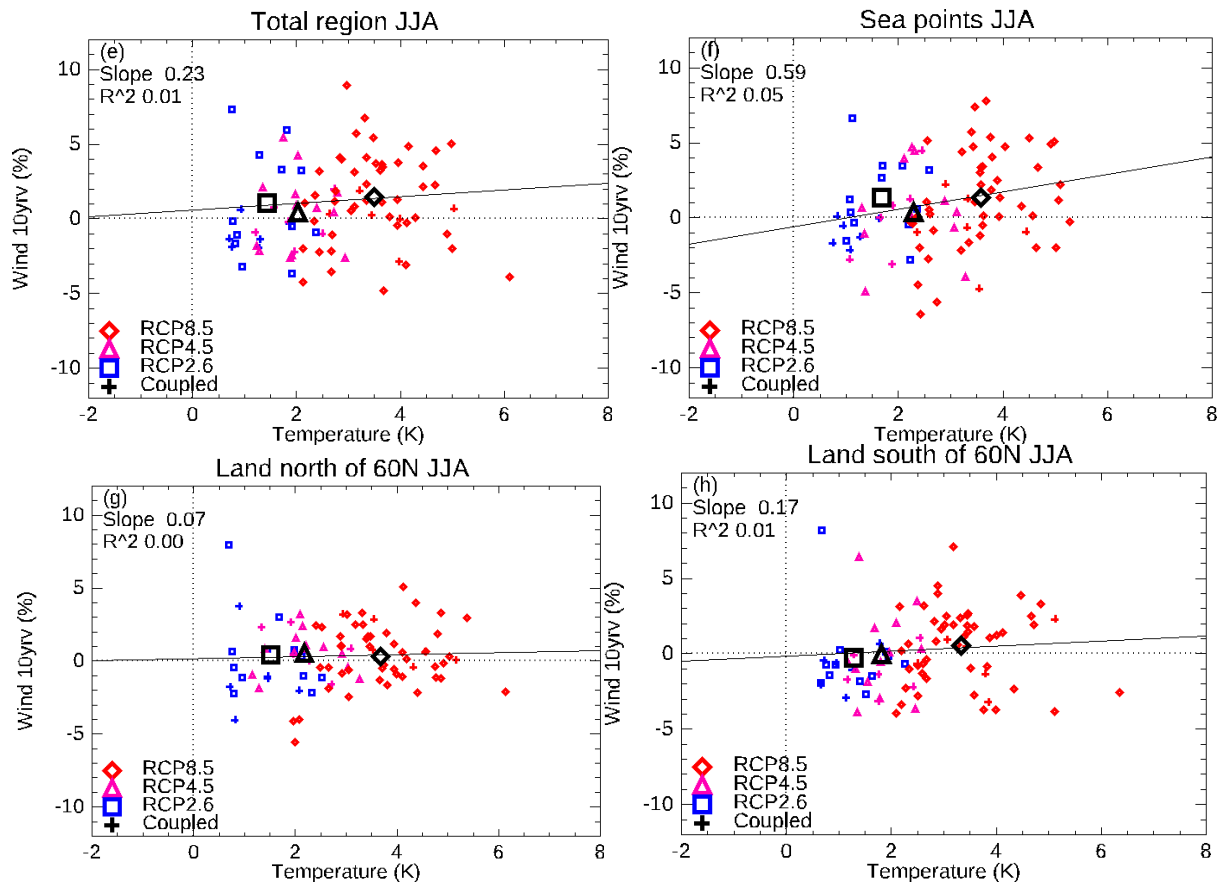
360 **Figure 5** Relative change 1981-2010 to 2071-2100 of 10m wind speed against temperature change for individual models and all scenarios. Scenario means are indicated by larger black symbols. Blue squares: RCP2.6; Pink triangles: RCP4.5; Red diamonds: RCP8.5; Green crosses: The ENSEMBLES simulations analysed in BACC II (2015). Plus signs in colours corresponding to the scenario: The RCA4-NEMO atmosphere-ocean coupled simulations. Calculation performed for subsets of the Baltic Catchment: The entire catchment; sea points; land points north and south of 60 degrees north, respectively.

365 Panels a-d show winter; panels e-h show summer. The lines, with quoted slope and squared correlation coefficient, are best fits to all EURO-CORDEX and ENSEMBLES data, but do not include coupled-model results.

The relative change in extreme wind speed is shown in Fig. 6 as the relative change of the 10-year return value of daily maximum wind speed for the EURO-CORDEX RCP-based and the BACC II SRES-based simulations considered, as well as for the coupled RCA4-NEMO simulations. The correlation between temperature and extreme wind is quite small, which

370 indicates that there is no significant signal.





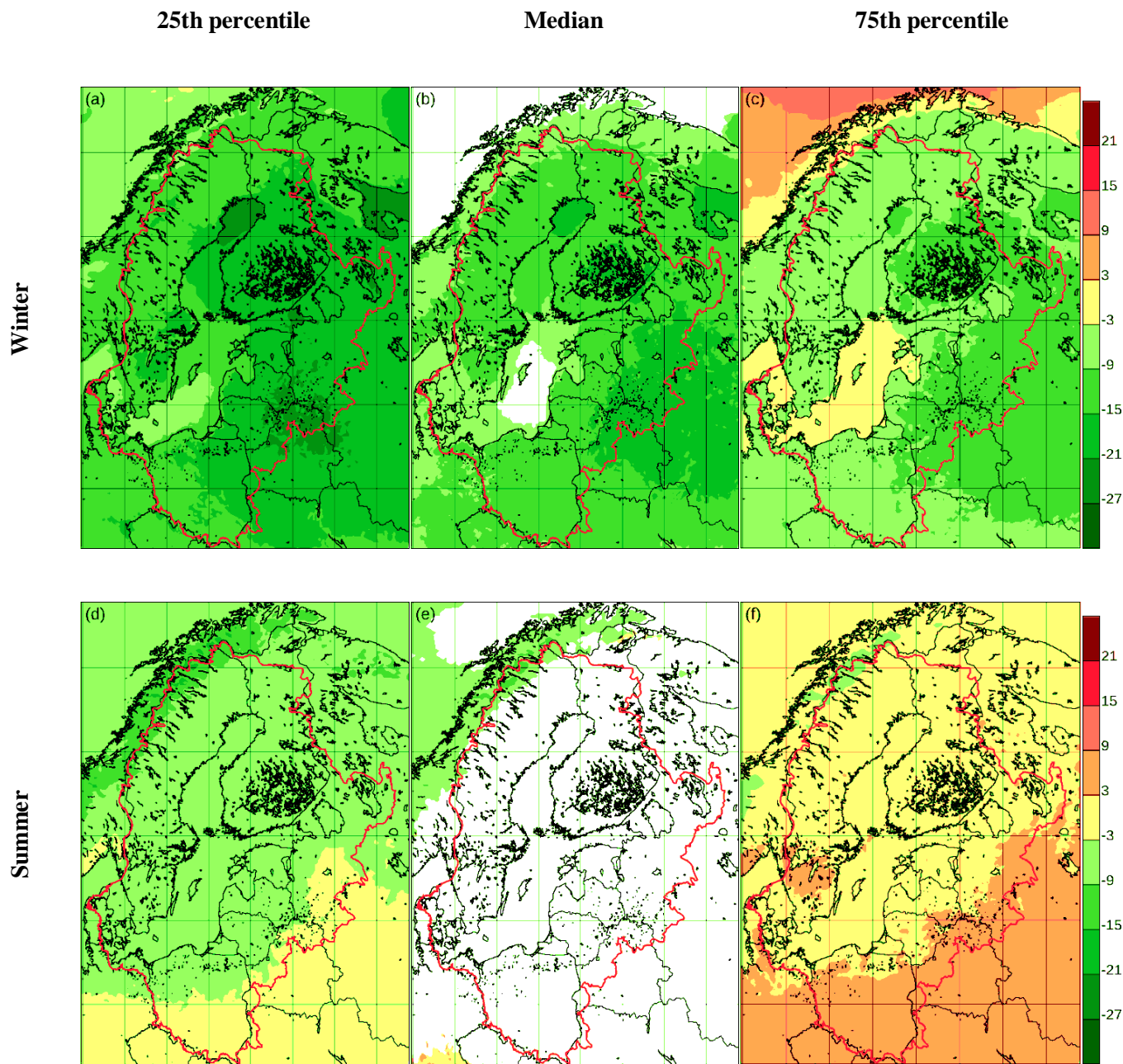
375 **Figure 6** Relative change 1981-2010 to 2071-2100 of the 10-year return value of 10 m daily maximum wind speed against  
 temperature change for individual models and all scenarios. Scenario means are indicated by larger black symbols. Blue  
 squares: RCP2.6; Pink triangles: RCP4.5; Red diamonds: RCP8.5; Green crosses: The ENSEMBLES simulations analysed  
 in BACC II (2015). Plus signs in colours corresponding to the scenario: The RCA4-NEMO atmosphere-ocean coupled  
 simulations. Calculation performed for subsets of the Baltic Catchment: The entire catchment; sea points; land points north  
 380 and south of 60 degrees north, respectively. Panels a-d show winter; panels e-h show summer. The lines, with quoted slope  
 and squared correlation coefficient, are best fits to all EURO-CORDEX and ENSEMBLES data, but do not include coupled-  
 model results.

### 3.5 Solar irradiation

In Fig. 7 we study the change in incoming solar radiation in the ensemble. In winter, most of the area shows a considerable  
 385 relative reduction of the order of 10%. This has been proposed to be linked to the more extensive cloud cover in northern  
 Europe in most EURO-CORDEX RCMs for the future (Coppola et al., 2021). It should be noted (Bartók et al., 2017) that  
 global and regional models frequently disagree considerably about the change in incoming radiation in a changing climate,

with global models having a more positive trend; this discrepancy is connected to different projections of cloud cover, with GCMs frequently projecting a decrease, while RCMs frequently show no significant change. We repeat here that the different treatment of aerosols in GCMs and RCMs play a role as many of the RCMs do not include time-varying anthropogenic aerosols as in GCMs (Boé et al., 2020). It has also been suggested that reduced snow cover (see Ch. 3.6 below) could contribute to attenuate gross downward solar radiation flux as the reduced surface albedo reduces multiple reflection between the surface and the clouds (Ruosteenoja and Räisänen, 2013).





395 **Figure 7.** Average incoming surface solar radiation relative change between 1981-2010 and 2071-2100 for 70 simulations from EURO-CORDEX according to the RCP8.5 scenario. Panels a-c: Winter; panels d-f: Summer. Panels a,d: lowest quartile; panels b,e: median value; panels c,f: higher quartile. For the medians, only points where 75% of models agree on the sign are shown. The Baltic Sea catchment is indicated in white.

### 3.6 Snow and sea ice

400 Future snow cover is expected to decrease with climate warming, both because more precipitation is projected to fall as rain, and because snow melt accelerates. As an indicator of less cold conditions, Coppola et al. (2021) show that the number of frost days decrease by more than two months in large parts of the Baltic Sea basin comparing a set of EURO-CORDEX RCMs under RCP8.5 for 2071-2100 with 1981-2010. Simultaneously, there is an increase in winter precipitation in Scandinavia, which may partly compensate for these effects.

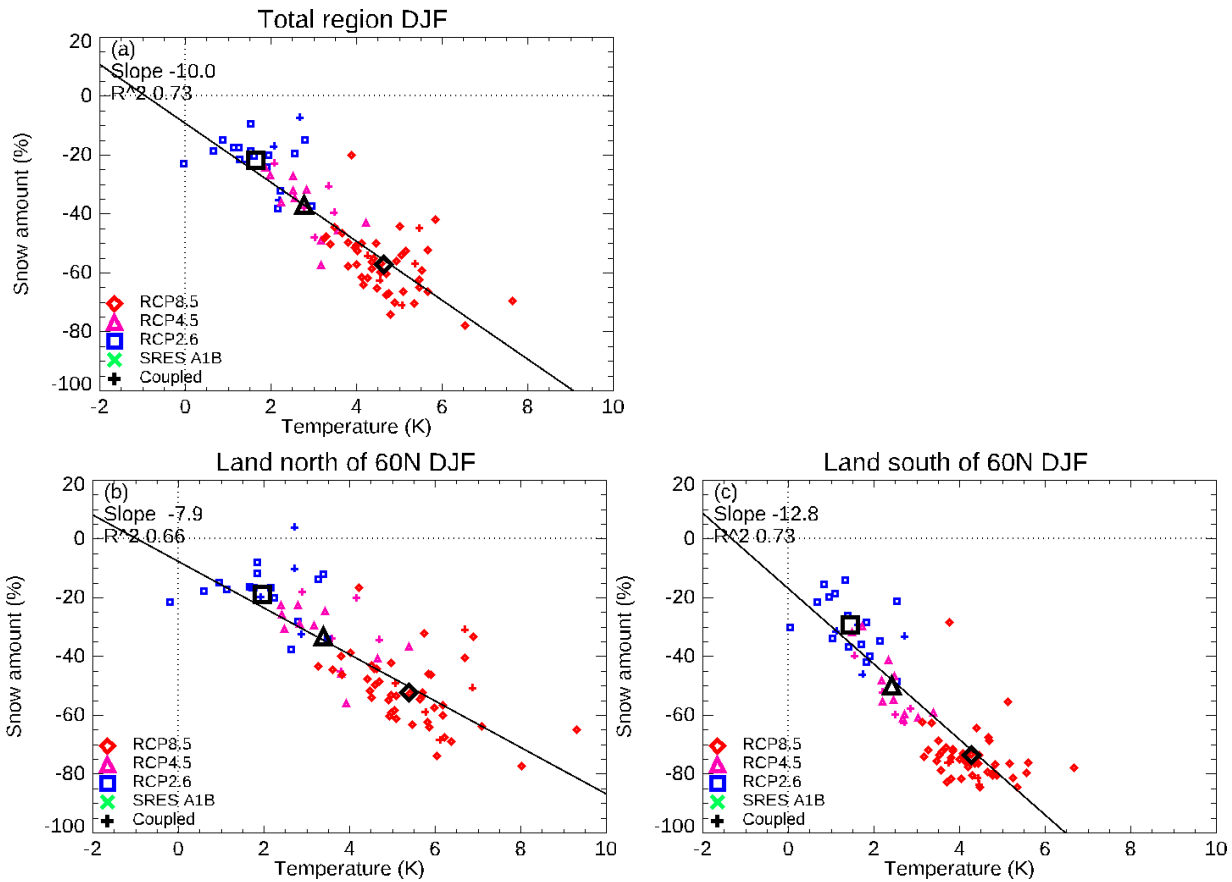
405 Räisänen and Eklund (2011) analysed data from RCM simulations from the ENSEMBLES project. The study found a decrease of snow volume across all of Europe in the future with the only exception that the Scandinavian mountain areas may experience a slight and statistically insignificant increase. Räisänen (2021) found a widespread future decrease in northern Europe for snow water equivalents also for a set of EURO-CORDEX RCMs. It was shown that a smaller snowfall fraction together with larger reduction of snow on ground more than compensated for increasing precipitation as seen in  
410 several of the RCMs. In relative numbers the decrease was found to be larger in southern warmer parts of Scandinavia while changes in absolute numbers are larger in the north. Similarly, the results were ambiguous for the most high-altitude parts of the Scandinavian mountains where some models indicate increasing snow water and others a decrease. A potential increase in the latter region was also proposed by Schuler et al. (2006) in a detailed study for Norway based on two RCM simulations with different GCM drivers. The study concluded that the maximum amount of snow in extreme years could be greater than  
415 in extreme years of the recent past in spite of decreasing average snow amount.

Winter snow cover is one of the most drastically changed climatological quantities (Fig. 8). There is agreement between models about a reduction of average winter-time snow amount of around 50% on average for land grid points north of 60°N for the RCP8.5 scenario, and almost 80% reduction for land grid points south of this latitude. Northern grid points probably have a lower reduction due to the generally colder climate and smaller amount of solar radiation. In addition, there is a  
420 significant amount of mountain grid points, where the warming temperature does not reach the freezing point as frequently as in lower-lying regions even if the frequency is increasing in a warmer climate (Nilsen et al. 2021). The reduction in snow amount is slightly larger than in BACC II (BACC II Author Team, 2015). This is), consistent both with the fact that the RCP8.5 scenario on average projects larger warming than the SRES A1B scenario used in BACC II and that the precipitation increase is smaller in the RCP8.5 scenario than in SRES A1B, at least north of 60°N (cf. Fig. 3c).

425 It is only in high-altitude parts of central and northern Scandinavia that changes are limited with relatively large amounts of snow also in the future. At high altitude, the increase of winter precipitation may be compensating for the increase in melting with higher temperature. Also the fact that increasing temperatures may not reach the melting point is significant; see, e.g., Gröger et al. (2021a) Fig. 12b. However, also in these high-altitude regions, the warmer future climate results in a shorter

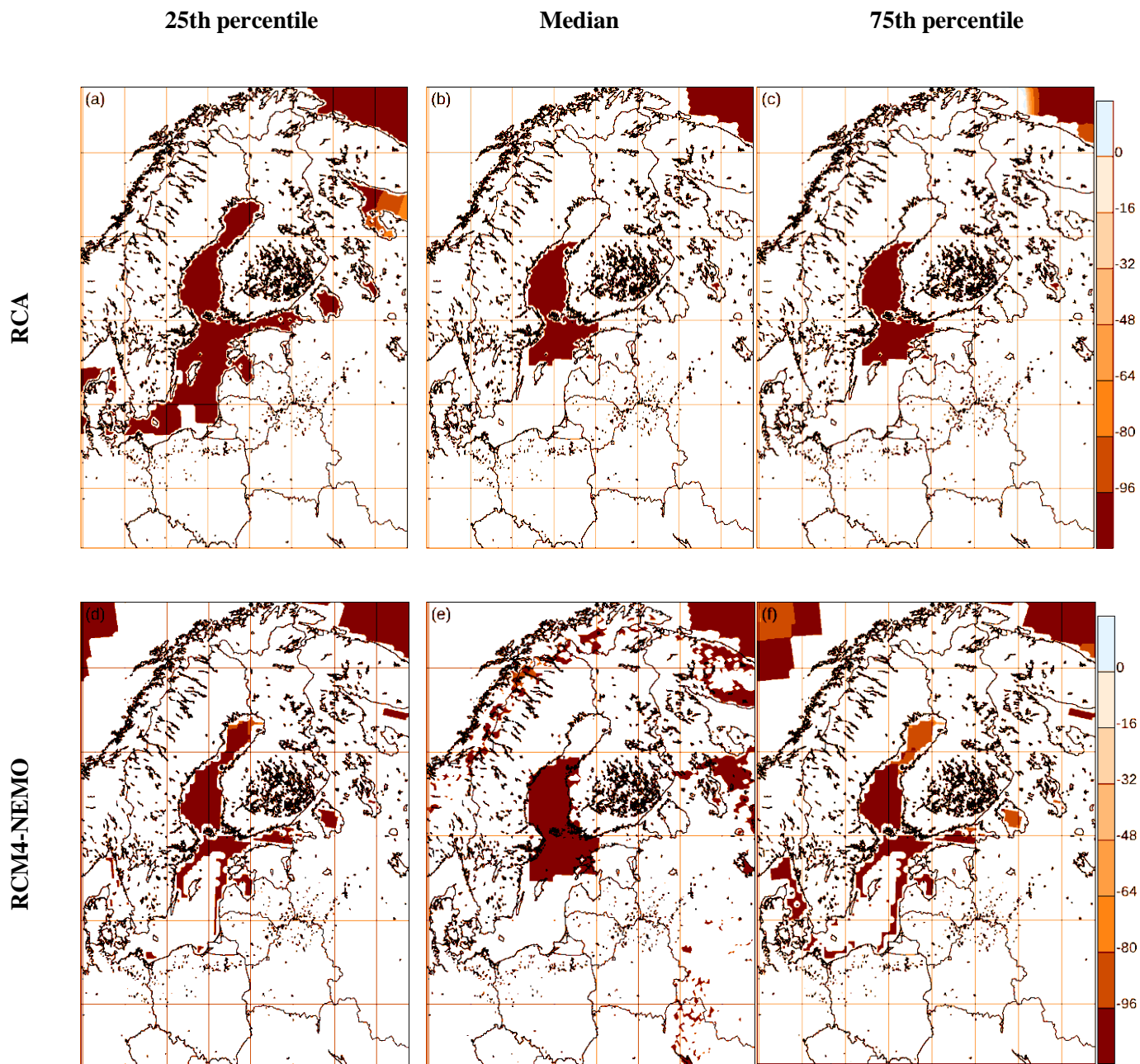
430 snow season with accumulation starting later and spring melt starting earlier that acts to reduce the total amount of snow (Räisänen, 2021).

Sea ice cover is not a product of the RCM, but rather an input originating from the driving GCM. We will show the changes in interpolated sea ice field for the RCP8.5 scenario in Fig. 9, as these changes are large, and are decisive for the change in climate between the periods. In order to compare to a more consistent description of sea ice we also show in Fig. 10 the corresponding figures for the 8-member RCA4-NEMO coupled regional simulations. The main difference is that the present-day simulations with the coupled model have some extent of coastal sea ice in the southern Baltic Sea, which is disappearing in the future.



440 **Figure 8** Relative change 1981-2010 to 2071-2100 of average winter (DJF) snow amount ( $\text{kg/m}^3$ ) against temperature change for 84 individual model simulations from all scenarios. Scenario means are indicated by larger symbols. Squares: RCP2.6; Triangles: RCP4.5; Diamonds: RCP8.5. Purple colour: The RCA4-NEMO atmosphere-ocean coupled simulations. Calculation performed for subsets of land points in the Baltic Catchment: The entire catchment; land points north and south

of 60 degrees north, respectively. The lines, with quoted slope and squared correlation coefficient are best fits to all EURO-CORDEX data, but do not include coupled-model results.



445 **Figure 9.** Panels a-c: Average winter sea ice cover relative change between 1981-2010 and 2071-2100 for the simulations from EURO-CORDEX according to the RCP8.5 scenario driven by the GCMs where RCA4-NEMO simulations exist. These values have been interpolated before the RCM simulations from the driving coupled GCM; note that several simulations have sea ice in the Baltic Sea in the present-day period, but not in the Bothnian Bay. For comparison, in panels d-f we also show the corresponding fields from the corresponding five coupled RCA4-NEMO simulations where sea ice cover is

450 calculated inside the regional model. Left column: lowest quartile; mid column: median value; right column: higher quartile.  
For the medians, only points where 75% of models agree on the sign are shown.

#### 4 Effects of model coupling

Here, we take a more detailed look at RCM simulations driven by the five GCMs, which have been downscaled both by the  
standalone atmosphere EURO-CORDEX ensemble and by the 24 km RCA4-NEMO coupled model version (all coloured  
455 squares in Tab. 1 for the RCM RCA4)..

For near-surface air temperature (Fig. 10) the large-scale anomaly pattern is fairly coherent in the two ensembles but  
differences are found over the northern Baltic Sea where the coupled model shows a systematically stronger winter warming  
than the uncoupled model. Over land the coupled model displays systematically lower warming. By contrast, during summer  
the coupled model shows a weaker warming over the entire Baltic Sea while land temperatures increase more than in RCA  
460 standalone.

Due to its higher effective heat capacity, the Baltic Sea acts as a thermal buffer, which dampens the seasonal amplitude  
compared to the surrounding land areas. As a result, the Baltic Sea is warmer than the overlying atmosphere during winter  
and releases heat to the atmosphere. Hence, in regions not covered by sea ice, the SST significantly influences the sea to air  
heat flux. Consequently, in the uncoupled model the prescribed SSTs from the driving AOGCM serve as a restoring term for  
465 the air temperature. By contrast, in the coupled model SSTs are simultaneously modelled by the ocean model and so the air  
to sea heat transfer acts to cool SSTs until a new equilibrium would be reached. Despite these different dynamics in thermal  
coupling, over the southern Baltic Sea the solution of the two models is quite similar compared to the northern Baltic (Fig.  
10).

In the northern Baltic Sea, the reduction of sea ice has to be considered. In the future climate, areas which today are covered  
470 by sea ice will get more tightly thermally coupled to the water body of the Baltic Sea (Dutheil et al., 2022). As shown by  
Gröger et al. (2015, 2020a, 2021b) the ocean-to-atmosphere heat transfer is largely affected by small-scale vertical mixing in  
the layered ocean because wind induced mixing transports warm waters from deeper water layers to the surface. These  
small-scale processes are most likely not well represented in the prescribed SST from the driving global ocean GCM.  
Furthermore, changes in the mean and turbulent wind stress due to local climate change in RCA have no impact on wind  
475 induced mixing in the ocean in the RCA standalone simulations. This further influences the local sea ice cover and thus may  
explain the stronger warming over the northern Baltic Sea in the coupled model compared to the uncoupled version of RCA,  
which according to Fig. 9 generally starts out with less sea ice in the present-day period and therefore experiences less sea  
ice loss. In the atmosphere, a stronger thermal coupling to the water body changes not only near-surface temperatures but

also modifies atmospheric stability and thereby mixing of heat, moisture and momentum with potential impacts on  
480 temperature, precipitation and winds.

During summer when the Baltic Sea takes up heat from the atmosphere, the air - sea heat exchange is greatly influenced by  
the water bodies' thermocline layer which is in the order between 10 to 30 meter thick (e.g. Gröger et al., 2019).  
Thermocline dynamics is likely much more realistically represented when explicitly modelled by a coupled high-resolution  
ocean RCM rather than reflected in prescribed SST taken from a global GCM of coarse resolution and only few vertical  
485 layers (Gröger et al., 2015).

Winter precipitation (Fig. 11) displays a fairly coherent spatial pattern of change for the coupled and uncoupled RCA  
projections. However, the coupled model simulates systematically lower increases in precipitation than the uncoupled  
model. This is seen for both winter and summer. The differences are most prominent over western Scandinavia and the  
Bothnian Sea especially during summer.

490 A prominent feature of winter wind speed changes (Figure 12) is the strong decrease along the Norwegian coast seen in the  
coupled RCA model. This is also notable but less pronounced in the uncoupled runs. However, in those regions with steep  
topographic gradients the differences can be likely attributed to the differing grid resolutions though coupling effects cannot  
be excluded. For most other land regions winds are slightly weakened in the lower and slightly strengthened in the higher  
quartile and a consequently high uncertainty is seen for median winds (not shown). This is probably an effect of the different  
495 resolution of the two ensembles. A noteworthy difference between coupled and uncoupled simulations during winter is the  
stronger increase in wind speeds over the Bothnian Bay. This points to local coupled feedback processes probably related to  
the vanishing sea ice, higher sea-surface temperatures and altered atmospheric static stability. A larger decrease in sea-ice  
and a stronger coupling between the atmosphere and the water body leads to a stronger heat flux to the atmosphere and  
thereby reduced vertical stability. This, in turn, leads to a more efficient downward mixing of momentum in the lower  
500 atmosphere and consequently higher wind speed close to the sea surface.

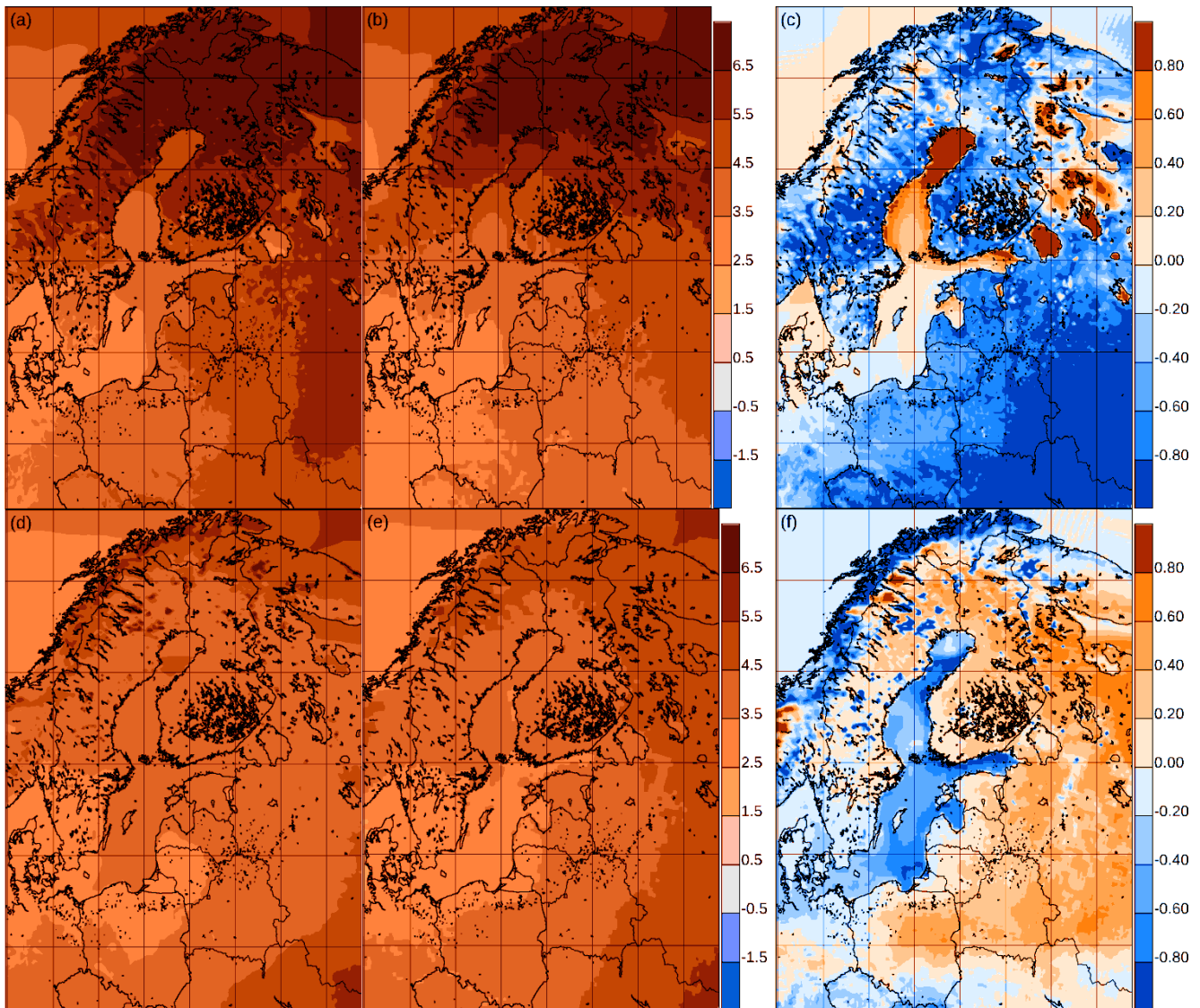
The changes between future and present climate conditions in solar irradiation (Fig. 13) are closely linked to changes in  
cloud cover. Both RCA versions simulate a generally less pronounced reduction in solar radiation during winter than the  
average reduction seen in the entire EURO-CORDEX ensemble (Fig. 7). Strongest reductions are found over the Bothnian  
Bay in winter where vanishing sea ice exposes open water to the atmosphere formerly isolated by sea ice. Compared to the  
505 coupled version, the uncoupled RCA reveals a stronger reduction, in particular over the Bothnian Sea (Fig. 13).

To fully understand the different responses, detailed process analysis including the respective ocean dynamics would be  
necessary to draw general conclusions. In addition, the here described systematic coupled vs. uncoupled differences may be  
specific with regard to the employed RCA regional atmosphere model and the coupled NEMO ocean RCM. Also, the



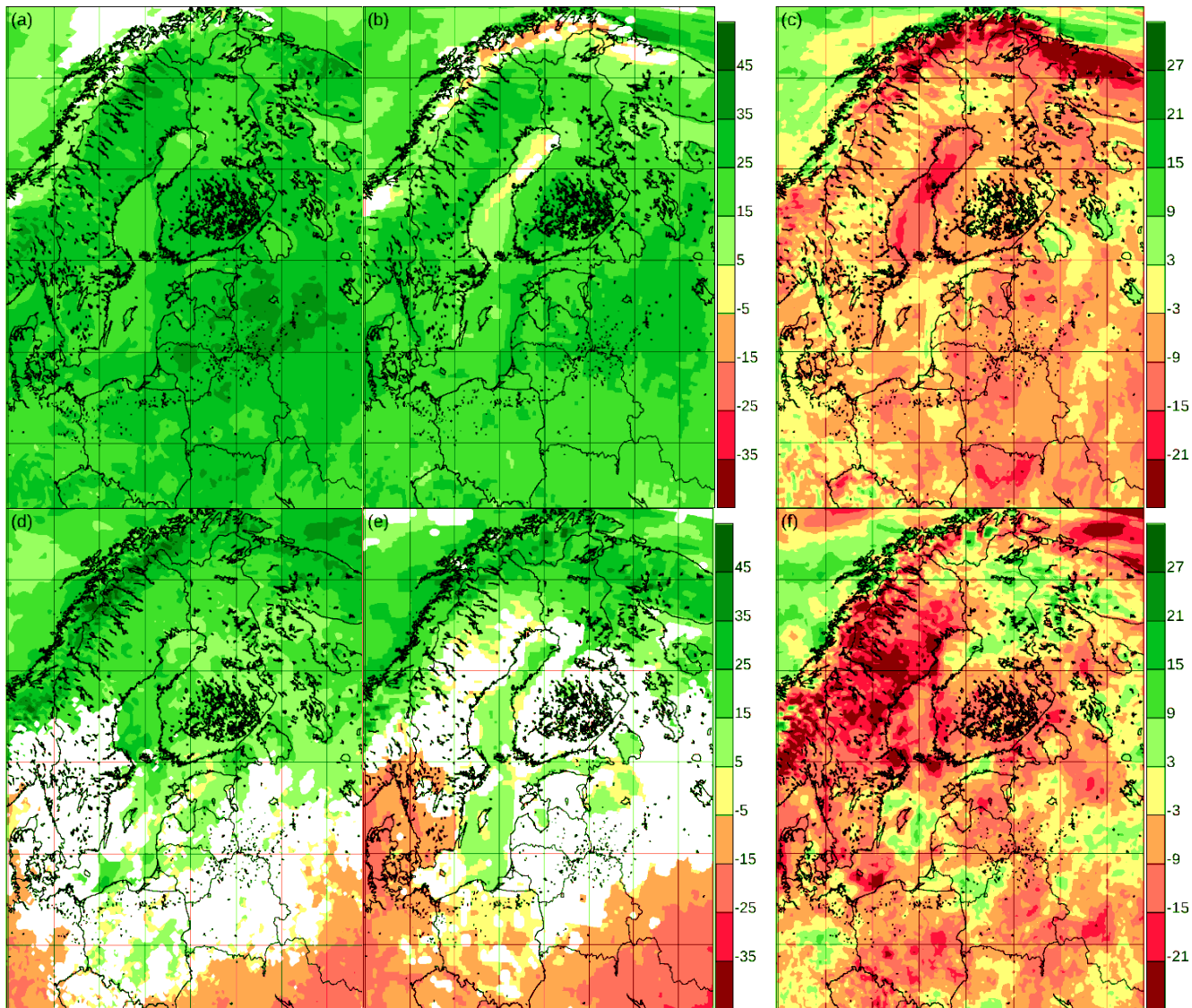
atmospheric part of the model, RCA, is run with different resolution in the coupled and uncoupled simulations, which may  
510 have an impact on the results. Hence, the here found systematic differences should be tested in coordinated experiments  
including also with other coupled and uncoupled systems.

Finally, we note that the coupling area comprising the North Sea and Baltic Sea only is relatively small compared to entire  
EURO-CORDEX domain and there is indication that coupling effects may be more important if other seas, such as the  
Mediterranean or the NE Atlantic, are included (e.g. Kelemen et al., 2019, Primo et al., 2019; Akhtar et al., 2019; Gröger et  
515 al., 2021b). The potential of different coupling techniques to influence the response of atmospheric large-scale circulation to  
climate change has been found to be most important during the winter season.





**Figure 10.** Temperature change between 1981-2010 and 2071-2100 for 5 atmosphere-only RCA4 simulations from EURO-CORDEX according to the RCP8.5 scenario (left column) and for the coupled single-model RCA4-NEMO ensemble with the same driving GCMs (middle column); pointwise median values, only coloured when 75% of simulations agree on the sign of the change. Difference between the two (right column; coupled minus uncoupled; degrees). Top row: Winter; bottom row: Summer.

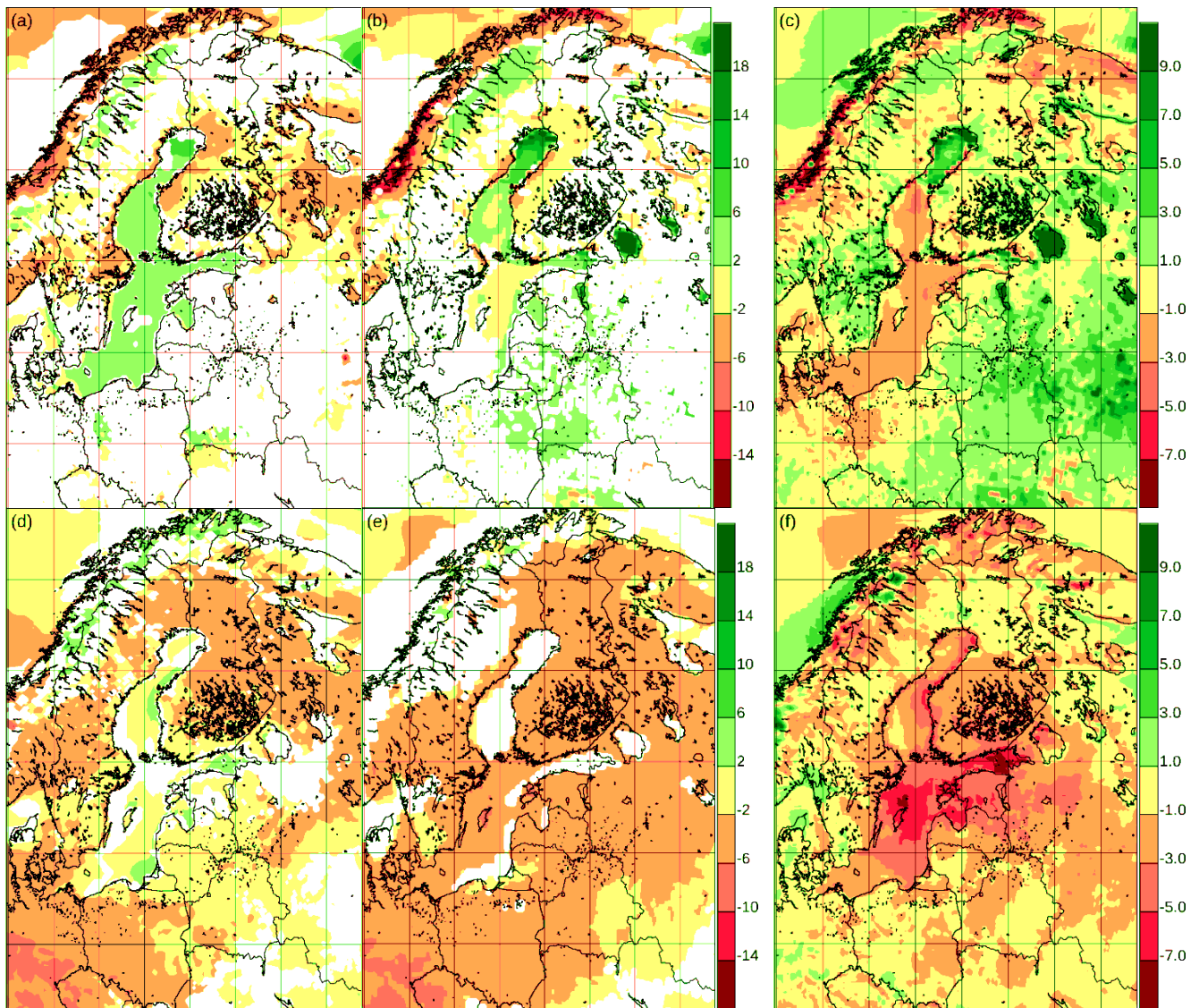


525

**Figure 11.** Precipitation relative change (%) between 1981-2010 and 2071-2100 for 5 atmosphere-only RCA4 simulations from EURO-CORDEX according to the RCP8.5 scenario (left column) and for the coupled single-model RCA4-NEMO ensemble with the same driving GCMs (right column); pointwise median values, only coloured when 75% of simulations

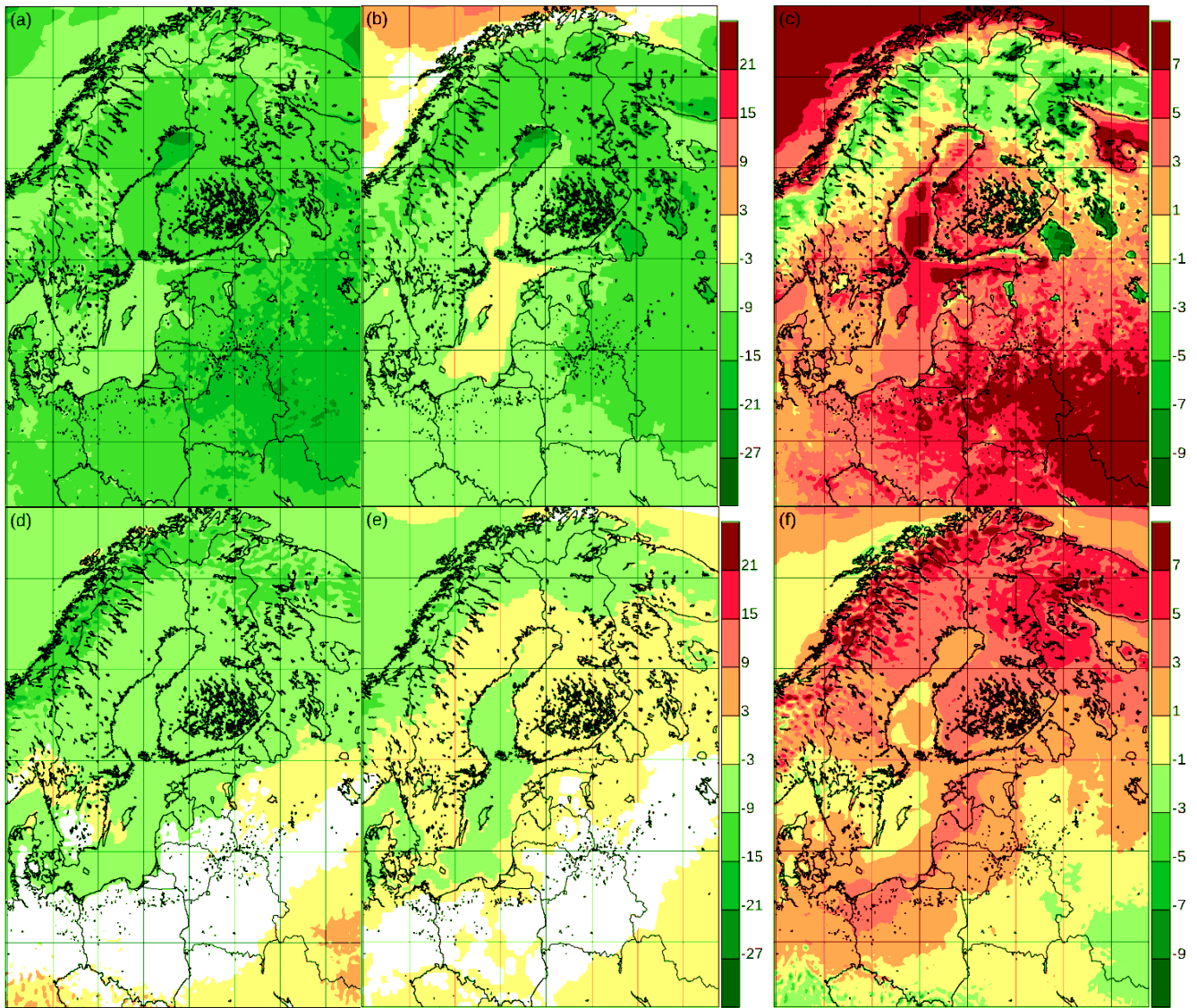
agree on the sign of the change. Difference between the two (right column; coupled minus uncoupled; percentage points).

530 Top row: Winter; bottom row: Summer.



**Figure 12.** Average wind speed relative change (%) between 1981-2010 and 2071-2100 for 5 atmosphere-only RCA4 simulations from EURO-CORDEX according to the RCP8.5 scenario (left column) and for the coupled single-model RCA4-NEMO ensemble with the same driving GCMs (right column); pointwise median values, only coloured when 75% of simulations agree on the sign of the change. Difference between the two (right column; coupled minus uncoupled; percentage points). Top row: Winter; bottom row: Summer.





540 **Figure 13.** Average incoming solar radiation relative change (%) between 1981-2010 and 2071-2100 for 5 atmosphere-only RCA4 simulations from EURO-CORDEX according to the RCP8.5 scenario (left column) and for the coupled single-model RCA4-NEMO ensemble with the same driving GCMs (right column); pointwise median values, only coloured when 75% of simulations agree on the sign of the change. Difference between the two (right column; coupled minus uncoupled; percentage points). Top row: Winter; bottom row: Summer.

## 545 **5 Conclusions**

Since the previous BACC reports from 2008 and 2015, a very large amount of high-resolution regional climate model simulations have been performed over Europe, mostly downscaling global simulations from CMIP5. We have presented ensemble model results here, and we have compared the climate change results to those of BACC II (BACC II Author Team, 2015). The regional climate model simulations of BACC II were using a different emission scenario (SRES A1B) and a  
550 different set of GCMs than the currently used RCP scenarios from CMIP5. We have therefore chosen to compare the results as a function of local temperature change.

The results, illustrated for seasonal-mean precipitation (Fig. 3) and wind speed (Fig. 5), do not indicate any significant change in the relation of these fields to local temperature change since BACC II. However, the much larger ensemble of scenario simulations allows for a more reliable assessment of future climate change compared to earlier studies. This is  
555 illustrated in the figures showing how the increase in the number of simulations, particularly the many more global models considered, has given much more robust estimates of uncertainty. This is the case both for local climate sensitivity, as illustrated by the different temperature change values for downscaling of each individual emission scenario, and for the inter-variable relations as illustrated with the general scatter of the points. Also, the addition of several emission scenarios enables a better foundation for estimating effects of e.g. emission mitigation.

The local winter temperature increases of current RCP8.5 simulations are close to the A1B results of BACC II, in spite of the  
560 stronger average global warming in the underlying RCP8.5 GCM ensemble compared to that in the A1B GCM ensemble. According to the two suites of GCMs, the difference in global mean by the end of the century is 0.7K, i.e. about 25%. For summer, the differences are larger and it cannot be generally concluded whether or not the regional sensitivity to global climate change is different from what it was in BACC II, or whether this is just caused by the concrete selections of models  
565 included in the two model suites

The expected anthropogenic climate change for the Baltic Sea area is corroborated by the present results: Temperature will increase, in step with global warming, and with a north-south gradient. In the northern part of the area in winter, the warming approaches twice the average global warming.

Precipitation increases over the entire area in winter, somewhat less in summer in the northern part of the domain, and it  
570 does not change significantly in summer in the southern part. Extreme precipitation, here the 10-year return value, increases systematically, particularly in summer, in the entire domain, with some simulations showing more than 50% increase.

The large ensemble of simulations does not indicate a significant change in wind speed. However, individual model simulations show distinct differences. Consequently, there is a large uncertainty related to future wind speed change in the area.

575 Solar irradiation at the surface is not projected to change in summer, but the RCM simulations show some decrease in winter connected to more extensive cloud cover and potentially also less snow in the future. There is, however, a large uncertainty related to this, since many GCMs show the opposite sign of the trend.

Snow cover, measured as the average amount of snow on the ground in winter (DJF), is reduced drastically, particularly in the south of the Baltic Sea catchment area, where the relative decrease is close to 80%.

580 With respect to coupled vs. uncoupled models, we find a stronger warming in the coupled model during winter which is most pronounced in areas that today are seasonally affected by sea ice. During summer the coupled model shows weaker warming compared to the uncoupled model. The comparison between coupled and uncoupled versions of a small subset of projections with the RCA4 and RCA4-NEMO models generally confirms results by Gröger et al. (2021b) who found coupling effects for changes in most climate indices, most clearly over the interactively coupled open sea area. Notable differences outside  
585 the coupled region occur over regions of topographically elevated terrain likely as an artefact of different model resolution.

## **Declarations**

## **Funding**

This study has been partly funded by the Copernicus Climate Change Service. ECMWF implements this Service on behalf of the European Commission. Part of the funding is by the Danish state through the National Centre for Climate Research  
590 (NCKF).

## **Availability of data and material**

All data used in this publication are publicly available through the ESGF network, e.g., <http://esgf-data.dkrz.de>.

## **Code availability**

All data manipulations in this study are straightforward and described in the manuscript

## **595 Acknowledgements**

The research presented in this study is part of the Baltic Earth Assessment Reports project of the Baltic Earth program (Earth System Science of the Baltic Sea Region, <https://baltic.earth> ). The authors would like to thank the EURO-CORDEX network and WCRP CORDEX for ensuring availability of CORDEX data.

It is with great sadness that we received the news that our co-author Christian Dieterich passed away during the review of  
600 this manuscript.

## References

- Akhtar, N., Krug, A., Brauch, J., Arsouze, T., Dieterich, C., Ahrens, B.: European Marginal Seas in a regional atmosphere-ocean coupled model and their impact on Vb-cyclones and associated precipitation, *Clim. Dyn.*, 1-33, <https://doi.org/10.1007/s00382-019-04906-x>, 2019
- 605 BACC Author Team (2008) Assessment of Climate Change for the Baltic Sea Basin. Regional Climate Studies, Springer Verlag, Berlin, Heidelberg
- BACC II Author Team (2015) Second Assessment of Climate Change for the Baltic Sea Basin. Regional Climate Studies, Springer Verlag, Berlin, Heidelberg
- Ban, N., Schmidli, J., and Schär, C.: Heavy precipitation in a changing climate: Does short-term summer precipitation  
610 increase faster?: *Geophys. Res. Lett.*, 42, 1165–1172, doi:10.1002/2014GL062588, 2015.
- Bartók, B., Wild, M., Folini, D.*et al.*: Projected changes in surface solar radiation in CMIP5 global climate models and in EURO-CORDEX regional climate models for Europe. *Clim Dyn* **49**, 2665–2683. <https://doi.org/10.1007/s00382-016-3471-2>, 2017
- Boé J., Somot S., Corre L., and Nabat .P.: Large discrepancies in summer climate change over Europe as projected by global  
615 and regional climate models: causes and consequences. *Clim Dyn* 54, 2981–3002. <https://doi.org/10.1007/s00382-020-05153-1> 2020.
- Buser, C. M., Künsch, H. R., and Schär, C.: Bayesian multi-model projections of climate: generalization and application to ENSEMBLES results. *Clim Res* 4:227-241 2010.
- Christensen, J. H., Larsen, M. A. D., Christensen, O. B., Drews, M., and Stendel, M.: Robustness of European climate  
620 projections from dynamical downscaling, *Clim. Dyn.*, 2019, <https://doi.org/10.1007/s00382-019-04831-z>, 2019.
- Christensen, J. H., and Christensen O. B.: Severe summertime flooding in Europe. *Nature* 421, 805-806, 2003.
- Christensen, J. H., and Christensen, O. B.: A summary of the PRUDENCE model projections of changes in European climate by the end of the century. *Climatic Change* 81, 7-30, 2007.
- Christensen JH, Hewitson B, Busuioc A, Chen A, Gao X, Held I, Jones R, Kolli RK, Kwon WT, Laprise R, Magaña Rueda  
625 V, Mearns L, Menéndez CG, Räisänen J, Rinke A, Sarr A, Whetton P (2007) Regional Climate Projections. In: Solomon S, Qin D, Manning M, Chen Z, Marquis M, Averyt KB, Tignor M, Miller HL (eds), *Climate Change 2007: The Physical*

Science Basis. Contribution of Working Group I to the Fourth Assessment Report of the Intergovernmental Panel on Climate Change. Cambridge University Press, Cambridge, UK

630 Christensen J. H., Kjellström E., Giorgi, F., Lenderink, G., and Rummukainen, M.: Weight assignment in regional climate models, *Clim Res* 44, 179-194, 2010.

Christensen O. B., Kjellström E., Zorita E.: Projected Change—Atmosphere. In: The BACC II Author Team (eds.). Second Assessment of Climate Change for the Baltic Sea Basin. *Regional Climate Studies*, 217-234. Springer [https://doi.org/10.1007/978-3-319-16006-1\\_102015](https://doi.org/10.1007/978-3-319-16006-1_102015), 2015a.

635 Christensen, O. B., S. Yang, F. Boberg, C. F. Maule, P. Thejll, M. Olesen, M. Drews, H. J. D. Sørup, J. H. Christensen: Scalability of regional climate change in Europe for high-end scenarios. *Climate Research* 64, 25-38, <https://doi.org/10.3354/CR01286>, 2015b.

Christensen, O. B., and Kjellström, E.: Projections for Temperature, Precipitation, Wind, and Snow in the Baltic Sea Region until 2100. *Oxford Research Encyclopedia of Climate Science*. <https://oxfordre.com/climatescience/view/10.1093/acrefore/9780190228620.001.0001/acrefore-9780190228620-e-695>  
640 <https://doi.org/10.1093/acrefore/9780190228620.013.695>, 2018.

Coppola, E., Nogherotto, R., Ciarlo, J. M., Giorgi, F., Somot, S., Nabat, P., Corre, L., Christensen, O. B., Boberg, F., van Meijgaard, E., Aalbers, E., Lenderink, G., Schwingshackl, C., Sandstad, M., Sillmann, J., Bülow, K., Teichmann, C., Iles, C., Kadyrov, N., Vautard, R., Levvasseur, G., Sørland, S. L., Demory, M.-E., Kjellström, E., and Nikulin, G.: Assessment of the European climate projections as simulated by the large EURO-CORDEX regional climate model ensemble. *J. Geophys. Res.: Atmospheres*, 126, e2019JD032356, DOI: 10.1029/2019JD032356, 2021.  
645

Déqué, M., Somot, S., Sanchez-Gomez, E., Goodess, C. M., Jacob, D., Lenderink, G., and Christensen O. B.: The spread amongst ENSEMBLES regional scenarios: regional climate models, driving general circulation models and interannual variability, *Clim. Dyn-* 38:951-964, 2012.

Dieterich, C., Wang, S., Schimanke, S., Gröger, M., Klein, B., Hordoir, R., Samuelsson, P., Liu, Y., Axell, L., Höglund, A.,  
650 and Meier, H. E. M.: Surface heat budget over the North Sea in climate change simulations, *Atmosphere*, 10, 272, <https://doi.org/10.3390/atmos10050272>, 2019.

Donat, M. G., Leckebusch, G. C., Wild, S., and Ulbrich, U.: Future changes in European winter storm losses and extreme wind speeds inferred from GCM and RCM multi-model simulations. *Nat Hazards Earth Syst Sci* 11:1351-1370, 2011.

Dosio, A.: Projections of climate change indices of temperature and precipitation from an ensemble of bias-adjusted high-resolution EURO-CORDEX regional climate models, *J. Geophys. Res. Atmos.*, 121, 5488–5511, <https://doi.org/10.1002/2015JD024411>, 2016.  
655

- Döscher, R., Willén, U., Jones, C., Rutgersson, A., Meier, H. E. M., Hansson, U., and Graham, L. P.: The development of the regional coupled ocean–atmosphere model RCAO. *Boreal Environment Research*, 7, 183–192, 2002.
- 660 Dutheil, C., Meier, H.E.M, Gröger, M., and Börgel, F.: Understanding past and future sea surface temperature trends in the Baltic Sea. *Climate Dynamics*, accepted
- Eyring, V., Bony, S., Meehl, G. A., Senior, C. A., Stevens, B., Stouffer, R. J., and Taylor, K. E.: Overview of the Coupled Model Intercomparison Project Phase 6 (CMIP6) experimental design and organization, *Geosci. Model Dev.*, 9, 1937–1958, <https://doi.org/10.5194/gmd-9-1937-2016>, 2016.
- 665 Feser, F., Weisse, R., von Storch, H.: Multi-decadal atmospheric modeling for Europe yields multipurpose data. *EOS Trans* 82:305-310, 2001.
- Gao, Y., Chen, F., and Jiang Y.: Evaluation of a convection-permitting modeling of precipitation over the Tibetan Plateau and its influences on the simulation of snow-cover fraction. *J Hydrometeorol* 21(7):1531–1548. <https://doi.org/10.1175/jhm-d-19-0277.1>, 2020.
- 670 Giorgi, F., Jones, C., and Asrar G. R.: Addressing climate information needs at the regional level: the CORDEX framework. *WMO Bull* 58:175-183, 2006.
- Giorgi, F., and Gao X.-J.: Regional earth system modeling: Review and future directions. *Atmospheric and Oceanic Science Letters*, 11, 189–197, 2018.
- Graham L. P., Chen, D., Christensen, O. B., Kjellström, E., Krysanova, V., Meier H. E. M., Radziejewski, M., Rockel, B., Ruosteenoja, K., and Räisänen, J.: Projections of future climate change. In *Assessment of Climate Change for the Baltic Sea Basin*. The BACC Author Team. 2008, XXI, 473 p., Springer. ISBN: 978-3-540-72785-9, 2008.
- 675 Gröger M, Dieterich C, Meier HEM, Schimanke S.: Thermal air-sea coupling in hindcast simulations for the North Sea and Baltic Sea on the NW European shelf,. *Tellus A Dyn Meteorol Oceanogr*, 67, 26911, <https://doi.org/10.3402/tellusa.v67.26911>, 2015.
- 680 Gröger, M., Arneborg, L., Dieterich, C., Höglund, A., and Meier, H.E.M.: Summer hydrographic changes in the Baltic Sea, Kattegat and Skagerrak projected in an ensemble of climate scenarios downscaled with a coupled regional ocean–sea ice–atmosphere model. *Clim Dyn* 53, 5945–5966, <https://doi.org/10.1007/s00382-019-04908-9>, 2019.
- Gröger, M., Dieterich, C., and Meier, H. E. M.: Is interactive air sea coupling relevant for simulating the future climate of Europe?. *Clim Dyn.*, 56, 491-514, <https://doi.org/10.1007/s00382-020-05489-8>, 2021a.



- 685 Gröger, M., Dieterich, C., Haapala, J., Ho-Hagemann, H. T. M., Hagemann, S., Jakacki, J., May, W., Meier, H. E. M., Miller, P. A., Rutgersson, A., and Wu, L.: Coupled regional Earth system modeling in the Baltic Sea region, *Earth Syst. Dynam.*, 12, 939–973, <https://doi.org/10.5194/esd-12-939-2021>, 2021
- Gustafsson N, Nyberg L and Omstedt A.: Coupling of a high-resolution atmospheric model and an ocean model for the Baltic Sea. *Monthly Weather Review*, 126, 2822– 2846, 1998.
- 690 Hagemann, S., Machenhauer, B., Jones, R., Christensen, O. B., Déqué, M., Vidale P. L.: Evaluation of water and energy budgets in regional climate models applied over Europe. *Clim Dynam* 23:547-567, 2004.
- Hanel, M., and Buishand, A.: Analysis of precipitation extremes in an ensemble of transient regional climate model simulations for the Rhine basin. *Clim Dynam* 36:1135-1153, 2011.
- Held, I., and Soden, B.: Robust response of the hydrological cycle to global warming. *J Clim* 19:5686-5699, 2006.
- 695 Ho-Hagemann HTM, Gröger M, Rockel B, Zahn M, Geyer B, Meier, HEM.: Effects of air-sea coupling over the North Sea and the Baltic Sea on simulated summer precipitation over Central Europe *Clim Dyn* 49: 3851. <https://doi.org/10.1007/s00382-017-3546-8>, 2017.
- IPCC Climate Change 2001: The Scientific Basis. Contribution from Working Group I to the Third Assessment Report of the Intergovernmental Panel on Climate Change. Houghton JT, Ding Y, Griggs DJ, Noguer M, van der Linden PJ, Dai X, Maskell K, Johnson CA (eds) Cambridge University Press, Cambridge, UK, 2001.
- 700 IPCC Climate Change 2007: The Physical Science Basis. Solomon S, Qin D, Manning M, Marquis M, Averyt K, Tignor MMB, Miller HL, Chen Z (eds), Cambridge University Press, Cambridge, UK
- IPCC Climate Change 2013: The Physical Science Basis. Contribution of Working Group I to the Fifth Assessment Report of the Intergovernmental Panel on Climate Change [Stocker, T.F., D. Qin, G.-K. Plattner, M. Tignor, S.K. Allen, J. Boschung, A. Nauels, Y. Xia, V. Bex and P.M. Midgley (eds.)]. Cambridge University Press, Cambridge, United Kingdom and New York, NY, USA, 1535 pp, 2013.
- 705 IPCC Climate Change 2021: The Physical Science Basis. Contribution of Working Group I to the Sixth Assessment Report of the Intergovernmental Panel on Climate Change [Masson-Delmotte, V., P. Zhai, A. Pirani, S. L. Connors, C. Péan, S. Berger, N. Caud, Y. Chen, L. Goldfarb, M. I. Gomis, M. Huang, K. Leitzell, E. Lonnoy, J.B.R. Matthews, T. K. Maycock, T. Waterfield, O. Yelekçi, R. Yu and B. Zhou (eds.)]. Cambridge University Press. In Press.
- 710 Jacob, D., J. Petersen, B. Eggert, A. Alias, O. B. Christensen, L. M. Bouwer, A. Braun, A. Colette, M. Déqué, G. Georgievski, E. Georgopoulou, A. Gobiet, L. Menut, G. Nikulin, A. Haensler, N. Hempelmann, C. Jones, K. Keuler, S.

- 715 Kovats, N. Kröner, S. Kotlarski, A. Kriegsmann, E. Martin, E. van Meijgaard, C. Moseley, S. Pfeifer, S. Preuschmann, C. Radermacher, K. Radtke, D. Rechid, M. Rounsevell, P. Samuelsson, S. Somot, J.-F. Soussana, C. Teichmann, R. Valentini, R. Vautard, B. Weber and Pascal Yiou.: EURO-CORDEX: new high-resolution climate change projections for European impact research. *Regional Environmental Change*.: <https://doi.org/10.1007/s10113-013-0499-2>, 2013.
- Kelemen, F. D., Primo, C., Feldmann, H., Ahrens, B.: Added Value of Atmosphere–Ocean Coupling in a Century-Long Regional Climate Simulation, *Atmosphere*, 10(9), 537; <https://doi.org/10.3390/atmos10090537>, 2019.
- 720 Kendon, E., Roberts, N. M., Fowler, H. J., Roberts, M. J., Chan, S. C., and Senior, C. A.: Heavier summer downpours with climate change revealed by weather forecast resolution model. *Nature Climate Change* 4, 570–576 <https://doi.org/10.1038/nclimate2258>, 2014.
- Keuler, K., Radtke, K., Kotlarski, S., and Lüthi, D.: Regional climate change over Europe in COSMO-CLM: Influence of emission scenario and driving global model., *Met. Z.* 25, 121-136. <https://doi.org/10.3929/ethz-b-000117030>, 2016
- Kjellström, E.: Recent and future signatures of climate change in Europe. *Ambio* 33:193-198, 2004.
- 725 Kjellström, E., and Ruosteenoja, K.: Present-day and future precipitation in the Baltic Sea region as simulated in a suite of regional climate models. *Climatic Change*. 81 (Suppl. 1), 281-291. <https://doi.org/10007/s10584-006-9219-y>, 2007.
- Kjellström, E., Bärring, L., Jacob, D., Jones, R., Lenderink, and G., Schär, C.: Modelling daily temperature extremes: Recent climate and future changes over Europe. *Climatic Change* 81(S1), 249-265, 2007.
- Kjellström, E., and Lind, P.: Changes in the water budget in the Baltic Sea drainage basin in future warmer climates as simulated by the regional climate model RCA3. *Boreal Environ Res* 14:114-124, 2009.
- 730 Kjellström, E., Nikulin, G., Hansson, U., Strandberg, G., and Ullerstig, A.: 21st century changes in the European climate: uncertainties derived from an ensemble of regional climate model simulations. *Tellus A* 63, 24-40, 2011a.
- 735 Kjellström, E., Räisänen, J., Skaugen, T. E., Rögnvaldsson, O., Agustsson, H., Olafsson, H., Nawri, N., Björnsson, H., Ylhäisi, J., Tietäväinen, H., Gregow, H., Jylhä, K., Ruosteenoja, K., Shkolnik, I., Efimov, S., Jokinen, P., and Benestad, R.: Climate scenarios. In: Thorsteinsson T, Björnsson H (eds). *Climate Change and Energy Systems: Impacts, Risks and Adaptation in the Nordic and Baltic countries*. TemaNord 2011, 502, 2011b.
- Kjellström, E., Thejll, P., Rummukainen, M., Christensen, J. H., Boberg, F., Christensen, O. B., Fox Maule, C.: Emerging regional climate change signals for Europe under varying large-scale circulation conditions. *Clim Res* 56, 103-119, 2013.

- 740 Kjellström, E., Bärring, L., Nikulin, G., Nilsson, C., Persson, G., and Strandberg, G.: Production and use of regional climate model projections – a Swedish perspective on building climate services. *Climate Services*, 2-3, 15-29. Doi: 10.1016/j.cliser.2016.06.004, 2016.
- Kjellström, E., Nikulin, G., Strandberg, G., Christensen, O. B., Jacob, D., Keuler, K., Lenderink, G., van Meijgaard, E., Schär, C., Somot, S., Sørland, S. L., Teichmann, C., and Vautard, R.: European climate change at global mean temperature increases of 1.5 and 2°C above pre-industrial conditions as simulated by the EURO-CORDEX regional climate models. *Earth Syst. Dynam.*, 9, 459-478, <https://doi.org/10.5194/esd-9-459-2018>, 2018.
- 745 Kjellström, E., and Christensen, O. B.: Regional Climate Modelling for the Baltic Sea Region. In: von Storch, H., (ed.). *Climate of the Baltic Sea region*. Oxford Research Encyclopedia of Climate Science. Oxford University Press USA. DOI: 10.1093/acrefore/9780190228620.013.700, 2020.
- Kotlarski, S., Keuler, K., Christensen, O. B., Colette, A., Déqué, M., Gobiet, A., Goergen, K., Jacob, D., Lüthi, D., van Meijgaard, E., Nikulin, G., Schär, C., Teichmann, C., Vautard, R., Warrach-Sagi, K., and Wulfmeyer, V.: Regional climate modeling on European scales: a joint standard evaluation of the EURO-CORDEX RCM ensemble, *Geosci. Model Dev.*, 7, 1297-1333, <https://doi.org/10.5194/gmd-7-1297-2014>, 2014.
- 750 Kyselý, J., Gaál, L., Beranová, R., and Plavcová, E.: Climate change scenarios of precipitation extremes in Central Europe from ENSEMBLES regional climate models. *Theor Appl Climatol* 104:529-542, 2011.
- Larsen, A. N., Gregersen, I. B., Christensen, O. B., Linde, J. J., Mikkelsen, P. S.: Potential future increase in extreme one-hour precipitation events over Europe due to climate change. *Water Sci Tech* 60:2205-2216, 2009.
- 755 Lenderink G, van Meijgaard E.: Linking increases in hourly precipitation extremes to atmospheric temperature and moisture changes. *Environ Res Lett* 5:025208. doi:10.1088/1748-9326/5/2/025208, 2010.
- Lenderink, G., Belušić, D., Fowler, H., Kjellström, E., Lind, P., van Meijgaard, E., van Uft, B., and de Vries, H.: Systematic increases in the thermodynamic response of hourly precipitation extremes in an idealized warming experiment with a convection-permitting climate model. *Environ. Res. Lett.* 14, 074012. DOI: 10.1088/1748-9326/ab214a, 2019.
- 760 Lind, P., and Kjellström, E.: Temperature and precipitation changes in Sweden; a wide range of model-based projections for the 21st century. *SMHI Reports Meteorology and Climatology*, 113, 2008.

- Lind, P., Lindstedt, D., Kjellström, E., and Jones, C.: Spatial and Temporal Characteristics of Summer Precipitation over Central Europe in a Suite of High- Resolution Climate Models. *J. Clim.*, 29, 3501-3518, <https://doi.org/10.1175/JCLI-D-15-0463.1>, 2016
- 765
- Lind, P., Belušić, D., Christensen, O.B. *et al.*: Benefits and added value of convection-permitting climate modeling over Fenno-Scandinavia. *Clim Dyn* **55**, 1893–1912 <https://doi.org/10.1007/s00382-020-05359-3>, 2020.
- Lindvall, J., and Svensson, G.: The diurnal temperature range in the CMIP5 models. *Clim Dyn* 44, 405–421 (2015). <https://doi.org/10.1007/s00382-014-2144-2>
- 770 Meier HEM, Höglund A, Döscher R, Andersson H, Löptien U, Kjellström E.: Quality assessment of atmospheric surface fields over the Baltic Sea from an ensemble of regional climate model simulations with respect to ocean dynamics. *Oceanologia* 53:193-227, 2011.
- Nakićenović, N., J. Alcamo, G. Davis, B. de Vries, J. Fenhann, S. Gaffin, K. Gregory, A. Grübler et al.: Emission scenarios. A Special Report of Working Group III of the Intergovernmental Panel on Climate Change. Cambridge University Press, 775 599 pp., 2000.
- Nikulin, G., Kjellström, E., Hansson, U., Jones, C., Strandberg, G., and Ullerstig, A.: Evaluation and future projections of temperature, precipitation and wind extremes over Europe in an ensemble of regional climate simulations. *Tellus A* 63:41-55, 2011.
- Nilsen, I. B., Hanssen-Bauer, I., Tveito, O. E., Wong, W. K.: Projected changes in days with zero crossings for Norway. *Int J Climatol.* 2021; 41: 2173– 2188. <https://doi.org/10.1002/joc.6913>, 2021.
- 780
- O’Neill, B. C., Kriegler, E., Ebi, K. L., Kemp-Benedict, E., Riahi, K., Rothman, D. S., van Ruijven, B. J., van Vuuren, D. P., Birkmann, J., Kok, K., Levy, M., and Solecki, W.: The roads ahead: Narratives for shared socioeconomic pathways describing world futures in the 21st century, *Global Environ. Chang.* 42, 169-180. doi:10.1016/j.gloenvcha.2015.01.004, 2017.
- 785 Prein, A. F., Gobiet, A., Truhetz, H., Keuler, K., Goergen, K., Teichmann, C., Fox Maule, C., van Meijgaard, E., Déqué, M., Nikulin, G., Vautard, R., Colette, A., Kjellström, E. and Jacob, D.: Precipitation in the EURO-CORDEX 0.11° and 0.44° simulations: high resolution, high benefits? *Clim. Dyn.*, <https://doi.org/10.1007/s00382-015-2589-y>, 2015.

- Primo, C., Kelemen, F. D., Feldmann, H., and Ahrens, B.: A regional atmosphere-ocean climate system model (CCLMv5.0clm7-NEMOv3.3-NEMOv3.6) over Europe including three marginal seas: on its stability and performance, 790 Geoscientific Model Development Discussions, 2019, 1-33, <https://doi.org/10.5194/gmd-2019-73>, 2019.
- Räisänen, J.: Probabilistic projections of temperature and precipitation change for the period 2021- 2050, In: Proc. Future Climate and Renewable Energy: Impacts, Risks and Adaptation, 31 May - 2 June 2010, Oslo, p 78-79, 2010.
- Räisänen, J.: Snow conditions in northern Europe: the dynamics of interannual variability versus projected long-term change, The Cryosphere, 15, 1677–1696, <https://doi.org/10.5194/tc-15-1677-2021>, 2021.
- 795 Räisänen, J., and Eklund, J.: 21st century changes in snow climate in northern Europe: a high-resolution view from ENSEMBLES regional climate models. *Clim Dynam* 38:2575-2591, 2011.
- Ruosteenoja, K., and Räisänen, P.: Seasonal changes in solar radiation and relative humidity in Europe in response to global warming. *J Clim* 26:2467–2481. doi:10.1175/JCLI-D-12-00007.1, 2013.
- Samuelsson, P., Jones, C., Willén, U., Ullerstig, A., Gollvik, S., Hansson, U., Kjellström, E., Nikulin, G., Wyser, K.: The 800 Rossby Centre Regional Climate Model RCA3: Model description and performance. *Tellus A* 63:4-23, 2011.
- Schuler, D. V., Beldring, S., Førland, E. J., Roald, L. A., and Engen-Skaugen, T.: Snow cover and snow water equivalent in Norway: current conditions (1961-1990) and scenarios for the future (2071-2100). Met No Report no. 01/2006 Climate. Oslo, Norway, 2006.
- Sein, D.V, Gröger, M., Cabos, W., Alvarez, F., Hagemann, S., de la Vara, A., Pinto, J.G., Izquierdo, A., Koldunov, N.V., 805 Dvornikov, A. Y., Limareva, N., Martinez, B., and Jacob, D.: Regionally coupled atmosphere - ocean - marine biogeochemistry model ROM: 2. Studying the climate change signal in the North Atlantic and Europe *J. Adv. Model. Earth Syst.*, <https://doi.org/10.1029/2019MS001646> 2020.
- Seneviratne, S.I., Nicholls, D., Easterling, C.M. Goodess, S. Kanae, J. Kossin, Y. Luo, J. Marengo, K. McInnes, M. Rahimi, M. Reichstein, A. Sorteberg, C. Vera, and X. Zhang.: Changes in climate extremes and their impacts on the natural 810 physical environment. In: Managing the Risks of Extreme Events and Disasters to Advance Climate Change Adaptation [Field, C.B., V. Barros, T.F. Stocker, D. Qin, D.J. Dokken, K.L. Ebi, M.D. Mastrandrea, K.J. Mach, G.-K. Plattner, S.K. Allen, M. Tignor, and P.M. Midgley (eds.)]. A Special Report of Working Groups I and II of the Intergovernmental Panel on Climate Change (IPCC). Cambridge University Press, Cambridge, UK, and New York, NY, USA, pp. 109-230, 2012.

- Strandberg, G., Bärring, L., Hansson, U., Jansson, C., Jones, C., Kjellström, E., Kolax, M., Kupiainen, M., Nikulin, G.,  
815 Samuelsson, P., Ullerstig, A., and Wang, S.: CORDEX scenarios for Europe from the Rossby Centre regional climate model  
RCA4. Reports Meteorology and Climatology, 116, SMHI, SE-60176 Norrköping, Sverige, 2014.
- Sutton, R. T., Dong, B., and Gregory, J. M.: Land/sea warming ratio in response to climate change: IPCC AR4 model results  
and comparison with observations, *Geophys. Res. Lett.*, 34, L02701, <https://doi.org/10.1029/2006GL028164>, 2007.
- Taylor, K. E., Stouffer, R. J., and Meehl, G. A.: An overview of CMIP5 and the experiment design. *Bull. Am. Meteorol.*  
820 *Soc.* 93, 485–498. <http://dx.doi.org/10.1175/BAMS-D-11-00094.1>, 2012.
- Tobin, I., Jerez, S., Vautard, R., Thais, F., Déqué, M., Kotlarski, S., Fox Maule, C., van Meijgaard, E., Nikulin, G., Noël, T.,  
Prein, A., and Teichmann, C.: Climate change impacts on the power generation potential of a European mid-century wind  
farms scenario, *Environmental Research Letters*, 11, 034013, <https://doi.org/10.1088/1748-9326/11/3/034013>, 2016.
- van der Linden, P., and Mitchell, J. F. B., (eds): ENSEMBLES: climate change and its impacts: summary of research and  
825 results from the ENSEMBLES project. Met Office, Hadley Centre, Exeter, UK, 2009.
- van Vuuren, D. P., Edmonds, J. A., Kainuma, M., Riahi, K., and Weyant, J.: A special issue on the RCPs. *Climatic Change*  
109:1-4, 2011.
- Vautard, R., Gobiet, A., Sobolowski, S., Kjellström, E., Stegehuis, A., Watkiss, P., Mendlik, T., Landgren, O., Nikulin, G.,  
Teichmann, C., and Jacob, D.: The European climate under a 2°C global warming. *Environ. Res. Lett.* 9, 034006,  
830 <https://doi.org/10.1088/1748-9326/9/3/034006>, 2014.
- Vautard, R., Kadyrov, N., Iles, C., Boberg, F., Buonomo, E., Bülow, K., Coppola, E., Corre, L., van Meijgaard, E.,  
Nogherotto, R., Sandstad, M., Schwingshackl, C., Somot, S., Aalbers, E., Christensen, O. B., Ciarlo, J. M., Demory, M.-E.,  
Giorgi, F., Jacob, D., Jones, R. G., Keuler, K., Kjellström, E., Lenderink, G., Levvasseur, G., Nikulin, G., Sillmann, J.,  
Solidoro, C., Sørland, S. L., Steger, C., Teichmann, C., Warrach-Sagi, K., and Wulfmeyer, V.: Evaluation of the large  
835 EURO-CORDEX regional climate model ensemble. *J. Geophys. Res.* <https://doi.org/10.1029/2019JD032344>, 2020.
- Wang, S., Dieterich, C., Döscher, R., Höglund, A., Hordoir, R., Meier, H., Samuelsson, P., and Schimanke, S.: Development  
and evaluation of a new regional coupled atmosphere ocean model in the North Sea and Baltic Sea, *Tellus A*, 67, 24284.  
<https://doi.org/10.3402/tellusa.v67.24284>, 2015.
- Wibig, J., Mauran, D., Benestad, R., Kjellström, E., Lorenz, P., Christensen, O. B.: Projected Change—Models and  
840 Methodology. In: The BACC II Author Team (eds.). *Second Assessment of Climate Change for the Baltic Sea Basin.*  
*Regional Climate Studies*, 189-216. Springer, [https://doi.org/10.1007/978-3-319-16006-1\\_102015](https://doi.org/10.1007/978-3-319-16006-1_102015), 2015.

## **Recommended Reading**

BACC II Author Team (2015) Second Assessment of Climate Change for the Baltic Sea Basin. Regional Climate Studies, Springer Verlag, Berlin, Heidelberg