

Storylines of weather-induced crop failure events under climate change

Henrique M.D. Goulart^{1,2}, Karin van der Wiel³, Christian Folberth⁴, Juraj Balkovic⁴, and Bart van den Hurk^{1,2}

¹Deltares, Delft, The Netherlands

²Institute for Environmental Studies, VU University Amsterdam, The Netherlands

³Royal Netherlands Meteorological Institute (KNMI), De Bilt, The Netherlands

⁴International Institute for Applied Systems Analysis (IIASA), Ecosystem Services and Management Program, Laxenburg, Austria

Correspondence: Henrique Goulart (henrique.goulart@deltares.nl)

Abstract. Unfavourable weather is a common cause for crop failures all over the world. Whilst extreme weather conditions may cause extreme impacts, crop failure commonly is induced by the occurrence of multiple and combined anomalous meteorological drivers. For these cases, the explanation of conditions leading to crop failure is complex, as the links connecting weather and crop yield can be multiple and non-linear. Furthermore, climate change is likely to perturb the meteorological conditions, possibly altering the occurrences of crop failures or leading to unprecedented drivers of extreme impacts. The goal of this study is to identify important meteorological drivers that cause crop failures and to explore changes in crop failures due to global warming. For that, we focus on a historical failure event, the extreme low soybean production during the 2012 season in the Midwestern US. We first train a random forest model to identify the most relevant meteorological drivers of historical crop failures and to predict crop failure probabilities. Second, we explore the influence of global warming on crop failures and on the structure of compound drivers. We use large ensembles from the EC-Earth global climate model, corresponding to present day, pre-industrial + 2 °C and 3 °C warming respectively, to isolate the global warming component. Finally, we explore the meteorological conditions inductive for the 2012 crop failure, and construct analogues of these failure conditions in future climate settings. We find that crop failures in the Midwestern US are linked to low precipitation levels, high temperature and diurnal temperature range (DTR) levels during July and August. Results suggest soybean failures are likely to increase with climate change. With more frequent warm years due to global warming, the joint hot-dry conditions leading to crop failures become mostly dependent on precipitation levels, reducing the importance of the relative compound contribution. While event-analogues of the 2012 season are rare and not expected to increase, these analogues show a significant increase in occurrence frequency under global warming, but for different combinations of the meteorological drivers than experienced in 2012. This has implications for assessment of the drivers of extreme impact events.

Keywords: climate change, crop failure, compound events, machine learning, storylines, large ensemble

1 Introduction

Soybeans are important for modern global society. They are used for human consumption, the main source of protein for animal feed worldwide and the second most consumed type of vegetable oil (Hartman et al., 2011). The vast majority of its production is concentrated in specific regions in Argentina, Brazil and United States of America, accounting for 80% of the world production (Hartman et al., 2011; Maria et al., 2020). The difference in scale between local production and global consumption makes soybeans the most traded crop in value in the world (FAO, 2021). Such a broad and extensive trade network renders the soybean supply chain especially vulnerable to local perturbations at the growing regions. Local shocks on production sites can potentially have worldwide consequences, as evidenced by the 2012 season, when exceptional low yields in most of the Midwestern of the United States drove global soybean prices to the highest values ever recorded (Zhang et al., 2018).

Weather and climate events have direct influence on agricultural production (IPCC, 2012). On a global level, interannual climate variability is responsible for approximately 30% of the year-to-year variability in crop yields (Lobell and Field, 2007), but the influence of interannual climate variability could rise up to 60% of the yield variability in certain regions (Ray et al., 2015; Frieler et al., 2017). Extreme weather events are also linked to crop failures (Vogel et al., 2019). In addition, unprecedented weather conditions due to anthropogenic global warming may alter crop failure frequency and the climatic drivers behind failures. Recent warming trends are already impacting crops worldwide in multiple ways and further warm conditions are expected to exacerbate these impacts (Schauberger et al., 2017; Moore and Lobell, 2015; Ray et al., 2019; Zhao et al., 2017; Wolski et al., 2020; Iizumi and Ramankutty, 2016; Zhu and Troy, 2018).

While extreme weather events, such as abnormally low levels of precipitation or excessive heat, can alone cause disruptions of crop development (Deryng et al., 2014), the majority of climate-driven societal or natural shocks are the result of compound events (Zscheischler et al., 2017; Zampieri et al., 2017). Compound events are combinations of multiple climate drivers that lead to an extreme impact, without necessarily being extreme themselves (Leonard et al., 2014; Zscheischler et al., 2018). Compound events should ideally be assessed from an impact perspective or the analysis should at least account for the complexity of weather-impact relations, rather than relying exclusively on extreme weather states (Zscheischler and Fischer, 2020; van der Wiel et al., 2020). Dealing with this complexity requires the use of explicit models (van den Hurk et al., 2015; van der Wiel et al., 2020), and a common alternative is to use statistical models to represent compound events. From linear models (Ben-Ari et al., 2018; Vogel et al., 2021) to deep neural networks (Crane-Droesch, 2018), statistical models in climate studies have been successful in linking extreme impacts to weather and in explaining specific unusual events.

Explaining individual events is part of the event attribution domain. It aims to determine both the influence of random weather and the footprint of climate change in individual cases (Trenberth et al., 2015; van Oldenborgh et al., 2021). Storylines of climatic events that lead to high impacts may be used to explore complex events, related drivers and interactions, improving risk awareness and strengthening decision making (Shepherd et al., 2018). Storylines start from a given impact, be it historical or physically plausible, and create a physically-sound chain of events from the impact to the driving components (Shepherd et al., 2018). The advantages of this approach are to quantify and understand the driving components and the influence of

55 climate change, and also the possibility of perturbing the driving components for the creation of analogues. Analogues are
alternative realisations of a reference event that are perturbed by hypothetical conditions. Storylines can naturally embed the
complexity of compound events and offer a framework to explore future analogues under different global warming scenarios
(Shepherd, 2019). Since crop failures are usually the result of compound meteorological drivers, storylines can be built from
a historical crop season of interest in order to disentangle the driving components and to generate analogues of the historical
60 season under influence of climate change.

There are many recent studies that explore the interactions between crop and climate (Gawęda et al., 2020; Zipper et al.,
2016; Heino et al., 2018; Iizumi et al., 2014; Zampieri et al., 2017; Ogutu et al., 2018). Some have included the possible impacts
of global warming under different scenarios (Rosenzweig et al., 2014; Lobell and Tebaldi, 2014; Feng et al., 2019; Xie et al.,
2018). Others aimed to represent the compound nature of crop failures (Ben-Ari et al., 2018; van der Wiel et al., 2020; Vogel
65 et al., 2021; Hamed et al., 2021; Zhu et al., 2021). van der Wiel et al. (2020) show the complexity between climate and crops by
explicitly modelling the full distribution of climate impacts on crops with a physical crop model and large ensembles of climatic
data. They demonstrate that links between extreme weather and extreme impacts are non-linear and the need for modelling
impacts. Vogel et al. (2021) apply a statistical linear model to automatically identify the most relevant meteorological variables
for simulated extreme impact events in large ensemble crop data. They conclude that compounding effects are ubiquitous
70 across time and meteorological drivers for crop failures. Hamed et al. (2021) use a statistical linear model to identify dominant
within season climatic drivers that influence soybean yield variability in the US and highlight the synergistic effects between
summer heat and moisture conditions modulating the final impact on yields. They find that, in spite of beneficial summer
wetting and cooling in the Midwest region largely attributed to agricultural intensification, the frequency of damaging joint hot
and dry conditions remains largely unchanged. Ben-Ari et al. (2018) also apply a statistical linear model to successfully link
75 climatic conditions with crop failures, including the identification of an extreme season that was not detected by the existing
forecast models. Moreover, they analyse univariately the trends for each of the selected meteorological variables for different
levels of global warming. Building on these works, we expand the studies of global warming impacts on agriculture to include
multivariate analysis, by explicitly modelling the compound nature of meteorological variables and their interactions.

The aim of this work is to understand how global warming affects the meteorological conditions leading to crop failures.
80 More specifically, we explain historical soybean failures, explore possible future analogues and assess changes in the compound
drivers due to rising temperatures. The work is divided in three parts (Figure 1): first, we develop a statistical model that
links soybean failures generated by a crop model to local meteorological conditions. We use a non-linear and non-parametric
statistical model (random forest) that accounts for compound drivers and that allows interpretation of the driving conditions
(Figure 1a). Second, we apply the model to 6000 years of climate data under different scenarios of global warming for failure
85 analysis (Figure 1b). Third, we evaluate analogues of the 2012 season in the global warming scenarios using two different
approaches (Figure 1c). Details on features selection, model training and the setup for the future analogues, along with the
data used for this work, are presented in Section 2. The selected features are show in Section 3.1, while the performance of
the model and the explanation of the driving components are demonstrated in Section 3.2. The use of large ensembles for
global warming scenarios and the role of compound events for crop failures are found in Section 3.3, while the exploration

90 of analogues of the 2012 season is shown in Section 3.4. The findings are put into context and debated in Section 4, and a summary of the work with its main messages is presented in Section 5.

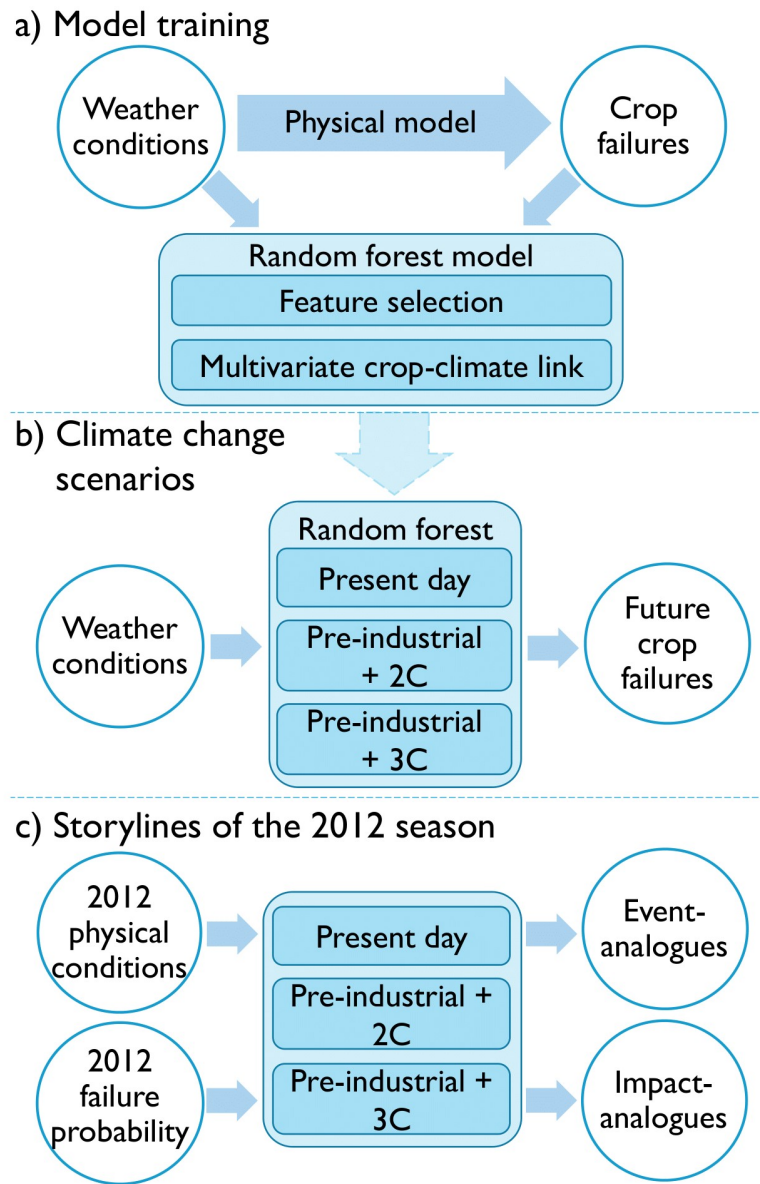


Figure 1. Experimental outline for this work. a) Model training: The process of training a random forest model to link multiple local meteorological variables to crop failures. b) Climate change scenarios: The extension of the trained random forest model for global warming scenarios to predict future soybean failure ratios. c) Storylines of the 2012 season: Construction of analogues to the 2012 season using two different approaches: the event-analogues and the impact-analogues.

2 Data and methods

2.1 Weather and crop data

We constructed a random forest (RF) model that identifies relationships between crop development and meteorological variables during the growing season. For crop data, we adopted yearly soybean yields (ton/ha of dry matter) generated by the global gridded crop model (GGCM) EPIC-IIASA (Balkovič et al., 2014), which is based on the Environmental Policy Integrated Climate (EPIC; Williams et al., 1995) field-scale crop model. This GGCM simulates complex relations between weather conditions and crops at planetary scales, by reproducing biophysical processes in the soil-plant-atmosphere system and providing crop-related outputs based on climatic-related inputs. Simulation outputs used in this study were performed for phase 3a of the Intersectoral Impact Model Intercomparison Project (ISIMIP; see <https://isimip.org> for details and protocols) and the Global Gridded Crop Model Intercomparison (GGCMI) initiative. It used as climatic inputs the GSWP3-W5E5 dataset, which is a merge between the GSWP3 (Global Soil Wetness Project phase 3) dataset (Dirmeyer et al., 2006) and the W5E5 dataset (Lange, 2019). It captures the period from 1901 to 2016 at a $0.5^\circ \times 0.5^\circ$ resolution. The reasons for using yields from crop models are the longer timeseries that allow for more years to be included in the training of the statistical model and uniformity of data quality for regions where there is low quality of observational data. Another advantage of using simulated crop models is that management and technology trends are static, whereas they are intrinsically embedded in the observed yield datasets. Other works have also adopted simulated yields for climate-crop analysis (Vogel et al., 2021; Zhu et al., 2021). Details of the EPIC-IIASA model's performance can be seen in Folberth et al. (2016); Müller et al. (2019). We used 100 years of data (1916 until 2016) to train the model and we limited the analysis to grid cells from the top ten US soybean producer states, which are (ordered by production volume): Illinois, Iowa, Minnesota, Indiana, Nebraska, Ohio, South Dakota, North Dakota, Missouri and Arkansas. Together, they represent over 70% of the US national soybean production and approximately 20% of the global soybean production (FAO, 2021). In addition, to ensure only rainfed soybeans were considered, we selected only grid cells that contained at least 90% of the grid as rainfed, which corresponded to 84% of the region studied (MIRCA2000; Portmann et al., 2010). For validation of the crop model, we compared the EPIC-IIASA simulated yields with the observed yields from the US Department of Agriculture (USDA, www.nass.usda.gov/Quick_Stats) for the region considered. EPIC-IIASA has higher mean and standard deviations values than the observed because the simulated yields are potential (Folberth et al., 2016). To evaluate the interannual variability, we obtained a coefficient of determination, R^2 , of 0.674. We also observed a good correlation between the two standardised datasets (Figure C1). We consider EPIC capable of replicating the interannual variability of the observed data.

For weather data, we used observed data obtained from the Climate Research Unit (CRU) TS4.04 dataset (Harris et al., 2020). It has global coverage at a resolution of $0.5^\circ \times 0.5^\circ$, covers the period from 1901 to 2019 at a monthly scale, and is based on weather station observations. The CRU dataset has a comprehensive range of climatic variables at monthly resolution (Table 1), which makes the dataset suitable for agricultural studies, as shown in Kent et al. (2017); Zhu and Troy (2018); Vogel et al. (2019); Hamed et al. (2021).

Variable name	Description	Units
Tmp	Mean temperature	°C
Tmn	Minimum temperature	°C
Tmx	Maximum temperature	°C
Dtr	Diurnal temperature range	°C
Precip	Precipitation amount	mm/month
Wet	Wet days per month	days
Vap	Vapour pressure	hPa
Pet	Potential evapotranspiration	mm/day
Frs	Ground frost days	days
Cld	Cloud cover	%

Table 1. Meteorological variables and their descriptions

125 Because the analysis involves also the exploration of future scenarios of global warming (GW), we included large ensembles of synthetic weather data produced by the global climate model (GCM) EC-Earth V2.3 (Hazeleger et al., 2012). As a global coupled climate model, it combines atmospheric, ocean, land surface and sea ice models at a resolution of $1.125^\circ \times 1.125^\circ$. We used large ensembles of short-time periods to represent the full range of possible realisations at different levels of global warming (Van der Wiel et al., 2019). Three scenarios are considered: a benchmark representing the present day climate of 130 2011-2015 (referred to as PD), a 5-year period representing an average global mean temperature 2°C above the pre-industrial levels (referred to as 2C) and another 5-year period corresponding to an average of 3°C above pre-industrial levels (referred to as 3C). To create the large ensembles for each GW scenario, we combined the 5-year periods with 16 different initial conditions and 25 different realisations based on stochastic physics. Together, they culminate in 2000 years of different simulations for each warming level scenario (Figure C2, see Van der Wiel et al. (2019) for more information on the ensemble setup). Finally, 135 we resampled the large ensembles in 20 members of 100 years to be consistent with the length of the historical dataset (referred to as grouped ensembles hereinafter).

2.2 Data aggregation and detrending

To facilitate the comparison of observed and modelled data, we first upscaled the CRU and crop model data to the same resolution of the EC-Earth data with the first order conservative remapping method (Jones, 1999). We spatially averaged all 140 data for the region studied (Figure 2) to focus on the regional scale of weather events and their crop yield impacts, as these have larger influence on global markets. Aggregating data spatially might lead to loss of information, especially on local extreme conditions, but the RF model performance is comparable when running on aggregated data and on all grid points (Table C1).

The setup of this work relies on comparing large uniform samples at different levels of global warming. Therefore, long term trends in the data needed to be removed. The yield data from the EPIC-IIASA model has a significant long term trend, which 145 is a result of the inclusion of atmospheric CO_2 concentration levels in the biomass growth calculation, a process called CO_2

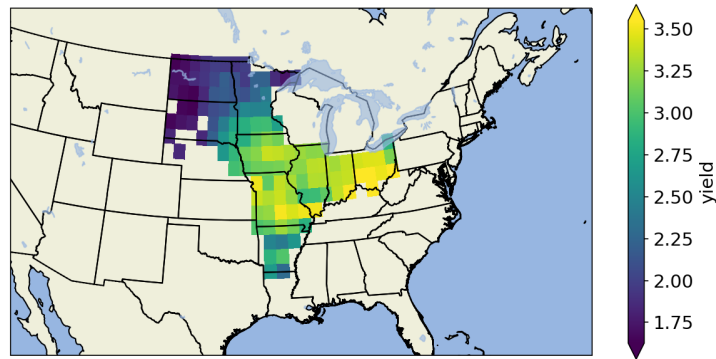


Figure 2. Selected grid points for the main producer states and the mean yields (ton/ha) per grid cell as simulated by the EPIC-IIASA model.

fertilisation (Deryng et al., 2016; Toreti et al., 2020). We regressed the yield data against the global CO₂ concentration levels to remove the long term trend (Figure C3). Here we explore the probability of soybean failure, which is defined by means of a threshold, similarly to Ben-Ari et al. (2018); Vogel et al. (2021); Zhu et al. (2021). Every season with yield one standard deviation below the mean was considered a failure. The meteorological variables from the CRU dataset were also detrended linearly to remove global warming influence. This way, we isolated the interannual variability component from long-term trends in both meteorological variables and crop yield timeseries.

2.3 Training and validation of the random forest model

We chose a random forest model to detect failures in soybean yields because of its high performance, flexibility and interpretability. Random forest (Breiman, 2001) is a non-linear and non-parametric statistical model for classification and regression. The model consists of an ensemble of independent decision trees. The decision trees are each trained on random sub-samples of the data to provide different predictions, and the final estimate of the model takes into consideration all predictions together, accounting for internal variability. Random forest has become widely popular and is applied in different fields of science. It presents high accuracy while providing low overfitting levels (Breiman, 2001) and is ranked among the best classifiers for real world problems (Fernández-Delgado et al., 2014).

The first step in designing the random forest model was the feature selection. Among the multiple meteorological variables considered (Table 1), some variables are more relevant than others in predicting crop failures for the region studied. There is also a temporal factor, where the importance of a meteorological variable shows a seasonal cycle. By removing non-relevant variables and months, the data fed to the random forest model is simplified and the model performance possibly increased. We considered multiple feature selection methods because there is no universal method, providing robustness to the selection. The methods are: analysis of variance (ANOVA) (Anderson, 2001), mutual information selection (Kraskov et al., 2004), chi-

squared test, and the internal feature selection of the random forest model (Breiman, 2001). At the end of the feature selection step, we obtained the most important meteorological variables to soybean failures.

Random forest models require the tuning of internal parameters for an optimal performance. We tuned the random forest's parameters following a resampling technique called cross-validation. It consisted of dividing the data in 10 different splits, where 9 splits are used to train the model and the remaining one is used for validation. The process is run 10 times so that every split is used once for testing. In addition, this process was repeated 5 times with different random divisions, leading to 50 runs in total. The final configuration of the RF parameters can be seen in Table C4. Because the crop yield dataset has less failure seasons than non-failure seasons, the dataset is imbalanced, affecting the model's capacity in identifying the minority class. To address this issue and improve the model performance, we assigned weights to the predictions of each class with values inversely proportional to their frequency. This increases the penalties for underrepresentation of the minority class, balancing the model.

With the RF setup complete, we trained and validated the RF model on the historical data following a 80/20 split, where 80% of the data was used to train the model and the remaining 20% was used to validate the model's performance on unseen data. Whilst non-parametric and non-linear models like random forests tend to achieve higher performance than simpler linear models, their complexity renders it more difficult to interpret the outcomes. We included partial dependence plots in the analysis. Partial dependence plots illustrate how model outputs vary according to alterations in one or more inputs, while preserving other inputs values (Friedman, 2001). These plots make the random forest model more interpretable and demonstrate the interactions between meteorological variables and crop yields.

In order to evaluate the random forest performance, we used the Matthews correlation coefficient (MCC) metric on the validation data. It is considered more informative and truthful for the evaluation of binary classification models than other metrics (Chicco and Jurman, 2020). The MCC assesses the performance of the model by quantifying the number of true positives (TP), the number of true negatives (TN), the number of false positives (FP) and the number of false negatives (FN), as illustrated in Equation 1. It ranges from -1 to 1, and a score of 0 is equivalent to a random prediction. The model requires both positive data and negative data to be correctly predicted to have a high score, which makes it particularly useful for imbalanced datasets (Chicco and Jurman, 2020). For a comprehensive overview of the model performance, we included additional performance metrics, which are: accuracy, precision, recall and f1-score. They can be seen in Appendix A.

$$MCC = \frac{TP * TN - FP * FN}{\sqrt{(TP + FP)(TP + FN)(TN + FP)(TN + FN)}} \quad (1)$$

We compare the random forest's performance to threshold conditioned methods, which are frequently used for multivariate risk assessment (Serinaldi, 2016; Salvadori et al., 2016; Zscheischler and Seneviratne, 2017). Two cases are here adopted: the "AND" and the "OR" cases. The "AND" case requires all variables to be equal or above hazard limits simultaneously for the failure definition. The "OR" case considers at least one of the conditions surpassing the limit to classify as failure (Salvadori et al., 2016). The threshold values for this work were defined as the average conditions of failure seasons in the observed data for each variable minus the corresponding standard deviation of that variables across the sample of failure seasons.

2.4 Exploration of global warming scenarios

200 To explore soybean failures at different levels of global warming, we used large ensembles of meteorological data from the EC-Earth model. The large ensembles have the advantage of explicitly simulating extreme events that would not be found in smaller datasets due to their rare nature (Van der Wiel et al., 2019). Because the RF model relies on thresholds that may be exceeded more or less frequently in biased climate model data, bias corrections were applied for the analysed regions. We estimated adjustment factors between the detrended CRU dataset between 1916 and 2016 and the PD scenario. Bias adjustment factors
205 were calculated with Detrended Quantile Mapping (Cannon et al., 2015), considering 25 degrees of freedom. The adjustment factors were then applied to the scenarios 2C and 3C, assuming a constant bias (see Figure C4 for bias correction results for each scenario and Figure C5 for spatial variability of corrected bias).

To assess the importance of the correlation of the conditions leading to failures, we created permuted versions of each large ensemble by randomly reshuffling the meteorological variables (van den Hurk et al., 2015; Santos et al., 2021), so that
210 the correlation structure between them was removed (referred to as shuffled versions). We also defined a metric called the relative compound contribution. Relative compound contribution measures the importance of the correlation structure between the meteorological variables leading to crop failures. It is a statistical interpretation comparing crop failures under different correlation structures. Relative compound contribution is calculated as the ratio of the failure ratio obtained with the original data to the failure ratio obtained with the shuffled data, $Relative\ compound\ contribution = \frac{Failure\ ratio_{original}}{Failure\ ratio_{shuffled}}$. The closer
215 to 1 the relative compound contribution gets, the less important the correlation structure between the variables is. For scenario exploration in this study, we use six scenarios: PD, PD-shuffled, 2C, 2C-shuffled, 3C and 3C-shuffled, each of which was fed into the RF model to obtain the soybean failure probabilities. We assessed the impact of climate change by comparing the failure probabilities for different return periods (calculated as the inverse of the exceedance probability of the specific event to occur) for the PD, 2C and 3C scenarios. Then, we quantified the relative compound contribution by comparing each level
220 of global warming with their shuffled variants. Finally, we compared the RF model with the threshold conditioned methods to account for differences in the approaches to predict changes with global warming and to quantify the relative compound contribution.

Machine learning algorithms do not extrapolate well for data outside the training range (Hengl et al., 2018). Given the random forest model in this work is trained on historical conditions but applied to GW scenarios, we tested the influence of
225 data outside the training range in the analysis following a three-step test: 1) Identify the number of cases outside the training range for each meteorological variable; 2) Restrict the values outside the training range to be within the training range; 3) Quantify possible differences and inconsistencies in the results between the data before and after the conversion of values outside the training data range (see Appendix B for more information).

2.5 Development of storylines

230 Storylines were here used to identify the driving components of a historical extreme event and to generate future analogues based on the same event. The 2012 soybean season is our case study, which presented extremely low yields across the main

producing regions of the United States. We first verified whether the trained RF model was able to correctly predict 2012 as a failure event and the failure probability assigned to it. To explore the possible analogues of the 2012 season in warmer scenarios, we took two approaches based on the event definition: 1) the first approach was based on the physical conditions that lead to the 2012 extreme event, defined here as "event-analogues". We quantified the joint occurrences of meteorological conditions exceeding the 2012 season conditions in the global warming (GW) scenarios; 2) the second approach was based on the impact metric of the event, its yield failure probability estimated by the random forest model, and we defined this approach as "impact-analogues" (as e.g. in Van der Wiel et al., 2019). Using this approach, we quantified the number of seasons in the GW scenarios with equal or higher failure probability predicted by the random forest model. Last, we compared the 2012 season meteorological conditions with the mean meteorological conditions of impact-analogues to account for possible changes in the physical aspects of the future analogues.

3 Results

3.1 Feature evaluation and selection

Following the methods section, the first step to build a random forest model is the feature selection. The four feature selection methods (Table C2) show potential evapotranspiration, diurnal temperature range, monthly maximum temperature and precipitation as the most important features. The considered soybean season in the US ranges from May to October, and we see that the months with the highest sensitivity to meteorological conditions are July and August (Figure C6). The two months correspond to the reproductive phase of soybeans in the region studied (Bastidas et al., 2008; Hatfield et al., 2018), which is a vulnerable crop stage to weather stress (Hatfield et al., 2011; Siebers et al., 2015; Hatfield and Prueger, 2015; Hamed et al., 2021). Based on this, we test an alternative version of the meteorological variables limited to July and August and aggregated along the two months. Results show the aggregated data outperforms the monthly data (Table C3). We therefore adopt for this study the aggregated version of the meteorological variables along July and August and compare them to their climatology to identify general features (Figure 3). Failure years are warmer, have lower levels of precipitation and less wet days, larger daily temperature range, higher levels of potential evapotranspiration and lower fractions of cloud cover when compared to the climatology. Vapour pressure and ground frost frequency do not show significant differences between normal and failure seasons, so they are removed from the model training.

The remaining meteorological variables have high correlation levels between themselves, as seen in Figure 3b. To separate which correlations have statistical redundancy and which have not, we examine each meteorological variable individually. Among the monthly temperature variables, mean (tmp), minimum (tmn) and maximum (tmx) temperature variables are highly interconnected. Tmx shows the best performance among the three variables, so we select tmx as the representative of temperature variables. Monthly precipitation and wet days per month are also highly interconnected, but their performance is similar. As precipitation is a precursor of wet days per month in the CRU dataset (Harris et al., 2020), monthly precipitation is selected. Potential evapotranspiration exhibits high correlation values to all other variables because potential evapotranspiration is derived from temperature, vapour pressure and cloud cover (Harris et al., 2020). Therefore, we consider potential evapo-

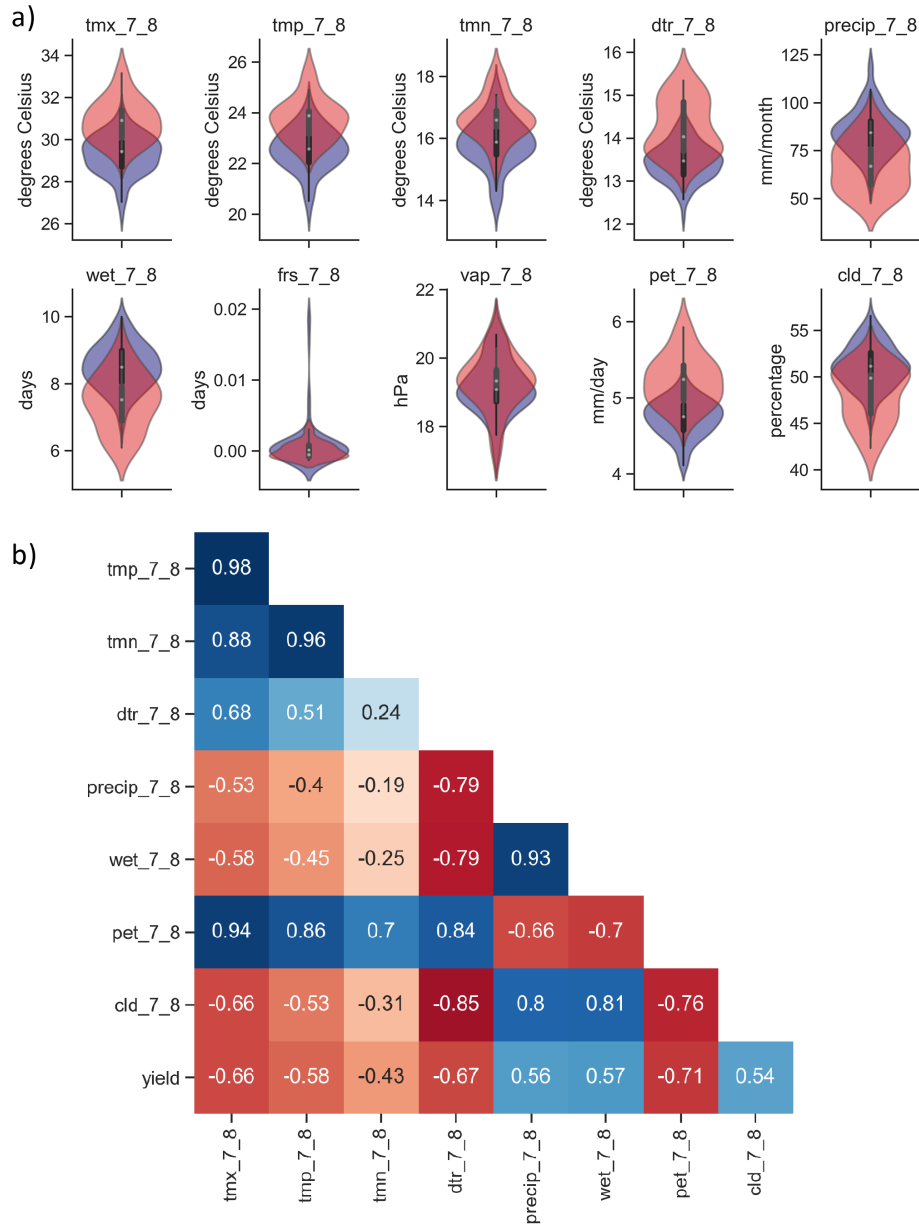


Figure 3. a) Probability distribution function of monthly values for meteorological conditions of soybean seasons with (red) and without (blue) failures for maximum monthly temperature (tmx), precipitation (precip), diurnal temperature range (dtr), vapour pressure (vap), potential evapotranspiration (pet) and cloud cover (cld). Numbers 7 and 8 indicate the months of July and August respectively. b) Pearson's correlation matrix indicating the correlation levels for meteorological variables aggregated along July and August, and crop yields.

transpiration redundant for this specific experiment. Finally, the three variables selected are maximum monthly temperature, precipitation and diurnal temperature range (DTR). They still have considerable levels of correlation, but these have a physical meaning, highlighting the compound nature of meteorological variables leading to crop failures in the region.

3.2 Random forest model evaluation

To evaluate the performance of the random forest (RF) model to link meteorological variables to crop yield failures, we use the Matthews correlation coefficient (MCC) metric (eq. 1), and compare the results with the "AND" and "OR" threshold conditioned approaches for reference. The RF model has the highest MCC score at 0.61, while the "AND" approach has 0.54 and the "OR" method only 0.34. The random forest model also performs better than the other methods in the additional metrics as seen in Figure C7. Therefore, the RF model is successful to link inputs with outputs and outperforms the threshold conditioned methods.

Partial dependence plots (Figure 4) explore which variables contribute to successfully distinguish between failure and non-failure conditions. They show the relationships between the meteorological variables' perturbations and crop failure probability. For the selected time period, crop failures are proportional to diurnal temperature range and maximum temperature. Precipitation shows a general inverse proportion to crop failure probability, suggesting low values of precipitation to increase failure probability, as indicated by Figure 4. Soybean failures in the region studied are thus associated to high levels of monthly maximum temperature, high levels of diurnal temperature range, and to low levels of precipitation. Furthermore, we observe that the links between crop failures and the meteorological variables are non-linear.

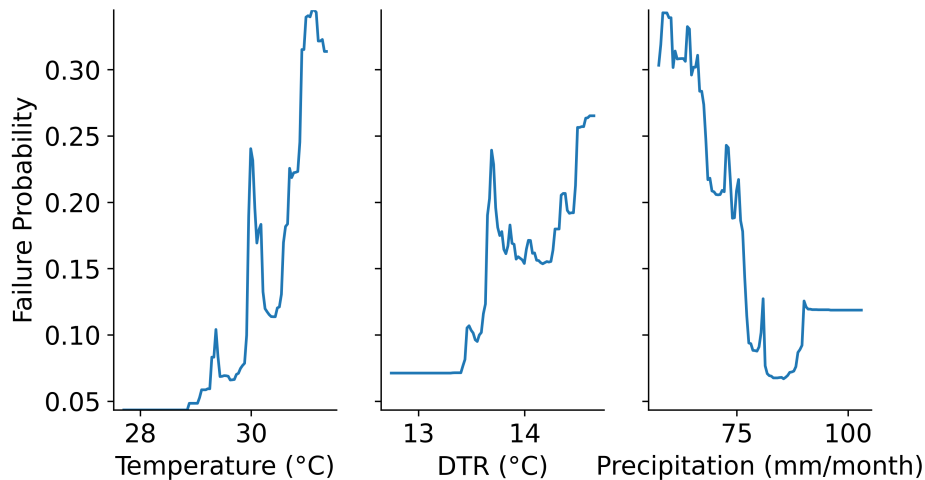


Figure 4. Partial dependence plots showing the failure probability (0 to 1.0) given the variation of the meteorological variables, monthly maximum temperature (Temperature), diurnal temperature range (DTR) and monthly precipitation (Precipitation) along the months of July and August.

The random forest model manages to successfully link weather conditions with crop failures, to capture the complexity of the failure, including non-linear relationships, and to outperform the approaches "AND" and "OR". The success in reproducing crop failure impacts from combinations of weather features for the historical datasets makes the model suitable to explore different climate scenarios.

3.3 Scenario exploration

The trained and validated random forest model is applied to the grouped ensembles to estimate crop failure probabilities for different global warming scenarios. First we determine if the crop failure probabilities obtained for the present day (PD) scenario is consistent with the historical data from EPIC-IIASA (Figure 5a). The width of the grouped ensemble (shading) indicates the many possible manifestations due to natural variability. The observed data are just a single realisation over that period and we see the observed data are within the range of the ensemble. For the estimation of global warming influence on crop failure probabilities, we quantify the return periods of failure probabilities for the PD, 2C and 3C scenarios (Figure 5b). The 2C scenario shows increased failure probabilities for any given return period with respect to the PD scenario, while the 3C scenario shows slightly higher failure probabilities than the 2C scenario. Global warming is therefore likely to increase the occurrence of soybean failures, but the difference between 2C and 3C is not significant.

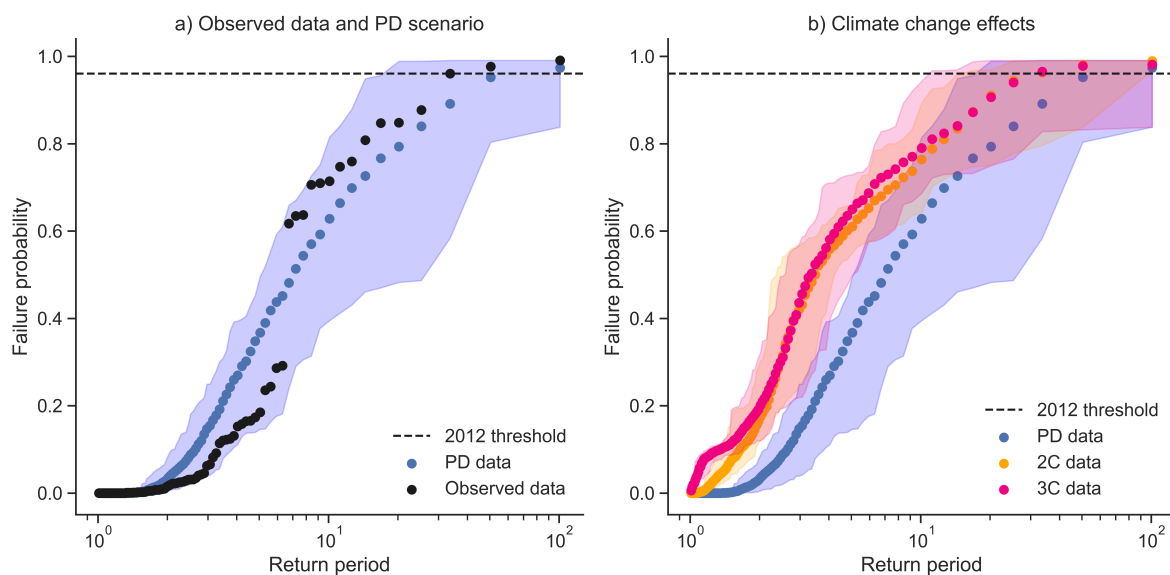


Figure 5. a) Random Forest model failure probabilities for different return periods, comparing observed data (black) to the PD scenario (blue). b) Return periods for PD (blue), 2C (orange) and 3C (pink). Dots show the 20 member mean, shading shows the range across the 20 members. The dashed line represents the failure probability of the 2012 season predicted by the RF model (Section 3.4).

The relative compound contribution is quantified by considering two versions of data arrangement: original (ordered) and shuffled (unordered, no correlation between variables). Figure 6 presents the crop failure probabilities for different return periods. In all scenarios, the return periods for the 0.5 failure probability threshold are shorter for the original data than for the shuffled data. Thus, the combination of the meteorological variables is relevant for the failure likelihood of soybeans (e.g. low precipitation concurs with above average temperatures), which highlights the compound nature of the crop failure drivers. For the 2000 years of data in each scenario, the RF model predicts 276 failure seasons for the PD original data whereas the shuffled version has 63 failure seasons predicted. The failure seasons for the 2C original and shuffled data are, respectively, 616 and 241 seasons, and for the 3C scenario, 621 and 353 seasons. Thus, while the number of failure seasons increases with global warming for the original data, the increase in the number of failure seasons for the shuffled data is larger. A reduction in the relative compound contribution for the 2C and 3C scenarios suggests the correlation structure between meteorological variables becomes less relevant for our definition of crop failure.

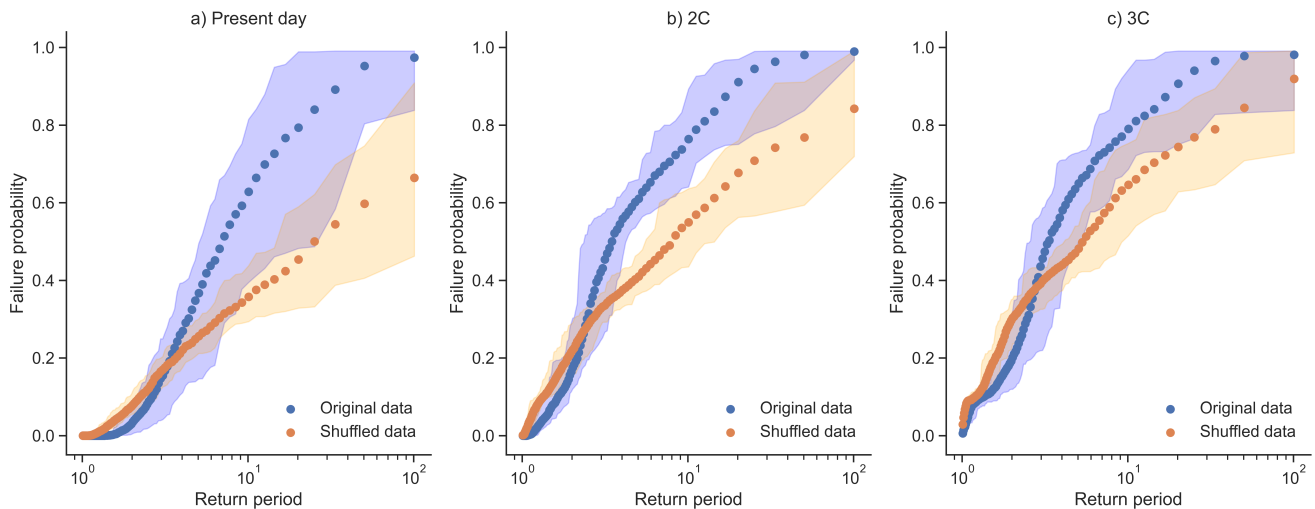


Figure 6. Random Forest model failure probabilities for different return periods, based on original data (variable correlations as normal, blue) and shuffled data (variable correlation removed, orange) for three climatic periods: a) present-day, b) pre-industrial +2C warming and c) pre-industrial +3C warming. Dots show the 20 member mean, shading shows the envelope of variability for the grouped ensemble.

We demonstrate the changes in the physical conditions for failure and non-failure seasons at each scenario (Figure 7 for 3C and Figure C8 for 2C). Median temperature values along July and August of failure years increase by 1.1 °C for 2C and 2.6 °C for 3C. Median precipitation values of failure years show little change, slightly increasing by 2.4 mm/month for 2C and 0.18 mm/month for the 3C compared to PD. Median diurnal temperature range values of failure years show a slight decrease of 0.33 °C and 0.36 °C for 2C and 3C scenarios, respectively. Despite median values of precipitation not changing significantly, we see an increase in the failure rate at the low-end of the rainfall distribution for 2C and 3C (Figure 7a top). Together with temperature extremes, the results suggest more frequent and intense joint warm and dry conditions in the future (Figure 7a).

However, we see also an increase in the failure distribution at higher (and thus less critical) precipitation levels for both 2C and 3C than for PD. A similar pattern is observed for the diurnal temperature range values, where less critical levels of DTR still incur in failures (Figure 7b). Extreme temperature values dominate the failure probability at warmer levels, which reduce the need of other variables to be extreme as well to generate failures. Therefore, the univariate increase in the temperature values due to global warming is associated with the increase of soybean failure ratios and with the decrease of the relative compound contribution.

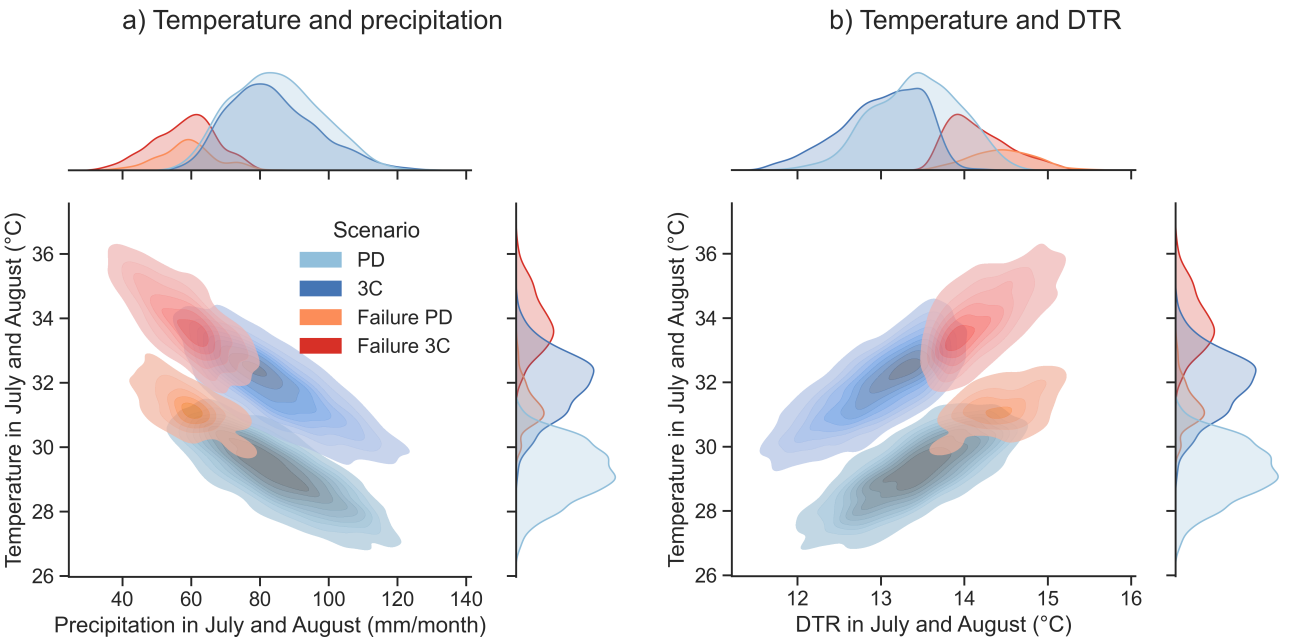


Figure 7. Kernel density estimate plots for seasons with and without failures at different GW scenarios: a) for maximum monthly temperature and precipitation and b) temperature and diurnal temperature range.

We compare the RF model with the "AND" and "OR" approaches to account for differences in the approaches in quantifying the relative compound contribution and the predicted changes with global warming. The "AND" approach shows the lowest ratio of failure for both original and shuffled data (Figure 8a), but also the highest levels of relative compound contribution (the difference between ordered and permuted datasets, Figure 8b). The "OR" approach only requires one critical variable for failure definition, which implies the highest failure ratios (Figure 8a). Moreover, breaking the correlation structure and shuffling the meteorological variables for this approach means increasing the number of failure seasons, which implies relative compound contribution has a decreasing role. Finally, the random forest model predicts an intermediate number of failure seasons. The RF model suggests relative compound contribution as an enhancing factor for crop failures (in contrast to the "OR" method), but not as much as suggested by the "AND" model (Figure 8a). Because the RF model presented the highest performance scores previously, we consider it to be the most reliable in quantifying relative compound contribution, while the others either

330 underestimate or overestimate the importance of compound structure for crop failures. Nevertheless, all three methods agree that relative compound contribution loses importance under warmer scenarios, trending towards a level of 1.0 (no relative compound contribution, Figure 8b).

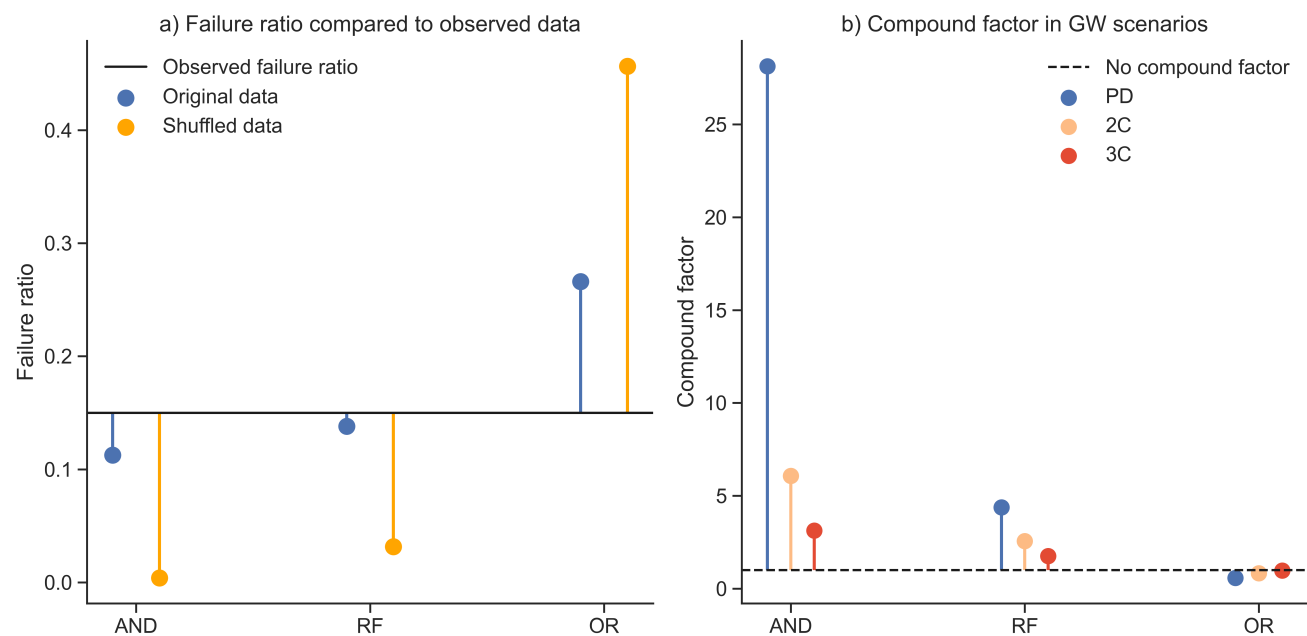


Figure 8. a) The failure ratios for ordered and shuffled PD data for the three approaches: AND, OR and RF with respect to the failure ratio of observed data; b) relative compound contribution level (original failure ratio divided by shuffled failure ratio) of each approach for the GW scenarios.

The extrapolation test indicates all three meteorological variables in the climate projections have values outside the training range, with temperature extremes exceeding the historical range as the most frequent case of extrapolation. However, the conversion of values outside the training range into values within the training range do not change the results obtained. This is because the model is a binary classifier, and the failure is defined within the historical data. Unprecedented extreme values do not change the failure definition, as it follows the assumption that values outside the training range are similar to the extremes in the training range (See Appendix B for further information).

With the extrapolation test demonstrating that values outside the training range do not affect the results, the impacts of different levels of climate change on soybean failure probability in the region are validated. Next we investigate if these general conclusions also hold for specific cases like the extreme 2012 season using a storyline approach.

3.4 Storyline analysis: the 2012 season and future analogues

The year 2012 had an extreme loss in US soybean production, with exceptionally low yields in the majority of the producing region (Figure 9a). We test the random forest model for the 2012 season to identify the meteorological variables associated with the failure event. The season stood out as all three selected meteorological variables presented extreme values (Figure 9b), with precipitation approximately at -2 STD (standard deviations), temperature above 2 STD, and DTR scoring the highest recorded value exceeding 3 STD. When used to predict the probability of crop failure due to the meteorological conditions described above, the RF model indicates a 0.96 likelihood of the 2012 season to be failure.

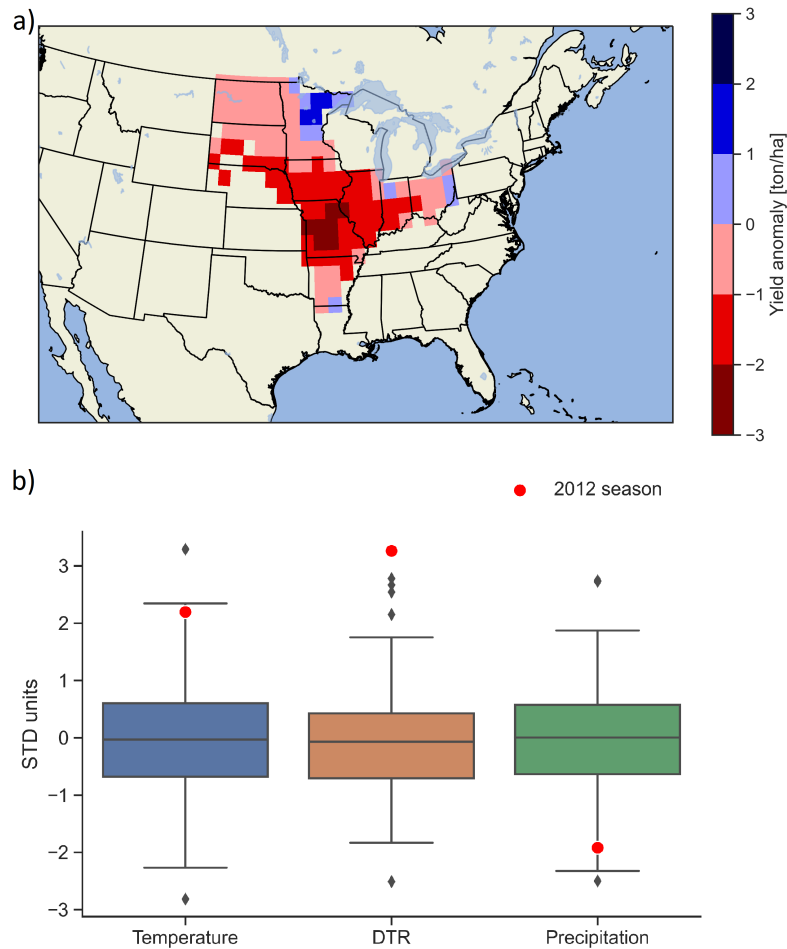


Figure 9. a) Map of the yield anomaly for the 2012 season compared to the averaged historical yield data from EPIC-IIASA; b) Normalised meteorological variables for the observed dataset and the corresponding 2012 season climatic conditions.

We create 2012 season analogues using both impact and event perspectives. Event-analogues are defined as the joint occurrences of the 2012 climatic conditions (as in Figure 9b), while impact-analogues are defined as the number of seasons with

failure probability assigned by the random forest model as equal or higher than the probability of the 2012 season (i.e. probability ≥ 0.96). The event-analogues have a occurrence ratio of 0.0015 (3 events in 2000 years, 666 years of return period) for both PD and 2C scenarios, but is not seen in the 3C scenario (Figure C9), suggesting a highly rare event that does not increase with global warming. However, we find a higher ratio of 2012 impact-analogues for the PD scenario, 0.022 (44 years of return period), 14 times the PD event-analogues. Impact-analogues also increase in frequency at warmer scenarios, 0.038 (26 years of return period) for 2C and 0.042 (24 years of return period) for 3C. The difference in results between the two types of analogues is mainly due to the DTR values, illustrated by Figure 10a, b, c, which shows the ratio of exceedance (the frequency of seasons exceeding a given threshold) of the 2012 meteorological conditions for each variable individually. Event-analogues require all variables to exceed the corresponding 2012 conditions. While we observe an increase in the number of seasons with temperature and precipitation exceeding the 2012 conditions in global warming scenarios, DTR does not increase with GW. Therefore, DTR becomes a bottleneck in the generation of event-analogues. Impact-analogues, on the other hand, are predicted to increase with global warming because they are defined based on the impact metric (failure probability) and bypass the DTR limitation. In addition, by relying on the impact metric, the meteorological conditions of the analogues can be analysed for changes due to global warming (Figures 10d, e, f and C10). The impact analogues of the 2012 year show warmer temperatures during summer with respect to the original event. For precipitation, the analogues are significantly drier than the 2012 year during July and August, the months in which the RF model takes into account. Finally, the analogues present lower DTR values during most of the year.

4 Discussion

A large portion of crop failures is attributed to combinations of meteorological drivers (Zampieri et al., 2017; Zscheischler et al., 2017) and the interactions between weather and crops are known to be nonlinear (Schlenker and Roberts, 2009; Zscheischler et al., 2017). It is a challenge, therefore, to identify the variety of combinations of weather conditions that can lead to crop failures. We argue that a model explicitly designed based on the impact, here crop failure, allows the conversion of a multivariate problem into a univariate variable, which simplifies the analysis, and improves the quality of results (van der Wiel et al., 2020). The random forest model here developed is successful at predicting soybean failure seasons and shows an overall better performance than benchmark methods. It adds to the list of works that demonstrate the usefulness of impact-inspired approaches (Ben-Ari et al., 2018; Vogel et al., 2021; van der Wiel et al., 2020; Hamed et al., 2021; Zhu et al., 2021). The feature selection process used here combines machine learning with findings from the literature to identify compound drivers of soybean failures in the US. Temperature, precipitation and diurnal temperature range along July and August are deemed key climatic drivers in the region studied. The meteorological variables identified in this work are in agreement with the work of Vogel et al. (2021), which also shows temperature, precipitation and DTR to be important meteorological variables for crop development, and with the work of Hamed et al. (2021), that highlights the harmful combination of hot and dry conditions along summer for soybeans in the same region. This work considers only meteorological variables during the growing season of rainfed soybeans, so management practices, irrigation and sub-surface conditions are not considered. The meteorological

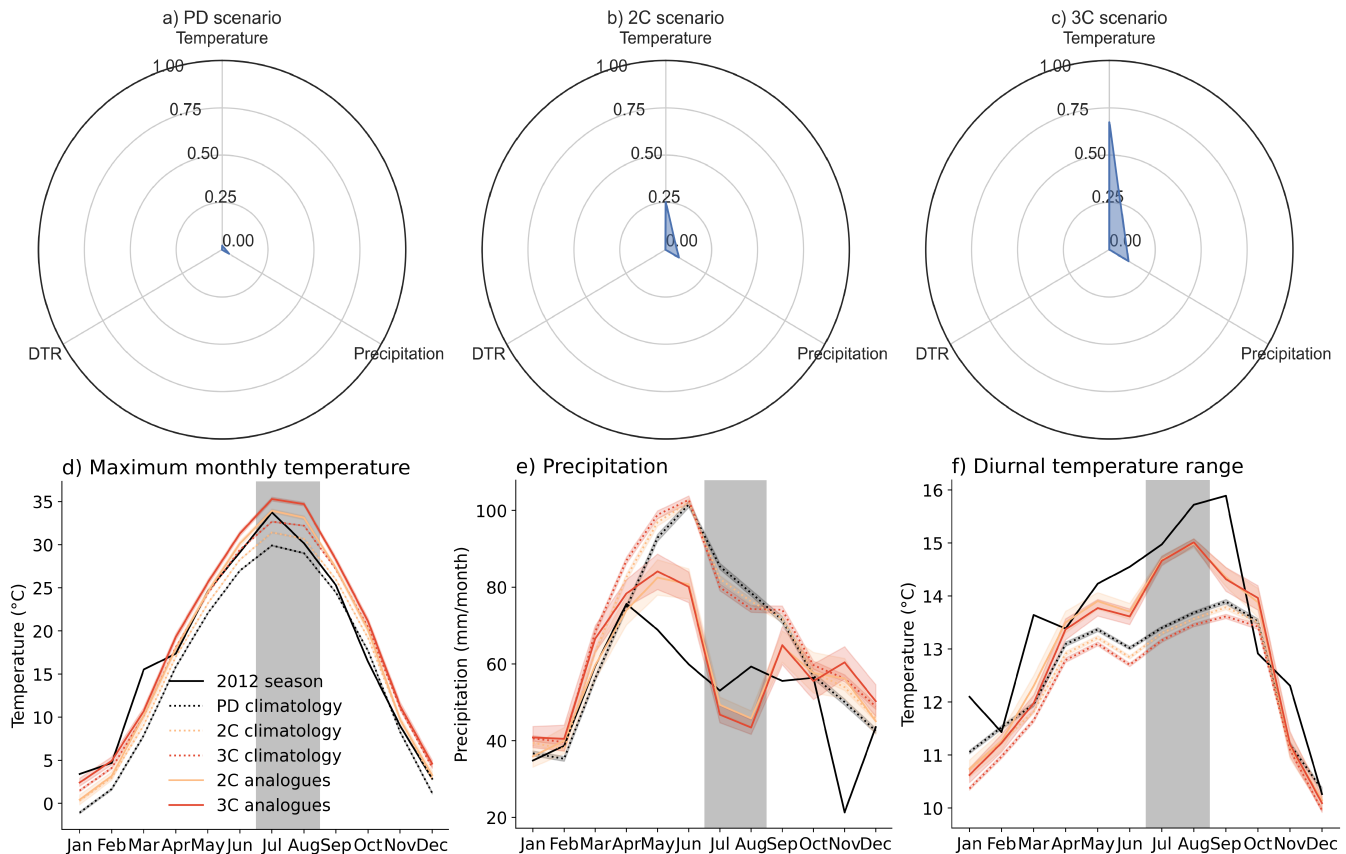


Figure 10. Radar graphs showing the number of seasons exceeding the 2012 values for each meteorological variable for Present Day (a), 2 °C global warming scenario (b) and 3 °C global warming scenario (c) scenarios. Annual cycle of the historical years, the 2012 season, the impact analogues and their corresponding climatology for maximum monthly temperature (d), precipitation (e) and diurnal temperature range (f). Coloured shadings represent 95% confidence interval for each scenario. Gray vertical bar represents the months considered in the training of the RF model.

variables are at a monthly scale, which has been used in past studies as well (Ben-Ari et al., 2018; Vogel et al., 2019; Hamed et al., 2021). However, adopting shorter timescales could lead to additional information on how weather interacts with crops. We spatially aggregate the climate and crop data over the region analysed to focus on crop failures and meteorological conditions at the regional scale. While this approach allows us to analyse the main dynamics of the region, information on local extreme conditions is not attained. Another caveat is that we do not account for CO₂ concentrations, due to our focus on year to year variability. Yet, CO₂ fertilisation is an important factor when considering crop-climate interactions and when looking at the effects of future climate change (Schlenker and Roberts, 2009; Deryng et al., 2016; Toreti et al., 2020).

Even though extrapolation with statistical models carries risks (Hengl et al., 2018), there are works that train statistical models on historical data and apply them on global warming scenarios (Schlenker and Roberts, 2009; Roberts et al., 2017;

Crane-Droesch, 2018; Zhu et al., 2021). The random forest model used here is a classifier trained to detect a class of failure events determined by the historical dataset. The decision trees within the random forest are threshold-based, so values outside the training range are categorised together with historical extremes. Furthermore, the purpose of the work is to measure the frequency of historical failures and analogues under future conditions, instead of quantifying the magnitude of failures under unprecedented extreme conditions. Finally, we run an extrapolation test and results show no influence of values outside the training data range in the results (Appendix B). Together, these factors validate the application of the random forest model for global warming scenarios under these assumptions.

We use three large ensembles with different levels of global mean surface temperature to investigate the influence of climate change on crop failure probabilities. Soybean failures increase in frequency for both 2 °C and 3 °C warmer worlds. When compared to the literature, some works support future global warming negatively affecting soybeans in the United States (Schlenker and Roberts, 2009; Deryng et al., 2014; Schauburger et al., 2017; Zhao et al., 2017), while others indicate that soybeans in the same region could actually benefit from climate change due to an intensification of local rainfall (Lesk et al., 2020). In the EC-Earth runs, we see a drying trend for extreme years in the Midwestern US (Figure 10d), which explains the different results. Dynamical aspects of global warming have large uncertainties due to high internal variability (Fischer et al., 2014) and the ensemble of CMIP6 models do not show significant changes for the months of July and August in the region studied (Almazroui et al., 2021). The adoption of different global climate models and the evaluation of climate change impacts conditioned on storylines of different levels of precipitation are alternatives that could explain the discrepancies seen above and should be further explored in the future. Furthermore, we do not consider potential adaptation measures by farmers such as the expansion of irrigation systems to counteract any possible drying trends.

Our results show climate change is expected to impact both univariate and multivariate components of crop failure. From an univariate perspective, temperature is expected to increase significantly, contributing to more frequent failures. In a warmer world, the same levels of precipitation lead to higher rates of crop failures than under the current climate conditions. The DTR projections indicate a descending trend, which in itself reduces crop failure probability according to our model. DTR is highly relevant for crop development, with previous studies showing the multiple impacts it can have on crops (Lobell, 2007; Zhang et al., 2013; Chen et al., 2015; Verón et al., 2015; Hernandez-Barrera et al., 2017; Rahman et al., 2017; van Etten et al., 2019). High values of DTR suggest peaks in high day-time temperature, which can disrupt the photosynthetic activity of crops (Allakhverdiev et al., 2008). High values of DTR can also indicate low night-time temperatures or night frosts, with capacity to damage crops during all stages of crop growth (Barlow et al., 2015). A study based on EPIC to simulate maize yields in the US has demonstrated that higher DTR values lead to greater evapotranspiration losses, reducing the yield outputs (Dhakhwa and Campbell, 1998). On the other hand, low values of DTR could indicate low solar radiation or high cloud coverage, both harmful for crops (van Etten et al., 2019; Vogel et al., 2019; Lobell, 2007). The decrease in DTR values due to global warming is mainly associated with a higher increase of minimum night-time temperature than daytime temperature (Qu et al., 2014; Sun et al., 2019). From a multivariate perspective, the correlation structure of the variables contributes to the occurrence of compound events, as previously shown by (van den Hurk et al., 2015) and (Santos et al., 2021). Yet, we observe a decrease in its importance under global warming conditions for the failure yield threshold adopted here (Figure 6). A higher frequency of

years with critical temperature during summer makes crop failures mostly dependent on precipitation values. Therefore, while still physically a compound event, the soybean failures under global warming become statistically similar to a univariate event based mostly on precipitation.

The random forest model defines the 2012 year as a highly likely failure season. That year, the climatic conditions during the reproductive phase of the crop were dry, hot and had a particularly high diurnal temperature range. When considering the event-analogues, i.e. looking at the event given its meteorological specifics, results show the 2012 season to be particularly rare and unlikely to increase in frequency due to climate change in the projections considered herein. Yet, when assessing the impact-analogues, defined as the likelihood of events with a similar failure probability using the random forest model, more events are identified in the PD scenario compared to the event-analogues. Furthermore, we find a significant increases are predicted for warmer scenarios. The differences between event-analogues and impact-analogues reflect the concept behind each approach. Event-analogues are based on the physical conditions of the event and obtained by quantifying the joint occurrence of these conditions in the ensembles. Impact-analogues, on the other hand, are based on the impact metric, accounting for all combinations of weather that lead to the same failure probability of the 2012 season. This difference between an event-based and impact-based approach was also highlighted by (van der Wiel et al., 2020). In spite of the exceptionally high DTR value for the 2012 season, the GW scenarios show decreasing DTR values with respect to the mean temperature increase. This evidence is supported by the literature, suggesting DTR is inversely proportional to global warming (Qu et al., 2014; Sun et al., 2019). Lower DTR values therefore constrain the increase of 2012 event-analogues, even though the other two meteorological variables show a significant increase. Since the random forest is able to explicitly account for the impact of the 2012 season, it detects other possible combinations of meteorological variables leading to 2012 impact-analogues. Furthermore, impact-analogues of the 2012 season in the future display a change in their physical properties: they are hotter and drier, but with lower values of diurnal temperature range. Results highlight the importance of the inclusion of impact-analogues in storylines creation. Storylines have been commonly used to generate counterfactuals by reproducing similar physical events to historical ones, adopting an event-inspired perspective (Shepherd, 2019; Sillmann et al., 2020). However, storyline counterfactuals (Shepherd et al., 2018) could profit from also explicitly considering the impact perspective, as we have shown with the impact-analogues created with the random forest model to directly model crop failures. The inclusion of the impact perspective into storylines allows for a more comprehensive view of future realisations when compared to considering only the occurrence of similar physical events. Note that for society it is the impacts that matter, rather than the meteorological condition. Furthermore, using impact-analogues allows for the estimation of possible changes in the physical characteristics of analogues due to global warming, increasing the robustness of climate risk assessment for future scenarios.

5 Conclusion

This work presents an evaluation of the impacts of global warming on weather-induced soybean failure events. Its novelty lies in combining a statistical model capable of simulating non-linear and compound interactions, the random forest model, with large ensembles of future global warming scenarios. The steps to create the model are the selection of the most important

meteorological variables during the growing phase of the crop and the training of the model on historical data. We explore the influence of global warming on soybean crop failure with the use of large ensembles at different levels of global warming. The model is successful at identifying failure seasons in the historical data and selecting the most relevant meteorological variables for crop failures. When compared to two benchmark methods, the model presents an overall better performance.

465 The main findings of the paper suggest soybean failures in the Midwestern United States are likely to increase with global warming mainly due to warmer atmospheric conditions during summer. With more frequent warmer years, the joint hot-dry conditions leading to crop failures become more common. Conversely, the increase in frequency of warmer years renders the occurrence of joint hot-dry extremes more dependent on summer precipitation anomalies, reducing the importance of the relative compound contribution. With global warming, the crop failures approximate statistically to a more univariate
470 behaviour, despite still being physically the results of compound events. Estimations of future analogues of the 2012 season diverge according to the approach used. If considering the event-inspired threshold conditioned method, event-analogues are deemed extremely rare and do not increase in likelihood with global warming. However, when using the impact-inspired model here developed, we show that impact-analogues are actually more common than what was originally predicted by the threshold conditioned method, and the number of analogues is expected to significantly increase with warmer climates. Moreover, we
475 observe changes in the physical properties of the impact-analogues under global warming, becoming warmer and drier, but with lower diurnal temperature range levels. Impact-analogues complement event-analogues, improving the risk estimation of storylines.

Appendix A: Additional performance metrics

To provide robustness to the performance analysis, additional performance metrics were used to evaluate the model. Accuracy
480 quantifies the amount of true positives (TP) and true negatives (TN) out of the total data (that is the true data plus false positives (FP) and false negatives (FN) (eq. A1). Precision defines the fraction of true positives cases out of the total predicted positive cases by the model (eq. A2). Recall measures the correct fraction of positive cases out of the true positive cases (eq. A3). The F1 score is a metric used to address false positives and negatives (eq. A4).

$$Accuracy = \frac{TP + TN}{TP + TN + FP + FN} \quad (A1)$$

$$485 \quad Precision = \frac{TP}{TP + FP} \quad (A2)$$

$$Recall = \frac{TP}{TP + FN} \quad (A3)$$

$$F1 = \frac{2TP}{2TP + FP + FN} \quad (A4)$$

Appendix B: Extrapolation test

Machine learning algorithms have the drawback of not extrapolating well for data outside the training range. However, there are works that use the extrapolation technique to predict crop impacts under global warming scenarios with statistical models (Schlenker and Roberts, 2009). Yet, the setup of the experiment is to quantify the number of failure events in global warming scenarios based on failures already identified in the historical data. The presence of values outside the training data range might not affect the random forest model, because the same failure probabilities are assigned to these values as to the closest values in the training range (corresponding maximum and minimum values). This is due to the decision trees that compose the random forest. The decision trees divide the input space using thresholds, which group similar input values together. Values outside the training data are grouped together with the corresponding extreme values within the training data, because they are within the same input space according to the decision tree (lower or higher than a threshold value). We verify the validity of the experiment with an extrapolation test based on three steps: 1) Identify the number of cases outside the training range for each meteorological variable; 2) Convert the values outside the training range into the closest values within the training range; 3) Quantify differences and inconsistencies in the results between the GW scenarios before and after the conversion.

The number of events in each GW scenario that is outside the training range is shown in Table B1. After the conversion of values outside the training data range into values within the training data range, the results stayed the same for all scenarios (Figure B1). We assume the presence of values outside the training range not to influence the results obtained with the random forest model.

	PD Above	PD Below	2C Above	2C Below	3C Above	3C Below
Temperature in July and August	2	0	103	0	607	0
DTR in July and August	3	14	3	34	0	97
Precipitation in July and August	5	26	13	48	10	91

Table B1. Number of years with values above the historical maximum ("Above") and below the historical minimum ("Below") for each of the GW scenarios PD, 2C and 3C. Each scenario has 2000 years in total.

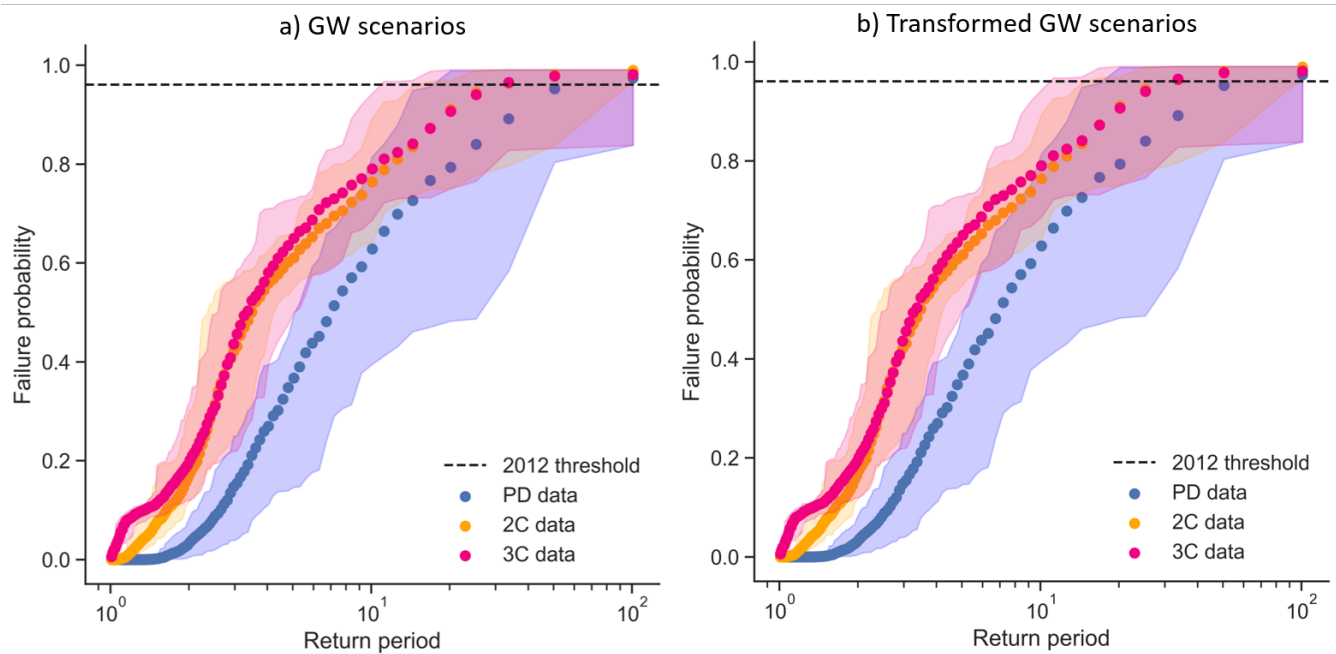


Figure B1. a) Random Forest model failure probabilities for PD (blue), 2C (orange) and 3C (pink), b) same as a) but for values adjusted to the training data limits. Dots show the 20 member mean, shading shows the range across the 20 members. The dashed line represents the failure probability of the 2012 season predicted by the RF.

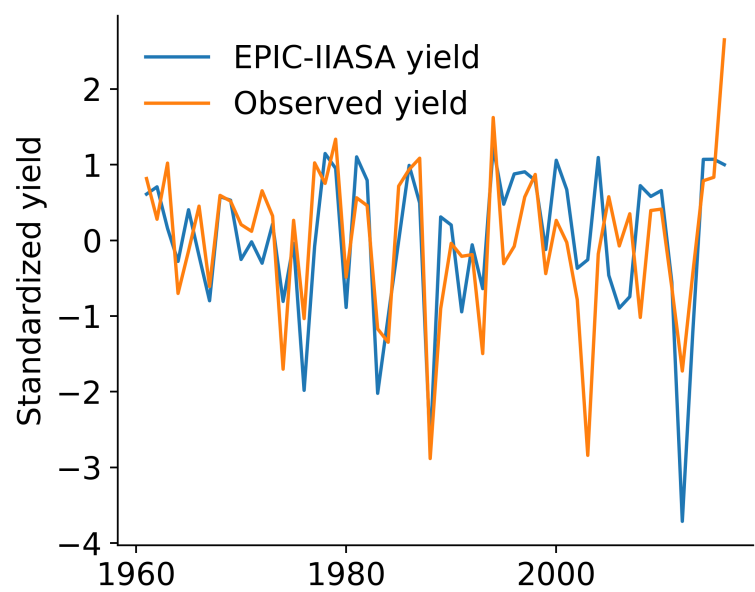


Figure C1. Standardized comparison between the EPIC-IIASA simulated yields and the observed yield dataset of the USDA (United States Department of Agriculture) for the region considered in this work.

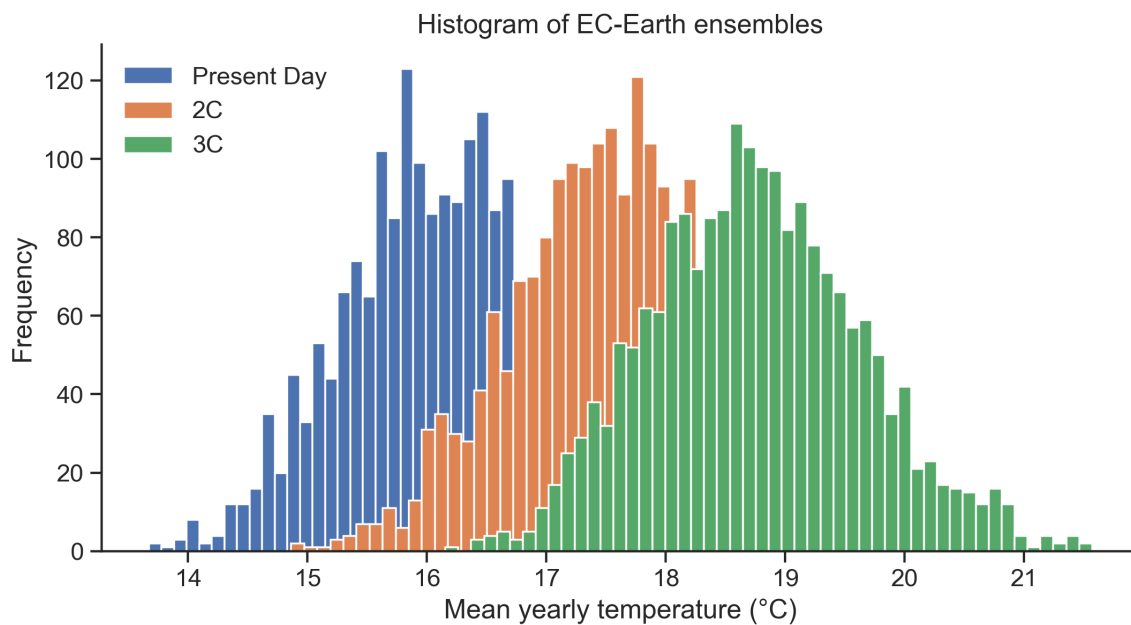


Figure C2. The distribution of mean yearly temperatures in the Midwestern US of EC-Earth ensembles for Present Day scenario (blue), 2 °C global warming scenario (2C, orange) and 3 °C global warming scenario (3C, green) scenarios.

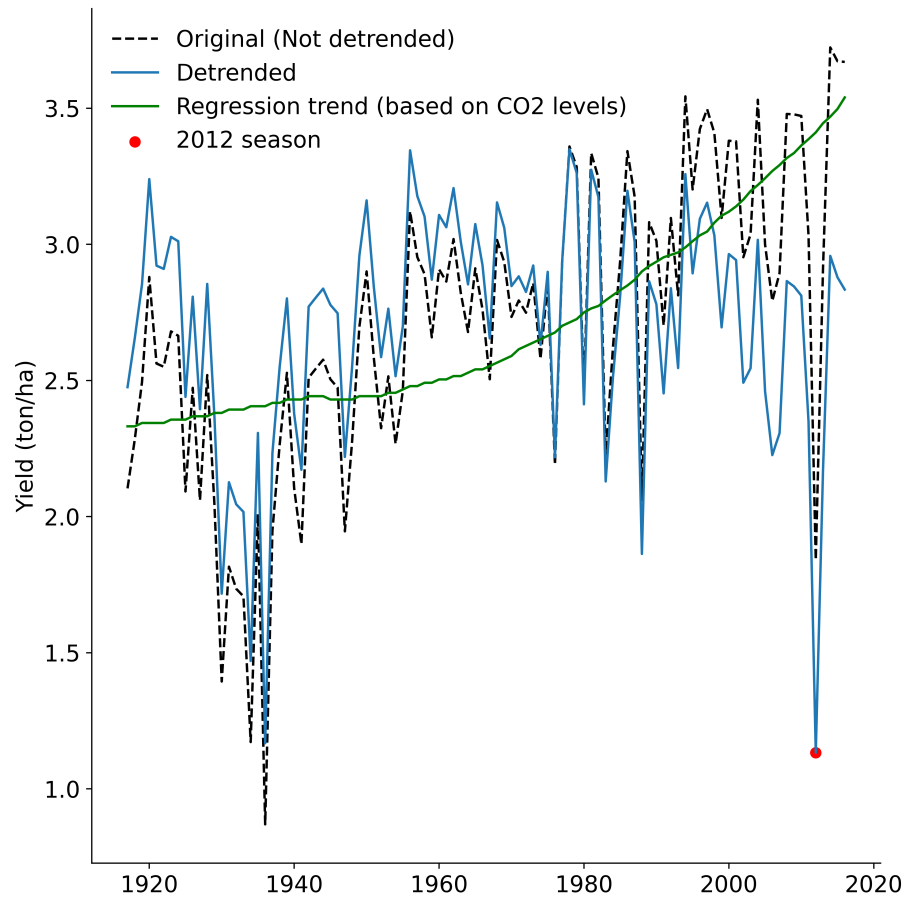


Figure C3. Timeseries of averaged US soybean yields for the selected area (black dotted line) and its detrended counterpart (blue). The 2012 season is highlighted in red. The regression trend based on the global CO2 levels that is used to detrend the soybean yields is shown in green.

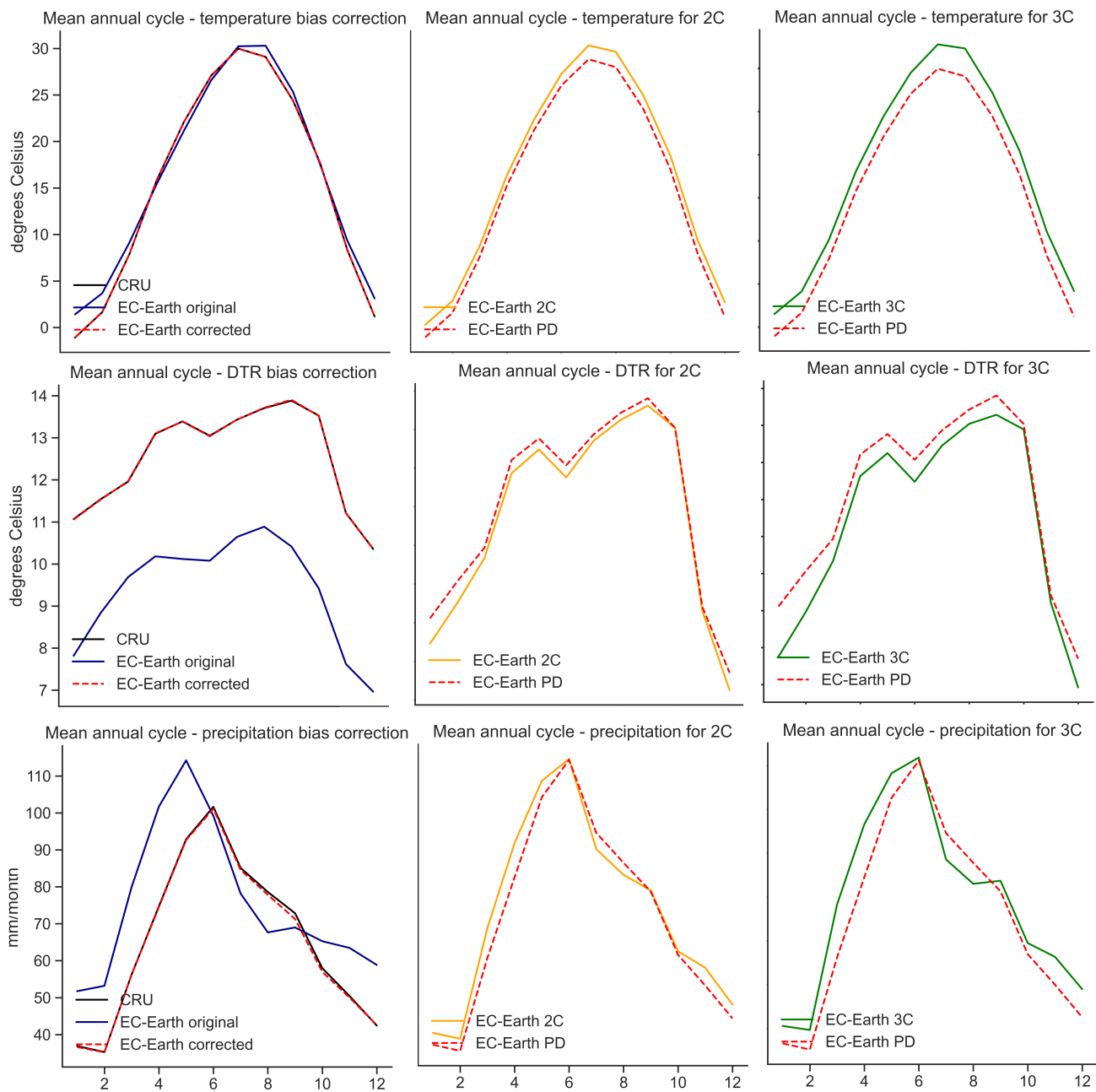


Figure C4. Mean annual cycle for the selected variables: Temperature (upper row), diurnal temperature range (DTR) (middle row) and precipitation (bottom row). Left column presents the observed data (black), the original EC-Earth PD data (blue) and the EC-Earth after bias correction (dashed red). On the central and right columns the bias corrected EC-Earth data for the Present Day scenario (PD, dashed red) is then compared with the bias corrected versions of the 2 °C (2C, central columns, orange) and 3 °C (3C, right column, green) scenarios.

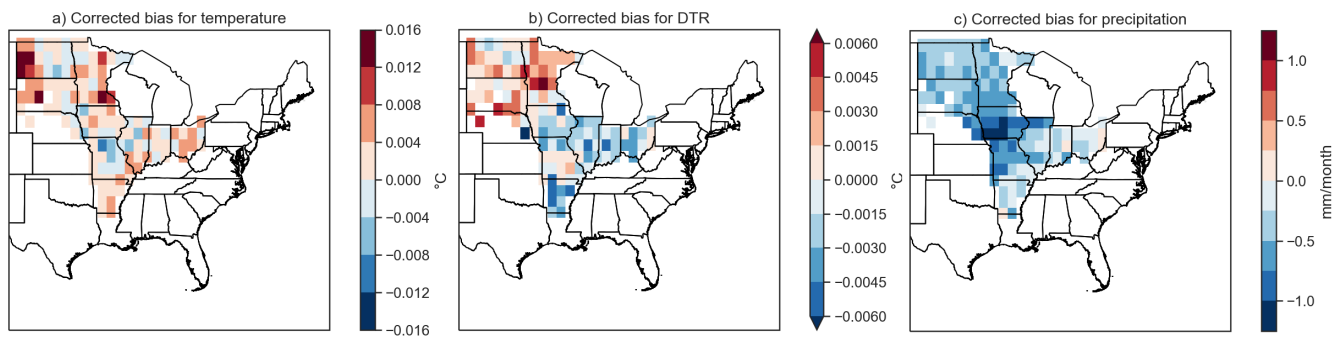


Figure C5. Spatial variability of bias corrected values between observed data and EC-Earth PD scenario for a) Monthly temperature values, b) Diurnal temperature range (DTR) and c) Precipitation.

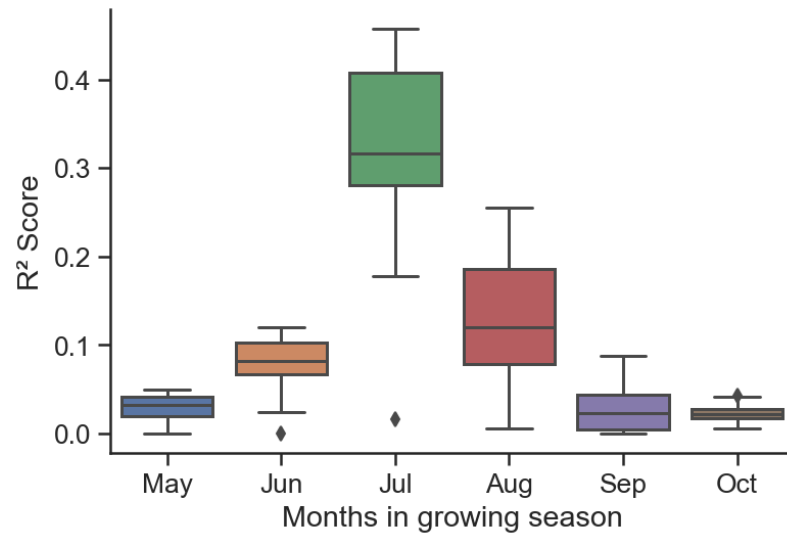


Figure C6. Coefficient of determination between soybean yields and all meteorological variables considered in this study grouped by month of the growing season.

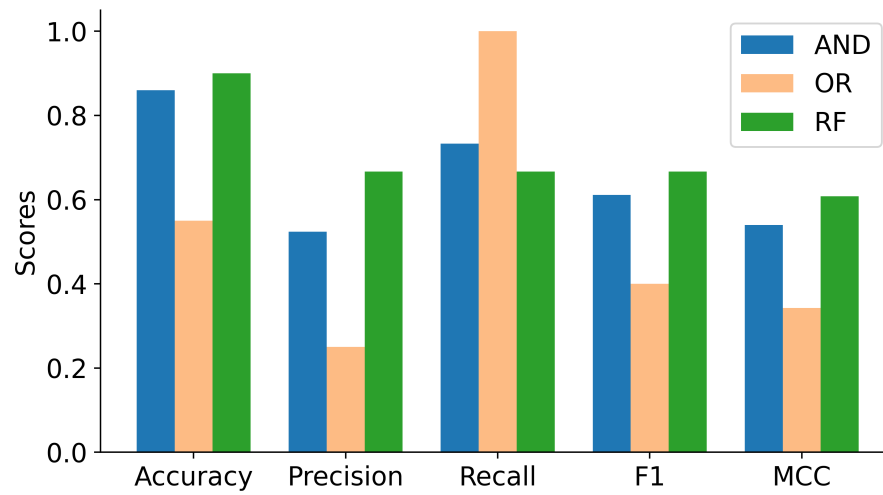


Figure C7. Evaluation of each approach in identifying crop failures for the observed data under different performance categories: Accuracy, Precision, Recall, F1 and MCC. The approaches are AND (blue), OR (orange) and RF (green).

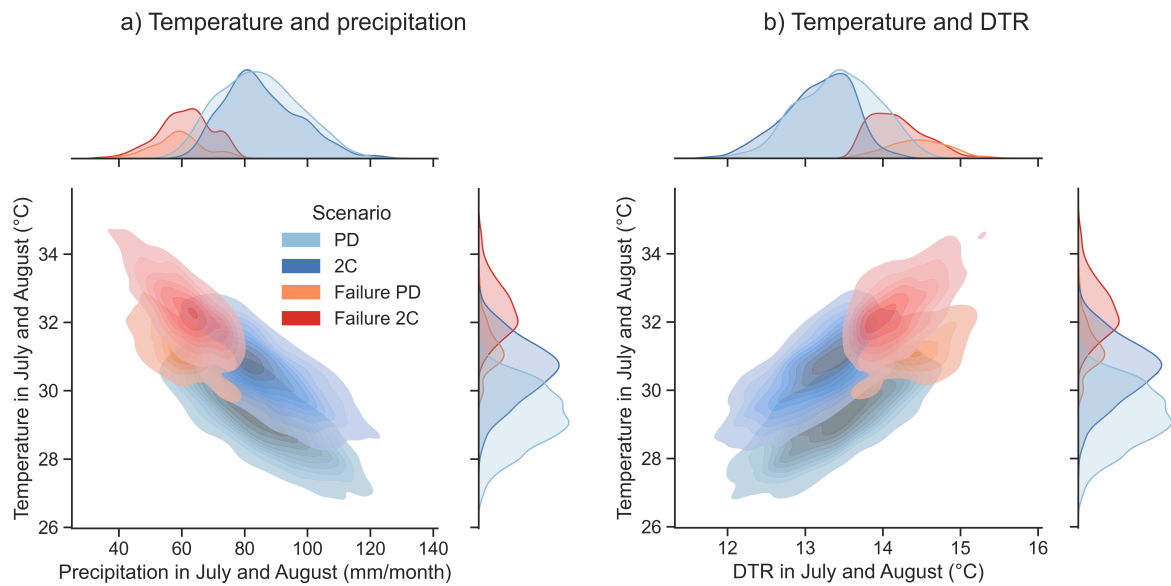


Figure C8. Same as Figure 7, but for the 2C scenario.

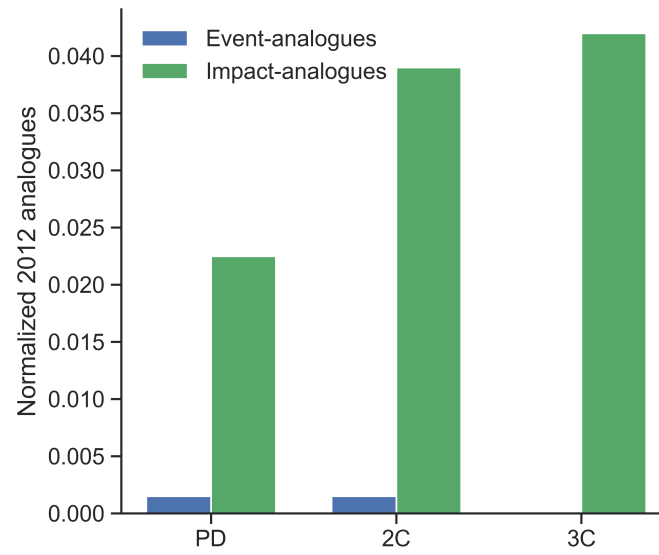


Figure C9. Event-analogues (blue) and impact-analogues (green) of the 2012 season for each GW scenario: Present Day scenario (PD), 2 °C (2C) and 3 °C (3C) scenarios.

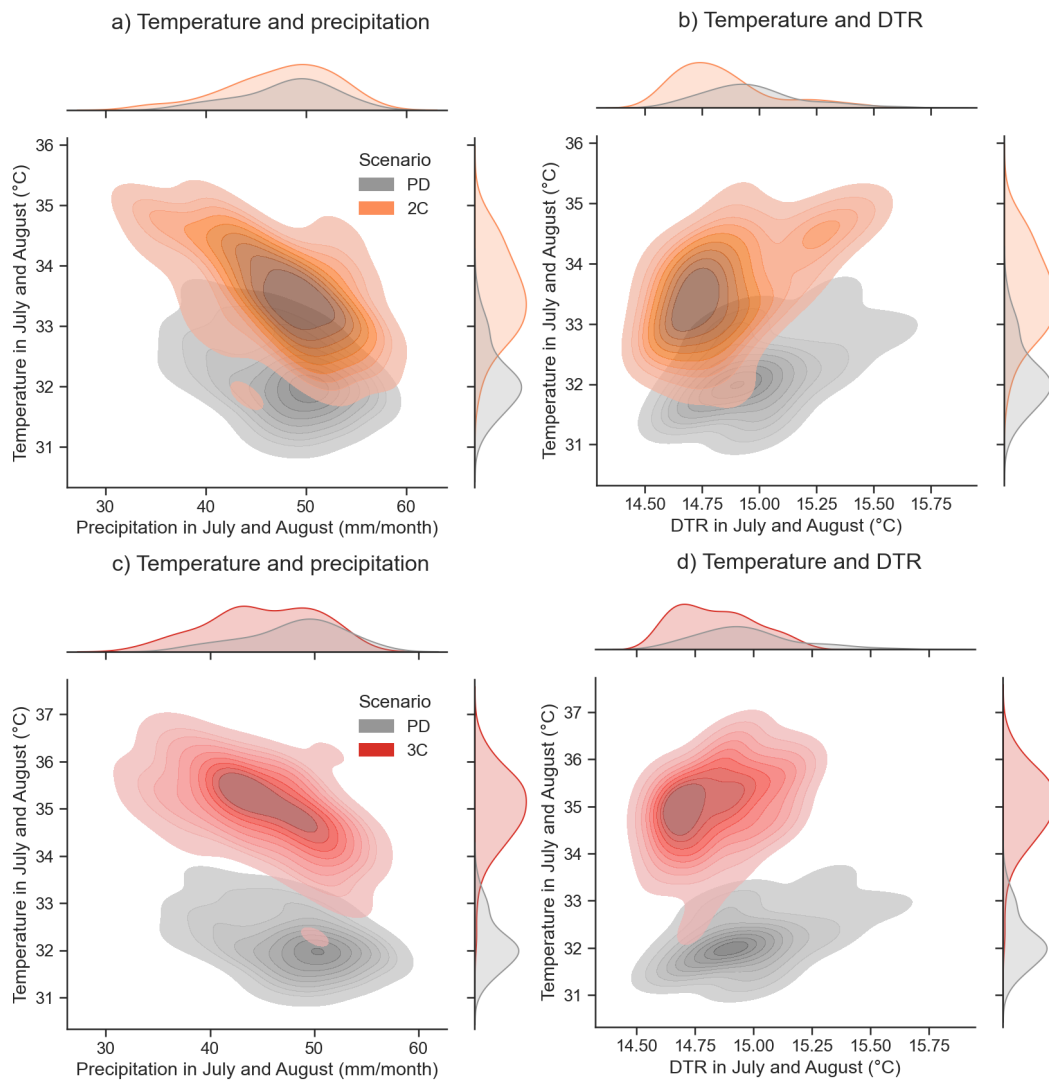


Figure C10. Same as Figure 7, but for the 2012 impact-analogues.

Spatial format	Accuracy	Precision	Recall	F1	MCC
Aggregated	0.9	0.67	0.67	0.67	0.61
Gridded	0.88	0.62	0.82	0.7	0.64

Table C1. Comparison of the random forest model performance between spatially aggregated data over the region studied and the gridded spatial format, considering all grid points.

Method	1st	2nd	3rd	4th	5th
ANOVA	pet_8	dtr_7	pet_7	tmx_8	tmx_7
Chi-2	pet_8	pet_7	dtr_8	dtr_7	precip_7
Mutual selection	pet_8	tmx_8	pet_6	tmx_7	dtr_7
Random forest	dtr_7	pet_7	pet_8	precip_7	tmx_7

Table C2. Rank of the most important features for different feature selection methods along the entire soybean growing season: ANOVA, Mutual information selection, random forest classifier and Chi-2. Variables considered are maximum monthly temperature (tmx), precipitation (precip), diurnal temperature range (dtr), vapour pressure (vap), potential evapotranspiration (pet) and cloud cover (cld). Numbers 7 and 8 indicate the months of July and August respectively.

Data arrangement	MCC	Accuracy	Precision	Recall	F1
Monthly	0.49	0.85	0.5	0.67	0.57
Aggregated	0.61	0.9	0.67	0.67	0.67

Table C3. Comparison of the random forest model performance between monthly data and aggregated data along reproductive phase of soybean growing season.

Parameter	Description	Value
n_estimators	Number of trees in the model	600
max_depth	Maximum tree depth	7
max_features	Maximum features per split	Square root of total features
class_weight	Weights associated with classes	"Balanced_subsample"

Table C4. Random forest model configuration of hyper-parameters.

Code availability. The code for this experiment is available at: https://github.com/dumontgoulart/agr_cli.

Data availability. CRU data is freely available with the cited literature. EC-Earth data is available with Karin van der Wiel (wiel@knmi.nl) on request. EPIC data is available at the Intersectoral Impact Model Intercomparison Project (ISIMIP).

Author contributions. HG, KvdV and BvdH contributed to the concept of the study. HG conduct the research and edited the manuscript.
510 KvdV, CF and JB provided the data. All authors discussed the analysis and results. BvdH and KvdW supervised the work and revised the manuscript.

Competing interests. The authors declare that they have no competing interests.

Special issue statement. This article is submitted to the special issue “Understanding compound weather and climate events and related impacts”.

515 *Acknowledgements.* This research has been supported by the European Union’s Horizon 2020 research and innovation programme under grant agreement No 820712 (project RECEIPT, REmote Climate Effects and their Impact on European sustainability, Policy and Trade). The GSWP3-W5E5 climate dataset and growing season data were provided by the Global Gridded Crop Model Intercomparison (GGCMI) initiative and the Intersectoral Impact Model Intercomparison Project (ISIMIP). We thank D. Wagenaar, L. Leunge, R. Hamed, A. Alexander and I. Lombardich for comments on previous versions of the manuscript.

- Allakhverdiev, S. I., Kreslavski, V. D., Klimov, V. V., Los, D. A., Carpentier, R., and Mohanty, P.: Heat stress: an overview of molecular responses in photosynthesis, *Photosynthesis research*, 98, 541–550, 2008.
- Almazroui, M., Islam, M. N., Saeed, F., Saeed, S., Ismail, M., Ehsan, M. A., Diallo, I., O'Brien, E., Ashfaq, M., Martínez-Castro, D., et al.: Projected changes in temperature and precipitation over the United States, Central America, and the Caribbean in CMIP6 GCMs, *Earth Systems and Environment*, 5, 1–24, 2021.
- Anderson, M. J.: A new method for non-parametric multivariate analysis of variance, *Austral Ecology*, 26, 32–46, <https://doi.org/https://doi.org/10.1111/j.1442-9993.2001.01070.pp.x>, 2001.
- Balkovič, J., van der Velde, M., Skalský, R., Xiong, W., Folberth, C., Khabarov, N., Smirnov, A., Mueller, N. D., and Obersteiner, M.: Global wheat production potentials and management flexibility under the representative concentration pathways, *Global and Planetary Change*, 122, 107–121, <https://doi.org/10.1016/j.gloplacha.2014.08.010>, 2014.
- Barlow, K., Christy, B., O'leary, G., Riffkin, P., and Nuttall, J.: Simulating the impact of extreme heat and frost events on wheat crop production: A review, *Field Crops Research*, 171, 109–119, 2015.
- Bastidas, A., Setiyono, T., Dobermann, A., Cassman, K. G., Elmore, R. W., Graef, G. L., and Specht, J. E.: Soybean sowing date: The vegetative, reproductive, and agronomic impacts, *Crop Science*, 48, 727–740, 2008.
- Ben-Ari, T., Boé, J., Ciais, P., Lecerf, R., van der Velde, M., and Makowski, D.: Causes and implications of the unforeseen 2016 extreme yield loss in the breadbasket of France, *Nature Communications*, 9, <https://doi.org/10.1038/s41467-018-04087-x>, 2018.
- Breiman, L.: Random Forests, 2001, <https://doi.org/10.1023/A:1010933404324>, 2001.
- Cannon, A. J., Sobie, S. R., and Murdock, T. Q.: Bias correction of GCM precipitation by quantile mapping: How well do methods preserve changes in quantiles and extremes?, *Journal of Climate*, 28, 6938–6959, <https://doi.org/10.1175/JCLI-D-14-00754.1>, 2015.
- Chen, C., Pang, Y., Pan, X., and Zhang, L.: Impacts of climate change on cotton yield in China from 1961 to 2010 based on provincial data, *Journal of Meteorological Research*, 29, 515–524, 2015.
- Chicco, D. and Jurman, G.: The advantages of the Matthews correlation coefficient (MCC) over F1 score and accuracy in binary classification evaluation, *BMC genomics*, 21, 1–13, 2020.
- Crane-Droesch, A.: Machine learning methods for crop yield prediction and climate change impact assessment in agriculture, *Environmental Research Letters*, 13, <https://doi.org/10.1088/1748-9326/aae159>, 2018.
- Deryng, D., Conway, D., Ramankutty, N., Price, J., and Warren, R.: Global crop yield response to extreme heat stress under multiple climate change futures, *Environmental Research Letters*, 9, <https://doi.org/10.1088/1748-9326/9/3/034011>, 2014.
- Deryng, D., Elliott, J., Folberth, C., Müller, C., Pugh, T. A., Boote, K. J., Conway, D., Ruane, A. C., Gerten, D., Jones, J. W., et al.: Regional disparities in the beneficial effects of rising CO₂ concentrations on crop water productivity, *Nature Climate Change*, 6, 786–790, 2016.
- Dhakhwa, G. B. and Campbell, C. L.: Potential effects of differential day-night warming in global climate change on crop production, *Climatic Change*, 40, 647–667, 1998.
- Dirmeyer, P. A., Gao, X., Zhao, M., Guo, Z., Oki, T., and Hanasaki, N.: GSWP-2: Multimodel Analysis and Implications for Our Perception of the Land Surface, *Bulletin of the American Meteorological Society*, 87, 1381 – 1398, <https://doi.org/10.1175/BAMS-87-10-1381>, 2006.
- FAO: Food and Agricultural Organization of the United Nations Statistical Database, Tech. rep., 2021.

- 555 Feng, P., Wang, B., Liu, D. L., Waters, C., and Yu, Q.: Incorporating machine learning with biophysical model can improve the evaluation of climate extremes impacts on wheat yield in south-eastern Australia, *Agricultural and Forest Meteorology*, 275, 100–113, <https://doi.org/10.1016/j.agrformet.2019.05.018>, 2019.
- Fernández-Delgado, M., Cernadas, E., Barro, S., and Amorim, D.: Do we need hundreds of classifiers to solve real world classification problems?, *Journal of Machine Learning Research*, 15, 3133–3181, <https://doi.org/10.1117/1.JRS.11.015020>, 2014.
- 560 Fischer, E. M., Sedláček, J., Hawkins, E., and Knutti, R.: Models agree on forced response pattern of precipitation and temperature extremes, *Geophysical Research Letters*, 41, 8554–8562, <https://doi.org/10.1002/2014GL062018>, 2014.
- Folberth, C., Elliott, J., Müller, C., Balkovic, J., Chryssanthacopoulos, J., Izaurrealde, R. C., Jones, C. D., Khabarov, N., Liu, W., Reddy, A., et al.: Uncertainties in global crop model frameworks: effects of cultivar distribution, crop management and soil handling on crop yield estimates, *Biogeosciences Discussions*, pp. 1–30, 2016.
- 565 Friedman, B. J. H.: Greedy Function Approximation: A Gradient Boosting Machine (1999 REITZ LECTURE), *Annals of statistics*, 2001.
- Frieler, K., Schauburger, B., Arneth, A., Balkovič, J., Chryssanthacopoulos, J., Deryng, D., Elliott, J., Folberth, C., Khabarov, N., Müller, C., Olin, S., Pugh, T. A., Schaphoff, S., Schewe, J., Schmid, E., Warszawski, L., and Levermann, A.: Understanding the weather signal in national crop-yield variability, *Earth’s Future*, 5, 605–616, <https://doi.org/10.1002/2016EF000525>, 2017.
- Gawęda, D., Nowak, A., Haliniarz, M., and Woźniak, A.: Yield and Economic Effectiveness of Soybean Grown Under Different Cropping Systems, *International Journal of Plant Production*, 14, 475–485, <https://doi.org/10.1007/s42106-020-00098-1>, 2020.
- 570 Hamed, R., van Loon, A. F., Aerts, J., and Coumou, D.: Impacts of hot-dry compound extremes on US soybean yields, *Earth System Dynamics Discussions*, 2021, 1–26, <https://doi.org/10.5194/esd-2021-24>, 2021.
- Harris, I., Osborn, T. J., Jones, P., and Lister, D.: Version 4 of the CRU TS monthly high-resolution gridded multivariate climate dataset, *Scientific Data*, 7, 109, <https://doi.org/10.1038/s41597-020-0453-3>, 2020.
- 575 Hartman, G. L., West, E. D., and Herman, T. K.: Crops that feed the World 2. Soybean-worldwide production, use, and constraints caused by pathogens and pests, *Food Security*, 3, 5–17, <https://doi.org/10.1007/s12571-010-0108-x>, 2011.
- Hatfield, J., Wright-Morton, L., and Hall, B.: Vulnerability of grain crops and croplands in the Midwest to climatic variability and adaptation strategies, *Climatic Change*, 146, 263–275, 2018.
- Hatfield, J. L. and Prueger, J. H.: Temperature extremes: Effect on plant growth and development, *Weather and Climate Extremes*, 10, 4–10, <https://doi.org/https://doi.org/10.1016/j.wace.2015.08.001>, uSDA Research and Programs on Extreme Events, 2015.
- 580 Hatfield, J. L., Boote, K. J., Kimball, B. A., Ziska, L. H., Izaurrealde, R. C., Ort, D., Thomson, A. M., and Wolfe, D.: Climate Impacts on Agriculture: Implications for Crop Production, *Agronomy Journal*, 103, 351–370, <https://doi.org/https://doi.org/10.2134/agronj2010.0303>, 2011.
- Hazeleger, W., Wang, X., Severijns, C., Ștefănescu, S., Bintanja, R., Sterl, A., Wyser, K., Semmler, T., Yang, S., van den Hurk, B., van Noije, T., van der Linden, E., and van der Wiel, K.: EC-Earth V2.2: Description and validation of a new seamless earth system prediction model, *Climate Dynamics*, 39, 2611–2629, <https://doi.org/10.1007/s00382-011-1228-5>, 2012.
- 585 Heino, M., Puma, M. J., Ward, P. J., Gerten, D., Heck, V., Siebert, S., and Kummu, M.: Two-thirds of global cropland area impacted by climate oscillations, *Nature Communications*, 9, 1–10, <https://doi.org/10.1038/s41467-017-02071-5>, 2018.
- Hengl, T., Nussbaum, M., Wright, M. N., Heuvelink, G. B., and Gräler, B.: Random forest as a generic framework for predictive modeling of spatial and spatio-temporal variables, *PeerJ*, 6, e5518, 2018.
- 590 Hernandez-Barrera, S., Rodriguez-Puebla, C., and Challinor, A.: Effects of diurnal temperature range and drought on wheat yield in Spain, *Theoretical and Applied Climatology*, 129, 503–519, 2017.

- Iizumi, T. and Ramankutty, N.: Changes in yield variability of major crops for 1981-2010 explained by climate change, *Environmental Research Letters*, 11, <https://doi.org/10.1088/1748-9326/11/3/034003>, 2016.
- 595 Iizumi, T., Luo, J. J., Challinor, A. J., Sakurai, G., Yokozawa, M., Sakuma, H., Brown, M. E., and Yamagata, T.: Impacts of El Niño Southern Oscillation on the global yields of major crops, *Nature Communications*, 5, 1–7, <https://doi.org/10.1038/ncomms4712>, 2014.
- IPCC: Managing the Risks of Extreme Events and Disasters to Advance Climate Change Adaptation, Cambridge University Press, Cambridge, <https://doi.org/10.1017/CBO9781139177245>, 2012.
- Jones, P. W.: First-and second-order conservative remapping schemes for grids in spherical coordinates, *Monthly Weather Review*, 127, 2204–2210, 1999.
- 600 Kent, C., Pope, E., Thompson, V., Lewis, K., Scaife, A. A., and Dunstone, N.: Using climate model simulations to assess the current climate risk to maize production, *Environmental Research Letters*, 12, <https://doi.org/10.1088/1748-9326/aa6cb9>, 2017.
- Kraskov, A., Stögbauer, H., and Grassberger, P.: Estimating mutual information, *Phys. Rev. E*, 69, 066138, <https://doi.org/10.1103/PhysRevE.69.066138>, 2004.
- 605 Lange, S.: WFDE5 over land merged with ERA5 over the ocean (W5E5), GFZ Data Services, <https://doi.org/10.5880/pik.2019.023>, 2019.
- Leonard, M., Westra, S., Phatak, A., Lambert, M., van den Hurk, B., McInnes, K., Risbey, J., Schuster, S., Jakob, D., and Stafford-Smith, M.: A compound event framework for understanding extreme impacts, *Wiley Interdisciplinary Reviews: Climate Change*, 5, 113–128, <https://doi.org/10.1002/wcc.252>, 2014.
- Lesk, C., Coffel, E., and Horton, R.: Net benefits to US soy and maize yields from intensifying hourly rainfall, *Nature Climate Change*, 10, <https://doi.org/10.1038/s41558-020-0830-0>, 2020.
- 610 Lobell, D. B.: Changes in diurnal temperature range and national cereal yields, *Agricultural and Forest Meteorology*, 145, 229–238, <https://doi.org/https://doi.org/10.1016/j.agrformet.2007.05.002>, 2007.
- Lobell, D. B. and Field, C. B.: Global scale climate-crop yield relationships and the impacts of recent warming, *Environmental Research Letters*, 2, <https://doi.org/10.1088/1748-9326/2/1/014002>, 2007.
- 615 Lobell, D. B. and Tebaldi, C.: Getting caught with our plants down: The risks of a global crop yield slowdown from climate trends in the next two decades, *Environmental Research Letters*, 9, <https://doi.org/10.1088/1748-9326/9/7/074003>, 2014.
- Maria, M. D., Robinson, E. J., Rajabu, J., Kadigi, R., Dreoni, I., and Couto, M.: Global soybean trade - the geopolitics of a bean, UK Research and Innovation Global Challenges Research Fund (UKRI GCRF) Trade, Development and the Environment Hub, <https://doi.org/10.34892/7yn1-k494>, 2020.
- 620 Moore, F. C. and Lobell, D. B.: The fingerprint of climate trends on european crop yields, *Proceedings of the National Academy of Sciences of the United States of America*, 112, 2970–2975, <https://doi.org/10.1073/pnas.1409606112>, 2015.
- Müller, C., Elliott, J., Kelly, D., Arneth, A., Balkovic, J., Ciais, P., Deryng, D., Folberth, C., Hoek, S., Izaurrealde, R. C., Jones, C. D., Khabarov, N., Lawrence, P., Liu, W., Olin, S., Pugh, T. A., Reddy, A., Rosenzweig, C., Ruane, A. C., Sakurai, G., Schmid, E., Skalsky, R., Wang, X., de Wit, A., and Yang, H.: The Global Gridded Crop Model Intercomparison phase 1 simulation dataset, *Scientific Data*, 6, 1–22, <https://doi.org/10.1038/s41597-019-0023-8>, 2019.
- 625 Ogutu, G. E., Franssen, W. H., Supit, I., Omondi, P., and Hutjes, R. W.: Probabilistic maize yield prediction over East Africa using dynamic ensemble seasonal climate forecasts, *Agricultural and Forest Meteorology*, 250-251, 243–261, <https://doi.org/10.1016/j.agrformet.2017.12.256>, 2018.

- Portmann, F. T., Siebert, S., and Döll, P.: MIRCA2000—Global monthly irrigated and rainfed crop areas around the year
630 2000: A new high-resolution data set for agricultural and hydrological modeling, *Global Biogeochemical Cycles*, 24,
<https://doi.org/https://doi.org/10.1029/2008GB003435>, 2010.
- Qu, M., Wan, J., and Hao, X.: Analysis of diurnal air temperature range change in the continental United States, *Weather and Climate
Extremes*, <https://doi.org/10.1016/j.wace.2014.05.002>, 2014.
- Rahman, M. A., Kang, S., Nagabhatla, N., and Macnee, R.: Impacts of temperature and rainfall variation on rice productivity in major
635 ecosystems of Bangladesh, *Agriculture & Food Security*, 6, 1–11, 2017.
- Ray, D. K., Gerber, J. S., Macdonald, G. K., and West, P. C.: Climate variation explains a third of global crop yield variability, *Nature
Communications*, 6, 1–9, <https://doi.org/10.1038/ncomms6989>, 2015.
- Ray, D. K., West, P. C., Clark, M., Gerber, J. S., Prishchepov, A. V., and Chatterjee, S.: Climate change has likely already affected global
food production, *PLoS ONE*, 14, 1–18, <https://doi.org/10.1371/journal.pone.0217148>, 2019.
- 640 Roberts, M. J., Braun, N. O., Sinclair, T. R., Lobell, D. B., and Schlenker, W.: Comparing and combining process-based crop models
and statistical models with some implications for climate change, *Environmental Research Letters*, 12, <https://doi.org/10.1088/1748-9326/aa7f33>, 2017.
- Rosenzweig, C., Elliott, J., Deryng, D., Ruane, A. C., Müller, C., Arneth, A., Boote, K. J., Folberth, C., Glotter, M., Khabarov, N., Neumann,
K., Piontek, F., Pugh, T. A., Schmid, E., Stehfest, E., Yang, H., and Jones, J. W.: Assessing agricultural risks of climate change in the
645 21st century in a global gridded crop model intercomparison, *Proceedings of the National Academy of Sciences of the United States of
America*, 111, 3268–3273, <https://doi.org/10.1073/pnas.1222463110>, 2014.
- Salvadori, G., Durante, F., De Michele, C., Bernardi, M., and Petrella, L.: A multivariate copula-based framework for dealing with hazard
scenarios and failure probabilities, *Water Resources Research*, 52, 3701–3721, <https://doi.org/10.1002/2015WR017225>, 2016.
- Santos, V. M., Casas-Prat, M., Poschlod, B., Ragno, E., van den Hurk, B., Hao, Z., Kalmár, T., Zhu, L., and Najafi, H.: Statistical modelling
650 and climate variability of compound surge and precipitation events in a managed water system: a case study in the Netherlands, *Hydrology
and Earth System Sciences*, 25, 3595–3615, <https://doi.org/10.5194/hess-25-3595-2021>, 2021.
- Schauberger, B., Archontoulis, S., Arneth, A., Balkovic, J., Ciais, P., Deryng, D., Elliott, J., Folberth, C., Khabarov, N., Müller, C., Pugh,
T. A., Rolinski, S., Schaphoff, S., Schmid, E., Wang, X., Schlenker, W., and Frieler, K.: Consistent negative response of US crops to high
temperatures in observations and crop models, *Nature Communications*, 8, <https://doi.org/10.1038/ncomms13931>, 2017.
- 655 Schlenker, W. and Roberts, M. J.: Nonlinear temperature effects indicate severe damages to U.S. crop yields under climate change, *Proceed-
ings of the National Academy of Sciences*, 106, 15 594–15 598, <https://doi.org/10.1073/pnas.0906865106>, 2009.
- Serinaldi, F.: Can we tell more than we can know? The limits of bivariate drought analyses in the United States, *Stochastic Environmental
Research and Risk Assessment*, 30, 1691–1704, <https://doi.org/10.1007/s00477-015-1124-3>, 2016.
- Shepherd, T. G.: Storyline approach to the construction of regional climate change information, *Proceedings of the Royal Society A: Mathe-
660 matical, Physical and Engineering Sciences*, 475, <https://doi.org/10.1098/rspa.2019.0013>, 2019.
- Shepherd, T. G., Boyd, E., Calel, R. A., Chapman, S. C., Dessai, S., Dima-West, I. M., Fowler, H. J., James, R., Maraun, D., Martius, O.,
Senior, C. A., Sobel, A. H., Stainforth, D. A., Tett, S. F. B., Trenberth, K. E., van den Hurk, B. J. J. M., Watkins, N. W., Wilby, R. L., and
Zenghelis, D. A.: Storylines: an alternative approach to representing uncertainty in physical aspects of climate change, *Climatic Change*,
151, 555–571, <https://doi.org/10.1007/s10584-018-2317-9>, 2018.

- 665 Siebers, M. H., Yendrek, C. R., Drag, D., Locke, A. M., Rios Acosta, L., Leakey, A. D. B., Ainsworth, E. A., Bernacchi, C. J., and Ort, D. R.: Heat waves imposed during early pod development in soybean (*Glycine max*) cause significant yield loss despite a rapid recovery from oxidative stress, *Global Change Biology*, 21, 3114–3125, <https://doi.org/https://doi.org/10.1111/gcb.12935>, 2015.
- Sillmann, J., Shepherd, T. G., van den Hurk, B., Hazeleger, W., Martius, O., Slingo, J., and Zscheischler, J.: Event-based storylines to address climate risk, *Earth's Future*, <https://doi.org/10.1029/2020ef001783>, 2020.
- 670 Sun, X., Ren, G., You, Q., Ren, Y., Xu, W., Xue, X., Zhan, Y., Zhang, S., and Zhang, P.: Global diurnal temperature range (DTR) changes since 1901, *Climate Dynamics*, <https://doi.org/10.1007/s00382-018-4329-6>, 2019.
- Toreti, A., Deryng, D., Tubiello, F. N., Müller, C., Kimball, B. A., Moser, G., Boote, K., Asseng, S., Pugh, T. A., Vanuytrecht, E., et al.: Narrowing uncertainties in the effects of elevated CO₂ on crops, *Nature Food*, 1, 775–782, 2020.
- Trenberth, K. E., Fasullo, J. T., and Shepherd, T. G.: Attribution of climate extreme events, *Nature Climate Change*, 5, 725–730, <https://doi.org/10.1038/nclimate2657>, 2015.
- 675 van den Hurk, B., Van Meijgaard, E., De Valk, P., Van Heeringen, K. J., and Gooijer, J.: Analysis of a compounding surge and precipitation event in the Netherlands, *Environmental Research Letters*, 10, <https://doi.org/10.1088/1748-9326/10/3/035001>, 2015.
- Van der Wiel, K., Wanders, N., Selten, F. M., and Bierkens, M. F.: Added Value of Large Ensemble Simulations for Assessing Extreme River Discharge in a 2 °C Warmer World, *Geophysical Research Letters*, 46, 2093–2102, <https://doi.org/10.1029/2019GL081967>, 2019.
- 680 van der Wiel, K., Selten, F. M., Bintanja, R., Blackport, R., and Screen, J. A.: Ensemble climate-impact modelling: extreme impacts from moderate meteorological conditions, *Environmental Research Letters*, 15, <https://doi.org/10.1088/1748-9326/ab7668>, 2020.
- van Etten, J., de Sousa, K., Aguilar, A., Barrios, M., Coto, A., Dell'Acqua, M., Fadda, C., Gebrehawaryat, Y., van de Gevel, J., Gupta, A., et al.: Crop variety management for climate adaptation supported by citizen science, *Proceedings of the National Academy of Sciences*, 116, 4194–4199, 2019.
- 685 van Oldenborgh, G. J., van der Wiel, K., Kew, S., Philip, S., Otto, F., Vautard, R., King, A., Lott, F., Arrighi, J., Singh, R., et al.: Pathways and pitfalls in extreme event attribution, *Climatic Change*, 166, 1–27, 2021.
- Verón, S. R., De Abelleyra, D., and Lobell, D. B.: Impacts of precipitation and temperature on crop yields in the Pampas, *Climatic change*, 130, 235–245, 2015.
- Vogel, E., Donat, M. G., Alexander, L. V., Meinshausen, M., Ray, D. K., Karoly, D., Meinshausen, N., and Frieler, K.: The effects of climate extremes on global agricultural yields, *Environmental Research Letters*, 14, <https://doi.org/10.1088/1748-9326/ab154b>, 2019.
- 690 Vogel, J., Rivoire, P., Deidda, C., Rahimi, L., Sauter, C. A., Tschumi, E., van der Wiel, K., Zhang, T., and Zscheischler, J.: Identifying meteorological drivers of extreme impacts: an application to simulated crop yields, *Earth System Dynamics*, 12, 151–172, <https://doi.org/10.5194/esd-12-151-2021>, 2021.
- Williams, J. R. et al.: The EPIC model., *Computer models of watershed hydrology*, pp. 909–1000, 1995.
- 695 Wolski, P., Lobell, D., Stone, D., Pinto, I., Crespo, O., and Johnston, P.: On the role of anthropogenic climate change in the emerging food crisis in southern Africa in the 2019–2020 growing season, *Global Change Biology*, 2020, 1–2, <https://doi.org/10.1111/gcb.15047>, 2020.
- Xie, W., Xiong, W., Pan, J., Ali, T., Cui, Q., Guan, D., Meng, J., Mueller, N. D., Lin, E., and Davis, S. J.: Decreases in global beer supply due to extreme drought and heat, *Nature Plants*, 4, 964–973, <https://doi.org/10.1038/s41477-018-0263-1>, 2018.
- Zampieri, M., Ceglar, A., Dentener, F., and Toreti, A.: Wheat yield loss attributable to heat waves, drought and water excess at the global, national and subnational scales, *Environmental Research Letters*, 12, 064008, <https://doi.org/10.1088/1748-9326/aa723b>, 2017.
- 700 Zhang, D., Zang, G., Li, J., Ma, K., and Liu, H.: Prediction of soybean price in China using QR-RBF neural network model, *Computers and Electronics in Agriculture*, 154, 10–17, <https://doi.org/10.1016/j.compag.2018.08.016>, 2018.

- Zhang, X., Wang, S., Sun, H., Chen, S., Shao, L., and Liu, X.: Contribution of cultivar, fertilizer and weather to yield variation of winter wheat over three decades: A case study in the North China Plain, *European Journal of Agronomy*, 50, 52–59, <https://doi.org/https://doi.org/10.1016/j.eja.2013.05.005>, 2013.
- Zhao, C., Liu, B., Piao, S., Wang, X., Lobell, D. B., Huang, Y., Huang, M., Yao, Y., Bassu, S., Ciais, P., Durand, J.-L., Elliott, J., Ewert, F., Janssens, I. A., Li, T., Lin, E., Liu, Q., Martre, P., Müller, C., Peng, S., Peñuelas, J., Ruane, A. C., Wallach, D., Wang, T., Wu, D., Liu, Z., Zhu, Y., Zhu, Z., and Asseng, S.: Temperature increase reduces global yields of major crops in four independent estimates, *Proceedings of the National Academy of Sciences*, 114, 9326–9331, <https://doi.org/10.1073/pnas.1701762114>, 2017.
- Zhu, P., Abramoff, R., Makowski, D., and Ciais, P.: Uncovering the past and future climate drivers of wheat yield shocks in Europe with machine learning, *Earth’s Future*, pp. 1–13, <https://doi.org/10.1029/2020ef001815>, 2021.
- Zhu, X. and Troy, T. J.: Agriculturally Relevant Climate Extremes and Their Trends in the World’s Major Growing Regions, *Earth’s Future*, 6, 656–672, <https://doi.org/10.1002/2017EF000687>, 2018.
- Zipper, S. C., Qiu, J., and Kucharik, C. J.: Drought effects on US maize and soybean production: Spatiotemporal patterns and historical changes, *Environmental Research Letters*, 11, <https://doi.org/10.1088/1748-9326/11/9/094021>, 2016.
- Zscheischler, J. and Fischer, E. M.: The record-breaking compound hot and dry 2018 growing season in Germany, *Weather and Climate Extremes*, 29, 100270, <https://doi.org/10.1016/j.wace.2020.100270>, 2020.
- Zscheischler, J. and Seneviratne, S. I.: Dependence of drivers affects risks associated with compound events, *Science Advances*, 3, 1–11, <https://doi.org/10.1126/sciadv.1700263>, 2017.
- Zscheischler, J., Orth, R., and Seneviratne, S.: Bivariate return periods of temperature and precipitation explain a large fraction of European crop yields, *Biogeosciences Discussions*, pp. 1–18, <https://doi.org/10.5194/bg-2017-21>, 2017.
- Zscheischler, J., Westra, S., van den Hurk, B. J., Seneviratne, S. I., Ward, P. J., Pitman, A., Aghakouchak, A., Bresch, D. N., Leonard, M., Wahl, T., and Zhang, X.: Future climate risk from compound events, *Nature Climate Change*, 8, 469–477, <https://doi.org/10.1038/s41558-018-0156-3>, 2018.