

Fig S1 annual precipitation anomaly (P) from 2000 to 2019 over S.E. Australia. The anomalies were calculated relative to the 1970-2019 climatology.

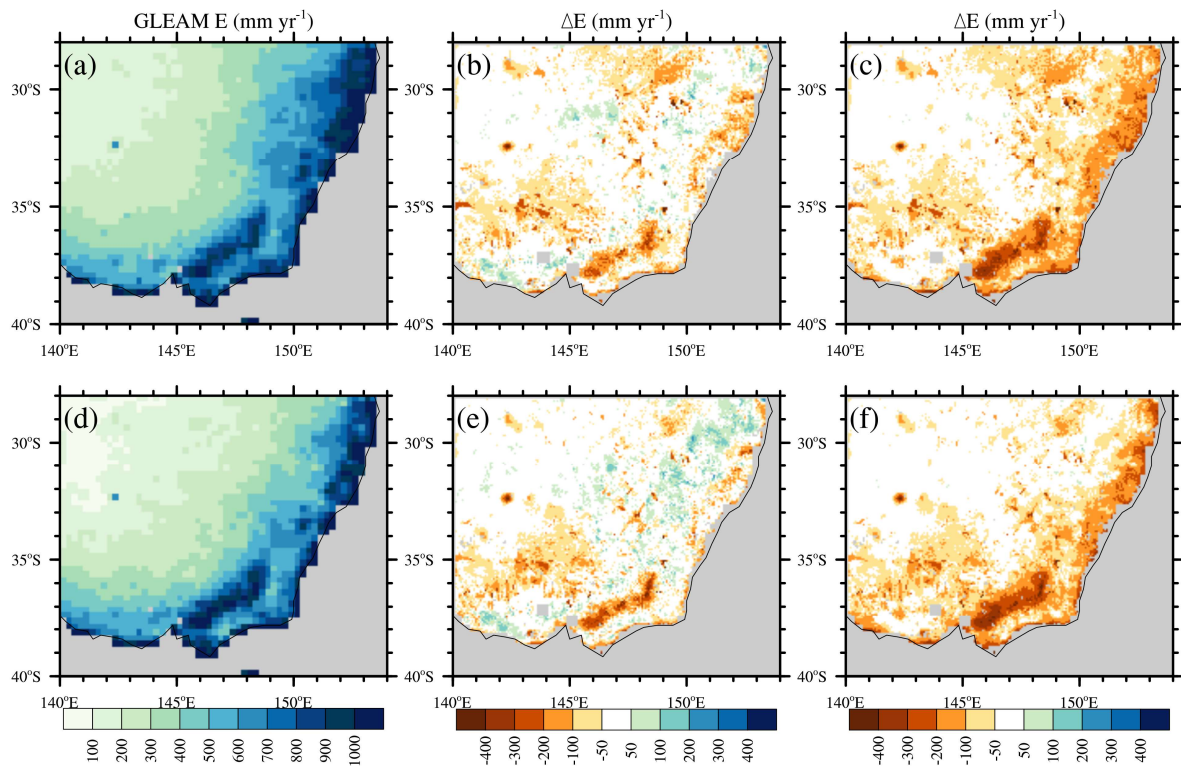


Fig S2 Annual evaporation (E). (a)-(c) are for Millennium drought, and (d)-(f) are for the recent drought. (a) and (d) are E in GLEAM; (b) and (e) are ΔE between GW and GLEAM; (c) and (f) are ΔE between FD and GLEAM.

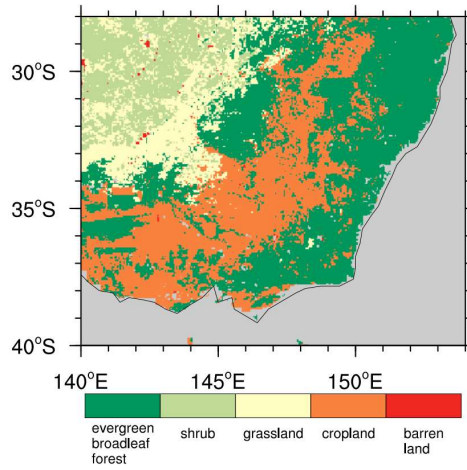


Fig. S3. Distribution of CABLE plant functional types over S.E. Australia.

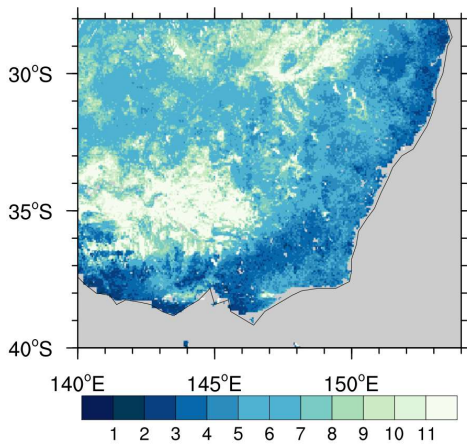


Fig S4 The mean water table depth (m) during 2017-2019 from the GW experiment.

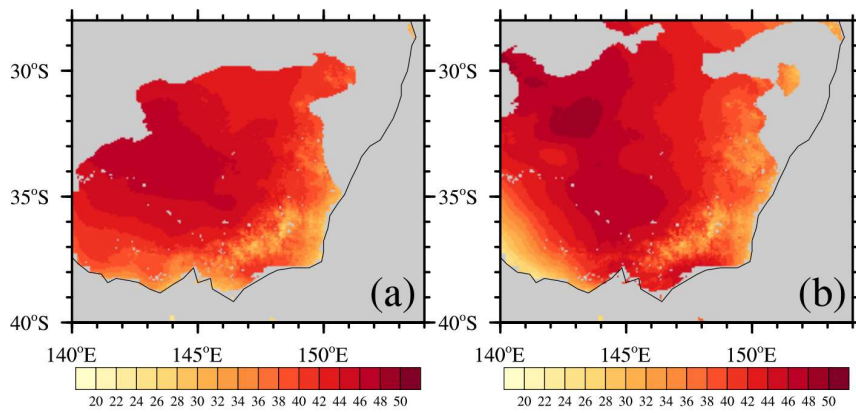


Fig S5. Maximum air temperature (°C) over the heatwave regions on (a) 15th and (b) 25th Jan 2019.

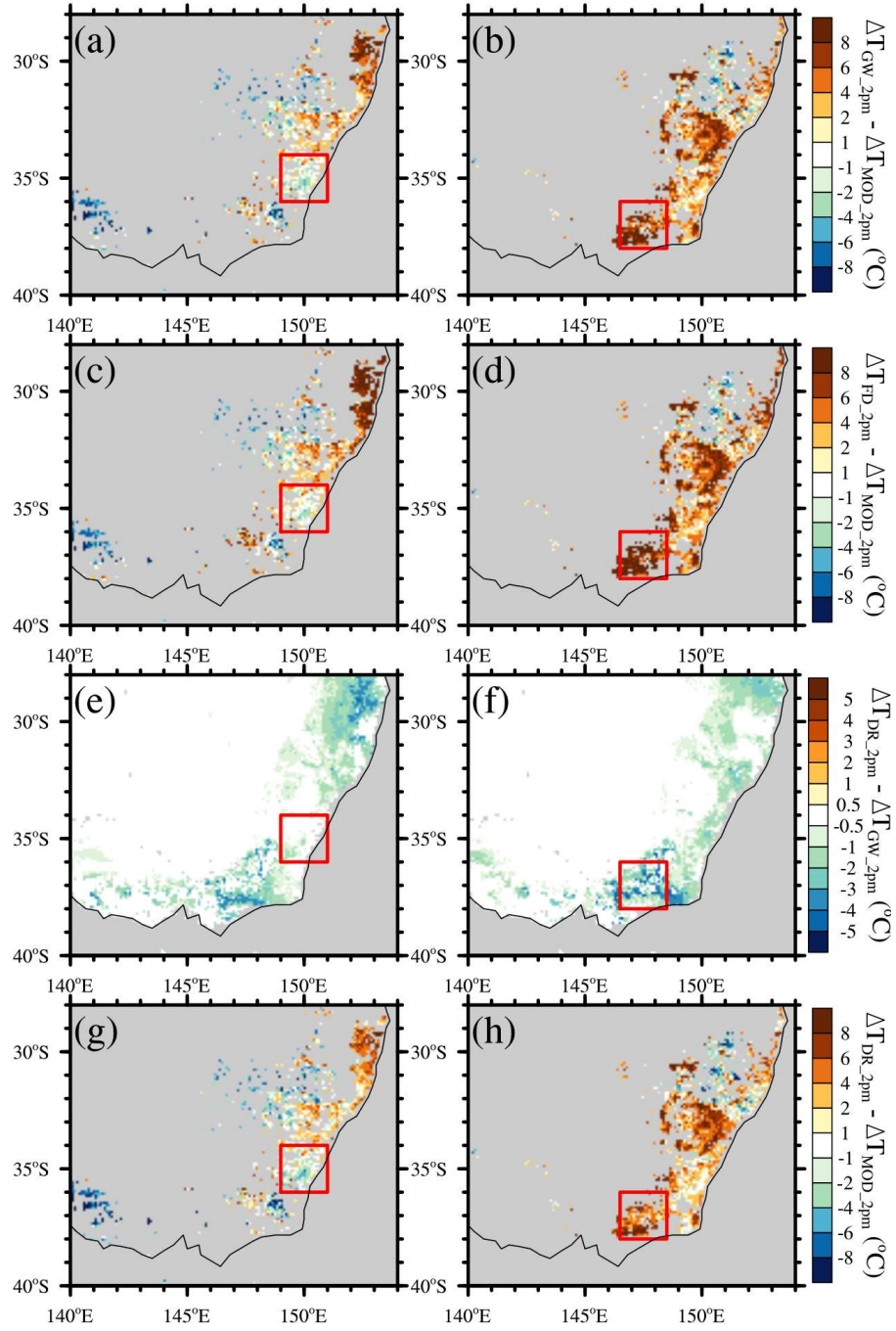


Fig S6. The difference of ΔT at 2pm between (a)-(b) GW and MODIS LST ($\Delta T_{GW_2pm} - \Delta T_{MOD_2pm}$), (c)-(d) FD and MODIS LST ($\Delta T_{FD_2pm} - \Delta T_{MOD_2pm}$), (e)-(f) DR and GW ($\Delta T_{DR_2pm} - \Delta T_{GW_2pm}$), and (g)-(h) DR and MODIS LST ($\Delta T_{DR_2pm} - \Delta T_{MOD_2pm}$). The left column is for 15th and the right is for 25th Jan 2019.

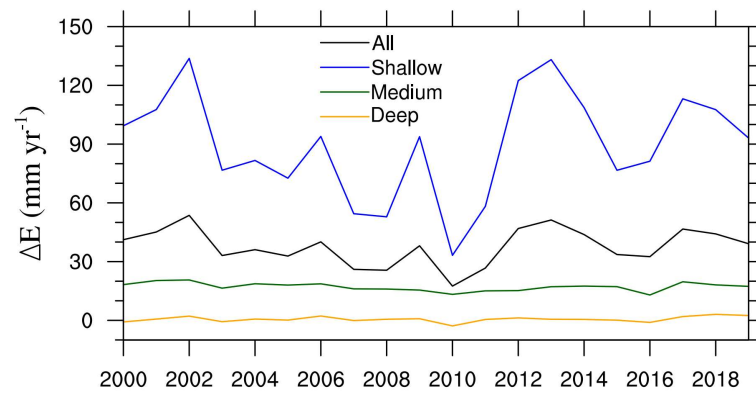


Fig S7. The time series of the difference in E between GW and FD (ΔE) over S.E. Australia. The lines show the mean ΔE over S.E. Australia (black), shallow WTD regions ($< 5\text{m}$; blue); medium WTD regions ($5\sim 10\text{m}$; green) and deep WTD region ($> 10\text{m}$; orange).