

Evaluation of convection-permitting extreme precipitation simulations for the south of France

Linh N. Luu^{1,2}, Robert Vautard¹, Pascal Yiou¹, and Jean-Michel Soubeyroux³

¹Laboratoire des Sciences du Climat et de l'Environnement, UMR 8212 CEA-CNRS-UVSQ, Université Paris-Saclay and IPSL, Gif-sur-Yvette, France

²now at Royal Netherlands Meteorological Institute (KNMI), De Bilt, Netherlands

³Météo-France, Toulouse, France

Correspondence to: Linh N. Luu (linh.luu@lsce.ipsl.fr)

Abstract. In the autumn, the French Mediterranean area is frequently exposed to heavy precipitation events whose daily accumulation can exceed 300 mm. One of the key processes contributing to these precipitation amounts is the deep convection, which can be resolved explicitly by state-of-the-art convection-permitting model to reproduce heavy rainfall events that are comparable to observations. ~~However, this approach has been tested and performed at climate scale in several studies in recent decades for different areas never been used in climate simulation for the Mediterranean coastal region.~~ In this research, we investigate the added values of using an ~~three~~ ensembles of three climate simulations at convection-permitting resolution (approx. 3 km) in replicating extreme precipitation events in both daily and shorter time scales s over the South of France. These three convection-permitting simulations are performed with the Weather Research and Forecasting Model (WRF). They are forced by three EURO-CORDEX simulations, which are also ~~downscaled-run~~ with WRF at the resolution of 0.11° (approx. 12 km). We found that a convection-permitting approach provides a more realistic representation of extreme daily and 3-hourly rainfall ~~simulations~~ in comparison with EURO-CORDEX simulations. Their similarity with observations allows a use for climate change studies and its impacts.

1. Introduction

Deep convection is a key atmospheric process leading to heavy rainfall in a short duration that can generate floods and infrastructure destruction with a large impact on societies. This process has close interactions with other physical and micro-physical processes, large-scale and local dynamics of the atmosphere. However, ~~because of the limitation in computer resources,~~ deep convection processes have ~~rarely been solved explicitly~~ parameterized in ~~long climate~~ simulations at climate scale (i.e., more than ten years) for a long period of time. ~~The P~~parameterization ~~schemes methods~~ that are based on statistical properties of convection processes es within a grid box and their interactions with prognostic variables have been designed to represent this process at local scale (Kendon et al., 2012). This procedure brings large uncertainty to the results of climate models,

including biases of rainfall characteristics such as the underestimation of short-duration extreme rainfall (Fosser et al., 2015; Hohenegger et al., 2008; Kendon et al., 2019; Lenderink and Van Meijgaard, 2008; Prein et al., 2013). Thanks to the rapid development of technology and computer power, A-a prominently emerging way that has been used in the recent two decades to resolve explicitly deep convection and avoid the application of convective parameterization schemes is to increase horizontal resolution to convection-permitting (~~or cloud-resolving~~) resolution (i.e. less than 4 km). Convection-permitting models hold promises of representing central processes in the climate system, and could make a step change in the climate projections as they better represent impactful precipitation extremes. There is also ~~is-a~~ hope that they could remove important biases if employed at global scale (Palmer and Stevens, 2019). However, this approach requires solving a trade-off between conducting several runs to generate large ensembles of simulations a long run with a sufficient resolution (e.g. for impact of extreme event or attribution studies) and saving the expense of computing resource (Giorgi and Mearns, 1999; Trenberth, 2008).

Several simulations at convection-permitting resolutions were conducted for different regions and periods of time to examine the added value of this approach in reproducing precipitation (Prein et al., 2015). Regional models have been used to dynamically downscale the output of global models (e.g. CMIP5 (Taylor et al., 2012)) or reanalysis data (e.g. ERA-Interim (Dee et al., 2011)) to these convection-permitting resolutions. Generally, the simulated rainfall from those models have a better agreement with observations compared to those using convective parameterization schemes, especially in terms of temporal and spatial distributions of extreme rainfall event from sub-daily to daily time scales (Armon et al., 2020; Ban et al., 2014, 2018; Chan et al., 2013, 2014; Fosser et al., 2015; Hodnebrog et al., 2019; Kendon et al., 2012; Knist et al., 2018; Prein et al., 2013; Vergara-Temprado et al., 2021). Additionally, the diurnal cycle of precipitation is also better represented in this cloud-resolving model (Ban et al., 2014; Fosser et al., 2015; Knist et al., 2018; Langhans et al., 2013; Prein et al., 2013; Scaff et al., 2019). The increase of extreme hourly rainfall at super adiabatic rate (e.g. around 14%/°C) when scaling with temperature in observations analyses is also reproduced in convection-permitting simulations for a few areas (Ban et al., 2014; Knist et al., 2018). ~~Kendon et al. (2012) found that cloud-resolving~~The convection-permitting models can also reduce the "drizzle problem" found in many lower-resolution simulations, which is characterized by frequent and persistent light rainfall events (Berthou et al., 2020; Fosser et al., 2015; Kendon et al., 2012; Lind et al., 2020). Scaff et al. (2019) additionally showed that the timing of the peak of convection was better performed by such very high resolutions. Given these added values of convection-permitting model in reproducing extreme precipitation events, a ~~large number of few~~ studies used this approach for ~~a robust~~ future projection of this variable with more confidence, especially in short duration events (e.g., Adinolfi et al., 2021; Vanden Broucke et al., 2019; Chan et al., 2020; Hodnebrog et al., 2019; Kendon et al., 2017, 2019; Pichelli et al., 2021).

70 The improvement in reproducing heavy precipitation events of the convection-permitting approach over parameterization methods comes from the higher resolution itself, the better representation of surface ~~field-properties~~ and complex topography (e.g. steep mountainous region), the explicit-solving of convection processes at local scale and its interaction with large-scale circulation and better solving of atmospheric dynamics (Feng et al., 2018; Prein et al., 2013, 2015). Despite those

75 enhancements, the systematic errors ~~in the simulation results~~ are inevitable because of the use of other parameterization schemes and discrete numerical methods and the fact that convection (both deep and shallow) is not completely resolved at the grid spacing of 1 to 3 km (Vanden Broucke et al., 2019). For instance, a convection-permitting model could overestimate or underestimate heavy rainfall, prolong the duration of light rainfall, provide more extreme precipitation events than

80 observations and fail in simulating the location of the heaviest rainfall events (Armon et al., 2019; Vanden Broucke et al., 2019; Chan et al., 2013, 2014; Fosser et al., 2015; Fumière et al., 2019). The coastal regions along the Mediterranean frequently undergo very heavy precipitation events (e.g. hundreds of millimeters per day) in the autumn which subsequently lead to flash floods and landslides causing massive losses and damages (Delrieu et al., 2005; Fresnay et al., 2012; Llasat et al., 2013; Nuissier et al., 2008; Ricard et al., 2012). In addition, this area is considered as a hotspot of climate change that strongly responds to warming at global scale (Giorgi, 2006; Tuel and Eltahir, 2020). As a result, the Mediterranean has received an increasing scientific interest, ~~for example under the framework of the HyMex⁺ project in investigating the mechanisms leading to flood-inducing heavy precipitation as well as in improving the model ability to predict and project those events in a complex changing climate that provides substantial support to adaptation and mitigation for society~~ (Drobinski et al., 2014; Ducrocq et al., 2014). The convection-permitting approach has been recently used to reproduce and obtain insights of extreme precipitation events in this area. Armon et al. (2019) showed that the convection-permitting model can reproduce the structure and location of 95% of 41 observed heavy precipitations events in the eastern

85 Mediterranean and consequently suggested ~~to using~~ this approach for a long simulation. Zittis et al. (2017) found that the convection-permitting model outperformed the convection parameterization approach for extreme rainfall events over the eastern Mediterranean. Fumière et al. (2019) used convection-permitting model to downscale the ERA-Interim reanalysis and proved that this high resolution improved the simulations of intensity and location of daily and sub-daily extreme precipitation. These results were confirmed over the area in a longer climate scale simulation by (Caillaud et al., (2021). (Berthou et al., (2020) also showed improvement of the convection-permitting model in reproducing daily heavy precipitation events in the autumn over the Mediterranean coasts at climate scale. (Meredith et al., (2020) found that the convection-

90

95

100

⁺ ~~Hydrological cycle in the Mediterranean eXperiment~~

105 permitting model can improve sub-hourly intense precipitation. Coppola et al. (2018) used, for the first time, a multi-model approach with convection-permitting resolution to simulate a few case studies of heavy rainfall events over the European Mediterranean areas. They showed that each convection-permitting model can reproduce the case studies. However, the results among models spread when the event was convective and less constrained by the large-scale dynamics. This multi-models approach was then performed at climate scale with reanalysis forcing (Ban et al., 110 and with CMIP5 forcing (Pichelli et al., 2021), which both found improvement in convective precipitation outcomes. These results highlighted the importance of using a multi-model approach to investigate convective precipitation events and stimulate the use of this approach in climate change impact study.

115 The assessment of convection-permitting simulations over long simulations requires further attention, in particular for the dynamical downscaling of global climate models used for projections of future scenarios. ~~However, such long simulations, to the best of our knowledge, have never been done for coastal area in the Mediterranean region.~~ This article is designed to evaluate the skills of a unique regional climate model (~~WRF~~) with a convection permitting set-up to simulate extreme hourly and daily precipitations in a region prone to such convective event in the Mediterranean area (Nuissier et al., 2008). The analysis made here is at a climate scale and is done by dynamically downscaling the climate information provided by the existing ~~results of~~ EURO-CORDEX experimentssimulations (Coppola et al., 2020; Jacob et al., 2014; Kotlarski et al., 2014; Vautard et al., 2020). The assessment is not made at the event or process levels but uses long simulations to evaluate whether the statistical properties (intensity, duration) of events are comparable to 125 observations. The area under consideration in this article is the Cévennes mountain range, a part of the Massif Central in the south of France (Figure 1), where extreme precipitation events are most intense in France (Vautard et al., 2015). The experimental design of these runs, reference datasets and evaluation methods are presented in Section 2. The evaluation and discussion are given in Section 3. The last section presents the conclusion. We also provide supplementary 130 information where a few simulations with convection-permitting configuration driven by the ERA-Interim are tested to select an appropriate domain.

2. Experimental design, data and methods

2.1. Experimental design

135 In this study, the Weather Research and Forecasting Model (WRF-ARW) version 3.8.1 is used to conduct several long simulations at convection-permitting resolution (0.0275°, approx. 3 km) for the French Mediterranean region. These simulations are forced by the three different EURO-CORDEX (0.11°, approx. 12 km, hereafter mentioned as EUR-11) simulations without nudging,

for which outputs are available every 3 hours. These EUR-11 simulations were ~~downscaled from General Circulation Models (GCMs)~~ also done with WRF-ARW version 3.8.1 and driven by three GCMs including the IPSL-CM5A-MR, the HADGEM2-ES and the NORESM1-M (see Vautard et al. (2020) for details about the new EURO-CORDEX ensemble). Each convection-permitting simulation (hereafter mentioned as CPS) is conducted for two different periods including 1951-1980 and 2001-2030 with the RCP8.5 scenario for the year after 2005. These two periods are chosen with a gap period (1981-2000) rather than a seamless one in order to perform an extreme event attribution climate change impact study which will be presented in another article and needs a maximal time distance between two periods (“current climate” and “past climate”).

The seasonal target of these downscaling experiments is the autumn when heavy rainfall events occur frequently over the Cévennes in the south of France. Hence, we initialize each autumn on August 26th and end the season on the 1st of December, as the extreme precipitation-Mediterranean events in the Mediterranean coastal areas do not generally occur outside of this period and years can be considered independent from each other. Only a few days at the end of August are spent as spin-up time for the model to obtain the physical consistency among prognosis variables after being interpolated from 12 km to 3 km in the preparation step, given that EUR-11 and CPS share the same regional model (i.e., WRF~~v~~3.8.1). Another factor that could take a long spin-up time (up to 10 years) in climate simulation is the soil moisture, especially the deep layer (Yang et al., 2011). Here, we facilitate our downscaling strategy (i.e., re-initializing the model every August) by interpolating the spin-up soil moisture (and temperature) in EUR-11 results for the initialization of each season run of the CPS. Even though the imbalance of soil moisture is inevitable by doing so, this procedure is expected to minimize, to some extent, the perturbation in the land surface model of WRF.

The spatial configuration contains 301x301 grid points covering the Cévennes mountain range, a large part of the French Mediterranean Sea-region including Corsica (Figure 1). This size and position of CPS domain are selected after evaluating four different configurations for simulations of the autumn 2014 driven by the ERA-Interim reanalysis (see the Supplementary section). We use the same number of hybrid sigma vertical levels of 32 as the EUR-11 boundary conditions. The time step of our simulations is 15 seconds, which is a fourth of the time step used in the EUR-11 (i.e., similar ratio as for resolutions). We adapt the same rotated map projection of EUR-11 simulations to these CPS experiments. Similar set of physics schemes as in EUR-11 simulations is used for these downscaling experiments. Those parameterization schemes incorporate the Thompson microphysics scheme (Thompson et al., 2008), the Rapid Radiative Transfer Model for GCMs (RRTMG) for long and short waves radiation (Iacono et al., 2008), the Monin-Obukhov (Janjic eta) surface layer scheme (Janjic, 1996), the Unified Noah land-surface model and the MYNN scheme for boundary layer (Nakanishi and Niino, 2006). We also update the sea surface

temperature every ~~6 hours~~ day at midnight consistently to the EURO-CORDEX simulations (Vautard et al., 2020). ~~The convection scheme is switched off in CPS simulations.~~

2.2. Evaluation methods ~~and reference datasets~~

We use four indices to investigate the skills of CPS and EUR-11 simulations in reproducing extreme rainfall over the Cévennes mountain range. These indices consist of: i) comparing the autumn maximum rainfall (Rx); ii) comparing the distribution of wet events; iii) comparing the scaling of extreme precipitation and temperature at 2-meter height; iv) determining the total moisture source from the surface to 700 ~~hPa-mb~~ (i.e., water vapour is mainly concentrated this low level of the atmosphere) that transports from the Mediterranean to the Cévennes.

The first index takes the average of autumn maxima rainfall values for the considering period. The second index compares the cumulative distributions of all rainfall values that are greater or equal to 0.1 mm (defined as wet events) in the considered period. The third index determines the non-parametric scaling of extreme precipitation with the ~~increas~~ing in surface temperature proposed by (Lenderink and Van Meijgaard, 2008). In particular, we pair the rainfall (daily or hourly) dataset with their corresponding daily mean 2m temperature over the Cévennes. This pairing dataset is then sorted in the ascending order of temperature. Next, we divide this dataset into several bins whose width is 2°C with 1°C overlapping between the two consecutive bins and calculate the 99th percentile for rainfall and the mean temperature for each bin. For making inference for each bin, we use a non-parametric bootstrap by picking 1000 samples of pairing temperature and rainfall with replacement from that original bin. Each sample size is ~~the same as similar to~~ that of the sample of the original bin. We repeat calculating the statistics for each bin and then estimate the 90% confidence interval of each bin based on those 1000 samples. The first three comparisons are applied to both daily rainfall events and daily maximum of 3-hour rainfall events which create six indices.

An important ingredient facilitating the mechanism of the severe precipitation events over the Cévennes ~~in the autumn~~ is the abundance of moisture ~~source conveyed~~ from the Mediterranean, which is enhanced by a warm sea surface being exposed to the heat during the summer. This moisture is conveyed by ~~an~~ unstable low-level southeastern flows produced by the usual development of a synoptic-scale trough to the west of the region during this season. This massive amount of moisture toward the Cévennes ~~is then~~ forced to lift up by high and steep orography of ~~the Cévennes~~ that triggers the quasi-stationary mesoscale convective system over the area. The updraft in this system is frequently strengthened at the same location as long as the low-level moist flows are persistent and intensified (Ducrocq et al., 2008, 2014; Lebeaupin et al., 2006; Lee et al., 2018; Nuissier et al., 2008, 2011). Based on these features, ~~We~~ propose here ~~the a~~ fourth index

to investigate the model ability in producing this low-level moisture transport impinging on the Cévennes mountain range using the method in (Lélé et al., 2015):

$$\vec{Q} = -\frac{1}{g} \int_{ps}^{pu} \overline{q\vec{U}} dp$$

In this equation, \vec{Q} is the ~~zonal and meridional~~horizontal moisture transport vector ($\text{kg}\cdot\text{m}^{-1}\cdot\text{s}^{-1}$), g ~~denotes is~~ the standard gravitational acceleration at mean sea level ($9.81 \text{ m}\cdot\text{s}^{-2}$), q is water vapour content (kg/kg), \vec{U} is zonal and meridional wind vector ($\text{m}\cdot\text{s}^{-1}$), ps and pu are surface and upper pressure level, in this case, 1000 ~~mb-hPa~~ and 700 ~~hPa~~mb, respectively. This equation is used to estimate the moisture transport for the 12 heaviest daily rainfall events occurring over the Cévennes mountain range in 30 years of each simulation and observations. Before selecting the events in each dataset, we first define the Cévennes box ([see Figure 1](#)) by deriving the maxima and minima of the latitudes and longitudes of the 14 stations along the Cévennes used in Vautard et al. (2015). This box is roughly limited from 2.6°E to 5°E and from 43.3°N to 45.1°N . Next, we determine the 12 maxima rainfall values and their date of occurrence at any station within the box. We extract the maxima from all stations (i.e., not only considering the 14 stations) we have as long as those stations are located within the box. We eliminate a less heavy event between the two events occurring within 7 days that are both ranked on the top 12 heaviest events, so that we can avoid considering twice the same large-scale dynamic and moisture characteristics leading to those heavy rainfall events. For each determined event, we take the average of a few time steps ([every 3 hours for simulations and every 6 hours for benchmark dataset](#)) from 18 UTC of the previous day to 21 UTC of the day that event happened. Finally, we compute the mean moisture transport of those mean values of the 12 heaviest rainfall events over the Cévennes box.

2.3. Reference datasets

In this study, we use four reference datasets to evaluate the CPS and EUR-11 simulations. The first dataset includes in situ observations of daily and daily maximum of 3-hour rainfall. The daily rainfall data spans 1961 to 2014. The sub-daily dataset is available from 1982 (a few stations start only from 1998) to 2018. The second reference dataset is the SAFRAN reanalysis (Quintana-Seguí et al., 2008; Vidal et al., 2010). SAFRAN is provided in [an](#) hourly interval with the horizontal resolution of 8 km and [starts](#) from 1958. We only use this dataset to evaluate the daily precipitation event because the hourly rainfall was interpolated from daily data that made its quality insufficient (Vidal et al., 2010). The third reference dataset is the **CO**mbinaison en vue de la **Me**illeure Estimation de la **Pr**écipitation **HO**rai**RE** (COMEPHORE), which is a combined product of rain gauge and radar observations (Tabary et al., 2012). This dataset has high temporal (1 hour) and spatial (1 km) resolutions and higher quality than any other gridded observations in France, especially over the complex terrain regions (e.g. the Cévennes) (Fumière et al., 2019). However,

this dataset only covers 11 years, from 1997 to 2007. The last dataset used for the evaluation is the ERA5 atmospheric reanalysis (Hersbach et al., 2020), which is a new-released dataset to replace the ERA-Interim operationally stopped in 2019. The ERA5 has a higher horizontal resolution (approx. 38 km) compared to its predecessor ERA-Interim and starts from 1979. We collect a few variables in pressure level such as the horizontal winds and specific humidity to serve the moisture transport investigation. Given that the time span of these reference datasets is different, we select different periods of simulations to be evaluated using different indices proposed in the beginning of this section. The selection of periods of simulations and reference datasets corresponding to each index is described in Table 1 below.

3. Evaluation results and discussion

In this section, we analyse and discuss the performance of EUR-11 and CPS simulations following the indices proposed in Section 2.2. Given the fact that EUR-11 and CPS simulations share the same regional model (i.e., WRF-ARW version 3.8.1) and physics, we mention each simulation shortly by its resolution combining with the driving GCMs (e.g., EUR-11-IPSL-CM5A-MR). We note that all numbers showing biases (in percentage) provided in this section come from comparisons between simulations and in situ observations.

3.1. Autumn maximum daily rainfall (Rx1day)

We first look at the spatial distribution of the mean of autumn maxima daily rainfall (Rx1day) from all simulations and observations (Figure 2). The results from the two reference datasets including the SAFRAN (Figure 2-g) and the in situ observations (Figure 2-h) show that daily rainfall events occur along the Cévennes mountain range (i.e. the diagonal of the Cévennes box), especially over its northern part (i.e. above the latitude of 44°N). The maximum and mean of 14 stations (as used in Vautard et al. (2015) from the SAFRAN and observations are close to each other, 98 mm and 77 mm, respectively for SAFRAN versus 97 mm and 81 mm for observations. This coherence comes from the fact that SAFRAN is an interpolation product from in situ observations.

Generally, we observe an agreement between all simulations and reference datasets that rainfall patterns are heavier along the Cévennes. However, the intensity of Rx1day from the CPSs and their driving EUR-11 are very different. The three EUR-11 simulations (Figure 2-a-c) show large dry biases over the Cévennes box. The mean dry biases from those simulations ranges from 33% (EUR-11-HadGEM2-ES) to 47% (EUR-11-NorESM1-M). Similarly, the three CPSs (Figure 2-d-f) slightly underestimate Rx1day over the Cévennes box with a dry bias ranging from 12% (CPS-HadGEM2-ES) to 28% (CPS-NorESM1-M). In contrast, all simulations tend to show a wet bias in Rx1day over the French Alps. The wet biases in this area are more intensified by the CPSs. We find that the behaviour of CPSs depends on their driving EUR-11 simulations. The EUR-11-

HadGEM2-ES or CPS—HadGEM2-ES shows the best agreement with observations when comparing them with other simulations with the same resolution.

3.2. Autumn maximum of daily maximum 3-hours rainfall (Rx3hour)

The convection-permitting model is expected to improve the representation of the deep convection process that leads to heavy precipitation at local scale in a short period of time (e.g. sub-daily time scale). In this section, we investigate the autumn maximum 3-hour rainfall (Rx3hour) to clarify how much the CPSs could improve the short-duration rainfall in comparison with their driving EUR-11 simulations for the period of 2001-2030. We use the COMEPHORE (1997-2007) and rain gauge measurement (1998-2018) for this evaluation. We skip the SAFRAN dataset due to its insufficient quality of hourly rainfall, which was obtained by interpolation process from daily data in combination with analysed hourly specific humidity and other factors (Vidal et al., 2010).

The spatial distributions of Rx3hour from simulations and observations are shown in Figure 3. We find that heavier rainfall events are still observed along a northeast-southwest axis, as for Rx1day. In addition, this pattern is expanded to the plain area on the south-east of the Cévennes range in the 11-years mean of COMEPHORE (Figure 3-g) and ~~the 11-years and~~ 21-years means of in situ observations (Figure 3-h-j). The spatial max/mean of Rx3hour of all 23 stations located within the Cévennes box from COMEPHORE are 81mm/45mm. This mean value is consistent with the two mean values from two different period of in-situ observations, but the maximum value is almost 30% larger compared to those from rain gauge data. This discrepancy could be explained by either the method applied to combining radar and in situ observations or the uncertainty in radar information over a complex topography area despite the good coverage of the radar system.

All simulations reproduce ~~well~~ this pattern well, despite the fact that their magnitudes of the event vary compared to the observations. This is consistent with what was found by those analyses of Fumière et al. (2019) who estimated the extreme tail percentile, rather than the mean, of daily and hourly rainfall from convection-permitting driven by reanalysis ERA-Interim data. As expected, the EUR-11 simulations underestimate 3-hour rainfall over the Cévennes. The mean dry biases of Rx3hour over 23 stations inside the Cévennes box from EUR-11-IPSL-CM5A-MR, EUR-11-HadGEM2-ES and EUR-11-NorESM1-M against in situ observations are -64%, -57% and -66%, respectively (Figure 3-a-c). The results from CPSs also underestimate the in situ observations. The spatial mean precipitation biases of 23 stations within the Cévennes box compared to observations range from -28% (CPS-NorESM1-M) to -6% (CPS-HadGEM2-ES). These CPSs perform better than EUR-11 in reproducing heavy rainfall over the plain and coastal area to the east of the Cévennes mountain range and over the Alps. However, the behaviour among CPSs varies for those areas. The CPS-IPSL-CM5A-MR shows a wet bias ranging from 20% to 60%. The CPS-HadGEM2-ES keeps showing the best performance with its bias ranging from -20% to 20%. The

CPS-NorESM1-M shows a dry bias at most of the stations ranging from 10% to 40%. In summary, the convection-permitting model show consistent skills in reproducing spatial distribution of heavy rainfall from daily to sub-daily time scale. We also find the coherence in the results in CPS and its driving EUR-11 simulations.

3.3. Distribution of wet events

In this section, we compare the station-pooling distributions of wet events (hourly/daily amount ≥ 0.1 mm) and the biases of the right tail (10%) of those distributions from all simulations against the in situ observations. We find the advantage of CPSs in simulating the extreme rainfall events in either daily or 3-hourly time scales compared to the EUR-11 simulations. The analysis for daily rainfall is shown in Figure 4. The tail of daily rainfall events in CPSs and EUR-11 is underestimated (Figure 4-b). However, the CPSs show better agreement with in situ observations. Their mean biases in the 10% tail range from -45% to -20%. The dry mean biases of EUR-11 simulations range from -60% to -50% for the 10% right tail of the distributions. The improvement in reproducing the extreme event of CPSs compared to EUR-11s is more obvious in the analysis of 3-hourly events (Figure 5). The distributions of 3-hourly wet events from CPSs are close to in situ observations (Figure 5-a). The mean biases in the right tail of these simulations range from -20% to 5%. The dry mean biases of EUR-11 simulations remain similar to their analysis of daily wet events (approx. -60%) (Figure 5-b). For either daily or sub-daily wet events, we find that the downscaling experiments from the HadGEM2-ES achieve the best skills in reproducing extreme rainfall events in comparison with other simulations with corresponding resolutions.

3.3.3.4. Scaling extreme rainfall with surface temperature

From the Clausius-Clapeyron relation, we can infer that when the atmospheric temperature increases by 1 K (or °C), the capacity of the atmosphere in holding water vapour accordingly increases by approximately 7%. This means that given the absence of significant changes in relative humidity, the water vapour supplied for the convection may increase following the Clausius-Clapeyron relation when the atmospheric temperature increases (Lenderink and Attema, 2015). This relationship links the increase in extreme daily and sub-daily time scale to regional and global warming (Lenderink et al., 2017; Pall et al., 2007; Westra et al., 2014). In this section, we model the relation between extreme precipitation and daily mean surface temperature, which is theoretically reflected by the Clausius-Clapeyron relation, by a simple non-parametric scaling method described in section 2.2. We apply this method to EUR-11 and CPS simulations and then compare to the result obtained on in situ observations. We use 14 stations as in Vautard et al. (2015) and Luu et al. (2018) for the scaling of daily rainfall and 23 stations within the Cévennes box for the scaling of 3-hourly rainfall.

-a compares the scaling model of extreme daily precipitation (99th percentile) with daily mean surface temperature from all simulations against in situ observations. The analysis of observations (black line) over the Cévennes shows that the dependence of extreme rainfall on the increasing in surface temperature closely follows the Clausius-Clapeyron (C-C) relation (black dotted lines in Figure 6) for the temperature above 23°C and breaks once exceeding 138°C. The scaling behavior of each CPS replicates its driving EUR-11 simulation for the daily precipitation scaling analysis, but the rainfall intensity from CPSs is higher. Specifically, the 2 downscaling simulations of the IPSL-CM5A-MR reproduce roughly the C-C relation in a range of 9°C to 17°C, while the 2 downscaling simulations of the HadGEM2-ES follow the C-C relation in range of 5°C to 13°C. The 2 simulations of NorESM1-M show similar behavior that follows the C-C relation in a range of roughly 4°C to 14°C. The overall scaling rate from EUR-11 simulations are close to observations, while CPSs slightly overestimate this rate. The three CPS simulations reproduce this behaviour, yet in different temperature ranges. Specifically, the CPS IPSL-CM5A-MR, CPS-HadGEM2-ES and CPS NorESM1-M follows this thermodynamic relation roughly for temperature ranging from 4°C to 16°C, from 4°C to 18°C and from 5°C to 15°C, respectively. The results of EUR-11 simulations show almost similar behaviour to their corresponding CPSs, but the rainfall intensity is lower.

The analysis for scaling of extreme 3-hourly rainfall with daily mean surface temperature is presented in Figure 6Figure 4-b. We show that the observations analysis follows the double (or super) C-C Clausius-Clapeyron relation for the temperature range of 5°C-6°C to 20°C13°C. This super relation can be directly explained that the latent heat released during the condensation period of water vapor can enhances the moisture convergence in lower level and the cloud dynamics (Lenderink et al., 2017; Trenberth et al., 2003). However, this result is different from what was found in (Drobinski et al., 2016). Their analysis showed that this scaling follows the Clausius-Clapeyron relation rather than the super Clausius-Clapeyron relation. This difference could come from the fact that Drobinski et al. (2016) used more than 200 stations which cover a large area in the South of France (i.e. not only restricted to the Cévennes) and they did not focus only on the autumn. This leads to the mixture of different patterns of rainfall in different seasons and areas.

For the simulations, we find that CPSs can reproduce the double (or super) C-C Clausius-Clapeyron relation similarly to observations (Figure 6Figure 4-b). The CPS IPSL-CM5A-MR shows a super C-C scaling in the range of 9°C to 17°C. The CPS HadGEM2-ES and CPS NorESM1-M follow super C-C in the range of 5°C to 17°C and 7°C to 14°C, respectively. These simulations also have a better agreement with observations in terms of intensity. In contrast, the three EUR-11 simulations are unsuccessful in approximating the super scaling behaviour as well as and especially the rainfall intensity. We could explain this underestimation by the fact that the resolution of EUR-11 is insufficient to reproduce the more localized extreme events and that

~~the convection scheme and that~~ the convection scheme used in EUR-11 over-simplified the cloud process ~~by statistical distributions and imposing assumptions of quasi-equilibrium with large-scale forcing (from grid points), approximation of moist air entraining in the updraft, and representation of all single cloud elements by sole steady state updraft of the whole cloud ensemble~~ (Houze, 2004; Lenderink and Attema, 2015; Prein et al., 2013; de Rooy et al., 2013). In addition, we find the decreasing trend (i.e., the hook shape) of this scaling model in high temperature ranges for both daily and sub-daily precipitation. Because we use surface temperature as a proxy of condensation temperature (i.e., dew point), we overestimate the real saturation temperature (Drobinski et al., 2016). In other word, this hook shape results from the lack of sufficient water vapour in the atmosphere (Hardwick Jones et al., 2010), therefore the condition of saturation is broken.

3.4. Distribution of wet events

~~In this section, we compare the station pooling distributions of wet events and the biases of the right tail (10%) of those distributions from all simulations against the in-situ observations (Figure 5 for daily wet events and Figure 6 for 3 hourly wet events). We find the advantage of CPSs in simulating the extreme rainfall events in either daily or 3 hourly time scales compared to the EUR-11 simulations. The analysis for daily rainfall is shown in Figure 5. The tail of daily rainfall events in CPSs and EUR-11 is underestimated (Figure 5 b). However, the CPSs show better agreement with in-situ observations. Their mean biases in the 10% tail range from 40% to 20%. The dry mean biases of EUR-11 simulations range from 60% to 50% for the 10% right tail of the distributions. The improvement in reproducing extreme event of CPSs compared to EUR-11s is more obvious in the analysis of 3 hourly event (Figure 6). The distributions of 3 hourly wet events from CPSs are close to in-situ observations (Figure 6 a). The mean biases in the right tail of these simulations range from 20% to 5%. The dry mean biases of EUR-11 simulations remain similar to their analysis of daily wet events (approx. 60%) (Figure 6 b). For either daily or sub-daily wet events, we find that the downscaling experiments from the HadGEM2-ES achieve the best skills in reproducing extreme rainfall events in comparison with other simulations with corresponding resolutions.~~

3.5. Moisture sources

In this section, we investigate the ability of ~~simulations~~ the model in reproducing the mean moisture source brought by the south-eastern flow impinging on the Cévennes. We use the method described in Section 2.2 to compare the mean moisture transport of the 12 heaviest Cévennes events in each simulation against the ERA5 reanalysis.

The comparison of the mean moisture transport of the 12 heaviest Cévennes rainfall events occurring over the Cévennes box is shown in Figure 7. Because the size of CPS domain is

insufficient for this large-scale analysis, we visually embed each CPS domain inside its driving EUR-11 domain in each panel showing the results from CPSs (Figure 7-d-f). This means that we estimate the mean moisture transport of the 12 heaviest Cévennes events from each CPS simulation and the corresponding information from its driving EUR-11 to perform those plots. Therefore, the information from EUR-11 simulations in those cases (Figure 7-d-f) may differ from those mean moisture transport investigations for the 12 heavy Cévennes events determined from EUR-11s themselves (Figure 7-a-c). The result from the ERA5 reanalysis indicates a low-pressure system locating around 50N and 9W in the north Atlantic with its trough expanding to the south (Figure 7-g). This large-scale system produces southerly to easterly flows that transport the moisture from the warm Mediterranean hitting the Cévennes. The mean moisture flux covering the Cévennes box in this case is $265 \text{ kg.m}^{-1}.\text{s}^{-1}$ and larger than surrounding areas. All EUR-11 simulations (i.e. either analysis of themselves in Figure 7-a-c or complement large-scale dynamics information for the CPS analyses in Figure 7-d-f) can reproduce well these synoptic features. The low-pressure systems are generally located between 45°N to 50°N and 5°W to 10°W. These systems enable the low-level flows bringing larger water vapour content into the Cévennes box compared to nearby areas in all simulations in a way that is coherent with ERA-5 analysis. The bias of mean moisture source on the Cévennes box from EUR-11 simulations is roughly 25% lower than in ERA5. The CPS simulations can reproduce better agreement of moisture source over the Cévennes box with ERA5, in spite of their restriction in domain size. The mean moisture of the 12 heaviest rainfall events over the Cévennes box from CPSs are approximately underestimated by 17% compared to the ERA5. In summary, all simulations can reproduce the moisture source hitting the Cévennes, with a slightly better performance from CPSs. However, the CPSs show more added values in reproducing more realistic extreme precipitation events. This suggests that the explicitly-resolving convection, finer resolution and more elaborated topography all play a role in this improvement.

4. Discussion and Conclusion

In this study, we conducted three dynamical downscaling experiments from 12 km to 3 km using the WRF-ARW version 3.8.1 for two different periods including 1951-1980 and 2001-2030. These simulations, following a few experiments of 3-month simulations driven by ERA-Interim for testing and selecting an appropriate configuration, are driven by the three EURO-CORDEX simulations using the same WRF-ARW version which downscaled three GCMs from CMIP5 including IPSL-CM5A-MR, HADGEM2-ES and NORESM1-M. We simulate precipitation only for the autumn over the French Mediterranean with focusing on the South of France. This downscaling strategy benefits from time and energy efficiency that we can run simulations for different autumns and experiments at the same time.

We find that convection-permitting simulations (CPS(s)) can reproduce more realistic heavy precipitation events in terms of magnitude, spatial coverage, and statistical properties than EURO-CORDEX simulations. This improvement is more pronounced in 3-hourly rainfall analysis than in the daily one. These features are robust at both climate scale driven by EUR-11s and the 3-months scale driven by the reanalysis (see the supplementary) to reproduce a few specific events occurring in the autumn 2014. In ~~particular~~ addition, the CPSs at climate scale can reproduce a doubling of the rate of the Clausius-Clapeyron relation for the scaling of 3-hourly rainfall to surface temperature that is ~~completely~~ absent in the EUR-11 simulations with convection parameterized method and reproduce the high extremes in plain areas. These findings are coherent with other studies with a convection-permitting approach forced by reanalysis data for the autumn events over the French Mediterranean region (Berthou et al., 2020; Caillaud et al., 2021; Fumière et al., 2019; Lenderink et al., 2019) and lately forced by CMIP5 models (Pichelli et al., 2021), and for other seasons and areas (Armon et al., 2019; Ban et al., 2018, 2021; Kendon et al., 2012; Knist et al., 2018). We also note that our findings remain similar when all results from the CPSs are upscaled to match the resolution of the EUR-11 that is usually applied in high-resolution model evaluation by several studies.

We also find that the behaviour of CPS simulations is modulated by their driving GCM simulations given that they share the same regional climate model (e.g., WRF model). The biases of the driving GCMs can be conveyed into the EUR-11s, and hence to the CPS simulations. For example, the downscaling experiments of the HadGEM2-ES show the best performance compared to others at the same resolution, while those from NorESM1-M show larger dry biases compared to the rest. We have verified that the bias in sea surface temperature (SST) over the French Mediterranean region during the 12 heaviest precipitation events was over 2°C underestimated by the NorESM1-M, while the others showed slightly overestimation (figure not shown here). The decrease in SST weakens the convection, hence potentially affecting the extreme precipitation (Lebeaupin et al., 2006). This emphasizes the role of boundary conditions on the feedback of nested domains.

Both EUR-11 and CPS simulations can reproduce the moisture transport hitting the Cévennes with slightly better agreement of CPS with ERA5 in terms of mean amount of moisture on the Cévennes box. Even though the moisture source is well presented in all simulations, with a slight enhancement in CPS simulations, only three CPS simulations are able to reproduce realistic sub-daily extreme precipitation over the Cévennes. It can be deduced that ~~cloud-solving~~ convection-permitting features, higher resolution, better representation of complex orography and a better supply of moisture source can all play a role in the added values of convection—~~permitting~~ simulations.

One of the remaining inherent problems in evaluating long simulations at hourly time scale is the uncertainty in observations (as mentioned in (Ban et al., 2014, 2021)). The 3-hourly observational

485 dataset used in this research started at different times among stations. In addition, the coverage of
stations, especially inside the Cévennes box, is limited only to the south-eastern part of the area. A
large part in the north of Cévennes range where a lot of heavy rainfall value happened is missing
(as shown by COMEPHORE data). The COMEPHORE data, which is the combination of radar
measurement and in situ observations, provides a better representation of the spatial distribution
490 of heavy rainfall. Even though this data also contains a lot of uncertainty which comes from poor
observations and radar information over the complex topography, its quality over the Cévennes is
sufficient (as discussed in Fumière et al. (2019)). However, the length of this dataset is quite short
and its observation period is different from the simulations in this research.

We conclude that a convection-permitting approach with the WRF regional climate model appears
495 to provide a fairly realistic representation of extreme daily and 3-hourly rainfall simulations. Their
similarity with observations allows for a use for climate change studies and their impacts. They
should provide more reliable simulations than GCMs or even the high-resolution EURO-CORDEX
simulations. However, we suggest using a multi-model approach to have a better consideration in
the sensitivity of this variable on different model dynamics or micro-physic schemes (Ban et al.,
500 2021; Pichelli et al., 2021).

References

- Adinolfi, M., Raffa, M., Reder, A. and Mercogliano, P.: Evaluation and Expected Changes of Summer Precipitation at Convection Permitting Scale with COSMO-CLM over Alpine Space, *Atmosphere (Basel)*, 12(1),
505 doi:10.3390/atmos12010054, 2021.
- Armon, M., Marra, F., Enzel, Y., Rostkier-Edelstein, D. and Morin, E.: Characterising patterns of heavy precipitation events in the eastern Mediterranean using a weather radar and convection-permitting WRF simulations, *Hydrol. Earth Syst. Sci. Discuss.*, 2019, 1–38, doi:10.5194/hess-2019-500, 2019.
- Armon, M., Marra, F., Enzel, Y., Rostkier-Edelstein, D. and Morin, E.: Radar-based characterisation of heavy
510 precipitation in the eastern Mediterranean and its representation in a convection-permitting model, *Hydrol. Earth Syst. Sci.*, 24(3), 1227–1249, doi:10.5194/hess-24-1227-2020, 2020.
- Ban, N., Schmidli, J. and Schär, C.: Evaluation of the convection-resolving regional climate modeling approach in decade-long simulations, *J. Geophys. Res. Atmos.*, 119(13), 7889–7907, 2014.
- Ban, N., Rajczak, J., Schmidli, J. and Schär, C.: Analysis of Alpine precipitation extremes using generalized
515 extreme value theory in convection-resolving climate simulations, *Clim. Dyn.*, 1–15, 2018.
- Ban, N., Caillaud, C., Coppola, E., Pichelli, E., Sobolowski, S., Adinolfi, M., Ahrens, B., Alias, A., Anders, I., Bastin, S., Belušić, D., Berthou, S., Brisson, E., Cardoso, R. M., Chan, S. C., Christensen, O. B., Fernández, J., Fita, L., Frisius, T., Gašparac, G., Giorgi, F., Goergen, K., Haugen, J. E., Hodnebrog, Ø., Kartsios, S., Katragkou, E., Kendon, E. J., Keuler, K., Lavin-Gullon, A., Lenderink, G., Leutwyler, D., Lorenz, T., Maraun, D.,
520 Mercogliano, P., Milovac, J., Panitz, H.-J., Raffa, M., Remedio, A. R., Schär, C., Soares, P. M. M., Srnec, L., Steensen, B. M., Stocchi, P., Tölle, M. H., Truhetz, H., Vergara-Temprado, J., de Vries, H., Warrach-Sagi, K., Wulfmeyer, V. and Zander, M. J.: The first multi-model ensemble of regional climate simulations at kilometer-scale resolution, part I: evaluation of precipitation, *Clim. Dyn.*, doi:10.1007/s00382-021-05708-w, 2021.
- Berthou, S., Kendon, E. J., Chan, S. C., Ban, N., Leutwyler, D., Schär, C. and Fosser, G.: Pan-European climate at
525 convection-permitting scale: a model intercomparison study, *Clim. Dyn.*, 55(1), 35–59, doi:10.1007/s00382-018-4114-6, 2020.
- Vanden Broucke, S., Wouters, H., Demuzere, M. and van Lipzig, N. P. M.: The influence of convection-permitting regional climate modeling on future projections of extreme precipitation: dependency on topography and timescale, *Clim. Dyn.*, 52(9), 5303–5324, doi:10.1007/s00382-018-4454-2, 2019.

- 530 Caillaud, C., Somot, S., Alias, A., Bernard-Bouissières, I., Fumière, Q., Laurantin, O., Seity, Y. and Ducrocq, V.: Modelling Mediterranean heavy precipitation events at climate scale: an object-oriented evaluation of the CNRM-AROME convection-permitting regional climate model, *Clim. Dyn.*, 56(5), 1717–1752, doi:10.1007/s00382-020-05558-y, 2021.
- Chan, S. C., Kendon, E. J., Fowler, H. J., Blenkinsop, S., Ferro, C. A. T. and Stephenson, D. B.: Does increasing
535 the spatial resolution of a regional climate model improve the simulated daily precipitation?, *Clim. Dyn.*, 41(5–6), 1475–1495, 2013.
- Chan, S. C., Kendon, E. J., Fowler, H. J., Blenkinsop, S., Roberts, N. M. and Ferro, C. A. T.: The value of high-resolution met office regional climate models in the simulation of multihourly precipitation extremes, *J. Clim.*, 27(16), 6155–6174, 2014.
- 540 Chan, S. C., Kendon, E. J., Berthou, S., Fosser, G., Lewis, E. and Fowler, H. J.: Europe-wide precipitation projections at convection permitting scale with the Unified Model, *Clim. Dyn.*, 55(3), 409–428, doi:10.1007/s00382-020-05192-8, 2020.
- Coppola, E., Sobolowski, S., Pichelli, E., Raffaele, F., Ahrens, B., Anders, I., Ban, N., Bastin, S., Belda, M. and Belusic, D.: A first-of-its-kind multi-model convection permitting ensemble for investigating convective
545 phenomena over Europe and the Mediterranean, *Clim. Dyn.*, 1–32, 2018.
- Coppola, E., Nogherotto, R., Ciarlò, J. M., Giorgi, F., van Meijgaard, E., Iles, C., Kadygrov, N., L. Corre, M. S., Somot, S., Nabat, P., Vautard, R., Levavasseur, G., Schwingshackl, C., Sillmann, J., Kjellström, E., Nikulin, G., Aalbers, E., Lenderink, G., Christensen, O. B., Boberg, F., Sørland, S. L., Demory, M.-E., Bülow, K. and Teichmann, C.: Assessment of the European climate projections as simulated by the large EURO-CORDEX
550 regional climate model ensemble, *J. Geophys. Res. sub judice*, 2020.
- Dee, D. P., Uppala, S. M., Simmons, A. J., Berrisford, P., Poli, P., Kobayashi, S., Andrae, U., Balmaseda, M. A., Balsamo, G., Bauer, P., Bechtold, P., Beljaars, A. C. M., van de Berg, L., Bidlot, J., Bormann, N., Delsol, C., Dragani, R., Fuentes, M., Geer, A. J., Haimberger, L., Healy, S. B., Hersbach, H., Hólm, E. V, Isaksen, I., Kållberg, P., Köhler, M., Matricardi, M., McNally, A. P., Monge-Sanz, B. M., Morcrette, J.-J., Park, B.-K., Peubey, C., de
555 Rosnay, P., Tavolato, C., Thépaut, J.-N. and Vitart, F.: The ERA-Interim reanalysis: configuration and performance of the data assimilation system, *Q. J. R. Meteorol. Soc.*, 137(656), 553–597, doi:10.1002/qj.828, 2011.
- Delrieu, G., Nicol, J., Yates, E., Kirstetter, P.-E., Creutin, J.-D., Anquetin, S., Obled, C., Saulnier, G.-M., Ducrocq, V., Gaume, E., Payraastre, O., Andrieu, H., Ayral, P.-A., Bouvier, C., Neppel, L., Livet, M., Lang, M., du-Châtelet, J. P., Walpersdorf, A. and Wobrock, W.: The Catastrophic Flash-Flood Event of 8–9 September 2002 in the Gard
560 Region, France: A First Case Study for the Cévennes–Vivarais Mediterranean Hydrometeorological Observatory,

- J. Hydrometeorol., 6(1), 34–52, doi:10.1175/jhm-400.1, 2005.
- Drobinski, P., Ducrocq, V., Alpert, P., Anagnostou, E., Béranger, K., Borga, M., Braud, I., Chanzy, A., Davolio, S., Delrieu, G., Estournel, C., Boubrahmi, N. F., Font, J., Grubišić, V., Gualdi, S., Homar, V., Ivančan-Picek, B., Kottmeier, C., Kotroni, V., Lagouvardos, K., Lionello, P., Llasat, M. C., Ludwig, W., Lutoff, C., Mariotti, A.,
565 Richard, E., Romero, R., Rotunno, R., Roussot, O., Ruin, I., Somot, S., Taupier-Letage, I., Tintore, J., Uijlenhoet, R. and Wernli, H.: HyMeX: A 10-Year Multidisciplinary Program on the Mediterranean Water Cycle, Bull. Am. Meteorol. Soc., 95(7), 1063–1082, doi:10.1175/bams-d-12-00242.1, 2014.
- Drobinski, P., Alonzo, B., Bastin, S., Silva, N. Da and Muller, C.: Scaling of precipitation extremes with temperature in the French Mediterranean region: What explains the hook shape?, J. Geophys. Res. Atmos., 121(7),
570 3100–3119, doi:10.1002/2015jd023497, 2016.
- Ducrocq, V., Nuissier, O., Ricard, D., Lebeaupin, C. and Thouvenin, T.: A numerical study of three catastrophic precipitating events over southern France. II: Mesoscale triggering and stationarity factors, Q. J. R. Meteorol. Soc., 134(630), 131–145, doi:10.1002/qj.199, 2008.
- Ducrocq, V., Braud, I., Davolio, S., Ferretti, R., Flamant, C., Jansa, A., Kalthoff, N., Richard, E., Taupier-Letage, I., Ayrat, P.-A., Belamari, S., Berne, A., Borga, M., Boudevillain, B., Bock, O., Boichard, J.-L., Bouin, M.-N., Bousquet, O., Bouvier, C., Chiggiato, J., Cimini, D., Corsmeier, U., Coppola, L., Cocquerez, P., Defer, E., Delanoë, J., Girolamo, P. Di, Doerenbecher, A., Drobinski, P., Dufournet, Y., Fourrié, N., Gourley, J. J., Labatut, L., Lambert, D., Coz, J. Le, Marzano, F. S., Molinié, G., Montani, A., Nord, G., Nuret, M., Ramage, K., Rison, W., Roussot, O., Said, F., Schwarzenboeck, A., Testor, P., Baelen, J. Van, Vincendon, B., Aran, M. and Tamayo, J.:
580 HyMeX-SOP1: The Field Campaign Dedicated to Heavy Precipitation and Flash Flooding in the Northwestern Mediterranean, Bull. Am. Meteorol. Soc., 95(7), 1083–1100, doi:10.1175/bams-d-12-00244.1, 2014.
- Feng, Z., Leung, L. R., Houze Jr, R. A., Hagos, S., Hardin, J., Yang, Q., Han, B. and Fan, J.: Structure and Evolution of Mesoscale Convective Systems: Sensitivity to Cloud Microphysics in Convection-Permitting Simulations Over the United States, J. Adv. Model. Earth Syst., 10(7), 1470–1494, 2018.
- 585 Fosser, G., Khodayar, S. and Berg, P.: Benefit of convection permitting climate model simulations in the representation of convective precipitation, Clim. Dyn., 44(1–2), 45–60, 2015.
- Fresnay, S., Hally, A., Garnaud, C., Richard, E. and Lambert, D.: Heavy precipitation events in the Mediterranean: sensitivity to cloud physics parameterisation uncertainties, Nat. Hazards Earth Syst. Sci., 12(8), 2012.
- Fumière, Q., Déqué, M., Nuissier, O., Somot, S., Alias, A., Caillaud, C., Laurantin, O. and Seity, Y.: Extreme
590 rainfall in Mediterranean France during the fall: added value of the CNRM-AROME Convection-Permitting Regional Climate Model, Clim. Dyn., 1–15, 2019.

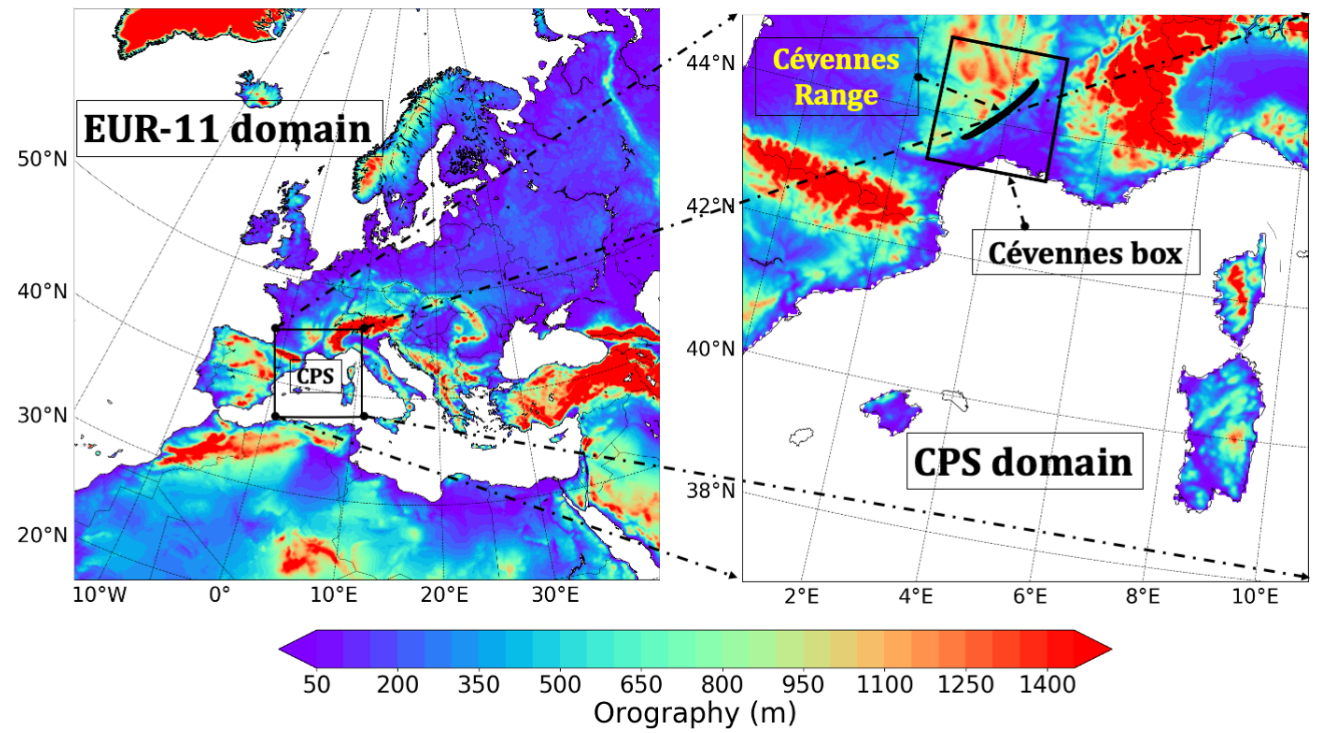
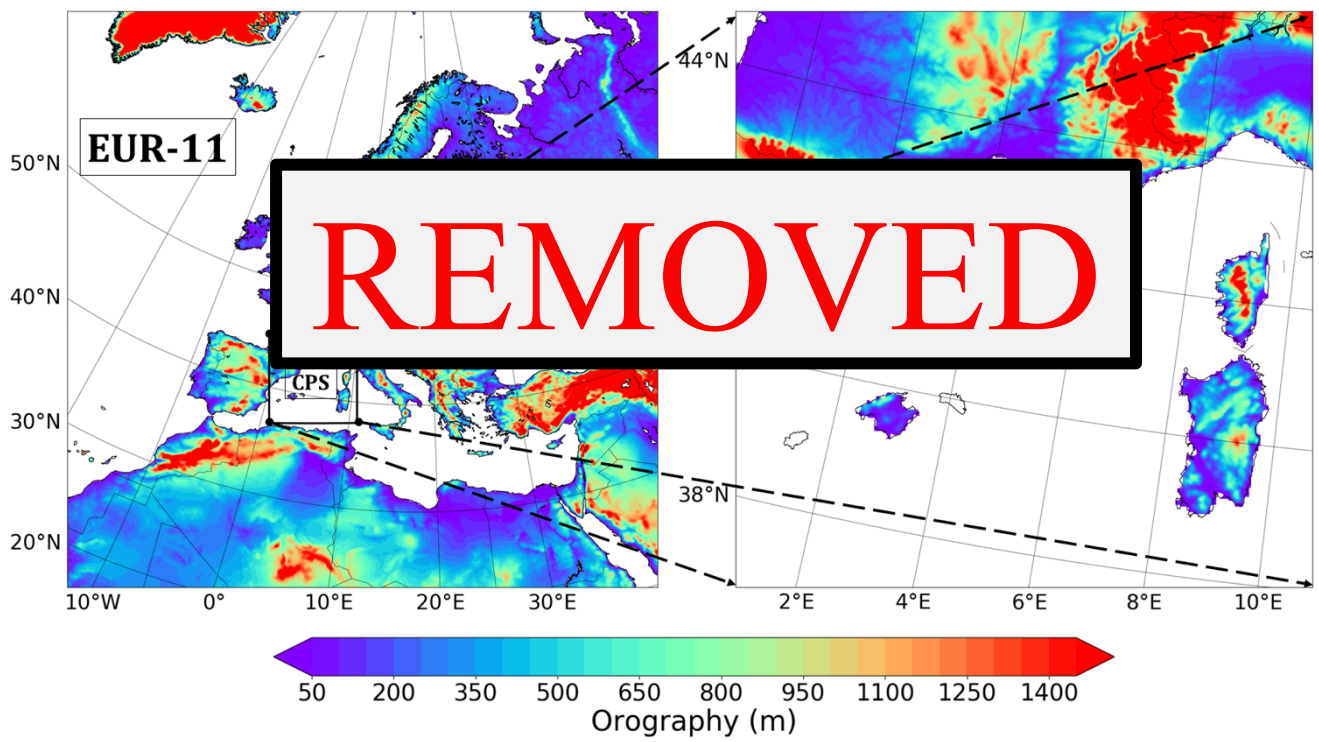
- Giorgi, F.: Climate change hot-spots, *Geophys. Res. Lett.*, 33(8), doi:10.1029/2006gl025734, 2006.
- Giorgi, F. and Mearns, L. O.: Introduction to special section: Regional climate modeling revisited, *J. Geophys. Res. Atmos.*, 104(D6), 6335–6352, 1999.
- 595 Hardwick Jones, R., Westra, S. and Sharma, A.: Observed relationships between extreme sub-daily precipitation, surface temperature, and relative humidity, *Geophys. Res. Lett.*, 37(22), doi:10.1029/2010GL045081, 2010.
- Hersbach, H., Bell, B., Berrisford, P., Hirahara, S., Horányi, A., Muñoz-Sabater, J., Nicolas, J., Peubey, C., Radu, R., Schepers, D., Simmons, A., Soci, C., Abdalla, S., Abellan, X., Balsamo, G., Bechtold, P., Biavati, G., Bidlot, J., Bonavita, M., De Chiara, G., Dahlgren, P., Dee, D., Diamantakis, M., Dragani, R., Flemming, J., Forbes, R.,
- 600 Fuentes, M., Geer, A., Haimberger, L., Healy, S., Hogan, R. J., Hólm, E., Janisková, M., Keeley, S., Laloyaux, P., Lopez, P., Lupu, C., Radnoti, G., de Rosnay, P., Rozum, I., Vamborg, F., Villaume, S. and Thépaut, J.-N.: The ERA5 global reanalysis, *Q. J. R. Meteorol. Soc.*, 146(730), 1999–2049, doi:https://doi.org/10.1002/qj.3803, 2020.
- Hodnebrog, Ø., Marelle, L., Alterskjær, K., Wood, R. R., Ludwig, R., Fischer, E. M., Richardson, T. B., Forster, P. M., Sillmann, J. and Myhre, G.: Intensification of summer precipitation with shorter time-scales in Europe,
- 605 *Environ. Res. Lett.*, 14(12), 124050, 2019.
- Hohenegger, C., Brockhaus, P. and Schaer, C.: Towards climate simulations at cloud-resolving scales, *Meteorol. Zeitschrift*, 17(4), 383–394, 2008.
- Houze, R. A.: Mesoscale convective systems, *Rev. Geophys.*, 42(4), 1–43, doi:10.1029/2004RG000150, 2004.
- Iacono, M. J., Delamere, J. S., Mlawer, E. J., Shephard, M. W., Clough, S. A. and Collins, W. D.: Radiative forcing
- 610 by long-lived greenhouse gases: Calculations with the AER radiative transfer models, *J. Geophys. Res. Atmos.*, 113(D13), doi:10.1029/2008JD009944, 2008.
- Jacob, D., Petersen, J., Eggert, B., Alias, A., Christensen, O. B., Bouwer, L. M., Braun, A., Colette, A., Déqué, M., Georgievski, G., Georgopoulou, E., Gobiet, A., Menut, L., Nikulin, G., Haensler, A., Hempelmann, N., Jones, C., Keuler, K., Kovats, S., Kröner, N., Kotlarski, S., Kriegsman, A., Martin, E., van Meijgaard, E., Moseley, C.,
- 615 Pfeifer, S., Preuschmann, S., Radermacher, C., Radtke, K., Rechid, D., Rounsevell, M., Samuelsson, P., Somot, S., Soussana, J.-F., Teichmann, C., Valentini, R., Vautard, R., Weber, B. and Yiou, P.: EURO-CORDEX: new high-resolution climate change projections for European impact research, *Reg. Environ. Chang.*, 14(2), 563–578, doi:10.1007/s10113-013-0499-2, 2014.
- Janjic, Z. I.: The surface layer parameterization in the NCEP Eta Model, *World Meteorol. Organ. TD*, 4.16-4.17,
- 620 1996.
- Kendon, E. J., Roberts, N. M., Senior, C. A. and Roberts, M. J.: Realism of rainfall in a very high-resolution regional climate model, *J. Clim.*, 25(17), 5791–5806, 2012.

- Kendon, E. J., Ban, N., Roberts, N. M., Fowler, H. J., Roberts, M. J., Chan, S. C., Evans, J. P., Fosser, G. and Wilkinson, J. M.: Do convection-permitting regional climate models improve projections of future precipitation change?, *Bull. Am. Meteorol. Soc.*, 98(1), 79–93, 2017.
- Kendon, E. J., Stratton, R. A., Tucker, S., Marsham, J. H., Berthou, S., Rowell, D. P. and Senior, C. A.: Enhanced future changes in wet and dry extremes over Africa at convection-permitting scale, *Nat. Commun.*, 10(1), 1794, 2019.
- Knist, S., Goergen, K. and Simmer, C.: Evaluation and projected changes of precipitation statistics in convection-permitting WRF climate simulations over Central Europe, *Clim. Dyn.*, 1–17, 2018.
- Kotlarski, S., Keuler, K., Christensen, O. B., Colette, A., Déqué, M., Gobiet, A., Goergen, K., Jacob, D., Lüthi, D., van Meijgaard, E., Nikulin, G., Schär, C., Teichmann, C., Vautard, R., Warrach-Sagi, K. and Wulfmeyer, V.: Regional climate modeling on European scales: a joint standard evaluation of the EURO-CORDEX RCM ensemble, *Geosci. Model Dev.*, 7(4), 1297–1333, doi:10.5194/gmd-7-1297-2014, 2014.
- Langhans, W., Schmidli, J., Fuhrer, O., Bieri, S. and Schär, C.: Long-term simulations of thermally driven flows and orographic convection at convection-parameterizing and cloud-resolving resolutions, *J. Appl. Meteorol. Climatol.*, 52(6), 1490–1510, 2013.
- Lebeaupin, C., Ducrocq, V. and Giordani, H.: Sensitivity of torrential rain events to the sea surface temperature based on high-resolution numerical forecasts, *J. Geophys. Res. Atmos.*, 111(D12), doi:https://doi.org/10.1029/2005JD006541, 2006.
- Lee, K. O., Flamant, C., Duffourg, F., Ducrocq, V. and Chaboureaud, J. P.: Impact of upstream moisture structure on a back-building convective precipitation system in south-eastern France during HyMeX IOP13, *Atmos. Chem. Phys.*, 18(23), 16845–16862, doi:10.5194/acp-18-16845-2018, 2018.
- Lélé, M. I., Leslie, L. M. and Lamb, P. J.: Analysis of Low-Level Atmospheric Moisture Transport Associated with the West African Monsoon, *J. Clim.*, 28(11), 4414–4430, doi:10.1175/jcli-d-14-00746.1, 2015.
- Lenderink, Barbero, R., Loriaux, J. M. and Fowler, H. J.: Super-Clausius–Clapeyron scaling of extreme hourly convective precipitation and its relation to large-scale atmospheric conditions, *J. Clim.*, 30(15), 6037–6052, 2017.
- Lenderink, G. and Attema, J.: A simple scaling approach to produce climate scenarios of local precipitation extremes for the Netherlands, *Environ. Res. Lett.*, 10(8), 85001, 2015.
- Lenderink, G. and Van Meijgaard, E.: Increase in hourly precipitation extremes beyond expectations from temperature changes, *Nat. Geosci.*, 1(8), 511, 2008.
- Lenderink, G., Belušić, D., Fowler, H. J., Kjellström, E., Lind, P., van Meijgaard, E., van Ulft, B. and de Vries, H.: Systematic increases in the thermodynamic response of hourly precipitation extremes in an idealized warming

- experiment with a convection-permitting climate model, *Environ. Res. Lett.*, 14(7), 74012, doi:10.1088/1748-9326/ab214a, 2019.
- Lind, P., Belušić, D., Christensen, O. B., Dobler, A., Kjellström, E., Landgren, O., Lindstedt, D., Matte, D., Pedersen, R. A., Toivonen, E. and Wang, F.: Benefits and added value of convection-permitting climate modeling over Fenno-Scandinavia, *Clim. Dyn.*, 55(7), 1893–1912, doi:10.1007/s00382-020-05359-3, 2020.
- Llasat, M. C., Llasat-Botija, M., Petrucci, O., Pasqua, A. A., Rosselló, J., Vinet, F. and Boissier, L.: Towards a database on societal impact of Mediterranean floods within the framework of the HYMEX project, *Nat. Hazards Earth Syst. Sci.*, 13(5), 1337–1350, doi:10.5194/nhess-13-1337-2013, 2013.
- Luu, L. N., Vautard, R., Yiou, P., van Oldenborgh, G. J. and Lenderink, G.: Attribution of Extreme Rainfall Events in the South of France Using EURO-CORDEX Simulations, *Geophys. Res. Lett.*, doi:10.1029/2018GL077807, 2018.
- Meredith, E. P., Ulbrich, U. and Rust, H. W.: Subhourly rainfall in a convection-permitting model, *Environ. Res. Lett.*, 15(3), 34031, doi:10.1088/1748-9326/ab6787, 2020.
- Nakanishi, M. and Niino, H.: An Improved Mellor–Yamada Level-3 Model: Its Numerical Stability and Application to a Regional Prediction of Advection Fog, *Boundary-Layer Meteorol.*, 119(2), 397–407, doi:10.1007/s10546-005-9030-8, 2006.
- Nuissier, O., Ducrocq, V., Ricard, D., Lebeaupin, C. and Anquetin, S.: A numerical study of three catastrophic precipitating events over southern France. I: Numerical framework and synoptic ingredients, *Q. J. R. Meteorol. Soc.*, 134(630), 111–130, 2008.
- Nuissier, O., Joly, B., Joly, A., Ducrocq, V. and Arbogast, P.: A statistical downscaling to identify the large-scale circulation patterns associated with heavy precipitation events over southern France, *Q. J. R. Meteorol. Soc.*, 137(660), 1812–1827, doi:10.1002/qj.866, 2011.
- Pall, P., Allen, M. R. and Stone, D. A.: Testing the Clausius–Clapeyron constraint on changes in extreme precipitation under CO₂ warming, *Clim. Dyn.*, 28(4), 351–363, doi:10.1007/s00382-006-0180-2, 2007.
- Palmer, T. and Stevens, B.: The scientific challenge of understanding and estimating climate change, *Proc. Natl. Acad. Sci.*, 116(49), 24390–24395, doi:10.1073/pnas.1906691116, 2019.
- Pichelli, E., Coppola, E., Sobolowski, S., Ban, N., Giorgi, F., Stocchi, P., Alias, A., Belušić, D., Berthou, S., Caillaud, C., Cardoso, R. M., Chan, S., Christensen, O. B., Dobler, A., de Vries, H., Goergen, K., Kendon, E. J., Keuler, K., Lenderink, G., Lorenz, T., Mishra, A. N., Panitz, H.-J., Schär, C., Soares, P. M. M., Truhetz, H. and Vergara-Temprado, J.: The first multi-model ensemble of regional climate simulations at kilometer-scale resolution part 2: historical and future simulations of precipitation, *Clim. Dyn.*, doi:10.1007/s00382-021-05657-4, 2021.

- 685 Prein, Gobiet, A., Suklitsch, M., Truhetz, H., Awan, N. K., Keuler, K. and Georgievski, G.: Added value of convection permitting seasonal simulations, *Clim. Dyn.*, 41(9–10), 2655–2677, 2013.
- Prein, Langhans, W., Fosser, G., Ferrone, A., Ban, N., Goergen, K., Keller, M., Tölle, M., Gutjahr, O. and Feser, F.: A review on regional convection-permitting climate modeling: Demonstrations, prospects, and challenges, *Rev. Geophys.*, 53(2), 323–361, 2015.
- 690 Quintana-Seguí, P., Moigne, P. Le, Durand, Y., Martin, E., Habets, F., Baillon, M., Canellas, C., Franchisteguy, L. and Morel, S.: Analysis of Near-Surface Atmospheric Variables: Validation of the SAFRAN Analysis over France, *J. Appl. Meteorol. Climatol.*, 47(1), 92–107, doi:10.1175/2007jamc1636.1, 2008.
- Ricard, D., Ducrocq, V. and Auger, L.: A Climatology of the Mesoscale Environment Associated with Heavily Precipitating Events over a Northwestern Mediterranean Area, *J. Appl. Meteorol. Climatol.*, 51(3), 468–488, doi:10.1175/JAMC-D-11-017.1, 2012.
- 695 de Rooy, W. C., Bechtold, P., Fröhlich, K., Hohenegger, C., Jonker, H., Mironov, D., Pier Siebesma, A., Teixeira, J. and Yano, J.-I.: Entrainment and detrainment in cumulus convection: an overview, *Q. J. R. Meteorol. Soc.*, 139(670), 1–19, doi:https://doi.org/10.1002/qj.1959, 2013.
- Scaff, L., Prein, A. F., Li, Y., Liu, C., Rasmussen, R. and Ikeda, K.: Simulating the convective precipitation diurnal cycle in North America’s current and future climate, *Clim. Dyn.*, doi:10.1007/s00382-019-04754-9, 2019.
- 700 Tabary, P., Dupuy, P., L’Henaff, G., Gueguen, C., Moulin, L., Laurantin, O., Merlier, C. and Soubeyroux, J.-M.: A 10-year (1997–2006) reanalysis of quantitative precipitation estimation over France: methodology and first results, *IAHS Publ*, 351, 255–260, 2012.
- Taylor, K. E., Stouffer, R. J. and Meehl, G. A.: An Overview of CMIP5 and the Experiment Design, *Bull. Am. Meteorol. Soc.*, 93(4), 485–498, doi:10.1175/bams-d-11-00094.1, 2012.
- 705 Thompson, G., Field, P. R., Rasmussen, R. M. and Hall, W. D.: Explicit Forecasts of Winter Precipitation Using an Improved Bulk Microphysics Scheme. Part II: Implementation of a New Snow Parameterization, *Mon. Weather Rev.*, 136(12), 5095–5115, doi:10.1175/2008mwr2387.1, 2008.
- Trenberth, K. E.: Observational needs for climate prediction and adaptation, *Bull. World Meteorol. Organ.*, 57(1), 17–21, 2008.
- 710 Trenberth, K. E., Dai, A., Rasmussen, R. M. and Parsons, D. B.: The Changing Character of Precipitation, *Bull. Am. Meteorol. Soc.*, 84(9), 1205–1218, doi:10.1175/bams-84-9-1205, 2003.
- Tuel, A. and Eltahir, E. A. B.: Why Is the Mediterranean a Climate Change Hot Spot?, *J. Clim.*, 33(14), 5829–5843, doi:10.1175/JCLI-D-19-0910.1, 2020.
- 715 Vautard, R., Yiou, P., van Oldenborgh, G.-J., Lenderink, G., Thao, S., Ribes, A., Planton, S., Dubuisson, B. and

- Soubeyroux, J.-M.: Extreme fall 2014 precipitation in the Cévennes mountains, *Bull. Am. Meteorol. Soc.*, 96(12), S56–S60, 2015.
- Vautard, R., Kadyrov, N., Iles, C., Boberg, F., Buonomo, E., Bülow, K., Coppola, E., Corre, L., van Meijgaard, E., Nogherotto, R., Sandstad, M., Schwingshackl, C., Somot, S., Aalbers, E., Christensen, O. B., Ciarlo', J. M.,
720 Demory, M.-E., Giorgi, F., Jacob, D., Jones, R. G., Keuler, K., Kjellström, E., Lenderink, G., Levavasseur, G., Nikulin, G., Sillmann, J., Sørland, S. L., Solidoro, C., Steger, C., Teichmann, C., Warrach-Sagi, K. and Wulfmeyer, V.: Evaluation of the large EURO-CORDEX regional climate model ensemble, *J. Geophys. Res.* sub judice, 2020.
- Vergara-Temprado, J., Ban, N. and Schär, C.: Extreme Sub-Hourly Precipitation Intensities Scale Close to the Clausius-Clapeyron Rate Over Europe, *Geophys. Res. Lett.*, 48(3), e2020GL089506,
725 doi:<https://doi.org/10.1029/2020GL089506>, 2021.
- Vidal, J.-P., Martin, E., Franchistéguy, L., Baillon, M. and Soubeyroux, J.-M.: A 50-year high-resolution atmospheric reanalysis over France with the Safran system, *Int. J. Climatol.*, 30(11), 1627–1644, doi:10.1002/joc.2003, 2010.
- Westra, S., Fowler, H. J., Evans, J. P., Alexander, L. V, Berg, P., Johnson, F., Kendon, E. J., Lenderink, G. and
730 Roberts, N. M.: Future changes to the intensity and frequency of short-duration extreme rainfall, *Rev. Geophys.*, 52(3), 522–555, doi:10.1002/2014rg000464, 2014.
- Yang, Y., Uddstrom, M. and Duncan, M.: Effects of short spin-up periods on soil moisture simulation and the causes over New Zealand, *J. Geophys. Res. Atmos.*, 116(D24), doi:10.1029/2011jd016121, 2011.
- Zittis, G., Bruggeman, A., Camera, C., Hadjinicolaou, P. and Lelieveld, J.: The added value of convection
735 permitting simulations of extreme precipitation events over the eastern Mediterranean, *Atmos. Res.*, 191, 20–33, 2017.



740 **Figure 1. The domains of EURO-CORDEX and convection-permitting simulations. The shading colours denote the surface height above mean sea level from WRF.**

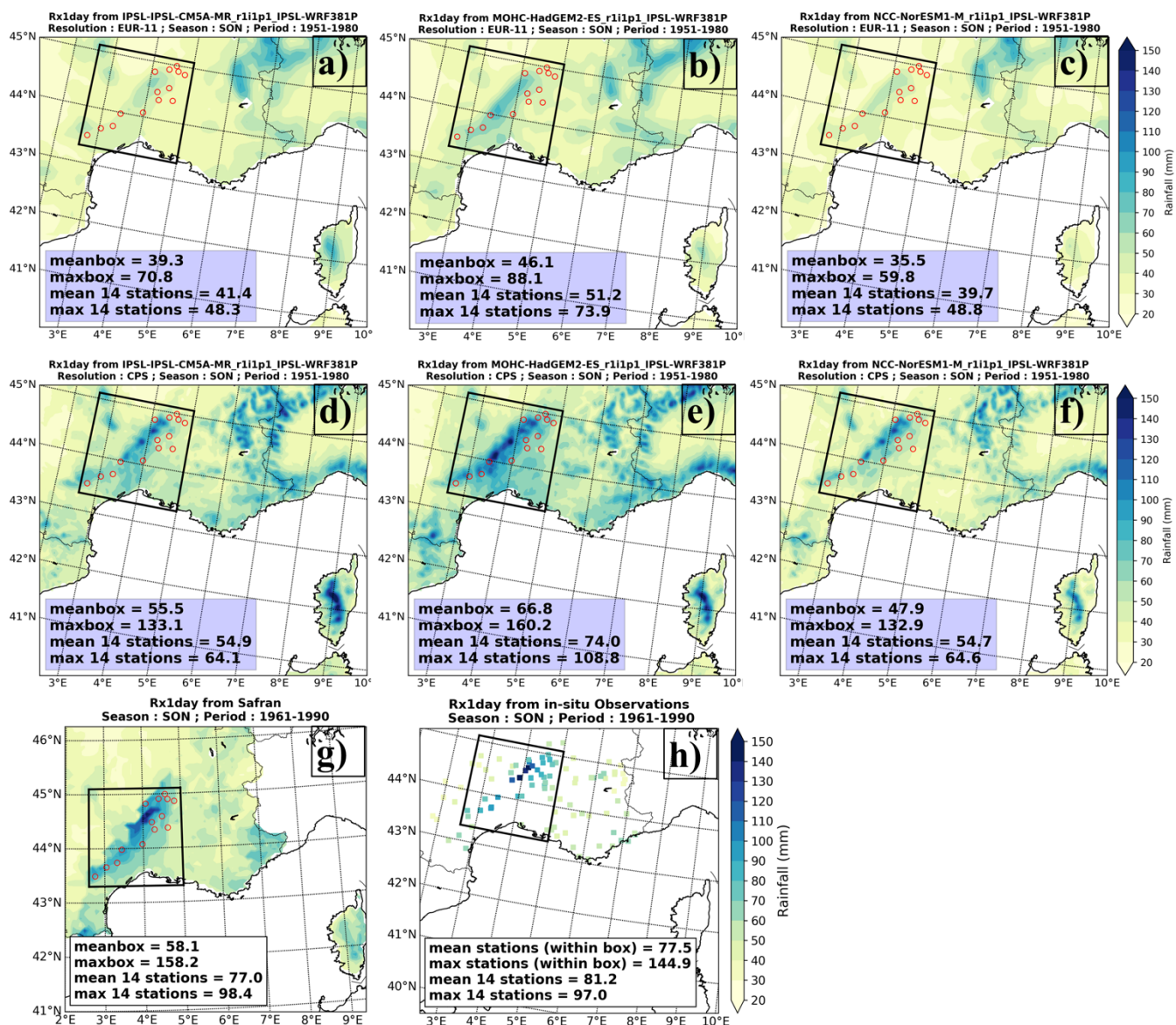
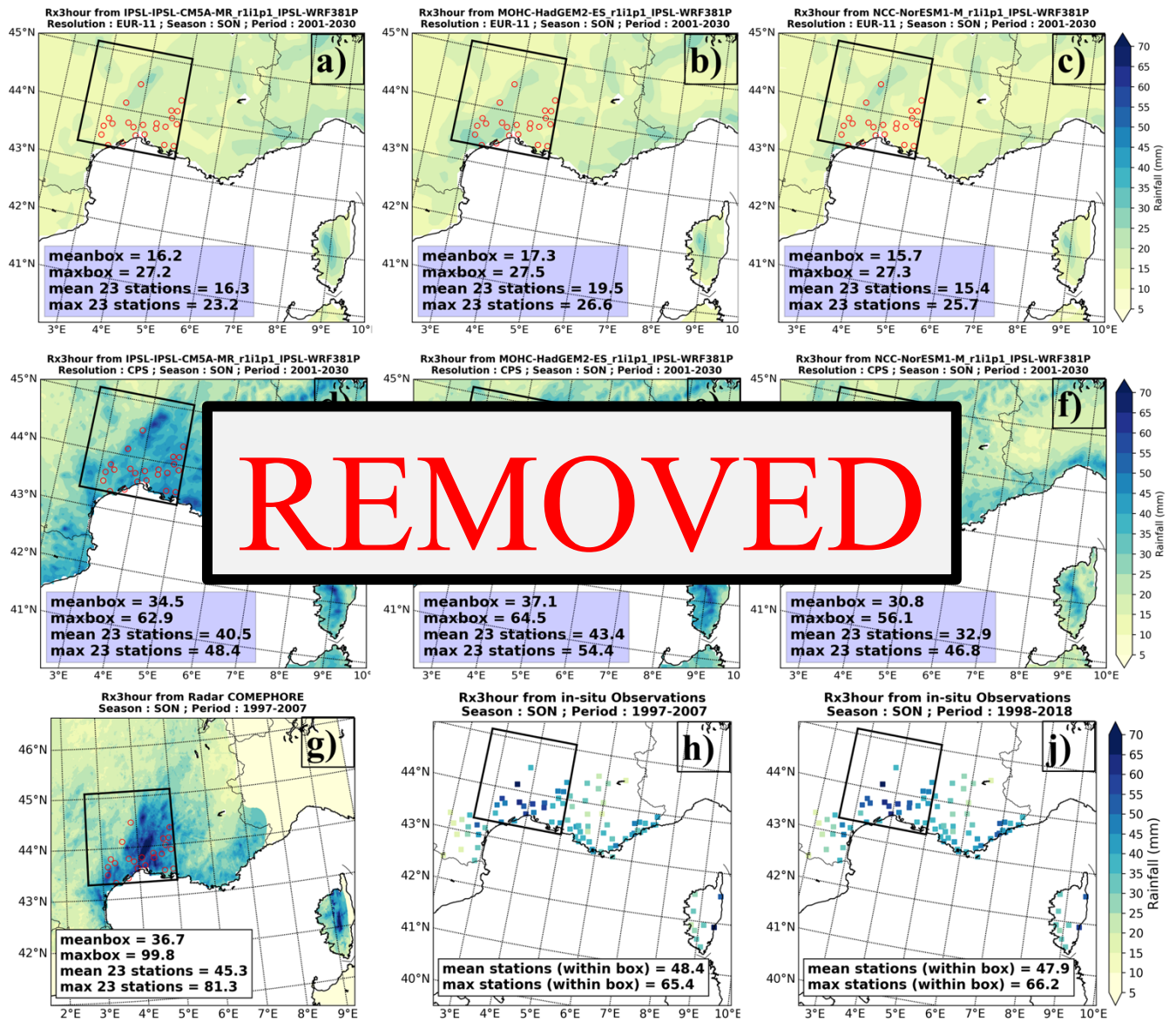
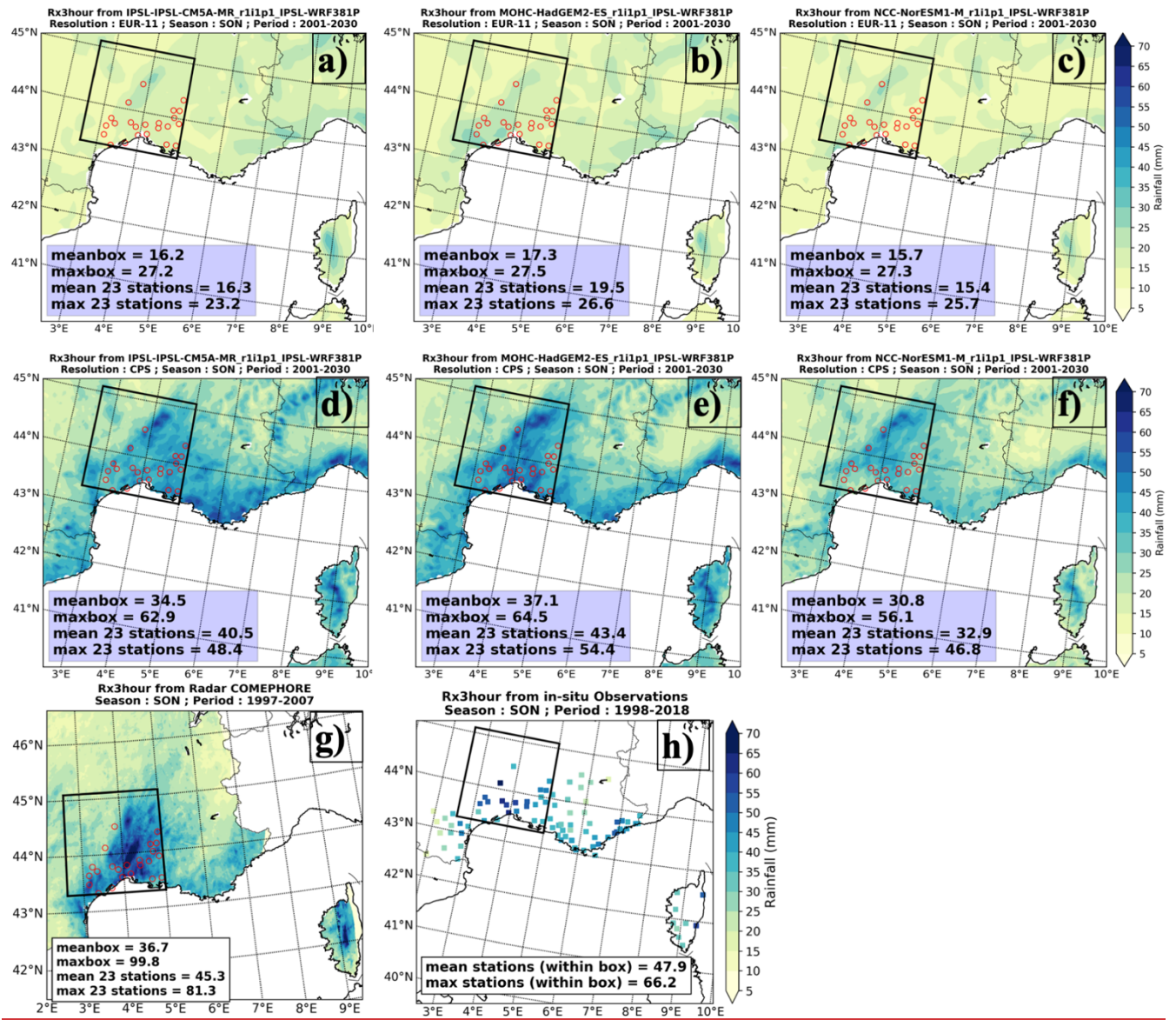


Figure 2. The Autumn maximum daily rainfall (Rx1day) from EUR-11 (a-c) simulations (1951–1980), CPS (d-f) simulations (1951–1980), SAFRAN (g) (1961–1990) and in situ observations (h) (1961–1990) data; The red empty circles inside the Cévennes box from panel a to g denote 14 stations used in Vautard et al. (2015).





750 **Figure 3.** The Autumn maximum 3-hour rainfall (Rx3hour) from EUR-11 (a-c) simulations (2001-2030), CPS (d-f) simulations (2001-2030), COMEPHORE (g) dataset (1997-2007) and in situ observations (h-j) datasets (~~1997-2007 and 1998-2018, respectively~~); The red empty circles inside the Cévennes box from panel a to g denote 23 stations that 3-hourly data is available.

Daily Rainfall (99.0th) and T2m relation
season: SON ; simu: 1951-1980; Observers: 1961-1990

Daily Max 3hr Rainfall (99.0th) and T2m relation
season: SON ; simu: 2001-2030; Observers: 1998-2018

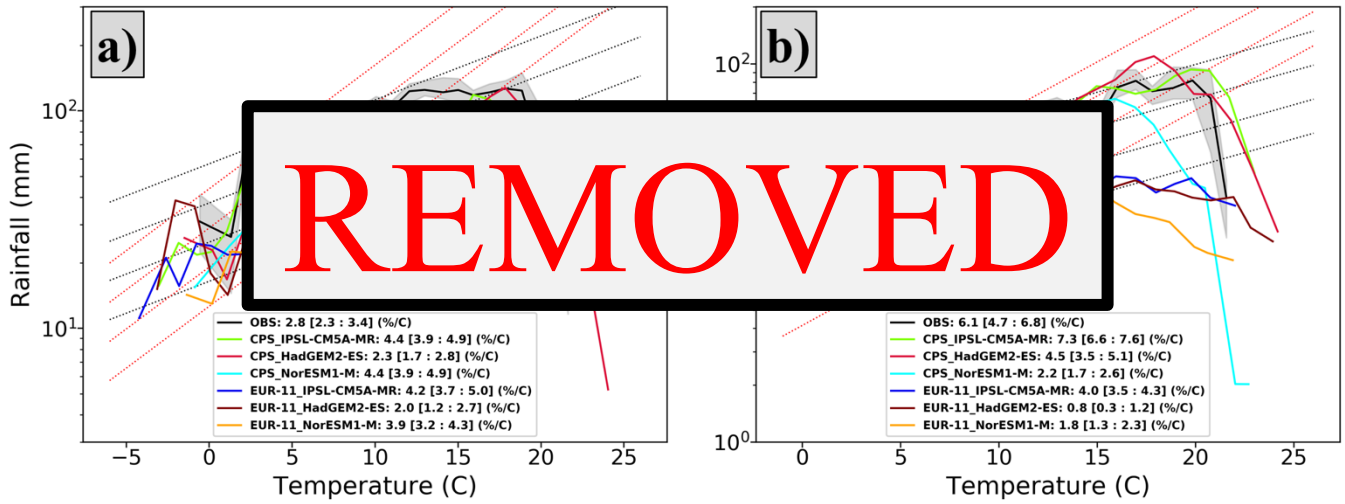


Figure 4. Extreme (99th percentile) daily precipitation (a) and daily maximum of 3 hourly rainfall (b) in scaling with daily temperature at 2m from simulations (1951-1980 for daily rainfall and 2001-2030 for 3 hourly rainfall) and in situ observations (1961-1990 for daily rainfall and 1998-2018 for 3 hourly rainfall); the black dot lines show Clausius-Clapeyron relation and the red dot lines show the super-Clausius-Clapeyron relation; the grey band denotes 90% confident interval of observational scaling.

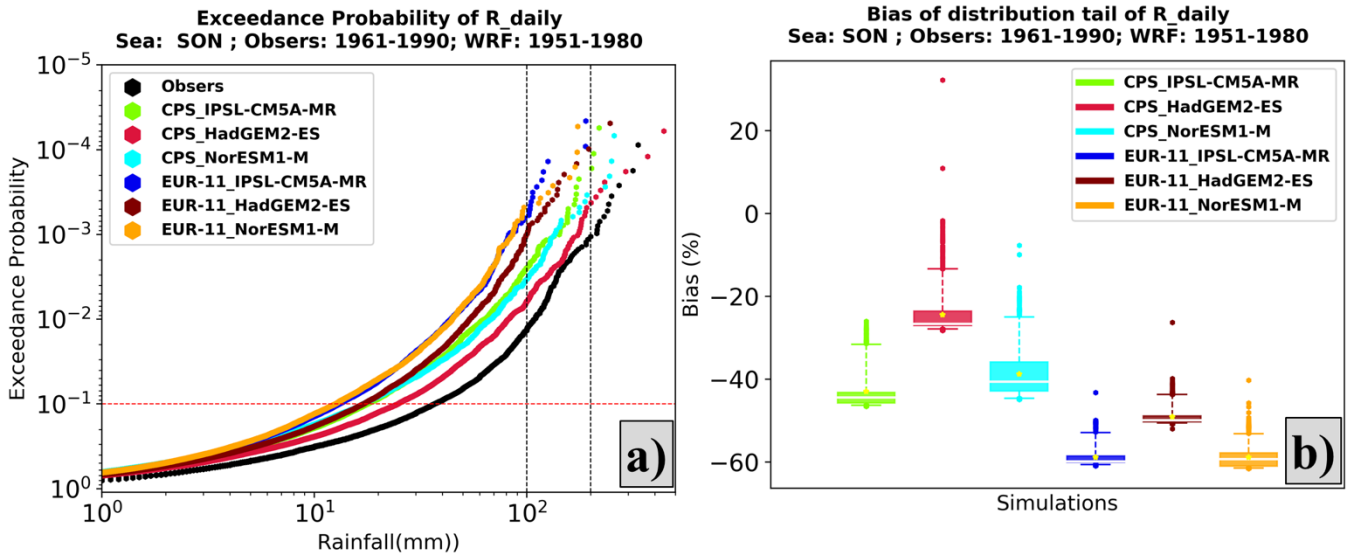


Figure 4. Exceedance probability distribution (a) for daily rainfall in the autumn from in situ observations (1961-1990) and all simulations (1951-1980) and the bias (b) of 10% in the tail of the distribution from each simulation against in situ observations. The red dotted line on panel a denotes the exceedance probability of 0.1 above which the simulated rainfall values are used to estimate the bias of the distribution tail on panel b.

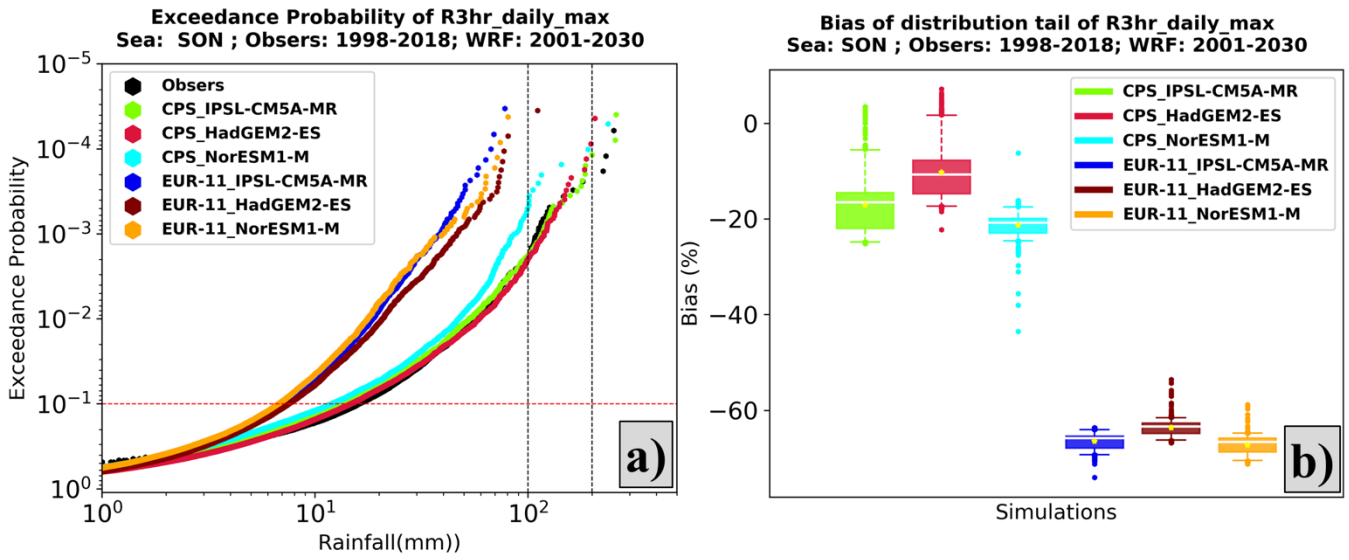
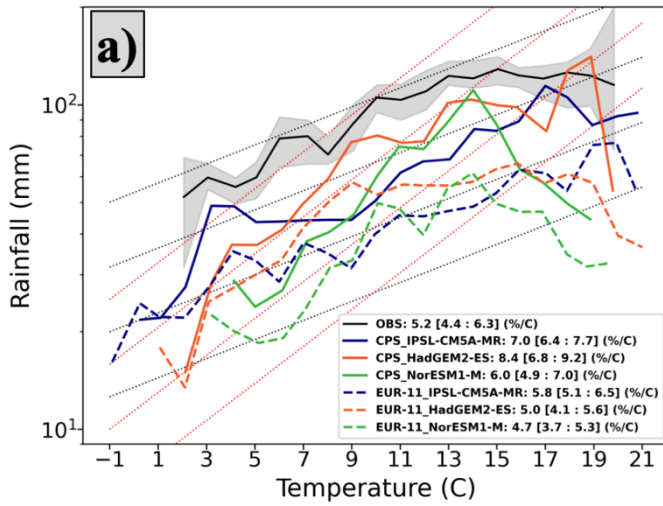


Figure 5. Exceedance probability distribution (a) for daily maximum of 3-hour rainfall in the autumn from in situ observations (1998-2018) and all simulations (2001-2030) and the bias (b) of 10% in the tail of the distribution from each simulation against in situ observations. The red dotted line on panel a denotes the exceedance probability of 0.1 above which the simulated rainfall values are used to estimate the bias of the distribution tail on panel b.

Daily Rainfall (99.0th) and T2m relation
season: SON ; simu: 1951-1980; Observ: 1961-1990



Daily Max 3hr Rainfall (99.0th) and T2m relation
season: SON ; simu: 2001-2030; Observ: 1998-2018

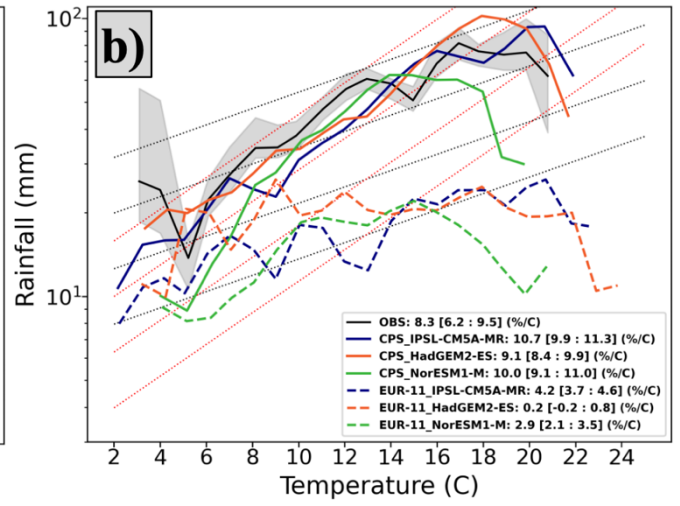


Figure 6. Extreme (99th percentile) daily precipitation (a) and daily maximum of 3-hourly rainfall (b) in scaling with daily temperature at 2m from simulations (1951-1980 for daily rainfall and 2001-2030 for 3-hourly rainfall) and in situ observations (1961-1990 for daily rainfall and 1998-2018 for 3-hourly rainfall); the black dot lines show Clausius-Clapeyron relation and the red dot lines show the super Clausius-Clapeyron relation; the grey band denotes 90% confidence interval of observational scaling.

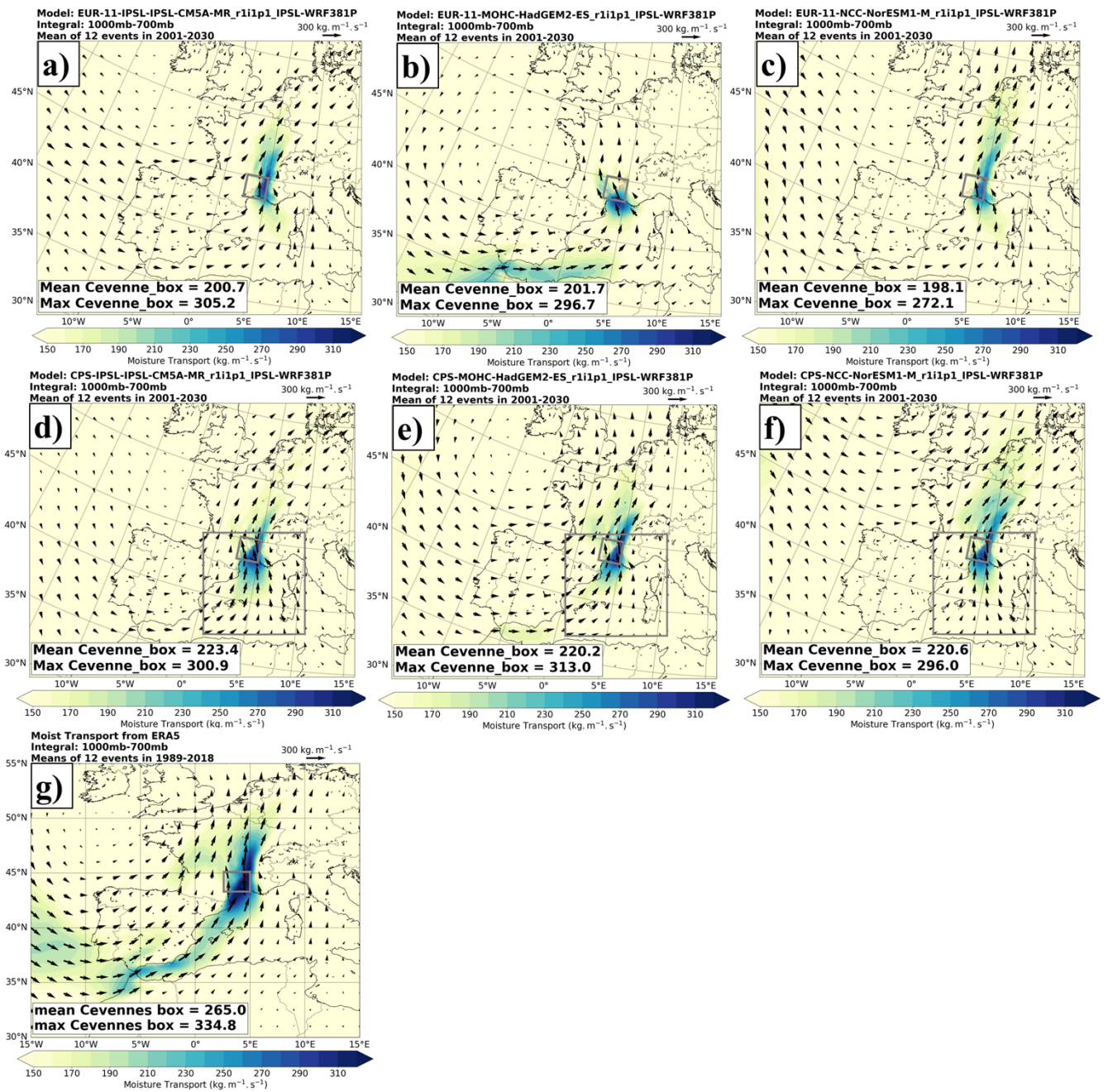


Figure 7. Mean moisture transport of the 12 heaviest daily rainfall events from all simulations (2001-2030) and ERA5 (1989-2018).

Table 1. The selection of periods of simulations and reference datasets for evaluation of each index.

No.	Indices	Period for each Dataset				
		OBS	WRF	COMEPHORE	SAFRAN	ERA5
1	Rx1day	1961-1990	1951-1980	-	1961-1990	
2	R-T Scaling (daily rainfall)			-	-	
3	Distribution of wet events (daily rainfall)			-	-	
4	Rx3hour	1998-2018	2001-2030	1997-2007	-	
5	R-T Scaling (daily maximum 3-hour rainfall)			-	-	
6	Distribution of wet events (daily maximum 3-hour rainfall)			-	-	
7	Moisture source	1989-2018	2001-2030	-	-	1989-2018