

# Climate model projections from the Scenario Model

## Intercomparison Project (ScenarioMIP) of CMIP6

Claudia Tebaldi<sup>1</sup>, Kevin Debeire<sup>2,3</sup>, Veronika Eyring<sup>2,4</sup>, Erich Fischer<sup>5</sup>, John Fyfe<sup>6</sup>, Pierre  
5 Friedlingstein<sup>7,8</sup>, Reto Knutti<sup>5</sup>, Jason Lowe<sup>9,10</sup>, Brian O'Neill<sup>11</sup>, Benjamin Sanderson<sup>12</sup>, Detlef van  
Vuuren<sup>13</sup>, Keywan Riahi<sup>14</sup>, Malte Meinshausen<sup>15</sup>, Zebedee Nicholls<sup>15</sup>, Katarzyna B. Tokarska<sup>5</sup>, George  
Hurt<sup>16</sup>, Elmar Kriegler<sup>17</sup>, Jean-Francois Lamarque<sup>18</sup>, Gerald Meehl<sup>18</sup>, Richard Moss<sup>1</sup>, Susanne E.  
Bauer<sup>19</sup>, Olivier Boucher<sup>20</sup>, Victor Brovkin<sup>21</sup>, Young-Hwa Byun<sup>22</sup>, Martin Dix<sup>23</sup>, Silvio Gualdi<sup>24</sup>, Huan  
Guo<sup>25</sup>, Jasmin G. John<sup>25</sup>, Slava Kharin<sup>6</sup>, Tsuyoshi Koshiro<sup>26</sup>, Libin Ma<sup>27</sup>, Dirk Olivier<sup>28</sup>, Swapna  
10 Panickal<sup>29</sup>, Fangli Qiao<sup>30</sup>, Nan Rosenbloom<sup>18</sup>, Martin Schupfner<sup>31</sup>, Roland Séférian<sup>32</sup>, Alistair Sellar<sup>9</sup>,  
Tido Semmler<sup>33</sup>, Xiaoying Shi<sup>34</sup>, Zhenya Song<sup>30</sup>, Christian Steger<sup>35</sup>, Ronald Stouffer<sup>36</sup>, Neil Swart<sup>6</sup>,  
Kaoru Tachiiri<sup>37</sup>, Qi Tang<sup>38</sup>, Hiroaki Tatebe<sup>37</sup>, Aurore Voldoire<sup>32</sup>, Evgeny Volodin<sup>39</sup>, Klaus Wyser<sup>40</sup>,  
Xiaoge Xin<sup>41</sup>, Rong Xinyao<sup>42</sup>, Shuting Yang<sup>43</sup>, Yongqiang Yu<sup>44</sup>, Tilo Ziehn<sup>23</sup>.

15 <sup>1</sup>Joint Global Change Research Institute (JGCRI), Pacific Northwest National Laboratory, College Park, MD, USA.

<sup>2</sup>Deutsches Zentrum für Luft- und Raumfahrt (DLR), Institut für Physik der Atmosphäre, Oberpfaffenhofen, Germany.

<sup>3</sup>Deutsches Zentrum für Luft- und Raumfahrt (DLR), Institut für Datenwissenschaften, Jena, Germany.

<sup>4</sup>University of Bremen, Institute of Environmental Physics (IUP), Bremen, Germany.

<sup>5</sup>ETH Zurich, Institute for Atmospheric and Climate Science, Zurich, Switzerland.

20 <sup>6</sup>Canadian Centre for Climate Modelling and Analysis, Environment and Climate Change Canada, Victoria, BC, Canada.

<sup>7</sup>College of Engineering, Mathematics and Physical Sciences, University of Exeter, Exeter, EX4 4QE, United Kingdom.

<sup>8</sup>LMD/IPSL, ENS, PSL Université, École Polytechnique, Institut Polytechnique de Paris, Sorbonne Université, CNRS, Paris, France.

<sup>9</sup>Met Office Hadley Center, Exeter, UK.

25 <sup>10</sup>Priestley International Center for Climate, School of Earth and Environment, University of Leeds, Leeds, UK.

<sup>11</sup>Josef Korbel School of International Studies, University of Denver, Denver, USA.

<sup>12</sup>CNRS/Centre Européen de Recherche et de Formation Avancée en Calcul Scientifique (CERFACS), Toulouse, France.

<sup>13</sup>PBL Netherlands Environmental Assessment Agency and Faculty of Geosciences, Utrecht University, Utrecht, The Netherlands.

30 <sup>14</sup>International Institute for Applied Systems Analysis, Laxenburg, Austria.

<sup>15</sup>Climate & Energy College, School of Earth Sciences, University of Melbourne, Australia.

<sup>16</sup>Department of Geographical Sciences, University of Maryland, College Park, MD, USA.

<sup>17</sup>Potsdam Institute for Climate Impact Research (PIK), Potsdam, Germany.

<sup>18</sup>Climate and Global Dynamics Laboratory, National Center for Atmospheric Research, Boulder, CO, USA.

35 <sup>19</sup>NASA Goddard Institute for Space Studies, New York, NY, USA.

<sup>20</sup>Institut Pierre-Simon Laplace, Sorbonne Université / CNRS, Paris, France.

- <sup>21</sup>Max Planck Institute for Meteorology, Hamburg, Germany; also: Center for Earth System Research and Sustainability, University of Hamburg, Germany.
- 40 <sup>22</sup>National Institute of Meteorological Sciences / Korea Meteorological Administration, South Korea.
- <sup>23</sup>CSIRO Oceans and Atmosphere, Aspendale, Victoria, Australia.
- <sup>24</sup>Centro Euro-Mediterraneo sui Cambiamenti Climatici (CMCC), Italy.
- <sup>25</sup>NOAA/OAR/Geophysical Fluid Dynamics Laboratory, Princeton, NJ, USA.
- <sup>26</sup>Meteorological Research Institute, Tsukuba, Japan.
- <sup>27</sup>Earth System Modeling Center, Nanjing University of Information Science and Technology, Jiangsu, China.
- 45 <sup>28</sup>Norwegian Meteorological Institute, Oslo, Norway.
- <sup>29</sup>Indian Institute of Tropical Meteorology, Pune, India.
- <sup>30</sup>First Institute of Oceanography (FIO), Ministry of Natural Resources (MNR), Qingdao, China.
- <sup>31</sup>Deutsches Klimarechenzentrum, Hamburg, Germany.
- <sup>32</sup>CNRM, Université de Toulouse, Météo-France, CNRS, Toulouse, France.
- 50 <sup>33</sup>Alfred Wegener Institute, Helmholtz Centre for Polar and Marine Research, Bremerhaven, Germany.
- <sup>34</sup>Oak Ridge National Laboratory, Oak Ridge, TN, USA.
- <sup>35</sup>Deutscher Wetterdienst, Offenbach, Germany.
- <sup>36</sup>University of Arizona, Tucson, AR, USA.
- <sup>37</sup>Research Institute for Global Change (RIGC), Japan Agency for Marine-Earth Science and Technology (JAMSTEC),  
55 Yokohama, Japan.
- <sup>38</sup>Lawrence Livermore National Laboratory, Livermore, CA, USA.
- <sup>39</sup>Institute of Numerical Mathematics, Moscow, Russian Federation.
- <sup>40</sup>Swedish Meteorological and Hydrological Institute, Norrköping, Sweden.
- <sup>41</sup>Beijing Climate Center, China Meteorological Administration, Beijing, China.
- 60 <sup>42</sup>State Key Laboratory of Severe Weather, Chinese Academy of Meteorological Sciences, Beijing, China.
- <sup>43</sup>Danish Meteorological Institute, Copenhagen, Denmark.
- <sup>44</sup>LASG, Institute of Atmospheric Physics, Chinese Academy of Sciences, Beijing, China.

*Correspondence to* Claudia Tebaldi (claudia.tebaldi@pnnl.gov)

**Abstract.** The Scenario Model Intercomparison Project (ScenarioMIP) defines and coordinates the main set of future climate projections, based on concentration driven simulations, within the Coupled Model Intercomparison Project Phase 6 (CMIP6).  
70 This paper presents a range of its outcomes by synthesizing results from the participating global coupled Earth system models. We limit our scope to the analysis of strictly geophysical outcomes: mainly global averages and spatial patterns of change for surface air temperature and precipitation. We also compare CMIP6 projections to CMIP5 results, especially for those scenarios that were designed to provide continuity across the CMIP phases, at the same time highlighting important differences in forcing composition, as well as in results. The range of future temperature and precipitation changes by the end of the century (2081-  
75 2100) encompassing the Tier 1 experiments (SSP1-2.6, SSP2-4.5, SSP3-7.0 and SSP5-8.5) and SSP1-1.9 spans a larger range of outcomes compared to CMIP5, due to higher warming (by close to 1.5°C) reached at the upper end of the 5-95% envelope of the highest scenario, SSP5-8.5. This is due to both the wider range of radiative forcing that the new scenarios cover and to higher climate sensitivities in some of the new models compared to their CMIP5 predecessors. Spatial patterns of change for temperature and precipitation averaged over models and scenarios have familiar features, and an analysis of their variations  
80 confirms model structural differences to be the dominant source of uncertainty. Models also differ with respect to the size and evolution of internal variability as measured by individual models' initial condition ensembles' spread, according to a set of initial condition ensemble simulations available under SSP3-7.0. These experiments suggest a tendency for internal variability to decrease along the course of the century in this scenario, a result that will benefit from further analysis over a larger set of models. Benefits of mitigation, all else being equal in terms of societal drivers, appear clearly when comparing scenarios  
85 developed under the same SSP, but to which different degrees of mitigation have been applied. It is also found that a mild overshoot in temperature of a few decades in mid-century, as represented in SSP5-3.4OS, does not affect the end outcome of temperature and precipitation changes by 2100, which return to the same level as those reached by the gradually increasing SSP4-3.4 (not erasing the possibility, however, that other aspects of the system may not be as easily reversible). Central estimates of the time at which the ensemble means of the different scenarios reach a given warming level might be biased by  
90 the inclusion of models that have shown faster warming in the historical period than the observed. Those estimates show all scenarios reaching 1.5°C of warming compared to the 1850-1900 baseline in the second half of the current decade, with the time span between slow and fast warming covering between 20 and 27 years from present. 2°C of warming is reached as early

as 2039 by the ensemble mean under SSP5-8.5, but as late as the mid-‘60s under SSP1-2.6. The highest warming level considered, 5°C, is reached only by the ensemble mean under SSP5-8.5, and not until the mid-‘90s.

95

## 1. Introduction

Multi-model climate projections represent an essential source of information for mitigation and adaptation decisions. O’Neill et al. (2016) describe the origin, rationale and details of the experimental design for the Scenario Model Intercomparison Project (ScenarioMIP) for the Coupled Model Intercomparison Project Phase 6 (CMIP6, Eyring et al, 2016). The experiments produce projections for a set of eight new 21st century scenarios based on the Shared Socio-economic Pathways (SSPs) and developed by a number of Integrated Assessment Models (IAMs). Extensions beyond 2100 based on idealized pathways of anthropogenic forcings are also included (formalized in their protocol by Meinshausen et al. (2020)), together with the request for a large initial condition ensemble under one of the 21st century scenarios. Two of the scenarios are concentration overshoot (peak and decline) trajectories, while the majority follow a traditional increasing or stabilizing trajectory. The new scenarios are the result of an intense research phase that produced a new systematic scenario approach, the SSP-RCP framework (van Vuuren et al., 2013), which relates the newer socio-economic scenarios to the Representative Concentration Pathways first adopted in CMIP5 (Moss et al., 2010; Taylor et al., 2012). New qualitative narratives and future pathways of socio-economic drivers (population, technology and GDP) were developed according to two dimensions relevant to the climate change problem, i.e., by positioning individual pathways as each representing a combination of low, medium or high degrees of challenge to adaptation and to mitigation (O’Neill et al., 2013). Five such pathways (SSP1 through SSP5) were developed. These were in turn used by IAMs to produce scenarios of anthropogenic emissions and land use (Riahi et al., 2017) consistent with the qualitative narratives and quantitative elements of each SSP. In addition to these baseline scenarios (i.e., scenarios that assume no explicit mitigation policies beyond those in place at the time the scenarios were created, prior to the Paris Agreement), a number of additional emissions and land use scenarios were produced that included mitigation policies (Kriegler et al., 2014) that achieved a range of radiative forcing targets for the end of the century. Thus, on the basis of a given SSP multiple levels of radiative forcings are achievable, given more or less stringent mitigation. Among this large set of scenarios, the ScenarioMIP design chose a subset to be run by global climate and Earth System Models (ESMs) in concentration driven mode. Some were chosen specifically to provide continuity with the RCPs: SSP1-2.6, SSP2-4.5, SSP4-6.0 and SSP5-8.5, where 2.6 to 8.5 stands for the stratospheric adjusted radiative forcing in  $Wm^{-2}$  by the end of the 21st century as estimated by the IAMs. Additional trajectories were also chosen to fill in gaps in the previous scenario set for both baseline and mitigation scenarios (SSP5-3.4; SSP3-7.0). Yet another was chosen to address new policy objectives (SSP1-1.9, designed to meet the 1.5°C target at the end of the century). The request of prioritizing initial condition ensemble members for only one of the scenarios (SSP3-7.0) was aimed at gathering sizable ensembles (10 members or more) from various modelling centers. This was decided in recognition of the important role of internal variability in contributing to future changes, whose exploration is facilitated by initial condition ensembles (Deser et al., 2020; Santer et al., 2019). It was also recognized that the spread in aerosol scenarios in the four

RCPs used in CMIP5 was too narrow, as all assumed a large reduction in atmospheric aerosol emissions (Moss et al. 2010, Stouffer et al., 2017). The new SSP-based scenarios better address this uncertainty by  
135 sampling a larger range of aerosols pathways consistent with the corresponding GHG emissions (Riahi et al. 2017). Scenario experiments were enabled by another community effort, input4mip: Based on the IAM's emission trajectories, and after harmonization of those to historical emission levels (Gidden et al., 2019), a community effort took place to translate those emission time series and to amend them with additional input fields for use by ESMs. These range from providing land-use patterns  
140 (<https://doi.org/10.22033/ESGF/input4MIPs.1127>), gridded aerosol emission fields (Hoesly et al, 2018), stratospheric aerosols (Thomason et al., 2018), solar irradiance time series (Mattes et al., 2017), greenhouse gas concentrations (Meinshausen et al., 2020), as well as ozone fields (<https://doi.org/10.22033/ESGF/input4MIPs.1115>).

Given the multi-model focus of CMIP and the overview purpose of this paper, the results reported here  
145 aim at giving a broadscale representation of ensemble results (mean and ranges, or other measures of variability). The ScenarioMIP design responded to many complex objectives and science questions, among which a high priority was the need to lay the foundation for integrated research across the geophysical, mitigation, impacts, adaptation and vulnerability research communities (O'Neill et al., 2020). The focus of this paper is to provide physical climate context for these more detailed analyses.  
150 Other Model Intercomparison Projects within CMIP6 have prescribed experiments that complement the ScenarioMIP design to address questions about the effects of small radiative forcing differences, specific (and often local) forcings like from land-use and short-lived climate forcers (SLCFs), the differential effects of emission versus concentration driven experiments testing the strength of the carbon cycle (Arora et al., 2020), and the effectiveness of emergent constraints in reshaping the  
155 uncertainty ranges of the new multi-model ensemble (Nijssen et al., 2020; Tokarska et al., 2020). They are the Land Use MIP (LUMIP, Lawrence et al., 2016), the Aerosol Chemistry MIP (AerChemMIP, Collins et al., 2017), the Coupled Climate-Carbon Cycle MIP (C4MIP, Jones et al., 2016), the Geoengineering MIP (GeoMIP, Kravitz et al., 2015) and the Carbon Dioxide Removal MIP (CDRMIP, Keller et al., 2018).

160 In this study, we focus the analysis on the future evolution of average temperatures and precipitation. We address questions regarding the strength of the signal under the different CMIP6 scenarios and compared to similar CMIP5 scenarios; the identification of the time of separation between the temperature trajectories under the different scenarios, and the time at which they cross global warming thresholds. We also analyze spatial patterns of change addressing questions of robustness between the  
165 CMIP5 and CMIP6 multi-model ensembles, and within the CMIP6 ensemble among models and scenarios.

## 2. ScenarioMIP experiments and participating models

170 As described in detail in O'Neill et al. (2016) and summarized in the matrix display of Figure A1 in the Appendix, the ScenarioMIP design consists of the following concentration-driven scenario experiments, subdivided into two tiers to guide prioritization of computing resources. Tier 1 consists of four 21st century scenarios. Three of them provide continuity with CMIP5 RCPs by targeting a similar level of aggregated radiative forcing (but we highlight important differences in the coming discussion): *SSP1-*

175 2.6, *SSP2-4.5 and SSP5-8.5*. An additional scenario, *SSP3-7.0*, fills a gap in the medium to high end of the range of future forcing pathways with a new baseline scenario, assuming no additional mitigation beyond what is currently in force. The same scenario also prescribes larger SLCFs concentrations and land-use changes compared to the other trajectories.

180 Only Tier 1, which can be satisfied by one realization per model, is required for participation in ScenarioMIP.

Tier 2 completes the design by adding

- *SSP1-1.9*, informing the Paris Agreement target of 1.5°C above pre-industrial;
- *SSP4-3.4*, a gap-filling mitigation scenario;

185 ● *SSP4-6.0*, an update of the CMIP5-era RCP6.0;

- *SSP5-3.4OS (overshoot)*, that tests the efficacy of an accelerated uptake of mitigation measures after a delay in curbing emissions until 2040: the scenario tracks *SSP5-8.5* until that date, then decreases to the same radiative forcing of *SSP4-3.4* by 2100;

190 ● *three extensions to 2300*, two of them continuing on from *SSP1-2.6* and *SSP5-8.5* and one extending the *SSP5-3.4* overshoot pathway towards the lower radiative forcing level of 2.6 Wm<sup>-2</sup>, to inform the analysis of long-memory processes, like ice-sheet melting and corresponding sea level rise.

- *nine additional initial condition ensemble members under SSP3-7.0* to explore internal variability and signal to noise characteristics of the different participating models.

195

A list of the participating models, with references for documentation and data, is shown in Table A1 in the Appendix. Table A2 lists the CMIP5 models used in the comparisons.

### 200 3. Results

For the results shown in this section we extracted monthly mean near-surface air temperature (TAS) and precipitation (PR) from the models listed in Table A1 and A2 (for CMIP5 scenarios). These were averaged globally or separately over land and oceans for time series analysis (no correction for drift was performed), and regridded to a common 1-degree grid by linear interpolation for pattern analysis. All

205 figures of this paper are produced with the Earth System Model Evaluation Tool (ESMValTool) version  
2.0 (v2.0) (Righi et al., 2020; Eyring et al., 2020; Lauer et al., 2020), a tool specifically designed to  
improve and facilitate the complex evaluation and analysis of CMIP models and ensembles.

### 3.1 Global Temperature and Precipitation Projections for Tier 1 and the SSP1-1.9 scenarios

210

#### 3.1.1 Time Series

Figure 1 shows time series of global mean surface air temperature (GSAT) and global precipitation  
changes (see Figure A2 in the Appendix for time series of the same variables disaggregated into land-  
only and ocean-only area averages; also see Tables A3 and A4 for changes under the different scenarios  
215 at mid-century and end-of-the-century). The historical baseline is taken as 1995-2014 (2014 being the  
last year of CMIP6 historical simulations). The five scenarios presented in these plots consist of the Tier  
1 experiments (SSP1-2.6, SSP2-4.5, SSP3-7.0 and SSP5-8.5) and the additional scenario designed to  
limit warming to 1.5°C above 1850-1900 (a period often used as a proxy for pre-industrial conditions),  
SSP1-1.9. We smooth each trajectory by an 11-yr running mean to focus on climate-scale variability.  
220 In the plots the thick line traces the ensemble average (see legend and Table A1 for the number of  
models included in each scenario calculation) and the shaded envelopes represent the 5-95% ranges,  
which are obtained assuming a normal distribution as  $1.64\sigma$ , where  $\sigma$  is the inter-model standard  
deviation of the smoothed trajectories, computed for each year. Only one ensemble member (in the  
majority of cases r1i1p1f1) is used even when more runs are available for some of the models. By the  
225 end of the century (i.e., as the mean of the period 2081-2100) the range of warming spanned by the  
multi-model ensemble means under all scenarios is between 0.69 °C and 3.99°C relative to 1995-2014  
(0.84°C more when using the 1850-1900 baseline). Considering the multi-model ensemble means as the  
best estimates of the forced response under each scenario, the range spanned by them can be interpreted  
as an estimate of scenario uncertainty. When considering the shaded envelopes around the ensemble  
230 mean trajectories, about 0.6°C at the lower end and 1.6°C at the upper end are added to this range. This  
range can be seen as reflecting the compound effects of model-response uncertainty and some measure  
of internal variability in the individual model trajectories, but the latter is likely underestimated, given  
that we are using only one run per model. The use of initial condition ensembles for each of the models  
would better characterize their respective internal variability (Lehner et al., 2020). Using the 5-95%  
235 confidence intervals as ranges, we find that by the end of the 21<sup>st</sup> century (2081-2100 average, always  
compared to the 1995-2014 average) global mean temperatures are projected to increase between  
2.40°C and 5.57°C for SSP5-8.5, between 1.95°C and 4.38°C under SSP3-7.0, and between 1.27°C and  
3.00°C for SSP2-4.5. Global temperatures stabilize or even somewhat decline in the second half of the  
century in SSP1-1.9 and SSP1-2.6 which span a range from 0.13°C to 1.25°C and 0.40°C to 2.05°C,  
240 respectively, whereas they continue to increase to the end of the century in all other SSPs. The ensemble  
spread appears to consistently increase with the higher forcing and over time. This suggests that the  
model response uncertainty increases for stronger responses, an expected result as in higher scenarios  
and later periods climate sensitivity – which significantly differs among the models -- more strongly  
influences the model response (Lehner et al. 2020). This result appears robust, given the number of  
245 models included (between 33 and 39 for Tier 1 experiments). Only the number of models contributing  
to the lowest scenario (SSP1-1.9) is significantly less, i.e., 13 at the time of writing, but the analysis of

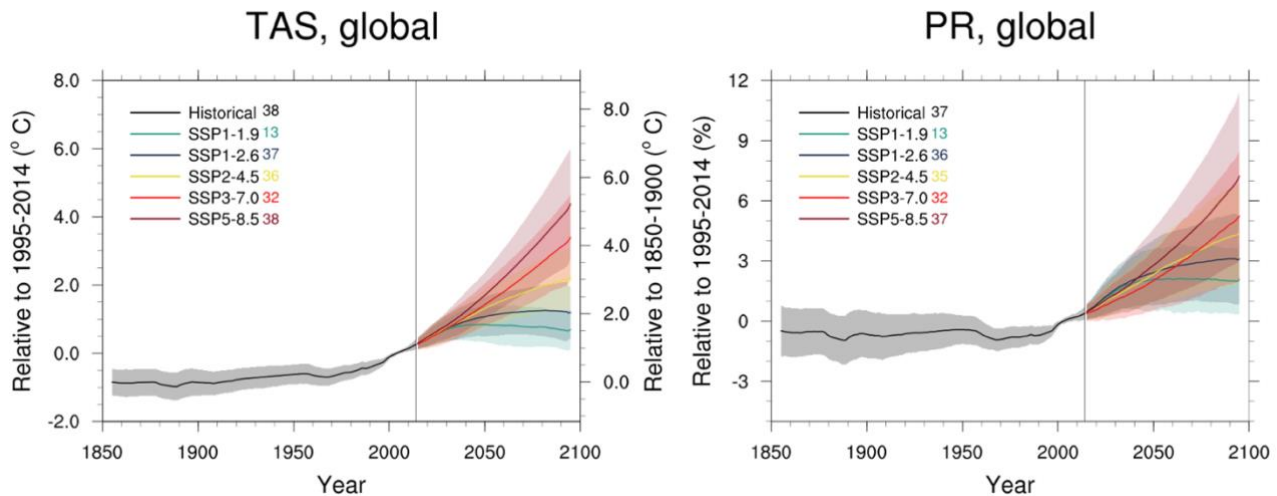
ensemble behavior of Section 3.2.1 below suggests that for global temperature and precipitation averages ten ensemble members provide a representative sample of the internal climate variability. The same qualitative behavior appears for land-only and ocean-only averages (Figure A2 and Table A3),  
250 with the faster warming over land than ocean reaching on average up to 5.46°C under SSP5-8.5 (compared to the global average reaching 3.99°C) and some models reaching a much larger value under this scenario of 7.57°C. For the lower scenarios, limiting warming in 2100 to 0.69°C and 1.23°C globally translates to an average warming on land of 0.96°C and 1.61°C respectively for SSP1-1.9 and SSP1-2.6 (see Table A3 for all projections and their ranges referenced to the historical baseline).

255

In order to characterize when pairs of scenarios diverge, we define separation the first occurrence of a positive difference between two time series, one under the higher and one under the lower forcing scenarios, which is then maintained for the remainder of the century. This is similar to Tebaldi and Friedlingstein (2013, TF13 in the following), which used the first occurrence of a significant trend in the year-by-year differences, then justified by the RCPs under consideration, among which only the lowest, RCP2.6, flattened out over the century. In that case, the remainder of the RCPs considered followed an increasing trajectory, with differential rates of increase, therefore justifying the expectation that year-by-year differences would eventually show a significant and persisting trends. Among the new scenarios at least two are expected to follow a flat trajectory, or even a slight peak and decline (SSP1-1.9 and SSP1-2.6) rendering the expectation of a trend in their differences untenable. We therefore adopt a slightly different definition, here, and we also note that this definition would need to be modified if overshoot scenarios -- crossing their reference as they decrease -- were the main focus of this analysis. Also, this is not the only way to define separating scenarios and other studies have applied different, but still fairly similar, definitions, e.g., recently, Marotzke (2019). We use time series of  
260 GSAT after applying a 21-year running mean, as we are concerned with differences in climate rather than in individual years, whose temperatures are affected by large variability (this is the part of the definition that takes the place of the consideration of long-term trends in TF13. We also need to choose a threshold by which we deem the difference “positive” and somewhat discernible (this takes the place of asking for a significant trend in TF13). To do so, we use the results in Tebaldi et al., 2015, where the regional sensitivities of temperature and precipitation to changes in global average temperature were  
275 quantified. According to that analysis, 0.1°C of difference in 20-yr means of GSAT was the lowest value at which a multi-model ensemble consistently had a positive fraction of the grid-cells experiencing significant warming. In Table A5 we report the precise years when the ensemble means of the smoothed GSAT time series under the various scenario pairs separate according to this definition, and, in parenthesis, when the last of all individual models’ pairs of trajectories separate, but of course those precise estimates would change if our choices of the moving window and the threshold had been different. The ensemble average trajectory of GSAT under SSP5-8.5 separates from the lower scenarios’ ensemble average trajectories between 2027 and 2034 with the longer time as expected applying to the separation from SSP3-7.0. SSP3-7.0 separates from the two scenarios at the lower end  
280 of the range between 2031 and 2037, and ten years later from SSP2-4.5. The ensemble average trajectory of global temperature under SSP2-4.5 separates from those under the two lower scenarios, SSP1-1.9 and SSP1-2.6 by 2034 and 2039 respectively, while the ensemble average GSAT trajectories under the two lower scenarios, SSP1-1.9 and SSP1-2.6, separate from one another in 2042 (in Figure



A3 the differences between ensemble averages for each pair of scenarios appear as red lines). When  
 290 considering individual models' trajectories under the different scenarios, and defining the time of  
 separation when the last of all individual pair of trajectories separates, model structural differences and  
 a larger effect of internal variability cause a significant delay compared to the ensemble mean  
 separation. Depending on the pair of scenarios considered, the length of the delay necessary for the last  
 of the models to show separation varies significantly: as few as 6 years for the full separation of SSP1-  
 2.6 from SSP5-8.5, as many as 19 years for the full separation of SSP3-7.0 from SSP5-8.5 (Figure A3,  
 295 black lines, and values in parenthesis in Table A5).  
 Ensemble mean precipitation change by 2081-2100 (as a percentage of the 1995-2014 baseline) is  
 between 2.0 and 3.0% for the lowest scenarios (SSP1-1.9 and SSP1-2.6), 4.2 and 4.9% for SSP2-4.5  
 and SSP3-7.0, and 7.3% for SSP5-8.5. As expected, the larger variability of precipitation changes  
 300 (relative to temperature changes), both from internal sources and model response uncertainty, is such  
 that only the highest scenario ensemble mean trajectory separates from the lower ones appreciably  
 before 2050 while the lowest scenario separates from the rest around mid-century. The ensemble means  
 of the three scenarios in between overlap until close to 2070. The multi-model spread and internal  
 variability confound a large fraction of the individual scenarios' trajectories until the end of the century  
 305 (Figure 1, right panel). Both the magnitude of the changes and their variability are larger for  
 precipitation averages over land than over oceans (Figure A2; see also Table A4 for a complete list of  
 mid- and late century changes).



310 **Figure 1:** Left panel: global average temperature time series (11-yr running averages) of changes from current baseline (1995-  
 2014, left axis) and pre-industrial baseline (1850-1900, right axis, obtained by adding a 0.84°C offset) for SSP1-1.9, SSP1-2.6,  
 SSP2-4.5, SSP3-7.0 and SSP5-8.5. Right panel: global average precipitation time series (11-yr running averages) of percent  
 315 changes from current baseline (1995-2014) for SSP1-1.9, SSP1-2.6, S SP2-4.5, SSP3-7.0 and SSP5-8.5. Thick lines are ensemble  
 means (number of models shown in the legends). The shading represents the  $\pm 1.64\sigma$  interval, where  $\sigma$  is the standard deviation of  
 the smoothed trajectories computed year-by-year (thus approximating the 5-95% confidence interval around the mean of a  
 normal distribution). Note that the uncertainty bands are computed for the anomalies with respect to the historical baseline (1995-  
 2014). Thus, the right axis of the global temperature plot, showing anomalies with respect to pre-industrial, applies to the ensemble  
 means, not to the uncertainty bands, which would be narrowest over the period 1850-1900 if we were to calculate uncertainties on

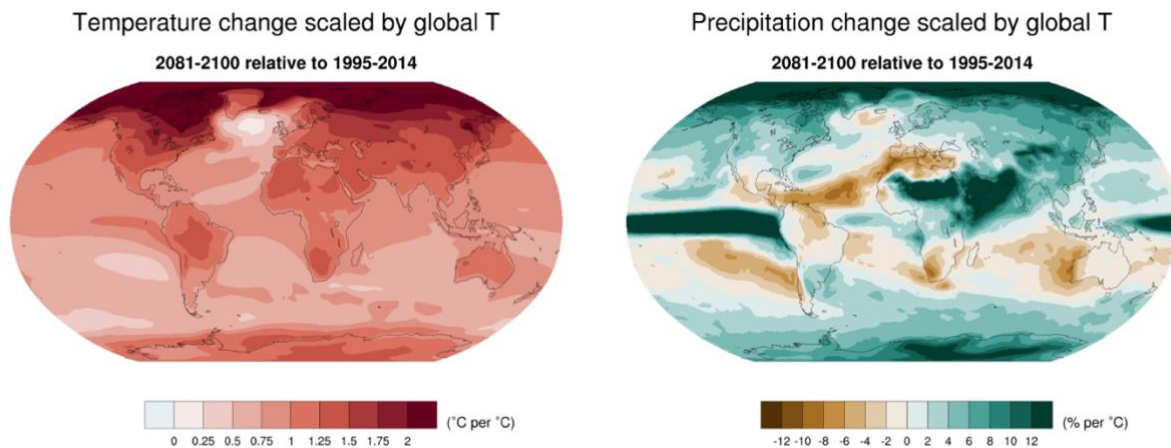
320 the basis of the models' output over that period, rather than by simply adding an offset uniformly. See Figure A2 in the Appendix  
for land-only and ocean-only averages and Tables A3 and A4 for the values of changes at mid and late century.

### 3.1.2 Normalized Patterns

325 In Figure A4 we show ensemble average patterns of change by the end of the century under the five  
scenarios for both variables. In this section we focus our discussion on the general features emerging  
from the average *normalized* patterns. Normalized patterns are computed as the end-of-century  
(percent) change compared to the historical baseline, divided by the corresponding change in global  
mean temperature. This computation is first performed for each individual model/scenario, at each grid  
330 point, after regridding temperature and precipitation output to a common  $1^\circ \times 1^\circ$  grid. The individual  
normalized patterns are then averaged across models and the five scenarios. As we will show, the total  
variations among the population of normalized patterns that form this grand average is mainly driven by  
inter-model variability, rather than inter-scenario differences. Thus, we choose to synthesize patterns of  
change across all scenarios by presenting regional changes per degree of global warming. More in depth  
335 analyses, also exploiting complementary experiments from LUMIP and AerChemMIP, may provide a  
more refined view of the inter-scenario differences possibly arising from different regional forcings.  
Figure 2a shows the spatial characteristics of warming, and of wetting and drying. For temperature  
changes, the left panel confirms the well-established gradient of warming decreasing from Northern  
high latitudes (with the Arctic regions warming at twice the pace of the global average) to the Southern  
Hemisphere, and the enhanced warming in the interior of the continents compared to ocean regions  
340 (which consistently warm slower than the global average). This differential is particularly pronounced  
in the Northern Hemisphere (and would be muted if the normalized pattern was computed at  
equilibrium). The familiar cooling spot in the Northern Atlantic appears as well - the only region with a  
negative sign of change. Studies have suggested that the cooling signal is an effect of the slowing of the  
Atlantic Meridional Overturning Circulation, which creates a signal of slower northward surface-heat  
345 transport, resulting in an apparent local cooling (Caesar et al., 2018; Keil et al., 2020).  
For precipitation, the strongest positive changes are in the equatorial Pacific and the highest latitudes of  
both hemispheres, especially the Arctic region. The large changes in subtropical Africa and Asia are due  
more to the small precipitation amounts of the climatological averages in these regions (at the  
denominator of these percent changes), than to a truly substantial increase in precipitation (see also  
350 below, for variability considerations). A strong drying signal continues to be projected for the  
Mediterranean together with central America, the Amazon region, Southern Africa and Western  
Australia.

Similar to Tebaldi & Arblaster (2014), we give a measure of robustness of these patterns by computing  
the standard deviation at each grid-point across individual model/scenario patterns (Figure 2b). We  
355 further distinguish the relative contribution of scenario and model variability by computing standard  
deviations *after* averaging across models separately for each individual scenario, and across scenarios  
for each individual model, respectively. Figure 2b, top row, highlights in darker colors regions where  
the standard deviation is higher and patterns are less robust. For temperature patterns, as has been found  
in earlier studies of pattern scaling (starting from Santer et al. (1990) and in more recent work, like  
360 Herger et al. (2015)) the edges of sea ice retreat at both poles are areas where models disagree, and  
scenarios, in lesser measure, can be at odds due to their different timing of persistent ice melt. The

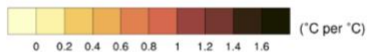
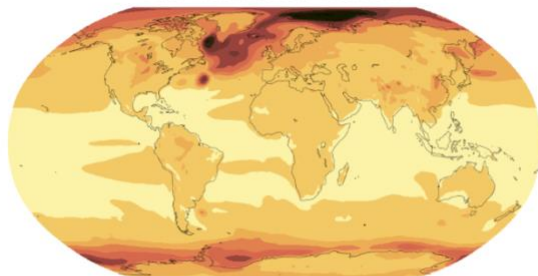
variability and therefore uncertainty of the precipitation pattern mirrors the signal of change at low latitudes in the Pacific and over Africa and Asia. The comparison of patterns in the middle and bottom rows of the figure elucidate the role of inter-model variability rather than scenario variability for both temperature and precipitation normalized changes, with scenario uncertainty only contributing to a small area of sea ice variability in the Arctic for temperature change, and a subregion of the Sahara for precipitation change (where the denominator of the percentage values is small and therefore prone to cause instabilities in the values computed) . Given the radically different sample sizes used to compute the averages from which scenario-driven standard deviations are derived compared to model-driven (more than 30 for the former, and only 5 for the latter), we can also infer that internal variability is a likely contributor to model-driven standard deviation, while is mostly eliminated before the computation of the scenario-driven standard deviation.



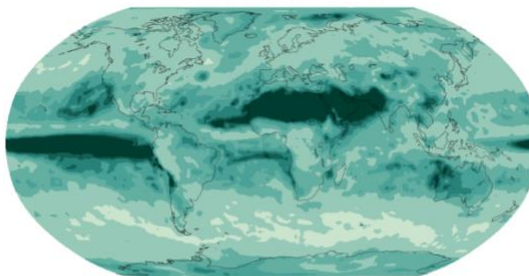
375

**Figure 2a: Patterns of temperature (left) and percent precipitation change (right) normalized by global average temperature change (averaged across CMIP6 models and all Tier 1 plus SSP1-1.9 scenarios).**

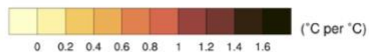
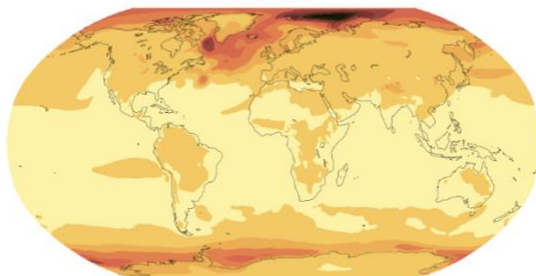
Standard deviation of temperature change scaled by global T  
2081-2100 relative to 1995-2014



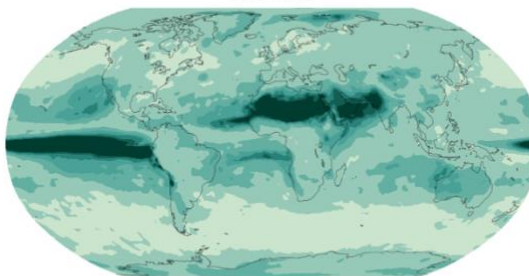
Standard deviation of precipitation change scaled by global T  
2081-2100 relative to 1995-2014



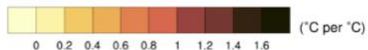
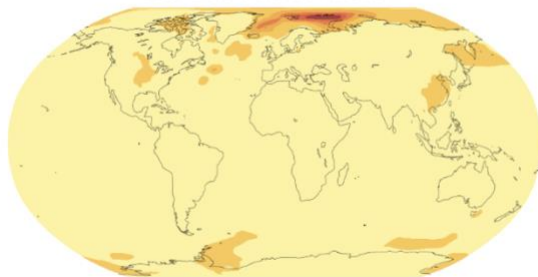
Intermodel standard deviation of temperature change scaled by global T  
2081-2100



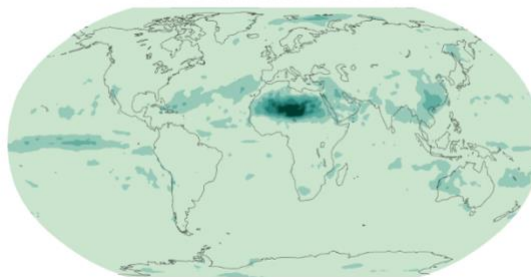
Intermodel standard deviation of precipitation change scaled by global T  
2081-2100



Interscenario standard deviation of temperature change scaled by global T  
2081-2100 relative to 1995-2014



Interscenario standard deviation of precipitation change scaled by global T  
2081-2100 relative to 1995-2014

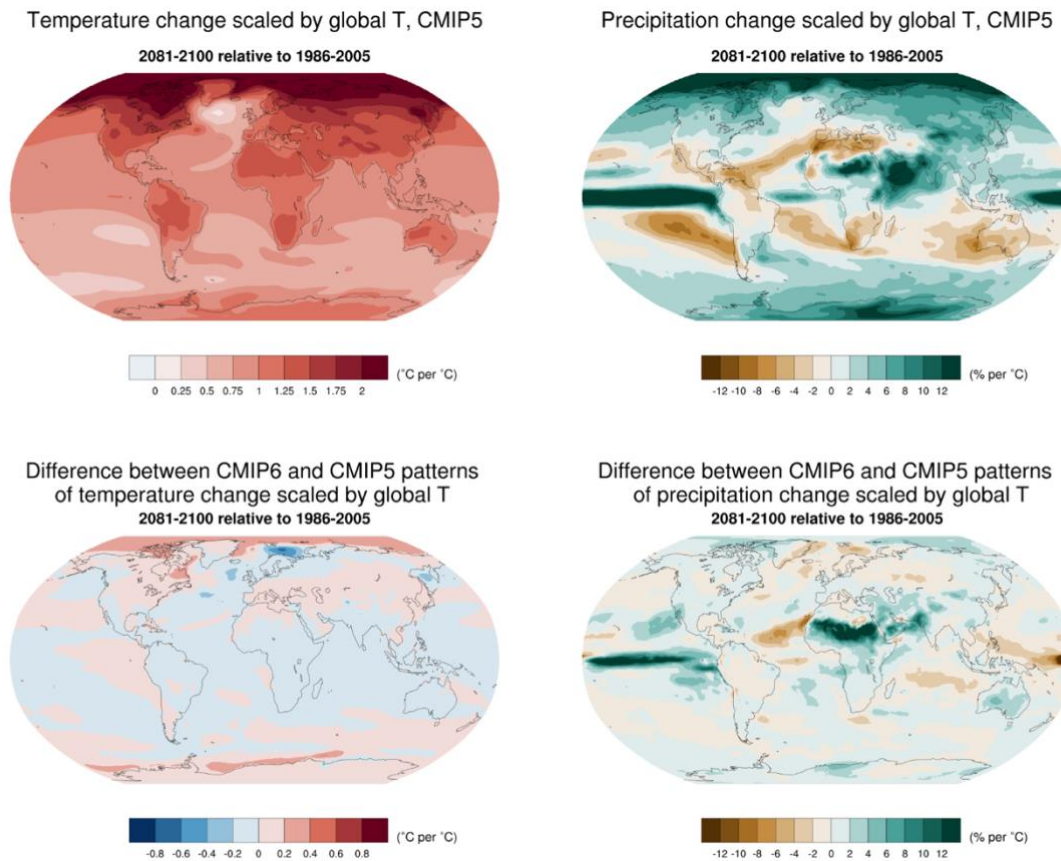


380 **Figure 2b: Top row: standard deviation of normalized patterns for individual CMIP6 models and scenarios. The individual**  
**patterns are the elements from which the averages shown in Figure 2 are computed. Center row: Standard deviation of**  
**normalized patterns, after averaging across scenarios, highlighting the role of inter-model variability. Bottom row: Standard**  
**deviation of normalized patterns after averaging across models, highlighting the role of inter-scenario variability.**

385

The robustness of these multi-model average patterns and the sources of their variability can be assessed by considering the same type of graphics computed from the four RCPs from the CMIP5 model ensemble.

390 Figures 3 (top row) and A5, using the same color scales, are easily compared to Figures 2a and 2b respectively, and confirm the striking consistency of the geographical features of the normalized patterns, the size and spatial features of their variability, together with the components of the latter (i.e., model vs. scenario variability).



395 **Figure 3: Patterns of temperature (left) and percent precipitation change (right) normalized by global average temperature change (averaged across models and scenarios) from CMIP5 models and scenarios, for comparison with Figure 2.**

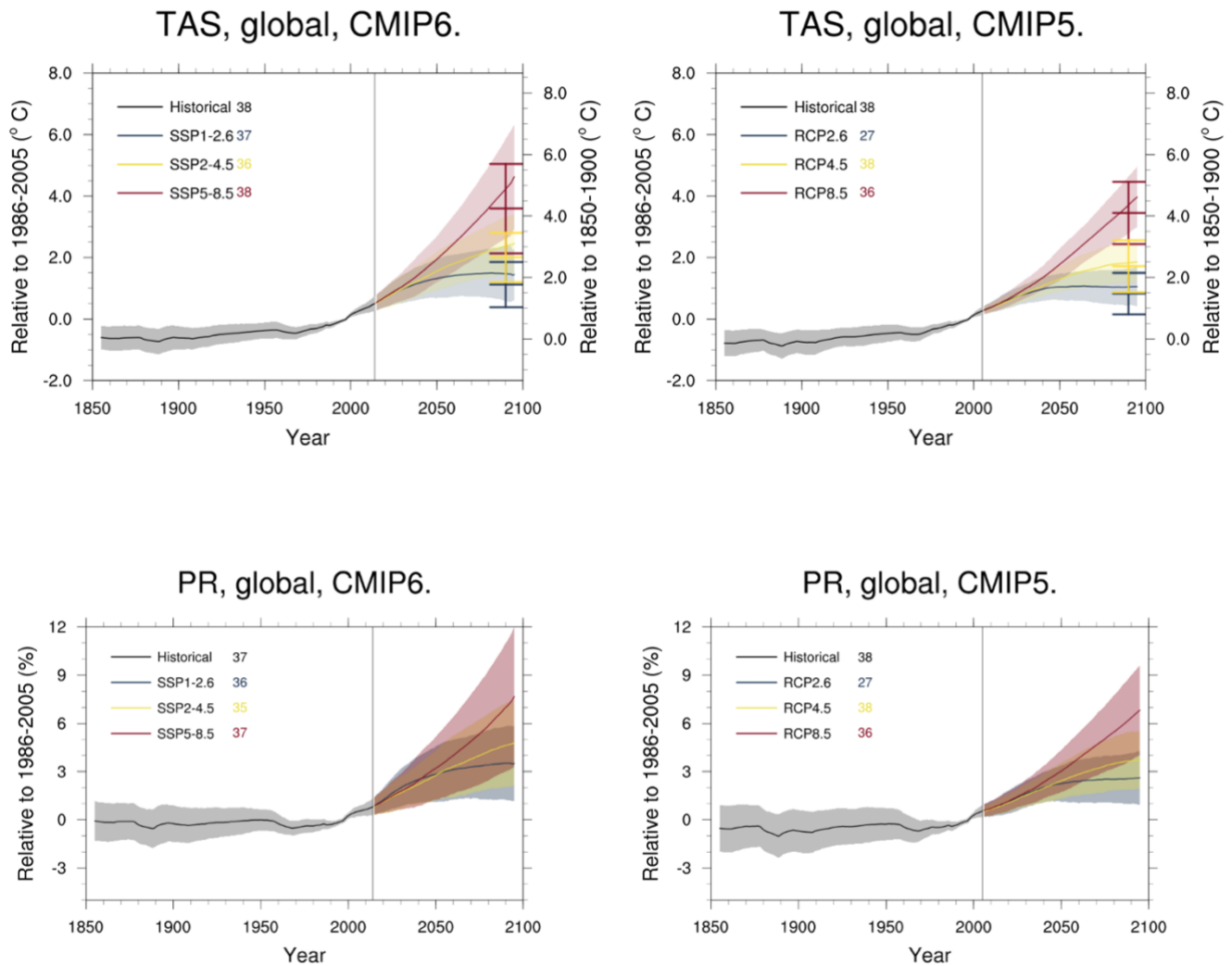
We deem a rigorous quantification of the differences between patterns beyond the scope of this paper, and focus on a qualitative assessment of the similarities that surface by showing on the bottom row of

400 Figure 3 the difference between CMIP6 and CMIP5 normalized patterns, confirming the small  
magnitude of the discrepancies in TAS over all regions, except for the Arctic, known to be affected by  
large variations among model, scenarios (with a possible role of the lowest scenario in CMIP6, SSP1-  
405 1.9, whose land-sea ratio has likely no equivalent among the CMIP5 scenarios, but further, more  
rigorous investigation is needed to confirm this) and internal noise (likely playing a minor role given the  
number of model and scenarios contributing to these averages). Similarly for percent precipitation the  
regions that stand out where the largest differences are found are the tropics, known to be affected by  
large variability and uncertainties. In this case the possible role of aerosol forcing (Yip et al., 2011)  
warrants further investigation, especially as we consider that SSP3-7.0 forcing composition and  
410 trajectory are quite different from previous scenarios'. As mentioned, the use of these experiments in  
conjunction with their variants by LUMIP and AerChemMIP could further attribute some of these  
scenario-dependent features to differences in regional forcing like land-use or aerosols. Also, a subset of  
CMIP6 models are running the CMIP5 RCPs, and results from those experiments will allow a clean  
analysis of variance, partitioning sources between model and scenario generations.

### 415 **3.1.3 Comparison of climate projections from CMIP6 and CMIP5 for three updated scenarios**

In the previous section the comparison of normalized patterns was by construction scenario  
independent. The design of ScenarioMIP, however, deliberately included scenarios aimed at updating  
CMIP5 RCPs, and three of those are in Tier 1. Updates in the historical point of departure (2015 for  
420 CMIP6 rather than 2006 for CMIP5) together with updates in the models forming the ensemble which  
reflect on the radiative forcing levels simulated by the individual models (Smith et al., 2020) are  
obvious differences that hamper a straightforward comparison. In addition, the emission composition of  
the scenarios also changed with the update, and we summarize how after presenting the projection  
comparison.

425 We show time series of global temperature for the three updated scenarios and the corresponding results  
from their CMIP5 counterparts: SSP1-2.6 vs RCP2.6, SSP2-4.5 vs RCP4.5, and SSP5-8.5 vs RCP8.5  
from CMIP6 and CMIP5, respectively. We show warming relative to the same historical baseline of  
1986-2005 used by CMIP5 (Taylor et al., 2012) and to 1850-1900. We further show how observational  
constraints applied to the range of trajectories from the new models based on recently published work  
430 (Tokarska et al., 2020) result in lower and narrower projections at the end of the century, and have the  
effect of bringing CMIP6 projections in closer alignment to CMIP5 end-of-the century warming, even  
when the same type of constraints are applied to the latter.



435 **Figure 4: Comparison of the three SSP-based scenarios updating 3 CMIP5-era RCPs with the corresponding CMIP5 output:**  
 440 **SSP1-2.6, SSP2-4.5 and SSP5-8.5 on the left can be compared to RCP2.6, RCP4.5 and RCP8.5 on the right for global average**  
**temperature change (top row) and global average precipitation change (as a percentage of the baseline values, which are set to**  
**1986-2005 for both ensembles). Indicators along the right axis of the plots of temperature projections show constrained ranges at**  
**2100, obtained by applying the method of Tokarska et al. (2020). Note that, as in Figure 1, the uncertainty bands in all figures are**  
 445 **computed for anomalies with respect to the historical baseline (1986-2005 in this case). Thus the right axis of the global**  
**temperature plots, showing anomalies with respect to pre-industrial, applies to the ensemble means, not to the uncertainty bands,**  
**which would be narrowest over the 1850-1900, were they calculated using the data from simulations over that period, rather than**  
**being registered to the new axis only on the basis of the offset. Figure A6 shows a more direct comparison of the CMIP6 and**  
**CMIP5 ranges before and after the application of constraints at 2081-2100, and Table A6 lists those ranges (and the unconstrained**  
**percent precipitation changes for the same comparisons) at 2041-2060 and 2081-2100.**

445 Figure 4 aligns two pairs of plots showing time series of global temperature and percent precipitation changes under the three updated scenarios and the original RCPs, from the CMIP6 and CMIP5 ensembles respectively: the left-hand panels show three of the trajectories already shown in Figure 1

(left panels of both rows) but as anomalies/percent changes from the period 1986-2005, i.e., the last 20  
450 years of the CMIP5 historical period (Taylor et al., 2012). The right-hand side panels show CMIP5  
results for the three corresponding RCPs (see Table A2 for a list of the models used), also using the  
1986-2005 baseline. The right axis on the temperature plots allows an assessment of changes compared  
to the 1850-1900 baseline. Table A6 lists mid- and late century changes for all model ensembles under  
the different scenarios. The new *unconstrained* results reach on average warmer levels, and have a  
455 larger inter-model spread, especially when comparing SSP5-8.5 to RCP8.5. There is 0.46°C (for the  
scenarios reaching 2.6Wm<sup>-2</sup>), 0.49°C (for the 4.5Wm<sup>-2</sup> scenarios) and 0.67°C (for the 8.5Wm<sup>-2</sup>  
scenarios) more mean warming, while the upper end of the shading for SSP5-8.5 reaches 1.5°C higher  
than the CMIP5 results (Table A6). The larger warming resulting from the CMIP6 experiments is a  
460 combination of different forcings and the presence among the new ensemble of models with higher  
climate sensitivities than the members of the previous generations. The higher climate sensitivities in  
CMIP6 compared to CMIP5 (Meehl et al., 2020; Zelinka et al., 2020) become more critical for higher  
forcings, when the model response is more highly correlated to its climate sensitivity explaining the  
differential in the higher warming across the range of new scenarios, with the largest difference evident  
for SSP5-8.5.

465 Several recent studies (Brunner et al., 2020, Liang et al., 2020, Nijssen et al., 2020; Ribes et al., 2020 and  
Tokarska et al., 2020) constrain the ensemble projections according to the evaluation of the ensemble  
historical behavior. All studies find a strong correlation between the simulated warming trends over the  
observed historical period and the warming in SSP scenarios, which suggested constraining future  
warming using observed warming trends estimated from several observational products, and all come to  
470 similar results. Here and in Table A6 we show how the 2081-2100 means for both CMIP5 and CMIP6  
are changed as a result of applying constraints as in Tokarska et al. (2020). Also in Figure A6 we show  
the same results, but focusing specifically on these 20-yr means, before and after the application of the  
constraints. The resulting observationally-constrained ranges bring CMIP6 projections closer to both the  
the raw CMIP5 ranges and their constrained counterparts in both mean and spread (especially the upper  
475 bound). In other words, models that project the most warming by the end of the century tend to do the  
least well in reproducing historical warming trends for both ensembles, but the effect is much more  
pronounced for CMIP6 than CMIP5 models (see also Figure A6). After constraints are applied, the  
difference in the mean changes by 2081-2100 is 0.29°C for the two lower scenarios, and 0.15°C under  
SSP5-8.5/RCP8.5. The difference in the upper range under the latter scenario is reduced to 0.59°C

480 Global precipitation projections follow temperature projections (O’Gorman et al., 2012), and therefore  
we see (unconstrained) CMIP6 trajectories reaching higher percent changes than CMIP5 of just below  
1%. Consistent with the relatively larger means, the spread of trajectories for individual scenarios,  
which combines internal variability with model uncertainty, is larger for the new models and scenarios.  
As mentioned, part of the differences described are due to forcing differences between the  
485 corresponding scenarios in CMIP5 and CMIP6. These are by design small in terms of aggregate  
radiative forcing, when radiative forcing is defined as IPCC-AR5-consistent total global stratospheric  
adjusted radiative forcing (AR5-SARF). By this measure of forcing, scenarios differ by less than 6% in  
2100 for the RCP2.6-SSP1-2.6 pair, 5% for the RCP4.5-SSP2-4.5 pair and around 0.3% at 8.9 Wm<sup>-2</sup> for  
the RCP8.5-SSP5-8.5 pair. Differences over the full pathway from 2015 to 2100 are below 15%, 5%  
490 and 4%, respectively. However, the literature in recent years has moved away from the AR5-SARF



definition (in particular, Etminan et al., 2016 – see also implementation in Meinshausen et al., 2020), towards the use of effective radiative forcing (ERF), which differs from AR5-SARF in that it includes any non-temperature mediated feedbacks (see e.g., Smith et al., 2020).

495 Given that CMIP5 and CMIP6 concentration pathways differ with respect to their composition across  
gases and other radiatively active species (Lurton et al., 2020, Fig.1), whose respective ERFs can be  
very different despite a similar AR5-SARF, the similarity between RCP and SSP scenarios in terms of  
forcing deteriorates when moving away from an AR5-SARF definition. For example, in SSP5-8.5 the  
AR5-SARF contribution of CH<sub>4</sub> is by 2100 about 0.5 Wm<sup>-2</sup> lower than in the CMIP5 RCP8.5 pathway.  
This is offset by the difference in CO<sub>2</sub> AR5-SARF, where SSP5-8.5 is around 0.5Wm<sup>-2</sup> higher. In  
500 contrast, these compensating effects do not hold any longer when using ERF. In fact, because ERF is  
higher than AR5-SARF for CO<sub>2</sub> and even more so for CH<sub>4</sub>, the 2100 radiative forcing level after which  
both the RCP and SSP pathway are named are not met precisely anymore when measured by ERF.  
Another pronounced difference between the CMIP5 RCPs and the new generation of SSP-RCP  
scenarios is that the latter span a wider range of aerosol emissions and corresponding forcings. The  
505 main reason for this difference is a wider consideration of the possible development of air pollution  
policies, ranging from major failure to address air pollution in the SSP3-7.0 pathway to very ambitious  
reductions of air pollution in the SSP1-2.6, SSP1-1.9 as well as SSP5-8.5 pathways (Rao et al., 2017).  
All the CMIP5 RCPs followed by comparison a more “middle of the road” pollution policy path. Last,  
the effective radiative forcing levels reached by both sets of pathways can be different - depending on  
510 each climate model processes - from their nominal AR5-SARF values labeling the pathway, usually  
obtained by running the emission pathways through simple models, like using MAGICC in its AR5-  
consistent setup (Riahi et al., 2017). A recent study with the EC-Earth model finds that about half of the  
difference in warming by the end of the century when comparing CMIP5 RCPs and their updated  
CMIP6 counterparts is due to difference in effective radiative forcings at 2100 of up to 1 Wm<sup>-2</sup> (Wyser  
515 et al., 2020). Figure A7, adapted from Meinshausen et al., (2020) shows a break-down of the  
comparison into the three main forcing agents among greenhouse gases, CO<sub>2</sub>, CH<sub>4</sub> and N<sub>2</sub>O, from  
which the significant differences in the composition can be assessed. Next to the AR5-consistent SARF  
time series, we also show effective radiative forcing ranges under the SSPs for the end of the 21<sup>st</sup>  
century for comparison using a newer version of MAGICC, MAGICC7.3.  
520 Here we note that in an effort to make the comparison more direct, CMIP5 RCP forcings are available  
to be run with CMIP6 models, and several modeling centers have started -- at the time of writing --  
these experiments, which have been added to the Tier 2 design of ScenarioMIP since the description in  
O’Neill et al. (2016). If enough models contribute these results, a cleaner comparison of the effects of  
the updated forcing pathways, controlling for the updated models’ effect, will be possible. Preliminary  
525 results with the Canadian model, CanESM2, confirm the significant role of higher radiative forcings  
found with EC-Earth.

### 3.1.4 Scenarios and Warming Levels

530 The ever-increasing attention to warming levels as policy targets, also due to the recognition that strong  
relations are found between them and a large set of impacts, motivates us to identify the time windows  
at which the new scenarios’ global temperature trajectories reach 1.5, 2.0, 3.0, 4.0 and 5.0°C since  
1850-1900. Table 1 shows the timing of first crossing of the thresholds by the ensemble average and the

5-95% uncertainty range around that date. This is derived by computing the 5-95% range for the ensemble of trajectories of GSAT, and identifying the dates at which the upper and lower bounds of the range cross the threshold. The range is computed by assuming a Normal distribution for the ensemble, as the inter-model standard deviation multiplied by 1.64. Considering this range rather than the minimum and maximum bounds of the ensembles makes the estimates of the 5-95% range more robust, especially for the lowest scenario, SSP1-1.9 for which we only rely on 13 models. The analysis is conducted after smoothing each of the individual models' time series by an 11-year running average, to smooth interannual variability. The width of the intervals would change if constraints based on the observed warming trends were applied to the ensemble along the whole century (as shown in Figure 4 for the end of the century) but here the unconstrained ensemble is used. The anomalies from 1850-1900 are computed as described in section 3.1.1, by computing anomalies with respect to the historical baseline (1995-2014) and then adding the offset value of 0.84°C to minimize the effect of biases in the warming during the historical period of the different models. Note however that remaining differences between models and observations in the warming trends over the period 2014 to present, and the effects of differences between observed and projected forcings may still introduce biases in the crossing level estimates, likely biasing them low.

We first synthesize results from the experiments from Tier 1, for which we extract a common subset of 31 models in order to make the threshold crossing estimates comparable across scenarios (for completeness we document in Table A7 the behavior of all models available, which does not change qualitatively the results that we are about to describe).

The lowest warming level of 1.5°C from pre-industrial is reached on average between 2026 and 2028 across SSP1-2.6, SSP2-4.5, SSP3-7.0 and SSP5-8.5 with largely overlapping confidence intervals that start from 2020 as the shortest waiting time and extend until 2046 at the latest under SSP2-4.5. Note however that the lower bound of the ensemble trajectories (determining the upper bound of the projected years by which the level is reached) under SSP1-2.6 does not warm to 1.5°C for the whole century (the NA as the upper bound of the time period signifies "not reached"). The next level of 2.0°C is reached as soon as 13 years later by the ensemble average under SSP5-8.5, and as late as 32 years later under SSP1-2.6, a striking reminder of how different the pace of warming is in these scenarios. The confidence intervals have similar lower bounds between 2030 and 2032 and extend to 2077 for SSP2-4.5, while they are significantly shorter for the higher scenarios (2064 and 2054 for SSP3-7.0 and SSP5-8.5 respectively). The confidence intervals for SSP1-2.6 do not reach any of the higher warming levels, while by 2059 the ensemble average under SSP5-8.5 has already warmed by 3°C. SSP3-7.0 takes 9 more years, while it takes until 2092 for the ensemble average under SSP2-4.5 to reach 3°C. Under this scenario it is worth noting that only 21 out of 37 models reach that level. Only the ensemble means of the two higher scenarios reach 4°C, as early as 2077 for SSP5-8.5, and 14 years later for SSP3-7.0. The highest warming level considered of 5°C is only reached by the upper range of SSP3-7.0 (only 4 models out of 33) while more than half the models running SSP5-8.5 (21 out of 39) reach that warming level in the last decade of the century (2094) as an ensemble average, and as early as 2074 when the warmer end of the ensemble range is considered.

Only 13 models are available at the time of writing under the lowest scenario specifically designed to meet the Paris Agreement target of 1.5°C warming by the end of the century. Of those, two remain below that target for the entire century, while others have a small overshoot of the target which was

575 expected by design. The ensemble mean reaches 1.5°C already by 2029. The lower bound never crosses  
that level, while the upper bound is already at 1.5°C currently, i.e., by 2021 (as a reminder, CMIP6  
future simulations start at 2015). In Table A8 in the Appendix, a comparison of the CMIP5/CMIP6  
three corresponding scenarios (SSP1-2.6, SSP2-4.5 and SSP5-8.5 compared to RCP2.6, RCP4.5 and  
580 RCP8.5) for a slightly larger ensemble of 36 CMIP6 models for which the three scenarios are available,  
and a CMIP5 ensemble of 29 models, shows dates compatible with the warmer characteristics of the  
CMIP6 models/scenarios. On average, the same target is reached from 3 to 9 years earlier by the CMIP6  
ensemble means compared to the CMIP5 ensemble means. A more in depth analysis than is in our  
scope is necessary to fully characterize the causes of this acceleration. Here we note that the behavior of  
585 the CMIP6 ensemble means reflect the use of unconstrained projections, with equal weight given to  
high climate sensitivity models, which are often also those less adherent to historical trends and that  
may show a faster historical warming in the last decade or so than observed. In addition, as we  
discussed in the previous section, even scenarios having the same AR5-SARF label see different  
forcings at play. The result is to make the pace of warming faster, and, in several cases, a target that was  
not reached by the CMIP5 models under a given scenario is instead reached by the corresponding  
590 CMIP6 ensemble/scenario. E.g, 2.0°C under SSP1-2.6 is reached in mean in 2056, while it was reached  
only by the upper bound (by 2040) under RCP2.6; at the opposite end, 5.0°C was reached only by the  
upper bound (in 2083) under RCP8.5, while it is reached by the ensemble mean in 2093 under SSP5-  
8.5.

595 **Table 1: Times (best estimate and range - in square brackets - based on the 5-95% range of the ensemble after smoothing the  
trajectories by eleven-year running means) at which various warming levels (defined as relative to 1850-1900) are reached  
according to simulations following, from left to right, SSP1-1.9, SSP1-2.6, SSP2-4.5, SSP3-7.0 and SSP5-8.5. Crossing of these  
levels are defined by using anomalies wrt 1995-2014 for the model ensembles and adding the offset of 0.84°C to derive warming  
from pre-industrial.**

600 We use a common subset of 31 models for the Tier 1 scenarios, and all available models (13) for SSP1-1.9, while Table A7 in the  
appendix shows the result of using all available models under each scenario. The number of models available under each scenario  
and the number of models reaching a given warming level are shown in parentheses. However, the estimates are based on the  
ensemble means and ranges computed from all the models considered (13 or 31 in this case), not just from the models that reach a  
given level. An estimate marked as NA is to be interpreted as “not reaching that warming level by 2100”. In cases where the  
605 ensemble average remains below the warming level for the whole century, it is possible for the central estimate to be NA, while the  
earlier time of the confidence interval is not, since it is determined by the warmer end of the ensemble range.

	<b>SSP1-1.9</b>	<b>SSP1-2.6</b>	<b>SSP2-4.5</b>	<b>SSP3-7.0</b>	<b>SSP5-8.5</b>
<b>1.5°C</b>	2029 [2021,NA] (11/13)	2028 [2020,NA] (30/31)	2028 [2020,2047] (31/31)	2028 [2020,2045] (31/31)	2026 [2020,2040] (31/31)
<b>2.0°C</b>	NA [2036,NA] (2/13)	2064 [2032,NA] (17/31)	2046 [2032,2082] (31/31)	2043 [2031,2064] (31/31)	2039 [2030,2055] (31/31)
<b>3.0°C</b>	NA [NA,NA] (0/13)	NA [NA,NA] (0/31)	2094 [2058,NA] (16/31)	2069 [2052,NA] (31/31)	2060 [2048,2083] (31/31)

<b>4.0°C</b>	NA [NA,NA] (0/13)	NA [NA,NA] (0/31)	NA [NA,NA] (1/31)	2091 [2071,NA] (17/31)	2078 [2062,NA] (27/31)
<b>5.0°C</b>	NA [NA,NA] (0/13)	NA [NA,NA] (0/31)	NA [NA,NA] (0/31)	NA [2088,NA] (3/31)	2094 [2075,NA] (15/31)

610

### 3.2 Climate projections from ScenarioMIP Tier 2 simulations

#### 3.2.1 SSP3-7.0 Initial Condition Ensembles

615 Five models (CanESM5, IPSL-CM6A-LR, MPI-ESM1-2-HR, MPI-ESM1-2-LR and UKESM1)  
 contributed at least ten initial condition (IC) ensemble members under SSP3-7.0. We focus here on the  
 behavior of the ensemble spread over the 21st century, as measured by the values of the inter-realization  
 standard deviations. In the following the phrase “ensemble spread” is used, which has to be interpreted  
 as the value of such standard deviation. Figure 5 shows the time evolution (over 1980-2100) of the  
 620 ensemble spreads for global temperature and precipitation computed on an annual basis (top row) and  
 after smoothing the individual time series by an 11-yr running mean (bottom row). One of the models,  
 CanESM5, provides 50 ensemble members that we use to randomly select subsets of 10 members and  
 form a background “distribution” of the timeseries of ensemble spreads, shown in grey in Figure 5. This  
 is not meant to provide a quantitative assessment but rather a qualitative representation of the variability  
 625 of “10-member ensembles”, which is what most models provide. When we compute trends for the time  
 series of the temperature ensemble spread all show a negative slope, indicating that the ensemble spread  
 has a tendency to narrow over time. In the case of the spread computed among annual values, only two  
 of the models pass a significance test at the 5% level, while for decadal averages all models show  
 significantly decreasing spreads (significantly negative trends). Trends of the ensemble spreads for  
 630 precipitation are non-significant for all models when the spread is computed from annual values, while  
 all are significantly negative, indicating a decrease in the spread, when that is computed from decadal  
 means. This result appears robust for this small set of models, but confirmation with a larger number of  
 models providing sizeable initial condition ensembles will be important. Decreases in GSAT variability  
 have however been found in earlier studies (Huntingford et al., 2013; Brown et al., 2017) and attributed  
 635 to reduced equator to pole gradients, and reduced albedo variability due to the disappearance of snow  
 and sea-ice. A deeper investigation of the sources of changes in variability for both variables (which  
 could also tackle how much of the changes in precipitation variability is directly connected to that of  
 GSAT, and what other sources may be at play) is beyond our scope but will be facilitated by the  
 availability of these CMIP6 IC ensembles in addition to the already well studied CMIP5-era large IC  
 640 ensembles (Deser et al., 2020).

After detrending the values, we compare the distribution of the ensemble spreads for an individual  
 model to that of other models in order to assess if models produce ensembles with spreads that are  
 significantly different. We use a Kolmogorov-Smirnov test (at 5% level) which measures differences in  
 distribution. For several pairs of models, ensemble spreads based on annual values turn out to be  
 645 indistinguishable: for temperature, CanESM5 ensemble spread is not significantly different from those

of the MPI-ESM model at Low Resolution and those of the UKESM1 model. The latter in turn has an ensemble spread that is not different from that of the IPSL-CM model. For precipitation, CanESM5 and IPSL-CM produce comparable spreads, as do the two MPI-ESM models, and the MPI-ESM at Low Resolution compared to UKESM1. When we test the spreads of decadal means, all models appear significantly different from one another. Last, we can exploit the CanESM5 large ensemble in order to assess the number of ensemble members necessary to estimate the forced response of globally averaged TAS and PR, assuming that the mean response obtained by averaging the full ensemble of 50 member is representative of the true forced response. It is found that, for temperature, ten ensemble members produce an ensemble mean trajectory indistinguishable from the one obtained averaging 50 members. For precipitation, only year-to-year variability is not completely smoothed out by averaging ten rather than 50 ensemble members, but filtering by an 11-year running mean effectively cancels out annual “wiggles”.

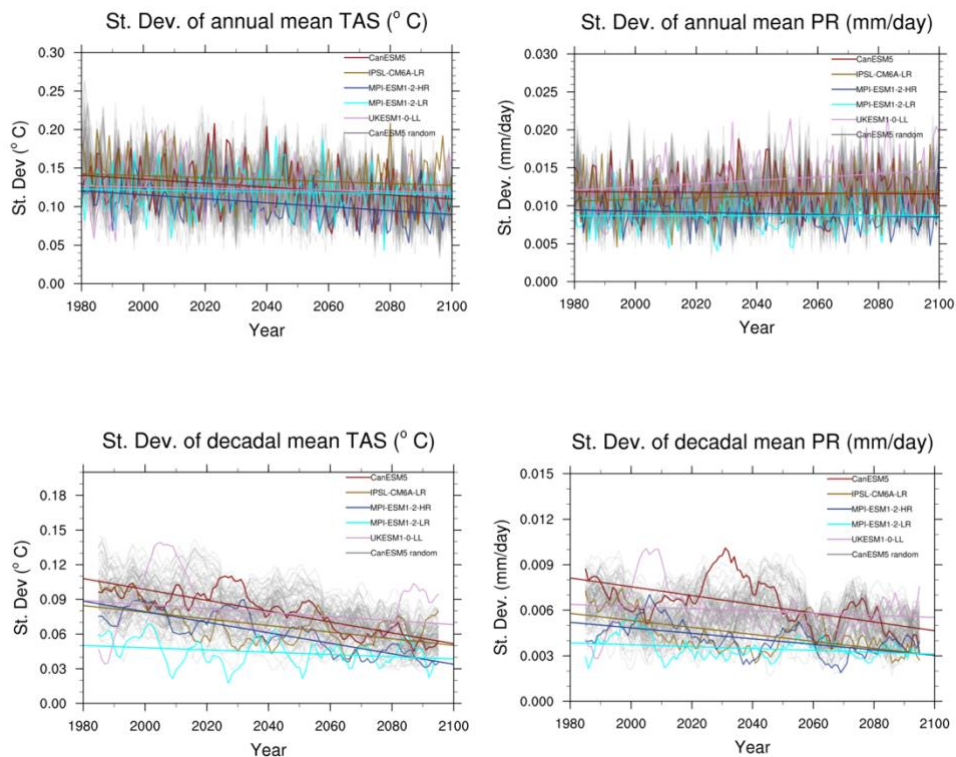


Figure 5: Time series of ensemble spreads (i.e., inter-member standard deviations) computed at each year among annual (top row) or decadal (bottom row) mean values of TAS (left) and PR (right). The grey lines are obtained by resampling subset of ten members from the CanESM5 model ensemble that provides 50 members. They are meant to provide a qualitative indication of the variability “hidden” in the 10 member ensembles provided by the majority of the models. The color lines show the time series of standard deviations computed from 10 members of 5 models running SSP3-7.0: CanESM5 (first ten members, red), IPSL-CM6A-LR (yellow), MPI-ESM1-2-HR (blue), MPI-ESM1-2-LR (cyan) and UKESM1 (light purple). Straight lines show least square fits of the linear trends.

### 3.2.2 Effects of mitigation policies comparing SSP5-8.5 with SSP5-3.4OS, and SSP4-6.0 with SSP4-3.4

670 The ScenarioMIP design includes two pairs of scenarios, each of which is derived from the same SSP  
and integrated assessment model and consists of one baseline scenario without mitigation and one  
scenario assuming mitigation policies that reduce radiative forcing. They can therefore be used to  
cleanly attribute differences in climate outcomes to mitigation efforts. The two sets of scenarios are  
675 SSP4-6.0 and SSP4-3.4 (produced with the GCAM model, Calvin et al., 2017), and SSP5-8.5 and  
SSP5-3.4OS (produced with the ReMIND-MagPIE model, Kriegler et al., 2017). Figures 6 and 7 show  
time series of global temperature and percent precipitation anomalies with respect to the baseline period  
of 1995-2014 for the two pairs, and the patterns of differences in temperature and percent precipitation  
changes by the end of the century, which we can characterize as the benefits of mitigation within the  
two SSP worlds. For reference, the pattern of change for the lower scenario in the pair is also shown.  
680 Figure 6 shows these outcomes for the pair of scenarios developed under SSP5. One of them is the  
unmitigated pathway already featured in the previous sections, SSP5-8.5, assuming high reliance on  
fossil fuels to support economic development, and reaching  $8.5\text{Wm}^{-2}$  by the end of the century. The  
other scenario, SSP5-3.4OS, follows the same path of emissions until 2040, when it enforces a steep  
decline in greenhouse gas emissions, which become negative after 2070 and therefore create an  
685 overshoot in concentrations, radiative forcing and global average temperature, to end up at  $3.4\text{Wm}^{-2}$  at  
2100. Note that the end-point of this scenario, according to these global measures, coincides with the  
end-point of SSP4-3.4, the lower scenario of the other pair considered in this section, which is however  
reached along a traditional non-exceed pathway.  
Figure 7 shows results for the other pair, developed under SSP4, which by the end of the century  
690 reached  $6.0\text{Wm}^{-2}$  (without mitigation) and  $3.4\text{Wm}^{-2}$  (with mitigation) respectively. Their greenhouse  
gas emissions start diverging immediately, by 2020, with those of the lower scenario already  
decreasing by that time, while those of the baseline scenario continue to increase for two more decades,  
plateauing and then decreasing only after 2060. Both scenarios have a non-decreasing shape in radiative  
forcing and temperature.  
695 At global scales, Figure 6 and Figure A8 (left panel) show that the forced temperature signals (identified  
by the ensemble averages, i.e., the red lines in the time series separation plots) for the SSP5-driven  
scenario pair respond within a decade of the divergence in the emission pathways, i.e., they separate by  
2050 (just a couple of years later if we consider the last of the individual models) when we apply the  
same definition of separation used in Sect. 3.1.1. Global percent precipitation changes show the  
700 expected delay in the emergence of the mitigation signal, with ensemble average time series separating  
only after 2060 and the overlap of a large fraction of individual ensemble members under the two  
scenarios persisting until the end of the century. The corresponding time series in Figure 7 (and the  
middle panel of Figure A8) shows that separation of temperature trajectories takes place even earlier for  
this pair of scenarios, by 2040 (2045 for the last of the individual models), consistently with the earlier  
705 start of the mitigation. A large majority of the precipitation trajectories still overlap at the end of the  
century.  
The differential patterns of temperature and precipitation change have strikingly similar spatial features  
when comparing Figures 6 and 7, only modulated by the strength of the changes, proportional to the gap  
in radiative forcings. Temperature changes benefit from mitigation over the whole globe, but more  
710 significantly and increasingly so the higher the latitude in the Northern Hemisphere. All land regions  
see a benefit of mitigation (in terms of the forced signal, again represented by the difference in

ensemble mean changes) of at least 2°C to 3°C in annual average temperatures at the end of the century, larger in most of the NH land regions and reaching 8°C in the Arctic for the SSP5-3.4OS/SSP5-8.5 scenario pair. For precipitation changes, the larger differences translate in a more than doubled intensity (note that the colors are the same or stronger in the difference plot than in the scenario change plot) in both directions of change over the high latitudes (wetting) and the subtropics (drying). It is worth pointing out that patterns of change under the individual scenarios and patterns of differences between scenarios are similar, a further indication of the stable nature of the patterns of future change across different forcing scenarios.

715

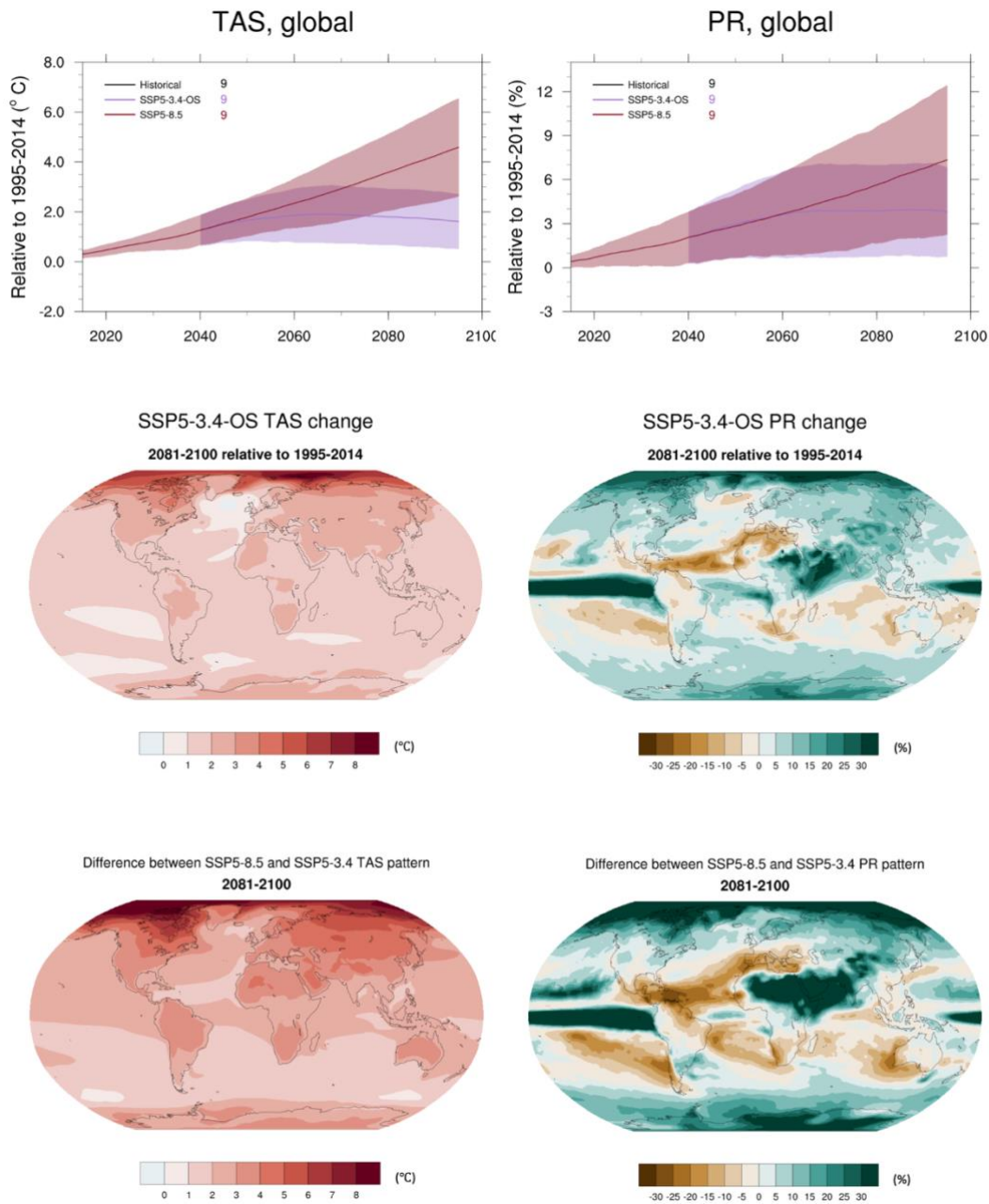
720 Last, we use Figure 6 and 7, together with the third panel of Figure A8 for an additional comparison, as the presence of two scenarios ending at the same level of radiative forcing (AR5-SARF), SSP4-3.4 and SSP5-3.4OS, allows us to compare the effects of the overshoot, after performing the same differencing for the 6 models that ran both of these scenarios. A comparison of the patterns of change under the two scenarios shows no apparent differences in the intensity of the changes for both temperature and

725 precipitation, consistent with the global time series reaching a similar warming and precipitation change level at 2100. The model by model differences of these two scenarios (right panel in Figure A8) for temperature show that the effects of the overshoot trajectory translate in warmer global temperatures starting from 2032 and all the way to 2080 in the ensemble mean, and from 2038 to 2087 when considering the least differentiated of the individual models' pairs. The overshoot causes 0.4°C of

730 additional warming in the middle of the 2030-2080 period (2055), with a cumulative measure of differential warming over the period of about 14 degree-years. This simple analysis suggests that average temperature and precipitation changes do not show significant memory and recover quickly after an overshoot of this magnitude.

735 The small number of models supporting these conclusions leaves the possibility that some of these numbers could change, when larger multi-model ensembles will become available.

740



**Figure 6: Time series and patterns comparing SSP5-8.5 to SSP5-3.4OS. First row: Global average time series of temperature and percent precipitation change with respect to the 1995-2014 baseline (11-yr running means). Second row: Patterns of change for the same quantities, under the lower scenario, SSP5-3.4OS. Third row: Differences between the patterns of change under the higher (SSP5-8.5) and lower scenario.**

745



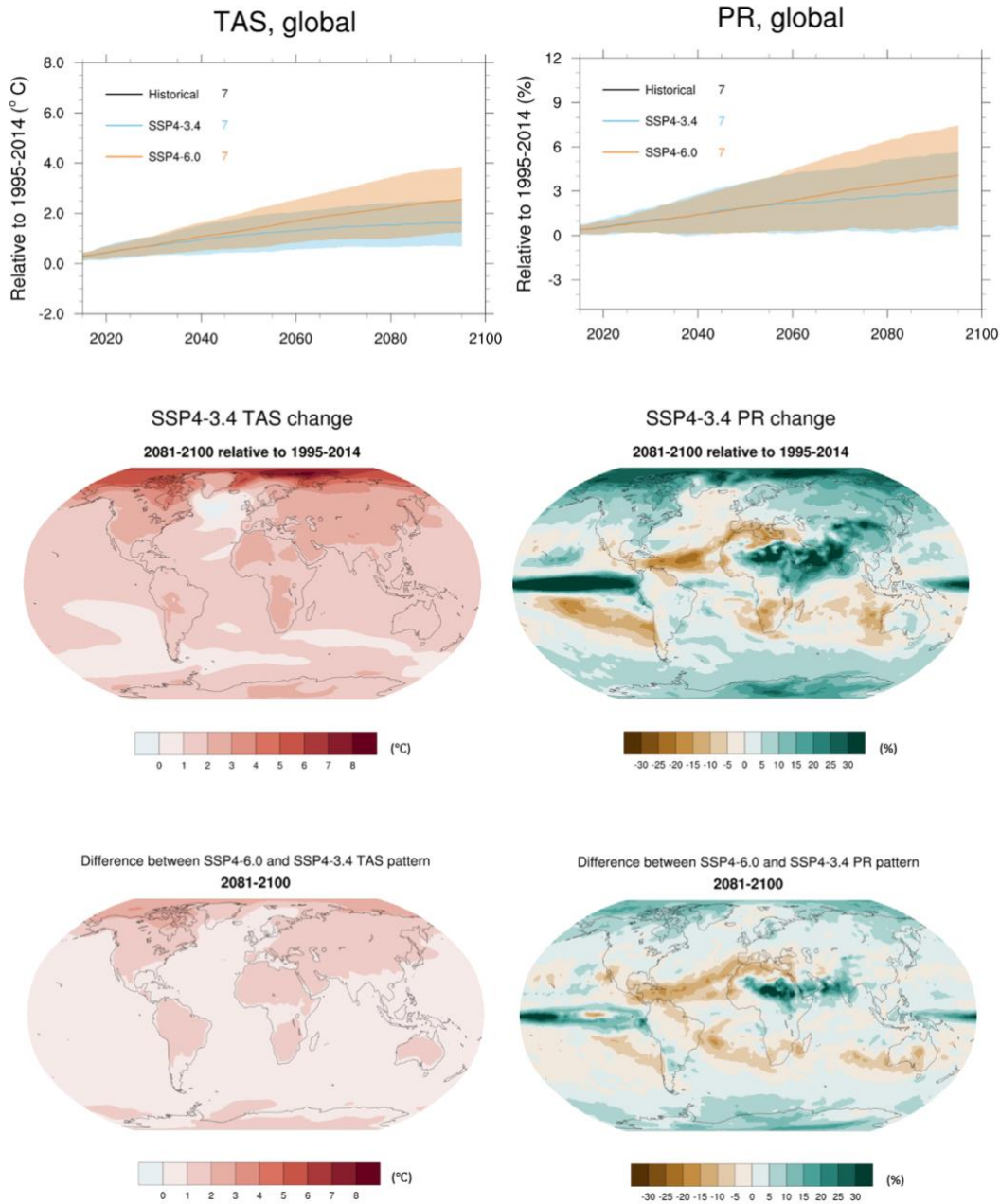


Figure 7: Like Figure 6, but for SSP4-6.0 and SSP4-3.4.

750

#### 4. Summary and Discussion

This paper provides an overview of ScenarioMIP results for surface temperature and precipitation projections under both Tier 1 and Tier 2 experiments, in addition to a comparison to CMIP5 outcomes for a subset of experiments that updated three of the RCPs.

755 The number of models contributing results for the simulations of 21st century scenarios ranges from almost 40 for experiments in Tier 1 to only 7 for some of the experiments in Tier 2. At the time of writing the availability of the long-term simulations results is too scarce to provide a robust multi-model ensemble perspective and we have not included those results.

760 Ensemble mean trajectories of global temperature under the Tier 1 and the 1.5°C scenarios (SSP1-1.9, SSP1-2.6, SSP2-4.5, SSP3-7.0 and SSP5-8.5) span values between 0.7°C and 4.0°C above the historical baseline (1995-2014) (1.5°C-4.8°C above 1850-1900 average), but individual models reach significantly larger warming levels under SSP5-8.5, above 5.5°C (6.4°C from 1850-1900). A comparison with the three CMIP5 RCPs (RCP2.6, RCP4.5 and RCP8.5) which reach the same nominal level of radiative forcing in 2100 (in terms of AR5-SARF) shows a wider range covered in the newest

765 simulations, especially with respect to the upper end. Studies (Tokarska et al., 2020; Nijssen et al., 2020; Brunner et al., 2020; van Vuuren and Carter, 2014) have confirmed that this is attributable to an interplay of both higher radiative forcings by 2100 in the scenarios (when measured by the currently preferred metric, ERF) and higher climate sensitivities in a subset of the CMIP6 models, together with differences in background volcanic aerosols and greenhouse gases that make a straightforward

770 comparison not possible (Fyfe et al., 2020; Lurton et al., 2020; Meehl et al., 2020; Meinshausen et al., 2020; Michou et al., 2020; Nicholls et al., 2020, Séférian et al., 2020; Smith et al., 2020, Wyser et al., 2020). We have shown that when applying constraints based on historical warming rates that weigh models differently on the basis of their performance (Tokarska et al., 2020), ensemble means and ranges of the CMIP6 experiments are brought closer to the corresponding means and ranges from CMIP5

775 model results, as many of the models with higher climate sensitivities also tend to perform less well over the historical period in terms of regional and aggregate warming trends (Brunner et al., 2020). This remains true even when the same constraints are applied to the CMIP5 ensembles, as they do not have as large an effect on the resulting trajectories (Figure 4 and A6). A recent assessment performs a thorough attempt at constraining the distribution of climate sensitivity based on multiple lines of

780 evidence, independently of climate models characteristics (Sherwood et al., 2020). If the resulting distribution of ECS were to be used to downweigh or cull models whose ECS is deemed an outlier, we would likely see changes in the CMIP6 ensemble projections in the same direction as those obtained by historical warming constraints, but formal studies applying this alternative type of constraints have not yet been published. The lack of a one-to-one correspondence between ECS and Transient Climate

785 Response (Sanderson, 2020), the latter more directly responsible for transient warming, further urges caution with this inference. According to the Tier 1 scenarios and SSP1-1.9 the 1.5°C target (above 1850-1900) is reached by the model ensemble average in the second half of the current decade (between 2026 and 2029 depending on the scenario). The scenario decides if the 2.0°C threshold is reached after only 13 more years (SSP5-8.5) or after more than 35 (SSP1-2.6) whereas it is never reached under

790 SSP1-1.9. Only under SSP3-7.0 and SSP5-8.5 does a majority of models reach 4°C, while 5°C is reached by half of the ensemble members only under SSP5-8.5: models produce 4.0°C of warming, on average, under the two higher scenarios in 2078 (SSP5-8.5) and 2091 (SSP3-7.0), while by 2094 5.0°C is reached by the ensemble average under SSP5-8.5. Global precipitation change follows the pace and magnitude of warming (O’Gorman et al., 2012; Lambert et al., 2008) and spans a higher range of

795 ensemble mean projections (by slightly less than 1%) than CMIP5 and a wider range of variability around them. Time series computed separately for land and ocean regions, and global patterns of change

- calculated as function of global warming - confirm well established behaviors: warming is stronger over land than over oceans; the North to South warming gradient over the globe persists, with strong polar amplification signals resulting in projected warming at twice the pace of the global average in the Arctic region. The regional cooling effect of North Atlantic upwelling emerges clearly. Precipitation change appears stronger on average over land than over the globally averaged oceans, with the (by now familiar) multi-model mean patterns of wetting and drying, with the high latitudes and the equatorial Pacific seeing increases, and the semi-arid regions of the Mediterranean, Australia and South Africa expecting further drying. As was the case for CMIP5 and previous multi-model ensembles, the average response across models is very robust to changes in the size and trajectory of well-mixed GHG forcings, and therefore similar across scenarios. However, individual models' regional behavior may deviate from the average behavior significantly, especially in the regions of high internal variability, at the edges of sea-ice melt for temperature and in the equatorial Pacific for precipitation.

The availability of ten (or more) ensemble members under SSP3-7.0 prescribed under Tier 2 and completed by five models at the time of writing allows to detect a tendency to decreasing internal variability on decadal scales over time for both temperature and precipitation in all models (we note that several models have voluntarily provided initial condition ensembles of various sizes under other scenarios, but we have used one member only for those, which was all it was required for participation in ScenarioMIP). When considering annual frequencies only two of the models show significantly decreasing spread, and only for global temperature. The decadal scale results appear at odds with recent studies that detected increased variability of precipitation with warming (Pendergrass et al., 2017; Yun et al., 2020), and call for in-depth studies of the sources and robustness of the behavior here described. For several pairs of models, ensemble spreads based on annual values turn out to be indistinguishable, while after computing running decadal means all models show significantly different spreads from one another, confirming that the representation of the climate system internal noise characteristics remains model dependent (Parsons et al., 2020). CanESM5 provides 50 members and a subsampling of its ensemble confirms that ten realizations are sufficient to robustly estimate the forced signal of global temperature and precipitation by their averages, consistently with studies that have recently sought to investigate the question of how large a large ensemble needs to be for such estimation in those quantities (Milinski et al., 2020).

Lastly, a new feature of ScenarioMIP's design builds on the matrix framework combining SSPs to different radiative forcing levels and therefore allows estimates of the benefits of mitigation for two pairs of scenarios, one pair under SSP4, the other under SSP5, and also an evaluation of the path dependency of warming in the presence of an overshoot. The comparison of SSP5-8.5 to the overshoot pathway that departs from it in 2040 to strongly mitigate radiative forcing down to  $3.4\text{Wm}^{-2}$  by 2100 (SSP5-3.4OS) shows that the warming and absolute changes in precipitation avoided through late mitigation in 2040 could be up to half the expected changes under the high scenarios at the end of the century. The comparison of the other pair, SSP4-6.0 and SSP4-3.4 shows a similar geography of avoided physical impacts, but with smaller absolute differences, given the smaller reduction in radiative forcing between these two scenarios. We also compare the end points of SSP4-3.4, which follows monotonically increasing forcing over the century, and of SSP5-3.4OS which overshoots the late century levels in radiative forcing and temperature, and therefore reaches them from above. Both temperature and precipitation changes (averaged over the last 20 years of the 21<sup>st</sup> Century) appear

comparable in magnitude, suggesting a short memory of the climate system with regard to global  
840 average temperature and precipitation, at least after it exceeds the ultimate target for up to 5 decades,  
and by about 15°C of cumulative differential warming, as in this comparison. We note however that  
other environmental dimensions of climate change (such as ocean acidification or sea level rise) are not  
as easily reversible, if at all (Tokarska et al., 2019; Schwinger and Tjiputra, 2018; John et al., 2015;  
Mathesius et al., 2015; MacDougall et al., 2015; Tokarska and Zickfeld, 2015).

845 A more general analysis of the time it takes for the various scenarios to see a significant separation of  
GSAT trajectories shows that the ensemble averages can show the climatological effects of mitigation  
(which we define as a persistent difference of at least a tenth of a degree) already within 15 years from  
the divergence of forcings when comparing SSP5-8.5 to the two lower scenarios, SSP1-1.9 and SSP1-  
2.6. “Adjacent” scenarios take longer to separate but they all do so, according to the ensemble means,  
850 by the mid 2040s. Individual pairs of trajectories from the ensemble members can take between about 5  
and 20 years longer than the ensemble means (the longer period corresponding to the comparison  
between the two higher scenarios, SSP3-7.0 and SSP5-8.5).

We have limited this analysis to two variables and simple descriptive statistics of their behavior. The  
ScenarioMIP design together with the presence of complementary experiments in several other MIPs,  
855 and of the richness of the archived data (Jukes et al., 2020) from the ESMs simulations is going to  
provide the basis for many more in-depth analyses of the physical system behavior. This will be further  
supported by a subset of CMIP6 models that are running CMIP5 RCPs, thus enabling a rigorous  
separation of the sources of variation between the two generations of experiments. Importantly, the  
ScenarioMIP effort aims at supporting integrated analyses of Earth and human systems’ responses to  
860 future changes. These studies will integrate socio-economic changes described by SSPs with climate  
system changes characterized by ESM outcomes to assess risks and possible mitigation and adaptation  
response options. While we don’t address the integration of ScenarioMIP outcomes in interdisciplinary  
studies within this overview, that integration remains the overarching motivation for ScenarioMIP  
coordinated effort.

## 865 **5. Data and Code Availability**

CMIP5 (see Table A2) and CMIP6 (see Table A1) model output is available through the Earth System  
Grid Foundation (ESGF) and can be directly used within the ESMValTool (e.g. [https://esgf-  
data.dkrz.de/projects/esgf-dkrz/](https://esgf-<br/>data.dkrz.de/projects/esgf-dkrz/)). The corresponding recipe that can be used to reproduce the figures of  
this paper will be included in ESMValTool v2.0 (Righi et al., 2020; Eyring et al., 2019a; Lauer et al.,  
870 2020; Weigel et al., 2020) as soon as the paper is published. The ESMValTool is released under the  
Apache License, VERSION 2.0. The ESMValTool code is available from the ESMValTool webpage at  
<https://www.esmvaltool.org/> and from github (<https://github.com/ESMValGroup/ESMValTool>). As of  
December 2020, 27 modeling centers participated in ScenarioMIP by running at a minimum its Tier 1  
experiments and provided their output through the ESGF. Table A1 lists them, together with their  
875 model(s) and the doi referencing the data.

### **Author Contributions**

C. Tebaldi, V. Eyring, J. Fyfe and E. Fischer designed and organized the analysis. K. Debeire

performed data processing and analysis, and drew all figures and most of the tables. C. Tebaldi wrote  
880 the first draft of the paper. All authors provided input, comments and editing on the various parts of the  
analysis. In addition, modeling centers representatives (from S. Bauer to T. Ziehn in the authors' list)  
were responsible for performing the ScenarioMIP simulations and publishing their model output to the  
ESGF. The authors declare that they have no conflict of interest.

## Acknowledgements

885 C. Tebaldi was supported by the Energy Exascale Earth System Model (E3SM) project, funded by U.S.  
Department of Energy, Office of Science, Office of Biological and Environmental Research. The  
Pacific Northwest National Laboratory is operated by Battelle for the US Department of Energy under  
Contract DE-AC05-76RLO1830. This work has been also supported by the European Union's Horizon  
2020 Framework Programme for Research and Innovation "Coordinated Research in Earth Systems and  
890 Climate: Experiments, kNowledge, Dissemination and Outreach (CRESCENDO)" project under Grant  
Agreement No. 641816, and the EVal4CMIP project funded by the Helmholtz Society. We  
acknowledge the World Climate Research Programme (WCRP), which, through its Working Group on  
Coupled Modelling, coordinated and promoted CMIP. We thank the climate modeling groups (listed in  
Tables A1 and A2) for producing and making available their model output, the Earth System Grid  
895 Federation (ESGF) for archiving the data and providing access, and the multiple funding agencies who  
support CMIP, ESGF and the individual modeling centers efforts. Work at LLNL was performed under  
the auspices of the U.S. Department of Energy by Lawrence Livermore National Laboratory under  
Contract DE-AC52-07NA27344. A. Voldoire and R. Seferian thank the H2020 CONSTRAIN under the  
grant agreement N. 820829 and the support of the team in charge of the CNRM-CM climate model.  
900 Supercomputing time was provided by the Meteo-France/DSI supercomputing center. The  
computational resources of the Deutsches Klimarechenzentrum (DKRZ, Hamburg, Germany) that  
allowed the analysis of this study with the ESMValTool are kindly acknowledged.

## References

- 905 Arora, V.K., Katavouta, A., Williams, R.G., Jones, C.D., Brovkin, V., Friedlingstein, P., Schwinger,  
J., Bopp, L., Boucher, O., Cadule, P., Chamberlain, M.A., Christian, J.R., Delire, C., Fisher, R. A.,  
Hajima, T., Ilyina, T., Joetzjer, E., Kawamiya, M., Koven, C. D., Krasting, J. P., Law, R. M., Lawrence,  
D. M., Lenton, A., Lindsay, K., Pongratz, J., Raddatz, T., Séférian, R., Tachiiri, K., Tjiputra, J. F.,  
Wiltshire, A., Wu, T., and Ziehn, T.: Carbon-concentration and carbon-climate feedbacks in CMIP6  
910 models, and their comparison to CMIP5 models, *Biogeosciences*, 17, 4173–4222,  
<https://doi.org/10.5194/bg-17-4173-2020>, 2020.
- Bao Y., Song, Z. and Qiao, F.: FIO-ESM version 2.0: Model description and evaluation, *Journal of  
Geophysical Research: Oceans*, 125, e2019JC016036, <https://doi.org/10.1029/2019JC016036>, 2020.
- 915 Bao, Q. and Li, J.: Progress in climate modeling of precipitation over the Tibetan Plateau, *National  
Science Review*, 7, 3, 486–487, <https://doi.org/10.1093/nsr/nwaa006>, 2020.

- 920 Bauer, N., Calvin, K., Hammerling, J., Fricko, O., Fujimori, S., Hilaire, J., Eom, J., Krey, V., Kriegler, E., Mouratiadou, I., Sytze de Boer, H., van den Berg, M., Carrara, S., Daioglou, V., Drouet, L., Edmonds, J.E., Gernaat, D., Havlik, P., Johnson, N., Klein, D., Kyle, P., Marangoni, G., Masui, T., Pietzcker, R.C., Strubegger, M., Wise, M., Riahi, K., and van Vuuren, D.P.: Shared Socio-Economic Pathways of the Energy Sector – Quantifying the Narratives, *Global Environmental Change*, 42, 2017, 316–330, <https://doi.org/10.1016/j.gloenvcha.2016.07.006>, 2017.
- 925 Beadling, R. L., Russell, J. L., Stouffer, R.J., Mazloff, M., Talley, L. D., Goodman, P. J., Sallée, J. B., Hewitt, H. T., Hyder, P., and Pandde, A.: Representation of Southern Ocean properties across Coupled Model Intercomparison Project generations: CMIP3 to CMIP6. *J. Climate*, <https://doi.org/10.1175/JCLI-D-19-0970.1>, 2020.
- 930 Bi, D., Dix, M., Marsland, S., O’Farrell, S., Sullivan, A., Bodman, R., Law, R., Harman, I., Srbinovsky, J., Rashid, H. A., Dobrohotoff, P., Mackallah, C., Yan, H., Hirst, A., Savita, A., Dias, F. B., Woodhouse, M., Fiedler, R., and Heerdegen, A.: Configuration and spin-up of ACCESS-CM2, the new generation Australian Community Climate and Earth System Simulator Coupled Model. *Journal of Southern Hemisphere Earth Systems Science*, 70, 1, 225-251, <https://doi.org/10.1071/ES19040>, 2020.
- 935 Boucher, O., Servonnat, J., Albright, A., Aumont, O., Balkanski, Y., Bastrikov, V., Bekki, S., Bonnet, R., Bony, S., Bopp, L., Braconnot, P., Brockmann, P., Cadule, P., Caubel, A., Cheruy, F., Codron, F., Cozic, A., Cugnet, D., D’Andrea, F., Davini, P., de Lavergne, C., Denvil, S., Deshayes, J., Devilliers, M., Ducharne, A., Dufresne, J., Dupont, E., Éthé, C., Fairhead, L., Falletti, L., Flavoni, S., Foujols, M., Gardoll, S., Gastineau, G., Ghattas, J., Grandpeix, J., Guenet, B., Guez, L., Guilyardi, E., Guimberteau, M., Hauglustaine, D., Hourdin, F., Idelkadi, A., Joussaume, S., Kageyama, M., Khodri, M., Krinner, G., Lebas, N., Levavasseur, G., Lévy, C., Li, L., Lott, F., Lurton, T., Luysaert, S., Madec, G., Madeleine, J., Maignan, F., Marchand, M., Marti, O., Mellul, L., Meurdesoif, Y., Mignot, J., Musat, I., Ottlé, C., Peylin, P., Planton, Y., Polcher, J., Rio, C., Rochetin, N., Rousset, C., Sepulchre, P., Sima, A., Swingedouw, D., Thiéblemont, R., Traore, A., Vancoppenolle, M., Vial, J., Vialard, J., Viovy, N., and Vuichard, N.: Presentation and evaluation of the IPSL-CM6A-LR climate model, *Journal of Advances in Modeling Earth System*, 12, e2019MS002010, <https://doi.org/10.1029/2019MS002010>, 2020.
- 945 950 Brown, P. T., Ming, Y., Li, W., and Hill, S. A.: Change in the magnitude and mechanisms of global temperature variability with warming. *Nature Climate Change* 7, 743–748. <https://doi.org/10.1038/nclimate3381>, 2017.
- 955 Brunner L., Pendergrass, A.G., Lehner, F., Merrifield, A.L., Lorenz, R., and Knutti, R.: Reduced global warming from CMIP6 projections when weighting models by performance and independence. *Earth System Dynamics*, 11, 995–1012, <https://doi.org/10.5194/esd-2020-23>, 2020.
- Burrows, S. M., Maltrud, M., Yang, X., Zhu, Q., Jeffery, N., Shi, X., Ricciuto, D., Wang, S., Bisht, G., Tang, J., Wolfe, J., Harrop, B. E., Singh, B., Brent, L., Baldwin, S., Zhou, T., Cameron-Smith, P., Keen,

- 960 N., Collier, N., Xu, M., Hunke, E. C., Elliott, S. M., Turner, A. K., Li, H., Wang, H., Golaz, J.-C., Bond-Lamberty, B., Hoffman, F. M., Riley, W. J., Thornton, P. E., Calvin, K., and Leung, L. R.: The DOE E3SM v1.1 biogeochemistry configuration: Description and simulated ecosystem-climate responses to historical changes in forcing. *Journal of Advances in Modeling Earth Systems*, 12, e2019MS001766, <https://doi.org/10.1029/2019MS001766>, 2020.
- 965 Caesar L, Rahmstorf, S., Robinson, A., Feulner, G., and Saba, V.: Observed fingerprint of a weakening Atlantic Ocean overturning circulation, *Nature*, 556, 191–196, <https://doi.org/10.1038/s41586-018-0006-5>, 2018.
- 970 Calvin, K., Bond-Lamberty, B., Clarke, L., Edmonds, J., Eom, J., Hartin, C., Kim, S., Kyle, P., Link, R., Moss, R., McJeon, H., Patel, P., Smith, S., Waldhoff, S., and Wise, M.: The SSP4: A world of deepening inequality. *Global Environmental Change*, 42, 284–296, <https://doi.org/10.1016/j.gloenvcha.2016.06.010>, 2017.
- 975 Cao, J., Wang, B., Yang, Y.-M., Ma, L., Li, J., Sun, B., Bao, Y., He, J., Zhou, X., and Wu, L.: The NUIST Earth System Model (NESM) version 3: description and preliminary evaluation, *Geoscientific Model Development*, 11, 2975-2993, <https://doi.org/10.5194/gmd-11-2975-2018>, 2018.
- 980 Cherchi A., Fogli, P.-G., Lovato, T., Peano, D., Iovino, D., Gualdi, S., Masina, S., Scoccimarro, E., Materia, S., Bellucci, A., and Navarra, A.: Global mean climate and main patterns of variability in the CMCC-CM2 coupled model, *Journal of Advances in Modeling Earth Systems*, 11,185–209, <https://doi.org/10.1029/2018MS001369>, 2019.
- 985 Collins, W.J., Lamarque, J.-F., Schultz, M., Boucher, O., Eyring, V., Hegglin, M.I., Maycock, A., Myhre, G., Prather, M., Shindell, D., and Smith, S.J.: AerChemMIP: Quantifying the Effects of Chemistry and Aerosols in CMIP6. *Geoscientific Model Development*, 10, 2, 585–607, <https://doi.org/10.5194/gmd-10-585-2017>, 2017.
- 990 Counillon, F., Keenlyside, N., Bethke, I., Wang, Y., Billeau, S., Shen, M.L., and Bentsen, M.: Flow-dependent assimilation of sea surface temperature in isopycnal coordinates with the Norwegian Climate Prediction Model. *Tellus A: Dynamic Meteorology and Oceanography*, 68, 1, 32437, <https://doi.org/10.3402/tellusa.v68.32437>, 2016.
- 995 Danabasoglu, G., Lamarque, J.-F., Bacmeister, J., Bailey, D. A., DuVivier, A. K., Edwards, J., Emmons, L. K., Fasullo, J., Garcia, R., Gettelman, A., Hannay, C., Holland, M. M., Large, W. G., Lauritzen, P. H., Lawrence, D. M., Lenaerts, J. T. M., Lindsay, K., Lipscomb, W. H., Mills, M. J., Neale, R., Oleson, K. W., Otto-Bliesner, B., Phillips, A. S., Sacks, W., Tilmes, S., van Kampenhout, L., Vertenstein, M., Bertini, A., Dennis, J., Deser, C., Fischer, C., Fox-Kemper, B., Kay, J. E., Kinnison, D., Kushner, P. J., Larson, V. E., Long, M. C., Mickelson, S., Moore, J. K., Nienhouse, E., Polvani, L., Rasch, P. J., and Strand, W. G., The Community Earth System Model Version 2 (CESM2). *Journal of Advances in Modeling Earth Systems*, 12, 2, <https://doi.org/10.1029/2019MS001916>, 2020.

- Delworth, T. L., Stouffer R.J., Dixon K.W., Spelman, M., Knutson, T., Broccoli, A., Kushner, P., and Wetherald, R.: Review of simulations of climate variability and change with the GFDL R30 coupled climate model. *Climate Dynamics*, 19(7), 555-574, <https://doi.org/10.1007/s00382-002-0249-5>, 2002.
- 1005 Deser, C., Lehner, F., Rodgers, K. B., Ault, T., Delworth, T. L., DiNezio, P. N., Fiore, A., Frankignoul, C., Fyfe, J. C., Horton, D. E., Kay, J. E., Knutti, R., Lovenduski, N. S., Marotzke, J., McKinnon, K. A., Minobe, S., Randerson, J., Screen, J. A., Simpson, I. R., and Ting, M.: Insights from Earth System Model Initial-Condition Large Ensembles and Future Prospects. *Nature Climate Change*, 10, 4, 277–286, <https://doi.org/10.1038/s41558-020-0731-2>, 2020.
- 1010 Doescher, R., and the EC-Earth Consortium: The EC-Earth3 Earth System Model for the Climate Model Intercomparison Project 6, in preparation, 2020.
- 1015 Dunne, J. P., Horowitz, L. W., Adcroft, A. J., Ginoux, P., Held, I. M., John, J. G., Krasting, J. P., Malyshev, S., Naik, V., Paulot, F., Shevliakova, E., Stock, C. A., Zadeh, N., Balaji, V., Blanton, C., Dunne, K. A., Dupuis, C., Durachta, J., Dussin, R., Gauthier, P. P. G., Griffies, S. M., Guo, H., Hallberg, R. W., Harrison, M., He, J., Hurlin, W., McHugh, C., Menzel, R., Milly, P. C. D., Nikonov, S., Paynter, D. J., Ploshay, J., Radhakrishnan, A., Rand, K., Reichl, B. G., Robinson, T., Schwarzkopf, D. M., Sentman, L. T., Underwood, S., Vahlenkamp, H., Winton, M., Wittenberg, A. T., Wyman, B., Zeng, Y., and Zhao, M.: The GFDL Earth System Model version 4.1 (GFDL-ESM4.1): Model 1 description and simulation characteristics. *Journal of Advances in Modeling Earth Systems*, <https://doi.org/10.1029/2019MS002015>, 2020.
- 1020 D. M., Sentman, L. T., Underwood, S., Vahlenkamp, H., Winton, M., Wittenberg, A. T., Wyman, B., Zeng, Y., and Zhao, M.: The GFDL Earth System Model version 4.1 (GFDL-ESM4.1): Model 1 description and simulation characteristics. *Journal of Advances in Modeling Earth Systems*, <https://doi.org/10.1029/2019MS002015>, 2020.
- 1025 Etminan, M., Myhre, G., Highwood, E. J., and Shine, K. P.: Radiative forcing of carbon dioxide, methane, and nitrous oxide: A significant revision of the methane radiative forcing, *Geophys. Res. Lett.*, 43, 12,614–12,623, doi:[10.1002/2016GL071930](https://doi.org/10.1002/2016GL071930), 2016.
- 1030 Eyring, V., Bony, S., Meehl, G.A., Senior, C.A., Stevens, B., Stouffer, R., and Taylor, K.E.: Overview of the Coupled Model Intercomparison Project Phase 6 (CMIP6) Experimental Design and Organization. *Geoscientific Model Development*, 9, 5, 1937–1958, <https://doi.org/10.5194/gmd-9-1937-2016>, 2016.
- 1035 Eyring, V., Bock, L., Lauer, A., Righi, M., Schlund, M., Andela, B., Arnone, E., Bellprat, O., Brötz, B., Caron, L.-P., Carvalhais, N., Cionni, I., Cortesi, N., Crezee, B., Davin, E. L., Davini, P., Debeire, K., de Mora, L., Deser, C., Docquier, D., Earnshaw, P., Ehbrecht, C., Gier, B. K., Gonzalez-Reviriego, N., Goodman, P., Hagemann, S., Hardiman, S., Hassler, B., Hunter, A., Kadow, C., Kindermann, S., Koirala, S., Koldunov, N., Lejeune, Q., Lembo, V., Lovato, T., Lucarini, V., Massonnet, F., Müller, B., Pandde, A., Pérez-Zanón, N., Phillips, A., Predoi, V., Russell, J., Sellar, A., Serva, F., Stacke, T., Swaminathan, R., Torralba, V., Vegas-Regidor, J., von Hardenberg, J., Weigel, K., and Zimmermann, K.: ESMValTool v2.0 – Extended set of large-scale diagnostics for quasi-operational and
- 1040



comprehensive evaluation of Earth system models in CMIP. *Geoscientific Model Development*, 13, 3383–3438, <https://doi.org/10.5194/gmd-13-3383-2020>, 2020.

- 1045 Fyfe, J.C., Kharin, V.V., Santer, B.D., Cole, N.S., and Gillett, N.P.: Significant impact of forcing uncertainty in a large ensemble of climate model simulations. *PNAS* (in review).
- Gidden, M. J., Riahi, K., Smith, S. J., Fujimori, S., Luderer, G., Kriegler, E., van Vuuren, D. P., van den Berg, M., Feng, L., Klein, D., Calvin, K., Doelman, J. C., Frank, S., Fricko, O., Harmsen, M.,  
1050 Hasegawa, T., Havlik, P., Hilaire, J., Hoesly, R., Horing, J., Popp, A., Stehfest, E., and Takahashi, K.: Global emissions pathways under different socioeconomic scenarios for use in CMIP6: a dataset of harmonized emissions trajectories through the end of the century, *Geosci. Model Dev.*, 12, 1443–1475, <https://doi.org/10.5194/gmd-12-1443-2019>, 2019.
- 1055 Golaz, J.-C., Caldwell, P. M., Van Roekel, L. P., Petersen, M. R., Tang, Q., Wolfe, J. D., Abeshu, G., Anantharaj, V., Asay-Davis, X. S., Bader, D. C., Baldwin, S. A., Bisht, G., Bogenschutz, P. A., Branstetter, M., Brunke, M. A., Brus, S. R., Burrows, S. M., Cameron-Smith, P. J., Donahue, A. S., Deakin, M., Easter, R. C., Evans, K.J., Feng, Y., Flanner, M., Foucar, J. G., Fyke, J. G., Griffin, B. M., Hannay, C., Harrop, B. E., Hoffman, M. J., Hunke, E. C., Jacob, R. L., Jacobsen, D. W., Jeffery, N.,  
1060 Jones, P. W., Keen, N. D., Klein, S. A., Larson, Vi. E., Leung, L. R., Li, H.-Y., Lin, W., Lipscomb, W. H., Ma, P.-L., Mahajan, S., Maltrud, M. E., Mamatjanov, A., McClean, J. L., McCoy, R. B., Neale, R. B., Price, S. F., Qian, Y., Rasch, P. J., Reeves Eyre, J. E. J., Riley, W. J., Ringler, T. D., Roberts, A.F., Roesler, E. L., Salinger, A. G., Shaheen, Z., Shi, X., Singh, B., Tang, J., Taylor, M. A., Thornton, P. E., Turner, A. K., Veneziani, M., Wan, H., Wang, H., Wang, S., Williams, D. N., Wolfram, P. J., Worley, P. H., Xie, S., Yang, Y., Yoon, J.-H., Zelinka, M. D., Zender, C. S., Zeng, X., Zhang, C., Zhang, K., Zhang, Y., Zheng, X., Zhou, T., and Zhu, Q.: The DOE E3SM coupled model version 1: Overview and evaluation at standard resolution. *Journal of Advances in Modeling Earth Systems*, 11, 2089–2129, <https://doi.org/10.1029/2018MS001603>, 2019.
- 1070 Hajima, T., Watanabe, M., Yamamoto, A., Tatebe, H., Noguchi, M. A., Abe, M., Ohgaito, R., Ito, A., Yamazaki, D., Okajima, H., Ito, A., Takata, K., Ogochi, K., Watanabe, S., and Kawamiya, M.: Development of the MIROC-ES2L Earth system model and the evaluation of biogeochemical processes and feedbacks, *Geosci. Model Dev.*, 13, 2197–2244, <https://doi.org/10.5194/gmd-13-2197-2020>, 2020.
- He, B., Bao, Q., Wang, X., Zhou, L., Wu, X., Liu, Y., Wu, G., Chen, K., He, S., Hu, W., Li, J., Li, J.,  
1075 Nian, G., Wang, L., Yang, J., Zhang, M., and Zhang, X.: CAS FGOALS-f3-L Model Datasets for CMIP6 Historical Atmospheric Model Intercomparison Project Simulation. *Advances in Atmospheric Sciences*, 36, 771–778, <https://doi.org/10.1007/s00376-019-9027-8>, 2019.
- Held, I. M., Guo, H., Adcroft, A., Dunne, J. P., Horowitz, L. W., Krasting, J., Shevliakova, E., Winton, M., Zhao, M., Bushuk, M., Wittenberg, A. T., Wyman, B., Xiang, B., Zhang, R., Anderson, W., Balaji, V., Donner, L., Dunne, K., Durachta, J., Gauthier, P. P. G., Ginoux, P., Golaz, J.-C., Griffies, S. M.,  
1080 Hallberg, R., Harris, L., Harrison, M., Hurlin, W., John, J., Lin, P., Lin, S.-J., Malyshev, S., Menzel, R.,

- 1085 Milly, P. C. D., Ming, Y., Naik, V., Paynter, D., Paulot, F., Rammaswamy, V., Reichl, B., Robinson, T., Rosati, A., Seman, C., Silvers, L. G., Underwood, S., and Zadeh, N.: Structure and performance of GFDL's CM4.0 climate model. *Journal of Advances in Modeling Earth Systems*, 11,h, <https://doi.org/10.1029/2019MS001829>, 2019.
- Herger, N., Sanderson, B. and Knutti, R.: Improved pattern scaling approaches for the use in climate impact studies. *Geophysical Research Letters*, 42, [doi:10.1002/2015GL063569](https://doi.org/10.1002/2015GL063569), 2015.
- 1090 Hoesly, R. M., Smith, S. J., Feng, L., Klimont, Z., Janssens-Maenhout, G., Pitkanen, T., Seibert, J. J., Vu, L., Andres, R. J., Bolt, R. M., Bond, T. C., Dawidowski, L., Kholod, N., Kurokawa, J.-I., Li, M., Liu, L., Lu, Z., Moura, M. C. P., O'Rourke, P. R., and Zhang, Q.: Historical (1750–2014) anthropogenic emissions of reactive gases and aerosols from the Community Emissions Data System (CEDS), *Geosci. Model Dev.*, 11, 369–408, <https://doi.org/10.5194/gmd-11-369-2018>, 2018.
- 1095 Hourdin, F., Rio, C., Grandpeix, J.-Y., Madeleine, J.-B., Cheruy, F., Rochetin, N., Jam, A., Musat, I., Idelkadi, A., Fairhead, L., Foujols, M.-A., Mellul, L., Traore, A.-K., Dufresne, J.-L., Boucher, O., Lefebvre, M.-P., Millour, E., Vignon, E., Jouhaud, J., Diallo, F. B., Lott, F., Gastineau, G., Caubel, A., Meurdesoif, Y., and Ghattas, J.: LMDZ-6A: the improved atmospheric component of the IPSL coupled model. *Journal of Advances in Modeling Earth System*, 12, e2019MS001892, <https://doi.org/10.1029/2019MS001892>, 2020.
- 1100 Huntingford, C., Jones, P. D., Livina, V. N., Lenton, T.M., and Cox, P.M.: No increase in global temperature variability despite changing regional patterns. *Nature* 500, 327–330, <https://doi.org/10.1038/nature12310>, 2013.
- 1105 John, J. G., Stock, C. A., and Dunne, J. P.: A more productive, but different, ocean after mitigation. *Geophysical Research Letters*, 42, 9836–9845. <https://doi.org/10.1002/2015GL066160>, 2015.
- 1110 Jones, C. D., Arora, V., Friedlingstein, P., Bopp, L., Brovkin, V., Dunne, J., Graven, H., Hoffman, F., Ilyina, T., John, J. G., Jung, M., Kawamiya, M., Koven, C., Pongratz, J., Raddatz, T., Randerson, J. T., and Zaehle, S.: C4MIP – The Coupled Climate–Carbon Cycle Model Intercomparison Project: experimental protocol for CMIP6, *Geosci. Model Dev.*, 9, 2853–2880, <https://doi.org/10.5194/gmd-9-2853-2016>, 2016.
- 1115 Juckes, M., Taylor, K. E., Durack, P. J., Lawrence, B., Mizielinski, M. S., Pamment, A., Peterschmitt, J.-Y., Rixen, M., and Sényesi, S.: The CMIP6 Data Request (DREQ, version 01.00.31), *Geosci. Model Dev.*, 13, 201–224, <https://doi.org/10.5194/gmd-13-201-2020>, 2020.
- 1120 Keil, P., Mauritsen, T., Jungclaus, J., Hedemann, C., Olonscheck, D., and Gosh, R.: Multiple drivers of the North Atlantic warming hole. *Nature Climate Change* 10, 667–671, <https://doi.org/10.1038/s41558-020-0819-8>, 2020.

- 1125 Keller, D. P., Lenton, A., Scott, V., Vaughan, N. E., Bauer, N., Ji, D., Jones, C. D., Kravitz, B., Muri, H., and Zickfeld, K.: The Carbon Dioxide Removal Model Intercomparison Project (CDRMIP): rationale and experimental protocol for CMIP6, *Geosci. Model Dev.*, 11, 1133–1160, <https://doi.org/10.5194/gmd-11-1133-2018>, 2018.
- 1130 Kelley, M., Schmidt, G. A., Nazarenko, L. S., Bauer, S. E., Ruedy, R., Russell, G. L., Ackerman, A. S., Aleinov, I., Bauer, M., Bleck, R., Canuto, V., Cesana, G., Cheng, Y., Clune, T. L., Cook, B. I., Cruz, C. A., Del Genio, A.D., Elsaesser, G. S., Faluvegi, G., Kiang, N. Y., Kim, D., Lacis, A. A., Leboissetier, A., LeGrande, A. N., Lo, K. K., Marshall, J., Matthews, E. E., McDermid, S., Mezuman, K., Miller, R. L., Murray, L. T., Oinas, V., Orbe, C., García-Pando, C. P., Perlwitz, J. P., Puma, M. J., Rind, D., Romanou, A., Shindell, D. T., Sun, S., Tausnev, N., Tsigaridis, K., Tselioudis, G., Weng, E., Wu, J., and Yao, M.-S.: GISS-E2.1: Configurations and climatology. *Journal of Advances in Modeling Earth Systems*, <https://doi.org/10.1029/2019MS002025>, 2020.
- 1140 Kravitz, B., Robock, A., Tilmes, S., Boucher, O., English, J. M., Irvine, P. J., Jones, A., Lawrence, M. G., MacCracken, M., Muri, H., Moore, J. C., Niemeier, U., Phipps, S. J., Sillmann, J., Storelvmo, T., Wang, H., and Watanabe, S.: The Geoengineering Model Intercomparison Project Phase 6 (GeoMIP6): simulation design and preliminary results, *Geosci. Model Dev.*, 8, 3379–3392, <https://doi.org/10.5194/gmd-8-3379-2015>, 2015.
- 1145 Kriegler, E., Edmonds, J., Hallegatte, S., Ebi, K.L., Kram, T., Riahi, K., Winkler, H., and van Vuuren, D.P.: A New Scenario Framework for Climate Change Research: The Concept of Shared Climate Policy Assumptions. *Climatic Change*, 122, 3, 401–414, <https://doi.org/10.1007/s10584-013-0971-5>, 2014.
- 1150 Kriegler, E., Bauer, N., Popp, A., Humpenöder, F., Leimbach, M., Strefler, J., Baumstark, L., Bodirsky, B. L., Hilaire, J., Klein, D., Mouratiadou, I., Weindl, I., Bertram, C., Dietrich, J.-P., Luderer, G., Pehl, M., Pietzcker, R.t, Piontek, F., Lotze-Campen, H., Biewald, A., Bonsch, M., Giannousakis, A., Kreidenweis, U., Müller, C., Rolinski, S., Schultes, A., Schwanitz, J., Stevanovic, M., Calvin, K., Emmerling, J., Fujimori, S., and Edenhofer, O.: Fossil-fueled development (SSP5): An energy and resource intensive scenario for the 21st Century. *Global Environmental Change*, 42, 297–315, <https://doi.org/10.1016/j.gloenvcha.2016.05.015>, 2017.
- 1160 Kuhlbrodt, T., Jones, C. G., Sellar, A., Storkey, D., Blockley, E., Stringer, M., Hill, R., Graham, T., Ridley, J., Blaker, A., Calvert, D., Copey, D., Ellis, R., Hewitt, H., Hyder, P., Ineson, S., Mulcahy, J., Siahann, A., and Walton, J.: The low-resolution version of HadGEM3 GC3.1: Development and evaluation for global climate. *Journal of Advances in Modeling Earth Systems*, 10, 2865–2888, <https://doi.org/10.1029/2018MS001370>, 2018.

- 1165 Lambert, F. H., Stine, A.R., Krakauer, N.Y. and Chiang, J.C.H.: How much will precipitation increase  
with global warming? *EOS, Transactions American Geophysical Union* 89, 21: 193-194,  
<https://doi.org/10.1029/2008EO210001>, 2008.
- 1170 Lauer, A., Eyring, V., Bellprat, O., Bock, L., Gier, B. K., Hunter, A., Lorenz, R., Pérez-Zanón, N.,  
Righi, M., Schlund, M., Senftleben, D., Weigel, K., and Zechlau, S.: Earth System Model Evaluation  
Tool (ESMValTool) v2.0 – diagnostics for emergent constraints and future projections from Earth  
system models in CMIP, *Geosci. Model Dev.*, 13, 4205–4228, [https://doi.org/10.5194/gmd-13-4205-](https://doi.org/10.5194/gmd-13-4205-2020)  
2020, 2020.
- 1175 Lawrence, D. M., Hurtt, G. C., Arneeth, A., Brovkin, V., Calvin, K. V., Jones, A. D., Jones, C. D.,  
Lawrence, P. J., de Noblet-Ducoudré, N., Pongratz, J., Seneviratne, S. I., and Shevliakova, E.: The Land  
Use Model Intercomparison Project (LUMIP) contribution to CMIP6: rationale and experimental  
design, *Geosci. Model Dev.*, 9, 2973–2998, <https://doi.org/10.5194/gmd-9-2973-2016>, 2016.
- 1180 Lee, J., Kim, J., Sun, M.-A., Kim, B.-H., Moon, H., Sung, H. M., Kim, J., and Byun, Y.-H.: Evaluation  
of the Korea Meteorological Administration Advanced Community Earth-System model (K-  
ACE). *Asia-Pacific J Atmos Sci* **56**, 381–395, <https://doi.org/10.1007/s13143-019-00144-7>, 2020.
- 1185 Lehner, F., Deser, C., Maher, N., Marotzke, J., Fischer, E. M., Brunner, L., Knutti, R., and Hawkins, E.:  
Partitioning climate projection uncertainty with multiple large ensembles and CMIP5/6, *Earth Syst.*  
*Dynam.*, 11, 491–508, <https://doi.org/10.5194/esd-11-491-2020>, 2020.
- 1190 Li, J., Bao, Q. Liu, Y., Wu, G., Wang, L., He, B., Wang, X., and Li, J.: Evaluation of FAMIL2 in  
Simulating the Climatology and Seasonal-to-Interannual Variability of Tropical Cyclone  
Characteristics. *Journal of Advances in Modeling Earth System*, 11, 1117-  
1136, <https://doi.org/10.1029/2018MS001506>, 2019.
- 1195 Liang, Y., Gillett, N.P. and Monahan, A.H.: Climate Model Projections of 21 St Century Global  
Warming Constrained Using the Observed Warming Trend. *Geophysical Research Letters*,  
<https://doi.org/10.1029/2019gl086757>, 2020.
- 1200 Lurton, T., Balkanski, Y., Bastrikov, V., Bekki, S., Bopp, L., Braconnot, P., Brockmann, P., Cadule, P.,  
Contoux, C., Cozic, A., Cugnet, D., Dufresne, J., Éthé, C., Foujols, M.-A., Ghattas, J., Hauglustaine, D.,  
Hu, R.-M., Kageyama, M., Khodri, M., Lebas, N., Levavasseur, G., Marchand, M., Ottlé, C., Peylin, P.,  
Sima, A., Szopa, S., Thiéblemont, R., Vuichard, N., and Boucher, O.: CMIP6 forcing data as  
implemented in the IPSL-CM6 model. *Journal of Advances in Modeling Earth System*, 12,  
e2019MS001940, <https://doi.org/10.1029/2019MS001940>, 2020.
- 1205 MacDougall, A. H., Zickfeld, K., Knutti, R., and Matthews, H. D.: Sensitivity of carbon budgets to  
permafrost carbon feedbacks and non-CO<sub>2</sub> forcings. *Environmental Research Letters*, 10,  
125003. <https://doi.org/10.1088/1748-9326/10/12/125003>, 2015.

- Marotzke, J.: Quantifying the role of internal variability in the temperature we expect to observe in the coming decades. *Wiley Interdiscip. Rev. Clim. Chang.*, 10, 1–12, <https://doi.org/10.1002/wcc.563>, 2019.
- 1210 Mathesius, S., Hofmann, M., Caldeira, K., and Schellnhuber, H. J.: Long-term response of oceans to CO<sub>2</sub> removal from the atmosphere. *Nature Climate Change*, 5(12), 1107–1113. <https://doi.org/10.1038/nclimate2729>, 2015.
- 1215 Matthes, K., Funke, B., Andersson, M. E., Barnard, L., Beer, J., Charbonneau, P., Clilverd, M. A., Dudok de Wit, T., Haberreiter, M., Hendry, A., Jackman, C. H., Kretzschmar, M., Kruschke, T., Kunze, M., Langematz, U., Marsh, D. R., Maycock, A. C., Misios, S., Rodger, C. J., Scaife, A. A., Seppälä, A., Shangguan, M., Sinnhuber, M., Tourpali, K., Usoskin, I., van de Kamp, M., Verronen, P. T., and Versick, S.: Solar forcing for CMIP6 (v3.2), *Geosci. Model Dev.*, 10, 2247–2302, <https://doi.org/10.5194/gmd-10-2247-2017>, 2017.
- 1220 Mauritsen, T., Bader, J., Becker, T., Behrens, J., Bittner, M., Brokopf, R., Brovkin, V., Claussen, M., Crueger, T., Esch, M., Fast, I., Fiedler, S., Fläschner, D., Gayler, V., Giorgetta, M., Goll, D.S., Haak, H., Hagemann, S., Hedemann, C., Hohenegger, C., Ilyina, T., Jahns, T., Jimenéz-de-la-Cuesta, D., 1225 Jungclaus, J., Kleinen, T., Kloster, S., Kracher, D., Kinne, S., Kleberg, D., Lasslop, G., Kornblueh, L., Marotzke, J., Matei, D., Meraner, K., Mikolajewicz, U., Modali, K., Möbis, B., Müller, W.A., Nabel, J. E. M. S., Nam, C. C. W., Notz, D., Nyawira, S., Paulsen, H., Peters, K., Pincus, R., Pohlmann, H., Pongratz, J., Popp, M., Raddatz, T.J., Rast, S., Redler, R., Reick, C.H., Rohrschneider, T., Schemann, V., Schmidt, H., Schnur, R., Schulzweida, U., Six, K.D., Stein, L., Stemmler, I., Stevens, B., von 1230 Storch, J.-S., Tian, F., Voigt, A., Vrese, P., Wieners, K.-H., Wilkenskjaeld, S., Winkler, A., and Roeckner, E.: Developments in the MPI-M Earth System Model version 1.2 (MPI-ESM1.2) and Its Response to Increasing CO<sub>2</sub>. *Journal of Advances in Modeling Earth Systems*, 11, 998–1038, [doi:10.1029/2018MS001400](https://doi.org/10.1029/2018MS001400), 2019.
- 1235 Meehl, G. A., Senior, C.A., Eyring, V., Flato, G., Lamarque, J.-F., Stouffer, R.J., Taylor, K.E., and Schlund, M.: Context for interpreting equilibrium climate sensitivity and transient climate response from the CMIP6 earth system models, *Science Advances*, 6, 26, <https://doi.org/10.1126/sciadv.aba1981>, 2020.
- 1240 Meinshausen, M., Nicholls, Z. R. J., Lewis, J., Gidden, M. J., Vogel, E., Freund, M., Beyerle, U., Gessner, C., Nauels, A., Bauer, N., Canadell, J. G., Daniel, J. S., John, A., Krummel, P. B., Luderer, G., Meinshausen, N., Montzka, S. A., Rayner, P. J., Reimann, S., Smith, S. J., van den Berg, M., Velders, G. J. M., Vollmer, M. K., and Wang, R. H. J.: The shared socio-economic pathway (SSP) greenhouse gas concentrations and their extensions to 2500, *Geosci. Model Dev.*, 13, 3571–3605, 1245 <https://doi.org/10.5194/gmd-13-3571-2020>, 2020.
- Michou, M., Nabat, P., Saint-Martin, D., Bock, J., Decharme, B., Mallet, M., Roehrig, R., Seferian, R.,

- Senesi, S., and Voldoire, A.: Present-day and historical aerosol and ozone characteristics in CNRM CMIP6 simulations. *Journal of Advances in Modeling Earth Systems*, 12, e2019MS001816, <https://doi.org/10.1029/2019MS001816>, 2020.
- 1250
- Milinski, S., Maher, N., and Olonscheck, D.: How large does a large ensemble need to be? *Earth System Dynamics*, 11, 885-901, <https://doi.org/10.5194/esd-11-885-2020>, 2020.
- 1255
- Miller, R.L., Schmidt, G.A., Nazarenko, L., Bauer, S.E., Kelley, M., Ruedy, R., Russell, G.L., Ackerman, A., Aleinov, I., Bauer, M., Bleck, R., Canuto, V., Cesana, G., Cheng, Y., Clune, T.L., Cook, B., Cruz, C.A., Del Genio, A.D., Elsaesser, G.S., Faluvegi, G., Kiang, N.Y., Kim, D., Laxis, A.A., Leboissetier, A., LeGrande, A.N., Lo, K.K., Marshall, J., Matthews, E.E., McDermid, S., Mezuman, K., Murray, L.T., Oinas, V., Orbe, C., García-Pando, C.P., Perlwitz, J.P., Puma, M.J., Rind, D., Romanou, A., Shindell, D.T., Sun, S., Tausnev, N., Tsigaridis, K., Tselioudis, G., Weng, E., Wu, J., and Yao, M.-S.: CMIP6 historical simulations (1850-2014) with GISS ModelE2.1. *Journal of Advances in Modeling Earth Systems*, doi:10.1029/2019MS002034, 2020.
- 1260
- Moss, R. H., Edmonds, J. A., Hibbard, K. A., Manning, M. R., Rose, S. K., van Vuuren, D. P., Carter, T. R., Emori, S., Kainuma, M., Kram, T., Meehl, G. A., Mitchell, J. F. B., Nakicenovic, N., Riahi, K., Smith, S. J., Stouffer, R. J., Thomson, A. M., Weyant, J. P., and Wilbanks, T. J.: The next generation of scenarios for climate change research and assessment. *Nature* 463, 7282, 747–756, <https://doi.org/10.1038/nature08823>, 2010.
- 1265
- Müller, W. A., Jungclaus, J. H., Mauritsen, T., Baehr, J., Bittner, M., Budich, R., Bunzel, F., Esch, M., Ghosh, R., Haak, H., Ilyina, T., Kleine, T., Kornblueh, L., Li, H., Modali, K., Notz, D., Pohlmann, H., Roeckner, E., Stemmler, I., Tian, F., and Marotzke, J.: A high-resolution version of the Max Planck Institute Earth System Model MPI-ESM1.2-HR. *Journal of Advances in Modeling Earth Systems*, 10, 1383–1413, [doi:10.1029/2017MS001217](https://doi.org/10.1029/2017MS001217), 2018.
- 1270
- Nicholls, Z. R. J., Meinshausen, M., Lewis, J., Gieseke, R., Dommenges, D., Dorheim, K., Fan, C.-S., Fuglestedt, J. S., Gasser, T., Golüke, U., Goodwin, P., Hartin, C., Hope, A. P., Kriegler, E., Leach, N. J., Marchegiani, D., McBride, L. A., Quilcaille, Y., Rogelj, J., Salawitch, R. J., Samset, B. H., Sandstad, M., Shiklomanov, A. N., Skeie, R. B., Smith, C. J., Smith, S., Tanaka, K., Tsutsui, J., and Xie, Z.: Reduced Complexity Model Intercomparison Project Phase 1: introduction and evaluation of global-mean temperature response, *Geosci. Model Dev.*, 13, 5175–5190, <https://doi.org/10.5194/gmd-13-5175-2020>, 2020.
- 1275
- 1280
- Nijse, F. J. M. M., Cox, P. M., and Williamson, M. S.: Emergent constraints on transient climate response (TCR) and equilibrium climate sensitivity (ECS) from historical warming in CMIP5 and CMIP6 models, *Earth Syst. Dynam.*, 11, 737–750, <https://doi.org/10.5194/esd-11-737-2020>, 2020.
- O’Gorman, P.A., Allan, R.P., Byrne, M.P. and Previdi, M.: Energetic constraints on precipitation under climate change. *Surveys in Geophysics*, 33, 585–608, <https://doi.org/10.1007/s10712-011-9159-6>, 2012.

1290

O'Neill, B. C., Tebaldi, C., van Vuuren, D. P., Eyring, V., Friedlingstein, P., Hurtt, G., Knutti, R., Kriegler, E., Lamarque, J.-F., Lowe, J., Meehl, G. A., Moss, R., Riahi, K., and Sanderson, B. M.: The Scenario Model Intercomparison Project (ScenarioMIP) for CMIP6, *Geosci. Model Dev.*, 9, 3461–3482, <https://doi.org/10.5194/gmd-9-3461-2016>, 2016.

1295

O'Neill, B.C., Kriegler, E., Riahi, K., Ebi, K.L., Hallegatte, S., Carter, T.R., Mathur, R., and van Vuuren, D.P.: A New Scenario Framework for Climate Change Research: The Concept of Shared Socioeconomic Pathways. *Climatic Change*, 122, 3, 387–400, <https://doi.org/10.1007/s10584-013-0905-2>, 2013.

1300

O'Neill, B. C., Carter, T. R., Ebi, K., Harrison, P. A., Kemp-Benedict, E., Kok, K., Kriegler, E., Preston, B. L., Riahi, K., Sillmann, J., van Ruijven, B. J., van Vuuren, D., Carlisle, D., Conde, C., Fuglestvedt, J., Green, C., Hasegawa, T., Leininger, J., Monteith, S., and Pichs-Madruga, R.: Achievements and needs for the climate change scenarios framework. *Nature Climate Change*,

1305 10, 1074–1084, <https://doi.org/10.1038/s41558-020-00952-0>, 2020.

Parsons, L. A., Brennan, M. K., Wills, R.C. J., and Proistosescu, C.: Magnitudes and spatial patterns of interdecadal temperature variability in CMIP6. *Geophysical Research Letters*, 47, e2019GL086588. <https://doi.org/10.1029/2019GL086588>, 2020.

1310

Pendergrass, A.G., Knutti, R., Lehner, F., Deser, C., and Sanderson, B.M.: Precipitation variability increases in a warmer climate. *Scientific Reports*, 7, 17966, <https://doi.org/10.1038/s41598-017-17966-y>, 2017.

1315

Rao, S., Klimont, Z., Smith, S. J., Van Dingenen, R., Dentener, F., Bouwman, L., Riahi, K., Amann, M., Bodirsky, B.L., van Vuuren, D. P., Aleluia Reis, L., Calvin, K., Drouet, L., Fricko, O., Fujimori, S., Gernaat, D., Havlik, P., Harmsen, M., Hasegawa, T., Heyes, C., Hilaire, J., Luderer, G., Masui, T., Stehfest, E., Stremler, J., van der Sluis, S., and Tavoni, M.: Future air pollution in the Shared Socioeconomic Pathways. *Global Environmental Change*, 42, 346-358,

1320 <https://doi.org/10.1016/j.gloenvcha.2016.05.012>, 2017.

Riahi, K., van Vuuren, D. P., Kriegler, E., Edmonds, J., O'Neill, B.C., Fujimori, S., Bauer, N., Calvin, K., Dellink, R., Fricko, O., Lutz, W., Popp, A., Cuaresma, J. C., KC, S., Leimbach, M., Jiang, L., Kram, T., Rao, S., Emmerling, J., Ebi, K., Hasegawa, T., Havlik, P., Humpenöder, F., Da Silva, L. A., Smith, S., Stehfest, E., Bosetti, V., Eom, J., Gernaat, D., Masui, T., Rogelj, J., Stremler, J., Drouet, L., Krey, V., Luderer, G., Harmsen, M., Takahashi, K., Baumstark, L., Doelman, J.C., Kainuma, M., Klimont, Z., Marangoni, G., Lotze-Campen, H., Obersteiner, M., Tabeau, A., and Tavoni, M.: The Shared Socioeconomic Pathways and Their Energy, Land Use, and Greenhouse Gas Emissions Implications: An Overview. *Global Environmental Change*, 42, 153–168,

1330 <https://doi.org/10.1016/j.gloenvcha.2016.05.009>, 2017.

Ribes, A., Qasmi, S., and Gillett, N.: Making climate projections conditional on historical observations. *Science Advances*, in press, 2020.

1335 Righi, M., Andela, B., Eyring, V., Lauer, A., Predoi, V., Schlund, M., Vegas-Regidor, J., Bock, L., Brötz, B., de Mora, L., Diblen, F., Dreyer, L., Drost, N., Earnshaw, P., Hassler, B., Koldunov, N., Little, B., Loosveldt Tomas, S., and Zimmermann, K.: Earth System Model Evaluation Tool (ESMValTool) v2.0 – technical overview, *Geosci. Model Dev.*, 13, 1179–1199, <https://doi.org/10.5194/gmd-13-1179-2020>, 2020.

1340

Roehrig, R., Beau, I., Saint-Martin, D., Alias, A., Decharme, B., Guérémy, J.-F., Voldoire, A., Abdel-Lathif, A.Y., Bazile, E., Belamari, S., Blein, S., Bouniol, D., Bouteloup, Y., Cattiaux, J., Chauvin, F., Chevallier, M., Colin, J., Douville, H., Marquet, P., Michou, M., Nabat, P., Oudar, T., Peyrillé, P., Piriou, J.-M., Salas y Mélia, D., Sférian, R., and Sénési, S.: The CNRM global atmosphere model

1345 ARPEGE-Climat 6.3: description and evaluation. *Journal of Advances in Modeling Earth Systems*, <https://doi.org/10.1029/2020MS002075>, 2020.

Rong, X., Li, J., Chen, H., Xin, Y., Su, J., Hua, L., Zhou, T., Qi, Y., Zhang, Z., Zhang, G., and Li, J.: The CAMS climate system model and a basic evaluation of the climatology and climate variability simulation. *Journal of Meteorological Research*, 32, 6, 839-861, <https://doi.org/10.1007/s13351-018-8058-x>, 2018.

1350

Sanderson, B.: Relating climate sensitivity indices to projection uncertainty. *Earth System Dynamics*, 11, 3, 721-735, <https://doi.org/10.5194/esd-11-721-2020>, 2020.

1355

---

Santer, B.D., Wigley, T.M.L., Schlesinger, M.E. and Mitchell, J.F.B.: Developing climate scenarios from equilibrium GCM results, Hamburg, Germany, [https://www.mpimet.mpg.de/fileadmin/publikationen/Reports/Report\\_47.pdf](https://www.mpimet.mpg.de/fileadmin/publikationen/Reports/Report_47.pdf), 1990.

Santer, B.D., Fyfe, J.C., Solomon, S., Painter, J.F., Bonfils, C., Pallotta, G., and Zelinka, M.D.:

1360 Quantifying Stochastic Uncertainty in Detection Time of Human-Caused Climate Signals. *Proceedings of the National Academy of Sciences*, 116, 40, 19821–19827, <https://doi.org/10.1073/pnas.1904586116>, 2019.

Schwinger, J., and Tjiputra, J.: Ocean carbon cycle feedbacks under negative emissions. *Geophysical Research Letters*, 45, 5062-5070. <https://doi.org/10.1029/2018GL077790>, 2018.

1365

Sférian, R., Nabat, P., Michou, M., Saint-Martin, D., Voldoire, A., Colin, J., Decharme, B., Delire, C., Berthet, S., Chevallier, M., Sénési, S., Franchisteguy, L., Vial, J., Mallet, M., Joetzjer, E., Geoffroy, O., Guérémy, J.-F., Moine, M.-P., Msadek, R., Ribes, A., Rocher, M., Roehrig, R., Salas-y-Mélia, D., Sanchez, E., Terray, L., Valcke, S., Waldman, R., Aumont, O., Bopp, L., Deshayes, J., Éthé, C., and Madec, G.: Evaluation of CNRM Earth-System model, CNRM-ESM2-1: role of Earth system processes

1370



in present-day and future climate. *Journal of Advances in Modeling Earth Systems*, 11, <https://doi.org/10.1029/2019MS001791>, 2020.

- 1375 Seland, Ø., Bentsen, M., Olivié, D., Toniazzo, T., Gjermundsen, A., Graff, L. S., Debernard, J. B., Gupta, A. K., He, Y.-C., Kirkevåg, A., Schwinger, J., Tjiputra, J., Aas, K. S., Bethke, I., Fan, Y., Griesfeller, J., Grini, A., Guo, C., Ilicak, M., Karset, I. H. H., Landgren, O., Liakka, J., Moseid, K. O., Nummelin, A., Spensberger, C., Tang, H., Zhang, Z., Heinze, C., Iversen, T., and Schulz, M.: Overview of the Norwegian Earth System Model (NorESM2) and key climate response of CMIP6 DECK, historical, and scenario simulations, *Geosci. Model Dev.*, 13, 6165–6200, <https://doi.org/10.5194/gmd-13-6165-2020>, 2020.
- 1380 Sellar, A. A., Jones, C. G., Mulcahy, J. P., Tang, Y., Yool, A., Wiltshire, A., O'Connor, F. M., Stringer, M., Hill, R., Palmieri, J., Woodward, S., de Mora, L., Kuhlbrodt, T., Rumbold, S. T., Kelley, D. I., Ellis, R., Johnson, C. E., Walton, J., Abraham, N.L., Andrews, M. B., Andrews, T., Archibald, A. T., Berthou, S., Burke, E., Blockley, E., Carslaw, K., Dalvi, M., Edwards, J., Folberth, G. A., Gedney, N., Griffiths, P. T., Harper, A. B., Hendry, M. A., Hewitt, A. J., Johnson, B., Jones, A., Jones, C. D., Keeble, J., Liddicoat, S., Morgenstern, O., Parker, R. J., Predoi, V., Robertson, E., Siahann, A., Smith, R. S., Swaminathan, R., Woodhouse, M. T., Zeng, G., and Zerroukat, M.: UKESM1: Description and evaluation of the U.K. Earth System Model. *Journal of Advances in Modeling Earth Systems*, 11, 4513–4558, <https://doi.org/10.1029/2019MS001739>, 2019.
- 1390 Semmler, T., S. Danilov, P. Gierz, H. F., Goessling, H.F., Hegewald, J., Hinrichs, C., Koldunov, N., Khosravi, N., Mu, L., Rackow, T., Sein, D.V., Sidorenko, D., Wang, Q., and Jung, T.: Simulations for CMIP6 with the AWI climate model AWI-CM-1-1. *Journal of Advances in Modeling Earth Systems*, 12, e2019MS002009. <https://doi.org/10.1029/2019MS002009>, 2020.
- 1395 Sherwood, S. C., Webb, M. J., Annan, J. D., Armour, K. C., Forster, P. M., Hargreaves, J. C., Hegerl, G., Klein, S. A., Marvel, K. D., Rohling, E. J., Watanabe, M., Andrews, T., Braconnot, P., Bretherton, C. S., Foster, G. L., Hausfather, Z., von der Heydt, A. S., Knutti, R., Mauritsen, T., Norris, J. R., Proistosescu, C., Rugenstein, M., Schmidt, G. A., Tokarska, K. B., and Zelinka, M. D.: An assessment of Earth's climate sensitivity using multiple lines of evidence. *Reviews of Geophysics*, <http://dx.doi.org/10.1029/2019RG000678>, 2020.
- 1400 Smith, C. J., Kramer, R. J., Myhre, G., Alterskjær, K., Collins, W., Sima, A., Boucher, O., Dufresne, J.-L., Nabat, P., Michou, M., Yukimoto, S., Cole, J., Paynter, D., Shiogama, H., O'Connor, F. M., Robertson, E., Wiltshire, A., Andrews, T., Hannay, C., Miller, R., Nazarenko, L., Kirkevåg, A., Olivié, D., Fiedler, S., Lewinschal, A., Mackallah, C., Dix, M., Pincus, R., and Forster, P. M.: Effective radiative forcing and adjustments in CMIP6 models, *Atmos. Chem. Phys.*, 20, 9591–9618, <https://doi.org/10.5194/acp-20-9591-2020>, 2020.
- 1410 Stouffer, R. J., Eyring, V., Meehl, G.A., Bony, S., Senior, C., Stevens, B., and Taylor, K.: CMIP5

- Scientific Gaps and Recommendations for CMIP6. *Bulletin of the American Meteorological Society*, 98, 1, 95–105, <https://doi.org/10.1175/bams-d-15-00013.1>, 2017.
- 1415 Swapna, P., Krishnan, R., Sandeep, N., Prajeesh, A.G., Ayantika, D.C., Manmeet, S., Vellore, R.: Long-term climate simulations using the IITM Earth System Model (IITM-ESMv2) with focus on the South Asian Monsoon. *Journal of Advances in Modeling Earth Systems*, <https://doi.org/10.1029/2017MS001262>, 2018.
- 1420 Swart, N. C., Cole, J. N. S., Kharin, V. V., Lazare, M., Scinocca, J. F., Gillett, N. P., Anstey, J., Arora, V., Christian, J. R., Hanna, S., Jiao, Y., Lee, W. G., Majaess, F., Saenko, O. A., Seiler, C., Seinen, C., Shao, A., Sigmund, M., Solheim, L., von Salzen, K., Yang, D., and Winter, B.: The Canadian Earth System Model version 5 (CanESM5.0.3), *Geosci. Model Dev.*, 12, 4823–4873, <https://doi.org/10.5194/gmd-12-4823-2019>, 2019.
- 1425 Tatebe, H., Ogura, T., Nitta, T., Komuro, Y., Ogochi, K., Takemura, T., Sudo, K., Sekiguchi, M., Abe, M., Saito, F., Chikira, M., Watanabe, S., Mori, M., Hirota, N., Kawatani, Y., Mochizuki, T., Yoshimura, K., Takata, K., O'ishi, R., Yamazaki, D., Suzuki, T., Kurogi, M., Kataoka, T., Watanabe, M., and  
1430 Kimoto, M.: Description and basic evaluation of simulated mean state, internal variability, and climate sensitivity in MIROC6, *Geosci. Model Dev.*, 12, 2727–2765, <https://doi.org/10.5194/gmd-12-2727-2019>, 2019.
- 1435 Taylor, K.E., Stouffer, R.J., and Meehl, G.A.: An Overview of CMIP5 and the Experiment Design. *Bulletin of the American Meteorological Society*, 93, 4, 485–498, <https://doi.org/10.1175/bams-d-11-00094.1>, 2012.
- 1440 Tebaldi, C., and Arblaster, J.M.: Pattern scaling: Its strengths and limitations, and an update on the latest model simulations. *Climatic Change* 122, 459–471, <https://doi.org/10.1007/s10584-013-1032-9>, 2014.
- Tebaldi, C., and Friedlingstein, P.: Delayed detection of climate mitigation benefits. *Proceedings of the National Academy of Sciences*, 110, 43, 17229–17234, <https://doi.org/10.1073/pnas.1300005110>, 2013.
- 1445 Tebaldi, C., O'Neill, B.C., and Lamarque, J.F.: Sensitivity of regional climate to global temperature and forcing. *Environ. Res. Lett.*, 10, 074001, <https://doi.org/10.1088/1748-9326/10/7/074001>, 2015.
- 1450 Thomason, L. W., Ernest, N., Millán, L., Rieger, L., Bourassa, A., Vernier, J.-P., Manney, G., Luo, B., Arfeuille, F., and Peter, T.: A global space-based stratospheric aerosol climatology: 1979–2016, *Earth Syst. Sci. Data*, 10, 469–492, <https://doi.org/10.5194/essd-10-469-2018>, 2018.
- Tjiputra, J. F., Schwinger, J., Bentsen, M., Morée, A. L., Gao, S., Bethke, I., Heinze, C., Goris, N., Gupta, A., He, Y.-C., Olivié, D., Seland, Ø., and Schulz, M.: Ocean biogeochemistry in the Norwegian

- 1455 Earth System Model version 2 (NorESM2), *Geosci. Model Dev.*, 13, 2393–2431, <https://doi.org/10.5194/gmd-13-2393-2020>, 2020.
- 1460 Tokarska, K. B., and Zickfeld, K.: The effectiveness of net negative carbon dioxide emissions in reversing anthropogenic climate change. *Environmental Research Letters*, 10, 094013. <https://doi.org/10.1088/1748-9326/10/9/094013>, 2015.
- 1465 Tokarska, K. B., Zickfeld, K., and Rogelj, J.: Path independence of carbon budgets when meeting a stringent global mean temperature target after an overshoot. *Earth's Future*, 7, 1283-1295 <https://doi.org/10.1029/2019EF001312>, 2019
- 1470 Tokarska, K.B., Stolpe, M.B., Sippel, S., et al., Past Warming Trend Constrains Future Warming in CMIP6 Models. *Science Advances*, 6, 12, <https://doi.org/10.1126/sciadv.aaz9549>, 2020.
- 1475 van Vuuren, D. P., and Carter, T. R.: Climate and socio-economic scenarios for climate change research and assessment: reconciling the new with the old. *Climatic Change*, 122, 3, 415-429, <https://doi.org/10.1007/s10584-013-0974-2>, 2014.
- 1475 Van Vuuren, D.P., Kriegler, E., O'Neill, B.C., Ebi, K.L., Riahi, K., Carter, T.R., Edmonds, J., Hallegatte, S., Kram, T., Mathur, R., and Winkler, H.: A New Scenario Framework for Climate Change Research: Scenario Matrix Architecture. *Climatic Change*, 122, 3, pp 373–386, <https://doi.org/10.1007/s10584-013-0906-1>, 2013.
- 1480 Voltaire, A., Saint-Martin, D., Sénési, S., Decharme, B., Alias, A., Chevallier, M., Colin, J., Guérémy, J.-F., Michou, M., Moine, M.-P., Nabat, P., Roehrig, R., Salas y Mélia, D., Séférian, R., Valcke, S., Beau, I., Belamari, S., Berthet, S., Cassou, C., Cattiaux, J., Deshayes, J., Douville, H., Ethé, C., Franchistéguy, L., Geoffroy, O., Lévy, C., Madec, G., Meurdesoif, Y., Msadek, R., Ribes, A., Sanchez-Gomez, E., Terray, L., and Waldman, R.: Evaluation of CMIP6 DECK experiments with CNRM-CM6-1. *Journal of Advances in Modeling Earth Systems*, 11, n.7, 2177-2213, <https://doi.org/10.1029/2019MS001683>, 2019.
- 1485 Volodin, E.M., Mortikov, E.V., Kostykin, S.V., Galin, V.Ya., Lykossov, V.N., Gritsun, A.S., Diansky, N.A., Gusev, A. V., Iakovlev, N.G., Shestakova, A.A., and Emelina, S.V.: Simulation of the modern climate using the INM-CM48 climate model. *Russian Journal of Numerical Analysis and Mathematical Modelling*, 33, n.6, 367-374, <https://doi.org/10.1515/rnam-2018-0032>, 2018.
- 1490 Volodin, E.M., Mortikov, E.V., Kostykin, S.V., Galin, V.Ya., Lykossov, V.N., Diansky, N.A., Gusev, A. V., and Iakovlev, N.G.: Simulation of the present-day climate with the climate model INMCM5. *Climate Dynamics*, 49, 3715–3734, <https://doi.org/10.1007/s00382-017-3539-7>, 2017.
- 1495 Weigel, K., Bock, L., Gier, B. K., Lauer, A., Righi, M., Schlund, M., Adeniyi, K., Andela, B., Arnone, E., Berg, P., Caron, L.-P., Cionni, I., Corti, S., Drost, N., Hunter, A., Lledó, L., Mohr, C. W., Paçal, A.,

- Pérez-Zanón, N., Predoi, V., Sandstad, M., Sillmann, J., Sterl, A., Vegas-Regidor, J., von Hardenberg, J., and Eyring, V.: Earth System Model Evaluation Tool (ESMValTool) v2.0 – diagnostics for extreme events, regional and impact evaluation and analysis of Earth system models in CMIP, *Geosci. Model Dev. Discuss.* [preprint], <https://doi.org/10.5194/gmd-2020-244>, in review, 2020.
- 1500 Williams, K. D., Copsey, D., Blockley, E. W., Bodas-Salcedo, A., Calvert, D., Comer, R., Davis, P., Graham, T., Hewitt, H. T., Hill, R., Hyder, P., Ineson, S., Johns, T. C., Keen, A. B., Lee, R. W., Megann, A., Milton, S. F., Rae, J. G. L., Roberts, M. J., Scaife, A. A., Schiemann, R., Storkey, D., Thorpe, L., Watterson, I. G., Walters, D. N., West, A., Wood, R. A., Woollings, T., and Xavier, P. K.: The Met Office Global Coupled model 3.0 and 3.1 (GC3.0 and GC3.1) configurations. *Journal of Advances in Modeling Earth Systems*, 10, 357–380, <https://doi.org/10.1002/2017MS001115>, 2017.
- 1505 Wu, T., Lu, Y., Fang, Y., Xin, X., Li, L., Li, W., Jie, W., Zhang, J., Liu, Y., Zhang, L., Zhang, F., Zhang, Y., Wu, F., Li, J., Chu, M., Wang, Z., Shi, X., Liu, X., Wei, M., Huang, A., Zhang, Y., and Liu, X.: The Beijing Climate Center Climate System Model (BCC-CSM): the main progress from CMIP5 to CMIP6, *Geosci. Model Dev.*, 12, 1573–1600, <https://doi.org/10.5194/gmd-12-1573-2019>, 2019.
- 1510 Wyser, Klaus, Kjellstrom, E., Koenigk, T., Martins, H., and Doscher, R.: Warmer Climate Projections in EC-Earth3-Veg: the Role of Changes in the Greenhouse Gas Concentrations from CMIP5 to CMIP6. *Environmental Research Letters*, 15, 5, p. 054020, <https://doi.org/10.1088/1748-9326/ab81c2>, 2020.
- 1515 Xin, X.-G., Wu, T.-W., Zhang, J., Zhang, F., Li, W.-P., Zhang, Y.-W., Lu, Y.-X., Fang, Y.-J., Jie, W.-H., Zhang, L., Dong, M., Shi, X.-L., Li, J.-L., Chu, M., Liu, Q.-X., and Yan, J.-H.: Introduction of BCC models and its participation in CMIP6. *Climate Change Research*, 15,5, 533-539, <https://doi.org/10.12006/j.issn.1673-1719.2019.039>, 2019.
- 1520 Yip, S., Ferro, C.A.T., Stephenson, D.B., and Hawkins, E.: A simple, coherent framework for partitioning uncertainty in climate predictions. *Journal of Climate*, 24, 17, 4634-4643, <https://doi.org/10.1175/2011JCLI4085.1>, 2011.
- 1525 Yukimoto, S., Kawai, H., Koshiro, T., Oshima, N., Yoshida, K., Urakawa, S., Tsujino, H., Deushi, M., Tanaka, T., Hosaka, M., Yabu, S., Yoshimura, H., Shindo, E., Mizuta, R., Obata, A., Adachi, Y., and Ishii, M.: The Meteorological Research Institute Earth System Model version 2.0, MRI-ESM2.0: Description and basic evaluation of the physical component. *Journal of the Meteorological Society of Japan*, 97, 931-965, <https://doi.org/10.2151/jmsj.2019-051>, 2019.
- 1530 Yun, K.-S., Lee, J.-Y., Timmermann, A., Stein, K., Stuecker, M.F., Fyfe, J.C., and Chung, E.S.: Increasing ENSO-rainfall variability due to changes in future tropical temperature-rainfall relationship. *Nature Communications Earth and Environment*, in press.
- 1535 Zelinka, M.D., Myers, T.A., McCoy, D.T., Po-Chedley, S., Caldwell, P.M., Ceppi, P., Klein, S.A., and Taylor, K.E.: Causes of Higher Climate Sensitivity in CMIP6 Models. *Geophysical Research Letters*,

47, 1, <https://doi.org/10.1029/2019gl085782>, 2020.

1540 Ziehn T., Chamberlain, M. A., Law, R. M., Lenton, A., Bodman, R.W., Dix, M., Stevens, L., Wang Y.-  
P., and Srbinovsky, J.: The Australian Earth System Model: ACCESS-ESM1.5. Journal  
of Southern Hemisphere Earth Systems Science 70, 193-214, <https://doi.org/10.1071/ES19035>, 2020.

1545

1550

1555

## Appendix: Additional Tables and Figures

1560 **Table A1. Modeling centers and their model(s) contributing to CMIP6 ScenarioMIP. The citations are included in the main bibliography. DOIs refer to the data available through the Earth System Grid Federation. The last columns details the experiments to which the model(s) contributed.**

<i>Institution</i>	<i>Model(s)</i>	<i>Model References Dataset DOIs</i>	<i>Experiments</i>
Alfred Wegener Institute, Helmholtz Centre for Polar and Marine Research (Germany)	AWI	Semmler et al. (2020) <a href="https://doi.org/10.22033/esgf/cmip6.376">https://doi.org/10.22033/esgf/cmip6.376</a> <a href="https://doi.org/10.22033/esgf/cmip6.359">https://doi.org/10.22033/esgf/cmip6.359</a>	historical, ssp126, ssp245, ssp370, ssp585
Beijing Climate Center (China)	BCC-CSM2-MR	Wu et al. (2019) Xin et al. (2019)  <a href="https://doi.org/10.22033/ESGF/CMIP6.1732">https://doi.org/10.22033/ESGF/CMIP6.1732</a>	historical, ssp126, ssp245, ssp370, ssp585
Canadian Centre for Climate	CanESM5-CanOE; CanESM5	Swart et al. (2019)	CanESM5-CanOE:

Modelling and Analysis(Canada)		<a href="https://doi.org/10.22033/ESGF/CMIP6.1317">https://doi.org/10.22033/ESGF/CMIP6.1317</a> <a href="https://doi.org/10.22033/ESGF/CMIP6.10207">https://doi.org/10.22033/ESGF/CMIP6.10207</a>	<p>historical, ssp126, ssp245, ssp370, ssp585</p> <p>CanESM5:  historical, ssp119, ssp126, ssp245, ssp370*, ssp434, ssp460, ssp534-over, ssp585</p>
Centre for Climate Change Research, Indian Institute of Tropical Meteorology (India)	IITM-ESM	<p>Swapna et al. (2018)</p> <p><a href="https://doi.org/10.22033/ESGF/CMIP6.44">https://doi.org/10.22033/ESGF/CMIP6.44</a></p>	<p>historical, ssp126, ssp370, ssp585</p>
Centro Euro-Mediterraneo sui Cambiamenti Climatici (Italy)	CMCC-CM2-SR5	<p>Cherchi et al. (2019)</p> <p><a href="http://doi.org/10.22033/ESGF/CMIP6.3825">http://doi.org/10.22033/ESGF/CMIP6.3825</a>  <a href="https://doi.org/10.22033/ESGF/CMIP6.3887">https://doi.org/10.22033/ESGF/CMIP6.3887</a>  <a href="https://doi.org/10.22033/ESGF/CMIP6.3889">https://doi.org/10.22033/ESGF/CMIP6.3889</a>  <a href="http://doi.org/10.22033/ESGF/CMIP6.3890">http://doi.org/10.22033/ESGF/CMIP6.3890</a>  <a href="http://doi.org/10.22033/ESGF/CMIP6.3896">http://doi.org/10.22033/ESGF/CMIP6.3896</a></p>	<p>historical, ssp126, ssp245, ssp370, ssp585</p>
Chinese Academy of Meteorological Sciences (China)	CAMS-CSM1.0	<p>Rong et al. (2018)</p> <p><a href="https://doi.org/10.22033/ESGF/CMIP6.11004">https://doi.org/10.22033/ESGF/CMIP6.11004</a></p>	<p>historical, ssp119, ssp126, ssp245, ssp370, ssp585</p>
CNRM-CERFACS (France)	CNRM-CM6.1-HR; CNRM-CM6.1; CNRM-ESM2.1	<p>Roehrig et al. (2020)  Michou, M., et al. (2020)  Voltaire A., et al. (2019)  Seferian R. et al. (2019)</p> <p><a href="https://doi.org/10.22033/ESGF/CMIP6.4191">https://doi.org/10.22033/ESGF/CMIP6.4191</a>, 2019.  <a href="https://doi.org/10.22033/ESGF/CMIP6.4197">https://doi.org/10.22033/ESGF/CMIP6.4197</a>  <a href="https://doi.org/10.22033/ESGF/CMIP6.4198">https://doi.org/10.22033/ESGF/CMIP6.4198</a></p>	<p>CNRM-CM6.1-HR:  historical, ssp126, ssp245, ssp370, ssp585</p> <p>CNRM-CM6.1:  historical, ssp126, ssp245, ssp370, ssp585</p> <p>CNRM-ESM2.1:  historical, ssp119, ssp126, ssp245, ssp370, ssp434, ssp460, ssp534-over, ssp585</p>
CSIRO (Australia)	ACCESS-ESM1.5	<p>Ziehn et al. (2020)</p> <p><a href="https://doi.org/10.22033/ESGF/CMIP6.2291">https://doi.org/10.22033/ESGF/CMIP6.2291</a></p>	<p>historical, ssp126, ssp245, ssp370, ssp585</p>
CSIRO-ARCCSS (Australia)	ACCESS-CM2	<p>Bi et al. (2020)</p> <p><a href="https://doi.org/10.22033/ESGF/CMIP6.2285">https://doi.org/10.22033/ESGF/CMIP6.2285</a></p>	<p>historical, ssp126, ssp245, ssp370, ssp585</p>
EC-Earth Consortium	EC-Earth3, EC-Earth3-Veg	<p>Doescher et al. (2020)</p> <p><a href="https://doi.org/10.22033/ESGF/CMIP6.2285">https://doi.org/10.22033/ESGF/CMIP6.2285</a></p>	<p>Both: historical, ssp119, ssp126, ssp245, ssp370, ssp585</p>

		<a href="#">GF/CMIP6.727</a>	
Department of Energy (USA)	E3SM-1.1	Golaz et al. (2018), Burrows et al., (2020).  <a href="https://doi.org/10.22033/ESGF/CMIP6.4497">https://doi.org/10.22033/ESGF/CMIP6.4497</a> <a href="http://cera-www.dkrz.de/WDCC/meta/CMIP6/CMIP6.ScenarioMIP.E3SM-Project.E3SM-1-1.ssp585">http://cera-www.dkrz.de/WDCC/meta/CMIP6/CMIP6.ScenarioMIP.E3SM-Project.E3SM-1-1.ssp585</a>	Historical, ssp585
First Institute of Oceanography (China)	FIO-ESM-2.0	Bao et al. (2020)  <a href="https://doi.org/10.22033/ESGF/CMIP6.9208">https://doi.org/10.22033/ESGF/CMIP6.9208</a> <a href="https://doi.org/10.22033/ESGF/CMIP6.9209">https://doi.org/10.22033/ESGF/CMIP6.9209</a> <a href="https://doi.org/10.22033/ESGF/CMIP6.9214">https://doi.org/10.22033/ESGF/CMIP6.9214</a>	historical, ssp126, ssp245, ssp585
Institut Pierre-Simon Laplace (France)	IPSL-CM6A-LR	Boucher. et al. (2020) Hourdin et al. (2019) Lurton et al. (2019)  <a href="https://doi.org/10.22033/ESGF/CMIP6.1532">https://doi.org/10.22033/ESGF/CMIP6.1532</a>	historical, ssp119, ssp126, ssp245, ssp370*, ssp434, ssp460, ssp534-over, ssp585
Institute for Numerical Mathematic (Russia)	INM-CM5.0;INM-CM4.8	Volodin et al. (2017) Volodin et al. (2018)  <a href="https://doi.org/10.22033/ESGF/CMIP6.12321">https://doi.org/10.22033/ESGF/CMIP6.12321</a> <a href="https://doi.org/10.22033/ESGF/CMIP6.12322">https://doi.org/10.22033/ESGF/CMIP6.12322</a>	Both: historical, ssp126, ssp245, ssp370, ssp585
Institute of Atmospheric Physics (China)	FGOALS-f3-L;FGOALS-g3	He et al. (2019) Li et al. (2019) Bao and Li. (2020)  <a href="https://doi.org/10.22033/ESGF/CMIP6.2046">https://doi.org/10.22033/ESGF/CMIP6.2046</a> <a href="https://doi.org/10.22033/ESGF/CMIP6.2056">https://doi.org/10.22033/ESGF/CMIP6.2056</a>	FGOALS-f3-L: historical, ssp126, ssp245, ssp370, ssp585  FGOALS-g3: historical, ssp126, ssp245, ssp370, ssp434, ssp534-over, ssp460, ssp585
JAMSTEC, NIES,AORI, U. of Tokyo(Japan)	MIROC6; MIROC-ES2L	Tatebe et al ( 2019) Hajima et al. (2020)  <a href="https://doi.org/10.22033/ESGF/CMIP6.898.2019">https://doi.org/10.22033/ESGF/CMIP6.898.2019</a> . <a href="https://doi.org/10.22033/ESGF/CMIP6.936.2019">https://doi.org/10.22033/ESGF/CMIP6.936.2019</a>	MIROC6: historical, ssp119, ssp126, ssp245, ssp370, ssp434, ssp460, ssp534-over, ssp585  MIROC-ES2L: historical, ssp119, ssp126, ssp245, ssp370, ssp534-over, ssp585

Korea Institute of Ocean Science and Technology	KIOST-ESM	Kim et al., 2020 <a href="https://doi.org/10.22033/ESGF/CMIP6.1922">https://doi.org/10.22033/ESGF/CMIP6.1922</a> <a href="https://doi.org/10.22033/ESGF/CMIP6.11241">https://doi.org/10.22033/ESGF/CMIP6.11241</a>	historical, ssp126, ssp245, ssp585
Max Planck Institute for Meteorology (Germany), also Deutsches Klimarechenzentrum (Germany) and Deutscher Wetterdienst (Germany)	MPI-ESM1.2-LR	Mauritsen et al. (2019), Mueller et al. (2018) <a href="https://doi.org/10.22033/ESGF/CMIP6.2450">https://doi.org/10.22033/ESGF/CMIP6.2450</a> <a href="https://doi.org/10.22033/ESGF/CMIP6.1869">https://doi.org/10.22033/ESGF/CMIP6.1869</a> <a href="https://doi.org/10.22033/ESGF/CMIP6.793">https://doi.org/10.22033/ESGF/CMIP6.793</a>	historical, ssp126, ssp245, sp370*, ssp585
Met Office Hadley Center (UK) and Natural Environment Research Council (UK)	UKESM1.0-LL; HadGEM3-GC31-LL; HadGEM3-GC31-MM	Sellar et al (2019) Kuhlbrodt et al (2018) Williams et al (2017) <a href="https://doi.org/10.22033/ESGF/CMIP6.1567">https://doi.org/10.22033/ESGF/CMIP6.1567</a> <a href="https://doi.org/10.22033/ESGF/CMIP6.10845">https://doi.org/10.22033/ESGF/CMIP6.10845</a>	UKESM1.0-LL: historical, ssp119, ssp126, ssp245, ssp370, ssp534-over, ssp585 HadGEM3-GC31-LL: historical, ssp126, ssp245, ssp585 HadGEM3-GC31-MM: historical, ssp126, ssp585
Meteorological Research Institute (Japan)	MRI-ESM2.0	Yukimoto et al. (2019) <a href="https://doi.org/10.22033/ESGF/CMIP6.638">https://doi.org/10.22033/ESGF/CMIP6.638</a>	historical, ssp119, ssp126, ssp245, ssp370, ssp434, ssp460, ssp534-over, ssp585
NASA GISS (USA)	GISS-E2.1-G	Kelley et al. (2020) Miller et al. (2020) <a href="https://doi.org/10.22033/ESGF/CMIP6.2074">https://doi.org/10.22033/ESGF/CMIP6.2074</a>	historical, ssp126, ssp370, ssp434, ssp460, ssp585
Nanjing University of Information Science and Technology (China)	NESM3	Cao et al. (2019) <a href="https://doi.org/10.22033/ESGF/CMIP6.2027">https://doi.org/10.22033/ESGF/CMIP6.2027</a>	historical, ssp126, ssp245, ssp585
National Center for Atmospheric Research (USA)	CESM2(CAM6) and CESM2 (WACCM6)	Danabasoglu et al. (2019) <a href="https://doi.org/10.22033/ESGF/CMIP6.10026">https://doi.org/10.22033/ESGF/CMIP6.10026</a> <a href="https://doi.org/10.22033/ESGF/CMIP6.2201">https://doi.org/10.22033/ESGF/CMIP6.2201</a>	CESM2: historical, ssp126, ssp245, ssp370, ssp585 CESM2 -WACCM: historical, ssp126, ssp245, ssp370, ssp534-over, ssp585
National Institute of Meteorological Sciences, Korea Meteorological Administration (South Korea)	K-ACE-1-0-G	Lee et al. (2020)	historical, ssp126, ssp245, ssp370, ssp585



		<a href="https://doi.org/10.22033/ESGF/CMIP6.2241">https://doi.org/10.22033/ESGF/CMIP6.2241</a>	
NOAA-Geophysical Fluid Dynamics Laboratory (USA)	GFDL-CM4; GFDL-ESM4	Held et al. (2019) Dunne et al. (2020)  <a href="https://doi.org/10.22033/ESGF/CMIP6.1414">https://doi.org/10.22033/ESGF/CMIP6.1414</a>  <a href="https://doi.org/10.22033/ESGF/CMIP6.9242">https://doi.org/10.22033/ESGF/CMIP6.9242</a>	GFDL-CM4: historical, ssp245, ssp585  GFDL-ESM4: historical, ssp119, ssp126, ssp245, ssp370, ssp585
Norwegian Climate Center (Norway)	NorESM2-LM; NorESM2-MM;	Seland et al. (2020) Tjiputra et al. (2020) Counillon et al. (2016)  <a href="https://doi.org/10.22033/ESGF/CMIP6.604">https://doi.org/10.22033/ESGF/CMIP6.604</a> <a href="https://doi.org/10.22033/ESGF/CMIP6.608">https://doi.org/10.22033/ESGF/CMIP6.608</a> <a href="https://doi.org/10.22033/ESGF/CMIP6.10894">https://doi.org/10.22033/ESGF/CMIP6.10894</a>	Both: historical, ssp126, ssp245, ssp370 ssp585
University of Arizona (USA)	MCM-UA-1-0	Delworth et al., (2002) Beadling et al. (2020)  <a href="https://doi.org/10.22033/ESGF/CMIP6.2421">https://doi.org/10.22033/ESGF/CMIP6.2421</a>	historical, ssp126, ssp245, ssp370 ssp585

**Table A2: Modeling centers participating in CMIP5 and their models used in the comparison of SSPs and RCPs.**

Beijing Climate Center (China)	BCC-CSM1-1; BCC-CSM1-1-M
BNU (China)	BNU-ESM
Canadian Centre for Climate Modelling and Analysis(Canada)	CanESM2
CNRM-Cerfacs (France)	CNRM-CM5
CSIRO-BOM (Australia)	ACCESS1-0;ACCESS1-3; CSIRO-Mk3-6-0
EC-Earth Consortium	EC-Earth
Euro-Mediterranean Center on Climate Change (Italy)	CMCC-CM;CMCC-CMS
First Institute of Oceanography (China)	FIO-ESM

Institut Pierre Simon Laplace (France)	IPSL-CM5A-LR;IPSL-CM5A-MR;IPSL-CM5B-LR
Institute for Numerical Mathematic (Russia)	INM-CM4
Institute of Atmospheric Physics (China)	FGOALS-g2
JAMSTEC, NIES, CCSR, U. of Tokyo(Japan)	MIROC-ESM; MIROC-ESM-CHEM;MIROC5
Max Planck Institute (Germany)	MPI-ESM-LR; MPI-ESM-HR
Met Office Hadley Center (UK)	HadGEM2-AO; HadGEM2-CC; HadGEM2-ES
Meteorological Research Institute (Japan)	MRI-CGCM3
NASA GISS (USA)	GISS-E2-R; GISS-E2-R-CC;GISS-E2-H; GISS-E2-H-CC
National Center for Atmospheric Research (USA)	CCSM4; CESM1-BGC; CESM1-CAM5; CESM1-WACCM
NOAA-Geophysical Fluid Dynamics Laboratory (USA)	GFDL-CM3; GFDL-ESM2G;GFDL-ESM2M
Norwegian Climate Center (Norway)	NorESM1-ME;NorESM1-M

**Table A3: CMIP6 models’ projected warming under the five scenarios by 2041-2060 and 2081-2100 relative to the historical baseline of 1995-2014. Ensemble mean values and, in square brackets, 5-95% confidence intervals (+/- 1.64 $\sigma$ ).**

<b>Surface Air Temperature Change (°C) (1995-2014)</b>	<b>SSP1-1.9 (13 models)</b>	<b>SSP1-2.6 (38 models)</b>	<b>SSP2-4.5 (37 models)</b>	<b>SSP3-7.0 (33 models)</b>	<b>SSP5-8.5 (39 models for global, 38 for land/ocean)</b>
2041-2060 Global	0.83 [0.31,1.36]	1.07 [0.51,1.63]	1.32 [0.77,1.88]	1.46 [0.82,2.10]	1.74 [1.05,2.42]
2081-2100 Global	0.69 [0.13,1.25]	1.23 [0.40,2.05]	2.14 [1.27,3.00]	3.16 [1.95,4.38]	3.99 [2.40,5.57]
2041-2060 Land-Only	1.16 [0.45,1.87]	1.45 [0.73,2.17]	1.80 [1.04,2.55]	1.97 [1.10,2.84]	2.35 [1.43,3.28]
2081-2100 Land-Only	0.96 [0.17,1.74]	1.61 [0.56,2.65]	2.85 [1.73,3.97]	4.26 [2.63,5.90]	5.46 [3.36,7.57]

1570

2041-2060 Ocean-Only	0.69 [0.26,1.12]	0.91 [0.42,1.40]	1.12 [0.64,1.59]	1.24 [0.70,1.78]	1.46 [0.87,2.05]
2081-2100 Ocean-Only	0.57 [0.11,1.03]	1.06 [0.33,1.79]	1.83 [1.07,2.59]	2.70 [1.65,3.74]	3.41 [2.06,4.75]

1580

1585

1590

1595

1600

1605

**Table A4: CMIP6 models' projected changes in precipitation under the five scenarios by 2041-2060 and 2081-2100 expressed as percentages relative to the historical baseline of 1995-2014. Ensemble mean values and, in square brackets, 5-95% confidence intervals (+/- 1.64 $\sigma$ ).**

1610

<b>Precipitation Change (%) (1995-2014)</b>	<b>SSP1-1.9 (13 models)</b>	<b>SSP1-2.6 (37 models)</b>	<b>SSP2-4.5 (36 models)</b>	<b>SSP3-7.0 (33 models)</b>	<b>SSP5-8.5 (38 models for global, 37 for land/ocean)</b>
---	---------------------------------	---------------------------------	---------------------------------	---------------------------------	---

2041-2060 Global	2.04 [0.53,3.56]	2.37 [0.63,4.10]	2.33 [0.81,3.85]	2.08 [0.58,3.57]	2.78 [0.89,4.67]
2081-2100 Global	2.02 [0.37,3.67]	3.05 [0.81,5.28]	4.19 [1.79,6.59]	4.88 [1.92,7.85]	7.30 [-0.65,15.26]
2041-2060 Land-Only	2.59 [0.53,4.66]	2.90 [-0.07,5.87]	2.91 [0.21,5.61]	2.67 [-0.22,5.57]	3.90 [0.55,7.24]
2081-2100 Land-Only	2.32 [0.03,4.61]	3.57 [0.04,7.11]	4.83 [1.06,8.60]	6.19 [1.14,11.24]	8.61 [2.37,14.85]
2041-2060 Ocean-Only	1.81 [0.44,3.17]	2.21 [0.54,3.88]	2.16 [0.60,3.72]	1.95 [0.53,3.38]	2.56 [0.72,4.40]
2081-2100 Ocean-Only	1.87 [0.36,3.38]	2.88 [0.77,5.00]	4.01 [1.55,6.47]	4.67 [1.62,7.72]	6.21 [2.07,10.35]

1615

**Table A5: Time of separation between smoothed GSAT trajectories under pairs of scenarios. Shown is the year by which the ensemble means separate, and, in square brackets, the year by which the last of the separation among individual models' trajectories takes place. Separation is defined as the emergence of a positive difference (we use 0.1°C as threshold) that persists for the remainder of the century. We first apply a 21-year running mean to the GSAT time series in order to characterize separation "of climates".**

	<b>SSP1-2.6</b>	<b>SSP2-4.5</b>	<b>SSP3-7.0</b>	<b>SSP5-8.5</b>
<b>SSP1-1.9</b>	2042 [2050]	2034 [2043]	2031 [2041]	2027 [2036]
<b>SSP1-2.6</b>		2039 [2053]	2037 [2048]	2030 [2036]
<b>SSP2-4.5</b>			2046 [2058]	2031 [2044]
<b>SSP3-7.0</b>				2034 [2053]

1620

**Table A6: Projected warming and precipitation change under comparable scenarios, for CMIP5 and CMIP6 ensembles, and for the CMIP6 ensemble constrained by the method of Tokarska et al. (2020). For the latter the number of models remains the same as for the unconstrained projections. Differently from Tables A3 and A4, which use the CMIP6 current baseline period of 1995-2014, here all changes are relative to the CMIP5 current baseline period of 1986-2005. See also Figure A6 for a graphical representation of the raw and constrained temperature projections for 2081-2100, besides Figure 4 in the main text.**

<b>GSAT Change (°C) (1986-2005)</b>	<b>Precipitation Change (%) (1986-2005)</b>
-------------------------------------	---

	<b>2041-2060</b>	<b>2081-2100</b>		<b>2041-2060</b>	<b>2081-2100</b>
<b>RCP 2.6 (28 models)</b>	1.01 (0.50,1.62)	1.01 (0.23,1.74)	<b>RCP 2.6 (27 models)</b>	2.20 (0.90,3.50)	2.52 (0.77,4.27)
<b>RCP 2.6 constrained</b>	0.85 (0.38,1.31)	0.83 (0.15,1.50)			
<b>SSP1-2.6 (37 models)</b>	1.35 (0.77,2.06)	1.47 (0.80,2.44)	<b>SSP1-2.6 (37 models)</b>	2.78 (0.95,4.61)	3.46 (1.14,5.79)
<b>SSP1-2.6 constrained</b>	1.07 (0.54,1.59)	1.12 (0.38,1.85)			
<b>RCP 4.5 (36 models)</b>	1.33 (0.86,1.83)	1.90 (1.07,2.72)	<b>RCP4.5 (38 models)</b>	2.42 (1.23,3.61)	3.64 (1.71,5.57)
<b>RCP 4.5 constrained</b>	1.19 (0.75,1.62)	1.71 (0.87, 2.56)			
<b>SSP2-4.5 (38 models)</b>	1.57 (1.04,2.30)	2.39 (1.53,3.50)	<b>SSP2-4.5 (36 models)</b>	2.75 (1.11,4.39)	4.62 (2.08,7.16)
<b>SSP2-4.5 constrained</b>	1.30 (0.80,1.79)	2.00 (1.20,2.80)			
<b>RCP 8.5 (37 models)</b>	1.79 (1.25,2.37)	3.71 (2.71,4.71)	<b>RCP8.5 (36 models)</b>	3.00 (1.54,4.46)	6.20 (3.35,9.06)
<b>RCP 8.5 constrained</b>	1.62 (1.12,2.12)	3.45 (2.43,4.46)			
<b>SSP5-8.5 (40 models)</b>	2.02 (1.37,2.95)	4.38 (2.92,6.20)	<b>SSP5-8.5 (37 models)</b>	3.25 (1.26,5.24)	7.05 (3.03,11.06)
<b>SSP5-8.5 constrained</b>	1.62 (0.99,2.24)	3.60 (2.13,5.05)			

1625

Table A7: Like Table 1 in the main text, times of crossing of different warming levels by the available ensembles running the various scenarios (best estimate and range - in square brackets - based on the 5-95% range of the ensemble after smoothing the trajectories by eleven-year running means). Crossing of these levels are defined by using anomalies wrt 1995-2014 for the model ensembles, and adding the offset of 0.84°C to derive warming from pre-industrial.

1630

Since the number of models available under each scenario varies, and in some cases not all models reach a given warming level, those numbers are shown in parentheses. However, the estimates are based on the ensemble means and ranges computed from the whole ensemble, not just from the models that reach a given level. An estimate

1635

marked as NA is to be interpreted as “not reaching a given level by 2100”. In cases where the ensemble average remains below the warming level for the whole century, it is possible for the central estimate to be NA, while the earlier time of the confidence interval is not, since the upper bound of the ensemble range may still reach that warming level.

1640

	<b>SSP1-1.9</b>	<b>SSP1-2.6</b>	<b>SSP2-4.5</b>	<b>SSP3-7.0</b>	<b>SSP5-8.5</b>
<b>1.5°C</b>	2029 [2021,NA] (11/13)	2028 [2020,NA] (37/38)	2027 [2020,2046] (37/37)	2028 [2020,2045] (33/33)	2026 [2020,2040] (39/39)
<b>2.0°C</b>	NA [2036,NA] (2/13)	2060 [2032,NA] (21/38)	2045 [2031,2077] (37/37)	2043 [2031,2064] (33/33)	2039 [2030,2054] (39/39)
<b>3.0°C</b>	NA [NA,NA] (0/13)	NA [NA,NA] (1/38)	2092 [2059,NA] (21/37)	2068 [2052,NA] (33/33)	2059 [2047,2082] (39/39)
<b>4.0°C</b>	NA [NA,NA] (0/13)	NA [NA,NA] (0/38)	NA [NA,NA] (2/37)	2091 [2071,NA] (18/33)	2077 [2062,NA] (33/39)
<b>5.0°C</b>	NA [NA,NA] (0/13)	NA [NA,NA] (0/38)	NA [NA,NA] (0/37)	NA [2088,NA] (4/33)	2094 [2074,NA] (21/39)

1645

1650

1655

**Table A8: Warming level crossings for CMIP5 and CMIP6 scenarios/ensembles. Shown are times when an 11-year running average of the ensemble mean trajectory, and the lower and upper bounds of its 90% confidence interval ( $1.64\sigma$ , where  $\sigma$  is the ensemble standard deviation after smoothing) cross various warming levels, under the three comparable scenarios: SSP1-2.6, SSP2-4.5 and SSP5-8.5 for CMIP6 models, RCP2.6, RCP4.5 and RCP8.5 for CMIP5 models. NAs values indicate that the corresponding ensemble metric (mean, lower or upper bound of the confidence interval) does not reach the corresponding warming level by 2100. The numbers on the bottom row of each cell indicate the number of models that reach that warming level. The largest ensemble available under all three scenarios**

1660

considered is used in both cases, with 36 CMIP6 models and 29 CMIP5 models.

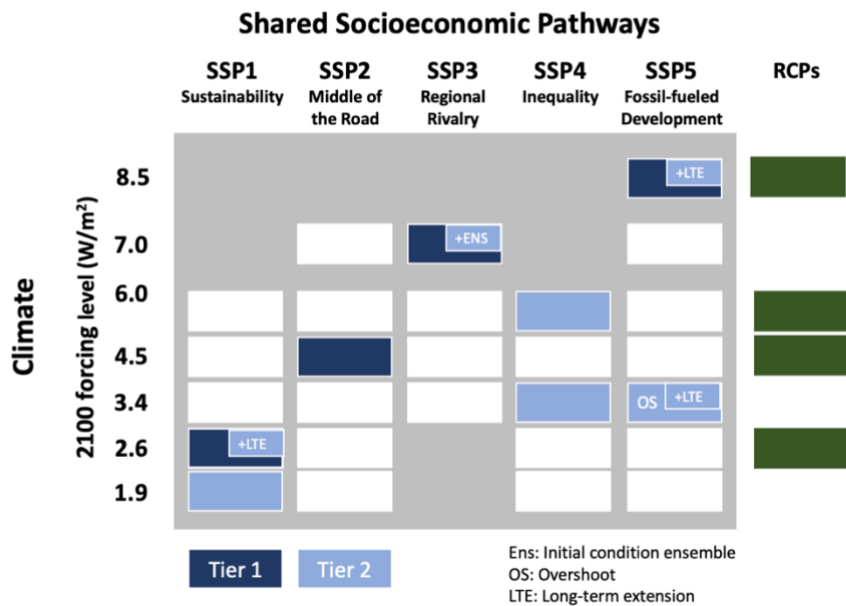
1665

	<b>SSP1-2.6</b>	<b>SSP2-4.5</b>	<b>SSP5-8.5</b>	<b>RCP2.6</b>	<b>RCP4.5</b>	<b>RCP8.5</b>
<b>1.5°C</b>	2025 (2020,NA) 35/36	2026 (2020,2047) 36/36	2024 (2020,2040) 36/36	2034 (2018,NA) 23/29	2029 (2021,2055) 29/29	2027 (2018,2039) 29/29
<b>2.0°C</b>	2056 (2029,NA) 18/36	2043 (2028,2080) 36/36	2038 (2027,2054) 36/36	NA (2040,NA) 7/29	2051 (2035,NA) 24/29	2041 (2030,2056) 29/29
<b>3.0°C</b>	NA (2092,NA) 2/36	2089 (2055,NA) 20/36	2058 (2045,2082) 36/36	NA (NA,NA) 0/29	NA (2069,NA) 7/29	2063 (2051,2085) 29/29
<b>4.0°C</b>	NA (NA,NA) 0/36	NA (2092,NA) 2/36	2076 (2060,NA) 31/36	NA (NA,NA) 0/29	NA (NA,NA) 0/29	2084 (2068,NA) 24/29
<b>5.0°C</b>	NA (NA,NA) 0/36	NA (NA,NA) 0/36	2093 (2073,NA) 20/36	NA (NA,NA) 0/29	NA (NA,NA) 0/29	NA (2083,NA) 10/29

1670

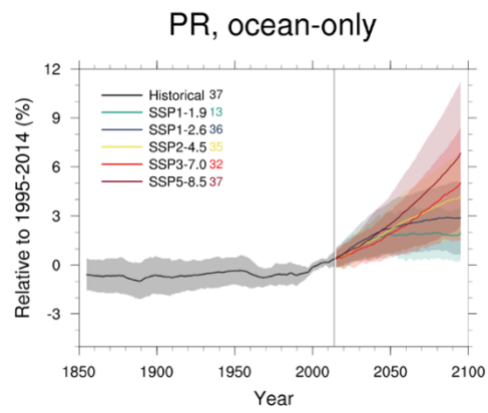
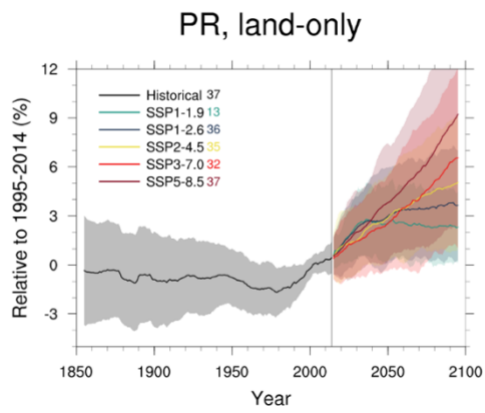
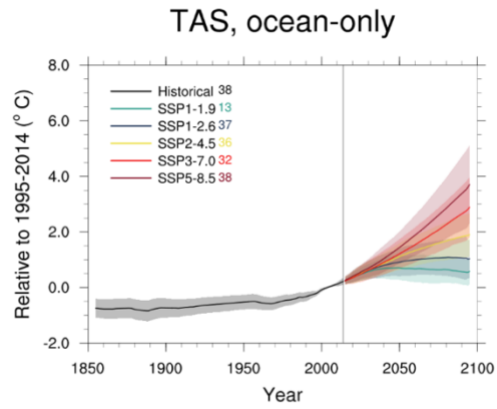
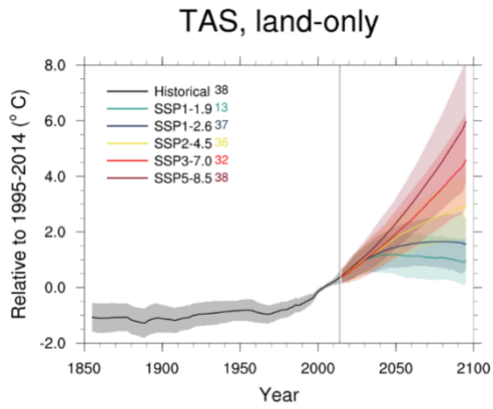
1675

1680



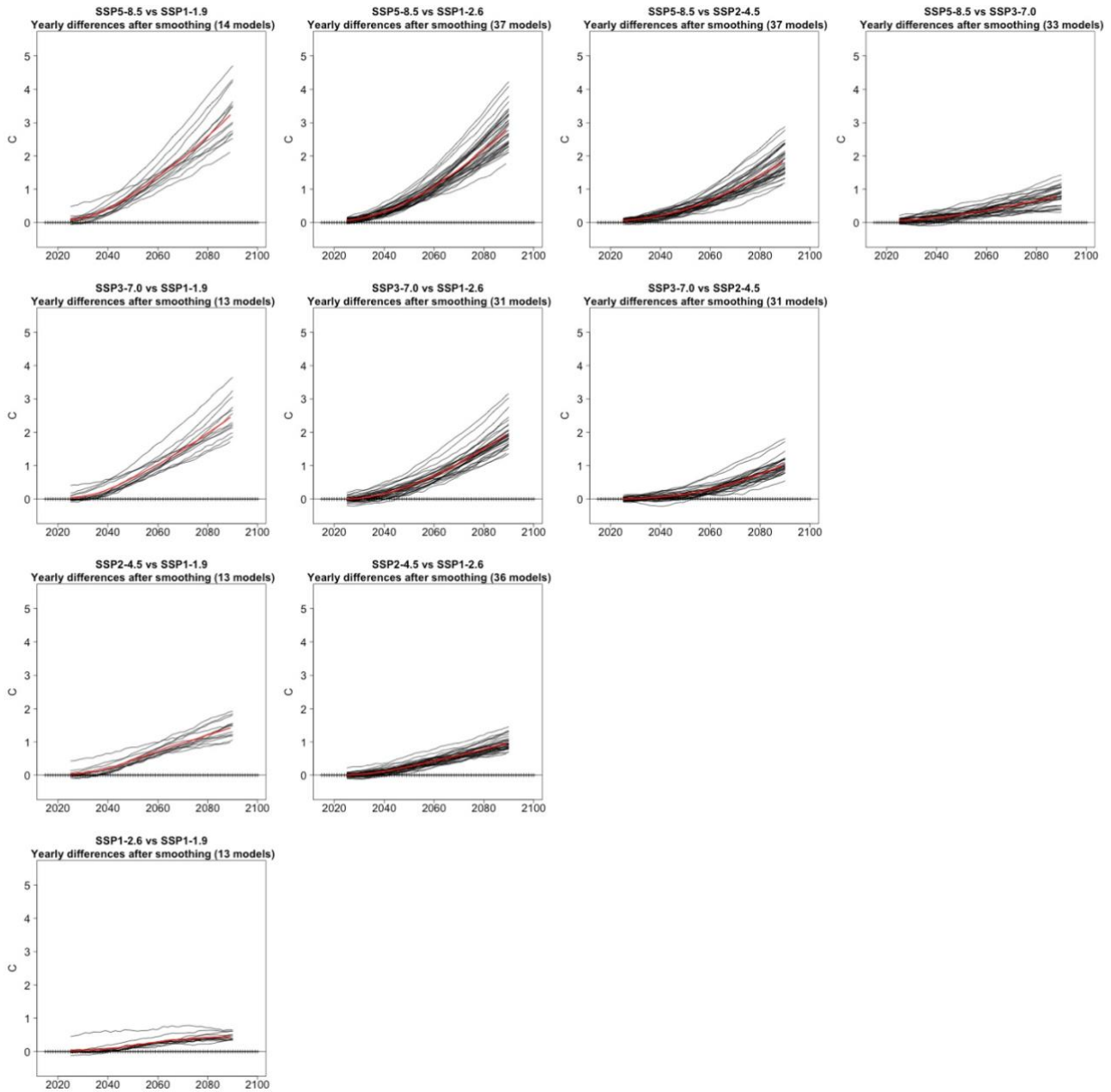
1685 **Figure A1: ScenarioMIP design (modified from O'Neill et al., 2020). White and colored boxes indicate achievable 2100 levels of forcings under the different SSPs. Grey areas are at the intersection of SSPs and radiative forcing levels that were not achievable by any of the IAMs employed to produce these scenarios.**





**Figure A2: Land-only and ocean-only average time series of temperature and percent precipitation changes relative to 1995-2014, for the 4 scenarios of Tier 1, SSP1-2.6, SSP2-4.5, SSP3-7.0, SSP5-8.5, and SSP1-1.9.**

1690



1695

**Figure A3: Time series of year-by-year differences in GSAT between each scenario run in Tier 1 and each of the lower scenario runs (including SSP1-1.9). The time series from the individual models were first smoothed by a 21-year running mean.**

**First row: differences between SSP5-8.5 and, respectively, SSP1-1.9, SSP1-2.6, SSP2-4.5 and SSP3-7.0.**

**Second row: differences between SSP3-7.0 and respectively SSP1-1.9, SSP1-2.6 and SSP2-4.5. Third row: differences between SSP2-4.5 and SSP1-1.9 and SSP1-2.6. Fourth row: differences between SSP1-2.6 and SSP1-1.9. Each black line corresponds to an individual model's time series of differences. The red line is the ensemble mean difference. The ensemble size varies across the plots based on the number of models available for which the difference can be computed. It is as small as 10 members for those**

1700

differences involving SSP1-1.9 and as large as 25 to 30 members when both scenarios belong to Tier 1.

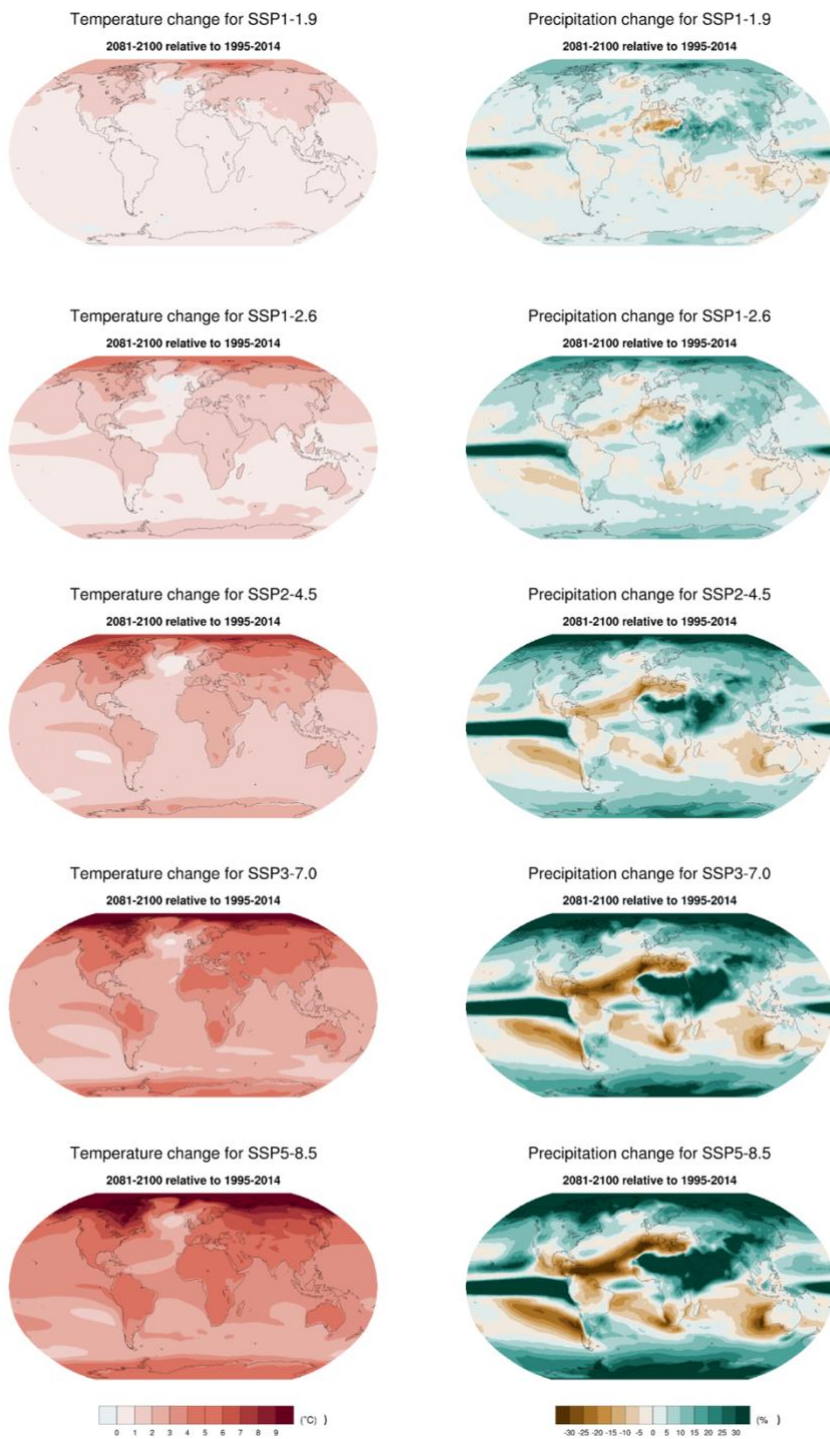
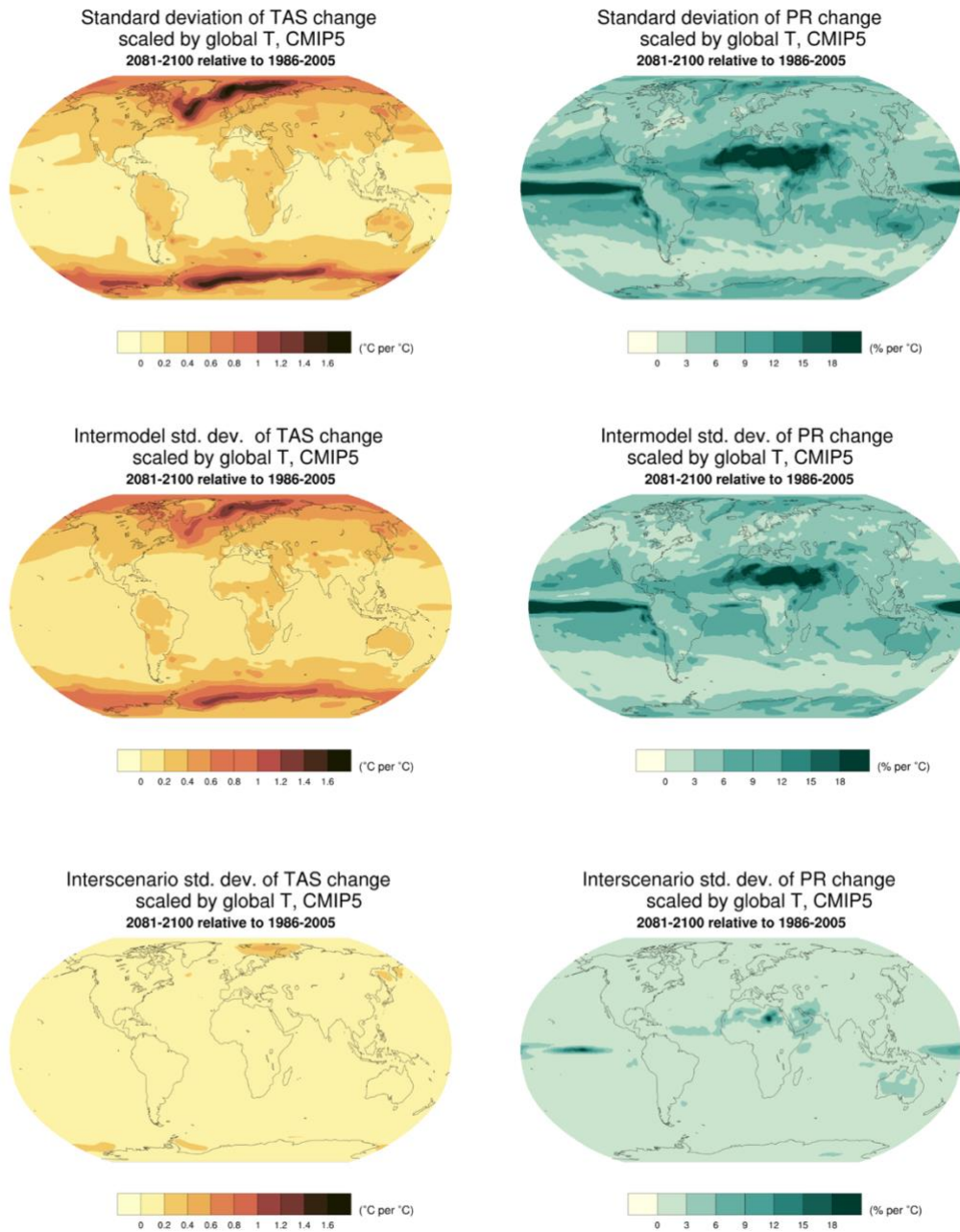
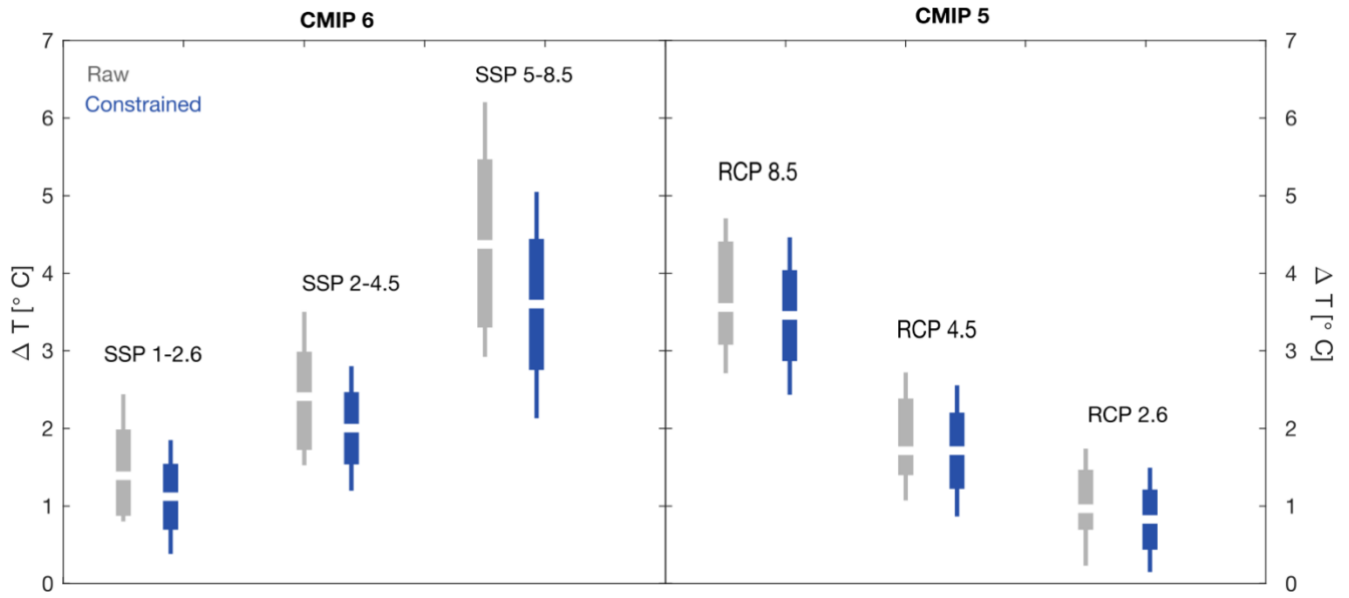


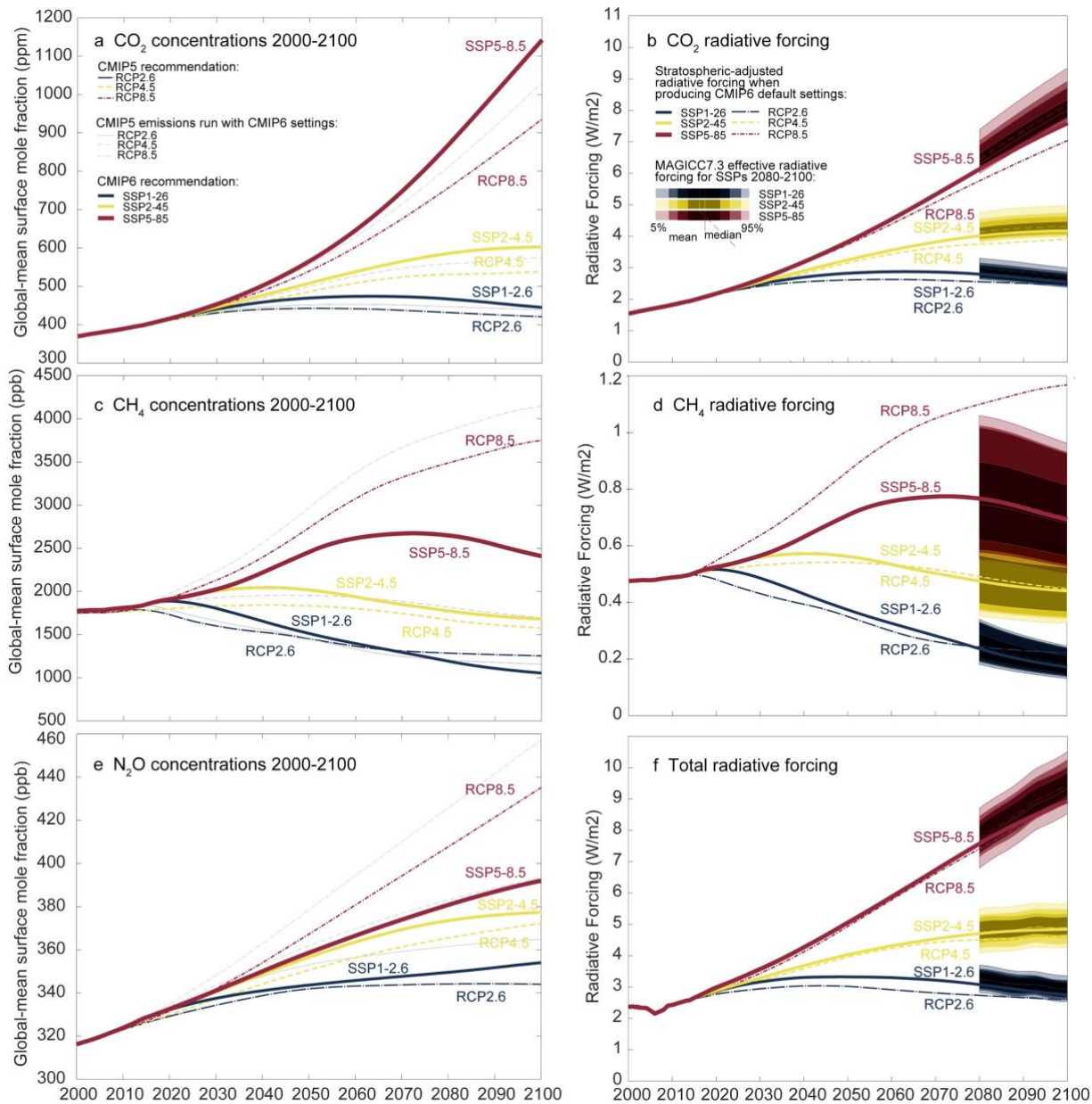
Figure A4: Patterns of changes by 2081-2100 relative to 1995-2014 in surface air temperature (°C) and precipitation (%) under the five scenarios.



**Figure A5:** Top row: standard deviation of normalized patterns for individual CMIP5 models and scenarios. The individual patterns are the elements from which the averages shown in Figure 3 are computed. Center row: Standard deviation of normalized patterns, after averaging across scenarios, highlighting the role of inter-model variability. Bottom row: Standard deviation of normalized patterns after averaging across models, highlighting the role of inter-scenario variability. These standard deviations can be compared with the corresponding results from CMIP6 models/scenarios in Figure A5.



1720 **Figure A6: A closer look at the effects of applying the Tokarska et al. 2020 constraints to CMIP6 and CMIP6 projections (mean changes at 2081-2100 compared to 1986-2005) for the nominally corresponding scenarios.**



**Figure A7: Comparison of CO<sub>2</sub>, CH<sub>4</sub> and N<sub>2</sub>O concentrations and radiative forcings for the concentration-driven CMIP5 runs with RCP-Y scenarios (Meinshausen et al., 2011) and CMIP6 runs with SSPX-Y scenarios (Meinshausen et al., 2020). The higher scenario SSP5-8.5 features higher CO<sub>2</sub> concentrations largely due to updated carbon cycle settings. RCP8.5 emissions with the same carbon cycle settings (shown as thin dashed line in panel a) would produce similar CO<sub>2</sub> concentrations. The methane and nitrous oxide concentrations are however lower in SSP5-8.5 than in RCP8.5 (despite updated gas cycles producing higher concentrations for the same emission trajectory). Panels a, c and e adapted from Figure 11 in Meinshausen et al. 2020. At the time of producing the SSPs (March 2018), stratospheric-adjusted radiative forcings have been used to compare the nameplate radiative forcing levels in 2100 using MAGICC6.8 with IPCC AR5 consistent settings (see panels b, d, f). Effective radiative forcings (ERFs) take additional adjustments into account that are non-temperature induced and differ from stratospheric-adjusted radiative**

1725

1730

forcings. Shown are 2080-2100 probabilistic results of SSP ERFs, using MAGICC7.3. These ERFs differ from SARFs and tend to be higher for CO<sub>2</sub> and total radiative forcings (see panel b and f). Given that the efficacy and rapid adjustments are different for different forcing agents, also the match between RCPs and SSP scenarios differs when comparing them in the effective radiative forcing space, rather than in terms of their stratospheric-adjusted radiative forcings.

1735

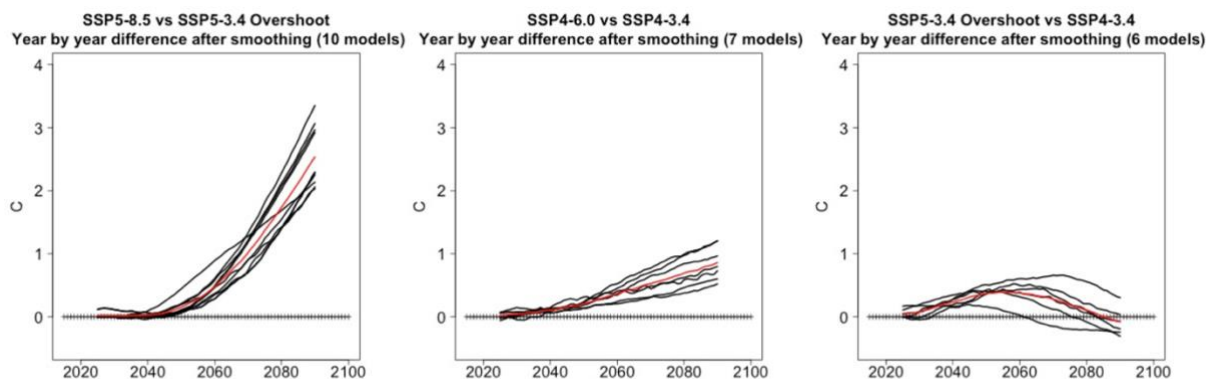


Figure A8: As in Figure A3, year by year GSAT differences for the two pairs of scenarios differing only by the amount of mitigation assumed (left and center panel) and for the two scenarios that achieve the same level of radiative forcing by 2100, one by overshooting it in the middle of the century (right panel). From left to right: year by year differences for the seven models that ran SSP5-8.5 and SSP5-3.4OS, for the seven models that ran SSP4-6.0 and SSP4-3.4, and for the 5 models that ran SSP4-3.4 and SSP5-3.4OS. Black lines are differences computed between pairs of GSAT trajectories for each of the models. Red lines are differences between the two ensemble mean trajectories.

1740

1745

1750