

Authors' Response to Reviewer #1

For convenience, we reproduce the original reviewer comments in black. Our responses are provided in blue.

Reviewer's general comments: In this study, the authors explore how different climate objections could be met by injections of sulfate aerosols at four locations, based on theories developed in previous works. Different climate objections are represented as the 2-D surface in a 3-D graph, and the possibility to achieve multiple goals is evaluated by the relative relationship among these surfaces, which are further evaluated using model simulations. This work offers a new way to examine the relationship between experiment designs and outcomes and help evaluate limits and trade-offs of aerosol injection geoengineering. I just have some minor comments:

We thank the reviewer for their assessment of our work, and respond to each of their comments individually below. For convenience, we repeat each of the reviewer's comments here, with our responses provided after each comment.

I would appreciate it if the author could provide more explanations or details about how the form of Eq.1 to Eq.3 in the paper is derived based on previous literature. Accordingly, I am not sure I fully understand how the mathematic form of the constraint (line 125) is derived. I would like to see this if possible.

We have added more detail to the paragraph preceding Equations 1-3 to explain the derivation and physical interpretation of these equations in greater depth. Additionally, we have added more detail to the relevant paragraph to describe how the constraint equation is derived from Equation 4.

Line 249: The global mean T and P cannot be managed at the same time using current injection design, but might be possible under other frameworks (e.g., Cao et al. 2017), which could be made clear here. REF: Cao, L., Duan, L., Bala, G., & Caldeira, K. (2017). Simultaneous stabilization of global temperature and precipitation through cocktail geoengineering. *Geophysical Research Letters*, 44(14), 7429-7437.

We thank the reviewer for bringing this manuscript to our attention. We have added a reference to these results and their implications to the relevant paragraph.

Line 420: The author conducted simulations that attempt to simultaneously restore three different climate variables, and evaluated the percent restoration in Eq.5. Since none of these simulations are able to restore all three climate goals, I think this raises the question about “what’s the most optimized climate state that has the smallest damages to the society”. I am not saying this should be done in this paper, but later maybe consider to balance different climate goals and use an overall restoration score for all these climate goals (and maybe also consider side effects on other variables, such as precipitation) would be helpful.

We thank the reviewer for raising an important point of discussion. As discussed in line 420, we do not include an overall "score" for how well each simulation performed in meeting its goals. This is because we do not wish to claim that a simulation performed "better" or "worse" than another, even if one came objectively closer to meeting its goals. This is because such a score would either require weighting of climate goals by relative importance, or the implication that all goals considered in this study are equally important. Such judgements are inherently subjective; even though financial impacts might be quantifiable, there are many other impacts to consider when determining if one outcome is “better” than another. However, it is an important topic to consider, and as such, we have added some text emphasizing the diversity of SAI strategies and some commentary on the weighting or aggregation of impacts.

Authors’ Response to Reviewer #2

For convenience, we reproduce the original reviewer comments in black. Our responses are provided in blue.

This study is built upon the Geoengineering Large Ensemble simulations (GLENS) that achieve multiple temperature stabilization goals by injecting SO₂ into the stratosphere at four different latitudes with feedback regulation. This study expands GLENS by targeting non-temperature stabilization goals including global mean precipitation, tropical precipitation centroid, and Arctic sea ice extent. There are two novelties of this study: First, it introduces a new method of visualizing the design space that helps to predict the climate model output under a given geoengineering scenario. Second, it demonstrates that in climate models, some non-temperature-based metrics can also be stabilized simultaneously via the feedback-control

scheme, which provides new insight into the design of geoengineering options. This study is clearly written. I recommend publication with minor revisions as suggested below.

We thank the reviewer for their assessment of our work, and respond to each of their comments individually below. For convenience, we repeat each of the reviewer's comments here, with our responses provided after each comment.

Line 24: the cooling effect of anthropogenic aerosol emission is not 'small'.

We thank the reviewer for pointing out this mistake. We have removed the word "small" from Line 24.

Line 25: More references should be given in addition to Robock et al. (2008) to support the statement that climate modeling studies agree . . .

We have added two more references: "Climate extremes in multi-model simulations of stratospheric aerosol and marine cloud brightening climate engineering" (Aswathy et al 2015) and "North Atlantic Oscillation response in GeoMIP experiments G6solar and G6sulfur: why detailed modelling is needed for understanding regional implications of solar radiation management" (Jones et al 2020).

Lines 42-44: If this is the motivation of this study, the motivation is weak. What does it mean by controlling precipitation? Stabilize global mean precipitation, prevents monsoon disruption, or minimize precipitation change at some regions?

We thank the reviewer for identifying an opportunity to clarify the purpose of this study. We have added additional text elaborating on our motivation; specifically, to demonstrate that two specific precipitation-based climate goals (the stabilization of global mean precipitation and the stabilization of the ITCZ) can be achieved directly through feedback-regulated aerosol injection. Additionally, we demonstrate that strategies which attempt to simultaneously meet these goals alongside other goals are viable, even if the individual goals depend on different climate variables (i.e. the ITCZ, global mean temperature, and September Arctic sea ice extent can all be targeted independently in the same scenario).

Lines 46-47: Before showing 2D and 3D maps, this statement in Introduction is too abstract to understand.

We thank the reviewer for feedback which will help us clarify our work for the reader. We have added more text to this part of the introduction to better explain our visual model before it is presented, explaining that the design space can be characterized in terms of choices for the SO₂ injection rates at several latitudes; with the latitudes used here, this gives a three-dimensional space. Any specific climate goal (such as the stabilization of global mean precipitation or temperature, or the ITCZ) can be approximated as requiring a linear combination of these three AOD degrees of freedom. We can visualize these requirements on a 3-D graph where the three axes represent the three AOD degrees of freedom, and combinations of AOD which satisfy a given objective are represented by a 2-D surface on the graph.

Line 50: 'a better proxy than T1". In what manner? Please explain it in a more explicit way.

We have added more text to clarify the relationships between these variables; specifically, the GLENS simulations controlled for T1 because it was known that both T1 and the ITCZ both depend on the interhemispheric AOD balance and are therefore linked, but the studies we reference (Donohoe et al 2013 and Frierson and Hwang 2012) measured the shift in the ITCZ directly by computing the shift in the tropical precipitation centroid. Therefore, in this study, rather than control T1 as a "proxy" for the ITCZ, we demonstrate that we can control the precipitation centroid directly.

Line 185: 'Some sensitivities". What could be those sensitivities?

This sentence as written was not clear; it was not intended to refer to any specific climate sensitivities. We have removed the last part of the sentence as it doesn't add anything.

Line 415, Equation (5) shows that for a restoration value of 100%, the value of 'actual' equals to that of RCP, which should indicate no restoration. But the authors state that a value of 100% indicate perfect restoration. Please check.

We thank the reviewer for identifying this error. We have fixed the equation.

Expanding the Design Space of Stratospheric Aerosol Geoengineering to Include Precipitation-Based Objectives and Explore Trade-offs

Walker Lee¹, Douglas MacMartin¹, Daniele Vioni¹, and Ben Kravitz^{2,3}

¹Sibley School for Mechanical and Aerospace Engineering, Cornell University, Ithaca, NY, USA

²Department of Earth and Atmospheric Science, Indiana University, Bloomington, IN, USA

³Atmospheric Sciences and Global Change Division, Pacific Northwest National Laboratory, Richland, WA, USA

Correspondence: Walker Lee (wl644@cornell.edu)

Abstract. Previous climate modeling studies demonstrate the ability of feedback-regulated, stratospheric aerosol geoengineering with injection at multiple independent latitudes to meet multiple simultaneous temperature-based objectives in the presence of anthropogenic climate change. However, the impacts of climate change are not limited to rising temperatures, but also include changes in precipitation, loss of sea ice, and many more; knowing how a given geoengineering strategy will affect each of these climate metrics is vital to understanding the limits and trade-offs of geoengineering. In this study, we first introduce a new method of visualizing the design space in which desired climate outcomes are represented by 2-D surfaces on a 3-D graph. Surface orientations represent how different injection choices influence that objective, and intersecting surfaces represent objectives which can be met simultaneously. Using this representation as a guide, we present simulations of two new strategies for feedback-regulated aerosol injection, using the Community Earth System Model with the Whole Atmosphere Community Climate Model CESM1(WACCM). The first simultaneously manages global mean temperature, tropical precipitation centroid, and Arctic sea ice extent, while the second manages global mean precipitation, tropical precipitation centroid, and Arctic sea ice extent. Both simulations control the tropical precipitation centroid to within 5% of the goal, and the latter controls global mean precipitation to within 1% of the goal. Additionally, the first simulation over-compensates sea ice, while the second under-compensates sea ice; all of these results are consistent with the expectations of our design space model. In addition to showing that precipitation-based climate metrics can be managed using feedback alongside other goals, our simulations validate the utility of our design space visualization in predicting our climate model behavior under a given geoengineering strategy, and together they help illustrate the fundamental limits and trade-offs of stratospheric aerosol geoengineering.

Copyright statement.

1 Introduction

20 As a supplement to carbon emission reduction and negative emissions, the artificial addition of aerosols into the stratosphere could potentially reduce the effects of climate change by reflecting a small portion of the incoming solar radiation. The theory is corroborated by observed decreases in global mean temperature following large volcanic eruptions (Crutzen, 2006; NRC, 2015; Robock, 2000), and existing aerosol emissions due to anthropogenic activities are also likely offsetting global warming by ~~a small~~ an appreciable amount (Lamarque et al., 2010; Najafi et al., 2015). Climate modeling results
25 agree that the addition of sulfate aerosols into the stratosphere will reduce global mean temperature (~~Robock et al., 2008~~) (Robock et al., 2008; Aswathy et al., 2015; Jones et al., 2020); however, they also show that this method of geoengineering will also influence other climate metrics, affecting not only global mean temperature but also various temperature and precipitation patterns, sea ice extent, stratospheric circulation, and many more. Furthermore, injections at different locations will affect each of these climate variables in different ways (Kravitz et al., 2019). As such, stratospheric aerosol geoengineering is
30 not a “yes or no” problem, but rather a design problem (Kravitz et al., 2016; MacMartin and Kravitz, 2019), and understanding the effects of injections at different locations on different climate variables is vital to mapping the design space.

The experiments of Kravitz et al. (2017) were the first to use multiple SO₂ injection locations to meet multiple climate goals; these simulations, conducted using the Community Earth Systems Model and the Whole Atmosphere Community Climate Model, or CESM1(WACCM), aimed to simultaneously manage global mean temperature (T_0), interhemispheric temperature
35 gradient (T_1), and equator-to-pole temperature gradient (T_2), to varying degrees of effect. The choice to manage T_1 was motivated by a desire to not shift the ITCZ to the north or south (Haywood et al., 2013); the choice to manage T_2 was motivated by a desire to avoid over-cooling the tropics and under-cooling the poles, as seen in previous simulations of solar reduction (Govindasamy and Caldeira, 2000) or equatorial injection (e.g., Kravitz et al., 2019). While the chosen objectives for that study represent important climate goals, a single set of temperature-based objectives does not capture all of the metrics
40 of interest. One study successfully controlled the extent of Arctic sea ice using injections at a single latitude (Jackson et al., 2015), and other studies have used prescribed solar dimming as a proxy for sulfate geoengineering to govern precipitation-based climate metrics (MacMartin et al., 2014; Kravitz et al., 2016). However, no study ~~has thus far controlled for precipitation in a simulation of thus far has demonstrated that global or regional precipitation can be controlled using feedback-regulated sulfate aerosol injection, and sea ice has not been managed~~ no study has attempted to govern sea ice extent alongside other
45 climate metrics as part of a multi-latitude, multi-objective geoengineering strategy. Since these possibilities have never been explored, it is unclear whether such non-temperature-based climate metrics are viable candidates for regulation in simulations of stratospheric aerosol injection; additionally, if one were to attempt to control them, it is unclear what the effect would be on other climate variables of interest, and this is the driving motivation behind our study.

The aims of this study are twofold. Firstly, to develop a better understanding of how attempting to meet one climate goal via stratospheric aerosol injection will influence other climate variables, we develop a visual model based on prior
50 CESM1(WACCM) simulations ~~in which different climate metrics~~. As we will discuss in Sect. 2, the geoengineering design space can be characterized in terms of choices for the SO₂ injection rates at several latitudes; the latitudes used in this study

provide three degrees of freedom. Any specific climate goal can be approximated as requiring a linear combination of these three degrees of freedom. Therefore, we can visualize these requirements on a 3-D graph where the three axes represent the three degrees of freedom and combinations of injection which will meet a given climate goal are represented by 2-D surfaces on a 3-D 2-D surface on the graph. The orientation of each surface represents how that metric responds to different modes of injection, and intersecting surfaces indicate climate objectives which can be met simultaneously; in. In developing this model, we consider not only the three temperature-based metrics of the GLENS study (T_0 , T_2 , and T_2), but also September Arctic sea ice (SSI) and two precipitation metrics introduced here: global mean precipitation (P_0), and the ITCZ, which we represent by the precipitation centroid between 20S and 20N, a better proxy than T_1 (Donohoe et al., 2013; Frierson and Hwang, 2012). Rather than use a temperature-based proxy for the ITCZ as in Kravitz et al. (2017), we compute the location of the ITCZ directly using tropical precipitation as in Donohoe et al. (2013) and Frierson and Hwang (2012); specifically, we define the ITCZ as the centroid of precipitation between 20° S and 20° N latitude. Technical background regarding the geoengineering design space is provided in Section Sect. 2, and we present our visualization in Section Sect. 3. The second aim of this study is to present two CESM1(WACCM) simulations of new geoengineering strategies in which we meet multiple climate objectives simultaneously via injections at multiple locations. These simulations illustrate the utility of our design space model by demonstrating whether certain objectives are mutually attainable and how pursuing certain objectives will influence other climate metrics, both in a manner consistent with our design space model's expectations. Additionally, our simulations demonstrate that feedback-regulated, multi-latitude aerosol injection strategies extend to precipitation-based objectives, and that non-temperature-based metrics, such as precipitation and sea ice, can be controlled alongside temperatures as part of a multi-objective strategy in CESM1(WACCM). We describe our simulation design process in Section Sect. 4. Sections 5 and 6 describe the climate model and feedback algorithms used in our simulations, respectively. We present the results of our simulations in Section Sect. 7, and in Section Sect. 8, we conclude by discussing the implications of our study on the fundamental limits and trade-offs of geoengineering, as well as the possibilities of future work.

75 2 Design Space Background

We consider three degrees of freedom that can be achieved through adjusting injection rates across multiple latitudes (MacMartin et al., 2017): firstly, injecting at any latitude will increase global mean AOD. Secondly, injecting in one hemisphere will preferentially increase AOD in that hemisphere as opposed to the other one. Lastly, injecting closer to the poles will preferentially increase AOD further from the equator, and vice versa. In order to elegantly quantify all three degrees of freedom, it is common within the literature (Ban-Weiss and Caldeira, 2010; MacMartin et al., 2013; Kravitz et al., 2016; MacMartin et al., 2017) to approximate AOD with a truncated Legendre decomposition; this breaks down zonal mean AOD into an ℓ_0 component (representing the global mean), an ℓ_1 component (representing the hemispheric imbalance), and an ℓ_2 component (representing

the equator/pole imbalance). We provide formulae for these components in Equations 2-4, where AOD_{zm} represents the zonal mean AOD. The projection of a function $f(x)$ onto a Legendre polynomial $L_i(x)$ is defined by Eq. 1 as follows:

$$85 \quad \ell_i(x) = \frac{\int_{-1}^1 f(x)L_i(x)dx}{\int_{-1}^1 L_i^2(x)dx} \quad (1)$$

Here we let $x = \sin(\phi)$, where ϕ represents latitude, and dA therefore integrate from 90° S to 90° N latitude with respect to dA , where dA represents an infinitesimal change in surface area. The first three Legendre polynomials are given by $L_0 = 1$, $L_1 = x$, and $L_2 = (3x^2 - 1)/2$; with $x = \sin(\phi)$, these become $L_0 = 1$, $L_1 = \sin(\phi)$, and $L_2 = (3\sin^2(\phi) - 1)/2$, respectively. Therefore, the projections of zonal mean AOD (abbreviated AOD_{zm}) onto the first three Legendre polynomials are given by the following equations:

$$90 \quad \ell_0 = \frac{\int_{-90}^{90} AOD_{zm}(\phi)L_0 dA}{\int_{-90}^{90} L_0^2 dA} = \frac{\int_{globe} AOD_{zm}(\phi) dA}{\int_{globe} dA} \quad (2)$$

$$\ell_1 = \frac{\int_{-90}^{90} AOD_{zm}(\phi)L_1 dA}{\int_{-90}^{90} L_1^2 dA} = \frac{\int_{globe} AOD_{zm}(\phi) \sin(\phi) dA}{\int_{globe} \sin^2(\phi) dA} \quad (3)$$

$$\ell_2 = \frac{\int_{-90}^{90} AOD_{zm}(\phi)L_2 dA}{\int_{-90}^{90} L_2^2 dA} = \frac{\int_{globe} AOD_{zm}(\phi) \left(\frac{3}{2} \sin^2(\phi) - \frac{1}{2}\right) dA}{\int_{globe} \left(\frac{3}{2} \sin^2(\phi) - \frac{1}{2}\right)^2 dA} \quad (4)$$

Simultaneous injections at multiple latitudes allows for semi-independent control over multiple degrees of freedom, and thus the ability to meet multiple climate goals simultaneously. While aerosols can be injected at any latitude (Dai et al., 2018), combinations of injections at only $30N, 15N, 15S,$ and $30S$ 30° N, 15° N, 15° S, and 30° S are sufficient to modify all three of these degrees of freedom at once (MacMartin et al., 2017). Injecting equal amounts at $15N$ and $15S$ 15° N and 15° S increases global mean AOD without substantially affecting the hemispheric imbalance or the equator/pole imbalance, thus producing only ℓ_0 . Injecting at $15N$ and $30N$ (or $15S$ and $30S$) 15° N and 30° N (or 15° S and 30° S) increases the global mean while also preferentially increasing the AOD in one hemisphere, thus producing $\ell_0 \pm \ell_1$. Finally, injecting at $30N$ and $30S$ 30° N and 30° S increases global mean AOD while also preferentially increasing AOD towards the poles, thus producing $\ell_0 + \ell_2$. The injection quantities (in teragrams) required to produce the desired AOD in CESM1(WACCM), first quantified by MacMartin et al. (2017), are given here in Equation Eq. 5; in this study, we will consider ℓ_0 , ℓ_1 , and ℓ_2 to be the “control knobs” which we can adjust in order to meet our desired climate objectives, and injections at $30N, 15N, 15S,$ and $30S$ 30° N, 15° N, 15° S, and 30° S are the means by which we adjust them. This four-latitude, three-DOF representation of the design space is not unique, nor is it necessarily the “best” possible representation or even a complete representation of the design space; ℓ_1 and ℓ_2 are not the only ways to represent the hemispheric imbalance or the equator/pole imbalance, merely convenient ones prevalent in the literature. The actual relationships between injection rates and ℓ_0 , ℓ_1 , and ℓ_2 approximated in Equation Eq. 5 are not perfectly

linear, and this nonlinearity produces complications which we will address later on. Additionally, the ℓ_0 - ℓ_1 - ℓ_2 representation
 110 neglects any higher-order patterns in zonal mean AOD that are not captured by mapping onto a second-order polynomial, as
 well as all zonal and seasonal dependence. Despite these shortcomings, however, this choice of representation is an elegant
 way of capturing all three primary degrees of freedom that allows us to easily translate injection quantities at the four given
 latitudes into their effects on AOD. The implications of these approximations, and ways in which further research will improve
 this representation, are further discussed in [Section Sect. 8](#). Additionally, we note that the relationships quantified in Equation
 115 5 are unique to CESM1(WACCM); while we expect the general idea to be robust (for example, injecting at [15N and 30N](#) [15°](#)
[N and 30° N](#) should produce ℓ_0 and ℓ_1 in any climate model), the quantities of AOD produced when injecting at a specific
 latitude will vary between models.

$$\begin{bmatrix} q_{30S} \\ q_{15S} \\ q_{15N} \\ q_{30N} \end{bmatrix} = \begin{bmatrix} 20\ell_1^S + 40\ell_2 \\ 30(\ell_0 - \ell_1^N - \ell_1^S - \ell_2) + 45\ell_1^S \\ 30(\ell_0 - \ell_1^N - \ell_1^S - \ell_2) + 45\ell_1^N \\ 20\ell_1^N + 40\ell_2 \end{bmatrix} \quad \text{where} \quad \begin{aligned} \ell_1^N &= \max(\ell_1, 0) \\ \ell_1^S &= \max(-\ell_1, 0) \end{aligned} \quad (5)$$

While it is theoretically possible to conduct a geoengineering simulation which simultaneously meets multiple climate objec-
 120 tives by predicting in advance the injection rates necessary to achieve them, the trial-and-error process of precisely quantifying
 those injection rates in the presence of uncertainties and nonlinearities would likely be prohibitively expensive computation-
 wise. This problem can be addressed through the application of a feedback algorithm, which monitors the behaviors of the
 relevant climate metrics and adjusts the injection rates mid-simulation as necessary. The application of such an algorithm
 manages uncertainty, making it significantly easier to employ a design-based strategy: rather than specifying injection rates,
 125 we choose the desired climate goals, and the feedback algorithm determines the injection rates needed to accomplish those
 goals (Kravitz et al., 2014). The first study to combine multi-latitude injection with feedback regulation was conducted in 2017
 (Kravitz et al., 2017; MacMartin et al., 2017) and duplicated in a large ensemble of simulations to produce the GLENS (Geo-
 engineering Large ENSEMBLE) project (Tilmes et al., 2018). As discussed in [Section Sect. 1](#), these experiments used injections
 at [30N, 15N, 15S, and 30S](#) [30° N, 15° N, 15° S, and 30° S](#) to regulate global mean temperature T_0 while simultaneously
 130 preserving both the hemispheric temperature imbalance T_1 and the equator-to-pole temperature imbalance T_2 . In addition to
 accounting for multiple important climate variables, this combination of objectives was ideal because the influences of each de-
 gree of freedom on each of the three metrics form a matrix of full rank: T_0 responds primarily to changes in ℓ_0 but is relatively
 unaffected by changes in ℓ_1 or ℓ_2 , T_1 responds to changes in ℓ_0 and ℓ_1 but is largely unaffected by ℓ_2 , and T_2 is influenced by
 changes in all three degrees of freedom. Therefore, the three climate variables could be controlled using a three-step process
 135 (described originally by Kravitz et al. (2016), using similar patterns of solar reduction): after every year of simulation, the
 feedback algorithm adjusts ℓ_0 to correct T_0 , then adjusts ℓ_1 to correct T_1 , and then adjusts ℓ_2 to correct T_2 . After determining
 the appropriate changes to each degree of freedom, the algorithm would then prescribe injection rates according to Equation 5.
 As such, by adjusting all three degrees of freedom independently, the simulations induced changes in all three of the targeted
 climate metrics.

140 The GLENS simulations were able to affect substantial changes to all three of the targeted climate metrics, but while they returned T_0 and T_1 to their target values, they were unable to completely offset climate-change-induced changes in T_2 . This happened because while the three degrees of freedom are independent on paper, in practice, they are constrained. Because aerosols cannot be artificially removed from the stratosphere, only added to it, it is impossible to increase the hemispheric imbalance or equator/pole imbalance except by adding more aerosols in the appropriate location; in other words, it is impossible to increase ℓ_1 or ℓ_2 without also increasing ℓ_0 . This ~~results in a~~ was first shown by MacMartin et al. (2017), who demonstrated that injecting at 30° N and 15° N to increase ℓ_1 would also increase ℓ_0 by a comparable amount, and that injecting at 30° N and 30° S to increase ℓ_2 would also increase ℓ_0 by a comparable amount. This results in an effective constraint on the controller, ~~which we approximate~~ approximated by the equation $\ell_0 \geq |\ell_1| + |\ell_2|$, ~~and the relationships between injection rates and AOD expressed in Eq. 5 only hold when the constraint equation is satisfied.~~ In the case of GLENS, the ℓ_0 , ℓ_1 , and ℓ_2 necessary to simultaneously manage T_0 , T_1 , and T_2 violated this inequality, and so the feedback algorithm could not regulate all three; since the controller was programmed to prioritize ℓ_0 first, ℓ_1 second, and ℓ_2 last, the controller chose to produce the “correct” amounts of ℓ_0 and ℓ_1 , but to underproduce ℓ_2 . As a result, the simulation met its goals of managing T_0 and T_1 , but could not return T_2 to its target value. These results demonstrate that the constraint on AOD distribution presents a significant barrier to the simultaneous achievement of multiple climate objectives, especially considering the nonlinearities present in the production of AOD; the approximation equation of $\ell_0 \geq |\ell_1| + |\ell_2|$ holds well at low injection rates, but the true constraint becomes more restrictive at higher injection rates (Visoni et al., 2020a). Additionally, while injecting at more or different latitudes may make it possible to move beyond this constraint (for example, injecting at higher latitudes may produce a ratio of more ℓ_2 to less ℓ_0), these possibilities have not yet been fully explored, and are further discussed in ~~Section~~ Sect. 8.

3 Visualizing the Design Space

160 In this study, we consider the same geoengineering injection scheme established by MacMartin et al. (2017) and Kravitz et al. (2017) and used in the GLENS study: injections at four latitudes (~~30S, 15S, 15N, and 30N~~ 30° S, 15° S, 15° N, and 30° N) are used to adjust three degrees of freedom (ℓ_0 , ℓ_1 , and ℓ_2) within the boundaries of the controller constraint $\ell_0 \geq |\ell_1| + |\ell_2|$ to influence desired climate objectives in CESM1(WACCM) simulations. Herein we consider six possible choices for these objectives (T_0 , T_1 , T_2 , P_0 , ITCZ, and SSI), but this approach could be extended to other metrics as well. We now present our visualization of the design space as a 3-D graph representing achievable linear combinations of ℓ_0 , ℓ_1 , and ℓ_2 , with each degree of freedom mapped to one axis. Climate objectives of interest are represented within this 3-D space as 2-D surfaces showing the possible combinations of AOD that would be required to meet each one in CESM1(WACCM). Such a visualization allows us to easily identify sets of climate goals which can be met simultaneously; if two (or more) surfaces intersect, the combination of ℓ_0 , ℓ_1 , and ℓ_2 represented by the location of the intersection will meet all of those objectives at once. If two surfaces do not intersect, there is no combination of ℓ_0 , ℓ_1 , and ℓ_2 achievable with the 4-latitude injection scheme that will meet those goals simultaneously, indicating that those climate goals are, for the chosen injection locations, mutually exclusive design choices in this climate model.

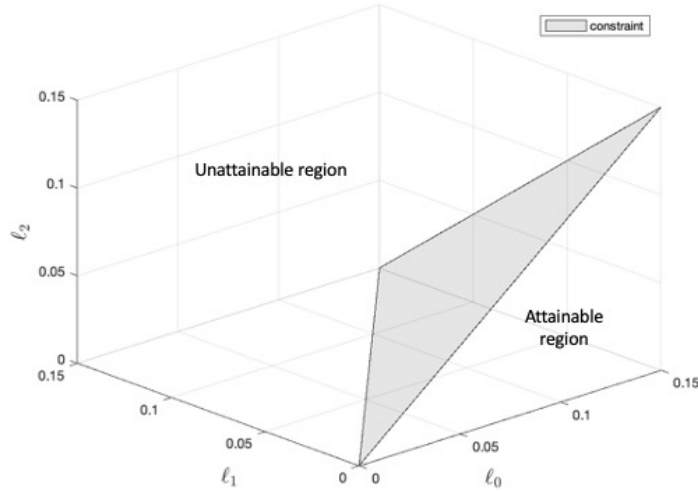


Figure 1. Graph of the geoengineering design space, with the axes representing the ℓ_0 , ℓ_1 , and ℓ_2 injected per degree of global warming. The triangle represents the approximated constraint of $\ell_0 \geq |\ell_1| + |\ell_2|$; subject to nonlinearities affecting the constraint, points on or underneath the triangle can be reached by choosing the injection rates at some or all of [30S30° S](#), [15S15° S](#), [15N15° N](#), and [30N30° N](#).

We begin by plotting the constraint of $\ell_0 \geq |\ell_1| + |\ell_2|$, which bounds the attainable region of AOD with the choices of injection latitudes used herein. On our 3-D graph of the ℓ_0 - ℓ_1 - ℓ_2 space, this constraint manifests as a triangle (see [Figure Fig. 1](#)); any point on or underneath the triangle represents an AOD that is achievable using the GLENS injection scheme, while any point above the triangle represents a combination of ℓ_0 , ℓ_1 , and ℓ_2 that violates the controller constraint and therefore cannot be reached by injecting only at the four chosen latitudes. However, recall that the relationship between AOD requested by the controller and AOD produced, while modeled as linear in [Equation Eq. 5](#), is actually not perfectly linear; as such, some points in the attainable region very close to the constraint may not actually be attainable in CESM1(WACCM), especially at high injection rates.

We now begin to introduce surfaces to the design space graph to represent different climate objectives. Each surface shows all combinations of AOD achievable with the GLENS injection scheme that will meet that objective; therefore, all surfaces presented here will be placed in the “attainable region” of ℓ_0 - ℓ_1 - ℓ_2 space shown in [Figure Fig. 1](#). In this study, we define one climate objective for each of the six chosen metrics, which is to restore that metric to its average value during the years 2010-2030 of the RCP8.5 simulations of Tilmes et al. (2018), averaged across all ensemble members. MacMartin et al. (2017) approximated that T_0 , T_1 , and T_2 respond linearly to small changes in ℓ_0 , ℓ_1 , or ℓ_2 near their respective reference values; we make the same approximation for our three new metrics. As such, all of the six climate goals can be met with linear combinations of ℓ_0 , ℓ_1 , and ℓ_2 , and therefore each surface considered in this study will manifest as a plane defined by an equation of the form $\alpha\ell_0 + \beta\ell_1 + \gamma\ell_2 = \delta$. The right-hand side, δ , represents the desired change in the climate metric, and α , β ,

Table 1. Surface equation components for six climate metrics (significant digits are based on standard error). α , β , and γ represent metric responses to changes in ℓ_0 , ℓ_1 , and ℓ_2 , respectively; bolded numbers indicate dominant sensitivities, and those given in italics are approximated as negligible. δ represents the change in each metric per degree of warming required to restore that metric to its 2010-2030 average under RCP8.5. The surface equation is defined by $\alpha\ell_0 + \beta\ell_1 + \gamma\ell_2 = \delta$, with any italicized sensitivities replaced by 0.

Metric	$\alpha(\ell_0^{-1})$	$\beta(\ell_1^{-1})$	$\gamma(\ell_2^{-1})$	$\delta(^{\circ}\text{C}^{-1})$	Surface Equation, approx. (per $^{\circ}\text{C}$ global warming)
T_0 (K)	-6.66	<i>-1.1</i>	<i>-1.60</i>	-1	$\ell_0 = 0.15$
P_0 ($\frac{\text{mm}}{\text{day}}$)	-0.601	<i>-0.05</i>	<i>-0.056</i>	<i>-0.059</i>	$\ell_0 = 0.10$
ITCZ ($^{\circ}\text{lat}$)	<i>-0.002</i>	-3.5	<i>-0.5</i>	-0.09	$\ell_1 = 0.02$
T_1 (K)	-2.43	-3.7	<i>-0.76</i>	-0.47	$2.4\ell_0 + 3.7\ell_1 = 0.47$
SSI (10^6 km^2)	14.9	9.3	5.59	2.26	$14.9\ell_0 + 9.3\ell_1 + 5.59\ell_2 = 2.26$
T_2 (K)	-2.29	-2.0	-2.49	-0.64	$2.29\ell_0 + 2.0\ell_1 + 2.49\ell_2 = 0.64$

190 and γ denote the respective sensitivities of the metric to changes in ℓ_0 , ℓ_1 , or ℓ_2 , respectively (i.e. the orientation of the plane). Therefore, each term in the left-hand side of the equation represents the change in the metric caused by one degree of freedom, and when those three changes sum to the total desired change, the objective is satisfied.

To estimate α , β , and γ for each metric, we examine the behavior of each metric in multiple past simulations and fit a linear regression model to the change in that metric (relative to RCP8.5) as a function of the ℓ_0 , ℓ_1 , and ℓ_2 present in that simulation. 195 We used three different data sets in order to obtain linearly independent combinations of ℓ_0 , ℓ_1 , and ℓ_2 . We use years 2075-2095 of the GLENS study (Tilmes et al., 2018), years 2075-2095 of a simulation in which global mean temperature was regulated via equatorial injection (Kravitz et al., 2019), and the years 2044-2049 in six simulations (Tilmes et al., 2017; MacMartin et al., 2017) in which aerosols were injected at constant rates at prescribed latitudes (12 Tg SO_2 per year at each of ~~15N, 15S, 30N, 30S; 30N and 15N~~ 15 $^{\circ}$ N, 15 $^{\circ}$ S, 30 $^{\circ}$ N, 30 $^{\circ}$ S; 30 $^{\circ}$ N and 15 $^{\circ}$ N together; and ~~30S and 15S~~ 30 $^{\circ}$ S and 15 $^{\circ}$ S together; and 6 200 Tg SO_2 per year at all four latitudes together). We treat each year of simulation as an independent sample, which yields 519 data points: 420 from GLENS (21 years of simulation times 20 ensemble members), 63 from the equatorial injection study (21 years of simulation times 3 ensemble members), and 36 from the prescribed-latitude injection study (6 years of simulation times 6 simulations). Fitting a linear regression model to the change in each metric relative to RCP8.5 during each year of simulation as a function of the ℓ_0 , ℓ_1 , and ℓ_2 present in that year yields our estimates for α , β , and γ , which we present in Table 205 1.

Uncertainty in these estimates arises both through natural variability and due to limitations of the data sources used in this analysis. The equatorial injection study injected at a latitude other than the four used in the GLENS scheme, and the prescribed-latitude injection simulations were only 10 years long; we discard the initial 4 years to avoid the initial transient (see MacMartin et al., 2017), but the climate response will still not yet be in steady-state over the remaining six years. The 210 prescribed-latitude simulations were also conducted using an earlier version of the land model (CLM4 rather than CLM4.5); ~~which may have affected some sensitivities~~. We also observe that our sensitivity estimates for temperature-based metrics are different from those of MacMartin et al. (2017). The discrepancies are likely due to the difference in the quantity of data

available; the estimates of MacMartin et al. (2017) were based solely on 10-year simulations in which the climate response had not yet converged, and it is therefore likely that they underpredicted the climate response. This is consistent with the signs of the differences in our estimates; our estimates for the dominant sensitivities of T_0 , T_1 , and T_2 are approximately 20% larger, two to three times larger, and four to five times larger than those of MacMartin et al. (2017), respectively. While the differences are not trivial, we present these calculations not to establish the ground truth of how much each metric changes in the presence of aerosols, but rather to demonstrate the process of creating our design space visualization and feedback algorithms by showing that certain degrees of freedom in AOD have much greater effects on certain metrics than others. Ultimately, our calculations allow us to draw the same conclusions regarding the relative sizes of sensitivities of climate metrics to AOD as those drawn by MacMartin et al. (2017) (i.e. that, for example, T_0 depends primarily on ℓ_0), and as our results will show in [Section Sect. 7](#), the sensitivities do not need to be perfect estimates as long as they are close enough for the feedback algorithm to converge.

For each metric, δ in Table 1 represents the change in that metric necessary to return that metric from its 2075-2095 RCP8.5 condition to its 2010-2030 reference condition. In order to make the surfaces agnostic to the amount of warming in the background scenario, we normalize δ by the amount of warming in RCP8.5 by the 2075-2095 period, which averages to 4.05°C . Therefore, by definition, $\delta = -1$ for T_0 , as the goal is to offset exactly 1°C of T_0 for each 1°C of global warming. For other metrics, such as the ITCZ, the δ value of -0.09 indicates that, in order to satisfy the ITCZ objective, the aerosols need to push the ITCZ south by 0.09 degrees latitude for each 1°C of global warming in the background scenario. The exception to the rule is SSI; while we approximate that SSI responds linearly to small changes in forcing near its reference value, the desired change in SSI is only proportional to the required changes in forcing up until SSI drops to zero around the year 2040. After this point, the desired change in SSI remains constant, but since the background warming continues to increase, the amount of forcing required to restore SSI to its reference condition also continues to increase. Therefore, the difference between the SSI reference value and the 2075-2095 RCP8.5 average SSI of zero does not accurately reflect the forcing required to restore SSI to its reference condition during the 2075-2095 period. To adjust for this, instead of using 0 for the RCP 8.5 value of SSI in 2075-2095, we extrapolate from the behavior of sea ice during the linear region of 2020-2040 in GLENS and compute the value SSI would have in 2075-2095 if it were allowed to drop below zero, which is approximately $-6.7 \times 10^6 \text{ km}^2$. While a negative amount of sea ice is obviously nonphysical, the amount of forcing required to restore sea ice is now proportional to the desired “change,” and as our results will demonstrate, this method permits us to accurately estimate the forcing required to restore SSI to its reference value.

With all four unknowns calculated, we can write the equation for each surface by setting $\alpha\ell_0 + \beta\ell_1 + \gamma\ell_2 = \delta$, as shown in the last column of Table 1. However, as discussed earlier, the feedback algorithms of Kravitz et al. (2017) neglected small sensitivities; for example, MacMartin et al. (2017) estimated the influence of ℓ_0 on T_0 to be an order of magnitude larger than the respective influences of ℓ_1 and ℓ_2 , and therefore neglected the latter. This approximation greatly simplified the design process of their feedback algorithm, and as demonstrated by their results, the uncertainty reduction provided by the application of feedback was sufficient to compensate for the errors introduced by the approximation. Therefore, when writing our surface equations in the last column of Table 1, we make the same approximation: since MacMartin et al. (2017) and Kravitz et al. (2017) safely neglected the influences of ℓ_1 and ℓ_2 on T_0 , and we compute those sensitivities to be at least four times smaller

than that of ℓ_0 , we neglect any sensitivities which are at least four times smaller than the dominant influence. For example, we estimate the influence of ℓ_1 on the ITCZ ($\beta = 0.35$ degrees per unit ℓ_1) to be seven times as large as the influence of ℓ_2 ($\gamma = 0.05$ degrees per unit ℓ_2) and several orders of magnitude larger than the influence of ℓ_0 ($\alpha = -0.002$ degrees per unit ℓ_0). We indicate this in Table 1 by bolding the dominant sensitivity and italicizing the neglected ones, and when writing the ITCZ surface equation in the last column of Table 1, we approximate that the ITCZ depends only on ℓ_1 and does not respond at all to changes in ℓ_0 or ℓ_2 . Similarly, we approximate T_0 as only depending on ℓ_0 , T_1 as depending on ℓ_0 and ℓ_1 , and T_2 as depending on all three degrees of freedom, which are the same approximations made by the GLENS study (MacMartin et al., 2017). We also approximate P_0 as depending only on ℓ_0 , and SSI as depending on all three. Like in Kravitz et al. (2017) and MacMartin et al. (2017), these approximations will greatly simplify the design of the feedback algorithms we will present in Section Sect. 6, and as our results will show in Section Sect. 7, the inherent uncertainty reduction of feedback is sufficient to compensate for the errors introduced by the approximations. Additionally, simplifying the equations substantially increases the visual clarity of our design space model without changing any of the core results (i.e. whether two surfaces intersect, and where).

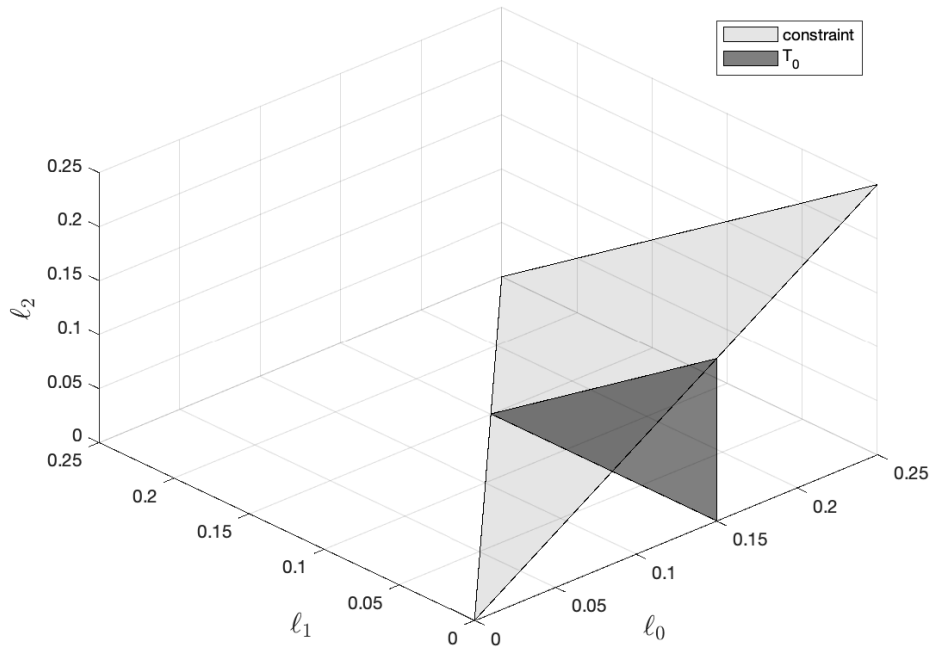


Figure 2. The geoengineering design space. The dark triangle representing T_0 , given by the equation $\ell_0 \approx 0.15$, represents all achievable combinations of AOD that will return T_0 to its reference condition.

We will now add the surfaces represented by the equations in the last column of Table 1 to the design space graph. In Figure Fig. 2, we add a dark gray surface representing global mean temperature (T_0). As shown in Table 1, T_0 is dominantly dependent

on ℓ_0 and largely independent of the other two degrees of freedom; as such, we approximate the T_0 surface as a plane normal to the ℓ_0 -axis with the equation $\ell_0 \approx 0.15$ per $^{\circ}\text{C}$ of warming (had we incorporated the estimated dependencies on ℓ_1 and ℓ_2 into the orientation of the surface, the surface would have a slight “tilt” relative to the ℓ_0 plane). Bounding the plane with the AOD constraint produces a triangle, shown in [Figure Fig. 2](#). This triangle represents all of the combinations of AOD in the achievable design space that will control T_0 ; hypothetically, any point on the triangle – that is, any pattern of AOD with $\ell_0 \approx 0.15$ per $^{\circ}\text{C}$ of warming – will restore T_0 . Any point closer to the origin ($\ell_0 < 0.15/^{\circ}\text{C}$) will under-compensate global mean temperature, leaving residual warming, while any point beyond the surface ($\ell_0 > 0.15/^{\circ}\text{C}$) will over-compensate global mean temperature, causing excess cooling.

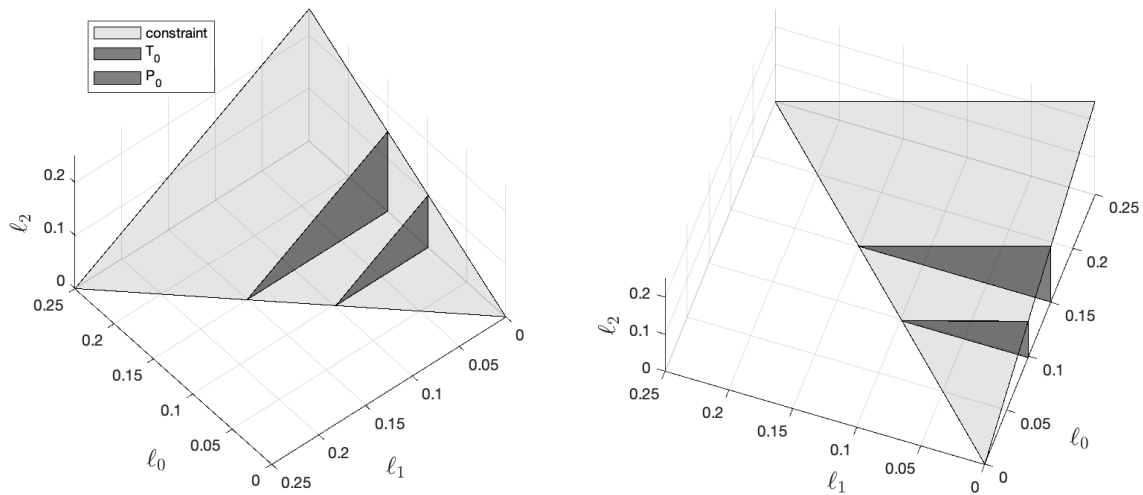


Figure 3. The geoengineering design space (two metrics). We add a second smaller dark triangle to represent AOD combinations that will control P_0 ; the two dark gray surfaces do not intersect, which indicates that T_0 and P_0 cannot be managed simultaneously.

270 In [Figure Fig. 3](#), we add a second dark gray surface to represent global mean precipitation (P_0). Like global mean temperature, P_0 depends primarily on ℓ_0 , and so we will also model the P_0 surface with a plane parallel to the ℓ_0 axis, placed at $\ell_0 = 0.10$ per $^{\circ}\text{C}$ of warming. Because controlling P_0 requires significantly less ℓ_0 than managing T_0 does, the surfaces for T_0 and P_0 do not intersect (this would still be true if the small ℓ_1 and ℓ_2 dependencies were incorporated into both surfaces). This indicates that it is not possible to control both metrics simultaneously, which is consistent with our understanding that

275 [global mean temperature and global mean precipitation cannot be managed at the same time using stratospheric sulfate aerosol geoengineering; while a mixed strategy utilizing both aerosol injection and cirrus cloud thinning may be successful at managing both variables \(Cao et al., 2017\), an approach using only stratospheric sulfate aerosol injection cannot simultaneously restore global mean temperature and global mean precipitation to the same pre-warming levels \(Bala et al., 2008; Tilmes et al., 2013; Kravitz et al., 2013\).](#)

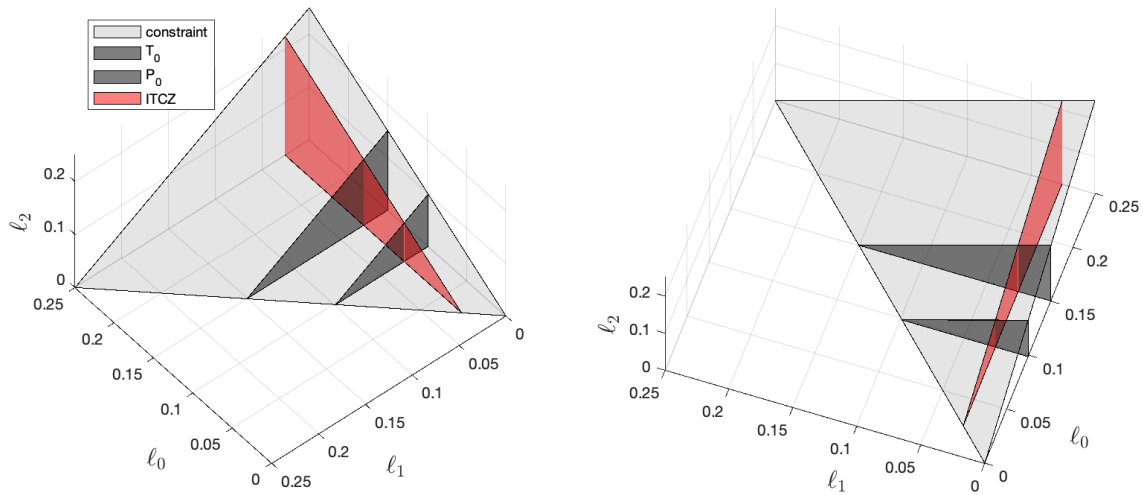


Figure 4. The geoengineering design space (three metrics). The red triangle represents AOD combinations that will control the ITCZ; unlike T_0 and P_0 , which depend primarily on ℓ_0 , the ITCZ is primarily influenced by ℓ_1 . Intersections between surfaces indicate AOD combinations that can manage multiple metrics simultaneously.

280 In [Figure Fig. 4](#), we add another surface to the graph: the red triangle represents all possible combinations of AOD that will manage the ITCZ. Unlike the metrics T_0 and P_0 , which have dominant dependencies on global mean AOD, the position of the ITCZ is influenced primarily by the hemispheric AOD distribution (Haywood et al., 2013), and so the surface is normal to the ℓ_1 -axis instead of the ℓ_0 -axis. Placed at $\ell_1 \approx 0.02$ per $^{\circ}\text{C}$ of warming, the red triangle intersects with both the T_0 and P_0 surfaces; these intersections indicate that it is possible to manage both the ITCZ and either of the ℓ_0 -dependent metrics at the
 285 same time. The AOD combinations necessary to accomplish this are given by the locations of the intersections on the graph; the T_0 and ITCZ triangles intersect at the vertical line [$\ell_0 \approx 0.15$, $\ell_1 \approx 0.02$], and so a geoengineering strategy with $\ell_0 \approx 0.15$ and $\ell_1 \approx 0.02$ (per $^{\circ}\text{C}$ of warming) will successfully control both metrics, regardless of ℓ_2 . Likewise, a strategy with $\ell_0 \approx 0.10$ and $\ell_1 \approx 0.02$ (per $^{\circ}\text{C}$ of warming) will manage both P_0 and the ITCZ simultaneously.

In [Figure Fig. 5](#), we add a blue surface to the graph representing T_1 . Like the ITCZ, T_1 responds to changes in ℓ_1 , but unlike
 290 the ITCZ, T_1 also has a substantial dependence on ℓ_0 which cannot be neglected; this is consistent with the observation that T_1 changes under global warming because the northern hemisphere has more land and therefore warms faster than the southern hemisphere (Schneider et al., 2014). While the ITCZ is also expected to shift slightly with climate change, the expected shift is relatively small; as such, while the red ITCZ surface can be approximated as normal to the ℓ_1 -axis, the blue T_1 surface is not perpendicular to either the ℓ_0 - nor the ℓ_1 -axis, but is diagonal on the ℓ_0 - ℓ_1 plane, defined by the equation $2.4\ell_0 + 3.7\ell_1 \approx 0.47$
 295 per $^{\circ}\text{C}$ of warming. The blue triangle intersects with each of the P_0 , T_0 , and ITCZ surfaces, indicating that T_1 could be controlled alongside any one of these three metrics. However, since there is no place where three surfaces intersect together, only two of these metrics can be managed at once. For example, consider the intersection of the dark-gray T_0 triangle and

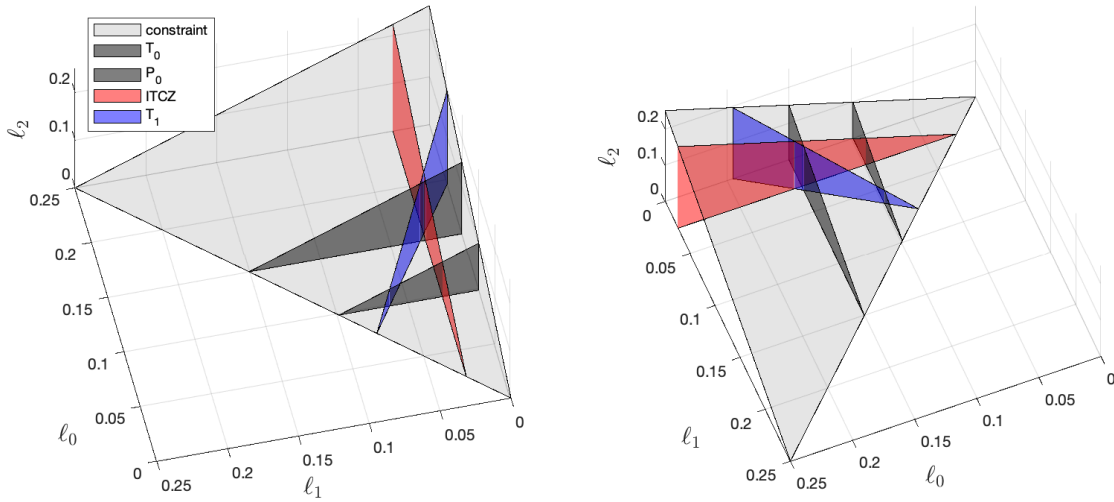


Figure 5. The geoengineering design space (four metrics). The blue triangle represents T_1 , which has substantial dependencies on both ℓ_0 and ℓ_1 , intersecting all three of the previous surfaces at an angle.

the blue T_1 triangle at the vertical line $\ell_0 \approx 0.15$, $\ell_1 \approx 0.03$; the intersection indicates that it is possible to manage T_0 and T_1 concurrently using this combination of AOD. However, this combination requires overcompensating the ITCZ, as an ℓ_1 of 0.03 is more than the 0.02 required to perfectly restore the ITCZ as defined by the red surface. This assertion is validated by the
 300 GLENS study, which produced a similar combination of AOD and successfully managed both T_0 and T_1 but overcompensated the ITCZ by about 50% (see Table 3, [Section Sect. 7](#); note that Kravitz et al. (2019) and Cheng et al. (2019) compute different results from GLENS because they use the global precipitation centroid, which is a poorer proxy for the ITCZ than the tropical precipitation centroid used here). The ability to visualize such mutually exclusive combinations of climate goals illustrates the
 305 power of our model in establishing the fundamental limits and trade-offs of geoengineering, which we will discuss more in [Section Sect. 8](#).

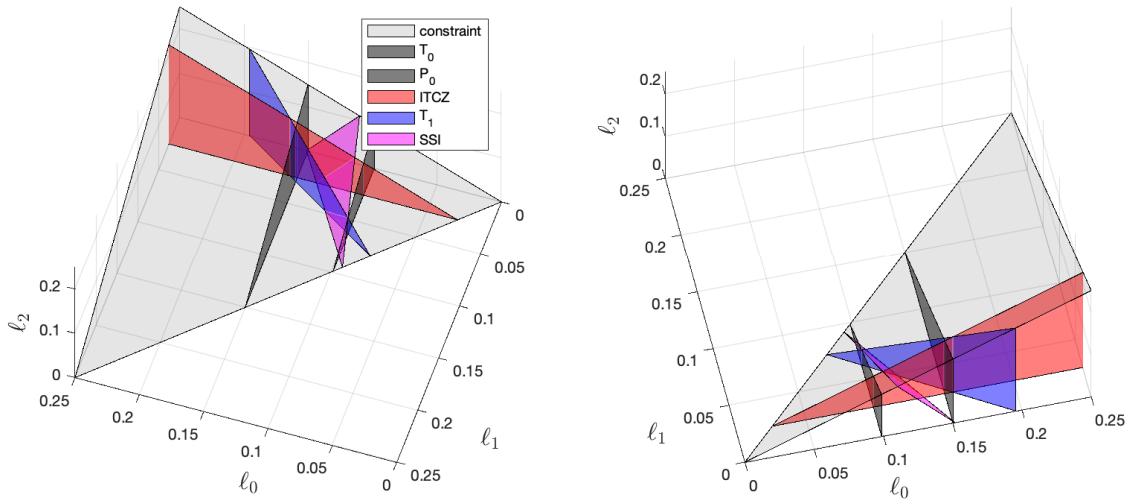


Figure 6. The geoengineering design space (five metrics). The pink triangle, representing SSI, has substantial dependencies on all three degrees of freedom. As the first introduced metric to have a substantial l_2 dependence, observe that the pink triangle has a vertical slant.

Figure 6 introduces a pink triangle, which represents the combinations of AOD that will manage SSI. All three degrees of freedom have significant influences on this climate metric, and therefore the resultant surface, defined by the equation $14.9l_0 + 9.3l_1 + 5.6l_2 \approx 2.26$ per $^{\circ}\text{C}$ of warming, appears slanted rather than perpendicular to any of the axes. The SSI surface intersects with all four of the previous surfaces, indicating that SSI is mutually compatible with any of these climate goals. For example, T_0 and SSI intersect very near to the point $[\ell_0 \approx 0.15, \ell_1 \approx \ell_2 \approx 0]$, indicating that while our T_0 and SSI objectives may be achieved together, this is only possible with very low quantities of ℓ_1 and ℓ_2 ; this is again consistent with the GLENS simulations, which controlled T_0 but overcompensated SSI (Jiang et al., 2019) because they produced non-zero quantities of ℓ_1 and ℓ_2 to manage T_1 and T_2 , respectively. Likewise, P_0 and SSI are also mutually compatible, but the intersection of $[\ell_0 \approx \ell_1 \approx 0.09, \ell_2 \approx 0]$ indicates that nearly all of the forcing would have to be weighted towards the northern hemisphere. This would likely have severe consequences for tropical precipitation, as the ℓ_1 of 0.09 required to accomplish this is much larger than the 0.02 necessary to return the ITCZ to its reference value.

In [Figure Fig. 7](#), we complete our design space model by introducing a green triangle to represent T_2 , the last of the six metrics we consider in this study. Like SSI, T_2 is sensitive to changes in all three AOD degrees of freedom, and we model the green T_2 surface with the equation $2.3l_0 + 2l_1 + 2.5l_2 \approx 0.64$ per $^{\circ}\text{C}$ of warming. The T_2 surface intersects with each of the T_0 , T_1 , and ITCZ surfaces, but the placement of the surface further out along the ℓ_0 -axis indicates that managing T_2 requires significantly more AOD than P_0 or SSI, making T_2 incompatible with either of the latter options. We observe that the T_0 , T_1 , and T_2 surfaces all intersect at the point $[\ell_0 \approx 0.15, \ell_1 \approx 0.03, \ell_2 \approx 0.10]$, which indicates that these three climate goals can be met simultaneously; however, the GLENS simulations attempted to accomplish this but could not completely restore T_2 , only offsetting about 80% of the increase caused by global warming. As such, it appears that at this rate of injection, the nonlinear

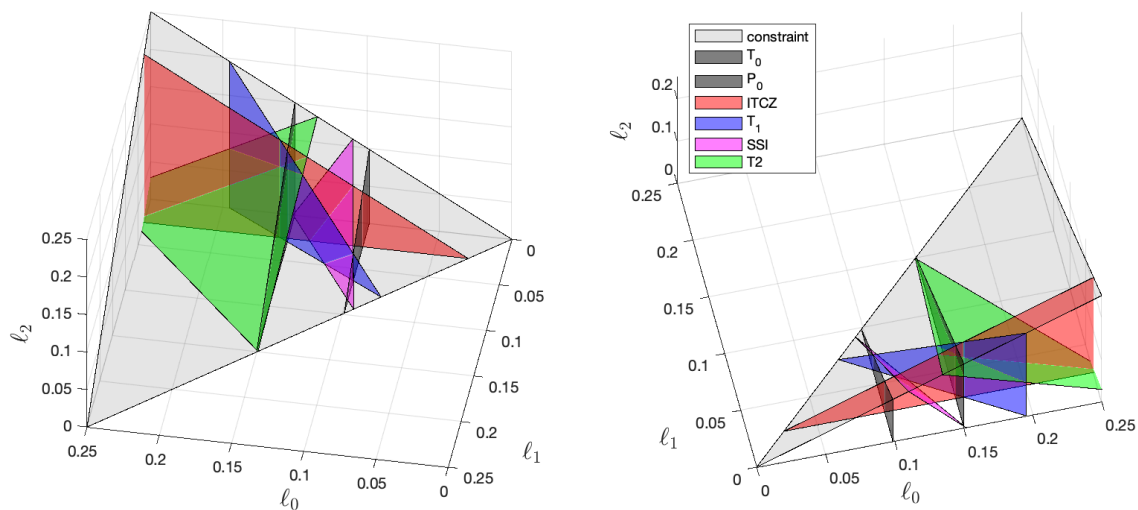


Figure 7. The geoengineering design space (six metrics). The green triangle represents T_2 , the last of the six metrics considered in this study. Like the pink SSI surface, the green T_2 surface depends on all three degrees of freedom.

nature of AOD production makes the true constraint more restrictive than our linear approximation of $l_0 \geq l_1 + l_2$ such that the combination of $l_0 \approx 0.15$, $l_1 \approx 0.03$, $l_2 \approx 0.10$ is actually outside of the attainable region of our design space model. We further discuss the implications of this discrepancy, and ways in which it might be surpassed, in [Sections Sect.s 7 and 8](#).

4 Simulation Design

330 With our design space model fully established, we now introduce simulations of two new feedback-regulated aerosol injection strategies. Like the simulations of GLENS and its predecessor Kravitz et al. (2017), each new simulation we present here attempts to simultaneously manage three climate metrics that depend on all three degrees of freedom. The purpose of these simulations is twofold: firstly, we use our design space visualization to choose climate objectives for each of our simulations, and the simulations validate our model by producing results consistent with the model’s expectations. Secondly, by including
 335 non-temperature-based goals among the climate objectives for each strategy, our simulations demonstrate that we can meet precipitation-based objectives with feedback-regulated SO_2 injection, and that we can manage sea ice alongside other metrics through injections at multiple locations.

Our first simulation attempts to manage T_0 , the ITCZ, and SSI simultaneously, and the second attempts to control P_0 , the ITCZ, and SSI simultaneously. In each case, the feedback algorithm attempts to restore each climate metric to its reference
 340 condition as defined in [Section Sect. 2](#) (the 2010-2030 average of that metric under RCP8.5). Each of these combinations produces a triangular influence matrix similar to that of Kravitz et al. (2017) and GLENS: T_0 and P_0 depend primarily on l_0 , the ITCZ depends primarily on l_1 , and SSI is the only metric in each set to depend on l_2 . As such, just as in Kravitz et al.

(2017), our algorithms will first adjust ℓ_0 based on the behavior of T_0 or P_0 , then adjust ℓ_1 based on the behavior of the ITCZ, and then adjust ℓ_2 based on the behavior of SSI. As shown in Figure Fig. 7, our design space model shows that the T_0 and ITCZ surfaces intersect, and that the P_0 and ITCZ surfaces intersect; therefore, in each case, our visualization predicts that our feedback algorithms can choose combinations of ℓ_0 and ℓ_1 that meet their first two objectives. However, the SSI surface does not coincide with either of these intersections, which means that in both simulations, our design space model predicts that the controller cannot choose an ℓ_2 to satisfy the SSI objective given the ℓ_0 and ℓ_1 already chosen to satisfy the other two. Additionally, based on the relative positioning of the surfaces in Figure Fig. 7, our visualization also predicts the behavior of SSI in each simulation. In the case of the first simulation (T_0 /ITCZ/SSI), the T_0 /ITCZ intersection is located beyond the SSI surface, indicating that the ℓ_0 and ℓ_1 chosen to manage the first two objectives will already produce more than enough forcing to compensate SSI; to minimize the overshoot, our controller will converge to an ℓ_2 of zero, but the simulation will still over-compensate SSI, resulting in more sea ice than the quantity designated by the objective. In the case of the second simulation (P_0 /ITCZ/SSI), the SSI surface is located beyond the P_0 /ITCZ intersection, indicating that there is no achievable quantity of ℓ_2 sufficient to return SSI to the desired value given the ℓ_0 and ℓ_1 chosen to manage the first two objectives. In order to restore as much sea ice as possible, the feedback algorithm will converge to the maximum ℓ_2 permitted by the controller constraint, approximated by $\ell_2 = \ell_0 - \ell_1$; however, the simulation will still under-compensate SSI, resulting in less sea ice than the target value.

Rather than simulate the entire 21st century, as in Kravitz et al. (2017) and Tilmes et al. (2018), both of our simulations begin in 2060 by branching from one of the GLENS runs as in Vioni et al. (2020b), and then run until 2095. Like these studies, we also use RCP8.5 as the background warming scenario; while the extremely high emissions in this scenario result in a large amount of warming, the magnitude of warming gives a strong signal-to-noise ratio, especially at the end of the century, and an emulator could project what the results would be for other warming scenarios (MacMartin et al., 2019). Branching in this way allows us to begin our study late in the century, make use of the high signal-to-noise ratio, and compare our results to those of the GLENS study without using unnecessary computer time to simulate the beginning of the century.

5 Climate Model

In this study, we use the Community Earth System Model version 1 with the Whole Atmosphere Community Climate Model (Mills et al., 2017) as the atmospheric component, or CESM1(WACCM). The model includes POP2 (ocean), CLM4.5 (land), and CICE4 (ice). The model is run at a horizontal resolution of 0.9° latitude by 1.25° longitude, and WACCM has a vertical grid of 70 layers up to an altitude of 145 km (approximately 10^{-6} hPa). As in Tilmes et al. (2018), SO_2 is injected at 30S, 15S, 15N, and 30N, approximately 5 km above the annual-mean tropopause (thus at 25km for 15N/S and 23km for 30N/S). The aerosol component, MAM3 (Liu et al., 2012) uses a trimodal distribution and is fully coupled to both atmospheric chemistry and radiation. The model has been validated against observations after volcanic eruptions (Mills et al. 2016, 2017, using CLM4); the version used here includes the updated land model version CLM4.5 as described in Tilmes et al. (2018). As in Kravitz et al. (2017), injection rates at each latitude are governed by a feedback algorithm which adjusts injection rates annually based

on the deviation of the metrics from their desired values (see [Section Sect. 6](#) for a more detailed description of the feedback algorithms used in this study).

6 Feedback Algorithm Design

Each of the two simulations in this study incorporates a control algorithm, which determines how much aerosol to inject
380 during each year of simulation in order to simultaneously manage three chosen climate metrics. The algorithm applies both
feedforward and feedback; the feedforward consists of estimates made before the simulation of how much AOD will be needed
as a function of time, and the feedback makes small corrections during the simulation based on the actual behavior of the metrics
to account for imperfections in the feedforward. Once the feedforward and feedback determine the appropriate combination
of ℓ_0 , ℓ_1 , and ℓ_2 , the algorithm then computes how much SO₂ to inject at each of [30N, 15N, 15S, and 30S](#) [30° N, 15° N, 15°](#)
385 [S, and 30° S](#) in order to produce that combination using the transformations given by [Equation Eq. 5](#). This section assumes
basic familiarity with feedback control theory; for a more detailed introduction to geoengineering feedback algorithms, we
recommend MacMartin et al. (2017), Kravitz et al. (2017), Kravitz et al. (2016), and MacMartin et al. (2014), who developed
the original algorithms upon which ours are based. For a more general introduction to feedback control, we recommend
Feedback Systems: An Introduction for Scientists and Engineers by Astrom and Murray (Princeton University Press, 2008).

390 The feedforward gains for each simulation prescribe the amounts of ℓ_0 , ℓ_1 , and ℓ_2 to be produced each year based on the
expected AOD needed to manage the three target metrics. As discussed in [Section Sect. 2](#), each climate metric considered here
responds roughly proportionally to small changes in forcing in the area of ℓ_0 - ℓ_1 - ℓ_2 space in which we operate. Since global
warming under RCP8.5 increases proportionally, or nearly proportionally, with time, the AOD required to counteract those
changes will also increase linearly with time. Thus while in general, the feedforward might be a more complicated function of
395 time (e.g., Tilmes et al., 2020), in this study the feedforward can be expressed more simply as three constant gains prescribing
the estimated increases in ℓ_0 , ℓ_1 , and ℓ_2 per year necessary to meet the given climate goals. For each simulation, we compute
these feedforward gains by first estimating the average values of ℓ_0 , ℓ_1 , and ℓ_2 necessary to control the three metrics in the
years 2075-2095 according to our design space model. While the estimates based on our model alone would likely be sufficient
to meet our chosen climate goals alongside the use of feedback, we attempt to further increase the accuracy of the feedforward
400 by compensating for some of the nonlinearities in the production of AOD in order to reduce the burden on the feedback. We do
this by relating the AOD requested by the GLENS controller to the actual AOD produced by the GLENS simulations. Once we
know how much total AOD the controller should request in (on average) the year 2085, we know that we want the controller to
increase linearly towards that amount from zero AOD beginning in 2020, so we divide the 2085 AOD by 65 years to finalize
the feedforward gains. These values are presented below. Note that the gains provided here were based on previous iterations
405 of the design space graph and do not reflect our current best estimates; more information about their derivation is provided in
Appendix B.

The feedback gains for each simulation prescribe adjustments to the ℓ_0 , ℓ_1 , and ℓ_2 to be injected each year based on the
deviation of each metric from its desired state. The algorithms used in this study use proportional-integral feedback, meaning

two distinct corrections are applied: one proportional to the magnitude of the error, and one proportional to the integral of the error over time. As in (Kravitz et al., 2017), the integral feedback gains for each of ℓ_0 , ℓ_1 , and ℓ_2 will equal their respective proportional feedback gains (Kravitz et al., 2016). We wish to achieve the same five-year convergence time as in Kravitz et al. (2016) and 2017; therefore, we use the same feedback gains scaled by the ratio of the appropriate metric sensitivities, which will recover the same behavior. These feedback gains are also presented below. As with the feedforward estimates, those provided here are based on prior sensitivity estimates and do not reflect our current best estimates for the optimal feedback gains to produce the desired convergence time; more information is available in Appendix B.

Table 2. Equations for the ℓ_0 , ℓ_1 , and ℓ_2 to be injected in each year of our simulations. The first term in each equation represents the feedforward; the second and third represent the proportional and integral feedbacks, respectively. Any additional terms represent corrections based on the appropriate metric’s sensitivities to the three degrees of freedom. Only the feedforwards are used during the first five years of simulation; after the first five years, the entire equations are applied.

$T_0/ITCZ/SSI$ (Sim 1)
$\ell_0 = 8.7 \times 10^{-3}(t - 2020) + 0.028(T_0 - T'_0) + 0.028 \int_{2065}^t (T_0 - T'_0)dt$
$\ell_1 = 1.2 \times 10^{-3}(t - 2020) + 0.058(ITCZ - ITCZ') + 0.058 \int_{2065}^t (ITCZ - ITCZ')dt$
$\ell_2 = 2.8 \times 10^{-3}(t - 2020) + 0.019(SSI - SSI') + 0.019 \int_{2065}^t (SSI - SSI')dt - 2\ell_0 - \ell_1$
$P_0/ITCZ/SSI$ (Sim 1)
$\ell_0 = 5.8 \times 10^{-3}(t - 2020) + 0.24(P_0 - P'_0) + 0.24 \int_{2065}^t (P_0 - P'_0)dt$
$\ell_1 = 2.2 \times 10^{-3}(t - 2020) + 0.058(ITCZ - ITCZ') + 0.058 \int_{2065}^t (ITCZ - ITCZ')dt - 0.1\ell_0$
$\ell_2 = 3.6 \times 10^{-3}(t - 2020) + 0.019(SSI - SSI') + 0.019 \int_{2065}^t (SSI - SSI')dt - 2\ell_0 - \ell_1$

For the first five years of simulation, only the feedforward is used; beginning in 2065, the feedforward and feedback corrections are then summed in order to determine how much ℓ_0 , ℓ_1 , and ℓ_2 to inject during the following year, as shown in Table 2; the first term in each equation represents the feedforward, and the second and third terms represent the proportional and integral feedbacks, respectively. Additionally, since ℓ_0 and ℓ_1 affect SSI, we account for those changes by subtracting out factors of the computed ℓ_0 and ℓ_1 based on the relative sensitivities of SSI to each degree of freedom (we do the same for the ITCZ in our second simulation; see the Appendix for more details). As discussed previously, combinations of AOD with $\ell_0 \geq |\ell_1| + |\ell_2|$ are not attainable using the four-latitude injection scheme. Therefore, the controller must prioritize its objectives in the event that it cannot produce the AOD required to meet all of them. The order in which the feedback algorithm prioritizes objectives is a design choice; in this study, we use the same prioritization scheme as in Kravitz et al. (2017), which prioritizes the ℓ_0 objective first, the ℓ_1 objective second, and the ℓ_2 objective last. Therefore, if the requested values of ℓ_0 , ℓ_1 , and ℓ_2 violate the inequality $\ell_0 \geq |\ell_1| + |\ell_2|$, the controller will satisfy the inequality by first reducing ℓ_2 , and then (if ℓ_2 cannot be reduced further and the constraint is still violated) by reducing ℓ_1 . Once the inequality has been satisfied, the algorithm converts the finalized values of ℓ_0 , ℓ_1 , and ℓ_2 into the quantities of SO₂ to be injected at ~~30S, 15S, 15N, and 30N~~ 30° S, 15° S, 15° N, and 30° N during the next year of simulation. This conversion is accomplished by solving the linear system described in Equation 5, which relates injections at the chosen latitudes to the production of ℓ_0 , ℓ_1 , and ℓ_2 . As discussed earlier, while the conversions from requested

AOD to injection rates to actual AOD are modeled as linear within the controller, the actual process is nonlinear. As a result of this, the actual AOD produced will always be different from the AOD commanded by the controller, and the difference worsens at higher injection rates (Visioni et al., 2020a). However, because the application of feedback manages uncertainty, there is a substantial amount of tolerance built into the algorithm, and our results demonstrate that our controller converges despite the 435 nonlinearities present in the production of AOD.

7 Results

Table 3. Differences between simulations (2075-2095 average) and reference value (2010-2030 average), and percent restoration for each metric. Metrics controlled in each simulation are bolded. As discussed in [Section Sect. 2](#), we use a negative value for RCP8.5 SSI so that the “change” in SSI is proportional to the change in forcing.

	RCP8.5	Simulation Residual (Percent Restoration)		
		$T_0/T_1/T_2$ (GLENS)	$T_0/ITCZ/SSI$ (Sim 1)	$P_0/ITCZ/SSI$ (Sim 2)
T_0 (K)	+4.05	+0.02 (99.5% ± 0.2%)	+0.10 (97% ± 1%)	+1.16 (71% ± 1%)
T_1 (K)	+1.92	+0.03 (98.5% ± 0.3%)	+0.04 (98% ± 2%)	+0.62 (68% ± 2%)
T_2 (K)	+2.61	+0.48 (81.7% ± 0.4%)	+0.84 (68% ± 2%)	+0.91 (65% ± 2%)
P_0 (mm/day)	+0.24	-0.09 (139.3% ± 0.4%)	-0.10 (141% ± 2%)	-0.003 (101% ± 2%)
ITCZ (° lat)	+0.365	-0.176 (148% ± 4%)	+0.003 (99% ± 23%)	-0.020 (105% ± 19%)
SSI (10^6 km ²)	-9.15*	+1.28 (114.0% ± 0.3%)	+0.71 (108% ± 2%)	-1.74 (81% ± 1%)

In [Figure Fig. 8](#), we present the behaviors of the six climate metrics (T_0 , T_1 , T_2 , P_0 , ITCZ, and SSI) in our two simulations, as well as in the GLENS simulations and the RCP8.5 simulations for comparison. The black dotted lines indicate the reference value for each metric, equivalent to the 2010-2030 average of the RCP8.5 simulations, which is the target value for simulations 440 in which that metric was controlled. ITCZ and SSI are smoothed with a five-year running average in all simulations, including individual ensemble members. In Table 3, we present the difference between the 2075-2095 average and the reference value for each metric, as well as the percent restoration and standard error for each metric; we define the percent restoration as the difference between the 2075-2095 average and the [reference value RCP8.5 2075-2095 average](#), normalized by the difference between the [reference value and the RCP8.5 2075-2095 average](#) and the [reference value](#), as given by [Equation Eq. 6](#):

$$\% \text{ restoration} = \frac{\text{actual change}}{\text{change required to restore metric}} = \frac{\text{actual} - \text{reference}}{\text{RCP} - \text{reference}} \quad \% \text{ restoration} = \frac{\text{actual change}}{\text{change required to restore metric}} = \frac{\text{act}}{\text{refer}}$$

445

(6)

For simulations in which a climate metric was controlled, a restoration value of 100% is the goal, which indicates that the metric was perfectly restored to its reference value and that geoengineering offset 100% of the global-warming-induced

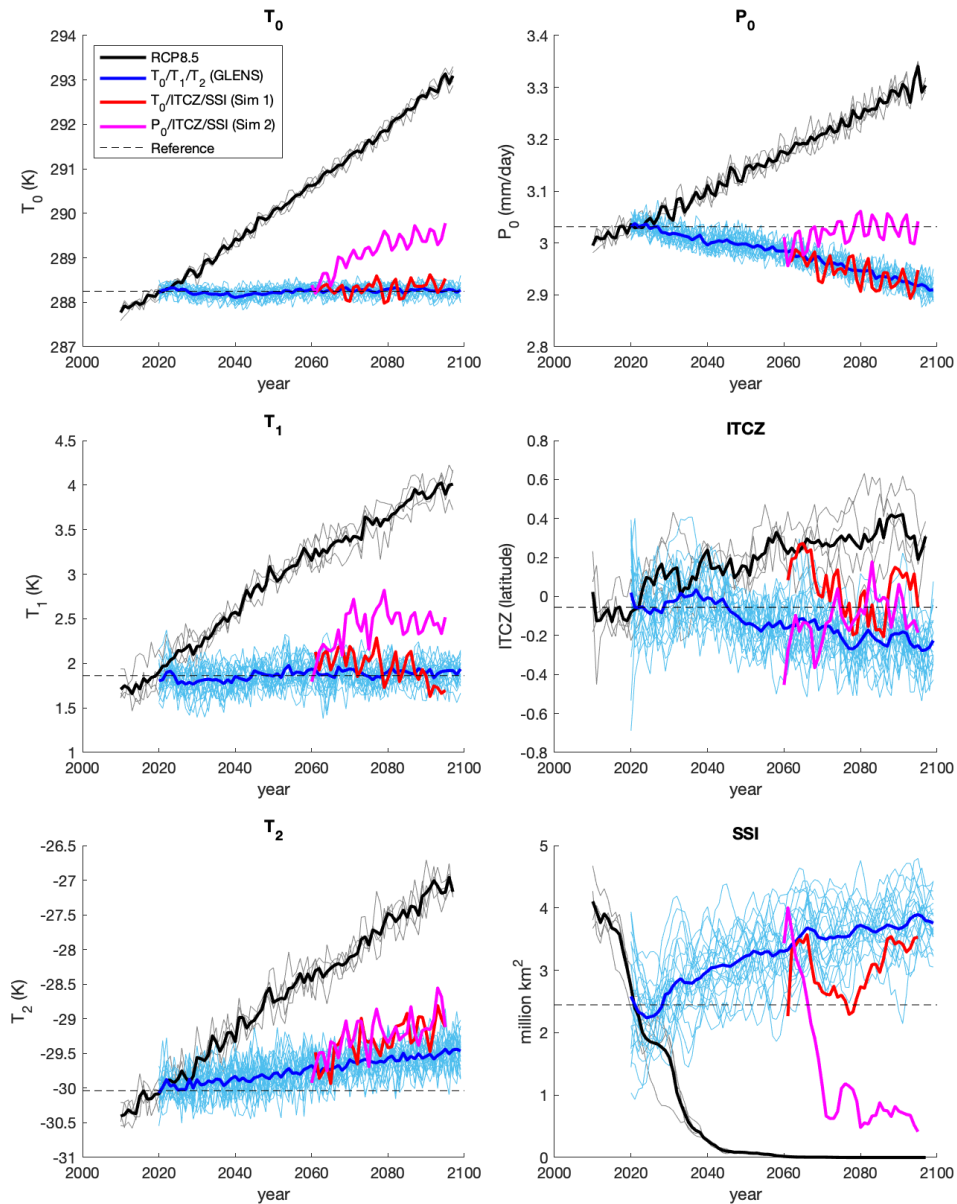


Figure 8. Climate metric behavior over time for our simulations, GLENS, and RCP8.5. ITCZ and SSI are smoothed using a five-year running average. Thick lines indicate ensemble averages, while faint lines indicate individual ensemble members. Dotted black lines indicate reference values.

change in that metric. A restoration value of less than 100% indicates that a geoengineering strategy did not fully return that climate metric to its reference value, while a restoration value greater than 100% indicates that a geoengineering strategy over-

450 corrected that particular climate metric, bringing it beyond its reference value. ~~We do~~ In evaluating the effectiveness of each strategy, we look only at the individual restoration values for each metric; we have made the conscious decision to not attempt to create an overall “restoration score” for one each simulation by averaging or otherwise combining the restoration values, as we assert that in order to evaluate the entire geoengineering strategy, it is more important to look at the behavior of each metric individually or to otherwise grade how “well” each strategy performed as a whole. To claim one strategy performed “better” or
 455 “worse” than another would require weighting different climate goals based on their relative importance. That type of judgment is inherently subjective, and such considerations are beyond the scope of this study.

Our first simulation, which controlled for T_0 , the ITCZ, and SSI, achieved restoration values of 97%, 99%, and 108%, respectively. The error in managing the ITCZ is well within the limits due to natural variability, and is statistically distinct from the ITCZ behavior in either GLENS or RCP8.5, indicating that actively controlling for ITCZ position by adjusting ℓ_1
 460 achieves the desired outcome. The amount of sea ice restored by the simulation is greater than the desired value, which is consistent with the expectations of our design space model. As expected, managing T_0 and the ITCZ simultaneously requires overcompensating global mean precipitation (148%) and under-compensating T_2 (68%); according to the equations in Table 1, for the AOD produced in this simulation (see Table 4 below), the design space graph predicts restoration values of 128% and 61%, respectively. We also observe that although our design space graph predicts a T_1 restoration of 87% for the produced
 465 AOD, the simulation restored 98% of T_1 , even though we were not controlling for it. Our second simulation, which controlled for P_0 , managed P_0 to within 1% of its target value, confirming that global mean precipitation can be managed successfully through feedback in a geoengineering simulation. The P_0 /ITCZ/SSI simulation also controlled the ITCZ to within 5% of its target value, which is again statistically significantly different from GLENS and from RCP8.5. As predicted, the simulation significantly under-compensated SSI (81%). Finally, as predicted by our design space model, the second simulation under-
 470 compensated T_0 (71%, compared to the design space graph’s estimate of 67%), T_1 (68% vs 52%), and T_2 (65% vs 54%). The discrepancies between the expected and actual restoration values for each simulation reflect the approximations described previously in the study (such as the assumption of linear responses to changes in forcing and the neglecting of small sensitivities to certain degrees of freedom), as well as some amount of natural variability; however, we note that in every case, our design space model correctly identifies whether a variable will be over-compensated or under-compensated when a given set of
 475 objectives is met.

Table 4. 2075-2095 averages for AOD produced in each simulation (error is less than 1% where not listed). We also include estimates of the design space models in [Section Sect. 3](#) for the AOD to which each simulation will converge given the climate objectives for that simulation and the boundaries of the design space.

	Design Space Graph			Simulation Result		
	ℓ_0	ℓ_1	ℓ_2	ℓ_0	ℓ_1	ℓ_2
$T_0/T_1/T_2$ (GLENS)	0.60	0.12	0.40	0.52	0.11	0.28
T_0 /ITCZ/SSI (Sim 1)	0.60	0.08	0	0.51	0.11 ± 0.007	0.07 ± 0.004
P_0 /ITCZ/SSI (Sim 2)	0.40	0.08	0.32	0.33	0.05 ± 0.005	0.21 ± 0.004

In Table 4, we present the 2075-2095 averages of ℓ_0 , ℓ_1 , and ℓ_2 in each of our simulations, as well as the GLENS simulations for comparison; we also present our design space graph's estimates for the quantities of AOD necessary for each simulation to meet its respective climate goals (or, in the case of ℓ_2 , the quantity to which the controller will converge as defined by the boundaries of the achievable region of the design space). In each case, the design space graph overpredicts the ℓ_0 necessary to manage the ℓ_0 -based metric by 10-20%. In the case of T_0 , this is likely due to the influences of ℓ_1 and ℓ_2 ; while the sensitivities of T_0 to these degrees of freedom are small compared to the effect of ℓ_0 , as documented in Table 1, the ℓ_1 and ℓ_2 produced in the GLENS and T_0 /ITCZ/SSI simulations decrease the ℓ_0 necessary to manage T_0 by a small amount. In the case of P_0 , the sensitivities to the other degrees of freedom are much smaller, and the over-prediction is likely due to the fact that, unlike T_0 , P_0 has never been controlled in a prior simulation. As the sensitivity data used to develop the design space model is derived from GLENS, which controlled T_0 successfully, it follows that the design space model's expectations for the forcing required to restore T_0 would match the GLENS results; on the other hand, GLENS overcompensated P_0 by about 40%, and therefore the amount of forcing required to restore P_0 is estimated using the approximation of linearity. As shown by the discrepancies between actual and estimated restoration values earlier in this section, that approximation is largely imperfect, which accounts for the difference between the prediction of our design space model and the actual AOD required in the P_0 /ITCZ/SSI simulation. Regardless, the application of feedback to manage uncertainty was sufficient to overcome the discrepancy in both cases, illustrating that prior estimates do not need to be perfect as long as they are close enough for the controller to converge.

Since both new simulations controlled for the ITCZ, the ℓ_1 predicted by the design space graph is the same for both simulations (0.02 per degree of warming, or 0.08). The first simulation (T_0 /ITCZ/SSI) converged to a value of 0.11, while the second (P_0 /ITCZ/SSI) converged to 0.05; given the large natural variability of the ITCZ and the spacing of the results of the two simulations on either side of the original estimate, it is likely that our estimate of 0.08 is largely correct and that the difference is due to natural variability. It is also possible that the different quantities of ℓ_2 produced in each simulation had a small effect; according to Table 1, ℓ_2 does have a small impact on the ITCZ, and the first simulation (which needed more ℓ_1) had much less ℓ_2 than the second.

The case of ℓ_2 is unique because in none of the three simulations considered here (GLENS and our two new simulations) was the controller able to produce the quantity of ℓ_2 required to meet that simulation's ℓ_2 -based objective. In the case of P_0 /ITCZ/SSI (our second simulation), the quantity of ℓ_2 required to meet SSI was too high and thus prohibited by the controller constraint, as indicated by the lack of an intersection between P_0 , ITCZ, and SSI in [Figure Fig. 7](#); therefore, the predicted ℓ_2 is the largest allowed for that simulation's combination of ℓ_0 and ℓ_1 , given by $\ell_2 = \ell_0 - \ell_1$. In the case of GLENS, the combination of AOD required to meet all three objectives does correspond to a three-way intersection in our design space model, but as discussed in [Section Sect. 3](#), the nonlinear nature of AOD production pushes that point outside of the achievable region in AOD space, and the controller again ends up requesting $\ell_2 = \ell_0 - \ell_1$. In the case of T_0 /ITCZ/SSI, the combination of ℓ_0 and ℓ_1 requested by the controller to meet the T_0 and ITCZ climate objectives is already too much to meet the SSI objective; therefore, our controller converged to zero ℓ_2 by around 2085 in order to produce the smallest increase in sea ice possible. The residual ℓ_2

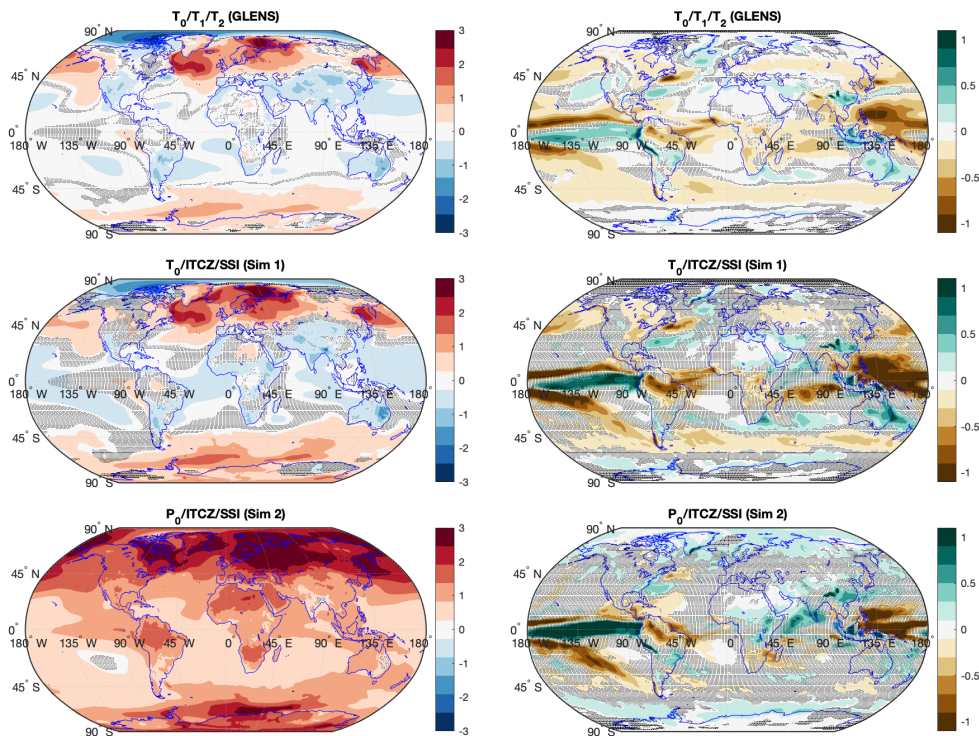


Figure 9. Simulation temperature (left) and precipitation (right) 2075-2095 averages, relative to the control period (2010-2030 average), for GLENS and our simulations. Gray shading indicates areas where changes are not statistically significant ($\alpha = 0.05$).

510 present in the final years of simulation is due to remaining aerosols from previous years of injection, small quantities produced by the subsequent injections at 15S, 15N, and 30N 15° S, 15° N, and 30° N, or a combination of both.

In Figure Fig. 9, we present maps of changes in temperature and precipitation for our simulations, as well as those of GLENS for comparison. The changes shown in the figure are the averages over the period of 2075-2095 minus the averages over the 2010-2030 period in the RCP8.5 simulations. Gray shading indicates regions where there is no statistically significant
 515 change ($\alpha = 0.05$) between the reference period and the simulation results. The temperature profiles of $T_0/T_1/T_2$ (GLENS) and $T_0/ITCZ/SSI$ are broadly similar, with most of the globe remaining within 1°C of the reference period. However, despite controlling for a high-latitude metric, both simulations still demonstrate a small degree of residual polar amplification, in which a geoengineering strategy over-cools the tropics and under-cools the poles. The temperature profile of $T_0/ITCZ/SSI$ shows more amplification than that of $T_0/T_1/T_2$ (GLENS), which is consistent with the higher quantities of ℓ_2 produced in
 520 the latter (see Table 4 above). Additionally, significantly more of the GLENS profile is statistically distinct from the reference period, but this is more likely the result of the large number of GLENS ensemble members rather than the climate goals chosen or AOD produced. Conversely, the temperatures of $P_0/ITCZ/SSI$ are almost universally warmer than the reference period, an observation consistent with both our design space model's predictions and the understanding that controlling precipitation

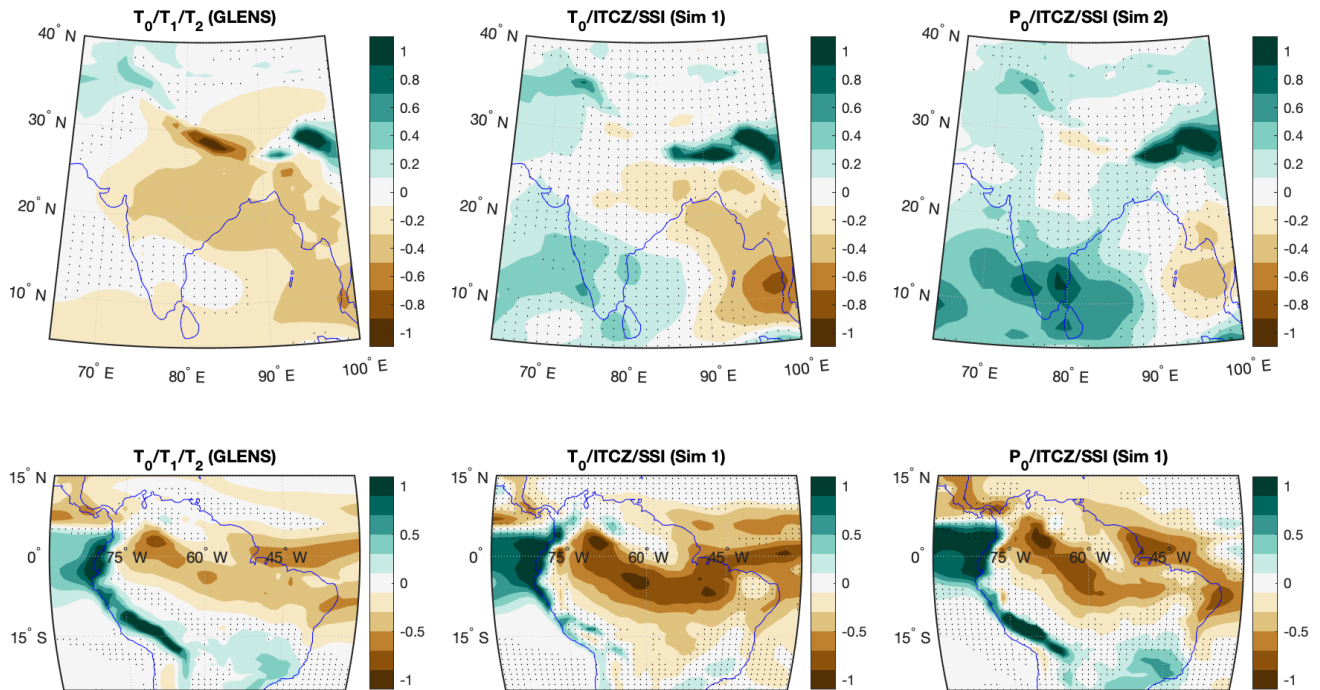


Figure 10. Precipitation changes over India and the Amazon for GLENS and our simulations, relative to control. Black speckling indicates areas where changes are not statistically significant ($\alpha = 0.05$).

requires under-compensating for changes in temperature. Changes in precipitation are much more subtle between simulations
525 than changes in temperature; this is likely due to the fact that precipitation is concentrated in the tropics, and so much of the
globe has small changes in precipitation regardless of what geoengineering strategy is used. However, there are some consist-
encies between simulations. All three geoengineering strategies ($T_0/T_1/T_2$, $T_0/ITCZ/SSI$, and $P_0/ITCZ/SSI$) produce similar
precipitation anomalies (relative to RCP8.5) over the tropical Pacific, consisting of a drop in precipitation near Malaysia and an
increase between the International Date Line and Peru. Again, when compared to the $T_0/T_1/T_2$ simulations, the precipitation in
530 both of our new simulations shows more statistical similarity to that of the reference period over much of the globe, but again,
this is primarily due to the large ensemble size of the former. [Figure Fig. 10](#) shows the precipitation changes over India and the
Amazon. We observe that the $T_0/T_1/T_2$ strategy reduces precipitation over Northern India (as observed in Cheng et al. (2019),
Simpson et al. (2019), and Visioni et al. (2020b)), while there is an increase in precipitation in both of our simulations. The
 $T_0/T_1/T_2$ strategy also decreases precipitation over the Amazon rainforest, and this reduction intensifies in both of our new
535 simulations.

8 Discussion and Conclusions

In this study, we produce two new simulations of different SO₂-injection strategies which expand the space of climate objectives considered in geoengineering. While Kravitz et al. (2016) showed that precipitation-based metrics can be controlled in a climate model by using solar reduction as a proxy for aerosol geoengineering, up until now, simulations of stratospheric aerosol injection controlled temperature gradients as proxies for non-temperature-based metrics, such as using T_1 as a proxy for the ITCZ and T_2 as a proxy for sea ice. In addition to demonstrating that three specific climate goals (i.e. control of global mean precipitation, tropical precipitation centroid, and September sea ice in the Arctic Ocean) can be met by adjusting the injection rates independently at four different latitudes, our results demonstrate that feedback algorithms can successfully manage non-temperature-based metrics directly instead of requiring temperature-based proxies, even in the presence of large natural variability, such as with the ITCZ.

In addition to presenting simulations of new strategies for stratospheric aerosol geoengineering, we also present a model for visualizing the geoengineering design space. Our simulations demonstrate the utility of our visualization in assessing the mutual achievability of multiple climate goals, and in assessing how other climate metrics will behave when certain goals are met. Our visualization enabled us to make two specific predictions about the degrees to which certain climate goals could or could not be accomplished together in CESM1(WACCM), and our simulations validated those predictions; additionally, our visualization correctly identified whether meeting those goals would result in the over- or under-correction of other climate metrics (and, to a lesser extent, the degree of over- or under-correction).

The general framework could be extended to consider a broader suite of design degrees of freedom; however, the design-space model presented here is intended to capture the influence of three degrees of freedom via aerosol injection at four specific latitudes. We represent the AOD distribution solely by its projection onto the first three Legendre polynomials; while this approximation was clearly sound enough for the purposes of these simulations, any distribution of AOD will of course contain some projection onto higher-order Legendre polynomials. Changing the injection latitudes in CESM1(WACCM), or evaluating the response in a different climate model, will result in different amounts of those higher-order components. As such, while the sensitivities and surface equations presented in [Section Sect. 3](#) will likely be valid for any CESM1(WACCM) simulation in which aerosols are injected at only [30S, 15S, 15N](#), [30° S, 15° S, 15° N](#), and/or [30N](#), [30° N](#), more research is needed to validate and improve our sensitivity estimates for simulations in which a different injection scheme or a different climate model is used.

In this study, we only considered one climate objective for each metric (namely, that metric's 2010-2030 average under RCP8.5); however, each metric represents an infinite number of possible climate goals, and each goal could be represented as a surface in our design space model. While we only quantified the surfaces corresponding to each metric's RCP8.5 2010-2030 average, and thus only evaluated intersections where those objectives can be simultaneously reached, our graph provides additional utility in visualizing how the changes in AOD necessary to induce a change in one metric will affect another. For example, our model shows that the overlap between P_0 and SSI is very small, but this does not mean it is impossible to achieve all sets of climate objectives containing one goal based on global mean precipitation and another goal based on sea ice, just

570 that one specific pair of goals is difficult to attain. However, our visualization does indicate that P_0 and SSI both have large dependencies on ℓ_0 , and therefore any geoengineering strategy intended to influence global mean precipitation will also have a substantial impact on sea ice, and vice versa. This limits the sets of achievable climate objectives which attempt to control both of these metrics in some way; once the target for P_0 is set, there is a constraint placed on achievable targets for SSI. Conversely, T_0 and the ITCZ depend primarily on different degrees of freedom, which means the two metrics are largely
575 independent. As such, the number of achievable climate states in which T_0 and the ITCZ are both objectives is much larger, as a goal for T_0 places a much smaller constraint (if any) on the ITCZ. In other words, the more parallel two surfaces appear in our visualization, the greater the co-dependency of the metrics; the more perpendicular two surfaces appear, the easier it is to influence those metrics independently, and therefore to choose independent goals for those metrics.

In conclusion, we identify several areas of research in which further progress will allow us to continue to develop our design
580 space model by increasing its accuracy, range, and scope of application. Of the three simulations considered in this study, none of them were able to meet all three of their climate objectives simultaneously; however, expanding the design space might make all three sets achievable in future experiments. Firstly, the controller constraint prevents the SSI surface from extending upwards and meeting the intersection of the P_0 and ITCZ surfaces. As discussed previously, meeting all three objectives requires a quantity of ℓ_2 not permitted by the required quantities of ℓ_0 and ℓ_1 ; identifying the circumstances under which we
585 could move beyond the current constraint, perhaps by injecting at higher latitudes to produce a higher ratio of ℓ_2 to ℓ_0 , might make this possible, which would expand the design space and therefore the range of achievable climate goals. The same is true for the combination of T_0 , T_1 , and T_2 . Secondly, expanding the design space in the opposite direction is also possible, as the results of MacMartin et al. (2017) demonstrate that injecting at the equator can produce a negative ℓ_2 , which may permit the SSI surface to extend downward and intersect with the T_0 and ITCZ surfaces. Thus, adding a fifth latitude (i.e. the equator)
590 to our four-latitude injection scheme could open up a new region of the design space in which the three goals of our first simulation (T_0 , ITCZ, and SSI) are simultaneously achievable.

In addition to expanding the design space, taking further steps to quantify our model would improve its accuracy and utility. For example, the T_0 - T_1 - T_2 intersection appears achievable in our design space model, but we know it not to be based on the results of the GLENS simulations. This is due to the fact that we modeled the controller constraint with a linear approximation,
595 and this approximation holds significantly better at low injection rates than at higher ones. The results presented in Table 3 help quantify the nonlinear relationship between injections and produced AOD, but a more thorough investigation would produce a better model of the controller constraint and thus better clarify which combinations of climate goals are or are not achievable at higher injection rates. Next, beyond the higher-order modes of AOD variability with latitude discussed previously, there are many more degrees of freedom which our model does not even begin to consider, including variations in altitude (e.g., Tilmes
600 et al., 2018), longitude, and season (Visoni et al., 2020a) of deployment. While a higher-dimensional graph would undoubtedly be more difficult for the human mind to visualize, introducing additional degrees of freedom to the model would undoubtedly reveal metric behavior that a 3-D graph cannot account for. Finally, there are far more reasonable choices for climate metrics than the ones considered here, and an infinite number of potential climate objectives; in this study, we consider only six of each. Regardless of the specific objectives chosen for a geoengineering scenario, a thorough understanding of the effects of a

605 given injection strategy on all of these metrics would go a long way towards answering the question of what geoengineering can and cannot accomplish.

Data availability. Data for the two simulations presented in this study (specifically, monthly data for precipitation, surface temperature, sea ice, and aerosol optical depth), are available through the Cornell e-Commons Library at <https://hdl.handle.net/1813/70180>, DOI 10.7298/d2qm-1568.

610 Appendix A: Updated Sensitivity Calculations

In Table A1, we present sensitivity calculations for each of our six climate metrics computed using the two new simulations we presented in this study in addition to the three sources of data described in [Section Sect. 3](#). We observe that none of the sensitivity variables have changes larger than their last decimal place; no single-variable surface equation has changed, and only the three multi-variable surface equations have small changes to their coefficients. This indicates that in our simulations, 615 climate metrics respond to changes in AOD in a manner largely consistent with the other sources of data, and we include this table only for the sake of completeness.

Table A1. Surface equation components for six climate metrics as in Table 1, but updated using the results of the two new simulations presented in this study.

Metric	$\alpha(\ell_0^{-1})$	$\beta(\ell_1^{-1})$	$\gamma(\ell_2^{-1})$	$\delta(^{\circ}\text{C}^{-1})$	Surface Equation, approx. (per $^{\circ}\text{C}$ warming)
T_0 (K)	-6.71	-1.1	-1.56	-1	$\ell_0 = 0.15$
P_0 ($\frac{\text{mm}}{\text{day}}$)	-0.605	-0.04	-0.055	-0.059	$\ell_0 = 0.10$
ITCZ ($^{\circ}\text{lat}$)	-0.007	-3.5	-0.6	-0.09	$\ell_1 = 0.02$
T_1 (K)	-2.46	-3.7	-0.74	-0.47	$2.5\ell_0 + 3.7\ell_1 = 0.47$
SSI (10^6 km^2)	15.1	9.2	5.50	2.26	$15.1\ell_0 + 9.2\ell_1 + 5.50\ell_2 = 2.26$
T_2 (K)	-2.32	-2.0	-2.49	-0.64	$2.32\ell_0 + 2.0\ell_1 + 2.49\ell_2 = 0.64$

Appendix B: Feedback Algorithm Calculations

The feedforward gains used in our first simulation were derived from an earlier iteration of the design space model, which based sensitivities and surface placements off of ensemble averages for AOD and metric restoration values from simulation 620 results rather than the least-squares method presented in [Section Sect. 3](#). This prior method estimated the 2085 AOD necessary to control T_0 , the ITCZ, and SSI as $\ell_0 = 0.52$, $\ell_1 = 0.05$, and $\ell_2 = 0.17$. In order to improve the accuracy of the feedforward and reduce the burden on the feedback, we attempted to account for the nonlinearities in AOD production by relating the AOD requested by the controller to the AOD produced for each of ℓ_0 , ℓ_1 , and ℓ_2 ; we did this by fitting cubics, provided in Equations

B1 - B3 below, to the relationships between the AOD requested in the GLENS controller logs (denoted with hats) and the AOD
625 produced in each year of the GLENS simulations.

$$\ell_0 = 0.5433\hat{\ell}_0^3 - 0.7987\hat{\ell}_0^2 + 1.1930\hat{\ell}_0 \quad (\text{B1})$$

$$\ell_1 = -2.4221\hat{\ell}_1^3 - 0.0091\hat{\ell}_1^2 + 0.6978\hat{\ell}_1 \quad (\text{B2})$$

$$\ell_2 = 0.1688\hat{\ell}_2^3 - 1.5122\hat{\ell}_2^2 + 1.1752\hat{\ell}_2 \quad (\text{B3})$$

Substituting the desired values of ℓ_0 , ℓ_1 , and ℓ_2 into the above equations and solving for $\hat{\ell}_0$, $\hat{\ell}_1$, and $\hat{\ell}_2$ produces $\hat{\ell}_0 = 0.5637$,
630 $\hat{\ell}_1 = 0.0856$, and $\hat{\ell}_2 = 0.1805$. Since we wish to achieve these values in 2085 by linearly increasing from 0 beginning in
2020, we divide each by 65 years to produce the feedforward gains used in Table 2. For the second simulation, we observed
that our desired ℓ_0 and ℓ_1 values were approximately 2/3 of produced used in GLENS. Additionally, the maximum ℓ_2 value
permitted by this combination would therefore equal 2/3 of the value used in GLENS. Therefore, for this simulation, we set our
feedforward gains to equal 2/3 of the AOD produced by GLENS (we did not attempt to account for the nonlinearities present
635 in AOD production as we did in the first simulation).

The feedback gains used for each metric were based on the following prior sensitivity estimates, in which the whole centuries
of simulation from the GLENS and equatorial injection studies were used: P_0 to ℓ_0 , -0.61 mm/day per unit ℓ_0 ; ITCZ to ℓ_1 ,
 -3.36 degrees latitude per unit ℓ_1 ; and SSI to ℓ_2 , 5.57 million km^2 per unit ℓ_2 . While these numbers do not reflect our
current best estimates, they are not substantially different from the values in Table 1, and therefore did not substantially change
640 the convergence time of any of the climate metrics considered in this study. Additionally, the ℓ_2 equations in Table 2 each
compensate for ℓ_0 and ℓ_1 by subtracting $2\ell_0$ and $1\ell_1$, and the ℓ_1 equation for the second simulation subtracts $0.1\ell_0$; these
corrections were based on the relative sizes of the aforementioned previously computed sensitivities, which placed the ratio of
 ℓ_0 to ℓ_1 sensitivities at 1:10 for the ITCZ and the ratio of ℓ_0 to ℓ_1 to ℓ_2 at 2:1:1, respectively.

Author contributions. WL and DM designed simulations. WL and DV conducted simulations. WL prepared the manuscript, with editing
645 from DM, DV, and BK.

Competing interests. The authors declare no competing interests.

Acknowledgements. We would like to acknowledge high-performance computing support from Cheyenne (doi:10.5065/D6RX99HX) pro-
vided by NCAR's Computational and Information Systems Laboratory, sponsored by the National Science Foundation. Support for WL and
DM was provided by the National Science Foundation through agreement CBET-1818759. Support for DV was provided by the Atkinson
650 Center for a Sustainable Future at Cornell University. Support for BK was provided in part by the National Sciences Foundation through
agreement CBET-1931641, the Indiana University Environmental Resilience Institute, and the *Prepared for Environmental Change* Grand

Challenge initiative. The Pacific Northwest National Laboratory is operated for the U.S. Department of Energy by Battelle Memorial Institute under contract DE-AC05-76RL01830. The CESM project is supported primarily by the National Science Foundation. This work was supported by the National Center for Atmospheric Research, which is a major facility sponsored by the National Science Foundation under
655 Cooperative Agreement No. 1852977.

References

- Aswathy, V. N., Boucher, O., Quaas, M., Niemeier, U., Muri, H., Mülmenstädt, J., and Quaas, J.: Climate extremes in multi-model simulations of stratospheric aerosol and marine cloud brightening climate engineering, *Atmospheric Chemistry and Physics*, 15, 9593–9610, <https://doi.org/10.5194/acp-15-9593-2015>, <https://acp.copernicus.org/articles/15/9593/2015/>, 2015.
- 660 Bala, G., Duffy, P. B., and Taylor, K. E.: Impact of geoengineering schemes on the global hydrological cycle, *Proceedings of the National Academy of Sciences*, 105, 7664–7669, <https://doi.org/10.1073/pnas.0711648105>, <https://www.pnas.org/content/105/22/7664>, 2008.
- Ban-Weiss, G. A. and Caldeira, K.: Geoengineering as an optimization problem, *Environmental Research Letters*, 5, 034009, <https://doi.org/10.1088/1748-9326/5/3/034009>, <https://doi.org/10.1088%2F1748-9326%2F5%2F3%2F034009>, 2010.
- Cao, L., Duan, L., Bala, G., and Caldeira, K.: Simultaneous stabilization of global temperature and precipitation through cocktail geoengineering, *Geophysical Research Letters*, 44, 7429–7437, <https://doi.org/10.1002/2017GL074281>, <https://agupubs.onlinelibrary.wiley.com/doi/abs/10.1002/2017GL074281>, 2017.
- 665 Cheng, W., MacMartin, D. G., Dagon, K., Kravitz, B., Tilmes, S., Richter, J. H., Mills, M. J., and Simpson, I. R.: Soil Moisture and Other Hydrological Changes in a Stratospheric Aerosol Geoengineering Large Ensemble, *Journal of Geophysical Research: Atmospheres*, 124, 12 773–12 793, <https://doi.org/10.1029/2018JD030237>, <https://agupubs.onlinelibrary.wiley.com/doi/abs/10.1029/2018JD030237>, 2019.
- 670 Crutzen, P. J.: Albedo Enhancement by Stratospheric Sulfur Injections: A Contribution to Resolve a Policy Dilemma?, *Climatic Change*, 77, 211, <https://doi.org/10.1007/s10584-006-9101-y>, <https://doi.org/10.1007/s10584-006-9101-y>, 2006.
- Dai, Z., Weisenstein, D. K., and Keith, D. W.: Tailoring Meridional and Seasonal Radiative Forcing by Sulfate Aerosol Solar Geoengineering, *Geophysical Research Letters*, 45, 1030–1039, <https://doi.org/10.1002/2017GL076472>, <https://agupubs.onlinelibrary.wiley.com/doi/abs/10.1002/2017GL076472>, 2018.
- 675 Donohoe, A., Marshall, J., Ferreira, D., and Mcgee, D.: The Relationship between ITCZ Location and Cross-Equatorial Atmospheric Heat Transport: From the Seasonal Cycle to the Last Glacial Maximum, *Journal of Climate*, 26, 3597–3618, <https://doi.org/10.1175/JCLI-D-12-00467.1>, <https://doi.org/10.1175/JCLI-D-12-00467.1>, 2013.
- Frierson, D. M. W. and Hwang, Y.-T.: Extratropical Influence on ITCZ Shifts in Slab Ocean Simulations of Global Warming, *Journal of Climate*, 25, 720–733, <https://doi.org/10.1175/JCLI-D-11-00116.1>, <https://doi.org/10.1175/JCLI-D-11-00116.1>, 2012.
- 680 Govindasamy, B. and Caldeira, K.: Geoengineering Earth’s radiation balance to mitigate CO₂-induced climate change, *Geophysical Research Letters*, 27, 2141–2144, <https://doi.org/10.1029/1999GL006086>, <https://agupubs.onlinelibrary.wiley.com/doi/abs/10.1029/1999GL006086>, 2000.
- Haywood, J. M., Jones, A., Bellouin, N., and Stephenson, D.: Asymmetric forcing from stratospheric aerosols impacts Sahelian rainfall, *Nature Climate Change*, 3, 660–665, <https://doi.org/10.1038/nclimate1857>, <https://doi.org/10.1038/nclimate1857>, doi:10.1038/nclimate1857, 2013.
- 685 Jackson, L. S., Crook, J. A., Jarvis, A., Leedal, D., Ridgwell, A., Vaughan, N., and Forster, P. M.: Assessing the controllability of Arctic sea ice extent by sulfate aerosol geoengineering, *Geophysical Research Letters*, 42, 1223–1231, <https://doi.org/10.1002/2014GL062240>, <https://agupubs.onlinelibrary.wiley.com/doi/abs/10.1002/2014GL062240>, 2015.
- Jiang, J., Cao, L., MacMartin, D. G., Simpson, I. R., Kravitz, B., Cheng, W., Visioni, D., Tilmes, S., Richter, J. H., and Mills, M. J.: Stratospheric Sulfate Aerosol Geoengineering Could Alter the High-Latitude Seasonal Cycle, *Geophysical Research Letters*, 46, 14 153–14 163, <https://doi.org/10.1029/2019GL085758>, <https://agupubs.onlinelibrary.wiley.com/doi/abs/10.1029/2019GL085758>, 2019.
- 690

- Jones, A., Haywood, J. M., Jones, A. C., Tilmes, S., Kravitz, B., and Robock, A.: North Atlantic Oscillation response in GeoMIP experiments G6solar and G6sulfur: why detailed modelling is needed for understanding regional implications of solar radiation management, *Atmospheric Chemistry and Physics Discussions*, 2020, 1–34, <https://doi.org/10.5194/acp-2020-802>, <https://acp.copernicus.org/preprints/acp-2020-802/>, 2020.
- 695 Kravitz, B., Caldeira, K., Boucher, O., Robock, A., Rasch, P. J., Alterskjær, K., Karam, D. B., Cole, J. N. S., Curry, C. L., Haywood, J. M., Irvine, P. J., Ji, D., Jones, A., Kristjánsson, J. E., Lunt, D. J., Moore, J. C., Niemeier, U., Schmidt, H., Schulz, M., Singh, B., Tilmes, S., Watanabe, S., Yang, S., and Yoon, J.-H.: Climate model response from the Geoengineering Model Intercomparison Project (GeoMIP), *Journal of Geophysical Research: Atmospheres*, 118, 8320–8332, <https://doi.org/10.1002/jgrd.50646>, <https://agupubs.onlinelibrary.wiley.com/doi/abs/10.1002/jgrd.50646>, 2013.
- 700 Kravitz, B., MacMartin, D. G., Leedal, D. T., Rasch, P. J., and Jarvis, A. J.: Explicit feedback and the management of uncertainty in meeting climate objectives with solar geoengineering, *Env. Res. Lett.*, 9, 044 006, <https://doi.org/10.1088/1748-9326/9/4/044006>, <https://doi.org/10.1088/1748-9326/9/4/044006>, 2014.
- Kravitz, B., Macmartin, D., Wang, H., and Rasch, P.: Geoengineering as a design problem, *Earth System Dynamics*, 7, 469–497, <https://doi.org/10.5194/esd-7-469-2016>, 2016.
- 705 Kravitz, B., MacMartin, D. G., Mills, M. J., Richter, J. H., Tilmes, S., Lamarque, J.-F., Tribbia, J. J., and Vitt, F.: First Simulations of Designing Stratospheric Sulfate Aerosol Geoengineering to Meet Multiple Simultaneous Climate Objectives, *Journal of Geophysical Research: Atmospheres*, 122, 12,616–12,634, <https://doi.org/10.1002/2017JD026874>, <https://agupubs.onlinelibrary.wiley.com/doi/abs/10.1002/2017JD026874>, 2017.
- 710 Kravitz, B., MacMartin, D. G., Tilmes, S., Richter, J. H., Mills, M. J., Cheng, W., Dagon, K., Glanville, A. S., Lamarque, J.-F., Simpson, I. R., Tribbia, J., and Vitt, F.: Comparing Surface and Stratospheric Impacts of Geoengineering With Different SO₂ Injection Strategies, *Journal of Geophysical Research: Atmospheres*, 124, 7900–7918, <https://doi.org/10.1029/2019JD030329>, <https://agupubs.onlinelibrary.wiley.com/doi/abs/10.1029/2019JD030329>, 2019.
- Lamarque, J.-F., Bond, T. C., Eyring, V., Granier, C., Heil, A., Klimont, Z., Lee, D., Liousse, C., Mieville, A., Owen, B., Schultz, M. G., Shindell, D., Smith, S. J., Stehfest, E., Van Aardenne, J., Cooper, O. R., Kainuma, M., Mahowald, N., McConnell, J. R., Naik, V., Riahi, K., , and van Vuuren, D. P.: Historical (1850–2000) gridded anthropogenic and biomass burning emissions of reactive gases and aerosols: methodology and application, *Atmos. Chem. Phys.*, 10, 7017–7039, <https://doi.org/10.5194/acp-10-7017-2010>, <https://doi.org/10.5194/acp-10-7017-2010>, 2010.
- 715 Liu, X., Easter, R. C., Ghan, S. J., Zaveri, R., Rasch, P., Shi, X., Lamarque, J.-F., Gettelman, A., Morrison, H., Vitt, F., Conley, A., Park, S., Neale, R., Hannay, C., Ekman, A. M. L., Hess, P., Mahowald, N., Collins, W., Iacono, M. J., Bretherton, C. S., Flanner, M. G., and Mitchell, D.: Toward a minimal representation of aerosols in climate models: description and evaluation in the Community Atmosphere Model CAM5, *Geoscientific Model Development*, 5, 709–739, <https://doi.org/10.5194/gmd-5-709-2012>, <https://gmd.copernicus.org/articles/5/709/2012/>, 2012.
- 720 MacMartin, D. G. and Kravitz, B.: The Engineering of Climate Engineering, *Annual Review of Control, Robotics, and Autonomous Systems*, 2, 445–467, <https://doi.org/10.1146/annurev-control-053018-023725>, <https://doi.org/10.1146/annurev-control-053018-023725>, 2019.
- MacMartin, D. G., Keith, D. W., Kravitz, B., and Caldeira, K.: Management of trade-offs in geoengineering through optimal choice of non-uniform radiative forcing, *Nature Clim Change*, 3, 365–368, <https://doi.org/10.1038/nclimate1722>, <https://doi.org/10.1038/nclimate1722>, 2013.

- MacMartin, D. G., Kravitz, B., Keith, D. W., , and Jarvis, A.: Dynamics of the coupled human-climate system resulting from closed-loop
730 control of solar geoengineering, *Climate Dynamics*, 43, 243–258, <https://doi.org/10.1007/s00382-013-1822-9>, <https://doi.org/10.1007/s00382-013-1822-9>, 2014.
- MacMartin, D. G., Kravitz, B., Tilmes, S., Richter, J. H., Mills, M. J., Lamarque, J.-F., Tribbia, J. J., and Vitt, F.: The Climate Response to Stratospheric Aerosol Geoengineering Can Be Tailored Using Multiple Injection Locations, *Journal of Geophysical Research: Atmospheres*, 122, 12,574–12,590, <https://doi.org/10.1002/2017JD026868>, <https://agupubs.onlinelibrary.wiley.com/doi/abs/10.1002/2017JD026868>, 2017.
735
- MacMartin, D. G., Wang, W., Kravitz, B., Tilmes, S., Richter, J. H., and Mills, M. J.: Timescale for Detecting the Climate Response to Stratospheric Aerosol Geoengineering, *Journal of Geophysical Research: Atmospheres*, 124, 1233–1247, <https://doi.org/10.1029/2018JD028906>, <https://agupubs.onlinelibrary.wiley.com/doi/abs/10.1029/2018JD028906>, 2019.
- Mills, M. J., Schmidt, A., Easter, R., Solomon, S., Kinnison, D. E., Ghan, S. J., Neely III, R. R., Marsh, D. R., Conley, A., Bardeen,
740 C. G., and Gettelman, A.: Global volcanic aerosol properties derived from emissions, 1990–2014, using CESM1(WACCM), *Journal of Geophysical Research: Atmospheres*, 121, 2332–2348, <https://doi.org/10.1002/2015JD024290>, <https://agupubs.onlinelibrary.wiley.com/doi/abs/10.1002/2015JD024290>, 2016.
- Mills, M. J., Richter, J. H., Tilmes, S., Kravitz, B., MacMartin, D. G., Glanville, A. A., Tribbia, J. J., Lamarque, J.-F., Vitt, F., Schmidt, A., Gettelman, A., Hannay, C., Bacmeister, J. T., and Kinnison, D. E.: Radiative and Chemical Response to Interactive Stratospheric Sulfate Aerosols in Fully Coupled CESM1(WACCM), *Journal of Geophysical Research: Atmospheres*, 122, 13,061–13,078,
745 <https://doi.org/10.1002/2017JD027006>, <https://agupubs.onlinelibrary.wiley.com/doi/abs/10.1002/2017JD027006>, 2017.
- Najafi, M., Zwiers, F., and Gillett, N.: Attribution of Arctic temperature change to greenhouse-gas and aerosol influences, *Nature Clim Change*, 5, 246–249, <https://doi.org/10.1038/nclimate2524>, <https://doi.org/10.1038/nclimate2524>, 2015.
- NRC: Climate Intervention: Reflecting Sunlight to Cool Earth, The National Academies Press, Washington, DC,
750 <https://doi.org/10.17226/18988>, <https://www.nap.edu/catalog/18988/climate-intervention-reflecting-sunlight-to-cool-earth>, 2015.
- Robock, A.: Volcanic eruptions and climate, *Reviews of Geophysics*, 38, 191–219, <https://doi.org/10.1029/1998RG000054>, <https://agupubs.onlinelibrary.wiley.com/doi/abs/10.1029/1998RG000054>, 2000.
- Robock, A., Oman, L., and Stenchikov, G. L.: Regional climate responses to geoengineering with tropical and Arctic SO₂ injections, *Journal of Geophysical Research: Atmospheres*, 113, <https://doi.org/10.1029/2008JD010050>, <https://agupubs.onlinelibrary.wiley.com/doi/abs/10.1029/2008JD010050>, 2008.
755
- Schneider, T., Bischoff, T., and Haug, G.: Migrations and dynamics of the intertropical convergence zone, *Nature*, 513, 45–13, <https://doi.org/10.1038/nature13636>, <https://doi.org/10.1038/nature13636>, 2014.
- Simpson, I. R., Tilmes, S., Richter, J. H., Kravitz, B., MacMartin, D. G., Mills, M. J., Fasullo, J. T., and Pendergrass, A. G.: The Regional Hydroclimate Response to Stratospheric Sulfate Geoengineering and the Role of Stratospheric Heating, *Journal of Geophysical Research: Atmospheres*, 124, 12 587–12 616, <https://doi.org/10.1029/2019JD031093>, <https://agupubs.onlinelibrary.wiley.com/doi/abs/10.1029/2019JD031093>, 2019.
760
- Tilmes, S., Fasullo, J., Lamarque, J.-F., Marsh, D. R., Mills, M., Alterskjær, K., Muri, H., Kristjánsson, J. E., Boucher, O., Schulz, M., Cole, J. N. S., Curry, C. L., Jones, A., Haywood, J., Irvine, P. J., Ji, D., Moore, J. C., Karam, D. B., Kravitz, B., Rasch, P. J., Singh, B., Yoon, J.-H., Niemeier, U., Schmidt, H., Robock, A., Yang, S., and Watanabe, S.: The hydrological impact of geoengineering in the Geoengineering Model Intercomparison Project (GeoMIP), *Journal of Geophysical Research: Atmospheres*, 118, 11,036–11,058,
765 <https://doi.org/10.1002/jgrd.50868>, <https://agupubs.onlinelibrary.wiley.com/doi/abs/10.1002/jgrd.50868>, 2013.

- Tilmes, S., Richter, J. H., Mills, M. J., Kravitz, B., MacMartin, D. G., Vitt, F., Tribbia, J. J., and Lamarque, J.-F.: Sensitivity of Aerosol Distribution and Climate Response to Stratospheric SO₂ Injection Locations, *Journal of Geophysical Research: Atmospheres*, 122, 12,591–12,615, <https://doi.org/10.1002/2017JD026888>, <https://agupubs.onlinelibrary.wiley.com/doi/abs/10.1002/2017JD026888>, 2017.
- 770 Tilmes, S., Richter, J. H., Kravitz, B., MacMartin, D. G., Mills, M. J., Simpson, I. R., Glanville, A. S., Fasullo, J. T., Phillips, A. S., Lamarque, J.-F., Tribbia, J., Edwards, J., Mickelson, S., and Ghosh, S.: CESM1(WACCM) Stratospheric Aerosol Geoengineering Large Ensemble Project, *Bulletin of the American Meteorological Society*, 99, 2361–2371, <https://doi.org/10.1175/BAMS-D-17-0267.1>, <https://doi.org/10.1175/BAMS-D-17-0267.1>, 2018.
- Tilmes, S., MacMartin, D. G., Lenaerts, J. T. M., van Kampenhout, L., Muntjewerf, L., Xia, L., Harrison, C. S., Krumhardt, K. M., Mills, 775 M. J., Kravitz, B., and Robock, A.: Reaching 1.5 and 2.0 °C global surface temperature targets using stratospheric aerosol geoengineering, *Earth System Dynamics*, 11, 579–601, <https://doi.org/10.5194/esd-11-579-2020>, <https://esd.copernicus.org/articles/11/579/2020/>, 2020.
- Visioni, D., MacMartin, D. G., Kravitz, B., Lee, W., Simpson, I. R., and Richter, J. H.: Reduced Poleward Transport Due to Stratospheric Heating Under Stratospheric Aerosols Geoengineering, *Geophysical Research Letters*, 47, e2020GL089470, <https://doi.org/10.1029/2020GL089470>, <https://agupubs.onlinelibrary.wiley.com/doi/abs/10.1029/2020GL089470>, e2020GL089470 780 10.1029/2020GL089470, 2020a.
- Visioni, D., MacMartin, D. G., Kravitz, B., Richter, J. H., Tilmes, S., and Mills, M. J.: Seasonally Modulated Stratospheric Aerosol Geoengineering Alters the Climate Outcomes, *Geophysical Research Letters*, 47, e2020GL088337, <https://doi.org/10.1029/2020GL088337>, <https://agupubs.onlinelibrary.wiley.com/doi/abs/10.1029/2020GL088337>, e2020GL088337 2020GL088337, 2020b.