

Supplementary material for:

A New View of Heat Wave Dynamics and Predictability over the Eastern Mediterranean

Assaf Hochman¹, Sebastian Scher², Julian Quinting¹, Joaquim G. Pinto¹, Gabriele Messori^{2,3}

5

Correspondence to: Assaf Hochman (assaf.hochman@kit.edu)

Table S1 The five homogenous representative daily maximum temperature stations over Israel
10 used for computing the absolute error of the model.

Serial number	Station name	Latitude (°)	Longitude (°)	Altitude (m)	WMO number
1	Elat (desert)	29.55	34.95	22	401990
2	Negba (Coastal plain)	31.66	34.68	95	
3	Beit-Jimal (low land)	31.72	34.98	355	
4	Jerusalem- center (mountainous)	31.78	35.22	810	402900
5	Zefat Har- Kenaan (mountainous)	32.98	35.51	936	401530

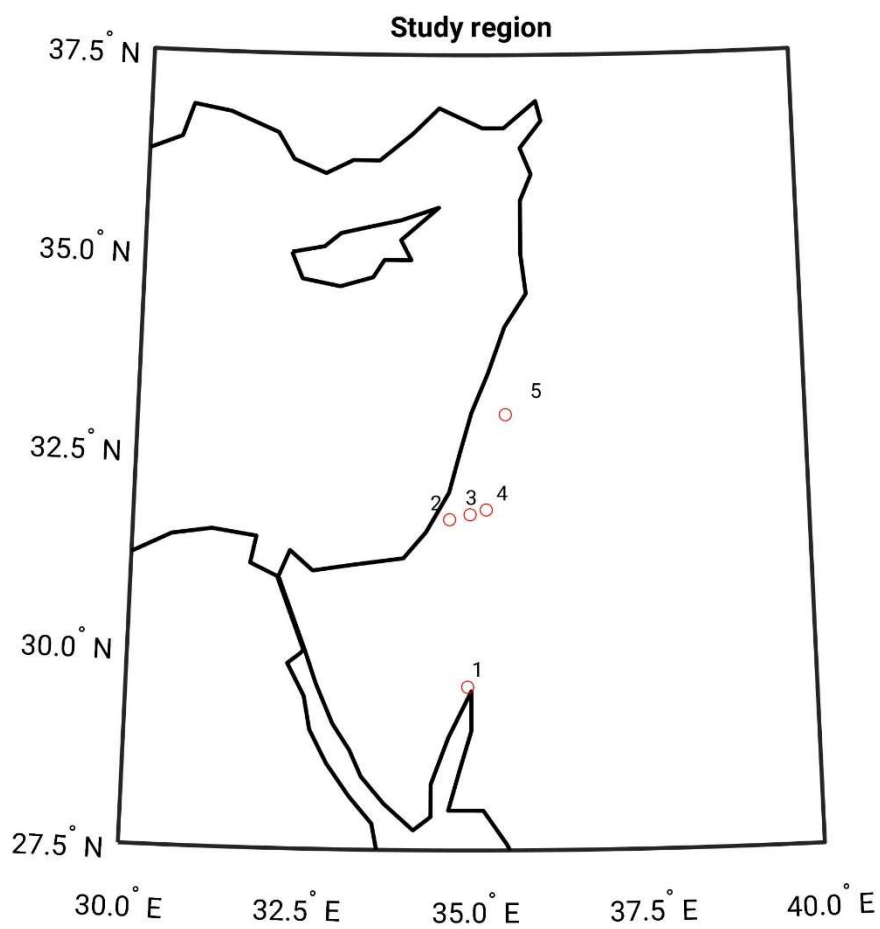


Figure S1 Study region over the Eastern Mediterranean including the five homogenized stations. The numbers refer to the serial numbers of the stations in Table S1.

20

25

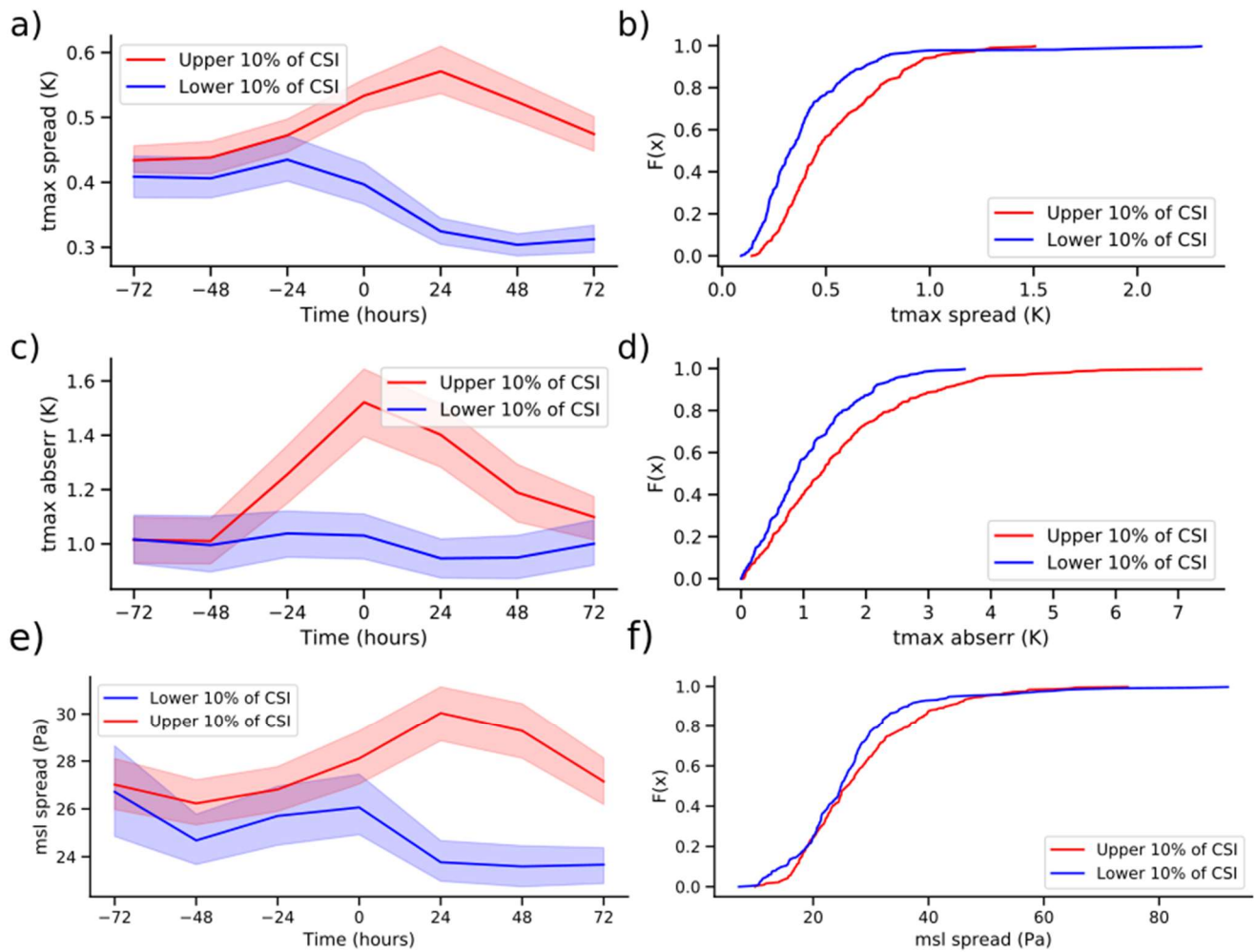


Figure S2 Same as Figure 5 but showing forecast valid time in (a, c, e) and showing CDFs for the forecasts valid at 0 h in (b, d, f).

35

40

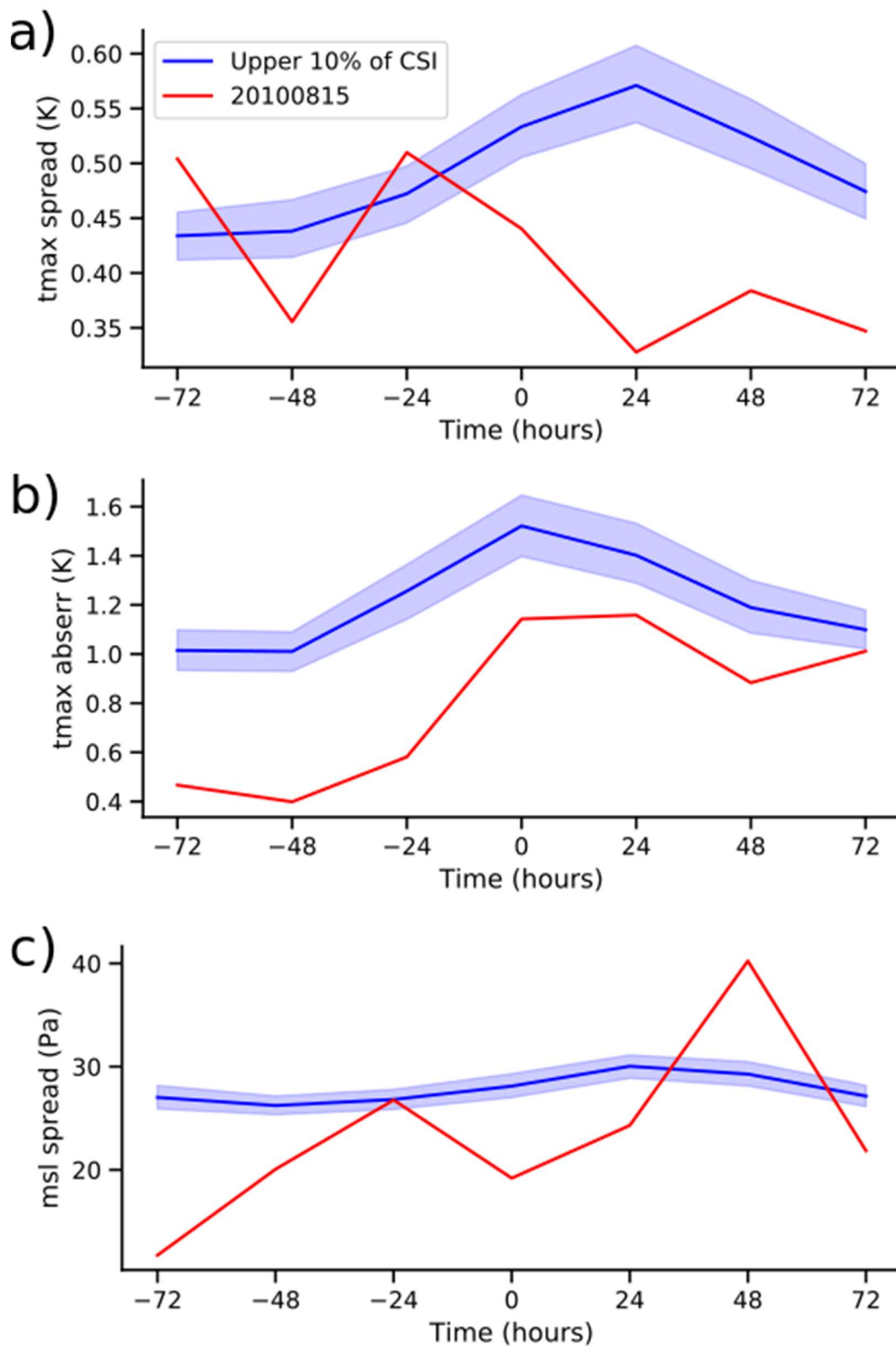


Figure S3 Same as Figure 8 but showing forecast valid time.