

# Variability of surface climate in simulations of past and future

Kira Rehfeld<sup>1</sup>, Raphaël Hébert<sup>2</sup>, Juan M. Lora<sup>3</sup>, Marcus Lofverstrom<sup>4</sup>, and Chris M. Brierley<sup>5</sup>

<sup>1</sup>Institute of Environmental Physics, Ruprecht-Karls-Universität Heidelberg, INF 229, 69120 Heidelberg, Germany

<sup>2</sup>Alfred-Wegener Institute Helmholtz-Center for Polar- and Marine Research, Telegrafenberg A45, 14473 Potsdam, Germany

<sup>3</sup>Department of Geology and Geophysics, Yale University, 210 Whitney Ave, New Haven, CT 06511, US

<sup>4</sup>Department of Geosciences, University of Arizona, 1040 E. 4th Street, Tucson, AZ 85721, US

<sup>5</sup>Department of Geography, University College London, London, WC1E 6BT, UK

**Correspondence:** Kira Rehfeld (krehfeld@iup.uni-heidelberg.de)

**Abstract.** It is virtually certain that the mean surface temperature of the Earth will continue to increase under realistic emission scenarios, yet comparatively little is known about future changes in climate variability. This study explores changes in climate variability over the large range of climates simulated by the Coupled Model Intercomparison Project Phases 5 and 6 (CMIP5/6) and the Paleoclimate Modeling Intercomparison Project Phase 3 (PMIP3), including time slices of the Last Glacial Maximum, 5 the Mid Holocene and idealized warming experiments (1% CO<sub>2</sub> and abrupt4×CO<sub>2</sub>). These states encompass climates with a range of 12°C of global mean temperature change. We examine climate variability from the perspectives of local interannual change, coherent climate modes, and through compositing extremes.

The change in the interannual variability of precipitation is strongly dependent upon the local change in the total amount of precipitation. At the global scale, temperature variability is inversely related to mean temperature change on intra-seasonal 10 to multi-decadal timescales. This decrease is stronger over the oceans, while there is an increased temperature variability over subtropical land areas (40° S - 40° N) in warmer simulations. We systematically investigate changes in the standard deviation of modes of climate variability, including the North Atlantic Oscillation, the El Niño-Southern Oscillation and the Southern Annular Mode, with global mean temperature change. While several climate modes do show consistent relationships (most notably the Atlantic Zonal Mode), no generalisable pattern emerges. By compositing extreme precipitation years across 15 the ensemble, we demonstrate that the same large-scale modes influencing rainfall variability in Mediterranean climates persist throughout palaeoclimate and future simulations. The robust nature of the response of climate variability, between both cold and warm climates and across multiple timescales, suggests that observations and proxy reconstructions could provide a meaningful constraint on climate variability in future projections.

## 1 Introduction

20 Knowledge of slow and sustained changes in mean climate conditions are important for understanding climatic risks and uncertainties (IPCC-AR5, 2013). However, understanding changes in the variability around the mean is at least as pressing of an issue as understanding of changes in mean climate for society and agriculture (Katz and Brown, 1992). This is because societal (Alexander and Perkins, 2013; Katz and Brown, 1992; Hsiang et al., 2013) and ecosystem (Seddon et al., 2016; Stenseth, 2002)

impacts scale with climate variability, and increasing variability leads to increasing extreme events (IPCC-AR5, 2013; Schär et al., 2004).

Climate variability can be defined as variations in the mean state and other statistics (e.g. standard deviations, frequency of occurrence of extremes) of temperature, precipitation and atmospheric circulation on spatial and temporal scales beyond individual weather events (Qin et al., 2014; Xie et al., 2015). Internal variability arises due to complex (often nonlinear) internal processes within the atmosphere-ocean-biosphere-cryosphere system (Deser et al., 2012a; Olonscheck and Notz, 2017; Lofverstrom, 2020), or as forced variability in response to changes in natural or anthropogenic forcing (Foster and Rahmstorf, 2011). However, the actual evolution of climate combines anthropogenic forcing and natural climate variability (Horton et al., 2016), with internal variability dominating the local-to-regional synoptic evolution (e.g., Deser et al., 2012a; Wallace et al., 2015). In a simple stochastic model (Hasselmann, 1976), internal variability is proportional to climate sensitivity, and has been used to derive emergent constraints from temperature variability over the historical era (Cox et al., 2018). A core focus of research has been the investigation of major *modes of climate variability* (Qin et al., 2014), such as the El-Niño/Southern Oscillation (Walker and Bliss, 1932; Bjerknes, 1966), and their contemporary change and representation by climate models (Deser et al., 2010, 2012a; Phillips et al., 2014). Their projected changes, and relevance for future regional climate evolution remain uncertain (Xie et al., 2015; Christensen et al., 2013). At the same time, atmospheric circulation changes contribute strongly to internal climate variability and, inherently, uncertainty of future projections (Thompson et al., 2015).

Trends established based on the instrumental record are uncertain, and both increasing (Hansen et al., 2012) or decreasing (Rhines and Huybers, 2013; Lenton et al., 2017) trends in temperature variability have been reported. These trends differ amongst world regions (Rhines and Huybers, 2013; Huntingford et al., 2013): More economically underdeveloped areas are generally more vulnerable to increases in temperature variability than the more high-latitude developed regions (Bathiany et al., 2018). In any region, climate impacts are expected to increase with greater variability (Katz and Brown, 1992; Alexander and Perkins, 2013). Therefore, there is a need to better understand changes to climate variability under warming. A warming similar to that projected for the next centuries (IPCC-AR5, 2013) occurred between the Last Glacial Maximum (LGM, 27-19 thousand years before present, 27-19 kyrs BP) until apparently stable Holocene climate conditions were reached (since 11.7 kyrs BP). Along with this warming, a reduction in centennial to millennial-scale temperature variability to a quarter of the glacial level was estimated based on palaeoclimate proxy data, and linked to the reduction of the local meridional temperature gradients (Rehfeld et al., 2018). Based on this mechanistic link, a continued decrease in temperature variability at the global scale could be expected at long timescales (Rehfeld et al., 2018). It is, however, unclear how these long timescales affect the synoptic to decadal variability, which is not generally observable with palaeoclimate proxies. There is corroborating evidence based on model simulations for decreases in variability at interannual (Holmes et al., 2016) and longer (Brown et al., 2017) timescales. In particular, the observed reduction in Arctic sea-ice extent has been linked a decline in temperature variability at a global scale (Huntingford et al., 2013; Olonscheck and Notz, 2017; Bathiany et al., 2018). At the seasonal scale, higher temperature variability over Northern Hemisphere (NH) land in summer has been observed (Holmes et al., 2016), consistent with increases

in summer extremes (Coumou and Rahmstorf, 2012; Pflieger et al., 2019).

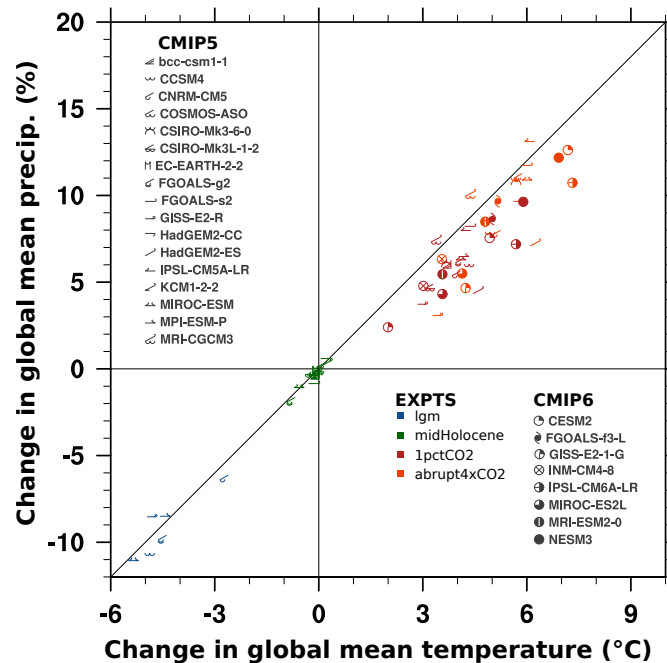
Changes in warm temperature extremes are linked to the local mean temperature change (Rhines and Huybers, 2013), but increasing synoptic variability could contribute to more frequent heat waves (Horton et al., 2016) and circulation changes to larger winter temperature variability (Screen and Simmonds, 2014) and persistence of weather patterns (Francis and Vavrus, 2012). For example, observed increases of both mean precipitation and precipitation variability, have been linked to warming (Pendergrass et al., 2017; Collins et al., 2013; Allen and Ingram, 2002; Held and Soden, 2006). In most climate models, precipitation variability was found to increase over land for future warming scenarios, with variability increasing at a similar or higher rate than the mean (Pendergrass et al., 2017). At synoptic to interannual timescales, local temperature and precipitation variability are negatively correlated over continental areas (Trenberth and Shea, 2005; Rehfeld and Laepple, 2016). Conversely, at longer timescales and at the global scale, a positive relationship has been found (Rehfeld and Laepple, 2016; Adler et al., 2008; Allen and Ingram, 2002). Precipitation changes are, however, strongly linked to changes in circulation and internal variability that remain poorly understood (Hawkins, 2011; Christensen et al., 2013; Deser et al., 2012a).

Here we investigate the link between mean-state and variability changes of temperature and precipitation across a wide range of global mean temperatures. In particular, we examine changes in climate variability on interannual to multidecadal timescales in simulations conducted in the framework of the Palaeoclimate Modeling Intercomparison Project phase 3 (Braconnot et al., 2012, PMIP3), as well as the Coupled Model Intercomparison Project phase 5 (CMIP5, Taylor et al., 2012) and phase 6 (CMIP6, Eyring et al., 2016a) to which it is affiliated. We contrast changes in interannual variability across simulations for the LGM (denoted *lgm* in the following), the mid-Holocene (*midHolocene*; 6,000 years before present) and idealized warming scenarios with 1%CO<sub>2</sub> increase per year (*1pctCO2*) as well as an abrupt quadrupling of CO<sub>2</sub> (*abrupt4xCO2*). Section 2 gives details on these experiments as well as the data preprocessing and comparison metrics. Section 3 examines changes in local interannual variability, modes of variability, the drivers of extreme precipitation changes and in the spectrum of variability. In Sect. 4 we discuss how this compares to previous findings, and identify key uncertainties. We conclude, in Sect. 5 with a discussion on prospects for validation of modeled climate variability.

## 2 Data and Methods

### 2.1 Model simulations

The core aim of this study is to compare past and future climate simulations, and to assess the similarities – or differences – in climate variability across different Earth system states. We consider a range of state-of-the-art climate models (listed in Table 1), based on climate model experiments coordinated by the Coupled Model Intercomparison Project (CMIP) phase 5 (CMIP5; Taylor et al., 2012) and phase 6 (CMIP6; Eyring et al., 2016a) as well as the corresponding Palaeoclimate Model Intercomparison Project phase 3 (PMIP3; Braconnot et al., 2012). There are 25 climate models considered in this study (Table 1 and Fig. 1). We use a single ensemble member for each model (generally r1i1[p1]f1) and climate state. The preindustrial control



**Figure 1.** Hydrological sensitivity across the past and future model ensemble. The change in global mean temperature from the PI is plotted against the percentage change in global mean precipitation rate. Symbols indicate the different climate models, following Table 1. Colours show the different experiments. The line indicates 2% change in precipitation per Kelvin temperature change.

(*piControl*) simulations represent constant preindustrial (PI) conditions and are the baseline for comparison in all our analyses. We analyze the air surface temperature (‘tas’), precipitation (‘pr’), sea surface temperature (SST) and sea-level pressure (SLP) variables.

## 2.2 The Last Glacial Maximum experiment (*lgm*)

- 5 The last glacial maximum (*lgm*) experiment represents conditions 21,000 years ago. Globally averaged surface temperature was about 3-5 degrees colder than today (Annan and Hargreaves, 2013; Shakun and Carlson, 2010) in response to a global mean radiative forcing of about  $-4\text{W/m}^2$  (Broccoli, 2000) by reduced greenhouse gas concentrations (GHG), large continental ice-sheets, and 120-130m lower sea-level (Clark and Mix, 2002; Broccoli, 2000; Annan and Hargreaves, 2015). A standard set of forcings (orbit, GHG) and surface boundary conditions (ice sheets) was set out in PMIP3 (Braconnot et al., 2012; PMIP3,
- 10 2010) . In particular, the ice sheet extent and height is modified with respect to the *piControl* configurations, to reflect the extensive LGM NH ice sheet cover. The  $\text{CO}_2$  concentrations is prescribed at 185ppm,  $\text{CH}_4$  at 350ppb and  $\text{N}_2\text{O}$  at 200ppb (PMIP3, 2010), whereas the solar constant, vegetation and aerosols follow the preindustrial control setup (Taylor et al., 2012). Overall, insolation was higher-than-preindustrial in winter in both hemispheres, and lower-than-preindustrial summer in both hemispheres (up to  $-12\text{W/m}^2$  in NH high latitudes, Otto-Bliesner et al., 2006). This corresponds to a reduced seasonal contrast

in the top-of-atmosphere radiation. The multi-model mean shows global cooling, strongest in the polar regions and above ice sheets (Fig. 2a).

### 2.3 The mid Holocene experiment (*midHolocene*)

The *midHolocene* experiments represent conditions at 6,000 years before present, during the peak warmth of the current interglacial (Taylor et al., 2012; Braconnot et al., 2012). The different orbital configuration (with higher-than-present-day obliquity and eccentricity) led to an enhanced seasonal contrast in insolation, with stronger insolation in June to September from the high northern latitudes down to 30°S (up to 32W/m<sup>2</sup> in NH summer), stronger insolation in September to November/SH spring (+48W/m<sup>2</sup>) (30°S to 90°S), and negative insolation anomalies of similar magnitude in the other months of the year (Otto-Bliesner et al., 2006). This led to a weak global mean insolation anomaly. Greenhouse gas concentrations in the PMIP3 ensemble were prescribed as for the *piControl* simulation (~ 280 ppm CO<sub>2</sub>, 650ppb CH<sub>4</sub>, 270 ppb N<sub>2</sub>O), as were the configurations of vegetation, aerosols, ice sheets, topography and coastlines (PMIP3, 2010). In previous model intercomparison exercises, global mean temperatures were found to be similar to today (Otto-Bliesner et al., 2006), but proxy data from the NH support warmer temperatures (Wanner et al., 2015; Marcott et al., 2013).

### 2.4 The warming experiments *IpctCO2* and *abrupt4xCO2*

To complement the palaeoclimate simulations, we analyze two experiments each model from CMIP5 and CMIP6 performed: the idealized warming experiments, *IpctCO2* and *abrupt4xCO2* (Taylor et al., 2012; Eyring et al., 2016a). In the *abrupt4xCO2* experiment, atmospheric CO<sub>2</sub> concentrations are abruptly quadrupled from preindustrial conditions to analyze fast feedbacks and climate sensitivity (Eyring et al., 2016a). The simulations are continued for at least 150 years. We analyze the years 100-150 for all simulations. [Note that we follow the naming scheme of CMIP5 (*abrupt4xCO2*; Taylor et al., 2012), while in CMIP6 the experiment name is *abrupt-4xCO2* (Eyring et al., 2016a). The experimental protocols are equivalent between the CMIP generations (Taylor et al., 2012).] The CO<sub>2</sub> concentrations in the *IpctCO2* simulations are prescribed to increase by 1% per year in a compound fashion starting from preindustrial conditions (Eyring et al., 2016a). The change in global mean temperature at the time of CO<sub>2</sub> doubling in this experiment is called the transient climate response (TCR; Andrews et al., 2012). This compound increase achieves a quadrupling of carbon dioxide after 140 years, but the climate system is still highly transient. The *IpctCO2* simulations are run between 140-160 years, of which we analyze the final 50 years. The realized warming in the *IpctCO2* scenarios is less than in the *abrupt4xCO2* runs (Table 1), as the system is still farther from equilibration.

### 2.5 Preprocessing of model simulations

The model output is treated in a consistent fashion across all the analyses. We always analyze the final 50 years of each simulation, except for in the *abrupt4xCO2* experiment, where the years 100 to 149 are analyzed. For the variability analyses, output is converted to anomalies with respect to the monthly climatology over the 50 years. These anomalies are then linearly detrended at each gridpoint.

This process removes the changing mean state in the transient simulations and is based on the conventions of the Climate Variability Diagnostics Package (CVDP, Phillips et al., 2014; Eyring et al., 2016b). The analyses performed here primarily focus on interannual timescales, therefore we do not apply the PaleoCalAdjust software to account for the output-averaging calendar effects (Bartlein and Shafer, 2019).

## 5 2.6 Comparisons across the ensemble

All model output used in the study is available for download on the Earth System Grid Federation (Eyring et al., 2016b). Each model is weighted equally during ensemble averaging. These experiments provide a large range of global mean temperature (GMT) changes (Fig. 1), ranging from -6 to +6.5 K with respect to the preindustrial state. Over this range of 12K in GMT, the area-weighted global mean precipitation (GMP) varies between -12%, for the *lgm* experiments, and +12% for the *abrupt4xCO2* experiments. The slope of the relationship between temperature change and precipitation change is known as the hydrological sensitivity (HS, O’Gorman et al., 2011). For CMIP5 and CMIP3 models, values between 2 and 3 % K<sup>-1</sup> have been established (Li et al., 2013; O’Gorman et al., 2011; Allen and Ingram, 2002). Based on the mean temperature and precipitation values for each model (Fig. 1), we calculate HS individually for each GCM (Table 1) and explore ensemble wide relationships (sections 3.1 & 3.2).

## 15 2.7 Diagnosing variability changes

This research spans across several different definitions of variability described in the literature. We term the kind of variability analysed by e.g. Huntingford et al. (2013) and Pendergrass et al. (2017) as “local variability”, in that it considers the year-to-year variations at an individual location. There has been a concerted effort to investigate the preferred spatial patterns and temporal variations that account for large-scale features in variance in the climate system. We term these as "modes of climate variability", and they are considered as the product of a specific spatial pattern and an associated index time series (Qin et al., 2014). They are diagnostic measures for teleconnections or surface climate patterns, and defined on pressure, temperature or precipitation fields. Here, we investigate the changes of ten modes of variability from the detrended time series following the workflow of the Climate Variability Diagnostics Package (CVDP, Phillips et al., 2014). We investigate seven atmospheric-oceanic coupled modes defined as predominant SST patterns, and three extratropical atmospheric modes with large-scale teleconnection patterns (Deser et al., 2010; Nigam, 2003). Internal variability of the  $j$ -th mode,  $\sigma_{\text{int},j}$ , was estimated across the  $N$  different models from  $1/N \sum_{i=1}^N x_{i,j,1} - x_{i,j,2}$ , where  $x_{i,j,1}$  is the standard deviation of the  $i$ -th model’s  $j$ -th mode for the first 50-year segment of the *piControl* simulation. A map with the spatial extent of these modes is given in supplementary figure 1 (SF1).

### 2.7.1 Local variability

30 Local variability is computed as the standard deviation of the annual mean temperature or precipitation. In all simulations, a 50 year subset was selected (typically the final 50 years, Sec. 2.5), anomalies with respect to the simulations climatology computed

Model	CMIP6	ECS (K)	midHolocene	lgm	1pctCO2	abrupt4xCO2	Hydro. Sens. ( $\eta_a$ , %/K)
bcc-csm1-1	False	3.1	-0.1	-	3.7	4.9	1.8
CCSM4	False	2.9	-0.2	-4.9	4.3	4.9	1.8
CESM2	True	5.2	-	-	4.9	7.2	1.6
CNRM-CM5	False	3.3	0.1	-2.7	4.0	5.1	1.7
COSMOS-ASO	False	N/A	-	-5.7	-	-	2.2
CSIRO-Mk3-6-0	False	4.1	-0.0	-	3.7	5.7	1.9
CSIRO-Mk3L-1-2	False	3.1	0.0	-	3.2	-	1.5
EC-EARTH-2-2	False	4.2	-0.1	-	-	-	-
FGOALS-f3-L	True	3	-	-	5.0	5.2	1.8
FGOALS-g2	False	3.7	-0.8	-4.5	3.3	5.7	2.0
FGOALS-s2	False	4.5	-0.1	-	4.4	6.0	2.0
GISS-E2-1-G	True	2.7	-	-	2.0	4.2	1.2
GISS-E2-R	False	2.1	-0.1	-4.8	3.0	3.4	1.5
HadGEM2-CC	False	4.5	0.2	-	-	-	-
HadGEM2-ES	False	4.6	0.2	-	4.6	6.2	1.1
INM-CM4-8	True	2.1	-	-	3.0	3.6	1.7
IPSL-CM5A-LR	False	4.1	-0.2	-4.7	4.2	6.1	2.4
IPSL-CM6A-LR	True	4.5	-	-	5.7	7.3	1.4
MIROC-ES2L	True	2.66	-	-	3.6	4.1	1.3
MIROC-ESM	False	4.7	-0.6	-5.3	4.1	6.0	1.9
MPI-ESM-P	False	3.5	-0.2	-4.4	4.2	5.8	1.7
MRI-CGCM3	False	2.6	-0.1	-4.7	3.4	4.4	2.5
MRI-ESM2-0	True	3.1	-	-	3.6	4.8	1.6
NESM3	True	3.7	-	-	5.9	6.9	1.7

**Table 1.** Details of the models and experiments involved in the analysis. Each experiment provides the global mean change in surface temperature from the preindustrial control simulation ( $\Delta T$ ). The (actual) hydrological sensitivity HS is the global mean percentage change in precipitation divided by the temperature change. It was calculated via linear regression through all the simulations if available. Where fewer experiments existed, it was calculated as the directed average of the values, excluding the midHolocene simulation.

and then detrended. Standard deviation ratios were computed on the individual model grids and interpolated bilinearly onto a common  $1 \times 1^\circ$  latitude/longitude grid prior to ensemble averaging.

### **2.7.2 The El Niño/Southern Oscillation (ENSO)**

The El Niño/Southern Oscillation (Bjerknes, 1966) is an atmosphere-ocean coupled mode of variability with large-scale changes in SST, SLP, precipitation and winds as well as the ocean thermocline depth in the equatorial Pacific varying semi-periodically with a timescale of 2-10 years (Philander, 1983). ENSO is one of the main drivers of global mean temperature variability, with global teleconnections (Bjerknes, 1969), and a pronounced impact on the global energy balance and global mean temperature (Trenberth and Fasullo, 2012; Foster and Rahmstorf, 2011). The SLP oscillation in the South Pacific ('Southern Oscillation') was first described by Walker and Bliss (1932), and the link between atmospheric oscillating patterns and local ocean circulation first described by Bjerknes (1966). Here we use the Niño3.4 and Niño4 indices, which are the equatorial ( $5^\circ\text{S}$ – $5^\circ\text{N}$ ) area-averaged SST anomalies over the regions  $170^\circ\text{W}$ – $120^\circ\text{W}$  and  $160^\circ\text{E}$ – $150^\circ\text{W}$ , respectively (Trenberth, 1997; Deser et al., 2010, 2012b).

### **2.7.3 The Interdecadal Pacific Oscillation (IPO)**

The Interdecadal Pacific Oscillation (IPO) shows a pattern of SST change similar to ENSO (equatorial warming), but with different impacts (Power et al., 1999; Meehl and Hu, 2006). Here we construct a monthly index timeseries based on the first principal component of 13-yr low pass filtered Pacific ( $40^\circ\text{S}$ – $60^\circ\text{N}$ ,  $110^\circ\text{E}$ – $70^\circ\text{W}$ ) area-weighted SST anomalies, where the global mean SST anomaly has been removed at each timestep.

### **2.7.4 The Indian Ocean Dipole (IOD)**

The Indian Ocean Dipole (IOD) is an irregular pattern of SST variability in the Indian Ocean independent of ENSO in the Pacific (Webster et al., 1999). In a negative IOD event, the western region warms and eastern region cools. The opposing pattern, with a decrease in the zonal temperature gradient, is a positive IOD event. The associated changes in surface pressure and rainfall lead to rainfall modulation and extreme precipitation events at the western/eastern boundaries (Webster et al., 1999). Its subdecadal variability is modulated on decadal to multi-decadal timescales (Ashok et al., 2004). Here, the index time series is calculated as the difference of the area-averaged SST anomaly between the regions  $50^\circ\text{E}$ – $70^\circ\text{E}$ ,  $10^\circ\text{S}$  –  $10^\circ\text{N}$  and  $90^\circ\text{E}$ – $110^\circ\text{E}$ ,  $10^\circ\text{S}$ -equator (Saji et al., 1999).

### **2.7.5 The Atlantic Meridional Mode (AMM)**

The Atlantic Meridional Mode (AMM), sometimes called the Atlantic dipole mode or gradient mode, is a leading mode of SST variability in the equatorial Atlantic (Servain et al., 1999). The SST pattern, with opposing anomalies on either side of the equator, modulates the meridional gradient of the sea surface temperature anomaly in the tropical Atlantic, and hence the movement of the Intertropical Convergence Zone (ITCZ) and associated precipitation (Xie and Carton, 2004). The SST gradient



is complemented by cross-equatorial atmospheric flow, strengthened by wind-evaporation-surface temperature feedbacks (Xie and Carton, 2004). The AMM has been linked with hurricane activity in the area (Vimont and Kossin, 2007) and impacts rainfall over tropical Atlantic/NE Brazil/Sahel (Kushnir et al., 2006). Following Doi et al. (2010), the AMM state is defined here as the area average, detrended SST anomaly difference between the two regions 15–5°N, 50–20°W and 15°S–5°S, 20°W–10°E  
5 (Phillips et al., 2014).

### **2.7.6 The Atlantic Zonal Mode (ATL3)**

Atlantic Zonal Mode (ATL3) is an equatorial coupled mode, similar to ENSO (Zebiak, 1993), therefore sometimes referred to as ‘Atlantic Niño’ (Xie and Carton, 2004). Calculation of the mode in the CVDP follows Zebiak (1993), and is based on the area average of the detrended SST anomaly over the region 3°N - 3°S, 20 - 0°W. The ATL3 displays interannual variations  
10 with roughly a four-year period. Its variations are linked to rainfall variability in the Sahel region (Giannini et al., 2003).

### **2.7.7 The Pacific Decadal Oscillation (PDO)**

The Pacific Decadal Oscillation (PDO, Power et al., 1999), is the leading mode of variability of monthly SST anomalies over the North Pacific after global mean anomaly is removed. It emerges as a mode partially driven by ENSO and independent, stochastically emerging variations with a timescale of decades (Mantua et al., 1997; Deser et al., 2010; Schneider and Cornuelle,  
15 2005). However, no clear spectral peak has been identified (Deser et al., 2010), as it arises from a superposition of SST fluctuations with different dynamical origins (Schneider and Cornuelle, 2005). The PDO was first described in 1997 as recurring climate pattern of ocean-atmosphere variability over North Pacific and linked to impacts on Salmon production and coastal surface temperatures on the west coast of the North American continent and the adjacent sea surface (Mantua et al., 1997). The index is associated with temperature/precipitation changes over western and eastern edges of North Pacific and displays  
20 positive correlation with winter precipitation in California (Mantua et al., 1997). The pattern is generally similar to ENSO variations but with a weaker Southern Pacific imprint (Deser et al., 2010). We calculate a monthly index time series from the leading principal component of the area-weighted SST anomalies in the box 20–70°N to 110°E–100°W, where the global mean SST anomaly for each time step has been removed (Deser et al., 2010).

### **2.7.8 North Atlantic Oscillation (NAO) and the Northern Annular Mode (NAM)**

The North Atlantic Oscillation (NAO) is a quasi-periodic spatial pattern of sea-level pressure changes between the Arctic and subtropical North Atlantic (Stephenson et al., 2003; Walker and Bliss, 1932). NAO variations impact the atmospheric circulation over North Atlantic and the strength of the Westerly inflow into Europe, influencing storm tracks, temperature and precipitation, in particular in boreal winter (Hurrell, 1995; Hurrell and Deser, 2010). It varies on a seasonal, interannual to decadal timescale (Hurrell, 1995). In positive NAO phases, a large difference in SLP between the high and mid-latitudes implies a strong SLP gradient and strong westerly inflow into central Europe. In negative NAO-phases, the smaller difference in  
30 pressure is associated with a southerly shift in the North Atlantic storm tracks and enhanced precipitation in the Mediterranean

and North Africa. Here we calculate the NAO index based on the first principal component of the boreal winter (DJF) area-weighted sea level pressure in the box 20 – 80°N, -90 – 40°E (Hurrell and Deser, 2010). Given that this calculation results in a normalised time series, to investigate changes in NAO variability, we consider the spatial standard deviation of the Empirical Orthogonal Function (EOF) over the box instead (Power et al., 2013).

5

The Northern Annular Mode (NAM) describes deviations in the zonal pressure gradient between the polar regions and the subtropics. This gradient governs synoptic (5-day-mean) variability of sea-level pressure in the NH (Lorenz, 1951). By definition, it is related to the NAO. Here, it is calculated as the leading EOF of the area-weighted monthly-mean SLP anomalies over the latitudes 20–90°N (Hurrell and Deser, 2010), with its variability measured by the spatial standard deviation of this  
10 EOF (Power et al., 2013).

### **2.7.9 Southern Annular Mode (SAM)**

The Southern Annular Mode (SAM) index gives the strength of the sea-level pressure gradient in the Southern Hemisphere mid-latitudes (Karoly, 1990). It is a distinctive pattern of climate variability in the Southern Hemisphere, in particular in winter (Karoly, 1990; Marshall, 2003). Variations in the SLP gradient impact regional temperatures, precipitation (Marshall, 2003;  
15 Gillett et al., 2006) as well as the circulation of the Southern Ocean. Negative values of SAM have been linked to weakenings of the polar vortex, and an increasing occurrence of hot and dry extremes in Australia (Lim et al., 2019). SAM impacts latitudinal rainfall distribution from the subtropics to Antarctica, with recent trends towards a more positive mode than over the last 1000 years, and links to an Antarctic interior cooling/peninsula warming (Abram et al., 2014). Monthly PSL anomalies averages are formed over the latitudes 20–90°S, and a square root of the cosine of latitude weighting is applied. The leading EOF is  
20 considered to give the pattern for the SAM (Thompson and Wallace, 2000), and spatial standard deviation of this pattern (Power et al., 2013) is used as our measure of its variability.

### **2.8 Changes in precipitation extremes**

We investigate the major large-scale patterns associated with precipitation variability across climates. Based on Fig.3 we find that, in many regions, past and future precipitation variability shows opposing signs. We select five regions with Mediterranean-  
25 type climates (Seager et al., 2019): (1) the southwestern tip of South America, (2) southwestern South Africa, (3) southwestern Australia, (4) coastal western North America, and, (5) the western Mediterranean. At present, these regions lie between the poleward edge of the winter Hadley cell and equatorward edge of the mid-latitude storm tracks. The climate is therefore characterized by wintertime precipitation and summertime dryness associated with subtropical subsidence, and display substantial interannual variability (Seager et al., 2019).

30

For each region, model and experiment we first calculate the climatological average, annual mean precipitation, and, as an individual threshold, the interannual standard deviation of local precipitation. We then identify where, in the 50-year times-

lice, precipitation falls above or below 1 standard deviation, and composite sea-level pressure, surface air temperature and precipitation for these extreme precipitation years across all experiments and model simulations.

## 2.9 Timescale-dependence of the variability changes

The power spectrum,  $P(\tau)$ , of a climate variable describes how its variability is distributed over the timescales  $\tau$ , with the integral over the entire spectrum yielding the total variance of the signal (Chatfield, 2004). Here we use multitaper power spectrum (Thomson, 1990) with linear detrending, and investigate the area-weighted mean spectra of the local (grid-box) time series. The scaling exponent,  $\beta$ , is used to summarize the scaling relationship of variance with timescale, or equivalently frequency which relates to timescale as  $f = 1/\tau$ , assuming that the spectrum approximately follows  $P(f) \sim \tau^\beta$ . The scaling exponent  $\beta$  is estimated as the linear slope between the logarithm of the power spectral density and the logarithm of timescales; the fit is performed between 4 months to 20 years. Uncorrelated white noise has no autocorrelation, and the scaling exponent is zero ( $\beta = 0$ ). For  $\beta > 0$  ( $\beta < 0$ ), the underlying stochastic process displays positive (negative) autocorrelation. Positive autocorrelation for temperature can be expected (Fredriksen and Rypdal, 2016), while precipitation and pressure have lower, or negative values (Fraedrich et al., 2009).

## 3 Results

### 3.1 Hydrological sensitivity across the ensemble

Fig. 1 shows the range of global mean temperature change and precipitation change from the *piControl* simulations. The *lgm* ensemble has a mean temperature anomaly of 4.2 (range of -2.5 to -6) K, and precipitation anomalies range from -6 to -12%/K. The *midHolocene* ensemble shows no large, consistent global mean changes. However, models with wetter conditions show positive global mean temperature anomalies. The *1pctCO2* simulations display temperature anomalies from +3 to +7K, and precipitation increases between 3 and 12%. The *abrupt4xCO2* warming simulations are slightly warmer (+4 to +7K) and wetter (+5 to +12%/K). For the entire ensemble, we estimate an overall mean HS of  $1.73 \pm 0.005$  (one standard error of the slope) taking into account all models weighted equally. The equilibrium experiments (*lgm* and *midHolocene*) fall consistently on the 2%/K-line (Allen and Ingram, 2002), whereas the transient warming experiments fall below. We find no discernible difference between the precipitation scaling between the CMIP5 and CMIP6 models. We find no systematic relationship between ECS and HS. Additional investigations (not shown) demonstrate that our findings hold with and without calendar adjustment.

### 3.2 Changes in local interannual variability

We aim at a comparison of mean state and variability changes across multiple climate states. Changes in temperature, and temperature variability (Fig. 2) do show some consistent progression from the palaeoclimate experiments to the idealized warming. As expected, we find globally cooler conditions for the LGM. These are highly consistent across the ensemble, as there is scarcely any stippling in Fig. 2a, indicating that at least 2/3rds of the considered models do agree on the same sign as

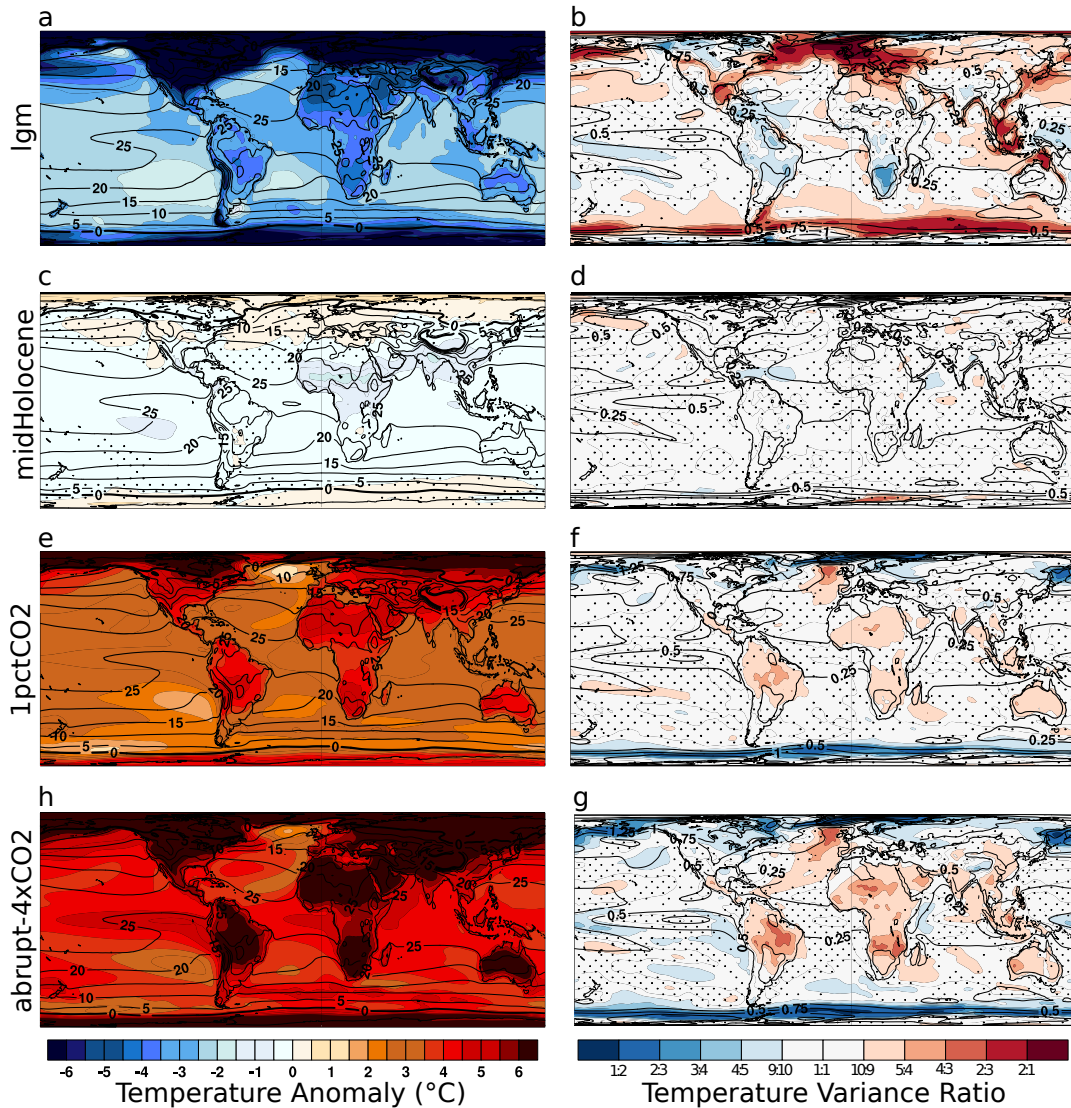
the mean. Comparing this to Fig. 2e, which shows the change in simulated temperature variability in the *lgm* experiment vs. the *piControl* as the ratio of standard deviations of the annual means shows that the interannual temperature variance is high in areas which experienced much colder conditions (at the sea-ice edges), and where the lower sea level led to more exposed shelves (e.g., Indonesia) as well as at the edges of the large continental ice sheets (Laurentide and Eurasian). The simulated *lgm* temperature variability is higher in the mid-to-high latitudes of both hemispheres, but large areas of the tropics show decreases in interannual temperature variance against the *piControl* experiment, in particular the ENSO region, South America, Southern Africa and the West Pacific Warm Pool. Overall, the mean-change pattern of the *lgm* experiment is weakly anticorrelated with the pattern of standard deviation changes ( $r=-0.12$ ,  $p<0.05$  based on area-weighted Pearson correlation and a one-sided t-test conservatively assuming 500 degrees of freedom, accounting for the high degree of spatial autocorrelation in the fields).

The local changes in mean precipitation for the *lgm* simulations (Fig. 3a) are overall negative, consistent with the globally decreased precipitation (Fig. 1). We find consistent shifts towards higher precipitation in the continental areas of both hemispheres affected by subtropical subsidence precipitation, over northern Africa, southern Africa, across the subtropical southern Atlantic, as well as southwestern North America. Interannual precipitation variance in the *lgm* simulations is lower than in the control simulations with the exception of the areas which have higher mean precipitation, where variability also increases (Fig. 3e). Across the multimodel field, mean and standard deviation change are positively correlated ( $r=0.63$ ,  $p<0.01$ ).

The *midHolocene* simulations show weak but consistent (sub)tropical cooling, and moderately warmer conditions in the annual mean temperatures (Fig. 2b), as expected given the positive high-latitude insolation forcing (Sect. 2.3). Overall, the interannual temperature variance shows patterns of higher and lower-than-*piControl* variance with modest degrees of inter-model consistency. Similar to the *lgm* variance ratio field, there are reductions in the tropical Atlantic temperature variance, collocated with a local increase in precipitation (Fig. 3b), and precipitation variance (Fig. 3f). Precipitation variance appears lower in the Pacific, and higher over the Atlantic and Indian Ocean sector, with a strong positive precipitation anomaly over Northern Africa. Mean and standard deviation changes are strongly correlated for precipitation ( $r=0.55$ ,  $p<0.01$ ), but only weakly correlated for temperature ( $r=0.09$ ,  $p<0.05$ ).

Mean temperature change for the *IpctCO2*-scenario is consistently positive with stronger warming over the continents and amplified warming in the high Northern latitudes (Fig. 2c). The interannual temperature standard deviation ratio (Fig. 3g) shows consistent increases in temperature variability over southwestern North America, South America, Africa, Australia, the Indian Peninsula and China as well as over the North Atlantic, and decreases in temperature variability against *piControl* over northern North America, Scandinavia, the Tibetan Plateau, Northeast China as well as across the Arctic. Surrounding Antarctica, decreasing temperature variability is observable south of the polar circle, but moderate increases in temperature standard deviations are observable over East Antarctica. Overall, the mean change and standard deviation change patterns are anticorrelated ( $r=-0.23$ ,  $p<0.01$ ), meaning that where we find stronger warming we also observe lower simulated temperature variability.

Mean precipitation change across the *IpctCO2*-ensemble is positive (Fig. 1). However, inspecting Fig. 3 indicates that this increase primarily affects the high latitudes and the Equatorial region. In South America, no clear change in precipitation is



**Figure 2.** The change in mean annual temperature (a-d) and its variability (e-f) across multiple climate experiments. Each panel shows the ensemble average difference. The changes in the mean temperature are calculated as the experiment minus preindustrial control gridbox annual means. The changes in variability are given based on the ratio of the standard deviation of annual mean temperature in the experiment, over that of the *piControl* experiment. Ratios above 1 indicate higher variability in the experiment than in the *piControl*. The contours in each panel show the ensemble-mean pattern in the preindustrial control. Contour variations are due the different number of models available for individual experiments, as the preindustrial ensemble-mean is only computed from models in each experiment. Stippling indicates where the sign of the change disagrees for more than 2/3rds of the ensemble.

discernible, whereas the Sahel and Arabian Sea are wetter. Mean and standard deviation change fields are positively correlated ( $r=0.67$ ,  $p < 0.01$ ). Patterns of temperature and precipitation changes in the *abrupt4xCO2*-scenario (Fig. 2d) and 3d) are highly

consistent with those for the *IpctCO2*-scenario ( $r=0.94, p<0.01$  for precipitation,  $r=0.98, p<0.01$  for temperature). In mean and variability, a stronger amplification of the warming patterns (Fig. 2h), over the continents, the North Atlantic, the Indo-pacific and the locations of the subtropical high are discernible. The polar and continental amplification of the temperature change patterns of the *lgm*-scenario are mirrored in the areas of warming in the *IpctCO2* and *abrupt4xCO2*-scenarios ( $r=-0.65$  and  $r=-0.64$  respectively,  $p<0.01$ ). In particular in the west-coast mid-latitudes where higher precipitation is simulated at the LGM, it appears lower in the warming scenarios of the NH.

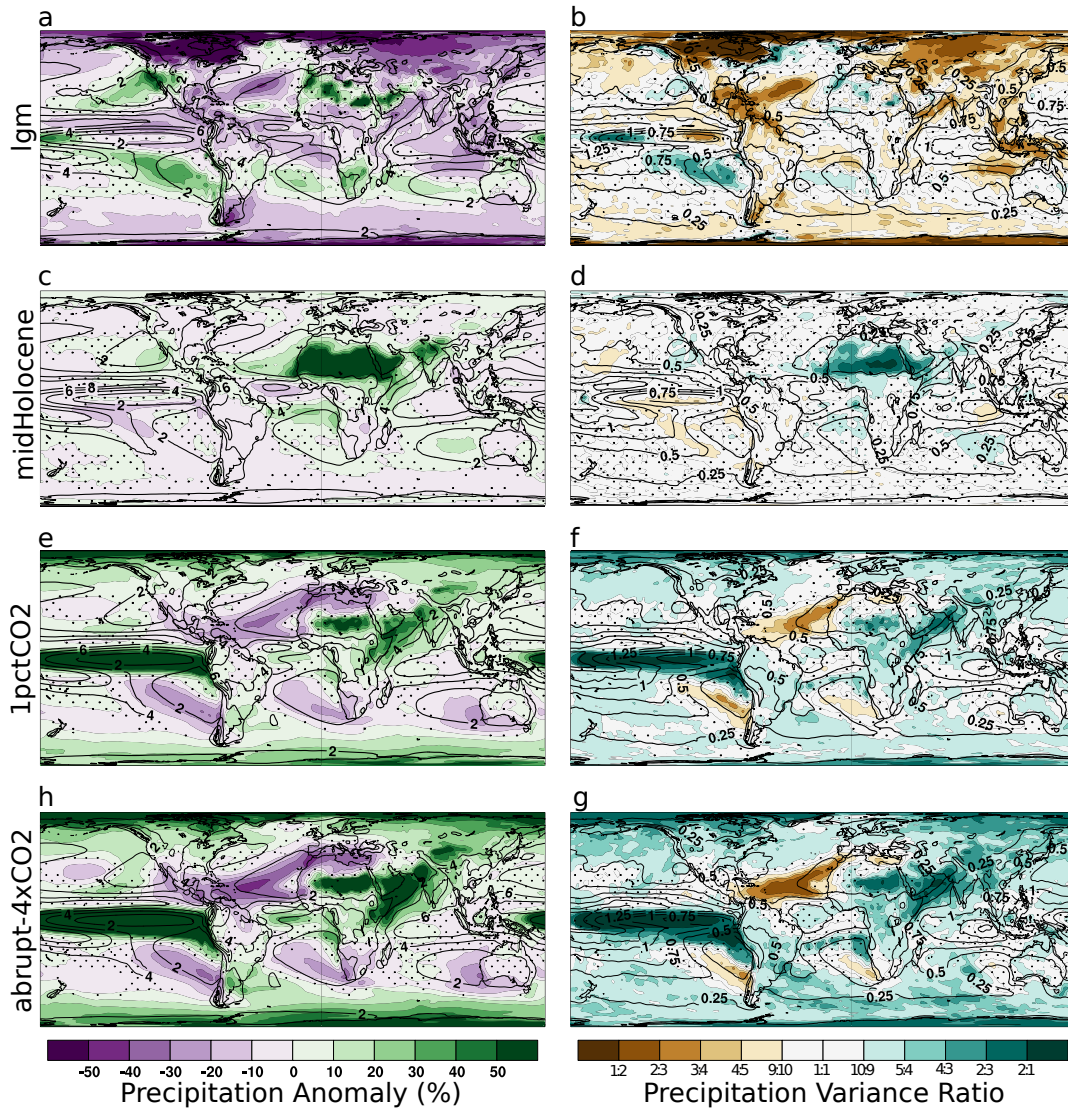
### 3.3 Changes in modes of variability

#### 3.3.1 Changes in the global mean

Global mean precipitation increases with global mean temperature across the ensemble (Fig. 1). However, the variance of global mean temperature decreases with the global mean state, resulting in lower variance than in the *piControl* for the majority of models considered in the idealized warming scenarios and higher-than-preindustrial variance for the *lgm* experiment (Fig. 4a). At the same time, the standard deviation of global mean precipitation increases with approximately 3%/K (Fig. 4b), hence at a higher rate than the global mean precipitation (Fig.1). Comparing these temporal changes against the spatial expression in Figs. 2 and 3 we find that the global reduction of temperature variability with warming is dominated by the ocean and high-latitude signal, whereas the mid-latitude continental areas show consistent increases in temperature variability with warming. At the same time, the increase in precipitation is more inhomogeneous in spatial location and magnitude (Fig. 3d,h).

#### 3.3.2 Changes in SST-based modes

Changes in the SST-based modes of variability across the ensemble are given in Fig. 4c–h. The majority of models (6/9) show a lower-than-preindustrial NINO3.4 and NINO4 standard deviation for the *lgm* and for the *midHolocene* (9/14), and a higher-than-preindustrial ENSO-index variance for the idealized warming scenarios (10/8 and 7/11, Fig. 4c,d). Nonetheless, there is no statistically significant link between global mean temperature and ENSO variability increase (e.g. Christensen et al., 2013). Preliminary findings from the new PMIP4 simulations appear to confirm these conclusions about the palaeoclimate time periods (Brown et al., 2020). This fits with palaeoENSO reconstructions of suppressed activity during the mid-Holocene, yet with potential changes in ENSO variability during the LGM (Lu et al., 2018). There are no systematic changes in standard deviation across the ensemble for the PDO (Fig.4e) or the IPO (Fig 4f), although both are not well resolved by the short records analysed here. For the IOD (Fig 4g) there are no tendencies in the *lgm*-ensemble, with about as many models showing an increased in standard deviation as showing a decrease. However, a majority of models show suppressed IOD activity under the warming scenarios corresponding with the reduced temperature variability over the Arabian Sea upwelling (Fig. 2), which may be a response to the increased ocean stratification seen in the transient simulations (Oyarzún and Brierley, 2019). In the tropical Atlantic, weak but negative trends for the AMM (Fig. 4h) and the ATL3 (Fig. 4i) variability for warmer conditions are found. This fits with the findings of Brierley and Wainer (2018), and is not inconsistent with the increased future rainfall variability



**Figure 3.** The change in mean annual precipitation (a-d) and its variability (e-f) across multiple climate experiments. Each panel shows the ensemble average difference (as percentage changes with respect to each models *piControl*). The changes in variability are based on the ratio of the standard deviation of annual mean precipitation in the experiment, over that of the *piControl* experiment. Ratios above 1 indicate higher variability in the experiment than in the *piControl*. The contours in each panel show the ensemble-mean pattern in the preindustrial control (in mm/day). Contour variations are due to the different number of models available for individual experiments, as the preindustrial ensemble-mean is only computed from models in each experiment. Stippling indicates where the sign of the change disagrees for more than 2/3rds of the ensemble.

over both the Amazon and West Africa (Fig. 3g,h) - rather, it indicates a diminished influence of Atlantic climate variability in the regions.

### 3.3.3 Changes in atmospheric modes of variability

Let us now consider the atmospheric modes of variability (Fig.4j-l). In the *lgm* experiments, the simulated temperature gradient in the NH is higher than in the *piControl* - all but one model (Fig. 4) show reduced variability for the NAM and the NAO. Conversely, in the idealized warming scenarios, which have a reduced meridional temperature gradient, more models show increasing standard deviations. Whether a reduced standard deviation indicates a more stable storm track or a more spatially-constrained one requires further investigation and possibly moving away from EOF-based mode definitions.

The Southern Annular Mode shows a tendency towards reduced standard deviations for the idealized warming scenarios (Fig. 4i). This also occurs in the *lgm* experiments. This counter-intuitive response may arise from the competing influences of variability of the Antarctic sea ice edge (Fig. 2) and the hydrologically-related variability within the storm tracks (Fig. 3).

### 10 3.4 Circulation patterns underlying extratropical precipitation extremes

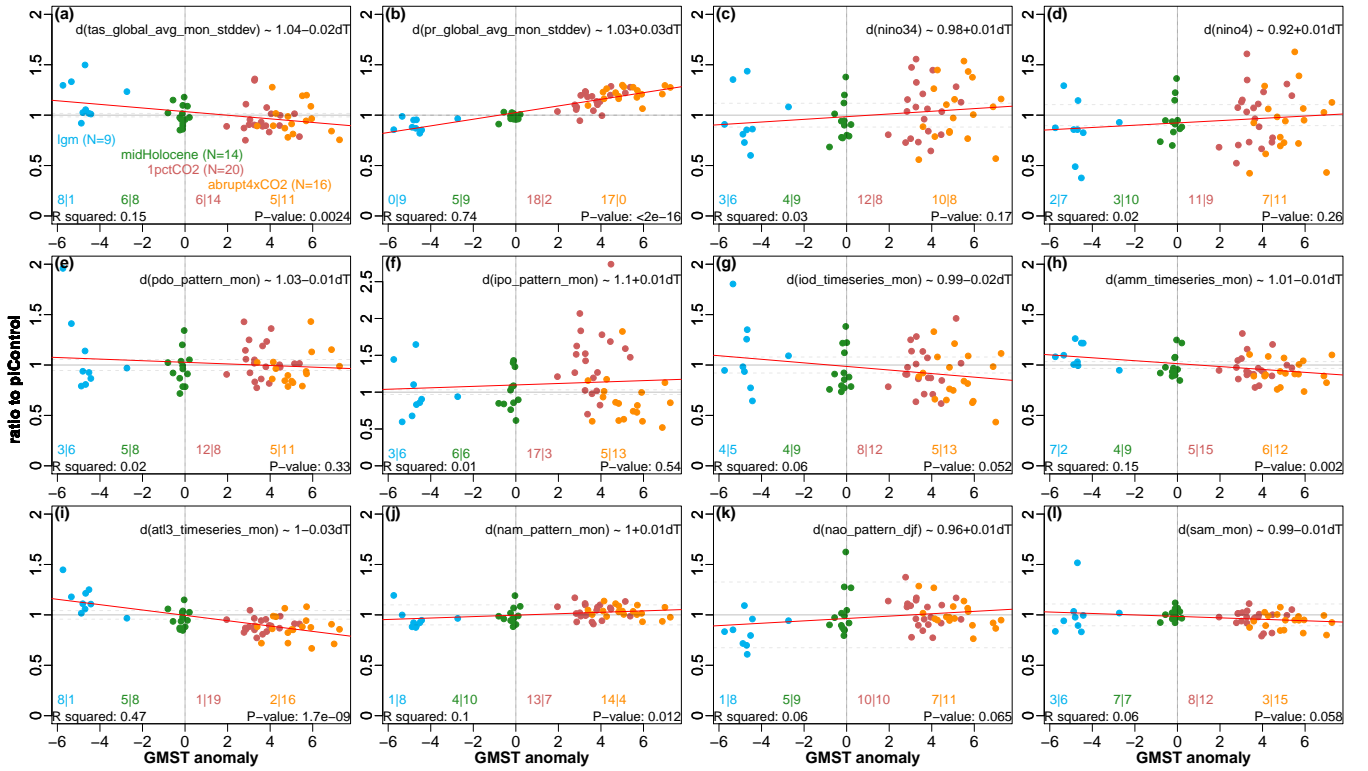
Precipitation changes in Mediterranean-type climates on the western edges of continents in the extratropics display opposite signs in their precipitation anomalies, with respect to pre-industrial, and relative to the global mean change across the ensemble (see Fig. 5). Given this difference, we assess whether the atmospheric drivers of such regional precipitation are consistent from past to future climates to better inform the relevance of variability in paleoclimates to future climate change in these susceptible semi-arid regions. We investigate sea-level pressure and surface air temperature anomalies associated with high and low annual precipitation by compositing over years with regional precipitation above or below one standard deviation around the mean (following sect. 2.8). Exploratory investigations uncovered no statistically significant changes between individual climate states (not shown). The following proceeds by the regions in Fig. 5.

High precipitation years in southwestern South America (Patagonia) are associated with an increased SLP gradient between the region and the Antarctic continent (Fig. 5a), indicative of positive SAM conditions, a moderate cooling in the southeastern Pacific sector, and warmer conditions in the South Atlantic and Southern Indian Ocean. The reverse situation can be found for years with low precipitation anomalies in the same region (supplementary Fig SF2a,b). This is true for the entire ensemble (Fig. SF3, as well as for individual climate states (not shown). The global precipitation composites for regional high and low-precipitation years in Fig. SF3 show that years with high-precipitation anomalies in the region are also associated with lower-than-average precipitation in the ENSO regions (Fig SF3b).

There is no inter-model and inter-experiment consistency in the interannual atmospheric conditions for high precipitation years in western South Africa with regards to SLP and temperature (Fig. 5c,d), indicating that the drivers of variability are more complex in this region and cannot be explained by a single climate mode. Precipitation variability may therefore be controlled more by differences between individual storms than by persistent large-scale modes of the atmosphere. Indeed, there are no coherent large-scale structures even within individual climate states, though a regional signature in temperature exists (Fig SF2, SF3).

The composite plots for southwestern Australia (Fig. 5e,f; Fig. SF2, SF3) show, similarly to the southwestern South American composites, that increased precipitation is found for years with a strong SAM and an increased SLP gradient between

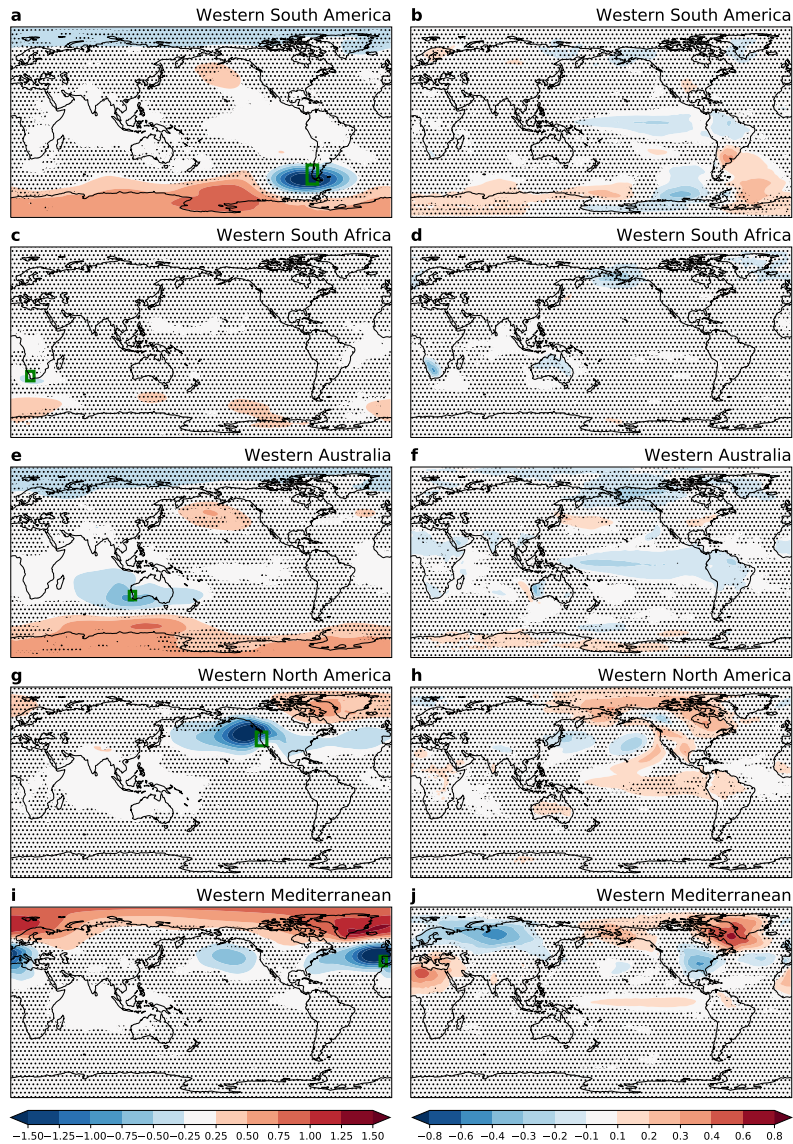




**Figure 4.** Relationship of the standard deviation of climate indices and modes to the change in global mean temperature from preindustrial conditions. Colours indicate the different experiments: CMIP5 and CMIP6 models are not differentiated. (a) Change in the standard deviation of the global, annual mean surface temperature. (b) Change in the standard deviation of the global, annual mean precipitation rate. Changes in the standard deviation (i.e. amplitude of the mode) of (c) ENSO based on the NINO3.4 index and (d) based on the NINO4 region, (e) the PDO, (f) the IPO, (g) the IOD, the meridional (h, AMM) and zonal (i, ATL3) modes of equatorial Atlantic SST variability, and (j) the Northern Annular Mode, (k) the boreal winter NAO and (l) the Southern Annular Mode. Dashed horizontal lines are given from  $1 \pm 2\sigma_{\text{int,mode}}$ . See Sect. 2.7 for details on the individual modes, and how changes in mean state between the experiments are removed prior to calculation. Linear unweighted fits to the mode changes are given in each panel without censoring for significance. P-values assume 60 degrees of freedom.

Australia and Antarctica. The higher pressure and temperatures in the North Pacific sector for both southwestern South American and Western Australian composites could indicate stable teleconnection patterns across the experiments. Cooler conditions prevail throughout the tropics in high-precipitation years, suggesting a decreased Southern Hemisphere meridional temperature gradient. Precipitation composites (Fig. SF3 e,f) show a dipole-like structure reminiscent of ENSO, with more precipitation in Western Australia associated with increased precipitation in southeast Asia, and less-than-average precipitation in the Equatorial Pacific.

High precipitation in southwestern North America is associated with enhanced local low-pressure and higher-than-average SLP over the eastern North Pacific, the North Atlantic and Greenland (Fig. 5g; Fig. SF2) as well as locally warmer conditions



**Figure 5.** Sea-level pressure (in hPa) and surface air temperature (in °C) anomaly composites for high precipitation years in five regions with Mediterranean climates (indicated by green boxes on the left-hand panels). Sea-level pressure anomaly composites (panels a,c,e,g,i on the left) and surface air temperature anomaly composites (panels b,d,f,h,j on the right) show the large-scale patterns across models and experiments composited over years of anomalously high precipitation (defined as one standard deviation above the average) in each region. Stippling shows areas wherein fewer than two-thirds of the simulations agree on the sign of the pattern. Supplementary figures .SF2 and 3 show the corresponding composites for anomalously low precipitation, and composites for the precipitation change in these years.

(Fig. 5h; Fig. SF3), and drier conditions to the North and South (Alaska/Mexico, Fig. SF3h). These patterns suggest a consistent influence of the PDO and the NAM on interannual precipitation variability in the region.

This response is structurally highly similar to the patterns observable for the western Mediterranean, where high precipitation anomalies are associated with an increased pressure gradient between the mid- and high latitudes (Fig. 5i; Fig. SF3), cooler conditions on the Iberian Peninsula and Eurasia and warmer conditions over the Arctic regions of North America and the Labrador Sea (Fig. 5j; Fig. SF3). For both Western North America and the Western Mediterranean, high annual precipitation  
5 years are associated with positive precipitation anomalies in the Equatorial Pacific (Fig. SF3h,j).

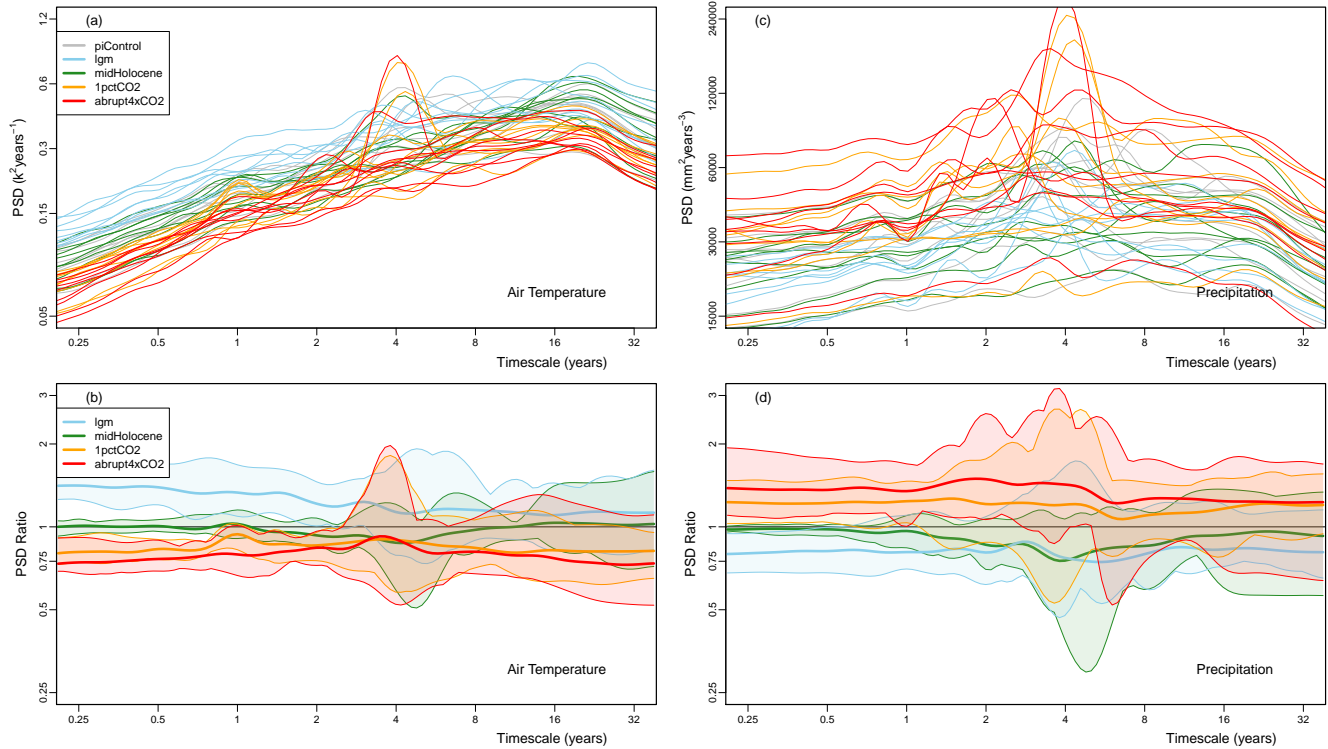
In summary, in both southwestern South and North America, anomalous precipitation is associated with sea-level pressure variations over the eastern Pacific in the respective hemisphere (low pressure during wet years, and high pressure during dry years) illustrative of circulation patterns that are more or less conducive to water delivery to the continent. In the Southern Hemisphere, this is also associated with a standing wave structure in surface air temperatures at mid-latitudes, as well as an  
10 equatorial Pacific signature reminiscent of ENSO. Precipitation variability over southwestern Australia is also linked to equatorial Pacific temperatures, as well as pressure variations in the Indian and south Pacific oceans, while precipitation variability over the western Mediterranean is more strongly linked to variability over the North Atlantic (likely the NAO), as well as the North Pacific and eastern equatorial Pacific (the latter is suggestive of ENSO).

### 3.5 Changes in the spectrum of variability

We investigate the globally averaged, area-weighted power spectra of local monthly temperature (Fig. 6 a,b) and precipitation  
15 (Fig. 6 c,d) anomalies. We find that, in the global mean, the spectrum of temperature shows overall higher local temperature variability in the *lgm* experiments, and lower temperature variability for the warm experiments (Fig. 6a), consistent with the findings for total variance (Figs. 2, 3 and 4a,b). On the ENSO timescale (around 3-7 years), the reduced variance is less important for the warm experiments, but more important for the *midHolocene* experiment, thus leading to small changes in the  
20 variance on longer and shorter timescales. Overall, the scaling of intra-annual to decadal temperature variability is consistent for all experiments (ranging from  $\beta=0.26$  to  $\beta=0.35$ ). The scaling changes little with respect to the *piControl* experiment, as can also be seen by the relatively flat spectral ratio curves (Fig. 6b). The *lgm* curve however shows a small decrease in scaling since the variance increases more on the side of smaller timescales. There is also an annual peak in the *1pctCO2* temperature spectra, which could be due to an incomplete detrending of a changing seasonal cycle. The global picture of more variable  
25 surface temperatures in the *lgm* experiments, and decreased variance at all timescales for the warmer experiments is weakened over land (SF6), but holds over the oceans (SF7). However, temperature variance increases over low-to-mid-latitude continental areas in the warm experiments (SF8, spectrum across 40°S to 40°N). Generally there is no strong inter-model consistency over the low-to-mid-latitude continental areas, as also indicated by Fig. 2.

The variance around the 3-5-year timescale in the warm experiments is more apparent for the local precipitation anomalies  
30 than for temperature (Fig. 6c); This is consistent with the findings of Cai et al. (2014), who found an increasingly frequent ENSO occurrence in warming experiments. Conversely, we find that it also decreases for the *midHolocene* and *lgm* experiments. Overall, the precipitation variance increases fairly consistently over all timescales for the warm experiments with respect to the *piControl* runs, and likewise decreases for the *lgm* and *midHolocene* experiments. The precipitation spectral ratios with respect to the *piControl* simulations (Fig. 6d) outline these patterns. These coherent changes in the global mean

spectra are also corroborated by a high degree of consistency in the scaling patterns of surface temperature, precipitation and surface pressure (SF4), which show ‘white’, or flat, spectra over the continents and ‘red’ spectra with variance concentrated at longer timescales over the oceans, particularly along the equator. There is a reddening of the variability over areas where sea-ice is lost in the warm experiments. This could be attributed to the open seas dampening the high-frequency variability more with warming. There is a similar blueing in the *lgm* over the Fram Strait and the Barents Sea where sea-ice cover is extended (SF4). However, there is a reddening over the Arctic for sea-level pressure in the *lgm*.



**Figure 6.** Changes of the global mean of the power spectra between the experiments. For temperature (a), variance across all timescales and for most models is highest in the *lgm* experiment, and decreases for the warmer experiments. This is the opposite for precipitation (c), which sees moderate increases in precipitation variability with warming. For each model, we took the ratio of the global mean spectra of each experiment over the *piControl* for both temperature (b) and precipitation (d), thus showing the timescale-dependency of the local variance change. Shaded confidence intervals are based on the entire range of the model ratios.

## 4 Discussion

### 4.1 Changes in climate variability with global mean temperature

Using a wide range of model simulations has allowed us to examine the relationship between changes in global mean temperature and climate variability from the perspective of the mean and standard deviation fields, changes in modes of variability, and the timescale-dependency of temperature and precipitation changes. We find that globally averaged temperature variability decreased from the cold to the warm climate states. We find also that consistent changes in temperature variance are more localized than changes in the mean fields. From the cold to the warm(er) simulations, temperature variability increases over land, and tends to decrease over the oceans. This pattern also holds across timescales. Temperature variability reduction is particularly strong at high latitudes, where seasonality and interannual temperature variability are high (Huybers and Curry, 2006). This suggests that changes in temperature variability, in both directions, affect areas which also undergo a large mean-state change.

We find clear indications for relationships between global mean temperature and precipitation variability as well as in modes of variability in the tropical Atlantic, with the zonal and meridional modes both strongly varying in the *lgm* experiments, and shifting towards weaker variability in the warmer scenarios. This is consistent with the recent findings of Brierley and Wainer (2018), who investigated tropical Atlantic sea surface temperature variability using a similar model ensemble, but also including the historical era. The zonal gradient mode in the Indian Ocean, IOD, shows a tendency for lower variability in the midHolocene (and thus, for tropical weak cooling) and future warming scenarios, and is therefore not systematically changing with global mean temperature.

The reduced ENSO variability for the *midHolocene* experiments shows that the strength of ENSO primarily links to the tropical temperature changes, and secondarily to global mean temperature change. This finding is corroborated by a clear decrease of ENSO-related variance in the global mean spectra for the *midHolocene* experiments. Beyond the ENSO-related timescales, however, changes in temperature and precipitation variability scale across the experiments without strong regard for timescales. In the ENSO power spectral range of 3-7 years we notice a peak-and-trough pattern of some models, which might represent a change in the ENSO frequency impacting global-scale climate variability. Changes in ENSO spatial patterns, or the event amplitude, however, would not be visible in the spectrum if the overall variance at the timescale did not change. Previous studies have suggested that ENSO variability might increase with global warming (e.g., Cai et al., 2018; Timmermann et al., 1999), but we do not find clear evidence supporting this finding (in agreement with Brown et al., 2020).

The meridional atmospheric gradient modes of variability in both hemispheres (SAM, NAM and NAO) show a weak tendency towards more positive (poleward) displacements of the subtropical high with global mean temperature increase. This is consistent with the findings of precipitation reductions in Mediterranean climates at the Western continental edges in both hemispheres. However, it is unclear to what extent the annular mode (and the westerly jet position) shift due to changes in global mean temperature and the general circulation, or due to ice-sheet height and sea-ice changes that might, to some extent, be independent of the change in the mean (Chavaillaz et al., 2013).

## 4.2 Temperature vs. precipitation scaling

Global averaged precipitation variability increases with the global mean temperature of the experiments in our analyses (Figs. 2,3,4b). There is a larger degree of correlation between mean and variability change for precipitation: Dry regions in the *lgm* experiment are spatially extensive, and highly correlated with areas of lower precipitation variability (Fig. 3). Conversely, wetter regions in the idealized warming scenarios also show higher precipitation variability. Yet, we find no relationship between the propensity of a model for precipitation increase and its sensitivity to warming under increased GHG forcing (Tab. 1). The overall scaling of 1.7%/K found across the model ensemble is somewhat lower than the 2%/K Li et al. (2013) found for a similar (although smaller) set of CMIP5 models and experiments. This is also smaller than what has been established for earlier models (Allen and Ingram, 2002; Held and Soden, 2006). We note, however, that mean precipitation in the *lgm*- to *midHolocene*-experiments scales with the respective temperature anomalies by 2%/K, and it is the idealized transient warming scenarios that fall below these lines. This could indicate that the temperature in these experiments changes faster than precipitation responses and, would the experiments be continued, they would get closer to the expected line (Samset et al., 2018; Myhre et al., 2018; Andrews et al., 2010). Indeed, Samset et al. (2018) found that the precipitation increase over the global oceans is markedly slower than that over land, which perhaps explains why our scaling is closer to the terrestrial response in equilibrium experiments (1.8%/K, Li et al., 2013). Andrews et al. (2010) established that the atmospheric response correlates strongly with the radiative forcing, whereas the slow response is, independent of the mechanism leading to the global temperature change, of 2-3%/K. It is also unclear how precipitation variability relates to precipitation extremes, as they typically operate on much shorter timescales. O’Gorman et al. (2011) found, based on CMIP3 model simulations, that extratropical precipitation extremes increase with 6%/K, and hence at a rate closer to the thermodynamic rate of 7%/K (Allen and Ingram, 2002; Held and Soden, 2006). Global mean precipitation rates are, therefore, increasing with warming. At daily to interannual timescales, soil moisture plays a relevant role in the precipitation feedback on temperature variability (Vidale et al., 2007; Fischer and Knutti, 2013). It is, however, also clear that models have difficulties representing these feedbacks at the land surface, in particular on longer timescales (Rehfeld and Laepple, 2016). The detail of representation of sub-grid-scale convective processes could also determine whether a local feedback is modeled positively or negatively (Hohenegger et al., 2009). The observed negative coupling between local temperature and precipitation variability at short timescales (e.g., Trenberth and Shea, 2005, found local correlations up to -0.7) therefore should feed back onto higher temperature variability. To what degree, however, we cannot assess from this analysis, as synoptic-scale processes are not resolved in the monthly data available.

## 4.3 Comparison to climate reconstructions and observations

Analysis of instrumental records has shown that the number of record-breaking rainfall events has been increasing over the instrumental era (Lehmann et al., 2015). This is consistent with an ongoing increase in the global mean precipitation rate. Evidence for continental-scale colder/drier conditions at the LGM comes from a variety of terrestrial proxies (Kohfeld and Harrison, 2000; Bartlein et al., 2011), as well as oceanic proxies (MARGO project members, 2009). The sampling rate and resolution of proxies for palaeohydrology are, however, often not sufficient to investigate changes in precipitation variability.

A high-resolution speleothem record allowed Luetscher et al. (2015) to relate shifts in the LGM westerly storm tracks in Europe, which are consistent with our finding of enhanced precipitation in the *lgm* experiments. Koutavas and Joannides (2012) suggested that ENSO variability was higher at the LGM than in the Holocene. It is, however, unclear how this relates to our finding of more La-Niña-like conditions in most model simulations, but a reduced variance in ENSO 3.4 region SSTs has been corroborated by isotope proxies and isotope-enabled modeling (Zhu et al., 2017). Other studies found ENSO variability to become more persistent with GHG-induced warming (Cai et al., 2014), especially for precipitation. Our results suggest that mean state and variability changes are coupled for both temperature and precipitation. Notwithstanding methodological challenges (Rehfeld et al., 2016; Rehfeld and Laepple, 2016), if robust joint/co-located estimates of past temperature and precipitation can be obtained from proxy data, these could potentially serve as constraints on future projections (Schmidt et al., 2014).

#### 4.4 Limitations

We have shown that patterns of temperature and precipitation variability in palaeoclimate and future simulations mirror one another, bringing together equilibrium and transient experiments. Nevertheless, there are important limitations that preclude a direct interpretation for future projections (Christensen et al., 2013). Firstly, the snapshots we analyzed here are short (50 years), and therefore many slower modes of variability, operating on decadal or longer timescales, are difficult to assess (such as the IOD, or the PDO). Furthermore, we are not able to investigate the variability in the index time series, but only their mean strength. Analysis of multidecadal modes, and driving mechanisms of variability changes (e.g., from the ocean circulation, or sea-ice mechanisms) in future studies could provide critical insights, and would strongly benefit from the availability of stored model diagnostics (e.g., AMOC strength) and longer simulation output. We have limited the analysis to linear properties of the surface climate fields, and therefore cannot distinguish whether local changes are remotely forced, e.g., due to changing teleconnections from ENSO. We find that, while temperature variability decreases in the model simulations from the *lgm* to the future *1pctCO2* and *abrupt4xCO2* scenarios, the magnitude of change is far lower than that observed in proxy data on longer timescales (Rehfeld et al., 2018). This could be due to models underestimating regional variability beyond the multidecadal timescale (Laepple and Huybers, 2014b; Rehfeld et al., 2018). At the global scale, climate models do, however, capture correct levels of intraannual to multi-decadal temperature variability (Laepple and Huybers, 2014a; Pages2k-Consortium, 2019).

#### 5 Conclusions

We have investigated the simulated changes in surface climate variability across a wide range of climates based on the PMIP3/CMIP5/CMIP6 model ensembles. We find global patterns of changes which are roughly opposite between cold (*lgm*) and warm (*1pctCO2/abrupt4xCO2*) experiments. Simulated global mean precipitation is found to increase with global temperatures. This is true for the change from pre-industrial conditions into idealized CO<sub>2</sub>-induced warming scenarios. We also find a similar increase from the cold period of the LGM to the pre-industrial reference period. Simulated temperature variability is, at the global scale, higher in the *lgm* scenarios, and decreases with temperature. Precipitation variability, on the other hand,

is lower in the cold state, and higher for the warmer scenarios. There are regions which display opposite patterns: in both hemispheres, precipitation changes at the mid-latitude western coasts of the continents (California, Patagonia, South Africa, Southern Australia, and the Mediterranean) are the inverse of the global mean change in precipitation. They display more precipitation variability in the *lgm* scenario, and consistently lower precipitation, and precipitation variability, in the *1pctCO2* and *abrupt4xCO2* scenarios. The circulation modes that affect these regions remain consistent across the model ensemble. We investigated, but did not find, an universal relationship between the variability of climate modes and global mean temperature change. No model shows a reduction in temperature variance as large as that for centennial-to-millennial timescales observed in palaeoclimate data for the Last Glacial to Holocene transition, but this could be due to the much shorter timescales we have investigated here. Yet, on seasonal to multidecadal timescales, we find evidence of scaling, and that changes in variability appear to occur proportionally across these timescales. Interannual precipitation variability across these simulations appears to robustly, and linearly, relate the relative change in regional variance and the relative change in the mean precipitation. This relationship, and the consistency across timescales, could imply that hydroclimate proxy reconstructions at decadal to centennial timescales provide an additional constraint on simulated past and future precipitation variability changes.

*Code and data availability.* Model data is freely available on the ESGF. The Climate Variability Diagnostic Package is available at [http://www.cesm.ucar.edu/working\\_groups/CVC/cvdp/](http://www.cesm.ucar.edu/working_groups/CVC/cvdp/). Processed data is available on the PMIPVarData website at [www.past2future.org](http://www.past2future.org). Scripts and code are available on request.

*Author contributions.* KR and CB devised the project. All coauthors jointly planned the analyses. CB performed the data standardization and computed the climate modes. KR performed the correlation and regression analyses. ML and JL performed the extratropical composites. RH performed spectral analyses. All authors prepared figures. KR wrote the paper with contributions from all coauthors. All authors commented on the final draft.

*Competing interests.* The authors declare no competing interests.

*Acknowledgements.* We acknowledge the World Climate Research Programme's Working Group on Coupled Modelling, which is responsible for CMIP, and we thank the climate modelling groups (listed in Table 1 of this paper) for producing and making available their model output. For CMIP, the US Department of Energy's Program for Climate Model Diagnosis and Intercomparison provides coordinating support and led the development of software infrastructure in partnership with the Global Organization for Earth System Science Portals. K.R. acknowledges funding by the German Research Foundation (DFG, code RE3994-2/1) and the Heidelberg Center for the Environment for providing a venue for discussion. We are thankful for the support of colleagues in two working groups: PAGES Climate Variability Across



Scales (CVAS) and PMIP Past2Future: insights from a constantly varying past. Special thanks are due to Julia Hargreaves, Darrell Kaufman, and Jarmo Kikstra. We thank the two reviewers for their thoughtful comments.

## References

- Abram, N. J., Mulvaney, R., Vimeux, F., Phipps, S. J., Turner, J., and England, M. H.: Evolution of the Southern Annular Mode during the past millennium, *Nature Climate Change*, 4, 564–569, <https://doi.org/10.1038/nclimate2235>, 2014.
- Adler, R. F., Gu, G., Wang, J.-J., Huffman, G. J., Curtis, S., and Bolvin, D.: Relationships between global precipitation and surface temperature on interannual and longer timescales (1979–2006), *Journal of Geophysical Research*, 113, D22 104, <https://doi.org/10.1029/2008JD010536>, <http://doi.wiley.com/10.1029/2008JD010536>, 2008.
- Alexander, L. and Perkins, S.: Debate heating up over changes in climate variability, *Environmental Research Letters*, 8, 7–10, <https://doi.org/10.1088/1748-9326/8/4/041001>, 2013.
- Allen, M. R. and Ingram, W. J.: Constraints on future changes in climate and the hydrologic cycle, *Nature*, 419, 228–232, <https://doi.org/10.1038/nature01092>, 2002.
- Andrews, T., Forster, P. M., Boucher, O., Bellouin, N., and Jones, A.: Precipitation, radiative forcing and global temperature change, *Geophysical Research Letters*, 37, <https://doi.org/10.1029/2010GL043991>, 2010.
- Andrews, T., Gregory, J. M., Webb, M. J., and Taylor, K. E.: Forcing, feedbacks and climate sensitivity in CMIP5 coupled atmosphere-ocean climate models, *Geophysical Research Letters*, 39, 2012.
- 15 Annan, J. D. and Hargreaves, J. C.: A new global reconstruction of temperature changes at the Last Glacial Maximum, *Climate of the Past*, 9, 367–376, <https://doi.org/10.5194/cp-9-367-2013>, 2013.
- Annan, J. D. and Hargreaves, J. C.: A perspective on model-data surface temperature comparison at the Last Glacial Maximum, *Quaternary Science Reviews*, 107, 1–10, <https://doi.org/10.1016/j.quascirev.2014.09.019>, 2015.
- Ashok, K., Chan, W.-L., Motoi, T., and Yamagata, T.: Decadal variability of the Indian Ocean dipole, *Geophysical Research Letters*, 31, L24 207, <https://doi.org/10.1029/2004GL021345>, 2004.
- 20 Bartlein, P. J. and Shafer, S. L.: Paleo calendar-effect adjustments in time-slice and transient climate-model simulations (PaleoCalAdjust v1.0): impact and strategies for data analysis, *Geoscientific Model Development*, 12, 3889–3913, <https://doi.org/10.5194/gmd-12-3889-2019>, 2019.
- Bartlein, P. J., Harrison, S. P., Brewer, S., Connor, S., Davis, B. A. S., Gajewski, K., Guiot, J., Harrison-Prentice, T. I., Henderson, A., Peyron, O., Prentice, I. C., Scholze, M., Seppä, H., Shuman, B., Sugita, S., Thompson, R. S., Viau, A. E., Williams, J., and Wu, H.: Pollen-based continental climate reconstructions at 6 and 21 ka: a global synthesis, *Climate Dynamics*, 37, 775–802, <https://doi.org/10.1007/s00382-010-0904-1>, 2011.
- Bathiany, S., Dakos, V., Scheffer, M., and Lenton, T. M.: Climate models predict increasing temperature variability in poor countries, *Science Advances*, 4, eaar5809, <https://doi.org/10.1126/sciadv.aar5809>, 2018.
- 30 Bjerknes, J.: A possible response of the atmospheric Hadley circulation to equatorial anomalies of ocean temperature, *Tellus A*, <https://doi.org/10.3402/tellusa.v18i4.9712>, 1966.
- Bjerknes, J.: Atmospheric Teleconnections from the Equatorial Pacific, *Monthly Weather Review*, 97, 163–172, [https://doi.org/10.1175/1520-0493\(1969\)097<0163:ATFTEP>2.3.CO;2](https://doi.org/10.1175/1520-0493(1969)097<0163:ATFTEP>2.3.CO;2), 1969.
- Braconnot, P., Harrison, S. P., Kageyama, M., Bartlein, P. J., Masson-Delmotte, V., Abe-Ouchi, A., Otto-Bliesner, B., and Zhao, Y.: Evaluation of climate models using palaeoclimatic data, *Nature Climate Change*, 2, 417–424, <https://doi.org/10.1038/nclimate1456>, 2012.
- 35 Brierley, C. and Wainer, I.: Inter-annual variability in the tropical Atlantic from the Last Glacial Maximum into future climate projections simulated by CMIP5/PMIP3, *Climate of the Past*, 14, 1377–1390, <https://doi.org/10.5194/cp-14-1377-2018>, 2018.

- Broccoli, A. J.: Tropical Cooling at the Last Glacial Maximum: An Atmosphere–Mixed Layer Ocean Model Simulation, *Journal of Climate*, 13, 951–976, [https://doi.org/10.1175/1520-0442\(2000\)013<0951:TCATLG>2.0.CO;2](https://doi.org/10.1175/1520-0442(2000)013<0951:TCATLG>2.0.CO;2), 2000.
- Brown, J., Brierley, C., An, S.-I., Guarino, M.-V., Stevenson, S., Williams, C., Zhang, Q., Zhao, A., Braconnot, P., Brady, E., Chandan, D., D’Agostino, R., Guo, C., LeGrande, A., Lohmann, G., Morozova, P., Ohgaito, R., O’ishi, R., Otto-Bliesner, B., Peltier, R., Shi, X., Sime, L., Volodin, E., Zhang, Z., and Weipeng, Z.: Comparison of past and future simulations of ENSO in CMIP5/PMIP3 and CMIP6/PMIP4 models, *Clim. Past Discuss.*, <https://doi.org/10.5194/cp-2019-155>, 2020.
- 5 Brown, P. T., Ming, Y., Li, W., and Hill, S. A.: Change in the magnitude and mechanisms of global temperature variability with warming, *Nature Climate Change*, 7, 743–748, <https://doi.org/10.1038/nclimate3381>, 2017.
- Cai, W., Borlace, S., Lengaigne, M., van Rensch, P., Collins, M., Vecchi, G., Timmermann, A., Santoso, A., McPhaden, M. J., Wu, L., England, M. H., Wang, G., Guilyardi, E., and Jin, F.-F.: Increasing frequency of extreme El Niño events due to greenhouse warming, *Nature Climate Change*, 4, 111–116, <https://doi.org/10.1038/nclimate2100>, 2014.
- 10 Cai, W., Wang, G., Dewitte, B., Wu, L., Santoso, A., Takahashi, K., Yang, Y., Carréric, A., and McPhaden, M. J.: Increased variability of eastern Pacific El Niño under greenhouse warming, *Nature*, 564, 201–206, <https://doi.org/10.1038/s41586-018-0776-9>, 2018.
- Chatfield, C.: *The analysis of time series: an introduction*, Chapman & Hall/ CRC Texts in Statistical Science, Florida, US, 6 edn., 2004.
- 15 Chavaillaz, Y., Codron, F., and Kageyama, M.: Southern westerlies in LGM and future (RCP4.5) climates, *Climate of the Past*, 9, 517–524, <https://doi.org/10.5194/cp-9-517-2013>, 2013.
- Christensen, J., Kumar, K. K., Aldrian, E., An, S.-I., Cavalcanti, I., de Castro, M., Dong, W., Goswami, P., Hall, A., Kanyanga, J., Kitoh, A., Kossin, J., Lau, N.-C., Renwick, J., Stephenson, D., Xie, S.-P., and Zhou, T.: Climate phenomena and their relevance for future regional climate change, in: *Climate Change 2013 the Physical Science Basis: Working Group I Contribution to the Fifth Assessment Report of the Intergovernmental Panel on Climate Change*, edited by Stocker, T. F., Qin, D., Plattner, G.-K., Tignor, M., Allen, S. K., Boschung, J., Nauels, A., Xia, Y., Bex, V., and Midgley, P., pp. 1217–1308, Cambridge University Press, Cambridge, United Kingdom and New York, NY, USA, <https://doi.org/10.1017/CBO9781107415324.028>, 2013.
- 20 Clark, P. U. and Mix, A. C.: Ice sheets and sea level of the Last Glacial Maximum, *Quaternary Science Reviews*, 21, 1–7, [https://doi.org/10.1016/S0277-3791\(01\)00118-4](https://doi.org/10.1016/S0277-3791(01)00118-4), 2002.
- 25 Collins, M., Knutti, R., Arblaster, J., Dufresne, J.-L., Fichet, T., Friedlingstein, P., Gao, X., Gutowski, W., Johns, T., Krinner, G., Shongwe, M., C. Tebaldi, Weaver, A., and Wehner, M.: Long-term climate change: projections, commitments and irreversibility, in: *Climate Change 2013-The Physical Science Basis: Contribution of Working Group I to the Fifth Assessment Report of the Intergovernmental Panel on Climate Change*, edited by Stocker, T.F., D. Qin, G.-K. Plattner, M. Tignor, S.K. Allen, J. Boschung, A. Nauels, Y. Xia, V. B. and Midgley, P., vol. 9781107057, pp. 1029–1136, Cambridge University Press, <https://doi.org/10.1017/CBO9781107415324.024>, 2013.
- 30 Coumou, D. and Rahmstorf, S.: A decade of weather extremes, *Nature Climate Change*, 2, 1–6, <https://doi.org/10.1038/nclimate1452>, 2012.
- Cox, P. M., Huntingford, C., and Williamson, M. S.: Emergent constraint on equilibrium climate sensitivity from global temperature variability, *Nature*, 553, 319–322, <https://doi.org/10.1038/nature25450>, 2018.
- Deser, C., Alexander, M. A., Xie, S.-P., and Phillips, A. S.: *Sea Surface Temperature Variability: Patterns and Mechanisms*, vol. 2, <https://doi.org/10.1146/annurev-marine-120408-151453>, 2010.
- 35 Deser, C., Phillips, A., Bourdette, V., and Teng, H.: Uncertainty in climate change projections: the role of internal variability, *Climate Dynamics*, 38, 527–546, <https://doi.org/10.1007/s00382-010-0977-x>, <http://link.springer.com/10.1007/s00382-010-0977-x>, 2012a.

- Deser, C., Phillips, A. S., Tomas, R. A., Okumura, Y. M., Alexander, M. A., Capotondi, A., Scott, J. D., Kwon, Y. O., and Ohba, M.: ENSO and pacific decadal variability in the community climate system model version 4, *Journal of Climate*, 25, 2622–2651, <https://doi.org/10.1175/JCLI-D-11-00301.1>, 2012b.
- Doi, T., Tozuka, T., and Yamagata, T.: The Atlantic meridional mode and its coupled variability with the Guinea dome, *Journal of Climate*, 5 23, 455–475, <https://doi.org/10.1175/2009JCLI3198.1>, 2010.
- Eyring, V., Bony, S., Meehl, G. A., Senior, C. A., Stevens, B., Stouffer, R. J., and Taylor, K. E.: Overview of the Coupled Model Intercomparison Project Phase 6 (CMIP6) experimental design and organization, *Geoscientific Model Development*, 9, 1937–1958, <https://doi.org/10.5194/gmd-9-1937-2016>, 2016a.
- Eyring, V., Gleckler, P. J., Heinze, C., Stouffer, R. J., Taylor, K. E., Balaji, V., Guilyardi, E., Joussaume, S., Kindermann, S., Lawrence, B. N., Meehl, G. A., Righi, M., and Williams, D. N.: Towards improved and more routine Earth system model evaluation in CMIP, *Earth System Dynamics*, 7, 813–830, <https://doi.org/10.5194/esd-7-813-2016>, 2016b.
- 10 Fischer, E. M. and Knutti, R.: Robust projections of combined humidity and temperature extremes, *Nature Climate Change*, 3, 126–130, <https://doi.org/10.1038/nclimate1682>, 2013.
- Foster, G. and Rahmstorf, S.: Global temperature evolution 1979–2010, *Environmental Research Letters*, 6, 044 022, 15 <https://doi.org/10.1088/1748-9326/6/4/044022>, 2011.
- Fraedrich, K., Blender, R., and Zhu, X.: Continuum climate variability: long-term memory, extremes, and predictability, *International Journal of Modern Physics B*, 23, 5403–5416, 2009.
- Francis, J. A. and Vavrus, S. J.: Evidence linking Arctic amplification to extreme weather in mid-latitudes, *Geophysical Research Letters*, 39, L06 801, <https://doi.org/10.1029/2012GL051000>, 2012.
- 20 Fredriksen, H.-B. B. and Rypdal, K.: Spectral Characteristics of Instrumental and Climate Model Surface Temperatures, *Journal of Climate*, 29, 1253–1268, <https://doi.org/10.1175/JCLI-D-15-0457.1>, 2016.
- Giannini, A., Saravanan, R., and Chang, P.: Oceanic Forcing of Sahel Rainfall on Interannual to Interdecadal Time Scales, *Science*, 302, 1027–1030, <https://doi.org/10.1126/science.1089357>, 2003.
- Gillett, N. P., Kell, T. D., and Jones, P. D.: Regional climate impacts of the Southern Annular Mode, *Geophysical Research Letters*, 33, 1–4, 25 <https://doi.org/10.1029/2006GL027721>, 2006.
- Hansen, J., Sato, M., and Ruedy, R.: Perception of climate change, *Proceedings of the National Academy of Sciences*, 109, E2415–E2423, <https://doi.org/10.1073/pnas.1205276109>, <http://www.pnas.org/cgi/doi/10.1073/pnas.1205276109>, 2012.
- Hasselmann, K.: Stochastic climate models Part I. Theory, *Tellus*, 28, 473–485, <https://doi.org/10.1111/j.2153-3490.1976.tb00696.x>, 1976.
- Hawkins, E.: Our evolving climate: communicating the effects of climate variability, *Weather*, 66, 175–179, <https://doi.org/10.1002/wea.761>, 30 <http://doi.wiley.com/10.1002/wea.761>, 2011.
- Held, I. M. and Soden, B. J.: Robust Responses of the Hydrological Cycle to Global Warming, *Journal of Climate*, 19, 5686–5699, <https://doi.org/10.1175/JCLI3990.1>, 2006.
- Hohenegger, C., Brockhaus, P., Bretherton, C. S., and Schär, C.: The soil moisture-precipitation feedback in simulations with explicit and parameterized convection, *Journal of Climate*, 22, 5003–5020, <https://doi.org/10.1175/2009JCLI2604.1>, 2009.
- 35 Holmes, C. R., Woollings, T., Hawkins, E., and de Vries, H.: Robust Future Changes in Temperature Variability under Greenhouse Gas Forcing and the Relationship with Thermal Advection, *Journal of Climate*, 29, 2221–2236, <https://doi.org/10.1175/JCLI-D-14-00735.1>, 2016.

- Horton, R. M., Mankin, J. S., Lesk, C., Coffel, E., and Raymond, C.: A Review of Recent Advances in Research on Extreme Heat Events, *Current Climate Change Reports*, 2, 242–259, <https://doi.org/10.1007/s40641-016-0042-x>, 2016.
- Hsiang, S. M., Burke, M., and Miguel, E.: Quantifying the Influence of Climate on Human Conflict, *Science*, 341, 1235 367–1235 367, <https://doi.org/10.1126/science.1235367>, 2013.
- 5 Huntingford, C., Jones, P. D., Livina, V. N., Lenton, T. M., and Cox, P. M.: No increase in global temperature variability despite changing regional patterns., *Nature*, 500, 327–30, <https://doi.org/10.1038/nature12310>, 2013.
- Hurrell, J. W.: Decadal trends in the North Atlantic oscillation: Regional temperatures and precipitation, *Science*, 269, 676–679, <https://doi.org/10.1126/science.269.5224.676>, 1995.
- Hurrell, J. W. and Deser, C.: North Atlantic climate variability: The role of the North Atlantic Oscillation, *Journal of Marine Systems*, 79, 231–244, <https://doi.org/10.1016/j.jmarsys.2009.11.002>, 2010.
- 10 Huybers, P. and Curry, W.: Links between annual, Milankovitch and continuum temperature variability., *Nature*, 441, 329–32, <https://doi.org/10.1038/nature04745>, 2006.
- IPCC-AR5: Climate Change 2013: The Physical Science Basis. Contribution of Working Group I to the Fifth Assessment Report of the Intergovernmental Panel on Climate Change, Cambridge University Press, 2013.
- 15 Karoly, D. J.: The role of transient eddies in low-frequency zonal variations of the Southern Hemisphere circulation, *Tellus, Series A*, 42 A, 41–50, <https://doi.org/10.3402/tellusa.v42i1.11858>, 1990.
- Katz, R. W. and Brown, B. G.: Extreme events in a changing climate: Variability is more important than averages, *Climatic Change*, 21, 289–302, <https://doi.org/10.1007/BF00139728>, 1992.
- Kohfeld, K. E. and Harrison, S. P.: How well can we simulate past climates? Evaluating the models using global palaeoenvironmental datasets, *Quaternary Science Reviews*, 19, 321–346, [https://doi.org/10.1016/S0277-3791\(99\)00068-2](https://doi.org/10.1016/S0277-3791(99)00068-2), 2000.
- 20 Koutavas, A. and Joanides, S.: El Niño–Southern Oscillation extrema in the Holocene and Last Glacial Maximum, *Paleoceanography*, 27, PA4208, <https://doi.org/10.1029/2012PA002378>, 2012.
- Kushnir, Y., Robinson, W. A., Chang, P., and Robertson, A. W.: The Physical Basis for Predicting Atlantic Sector Seasonal-to-Interannual Climate Variability, *Journal of Climate*, 19, 5949–5970, <https://doi.org/10.1175/JCLI3943.1>, 2006.
- 25 Laepple, T. and Huybers, P.: Global and regional variability in marine surface temperatures, *Geophysical Research Letters*, 41, 2528–2534, <https://doi.org/10.1002/2014GL059345>, 2014a.
- Laepple, T. and Huybers, P.: Ocean surface temperature variability: Large model-data differences at decadal and longer periods., *Proceedings of the National Academy of Sciences of the United States of America*, <https://doi.org/10.1073/pnas.1412077111>, 2014b.
- Lehmann, J., Coumou, D., and Frieler, K.: Increased record-breaking precipitation events under global warming, *Climatic Change*, 132, 501–515, <https://doi.org/10.1007/s10584-015-1434-y>, 2015.
- 30 Lenton, T. M., Dakos, V., Bathiany, S., and Scheffer, M.: Observed trends in the magnitude and persistence of monthly temperature variability, *Scientific Reports*, 7, 5940, <https://doi.org/10.1038/s41598-017-06382-x>, <http://www.nature.com/articles/s41598-017-06382-x>, 2017.
- Li, G., Harrison, S. P., Bartlein, P. J., Izumi, K., and Colin Prentice, I.: Precipitation scaling with temperature in warm and cold climates: An analysis of CMIP5 simulations, *Geophysical Research Letters*, 40, 4018–4024, <https://doi.org/10.1002/grl.50730>, 2013.
- 35 Lim, E. P., Hendon, H. H., Boschat, G., Hudson, D., Thompson, D. W., Dowdy, A. J., and Arblaster, J. M.: Australian hot and dry extremes induced by weakenings of the stratospheric polar vortex, *Nature Geoscience*, 12, 896–901, <https://doi.org/10.1038/s41561-019-0456-x>, 2019.

- Lofverstrom, M.: A dynamic link between high-intensity precipitation events in southwestern North America and Europe at the Last Glacial Maximum, *Earth and Planetary Science Letters*, 534, 116081, <https://doi.org/10.1016/j.epsl.2020.116081>, 2020.
- Lorenz, E. N.: Seasonal and Irregular Variations of the Northern Hemisphere Sea-Level Pressure Profile, [https://doi.org/10.1175/1520-0469\(1951\)008<0052:saivot>2.0.co;2](https://doi.org/10.1175/1520-0469(1951)008<0052:saivot>2.0.co;2), 1951.
- 5 Lu, Z., Liu, Z., Zhu, J., and Cobb, K. M.: A Review of Paleo El Niño-Southern Oscillation, *Atmosphere*, 9, 130, <https://doi.org/10.3390/atmos9040130>, 2018.
- Luetscher, M., Boch, R., Sodemann, H., Spötl, C., Cheng, H., Edwards, R. L., Frisia, S., Hof, F., and Müller, W.: North Atlantic storm track changes during the Last Glacial Maximum recorded by Alpine speleothems, *Nature Communications*, 6, 27–32, <https://doi.org/10.1038/ncomms7344>, 2015.
- 10 Mantua, N. J., Hare, S. R., Zhang, Y., Wallace, J. M., and Francis, R. C.: A Pacific Interdecadal Climate Oscillation with Impacts on Salmon Production, *Bulletin of the American Meteorological Society*, 78, 1069–1079, [https://doi.org/10.1175/1520-0477\(1997\)078<1069:APICOW>2.0.CO;2](https://doi.org/10.1175/1520-0477(1997)078<1069:APICOW>2.0.CO;2), 1997.
- Marcott, S. A., Shakun, J. D., Clark, P. U., and Mix, A. C.: A reconstruction of regional and global temperature for the past 11,300 years., *Science (New York, N.Y.)*, 339, 1198–201, <https://doi.org/10.1126/science.1228026>, 2013.
- 15 Marshall, G. J.: Trends in the Southern Annular Mode from observations and reanalyses, *Journal of Climate*, 16, 4134–4143, [https://doi.org/10.1175/1520-0442\(2003\)016<4134:TITSAM>2.0.CO;2](https://doi.org/10.1175/1520-0442(2003)016<4134:TITSAM>2.0.CO;2), 2003.
- Meehl, G. A. and Hu, A.: Megadroughts in the Indian monsoon region and southwest North America and a mechanism for associated multidecadal Pacific Sea surface temperature anomalies, *Journal of Climate*, 19, 1605–1623, <https://doi.org/10.1175/JCLI3675.1>, 2006.
- Myhre, G., Samset, B. H., Hodnebrog, O., Andrews, T., Boucher, O., Faluvegi, G., Fläschner, D., Forster, P. M., Kasoar, M., Kharin, V., Kirkevåg, A., Lamarque, J. F., Olivié, D., Richardson, T. B., Shawki, D., Shindell, D., Shine, K. P., Stjern, C. W., Takemura, T., and Voulgarakis, A.: Sensible heat has significantly affected the global hydrological cycle over the historical period, *Nature Communications*, 9, <https://doi.org/10.1038/s41467-018-04307-4>, 2018.
- Nigam, S.: Teleconnections, in: *Encyclopedia of Atmospheric Sciences*, pp. 2243–2269, Academic Press, [www.academicpress.com/atmospheric](http://www.academicpress.com/atmospheric), 2003.
- 25 O’Gorman, P. A., Allan, R. P., Byrne, M. P., and Previdi, M.: Energetic Constraints on Precipitation Under Climate Change, *Surveys in Geophysics*, 33, 585–608, <https://doi.org/10.1007/s10712-011-9159-6>, 2011.
- Olonscheck, D. and Notz, D.: Consistently estimating internal climate variability from climate model simulations, *Journal of Climate*, 30, 9555–9573, <https://doi.org/10.1175/JCLI-D-16-0428.1>, 2017.
- Otto-Bliesner, B. L., Brady, E. C., Clauzet, G., Tomas, R., Levis, S., and Kothavala, Z.: Last Glacial Maximum and Holocene Climate in CCSM3, *Journal of Climate*, 19, 2526–2544, <https://doi.org/10.1175/JCLI3748.1>, 2006.
- 30 Oyarzún, D. and Brierley, C. M.: The future of coastal upwelling in the Humboldt current from model projections, *Climate Dynamics*, 52, 599–615, <https://doi.org/10.1007/s00382-018-4158-7>, 2019.
- Pages2k-Consortium: Consistent multidecadal variability in global temperature reconstructions and simulations over the Common Era, *Nature Geoscience*, 12, 643–649, <https://doi.org/10.1038/s41561-019-0400-0>, 2019.
- 35 Pendergrass, A. G., Knutti, R., Lehner, F., Deser, C., and Sanderson, B. M.: Precipitation variability increases in a warmer climate, *Scientific Reports*, pp. 1–9, <https://doi.org/10.1038/s41598-017-17966-y>, 2017.
- Pfleiderer, P., Schleussner, C. F., Kornhuber, K., and Coumou, D.: Summer weather becomes more persistent in a 2 °C world, *Nature Climate Change*, 9, 666–671, <https://doi.org/10.1038/s41558-019-0555-0>, 2019.

- Philander, S. G. H.: El Niño Southern Oscillation phenomena, *Nature*, 302, 295–301, <https://doi.org/10.1038/302295a0>, 1983.
- Phillips, A. S., Deser, C., and Fasullo, J.: Evaluating Modes of Variability in Climate Models, *Eos, Transactions American Geophysical Union*, 95, 453–455, <https://doi.org/10.1002/2014EO490002>, 2014.
- PMIP3: PMIP3 Experimental Design, <https://wiki.lscce.ipsl.fr/pmip3/doku.php/pmip3:design:final>, 2010.
- 5 Power, S., Casey, T., Folland, C., Colman, A., and Mehta, V.: Inter-decadal modulation of the impact of ENSO on Australia, *Climate Dynamics*, 15, 319–324, <https://doi.org/10.1007/s003820050284>, 1999.
- Power, S., Delage, F., Chung, C., Kociuba, G., and Keay, K.: Robust twenty-first-century projections of El Niño and related precipitation variability, *Nature*, 502, 541–545, <https://doi.org/10.1038/nature12580>, 2013.
- MARGO project members: Constraints on the magnitude and patterns of ocean cooling at the Last Glacial Maximum, *Nature Geoscience*, 2,  
10 127–132, <https://doi.org/10.1038/ngeo411>, 2009.
- Qin, D., Tignor, M., Allen, S. K., Boschung, J., Nauels, A., Xia, Y., Bex, V., and Kingdom, U.: Annex III: Glossary, in: *Climate Change 2013 - The Physical Science Basis*, edited by Intergovernmental Panel on Climate Change, pp. 1447–1466, Cambridge University Press, Cambridge, <https://doi.org/10.1017/CBO9781107415324.031>, 2014.
- Rehfeld, K. and Laepple, T.: Warmer and wetter or warmer and dryer? Observed versus simulated covariability of Holocene temperature and  
15 rainfall in Asia, *Earth and Planetary Science Letters*, 436, 1–9, <https://doi.org/10.1016/j.epsl.2015.12.020>, 2016.
- Rehfeld, K., Trachsel, M., Telford, R. R. J., and Laepple, T.: Assessing performance and seasonal bias of pollen-based climate reconstructions in a perfect model world, *Climate of the Past*, 12, 2255–2270, <https://doi.org/10.5194/cp-12-2255-2016>, 2016.
- Rehfeld, K., Münch, T., Ho, S. L., and Laepple, T.: Global patterns of declining temperature variability from the Last Glacial Maximum to the Holocene, *Nature*, 554, 356–359, <https://doi.org/10.1038/nature25454>, 2018.
- 20 Rhines, A. and Huybers, P.: Frequent summer temperature extremes reflect changes in the mean, not the variance, *Proceedings of the National Academy of Sciences of the United States of America*, 110, E546–E546, <https://doi.org/10.1073/pnas.1218748110>, 2013.
- Saji, N., Goswami, B., Vinayachandran, P., and Yamagata, T.: A dipole mode in the Tropical Ocean, *Nature*, 401, 360–363, 1999.
- Samset, B. H., Myhre, G., Forster, P. M., Hodnebrog, O., Andrews, T., Boucher, O., Faluvegi, G., Fläschner, D., Kasoar, M., Kharin, V., Kirkevåg, A., Lamarque, J.-F., Olivie, D., Richardson, T. B., Shindell, D., Takemura, T., and Voulgarakis, A.: Weak hydrolog-  
25 ical sensitivity to temperature change over land, independent of climate forcing, *npj Climate and Atmospheric Science*, 1, 20173, <https://doi.org/10.1038/s41612-017-0005-5>, 2018.
- Schär, C., Vidale, P. L., Lüthi, D., Frei, C., Häberli, C., Liniger, M. A., and Appenzeller, C.: The role of increasing temperature variability in European summer heatwaves, *Nature*, 427, 332–336, <https://doi.org/10.1038/nature02300>, 2004.
- Schmidt, G. A., Annan, J. D., Bartlein, P. J., Cook, B. I., Guilyardi, E., Hargreaves, J. C., Harrison, S. P., Kageyama, M., LeGrande, A. N.,  
30 Konecky, B., Lovejoy, S., Mann, M. E., Masson-Delmotte, V., Risi, C., Thompson, D., Timmermann, A., Tremblay, L.-B., and Yiou, P.: Using palaeo-climate comparisons to constrain future projections in CMIP5, *Climate of the Past*, 10, 221–250, <https://doi.org/10.5194/cp-10-221-2014>, 2014.
- Schneider, N. and Cornuelle, B. D.: The forcing of the Pacific Decadal Oscillation, *Journal of Climate*, 18, 4355–4373, <https://doi.org/10.1175/JCLI3527.1>, 2005.
- 35 Screen, J. A. and Simmonds, I.: Amplified mid-latitude planetary waves favour particular regional weather extremes, *Nature Climate Change*, 4, 704–709, <https://doi.org/10.1038/nclimate2271>, 2014.
- Seager, R., Osborn, T. J., Kushnir, Y., Simpson, I. R., Nakamura, J., and Liu, H.: Climate variability and change of mediterranean-type climates, *Journal of Climate*, 32, 2887–2915, <https://doi.org/10.1175/JCLI-D-18-0472.1>, 2019.

- Seddon, A. W. R., Macias-Fauria, M., Long, P. R., Benz, D., and Willis, K. J.: Sensitivity of global terrestrial ecosystems to climate variability, *Nature*, 531, 229–232, <https://doi.org/10.1038/nature16986>, <https://www.nature.com/nature/journal/v531/n7593/full/nature16986.html><https://www.nature.com/nature/journal/v531/n7593/pdf/nature16986.pdf>, 2016.
- Servain, J., Wainer, I., McCreary, J. P., and Dessier, A.: Relationship between the equatorial and meridional modes of climatic variability in the tropical Atlantic, *Geophysical Research Letters*, 26, 485–488, <https://doi.org/10.1029/1999GL900014>, 1999.
- Shakun, J. D. and Carlson, A. E.: A global perspective on Last Glacial Maximum to Holocene climate change, *Quaternary Science Reviews*, 29, 1801–1816, <https://doi.org/10.1016/j.quascirev.2010.03.016>, 2010.
- Stenseth, N. C.: Ecological Effects of Climate Fluctuations, *Science*, 297, 1292–1296, <https://doi.org/10.1126/science.1071281>, 2002.
- Stephenson, D. B., Wanner, H., Brönnimann, S., and Luterbacher, J.: The history of scientific research on the north atlantic oscillation, *Geophysical Monograph Series*, 134, 37–50, <https://doi.org/10.1029/134GM02>, 2003.
- Taylor, K. E., Stouffer, R. J., and Meehl, G. A.: An Overview of CMIP5 and the Experiment Design, *Bulletin of the American Meteorological Society*, 93, 485–498, <https://doi.org/10.1175/BAMS-D-11-00094.1>, 2012.
- Thompson, D. W. and Wallace, J. M.: Annular modes in the extratropical circulation. Part I: Month-to-month variability, *Journal of Climate*, 13, 1000–1016, [https://doi.org/10.1175/1520-0442\(2000\)013<1000:AMITEC>2.0.CO;2](https://doi.org/10.1175/1520-0442(2000)013<1000:AMITEC>2.0.CO;2), 2000.
- Thompson, D. W., Barnes, E. A., Deser, C., Foust, W. E., and Phillips, A. S.: Quantifying the role of internal climate variability in future climate trends, *Journal of Climate*, 28, 6443–6456, <https://doi.org/10.1175/JCLI-D-14-00830.1>, 2015.
- Thomson, D.: Time series analysis of Holocene climate data, *Philosophical Transaction of the Royal Society A*, 330, 601–616, <http://rsta.royalsocietypublishing.org/content/330/1615/601.short>, 1990.
- Timmermann, A., Oberhuber, J., Bacher, A., M. Esch, Latif, M., and Roeckner, E.: Increased El Niño frequency, *Nature*, 6, <https://doi.org/10.1038/19505>, 1999.
- Trenberth, K. E.: The Definition of El Niño, *Bulletin of the American Meteorological Society*, 78, 2771–2777, [https://doi.org/10.1175/1520-0477\(1997\)078<2771:TDOENO>2.0.CO;2](https://doi.org/10.1175/1520-0477(1997)078<2771:TDOENO>2.0.CO;2), 1997.
- Trenberth, K. E. and Fasullo, J. T.: Tracking Earth’s Energy: From El Niño to Global Warming, *Surveys in Geophysics*, 33, 413–426, <https://doi.org/10.1007/s10712-011-9150-2>, <http://link.springer.com/10.1007/s10712-011-9150-2>, 2012.
- Trenberth, K. E. and Shea, D. J.: Relationships between precipitation and surface temperature, *Geophysical Research Letters*, 32, 2–5, <https://doi.org/10.1029/2005GL022760>, 2005.
- Vidale, P. L., Lüthi, D., Wegmann, R., and Schär, C.: European summer climate variability in a heterogeneous multi-model ensemble, *Climatic Change*, 81, 209–232, <https://doi.org/10.1007/s10584-006-9218-z>, 2007.
- Vimont, D. J. and Kossin, J. P.: The Atlantic Meridional Mode and hurricane activity, *Geophysical Research Letters*, 34, 1–5, <https://doi.org/10.1029/2007GL029683>, 2007.
- Walker, G. T. and Bliss, E.: World Weather V, *Memoirs of the Royal Meteorological Society*, 4, 53–84, <https://doi.org/10.2307/3901664>, 1932.
- Wallace, J. M., Deser, C., Smoliak, B. V., and Phillips, A. S.: Attribution of Climate Change in the Presence of Internal Variability, in: *World Scientific Series on Asia-Pacific Weather and Climate*, vol. 6, pp. 1–29, [https://doi.org/10.1142/9789814579933\\_0001](https://doi.org/10.1142/9789814579933_0001), 2015.
- Wanner, H., Mercolli, L., Grosjean, M., and Ritz, S. P.: Holocene climate variability and change; a data-based review, *Journal of the Geological Society*, 172, 254–263, <https://doi.org/10.1144/jgs2013-101>, 2015.
- Webster, P. J., Moore, A., Loschnigg, J. P., and R., L. R.: Coupled oceanic-atmospheric dynamics in the Indian Ocean during 1997–1998, *Nature*, 401, 356–360, 1999.



- Xie, S. P. and Carton, J. A.: Tropical atlantic variability: Patterns, mechanisms, and impacts, in: Earth Climate: The Ocean-Atmosphere Interaction, edited by Wang, C., Xie, S.-P., and Carton, J. A., vol. 147, pp. 121–142, American Geophysical Union, Washington D.C., <https://doi.org/10.1029/147GM07>, 2004.
- Xie, S. P., Deser, C., Vecchi, G. A., Collins, M., Delworth, T. L., Hall, A., Hawkins, E., Johnson, N. C., Cassou, C., Gianini, A., and Watanabe, M.: Towards predictive understanding of regional climate change, *Nature Climate Change*, 5, 921–930, <https://doi.org/10.1038/nclimate2689>, 2015.
- 5 Zebiak, S. E.: Air-sea interaction in the equatorial Atlantic region, [https://doi.org/10.1175/1520-0442\(1993\)006<1567:AIITEA>2.0.CO;2](https://doi.org/10.1175/1520-0442(1993)006<1567:AIITEA>2.0.CO;2), 1993.
- Zhu, J., Liu, Z., Brady, E., Otto-Bliesner, B., Zhang, J., Noone, D., Tomas, R., Nusbaumer, J., Wong, T., Jahn, A., and Tabor, C.: Reduced ENSO variability at the LGM revealed by an isotope-enabled Earth system model, *Geophysical Research Letters*, 44, 6984–6992, <https://doi.org/10.1002/2017GL073406>, 2017.
- 10