

## Review Response

We thank both reviewers for reviewing the paper a second time and sending additional comments. Please see our responses below.

### Reviewer 1

*The authors have provided a reasoned reply to my original set of comments, and I find that the overall message is now much clearer than in the previous version of the paper. I also appreciated the addition of some technical details, such as in Appendix A1. However, there are still a number of inaccuracies and minor issues that I would suggest the authors to address before the paper may be published in ESD.*

*1. In the abstract, the authors state that: "The combination of using an overshoot scenario as a baseline that limits the needed amount of SAG applications and the use of a feedback algorithm to reach predefined temperature targets in model experiments is expected to reduce some of the earlier identified side effects of SAG." This is a somewhat ambiguous statement, as it places on the same level the feedback algorithm and the choice of scenario. However, the feedback algorithm is an implementation method, while the choice of scenario is a somewhat arbitrary assumption on our future social, political and economic development. I think it is important to clearly distinguish between the two, and concisely motivate in the abstract the relevance of using an overshoot scenario. To me, this relevance is not that it limits the needed amount of SAG applications – in that case the most logical scenario to use would be SSP1-1.9 – but rather that it is conducive to investigating a peak-shaving scenario, which is a potentially effective proposal for how to deal with the ongoing rapid climate change.*

We thank the reviewer for the comment. The reviewer is correct that there are two separate issues addressed in this paper that both are expected to reduce side effects. One is the use of the overshoot as the baseline scenario, while the other is reaching the three temperature targets (though the feedback controller) to reduce additional side effects. The idea here is really to apply those two together. While it is relevant to limit the duration of the SAG application through a peak-shaving application, as the reviewer is pointing out, limiting the amount of SAG is also important to reduce side effects, as shown in this paper.

To address the comment and to more clearly distinguish between the two we changed the first part of the abstract to:

"A new set of stratospheric aerosol geoengineering (SAG) model experiments have been performed with CESM2(WACCM6) that are based on the CMIP6 overshoot scenario (SSP5-34-OS) as a baseline scenario to limit global warming to 1.5°C or 2.0°C above 1850–1900 conditions. The overshoot scenario allows us to apply a peak-shaving scenario that reduces the needed duration and amount of SAG application compared to a high forcing scenario. In addition, a feedback algorithm identifies the needed amount of sulfur dioxide injections in the stratosphere at four predefined latitudes, 30°N, 15°N, 15°S, and 30°S, to reach three surface temperature targets: global mean temperature, and interhemispheric and pole-to-equator temperature gradients. These targets further help to reduce side effects, including overcooling in the tropics, warming of high latitudes and large shifts in precipitation patterns."

*2. In the abstract, the authors write: " Others, including global precipitation changes and the*

*recovery of the Antarctic ozone hole, depend strongly, on the amount of SAG application”. But is it not the case that they depend: “on the amount and details of SAG application”?*

We agree that the effects of SAG on precipitation depend on various other factors. The statement in the paper is not excluding the fact that other factors also play a role.

*3. Related to (1) the above, in the introduction I would discuss the relation between the overshoot scenario and peak shaving in the paragraph starting on l. 55, instead of the one starting on l. 68. Else the reader in the latter paragraph doesn’t immediately understand the logic of using an OS scenario and how this combines “two main objectives that have only been addressed separately in previous studies”.*

We agree with the suggestion by the reviewer and added information to the overshoot scenario earlier in the text:

“Several studies have pointed out that SAG may be able to reduce some of the effects of global warming temporarily while decarbonization efforts (including mitigation and negative emissions through carbon dioxide removal) are ramped up. **This would be possible if following an overshoot scenario, where mitigation and decarbonization is applied in a way that surface temperatures would peak above desired temperature targets for a limited time and then slowly decline below these temperature targets.** A so-called peak-shaving scenario using SAG was proposed that would potentially help prevent reaching tipping points until greenhouse gas levels have been sufficiently reduced.”

*4. l. 137 I don’t quite understand this sentence: “While different ensemble members may reach the target temperature at different times, they still have to be setup to reach the same temperature targets and may start at the same time.” What do the authors mean by “start at the same time”? Do they refer to the SAG intervention? Please rephrase.*

To clarify this part, we rephrased the text:

“The start of each climate intervention experiment is defined by the time that the baseline simulation has reached a near-surface global-mean temperature of 1.5°C and 2.0°C above pre-industrial, considering a ten-year running mean (in WACCM6 this is around 2020–2025 for 1.5°C and around 2034 for 2°C). **For easier comparisons, all ensemble members use the same exact numbers for the three temperature targets, even if surface temperatures slightly vary for different ensemble members.**”

*5. l. 144 Is there a specific reason for picking 180° W or is longitude largely irrelevant and just an arbitrary choice? Either way, please specify this in the text.*

There is no specific reason for picking 180° W. It just has to be at one point and this was also chosen by the GLENS simulations. We changed the text to:

“Sulfur dioxide injections into the stratosphere are performed at 4 locations 5 km above the tropopause, at 15°N, 15°S, 30°N, and 30°S in latitude, and **at an arbitrary longitude of 180°W**, following the approach described in Kravitz et al. (2017) and Tilmes et al. (2018).”

*6. l. 150 The authors mention the SSP-8.5 scenario here, but only describe the relevant experiment in the paragraph starting on l. 161. It may be more logical to invert the order of the two and first describe all experiments conducted here and then describe the feedback controller and temperature gradient constraints.*

Based on the first round of reviews, we have moved the description of the SSP5-85 scenario to the end of this section, to distinguish from the simulations that are part of the proposed “testbed” experiments. We therefore prefer to keep it the way it is now.

*7. l. 333 Note that this only holds in the case of a perfectly Gaussian distribution. A more robust approach would be using percentiles of the single-gridpoint distributions.*

The reviewer is absolutely correct that the 95% confidence interval language is only robust for normally distributed data. The text has been modified to make this clear.

“Anomalies outside historical climate variability are one indication of ocean conditions that ecosystems are not adapted to, and thus expected to cause disruption to fisheries and natural ecosystems (Bopp et al., 2013; Heneghan et al., 2019). Accordingly, the significance of SST (Fig. A3) and NPP (Fig. 9) anomalies was determined by using the standard deviation ( $\sigma$ ) in each model grid cell of the yearly means from the 499-year pre-industrial control run. An anomaly was considered significant when it was greater than 1.96  $\sigma$  (95% confidence interval) **assuming normally distributed data.**”

We are already using a threshold for significance higher or similar to many other studies (e.g., Fasulo et al. 2018; Brady et al., 2017, Krumhardt et al., 2017). While we agree that a percentile analysis would be interesting, it would not change the results very much here, and definitely would not change the messaging of the paper. If one was going to engage in a detailed statistical analysis relevant for ecosystems, it would make more sense to go into monthly or even daily data and look for extreme climate events and phenology changes, which is well beyond the scope here. We agree ours is a somewhat crude statistical analysis, especially from the point of view of ecological studies, but that is what we were going for in this paper, using a common statistical method in the climate modeling community. We look forward to engaging in more nuanced analysis in future in more ecologically-focused studies.

*8. Sect. 4.6/Fig. 10b The offset in the starting point of the Antarctic SMB is quite striking. I would suggest adding a comment concerning the fact that the GrIS is much closer to the historical range in 2030 than the AIS.*

That’s a good point. The Antarctic SMB is very sensitive to temperature changes, since precipitation (snowfall) increases with increasing temperatures (through the Clausius-Clapeyron relationship). Since CESM2 is characterized by a relatively high climate sensitivity, the AIS atmosphere has already been warming in the period 1990-2014, which explains why the Antarctic SMB in the future simulations is clearly higher than the historical SMB from the beginning onwards. This is not as clear for Greenland, where snowfall and runoff can compensate one another, leading to a much smaller change in SMB.

To address the comment, we changed the text to:

“Figure 10b shows AIS SMB. In contrast to the GrIS, surface runoff plays only a minor role on the AIS (Figure A4) and the overall trend is dominated by increased snowfall with temperature, resulting in increased SMB. **A discernable departure from 1960-1999 values is obvious in all simulations due to end of 20th century warming.**”

*9. Sect. 4.7 When discussing the ozone here, or in the conclusions section, it may be worth briefly mentioning that our view of the recovery of the ozone hole through column-integrated measurements may be somewhat biased when focusing exclusively on the high latitudes (e.g. Ball et al., 2018).*

<https://www.atmos-chem-phys.net/18/1379/2018/>

The review points to the paper by Ball et al., which focuses on latitudes outside the polar region. We agree that column integrated measures in mid and low latitudes can be misleading with regard to halogen induced ozone recovery. However, in high latitudes, column-integrated measures are still a very good measure for the recovery of the ozone hole. We slightly revise the text to point to the fact that we are focusing here on changes in high latitudes:

“These changes, in addition to the cooling of the surface and the troposphere, influence the strength of the sub-tropical and polar jets and therefore transport of stratospheric **airmasses, which results in changes of ozone.** In addition, stratospheric aerosols increase the aerosol surface area important for heterogeneous reactions. This leads to an enhanced activation of chlorine and therefore increased ozone depletion **in the polar stratosphere.** The effect of SAG was estimated to delay the recovery of the ozone hole by at least 40 years (Tilmes et al., 2008).

And add to the end of this section:

“Changes in stratospheric ozone in regions outside the SH polar latitudes as the result of SAG will be discussed in future studies.”

*10. Sect. 5 Perhaps worth mentioning again the “peak-shaving” concept in the first paragraph as motivation for using the OS scenario?*

We agree and mentioned the peak-shaving scenario again in the text:

“The resulting overshoot in surface temperatures above the desired temperature targets **allows the application of a peak-shaving scenario** that requires limited SAG applications in time and amount, compared to steadily increasing injections needed for a high forcing scenario.”

*11. Paragraph starting on l. 423: I find the paragraph to be poorly written and the overall message it carries unclear. Specifically:*

*l. 423 “to control for” ◇ “to achieve” or “to follow” or similar*

*l. 424 “can be done in” ◇ “can be done by”*

ll. 424-425 Specify what these improvements are (i.e. reduced climate/bio-geophysical impacts, as opposed to improvements in actually meeting the global mean temperature target).

l. 427 “and are therefore provide a complete picture”  $\diamond$  “and therefore provide a more complete picture”

”Both limited applications of SAG and improved climate targets result in reduced climate impacts and risks, and are therefore provide a complete picture for studying impacts on society and ecosystems than much larger scale SAG applications.” By “improved climate targets” do you mean following future scenarios of lower emissions? In any case, I do not think that lower emissions and lower SAG injections “provide a complete picture for studying impacts on society and ecosystems than much larger scale SAG applications”. The completeness of the picture is not related in any way to the level of climate impacts and risks. Indeed, one may have a very complete picture of a high-risk scenario or a very incomplete picture of a low risk scenario.

As pointed out more clearly above, we are aiming for impact relevant temperature targets of 1.5°C or 2.0°C. Furthermore, we are not only keeping global mean surface temperature at these levels, but also keep interhemispheric and pole-to-equator surface temperatures from changing. If SAG would be applied in this way, one would expect reduced side effects as compared to following unreasonably high injection scenarios or unreasonable setups. We propose that impact studies are more meaningful if they are performed based on scenarios that seem to be more reasonable than others. We adjusted the text in the manuscript to make this point clearer and improve the paragraph:

“In addition to reaching global surface temperature targets, the experiment requires **the achievement of** interhemispheric and pole- to-equator temperature targets, which can be done **by** using a feedback control algorithm to identify annual stratospheric injection amounts at 4 different latitudinal locations. For example, Kravitz et al. (2017) have shown several improvements in using the feedback controller to achieve the three temperature targets. Reaching global temperature surface targets **of 1.5°C or 2.0°C and keeping interhemispheric and pole-to-equator temperatures from changing has been shown to reduce global impacts**, including heatwaves, sea ice melting, **and large shifts in precipitation patterns. This scenario would therefore** reduce climate impacts and risks, and provide an improved basis for studying impacts on society and ecosystems **as compared to using unrealistic SAG applications based on a high greenhouse gas scenario. However, before impact studies are meaningful**, multi-model experiments are **required** to identify the range of outcomes and uncertainties. We therefore recommend including these experiments as a new testbed GeoMIP scenario for CMIP6.”

12. l. 435 “result in small differences in the amount of warming in high latitudes between a 1.5 °C and a 2 °C temperature target”. Is this really the case? For the SH I agree, but for the NH high latitudes the difference between the OS1.5 and OS2.0 cases seems to be in the region of 0.5 °C. Perhaps providing exact numbers would help here.

What we mean here was the “relative” warming of the high latitudes in each of these scenarios, not the absolute change. In Figure 4, changes are illustrated with regard to 2015-2025

conditions, which will result in a difference of 0.5C between the Geo 1.5C and Geo 2.0C case. We change the text to “**relative** amount warming”.

*13. Formula A1: I am a bit puzzled by the notation. Having a summation over index j, without any j dependence in the summed terms would equal to multiplying these terms by k. Also, shouldn't the LHS of the equation have some dependence on “i”? I admit I am confused by this equation, and the individual terms/indices should be explained more clearly in the text.*

Thanks for pointing us to this mistake. We mistakenly used the wrong index and T[i] should have been T[j]

The correct formula should read:

$$S[k+1] = \hat{S}[k+1] + K_p(T[k] - T_{goal}) + K_i \sum_{j=0}^k (T[j] - T_{goal})$$

We also changed the text to explain the different quantiles:

“Where  $S$  (the injection amounts in the next year) is the sum of the best estimate or feedforward value for year  $k+1$ ,  $\hat{S}[k+1]$  and a feedback correction.  $K_p$  and  $K_i$  are the proportional and integral control gains, whereby  $K_p$  only reacts to the temperature error in the previous year ( $T[k]$ ).  $K_i$  is required to ensure zero steady-state error (the correction in response to the integrated error will continue to build as long as there is nonzero bias in the error). The summation in the integral term begins from the first year of injection ( $j=0$ ) through to the year of simulation just completed.”

*Other Remarks*

*l. 170 “Geo RCP-85 1.5” make sure this matches the label in Table 1 and its caption.*

Thanks, we consistently changed it to “Geo RCP85 1.5”

*l. 191 “could be differences” ◇ “could be due to differences”*

Thanks, this has been fixed.

*l. 198 “falling” ◇ “fall”*

Thanks, this has been fixed.

*l. 222 “increasing greenhouse gases” ◇ “increasing greenhouse gas concentrations”*

Thanks, this has been fixed consistently throughout the text.

*Table 1: Missing °C in the left-most column. Final entry reads “2.”*

Thanks, we added °C for all the entities in the right panel (assuming that is what the reviewer means)

*l. 414 “and”  $\diamond$  “or”*

Thanks, this has been fixed.

*Sect. 4.4 Since the section only discusses data for SMB, it would be better to add “surface” in the title.*

We agree and changed it to “Ice sheet **surface** mass balance”

*l. 434 “three temperature targets” The temperature targets are only two, and one is considered for two different baseline scenarios.*

Here we are referring to the three temperature targets applying the feedback algorithm, namely, global surface temperatures, interhemispheric and pole-to-equator temperature gradients.

We are adjusting the text to clarify:

**“Applications of the feedback controller to achieve the three temperature targets in WACCM6, global surface temperatures, and interhemispheric and pole-to-equator temperature gradients, result in small differences in the amount of warming in high latitudes between a 1.5°C and a 2°C temperature target.”**

*l. 447 “illustrate”  $\diamond$  “illustrates”*

Thanks, this has been fixed.

*Caption Fig. 1 “methan”  $\diamond$  “methane”*

Thanks, this has been fixed.

*Fig. 1a Even though you specify the units in the title it is always good practice to label the axes too.*

We have added a label to the y-axis for panel a).

*Fig. 1 In all panels, the units (K) appear twice.*

We assume that the reviewer is pointing here to Fig. 5 and not Fig. 1, and have change the unites K to unites C and removed the unites in the title of each panel.

*Fig. 3 Caption “result” ↯ “results”*

Thanks, this has been fixed.

*Fig. 5 I struggle to identify the significant regions (to me, all regions in all panels appear to be “shaded in colour”). Also, what test was used to define the significance of deviations from climatology?*

There are white areas in the panel between the pink and light blue shades that are not colored. We used the *t*-test for significance and added in the caption:

“Regions shaded in color are significant with 95% confidence **based on the Student’s *t*-test.**”

*Fig. 7 “The shaded area is 1 standard deviation of 450 years pre-industrial control simulation” I am not sure I see the logic in this. Why add the PI SD to the SSP scenarios? If the aim is to provide a SD comparison, a table or some numbers in the text would be more indicated.*

In Figure 7, we show the two ensemble members (solid lines). On top, we plot the natural variability based on the pre-industrial control simulation, in order to indicate if differences are larger than the natural variability and if they therefore significant. In the revised manuscript, we have now applied the same method consistently for land NPP (Fig.7 and 8) and SSTs and ocean NPP (Figures 9, A3) and using for significance 1.96 times standard deviation from PI control (or 95% confidence of significance).

To clarify we added to the text:

“Fig. 7 shows the accumulated annual land NPP in different baselines and SAG scenarios. **The shaded areas around the curves illustrate the natural variability of NPP based on pre-industrial control conditions. Differences between the scenarios are considered to be significant if they lie outside the shaded area, as the case for SP5-85 and Geo SSP5-85 1.5, showing a slight reduction in NPP if SAG has been applied. The other scenarios do not show a significant difference.**”

*Fig. 8 Caption “pannel” ↯ “panel”*

Thanks, this has been fixed.

*Fig. 8 “Hatched regions are areas with changes within 1 standard deviation of 450 years pre-*

*industrial control simulation.” It doesn’t make much sense to show this unless it is discussed/commented upon in the paper.*

As for Figure 7, we added to the text:

“Figure 8 shows NPP anomalies between the three SAG scenarios and their baseline during 2060–2069. **Significance of results is assumed if the difference between the two simulations that are compared is larger than the natural variability, assuming the standard deviation ( $\sigma$ ) in each model grid cell of the yearly means from the 499-year pre-industrial control run. An anomaly was considered significant when it was greater than  $1.96 \sigma$  (95% confidence interval assuming normally distributed data)**”

*Fig. 9 See comment (7) above concerning the 95% level.*

Thanks for the comment we added: “assuming normally distributed data” to the figure caption.

*Fig. 11 Caption: “indicats”  $\diamond$  “indicates”*

Thanks, this has been fixed.

*Fig. 11 Caption: “from the one-member simulations.” Don’t all simulations have two members? Do the authors mean “the individual model realisations”?*

We thank the reviewer for catching this mistake, we reworded the sentence to: “A running mean over 5 years has been applied to the results.”

*Figure A1 caption: it would be helpful to include these functional shapes in the description of the algorithm in the Appendix text.*

To address this comment, we have added the formulas of these functions into the text and refer to them in the Figure caption:

“The time-varying amount of cooling relative to the desired target was computed using the baseline simulations and fitted **with** a simple functional form. The desired feedforward was scaled from the values previously used values in the GLENS simulations. These had been estimated from earlier simulations, and so the feedforward estimates were somewhat different from what is needed in WACCM6. **The feedforward functions ( $\hat{S}$ ) had to be fit to the different cases as illustrated in Figure A1 with  $k$  being a function of years between the start of the injection and the end of the simulations:**

- SSP5-8.5, 1.5°C target:  $\hat{S}[k] = 0.045(k - 2020)$
- SSP5-34-OS, 1.5°C target:  $\hat{S}[k] = 0.045(k - 2020)$  for  $k < 2050$ ,  $\hat{S}[k] = 0.31 + 0.0487(k - 2020) + 0.000502(k - 2020)^2$
- SSP5-34-OS, 2°C target:  $\hat{S}[k] = \max(\hat{S}_{1.5C}[k] - 0.5, 0)$

Figure A1 caption: “Top panel shows the fit to the desired temperature reduction for different cases (see text for details).

*Fig. A2, A3 As above: how is significance computed?*

Please see comment to Fig.9.

*Fig. A4 Would it be possible to add a reference historical range as done in Fig. 10?*

Thanks for the suggestion. We added the historical range in Fig. A4.

## Reviewer 2

### ***Suggestions for revision or reasons for rejection (will be published if the paper is accepted for final publication)***

*The authors have significantly improved the paper. The focus is now shifted to present and discuss the results of the simulations. A clearer motivation is given explaining the novelties and the relevance of the present study. A second set of experiments has been performed, which in my view is a major improvement as it gives some indication of the uncertainties coming from internal variability. Although the intention to establish a new testbed (and the related protocol) for model experiment has somewhat put more in the background in the present version, I believe that this study will motivate other groups to perform similar simulations. Not only in this respect the new appendix describing the feedback controller is very useful.*

*Overall, I believe the manuscript now provides sufficient new and valuable material to warrant publication. I have only found one (very minor) technical point:*

*Table 2 caption: meansures -> measures*

Thanks, we have fixed the typo.

# Reaching 1.5°C and 2.0°C global surface temperature targets using stratospheric aerosol geoengineering

Simone Tilmes<sup>1</sup>, Douglas E. MacMartin<sup>2</sup>, Jan T. M. Lenaerts<sup>3</sup>, Leo van Kampenhout<sup>4</sup>, Laura Muntjewerf<sup>5</sup>, Lili Xia<sup>6</sup>, Cheryl S. Harrison<sup>7</sup>, Kristen M. Krumhardt<sup>8</sup>, Michael J. Mills<sup>1</sup>, Ben Kravitz<sup>9,10</sup>, and Alan Robock<sup>6</sup>

<sup>1</sup>Atmospheric Chemistry, Observations, and Modeling Laboratory, National Center for Atmospheric Research, Boulder, CO, USA

<sup>2</sup>Mechanical and Aerospace Engineering, Cornell University, Ithaca, NY, USA

<sup>3</sup>Department of Atmospheric and Oceanic Sciences, University of Colorado Boulder, CO, USA

<sup>4</sup>Institute for Marine and Atmospheric Research, Utrecht University, Utrecht, The Netherlands

<sup>5</sup>Department of Geoscience and Remote Sensing, Delft University of Technology, The Netherlands

<sup>6</sup>Department of Environmental Sciences, Rutgers University, New Brunswick, NJ, USA

<sup>7</sup>Port Isabel Campus, University of Texas, Rio Grande Valley, USA

<sup>8</sup>Climate Global Dynamics Laboratory, National Center for Atmospheric Research, Boulder, CO, USA

<sup>9</sup>Department of Earth and Atmospheric Sciences, Indiana University, Bloomington, IN, USA

<sup>10</sup>Atmospheric Sciences and Global Change Division, Pacific Northwest National Laboratory, Richland, WA, USA

**Correspondence:** Simone Tilmes(tilmes@ucar.edu)

**Abstract.** A new set of stratospheric aerosol geoengineering (SAG) model experiments have been performed with CESM2(WACCM6) that are based on the CMIP6 overshoot scenario (SSP5-34-OS) as a baseline scenario to limit global warming to 1.5°C

or 2.0°C above 1850–1900 conditions. ~~A feedback algorithm has been used to identify~~ The overshoot scenario allows us to applying a peak-shaving scenario that reduces the needed duration and amount of SAG application compared to a high

5 forcing scenario. In addition, a feedback algorithm identifies the needed amount of sulfur dioxide injections in the stratosphere at four predefined latitudes, 30°N, 15°N, 15°S, and 30°S, to reach three surface temperature targets: global mean temperature, and ~~inter-hemispheric~~ interhemispheric and pole-to-equator temperature gradients. ~~The combination of using an overshoot scenario as a baseline that limits the needed amount of SAG applications and the use of a feedback algorithm to reach pre-defined temperature targets in model experiments is expected to reduce some of the earlier identified side effects of~~

10 ~~SAG~~ These targets further help to reduce side effects, including overcooling in the tropics, warming of high latitudes and large shifts in precipitation patterns. These experiments are therefore relevant for investigating the impacts on society and ecosystems. Comparisons to SAG simulations based on a high emission pathway baseline scenario (SSP5-85) ~~further help are also~~

performed to investigate the dependency of impacts using different injection amounts to offset surface warming by SAG. We find that changes from present day conditions around 2020 in some variables depend strongly on the defined temperature target

15 (1.5°C vs 2.0°C). These include surface air temperature and related impacts, the Atlantic Meridional Overturning Circulation (AMOC), which impacts ocean net primary productivity, and changes in ice sheet surface mass balance, which impacts sea-level rise. Others, including global precipitation changes and the recovery of the Antarctic ozone hole, depend strongly on the amount of SAG application. Furthermore, land net primary productivity as well as ocean acidification depend mostly on

the global atmospheric CO<sub>2</sub> concentration and therefore the baseline scenario. Multi-model comparisons of experiments that include strong mitigation, carbon dioxide removal with some SAG application are proposed to assess the robustness of impacts on societies and ecosystems.

## 1 Introduction

Large-scale mitigation efforts to phase out anthropogenic emissions are likely no longer sufficient to keep global mean surface temperature from rising less than 2°C above pre-industrial levels, which is required to avoid significant impacts on societies and ecosystems (Masson-Delmotte et al., 2018). Stratospheric aerosol geoengineering (SAG) has been suggested as part of a portfolio of responses, including mitigation, adaptation, and carbon dioxide removal, to potentially reach required surface temperature targets and to reduce some of the effects of anthropogenic interference in the climate system (e.g., Long and Shepherd, 2014; Lawrence et al., 2018; MacMartin et al., 2018). Here we present climate model experiments designed to assess impacts as a function of future greenhouse gas concentrations, the amount of SAG application, target temperatures, and the details of the application.

Various uniformly defined stratospheric aerosol geoengineering modeling experiments of different complexity have been designed within the Geoengineering Model Intercomparison Project (GeoMIP) to be performed by different modeling groups, within Coupled Model Intercomparison Project 5 (CMIP5) (Kravitz et al., 2011) and CMIP6 (Kravitz et al., 2015). These simulations involve either injecting sulfur dioxide at the equator or using earlier derived prescribed aerosol distributions to reach the described goals (e.g., Pitari et al., 2014). These were designed, for instance, to keep the radiative forcing at 2020 levels, or apply a constant injection followed by a termination of the injection after 50 years. New GeoMIP experiments were designed for CMIP6, using a high forcing SSP5-85 scenario as a baseline and applying either sulfur dioxide injections or solar dimming in order to reach the moderate radiative forcing of the SSP2-45 scenario (Kravitz et al., 2015). However, no Tier 1 GeoMIP experiments have been designed so far to achieve the 2.0°C and 1.5°C required temperature targets of the Paris Agreement. Furthermore, earlier GeoMIP experiments specify injections at or in a region around the equator, which result in excessive cooling of the tropics and less cooling of high latitudes, in turn causing large-scale precipitation shifts (Kravitz et al., 2013).

The geoengineering large ensemble (GLENS) project has defined experiments that aim to keep surface temperature values at close to present day levels to reduce impacts from global warming (Tilmes et al., 2018b)(Tilmes et al., 2018a). The experiments used a feedback controller to maintain global average surface temperatures, as well as equator-to-pole and interhemispheric temperature gradients, at 2020 levels. After each year of the simulation, the amount of sulfur injections at each of the four different latitude locations in the stratosphere was calculated, based on the deviations in meeting these surface temperature goals (see Appendix for more details). GLENS was based on a high forcing future climate scenario (RCP8.5) and required an increasing amount of sulfur injection with time. GLENS simulations have shown that using global surface temperature and surface temperature gradients, instead of only controlling for global surface temperature, results in reduced side effects, including more even cooling and reduced shifts in precipitation pattern-patterns (Kravitz et al., 2019). However, there are other changes

in the climate system that do not directly correlate with these quantities. Those include changes in atmospheric circulation and transport, monsoonal rainfall, and chemistry, as well as some responses of the biosphere on land and ocean. The magnitude of changes has been shown to be at least in part dependent on the applied amount and details of the application of SAG (Kravitz et al., 2017; Richter et al., 2018; Kravitz et al., 2019; Simpson et al., 2019; MacMartin et al., 2019). Furthermore, risks to climate and ecosystems posed by a sudden SAG termination grow with increasing amount of sulfur injection. Consequently, side effects and risks depend strongly on the required amount of intervention application, which is defined by the desired targets and the underlying greenhouse gas concentration pathway.

Several studies have pointed out that SAG may be able to reduce some of the effects of global warming temporarily while decarbonization efforts (including mitigation and negative emissions through carbon dioxide removal) are ramped up. [This would be possible if following an overshoot scenario, where mitigation and decarbonization is applied in a way that surface temperatures would peak above desired temperature targets for a limited time and then slowly decline below these temperature targets.](#) A so-called peak-shaving scenario was proposed that would potentially help prevent reaching tipping points until greenhouse gas levels have been sufficiently reduced (Wigley, 2006; Tilmes et al., 2016; MacMartin et al., 2018; Lawrence et al., 2018). Tilmes et al. (2016), and Jones et al. (2018), have produced simulations that kept surface temperature increases to 1.5°C or 2°C levels using different RCP forcing scenarios. Jones et al. (2018) used the RCP2.6 scenario as a baseline, resulting in a slight reduction of temperature by the end of the 21st century. Their scenario therefore did not require continuously increasing injections around the equator, but lead to some injection reductions by the end of the century to reach 1.5°C temperature targets. Tilmes et al. (2016) used a late decarbonization pathway, starting in 2040 from the high forcing scenario RCP8.5 and applied different amounts of stratospheric aerosol geoengineering to keep surface temperatures to 2.0°C and 1.5°C, using a prescribed aerosol distribution scaled to produce the required cooling. Neither Jones et al. (2018) nor Tilmes et al. (2016) used a feedback algorithm or the multiple injection locations in their approach, as was done in GLENS, and their results showed continued warming in high latitudes and precipitation shifts, while reaching global temperature targets.

The experiments performed here combine two main objectives that have only been addressed separately in previous studies. First, we apply a feedback controller to maintain three temperature targets, in order to reduce some of the side effects identified in earlier studies. Second, we use an overshoot scenario as the baseline scenario to limit the needed amount and duration of SAG to reach a 2.0°C or 1.5°C surface temperature target. Furthermore, we use well defined CMIP6 experiments as baseline experiments that have been performed by various modeling groups. To facilitate baseline scenarios that allow similar peak-shaving geoengineering experiments, as described by Tilmes et al. (2016), CMIP6 designed the overshoot scenario (OS) SSP5-34-OS (O'Neill et al., 2016). This scenario follows the high forcing scenario SSP5-85 until 2040 and then applies drastic decarbonization efforts, including mitigation and active carbon dioxide removal to produce net-negative emissions after 2070. The SSP5-34-OS scenario applies a sudden change in behavior in the consumption of fossil fuel emissions and also assumes large amounts of carbon removal. This produces a carbon dioxide (CO<sub>2</sub>) concentration overshoot and a surface temperature profile that significantly overshoots the required temperature target before 2100.

We use the state-of-the-art Community Earth System Model version 2 (CESM2) with the Whole Atmosphere Community Climate Model (WACCM6) atmospheric component, from here on called WACCM6, which has been used for CMIP6

simulations. Section 2 describes the model as well as the experiments. We further establish a protocol for new GeoMIP experiments that are designed to reach 1.5°C and 2.0°C surface temperature targets and are based on the SSP5-34-OS scenario in order to require less sulfur injection than using a high forcing scenario. We require the use of four pre-defined stratospheric injection locations as well as the use of a feedback controller (or a similar approach) to keep global surface temperatures, inter-hemispheric and pole-to-equator surface temperatures, at the defined target temperatures. These experiments are more relevant for impact analysis than any of the existing GeoMIP experiments. We hope to motivate other modeling groups to conduct the same experiments, thereby allowing for an analysis of the outcomes from a multi-model perspective.

We further contrast differences that arise if applying SAG to a high forcing future scenario to reach the 1.5°C temperature target. Resulting sulfur injections, stratospheric sulfur burden and comparisons of the efficiency using different scenarios is done in Section 3. The outcomes of these simulations are discussed in Section 4, where we summarize large-scale effects of SAG on surface temperature and precipitation, sea-surface temperatures and the Atlantic Meridional Overturning Circulation (AMOC). In addition, we include some diagnostics that are important for ecosystem and societal impact studies including changes in land primary productivity and land ice mass balance, effects on ocean ecosystems and the recovery of the Antarctic ozone hole. We do not discuss any detailed regional outcomes based on a two-member ensemble and a single model. Some comparisons are performed to the GLENS project, to identify potential ranges of outcomes using an earlier CESM model version. Discussions and conclusions are presented in Section 5.

## 2 Model description and experimental design

### 2.1 Model description

The model experiments described here were performed with the WACCM6. Details on CESM2 and WACCM6 model configurations, including an overview of the performance and new features, are described by Danabasoglu et al. (2019) and Gettelman et al. (2019), respectively. The WACCM6 atmospheric model uses a horizontal resolution of 1.25° in longitude and 0.95° in latitude, and 70 vertical layers, reaching up to 140 km height above sea level ( $6 \times 10^{-6}$  hPa). Stratospheric dynamics perform well compared to observations, producing an interactive quasi-biennial oscillation (Gettelman et al., 2019). The simulations are performed with comprehensive tropospheric, stratospheric, mesospheric, and lower thermospheric (TSMLT) chemistry (Emmons, L. et al., 2019) and an updated secondary organic aerosol scheme in the troposphere (Tilmes et al., 2019). It further uses a modal aerosol scheme (MAM4) for both troposphere and stratosphere (Liu et al., 2016) and prognostic sulfur injection to simulate eruptive volcanoes during the historical period (Mills et al., 2016, 2017). The atmospheric model is coupled to the other components in CESM2. The Parallel Ocean Program version 2 (POP2) (Smith et al., 2010; Danabasoglu et al., 2012) includes several improvements compared to earlier versions, including ocean biogeochemistry represented by the Marine Biogeochemistry Library (MARBL), which incorporates the Biogeochemical Elemental Cycle (BEC) ocean biogeochemistry-ecosystem model (e.g., Moore et al., 2014; Harrison et al., 2018) and the NOAA WaveWatch-III ocean surface wave prediction model (Tolman, 2009). Additional components are the sea-ice model CICE version 5.1.2 (CICE5) (Hunke et al., 2015) and the Community Ice Sheet Model version 2.1 (CISM2.1), (Lipscomb et al., 2019). The Community Land Model version 5 (CLM5)

120 also includes various updates, including interactive crops and irrigation for the land (Lawrence et al., 2019), and the Model for Scale Adaptive River Transport (MOSART).

CESM2 and WACCM6 have contributed to the Coupled Model Intercomparison Project phase 6 (CMIP6) (Eyring et al., 2016). As part of CMIP6, WACCM6 performed the DECK simulations, as well as the historical simulations, which reproduced the observed surface temperature trend within the expected variability (Gettelman et al., 2019).

## 125 2.2 Description of the experiments

The SSP5-34 OS CMIP6 scenario is used as the baseline scenario for the GeoMIP testbed experiments. It starts in 2015 from a historical simulation and ends in 2100 (O'Neill et al., 2016). Anthropogenic, biomass burning, ocean, soil, and volcanic emissions are prescribed, as well as surface concentrations of greenhouse gases and land surface values, using the corresponding scenarios (Meinshausen et al., 2017), while biogenic emissions are interactively calculated. SSP5-34 OS follows the same  
130 specifications as the SSP5-85 high forcing scenario until 2040. After 2040, the SSP5-34 OS scenario diverges from SSP5-85. SSP5-85 CO<sub>2</sub> concentrations continuously increase after 2040 until the end of the 21st century, reaching up to 1100 ppm, and methane (CH<sub>4</sub>) concentrations increase until 2070 and slowly decline thereafter (Fig. 1, panel b). For SSP5-34-OS, strong mitigation efforts are set in place after 2040, as well as the inclusion of negative emissions. Nevertheless, CO<sub>2</sub> concentrations still grow until about 2060 reaching  $\approx$  550 ppm and then slowly decline by the end of the 21st century, reaching  $\approx$  500 ppm based  
135 on WACCM6 simulations. CH<sub>4</sub> concentrations drop relatively quickly after 2040, due to its much shorter lifetime than CO<sub>2</sub>, reaching values of 1 ppb by the end of the 21st century. This is assuming a drastic phase-out of any anthropogenic production of CH<sub>4</sub> after 2040.

Two climate intervention experiments are designed to use the same prescribed greenhouse gas concentrations, emissions, and land surface values as the baseline SSP5-34-OS scenario. The experiments are designed to maintain global mean near surface  
140 temperatures around 1.5°C and 2.0°C warming compared to 1850-1900 levels, respectively, and are called “Geo SSP5-34-OS 1.5” and “Geo SSP5-34-OS 2.0”. The start of each climate intervention experiment is defined by the time that the baseline simulation has reached a near-surface global-mean temperature of 1.5°C and 2.0°C above pre-industrial, considering a ten-year running mean (in WACCM6 this is around 2020–2025 for 1.5°C and around 2034 for 2°C). ~~While different ensemble members may reach the target temperature at different times, they still have to be setup to reach the same temperature targets and may start at the same time~~  
145 For easier comparisons, all ensemble members use the same exact numbers for reaching the three temperature targets, even if surface temperatures slightly vary for different ensemble members.

Besides global mean surface temperature targets we require two more surface temperature measures in the proposed experiments, namely interhemispheric temperature gradients and equator to pole temperature targets, as described in Kravitz et al. (2016) and MacMartin et al. (2017). These additional temperature targets are defined based on the period when global mean  
150 surface temperatures have reached the specific climate goals, see above. Sulfur dioxide injections into the stratosphere are performed at 4 locations 5km above the tropopause, at 15°N, 15°S, 30°N, and 30°S in latitude, and at an arbitrary longitude of 180°W~~in longitude~~, following the approach described in Kravitz et al. (2017) and ~~Tilmes et al. (2018b)~~Tilmes et al. (2018a). We suggest to use a feedback control algorithm, as applied applied here, that was developed by MacMartin et al. (2017), based

on an earlier WACCM version 5.4 (WACCM5.4) (Mills et al., 2017). The injection rate each year is computed based on an  
155 initial guess (a “feed-forward”) that is corrected based on the actual temperature history (the “feedback”). The feed-forward  
function helps the controller more easily to reach the goals. This algorithm has been adopted in the WACCM6 without any  
changes, despite using a slightly different scenario in WACCM6 (using SSP5-85) compared to GLENS (using RCP8.5). For  
the OS simulations, the same feedback algorithm was applied, but with changes to the feed-forward function to account for the  
different temperature evolution in the baseline simulation. Details are described in the Appendix.

160 In this study, two realizations of the proposed experiments have been performed. Since the SSP5-85 scenario is identical to  
SSP5-34-OS until 2040, we started the SSP5-34-OS in 2040 from the SSP5-85 scenario. WACCM6 near surface temperatures  
reached around 1.3°C warming compared to the 1850-1900 average by 2015 and 1.5°C around 2020–2025 using the two  
WACCM6 ensemble members from the historical simulation (Fig. 1, panel a). The global mean surface warming reaches  
6.3°C by 2100. The SSP5-34-OS global mean surface temperature reaches up to 3°C above the 1850-1900 temperature by  
165 2060, aligned with the maximum peak in CO<sub>2</sub> concentrations. Temperatures slightly decline by the end of the century to about  
2.5°C above pre-industrial. Global near surface temperature targets were reached in the two SAG model experiments within  
about 0.2°C (Fig. 1, panel a, green and orange lines).

In addition to the proposed testbed experiments, we also performed a third climate intervention experiment that uses SSP5-  
85 as the baseline scenario, while applying sulfur injections to keep near surface temperature levels at 1.5°C targets, called  
170 “Geo SSP5-85 1.5”. Note that this scenario is identical to the “Geo SSP5-34-OS 1.5” experiment between 2015 and 2040  
(Fig. 1, panel a, purple lines). This experiment is not required for the proposed GeoMIP testbed experiment but can be useful  
for additional analysis. Comparing the outcomes of Geo SSP5-85 1.5 with the Geo SSP5-34-OS 1.5 experiment allows us to  
explore the differences of the impact of SAG using a high forcing greenhouse gas scenario vs. the overshoot scenario after 2040.  
Geo SSP5-85 1.5 can also be compared to the results in GLENS, since it uses the same setup with a similar baseline simulation  
175 but different model versions (WACCM5.4). GLENS simulations include a 3-member ensemble of the future baseline simulation  
starting in 2010, following the RCP8.5 pathway, called “RCP8.5” in the following. GLENS SAG simulations reached the same  
surface temperature targets of around 1.5°C and are called “Geo RCP8.5 1.5” in the following (see Table 1).

### 3 Sulfur injection rates and burden

The feedback algorithm calculates the required injection amount per injection location after each year of the simulation, based  
180 on the surface temperature deviations from the target temperatures. For all of the cases, a larger fraction of the injection was  
placed into the Southern Hemisphere (SH) (Fig. 2). For Geo SSP5-85 1.5, the injections were mainly placed at 30°N and 30°S,  
with a slightly smaller amount in the Northern Hemisphere (NH). Only half of the amount that was used at 30°S was required  
at 15°S and almost no injection was required at 15°N to achieve the predefined temperature goals. For the Geo SSP5-34-OS  
1.5 and Geo SSP5-34-OS 2.0 experiments, most injections were placed at 30°N, 30°S, and 15°S. After 2080 for Geo SSP5-  
185 34-OS 1.5 (2070 for Geo SSP5-34-OS 2.0) only injections in the SH were needed, and injections at 15°S dominated. As a  
result, the sulfate loading is significantly larger over the SH than the NH. This is in contrast to what has been simulated in

Geo RCP8.5 1.5 (GLENS), where more injections were required in the NH in order to achieve the same temperature targets (Tilmes et al., 2018b)(Tilmes et al., 2018a). An in depth investigation is needed in future studies to understand the differences using the two different CESM model versions. However, differences may be in part connected to differences in the ocean response, described in Section 4, and may be a result of differences in anthropogenic sulfur emissions between SSP5-85 and RCP8.5.

Differences between the 3 SAG experiments and the Geo RCP85 1.5 also arise in terms of accumulated SO<sub>2</sub> injection amount (Table 1) and aerosol burden with regard to sulfur injections per year (Fig. 3). The maximum injection amount in Geo SSP5-85 1.5 is 48 TgSO<sub>2</sub> per year with a total burden reaching up to 25 TgS. This results in an accumulated injection amount of 1710 and 1620 TgSO<sub>2</sub>, respectively, for the two ensemble members by the end of the century (Table 1). In contrast, Geo RCP85 1.5 required a larger injection with an accumulated injection amount of 2056 TgSO<sub>2</sub> and a corresponding burden of 28 TgS. The correlation between sulfur burden and injection rate is similar between Geo RCP85 1.5 and Geo SSP5-85 1.5 (Fig.3, panel b), which concludes that production, transport and removal processes in the two WACCM versions are similar. The reason for the slightly smaller required injection amount in Geo SSP5-85 1.5 compared to Geo RCP8.5 1.5 could be due to differences in the baseline scenarios, which specify a larger sulfate burden in the troposphere in SSP5-85 compared to RCP8.5 (not shown).

The two SAG experiments that are based on the OS scenario show much reduced accumulated SO<sub>2</sub> injections compared to the high forcing scenarios, with 605 and 593 Tg SO<sub>2</sub> for the 1.5°C temperature target and 305 and 328 Tg SO<sub>2</sub> for the 2.0°C temperature target for each of the two ensemble members. For Geo SSP5-34-OS 1.5, the total annual injection peaks between 2050 and 2070 at 10-12 Tg SO<sub>2</sub>, an amount comparable to the observed global sulfate perturbation from the 1991 eruption of Mt. Pinatubo (Baran and Foot, 1994; Dhomse et al., 2014; Mills et al., 2016). For Geo SSP5-34-OS 2.0, injections peak around 2050, reaching between 7 and 9 TgSO<sub>2</sub>, and falling-fall off after that towards around 1 TgSO<sub>2</sub> injections per year by the end of the century. In particular for the OS cases, there were periods in which the near surface temperatures were slightly cooler than the target temperature. This was likely due to shortcomings in the feed-forward component of the controller setup; in particular, the feed-forward was estimated based only on the instantaneous cooling required and did not adequately take into account the “memory” in both the aerosol concentrations and the resulting temperature response. The feed-forward component thus overestimated the amount of SO<sub>2</sub> injection required once aggressive mitigation began; this was eventually successfully corrected by the feedback. Both experiments that are based on the OS baseline scenario show a larger burden per injection amount (Fig. 3, panel b) for the years when SO<sub>2</sub> injections have been declining because of the prevalent sulfate burden from previous years.

## 4 Impacts of stratospheric aerosol geoengineering

### 4.1 Surface air temperature changes

The design of the proposed testbed experiments allows us to assess the effects of SAG, while surface air temperatures are maintained at specific targets, here 1.5°C and 2.0°C above pre-industrial levels. Since 1.5°C of warming, the more desired

220 temperature target defined by the IPCC1.5 report, is reached around 2020 (2015–2025) for the first ensemble member of the WACCM6 SSP5-85 simulation, we use this period as the control period for our analysis. Results in Figs. 4 and 5 are therefore illustrated in reference to 2015–2025 control values based on SSP5-85. The evolution of global mean surface air temperatures in the different experiments has been described above. Here, we discuss the surface air temperature evolution in NH and SH, in order to illustrate interhemispheric temperature differences, Fig. 4, solid and dotted lines, respectively, for the different  
225 experiments.

The two baseline simulations (SSP5-85 and SSP5-34-OS) show an increase in deviations of hemispheric surface air temperatures from the global mean temperature. While in SSP5-85, interhemispheric temperature differences continue to increase towards the end of the 21st century with stronger temperature trends in the NH compared to the SH, interhemispheric temperature differences in SSP5-34-OS reverse around 2070. This results in very small temperature trends in the SH after 2070 and  
230 decreasing temperatures in the NH. In WACCM6, NH temperatures are strongly impacted by the so called “warming hole” in the North Atlantic, which describes a local cooling that counters increasing temperatures from increasing greenhouse ~~gases~~gas concentrations (Fig. 5, panels a and b). The cooling of surface air temperatures above the North Atlantic is similar in magnitude for both SSP5-85 and SSP5-34-OS, likely a result of a fairly similar slowdown of the AMOC, as discussed in Section 4.2. On the other hand, the warming in the NH due to increasing greenhouse ~~gases~~gas concentrations is much larger in SSP5-85 than  
235 in SSP5-34-OS, resulting in the differences in North-to-South temperatures between the two baseline scenarios.

Applying the feedback algorithm to SSP5-85 and SSP5-34-OS results in a removal of the interhemispheric gradient in addition to maintaining global mean surface air temperatures. Only the last 15 years (2085–2100) of the Geo SSP5-34-OS 2.0 experiment produces somewhat larger warming in the SH than in the NH (Fig. 4, left panels). Zonal mean surface air temperature changes from the different experiments are illustrated for two different periods in Fig. 4, panels c and e. For the  
240 baseline simulations, temperature anomalies in high latitudes are higher than in mid and low latitudes, as expected, leading to much larger warming than the global mean. Effects of the warming hole (cooling) in the North Atlantic are visible (Fig. 5), particularly for the SSP5-34-OS scenario towards the end of the 21st century. SAG applications show a significant reduction in the warming of the polar regions, with very little difference between pole and equator in all the sulfur injection experiments. Only a slight warming up to 1°C occurs in the SH polar region by the end of the 21st century. The continuous cooling in  
245 the North Atlantic (Fig. 5, panels c and d) is compensated by a warming over Northwest Europe. Temperature goals are therefore reached equally well in all the sulfur injection experiments, using different baseline scenarios. The Geo SSP5-34-OS 2.0 is slightly cooler in the NH and shows a slight warming in the SH compared to the temperature target. This experiment is designed to be 0.5°C warmer than the other two SAG experiments. Therefore, independent of reaching 1.5°C or 2.0°C temperature targets, the feedback approach is able to maintain zonally averaged surface air temperatures at most latitudes.

## 250 4.2 Atlantic Meridional Overturning Circulation changes

Sea surface temperature (SST) anomalies are significantly reduced by SAG in all scenarios. Simulated present day (2015–2025) SST is already significantly warmer than pre-industrial (PI) across the tropics, subtropics, and into the Southern Ocean, with anomalies between 0.5°C and 1.5°C, reaching 2°C in the equatorial Pacific for one ensemble member (Fig. A2). On top of

255 this, in the 2060s simulated SST is significantly warmer than 2015–2025, with broad regions reaching anomalies above 2°C in the SSP5-85 case and 1.5°C in the SSP5-34-OS case; the exception is the warming hole in the North Atlantic (Drijfhout et al., 2012), which is significantly and persistently cooler by 1–2°C from both PI and present day SST by 2070, even in SSP5-85 (Fig. A3). SST anomalies are largely reduced in all geoengineering protocols implemented in this study especially in the 1.5°C cases, with exception of the warming hole, which remains persistently cool in all scenarios. Regions of persistently warm anomalies remain in the 2.0°C case, including much of the eastern Indian Ocean and the equatorial eastern South Atlantic  
260 based on the two ensemble members.

The apparent warming hole in all of the simulations is very likely related to changes in the AMOC (Fig. 6). The baseline scenarios SSP5-85 and SSP5-34-OS show a very similar decline until the last 2 decades of the simulation, with a maximum decline of more than 50% by the end of the century. Both SAG scenarios that target the 1.5°C temperatures show only a relatively small decline from 2020 values (approx 25%), with the largest reduction during the last 20 years of the simulation.  
265 The Geo SSP5-34-OS 2.0 produces a stronger decline closer to 40% and therefore closer to the SSP5-34-OS baseline scenario.

In comparison, Geo RCP85 1.5 (GLENs) simulations do not show the relative cooling in the North Atlantic (Fasullo et al., 2018). The earlier version of the model shows a slowing of the AMOC for the RCP8.5 scenario similar to the WACCM6 CMIP6 SSP5-85 simulation, which is however much smaller. Danabasoglu et al. (2019) found that the maximum AMOC strength in CESM2 is stronger than in CESM1. The differences in AMOC between CESM1 and CESM2 reflect differences in water mass  
270 properties that are ascribed (partly) to surface flux differences, as the ocean model component in both model versions handles the dense-water overflows through the Denmark Strait and the Faroe Bank Channel in the same way. Applying SAG resulted in an acceleration of the AMOC in GLENs (Fig. 6, grey shaded area), which is not the case in any of the WACCM6 SAG simulations. In these simulations the AMOC is still declining, even though less severely than in the SSP5-8.5 simulation. Responses of AMOC and therefore effects on surface air temperatures seem to be largely model version dependent.

#### 275 4.3 Zonal mean precipitation changes

Global mean precipitation is changing compared to the 2015–2025 control (Fig. 4, panel b), even though global surface air temperatures are maintained using SAG, as expected based on various earlier studies. Similarly to what has been found in Tilmes et al. (2016), and Jones et al. (2018), precipitation is increasing for the baseline scenarios, while applications of a low forcing scenario result in close to present day global precipitation values. In WACCM6, precipitation is declining the most  
280 compared to 2020 values in Geo SSP5-85 1.5, with increasing reductions towards the end of the century, aligned with the increasing amount of sulfur dioxide injections, which is very similar to what has been found in GLENs (e.g., Fasullo et al., 2018). However, the SAG experiment based on the OS pathway and aiming for the 1.5°C target, results in a much smaller global mean precipitation change. Furthermore, Geo SSP5-34-OS 2.0 shows a slight increase in global mean precipitation with increasing values after 2070.

285 Large scale precipitation changes from the control are shown in the zonal mean precipitation anomalies (Fig. 4, panels d and f). Both baseline simulations (SSP5-85 and SSP5-34-OS) show increasing precipitation in tropics and mid to high latitudes between 2060–69. While this trend is continuing in SSP5-85, the SSP5-34-OS shows a reduction in the precipitation changes

compared to control, as a result of reduced warming in this scenario by the end of the 21st century. A shift in tropical precipitation towards the SH (and therefore a shift in the Inter-tropical Convergence Zone (ITCZ)) occurs and is most pronounced in the SSP5-85, with increasing intensity towards the end of the 21st century in both baseline scenarios. Despite the reduction in greenhouse gases and surface temperature relative to SSP5-85, impacts on tropical precipitation using the overshoot scenario are still large and may result in large regional impacts. SAG applications successfully reduce increasing precipitation and shifts in tropical precipitation in 2060–2069, with slight reductions in precipitation in the SH subtropics. Some larger differences occur by the end of the 21st century, where reductions in precipitation are most pronounced if using the SSP5-85 baseline scenario. Also, the strength in the shifts in tropical precipitation differs within the different ensemble members. More detailed investigations have to be performed in future studies, as well as in a multi-model comparison context. Precipitation changes are therefore strongly dependent on the amount and strategy of SAG application.

#### 4.4 Land Primary Productivity

Net primary productivity (NPP) over land is the difference between gross primary productivity (GPP) and plant respiration (Cramer et al., 1999), and it is a key component in the terrestrial carbon cycle. NPP is sensitive to climate changes, including temperature, precipitation, soil moisture and photosynthetically active radiation. As shown in previous analysis (Cheng et al., 2019), relative to the baseline, SAG would reduce temperature, change precipitation and evaporation, which would potentially change soil moisture, and reduce the total incoming solar radiation. Therefore, terrestrial NPP is influenced by SAG.

Fig. 7 shows the accumulated annual land NPP in different baselines and SAG scenarios. ~~Here NPP~~ The shaded areas around the curves illustrate the natural variability of NPP based on pre-industrial control conditions. Differences between the scenarios are considered to be significant if they lie outside the shaded area, as the case for SSP5-85 and Geo SSP5-85 1.5, showing a slight reduction in NPP if SAG has been applied. The other scenarios do not show a significant difference. NPP shows strong dependency on CO<sub>2</sub> concentration, consistent with previous studies (Govindasamy, 2002; Kravitz et al., 2013; Glienke et al., 2015). In CLM5, CO<sub>2</sub> concentration is one of the factors to determine the stomatal resistance and photosynthesis rate (Lawrence 2019). With higher CO<sub>2</sub> concentration in SSP5-85 and Geo SSP5-85 1.5, plants tend to have less stomatal conductance which makes them more resistant to water stress, and to have higher photosynthesis rate. Therefore, land NPP in those two scenarios increases constantly through the whole simulation period. With mitigation and carbon dioxide removal strategy, CO<sub>2</sub> concentration under SSP5-34-OS and the related SAG scenarios reaches a maximum around 2060, and then reduces slowly. In general, land NPP in our simulations follow the change of CO<sub>2</sub> concentrations in the baseline. Temperature reduction or other climate changes from SAG show mild impact on land accumulated NPP. However, comparison between baseline and SAG indicates regional different responses of land NPP to SAG climate changes.

Figure 8 shows NPP anomalies between the three SAG scenarios and their baseline during 2060–2069. Significance of results is assumed if the difference between the two simulations that are compared is larger than the natural variability, assuming the standard deviation  $\sigma$  in each model grid cell of the yearly means from the 499-year pre-industrial control run. An anomaly was considered significant when it was greater than 1.96  $\sigma$  (95% confidence interval assuming normally distributed data). There are similar patterns in the maps with SAG, where land NPP increases over tropical and midlatitude regions, while it decreases

over high latitude and high altitude areas. The temperature reduction from SAG plays an important role in this pattern (Kravitz et al., 2013). Lower leaf temperature over tropical and midlatitude regions enhances stomatal conductance and hence promotes the carbon gain, while over high latitude and high altitude regions, the cooling is not optimal for plant growth. The magnitude of changes depend on both baseline and the temperature target. With a larger temperature difference between the baseline and the SAG, the NPP changes are bigger. As shown in Fig. 7, NPP changes are the largest between SSP5-8.5 and Geo SSP5-8.5 1.5.

#### 4.5 Ocean ecosystem impacts

Warming has large impacts on ocean ecosystems and fisheries, both directly through ocean temperature impacts on physiological processes, and indirectly through warming-induced changes in ocean physics. Increases in ocean temperature elevate respiration rates for endothermic (cold-blooded) animals, including zooplankton and fish, decreasing body size and limiting energy transfer to commercial fishery species and large marine vertebrates (Heneghan et al., 2019; Lotze et al., 2019). In contrast, warming ocean temperatures may stimulate NPP by phytoplankton, marine primary producers that make up the base of the marine food-web, assuming no other changing conditions (Eppley, 1972; Krumhardt et al., 2017). Additionally, however, warming drives changes in ocean stratification, currents and other physical mechanisms (clouds, sea ice, river flow) that affect nutrient delivery processes and available light (Laufkötter et al., 2015; Lauvset et al., 2017; Harrison et al., 2018). For example, warming induced stratification increases in pelagic ecosystems may reduce the amount of nutrients supplied to the photic zone, decreasing marine NPP, indirectly impacting higher trophic levels. Combined together, net responses of marine ecosystems to climate perturbations are dependent on local physical and biogeochemical conditions, leading to diverse ecosystem responses in different regions (Bopp et al., 2013; Krumhardt et al., 2017; Lauvset et al., 2017). Globally integrated, these processes are predicted to cause a net decrease of globally integrated oceanic biological production in future climate scenarios (Krumhardt et al., 2017), with a projected 5% decline in fisheries production for every degree of surface temperature warming (Lotze et al., 2019). Here we investigate to what degree solar radiation management mitigates the primary drivers of marine ecosystem disruption, sea surface temperature and net primary productivity.

Anomalies outside historical climate variability are one indication of ocean conditions that ecosystems are not adapted to, and thus expected to cause disruption to fisheries and natural ecosystems (Bopp et al., 2013; Heneghan et al., 2019). Accordingly, as for land NPP, significance of SST (Fig. A3) and ocean NPP (Fig. 9) anomalies was determined by using the standard deviation ( $\sigma$ ) in each model grid cell of the yearly means from the 499-year pre-industrial control run. An anomaly was considered significant when it was greater than 1.96  $\sigma$  (95% confidence interval assuming normally distributed data).

Oceanic NPP, the rate of photosynthetic carbon fixation by marine phytoplankton (Krumhardt et al., 2017; Harrison et al., 2018), represents the base of marine food web, supporting fisheries and natural ecosystems and driving the biological carbon pump that removes CO<sub>2</sub> from the atmosphere (e.g., Sarmiento and Gruber, 2006; Harrison et al., 2018). Similar to previous Earth system model simulations, anomalies of NPP in future climate are highly variable in space, and feature both strong positive and negative anomalies (Fig. 9), driven by different mechanisms in different biomes (Bopp et al., 2013; Krumhardt

et al., 2017). In contrast to SST, simulated NPP is not significantly different in 2015–2025 relative to PI over much of the global ocean, with the exception of increased NPP at the poles, where both declining ice and warming temperatures increase production, and a narrow strip at the subtropical-subpolar boundary in the Southern Hemisphere (Fig. A2); these anomalies get stronger by 2070 (Fig. 9). Additionally, the North Atlantic warming hole is associated with NPP declines of 30–40%, likely caused by changes in nutrient supply. All anomalies are substantially mitigated by SAG, with positive NPP anomalies relative to present disappearing over much of polar oceans, and NPP reductions in the North Atlantic decreasing from 30–40% (baseline cases) to 20–30% in the 1.5°C SAG cases. Thus, SAG could reduce negative impacts of climate change on marine ecosystems in the North Atlantic, an important region for fisheries. It is important to note, however, that the ocean ecosystem model in CESM2 does not account for the effects of ocean acidification on marine phytoplankton, which could impact, for example, calcifying phytoplankton (Krumhardt et al., 2019) or diatoms (Bach et al., 2019; Petrou et al., 2019).

#### 4.6 Ice sheet surface mass balance

The mass balance (MB) of (grounded) ice sheets, which determines their contribution to sea level rise, is made up from two components: the surface mass balance (SMB; representing snowfall and surface melt), and solid ice discharge (D) across the grounding line (Lenaerts et al., 2019)

$$MB = SMB - D$$

As D is controlled by ice flow speed and ice thickness, and responds relatively slowly to external forcing, it is challenging to detect an impact from SAG on ice discharge within a single century. Moreover, default CESM2 and therefore WACCM6 does not explicitly represent D, as it requires a dynamic ice sheet model coupled to the ESM, a feature that is currently only available in dedicated CESM2 experiments (Lipscomb et al., 2019). SMB, on the other hand, is explicitly represented in CESM2, ~~as~~ it (van Kampenhout et al., 2020). Since SMB is primarily driven by atmospheric and surface processes, in particular snowfall and surface melting, ~~and therefore it~~ has a much shorter response time than D. In addition, while ice sheet SMB exhibits large interannual variations, it also is observed to show a discernible trend on ice sheets in both hemispheres (Lenaerts et al., 2019). The observed Greenland Ice Sheet mass loss and associated sea level rise is primarily driven by a declining SMB (van den Broeke et al., 2016), and will very likely continue to do so in the future (Aschwanden et al., 2019). A common tipping point for the Greenland Ice Sheet (GrIS) is assumed to SMB = 0, when the ice sheet no longer has a mechanism to gain mass; this threshold is likely already reached this century in higher-emission scenarios (Pattyn et al., 2018). In contrast, the Antarctic Ice Sheet SMB has increased throughout the past century (Medley and Thomas, 2019), potentially acting to mitigate Antarctic mass loss through increasing D. While we are not able to identify the impact of SAG on Antarctic D, recent studies indicate that the Antarctic Ice Sheet will likely become unstable (leading to a sharp increase in D) when we increase global mean temperature by above 2°C (Pattyn et al., 2018).

In Figure ~~40~~10a, a general decrease in GrIS SMB is seen in all simulations compared to the historical period, but most notably in the high-warming scenarios SSP5-85 and SSP5-34-OS. This decrease is driven by increased surface runoff (Fig. A4), which is only partly offset by increased snowfall (not shown). SAG is effective in stabilizing runoff and therefore SMB in all three simulations, albeit there still is a distinct departure from late 20th century values. Although this is good news for

390 the stability of the GrIS, and the tipping point  $SMB=0$  is only reached in SSP5-85, it does not guarantee the GrIS existence in the long run since we do not resolve discharge. Moreover, the SMB-elevation feedback is not explicitly modeled, which starts to play a dominant role on millennial time scales (Pattyn et al., 2018). Based on these results, we deem it unlikely that large freshwater fluxes will originate from the GrIS by surface processes alone in all 3 geoengineering scenarios.

395 Figure 10b shows AIS SMB. In contrast to the GrIS, surface runoff plays only a minor role on the AIS (Figure A4) and the overall trend is dominated by increased snowfall with temperature, resulting in increased SMB. A discernable departure from 1960-1999 values is obvious in all simulations due to end of 20th century warming. Throughout most of the 21st century, the response of AIS SMB is similar in all SAG simulations (Fig. 10, panel b). ~~Again, both a stabilization and a marked departure are seen from 1960-1999 values, suggesting that the~~ 10b). The early stabilization in these simulations confirms the short response time of SMB ~~to warming is~~ in the order of years-decades. ~~In contrast to the GrIS, SMB increases during the 21st century, which is explained by the dominant role of precipitation on the AIS, whereas surface runoff remains a comparatively small mass flux (Fig. A3).~~ Interestingly, simulations Geo SSP5-34-OS 1.5 and SSP5-85 1.5 depart from one another during the second half of the 21 century. We attribute this difference to the different aerosol loading in the two simulations, which impacts the formation of precipitation.

#### 4.7 Evolution of the Antarctic ozone hole

405 The annually recurring ozone hole over Antarctica that began around 1980 is a result of enhanced CFCs and other halogen reservoirs in the stratosphere, the so-called ozone destroying substances (ODS), that mostly accumulated before the 1990s. Due to their very long lifetime of some CFCs over 100 years, the burden of ODS peaked around the year 1990 and is now slowly declining. The Antarctic ozone hole is expected to recover back to 1980 values in 2060 (WMO, 2018). However, changes in surface climate due to anthropogenic climate change are projected to accelerate the Brewer-Dobson Circulation  
410 in the stratosphere and with that transport more ozone into high latitudes and increase ozone with time, which can lead to a “super recovery” of ozone. The larger the forcing scenario, the larger is this effect, which would potentially slightly speed up the recovery of the ozone hole. RCP8.5 simulations as part of GLENS show the recovery of the Antarctic ozone in October by around 2060 compared to 1980 total column ozone values (Fig. 11, panel a) and an increase of column ozone up to 30 DU by the end of the century. The same behavior is also shown in WACCM6 following SSP5-85. Overshoot scenarios also show  
415 a recovery to 1980 values, which stays at or slightly below that value for the rest of the simulations, as a result of the reduced climate change effect on ozone (Fig. 11, panel b).

The increasing aerosol burden in the stratosphere in the SAG modeling experiments has significant effects on stratospheric chemistry and transport (e.g., Tilmes et al., 2009; Ferraro et al., 2014; Richter et al., 2018). The absorption of radiation by sulfate aerosols heats the lower tropical stratosphere. The amount of heating is proportional to the sulfur injection amount and  
420 results in a drop of the tropopause altitude and an increase in tropopause temperatures (Tilmes et al., 2017). These changes, in addition to the cooling of the surface and the troposphere, influence the strength of the sub-tropical and polar jets and therefore transport of stratospheric airmasses, which results in changes in ozone. In addition, stratospheric aerosols increase the aerosol surface area important for heterogeneous reactions. This leads to an enhanced activation of chlorine and therefore increased

ozone depletion [in the polar stratosphere](#). The effect of SAG was estimated to delay the recovery of the ozone hole by at least 40 years (Tilmes et al., 2008). [Changes in stratospheric ozone in regions outside the SH polar latitudes as the result of SAG will be discussed in future studies.](#)

Both GLENS and WACCM6 simulations show a drop in Antarctic column ozone at the start of the SAG application between 2020 and 2030 of up to 70 DU and then an increasing trend, similar to the case without SAG application. Antarctic column ozone has not fully recovered in Geo SSP5-85 1.5 by the end of the century. On the other hand, the SAG scenarios Geo SSP5-34-OS 1.5 and 2.0 show a faster recovery of the ozone hole than Geo SSP5-85 1.5, which is reached around 2080. The reduced forcing scenario does require less sulfur injections to reach the temperature targets, which results in a smaller stratospheric aerosol burden. Therefore, less ozone depletion is expected and the delay of the recovery of the ozone hole would be shortened to 20–30 years. For SSP5-34-OS 2.0, the later start of SAG application leads on average to a weaker reduction of column ozone of around 45 DU compared to the drop in column ozone of around 60 DU if SAG would be started in 2020.

## 5 Discussions and conclusions

This paper describes a set of new SAG simulations using WACCM6, which aim to keep global warming to less than 1.5°C ~~and or~~ 2.0°C above pre-industrial. The overshoot scenario SSP5-34-OS has been used as the baseline scenario, which follows the SSP5-85 future pathway until 2040, and then drastically increases decarbonization afterwards. The resulting overshoot in surface temperatures above the desired temperature targets [allows the application of a peak-shaving scenario that](#) requires limited SAG applications in time and amount, compared to steadily increasing injections needed for a high forcing scenario. We acknowledge that the SSP5-34-OS scenario is not a recommended scenario, because of delayed actions in mitigation and CDR, however, it is the only CMIP6 scenario that produces a temperature overshoot before the end of this century. More realistic and policy relevant scenarios need to be designed in the future that include earlier actions on mitigation, more realistic implementation of potential negative emissions and assumed surface emissions.

In addition to reaching global surface temperature targets, the experiment requires ~~to control for the achievement of~~ inter-hemispheric and pole-to-equator temperature targets, which can be done ~~in by~~ using a feedback control algorithm to identify annual stratospheric injection amounts at 4 different latitudinal locations. For example, Kravitz et al. (2017) have shown several improvements in using the feedback controller to achieve the three temperature targets. ~~Surface air temperature targets are relevant for reducing effects including extreme temperatures, heatwaves, and~~ [Reaching global temperature surface targets of 1.5°C or 2.0°C and keeping interhemispheric and pole-to-equator surface temperatures from changing has been shown to reduce global impacts, including heatwaves,](#) sea ice melting. ~~Both limited applications of SAG and improved climate targets result in,~~ [and large shifts in precipitation patterns. This scenario would therefore](#) reduced climate impacts and risks, and ~~are~~ therefore provide a complete picture for studying impacts on society and ecosystems ~~than much larger scale SAG applications~~ ~~Multi-model experiments are needed as compared to using unrealistic SAG applications based on a high greenhouse gas~~ [scenario. However, before impact studies are meaningful, multi-model experiments are required](#) to identify the range of outcomes and uncertainties. We therefore recommend including these experiments as a new testbed GeoMIP scenario for CMIP6.

Here, we further compare the experiments that are based on the OS scenario to SAG applications using the high greenhouse gas emission scenario SSP5-85, and to the earlier performed GLENS simulations that are based on the RCP8.5 scenario. These experiments provide the opportunity to explore the range of outcomes of SAG dependent on the amount of SAG injections, the background CO<sub>2</sub> concentrations, and the target surface air temperatures. Applications of the [feedback controller to achieve the three temperature targets in WACCM6, global surface temperatures, and interhemispheric and pole-to-equator temperature gradients](#), result in small differences in the [relative](#) amount of warming in high latitudes between a 1.5°C and a 2°C temperature target. Therefore, differences that were described in the IPCC1.5 report (Masson-Delmotte et al., 2018) between reaching 1.5°C or 2°C target may be different if they are reached with SAG or with emission reductions only, and have to be investigated further.

On the other hand, global precipitation changes depend on the amount of sulfur injections, resulting in a stronger reduction with increasing application. Precipitation changes and shifts in the ITCZ occur in both baseline scenarios, and in the OS case by the end of the century. This is likely a result of changes in the distribution of tropospheric aerosols. SAG using the feedback algorithm helps to reduce these shifts, whereby reduction in precipitation is strongest with higher injection amounts and to a lesser amount depends on the temperature targets.

The impacts of SAG need to be explored within the entire space between scenarios and societal and ecological relevant impacts to holistically assess and improve SAG applications. Here we provide examples of how such an assessment could be established, considering different types of scenarios, e.g., high greenhouse gas scenarios, low GHG scenarios, high vs. low SAG, and differences in temperature targets. All of these matter for different impact variables in a different manner. There are many different variables that need to be investigated. This paper explores only a few of those variables and ~~illustrate~~[illustrates](#) their dependency on impacts based on temperature targets, amount of sulfur burden, and the baseline simulations (Table 2). Furthermore, differences in injection amounts will impact costs of the implementation and need to be considered, but have not been investigated here.

Changes in AMOC, that are coupled to the surface temperatures, lead to a significant warming hole in WACCM6 with consequences for ocean temperatures, reducing NPP in the ocean in the North Atlantic. The reduced slowing of the AMOC with SAG would decrease some impacts on marine ecosystems. However, SAG will not mitigate other ecosystem stressors, like ocean acidification, which depend on the baseline scenario. Land NPP is also strongly dependent on the CO<sub>2</sub> content of the atmosphere and therefore on the baseline simulations but not so much on the temperature target. On the other hand, mean ice sheet surface mass balance is strongly dependent on the surface temperature target and has only a small direct dependence on the amount of SAG application or the baseline simulations. Finally, the Antarctic ozone hole is expected to recover around 2060 without SAG, but cannot fully recover by the end of the century if SAG would be applied to the SSP5-85 baseline scenario to reach 1.5°C. Using the OS scenario, ozone super-recovery is reduced and SAG applications would delay the recovery by approx. 20–30 years until around 2080, with a slightly early recovery if the 2°C target would be used.

In summary, future changes in different quantities that are important for societal and ecological impacts depend on very different measures, including the amount of SAG application, temperature target and baseline simulation. A comprehensive assessment is required that holistically considers benefits and side effects of climate intervention strategies.

*Data availability.* Previous and current CESM versions are freely available ([www.cesm.ucar.edu/models/cesm2](http://www.cesm.ucar.edu/models/cesm2)). The CESM2 WACCM6 SSP5-85 and SSP5-34-OS data analyzed in this manuscript have been contributed to CMIP6 and are freely available at the Earth System Grid Federation (ESGF; <https://esgf-node.llnl.gov/search/cmip6/>) or from the NCAR Digital Asset Services Hub (DASH; <https://data.ucar.edu>) or from the links provided from the CESM website ([www.cesm.ucar.edu](http://www.cesm.ucar.edu)). The additional SAG experiments are available under <https://doi.org/10.26024/t49k->

495 1016

*Author contributions.* As the first author, Simone Tilmes organized and wrote a large portion of the paper, produced all the simulations, and performed the analysis presented in about half of the figures. Douglas E. MacMartin was instrumental in properly setting up the feedback algorithm, and contributed to the interpretation of results and the writing of the paper. Jan T. M. Lenaerts and Leo van Kampenhout analyzed land ice mass balance and produced related figures and text. Laura Muntjewerf produced AMOC figures and the corresponding text. Lili Xia analyzed land primary productivity and produced related figures and text. Cheryl S. Harrison and Kristen M. Krumhardt analyzed sea surface temperature and ocean net primary productivity, producing related figures and text. Michael J. Mills, Ben Kravitz, and Alan Robock contributed to the writing of the paper and the overall framing.

*Competing interests.* There is are no competing interests at present

*Acknowledgements.* We thank Anne K. Smith and Douglas E. Kinnison for helpful comments and suggestions. Support for Ben Kravitz was provided in part by the National Science Foundation through agreement CBET-1931641, the Indiana University Environmental Resilience Institute, and the Prepared for Environmental Change Grand Challenge initiative. The Pacific Northwest National Laboratory is operated for the US Department of Energy by Battelle Memorial Institute under contract DE-AC05-76RL01830. Alan Robock was supported by NSF grant AGS-1617844. The CESM project is supported primarily by the National Science Foundation. This material is based upon work supported by the National Center for Atmospheric Research, which is a major facility sponsored by the NSF under Cooperative Agreement No. 1852977. Computing and data storage resources, including the Cheyenne supercomputer (doi:10.5065/D6RX99HX), were provided by the Computational and Information Systems Laboratory (CISL) at NCAR. Part of this work was carried out under the program of the Netherlands Earth System Science Centre (NESSC), financially supported by the Ministry of Education, Culture and Science (OCW)". (Grantnr. 024.002.001).

## References

- 515 Aschwanden, A., Fahnestock, M. A., Truffer, M., Brinkerhoff, D. J., Hock, R., Khroulev, C., Mottram, R., and Khan, S. A.: Contribution of the Greenland Ice Sheet to sea level over the next millennium, *Science Advances*, 5, eaav9396, <https://doi.org/10.1126/sciadv.aav9396>, <http://advances.sciencemag.org/lookup/doi/10.1126/sciadv.aav9396>, 2019.
- Bach, L. T., Hernández-Hernández, N., Taucher, J., Spisla, C., Sforza, C., Riebesell, U., and Arístegui, J.: Effects of elevated CO<sub>2</sub> on a natural diatom community in the subtropical NE Atlantic, *Frontiers in Marine Science*, 6, 1–16, <https://doi.org/10.3389/fmars.2019.00075>, 2019.
- 520 Baran, A. J. and Foot, J. S.: New application of the operational sounder HIRS in determining a climatology of sulphuric acid aerosol from the Pinatubo eruption, *Journal of Geophysical Research*, 99, 25 673, <https://doi.org/10.1029/94JD02044>, <http://doi.wiley.com/10.1029/94JD02044>, 1994.
- Bopp, L., Resplandy, L., Orr, J. C., Doney, S. C., Dunne, J. P., Gehlen, M., Halloran, P., Heinze, C., Ilyina, T., Séférian, R., Tjiputra, J., and Vichi, M.: Multiple stressors of ocean ecosystems in the 21st century: projections with CMIP5 models, *Biogeosciences*, 10, 6225–6245, <https://doi.org/10.5194/bg-10-6225-2013>, <https://www.biogeosciences.net/10/6225/2013/>, 2013.
- 525 Cheng, W., MacMartin, D. G., Dagon, K., Kravitz, B., Tilmes, S., Richter, J. H., Mills, M. J., and Simpson, I. R.: Soil moisture and other hydrological changes in a stratospheric aerosol geoengineering large ensemble, *Journal of Geophysical Research: Atmospheres*, p. 2018JD030237, <https://doi.org/10.1029/2018JD030237>, <https://onlinelibrary.wiley.com/doi/abs/10.1029/2018JD030237>, 2019.
- Cramer, W., Kicklighter, D. W., Bondeau, A., Iii, B. M., Churkina, G., Nemry, B., Ruimy, A., Schloss, A. L., and Intercomparison, T. P. O. T. P.: Comparing global models of terrestrial net primary productivity (NPP): overview and key results, *Global Change Biology*, 5, 1–15, <https://doi.org/10.1046/j.1365-2486.1999.00009.x>, <http://doi.wiley.com/10.1046/j.1365-2486.1999.00009.x>, 1999.
- 530 Danabasoglu, G., Bates, S. C., Briegleb, B. P., Jayne, S. R., Jochum, M., Large, W. G., Peacock, S., and Yeager, S. G.: The CCSM4 Ocean Component, *Journal of Climate*, 25, 1361–1389, <https://doi.org/10.1175/JCLI-D-11-00091.1>, <http://journals.ametsoc.org/doi/abs/10.1175/JCLI-D-11-00091.1>, 2012.
- 535 Danabasoglu, G., Lamarque, J.-F., Bachmeister, J., Bailey, D. A., DuVivier, A. K., and et al. Edwards, J.: The Community Earth System Model version 2 (CESM2), *Journal of Advances in Modeling Earth Systems*, 2019.
- Dhomse, S. S., Emmerson, K. M., Mann, G. W., Bellouin, N., Carslaw, K. S., Chipperfield, M. P., Hommel, R., Abraham, N. L., Telford, P., Braesicke, P., Dalvi, M., Johnson, C. E., O'Connor, F., Morgenstern, O., Pyle, J. A., Deshler, T., Zawodny, J. M., and Thomason, L. W.: Aerosol microphysics simulations of the Mt. Pinatubo eruption with the UM-UKCA composition-climate model, *Atmospheric Chemistry and Physics*, 14, 11 221–11 246, <https://doi.org/10.5194/acp-14-11221-2014>, <https://www.atmos-chem-phys.net/14/11221/2014/>, 2014.
- 540 Drijfhout, S., van Oldenborgh, G. J., and Cimadoribus, A.: Is a Decline of AMOC Causing the Warming Hole above the North Atlantic in Observed and Modeled Warming Patterns?, *Journal of Climate*, 25, 8373–8379, <https://doi.org/10.1175/JCLI-D-12-00490.1>, <http://journals.ametsoc.org/doi/abs/10.1175/JCLI-D-12-00490.1>, 2012.
- 545 Emmons, L., K., Orlando, J. J., Tyndall, G., Schwantes, R. H., Kinnison, D. E., Marsh, D. R., Mills, M. J., Tilmes., S., and Lamarque, J.-F.: The MOZART Chemistry Mechanism in the Community Earth System Model version 2 (CESM2), to be submitted to *J. Adv. Modeling Earth Systems*, 2019.
- Eppley, R.: Temperature and Phytoplankton Growth in Sea, *Fish. Bull.* 70, pp. 1063–1085, 1972.

- Eyring, V., Bony, S., Meehl, G. A., Senior, C. A., Stevens, B., Stouffer, R. J., and Taylor, K. E.: Overview of the Coupled Model Intercomparison Project Phase 6 (CMIP6) experimental design and organization, *Geoscientific Model Development*, 9, 1937–1958, <https://doi.org/10.5194/gmd-9-1937-2016>, <https://www.geosci-model-dev.net/9/1937/2016/>, 2016.
- Fasullo, J. T., Tilmes, S., Richter, J. H., Kravitz, B., MacMartin, D. G., Mills, M. J., and Simpson, I. R.: Persistent polar ocean warming in a strategically geoengineered climate, *Nature Geoscience*, 11, 910–914, <https://doi.org/10.1038/s41561-018-0249-7>, <http://dx.doi.org/10.1038/s41561-018-0249-7>, 2018.
- Ferraro, A. J., Highwood, E. J., and Charlton-Perez, A. J.: Weakened tropical circulation and reduced precipitation in response to geoengineering, *Environmental Research Letters*, 9, 014 001, <https://doi.org/10.1088/1748-9326/9/1/014001>, <http://stacks.iop.org/1748-9326/9/i=1/a=014001?key=crossref.878d5812d41285f5514acaa5402e63c3>, 2014.
- Gettelman, A., Mills, M. J., Kinnison, D. E., Garcia, R. R., Smith, A. K., Marsh, D. R., Tilmes, S., Vitt, F., Bardeen, C. G., McInerney, J., Liu, H.-L., Solomon, S. C., Polvani, L. M., Emmons, L. K., Lamarque, J.-F., Richter, J. H., Glanville, A. S., Bacmeister, J. T., Phillips, A. S., Neale, R. B., Simpson, I. R., DuVivier, A. K., Hodzic, A., and Randel, W. J.: The Whole Atmosphere Community Climate Model Version 6 (WACCM6), *Journal of Geophysical Research: Atmospheres*, p. 2019JD030943, <https://doi.org/10.1029/2019JD030943>, <https://onlinelibrary.wiley.com/doi/abs/10.1029/2019JD030943>, 2019.
- Glienke, S., Irvine, P. J., and Lawrence, M. G.: The impact of geoengineering on vegetation in experiment G1 of the GeoMIP, *Journal of Geophysical Research: Atmospheres*, 120, <https://doi.org/10.1002/2015JD024202>, <https://onlinelibrary.wiley.com/doi/abs/10.1002/2015JD024202>, 2015.
- Govindasamy, B.: Impact of geoengineering schemes on the terrestrial biosphere, *Geophysical Research Letters*, 29, 2061, <https://doi.org/10.1029/2002GL015911>, <http://doi.wiley.com/10.1029/2002GL015911>, 2002.
- Harrison, C. S., Long, M. C., Lovenduski, N. S., and Moore, J. K.: Mesoscale Effects on Carbon Export: A Global Perspective, *Global Biogeochemical Cycles*, 32, 680–703, <https://doi.org/10.1002/2017GB005751>, <http://doi.wiley.com/10.1002/2017GB005751>, 2018.
- Heneghan, R. F., Hatton, I. A., and Galbraith, E. D.: Climate change impacts on marine ecosystems through the lens of the size spectrum, *Emerging Topics in Life Sciences*, 3, 233–243, <https://doi.org/10.1042/ETLS20190042>, <https://portlandpress.com/emergtoplifesci/article/3/2/233/219720/Climate-change-impacts-on-marine-ecosystems>, 2019.
- Hunke, E. C., Lipscomb, W. H., Turner, A. K., Jeffery, N., and Elliott, S.: The Los Alamos Sea Ice Model. Documentation and Software User’s Manual. Version 5.1., Tech. rep., T-3 Fluid Dynamics Group, Los Alamos National Laboratory, 2015.
- Jones, A. C., Hawcroft, M. K., Haywood, J. M., Jones, A., Guo, X., and Moore, J. C.: Regional Climate Impacts of Stabilizing Global Warming at 1.5 K Using Solar Geoengineering, *Earth’s Future*, 6, 230–251, <https://doi.org/10.1002/2017EF000720>, <http://doi.wiley.com/10.1002/2017EF000720>, 2018.
- Kravitz, B., Robock, A., Boucher, O., Schmidt, H., Taylor, K. E., Stenchikov, G., and Schulz, M.: The Geoengineering Model Intercomparison Project (GeoMIP), *Atmospheric Science Letters*, 12, 162–167, <https://doi.org/10.1002/asl.316>, <http://doi.wiley.com/10.1002/asl.316>, 2011.
- Kravitz, B., Caldeira, K., Boucher, O., Robock, A., Rasch, P. J., Alterskjaer, K., Karam, D. B., Cole, J. N. S., Curry, C. L., Haywood, J. M., Irvine, P. J., Ji, D., Jones, A., Kristjánsson, J. E., Lunt, D. J., Moore, J. C., Niemeier, U., Schmidt, H., Schulz, M., Singh, B., Tilmes, S., Watanabe, S., Yang, S., and Yoon, J.-H.: Climate model response from the Geoengineering Model Intercomparison Project (GeoMIP), *Journal of Geophysical Research: Atmospheres*, 118, 8320–8332, <https://doi.org/10.1002/jgrd.50646>, <http://doi.wiley.com/10.1002/jgrd.50646>, 2013.

- Kravitz, B., Robock, A., Tilmes, S., Boucher, O., English, J. M., Irvine, P. J., Jones, A., Lawrence, M. G., MacCracken, M., Muri, H., Moore, J. C., Niemeier, U., Phipps, S. J., Sillmann, J., Storelvmo, T., Wang, H., and Watanabe, S.: The Geoengineering Model Inter-comparison Project Phase 6 (GeoMIP6): simulation design and preliminary results, *Geoscientific Model Development*, 8, 3379–3392, <https://doi.org/10.5194/gmd-8-3379-2015>, <https://www.geosci-model-dev.net/8/3379/2015/>, 2015.
- 590 Kravitz, B., Macmartin, D. G., Wang, H., and Rasch, P. J.: Geoengineering as a design problem, *Earth System Dynamics*, 7, 469–497, <https://doi.org/10.5194/esd-7-469-2016>, 2016.
- Kravitz, B., MacMartin, D. G., Mills, M. J., Richter, J. H., Tilmes, S., Lamarque, J.-F., Tribbia, J. J., and Vitt, F.: First Simulations of Designing Stratospheric Sulfate Aerosol Geoengineering to Meet Multiple Simultaneous Climate Objectives, *Journal of Geophysical Research: Atmospheres*, 122, <https://doi.org/10.1002/2017JD026874>, 2017.
- 595 Kravitz, B., MacMartin, D. G., Tilmes, S., Richter, J. H., Mills, M. J., Cheng, W., Dagon, K., Glanville, A. S., Lamarque, J., Simpson, I. R., Tribbia, J., and Vitt, F.: Comparing Surface and Stratospheric Impacts of Geoengineering With Different SO<sub>2</sub> Injection Strategies, *Journal of Geophysical Research: Atmospheres*, 124, 7900–7918, <https://doi.org/10.1029/2019JD030329>, <https://onlinelibrary.wiley.com/doi/abs/10.1029/2019JD030329>, 2019.
- Krumhardt, K. M., Lovenduski, N. S., Long, M. C., and Lindsay, K.: Avoidable impacts of ocean warming on marine primary production: Insights from the CESM ensembles, *Global Biogeochemical Cycles*, 31, 114–133, <https://doi.org/10.1002/2016GB005528>, <http://doi.wiley.com/10.1002/2016GB005528>, 2017.
- 600 Krumhardt, K. M., Lovenduski, N. S., Long, M. C., Levy, M., Lindsay, K., Moore, J. K., and Nissen, C.: Coccolithophore Growth and Calcification in an Acidified Ocean: Insights From Community Earth System Model Simulations, *Journal of Advances in Modeling Earth Systems*, 11, 1418–1437, <https://doi.org/10.1029/2018MS001483>, <https://onlinelibrary.wiley.com/doi/abs/10.1029/2018MS001483>, 2019.
- 605 Laufkötter, C., Vogt, M., Gruber, N., Aita-Noguchi, M., Aumont, O., Bopp, L., Buitenhuis, E., Doney, S. C., Dunne, J., Hashioka, T., Hauck, J., Hirata, T., John, J., Le Quéré, C., Lima, I. D., Nakano, H., Seferian, R., Totterdell, I., Vichi, M., and Völker, C.: Drivers and uncertainties of future global marine primary production in marine ecosystem models, *Biogeosciences*, 12, 6955–6984, <https://doi.org/10.5194/bg-12-6955-2015>, <https://www.biogeosciences.net/12/6955/2015/>, 2015.
- Lauvset, S. K., Tjiputra, J., and Muri, H.: Climate engineering and the ocean: effects on biogeochemistry and primary production, *Biogeosciences*, 14, 5675–5691, <https://doi.org/10.5194/bg-14-5675-2017>, <https://www.biogeosciences.net/14/5675/2017/>, 2017.
- 610 Lawrence, D. M., Fisher, R. A., Koven, C. D., Oleson, K. W., Swenson, S. C., Bonan, G., Collier, N., Ghimire, B., Kampenhout, L., Kennedy, D., Kluzek, E., Lawrence, P. J., Li, F., Li, H., Lombardozi, D., Riley, W. J., Sacks, W. J., Shi, M., Vertenstein, M., Wieder, W. R., Xu, C., Ali, A. A., Badger, A. M., Bisht, G., Broeke, M., Brunke, M. A., Burns, S. P., Buzan, J., Clark, M., Craig, A., Dahlin, K., Drewniak, B., Fisher, J. B., Flanner, M., Fox, A. M., Gentine, P., Hoffman, F., Keppel-Aleks, G., Knox, R., Kumar, S., Lenaerts, J., Leung, L. R., Lipscomb, W. H., Lu, Y., Pandey, A., Pelletier, J. D., Perket, J., Randerson, J. T., Ricciuto, D. M., Sanderson, B. M., Slater, A., Subin, Z. M., Tang, J., Thomas, R. Q., Val Martin, M., and Zeng, X.: The Community Land Model version 5: Description of new features, benchmarking, and impact of forcing uncertainty, *Journal of Advances in Modeling Earth Systems*, p. 2018MS001583, <https://doi.org/10.1029/2018MS001583>, <https://onlinelibrary.wiley.com/doi/abs/10.1029/2018MS001583>, 2019.
- 620 Lawrence, M. G., Schäfer, S., Muri, H., Scott, V., Oschlies, A., Vaughan, N. E., Boucher, O., Schmidt, H., Haywood, J., and Scheffran, J.: Evaluating climate geoengineering proposals in the context of the Paris Agreement temperature goals, *Nature Communications*, 9, 3734, <https://doi.org/10.1038/s41467-018-05938-3>, <http://www.nature.com/articles/s41467-018-05938-3>, 2018.
- Lenaerts, J. T. M., Medley, B., Broeke, M. R., and Wouters, B.: Observing and Modeling Ice Sheet Surface Mass Balance, *Reviews of Geophysics*, 57, 376–420, <https://doi.org/10.1029/2018RG000622>, <https://onlinelibrary.wiley.com/doi/abs/10.1029/2018RG000622>, 2019.

- Lipscomb, W. H., Price, S. F., Hoffman, M. J., Leguy, G. R., Bennett, A. R., Bradley, S. L., Evans, K. J., Fyke, J. G., Kennedy, J. H.,  
625 Perego, M., Ranken, D. M., Sacks, W. J., Salinger, A. G., Vargo, L. J., and Worley, P. H.: Description and evaluation of the Community  
Ice Sheet Model (CISM) v2.1, *Geoscientific Model Development*, 12, 387–424, <https://doi.org/10.5194/gmd-12-387-2019>, <https://www.geosci-model-dev.net/12/387/2019/>, 2019.
- Liu, X., Ma, P. L., Wang, H., Tilmes, S., Singh, B., Easter, R. C., Ghan, S. J., and Rasch, P. J.: Description and evaluation of a new four-  
mode version of the Modal Aerosol Module (MAM4) within version 5.3 of the Community Atmosphere Model, *Geoscientific Model*  
630 *Development*, 9, 505–522, <https://doi.org/10.5194/gmd-9-505-2016>, 2016.
- Long, J. C. S. and Shepherd, J. G.: The Strategic Value of Geoengineering Research, in: *Global Environmental Change*, pp. 757–770, Springer  
Netherlands, Dordrecht, [https://doi.org/10.1007/978-94-007-5784-4\\_24](https://doi.org/10.1007/978-94-007-5784-4_24), [http://link.springer.com/10.1007/978-94-007-5784-4\\_{\\_}24](http://link.springer.com/10.1007/978-94-007-5784-4_{_}24),  
2014.
- Lotze, H. K., Tittensor, D. P., Bryndum-Buchholz, A., Eddy, T. D., Cheung, W. W. L., Galbraith, E. D., Barange, M., Barrier, N., Bianchi, D.,  
635 Blanchard, J. L., Bopp, L., Büchner, M., Bulman, C. M., Carozza, D. A., Christensen, V., Coll, M., Dunne, J. P., Fulton, E. A., Jennings,  
S., Jones, M. C., Mackinson, S., Maury, O., Niiranen, S., Oliveros-Ramos, R., Roy, T., Fernandes, J. A., Schewe, J., Shin, Y.-J., Silva,  
T. A. M., Steenbeek, J., Stock, C. A., Verley, P., Volkholz, J., Walker, N. D., and Worm, B.: Global ensemble projections reveal trophic  
amplification of ocean biomass declines with climate change, *Proceedings of the National Academy of Sciences*, 116, 12 907–12 912,  
<https://doi.org/10.1073/pnas.1900194116>, <http://www.pnas.org/lookup/doi/10.1073/pnas.1900194116>, 2019.
- 640 MacMartin, D. G., Kravitz, B., Keith, D. W., and Jarvis, A.: Dynamics of the coupled human-climate system resulting from closed-loop  
control of solar geoengineering, *Climate Dynamics*, 43, 243–258, <https://doi.org/10.1007/s00382-013-1822-9>, 2014.
- MacMartin, D. G., Kravitz, B., Tilmes, S., Richter, J. H., Mills, M. J., Lamarque, J.-F., Tribbia, J. J., and Vitt, F.: The Climate Response  
to Stratospheric Aerosol Geoengineering Can Be Tailored Using Multiple Injection Locations, *Journal of Geophysical Research: Atmo-*  
*spheres*, 122, <https://doi.org/10.1002/2017JD026868>, 2017.
- 645 MacMartin, D. G., Ricke, K. L., and Keith, D. W.: Solar geoengineering as part of an overall strategy for meeting the 1.5°C  
Paris target, *Philosophical Transactions of the Royal Society A: Mathematical, Physical and Engineering Sciences*, 376, 20160454,  
<https://doi.org/10.1098/rsta.2016.0454>, <https://royalsocietypublishing.org/doi/10.1098/rsta.2016.0454>, 2018.
- MacMartin, D. G., Wang, W., Kravitz, B., Tilmes, S., Richter, J. H., and Mills, M. J.: Timescale for Detecting the Cli-  
mate Response to Stratospheric Aerosol Geoengineering, *Journal of Geophysical Research: Atmospheres*, 124, 1233–1247,  
650 <https://doi.org/10.1029/2018JD028906>, <http://doi.wiley.com/10.1029/2018JD028906>, 2019.
- Masson-Delmotte, V., Zhai, P., Pörtner, H. O., Roberts, D., Skea, J., Shukla, P., Pirani, A., Moufouma-Okia, W., Péan, C., Pidcock, R.,  
Connors, S., Matthews, J. B. R., Chen, Y., Zhou, X., Gomis, M. I., Lonnoy, E., Maycock, T., Tignor, M., and Waterfield T. (eds.): IPCC,  
2018: Global Warming of 1.5°C. An IPCC Special Report on the impacts of global warming of 1.5°C above pre-industrial levels and  
related global greenhouse gas emission pathways, in the context of strengthening the global response to the threat of cli, Tech. rep., 2018.
- 655 Medley, B. and Thomas, E. R.: Increased snowfall over the Antarctic Ice Sheet mitigated twentieth-century sea-level rise, *Nature Climate*  
*Change*, 9, 34–39, <https://doi.org/10.1038/s41558-018-0356-x>, <http://dx.doi.org/10.1038/s41558-018-0356-x>, 2019.
- Meinshausen, M., Vogel, E., Nauels, A., Lorbacher, K., Meinshausen, N., Etheridge, D. M., Fraser, P. J., Montzka, S. A., Rayner, P. J.,  
Trudinger, C. M., Krummel, P. B., Beyerle, U., Canadell, J. G., Daniel, J. S., Enting, I. G., Law, R. M., Lunder, C. R., O’Doherty,  
S., Prinn, R. G., Reimann, S., Rubino, M., Velders, G. J. M., Vollmer, M. K., Wang, R. H. J., and Weiss, R.: Historical greenhouse gas  
660 concentrations for climate modelling (CMIP6), *Geoscientific Model Development*, 10, 2057–2116, [https://doi.org/10.5194/gmd-10-2057-](https://doi.org/10.5194/gmd-10-2057-2017)  
<https://www.geosci-model-dev.net/10/2057/2017/>, 2017.

- Mills, M. J., Schmidt, A., Easter, R., Solomon, S., Kinnison, D. E., Ghan, S. J., Neely, R. R., Marsh, D. R., Conley, A., Bardeen, C. G., and Gettelman, A.: Global volcanic aerosol properties derived from emissions, 1990–2014, using CESM1(WACCM), *Journal of Geophysical Research: Atmospheres*, 121, 2332–2348, <https://doi.org/10.1002/2015JD024290>, 2016.
- 665 Mills, M. J., Richter, J. H., Tilmes, S., Kravitz, B., MacMartin, D. G., Glanville, A. A., Tribbia, J. J., Lamarque, J.-F., Vitt, F., Schmidt, A., Gettelman, A., Hannay, C., Bacmeister, J. T., and Kinnison, D. E.: Radiative and chemical response to interactive stratospheric sulfate aerosols in fully coupled CESM1(WACCM), *Journal of Geophysical Research: Atmospheres*, 122, <https://doi.org/10.1002/2017JD027006>, 2017.
- Moore, J. C., Rinke, A., Yu, X., Ji, D., Cui, X., Li, Y., Alterskjaer, K., Kristjánsson, J. E., Muri, H., Boucher, O., Huneus, N., Kravitz, B., Robock, A., Niemeier, U., Schulz, M., Tilmes, S., Watanabe, S., and Yang, S.: Arctic sea ice and atmospheric circulation under the GeoMIP G1 scenario, *Journal of Geophysical Research: Atmospheres*, 119, 567–583, <https://doi.org/10.1002/2013JD021060>, <http://doi.wiley.com/10.1002/2013JD021060>, 2014.
- 670 O'Neill, B. C., Tebaldi, C., van Vuuren, D. P., Eyring, V., Friedlingstein, P., Hurtt, G., Knutti, R., Kriegler, E., Lamarque, J.-F., Lowe, J., Meehl, G. A., Moss, R., Riahi, K., and Sanderson, B. M.: The Scenario Model Intercomparison Project (ScenarioMIP) for CMIP6, *Geoscientific Model Development*, 9, 3461–3482, <https://doi.org/10.5194/gmd-9-3461-2016>, <https://www.geosci-model-dev.net/9/3461/2016/>, 2016.
- 675 Pattyn, F., Ritz, C., Hanna, E., Asay-Davis, X., DeConto, R., Durand, G., Favier, L., Fettweis, X., Goelzer, H., Golledge, N. R., Kuipers Munneke, P., Lenaerts, J. T. M., Nowicki, S., Payne, A. J., Robinson, A., Seroussi, H., Trusel, L. D., and van den Broeke, M.: The Greenland and Antarctic ice sheets under 1.5 °C global warming, *Nature Climate Change*, 8, 1053–1061, <https://doi.org/10.1038/s41558-018-0305-8>, <http://www.nature.com/articles/s41558-018-0305-8>, 2018.
- 680 Petrou, K., Baker, K. G., Nielsen, D. A., Hancock, A. M., Schulz, K. G., and Davidson, A. T.: Acidification diminishes diatom silica production in the Southern Ocean, *Nature Climate Change*, 9, 781–786, <https://doi.org/10.1038/s41558-019-0557-y>, <http://www.nature.com/articles/s41558-019-0557-y>, 2019.
- Pitari, G., Aquila, V., Kravitz, B., Robock, A., Watanabe, S., Cionni, I., Luca, N. D., Genova, G. D., Mancini, E., and Tilmes, S.: Stratospheric ozone response to sulfate geoengineering: Results from the Geoengineering Model Intercomparison Project (GeoMIP), *Journal of Geophysical Research: Atmospheres*, 119, 2629–2653, <https://doi.org/10.1002/2013JD020566>, <http://doi.wiley.com/10.1002/2013JD020566>, 2014.
- 685 Richter, J. H., Tilmes, S., Glanville, A., Kravitz, B., MacMartin, D., Mills, M., Simpson, I., Vitt, F., Tribbia, J., and Lamarque, J.-F.: Simulations of stratospheric sulfate aerosol geoengineering with the Whole Atmosphere Community Climate Model (WACCM), *Journal of Geophysical Research Atmospheres*, 122, 2018.
- 690 Sarmiento, J. L. and Gruber, N.: *Ocean biogeochemical dynamics*, Tech. rep., Princeton University Press, 2006.
- Simpson, I. S., S.Tilmes, Richter, J. H., Kravitz, B., MacMartin, D. G., Mills, M. J., Fasullo, J. T., and Pendergrass, A. G.: The regional hydroclimate response to stratospheric sulfate geoengineering and the role of stratospheric heating, *J.Geophys. Res. Geophysical Res.*, 2019.
- Smith, R., Jones, P., Briegleb, B., Bryan, F., Danabasoglu, G., and et al. Dennis, J.: The Parallel Ocean Program (POP) Reference Manual Ocean Component of the Community Climate System Model (CCSM) and Community Earth System Model (CESM)., Tech. rep., <https://ccsm.ucar.edu/models/cesm1.2/pop2/doc/sci/POPRefManual.pdf>, 2010.
- 695 Tilmes, S., Müller, R., Salawitch, R. J., Schmidt, U., Webster, C. R., Oelhaf, H., Russell III, J. M., and Camy-Peyret, C. C.: Chemical ozone loss in the Arctic winter 1991–1992, *Atmos. Chem. Phys.*, 8, 1897–1910, 2008.

700 Tilmes, S., Garcia, R. R., Kinnison, D. E., Gettelman, A., and Rasch, P. J.: Impact of geoengineered aerosols on the troposphere and strato-  
sphere, *Journal of Geophysical Research*, 114, D12 305, <https://doi.org/10.1029/2008JD011420>, <http://www.agu.org/pubs/crossref/2009/2008JD011420.shtml>, 2009.

Tilmes, S., Sanderson, B. M., and O'Neill, B. C.: Climate impacts of geoengineering in a delayed mitigation scenario, *Geophysical Research Letters*, 43, 8222–8229, <https://doi.org/10.1002/2016GL070122>, <http://doi.wiley.com/10.1002/2016GL070122>, 2016.

705 Tilmes, S., Richter, J. H., Mills, M. J., Kravitz, B., MacMartin, D. G., Vitt, F., Tribbia, J. J., and Lamarque, J.-F.: Sensitivity of Aerosol  
Distribution and Climate Response to Stratospheric SO<sub>2</sub> Injection Locations, *Journal of Geophysical Research: Atmospheres*, 122,  
<https://doi.org/10.1002/2017JD026888>, 2017.

Tilmes, S., Richter, J. H., Kravitz, B., MacMartin, D. G., Mills, M. J., Simpson, I. R., Glanville, A. S., Fasullo, J. T., Phillips, A. S.,  
Lamarque, J.-F., Tribbia, J., Edwards, J., Mickelson, S., and Ghosh, S.: CESM1(WACCM) Stratospheric Aerosol Geoengineering Large  
Ensemble Project, *Bulletin of the American Meteorological Society*, 99, 2361–2371, <https://doi.org/10.1175/BAMS-D-17-0267.1>, <http://journals.ametsoc.org/doi/10.1175/BAMS-D-17-0267.1>, 2018a.

710 Tilmes, S., Richter, Y., Mills, M., Kravitz, B., MacMartin, D., Garcia, R., Kinnison, D., Lamarque, J.-F., Tribbia, J., and Vitt, F.: Simu-  
lations of stratospheric sulfate aerosol geoengineering with the Whole Atmosphere Community Climate Model (WACCM), *Journal of  
Geophysical Research Atmospheres*, 12, 2018b.

Tilmes, S., Hodzic, A., Emmons, L. K., Mills, M. J., Gettelman, A., Kinnison, D. E., Park, M., Lamarque, J.-F., Vitt, F., Shrivastava, M., Jost,  
715 P. C., Jimenez, J., and Liu, X.: Climate forcing and trends of organic aerosols in the Community Earth System Model (CESM2), *Journal  
of Advances in Modeling Earth Systems*, 2019.

Tolman, H. L.: User manual and system documentation of WAVEWATCH III TM version 3.14. Technical note., Tech. rep., 2009.

van den Broeke, M. R., Enderlin, E. M., Howat, I. M., Kuipers Munneke, P., Noël, B. P. Y., van de Berg, W. J., van Meijgaard, E., and Wouters,  
B.: On the recent contribution of the Greenland ice sheet to sea level change, *The Cryosphere*, 10, 1933–1946, [https://doi.org/10.5194/tc-](https://doi.org/10.5194/tc-10-1933-2016)  
720 [10-1933-2016](https://doi.org/10.5194/tc-10-1933-2016), <https://www.the-cryosphere.net/10/1933/2016/>, 2016.

van Kampenhout, L., Lenaerts, J. T. M., Lipscomb, W. H., Lhermitte, S., Noël, B., Vizcaíno, M., Sacks, W. J., and van den Broeke, M. R.:  
Present-Day Greenland Ice Sheet Climate and Surface Mass Balance in CESM2, *Journal of Geophysical Research: Earth Surface*, 125,  
<https://doi.org/10.1029/2019JF005318>, <https://onlinelibrary.wiley.com/doi/abs/10.1029/2019JF005318>, 2020.

Wigley, T. M.: A combined mitigation/geoengineering approach to climate stabilization, *Science*, 314, 452–454, 2006.

725 WMO: Scientific Assessment of Ozone Depletion: 2018, Global Ozone Research and Monitoring Project–Report No. 58, Geneva, Switzer-  
land, 2018.

**Table 1.** Overview of model simulations

Model	Experiment	Emission and Concentration Pathway	Accumulated SO <sub>2</sub> injection <sup>a)</sup>	Max Surface Air Temp from PI
WACCM6	SSP5-85	SSP5-85	0.	6.3°C
WACCM6	SSP5-34-OS	SSP5-34-OS	0.	3.0°C
WACCM5.4	RCP-85	RCP-85	0.	6.5°C
WACCM6	Geo SSP5-85 1.5	SSP5-85	1710; 1620 Tg SO <sub>2</sub>	1.5°C
WACCM6	Geo <del>RCP-85</del> <u>RCP85</u> 1.5	RCP-85	2056 Tg SO <sub>2</sub>	1.5°C
WACCM6	Geo SSP5-34-OS 1.5	SSP5-34-OS	605; 593 Tg SO <sub>2</sub>	1.5°C
WACCM6	Geo SSP5-34-OS 2.0	SSP5-34-OS	305; 328 Tg SO <sub>2</sub>	<del>2.2</del> <u>2.0</u> °C

a) Ensemble mean for GLENS (Geo RCP85 1.5); Two numbers correspond to the two ensemble members for the WACCM6 SRM cases.

**Table 2.** Impacts dependent on different ~~measures~~measures: achieved temperature targets applying SAG, amount of sulfur burden, and the baseline scenario.

Dependencies	Temperature targets (1.5 vs. 2°C)	Accumulated SO <sub>2</sub> injection	Baseline scenario
Major Importance	Surface air and ocean temperature Land Ice, AMOC Ocean NPP	Global precipitation Ozone hole	Land NPP Ocean acidification
Minor Importance	Global precipitation Land NPP Ozone hole	Surface air temperature Land NPP Land ice, AMOC	Surface air ocean temperature Ozone hole Land ice, AMOC

**Appendix A: Feedback Control Algorithm**

The injection rates necessary to achieve desired temperature targets through stratospheric sulfur injections in Earth System Models are strongly model and scenario dependent. A trial-and-error approach could in principle be used to determine, in each model, the necessary injection rates as a function of time. However, this can be time-consuming even with only a single goal and a single latitude of injection, and may be prohibitive for tuning the time-varying injection rates across multiple latitudes to simultaneously meet multiple climate goals, particularly when the unknown injection rates might also depend nonlinearly on the amount of cooling needed. In addition, a simple trial and error approach is not able to respond smoothly to changes, which however can be done with applying control theory. We thus chose to use a trained control algorithm to effectively “learn” the right injection rates to use (MacMartin et al., 2014; Kravitz et al., 2016), and recommend a similar approach if other modeling centers want to repeat these experiments in different models.

A best-estimate (also called the feedforward) for the required injection rates is first determined; if this were perfect, then no correction would be needed. A feedback algorithm is then used to update the injection rates after each year of the simulation in response to the error in meeting the goals over the previous years. The approach is documented in detail in Kravitz et al.

740 (2016) and Kravitz et al. (2017). The first step to reach the three temperature targets is to control for Aerosol Optical Depth (AOD), which can then be directly related to the sulfur injections. The algorithm first computes the projection of AOD onto 3 independent basis functions. Thus, the global-mean AOD is adjusted in response to an error in the global-mean temperature, the interhemispheric difference in AOD adjusted in response to an error in interhemispheric temperature gradient, and equator-to-pole difference in AOD adjusted in response to equator-to-pole temperature gradient. The injection rates at each latitude  
 745 are then determined based on the desired AOD (see also MacMartin et al., 2017). Neither the relationship between injection rates and spatial patterns of AOD, nor the relationship between those patterns of AOD and the resulting surface temperature response need to be known accurately, as the feedback will converge despite uncertainty.

The feedforward provides the feedback control algorithm with an initial estimate on the needed injections. The feedforward that was used in Kravitz et al. (2017) and ~~Tilmes et al. (2018b)~~ [Tilmes et al. \(2018a\)](#) was a simple linear scaling of the desired  
 750 cooling, with the proportionality estimated from 10-year simulations described in Tilmes et al. (2017). For the simulations conducted here, the same approach was used. The time-varying amount of cooling relative to the desired target was computed using the baseline simulations and fitted [with](#) a simple functional form. The ~~desired feedforward was scaled from the values previously used values in feedforward functions ( $\hat{S}$ ) had to be fit to the different cases as illustrated in Figure A1 with  $k$  being a function of years between the start of the injection and the GLENS simulations. These had been estimated from~~  
 755 ~~earlier simulations, and so the feedforward estimates were somewhat different from what is needed in WACCM6. end of the simulations:~~

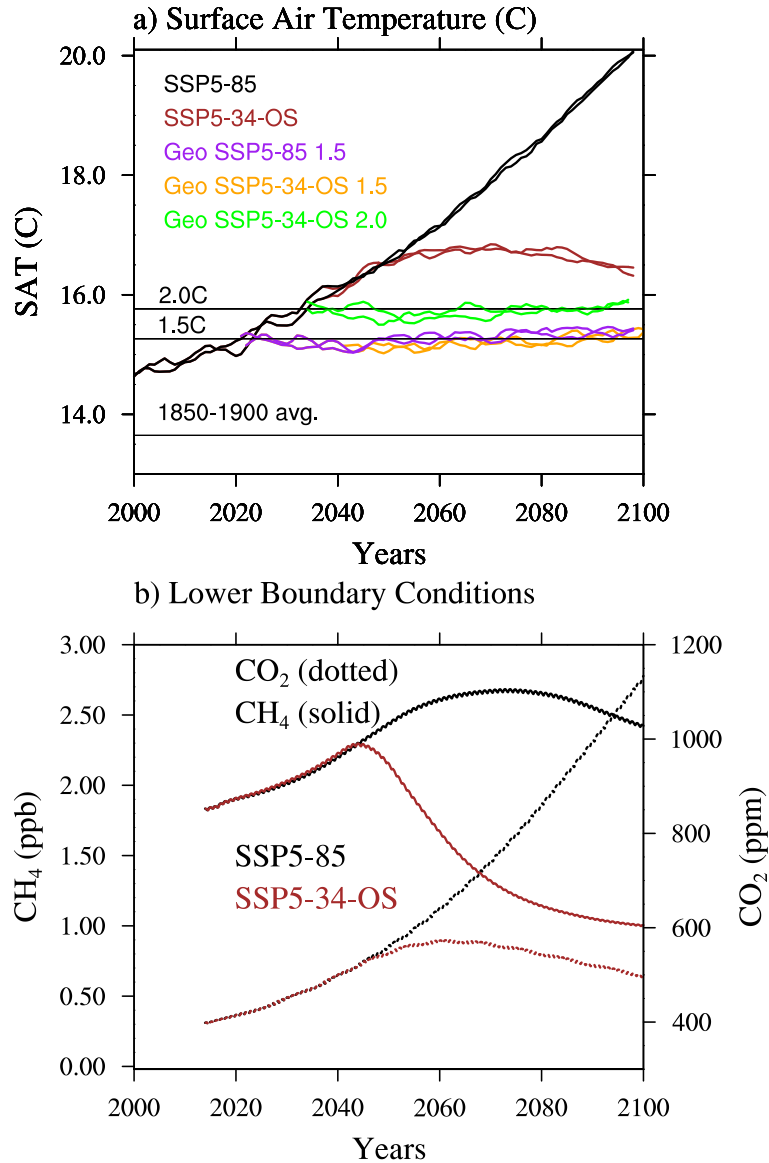
- [SSP5-8.5, 1.5°C target:  \$\hat{S}\[k\] = 0.045\(k - 2020\)\$](#)
- [SSP5-34-OS, 1.5°C target:  \$\hat{S}\[k\] = 0.045\(k - 2020\)\$  for  \$k < 2050\$ ,  \$\hat{S}\[k\] = 0.31 + 0.0487\(k - 2020\) + 0.000502\(k - 2020\)^2\$](#)
- 760 - [SSP5-34-OS, 2°C target:  \$\hat{S}\[k\] = \max\(\hat{S}\_{1.5C}\[k\] - 0.5, 0\)\$](#)

Furthermore, because of the memory inherent in the system, more injection is needed while GHG levels are increasing than at the same temperatures later in the overshoot runs while GHG levels are decreasing. Because the feedback algorithm does not correct this error immediately, there is some temporary overcooling in our simulations roughly when the peak GHG-warming (peak desired cooling from SAG) is obtained; this could have been corrected by accounting for the system memory in designing  
 765 the feedforward.

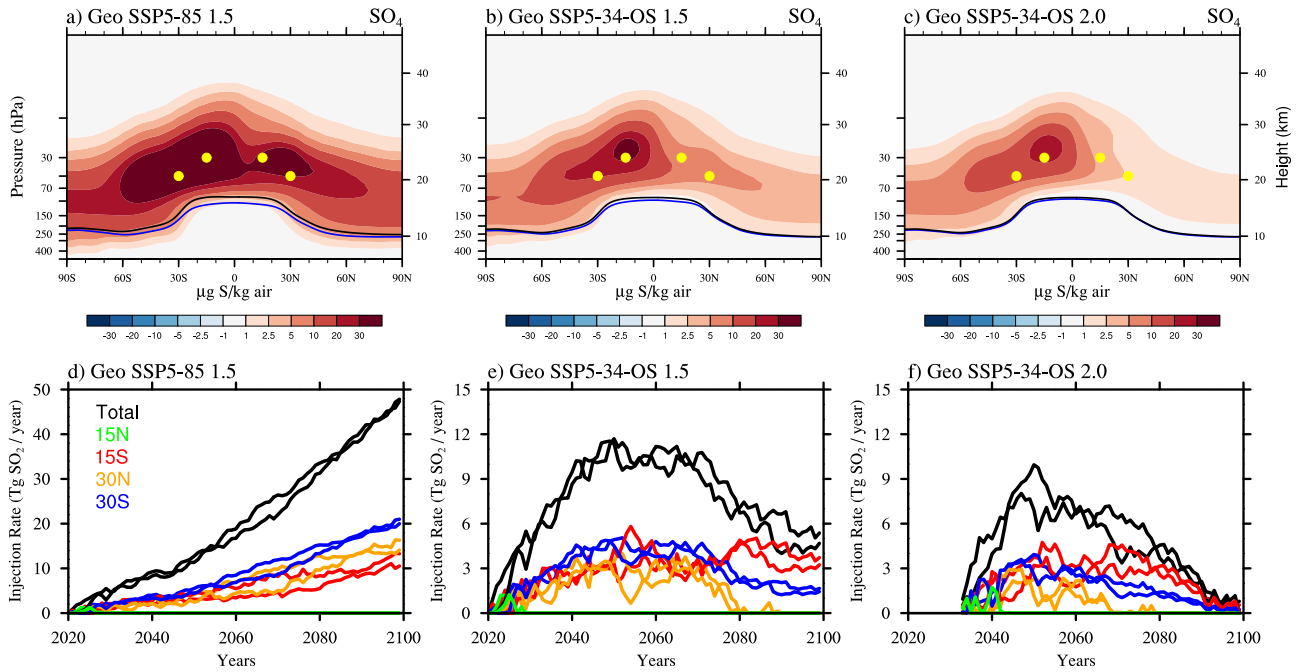
For the feedback correction, the same proportional-integral control law as in Kravitz et al. (2017) was used here. Thus in each year of the simulation, the desired values for each of the three basis functions of AOD are computed as the sum of that year's best-estimate value (the feedforward), and a two-term feedback correction, as

$$S[k+1] = \hat{S}[k+1] + K_p(T[k] - T_{goal}) + K_i \sum_{j=0}^k (T[\textcolor{blue}{i}\textcolor{red}{j}] - T_{goal}) \quad (\text{A1})$$

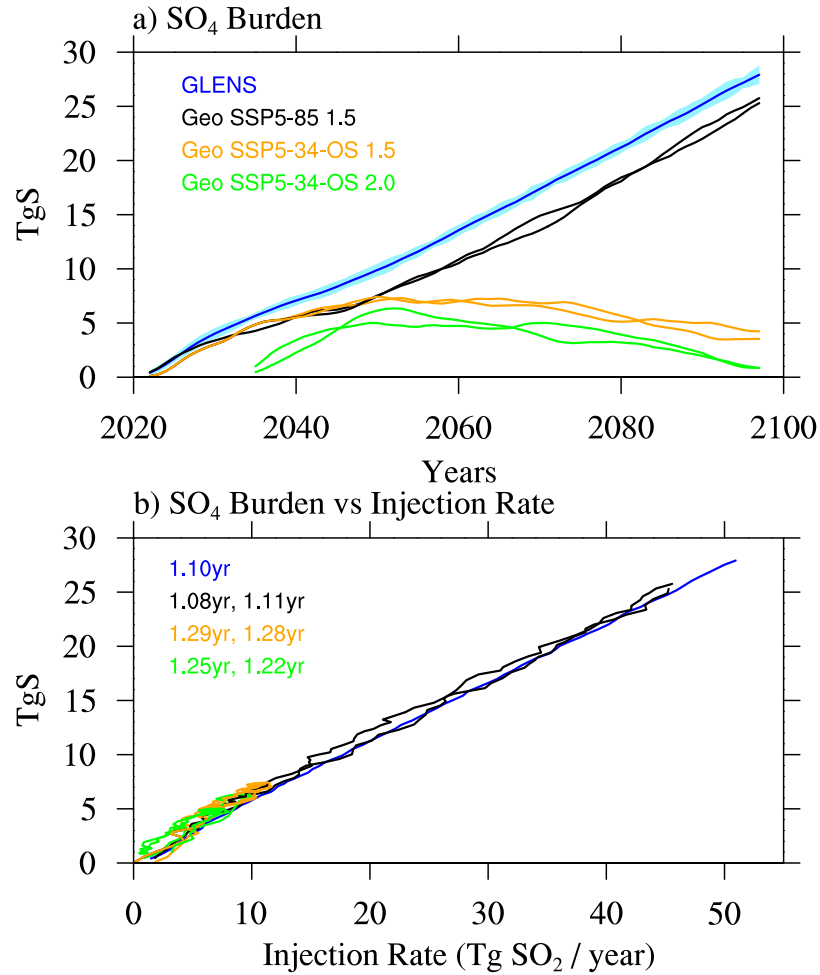
770     Where ~~the proportional term (with gain  $K_p$ )~~  $S$  (the injection amounts in the next year) is the sum of the best estimate  
or feedforward value for year  $k+1$ ,  $\hat{S}[k+1]$  and a feedback correction.  $K_p$  and  $K_i$  are the proportional and integral control  
gains, whereby  $K_p$  only reacts to the temperature error in the previous year ~~, and the integral term (with gain  $K_i$ )~~  $(T[k])$ .  $K_i$   
is required to ensure zero steady-state error (the correction in response to the integrated error will continue to build as long as  
there is nonzero bias in the error). The summation in the integral term begins from the first year of injection ( $j = 0$ ) through to  
775 the year of simulation just completed.



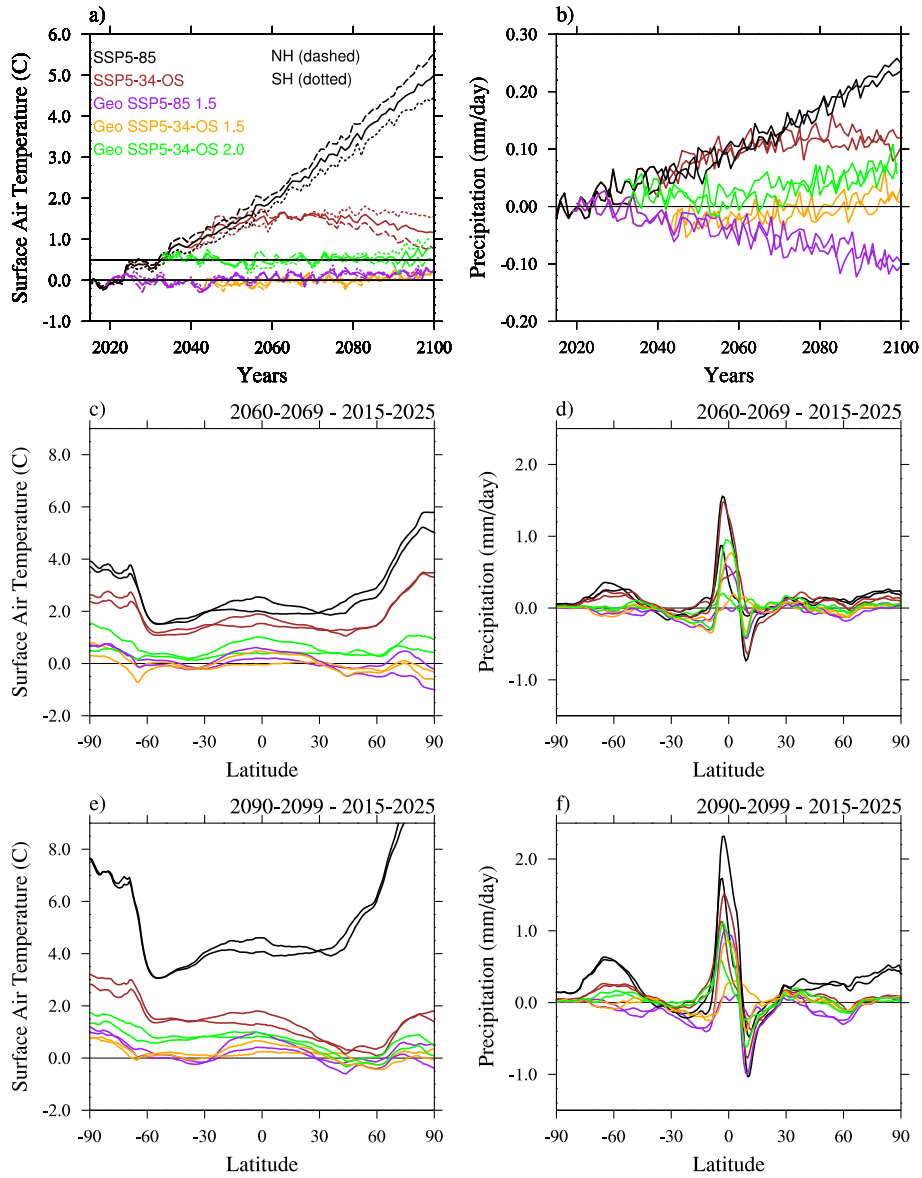
**Figure 1.** Top panel: Annual surface air temperature evolution for 2 ensemble members of the business as usual case (SSP5-85), the overshoot case that is following business as usual until 2040 and then starting strong mitigation and carbon dioxide removal (SSP5-34-OS), and for 3 different SAG scenarios: based on the SSP5-85 baseline scenario and applying sulfur injections to reduce warming to 1.5°C above pre-industrial (PI) conditions (Geo SSP5-85 1.5); based on the SSP5-34-OS and reducing warming to 1.5°C above PI (Geo SSP5-34-OS 1.5), and based on the SSP5-34-OS and reducing warming to 2.0°C above PI (Geo SSP5-34-OS 2.0). A ten year running mean has been applied to all the timeseries. Black lines indicate the 1850-1900 temperature average (pre-industrial (PI) control temperatures) and the 1.5°C and 2.0°C surface air temperatures above PI control. Bottom panel: Concentrations of carbon dioxide (CO<sub>2</sub>), dotted lines, and ~~methan~~-methane (CH<sub>4</sub>), solid line, for the 2 baseline simulations.



**Figure 2.** Top row: Difference of zonally and annually averaged sulfate  $\text{SO}_4$  burden between the ensemble average of stratospheric sulfur injection cases in 2070–2089 and the control experiment for the same period for Geo SSP5-85 (panel a), Geo SSP5-34-OS 1.5 (panel b), and Geo SSP5-35-OS 2.0 (panel c). The lapse rate tropopause is indicated as a black line for the control and a blue line for the  $\text{SO}_2$  injection cases. Yellow dots indicate locations of injection. Bottom row: Injection rate in  $\text{Tg SO}_2$  per year for the three cases as in the top row (including two ensemble members): total injections (black), injections at  $15^\circ\text{N}$  (green),  $15^\circ\text{S}$  (red),  $30^\circ\text{N}$  (orange), and  $30^\circ\text{S}$  (blue).

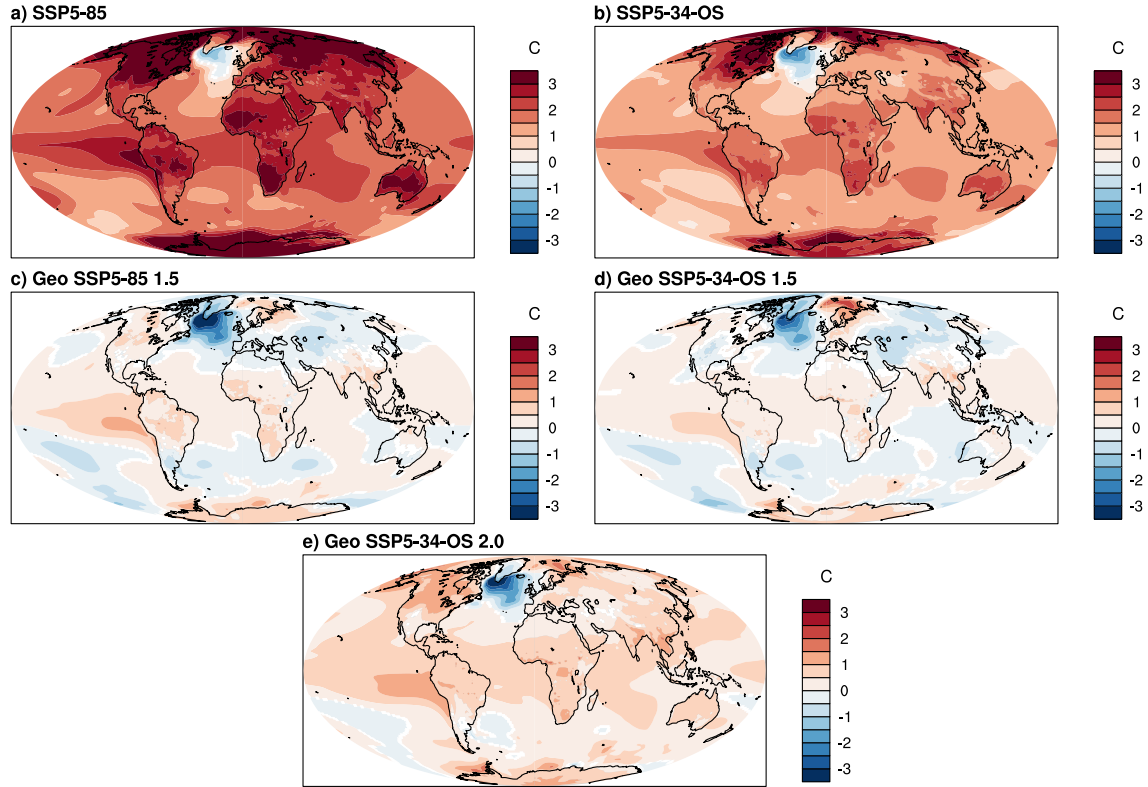


**Figure 3.** Annual averaged stratospheric sulfate aerosol burden in TgS for the geoengineering injection experiments minus the control with time (panel a) and injection rate (panel b). The stratospheric burden vs. injection amount (in units years) is listed in the bottom panel for the two ensemble members of each experiment. In addition to the model experiments performed in this study, we add [result-results](#) for the Geoengineering Large Ensemble (GLENS). See text more details.

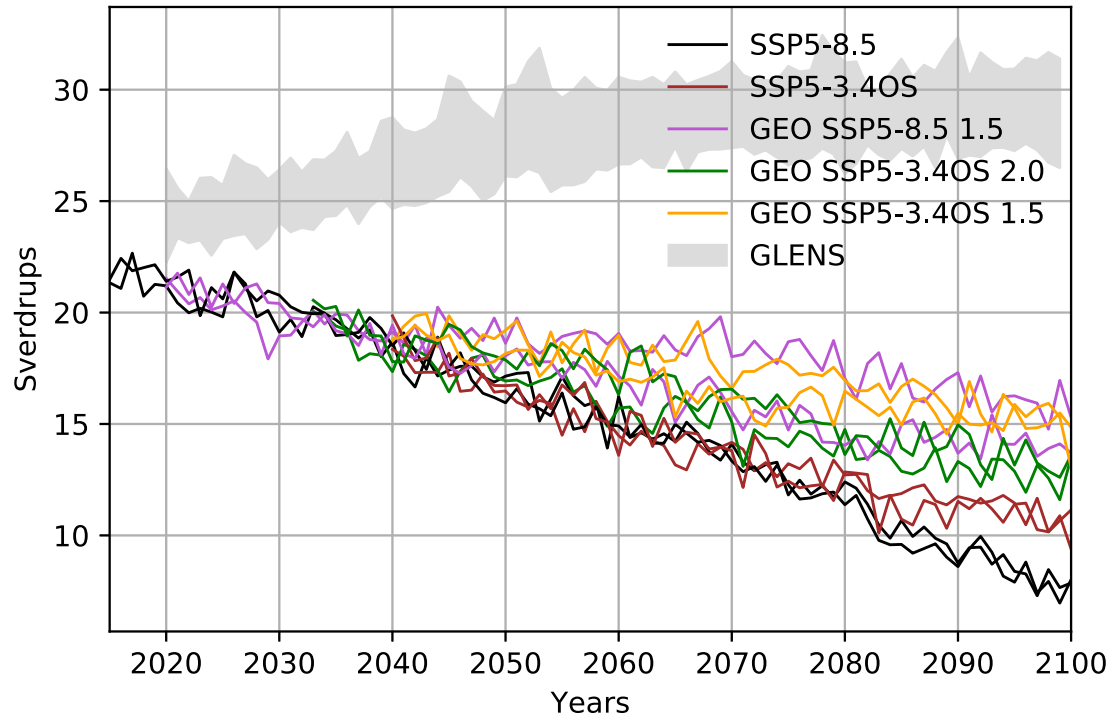


**Figure 4.** Panel a: Time evolution of the ensemble mean area weighted annual mean surface air temperature with regard to 2010-2025 conditions, averaged over the globe (solid), over the Northern Hemisphere (dashed) and over the Southern Hemisphere (dotted) for different model experiments (different colors, see legend); panel b: Time evolution of area weighted annual precipitation with regard to 2015-2025 conditions for different model experiments and ensemble members (different colors); differences of zonal mean surface air temperatures (panel c and e) and precipitation (panel d and f) with regard to 2015–2025 SSP5-85 conditions for values in 2060-2069 (middle) and 2090-99 (bottom) for the different model experiments (different colors).

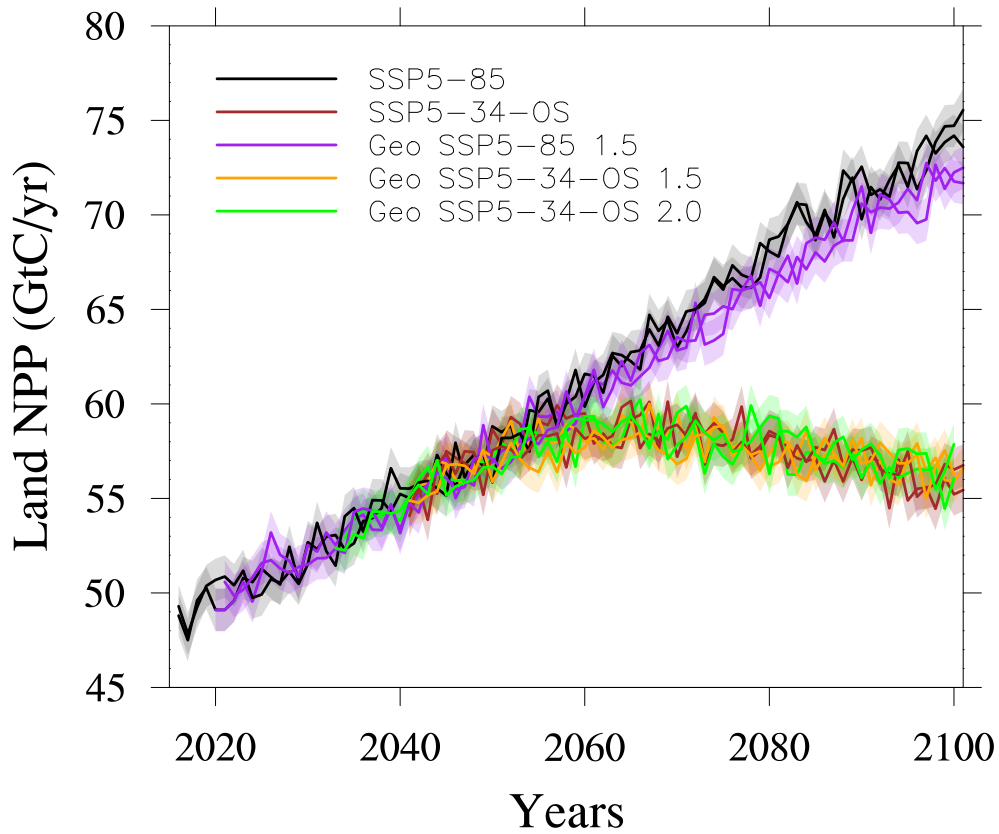
## Surface Air Temperature 2060-2069 minus 2015-2025



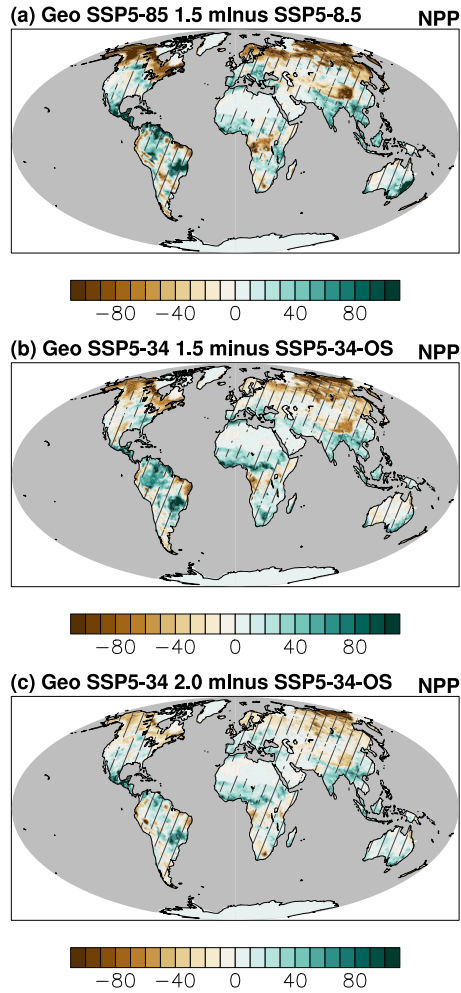
**Figure 5.** Ensemble-mean surface air temperature difference between 2060–69 and 2015–2025 for SSP5-85 and SSP5-35-OS (panels a and b), Geo SSP5-85 1.5 and Geo SSP5-34-OS 1.5 (panels c and d) and Geo SSP5-35-OS 2.0 (panel e). Regions shaded in color are significant with 95% confidence [based on the Student's t-test](#).



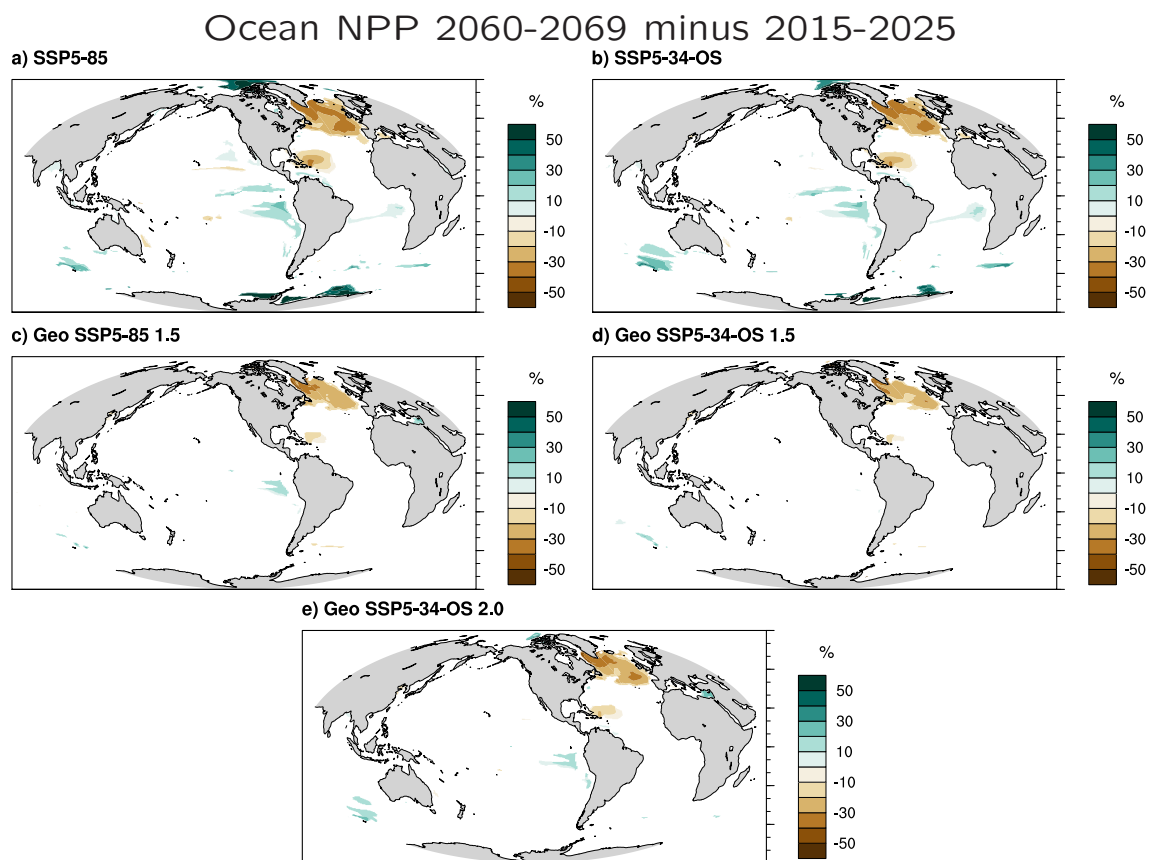
**Figure 6.** Evolution of the maximum North Atlantic Meridional Overturning Circulation strength from the AMOC index for the different scenarios and ensemble members. Shaded grey area is AMOC index range in the 21-member GLENS ensemble. The AMOC index is defined as the maximum flux in the Atlantic Basin between 500m depth to the bottom, and between 28–90°N (Sverdrups).



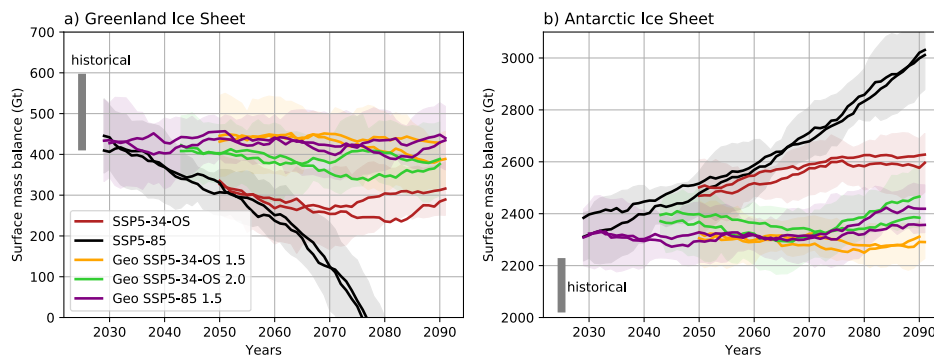
**Figure 7.** Annual land accumulated NPP (GtC/yr) in baseline and SAG scenarios and ensemble members (different colors are indicated in legend). The shaded area is  $\pm 1$  standard deviation areas are showing 95% confidence of 450 years pre-industrial control simulation significance, assuming normally distributed data.



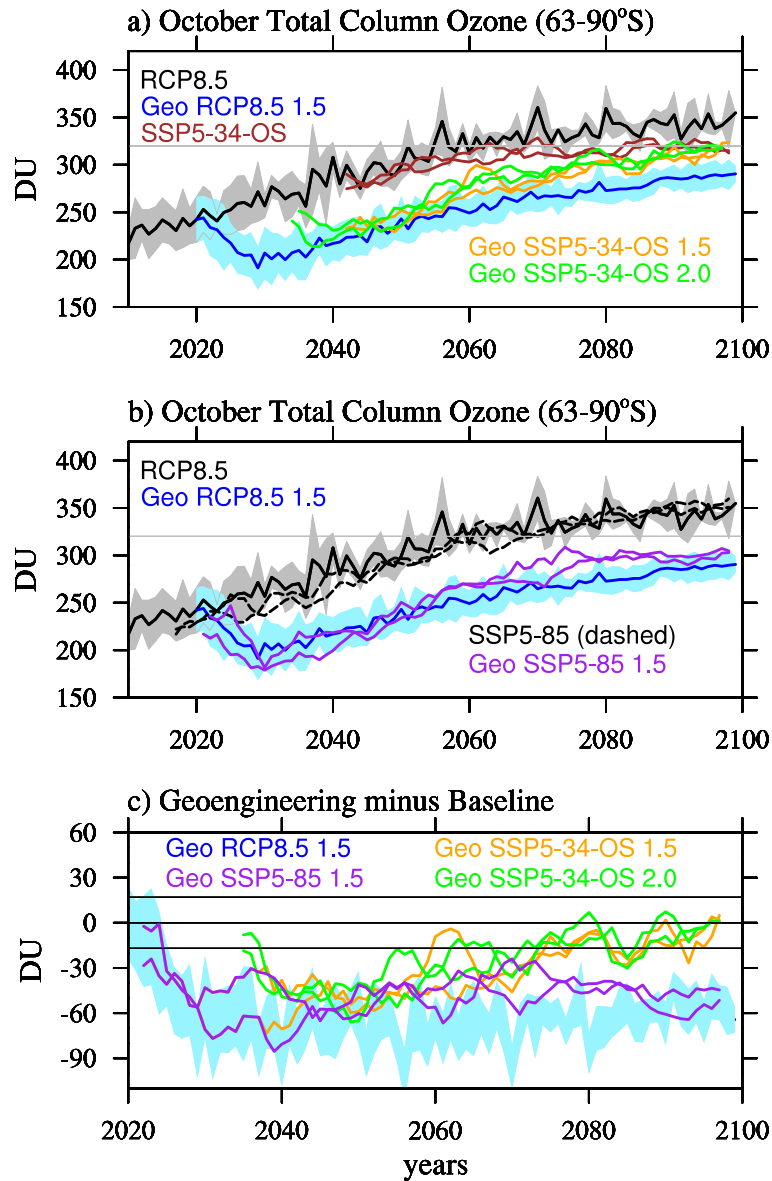
**Figure 8.** Ensemble mean land accumulated NPP difference ( $\text{gC/m}^2/\text{yr}$ ) between 2060-69 for Geo SSP5-85 1.5 and SSP5-85 (panel a), Geo SSP5-34-OS 1.5 and SSP5-34-OS (panel b), and Geo SSP5-34-OS 2.0 and SSP5-34-OS (panel c). Hatched regions are areas not significant with changes within 1 standard deviation of 450 years pre-industrial control simulation 95% confidence, assuming normally distributed data.



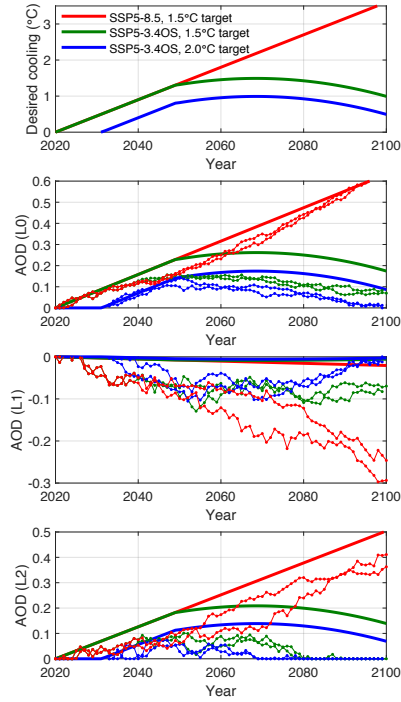
**Figure 9.** Ensemble mean percent difference in ocean net primary productivity (NPP) in 2060–2069 from 2015–2025. Regions shaded in color are significant with 95% confidence, [assuming normally distributed data](#).



**Figure 10.** Mean ice sheet surface mass balance (SMB) in Gt per year. Shading indicates standard deviation of one of the members, calculated after detrending the time series using empirical model decomposition. A 20-year running mean has been applied to filter out year-to-year variability. For the GrIS (panel a), the area of integration is the contiguous ice sheet (1,699,077 km<sup>2</sup>). For the AIS (panel b), the area of integration is the grounded ice sheet (12,028,595 km<sup>2</sup>). The solid grey bar indicates the +/- 1 standard deviation SMB over the period 1960-1999 in CESM2(WACCM) for reference.

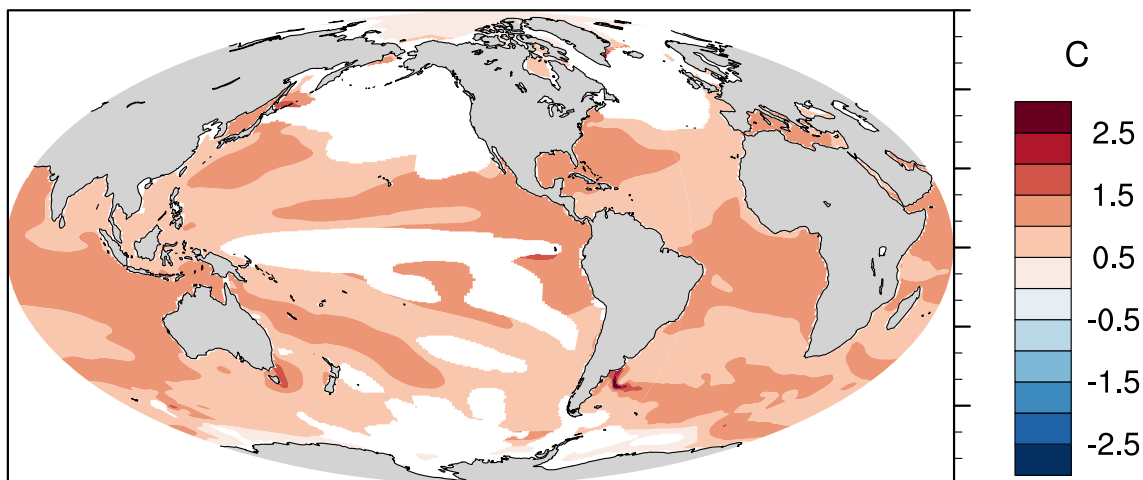


**Figure 11.** October averaged total column ozone between 63-90°S for different model experiments and ensemble members (different colors) (panel a and b). Grey and light blue areas show the standard deviation of the GLENS ensemble and the light grey line indicates 1980 values. Panel c: differences between geoengineering and corresponding baseline experiments, the two black lines around zero indicate the standard deviation from the GLENS baseline simulations. A running mean over 5 years has been applied to the results.

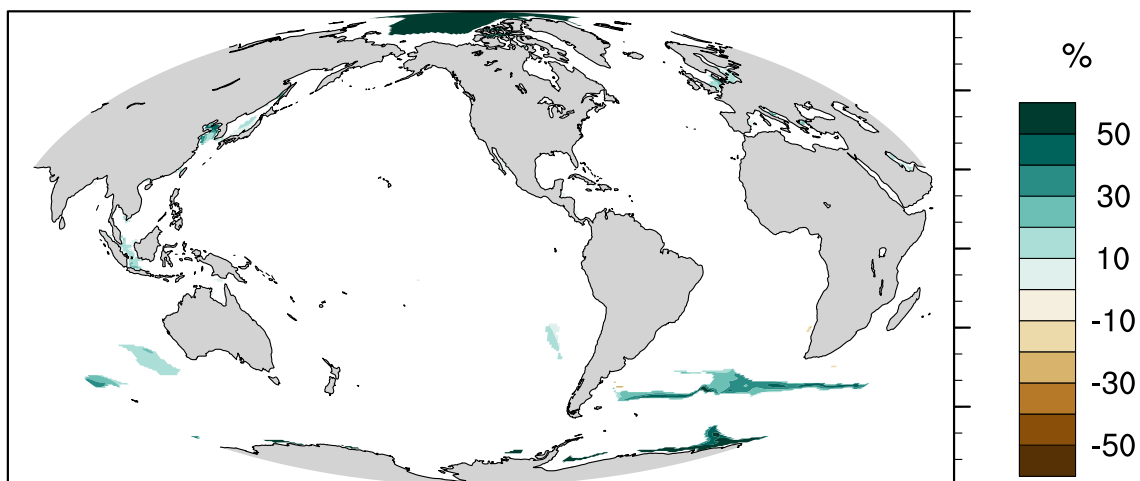


**Figure A1.** Feedforward used in simulations. Top panel shows the fit to the desired temperature reduction for different cases ([see text for details](#)). Remaining panels show both the feedforward (best-guess for desired AOD prior to conducting the simulation) and actual AOD after feedback correction (dotted lines) for the global-mean AOD (L0), the projection of the AOD onto  $\sin(\text{lat})$  (the interhemispheric gradient L1), and the projection onto a quadratic (the equator-to-pole gradient L2). There is substantial error in the initial guess, due to a combination of uncertainty, nonlinearity, and making the feedforward in a given year only proportional to the desired temperature reduction in that year; this illustrates the importance of using a feedback algorithm to correct these initial guesses.

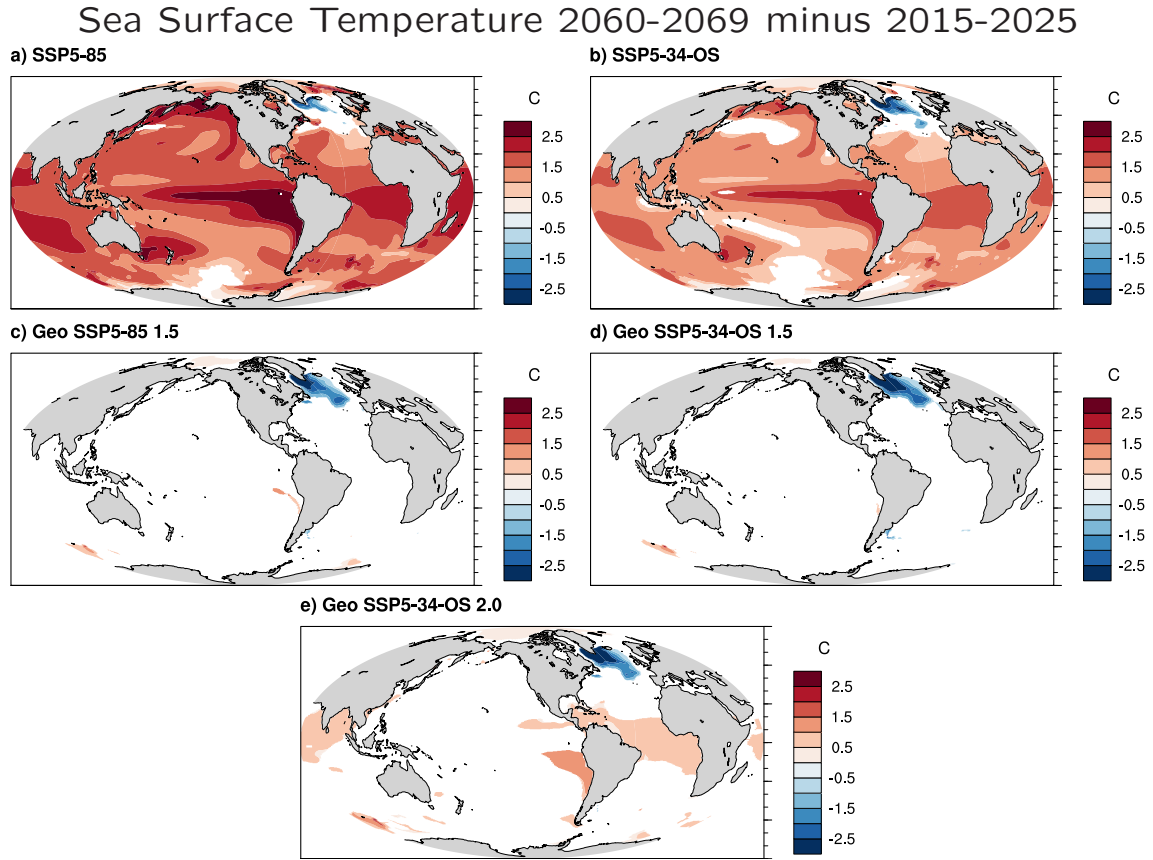
**a) SSP5-85 SST 2015-2025 minus PI**



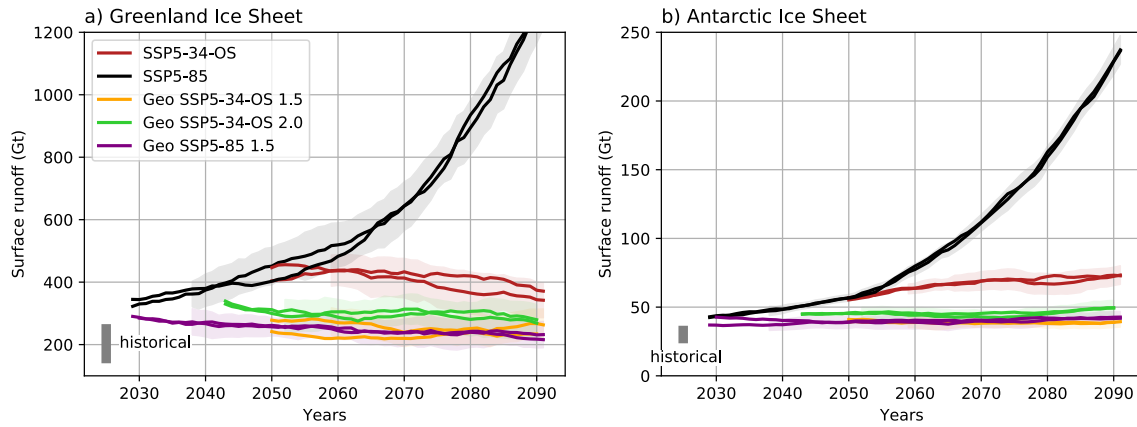
**b) SSP5-85 NPP 2015-2025 minus PI**



**Figure A2.** Simulated sea surface temperature (SST) anomaly (panel a) and % change in net primary productivity (NPP) (panel b) in SSP5-8.5 2015–2025 relative to pre-industrial long term means. Regions shaded in color are significant with 95% confidence, [assuming normally distributed data](#).



**Figure A3.** Ensemble mean sea surface temperature (SST) in 2060–2069 relative to 2015–2025 for different scenarios (different panels). Regions shaded in color are significant with 95% confidence, [assuming normally distributed data](#).



**Figure A4.** Mean ice sheet runoff in Gt per year. Shading indicates standard deviation of one of the members, calculated after detrending the time series using empirical model decomposition. A 20-year running mean has been applied to filter out the high year-to-year variability. The area of integration is the same as in Figure 10. [The solid grey bar indicates the  \$\pm\$  standard deviation runoff over the period 1960-1999 in CESM2\(WACCM\) for reference.](#)