

## Response to Anonymous Referee #1

We thank the Referee 1 for sending very helpful comments and suggestions to the manuscript. All the comments are addressed below in detail:

*This study seeks to propose new testbed model experiments for studying scenarios of stratospheric aerosol geoengineering (SAG) designed to limit global warming to fixed global mean surface temperature targets, with some additional constraints to limit undesirable side-effects. I appreciate the interest that the authors' idea has for the earth system community, and I find the paper to be generally well-structured and with a clear logical flow. However, as far as I can tell the main novelties of the study lie in the use of a very recent CMIP6 model, and in the combination of a feedback controller modelling approach with overshoot climate scenarios – neither of which is novel in isolation. Several of the conclusions are likely highly model dependent, and the broader considerations echo the results of other recent studies. Furthermore, some aspects of the manuscript – for example the figures – have a very unrefined feeling. Finally, I have two major concerns on the structure and contents of the study, which I detail below. Based on this, even though the topic of the study is well-suited to ESD, I am not convinced that it is suitable for publication in this journal.*

Based on the two referees comments we realized that novel findings of this paper have not been adequately conveyed. We have significantly improved the revised version of the manuscript to address those concerns. The referee is correct that main novelty of the experiments lies in the fact that we have combined the feedback controller with the overshoot scenario. In the revised version of the paper we improve the motivation for these experiments, which are more important for assessing social and ecological relevant impacts than previous GeoMIP experiments. Furthermore, findings of the paper are pointed out more clearly, e.g., impacts of stratospheric aerosol geoengineering strongly depend on various different aspects of the experimental design, including the considered baseline scenarios and therefore the CO<sub>2</sub> concentrations, the amount of SO<sub>2</sub> injection, and the chosen temperature targets. Other novelties, include that the experiments are based on the CMIP6 future pathways, which are unique since they are based on socio-economic considerations. We agree with the referee that the results are highly model dependent and it is therefore important to produce multi-model comparisons to help determine uncertainties of impact relevant measures. The paper has been revised and in particular the abstract and discussion and conclusions have been modified accordingly. We improved the figures in the revised version of the manuscript as suggested by the referee.

### Major Comments

*1. The study performs only one simulation for each geoengineering experiment, citing computational limitations as the main reason. Since the authors state that the study's goal is to establish a protocol for new model experiments, this is justifiable. However, the authors then perform only three SAG experiments; the obvious absent is Geo-SSP85 2.0. Given that comparing SAG interventions with the same temperature goals under different scenarios is a major focus of the study, and that – as the authors themselves underscore – past simulations with earlier model versions show significant differences from the ones presented in this study, I struggle to see the logic in not including such a simulation.*

In the revised version of the paper we have clarified that we propose SRM experiments that are based on the overshoot scenario, comparing the two different temperature targets. The additional comparisons to the high forcing scenario have been performed to help to identify impacts using a different baseline scenario and to identify differences with the earlier study, using a different model

version. We don't think that the addition of the Geo-SSP85 2.0 scenario would add much to the conclusions. Based on the available simulations Geo-SSP5-34-OS 1.5 and Geo-SSP534-OS-2.0, we are able to discuss differences between different target temperatures using the same baseline scenario. We have now finalized a second ensemble member for each of the simulations presented in the manuscript, and we believe that our findings are more robust with those.

*2. The study reads as a generally well-structured, primarily descriptive report of a set of three SAG model simulations. If the aim of the study is indeed to describe new numerical simulations, then I would expect to see a larger number of different experiments, ensembles etc. If, instead, the goal is to establish a protocol for new model experiments, I would expect significant additional analyses and tests on the feedback controller, the latitudes of injection of the aerosols etc. The study is therefore in a grey area between a description of new numerical simulations and a more technical/mechanistic experiment design work, and I find it somewhat unsatisfactory under both categories.*

We thank the referee for pointing this out. We have shifted the focus of the paper to describing and discussing the new numerical simulations and performed a second ensemble member to this study. Based on the findings, we are still recommending that it would be beneficial if the experiments based on the overshoot scenario are performed by other modeling groups to identify the range of outcomes of impact relevant diagnostics.

The referee suggests that to establish a protocol for new model experiment, additional analysis and tests of the feedback controller are required. We agree with the reviewer that more tests of the feedback controller in terms of latitudes and altitudes would be required to be refined. However, as has been shown in the earlier studies, the defined setup has been successful to reach the pre-defined temperature targets. For comparisons of different model results, it is important to use the same protocol. In the revised version of the manuscript, we have more clearly defined the specifics of the experiment, including requiring injections at four fixed altitudes at 5 km about the tropopause, and using a feedback controller that will check annual deviations for the defined temperature goals. We provided more details on the feedback control algorithm in the appendix and added a figure. We suggest that modeling groups use the same setup and defined surface temperature targets, to be able to directly compare the outcomes of different models.

*3. I find the figures unsuitable for publication. Some examples: the styles differ across figures and panels within the same figure (e.g. Fig. 4, top row vs. middle and bottom rows), colour-coding/labelling of experiments is inconsistent (e.g. cf. Fig. 1, 3, 11), some figures have panel labels (e.g. Fig. 9), while others do not, different map projections are used (e.g. cf. Figs. 5, 8 and 9) etc. I provide an incomplete list of suggestions in the minor comments below.*

The listed figures have been improved and apply now the same style within figures and use consistent labelling and map projections (including color coding) in the revised version of the manuscript.

#### *Some Minor Comments*

*1. Introduction: keeping in mind the relatively broad readership of ESD, it would be useful to add one or two sentences explaining what a "feedback controller" is in this context.*

We agree with the referee and added to the introduction: “The experiments used a feedback controller to maintain global average surface temperatures, as well as equator-to-pole and interhemispheric temperature gradients, at 2020 levels. [After each year of the simulation, the amount of sulfur injections at each of the four different latitude locations in the stratosphere was calculated, based on the deviations in meeting these surface temperature goals \(see Appendix for more details\).](#)”

*2. Sect. 2.2: echoing the above comment, the description of the feedback control algorithm in this section is poor. Please rephrase and expand it. A practical example of its functioning would be beneficial.*

We agree and added a new section in the appendix on the feedback control algorithm.

*3. p. 2 ll. 44-46 This is a somewhat awkward sentence, please rephrase.*

In the revised version of the manuscript we will rephrase the text to:

“GLENS was based on a high forcing future climate scenario (RCP8.5) and required an increasing amount of sulfur injection with time. [GLENS simulations have shown that using global surface temperature and surface temperature gradients as targets, instead of only controlling for global surface temperature, results in reduced side effects, including more even cooling and reduced shifts in precipitation pattern \(Kravitz et al., 2019\).](#)”

*4. p. 6 l. 164 algorithm → algorithm*

changed

*5. Sect. 3 The authors use the term “efficiency” in the title, but never refer back to this in the section. I would suggest either discussing this in the text or removing the term altogether.*

Thanks for this comment. We remove this term from the title and clarify that we are discussing aerosol burden with regard to sulfur injections per years, based on Figure 3. To clarify, the following sentences have been revised:

“Differences between the 3 SAG experiments and the Geo RCP85 1.5 also arise in terms [of accumulated SO<sub>2</sub> injection amount \(Table 1\) and aerosol burden with regard to sulfur injections per year](#) (Fig. 3).

And later:

“Both experiments that are based on the OS baseline scenario show [larger burden per injection amount](#) (Fig. 3, panel b) for the years when SO<sub>2</sub> injections have been declining because of the prevalent sulfate burden from previous years.”

*6. p. 6 l. 184 tropospheric → troposphere.*

changed

*7. p. 8 l. 222 “For the baseline simulations, temperatures in high latitudes are higher than in mid and low latitudes” Perhaps the authors mean “temperature anomalies”?*

Yes, we have corrected this.

8. p.8 l. 230 “1.5C and 2.0C” → 1.5C or 2.0C

This has been corrected

9. Table 1: I would suggest adding a column with the models used, as I understand that these vary between the RCP and SSP simulations.

Thanks, we added additional column to the Table 1 and additional numbers for the second ensemble member of each experiment.

10. All figures: add panel letters to all figures, which makes referencing more straight forward and concise (avoiding sentences like: “Fig. 4, middle and bottom panels on the right”).

Thanks, we added letters to all multiple panel figures.

11. Fig. 1 In the top panel there seems to be a large gap between the SSP scenario and the beginning of the Geo SSP5-34-OS 2.0 experiment. Is that due to the choice of using RCP8.5 for initialisation? If so, what effects may this have on the results? If not, what is it due to?

This was a plotting error of not drawing a line between the year of initialization and the first year of output in this simulation, which has been fixed.

12. Fig. 1 Please fix in-panel labels in bottom panel (space between parentheses and “dotted”/“solid”).

Thanks, we fixed that.

13. Fig. 2 Top row: the black and blue lines are almost indistinguishable. Please make them thicker, use different line styles, or otherwise modify them to make the figure clearer.

The blue and black lines have been made thicker.

14. Fig. 3 Please move the legend to the top panel.

We moved the legend to the top panel, and kept the lifetime information in the bottom panel.

15. Fig. 3 The title of the top panel is chopped off in the PDF I downloaded.

This has been fixed

16. Fig. 3 In the legend, please use full name of the experiments as done in other figures.

This has been fixed

17. Fig. 6 Caption: “scenario’s” → “scenarios”.



Thanks, this has been fixed.

*18. Competing interests: "There is are competing interests at present". Barring the "is are", shouldn't these be stated?*

We fix the typo meaning "There are no competing interests at present"

## Response to Anonymous Referee #2

*Overall I find the paper well-written and well-structured. The designs of the individual scenarios and the analysis of the results are sound. In general, I also appreciate the, according to the authors, main goal of this study: establishing a new model testbed with a clear protocol. In this respect, the proposed scenarios and analyses may serve as a guideline. However, in my view the present version does not provide enough material to warrant publication, and major modifications are needed. Beside a more concrete definition of the proposed testbed (major 1 & 2, minor 2), my main concern is the high level of uncertainty, which may prevent significant interpretation and comparison of the results (major 3).*

We thank Referee 2 for sending very helpful comments and suggestions to the manuscript. Based on the two referee's comments we realized that novel findings of this paper have not been adequately conveyed and have significantly improved the revised version of the manuscript accordingly, as outlined below in detail.

### *Major comments*

*1) It is not completely clear to me, what the actual proposed testbed (and the related protocol) is. From the abstract it appears (to me) that two simulations limiting global warming to 1.5C or 2.0C (with reducing side effects) based on an overshoot baseline scenario are the central experiments. However, it seems (e.g. discussions and conclusions) that also the comparison with the high greenhouse emission baseline is part of the protocol. This needs clarification. Furthermore, if the latter is true both the 1.5C and the 2.0C case need to be included in this study.*

We agree with the referee that the text, in particular the discussions and conclusions, were misleading and we have revised these parts. We clarified in the new version of the manuscript that the testbed experiment is indeed based only on the overshoot baseline experiment. The additional SSP5-85 cases were performed to be able to compare to earlier studies using a different model version and to analyze the effects if using a different baseline simulation. We revised the description of the experiment in Section 2.2.

*Addressing Major Comment 2) The feedback controller appears to me a major factor defining the results, as it determines the sulfur dioxide forcing. It is not clear to me whether the forcing computed by the controller is unique in terms of reaching the given targets and limiting the side effects. A clear defined forcing is, in my view, a major point in defining testbed experiments. In the present case, it seems even more important as some results strongly depend on the particular sulfur injection. Thus, some more words on the forcing (and controller, see minor 3) are needed, in particular: how unique is the forcing obtained from the controller given the set of target temperatures?*

We agree with the referee and added more information to the controller algorithm in the introduction and added text and a figure in the appendix and point to the important references: In detail, the controller algorithm is designed to check annual temperatures each year, in order to determine how much SO<sub>2</sub> injection is required for each of the four predefined injection locations to reach the 3 temperature targets. Since models will respond differently, it is expected that the amount of SO<sub>2</sub> injection will differ for each model version. This has been shown if comparing WACCM6 results with the GLENS results. Therefore, the forcing of SO<sub>4</sub> in the stratosphere will differ in each model version, some will require more injections than others, some will require a different amount in different hemispheres.

The idea of the proposed GeoMIP testbed experiment is to compare the behavior of different models while the injection rates are chosen to meet the same 3 temperature goals. We are not proposing to compare model results that use the same injection rate but ones that result in the same temperature outcomes. Thus, one question would be to explore how different the forcings will be to reach the same temperature targets. Also, if the same temperature targets have been reached, we can ask the question whether the outcomes on impact relevant measures be different or similar? This approach will help to identify the ranges of outcomes in order to help quantify the ranges of uncertainties.

Instead of running a feedback algorithm, the required SO<sub>2</sub> injection rates could be estimated through trial-and-error, but this would be very time-consuming to “learn” the right injection rates to use at multiple latitudes, and as a function of time, to achieve the 3 temperature targets in any given model. We therefore recommend that use of a feedback algorithm, while not an essential component of the testbed specification, is a more efficient way of achieving the desired targets.

*Addressing Major Comment 3) So far, only one simulation for every scenario has been performed. This strongly hampers the assessment of uncertainties. For example, it is not clear how much of the pronounced North Atlantic warming hole is related to internal variability or the models sensitivity to the particular forcing. This makes the interpretation of the presented results difficult, and complicates the comparison with simulations performed by other models following the proposed protocol. Thus, without having an (at least very small) ensemble, or any other convincing assessment of the uncertainties, the presented results may not include enough robust information.*

We have now finalized a second ensemble member for each of the presented experiments and therefore increased the significance of the results. Conclusions drawn from the two ensemble members have not changed significantly compared to just using the one ensemble member. This is because the variability of the different impact measures between the different ensemble members is to the most part smaller than the difference between the different model experiments.

*Addressing Minor & technical:*

*1) It would be valuable to have a more comprehensive motivation for such a testbed. What information may we get from it, except the sensitivity of particular models to a specific forcing scenario which may 'not be policy relevant' (L422)?*

We agree with the referee and we added more information to the motivation of these experiments at different places in the paper, including in the abstract:

“The combination of using an overshoot scenario as a baseline that limits the needed amount of SAG applications and the use of a feedback algorithm to reach pre-defined temperature targets in model experiments is expected to reduce some of the earlier identified side effects of SAG. These experiments are therefore relevant for investigating the impacts on society and ecosystems.”

In the introduction:

We further establish a protocol for new GeoMIP testbed experiments that are designed to reach 1.5°C and 2.0°C surface temperature targets and are based on the SSP5-34-OS scenario in order to require less sulfur injection than using a high forcing scenario. We require the use of four pre-defined stratospheric

injection locations as well as the use of a feedback controller (or a similar approach) to keep global surface temperatures, inter-hemispheric and pole-to-equator surface temperatures, at the defined target temperatures. These experiments are more relevant for impact analysis than any of the existing GeoMIP experiments. We hope to motivate other modeling groups to conduct the same experiments, thereby allowing for an analysis of the outcomes from a multi-model perspective.

And in the discussions and conclusions:

*“Both limited applications of SAG and improved climate targets result in reduced climate impacts and risks, and are therefore better suited for studying impacts on society and ecosystems than much larger scale SAG applications. Multi-model experiments are needed to identify the range of outcomes and uncertainties. We therefore recommend including these experiments as a new testbed GeoMIP scenario for CMIP6. “*

*2) Independent of my major points above, I think that a protocol as precise as possible would help to establish such a testbed.*

We agree with the referee and revised Section 2.2 to clarify the protocol.

*3) As the feedback controller appears central for the scenarios and results (see Major 2). Thus, a thorough description would be helpful.*

In the revised version of the manuscript, we added more detailed information in the appendix.

*4) Table 1: It may be noted that the RCP-85 simulations are run with a different model version (as far as I understand).*

As suggested by referee 1, we added an additional column to clarify the model versions used for the different experiments.

*5) L300: citep[]Kravitz2013 -> (Kravitz et al., 2013)*

Has been corrected.

*6) L415: SSP5-34\_OS 1.5 -> SSP5-34\_OS 2.0*

Has been corrected.

*7) Figure 3, caption: See text more more -> See text for more*

Has been corrected.

# Reaching 1.5°C and 2.0°C global surface temperature targets using stratospheric aerosol geoengineering

Simone Tilmes<sup>1</sup>, Douglas E. MacMartin<sup>2</sup>, Jan T. M. Lenaerts<sup>3</sup>, Leo van Kampenhout<sup>4</sup>, Laura Muntjewerf<sup>5</sup>, Lili Xia<sup>6</sup>, Cheryl S. Harrison<sup>7</sup>, Kristen M. Krumhardt<sup>8</sup>, Michael J. Mills<sup>1</sup>, Ben Kravitz<sup>9,10</sup>, and Alan Robock<sup>6</sup>

<sup>1</sup>Atmospheric Chemistry, Observations, and Modeling Laboratory, National Center for Atmospheric Research, Boulder, CO, USA

<sup>2</sup>Mechanical and Aerospace Engineering, Cornell University, Ithaca, NY, USA

<sup>3</sup>Department of Atmospheric and Oceanic Sciences, University of Colorado Boulder, CO, USA

<sup>4</sup>Institute for Marine and Atmospheric Research, Utrecht University, Utrecht, The Netherlands

<sup>5</sup>Department of Geoscience and Remote Sensing, Delft University of Technology, The Netherlands

<sup>6</sup>Department of Environmental Sciences, Rutgers University, New Brunswick, NJ, USA

<sup>7</sup>Port Isabel Campus, University of Texas, Rio Grande Valley, USA

<sup>8</sup>Climate Global Dynamics Laboratory, National Center for Atmospheric Research, Boulder, CO, USA

<sup>9</sup>Department of Earth and Atmospheric Sciences, Indiana University, Bloomington, IN, USA

<sup>10</sup>Atmospheric Sciences and Global Change Division, Pacific Northwest National Laboratory, Richland, WA, USA

**Correspondence:** Simone Tilmes(tilmes@ucar.edu)

**Abstract.** ~~We propose new testbed model experiments for the Geoengineering Model Intercomparison Project (GeoMIP). A new set of stratospheric aerosol geoengineering (SAG) model experiments have been performed with CESM2(WACCM6) that are designed based on the CMIP6 overshoot scenario (SSP5-34-OS) as a baseline scenario to limit global warming to 1.5°C or 2.0°C above 1850–1900 conditions using stratospheric aerosol geoengineering (SAG). The new modeling experiments use the overshoot scenario defined in CMIP6 (SSP5-34-OS) as a baseline scenario and are designed to reduce side effects of SAG in reaching three temperature targets: global mean surface temperature, and inter-hemispheric and pole-to-equator surface temperature gradients. We further compare results to another SAG simulation using a high emission scenario (SSP5-85) as a baseline scenario in order to investigate the dependency of impacts using different injection amounts to offset different amounts of warming by SAG. The new testbed simulations are performed with the CESM2(WACCM6). We use a feedback algorithm that identifies. A feedback algorithm has been used to identify the needed amount of sulfur dioxide injections in the stratosphere at four predefined latitudes, 30°N, 15°N, 15°S, and 30°S, to reach the three temperature targets. Here we analyze climate variables and quantities that matter for societal and ecosystem impacts three surface temperature targets: global mean temperature, and inter-hemispheric and pole-to-equator temperature gradients. The combination of using an overshoot scenario as a baseline that limits the needed amount of SAG applications and the use of a feedback algorithm to reach pre-defined temperature targets in model experiments is expected to reduce some of the earlier identified side effects of SAG. These experiments are therefore relevant for investigating the impacts on society and ecosystems. Comparisons to SAG simulations based on a high emission pathway baseline scenario (SSP5-85) further help investigate the dependency of impacts using different injection amounts to offset surface warming by SAG. We find that changes from present day conditions (2015–2025)~~

around 2020 in some variables depend strongly on the defined temperature target (1.5°C vs 2.0°C). These include surface air  
20 temperature and related impacts, the Atlantic Meridional Overturning Circulation (AMOC), which impacts ocean net primary  
productivity, and changes in ice sheet surface mass balance, which impacts sea-level rise. Others, including global precipitation  
changes and the recovery of the Antarctic ozone hole, depend strongly on the amount of SAG application. Furthermore,  
land net primary productivity as well as ocean acidification depend mostly on the global atmospheric CO<sub>2</sub> concentration and  
therefore the baseline scenario. Multi-model comparisons of ~~the experiments proposed here would help identify consequences~~  
25 ~~of scenarios-experiments~~ that include strong mitigation, carbon dioxide removal with some SAG application ~~;- on societal~~  
~~impacts-are proposed to assess the robustness of impacts on societies~~ and ecosystems.

## 1 Introduction

Large-scale mitigation efforts to phase out anthropogenic emissions are likely no longer sufficient to keep global mean surface  
temperature from rising less than 2°C above pre-industrial levels, which is required to avoid significant impacts on societies  
30 and ecosystems (Masson-Delmotte et al., 2018). Stratospheric aerosol geoengineering (SAG) has been suggested as part of  
a portfolio of responses, including mitigation, adaptation, and carbon dioxide removal, to potentially reach required surface  
temperature targets and to reduce some of the effects of anthropogenic interference in the climate system (e.g., Long and  
Shepherd, 2014; Lawrence et al., 2018; MacMartin et al., 2018). Here we present climate model experiments designed to  
assess impacts as a function of future greenhouse gas concentrations, the amount of SAG application, target temperatures, and  
35 the details of the application.

Various uniformly defined stratospheric aerosol geoengineering modeling experiments of different complexity have been  
designed within the Geoengineering Model Intercomparison Project (GeoMIP) to be performed by different modeling groups,  
within Coupled Model Intercomparison Project 5 (CMIP5) (Kravitz et al., 2011) and CMIP6 (Kravitz et al., 2015). These  
simulations involve either injecting sulfur dioxide at the equator or using earlier derived prescribed aerosol distributions to  
40 reach the described goals (e.g., Pitari et al., 2014). These were designed, for instance, to keep the radiative forcing at 2020  
levels, or apply a constant injection followed by a termination of the injection after 50 years. New GeoMIP experiments were  
designed for CMIP6, using a high forcing SSP5-85 scenario as a baseline and applying either sulfur dioxide injections or solar  
dimming in order to reach the moderate radiative forcing of the SSP2-45 scenario (Kravitz et al., 2015). However, no Tier  
1 GeoMIP experiments have been designed so far to achieve the 2.0°C and 1.5°C required temperature targets of the Paris  
45 Agreement. Furthermore, earlier GeoMIP experiments specify injections at or in a region around the equator, which result in  
excessive cooling of the tropics and less cooling of high latitudes, in turn causing large-scale precipitation shifts (Kravitz et al.,  
2013).

The geoengineering large ensemble (GLENS) project has defined experiments that aim to keep surface temperature values at  
close to present day levels to reduce impacts from global warming (Tilmes et al., 2018). The experiments used a feedback con-  
50 troller to maintain global average surface temperatures, as well as equator-to-pole and interhemispheric temperature gradients,  
at 2020 levels. After each year of the simulation, the amount of sulfur injections at each of the four different latitude locations

in the stratosphere was calculated, based on the deviations in meeting these surface temperature goals (see Appendix for more details). GLENS was based on a high forcing future climate scenario (RCP8.5) and required an increasing amount of sulfur injection with time. GLENS simulations have shown that ~~keeping using~~ global surface temperature and ~~temperature gradients~~ ~~changing results in benefits with respect to temperature-related impacts compared to experiments that only focus on surface~~ ~~temperature gradients, instead of only~~ controlling for global surface temperature, results in reduced side effects, including more even cooling and reduced shifts in precipitation pattern (Kravitz et al., 2019). However, there are other changes in the climate system that do not directly correlate with ~~surface temperatures~~ these quantities. Those include changes in atmospheric circulation and transport, monsoonal rainfall, and chemistry, as well as some responses of the biosphere on land and ocean.

The magnitude of changes has been shown to be at least in part dependent on the applied amount and details of the application of SAG (Kravitz et al., 2017; Richter et al., 2018; Kravitz et al., 2019; Simpson et al., 2019; MacMartin et al., 2019). Furthermore, risks to climate and ecosystems posed by a sudden SAG termination grow with increasing amount of sulfur injection. Consequently, side effects and risks depend strongly on the required amount of intervention application, which is defined by the desired targets and the underlying greenhouse gas concentration pathway.

Several studies have pointed out that SAG may be able to reduce some of the effects of global warming temporarily while decarbonization efforts (including mitigation and negative emissions through carbon dioxide removal) are ramped up. A so-called peak-shaving scenario was proposed that would potentially help prevent reaching tipping points until greenhouse gas levels have been sufficiently reduced (Wigley, 2006; Tilmes et al., 2016; MacMartin et al., 2018; Lawrence et al., 2018). Tilmes et al. (2016), and Jones et al. (2018), have produced simulations that kept surface temperature increases to 1.5°C or 2°C levels using different RCP forcing scenarios. Jones et al. (2018) used the RCP2.6 scenario as a baseline, resulting in a slight reduction of temperature by the end of the 21st century. Their scenario therefore did not require continuously increasing injections around the equator, but lead to some injection reductions by the end of the century to reach 1.5°C temperature targets. Tilmes et al. (2016) used a late decarbonization pathway, starting in 2040 from the high forcing scenario ~~SSP8~~RCP8.5 and applied different amounts of stratospheric aerosol geoengineering to keep surface temperatures to 2.0°C and 1.5°C, using a prescribed aerosol distribution scaled to produce the required cooling. Neither Jones et al. (2018) nor Tilmes et al. (2016) used a feedback algorithm or the multiple injection locations in their approach, as was done in GLENS, and their results showed continued warming in high latitudes and precipitation shifts, while reaching global temperature targets.

The ~~new GeoMIP testbed experiment, proposed here, combines~~ experiments performed here combine two main objectives that have only been addressed separately in previous studies. First, we apply a feedback controller to maintain three temperature targets, in order to reduce some of the side effects identified in earlier studies. Second, we use an overshoot scenario as the baseline scenario to limit the needed amount and duration of SAG to reach a 2.0°C or 1.5°C surface temperature target. Furthermore, we use well defined CMIP6 experiments as baseline experiments that have been performed by various modeling groups. To facilitate baseline scenarios that allow similar peak-shaving geoengineering experiments, as described by Tilmes et al. (2016), CMIP6 designed the overshoot scenario (OS) SSP5-34-OS (O'Neill et al., 2016). This scenario follows the high forcing scenario SSP5-85 until 2040 and then applies drastic decarbonization efforts, including mitigation and active carbon dioxide removal to produce net-negative emissions after 2070. The SSP5-34-OS scenario applies a sudden change in behavior

in the consumption of fossil fuel emissions and also assumes large amounts of carbon removal. This produces a carbon dioxide (CO<sub>2</sub>) concentration overshoot and a surface temperature profile that significantly overshoots the required temperature target before 2100.

90 We use the state-of-the-art Community Earth System Model version 2 (CESM2) with the Whole Atmosphere Community Climate Model (WACCM6) atmospheric component, from here on called WACCM6, which has been used for CMIP6 simulations. Section 2 describes the model as well as the experiments~~which~~. We further establish a protocol for new GeoMIP experiments that are designed to reach 1.5°C and 2.0°C surface temperature targets ~~. For baseline simulations we use the SSP5-85 and are based on the SSP5-34-OS scenarios to~~scenario in order to require less sulfur injection than using  
95 a high forcing scenario. We require the use of four pre-defined stratospheric injection locations as well as the use of a feedback controller (or a similar approach) to keep global surface temperatures, inter-hemispheric and pole-to-equator surface temperatures, at the defined target temperatures. These experiments are more relevant for impact analysis than any of the existing GeoMIP experiments. We hope to motivate other modeling groups to conduct the same experiments, thereby allowing for an analysis of the outcomes from a multi-model perspective.  
100 We further contrast differences that arise if applying SAG to a high forcing future scenario to reach the 1.5°C temperature target. ~~This comparison motivates the use of the overshoot scenario compared to the high forcing scenario.~~ Resulting sulfur injections, stratospheric sulfur burden and comparisons of the efficiency using different scenarios is done in Section 3. The outcomes of these simulations are discussed in Section 4, where we summarize large-scale effects of SAG on surface temperature and precipitation, sea-surface temperatures and the Atlantic Meridional Overturning Circulation (AMOC). In addition,  
105 we include some diagnostics that are important for ecosystem and societal impact studies including changes in land primary productivity and land ice mass balance, effects on ocean ecosystems and the recovery of the Antarctic ozone hole. We do not discuss any detailed regional outcomes based on ~~one ensemble member~~a two-member ensemble and a single model. Some comparisons are performed to the GLENS project, to identify potential ranges of outcomes using an earlier CESM model version. Discussions and conclusions are presented in Section 5.  
110 ~~The main goal of this paper is to establish a protocol for the new model experiments and motivate other modeling groups to conduct the same experiments, thereby allowing for an analysis of the outcomes from a multi-model perspective.~~

## 2 Model description and experimental design

### 2.1 Model description

The model experiments described here were performed with the WACCM6. Details on CESM2 and WACCM6 model configurations, including an overview of the performance and new features, are described by Danabasoglu et al. (2019) and Gettelman et al. (2019), respectively. The WACCM6 atmospheric model uses a horizontal resolution of 1.25° in longitude and 0.95° in latitude, and 70 vertical layers, reaching up to 140 km height above sea level ( $6 \times 10^{-6}$  hPa). Stratospheric dynamics perform well compared to observations, producing an interactive quasi-biennial oscillation (Gettelman et al., 2019). The simulations are performed with comprehensive tropospheric, stratospheric, mesospheric, and lower thermospheric (TSMILT) chemistry (Em-



120 mons, L. et al., 2019) and an updated secondary organic aerosol scheme in the troposphere (Tilmes et al., 2019). It further  
uses a modal aerosol scheme (MAM4) for both troposphere and stratosphere (Liu et al., 2016) and prognostic sulfur injec-  
tion to simulate eruptive volcanoes during the historical period (Mills et al., 2016, 2017). The atmospheric model is coupled  
to the other components in CESM2. The Parallel Ocean Program version 2 (POP2) (Smith et al., 2010; Danabasoglu et al.,  
125 Biogeochemistry Library (MARBL), which incorporates the Biogeochemical Elemental Cycle (BEC) ocean biogeochemistry-  
ecosystem model (e.g., Moore et al., 2014; Harrison et al., 2018) and the NOAA WaveWatch-III ocean surface wave prediction  
model (Tolman, 2009). Additional components are the sea-ice model CICE version 5.1.2 (CICE5) (Hunke et al., 2015) and the  
Community Ice Sheet Model version 2.1 (CISM2.1), (Lipscomb et al., 2019). The Community Land Model version 5 (CLM5)  
also includes various updates, including interactive crops and irrigation for the land (Lawrence et al., 2019), and the Model for  
130 Scale Adaptive River Transport (MOSART).

CESM2 and WACCM6 have contributed to the Coupled Model Intercomparison Project phase 6 (CMIP6) (Eyring et al.,  
2016). As part of CMIP6, WACCM6 performed the DECK simulations, as well as the historical simulations, which reproduced  
the observed surface temperature trend within the expected variability (Gettelman et al., 2019).

## 2.2 Description of the ~~testbed~~ experiments

135 ~~For the testbed baseline scenarios, the SSP5-85 and~~ The SSP5-34 OS CMIP6 ~~scenarios are used. SSP5-85 scenario is used~~  
as the baseline scenario for the GeoMIP testbed experiments. It starts in 2015 from a historical simulation and ends in 2100  
(O'Neill et al., 2016). Anthropogenic, biomass burning, ocean, soil, and volcanic emissions are prescribed, as well as surface  
concentrations of greenhouse gases and land surface values, using the corresponding scenarios (Meinshausen et al., 2017),  
while biogenic emissions are interactively calculated. ~~SSP5-34-OS concentrations follow the~~ SSP5-34 OS follows the same  
140 specifications as the SSP5-85 ~~scenario until high forcing scenario until 2040. After 2040 and then drastically change path, the~~  
SSP5-34 OS scenario diverts from SSP5-85. SSP5-85 CO<sub>2</sub> concentrations continuously increase after 2040 until the end of  
the 21st century, reaching up to 1100 ppm, and methane (CH<sub>4</sub>) concentrations increase until 2070 and slowly decline thereafter  
(Fig. 1, ~~bottom panel~~ panel b). For SSP5-34-OS, strong mitigation efforts are set in place after 2040, as well as the inclusion of  
negative emissions. Nevertheless, CO<sub>2</sub> concentrations still grow until about 2060 reaching  $\approx$  550 ppm and then slowly decline  
145 by the end of the 21st century, reaching  $\approx$  500 ppm based on WACCM6 simulations. CH<sub>4</sub> concentrations drop relatively  
quickly after 2040, due to its much shorter lifetime than CO<sub>2</sub>, reaching values of 1 ppb by the end of the 21st century. This is  
assuming a drastic phase-out of any anthropogenic production of ~~CH<sub>4</sub>~~ CH<sub>4</sub> after 2040.

Two climate intervention experiments are designed to use the same prescribed greenhouse gas concentrations, emissions, and  
land surface values as the baseline SSP5-34-OS scenario. The experiments are designed to maintain global mean near surface  
150 temperatures around 1.5°C and 2.0°C warming compared to 1850-1900 levels, respectively, and are called “Geo SSP5-34-OS  
1.5” and “Geo SSP5-34-OS 2.0”. The start of each climate intervention experiment is defined by the time that the baseline  
simulation has reached near-surface global-mean temperature of 1.5°C and 2.0°C above pre-industrial, considering a ten-year  
running mean (in WACCM6 this is around ~~2020-2020-2025~~ for 1.5°C and around 2034 for 2°C ~~for the first ensemble member~~).

155 ). While different ensemble members may reach the target temperature at different times, they still have to be setup to reach the same temperature targets and may start at the same time.

Besides global mean surface temperature targets we require two more surface temperature measures in the proposed experiments, namely interhemispheric temperature gradients and equator to pole temperature targets, as described in Kravitz et al. (2016) and MacMartin et al. (2017). These additional temperature targets are defined based on the period when global mean surface temperatures have reached the specific climate goals, see above. Sulfur dioxide injections into the stratosphere are performed at 4 locations 5km above the tropopause, at 15°N, 15°S, 30°N, and 30°S ,in latitude, and at 180°W in longitude, following the approach described in Kravitz et al. (2017) and Tilmes et al. (2018). ~~A feedback algorithm has been applied~~ We suggest to use a feedback control algorithm, as applied applied here, that was developed by MacMartin et al. (2017), based on an earlier ~~version of WACCM~~ WACCM version 5.4 (WACCM5.4) (Mills et al., 2017). The injection rate each year is computed based on an initial guess (a “feed-forward”) that is corrected based on the actual temperature history (the “feedback”). The feed-forward function helps the controller more easily to reach the goals. This algorithm has been adopted in the WACCM6 without any changes, despite using a slightly different scenario in WACCM6 (using SSP5-85) compared to GLENS (using RCP8.5). For the OS simulations, the same feedback algorithm was applied, but with changes to the feed-forward function to account for the different temperature evolution in the baseline simulation. Details are described in the Appendix.

In this study, ~~only one realization~~ two realizations of the proposed ~~testbed experiments has been used due to computational limitation and one additional ensemble is in progress~~ experiments have been performed. Since the SSP5-85 scenario is identical to SSP5-34-OS until 2040, we started the SSP5-34-OS in 2040 from the SSP5-85 scenario. WACCM6 near surface temperatures reached around 1.3°C warming compared to the 1850-1900 average by 2015 and 1.5°C around ~~2020 using the first~~ 2020–2025 using the two WACCM6 ensemble ~~member members~~ from the historical simulation (Fig. 1, ~~top panel~~ panel a). The global mean surface warming reaches 6.3°C by 2100. The SSP5-34-OS global mean surface temperature reaches up to 3°C above the 1850-1900 temperature by 2060, aligned with the maximum peak in CO<sub>2</sub> concentrations. Temperatures slightly decline by the end of the century to about 2.5°C above pre-industrial. Global near surface temperature targets were reached in the two SAG model experiments within about 0.2°C (Fig. 1, ~~top panel~~ panel a, green and orange lines).

In addition to the ~~two proposed SAG model simulations~~ proposed testbed experiments, we also performed a third climate intervention experiment that uses SSP5-85 as the baseline scenario, while applying sulfur injections to keep near surface temperature levels at 1.5°C targets, called “Geo SSP5-85 1.5”. Note that this scenario is identical to the “Geo SSP5-34-OS 1.5” experiment between 2015 and 2040 (Fig. 1, ~~top panel~~ panel a, purple line).

panel a, purple lines). This experiment is not required for the proposed GeoMIP testbed experiment but can be useful for additional analysis. Comparing the outcomes of Geo SSP5-85 1.5 with the Geo SSP5-34-OS 1.5 experiment ~~allows us to~~ explore the differences of the impact of SAG using a high forcing greenhouse gas scenario vs. the overshoot scenario after 2040. Geo SSP5-85 1.5 can also be compared to the results in GLENS, since it uses the same setup with a similar baseline simulation but different model versions ~~. GLENS was performed with an earlier WACCM version 5.4 (Mills et al., 2017). GLENS (WACCM5.4).~~ GLENS simulations include a 3-member ensemble of the future baseline simulation starting in 2010,

following the RCP8.5 pathway, called “RCP8.5” in the following. GLENS SAG simulations ~~reach~~reached the same surface temperature targets of around 1.5°C and are called “Geo RCP8.5 1.5” in the following (see Table 1).

### 190 3 Sulfur injection rates ~~,burden,~~ and ~~efficiency~~burden

The feedback ~~algorithm~~algorithm calculates the required injection amount per injection location after each year of the simulation, based on the surface temperature deviations from the target temperatures. For all of the cases, a larger fraction of the injection was placed into the Southern Hemisphere (SH) (Fig. 2). For Geo SSP5-85 1.5, the injections were mainly placed at 30°N and 30°S, with a slightly smaller amount in the Northern Hemisphere (NH). Only half of the amount that was used  
195 at 30°S was required at 15°S and almost no injection was required at 15°N to achieve the predefined temperature goals. For the Geo SSP5-34-OS 1.5 and Geo SSP5-34-OS 2.0 experiments, most injections were placed at 30°N, 30°S, and 15°S. After 2080 for Geo SSP5-34-OS 1.5 (2070 for Geo SSP5-34-OS 2.0) only injections in the SH were needed, and injections at 15°S dominated. As a result, the sulfate loading is significantly larger over the SH than the NH. This is in contrast to what has been simulated in Geo RCP8.5 1.5 (GLENS), where more injections were required in the NH in order to achieve the same  
200 temperature targets (Tilmes et al., 2018). An in depth investigation is needed in future studies to understand the differences using the two different CESM model versions,~~however,~~However, differences may be in part connected to differences in the ocean response, described in Section 4, and ~~potentially as may be~~potentially as may be a result of differences in anthropogenic sulfur emissions between SSP5-85 and RCP8.5.

Differences between the 3 SAG experiments and the Geo RCP85 1.5 also arise in terms of ~~injection amount and the resulting~~  
205 ~~aerosol burden~~accumulated SO<sub>2</sub> injection amount (Table 1~~and~~) and aerosol burden with regard to sulfur injections per year (Fig. 3). The maximum injection amount in Geo SSP5-85 1.5 is 48 TgSO<sub>2</sub> per year with a total burden reaching up to 25 TgS. This results in an accumulated injection amount of 1710 and 1620 TgSO<sub>2</sub>, respectively, for the two ensemble members by the end of the century (Table 1). In contrast, Geo RCP85 1.5 required a larger injection with an accumulated injection amount of 2056 TgSO<sub>2</sub> and a corresponding burden of 28 TgS. The correlation between sulfur burden and injection rate is similar  
210 between Geo RCP85 1.5 and Geo SSP5-85 1.5 (Fig.3, ~~bottom panel~~panel b), which concludes that production, transport and removal processes in the two WACCM versions are similar. The reason for the slightly smaller required injection amount in Geo SSP5-85 1.5 compared to Geo RCP8.5 1.5 could be differences in the baseline scenarios, which specify a larger sulfate burden in the ~~tropospheric~~troposphere in SSP5-85 compared to RCP8.5 (not shown).

The two ~~testbed~~-SAG experiments that are based on the OS scenario show much reduced accumulated SO<sub>2</sub> injections  
215 compared to the high forcing scenarios, with 605 and 593 Tg SO<sub>2</sub> for the 1.5°C temperature target and 305 and 328 Tg SO<sub>2</sub> for the 2.0°C temperature target for each of the two ensemble members. For Geo SSP5-34-OS 1.5, the total annual injection peaks between 2050 and 2070 at 10-12 Tg SO<sub>2</sub>, an amount comparable to the observed global sulfate perturbation from the 1991 eruption of Mt. Pinatubo (Baran and Foot, 1994; Dhomse et al., 2014; Mills et al., 2016). For Geo SSP5-34-OS 2.0, injections peak around 2050, reaching ~~about~~between 7 and 9 TgSO<sub>2</sub>, and falling off after that towards around 1 TgSO<sub>2</sub>  
220 injections per year by the end of the century. In particular for the OS cases, there were periods in which the near surface

temperatures were slightly cooler than the target temperature~~(e. g. between 2050 and 2070 for Geo-SSP5-34-OS 2.0). This was.~~ This was likely due to shortcomings in the feed-forward component of the controller setup~~for the SSP5-34-OS 2.0;~~ in particular, the feed-forward was estimated based only on the instantaneous cooling required and did not adequately take into account the “memory” in both the aerosol concentrations and the resulting temperature response. The feed-forward component thus overestimated the amount of SO<sub>2</sub> injection required once aggressive mitigation began; this was eventually successfully corrected by the feedback. Both experiments that are based on the OS baseline scenario show ~~reduced values of sulfate burden vs. sulfur dioxide injections a larger burden per injection amount~~ (Fig. 3, ~~bottom panel-panel b~~) for the years when SO<sub>2</sub> injections have been declining because of the prevalent sulfate burden from previous years.

## 4 Impacts of stratospheric aerosol geoengineering

### 4.1 Surface air temperature changes

The design of the proposed testbed experiments allows us to assess the effects of SAG, while surface air temperatures are maintained at specific targets, here 1.5°C and 2.0°C above pre-industrial levels. Since 1.5°C of warming, the more desired temperature target defined by the IPCC1.5 report, is reached around 2020 (2015–2025) ~~in the~~ for the first ensemble member of the WACCM6 SSP5-85 simulation, we use this period as the control period for our analysis. Results in Figs. 4 and 5 are therefore illustrated in reference to 2015–2025 control values based on SSP5-85. The evolution of global mean surface air temperatures in the different experiments has been described above. Here, we discuss the surface air temperature evolution in NH and SH, in order to illustrate interhemispheric temperature differences, Fig. 4, solid and dotted lines, respectively, for the different experiments.

The two baseline simulations (SSP5-85 and SSP5-34-OS) show an increase in deviations of hemispheric surface air temperatures from the global mean temperature. While in SSP5-85, interhemispheric temperature differences continue to increase towards the end of the 21st century with stronger temperature trends in the NH compared to the SH, interhemispheric temperature differences in SSP5-34-OS reverse around 2070. This results in very small temperature trends in the SH after 2070 and decreasing temperatures in the NH. In WACCM6, NH temperatures are strongly impacted by the so called “warming hole” in the North Atlantic, which describes a local cooling that counters increasing temperatures from increasing greenhouse gases (Fig. 5, ~~top panel~~ panels a and b). The cooling of surface air temperatures above the North Atlantic is similar in magnitude for both SSP5-85 and SSP5-34-OS, likely a result of a fairly similar slowdown of the AMOC, as discussed in Section 4.2. On the other hand, the warming in the NH due to increasing greenhouse gases is much larger in SSP5-85 than in SSP5-34-OS, resulting in the differences in North-to-South temperatures between the two baseline scenarios.

Applying the feedback algorithm to SSP5-85 and SSP5-34-OS results in a removal of the interhemispheric gradient in addition to maintaining global mean surface air temperatures. Only the last 15 years (2085–2100) of the Geo SSP5-34-OS 2.0 experiment produces somewhat larger warming in the SH than in the NH (Fig. 4, left panels). Zonal mean surface air temperature changes from the different experiments are illustrated for two different periods in Fig. 4, ~~middle and bottom panels on the left~~ panels c and e. For the baseline simulations, ~~temperatures~~ temperature anomalies in high latitudes are higher

than in mid and low latitudes, as expected, leading to much larger warming than the global mean. Effects of the warming hole (cooling) in the North Atlantic are visible (Fig. 5), particularly for the SSP5-34-OS scenario towards the end of the 21st century. SAG applications show a significant reduction in the warming of the polar regions, with very little difference between pole and equator in all the sulfur injection experiments. Only a slight warming up to 1°C occurs in the SH polar region by the end of the 21st century. The continuous cooling in the North Atlantic (Fig. 5, ~~middle panels~~ panels c and d) is compensated by a warming over Northwest Europe. Temperature goals are therefore reached equally well in all the sulfur injection experiments, using different baseline scenarios. The Geo SSP5-34-OS 2.0 is slightly cooler in the NH and shows a slight warming in the SH compared to the temperature target. This experiment is designed to be 0.5°C warmer than the other two SAG experiments. Therefore, independent of reaching 1.5°C ~~and/or~~ 2.0°C temperature targets, the feedback approach is able to maintain zonally averaged surface air temperatures at most latitudes.

## 4.2 Atlantic Meridional Overturning Circulation changes

Sea surface temperature (SST) anomalies are significantly reduced by SAG in all scenarios. Simulated present day (~~2015–2024~~ 2015–2025) SST is already significantly warmer than pre-industrial (PI) across the tropics, subtropics, and into the Southern Ocean, with anomalies between 0.5°C and 1.5°C, reaching 2°C in the equatorial Pacific for one ensemble member (Fig. ~~A1~~ A2). On top of this, in the 2060s simulated SST is significantly warmer than ~~2015–2024~~ 2015–2025, with broad regions reaching anomalies above 2°C in the SSP5-85 case and 1.5°C in the SSP5-34-OS case; the exception is the warming hole in the North Atlantic (Drijfhout et al., 2012), which is significantly and persistently cooler by 1–2°C from both PI and present day SST by 2070, even in SSP5-85 (Fig. ~~A2~~ A3). SST anomalies are largely reduced in all geoengineering protocols implemented in this study especially in the 1.5°C cases. ~~The exception is, with exception of~~ the warming hole, which remains persistently cool in all scenarios, regions of the Arctic which remain slightly warm, and small regions of warming in the Indian sector of the Southern Ocean. Regions of persistently warm anomalies remain in the 2.0°C case, including much of the eastern Indian Ocean ~~, the equatorial and western North Atlantic, and east of Japan in the North Pacific~~ and the equatorial eastern South Atlantic based on the two ensemble members.

The apparent warming hole in all of the simulations is very likely related to changes in the AMOC (Fig. 6). The baseline scenarios SSP5-85 and SSP5-34-OS show a very similar decline until the last 2 decades of the simulation, with a maximum decline of more than 50% by the end of the century. Both SAG scenarios that target the 1.5°C temperatures show only a relatively small decline from 2020 values (approx 25%), with the largest reduction during the last 20 years of the simulation. The Geo SSP5-34-OS 2.0 produces a stronger decline closer to 40% and therefore closer to the SSP5-34-OS baseline scenario.

In comparison, Geo RCP85 1.5 (GLENS) simulations do not show the relative cooling in the North Atlantic (Fasullo et al., 2018). The earlier version of the model shows a slowing of the AMOC for the RCP8.5 scenario similar to the WACCM6 CMIP6 SSP5-85 simulation, which is however much smaller. Danabasoglu et al. (2019) found that the maximum AMOC strength in CESM2 is stronger than in CESM1. The differences in AMOC between CESM1 and CESM2 reflect differences in water mass properties that are ascribed (partly) to surface flux differences, as the ocean model component in both model versions handles the dense-water overflows through the Denmark Strait and the Faroe Bank Channel in the same way. Applying SAG resulted

in an acceleration of the AMOC in GLENS (Fig. 6, grey shaded area), which is not the case in any of the WACCM6 SAG simulations. In these simulations the AMOC is still declining, even though less severely than in the SSP5-8.5 simulation.

290 Responses of AMOC and therefore effects on surface air temperatures seem to be largely model version dependent.

### 4.3 Zonal mean precipitation changes

Global mean precipitation is changing compared to the 2015–2025 control ~~;~~ (Fig. 4, panel b), even though global surface air temperatures are maintained using SAG, as expected based on various earlier studies. Similarly to what has been found in Tilmes et al. (2016), and Jones et al. (2018), precipitation is increasing for the baseline scenarios, while applications of a low

295 forcing scenario result in close to present day global precipitation values. In WACCM6, precipitation is declining the most compared to 2020 values in Geo SSP5-8.5 1.5, with increasing reductions towards the end of the century, aligned with the increasing amount of sulfur dioxide injections, which is very similar to what has been found in GLENS (Fasullo et al., 2018, e.g.) (e.g., Fasullo et al., 2018). However, the SAG experiment based on the OS pathway and aiming for the 1.5°C target, results in a much smaller global mean precipitation change. Furthermore, Geo SSP5-34-OS 2.0 shows a slight increase in global mean

300 precipitation with increasing values after 2070.

Large scale precipitation changes from the control are shown in the zonal mean precipitation anomalies (Fig. 4, ~~middle and bottom panels on the right~~ panels d and f). Both baseline simulations (SSP5-85 and SSP5-34-OS) show increasing precipitation in tropics and mid to high latitudes between 2060–69. While this trend is continuing in SSP5-85, the SSP5-34-OS shows a reduction in the precipitation changes compared to control, as a result of reduced warming in this scenario by the end of the

305 21st century. A shift in tropical precipitation towards the SH (and therefore a shift in the Inter-tropical Convergence Zone (ITCZ)) occurs and is most pronounced in the SSP5-85, with increasing intensity towards the end of the 21st century in both baseline scenarios. Despite the reduction in greenhouse gases and surface temperature relative to SSP5-85, impacts on tropical precipitation using the overshoot scenario are still large and may result in large regional impacts. SAG applications successfully reduce increasing precipitation and shifts in tropical precipitation in 2060–2069, with slight reductions in precipitation in

310 the SH subtropics. Some larger differences occur by the end of the 21st century, where reductions in precipitation are most pronounced if using the SSP5-85 baseline scenario. Also, ~~we identify a shift in tropical precipitation for Geo SSP5-34-OS 2.0, which is likely a result of the occurrence of an interhemispheric temperature gradient in this scenario by the end of the 21st century~~ the strength in the shifts in tropical precipitation differs within the different ensemble members. More detailed investigations have to be performed in future studies, as well as in a multi-model comparison context. Precipitation changes

315 are therefore strongly dependent on the amount and strategy of SAG application.

### 4.4 Land Primary Productivity

Net primary productivity (NPP) over land is the difference between gross primary productivity (GPP) and plant respiration (Cramer et al., 1999), and it is a key component in the terrestrial carbon cycle. NPP is sensitive to climate changes, including temperature, precipitation, soil moisture and photosynthetically active radiation. As shown in previous analysis (Cheng et al.,



2019), relative to the baseline, SAG would reduce temperature, change precipitation and evaporation, which would potentially change soil moisture, and reduce the total incoming solar radiation. Therefore, terrestrial NPP is influenced by SAG.

Fig. 7 shows the accumulated annual land NPP in different baselines and SAG scenarios. Here NPP shows strong dependency on CO<sub>2</sub> concentration, consistent with previous studies (Govindasamy, 2002; Kravitz et al., 2013; Glienke et al., 2015). In CLM5, CO<sub>2</sub> concentration is one of the factors to determine the stomatal resistance and photosynthesis rate (Lawrence 2019). With higher CO<sub>2</sub> concentration in SSP5-85 and Geo SSP5-85 1.5, plants tend to have less stomatal conductance which makes them more resistant to water stress, and to have higher photosynthesis rate. Therefore, land NPP in those two scenarios increases constantly through the whole simulation period. With mitigation and carbon dioxide removal strategy, CO<sub>2</sub> concentration under SSP5-34-OS and the related SAG scenarios reaches a maximum around 2060, and then reduces slowly. In general, land NPP in our simulations follow the change of CO<sub>2</sub> concentrations in the baseline. Temperature reduction or other climate changes from SAG show mild impact on land accumulated NPP. However, comparison between baseline and SAG indicates regional different responses of land NPP to SAG climate changes.

Figure 8 shows NPP anomalies between the three SAG scenarios and their baseline during 2060–2069. There are similar patterns in the maps with SAG, where land NPP increases over tropical and midlatitude regions, while it decreases over high latitude and high altitude areas. The temperature reduction from SAG plays an important role in this pattern citeKravitz2013(Kravitz et al., 2013). Lower leaf temperature over tropical and midlatitude regions enhances stomatal conductance and hence promotes the carbon gain, while over high latitude and high altitude regions, the cooling is not optimal for plant growth. The magnitude of changes depend on both baseline and the temperature target. With a larger temperature difference between the baseline and the SAG, the NPP changes are bigger. As shown in Fig. 7, NPP changes are the largest between SSP5-8.5 and Geo SSP5-8.5 1.5.

#### 4.5 Ocean ecosystem impacts

Warming has large impacts on ocean ecosystems and fisheries, both directly through ocean temperature impacts on physiological processes, and indirectly through warming-induced changes in ocean physics. Increases in ocean temperature elevate respiration rates for endothermic (cold-blooded) animals, including zooplankton and fish, decreasing body size and limiting energy transfer to commercial fishery species and large marine vertebrates (Heneghan et al., 2019; Lotze et al., 2019). In contrast, warming ocean temperatures may stimulate NPP by phytoplankton, marine primary producers that make up the base of the marine food-web, assuming no other changing conditions (Eppley, 1972; Krumhardt et al., 2017). Additionally, however, warming drives changes in ocean stratification, currents and other physical mechanisms (clouds, sea ice, river flow) that affect nutrient delivery processes and available light (Laufkötter et al., 2015; Lauvset et al., 2017; Harrison et al., 2018). For example, warming induced stratification increases in pelagic ecosystems may reduce the amount of nutrients supplied to the photic zone, decreasing marine NPP, indirectly impacting higher trophic levels. Combined together, net responses of marine ecosystems to climate perturbations are dependent on local physical and biogeochemical conditions, leading to diverse ecosystem responses in different regions (Bopp et al., 2013; Krumhardt et al., 2017; Lauvset et al., 2017). Globally integrated, these processes are predicted to cause a net decrease of globally integrated oceanic biological production in future climate scenarios (Krumhardt

et al., 2017), with a projected 5% decline in fisheries production for every degree of surface temperature warming (Lotze et al., 2019). Here we investigate to what degree solar radiation management mitigates the primary drivers of marine ecosystem disruption, sea surface temperature and net primary productivity.

Anomalies outside historical climate variability are one indication of ocean conditions that ecosystems are not adapted to, and thus expected to cause disruption to fisheries and natural ecosystems (Bopp et al., 2013; Heneghan et al., 2019). Accordingly, significance of SST (Fig. A2A3) and NPP (Fig. 9) anomalies was determined by using the standard deviation ( $\sigma$ ) in each model grid cell of the yearly means from the 499 year pre-industrial control run. An anomaly was considered significant when it was greater than 1.96  $\sigma$  (95% confidence interval).

Oceanic NPP, the rate of photosynthetic carbon fixation by marine phytoplankton (Krumhardt et al., 2017; Harrison et al., 2018), represents the base of marine food web, supporting fisheries and natural ecosystems and driving the biological carbon pump that removes CO<sub>2</sub> from the atmosphere (e.g., Sarmiento and Gruber, 2006; Harrison et al., 2018). Similar to previous Earth system model simulations, anomalies of NPP in future climate are highly variable in space, and feature both strong positive and negative anomalies (Fig. 9), driven by different mechanisms in different biomes (Bopp et al., 2013; Krumhardt et al., 2017). In contrast to SST, simulated NPP is not significantly different in 2015–2024 2015–2025 relative to PI over much of the global ocean, with the exception of increased NPP at the poles, where both declining ice and warming temperatures increase production, and a narrow strip at the subtropical-subpolar boundary in the Southern Hemisphere (Fig. A1A2); these anomalies get stronger by 2070 (Fig. 9). Additionally, the North Atlantic warming hole is associated with NPP declines of 30–40%, likely caused by changes in nutrient supply. All anomalies are substantially mitigated by SAG, with positive NPP anomalies relative to present disappearing over much of polar oceans, and NPP reductions in the North Atlantic decreasing from 30–40% (baseline cases) to 20–30% in the 1.5°C SAG cases. Thus, SAG could reduce negative impacts of climate change on marine ecosystems in the North Atlantic, an important region for fisheries. It is important to note, however, that the ocean ecosystem model in CESM2 does not account for the effects of ocean acidification on marine phytoplankton, which could impact, for example, calcifying phytoplankton (Krumhardt et al., 2019) or diatoms (Bach et al., 2019; Petrou et al., 2019).

#### 4.6 Ice sheet mass balance

The mass balance (MB) of (grounded) ice sheets, which determines their contribution to sea level rise, is made up from two components: the surface mass balance (SMB; representing snowfall and surface melt), and solid ice discharge (D) across the grounding line (Lenaerts et al., 2019)

$$MB = SMB - D$$

As D is controlled by ice flow speed and ice thickness, and responds relatively slowly to external forcing, it is challenging to detect an impact from SAG on ice discharge within a single century. Moreover, default CESM2 and therefore WACCM6 does not explicitly represent D, as it requires a dynamic ice sheet model coupled to the ESM, a feature that is currently only available in dedicated CESM2 experiments (Lipscomb et al., 2019). SMB, on the other hand, is explicitly represented in CESM2, as it is primarily driven by atmospheric and surface processes, in particular snowfall and surface melting, and therefore has a much shorter response time. In addition, while ice sheet SMB exhibits large interannual variations, it also is observed to show



a discernible trend on ice sheets in both hemispheres (Lenaerts et al., 2019). The observed Greenland Ice Sheet mass loss and associated sea level rise is primarily driven by a declining SMB (van den Broeke et al., 2016), and will very likely continue to do so in the future (Aschwanden et al., 2019). A common tipping point for the Greenland Ice Sheet (GrIS) is assumed to SMB = 0, when the ice sheet no longer has a mechanism to gain mass; this threshold is likely already reached this century in higher-emission scenarios (Pattyn et al., 2018). In contrast, the Antarctic Ice Sheet SMB has increased throughout the past century (Medley and Thomas, 2019), potentially acting to mitigate Antarctic mass loss through increasing D. While we are not able to identify the impact of SAG on Antarctic D, recent studies indicate that the Antarctic Ice Sheet will likely become unstable (leading to a sharp increase in D) when we increase global mean temperature by above 2°C (Pattyn et al., 2018).

In Figure 10, a general decrease in GrIS SMB is seen in all simulations compared to the historical period, but most notably in the high-warming scenarios SSP5-85 and SSP5-34-OS. This decrease is driven by increased surface runoff (Fig. A3)A4), which is only partly offset by increased snowfall (not shown). SAG is effective in stabilizing runoff and therefore SMB in all three simulations, albeit there still is a distinct departure from late 20th century values. Although this is good news for the stability of the GrIS, and the tipping point SMB=0 is only reached in SSP5-85, it does not guarantee the GrIS existence in the long run since we do not resolve discharge. Moreover, the SMB-elevation feedback is not explicitly modeled, which starts to play a dominant role on millennial time scales (Pattyn et al., 2018). Based on these results, we deem it unlikely that large freshwater fluxes will originate from the GrIS by surface processes alone in all 3 geoengineering scenarios.

Throughout most of the 21st century, the response of AIS SMB is similar in all SAG simulations (Fig. 10, right-panel-panel b). Again, both a stabilization and a marked departure are seen from 1960–1999 values, suggesting that the response time of SMB to warming is in the order of years-decades. In contrast to the GrIS, SMB increases during the 21st century, which is explained by the dominant role of precipitation on the AIS, whereas surface runoff remains a comparatively small mass flux (Fig. A3). Interestingly, simulations Geo SSP5-34-OS 1.5 and SSP5-85 1.5 depart from one another during the second half of the 21 century. We attribute this difference to the different aerosol loading in the two simulations, which impacts the formation of precipitation.

#### 4.7 Evolution of the Antarctic ozone hole

The annually recurring ozone hole over Antarctica that began around 1980 is a result of enhanced CFCs and other halogen reservoirs in the stratosphere, the so-called ozone destroying substances (ODS), that mostly accumulated before the 1990s. Due to their very long lifetime of some CFCs over 100 years, the burden of ODS peaked around the year 1990 and is now slowly declining. The Antarctic ozone hole is expected to recover back to 1980 values in 2060 (WMO, 2018). However, changes in surface climate due to anthropogenic climate change are projected to accelerate the Brewer-Dobson Circulation in the stratosphere and with that transport more ozone into high latitudes and increase ozone with time, which can lead to a “super recovery” of ozone. The larger the forcing scenario, the larger is this effect, which would potentially slightly speed up the recovery of the ozone hole. RCP8.5 simulations as part of GLENS show the recovery of the Antarctic ozone in October by around 2060 compared to 1980 total column ozone values (Fig. 11, top-panel-panel a) and an increase of column ozone up to 30 DU by the end of the century. The same behavior is also shown in WACCM6 following SSP5-85. Overshoot scenarios also

show a recovery to 1980 values, which stays at or slightly below that value for the rest of the simulations, as a result of the reduced climate change effect on ozone (Fig. 11, ~~middel-panel~~panel b).

The increasing aerosol burden in the stratosphere in the SAG modeling experiments has significant effects on stratospheric chemistry and transport (e.g., Tilmes et al., 2009; Ferraro et al., 2014; Richter et al., 2018). The absorption of radiation by sulfate aerosols heats the lower tropical stratosphere. The amount of heating is proportional to the sulfur injection amount and results in a drop of the tropopause altitude and an increase in tropopause temperatures (Tilmes et al., 2017). These changes, in addition to the cooling of the surface and the troposphere, influence the strength of the sub-tropical and polar jets and therefore transport of stratospheric airmasses. In addition, stratospheric aerosols increase the aerosol surface area important for heterogeneous reactions. This leads to an enhanced activation of chlorine and therefore increased ozone depletion. The effect of SAG was estimated to delay the recovery of the ozone hole by at least 40 years (Tilmes et al., 2008).

Both GLENS and WACCM6 simulations show a drop in Antarctic column ozone at the start of the SAG application between 2020 and 2030 of up to 70 DU and then an increasing trend, similar to the case without SAG application. Antarctic column ozone has not fully recovered in Geo SSP5-85 1.5 by the end of the century. On the other hand, the SAG scenarios Geo SSP5-34-OS 1.5 and 2.0 show a faster recovery of the ozone hole than Geo SSP5-85 1.5, which is reached around 2080. The reduced forcing scenario does require less sulfur injections to reach the temperature targets, which results in a smaller stratospheric aerosol burden. Therefore, less ozone depletion is expected and the delay of the recovery of the ozone hole would be shortened to 20–30 years. For SSP5-34-OS 2.0, the later start of SAG application leads on average to a weaker reduction of column ozone of around 45 DU compared to the drop in column ozone of ~~70~~around 60 DU if SAG would be started in 2020.

## 440 5 Discussions and conclusions

This paper describes a ~~new testbed GeoMIP scenario for CMIP6, which aims~~set of new SAG simulations using WACCM6, which aim to keep global warming to less than 1.5°C and 2.0°C above pre-industrial. ~~Two different baseline scenarios are used, the high greenhouse gas emission scenario SSP5-85 and the~~The overshoot scenario SSP5-34-OS ~~has been used as the baseline scenario~~, which follows the SSP5-85 future pathway until 2040, and then drastically increases decarbonization afterwards.

~~We describe three different stratospheric aerosol geoengineering simulations. The first uses the SSP5-85 baseline scenario and performs stratospheric sulfur injections to keep surface air temperatures at the 1.5°C temperature target, while starting sulfur injections in year 2021 (Geo SSP5-85 1.5) using WACCM6. The second experiment uses the~~The resulting overshoot in surface temperatures above the desired temperature targets requires limited SAG applications in time and amount, compared to steadily increasing injections needed for a high forcing scenario. We acknowledge that the SSP5-34-OS ~~baseline scenario and is also~~ designed to keep surface air temperatures at the 1.5°C temperature target (Geo SSP5-34-OS 1.5). Both Geo SSP5-85 1.5 and Geo SSP5-34-OS 1.5 are identical until the year 2040. The third experiment uses the SSP5-34-OS baseline scenario, but this time is designed to keep surface air temperatures at the 2.0°C temperature target, starting in 2034 (Geo SSP5-34-OS 1.5) in WACCM6 scenario is not a recommended scenario, because of delayed actions in mitigation and CDR, however, it is the only CMIP6 scenario that produces a temperature overshoot before the end of this century.

455 The purpose of the different simulations is to explore the range of outcomes of SAG dependent on the amount of SAG injections, the background CO<sub>2</sub> concentrations, and the target surface air temperatures. The overshoot baseline scenario is used because it provides the opportunity to study the effects of limiting SAG applications in duration and amount. The proposed SAG testbed simulation starts in WACCM6 around 2020 or 2034 (which could be somewhat different in other models), a period when the overshoot scenario is still on an increasing greenhouse gas emission path. We do not recommend to consider applications of SAG before large scale mitigation measures have been adopted and therefore consider this scenario not to be policy relevant. More realistic and policy relevant scenarios need to be designed in the future that include earlier actions on mitigation, more realistic implementation of potential negative emissions and assumed surface emissions.

However, we decided to use it, because it is the best scenario that has been designed and is available to

465 In addition to reaching global surface temperature targets, the CMIP6 modeling community to be used for CMIP6 experiment requires to control for interhemispheric and pole-to-equator temperature targets, which can be done in using a feedback control algorithm to identify annual stratospheric injection amounts at 4 different latitudinal locations.

Proposed SAG modeling experiments need to be designed in a strategic manner in order to achieve the least amount of side effects. For example, Kravitz et al. (2017) have shown several improvements in using the feedback controller to achieve the three temperature targets. Surface air temperature targets are relevant for reducing effects including extreme temperatures, heatwaves, and sea ice melting. The better outcomes can be reached using the feedback algorithm to keep temperature gradients between North and South and between the Equator and the poles from changing. Both limited applications of SAG and improved climate targets result in reduced climate impacts and risks, and are therefore provide a complete picture for studying impacts on society and ecosystems than much larger scale SAG applications. Multi-model experiments are needed to identify the range of outcomes and uncertainties. We therefore recommend including these experiments as a new testbed GeoMIP scenario for CMIP6.

480 Here, we further compare the experiments that are based on the OS scenario to SAG applications using the high greenhouse gas emission scenario SSP5-85, and to the earlier performed GLENS simulations that are based on the RCP8.5 scenario. These experiments provide the opportunity to explore the range of outcomes of SAG dependent on the amount of SAG injections, the background CO<sub>2</sub> concentrations, and the target surface air temperatures. Applications of the three temperature targets in WACCM6 result in small differences in the amount of warming in high latitudes between a 1.5°C and a 2°C temperature target. Therefore, differences that were described in the IPCC1.5 report (Masson-Delmotte et al., 2018) between reaching 1.5°C or 2°C target may be different if they are reached with SAG or with emission reductions only, and have to be investigated further. On the other hand, global precipitation changes depend on the amount of sulfur injections, resulting in a stronger reduction with increasing application. Precipitation changes and shifts in the ITCZ occur in both baseline scenarios, and in the OS case by the end of the century. This is likely a result of changes in the distribution of tropospheric aerosols. SAG using the feedback algorithm helps to reduce these shifts, whereby reduction in precipitation is strongest with higher injection amounts and to a lesser amount depends on the temperature targets. For the testbed experiment, it would be most desirable to implement this feedback controller in other models to be able to reach similar temperature targets.

The impacts of SAG need to be explored within the entire space between scenarios and societal and ecological relevant impacts to holistically assess and improve SAG applications. Here we provide examples of how such an assessment could be established, considering different types of scenarios, e.g., high greenhouse gas scenarios, low GHG scenarios, high vs. low SAG, and differences in temperature targets. All of these matter for different impact variables in a different manner. There are many different variables that need to be investigated. This paper explores only a few of those variables and illustrate their dependency on impacts based on temperature targets, amount of sulfur burden, and the baseline simulations (Table 2). Furthermore, differences in injection amounts will impact costs of the implementation and need to be ~~taken into account~~considered, but have not been investigated here.

Changes in AMOC, that are coupled to the surface temperatures, lead to a significant warming hole in WACCM6 with consequences for ocean temperatures, reducing NPP in the ocean in the North Atlantic. The reduced slowing of the AMOC with SAG would decrease some impacts on marine ecosystems. However, SAG will not mitigate other ecosystem stressors, like ocean acidification, which depend on the baseline scenario. Land NPP is also strongly dependent on the CO<sub>2</sub> content of the atmosphere and therefore on the baseline simulations but not so much on the temperature target. On the other hand, mean ice sheet surface mass balance is strongly dependent on the surface temperature target and has only a small direct dependence on the amount of SAG application or the baseline simulations. Finally, the Antarctic ozone hole is expected to recover around 2060 without SAG, but cannot fully recover by the end of the century if SAG would be applied to the SSP5-85 baseline scenario to reach 1.5°C. Using the OS scenario, ozone super-recovery is reduced and SAG applications would delay the recovery by approx. 20–30 years until around 2080, with a slightly early recovery if the 2°C target would be used.

In summary, future changes in different quantities that are important for societal and ecological impacts depend on very different measures, including the amount of SAG application, temperature target and baseline simulation. A comprehensive assessment is required that holistically considers benefits and side effects of climate intervention strategies. ~~Multi-model experiments are needed to identify the range of outcomes and uncertainties.~~

*Data availability.* Previous and current CESM versions are freely available ([www.cesm.ucar.edu/models/cesm2](http://www.cesm.ucar.edu/models/cesm2)). The CESM2 data analyzed in this manuscript have been contributed to CMIP6 and are freely available at the Earth System Grid Federation (ESGF; <https://esgf-node.llnl.gov/search/cmip6/>) or from the NCAR Digital Asset Services Hub (DASH; <https://data.ucar.edu>) or from the links provided from the CESM website ([www.cesm.ucar.edu](http://www.cesm.ucar.edu)).

*Author contributions.* As the first author, Simone Tilmes organized and wrote a large portion of the paper, produced all the simulations, and performed the analysis presented in about half of the figures. Douglas E. MacMartin was instrumental in properly setting up the feedback algorithm, and contributed to the interpretation of results and the writing of the paper. Jan T. Lenaerts and Leo van Kampenhout analyzed land ice mass balance and produced related figures and text. Laura Muntjewerf produced AMOC figures and the corresponding text. Lili Xia analyzed land primary productivity and produced related figures and text. Cheryl S. Harrison and Kristen M. Krumhardt analyzed sea

520 surface temperature and ocean net primary productivity, producing related figures and text. Michael J. Mills, Ben Kravitz, and Alan Robock contributed to the writing of the paper and the overall framing.

*Competing interests.* There is are no competing interests at present

*Acknowledgements.* We thank Anne K. Smith and Douglas E. Kinnison for helpful comments and suggestions. Support for Ben Kravitz was provided in part by the National Science Foundation through agreement CBET-1931641, the Indiana University Environmental Resilience  
525 Institute, and the Prepared for Environmental Change Grand Challenge initiative. The Pacific Northwest National Laboratory is operated for the US Department of Energy by Battelle Memorial Institute under contract DE-AC05-76RL01830. Alan Robock was supported by NSF grant AGS-1617844. The CESM project is supported primarily by the National Science Foundation. This material is based upon work supported by the National Center for Atmospheric Research, which is a major facility sponsored by the NSF under Cooperative Agreement No. 1852977. Computing and data storage resources, including the Cheyenne supercomputer (doi:10.5065/D6RX99HX), were provided  
530 by the Computational and Information Systems Laboratory (CISL) at NCAR. Part of this work was carried out under the program of the Netherlands Earth System Science Centre (NESSC), financially supported by the Ministry of Education, Culture and Science (OCW)”. (Grantnr. 024.002.001).

## References

- Aschwanden, A., Fahnestock, M. A., Truffer, M., Brinkerhoff, D. J., Hock, R., Khroulev, C., Mottram, R., and Khan, S. A.: Contribution of the Greenland Ice Sheet to sea level over the next millennium, *Science Advances*, 5, eaav9396, <https://doi.org/10.1126/sciadv.aav9396>, <http://advances.sciencemag.org/lookup/doi/10.1126/sciadv.aav9396>, 2019.
- Bach, L. T., Hernández-Hernández, N., Taucher, J., Spisla, C., Sforza, C., Riebesell, U., and Arístegui, J.: Effects of elevated CO<sub>2</sub> on a natural diatom community in the subtropical NE Atlantic, *Frontiers in Marine Science*, 6, 1–16, <https://doi.org/10.3389/fmars.2019.00075>, 2019.
- Baran, A. J. and Foot, J. S.: New application of the operational sounder HIRS in determining a climatology of sulphuric acid aerosol from the Pinatubo eruption, *Journal of Geophysical Research*, 99, 25 673, <https://doi.org/10.1029/94JD02044>, <http://doi.wiley.com/10.1029/94JD02044>, 1994.
- Bopp, L., Resplandy, L., Orr, J. C., Doney, S. C., Dunne, J. P., Gehlen, M., Halloran, P., Heinze, C., Ilyina, T., Séférian, R., Tjiputra, J., and Vichi, M.: Multiple stressors of ocean ecosystems in the 21st century: projections with CMIP5 models, *Biogeosciences*, 10, 6225–6245, <https://doi.org/10.5194/bg-10-6225-2013>, <https://www.biogeosciences.net/10/6225/2013/>, 2013.
- Cheng, W., MacMartin, D. G., Dagon, K., Kravitz, B., Tilmes, S., Richter, J. H., Mills, M. J., and Simpson, I. R.: Soil moisture and other hydrological changes in a stratospheric aerosol geoengineering large ensemble, *Journal of Geophysical Research: Atmospheres*, p. 2018JD030237, <https://doi.org/10.1029/2018JD030237>, <https://onlinelibrary.wiley.com/doi/abs/10.1029/2018JD030237>, 2019.
- Cramer, W., Kicklighter, D. W., Bondeau, A., Iii, B. M., Churkina, G., Nemry, B., Ruimy, A., Schloss, A. L., and Intercomparison, T. P. O. T. P.: Comparing global models of terrestrial net primary productivity (NPP): overview and key results, *Global Change Biology*, 5, 1–15, <https://doi.org/10.1046/j.1365-2486.1999.00009.x>, <http://doi.wiley.com/10.1046/j.1365-2486.1999.00009.x>, 1999.
- Danabasoglu, G., Bates, S. C., Briegleb, B. P., Jayne, S. R., Jochum, M., Large, W. G., Peacock, S., and Yeager, S. G.: The CCSM4 Ocean Component, *Journal of Climate*, 25, 1361–1389, <https://doi.org/10.1175/JCLI-D-11-00091.1>, <http://journals.ametsoc.org/doi/abs/10.1175/JCLI-D-11-00091.1>, 2012.
- Danabasoglu, G., Lamarque, J.-F., Bachmeister, J., Bailey, D. A., DuVivier, A. K., and et al. Edwards, J.: The Community Earth System Model version 2 (CESM2), *Journal of Advances in Modeling Earth Systems*, 2019.
- Dhomse, S. S., Emmerson, K. M., Mann, G. W., Bellouin, N., Carslaw, K. S., Chipperfield, M. P., Hommel, R., Abraham, N. L., Telford, P., Braesicke, P., Dalvi, M., Johnson, C. E., O'Connor, F., Morgenstern, O., Pyle, J. A., Deshler, T., Zawodny, J. M., and Thomason, L. W.: Aerosol microphysics simulations of the Mt. Pinatubo eruption with the UM-UKCA composition-climate model, *Atmospheric Chemistry and Physics*, 14, 11 221–11 246, <https://doi.org/10.5194/acp-14-11221-2014>, <https://www.atmos-chem-phys.net/14/11221/2014/>, 2014.
- Drijfhout, S., van Oldenborgh, G. J., and Cimadoribus, A.: Is a Decline of AMOC Causing the Warming Hole above the North Atlantic in Observed and Modeled Warming Patterns?, *Journal of Climate*, 25, 8373–8379, <https://doi.org/10.1175/JCLI-D-12-00490.1>, <http://journals.ametsoc.org/doi/abs/10.1175/JCLI-D-12-00490.1>, 2012.
- Emmons, L., K., Orlando, J. J., Tyndall, G., Schwantes, R. H., Kinnison, D. E., Marsh, D. R., Mills, M. J., Tilmes, S., and Lamarque, J.-F.: The MOZART Chemistry Mechanism in the Community Earth System Model version 2 (CESM2), to be submitted to *J. Adv. Modeling Earth Systems*, 2019.
- Eppley, R.: Temperature and Phytoplankton Growth in Sea, *Fish. Bull.* 70, pp. 1063–1085, 1972.

- Eyring, V., Bony, S., Meehl, G. A., Senior, C. A., Stevens, B., Stouffer, R. J., and Taylor, K. E.: Overview of the Coupled Model Intercomparison Project Phase 6 (CMIP6) experimental design and organization, *Geoscientific Model Development*, 9, 1937–1958, <https://doi.org/10.5194/gmd-9-1937-2016>, <https://www.geosci-model-dev.net/9/1937/2016/>, 2016.
- 570 Fasullo, J. T., Tilmes, S., Richter, J. H., Kravitz, B., MacMartin, D. G., Mills, M. J., and Simpson, I. R.: Persistent polar ocean warming in a strategically geoengineered climate, *Nature Geoscience*, 11, 910–914, <https://doi.org/10.1038/s41561-018-0249-7>, <http://dx.doi.org/10.1038/s41561-018-0249-7>, 2018.
- Ferraro, A. J., Highwood, E. J., and Charlton-Perez, A. J.: Weakened tropical circulation and reduced precipitation in response to geoengineering, *Environmental Research Letters*, 9, 014 001, <https://doi.org/10.1088/1748-9326/9/1/014001>, <http://stacks.iop.org/1748-9326/9/i=1/a=014001?key=crossref.878d5812d41285f5514acaa5402e63c3>, 2014.
- 575 Gettelman, A., Mills, M. J., Kinnison, D. E., Garcia, R. R., Smith, A. K., Marsh, D. R., Tilmes, S., Vitt, F., Bardeen, C. G., McInerney, J., Liu, H.-L., Solomon, S. C., Polvani, L. M., Emmons, L. K., Lamarque, J.-F., Richter, J. H., Glanville, A. S., Bacmeister, J. T., Phillips, A. S., Neale, R. B., Simpson, I. R., DuVivier, A. K., Hodzic, A., and Randel, W. J.: The Whole Atmosphere Community Climate Model Version 6 (WACCM6), *Journal of Geophysical Research: Atmospheres*, p. 2019JD030943, <https://doi.org/10.1029/2019JD030943>, <https://onlinelibrary.wiley.com/doi/abs/10.1029/2019JD030943>, 2019.
- 580 Glienke, S., Irvine, P. J., and Lawrence, M. G.: The impact of geoengineering on vegetation in experiment G1 of the GeoMIP, *Journal of Geophysical Research: Atmospheres*, 120, <https://doi.org/10.1002/2015JD024202>, <https://onlinelibrary.wiley.com/doi/abs/10.1002/2015JD024202>, 2015.
- 585 Govindasamy, B.: Impact of geoengineering schemes on the terrestrial biosphere, *Geophysical Research Letters*, 29, 2061, <https://doi.org/10.1029/2002GL015911>, <http://doi.wiley.com/10.1029/2002GL015911>, 2002.
- Harrison, C. S., Long, M. C., Lovenduski, N. S., and Moore, J. K.: Mesoscale Effects on Carbon Export: A Global Perspective, *Global Biogeochemical Cycles*, 32, 680–703, <https://doi.org/10.1002/2017GB005751>, <http://doi.wiley.com/10.1002/2017GB005751>, 2018.
- Heneghan, R. F., Hatton, I. A., and Galbraith, E. D.: Climate change impacts on marine ecosystems through the lens of the size spectrum, *Emerging Topics in Life Sciences*, 3, 233–243, <https://doi.org/10.1042/ETLS20190042>, <https://portlandpress.com/emergtoplifesci/article/3/2/233/219720/Climate-change-impacts-on-marine-ecosystems>, 2019.
- 590 Hunke, E. C., Lipscomb, W. H., Turner, A. K., Jeffery, N., and Elliott, S.: The Los Alamos Sea Ice Model. Documentation and Software User’s Manual. Version 5.1., Tech. rep., T-3 Fluid Dynamics Group, Los Alamos National Laboratory, 2015.
- Jones, A. C., Hawcroft, M. K., Haywood, J. M., Jones, A., Guo, X., and Moore, J. C.: Regional Climate Impacts of Stabilizing Global Warming at 1.5 K Using Solar Geoengineering, *Earth’s Future*, 6, 230–251, <https://doi.org/10.1002/2017EF000720>, <http://doi.wiley.com/10.1002/2017EF000720>, 2018.
- 595 Kravitz, B., Robock, A., Boucher, O., Schmidt, H., Taylor, K. E., Stenchikov, G., and Schulz, M.: The Geoengineering Model Intercomparison Project (GeoMIP), *Atmospheric Science Letters*, 12, 162–167, <https://doi.org/10.1002/asl.316>, <http://doi.wiley.com/10.1002/asl.316>, 2011.
- 600 Kravitz, B., Caldeira, K., Boucher, O., Robock, A., Rasch, P. J., Alterskjaer, K., Karam, D. B., Cole, J. N. S., Curry, C. L., Haywood, J. M., Irvine, P. J., Ji, D., Jones, A., Kristjánsson, J. E., Lunt, D. J., Moore, J. C., Niemeier, U., Schmidt, H., Schulz, M., Singh, B., Tilmes, S., Watanabe, S., Yang, S., and Yoon, J.-H.: Climate model response from the Geoengineering Model Intercomparison Project (GeoMIP), *Journal of Geophysical Research: Atmospheres*, 118, 8320–8332, <https://doi.org/10.1002/jgrd.50646>, <http://doi.wiley.com/10.1002/jgrd.50646>, 2013.

- 605 Kravitz, B., Robock, A., Tilmes, S., Boucher, O., English, J. M., Irvine, P. J., Jones, A., Lawrence, M. G., MacCracken, M., Muri, H., Moore, J. C., Niemeier, U., Phipps, S. J., Sillmann, J., Storelvmo, T., Wang, H., and Watanabe, S.: The Geoengineering Model Inter-comparison Project Phase 6 (GeoMIP6): simulation design and preliminary results, *Geoscientific Model Development*, 8, 3379–3392, <https://doi.org/10.5194/gmd-8-3379-2015>, <https://www.geosci-model-dev.net/8/3379/2015/>, 2015.
- Kravitz, B., Macmartin, D. G., Wang, H., and Rasch, P. J.: Geoengineering as a design problem, *Earth System Dynamics*, 7, 469–497, <https://doi.org/10.5194/esd-7-469-2016>, 2016.
- 610 Kravitz, B., MacMartin, D. G., Mills, M. J., Richter, J. H., Tilmes, S., Lamarque, J.-F., Tribbia, J. J., and Vitt, F.: First Simulations of Designing Stratospheric Sulfate Aerosol Geoengineering to Meet Multiple Simultaneous Climate Objectives, *Journal of Geophysical Research: Atmospheres*, 122, <https://doi.org/10.1002/2017JD026874>, 2017.
- Kravitz, B., MacMartin, D. G., Tilmes, S., Richter, J. H., Mills, M. J., Cheng, W., Dagon, K., Glanville, A. S., Lamarque, J., Simpson, I. R., Tribbia, J., and Vitt, F.: Comparing Surface and Stratospheric Impacts of Geoengineering With Different SO<sub>2</sub> Injection Strategies, *Journal of Geophysical Research: Atmospheres*, 124, 7900–7918, <https://doi.org/10.1029/2019JD030329>, <https://onlinelibrary.wiley.com/doi/abs/10.1029/2019JD030329>, 2019.
- 615 Krumhardt, K. M., Lovenduski, N. S., Long, M. C., and Lindsay, K.: Avoidable impacts of ocean warming on marine primary production: Insights from the CESM ensembles, *Global Biogeochemical Cycles*, 31, 114–133, <https://doi.org/10.1002/2016GB005528>, <http://doi.wiley.com/10.1002/2016GB005528>, 2017.
- 620 Krumhardt, K. M., Lovenduski, N. S., Long, M. C., Levy, M., Lindsay, K., Moore, J. K., and Nissen, C.: Coccolithophore Growth and Calcification in an Acidified Ocean: Insights From Community Earth System Model Simulations, *Journal of Advances in Modeling Earth Systems*, 11, 1418–1437, <https://doi.org/10.1029/2018MS001483>, <https://onlinelibrary.wiley.com/doi/abs/10.1029/2018MS001483>, 2019.
- Laufkötter, C., Vogt, M., Gruber, N., Aita-Noguchi, M., Aumont, O., Bopp, L., Buitenhuis, E., Doney, S. C., Dunne, J., Hashioka, T., Hauck, J., Hirata, T., John, J., Le Quéré, C., Lima, I. D., Nakano, H., Seferian, R., Totterdell, I., Vichi, M., and Völker, C.: Drivers and uncertainties of future global marine primary production in marine ecosystem models, *Biogeosciences*, 12, 6955–6984, <https://doi.org/10.5194/bg-12-6955-2015>, <https://www.biogeosciences.net/12/6955/2015/>, 2015.
- 625 Lauvset, S. K., Tjiputra, J., and Muri, H.: Climate engineering and the ocean: effects on biogeochemistry and primary production, *Biogeosciences*, 14, 5675–5691, <https://doi.org/10.5194/bg-14-5675-2017>, <https://www.biogeosciences.net/14/5675/2017/>, 2017.
- 630 Lawrence, D. M., Fisher, R. A., Koven, C. D., Oleson, K. W., Swenson, S. C., Bonan, G., Collier, N., Ghimire, B., Kampenhout, L., Kennedy, D., Kluzek, E., Lawrence, P. J., Li, F., Li, H., Lombardozi, D., Riley, W. J., Sacks, W. J., Shi, M., Vertenstein, M., Wieder, W. R., Xu, C., Ali, A. A., Badger, A. M., Bisht, G., Broeke, M., Brunke, M. A., Burns, S. P., Buzan, J., Clark, M., Craig, A., Dahlin, K., Drewniak, B., Fisher, J. B., Flanner, M., Fox, A. M., Gentine, P., Hoffman, F., Keppel-Aleks, G., Knox, R., Kumar, S., Lenaerts, J., Leung, L. R., Lipscomb, W. H., Lu, Y., Pandey, A., Pelletier, J. D., Perket, J., Randerson, J. T., Ricciuto, D. M., Sanderson, B. M., Slater, A., Subin, Z. M., Tang, J., Thomas, R. Q., Val Martin, M., and Zeng, X.: The Community Land Model version 5: Description of new features, benchmarking, and impact of forcing uncertainty, *Journal of Advances in Modeling Earth Systems*, p. 2018MS001583, <https://doi.org/10.1029/2018MS001583>, <https://onlinelibrary.wiley.com/doi/abs/10.1029/2018MS001583>, 2019.
- 635 Lawrence, M. G., Schäfer, S., Muri, H., Scott, V., Oschlies, A., Vaughan, N. E., Boucher, O., Schmidt, H., Haywood, J., and Scheffran, J.: Evaluating climate geoengineering proposals in the context of the Paris Agreement temperature goals, *Nature Communications*, 9, 3734, <https://doi.org/10.1038/s41467-018-05938-3>, <http://www.nature.com/articles/s41467-018-05938-3>, 2018.
- 640 Lenaerts, J. T. M., Medley, B., Broeke, M. R., and Wouters, B.: Observing and Modeling Ice Sheet Surface Mass Balance, *Reviews of Geophysics*, 57, 376–420, <https://doi.org/10.1029/2018RG000622>, <https://onlinelibrary.wiley.com/doi/abs/10.1029/2018RG000622>, 2019.



- Lipscomb, W. H., Price, S. F., Hoffman, M. J., Leguy, G. R., Bennett, A. R., Bradley, S. L., Evans, K. J., Fyke, J. G., Kennedy, J. H., Perego, M., Ranken, D. M., Sacks, W. J., Salinger, A. G., Vargo, L. J., and Worley, P. H.: Description and evaluation of the Community Ice Sheet Model (CISM) v2.1, *Geoscientific Model Development*, 12, 387–424, <https://doi.org/10.5194/gmd-12-387-2019>, <https://www.geosci-model-dev.net/12/387/2019/>, 2019.
- Liu, X., Ma, P. L., Wang, H., Tilmes, S., Singh, B., Easter, R. C., Ghan, S. J., and Rasch, P. J.: Description and evaluation of a new four-mode version of the Modal Aerosol Module (MAM4) within version 5.3 of the Community Atmosphere Model, *Geoscientific Model Development*, 9, 505–522, <https://doi.org/10.5194/gmd-9-505-2016>, 2016.
- Long, J. C. S. and Shepherd, J. G.: The Strategic Value of Geoengineering Research, in: *Global Environmental Change*, pp. 757–770, Springer Netherlands, Dordrecht, [https://doi.org/10.1007/978-94-007-5784-4\\_24](https://doi.org/10.1007/978-94-007-5784-4_24), [http://link.springer.com/10.1007/978-94-007-5784-4\\_{\\_}24](http://link.springer.com/10.1007/978-94-007-5784-4_{_}24), 2014.
- Lotze, H. K., Tittensor, D. P., Bryndum-Buchholz, A., Eddy, T. D., Cheung, W. W. L., Galbraith, E. D., Barange, M., Barrier, N., Bianchi, D., Blanchard, J. L., Bopp, L., Büchner, M., Bulman, C. M., Carozza, D. A., Christensen, V., Coll, M., Dunne, J. P., Fulton, E. A., Jennings, S., Jones, M. C., Mackinson, S., Maury, O., Niiranen, S., Oliveros-Ramos, R., Roy, T., Fernandes, J. A., Schewe, J., Shin, Y.-J., Silva, T. A. M., Steenbeek, J., Stock, C. A., Verley, P., Volkholz, J., Walker, N. D., and Worm, B.: Global ensemble projections reveal trophic amplification of ocean biomass declines with climate change, *Proceedings of the National Academy of Sciences*, 116, 12 907–12 912, <https://doi.org/10.1073/pnas.1900194116>, <http://www.pnas.org/lookup/doi/10.1073/pnas.1900194116>, 2019.
- MacMartin, D. G., Kravitz, B., Keith, D. W., and Jarvis, A.: Dynamics of the coupled human-climate system resulting from closed-loop control of solar geoengineering, *Climate Dynamics*, 43, 243–258, <https://doi.org/10.1007/s00382-013-1822-9>, 2014.
- MacMartin, D. G., Kravitz, B., Tilmes, S., Richter, J. H., Mills, M. J., Lamarque, J.-F., Tribbia, J. J., and Vitt, F.: The Climate Response to Stratospheric Aerosol Geoengineering Can Be Tailored Using Multiple Injection Locations, *Journal of Geophysical Research: Atmospheres*, 122, <https://doi.org/10.1002/2017JD026868>, 2017.
- MacMartin, D. G., Ricke, K. L., and Keith, D. W.: Solar geoengineering as part of an overall strategy for meeting the 1.5°C Paris target, *Philosophical Transactions of the Royal Society A: Mathematical, Physical and Engineering Sciences*, 376, 20160454, <https://doi.org/10.1098/rsta.2016.0454>, <https://royalsocietypublishing.org/doi/10.1098/rsta.2016.0454>, 2018.
- MacMartin, D. G., Wang, W., Kravitz, B., Tilmes, S., Richter, J. H., and Mills, M. J.: Timescale for Detecting the Climate Response to Stratospheric Aerosol Geoengineering, *Journal of Geophysical Research: Atmospheres*, 124, 1233–1247, <https://doi.org/10.1029/2018JD028906>, <http://doi.wiley.com/10.1029/2018JD028906>, 2019.
- Masson-Delmotte, V., Zhai, P., Pörtner, H. O., Roberts, D., Skea, J., Shukla, P., Pirani, A., Moufouma-Okia, W., Péan, C., Pidcock, R., Connors, S., Matthews, J. B. R., Chen, Y., Zhou, X., Gomis, M. I., Lonnoy, E., Maycock, T., Tignor, M., and Waterfield T. (eds.): IPCC, 2018: Global Warming of 1.5°C. An IPCC Special Report on the impacts of global warming of 1.5°C above pre-industrial levels and related global greenhouse gas emission pathways, in the context of strengthening the global response to the threat of cli, Tech. rep., 2018.
- Medley, B. and Thomas, E. R.: Increased snowfall over the Antarctic Ice Sheet mitigated twentieth-century sea-level rise, *Nature Climate Change*, 9, 34–39, <https://doi.org/10.1038/s41558-018-0356-x>, <http://dx.doi.org/10.1038/s41558-018-0356-x>, 2019.
- Meinshausen, M., Vogel, E., Nauels, A., Lorbacher, K., Meinshausen, N., Etheridge, D. M., Fraser, P. J., Montzka, S. A., Rayner, P. J., Trudinger, C. M., Krummel, P. B., Beyerle, U., Canadell, J. G., Daniel, J. S., Enting, I. G., Law, R. M., Lunder, C. R., O’Doherty, S., Prinn, R. G., Reimann, S., Rubino, M., Velders, G. J. M., Vollmer, M. K., Wang, R. H. J., and Weiss, R.: Historical greenhouse gas concentrations for climate modelling (CMIP6), *Geoscientific Model Development*, 10, 2057–2116, <https://doi.org/10.5194/gmd-10-2057-2017>, <https://www.geosci-model-dev.net/10/2057/2017/>, 2017.

- Mills, M. J., Schmidt, A., Easter, R., Solomon, S., Kinnison, D. E., Ghan, S. J., Neely, R. R., Marsh, D. R., Conley, A., Bardeen, C. G., and Gettelman, A.: Global volcanic aerosol properties derived from emissions, 1990–2014, using CESM1(WACCM), *Journal of Geophysical Research: Atmospheres*, 121, 2332–2348, <https://doi.org/10.1002/2015JD024290>, 2016.
- Mills, M. J., Richter, J. H., Tilmes, S., Kravitz, B., MacMartin, D. G., Glanville, A. A., Tribbia, J. J., Lamarque, J.-F., Vitt, F., Schmidt, A., Gettelman, A., Hannay, C., Bacmeister, J. T., and Kinnison, D. E.: Radiative and chemical response to interactive stratospheric sulfate aerosols in fully coupled CESM1(WACCM), *Journal of Geophysical Research: Atmospheres*, 122, <https://doi.org/10.1002/2017JD027006>, 2017.
- Moore, J. C., Rinke, A., Yu, X., Ji, D., Cui, X., Li, Y., Alterskjaer, K., Kristjánsson, J. E., Muri, H., Boucher, O., Huneus, N., Kravitz, B., Robock, A., Niemeier, U., Schulz, M., Tilmes, S., Watanabe, S., and Yang, S.: Arctic sea ice and atmospheric circulation under the GeoMIP G1 scenario, *Journal of Geophysical Research: Atmospheres*, 119, 567–583, <https://doi.org/10.1002/2013JD021060>, <http://doi.wiley.com/10.1002/2013JD021060>, 2014.
- O'Neill, B. C., Tebaldi, C., van Vuuren, D. P., Eyring, V., Friedlingstein, P., Hurtt, G., Knutti, R., Kriegler, E., Lamarque, J.-F., Lowe, J., Meehl, G. A., Moss, R., Riahi, K., and Sanderson, B. M.: The Scenario Model Intercomparison Project (ScenarioMIP) for CMIP6, *Geoscientific Model Development*, 9, 3461–3482, <https://doi.org/10.5194/gmd-9-3461-2016>, <https://www.geosci-model-dev.net/9/3461/2016/>, 2016.
- Pattyn, F., Ritz, C., Hanna, E., Asay-Davis, X., DeConto, R., Durand, G., Favier, L., Fettweis, X., Goelzer, H., Golledge, N. R., Kuipers Munneke, P., Lenaerts, J. T. M., Nowicki, S., Payne, A. J., Robinson, A., Seroussi, H., Trusel, L. D., and van den Broeke, M.: The Greenland and Antarctic ice sheets under 1.5 °C global warming, *Nature Climate Change*, 8, 1053–1061, <https://doi.org/10.1038/s41558-018-0305-8>, <http://www.nature.com/articles/s41558-018-0305-8>, 2018.
- Petrou, K., Baker, K. G., Nielsen, D. A., Hancock, A. M., Schulz, K. G., and Davidson, A. T.: Acidification diminishes diatom silica production in the Southern Ocean, *Nature Climate Change*, 9, 781–786, <https://doi.org/10.1038/s41558-019-0557-y>, <http://www.nature.com/articles/s41558-019-0557-y>, 2019.
- Pitari, G., Aquila, V., Kravitz, B., Robock, A., Watanabe, S., Cionni, I., Luca, N. D., Genova, G. D., Mancini, E., and Tilmes, S.: Stratospheric ozone response to sulfate geoengineering: Results from the Geoengineering Model Intercomparison Project (GeoMIP), *Journal of Geophysical Research: Atmospheres*, 119, 2629–2653, <https://doi.org/10.1002/2013JD020566>, <http://doi.wiley.com/10.1002/2013JD020566>, 2014.
- Richter, J. H., Tilmes, S., Glanville, A., Kravitz, B., MacMartin, D., Mills, M., Simpson, I., Vitt, F., Tribbia, J., and Lamarque, J.-F.: Simulations of stratospheric sulfate aerosol geoengineering with the Whole Atmosphere Community Climate Model (WACCM), *Journal of Geophysical Research Atmospheres*, 122, 2018.
- Sarmiento, J. L. and Gruber, N.: *Ocean biogeochemical dynamics*, Tech. rep., Princeton University Press, 2006.
- Simpson, I. S., S.Tilmes, Richter, J. H., Kravitz, B., MacMartin, D. G., Mills, M. J., Fasullo, J. T., and Pendergrass, A. G.: The regional hydroclimate response to stratospheric sulfate geoengineering and the role of stratospheric heating, *J.Geophys. Res. Geophysical Res.*, 2019.
- Smith, R., Jones, P., Briegleb, B., Bryan, F., Danabasoglu, G., and et al. Dennis, J.: The Parallel Ocean Program (POP) Reference Manual Ocean Component of the Community Climate System Model (CCSM) and Community Earth System Model (CESM)., Tech. rep., <https://ccsm.ucar.edu/models/cesm1.2/pop2/doc/sci/POPRefManual.pdf>, 2010.
- Tilmes, S., Müller, R., Salawitch, R. J., Schmidt, U., Webster, C. R., Oelhaf, H., Russell III, J. M., and Camy-Peyret, C. C.: Chemical ozone loss in the Arctic winter 1991–1992, *Atmos. Chem. Phys.*, 8, 1897–1910, 2008.

Tilmes, S., Garcia, R. R., Kinnison, D. E., Gettelman, A., and Rasch, P. J.: Impact of geoengineered aerosols on the troposphere and stratosphere, *Journal of Geophysical Research*, 114, D12 305, <https://doi.org/10.1029/2008JD011420>, <http://www.agu.org/pubs/crossref/2009/2008JD011420.shtml>, 2009.

Tilmes, S., Sanderson, B. M., and O'Neill, B. C.: Climate impacts of geoengineering in a delayed mitigation scenario, *Geophysical Research Letters*, 43, 8222–8229, <https://doi.org/10.1002/2016GL070122>, <http://doi.wiley.com/10.1002/2016GL070122>, 2016.

Tilmes, S., Richter, J. H., Mills, M. J., Kravitz, B., MacMartin, D. G., Vitt, F., Tribbia, J. J., and Lamarque, J.-F.: Sensitivity of Aerosol Distribution and Climate Response to Stratospheric SO<sub>2</sub> Injection Locations, *Journal of Geophysical Research: Atmospheres*, 122, <https://doi.org/10.1002/2017JD026888>, 2017.

Tilmes, S., Richter, Y., Mills, M., Kravitz, B., MacMartin, D., Garcia, R., Kinnison, D., Lamarque, J.-F., Tribbia, J., and Vitt, F.: Simulations of stratospheric sulfate aerosol geoengineering with the Whole Atmosphere Community Climate Model (WACCM), *Journal of Geophysical Research Atmospheres*, 12, 2018.

Tilmes, S., Hodzic, A., Emmons, L. K., Mills, M. J., Gettelman, A., Kinnison, D. E., Park, M., Lamarque, J.-F., Vitt, F., Shrivastava, M., Jost, P. C., Jimenez, J., and Liu, X.: Climate forcing and trends of organic aerosols in the Community Earth System Model (CESM2), *Journal of Advances in Modeling Earth Systems*, 2019.

Tolman, H. L.: User manual and system documentation of WAVEWATCH III TM version 3.14. Technical note., Tech. rep., 2009.

van den Broeke, M. R., Enderlin, E. M., Howat, I. M., Kuipers Munneke, P., Noël, B. P. Y., van de Berg, W. J., van Meijgaard, E., and Wouters, B.: On the recent contribution of the Greenland ice sheet to sea level change, *The Cryosphere*, 10, 1933–1946, <https://doi.org/10.5194/tc-10-1933-2016>, <https://www.the-cryosphere.net/10/1933/2016/>, 2016.

Wigley, T. M.: A combined mitigation/geoengineering approach to climate stabilization, *Science*, 314, 452–454, 2006.

WMO: Scientific Assessment of Ozone Depletion: 2018, Global Ozone Research and Monitoring Project–Report No. 58, Geneva, Switzerland, 2018.

**Table 1.** Overview of model simulations

<u>Model</u>	Experiment	Emission and Concentration Pathway	Accumulated SO <sub>2</sub> injection <sup>a)</sup>	Max Surface Air <del>Temperature-Ten</del>
<u>WACCM6</u>	SSP5-85	SSP5-85	0.	6.3
<u>WACCM6</u>	SSP5-34-OS	SSP5-34-OS	0.	3.0
<u>WACCM5.4</u>	RCP-85	RCP-85	0.	6.5
<u>WACCM6</u>	Geo SSP5-85 1.5	SSP5-85	1710; <u>1620</u> Tg SO <sub>2</sub>	1.5C
<u>WACCM6</u>	Geo RCP-85 1.5	RCP-85	2056 Tg SO <sub>2</sub>	1.5C
<u>WACCM6</u>	Geo SSP5-34-OS 1.5	SSP5-34-OS	605; <u>593</u> Tg SO <sub>2</sub>	1.5C
<u>WACCM6</u>	Geo SSP5-34-OS 2.0	SSP5-34-OS	305; <u>328</u> Tg SO <sub>2</sub>	2.C

a) Ensemble mean for GLENS (Geo RCP-85 1.5); Two numbers correspond to the two ensemble members for the WACCM6 SRM cases.

**Table 2.** Impacts dependent on different measures: achieved temperature targets applying SAG, amount of sulfur burden, and the baseline scenario.

Dependencies	Temperature targets (1.5 vs. 2°C)	Accumulated SO <sub>2</sub> injection	Baseline scenario
Major Importance	Surface air and ocean temperature Land Ice, AMOC Ocean NPP	Global precipitation Ozone hole	Land NPP Ocean acidification
Minor Importance	Global precipitation Land NPP Ozone hole	Surface air temperature Land NPP Land ice, AMOC	Surface air ocean temperature Ozone hole Land ice, AMOC

~~A1: Simulated sea surface temperature (SST) anomaly and % change in net primary productivity (NPP) in SSP5-8.5 2015–2024 relative to pre-industrial long term means. Regions shaded in color are significant with 95% confidence.~~

~~A2: Sea surface temperature (SST) in 2060-2069 relative to 2015–2024 for different scenarios (different panels). Regions shaded in color are significant with 95% confidence.~~

~~A3: Mean ice sheet runoff in Gt per year with shading indicating the standard deviation. A 20-year running mean has been applied to filter out the high year-to-year variability. The area of integration is the same as in Figure 10.~~

745 **Appendix A: Feedback Control Algorithm**

The injection rates necessary to achieve desired temperature targets through stratospheric sulfur injections in Earth System Models are strongly model and scenario dependent. A trial-and-error approach could in principle be used to determine, in each model, the necessary injection rates as a function of time. However, this can be time-consuming even with only a single goal and a single latitude of injection, and may be prohibitive for tuning the time-varying injection rates across multiple latitudes to

750 simultaneously meet multiple climate goals, particularly when the unknown injection rates might also depend nonlinearly on the amount of cooling needed. In addition, a simple trial and error approach is not able to respond smoothly to changes, which however can be done with applying control theory. We thus chose to use a trained control algorithm to effectively “learn” the right injection rates to use (MacMartin et al., 2014; Kravitz et al., 2016), and recommend a similar approach if other modeling centers want to repeat these experiments in different models.

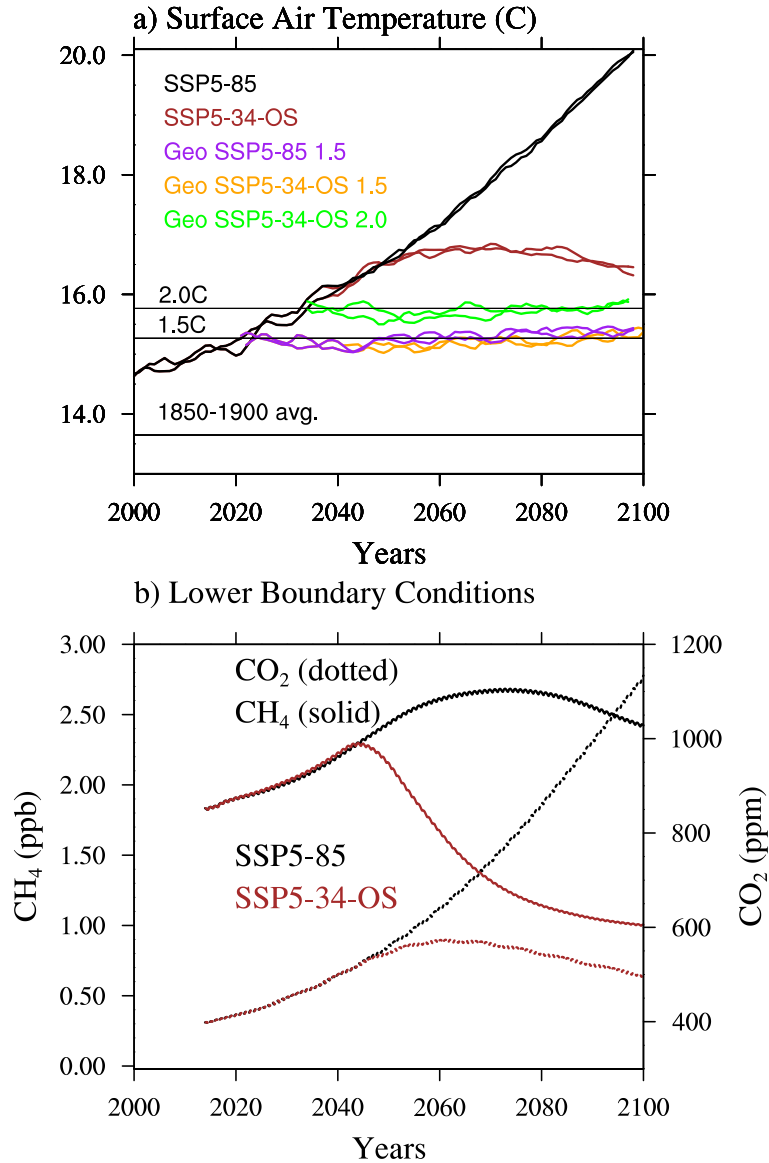
755 A best-estimate (also called the feedforward) for the required injection rates is first determined; if this were perfect, then no correction would be needed. A feedback algorithm is then used to update the injection rates after each year of the simulation in response to the error in meeting the goals over the previous years. The approach is documented in detail in Kravitz et al. (2016) and Kravitz et al. (2017). The first step to reach the three temperature targets is to control for Aerosol Optical Depth (AOD), which can then be directly related to the sulfur injections. The algorithm first computes the projection  
760 of AOD onto 3 independent basis functions. Thus, the global-mean AOD is adjusted in response to an error in the global-mean temperature, the interhemispheric difference in AOD adjusted in response to an error in interhemispheric temperature gradient, and equator-to-pole difference in AOD adjusted in response to equator-to-pole temperature gradient. The injection rates at each latitude are then determined based on the desired AOD (see also MacMartin et al., 2017). Neither the relationship between injection rates and spatial patterns of AOD, nor the relationship between those patterns of AOD and the resulting surface  
765 temperature response need to be known accurately, as the feedback will converge despite uncertainty.

The feedforward provides the feedback control algorithm with an initial estimate on the needed injections. The feedforward that was used in Kravitz et al. (2017) and Tilmes et al. (2018) was a simple linear scaling of the desired cooling, with the proportionality estimated from 10-year simulations described in Tilmes et al. (2017). For the simulations conducted here, the same approach was used. The time-varying amount of cooling relative to the desired target was computed using the baseline  
770 simulations and fitted a simple functional form. The desired feedforward was scaled from the values previously used values in the GLENS simulations. These had been estimated from earlier simulations, and so the feedforward estimates were somewhat different from what is needed in WACCM6. Furthermore, because of the memory inherent in the system, more injection is needed while GHG levels are increasing than at the same temperatures later in the overshoot runs while GHG levels are decreasing. Because the feedback algorithm does not correct this error immediately, there is some temporary overcooling in  
775 our simulations roughly when the peak GHG-warming (peak desired cooling from SAG) is obtained; this could have been corrected by accounting for the system memory in designing the feedforward.

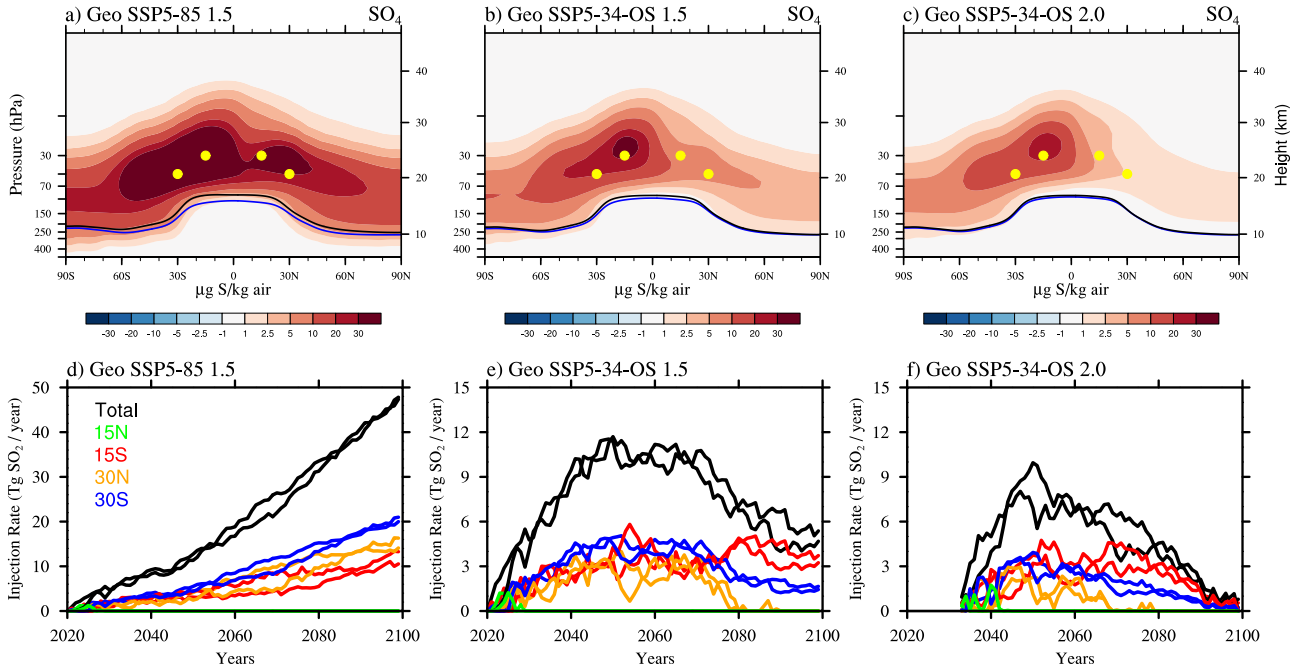
For the feedback correction, the same proportional-integral control law as in Kravitz et al. (2017) was used here. Thus in each year of the simulation, the desired values for each of the three basis functions of AOD are computed as the sum of that year’s best-estimate value (the feedforward), and a two-term feedback correction, as

$$780 \quad \underbrace{S[k+1]}_{\text{desired AOD}} = \underbrace{\hat{S}[k+1]}_{\text{best-estimate}} + \underbrace{K_p(T[k] - T_{goal})}_{\text{proportional}} + \underbrace{K_i \sum_{j=0}^k (T[j] - T_{goal})}_{\text{integral}} \quad (\text{A1})$$

Where the proportional term (with gain  $K_p$ ) only reacts to the temperature error in the previous year, and the integral term (with gain  $K_i$ ) is required to ensure zero steady-state error (the correction in response to the integrated error will continue to build as long as there is nonzero bias in the error).

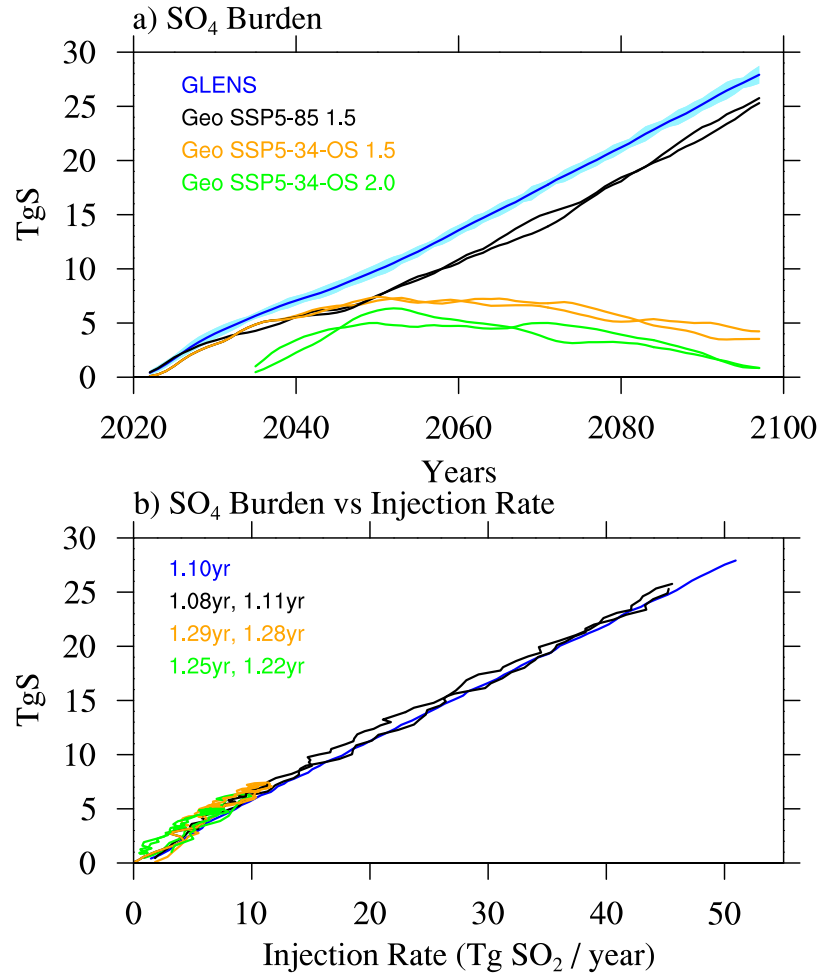


**Figure 1.** Top panel: Annual surface air temperature evolution for [2 ensemble members](#) of the business as usual case (SSP5-85), the overshoot case that is following business as usual until 2040 and then starting strong mitigation and carbon dioxide removal (SSP5-34-OS), and for 3 different SAG scenarios: based on the SSP5-85 baseline scenario and applying sulfur injections to reduce warming to 1.5°C above pre-industrial (PI) conditions (Geo SSP5-85 1.5); based on the SSP5-34-OS and reducing warming to 1.5°C above PI (Geo SSP5-34-OS 1.5), and based on the SSP5-34-OS and reducing warming to 2.0°C above PI (Geo SSP5-34-OS 2.0). A ten year running mean has been applied to all the timeseries. Black lines indicate the 1850-1900 temperature average (pre-industrial (PI) control temperatures) and the 1.5°C and 2.0°C surface air temperatures above PI control. Bottom panel: Concentrations of carbon dioxide (CO<sub>2</sub>), dotted lines, and methane (CH<sub>4</sub>), solid line, for the 2 baseline simulations.

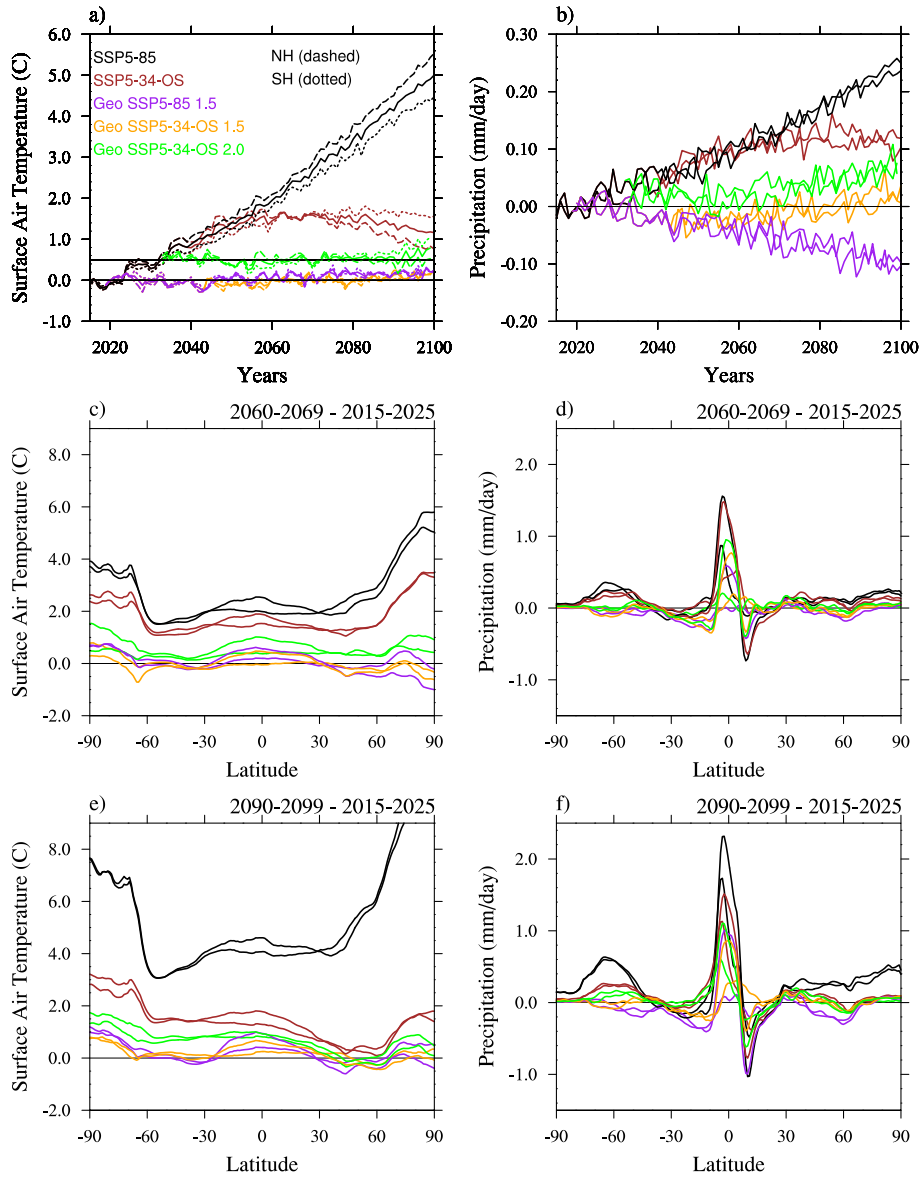


**Figure 2.** Top row: Difference of zonally and annually averaged sulfate  $\text{SO}_4$  burden between [the ensemble average of](#) stratospheric sulfur injection cases in 2070–2089 and the control experiment for the same period for Geo SSP5-85 ([left panel a](#)), Geo SSP5-34-OS 1.5 ([middle panel b](#)), and Geo SSP5-34-OS 2.0 ([right panel c](#)). The lapse rate tropopause is indicated as a black line for the control and a blue line for the  $\text{SO}_2$  injection cases. Yellow dots indicate locations of injection. Bottom row: Injection rate in  $\text{Tg SO}_2/\text{year}$  for the three cases as in the top row ([including two ensemble members](#)): total injections (black), injections at  $15^\circ\text{N}$  (green),  $15^\circ\text{S}$  (red),  $30^\circ\text{N}$  (orange), and  $30^\circ\text{S}$  (blue).



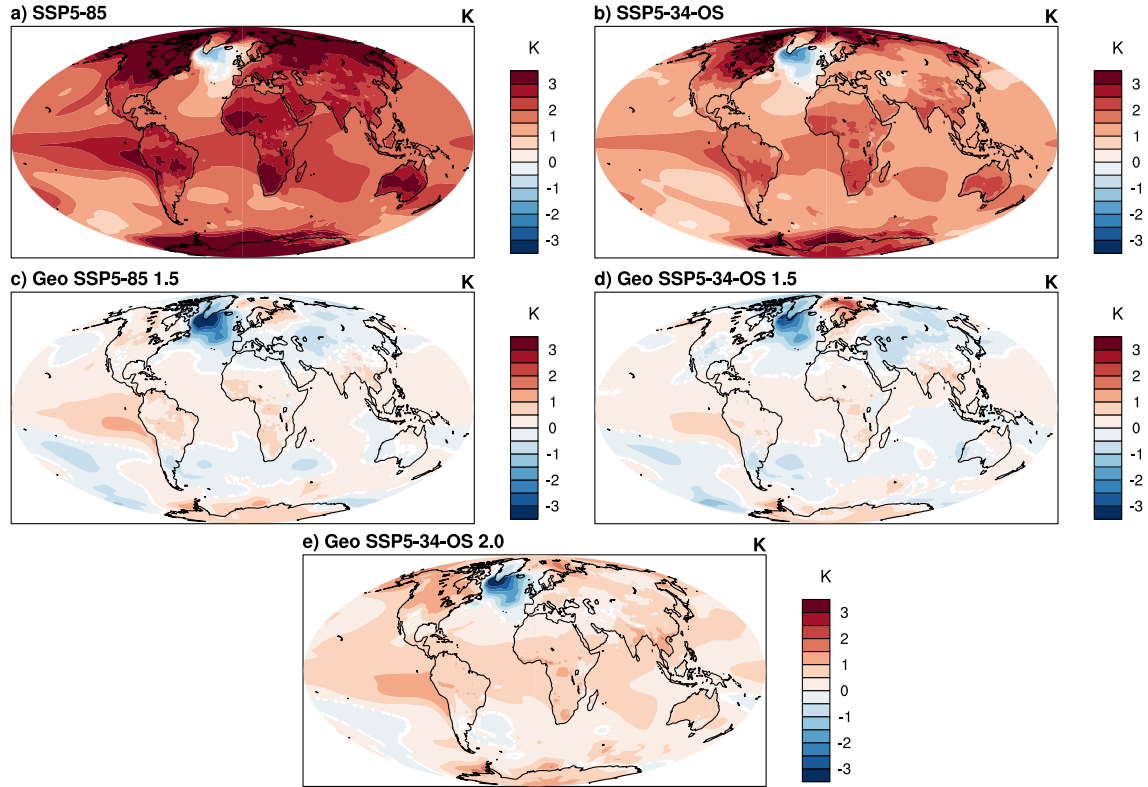


**Figure 3.** Annual averaged stratospheric sulfate aerosol burden in TgS for the geoengineering injection experiments minus the control with time (top-panel a) and injection rate (bottom-panel b). The stratospheric sulfate-lifetime-burden vs. injection amount (in units years) is listed in the bottom panel for the two ensemble members of each experiment. In addition to the model experiments performed in this study, we add result for the Geoengineering Large Ensemble (GLENS). See text more more-details.

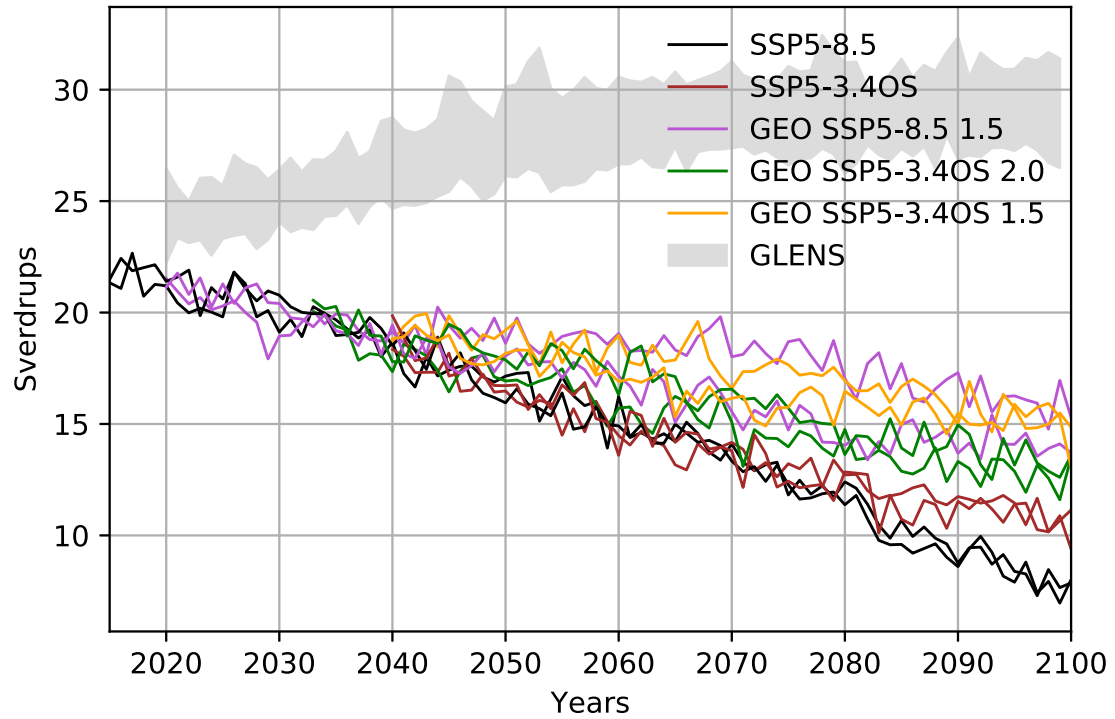


**Figure 4.** **Top-left panel a:** Time evolution of the ensemble mean area weighted annual mean surface air temperature with regard to 1850-1900 2010-2025 conditions, averaged over the globe (solid), over the Northern Hemisphere (dashed) and over the Southern Hemisphere (dotted) for different model experiments (different colors, see legend); **Top-right panel b:** Time evolution of area weighted annual precipitation with regard to 1850-1900-2015-2025 conditions for different model experiments and ensemble members (different colors); **Middle and bottom row:** differences for of zonal mean surface air temperatures (left panel c and e) and precipitation (right panel d and f) between with regard to 2015-2025 SSP5-85 conditions for values in 2060-2069 (middle) and 2090-99 (bottom) for the different model experiments (different colors) and 2015-2025 SSP5-85 conditions.

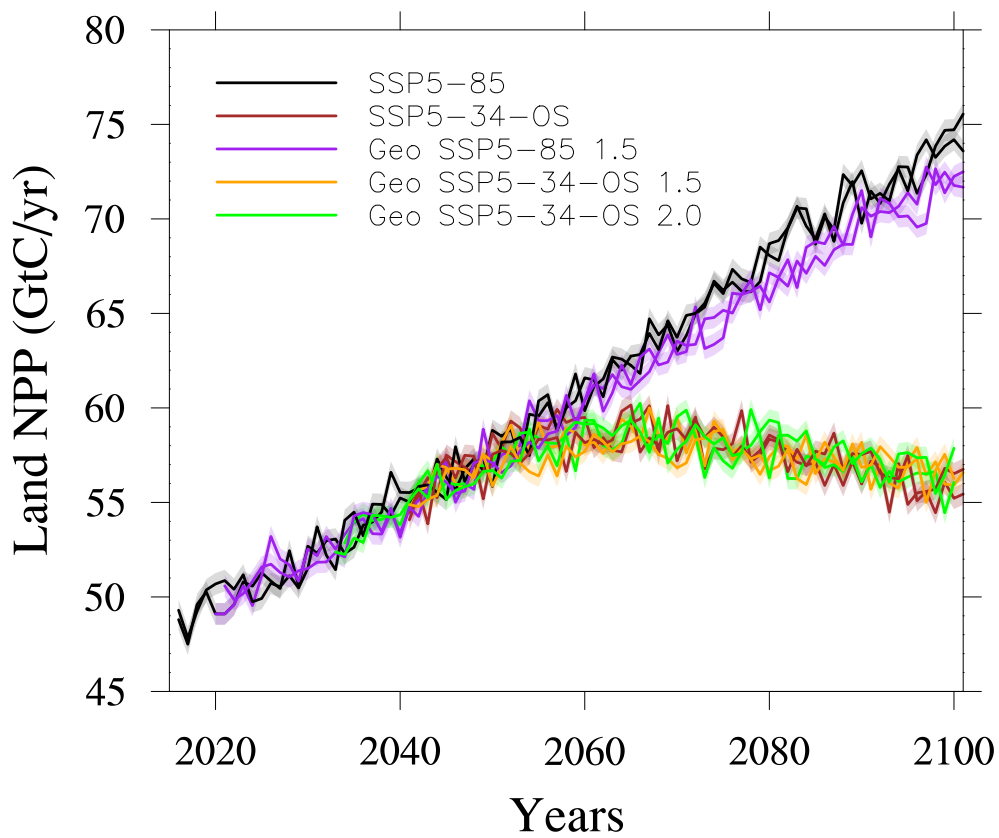
## Surface Air Temperature 2060-2069 minus 2015-2025



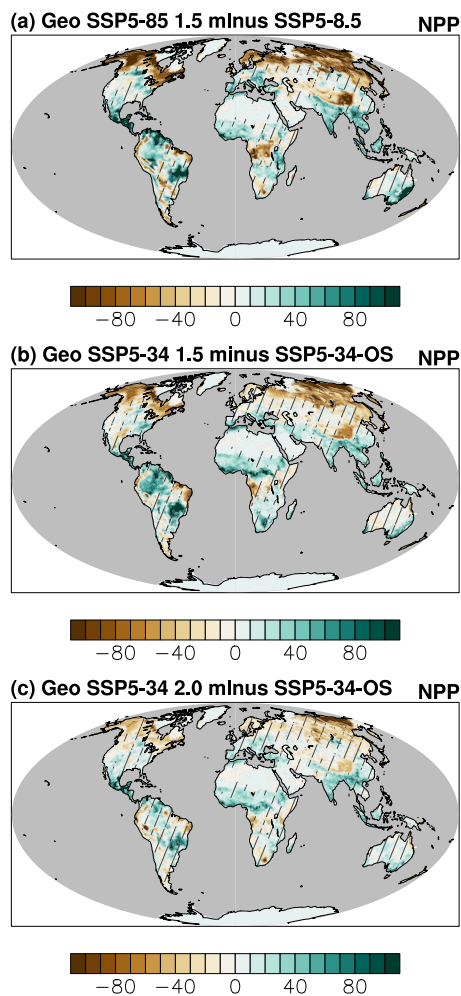
**Figure 5.** Surface Air Temperature Ensemble-mean surface air temperature difference between 2060–69 and 2015–2025 for SSP5-85 and SSP5-35-OS (top panels a and b), Geo SSP5-85 1.5 and Geo SSP5-34-OS 1.5 (middle panels c and d) and Geo SSP5-35-OS 2.0 (bottom panel e). Regions shaded in color are significant with 95% confidence.



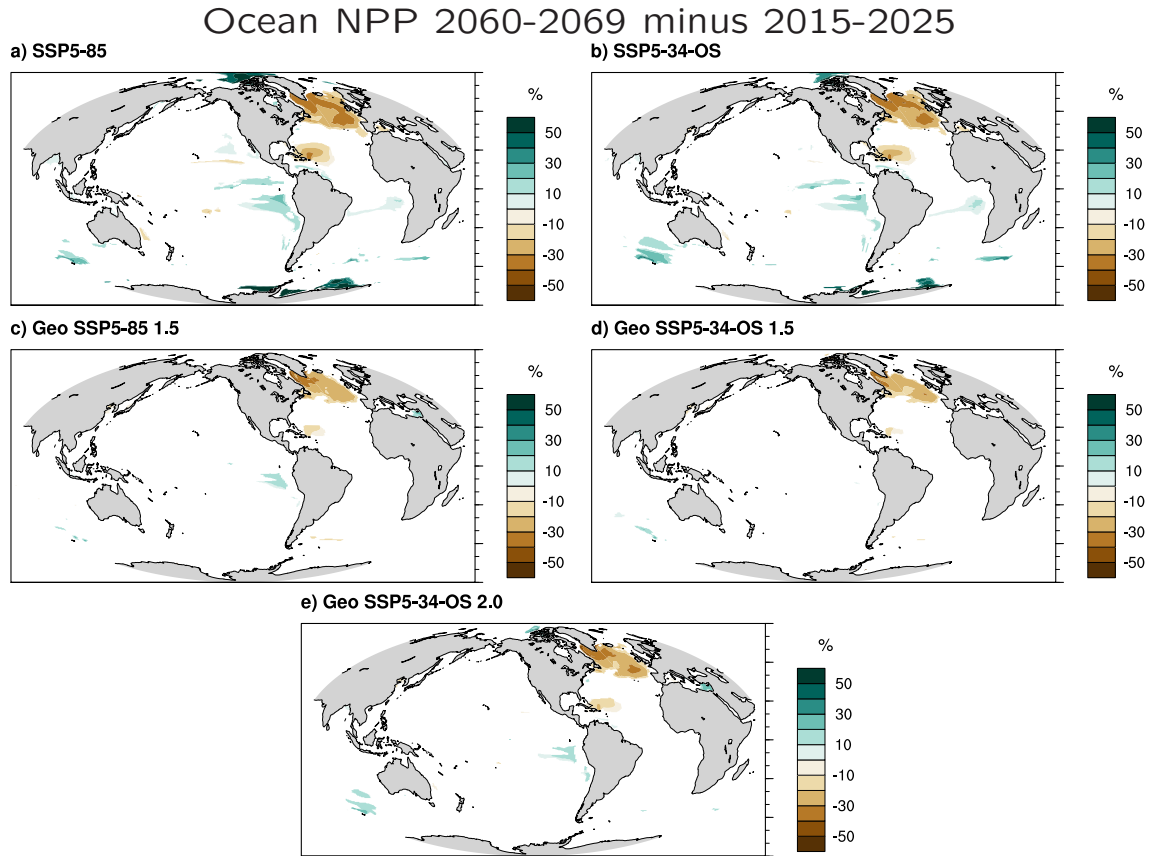
**Figure 6.** Evolution of the maximum North Atlantic Meridional Overturning Circulation strength from the AMOC index for the different ~~scenario's~~scenarios and ensemble members. Shaded grey area is AMOC index range in the 21-member GLENS ensemble. The AMOC index is defined as the maximum flux in the Atlantic Basin between 500m depth to the bottom, and between 28–90°N (Sverdrups).



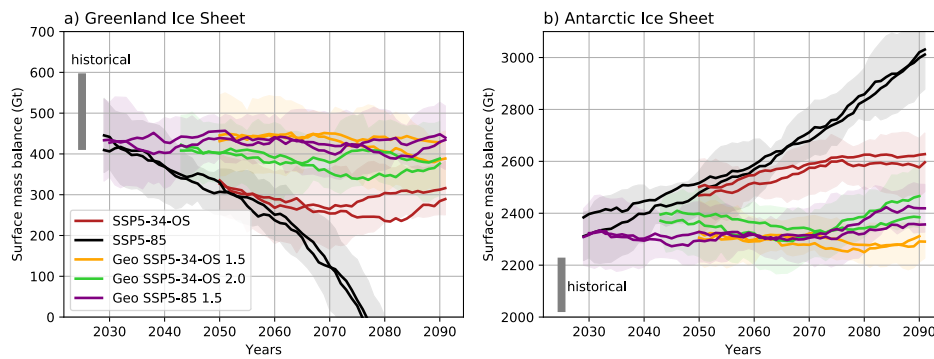
**Figure 7.** Annual land accumulated NPP (GtC/yr) in baseline and SAG scenarios [and ensemble members](#) (different colors are indicated in legend). The shaded area is 1 standard deviation of 450 years pre-industrial control simulation.



**Figure 8.** ~~Land~~Ensemble mean land accumulated NPP difference ( $\text{gC/m}^2/\text{yr}$ ) between 2060-69 for Geo SSP5-85 1.5 and SSP5-85 (~~top~~ panel a), Geo SSP5-34-OS 1.5 and SSP5-34-OS (~~middle~~ panel b), and Geo SSP5-34-OS 2.0 and SSP5-34-OS (~~bottom~~ panel c). Hatched regions are areas with changes within 1 standard deviation of 450 years pre-industrial control simulation.

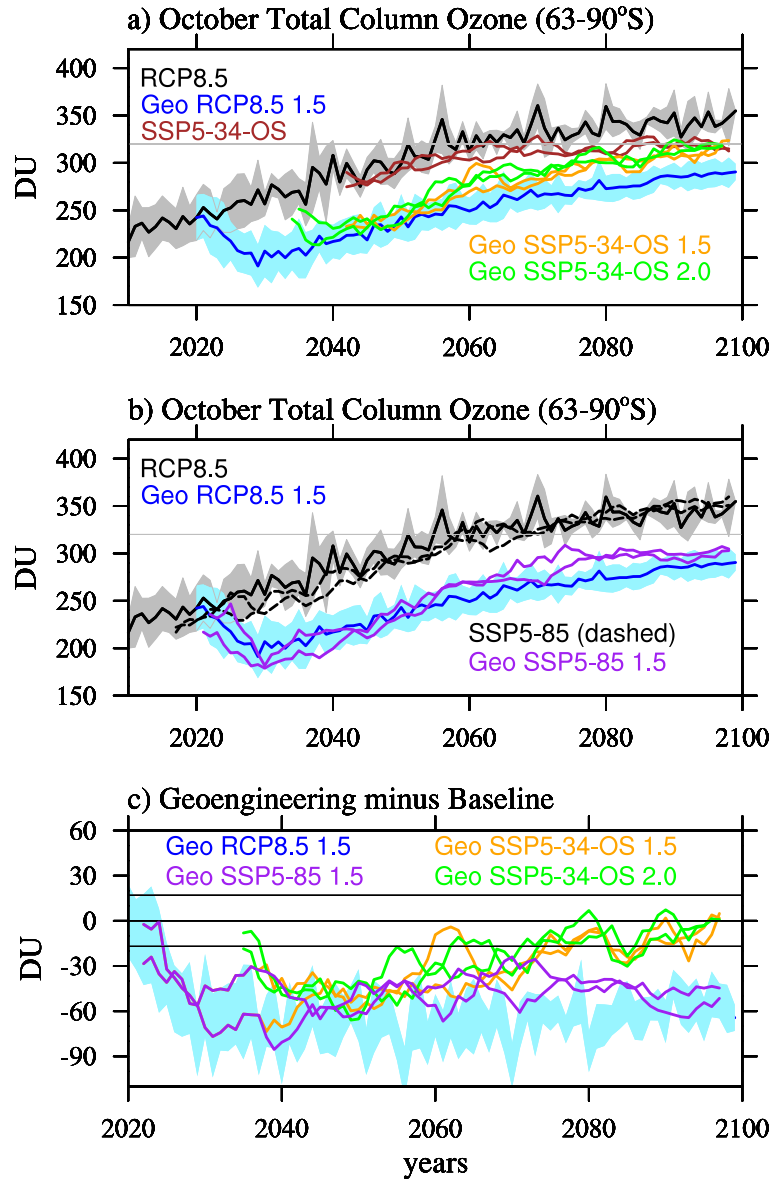


**Figure 9.** ~~Percent~~ Ensemble mean percent difference in ocean net primary productivity (NPP) in ~~2060-2069~~ 2060-2069 from ~~2015-2024~~ 2015-2025. Regions shaded in color are significant with 95% confidence.

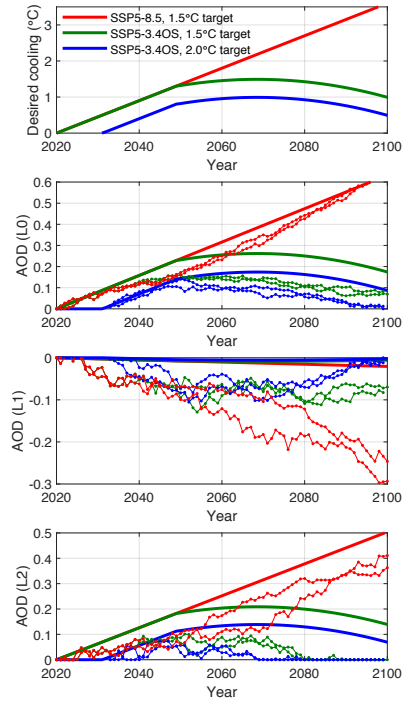


**Figure 10.** Mean ice sheet surface mass balance (SMB) in Gt per year ~~with shading indicating the~~. Shading indicates standard deviation of one of the members, calculated after detrending the time series using empirical model decomposition. A 20-year running mean has been applied to filter out year-to-year variability. For the GrIS (~~left~~-panel a), the area of integration is the contiguous ice sheet (1,699,077 km<sup>2</sup>). For the AIS (~~right~~-panel b), the area of integration is the grounded ice sheet (12,028,595 km<sup>2</sup>). The solid grey bar indicates the +/- 1 standard deviation SMB over the period 1960-1999 in CESM2(WACCM) for reference.



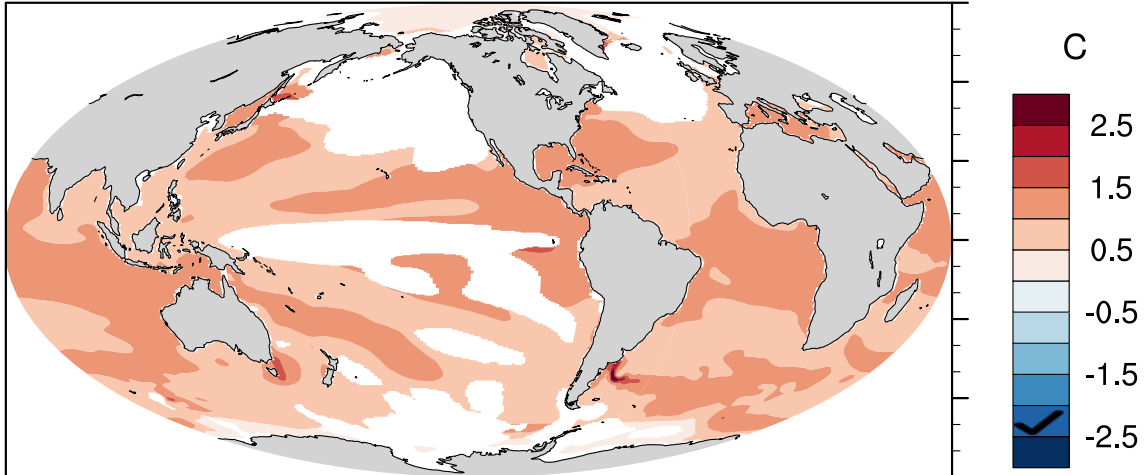


**Figure 11.** ~~Top and middle panel:~~ October averaged total column ozone between 63-90°S for different model experiments and ensemble members (different colors) (panel a and b). Grey and and light blue areas show the standard deviation of the GLENS ensemble and the light grey line indicates 1980 values. ~~Bottom panel, Panel c:~~ differences between geoengineering and ~~control~~ corresponding baseline experiments, the two black lines around zero indicate the standard deviation from the GLENS baseline simulations. A running mean over 5 years has been applied to results from the one-member simulations.

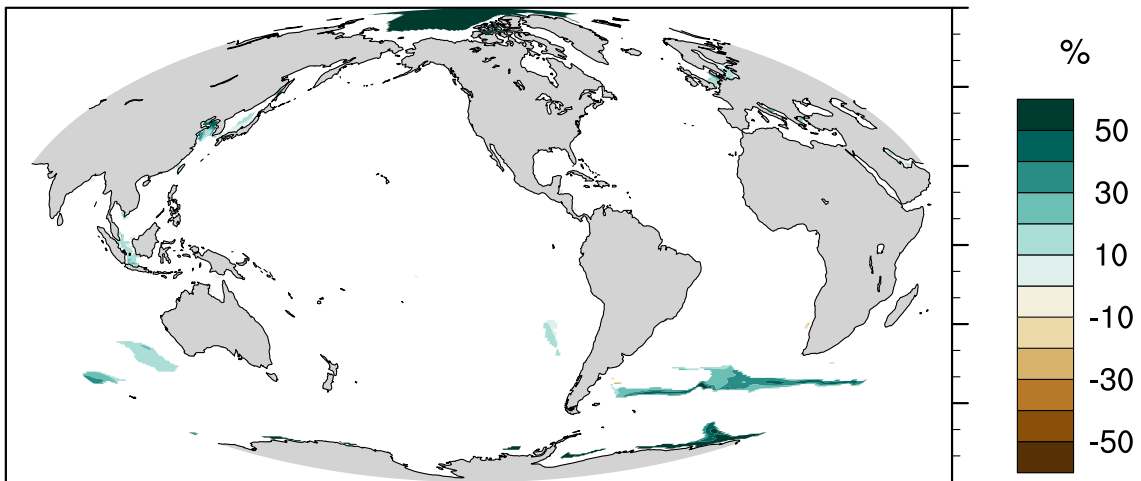


**Figure A1.** Feedforward used in simulations. Top panel shows the fit to the desired temperature reduction for different cases. Remaining panels show both the feedforward (best-guess for desired AOD prior to conducting the simulation) and actual AOD after feedback correction (dotted lines) for the global-mean AOD (L0), the projection of the AOD onto  $\sin(\text{lat})$  (the interhemispheric gradient L1), and the projection onto a quadratic (the equator-to-pole gradient L2). There is substantial error in the initial guess, due to a combination of uncertainty, nonlinearity, and making the feedforward in a given year only proportional to the desired temperature reduction in that year; this illustrates the importance of using a feedback algorithm to correct these initial guesses.

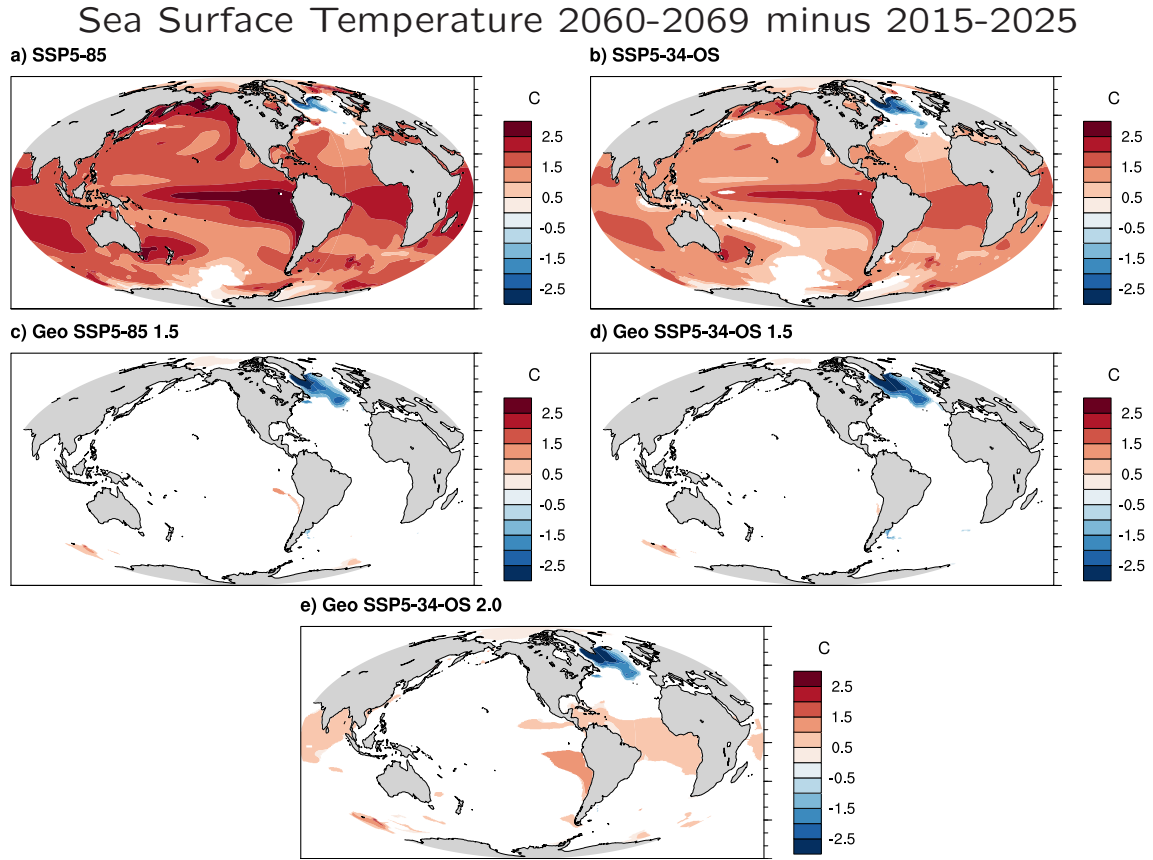
**a) SSP5-85 SST 2015-2025 minus PI**



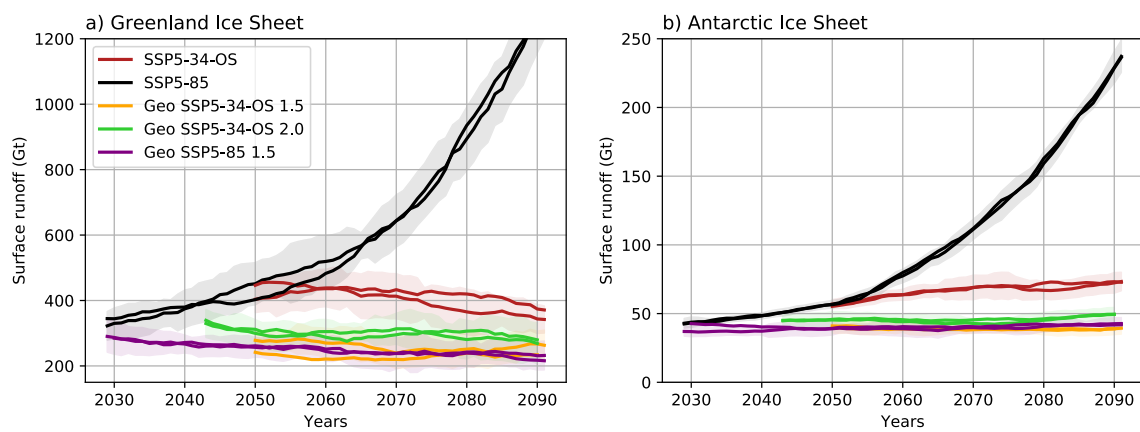
**b) SSP5-85 NPP 2015-2025 minus PI**



**Figure A2.** Simulated sea surface temperature (SST) anomaly (panel a) and % change in net primary productivity (NPP) (panel b) in SSP5-8.5 2015–2025 relative to pre-industrial long term means. Regions shaded in color are significant with 95% confidence.



**Figure A3.** Ensemble mean sea surface temperature (SST) in 2060–2069 relative to 2015–2025 for different scenarios (different panels).  
Regions shaded in color are significant with 95% confidence.



**Figure A4.** Mean ice sheet runoff in Gt per year. Shading indicates standard deviation of one of the members, calculated after detrending the time series using empirical model decomposition. A 20-year running mean has been applied to filter out the high year-to-year variability. The area of integration is the same as in Figure 10.