

Anna L. Merrifield
Universitätstrasse 16, 8092 Zürich
Switzerland
☎ +41 (78) 660 6670
✉ anna.merrifield@env.ethz.ch

Earth System Dynamics
An EGU Journal

May 13, 2020

Dear Dr. Milinski,

We have resubmitted the article *A weighting scheme to incorporate large ensembles in multi-model ensemble projections* by Anna L. Merrifield, Lukas Brunner, Ruth Lorenz, Iselin Medhaug, and Reto Knutti (please note additional author, Iselin Medhaug) to be considered for publication in *Earth System Dynamics*. We have made substantial changes to the document in line with reviewer comments and have provided a side-by-side document comparison to try to capture the scope of changes. Please let us know if an additional track change document is necessary and we will do our best to provide one.

We have followed through with our response to the reviewers (submitted prior) and hope you find your two fundamental questions addressed: (1) Similarity between the output from two simulations can either indicate that the underlying models are not independent and share biases, or indicate that two independent models are converging on the truth and (2) Realisations generated by the same model should have identical performance. For (1), we explore known vs. model output-assumed dependencies and propose a separate set of predictors that are independent of performance, such that models are not penalized for converging to truth. For (2), we fix initial condition member performance to be the same and treat initial condition ensembles as models throughout the manuscript. Thank you for your consideration and please let us know if an additional revised point-by-point response to the reviewers is necessary.

Sincerely,

Anna L. Merrifield

Compare Results

Old File:

ESD_Merrifield_Old.pdf

30 pages (16.20 MB)

13.05.20, 15:42:39

versus

New File:

ESD_Merrifield_Rev.pdf

36 pages (14.36 MB)

13.05.20, 16:07:54

Total Changes

437

Text only comparison

Content

196 Replacements

135 Insertions

106 Deletions

Styling and Annotations

0 Styling

0 Annotations

[Go to First Change \(page 1\)](#)

A weighting scheme to incorporate large ensembles in multi-model ensemble projections

Anna L. Merrifield¹, Lukas Brunner¹, Ruth Lorenz¹, Iselin Medhaug¹, and Reto Knutti¹

¹Institute for Atmospheric and Climate Science, ETH Zurich, Zurich, Switzerland

Correspondence: Anna L. Merrifield (anna.merrifield@env.ethz.ch)

Abstract. Multi-model ensembles can be used to estimate uncertainty in projections of regional climate, but this uncertainty often depends on the constituents of the ensemble. The dependence of uncertainty on ensemble composition is clear when single model initial condition large ensembles (SMILEs) are included within a multi-model ensemble. SMILEs represent internal variability, a non-negligible component of uncertainty on regional scales, but also may serve to inappropriately narrow uncertainty by giving a single model many additional votes. In advance of the mixed multi-model, SMILE Coupled Model Intercomparison version 6 (CMIP6) ensemble, we investigate weighting approaches to incorporate 50-members of the Community Earth System Model (CESM1.2.2-LE), 50-members of the Canadian Earth System Model (CanESM2-LE), and 100-members of the MPI Grand Ensemble (MPI-GE) into an 88-member Coupled Model Intercomparison Project Phase 5 (CMIP5) ensemble. The weights assigned are based on ability to reproduce observed climate (performance) and scaled by a measure of redundancy (dependence). Surface air temperature (SAT) and sea level pressure (SLP) predictors are used to determine the weights, and relationships between present and future predictor behavior are discussed. Estimated residual thermodynamic trend is proposed as an alternative predictor to replace 50-year regional SAT trends, which are more susceptible to internal variability.

Uncertainty in estimates of Northern European winter and Mediterranean summer end-of-century warming is assessed in a CMIP5 and a combined SMILE-CMIP5 multi-model ensemble. Five different weighting strategies to account for the mix of initial condition (IC) ensemble members and individually represented models within the multi-model ensemble are considered. Allowing all multi-model ensemble members to receive either equal weight or solely a performance weight (based on root-mean-square-error (RMSE) between member and observations over nine predictors) is shown to lead to uncertainty estimates that are dominated by the presence of SMILEs. A more suitable approach includes a dependence assumption, scaling either by N, the number of constituents representing a "model", or by the same RMSE distance metric used to define model performance. SMILE contributions to the weighted ensemble are smallest (< 12%) when a "model" is defined as an IC ensemble, and increase slightly (< 24%) when the definition of "model" expands to include members from the same institution/development stream. SMILE contributions increase further when dependence is defined by RMSE (over nine predictors) amongst members because RMSEs between SMILE members can be as large as RMSEs between SMILE members and other models. We find that an alternative RMSE distance metric, derived from global SAT and hemispheric SLP climatology, is able to better identify IC member in general and SMILE members in particular as members of the same model. Further, more subtle dependencies associated with resolution differences and component similarities are also identified by the global predictor set.

1 Introduction

Projections of regional climate change are both key to climate adaptation policy and fundamentally uncertain due to the nature of the climate system (Deser et al., 2012; Kunreuther et al., 2013). In order to represent regional climate uncertainty to policy-makers, scientists often turn to multi-model ensembles to provide a range of plausible outcomes a region may experience (Tebaldi and Knutti, 2007). Uncertainty in a multi-model ensemble is commonly estimated from the ensemble spread, which can be represented e.g., as the 5-95% likely range of the distribution and is usually presented with respect to the arithmetic ensemble mean (e.g. Collins et al., 2013). This representation of uncertainty appears unambiguous, but is perhaps deceptively so. It is influenced by choices made in multi-model ensemble construction, choices that are often overlooked (Knutti et al., 2010a, b).

Multi-model ensembles, such as those constructed from Coupled Model Intercomparison Projects or CMIPs (Meehl et al., 2000), tend to be comprised of both different models and multiple members of the same model, subject to the same radiative forcing pathway intended to reflect plausible future emissions scenario (van Vuuren et al., 2011; O'Neill et al., 2014). This choice allows the multi-model ensemble to represent two types of regional-scale uncertainty: model uncertainty and internal variability (e.g. Hawkins and Sutton, 2009; Deser et al., 2012). Model uncertainty accounts for differences in how models simulate climate, from how the equations governing flow in the atmosphere are numerically solved to how sub-grid scale processes in the climate system are parameterized. Sub-grid scale processes are often the product of complex interactions and feedbacks between the land surface, ocean, cryosphere, and atmosphere, many of which can not be directly measured (e.g. Seneviratne et al., 2010; Deser et al., 2015). How models estimate these interactions can result in various advantages and limitations in regional climate representation, and thus affect regional uncertainty estimates.

By considering differences in regional "performance", it becomes clear that uncertainty is affected by the assumption that each member of a multi-model ensemble is an equally plausible representation of observed climate. Known biases associated with cloud processes, land-atmosphere interactions, and sea surface temperature (e.g. Boberg and Christensen, 2012; Li and Xie, 2012; Pithan et al., 2014; Merrifield and Xie, 2016) may result in more uncertainty in projections of future climate than is warranted given our understanding of the climate system (Vogel et al., 2018). Using expert judgement to weight or select multi-model ensemble members based on process- or region-specific metrics of performance has been shown to justifiably constrain uncertainty in other studies (e.g. Abramowitz et al., 2008; Knutti et al., 2017; Lorenz et al., 2018).

The second type of uncertainty, internal variability, reflects the regional influence of the amalgamation of unpredictable fluctuations in the climate system (Hawkins and Sutton, 2009; Deser et al., 2012; Knutti and Sedláček, 2013). Internal variability is ostensibly a feature of the climate system and manifests itself in climate variables, such as regional surface air temperature (SAT), through a complex set of controlling influences, chief among them being variability in the attendant atmospheric circulation (Wallace et al., 1995, 2015; Branstator and Teng, 2017). The influence of internal atmospheric variability on SAT can be quantified and accounted for in projections of future climate using dynamical adjustment methods (e.g. Deser et al.,

60 2016; Sippel et al., 2019). Additionally, internal variability can be explicitly represented by sets of simulations from the same model, subject to identical forcing, where members differ only by initial conditions (e.g. Kay et al., 2015; Maher et al., 2019). These single model initial condition large ensembles or SMILEs have become an indispensable tool to concisely represent uncertainty within a model, information that should be considered in a multi-model ensemble context (Rondeau-Genesse and Braun, 2019).

65 The prospect of including SMILE members into a multi-model ensemble directly challenges another assumption that tends to be made when calculating probabilistic estimates from multi-model ensembles: each member is an independent representation of climate. Though all members of a multi-model ensemble describe the same climate system, differences in model structure and internal variability create a distribution of regional climate change estimates. Differences in model structure are often welcome; for many applications, distributions comprised of several models are hypothesized to reflect the range of possible
70 climate outcomes better than distributions from a single model (Abramowitz et al., 2019). When different models (that are deemed independent from each other) agree, there is a notion of robustness and increased certainty in the outcome. Ultimately, there is also a notion that as models improve, there will be a "convergence to reality" with models independently simulating the same "right" outcome.

In reality, however, members of a multi-model ensemble are often dependent entities. Narrowing of uncertainty comes
75 through redundant representation of historical and future climate, rather than through the independent simulation of the "right" outcome (Herger et al., 2018). Redundancy within a multi-model ensemble can arise from different models having similar biases with respect to observations. Models have historically shared code, from parametrization schemes to full components, and tend to have the same limitations associated with resolution (i.e., simplified topography) (Masson and Knutti, 2011; Knutti et al., 2013; Boé, 2018). These commonalities can cause similar climate trajectories amongst models with different names,
80 complicating the notion of "convergence to reality" through dependence of differently named models. Another clear contributor to redundancy is multiple initial condition (IC) ensemble members that project climate trajectories which only differ by internal variability; similar trajectories are likely to exist amongst the 50 to 100 members of a SMILE. It is therefore important when assembling a multi-model ensemble that uncertainty estimates reflect that not every member is an independent entity (Pennell and Reichler, 2011).

85 What constitutes an independent entity within a multi-model ensemble remains a topic of debate (Annan and Hargreaves, 2017; Abramowitz et al., 2019). Independence can be decided *a priori*, i.e., that a model, as defined by its name, is an independent entity. This choice renders IC members dependent. It could also be decided that only models from different institutions of origin are independent entities, as in the "same-center hypothesis" explored by Leduc et al. (2016). In the absence of knowledge of model origin and development, independent entities could instead be defined using statistical properties of model
90 outputs (Masson and Knutti, 2011; Bishop and Abramowitz, 2013). In this *a posteriori* definition, models may have a degree of independence, rather than simply an independent or dependent designation (Knutti et al., 2017).

Regardless of how dependent/independent entities are defined, it is important that dependence is accounted for and redundancy mitigated in order avoid an overconfident, inappropriately narrow distributions of future change (Leduc et al., 2016; Abramowitz et al., 2019). Dependent information reduction can be achieved through subsetting, where information deemed

95 dependent is discarded, or through a weighting scheme, where information is scaled by degree of dependence. In this study, we evaluate if a performance and independence weighting scheme (Knutti et al., 2017; Lorenz et al., 2018; Brunner et al., 2019) can be used to include three SMILEs into a CMIP5 multi-model ensemble and provide a justifiably constrained estimate of European regional end-of-century warming uncertainty. Northern European winter and Mediterranean summer SAT changes between the 1990-2009 and 2080-2099 mean state are considered. We discuss details of the weighting method including
100 emergent predictor relationships and optimal parameter choices for attempting to comprehensively characterize member performance while separating independent information from information known to have common origin (SMILE members). We highlight a new metric, estimated residual thermodynamic trend, which can be used as an alternative to trend-based metrics that do not optimally reflect a model's performance on regional scales. We compare how five different weighting strategies, based on different independence assumptions, constrain uncertainty in a CMIP5 multi-model ensemble with and without the SMILEs
105 included. Weighted SMILE contributions in each CMIP5-SMILE "ALL" ensemble are explicitly computed. The five weighting strategies come from the continuum of assumptions that can arise in multi-model ensemble construction: (1) all members are independent and equally plausible (equal weighting), (2) some members are more realistic than others (performance weighting), (3,4) members from the same model are dependent (1/N scaling, N being number of IC members or modelling center contributions), and (5) all members are dependent to some degree (RMSE distance metric scaling). For the last approach, we
110 demonstrate that an RMSE dependence scaling that groups SMILE members and distinguishes them from other models can be obtained using on large-scale, long term SAT and sea level pressure (SLP) climatology fields. The SMILEs, CMIP5, and observational datasets used in the weightings are described in Section 2, while the weighting schemes are detailed in Section 3. The influence of SMILE inclusion on the weighting under different independence assumptions and the predictor set that identifies SMILE members as dependent entities based on RMSE distance are discussed in Section 4. To close, conclusions
115 and discussion is presented in Section 5.

2 Data

✖ The multi-model ensemble used in this study is comprised of members from the CMIP5 archive and three SMILEs: a 50-member ensemble generated using the Community Earth System Model version 1.2.2 (CESM1.2.2-LE), the 50-member Canadian Earth System Model version 2 large ensemble (CanESM2-LE), and the 100-member Max Planck Institute for Meteorology
120 Grand Ensemble (MPI-GE). This combined CMIP5-SMILE ensemble ✖ ✖ ✖ is summarized in Table 1, which lists the name of each model and the members used. A similar CMIP5 multi-model ensemble was used in Lorenz et al. (2018) and Brunner et al. (2019) and features 88 members from 40 (named) model setups, including 13 initial condition ensembles ranging from 2 to 10 members. Additionally, NOAA GISS contributes 3 different physics setups for the GISS-E2-H and GISS-E2-R experiments, which we treat as a "p1" 2 member IC ensemble, a p2 member, and a "p3" 2 member IC ensemble (Table 1). In Table 1,
125 initial condition ensembles are indicated in italic and SMILEs are indicated in bold with a star. Horizontal lines denote modelling center/known development streams that are grouped as dependent entities under the fourth independence assumption we investigate ✖ ✖

Table 1. Summary of the CMIP5 + SMILE Multi-Model Ensemble used in this study. Initial condition ensembles within CMIP5 are indicated in italics. SMILEs are indicated in bold with a star. Modelling center/development streams groupings are separated by horizontal lines.

Group	Model	Members Used	Group	Model	Members Used
ACCESS	ACCESS1-0	rlilp1	NASA GISS (cont.)	GISS-E2-R-CC	rlilp1
	ACCESS1-3	rlilp1		<i>GISS-E2-R</i>	<i>r(1-2)ilp1</i>
NCAR	BNU-ESM	rlilp1		<i>GISS-E2-R</i>	rlilp2
	<i>CCSM4</i>	<i>r(1-6)ilp1</i>		<i>GISS-E2-R</i>	<i>r(1-2)ilp3</i>
	CESM1-BGC	rlilp1	MOHC	HadGEM2-AO	rlilp1
	<i>CESM1-CAM5</i>	<i>r(1-3)ilp1</i>		HadGEM2-CC	rlilp1
CMCC	CESM1.2.2-LE*	r(0-49)ilp1		<i>HadGEM2-ES</i>	<i>r(1-4)ilp1</i>
	CMCC-CESM	rlilp1	IPSL	<i>IPSL-CM5A-LR</i>	<i>r(1-3)ilp1</i>
	CMCC-CMS	rlilp1		IPSL-CM5A-MR	rlilp1
	CMCC-CM	rlilp1		IPSL-CM5B-LR	rlilp1
CCCma	<i>CNRM-CM5</i>	<i>r(1,2,4,6,10)ilp1</i>	MIROC	MIROC-ESM	rlilp1
	<i>CSIRO-Mk3-6-0</i>	<i>r(1-10)ilp1</i>		MIROC-ESM-CHEM	rlilp1
	CanESM2-LE*	r(1-50)ilp1		<i>MIROC5</i>	<i>r(1-3)ilp1</i>
	<i>CanESM2</i>	<i>r(1-5)ilp1</i>	MPI-M	<i>MPI-ESM-LR</i>	<i>r(1-3)ilp1</i>
NOAA GFDL	<i>EC-EARTH</i>	<i>r(1,2,8,9,12)ilp1</i>		MPI-ESM-MR	rlilp1
	FGOALS-g2	rlilp1		MPI-GE*	r(1-100)ilp3*
	<i>FIO-ESM</i>	<i>r(1-3)ilp1</i>	MRI	MRI-CGCM3	rlilp1
	GFDL-CM3	rlilp1		MRI-ESM1	rlilp1
NASA GISS	GFDL-ESM2G	rlilp1	NCC	NorESM1-M	rlilp1
	GFDL-ESM2M	rlilp1		NorESM1-ME	rlilp1
	GISS-E2-H-CC	rlilp1	BCC	bcc-csm1-l-m	rlilp1
	<i>GISS-E2-H</i>	<i>r(1-2)ilp1</i>		bcc-csm1-l	rlilp1
	GISS-E2-H	rlilp2		inmcm4	rlilp1
	<i>GISS-E2-H</i>	<i>r(1-2)ilp3</i>	Total		288 members

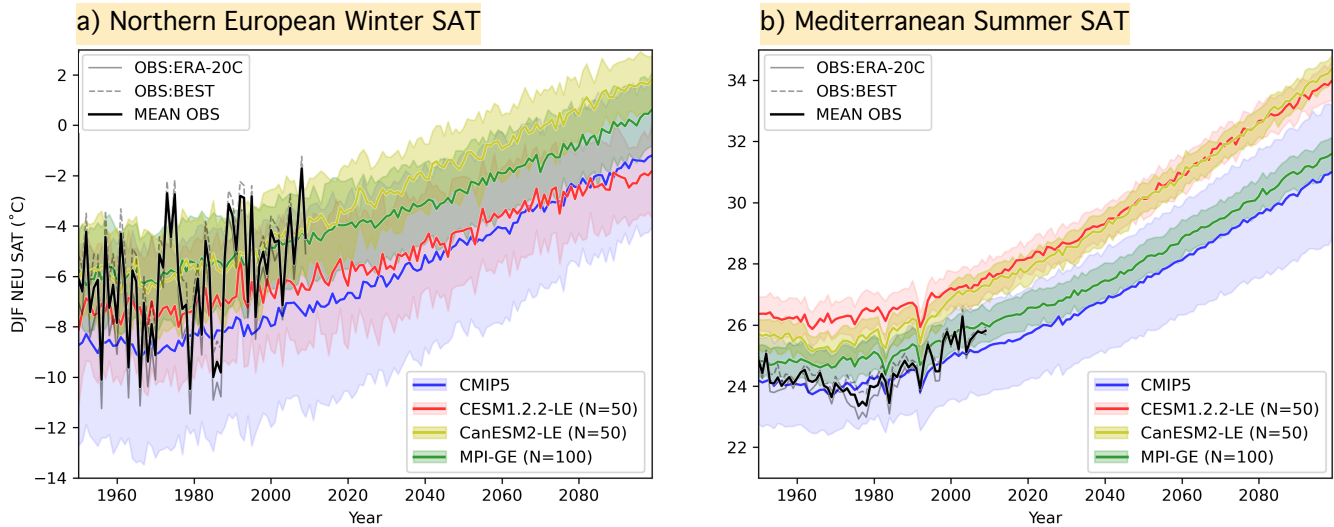


Figure 1. Observational estimates (OBS) and the ensemble mean and spread ($\pm 1\sigma$) of a) DJF NEU and b) JJA MED SAT ($^{\circ}\text{C}$) for the CMIP5 ensemble (blue), the CESM1.2.2 large ensemble (red), CanESM2 large ensemble (yellow), and the MPI grand ensemble (green). The ensemble mean of each ensemble is shown by a solid line and the ensemble spread is shown by the shading. The number of members, N , in each ensemble is indicated in the legend. The two OBS datasets, ERA-20C Temperature and the Berkeley Earth Surface Temperature (BEST) product, are shown in solid gray and dashed gray respectively. Their average, used to determine member performance, is shown in solid black.

The CESM1.2.2-LE used in this study was derived from a 4700-yr CESM control simulation with constant preindustrial forcing generated at ETH Zürich (Sippel et al., 2019). CESM1.2.2 uses the Community Atmosphere Model, version 5.3 (CAM5.3) and has a horizontal atmospheric resolution of $1.9^{\circ} \times 2.5^{\circ}$ with 30 vertical levels (Hurrell et al., 2013). The preindustrial control run was branched at 20-year intervals, starting from the year 580, to create an ensemble with "macro" initial conditions, i.e., different coupled initial conditions picked from well separated start dates (Stainforth et al., 2007; Hawkins et al., 2016). Members of the macro initial condition ensemble were run from 1850-1940 driven by historical CMIP5 forcing (Meinshausen et al., 2011). At year 1940, each macro initial condition member was branched into four different realizations, each subject to an atmospheric temperature perturbation of 10^{-13} to create "micro" initial condition ensembles (Hawkins et al., 2016). From these micro initial condition ensembles, 50 members were selected for the CESM1.2.2-LE (specifically, 4 micro ensemble members from macro ensemble members 1 through 12 and 2 micro ensemble members from macro ensemble member 13).

The MPI-GE was generated using the low resolution set up of the MPI Earth System Model (MPI-ESM1.1) (Giorgetta et al., 2013). The 100 member ensemble has macro initial conditions: a preindustrial control simulation was branched on the first of January for selected years between 1874 and 3524 to sample different states of a stationary and volcano-free 1850 climate (Maher et al., 2019). The MPI-GE uses ECHAM6.3 run in a T63L47 configuration (Stevens et al., 2013) as its atmospheric component for a horizontal resolution of approximately 1.8° .

The CanESM2-LE (Arora et al., 2011) was initiated from the 5 CanESM2 members contributed to CMIP5 (which are included in our CMIP5 basis multi-model ensemble). As with CESM1.2.2, the CanESM2 large ensemble has a combination of macro and micro initial conditions. Macro initial conditions were taken from year 1950 of the 5 original CanESM2 members. Each were then branched 10 times with micro initial conditions (a random permutation to the seed used in the random number generator for cloud physics) to give a total of 50 members (Swart et al., 2018). The CanESM2-LE uses the CanAM4 atmosphere model run at a T63 spectral resolution.

The CMIP5 ensemble and three SMILEs are shown in terms of their ensemble mean and spread (± 1 standard deviation) in Figure 1, for the two region/seasons of interest: Northern European (NEU) winter (December-January-February; DJF) SAT (panel a) and Mediterranean (MED) summer (June-July-August; JJA) SAT (panel b). The NEU and MED regions used are the SREX regions defined in Seneviratne (2012). All models are forced with historical CMIP5 forcing from 1950–2005 followed by Representative Concentration Pathway 8.5 (RCP8.5) forcing from 2006–2099 (Meinshausen et al., 2011). The multi-model CMIP5 ensemble (Fig.1 blue) has a larger spread than the single model SMILEs, demonstrating that model uncertainty does rise above well-defined estimates of internal variability in the two European regions and seasons considered. The combined macro-micro perturbation CESM1.2.2-LE (Fig.1 red) has a larger ensemble spread than the CanESM2-LE (Fig.1 yellow), but, on average, warms less by end-of-century. The MPI-GE (Fig.1 green) has approximately the same amount of JJA MED warming as the CMIP5 ensemble average.

In addition to the multi-model ensemble, several observational estimates are used to assess model performance. Two global atmospheric reanalysis products, ERA-20C and NOAA-CIRES-DOE 20th Century Reanalysis V3 (NOAA-20C), represent observed SLP, while ERA-20C and a merged temperature data set, Berkeley Earth Surface Temperature (BEST), represent observed SAT. ERA-20C was created by European Centre for Medium-Range Weather Forecasts (ECMWF) and assimilates surface pressure and marine wind observations over the 20th century (1900–2010) into the IFS version Cy38r1 model (Poli et al., 2016). NOAA-20C, a co-effort between the National Oceanic and Atmospheric Administration (NOAA), the Cooperative Institute for Research in Environmental Sciences (CIRES), and the U.S. Department of Energy (DOE), assimilates surface pressure observations into the NCEP GFS v14.0.1 model to provide output from 1836–2015 (Compo et al., 2011; Slivinski et al., 2019). BEST was created to be an independent estimate of global temperature, obtained through spatiotemporal interpolation of in situ temperature measurements (Rohde et al., 2013).

The weighting can comprehensively account for observational uncertainty (Lorenz et al., 2018; Brunner et al., 2019), but for this study, we chose to use the average of two observational estimates in order to have a simple and straight-forward definition of climate within which the sensitivity of the weighting scheme can be interrogated. ERA-20C and NOAA-20C reanalyses were chosen because they provide temporally and spatially complete fields that extend back to 1950. Additionally, as reanalysis products are, after all, model-based, we chose a reanalysis product with both SLP and SAT available (ERA-20C), as well as SAT and SLP fields from different sources (NOAA-20C and BEST). We further used the SLP-SAT relationship to obtain the circulation-induced component of SAT, which is removed to obtain the estimated residual thermodynamic SAT trends (see Appendix A). Though all products are observational estimates, we henceforth refer to them as "observations" or "OBS" to distinguish them from members of the multi-model ensemble.

3 Weighting Schemes

The weighting strategies used to constrain uncertainty in this study are rooted in a combination performance and independence weighting metric developed by Knutti et al. (2017), following on the work of Sanderson et al. (2015a, b). Summarized in the subsections below, the five strategies considered arise from common assumptions surrounding plausibility and similarity made about constituents of multi-model ensembles. With the exception of the first strategy, which assigns each member an equal weight, the basic principle of the weighting is as follows: a member will receive a performance weight based on how closely it resembles observed climate (based on nine chosen predictors; detailed in the following section). That performance weight will then be divided by an independence scaling that represents whether (or to what degree) a member is identified as a "duplicate" of another member over the historical period. It is important to note that independence in this study is never determined by future behavior. Doing so would jeopardize the "agreement suggests robustness" paradigm by penalizing convergence. Rather, independence is either a model property decided upon beforehand or determined through RMSE distances between historical aspects of climate.

3.1 Equal Weighting

The first way in which the multi-model ensemble is weighted is by all members receiving a weight, w_i^I , of 1.

$$w_i^I = 1 \quad (1)$$

This equal weighting follows from the assumption that all multi-model ensemble members are independent and equally plausible and is sometimes referred to as a "model democracy" assumption (Knutti et al., 2010a; Knutti, 2010). In instances where SMILEs are incorporated into a multi-model ensemble, the equal weighting strategy is clearly flawed; 50-100 members from the same model is a clear voting advantage within the model democracy. However, equal weighting serves as a baseline handling of multi-model ensemble information against which other weighting strategies can be compared.

3.2 Performance Weighting

The second weighting strategy builds upon the first in that all members are still assumed to be independent, but some members are identified to be more realistic than others. Members are thus weighted (w_i^{II}) by a measure of performance, here, based on the numerator of the Knutti et al. (2017) weighting function.

$$w_i^{II} = e^{-\frac{D_i^2}{\sigma_D^2}} \quad (2)$$

The term D_i represents the RMSE distance between a multi-model ensemble member and observations; w_i^{II} decreases exponentially as members increasingly differ from observations ($D_i \gg 0$). A shape parameter σ_D dictates the width of the performance weight Gaussian, determining how far apart a member and observations must be to be down-weighted. For a smaller value of σ_D , models are more rapidly down-weighted as they diverge from observed climate which often results in a weighting where few models receive weights of meaningful magnitude. For a larger value of σ_D , models are not as strongly

penalized for not resembling observations which often results in a more even distribution of weights within the ensemble. Here, we select σ_D to be 0.4 in both region/seasons evaluated (further discussion in Appendix B).

210 3.3 1/N scaling, IC members

The third weighting strategy extends the performance weighting by including an independence assumption, making it suitable for the combined CMIP5-SMILE ensemble we evaluate. Each "model" gets a unique weight. The independent entity, "model", is assumed to be determinable by name (as listed in Table 1), which renders members of IC ensembles within the multi-model ensemble (the 13 within the CMIP5 ensemble and the 3 SMILEs) dependent entities. To achieve the model weighting, models
 215 that are represented by one member receive their performance weight w_i^{II} . Models that are represented by IC members receive an average of the performance weights of their N constituents ($\frac{1}{N} \sum_1^N e^{-\frac{D_i^2}{\sigma_D^2}}$). That average performance weight, scaled by N, is assigned to each IC member. Therefore, the weight each member receives, w_i^{III} , is:

$$w_i^{III} = \frac{\sum_1^N e^{-\frac{D_i^2}{\sigma_D^2}}}{N^2} \quad (3)$$

Each IC member is assigned the average performance weight of the IC ensemble (rather than its individually computed
 220 performance weight) to reflect the assumption that all IC members represent an equally likely outcome of the model. This choice accounts for the fact that when computed by RMSE, performance weights differ between IC members due to internal variability.

3.4 1/N scaling, modelling center

The fourth weighting strategy is identical to the third, but has a different definition of "model". The independent entity is
 225 determined not by name, but by a conjecture about model origin. Similar to the "same-center hypothesis" (Leduc et al., 2016), we group all members provided by a modelling center and/or in a known development stream (i.e., the CESM1.2.2-LE is grouped with the NCAR models, though it was run at ETH Zürich) as dependent entities. The weight of each model, w_i^{IV} , is computed as in the IC case, with averages taken over N, the number of members that constitute a model.

$$w_i^{IV} = \frac{\sum_1^N e^{-\frac{D_i^2}{\sigma_D^2}}}{N^2} \quad (4)$$

230 3.5 RMSE distance scaling

Finally, the fifth weighting strategy operates under the assumption that independence cannot necessarily be determined by model name, but shared biases in simulating historical climate can give an idea of dependence that comes from differently

named models sharing ideas and code. The RMSE weighting is the weighting proposed by Knutti et al. (2017), and features an independence scaling based on RMSE distance metrics in addition to the RMSE-derived performance weights (w_i^V).

$$w_i^V = \frac{e^{-\frac{D_i^2}{\sigma_D^2}}}{1 + \sum_{j \neq i}^M e^{-\frac{S_{ij}^2}{\sigma_S^2}}} \quad (5)$$

S_{ij} represents the distance between multi-model ensemble member i and multi-model ensemble member j . Unlike in the 1/N strategies, the independence scaling is based solely on S_{ij} , how far a member is from all the other members in the ensemble, and not on any prior knowledge of the multi-model ensemble member's origin. As with the performance weight, a shape parameter σ_S dictates the width of the Gaussian that is applied to the member pairs. σ_S represents how close a member must be to another member before they are considered dependent entities. For a member with no close neighbors ($S_{ij} \gg \sigma_S$), the independence scaling tends to 1, preserving the member's overall weight. For a member with many close neighbors ($S_{ij} \ll \sigma_S$), the independence scaling is greater than 1 and reduces its overall weight. For the CMIP5-SMILE ensemble, the goal is to select a σ_S that is large enough such that members of a SMILE are considered dependent entities, but not so large that the majority of multi-model ensemble members are considered dependent as well. Here, we select DJF NEU σ_S to be 0.25 and JJA MED σ_S to be 0.26. Sensitivity to the choice of σ_S and further details on selection strategies are discussed in Appendix B. Upon computation of the weights in each strategy, each weight is normalized by $\sum_i w_i$ such that they sum to 1.

3.6 Defining "Climate": Predictor Selection

Both the performance weight used in weighting strategies two through five and the independence scaling used in strategy five are based on a chosen definition of climate. A model's performance is based on its ability to reproduce observed climate. Under assumption five, a member's independence is based on how much its climate differs from the climate in other members. When defining climate, the aim is to optimize the "fitness for purpose", which should include choosing predictors that are physically associated with the target and will indicate if a model is biased in a way that would make it unsuitable for realistic simulation of the target. For example, in Knutti et al. (2017), aspects of climate relevant for September sea ice extent, such as the climatological mean and trend in hemispheric mean September Arctic sea ice extent, gridded climatological mean and standard deviation in SAT for each month, were chosen. The chosen predictors reflected that models with almost no sea ice in the present day or significantly more sea ice in the future than presently observed were less suitable for the task of projecting changes in sea ice extent. It is also good practice to avoid using a single predictor to define climate to avoid an over-confident uncertainty estimate. No one model property can comprehensively reflect if the model is "good" for a particular purpose, and it is dangerous to constrain uncertainty by dismissing models that don't match observations for a particular statistical definition for those that happen to be tuned to match that definition. Lorenz et al. (2018) discusses a more holistic strategy for choosing predictors and ultimately selected from a set of 24 predictors deemed relevant for projecting North American maximum temperature, based on known physical relationships, predictor-target correlations, and variance inflation considerations.

Here "fitness for purpose" is a relatively simple and straight-forward definition of climate within which the sensitivity of the weighting scheme can be interrogated. We base the performance weighting and the RMSE independence scaling on nine predictors: the climatology and interannual variability (represented by standard deviation) of SAT and SLP during the periods of 1950-1969 and 1990-2009 and a 50-year derived SAT trend (estimated residual thermodynamic trend; described in more detail in subsequent paragraphs) for the period of 1960-2009. We chose predictors to be aspects of regional temperature and pressure in a domain that encompasses modes of atmospheric circulation variability relevant to European climate, because they are (1) physically associated with the target (end-of-century warming) and (2) fields that may reflect model biases that would affect realistic simulation of future climate. For example, a model with a warmer-than-observed mean state in the Mediterranean may experience an enhanced land-atmosphere feedback mechanism that amplifies drying and warming of the region (e.g. Christensen and Boberg, 2012; Mueller and Seneviratne, 2014; Vogel et al., 2018). SAT and SLP are found to be highly relevant predictors by earlier studies (Brunner et al., 2019) and are among the most comprehensively measured atmospheric fields prior to the satellite era (Trenberth and Paolino, 1980). In terms of spatial domain, SAT climatology and variability predictors are computed over their corresponding ocean-masked SREX regions (i.e. NEU for DJF and MED for JJA) and SLP climatology and variability predictors are computed over a larger European sector domain that includes the North Atlantic (25 – 90°N and 60°W – 100°E). The derived SAT trend, estimated residual thermodynamic trend, is computed over the ocean-masked continental European domain (EUR; 30 – 76.25°N and 10°W – 39°E).

To compute the aggregate distance metrics from nine predictors, all predictor and observational fields are bilinearly interpolated to a shared 2.5° x 2.5° latitude-longitude grid. The predictors are then time-aggregated, with the mean or standard deviation computed over the periods 1950-1969 and 1990-2009, and the estimated residual thermodynamic trend computed over the period 1960-2009. For each time-aggregated predictor, the differences between the observed mean value and member value (or member value and member value in the case of the RMSE independence scaling) are computed at each grid point and subsequently squared. The squared differences are then area-averaged over the predictor domain and square-rooted to obtain an RMSE distance for observed-member and member-member pairs. For each predictor, the resulting distributions of observed-member and member-member RMSEs are then normalized by their mid-range value ($(\text{maximum} + \text{minimum})/2$), such that the distance for each of the nine predictors are on the same order of magnitude and can be combined into a single D_i (Figure B1) and S_{ij} (Figure B2) for each member.

A final consideration in predictor selection is one of relationship between past and future predictor behavior. A model's performance weight is based on its ability to reproduce observed climate, and this methodological choice follows from the concept of emergent constraints (e.g. Hall and Manabe, 1999; Allen and Ingram, 2002; Borodina and Knutti, 2017). The assumption is that if a model accurately represents an aspect of historical climate, it is likely to realistically represent relevant physical processes and therefore is likely to provide a reliable future projection. If a model is significantly biased with respect to observed climate, its future representation of climate may be cause for concern (Knutti et al., 2017). For these tendencies to hold, a statistical relationship between the historical and future climate feature of interest must exist. In the absence of a strong relationship, predictors serve to add degrees of difference between members that helps to ward against overconfident weighting.

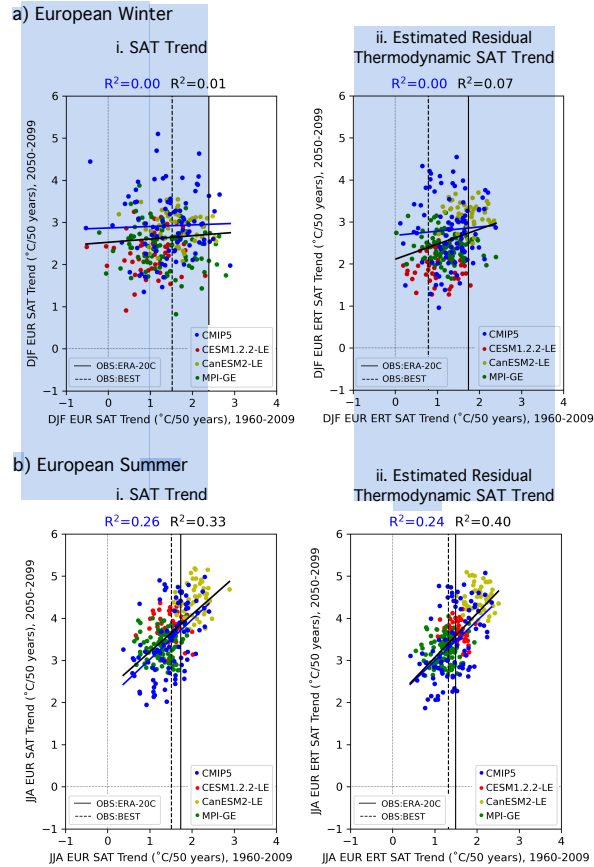


Figure 2. Predictor relationships of the domain-averaged 50-year trends of a) DJF and b) JJA European (EUR) SAT. 50-year raw trends are shown in panel i and 50-year estimated residual thermodynamic trends are shown in panel ii. In each panel, 1960-2009 is shown on the abscissa and 2050-2099 is shown on the ordinate. ERA-20C (BEST) observational estimates of the 1960-2009 trends are indicated by the solid (dashed) vertical lines. Least-squares regression fits (solid lines) and R^2 values computed for solely the CMIP5 output are shown in blue and computed for ALL output (CMIP5 and the three SMILEs) are shown in black.

Statistical relationships between historical and future climate can be obscured by internal variability, and the inclusion of SMILEs in a multi-model ensemble highlights the need to understand the role of internal variability on the chosen predictors.

300 In particular, internal variability **is** shown to influence trends in regional SAT even on the 50-year predictor timescales we have selected (Deser et al., 2016). Because of this, a member may have a similar-to-observed SAT trend (and thus a higher performance weight) by chance, simply because it has similar-to-observed climate variability over the trend period (i.e. a similar set of El Niño and La Niña events or similar phasing of the Atlantic **Multi-decadal** Oscillation). Because internal variability is inherently random in temporal phase (Deser et al., 2012), a member's match to observations over one trend period does not

305 guarantee a match in the future. This issue is demonstrated in Figure 2ai, which shows that there is **no** discernible relationship ($R^2 \sim 0$) between the DJF **EUR** SAT trend from 1960-2009 and from 2050-2099 in CMIP5 with (black line) or without (blue

line) the SMILES. Even the two observational estimates differ in European winter trend by more than a degree over 50 years. In summer, a season with less midlatitude climate variation, a relationship emerges between 1960-2009 and 2050-2099 European SAT trends. The linear relationship between past and future trend is reinforced by the SMILES in a model mean sense, i.e.,
310 the three new models added to the CMIP5 ensemble support the relationship (Fig.2bi). It is not evident within the SMILES themselves, which reflects that the relationship is due to model differences and not the behavior of individual IC members.

The removal of the estimated influence of internal atmospheric variability from regional SAT, however, provides an alternative performance metric on which observations and models can be compared. Using a method of dynamical adjustment (described in Appendix A and in further detail in (Deser et al., 2016)), we construct an estimate of the component of SAT
315 variability induced by large-scale atmospheric circulation patterns, remove it from the SAT record, and obtain the estimated residual thermodynamic trend for 1960-2009 and 2050-2099. The estimated residual thermodynamic trend is an estimate of both the influence of surface processes (i.e., land-atmosphere interactions (Lehner et al., 2017; Merrifield et al., 2017)) and the influence of the radiative forcing, an influence often defined as the forced response. In the model world, the forced response of a field is often defined as the ensemble mean or average across multiple ensemble members. However, there is no observational
320 equivalent to the ensemble mean; there is only one observed realization of climate. Therefore, we use the estimated residual thermodynamic trend as a predictor because it can be computed in the same manner through dynamical adjustment in both observations and each multi-model ensemble member.

Internal atmospheric variability serves to amplify both observed SAT trends in winter by approximately 0.6°C . Removing the influence of dynamics results an average observed estimated residual thermodynamic trend that falls centrally within the CMIP5
325 and SMILE distributions (Fig.2aai). In summer, dynamical adjustment also centers estimated residual thermodynamic trend and slightly reduces the difference between observational datasets (Fig.2bii). In terms of weighting, the shift of observed values to the center of the model distribution will lead to more models "performing" in their simulation of trend, which will, in turn, allow more models to contribute to the uncertainty estimate. The estimated residual thermodynamic trend can also be thought of as a property of each model, a measure that includes the response to the shared forcing analogous to climate sensitivity (Knutti et al.,
330 2017). We find that SMILE members, which share both model setup and forcing, also tend to have similar estimated residual thermodynamic trends (Fig.2a,bii). In winter, the clustering of SMILE estimated residual thermodynamic trends is striking in comparison with SMILE trends: CESM1.2.2-LE members tend to have the least EUR warming in both periods, while CanESM2-LE members tend to warm the most. The addition of the SMILES then introduces a slightly positive relationship between past and future responses (Fig. 2aai, black trend line) not apparent in the CMIP5 ensemble (Fig. 2aai, blue trend line),
335 though no strong relationship emerges from variability in either case. In summer, the positive relationship seen between past and future Mediterranean SAT trends (Fig.2bi) is robust to the combination of removing internal atmospheric variability and adding the SMILES (Fig.2bii). CanESM2 has the most JJA MED warming in both the past and future periods, while MPI-GE has the least. Because estimated residual thermodynamic SAT trends in the broader European region are more comparable between members and observations due to the removal of an estimate of the influence of atmospheric variability that manifests
340 on multi-decadal time-scales, we use them as the ninth predictor in the definition of climate used in our performance weightings and RMSE independence weighting. Emergent relationships within the other eight predictors are discussed in Appendix C.

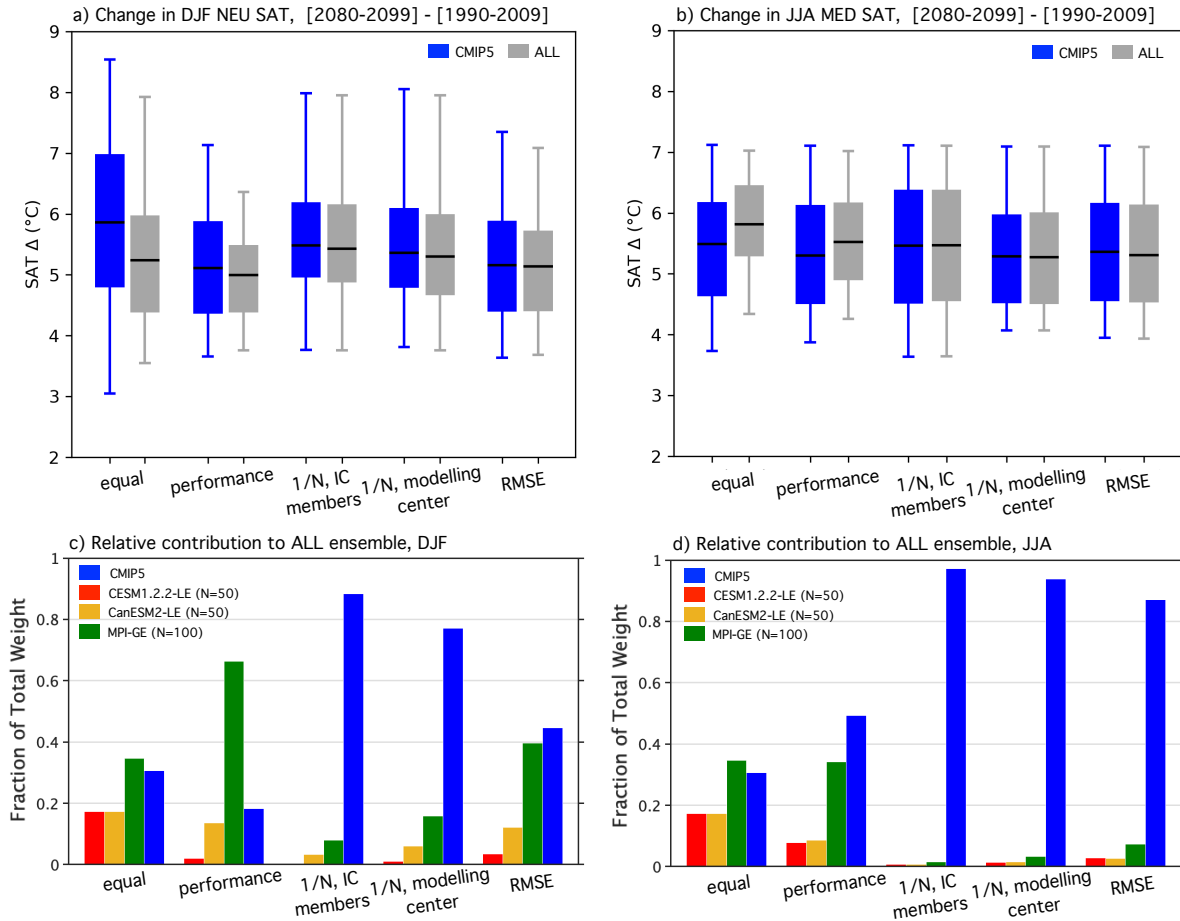


Figure 3. (a) Box-and-whisker plot showing how the five weighting strategies effect the distributions of DJF NEU SAT change (Δ , [2080-2099]-[1990-2009]) for the CMIP5 ensemble (blue) and ALL ensemble (CMIP5 with the three SMILEs; gray). The box element spans the 25th to 75th percentile of the distribution; mean SAT change is indicated by the horizontal line within the box. The whisker element spans the 5th to 95th percentile. b) As in a), but for JJA MED SAT change. c) The contribution of SMILE and CMIP5 members to the DJF NEU ALL ensemble under different weighting strategies, in terms of fraction of total weight. d) As in c), but for the JJA MED ALL ensemble.

4 Results

To assess the influence of the weightings, we evaluate the magnitude of regional European end-of-century warming in terms of the SAT change (Δ) from 1990-2009 climatology to 2080-2099 climatology. Two ensembles are considered, one comprised solely of CMIP5 members (CMIP5; distribution of 88 values) and one comprised of all available members from CMIP5 and the three SMILEs (ALL; distribution of 288 values). The CMIP5 and ALL SAT Δ distributions are shown side-by-side as box-and-whiskers elements in Figure 3 a and b for the five weighting strategies considered: equal, performance, 1/N scaling of IC members, 1/N scaling of modelling center contributions, and RMSE distance scaling. Weighted ensemble mean values are

shown by solid horizontal lines within the box elements. Weighted ensemble spread is illustrated by the box, which indicates the 25th and 75th percentile, and the whisker, which indicates the 5th and 95th percentile.

For each weighting strategy, comparisons between the CMIP5 and ALL distributions help to elucidate (i) how the weighting constrains uncertainty in the magnitude of end-of-century regional European warming and (ii) how the inclusion of SMILE members influences the distribution. To explicitly determine the contribution of the SMILEs, we also show the fraction of total weight received by each SMILE and the CMIP5 in Fig.3 c and d. Contributions are determined by summing the normalized weights of the 50 CESM1.2.2-LE members (red bar), 50 CanESM2-LE members (yellow bar), 100 MPI-GE members (green bar), and the remaining 88 CMIP5 members (blue bar). For the most part, the weighting strategies introduce only modest distributional shifts; both Northern European winters and Mediterranean summers are projected to warm, most likely by about 5-6°C, by end-of-century (Fig.3a,b). What is more at issue than the distributional statistics, though, is what the distribution actually represents.

An equal weighting results in a distribution representative of warming in the models with the most votes; in this case the SMILEs. In both seasons, the equal weighting demonstrates why it is important to treat SMILE members as dependent entities within a multi-model ensemble. The CMIP5 ensemble projects an ensemble mean end-of-century warming of 5.9°C and an interquartile spread of 2.2°C for Northern European winter (Fig.3a), and an ensemble mean end-of-century warming of 5.5°C and an interquartile spread of 1.5°C for Mediterranean summer (Fig.3b). The addition of 200 SMILE members to the 88 member CMIP5 ensemble shift the end-of-century warming distributions towards less DJF NEU end-of-century warming and more JJA MED end-of-century warming, and reduces interquartile spread by approximately 25% in both cases. The large contributions of the three added SMILEs artificially constrain uncertainty, the CESM1.2.2-LE and CanESM2-LE each receive 17.4% of the total ALL ensemble weight, while the MPI-GE makes up the majority 34.7% (Fig.3c,d).

A performance weighting results in a distribution representative of warming in the models that historically get things right. By diminishing the contribution of members that differ from observational estimates, the performance weight acts to constrain uncertainty in both the CMIP5 and the ALL ensemble. For DJF NEU SAT change, the performance weight shifts the CMIP5 ensemble mean downwards by 0.75°C, the 75th percentile downwards by 1.1°C, and 25th percentile downwards by 0.43°C. This distributional shift towards less end-of-century warming is a due, in part, to members with SAT Δ greater than 8°C receiving weights that are two orders of magnitude smaller than the average assigned weight. Uncertainty in the DJF NEU ALL ensemble is constrained both by the performance weight diminishing the contribution of CMIP5 member and because MPI is one of the highest performing models based on the chosen DJF predictors. The high performing MPI-GE receives 66.2% of the total ALL ensemble weight, and the DJF NEU ALL distribution thus largely reflects the range of warming projected by MPI, not the range of warming projected by all independent entities within the ensemble. The DJF NEU case clearly exemplifies the need for an independence assumption so no one model is over-represented, regardless of how realistic it is.

For JJA MED SAT change, the performance weight reduces the contribution of the three SMILEs to the ALL distribution in comparison to the equal weighting case, with the largest reduction made to CESM1.2.2-LE contribution (17.4% to 7.8%; Fig.3d). As in the equal weighting case, the JJA MED ALL performance-weighted ensemble mean is still modestly shifted

towards more end-of-century warming than its JJA MED CMIP5 counterpart. This reflects the above CMIP5-average SAT
385 change of the CESM1.2.2-LE and the CanESM2-LE in Mediterranean summer. Additionally, the performance-weighted JJA
MED ALL distribution features an interquartile spread of similar magnitude to the equally-weighted JJA MED ALL distribu-
tion that further codifies that performance is not a substitute for an independence scaling in the presence of multiple members
of high performing models.

In light of the clear necessity, we explore three scalings that reflect different member dependence assumptions: that IC mem-
390 bers are dependent (Fig.3a,b; 1/N, IC members), that modelling center contributions are dependent (Fig.3a,b; 1/N, modelling
center), and that members with similar historical climate are dependent (Fig.3a,b; 1/N, RMSE). The 1/N IC member scaling is
based on the widely accepted assumption that IC ensemble members are, by definition, dependent. Originating from the same
model setup, differences in IC members are not due to differences in model skill. Therefore, it follows that IC members should
all receive the same performance weight which, in aggregate, reflects the skill of its basis model. We achieve this by averaging
395 the performance weights of all members of a SMILE or CMIP5-based IC ensemble (Table 1, italic) and subsequently dividing
this average performance weight by the number of members (N). This reduces the number of unique weights in the CMIP5
ensemble from 88 (each member receive a unique weight) to 44 and the number of unique weights in the ALL ensemble from
288 to 47.

The scaling of IC ensemble member weight within the CMIP5 ensemble (blue element) decreases DJF NEU end-of-century
400 warming uncertainty and slightly increases JJA MED end-of-century warming uncertainty with respect to equal weighting. It
is therefore evident that the IC ensembles within CMIP5, which range from 2 to 10 members, exert influence on the perfor-
mance weighted DJF NEU distribution in the same way the SMILEs influence the corresponding performance weighted ALL
distribution. While this is not seen in the corresponding JJA MED CMIP5 equal and performance weightings, it is important
to note that even two or three extra votes for a high performing model are enough to influence uncertainty. The reduction of IC
405 member influence is even more striking in the ALL distribution; the three SMILEs contribute 11.7% of the total weight in the
DJF NEU and 2.9% in the JJA MED, down from performance weight contributions of 82.0% and 50.7% respectively. As with
other strategies, the 1/N IC member scaled DJF NEU ALL distribution is shifted towards less end-of-century warming with
respect to its CMIP5 counterpart. The ALL and CMIP5 1/N IC member scaled JJA MED distributions are almost identical.

In addition to IC members, it is reasonable to assume that members of the same model that differ in resolution (i.e., MPI-
410 ESM-LR and MPI-ESM-MR) or in component module used (i.e., MIROC-ESM and MIROC-ESM-CHEM) are dependent
entities. However, determining where to draw the line between dependence and independence is difficult; models from different
modelling centers share components, while models in a modelling center's development chain can differ from each other in
most major parameterizations (Knutti et al., 2013). Here, we chose to take a logical approach to the dependent entity grouping,
based largely on model name or knowledge of institution of origin (Table 1, Group). 1/N modelling center weights are computed
415 in the same manner as the 1/N IC member weight within these broader groupings. The number of unique weights becomes 20 in
both the CMIP5 and ALL ensembles because the CESM1.2.2-LE is grouped with the other NCAR models, the CanESM2-LE
is grouped with the 5 members of CanESM2 in the CMIP5 ensemble, and the MPI-GE is grouped with MPI-ESM-LR and MPI-
ESM-MR members. The 1/N modelling center scaling results in similar CMIP5 and ALL end-of-century warming distributions

in both the DJF NEU and JJA MED, with distributions characterized by positive skewness and a narrower interquartile range than in the 1/N IC member scaling case. The SMILE contributions all approximately double from their 1/N IC member scaling levels, to contribute a combined 22.9% to the DJF NEU and 6.1% to the JJA MED ALL distributions respectively.

Finally, in the instance that dependence is not known *a priori*, an RMSE-based metric can be used to assign dependence. The idea is that because of model biases, dependent entities can be identified by their similar climates. Using the same set of predictors as used for performance, each member receives a unique weight: RMSE-based performance scaled by RMSE-based dependence. The RMSE dependence scaling allows for more SMILE contribution than the 1/N dependence scaling approaches (Fig.3 c,d) because internal variability distinguishes SMILE members from one another and thus allows them to be treated as separate entities. With more entities in the ensemble, it follows that the degree of dependence of the existing CMIP5 models increases (CMIP5 models become more dependent) in tandem with SMILE members degree of dependence decreasing (SMILE members become less-than-fully dependent). In the DJF NEU, it is striking that the RMSE ALL weighted distribution is ultimately almost identical to the equally weighted ALL distribution because the high performing MPI-GE again contributes over 40% of the total weight. In the JJA MED, the RMSE dependence scaling leads to a comparable CMIP5 and ALL distributions, a contrast to the performance weighted case.

4.1 Reconciling the RMSE and 1/N scalings

For the weighting approach introduced by Knutti et al. (2017) to be suitable for incorporating large initial condition ensembles into a multi-model ensemble, there must be a demonstrable reconciliation between the 1/N IC member and the RMSE independence scalings. The RMSE independence scaling has the ability to assign a degree of independence to all members. This addresses the issue that we may not truly know how independent a model is based on name or modelling center of origin alone. However, when dependent entities (i.e., SMILE members) are known, the RMSE metric must be able to identify them as dependent and scale their influence appropriately. In practice, this means we seek a RMSE scaling that approaches (or exceeds) 1/N for the SMILEs and the IC ensembles within the CMIP5 ensemble. The goal of an RMSE scaling proportional to ensemble size comes with the understanding that scaling may be larger if the IC ensemble is very similar to other models or smaller if the IC ensemble is not fully identified as one model (as was the case with the nine predictor RMSE scaling).

One way to achieve an RMSE scaling that identifies IC members as dependent is to remove internal variability from the metric through predictor choice. While it would not be good practice to base member performance on few predictors because of over-confidence concerns, member dependence may be more accurately reflected by fewer predictors that distinguish models from one another. Advantages of choosing different sets of predictors for determining dependence and performance is two-fold: first, by selecting for ability to distinguish models rather than realism, dependence predictors can achieve a more substantial separation between SMILE-SMILE distances and SMILE-model distances. This reduces reliance on and sensitivity to the independence shape parameter σ_s (Appendix B). Second, the "convergence to reality" paradox is no longer an issue; models will not be down-weighted for moving closer to observations (and thus each other) based on performance predictors.

We find that large-scale, long-term climatological averages are the most suitable predictors for this purpose because, in general, the influence of internal variability increases on smaller spatial-scales and shorter time-scales (Hawkins and Sutton,

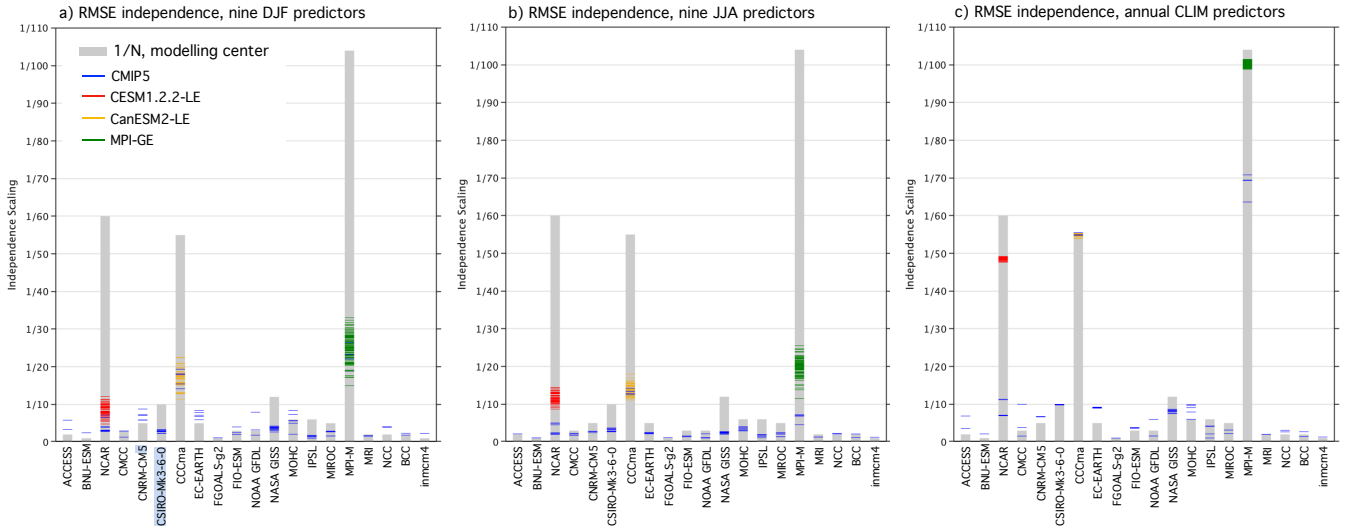


Figure 4. RMSE independence scalings (colored lines) of the SMILEs and CMIP5 ensemble members, grouped as listed in Table 1. CESM1.2.2-LE members are shown in red, CanESM2-LE members are shown in yellow, and MPI-GE members are shown in green, while the remainder of CMIP5 members are shown in blue. The 1/N modelling center scaling is shown in gray bars behind each grouping as a point of reference. Panels a and b show the scalings computed from the nine predictors used in the original DJF and JJA RMSE distance weightings respectively. Panel c shows the scalings computed from global land SAT and Northern Hemisphere SLP climatology predictors.

2009). The climatological time aggregation (CLIM) was chosen because, of the nine original predictors utilized, 20-year climatological averages cluster in SMILEs more than 20-year variability or 50-year derived trend values on regional scales (Figures 2, C1, and C2). We average over the entire historical period, 1950-2009, to obtain two long-term CLIM predictors: annually-averaged Northern Hemisphere SLP and annually-averaged global land SAT. The Northern Hemisphere region was selected for SLP to maintain the distinguishing characteristics of mean circulation biases in the target-relevant European sector (Figures C 3,4), while global land was selected for SAT to avoid convergence associated with models having similar average ocean temperatures. The RMSE independence scalings derived from the nine predictors in DJF and JJA are shown alongside the scalings derived from Global Land SAT and Northern Hemisphere SLP climatology predictors in Figure 4. RMSE independence scalings for each member of the ALL ensemble are indicated by thin horizontal colored line within their respective modelling center groupings. For comparison, the RMSE independence scalings are superposed on the 1/N modelling center scaling (gray bar).

In contrast to the nine predictor RMSE scaling (Figure 4a,b), the global land SAT-Northern Hemisphere SLP RMSE scaling allows for SMILE members to distinguish themselves and to approach or exceed 1/N values (Fig. 4c). In both DJF and JJA, no member of the ALL ensemble has a nine predictor RMSE scaling that exceeds 1/35. Inter-member RMSE distances, shown in panels a and b of Fig.B2, reflect why this occurs; SMILE members can be as different from one another as CMIP5 models are. The nine predictor independence scaling is better able to distinguish SMILE members from CMIP5 members in JJA than

in DJF (Fig.4b). With the global land SAT and Northern Hemisphere SLP CLIM predictors, SMILE members are clearly
470 closer each other than to other models, with the exception of the CanESM2-LE. Because the CanESM2-LE is created using
the five CanESM2 contributions to CMIP5, the SMILE and CMIP5 contributions cluster as a 55-member CanESM2 ensemble
within the ALL ensemble (Fig.4c). In terms of scaling, 55 CanESM2 members are scaled by an average of $1/55.0$, while
the CESM1.2.2-LE and the MPI-GE are scaled by an average of $1/48.7$ and $1/100.5$ respectively (Fig.4c). In addition to the
SMILEs, other IC ensembles within CMIP5, such as the 10-member CSIRO-Mk3-6-0 ensemble, also achieve a $1/N$ scaling.
475 Individually represented models, such as FGOALS-g2, are considered more independent and are thus scaled by factors that
approach unity. On the other end of the independence continuum, the four MPI-M contributions to CMIP5 are identified to
have a high degree of similarity to the MPI-GE and are scaled accordingly by factors exceeding $1/60$.

To understand why large-scale, long-term CLIM predictors are able to group SMILE members and set a degree of indepen-
dence for CMIP5 members, we investigate where each member falls in the global land SAT and Northern Hemisphere SLP
480 climatology predictor space in Figure 5. Each member is labelled either by color (SMILEs) or by model name (CMIP5) and
IC ensembles within CMIP5 are circled. Circling IC ensembles within CMIP5 is possible because, along with the SMILEs,
the IC members also tend to cluster. This phenomenon is in line with the assumption that IC members are dependent entities;
the two large-scale, long-term CLIM predictors reflect this dependence. Notable IC clusters include MIROC5 (3 members)
and EC-EARTH (5 members). The bifurcation in GISS-E2-H and GISS-E2-R ensembles reflect the p3 (top) vs. the p1 and p2
485 (bottom) perturbations used for different members. CanESM2 CMIP5 members join the CanESM2-LE (as indicated by Fig.
4c) and the MPI-ESM-MR and MPI-ESM-LR contributions fall within the MPI-GE.

The assumption that members from the same modelling center are dependent entities, however, is not as clear cut in the
global land SAT and Northern Hemisphere SLP climatology predictor space. GISS contributions share a response (lower
Northern Hemisphere average SLP and higher global land average SAT), while the contributions from CMCC, GFDL, and
490 IPSL feature markedly different responses (Fig.5). Another clustering feature present in both seasons is that of several separate
clusters for a modelling center. This can be seen for the NCAR modelling center grouping: CCSM4 and CESM1-BGC form
a cluster separate from both the CESM1-CAM5 cluster and the CESM1.2.2-LE cluster. The NCAR case illustrates that new
models in a modelling center's development stream can be distinct from their predecessors and should not necessarily be
considered dependent based on their shared name. On the other hand, there are also instances where models of different names
495 are similar to each other. Bcc-csm1-1 falls within the CCSM4-CESM1-BGC cluster (Fig.5), which suggests that with shared
components (Knutti, 2010), models can have similar responses and be identified as more dependent than their name would
suggest. Ultimately, discrepancies between model name and model response suggest that assigning each member a degree
of independence is a useful way to handle the continuum of dependence assumptions. Provided care is taken to select an
appropriate set of predictors for independence scaling, IC members cluster in an anticipatable way while an interplay between
500 named and unnamed model dependence remains.

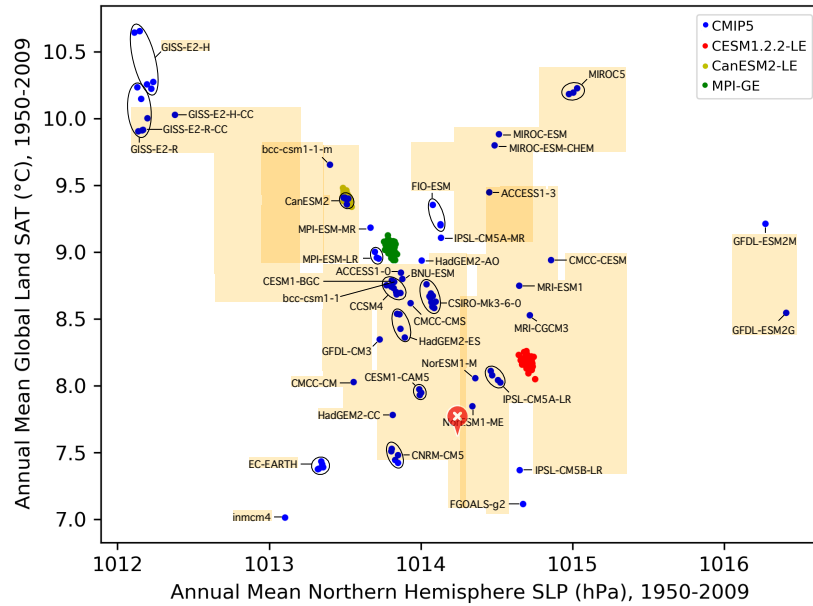


Figure 5. Scatter plot showing how ALL ensemble members distribute in the Northern Hemisphere SLP climatology / global land SAT climatology predictor space. Members and IC ensembles within the CMIP5 ensemble (blue) are labelled by model name. The CESM1.2.2-LE is indicated in red, the CanESM2-LE is indicated in yellow, and the MPI-GE is indicated in green, consistent with other figures.

5 Conclusions

We find that the performance and independence weighting scheme pioneered by Knutti et al. (2017) can be used to incorporate regional climate information from three single member initial condition large ensembles into a CMIP5 multi-model ensemble and return a justifiably constrained estimate of European regional end-of-century warming uncertainty. The performance weighting, which accounts for an ensemble member's ability to reproduce selected aspects of observed climate, is based on regional surface air temperature and sea level pressure climatology and interannual variability over two 20-year intervals during the historical period (1950-1969 and 1990-2009) and a 50-year estimated residual thermodynamic SAT trend computed using a method of dynamical adjustment (Deser et al., 2016). These predictors bring both emergent relationships between past and future climate and aspects of climate that are important for a model to historically simulate in order to realistically project future warming to the definition of performance. The principle of emergent constraints underpins the choice to use estimated residual thermodynamic SAT trend over SAT trend, as the former is an estimate of a model-specific property that can be compared with observations and the latter is influenced by internal variability even on 50-year timescales.

Five different strategies based on the Knutti et al. (2017) performance and independence weighting are assessed for suitability of use in a CMIP5 and a combined CMIP5-SMILE ALL ensemble. While the different strategies introduce only modest distributional shifts (towards less end-of-century warming than in the equal weighting case), they imbue different meaning to

the distribution. SAT change between 1990-2009 and 2080-2099 is projected to be about 5-6°C in both Northern European winter and Mediterranean summer when historical model performance is considered. Equal and performance weighted ALL distributions are narrowed by a 50-82% contribution from the SMILEs, which is an outsize contribution from three models to an ensemble comprised of 40 uniquely named models. The high performing, numerously represented MPI-GE receives over 520 65% of the total weight in the performance-weighted DJF NEU end-of-century warming distribution, demonstrating that an independence scaling is necessary so no one model defines the uncertainty range of a multi-model ensemble, regardless of its historical realism.

Three plausible independence assumptions are made to account for model contribution issues in an ensemble comprised of both known (i.e., IC members) and unknown (i.e., model component sharing) dependencies. By explicitly defining IC 525 members as dependent entities, SMILE contributions drop to less than 12% while maintaining distributional shift tendency towards less end-of-century warming. Taking the definition of dependence a step further by considering all members from the same modelling center and/or development stream dependent introduces positive skewness and a narrower interquartile range to the distribution now containing 20 uniquely weighted entities. Finally, by acknowledging dependencies may not always be clearly determinable *a priori*, the independence scaling based on inter-member RMSE distances from the same nine predictors 530 used to determine performance allows for reasonable levels of SMILE contribution to Mediterranean summer end-of-century warming uncertainty. However, the high performing MPI-GE contributes approximately 40% of the total weight to the Northern European winter distribution as a result of predictor internal variability distinguishing SMILE members as independent models.

The advantages of the RMSE-based independence scaling, which include allowing for degrees of independence, are subverted somewhat by the inability of performance predictors to distinguish known dependent entities (i.e., IC members) from 535 (presumed) independent ones. To address this issue, we show that a set of two predictors, 60-year annual average global land SAT climatology and 60-year annual average Northern Hemisphere SLP climatology, is capable of rendering an RMSE scaling of 1/N for SMILE members while assigning a degree of dependence to the rest of CMIP5. A notable achievement for these large-scale, long-term predictors is their ability to identify the CanESM2 members from CMIP5 as being from the same model version as the CanESM2-LE and scale the 55-member ensemble accordingly. A deeper look into groupings in the global land 540 SAT and Northern Hemisphere SLP climatology predictor space reveals clustering of IC ensembles within the CMIP5 ensemble, in addition to the SMILEs, in both seasons. MPI-ESM-MR and MPI-ESM-LR contributions cluster near the MPI-GE, while the NCAR model group separates into three distinct clusters consistent with NCAR's model development over time. The interplay between model name and model response does exhibit some complexity; models from the same center (i.e., GFDL) can have markedly different responses and models from different centers (bcc-csm1-1 and CCSM4) can have similar 545 responses. This suggests that assigning degrees of independence is a useful way to represent the information in an ensemble of opportunity like CMIP5.

It is important to note that while the weighting has a relatively straightforward functional form, it requires application-specific sets of predictors and appropriate shape parameters. Strategies to select optimal shape parameters are discussed in Appendix B of this study, and we advise that emergent predictor relationships are explored, as in Appendix C, to provide 550 justification for the performance metric. When defining model skill for performance, it is important to carefully consider

whether predictors are relevant to a model's ability to project the future target realistically. Different targets, such as hydrological changes, may require predictors to capture a more complex set of physical processes. It is also important to assess RMSE distance to observations of known dependent entities such as SMILEs to ensure internal variability in the selected set of predictors does not assign them skill of different orders of magnitude. Because SMILE members had relatively similar RMSE distance to observations over the nine original predictor, we did not require members of the SMILE to have identical performance weights under the performance and RMSE case assumptions evaluated. We, however, do see the merit in fixing IC member performance to an ensemble average value to insure model skill is appropriately assigned. We also recommend that different sets of predictors be used for determining performance weight and independence scaling to avoid down-weighting independent models with historical climate that converges to reality. Independence predictors should be fields with minimal internal variability, such large-scale, long-term averages, and ideally fields that model developers do not explicitly tune, such as absolute global temperature (Mauritsen et al., 2012; Hourdin et al., 2017).

We assess a relatively unconventional multi-model ensemble in this study, which is comprised of 200 members from three models and only 88 members from the remaining 40 named models. This is a deliberate choice made to test and improve the independence scaling, as determining best practices for representing uncertainty in a multi-model ensemble that includes initial condition ensemble members is necessary in advance of CMIP6, as modelling centers are slated to submit more ensemble members to the project than were submitted to CMIP5 (Eyring et al., 2016; Stouffer et al., 2017). A weighting scheme, such as the one assessed here, is thus ideal for providing justifiable estimates of uncertainty in the combined multi-model, multi-initial condition ensemble member CMIP6 ensemble.

Appendix A: Dynamical Adjustment

To obtain estimated forced trends in SAT, a method of dynamical adjustment, based on constructed circulation analogues, is used (Deser et al., 2016; Lehner et al., 2017; Merrifield et al., 2017; Guo et al., 2019). Dynamical adjustment provides an empirically-derived estimate of the SAT trends induced by atmospheric circulation variability; removal of this circulation-driven component from a SAT record thus reveals an estimate of the SAT trend associated with thermodynamic processes and radiative effects. Dynamical adjustment relies on the ability to reconstruct a monthly mean circulation field, which we represent with sea level pressure (SLP) as in Deser et al. (2016), from a large set of analogues. Here, SLP analogues are selected from 60 possible choices (from the period 1950-2010), excluding the target month, and the method is therefore referred to as the "leave-one-out" method of dynamical adjustment. SLP fields in SMILE members, CMIP5 ensemble members, and the observational estimates ERA-20C and NOAA-20C are constructed in this manner for target months in the 1950-2010 period. For model years 2011-2099, analogues are selected from the entire 1950-2010 period. No notable trends in SLP have been identified over this period in previous dynamical adjustment studies (Deser et al., 2012, 2016; Lehner et al., 2017).

It is important to acknowledge that because of the paucity of analogue choices in leave-one-out dynamical adjustment, the term "analogue" is a bit of a misnomer. The term evokes the idea of a match, though in practice, analogues may not closely

resemble the target. For convenience, we will continue to refer to the months used in target SLP construction as "analogues", but we do so with the understanding that target and analogue patterns may differ over the selection domain.

585 A month is determined to be an analogue of the target month if the Euclidean distance between target and analogue SLP is small. Euclidean distance is computed at each grid point and averaged over the European sector domain also used for SLP predictors (25-90°N, 60°W-100°E). This selection metric, therefore, does not require an analogue to match the target month spatially over the whole domain. This is necessary because, with 60 possible options, it is statistically unlikely that a "perfect" analogue will exist for a particular target month. van den Dool (1994) found that it would take on the order of 10^{30} years to find two Northern hemisphere circulation patterns that match within observational uncertainty. With this in mind, a smaller than hemispheric domain and an iterative averaging schemes are employed to make the most of "imperfect" analogues available (Wallace et al., 2012; Deser et al., 2014, 2016).

Once the Euclidean distances are determined, the 50 closest SLP analogues are chosen, and the iterative process of selecting 30 of 50 SLP analogues and optimally reconstructing a target SLP field \mathbf{X}_h commences. The optimal reconstruction of the target SLP is mathematically equivalent to multivariate linear regression; each analogue is assigned a weight (β) such that a weighted linear combination of analogues produces a least-squares estimate of the target SLP. β is computed through a singular value decomposition of a column vector matrix \mathbf{X}_c containing the 30 selected analogues and can also be estimated using through a Moore-Penrose pseudoinverse:

$$\beta = [(\mathbf{X}_c^T \mathbf{X}_c)^{-1} \mathbf{X}_c^T] \mathbf{X}_h \quad (\text{A1})$$

600 The analogue weighting scheme ensures that analogues which are further from (closer to) the target, in a Euclidean distance sense, contribute less (more) to the constructed SLP field.

After the target SLP field is constructed, the β values derived for each SLP analogue are applied to their corresponding monthly-averaged SAT fields. Prior to the application of weights, a quadratic trend representing anthropogenic warming is removed from the SAT record at each point in space. The purpose of this detrending is so that months picked from the end of the record do not contribute higher SAT anomalies simply because of the anthropogenically forced warmer background climate, even if the SLP patterns are the same (Lehner et al. 2017). Detrending strategies are further discussed in Deser et al. (2016). The weighted, detrended SAT fields are then used to construct a dynamic SAT anomaly field for the target month. SLP, which is representative of low-level atmospheric circulation, and SAT are physically related; SLP-derived weights are applied to SAT to empirically construct that relationship. Conceptually, dynamic SAT anomalies are those that would occur given the attendant circulation pattern. The second through fifth steps of dynamical adjustment (selection of 30 of 50 SLP analogues, optimal reconstruction of target SLP, and construction of dynamic SAT) are then repeated 100 times, following Lehner et al. (2017). The dynamic component of SAT in the target month is the average of the 100 constructions. It is then subtracted from SAT in the target month to find the residual thermodynamic component of SAT, used as an estimate of the regional SAT response to surface processes and radiative forcing. The trend of the residual thermodynamic SAT component which is used as a predictor in this study; the trend is computed at each land grid point in the predictor domain and subsequently area-averaged.

Appendix B: Selecting σ_D and σ_S

Determining the shape parameters σ_D and σ_S is an important step in the RMSE weighting process (Knutti et al., 2017). σ_D can be set using a perfect model test, as described in Lorenz et al. (2018). Here, the perfect model test is performed on an 43 member ensemble, which includes only the first initial condition member from the SMILEs and each of the named CMIP5 models. This is done because having very similar members in the ensemble could bias the perfect model test, which is based on predicting one member using a weighted distribution of the rest. We use member 1 for each initial condition ensemble because, often, when multiple initial condition members are available, the first member is selected (e.g. Liu et al., 2012; Karlsson and Svensson, 2013; Sillmann et al., 2013). During the perfect model test, each member is assumed to be the "truth" once, and a weighting is performed using the remaining members to predict this "truth". A range of σ_D values are used for each "truth" prediction and the optimal σ_D is chosen as the smallest value such that the "truth" falls between the 10th and 90th percentile of the "truth" prediction in 80% of the cases. The 80% threshold is chosen so as to not be over-confident in the weighting.

The RMSE distances between multi-model ensemble members and observations (D_i) are shown in Figure B1. Members of the ALL ensemble are plotted in ascending order with the position of SMILE member indicated in red for the CESM1.2.2-LE, in yellow for the CanESM2-LE, and in green for the MPI-GE. In winter (Fig.B1a), distances between members and observations are distributed in a positively skewed fashion with the mode of the distribution at approximately $D_i = 0.4$ with a tail of larger D_i values. In contrast, distances in summer (Fig.B1b) are approximately normally distributed about a mean of $D_i = 0.9$. The addition of the SMILEs to the distribution contribute to both of these distributional tendencies. σ_D is calculated using a perfect model test (Lorenz et al., 2018; Brunner et al., 2019) and is set to 0.32 in DJF and 0.4 in JJA in both the CMIP5 and ALL ensembles to eliminate a degree of freedom of the method. Members are more strongly weighted by performance in winter than in summer, due to the different distance distributions.

σ_S can be determined using initial condition ensembles present in the multi-model ensemble, including SMILEs. The inclusion of SMILE members in a multi-model ensemble emphasizes the need for σ_S to be carefully selected, as SMILEs add redundant information and the purpose of σ_S is to reduce the influence of redundant information. However, not all information added by a SMILE is distinguishable from information in other models; inter-member distances in an initial condition ensemble can be as large as inter-model distances in the multi-model ensemble (Figure B2).

If σ_S is too small or too large, there are implications for the nine predictor RMSE weighted ensemble mean and spread. This sensitivity to σ_S is shown in in Figure B3. We assess the characteristics of the nine predictor RMSE weighted CMIP5 distributions (Fig.B3a,bi) and RMSE weighted ALL distributions (Fig.B3a,bii) for different values of σ_S , varying from 0.05 to 0.8.

For small σ_S , all members of the multi-model ensemble are considered independent and the RMSE weighting tends toward the performance weighted approach. If σ_S is set on the order of the largest inter-member distances in a SMILE ($\sigma_S \geq \sim 0.4$), few members of the multi-model ensemble will be considered independent from each other, despite coming from different models. The systematic scaling of performance weights in the ensemble at large tends to also lead to a narrowing of uncertainty. Only members that are very far from other members will not have a scaled performance weight, but these "independent"

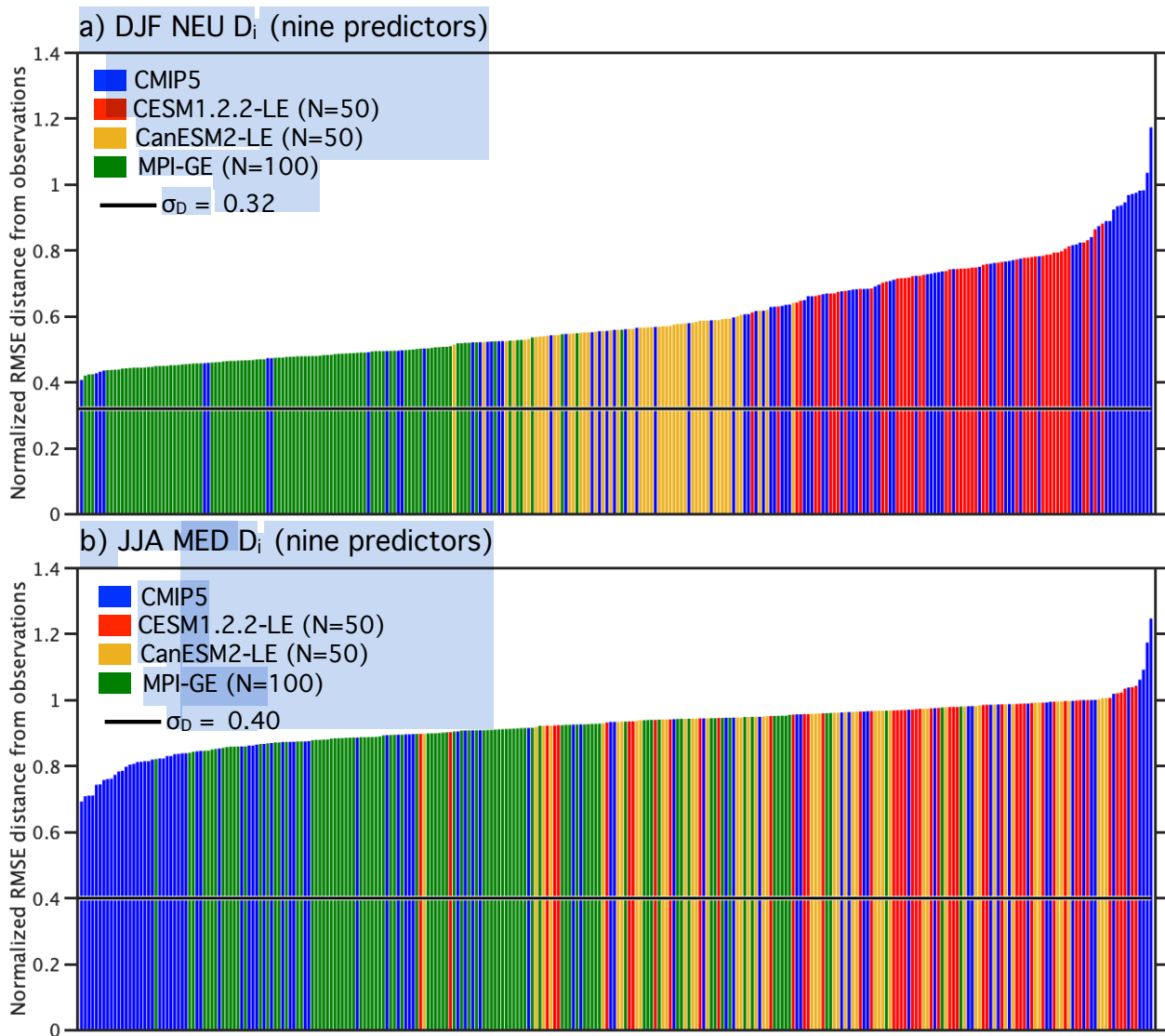


Figure B1. RMSE distance D_i , derived from nine predictors, between observations and the 288 members of the ALL ensemble (CMIP5 (blue) + CESM1.2.2 (red) + CanESM2 (yellow) + MPI-GE (green)). DJF NEU distances are shown in panel a and JJA MED distances are shown in panel b.

650 members tend to also be far from observations and therefore have little performance weight to begin with. For σ_S between approximately 0.2 to 0.4, uncertainty in the RMSE weighted distributions increases in all but the JJA MED CMIP5 case. The JJA MED CMIP5 distribution is relatively insensitive to σ_S because 50% of the RMSE distances between CMIP5 members are between 0.56 and 0.71 (Fig.B2b). For the ALL distributions, the RMSE weighted mean shifts up modestly in DJF and down in JJA. In order to avoid an underestimate of uncertainty, either due to redundancy or from down-weighting independent

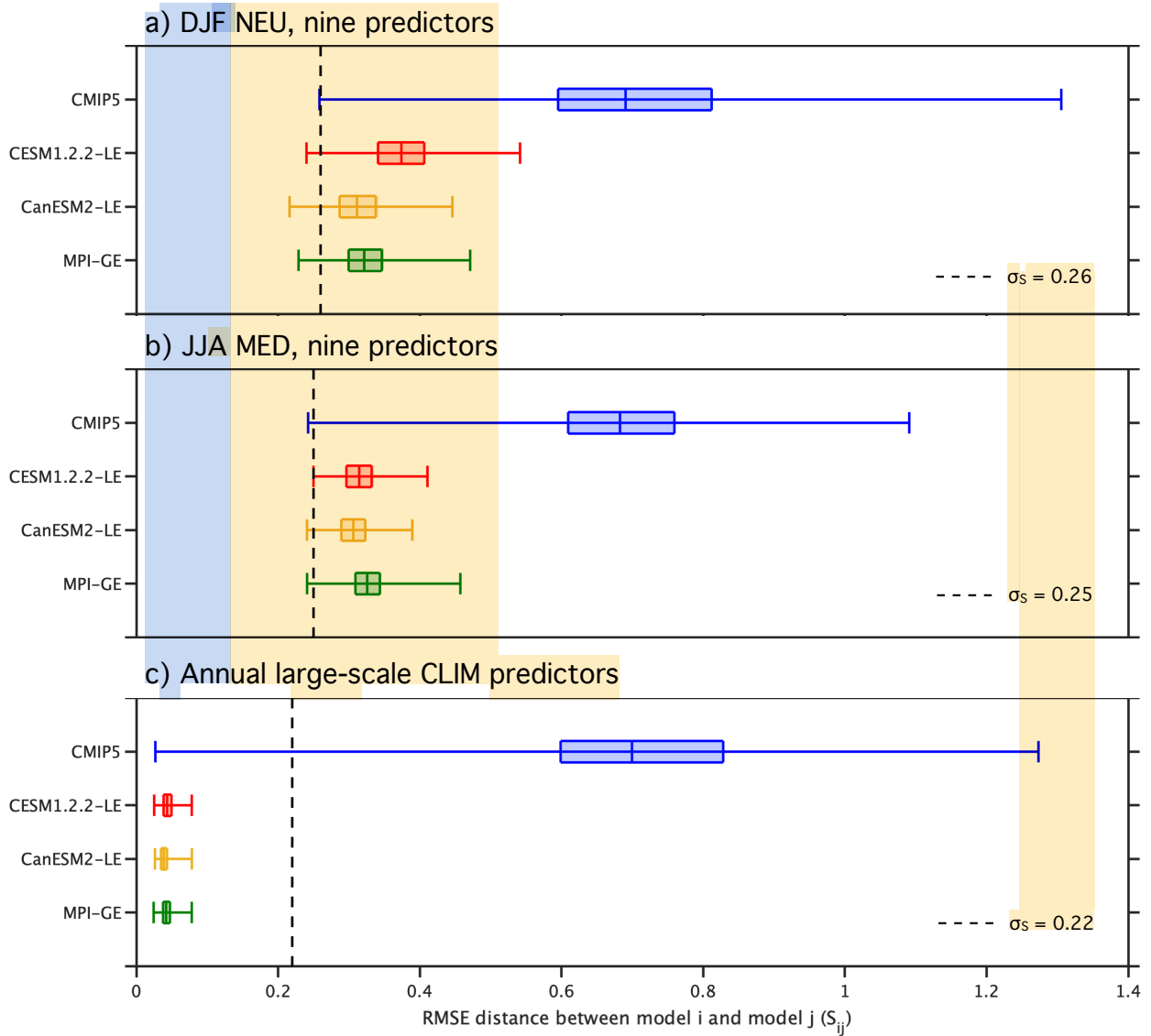


Figure B2. Distributions of RMSE distance (S_{ij}) within the SMILEs, the CESM1.2.2-LE (red), the CanESM2-LE (yellow), and the MPI-GE (green) and the CMIP5 ensemble (blue). The box element spans the 25th to 75th percentile of the distribution; median S_{ij} is indicated by the horizontal line within the box. The whisker element spans the full range of the S_{ij} distribution. The value of σ_S used for the weighting is indicated by the dashed line. DJF NEU distances, based on the nine predictors, are shown in panel a, JJA MED distances are shown in panel b, and distances based on annual global land SAT and Northern Hemisphere SLP climatology are shown in panel c.

information, we propose that σ_S should be set carefully. For the set of nine predictors, we set σ_S based on the S_{ij} distribution in initial condition ensembles present within the multi-model ensemble. We compute the S_{ij} with the three SMILEs and set

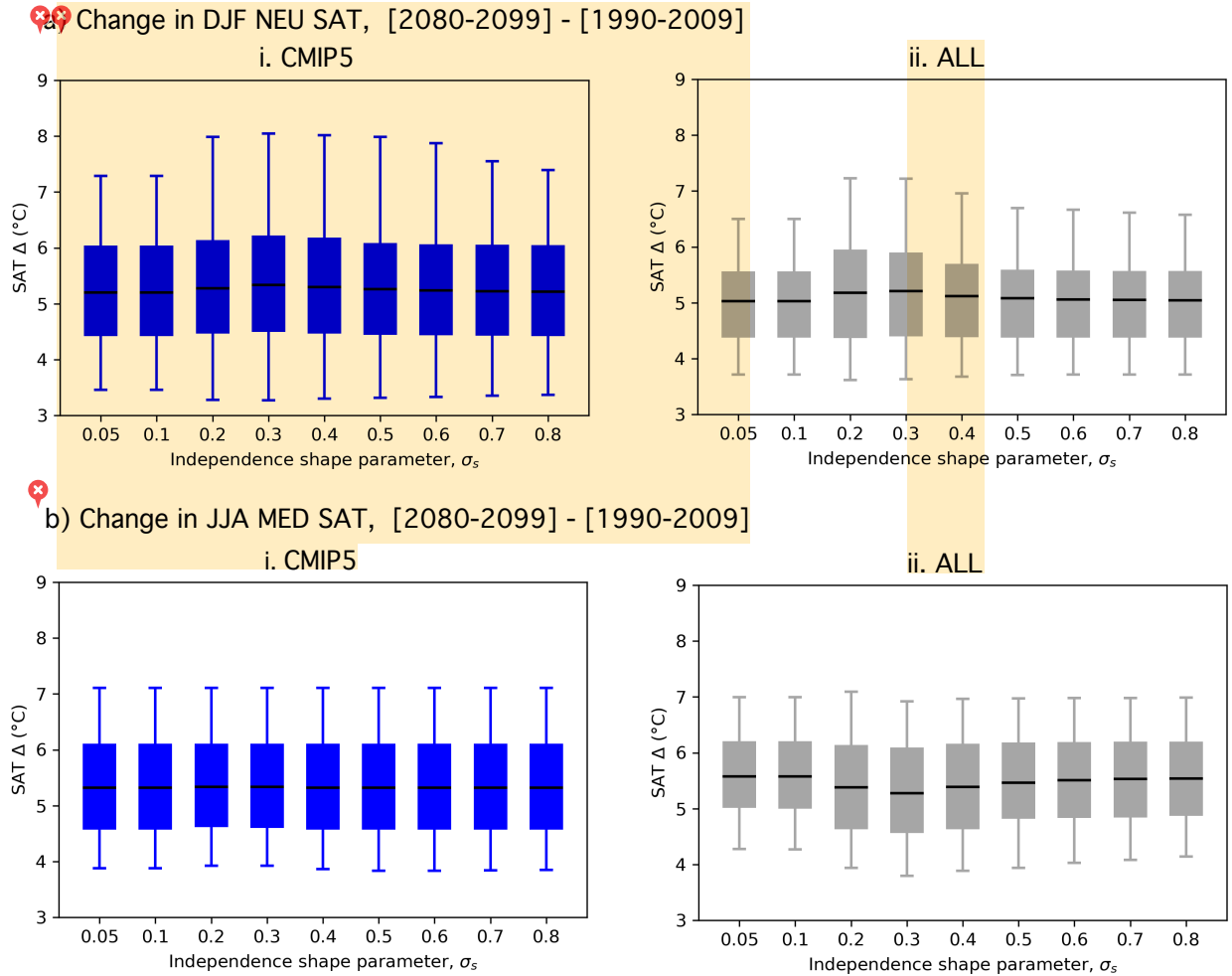


Figure B3. σ_S sensitivity of the RMSE independence scaling weighting assumption in Figure 3. σ_S used for each weighting is indicated below each box element. Box-and-whiskers showing the SAT change distribution under the RMSE independence scaling weighting assumption (Δ , [2080-2099]-[1990-2009]) for the CMIP5 ensemble (i; blue) and ALL ensemble (ii; gray). The box element spans the 25th to 75th percentile of the distribution; mean SAT change is indicated by the horizontal line within the box. The whisker element spans the 5th to 95th percentile. DJF NEU SAT change is shown in a and JJA MED SAT change is shown b.

σ_S at two standard deviations below the SMILE S_{ij} mean value (Fig. B2). The three values are then averaged. By this metric, DJF NEU σ_S is 0.26 and JJA MED σ_S is 0.25.

Another option, as discussed in the main text, is to select a set of independence predictors that explicitly differentiate inter-IC member distances from inter-model distances. In this case, σ_S should be set to be greater than the largest SMILE S_{ij} . For the large-scale CLIM predictor set explored in Figure 4, σ_S can be computed as part of the perfect model test as described in Brunner et al. (2019); σ_S in this instance is 0.22.

Appendix C: Emergent Predictor Relationships

In addition to relationships between past and future (estimated residual thermodynamic) trend (Fig.2), emergent relationships among the remaining predictors we use to represent climate are shown in Figure C1 and C2. Linear relationships are clear for climatological averages in both seasons; multi-model ensemble members with hotter mean state climate than other members during the historical period also tend to have hotter mean state climate than other members in the future. Similarly, the tendency of domain-averaged SLP values to be and remain lower or higher also persists into the future. This relationship is explored spatially in Figure C3 and C4. Mean states within SMILEs tend to cluster together. With the exception of JJA MED SLP climatology (Fig.C2c), the addition of the SMILEs does not change the linear relationship found in the CMIP5 multi-model ensemble.

For variability (standard deviation over the given period), members of SMILEs differ as much from each other as from other multi-model ensemble members in DJF (Fig.C1b,d). In JJA (Fig.C2b,d), several members of the CMIP5 multi-model ensemble have domain-averaged variability that falls outside the distribution of SMILE members. The addition of the SMILEs to the CMIP5 multi-model ensemble reduces correlations between historical and future variability for SAT and SLP in both seasons. This is particularly striking in JJA where the correlations tend to be due to the CMIP5 multi-model ensemble outliers.

Because the SLP predictor domain has a larger spatial extent than the SAT predictor domains, we also assess spatial patterns of climatological SLP which average to the lowest and highest domain-averages values in the 1990-2009 climatological period (Figures C3 and C4). The "end-members" illustrate the climatological emergent constraint relationship seen in Figures C1 and C2 in terms of pattern, that is important for a field like SLP which tends to feature dipoles on basin and continental scales. For simplicity, we compare the end-members to one observational estimate from ERA-20C.

In winter, multi-model ensemble members tend to feature similar-to-observed spatial patterns of climatological SLP in the predictor domain, with a low pressure center over the high latitude North Atlantic and a region of high pressure over the Eurasian continent (Fig.C3). For the member with the lowest domain-average, the difference arises from a further extension of the low pressure center across Northern Europe and a weaker high pressure center than observed, especially in the vicinity of the Tibetan plateau (Fig.C3 ii,v). For the member with the highest domain-average, the difference arises from high pressure features over high altitude regions, such as Greenland and the Tibetan plateau (Fig.C3 iii,vi).

In summer, members differ in spatial patterns of climatological SLP in the predictor domain, though most feature a high pressure center over the subtropical North Atlantic and lower pressure over the Eurasian continent seen in ERA-20C (Fig.C4). The member with the lowest domain-average features the aforementioned spatial pattern, but with a higher-than-observed amplitude i.e. both a higher North Atlantic subtropical high pressure center and a lower region of continental low pressure (Fig.C4 ii,v). In contrast, the member with the highest domain-average has high pressure over the entire Atlantic basin as well as over Greenland and the Tibetan plateau (Fig.C4 iii,vi). Most importantly, in all cases, the climatological behavior of the past continues into the future, which supports the primary tenet of an emergent constraint.

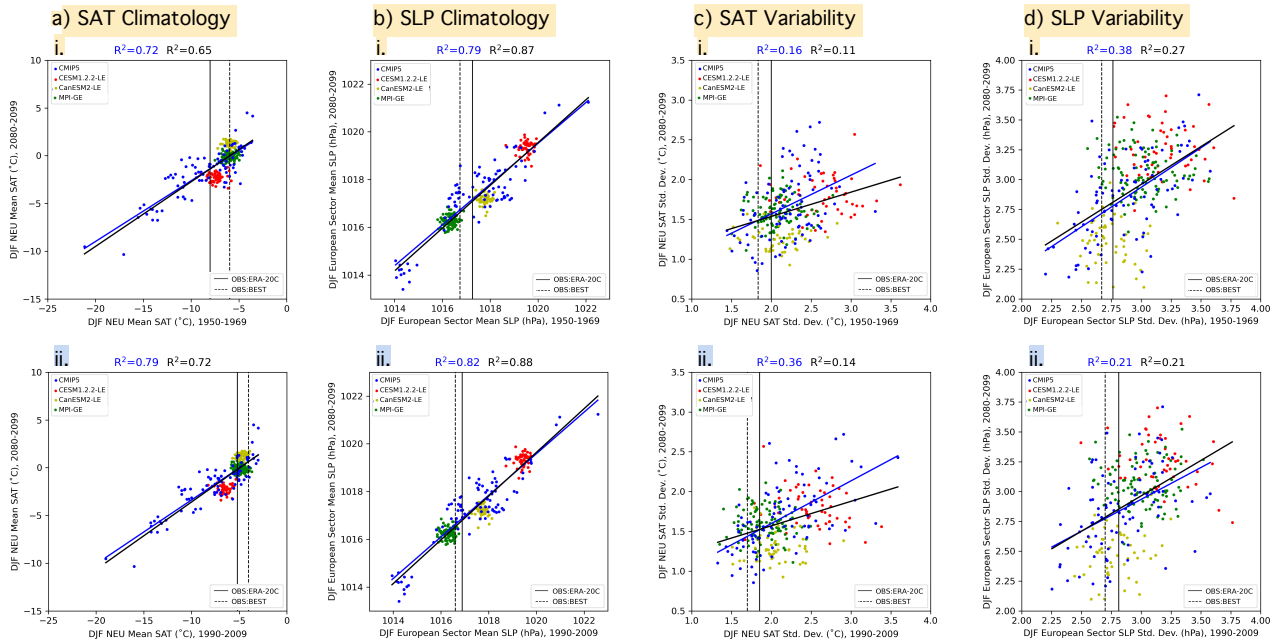


Figure C1. Predictor relationships in DJF comparing domain-averaged climate in two historical periods, (i) 1950-1969 and (ii) 1990-2009, to a future period, 2080-2099 in all panels. Observational estimates in the respective historical periods are indicated with a solid vertical line (ERA-20C SAT and SLP) and dashed vertical black line (BEST SAT and NOAA-20C SLP) in each panel. a) NEU SAT climatology ($^{\circ}\text{C}$), b) SLP climatology, averaged over the predictor region (hPa), c) NEU SAT standard deviation ($^{\circ}\text{C}$), and d) SLP standard deviation, averaged over the predictor region (hPa) are eight of the nine predictors used to determine RMSE member performance and independence in Figure 3. Least-squares regression fits (solid lines) and R^2 values computed for solely the CMIP5 output are shown in blue and computed for all output (CMIP5 and the three SMILEs) are shown in black.

695 *Author contributions.* RK, RL, and LB conceived of and wrote the weighting scheme python package. ALM and LB implemented the
 weighting scheme with contributions from RL. ALM, LB, and IK analyzed the output. ALM wrote the paper with contributions from
 co-authors.

Competing interests. We declare that we have no conflict of interest.

Acknowledgements. We would like to thank Drs. Nicola Maher, Flavio Lehner, Angeline Pendergrass, and Sebastian Sippel for their help-
 ful comments on this manuscript. This project was funded by the European Union's Horizon 2020 research and innovation program under grant agreements 641816 (CRESCENDO) and 776613 (EUCP). We acknowledge the World Climate Research Programme's Working Group on Coupled Modelling, which is responsible for CMIP, and we thank the climate modeling groups for producing and making available their model output. CMIP5 data was obtained from <http://cmip-pcmdi.llnl.gov/cmip5/>. The CESM1.2.2 large ensemble was

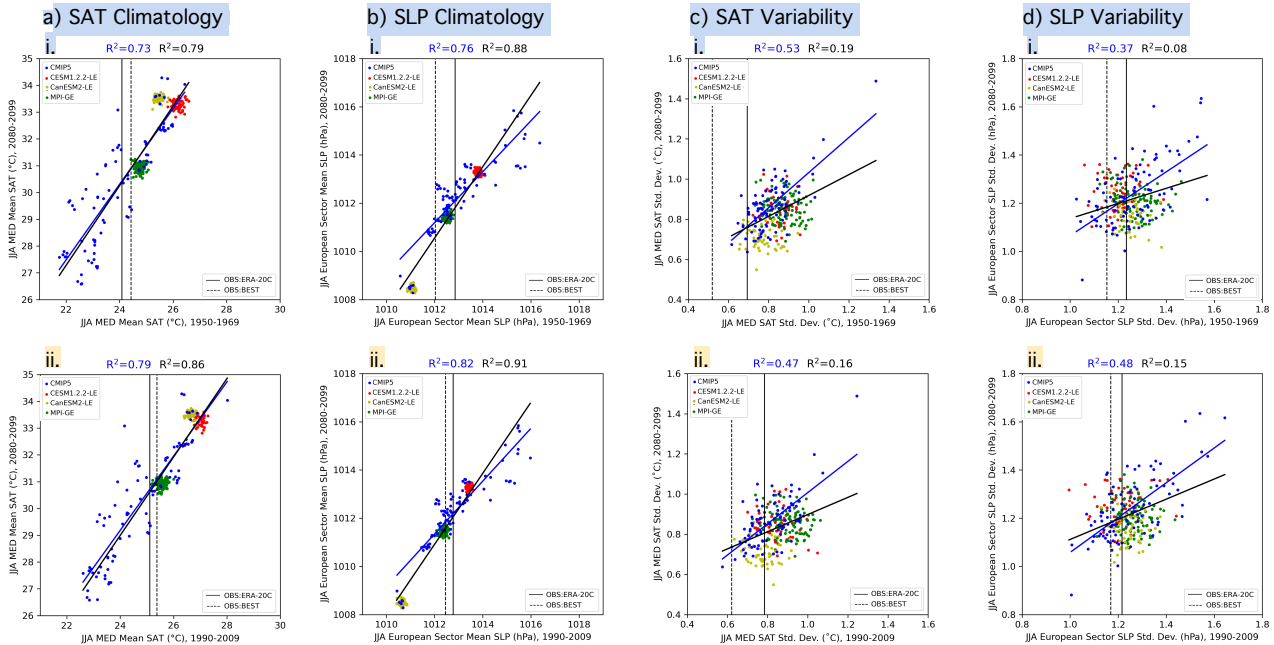


Figure C2. As is Figure C1, but for JJA. a) MED SAT climatology ($^{\circ}\text{C}$), b) MED SAT standard deviation ($^{\circ}\text{C}$), c) SLP climatology over the predictor region (hPa) and d) SLP standard deviation over the predictor region (hPa) are eight of the nine predictors used to determine member performance and independence.

generated at ETH Zürich and is available upon request. The CanESM2 large ensemble was generated by the Environment and Climate Change Canada's Canadian Centre for Climate Modelling and Analysis and is available at <http://open.canada.ca/data/en/dataset/aa7b6823-fd1e-49ff-a6fb-68076a4a477c>. The MPI Grand Ensemble was generated at the Max Planck Institute for Meteorology and is available esgf-data.dkrz.de/projects/mp-ge/. ERA-20C data is provided by ECMWF and was obtained from <https://apps.ecmwf.int/datasets/data/era20c-moda/levtype=sfc/type=an/>. The weighting protocol is available as a python package and can be obtained via GitHub (<https://github.com/lukasbrunner/Clim>) under a GPLv3.

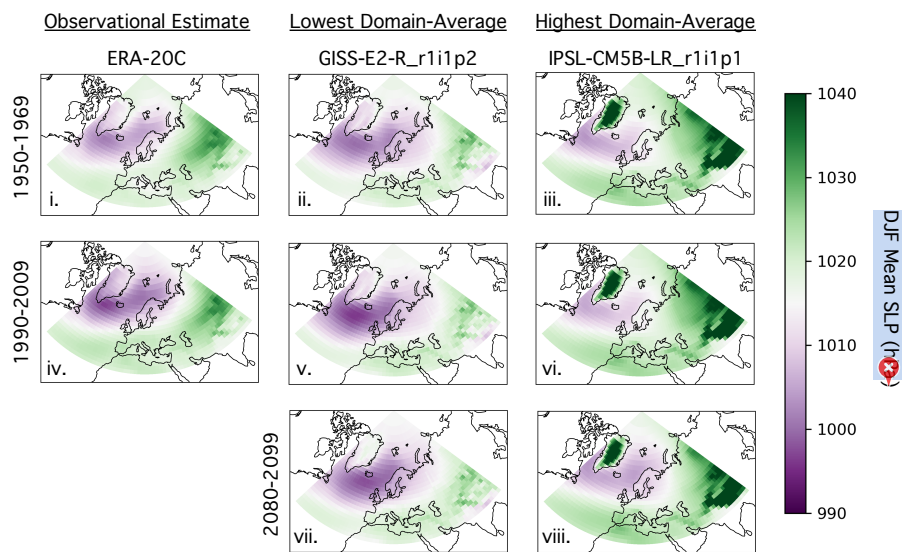


Figure C3. The spatial pattern of DJF SLP climatology for: 1950-1969 (i-iii), 1990-2009 (iv-vi), and 2080-2099 (vii-viii). The observational estimate of SLP climatology (ERA-20C) is shown in the left column (i,iv). The ensemble member with the lowest domain-average SLP climatology for the two historical periods (GISS-E2-Rr1i1p2) is shown in the center column (ii,v,vii). The ensemble member with the highest domain-average SLP climatology the two historical periods (IPSL-CM5B-LRr1i1p1) is shown in the right column (iii,vi,viii).

710 References

- Abramowitz, G., Leuning, R., Clark, M., and Pitman, A.: Evaluating the performance of land surface models, *J. Climate*, 21, 5468–5481, <https://doi.org/10.1175/2008JCLI2378.1>, 2008.
- Abramowitz, G., Herger, N., Gutmann, E., Hammerling, D., Knutti, R., Leduc, M., Lorenz, R., Pincus, R., and Schmidt, G. A.: ESD Reviews: Model dependence in multi-model climate ensembles: weighting, sub-selection and out-of-sample testing, *Earth Syst. Dyn.*, 10, 2019.
- 715 Allen, M. R. and Ingram, W. J.: Constraints on future changes in climate and the hydrologic cycle, *Nature*, 419, 228–232, <https://doi.org/10.1038/nature01092>, 2002.
- Annan, J. D. and Hargreaves, J. C.: On the meaning of independence in climate science, *Earth System Dynamics*, 8, 211–224, <https://doi.org/10.5194/esd-8-211-2017>, 2017.
- Arora, V. K., Scinocca, J. F., Boer, G. J., Christian, J. R., Denman, K. L., Flato, G. M., Kharin, V. V., Lee, W. G., and Merryfield, W. J.: Carbon emission limits required to satisfy future representative concentration pathways of greenhouse gases, *Geophys. Res. Lett.*, 38, L05 805, <https://doi.org/10.1029/2010GL046270>, 2011.
- 720 Bishop, C. and Abramowitz, G.: Climate model dependence and the replicate Earth paradigm, *Clim. Dyn.*, 41, 885–900, <https://doi.org/10.1007/s00382-012-1610-y>, 2013.
- Boberg, F. and Christensen, J.: Overestimation of Mediterranean summer temperature projections due to model deficiencies, *Nature Clim Change*, 2, 433–436, <https://doi.org/10.1038/nclimate1454>, 2012.
- 725

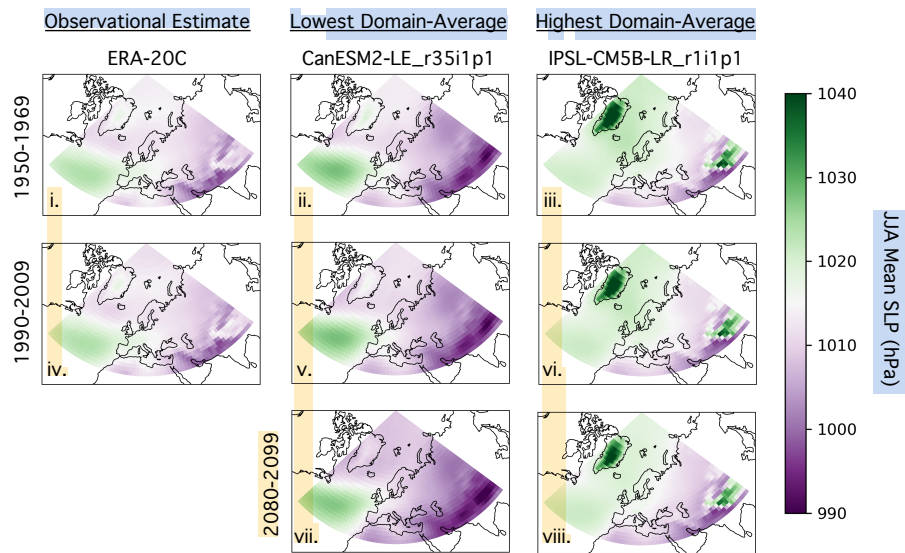


Figure C4. As is Figure A3, but for JJA SLP climatology. The observational estimate of SLP climatology (ERA-20C) is shown in the left column (i,iv). The ensemble member with the lowest domain-average SLP climatology for the two historical periods (CanESM2-LEr35i1p1) is shown in the center column (ii,v,vii). The ensemble member with the highest domain-average SLP climatology the two historical periods (IPSL-CM5B-LRr1i1p1) is shown in the right column (iii,vi,viii).

Boé, J.: Interdependency in multimodel climate projections: Component replication and result similarity, *Geophysical Research Letters*, 45, 2771–2779, <https://doi.org/10.1002/2017GL076829>, 2018.

Borodina, A., E. F. and Knutti, R.: Emergent Constraints in Climate Projections: A Case Study of Changes in High-Latitude Temperature Variability, *J. Climate*, 30, 3655–3670, <https://doi.org/10.1175/JCLI-D-16-0662.1>, 2017.

730 Branstator, G. and Teng, H.: Tropospheric Waveguide Teleconnections and Their Seasonality, *J. Atmos. Sci.*, 74, 1513–1532, <https://doi.org/10.1175/JAS-D-16-0305.1>, 2017.

Brunner, L., Lorenz, R., Zumwald, M., and Knutti, R.: Quantifying uncertainty in European climate projections using combined performance-independence weighting, *Environmental Research Letters*, <http://iopscience.iop.org/10.1088/1748-9326/ab492f>, 2019.



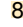


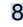
Christensen, J. H. and Boberg, F.: Temperature dependent climate projection deficiencies in CMIP5 models, *Geophysical Research Letters*, 39, L24 705, <https://doi.org/10.1029/2012GL053650>, 2012.

Collins, M., Knutti, R., Arblaster, J., Dufresne, J.-L., Fichefet, T., Friedlingstein, P., Gao, X., Gutowski, W., Johns, T., Krinner, G., Shongwe, M., Tebaldi, C., Weaver, A., and Wehner, M.: Long-term Climate Change: Projections, Commitments and Irreversibility, book section 12, p. 1029–1136, Cambridge University Press, Cambridge, United Kingdom and New York, NY, USA, <https://doi.org/10.1017/CBO9781107415324.024>, www.climatechange2013.org, 2013.

740 Compo, G., Whitaker, J., Sardeshmukh, P., Matsui, N., Allan, R., Yin, X., Gleason, B., Vose, R., Rutledge, G., Bessemoulin, P., Brönnimann, S., Brunet, M., Crouthamel, R., Grant, A., Groisman, P., Jones, P., Kruk, M., Kruger, A., Marshall, G., Maugeri, M., Mok, H., Nordli, , Ross, T., Trigo, R., Wang, X., Woodruff, S., and Worley, S.: The Twentieth Century Reanalysis Project, *Quarterly J. Roy. Meteorol. Soc.*, 137, 1–28, <https://doi.org/10.1002/qj.776>, 2011.

- Deser, C., Knutti, R., Solomon, S., and Phillips, A. S.: Communication of the role of natural variability in future North American climate, *Nature Climate Change*, 2, 775–779, <https://doi.org/10.1038/NCLIMATE1562>, 2012.
- Deser, C., Phillips, A., Alexander, M. A., and Smoliak, B. V.: Projecting North American climate over the next 50 years: Uncertainty due to internal variability, *J. Climate*, 27, 2271–2296, <https://doi.org/10.1175/JCLI-D-13-00451.1>, 2014.
- Deser, C., Tomas, R., and Sun, L.: The Role of Ocean-Atmosphere Coupling in the Zonal-Mean Atmospheric Response to Arctic Sea Ice Loss, *J. Climate*, 28, 2168–2186, <https://doi.org/10.1175/JCLI-D-14-00325.1>, 2015.
- Deser, C. A., Terray, L., and Phillips, A. S.: Forced and internal components of winter air temperature trends over North America during the past 50 years: Mechanisms and implications, *J. Climate*, 29, 2237–2258, <https://doi.org/10.1175/JCLI-D-15-0304.1>, 2016.
- Eyring, V., Bony, S., Meehl, G. A., Senior, C. A., Stevens, B., Stouffer, R. J., and Taylor, K. E.: Overview of the Coupled Model Intercomparison Project Phase 6 (CMIP6) experimental design and organization, *Geosci. Model Dev.*, 9, 1937–1958, <https://doi.org/10.5194/gmd-9-1937-2016>, 2016.
- Giorgetta, M. A., Jungclaus, J., Reick, C. H., Legutke, S., Bader, J., Böttinger, M., Brovkin, V., Crueger, T., Esch, M., Fieg, K., Glushak, K., Gayler, V., Haak, H., Hollweg, H., Ilyina, T., Kinne, S., Kornbluh, L., Matei, D., Mauritsen, T., Mikolajewicz, U., Mueller, W., Notz, D., Pithan, F., Raddatz, T., Rast, S., Redler, R., Roeckner, E., Schmidt, H., Schnur, R., Segschneider, J., Six, K. D., Stockhause, M., Timmreck, C., Wegner, J., Widmann, H., Wieners, K., Claussen, M., Marotzke, J., and Stevens, B.: Climate and carbon cycle changes from 1850 to 2100 in MPI-ESM simulations for the Coupled Model Intercomparison Project phase 5, *Journal of Advances in Modeling Earth Systems*, 5, 572–597, <https://doi.org/10.1002/jame.20038>, 2013.
- Guo, R., Deser, C., Terray, L., and Lehner, F.: Human influence on winter precipitation trends (1921–2015) over North America and Eurasia revealed by dynamical adjustment, *Geophysical Research Letters*, 46, 3426–3434, <https://doi.org/10.1029/2018GL081316>, 2019.
- Hall, A. and Manabe, S.: The Role of Water Vapor Feedback in Unperturbed Climate Variability and Global Warming, *Journal of Climate*, 12, 2327–2346, [https://doi.org/10.1175/1520-0442\(1999\)012<2327:TROWVF>2.0.CO;2](https://doi.org/10.1175/1520-0442(1999)012<2327:TROWVF>2.0.CO;2), 1999.
- Hawkins, E. and Sutton, R.: The Potential to Narrow Uncertainty in Regional Climate Predictions, *Bull. Amer. Meteor. Soc.*, 90, 1095–1108, <https://doi.org/10.1175/2009BAMS2607.1>, 2009.
- Hawkins, E., Smith, R. S., Gregory, J. M., and Stainforth, D. A.: Irreducible uncertainty in near-term climate projections, *Clim Dyn*, 46, 3807–3819, <https://doi.org/10.1007/s00382-015-2806-8>, 2016.
- Herger, N., Abramowitz, G., Knutti, R., Angélil, O., Lehmann, K., and Sanderson, B. M.: Selecting a climate model subset to optimise key ensemble properties, *Earth System Dynamics*, 9, 135–151, <https://doi.org/10.5194/esd-9-135-2018>, 2018.
- Hourdin, F., Mauritsen, T., Gettelman, A., Golaz, J., Balaji, V., Duan, Q., Folini, D., Ji, D., Klocke, D., Qian, Y., Rauser, F., Rio, C., Tomassini, L., Watanabe, M., and Williamson, D.: The Art and Science of Climate Model Tuning, *Bull. Amer. Meteor. Soc.*, 98, 589–602, <https://doi.org/10.1175/BAMS-D-15-00135.1>, 2017.
- Hurrell, J., Holland, M., Gent, P., Ghan, S., Kay, J., Kushner, P., Lamarque, J., Large, W., Lawrence, D., Lindsay, K., Lipscomb, W., Long, M., Mahowald, N., Marsh, D., Neale, R., Rasch, P., Vavrus, S., Vertenstein, M., Bader, D., Collins, W., Hack, J., Kiehl, J., and Marshall, S.: The Community Earth System Model: A Framework for Collaborative Research, *Bull. Amer. Meteor. Soc.*, 94, 1339–1360, <https://doi.org/10.1175/BAMS-D-12-00121.1>, 2013.
- Karlsson, J. and Svensson, G.: Consequences of poor representation of Arctic sea-ice albedo and cloud-radiation interactions in the CMIP5 model ensemble, *Geophys. Res. Lett.*, 40, 4374–4379, <https://doi.org/10.1002/grl.50768>, 2013.
- Kay, J. E., Deser, C., Phillips, A., Mai, A., Hannay, C., Strand, G., Arblaster, J., Bates, S., Danabasoglu, G., Edwards, J., Holland, M., Kushner, P., Lamarque, J. F., Lawrence, D., Lindsay, K., Middleton, A., Munoz, E., Neale, R., Oleson, K., Polvani, L., and Vertenstein,

- M.: The Community Earth System Model (CESM) Large Ensemble Project: A community resource for studying climate change in the presence of internal climate variability, *Bull. Amer. Met. Soc.*, 96, 1333–1349, <https://doi.org/10.1175/BAMS-D-13-00255.1>, 2015.
- Knutti, R.: The end of model democracy?, *Clim. Change*, 102(3-4), 395–404, <https://doi.org/10.1007/s10584-010-9800-2>, 2010.
- 785 Knutti, R. and Sedláček, J.: Robustness and Uncertainties in the New CMIP5 Climate Model Projections, *Nature Climate Change*, 3, 369–373, <https://doi.org/10.1038/NCLIMATE1716>, 2013.
- Knutti, R., Abramowitz, G., Collins, M., Eyring, V., Gleckler, P., Hewitson, B., and Mearns, L.: Good Practice Guidance Paper on Assessing and Combining Multi Model Climate Projections, in: Meeting Report of the Intergovernmental Panel on Climate Change Expert Meeting on Assessing and Combining Multi Model Climate Projections, edited by Stocker, T., Qin, D., Plattner, G.-K., Tignor, M., and Midgley, P., IPCC Working Group I Technical Support Unit, University of Bern, Bern, Switzerland, 2010a.
- 790 Knutti, R., Furrer, R., Tebaldi, C., Cermak, J., and Meehl, G.: Challenges in Combining Projections from Multiple Climate Models, *J. Climate*, 23, 2739–2758, <https://doi.org/10.1175/2009JCLI3361.1>, 2010b.
- Knutti, R., Masson, D., and Gettelman, A.: Climate model genealogy: Generation CMIP5 and how we got there, *Geophys. Res. Lett.*, 40, 1194–1199, <https://doi.org/10.1002/grl.50256>, 2013.
- 795 Knutti, R., Sedláček, J., Sanderson, B. M., Lorenz, R., Fischer, E., and Eyring, V.: A climate model projection weighting scheme accounting for performance and interdependence, *Geophysical Research Letters*, 44, 1909–1918, <https://doi.org/10.1002/2016GL072012>, 2017.
- Kunreuther, H., Heal, G., Allen, M., Edenhofer, O., Field, C. B., and Yohe, G.: Risk management and climate change, *Nature Climate Change*, 3, 447–450, <https://doi.org/10.1038/NCLIMATE1740>, 2013.
- Leduc, M., Laprise, R., de Elfa, R., and Šeparović, L.: Is Institutional Democracy a Good Proxy for Model Independence?, *J. Climate*, 29, 8301–8316, <https://doi.org/10.1175/JCLI-D-15-0761.1>, 2016.
- 800 Lehner, F., Deser, C., and Terray, L.: Towards a new estimate of "time of emergence" of anthropogenic warming: insights from dynamical adjustment and a large initial-condition model ensemble, *J. Climate*, 109, 14 337–14 342, <https://doi.org/10.1175/JCLI-D-16-0792.1>, 2017.
- Li, G. and Xie, S.: Origins of tropical-wide SST biases in CMIP multi-model ensembles, *Geophys. Res. Lett.*, 39, L22 703, <https://doi.org/10.1029/2012GL053777>, 2012.
- 805 Liu, C., Allan, R. P., and Huffman, G. J.: Co-variation of temperature and precipitation in CMIP5 models and satellite observations, *Geophys. Res. Lett.*, 39, L13 803, <https://doi.org/10.1029/2012GL052093>, 2012.
- Lorenz, R., Herger, N., Sedláček, J., Eyring, V., Fischer, E. M., and Knutti, R.: Prospects and caveats of weighting climate models for summer maximum temperature projections over North America, *Journal of Geophysical Research: Atmospheres*, 123, 4509–4526, <https://doi.org/10.1029/2017JD027992>, 2018.
- 810 Maher, N., Milinski, S., Suarez-Gutierrez, L., Botzet, M., Dobrynin, M., Kornblueh, L., Kröger, J., Takano, Y., Ghosh, R., Hedemann, C., Li, C., Li, H., Manzini, E., Notz, N., Putrasahan, D., Boysen, L., Claussen, M., Ilyina, T., Olonscheck, D., Raddatz, T., Stevens, B., and Marotzke, J.: The Max Planck Institute Grand Ensemble: Enabling the Exploration of Climate System Variability, *Journal of Advances in Modeling Earth Systems*, 11, 1–21, <https://doi.org/10.1029/2019MS001639>, 2019.
- Masson, D. and Knutti, R.: Climate model genealogy, *Geophys. Res. Lett.*, 38, L08 703, <https://doi.org/10.1029/2011GL046864>, 2011.
- 815 Mauritsen, T., Stevens, B., Roeckner, E., Crueger, T., Esch, M., Giorgetta, M., Haak, H., Jungclaus, J., Klocke, D., Matei, D., Mikolajewicz, U., Notz, D., Pincus, R., Schmidt, H., and Tomassini, L.: Tuning the climate of a global model, *J. Adv. Model. Earth Syst.*, 4, M00A01, <https://doi.org/10.1029/2012MS000154>, 2012.
- Meehl, G. A., Boer, G. J., Covey, C., Latif, M., and Stouffer, R. J.: The Coupled Model Intercomparison Project (CMIP), *Bulletin of the American Meteorological Society*, 81, 313–318, <https://doi.org/http://www.jstor.org/stable/26215108>, 2000.

- 820 Meinshausen, M., Smith, S. J., Calvin, K., Daniel, J. S., Kainuma, M. L. T., Lamarque, J.-F., Matsumoto, K., Montzka, S. A., Raper, S. C. B., Riahi, K., Thomson, A., Velders, G. J. M., and van Vuuren, D. P.: The RCP greenhouse gas concentrations and their extensions from 1765 to 2300, *Climatic Change*, 109, 213, <https://doi.org/10.1007/s10584-011-0156-z>, 2011.
-  Merrifield, A. and Xie, S.: Summer U.S. Surface Air Temperature Variability: Controlling Factors and AMIP Simulation Biases, *J. Climate*, 29, 5123–5139, <https://doi.org/10.1175/JCLI-D-15-0705.1>, 2016.
- 825  Merrifield, A. L., Lehner, F., Xie, S.-P., and Deser, C.: Removing circulation effects to assess central U.S. land-atmosphere interactions in the CESM Large Ensemble, *Geophys. Res. Lett.*, 44, 9938–9946, <https://doi.org/10.1002/2017GL074831>, 2017.
- Mueller, B. and Seneviratne, S. I.: Systematic land climate and evapotranspiration biases in CMIP5 simulations, *Geophys. Res. Lett.*, 41, 128–134, <https://doi.org/10.1002/2013GL058055>, 2014.
- O'Neill, B. C., Kriegler, E., Riahi, K., Ebi, K. L., Hallegatte, S., Carter, T. R., Mathur, R., and van Vuuren, D. P.: A new scenario framework for climate change research: the concept of shared socioeconomic pathways, *Climatic Change*, 122, 387–400, [https://doi.org/10.1007/s10584-](https://doi.org/10.1007/s10584-013-0905-2)
- 830 [013-0905-2](https://doi.org/10.1007/s10584-013-0905-2), 2014.
- Pennell, C. and Reichler, T.: On the Effective Number of Climate Models, *J. Climate*, 24, 2358–2367, <https://doi.org/10.1175/2010JCLI3814.1>, 2011.
- Pithan, F., Medeiros, B., and Mauritsen, T.: Mixed-phase clouds cause climate model biases in Arctic wintertime temperature inversions, *Clim Dyn*, 43, 289–303, <https://doi.org/10.1007/s00382-013-1964-9>, 2014.
- 835  Poli, P., Hersbach, H., Dee, D., Berrisford, P., Simmons, A., Vitart, F., Laloyaux, P., Tan, D., Peubey, C., Thépaut, J., Trémolet, Y., Hólm, E., Bonavita, M., Isaksen, L., and Fisher, M.: ERA-20C: An Atmospheric Reanalysis of the Twentieth Century, *J. Climate*, 29, 4083–4097, <https://doi.org/10.1175/JCLI-D-15-0556.1>, 2016.
- Rohde, R., Muller, R., Jacobsen, R., Perlmutter, S., Rosenfeld, A., and et al.: Berkeley Earth Temperature Averaging Process, *Geoinfor Geostat: An Overview*, 1:2, <https://doi.org/10.4172/2327-4581.1000103>, 2013.
- 840 Rondeau-Genesse, G. and Braun, M.: Impact of internal variability on climate change for the upcoming decades: analysis of the CanESM2-LE and CESM-LE large ensembles, *Climatic Change*, p. 1–16, <https://doi.org/10.1007/s10584-019-02550-2>, 2019.
- Sanderson, B. M., Knutti, R., and Caldwell, P.: Addressing interdependency in a multimodel ensemble by interpolation of model properties, *Journal of Climate*, 28, 2015a.
- 845 Sanderson, B. M., Knutti, R., and Caldwell, P.: A representative democracy to reduce interdependency in a multimodel ensemble, *Journal of Climate*, 28, 2015b.
-  Seneviratne, S. I., e. a.: Changes in climate extremes and their impacts on the natural physical environment, in: Managing the Risks of Extreme Events and Disasters to Advance Climate Change Adaptation. A Special Report of Working Groups I and II of the Intergovernmental Panel on Climate Change (IPCC), edited by Field, C. B., Barros, V., Stocker, T. F., Qin, D., Dokken, D. J., Ebi, K. L., Mastrandrea, M. D., Mach, K. J., Plattner, G. K., Allen, S. K., Tignor, M., and Midgley, P. M., pp. 109–230, Cambridge University Press, Cambridge, United Kingdom and New York, NY, USA, 2012.
- 850  Seneviratne, S., Corti, T., Davin, E., Hirschi, M., Jaeger, E., Lehner, I., Orlowsky, B., and Teuling, A.: Investigating soil moisture-climate interactions in a changing climate: a review, *Earth-Sci. Rev.*, 99, 125–161, <https://doi.org/10.1016/j.earscirev.2010.02.004>, 2010.
- Sillmann, J., Kharin, V. V., Zhang, X., Zwiers, F. W., and Bronaugh, D.: Climate extremes indices in the CMIP5 multimodel ensemble: Part 1. Model evaluation in the present climate, *J. Geophys. Res. Atmos.*, 118, 1716–1733, <https://doi.org/10.1002/jgrd.50203>, 2013.
- 855  Sippel, S., Meinshausen, N., Merrifield, A., Lehner, F., Pendergrass, A., Fischer, E., and Knutti, R.: Uncovering the Forced Climate Response from a Single Ensemble Member Using Statistical Learning, *J. Climate*, 32, 5677–5699, <https://doi.org/10.1175/JCLI-D-18-0882.1>, 2019.

- Slivinski, L. C., Compo, G. P., Whitaker, J. S., Sardeshmukh, P. D., Giese, B. S., McColl, C., Allan, R., Yin, X., Vose, R., Titchner, H., Kennedy, J., Spencer, L. J., Ashcroft, L., Brönnimann, S., Brunet, M., Camuffo, D., Cornes, R., Cram, T. A., Crouthamel, R., Domínguez-Castro, F., Freeman, J. E., Gergis, J., Hawkins, E., Jones, P. D., Jourdain, S., Kaplan, A., Kubota, H., Blancq, F. L., Lee, T., Lorrey, A., Luterbacher, J., Maugeri, M., Mock, C. J., Moore, G. K., Przybylak, R., Pudmenzky, C., Reason, C., Slonosky, V. C., Smith, C. A., Tinz, B., Trewin, B., Valente, M. A., Wang, X. L., Wilkinson, C., Wood, K., and Wyszyński, P.: Towards a more reliable historical reanalysis: Improvements for version 3 of the Twentieth Century Reanalysis system, *Quarterly J. Roy. Meteorol. Soc.*, 145, 2876–2908, <https://doi.org/10.1002/qj.3598>, 2019.
- 860 Stainforth, D., Allen, M., Tredger, E., and Smith, L.: Confidence, uncertainty and decision-support relevance in climate predictions, *Philos Trans A*, 265, 2145–2161, <https://doi.org/10.1098/rsta.2007.2074>, 2007.
- Stevens, B., Giorgetta, M., Esch, M., Mauritsen, T., Crueger, T., Rast, S., Salzmann, M., Schmidt, H., Bader, J., Block, K., Brokopf, R., Fast, I., Kinne, S., Kornblueh, L., Lohmann, U., Pincus, R., Reichler, T., and Roeckner, E.: Atmospheric component of the MPI-M Earth System Model: ECHAM6, *Journal of Advances in Modeling Earth Systems*, 5, 146–172, <https://doi.org/10.1002/jame.20015>, 2013.
- 870 Stouffer, R., Eyring, V., Meehl, G., Bony, S., Senior, C., Stevens, B., and Taylor, K.: CMIP5 Scientific Gaps and Recommendations for CMIP6, *Bull. Amer. Meteor. Soc.*, 98, 95–105, <https://doi.org/10.1175/BAMS-D-15-00013.1>, 2017.
- Swart, N. C., Gille, S. T., Fyfe, J. C., and Gillett, N. P.: Recent Southern Ocean warming and freshening driven by greenhouse gas emissions and ozone depletion, *Nature Geoscience*, 11, 836–841, <https://doi.org/10.1038/s41561-018-0226-1>, 2018.
- Tebaldi, C. and Knutti, R.: The Use of the Multi-Model Ensemble in Probabilistic Climate Change Projections, *Philosophical transactions. Series A, Mathematical, physical, and engineering sciences*, 365, 2053–2075, <https://doi.org/10.1098/rsta.2007.2076>, 2007.
- 875 Trenberth, K. and Paolino, D.: The Northern Hemisphere Sea-Level Pressure Data Set: Trends, Errors and Discontinuities, *Mon. Wea. Rev.*, 108, 855–872, [https://doi.org/10.1175/1520-0493\(1980\)108<0855:TNHSLP>2.0.CO;2](https://doi.org/10.1175/1520-0493(1980)108<0855:TNHSLP>2.0.CO;2), 1980.
- van den Dool, H. M.: Searching for analogues, how long must we wait?, *Tellus A*, 46, 314–324, <https://doi.org/10.1034/j.1600-0870.1994.t01-2-00006.x>, 1994.
- 880 van Vuuren, D., Edmonds, J., Kainuma, M., Riahi, K., Thomson, A., Hibbard, K., Hurtt, G. C., Kram, T., Krey, V., Lamarque, J.-F., Masui, T., Meinshausen, M., Nakicenovic, N., Smith, S. J., and Rose, S. K.: The representative concentration pathways: an overview, *Climatic Change*, 109, 5–31, <https://doi.org/10.1007/s10584-011-0148-z>, 2011.
- Vogel, M. M., Zscheischler, J., and Seneviratne, S. I.: Varying soil moisture–atmosphere feedbacks explain divergent temperature extremes and precipitation projections in central Europe, *Earth System Dynamics*, 9, 1107–1125, <https://doi.org/10.5194/esd-9-1107-2018>, <https://www.earth-syst-dynam.net/9/1107/2018/>, 2018.
- 885 Wallace, J., Fu, Q., Smoliak, B. V., Lin, P., and Johanson, C. M.: Simulated versus observed patterns of warming over the extratropical Northern Hemisphere continents during the cold season, *Proc. Natl. Acad. Sci. (USA)*, 109, 14 337–14 342, <https://doi.org/10.1073/pnas.1204875109>, 2012.
- Wallace, J. M., Zhang, Y., and Renwick, J. A.: Dynamic contribution to hemispheric mean temperature trends, *Science*, 270, 780–783, <https://doi.org/10.1126/science.270.5237.780>, 1995.
- 890 Wallace, J. M., Deser, C., Smoliak, B., and Phillips, A.: Attribution of climate change in the presence of internal variability, in: *Climate Change: Multidecadal and Beyond*, edited by Chang, C.-P., Ghil, M., Latif, M., and Wallace, J. M., pp. 1–29, World Scientific Publishing, 2015.