



# Differing precipitation response between Solar Radiation Management and Carbon Dioxide Removal due to fast and slow components

Anton Laakso<sup>1,2</sup>, Peter K. Snyder<sup>1</sup>, Stefan Liess<sup>3</sup>, Antti-Ilari Partanen<sup>4</sup> and Dylan B. Millet<sup>1</sup>

5 <sup>1</sup>Department of Soil, Water and Climate, University of Minnesota, Twin Cities, St. Paul, MN-55108, Minnesota, USA

<sup>2</sup>Finnish Meteorological Institute, Atmospheric Research Centre of Eastern Finland, Kuopio, FI-70200, Finland

<sup>3</sup>Department of Earth Sciences, University of Minnesota, Minneapolis, MN-55455

<sup>4</sup>Finnish Meteorological Institute, Climate System Research, Helsinki, FI-00100, Finland

*Correspondence to:* Anton Laakso (anton.laakso@fmi.fi)

10 **Abstract.** Solar Radiation Management (SRM) and Carbon Dioxide Removal (CDR) are geoengineering methods that have been proposed to prevent climate warming in the event of insufficient greenhouse gas emission reductions. Here, we have studied temperature and precipitation responses to CDR and SRM with the RCP4.5 scenario using the MPI-ESM and CESM Earth System Models (ESMs). The SRM scenarios were designed to meet one of the two different climate targets: to keep either global mean 1) surface temperature or 2) precipitation at the 2010-2020 level via stratospheric sulfur injections.

15 Stratospheric sulfur fields were simulated beforehand with an aerosol-climate model, with the same aerosol radiative properties used in both ESMs. In the CDR scenario, atmospheric CO<sub>2</sub> concentrations were reduced to keep the global mean temperature at approximately the 2010-2020 level. Results show that applying SRM to offset 21st century climate warming in the RCP4.5 scenario leads to a 1.42% (MPI-ESM) or 0.73% (CESM) reduction in global mean precipitation, whereas CDR increases global precipitation by 0.5% in both ESMs for 2080-2100 relative to 2010-2020. In all cases, the simulated global mean

20 precipitation change can be represented as the sum of a slow temperature-dependent component and a fast temperature-independent component, which are quantified by regression method. Based on this component analysis, the fast temperature-independent component of CO<sub>2</sub> explains the global mean precipitation change in both SRM and CDR scenarios. Based on the SRM simulations, a total of 163-199 Tg(S) (CESM) or 292-318 Tg(S) (MPI-ESM) of injected sulfur from 2020 to 2100 was required to offset global mean warming based on the RCP4.5 scenario. To prevent a global mean precipitation increase, only

25 95-114 Tg(S) was needed and this was also enough to prevent global mean climate warming from exceeding 2 degrees above preindustrial temperatures. The distinct effects of SRM in the two ESM simulations mainly reflected differing shortwave absorption responses to water vapor. Results also showed relatively large differences in the individual (fast versus slow) precipitation components between ESMs.

## 1 Introduction

30 It is now widely recognized that fast greenhouse gas (GHG) emission reductions, especially for carbon dioxide (CO<sub>2</sub>), are needed if ongoing global warming is to be minimized. The Intergovernmental Panel on Climate Change (IPCC) Special Report



on Global warming of 1.5 °C (henceforth SR15, IPCC, 2018) brought to wider attention many, partly irreversible, risks associated with global mean warming of 1.5 °C above the pre-industrial level (Liu et al., 2018; Schleussner et al., 2016; Seneviratne 2018). The aim of the 2015 Paris Agreement was to maintain the global mean temperature within 2 °C of the pre-  
35 industrial level, and to pursue efforts to limit the mean increase to 1.5 °C (UNFCCC, 2015). Based on climate model simulations, only one of the Representative Concentration Pathway (RCP) scenarios used in the IPCC Fifth Assessment report (IPCC, 2014) is associated with global mean warming of less than 2 °C; this pathway includes presumptive mitigation after year 2010, which has not taken place (van Vuuren et al., 2007). Millar et al. (2017) and Rogelj et al. (2018) have shown that limiting warming to 1.5 °C is still possible, but would require rapid abandonment of fossil fuel and a reduction of energy use.  
40 In addition, air quality legislation will likely lead to decreased cooling from anthropogenic aerosols, which might by itself be enough to increase global mean temperatures over the 1.5 °C target (Hienola et al., 2018).

Geoengineering methods have been proposed to prevent dangerous climate warming if CO<sub>2</sub> emissions are not reduced quickly enough (e.g., Caldeira et al., 2013). Such techniques are usually divided into two categories. One is Carbon Dioxide Removal  
45 (CDR), whereby CO<sub>2</sub> is removed from the atmosphere—thus addressing the root cause of climate warming (Royal Society, 2009). While these actions will face many political, economic and technical challenges they are most likely needed in some form to avoid 1.5 C warming (Luderer et al., 2018, IPCC 2018). The second is Solar Radiation Management (SRM), which aims to increase the shortwave (solar) reflectivity of the atmosphere or Earth's surface. The Paris agreement states that the 2 °C target should be achieved by reaching a balance between anthropogenic GHG emissions and anthropogenic GHG sinks  
50 (i.e., CDR) (UNFCCC, 2015). However, challenges related to mitigation and CDR, underestimation of future carbon budgets, or new scientific understanding of tipping points could lead to increased interest in using SRM to avoid crossing the Paris Agreement temperature thresholds.

Discussions related to SR15 and the Paris Agreement have concentrated mainly on global mean temperature change, rather  
55 than on regional variations in temperature changes (Collins et al., 2018; Seneviratne et al., 2018) or on other climate impacts, such as changes in precipitation, that are driven by temperature changes or caused directly by GHG or other forcing agents. On the global scale, precipitation changes can be separated into a surface-temperature dependent slow component, which does not depend on the forcing agent causing the underlying temperature change, and a temperature-independent fast component, which is caused directly by the altered atmospheric radiation absorption (Bala et al., 2009; Myhre et al., 2017; Samset et al.,  
60 2016). Changes to the hydrological cycle thus depend not only on the degree of warming but also on the forcing agents and emission changes that are causing the warming. As a result, different emission pathways can lead to different precipitation changes even if they result in similar global mean temperatures. Such hydrologic changes may have a larger impact on human wellbeing than changes in temperature due to impacts on floods, droughts, water resources and ecosystems (Lausier and Jain 2018).



Problems and side effects associated with SRM have been discussed extensively (Robock et al. 2009; Royal Society 2009). One fundamental problem is that SRM would decrease global mean precipitation through the direct radiative effect described above. This can be understood as follows. Given a GHG concentration increase, less outgoing longwave (LW) radiation escapes to space, causing surface temperatures to increase until a new equilibrium is achieved. SRM methods aim to offset  
70 this temperature increase by reducing incoming shortwave (SW) solar radiation. Thus, even though the total radiative flux may be the same between an increased GHG + SRM scenario and the unperturbed climate, the atmospheric SW and LW radiative fluxes differ. This has been shown in general to lead to a decrease in global mean precipitation (Bala et al., 2008). In general, the suite of climate responses arising from a LW radiation change cannot be fully compensated by modifying SW radiation. Use of SRM thus involves a tradeoff between temperature and precipitation on the global scale.

75  
CDR methods are considered less risky than SRM as these methods remove CO<sub>2</sub> from the atmosphere and thus reduce the atmospheric GHG concentration (Royal Society 2009). However, climate change is not a reversible process due to factors such as sea and glacier ice melt, sea level rise, and carbon cycle changes (Frölicher and Joos 2010; Wu et al., 2015). In addition, climate does not adapt immediately to a change in radiative forcing. For example, due to ocean thermal inertia global  
80 temperatures will continue to change decades or even centuries after a given radiative forcing perturbation. It is therefore important that CDR scenarios be studied to assess climate responses beyond changes to global mean temperature.

In this study, the temperature and precipitation responses to CDR and SRM are simulated with two Earth System Models (ESMs). The mechanisms driving global mean precipitation changes are assessed by separately examining the temperature-  
85 dependent slow response and radiatively-induced fast response for differing magnitudes of SRM and CDR. This methodology can be used to better understand impacts of CDR and SRM, and to predict total temperature and precipitation responses if CDR and SRM are used simultaneously. Unlike in several previous studies, here, fast and slow responses are quantified by a regression method instead of a fixed sea surface temperature (SST) method (Duan et al., 2018; Myhre et al., 2017; Samset et al., 2016). Advantage of regression method is that it separate totally temperature-dependent and independent responses while  
90 in the fixed-SST method land temperature adjustments are included in the temperature-independent fast response. We also study regional disparities in temperature and precipitation responses for both geoengineering techniques, and estimate the SO<sub>2</sub> emission amounts required to keep either temperature or precipitation at present-day levels.

We simulate three geoengineering scenarios against a Representative Concentration Pathway 4.5 (RCP4.5) scenario (Thomson et al., 2011). First, we examine two SRM scenarios designed to address two different climate targets: keeping either global  
95 mean 1) surface temperature or 2) precipitation at 2010-2020 level via stratospheric sulfur injections. Next, we examine a CDR scenario designed to keep the global mean temperature at approximately the 2010 level. We used an aerosol-climate model to simulate stratospheric aerosol fields, and two separate ESMs (MPI-ESM and CESM) to simulate the climate response to SRM and CDR.



## 100 2 Methods

### 2.1 Models

This study was conducted using three climate models: one aerosol-climate model with fixed sea surface temperature, and two ESMS. We first simulated stratospheric aerosol fields with the aerosol climate model ECHAM-HAMMOZ. We then implemented the radiative properties of these fields in two ESMS—the Max Planck Institute Earth System Model (MPI-ESM) and the National Center for Atmospheric Research’s Community Earth System Model (CESM)—for simulation of the various scenarios. For each scenario, we run a three-member ensemble with both ESMS.

#### 2.1.1 ECHAM – HAMMOZ

We defined the radiative properties of the aerosol fields resulting from stratospheric injections of sulfur dioxide (SO<sub>2</sub>) with the MAECHAM6.1-HAM2.2-SALSA global aerosol-climate model (Bergman et al., 2012; Kokkola et al., 2008; Laakso et al., 2016; Stevens et al., 2013, Zhang et al., 2012). In this model, the ECHAM atmospheric module (Stevens et al., 2013) is coupled interactively with the HAM aerosol module (Zhang et al., 2012). The HAM module calculates the emissions, removal, and radiative properties of aerosols along with the associated gas and liquid phase chemistry. The model includes the SALSA explicit sectional aerosol scheme (Kokkola et al., 2018), which describes aerosols based on number and volume size distributions with 10 and 7 size sections for soluble and insoluble particles, respectively. The model simulates the microphysical processes of nucleation, condensation, coagulation, and hydration. The model was configured as described by Laakso et al. (2017). Simulations were performed at T63L47 resolution, which corresponds approximately to a 1.9° x 1.9° horizontal grid with 47 vertical levels reaching up to ~80 km. The model accurately simulates stratospheric aerosol loads and radiative properties based on observations of the 1991 Mt. Pinatubo eruption (Laakso et al., 2016; Kokkola et al., 2018). It should be noted that this model configuration does not simulate the quasi biennial oscillation at L47 resolution. Hydroxyl radical (OH), which impacts the oxidation of SO<sub>2</sub> to sulfate as well as ozone concentration, is accounted for through prescribed monthly mean fields.

#### 2.1.2 MPI-ESM and CESM

MPI-ESM (Giorgetta et al., 2013) consists of the same atmospheric model (ECHAM6.1) as ECHAM-HAMMOZ, and the MPI-ESM simulations here also employed the same T63L47 resolution as the ECHAM-HAMMOZ simulations described above. MPI-ESM includes the JSBACH active land model (Reich et al., 2013) and the Max Planck Institute Ocean Model (MPIOM) (Junglaus et al., 2012), both fully coupled to the atmospheric module. MPIOM includes the HAMOCC ocean biogeochemistry model (Ilyina et al., 2013). The tropospheric aerosol climatology of Kinne et al. (2013) is used in all scenarios.



130 CESM version 1.2.2 (Hurrell et al., 2013) consists of the Community Atmospheric Model (CAM4) which is used with horizontal resolution of  $0.9^\circ \times 1.25^\circ$  and 26 vertical levels up to 40 km (finite volume grid). It is coupled to the Parallel Ocean Program (POP2) ocean model, the Community Land Model (CLM4) and Community Ice CodE (CICE4) sea ice model.

### 2.1.3 Implementing prescribed aerosol fields in ESMs

135 To examine the effects of solar radiation management by stratospheric sulfur injections we implemented prescribed sulfate fields in the ESMs as described by Laakso et al. (2017). First, we used ECHAM-HAMMOZ to simulate aerosol fields resulting from gaseous  $\text{SO}_2$  injections. These simulations include a 2-year spin-up period followed by a 5-year steady-state period. From this 5-year period, mean stratospheric values for aerosol optical depth (AOD), single scattering albedo (SSA), and the asymmetry factor (ASYM) were archived as monthly output in 14 SW bands plus 16 LW bands for (absorption) AOD. We then implemented these fields in the two ESMs as prescribed zonal and monthly mean fields. ECHAM-HAMMOZ and MPI-ESM share the ECHAM atmosphere model, which itself uses the Rapid Radiative Transfer Model. Because the same resolution (T63L47) was employed for both ECHAM-HAMMOZ and MPI-ESM, the only differences in aerosol radiative properties between the models was caused by zonal and monthly averaging of the radiative properties (however, the total AOD did not vary between the two). In the case of CESM, aerosol fields from the ECHAM-HAMMOZ simulations had to be interpolated horizontally to  $0.9^\circ \times 1.25^\circ$  and to 26 vertical levels. Because CAM4 uses different wavelength bands than does ECHAM (7 LW bands and 19 SW bands), we interpolated the aerosol optical properties accordingly.

145

The above implementation ensures that SRM radiative effects are consistent in both ESMs, while also enabling longer-term analyses since computationally expensive aerosol microphysics are prescribed rather than simulated online. The aerosol radiative effects are nevertheless based on explicit simulations of aerosol microphysics and of the resulting aerosol size distribution and spatial-temporal variability. Our methodology is therefore more physically realistic compared to approaches that simply reduce the solar constant or apply idealized zonally homogenous aerosol fields. Realistic simulation of aerosol microphysics is necessary for robust prediction of the associated radiative effects, which depend on the size, properties, and location of the particle. In the stratosphere, particle life times are roughly one year, so that microphysical processes such as coagulation and condensation play a greater role than in the troposphere. As a result of these microphysical processes, radiative forcing from stratospheric sulfur injections does not increase linearly with the amount of injected sulfur (Niemeier et al., 2015).

## 155 2.2 Simulations

To simulate SRM stratospheric aerosol fields, we performed six SRM and one control simulation with ECHAM-HAMMOZ. Here,  $\text{SO}_2$  was injected continuously throughout the simulation at 20 km altitude between 10 N and 10 S latitudes. Each of the ECHAM-HAMMOZ simulations included injection of 1, 2, 3, 4, 5 or 6 Tg(S)/yr.



160 We divide the ESM simulations into two groups: 1) component analysis simulations, and 2) scenarios. Component analysis  
simulations are performed to enable subsequent separation of the slow (temperature-dependent) and fast (temperature-  
independent) responses to the specific forcing agent (Gregory et al., 2004) based on a regression method. In this method, an  
individual forcing agent (CO<sub>2</sub> or SRM) is added to the steady state climate conditions, and different climate variables are  
regressed against the global mean surface temperature change. The fast and slow responses for a specific forcing agent is then  
165 obtained from the fitted regression line. Specifically, the fast temperature-independent response is derived as the intercept  
(zero temperature change), while the slow temperature-dependent response is derived as the slope. This analysis is done for  
three purposes: 1) to evaluate the implementation of the stratospheric aerosol fields across the two ESMs, 2) to quantify  
differences in radiative forcing and climate sensitivity between models under a specific forcing agent, and 3) to separate the  
fast and slow precipitation responses of the forcing agents. A total of 9 scenarios are simulated with both ESMs: preindustrial,  
170 6 SRM scenarios with 1, 2, 3, 4, 5, 6 Tg(S) injections, and 2xCO<sub>2</sub> and 4xCO<sub>2</sub> conditions.

All component analysis simulations start from a radiatively balanced climate for pre-industrial conditions. A forcing agent  
(CO<sub>2</sub> or SRM) is introduced at the outset of the simulation while other conditions are kept pre-industrial levels. We simulated  
three 20-year ensemble members for each component analysis scenario in Table 1.

175 Scenario simulations were based on RCP 4.5 (Moss et al., 2010; van Vuuren et al., 2011), and included: i) one baseline scenario  
with no geoengineering (RCP45), ii) two SRM scenarios designed to keep global mean surface temperature (SRM-TEMP) or  
precipitation (SRM-PRECI) at 2010-2020 mean values, and iii) one CDR scenario designed to keep global mean surface  
temperature at the 2010-2020 mean value (CDR). In each case, three ensemble members were simulated for years 2010-2100.

180 In the RCP 4.5 scenario, radiative forcing stabilizes several decades before the end of the simulations (year 2100), leading to  
warming clearly below that seen in business as usual scenarios, but above the targets defined in the Paris Agreement. For the  
SRM-TEMP and SRM-PRECI scenarios, the global mean temperature or precipitation was kept close to the 2010-2020 mean  
via controlled stratospheric sulfur injections.

185 In practice, the SRM scenario objectives were achieved by adjusting the aerosol loading as needed based on the continuous  
SO<sub>2</sub> injection simulations from ECHAM-HAMMOZ (Sect. 2.1.3). Specifically, the SRM was controlled annually based on  
mean temperature or precipitation values from the two preceding years, as follows:

190 If  $(X_{\text{year}-1} + X_{\text{year}-2})/2 > X_{2010-2020} + A$  then  $\text{SRM}_{\text{year}} = \text{SRM}_{\text{year}-1} + 1 \text{ Tg(S)}/\text{yr}$ .

If  $(X_{\text{year}-1} + X_{\text{year}-2})/2 < X_{2010-2020} - A$  then  $\text{SRM}_{\text{year}} = \text{SRM}_{\text{year}-1} - 1 \text{ Tg(S)}/\text{yr}$ ,



where  $X_{\text{year-1}} + X_{\text{year-2}}$  are the global mean temperature (for SRM-TEMP) or precipitation (for SRM-PRECI) in the two preceding years, while  $X_{2010-2020}$  is the corresponding global mean value for 2010-2020 based on RCP45. An approximation  
195 inherent in this approach is that transitory ramp-up and ramp-down periods in the stratospheric aerosol burden with 1 Tg(S)/yr changes in SRM are not taken account.

The A parameter is a boundary value and set to 0.2 K in SRM-TEMP, which based on our test simulations is generally larger than natural variability. For SRM-PRECI A is defined to correspond to a 0.5% change in the global mean precipitation in the  
200 model. If both of the above conditions are false, the stratospheric sulfur injections are maintained at the prior year's level. SRM simulations are initialized with 1 Tg(S)/yr injections at year 2020. A two-year running window is used to avoid undue influence from natural variability in global mean temperature or precipitation. Use of a longer window is suboptimal because the temperature or precipitation change the year following an SRM adjustment then does not carry sufficient weight for the subsequent evaluation. This can lead to overly large temperature or precipitation changes before the need to act is recognized.

205  
In the CDR scenarios, CO<sub>2</sub> removal was likewise initialized at year 2020. Here, the annual CO<sub>2</sub> increase based on RCP4.5 was counteracted by a 1% annual removal of the atmospheric CO<sub>2</sub> concentration. This process was continued until year-2070, when radiative forcing is stabilized in the RCP4.5 scenario. Accounting for both RCP4.5 emissions and CDR, the total atmospheric CO<sub>2</sub> concentration is then reduced yearly by 0.3 - 0.6 % between 2020-2070 (Fig. 1). Removing 1% of atmospheric CO<sub>2</sub> in  
210 2020 corresponds to negative emissions of approximately 8.7 GtC/yr. As carbon cycle feedbacks (i.e., outgassing from natural carbon sinks) lower the efficiency of CDR (Tokarska and Zickfeld, 2015), the actual amount of sequestered carbon would in reality need to be even higher than this. Achieving such high negative emissions in 2020 would be virtually impossible. The rate required is higher than the maximum estimated sustainable potential of the highest-potential negative emission technologies (Fuss et al., 2018), without even considering competition between the methods. Among SR15 scenarios pursuing  
215 the most aggressive CDR, the median carbon sequestration rate for the primary employed method (bioenergy with carbon capture and storage) reaches ~4 GtC/yr in 2100 (Rogelj et al., 2018). Thus, the CDR scenario employed here should be considered an idealized high-end carbon removal scenario, and we do not speculate how CDR could be achieved and do not study impacts of any specific CDR technology. All non-CO<sub>2</sub> GHG concentrations and other forcings in the CDR scenario are the same as in RCP45.

### 220 3. Fast and slow components of radiation and precipitation

Fast and slow components of radiation and precipitation were quantified from the component analysis simulations by regressing studied variable against temperature. These simulations were 20 year long. In each case, three ensemble members were simulated. Simulations were initiated in stable preindustrial conditions. In addition, studied forcing agent (CO<sub>2</sub> or SRM)





were included, which causes radiative imbalance and results in warming or cooling. Then, annual global mean values were  
225 regressed against temperature to separate temperature-dependent and independent responses.

### 3.1 Evaluating the implementation of stratospheric sulfur aerosol fields in MPI-ESM and CESM

We evaluated the stratospheric aerosol implementation by comparing clear-sky aerosol radiative forcing in the two ESMs with  
that in ECHAM-HAMMOZ. The ECHAM-HAMMOZ simulations were performed with fixed sea surface temperatures, with  
aerosol radiative forcing calculated based on the change between a scenario with stratospheric sulfur injection and the control  
230 simulation. To calculate the corresponding radiative forcing in the ESMs, a regression (Gregory) method was used (Gregory  
et al., 2004) (Fig. 2), which also provides the climate feedback parameter. First, we calculated the clear-sky shortwave flux  
and temperature anomaly compared to the Preind simulation for each year individually and made a linear regression between  
the two variables. Then, we obtained radiative forcing as the clear-sky shortwave flux anomaly of the linear regression line at  
zero temperature anomaly (i.e., when the climate system has not yet adjusted to the forcing).

235

The SW radiative forcing in both ESMs was in good agreement with that in ECHAM-HAMMOZ (dashed lines). Radiative  
forcings were slightly smaller in MPI-ESM than ECHAM-HAMMOZ, likely due to differing background conditions  
(preindustrial in MPI-ESM versus year-2000 in ECHAM-HAMMOZ, and thus more extensive ice cover in the MPI-ESM  
simulations). The zonal distribution of radiative forcing also agrees well between the models (not shown). Stratospheric  
240 aerosols absorb some LW radiation, and the LW radiative forcing in MPI-ESM agrees well with that in ECHAM-HAMMOZ.  
However, CESM exhibits 37% (on average) weaker LW radiative forcing than ECHAM-HAMMOZ. This is probably due to  
the different radiative transfer models in CESM-CAM4 (9 LW radiation bands) and ECHAM-HAMMOZ (16 LW radiation  
bands). However, LW radiative forcing was small compared to the SW forcing, and this underestimation does not significantly  
affect the results or conclusions of this study. Because LW radiative forcing (warming effect) is weaker while SW radiative  
245 forcing (cooling) is stronger in CESM than in MPI-ESM, SRM resulted in slightly more clear-sky cooling in CESM.

We see in Fig. 2 that SW radiative forcing does not increase linearly with the amount of injected sulfur. This is because more  
sulfur condenses onto existing particles, and small particles coagulate more efficiently with larger particles, when the sulfate  
burden is increased. This leads to lower particle numbers and larger particle sizes per unit sulfur injected (Heckendorn et al.,  
250 2009; English et al., 2012; Niemeier and Timmreck, 2015). Conversely, Fig. 2 shows that the LW radiative forcing increased  
quite linearly with the amount of injected sulfur as shown, as also demonstrated by Niemeier and Timmreck (2015).

Earth's outgoing radiation is a linear function of temperature (Koll and Cronin 2018), an effect apparent in Fig. 2 c and d.  
However, SW radiation also changes as a function of temperature and we found that this change is fairly linear. The resulting  
255 feedback was positive, amplifying cooling in the SRM scenarios and amplifying warming in the case of a CO<sub>2</sub> increase. The  
radiative fluxes in Fig. 2 are clear-sky, and this SW feedback is thus caused mainly by ice cover and albedo changes along





with changes in atmospheric absorption. The SW feedback was much larger in CESM (all-scenario average of 0.96 W/m<sup>2</sup>K) than in MPI-ESM (0.50 W/m<sup>2</sup>K). There was no large difference in surface albedo change between models. However, clear-sky SW absorption (net clear-sky SW flux at top of the atmosphere (TOA) - net clear-sky SW flux at surface) was linearly  
260 dependent on surface temperature by 0.98 W/m<sup>2</sup>K in MPI-ESM and 0.85 W/m<sup>2</sup>K in CESM. We attribute this to the change in atmospheric water vapor due to the temperature change, which then contributes to atmospheric shortwave absorption. The differing model response likely originates from the distinct radiation schemes and spectral resolutions in MPI-ESM and CESM. This argument is supported by Fildier and Collins (2015), who likewise derived a larger SW absorption response to temperature in MPI-ESM compared to models that include CAM4.

265

Overall, we find that the clear-sky aerosol radiative forcings in the two ESMs are in good agreement with ECHAM-HAMMOZ. However, the same stratospheric sulfur fields yielded 8% weaker (on average) total (SW+LW) clear-sky radiative forcing in MPI-ESM than in CESM.

### 3.2 Differences in Effective Radiative Forcings in MPI-ESM and CESM

270 Figure 3 shows Gregory plots for the total TOA all-sky radiative forcing with clouds also taken into account. In this case, the total SRM radiative forcing was 22% weaker in MPI-ESM than in CESM. On the other hand, the radiative forcing due to increased CO<sub>2</sub> concentrations was larger in MPI (orange and red symbols in Fig. 3), but the difference was relatively small and is explained by different cloud forcings between models. The impact on SW radiation was larger than it was on LW radiation. The overall result is that the same stratospheric sulfur injection led to larger and faster cooling in CESM than in  
275 MPI-ESM (Fig. 3). During the 20-year simulation period, stratospheric sulfur injections of 6 Tg(S)/yr (SRM6) led to slightly over -1 K global mean cooling (left-most green hexagon symbols in Fig. 3a) in MPI-ESM but closer to -2 K in CESM (Fig 3b). Global mean warming after 20-year 2xCO<sub>2</sub> and 4xCO<sub>2</sub> simulations was consistent between the models. However, there was a nearly 2 x larger radiative imbalance in MPI-ESM compared to CESM by the end of the simulations. If these simulations reached radiative equilibrium, the climate would presumably therefore be warmer in MPI-ESM than in CESM.

### 280 3.3 Temperature-independent fast and temperature-dependent slow precipitation responses

Precipitation responses can be divided into a temperature-independent fast response, which takes place immediately when some forcing agent is introduced, and a slow response caused by the temperature change and subsequent feedbacks (Myhre et al., 2017). Because of climate (e.g., ocean) inertia, precipitation will change slowly along with temperature even in the case of abrupt radiative forcing changes. Here, we separately quantified these fast and slow responses based on the regression method  
285 described earlier. Results are shown in Fig. 4. Fast response was obtained by intersection of fitted line and the y-axes (T=0), and slope of the linear fit shows the slow response due to the temperature change. Fast responses are driven by changes in atmospheric absorption (Samset et al., 2016). A change in absorbed radiation modifies the amount of energy transferred between the TOA and surface. This energy transfer is then largely compensated by a change in latent heat flux (evaporation),



in turn changing precipitation. Changes in CO<sub>2</sub> concentration affect LW atmospheric absorption while SRM primarily modifies  
290 SW reflection.

Figure 4 shows that an atmospheric CO<sub>2</sub> increase led immediately to a decrease in global mean precipitation. However, this  
CO<sub>2</sub> increase simultaneously warmed the climate, which eventually led to a precipitation increase. After 2-5 years, this  
temperature-dependent slow component exceeded the immediate radiative component, and global mean precipitation was then  
295 larger than in the absence of a CO<sub>2</sub> increase. On one hand, stratospheric sulfur aerosols (SRM1-6) also absorb some radiation  
(Fig. 2b), but on the other hand, relatively much more solar radiation is reflected and thus less is absorbed by background  
atmosphere. We therefore saw only a small total temperature-independent increase in global mean precipitation for most SRM  
cases. Overall increasing CO<sub>2</sub> decreases precipitation via the fast component and increases precipitation via the slow  
temperature component (Fig. 5). Fast precipitation impacts were significantly larger for CO<sub>2</sub> changes than for SRM (shown in  
300 legends in Fig 4.), and therefore the fast precipitation component of SRM was omitted in Figure 5 for clarity.

As Fig. 4a shows, the fast precipitation responses in MPI-ESM differed from those in ECHAM-HAMMOZ, despite the fact  
that the same atmosphere model was used in both cases. This may result from differing background conditions between the  
models, land temperature change in ECHAM-HAMMOZ with fixed SST, or noise of in the yearly mean values of MPI-ESM  
305 simulations.

Based on the scenarios examined here, the average global precipitation change scales with global mean temperature with a  
proportionality coefficient of 2.54 (SD 0.27) %/K in MPI-ESM and 2.26 (SD 0.13) %/K in CESM. These values are robust for  
temperature changes caused by CO<sub>2</sub> and SRM forcings. Our results thus support prior findings that the slow precipitation  
310 response is not dependent on the forcing agent (Kvalevåg et al., 2013).

#### 4. Results from simulated scenarios

In the scenario runs (Table 1), the years 2010-2100 were simulated for RCP45 and for geoengineering the RCP4.5 climate via  
SRM or CDR. Results are discussed below.

##### 4.1 Change in global mean temperature

315 Global mean temperature and precipitation anomalies relative to 2010-2020 are shown in Fig. 1. Under RCP45, the global  
mean temperature increased by 1.30 K and 1.20 K in MPI-ESM and CESM, respectively. These changes were slightly below  
the CMIP5 multi-model mean of 1.35 K (Knutti and Sedláček, 2012). During the same period, global mean precipitation  
increased by 1.76-1.78 % under RCP4.5, also below the CMIP5 multi-model mean (2.66 %).



320 In the SRM-TEMP scenario, the global mean surface temperature was kept close to the present-day value via stratospheric sulfur injections. This reduced global mean precipitation in both ESM simulations (Fig. 6). The reduction was significantly larger in MPI-ESM (-1.42 %) than in CESM (-0.73 %). These differences are explored in Sect. 5. Given the SRM-TEMP results, it is not surprising that when global mean precipitation is maintained at the 2010-level in the SRM-PRECI scenario, the climate warms. SRM-PRECI warming in MPI-ESM is 0.64 K over 2010-2020, substantially larger than was seen in CESM  
325 (0.27 K). This is consistent with the disparate model results for SRM-TEMP.

Overall, in both models, the majority of the global mean climate warming seen in RCP45 was compensated in SRM-PRECI. Based on GISTEMP data, the global average temperature in 2010-2018 was approximately 1 K warmer than in the pre-industrial era (defined as 1880-1900) (GISTEMP Team, 2019; Lennsen et al., 2019). Thus, in both ESMs the SRM-PRECI  
330 global temperature increase stayed within the 2 C target of the Paris Agreement. For CESM, the SRM-PRECI temperature increase also stayed within the 1.5 C target.

The CDR scenario led to a 0.10 (MPI-ESM) and -0.11 (CESM) K change in global mean temperature by the end of the century (2080-2100) compared to present-day (2010-2020). There was thus no significant difference in global mean temperature  
335 between the CDR and SRM-TEMP scenarios at the end of the century. The largest difference in global mean temperature between these scenarios was seen immediately after the onset of geoengineering, when the CDR temperature was larger than in SRM-TEMP. Under CDR, the global mean temperature only starts to decrease post-2040. This is because CDR acts more slowly to reduce global temperatures than does stratospheric sulfur injection (Royal Society 2008). In the CDR scenario, CO<sub>2</sub> removal was suspended in year-2070, when atmospheric CO<sub>2</sub> concentrations have returned to their 1976 levels. The global  
340 mean temperature at that time was close to the present-day value, and did not change significantly through the end of the century (when the rate of change in atmospheric CO<sub>2</sub> matches that seen in RCP 4.5). Thus, even this very optimistic CDR scenario is insufficient for cooling climate to pre-21st century levels. However, our CDR scenario only reduced CO<sub>2</sub> concentrations, with other GHGs and aerosol concentrations following RCP 4.5.

#### 4.2 Change in global mean precipitation

345 Although the global mean surface temperature in the CDR scenario was the same at the end of the century (2080-2100) as at the beginning of the century (2010-2020), the global mean precipitation was over 0.5 % larger in both ESMs. In Sect. 3.3, we showed that the precipitation impacts of SRM and CO<sub>2</sub> can be separated into a temperature-independent fast component and a temperature-dependent slow component. Here we use that framework to examine precipitation responses across the different geoengineering scenarios. Precipitation is also affected by non- CO<sub>2</sub> GHGs, tropospheric aerosols, and land-use changes, all  
350 of which can induce their own temperature-independent fast components. For our purposes this can be assumed to be the same across all scenarios.



We thus describe the global mean precipitation change as the sum of the temperature dependent slow component ( $a \cdot \Delta T$ ) and all fast components (Fläschner et al., 2016):

$$355 \quad \Delta P = a \times a\Delta T + b(\text{SRM}) + c \times \ln \frac{CO_2 \text{ preind} + \Delta CO_2}{CO_2 \text{ preind}} + \text{BG}, \quad (1)$$

where  $a, b, c$  are model-specific coefficients,  $T$  is simulated global mean surface temperature,  $CO_2 \text{ preind}$  is the preindustrial  $CO_2$  concentration,  $\Delta CO_2$  is the atmospheric  $CO_2$  change relative to the preindustrial value, and  $\text{BG}$  is the background fast component, assumed to be the same for all scenarios. Coefficient  $a$  is obtained from the scenario-ensemble mean slope in Fig 4, while  $b$  is the fast component (intercept) from simulations of the corresponding SRM scenario. The fast precipitation response varies linearly with absorbed radiation (Myhre et al., 2017). Radiative forcing due to  $CO_2$  varies logarithmically with concentration (Etminan et al., 2016). Thus, the fast precipitation response for  $CO_2$  is logarithmically dependent on  $CO_2$  concentrations. We calculated the fast precipitation response for three different  $CO_2$  concentrations: preindustrial,  $2xCO_2$ , and  $4xCO_2$ . The coefficient  $c$  can then be calculated from a logarithmical fit of the fast response versus  $CO_2$  concentration across these three scenarios. This approach yields  $c$  values of 4.5 (%) for MPI-ESM and 4.0 (%) for CESM. Finally, we calculated the BG component as the 5-year running mean residual between the first three right-hand terms of Eq. (1) and the modelled precipitation in the RCP45 scenario. Note that if Eq. (1) is used only to study precipitation change between scenarios, the BG component is not needed (see supplementary material Fig. S1). However here we also wish to examine precipitation changes relative to 2010-2020, and the BG term is thus included here.

370 Figure 7 shows the precipitation component for each scenario in MPI-ESM and CESM. In general, the precipitation signal as estimated by the fast and slow components via Eq. (1) corresponds well to the actual model quantity in both ESMs for all scenarios. From year 2020 to 2100 mean error in results between Eq. (1) and actual model quantity were 0.01%, 0.04%, and -0.01% with MPI-ESM and -0.16%, -0.12%, and 0.05% with CESM in SRM-TEMP, SRM-PRECI, and CDR, respectively. These individual components can therefore be used to understand the drivers of precipitation change for each scenario.

375 Figures 7a and b show that the precipitation increase in RCP45 would be roughly twice as large if only the slow component were operative. However, the fast radiative component reduced global mean precipitation increase by over 1% in both ESMs. This fast component related to increasing atmospheric  $CO_2$  (plus other GHG and absorbing aerosol) probably also explains why the increase of observed global mean precipitation to date has not increased significantly to date, despite the fact that climate has warmed (Allan et al., 2014).

380 Under the SRM-TEMP scenario (Fig. 7 c and d), the global temperature change (and thus the slow precipitation component) was small, as is the fast precipitation component due to sulfate aerosols. However, the fast component due to  $CO_2$  was as large as in RCP45. This fast (radiative) component from  $CO_2$  is the main reason that SRM generally leads to a decrease in global



385 mean precipitation when used to fully offset GHG-induced warming. On the other hand, in the SRM-PRECI scenario (Fig. 7  
e and f) the climate was cooled to the point that the temperature-dependent slow component balances the fast radiative  
components (CO<sub>2</sub>, SRM and background), so that the net precipitation change was close to zero.

The CDR scenario led to a slight increase in global mean precipitation, despite no significant net change in global mean  
390 temperature. Figures 7 g and f show that this was also explained by the fast radiative component of CO<sub>2</sub>. As in SRM-TEMP  
the slow temperature-dependent component was small. However, atmospheric CO<sub>2</sub> concentrations were much lower by the  
end of the century, reducing atmospheric absorption and thus increasing global precipitation compared to 2010-2020.

Although the global mean precipitation response was approximately the same in both ESMs in RCP45 and CDR, a closer look  
395 at the underlying drivers shows that only the radiative component of CO<sub>2</sub> was consistent across models. The temperature-  
dependent response differs between ESMs, driving divergent precipitation impacts. This was resulted from slightly different  
temperature response and hydrological sensitivity between ESMs. In RCP4.5 temperature-dependent slow component was  
32% larger in end of the simulation (2080-2100) with MPI-ESM than in CESM simulation. In CDR magnitude of slow  
component was same between models (0.28% in MPI-ESM and -0.24% in CESM at the end of the simulation), but a sign was  
400 different. However, this effect was compensated by differing non-CO<sub>2</sub> background responses, which also changed over the  
course of the simulated century. Figure 7 shows that this BG response is very different between the models and even have a  
different sign. In MPI-ESM non-CO<sub>2</sub> fast components were causing 0.48% decrease on precipitation at the end of the  
simulation (2080-2100) compared to the beginning (2010-2020) while in CESM non-CO<sub>2</sub> forcers were increasing precipitation  
by 0.23%. Thus, it is merely fortuitous that the net precipitation response was similar between models in the CDR and RCP45  
405 scenarios.

The BG radiative components impacting precipitation include a range of factors including non-CO<sub>2</sub> GHG (methane, nitrous  
oxide, ozone, CFCs etc), tropospheric and background stratospheric aerosols, and land-use change—with differing treatments  
between models. Radiative transfer modeling also differs between the ESMs. As shown in Sect. 3.1-3, radiative forcing and  
410 (particularly) atmospheric absorption—and thus latent heat flux and precipitation—in the ESMs responded differently to the  
various forcing agents. Thus, it is not surprising that the BG precipitation component, which is affected by several different  
forcing agents, also differs between models.

## 5. Sulfur injections

Figure 8 shows the amount of sulfur required to keep global temperature or precipitation at current levels through the end of  
415 the 21st century. All scenarios started with injections of 1 Tg(S)/yr in year-2020, and the amount of required sulfur then  
increased along with the RCP4.5-driven warming. In all cases, more sulfur was needed to compensate for RCP4.5 warming



than for the associated precipitation increase (see cumulative injection amount on right-hand axes). As shown in Sect. 4.2, the fast, CO<sub>2</sub>-driven radiative component partly offsets the temperature-driven precipitation component caused by global warming. Thus, in the SRM-PRECI scenario, the sulfur aerosol only needs to compensate for the (already partly offset) precipitation effect of changing temperatures, rather than for the total temperature change (as is the case in SRM-TEMP).

Based on these simulations, in a total of 107-113 Tg(S) and 95-114 Tg(S) was required to prevent a simulated precipitation increase between years 2020 and 2100 in MPI-ESM and CESM, respectively (scenario SRM-PRECI). These 80-year totals are slightly larger than the amount of SO<sub>2</sub> emitted each year in the mid 1970s, when annual emissions were roughly 75 Tg(S)/yr (Smith et al., 2011). Global sulfur emissions have since decreased; however, China alone emitted over 100 Tg(S) SO<sub>2</sub> between 2006 and 2008 (Li et al., 2017). However, the lifetime of aerosols derived from surface emissions is on the order of days, and the cooling impact is therefore much smaller than in the case of stratospheric injection. In the SRM-PRECI scenario, yearly injections are 3 Tg(S)/yr or less, with the exception of occasionally higher injections for one MPI-ESM ensemble member.

Figure 8 reveals significant differences in injection amounts between the two ESMs. In CESM, preventing global mean warming (under RCP4.5) through year-2100 requires a total of 163-199 Tg(S). This was less than twice the amount required to prevent an increase in global precipitation. However, simulations with MPI-ESM suggest that preventing global mean warming via SRM would require 292-318 Tg(S), 50-100% more than in CESM and approximately 3x the amount required to stabilize global mean precipitation in scenario SRM-PRECI. Maximum yearly injections reached 6 Tg(S)/yr in MPI-ESM but only 3 Tg(S)/yr in CESM. These differences are mostly explained by the model responses to sulfate aerosols shown in Sect. 3: the all-sky forcing for a given amount of sulfur was significantly (22-33 %) larger in CESM than in MPI-ESM.

Figure 8 also shows some limitations of the climate-control algorithm used here. At times the change in SRM injection amount was too large, leading to an overly-strong climate response. In some cases the ensuing compensatory change in injection amount then overshoots the desired climate response in the opposite direction. This led to rapid fluctuations between SRM levels, as seen for example between years 2070-2080 in MPI-ESM ensemble member 2 for the SRM-PRECI scenario. Such effects could be avoided by smaller injection increments or by using a more sophisticated algorithm that could better separate large natural variations in temperature or precipitation from long-term changes. We also noted that the introduction of 1 Tg(S)/yr in 2020 led to an overly-large precipitation response for all simulations under scenario SRM-PRECI. However, the above effects do not affect the overall results and conclusions shown here.

## 6. Regional climate responses

While the SRM-TEMP and CDR scenario simulations led to similar global mean temperatures by the end of 21st century, the regional responses were quite different. Figures 9 a and b map the temperature difference between these two scenarios in both





ESMs for the last 20 years of the 21st century. We see that the SRM-TEMP scenario led to cooler tropics and warmer high  
450 latitudes than the CDR scenario in both ESMs. These regional discrepancies have been demonstrated in prior studies (Kravitz  
et al., 2013; Laakso et al., 2017) and point to a fundamental problem with the SRM approach. Aerosols primarily affect  
incoming SW radiation, while GHGs affect LW thermal radiation, and the meridional gradient is steeper for SW than for LW  
radiation. Consequently, compensating for a global mean LW change by modifying SW radiation leads to zonally-dependent  
differences. This issue can be reduced by concentrating the SRM injections in mid and high latitudes, or via seasonal  
455 adjustment of the sulfur injection area (Laakso et al., 2017). Overall, however, the temperature differences over land between  
scenarios were rarely statistically significant (indicated by hatching in Fig. 9).

Figures 9 c and d compare the SRM-TEMP scenario to present-day climate (2010-2020). In MPI-ESM, the regional SRM-  
TEMP versus present-day temperature differences were significantly larger than those between SRM-TEMP and CDR at the  
460 end of the century. However, this was not the case in the CESM simulations. It should be kept in mind that comparing years  
2080-2100 from the SRM-TEMP scenario with 2010-2020 (as present-day) is a somewhat arbitrary choice, and that the  
comparison reflects not only geoengineering impacts but also climate change under RCP4.5. In addition, even though the  
global mean temperature was similar between these two periods, the climate was relatively stable in 2080-2100 but was  
warming in 2010-2020 climate. The regional patterns seen in Fig. 9 c) and d) thus depend to a degree on the choice of reference  
465 years, and not only the impacts of geoengineering.

Regional temperature anomalies for other scenarios are provided in the supplement (Fig. S2). Overall, RCP45 led to larger  
warming at high latitudes than at low latitudes when compared to CDR for years 2080-2100. The corresponding regional  
patterns in SRM-PRECI were similar to those in RCP45 but with reduced magnitude. Nevertheless, warming in SRM-PRECI  
470 relative to the CDR scenario was statistically significant almost everywhere in both models.

Figure 10 shows the relative precipitation differences between the SRM-PRECI and CDR scenarios in boreal winter (DJF) and  
summer (JJA) in 2080-2100. Globally, CDR led to 0.5% more precipitation than SRM-PRECI in both models. However, this  
precipitation change was not regionally or seasonally homogeneous. A key conclusion is that these changes were rarely  
475 statistically significant (hatching in Fig. 10) and that there was often not good agreement between models.

Both models did show broadly similar responses over tropical oceans, especially over the Eastern Pacific and Atlantic. This  
was probably caused by an Intertropical Convergence Zone (ITCZ) shift due to the zonal temperature difference between  
SRM-PRECI and CDR (SRM-PRECI led to more warming in high versus low latitudes compared to CDR). Generally, the  
480 responses seen in Fig. 10 were larger in MPI-ESM than in CESM, likely due to the significantly warmer climate in MPI-ESM  
under SRM-PRECI. Supplemental Figures S3 and S4 show that when comparing temperature in SRM-PRECI and CDR,  
simulations with MPI-ESM led to much greater warming in DJF and (especially) JJA over Europe, Australia and South



America when compared to CESM. Figure 10 shows that the corresponding precipitation responses were also significantly different over these areas. Precipitation responses for the other studied scenarios are shown in the supplement (Figs. S5 and 485 S6). As with the results in Fig. 10, spatial features of these precipitation responses were rarely statistically significant. To increase confidence in how SRM and CDR would affect regional precipitation distributions, longer simulations or larger ensemble sizes are necessary.

## 7. Discussion and conclusions

Here, we have studied different scenarios in which global mean warming and precipitation changes are compensated by solar 490 radiation management (SRM) or carbon dioxide removal (CDR) during the 21st century. We carried out simulations using two Earth System Models, MPI-ESM and CESM, with SRM based on stratospheric aerosols first simulated with the aerosol-climate model ECHAM-HAMMOZ. SRM was used for two scenarios in which the magnitude of sulfur injections was controlled to maintain global mean temperature or precipitation at year 2010-2020 levels in the RCP4.5 scenario. Additionally, an idealized CDR scenario (also based on RCP4.5) was performed that included 1%/yr removal of atmospheric CO<sub>2</sub>. We 495 examined the resulting global mean precipitation changes mechanistically by dividing the response into temperature-dependent and temperature-independent components. These model-specific components were defined based on a regression method using simulations with fixed climate conditions, and that included a constant SRM treatment or an abrupt change in atmospheric CO<sub>2</sub> concentrations.

500 Our work supports prior studies in showing that the ratio of the global precipitation change to the global temperature change for SRM is larger than for an atmospheric CO<sub>2</sub> perturbation (e.g. Bala et al., 2008). Thus, less sulfur was needed to compensate for the global mean precipitation change under RCP4.5 than to compensate for the corresponding temperature. Our results showed that maintaining global precipitation at the same level from 2010 to 2100 required a total of 107-113 Tg(S) (with MPI-ESM) and 95-114 Tg(S) (with CESM). However, preventing an increase in global mean temperature required 292-318 Tg(S) 505 (with MPI-ESM) and 163-199 Tg(S) (with CESM). Keeping global precipitation at current levels through 2100 would thus require roughly the same amount of sulfur as the estimated surface emissions of China alone between 1996-2005 (121 Tg(S), Smith et al., 2011) <http://sedac.ciesin.columbia.edu/data/set/haso2-anthro-sulfur-dioxide-emissions-1850-2005-v2-86/data-download>). This simultaneously reduced global mean warming by 50% and 78% based on the MPI-ESM and CESM simulations, respectively (compared to the 2010-2100 RCP4.5 temperature increase in the absence of SRM).

510

While completely preventing global mean warming in this century (in RCP4.5) would require much more sulfur than preventing a change in global precipitation, the total sulfur required was comparable to that emitted globally at the surface from anthropogenic sources during the first five years of the 21st century (274 Tg(S), Smith et al., 2011). However, maintaining a constant global mean temperature in this way led to a significant reduction in global mean precipitation (-1.42% with MPI-



515 ESModel and -0.73% with CESM) compared to present-day climate. Our component analysis showed that this precipitation  
decrease was caused by the temperature-independent radiation component resulting from the CO<sub>2</sub> increase in the RCP 4.5  
scenario. Under RCP45 without SRM, this component was overridden by the temperature-dependent effect on precipitation  
from global warming. When this temperature component was compensated by SRM, the CO<sub>2</sub> component remains and global  
mean precipitation decreases. It should be noted that this is the case for all SRM methods and not only for stratospheric  
520 aerosols. SRM itself had only a small temperature-independent fast effect on precipitation.

In the CDR scenario, the annual CO<sub>2</sub> increase based on RCP4.5 was counteracted by a 1% annual removal of the atmospheric  
CO<sub>2</sub> concentration until year 2070. This was found to slow down warming significantly and to return the global mean  
temperature to its present-day (2010-2020) value. The atmospheric CO<sub>2</sub> budget is currently increasing at roughly 4 GtC/yr. In  
525 our CDR scenario, 8.7 GtC of CO<sub>2</sub> was removed yearly after year-2020. Our scenario should be considered as an idealized  
high-end CDR scenario as achieving this high CO<sub>2</sub> removal rates in a few years would not be feasible due to technological,  
economic, social, and political issues. The results highlight the challenge in substantially slowing global warming, and suggest  
that entirely preventing global-mean warming during this century solely via CDR without significant cuts in CO<sub>2</sub> emissions is  
probably not achievable.

530 Even though global mean temperature at end of the CDR simulation was the same as at the beginning, global mean precipitation  
increased (~0.5 %) in both ESMs. To date, we have not seen as large increase in global mean precipitation as would be expected  
only based on the temperature increase (Allan et al., 2014). This is because the fast radiation-driven precipitation effect is  
largely compensating the slower temperature-dependent component from warming. However, over time, the temperature  
component will dominate, and a significant increase in global mean precipitation is expected. If atmospheric CO<sub>2</sub> is removed  
535 as in the CDR scenario, the temperature component is prevented from increasing, but simultaneously a positive fast CO<sub>2</sub>  
precipitation component is induced by the reduction of CO<sub>2</sub>, increasing global mean precipitation. It is thus difficult to prevent  
an increase in global mean precipitation via GHG reduction. However, global precipitation changes are also driven by the fast  
radiative components of aerosols and non-CO<sub>2</sub> GHGs, and future precipitation will depend on how these emissions evolve  
540 over time.

RCP45 and CDR scenarios led to a similar global mean precipitation response between the two ESMs. However, regression  
analysis revealed that this was fortuitous. The precipitation response to changing temperature and CO<sub>2</sub> concentrations differed  
between the ESMs, but these differences were masked by offsetting background (BG) effects related to other GHGs and  
545 tropospheric aerosols. Large differences in the primary drivers of precipitation change can therefore exist between ESMs even  
when the ESMs predict similar net changes. A more detailed component analysis, with BG effects separated into relevant  
subcomponents, is therefore needed. The Precipitation Driver Response Model Intercomparison Project (PDRMIP) may help  
address this issue (Myhre et al., 2017).



550 Similar component analyses as done here on the global scale (Sect. 4.2) can in principle be performed regionally. However,  
for regional analyses (e.g., applying Eq. (1) for a single model grid box), the dry static energy flux divergence of the atmosphere  
needs to be taken into account (Richardson et al., 2016). This term depends on the neighbouring grid boxes and is not linear  
or independent from other components. Because of this and natural variability, regression analyses to quantify the fast and  
slow precipitation components either regionally or for individual grid boxes will be subject to noisier data than in the global  
555 case. However, preliminary analyses reveal regions where the approach appears promising, and we therefore recommend  
further evaluation of this potential in subsequent work.

Overall, this study shows that global mean temperature-independent fast and temperature-dependent slow precipitation  
responses caused by CDR and SRM can be quantified by the regression method. When these components are known, the  
560 global mean precipitation change can be presented as the sum of the temperature dependent slow component and all fast  
components. Our results show that the fast responses of CO<sub>2</sub> have a major role in the resulting precipitation impacts, when  
CO<sub>2</sub> induced global warming is slowed down by geoengineering. If global warming is prevented by stratospheric sulfur  
injections while atmospheric CO<sub>2</sub> concentration still increases, the global mean precipitation is decreased due to the fast  
response of increasing atmospheric CO<sub>2</sub>. On the other hand, less sulfur is required to keep the global mean precipitation stable,  
565 because the fast precipitation response to increased CO<sub>2</sub> is the opposite of the slow precipitation response resulting from  
warmer climate. Without SRM, temperature response overruns CO<sub>2</sub> fast response (as in RCP45). Also in our CDR scenario,  
the global mean precipitation increase was explained by the positive fast precipitation response to reduced CO<sub>2</sub>. As we showed  
here, separating precipitation to fast and slow response is a useful method to analyse differing precipitation responses between  
different geoengineering techniques. This framework can thus help to understand and anticipate temperature and precipitation  
570 responses in different time scales and geoengineering scenarios, where SRM and CDR are used potentially simultaneously. In  
principle, this method can also be used to study precipitation response in any scenario, if the temperature change and forcing  
agents are known.

Code and data availability. The data from the model simulations and implemented model codes are available from the authors  
575 upon request.

Author contributions. AL designed the research, performed the experiments, carried out the analysis and prepared manuscript.  
All author contributed ideas, interpretation and discussion of results and to writing the paper.

580 Competing interests. The authors declare that they have no conflict of interest.



Acknowledgements. A. Laakso was supported by Tiina and Antti Herlin Foundation. A.-I. Partanen was supported by the Fonds de Recherche du Québec - Nature et technologies (grant number: 200414), Concordia Institute for Water, Energy and Sustainable Systems (CIWESS) and the Academy of Finland (grant number: 308365). The ECHAM–HAMMOZ model is developed by a consortium composed of ETHZ, Max-Planck Institut für Meteorologie, Forschungszentrum Jülich, University of Oxford and the Finnish Meteorological Institute and managed by the Center of Climate Systems Modeling (C2SM) at ETHZ.

## References

Allan, R., Liu, C., Zahn, M., Lavers, D., Koukouvagias, E., & Bodas-Salcedo, A.: Physically Consistent Responses of the Global Atmospheric Hydrological Cycle in Models and Observations. *Surveys in Geophysics*, 35(3), 533-552, <https://doi.org/10.1007/s10712-012-9213-z>, 2014.

Bala, G., Duffy, P. B., and Taylor, K. E.: Impact of geoengineering schemes on the global hydrological cycle, *P. Natl. Acad. Sci. USA*, 105, 7664–7669, <https://doi.org/10.1073/pnas.0711648105>, 2008.

Bala, G., Caldeira, K., Nemani, R., Fast versus slow response in climate change: implications for the global hydrological cycle, *Climate Dynamics*, <https://doi.org/10.1007/s00382-009-0583-y>, 2009

Bergman, T., Kerminen, V.-M., Korhonen, H., Lehtinen, K. J., Makkonen, R., Arola, A., Mielonen, T., Romakkaniemi, S., Kulmala, M., and Kokkola, H.: Evaluation of the sectional aerosol microphysics module SALSA implementation in ECHAM5HAM aerosol-climate model, *Geosci. Model Dev.*, 5, 845–868, <https://doi.org/10.5194/gmd-5-845-2012>, 2012.

Caldeira, K., Govindasamy B. and Cao, L.: The Science of Geoengineering, *Annual Review of Earth and Planetary Sciences*, 41-1, 231-256, <https://doi.org/10.1146/annurev-earth-042711-105548>, 2013.

Collins, M. et al.: Challenges and opportunities for improved understanding of regional climate dynamics. *Nat. Clim. Change* 8, 101–108, <https://doi.org/10.1038/s41558-017-0059-8>, 2018.

Duan, L., Cao, L., Bala, G., and Caldeira, K.: Comparison of the fast and slow climate response to three radiation management geoengineering schemes. *Journal of Geophysical Research: Atmospheres*, 123, 11– 980. <https://doi.org/10.1029/2018JD029034>, 2018



- English, J. M., Toon, O. B., and Mills, M. J.: Microphysical simulations of sulfur burdens from stratospheric sulfur geoengineering, *Atmos. Chem. Phys.*, 12, 4775–4793, <https://doi.org/10.5194/acp-12-4775-2012>, 2012.
- 615
- Etminan, M., G. Myhre, E. J. Highwood, and K. P. Shine, Radiative forcing of carbon dioxide, methane, and nitrous oxide: A significant revision of the methane radiative forcing, *Geophys. Res. Lett.*, 43, 12,614–12,623, doi:10.1002/2016GL071930, 2016.
- 620
- Fildier, B., and W. D. Collins, Origins of climate model discrepancies in atmospheric shortwave absorption and global precipitation changes, *Geophys. Res. Lett.*, 42, 8749–8757, doi:10.1002/2015GL065931, 2015.
- Frölicher T. L. and Joos F.: Reversible and irreversible impacts of greenhouse gas emissions in multi-century projections with the NCAR global coupled carbon cycle-climate model, *Climate Dynamics*, 35, 7, 1439–1459, <https://doi.org/10.1007/s00382-009-0727-0>, 2010.
- 625
- Fläschner, D., T. Mauritsen, and B. Stevens: Understanding the Intermodel Spread in Global-Mean Hydrological Sensitivity. *J. Climate*, 29, 801–817, <https://doi.org/10.1175/JCLI-D-15-0351.1>, 2016
- 630
- Fuss, S., Lamb, W., Callaghan, M., Hilaire, J., Creutzig, F., Amann, T., Minx, J., Negative emissions—Part 2: Costs, potentials and side effects. *Environmental Research Letters*, 13(6), 063002, <http://dx.doi.org/10.1088/1748-9326/aabf9f> TI, 2018.
- Giorgetta, M., Jungclaus, J., Reick, C. H., Legutke, S., Bader, J., Böttinger, M., Brovkin, V., Crueger, T., Esch, M., Fieg, K., Glushak, K., Gayler, V., Haak, H., Hollweg, H.-D., Ilyina, T., Kinne, S., Kornblueh, L., Matei, D., Mauritsen, T., Mikolajewicz, U., Mueller, W., Notz, D., Pithan, F., Raddatz, T., Rast, S., Redler, R., Roeckner, E., Schmidt, H., Schnur, R., Segschneider, J., Six, K. D., Stockhause, M., Timmreck, C., Wegner, J., Widmann, H., Wieners, K.-H., Claussen, M., Marotzke, J., and Stevens, B.: Climate and carbon cycle changes from 1850 to 2100 in MPI-ESM simulations for the coupled model intercomparison project phase 5, *J. Adv. Model. Earth Syst.*, 5, 572–597, <https://doi.org/10.1002/jame.20038>, 2013.
- 635
- 640
- GISTEMP Team: GISS Surface Temperature Analysis (GISTEMP). NASA Goddard Institute for Space Studies. Dataset accessed 2019-04-03 at <https://data.giss.nasa.gov/gistemp/>, 2019.
- 645
- Gregory, J. M., Ingram, W. J., Palmer, M. A., Jones, G. S., Stott, P. A., Thorpe, R. B., Lowe, J. A., Johns, T. C. and Williams, K. D.: A new method for diagnosing radiative forcing and climate sensitivity, *Geophys. Res. Lett.*, 31, L03205, doi:10.1029/2003GL018747, 2004.





- 650 Hienola, A., Partanen, A.-I. Pietikäinen, J., O' Donnell, D., Korhonen, H., Matthews, D. and Laaksonen, A.: The impact of aerosol emissions on the 1.5 °C pathways, *Environ. Res. Lett.* 13, 04401, <https://doi.org/10.1088/1748-9326/aab1b2>, 2018
- Heckendorn, P., Weisenstein, D., Fueglistaler, S., Luo, B. P., Rozanov, E., Schraner, M., Thomason, L. W., and Peter, T.: The impact of geoengineering aerosols on stratospheric temperature and ozone, *Environ. Res. Lett.*, 4, 045108, <https://doi.org/10.1088/1748-9326/4/4/045108>, 2009.
- 655 Hurrell, J. W., Holland, M. M., Gent, P. R., Ghan, S., Kay, J. E., Kushner, P. J., Lamarque, J.-F., Large, W. G., Lawrence, D., Lindsay, K., Lipscomb, W. H., Long, M. C., Mahowald, N., Marsh, D. R., Neale, R. B., Rasch, P., Vavrus, S., Vertenstein, M., Bader, D., Collins, W. D., Hack, J. J., Kiehl, J., and Marshall, S.: The Community Earth System Model: a framework for collaborative research, *B. Am. Meteorol. Soc.*, 94, 1339–1360, doi:10.1175/BAMS-D-12-00121.1, 2013.
- 660 Ilyina, T., Six, K. D., Segschneider, J., Maier-Reimer, E., Li, H., and Nunez-Riboni, I.: Global ocean biogeochemistry model HAMOCC: Model architecture and performance as component of the MPI-Earth System Model in different CMIP5 experimental realizations, *J. Adv. Model. Earth Syst.*, 5, 287–315, <https://doi.org/10.1029/2012MS000178>, 2013.
- IPCC, 2014: Climate Change 2014: Synthesis Report. Contribution of Working Groups I, II and III to the Fifth Assessment Report of the Intergovernmental Panel on Climate Change [Core Writing Team, R.K. Pachauri and L.A. Meyer (eds.)]. IPCC, Geneva, Switzerland, 151 pp., 2014.
- 665 IPCC, 2018: Global warming of 1.5°C. An IPCC Special Report on the impacts of global warming of 1.5°C above pre-industrial levels and related global greenhouse gas emission pathways, in the context of strengthening the global response to the threat of climate change, sustainable development, and efforts to eradicate poverty [V. Masson-Delmotte, P. Zhai, H. O. Pörtner, D. Roberts, J. Skea, P.R. Shukla, A. Pirani, W. Moufouma-Okia, C. Péan, R. Pidcock, S. Connors, J. B. R. Matthews, Y. Chen, X. Zhou, M. I. Gomis, E. Lonnoy, T. Maycock, M. Tignor, T. Waterfield (eds.)]. In Press.
- 670 Jungclaus, J. H., Fischer, N., Haak, H., Lohmann, K., Marotzke, J., Matei, D., Mikolajewicz, U., Notz, D., and von Storch, J.-S.: Characteristics of the ocean simulations in MPIOM, the ocean component of the MPI Earth System Model, *J. Adv. Model. Earth Syst.*, 5, 422–446, <https://doi.org/10.1002/jame.20023>, 2013.
- 680 Kinne, S., O'Donnell, D., Stier, P., Kloster, S., Zhang, K., Schmidt, H., Rast, S., Giorgetta, M., Eck, T. F., and Stevens, B.: MAC-v1: A new global aerosol climatology for climate studies, *J. Adv. Model. Earth Syst.*, 5, 704–740, <https://doi.org/10.1002/jame.20035>, 2013.



- Knutti, R., & Sedláček, J.: Robustness and uncertainties in the new CMIP5 climate model projections. *Nature Climate Change*, 3, 369, <https://doi.org/10.1038/nclimate1716>, 2012.
- 685 Kokkola, H., Korhonen, H., Lehtinen, K. E. J., Makkonen, R., Asmi, A., Järvenoja, S., Anttila, T., Partanen, A.-I., Kulmala, M., Järvinen, H., Laaksonen, A., and Kerminen, V.-M.: SALSA – a Sectional Aerosol module for Large Scale Applications, *Atmos. Chem. Phys.*, 8, 2469–2483, <https://doi.org/10.5194/acp-8-24692008>, 2008.
- Kokkola, H., Kühn, T., Laakso, A., Bergman, T., Lehtinen, K. E. J., Mielonen, T., Arola, A., Stadtler, S., Korhonen, H.,  
690 Ferrachat, S., Lohmann, U., Neubauer, D., Tegen, I., Siegenthaler-Le Drian, C., Schultz, M. G., Bey, I., Stier, P., Daskalakis, N., Heald, C. L., and Romakkaniemi, S.: SALSA2.0: The sectional aerosol module of the aerosol–chemistry–climate model ECHAM6.3.0-HAM2.3-MOZ1.0, *Geosci. Model Dev.*, 11, 3833–3863, <https://doi.org/10.5194/gmd-11-3833-2018>, 2018.
- Koll, D. D. P. and Cronin, T. W.: Earth’s outgoing longwave radiation linear due to H<sub>2</sub>O greenhouse effect, *Proceedings of*  
695 *the National Academy of Sciences*, 115 (41) 10293–10298; DOI: 10.1073/pnas.1809868115, 2018.
- Kravitz, B., Caldeira, K., Boucher, O., Robock, A., Rasch, P. J., Alterskjær, K., Karam, D. B., Cole, J. N. S., Curry, C. L., Haywood, J. M., Irvine, P. J., Ji, D., Jones, A., Kristjánsson, J. E., Lunt, D. J., Moore, J. C., Niemeier, U., Schmidt, H., Schulz, M., Singh, B., Tilmes, S., Watanabe, S., Yang, S., and Yoon, J.-H.: Climate model response from the Geoengineering Model  
700 Intercomparison Project (GeoMIP), *J. Geophys. Res.-Atmos.*, 118, 8320–8332, <https://doi.org/10.1002/jgrd.50646>, 2013.
- Kvalevåg, M. M., B. H. Samset, and G. Myhre, Hydrological sensitivity to greenhouse gases and aerosols in a global climate model, *Geophys. Res. Lett.*, 40, 1432–1438, doi:10.1002/grl.50318, 2013.
- 705 Laakso, A., Kokkola, H., Partanen, A.-I., Niemeier, U., Timmreck, C., Lehtinen, K. E. J., Hakkarainen, H., and Korhonen, H.: Radiative and climate impacts of a large volcanic eruption during stratospheric sulfur geoengineering, *Atmos. Chem. Phys.*, 16, 305–323, <https://doi.org/10.5194/acp-16-305-2016>, 2016.
- Laakso, A., Korhonen, H., Romakkaniemi, S., and Kokkola, H.: Radiative and climate effects of stratospheric sulfur  
710 geoengineering using seasonally varying injection areas, *Atmos. Chem. Phys.*, 17, 6957–6974, <https://doi.org/10.5194/acp-17-6957-2017>, 2017.
- Lausier, A. M. and Jain S.: Overlooked Trends in Observed Global Annual Precipitation Reveal Underestimated Risks, *Scientific Reports*, 8, 1, 16746, <https://doi.org/10.1038/s41598-018-34993-5>, 2018.



715

Lenssen, N., Schmidt, G., Hansen, J., Menne, M., Persin, A., Ruedy, R. and Zyss, D.: Improvements in the uncertainty model in the Goddard Institute for Space Studies Surface Temperature (GISTEMP) analysis. *J. Geophys. Res. Atmos.*, in press, doi:10.1029/2018JD029522, 2019.

720 Li, C., McLinden, C., Fioletov, V., Krotkov, N., Carn, S., Joiner, J., Streets, D., He, H., Ren, X., Li, Z., Dickerson, R.R.: India is overtaking China as the World's largest emitter of anthropogenic sulfur dioxide. *Sci. Rep.* 7 (1), 14304, <https://doi.org/10.1038/s41598-017-14639-8DO>, 2017.

Liu, W., Sun, F., Lim, W. H., Zhang, J., Wang, H., Shiogama, H., and Zhang, Y.: Global drought and severe drought-affected  
725 populations in 1.5 and 2 °C warmer worlds, *Earth Syst. Dynam.*, 9, 267-283, <https://doi.org/10.5194/esd-9-267-2018>, 2018.

Luderer, G., Vrontisi, Z., Bertram, C., Edelenbosch, O., Pietzcker, R., Rogelj, J. and Kriegler, E.: Residual fossil CO<sub>2</sub> emissions in 1.5–2 °C pathways. *Nature Climate Change*, 8(7), 626-633. <https://doi.org/10.1038/s41558-018-0198-6DO>, 2018.

730 Millar, R., Fuglestedt, J., Friedlingstein, P., Rogelj, J., Grubb, M., Matthews, H. and Allen, M.: Emission budgets and pathways consistent with limiting warming to 1.5 °C. *Nature Geoscience*, 10, 741. doi:10.1038/ngeo3031, 2017.

Moss, R. H., Edmonds, J. A., Hibbard, K. A., Manning, M. R., Rose, S. K., van Vuuren, D. P., Carter, T. R., Emori, S., Kainuma, M., Kram, T., Meehl, G. A., Mitchell, J. F. B., Nakicenovic, N., Riahi, K., Smith, S. J., Stouffer, R. J., Thomson, A.  
735 M., Weyant, J. P., and Wilbanks, T. J.: The next generation of scenarios for climate change research and assessment, *Nature*, 463, 747–756, doi:10.1038/nature08823, 2010.

Myhre, G., P.M. Forster, B.H. Samset, Ø. Hodnebrog, J. Sillmann, S.G. Aalbergstjø, T. Andrews, O. Boucher, G. Faluvegi, D. Fläschner, T. Iversen, M. Kasoar, V. Kharin, A. Kirkevåg, J. Lamarque, D. Olivié, T.B. Richardson, D. Shindell, K.P. Shine,  
740 C.W. Stjern, T. Takemura, A. Voulgarakis, and F. Zwiers: PDRMIP: A Precipitation Driver and Response Model Intercomparison Project—Protocol and Preliminary Results. *Bull. Amer. Meteor. Soc.*, 98, 1185–1198, <https://doi.org/10.1175/BAMS-D-16-0019.1>, 2017.

Niemeier, U. and Timmreck, C.: What is the limit of climate engineering by stratospheric injection of SO<sub>2</sub>?, *Atmos. Chem. Phys.*, 15, 9129-9141, <https://doi.org/10.5194/acp-15-9129-2015>, 2015.

Reick, C., Raddatz, T. V., Brovkin, V., and Gayler, V.: The representation of natural and anthropogenic land cover change in MPI-ESM, *J. Adv. Model. Earth Syst.*, 5, 459–482, <https://doi.org/10.1002/jame.20022>, 2013.



750 Richardson, T.B., Forster, P. M., Andrews, T. and Parker, D. J.: Understanding the Rapid Precipitation Response to CO<sub>2</sub> and Aerosol Forcing on a Regional Scale. *J. Climate*, 29, 583–594, <https://doi.org/10.1175/JCLI-D-15-0174.1>, 2016

Robock, A., A. Marquardt, B. Kravitz, and G. Stenchikov, Benefits, risks, and costs of stratospheric geoengineering, *Geophys. Res. Lett.*, 36, L19703, doi:10.1029/2009GL039209. 2009.

755

Rogelj, J., D. Shindell, K. Jiang, S. Ffifita, P. Forster, V. Ginzburg, C. Handa, H. Khesghi, S. Kobayashi, E. Kriegler, L. Mundaca, R. Séférian, M. V. Vilariño, 2018, Mitigation pathways compatible with 1.5°C in the context of sustainable development. In: *Global warming of 1.5°C. An IPCC Special Report on the impacts of global warming of 1.5°C above pre-industrial levels and related global greenhouse gas emission pathways, in the context of strengthening the global response to the threat of climate change, sustainable development, and efforts to eradicate poverty* [V. Masson-Delmotte, P. Zhai, H. O. Pörtner, D. Roberts, J. Skea, P. R. Shukla, A. Pirani, W. Moufouma-Okia, C. Péan, R. Pidcock, S. Connors, J. B. R. Matthews, Y. Chen, X. Zhou, M. I. Gomis, E. Lonnoy, T. Maycock, M. Tignor, T. Waterfield (eds.)]. In Press.

760

Royal Society: *Geoengineering the climate – Science, governance and uncertainty*, RS Policy document 10/09, London, 2009.

765

Samset, B. H., Myhre, G., Forster, P. M., Hodnebrog, Ø., Andrews, T., Faluvegi, G., Fläschner, D., Kasoar, M., Kharin, V., Kirkevåg, A., Lamarque, J.-F., Olivie, D., Richardson, T., Shindell, D., Shine, K. P., Takemura, T. and Voulgarakis, A.: Fast and slow precipitation responses to individual climate forcings: A PDRMIP multimodel study, *Geophys. Res. Lett.*, 43, 2782–2791, doi:10.1002/2016GL068064, 2016.

770

Schleussner, C.-F., Lissner, T. K., Fischer, E. M., Wohland, J., Perrette, M., Golly, A., Rogelj, J., Childers, K., Schewe, J., Frieler, K., Mengel, M., Hare, W., and Schaeffer, M.: Differential climate impacts for policy-relevant limits to global warming: the case of 1.5 °C and 2 °C, *Earth Syst. Dynam.*, 7, 327-351, <https://doi.org/10.5194/esd-7-327-2016>, 2016.

775 Seneviratne, S., Rogelj, J., Séférian, R., Wartenburger, R., Allen, M., Cain, M. Warren, R.. The many possible climates from the Paris Agreement’s aim of 1.5 °C warming. *Nature*, 558(7708), 41-49, <https://doi.org/10.1038/s41586-018-0181-4>, 2018.

Smith, S. J., van Aardenne, J., Klimont, Z., Andres, R. J., Volke, A., and Delgado Arias, S.: Anthropogenic sulfur dioxide emissions: 1850–2005, *Atmos. Chem. Phys.*, 11, 1101-1116, <https://doi.org/10.5194/acp-11-1101-2011>, 2011.

780

Stevens, B., Giorgetta, M., Esch, M., Mauritsen, T., Crueger, T., Rast, S., Salzmann, M., Schmidt, H., Bader, J., Block, K., Brokopf, R., Fast, I., Kinne, S., Kornbluh, L., Lohmann, U., Pincus, R., Reichler, T., and Roeckner, E.: The atmospheric



component of the MPI-M Earth System Model: ECHAM6, J. Adv. Model.EarthSyst., 5, 1–27,  
<https://doi.org/10.1002/jame.20015>, 2013.

785

Thomson, A., Calvin, K., Smith, S., Kyle, G., Volke, A., Patel, P., Edmonds, J.: RCP4.5: a pathway for stabilization of radiative forcing by 2100. Climatic Change, 109(1), 77, <https://doi.org/10.1007/s10584-011-0151-4>, 2011.

790

Tokarska, K., & Zickfeld, K.: The effectiveness of net negative carbon dioxide emissions in reversing anthropogenic climate change. Environmental Research Letters, 10(9), 094013, <https://doi.org/10.1088/1748-9326/10/9/094013>, 2015.

van Vuuren, D., M. den Elzen, P. Lucas, B. Eickhout, B. Strengers, B. van Ruijven, S. Wonink, R. van Houdt, 2007. Stabilizing greenhouse gas concentrations at low levels: an assessment of reduction strategies and costs. Climatic Change, doi:10.1007/s10584-006-9172-9, 2007.

795

van Vuuren, D. P., Edmonds, J., Kainuma, M., Riahi, K., Thomson, A., Hibbard, K., Hurtt, G. C., Kram, T., Krey, V., Lamarque, J.-F., Masui, T., Meinshausen, M., Nakicenovic, N., Smith, S. J., and Rose, S. K.: The representative concentration pathways: an overview, Climatic Change, 109, 5–31, doi:10.1007/s10584-011-0148-z, 2011.

800

UNFCCC, Adoption of the Paris Agreement FCCC/CP/2015/L.9/Rev. 1, <http://unfccc.int/resource/docs/2015/cop21/eng/109r01.pdf>, 2015.

Wu, P., J. Ridley, A. Pardaens, R. Levine and J. Lowe, The reversibility of CO<sub>2</sub> induced climate change, Climate Dynamics, 45, 3, 745-754, <https://doi.org/10.1007/s00382-014-2302-6>, 2015.

805

Zhang, K., O'Donnell, D., Kazil, J., Stier, P., Kinne, S., Lohmann, U., Ferrachat, S., Croft, B., Quaas, J., Wan, H., Rast, S., and Feichter, J.: The global aerosol-climate model ECHAM-HAM, version 2: sensitivity to improvements in process representations, Atmos. Chem. Phys., 12, 8911–8949, <https://doi.org/10.5194/acp-12-8911-2012>, 2012.

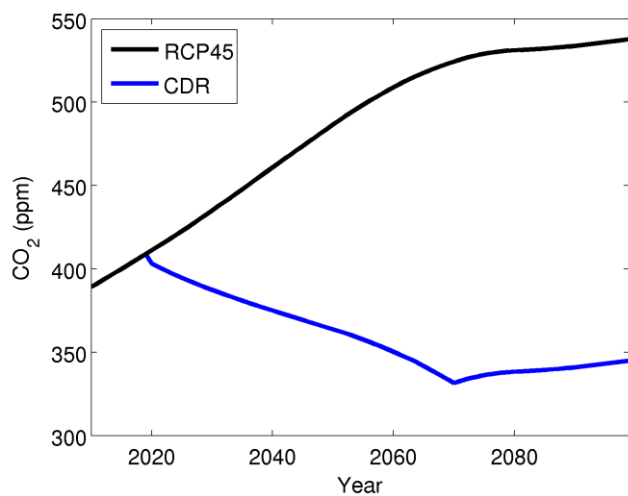
810

<b>Component analysis simulations</b> (Preindustrial)	20 years with fixed background conditions
Preind	Fixed preindustrial conditions
2xCO <sub>2</sub>	Atmospheric CO <sub>2</sub> concentration = 570 pm



4xCO <sub>2</sub>	Atmospheric CO <sub>2</sub> concentration = 1140 pm
SRM1-6	Continuous 1-6 Tg(S)/yr sulfur injections (10 N - 10 S, 20km)
<b>Scenarios (RCP 4.5)</b>	years: 2010 - 2100 with RCP 4.5 scenario in background
RCP45	Representative Concentration Pathway 4.5 W/m <sup>2</sup>
SRM-TEMP	Temperature kept at 2010-2020 level by SRM
SRM-PRECI	Precipitation kept at 2010-2020 level by SRM
CDR	In addition to yearly change in atmospheric CO <sub>2</sub> concentration in RCP 4.5, 1%/yr CO <sub>2</sub> is removed from atmosphere

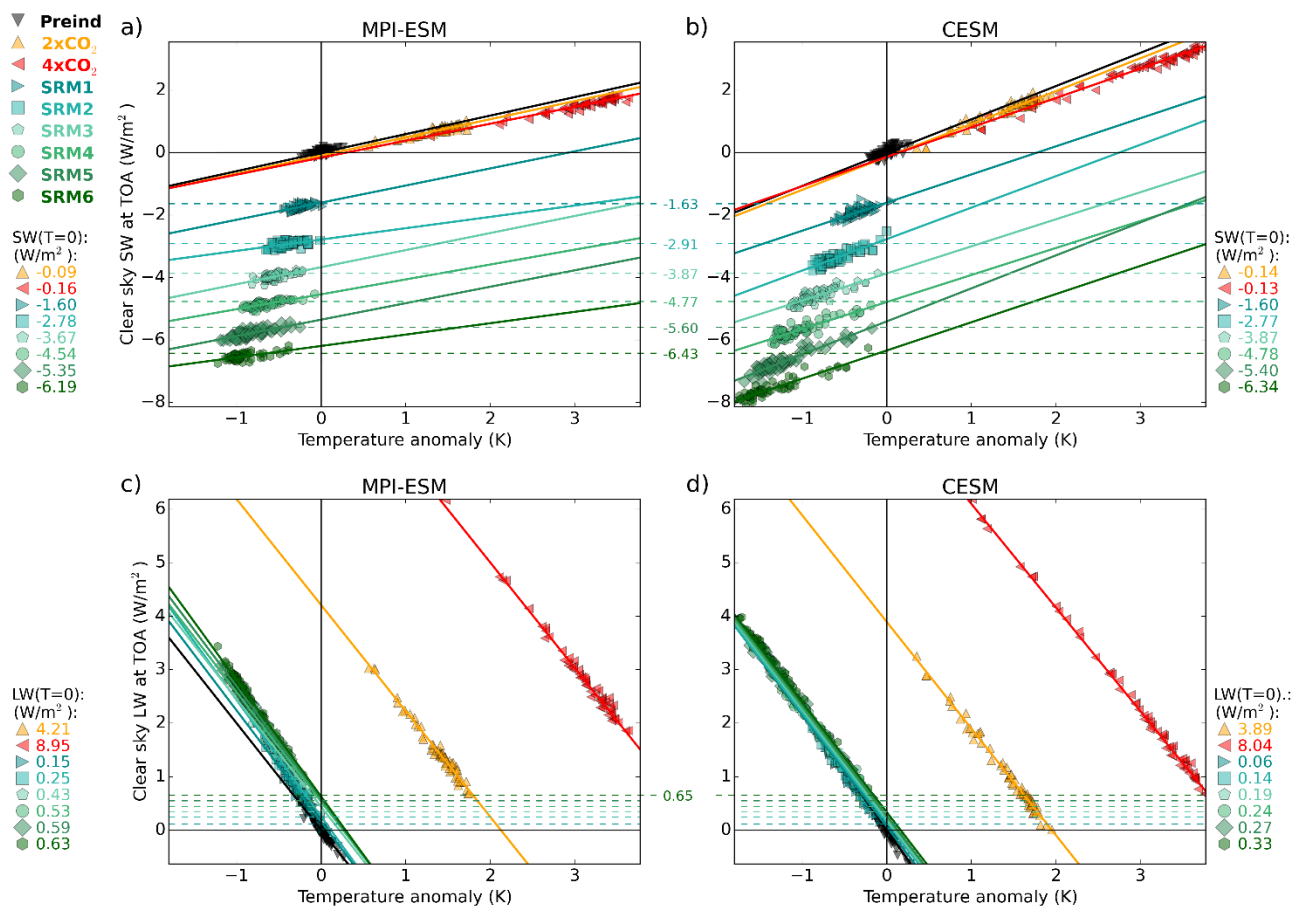
**Table 1. Simulations**



815

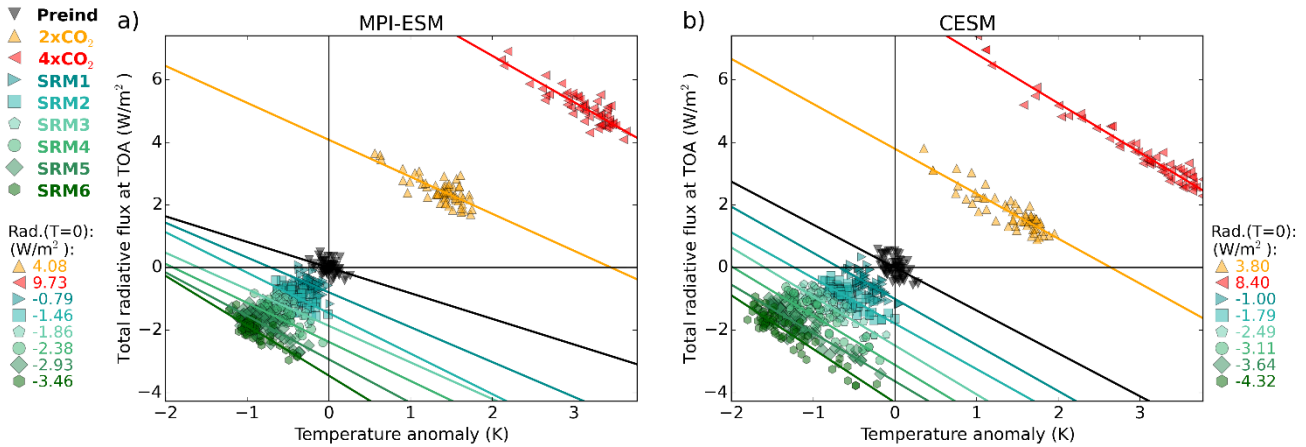
**Figure 1: Atmospheric carbon dioxide concentration in scenarios RCP45 and CDR.**



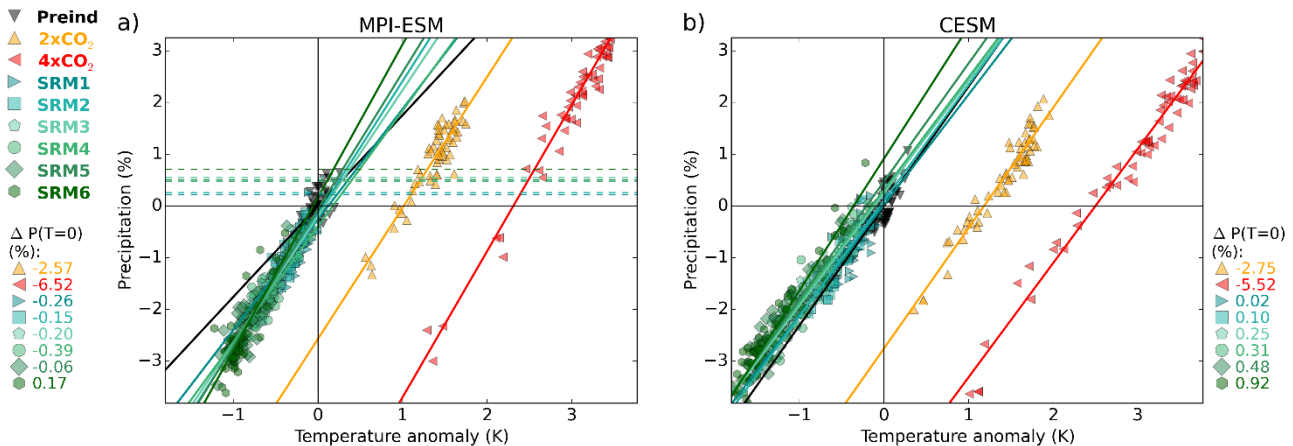


**Figure 2: Gregory plots of the shortwave radiative flux change (clear-sky conditions) with a) MPI-ESM and b) CESM, and of the longwave radiative flux change (clear-sky conditions) with c) MPI-ESM and d) CESM. Markers indicate a single-year global mean value in one ensemble member and solid lines are linear fit lines. Dashed lines show aerosol clear-sky radiative forcing in ECHAM-HAMMOZ, with numerical values shown in the middle. Corresponding radiative forcing (intersection of linear fit and the y-axes (T=0)) in MPI-ESM and in CESM are shown in legends next to the figure. Origin represents zero temperature and clear-sky radiative flux anomaly compared to Preind simulation.**

820

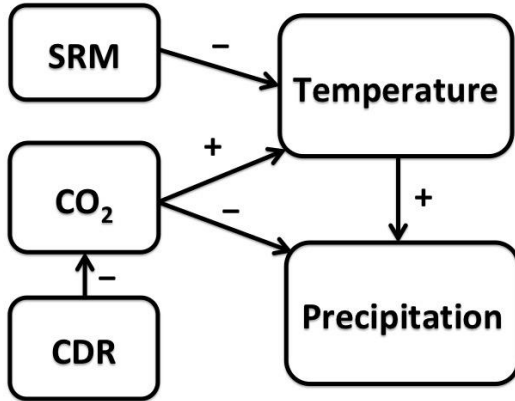


825 **Figure 3: Gregory plots of total all-sky radiative flux change at the top of the atmosphere for a) MPI-ESM and b) CESM. Markers indicate a single-year global mean value for one ensemble member and solid lines are linear fits. Corresponding all-sky radiative forcing (intersection of linear fit and the y-axes ( $T=0$ )) in MPI-ESM and in CESM are shown in legends next to the figure. Origin represents zero temperature and clear-sky radiative flux anomaly compared to Preind simulation.**



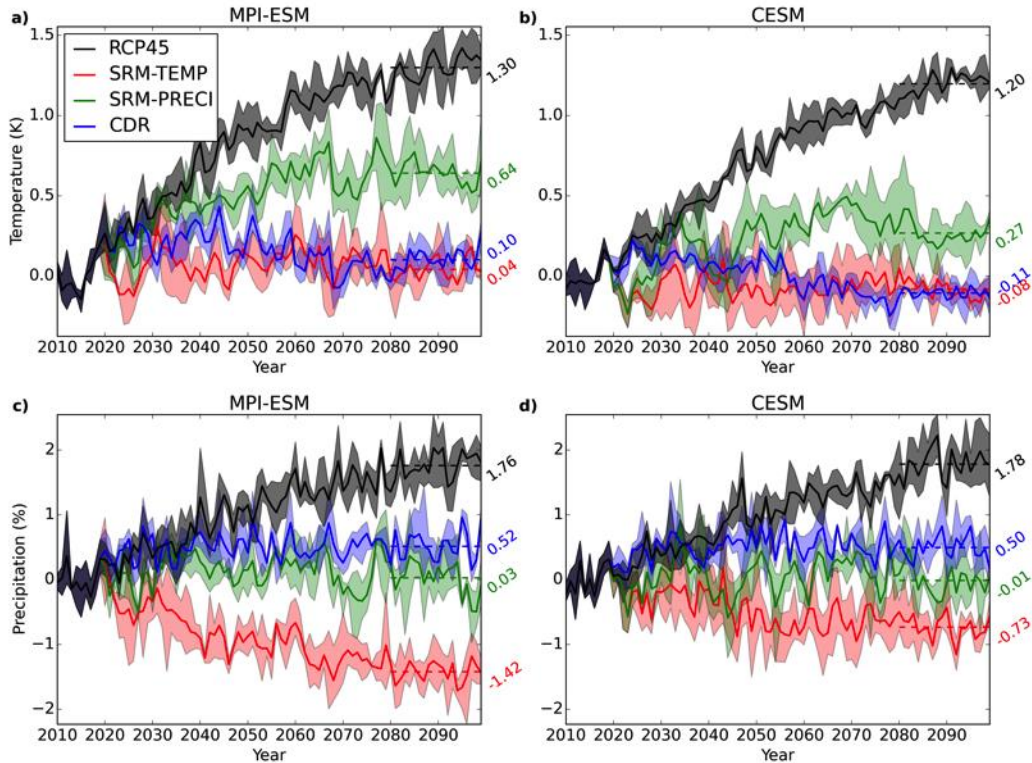
830 **Figure 4: Gregory plots of global precipitation changes under increased  $\text{CO}_2$  (orange and red) and SRM scenarios with differing sulfur injection amounts (blue to green) for a) MPI-ESM and b) CESM. Each markers indicates a single-year global mean value for one of three ensemble members and solid lines are linear fits. Origin represents zero temperature and precipitation anomaly compared to Preind simulation. Fast precipitation response is obtained from intersection of linear fit and the y-axes ( $T=0$ ) (shown in legends next to the figure), and slope of the linear fit corresponds the slow response due to the temperature change. Dashed lines show (fast) precipitation responses for the corresponding scenarios in ECHAM-HAMMOZ (simulations with fixed SST).**

835



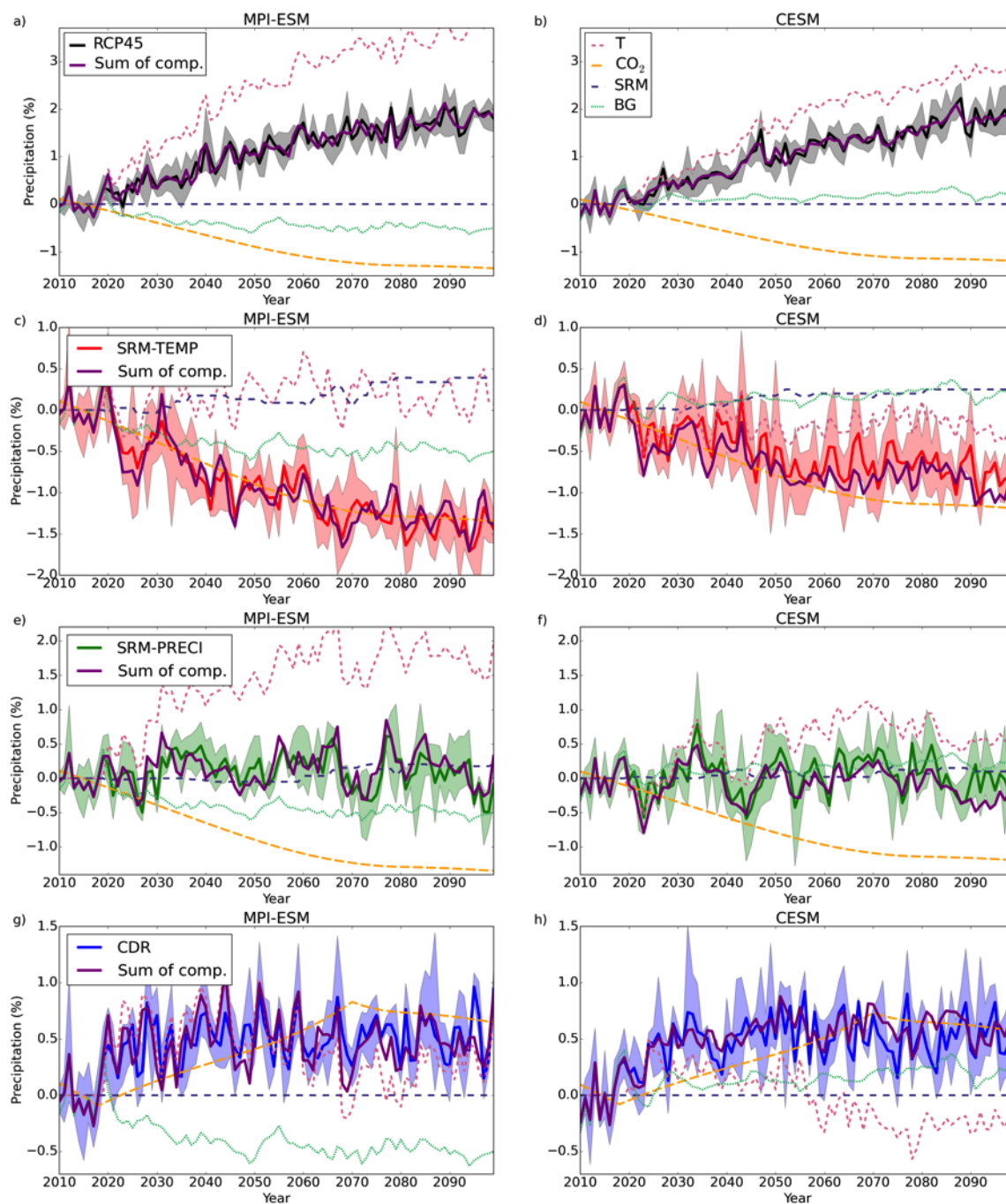
840

Figure 5: A schematic presentation of fast radiatively-induced and slow temperature-induced components of SRM and CDR. Plus and minus signs indicate the direction of change in the target variable when the driving variable is increasing. If the driving variable is decreasing (e.g., temperature decrease due to SRM), the target variable changes in the opposite direction as indicated (e.g., decrease in precipitation due to decreased temperature). The fast component of SRM is so small compared to that induced by changes in CO<sub>2</sub> concentration that it is omitted for clarity.



845

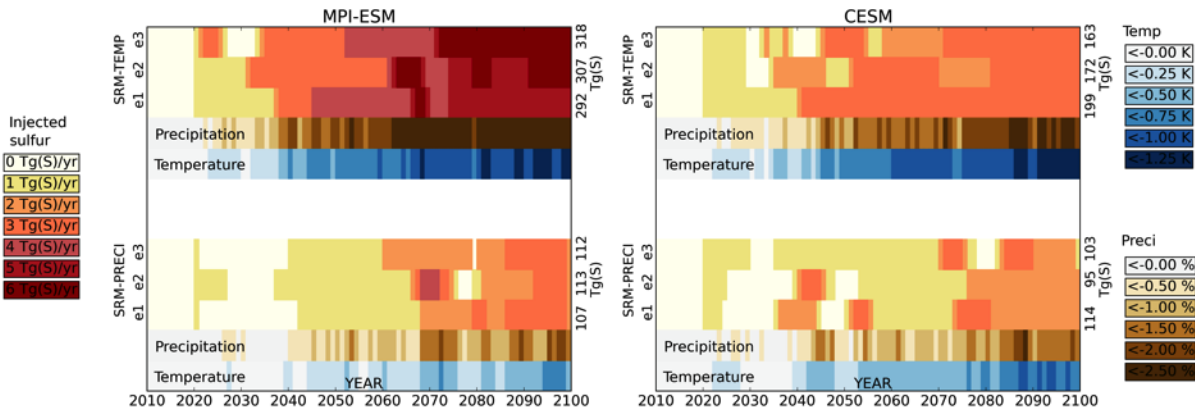
Figure 6: Global mean temperature anomalies in a) MPI-ESM and b) CESM, and global mean precipitation anomalies in c) MPI-ESM and d) CESM. Numbers to the right of each figure indicate the global mean difference between 2080-2100 and 2010-2020. Shaded areas show the maximum and minimum across three ensemble members.



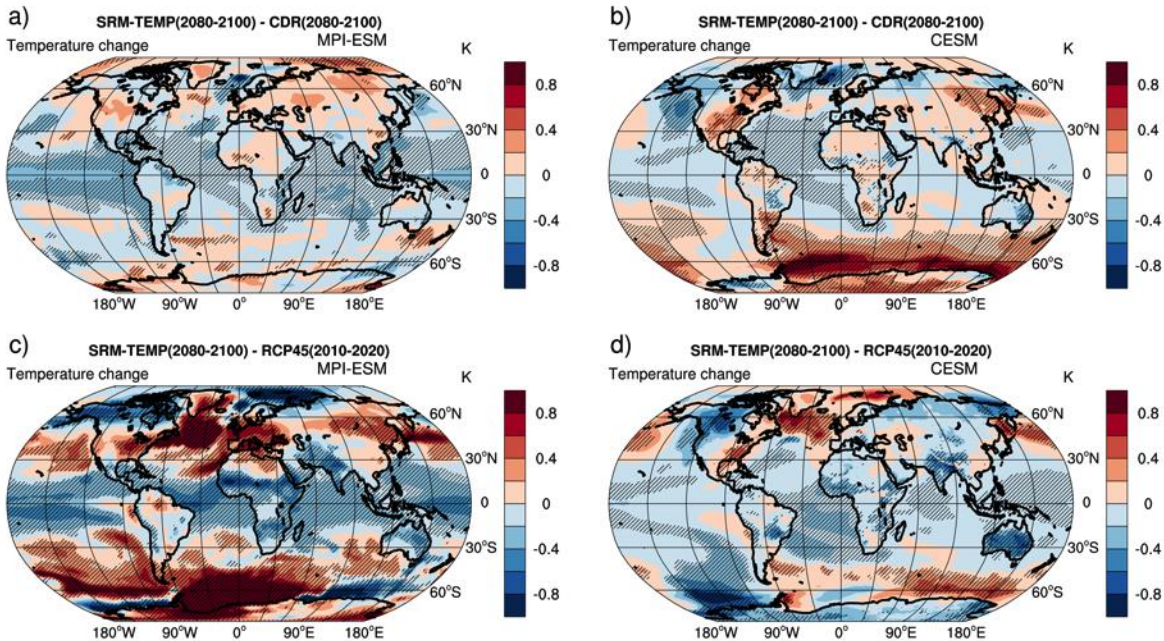
**Figure 7: Precipitation components for each of the simulated scenarios. Solid colored lines with shaded areas have the same meaning as in Figures 5 c and d. Dashed colored lines indicate the precipitation change caused by individual component (see legend in panel b) for each scenario and model. The purple solid line shows the sum of all precipitation components (T, SRM, CO<sub>2</sub>, and BG).**

850

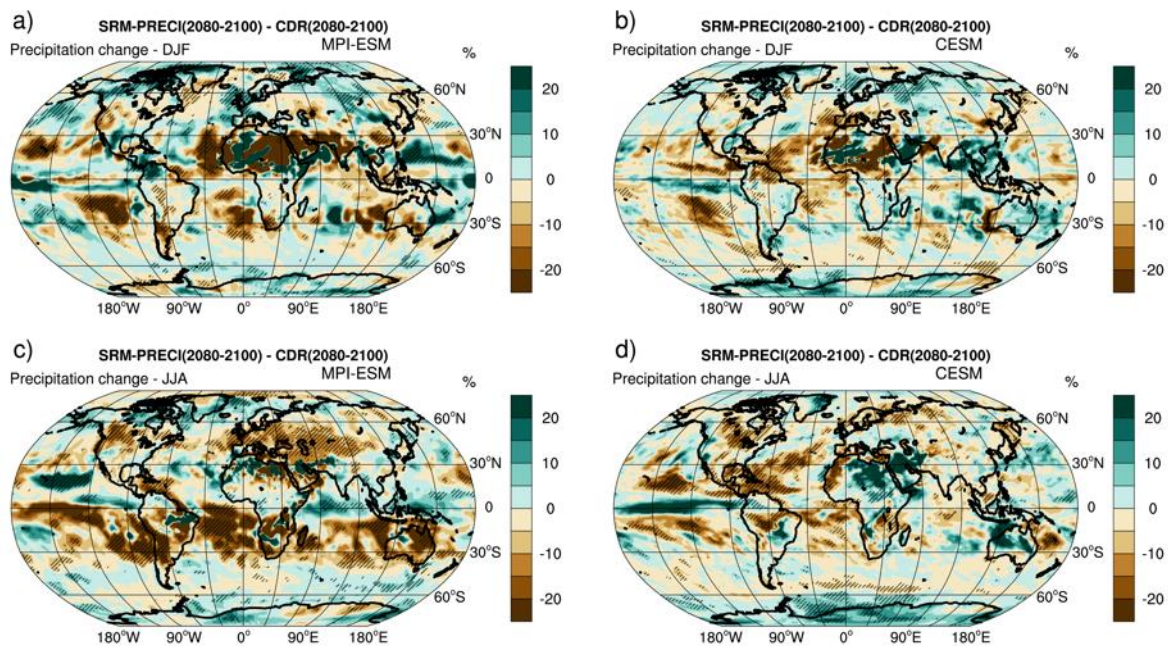




855 **Figure 8:** Yearly sulfur injections in scenarios SRM-TEMP and SRM-PRECI for three ensemble members in MPI-ESM (left) and CESM (right). Also shown are the corresponding global mean precipitation and temperature differences relative to RCP45. The cumulative injection amount for each ensemble member is listed on the right-hand axis.



860 **Figure 9:** Differences in regional temperature patterns between the SRM-TEMP and CDR scenarios for years 2080-2100 in a) MPI-ESM and b) CESM. Also shown are the temperature differences between the SRM-TEMP scenario for years 2080-2100 and present-day climate (RCP45, years 2010-2020), in c) MPI-ESM and d) CESM. Hatching indicates regions where the temperature change is statistically significant at the 95% level, with significance levels estimated using a Student's paired t-test (sample of 20 yearly mean values for 3 ensemble members).



865 **Figure 10: Relative change in precipitation between the SRM-PRECI and CDR scenarios for a) December-January-February and c) June-July-August in MPI-ESM, along with the corresponding figures for CESM (b and d). Hatching indicates regions where the temperature change is statistically significant at the 95% level, with significance levels estimated using a Student's paired t-test with (sample of 20 yearly mean values for 3 ensemble members).**