

Response to Reviewer 1

We thank the reviewer for the constructive comments. We appreciate the time and effort that the reviewer has dedicated to providing valuable feedbacks on our manuscript. All the comments have been accounted for.

Comments from Reviewer 1

This study investigated the hydrological cycle over West African region using CORDEX-AFRICA data between 2006 and 2099. To achieve their purpose, authors used the known ETCCD indexes combined with hydroclimatic indice. They found that West African region is expected to be warmer than the global average per decade (0.5o C vs 0.3o C). Also precipitations are expected to become more intense and less frequent. This is a very interesting work and address relevant scientific questions in the scope of ESD. Data and methodology are clearly stated as well as main findings. However the writing style is too amorphous from beginning to the end making this interesting fining a bit boring on reading. Please below see my suggestions to improve the manuscript.

Major comment

Comment 1: *Authors discussed how the MCSs may impact precipitation distribution over the studied though these MCSs were not considered in the CORDEX data. A similar attempt should be done for others forcing such as aerosols especially dust that are abundantly present in the region and known to impact West African climate through their radiative forcing: Konare, A., et al. "A regional climate modeling study of the effect of desert dust on the West African monsoon." *Journal of Geophysical Research:Atmospheres* 113.D12 (2008). N'Datchoh, E. T., et al. "Dust induced changes on the West African summer monsoon features." *International Journal of Climatology* 38.1 (2018): 452-466. Yoshioka, Masaru, et al. "Impact of desert dust radiative forcing on Sahel precipitation: Relative importance of dust compared to sea surface temperature variations, vegetation changes, and greenhouse gas warming." *Journal of Climate* 20.8 (2007): 1445-1467. Silué et al., (2019) *Evidence of Long-Term Trend of Visibility in the Sahel and Coevolution with Meteorological Conditions and Vegetation Cover during the Recent Period. Atmospheric and Climate Sciences*, 9, 346-368. doi:10.4236/acs.2019.93025.*

Response: We agree with the reviewer, and such a discussion is now included in the revised manuscript as follows: "Similarly, the impacts of atmospheric aerosols, particularly abundant over West Africa due to seasonal desert dusts (Konare et al. 2008, N'Datchoh et al. 2018), are only partially accounted for in CORDEX AFRICA due to the simplified parameterization schemes for aerosols in this dataset. However, because aerosols are expected to affect temperature and precipitation in this region (e.g. Konare et al. 2008, N'Datchoh et al. 2018), we suggest that our results are also limited by this simplified representation of aerosols. Additional simulations at higher resolution and using a more complex parameterization scheme for aerosols would be required to identify the impact of MCSs and aerosols on our results, which is beyond the scope of our study."

Minor comments

Comment 2: *L30 - L32 "Growing season": I guess it refers to agriculture however, as stated links are that clear for the reader. I suggest authors to include a sentence relating precipitation to the agriculture before this statement.*

Response: Thank you for pointing this out. This is now clarified in the revised manuscript as follows: "Particularly relevant for agriculture, changes in precipitation are also projected during the growing season, expected to become shorter, as torrid, arid, and semi-arid climate conditions are expected to extend (Sylla et al., 2016)."

Comment 3: L36: Authors stated “tropospheric moisture and precipitation is highly complex” Is it in the world or very specific to the studied region? Please specify it.

Response: Global, this is now clarified in the revised manuscript.

Comment 4: L72: please change “Following” by or “base on” it looks quite monotone to use “following”

Response: The revised manuscript has been altered accordingly.

Comment 5: L92: Please add a connector between statements to make the text flow

Response: Thank you for this point, the following sentence has been added in the revised manuscript: “Results are shown in Supplementary Figures 1 and 2, and summarized here. Each for the 18 CORDEX simulations satisfactorily reproduces the spatial distribution of the CHIRPS daily mean precipitation...”.

Comment 6: L102: please replace “than” by “with”

Response: The revised manuscript has been altered accordingly.

Comment 7: L112 – L114: please edit the sentence by making it more clear. The statement is confusing and look more like figure label.

Response: We agree with the reviewer, the revised manuscript has been altered as follows: “Trends (2006-2100) of air surface temperature (°C per decade), mean precipitation (mm/day per decade), INT (mm/day per decade), RR1 (days per decade), CDD (days), and CWD (days) are shown in Figure 1, as multimodel mean maps. From Figure 1, temperature...”.

Comment 8: Across the entire manuscript, authors stated “according to” more than 10 times when commenting and discussing figures. It makes the manuscript quite monotone I suggest some of these should be change may be rewrite a little bit differently using statement such as: From Figure : : : Figure : : : suggests /implies : : : (Not exhaustive)

Response: We agree with the reviewer, the revised manuscript has been modified throughout accordingly. Here are a few examples:

E.g. 1: “Mean precipitation is expected to increase on average by + 0.03 mm/day per decade over the Guinea Coast, and decrease on average by - 0.015 and - 0.001 mm/day per decade over West Sahel and Central Sahel, respectively (Figure 1b). INT is expected...”.

E.g. 2: “Trends (2006-2100) of INTn, DSLn, and HY-INT are shown in Figure 2, as multimodel mean maps.”.

E.g. 3: “In addition, whereas DSL is expected to increase over the Sahel on average by + 0.05 (5 %) per decade with a latitudinal increase northward that reaches + 0.1 (10 %) per decade over the western part of the Sahel, negligible changes are expected over the Guinea Coast (Figure 2b). As a result, HY-INT is...”.

E.g. 4: “Annual values (2006-2009) of mean precipitation (mm/day), RR1 (days), and INT (mm/day) are shown in Figure 3, plotted against the corresponding annual mean values of air surface temperature (°C), and as averaged over a) West Sahel, b) Central Sahel, and c) Guinea Coast.”

E.g. 5: “As seen in Figure 3, even though...”.

Comment 9: Though the active form writing style is correct and show the authors efforts and work, it may be interesting to have some variation in the manuscript with the passive form too. Similarly, all figures comments start by “Figure xx shows” however these statements can be write differently to allow the manuscript to be more alive. For example, L158-L160: Statement can be rewrite as: “The annual values : : : are shown in figure 4”

Response: We agree with the reviewer, the revised manuscript has been modified accordingly throughout. For example, the sentence you noted now reads as follows: “Annual values (2006-2009) of INTn, DSLn, and HY-INT are shown in Figure 4, plotted against...”

Comment 10: *L162: All three regions please replace by "all the three regions"*

Response: The revised manuscript has been altered accordingly.

Comment 11: *L169: please write "explain about"*

Response: The revised manuscript has been altered accordingly.

Comment 12: *L170: please replace "as for" by "similarly to"*

Response: The revised manuscript has been altered accordingly.

We thank the reviewer for the constructive comments. We appreciate the time and effort that the reviewer has dedicated to providing valuable feedbacks on our manuscript. All the comments have been accounted for.

This paper looks at the intensification of the hydrological cycle over West Africa, a small part of the CORDEX Africa region, using a number of the CORDEX simulations. Results are given for the multi-model mean. The paper is clearly written and describes the observational and model datasets used. The methods used to analyze the data are not novel but are clearly described and referenced. The supplementary data is used to show how well the individual regional simulations and the multi-model mean for the current climate agree with observations.

Comment 1: *One thing the paper omits is any justification of using a multi-model mean and any discussion of the set of CORDEX regional simulations chosen in Table 1. 8 of the 18 members using the same regional model SMHI-RCA4_v1. Does this impact on the results? Looking at Figure 3 to 5 it looks as though some of the results from the other regional model are on the edges of the ensemble of points.*

Dosio et al 2019 (Climate Dynamics) is not referenced and gives a comparison of the CORDEX Africa regional model results.

Knutti et al 2010 (J Clim) Challenges in combining Projections from multiple models.

Response: We thank the reviewer for this constructive comment and useful references. They have all been accounted for in the revised manuscript as follows: “We use an ensemble of 18 high-resolution regional climate projections taken from the most up-to-date ensemble produced in the recent years for Africa: CORDEX-AFRICA (Giorgi et al., 2009; Jones et al., 2011; Hewitson et al. 2012; Kim et al. 2014). All the simulations available online at the time of the analysis have been used. In this ensemble, 5 Regional Climate Models (RCMs) are used to downscale 10 Global Climate Models (GCMs) under the climate scenario RCP8.5 (Table 1). Out of the 50 combinations possible, only 18 were available, from which 8 use the same RCM. Whereas this imbalance presents the disadvantage to slightly bias the results towards this RCM, it also presents the advantage of representing a large number of GCM, not accessible otherwise. Because the impact of the heterogeneity of the CORDEX-AFRICA GCM-RCM matrix on future precipitation changes is found mostly over Central and West Africa (Dosio et al., 2019), we choose to represent a maximum diversity of RCMs and GCMs. Furthermore, although averaging model output may lead to a loss of signal (such that the true expected change is very likely to be larger than suggested by a model average), there is too little agreement on metrics to separate “good” and “bad” models to objectively weight the models (Knutti et al., 2010). In the following, we thus use the equal-weighted model average to illustrate the mean response of our ensemble (multimodel mean maps in Figures 1-2), and show the individual responses of each simulation using scatter plots (Figures 3-5). “

Specific comments:

Comment 2 *Page 2, L46 the first mention of CORDEX-AFRICA has no references.*

Response: Thank you for this comment, the revised manuscript has been altered accordingly as follows: “... recent CORDEX-AFRICA (Giorgi et al. 2009; Jones et al. 2011; Hewitson et al. 2012; Kim et al. 2014) experiments ...”.

Comment 3: *Page 8 L 221 There are now published results for West Africa from a convection permitting resolution simulation over Africa. Berthou et al 2019 (Geophys Res Lett).*

Response: Thank you for this reference, it has been included in the revised manuscript as follows: “For instance, Berthou et al. (2019) have shown that over the West Sahel, future changes in extreme rainfall increase by a factor 5 to 10 at 4.5 km resolution (convection-permitting model allowing a good representation of MCSs), as compared to a factor 2 to 3 at 25 km resolution.”

Intensification of the hydrological cycle expected in West Africa over the 21st century

Stella Todzo¹, Adeline Bichet², Arona Diedhiou^{1,2}

¹ African Center of Excellence on Climate Change, Biodiversity and Sustainable Agriculture (ACE CCBAD),
University Félix Houphouët Boigny, Abidjan, Côte d'Ivoire.

² University Grenoble Alpes, CNRS, IGE UMR 5001, Grenoble, F-38000, France

Correspondence to: Adeline Bichet (adeline.bichet@univ-grenoble-alpes.fr)

Abstract. This study uses the high resolution outputs of the recent CORDEX-AFRICA climate projections to investigate the future changes in different aspects of the hydrological cycle over West Africa. Over the twenty-first century, temperatures in West Africa are expected to increase at a faster rate (+ 0.5 °C per decade) than the global average (+ 0.3 °C per decade), and mean precipitation is expected to increase over the Guinea Coast (+ 0.03 mm/day per decade) but decrease over the Sahel (- 0.005 mm/day per decade). In addition, precipitation is expected to become more intense (+ 0.2 mm/day per decade) and less frequent (- 1.5 days per decade) over the entire West Africa as a results of increasing regional temperature (precipitation intensity increases on average by + 0.35 mm/day per °C and precipitation frequency decreases on average by - 2.2 days per °C). Over the Sahel, the average length of dry spells is also expected to increase with temperature (+ 4% days per °C), which increases the likelihood for droughts with warming in this sub-region. Hence, the hydrological cycle is expected to increase throughout the twenty-first century over the entire West Africa, on average by + 11% per °C over the Sahel as a result of increasing precipitation intensity and lengthening of dry spells, and on average by + 3% per °C over the Guinea Coast as a result of increasing precipitation intensity only.

1 Introduction

It is now established that global warming will result from enhanced anthropogenic greenhouse gases (e.g. Collins et al. 2013). Such a warming is expected to affect precipitation and its variability, especially drought and flood episodes, in both the tropics and the subtropics (Zwiers et al., 2013; Giorgi et al., 2014). Over West Africa, previous studies (Collins et al., 2013; Diedhiou et al., 2018; Bichet et al., [2019, submitted](#)) have shown that the warming is expected to occur at a faster rate than the global average (+ 0.5 vs. + 0.3 °C per decade). Future changes in precipitation however are still unclear (e.g. Collins et al., 2013; Sylla et al., 2016; [Bichet et al., submitted](#)). [Nevertheless, future](#)Future changes in precipitation extremes are expected in some sub-regions, such as an increase in the maximum length of dry spells over West Sahel (Sylla et al., 2016; Diedhiou et al., 2018) and an intensification of extreme rainfall over the Guinea Coast

(Diedhiou et al., 2018). Particularly relevant for agriculture, changes in precipitation are also projected during the growing season, expected to become shorter, as torrid, arid, and semi-arid climate conditions are expected to extend (Sylla et al., 2016). ~~In addition, the growing season is also expected to become shorter in West Africa, while the torrid, arid and semi-arid climate conditions are expected to extend (Sylla et al., 2016).~~ Such conditions can produce significant stresses on agricultural activities, water resources management, ecosystem services and urban areas planning over West Africa, a region that is already highly vulnerable to climate variability. However, whereas previous studies project important changes in the precipitation, very little is known about the role of future warming and the processes involved.

Global ~~Thus, even though previous studies have reported important changes in the future regional precipitation, very little is known about the processes involved and the role of the future warming.~~

~~The~~ distribution of tropospheric moisture and precipitation is highly complex, but there is one clear and strong control: moisture condensates out of supersaturated air. Assuming that relative humidity would remain roughly constant under global warming, the Clausius-Clapeyron relationship implies that specific humidity would increase exponentially with temperature, at a rate of about 6.5% per °C (e.g. Allen and Ingram, 2002). Assuming no change in the evapotranspiration, a warmer atmosphere is thus expected to be able to hold more moisture before reaching saturation, thereby taking more time to reach saturation (longer periods of dryness between two rainy episodes), and releasing more water when moisture does condensate (intensification of the precipitation). Within this integrated view, Giorgi et al. (2011) introduced a single index (HY-INT) that quantitatively combines measures of precipitation intensity and dry spell length, thereby providing an overall metric of hydroclimatic intensity.

To better understand the future impact of the warming on the hydrological cycle in the different sub-regions of West Africa, this study uses the state-of-the-art, high resolution projections of the recent CORDEX-AFRICA (Giorgi et al., 2009; Jones et al., 2011; Hewitson et al., 2012; Kim et al., 2014) experiments to investigate, over the twenty-first century, the future changes in different aspects of the hydrological cycle and their relationship with regional temperatures. After describing the methodology (Section 2), the expected changes in temperature, precipitation, precipitation intensity, dry spells, wet spells, and HY-INT are identified (Section 3.1), before their relationship with regional temperature is quantified (Section 3.2). Section 4 discusses and concludes the study.

2. Dataset and methodology

2.1 Methodology

We consider the three following sub-regions: West Sahel (10°N-20°N 18°W-10°W), Central Sahel (10°N-20°N 10°W-10°E), and Guinea Coast (5°N-10°N 10°W-10°E), shown as black boxes in Figure 1a. We focus on annual values over

the period 2006-2099. Following previous studies (Froidurot et al., 2017; Bichet and Diedhiou, 2018a and 2018b), we define a wet (dry) day using the threshold of 1 mm/day. We define a dry spell as a sequence of 2 or more consecutive dry days, that are preceded and followed by a wet day. Hence, the duration of a dry spell, as defined in our study, spans from 2 to 365 days. We compute the annual precipitation intensity (INT), number of wet days (RR1), maximum length of consecutive dry days (CDD), and maximum length of consecutive wet days (CWD) following the definition of the Expert Team of Climate Change Detection and Indices (ETCCDI; Zhang et al., 2011). Note that because INT corresponds to the precipitation averaged over wet days, a change in the INT value directly translates into a change in the intensity of wet events, regardless the number of wet events. In addition, we compute the annual contribution of very heavy rain (C98) following Eq. (1):

$$C98 = \frac{PRCPTOT98}{PRCPTOT}, \quad (1)$$

Where $PRCPTOT98$ is the sum of daily precipitation above or equals to the 98th percentile annual value at wet days (Pctl98), and $PRCPTOT$ is the sum of daily precipitation at wet days during that year. Following previous studies (Giorgi et al., 2011; Bichet and Diedhiou, 2018a and 2018b), we compute the annual average duration of dry spells (DSL) following Eq. (2):

$$DSL = \frac{NDD}{NDS}, \quad (2)$$

where NDD is the annual number of dry days excluding isolated dry days (single dry day preceded and followed by a wet day), and NDS is the total number of dry spells during that year. Note that the annual number of dry days is directly derived from the annual number of wet days (RR1). Based on Following previous studies (Giorgi et al., 2011; Mohan and Rajeevan, 2017), we compute the annual hydroclimatic intensity index (HY-INT) following Eq. (3):

$$HY - INT = \frac{DSL_n}{INT_n}, \quad (3)$$

Where DSL_n and INT_n are the normalized DSL and INT , respectively. The normalization consists, for each grid point, in dividing the annual time series of $INT(DSL)$ by its mean value over the period 2006-2099.

2.2 Data

We use an ensemble of 18 high-resolution regional climate projections taken from the most up-to-date ensemble produced in the recent years for Africa: CORDEX-AFRICA (Giorgi et al., 2009; Jones et al., 2011; Hewitson et al.,

[2012; Kim et al., 2014](#)). All the simulations available online at the time of the analysis have been used. In this ensemble, 5 Regional Climate Models (RCMs) are used to downscale 10 Global Climate Models (GCMs) under the climate scenario RCP8.5 (Table 1). [Out of the 50 combinations possible, only 18 were available, from which 8 use the same RCM. Whereas this imbalance presents the disadvantage to slightly bias the results towards this RCM, it also presents the advantage of representing a large number of GCM, not accessible otherwise. Because the impact of the heterogeneity of the CORDEX-AFRICA GCM-RCM matrix on future precipitation changes is found mostly over Central and West Africa \(Dosio et al., 2019\), we choose to represent a maximum diversity of RCMs and GCMs. Furthermore, although averaging model output may lead to a loss of signal \(such that the true expected change is very likely to be larger than suggested by a model average\), there is too little agreement on metrics to separate “good” and “bad” models to objectively weight the models \(Knutti et al., 2010\). In the following, we thus use the equal-weighted model average to illustrate the mean response of our ensemble \(multimodel mean maps in Figures 1-2\), and show the individual responses of each simulation using scatter plots \(Figures 3-5\).](#) The simulations span the period 2006-2099 at a daily mean time step, and cover Africa (24.64°W – 60.28°E; 45.76°S – 42.24°N) at about 50 km (~ 0.5°) spatial resolution in latitude and longitude. For each simulation and each grid cell, daily time series of surface air temperature and precipitation are retrieved.

We evaluate the spatial distribution of daily [mean](#) rainfall simulated in the CORDEX models by comparing it to the satellite ~~Climate~~ Hazards Group Infrared Precipitation with Station data ([CHIRPS](#)) ~~dataset~~ ~~CHIRPS~~-rainfall dataset (Supplementary Figure 1). The CHIRPS dataset is explicitly designed for monitoring agricultural drought and global environmental change over land. It corresponds to a gridded, quasi-global (50° S– 50° N), high-resolution (0.05°), daily rainfall dataset that covers the time period 1981–2014 (Funk et al., 2015). In addition, we evaluate the statistical distribution of daily [mean and yearly mean](#) rainfall simulated in the CORDEX models ~~from in~~ three cities (Ouagadougou Airport (12.35° N, 1.52° W), Dakar-Yoff (14.72° N, 17.51° W, and Accra Kotoka International Airport (5.6° N, 0.17° W), as seen in Figure 1a), by comparing it to the CHIRPS dataset (grid point comparison) and to three near-surface daily rain gauge data extracted from the BADOPLUS dataset, as described in Panthou et al. ([2012](#)). [Results are shown in Supplementary Figures 1 and 2, and summarized here. Each for the 18 CORDEX simulations 2012](#)) (Supplementary Figure 2). ~~We find that for all the CORDEX simulations, the spatial distribution of mean precipitation and to some extent RRI~~ satisfactorily reproduces the spatial distribution of the CHIRPS [daily mean precipitation, and to some dataset extent RR1 \(slightly overestimated in CORDEX, especially along the Guinea Coast ; Supplementary Figure 1](#)(Supplementary Figure 1). ~~The multimodel mean however overestimates the observed RR1, especially along the Guinea Coast.~~ More disagreements are found across models for INT, even though the multimodel mean is in good agreement with ~~the the~~ [CHIRPS dataset \(Supplementary Figure 1\)](#)-observation. ~~In Dakar~~In addition, we

~~find that in Dakar~~, the CHIRPS and the BADOPLUS datasets show similar statistical distribution of daily mean and yearly mean precipitation, as well as RR1, daily mean precipitation, yearly mean precipitation, RR1, and to some extent INT (Supplementary Figure 2). In Ouagadougou and Accra however, CHIRPS and the BADOPLUS datasets the two observational datasets show similar statistical distributions for daily mean and yearly mean precipitation, but strongly disagree for RR1 (underestimated in the CHIRPS dataset) and INT (overestimated in the CHIRPS dataset; Supplementary Figure 2). In other words, the CHIRPS dataset shows more frequent but less intense precipitation than the BADOPLUS dataset in Ouagadougou and Accra. Each of the 18 Finally, we find that the CORDEX simulations generally show a similar statistical distribution with than the observations for daily mean and yearly mean precipitation: However but, they tend to overestimate (underestimate) the observed RR1 in Accra and Ouagadougou (Dakar), and underestimate the observed (particularly as compared to the BADOPLUS dataset) INT in all the three locations (Supplementary Figure 2). In other words, the CORDEX simulations show less intense precipitation compared to than the observations (especially the BADOPLUS dataset) in all the three locations, and less (more) frequent precipitation in Dakar (Ouagadougou and Accra) than the observations. Nevertheless, we find that the observations are always included within the range of the 18 CORDEX simulations. Hence, we conclude that the CORDEX simulations compare satisfactorily well with the observations, and can be used for the purpose of our study.

3. Results

3.1 Time evolution

Trends (2006-2100) of air surface temperature (°C per decade), mean precipitation (mm/day per decade), INT (mm/day per decade), RR1 (days per decade), CDD (days), and CWD (days) are shown in Figure 1, as multimodel mean maps. From Figure 1, ~~Figure 1~~ shows the multimodel mean trend maps (2006-2100) for annual a) mean air surface temperature (°C per decade), b) mean precipitation (mm/day per decade), c) INT (mm/day per decade), d) RR1 (days per decade), e) CDD (days), and f) CWD (days) over West Africa. ~~According to Figure 1a,~~ temperature is expected to increase on average by + 0.5 °C per decade over the entire region, with a northward increase that reaches + 0.7 °C per decade over the northern Sahel. More specifically, temperature is expected to increase on average by + 0.5, + 0.6, and + 0.45 °C per decade over West Sahel, Central Sahel, and the Guinea Coast, respectively (Figure 1a). ~~Mean~~ ~~According to Figure 1b,~~ mean precipitation is expected to increase on average by + 0.03 mm/day per decade over the Guinea Coast, and decrease on average by - 0.015 and - 0.001 mm/day per decade over West Sahel and Central Sahel, respectively (Figure 1b). ~~INT~~ ~~According to Figure 1c,~~ INT is expected to increase on average by + 0.2 mm/day per decade over the entire West Africa, reaching up to + 0.3 mm/day over the Guinea Coast (Figure 1c), and RR1 ~~According to Figure 1d,~~ RR1 is expected to decrease on average by - 1.5 days per decade over the entire West Africa, reaching up to - 3 days per decade over West Sahel (Figure 1d). ~~Furthermore,~~ ~~According to Figure 1e,~~ CDD is expected to increase on average

by + 1 day per decade over the entire region, with a northward increase that reaches + 5 days per decade over the northern Sahel (Figure 1e), and—According to Figure 1f, CWD is expected to decrease on average by – 0.5 day per decade over the Guinea Coast, and more specifically over Guinea Bissau, Guinea, Sierra Leone, Liberia, Ghana, Benin, Togo and Nigeria (Figure 1f). Hence, our results show that by the end of the century, precipitation is expected to intensify but rarefy (including longer dry periods and shorter wet periods) over the entire West Africa, with different impacts on mean precipitation depending on the sub-region: decrease in mean precipitation over the Sahel (especially over West Sahel) and increase in mean precipitation over the Guinea Coast.

Trends (2006-2100) of INTn, DSLn, and HY-INT are shown in Figure 2, as multimodel mean maps. Figure 2 shows the multimodel mean trend maps (2006-2100) for annual a) INTn, b) DSLn, and c) HY-INT. In agreement with Figure 1c, Figure 2a shows an intensification of precipitation over the entire West Africa, on average by + 0.02 (2 %) per decade (Figure 2a). In addition, whereas According to Figure 2b, DSL is expected to increase over the Sahel on average by + 0.05 (5 %) per decade, with a latitudinal increase northward that reaches + 0.1 (10 %) per decade over the western part of the Sahel. Negligible changes are expected over the Guinea Coast (Figure 2b). As a result, According to Figure 2c, HY-INT is expected to increase on average by + 0.05 (5 %) over West Africa, with a latitudinal increase northward that reaches + 1.5 (15 %) per decade over the Sahel. (Figure 2c). ThereforeHence, our results show that the hydrological cycle is expected to intensify by the end of the century over the entire West Africa. Over the Guinea Coast, this intensification results exclusively from an increase in precipitation intensity (INT). Over the Sahel however, it results from both, an increase in precipitation intensity (INT) and an increase in the average length of dry spells (DSL). Hence over the Sahel, rainfall events are expected to become more intense and separated by much longer periods of dryness.

3.2 Relationship with temperature

Annual values (2006-2009) of mean precipitation (mm/day), RR1 (days), and INT (mm/day) are shown in Figure 3, plotted against the corresponding annual mean values of air surface temperature (°C), and as averaged over a) West Sahel, b) Central Sahel, and c) Guinea Coast. Figure 3 shows the annual values, over 2006-2009, of mean precipitation (mm/day, top row), RR1 (days, middle row), and INT (mm/day, bottom row), plotted against the corresponding annual mean values of air surface temperature (°C), and as averaged over a) West Sahel, b) Central Sahel and c) Guinea Coast. Individual CORDEX simulations are represented by the thin colored dots (see Table 1 for color references), and the multimodel mean is represented by the thick black dots. According to Figure 3, mean precipitation decreases with temperature over the Sahel (multimodel mean decreases by - 0.032 and - 0.012 mm/day per °C over West Sahel and Central Sahel, respectively) and increases with temperature over the Guinea Coast (multimodel mean increases by + 0.062 mm/day per °C). In all the three sub-regions, RR1 decreases with temperature (multimodel mean decreases by - 2.3, - 1.7 and - 2.6 days per °C over West Sahel, Central Sahel and Guinea Coast, respectively) while INT increases

with temperature (multimodel mean increases by + 0.33, + 0.27 and + 0.41 mm/day per °C, respectively). Based on the multimodel mean values, ~~we show we find~~ that changes in temperature explain less than 24 % of the changes in mean precipitation in all ~~the~~ three sub-regions, but more than 67 % (51 %) of the changes in RR1 (INT). ~~As seen in~~ ~~According to~~ Figure 3, even though the annual mean values vary greatly from a simulation to another (e.g. NCC-NorESM1-HIRHAM5 is particularly warm over Central Sahel, ICHEC-RACMO is particularly cold over the three sub-regions, NCC-NorESM1-HIRHAM5 is particularly wet over the Guinea Coast, and CSIRO-SMHI is particularly wet over the Sahel), the relation between each variable and the temperature is consistent across all models, albeit with a different strength.

~~Annual values (2006-2009) of INTn, DSLn, and HY-INT are shown in Figure 4. Figure 4 shows the annual values, over 2006-2009, of INTn (top row), DSLn (middle row), and HY-INT (bottom row),~~ plotted against the corresponding annual mean values of air surface temperature (°C), and as averaged over a) West Sahel, b) Central Sahel, and c) Guinea Coast. As for Figure 3, individual CORDEX simulations are represented by the thin colored dots and the multimodel mean by the thick black dots. ~~From~~ ~~According to~~ Figure 4, INTn increases with temperature in all ~~the~~ three regions (multimodel mean increases by + 0.031 (3.1 %) per °C over the Sahel and + 0.041 (4.1 %) per °C over the Guinea Coast). ~~However,~~ whereas DSLn increases with temperature over the Sahel (multimodel mean increases by + 0.093 (9.3 %) and + 0.056 (5.6 %) per °C over West Sahel, and Central Sahel, respectively; ~~Figure 4a and 4b) but~~); it decreases with temperature over the Guinea Coast (multimodel mean decreases by – 0.01 (1 %) per °C ; ~~Figure 4c). As a result,~~ ~~Finally,~~ HY-INT increases with temperature in all ~~the~~ three sub-regions (multimodel mean increases by + 0.13 (13 %), + 0.089 (8.9 %), and + 0.031 (3.1 %) per °C over West Sahel, Central Sahel, and the Guinea Coast, respectively). Based on the multimodel mean values, we ~~show~~~~find~~ that changes in temperature explain ~~about~~ 63 % (74 %) of the changes in DSLn (HY-INT) over the Sahel and 14 % (27 %) over the Guinea Coast. ~~As shown in~~ ~~According to~~ Figure 4, the annual mean values of DSLn vary greatly from a simulation to another over the Sahel, but are similar across simulations over the Guinea Coast. ~~Similar to~~ ~~As for~~ Figure 3, we find that the relation between each variable and the temperature is consistent across all models, albeit with different strength. We conclude that most of the trends observed in Figures 1 and 2 show a positive relationship with regional warming.

4 Discussion and conclusion

This study uses an ensemble of high resolution regional climate projections (CORDEX-AFRICA) to investigate, over the twenty-first century, the relationship between regional warming and different aspects of the hydrological cycle, as seen in three different sub-regions of West Africa. In agreement with previous studies (e.g. Vizy and Cook, 2012; Collins et al., 2013; Sylla et al., 2016; Diedhiou et al., 2018; Klutse et al., 2018), we find that 1) West African surface temperatures are expected to increase at a faster rate than the global averaged warming (+ 0.5 °C vs. +

0.3 °C per decade), 2) precipitation is expected to intensify but rarefy over the entire region, 3) dry spells are expected to become longer (especially over the northern and the western part of the Sahel), and 4) wet spells are expected to become shorter over the Guinea Coast.

In addition, we show that 1) mean precipitation is expected to increase over the Guinea Coast and decrease over the Sahel, and 2) the hydrological cycle, as defined by Giorgi et al. (2011), is expected to intensify over the entire West Africa (+ 5 % per decade on average). Whereas this intensification results solely from more intense precipitation over the Guinea Coast, we find it results from both, more intense precipitation (+ 2 %) and longer periods of dryness (+ 5-10 %) over the Sahel.

According to our results, all the aforementioned trends show a positive relationship with regional temperatures. In agreement with Collins et al. (2013), we find that mean precipitation is expected to decrease with temperature over the Sahel and increase with temperature over the Guinea Coast. In addition, we find that the hydrological cycle is expected to increase with temperature over the entire West Africa, on average by + 11 % per °C over the Sahel and + 3 % per °C over the Guinea Coast. This increase is in qualitative agreement with the Clausius-Clapeyron relationship, which implies that specific humidity would increase exponentially with temperature (at a rate of about 6.5% per °C), meaning that a warmer atmosphere is expected to take longer to reach saturation and release more water when it condensates, thereby intensifying the hydrological cycle (e.g. Allen and Ingram, 2002). Over the Sahel, we find indeed that the warmer atmosphere takes longer to reach saturation (DSL increases on average by + 7.5 % per °C) and releases more water when it condensates (INT increases on average by + 3.1 % per °C). Over the Guinea Coast however, we find that the warmer atmosphere does not take longer to reach saturation (DSL decreases on average by – 1 % per °C), but does release more water when it condensates (INT increases by + 4.1 % per °C but DSL decreases by – 1 % per °C). To understand the processes involved, Figure 5 (top row) shows the evolution of annual mean specific humidity as a function of annual mean temperatures in all [the](#) three sub-regions. [It is shown that According to Figure 5, the](#) specific humidity increases with temperature on average by + 5 % per °C in all [the](#) three sub-regions ([Figure 5](#)), which is close to the rate expected from the Clausius-Clapeyron relationship (+ 6.5 % per °C). Thus, we conclude that in all [the](#) three sub-regions, a warmer atmosphere does increase the amount of moisture in the atmosphere, which leads to more intense precipitation (INT increase in both sub-regions). However, whereas a warmer atmosphere also leads to longer periods of dryness over the Sahel (DSL increase over the Sahel), this is not the case over the Guinea Coast. We suggest that unlike [the](#) Sahel, the atmosphere over the Guinea Coast does not require more time [to](#) reach saturation because it is already very close to saturation. Thus, although the likelihood for droughts increases with temperature over the Sahel (and in particular over West Sahel), this is not the case over the Guinea Coast. To understand the impact on the very heavy rainfall and floods, Figure 5 also shows the evolution of the 98th percentile annual value (Pct198 in mm/day, middle row)

and the annual contribution of very heavy rain (C98 in %, bottom row) as a function of annual mean temperatures in all [the](#) three sub-regions. [It is shown that According to Figure 5,](#) a warmer climate implies heavier rainfall (multimodel mean increases by + 3.1 %, + 4.2 %, and + 8.6 % over West Sahel, Central Sahel, and Guinea Coast, respectively) and a larger contribution of very heavy rainfall (+ 5.6 %, + 4.1 %, and + 3.7 % in West Sahel, Central Sahel, and Guinea Coast, respectively) in all [the](#) three sub-regions ([Figure 5](#)), which indicates an increase in the likelihood for floods with temperature over the entire West Africa.

Finally, it is worth noting that over the Sahel, precipitation intensity is also driven by the frequency of the Mesoscale Convective Systems (MCSs), which are driven by the meridional temperature gradient between the Sahel and the Sahara (Taylor et al., 2017). Whereas the meridional temperature gradient between the Sahel and the Sahara is projected to increase in CORDEX-AFRICA (on average by + 2 °C by the end of the century, not shown), the impact of this increase on the frequency of the MCSs cannot be simulated by these models (50 km) because MCSs occur on scales that are not resolved by these models. Hence, we suggest that over the Sahel, precipitation intensity may increase more than projected in our study, as result of the increasing meridional temperature gradient between the Sahel and the Sahara. [For instance, Berthou et al. \(2019\) have shown that over the West Sahel, future changes in extreme rainfall increase by a factor 5 to 10 at 4.5 km resolution \(convection-permitting model allowing a good representation of MCSs\), as compared to a factor 2 to 3 at 25 km resolution. Similarly, the impacts of atmospheric aerosols, particularly abundant over West Africa due to seasonal desert dusts \(Konare et al., 2008; N'Datchoh et al., 2018\), are only partially accounted for in CORDEX AFRICA due to the simplified parameterization schemes for aerosols in this dataset. However, because aerosols are expected to affect temperature and precipitation in this region \(e.g. Konare et al., 2008; N'Datchoh et al., 2018\), we suggest that our results are also limited by this simplified representation of aerosols. Additional simulations at higher resolution and using a more complex parameterization scheme for aerosols would be required to identify the impact of MCSs and aerosols on our results, which is beyond the scope of our study. would be required to confirm this hypothesis.](#)

Figure Captions.

Table 1. Summary of 18 simulations (GCM/RCM chains) taken from the CORDEX-AFRICA data. In this ensemble, 5 RCMs are used to downscale 10 GCMs. Each experiment comprises one historical and one scenario (RCP8.5) run, spanning the periods 1981-2005 and 2006-2099 respectively. The horizontal resolution of all simulations is 0.5° in both latitude and longitude. The colors and symbols refer to Figures 3, 4, and 5.

Figure 1. Multimodel mean trend maps (2006-2100) for annual a) mean temperature (°C per decade), b) mean precipitation (mm/day per decade), c) INT (mm/day per decade), d) RR1 (days per decade), e) CDD (days per decade),

and f) CWD (days per decade). Trends that are not significant at 95% according to the Student's t-test are shaded in gray. The black boxes correspond to the three regions of interested: West Sahel, (10°N-20°N 18°W-10°W) Central Sahel (10°N-20°N 10°W-10°E), and the Guinea Coast (5°N-10°N 10°W-10°E), respectively.

Figure 2. Multimodel mean trend maps (2006-2100) for annual a) INTn, b) DSLn, and c) HY-INT, in unit per decade. Trends that are not significant at 95% according to the Student's t-test are shaded in gray.

Figure 3. Annual values of mean precipitation (mm/day), RR1 (days), and INT (mm/day) (y-axis) shown against annual mean temperature (°C) (x-axis), and averaged over a) West Sahel, b) Central Sahel, and c) Guinea Coast. Each color corresponds to a single simulation, as described in Table 1, and the thick black dots correspond to the multimodel mean. Also shown are the fitted regression line of the multimodel mean (red line) and the associated coefficient of determination (r^2) and correlation ('slope').

Figure 4. Annual values of INTn, DSLn, and HY-INT (y-axis) shown against annual mean temperature (°C) (x-axis), and averaged over a) West Sahel, b) Central Sahel, and c) Guinea Coast. Each color corresponds to a single simulation, as described in Table 1, and the thick black dots correspond to the multimodel mean. Also shown are the fitted regression line of the multimodel mean (red line) and the associated coefficient of determination (r^2) and correlation ('slope').

Figure 5. Annual values of specific humidity, 98th percentile (mm/day), and contribution of precipitation above the 98th percentile (%) (y-axis) shown against annual mean temperature (°C) (x-axis), and averaged over a) West Sahel, b) Central Sahel, and c) Guinea Coast. Each color corresponds to a single simulation, as described in Table 1, and the thick black dots correspond to the multimodel mean. Also shown are the fitted regression line of the multimodel mean (red line) and the associated coefficient of determination (r^2) and correlation ('slope', in % per °C, as compared to the 2006-2100 mean value). Note that specific humidity for the model NCC-NorESM1-HIRHAM5 was not available to download at the time of the analysis.

Data availability: The CORDEX-AFRICA data set from the World Climate Research Program's Working Group on Regional Climate is freely available to download at <http://www.cordex.org/data-access/esgf/>. The CHIRPS dataset from the Climate Hazards Group is freely available to download at <http://chg.geog.ucsb.edu/data/chirps>. The BADOPLUS dataset is freely available to download at <http://www.amma-catch.org/>.

Author contribution: The authors declare to have no conflict of interest with this work. A. Bichet and A. Diedhiou fixed the analysis framework. S. Todzo carried out all the calculations and analyses and produced graphs. All authors

contributed to the redaction.

Acknowledgements: The research leading to this publication received funding from the African Center of Excellence on Climate Change, Biodiversity and Sustainable Agriculture (ACE CCBAD), the NERC/DFID “Future Climate for Africa” program under the AMMA-2050 project, grant number NE/M019969/1, and the French public research institution IRD (Institut de Recherche pour le Développement; France). This work is a contribution to CORDEX-AFRICA initiative. We acknowledge the usage of the CORDEX-AFRICA data set from the World Climate Research Program’s Working Group on Regional Climate (<http://www.cordex.org/data-access/esgf/>) and the CHIRPS dataset from the Climate Hazards Group (<http://chg.geog.ucsb.edu/data/chirps>). Our work has benefited from access to rainfall data sets provided by the AMMA-CATCH observatory, the AMMA international program, DMN Burkina, ANACIM, and DMN Niger; we sincerely thank all of them, as well as the staff at the IGE computation center (Guillaume Quantin, Véronique Chaffard, Patrick Juen, and Wajdi Nechba) for their technical support, and Jeremy Panthou for his role in accessing the data and insights into the dataset. We also thank the staff at the IGE computation center (Patrick Juen and Wajdi Nechba) for their technical support.

References

Allen, M. R. and Ingram, W. J.: Constraints on future changes in the hydrological cycle, *Nature*, 419, 224–228, 2002.

Bichet, A. and Diedhiou, A.: West African Sahel has become wetter during the last 30 years, but dry spells are shorter and more frequent, *Clim. Res.*, 75, 155-162, 2018a.

Bichet, A. and Diedhiou, A.: Less frequent and more intense rainfall along the coast of the Gulf of Guinea in West and Central Africa (1981–2014), *Clim. Res.*, 76, 191-201, 2018b.

[Bichet, A., Diedhiou A., Hingray B., Evin G., N'Datchoh Touré E., Klutse N.A.B., and Kouadio K.: Assessing uncertainties in the regional projections of precipitation in CORDEX-AFRICA \(submitted\).](#)

[Bichet, A., Hingray B., Evin G., Diedhiou A., Kebe C.M.F., and Anquetin S.: Potential impact of climate change on solar resource in Africa for photovoltaic energy: analyses from CORDEX-AFRICA climate experiments, *Env. Res. Lett.*, 14, 12403, 2019.](#)

[Berthou, S., Kendon, E., Rowell, D. P., Roberts, M. J., Tucker, S. O., and Stratton, R. A.: Larger future intensification of rainfall in the West African Sahel in a convection-permitting model. *Geophysical Research Letters*, 46, 13,299–13,307. doi: <https://doi.org/10.1029/2019GL083544>, 2019.](#)

[Bichet, A., Hingray, B., Evin, G., and Diedhiou, A.: Potential impact of climate change on solar resource in Africa: analyses from CORDEX-AFRICA experiments, submitted.](#)

Collins, M., Knutti, R., Arblaster, J., Dufresne, J.-L., Fichet, T., Friedlingstein, P., Gao, X., Gutowski, W. J., Johns, T., Krinner, G., Shongwe, M., Tebaldi, C., Weaver, A. J., and Wehner, M.: Long-term Climate Change: Projections, Commitments and Irreversibility. In: Climate Change 2013: The Physical Science Basis. Contribution of Working Group I to the Fifth Assessment Report of the Intergovernmental Panel on Climate Change [Stocker, T. F., Qin, D., Plattner, G.-K., Tignor, M., Allen, S. K., Boschung, J., Nauels, A., Xia, Y., Bex, V., and Midgley, P. M. (eds.)]. Cambridge University Press, Cambridge, United Kingdom and New York, NY, USA, 2013.

Diedhiou, A., Bichet, A., Wartenburger, R., Seneviratne, S. I., Rowell, D. P., Sylla, M. B., Diallo, I., Todzo, S., N'datchoh Touré, E., Camara, M., Ngounou Ngatchah, B., Kane, N. A., Tall, L., and Affholder, F.: Changes in climate extremes over West and Central Africa at 1.5 °C and 2 °C global warming, *Env. Res. Lett.*, 13, 065020., 2018.

[Dosio, A., Jones, R.G., Jack, C., Lennard, C., Nikulins, G., and Hewitson, B.: What can we know about future precipitation in Africa? Robustness, significance and added value of projections from a large ensemble of regional climate models, *Climate Dynamics*, 53, 5833–5858, doi: <https://doi.org/10.1007/s00382-019-04900-3>, 2019.](#)

Douglas, I., Alam, K., Maghenda, M., McDonnell, Y., Mclean, L., and Campbell, J.: Unjust waters: Climate change, flooding and the urban poor in Africa, *Env. and Urban.*, 20, 187–205, doi:10.1177/0956247808089156, 2008.

Froidurot, S. and Diedhiou, A.: Characteristics of wet and dry spells in the West African monsoon system, *Atmos. Sci. Lett.*, 18, 125–131, 2017.

Funk, C., Peterson, P., Landsfeld, M., Pedreros, D. et al.: The climate hazards infrared precipitation with stations - a new environmental record for monitoring extremes, *Sci. Data* 2, 150066, 2015.

Giorgi, F., Jones, C., and Asrar, G.: Addressing climate information needs at the regional level. The CORDEX framework, *WMO Bulletin*, 58, 175-183, 2009.

Giorgi, F., Im, E.-S., Coppola, E., Diffenbaugh, N. S., Gao, X. J., Mariotti, L., and Shi, Y.: Higher hydroclimatic intensity with global warming, *J. Climate*, 24, 5309–5324, doi:<https://doi.org/10.1175/2011JCLI3979.1>, 2011.

Giorgi, F., Coppola, E., and Raffaele, F.: A consistent picture of the hydroclimatic response to global warming from multiple indices: Models and observations, *J. of Geophys. Res.: Atmosphere*, 119, doi:10.1002/2014JD022238, 2014.

[Hewitson, B., Lennard, C., Nikulin, G., and Jones, C.: CORDEX-Africa: A unique opportunity for science and capacity building. *CLIVAR Exchanges* 60, International CLIVAR Project Office, Southampton, UK, pp 6–7, 2012.](#)

Jones, C., Giorgi, F., and Asrar, G.: The coordinated regional downscaling experiment: CORDEX an international downscaling link to CMIP5, CLIVAR Exchanges, 56(16), 34–40, 2011.

[Kim, J., Waliser, D.E., Mattmann, C.A., Goodale, C.E., Hart, A.F., Zimdars, P.A., Crichon, D.J., Jones, C., Nikulin, G., Hewitson, B., Jack, C., Lennard, C., and Favre, A.: Evaluation of the CORDEX-Africa multi-RCM hindcast: Systematic model errors. *Climate Dynamics*, 42, 1189-1202. \[10.1007/s00382-013-1751-7\]\(https://doi.org/10.1007/s00382-013-1751-7\), 2014.](#)

Klutse, N. A. B., Ajayi, V. O., Gbobaniyi, E. O., Egbebiyi, T. S., Kouadio, K., Nkrumah, F., Quagraine, K. A., Olusegun, C., Diasso, U., Abiodun, B. J., Lawal, K., Nikulin, G., Lennard, C., and Dosio, A.: Potential impact of 1.5 °C and 2 °C global warming on consecutive dry and wet days over West Africa, *Env. Res. Lett.*, 13, 055013, 2018.

[Knutti, R., Furrer, R., Tebaldi, C., Cermak, J., and Meehl, G.A.: Challenges in Combining Projections from Multiple Climate Models. *J. Climate*, 23, 2739–2758, doi: <https://doi.org/10.1175/2009JCLI3361.1>, 2010.](#)

[Konare, A., Zakey, A. S., Solomon, F., Giorgi, F., Rauscher, S., Ibrah, S., and Bi, X.: A regional climate modeling study of the effect of desert dust on the West African monsoon. *J Geophys Res* 113: D12206, doi:10.1029/2007JD009322, 2008.](#)

Mohan, T. and Rajeevan, M.: Past and future trends of hydroclimatic intensity over the Indian monsoon region, *J. Geophys. Res.: Atmospheres*, 122, 896–909, 2017.

[N'Datchoh Touré, E., Diallo, I., Konaré, A., Silué, S., Ogunjobi, K. O., Diedhiou, A., and Doumbia, M.: Dust induced changes on the West African summer monsoon features. *Int J Climatol* 38:452–466. <https://doi.org/10.1002/joc.5187>, 2018.](#)

Panthou, G., Vischel, T., Lebel, T., Blanchet, J., Quantin, G., and Ali A.: Extreme rainfall in West Africa: a regional modeling, *Water Resour. Res.*, 48, W08501, 2012.

Sylla, M. B., Nikiema, P. M., Gibba, P., Kebe, I., Klutse, N. A. B.: Climate change over West Africa: recent trends and future projections. In: Yaro, J. A. and Hesselberg, J. (eds), *Adaptation to climate change and variability in rural West Africa*, Springer International Publishing, Basel, p 25–40, 2016.

Taylor, C. M., Belušić, D., Guichard, F., Parker, D. J., Vischel, T., Bock, O., Harris, P. P., Janicot, S., Klein, C., and Panthou, G.: Frequency of extreme Sahelian storms tripled since 1982 in satellite observations, *Nature*, 544, 475-488, doi:10.1038/nature22069, 2017.

Vizy, E. K. and Cook, K. H.: Mid-twenty-first-century changes in extreme events over northern and tropical Africa, *J. Climate*, 25(17), 5748–5767, doi:10.1175/JCLI-D-11-00693.1, 2012.

Zhang, X., Alexander, L., Hegerl, G. C., Jones, P., et al.: Indices for monitoring changes in extremes based on daily temperature and precipitation data, *Wiley Interdiscip Rev. Clim. Change*, 2, 851–870, 2011.

Zwiers, F. W., Alexander, L. V., Hegerl, G. C., Knutson, T. R., Kossin, J., Naveau, P., Nicholls, N., Schär, C., Seneviratne, S. I., and Zhang, X.: Challenges in estimating and understanding recent changes in the frequency and intensity of extreme climate and weather events. In Asrar, G. R. and Hurrell, J. W. (Eds.), *Climate Science for Serving Society: Research, Modeling and Prediction Priorities*, doi 10.1007/978-94-007-6692-1_13, 2013.

Table 1. Summary of 18 simulations (GCM/RCM chains) taken from the CORDEX-AFRICA data. In this ensemble, 5 RCMs are used to downscale 10 GCMs. Each experiment comprises one historical and one scenario (RCP8.5) run, spanning the periods 1981-2005 and 2006-2099 respectively. The horizontal resolution of all simulations is 0.5° in both latitude and longitude. The colors and symbols refer to Figures 3, 4, and 5.

RCM \ GCM	DMI-HI- RHAM5_v2	CLMcom- CCLM4- 8-17_v1	KNMI-RAC- MO22T_v1	SMHI- RCA4_v1	REMO2009_v1
ICHEC- EC- EARTH	(.)	(.)	(+)	(.)	(.)
CNRM- CERFACS- CNRM- CM5		(.)			
MPI-M- MPI-ESM- LR		(+)		(+)	(+)
NCC-No- rESM1-M	(+)			(.)	
NOAA- GFDL- GFDL- ESM2M				(.)	
IPSL-IPSL- CM5A-MR				(+)	(+)
MIROC- MIROC5				(+)	
CSIRO- QCCCE- CSIRO- Mk3-6-0				(.)	
CCCma- CanESM2				(.)	
MOHC- HadGEM2- ES		(+)			

Figures.

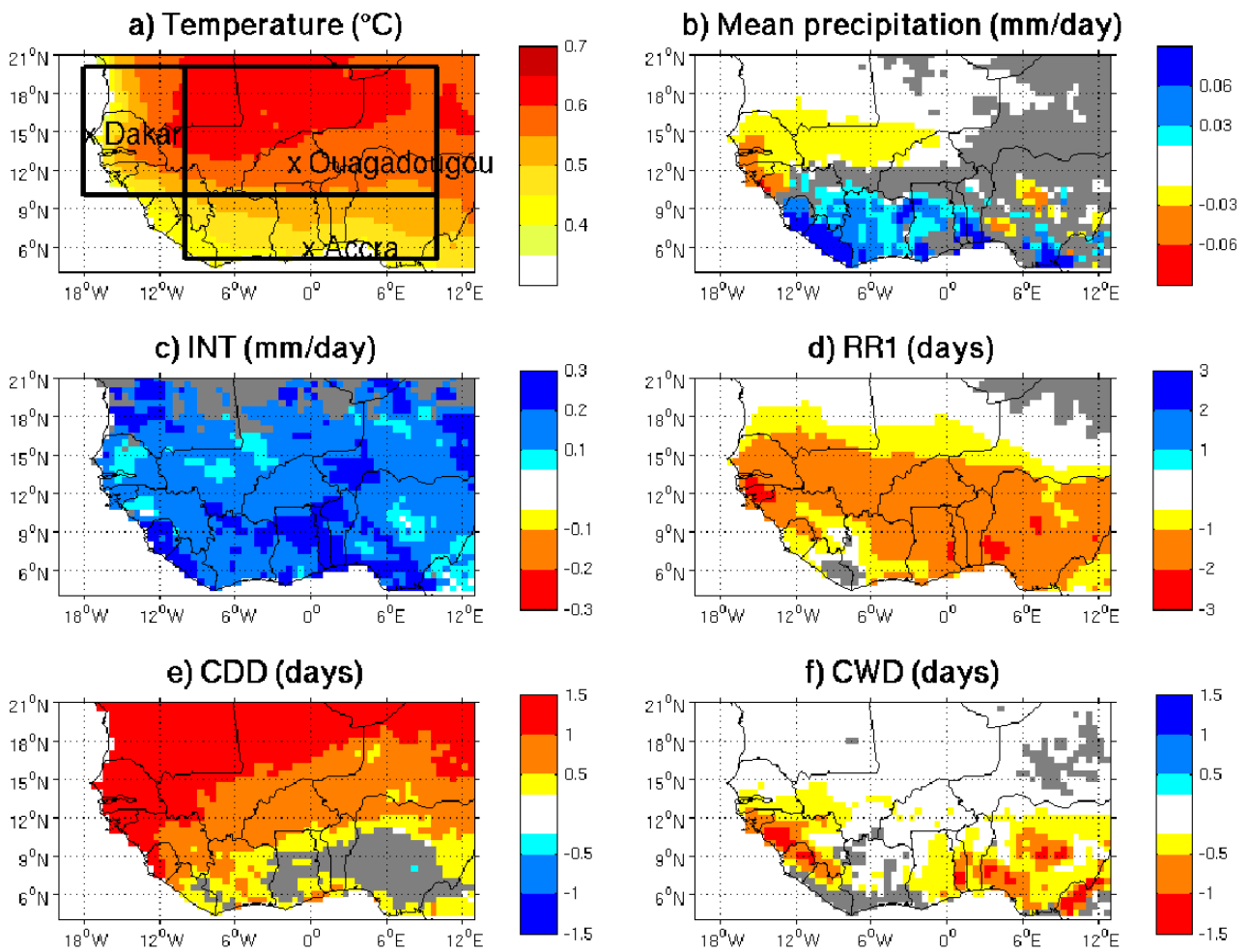


Figure 1. Multimodel mean trend maps (2006-2100) for annual a) mean temperature ($^{\circ}\text{C}$ per decade), b) mean precipitation (mm/day per decade), c) INT (mm/day per decade), d) RR1 (days per decade), e) CDD (days per decade), and f) CWD (days per decade). Trends that are not significant at 95% according to the Student's t-test are shaded in gray. The black boxes correspond to the three regions of interested: West Sahel, (10°N - 20°N 18°W - 10°W) Central Sahel (10°N - 20°N 10°W - 10°E), and the Guinea Coast (5°N - 10°N 10°W - 10°E), respectively.

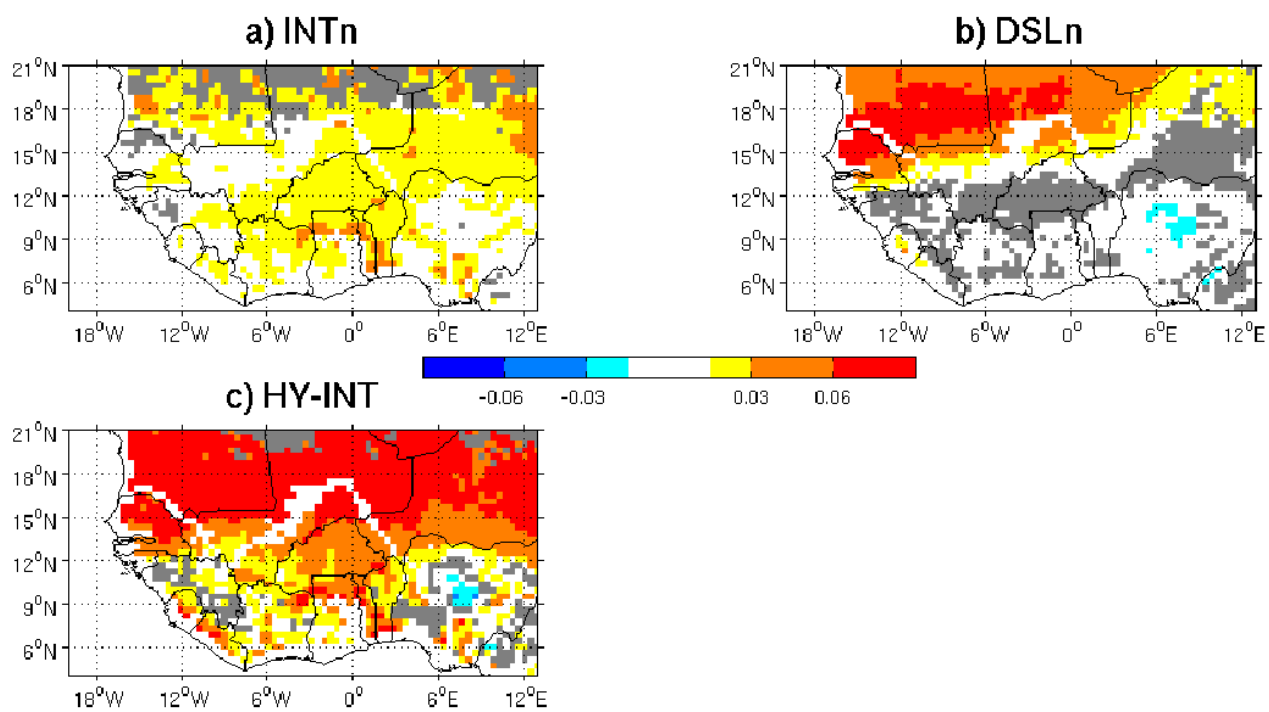


Figure 2. Multimodel mean trend maps (2006-2100) for annual a) INTn, b) DSLn, and c) HY-INT, in unit per decade. Trends that are not significant at 95% according to the Student's t-test are shaded in gray.

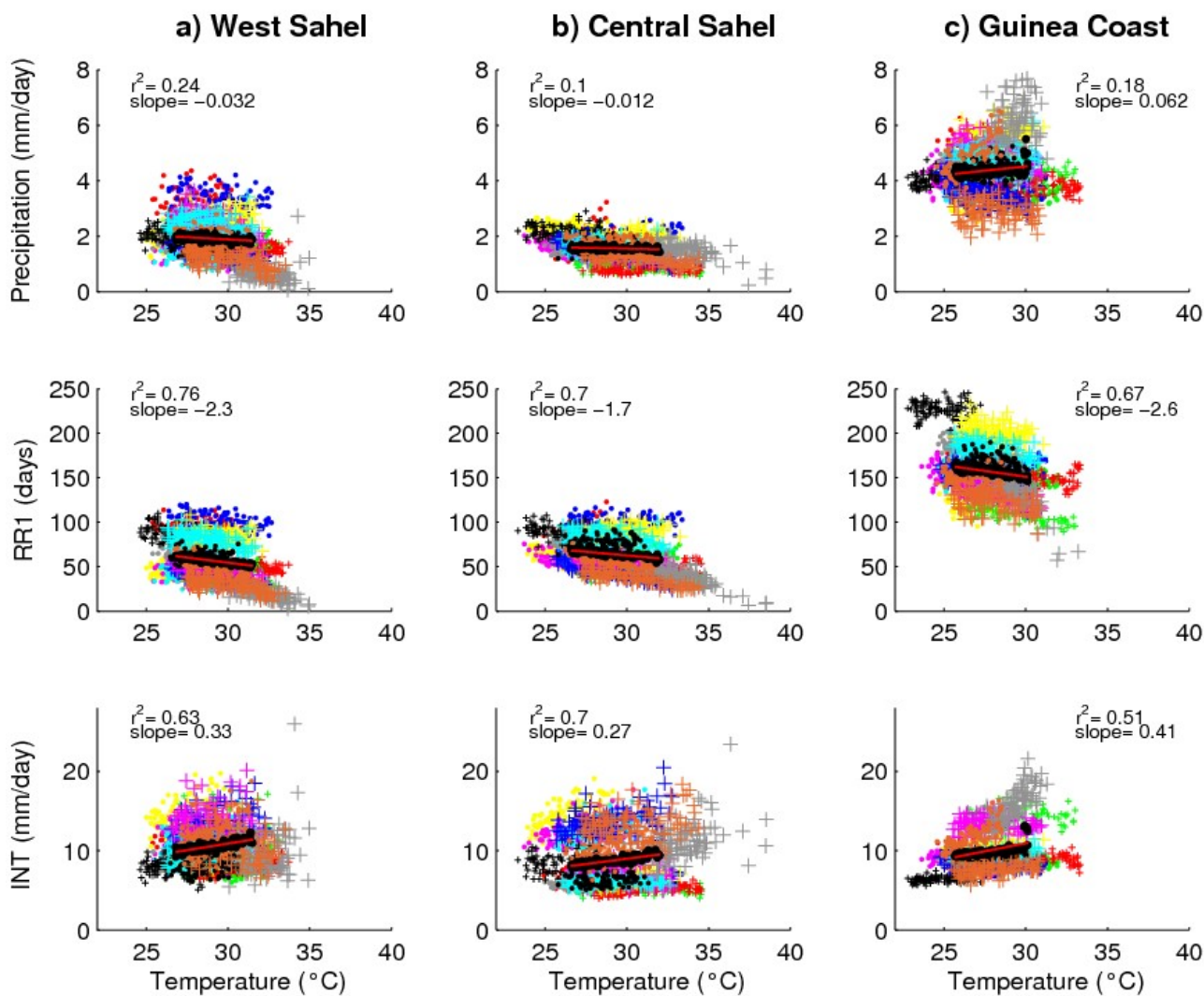


Figure 3. Annual values of mean precipitation (mm/day), RR1 (days), and INT (mm/day) (y-axis) shown against annual mean temperature (°C) (x-axis), and averaged over a) West Sahel, b) Central Sahel, and c) Guinea Coast. Each color corresponds to a single simulation, as described in Table 1, and the thick black dots correspond to the multimodel mean. Also shown are the fitted regression line of the multimodel mean (red line) and the associated coefficient of determination (r^2) and correlation ('slope').

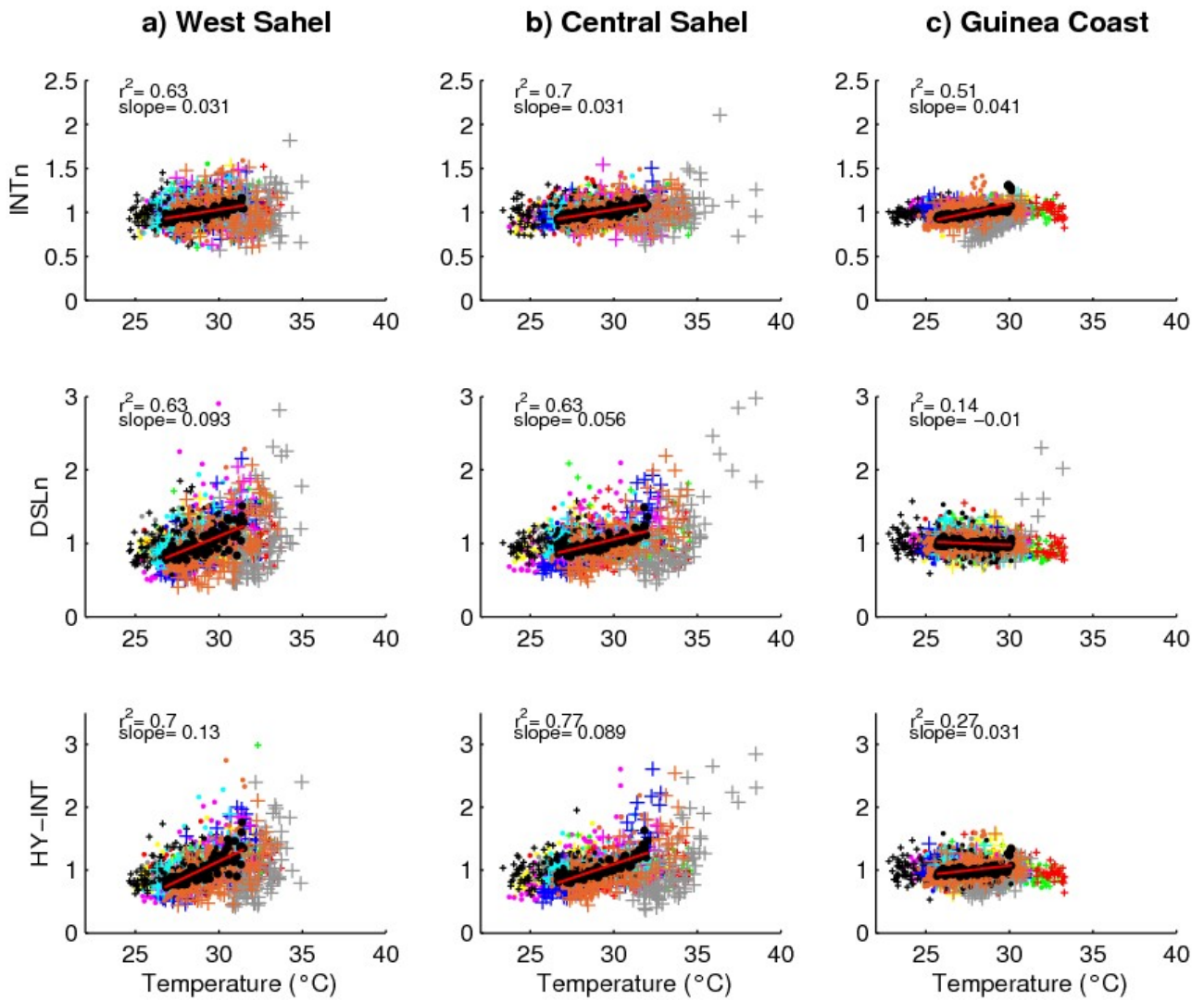


Figure 4. Annual values of INTn, DSLn, and HY-INT (y-axis) shown against annual mean temperature (°C) (x-axis), and averaged over a) West Sahel, b) Central Sahel, and c) Guinea Coast. Each color corresponds to a single simulation, as described in Table 1, and the thick black dots correspond to the multimodel mean. Also shown are the fitted regression line of the multimodel mean (red line) and the associated coefficient of determination (r^2) and correlation ('slope').

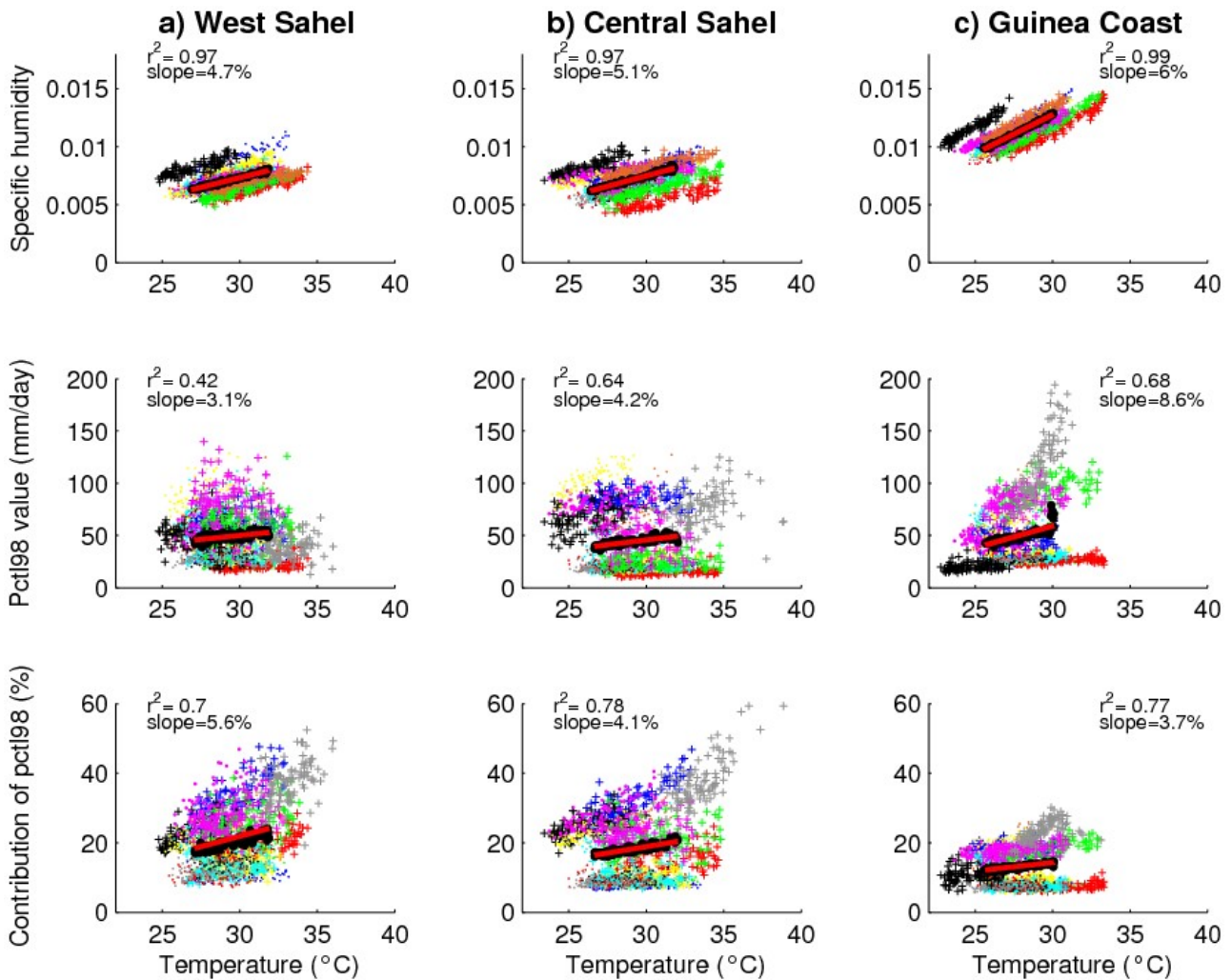


Figure 5. Annual values of specific humidity, 98th percentile (mm/day), and contribution of precipitation above the 98th percentile (%) (y-axis) shown against annual mean temperature (°C) (x-axis), and averaged over a) West Sahel, b) Central Sahel, and c) Guinea Coast. Each color corresponds to a single simulation, as described in Table 1, and the thick black dots correspond to the multimodel mean. Also shown are the fitted regression line of the multimodel mean (red line) and the associated coefficient of determination (r^2) and correlation ('slope', in % per °C, as compared to the 2006-2100 mean value). Note that specific humidity for the model NCC-NorESM1-HIRHAM5 was not available to download at the time of the analysis.