

Supplementary material for:

Projecting Antarctica's contribution to future sea level rise from basal ice-shelf melt using linear response functions of 16 ice sheet models (LARMIP-2)

- 5 Anders Levermann^{1,2,3,*}, Ricarda Winkelmann^{1,3}, Torsten Albrecht¹, Heiko Goelzer^{4,5}, Nicholas R. Golledge^{6,7}, Ralf Greve⁸, Philippe Huybrechts⁹, Jim Jordan¹⁰, Gunter Leguy¹¹, Daniel Martin¹², Mathieu Morlighem¹³, Frank Pattyn⁵, David Pollard¹⁴, Aurelien Quiquet¹⁵, Christian Rodehacke¹⁶, Helene Seroussi¹⁷, Johannes Sutter^{18,19}, Tong Zhang²⁰, Jonas Van Breedam⁹, Robert DeConto²¹, Christophe Dumas¹⁵, Julius Garbe^{1,3}, G. Hilmar Gudmundsson¹⁰, Matthew J. Hoffman²⁰, Angelika Humbert^{18,22},
10 Thomas Kleiner¹⁸, William Lipscomb¹¹, Malte Meinshausen^{23,1}, Esmond Ng¹², Mauro Perego²⁴, Stephen F. Price²⁰, Fuyuki Saito²⁵, Nicole-Jeanne Schlegel¹⁷, Sainan Sun⁵, Roderik S.W. van de Wal^{4,26}

¹ Potsdam Institute for Climate Impact Research, Potsdam, Potsdam, Germany

² LDEO, Columbia University, New York, USA

³ Institute of Physics and Astronomy, University of Potsdam, Potsdam, 14476, Germany

- 15 ⁴ Institute for Marine and Atmospheric research Utrecht, Utrecht University, The Netherlands

⁵ Laboratoire de Glaciologie, Université libre de Bruxelles (ULB), Brussels, Belgium

⁶ Antarctic Research Centre, Victoria University of Wellington, Wellington 6140, New Zealand

⁷ GNS Science, Avalon, Lower Hutt 5011, New Zealand

⁸ Institute of Low Temperature Science, Hokkaido University, Sapporo 060-0819, Japan

- 20 ⁹ Department of Geography, Vrije Universiteit Brussel, Brussels, Belgium

¹⁰ Department of Geography and Environmental Sciences, University of Northumbria, Newcastle. UK.

¹¹ Climate and Global Dynamics Laboratory, National Center for Atmospheric Research, Boulder, CO, USA

¹² Lawrence Berkeley National Laboratory, Berkeley, CA, USA

¹³ Department of Earth System Science, University of California Irvine, Irvine CA, USA

- 25 ¹⁴ Earth and Environmental Systems Institute, Pennsylvania State University, University Park, Pennsylvania, USA.

¹⁵ Laboratoire des Sciences du Climat et de l'Environnement, CEA/CNRS-INSU/UVSQ, Gif-sur-Yvette Cedex, France

¹⁶ Danish Meteorological Institute, Arctic and Climate, Copenhagen, Denmark

¹⁷ Jet Propulsion Laboratory, California Institute of Technology, Pasadena, CA, USA

¹⁸ Alfred Wegener Institute Helmholtz Centre for Polar and Marine Research, Bremerhaven, Germany

- 30 ¹⁹ Physics Institute, University of Bern, Bern, Switzerland

²⁰ Theoretical Division, Los Alamos National Laboratory, Los Alamos, New Mexico, 87545, USA

²¹ Department of Geosciences, University of Massachusetts, Amherst, Massachusetts, USA.

²² Department of Geosciences, University of Bremen, Germany

²³ Climate & Energy College, School of Earth Sciences, University of Melbourne, Parkville, Victoria, Australia

- 35 ²⁴ Center for Computing Research, Sandia National Laboratories, Albuquerque, New Mexico, 87185, USA

²⁵ Japan Agency for Marine-Earth Science and Technology, Yokohama, Japan

²⁶ Geosciences, Physical Geography, Utrecht University, Utrecht, the Netherlands

Correspondence to: Anders Levermann (anders.levermann@pik-potsdam.de)

Figures

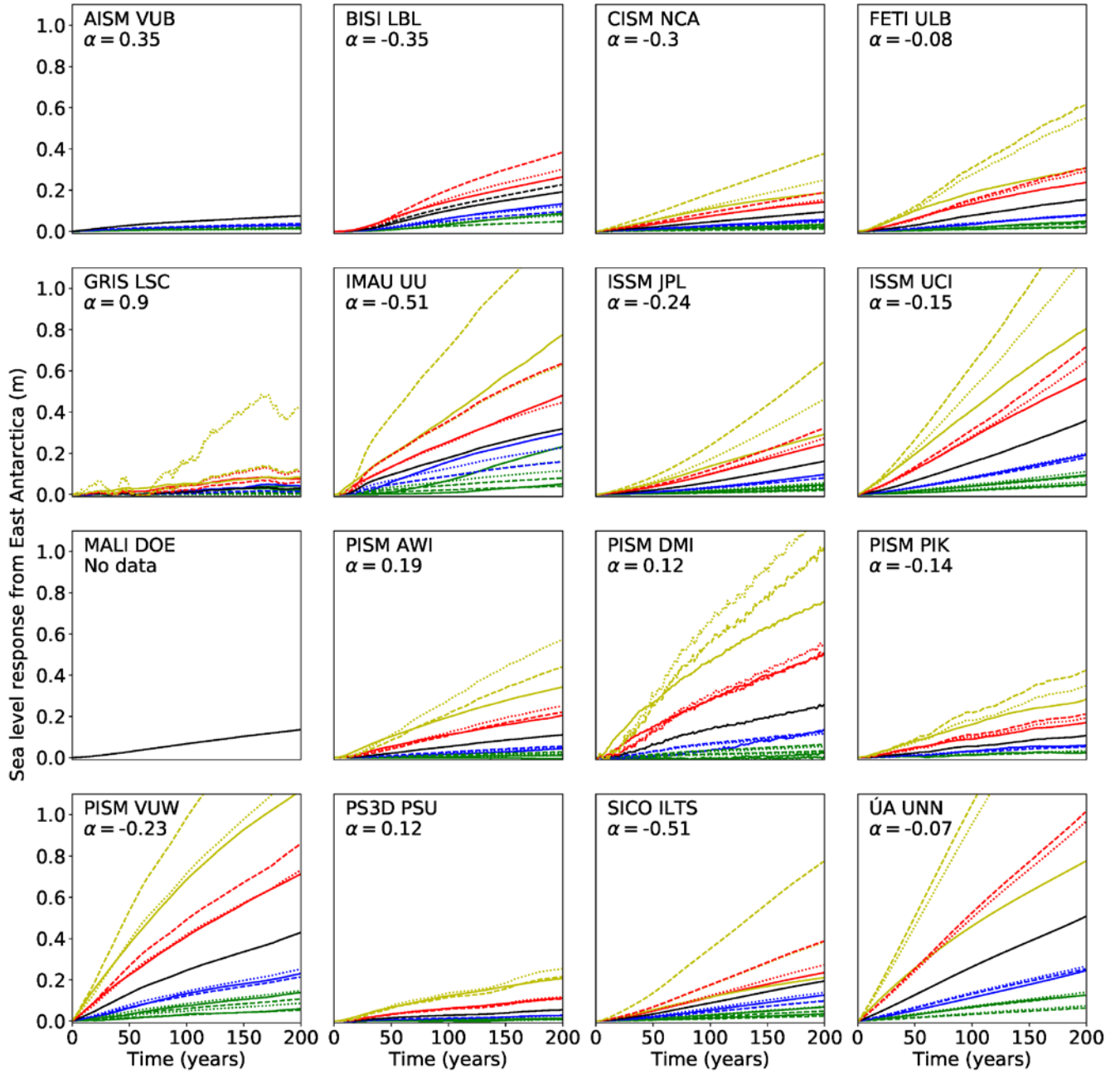


Figure S1a: Linearity check for East Antarctica as in Figure 1a but including the experiment 32 m/yr as yellow curves.

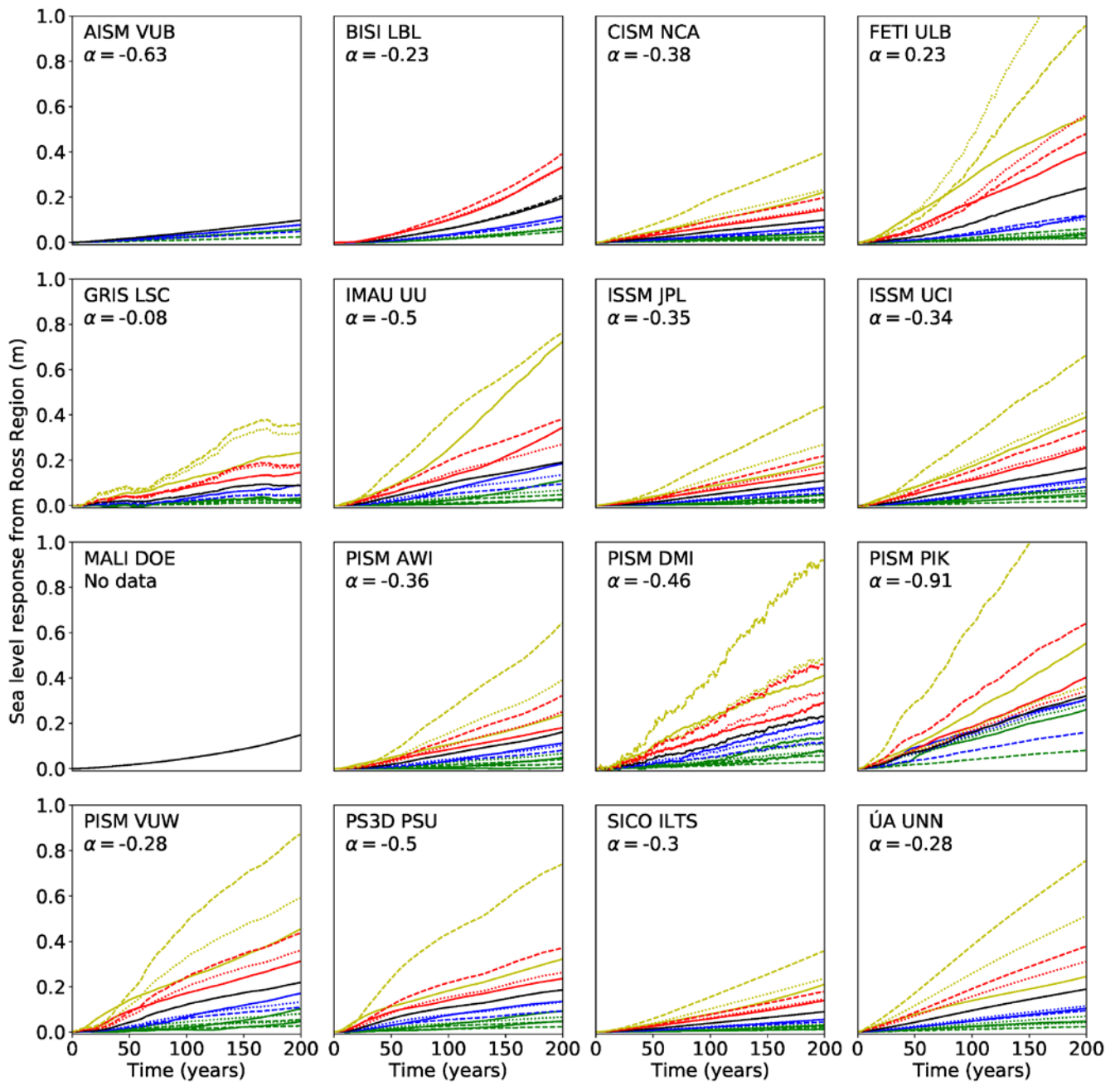


Figure S1b: Linearity check for the Ross region as in Figure S1a.

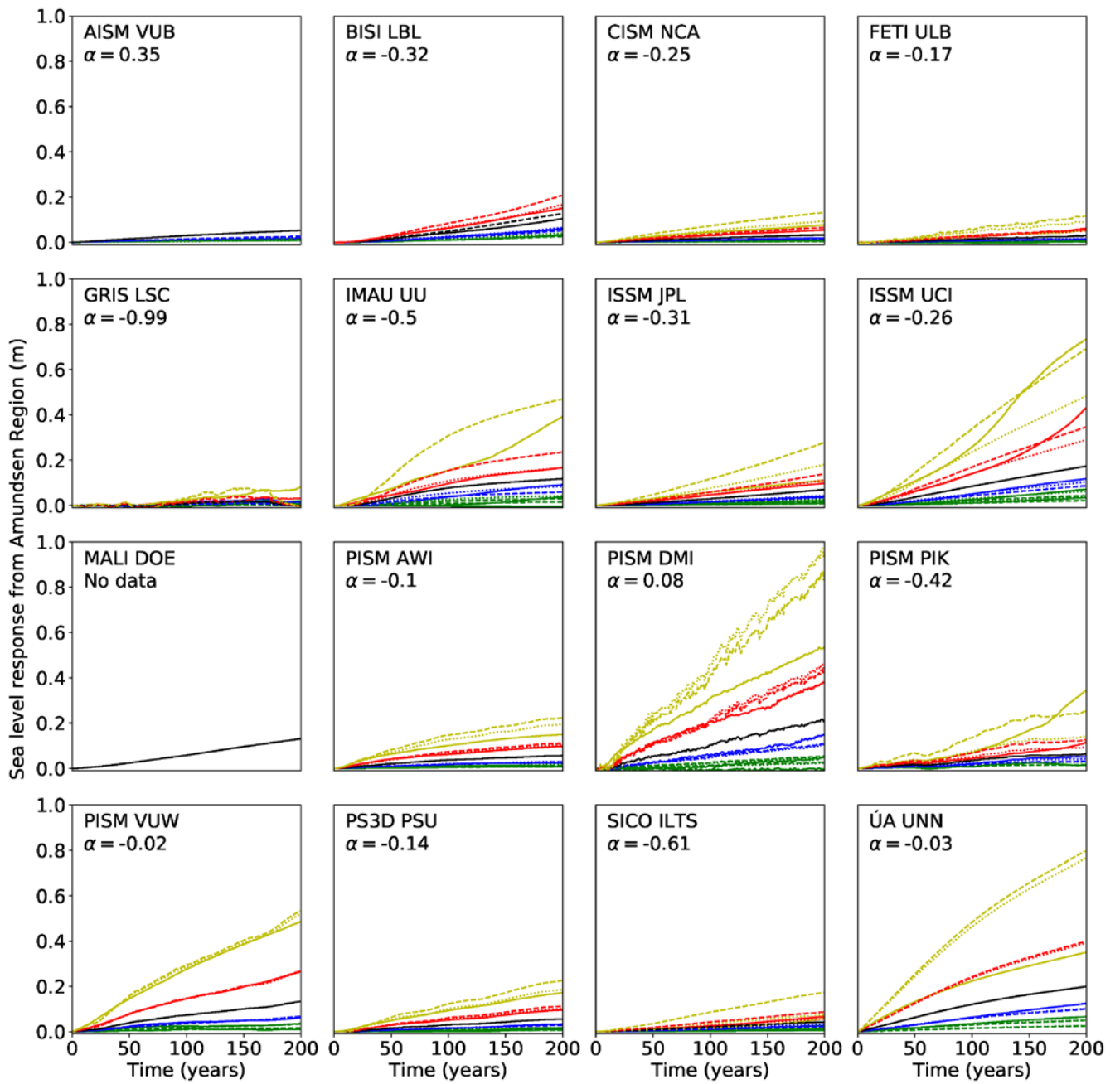


Figure S1c: Linearity check for the Amundsen Sea region as in Figure S1a.

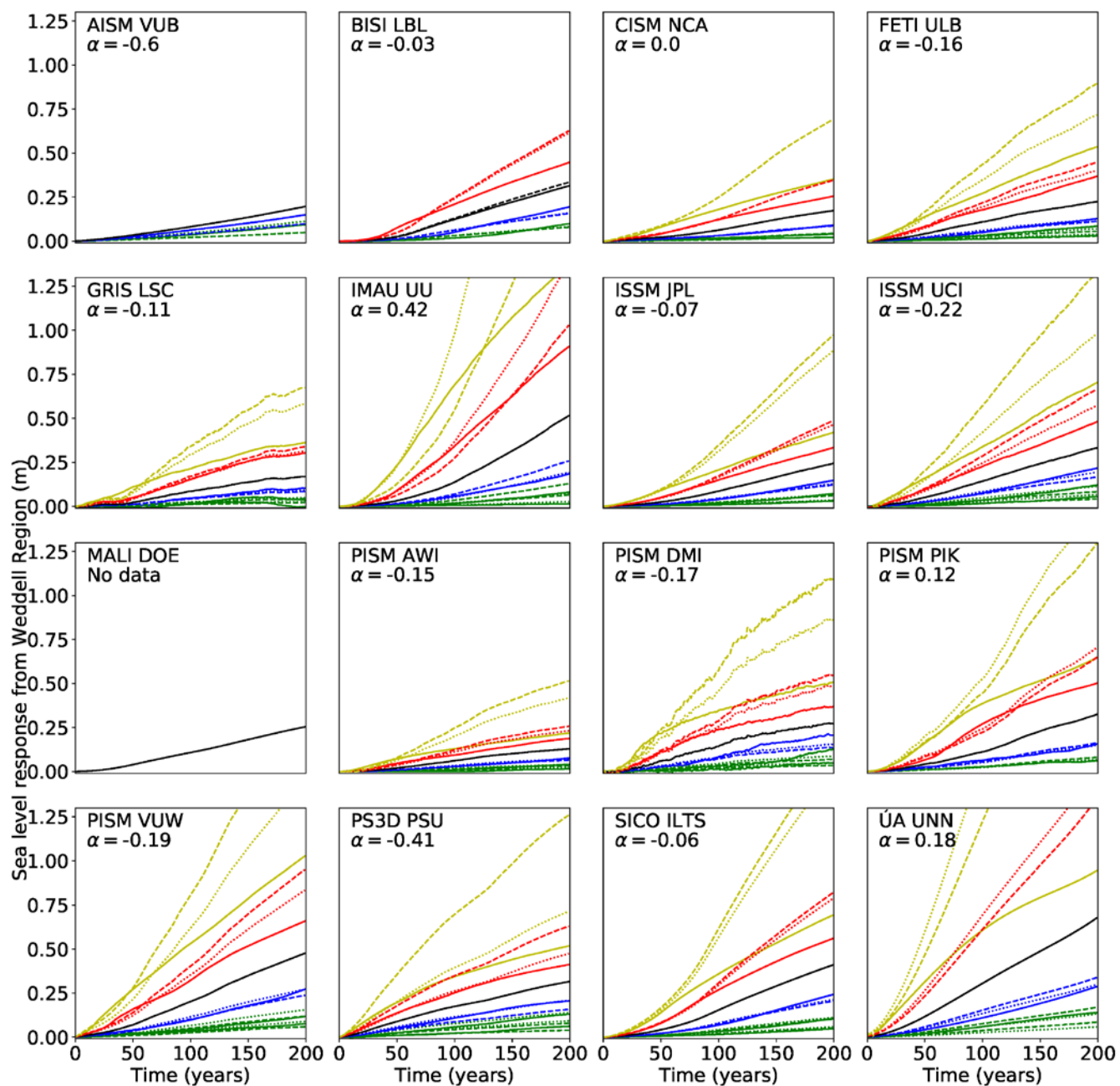


Figure S1d: Linearity check for the Weddell Sea region as in Figure S1a.

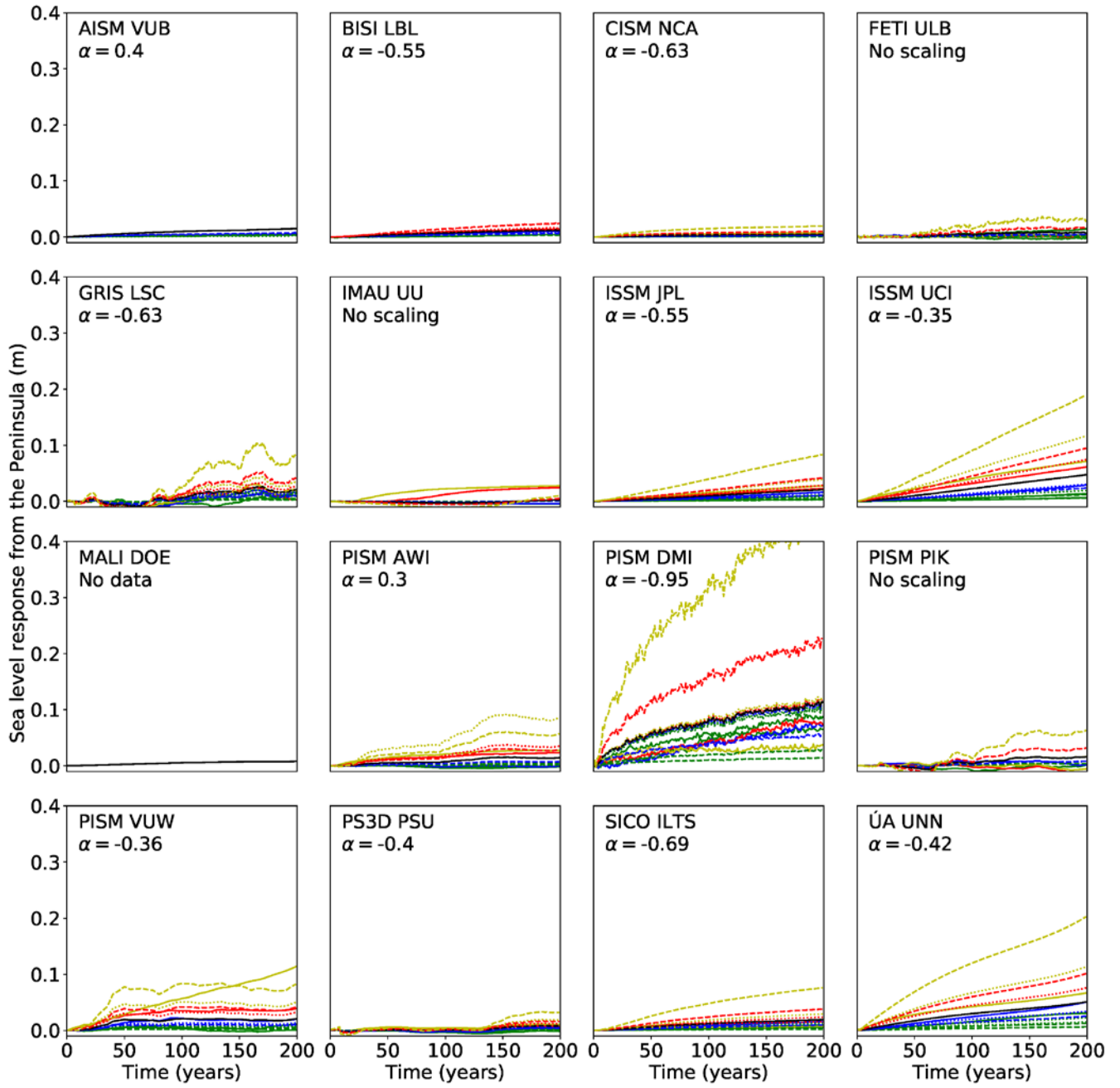


Figure S1e: Linearity check for the Antarctic Peninsula as in Figure S1a.