

Reply to the comments from Anonymous Reviewer

The authors simulate the solar radiation method (SRM) of stratospheric sulfate aerosols by prescribing a uniform layer of sulfate aerosol concentration. Assuming different altitudes of this layer, they determine the impact on different variables like radiative forcing, surface temperature, and humidity and temperature in the stratosphere.

The paper is very well written and includes an impressive literature review. I recommend publication after the authors addressed the following comments.

We thank the reviewer for the suggestions which helped us to further improve the manuscript.

General comments:

I expressed my concern related to the prescribed aerosol layer in my first review. The authors have not performed a more realistic simulation, where the sulfate spreads over a larger vertical area. They want to keep this for another more detailed study. As they state this simplification know clearly in the text, I can accept this. However, I am not really satisfied with the motivation of the work. The results of Kleinschmitt et al (2017) are different to previous studies, as one can see also in the comparison to the second model in their paper. Tilmes et al (2017), English et al, Niemeier and Schmidt (2017) show an increase of the TOA imbalance when increasing the injection height. Thus, motivating the work with Kleinschmitt et al (2018) is difficult in my point of view.

Models used in the several previous simulate complex processes such as aerosol microphysics, chemistry, sedimentation, transport, etc. Thus, the altitude sensitivity estimated in these studies is a net effect of all these processes. The estimation of individual contribution to the sensitivity is lacking. In our approach, we used an idealized prescribed aerosol model which has the advantage of isolating and analyzing the individual effects of these processes. In this study, by fixing the aerosol size and amount, we analyzed the altitude sensitivity of climate related to the fast adjustment processes such as aerosol-induced heating and the consequent changes in stratospheric water vapor and clouds (Boucher et al., 2017). We have modified the last paragraph of the introduction section in the revised manuscript to clearly communicate this motivation.

Specific comments:

Check the spelling of names in citations.

Thank you for pointing out the typos. We have corrected the errors in the revised version.

Page 3 Line 9 Why depends sedimentation on Brewer-Dobson Circulation (BDC)?
Sedimentation is vertical and BDC mostly meridional transport, at least the deep branch as named in the text.

For the high altitude injection at the equator, Tilmes et al., (2017) shows that the upward branch of the BDC in the tropics carries the aerosols upwards which results in maximum stratospheric sulfate burden in the tropics for all seasons. For the injections outside the tropics, the meridional transport is significant, where the aerosol follows the deep branch of

BDC and is transported more effectively toward middle and high latitudes. We have modified this section in the revised manuscript to include these details.

Page 10 Line 23 - 26: This needs to be sorted! Aquilla shows this for tropical jets of the QBO. Your model has no QBO and strengthens the easterly jets in this area. You seem to mix tropical and high latitude jets here. Additionally, the largest negative response is in Vol_100hPa.

Thank you for the suggestion. We have modified this paragraph in the revised manuscript to discuss the changes in tropical and high latitude jets separately.

Fig. 8: Include the upper troposphere region in the plot.

The figure is modified in the revised manuscript to include the upper troposphere region.

Page 13 Line 10: This is not new and shown in many more previous studies. Results depend on the model, strong uncertainty, but also on injection strategy and model resolution. Resolving the QBO or not has an impact as well.

We have modified the sentence in the revised manuscript to include more details as suggested.

Page 14 Line 3-4: What about the easterlies. You never say that your westerlies are the polar night jet, not the tropical jets. A model without QBO gives easterlies in the tropics.

The sentence is modified in the revised manuscript to “The aerosol induced stratospheric warming and the resulting strong stratospheric high-latitude westerly and tropical easterly wind anomalies are sensitive to the altitude of the aerosols”.

List of relevant changes in the revised manuscript:

Dear Editor and Reviewers,

The manuscript have been corrected by the following modifications.

- 1) Throughout the manuscript, modifications are made as per the suggestions of the reviewer.
- 2) As suggested by the reviewer, vertical profiles for changes in temperature and specific humidity is modified to include the upper troposphere (Figure. 8 in the revised manuscript).

The changes in the revised manuscript are shown in the attached marked-up version.

Climate System Response to Stratospheric Sulfate Aerosols: Sensitivity to Altitude of Aerosol Layer

Krishnamohan Krishna-Pillai Sukumara-Pillai¹, Govindasamy Bala¹, and Long Cao², Lei Duan^{2,3} and Ken Caldeira³

5 ¹ Centre for Atmospheric and Oceanic Sciences, Indian Institute of Science, Bangalore 560012, India

² Department of Earth Sciences, Zhejiang University, Hangzhou, Zhejiang 310027, China

³ Department of Global Ecology, Carnegie Institution for Science, Stanford, CA 94305, USA

Correspondence to: Krishnamohan Krishna-Pillai Sukumara-Pillai (krishmet@gmail.com)

Abstract. Reduction of surface temperatures of the planet by injecting sulfate aerosols in the stratosphere has been suggested
10 as an option to reduce the amount of human-induced climate warming. Several previous studies have shown that for a specified
amount of injection, aerosols injected at a higher altitude in the stratosphere would produce more cooling because aerosol
sedimentation would take longer time. In this study, we isolate and assess the sensitivity ~~to the altitude of the aerosol layer~~ of
stratospheric aerosol radiative forcing and the resulting climate change ~~to the altitude of the aerosol layer~~. We study this by
prescribing a specified amount of sulfate aerosols, of a size typical of what is produced by volcanoes, distributed uniformly at
15 different levels in the stratosphere. We find that stratospheric sulfate aerosols are more effective in cooling climate when they
reside higher in the stratosphere. We explain this sensitivity in terms of effective radiative forcing: volcanic aerosols heat the
stratospheric layers where they reside, altering stratospheric water vapor content, tropospheric stability and clouds, and
consequently the effective radiative forcing. We show that the magnitude of the effective radiative forcing is larger when
aerosols are prescribed at higher altitudes and the differences in radiative forcing due to fast adjustment processes can account
20 for a substantial part of the dependence of amount of cooling on aerosol altitude. These altitude effects would be additional to
dependences on aerosol microphysics, transport, and sedimentation, which are outside the scope of this study. The cooling
effectiveness of stratospheric sulfate aerosols likely increases with altitude of the aerosol layer both because aerosols higher
in the stratosphere have larger effective radiative forcing and because they have a longer stratospheric residence time; these
two effects are likely to be of comparable importance.

25 **1 Introduction**

Anthropogenic emissions of greenhouse gases alter the radiative balance of the planet, leading to long-term climate changes
(IPCC, 2013). Of particular interest is the warming from an increasing concentration of atmospheric carbon dioxide (CO₂),
which is the primary warming agent in the industrial era. Solar radiation management (also known as solar geoengineering)

through albedo enhancement methods such as deliberate injection of sulfate aerosols into the stratosphere has been suggested as an option to counteract human-induced climate change (Budyko, 1977; Crutzen, 2006). In some such envisioned geoengineering implementations, the positive radiative forcing from the greenhouse gases would be partially or fully offset by negative radiative forcing from increased shortwave scattering by aerosols.

5 Major volcanic eruptions have been considered as a natural analogue to stratospheric sulfate aerosol geoengineering. Major volcanic eruptions inject the sulfate aerosol precursor SO₂ into the stratosphere where it is converted to sulfate aerosols. These sulfate aerosol concentrations decay with an e-folding time of approximately 1 year (Robock, 2000). The increased scattering of shortwave radiation by the aerosols has a cooling effect on the climate system (Hansen et al., 1992; Robock, 2000; Soden et al., 2002). Volcanic eruptions are episodic, but for stratospheric aerosol geoengineering, the aerosol layer
10 would need to be maintained with quasi-continuous injection of additional aerosols. The quasi-continuous injection can lead to particle growth where the newly injected particles coagulate with background particles, which can potentially lead to decreased scattering efficiency (Heckendorn et al., 2009; Niemeier et al., 2011; Niemeier and Timmreck, 2015; Tilmes et al., 2017).

The time-evolution of radiative forcing and surface cooling per unit mass of injection of aerosols depends on several
15 factors such as type of aerosol used (Pope et al., 2012; Weisenstein et al., 2015), particle size (Rasch et al., 2008; Heckendorn et al., 2009), amount of aerosols injected (Heckendorn et al., 2009; Niemeier and Timmreck, 2015; Kleinschmitt et al., 2018), and the geographical location and altitude of injection (Tilmes et al., 2017; Dai et al., 2018). One of the primary factors affecting the amount of cooling in geoengineering scenarios is aerosol particle size. For a specified mass, smaller particles are more efficient in scattering (Rasch et al., 2008; Heckendorn et al., 2009). As particles with radius in the range of 0.1 μm have
20 the largest backscattering cross section per unit mass, they have been suggested to be the most suitable for geoengineering (Heckendorn et al., 2009).

The amount of injection, evolution of the size of the particles, and removal processes influence the radiative forcing and resulting climate change in state-of-the-art climate models which simulate the evolution and transport of sulfate aerosols. The rate of injection, location, and altitude of injection control processes such as particle growth (by nucleation, condensation,
25 coagulation or evaporation), transport, gravitational settling and removal processes (Heckendorn et al., 2009; Niemeier and Timmreck, 2015; Tilmes et al., 2017; Kleinschmitt et al., 2018) and strongly influence the efficiency of the stratospheric geoengineering schemes. The amount of cooling produced by continuous sulfate aerosol injection initially increases as the rate of injection increases but then decreases as the rate increases further (Niemeier et al., 2011; Niemeier and Timmreck, 2015; Kleinschmitt et al., 2018). This is because as the rate of injection increases beyond a threshold, coagulation increases, forming
30 larger particles. Larger particles are less efficient in scattering sunlight and are more susceptible to removal through sedimentation (Tilmes et al., 2017; Kleinschmitt et al., 2018).

The altitude of injection affects the microphysics and transport of the aerosols in the stratosphere and thereby affects the amount of cooling produced. High-altitude injection of the aerosols extends the sedimentation time and contributes to a longer aerosol lifetime in the stratosphere (Heckendorn et al., 2009; Niemeier et al., 2011; Niemeier and Timmreck, 2015). [Niemeier et al., \(2013\)](#) found that the altitude of the of aerosol layer could affect the radiative transfer through the atmosphere: a reflecting layer in the lower altitude causes smaller magnitude of top of atmosphere shortwave forcing due to absorption and downward reflection of the upward beam. In the stratosphere, circulation patterns associated with the Brewer-Dobson Circulation are important as they influence aerosol transport and burden. [Tilmes et al. \(2017\)](#) show that, for equatorial regions, high-altitude injections ~~increase~~, total aerosol burden [in the tropics increases](#) more than [for the](#) low-altitude injections because ~~of longer sedimentation paths in the stratosphere associated with aerosols are carried upward by~~ the deep branch of the Brewer-Dobson Circulation. ~~However, the (BDC) in the tropics. For high altitude injections outside the equator, they find that the aerosols are transported more effectively toward middle and high latitudes by the deep branch of BDC. For the low altitude injections, the aerosols remain in the shallow branch of the BDC and are removed rapidly from the stratosphere (Tilmes et al., 2017).~~ [The](#) longer lifetime also leads to particles with larger effective radii that reduce the scattering effect and that sediment faster from the stratosphere. [Kleinschmitt et al. \(2018\)](#) find that for tropical injections the net radiative forcing is nearly independent of the altitude of injection despite an increase in the sedimentation time with the altitude of injection, due to the counteracting effects of the particle growth (and hence shorter lifetime) and the resulting reduced scattering properties.

The climates generated by stratospheric sulfate injections can be modulated by varying the timing, latitude and altitude of aerosol injection. A set of studies using the Whole Atmosphere Community Climate Model (CESM1-WACCM) showed that multiple simultaneous climate objectives could be met by strategically injecting aerosols at multiple locations in the stratosphere ([Tilmes et al., 2017](#); [Kravitz et al., 2017](#); [MacMartin et al., 2017](#); [Tilmes et al., 2018a](#)). These studies have shown that the spatial pattern of aerosol optical depth (AOD) can be partially controlled by optimizing the locations of injection ([MacMartin et al., 2017](#); [Kravitz et al., 2017](#)). Non-equatorial high-altitude injections are more efficient in controlling the surface climate because the transport of aerosols into middle and high latitudes results in particles of a smaller effective radius and larger aerosol burden in these latitudes ([Tilmes et al., 2017](#); [MacMartin et al., 2017](#)).

The studies discussed above have studied the climate responses mainly focused on the changes in aerosol burden with particle microphysics, transport, and removal processes. But there are several other fast-adjustment processes in the climate system which can impact the effective radiative forcing and climate responses. Aerosols prescribed in the stratosphere can cause local warming in the stratosphere by absorbing near-IR and terrestrial radiation ([Stenchikov et al., 1998](#); [Ferraro et al., 2011](#)). This warming can lead to changes in the amount of water vapor in the stratosphere ([Dessler et al., 2013](#)) and the amount of high clouds by changing the tropospheric stability ([Kuebbeler et al., 2012](#); [Vioni et al., 2018](#)). [Boucher et al. \(2017\)](#) has shown that these fast adjustment processes can influence the effective radiative forcing of the climate system for sulfate aerosol injections. The altitude of the prescribed aerosol layer can thus affect climate depending on the proximity of the heated layer

to the tropopause as heat and mass exchange between stratosphere and troposphere can lead to changes in clouds and stratospheric water vapor. Although most of [cited](#) studies include the fast adjustment processes, radiative forcing and response, there is a lack of clear and systematic understanding of the dependence of radiative forcing and climate response on the altitude of sulfate aerosols in the stratosphere.

5 In this study, we use idealized climate model experiments to systematically study the sensitivity of the effective radiative forcing and the simulated surface climate to the height at which aerosols are prescribed in the stratosphere. [The models used in several previous studies include the effects of several processes that affect the aerosol microphysics, transport, and removal processes, and hence the altitude sensitivity estimated in these studies is the net effect of all these processes. The idealized prescribed aerosol model used in this study has the advantage of isolating and analyzing the individual effects, which](#)
10 [will be challenging in complex models.](#) In all our stratospheric aerosol experiments, we use the same total amount of aerosols but alter their altitude. ~~Our~~[Thus, our](#) idealized simulations are intended to highlight the radiative influences of aerosol [layer](#) height and isolate these effects from effects associated with aerosol particle evolution and transport.

2 Methods

2.1 Model details

15 To study the dependence of the surface climate on the height of the sulfate aerosols in the stratosphere, we use the NCAR Community Earth System Model version 1.0.4 (CESM; Gent et al., 2011). The CESM consists of five components: atmosphere (Community Atmosphere Model version 4 - CAM4), sea-ice (Community Ice Code version 4 - CICE4), land (Community Land Model version 4 - CLM4), ocean (Parallel Ocean Program - POP), and land-ice (Community Ice Sheet Model), which are coupled through a coupler. For this study, we use a configuration where CAM4 is coupled with the Community Land
20 Model and a Slab Ocean Model (SOM) for simulating the climate change. We also use the prescribed sea surface temperature (pSST) configuration of CAM4 for estimating the radiative forcings. The configuration used here has a horizontal resolution of 1.9° in latitude and 2.5° in longitude, and a vertical resolution of 26 layers with 8 model layers in the stratosphere. The top of the atmosphere (TOA) in the model is approximately at 3 hPa. The land model used here, (CLM4) has an integrated representation of water, carbon and nitrogen cycles (Oleson et al., 2010).

25 2.2 Experimental design

The reference climate of our study is based on a 100-year pre-industrial control simulation (called “1XCO₂” hereafter) with the atmospheric CO₂ concentration fixed at 284.7 ppm. We also perform a ‘2XCO₂’ experiment where the atmospheric CO₂ concentration is doubled to 569.4 ppm. To assess the sensitivity to the altitude of prescribed aerosols, a set of three stratospheric aerosol experiments are designed by altering the altitude of additional aerosol layer but keeping the total mass of aerosols
30 constant at 20 Tg and CO₂ concentration at 569.4 ppm. The mass of aerosol was chosen based on Nalam et al. (2017), where

they prescribed 20 Tg of background sulfate aerosols in five layers centered at 37 hPa to offset the global mean surface temperature change caused by a doubling of CO₂. In CAM4, the sulfate aerosols are log-normally distributed with fixed size distributions (Neale et al., 2010). For our stratospheric aerosol experiments, we use volcanic aerosols which have an effective mean radius of 0.426 μm and a geometric standard deviation of 1.25. The mass of the aerosols consists of 75% H₂SO₄ and 25% H₂O (Neale et al., 2010). The zonal variations as well as interannual variations (for this study) in mixing ratio of the volcanic aerosols are omitted (Ammann et al., 2003; Neale et al., 2010). The volcanic aerosol size used here corresponds to the large aerosols formed 6 to 12 months after a volcanic eruption (Stenchikov et al., 1998; Bauman et al., 2003; Rasch et al., 2008). The aerosols are prescribed as a globally uniform layer in the stratosphere as shown in Fig. 1. Processes such as aerosol microphysics, chemistry, transport, and sedimentation are not included, and the aerosol layer remains fixed throughout the simulations. The aerosols are distributed in single model layers centered at pressure levels 100 hPa, 70 hPa, and 37 hPa altitudes with layer thicknesses in the range of 15.5±1.0 hPa in each case. Corresponding standard atmospheric heights are approximately 16 km, 19 km, and 22 km. These experiments are referred to as Volc_100hPa, Volc_70hPa, and Volc_37hPa.

In CAM4, the solar radiation is divided into 19 discrete spectral and pseudo-spectral intervals in the radiation module (Briegleb, 1992; Collins, 1998; Neale et al., 2010). The near IR absorption by volcanic aerosols is calculated in the model along with the longwave absorption which is a function of the seven longwave bands specified in the model. The concentration distributions of all other types of aerosols in the model such as dust, organic carbon, black carbon, and sea-salt are unchanged in the 2XCO₂ and in the three stratospheric aerosol experiments. All the slab ocean model simulations are performed for 100 years. Climate change analysis is performed on the last 60 years of model-generated data (from year 41 to 100), as the simulated climate closely approaches equilibrium within the first 20-30 years. The corresponding prescribed SST model configuration is used to simulate 60 years and the last 30 years of data are used for estimating radiative forcing and related fast adjustments.

3 Results

Before discussing the main results, it is instructive to briefly review the concepts of effective radiative forcing, fast adjustments, efficacy of different forcing agents, and the efficiency of aerosols. These concepts are discussed briefly in the supplementary Sect. S1 where the various methods of estimating the effective radiative forcing are also discussed: the prescribed-SST method (Hansen et al., 2005; Bala et al., 2010), the regression method (Gregory et al., 2004; Gregory and Webb, 2008), and the two-point method (Modak et al., 2018; Duan et al., 2018). Results on effective radiative forcing are presented in Sect. 3.1, and results for the climate feedback parameter and efficacy (supplementary Sect. S1) are presented in Sect. 3.2. Throughout the Sect., the uncertainties in the global mean values of the variables of any simulation are represented by one standard deviation to show the internal variability and the uncertainties for the changes are represented by standard error.

3.1 Global Mean Temperature and Net Top-of-Atmosphere Fluxes

Because our sulfate simulations produce cooling from a 2XCO₂ background state, in the interest of consistency we report all results relative to the 2XCO₂ simulation. Results for global mean temperature change and top-of-atmosphere (TOA) fluxes are shown in Fig. 2 and Table 1. A halving of CO₂ concentrations from the 2XCO₂ state in the prescribed SST configuration causes a top-of-atmosphere net radiative flux (ΔN_{SST}) of -3.52 ± 0.09 W m⁻² at TOA (Fig. 2a), as found in previous studies that used the CAM4 model (Nalam et al., 2017). Due to land surface cooling, the global mean surface temperature change (ΔT_{SST}) is -0.24 ± 0.01 K in this case. Quasi-steady-state results for halving of CO₂ concentrations from the 2XCO₂ state in the slab-ocean-model configuration show global mean temperature change (ΔT_{SOM}) of -3.13 ± 0.03 K and TOA flux change (ΔN_{SOM}) of -0.01 ± 0.12 W m⁻² in this case.

There is more negative TOA radiative imbalance when the volcanic aerosols are prescribed at a higher altitude (Fig. 2a): ΔN_{SST} is -2.79 ± 0.11 , -3.44 ± 0.09 , and -3.91 ± 0.11 W m⁻², for the Volc_100hPa, Volc_70hPa, and Volc_37hPa prescribed-SST simulations, respectively, relative to the 2XCO₂ control case. The corresponding global mean surface temperature changes (ΔT_{SST}) in these prescribed SST simulations are -0.13 ± 0.01 , -0.13 ± 0.01 , and -0.14 ± 0.01 , respectively. The TOA radiative imbalance discussed here are actually the prescribed-SST radiative forcing as discussed in several previous studies (Bala et al., 2010; Modak et al., 2014; Nalam et al., 2018). This imbalance is corrected for the land surface temperature change in the prescribed SST simulations, to obtain the TOA radiative forcing (section 3.2) in the two-point method as discussed in Modak et al., (2018) and Duan et al., (2018) and in the supplemental sect. S1. Residual TOA net fluxes in the steady-state for the sulfate aerosol slab ocean simulations (ΔN_{SOM}) are 0.02 ± 0.13 , 0.01 ± 0.13 , and 0.0 ± 0.12 , for the Volc_100hPa, Volc_70hPa, and Volc_37hPa simulations respectively. The corresponding ΔT_{SOM} values are -2.18 ± 0.03 , -2.57 ± 0.03 , and -2.91 ± 0.03 K, respectively.

3.2 Radiative forcing and climate feedback parameters

With the values presented above, using Eq. (1) and (2) in Supplementary Sect. S1, we can calculate the effective radiative-forcing (F) and climate feedback parameters (λ) for each of our experimental simulations (Fig. 2 and Table 1) using the two-point method (Supplementary Sect. S1). A halving of CO₂ concentration from 2XCO₂ to 1XCO₂ results in an estimate for F of -3.82 ± 0.09 W m⁻², and an estimate for λ of 1.22 ± 0.05 W m⁻² K⁻¹. Introduction of stratospheric aerosol layers at 100 hPa, 70 hPa, and 37 hPa results in estimates for F of -2.97 ± 0.11 W m⁻², -3.62 ± 0.09 W m⁻², and -4.12 ± 0.11 W m⁻², respectively. Corresponding estimates of λ are 1.37 ± 0.09 , 1.41 ± 0.07 , and 1.42 ± 0.06 W m⁻² K⁻¹. Thus, there is a substantial increase in the magnitude of radiative forcing from sulfate aerosols when they are higher in the stratosphere (Fig. 2b); this effect appears to be slightly offset by a small (i.e., not statistically significant) increase in the climate feedback parameter. For example, for the 37 hPa case relative to the 100 hPa case, the radiative forcing is 38% larger in magnitude, but the climate feedback parameter is 3% larger, resulting in a temperature change that is 34% larger in magnitude. The climate feedback parameters for sulfate

aerosols differs substantially from the climate feedback parameter for CO₂, resulting in efficacy values (e_{SAI}) of 0.89 ± 0.07 , 0.87 ± 0.05 , and 0.86 ± 0.05 for the Volc_100hPa, Volc_70hPa, and Volc_37hPa cases, respectively, indicating that effective radiative forcing from stratospheric sulfate aerosols would generate 11 to 14% less global mean temperature change than would an equivalent amount of effective radiative forcing from CO₂. Hence, the efficacy of sulfates is less than one as also found in recent studies (e.g., Duan et al. 2018), and for an equivalent amount of effective radiative forcing, CO₂ reduction would be more effective in cooling the climate. The magnitude of climate feedback parameter differs slightly between the stratospheric sulfate experiments, which is mainly associated with the changes in the cloudy-sky feedback parameters (Fig. S1). The reasons for these changes are not analyzed here but would be investigated in detail in a future study. The larger magnitude of the climate feedback parameter obtained for sulfate aerosols relative the CO₂ forcing is qualitatively similar to the difference between the feedback parameters for solar irradiance and CO₂ forcing found in a recent study (Modak et al., 2016). Our calculated efficacy values for stratospheric sulfate aerosols are somewhat larger than the value of 0.83 for solar irradiance estimated by Modak et al. (2016). This is likely due to differing climate sensitivity of the version of the atmospheric model used (CAM5 in Modak et al. (2016) and CAM4 for our experiments) and the differing heating structures in the stratosphere for changes in solar irradiance versus sulfate aerosols. The efficacy value estimated for sulfates in our study is broadly consistent with that reported by Duan et al. (2018) where it is found that efficacy of sulfate aerosols at the top of the atmosphere relative to CO₂ is 0.85.

We have also applied the two-point method (Supplementary Sect. S1) to the individual radiative forcing components. The radiative forcing and corresponding feedback parameters are shown in Fig. S1 and Table S1 which indicates that the longwave (LW) forcing from volcanic aerosols are not negligible (Fig. 3b) - the magnitude is about 13% of the SW forcing. The total LW radiative forcing is positive in the stratospheric aerosol experiments relative to the 2XCO₂ case (i.e., increased downward LW radiation; Fig. 3b) but the negative shortwave (SW) forcing dominates (i.e., increased upward SW radiation; Fig. 3a) and hence the net TOA radiative forcing is negative relative (increased upward) to the 2XCO₂ case (Fig. 2b). A detailed analysis of the radiative forcing components and fast adjustments in clouds, water vapor and temperature are given below.

The clear-sky SW radiative forcing is negative in all cases (Fig. 3c) due to the SW back-scattering by the prescribed aerosols. The sensitivity to the altitude of aerosols can be explained by the changes in water vapor content in the stratosphere. When aerosols are prescribed at lower levels close to the tropopause, radiative heating by aerosols leads to an increase in cold point tropopause temperature and an increase in stratospheric water vapor (Fig. S2). The increase in water vapor leads to increased absorption of SW radiation, which can provide a strong positive water vapor feedback. As the changes in water vapor amount decreases rapidly in the stratosphere with height of the prescribed aerosols, the water vapor feedback related SW absorption decreases and hence we find a larger negative SW clear-sky radiative forcing when aerosols are prescribed at higher altitudes (Fig. 3c).

The clear-sky LW forcing is positive for all cases (Fig. 3d) due to LW absorption by volcanic aerosols and their differences are associated with different changes in water vapor. As discussed earlier, there is an increase in water vapor (Fig. S2) which is larger when aerosols are prescribed at lower levels. As water vapor absorbs LW radiation, we find that the LW clear-sky forcing increases when aerosols are prescribed at lower stratospheric levels.

5 The SW cloud radiative forcing is positive in all cases (Fig. 3e) because of a reduction in clouds in the stratospheric aerosol experiments relative to the 2XCO₂ case (Fig. S3a). The upper troposphere warms in the stratospheric aerosol experiments (Fig. S4 and S5) because of mixing between the tropospheric and radiatively heated stratospheric air. As the upper troposphere warms, the stability of the troposphere increases which causes a reduction in water vapor transport to the upper troposphere, the probability of ice-supersaturation and a reduction of high clouds (Kuebbeler et al., 2012; Vioni et al., 2018).
10 Similar to these studies, a reduction in high cloud cover is simulated in our stratospheric aerosol experiments relative to the 2XCO₂ (Fig S3b, S6). Further, the increase in stability and less water vapor transport to the upper troposphere leads to a smaller decrease in low cloud fraction for the Volc_100hPa case compared to the Volc_70hPa and Volc_35hPa cases (Fig. S3c). The increase in tropospheric stability is less when aerosols are prescribed at higher stratospheric levels as the upper tropospheric warming decreases. As low clouds are optically thicker than high clouds and their increase is larger for the
15 Volc_100hPa case (Fig. S3c), a corresponding less positive SW cloud radiative forcing is simulated in the Volc_100hPa case (Fig. 3c).

A sensitivity of cloudy-sky LW forcing to the height of the aerosols is also simulated (Fig. 3f) which can be attributed to the changes in high cloud cover in the stratospheric aerosol experiments (Fig. S3b and S6). The decrease in high clouds results in a cirrus cloud thinning effect (Storelvmo et al., 2013) and allows more longwave radiation to pass through the
20 atmosphere resulting in negative longwave forcing. The magnitude of this effect decreases as the aerosols are prescribed at higher altitudes (Fig. 3f). In the Vol_100hPa case, the magnitude of the cloud-induced LW forcing is about one third of the net SW forcing which shows that the indirect high cloud effect is large.

3.3 Global climate change

The radiative forcing of -3.82 W m^{-2} from a halving of CO₂ in the 1XCO₂ experiment leads to a decrease in global mean
25 surface temperature by 3.13 K (Figs. 4a and 5a). In the stratospheric aerosol experiments, the aerosol induced negative radiative forcing induces a surface cooling (Fig. 4a). As the TOA radiative forcing varies with the altitude of the aerosols in the stratospheric aerosol experiments, corresponding changes are simulated in surface temperature. The global cooling is more when volcanic aerosols are prescribed at the higher levels of the stratosphere (Fig. 4a). The spatial changes in global mean surface temperature for the stratospheric aerosol experiments relative to the 2XCO₂ experiment are shown in Fig. 5. In all
30 stratospheric sulfate experiments larger surface cooling is simulated in the higher latitudes compared with the tropics which is consistent with the polar amplification simulated for an increase in CO₂ (Fig. S7a). Compared to other stratospheric sulfate

experiments, the lower net negative radiative forcing in the Volc_100hPa case contributes to a global mean surface cooling of 2.18 K with respect to the 2XCO₂ experiment, which attains only 70% of the cooling in 1XCO₂ relative to 2XCO₂. For the Volc_70hPa case, the surface cooling increases to 2.57 K relative to the 2XCO₂ case reaching 82% of cooling due to halving of CO₂. Larger negative forcing in the Volc_37hPa case compared to other cases leads to more surface cooling in Volc_37hPa and thereby attaining ~93% of the cooling simulated in the 1XCO₂ case.

The residual surface temperature patterns in the stratospheric aerosol simulations relative to 1XCO₂ experiment (Fig. S7) shows a large warming at the higher latitudes. This is in agreement with several previous studies (Govindasamy et al., 2003; Kravitz et al., 2016; Nalam et al., 2017). The net surface cooling in the Volc_37hPa is less than the 1XCO₂ experiment even-though the net negative radiative forcing surpasses the 1XCO₂ radiative forcing (Fig. 2b and 4a). This is partly attributed to the lower efficacy of sulfate aerosol forcing (0.86-0.89; Sect. 3.2) and partly to the CO₂ physiological effect. For counteracting the global mean surface warming, the magnitude of sulfate forcing should be larger than CO₂ radiative forcing as its efficacy is less than one. The lower efficacy of sulfate aerosols is similar to the case of solar forcing which has an efficacy of about 0.8 (Schmidt et al., 2012; Modak et al., 2016; Duan et al., 2018). The CO₂ physiological forcing is caused by elevated CO₂ concentration, where the plant stoma opens less widely leading to less canopy transpiration and reduced evapotranspiration which leads to an increase in mean surface air temperature over land (Cao et al., 2010).

Kravitz et al. (2013a) have shown that for an abrupt increase in CO₂ concentration, the precipitation initially reduces due to the fast adjustment to CO₂ forcing, and later increases in response to the temperature increase. Fast adjustments to CO₂ radiative forcing results in precipitation suppression (Bala et al., 2010; Ferraro et al., 2014), associated with an increase in stability in the lower troposphere (Bala et al., 2010; Cao et al., 2012). The fast precipitation change is related to atmospheric radiative imbalance (Liepert and ~~Prevedi~~[Previdi](#), 2009) and is also associated with reduced evaporation (Kravitz et al., 2013a). Thus, the fast response to a reduction in CO₂ radiative forcing involves an increase in precipitation. In contrast, the fast response to the negative forcing from the introduction of a stratospheric aerosol layer does not involve an increase in global mean precipitation. The surface cooling caused by a halving of CO₂ in 1XCO₂ experiment is associated with a decrease in global mean precipitation and the net change is -5.8% relative to the 2XCO₂ experiment (Fig. 4b and 6a). In the stratospheric aerosol experiments, even though the global mean surface cooling less than the 1XCO₂ experiment, a larger net reduction in global mean precipitation is simulated because the introduction of a stratospheric aerosol layer does not lead to an increase in fast global mean precipitation. For all types of forcing considered here, a decrease in global mean temperatures is associated with decreases in global mean precipitation. For our volcanic aerosol simulations, both equilibrium global mean surface temperatures and equilibrium global mean precipitation decrease with increasing altitude of the stratospheric aerosol layer (Fig. 4b). The spatial patterns (Fig. 6) show that the reduction in precipitation is larger over the tropics which is consistent with earlier studies (Govindasamy et al., 2003; Kravitz et al., 2013b; Tilmes et al., 2013).

3.4 Stratospheric dynamics

An increase in atmospheric CO₂ concentration causes a warming of the surface and the troposphere but a cooling in the stratosphere and mesosphere (Goessling and Bathiany, 2016 and references therein). Additionally, the local warming by aerosols can affect the dynamics of the stratosphere (Aquila et al., 2014; Niemeier and Schmidt, 2017). The vertical resolution of the model is not likely adequate to simulate the complex stratospheric dynamics and features such as quasi-biennial oscillation (QBO), which require “high-top” versions of CAM such as Whole Atmosphere Community Climate Model (WACCM) (Marsh et al., 2013; Tilmes et al., 2017; Mills et al., 2017) that has high vertical resolution in the stratosphere. However, some recent studies have shown that even with the limited vertical resolution, the CAM4 model is capable of simulating stratospheric circulation patterns such as the ~~Brewer-Dobson circulation~~[BDC](#) (e.g., Smith et al. 2014; Tilmes et al., 2015) which is important for vertical and meridional water vapor transport in the stratosphere.

We have performed a set of additional, 12-member ensemble simulations lasting 1 day to evaluate the effects of aerosols on the radiative heating. These 1-day runs provide an estimate of the instantaneous radiative effects of the prescribed aerosols. Monthly restarts from the 60th year of the prescribed SST control run are used to initialize these 1-day runs. Each member of the ensemble starts from the first day of each calendar month (1st January, 1st February... etc.) and the simulation is performed with hourly outputs from the model. By averaging the 12 ensemble runs, the effects of seasonal cycle on the radiative forcing estimates are excluded.

The SW heating rate increases with the prescribed altitude, with a maximum warming of 0.24 K day⁻¹ for Volc_100hPa to 0.39 K day⁻¹ for Volc_70hPa, and 0.43 K day⁻¹ for Volc_37hPa (Fig. S8a). This is because the amount of solar radiation decreases downward due to attenuation and hence more SW radiation is available at higher altitudes. For LW heating, a maximum of 0.32 K day⁻¹ is simulated for the Volc_70hPa case while the maximum is 0.13 K day⁻¹ for the Volc_100hPa case, and 0.16 K day⁻¹ for the Volc_37hPa (Fig. S8b). We are not aware of the reason for the maximum LW heating in the Volc_70hPa. Due to the differing SW and LW radiative heating rates in the three cases, the maximum heating rate and temperature change is simulated for the Volc_70hPa case (0.68 K day⁻¹), followed by Volc_37hPa (0.58 K day⁻¹), and Volc_100hPa (0.34 K day⁻¹) (Fig. S8c).

To illustrate the effects of aerosol-induced warming on the dynamics of the stratosphere, changes in zonal mean temperature and wind for the stratospheric aerosol experiments with respect to the 2XCO₂ simulation are analyzed (Fig. 7). Although the aerosols are prescribed uniformly around the globe, for the same altitude more warming is simulated in the tropics than in the poles (Fig. 7a) because the annual mean incoming solar radiation is larger in the tropics, and hence the aerosol-induced warming is larger in the tropics. A maximum warming of approximately 6 K is simulated for the Volc_100hPa case relative to the 2XCO₂ experiment. The maximum warming increases to almost 15 K for the Volc_70hPa case and it is approximately 10 K for the Volc_37hPa case. The uneven meridional [distribution of](#) radiative heating (Fig. 7) alters the thermal

wind balance in the stratosphere, ~~and related changes resulting in pressure gradients generate~~ high latitude westerly wind anomalies (Ferraro et al., 2011; Aquila et al., 2015) and low latitude easterly anomalies. Large westerly ~~2014~~. Large wind anomalies are simulated for the Volc_70hPa and Volc_37hPa cases (Fig. 7b,d) as the radiative heating ~~was~~ larger in these two cases (Fig. S8). In models which simulate QBO, sulfate injection could lead to prolonged westerly phase of QBO in the tropical lower stratosphere (Aquila et al., 2014). Since the model used in this study does not simulate QBO, in the tropics, easterly wind anomalies are simulated in all cases with maximum magnitude in the Volc_100hPa case (Fig. 7).

The radiative heating by sulfate aerosols, especially in the lower stratosphere leads to an increase in temperature of the tropical tropopause layer and an associated increase in water vapor transport from the troposphere to the stratosphere (Dessler et al., 2013). When the volcanic aerosols are prescribed at 100 hPa, the warming is near the tropical tropopause and it causes a significant increase in water vapor in the stratosphere (Fig. 8). An increase in specific humidity of 60% is simulated in the stratosphere for the Volc_100hPa case relative to the 2XCO₂ experiment (Fig. 8). Though the radiative heating is largest for the Volc_70hPa experiment, the altitude of the layer is much above the tropopause and thus only a 25% increase in specific humidity is simulated. No significant changes in specific humidity are simulated for Volc_37hPa case.

3.5 Effects on Terrestrial vegetation productivity

The vegetation primary productivity on land is proportional to the available photosynthetically active radiation at the surface (Pinker and Lazlo, 1992), which is the sum of direct and diffuse solar radiation (Alados and Alados-Arboledas, 1999). In our stratospheric aerosol experiments, a reduction in direct solar radiation reaching the surface is simulated due to the increased SW scattering by the aerosols (Fig. S9, Table 2). However, the diffuse solar radiation reaching the surface increases (Fig. S9b; Kalidindi et al., 2015). This causes diffuse fertilization effect where the increase in diffuse radiation leads to increased productivity by increasing the light availability to a larger fraction of the canopy which otherwise remain shaded (Mercado et al., 2009; Kanniah et al., 2012). Thus, the diffuse radiation can cause an increase in productivity and can enhance the terrestrial carbon uptake (Alton et al., 2007; Mercado et al., 2009). Increased diffuse radiation availability and suppressed plant and soil respiration due to cooling can enhance the terrestrial carbon sink in a sulfate geoengineering scenario (Xia et al., 2016).

The changes in the global mean values over land for the diffused and direct solar radiation components and corresponding changes in primary productivity for the experiments with respect to the 2XCO₂ case are shown in Table 2. In the 2XCO₂ experiment, there is an increase of 26.72 Gt-C yr⁻¹ (22.5%) in gross primary productivity (GPP) compared to the 1XCO₂ experiment although the amount of radiation available for productivity is approximately the same in both cases. A doubling of CO₂ concentration causes an increase in the plant productivity due to the CO₂ fertilization effect (Farquhar, 1997; Owensby et al., 1999). To exclude the CO₂ fertilization effect and assess the changes due to only the prescribed aerosols in the stratospheric aerosol experiments, changes in radiation and productivity are discussed relative to the 2XCO₂ experiment below.

For the Volc_100hPa case, a decrease of 9.5 W m^{-2} (-6.64%) in direct radiation relative to the 2XCO₂ case is simulated. The reduction in direct radiation increases with the altitude of aerosols to -11.4 W m^{-2} (-8%) and -12.5 W m^{-2} (-8.8%) for the Volc_70hPa, and Volc_37hPa cases, respectively. An increase in diffuse radiation of 8.1 W m^{-2} is simulated for the Volc_100hPa case, which is 18.7% larger than in the 2XCO₂ case. As the height of volcanic aerosol increases, the increase in diffuse radiation at the surface becomes larger and the increase reaches 26% (11.2 W m^{-2}) of the 2XCO₂ case for the Volc_37 hPa case. The changes simulated in the diffuse radiation and direct radiation are of similar magnitude in all sulfate aerosol experiments. Thus, the decrease in the direct radiation is partially offset by the increase in availability of diffuse radiation at the surface. From Table 2, it can be inferred that the net reduction in solar radiation at the surface is about 1.3 W m^{-2} (~0.7%).

Spatial patterns of direct and diffuse radiation change relative to 2XCO₂ experiment for the Volc_100hPa case over the land shows that overall there is a decrease in direct radiation and an increase in diffuse radiation all over the globe (Fig. S9a, b). We found that these patterns are similar for the other two stratospheric sulfate experiments. Large changes in direct and diffuse radiation are simulated in the dry regions and deserts. Spatial pattern of vertically integrated cloud cover in the 2XCO₂ case (Fig. S9c) show that these large changes in direct and diffuse solar radiation occur in areas where the total cloudiness is small.

The total GPP is the sum of sunlit GPP (which depends on direct solar radiation) and shaded GPP (which depends on diffuse solar radiation). The changes in total GPP in all cases are dominated by the change in sunlit GPP (Table 2). Although the changes in direct and diffuse radiations are comparatively of similar magnitudes, the decrease in sunlit GPP is significantly more (by an order of magnitude) than the increase in shaded GPP (Table 2). Thus, the additional productivity due to the increased diffused radiation availability is overwhelmed by the reduction in sunlit GPP. Other studies have also found that the effect from reduced direct radiation dominate the effect of increased diffuse radiation, and thus the net effect of sulfate geoengineering is to reduce plant productivity (e.g., Kalidindi et al., 2015).

The decrease in sunlit GPP is less when volcanic aerosols are prescribed at the lower levels of the stratosphere as the reduction in direct sunlight at the surface is less. The changes in GPP can also be modulated by the availability of nitrogen as simulated by the CN (carbon and nitrogen) module in CLM4. When aerosols are prescribed at lower levels, there is less cooling which causes relatively more mineralization reducing the nitrogen limitation effect (Rustard et al., 2001). The net primary productivity (NPP) shows similar changes (Table 2): the minimum decrease in NPP is simulated in the Volc_100hPa case ($-0.96 \text{ Gt-C yr}^{-1}$ relative to the 2XCO₂ case). The percentage decrease in NPP (2.0 to 3.5%) is smaller than GPP (5.0 to 7.6%) because of a decrease in autotrophic respiration in the stratospheric aerosol experiments (NPP equals GPP minus autotrophic respiration; Table 2). The decrease in autotrophic and heterotrophic respiration is related to a relatively cooler climate in the stratospheric aerosol experiments compared to the 2XCO₂ case.

4 Discussion and conclusion

Sensitivity of radiative forcing and surface temperature to the altitude of volcanic size sulfate aerosols in the stratosphere is analyzed in this study using a climate model with prescribed aerosol distributions. The model used is less comprehensive than models which simulate the aerosol microphysics, transport and removal processes. By excluding these processes, we isolate the dependence of radiative forcing on the height of the aerosol layer. The sensitivity experiments are performed by prescribing aerosols of a size characteristic of volcanoes at three different altitudes in the stratosphere (100 hPa, 70 hPa, and 37 hPa) but keeping the total mass of the volcanic aerosols constant at 20 Tg (15 Tg of H₂SO₄).

We show that for the same additional aerosol mass, volcanic aerosols produce more negative radiative forcing when they are prescribed at higher altitudes in the stratosphere (Fig. 2b). The aerosol microphysical changes can affect the optical and radiative properties of the aerosols through nucleation, condensation, coagulation, hygroscopic growth, etc. (e.g. ~~Heekendorn, Heckendorn~~ et al., 2009). The changes in the optical and radiative properties affects the radiative forcing and thereby influences the surface cooling efficiency in the aerosol geoengineering schemes. Since the microphysical or transport processes is not included in this study, the global mean surface temperature change is solely dependent on the effective radiative forcing which is sensitive to the prescribed altitude of aerosols. The radiative heating by volcanic aerosol in the lower stratosphere leads to increased stability of the upper troposphere and a reduction in the high cloud cover, and increased water vapor transport to the stratosphere (Kuebbeler et al., 2012; Fig. S6; Fig. S2). However, the resulting negative LW forcing from cloud cover change is overwhelmed by the large positive LW forcing due to the absorption of radiation by prescribed aerosols (Figs. 3d, 3f). The high cloud changes are sensitive to the proximity of the heated layer to tropopause and is thus sensitive to the altitude of the aerosols. The changes in tropospheric stability also contributes to changes in low cloud cover (Fig. S3). Further, the changes in tropopause cold point temperature due to the radiative warming of the lower stratosphere and increased stratospheric humidity affects the clear-sky radiative forcing. The positive LW forcing offsets a part of the negative SW forcing in the stratospheric aerosol experiments. ~~Thus,~~ Thus, as shown in several previous studies such as Kleinschmitt et al. (2018), our study also highlights the importance of LW forcing in the efficiency of the stratospheric aerosol experiments (~~Kleinschmitt et al., 2018~~). The LW forcing would depend on the model, and several other factors such as the type of aerosol used, location of injection, stratospheric humidity, etc.

The differences simulated in radiative forcing are reflected in the surface temperature response and we find that volcanic aerosols cause more surface cooling when they are prescribed at higher levels of the stratosphere. Assuming a lifetime of 1 year of the aerosols in the stratosphere, the 20 Tg of aerosol used in this study is equivalent to 9.79 Tg yr⁻¹ SO₂ injection (or 4.9 Tg-S yr⁻¹). As this amount at 37hPa almost completely attains the halving of CO₂ induced cooling, the efficiency in cooling the surface is estimated as 0.59 K Tg-S⁻¹. The corresponding efficiencies for the Volc_70hPa and Volc_100hPa simulations are 0.52 K Tg-S⁻¹ and 0.44 K Tg-S⁻¹, respectively. The surface temperature difference between our stratospheric

aerosol experiments shows that even when the processes such as aerosol microphysics, transport and sedimentation are excluded, the differences in effective radiative forcing between the stratospheric aerosol simulations experiments is substantial.

For 6 Tg-SO₂ yr⁻¹ injections, Tilmes et al. (2017) estimated a cooling of ~0.22 K Tg-S⁻¹ for equatorial high-altitude injections (30 hPa) and ~0.18 K Tg-S⁻¹ for equatorial low-altitude injections (60 hPa) when aerosols concentrations in the stratosphere had reached a steady state. While our results agree in sign, it should be noted that while Tilmes et al. (2017) estimated efficiency from experiments with sulfur emissions we have made estimates using prescribed aerosol burden. Further, the surface cooling discussed in Tilmes et al. (2017) are from 10-year coupled simulations where the climate system has not reached a steady state, while our results are from equilibrium simulations. Further differences can be attributed to differing model configurations (slab ocean versus fully coupled) and different versions of the model used in the two studies.

With the surface cooling in stratosphere aerosol experiments, a reduction in global mean precipitation is simulated in the stratospheric aerosol experiments as shown in several previous studies (Bala et al., 2010; Modak and Bala, 2014; Nalam et al., 2017). The reduction in global annual mean precipitation increases as the height of the aerosol layer increases. Because of the absorption of radiation by volcanic aerosols, a significant warming in the stratosphere is simulated as reported in many previous studies ([FerraroFerraro](#) et al., 2011; [NiemeierNiemeier](#) and Schmidt, 2017; Richter et al., 2017). The magnitude of radiative warming is also sensitive to the altitude of the aerosols and a maximum warming of 15 K is simulated relative to the 2XCO₂ experiment for the case where aerosols are prescribed at 70hPa. The maximum warming simulated here is comparable to the maximum warming of 10 to 15 K simulated in other studies such as Richter et al. (2017) and Tilmes et al. (2018b). The aerosol induced stratospheric warming and the resulting strong stratospheric [high-latitude](#) westerly [and tropical easterly](#) wind anomalies are sensitive to the altitude of the aerosols. Further, the radiative heating in the lower stratosphere causes the tropical upper tropopause layer to warm which leads to increased water vapor transport into the stratosphere. In the stratospheric aerosol experiments, due to shortwave scattering by aerosols, there is an increase in diffused solar radiation and a decrease in direct solar radiation reaching the surface. Correspondingly, an increase in shaded GPP and a decrease in sunlit GPP are simulated. The net result is a decrease in GPP in all cases as the decrease in sunlit GPP is significantly larger compared to the increase in shaded GPP.

There are several limitations to this study. First, the aerosols are distributed uniformly at specific heights with fixed particle size distributions in our simulations, which is likely not achievable in an actual stratospheric sulfate deployment scenario. Unlike the aerosol injection simulations, the sedimentation and vertical spread of the aerosols are not modeled in our study, and thus our idealized aerosol profile differs from the simulations which include sedimentation. Thus, the vertical spread of the aerosol-induced warming is not accounted for in our study which will have effects on the vertical structure of temperature and humidity changes, and magnitude of the fast adjustment processes mentioned in the study. A realistic prescribed distribution would be one that is calculated from an aerosols microphysical model. However, we believe that the qualitative

and fundamental results obtained in this study will not be altered with a more realistic distribution. We intend to use a more realistic distribution of aerosols and repeat this sensitivity analysis in a future study.

Our experiments do not include the effects of particle growth, aerosol chemistry, transport as well as its removal processes. The volcanic aerosol geometric mean radius used here (0.423 μm) is very close to the size where significant sedimentation can occur (Tilmes and Mills, 2014). A lack of ozone chemistry in the model and the absence of events such as internally generated ~~quasi-biennial oscillation (QBO)~~ limits detailed analysis on stratospheric responses to the radiative warming by aerosols (Aquila et al., 2014; Kleinschmitt et al., 2018). For computational efficiency, we have used slab ocean version of the coupled model instead of fully dynamic ocean component and hence the transient effects and deep ocean feedbacks are missing in our study. Despite these limitations, we believe that our conclusions on the dependence of the radiative forcing and hence the surface climate on the altitude of aerosol layer are more fundamental and the robustness of our results should be assessed using multiple models in a future study.

To summarize, for the same mass, the efficiency (defined as changes in surface temperature per Tg-S) of volcanic aerosol is less when they are prescribed at the lower altitudes in the stratosphere (Fig. 9). For example, in our simulations, there is a surface cooling of 0.44 K for each Tg-S placed in the stratosphere at about 16 km altitude (100 hPa). There is an additional surface cooling of 0.15 K per Tg-S when the prescribed altitude is increased from about 16 km to about 22 km (37 hPa).

Code and data availability. Model outputs and analysis scripts are available on request from the corresponding author.

Author contributions. KKS and GB designed the study, analyzed the data and wrote the manuscript. LC, LD, and KC contributed to the study design and writing of the manuscript.

Competing interests. Author GB is a member of the editorial board of the journal. Other authors declare that they have no conflict of interest.

Acknowledgements. This work was funded by the Department of Science and Technology (DST), India grant number DST/CCP/MRDP/96/2017(G). Numerical simulations were performed on the supercomputer Sahasrat at the Supercomputer Education and Research Centre (SERC), Indian Institute of Science, Bangalore. The authors thank Angshuman Modak (Indian Institute of Science) and Adithya Nalam (Institute for Advanced Sustainability Studies Potsdam) for their technical help.

References

- Alados, I. and Alados-Arboledas, L.: Direct and diffuse photosynthetically active radiation: Measurements and modeling, *Agric. For. Meteorol.*, 93(1), 27-38, [https://doi.org/10.1016/S0168-1923\(98\)00107-5](https://doi.org/10.1016/S0168-1923(98)00107-5), 1999.
- Alton, P. B., North, P. R., and Los, S. O.: The impact of diffuse sunlight on canopy light-use efficiency, gross photosynthetic product and net ecosystem exchange in three forest biomes, *Global. Change. Biol.*, 13(4), 776-787, <https://doi.org/10.1111/j.1365-2486.2007.01316.x>, 2007.
- Ammann, C. M., Meehl, G. A., Washington, W. M., and Zender, C. S.: A monthly and latitudinally varying volcanic forcing dataset in simulations of 20th century climate, *Geophys. Res. Lett.*, 30(12), 1657, <http://doi.org/10.1029/2003GL016875>, 2003.
- Aquila, V., Garfinkel, C. I., Newman, P. A., Oman, L. D., and Waugh, D. W.: Modifications of the quasi-biennial oscillation by a geoengineering perturbation of the stratospheric aerosol layer, *Geophys. Res. Lett.*, 41,1738-1744, doi:10.1002/2013GL058818, 2014.
- Bala, G., Caldeira, K., and Nemani, R.: Fast versus slow response in climate change: implications for the global hydrological cycle, *Clim. Dyn.*, 35, 423-434, doi:10.1007/s00382-00009-00583-y, 2010.
- Bauman, J. J., Russell, P. B., Geller, M. A., and Hamill, P.: A stratospheric aerosol climatology from SAGE II and CLAES measurements: 2. Results and comparisons, 1984-1999, *J. Geophys. Res.*, 108(D13), 4383, doi:10.1029/2002JD002993, 2003.
- Boucher, O., Kleinschmitt, C., and Myhre, G.: Quasi-additivity of the radiative effects of marine cloud brightening and stratospheric sulfate aerosol injection, *Geophys. Res. Lett.*, 44, 11158-11165, <https://doi.org/10.1002/2017GL074647>, 2017.
- Briegleb, B. P.: Delta-Eddington approximation for solar radiation in the NCAR Community Climate Model, *J. Geophys. Res.*, 97(D7), 7603-7612, doi:10.1029/92JD00291, 1992.
- Budyko, M. I. (Eds): *Climatic Changes*. American Geophysical Union, Washington DC, <https://doi.org/10.1029/SP010>, 1977.
- Cao, L., Bala, G., Caldeira, K., Nemani, R., and Ban-Weiss, G.: Importance of carbon dioxide physiological forcing to future climate change, *Proc. Nat. Acad. Sci.*, 107(21), 9513-9518, <http://doi.org/10.1073/pnas.0913000107>, 2010.
- Cao, L., Bala, G., and Caldeira, K.: Climate response to changes in atmospheric carbon dioxide and solar irradiance on the time scale of days to weeks, *Environ. Res. Lett.*, 7, 034015, doi:10.1088/1748-9326/7/3/034015, 2012.
- Collins, W. D.: A global signature of enhanced shortwave absorption by clouds, *J. Geophys. Res.*, 103(D24), 31669-31679. <https://doi.org/10.1029/1998JD200022>, 1998.

- Crutzen, P. J.: Albedo enhancement by stratospheric sulfur injections: a contribution to resolve a policy dilemma? *Climatic Change*, 77, 211-219, <https://doi.org/10.1007/s10584-006-9101-y>, 2006.
- Dai, Z., Weisenstein, D. K., and Keith, D. W.: Tailoring meridional and seasonal radiative forcing by sulfate aerosol solar geoengineering, *Geophys. Res. Lett.*, 45, 1030-1039, <http://doi.org/10.1002/2017GL076472>, 2018.
- 5 Dessler, A. E., Schoeberl, M. R., Wang, T., Davis, S. M., and Rosenlof, K. H.: Stratospheric water vapor feedback. *Proc. Nat. Acad. Sci.*, 110(45), 18087-18091, <https://doi.org/10.1073/pnas.1310344110>, 2013.
- Duan, L., Cao, L., Bala, G., and Caldeira, K.: Comparison of the fast and slow climate response to three radiation management geoengineering schemes, *J. Geophys. Res. Atmos.*, 123, 11980-12001, <https://doi.org/10.1029/2018JD029034>, 2018.
- Farquhar, G. D.: Carbon dioxide and vegetation, *Science*, 278(5342), 1411, DOI: 10.1126/science.278.5342.1411, 1997.
- 10 Ferraro, A. J., Highwood, E. J., and Charlton-Perez, A. J.: Stratospheric heating by potential geoengineering aerosols, *Geophys. Res. Lett.*, 38, L24706, doi: 10.1029/2011GL049761, 2011.
- Ferraro, A. J., Highwood, E. J., and Charlton-Perez, A. J.: Weakened tropical circulation and reduced precipitation in response to geoengineering, *Environ. Res. Lett.*, 9(1), 014001, <http://doi.org/10.1088/1748-9326/9/1/014001>, 2014.
- 15 [Ferraro, A. J., Charlton-Perez, A. J. and Highwood, E. J.: Stratospheric dynamics and midlatitude jets under geoengineering with space mirrors and sulfate and titania aerosols, *J. Geophys. Res. Atmos.*, 120\(2\), 414–429, doi:10.1002/2014JD022734, 2015.](#)
- Gent, P. R., Danabasoglu, G., Donner, L. J., Holland, M. M., Hunke, E. C., Jayne, S. R., Lawrence, D. M., Neale, R. B., Rasch, P. J., Vertenstein, M. and others: The community climate system model version 4, *J. Clim.*, 24(19), 4973–4991, 2011.
- Goessling, H. F., Bathiany, S.: Why CO₂ cools the middle atmosphere - a consolidating model perspective, *Earth Syst. Dyn.*, 20 7, 697-715, <https://doi.org/10.5194/esd-7-697-2016>, 2016.
- Govindasamy, B., Caldeira, K., and Duffy, P. B. Geoengineering earth's radiation balance to mitigate climate change from a quadrupling of CO₂, *Glob. Planet. Change.*, 37(1-2), 157-168, [https://doi.org/10.1016/S0921-8181\(02\)00195-9](https://doi.org/10.1016/S0921-8181(02)00195-9), 2003.
- Gregory, J. M., Ingram, W. J., Palmer, M. A., Jones, G. S., Stott, P. A., Thorpe, R. B., Lowe, J. A., Johns, T. C., and Williams, K. D.: A new method for diagnosing radiative forcing and climate sensitivity, *Geophys. Res. Lett.*, 31, L03205, 25 doi:10.1029/2003GL018747, 2004.
- Gregory, J. M., Webb, M. J.: Tropospheric adjustment induces a cloud component in CO₂ forcing, *J. Climate*, 21, 58-71, doi:10.1175/2007JCLI1834.1, 2008.

Hansen, J., Lacis, A., Ruedy, R., Sato, M.: Potential climate impact of the Mount Pinatubo eruption, *Geophys. Res. Lett.*, 19, 215-218, <https://doi.org/10.1029/91GL02788>, 1992.

Hansen, J., Sato, M., Ruedy, R., Nazarenko, L., Lacis, A., Schmidt, G. A., Russell, G., Aleinov, I., Bauer, M., Bauer, S., Bell, N., Cairns, B., Canuto, V., Chandler, M., Cheng, Y., Del Genio, A., Faluvegi, G., Fleming, E., Friend, A., Hall, T., Jackman, C., Kelley, M., Kiang, N., Koch, D., Lean, J., Lerner, J., Lo, K., Menon, S., Miller, R., Minnis, P., Novakov, T., Oinas, V., Perlwitz, J., Perlwitz, J., Rind, D., Romanou, A., Shindell, D., Stone, P., Sun, S., Tausnev, N., Thresher, D., Wielicki, B., Wong, T., Yao, M. and Zhang, S.: Efficacy of climate forcings, *J. Geophys. Res. Atmos.*, 110, D18104, doi:10.1029/2005JD005776, 2005.

Heckendorn, P., Weisenstein, D., Fueglistaler, S., Luo, B. P., Rozanov, E., Schraner, M., Thomason, L. W., and Peter, T.: The impact of geoengineering aerosols on stratospheric temperature and ozone, *Environ. Res. Lett.*, 4(4), 045108, <https://doi.org/10.1088/1748-9326/4/4/045108>, 2009.

IPCC : Contribution of Working Group I to the fifth assessment report of the intergovernmental panel on climate change, in: *Climate change 2013: the physical science basis*, edited by: Stocker, T. F., Qin, D., Plattner, G-K., Tignor, M., Allen, S. K., Boschung, J., Nauels, A., Xia, Y., Bex, V., and Midgley, P. M., Cambridge University Press, Cambridge, UK and New York, NY, USA, 2013.

Kalidindi, S., Bala, G., Modak, A., and Caldeira, K.: Modeling of solar radiation management: a comparison of simulations using reduced solar constant and stratospheric sulfate aerosols, *Clim. Dyn.*, 44(9-10), 2909-2925, <https://doi.org/10.1007/s00382-014-2240-3>, 2015.

Kanniah, K. D., Beringer, J., North, P., and Hutley, L.: Control of atmospheric particles on diffuse radiation and terrestrial plant productivity: A review, *Prog. Phys. Geogr.*, 36(2), 209-237, <http://doi.org/10.1177/0309133311434244>, 2012.

Kleinschmitt, C., Boucher, O., Platt, U.: Sensitivity of the radiative forcing by stratospheric sulfur geoengineering to the amount and strategy of the SO₂ injection studied with the LMDZ-S3A model, *Atmos. Chem. Phys.*, 18, 2769-2786. <https://doi.org/10.5194/acp-18-2769-2018>, 2018.

Kravitz, B., Rasch, P. J., Forster, P. M., Andrews, T., Cole, J. N. S., Irvine, P. J., Ji, D., Kristjánsson, J. E., Moore, J. C., Muri, H., Niemeier, U., Robock, A., Singh, B., Tilmes, S., Watanabe, S. and Yoon, J. H.: An energetic perspective on hydrological cycle changes in the Geoengineering Model Intercomparison Project, *J. Geophys. Res. Atmos.*, 118(23), 13087–13102, doi:10.1002/2013JD020502, 2013a.

Kravitz, B., Caldeira, K., Boucher, O., Robock, A., Rasch, P. J., Alterskjær, K., Karam, D. B., Cole, J. N. S., Curry, C. L., Haywood, J. M. and others: Climate model response from the geoengineering model intercomparison project (GeoMIP), *J. Geophys. Res. Atmos.*, 118(15), 8320–8332, doi:10.1002/jgrd.50646, 2013b.

- Kravitz, B., MacMartin, D. G., Wang, H., and Rasch, P. J.: Geoengineering as a design problem, *Earth Syst. Dyn.*, 7, 469-497, doi:10.5194/esd-7-469-2016, 2016.
- Kravitz, B., MacMartin, D. G., Mills, M. J., Richter, J. H., Tilmes, S., Lamarque, J-F., Tribbia, J. J., and Vitt, F.: First simulations of designing stratospheric sulfate aerosol geoengineering to meet multiple simultaneous climate objectives, *J. Geophys. Res. Atmos.*, 122, 12616-12634, <https://doi.org/10.1002/2017JD026874>, 2017.
- Liepert, B. G. and Previdi, M.: Do models and observations disagree on the rainfall response to global warming?, *J. Clim.*, 22(11), 3156–3166, doi:10.1175/2008JCLI2472.1, 2009.
- MacMartin, D. G., Kravitz, B., Tilmes, S., Richter, J. H., Mills, M. J., Lamarque, J-F., Tribbia, J. J., and Vitt, F.: The climate response to stratospheric aerosol geoengineering can be tailored using multiple injection locations, *J. Geophys. Res. Atmos.*, 122, 12574-12590, <http://doi.org/10.1002/2017JD026868>, 2017.
- Mercado, L. M., Bellouin, N., Sitch, S., Boucher, O., Huntingford, C., Wild, M., and Cox, P. M.: Impact of changes in diffuse radiation on the global land carbon sink, *Nature*, 458, 1014-1017, doi:10.1038/nature07949, 2009.
- Modak, A. and Bala, G.: Sensitivity of simulated climate to latitudinal distribution of solar insolation reduction in solar radiation management. *Atmos. Chem. Phys.*, 14(15), 7769-7779, <http://doi.org/10.5194/acp-14-7769-2014>, 2014.
- Modak, A., Bala, G., Cao, L., and Caldeira, K.: Why must a solar forcing be larger than a CO₂ forcing to cause the same global mean surface temperature change? *Environ. Res. Lett.*, 11(4), 044013, <http://doi.org/10.1088/1748-9326/11/4/044013>, 2016.
- Modak, A., Bala, G., Caldeira, K., and Cao, L.: Does shortwave absorption by methane influence its effectiveness? *Clim. Dyn.*, 51(9-10), 3653-3672, <http://doi.org/10.1007/s00382-018-4102-x>, 2018.
- Nalam, A., Bala, G., Modak, A.: Effects of Arctic geoengineering on precipitation in the tropical monsoon regions, *Clim. Dyn.*, 50 (9-10), 3375-3395, <https://doi.org/10.1007/s00382-017-3810-y>, 2017.
- Neale, R. B., Richter, J. H., Conley, A. J., Park, S., Lauritzen, P. H., Gettelman, A., Williamson, D. L., Rasch, P. J., Vavrus, S. J., Taylor, M. A., Collins, W. D., Zhang, M. and Lin, S.: Description of the NCAR Community Atmosphere Model (CAM 4.0), NCAR Tech. Note NCAR/TN-485+STR, National Center for Atmospheric Research, Boulder, Colorado, USA. 2010.
- Niemeier, U., Schmidt, H., and Timmreck, C.: The dependency of geoengineered sulfate aerosol on the emission strategy. *Atmos. Sci. Lett.*, 12(2), 189-194, <https://doi.org/10.1002/asl.304>, 2011.
- Niemeier, U., Schmidt, H., Alterskjær, K. and Kristjánsson, J. E.: Solar irradiance reduction via climate engineering: Impact of different techniques on the energy balance and the hydrological cycle, *J. Geophys. Res. Atmos.*, 118(21), 11905–11917, doi:10.1002/2013JD020445, 2013.

- Niemeier, U. and Timmreck, C.: What is the limit of climate engineering by stratospheric injection of SO₂? *Atmos. Chem. Phys.* 15(16), 9129-9141, <https://doi.org/10.5194/acp-15-9129-2015>, 2015.
- Niemeier, U. and Schmidt, H.: Changing transport processes in the stratosphere by radiative heating of sulfate aerosols, *Atmos. Chem. Phys.*, 17(24), 14871-14886, <https://doi.org/10.5194/acp-17-14871-2017>, 2017.
- 5 Oleson, K. W., Lawrence, D. M., Bonan, G. B., Flanner, M. G., Kluzek, E., Lawrence, P. J., Levis, S., Swenson, S. C., Thornton, P. E., Dai, A., Decker, M., Dickinson, R., Feddema, J., Heald, C. L., Hoffman, F., Lamarque, J.-F., Mahowald, N., Niu, G.-Y., Qian, T., Randerson, J., Running, S., Sakaguchi, K., Slater, A., Stöckli, R., Wang, A., Yang, Z.-L., Zeng, X., and Zeng, X.: Technical Description of version 4.0 of the Community Land Model (CLM), Tech. rep., National Center for Atmospheric Research, Boulder, Colorado, 2010.
- 10 Owensby, C. E., Ham, J. M., Knapp, A. K., and Auen, L. M.: Biomass production and species composition change in a tall grass prairie ecosystem after long-term exposure to elevated atmospheric CO₂, *Global Change Biol.*, 5, 497-506, doi:10.1046/j.1365-2486.1999.00245.x, 1999.
- Pinker, R. T. and Laszlo, I.: Global distribution of photosynthetically active radiation as observed from satellites, *J. Clim.*, 5, 56-65, [https://doi.org/10.1175/1520-0442\(1992\)005<0056:GDOPAR>2.0.CO;2](https://doi.org/10.1175/1520-0442(1992)005<0056:GDOPAR>2.0.CO;2), 1992.
- 15 Pope, F. D., Braesicke, P., Grainger, R. G., Kalberer, M., Watson, I. M., Davidson, P. J., and Cox, R. A.: Stratospheric aerosol particles and solar-radiation management, *Nat. Clim. Change*, 2(10), 713-719, <https://doi.org/10.1038/nclimate1528>, 2012.
- Rasch, P. J., Crutzen, P. J., and Coleman, D. B.: Exploring the geoengineering of climate using stratospheric sulfate aerosols: The role of particle size, *Geophys. Res. Lett.*, 35, L02809, <https://doi.org/10.1029/2007GL032179>, 2008.
- Richter, J. H., Tilmes, S., Mills, M. J., Tribbia, J. J., Kravitz, B., MacMartin, D. G., Vitt, F., Lamarque, J.-F.: Stratospheric Dynamical Response and Ozone Feedbacks in the Presence of SO₂ Injections, *J. Geophys. Res. Atmos.*, 122, 12557-12573, <https://doi.org/10.1002/2017JD026912>, 2017.
- 20 Robock, A.: Volcanic eruptions and climate, *Rev. Geophys.*, 38(2), 191-219, doi:10.1029/1998RG000054, 2000.
- Rustad, L. E., Campbell, J. L., Marion, G. M., Norby, R. J., Mitchell, M. J., Hartley, A. E., Cornelissen, J. H. C., Gurevitch, J., and GCTE NEWS : A meta-analysis of the response of soil respiration, net nitrogen mineralization, and aboveground plant growth to experimental ecosystem warming, *Oecologia*, 126(4), 543-562, <https://doi.org/10.1007/s004420000544>, 2001.
- 25 Schmidt, H., Alterskjær, K., Bou Karam, D., Boucher, O., Jones, A., Kristjánsson, J. E., Niemeier, U., Schulz, M., Aaheim, A., Benduhn, F., Lawrence, M. and Timmreck, C.: Solar irradiance reduction to counteract radiative forcing from a quadrupling of CO₂: climate responses simulated by four earth system models, *Earth Syst. Dyn.*, 3(1), 63–78, doi:10.5194/esd-3-63-2012, 2012.

- Smith, K. L., Neely, R. R., Marsh, D. R. and Polvani, L. M.: The Specified Chemistry Whole Atmosphere Community Climate Model (SC-WACCM), *J. Adv. Model. Earth Syst.*, 6(3), 883–901, doi:10.1002/2014MS000346, 2015.
- Soden, B. J., Wetherald, R. T., Stenchikov, G. L., and Robock, A.: Global cooling after the eruption of Mount Pinatubo: a test of climate feedback by water vapor, *Science*, 296(5568), 727-730, doi:10.1126/science.296.5568.727, 2002.
- 5 Stenchikov, G. L., Kirchner, I., Robock, A., Graf, H-F., Antuña, J. C., Grainger, R. G., Lambert, A., and Thomason, L.: Radiative forcing from the 1991 Mount Pinatubo volcanic eruption, *J. Geophys. Res.*, 103(D12), 13837-13857, <http://doi.org/10.1029/98JD00693>, 1998.
- Storelvmo, T., Kristjansson, J. E., Muri, H., Pfeiffer, M., Barahona, D., and Nenes, A.: Cirrus cloud seeding has potential to cool climate, *Geophys. Res. Lett.*, 40, 178-182, <https://doi.org/10.1029/2012GL054201>, 2013.
- 10 Tilmes, S., Fasullo, J., Lamarque, J.-F., Marsh, D. R., Mills, M., Alterskjær, K., Muri, H., Kristjánsson, J. E., Boucher, O., Schulz, M., Cole, J. N. S., Curry, C. L., Jones, A., Haywood, J., Irvine, P. J., Ji, D., Moore, J. C., Karam, D. B., Kravitz, B., Rasch, P. J., Singh, B., Yoon, J.-H., Niemeier, U., Schmidt, H., Robock, A., Yang, S. and Watanabe, S.: The hydrological impact of geoengineering in the Geoengineering Model Intercomparison Project (GeoMIP), *J. Geophys. Res. Atmos.*, 118(19), 11036-11058, doi:10.1002/jgrd.50868, 2013.
- 15 Tilmes, S., Mills, M.: Stratospheric Sulfate Aerosols and Planetary Albedo, in: *Global Environmental Change. Handbook of Global Environmental Pollution*, Vol., 1, edited by: Freedman B., Springer, Dordrecht, 2014.
- Tilmes, S., Lamarque, J.-F., Emmons, L. K., Kinnison, D. E., Ma, P.-L., Liu, X., Ghan, S., Bardeen, C., Arnold, S., Deeter, M., Vitt, F., Ryerson, T., Elkins, J. W., Moore, F., Spackman, J. R. and Val Martin, M.: Description and evaluation of tropospheric chemistry and aerosols in the Community Earth System Model (CESM1.2), *Geosci. Model Dev.*, 8(5), 1395–
- 20 1426, doi:10.5194/gmd-8-1395-2015, 2015.
- Tilmes, S., Richter, J. H., Mills, M. J., Kravitz, B., MacMartin, D. G., Vitt, F., Tribbia, J. J. and Lamarque, J.-F.: Sensitivity of Aerosol Distribution and Climate Response to Stratospheric SO₂ Injection Locations, *J. Geophys. Res. Atmos.*, 122(23), 12591-12615, doi:10.1002/2017JD026888, 2017.
- Tilmes, S., Richter, J. H., Kravitz, B., MacMartin, D. G., Mills, M. J., Simpson, I. R., Glanville, A. S., Fasullo, J. T., Phillips,
- 25 A. S., Lamarque, J.-F., Tribbia, J., Edwards, J., Mickelson, S. and Gosh, S.: CESM1(WACCM) Stratospheric Aerosol Geoengineering Large Ensemble (GLENS) Project, *Bull. Am. Meteorol. Soc.*, 99, 2361-2371, <http://doi.org/10.1175/BAMS-D-17-0267.1>, 2018a.

Tilmes, S., Richter, J. H., Mills, M. J., Kravitz, B., MacMartin, D. G., Garcia, R. R., Kinnison, D. E., Lamarque, J.-F., Tribbia, J. and Vitt, F.: Effects of different Stratospheric SO₂ Injection Altitudes on Stratospheric Chemistry and Dynamics, *J. Geophys. Res. Atmos.*, 123, 4654-4673, <https://doi.org/10.1002/2017JD028146>, 2018b.

5 Visionsi, D., Pitari, G., di Genova, G., Tilmes, S., and Cionni, I.: Upper tropospheric ice sensitivity to sulfate geoengineering, *Atmos. Chem. Phys.*, 18, 14867-14887, <https://doi.org/10.5194/acp-18-14867-2018>, 2018.

Weisenstein, D. K., Keith, D. W., and Dykema, J. A.: Solar geoengineering using solid aerosol in the stratosphere, *Atmos. Chem. Phys.*, 15(20), 11835-11859, <https://doi.org/10.5194/acp-15-11835-2015>, 2015.

Xia, L., Robock, A., Tilmes, S., and Neely III, RR.: Stratospheric sulfate geoengineering could enhance the terrestrial photosynthesis rate, *Atmos. Chem. Phys.*, 16(3), 1479-1489, <http://doi.org/10.5194/acp-16-1479-2016>, 2016.

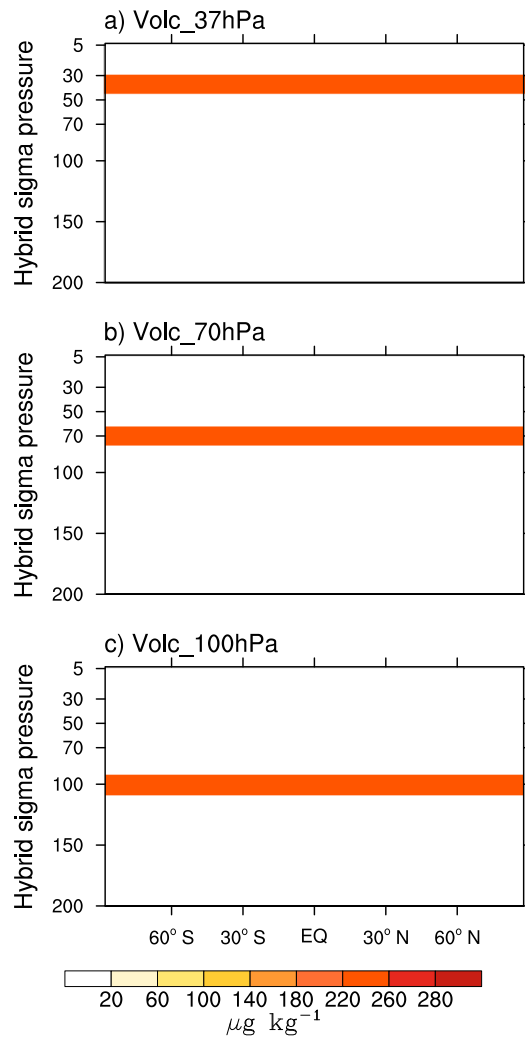


Figure 1: Vertical distribution of the volcanic aerosols used in our stratospheric sulfate aerosol simulations. The aerosol
 5 layers are centered at a) 37 hPa b) 70 hPa, and c) 100hPa with a thickness of approximately 16 hPa.

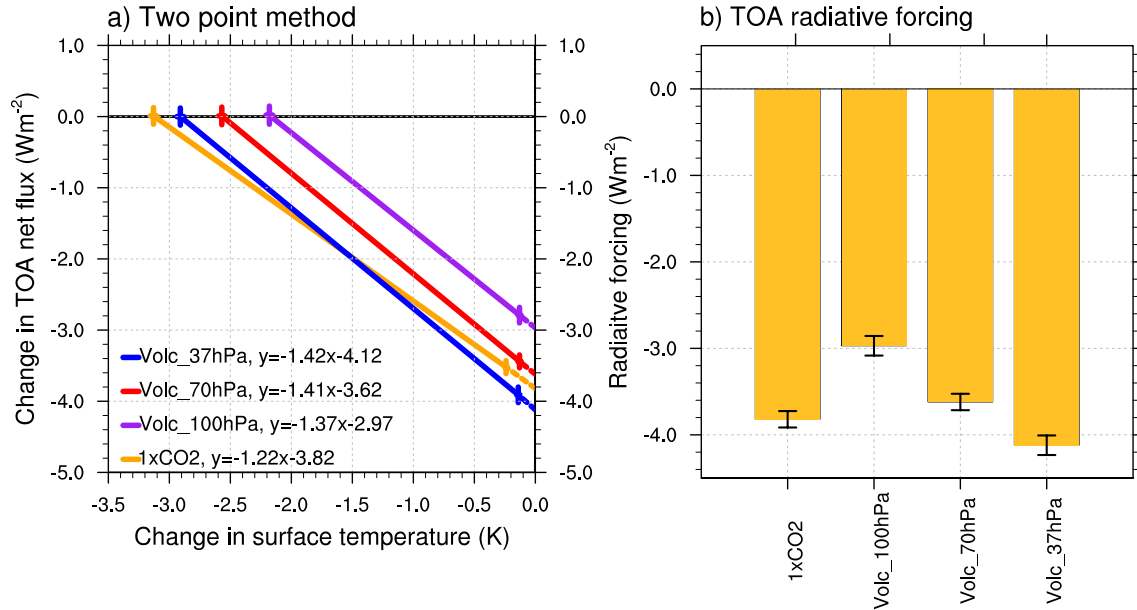


Figure 2: (a) The two-point method for estimating radiative forcing and feedback parameter (Supplementary Sect. S1). Change in global and annual mean surface temperature and TOA radiative imbalance from the slab ocean (points on the left) and prescribed SST (points on the right) simulations relative to the 2XCO₂ simulation. The climate feedback parameter (slope of the lines) and the effective radiative forcing (intercept on the y-axis on the right) for CO₂ change (1XCO₂-2XCO₂) and all stratospheric sulfate experiments can be inferred from the linear regression relationships shown in the figure legends. Horizontal and vertical bars show 2 standard errors of the annual mean differences in surface temperature and radiative forcing relative to 2XCO₂ experiment, respectively. The standard errors are estimated using 30 annual means for prescribed-SST simulations and 60 annual means for slab ocean simulations. (b) The global annual mean TOA radiative forcing at top of the atmosphere relative to the 2XCO₂ experiment, estimated using the two-point method as illustrated in panel (a). The error bars represent 2 standard errors calculated from 30 annual means of the difference from the 2XCO₂ experiment.

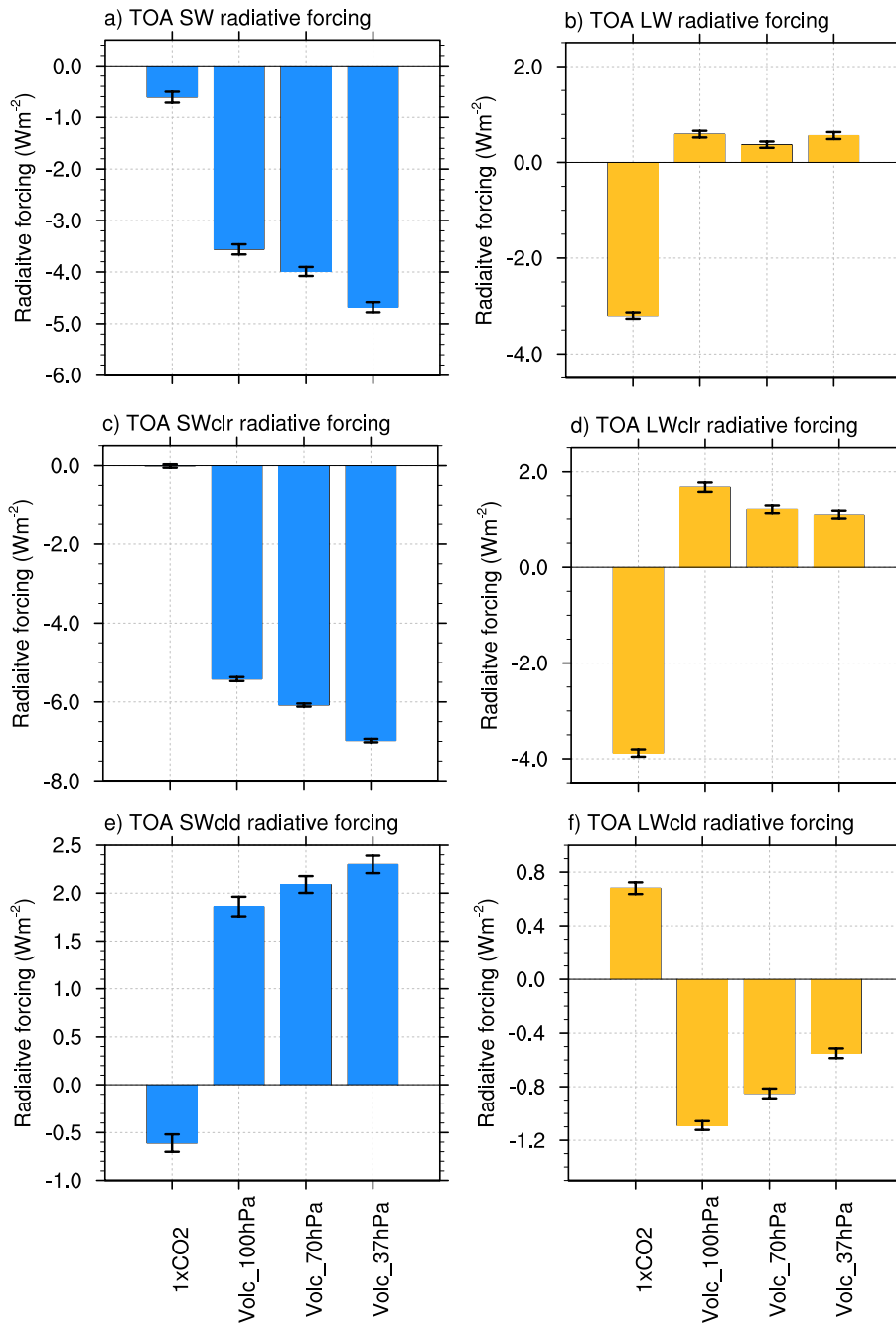


Figure 3: TOA SW and LW radiative forcing for all-sky (top panels) clear-sky (middle panels) and cloudy-sky (bottom panels) conditions relative to the 2XCO2 experiment, estimated using the two-point method (Supplementary Sect. S1). The error bars represent 2 standard errors calculated from 30 annual means of the difference from the 2XCO2 experiment.

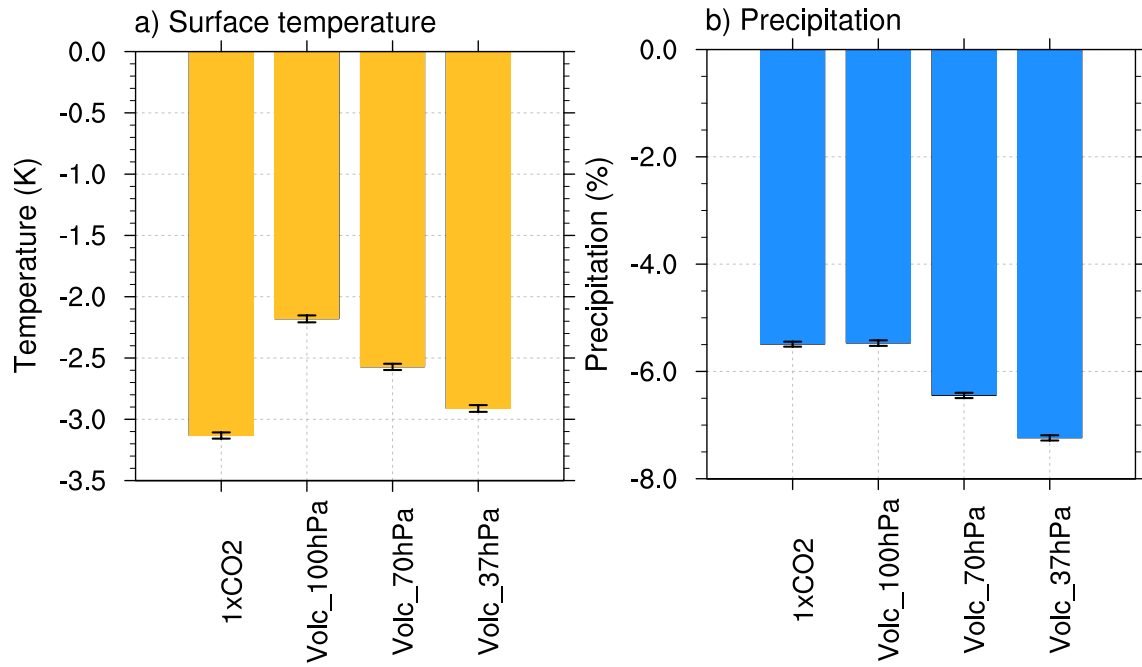


Figure 4: Changes in global and annual mean (a) surface temperature and (b) precipitation relative to the 2XCO2 experiment (slab ocean simulations). The error bars represent 2 standard errors calculated from 60 annual means of the difference from the 2XCO2 experiment.

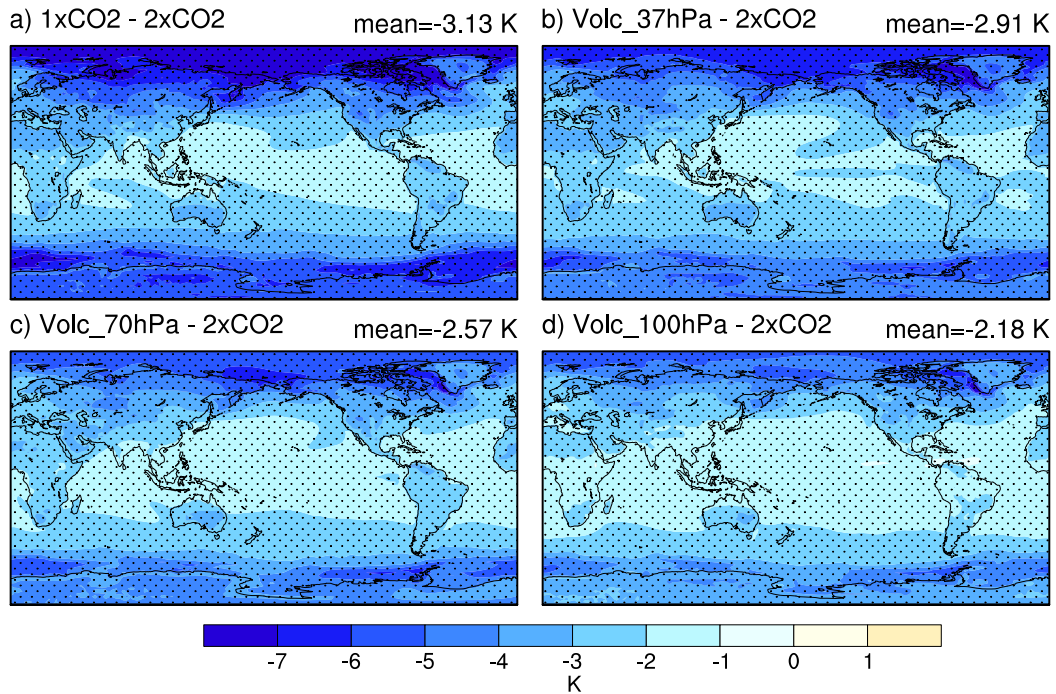


Figure 5: The spatial pattern of changes in surface temperature relative to the 2XCO₂ experiment (slab ocean simulations). The hatched areas show the regions where the changes are significant at the 5% significance level. Significance level is estimated using Students t-test from 60 annual means of the experiments. Global mean value of the changes in each experiment is shown at the top right of each panel.

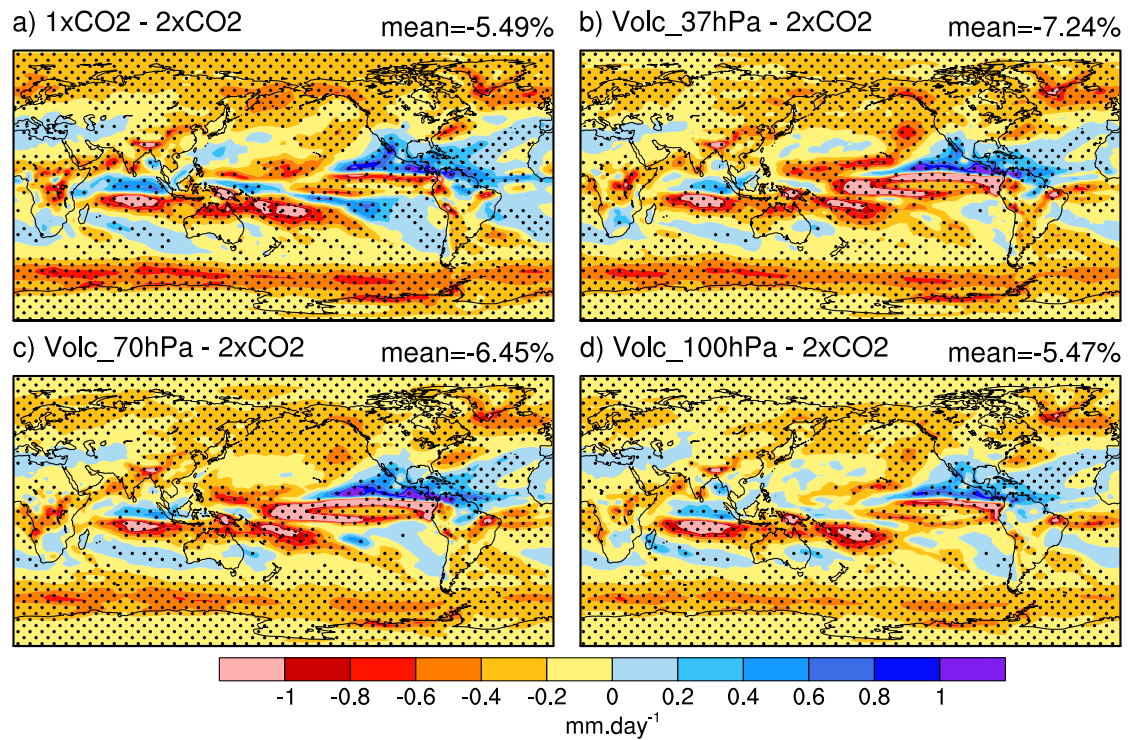


Figure 6: The spatial pattern of changes in precipitation relative to the 2XCO₂ experiment (slab ocean simulations). The hatched areas show the regions where the changes are significant at the 5% significance level. Significance level is estimated using Students t-test from 60 annual means of the experiments. Global mean value of the changes in each experiment is shown at the top right of each panel.

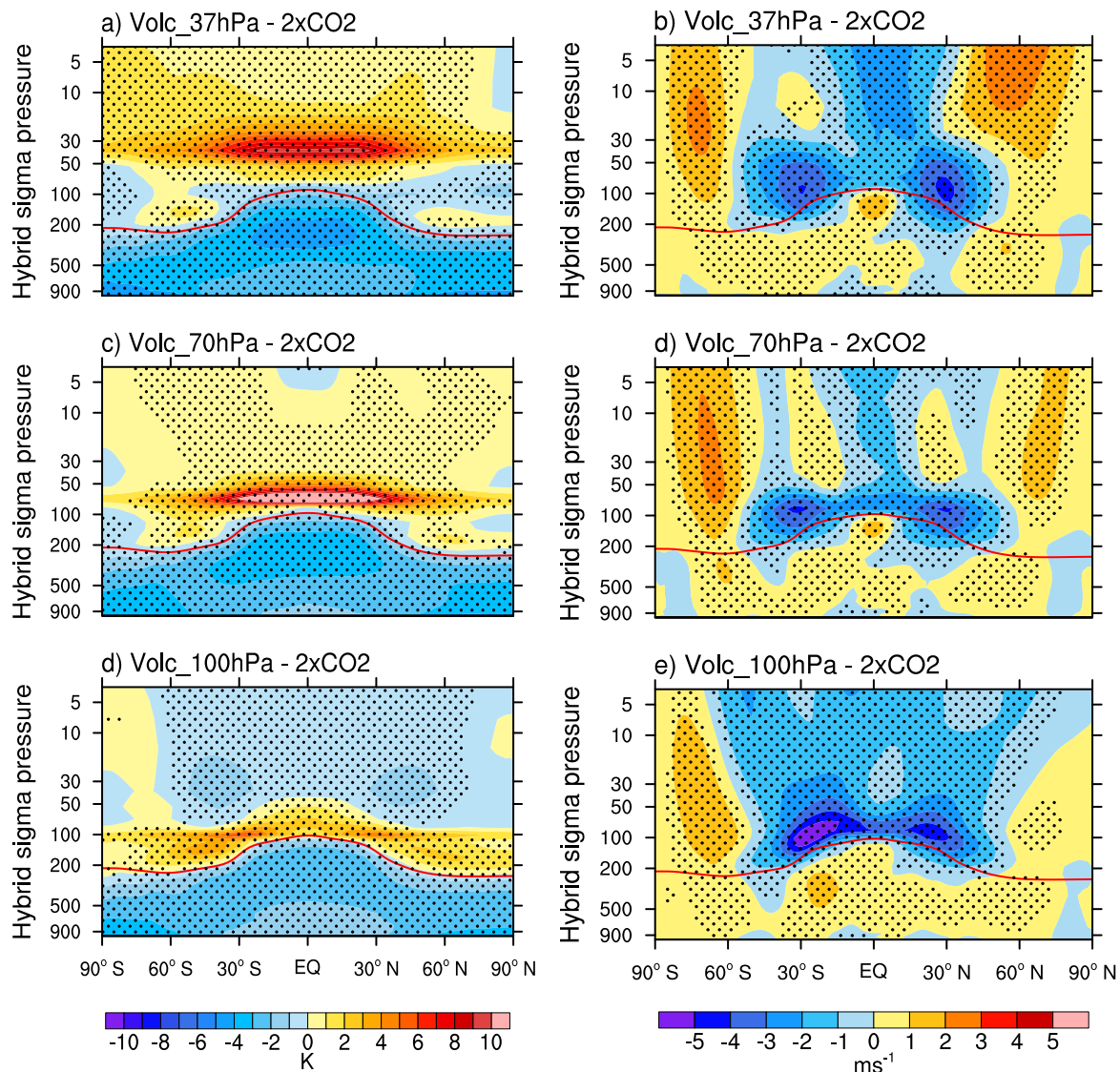
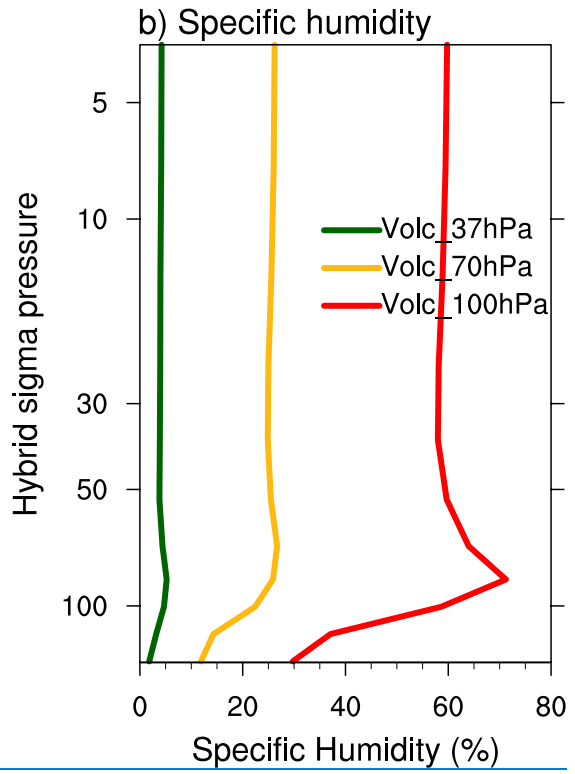
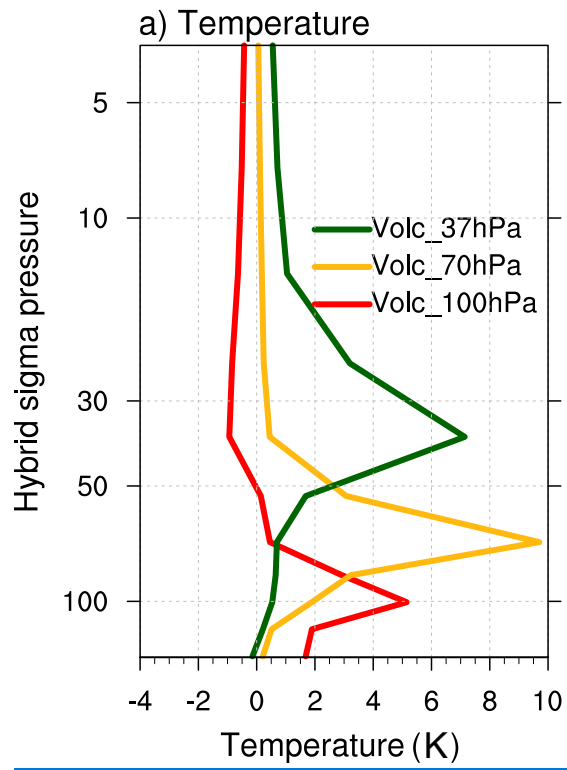


Figure 7: The changes in zonal average temperature (left panels) and winds (right panels) in the three stratospheric sulfate simulations relative to the 2XCO₂ simulation (slab ocean simulations). Position of the tropopause in each case is marked as a red line. The hatched areas in the plot show the regions where the changes are significant at the 5% significance level.

5 Significance level is estimated using Students t-test from 60 annual means of the experiments.



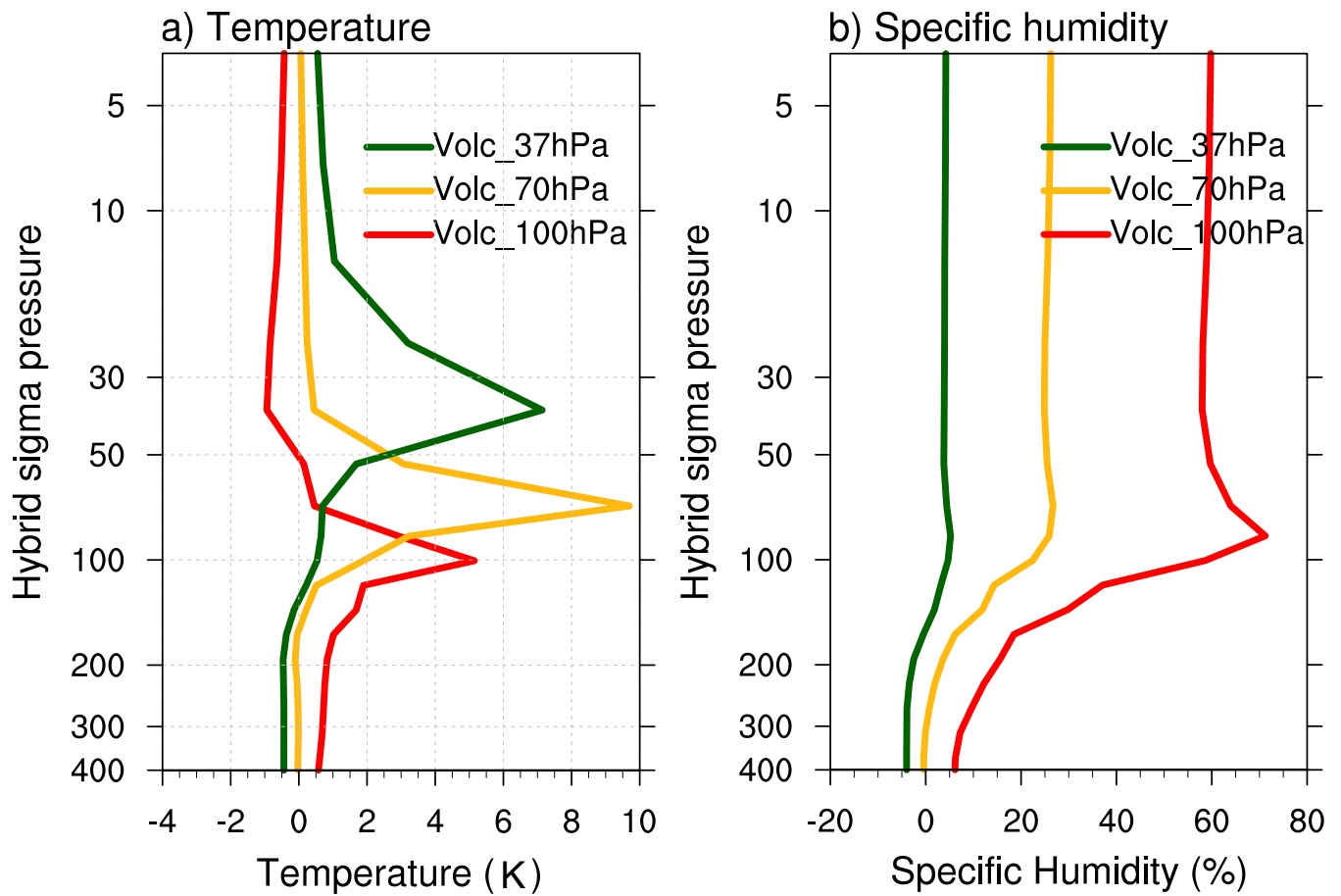


Figure 8: Vertical profiles of changes in global and annual mean of stratospheric (a) temperature and (b) specific humidity in percentage for the stratospheric sulfate simulations relative to the 2XCO₂ experiment (slab ocean simulations). Lines are linear interpolations between layer midpoint values.

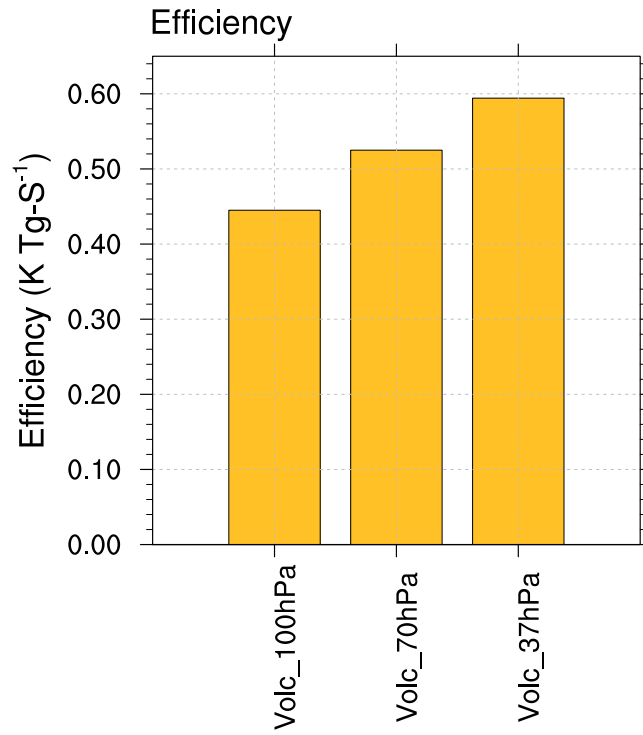


Figure 9: Change in global mean surface temperature per Tg-S in the stratosphere (efficiency) in the volcanic aerosol simulations.

Table 1. Radiative forcing estimates and global annual mean temperature changes relative to the 2XCO₂ case, and climate sensitivity and efficacy. Uncertainties for changes are estimated as the 2 standard errors. Uncertainties are calculated from 60 annual mean differences for slab ocean and 30 annual means for prescribed SST experiments. The two-point method of estimating the radiative forcing, climate sensitivity and efficacy are discussed in Supplementary Sect. S1.

	1XCO ₂	Volc_100hPa	Volc_70hPa	Volc_37hPa
Radiative forcing (Prescribed-SST method; W m ⁻²)	-3.52±0.09	-2.79±0.11	-3.44±0.09	-3.91±0.11
Global mean temperature change (K)	-3.13±0.03	-2.18±0.03	-2.57±0.03	-2.91±0.03
Radiative forcing (two-point method; W m ⁻²)	-3.82±0.09	-2.97±0.11	-3.62±0.26	-4.2±0.11
Climate feedback parameter (two-point method; W m ⁻² K ⁻¹)	1.22±0.05	1.37±0.09	1.41±0.07	1.42±0.06
Efficacy relative to CO ₂ forcing (two-point method)	One	0.89±0.07	0.87±0.05	0.86±0.05

5

Table 2. Global and annual mean values of key land model variables from the 1XCO₂ and 2XCO₂ simulations and the change in these variables in the stratospheric sulfate experiments relative to the 2XCO₂ experiment. Uncertainties for changes are estimated as 2 standard errors calculated from 60 annual mean differences. Uncertainties for 1XCO₂ and 2XCO₂ cases are estimated as the standard deviation from the 60 annual means. Percentage changes from the 2XCO₂ simulation is given in parenthesis.

	1XCO ₂	2XCO ₂	Volc_100hPa minus 2XCO ₂	Volc_70hPa minus 2XCO ₂	Volc_37hPa minus 2XCO ₂
Diffuse radiation (W m ⁻²)	44.63±0.13	43.23±0.17	8.09±0.09 (18.7%)	9.91±0.06 (22.9%)	11.22±0.05 (26%)
Direct radiation (W m ⁻²)	142.73±0.51	142.23±0.18	-9.45±0.22 (-6.6%)	-11.37±0.21 (-8%)	-12.50±0.23 (-8.8%)
Shaded GPP (Gt-C yr ⁻¹)	56.66±0.58	63.62±0.53	0.28±0.20 (0.4%)	0.61±0.22 (1%)	0.50±0.28 (0.8%)
Sunlit GPP (Gt-C yr ⁻¹)	62.17±0.48	81.93±0.67	-7.52±0.29 (-9.2%)	-10.09±0.25 (-12.3%)	-11.63±0.28 (-14.2%)
GPP (Gt-C yr ⁻¹)	118.83±0.96	145.55±1.15	-7.23±0.45 (-5%)	-9.48±0.45 (-6.5%)	-11.13±0.53 (-7.6%)
NPP (Gt-C yr ⁻¹)	41.36±0.44	47.90±0.55	-0.96±0.19 (-2%)	-1.33±0.19 (-2.8%)	-1.69±0.22 (-3.5%)
Autotrophic Resp. (Gt-C yr ⁻¹)	77.47±0.74	97.65±0.92	-6.27±0.35 (-6.43%)	-8.16±0.33 (-8.36%)	-9.44±0.41 (-9.67%)
Heterotrophic Resp. (Gt-C yr ⁻¹)	39.01±0.25	44.54±0.38	-1.14±0.13 (-2.56%)	-1.48±0.12 (-3.31%)	-1.76±0.14 (-3.96%)
Vegetation carbon (Gt-C yr ⁻¹)	596.64±2.87	706.88±7.05	-3.54±1.40 (-0.50%)	-5.57±1.47 (-0.79%)	-7.68±1.34 (-1.09%)
Soil carbon (Gt-C)	471.81±0.19	470.91±1.34	12.65±0.65 (2.69%)	15.01±0.79 (3.19%)	16.44±0.85 (3.49%)
Total ecosystem carbon (Gt-C)	1068.45±2.93	1177.79±8.31	9.11±2.02 (0.77%)	9.43±2.25 (0.80%)	8.76±2.12 (0.74%)