

Dear Dr. Sagnik Dey,

Please find below our point-by-point response to the reviews including all relevant changes made in view of the reviewers' comments. The main changes are also highlighted in the marked-up version of the manuscript that is attached below the point-by-point reply.

Sincerely,

Dr. Sabrina Hempel

on behalf of the authors

ESDD – Review 1

Interesting manuscript evaluating climate change on heat stress impacts in European dairy cattle. Model development is appropriate and authors have acknowledged potential shortcomings. Paper is generally well written. I am not familiar with this journal but text was more conversational than most scientific journals I read. Generally try not to use we did this or our analysis.

We thank the reviewer for his valuable comments. As the topic is very interdisciplinary, we tried to avoid the use of too many discipline-specific terms. This may let the text appear rather conversational in some parts. When processing the specific comments, we pay particular attention to minimize the use of phrasings like “we did” and “our analysis”.

Specific comments

Page 1, line 17, not sure what sentence means, especially “region respectively the barn”

This sentence was intended to emphasise that the investigated barns are located in different (climatic) regions. Barn design / management affect the reaction to local climatic conditions. In addition, different climate models and RCP scenarios project different local climatic conditions. All together affects the heat stress risk projection. We rephrased the sentence to make our point more clear: „The impacts of the projected increase of heat stress risk varied among the barns due to different location and design as well as the anticipated climate change (considering different climate models and future greenhouse gas concentrations). There was an overall increasing trend in number and duration of heat stress events.”

Page 2, line 24, is there a reference for this or is this opinion? If opinion change considered to believed. I would argue that livestock are not more efficient and genetic adaptation is slower.

The remark is based on some review papers, but it is related to (1) intensive livestock farming and (2) direct physiological adaption, not genetic adaptation. We regret that we haven't made our point clear here. As this is rather an afterthought, we will refrain from a more detailed explanation in the text and remove the remark.

Page 3, line 10-12, this sentence is self-defeating. The fact that economic drivers are not triggering mitigation strategies may be negating premise of paper.

We apologize that our phrasing was ambiguous in this paragraph. It was not our intention to say that economic drivers are not triggering mitigation strategies. We rather intended to highlight that climate change adaptation and heat stress mitigation are (too) little considered in breeding strategies so far compared to other economic drivers such as high production rates. Adaption and mitigation via modification in housing on the other hand has gained some interest also in the scientific community. Measures and systems are, however, not optimized due to a lack of understanding of the complex livestock environment interaction which involves diverse factors and feedback loops. We rephrased the paragraph: "Breeding is one possibility to reduce the impacts of climatic stress (Hammami et al., 2014). However, climate change is a slow process, feedback mechanisms are not fully understood and there are contradictory aims (i.e. low heat stress susceptibility versus high yields) (Hoffmann, 2010). In consequence, climate change adaptation or heat stress mitigation, respectively, play only a minor role in breeding strategies. Modifications in housing management are the main measures taken to improve the ability of livestock to cope with climatic stress conditions."

Page 3, line 30, Adaption and recovery sentence seems unnecessary. I know you discuss recovery later in paper but this sentence seems like an afterthought here. Either expand on importance or delete.

We agree that for the introduction the recovery aspect is rather an afterthought. We deleted the sentence.

Page 4, line 6, human health implication is a stretch, particularly without a reference.

We agree that potential secondary implications on human health are not in the focus of this study. As a detailed discussion of those impacts would be out of the scope of this paper, we removed the remark on human health from the introduction.

Page 4, line 19, don't think you need this last sentence.

We removed the sentence.

Page 4, line 22-32, very conversational, lot of we and our. Definitely delete Eventually in line 29.

These paragraphs are rephrased avoiding "we did" or "our analysis" as suggested. We removed "eventually".

Page 12, line 20-24, very conversational again. I am not used to a having an introductory paragraph like this in front of each section, check if it is appropriate for journal

We checked the journal guidelines for authors and several papers which were published in this journal and haven't found a standard procedure with regard to introductory paragraphs. There are papers with such an introductory paragraph and papers without it. We came to the conclusion that both options are appropriate for a publication in the journal. We agree, however, that some parts of our introductory paragraph are a repetition of what was said earlier. We rephrased and shortened the paragraph: "For the sake of simplicity, projections of the indoor climate and the estimated heat stress risk for the housed dairy cattle are shown for individual barns. Seasonal characteristics as well as differences between the three RCP scenarios and the two stress indices emerge. "

Page 18, line5, I would delete this last sentence

We deleted the sentence.

Page 23, line 2-4, I like this intro better than the conversational intros in some of earlier sections.

We used the format of this intro as some kind of template for the rephrasing of the other introductory paragraphs.

Page 23, line 19, need to justify the 0.6 kg better a 50% inflation over what was reported in other studies seems like a pretty steep scale or drop it down a little if just a guess.

We agree that up to 50% inflation appears pretty steep at the first glance. The reasoning behind is the following: The herds reported in the studies of Bouraoui et al. and Bohmanova et al. we consider as “average producing cows” (20 -30 kg daily milk yield). In the study of Carabonao et al. the most productive cows (> 40 kg daily milk yield) lost 0.174 kg/day per THI unit more than the average producing cows (around 30 kg daily milk yield). Taking the values from Bouraoui et al. and Bohmanova et al. and adding the value from Carabonao et al., we end up with a range of 0.474 kg/day to 0.584 kg/day for highly productive cows as they are common in our focus barns. We decided to consider a worst case scenario (value of the upper bound of that range) without genetic adaptation (e.g. strong and fast temperature rise) and taking into account that the average producing cows in the studies of Bouraoui et al. and Bohmanova et al. were even less productive than the average cows in the study of Carabanao et al.

Following the reviewers suggestion we adapted our estimation using now a value in the middle of the range (i.e. a decrease of 0.5 kg/day instead of 0.6 kg/day). By that our extrapolation ends up with milk yield losses of 0.68% instead of 0.87% of the milk yield in Germany and Spain, or 2.8% instead of 3.6% of the annual European milk yield. Extrapolated losses for farmers will be 14€ (5.4% of monthly income) instead of 17€ (6.6% of monthly income), i.e. 30% instead of 37% (Germany) or 26% instead of 32% (Spain) of monthly farm gross margin.

Page 24, line 13, I think you are over interpreting what has been reported in literature. Lower productive cows are less efficient and may have increased ammonia emission compared to high producing cows. Heat stress doesn't change the cow's genetic efficiency, it impacts their behavior and thereby their feed intake which decreases productivity but if they are eating less they are producing less ammonia.

We agree that heat stress doesn't change the genetic efficiency, but mainly affects feed intake which changes the composition of excrements and urine and in consequence the composition of manure and slurry. This implies a reduction of ammonia emissions. On the other hand, heat stress conditions are associated with high temperature. Following Arrhenius law this significantly speeds up reaction kinetics and in consequence leads to higher ammonia emissions. Although those two competing effects exist, measurements in cattle barns reported in early studies clearly show that in a temperature range of approximately 10°C to 40°C the reaction kinetics are the dominant driving force and emissions are in general increasing (cf. for example Hempel et al., 2016 or Sanchis et al., 2019 from the reference list in our manuscript).

Page 25, line 10, need reference for increase in methane from manure. Think you are implying that at higher temperatures more methane is released from manure due specifically to methane volatility not to amount of methane in manure. Is this relevant? Pile of composting manure is hotter than ambient temperature so is ambient temperature relevant to methane release?

We added a reference for the increase in methane from manure. Methane emissions from manure management are heavily dependent on ambient temperature (see e.g. IPCC Guidelines for National Greenhouse Gas Inventories, volume 4 (agriculture) chap. 10 (emissions from livestock and manure management; or Amon, B; Kryvoruchko, V; Frohlich, M; Amon, T; Pollinger, A; Mosenbacher, I; Hausleitner, A, (2007): Ammonia and greenhouse gas emissions from a straw flow system for fattening pigs: Housing and manure storage. LIVEST SCI. LIVESTOCK SCIENCE; 112: 199-207). It is not the volatility that increases, but the methane production conducted by anaerobic bacteria, which strongly depends on ambient temperature. This effect is utilized e.g. in biogas plants where the digesters are heated to increase methane production. Our estimations are based on dairy housing systems with liquid manure, not on composting systems (the latter are less temperature dependent than slurry systems.) We added a remark on that point.

In contrast to anaerobic liquid manure systems, in aerobic systems such as composting methane formation processes are generally of minor importance.

Page 26, line 26, may be useful here to add short discussion about Middle-Eastern and Tropical dairies. You are kind of concluding that Mediterranean region will be too hot to allow for dairy industry but they have dairy cattle in hotter environments already.

It was not our intention to convey that the Mediterranean region will be too hot for dairy industry by the end of the century, but rather to highlight that adaptation (of breeds and husbandry system) is urgently needed. We apologize to be not clear in that point.

We added the following short discussion at the end of the subsection:

“In consequence milk yield is expected to decrease significantly if no additional cooling is provided. It has to be noted that the dairy husbandry in the Mediterranean region, as well as in countries in Middle-Eastern or in tropical regions, is already faced with extended periods of heat load conditions along the year (Honig et al., 2012, Costa et al., 2015, Ortiz et al., 2015). The associated reactions to heat stress conditions have a strong genetic component (Broucek et al. (2007), Bernabucci et al. (2014)). If climate changes sufficiently slow, dairy herds will genetically adapt by nature to some degree to the elevated temperatures. In addition, most of the hot countries already search actively for adaptation measures to alleviate the cows’ heat stress (cf. Sec. 3.4.4). Those measures include, for example, promoting cross breeds adapted to the heat load conditions (Costa et al., 2015), and evaporative cooling systems to provide refreshment for the cows, especially during the day when the environment temperature is particularly high (Honig et al., 2012, Ortiz et al., 2015, Pinto et al., 2019b, Berman, 2006, Broucek et al., 2007, Avendano-Reyes et al., 2010, Legrand et al., 2011, Calegari et al., 2016). These efforts need to be further intensified in the future.”

Page 28, line 11-12, think you are stretching human health impact. Most of health issues seen in heat stress are metabolic in nature and therefore no need for antibiotics.

We agree that potential implications on antibiotics are indirect. There are recent studies showing that with temperature rise the growth of bacteria and viruses is amplified which increases the probability for infections. Potential secondary impacts on human health can be expected since animals under heat stress that suffer from metabolic illness can be expected to be more susceptible also to bacterial and viral infections. However, these aspects are not investigated in detail in our study. We removed the remark.

Technical corrections

Page 1, line 1, delete exceptional. There is a warming trend not sure we can call it exceptional

We agree that if the trend can be call exceptional or not is very much depended on the considered time scale. We deleted „exceptional“.

Page 1, line 5, delete however

We deleted „however“.

Page 1, line 6, delete Moreover

We deleted „moreover“.

Page 2, line 17, change was to is expected to be,

We changed „was“ to „is expected to be“.

Page 3, line 31, delete The

We deleted „the“.

Page 17, line 3, diverse is misspelled, also delete While for at beginning of next sentence

We changed “divers” to “diverse”.

Page 25, line 21, breaths per minute not beats.

We changed “beats” to “breaths”.

Page 26, line 8, muscles of the animal tend TO fatigue.

We added “to”.

ESDD – Review 2

We accept for publication that attached paper with some notices in revised paper. Please also note the supplement to this comment.

We thank the reviewer for the valuable comments and made the suggested formal amendments.

Heat stress risk in European dairy cattle husbandry under different climate change scenarios - uncertainties and potential impacts

Sabrina Hempel¹, Christoph Menz², Severino Pinto¹, Elena Galán³, David Janke¹, Fernando Estellés⁴, Theresa Müschner-Siemens¹, Xiaoshuai Wang⁵, Julia Heinicke¹, Guoqiang Zhang⁵, Barbara Amon^{1,8}, Agustín del Prado^{3,6}, and Thomas Amon^{1,7}

¹Leibniz Institute for Agricultural Engineering and Bioeconomy (ATB), Max-Eyth-Allee 100, 14469 Potsdam, Germany

²Potsdam Institute for Climate Impact Research (PIK), Telegraphenberg A 31, 14473 Potsdam, Germany

³Basque Centre for Climate Change (BC3), Sede Building 1, 1st floor, Scientific Campus of the University of the Basque Country, 48940 Leioa, Spain

⁴Institute of Animal Science and Technology, Universitat Politècnica de València, (UPV), Camino de Vera, s/n 46022 Valencia, Spain

⁵Aarhus University (AU), Department of Engineering, Blichers Allé 20, P.O. Box 50, 8830 Tjele, Denmark

⁶Basque Center for Applied Mathematics (3BCAM), Alameda de Mazarredo 14, 48009 Bilbao, Bizkaia

⁷Free University Berlin (FUB), Department of Veterinary Medicine, Institute of Animal Hygiene and Environmental Health

⁸University of Zielona Góra, Faculty of Civil Engineering, Architecture and Environmental Engineering, Poland

Correspondence: Sabrina Hempel (shempel@atb-potsdam.de)

Abstract. In the last decades, a global warming trend was observed. Along with the temperature increase, modifications in the humidity and wind regime amplify the regional and local impacts on livestock husbandry. Direct impacts include the occurrence of climatic stress conditions. In Europe, cows are economically highly relevant and are mainly kept in naturally ventilated buildings that are most susceptible to climate change. The high-yielding cows are particularly vulnerable to heat stress. Modifications in housing management are the main measures taken to improve the ability of livestock to cope with these conditions. Measures are typically taken in direct reaction to uncomfortable conditions instead of in anticipation of a long term risk for climatic stress. Measures that balance welfare, environmental and economic issues are barely investigated in the context of climate change and are thus almost not available for commercial farms. Quantitative analysis of the climate change impacts on the animal welfare and linked economic and environmental factors are rare.

Therefore, we used a numerical modeling approach to estimate the future heat stress risk in such dairy cattle husbandry systems. The indoor climate was monitored inside three reference barns in Central Europe and in the Mediterranean region. An artificial neuronal network (ANN) was trained to relate the outdoor weather conditions provided by official meteorological weather stations to the measured indoor microclimate. Subsequently, this ANN model was driven by an ensemble of regional climate model projections with three different greenhouse gas concentration scenarios. For the evaluation of the heat stress risk, we considered the amount and duration of heat stress events. Based on the changes of the heat stress events various economic and environmental impacts were estimated.

The impacts of the projected increase of heat stress risk varied among the barns due to different location and design as well as the anticipated climate change (considering different climate models and future greenhouse gas concentrations). There was an overall increasing trend in number and duration of heat stress events. At the end of the century, the number of annual

stress events can be expected to increase by up to 2000 hours while the average duration of the events increases by up to 22 hour compared to the end of the last century. This implies strong impacts on economics, environment and animal welfare and an urgent need for mid-term adaptation strategies. We anticipated that up to one tenth of all hours of a year respectively one third of all days will be classified as critical heat stress conditions. Due to heat stress, milk yield may decrease by about 2.8% relative to the present European milk yield and farmers may expect financial losses in the summer season of about 5.4% of their monthly income. In addition, an increasing demand for emission reduction measures must be expected, as an emission increase of about 16 Gg ammonia and 0.1 Gg methane per year can be expected under the anticipated heat stress conditions. The cattle respiration rate increases by up to 60% and the standing time may be prolonged by 1 h. This promotes health issues and increases the probability of medical treatments.

The various impacts imply feedback loops in the climate system which are presently underexplored. Hence, future in-depth studies on the different impacts and adaptation options at different stress levels are highly recommended.

Copyright statement. ...

1 Introduction

In the last decades, a continuation of the long-term global warming trend was observed and regional and local impacts have already become apparent (WMO, 2018). These impacts are expected to become worse with ongoing climate change (Christensen et al., 2007; van Oldenborgh et al., 2013). For Europe, temperature increase is projected in all seasons (Kjellström et al., 2018). Regional climate models anticipate a strong warming in large parts of North-East Europe that is particularly pronounced in winter. The strongest warming in summer is expected to be observed in South and South-West Europe. Along with the temperature increase, modifications in the humidity (precipitation) and wind regime are expected.

Seasonal shifts and changes in frequency and intensity of weather extremes will amplify the impacts in many economic sectors such as agriculture (Nardone et al., 2010). It is expected that approximately 26% of all damages and losses associated with medium to large scale climate-related disaster are attributed to agriculture with its sectors crops, livestock, fisheries, aquaculture and forestry (Food and Agriculture Organization of the United Nations (FAO), 2017). So far, many studies of climate change impacts on agricultural production focus mainly on land use or crop yields (Olesen and Bindi, 2002; Kurukulasuriya and Rosenthal, 2013). Mechanisms of climatic effects on plants have been already implemented in numeric models decades ago such as EPIC (Erosion-Productivity Impact Calculator) plant growth model or WOFOST (WOrld FOod STudies) model (Williams et al., 1989; Diepen et al., 1989). The development of models for the livestock sector emerged in recent years and focused on field and farm scale models that map the interactions between farm components such as livestock, grassland, animal housing, manure storage and farm management (Hutchings et al., 1996; Del Prado et al., 2006). In consequence, initiatives like AgMIP (www.agmip.org), ISIMIP (www.isimip.org) or MACSUR (www.macsur.eu) have many more contributions in the crop sector as compared to the livestock sector.

The topic of direct climate change impacts on livestock production is becoming more and more important due to the potential consequences of climatic stress (Vitt et al., 2017). Uncomfortable climatic conditions impair animal growth, meat and milk yield and quality, egg yield, weight and quality, reproductive performance, metabolic and health status and immune response of farm animals (Nardone et al., 2010; Brouček et al., 1991; Angrecka et al., 2015). The term climatic stress (i.e., heat stress and cold stress) refers to any change to the body of livestock when trying to adapt to changing meteorological conditions. This includes physiological and behavioral changes (Galán et al., 2018). It can be caused by any combination of air movement, temperature, humidity and radiant heat (Mader et al., 2006).

Breeding is one possibility to reduce the impacts of climatic stress (Hammami et al., 2014). However, climate change is a slow process, feedback mechanisms are not fully understood and there are contradictory aims (i.e. low heat stress susceptibility versus high yields) (Hoffmann, 2010). In consequence, climate change adaptation or heat stress mitigation, respectively, play only a minor role in breeding strategies. Modifications in housing management are the main measures taken to improve the ability of livestock to cope with climatic stress conditions. Measures and systems for early warning and automatic adaptation that balance welfare, environmental and economic issues are, however, barely investigated in the context of climate change and are thus almost not available for commercial farms. In order to address this crucial and complex topic inter- and transdisciplinary research is required, incorporating natural sciences, social sciences and engineering.

According to STATISTICA (www.statista.com), approximately 47 million tons of fresh dairy products are consumed annually in the European Union. In 2016, according to EUROSTAT (ec.europa.eu/eurostat/statistics-explained), 168 million tons of milk were produced in the EU-28, nearly 97% of which were from cattle. The large-scale farming of cattle is a hot topic in public discussions related to animal welfare and emissions (Steinfeld et al., 2013). High-yielding dairy cattle have a relatively narrow range of environmental conditions for optimal milk yield and milk quality (West, 2003; Kadzere et al., 2002). In this so-called thermo-neutral zone (typically around 10 °C) the cattle do not suffer significantly from climatic stress (i.e., minimal physiological effort for adaptation) which has an added value on animal welfare and health. The thermal optimum is associated with minimal methane emissions (Hempel et al., 2016b). Depending on cow individual factors, such as breed, age or productivity (milk yield), and the local environment to which the cows are adapted, the edges of the thermo-neutral zone and the stress threshold differ (e.g., the optimum is considered to be at 5 °C or at 15 °C) (Hahn, 1999; Kadzere et al., 2002; West, 2003; Brügemann et al., 2012; Heinicke et al., 2018). Potential stress indicators are changes in body temperature, respiration rate, milk yield, rumination activity or lying, feeding and drinking behavior (Hempel et al., 2016a; Polsky and von Keyserlingk, 2017; Curtis et al., 2017; Heinicke et al., 2018).

High-yielding dairy cattle are particularly susceptible to heat stress. Hence, farmers are aware of the importance and benefits of a good ventilation system for removing excess moisture (about 600 g/h per cow) and heat (about 1500 W per cow) produced by the cows in order to minimize heat stress (Pedersen and Sällvik, 2002). There are in principle two options to achieve this, mechanical and natural ventilation, of which the latter is most typical for dairy cows across Europe, as well as in many other parts of the world (Queiroz et al., 2005; Samer et al., 2011). Despite of some regional differences, all naturally ventilated barns have the energy saving aspect in common since they do not require energy to constantly operate fans. However, they are most vulnerable to increased climate variability associated with climate change, since there is lack of precise control of the air flow.

A suitable location of the building with respect to prevailing winds and surrounding trees, structures and land formations is essential.

All together this renders adaptation of dairy cattle husbandry to climate change particularly challenging and leads to various impacts, not only on animal welfare, but also on economics and environment. The current design of naturally ventilated barns offers only limited regulation options which have been developed to fit to the local outdoor climate in specific regions. Adaptation involves mainly short-term strategies such as turning fans or sprinklers on or off depending on the predicted outdoor temperature. A sound prediction of the anticipated number and duration of heat stress events in naturally ventilated barns will be valuable for the farmers to schedule mid-term and optimize short-term adaptation strategies. Indoor climate modeling based on indoor measurements (together with knowledge of the range of uncertainties) can improve the assessment of future heat stress events and thus promote adaption of the husbandry system.

The interdisciplinary European project OptiBarn (www.optibarn.eu, Hempel et al. (2017a, b, c)) was designed to investigate adaptation needs and options for optimized animal-specific housing of European livestock under climate change. A modeling system was established in the project to link measurements and modeling of barn climate (natural sciences and engineering) and research on climate-induced behavioral and physiological changes at the barn scale (veterinary and agricultural sciences) with research on climate change and economic impacts at the farm scale. Important aspects in this context are the physiological needs of the roomed livestock species as well as the regionally typical specifications of the housing.

Within the OptiBarn project, meteorological data was collected inside naturally ventilated barns together with physiological and behavioral data focusing on dairy cattle farming in three reference barns in Central Europe and in the Mediterranean region in order to develop region-specific, sustainable adaptation strategies for dairy housing. Here, this data set was used, to investigate changes in the heat stress risk of dairy cattle housed in naturally ventilated barns. We hypothesize that the probability of the occurrence of critical indoor conditions depends on the barn concept and the outdoor climate conditions. The consequences for future heat stress risk were analyzed when considering different climate projections for different regions including the effect of air movement. Uncertainties of those heat stress risk projections are discussed and an overview of potential impacts is provided that need further research in the future. Using the database of the OptiBarn project and contemporary literature impacts on milk yield and subsequent farm income, ammonia and methane emissions, as well as respiration and activity of cows (to evaluate the impact on animal welfare and health) are deduced. Potential mid-term and short-term adaptation strategies are outlined.

2 Data and Methods

The analysis was based on data collected within several measurement campaigns in three barns conducted during the OptiBarn project. Statistical models were developed to relate the outdoor weather conditions to the indoor microclimate. The latter was related to the stress perceived by the cows using two empirical models. An ensemble of simulations from different regional climate models (RCMs) was considered to evaluate the future heat stress risk. Anticipated impacts and adaptation options were further discussed taking into account data of the animals' physiological state and behavior collected on different farms in the OptiBarn project and in contemporary literature.

Table 1. Overview of on-farm measurement campaigns. Measurements were conducted approximately 3 m above the floor of the barns. The horizontal distribution of measurement points is sketched in Fig. 1 (cf. IDs). Device specifications: Comark Diligence EV N2003 sensors (Comark Limited, Hertfordshire, UK) logged temperature and relative humidity every 10 minutes (instantaneous value for the second). EasyLog USB 2+ sensors (Lascar Electronics Inc., USA) logged temperature and relative humidity every 5 minutes (instantaneous value, shortest logging rate ten seconds). 3-axis ultrasonic anemometers of type Wind Master (Gill Instruments Limited, Hampshire, UK) logged air velocity every second.

Focus region	reference barn	Begin	End	Devices	ID
Central European maritime	Dummerstorf	27-05-2015	01-11-2016	4 Comark Diligence EV N2003	DT_T1
Central European maritime	Dummerstorf	01-11-2016	28-08-2017	4 EasyLog USB 2+	DT_T2
Central European maritime	Dummerstorf	23-03-2015	28-08-2017	9 Wind Master	DT_V1
Central European maritime	Dummerstorf	23-03-2015	12-10-2016	4 additional Wind Master	DT_V2
Central European maritime	Dummerstorf	26-10-2016	28-08-2017	4 additional Wind Master	DT_V3
Central European continental	Gross Kreutz	02-06-2015	19-05-2017	8 EasyLog USB 2+	GK_T
Central European continental	Gross Kreutz	02-06-2015	19-05-2017	8 Wind Master	GK_V
Mediterranean	Bétera	30-06-2016	06-07-2016	4 EasyLog USB 2+	BT_T1
Mediterranean	Bétera	18-07-2017	08-09-2017	4 EasyLog USB 2+	BT_T2

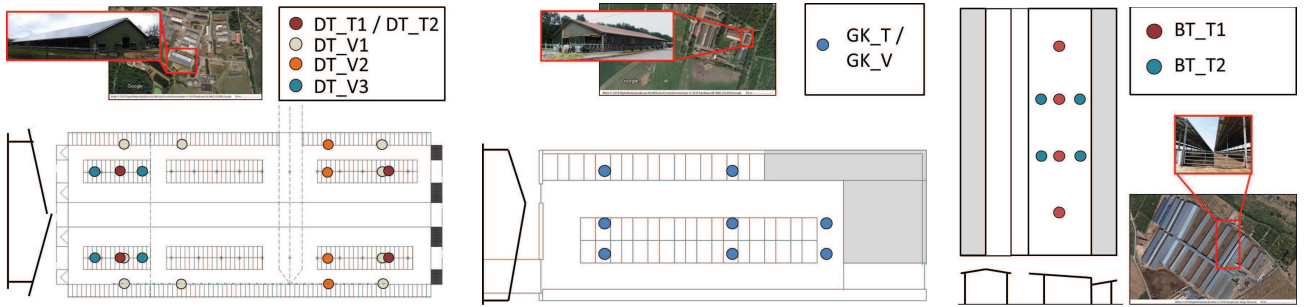


Figure 1. Outer view of the reference barn (source: ATB), aerial photo of the associated farm (source: Google Maps) and distribution of the sensors positions during different measurement campaigns for the three reference barns in Dummerstorf (left), Gross Kreutz (middle) and Bétera (right). In addition, the roof shapes are sketched. Details on the measurement campaigns can be found in Table. 1 (cf. IDs).

2.1 On-farm measurements

Our analysis was conducted based on data from three locations in Europe: two barns in Germany and one barn in Spain. The meteorological indoor data sets covered air temperature and relative humidity as well as air velocity collected between summer 2015 and summer 2017.

2.1.1 Reference barn Dummerstorf - Central European maritime region

The naturally ventilated dairy building is located in North-East Germany close to the Baltic Sea (Gut Dummerstorf in Mecklenburg - Western Pomerania, 42 m above sea level, cf. (Hempel et al., 2018)). It is approx. 96 m long and 34 m wide. The roof height varies from approx. 4 m to 10.5 m. The internal room volume is approximately 25000 m³, and was designed for 364 dairy cows (i.e., approx. 70 m³ per animal). The barn has an open ridge slot, partly closed gable walls and open long sidewalls protected by nets and adjustable curtains (cf. Fig. 1). It represents a typical building design for moderate climate used, for example, in Northern Germany, the Netherlands or the Northern USA (Mendes et al., 2015; Wang et al., 2016; Hempel et al., 2016b; Kafle et al., 2018).

Temperature, relative humidity and air velocity were logged at various positions inside the barn in approximately 3 m height during measurement campaigns from summer 2015 until summer 2017 (cf. Table 1 and Fig. 1).

2.1.2 Reference barn Gross Kreutz - Central European continental region

This naturally ventilated dairy building is located in Eastern Germany (Teaching and Research Institute for Animal Breeding and Animal Husbandry Gross Kreutz, Brandenburg, 32 m above sea level, cf. (Hempel et al., 2018)). It is approx. 39 m long and 18 m wide. The height of the roof varies from approx. 3.5 m to 6 m. The internal room volume is approximately 4500 m³, designed for 50 dairy cows (i.e., ca. 90 m³ per animal). The barn has a closed roof and partly closed gable walls (cf. Fig. 1). One long sidewall is open up to about 1.5 m height, the opposite is open up to the roof.

Temperature, relative humidity and air velocity were logged continuously at 8 positions inside the barn in approximately 3 m height from summer 2015 until summer 2017 (cf. Table 1 and Fig. 1). In addition, at three of the sensor positions in the center of the barn, temperature and relative humidity was measured in 4 other heights between approximately 4 m and 6 m.

2.1.3 Reference barn Bétera - Western Mediterranean region

The commercial naturally ventilated building is located in Eastern Spain (More Holstein S.L., Bétera, Valencia, 125 m above sea level). It is approx. 137 m long and 18 m wide with open walls (fences) and a broad roof opening (cf. Fig. 1). The roof height varies from approx. 4.5 m to 6 m. The internal room volume is approximately 12700 m³, and was designed for 192 dairy cows (i.e., approx. 66 m³ per animal).

Temperature and relative humidity were logged at various positions inside the barn in approximately 3 m height during two measurement campaigns in summer 2016 and 2017 (cf. Table 1 and Fig. 1).

2.2 Outdoor climate data

Our outdoor climate data consists of station observations from local weather services. We employed the observation network of the German Weather Service (DWD) for both reference barns in Germany. The observations for Spain were taken from the National Climatic Data Center (NCDC) Archive of the National Oceanic and Atmospheric Administration (NOAA). In detail, observations for Valencia were based on Meteorological Aerodrome Reports (METAR) of Valencia Airport.

For each barn we selected one meteorological station based on two constraints: 1) the station had to be close to the respective barn to assure that the station weather observation is representative for the weather near the barn and 2) the station should cover at least the same period as the indoor measurements to permit a reasonable indoor model calibration. Table 2 summarizes the stations chosen for each reference barn respectively focus region.

Table 2. Stations and sources for meteorological outdoor data

Focus region	Reference barn	Station name	Station ID	Source	Distance to barn
Central European maritime	Dummerstorf	Rostock-Warnemünde	04271	DWD Network	21.29 km
Central European continental	Gross Kreutz	Potsdam	03987	DWD Network	20.31 km
Western Mediterranean	Bétera	Valencia	08284	NCDC/NOAA Archive	20.16 km

- 5 All stations reported data with a temporal resolution of at least one hour. Where necessary, the unprocessed observations were aggregated to hourly values. Missing measurements were filled using a hot deck imputation method (Ford, 1983) based on temporal analogs. If no analog existed and the gap was smaller than 5 hours, a linear interpolation between measurement dates was used. The hot deck imputation method comprised all meteorological stations within a 150 km radius around the station under consideration.
- 10 To assess the impact of the anticipated climate change we used an ensemble of regional model projections. Table 3 summarizes the regional and driving global models used in our analysis. The simulations were partially conducted within the ReKliEs-De (<http://reklies.hlnug.de>) project and conform to the CORDEX-EUR11 specifications defined in the framework of the Coordinated Regional Downscaling Experiment (CORDEX, <http://cordex.org>, Giorgi and Gutowski Jr (2015)). Figure 2 presents the full simulation domain defined within this framework together with our three focus regions containing the refer-
- 15 ence barns. The simulations were available on a daily timescale with a horizontal resolution of 0.11 degree (approx. 12.5 km). They covered the period from 1970 to 2098. For each focus region we averaged the time series of the 9 grid boxes surrounding the meteorological station (cf. Fig. 2). The RCMs were driven by 8 different global climate models (GCMs) in total taking into account three different greenhouse gas concentration scenarios for the period 2006 to 2100, i.e. representative concentration pathways (RCPs) as defined in the IPCC’s fifth Assessment Report (AR5) (Pachauri et al., 2014). Here, we considered an
- 20 anticipated radiative forcing of 2.6 W/m² (RCP 2.6), 4.5 W/m² (RCP 4.5) and 8.5 W/m² (RCP 8.5) in 2100. For the years 1970 to 2005 the RCMs used the observed greenhouse gas concentrations as boundary condition.

- Before applying the simulations to our indoor climate model we adjusted the biases. For temperature and relative humidity we used the ISIMIP-FastTrack bias adjustment method using the station observations as reference (Hempel et al., 2013). The two horizontal wind components were adjusted together using a two-dimensional adjustment approach of Cannon (2018).
- 25 Furthermore, we interpolated the daily values to hourly time steps using a regularized multivariate linear regression model. Each 24 hours of one day were mapped from daily values separately, i.e. our temporal downscaling does not account for inter-day dependencies.

Table 3. Modeling matrix of driving global models - rows - and the respective regional models - columns - used in this study. The numbers indicate the respective RCP scenarios covered by each GCM-RCM combination.

	SMHI- RCA4	KNMI- RACMO22E	DMI- HIRHAM5	CLM- CCLM4-8-17	GERICS- REMO2015	MPI-CSC- REMO2009
HadGEM2-ES	2.6 / 4.5 / 8.5	2.6 / 4.5 / 8.5	-	4.5 / 8.5	8.5	-
EC-EARTH	2.6 / 4.5 / 8.5	2.6 / 4.5 / 8.5	2.6 / 4.5 / 8.5	2.6 / 4.5 / 8.5	8.5	-
MPI-ESM-LR	2.6 / 4.5 / 8.5	-	-	2.6 / 4.5 / 8.5	-	2.6 / 4.5 / 8.5
IPSL-CM5A-MR	4.5 / 8.5	-	-	-	-	-
CNRM-CM5	4.5 / 8.5	-	-	4.5 / 8.5	8.5	-
NorESM1-M	-	-	4.5 / 8.5	-	-	-
CanESM2	-	-	-	8.5	8.5	-
MIROC5	-	-	-	8.5	8.5	-

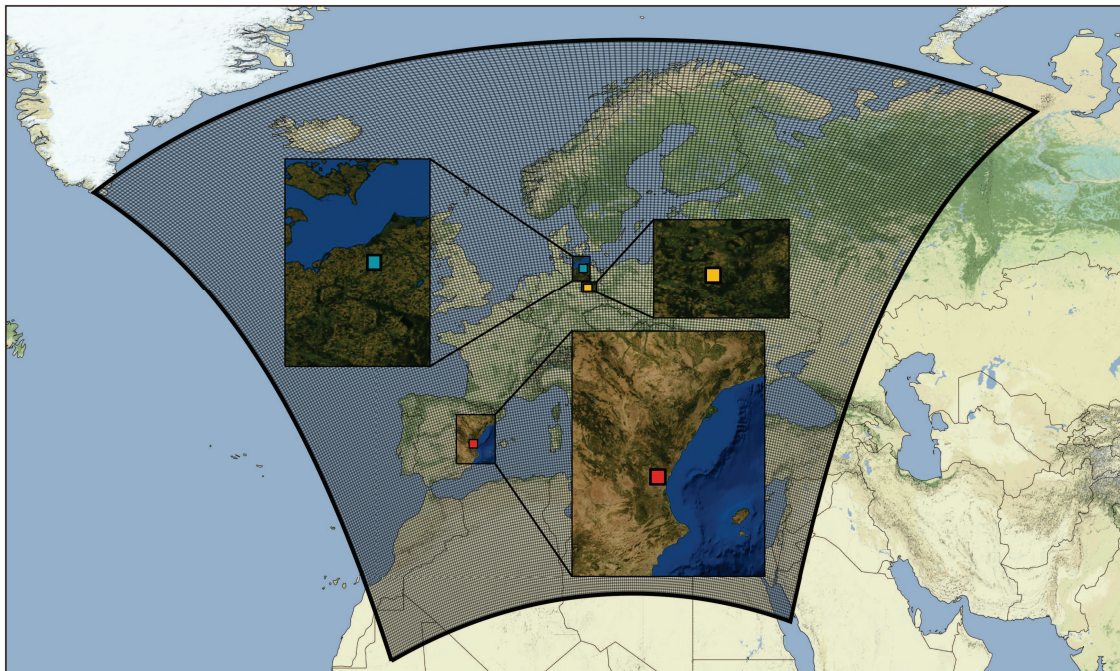


Figure 2. Map of the focus regions considered in our analysis. The surrounding lattice represents the RCM simulation domain (CORDEX-EUR11). The colored boxes mark the position of the selected meteorological stations of each focus region.

2.3 Statistical indoor climate model

To analyze the impact of the anticipated climate change on the animal welfare and linked farm-economic and environmental factors, we need to determine the microclimate inside the barn from the outdoor weather conditions. Therefor we used a purely data-driven statistical approach, as it permits a fast and yet powerful simulation of the indoor microclimate conditions using the available observations. Depending on the statistical approach it implicitly implements the complex relationships between outdoor and indoor conditions depending on the building design, materials, orientation and outdoor environment. Compared to dynamical approaches it allows also an easy and automatized calibration for various climate conditions and barn layouts using individual configurations of observations (Gebremedhin and Wu, 2005; Wu et al., 2012; Fiedler et al., 2014).

We derived our statistical indoor climate model using outdoor weather conditions as predictors to estimate the microclimate inside each barn. We focused our modeling on those variables that have the most significant impact on animals' climate stress, namely temperature, relative humidity and wind (Mader et al., 2006) inside the barn. Solar radiation was neglected for our model as we assumed sufficient roof insulation and only minor radiation entries via the openings. In order to reduce the degree of complexity the indoor model uses only hourly and spatial averaged values of the whole barn (cf. discussion of uncertainty in calibration data in Sect. 3.3.4).

As our reference barns were naturally ventilated, the outdoor weather conditions significantly influence the indoor conditions. However the relationship is complex and based on non-linear physical processes. To simulate this relationship we tested several different statistical machine learning approaches. Due to the unique outdoor conditions in each region and the specific layout and building materials for each barn we trained a separate model for each barn. We tested the artificial neural network (ANN) approach, linear regression models with and without regularization, random forests regression and support vector regression models, all with different hyperparameter settings. The models were trained to predict at any hour the temperature, relative humidity and the two horizontal wind components inside the barn (predictands) based on outdoor temperature, relative humidity, zonal and meridional wind, sea level pressure and global radiation (predictors). For the Mediterranean region the model was set up with temperature and relative humidity as predictors and predictands only, due to the reduced observation data set for outdoor (Valencia) and indoor (Bétera) measurements. Each hour of the indoor predictands was modeled separately. Hence our model did not account for a memory effect of the indoor variables directly. However indirectly we considered a memory effect and lagged responses by using the values of the outdoor predictors two hours before and two hours after the predicted time step. Overall our feature space consists of 30 dimensions (6 predictors times 5 hours) for Dummerstorf and Gross Kreutz and 10 dimensions (2 predictors time 5 hours) for Bétera.

According to our analysis, the model type with the best performance was the ANN (Gurney, 1997; Heaton, 2015). To limit the complexity of the ANN we choose a simple dense network design. We tested different hyperparameter configurations of the ANN using up to three hidden layers with varying numbers of nodes in each layer and different activation functions. To train our ANN we used backpropagation (Werbos, 1974) with a mean squared error loss function. We prevented the network from overfitting by using a dropout regularization (Srivastava et al., 2014) and 8-fold cross validation. Table 4 summarizes the best performing ANN configuration for each reference barn along with the respective cross validation R^2 as performance score. For

Reference barn	Layout	Activation	Predictor	Predictand	Total R^2
Dummerstorf	(78, 54)	ReLU	T, H, W, P, R	T, H, W	0.74
Gross Kreutz	(90, 74)	ReLU	T, H, W, P, R	T, H, W	0.56
Bétera	(50)	ReLU	T, H	T, H	0.85

Table 4. Best performing ANN configurations after a grid search hyperparameter optimization. We optimized the ANN for each reference barn separately. The layout configurations refer to the number of nodes in each hidden layer. The predictor and predictand abbreviations are defined by: T - temperature, H - relative humidity, W - zonal and meridional wind, P - sea level pressure, R - global radiation.

all reference barns we found a rectified linear unit (ReLU) activation function in each node as the optimal choice. The output layer uses a linear activation function as it maps to the real valued predictands. The final network layout for Dummerstorf and Gross Kreutz is more complex compared to Bétera due to the lower number of predictors and predictands for the latter barn. The different predictands are also reflected in lower R^2 scores for the German barns with 0.74 and 0.56 for Dummerstorf and Gross Kreutz compared to 0.85 for Bétera. The low performance of the wind components inside the barn resulted in the lower total R^2 score.

2.4 Statistical evaluation

As shown in table 3, our RCM ensemble was imbalanced towards CLM-CCLM4-8-17, GERICS-REMO2015 and SMHI-RCA4 regional models, with six and five driving GCMs respectively compared to only two driving models for KNMI-RACMO22E and DMI-HIRHAM5 and one for MPI-CSC-REMO2009. This imbalance would propagate into our uncertainty estimation if we naively assume that each simulation, i.e. each GCM-RCM combination, is equally weighted in the ensemble. However our assumption is that each single RCM should be equally weighted. We think of the different GCM simulations driving the same RCM as an additional artificial variability of that RCM. Hence we consider 3 different sources of uncertainty in our statistical evaluation of the full model ensemble:

- Temporal uncertainty. Estimated from the year-to-year variability of the time series of each single simulation.
- GCM uncertainty. Estimated from different GCMs driving the same RCM.
- RCM uncertainty. Estimated from the different RCM simulations.

All these sources are coupled and the underlying probability distribution is not necessarily Gaussian. To avoid the usage of a complex statistical model we adopted a simple bootstrap method for the statistical evaluation of the full ensemble (Efron, 1979; Efron and Tibshirani, 1986).

We draw 10000 random samples of the GCM-RCM matrix keeping the same structure (i.e. the same number of total RCMs, the same number of GCMs per RCM). This is done in three steps. In the first step we draw 6 RCMs out of the 6 available. In the second step we draw randomly from the available GCMs of the respective RCM. Here we draw the same number of times as GCMs are available for that RCM (five for SMHI-RCA4, two for KNMI-RACMO22E, two for DMI-HIRHAM5, six for CLM-

CCLM4-8-17, five for GERICS-REMO20015 and one for MPI-CSC-REMO2009). In the last step we draw randomly from the available reference years (30 out of 1971-2000) for each RCM-GCM combination. This way we end up with a bootstrap sample with the same structure and magnitude as the original modeling matrix. For each sample we calculate first the time average. Then we average over all GCM simulations of one RCM. We end up with 6 averaged RCMs for each sample. This way we can estimate the spread of the ensemble considering three uncertainty sources and their propagation.

2.5 Empirical heat stress models

Heat stress conditions for dairy cattle are expected to occur much more frequently in our focus regions than cold stress conditions. Hence, we focused our assessment on heat stress. To quantify the effect of the indoor microclimate on the animal perceived stress we considered two different heat stress indices. These empirical models link air temperature with additional state variables of the indoor air in order to evaluate the anticipated individual comfort or discomfort under hot environmental conditions (e.g., hot and humid air appears particularly warm). The two selected indices differ according to the number of state variables considered. Heat stress was evaluated in term of thresholds (cf. Table 5).

First, we considered the temperature humidity index (THI, cf. Eq. 1) originally published in this form by the United States National Weather Service (NRC, 1971). Since the early 1990's the index was frequently used to evaluate heat stress in cattle using the following definition:

$$THI = (1.8 \cdot T + 32) - ((0.55 - 0.0055 \cdot H) \cdot (1.8 \cdot T - 26)) \quad (1)$$

with air temperature (T) in °C and relative humidity (H) in %. The THI incorporates dry bulb temperature and relative humidity, but it does not take into account wind speed or solar radiation (Dikmen and Hansen, 2009; Lees et al., 2018; Wang et al., 2018b).

Second, we considered the equivalent temperature index for cattle (ETIC, cf. Eq. 2) which was developed within the OptiBarn project (Wang et al., 2018b). We used the following ETIC definition:

$$ETIC = T - 0.0038 \cdot T \cdot (100 - H) - 0.1173 \cdot |v|^{0.707} \cdot (39.20 - T) + 1.86 \cdot 10^{-4} \cdot T \cdot Q \quad (2)$$

with air temperature T in °C, relative humidity H in %, air velocity v in $m s^{-1}$ and solar radiation Q in $W m^{-2}$.

For the evaluation of the heat stress risk, we defined the number of heat stress events (HSE) as amount of hours of at least moderate heat stress, i.e. with indoor $THI \geq 72$ respectively $ETIC \geq 20$ (cf. Table 5). In addition, we considered the duration of heat stress events (HSED) as the length of periods of consecutive hours of at least moderate heat stress. In the analysis of the heat stress risk we considered changes compared to a reference period 1971-2000.

2.6 Impact assessment

Heat stress is known to affect farm-economics (e.g. milk yield and quality) and environment (emissions) as well as animal physiology and behavior resulting in impacts on animal welfare and health. We used physiological and behavioral data collected in the OptiBarn project as well as contemporary literature for the impact assessment.

Table 5. Categories of heat stress levels used for our assessment. For THI we used the thresholds defined by Collier based on milk yield losses (Collier et al., 2012). For ETIC we used the thresholds defined by Wang based on a linear regression between THI and ETIC without wind ($v = 0 \text{ m s}^{-1}$) and solar radiation (i.e., $Q = 0 \text{ W m}^{-2}$) (Wang et al., 2018a)

	mild stress	moderate stress	severe stress	emergency
THI	$68 \leq \text{THI} < 72$	$72 \leq \text{THI} < 80$	$80 \leq \text{THI} < 90$	≥ 90
ETIC	$18 \leq \text{ETIC} < 20$	$20 \leq \text{ETIC} < 25$	$25 \leq \text{ETIC} < 32$	$\text{ETIC} \geq 32$

Since the underlying assumptions and compiled data in the quantification of the heat stress impacts introduce considerable additional uncertainty, we will only concentrate on the magnitude of impacts. We focused our assessment on the RCP 8.5 scenario to estimate impacts under the strongest anticipated climate change. Furthermore, we neglected the range of uncertainty in the model projections and potential adaptation measures (related, for example, to housing, feeding or breeding). Moreover, the physiological adaptation (due to a general temperature increase and prolonged heat load duration), and the effect of heat load aggregation over the day, i.e. the number of heat stress hours where the THI was above the onset of mild heat stress (i.e., $\text{THI} \geq 68$, cf. Table 5) was not taken into consideration (St-Pierre et al., 2003). The daily maximum THI was not explicitly considered and the further aggravation of impacts for $\text{THI} > 72$ was neglected.

For the estimation of impacts, where the increase or decline rates were given per THI unit in literature, we used a factor 4 to scale the rates as in our results we considered the increase of at least moderate heat stress events (i.e. $\text{THI} \geq 72$ relative to a heat stress threshold of 68, namely at least 4 THI units).

As many impacts were related to daily THI values in literature, we need to estimate the number of heat stress days (HSD) based on the hourly THI values. This, however, requires the introduction of additional constraints (e.g., what's the minimal number of heat stress hours to make a heat stress day). To simplify the accumulation of hourly heat stress events to daily mean heat stress we assume that only one period of consecutive heat stress hours occurs per day. In consequence, we approximate the number of heat stress days by dividing the average projected number of heat stress events by its duration (i.e., HSE/HSED).

Note that regional differences in the impacts might be underrepresented in the overall estimation as there was only data for three barns available.

3 Results and Discussion

For the sake of simplicity, projections of the indoor climate and the estimated heat stress risk for the housed dairy cattle are shown for individual barns. Seasonal characteristics as well as differences between the three RCP scenarios and the two stress indices emerge.

3.1 Indoor climate changes

The projected climate change and thus the anticipated indoor climate differed depending on the greenhouse gas concentration scenario and the region under consideration. Overall the temperature is expected to increase in all three focus regions until

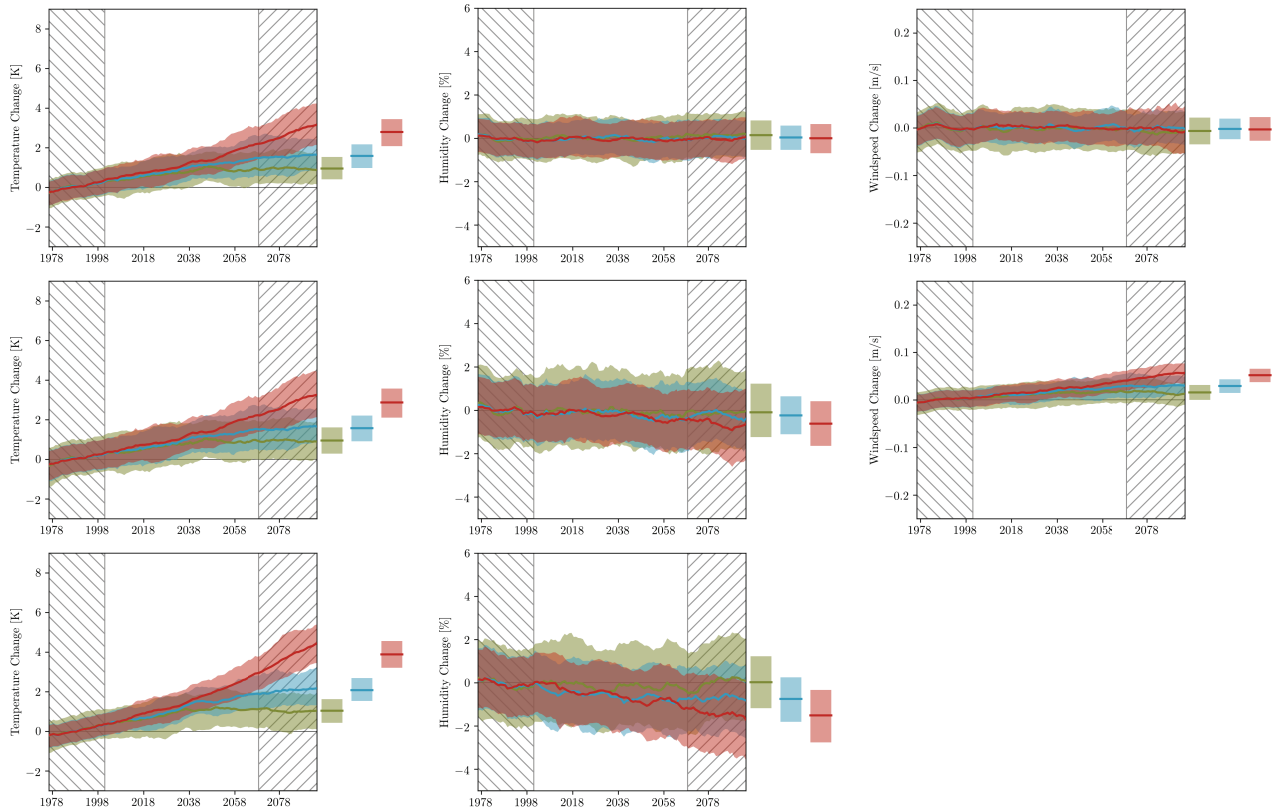


Figure 3. Projected change in indoor temperature, humidity and wind in the three focus regions of this study under RCP 2.6 (green), 4.5 (blue) and 8.5 (red). Regions: Central European maritime region with reference weather station Rostock-Warnemünde (top), Central European continental region with reference weather station Potsdam (middle) and Western Mediterranean region with reference weather station Valencia (bottom).

the end of the century between 1°C and 5°C. The statistical model simulations showed a slightly higher increase of indoor temperatures for the barn in the Western Mediterranean compared to those in the Central European focus regions (cf. Fig. 3).

The anticipated relative humidity remained approximately constant in the barn in the Central European maritime region and decreased towards the South (with a stronger decrease for the barn in the Mediterranean region than for the barn in the Central European continental region). All changes were well below 5% and in most cases not statistically significant. However, the decrease in the Mediterranean region is inline with the anticipated temperature increase and precipitation decrease.

For the reference barn Gross Kreutz (Central European continental region) the climate model ensemble projected a slight increase in the near-surface wind under all three RCP scenarios. The RCP 8.5 showed the largest increase in the average indoor wind speed with a value of up to 0.05 m s⁻¹ over the century (cf. Fig. 3). This means a decrease by more than 10% taking into account that the typical average wind speed in the barn today is around 0.4 m s⁻¹. The change was particularly pronounced

in the summer months with up to approximately 0.15 m s^{-1} during June, July and August compared to almost 0 m s^{-1} in December, January, February (results not shown).

In contrast, in the reference barn Dummerstorf (Central European maritime region) no significant annual trend in the average wind speed was found (cf. Fig. 3). Largest changes were projected in autumn (up to -0.1 m s^{-1}) and winter (up to 0.15 m s^{-1}) under RCP 8.5, but model simulations were discordant with regard to the trends (results not shown).

Wind projections for the reference barn Bétera (Mediterranean region) were not available due to a lack of sufficiently long wind measurements in the barn.

3.2 Heat stress risk

The number and duration of heat stress events was derived from the indoor climate projections. The risk of moderate heat stress showed an overall increasing trend.

3.2.1 Risk under different RCPs

In order to assess the effect of different atmospheric greenhouse gas concentrations on the heat stress risk, we considered the example of the reference barn Gross Kreutz (Germany, Central European continental region) as for this location we could make use of the most comprehensive and homogeneous data set. The heat stress risk under RCP 2.6, RCP 4.5 and RCP 8.5 was evaluated using the number and duration of anticipated heat stress events based on the projected indoor THI as described in Sect. 2.5 (cf. Fig. 4).

Until mid of the 21st century (≈ 2040) there is no significant difference between the projections under different RCP scenarios. The average duration of the stress events is expected to increase up to approximately 1 h in all scenarios, while the number of events is expected to increase by up to approximately 150 (i.e., up to approximately 2% of all hours of a year, corresponding to 6% of all hours of a summer, will be classified as at least moderate stress event in addition to the current situation).

For the second half of the 21st century, the average duration of heat stress events is expected to stay at the mid-century level under RCP 2.6 and RCP 4.5. For the extreme scenario RCP 8.5, the increase continues up to approximately 3 h. The number of heat stress events is projected to stay approximately at the mid-century level under RCP 2.6 and increases only slightly during the second half of the century under RCP 4.5 (approximately 150 additional heat stress events for RCP 2.6 and 200 for RCP 4.5). Under RCP 8.5, however, the number of additional heat stress events increases up to approximately 600, i.e. nearly 7% of all hours of a year will be additionally classified as heat stress events, most pronounced in the summer season. Hence, approximately 27% of all summer hours, i.e. more than every fourth hour, will be characterized by at least moderate heat stress conditions in addition by the end of the century.

Despite the described relations between the ensemble averages for each RCP scenario there was a range of uncertainty of approximately $\pm 1 \text{ h}$ regarding the duration and ± 200 regarding the number.

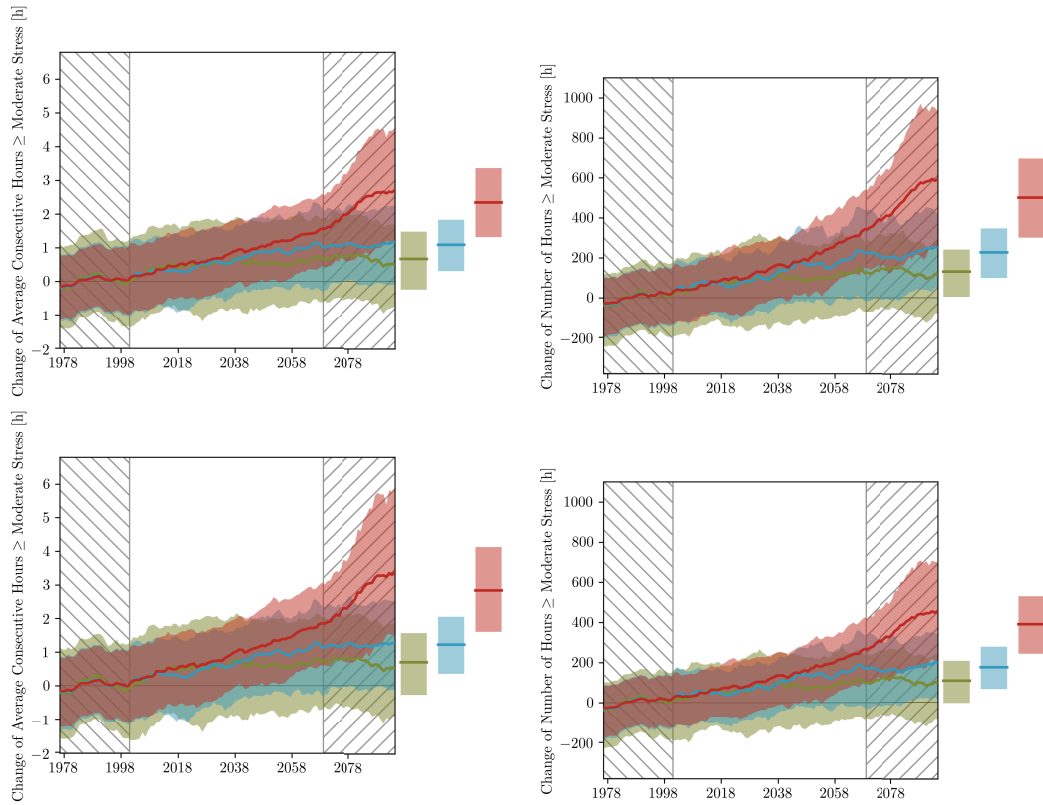


Figure 4. Projected change in heat stress events in the reference barn in Central Europe (annual changes in upper panels and summer changes in lower panels). Modifications in average duration (average consecutive hours) and number (number of consecutive hours) of moderate stress events under RCP 2.6 (green), 4.5 (blue) and 8.5 (red) are plotted based on the evolution of the temperature humidity index (THI) with a threshold of 72.

3.2.2 Regional differences

In order to evaluate the regional differences of climate change impacts on dairy farming, we considered the example of two reference barns in maritime regions, one in Central Europe and one in the Mediterranean region (cf. Fig. 5). As in Sect. 3.2.1 the heat stress risk under RCP 2.6, RCP 4.5 and RCP 8.5 was evaluated in terms of number and duration of heat stress events as described in Sect. 2.5.

Although the annual temperature increase does not differ a lot among the regions (Fig. 3) the implications in terms of critical THI values were rather different for the two regions. By mid of the 21st century we found an increase of the duration of heat stress events of approximately 1.5 h for Central Europe and 2.5 h for the Mediterranean region under all RCPs. For RCP 2.6 this is also true until the end of the century. Under RCP 4.5 in the second half of the century an increase of 2 h for Central Europe versus 5 h for the Mediterranean region was projected. For RCP 8.5 the deviation between the regions is even larger

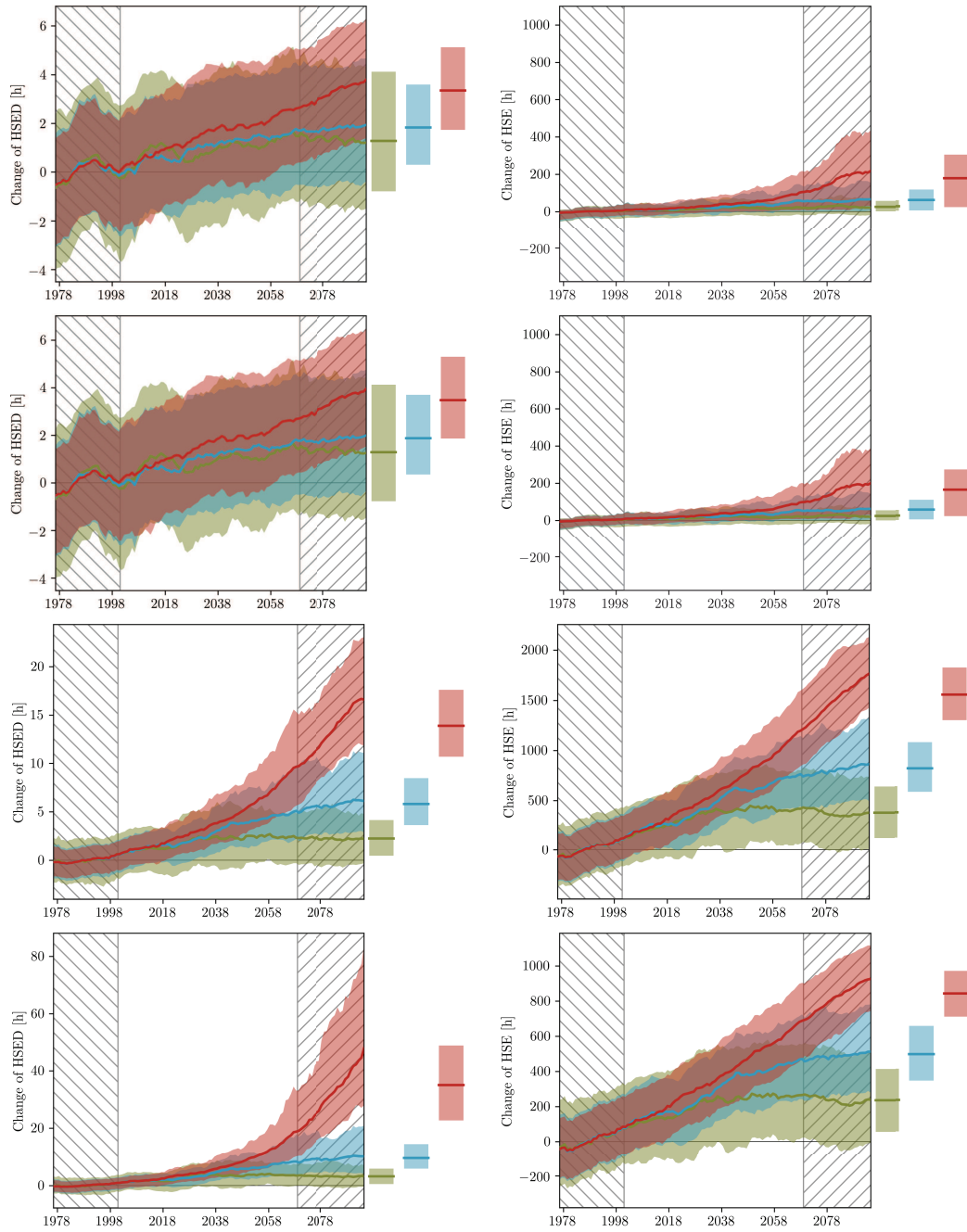


Figure 5. Projected change in heat stress events in the reference barns in maritime regions in Central Europe (2 top rows) versus Mediterranean region (2 bottom rows). Modifications in annual (first row) and summer (second row) average of duration (average consecutive hours) and number (number of consecutive hours) of moderate stress events under RCP 2.6 (green), 4.5 (blue) and 8.5 (red) are plotted based on the temperature humidity index (THI) with a threshold of 72.

with an increase of 4 h in Central Europe versus 17 h in the Mediterranean region. The latter implies that there will be barely any recovery phases for the cows in the reference barn in the Mediterranean region.

The change in the number of the heat stress events was even more diverse among the regions and RCPs. While for the barn in Central Europe up to approximately 200 additional hours of heat stress are expected (i.e., even less than for the barn in the Central European continental region described in the previous subsection), for the Mediterranean region the increase was much stronger: Under RCP 2.6 approximately 300 additional heat stress events (i.e., 4% of all hours of a year), under RCP 4.5 approximately 800 additional heat stress events (i.e., nearly 9% of all hours of a year) and under RCP 8.5 approximately 1800 additional heat stress events (i.e., nearly 21% of all hours of a year) were projected. In addition, in Central Europe most of the additional heat stress events occurred in the summer season. In the Mediterranean region, only approximately half of the increase was anticipated for summer, while there was a significant increase in the number of heat stress events projected for spring and autumn.

Again, we focused the comparison on the ensemble averages, while there was a range of uncertainty of ± 200 regarding the number and approximately ± 2 h (Central Europe) respectively ± 5 h (Mediterranean) regarding the duration. Towards the end of the century, the ranges tend to further increase, particularly for the RCP 8.5 scenario.

3.2.3 The effect of air movement

We investigated the impact of wind as additional environmental parameter to evaluate the heat stress risk using the example of the reference barn Gross Kreutz (Germany, Central European continental region) and the heat stress index ETIC.

The change in duration and number of heat stress events was investigated using ETIC with and without wind, neglecting radiation effects in both cases (cf. Fig. 6). We found a general tendency towards an increase of the duration and number of heat stress events by the end of the century which was in the same order of magnitude as predicted using the THI (cf. Fig. 6 compared to Fig. 4).

Without the wind effect (i.e., ETIC with $v = 0 \text{ m s}^{-1}$ at all time points, cf. Fig. 6 upper panels) the projected increase of the duration of heat stress was under RCP 8.5 on average 4 h (ETIC) compared to 3 h (THI). Taking the range of the model ensemble into consideration, it was even 6 h (ETIC) versus 4.5 h (THI). Similar deviations were observed for the estimated increase in the number of heat stress events. Here, ETIC under RCP 8.5 resulted in on average 800 more heat stress events (up to 1200 considering the uncertainty of the model ensemble) while THI resulted in on average 600 more heat stress events (up to 900 considering the uncertainty of the model ensemble).

Taking into account the wind in the ETIC calculation (cf. Fig. 6 lower panels), the heat stress risk decreased as the wind increased (particularly in summer), which had a cooling effect. While ETIC under RCP 8.5 projected on average approximately 800 additional heat stress events without wind effect, on average approximately 600 additional heat stress events were projected with wind effect. This is a relative reduction of the number of heat stress events of approximately 25% due to changes in the wind regime. However, the projected heat stress risk considering ETIC with the wind effect was almost the same as that projected with the THI which does not include the wind effect at all.

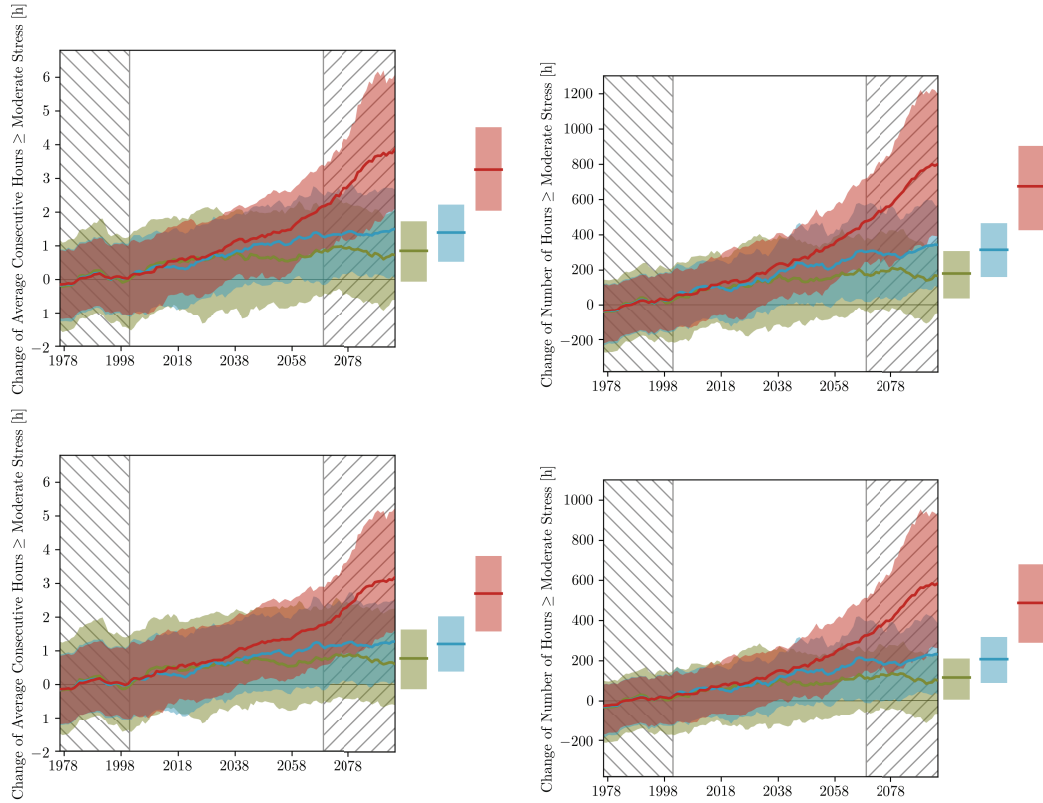


Figure 6. Projected change in heat stress events in the reference barn in Central Europe without (top) and with (bottom) consideration of near-surface wind. Modifications in annual average of duration (average consecutive hours) and number (number of consecutive hours) of at least moderate stress events under RCP 2.6 (green), 4.5 (blue) and 8.5 (red) are plotted based on the Equivalent Temperature Index for Cattle (ETIC) with a threshold of 20.

3.3 Model uncertainty

While our results showed a general tendency of increasing heat stress risk, there was a large uncertainty on the magnitude of the anticipated increase. The overall model uncertainty involves: (1) the climate models used to drive the indoor climate model, (2) the considered greenhouse gas concentration scenarios, (3) the selected index and threshold that was used to define heat stress events, and (4) the accuracy of measurements used to calibrate the indoor climate model.

3.3.1 Climate model ensembles

The span of anticipated climate signals was well represented in our ensemble with GCMs projecting strong respectively weak changes in the global mean temperature and precipitation (Warszawski et al., 2014). The RCM-GCM combinations capture the edges of the intermodel variability in the CORDEX-EUR ensemble in terms of biases in temperature and precipitation (cf. (Dosio, 2016)).

However, only a limited number of runs per RCP was available for our study, namely 11 for RCP 2.6, 12 for RCP 4.5 and 21 for RCP 8.5. Increasing the number of simulations might increase our estimated uncertainty ranges. In order to account for the imbalanced sampling among the possible climate signals (cf. sparse modeling matrix in Table 3), we used a bootstrapping algorithm for the statistical analysis to evaluate the heat stress risk. Our analysis shows a similar range of the anticipated changes in the number of heat stress events for all three barns as well as all RCPs and time slices. The uncertainty in the anticipated duration of heat stress events was also similar among the RCPs and time slices.

The uncertainty in the duration, however, varied regionally. In the Mediterranean region, where the largest impacts are expected, it was particularly high, yielding additional challenges for adaption. These regional differences in the uncertainty might be, however, to some degree also caused by the fact that the calibration data sets for the indoor-THI-model differed with regard to comprehensiveness and homogeneity.

3.3.2 RCP scenarios

Earlier other authors used one climate model, one emission scenario and the outdoor THI to perform a similar study for Spain (Segnalini et al., 2013). Our study on the other hand was based on a model ensemble and used an indoor THI together with multiple recent emission scenarios to cover the full range of future socio-economic pathways.

Segnalini et al. (2013) derived a slight increase of the heat stress risk mainly in summer. Our results based on the indoor THI under RCP 2.6 were well inline with this former study. However, based on the more recent climate projections, a larger ensemble of climate models and incorporating the effect of housing on the THI, our results also indicated that the former projections can be understood as some kind of best case scenario. The projected indoor temperature change by the end of the 21st century deviated in our study among the RCPs by approximately 2 °C in the barns in Central Europe and 4 °C in the barn in the Mediterranean region (cf. Fig. 3). At the same time, the projected change of annual humidity deviated by less then 3% relative humidity. Thus, the THI increase is likely to be higher than previously assumed.

Moreover, the projected change in temperature, humidity and wind resulted in an increase of the duration of heat stress events which was approximately 3 h (Central European regions) respectively 17 h (Mediterranean region) less under RCP 2.6 than under RCP 8.5. In addition, approximately 5% heat stress hours less per year (relative to the total number of hours in a year) were projected under RCP 2.6 compared to RCP 8.5 for the Central European regions by the end of the century. In the Mediterranean region the deviation between RCP 2.6 compared to RCP 8.5 was approximately 17%. This implies that with the continuation of the global warming the regional differences will be amplified with higher greenhouse gas concentrations.

The RCP scenarios considered in our study were associated with different socio-economic, technological and political developments that yield different atmospheric greenhouse gas concentrations. Feedback loops induced by changing duration and number of heat stress events were not included. However, it is known that the net emissions from cattle husbandry (dependent on the storage, treatment and application of manure and slurry as well as on the production level and feed of the ruminants) are influenced by environmental parameter such as temperature and humidity (Monteny et al., 2001). Increased heat stress may yield higher ammonia and methane emissions affecting aerosol formation and amplifying the increase in greenhouse gas concentration as discussed in Sect. 3.4.2.

Such effects are, however, underexplored so far and should be addressed in future studies to further develop representative greenhouse gas and ammonia concentration scenarios for climate impact assessments.

3.3.3 Stress index

A lot of cattle-related thermal indices have been proposed in literature, two of which we considered in our study (Bianca, 1962; Mader et al., 2006; Gaughan et al., 2008; Mader et al., 2010; Da Silva et al., 2015; Lees et al., 2018; Wang et al., 2018b). The genetic basis used to derive the indices relative to the dominating genotypic conditions in our study (including resilience types and future adaptation) represent additional incalculable factors. Our results (cf. Sect. 3.2.3) indicated that the uncertainty that was introduced by choosing one of the stress indices (THI or ETIC with respectively without wind) together with a particular threshold was in the same order of magnitude as the wind effect. This leads to the assumption, that the effect of wind speed could be neglected in heat stress risk projections using the common indices.

It has, however, to be noted that these results referred only to an averaged wind speed in the barn under consideration, while the distribution of the air flow inside the building is very sensitive to changes in the inflow conditions (e.g. surrounding building or planting) as well as the building design (cf. Sec. 3.3.4) (Hempel et al., 2015b; Yi et al., 2018). The impact of including or neglecting the wind may be different for other barns or even when considering heat stress levels in individual locations of the same barn.

The location of the animals inside the barn is also crucial with regards to shading as the lack of shade shifts the heat stress threshold towards lower ambient temperatures (e.g., body temperature increases earlier) (Berman, 2005; Kendall et al., 2006). This effect was neglected in our study as the cows were free to move inside the barns and could look for shade almost all the time. The roof height and insulation were considered sufficient to avoid direct radiation effects. The validity of this approximation depends on the building design. Larger radiation effects can be expected in the reference barn in Bétera (Spain, Western Mediterranean region) which has a wide roof opening compared to the reference barn in Gross Kreutz (Germany, Central European continental region) which has no roof opening, but only roof-lights.

Moreover, the projected indoor temperature, humidity and wind were not linearly translated into heat stress events, as in our study heat stress was evaluated in terms of critical thresholds. The choice of the threshold affects the risk assessment and depends on the considered indicator (e.g., milk yield, body temperature, respiration rate, rumination or lying time). The threshold we used for THI was based on milk yield depression and related to respiration rate in literature (Bohmanova et al., 2007; Collier et al., 2012). Although based on the same indicator, the thresholds for THI and ETIC differ slightly due to the imperfect correlation and rounding when ETIC thresholds were derived from THI thresholds with a linear transfer function (Wang et al., 2018b).

In addition, the thresholds provided in literature only refer to some kind of prototypical cattle. The actual threshold is animal-individual and depends on the local environment to which the animals are adapted (Bohmanova et al., 2007). Referring to the thresholds defined by Collier (cf. Sec.2.5), for example, Israeli Holstein in summer in Israel are permanently under heat stress conditions, while producing a similar amount of milk or even more than Holstein Frisian in Germany, as breed, barn design and cooling management are already adapted to the local climate conditions (Pinto et al., 2019a, c). In consequence, due to the

regional adaptation the threshold for moderate stress in our Central European focus regions may relate only to mild stress in our Mediterranean focus region.

Furthermore, under heat stress conditions cows tend to adapt their body posture together with the respiration rate (Pinto et al., 2019b). As laying down decreases the body surface area of cows that is exposed to air by approximately 42 % the effect of wind differs depending on the body posture. In consequence, lying cows increase the respiration rate significantly more than cows in standing posture and cows with higher core body temperature tend to stand up (Allen et al., 2015; Hempel et al., 2016a). As body posture changes depending on the barn management (e.g., feeding or milking times) and in reaction to the ambient climate conditions may occur simultaneously additional uncertainty in the threshold selection is introduced.

Finally, milk yield, lactation phase and age influence directly the heat stress susceptibility. Because of the metabolized energy used for milk production, high-yielding cows have significantly more heat to dissipate than low-yielding cows and are thus more susceptible to heat stress (Kadzere et al., 2002; West, 2003; Spiers et al., 2004). Cows at the beginning of the lactation tend to produce more milk than cows during a late lactation period, yielding higher heat stress susceptibility. In addition, there are evidences that older (multiparous) cows are more affected by heat load than young (primiparous) ones (Bernabucci et al., 2014). As the herds in our reference barns consist of cows of different age and lactation phase and hence different milk yield, the projected heat stress risks will apply only for herd average.

With the breeding towards higher milk yields of the individual cows, as observed in the past, the thresholds for heat stress can be expected to further decrease on a herd level (Carabano et al., 2016). This will amplify the projected heat stress risks. However, further quantitative studies are required to evaluate to which degree the thresholds will decrease in the future in the focus regions.

3.3.4 Calibration data

Besides systematic errors related to the measurement device accuracy and long-term stability, the spatial and temporal variability of the outdoor and indoor measurements, that were used to derive and calibrate our indoor climate model, introduces uncertainty related to the sampling procedure.

For outdoor measurements (i.e., weather observations from meteorological observation stations) this relates mainly to the question if the weather conditions at the meteorological station are connected to those near the barn. Here the aspect of closeness is crucial, but also topographic / orographic considerations which affect particularly the dynamics of the humidity time series (e.g., the autocorrelation function decreases faster for Rostock-Warnemünde than for Dummerstorf potentially because it is closer to the sea (Hempel et al., 2018)). In order to minimize the impact of such complex effects, we applied the artificial neural network approach and considered a time lag of ± 2 h (cf. Sect. 2.3).

For indoor measurements the topic of data variability relates to the question if point measurements are representative for the barn average. All measurement devices were mounted in such a way that they were as much as possible exposed to free inflow in order to minimize systematic errors induced by the construction material of the barns (e.g. wind shading or conduction). Moreover, to reduce the spatial and temporal variability in the relevant variables, we focused our modeling on hourly averaged

values. Direct air movement and turbulent diffusion, which are mainly responsible for the high spatial variability, can not be resolved on hourly timescale, which justifies also our choice of focusing on spatial averages over the whole barn.

The calibration data used for our statistical indoor models differed in homogeneity and extent between the individual barns. The most comprehensive data set was the one for the reference barn Gross Kreutz where wind, temperature and humidity were measured in about 3 m height approximately every 10 m. In contrast, in the reference barns Dummerstorf and Betera the spatial resolution of the measurements and the spatial coverage of individual barn locations changed over the measurement periods and differed between the variables. This introduces additional uncertainty in the spatial averages. In addition, three vertical indoor profiles for temperature and relative humidity were incorporated in the spatial averaging in Gross Kreutz which were not available for the other barns. The observed vertical gradients in temperature and relative humidity are, however, much smaller than the horizontal variability. Thus, the effect of this additional data can be neglected for the total barn average.

Preceding studies indicated that there is a high degree of turbulence yielding to significant spatial inhomogeneities in the velocity field inside the barn (Fiedler et al., 2014; Yi et al., 2018). Depending on the opening sizes of the inlets eddies of different sizes propagate towards the outlets (Hempel et al., 2015a; Yi et al., 2018). The spatial spreading of the wind speed \tilde{v} increases typically with the average wind speed \bar{v} (i.e., $\tilde{v} \approx 6.96 \cdot \bar{v}$ for the barns under consideration). This means the spatial variability of the wind depends on the actual inflow speed. Considering the median of the distribution of the observed hourly averaged wind speed values, the typical spatial wind speed variance is approximately 2.4 m s^{-1} . The anticipated changes in the near-surface wind, which governs the inflow, are however regionally very divers (Kjellström et al., 2018).

Considering the threshold $\text{ETIC} = 20$ (as used in our study, a decrease of the wind speed from 2.4 m/s to 0 m/s results in a increase of the ETIC value between approximately 1.5 (for very low relative humidity) and 4 for very high humidity. This means under arid climate cows in some locations of the barn, that are particularly exposed to the wind, will only exceed the threshold for mild stress, while others in calm locations suffer from already moderate stress. Under humid climate, the effect is even stronger as cows in locations that are particularly exposed to the wind may not even be under heat stress at all (ETIC with wind approximately 16 instead of 20), while others are suffering from already moderate heat stress.

The inhomogeneous distribution of heat and humidity sources related to farm management and the turbulent inflow associated with the meteorological boundary conditions yield also high spatial and temporal variability of air temperature (approximately $\pm 2^\circ\text{C}$) and relative humidity (up to $\pm 20\%$ relative humidity) (Herbut et al., 2015; Hempel et al., 2018). For THI values close to the threshold 72 each of those uncertainty values correspond approximately to ± 2 THI units. However, this estimated spatial variability refers to measurements with a temporal resolution of 5 to 10 minutes.

However, it has to be noted that the spatial variability of the THI inside the barn can be up to ± 4 THI units from the projected average value (considering the spatial variation of temperature and humidity as independent of each other). This is almost a difference of one THI class, which implies that events classified as moderate based on the spatial average might correspond to already severe heat stress in some locations and only mild stress in other parts of the building.

3.4 Projected impacts and adaption options

The anticipated increase of the number and duration of heat stress events will have significant impacts and implies a strong need for adaptation measures for the European dairy husbandry system due to economic, environmental and ethic (animal welfare) aspects.

5 3.4.1 Economic impact

Heat stress affects the reproductive performance of cows and decreases fertility (De Rensis et al., 2015; Schüller, 2015). In addition, elevated temperatures may increase disease pressure and lead on to more health treatment (cf. Sect. 3.4.3). In particular, the occurrence of heat stress events can be translated into losses in milk yield and quality where the decline of milk yield begins directly after being exposed to uncomfortable environmental conditions (Rushen et al., 2001). In literature it is often assumed that milk yield stays almost constant until a certain threshold and then linearly declines with increasing degree of THI (Ravagnolo and Misztal, 2000; Bohmanova et al., 2007). The decline rate per cow and day per THI unit with the onset of heat stress has been estimated for Holstein dairy cattle (the breed in our reference barns) to be, for example, between 0.3 kg and 0.39 kg for cows with 28 kg daily milk yield in the US and around 0.41 kg for cows with 20 kg milk yield in the Mediterranean region (Bouraoui et al., 2002; Bohmanova et al., 2007). These cows can be considered as average producing cows. Higher-yielding cows are known to be more susceptible to heat stress (Kadzere et al., 2002; Nardone et al., 2010; West, 2003). It has been shown that at the same THI threshold the most productive cows (yield average 42.5 kg d^{-1}) of the same Holstein breed lost 0.174 kg d^{-1} per unit of THI more than the average cows (31.5 kg d^{-1}) (Carabano et al., 2016). As the average milk yield of the cows in our focus regions is higher than in the mentioned studies about milk yield depression (approximately 35 kg d^{-1} to 45 kg d^{-1} milk yield), it is reasonable to scale the decline rates accordingly leading to an expected decline range between 0.474 kg d^{-1} to 0.584 kg d^{-1} per THI unit. In consequence, we assumed an average decline of approximately 0.5 kg per day and cow for each THI unit above the heat stress threshold. That means 2.0 kg less milk per day and cow for each additional day with moderate heat stress can be expected (cf. Sect. 2.6).

Our results imply an increase of on average approximately 120 heat stress days with $\text{THI} \geq 72$ by the end of the century (cf. Table 6). Eventually, the estimated milk yield losses in Germany and Spain, where our reference barns were located, accumulate to approximately 0.68% of the annual European milk yield today which is approximately $168 \cdot 10^6$ tons (cf. Tab 6). As Germany and Spain provide together approximately 24% of the European milk yield, assuming our reference barns and the focus regions to be representative for the average change of heat stress events in Europe, the total loss can be extrapolated to be about 2.8% of the annual milk yield today under the RCP 8.5 scenario.

In addition to the milk yield, a decrease in the milk fat (approximately 0.34% to 0.4%) and protein (approximately 0.08% to 0.2%) content (with milk fat content typically around 3.5% and milk protein content typically around 2.9%) can be expected according to literature (Bouraoui et al., 2002; Collier et al., 2012; Carabano et al., 2016). Under contemporary market conditions, higher percentages of fat and proteins increase the milk price (Bailey et al., 2005). The amount of these price corrections

Table 6. The number of heat stress events (HSE) and their average duration (HSED) based on the projections under RCP 8.5 were considered. The number of heat stress days (HSD) was estimated as the ratio HSE/HSED assuming one period of consecutive heat stress hours per day. Milk yield loss (MYL) per country was extrapolated for the countries where the reference barns are located and given relative to a reference milk yield. The assumed total amount of cows was $4.2 \cdot 10^6$ in Germany and $0.8 \cdot 10^6$ in Spain (2017 level according to de.statistica.com). For Germany half of the cows were allocated to the projected change for the reference barn Gross Kreutz and the other half to the one for the reference barn Dummerstorf. A reference annual European milk yield of $168 \cdot 10^6$ tons was assumed (cf. introduction section).

focus region / reference barn	HSE	HSED [h]	HSD	MYL per cow [kg]	MYL per country [%]
Central Europe maritime (reference barn Dummerstorf)	600±200	3±1	200	400.0	0.50
Central Europe continental (reference barn Gross Kreutz)	200±200	4±2	50	100.0	0.125
Mediterranean (reference barn Bétera)	1800±200	17±5	106	212	0.1

depends on the local markets. In addition to losing these potential bonuses, low fat and protein content increases the risk of rejection from the buyer of the milk lot.

Heat stress events and thus financial losses are concentrated in the summer. An increase of 120 additional heat stress days per year, at least half of which are expected to occur in summer, implies that in each summer month approximately 20 additional heat stress days can be expected, thus affecting liquidity of farms in summer. In the worst summer month, farmers may lose approximately 14 Euro per cow assuming an average milk price of 35 cent per kg milk. With our estimates, a month with mild stress would be equivalent to lose 5.4% of the monthly income. For an average farm in Germany and Spain that would involve losing 30% respectively 26% of the monthly farm gross margin without coupled payments from the year 2016. This yields particular challenges for the survival of dairy specialized farms, of which only 2% and 21% in Germany and Spain respectively have positive net economic margin (European Commission - EU FADN, 2018).

Finally, in countries with already pronounced hot summer periods, like in the Mediterranean region, where farms already manage calving seasonally in order to avoid the lower summer fertility rates, the increase of the number of heat stress events in spring or autumn may be particularly damaging.

3.4.2 Environmental impact

Lower productivity per cow, as expected under heat stress (cf. Sect. 3.4.1), has been linked with increased ammonia emission intensity in the literature (Groenestein et al., 2019; Sajeev et al., 2018; Sanchis et al., 2019). The ammonia release from manure increases with temperature by approximately 1.5 g Hence, the increase in heat stress events can be translated into the number of hours with at least 4.5 g per cow and day higher ammonia emissions. With approximately 120 more heat stress days (cf. estimation in Sect. 3.4.1) 540 g per cow and year (which is about 10^6 mg per barn and year) higher ammonia emissions can be expected as a result of the climate change. With around $30 \cdot 10^6$ dairy cattle in Europe this would pile up to additional

annual ammonia emissions from European dairy cattle husbandry of about 16 Gg per year (i.e., approximately 2.9% (550 Gg) of the German, 4.5% (353 Gg) of the Spanish or 0.4% (3624 Gg) of the EU-28 National Emission Ceilings (NEC) target, cf. <https://www.eea.europa.eu>). This implies further impacts as ammonia contributes to the formation of secondary particulate matter, which is relevant with regard to respiratory health issues and the Earth's radiation budget (Lelieveld et al., 2015).

Moreover, ammonia reacts to chemical compounds that lead to acidification of soil and water (Sutton et al., 2013).

Besides ammonia, the emission of greenhouse gases, particularly methane, is a crucial topic. Although its average atmospheric concentration is only a small fraction of that of carbon dioxide (1800 ppb compared to 390 ppm), methane is initially far more harmful (Pachauri et al., 2014). Methane production of ruminants is associated with microbial fermentation of hydrolyzed carbohydrates and influenced by many factors including the ambient temperature (Broucek, 2014). An optimal ambient temperature (i.e., no climatic stress) corresponds to minimal methane emissions from dairy cattle, while each heat stress event is expected to lead to a few grams per livestock unit and hour higher methane emissions (Hempel et al., 2016b). In addition, the higher temperatures will yield a considerable increase of methane emissions from manure (particularly liquid manure) (Amon et al., 2007). The total methane increase implies a positive feedback loop as the increased methane concentration in the atmosphere will contribute to an acceleration of climate change. Based on the expected increase of the number of heat stress events, the impact of heat stress on methane emissions is about 10^6 mg per year per dairy barn (cf. Table 7). With around $30 \cdot 10^6$ dairy cattle in Europe and assuming an average barn size of 200 cattle this corresponds to an increase of approximately 0.15 Gg/year (i.e. on average about 10^{-3} ppb higher methane concentrations).

Table 7. The change in methane release (corresponding to annual emissions) is estimated as the product of the average livestock unit (LU_{avg}) in the barn and the estimated number of additional heat stress events (HSE). A $1 \text{ g LU}^{-1} \text{ h}^{-1}$ higher methane emission during heat stress conditions is assumed (Hempel et al., 2016b). The average livestock unit of the reference barns was estimated as number of animals in the barn times 500 kg divided by the average body weight. Considering a total mass of the earth's atmosphere of approximately $5 \cdot 10^{21} \text{ g}$ this methane release was converted into a concentration increase, neglecting other processes that affect the methane concentration (Trenberth and Smith, 2005).

focus region / reference barn	LU_{avg}	HSE	release [mg]	concentration increase [mg/g]	concentration increase [ppb]
Central Europe maritime	275	200	$55 \cdot 10^6$	$1.1 \cdot 10^{-14}$	$1.1 \cdot 10^{-8}$
Central Europe continental	40	600	$24 \cdot 10^6$	$0.5 \cdot 10^{-14}$	$0.5 \cdot 10^{-8}$
Mediterranean	150	1800	$270 \cdot 10^6$	$5.4 \cdot 10^{-14}$	$5.4 \cdot 10^{-8}$

3.4.3 Welfare impact

Heat stress introduces a couple of physiological impacts as cattle try to adapt themselves by increasing respiration rate (in extreme situation as panting), reducing milk yield and reproductive performance as well as by changing the feeding behavior, decreasing activity and increasing standing time (De Rensis and Scaramuzzi, 2003; West, 2003; Schütz et al., 2008; Dikmen and Hansen, 2009). Behavior, health and productivity provide information to evaluate the welfare.

The respiration rate, measured in breaths per minute (bpm), is particularly valuable to evaluate instantaneous heat stress as it is affected by the ambient conditions with little or no time lag (Pinto et al., 2019a; Galán et al., 2018; Brown-Brandl et al., 2005). While under thermo-neutral conditions the respiration rate ranges from 15 bpm to 36 bpm, high-yielding dairy cattle tend to increase their respiration rate by 27 bpm to 39 bpm if THI increases from $\text{THI} \leq 68$ to $\text{THI} \geq 80$ (i.e., 2-4 bpm per THI unit) (Dirksen et al., 1990; Jackson and Cockcroft, 2008; Pinto et al., 2019b; Berman et al., 1985; Ominski et al., 2002). In consequence, based on our results an increase of approximately 9 bpm (i.e., 25% to 60% relative to the normal respiration rate) can be expected under RCP 8.5 during one tenth of all hours of a year or one fourth of all summer hours in addition to the current situation in the reference barns in our focus regions. The initial response is, however, part of a homeostatic mechanism which includes besides increased respiration rate also increased water intake, increased loss of body fluids due to sweating and panting and reduction in fecal and urinary water losses, reduced feed intake, and increased heart rate during short-term exposure to heat (Kadzere et al., 2002). If the heat stress persists, the muscles of the animal tend to fatigue and the respiration rate tend to decrease again for a short time. Thus, with persisting heat load accumulation, the respiration rate will level off at an intermediate value which can, however, still be considerable above the normal state. These changes promote diseases, such as disorders of the acid-base-budget (alkalosis), which increase the probability for medical treatments and in the long term may negatively affect longevity (West, 2003).

The most common behavioral indicator for heat stress is the time spent standing, where the lying posture is considered as a cow comfort indicator (Galán et al., 2018; Acatincăi et al., 2010; Herbut and Angrecka, 2018). The average daily lying time decreases by approximately 10 to 20 minutes per THI unit under heat stress conditions resulting in an increase of the standing time in the same order of magnitude to improve the wind convection and thus increase the heat dissipation (Cook et al., 2007; Allen et al., 2015; Heinicke et al., 2018). This increased standing time is an effect of aggregated heat stress events and is typically associated with daily averaged THI. Our results imply approximately 120 additional heat stress days with prolonged periods of $\text{THI} \geq 72$ (i.e. nearly 1/3 of the year). At each of those days an approximately 1 h longer standing time can be expected. This significantly contributes to a higher risk of lameness (Cook et al., 2007; Allen et al., 2013).

The changes in the average duration of heat stress events further imply that in the Mediterranean region cattle are potentially under permanent heat stress in summer. Especially during the night, the decrease of the ambient temperature is too low for recovering (Polsky and von Keyserlingk, 2017). Hence, a behavioral adaption in terms of shifting activity towards non-heat stress hours might become impossible. Although short-term adaptation of the physiology of the cows might be supported by the increased duration to some degree, finally, the effect of the daily heat load duration amplifies the effect of the average daily THI up to a point at which the cows can not further adapt their activity changes (Heinicke et al., 2018, 2019). In consequence milk yield is expected to decrease significantly if no additional cooling is provided.

It has to be noted that the dairy husbandry in the Mediterranean region, as well as in countries in Middle-Eastern or in tropical regions, is already faced with extended periods of heat load conditions along the year (Honig et al., 2012; da Costa et al., 2015; Ortiz et al., 2015). The associated reactions to heat stress conditions have a strong genetic component (Broucek et al., 2007; Bernabucci et al., 2014). If climate changes slow enough, dairy herds will genetically adapt by nature to some degree to the elevated temperatures. In addition, most of the hot countries already search actively for adaptation measures to

alleviate the cows' heat stress (cf. Sec. 3.4.4). Those measures include, for example, promoting cross breeds adapted to the heat load conditions (da Costa et al., 2015), and evaporative cooling systems to provide refreshment for the cows, especially during the day when the environment temperature is particularly high (Honig et al., 2012; Ortiz et al., 2015; Pinto et al., 2019a; Broucek et al., 2007). These efforts need to be further intensified in the future.

5 3.4.4 Adaptation options for animal housing

Moderate changes in the heat stress risk can be addressed by short-term measures which optimize the already implemented control mechanisms such as shading, fans, adjustable opening or cow showers and fogging devices (St-Pierre et al., 2003; Galán et al., 2018; Davison et al., 2016; Polsky and von Keyserlingk, 2017; Honig et al., 2012; Anderson et al., 2013; Valtorta and Gallardo, 2004). Depending on the boundary conditions some of those measures may become more suitable than others.

10 If the annual variability of temperature is rather small and the overall heat stress risk is high, such as in Mediterranean regions, open barns can be considered as an adaptation measure. Under such conditions, as in the example of the reference barn Bétera, natural ventilation offers almost no possibility for further adaptation by adjusting the opening configurations. In such buildings, fans and showers or fogging devices have been implemented in the past to alleviate the heat load and enable high milk yields during hot periods (Ortiz et al., 2015; Fournel et al., 2017). The fans can in principle decrease or increase
15 the air speed in the animal occupied zone as they induce a flow that can be aligned or opposed to the naturally induced flow (Anderson et al., 2013). The speed and direction of the fan-induced flow could be optimized via velocity measurements inside the barns. High relative humidity can additionally promote the cooling via the air flow. Similarly, showering and fogging contribute to the reduction of heat stress, particularly under dry weather conditions. If the ambient relative humidity is already high these measures are less efficient, but it has been shown that frequent showering can be still valuable (Honig et al., 2012). In
20 terms of costs and benefits, recurring cooling sessions instead of constant cooling are reasonable, where the number of sessions is an important factor (Pinto et al., 2019c). With increasing temperatures and decreasing humidity (as projected in our study, cf. Fig. 3) frequent showering, as common for example in the Israeli husbandry system, might become more valuable for the Western Mediterranean region.

For the Central European regions, in general the cooling by showering and fogging can be expected to be less efficient
25 than in the Mediterranean region due to the higher relative humidity. However, as hot and dry periods are expected to become more frequent, such devices can still be a valuable investment (Hübener et al.). Smart regulation of the fans and the opening configurations will be, however, even more valuable. The position of curtains and the opening ratio have a crucial impact on the flow pattern and the air speed in the animal occupied zone. It has been shown that the average horizontal velocity in the animal occupied zone could be varied in a range of -4% up to 70% of the incident flow velocity (Yi et al., 2018). This can reduce
30 emissions, because the airflow can be controlled precisely and the overflowing of emission-active surfaces can be minimized. Moreover, the local air exchange rates in the animal occupied zones can be significantly improved.

As a mid-term adaption strategy, a sensor-based control of openings, fans and fogging devices should be implemented, including a smart control of the fogging times governed by the actual relative humidity. Active cooling may involve also the use of tubes for targeted supply of (potentially pre-cooled) air in the animal occupied zone. The speed and orientation of the

mechanical ventilation support (e.g. by fans or tubes) should be regulated automatically based on wind speed measurements in the barn. In addition, further improvement of the roof insulation and the use of cooling pads in the cubicles may reduce the thermal load. The number and timing of the cooling sessions, the operation of the fans or tubes and the control of the curtains should be based on cow-specific indicators such as respiration rate or body temperature. In this context, respiration rate is the more direct indicator, but it is much harder to measure automatically at the moment (Strutzke et al., 2018).

Finally, considering the large probability of highly increasing heat stress risk by the end of the century, the investment in hybrid ventilation systems for cattle husbandry might become valuable. An engineering solution of a precision air supply system with additional mechanical ventilation could provide a better local thermal environment for cows and remove considerably more heat from the animals than state-of-the-art systems, especially under calm conditions (Wang et al., 2018c). Such a system may be combined with smart fogging devices and air flushing systems as well as adjustable opening configurations and a number of fans permitting to switch between natural ventilation, mechanically supported natural ventilation and mechanical ventilation in a smart, automated way.

4 Summary and Conclusions

Our study showed that the annual average temperature significantly increases inside the barns in our focus regions, while the relative humidity showed a decreasing trend and the wind showed no respectively a weak increasing trend. Although decreasing humidity and increasing wind speed in general alleviate the heat load, the elevated temperatures lead to a considerable increase of the heat stress risk reflected by an increase in the number (additionally up to 21% of all hours of a year) and the duration of heat stress events (up to 17 h prolonged). The heat stress risk and the magnitude of subsequent impacts differ regionally due to different offsets and seasonal variability and depending on the assumed radiative forcing and the driving climate model. Nevertheless, considerable socio-economic and environmental impacts must be expected.

For example, we estimated an increase of the respiration rate of up to 60% during one tenth of all hours of a year and up to 1 h prolonged standing times at one third of the days, which promotes health issues and increases the probability of medical treatments. This implies additional costs for the farmers. *At the same time, milk yield was estimated to decrease by about 2.8% relative to the present European milk yield. In consequence, farmers may expect financial losses particularly during the summer season of about 5.4% of the monthly income.* In addition, an increasing demand for emission reduction measures must be expected. We estimated that an emission increase of about 16 Gg ammonia per year and 0.1 Gg methane per year can be expected, implying feedback loops in the climate system which are presently underexplored.

The multiple impacts highlight the urgent need for an adaptation of the husbandry system. The most common approach is the adaptation of housing. For example, short-term measures which optimize the already implemented control mechanisms in dairy cattle buildings such as fans, air flushing systems with active cooling, adjustable openings, cow showers and fogging devices can be valuable. Furthermore, smart and automated control systems based on animal-associated sensors can substantially increase the efficiency of those devices and alleviate the impacts.

Our impact assessment demonstrated the diversity and complexity of climate change impacts on dairy cattle. We estimated the order of magnitude of potential impacts of heat stress in the European dairy cattle husbandry system. However, the presented impacts were estimated based on a variety of simplifications implying that further quantitative studies on the direct and indirect economic, environmental and ethic (i.e. animal welfare aspects) impacts are required. This includes, for example, research on the dependency of ammonia, methane and other pollutant emissions on the ambient conditions (such as air temperature) as well as the building design and management. Moreover, the relation between heat stress induced physiological and behavioral changes, health issues and medical treatments must be investigated in more detail. In addition, scenarios for future adaptation (e.g., breeding, housing, feeding, acclimatization) and future milk yields and milk prices should be further developed and included in forthcoming studies. The same applies to the accumulation of heat stress impacts with increasing duration of heat load and differentiated by heat stress levels (e.g., mild, moderate, severe) and breed.

Our heat stress projections and the subsequent impact assessment were based on several models that involved different levels of uncertainty. The uncertainty analysis revealed knowledge gaps that require further detailed research in the future involving, for example, studies about the refinement of regional climate model projections, particularly with regard to changes in the wind regime. Moreover, feedback loops related to the radiative forcing which are implied by an emission increase with temperature rise should be investigated in-depth. This includes, for example, the accelerated increase of atmospheric methane concentration or ammonia-induced formation of particulate matter. It also involves detailed research on the accuracy and representativeness of measurements of agricultural emissions. Furthermore, in-depth understanding of animal-individual heat stress thresholds dependent on activity and vitality, posture and position instead of herd and barn averaged indices and thresholds is required.

Finally, future research must incorporate the further development and refinement of indoor climate models. This applies to the statistical as well as to dynamical approaches such as Reynolds-averaged Navier-Stokes (RANS), Large Eddy Simulation (LES) and Direct Numerical Simulation (DNS) approaches for naturally ventilated barns. The applicability of statistical models under climate change conditions is per se limited. Hence, a generalization and extrapolation to other regions and climate zones including cross-validation with further measurement data and simulations of dynamical indoor models would be valuable to evaluate possible adaptation and mitigation strategies in future studies.

Data availability. Hempel, Sabrina; Menz, Christoph (2019), "Indoor climate projections for European cattle barns", Mendeley Data, v1, <http://dx.doi.org/10.17632/tjp8h523p7.1>

Appendix A: Table of Nomenclature and Abbreviations

Table A1. Nomenclature and abbreviations used in this manuscript.

GCM	global climate model – general circulation model to describe climate behavior by integrating a variety of fluid dynamical and chemical equations that are derived directly from physical laws or constructed by empirical means
RCM	regional climate model – numeric climate prediction model forced by specified lateral and ocean conditions from a GCM or observation-based dataset that accounts for high-resolution topographical data, land-sea contrasts and surface characteristics
RCP	representative concentration pathway – greenhouse gas concentration trajectory which describe climate futures with a particular radiative forcing values in the year 2100
ReLU	rectified linear unit – activation function in neuronal networks defined as the positive part of its argument
THI	temperature humidity index – empirical model to evaluate the thermal environment as a function of air temperature and humidity
ETIC	equivalent temperature index for cattle – empirical model to evaluate the thermal environment as a function of air temperature, humidity, air speed and radiation
HSE	heat stress events – number of consecutive hours of at least moderate heat stress as defined by a THI- or ETIC-threshold
HSED	heat stress event duration – length of periods of consecutive hours of at least moderate heat stress
HSE	number of heat stress days – amount of days with hours of at least moderate heat stress (approximated by HSE/HSED)
NEC	national emission ceilings – European directive which sets national reduction commitments for pollutants which lead to significant negative impacts on human health and the environment

Author contributions. SH made major contributions to the general setup of the study, the conception of the manuscript, the data analysis and the writing process (original draft, review and editing) in all sections and contributed to the on-farm measurements and data curation.

CM made major contributions to the general setup of the study, the conception of the manuscript, the data curation, the model development and the visualization and contributed to the writing process (original draft, review and editing) in all sections.

SP contributed to the general setup of the study, the on-farm measurements and the writing process (original draft, review and editing) with major contributions on stress indices and welfare impacts.

EG contributed to the general setup of the study and the writing process (original draft, review and editing) with contributions to welfare impacts and adaptation and major contributions on economic impacts.

DJ contributed to the general setup of the study, the on-farm measurements, the data curation and the writing process (original draft, review and editing) with major contributions to adaptation.

FE contributed to the general setup of the study, the on-farm measurements and the writing process (review and editing) with a focus on environmental impacts.

TMS contributed to the general setup of the study, the on-farm measurements and the writing process (review and editing) with a focus on stress indices and welfare impacts.

XW contributed to the writing process (review and editing) with a focus on methods and adaptation.

JH contributed to the on-farm measurements and the writing process (review and editing) with a focus on stress indices and welfare.
 GZ contributed to the general setup of the study and the writing process (review and editing) with a focus on adaptation.
 BA contributed to the general setup of the study and the writing process (review and editing) with a focus on the impacts.
 AdP contributed to the general setup of the study and the writing process (review and editing) with a focus on economics.
 5 TA contributed to the general setup of the study and the writing process (review and editing).

Competing interests. The authors declare that there are no competing interests.

Acknowledgements. This study was conducted in the framework of the OptiBarn project in the FACCE ERANET+ initiative on climate smart agriculture. The research was financially supported by:

- the German Federal Ministry of Food and Agriculture (BMEL) through the Federal Office for Agriculture and Food (BLE), grant
 10 numbers 2814ERA02C and 2814ERA03C
- the Instituto Nacional de Investigación Tecnología Agraria y Alimentaria (INIA) grant number 618105
- the Basque Government through the BERC 2018-2021 program
- the Spanish Ministry of Economy and Competitiveness MINECO through BC3 María de Maeztu excellence accreditation MDM-2017-
 0714
- 15 – the Innovation Foundation Denmark, DK-Grant No. 4215-00004B

Elena Galán is financed by the the grant Juan de la Cierva 2016 (FJCI-2016-30263) from the Spanish Ministry of Economy, Industry and Competitiveness. Agustin del Prado is financed by the programme Ramon y Cajal from the Spanish Ministry of Economy, Industry and Competitiveness (RYC-2017-22143).

We thank Klaus Parr, Detlef May and Ramón Morla for permitting to conduct the on-farm measurements and Carola Franke (LVAT) for
 20 her assistance in managing / scheduling the intensive on-farm measurements in the barn Gross Kreutz.

We further thank Knut Schröter, Ulrich Stollberg and Andreas Reinhardt, technicians at ATB, for supporting the implementation of the on-farm measurements.

We further thank the ReKliEs-De project (funded by German Ministry of Education and Research, grant 01LK1401) team for provide us with the RCM simulations used within this study.

References

- Acatincăi, S., Gavojdian, D., Stanciu, G., Csiszter, L. T., Tripon, I., and Baul, S.: Study Regarding Rumination Behavior in Cattle–Position Adopted by Cows During Rumination Process, *Scientific Papers Animal Science and Biotechnologies*, 43, 199–202, 2010.
- Allen, J., Anderson, S., Collier, R., and Smith, J.: Managing heat stress and its impact on cow behavior, in: 28th Annual Southwest Nutrition and Management Conference, 2013.
- Allen, J., Hall, L., Collier, R., and Smith, J.: Effect of core body temperature, time of day, and climate conditions on behavioral patterns of lactating dairy cows experiencing mild to moderate heat stress, *Journal of dairy science*, 98, 118–127, 2015.
- Amon, B., Kryvoruchko, V., Fröhlich, M., Amon, T., Pöllinger, A., Mösenbacher, I., and Hausleitner, A.: Ammonia and greenhouse gas emissions from a straw flow system for fattening pigs: Housing and manure storage, *Livestock Science*, 112, 199–207, 2007.
- Anderson, S., Bradford, B., Harner, J., Tucker, C., Choi, C., Allen, J., Hall, L., Rungruang, S., Collier, R., and Smith, J.: Effects of adjustable and stationary fans with misters on core body temperature and lying behavior of lactating dairy cows in a semiarid climate, *Journal of dairy science*, 96, 4738–4750, 2013.
- Angrecka, S., Herbut, P., et al.: Conditions for cold stress development in dairy cattle kept in free stall barn during severe frosts, *Czech Journal of Animal Science*, 60, 81–87, 2015.
- Bailey, K., Jones, C., and Heinrichs, A.: Economic returns to Holstein and Jersey herds under multiple component pricing, *Journal of dairy science*, 88, 2269–2280, 2005.
- Berman, A.: Estimates of heat stress relief needs for Holstein dairy cows 1, *Journal of animal science*, 83, 1377–1384, 2005.
- Berman, A., Folman, Y., Kaim, M., Mamen, M., Herz, Z., Wolfenson, D., Arieli, A., and Graber, Y.: Upper critical temperatures and forced ventilation effects for high-yielding dairy cows in a subtropical climate, *Journal of Dairy Science*, 68, 1488–1495, 1985.
- Bernabucci, U., Biffani, S., Buggiotti, L., Vitali, A., Lacetera, N., and Nardone, A.: The effects of heat stress in Italian Holstein dairy cattle, *Journal of dairy science*, 97, 471–486, 2014.
- Bianca, W.: Relative importance of dry- and wet-bulb temperatures in causing heat stress in cattle, *Nature*, 195, 251–252, 1962.
- Bohmanova, J., Misztal, I., and Cole, J.: Temperature-humidity indices as indicators of milk production losses due to heat stress, *Journal of dairy science*, 90, 1947–1956, 2007.
- Bouraoui, R., Lahmar, M., Majdoub, A., Djemali, M., and Belyea, R.: The relationship of temperature-humidity index with milk production of dairy cows in a Mediterranean climate, *Animal Research*, 51, 479–491, 2002.
- Broucek, J.: Production of methane emissions from ruminant husbandry: a review, *Journal of Environmental Protection*, 5, 1482, 2014.
- Brouček, J., Letkovičová, M., and Kovalčuj, K.: Estimation of cold stress effect on dairy cows, *International journal of biometeorology*, 35, 29–32, 1991.
- Broucek, J., Ryba, S., Mihina, S., Uhrincat, M., and Kisac, P.: Impact of thermal-humidity index on milk yield under conditions of different dairy management, *Journal of Animal and Feed Sciences*, 16, 329, 2007.
- Brown-Brandl, T., Eigenberg, R., Nienaber, J., and Hahn, G. L.: Dynamic response indicators of heat stress in shaded and non-shaded feedlot cattle, Part 1: Analyses of indicators, *Biosystems engineering*, 90, 451–462, 2005.
- Brügemann, K., Gernand, E., König von Borstel, U., and König, S.: Defining and evaluating heat stress thresholds in different dairy cow production systems, *Archives Animal Breeding*, 55, 13–24, 2012.
- Cannon, A. J.: Multivariate quantile mapping bias correction: an N-dimensional probability density function transform for climate model simulations of multiple variables, *Climate Dynamics*, 50, 31–49, <https://doi.org/10.1007/s00382-017-3580-6>, 2018.

- Carabano, M.-J., Logar, B., Bormann, J., Minet, J., Vanrobays, M.-L., Diaz, C., Tychon, B., Gengler, N., and Hammami, H.: Modeling heat stress under different environmental conditions, *Journal of dairy science*, 99, 3798–3814, 2016.
- Christensen, J., Hewitson, B., Busuioc, A., Chen, A., Gao, X., Held, I., Jones, R., Kolli, R., Kwon, W.-T., Laprise, R., Magaña Rueda, V., Mearns, L., Menéndez, C., Räisänen, J., Rinke, A., Sarr, A., and Whetton, P.: Regional Climate Projections, in: *IPCC Climate Change 2007: The Physical Science Basis*, edited by Solomon, S., Qin, D., Manning, M., Chen, Z., Marquis, M., Averyt, K., Tignor, M., and Miller, H., Cambridge University Press, Cambridge, United Kingdom and New York, NY, USA, 2007.
- Collier, R. J., Hall, L. W., Rungruang, S., and Zimbleman, R. B.: Quantifying heat stress and its impact on metabolism and performance, *Department of Animal Sciences University of Arizona*, p. 68, 2012.
- Cook, N., Mentink, R., Bennett, T., and Burgi, K.: The effect of heat stress and lameness on time budgets of lactating dairy cows, *Journal of Dairy Science*, 90, 1674–1682, 2007.
- Curtis, A., Scharf, B., Eichen, P., and Spiers, D.: Relationships between ambient conditions, thermal status, and feed intake of cattle during summer heat stress with access to shade, *Journal of thermal biology*, 63, 104–111, 2017.
- da Costa, A. N. L., Feitosa, J. V., Montezuma, P. A., de Souza, P. T., and de Araújo, A. A.: Rectal temperatures, respiratory rates, production, and reproduction performances of crossbred Girolando cows under heat stress in northeastern Brazil, *International journal of biometeorology*, 59, 1647–1653, 2015.
- Da Silva, R. G., Maia, A. S. C., and de Macedo Costa, L. L.: Index of thermal stress for cows (ITSC) under high solar radiation in tropical environments, *International journal of biometeorology*, 59, 551–559, 2015.
- Davison, T., Jonsson, N., Mayer, D., Gaughan, J., Ehrlich, W., and McGowan, M.: Comparison of the impact of six heat-load management strategies on thermal responses and milk production of feed-pad and pasture fed dairy cows in a subtropical environment, *International journal of biometeorology*, 60, 1961–1968, 2016.
- De Rensis, F. and Scaramuzzi, R. J.: Heat stress and seasonal effects on reproduction in the dairy cow — a review, *Theriogenology*, 60, 1139–1151, 2003.
- De Rensis, F., Garcia-Ispuerto, I., and López-Gatius, F.: Seasonal heat stress: Clinical implications and hormone treatments for the fertility of dairy cows, *Theriogenology*, 84, 659–666, 2015.
- Del Prado, A., Scholefield, D., Chadwick, D., Misselbrook, T., Haygarth, P., Hopkins, A., Dewhurst, R., Davison, P., Lord, E., Turner, M., et al.: A modelling framework to identify new integrated dairy production systems, in: *EGF: 21st General Meeting on “Sustainable Grassland Productivity”*, Badajoz, Spain, 2006.
- Diepen, C. v., Wolf, J., Keulen, H. v., and Rappoldt, C.: WOFOST: a simulation model of crop production, *Soil use and management*, 5, 16–24, 1989.
- Dikmen, S. and Hansen, P.: Is the temperature-humidity index the best indicator of heat stress in lactating dairy cows in a subtropical environment?, *Journal of dairy science*, 92, 109–116, 2009.
- Dirksen, G., Gründer, H., Stöber, M., Grunert, E., Krause, D., et al.: *Clinical examination of cattle*, Verlag Paul Parey, Berlin, ed. 3., 1990.
- Dosio, A.: Projections of climate change indices of temperature and precipitation from an ensemble of bias-adjusted high-resolution EURO-CORDEX regional climate models, *Journal of Geophysical Research: Atmospheres*, 121, 5488–5511, 2016.
- Efron, B.: Bootstrap Methods: Another Look at the Jackknife, *The Annals of Statistics*, 7, 1–26, <https://doi.org/10.1214/aos/1176344552>, 1979.
- Efron, B. and Tibshirani, R.: Bootstrap Methods for Standard Errors, Confidence Intervals, and Other Measures of Statistical Accuracy, *Statistical Science*, 1, 54–75(22), <https://doi.org/10.1214/ss/1177013815>, 1986.

- European Commission - EU FADN: EU Dairy Farms Report Based on 2016 FADN Data, https://ec.europa.eu/agriculture/fadn_en, 2018.
- Fiedler, A., Fischer, J., Hempel, S., Saha, C., Loebstin, C., Berg, W., Amon, B., Brunsch, R., and Amon, T.: Flow fields within a dairy barn - Measurements, physical modelling and numerical simulation, in: *Proceedings of the International Conference of Agricultural Engineering AgEng*, pp. 1–5, Zürich, 2014.
- Food and Agriculture Organization of the United Nations (FAO): The Impact of Disasters on Agriculture – Assessing the information gap, <http://www.fao.org/3/a-i7279e.pdf>, 2017.
- Ford, B.: An Overview of Hot-Deck Procedures, in: *Incomplete Data in Sample Surveys: Theory and Bibliographies*, edited by Madow, W., Olkin, I., and Rubin, D., Academic Press, 1983.
- Fournel, S., Ouellet, V., and Charbonneau, É.: Practices for alleviating heat stress of dairy cows in humid continental climates: a literature review, *Animals*, 7, 37, 2017.
- Galán, E., Llonch, P., Villagrà, A., Levit, H., Pinto, S., and del Prado, A.: A systematic review of non-productivity-related animal-based indicators of heat stress resilience in dairy cattle, *PloS one*, 13, e0206520, 2018.
- Gaughan, J., Mader, T. L., Holt, S., and Lisle, A.: A new heat load index for feedlot cattle, *Journal of Animal Science*, 86, 226–234, 2008.
- Gebremedhin, K. and Wu, B.: Simulation of flow field of a ventilated and occupied animal space with different inlet and outlet conditions, *Journal of Thermal Biology*, 30, 343–353, 2005.
- Giorgi, F. and Gutowski Jr, W. J.: Regional dynamical downscaling and the CORDEX initiative, *Annual Review of Environment and Resources*, 40, 467–490, 2015.
- Groenestein, C., Hutchings, N., Haenel, H., Amon, B., Menzi, H., Mikkelsen, M., Misselbrook, T., van Bruggen, C., Kupper, T., and Webb, J.: Comparison of ammonia emissions related to nitrogen use efficiency of livestock production in Europe, *Journal of Cleaner Production*, 211, 1162–1170, 2019.
- Gurney, K.: *An Introduction to Neural Networks*, Taylor & Francis, 1997.
- Hahn, G.: Dynamic responses of cattle to thermal heat loads, *Journal of Animal Science*, 77, 10–20, 1999.
- Hammami, H., Carabaño, M.-J., Logar, B., Vanrobays, M.-L., and Gengler, N.: Genotype x Climate interactions for protein yield using four European Holstein Populations, in: *Proceedings of 10th World Congress of Genetics Applied to Livestock Production*, 2014.
- Heaton, J.: *Artificial Intelligence for Humans, Volume 3: Deep Learning and Neural Networks*, Artificial Intelligence for Humans Series, CreateSpace Independent Publishing Platform, 2015.
- Heinicke, J., Hoffmann, G., Ammon, C., Amon, B., and Amon, T.: Effects of the daily heat load duration exceeding determined heat load thresholds on activity traits of lactating dairy cows, *Journal of thermal biology*, 77, 67–74, 2018.
- Heinicke, J., Ibscher, S., Belik, V., and Amon, T.: Cow individual activity response to the accumulation of heat load duration, *Journal of Thermal Biology*, 2019.
- Hempel, S., Frieler, K., Warszawski, L., Schewe, J., and Piontek, F.: A trend-preserving bias correction—the ISI-MIP approach, *Earth System Dynamics*, 4, 219–236, 2013.
- Hempel, S., Wiedemann, L. and Ammon, C., Fiedler, A., Saha, C. and Janke, D. L. C., Fischer, J., Amon, B., Hoffmann, G., Menz, C., Zhang, G. and Halachmi, I., Del Prado, A., Estelles, F., Berg, W., Brunsch, R., and Amon, T.: Determine the flow characteristics of naturally ventilated dairy barns to optimize barn climate, in: *12. Tagung: Bau, Technik und Umwelt 2015 in der landwirtschaftlichen Nutztierhaltung*, pp. 346–351, KTBL, Darmstadt, 2015a.
- Hempel, S., Wiedemann, L., Ammon, C., Fiedler, M., Saha, C., Loebstin, C., Fischer, J., Berg, W., Brunsch, R., and Amon, T.: Assessment of the through-flow patterns in naturally ventilated dairy barns – Three methods, one complex approach, in: *RAMIRAN 2015 – Rural-Urban*

- Symbiosis, edited by Körner, I., TC-O_16, pp. 356–359, TUTech Verlag, Hamburg, Germany, Hamburg University of Technology, Germany, e-book, 2015b.
- Hempel, S., Janke, D., König, M., Menz, C., Englisch, A., Pinto, S., Sibony, V., Halachmi, I., Rong, L., Zong, C., et al.: Integrated modelling to assess optimisation potentials for cattle housing climate, *Advances in Animal Biosciences*, 7, 261, 2016a.
- 5Hempel, S., Saha, C. K., Fiedler, M., Berg, W., Hansen, C., Amon, B., and Amon, T.: Non-linear temperature dependency of ammonia and methane emissions from a naturally ventilated dairy barn, *Biosystems Engineering*, 145, 10–21, 2016b.
- Hempel, S., König, M., Menz, C., Janke, D., Amon, B., Banhazi, T. M., Estellés, F., and Amon, T.: Uncertainty in the measurement of indoor temperature and humidity in naturally ventilated dairy buildings as influenced by measurement technique and data variability, *Biosystems Engineering*, 166, 58–75, 2018.
- 10Hempel, S. et al.: Report on FACCE-JPI valorisation meeting, https://www.faccejpi.com/content/download/5161/48933/version/1/file/FACCE-JPI_Synthesis-valorisation-survey-results-FINAL.pdf, 2017a.
- Hempel, S. et al.: Report on ERANET+ mid-term meeting, https://www.faccejpi.com/content/download/5163/48955/version/2/file/Projects+booklet_updated+08+May+2017.pdf, 2017b.
- Hempel, S. et al.: Report on ERANET+ mid-term meeting, https://www.faccejpi.com/content/download/5295/50720/version/1/file/OptiBarn_15_presentation_ERA_NET+final+meeting+March18%5B1%5D.pdf, 2017c.
- Herbut, P. and Angrecka, S.: Relationship between THI level and dairy cows' behaviour during summer period, *Italian Journal of Animal Science*, 17, 226–233, 2018.
- Herbut, P., Angrecka, S., Nawalany, G., and Adamczyk, K.: Spatial and temporal distribution of temperature, relative humidity and air velocity in a parallel milking parlour during summer period, *Annals of Animal Science*, 15, 517–526, 2015.
- 20Hoffmann, I.: Climate change and the characterization, breeding and conservation of animal genetic resources, *Animal genetics*, 41, 32–46, 2010.
- Honig, H., Miron, J., Lehrer, H., Jackoby, S., Zachut, M., Zinou, A., Portnick, Y., and Moallem, U.: Performance and welfare of high-yielding dairy cows subjected to 5 or 8 cooling sessions daily under hot and humid climate, *Journal of dairy science*, 95, 3736–3742, 2012.
- Hübener, H., Bülow, K., Fooker, C., Früh, B., Hoffmann, P., Höpp, S., Keuler, K., Menz, C., Mohr, V., Radtke, K., Ramthun, H., Spekat, A., 25 Steger, C., Toussaint, F., Warrach-Sagi, K., and Woldt, M.: Tech. rep.
- Hutchings, N., Sommer, S. G., and Jarvis, S.: A model of ammonia volatilization from a grazing livestock farm, *Atmospheric Environment*, 30, 589–599, 1996.
- Jackson, P. and Cockcroft, P.: Clinical examination of farm animals, John Wiley & Sons, 2008.
- Kadzere, C., Murphy, M., Silanikove, N., and Maltz, E.: Heat stress in lactating dairy cows: a review, *Livestock Science*, 77, 59–91, 2002.
- 30Kafle, G. K., Joo, H., and Ndegwa, P. M.: Sampling Duration and Frequency for Determining Emission Rates from Naturally Ventilated Dairy Barns, 2018.
- Kendall, P., Nielsen, P., Webster, J., Verkerk, G., Littlejohn, R., and Matthews, L.: The effects of providing shade to lactating dairy cows in a temperate climate, *Livestock Science*, 103, 148–157, 2006.
- Kjellström, E., Nikulin, G., Strandberg, G., Christensen, O. B., Jacob, D., Keuler, K., Lenderink, G., van Meijgaard, E., Schär, C., Somot, S., 35 et al.: European climate change at global mean temperature increases of 1.5 and 2° C above pre-industrial conditions as simulated by the EURO-CORDEX regional climate models, *Earth System Dynamics*, 9, 459, 2018.
- Kurukulasuriya, P. and Rosenthal, S.: Climate change and agriculture: A review of impacts and adaptations, 2013.
- Lees, J., Lees, A., and Gaughan, J.: Developing a heat load index for lactating dairy cows, *Animal Production Science*, 2018.

- Lelieveld, J., Evans, J. S., Fnais, M., Giannadaki, D., and Pozzer, A.: The contribution of outdoor air pollution sources to premature mortality on a global scale, *Nature*, 525, 367, 2015.
- Mader, T., Johnson, L., and Gaughan, J.: A comprehensive index for assessing environmental stress in animals, *Journal of Animal Science*, 88, 2153–2165, 2010.
- 5Mader, T. L., Davis, M., and Brown-Brandl, T.: Environmental factors influencing heat stress in feedlot cattle, *Journal of Animal Science*, 84, 712–719, 2006.
- Mendes, L. B., Edouard, N., Ogink, N. W., Van Dooren, H. J. C., Ilda de Fátima, F. T., and Mosquera, J.: Spatial variability of mixing ratios of ammonia and tracer gases in a naturally ventilated dairy cow barn, *biosystems engineering*, 129, 360–369, 2015.
- Monteny, G., Groenestein, C., and Hilhorst, M.: Interactions and coupling between emissions of methane and nitrous oxide from animal husbandry, *Nutrient Cycling in Agroecosystems*, 60, 123–132, 2001.
- 10 Nardone, A., Ronchi, B., Lacetera, N., Ranieri, M. S., and Bernabucci, U.: Effects of climate changes on animal production and sustainability of livestock systems, *Livestock Science*, 130, 57–69, 2010.
- NRC: A guide to environmental research on animals, National Academy of Science, Washington, DC, 1971.
- Olesen, J. E. and Bindi, M.: Consequences of climate change for European agricultural productivity, land use and policy, *European journal of agronomy*, 16, 239–262, 2002.
- 15 Ominski, K., Kennedy, A., Wittenberg, K., and Nia, S. M.: Physiological and production responses to feeding schedule in lactating dairy cows exposed to short-term, moderate heat stress, *Journal of Dairy Science*, 85, 730–737, 2002.
- Ortiz, X., Smith, J., Rojano, F., Choi, C., Bruer, J., Steele, T., Schuring, N., Allen, J., and Collier, R.: Evaluation of conductive cooling of lactating dairy cows under controlled environmental conditions, *Journal of dairy science*, 98, 1759–1771, 2015.
- 20 Pachauri, R. K., Allen, M. R., Barros, V. R., Broome, J., Cramer, W., Christ, R., Church, J. A., Clarke, L., Dahe, Q., Dasgupta, P., et al.: Climate change 2014: synthesis report. Contribution of Working Groups I, II and III to the fifth assessment report of the Intergovernmental Panel on Climate Change, IPCC, 2014.
- Pedersen, S. and Sällvik, K.: Climatization of animal houses. Heat and moisture production at animal and house levels, Research Centre Bygholm, Danish Institute of Agricultural Sciences, 2002.
- 25 Pinto, S. and Levit, H., Müschner-Siemens, T., Hoffmann, G., Ammon, C., Halachmi, I., Heuwieser, W., and Amon, T.: Influence of evaporative cooling on respiration rate of lactating cows under hot climate conditions, in: *New Engineering Concepts for Valued Agriculture*. European Conference of Agricultural Engineering EurAgEng 2018, pp. 808–812, Wageningen, 2019a.
- Pinto, S., Hoffmann, G., Ammon, C., Amon, B., Heuwieser, W., Halachmi, I., Banhazi, T., and Amon, T.: Influence of barn climate, body postures and milk yield on the respiration rate of dairy cows, *Annals of Animal Science*, 19, 469–481, 2019b.
- 30 Pinto, S., Hoffmann, G., Ammon, C., Heuwieser, W., Levit, H., Halachmi, I., and Amon, T.: Effect of two cooling frequencies on respiration rate in lactating dairy cows under hot and humid climate conditions, *Annals of Animal Science*, 1, 2019c.
- Polisky, L. and von Keyserlingk, M. A.: Invited review: Effects of heat stress on dairy cattle welfare, *Journal of dairy science*, 100, 8645–8657, 2017.
- Queiroz, M. P. G., Naas, I. d. A., and Sampaio, C. A. d. P.: Estimating thermal comfort for piglets considering ammonia concentration, *E-journal* 35 - CIGR, 2005.
- Ravagnolo, O. and Misztal, I.: Genetic component of heat stress in dairy cattle, parameter estimation, *Journal of dairy science*, 83, 2126–2130, 2000.

- Rushen, J., Munksgaard, L., Marnet, P., and DePassillé, A.: Human contact and the effects of acute stress on cows at milking, *Applied animal behaviour science*, 73, 1–14, 2001.
- Sajeev, E. P. M., Amon, B., Ammon, C., Zollitsch, W., and Winiwarter, W.: Evaluating the potential of dietary crude protein manipulation in reducing ammonia emissions from cattle and pig manure: A meta-analysis, *Nutrient Cycling in Agroecosystems*, 110, 161–175, 2018.
- 5Samer, M., Fiedler, M., Müller, H.-J., Gläser, M., Ammon, C., Berg, W., Sanftleben, P., and Brunsch, R.: Winter measurements of air exchange rates using tracer gas technique and quantification of gaseous emissions from a naturally ventilated dairy barn, *Applied engineering in agriculture*, 27, 1015–1025, 2011.
- Sanchis, E., Calvet, S., del Prado, A., and Estellés, F.: A meta-analysis of environmental factor effects on ammonia emissions from dairy cattle houses, *Biosystems Engineering*, 178, 176–183, 2019.
- 10Schüller, L.-K.: Influence of heat stress on the reproductive performance of dairy cows in the moderate climate of the temperate latitude, Ph.D. thesis, Free University of Berlin, 2015.
- Schütz, K. E., Cox, N. R., and Matthews, L. R.: How important is shade to dairy cattle? Choice between shade or lying following different levels of lying deprivation, *Applied animal behaviour science*, 114, 307–318, 2008.
- Segnalini, M., Bernabucci, U., Vitali, A., Nardone, A., and Lacetera, N.: Temperature humidity index scenarios in the Mediterranean basin, *International journal of biometeorology*, 57, 451–458, 2013.
- 15Spiers, D., Spain, J., Sampson, J., and Rhoads, R.: Use of physiological parameters to predict milk yield and feed intake in heat-stressed dairy cows, *Journal of Thermal Biology*, 29, 759–764, 2004.
- Srivastava, N., Hinton, G., Krizhevsky, A., Sutskever, I., and Salakhutdinov, R.: Dropout: A Simple Way to Prevent Neural Networks from Overfitting, *Journal of Machine Learning Research*, 15, 1929–1958, <http://jmlr.org/papers/v15/srivastava14a.html>, 2014.
- 20St-Pierre, N., Cobanov, B., and Schnitkey, G.: Economic losses from heat stress by US livestock industries¹, *Journal of dairy science*, 86, E52–E77, 2003.
- Steinfeld, H., Mooney, H. A., Schneider, F., and Neville, L. E.: *Livestock in a changing landscape, volume 1: drivers, consequences, and responses*, Island Press, 2013.
- Strutzke, S., Fiske, D., Hoffmann, G., Ammon, C., Heuwieser, W., and Amon, T.: Development of a noninvasive respiration rate sensor for
25 cattle, *Journal of dairy science*, 2018.
- Sutton, M., Bleeker, A., Howard, C., Bekunda, M., Grizzetti, B., de Vries, W., van Grinsven, H., Abrol, Y., Adhya, T., Billen, G., Davidson, E., Datta, A., Diaz, R., Erisman, J., Liu, X., Oenema, O., Palm, C., Raghuram, N., Reis, S., Scholz, R., Sims, T., Westhoek, H., and Zhang, F.: Our Nutrient World: the challenge to produce more food and energy with less pollution, NERC/Centre for Ecology Hydrology, Edinburgh, <http://nora.nerc.ac.uk/id/eprint/500700>, 2013.
- 30Trenberth, K. E. and Smith, L.: The Mass of the Atmosphere: A Constraint on Global Analyses, *Journal of Climate*, 18, 864–875, <https://doi.org/10.1175/JCLI-3299.1>, 2005.
- Valtorta, S. E. and Gallardo, M. R.: Evaporative cooling for Holstein dairy cows under grazing conditions, *International journal of biometeorology*, 48, 213–217, 2004.
- van Oldenborgh, G., Collins, M., Arblaster, J., Christensen, J.H. andMarotzke, J., Power, S., Rummukainen, M., and Zhou, T.: Annex I: Atlas
35 of Global and Regional Climate Projections, in: *Climate Change 2013: The Physical Science Basis*, edited by Stocker, T., Qin, D., Plattner, G.-K., Tignor, M., Allen, S., Boschung, J., Nauels, A., Xia, Y., Bex, V., and Midgley, P., Cambridge University Press, Cambridge, United Kingdom and New York, NY, USA, 2013.

- Vitt, R., Weber, L., Zollitsch, W., Hörtenhuber, S. J., Baumgartner, J., Niebuhr, K., Piringer, M., Anders, I., Andre, K., Hennig-Pauka, I., et al.: Modelled performance of energy saving air treatment devices to mitigate heat stress for confined livestock buildings in Central Europe, *Biosystems Engineering*, 164, 85–97, 2017.
- Wang, X., Ndegwa, P. M., Joo, H., Neerackal, G. M., Stöckle, C. O., Liu, H., and Harrison, J. H.: Indirect method versus direct method for
5 measuring ventilation rates in naturally ventilated dairy houses, *biosystems engineering*, 144, 13–25, 2016.
- Wang, X., Gao, H., Gebremedhin, K. G., Bjerg, B. S., Van Os, J., Tucker, C. B., and Zhang, G.: Corrigendum to “A predictive model of equivalent temperature index for dairy cattle (ETIC)”, *Journal of Thermal Biology*, pp. 165—170, 2018a.
- Wang, X., Gao, H., Gebremedhin, K. G., Bjerg, B. S., Van Os, J., Tucker, C. B., and Zhang, G.: A predictive model of equivalent temperature index for dairy cattle (ETIC), *Journal of Thermal Biology*, 2018b.
- 10 Wang, X., Zhang, G., and Choi, C. Y.: Evaluation of a precision air-supply system in naturally ventilated freestall dairy barns, *Biosystems Engineering*, 175, 1–15, 2018c.
- Warszawski, L., Frieler, K., Huber, V., Piontek, F., Serdeczny, O., and Schewe, J.: The inter-sectoral impact model intercomparison project (ISI-MIP): project framework, *Proceedings of the National Academy of Sciences*, 111, 3228–3232, 2014.
- Werbos, P. J.: *Beyond Regression: New Tools for Prediction and Analysis in the Behavioral Sciences*, Ph.D. thesis, Harvard University, 1974.
- 15 West, J.: Effects of heat-stress on production in dairy cattle, *Journal of dairy science*, 86, 2131–2144, 2003.
- Williams, J., Jones, C., Kiniry, J., and Spanel, D. A.: The EPIC crop growth model, *Transactions of the ASAE*, 32, 497–0511, 1989.
- WMO: WMO Statement on the state of the global climate in 2017, in: WMO-No.1212, edited by Publications Board World Meteorological Organization (WMO) , World Meteorological Organization, CH-1211 Geneva 2, Switzerland, 2018.
- Wu, W., Zhai, J., Zhang, G., and Nielsen, P. V.: Evaluation of methods for determining air exchange rate in a naturally ventilated dairy cattle
20 building with large openings using computational fluid dynamics (CFD), *Atmospheric Environment*, 63, 179–188, 2012.
- Yi, Q., König, M., Janke, D., Hempel, S., Zhang, G., Amon, B., and Amon, T.: Wind tunnel investigations of sidewall opening effects on indoor airflows of a cross-ventilated dairy building, *Energy and Buildings*, 175, 163–172, 2018.