

Reply to the Editor Report

Hanna Paulsen and Co-authors

November 2018

Dear Michel Crucifix,

thank you for your positive feedback and for pointing out the additional editorial issues. We followed all of your suggestions and modified the respective text passages in the manuscript:

- We omit the expression "It has to be noted that..." on page 5 and 6 in the manuscript.
- We replaced the expression "anomalies larger than 90% significance (Student's t-test)" by "statistically significant anomalies at the 90% confidence level (Student's t-test)" (page 8 line 23, captions of Figures 2,5,6,7).
- We replaced the symbol " \sim " by "approx."

Furthermore, we included all changes that were listed in the replies to the Reviewers (see AC1-AC4) in the final manuscript. We hope that all changes are to your satisfaction.

Yours sincerely,

Hanna Paulsen and Co-authors

Light absorption by marine cyanobacteria affects tropical climate mean state and variability

Reply to Reviewer 1

Hanna Paulsen and Co-authors

November 2018

We thank the reviewer for the positive feedback and for the helpful and constructive comments. A point-to-point reply is given below. The referee's comments are in red color, and our reply in black color.

Summary: This manuscript presents a sensitivity study of the effects of including a biophysical feedback of general phytoplankton and cyanobacteria light attenuation in an earth system model. With respect to cyanobacteria, the authors find a significant effect on tropical general circulation that opposes the prevailing understanding based on observations and regional modelling. Biophysical feedbacks are typically ignored in ocean modelling, thus this manuscript advances our understanding of potential deficits in the state of the science. The science is of a high quality and is suitable for publication in ESD. The language needs editing but I have no major concerns about this study.

General Comments: The positive buoyancy of cyanobacteria in the model is novel, as far as I am aware, and deserves more discussion. If a high concentration of cyanobacteria warms the local water (or produces a cooling via advection), this should also change the surface density. I assume the cyanobacteria buoyancy then adjusts, but are there upper or lower limits to this? If limits are imposed, is there an implication for the model results?

In the model, we assume a constant rising velocity of 1 m d^{-1} . Thus, density changes of the surrounding water do not feed back on the buoyancy of cyanobacteria. The vertical movement of cyanobacteria is not well constrained, and observations range from a negative buoyancy (sinking) to a rising velocity of about 260 m d^{-1} (Walsby, 1978; Villareal and Carpenter, 2003; Guidi et al., 2012). The aim of prescribing a positive rising velocity (instead of a neutral buoyancy as prescribed for bulk phytoplankton) is to simulate accumulations of cyanobacteria biomass at the surface (representing surface blooms). In Paulsen et al. (2017), we did sensitivity experiments with varying rising velocities (ranging from 0 to 50 m d^{-1}). We found the largest sensitivity between 0 m d^{-1} and 1 m d^{-1} . Already a value of 1 m d^{-1} counteracts the downward mixing and leads to a major fraction of biomass in the first model layer. As higher rising velocities give only slightly different results, we decided to take a value of 1 m d^{-1} , analogous to Sonntag (2013).

Specific Comments:

Abstract: Please add a sentence explaining the reason for the apparent disagreement

between your model results (cooling effect) and observations (heating effect).

Observations rather represent snapshots of local heating events. In the model, we also find a local increase in SST on short timescales in times of high cyanobacteria concentrations. On larger timescales, however, the cooling due to the upwelling of cooler subsurface water outweighs the local warming effect in largest areas. The focus of this paper is on these global effects on climatological timescales which leads to the apparent disagreement between the observed local heating and the simulated cooling. We slightly modified the sentences in the abstract, so that the difference between observations (short time scales) and presented model results (climatological timescales) is made more clear.

Page 2, line 14-16. Not quite true, see Dutkiewicz et al. (2015) Biogeosciences and references contained within. I'm not sure how many of these include bio-physical feedback however.

The study of Dutkiewicz et al. (2015) explicitly includes the effect of several optically important water constituents (amongst others different phytoplankton functional types) to resolve the penetration of spectral irradiance. The study, however, does not include the feedback from phytoplankton light absorption on temperature, but only investigates the effects of different light attenuation formulations on ocean biogeochemistry. In the respective text passage in our manuscript we emphasize that to our knowledge there is no study that differentiates between different phytoplankton types and investigates their contribution to the feedback on physics. We modified the text in the manuscript to make this more clear to the reader (page 2 lines 14-16).

Page 18 line 16. The model has short time steps. Does it produce temporary local heating? And please mention whether there has been observed subsurface cooling associated with the localized warming.

The increased light absorption due to the presence of cyanobacteria always leads to a relative local heating of the surface water. If the net effect is, however, a warming or a cooling depends on which of the two processes – the warming or the cooling due to upwelling and transport of cooler subsurface water – dominates. On short timescales, we indeed see the local heating effect which takes place in times of high cyanobacteria concentrations. On climatological timescale, the timescale we focus on in this study, the surface cooling prevails in largest areas. There are, however, some limited regions, such as the eastern tropical Atlantic and Pacific, with a positive SST anomaly on the climatological mean (as described in the manuscript, page 10, lines 16-20).

The observations focused on the surface ocean (Kahru et al., 1993; Capone et al., 1998; Wurl et al., 2018). The respective studies only reported a surface heating effect and do not mention the effect on the subsurface. It is probably difficult to attribute measured subsurface anomalies to the impact of cyanobacteria light absorption due to other processes acting at the same time.

Technical Corrections:

We thank the reviewer for the detailed corrections of the language. We changed everything as recommended. In the following, we only list the points that require additional commenting by the authors.

Page 2 line 19: edit to "to particularly affect", and insert the relevant regions associated with each study for clarity.

We edited the formulation (page 2 lines 18-19). All mentioned studies, however, focus on similar regions. So, it is not necessary to separate between the studies.

Page 3 line 18: So there is a single shortwave radiation value at each latitude per day? This should be made clearer.

As we are using a fully coupled Earth system model, incoming shortwave radiation that enters the ocean depends on regionally varying factors, such as cloud conditions. It is, however, correct that the atmospheric model is coupled to the ocean model once per day, that means there is no diurnal cycle in the incoming radiation. We added this in the manuscript (page 4 line 10).

Page 4 line 1: What other models include positive buoyancy in some phytoplankton types? This should be addressed by one sentence in the Introduction.

The studies which are given as references in the manuscript (Hense, 2007; Sonntag and Hense, 2011; Sonntag, 2013), use an idealized biogeochemical model which includes positive buoyancy of cyanobacteria. It is applied in an one-dimensional as well as three dimensional setup of the North Atlantic, and the Baltic Sea, respectively. We already mention in the Introduction that these studies include the positive buoyancy of cyanobacteria (page 2 line 9). To our knowledge there is no global model that includes positive buoyancy of phytoplankton types. We modified the respective text passage in the Introduction to make clear, that we refer to global model studies in this context (page 2 line 16).

Page 4 Equation 1: There is no light attenuation by sea ice? Are the parameter values also adopted from Zielinski et al (2002) or were they tuned for MPI-ESM according to some criteria?

Light is not able to penetrate through sea ice in the model. Equation 1 refers to ice-free regions of the ocean.

Yes, the parameter values for light attenuation are adopted from Zielinski et al. (2002). We added one sentence in the manuscript (page 4 lines 15-16).

Page 6 line 29: remove "probably somewhat"

In the eastern tropical Pacific, there are no observations of cyanobacteria biomass and N_2 fixation available. The statement that the model overestimates biomass and N_2 fixation rates is only based on the fact, that the dust deposition is overestimated in this region (Paulsen et al., 2017). We reformulated the sentence to make this more clear (page 6 lines 27-29): "In the eastern tropical Pacific, on the other hand, concentrations and fixation rates are high, but the lack of observational data does not allow for a proper assessment."

Page 8 line 7: really? My impression from Page 6 line 25 and Page 7 is the top layer is 22 m thick.

The first model layer is 12 m thick, modified by variations of the sea surface height. The figures in the manuscript show the mean of the first two layers (~ 22 m). The caption of Figure 1 of the manuscript, which said "surface concentrations", was indeed somewhat misleading. We modified it accordingly to "in the upper 22 m" to make it clear (see caption of Figure 1 in the manuscript, page 7).

Page 21 line 4: remove "seems to", change to "overestimates"

As mentioned above, in the eastern tropical Pacific there are not sufficient observations to evaluate the model performance with respect to cyanobacteria concentrations. We therefore reformulate it to "might overestimate" (page 20 line 34).

References

- Capone, D. G., A. Subramaniam, J. P. Montoya, M. Voss, C. Humborg, A. M. Johansen, R. L. Siefert, and E. J. Carpenter (1998). An extensive bloom of the diazotrophic cyanobacterium, *Trichodesmium*, in the Central Arabian Sea during the spring intermonsoon. *Mar. Ecol. Prog. Ser.* 172, 281–292.
- Dutkiewicz, S., A. Hickman, O. Jahn, W. Gregg, C. Mouw, and M. Follows (2015). Capturing optically important constituents and properties in a marine biogeochemical and ecosystem model. *Biogeosciences* 12(14), 4447–4481.
- Guidi, L., P. H. Calil, S. Duhamel, K. M. Björkman, S. C. Doney, G. A. Jackson, B. Li, M. J. Church, S. Tozzi, Z. S. Kolber, et al. (2012). Does eddy-eddy interaction control surface phytoplankton distribution and carbon export in the North Pacific Subtropical Gyre? *Journal of Geophysical Research: Biogeosciences* 117(G2).
- Hense, I. (2007). Regulative feedback mechanisms in cyanobacteria-driven systems: a model study. *Marine Ecology Progress Series* 339, 41–47.
- Kahru, M., J.-M. Leppäpaenen, and O. Rud (1993). Cyanobacterial blooms heating of the sea surface. *Marine ecology progress series. Oldendorf* 101(1), 1–7.
- Paulsen, H., T. Ilyina, K. D. Six, and I. Stemmler (2017). Incorporating a prognostic representation of marine nitrogen fixers into the global ocean biogeochemical model HAMOCC. *Journal of Advances in Modeling Earth Systems* 9(1), 438–464.
- Sonntag, S. (2013). *Modeling biological-physical feedback mechanisms in marine systems*. Ph. D. thesis, Universität Hamburg.
- Sonntag, S. and I. Hense (2011). Phytoplankton behavior affects ocean mixed layer dynamics through biological-physical feedback mechanisms. *Geophysical Research Letters* 38(15).
- Villareal, T. and E. Carpenter (2003). Buoyancy regulation and the potential for vertical migration in the oceanic cyanobacterium *Trichodesmium*. *Microbial Ecology* 45(1), 1–10.
- Walsby, A. (1978). The properties and buoyancy-providing role of gas vacuoles in *Trichodesmium* Ehrenberg. *British Phycological Journal* 13(2), 103–116.
- Wurl, O., K. Bird, M. Cunliffe, W. Landing, U. Miller, N. Mustafa, M. Ribas-Ribas, C. Witte, and C. Zappa (2018). Warming and inhibition of salinization at the ocean's surface by cyanobacteria. *Geophysical Research Letters*.
- Zielinski, O., O. Llinás, A. Oschlies, and R. Reuter (2002). Underwater light field and its effect on a one-dimensional ecosystem model at station ESTOC, north of the Canary Islands. *Deep Sea Research Part II: Topical Studies in Oceanography* 49(17), 3529–3542.

Light absorption by marine cyanobacteria affects tropical climate mean state and variability

Reply to Reviewer 2

Hanna Paulsen and Co-authors

November 2018

We thank the reviewer for the positive feedback and for the helpful and constructive comments. A point-to-point reply is given below. The referee's comments are in red color, and our reply in black color.

Paulsen et al. implement light absorption by cyanobacteria in the MPI ESM and discuss its impact on the mean climate as well as on the seasonal SST cycle and interannual SST variability. They suggest that cyanobacteria lower SST due to a shading effect: the sub-surface water cool because they receive less sunlight, and the upwelling of these sub-surface waters lead to a SST decrease. Changes in SST gradients induce changes in ocean currents, thus slightly altering the mean climate state. Light absorption by cyanobacteria also leads to a greater seasonal SST cycle in the tropics.

Paulsen et al., implement a new effect, that is neglected in most models I believe. The parametrization implemented makes sense and the MPI model is well tested. The impact on sub-surface temperature seem justified. The manuscript is clear and well written. I thus recommend publication after the comments below are addressed.

1) This new implementation affects the oceanic and atmospheric circulations with effects reaching the mid latitude. Explaining some of these changes is not straight forward, and the authors suggest changes in the Hadley cells and the Walker circulation. In the present state of the manuscript it is not possible to check whether this is really the case. Changes in the Hadley cells and the Walker circulation would need to be shown: figures of the atmospheric circulation are needed. Figures showing changes in ocean surface currents would also help as they are discussed in the text.

Figures of the Hadley circulation (zonal global mean meridional mass flux), surface wind, wind stress on the ocean, and ocean surface currents – as well as their respective anomalies – are provided at the end of this document (Figures R 1-4). They are discussed in more detail below.

If the Walker circulation is stronger (p11, L.17), shouldn't the upwelling in the Eastern equatorial pacific be stronger (p10, L.18)? From Fig. 6, I can see that the upwelling in the EEP and EEA are indeed weaker, and that the barotropic stream-function seems weaker almost everywhere. This is consistent with weaker wind-driven circulation as mentioned p13, l12. I can see that in other parts of the text the authors suggest the

strengthening is mostly restricted to the western side of the Pacific basin. Please make sure your description of the Walker circulation changes are accurate. The northward shift of the Gulf Stream is consistent with Fig.6b, however the change in the Kuroshio is less clear.

As stated correctly by the reviewer, the strengthening of the Walker circulation is restricted to the western Pacific (visible in the strengthening of the westward equatorial winds, Figure R 2). At the same time, the transition between convection and subsidence is shifted towards the west (see Figure 5c of the manuscript). That means, the region of convection is more confined to the western part of the Pacific basin. Related to that, the strengthening of the windstress on the ocean (Figure R 3) and the strengthening of the equatorial upwelling (Figure 6d of the manuscript) is also restricted to the western equatorial region. In the eastern tropical Pacific, on the other hand, the weakening of the trade winds (Figure R 2) due to the weaker meridional SST gradient rather causes a decrease in upwelling strength (Figure 6d of the manuscript). We modified the respective text passages in the manuscript to be more precise about the changes in the Walker circulation (page 11 lines 14-20, page 13 lines 1-2). Furthermore, we included figures of the wind field and its anomaly (Figure R 2) in the manuscript (Figure 5a,b).

The northward shift of the subtropical gyre (and the western boundary current) is indeed more pronounced in the North Atlantic than in the North Pacific, as seen in the barotropic streamfunction (Figure 6b of the manuscript). Although a slight northward shift is also visible in the North Pacific (better visible in experiment PHY_CYA_{x2} than in PHY_CYA, see Figure R 5), the dominant cause of the cold anomaly in the western subtropical Pacific is probably the decrease in the northward transport of warm tropical surface water (Figure R 4) related to the changes in the wind field (Figure R 2). We modified the respective passage in the manuscript to make this more clear (page 12 lines 32-33, page 14 lines 1-2).

Although the additional figures (Figures R 1-4 of this document) generally underline what is described in the text, we decided to add only one additional figure to the manuscript, showing the wind field and its anomaly (Figure R 2 of this document, Figure 5a,b in the manuscript, respectively). The other properties (wind stress on the ocean and ocean surface currents) mainly follow the patterns of the surface wind field and hence do not need to be additionally shown in our opinion. Following the reviewer comments, we improved the descriptions in the text regarding the changes in Hadley and Walker circulation.

P13, L.1: It is stated that the Hadley cells are expanded: is it in both hemispheres?

Figure R 1 shows the global zonal mean meridional mass flux Ψ visualizing the Hadley circulation. In both hemispheres, the anomaly patterns indicate a slight shift of the boundaries of the Hadley cells polewards. The expansion is, however, rather small. Furthermore, in the southern hemisphere, the subtropical gyres do not show a poleward shift in the barotropic streamfunction (Figure 6b of the manuscript) which one would expect from an expansion of the Hadley cells. We modified the respective text passages in the manuscript and stress the weakening of the Hadley circulation rather than the expansion of its cells (page 1 line 8, page 13 line 6, page 24 line 5).

P13, L. 19-20: This sentence is really confusing. Are the authors really talking about

the Northwest Pacific Ocean? Is there really southerly winds dominating there (I would have thought it would have been westerlies)? Latitude and an East-West location are needed to really understand this sentence. As mentioned above a figure of winds and wind anomalies would really help to understand.

Winds and wind anomalies are shown in Figure R 2 and are added to the manuscript (Figure 5a,b). The description in the manuscript was indeed not very clear about the geographical location of the described changes. The location that is meant is in the tropical Pacific north of the equator along the coast of Southeast Asia (10-30°N, ~120°E). In this region, a southwestward wind is prevailing on the climatological mean (Figure R 2a). In PHY_CYA and PHY_CYAx2, this wind is enhanced (Figure R 2b,c), subsequently enhancing the windstress on the ocean (Figure R 3b,c). This southwestward windstress acts in the opposite direction than the flow of the northeastward western boundary current (Figure R 4a) and hence reduces its transport. This, together with the slight northward shift of the northern boundary of the subtropical gyre (Figure 6b of the manuscript and Figure R 5 of this document), results in the cold SST anomaly in the northwestern Pacific subtropical gyre. We modified the respective text passage in the manuscript to make the location of the described changes of winds and ocean transport more clear (page 13 lines 26-29).

2) Section 5: seasonal dynamics. It might help to mention at which time the cyanobacteria blooms occur. The timing of the blooms will most likely significantly impact the seasonal changes. Is the timing of the blooms in agreement with observations?

As shown in Figure 9 of the manuscript, the timing of the blooms affects the seasonal cycle of SST in the model. The seasonal cycle of cyanobacteria concentrations is regionally quite different and depends on several factors such as temperature, ocean circulation, and phosphate and iron availability. Not many long-term observations of the seasonality of cyanobacteria concentrations and N₂ fixation rates are available. Exceptions regarding N₂ fixation are the stations ALOHA and BATS. An evaluation of the timing for ALOHA and BATS for N₂ fixation is given in Paulsen et al., 2017. The modeled seasonality of N₂ fixation roughly reproduces the observed seasonal cycle. We added some more information on the seasonality of N₂ fixation in the manuscript (page 6 line 29-30).

3) Figures: Figure 1: Add Latitude in plot 1b as it is different from a, c and d. It would be nice to add the satellite estimate of Chla for comparison.

We thank the reviewer for pointing this out. We modified the latitudinal range in Figure 1b so that it is identical with a,c,and d.

In this study, we specifically investigate the sensitivity of the climate system to light absorption by cyanobacteria. Satellite products of chlorophyll only provide an approximation of total chlorophyll concentrations. There is no satellite product available providing separate chlorophyll data for cyanobacteria. We, instead, evaluate the simulated distribution of cyanobacteria via its biomass (see Paulsen et al., 2017). Chlorophyll is only used as a measure of strength of light absorption. It is not a prognostic variable but depends linearly on cyanobacteria concentrations. The applied C:Chl ratio is based on observations. A sensitivity experiment was performed to assess the sensitivity to this parameter. We think that the distribution of cyanobacteria and their chlorophyll concentrations are evaluated to the extent possible. The model's ability to simulate large scale patterns of phytoplankton in general has been shown elsewhere (e.g., Wetzel et al., 2006). We there-

fore refrain from including a figure of satellite-derived chlorophyll a in this study.

Figure 2: why are the plots cut at 50deg? It might help to see what's happening poleward of 50deg, particularly for the change in Kuroshio and Gulf Stream.

Figure R 6 of this document shows Figure 2 of the manuscript, but with extended latitudinal range up to 90°S and 90°N. There are indeed also anomalies in higher latitudes. However, since this paper focuses on the effects on low and mid-latitudes, we decided to keep the figures in the manuscript unchanged.

Extending the latitudinal range does not help a lot to explain the changes in the Kuroshio Current and the Gulf Stream. Thus, instead of showing a larger latitudinal range, we improved the descriptions in the text to make the changes – and its causes – more clear.

Figure 11: Should the authors also plot PHY_ONLY-CTRL? In that way in one figure one can see the impact varying light attenuation, and the impact of the cyanobacteria. This would be particularly useful as the high latitude regions are not shown in Figure 2.

Figure R 7 shows the difference in SST between PHY_ONLY and CTRL. The differences between this plot and Figure 11b of the manuscript (showing the difference between PHY_CYA and CTRL) are difficult to see since the anomalies between the experiments with and without feedback included (PHY_ONLY and CTRL, and PHY_CYA and CTRL, respectively) are larger than the anomalies between the experiments with and without cyanobacteria (PHY_ONLY and PHY_CYA). The applied color scale is hence not suitable to show both impacts – the impact of varying light attenuation, and the impact of the cyanobacteria. Thus, we decided not to include this additional figure in the manuscript.

4) Minor and typos: P6, L. 13: "Furthermore, we" P6, L. 33: "For comparison" (remove the) P10, L.19: "surface warming." (remove effect) P11, L. 4-5: Rephrase "Here, it is probably the changes in the circulation system that is causing the anomalies instead of the local heat absorption effect." P13, L.3: "There" instead of "Here" P13, L. 21: "Interior"

We modified all of the respective text passages according to the suggestions.

Section 6: Many sentences have a weird structure. It would be worth trying to improve the flow of the section

We reworked the structure of a number of sentences of Section 6 to improve their readability (pages 18-23).

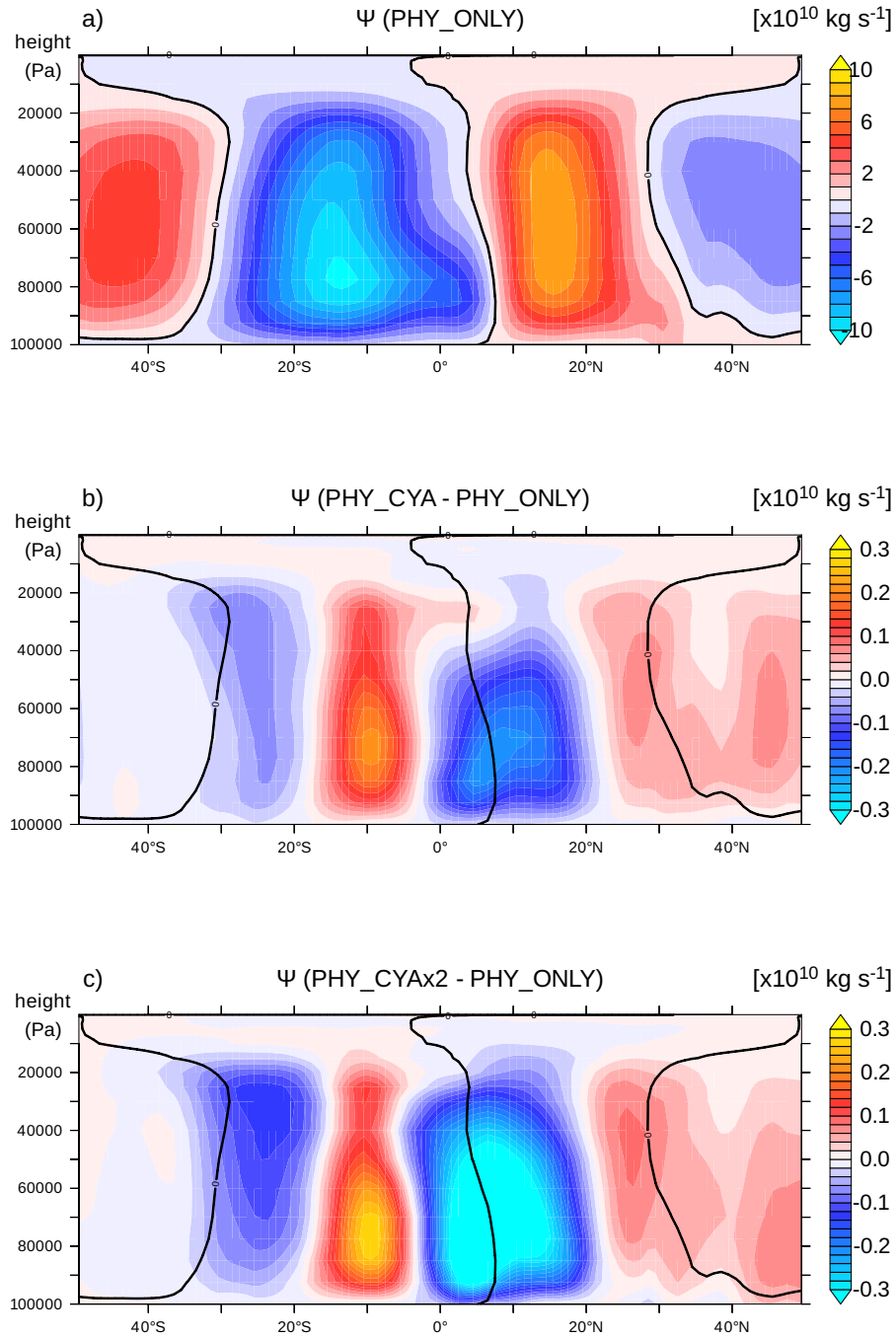


Figure R 1: a) Climatological global zonal mean meridional mass flux Ψ [$10^{10} \text{ kg s}^{-1}$] in PHY_ONLY. The zero-isoline is overlaid in black. b) The difference in the climatological zonal mean meridional mass flux [$10^{10} \text{ kg s}^{-1}$] between PHY_CYA and PHY_ONLY. The zero isoline of PHY_ONLY is overlaid in black. c) The difference in the climatological zonal mean meridional mass flux [$10^{10} \text{ kg s}^{-1}$] between PHY_CYA_{x2} and PHY_ONLY. The zero isoline of PHY_ONLY is overlaid in black.

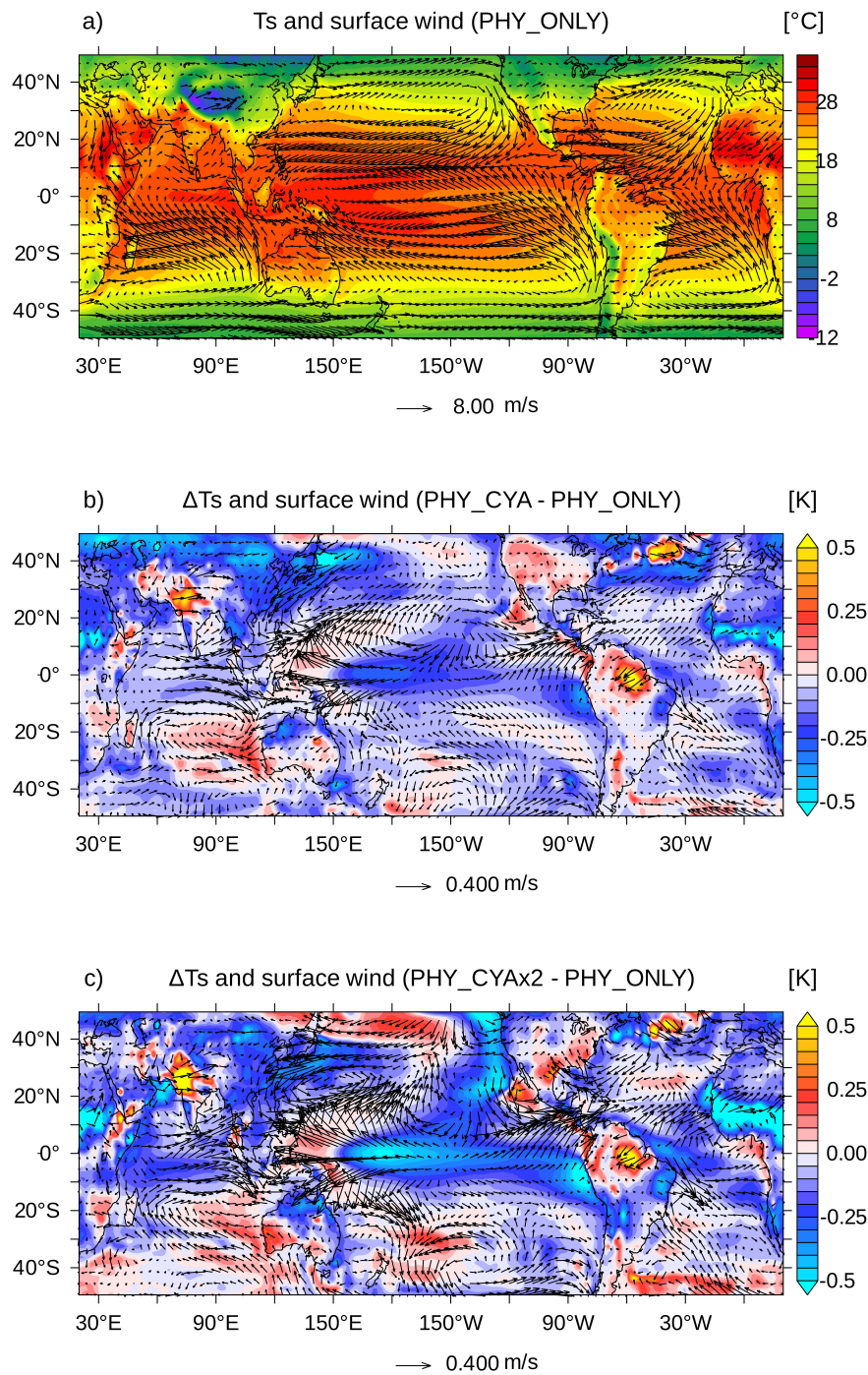


Figure R 2: a) Vectors: Climatological annual mean wind vectors in PHY_ONLY (the reference vector refers to 8 m s^{-1}). Colors: Climatological annual mean surface air temperature [K]. b) analogous to a) but for the anomalies between PHY_CYA and PHY_ONLY (the reference vector refers to 0.4 m s^{-1}). c) analogous to a) but for the anomalies between PHY_CYAx2 and PHY_ONLY (the reference vector refers to 0.4 m s^{-1}).

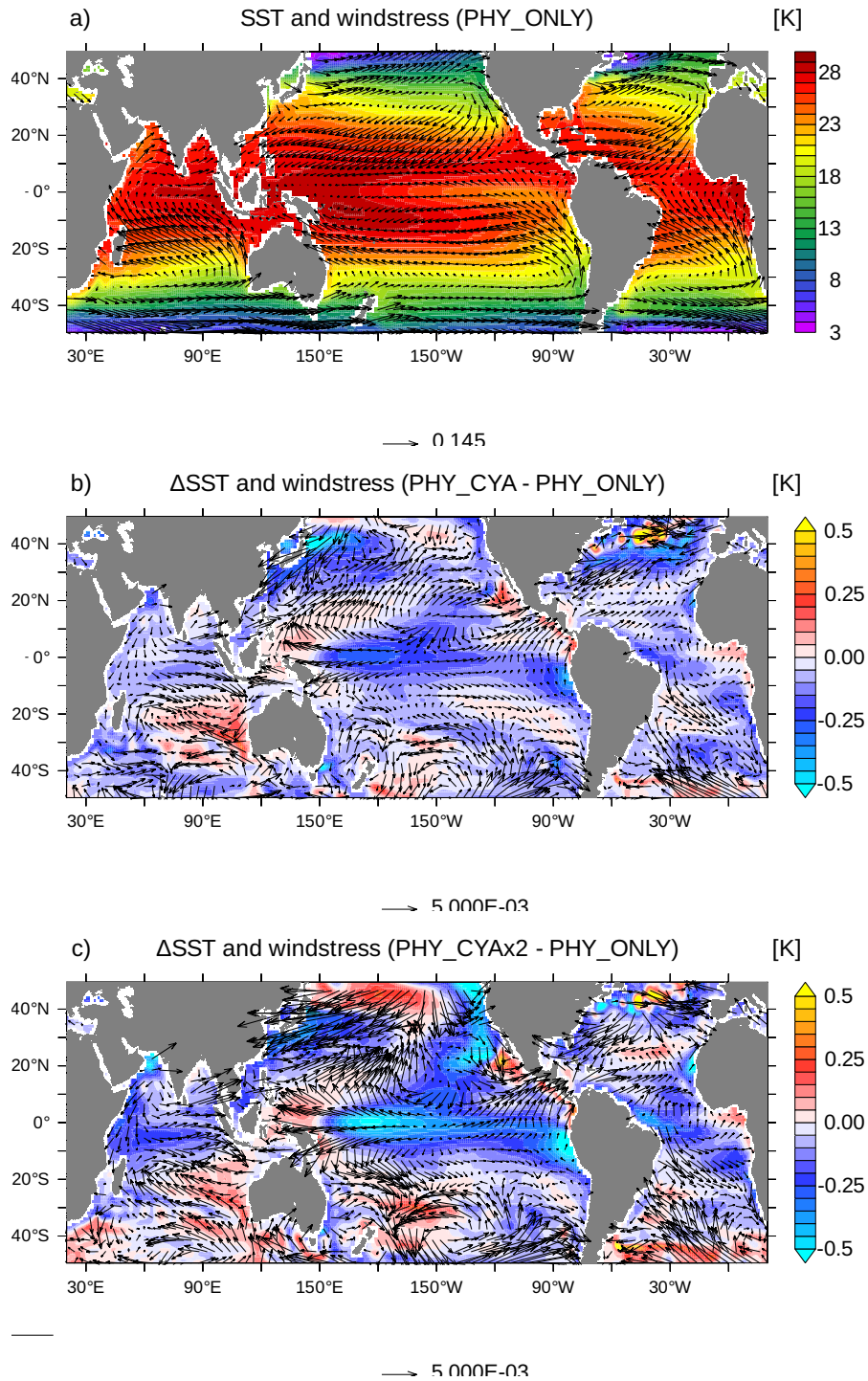


Figure R 3: a) Vectors: Climatological annual mean windstress on the ocean in PHY_ONLY (the reference vector refers to 0.145 N m^{-2}). Colors: Climatological annual mean SST [K]. b) analogous to a) but for the anomalies between PHY_CYA and PHY_ONLY (the reference vector refers to 0.005 N m^{-2}). c) analogous to a) but for the anomalies between PHY_CYA_{x2} and PHY_ONLY (the reference vector refers to 0.005 N m^{-2}).

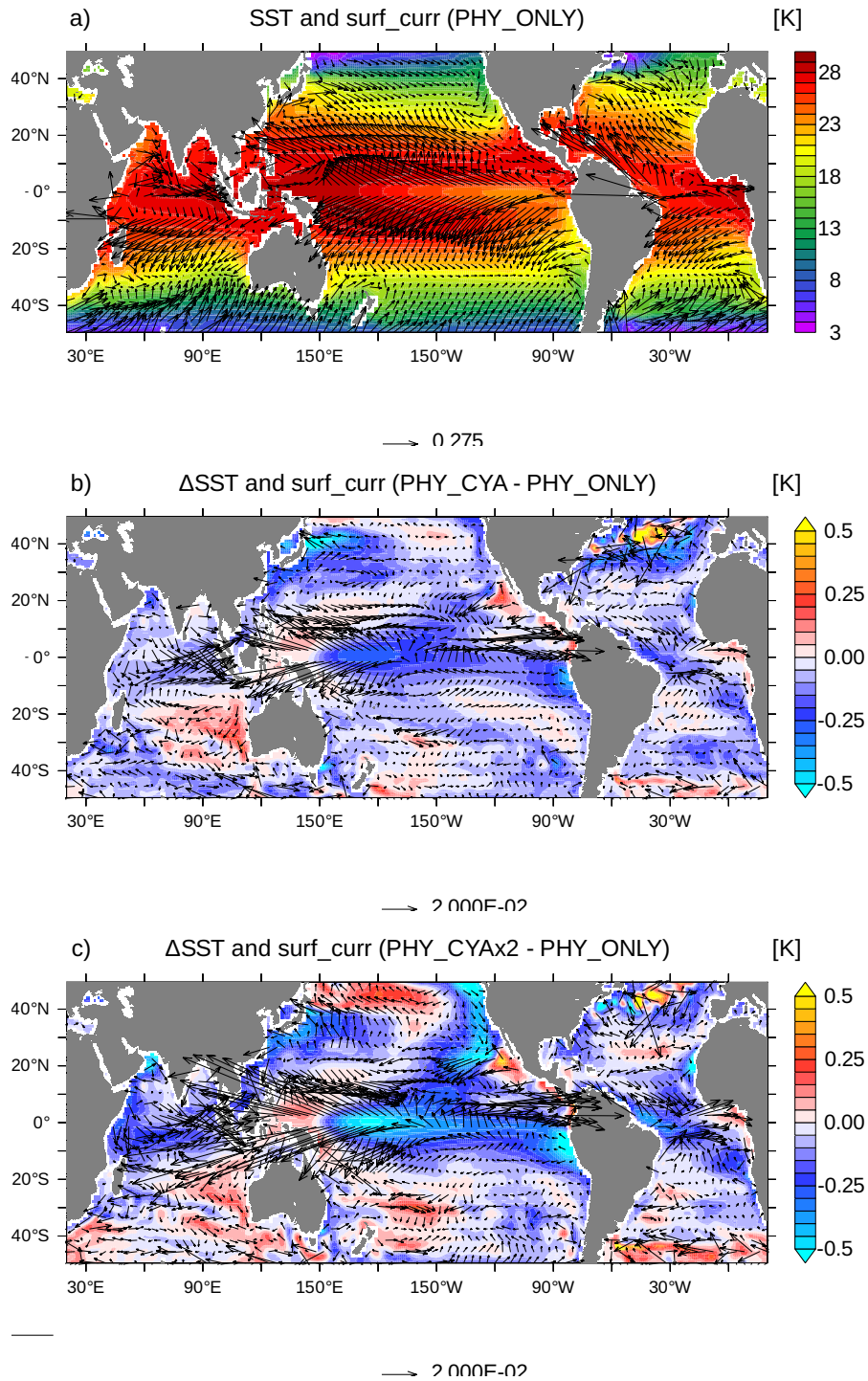


Figure R 4: a) Vectors: Climatological annual mean ocean surface currents in PHY_ONLY (the reference vector refers to 0.275 m s^{-1}). Colors: Climatological annual mean SST [K]. b) analogous to a) but for the anomalies between PHY_CYA and PHY_ONLY (the reference vector refers to 0.02 m s^{-1}). c) analogous to a) but for the anomalies between PHY_CYAx2 and PHY_ONLY (the reference vector refers to 0.02 m s^{-1}).

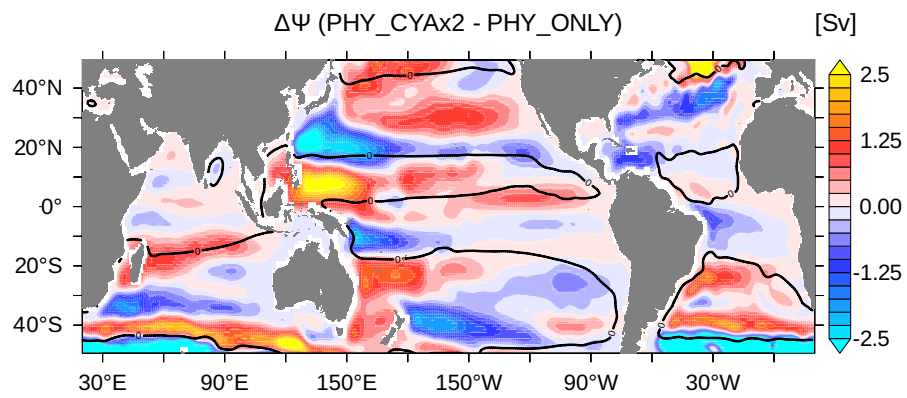


Figure R 5: Difference in the barotropic streamfunction Ψ [Sv] between PHY_CYAx2 and PHY_ONLY.

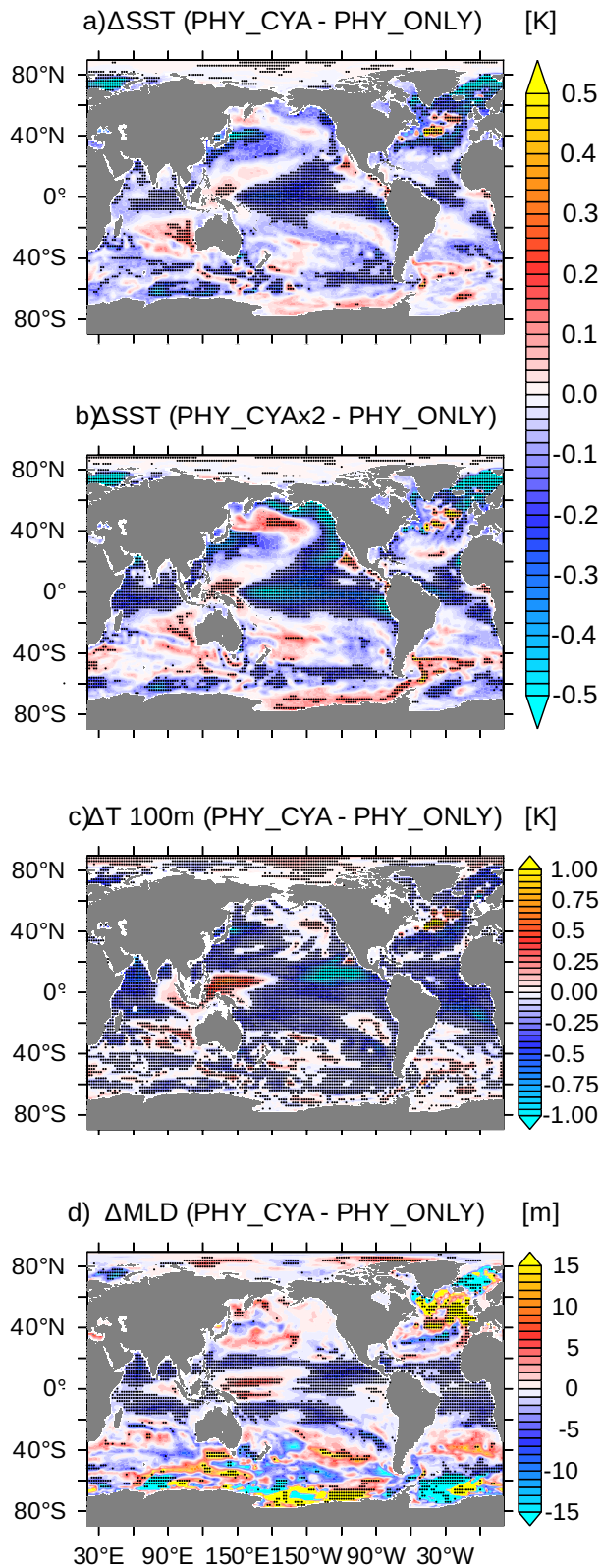


Figure R 6: a) Difference in the climatological annual mean SST [K] between PHY_CYA and PHY_ONLY and b) between PHY_CYA_{x2} and PHY_ONLY. c) Difference in the climatological annual mean temperature at a depth of 100 m [K], and d) mixed layer depth [m] between PHY_CYA and PHY_ONLY. Dotted areas show anomalies larger than 90 % significance (Student's *t*-test).

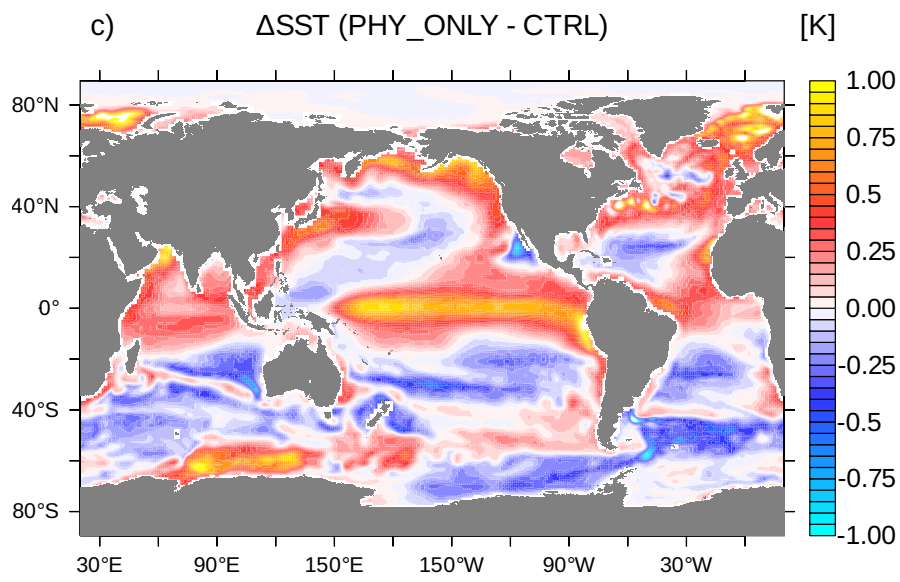


Figure R 7: Difference in SST [K] between PHY_ONLY and CTRL.

References

- Paulsen, H., T. Ilyina, K. D. Six, and I. Stemmler (2017). Incorporating a prognostic representation of marine nitrogen fixers into the global ocean biogeochemical model HAMOCC. *Journal of Advances in Modeling Earth Systems* 9(1), 438–464.
- Wetzel, P., E. Maier-Reimer, M. Botzet, J. Jungclaus, N. Keenlyside, and M. Latif (2006). Effects of ocean biology on the penetrative radiation in a coupled climate model. *Journal of Climate* 19(16), 3973–3987.

Light absorption by marine cyanobacteria affects tropical climate mean state and variability

Hanna Paulsen¹, Tatiana Ilyina¹, Johann H. Jungclauss¹, Katharina D. Six¹, and Irene Stemmler¹

¹Max Planck Institute for Meteorology, Hamburg, Germany

Correspondence: Hanna Paulsen (hanna.paulsen@mpimet.mpg.de)

Abstract.

Observations indicate that positively buoyant marine cyanobacteria, which are abundant throughout the tropical and subtropical ocean, have a strong local heating effect due to light absorption at the ocean surface. How these local changes in radiative heating affect the climate system on the large scale is **unclear**. We use the Max Planck Institute Earth System Model (MPI-ESM), **include light absorption by cyanobacteria, and find a considerable cooling effect on tropical sea surface temperature (SST) in the order of 0.5 K on climatological timescale**. This cooling is caused by local shading of subtropical subsurface water **by cyanobacteria** that is upwelled at the equator and in eastern boundary upwelling systems. Implications for the climate system include a **westward shift of the Walker circulation and a weakening of the Hadley circulation**. The amplitude of the seasonal cycle of SST is increased in large parts of the tropical ocean by up to 25 %, and the tropical Pacific interannual variability is enhanced by **approx. 20 %**. This study emphasizes the sensitivity of the tropical climate system to light absorption **by cyanobacteria** due to its regulative effect on tropical SST. Generally, **including phytoplankton-dependent** light attenuation instead of a globally uniform attenuation depth improves some of the major model temperature biases, indicating the relevance of taking this bio-physical feedback into account in climate models.

1 Introduction

Phytoplankton pigments, predominantly chlorophyll *a* (Chl), absorb light and thereby modify the vertical distribution of radiative heating in the upper ocean (e.g., Lewis et al., 1990; Strutton and Chavez, 2004). Numerous model studies, using ocean-only and coupled climate models, indicate that the biologically-induced redistribution of heat in the water column considerably affects ocean temperature and circulation (e.g., Murtugudde et al., 2002; Manizza et al., 2008; Löptien et al., 2009) with implications for climate mean state and variability (e.g., Wetzel et al., 2006; Anderson et al., 2007; Patara et al., 2012). In this study, we specifically investigate the effects of light absorption by the phytoplankton group of positively buoyant marine cyanobacteria on the tropical climate system.

Positively buoyant marine cyanobacteria are observed by in situ and satellite measurements to have a particularly strong local heating effect on sea surface temperature (SST) by up to 0.95–5.0 K (Kahru et al., 1993; Capone et al., 1998; Wurl et al., 2018). Cyanobacteria are abundant throughout the tropical and subtropical ocean, where they often represent a dominant fraction of total phytoplankton biomass (e.g., Carpenter and Romans, 1991; Capone et al., 1997; Luo et al., 2012). The unique capability

of cyanobacteria to fix nitrogen gas (N₂) enables them to grow within and at the edges of the nitrate-depleted subtropical gyres (e.g., Luo et al., 2012). Positively buoyant cyanobacteria have the capacity to form large surface blooms extending up to several million square kilometres (e.g., Capone et al., 1998). Although the chlorophyll content of cyanobacteria is in general rather low compared to that of other phytoplankton (e.g., Berman-Frank et al., 2001; Carpenter et al., 2004; Sathyendranath et al., 2009), the dense accumulations of biomass in cyanobacteria blooms result in high chlorophyll concentrations (e.g., Subramaniam et al., 2001; Westberry and Siegel, 2006) and hence strong light absorption and heat trapping at the ocean surface.

The strong observed effect of cyanobacteria on the local vertical thermal structure of the water column is supported by one-dimensional and regional model studies of the Baltic Sea and the North Atlantic Ocean (Hense, 2007; Sonntag and Hense, 2011; Sonntag, 2013). In these studies, positively buoyant cyanobacteria lead to a local heating effect of up to 2 K and a mixed layer depth shoaling of up to 20 m. These changes in the physical environment regionally promote growth of cyanobacteria itself, constituting a positive feedback loop between ocean biology and physics.

The existing observational and model studies give evidence for the importance of light absorption by cyanobacteria for the physical environment. But these studies are representative only on a local, or the best, regional scale. All global model studies dealing with the feedback from phytoplankton on ocean temperature, however, only consider the effect of light absorption by phytoplankton in general, without differentiating between individual phytoplankton groups (e.g., Patara et al., 2012, and references therein). Moreover, none of the biogeochemical models used in these global studies contains positively buoyant cyanobacteria. Cyanobacteria are, however, abundant throughout large parts of the tropical and subtropical ocean. In these areas, more precisely within and at the margins of the subtropical gyres, light absorption by marine biota was proposed to particularly affect tropical SST and the climate system (Anderson et al., 2007, 2009; Gnanadesikan and Anderson, 2009). By using a modified satellite chlorophyll climatology in which chlorophyll is set to zero in distinct regions, these studies showed that the presence of chlorophyll in the respective regions strongly affects the oceanic and atmospheric large scale circulation, as well as tropical Pacific interannual variability. Given that cyanobacteria are a dominant phytoplankton group in these regions of the ocean, the open question is: Do cyanobacteria affect their environment not only locally, as indicated by previous studies, but also play a role in the climate system on a more global scale?

We therefore investigate the interactive feedback from cyanobacteria light absorption on the large scale tropical climate system. We use the Max Planck Institute Earth System Model (MPI-ESM) which was recently extended by a realistic representation of positively buoyant, N₂-fixing cyanobacteria (Paulsen et al., 2017). We include cyanobacteria, in addition to bulk phytoplankton, in affecting the shortwave radiation attenuation depth. By setting the chlorophyll content of cyanobacteria to zero, we separate the effects induced by cyanobacteria from those induced by bulk phytoplankton, and address the following questions. 1) How does the local redistribution of heat by cyanobacteria affect the large scale ocean temperature distribution and the climate mean state, such as ocean and atmosphere general circulation? 2) What are the effects on climate variability, such as seasonal variability of SST and tropical Pacific interannual variability of SST? 3) How do the changes in ocean temperature and circulation feed back on phytoplankton growth itself? 4) What are the positive/negative feedbacks at play? By varying the chlorophyll content per cyanobacteria biomass (and thereby the strength of light absorption), we get a better understanding of the underlying processes and can assess the sensitivity of the results to this parameter. We furthermore compare the model

results against a model state with phytoplankton-independent (globally uniform) light attenuation. We discuss the results in the context of model biases and in the context of previous model studies, and indicate implications for the Earth system model.

2 Model description and experimental setup

2.1 The MPI-ESM

5 We use MPI-ESM1.2, which consists of the coupled general circulation models for the atmosphere ECHAM (Stevens et al., 2013) and the ocean MPIOM (Jungclaus et al., 2013), the ocean biogeochemistry model HAMOCC (Ilyina et al., 2013) extended by prognostic N_2 -fixing cyanobacteria (Paulsen et al., 2017), and the land surface and terrestrial biosphere model including dynamic vegetation JSBACH (Reick et al., 2013; Schneck et al., 2013). The explicit model versions are ECHAM6.3.02p2, MPIOM1.6.2p2, HAMOCC5.2, JSBACH3.10, which are further developments of the models described in the references above.

10 We apply a grid configuration referred to as LR (GR15 for MPIOM, T63L47 for ECHAM6). In the atmosphere, the horizontal resolution is T63 in spectral space (approx. 1.75° on a Gaussian grid) with 47 vertical σ -hybrid layers. The time step is 450 seconds. In the ocean, the bipolar grid GR15 has poles over Antarctica and Greenland and a horizontal resolution of approx. 1.5° , gradually varying between 15 km in the Arctic and about 184 km in the Tropics. In the vertical, there are 40 unevenly spaced layers with level thicknesses increasing with depth and nine layers located within the upper 90 m. The time

15 step is 2700 seconds. MPIOM is a z-coordinate global general circulation model solving the primitive equations under the hydrostatic and Boussinesq approximation on a C-grid with a free surface (Marsland et al., 2003; Jungclaus et al., 2013). Momentum, heat and freshwater fluxes are coupled daily between ECHAM and MPIOM using the Ocean Atmosphere Sea Ice Soil (OASIS3-MCT; Valcke, 2013) coupler.

The global ocean biogeochemistry model HAMOCC serves to simulate carbon cycling in the ocean. The spatial and tempo-

20 ral resolutions of HAMOCC are inherited from MPIOM. HAMOCC includes biogeochemical processes in the water column, the sediment, and gas-exchange processes at the air-sea interface. Biogeochemical tracers in the water column are fully advected, mixed, and diffused by the flow field of the physical model. Biogeochemistry dynamics are premised on an extended NPZD (Nutrients, Phytoplankton, Zooplankton, Detritus) model approach (Six and Maier-Reimer, 1996), and include phosphate, nitrate, iron, oxygen, silicate, opal, calcium carbonate, dissolved inorganic carbon, alkalinity, two phytoplankton groups,

25 zooplankton, dissolved organic matter, and detritus. Organic material composition follows a constant molar ratio ($C:N:P:O_2 = 122:16:1:-172$) based on Takahashi et al. (1985) and of iron ($Fe:P = 366 \cdot 10^{-6}:1$) based on Johnson et al. (1997).

Phytoplankton is represented by two tracers in the model, N_2 -fixing cyanobacteria (Cya) and bulk phytoplankton (Phy). The growth parameterization of cyanobacteria is based on physiological characteristics of *Trichodesmium* (Paulsen et al., 2017), a positively buoyant cyanobacteria group which is considered as one of the most important marine diazotrophs (e.g.,

30 LaRoche and Breitbarth, 2005). Cyanobacteria fix N_2 under nitrate depletion but can also take up nitrate, when available. Furthermore, cyanobacteria are positively buoyant with a rising velocity of 1 m d^{-1} (based on Sonntag, 2013), in contrast to bulk phytoplankton which are neutrally buoyant. Growth of cyanobacteria occurs within a specific optimum temperature range described by a modified Gaussian function with an optimum at 28°C (Sonntag and Hense, 2011; Breitbarth et al., 2007).

For bulk phytoplankton, on the contrary, a power law temperature dependency is applied (Eppley, 1972). Cyanobacteria grow slower than bulk phytoplankton, have a higher iron limitation, and are assumed not to be grazed. A detailed description of the parameterization as well as evaluation of the model performance with respect to cyanobacteria are given in Paulsen et al. (2017).

5 2.2 Parameterization of radiative heating in the water column

Incoming shortwave radiation in the open ocean is attenuated primarily by seawater and by phytoplankton. We use chlorophyll, derived from the phytoplankton concentrations simulated in the biogeochemical model, as a measure of strength of light absorption in the physical model. The vertical light field $I(z)$ is described by the scheme after Zielinski et al. (2002):

$$I(z) = I_0 \cdot f_{vis} \cdot \left[\sigma \cdot \exp(-z \cdot k_r) + (1 - \sigma) \cdot \exp(-z \cdot k_w - k_{Chl} \cdot \int_0^z Chl(z') dz') \right]. \quad (1)$$

- 10 I_0 is the daily mean short wave radiation at sea level calculated by ECHAM and passed once per day to MPIOM. f_{vis} is the visible light fraction (0.58) which has the potential to penetrate into deeper layers. It covers the wavelength range of 400–700 nm. At 580 nm, the light spectrum is divided (prescribed by $\sigma = 0.4$) into two domains: For larger wavelengths (red domain) attenuation is dominated by sea water with the attenuation coefficient k_r (0.35 m^{-1}). For shorter wavelengths (blue/green domain) the absorption by chlorophyll with the absorption coefficient k_{Chl} ($0.04 \text{ m}^2 (\text{mg Chl})^{-1}$) is considered in
- 15 addition to clear water with the absorption coefficient k_w (0.03 m^{-1}). The parameter values are adopted from Zielinski et al. (2002). Chlorophyll (Chl) is assumed to be a linear function of bulk phytoplankton and cyanobacteria concentrations:

$$Chl(z) = \frac{1}{R_{Phy}} \cdot Phy(z) + \frac{1}{R_{Cya}} \cdot Cya(z). \quad (2)$$

- with $Phy(z)$ and $Cya(z)$ being vertical profiles of bulk phytoplankton and cyanobacteria concentrations in carbon units, and R_{Phy} and R_{Cya} the respective C:Chl ratios in $\text{mg C} (\text{mg Chl})^{-1}$. Phytoplankton and cyanobacteria concentrations are not only
- 20 a function of depth (z), but also vary horizontally and temporally, resulting in a temporally and spatially varying chlorophyll field $Chl(x, y, z, t)$.

Radiative heating of water is accounted for by an internal source of heat in the temperature equation, proportional to the vertical derivative of the light field $I(z)$:

$$\frac{\partial T}{\partial t} = \frac{1}{\rho \cdot c_p} \cdot \frac{\partial I(z)}{\partial z} \quad (3)$$

- 25 with ρ as the density and c_p the specific heat capacity of seawater. Thereby, it is assumed that the total absorbed light is converted into heat. Biological fluorescence mostly converts into heat, and the absorbed energy stored in biomass is generally small and can be neglected (Lewis et al., 1983, and references therein).

Table 1. Experiment names and descriptions.

Experiment name	Description
PHY_ONLY	light absorption by bulk phytoplankton only (cyanobacteria are set to transparent)
PHY_CYA	light absorption by bulk phytoplankton and cyanobacteria
PHY_CYAx2	light absorption by bulk phytoplankton and cyanobacteria, with doubled chlorophyll content of cyanobacteria
CTRL	globally uniform attenuation depth (17 m)

The phytoplankton-dependent light attenuation scheme (Equation 1) is not part of the default standard model MPIOM (Junglaus et al., 2013). The standard model version, e.g., used for the fifth phase of the Coupled Model Intercomparison Project (CMIP5), applies a globally uniform exponential profile of light $I(z)$ instead (Paulson and Simpson, 1977):

$$I(z) = I_0 \cdot f_{blue} \cdot \exp(-k_{blue} \cdot z) \quad (4)$$

- 5 The attenuation coefficient k_{blue} of 0.06 m^{-1} (attenuation depth: 17 m) and the blue water fraction f_{blue} of 0.41 roughly correspond to the Jerlov optical water type 1A (Jerlov, 1976; Kara et al., 2005). The attenuation depth of 17 m is in the order of magnitude as often used in climate models (Patara et al., 2012, and references therein). Radiative heating is formulated as shown in Equation 3.

2.3 Experimental setup

- 10 Three experiments are conducted (Table 1), which all use the phytoplankton-dependent attenuation scheme (Equation 1). In the first experiment, PHY_ONLY, only light absorption by bulk phytoplankton is accounted for. Cyanobacteria are **made transparent** with respect to shortwave radiation in the physical model ($1/R_{cya} = 0$ in Equation 2). For bulk phytoplankton, the C:Chl ratio is set to $R_{Phy} = 60 \text{ mg C (mg Chl)}^{-1}$ as is used in HAMOCC (Ilyina et al., 2013). This value lies in the middle of the observed range, which spans values from about 12 to more than 200 $\text{mg C (mg Chl)}^{-1}$, depending on species, light
15 conditions, nutrient limitation, and temperature (e.g., Taylor et al., 1997).

- In the second experiment, PHY_CYA, we include cyanobacteria in addition to bulk phytoplankton in affecting the radiative heating in the water column. For cyanobacteria, the C:Chl ratio is set to $R_{Cya} = 120 \text{ mg C (mg Chl)}^{-1}$. Cyanobacteria generally contain less chlorophyll than other phytoplankton groups (e.g., Berman-Frank et al., 2001; Carpenter et al., 2004). The chosen value lies in the middle of the observed range for *Trichodesmium* of **approx.** 40 to 200 $\text{mg C (mg Chl)}^{-1}$ (e.g., Berman-Frank
20 et al., 2001; Carpenter et al., 2004).

Finally, because the light absorption strength of cyanobacteria is not well constrained, we consider a sensitivity experiment, PHY_CYAx2. In this experiment, we double the chlorophyll content per cyanobacteria biomass, i.e. setting the value of R_{Cya} to $60 \text{ mg C (mg Chl)}^{-1}$ which is the value also applied for bulk phytoplankton. The value lies in the lower range of observed values for *Trichodesmium* (that means in the upper range of observed chlorophyll **content**). This experiment allows us to test

the sensitivity and linearity of the results to this prescribed parameter, and to assess the upper limit of the effects induced by cyanobacteria light absorption.

The different C:Chl ratios for cyanobacteria are only applied for calculating the radiative heating in the physical model. In the biogeochemical model, in all experiments the same self shading effect is applied for light limitation of photosynthesis for bulk phytoplankton and cyanobacteria ($R_{Phy} = R_{Cya} = 60 \text{ mg C (mg Chl)}^{-1}$) in order to exclude direct effects on cyanobacteria growth.

All three experiments are started from a preindustrial simulation CTRL in steady state. CTRL uses the standard model version with globally uniform light attenuation (Equation 4). All three experiments are integrated for 300 years with prescribed preindustrial atmospheric CO_2 volume mixing ratio (284.7 ppm). For all analyses the mean of the last 100 years is evaluated, in which the upper ocean (approx. 500 m) shows no considerable drifts in temperature. To assess the added impact on the attenuation depth of shortwave radiation by cyanobacteria, we subtract the mean state PHY_ONLY from PHY_CYA (and PHY_ONLY from PHY_CYAx2, respectively). Furthermore, we compare the model states of the three experiments against CTRL. CTRL spans 800 years and represents an estimate of the internal variability of the model.

3 Global distribution of cyanobacteria and chlorophyll

Cyanobacteria occur between 40° S and 40° N (see Figure 1 for PHY_CYA) where they constitute an important fraction of total phytoplankton biomass (approx. 18 %, locally up to 90 %). The restriction of cyanobacteria's major habitat to the tropical and subtropical ocean is in agreement with in situ and satellite-based observations (Westberry and Siegel, 2006; Breitbarth et al., 2007; Bracher et al., 2009; Luo et al., 2012). The ecological niche of cyanobacteria is mainly determined by their ability to fix N_2 , their positive buoyancy, a high optimum temperature of growth, and a strong iron limitation (Paulsen et al., 2017). The global depth-integrated N_2 fixation rate of $116.6 \text{ Tg N yr}^{-1}$ (in PHY_CYA) lies within the range of reported estimates of approx. 80–200 Tg N yr^{-1} (e.g., Karl et al., 2002; Großkopf et al., 2012). The simulated maximum annual mean surface concentrations reach values of approx. 400 mg C m^{-3} (depth-integrated approx. 700 mg C m^{-2}), and surface fixation rates of approx. $300 \mu\text{mol N m}^{-3} \text{ d}^{-1}$ (depth-integrated approx. $5000 \mu\text{mol N m}^{-2} \text{ d}^{-1}$). The major fraction of biomass and N_2 fixation (approx. 85 %) is located in the upper 20 m. The orders of magnitudes of biomass and fixation rates, as well as the large scale spatiotemporal patterns, are in agreement with observations (Luo et al., 2012). In the North Atlantic subtropical gyre, the model is characterized by an underestimation of cyanobacteria concentrations and N_2 fixation rates in comparison to observations. In the eastern tropical Pacific, on the other hand, concentrations and fixation rates are high, but the lack of observational data does not allow for a proper assessment. Seasonal dynamics of N_2 fixation at the two long-term observational stations BATS (Bermuda Atlantic Time Series Study) and ALOHA (A Long-term Oligotrophic Habitat Assessment) are roughly captured. For a detailed description and model evaluation, see Paulsen et al. (2017).

The simulated annual mean distribution of chlorophyll (Figure 1c), derived from bulk phytoplankton and cyanobacteria (PHY_CYA) qualitatively reproduces the main global patterns of chlorophyll *a* estimates deduced from satellite measurements of ocean color (e.g., SeaWiFS Project, 2003; Gregg et al., 2005). For the presented comparison, it is assumed that the general

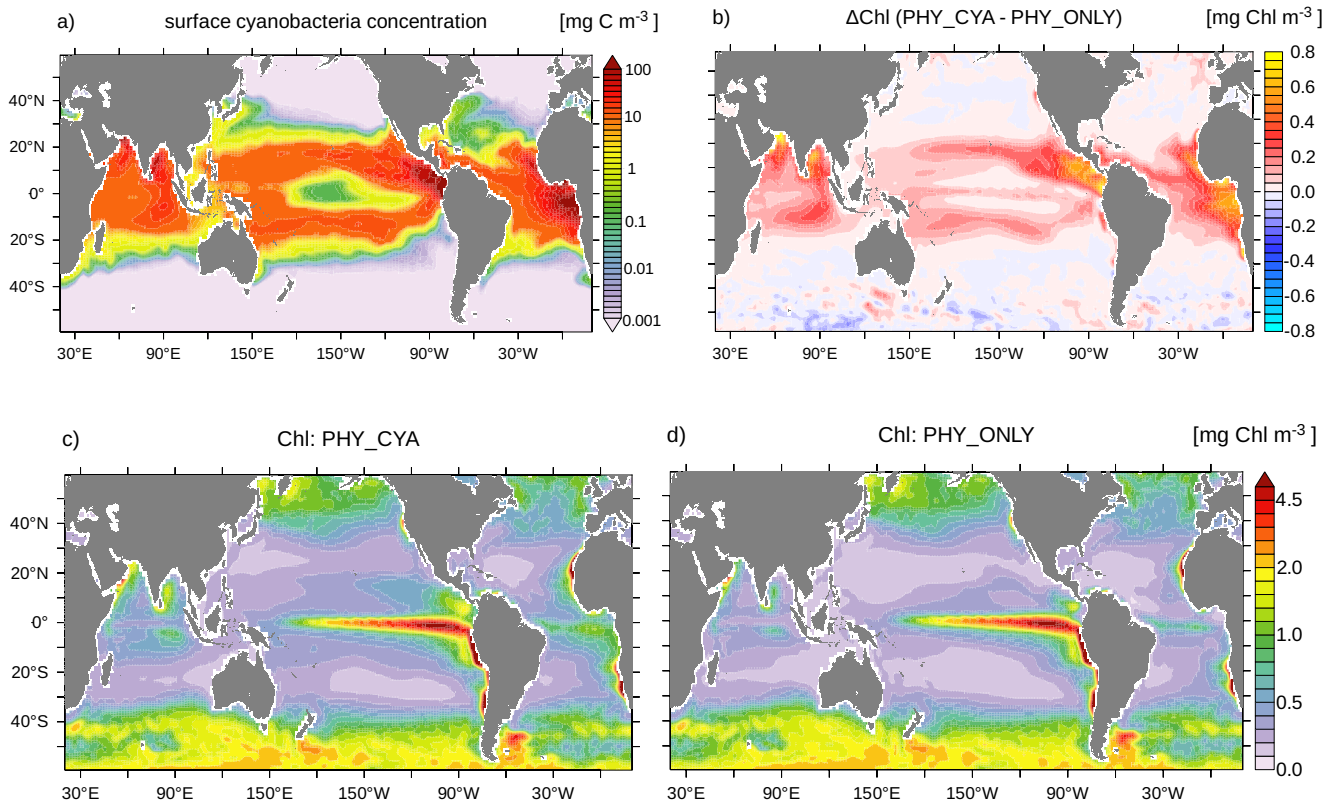


Figure 1. a) Climatological annual mean cyanobacteria concentrations [mg C m^{-3}] in the upper 22 m in PHY_CYA. Note the nonlinear color scale. b) Difference in the climatological annual mean chlorophyll [mg Chl m^{-3}] in the upper 22 m between PHY_CYA and PHY_ONLY. c) Climatological annual mean global chlorophyll concentrations [mg Chl m^{-3}] in the upper 22 m as used for the light attenuation scheme in the physical model in PHY_CYA, and d) in PHY_ONLY.

large scale patterns and the order of magnitude of the concentrations have not considerably changed between the preindustrial and the satellite era. High simulated values of chlorophyll occur in high latitudes north and south of 40° latitude (annual mean approx. $0.5\text{--}3 \text{ mg Chl m}^{-3}$) as well as in the nutrient rich upwelling regions at the equator and along the eastern boundaries of the ocean basins (annual mean approx. $1\text{--}5 \text{ mg Chl m}^{-3}$). In the equatorial Pacific, chlorophyll values are overestimated by the model, due to too high biological production caused by too strong upwelling (Ilyina et al., 2013). Low chlorophyll values, on the other hand, are present in the oligotrophic areas of the downwelling regions in the central subtropical gyres (annual mean approx. $0.1\text{--}0.3 \text{ mg Chl m}^{-3}$). The simulated values in these regions are slightly higher than satellite estimates of chlorophyll ($0.03\text{--}0.2 \text{ mg Chl m}^{-3}$, e.g., Gregg et al., 2005).

The contribution of cyanobacteria to annual mean surface chlorophyll becomes visible in the comparison between experiment PHY_CYA (Figure 1c) and PHY_ONLY (Figure 1d) shown in Figure 1b, where in PHY_ONLY, cyanobacteria are made transparent with respect to shortwave radiation. In the tropical and subtropical ocean the contribution of cyanobacteria to sur-

face chlorophyll is in the order of 0.1–0.3 mg Chl m⁻³, regionally up to 0.8 mg Chl m⁻³. This represents up to 80 % of the total surface chlorophyll concentrations in certain regions (e.g. in the eastern equatorial Atlantic and Pacific). The large contribution of cyanobacteria to surface chlorophyll in certain regions can be explained, first, by their capability to grow in nitrate depleted areas (in contrast to bulk phytoplankton), and second, by the fact that they are concentrated at the surface due to their positive buoyancy (in contrast to neutrally buoyant bulk phytoplankton, which shows a deep chlorophyll maximum at roughly 50–100 m in large parts of the tropical and subtropical ocean in summer months). In bloom conditions, cyanobacteria biomass is often confined to the upper first meter in the real ocean. In the model, the first layer is, however, 12 m thick. If the simulated chlorophyll content of cyanobacteria of the first model layer with an annual mean concentration of up to 0.9 mg Chl m⁻³ was confined more to the surface (e.g. to the upper first meter) this would **convert** to a value of 10.8 mg Chl m⁻³, which lies within the range of reported values for *Trichodesmium* blooms (**approx.** 0.8–40 mg Chl m⁻³; e.g., Subramaniam et al., 2001; Westberry and Siegel, 2006; Mohanty et al., 2010). Overall, the simulated values of cyanobacteria chlorophyll concentrations are thus **of** a plausible order of magnitude.

In experiment PHY_CYAx2, the patterns of cyanobacteria and chlorophyll are consistent with PHY_CYA (not shown). The chlorophyll values are, however, roughly doubled. Mean cyanobacteria chlorophyll values **reach 1.6 mg Chl m⁻³**. Blooms would have a chlorophyll concentration of 21.6 mg Chl m⁻³ if confined to the first meter, which also lies within the reported range.

4 Effects of cyanobacteria light absorption on the mean tropical climate state

4.1 Effects on ocean temperature and mixed layer depth

Including light absorption by cyanobacteria in addition to bulk phytoplankton (experiment PHY_CYA compared to PHY_ONLY) has a warming effect on SST in some limited areas of the tropical ocean (Figure 2a). **In contrast, a cooling effect on SST dominates larger areas.** The mean cooling effect in the tropical area (20° S–20° N) is small (0.07 K). Regionally, however, the negative SST anomalies reach values of up to 0.5 K in **PHY_CYA**, which is significantly larger than the internal variability of the model (dotted areas in Figure 2b **indicate statistically significant anomalies at the 90 % confidence level** according to the Student's *t*-test). The strongest negative anomalies occur at the equator and in the eastern boundary upwelling systems off the South American and African continents. The surface cooling can be explained by the following mechanism. The presence of cyanobacteria increases light absorption in the upper layers. Radiative heating is thus more confined to the surface, causing a significant shoaling of the mixed layer depth (MLD) by up to 10 m (Figure 2d) and a shoaling of the thermocline depth (shown for the equatorial Pacific in Figure 3). At the same time, deeper layers receive less radiation, which leads to a decrease in subsurface temperature (Figure 2c), in the global zonal mean by up to 0.5 K (Figure 4). The cold signal reaches below the MLD and down to the thermocline (defined here as the depth of the 20°C isotherm). This subsurface water feeds the shallow overturning cells and is transported equatorward along the thermocline (which is equivalent with the pycnocline in the Tropics). At the equator, the relatively cooler subsurface water is upwelled, where it outweighs the direct heating effect due to local cyanobacteria light absorption at the surface. The upwelled water is spread laterally via the poleward surface Ekman

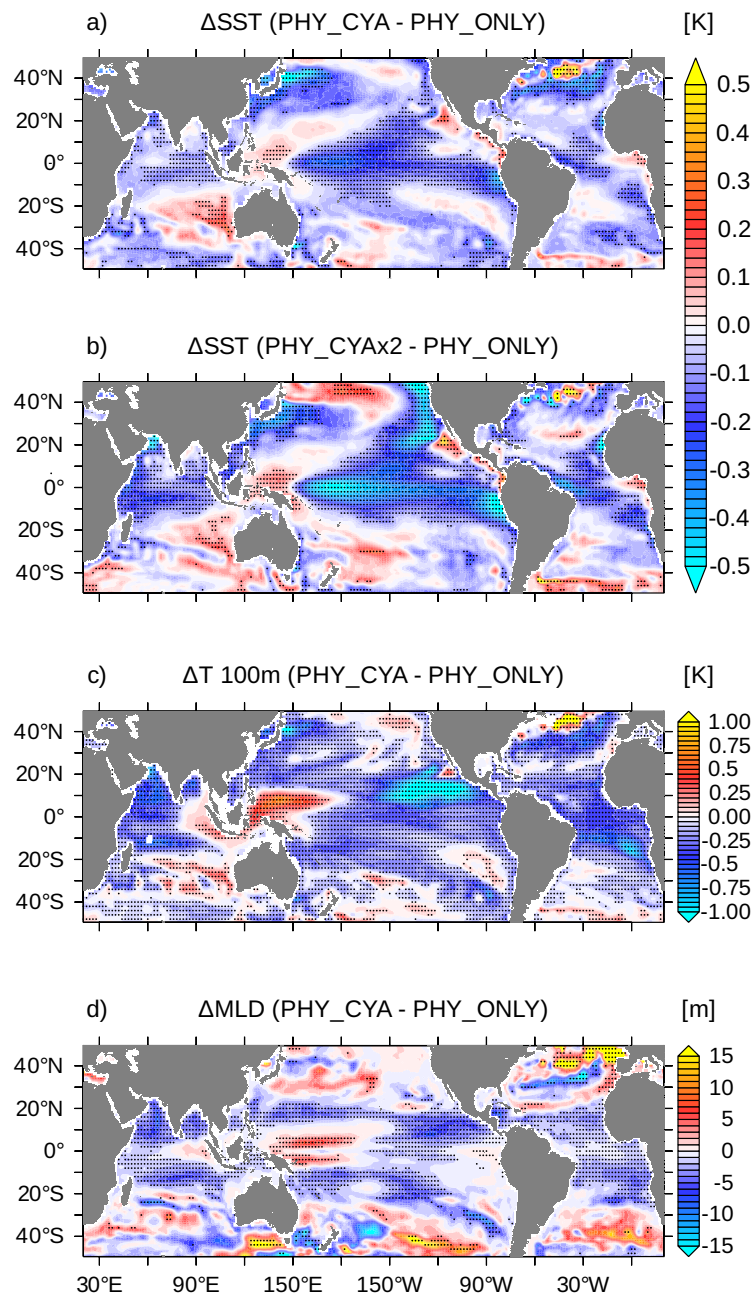


Figure 2. a) Difference in the climatological annual mean SST [K] between PHY_CYA and PHY_ONLY and b) between PHY_CYAx2 and PHY_ONLY. c) Difference in the climatological annual mean temperature at a depth of 100 m [K], and d) mixed layer depth [m] between PHY_CYA and PHY_ONLY. Dotted areas indicate statistically significant anomalies at the 90 % confidence level (Student's *t*-test).

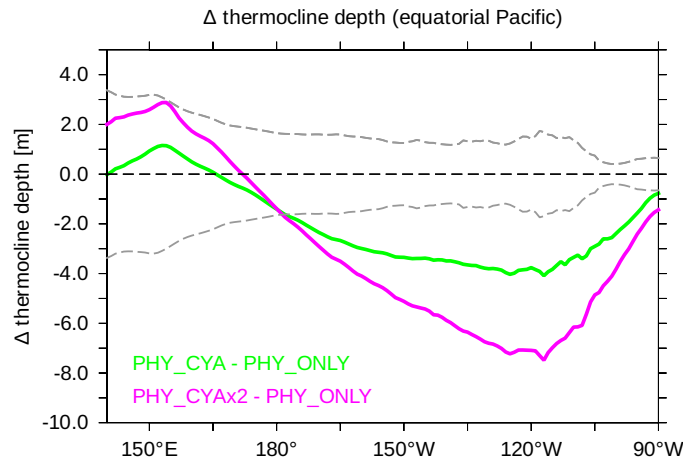


Figure 3. Difference in the climatological mean thermocline depth [m] between PHY_CYA and PHY_ONLY (green) and PHY_CYA2 and PHY_ONLY (purple). To provide a sense for the internal variability of the model, the grey dashed lines show \pm two times the standard deviation of eight 100 year periods of CTRL.

transport and leads to a cooling in large parts of the tropical and subtropical ocean. Hence, instead of the expected surface heating induced by the presence of cyanobacteria, the advective process bringing relatively cooler subsurface water to the surface dominates. In addition, the atmospheric cooling above respective regions spreads throughout the troposphere and enhances the surface cooling in other regions due to an enhanced heat flux directed from the ocean into the atmosphere (not shown).

5 The cold upwelled subsurface water originates from regions where cyanobacteria are abundant and shade the deeper layers (Figure 1a,b). These regions mainly comprise two different physical regimes. The first regime includes the downwelling regions of the subtropical gyres in which the cooler water is subducted within the shallow meridional overturning cells and then transported equatorward along the thermocline. The second regime includes the eastern boundary upwelling regions at the margins of the subtropical gyres (the eastern tropical Atlantic north and south of the equator, and the eastern tropical Pacific north of the equator). Here, overall high cyanobacteria concentrations are present, which strongly shade and hence cool the subsurface layers. Also from here, the water partly ends up in the shallow meridional overturning cells and the equatorial upwelling system, contributing to the cold SST signal seen at the equator. Due to the complexity of the circulation system and the exchange pathways between the tropical and subtropical ocean, it is difficult to distinguish contributions of the subtropical gyres from contributions of their margins.

15 Besides the SST decrease, which dominates large parts of the tropical and subtropical ocean in PHY_CYA compared to PHY_ONLY, there are some limited regions with a significant annual mean SST increase (Figure 2a). These regions include the eastern equatorial Atlantic and the eastern equatorial Pacific adjacent to the coast. In these regions, the direct heating by high cyanobacteria concentrations together with the decrease in upwelling strength (as will be discussed in Section 4.3), outweighs the upwelling effect of cooler subsurface water and results in a surface warming. Whether light absorption by cyanobacteria leads locally to a mean surface warming or cooling thus depends on two opposing effects: the local heating due

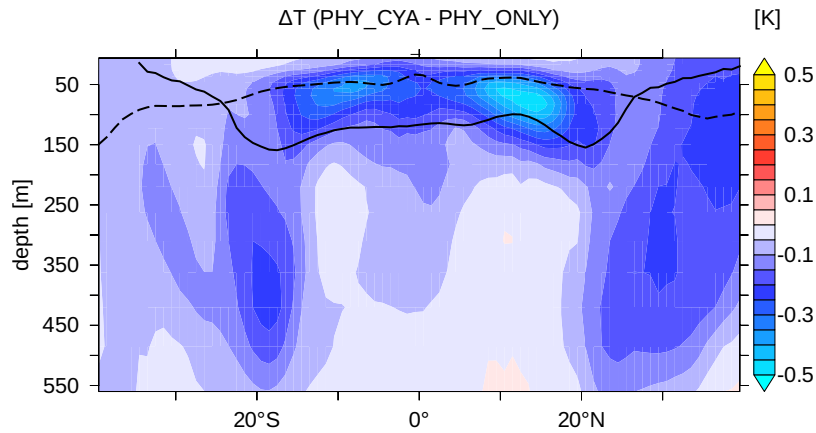


Figure 4. Difference in the climatological global zonal mean temperature [K] in the upper 550 m between PHY_CYA and PHY_ONLY. The dashed black line shows the global zonal mean MLD and the solid black line the global zonal mean thermocline depth (defined as the depth of the 20°C isotherm) in PHY_ONLY.

to light absorption and the non-local cooling due to upwelling of cooler subsurface water. Which process dominates, strongly depends on the region and on the local cyanobacteria concentrations. Two other regions with significant positive SST anomalies are the western Pacific warm pool and the eastern subtropical Indian Ocean. **In these regions, it is not the local effect of high light absorption causing anomalies, but changes in the circulation (Section 4.3).**

5 In the sensitivity **experiment PHY_CYA_{x2}**, the patterns of change in SST relative to PHY_ONLY are consistent with PHY_CYA relative to PHY_ONLY (compare Figures 2a and b, respectively). The magnitudes of the anomalies, both the positive and negative ones, **are enlarged** by roughly a factor of two (e.g., equatorial Pacific: **approx. 0.6 K** in PHY_CYA_{x2} compared to **approx. 0.3 K** in PHY_CYA). The higher chlorophyll content of cyanobacteria leads to a stronger local warming in regions where they are present. But at the same time this also leads to a stronger shading of the subsurface water, which
 10 enhances the subsurface cooling **and brings** cooler water to the surface. The resulting patterns of the net effect (cooling or warming) are consistent between the two experiments. The consistency of the anomaly patterns between PHY_CYA_{x2} and PHY_CYA (relative to PHY_ONLY) also counts for most other quantities **that** are analyzed in this study. Thus, in the following, only the anomaly maps for experiment PHY_CYA are shown. The respective numbers for PHY_CYA_{x2} are stated in the text.

15 **4.2 Effects on wind patterns and precipitation**

The cooling of the cold tongue in the east Pacific and heating of the warm pool in the west Pacific in experiment PHY_CYA compared to PHY_ONLY intensifies the zonal SST gradient, implying a strengthening of the Walker circulation **above the western Pacific warm pool (Figure 5c)**. The ascent of the air over the warm pool is enhanced west of 150° E by roughly 6 % (13 % in PHY_CYA_{x2}) (vertical velocity ω at 500 hPa averaged from 120–140° E). **Related to this, the equatorial easterly**
 20 **winds are intensified west of 160° W (Figure 5a,b), enhancing the westward windstress on the ocean (not shown). Furthermore,**

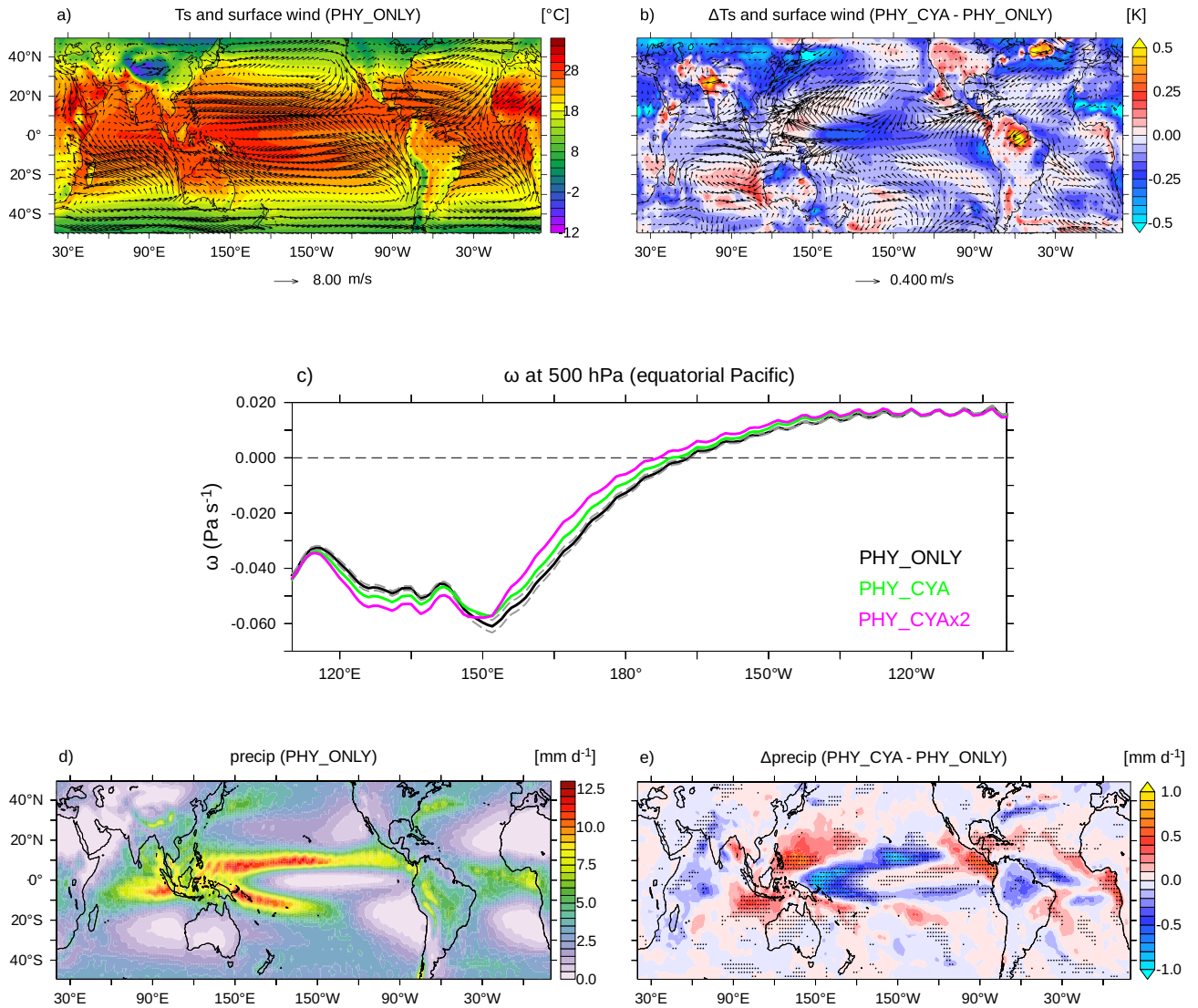


Figure 5. a) Climatological mean surface air temperatures [°C] and vectors of surface winds [m s^{-1}] in PHY_CYA. b) Difference in the climatological annual mean surface air temperature [K] and vectors of surface wind anomalies [m s^{-1}] between PHY_CYA and PHY_ONLY. c) Climatological mean vertical velocity ω [Pa s^{-1}] at 500 hPa above the equatorial Pacific ($10^\circ \text{ S} - 10^\circ \text{ N}$) in PHY_ONLY (black, \pm two times the standard deviation of eight 100 year periods of CTRL in dashed grey), PHY_CYA (green) and PHY_CYAx2 (purple). d) Climatological annual mean precipitation [mm d^{-1}] in PHY_CYA. e) Difference in the climatological annual mean precipitation [mm d^{-1}] between PHY_CYA and PHY_ONLY. The dotted areas indicate statistically significant anomalies at the 90 % confidence level (Student's *t*-test).

the transition between the convection and the subsidence zone of the Walker circulation is shifted westward by approx. 3° longitude (approx. 6° longitude in PHY_CYAx2) (Figure 5c). This is a significant change, larger than the internal variability of the model, which is estimated as \pm two times the standard deviation of eight 100 year periods of experiment CTRL (dashed grey lines in Figure 5c). In other words, the convection gets stronger, but more confined to the western part of the Pacific basin.

5 The strong cold SST anomaly at the equator generally reduces the meridional SST gradient between the equatorial zone and the Extratropics (Figure 2a). This results in weaker trade winds and a weakening of the Hadley circulation (Figure 5a,b). At the same time, the Hadley cells are slightly expanded polewards which leads to a slight northward shift of the western boundary currents (Kuroshio Current and Gulf Stream) as visible in the dipole SST pattern (Figure 2a).

The strongest effect on precipitation can be seen over the western equatorial Pacific (Figure 5e). There, the strong decrease in equatorial SST at 160° E (Figure 2a) and the zonal displacement of the Walker circulation (Figure 5c) lead to a change in the location and strength of convection and precipitation. Precipitation significantly decreases with a maximum centered at approx. 160° E by up to 1.0 mm d⁻¹ (up to 1.6 mm d⁻¹ in PHY_CYAx2), and extending off-equator in latitudinal bands at about 10° S and 10° N towards the east. A significant decrease is also seen above the cold SST anomalies in the western Indian Ocean, as well as the western tropical Atlantic and over the Amazon region. In the eastern parts of the ocean basins, the eastern equatorial Atlantic, Pacific and Indian Ocean, relatively warmer surface water, on the other hand, increases convection and hence precipitation by up to approx. 0.8 mm d⁻¹ (approx. 1.0 mm d⁻¹ in PHY_CYAx2).

4.3 Effects on ocean circulation

The weakening of the Hadley cells in PHY_CYA (and PHY_CYAx2) compared to PHY_ONLY implies a weakening of the wind driven ocean circulation. The barotropic streamfunction Ψ , which describes the large-scale horizontal ocean circulation, significantly decreases in magnitudes both in the subtropical- as well as in the equatorial gyres (Figure 6a,b). The dipole anomaly patterns within the subtropical gyres in the northern hemisphere indicate a poleward shift of its boundaries. This feature is most dominant in the North Atlantic, where the weakening in the southern part and strengthening in the northern part reflect a northward shift of the position of the Gulf Stream and the North Atlantic Current, respectively. The northward shift is also visible in the strong negative temperature anomaly which is present at the surface (Figure 2a) and reaches down to greater depth (Figure 4).

In the tropical Pacific north of the equator, the increase of annual mean southward windstress along the Southeast Asian coast (10-30°N, approx. 120°E) (Figure 5a,b) reduces the northward warm water transport of the Kuroshio Current. This, together with the slight northward shift of the Kuroshio Current, leads to the strong negative SST anomaly, which reaches into the interior of the ocean basin (Figure 2a).

30 In the Indian Ocean, both the equatorial and the subtropical gyres are generally weaker in PHY_CYA compared to PHY_ONLY and the boundary between them is slightly shifted southwards (Figure 6a,b). The significant reduction in strength of the Indian Ocean subtropical gyre is accompanied by a weakening of the so-called Southern Hemisphere "supergyre" (e.g., Speich et al., 2007), which extends into the South Atlantic. The associated reduced transport of warm water from the Indian Ocean into the South Atlantic ocean is visible in the cold SST signal around the tip of South Africa (Figure 2a). This cooling effect enhances

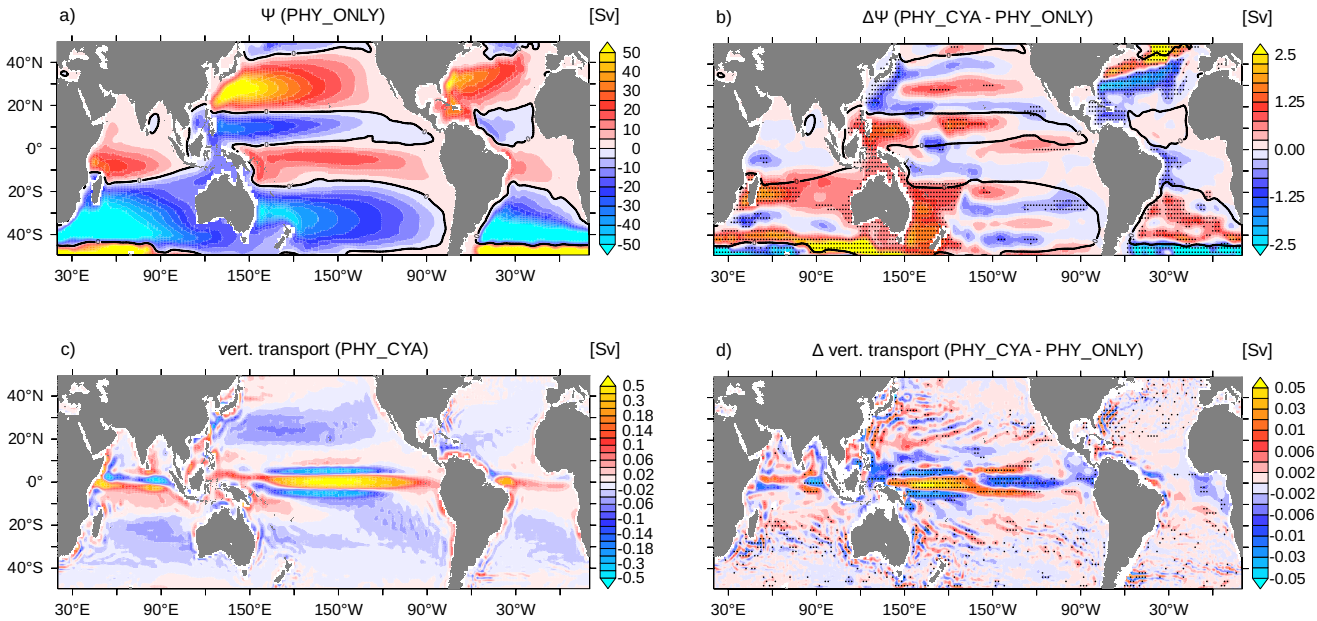


Figure 6. a) Climatological mean barotropic streamfunction Ψ [Sv] in PHY_ONLY. The zero-isoline is overlaid in black. b) Difference in the climatological mean Ψ [Sv] between PHY_CYA and PHY_ONLY. The zero-isoline of PHY_ONLY is overlaid in black. c) Climatological mean vertical transport in the upper 100 m [Sv] in PHY_ONLY. Note the non-linear color scaling with 0.01 Sv between -0.2 and 0.2 Sv and 0.1 Sv for the remaining range. d) Difference in the climatological annual mean vertical transport in the upper 100 m [Sv] between PHY_CYA and PHY_ONLY. Note the non-linear color scaling with 0.001 Sv between -0.01 and 0.01 Sv and 0.01 Sv for the remaining range. The dotted areas in b) and d) indicate statistically significant anomalies at the 90 % confidence level (Student's *t*-test).

the negative SST signal which occurs at the eastern margin of the South Atlantic due to the upwelling of colder subsurface water in the Benguela Upwelling system.

In the Atlantic Ocean, the reduction of the trade winds (Figure 5a,b) and the related windstress on the ocean (not shown) reduces equatorial divergence. The related weakening of the overturning cells slightly **damps** equatorial upwelling and reduces downwelling in the subtropical gyres (Figure 6c). Thus, the atmospheric response to the SST anomaly pattern does not amplify the negative equatorial SST signal, but rather **damps** it, by **causing less transport of** cold subsurface water to the surface. In combination with the local heating due to high cyanobacteria concentrations, this results in a positive SST signal at the eastern boundary (Figure 2a). In the Pacific Ocean, a similar behavior of weaker trade winds and **weaker** equatorial upwelling (Figure 6d) can be seen in the eastern part of the basin (east of 160° W). In the western part, on the contrary, the strengthening of the westward surface current related to the change in the Walker circulation increases equatorial upwelling. Here, the atmospheric feedback intensifies the surface cooling effect. This explains the larger SST signal in the western central Pacific Ocean compared to the east (Figure 2a). In summary, the atmospheric feedback amplifies the SST signal in the western Pacific by enhancing the upwelling strength, and **damps it in** the eastern Pacific and the Atlantic Ocean by reducing the upwelling strength.

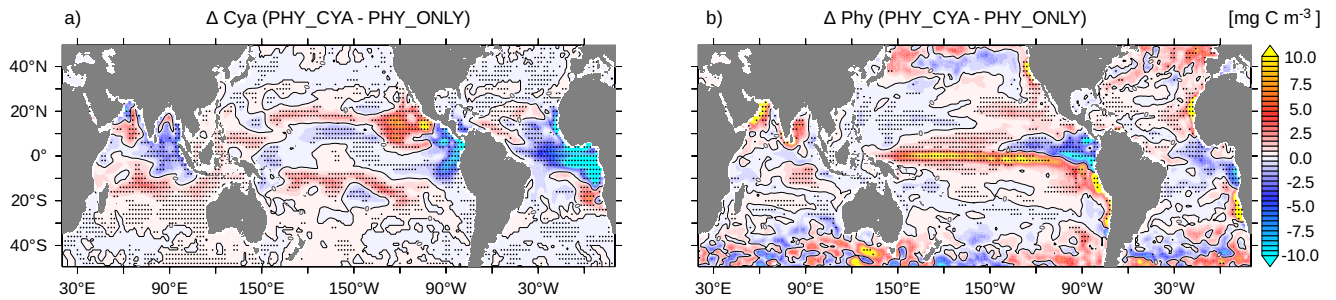


Figure 7. Change in a) climatological annual mean surface (0-22 m) cyanobacteria concentrations [mg C m^{-3}] and b) surface bulk phytoplankton concentrations [mg C m^{-3}] between PHY_CYA and PHY_ONLY. The zero-isolines are overlaid in black. The dotted areas indicate statistically significant anomalies at the 90 % confidence level (Student's t -test).

4.4 Feedback on phytoplankton abundance

By comparing the simulations with and without cyanobacteria light absorption we quantify how cyanobacteria induced changes in the physical ocean state feed back on the growth conditions of cyanobacteria and bulk phytoplankton itself. Globally integrated, the biogeochemical mean states in PHY_CYA, PHY_CYA_{x2} and PHY_ONLY do not differ notably from each other in quantities like the total cyanobacteria and phytoplankton biomass, nitrogen fixation and primary production. Regionally, however, significant changes in the concentrations of bulk phytoplankton and cyanobacteria occur (Figure 7). Thereby, phytoplankton concentrations, both of cyanobacteria and bulk phytoplankton, do not uniformly decrease or increase, but show a more complex pattern of change. Hence, we cannot generally refer to a positive or negative feedback between ocean physics and cyanobacteria light absorption. A positive feedback means that induced changes in ocean circulation and temperature result in an increase in cyanobacteria biomass, which further enhances the initial perturbation - i.e., the increase in light absorption strength. This is indeed the case in the subtropical bands of the Pacific ocean. Here, the cyanobacteria abundance results in cooling of equatorial SST (Figure 2a), which shifts the Walker circulation westward (Figure 5c), implying an increase in upwelling strength in the western equatorial Pacific (Figure 6d). The related increased abundance of nutrients at the surface is spread poleward via Ekman transport and promotes growth of cyanobacteria (and partially also bulk phytoplankton) in the subtropical bands at about approx. 10–20° S and approx. 10–20° N (Figure 7), closing the positive feedback loop. In the eastern tropical Atlantic and Indian Ocean, as well as the eastern equatorial Pacific, the decrease in upwelling strength and the increase in SST above the optimum temperature of 28°C impair cyanobacteria growth conditions and results in a strong decline in cyanobacteria concentrations of up to 25 % (Figure 7a). In experiment PHY_CYA_{x2}, the decline in these regions reaches values of up to 60 % (not shown). The cyanobacteria decline damps the effect of light absorption, thus constituting a negative feedback. The strong increase in bulk phytoplankton in the equatorial Pacific, as well as in the eastern boundary upwelling areas (Figure 7b), also damps the cooling effect due to the large increase in surface light absorption directly at the upwelling sites. In summary, the net effect of including cyanobacteria's effect on light absorption on cyanobacteria and phytoplankton growth is regionally variable and results from an interplay of different physical and biogeochemical processes.

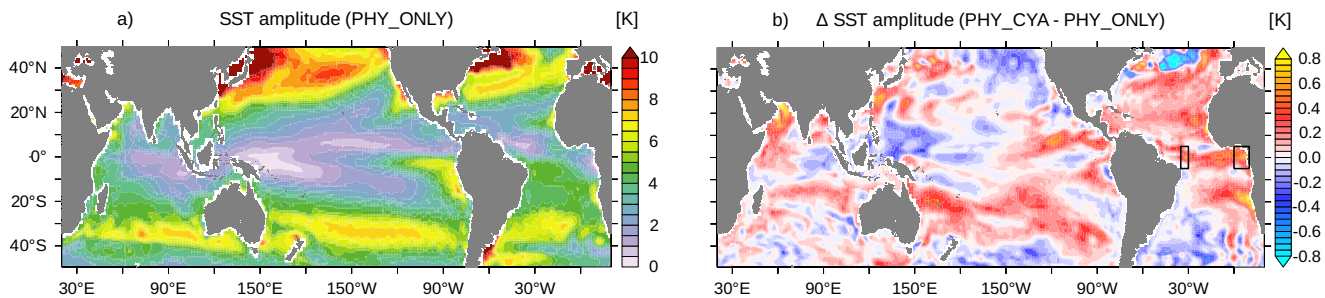


Figure 8. a) Climatological mean amplitude of the seasonal cycle of SST [K] in PHY_ONLY. b) Difference in the climatological mean amplitude of the seasonal cycle of SST [K] between PHY_CYA and PHY_ONLY. The black boxes display the locations discussed in Section 5 (Figure 9).

5 Effects of cyanobacteria light absorption on seasonal dynamics and interannual variability of SST

Including cyanobacteria light absorption modifies not only the mean climate state but also the seasonal SST amplitude as well as interannual SST variability. We find an increase in the amplitude of the climatological mean seasonal cycle of SST in PHY_CYA compared to PHY_ONLY in large parts of the tropical and subtropical ocean, regionally by up to **approx. 25 %** (Figure 8) (in PHY_CYA_{x2} up to **approx. 50 %**). In large parts, this increase improves the model performance in comparison to the observed amplitude of the seasonal cycle (Reynolds et al., 2007, not shown). The increase in the simulated amplitude is characterized by either an increase in the maximum annual monthly mean temperature (caused by the direct heating of local cyanobacteria biomass) or by a decrease of the minimum annual monthly mean temperature (caused by the indirect cooling due to the upwelling of subsurface water and its subsequent lateral transport), or by a combination of both. Both processes have their own – partly interdependent – seasonal dynamics. The changes in temperature and upwelling strength furthermore feed back on the cyanobacteria abundance itself. **We select** two locations (the western and eastern tropical Atlantic) and show the climatological seasonal cycle of SST and surface cyanobacteria biomass (Figure 8b, black boxes) to illustrate that, depending on the region, different factors play a role.

In the western Atlantic equatorial upwelling region, a stronger surface cooling prevails year-round in PHY_CYA (and PHY_CYA_{x2}) compared to PHY_ONLY (Figure 9a) due to upwelling of relatively cooler subsurface water. The decrease is stronger from July to September (due to low cyanobacteria concentrations and hence surface light absorption), resulting in an increased amplitude of the seasonal cycle of 13.5 % in PHY_CYA (19.7 % in PHY_CYA_{x2}) which slightly impairs the model results in comparison to the observed amplitude of the seasonal cycle at this location (Reynolds et al., 2007). Cyanobacteria concentrations are lower in PHY_CYA (and PHY_CYA_{x2}) compared to PHY_ONLY at the beginning of the year due to weaker upwelling (Figure 9b).

In the eastern equatorial Atlantic (Gulf of Guinea), maximum temperatures between December and March are increased in PHY_CYA (and PHY_CYA_{x2}) compared to PHY_ONLY due to the surface heating effect of the high local cyanobacteria concentrations which prevail in this period. From May to October, on the other hand, the cyanobacteria concentrations – and

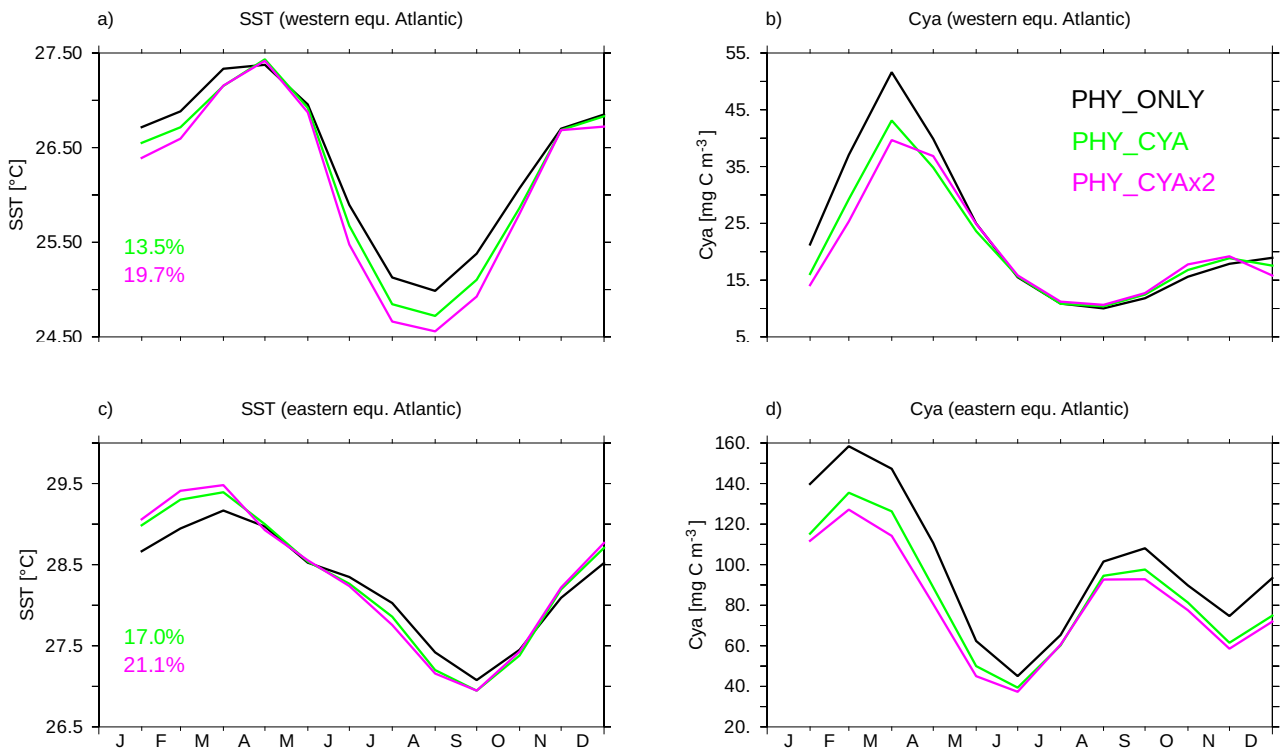


Figure 9. a) and c): Climatological monthly mean seasonal cycle of SST [$^{\circ}\text{C}$] in the western (top) and eastern (bottom) tropical Atlantic in PHY_ONLY (black), PHY_CYA (green), and PHY_CYAx2 (purple). The displayed numbers show the change in the amplitude in percent. b) and d): Climatological mean seasonal cycle of surface cyanobacteria concentrations [mg C m^{-3}] in the western (top) and eastern (bottom) tropical Atlantic in PHY_ONLY (black), PHY_CYA (green), and PHY_CYAx2 (purple). The locations are shown as black boxes in Figure 8b.

hence the surface warming effect – decrease and, instead, the upwelling of colder subsurface water dominates and results in a slight decrease in SST. In total, the amplitude of the seasonal cycle of SST is enhanced (17.0 % in PHY_CYA, 21.1 % in PHY_CYAx2, Figure 9c). This brings it slightly closer to the observed amplitude (Reynolds et al., 2007, not shown) which is generally underestimated in the model in this region of the ocean. Cyanobacteria growth and concentrations are reduced in PHY_CYA (and PHY_CYAx2) compared to PHY_ONLY all year round (Figure 9d) since the upwelling strength is weaker (Figure 6d) and SST exceeds the optimum value of 28°C in the beginning of the year.

Besides the seasonal dynamics of SST, the interannual variability of SST is also affected by cyanobacteria light absorption. The interannual standard deviation of SST in the equatorial Pacific (160°E - 80°W , 10°S - 10°N) is increased by 21.8 % in PHY_CYA compared to PHY_ONLY (Figure 10a,b) which exceeds an estimate of centennial anomalies of the model (Figure 10c, dots show significant anomalies larger than \pm two times the standard deviation of eight 100 year periods of CTRL). Regionally, the increase reaches values of 60 %. The Niño 3.4 index (SST anomalies averaged over the area 5°S - 5°N , 170°W - 120°W) is increased by 16 % (from 0.69 K in PHY_ONLY to 0.80 K in PHY_CYA). The increase in variability is probably related to the mean state changes induced by the presence of cyanobacteria: first, the increased asymmetry in zonal

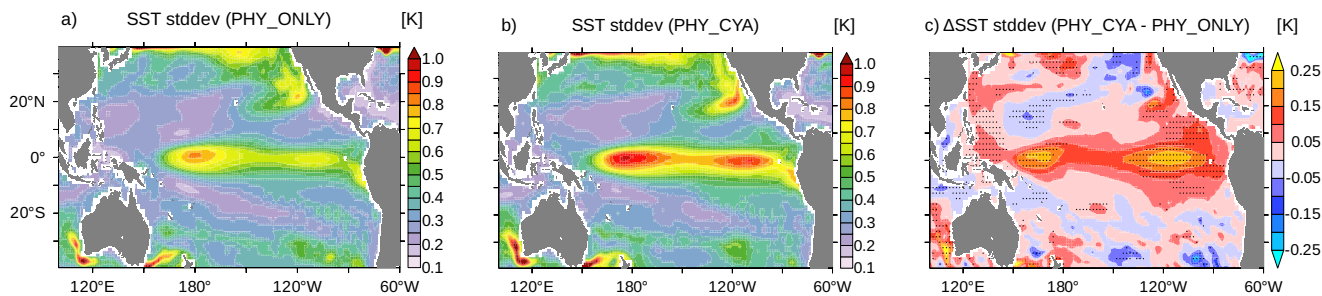


Figure 10. Standard deviation of SST [K] in the tropical Pacific in a) PHY_ONLY and b) PHY_CYA, and c) the difference between PHY_CYA and PHY_ONLY. The dotted areas show anomalies larger than \pm two times the standard deviation of eight 100 year periods of CTRL.

SST due to the cooling of the cold tongue (Figure 2a), and second, the shoaling of the equatorial thermocline (Figure 3). Both factors are generally proposed to increase variability of tropical SST and El Niño-Southern Oscillation (ENSO) (e.g., Collins et al., 2010; Meehl et al., 2001). Hence, cyanobacteria, although mainly growing off-equator, influence ENSO dynamics by remotely modifying SST and the thermocline depth at the equator.

- 5 Also in experiment PHY_CYA_{x2}, interannual variability is increased compared to PHY_ONLY (not shown). **Interestingly, a stronger cooling of the cold tongue (Figure 2b) and shoaling of the equatorial thermocline (Figure 3) in PHY_CYA_{x2} compared to PHY_CYA does not lead to a stronger increase in variability (e.g., Collins et al., 2010; Meehl et al., 2001). The increase is slightly lower (17.1 % in the area 160° E-80° W, 10° S-10° N, and regionally up to 50 %).** This indicates that there are other factors besides the mean state changes in zonal SST and thermocline depth **that** influence the tropical Pacific interannual
- 10 variability.

6 Discussion and synthesis

6.1 Discussion in the context of observations and previous model studies

- Including light absorption by cyanobacteria in MPI-ESM has considerable effects on the **simulated** tropical climate mean state and variability. The net surface cooling effect induced by cyanobacteria in large parts of the tropics **is rather counterintuitive.**
- 15 Theoretical considerations and a one-dimensional model study (Sonntag and Hense, 2011) **suggest** a local surface warming **would take place** due to cyanobacteria light absorption. Also satellite and in situ observations show a local warming effect due to the presence of cyanobacteria blooms (Kahru et al., 1993; Capone et al., 1998; Wurl et al., 2018). These observations, however, only represent snapshots of **local** heating events. Within the framework of the Earth system model used in this study, we show that on climatological time scale **this surface warming effect** prevails only in limited areas. In **larger** areas, on the
- 20 contrary, the **local surface warming effect** of cyanobacteria, transfers into a cooling effect on the climatological large scale due

to the upwelling of cooler subsurface water. Cyanobacteria **remotely affect regions relevant for biogeochemistry and climate variability and thus play a role on a larger scale than indicated by local observations and one-dimensional models.**

A number of previous model studies concur with the relevance of the advective redistribution of heat and also diagnosed a cooling of equatorial SST caused by the presence of phytoplankton (Nakamoto et al., 2001; Sweeney et al., 2005; Anderson et al., 2007; Gnanadesikan and Anderson, 2009; Sonntag, 2013). In an idealized regional ocean model of the North Atlantic, Sonntag (2013) found that cyanobacteria locally heat the surface ocean, and non-locally cool the equatorial SST due to advective processes – a result which qualitatively agrees with our study. The global model studies of Anderson et al. (2007) and Gnanadesikan and Anderson (2009) focused on similar regions as we do in this study. **In line with our study, the authors found that explicitly accounting for water turbidity in off-equatorial regions (more precisely in the subtropical gyres and the eastern tropical regions overlying the oxygen minimum zones) leads to a surface cooling with similar patterns and effects on the mean climate state. Agreement between this study and the coupled model study by Gnanadesikan and Anderson (2009) on the sensitivity of the Walker and Hadley circulation, as well as precipitation patterns, to the changes in SST gives confidence about the robustness of our model results.** Whereas Gnanadesikan and Anderson (2009) used a satellite climatology of chlorophyll, we applied a full biogeochemical model with interactive biogeophysical feedback. This **ensures 1)** a temporally varying chlorophyll field that is consistent with the model circulation field (due to nutrient and temperature limitation of phytoplankton growth which is to a large degree affected by the ocean circulation), **2)** vertical variations in chlorophyll concentrations, **and 3) the** feedback from changes in physics on chlorophyll concentrations themselves. Furthermore, we were able to identify cyanobacteria to be the phytoplankton group that is largely responsible for the light absorption in the areas **that** are already considered important by Gnanadesikan and Anderson (2009). Cyanobacteria, **able to fix N₂**, inhabit exactly the regions which have a regulative effect on tropical SST due to shading of the subsurface water that enters the shallow meridional cells. Moreover, cyanobacteria are positively buoyant and hence mainly concentrated in the upper 20 m, where highest incoming radiation is present, and where effects on light absorption thus have strongest effects on temperature. Based on idealized model setups, Sonntag and Hense (2011) and Hense et al. (2017) already pointed out the potential necessity of "surface mat producers", such as positively buoyant cyanobacteria, to be included in Earth system models – a suggestion that we confirm in our study and furthermore **quantify.**

The cooling effect due to **the water turbidity off-equator** was also stressed in global ocean-only studies. By considering the zonal momentum budget integrated over the mixed layer, the authors argue that stronger light absorption and related shallower MLDs in the regions off-equator enhance the meridional transport and equatorial upwelling, which causes the simulated SST decrease at the equator (Sweeney et al., 2005; Löptien et al., 2009; Park et al., 2014). In our coupled model setup, on the contrary, we show that the atmospheric feedback on ocean circulation largely outweighs the effect on upwelling induced by the change in the MLD and results, instead, in a decrease in upwelling strength in most parts. In the coupled system, the shading and hence cooling of the subsurface water that is eventually upwelled is responsible for the cooling effect, rather than an increase in upwelling strength itself. This discrepancy between the results of the ocean-only and the coupled model setup emphasizes the importance of using an Earth system model to study biogeophysical feedbacks in order to account for interactions between the different components of the Earth system.

We find that including the effect of light attenuation of phytoplankton on the ocean heat budget affects ENSO dynamics. This has already been suggested by previous model studies (e.g., Timmermann and Jin, 2002; Marzeion et al., 2005; Jochum et al., 2010). Many of the studies, however, attribute this effect to the presence of chlorophyll at the equator. Our study indicates, in agreement with Anderson et al. (2009), that especially light absorption off-equator plays a relevant role by modifying equatorial SST and thermocline depth. As cyanobacteria are strongly contributing to the light absorption strength off-equator, they impose further complexity on ENSO dynamics that has not been taken into account in previous studies.

The use of an Earth system model with interactive biogeochemistry (instead of a chlorophyll climatology) furthermore allows us to study the feedback from phytoplankton induced changes in climate on phytoplankton growth itself. The positive feedback (cyanobacteria promote their own growth due to the process of light absorption) which we find in some regions, such as the subtropical bands of the Pacific Ocean, is in line with idealized model studies (Hense, 2007; Sonntag and Hense, 2011; Sonntag, 2013). In our simulations, however, the positive feedback is not acting locally via changes in temperature, as is the case in the studies mentioned above, but mainly via non-local processes, i.e. changes in the upwelling strength and hence the supply of nutrients. In large regions, these circulation changes lead to a decline in cyanobacteria concentrations in our simulation, which constitutes a negative feedback. Nutrient limitation of cyanobacteria growth is not included in abovementioned studies. This could explain the diverging results.

As seen in our sensitivity experiment, the patterns of change in climate properties induced by cyanobacteria are largely independent of their prescribed absorption strength (i.e. chlorophyll content). The magnitudes of the effects behave roughly linearly: a doubling of the absorption strength roughly doubles the anomalies for many of the analyzed quantities in large areas. This is not obvious, since many non-linear processes are involved and the resulting local heating effect and non-local cooling effect do not necessarily need to add up to the same net effect (surface cooling or warming). The magnitudes of the effects are very sensitive to the prescribed strength of light absorption, i.e. the chlorophyll content of cyanobacteria. Since this parameter is not well constrained, there is a considerable potential range of impact induced by cyanobacteria light absorption. Chlorophyll concentrations are derived linearly from the cyanobacteria concentrations and thus have to be seen as a rough first order approximation. In reality, chlorophyll content depends on a lot of factors, e.g., light conditions and temperature. For both applied parameters, 120 and 60 mg C (mg Chl)⁻¹, the changes in the climate mean state and variability are significant compared to the internal variability of the model. The value of 60 mg C (mg Chl)⁻¹, as applied in PHY_CYAx2, is situated in the lower range of observations (i.e. in the upper range of chlorophyll contents) (e.g., Berman-Frank et al., 2001; Carpenter et al., 2004; Sathyendranath et al., 2009). The effects in this experiment can thus be roughly seen as upper limit. On the other hand, cyanobacteria contain also pigments other than chlorophyll, like phycocyanin, which also absorb shortwave radiation in the visible range (e.g., Navarro Rodriguez, 1998), but are not accounted for in the model parameterization.

In addition to these uncertainties in the prescribed light absorption strength per cyanobacteria biomass, uncertainties in the cyanobacteria distribution itself impose uncertainties on the model results. As discussed in Paulsen et al. (2017), the model underestimates cyanobacteria concentrations in the North Atlantic subtropical gyre. Related to that, the surface cooling effect in the tropical Atlantic might be underestimated. On the other hand, the model might overestimate cyanobacteria concentrations in the tropical East Pacific, and thus also likely the cooling effect of the Pacific cold tongue. Despite these uncertainties in the

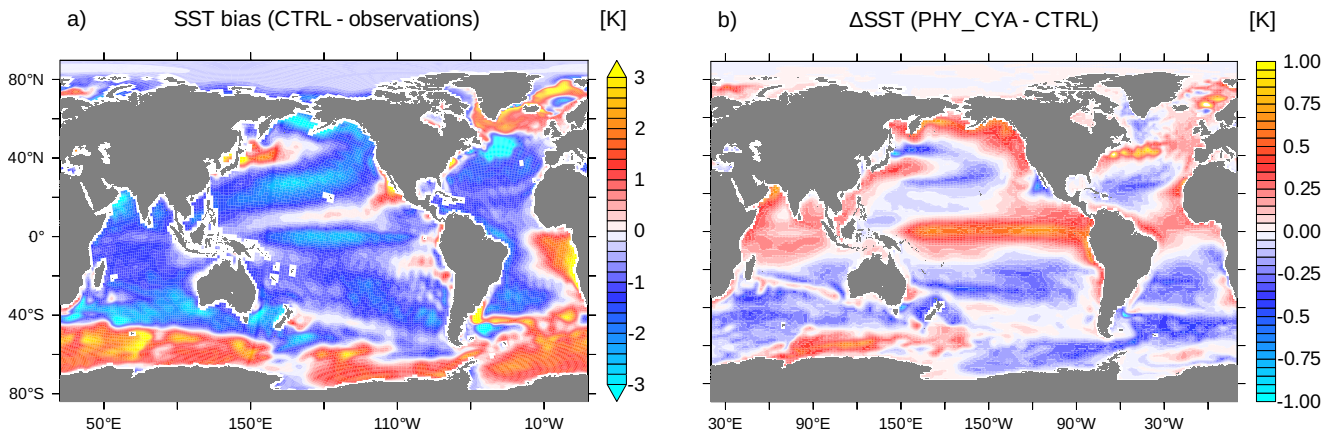


Figure 11. a) SST [K] bias of CTRL compared to observations (PHC3 climatology). b) Difference in SST [K] between PHY_CYA and CTRL.

details of the strength and patterns of the effects, the model results clearly indicate the potential of the phytoplankton group of cyanobacteria to play a relevant role in the Earth system.

6.2 Implications for the Earth system model

In this study, we focused on the impact of including prognostic cyanobacteria in addition to bulk phytoplankton in the dynamic biological shortwave heating on the climate system in MPI-ESM. In the following, we discuss our results in the context of the standard model version, **which uses a globally uniform optical water type (our simulation CTRL)**, and in the context of observations. Figure 11a shows the SST bias of CTRL in comparison to observations (the Polar Science Center Hydrographic Climatology, PHC3, a blend of the Levitus et al. (1998) data with an updated data set for the Arctic from Steele et al. (2001)). The changes in SST due to including the biogeophysical feedback from phytoplankton – bulk phytoplankton and cyanobacteria – on radiative heating only slightly improve the globally averaged mean SST bias (0.61 K in PHY_CYA compared to 0.62 K in CTRL) and the globally averaged root mean square error (1.35 K in PHY_CYA compared to 1.38 K in CTRL). In contrast, regional improvements are much more prominent. **The tropical Pacific cold bias in PHY_CYA is reduced by 0.7 K (approx. 25 %) in comparison to CTRL (Figure 11b).** This furthermore implies a reduction of the precipitation bias in the western equatorial Pacific (not shown). The reduction of the cold bias in PHY_CYA compared to CTRL can be explained as follows: **the globally constant water turbidity assumed in CTRL (which approximates to $0.44 \text{ mg Chl m}^{-3}$) overestimates the turbidity, and hence light absorption strength, within the clear water regions of the oligotrophic subtropical gyres. In PHY_CYA, the phytoplankton-dependent water turbidity takes account of these low-chlorophyll areas. This leads to deeper reaching light penetration within the subtropical gyres that results in a warming of the subsurface water within the shallow meridional overturning cells – the water that is eventually upwelled at the equator. This equatorial surface warming effect due to clearer subtropical gyres was also seen in the study of Wetzels et al. (2006), in which a former version of MPI-ESM was used. Other studies (Patara et al., 2012, and references therein) also compared a model state with phytoplankton light absorption included (either from satellite**

chlorophyll or calculated in the biogeochemical model) against a reference state with globally constant water turbidity (either corresponding to zero chlorophyll or a constant non-zero chlorophyll value). Whether this leads to a warming, as in our study and in Wetzel et al. (2006), or to a cooling of equatorial SST, strongly depends on the chosen reference state: If the reference turbidity within the subtropical gyres is lower than the prognostic value (e.g., zero chlorophyll, as in Gnanadesikan and Anderson, 2009), including the feedback leads to a cooling. In this case the higher chlorophyll values shade and hence cool the subsurface water that is upwelled at the equator. If the reference turbidity within the subtropical gyres, on the other hand, is larger than the prognostic value (as is the case in our study and in Wetzel et al., 2006), including the feedback leads to a **warming**. The magnitudes of the anomalies are not directly comparable between the studies due to the different reference attenuation depths which were used (11–43 m, see Patara et al., 2012, and references therein). All studies, including ours, however, agree that applying a phytoplankton-dependent light attenuation scheme instead of a globally uniform attenuation has considerable effects on the simulated model state. In our case, the changes improve some of the model biases, which emphasizes the relevance of including the bio-physical feedback in the model. Omitting the effect of cyanobacteria (that means considering only the effect of bulk phytoplankton) results in even lower water turbidity within the subtropical gyres. The heating of the Pacific cold tongue and hence the improvement with respect to the Pacific SST bias compared to CTRL is even larger in PHY_ONLY compared to PHY_CYA. The strong regulative effect that cyanobacteria have on equatorial SST is important to note in this regard. Considering cyanobacteria in addition to bulk phytoplankton in the feedback, changes the anomaly by **approx. 30 %** (PHY_CYA - CTRL: 0.7 K, PHY_ONLY - CTRL: 1.0 K). This magnitude (0.3 K, Figure 2a) is roughly half of **approx. 0.75 K**, which is the difference that arises from running the model with a higher horizontal resolution (MR, global resolution of 0.4°, Jungclaus et al., 2013). The fact that in the equatorial region more realistic SST values are simulated when omitting light absorption by **cyanobacteria might** have two reasons. First, the surface chlorophyll of bulk phytoplankton in the subtropical gyres is slightly overestimated in comparison to satellite data (as mentioned in Section 3). This might lead to an overestimation of the water turbidity and hence an underestimation of the subsurface heating and the related equatorial surface warming. Second, model parameters were chosen to **best represent** the climate state in a model version without accounting for the biogeophysical feedback of light absorption. The fact that including cyanobacteria, which to our best knowledge should improve the represented distribution of light absorption, does, however, regionally impair the model biases, might indicate the demand for a retuning of certain model parameters, such as the ones related to vertical mixing.

Associated with a reduction of the SST bias of the Pacific cold tongue in the experiments with feedback included (PHY_ONLY, PHY_CYA and PHY_CYA_{x2}) compared to CTRL, the representation of the seasonality of tropical Pacific variability **is also** improved (Figure 12). Whereas in CTRL the Niño3.4 variability seems to have almost no seasonality, all simulations with feedback included establish a seasonal cycle in closer agreement with observations (HadISST1, Rayner et al., 2003). If the differences between the setups with and without cyanobacteria are significant against the large internal variability of the model (see blue bars in Figure 12 which show \pm the standard deviation of eight 100 year periods of CTRL), has to be tested in longer runs. The improvement of the seasonality of ENSO variability due to applying a phytoplankton-dependent instead of a globally uniform light attenuation was also found in Wetzel et al. (2006).

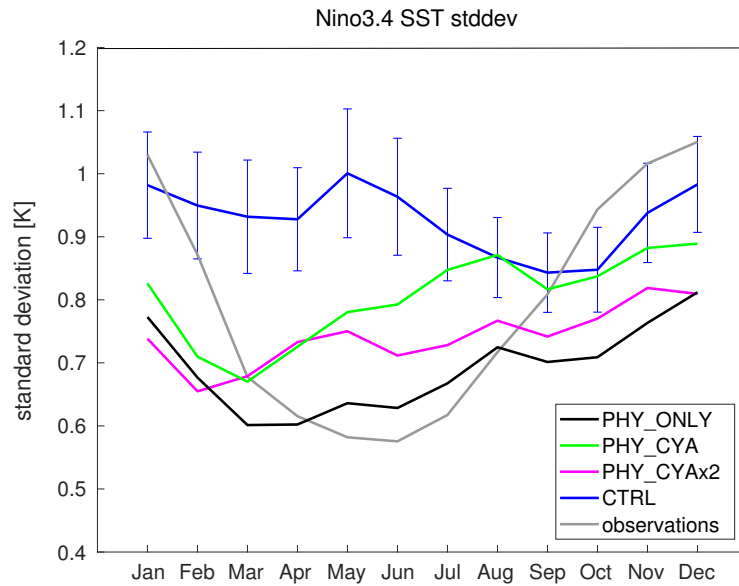


Figure 12. Seasonal cycle of the standard deviations of the Niño3.4 SST index (SST anomalies averaged over the area 5° S–5° N, 170° W–120° W) for the experiments PHY_ONLY (black), PHY_CYA (green), PHY_CYAx2 (purple), CTRL (blue) and observations (HadISST1) (grey). The blue errorbars on the blue curve show \pm the standard deviation of eight 100 year periods of CTRL.

In contrast to the equatorial Pacific, where the inclusion of light absorption by cyanobacteria in addition to bulk phytoplankton does rather impair the SST bias, there are also regions where the SST bias is improved. In the coastal upwelling region of the southeastern tropical Atlantic, the cooling effect caused by including cyanobacteria reduces the coastal warm bias by 0.2–0.4 K in PHY_CYA compared to PHY_ONLY (relative to CTRL). This magnitude, and also the bias reduction in the equatorial Pacific of 0.7 K in PHY_CYA compared to CTRL mentioned above, are significantly larger than the internal variability of the model. They do, however, not completely eliminate the model biases. Other model uncertainties, like erroneous winds and an improper representation of stratocumulus clouds still prevail (Jungclaus et al., 2013). Furthermore, the resolution of the atmospheric (Milinski et al., 2016) and the ocean general circulation model (Jungclaus et al., 2013) might induce biases. Nevertheless, our results show that the sensitivity of SST and climate to details in the spatial distribution of light absorption by marine biota, indeed, adds another level of complexity to the model which is largely independent of the model resolution and which should be taken into account in considerations of climate model biases.

7 Summary and Conclusions

We use the Earth system model MPI-ESM to study the effects of light absorption by marine cyanobacteria on the tropical climate system. We find that accounting for prognostic cyanobacteria in addition to bulk phytoplankton in the attenuation depth of light has significant effects on the model’s climate mean state and variability. In most regions, cyanobacteria induce

a surface cooling on tropical SST on climatological time scale in the order of 0.5 K. This is because cyanobacteria biomass, located throughout the tropical and subtropical ocean, shades and hence cools the subsurface water that is upwelled at the equator and in eastern boundary upwelling regions. On climatological timescales, this advective process of bringing cooler subsurface water to the surface outweighs the direct local heating effect that was inferred from observations and idealized one-dimensional studies. The equatorial cooling leads to a weakening of the Hadley circulation, a westward shift (approx. 3.0° longitude) of the Walker circulation, as well as changes in the precipitation patterns (up to 1.0 mm d⁻¹). Changes in ocean temperature and circulation feed back on cyanobacteria growth itself, imposing complex patterns of positive and negative feedback loops. Furthermore, the amplitude of the seasonal cycle of SST in areas where cyanobacteria are abundant is increased by approx. 25 %. Tropical Pacific variability is enhanced by roughly 20 %. The magnitudes of all effects are thereby sensitive to the prescribed strength of light absorption per cyanobacteria biomass. Doubling the chlorophyll content per cyanobacteria biomass (which results in a value in the upper range of observations), roughly doubles the magnitudes of most effects.

Accounting for the biologically induced radiative heating of phytoplankton (bulk phytoplankton and cyanobacteria) improves some of the model SST biases, e.g., the Pacific cold bias and the coastal warm bias in the southeastern tropical Atlantic, compared to the standard model version that applies a globally uniform light attenuation depth. The effects between including or not including cyanobacteria in the feedback demonstrate the sensitivity of the simulated climate mean state and variability to details in the distribution and representation of marine biota. In light of the uncertainties in the spatial distribution and light absorption strength of phytoplankton, the results stress the need for more observations to further constrain and better represent the effects of light absorption by marine biota in Earth system models. Our results indicate that the functional group of surface buoyant, N₂-fixing cyanobacteria is important to be considered due to its regulative effect on tropical SST and climate.

Code and data availability. All simulations were performed at the German Climate Computing Center (DKRZ). The model code, primary data and scripts needed to reproduce the analyses presented in this study are archived by the Max Planck Institute for Meteorology, and will be available by contacting publications@mpimet.mpg.de.

Author contributions. H.P. developed the model code (with contributions from T.I., K.D.S. and I.S.), performed the experiments, and carried out the analyses (with contributions from all co-authors). H.P. prepared the manuscript with contributions from all co-authors.

Competing interests. The authors declare that they have no conflict of interest.

Acknowledgements. This study was part of the PhD thesis of H.P. (Paulsen, 2018) and was funded by the International Max Planck Research School on Earth System Modelling. The authors would like to thank Michael Botzet for performing the simulation CTRL and Sebastian Sonntag for helpful comments on the manuscript.

References

- Anderson, W., Gnanadesikan, A., Hallberg, R., Dunne, J., and Samuels, B.: Impact of ocean color on the maintenance of the Pacific Cold Tongue, *Geophysical Research Letters*, 34, 2007.
- Anderson, W., Gnanadesikan, A., and Wittenberg, A.: Regional impacts of ocean color on tropical Pacific variability, *Ocean Science*, 5, 313, 5 2009.
- Berman-Frank, I., Cullen, J. T., Shaked, Y., Sherrell, R. M., and Falkowski, P. G.: Iron availability, cellular iron quotas, and nitrogen fixation in *Trichodesmium*, *Limnology and Oceanography*, 46, 1249–1260, 2001.
- Bracher, A., Vountas, M., Dinter, T., Burrows, J., Roettgers, R., and Peeken, I.: Quantitative observation of cyanobacteria and diatoms from space using PhytoDOAS on SCIAMACHY data, *Biogeosciences*, 6, 751–764, 2009.
- 10 Breitbarth, E., Oschlies, A., and LaRoche, J.: Physiological constraints on the global distribution of *Trichodesmium* - effect of temperature on diazotrophy, *Biogeosciences*, 4, 53–61, 2007.
- Capone, D. G., Zehr, J. P., Paerl, H. W., Bergman, B., and Carpenter, E. J.: *Trichodesmium*, a globally significant marine cyanobacterium, *Science*, 276, 1221–1229, 1997.
- Capone, D. G., Subramaniam, A., Montoya, J. P., Voss, M., Humborg, C., Johansen, A. M., Siefert, R. L., and Carpenter, E. J.: An extensive 15 bloom of the diazotrophic cyanobacterium, *Trichodesmium*, in the Central Arabian Sea during the spring intermonsoon, *Mar. Ecol. Prog. Ser.*, 172, 281–292, 1998.
- Carpenter, E. J. and Romans, K.: Major role of the cyanobacterium *Trichodesmium* in nutrient cycling in the North Atlantic Ocean., *Science(Washington)*, 254, 1356–1358, 1991.
- Carpenter, E. J., Subramaniam, A., and Capone, D. G.: Biomass and primary productivity of the cyanobacterium *Trichodesmium* spp. in the 20 tropical North Atlantic ocean, *Deep Sea Research Part I: Oceanographic Research Papers*, 51, 173–203, 2004.
- Collins, M., An, S.-I., Cai, W., Ganachaud, A., Guilyardi, E., Jin, F.-F., Jochum, M., Lengaigne, M., Power, S., Timmermann, A., et al.: The impact of global warming on the tropical Pacific Ocean and El Niño, *Nature Geoscience*, 3, 391–397, 2010.
- Eppley, R. W.: Temperature and phytoplankton growth in the sea, *Fish. Bull.*, 70, 1063–1085, 1972.
- Gnanadesikan, A. and Anderson, W. G.: Ocean water clarity and the ocean general circulation in a coupled climate model, *Journal of Physical* 25 *Oceanography*, 39, 314–332, 2009.
- Gregg, W. W., Casey, N. W., and McClain, C.: Recent trends in global ocean chlorophyll, *Geophysical Research Letters*, 32, 2005.
- Großkopf, T., Mohr, W., Baustian, T., Schunck, H., Gill, D., Kuypers, M. M., Lavik, G., Schmitz, R. A., Wallace, D. W., and LaRoche, J.: Doubling of marine dinitrogen-fixation rates based on direct measurements, *Nature*, 488, 361–364, 2012.
- Hense, I.: Regulative feedback mechanisms in cyanobacteria-driven systems: a model study, *Marine Ecology Progress Series*, 339, 41–47, 30 2007.
- Hense, I., Stemmler, I., and Sonntag, S.: Ideas and perspectives: climate-relevant marine biologically driven mechanisms in Earth system models, *Biogeosciences*, 14, 403, 2017.
- Ilyina, T., Six, K. D., Segsneider, J., Maier-Reimer, E., Li, H., and Núñez-Riboni, I.: Global ocean biogeochemistry model HAMOCC: Model architecture and performance as component of the MPI-Earth system model in different CMIP5 experimental realizations, *Journal* 35 *of Advances in Modeling Earth Systems*, 5, 287–315, 2013.
- Jerlov, N.: *Optical water types*, Marine Optics. Elsevier Scientific, New York, pp. 132–137, 1976.

- Jochum, M., Yeager, S., Lindsay, K., Moore, K., and Murtugudde, R.: Quantification of the feedback between phytoplankton and ENSO in the Community Climate System Model, *Journal of Climate*, 23, 2916–2925, 2010.
- Johnson, K. S., Gordon, R. M., and Coale, K. H.: What controls dissolved iron concentrations in the world ocean? Authors' closing comments, *Marine Chemistry*, 57, 181–186, 1997.
- 5 Jungclaus, J., Fischer, N., Haak, H., Lohmann, K., Marotzke, J., Matei, D., Mikolajewicz, U., Notz, D., and Storch, J.: Characteristics of the ocean simulations in the Max Planck Institute Ocean Model (MPIOM) the ocean component of the MPI-Earth system model, *Journal of Advances in Modeling Earth Systems*, 5, 422–446, 2013.
- Kahru, M., Leppaenen, J.-M., and Rud, O.: Cyanobacterial blooms heating of the sea surface, *Marine ecology progress series*. Oldendorf, 101, 1–7, 1993.
- 10 Kara, A. B., Wallcraft, A. J., and Hurlburt, H. E.: A new solar radiation penetration scheme for use in ocean mixed layer studies: an application to the Black Sea using a fine-resolution Hybrid Coordinate Ocean Model (HYCOM), *Journal of physical oceanography*, 35, 13–32, 2005.
- Karl, D., Michaels, A., Bergman, B., Capone, D., Carpenter, E., Letelier, R., Lipschultz, F., Paerl, H., Sigman, D., and Stal, L.: Dinitrogen fixation in the worlds oceans, Springer, 2002.
- LaRoche, J. and Breitbart, E.: Importance of the diazotrophs as a source of new nitrogen in the ocean, *Journal of Sea Research*, 53, 67–91, 15 2005.
- Levitus, S., Boyer, T., Conkright, M., Johnson, D., Antonov, T. J., Stephens, C., and Gelfeld, R.: World ocean database 1998, volume 2: Temporal distribution of mechanical bathythermograph profiles, NOAA Atlas NESDIS, 19, 1998.
- Lewis, M., Cullen, J., and Platt, T.: Phytoplankton and thermal structure in the upper ocean: consequences of non-uniformity in chlorophyll profile, *Journal of Geophysical Research Oceans*, 88, 2565–2570, 1983.
- 20 Lewis, M. R., Carr, M.-E., Feldman, G. C., Esaias, W., and McClain, C.: Influence of penetrating solar radiation on the heat budget of the equatorial Pacific Ocean, *Nature*, 347, 543, 1990.
- Löptien, U., Eden, C., Timmermann, A., and Dietze, H.: Effects of biologically induced differential heating in an eddy-permitting coupled ocean-ecosystem model, *Journal of Geophysical Research: Oceans*, 114, 2009.
- Luo, Y.-W., Doney, S., Anderson, L., Benavides, M., Berman-Frank, I., Bode, A., Bonnet, S., Boström, K., Böttjer, D., Capone, D., et al.: 25 Database of diazotrophs in global ocean: abundance, biomass and nitrogen fixation rates, *Earth System Science Data*, 4, 47–73, 2012.
- Manizza, M., Le Quére, C., Watson, A. J., and Buitenhuis, E. T.: Ocean biogeochemical response to phytoplankton-light feedback in a global model, *Journal of Geophysical Research: Oceans*, 113, 2008.
- Marsland, S. J., Haak, H., Jungclaus, J. H., Latif, M., and Röske, F.: The Max-Planck-Institute global ocean/sea ice model with orthogonal curvilinear coordinates, *Ocean modelling*, 5, 91–127, 2003.
- 30 Marzeion, B., Timmermann, A., Murtugudde, R., and Jin, F.-F.: Biophysical feedbacks in the tropical Pacific, *Journal of Climate*, 18, 58–70, 2005.
- Meehl, G., Gent, P., Arblaster, J., Otto-Bliesner, B., Brady, E., and Craig, A.: Factors that affect the amplitude of El Nino in global coupled climate models, *Climate Dynamics*, 17, 515–526, 2001.
- Milinski, S., Bader, J., Haak, H., Siongco, A. C., and Jungclaus, J. H.: High atmospheric horizontal resolution eliminates the wind-driven 35 coastal warm bias in the southeastern tropical Atlantic, *Geophysical Research Letters*, 43, 2016.
- Mohanty, A., Satpathy, K., Sahu, G., Hussain, K., Prasad, M., and Sarkar, S.: Bloom of *Trichodesmium erythraeum* (Ehr.) and its impact on water quality and plankton community structure in the coastal waters of southeast coast of India, 2010.

- Murtugudde, R., Beauchamp, J., McClain, C. R., Lewis, M., and Busalacchi, A. J.: Effects of penetrative radiation on the upper tropical ocean circulation, *Journal of Climate*, 15, 470–486, 2002.
- Nakamoto, S., Kumar, S. P., Oberhuber, J., Ishizaka, J., Muneyama, K., and Frouin, R.: Response of the equatorial Pacific to chlorophyll pigment in a mixed layer isopycnal ocean general circulation model, *Geophysical Research Letters*, 28, 2021–2024, 2001.
- 5 Navarro Rodriguez, A. J.: Optical properties of photosynthetic pigments and abundance of the cyanobacterium *Trichodesmium* in the eastern Caribbean Basin, Ph.D. thesis, UNIVERSITY OF PUERTO RICO, MAYAGUEZ (PUERTO RICO), 1998.
- Park, J.-Y., Kug, J.-S., Seo, H., and Bader, J.: Impact of bio-physical feedbacks on the tropical climate in coupled and uncoupled GCMs, *Climate dynamics*, 43, 1811–1827, 2014.
- Patara, L., Vichi, M., Masina, S., Fogli, P. G., and Manzini, E.: Global response to solar radiation absorbed by phytoplankton in a coupled
10 climate model, *Climate dynamics*, 39, 1951–1968, 2012.
- Paulsen, H.: The effects of marine nitrogen-fixing cyanobacteria on ocean biogeochemistry and climate – an Earth system model perspective, Ph.D. thesis, Universität Hamburg, 2018.
- Paulsen, H., Ilyina, T., Six, K. D., and Stemmler, I.: Incorporating a prognostic representation of marine nitrogen fixers into the global ocean biogeochemical model HAMOCC, *Journal of Advances in Modeling Earth Systems*, 9, 438–464, 2017.
- 15 Paulson, C. A. and Simpson, J. J.: Irradiance measurements in the upper ocean, *Journal of Physical Oceanography*, 7, 952–956, 1977.
- Rayner, N., Parker, D. E., Horton, E., Folland, C., Alexander, L., Rowell, D., Kent, E., and Kaplan, A.: Global analyses of sea surface temperature, sea ice, and night marine air temperature since the late nineteenth century, *Journal of Geophysical Research: Atmospheres*, 108, 2003.
- Reick, C., Raddatz, T., Brovkin, V., and Gayler, V.: Representation of natural and anthropogenic land cover change in MPI-ESM, *Journal of
20 Advances in Modeling Earth Systems*, 5, 459–482, 2013.
- Reynolds, R. W., Smith, T. M., Liu, C., Chelton, D. B., Casey, K. S., and Schlax, M. G.: Daily high-resolution-blended analyses for sea surface temperature, *Journal of Climate*, 20, 5473–5496, 2007.
- Sathyendranath, S., Stuart, V., Nair, A., Oka, K., Nakane, T., Bouman, H., Forget, M.-H., Maass, H., and Platt, T.: Carbon-to-chlorophyll ratio and growth rate of phytoplankton in the sea, *Marine Ecology Progress Series*, 2009.
- 25 Schneck, R., Reick, C. H., and Raddatz, T.: Land contribution to natural CO₂ variability on time scales of centuries, *Journal of Advances in Modeling Earth Systems*, 5, 354–365, 2013.
- SeaWiFS Project: SeaWiFS Global Monthly Mapped 9 km Chlorophyll a. Ver. 1., PO.DAAC, CA, USA., 2003.
- Six, K. D. and Maier-Reimer, E.: Effects of plankton dynamics on seasonal carbon fluxes in an ocean general circulation model, *Global Biogeochemical Cycles*, 10, 559–583, 1996.
- 30 Sonntag, S.: Modeling biological-physical feedback mechanisms in marine systems, Ph.D. thesis, Universität Hamburg, 2013.
- Sonntag, S. and Hense, I.: Phytoplankton behavior affects ocean mixed layer dynamics through biological-physical feedback mechanisms, *Geophysical Research Letters*, 38, 2011.
- Speich, S., Blanke, B., and Cai, W.: Atlantic meridional overturning circulation and the Southern Hemisphere supergyre, *Geophysical Research Letters*, 34, 2007.
- 35 Steele, M., Morley, R., and Ermold, W.: PHC: A global ocean hydrography with a high-quality Arctic Ocean, *Journal of Climate*, 14, 2079–2087, 2001.
- Stevens, B., Giorgetta, M., Esch, M., Mauritsen, T., Crueger, T., Rast, S., Salzmann, M., Schmidt, H., Bader, J., Block, K., et al.: Atmospheric component of the MPI-M Earth System Model: ECHAM6, *Journal of Advances in Modeling Earth Systems*, 5, 146–172, 2013.

- Strutton, P. G. and Chavez, F. P.: Biological heating in the equatorial Pacific: Observed variability and potential for real-time calculation, *Journal of climate*, 17, 1097–1109, 2004.
- Subramaniam, A., Brown, C. W., Hood, R. R., Carpenter, E. J., and Capone, D. G.: Detecting *Trichodesmium* blooms in SeaWiFS imagery, *Deep Sea Research Part II: Topical Studies in Oceanography*, 49, 107–121, 2001.
- 5 Sweeney, C., Gnanadesikan, A., Griffies, S. M., Harrison, M. J., Rosati, A. J., and Samuels, B. L.: Impacts of shortwave penetration depth on large-scale ocean circulation and heat transport, *Journal of Physical Oceanography*, 35, 1103–1119, 2005.
- Takahashi, T., Broecker, W. S., and Langer, S.: Redfield ratio based on chemical data from isopycnal surfaces, *Journal of Geophysical Research: Oceans (1978–2012)*, 90, 6907–6924, 1985.
- Taylor, A. H., Geider, R. J., and Gilbert, F. J.: Seasonal and latitudinal dependencies of phytoplankton carbon-to-chlorophyll a ratios: results
10 of a modelling study, *Marine Ecology Progress Series*, pp. 51–66, 1997.
- Timmermann, A. and Jin, F.-F.: Phytoplankton influences on tropical climate, *Geophysical research letters*, 29, 2002.
- Westberry, T. K. and Siegel, D. A.: Spatial and temporal distribution of *Trichodesmium* blooms in the world’s oceans, *Global Biogeochemical Cycles*, 20, 2006.
- 15 Wetzel, P., Maier-Reimer, E., Botzet, M., Jungclaus, J., Keenlyside, N., and Latif, M.: Effects of ocean biology on the penetrative radiation in a coupled climate model, *Journal of Climate*, 19, 3973–3987, 2006.
- Wurl, O., Bird, K., Cunliffe, M., Landing, W., Miller, U., Mustafa, N., Ribas-Ribas, M., Witte, C., and Zappa, C.: Warming and inhibition of salinization at the ocean’s surface by cyanobacteria, *Geophysical Research Letters*, 2018.
- Zielinski, O., Llinás, O., Oschlies, A., and Reuter, R.: Underwater light field and its effect on a one-dimensional ecosystem model at station ESTOC, north of the Canary Islands, *Deep Sea Research Part II: Topical Studies in Oceanography*, 49, 3529–3542, 2002.