

## **Pipes to Earth's subsurface: The role of atmospheric conditions in controlling air transport through boreholes and shafts**

Letter of response:

Reviewer 1:

I believe that, following the revisions implemented by the authors, the manuscript should be accepted for publication. Nevertheless, in case they are of help when finalizing the paper, I offer the following suggestions (by page/line numbers in the revised manuscript).

We would like to thank Prof. Kowalski for his additional comments. A detailed response for each comment is presented below in blue font.

### **Minor comments**

1/13 I would change "3.4 m and 59 m, respectively" to "59 m and 3.4 m, respectively", such that the order of depth and diameter is consistent in this sentence.

Done.

1/19: Change "CO<sub>2</sub> concentrations (~2000 ppm) were found" to "CO<sub>2</sub> concentrations of ~2000 ppm were found"

Done.

2/9: I remain unconvinced regarding the terminology "thermal-induced convection (TIC)". The *raison d'être* of the virtual temperature is that the density gradients that cause convection are not exclusively thermal, but can also be due to differences in air composition. Therefore, I suggest getting rid of the TIC terminology throughout the manuscript, and replacing it with something more appropriate. Perhaps "convective overturning (CO)" would work, since it is grammatically consistent with "barometric pumping (BP)".

TIC was deleted from the text. Using convective overturning (CO) can potentially confuse the reader to think CO is the abbreviation of Carbone monoxide gas so instead we used density-induced convection (DIC), which we think is relevant because the convection is driven by density gradients.

2/28: As it is written, this sentence seems to suggest a lower limit of 10,000 ppm for soil CO<sub>2</sub> concentrations, which is certainly not correct. I suggest changing "ranging from 10,000 to 100,000 ppm and above" to "ranging as high as 100,000 ppm", or something similar.

The sentence was changed to: "...ranging as high as 100,000 ppm..." (2/27).

3/16: The negative sign (-80 m) is unnecessary since the sentence says "below the ground".

The negative sign was deleted.

3/30: I find it awkward that the authors have agreed to use "U" in equations to represent the relative humidity, but continue to refer to it as "RH" in the text. I would suggest simply defining the relative humidity (U) and consistently referring to it using this symbol.

We appreciate the comment and agree that both options are possible, with some pros and cons. Yet we believe that RH is a more common abbreviation in the relevant literature. Additionally, we are also using the RH terminology in our recent published manuscripts. Therefore, we prefer to stay with RH instead of U, convinced that it will be easier to follow for most potential readers.

4/9: Similarly, I would change this sentence to say "The absolute humidity, or water vapor density ( $\rho_v$ ) was used...", and then to use  $\rho_v$  instead of AH throughout.

Again, we do understand that there are two options here, but prefer to stay with the existing terminology for the same reasons explained above.

6/32: "when negative pressure changes occur"

Done.

7/21: change "two-" to "two"

Done.

8/7: Change "thermal-stability" to "stratification"

Done.

9/3: In mathematics, two variables are proportional if there is always a constant ratio between them. The constant is called the coefficient of proportionality or proportionality constant. Because the exponent relating the variables u and r is 1.85, I

think it is incorrect to say that they are (inversely) proportional. The same applies to the sentence at page 9 line 15.

In both lines, the word “proportional” was changed to “correlated” to avoid this mathematical error.

11/1: change "Methane, which is emissions" to "Methane, whose emissions"

Done.

12/10: Kowalski is misspelled.

We apologies, the name is now spelled as “Kowalski”.

# Pipes to Earth's subsurface: The role of atmospheric conditions in controlling air transport through boreholes and shafts

Elad Levintal<sup>1</sup>, Nadav G Lensky<sup>2</sup>, Amit Mushkin<sup>3</sup>, Noam Weisbrod<sup>1</sup>

<sup>1</sup>Environmental Hydrology and Microbiology, The Zuckerberg Institute for Water Research, The Jacob Blaustein Institutes for Desert Research, Ben-Gurion University of the Negev, Midreshet Ben-Gurion 8499000, Israel.

<sup>2</sup>Geological Survey of Israel, Jerusalem 9550161, Israel.

<sup>3</sup>Department of Earth & Space Sciences, University of Washington, Seattle WA 98105, USA.

*Corresponding author:* Noam Weisbrod (weisbrod@bgu.ac.il)

**Abstract.** Understanding air exchange dynamics between underground cavities (e.g., caves, mines, boreholes, etc.) and the atmosphere is significant for the exploration of gas transport across the Earth–atmosphere interface. Here, we investigated the role of atmospheric conditions in controlling air transport inside boreholes using in-situ field measurements. Three geometries were explored: (1) a narrow and deep *shaft* (0.1 m and 27 m, respectively), ending in a large underground cavity; (2) the same *shaft* after the pipe was lowered and separated from the cavity; and (3) a deep *large-diameter borehole* (3.459 m and 593.4 m, respectively). Absolute humidity was found to be a reliable proxy for distinguishing between atmospheric and cavity air masses (mainly during winter and spring seasons), and thus to explore air transport through the three geometries. Airflow directions in the first two narrow-diameter geometries were found to be driven by changes in barometric pressure, whereas airflow in the large-diameter geometry was correlated primarily to the diurnal cycles of ambient atmospheric temperature. CO<sub>2</sub> concentrations of (~2000 ppm) were found in all three geometries, indicating that airflow from the Earth's subsurface into the atmosphere may also be significant in the investigation of greenhouse gas emissions.

## 1 Introduction

Understanding air transport between the Earth's subsurface and the atmosphere is a key element in the study of surface and near-surface biological, chemical, and physical processes. Air transport between the Earth and the atmosphere is commonly driven by diffusive and advective mechanisms (Choi and Smith, 2005; Ganot et al., 2014; Hillel, 1998; Kawamoto et al., 2006; Kuang et al., 2013; Noronha et al., 2017; Sánchez-Cañete et al., 2013) and has been mainly studied within soils (e.g., Allaire et al., 2009; Bayer et al., 2017; Choi and Smith, 2005; Zeng et al., 2017). However, as different types of natural or artificial boreholes and shafts also exist (e.g., Berthold and Börner, 2008; Kang et al., 2014, 2015), understanding the

mechanisms that govern air and greenhouse gas (GHG) transport in such conduits is also important (Berthold and Börner, 2008; Perrier et al., 2005).

Boreholes and shafts are abundant discontinuities crossing the Earth's surface that commonly function as conduits between the ambient atmosphere and underground cavities (e.g., James et al., 2015; Moore et al., 2011; Pla et al., 2016; Steinitz and Piatibratova, 2010). These underground cavities can be more than one-order of magnitude larger than the connecting conduit. Advective air transport in such boreholes or shafts can be governed mainly by: (1) barometric pumping (BP), which is the inflow and outflow motion of subsurface air due to pressure gradients governed by changes in barometric pressure (Ellerd et al., 1999; Neeper, 2002; Neeper and Stauffer, 2012; Perina, 2014; Perrier and Le Mouél, 2016; Rossabi and Falta, 2002; Thorstenson et al., 1998); and (2) [thermal density](#)-induced convection ([TIEDIC](#)), which develops when there are unstable density gradients resulting from temperature and air composition differences between the atmospheric air and the borehole or underground cavity (Ganot et al., 2012; Nachshon et al., 2008; Perrier et al., 2002; Weisbrod et al., 2009; Weisbrod and Dragila, 2006).

BP will initiate airflow when pore pressure in the surrounding rock/soil differs from the pressure within the borehole or the underground cavity, which is considered as equal to atmospheric pressure (Kuang et al., 2013; Neeper, 2003; You et al., 2010). BP is dependent on the surrounding rock/soil depth and permeability and on the barometric pressure changes (Massmann et al., 2000). A water table at the lower boundary is considered to be impermeable to BP (You et al., 2010).

The onset of [TIEDIC](#) is typically primarily determined by temperature differences within the borehole or shaft and between them and the atmosphere above. Temperature differences can differ between locations and depend on several parameters, such as the surrounding rock/soil thermal properties, the geometry of the borehole, or the atmosphere temperature cycles (e.g., Eppelbaum and Kutasov, 2011; Klepikova et al., 2011; You and Zhan, 2012). Although air density depends mainly on temperature, it is also depend on the air humidity, and to a lesser degree on the air's gas composition (Kowalski and Sánchez-Cañete, 2010). Integration of these three effects (temperature, relative humidity, and air composition) into a single parameter named virtual temperature ( $T_v$ ) was proposed by Sánchez-Cañete et al. (2013). In environments of high  $\text{CO}_2$  concentrations compared to the atmosphere, the importance of the gas composition on the  $T_v$  becomes more pronounced. Such underground environments can be karstic areas of carbonate rocks (Sanchez-Cañete et al., 2011), caves (Denis et al., 2005; Guillon et al., 2015), and soils (Amundson and Davidson, 1990) where  $\text{CO}_2$  concentrations can be very high, ranging ~~from 10,000 to as high as~~ 100,000 ppm and above. For a given altitude, the differences in  $T_v$  will determine the onset of [TIEDIC](#).

Each of the above advective mechanisms was studied individually. However, to the best of our knowledge, no comparative research has been conducted to determine which mechanisms dominate different borehole and shaft geometries, e.g.,

different borehole diameters. Therefore, the relative contribution of each mechanism to the overall air transport within boreholes or shafts under different environmental conditions remains loosely constrained.

Here, we investigated the role of atmospheric conditions on the air transport mechanisms inside three borehole geometries: (1) a narrow-diameter shaft (0.1 m) with a PVC pipe, opening into a large underground cavity (defined hereafter as “*shaft*” geometry); (2) the same shaft after the pipe was lowered and the link between the shaft and the underground cavity was blocked (“*borehole*” geometry); and (3) a borehole with a larger diameter of 3.4 m (“*large-diameter borehole*” geometry). Specifically, we aimed to assess the air inflow and outflow events by quantifying oscillation of physical parameters, mainly temperature and relative humidity (RH) along the boreholes, and relate the flow events to the atmospheric forcing conditions.

## 10 2 Materials and Methods

We examined two sites: (1) A narrow-diameter (0.1 m) 27-m-deep borehole that reaches a large underground cavity located above the local water table of the southern part of the Israeli Coastal Aquifer, and (2) a large-diameter (3.4 m) 59-m-deep borehole that reaches the local aquifer near the Nabatean archaeological site of Avdat in the Negev highlands of southern Israel. The distance between these sites is ~60 km.

15 The first borehole was drilled into a sequence of alternating layers of sand, sandstone and silt, comprising the unsaturated zone of the Israeli coastal aquifer (Goren et al., 2014; Schwarz et al., 2016). A PVC pipe (case), was inserted into the narrow-diameter borehole to prevent potential soil collapse. The pipe reached the top of the underground cavity, which is at least two orders of magnitudes larger in volume than the pipe and is located well above the local groundwater level of ~80 m below the ground. The measurements lasted 46 days during the spring/summer of 2016 with only one rainy day during that period (13/4/2016). During the first 42 days of measurement (5/4/2016-16/5/2016), the underground cavity was connected to the atmosphere only by the PVC pipe (“*shaft*” geometry). Then, for an additional four days, the PVC pipe was lowered such that the end of the pipe touched the cavity floor, effectively disconnecting the underground cavity from the borehole and the atmosphere (“*borehole*” geometry). Therefore, we could distinguish between airflow when: (1) the borehole connects between the ambient atmosphere and the deep cavity, and (2) the borehole is disconnected from an underground reservoir and only connected to the ambient atmosphere.

The second borehole site (“*large-diameter borehole*”) is an archaeological site that was excavated into Eocene chalk formations with an upper part of loess soil (Nativ et al., 2003; Shentsis et al., 1999). The water table in this site is at depth of ~55.5 m with small seasonal changes of less than 1 m, thus the 59 m deep borehole reached the local water table. The borehole did not have casings except for a few meters in the upper parts of the loess soil, and it was open to the atmosphere. The measurements at this site lasted for one week (20/4/2017-26/4/2017). The three geometries are illustrated in Fig. 1a.

Sensors installed at the first site included four thermocouples (type T, Omega Engineering, UK) at depths of: 0, 6, 18, and 24 m and two RH-temperature sensors (Hygroclip 2, Rotronic AG, Switzerland) at a depth of 12 m and at the lower part of the borehole at its connection point to the cavity (27 m depth); see Fig. 1b for an example of sensor locations. Outside the borehole, a meteorological station was installed, at 2 m above ground, including the following sensors: (1) wind velocity and direction (WindSonic, Gill Instruments, UK); (2) Barometric pressure (CS106, Vaisala, Finland); and (3) RH-temperature (same type as within the borehole). Data from all sensors were measured at 5-second intervals and averaged and logged at 10-min intervals (CR1000, Campbell Scientific, UT, USA). In addition, a televiewer was lowered into the pipe to verify that the pipe was intact and was either connected to or disconnected from the underground cavity in the *shaft* or *borehole*, respectively. Measurements at the second site included a similar RH-temperature sensor at the depth of 10 m and a temperature sensor at 59 m.

Absolute humidity (AH) was used as a tracer for the air transport within the three geometries and was calculated from the measured temperature and RH data using Eq. (1). (Hall et al., 2016):

$$\rho_v = \frac{6.112 \times e^{[(17.67T)/(T+243.5)]} \times 2.1674U}{(273.15+T)} \quad (1)$$

where  $\rho_v$  is AH in  $\text{g/m}^3$ ,  $T$  is temperature in  $^{\circ}\text{C}$ , and  $U$  is RH in %. The use of AH as a tracer was previously suggested by Neeper (2003). Calculation of  $T_v$  for the onset of [TICDIC](#) between the borehole and atmospheric was done according to Sánchez-Cañete et al. (2013).

### 3 Results and Discussion

#### 3.1 Shaft geometry

One week time series results from the *shaft* is shown in Fig. 2a. Atmospheric temperature and RH presented typical daily cycles, as expected. During daytime, atmosphere air temperatures were higher with lower RH values (25-30  $^{\circ}\text{C}$ , 20-50 %, respectively) compared to night time (10-15  $^{\circ}\text{C}$ , 80-100 % respectively) (Fig. 2a -1 and 2, black lines). In contrast, air temperature and RH changes inside the *shaft* did not follow the daily cycle (Fig. 2a -1 and 2, purple and green lines). Measured temperatures at 12 and 27 m were  $23.7 \pm 0.7$  and  $24.7 \pm 0.6$   $^{\circ}\text{C}$ , respectively, with similar amplitudes. The RH sensors showed similar values at 12 and 27 m (Fig. 2a -2, purple and green lines, respectively): From the overall 6048 measurements (42 days) at 12 and 27 m, 79 and 76 % of the RH values were above 90 %, respectively. The remainder of the measurements were no lower than a minimum of  $\sim 50$  % RH (Fig. S1 – supporting information).

Barometric pressure typically varied with two diurnal cycles; the average barometric pressure was  $1008.68 \pm 3.2$  mbar (Fig. S1) with a rate of changes ranging from  $-4 \times 10^{-4}$  to  $4 \times 10^{-4}$  mbar/min (Fig. 2a -4). For the majority of time (80 %) the  $T_v$  at

the lower part of the *shaft* (depths of 12 and 27 m) were higher than those measured in the atmospheric air with an average  $T_v$  difference of  $4.0 \pm 5.4$  °C (Fig. 2a -5). Wind velocity at 2 m above ground was mostly calm (1-2 m/s) with daily peaks of 7-10 m/s in the afternoon, corresponding to the Mediterranean Sea Breeze (hours 13:00-18:00, Fig. 2a -6) (Lensky and Dayan, 2012).

5 Atmospheric AH was stable during the measurement period and values ranged between 10-15 g/m<sup>3</sup>. Contrastingly, the AH at the underground cavity boundary was considered as a constant value of 22.7 g/m<sup>3</sup> according to  $T = 24.7$  °C (the measured temperature at the *shaft*-cavity interface) and RH = 100 % (representing saturation conditions as suggested for underground cavities by Bourges et al., 2014 and Perrier et al., 2005). AH values inside the *shaft* fluctuated between these two end values (cavity at the bottom and atmosphere at the top). Most of the time *shaft* AH values, 12 and 27 m, reflected cavity values (>20  
10 g/m<sup>3</sup>) and ~10 % of the time *shaft* AH values reflected atmospheric values, below 15 g/m<sup>3</sup> (Fig. 2a -3, purple and green lines). No marked difference was observed between the 12 and 27 m values. Considering the *shaft*'s impermeable perimeter (i.e., the PCV pipe), AH changes in the *shaft* necessarily indicate inflow/outflow from the *shaft*'s lower and upper boundaries (i.e., the atmosphere or cavity air). We therefore regard low and high AH values in the *shaft* as indicators for down-welling mass flow (inflow) and upwelling mass flow (outflow), respectively. The use of AH as a proxy for airflow direction is  
15 suitable mainly for winter and spring seasons when the atmospheric AH is lower compared to AH within underground cavities (Figs. S2 and S3– supporting information). During the summer season, there are periods in which atmosphere and cavity AH are in equilibrium, and thus the use of AH as a proxy for airflow directions would not be reliable (see supporting information for AH sensitivity analysis).

To quantitatively define each inflow or outflow event, a classification algorithm was built and solved for the 42-days data  
20 using MATLAB<sup>TM</sup> software. The 12 m AH vector was transformed to a  $d\rho_v/dt$  vector and then two conditions were defined as “must” so that an event is classified as an “inflow” or an “outflow” event: (1)  $d\rho_v/dt < \text{threshold value}$  for an inflow event or  $d\rho_v/dt > \text{threshold value}$  for an outflow event; and (2) the first condition (1) is met for at least two continuous readings ( $\geq 20$  min). In other words, the  $d\rho_v/dt$  inside the *shaft* represented the AH changes in the *shaft* over time. This AH change was controlled by the air inflow or outflow from the upper or lower boundary, respectively. Therefore,  $d\rho_v/dt$  was used to classify  
25 the airflow direction. The threshold value that was found to be the optimal to classify airflow was 50 % of the  $d\rho_v/dt$  standard deviation. Using greater threshold values resulted in an underestimation of the number of both the inflow and outflow events, and vice-versa for the case of lower threshold values. As an example for the classification algorithm, results from the inflow and outflow classification for eight arbitrarily selected representative days (from Fig. 2) are shown in Fig. 3.

To identify the physical parameters that control the transition between air inflow and outflow events, we focused and  
30 analyzed in detail single events, one of them given as an example in Fig. 4. In a typical event, with both inflow and outflow, three stages were observed: (1) transition of  $dP_{atm}/dt$  (i.e., changes of barometric pressure over time) from negative to positive values (stage 1); (2) followed by a momentary decrease in temperature in the *shaft* observed by the temperature



sensors at depths of 12 and 27 m (stage 2); and (3) finally inflow of air from the ambient atmosphere downward into the *shaft* that reduced the AH (stage 3). These stages were repeated in reverse in an outflow event (stages 4-6). The time lags between the changes of  $dP_{amb}/dt$  (stage 1) and the start of inflow/outflow events (stage 3) were similar in 60 % of the events ( $\leq 20$  min). In the remainder 40 % of events, time lags were greater than 20 min (20-60 min; Fig. 5). The middle-stage of a momentary temperature change inside the *shaft* (stages 2 and 5 in Fig. 4) was previously reported by Perrier et al (2002), who attributed these temperature changes to vertical movements of cold air plumes. In addition, these changes also provide further indication for the airflow origin. In an inflow event, it is expected that the sensor located closer to the atmosphere will respond before the lower one and the opposite in a case of an outflow from the cavity. Indeed, in an inflow event the negative  $dT/dt$  peak occurs at depth of 12 m before 27 m and vice-versa in an outflow event (Fig. 4a -3). Stages 2 and 4 in Fig. 4 are valid mainly during winter and spring night-times when atmospheric temperatures are lower than within the borehole.

Figure. 6 examines the correlation between the direction of air transport (inflow/outflow) and the atmospheric forcing, i.e., changes in barometric pressure and thermal stability. The general distribution of the  $dP_{amb}/dt$  in the 42-days of measurements was defined as a normal distribution with an average  $dP_{amb}/dt \sim 0$  (Fig. 6a). However, when analyzing only the data set from the inflow/outflow events there was a clear trend in the  $dP_{amb}/dt$  distribution. As expected, an inflow event (i.e., stage 3 of AH decrease) occurred when barometric pressure increased,  $dP_{amb}/dt > 0$  (Fig. 6b), whereas an outflow event (i.e., stage 6 of AH increase) occurred when barometric pressure decreased,  $dP_{amb}/dt < 0$  (Fig. 6c). A similar analysis was done to check whether there is a correlation between the *shaft*-atmosphere  $T_v$  differences and the direction of air transport (i.e., AH changes). In this case, no significant changes were observed between the distribution in an inflow or outflow event (Fig. 6e and f) and the general distribution over the 42 days (Fig. 6d). The finding that  $dP_{amb}/dt$  rather than  $T_v$  differences explains a very large portion of the air transport polarity variance, implies that the inflow/outflow changes inside the *shaft* were due to atmospheric barometric pressure changes and not due to thermal instability (i.e., [TIEDIC](#)) inside the *shaft*. Noteworthy is that because of the time lag (about 20 min) between the changes in  $dP_{amb}/dt$  and the initiation of the inflow/outflow events, it is expected that not all inflow/outflow events will be explained by the  $dP_{amb}/dt$  distribution analysis in Fig. 6. Previous studies where [TIEDIC](#) was found to be the governing convective air movement mechanism in the subsurface were focused on shallow systems (1-2 m depth; Ganot et al., 2014, 2012; Levintal et al., 2017; Weisbrod et al., 2009). Here, we focus on deeper settings where barometric pressure variations appear to be more important than [TIEDIC](#) for the development of convective air movement.

Our results indicate that changes in atmosphere barometric pressure determine the advective airflow direction. This is presumably due to the difference between the barometric pressure and the cavity pressure caused by the vertical propagation of the barometric pressure (Neeper, 2003; Neeper and Stauffer, 2012; Perina, 2014; You et al., 2011). In case of positive barometric pressure changes (i.e., increase of barometric pressure over time), the barometric pressure will be greater than the

cavity pressure and thus inflow of air will develop. In contrast, outflow of air will start when negative pressure changes ~~are present~~ occur (i.e., decrease of barometric pressure over time).

### 3.2 Borehole geometry

Atmospheric conditions during the *borehole* measurements presented daily temperature and RH cycles (Fig. 2b -1 and 2, black lines). During daytime, air temperatures and RH values were 20-25 °C and 50-70 %, respectively, compared to night time values of 15-18 °C and 80-90 %. At a depth of 12 m, the average temperature, RH, and AH were  $23.9 \pm 0.3$  °C,  $83.7 \pm 13.0$  %, and  $18.2 \pm 3.0$  g/m<sup>3</sup>, respectively (Fig. 2b -1, 2 and 3, purple lines). In contrast, at a depth of 27 m, measurements were significantly more stable than at 12 m: temperature, RH, and AH averages values were  $25.1 \pm 0.2$  °C,  $90.0 \pm 3.6$  %, and  $20.8 \pm 0.9$  g/m<sup>3</sup>, respectively (Fig. 2b -1, 2 and 3, green lines).

In the inflow events the AH values in the middle *borehole* sensor (12 m) were similar to the upper atmospheric values (Fig. 2b -3, purple and black lines), whereas in the outflow events they equalled to those in the lower part of the *borehole* (Fig. 2b -3, purple and black dash lines). Nonetheless, the airflow effect was observed only at the 12 m depth and not at 27 m (Fig. 2b -3, green line). Therefore, we conclude that inflow events reached the depth of 12 m but did not reach depths of 27 m.

### 3.3 Comparison between shaft and borehole geometries

While all *shaft* and *borehole* parameters at site 1, other than the connection to the lower cavity, were identical, and the atmospheric conditions in the two measurement periods were similar, there were still clear differences between the two geometries. The *borehole* temperature readings at 12 m exhibited only half of the standard deviation compared to the same depth in the *shaft* ( $\pm 0.3$  °C compared to  $\pm 0.7$  °C). At 27 m, the differences between the two geometries were even more pronounced (Fig. 2a -1 and 2; compare to b -1 and 2, green lines). No significant changes in temperature or RH along the measurement period were measured at 27 m for the *borehole*, while there were changes observed in the *shaft* (e.g., *shaft* RH at 27 m fluctuated between 60 and 100 %).

The *shaft/borehole* differences at the 27 m sensor can be explained using a simple two-reservoir model. In the case of the *shaft*, we can define both the atmosphere and the cavity as two- infinite air reservoirs connected via a finite volume *shaft*. Therefore, air transport between the two reservoirs is unlimited and controlled only by the boundary conditions (i.e., barometric pressure). In this case, all sensors throughout the *shaft* will show similar AH decrease/increase, as evident from the similar changes of the purple and green lines in Fig. 2a -3. On the other hand, in the *borehole*, there is only one upper infinite reservoir (i.e., the atmosphere) and each inflow air transport is limited by the soil resistivity at the lower boundary (i.e., the soil capability to enable penetration of air inflow events – the soil permeability and porosity). Here, the effect of AH decreases with depth and indeed the deepest sensor of 27 m showed no change in AH compared to the changes in AH at the 12 m depth (Fig. 2b -3).

### 3.4 Comparison between shaft/borehole geometries and large-diameter borehole

Results from the *large-diameter borehole* are presented in Fig. 7. In contrast to the *shaft/borehole*, AH changes inside this *large-diameter borehole* (measured at 10 m depth) were correlated to the  $T_v$  differences between 10 m depth and the atmosphere and not to the barometric pressure changes. No barometric pressure effect on the AH was observed, and during most of the measurement period the atmospheric AH and that at 10 m were similar (Fig. 7a -3, purple and black lines). This was because thermal instability inside the *large-diameter borehole* (i.e., cold atmospheric air above warm borehole air) initiated **HEDIC** mixing with the atmosphere. The cases of AH increase at 10 m occurred when ~~thermal stability stratification~~ controlled the air movement inside the *large-diameter borehole*, and only then did AH at 10 m increase to the saturation conditions that characterize the lower boundary (marked as gray columns in Fig. 7a). The correlation between the positive  $T_v$  differences and the decrease in AH in this *large-diameter borehole* (3.4 m), which was not found in the small-diameter *shaft/borehole* (0.1 m), clearly indicated that **HEDIC** was the controlling mechanism for advective air movement in the *large-diameter borehole*. Furthermore, the fact that changes in barometric pressure did not lead to changes in AH, e.g., from 23/4 to 25/4 (Fig. 7a -4), suggest that BP was not the dominating driving force as in the small-diameter *shaft/borehole*.

We posit that the main parameter controlling which transport mechanisms govern advective air movement is the *borehole* or *shaft* diameter. A small *borehole* diameter will decrease the magnitude of the **HEDIC**. This is because **HEDIC** magnitude in a cylinder geometry is positively proportional by the fourth power of the cylinder radius (e.g., Berthold, 2010; Berthold and Börner, 2008; Berthold and Resagk, 2012; Rayleigh, 1916). Therefore, in our case of a small diameter *borehole* of 0.1 m, **HEDIC** had minor influence on air transport inside the *shaft/borehole*. The following equations provide the theoretical base for our conclusion that *borehole* diameter ( $r$ ) impacts the airflow within boreholes.

For BP, under the assumption of uni-dimensional cylindrical flow, the volume flow rate per unit length ( $A$ ) is approximately proportional to one-sixth power of the *borehole* radius (Eq. (2)), such that increasing  $r$  by a factor of 10 will only increase  $A$  by 41 % (Neeper, 2003).

$$A \propto r^{0.15} \tag{2}$$

where  $r$  is the *borehole* diameter [m] and  $A$  is the volume flow rate per unit length [ $\text{m}^3/\text{m}/\text{s}$ ]. Because  $Q$  is proportional to  $A$ , we can also define:

$$Q \propto r^{0.15} \tag{3}$$

where  $Q$  is the *borehole* total volume rate to the atmosphere [ $\text{m}^3/\text{s}$ ]. For a cylindrical flow the air velocity ( $u$ ) is defined as:

$$u = \frac{Q}{\pi r^2} \tag{4}$$

where  $u$  is the air velocity [m/s]. Thus, from Eqs. (3) and (4), we can conclude that the proportion between  $u$  and  $r$  is:

$$u_{BP} \propto \frac{r^{0.15}}{r^2} \text{ or } u_{BP} \propto \frac{1}{r^{1.85}} \quad (5)$$

Equation 5 implies that  $u$  is inversely ~~proportional~~ correlated to  $r$ .

For the case of ~~BP~~ FDIC, the thermal instability number ( $Ra$ ), which is an indicator for  $u$ , is proportional to the temperature gradient ( $dT/dz$ ) and to  $r$  by the fourth power (Berthold, 2010; Berthold and Resagk, 2012; Rayleigh, 1916):

$$Ra = \frac{\alpha \times g}{D_T \times \nu} \times \frac{dT}{dz} \times r^4 \quad (6)$$

where  $Ra$  is dimensionless [-],  $D_T$  is the thermal diffusivity [ $m^2/s$ ],  $\alpha$  is the thermal expansion coefficient [ $1/K$ ],  $g$  is the gravitational acceleration [ $m/s^2$ ],  $r$  is the characteristic length dependent on the geometry, also defined as the radius of the *borehole* [m], and  $\nu$  is the kinematic viscosity of the air [ $m^2/s$ ]. Applying Rayleigh-Benard models to *borehole* geometry relates  $Ra$  number to Reynolds number ( $Re$ , Eq. (7)) and to  $u$  (Eq. (8)) (Grossmann and Lohse, 2000; Perrier et al., 2005):

$$Re = 3.5 \times Ra^{0.446} \quad (7)$$

$$u = \frac{Re \times \nu}{h} \quad (8)$$

where  $h$  is the characteristic length [m] equal to  $r$ . Substituting Eqs. (6) and (7) in Eq. (8) results in:

$$u = \frac{(0.35 \times (\frac{\alpha \times g}{D_T \times \nu} \times \frac{dT}{dz} \times r^4)^{0.446}) \times \nu}{r} \quad (9)$$

therefore,  $u$  is ~~proportional~~ correlated to  $r$  such that:

$$u_{FDIC} \propto r^{0.784} \quad (10)$$

Finally, when comparing the  $u$  dependency on  $r$  for the case of BP (Eq. (5)) and ~~BP~~ FDIC (Eq. (10)) it is clear that an increase in  $r$  will have a contrasting effect on the airflow generated from ~~BP~~ FDIC compared to the one generated from BP; increase in  $r$  will increase the  $u$  generated from ~~BP~~ FDIC while decreasing the  $u$  generated from BP. This quantitatively supports the conclusion from the field observations that in a *large-diameter borehole* ~~BP~~ FDIC was more significant to the gas transport than BP.

The use of Eqs. (5) and (10) for comparison purpose cannot be addressed without considering the differences of  $u$  between BP and ~~BP~~ FDIC due to the flow geometry. In BP  $u$  is uni-directional (inward or outward flow), whereas in ~~BP~~ FDIC  $u$  represents a bi-directional flow (e.g., Eckert and Diaguila, 1955). Nevertheless, in both cases (BP and ~~BP~~ FDIC)  $u$  describes

the same physical meaning of air velocity magnitude. Thus, we still consider Eqs. (5) and (10) as a good first order approximation for comparing the correlation between airflow and *borehole* radius for BP and [TIEDIC](#) conditions.

It should be emphasized that the threshold value of  $r$  to determine when [TIEDIC](#) dominates BP and vice versa cannot be considered as one absolute value. This is because atmospheric conditions differ between different sites, thus the magnitude of  $dT/dz$  and  $dP_{atm}/dt$  can change. For example, a tropical climate will exhibit a smaller diurnal temperature cycle, which will cause a lower  $dT/dz$ . Therefore, [TIEDIC](#) intensity will be markedly suppressed compared to the same *borehole* in an arid climate. An additional property that can also differ between sites and affect the air transport is the air viscosity, which is related to the air temperature (Finkelstein et al., 2006). Moreover, some of the parameters presented in Eqs. (2) to (10) can exhibit nonlinear behavior (Kardashov et al., 2000), mainly  $dT/dz$ , which suggests that a comparison between sites is highly complex.

A conceptual model was developed to present the advective transport mechanisms of the three geometries (Fig. 8). The differences between the *borehole* and the *shaft* are illustrated in Fig. 8a and the differences between them and the *large-diameter borehole* in Fig. 8b. The *borehole* diameter will define which advective transport mechanism is more significant: at a small diameter of 0.1 m, BP controls gas transport (Fig. 8a), whereas at the *large-diameter borehole* of 3.4 m [TIEDIC](#) is the dominant mechanism (Fig. 8b).

### 3.5 Field implications

The mechanisms controlling the subsurface-atmosphere air exchange have several important implications. These include, for example, volatile organic compounds (VOCs) transport from the subsurface to the atmosphere in contaminated sites (Boothroyd et al., 2016), natural aeration (oxygen supply) of underground quarries or tunnels and the need for artificial, enhanced, air exchange facilities in such environments and changes of RH values in karst systems. For example, RH changes in a mine underground atmosphere have great influence on the rock physico-mechanical parameters and stability (Auvray et al., 2008). Commonly used mine *shafts* can induce rapid RH changes at the *shaft*-cavity interface as presented above, which can then lead to rock stability problems. Shafts can also be used for fast removal of water vapour from deep soil layers, in order to lower its hydraulic conductivity and subsequently cease downward transport of contaminants.

One of the important implications is the potential role of *shafts* and *boreholes* as conduits for air-exchange to the overall GHG emission and related mechanisms such as carbon capture and storage processes (CCS). Two basic assumptions are here to consider: first that the BP air transport rate is up to a few-order of magnitude greater than diffusion, (You et al., 2011), and second that these conduits can act as “pipes” to the Earth’s subsurface, connecting elevated GHG sources to the atmosphere (e.g., Serrano-Ortiz et al., 2010).

One example of a significant GHG type emitted from *borehole* is Methane, ~~which whose its~~ emissions were quantified for 19 narrow *boreholes* in Pennsylvania (Kang et al., 2014, 2015). After upscaling their results to the state level, it was proposed that these *boreholes* emissions represent 4–7% of the total methane emissions in Pennsylvania. Their research focused mainly on the production function of Methane and not on the physical transport mechanism. Implementing our conclusion that BP was the main air transport mechanism can indicate that the Methane emissions presented by Kang et al. (2015, 2014) likely occurred mainly during periods of  $dP_{atm}/dt < 0$ .

#### 4 Conclusions

Three borehole geometries were compared to explore air transport mechanisms under natural, variable, atmospheric conditions. The first case was a 27 m vertical *shaft* with a 0.1 m diameter that connected a large underground cavity to the atmosphere, the second case was the same *borehole* but connection to the underground cavity was blocked and the pipe ended in the unsaturated soil matrix. The third was a *large-diameter borehole* of 3.4 m in diameter and 59 m depth. In the first two, *shaft* and *borehole*, the air inflow and outflow at 12 m were found to be correlated to the changes in barometric pressure (BP). However, in the *large-diameter borehole*, the air transport at a similar depth (10 m) was correlated to ~~thermal~~ density-instability (TDIC) rather than barometric pressure.

Use of AH changes during the winter and spring seasons was shown as a practical tool to identify the source of air parcels within the three geometries, namely atmospheric vs. lower-borehole/cavity, and thus to determine the direction and effect of the air transport. Water vapor concentrations in the atmosphere vary along the day, while are almost constant in underground cavities, and therefore can be used as a natural tracer for air source and flow directions without injecting additional gases.

A conceptual model is presented to describe the induced airflow in all three geometries. In the *shaft*, the atmospheric air entered through the *shaft* to the cavity and vice-versa. In other words, the *shaft* connects between two large air sources and inflow and outflow via the *shaft* is determined according to the barometric pressure changes. In the *borehole*, the atmospheric air entrance was limited by the soil resistivity at the lower boundary. Thus, inflow of atmospheric air was observed only at 12 m depth and not at the deeper 27 m sensor. BP was found to control air advective transport in both geometries. On the other hand, in the third geometry of a *large-diameter borehole*, thermal-instability initiated TDIC advection while BP did not play a significant role. This caused circulation of atmospheric air into the *borehole* to a depth of 10 m, whenever the thermal instability occurred. This mechanistic explanation was validated using the winter and spring season's dataset. Although we show that theoretically the transport mechanism observed for winter and spring should hold, with reduced significance, for summer and autumn, further data are needed to verify the theoretical calculation.

In summary, our observations improve the understanding of the governing mechanisms controlling air movement in boreholes and shafts as a function of their geometries and diameters as well as the ambient atmospheric conditions. In

addition, our observations assist to better calculate GHG fluxes from these domains as well as estimate the time periods when these fluxes are enhanced.

**Data Availability.** The data set used in the analyses is public, and available from <https://doi.org/10.6084/m9.figshare.5786796.v1> and in supporting information.

- 5 **Author Contributions.** EL, NGL, AM and NW performed the data analysis. EL and NW wrote the first draft of the manuscript and all authors contributed to the final version.

**Competing Financial Interests.** There are no competing financial interests.

10 **Acknowledgements.** This work was funded by the ~~Israeli Science Foundation (ISF), contract 678/11, The~~ Bi-National Science Foundation (BSF) contract number (2014220), ~~and~~ the Israeli Ministry of Agriculture, contract 857-0686-13, ~~and the~~ [Israeli Science Foundation \(ISF\), contracts 678/11 and 1471/18](#). We also acknowledge the Sam Zuckerberg scholarship provided to EL and the fruitful comments provided by A. [Kowalsky Kowalski](#) and the two anonymous reviewers who helped to improve this manuscript. The field observations were conducted with the Geological Survey of Israel team: Hallel Lutzky, Uri Malik, Haim Chemo, Ziv Mor and Haggai Eyal; and Raz Amir from the Ben-Gurion University of the Negev.

## References

- 15 Allaire, S. E., Roulier, S. and Cessna, A. J.: Quantifying preferential flow in soils: A review of different techniques, *J. Hydrol.*, 378(1–2), 179–204, doi:10.1016/j.jhydrol.2009.08.013, 2009.
- Amundson, R. G. and Davidson, E. A.: Carbon dioxide and nitrogenous gases in the soil atmosphere, *J. Geochemical Explor.*, 38(1–2), 13–41, doi:10.1016/0375-6742(90)90091-N, 1990.
- Auvray, C., Homand, F. and Hoxha, D.: The influence of relative humidity on the rate of convergence in an underground gypsum mine, *Int. J. Rock Mech. Min. Sci.*, 45(8), 1454–1468, doi:10.1016/j.ijrmms.2008.02.008, 2008.
- 20 Bayer, A. D., Lindeskog, M., Pugh, T. A. M., Anthoni, P. M., Fuchs, R. and Arneith, A.: Uncertainties in the land-use flux resulting from land-use change reconstructions and gross land transitions, *Earth Syst. Dyn.*, 8(1), 91–111, doi:10.5194/esd-8-91-2017, 2017.
- Berthold, S.: Synthetic convection log - characterization of vertical transport processes in fluid-filled boreholes, *J. Appl. Geophys.*, 72, 20–27, doi:10.1016/j.jappgeo.2010.06.007, 2010.
- 25 Berthold, S. and Börner, F.: Detection of free vertical convection and double-diffusion in groundwater monitoring wells with geophysical borehole measurements, *Environ. Geol.*, 54(7), 1547–1566, doi:10.1007/s00254-007-0936-y, 2008.
- Berthold, S. and Resagk, C.: Investigation of thermal convection in water columns using particle image velocimetry, *Exp. Fluids*, 52(6), 1465–1474, doi:10.1007/s00348-012-1267-7, 2012.

- Boothroyd, I. M., Almond, S., Qassim, S. M., Worrall, F. and Davies, R. J.: Fugitive emissions of methane from abandoned, decommissioned oil and gas wells, *Sci. Total Environ.*, 547, 461–469, doi:10.1016/j.scitotenv.2015.12.096, 2016.
- Bourges, F., Genthon, P., Genty, D., Lorblanchet, M., Mauduit, E. and D’Hulst, D.: Conservation of prehistoric caves and stability of their inner climate: Lessons from Chauvet and other French caves, *Sci. Total Environ.*, 493, 79–91, doi:10.1016/j.scitotenv.2014.05.137, 2014.
- Choi, J.-W. and Smith, J. a.: Geoenvironmental Factors Affecting Organic Vapor Advection and Diffusion Fluxes from the Unsaturated Zone to the Atmosphere under Natural Conditions, *Environ. Eng. Sci.*, 22(1), 95–108, doi:10.1089/ees.2005.22.95, 2005.
- Denis, A., Lastennet, R., Huneau, F. and Malaurent, P.: Identification of functional relationships between atmospheric pressure and CO<sub>2</sub> in the cave of Lascaux using the concept of entropy of curves, *Geophys. Res. Lett.*, 32(5), 1–4, doi:10.1029/2004GL022226, 2005.
- Eckert, E. R. G. and Diaguila, A. J.: Experimental investigation of free-convection heat transfer in vertical tube at large Grashof numbers, Cleveland, Ohio., 1955.
- Ellerd, M. G., Massmann, J. W., Schwaegler, D. P. and Rohay, V. J.: Enhancements for Passive Vapor Extraction: The Hanford Study, *Ground Water*, 37(3), 427–437, doi:10.1111/j.1745-6584.1999.tb01122.x, 1999.
- Eppelbaum, L. V and Kutasov, I. M.: Estimation of the effect of thermal convection and casing on the temperature regime of boreholes: a review, *J. Geophys. Eng.*, 8, R1–R10, doi:10.1088/1742-2132/8/1/R01, 2011.
- Finkelstein, M., Eppelbaum, L. V. and Price, C.: Analysis of temperature influences on the amplitude-frequency characteristics of Rn gas concentration, *J. Environ. Radioact.*, 86(2), 251–270, doi:10.1016/j.jenvrad.2005.09.004, 2006.
- Ganot, Y., Dragila, M. I. and Weisbrod, N.: Impact of thermal convection on air circulation in a mammalian burrow under arid conditions, *J. Arid Environ.*, 84, 51–62, doi:10.1016/j.jaridenv.2012.04.003, 2012.
- Ganot, Y., Dragila, M. I. and Weisbrod, N.: Impact of thermal convection on CO<sub>2</sub> flux across the earth–atmosphere boundary in high-permeability soils, *Agric. For. Meteorol.*, 184, 12–24, doi:10.1016/j.agrformet.2013.09.001, 2014.
- Goren, O., Burg, A., Gavrieli, I., Negev, I., Guttman, J., Kraitzer, T., Kloppmann, W. and Lazar, B.: Biogeochemical processes in infiltration basins and their impact on the recharging effluent, the soil aquifer treatment (SAT) system of the Shafdan plant, Israel, *Appl. Geochemistry*, 48, 58–69, doi:10.1016/j.apgeochem.2014.06.017, 2014.
- Grossmann, S. and Lohse, D.: Scaling in thermal convection: a unifying theory, *J. Fluid Mech.*, 407, 27–56, doi:10.1017/S0022112099007545, 2000.
- Guillon, S., Agrinier, P. and Pili, É.: Monitoring CO<sub>2</sub> concentration and  $\delta^{13}\text{C}$  in an underground cavity using a commercial isotope ratio infrared spectrometer, *Appl. Phys. B*, 119(1), 165–175, doi:10.1007/s00340-015-6013-4, 2015.
- Hall, S. J., Learned, J., Ruddell, B., Larson, K. L., Cavender-Bares, J., Bettez, N., Groffman, P. M., Grove, J. M., Heffernan, J. B., Hobbie, S. E., Morse, J. L., Neill, C., Nelson, K. C., O’Neil-Dunne, J. P. M., Ogden, L., Pataki, D. E., Pearse, W. D., Polsky, C., Chowdhury, R. R., Steele, M. K. and Trammell, T. L. E.: Convergence of microclimate in residential landscapes across diverse cities in the United States, *Landsc. Ecol.*, 31(1), 101–117, doi:10.1007/s10980-015-0297-y, 2016.



- Hillel, D.: *Environmental Soil Physics*, Academic Press, San Diego, CA. [online] Available from: [https://books.google.com.co/books?id=tP\\_\\_y5xRd0oC](https://books.google.com.co/books?id=tP__y5xRd0oC) (Accessed 10 May 2014), 1998.
- James, E. W., Banner, J. L. and Hardt, B.: A global model for cave ventilation and seasonal bias in speleothem paleoclimate records, *Geochemistry, Geophys. Geosystems*, 16(4), 1044–1051, doi:10.1002/2014GC005658, 2015.
- 5 Kang, M., Kanno, C. M., Reid, M. C., Zhang, X., Mauzerall, D. L., Celia, M. A., Chen, Y. and Onstott, T. C.: Direct measurements of methane emissions from abandoned oil and gas wells in Pennsylvania, *Proc. Natl. Acad. Sci.*, 111(51), 18173–18177, doi:10.1073/pnas.1408315111, 2014.
- Kang, M., Baik, E., Miller, A. R., Bandilla, K. W. and Celia, M. A.: Effective Permeabilities of Abandoned Oil and Gas Wells: Analysis of Data from Pennsylvania, *Environ. Sci. Technol.*, 49(7), 4757–4764, doi:10.1021/acs.est.5b00132, 2015.
- 10 Kardashov, V. R., Eppelbaum, L. V. and Vasilyev, O. V.: The role of nonlinear source terms in geophysics, *Geophys. Res. Lett.*, 27(14), 2069–2072, doi:10.1029/1999GL011192, 2000.
- Kawamoto, K., Moldrup, P., Schjønning, P., Iversen, B. V., Rolston, D. E. and Komatsu, T.: Gas transport parameters in the vadose zone, *Vadose Zo. J.*, 5(4), 1194–1204, doi:10.2136/vzj2006.0014, 2006.
- Klepikova, M. V., Le Borgne, T., Bour, O. and Davy, P.: A methodology for using borehole temperature-depth profiles  
15 under ambient, single and cross-borehole pumping conditions to estimate fracture hydraulic properties, *J. Hydrol.*, 407(1–4), 145–152, doi:10.1016/j.jhydrol.2011.07.018, 2011.
- Kowalski, A. S. and Sánchez-Cañete, E. P.: A New Definition of the Virtual Temperature, Valid for the Atmosphere and the CO<sub>2</sub>-Rich Air of the Vadose Zone, *J. Appl. Meteorol. Climatol.*, 49(8), 1692–1695, doi:10.1175/2010JAMC2534.1, 2010.
- Kuang, X., Jiao, J. J. and Li, H.: Review on airflow in unsaturated zones induced by natural forcings, *Water Resour. Res.*,  
20 49(10), 6137–6165, doi:10.1002/wrcr.20416, 2013.
- Lensky, I. M. and Dayan, U.: Continuous detection and characterization of the Sea Breeze in clear sky conditions using Meteorat Second Generation, *Atmos. Chem. Phys.*, 12(14), 6505–6513, doi:10.5194/acp-12-6505-2012, 2012.
- Levintal, E., Dragila, M. I., Kamai, T. and Weisbrod, N.: Free and forced gas convection in highly permeable, dry porous media, *Agric. For. Meteorol.*, 232, 469–478, doi:10.1016/j.agrformet.2016.10.001, 2017.
- 25 Massmann, J., Shock, S. and Johannesen, L.: Uncertainties in cleanup times for soil vapor extraction, *Water Resour. Res.*, 36(3), 679–692, doi:10.1029/1999WR900305, 2000.
- Moore, J. R., Gischig, V., Katterbach, M. and Loew, S.: Air circulation in deep fractures and the temperature field of an alpine rock slope, *Earth Surf. Process. Landforms*, 36(15), 1985–1996, doi:10.1002/esp.2217, 2011.
- Nachshon, U., Weisbrod, N. and Dragila, M. I.: Quantifying Air Convection through Surface-Exposed Fractures: A  
30 Laboratory Study, *Vadose Zo. J.*, 7(3), 948–956, doi:10.2136/vzj2007.0165, 2008.
- Nativ, R., Adar, E., Assaf, L. and Nygaard, E.: Characterization of the hydraulic properties of fractures in chalk, *Ground Water*, 41(4), 532–543, doi:10.1111/j.1745-6584.2003.tb02387.x, 2003.
- Neeper, D. A.: Investigation of the vadose zone using barometric pressure cycles, *J. Contam. Hydrol.*, 54(1–2), 59–80, doi:10.1016/S0169-7722(01)00146-2, 2002.

- Neeper, D. A.: Harmonic analysis of flow in open boreholes due to barometric pressure cycles, *J. Contam. Hydrol.*, 60(3–4), 135–162, doi:10.1016/S0169-7722(02)00086-4, 2003.
- Neeper, D. A. and Stauffer, P. H.: Transport by Oscillatory Flow in Soils with Rate-Limited Mass Transfer: 1. Theory, *Vadose Zo. J.*, 11(2), 0, doi:10.2136/vzj2011.0094, 2012.
- 5 Noronha, A. L., Hardt, B. F., Banner, J. L., Jenson, J. W., Partin, J. W., James, E. W., Lander, M. A. and Bautista, K. K.: Trade winds drive pronounced seasonality in carbonate chemistry in a tropical Western Pacific island cave—Implications for speleothem paleoclimatology, *Geochemistry, Geophys. Geosystems*, 18(1), 384–399, doi:10.1002/2016GC006644, 2017.
- Perina, T.: General well function for soil vapor extraction, *Adv. Water Resour.*, 66, 1–7, doi:10.1016/j.advwatres.2014.01.005, 2014.
- 10 Perrier, F. and Le Mouél, J.-L.: Stationary and transient thermal states of barometric pumping in the access pit of an underground quarry, *Sci. Total Environ.*, 550, 1044–1056, doi:10.1016/j.scitotenv.2016.01.125, 2016.
- Perrier, F., Morat, P. and Le Mouél, J. L.: Dynamics of air avalanches in the access pit of an underground quarry., *Phys. Rev. Lett.*, 89(13), 1–4, doi:10.1103/PhysRevLett.89.134501, 2002.
- Perrier, F., Le Mouél, J.-L., Kossobokov, V., Crouzeix, C., Morat, P. and Richon, P.: Properties of turbulent air avalanches in a vertical pit, *Eur. Phys. J. B*, 46(4), 563–579, doi:10.1140/epjb/e2005-00289-9, 2005.
- 15 Pla, C., Cuezva, S., Garcia-Anton, E., Fernandez-Cortes, A., Cañaveras, J. C., Sanchez-Moral, S. and Benavente, D.: Changes in the CO<sub>2</sub> dynamics in near-surface cavities under a future warming scenario: Factors and evidence from the field and experimental findings, *Sci. Total Environ.*, 565, 1151–1164, doi:10.1016/j.scitotenv.2016.05.160, 2016.
- Rayleigh, Lord: LIX. On convection currents in a horizontal layer of fluid, when the higher temperature is on the under side, *Philos. Mag. Ser. 6*, 32(192), 529–546, doi:10.1080/14786441608635602, 1916.
- 20 Rossabi, J. and Falta, R. W.: Analytical Solution for Subsurface Gas Flow to a Well Induced by Surface Pressure Fluctuations, *Ground Water*, 40(1), 67–75, doi:10.1111/j.1745-6584.2002.tb02492.x, 2002.
- Sánchez-Cañete, E., Serrano-Ortiz, P., Domingo, F. and Kowalski, A.: Cave ventilation is influenced by variations in the CO<sub>2</sub>-dependent virtual temperature, *Int. J. Speleol.*, 42(1), 1–8, doi:10.5038/1827-806X.42.1.1, 2013.
- 25 Sanchez-Cañete, E. P., Serrano-Ortiz, P., Kowalski, A. S., Oyonarte, C. and Domingo, F.: Subterranean CO<sub>2</sub> ventilation and its role in the net ecosystem carbon balance of a karstic shrubland, *Geophys. Res. Lett.*, 38(9), n/a-n/a, doi:10.1029/2011GL047077, 2011.
- Schwarz, J., Bear, J. and Dagan, G.: Groundwater Development in Israel, *Groundwater*, 54(1), 143–148, doi:10.1111/gwat.12384, 2016.
- 30 Serrano-Ortiz, P., Roland, M., Sanchez-Moral, S., Janssens, I. A., Domingo, F., Goddérís, Y. and Kowalski, A. S.: Hidden, abiotic CO<sub>2</sub> flows and gaseous reservoirs in the terrestrial carbon cycle: Review and perspectives, *Agric. For. Meteorol.*, 150(3), 321–329, doi:10.1016/j.agrformet.2010.01.002, 2010.
- Shentsis, I., Meirovich, L., Ben-Zvi, A. and Rosenthal, E.: Assessment of transmission losses and groundwater recharge from runoff events in a wadi under shortage of data on lateral inflow, Negev, Israel, *Hydrol. Process.*, 13(11), 1649–1663,

doi:10.1002/(SICI)1099-1085(19990815)13:11<1649::AID-HYP834>3.0.CO;2-N, 1999.

Steinitz, G. and Piatibratova, O.: Radon signals at the Roded site, southern Israel, *Solid Earth*, 1(1), 99–109, doi:10.5194/se-1-99-2010, 2010.

5 Thorstenson, D. C., Weeks, E. P., Haas, H., Busenberg, E., Plummer, N. and Peters, C. a.: Chemistry of unsaturated zone gases sampled in open boreholes at the crest of Yucca Mountain, Nevada: Data and basic concepts of chemical and physical processes in the mountain, *Water Resour. Res.*, 34(6), 1507–1529, doi:10.1029/98WR00267, 1998.

Weisbrod, N. and Dragila, M. I.: Potential impact of convective fracture venting on salt-crust buildup and ground-water salinization in arid environments, *J. Arid Environ.*, 65(3), 386–399, doi:10.1016/j.jaridenv.2005.07.011, 2006.

10 Weisbrod, N., Dragila, M. I., Nachshon, U. and Pillersdorf, M.: Falling through the cracks: The role of fractures in Earth-atmosphere gas exchange, *Geophys. Res. Lett.*, 36(2), n/a-n/a, doi:10.1029/2008GL036096, 2009.

You, K. and Zhan, H.: Can atmospheric pressure and water table fluctuations be neglected in soil vapor extraction?, *Adv. Water Resour.*, doi:10.1016/j.advwatres.2011.10.008, 2012.

You, K., Zhan, H. and Li, J.: A new solution and data analysis for gas flow to a barometric pumping well, *Adv. Water Resour.*, 33(12), 1444–1455, doi:10.1016/j.advwatres.2010.07.008, 2010.

15 You, K., Zhan, H. and Li, J.: Gas flow to a barometric pumping well in a multilayer unsaturated zone, *Water Resour. Res.*, 47(5), W05522, doi:10.1029/2010WR009411, 2011.

Zeng, Y., Xie, Z. and Liu, S.: Seasonal effects of irrigation on land-atmosphere latent heat, sensible heat, and carbon fluxes in semiarid basin, *Earth Syst. Dyn.*, 8(1), 113–127, doi:10.5194/esd-8-113-2017, 2017.

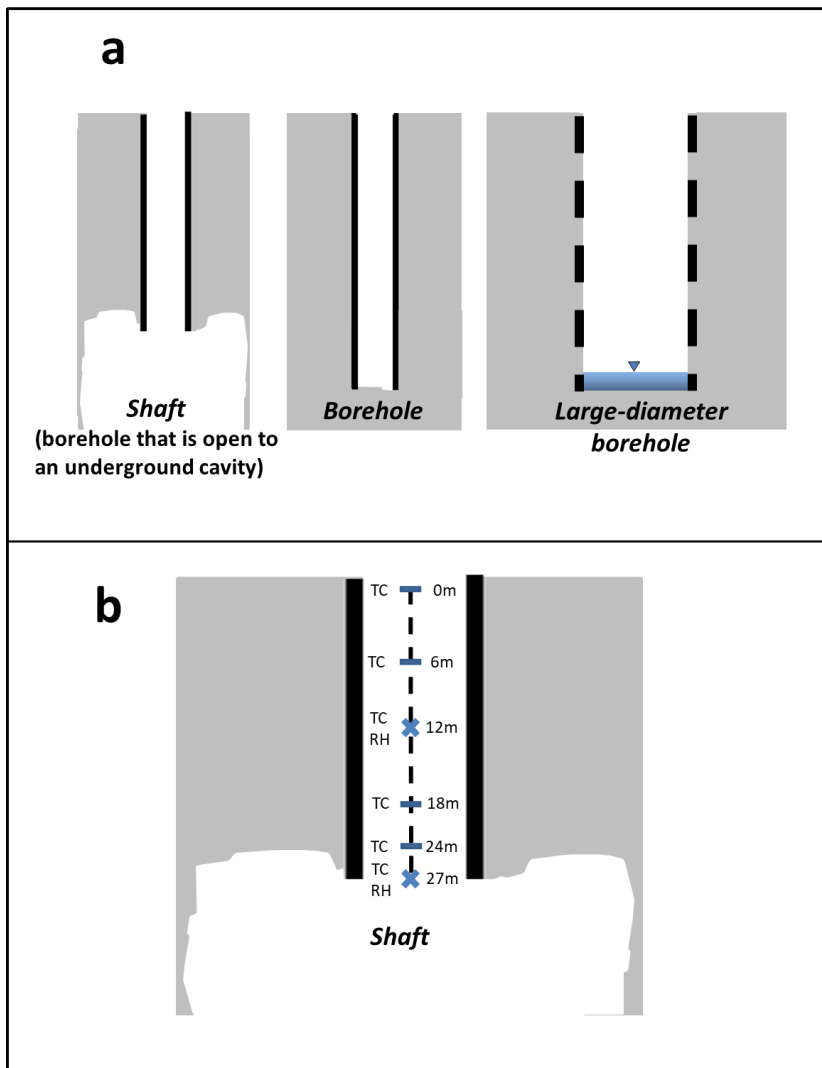


Figure. 1. Schematic illustration of the three studied geometries (a); and an example of the sensors locations within the *shaft* (b). The sensor's location within the *shaft* included four thermocouples at depths of: 0, 6, 18, and 24 m and two RH-temperature sensors at the lower part of the *shaft* at its connection point to the cavity (27 m depth).

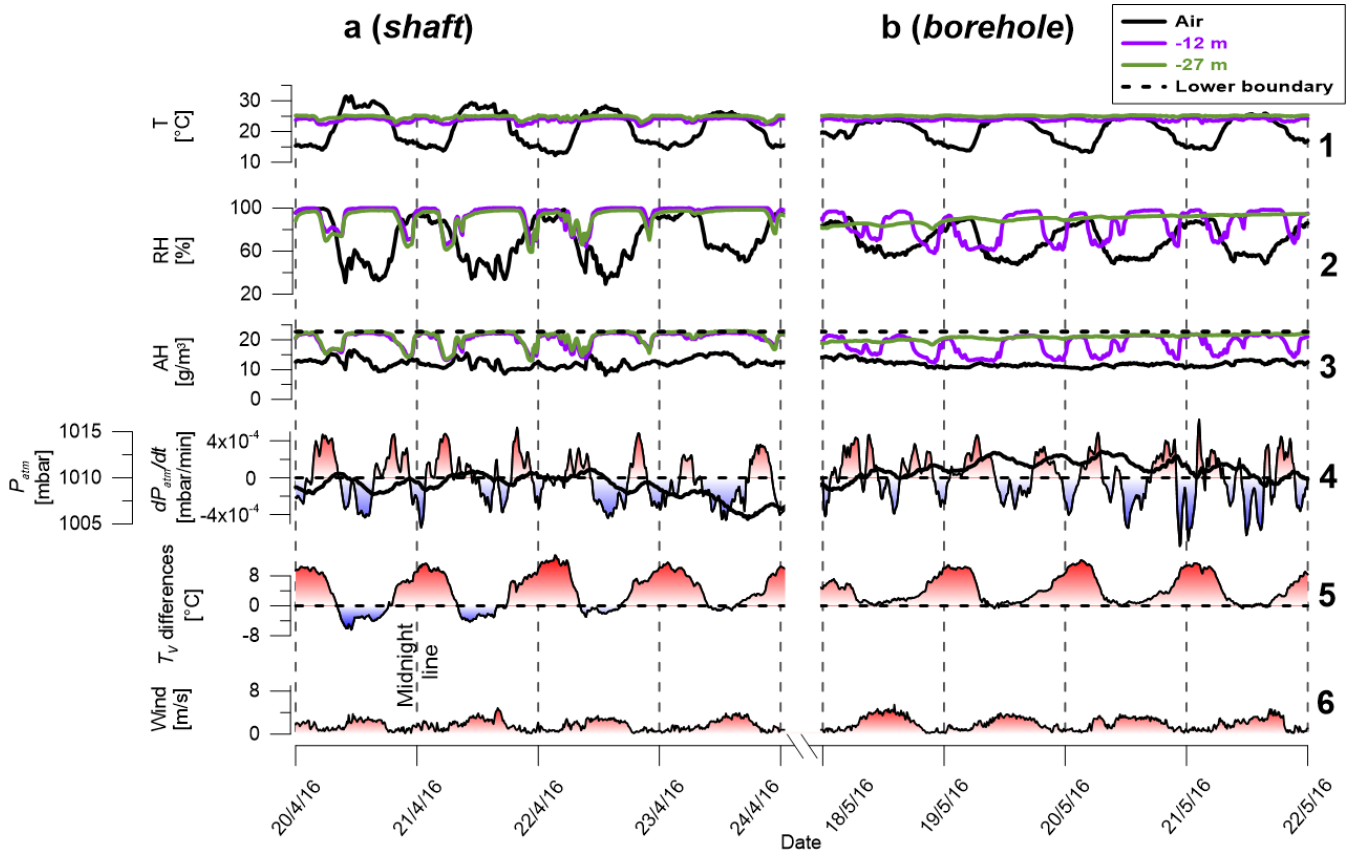


Figure. 2. Time series results from four representative days for the *shaft* (a) and *borehole* (b). For simplicity, results from only four continuous days are shown and the complete data from the 42-days of measurements are shown in Fig. S1. Absolute humidity (AH) values were calculated using Eq. (1). The lower boundary (black dashed line in panel 3) was approximated as constant with  $T = 24.7$  °C and  $RH = 100$  % and for the case of the *borehole* represents the values at the soil-*borehole* interface.  $T_v$  differences values (5) represent the  $T_v$  differences between 12 m depth and the air above ground.  $T_v$  were calculated according to Sánchez-Cañete et al. (2013) using  $CO_2$  concentrations of 2,000 and 400 ppm for 12 m depth and air above ground, respectively. The  $CO_2$  value used for the 12 m was obtained from two weeks of measurements within the borehole during the winter of 2017, in which the  $CO_2$  did not exceed 2,000 ppm.

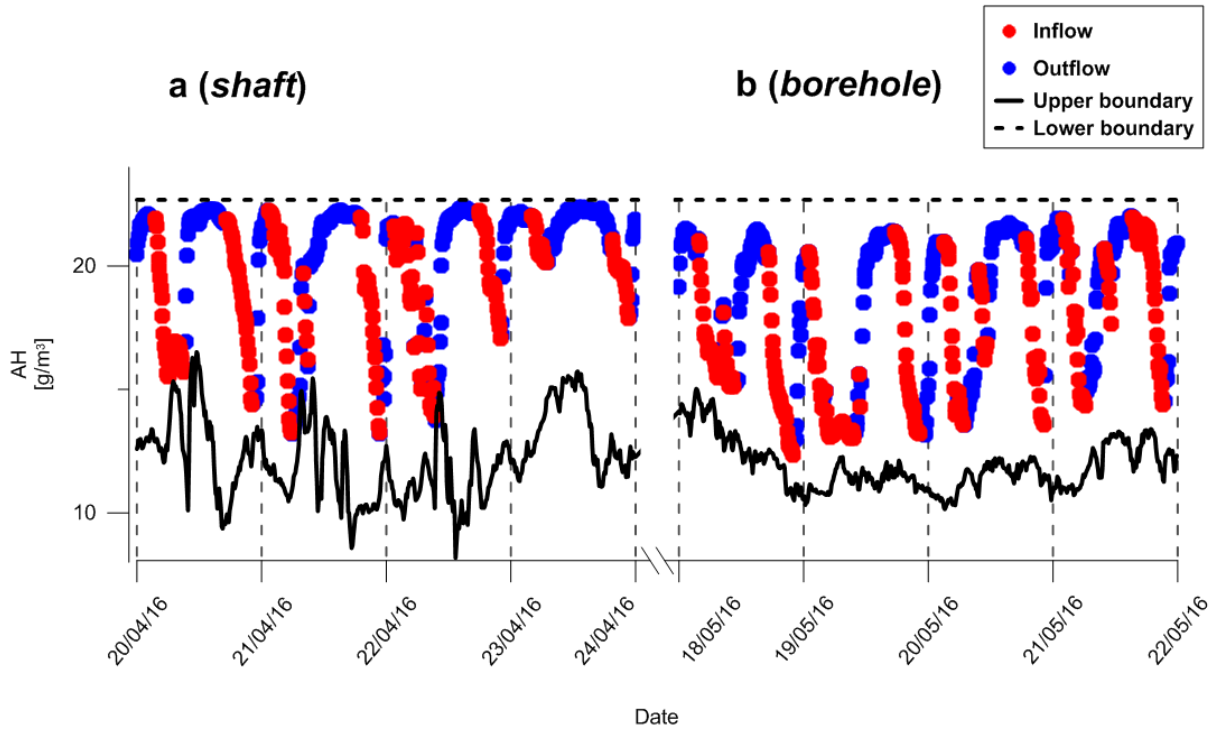


Figure. 3. Classification of inflow and outflow transition events at 12 m depth for *shaft* (a) and *borehole* (b). Upper boundary represents the AH values according to the temperature and RH measured at 2 m above ground; lower boundary represents the AH values in the underground cavity (*shaft*) or the soil-*borehole* interface (*borehole*). Point intervals are at 10 min each.

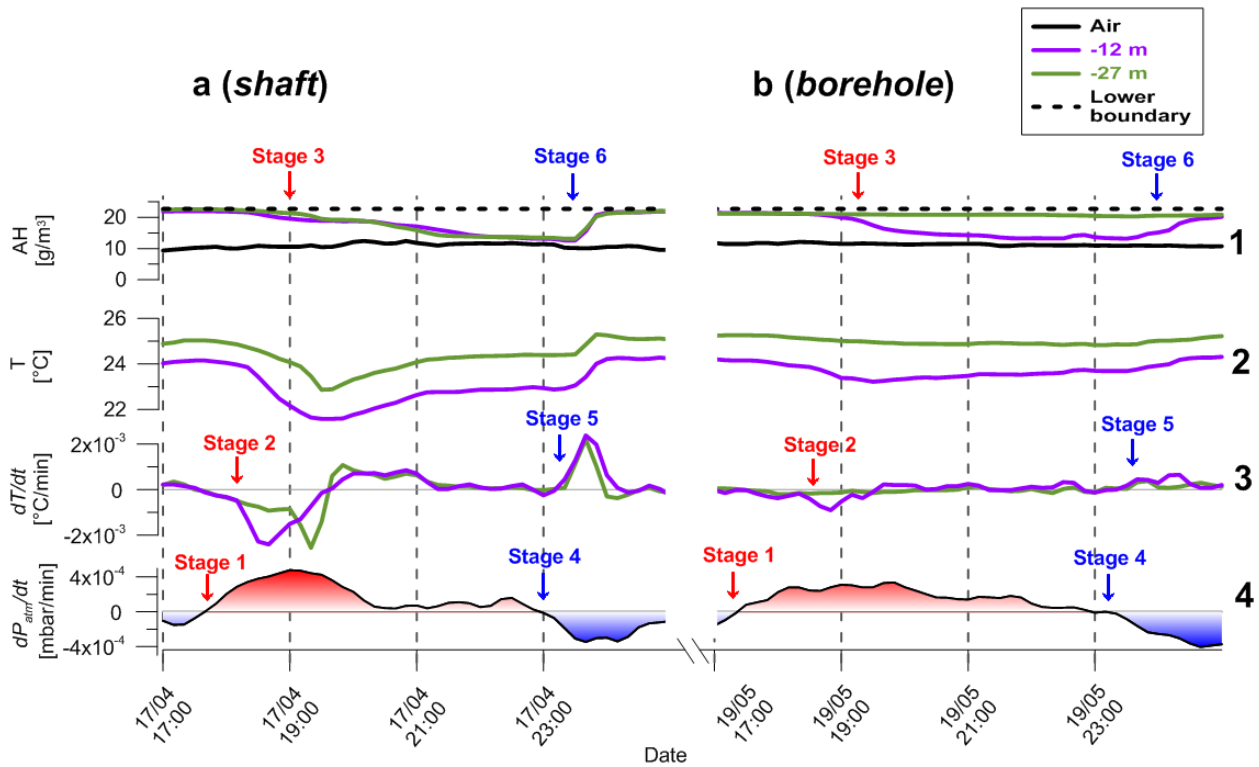


Figure 4. Time series results from a single transition event. Left side (a) and right side (b) represent the *shaft* and *borehole* results, respectively. Red and blue text fonts represent stages in the inflow and outflow events, respectively.  $dT/dt$  values were derived from the temperature values in line 2.

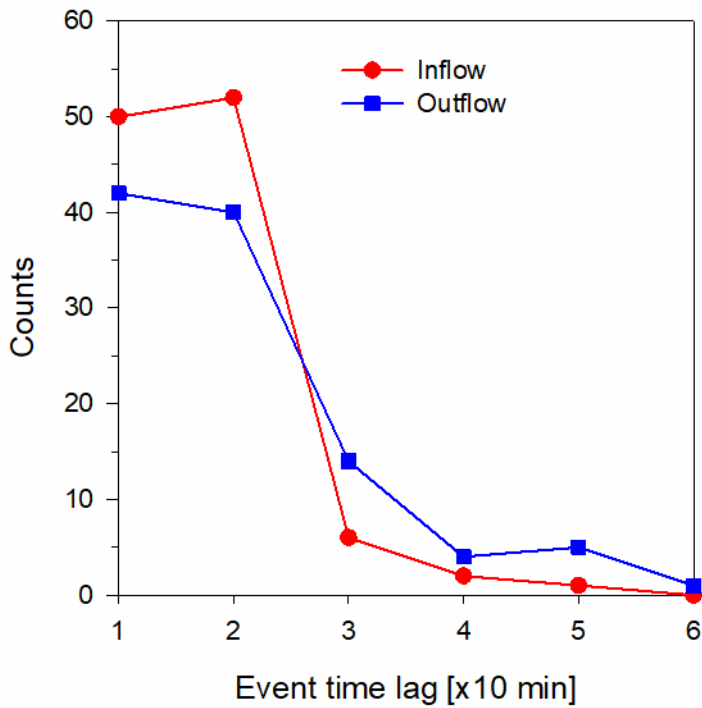


Figure. 5. Time lags between changes of  $dP_{atm}/dt$  (i.e., changes of barometric pressure over time) and the start of inflow/outflow events. Event classification was done automatically using the data from the 12 m depth sensors. Red symbols represent the time lag between the transition of  $dP_{atm}/dt$  from negative to positive values and the start of an inflow event (stages 1 and 3 in Fig. 4). Blue symbols represent the time lag between the transition of  $dP_{atm}/dt$  from positive to negative values and the start of an outflow event (stages 4 and 6 in Fig. 4).



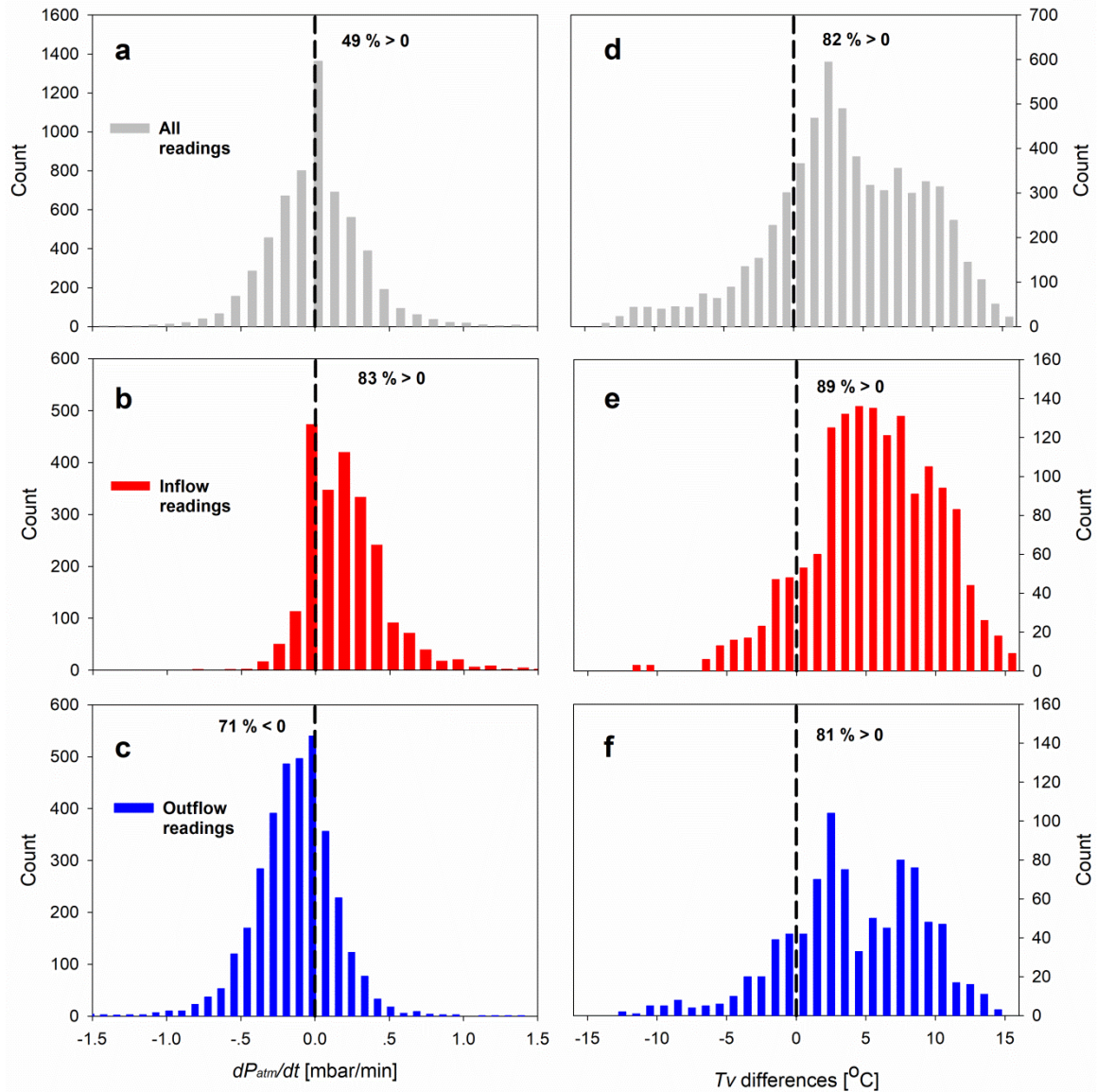


Figure. 6. Histograms of changes of atmospheric barometric pressure ( $dP_{atm}/dt$ ) and  $T_v$  difference between the *shaft* and the atmosphere. The gray color (a, d) represents data from all 42 days of measurement. Red (b, e) and blue colors (c, f) represent data from the inflow and outflow events, respectively. Positive values of  $dP_{atm}/dt$  can drive inflow events from the atmosphere into the underground cavity, whereas negative values can drive outflow events.  $T_v$  differences (X-axis) are between 12 m-deep inside the *shaft* and the atmosphere.

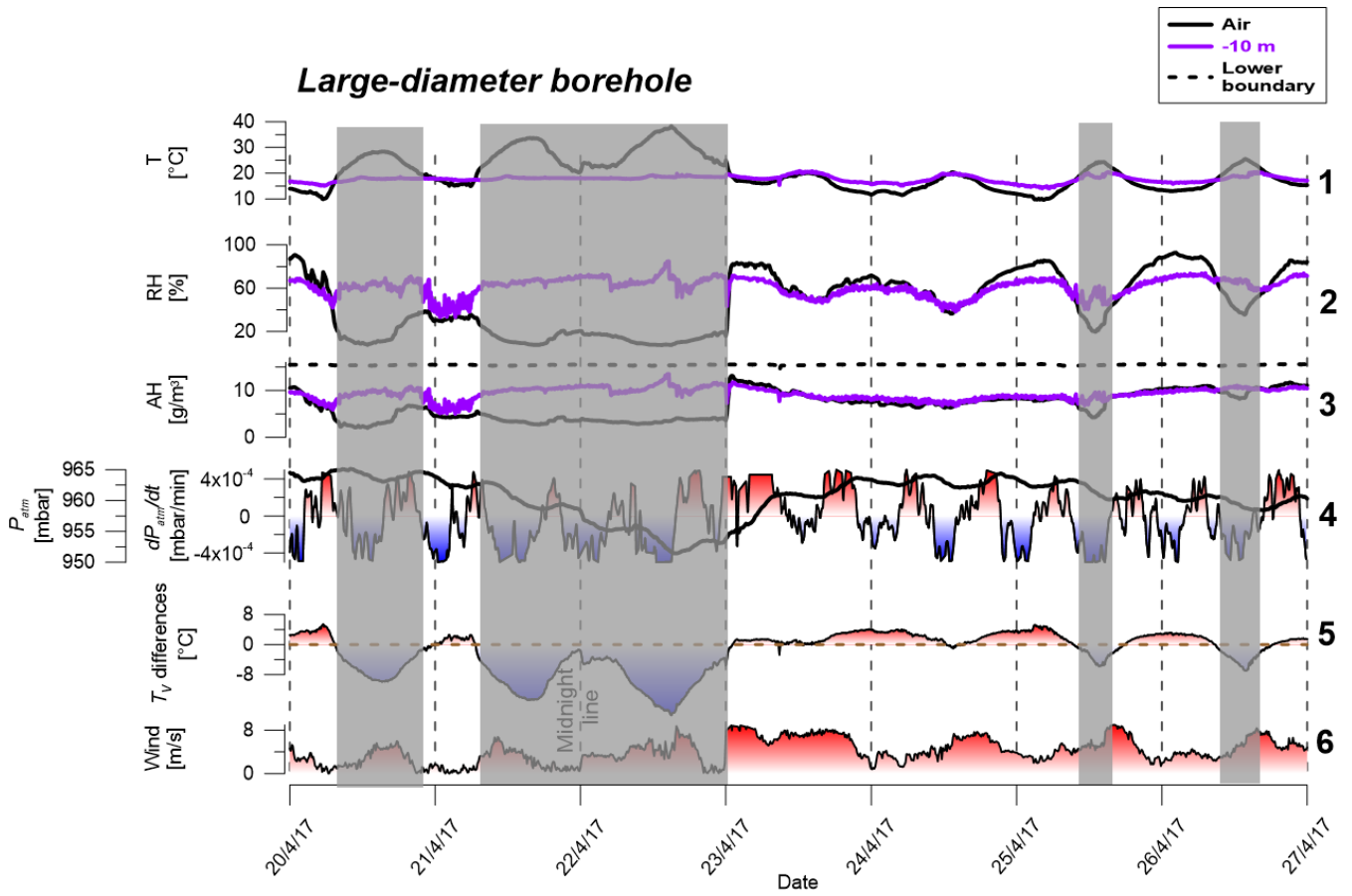


Figure 7. Time series results from the *large-diameter borehole* for one week. Gray columns represent periods of thermal-stability inside the *large-diameter borehole*. Values in line 5 represent  $T_v$  differences between 10 m depth and the air above ground.  $T_v$  were calculated according to Sánchez-Cañete et al. (2013) using  $\text{CO}_2$  concentrations of 2,000 and 400 ppm for 10 m depth and air above ground, respectively.

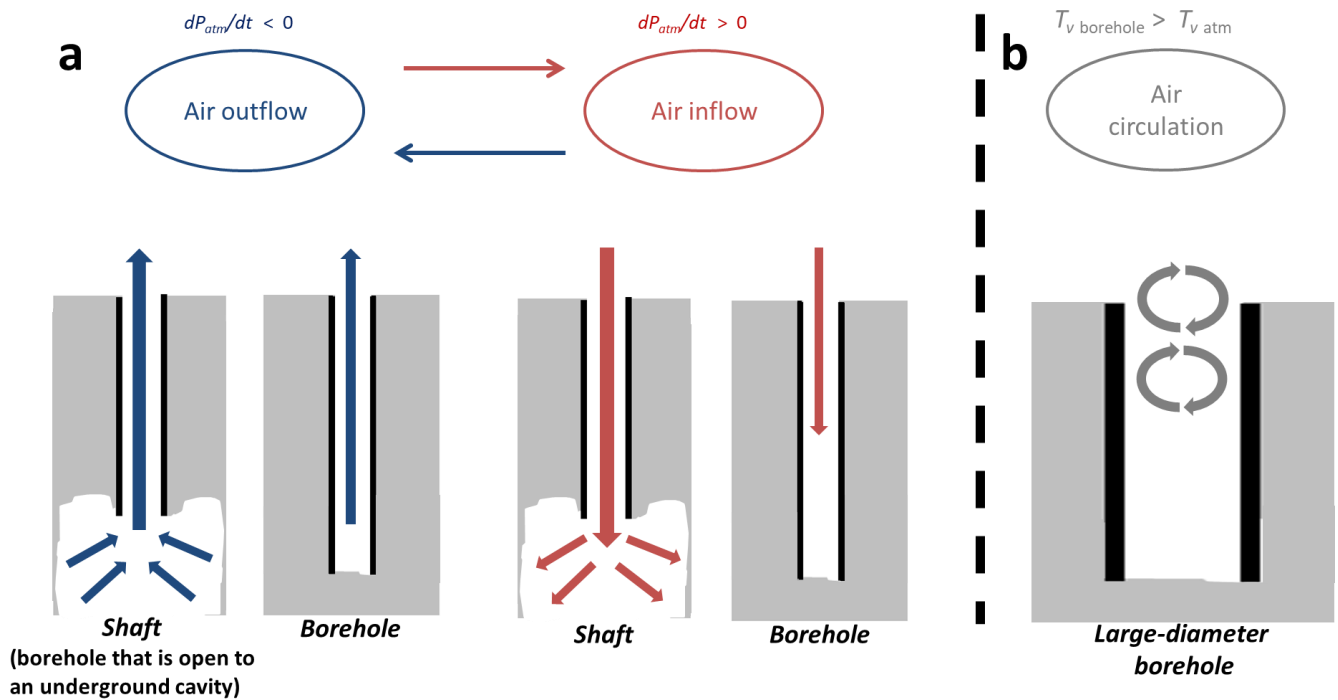


Figure 8. Conceptual model for airflow inside boreholes and shafts. Left side (a) represents the *shaft/borehole* and right side (b) represents the *large-diameter borehole*. Blue arrows illustrate the air outflow events in which air flows from the bottom cavity (shaft) or the bottom *borehole-soil* interface (*borehole*) to the atmosphere, whereas red arrows illustrate the air inflow events in the opposite direction. For example, as the red arrows indicate, air from the atmosphere will enter the cavity, equalling the absolute humidity (AH) values throughout the *shaft* to the atmospheric values. In contrast, in the *borehole*, this stage will only be effective to a certain depth and the bottom *borehole-soil* interface will not be significantly affected. In the *large-diameter borehole*, gray arrows illustrate circulation of air from the atmosphere into the *large-diameter borehole* due to thermal-instability that initiates **TECDIC**. The diameter will define which advective transport mechanism is more significant: at a small diameter of 0.1 m, BP controls gas transport (a), whereas at a larger diameter of 3.4 m **TECDIC** is the dominant mechanism (b).