

Dear Editor,

Thank you and the two reviewers so much for the insightful comments and suggestions. We have taken all of them seriously and had major revisions accordingly. Our responses by point-to-point are detailed below in blue, and the revised portions are marked in red in the revised version. Your reconsiderations will be highly appreciated!

Sincerely yours

Fulu Tao & Ran Zhai

Response to Reviewer #1:

The manuscript investigated the impacts of global warming on river runoff and terrestrial ecosystem water retention under two climate scenarios. Overall, I feel the paper is well-written and presents interesting results. However, some detailed explanations and more analysis are needed. Finally, I'd recommend the paper for publication after substantial improvements have been made to address the following concerns (major revision).

Thanks a lot for the positive comments.

1. The authors should present the full name of some abbreviations for the first occurrence. For example, "GCMs", "ECHAM6-3-LR, MIROC5, NorESM1-HAPPI, and CAM4-2degree" (Pages 2 Line 30, Page 3 Line 1).

Revised. We have presented the full name of all abbreviations for the first occurrence (Page 2 line 9, Page 2 lines 16-17, Page 2 line 19, Page 2 line 27, Page 4 line 3). And we added original institute name and original institute ID of ECHAM6-3-LR, MIROC5, NorESM1-HAPPI and CAM4-2degree model in Table 1.

2. Page 4 Line: "showed" should be "shows".

We have revised it in Page 4 line 8.

3. Do Figs. 2 and 3 show the changes in temperature and precipitation under the two warming scenarios relative to the baseline period (2006-2015)? In addition, "all the four GCMs" in Figs. 2e and 2j is the average mean of the four GCMs? Please make them clear.

Yes, Figs. 2 and 3 show the changes in temperature and precipitation under the two warming scenarios relative to the baseline period (2006-2015), it was explained in the revised manuscript in Section 2.6 (Page 5 lines 20-22). The captions of Figs. 2 and 3 were revised to clarify these. "all the four GCMs" in Figs. 2e and 2j are the median values of the projected changes among

all 70 ensembles under the four GCMs (Page 5 line 28 to Page 6 line 1).

4. Page 6 Line 20: "Fig. 2a, d, f, i" should be "Figs. 2a, d, f, i".The same for the whole manuscript.

We have revised all these in the manuscript.

5. Compared to the mean value, the projections of hydrological extremes are more important. However, the explaining for the reason of the changes in Q_{10} and Q_{90} and the differences between 1.5 and 2.0 warming scenarios were not presented.

We presented the differences of Q_{10} and Q_{90} between 1.5°C and 2.0°C warming scenarios in Section 3.4, and added a Figure about SD of precipitation (Fig. A3) to explain for the reason of the changes in Q_{10} and Q_{90} (Page 8, lines 23-24). And we added Figure A8 and Figure A9 to show the probability density functions of changes of Q_{10} and Q_{90} under 1.5°C warming scenario and 2.0°C warming scenario across all 700 years in 70 ensembles in the four GCMs for all the grids in each basin. Results showed most grids under the two warming scenarios showed increasing Q_{10} and Q_{90} across China. Q_{90} was projected to increase more in most basins across China than Q_{10} under 2.0°C warming scenario than 1.5°C warming scenario (Figs. A8 and A9). And this may imply more flood and drought risks under 2.0°C warming scenario than 1.5°C warming scenario. Please refer to Page 10 line 29 to Page 11 line 2.

6. Fig. 10 showed the Pearson correlations between river runoff and maximum and minimum temperatures, since the last two climate variables were the input of the VIC model. However, the manuscript mainly discussed the mean temperature in Section 3. In addition, wind speed was not mentioned in Sections 2 and 3.

Yes, we only discussed annual mean temperature and annual precipitation in Section 3, because these two climate variables are the most representative and important variables to represent every scenario of each GCM's characteristics. Only key variables and results were stressed to avoid too many figures. And we added this point in Section 2.3 in Page 4 lines 9-11.

7. The Spearman correlation coefficients did not represent the contributions of the input climate variables. The authors should use other statistical methods, such as partial correlations or multi-regression method, to investigate the contribution of each climate variable on the river runoff and TEWR.

We tried to use multi-regression method and partial correlation method to investigate the contribution of each variable on runoff and TEWR. But the results were strange. For example, the relation between annual runoff change and annual maximum temperature change after standardization through multi-regression method was shown in Fig. R1. According to common sense,

maximum temperature would lead to runoff decrease because of increasing evapotranspiration in most areas in China (Liu et al., 2017), but the results there showed annual maximum temperature change had a positive relation with runoff change in most areas across China. We think it was caused by multicollinearity between annual maximum temperature and annual minimum temperature. For partial correlation method, we need to control other independent variables and analyze the relation between one independent variable and dependent variable. It is unrealistic to only change maximum temperature without change the minimum temperature in the real world. So, we only analyzed the correlation between runoff and the four input variables (precipitation, maximum temperature, minimum temperature, wind speed). As for TEWR, because we used a simple linear equation to calculate TEWR, so the coefficients were consistent with the equation when using multi-regression method and partial correlation method. So, we just used the Pearson correlation method to show the relationships between the independent variables and the dependent variables, although the Pearson correlation coefficient did not represent the contribution of the input climate variables.

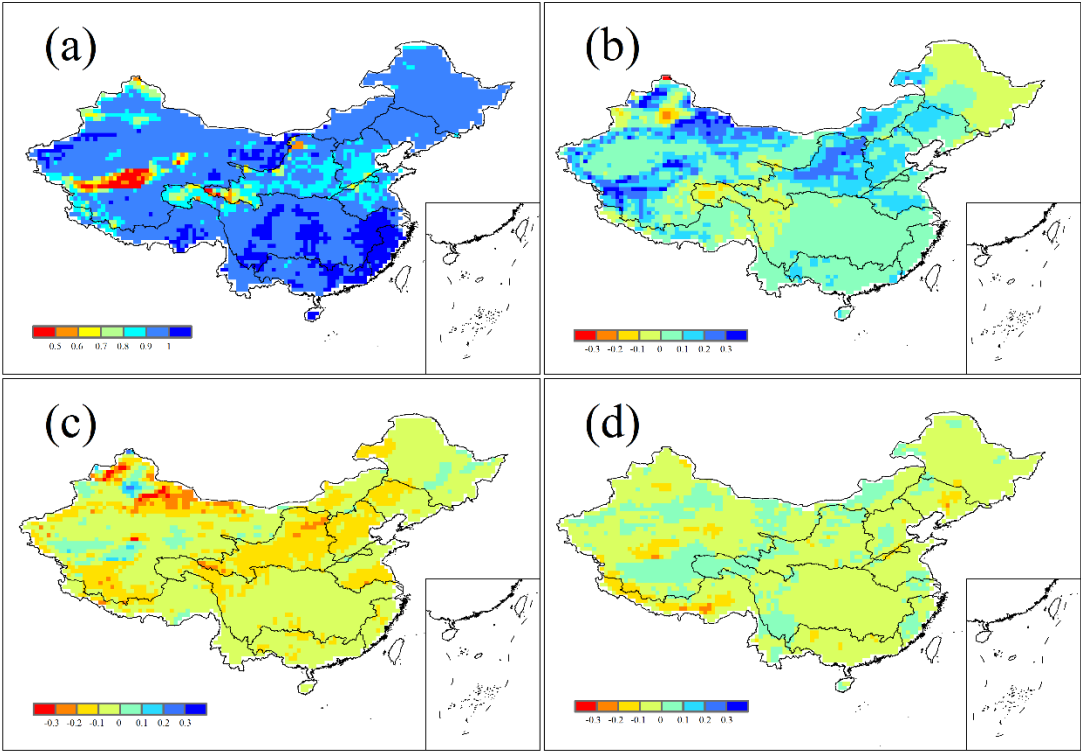


Figure R1: Spatial patterns of the multi-regression coefficient (r) between data series of runoff changes and four key impact factors

changes (a: runoff and precipitation, b: runoff and annual maximum temperature, c: runoff and annual minimum temperature, d: runoff and wind speed) under 1.5 °C and 2.0 °C warming scenarios from 2106 to 2115 relative to the baseline period from 2006 to 2015.

8. The description in Section 4.3 did not provide any useful information for the readers. It is better to evaluate the performances of the VIC model driven by GCM ensemble simulations using ground-based or satellite-based observations between 2006 and 2015.

Thanks a lot for the insightful suggestions. We added three parts to make our uncertainties more meaningful. First, according to suggestion, we evaluated the performances of the VIC model driven by GCM ensembles simulations using ground-based observation climate data between 2006 to 2015. We analyzed the differences between the median value of VIC model result driven by 70 GCM ensembles simulations and driven by ground-based observation data between 2006 to 2015. Please refer to Page 12 lines 20-30, and Fig 12. Second, to make our results more convincing, we added other ten observation runoff station data located in different main basins to validate our calibrated parameters, and the result showed our calibrated parameters were also validated for other catchments in the same basin. Please refer to Page 6 line 26 to Page 7 line 3 and Table 3. Third, we evaluated the model agreement through analyzing the number of model ensembles showing the same increasing trend in runoff and TEWR at each grid, please refer to Page 12 line 31 to Page 13 line 2 and Figure 13. Based on all of these, we think Section 4.3 now provide more useful information for readers than before.

Reference

Liu, J. Y., Zhang, Q., Singh, V. P., and Shi, P. J.: Contribution of multiple climatic variables and human activities to streamflow changes across China, *Journal of Hydrology*, 545, 145-162, 10.1016/j.hydrol.2016.12.016, 2017.

Response to Reviewer #2:

This paper presented changes in river runoff and terrestrial ecosystem water retention in China under 1.5 and 2 degree warming scenarios simulated by the VIC model. The simulations are under the HAPPI project framework, and the results are interesting in the context of Paris Agreement and IPCC 1.5 degree special report. There are however major issues in the current version

of the manuscript that should be addressed before considering the paper for publication.

Thanks a lot for the positive comments.

1. Although previous research has not investigated the changes in river runoff under 1.5 and 2 degree warming specifically, it is useful to compare with changes under RCP2.6 scenario (the warming level is similar, and aerosol forcing used is also the same as RCP2.6's end of 21st century level).

Revised. We compared the results with other studies under RCP2.6 scenario across China. Please refer to the revised manuscript in Page 12 lines 10-19.

2. For the wide readership of ESD, it would be helpful to expand the model description of VIC and explain briefly the key model features. More details should also be provided for the calibration procedure and validation. Ideally different stations could be used for the validation purpose. It would also be interesting if the authors would briefly explain why the bias for the calibration and validation period is of opposite direction for all stations (Table 2).

Firstly, following the suggestions, we expanded the model description of VIC in Section 2.2 (Page 3 lines 20-27). Secondly, to provide more details for the calibration and validation procedure in Section 3.1, we added Fig. A1, and the parameters needed to be calibrated in Page 4 lines 25-28. Thirdly, we collected ten other hydrological stations located in different main basins for the validation purpose in Section 3.1 (Page 6 line 26 to Page 7 line 3), and we added Table 3 to show these hydrological stations characteristics and validation results to support our results. We also added the locations of these ten stations in Figure 1. Lastly, as for the bias for the calibration and validation procedure, it might be caused by trying to make the results of calibration and validation both better when parameters were calibrated.

3. The uncertainty analysis is currently lacking. Section 4.3 proposed a few potential uncertainty sources but no actual analyses is presented. A better effort to present uncertainty in the results would improve the readability of the paper. For example, for some of the projected changes the authors could show maps of model agreement (number of model ensembles showing the same trend) at each grid point. It is not clear if the changes are statistically significant. The uncertainty range among the ensembles for the GCMs should also at least be mentioned for Figure 9.

Thanks a lot for the insightful suggestions. We added three parts to make our uncertainties more meaningful. First, we evaluated the model agreement through analyzing the number of model ensembles showing the same increasing trend in runoff

and TEWR at each grid, please refer to Page 12 line 31 to Page 13 line 2 (Fig. 13). Second, we added Figure A4 to show the uncertainty range for annual mean temperature change, annual precipitation change, annual runoff change and annual TEWR change among the ensembles for all the GCMs. Third, we evaluated the performances of the VIC model driven by GCM ensembles simulations using ground-based observation climate data between 2006 to 2015. We analyzed the differences between the median value of VIC model result driven by 70 GCM ensembles simulations and driven by ground-based observation data between 2006 to 2015. Please refer to Page 12 lines 20-30 (Fig 12). Based on all of these, we think Section 4.3 now provide more useful information for readers than before.

4. A more quantitative conclusion should be provided with some regionally averaged statistics, especially on the difference between 1.5 degree and 2 degree scenarios. In general more quantitative results should be provided from the analyses as well. The connection to climate change mitigation and adaptation needs is not convincing as the manuscript discussed very little about the risks (which should also have a socioeconomics component) of hydrological extremes, and the effect of human management is also not examined in this study. The last paragraph is a bit far-fetched and is not supported well enough by the results.

Firstly, we added Table 4 to provide with some regional averaged statistics data, to show how annual temperature, annual precipitation, annual runoff and annual TEWR change under 1.5°C and 2.0°C warming scenarios, and to show the difference between 1.5°C and 2.0°C warming scenarios under all ensembles in the four GCMs. And we also added some quantitative results in Section 4.1, please refer to Page 9 lines 26-29, Page 9 line 30 to Page 10 line 1, Page 10 lines 7-10 and Page 10 lines 14-15. Secondly, following the suggestion, we deleted the last paragraph in conclusion.

A couple of minor points/questions:

1. Are there similar results from HAPPI based on a different model other than VIC?

Based on our knowledge, there are only a few studies using HAPPI data now, however, this is the first to use HAPPI data to analyze the runoff and TEWR change in China.

2. What is the role of snow accumulation/melting change, especially in/near the Tibetan Plateau?

As previous studies, snowmelt contributes much water to the runoff for rivers in the Tibetan Plateau (Liu et al., 2015). However, snow accumulation/melting change is a complicated process (Su et al., 2016). Under warming scenarios, first snow melting

would lead to runoff increase (Zhang et al., 2013). And the time of snow melting would in advance and change the annual runoff distribution (Barnett et al., 2005). However, because of global warming, glacial retreat and the amount of snow accumulation decrease, the runoff caused by snow and glacier melting would decrease later (Liu et al., 2015). And in this present study, unlike other main basins, runoff had a weaker relation with precipitation in some area in the Tibetan Plateau (Fig. 10a), and increasing annual minimum temperature would lead to runoff increase (Fig. 10c), which may cause by snow and glacier melting in the Tibetan Plateau. We added this point in Page 11, lines 20-23.

3. What is the reasoning of showing change in Q10 and Q90 based on the full ensemble, instead of for each GCM (similar to the other figures)? Will the results vary among the GCMs? It is also arguable how “extreme” Q10 and Q90 are. It is more meaningful to use large number of sample data to calculate Q₁₀ and Q₉₀, so we used all the ensemble data instead of every ensemble data in each GCM. In the revised manuscript, we added a figure to illustrate the Q₁₀ and Q₉₀ change in each GCM in every main basin (Fig. A5). It was true that the results of the changes in Q₁₀ and Q₉₀ in each basin were different for different GCM, so using a large sample data to analyze would be more comprehensive and convincing to present a general idea of the changes in Q₁₀ and Q₉₀.

As for Q₁₀ and Q₉₀, Q₁₀ represents ten percentile value in all the 700 years data, and Q₉₀ represent ninety percentile value in all the 700 years data in each grid in each period (2006-2015, 2106-2115 under 1.5°C warming scenario, and 2106-2115 under 2.0°C warming scenario). They could represent high runoff and low runoff change under the two warming scenarios. Although, there are some other indicators, for example Q₁₅ (low runoff) and Q₈₅ (high runoff), Q₅ (low runoff) and Q₉₅ (high runoff), but Q₁₀ and Q₉₀ were used more to represent extreme events (Strzepek et al., 2013; Krysanova et al., 2017; Vetter et al., 2017). If Q₁₀ decrease more, it may represent more drought risks, and if Q₉₀ increase more, it may represent more flood risks in a period. Because Q₁₀ and Q₉₀ of yearly runoff may not represent extreme droughts and floods only happened in several days, so we deleted ‘extreme’ in our revised manuscript, and only used low runoff and high runoff to describe Q₁₀ and Q₉₀.

4. Figure 5 seems to have a more mixed result on the change of river runoff SD: in some regions the SD increase is larger under 1.5 degree scenario especially for NorESM1.

It is true that the SD increase is larger under 1.5°C warming scenario in some regions. Different GCMs may give contrasting results, but in general, the increase of SD was larger under 2.0°C warming scenario than 1.5°C warming scenario. Because of

the large area of our study region, it is hard to get a uniform result in every region and in every GCM. So we analyzed median values of all ensembles in the four GCMs to draw a more general, comprehensive and convincing result (Page 13 lines 25-26).

5. How large is the signal of half degree warming compared to model specific difference in precipitation pattern? Figure 8 for example show quite different spatial patterns of changes among the GCMs (the first sentence on page 9 is a bit confusing, please reword).

First, according to Figure 9b, we found model specific difference in precipitation pattern was much larger than half degree warming, because differences between precipitation change under different scenarios of the same GCM were smaller than differences between precipitation change under the same scenario of different GCMs. And this finding was supported by many other researches (Chen et al., 2011; Ouyang et al., 2015; Liu et al., 2017; Zhang et al., 2017). For example, Ouyang et al. (2015) found that GCM models and RCPs would suggest large uncertainty in the future climate scenarios, and GCM modeling was a large source of uncertainty than variations in RCPs. So, we tried to get a more comprehensive result through using 4 GCMs including 70 ensembles. And we added this point in our manuscript in Page 10 lines 10-12 and Page 13 lines 25-26. Second, we rewrote the first sentence on Page 9, please refer to Page 9, lines from 16 to 17 now.

6. Both runoff (generated at grid level) and river runoff are used which may confuse the reader. Is river runoff river discharge (after routing)?

No, river runoff also means runoff generated at grid scale. To avoid confusion, we changed all river runoff to runoff in the manuscript.

7. Table 2 should include units for catchment area, and explain how model grid is selected (note for Zhongaiqiao station, its longitude is at the edge of a 0.5 degree grid box).

Yes, we have added units (km²) for catchment area in Table 2. And explained how model grid was selected (Page 3 lines 18-20). And Zhongaiqiao station is located in the edge of two grids, it only had effect when we routed runoff to calibrate and validate the model using observation data, we need to confirm which grid contained the station, so we chose the grid which had a lower elevation according to elevation data, because water always flow downwards.

Reference

- Barnett, T. P., Adam, J. C., and Lettenmaier, D. P.: Potential impacts of a warming climate on water availability in snow-dominated regions, *Nature*, 438, 303-309, 10.1038/nature04141, 2005.
- Chen, J., Brissette, F. P., Poulin, A., and Leconte, R.: Overall uncertainty study of the hydrological impacts of climate change for a Canadian watershed, *Water Resources Research*, 47, 10.1029/2011wr010602, 2011.
- Krysanova, V., Vetter, T., Eisner, S., Huang, S. C., Pechlivanidis, I., Strauch, M., Gelfan, A., Kumar, R., Aich, V., Arheimer, B., Chamorro, A., van Griensven, A., Kundu, D., Lobanova, A., Mishra, V., Plotner, S., Reinhardt, J., Seidou, O., Wang, X. Y., Wortmann, M., Zeng, X. F., and Hattermann, F. F.: Intercomparison of regional-scale hydrological models and climate change impacts projected for 12 large river basins worldwide-a synthesis, *Environmental Research Letters*, 12, 10.1088/1748-9326/aa8359, 2017.
- Liu, J. Y., Zhang, Q., Singh, V. P., and Shi, P. J.: Contribution of multiple climatic variables and human activities to streamflow changes across China, *Journal of Hydrology*, 545, 145-162, 10.1016/j.jhydrol.2016.12.016, 2017.
- Liu, W. F., Xu, Z. X., Li, F. P., Zhang, L. Y., Zhao, J., and Yang, H.: Impacts of climate change on hydrological processes in the Tibetan Plateau: a case study in the Lhasa River basin, *Stochastic Environmental Research and Risk Assessment*, 29, 1809-1822, 10.1007/s00477-015-1066-9, 2015.
- Ouyang, F., Zhu, Y. H., Fu, G. B., Lu, H. S., Zhang, A. J., Yu, Z. B., and Chen, X.: Impacts of climate change under CMIP5 RCP scenarios on streamflow in the Huangnizhuang catchment, *Stochastic Environmental Research and Risk Assessment*, 29, 1781-1795, 10.1007/s00477-014-1018-9, 2015.
- Strzepek, K., Jacobsen, M., Boehlert, B., and Neumann, J.: Toward evaluating the effect of climate change on investments in the water resources sector: insights from the forecast and analysis of hydrological indicators in developing countries, *Environmental Research Letters*, 8, 10.1088/1748-9326/8/4/044014, 2013.
- Su, F., Zhang, L., Ou, T., Chen, D., Yao, T., Tong, K., and Qi, Y.: Hydrological response to future climate changes for the major upstream river basins in the Tibetan Plateau, *Global and Planetary Change*, 136, 82-95, 10.1016/j.gloplacha.2015.10.012, 2016.
- Vetter, T., Reinhardt, J., Florke, M., van Griensven, A., Hattermann, F., Huang, S. C., Koch, H., Pechlivanidis, I. G., Plotner, S., Seidou, O., Su, B. D., Vervoort, R. W., and Krysanova, V.: Evaluation of sources of uncertainty in projected

hydrological changes under climate change in 12 large-scale river basins, *Climatic Change*, 141, 419-433, 10.1007/s10584-016-1794-y, 2017.

Zhang, L. L., Su, F. G., Yang, D. Q., Hao, Z. C., and Tong, K.: Discharge regime and simulation for the upstream of major rivers over Tibetan Plateau, *Journal of Geophysical Research-Atmospheres*, 118, 8500-8518, 10.1002/jgrd.50665, 2013.

Zhang, Q., Liu, J. Y., Singh, V. P., Shi, P. J., and Sun, P.: Hydrological responses to climatic changes in the Yellow River basin, China: Climatic elasticity and streamflow prediction, *Journal of Hydrology*, 554, 635-645, 10.1016/j.jhydrol.2017.09.040, 2017.

Spatial-temporal changes in runoff and terrestrial ecosystem water retention under 1.5°C and 2°C warming scenarios across China

Ran Zhai^{1,2}, Fulu Tao^{1,2,3,*}, Zhihui Xu⁴

¹ Key Laboratory of Land Surface Pattern and Simulation, Institute of Geographic Sciences and Natural Resources Research, Chinese Academy of Sciences, Beijing 100101, China

² College of Resources and Environment, University of Chinese Academy of Sciences, Beijing 100049, China

³ Natural Resources Institute Finland (Luke), FI-00790 Helsinki, Finland

⁴ Information Center of Yellow River Conservancy Commission, Zhengzhou 450004, China

Correspondence to: Fulu Tao (taofl@igsrr.ac.cn)

Abstract. The Paris Agreement set a long-term temperature goal of holding the global average temperature increase to below 2.0°C above pre-industrial levels, pursuing efforts to limit this to 1.5°C, it is therefore important to understand the impacts of climate change under 1.5°C and 2.0°C warming scenarios for climate adaptation and mitigation. Here, climate scenarios from four Global Circulation Models (GCMs) for the baseline (2006-2015), 1.5°C and 2.0°C warming scenarios (2106-2115) were used to drive the validated Variable Infiltration Capacity (VIC) hydrological model to investigate the impacts of global warming on runoff and Terrestrial Ecosystem Water Retention (TEWR) across China at a spatial resolution of 0.5 degree. The trends in annual mean temperature, precipitation, runoff and TEWR were analysed at the grid and basin scale. Results showed that there were large uncertainties in climate scenarios from different GCMs, which led to large uncertainties in impact assessment. The differences among the four GCMs were larger than differences between the two warming scenarios. The interannual variability of runoff increased notably in areas where it was projected to increase, and the interannual variability increased notably from 1.5°C to 2.0°C warming scenario. By contrast, TEWR would remain relatively stable. Both low and high runoff would increase under the two warming scenarios in most areas across China, with high runoff increasing more. The risk of low and high runoff events would be higher under 2.0°C than 1.5°C warming scenario in term of both extent and intensity. Runoff was significantly positively correlated to precipitation, while increase in maximum temperature would generally cause runoff to decrease through increasing evapotranspiration. Likewise, precipitation also played a dominant role in affecting TEWR. Our findings on the spatiotemporal patterns of climate impacts and their shifts from 1.5°C to 2.0°C warming scenario are useful for water resource management under different warming scenarios.

1 Introduction

The global average surface temperature increased by 0.85°C from 1880 to 2012, and the beginning of the 21st century has been the warmest on record (IPCC, 2013). In 2015, the Paris Agreement set a long-term temperature goal of holding the global average temperature increase to below 2.0°C above pre-industrial levels, pursuing efforts to limit this to 1.5°C, because the

risks and impacts of climate change were thought to decrease significantly under global warming of 1.5°C than 2.0°C (Schleussner et al., 2016). This calls for spatial explicitly climate change impact assessment on multiple sectors under global warming of 1.5°C and 2.0°C. Up to now, climate impact under 1.5°C and 2.0°C warming scenarios has been rarely assessed, but is urgently needed for climate adaptation and mitigation.

5 Global warming is likely to have major impacts on hydrological cycle (Huntington, 2006; Milliman et al., 2008; Arnell and Gosling, 2013), such as changing precipitation pattern and increasing risks of extreme hydrological events (Wang et al., 2012; Zhang et al., 2016). China is vulnerable to future climate change, the impacts of climate change on water resources in China have been of key concern (Piao et al., 2010; Leng et al., 2015). Hydrological models have been routinely used to investigate the impacts of climate change on water resources, driven by climate scenarios from **Global Circulation Models (GCMs)**. Several
10 previous studies had assessed climate change impacts on water resources in some river basins over China (e.g, Chen et al., 2012; Li et al., 2013; Zhang et al., 2016). For example, with the Xin-anjiang model and HBV model in the Qingjiang Watershed, Chen et al. (2012) showed runoff would firstly **decrease** during 2011-2040 and then **increase** under A2 and B2 scenarios relative to the baseline period (1962-1990). Using the SIMHYD and GR4J rainfall-runoff models, driven by climate scenarios from 20 GCMs, mean runoff was projected to increase by most of the GCMs under a 1.0°C increase in global average
15 surface air temperature across the Yarlung Tsangpo River basin (Li et al., 2013). Using the Soil and Water Assessment Tool (SWAT), Zhang et al. (2016) showed that future runoff would not change much under **Representative Concentration Pathways 2.6 (RCP2.6) and 4.5 (RCP4.5) scenarios**, but increased significantly under RCP8.5 scenario from three different GCMs (BCC-CSM1.1, CanESM2, and NorESM1-M) in the Xin River basin of China. However, climate change impact on water resources across the whole China has rarely been investigated. Using the **Variable Infiltration Capacity (VIC)** model, Wang et
20 al. (2012) showed the total amount of annual runoff over China would increase by approximately 3-10% by 2050 under A2, B2, and A1B emissions scenarios, with uneven distribution, relative to 1961-1990. Using the VIC model driven by climate scenarios from five GCMs under RCP8.5 emission scenario, Leng et al. (2015) showed that climate change could increase water-related risks across China in the 21st century because of projected decrease in runoff and increase in interannual variability. The changes in runoff under 1.5°C and 2.0°C warming scenarios across China have not been investigated yet.
25 Because of vast territory and large amount of population, it is important to understand the spatial explicitly changes in water resources under 1.5°C and 2.0°C warming scenarios across China.

Terrestrial Ecosystem Water Retention (TEWR) is one of important processes affecting runoff yield. With the rapid growth of population and economy, ecosystem degradation and ecosystem services have increasingly become a hot topic. TEWR is one of important ecosystem services (Gong et al., 2017; Xu et al., 2017). Different methods have been used to
30 quantify TEWR. One of popular methods is based on terrestrial ecosystem water balance, the capacity of TEWR is the difference between the amount of precipitation and the sum of runoff and evapotranspiration (Ouyang et al., 2016; Xu et al., 2017). It is of great importance to evaluate TEWR service under changing climate for ecosystem and water resource management (Tao et al., 2003).

To our knowledge, this study is the first to investigate the changes in runoff and TEWR service across China under 1.5°C and 2.0°C warming scenarios, as well as the differences between the two warming scenarios. The objectives of this study are 1) to investigate the characteristics of expected changes in temperature and precipitation under 1.5°C and 2.0°C warming scenarios; 2) to investigate the changes in runoff, and TEWR across China under 1.5°C and 2.0°C warming scenarios at the grid scale and basin scale; 3) to evaluate the dominant factors for changes in runoff and TEWR under warming climate.

2 Materials and methods

2.1 Study domain

There are ten main basins in China (Fig. 1), including the Songhua River basin (SHR), Liao River basin (LR), Northwest River basins (NWR), Hai River basin (HR), and Yellow River basin (YR) in the northern China; the Yangtze River basin (YTR), Huai River basin (HuR), Southeast River basins (SER), Southwest River basins (SWR), and Pearl River basin (PR) in the southern China (Leng et al., 2015; Liu et al., 2017c). The temperature increases from north to south, and precipitation increases gradually from northwest to southeast (Xie et al., 2007). Mean annual runoff for China is around 284 mm based on synchronous runoff data for a 50-year period from 1956-2005 (Wang et al., 2012). However, water resource is unevenly distributed spatially and seasonally. In most areas, there are more than 70% of total runoff in the flood season from June to October (Wang et al., 2012). Water is more abundant in the southern China than the northern China (Piao et al., 2010).

2.2 Model description

A large-scale semi-distributed hydrological model, VIC, was applied in this study. We divided China into 0.5°×0.5° grids with three layers of soil in this study. The grids were between 18°N to 54°N from south to north, and between 73°E to 135.5°E from west to east. Only the grids with whole area located in the continental of China were investigated in this research. The soil and vegetation situation in each grid are considered in the model. Each grid cell is described by N+1 land cover tiles, it represents N different tiles of vegetation and bare soil. The total evapotranspiration includes canopy evaporation, vegetation transpiration and bare soil evaporation. The total runoff consists of surface runoff and base flow (Wang et al., 2012). The VIC model uses the variable infiltration curve to account for the spatial heterogeneity of runoff generation. It assumes that surface runoff for the upper two soil layers is generated by those areas for which precipitation exceeds the storage capacity of the soil. ARNO method is used to describe base flow, which only happens in the third layer of soil (Todini, 1996). A routing model is used to calculate runoff in each catchment after running VIC model (Lohmann et al., 1996). More details could be found in Liang et al. (1994, 1996), Liang and Xie (2001), Xie et al. (2003).

2.3 Data

Bias-corrected climate datasets for this study were from the project “Half a degree Additional warming, Prognosis and Projected Impacts” (HAPPI). It provides climate data to assess how the climate, especially extreme weather, might be

different from the current days in the world under 1.5°C and 2.0°C warmer than pre-industrial conditions (Mitchell et al., 2017). Large ensembles of simulations (>50 members) for three time periods have been produced after being bias corrected using the **Inter-Sectoral Impact Model Intercomparison Project (ISIMIP2b)** bias correction approach (Frieler et al., 2016), from four GCMs up to now, including ECHAM6-3-LR, MIROC5, NorESM1-HAPPI, and CAM4-2degree (Table 1) (http://portal.nersc.gov/c20c/data/ClimateAnalytics/). The first time period was from 2006 to 2015 which is the most recently observed 10-year, the second time period was from 2106 to 2115 under 1.5°C and 2.0°C warming scenarios, respectively. Each simulation within a time period was different from the others in its initial weather state (Mitchell et al., 2017). Table 1 shows the available ensemble members in each GCM under current period from 2006 to 2015, and 1.5°C and 2.0°C warming scenarios from 2106 to 2115. **The input data of VIC includes daily precipitation, daily maximum temperature, daily minimum temperature and daily wind speed. And we analysed annual precipitation and annual mean temperature to show the differences between GCMs.**

The **observation** daily weather data, **including daily time series of precipitation, maximum temperature, minimum temperature and wind speed**, from 1961 to 1979 and **from 2006-2015** was obtained from China Meteorological Administration (CMA) **used for calibrate and validate the VIC model. The meteorological data were interpolated to each 0.5° × 0.5° grid through linear interpolation weighted by the inverse squared distances between the meteorological stations and the center of each grid cells (Xie et al., 2007).** 1 km land cover data was from the University of Maryland (http://glcfapp.glc.f.umd.edu:8080/esdi/index.jsp). 1 km soil texture data (China Soil Map Based Harmonized World Soil Database (v1.1)), and 1 km Digital Elevation Model dataset were obtained from the Cold and Arid Regions Sciences Data Center at Lanzhou (http://westdc.westgis.ac.cn). These data were used to build the VIC model. The NASA Shuttle Radar Topographic Mission (SRTM) 90 m Digital Elevation Data (http://srtm.csi.cgiar.org/) was used to extract each catchment. Monthly runoff observation data, obtained from the hydrological year book of China and local water resources department, were used for calibrating and validating the VIC model. A detailed description was presented in Zhai and Tao (2017).

2.4 VIC model parameters calibration and validation

Monthly runoff data from 1961-1979 was used to calibrate and validate the VIC model (Wang et al., 2012;Liu et al., 2017c). Seven parameters in the VIC model needed to be calibrated because **they were** difficult to obtain, **including the variable infiltration curve parameter (b), the maximum velocity of base flow (D_{max}), the fraction of D_{max} where non-linear base flow begins (D_s), the fraction of maximum soil moisture where non-linear base flow occurs (W_s), and the thickness of each soil moisture layer (d_i, i = 1,2,3).** We divided 1961-1979 into three periods, including preheating period (1961-1962), calibration period (1963-1969), and validation period (1970-1979) in each catchment. **The parameters calibrated in a catchment are further validated in other different catchment located in the same basin.** The VIC model was run at daily time step and the results were aggregated to monthly time step at each catchment for calibrating and validating parameters. The relative error (*BIAS* ; %) and the Nash-Sutcliffe efficiency coefficient (*NSE*) were used to calibrate and validate the parameters:

1) The *BIAS* (%) represents the error between simulated (\bar{Q}_s) and observed mean monthly runoff (\bar{Q}_o):

$$BIAS = (\bar{Q}_s - \bar{Q}_o) / \bar{Q}_o, \quad (1)$$

2) The *NSE* (Nash and Sutcliffe, 1970) represents the matching degree between the simulated and observed runoff:

$$NSE = \frac{\sum(Q_{i,o} - \bar{Q}_o)^2 - \sum(Q_{i,o} - Q_{i,s})^2}{\sum(Q_{i,o} - \bar{Q}_o)^2}, \quad (2)$$

5 where, $Q_{i,o}$ and $Q_{i,s}$ are the observed monthly runoff (mm) and the simulated monthly runoff (mm) at the month i , and \bar{Q}_o is the mean observed monthly runoff (mm). A good simulation result will have *NSE* close to 1 and *BIAS* approach to 0.

2.5 Quantification of TEWR service

In this study, considering the input water and output water of a certain grid, we adopted the following equation to calculate the total amount of TEWR capacity (Ouyang et al., 2016; Xu et al., 2017).

$$W = P - ET - R, \quad (3)$$

where, W represents TEWR (mm), P represents precipitation (mm), ET represents evapotranspiration (mm), and R represents runoff (mm).

2.6 Analysis

15 The climate scenarios from the GCMs of ECHAM6-3-LR, MIROC5, NorESM1-HAPPI, CAM4-2degree were input to drive the VIC hydrological model. Each GCM had output three climate change scenarios: baseline period from 2006-2015, 1.5°C warming scenario from 2106-2115, and 2.0°C warming scenario from 2106-2115. For each GCM of ECHAM6-3-LR, NorESM1-HAPPI, and CAM4-2degree, we had 200 simulations (10 years × 20 ensembles) for the baseline period, 1.5°C and 2.0 °C warming scenarios, respectively. For the GCM of MIROC5, we had 100 simulations (10 years × 10 ensembles)

20 for the baseline period, 1.5°C and 2.0°C warming scenarios, respectively. **Changes in annual mean temperature and annual precipitation were calculated using each ensemble for future 10 years period (2106-2115) under 1.5°C and 2.0 °C warming scenarios relative to the corresponding ensemble for the baseline period (2006-2015).** Changes in annual mean and **SD (standard deviation)** as a measure of interannual variability were used to analyse the impacts of climate change on runoff and TEWR across China. We computed the changes in annual mean and SD of runoff and TEWR as the relative differences

25 between the simulations using each ensemble for future 10 years period (2106-2115) under 1.5°C and 2.0 °C warming scenarios relative to the simulations using the corresponding ensemble for the baseline period (2006-2015). For each warming scenario in each GCM, we adopted the median value of the changes among ensembles, which should be the most likely result avoiding abnormal value (Tao and Zhang, 2011). **We also calculated the median value of annual mean temperature change, precipitation change, runoff change, TEWR change and the median value of SD change of runoff and**

TEWR among all the 70 ensembles under the four GCMs of each grid. Then we calculated probability density functions of runoff change and TEWR change through the median value from all the 70 ensembles in every grid in the ten main basins across China under 1.5°C and 2.0°C warming scenarios (2106-2115) relative to the baseline period (2006-2015). The basin mean was calculated by averaging the values for the individual grid cells within the basin for each ensemble of a GCM.

5 Two annual runoff quantiles Q_{10} (low runoff) and Q_{90} (high runoff) were used to evaluate the risks of hydrological extremes. We used all ensemble simulations in the baseline period in 2006-2015, in 2106-2115 under 1.5°C warming scenario, and in 2106-2115 under 2.0°C warming scenario to evaluate the changes in low runoff and high runoff. Therefore, there were 700 years data (3 GCMs \times 20 ensembles \times 10 years + 1 GCM \times 10 ensembles \times 10 years = 700) for baseline period in 2006-2015, 1.5°C warming scenario in 2106-2115, and 2.0°C warming scenario in 2106-2115, respectively.

10 Pearson Correlation Coefficient r was used to analyse the dominant factors affecting runoff and TEWR:

$$r = \frac{\sum_{i=1}^n (x_i - \bar{x})(y_i - \bar{y})}{\sqrt{\sum_{i=1}^n (x_i - \bar{x})^2 \sum_{i=1}^n (y_i - \bar{y})^2}}, \quad (4)$$

Where, n represents sample size, including four GCMs, two warming scenarios relative to the baseline in each GCM, 20 or 10 ensembles in each warming scenario, 10 years in each ensemble, so there are 1400 samples (3 GCMs \times 2 warming scenarios \times 20 ensembles \times 10 years + 1 GCM \times 2 warming scenarios \times 10 ensembles \times 10 years = 1400) in each grid. x_i

15 and y_i are variable change values under 1.5°C and 2.0°C warming scenarios (2106-2115) relative to the baseline period (2006-2015) in each data set, and \bar{x} , \bar{y} are mean change value of each variable in each grid.

3 Result

3.1 VIC model parameters calibration and validation

The VIC model was calibrated and validated in ten catchments located in different main basins in China (Fig. 1 and Fig. A1), and then the calibrated parameters were applied in all the grids located in the same basin. The NSE values of monthly runoff were above 0.70 in eight catchments in the calibration period, while the NSE values were above 0.70 in seven catchments in the validation period (Table 2). Except the Xiahui catchment, the $BIAS$ values in all catchments were between -15% and 15%, which indicated the model simulated monthly runoff fairly well. Generally, the VIC model performed better in catchments located in the southern China where there were more precipitation and runoff compared with catchments located in the northern China. The NSE values for the Sanjiangkou, Xixian, Yangkou, Zhongaiqiao and Changle catchment in the southern China were all more than 0.75, and the $BIAS$ values were between -10% and 10%. To make our parameter transplantation more convincing, we validated the calibrated parameters in ten other catchments different from those used for parameters calibration. Catchments areas range from 11280 km² to 730036 km². Generally,

results showed that the parameters calibrated in a catchment were also validated for other catchments located in the same basin, the *NSE* values for these ten catchments were all large than 0.65, and except the Bantai catchment, the *BIAS* value were all between -20% and 20% (Table 3).

3.2 Climate change across China under 1.5°C and 2.0°C warming scenarios

5 The median values of the changes in annual mean temperature and annual precipitation under the two warming scenarios for each GCM and all the four GCMs were shown in Fig. 2 and Fig. 3, respectively. Generally, the ECHAM6-3-LR and CAM4-2degree projected a relatively small increase in annual mean temperature (Figs. 2a,d,f,i). The MIROC5 projected a relatively large increase in annual mean temperature in comparison with other GCMs (Figs. 2b,g). As for annual precipitation, the ECHAM6-3-LR projected a decrease in precipitation over large areas across China under 1.5°C warming
10 scenario, and the decreasing trends reduced in the northeastern China and northwestern China, and increased in the Yellow River basin, Huai River basin, Yangtze River basin, and Southwest River basins under 2.0°C warming scenario (Figs.3a,f). In contrast, the MIROC5, NorESM1-HAPPI and CAM4-2degree projected an increase in precipitation over large areas across China under both 1.5°C and 2.0°C warming scenarios. In particular, the MIROC5 projected the largest increase in precipitation by more than 20% in large areas in the southern China (Figs. 3b,g). Nearly all the four GCMs projected that
15 precipitation decreased more (or increased less) in most areas located in the northwestern China than other areas in China (Fig. 3). In contrast, precipitation was projected to increase more (or decrease less) in the southeastern China (Fig. 3). There were large differences among the projections by the four different GCMs, suggesting a large uncertainty from climate change projection. Take all the 70 ensembles of the four GCMs as a whole, annual mean temperature was projected to increase more in the northern China and the middle and lower reaches of the Yangtze River basin than other areas (Figs.
20 2e,j). And annual precipitation was projected to increase more in the southeastern China under 1.5°C warming scenario, and the increasing trend was projected to narrow down in the Yangtze River basin and extend to some areas located in the northern China under 2.0°C warming scenario (Figs. 3e,j).

3.3 Changes in runoff across China under 1.5°C and 2.0°C warming scenarios

There were significant differences in projected change in runoff using the VIC model driven by the four different GCMs (Fig.
25 4). The projected runoff pattern was consistent with that of precipitation generally, suggesting precipitation change played a dominant role in runoff change. For example, under 1.5°C and 2.0°C warming scenarios by the ECHAM6-3-LR, runoff was projected to decrease in most areas across China (Figs. 4a,f) due to the projected decrease in precipitation (Figs. 3a,f). By contrast, using the climate scenarios by the MIROC5, runoff was projected to increase most (Figs. 4b,g) due to the projected increase in precipitation (Figs. 3b,g). In addition, increase in temperature would lead to increase in evapotranspiration
30 generally (Fig. A2), which resulted in decrease in runoff. For example, under 1.5°C warming scenario by the CAM4-2degree, precipitation would increase in most areas but the magnitude of increase was small, runoff was projected to decrease in large areas in the Hai River basin, Yellow River basin, Huai River basin, and the source regions of the Yellow River basin and

Yangtze River basin (Fig. 4d). Using the climate scenarios by the MIROC5 and NorESM1-HAPPI, runoff was projected to increase in most areas across China (Figs. 4b,c,g,h), suggesting the positive effects of precipitation increase should exceed the negative effects of temperature increase. For the median change across all the 70 ensembles in the four GCMs, runoff was projected to increase in large areas in China, especially in the Yellow River basin, Huai River basin, and Pearl River basin (Figs. 4e,j). By contrast, runoff was projected to decrease **obviously** in areas located in the Northwest River basins under 1.5°C warming scenario and the source regions of the Yellow River basin and the Yangtze River basin under 2.0°C warming scenario (Figs. 4e,j).

For each GCM, the median changes in SD among the ensembles under 1.5°C and 2.0°C warming scenarios were presented (Fig. 5). The **SD** was projected to increase notably in areas where the annual runoff increased notably, for all the four GCMs. Furthermore, the SD of the simulated runoff increased more under 2.0°C warming scenario than that under 1.5°C warming scenario generally (Figs. 5e,j), suggesting that interannual variation of runoff would increase with climate warming.

3.4 Changes in low runoff and high runoff across China under 1.5°C and 2.0°C warming scenarios

Both low runoff (Q_{10}) and high runoff (Q_{90}) were projected to increase in large areas across China, although decrease in some areas in the Northwest River basins and the source regions of the Yellow River basin and the Yangtze River basin (Fig. 6). High runoff was expected to increase more (or decrease less) than low runoff in most areas (Fig. 6). In some areas in the Northwest River basins, Songhua River basin and the source regions of the Yellow River basin and the Yangtze River basin, low runoff was projected to decrease under both 1.5°C and 2.0°C warming scenarios (Figs. 6a,b). The areas with low runoff decreasing were projected to enlarge under 2.0°C warming scenario (Figs. 6a,b) around the source regions of the Yellow River basin and the Yangtze River basin, suggesting much more drought risks under 2.0°C warming scenario than under 1.5°C warming scenario. And the low runoff increased less under 2.0°C warming scenario than 1.5°C warming scenario in most grids in China (Figs. 6a,b). The areas with high runoff increasing were projected to enlarge under 2.0°C warming scenario than 1.5°C warming scenario (Figs. 6c,d), **because the SD of annual precipitation was projected to increase more under 2.0°C warming scenario than 1.5°C warming scenario in most areas across China (Fig. A3)**. The intensity of **high runoff** was also expected to increase in most areas across China, especially in the Huai River basin (Figs. 6c,d), suggesting flood risks would increase under 2.0°C warming scenario. In contrast, high runoff in some areas in the source regions of the Yellow River basin and the Yangtze River basin was expected to decrease, and decreased more under 2.0°C warming scenario than 1.5°C warming scenario (Figs. 6c,d), **which caused by increasing evapotranspiration**. Generally, high runoff was expected to increase more than low runoff in most areas across China, and the risks of high runoff and low runoff were expected to increase under 2.0°C warming scenario than 1.5°C warming scenario.

3.5 Changes in TEWR across China under 1.5°C and 2.0°C warming scenarios

Changes in TEWR were consistent with changes in precipitation and runoff. With the climate scenarios by ECHAM6-3-LR, TEWR was projected to decrease in large areas in China under both 1.5°C and 2.0°C warming scenarios (Figs. 7a,f), mainly due to the projected decrease in precipitation. In addition, precipitation was not the only factor for changes in TEWR. For example, precipitation was projected to increase in the source regions of the Yellow River basin and Yangtze River basin under warming scenarios by the MIROC5 (Figs. 3b,g), but TEWR there was projected to decrease (Figs. 7b,g) due to increasing evapotranspiration (Figs. A2b,g). Based on the median value of all 70 ensembles from the four GCMs, TEWR was projected to be more stable than runoff (Figs. 4e,j, Figs. 7e,j), projected changes for most grids would range from -5% to 5%. Compared with runoff, TEWR was projected to decrease under 2.0°C warming scenario than 1.5°C warming scenario relative to the baseline period (Figs. 4e,j, Figs. 7e,j).

As runoff, the SD of TEWR was projected to increase notably in areas where the TEWR increased notably for all the four GCMs generally (Fig. 8). However, the SD was projected to increase in some areas where TEWR decreased, such as the Liao River basin under 2.0°C warming scenario by the ECHAM6-3-LR (Fig. 7f, Fig. 8f). The changes in SD of TEWR were not as significant as that of runoff. The differences among the ten main basins were not as significant as runoff. As for the median SD value of the 70 ensembles, it was projected to increase more across China under 1.5°C (Fig. 8e) than 2.0°C warming scenario (Fig. 8j), suggesting the interannual variability of TEWR would be larger under 1.5°C warming scenario than 2.0°C warming scenario.

4 Discussion

4.1 Differences in climate variables and water resources between 1.5°C and 2.0°C warming scenarios by each GCM at the basin scale

To evaluate climate change and its potential impact on runoff and TEWR at the basin scale, the annual mean temperature change, annual precipitation change, annual runoff change, and annual TEWR change for all the 10 basins were summarized (Table 4 and Fig. 9). The uncertainties of all the 70 ensembles in each main basin of annual temperature change, annual precipitation change, annual runoff change and annual TEWR change were shown in Fig. A4. And the changes in low runoff (Q_{10}) and high runoff (Q_{90}) in each main basin in China from each GCM were shown in Fig. A5. At the basin scale, annual mean temperature increased more in the northern China (the median value ranged from 0.83°C to 0.92°C under 1.5°C warming scenario, and ranged from 1.55°C to 1.65°C under 2.0°C warming scenario) than the southern China (the median value ranged from 0.77°C to 0.86°C under 1.5°C warming scenario, and ranged from 1.41°C to 1.46°C under 2.0°C warming scenario), and the differences between the northern China and southern China enlarged under 2.0°C than 1.5°C warming scenario (Fig. 9a), while annual precipitation increased more in the southern China (the median value ranged from 3.86% to 8.58% under 1.5°C warming scenario, and ranged from 4.64% to 7.93% under 2.0°C warming scenario) than the northern China (the median value ranged from 1.90% to 5.24% under 1.5°C warming scenario, and ranged from 3.14% to 6.54%

under 2.0°C warming scenario) (Fig. 9b). Generally, both runoff and TEWR would change consistently with precipitation (Figs. 9b,c,d). Annual mean temperature increased less under the climate scenarios by ECHAM6-3-LR than the other three GCMs in most basins. Annual precipitation was projected to decrease slightly in most basins under the climate scenarios by ECHAM6-3-LR. However, precipitation was projected to increase in all basins under the climate scenarios by the other three GCMs (Fig. 9b). Runoff was projected to increase under the climate scenarios by the four GCMs, except some basins under the climate scenarios by ECHAM6-3-LR and CAM4-2degree (Fig. 9c). According to the median value across all ensembles in the four GCMs, runoff was projected to increase in all basins (the median value ranged from 3.61% to 13.86% under 1.5°C warming scenario, and ranged from 4.20% to 17.89% under 2.0°C warming scenario) but TEWR was projected to decrease or increase less than runoff (Figs. 9c,d) (the median value ranged from -0.45% to 6.71% under 1.5°C warming scenario, and ranged from -3.48% to 4.40% under 2.0°C warming scenario). Our results showed that the differences of runoff and TEWR between GCMs were larger than those between warming scenarios by a certain GCM. This finding was supported by many other researches (Chen et al., 2011; Ouyang et al., 2015; Liu et al., 2017d; Zhang et al., 2017). In addition, we found that the changes in runoff and TEWR were more pronounced than those of precipitation. Precipitation changes ranged from -4.42% to 27.02%, however projected changes in runoff and TEWR would range from -20.12% to 84.02%, -18.57% to 34.84% of each GCM in every basin, respectively.

The variations of runoff under different GCMs and warming scenarios were larger in the Huai River basin than other basins (Fig. A4), and extremely large under the climate scenarios by MIROC5 (Fig. 9c), suggesting there could be larger uncertainty in the Huai River basin than other basins. The projected median annual mean precipitation and median annual mean runoff were, respectively, about 919 mm and 204 mm during 2006 to 2015 by the MIROC5 in the Huai River basin. However, precipitation and temperature increase did not lead to a significant increase in evapotranspiration (Figs. A2b,g), more than 20% increase in precipitation would lead to a large percentage increase in runoff because the base value in the baseline period was small.

Probability density functions of median changes of runoff and TEWR across all ensembles in the four GCMs for all the grids in each basin were presented in Figs. A6 and A7, respectively. Runoff was projected to increase with higher probability under 2.0°C than 1.5°C warming scenario in most basins across China (Fig. A6), because precipitation was projected to increase more under 2.0°C than 1.5°C warming scenario in most basins across China (Fig. 9b and Table 4). TEWR was projected to change less than runoff under both 1.5°C and 2.0°C warming scenarios (2106-2115) compared to the baseline period (2006-2015). TEWR change was projected to decrease with higher probability under 2.0 °C than 1.5°C warming scenario compared with baseline period in most basins across China (Fig. A7). Probability density functions of changes of low runoff and high runoff under 1.5°C and 2.0°C warming scenarios across all ensembles of the four GCMs for all the grids in each basin were presented in Figs. A8 and A9, respectively. Most grids under the two warming scenarios showed increasing low runoff and high runoff across China. High runoff was projected to increase more in most basins across China than low runoff under 2.0°C warming scenario than 1.5°C warming scenario (Figs. A8 and A9). And this, consistent with the

increase in SD of runoff under 2.0°C warming scenario (Fig. 5), may imply more flood and drought risks under 2.0°C warming scenario than 1.5°C warming scenario.

4.2 Major factors controlling changes in runoff, and TEWR

The VIC model has four input climate variables, including precipitation, maximum temperature, minimum temperature and wind speed, the Pearson Correlation Coefficient was calculated between the projected changes in annual runoff and the changes in climate variables, including annual precipitation (Fig. 10a), annual mean maximum temperature (Fig. 10b), annual mean minimum temperature (Fig. 10c) and annual mean wind speed (Fig. 10d). Only significant correlations were shown ($p < 0.05$). Generally, the correlations between precipitation change and runoff change were much more significant than the other three variables in China (Fig. 10). This finding was supported by some previous studies (Dan et al., 2012; Wang et al., 2016; Huang et al., 2016; Liu et al., 2017c). The correlations were smaller in the Yellow River basin, Hai River basin, and Huai River basin than other basins, even less than 0.5 for some grids in the Northwest River basins and the source regions of the Yellow River basin (Fig. 10a). This may be caused by complex topography and land type, as well as the arid condition, which prevented the amount of water to form runoff (Liu et al., 2017a). There were significant negative correlations between annual runoff change and annual mean maximum temperature change in most areas across China. Increasing annual maximum temperature would lead to runoff decrease in most areas because of increasing evapotranspiration (Huang et al., 2016), especially in the southern China (Fig. 10b). The correlations between annual runoff change and annual mean minimum temperature change were not significant in nearly half of the studied grids in China, which was negative at most areas in the Hai River basin, Huai River basin, the source regions of the Yellow River basin and Yangtze River basin, and some areas in the Yellow River basin, Yangtze River basin, Pearl River basin, Southwest River basins and the Northwest River basins, and positive at other areas. Increase in annual mean minimum temperature would increase melting of snow or ice in the Tibetan Plateau and high latitude areas with cold weather regime, resulting in an increase in water supply to runoff (Liu et al., 2017a). So correlation between precipitation and runoff was smaller in some areas in the Tibetan Plateau. Since increase in minimum temperature was accompanied with increase in precipitation in most of the climate scenarios, there were positive correlations between minimum temperature change and runoff change at some areas. However, at other areas (e.g. Huai River basin, Hai River basin), increase in minimum temperature change would lead to decrease in runoff change, mainly caused by increasing evapotranspiration. There were significantly negative correlations between runoff change and wind speed change at most areas. Decrease in wind speed would lead to less evapotranspiration (She et al., 2017), consequently more runoff.

The TEWR was calculated through three variables, including precipitation, evapotranspiration, and runoff, we analysed the correlations between TEWR and the three variables. Like runoff, the correlation coefficients were also more significant between annual TEWR change and annual precipitation change (Fig. 11a), which suggested that increase in precipitation change would lead to increase in TEWR change, but not as significant as the correlations between precipitation change and runoff change (Fig. 10a). The Pearson Correlation Coefficients were smaller in the Southwest River basins than those in

other basins. The correlations were nearly the same but smaller between TEWR change and runoff change than those between TEWR change and precipitation change (Figs. 11a,c), because runoff change and precipitation change had a strong correlation (Fig. 10a). There were negative correlations between TEWR change and evapotranspiration change in the Songhua River basin, Liao River basin, Hai River basin, Huai River basin, Southeast River basin, Pearl River basin and the source regions of the Yellow River basin and Yangtze River basin (Fig. 11b), increase in evapotranspiration change with increasing temperature change would lead to decrease in TEWR change. However, increase in evapotranspiration with increasing temperature would usually company with precipitation increasing, which led to a positive correlation between the evapotranspiration change and TEWR change at some basins.

4.3 Uncertainty analysis

Although previous research has not investigated the changes in runoff under 1.5°C and 2.0°C warming scenarios, runoff changes under RCP2.6 scenario were assessed. Since the end-of-century anthropogenic radiative forcing conditions used for 1.5°C warming scenario is the same as that for the RCP2.6 scenario, the warming level of the two scenarios are comparable (Mitchell et al., 2017). Our findings are supported by previous studies using the RCP2.6 scenario. For example, under the RCP2.6 scenario, the ensemble-averaged precipitation was expected to increase throughout China between 2015 and 2099 by 0.48% per decade relative to 1986-2005 (Liu et al., 2017b) among seven GCMs from the Coupled Model Intercomparison Project phase 5 (CMIP5). Precipitation would increase across most regions in China under RCP2.6 among 12 GCMs in 2070-2099 compared with 1960-1979, which is the main reason for runoff change in China (Liu et al., 2017d). Runoff was projected to decrease in the source regions of the Yellow River basin under RCP2.6 scenario among 12 GCMs (Zhang et al., 2017).

The HAPPI annual mean temperature and precipitation data were compared with the observed data, and the runoff and TEWR results driven by the HAPPI data and observation data were also compared in the baseline period (2006-2015) (Fig.12). Median values from all ensembles in every GCM and all the 70 ensembles of annual mean temperature, annual precipitation, annual runoff and annual TEWR were used to represent HAPPI data in each grid. The differences between projected and observed temperature were generally between -2°C to 2°C in around 65% areas in China, nevertheless the grids located in the western China showed large differences between HAPPI data from observed data (Figs. 12a1-a5), because the number of meteorological stations was sparse in the western China than other areas. The differences of annual precipitation between the HAPPI data and the observed data ranged from -20% to 20% in more than 75% areas in China. The differences were smaller in the southern China than those in the northern China and western China (Figs. 12b1-b5). The differences between the projected runoff and TEWR using the HAPPI data and observed data ranged from -20% to 20% at about 50% of the grids (Figs. 12c1-c5, d1-d5).

The ensemble numbers from the 70 ensembles of the four GCMs showing an increase trend in annual runoff and annual TEWR under 1.5°C and 2.0°C warming scenarios were presented in Figure 13. Runoff showed a consistent increase trend in most areas, especially in the southern China (Figs.13a,b), however a consistent decrease trend in the source regions in the

Yellow River basin and Yangtze River basin under 2.0°C warming scenario (Fig.13b). Unlike runoff, TEWR was projected to change inconsistently in most areas (Figs.13c,d). The projected changes in runoff and TEWR had large uncertainties due to uncertainties in GCMs. It is hard to determine which GCM is better than others. Therefore, this study applied ensemble projections with multiple climate scenarios from multiple GCMs to provide a more comprehensive and robust results.

5 Human activities also have unavoidable impacts on water resources, more and more evidence showed that the influence of human activities on water resources is significantly enhanced (Jiang and Wang, 2016; Yuan et al., 2016; Liu et al., 2017c; Zhai and Tao, 2017). Human activities such as land use/cover changes and the increase in water withdrawal will affect runoff in the future, which is not taken into account in this study, because changing catchment characteristics may also generate larger uncertainties in simulation (Liu et al., 2017d). Although increase in runoff was projected in most areas across
10 China, the runoff may experience a decrease trend with the influence of human activities such as water withdrawal for life, industry and agriculture. Therefore, the impacts of human activities should be elaborated in further studies.

5 Conclusions

The validated VIC model was applied to simulate future hydrological processes driven by climate scenarios by four GCMs. In general, annual mean temperature increased more in the northern China than the southern China. On the contrary, annual
15 precipitation increased more in the southern China than the northern China. The projected changes in runoff and TEWR were consistent with the projected changes in precipitation, which were different for different GCMs under 1.5°C and 2.0°C warming scenarios. Annual runoff was projected to increase in most areas in China using climate scenarios by most of the four GCMs. The interannual variations of runoff was projected to increase notably in areas where annual runoff increased notably, leading to more extreme risks. The interannual variations would enlarge under 2.0°C warming scenario compared with 1.5°C
20 warming scenario. Furthermore, the high runoff increased much more than the low runoff especially in the Huai River basin, and the risks of high runoff and low runoff would be enlarged under 2.0°C warming scenario in comparison with 1.5°C warming scenario. Annual TEWR was projected to change less than annual runoff. The interannual variations of TEWR were more stable than those of runoff. Multi-ensemble simulation results showed that precipitation change was the dominant factors for changes in runoff and TEWR. Maximum temperature had a negative correlation with runoff in most areas across
25 China because it would increase evapotranspiration. However, a large uncertainty is originated from different GCMs, so in this research we used a large ensemble simulation to provide a more comprehensive and convincing result. The impacts of human activities should be elaborated in further studies.

Data availability

All the data is available upon request. Please contact Fulu Tao at taofl@igsrr.ac.cn.

30 Acknowledgement

This work was supported by the National Key Research and Development Program of China (No. 2017YFA0604703), and the National Science Foundation of China (Nos. 41571088, 41571493 and 31561143003). Funding support by Luke of

Finland through the strategic ClimSmartAgri project is also gratefully acknowledged. We acknowledge HAPPI core team and NERSC for data storage.

References

- 5 Arnell, N. W., and Gosling, S. N.: The impacts of climate change on river flow regimes at the global scale, *Journal of Hydrology*, 486, 351-364, 10.1016/j.jhydrol.2013.02.010, 2013.
- Chen, H., Xiang, T. T., Zhou, X., and Xu, C. Y.: Impacts of climate change on the Qingjiang Watershed's runoff change trend in China, *Stochastic Environmental Research and Risk Assessment*, 26, 847-858, 10.1007/s00477-011-0524-2, 2012.
- Chen, J., Brissette, F. P., Poulin, A., and Leconte, R.: Overall uncertainty study of the hydrological impacts of climate change for a Canadian watershed, *Water Resources Research*, 47, 10.1029/2011wr010602, 2011.
- 10 Dan, L., Ji, J. J., Xie, Z. H., Chen, F., Wen, G., and Richey, J. E.: Hydrological projections of climate change scenarios over the 3H region of China: A VIC model assessment, *Journal of Geophysical Research-Atmospheres*, 117, 10.1029/2011jd017131, 2012.
- Frieler, K., Betts, R., Burke, E., Ciais, P., Denvil, S., Deryng, D., Ebi, K., Eddy, T., Emanuel, K., and Elliott, J.: Assessing the impacts of 1.5 °C global warming – simulation protocol of the Inter-Sectoral Impact Model Intercomparison Project
15 (ISIMIP2b), 1-59, 2016.
- Gong, S. H., Xiao, Y., Xiao, Y., Zhang, L., and Ouyang, Z. Y.: Driving forces and their effects on water conservation services in forest ecosystems in China, *Chinese Geographical Science*, 27, 216-228, 10.1007/s11769-017-0860-3, 2017.
- Huang, Z. W., Yang, H. B., and Yang, D. W.: Dominant climatic factors driving annual runoff changes at the catchment scale across China, *Hydrology and Earth System Sciences*, 20, 2573-2587, 10.5194/hess-20-2573-2016, 2016.
- 20 Huntington, T. G.: Evidence for intensification of the global water cycle: Review and synthesis, *Journal of Hydrology*, 319, 83-95, 10.1016/j.jhydrol.2005.07.003, 2006.
- IPCC: Climate Change 2013: The Physical Science Basis. Contribution of Working Group I to the Fifth Assessment Report of the Intergovernmental Panel on Climate Change [Stocker, T.F., D. Qin, G.-K. Plattner, M. Tignor, S.K. Allen, J. Boschung, A. Nauels, Y. Xia, V. Bex and P.M. Midgley (eds.)]. Cambridge University Press, Cambridge, United
25 Kingdom and New York, NY, USA, 1535 pp, 2013.
- Jiang, C., and Wang, F.: Temporal changes of streamflow and its causes in the Liao River Basin over the period of 1953-2011, northeastern China, *Catena*, 145, 227-238, 10.1016/j.catena.2016.06.015, 2016.
- Leng, G. Y., Tang, Q. H., Huang, M. Y., Hong, Y., and Ruby, L. L.: Projected changes in mean and interannual variability of surface water over continental China, *Science China-Earth Sciences*, 58, 739-754, 10.1007/s11430-014-4987-0, 2015.
- 30 Li, F. P., Zhang, Y. Q., Xu, Z. X., Teng, J., Liu, C. M., Liu, W. F., and Mpelasoka, F.: The impact of climate change on runoff in the southeastern Tibetan Plateau, *Journal of Hydrology*, 505, 188-201, 10.1016/j.jhydrol.2013.09.052, 2013.

- Liang, X., Lettenmaier, D. P., Wood, E. F., and Burges, S. J.: A SIMPLE HYDROLOGICALLY BASED MODEL OF LAND-SURFACE WATER AND ENERGY FLUXES FOR GENERAL-CIRCULATION MODELS, *Journal of Geophysical Research-Atmospheres*, 99, 14415-14428, 10.1029/94jd00483, 1994.
- 5 Liang, X., Lettenmaier, D. P., and Wood, E. F.: One-dimensional statistical dynamic representation of subgrid spatial variability of precipitation in the two-layer variable infiltration capacity model, *Journal of Geophysical Research-Atmospheres*, 101, 21403-21422, 10.1029/96jd01448, 1996.
- Liang, X., and Xie, Z. H.: A new surface runoff parameterization with subgrid-scale soil heterogeneity for land surface models, *Advances in Water Resources*, 24, 1173-1193, 10.1016/s0309-1708(01)00032-x, 2001.
- 10 Liu, D., Mishra, A. K., and Zhang, K.: Runoff sensitivity over Asia: Role of climate variables and initial soil conditions, *Journal of Geophysical Research-Atmospheres*, 122, 2218-2238, 10.1002/2016jd025694, 2017a.
- Liu, J., Du, H. B., Wu, Z. F., He, H. S., Wang, L., and Zong, S. W.: Recent and future changes in the combination of annual temperature and precipitation throughout China, *International Journal of Climatology*, 37, 821-833, 10.1002/joc.4742, 2017b.
- 15 Liu, J. Y., Zhang, Q., Singh, V. P., and Shi, P. J.: Contribution of multiple climatic variables and human activities to streamflow changes across China, *Journal of Hydrology*, 545, 145-162, 10.1016/j.hydrol.2016.12.016, 2017c.
- Liu, J. Y., Zhang, Q., Zhang, Y. Q., Chen, X., Li, J. F., and Aryal, S. K.: Deducing Climatic Elasticity to Assess Projected Climate Change Impacts on Streamflow Change across China, *Journal of Geophysical Research-Atmospheres*, 122, 10197-10214, 10.1002/2017jd026701, 2017d.
- 20 Lohmann, D., NolteHolube, R., and Raschke, E.: A large-scale horizontal routing model to be coupled to land surface parametrization schemes, *Tellus Series a-Dynamic Meteorology and Oceanography*, 48, 708-721, 10.1034/j.1600-0870.1996.t01-3-00009.x, 1996.
- Milliman, J. D., Farnsworth, K. L., Jones, P. D., Xu, K. H., and Smith, L. C.: Climatic and anthropogenic factors affecting river discharge to the global ocean, 1951-2000, *Global and Planetary Change*, 62, 187-194, 10.1016/j.gloplacha.2008.03.001, 2008.
- 25 Mitchell, D., AchutaRao, K., Allen, M., Bethke, I., Beyerle, U., Ciavarella, A., Forster, P. M., Fuglestedt, J., Gillett, N., Haustein, K., Ingram, W., Iversen, T., Kharin, V., Klingaman, N., Massey, N., Fischer, E., Schleussner, C. F., Scinocca, J., Seland, O., Shiogama, H., Shuckburgh, E., Sparrow, S., Stone, D., Uhe, P., Wallom, D., Wehner, M., and Zaaboul, R.: Half a degree additional warming, prognosis and projected impacts (HAPPI): background and experimental design, *Geoscientific Model Development*, 10, 571-583, 10.5194/gmd-10-571-2017, 2017.
- 30 Nash, J. E., and Sutcliffe, J. V.: River flow forecasting through conceptual models part I — A discussion of principles, *Journal of Hydrology*, 10, 282-290, [http://dx.doi.org/10.1016/0022-1694\(70\)90255-6](http://dx.doi.org/10.1016/0022-1694(70)90255-6), 1970.
- Ouyang, F., Zhu, Y. H., Fu, G. B., Lu, H. S., Zhang, A. J., Yu, Z. B., and Chen, X.: Impacts of climate change under CMIP5 RCP scenarios on streamflow in the Huangnizhuang catchment, *Stochastic Environmental Research and Risk Assessment*, 29, 1781-1795, 10.1007/s00477-014-1018-9, 2015.

- Ouyang, Z., Zheng, H., Xiao, Y., Polasky, S., Liu, J., Xu, W., Wang, Q., Zhang, L., Xiao, Y., Rao, E. M., Jiang, L., Lu, F., Wang, X. K., Yang, G. B., Gong, S. H., Wu, B. F., Zeng, Y., Yang, W., and Daily, G. C.: Improvements in ecosystem services from investments in natural capital, *Science*, 352, 1455-1459, 10.1126/science.aaf2295, 2016.
- Piao, S. L., Ciais, P., Huang, Y., Shen, Z. H., Peng, S. S., Li, J. S., Zhou, L. P., Liu, H. Y., Ma, Y. C., Ding, Y. H., Friedlingstein, P., Liu, C. Z., Tan, K., Yu, Y. Q., Zhang, T. Y., and Fang, J. Y.: The impacts of climate change on water resources and agriculture in China, *Nature*, 467, 43-51, 10.1038/nature09364, 2010.
- Schleussner, C. F., Rogelj, J., Schaeffer, M., Lissner, T., Licker, R., Fischer, E. M., Knutti, R., Levermann, A., Frieler, K., and Hare, W.: Science and policy characteristics of the Paris Agreement temperature goal, *Nature Climate Change*, 6, 827-835, 10.1038/nclimate3096, 2016.
- She, D. X., Xia, J., Shao, Q. X., Taylor, J. A., Zhang, L. P., Zhang, X., Zhang, Y. J., and Gu, H. H.: Advanced investigation on the change in the streamflow into the water source of the middle route of China's water diversion project, *Journal of Geophysical Research-Atmospheres*, 122, 6950-6961, 10.1002/2016jd025702, 2017.
- Tao, F. L., Yokozawa, M., Hayashi, Y., and Lin, E.: Terrestrial water cycle and the impact of climate change, *Ambio*, 32, 295-301, 10.1639/0044-7447(2003)032[0295:twcati]2.0.co;2, 2003.
- Tao, F. L., and Zhang, Z.: Impacts of climate change as a function of global mean temperature: maize productivity and water use in China, *Climatic Change*, 105, 409-432, 10.1007/s10584-010-9883-9, 2011.
- Todini, E.: The ARNO rainfall-runoff model, *Journal of Hydrology*, 175, 339-382, 10.1016/s0022-1694(96)80016-3, 1996.
- Wang, G. Q., Zhang, J. Y., Jin, J. L., Pagano, T. C., Calow, R., Bao, Z. X., Liu, C. S., Liu, Y. L., and Yan, X. L.: Assessing water resources in China using PRECIS projections and a VIC model, *Hydrology and Earth System Sciences*, 16, 231-240, 10.5194/hess-16-231-2012, 2012.
- Wang, G. Q., Zhang, J. Y., Pagano, T. C., Xu, Y. P., Bao, Z. X., Liu, Y. L., Jin, J. L., Liu, C. S., Song, X. M., and Wan, S. C.: Simulating the hydrological responses to climate change of the Xiang River basin, China, *Theoretical and Applied Climatology*, 124, 769-779, 10.1007/s00704-015-1467-1, 2016.
- Xie, Z. H., Su, F. G., Liang, X., Zeng, Q. C., Hao, Z. C., and Guo, Y. F.: Applications of a surface runoff model with Horton and Dunne runoff for VIC, *Advances in Atmospheric Sciences*, 20, 165-172, 2003.
- Xie, Z. H., Yuan, F., Duan, Q. Y., Zheng, J., Liang, M. L., and Chen, F.: Regional parameter estimation of the VIC land surface model: methodology and application to river basins in China, *Journal of Hydrometeorology*, 8, 447-468, 10.1175/jhm568.1, 2007.
- Xu, W. H., Xiao, Y., Zhang, J. J., Yang, W., Zhang, L., Hull, V., Wang, Z., Zheng, H., Liu, J. G., Polasky, S., Jiang, L., Xiao, Y., Shi, X. W., Rao, E. M., Lu, F., Wang, X. K., Daily, G. C., and Ouyang, Z. Y.: Strengthening protected areas for biodiversity and ecosystem services in China, *Proceedings of the National Academy of Sciences of the United States of America*, 114, 1601-1606, 10.1073/pnas.1620503114, 2017.

Yuan, Y. J., Zhang, C., Zeng, G. M., Liang, J., Guo, S. L., Huang, L., Wu, H. P., and Hua, S. S.: Quantitative assessment of the contribution of climate variability and human activity to streamflow alteration in Dongting Lake, China, *Hydrological Processes*, 30, 1929-1939, 10.1002/hyp.10768, 2016.

5 Zhai, R., and Tao, F.: Contributions of climate change and human activities to runoff change in seven typical catchments across China, *Science of The Total Environment*, 605, 219-229, <http://dx.doi.org/10.1016/j.scitotenv.2017.06.210>, 2017.

Zhang, Y. Q., You, Q. L., Chen, C. C., and Ge, J.: Impacts of climate change on streamflows under RCP scenarios: A case study in Xin River Basin, China, *Atmospheric Research*, 178, 521-534, 10.1016/j.atmosres.2016.04.018, 2016.

Zhang, Q., Liu, J. Y., Singh, V. P., Shi, P. J., and Sun, P.: Hydrological responses to climatic changes in the Yellow River basin, China: Climatic elasticity and streamflow prediction, *Journal of Hydrology*, 554, 635-645, 10.1016/j.jhydrol.2017.09.040,
10 2017.

15

20

25

30

Table 1. The ensemble members in each GCM used in this study.

GCM	Original institute	Original institute ID	Ensemble member		
			2006-2015	2106-2115 (+1.5°C)	2106-2115 (+2°C)
ECHAM6-3-LR	Max Planck Institute for Meteorology, Hamburg, Germany & Deutsche Klimarechenzentrum, Hamburg, Germany	MPI-M	20	20	20
MIROC5	Atmosphere and Ocean Research Institute, The University of Tokyo, Chiba, Japan; National Institute for Environmental Studies, Ibaraki, Japan; Japan Agency for Marine-Earth Science and Technology, Kanagawa, Japan	MIROC	10	10	10
NorESM1-HAPPI	NorESM Climate modeling Consortium	NCC	20	20	20
CAM4-2degree	ETH, Zurich, Switzerland	ETH	20	20	20

5

10

15

Table 2. Information on the ten catchments (hydrological stations) used for calibrated and validated parameters and the performance of the VIC model for monthly runoff simulation in each catchment.

Catchment	Basin	Area (km ²)	Longitude	Latitude	Missing year	Calibration period (1963-1969)		Validation period (1970-1979)	
						<i>NSE</i>	<i>BIAS</i> (%)	<i>NSE</i>	<i>BIAS</i> (%)
Nianzishan	SHR	13567	122°53'	47°29'		0.66	-12.3	0.72	1.7
Liaoyang	LR	8082	123°12'	41°16'		0.82	-9.5	0.61	4.9
Yingluoxia	NWR	10009	100°11'	38°48'		0.88	-1.4	0.87	4.7
Xiahui	HR	5340	117°10'	40°37'		0.75	14.5	0.61	-22.7
Qinan	YR	9805	105°40'	34°54'		0.66	5.7	0.60	-5.9
Sanjiangkou	YTR	15242	111°18'	29°35'		0.84	-9.9	0.91	4.1
Xixian	HuR	10190	114°44'	32°20'		0.82	-6.2	0.83	5.7
Yangkou	SER	12669	117°55'	26°48'	1962, 1966	0.91	2.5	0.90	-3.1
Zhongaiqiao	SWR	3562	101°30'	23°21'	1964	0.78	-5.3	0.80	5.0
Changle	PR	6645	109°25'	21°50'		0.88	-3.6	0.82	7.1

5

10

15

20

Table 3. Information on the additional ten catchments (hydrological stations) used for validating parameters calibrated in different catchments of the same basin.

Catchment	Basin	Area (km ²)	Longitude	Latitude	Data period	Missing year	<i>NSE</i>	<i>BIAS</i> (%)
Lanxi	SHR	27305	126°20'	46°15'	1981-1987		0.67	10.1
Guantai	HR	17800	114°05'	36°20'	1963-1979		0.71	-8.5
Yangjiaping	YR	14124	107°44'	35°20'	1963-1979		0.71	-15.2
Huayuankou	YR	730036	113°39'	34°55'	1963-1979		0.65	-14.7
Huangjiagang	YTR	95217	111°31'	32°31'	1963-1972		0.75	14.0
Pingshan	YTR	485099	104°10'	28°38'	1963-1979		0.83	-19.1
Bantai	HuR	11280	115°04'	32°43'	1963-1979		0.67	34.7
Xuren	SER	13560	120°19'	28°09'	1964-1979		0.81	-16.1
Changdu	SWR	48448	97°11'	31°11'	1963-1979	1964, 1969, 1971, 1972	0.81	-2.3
Wuzhou	PR	327006	111°20'	23°28'	1963-1979		0.90	2.9

5

10

15

Table 4. Median values of changes in annual mean temperature ($^{\circ}\text{C}$), annual precipitation (%), annual runoff (%) and annual TEWR (%) in all corresponding ensembles of the four GCMs over 2106-2115 under 1.5 $^{\circ}\text{C}$ and 2.0 $^{\circ}\text{C}$ warming scenarios relative to baseline period 2006-2015, respectively, in the ten main basins across China.

	ΔT ($^{\circ}\text{C}$)		ΔP (%)		ΔR (%)		ΔTEWR (%)	
	+1.5 $^{\circ}\text{C}$	+2.0 $^{\circ}\text{C}$	+1.5 $^{\circ}\text{C}$	+2.0 $^{\circ}\text{C}$	+1.5 $^{\circ}\text{C}$	+2.0 $^{\circ}\text{C}$	+1.5 $^{\circ}\text{C}$	+2.0 $^{\circ}\text{C}$
SHR	0.83	1.65	3.50	4.82	5.34	6.20	2.11	-1.49
LR	0.92	1.62	5.24	6.54	6.86	9.07	1.76	0.65
NWR	0.87	1.63	1.90	3.14	3.61	4.20	0.52	-0.17
HR	0.85	1.55	3.22	4.44	7.93	4.75	3.00	4.40
YR	0.88	1.57	4.06	5.72	8.72	9.40	2.84	-0.67
YTR	0.86	1.46	5.05	4.64	7.07	4.33	-0.45	-3.48
HuR	0.80	1.44	5.94	6.68	12.11	17.89	6.71	4.01
SER	0.84	1.42	8.58	7.93	11.04	8.77	1.76	-1.60
SWR	0.77	1.43	3.86	4.80	4.94	5.18	-0.36	-0.82
PR	0.84	1.41	6.71	6.26	13.86	11.17	2.79	0.37

ΔT , ΔP , ΔR , ΔTEWR represent annual mean temperature change, annual precipitation change, annual runoff change and

5 annual TEWR change.

10

15

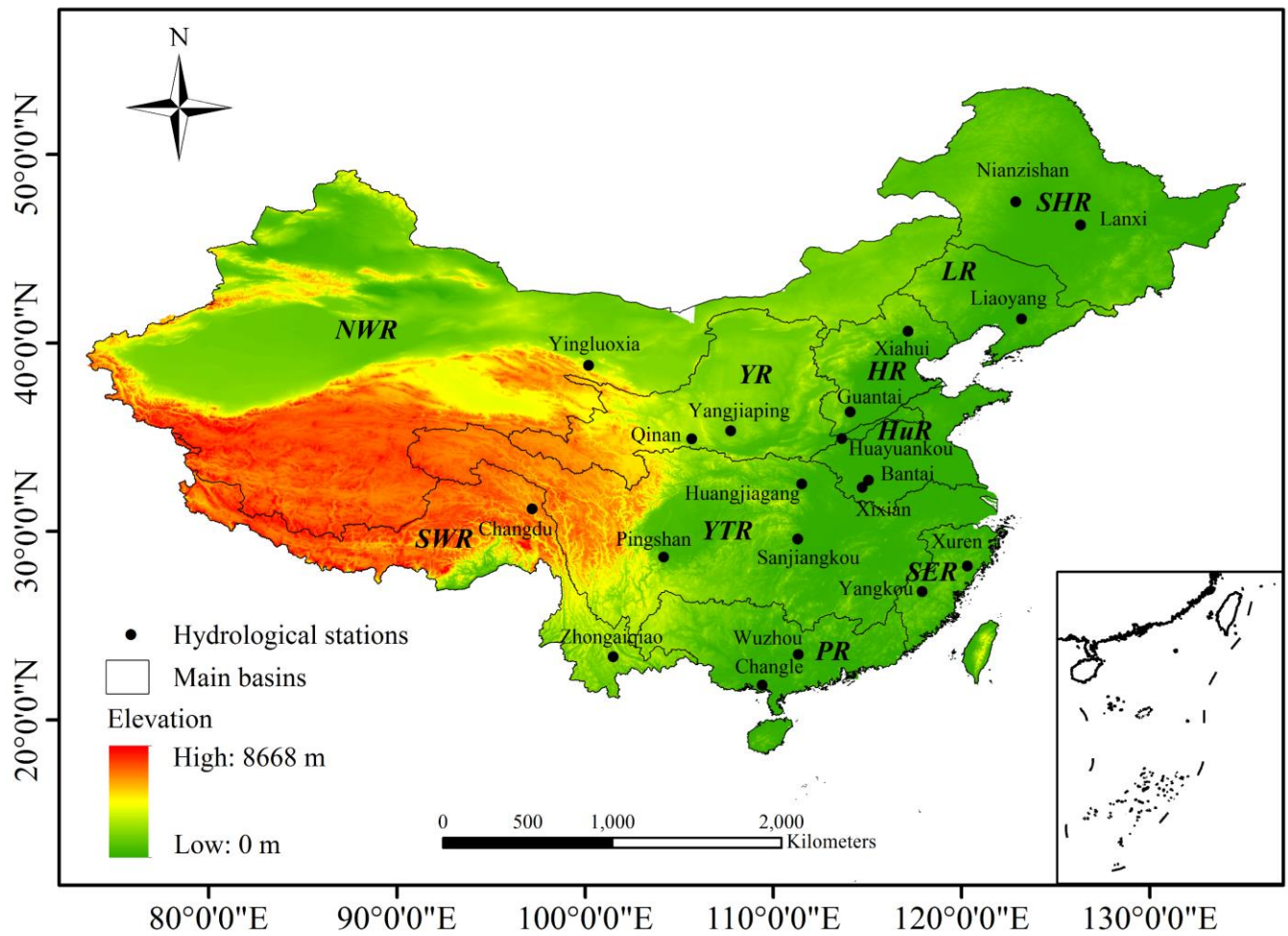


Figure 1: The ten main basins in China, as well as the twenty catchments (hydrological stations) used for calibrated and validated the VIC hydrological model.

5

10

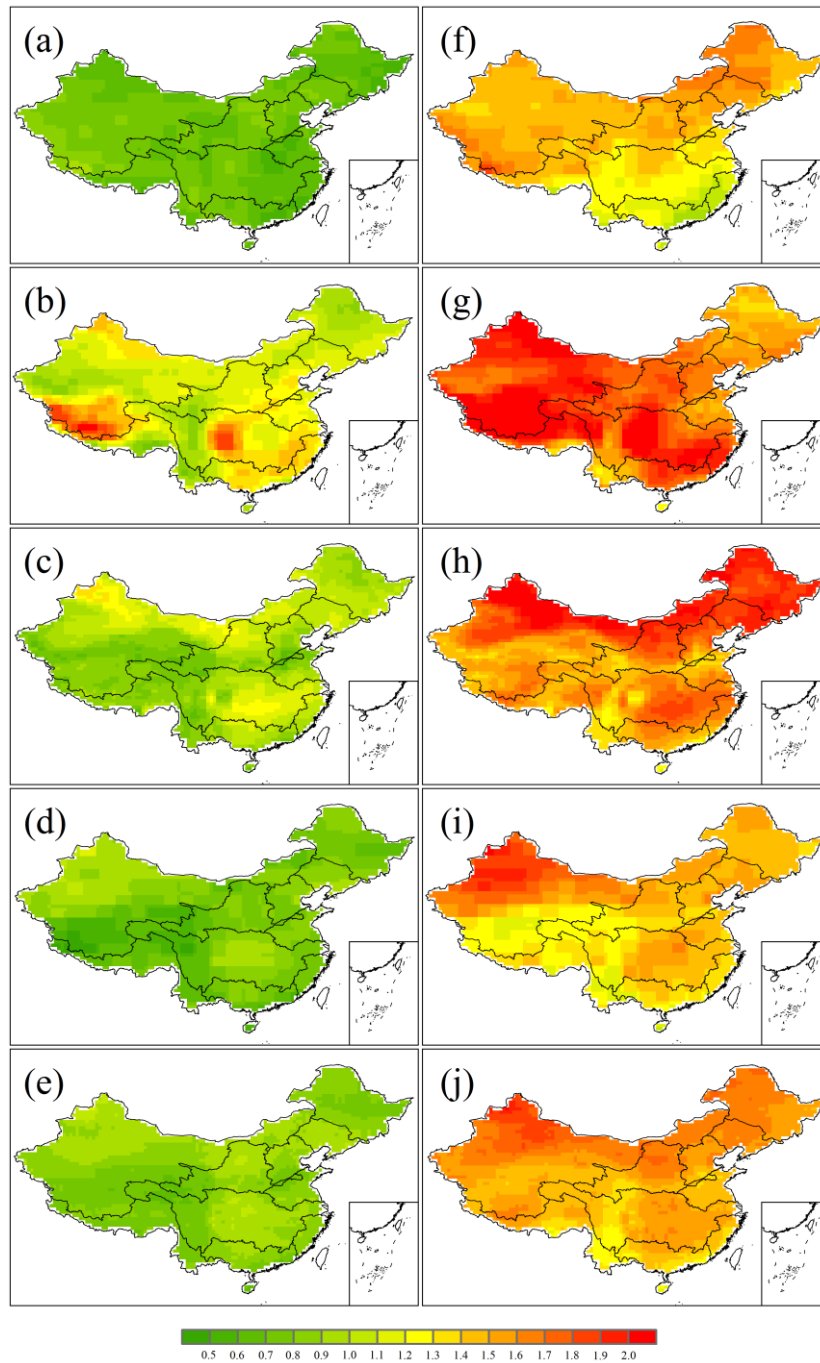


Figure 2: Median values of the projected changes in annual mean temperature (°C) in China under the 1.5°C (a, b, c, d, e) and 2.0°C (f, g, h, i, j) warming scenarios by the ECHAM6-3-LR (a, f), MIROC5 (b, g), NorESM1-HAPPI (c, h), CAM4-2degree (d, i), all the four GCMs (e, j), relative to 2006-2015.

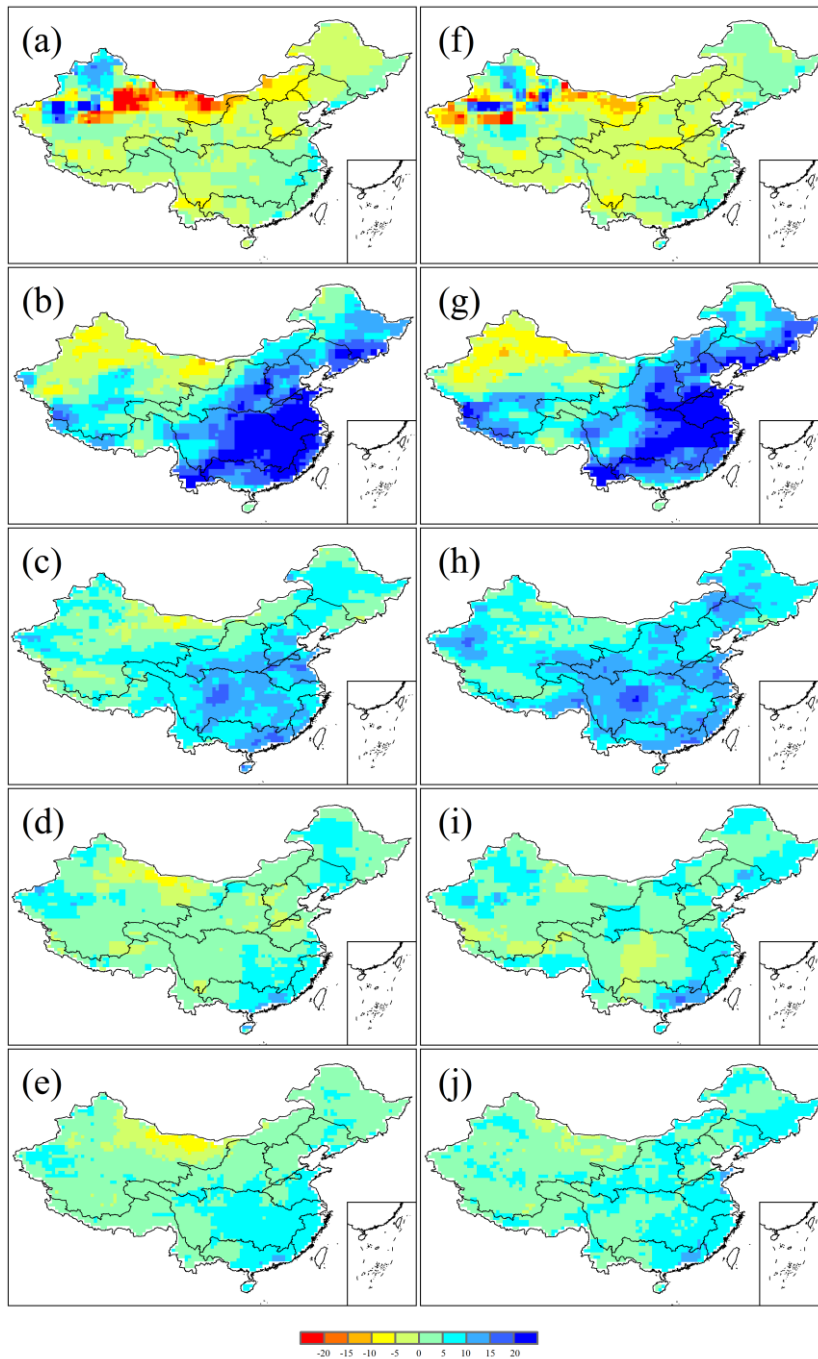


Figure 3: Median values of the projected changes in annual precipitation (%) in China under the 1.5°C (a, b, c, d, e) and 2.0°C (f, g, h, i, j) warming scenarios by the ECHAM6-3-LR (a, f), MIROC5 (b, g), NorESM1-HAPPI (c, h), CAM4-2degree (d, i), all the four GCMs (e, j), relative to 2006-2015.

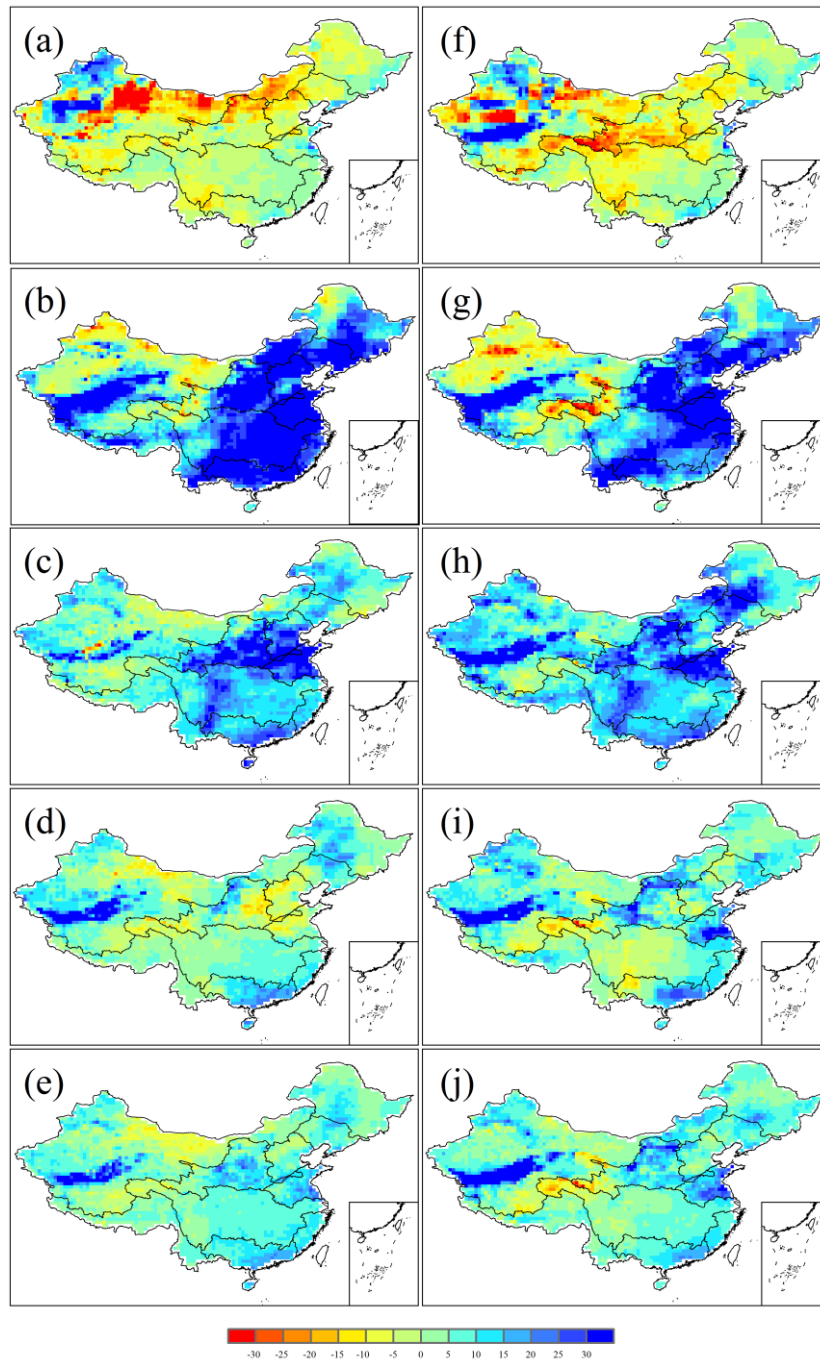


Figure 4: Median values of the projected changes in annual runoff (%) in China under the 1.5°C (a, b, c, d, e) and 2.0°C (f, g, h, i, j) warming scenarios by the ECHAM6-3-LR (a, f), MIROC5 (b, g), NorESM1-HAPPI (c, h), CAM4-2degree (d, i), all the four GCMs (e, j), relative to 2006-2015.

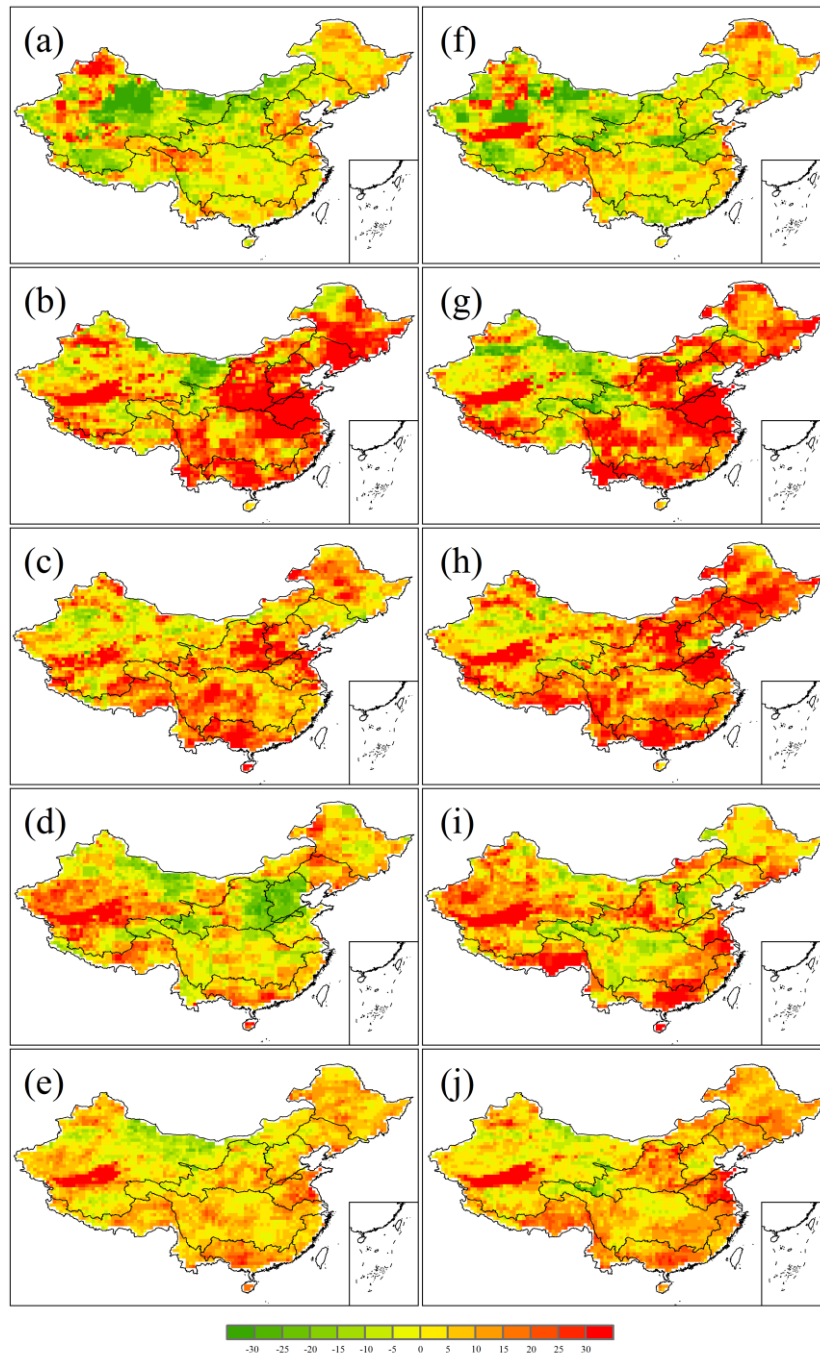


Figure 5: Median values of the changes in SD of the simulated annual runoff (%) in China under the 1.5°C (a, b, c, d, e) and 2.0°C (f, g, h, i, j) warming scenarios by the ECHAM6-3-LR (a, f), MIROC5 (b, g), NorESM1-HAPPI (c, h), CAM4-2degree (d, i), all the four GCMs (e, j), relative to 2006-2015.

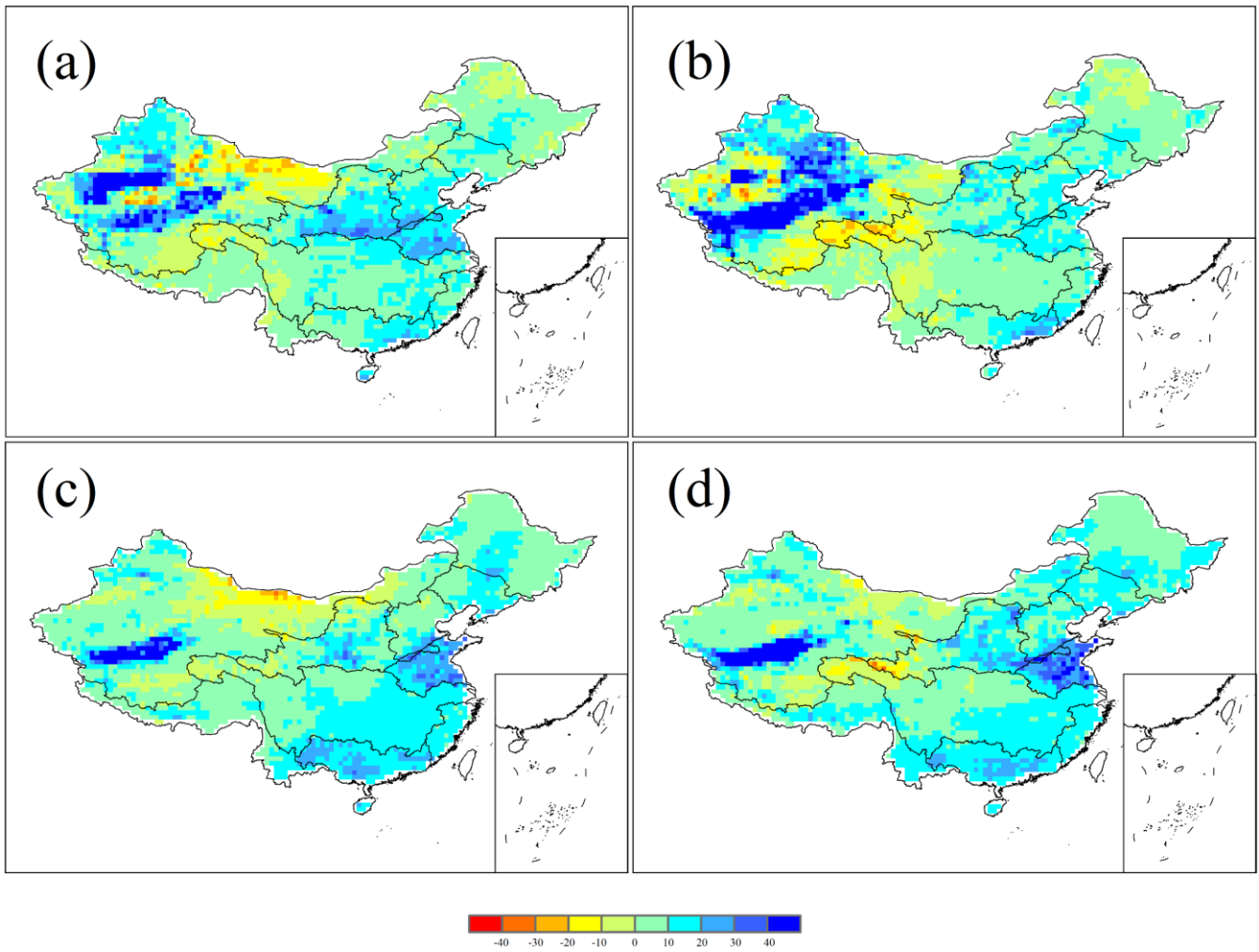


Figure 6: Projected changes in low runoff (Q_{10}) and high runoff (Q_{90}) (%) in China under 1.5°C (a, c) and 2.0°C (b, d) warming scenarios in 2106-2115, respectively, relative to 2006-2015.

5

10

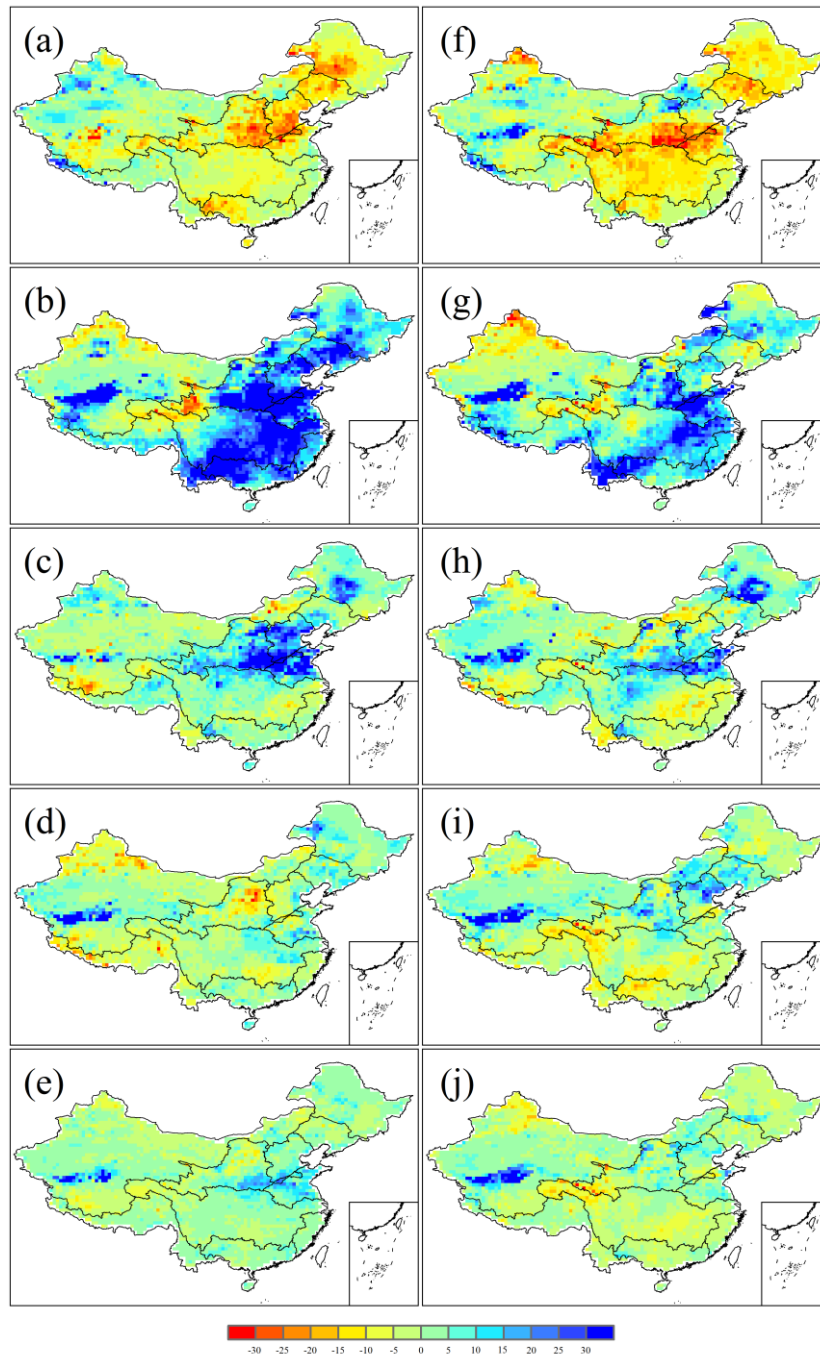


Figure 7: Median values of the changes in annual TEWR (%) in China under 1.5°C (a, b, c, d, e) and 2.0°C (f, g, h, i, j) warming scenarios from the ECHAM6-3-LR (a, f), MIROC5 (b, g), NorESM1-HAPPI (c, h), CAM4-2degree (d, i), all the four GCMs (e, j), relative to 2006-2015.

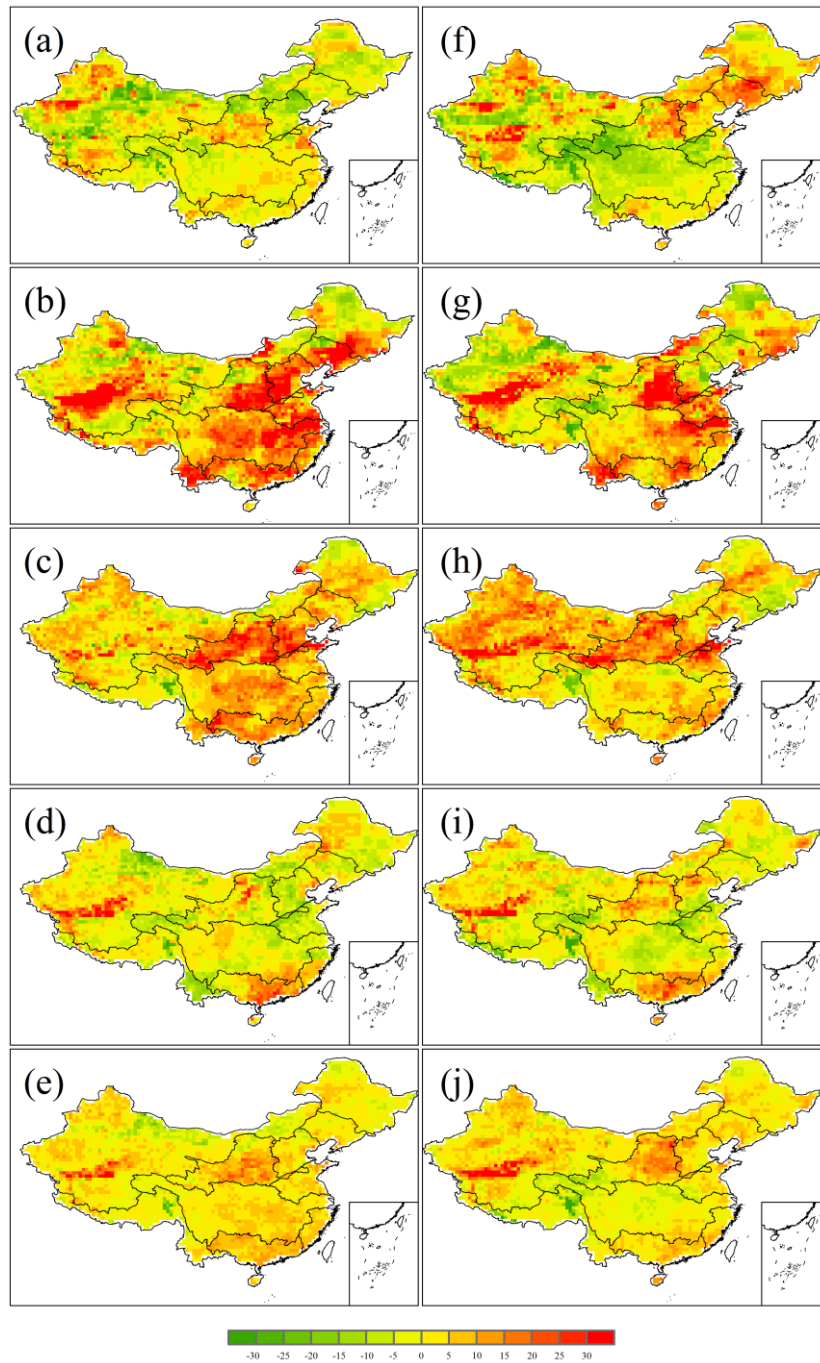


Figure 8: Median values of the changes in SD of TEWR (%) in China under 1.5°C (a, b, c, d, e) and 2.0°C (f, g, h, i, j) warming scenarios from the ECHAM6-3-LR (a, f), MIROC5 (b, g), NorESM1-HAPPI (c, h), CAM4-2degree (d, i), all the four GCMs (e, j), relative to 2006-2015.

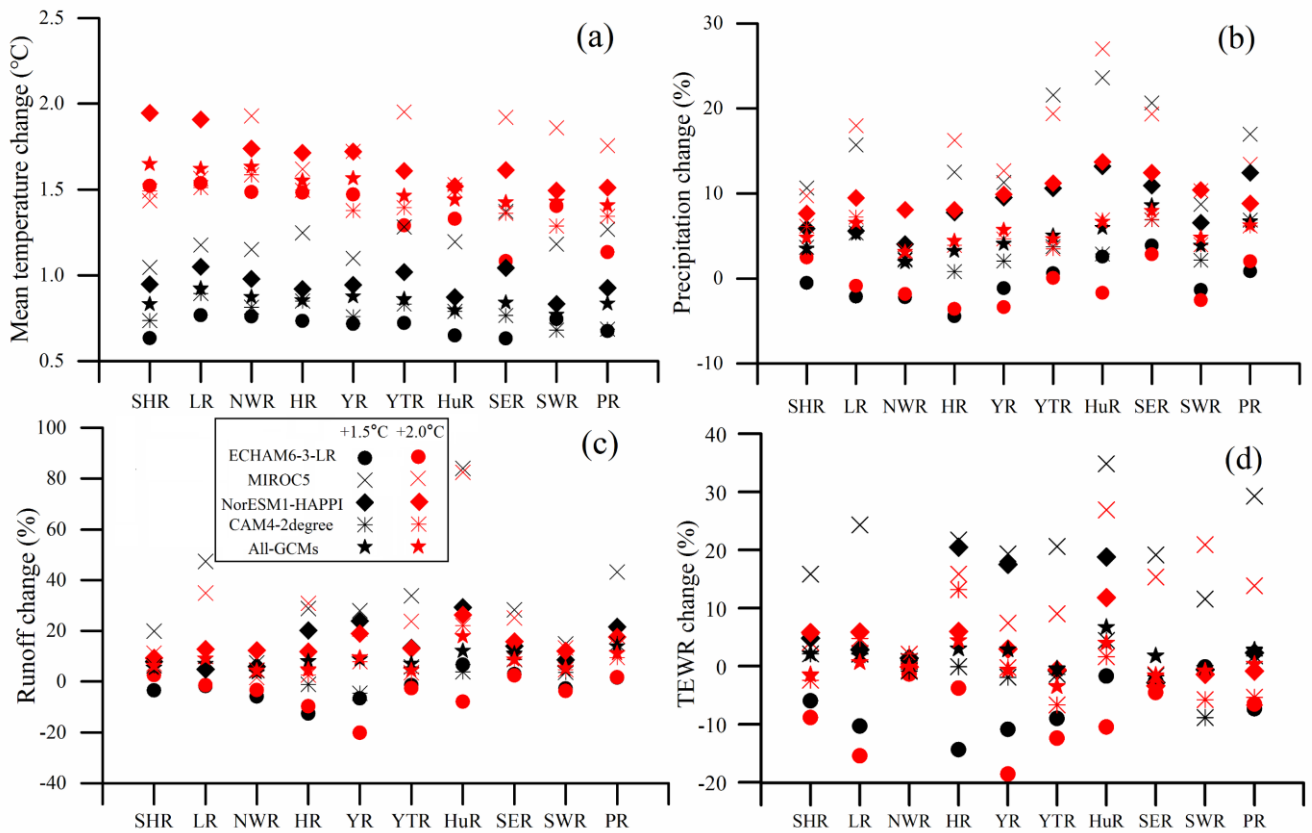


Figure 9: Median values of changes in annual mean temperature (°C) (a), annual precipitation (%) (b), annual runoff (%) (c) and annual TEWR (%) (d) in all corresponding ensembles of the four GCMs during 2106-2115 under 1.5°C and 2.0°C warming scenarios relative to the baseline period 2006-2015, respectively, in the ten main basins across China.

5

10

15

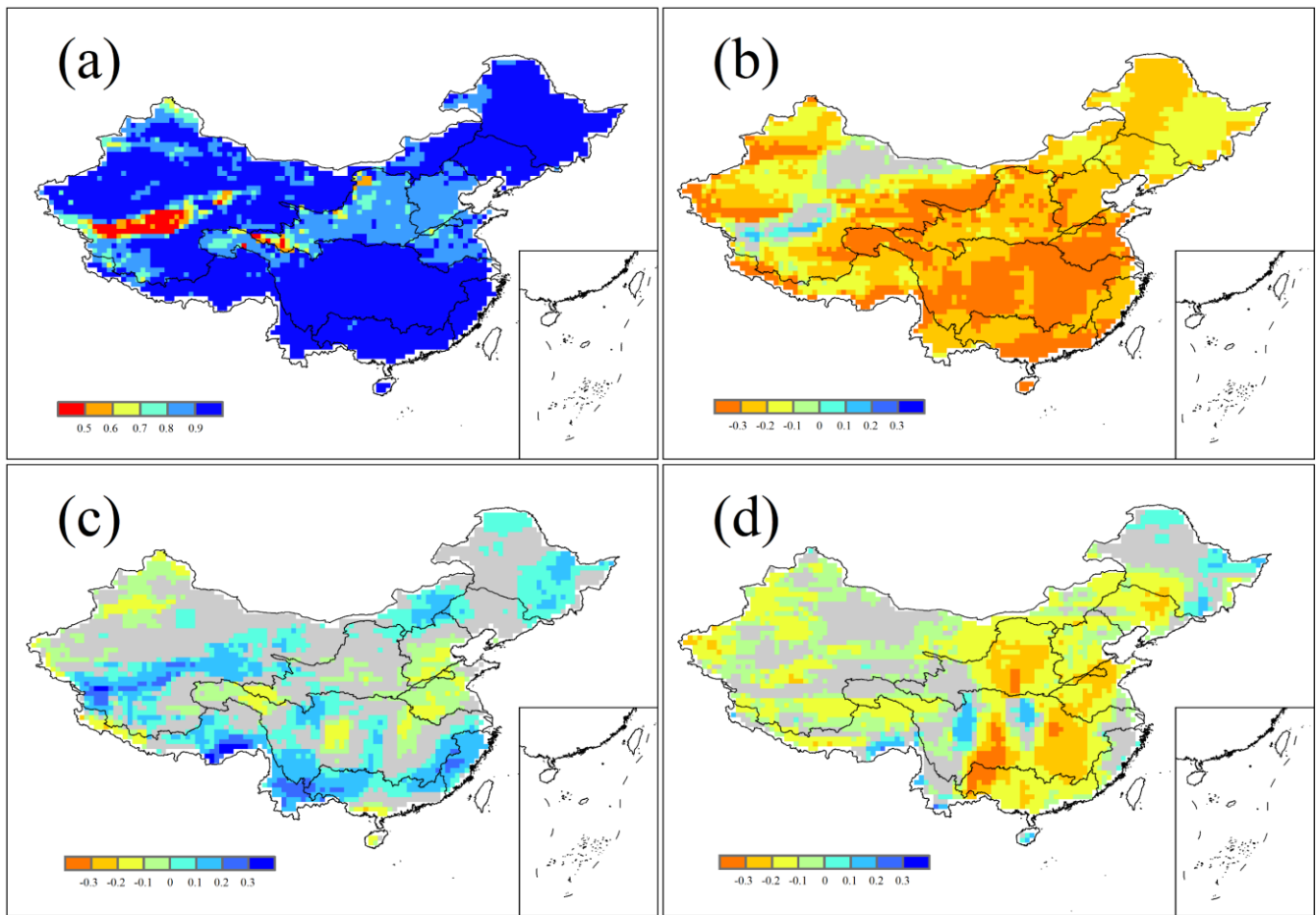


Figure 10: Spatial patterns of the Pearson Correlation Coefficient (r) between data series of runoff changes and four key impact factors changes (a: runoff and precipitation, b: runoff and annual maximum temperature, c: runoff and annual minimum temperature, d: runoff and wind speed) under 1.5°C and 2.0°C warming scenarios during 2106-2115, relative to the baseline period 2006-2015. Only grids with significant correlation ($p < 0.05$) were shown.

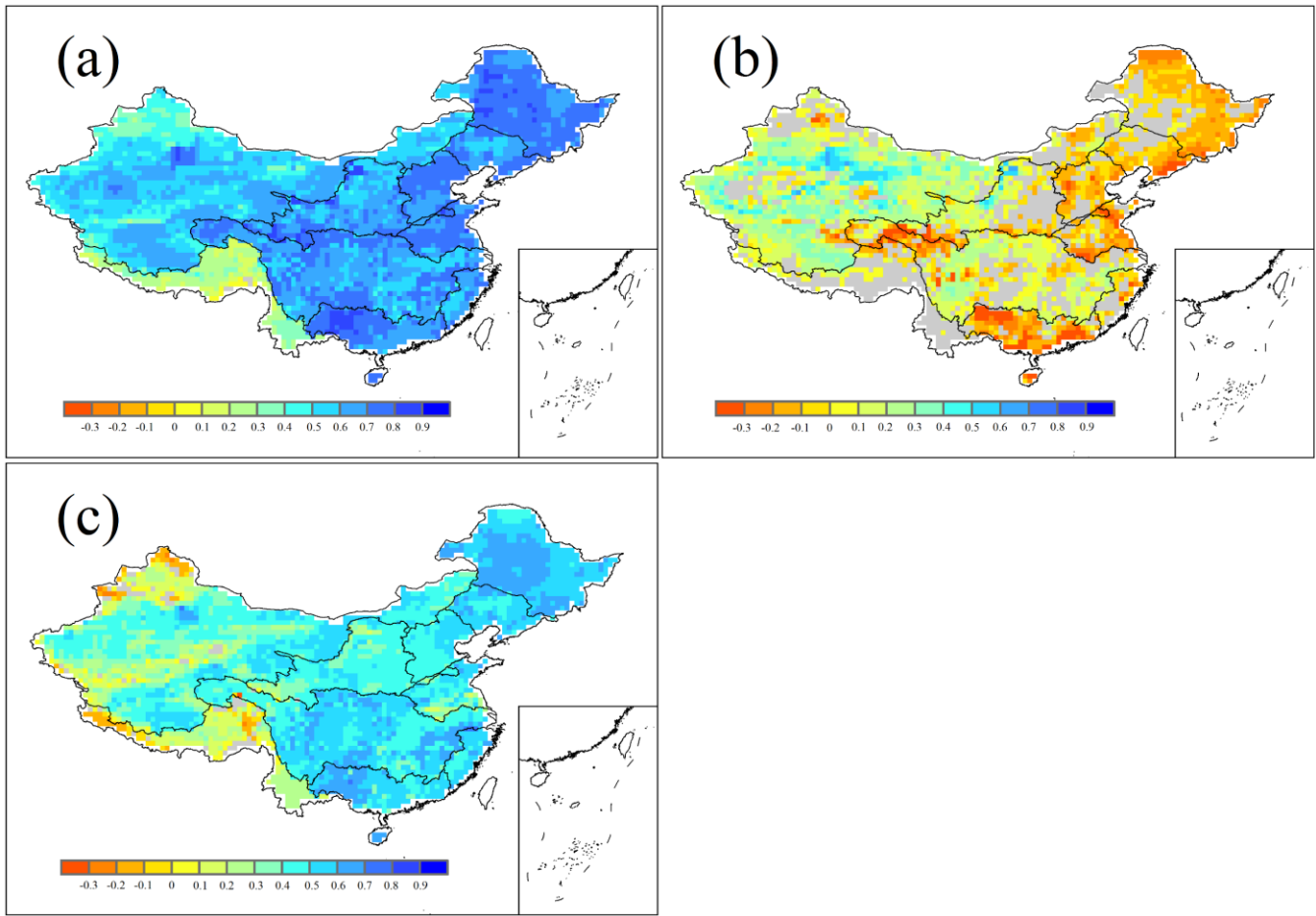


Figure 11: Spatial patterns of the Pearson Correlation Coefficient (r) between data series of TEWR changes and three key impact factors changes (a: TEWR and precipitation; b: TEWR and evapotranspiration; c: TEWR and runoff) under 1.5°C and 2.0°C warming scenarios during 2106-2115, relative to the baseline period 2006-2015. Only grids with significant correlation ($p < 0.05$) were shown.

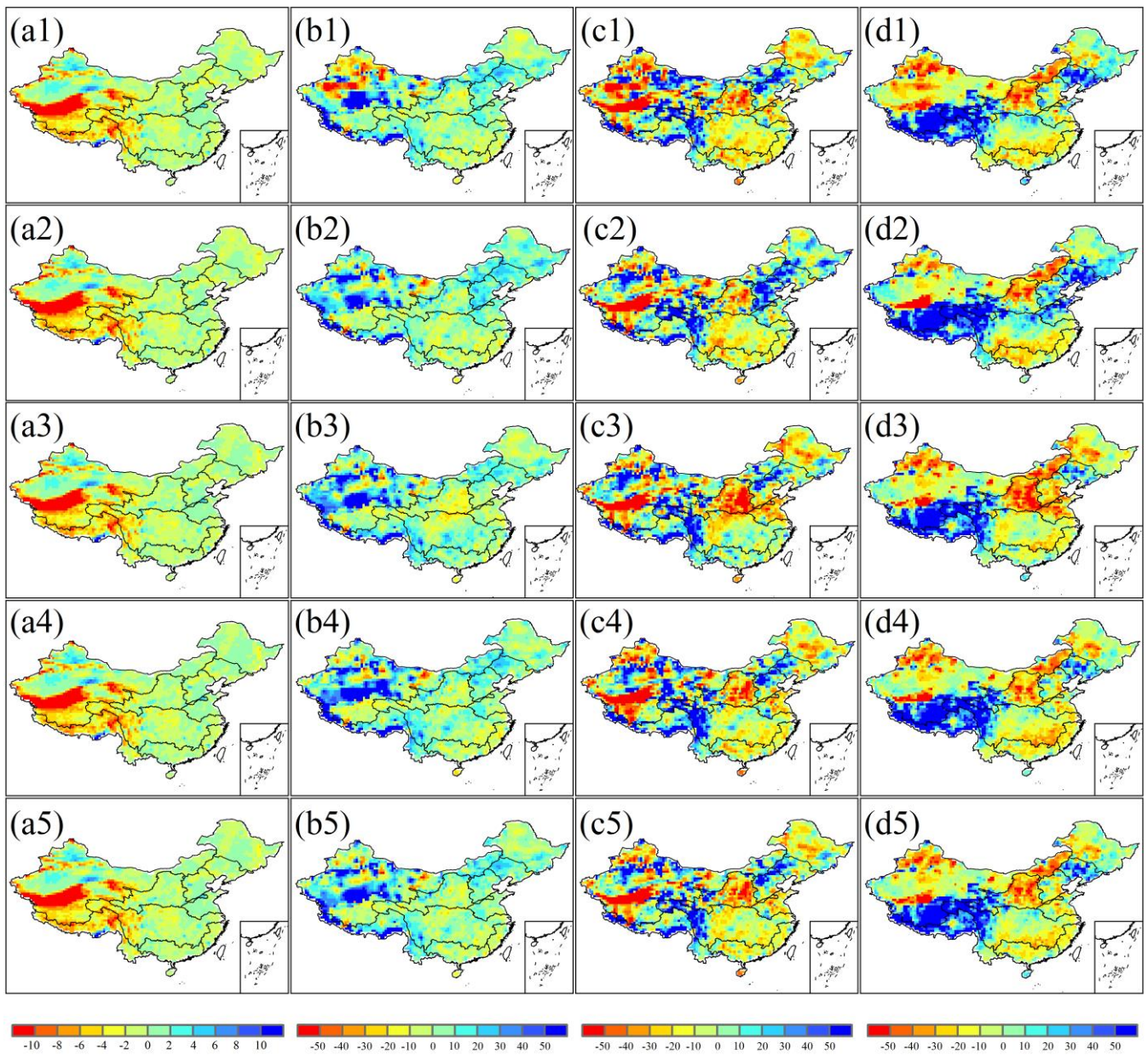


Figure 12: Differences between the HAPPI data and the observed data in terms of annual temperature (°C) (a1-a5), annual precipitation (%) (b1-b5), as well as the differences between the projected annual runoff (%) (c1-c5) and annual TEWR (%) (d1-d5) by the HAPPI data and by the observed data, for 2006-2015, based on the ECHAM6-3-LR (a1, b1, c1, d1), MIROC5 (a2, b2, c2, d2),
 5 NorESM1-HAPPI (a3, b3, c3, d3), CAM4-2degree (a4, b4, c4, d4), and all the four GCMs (a5, b5, c5, d5), respectively.

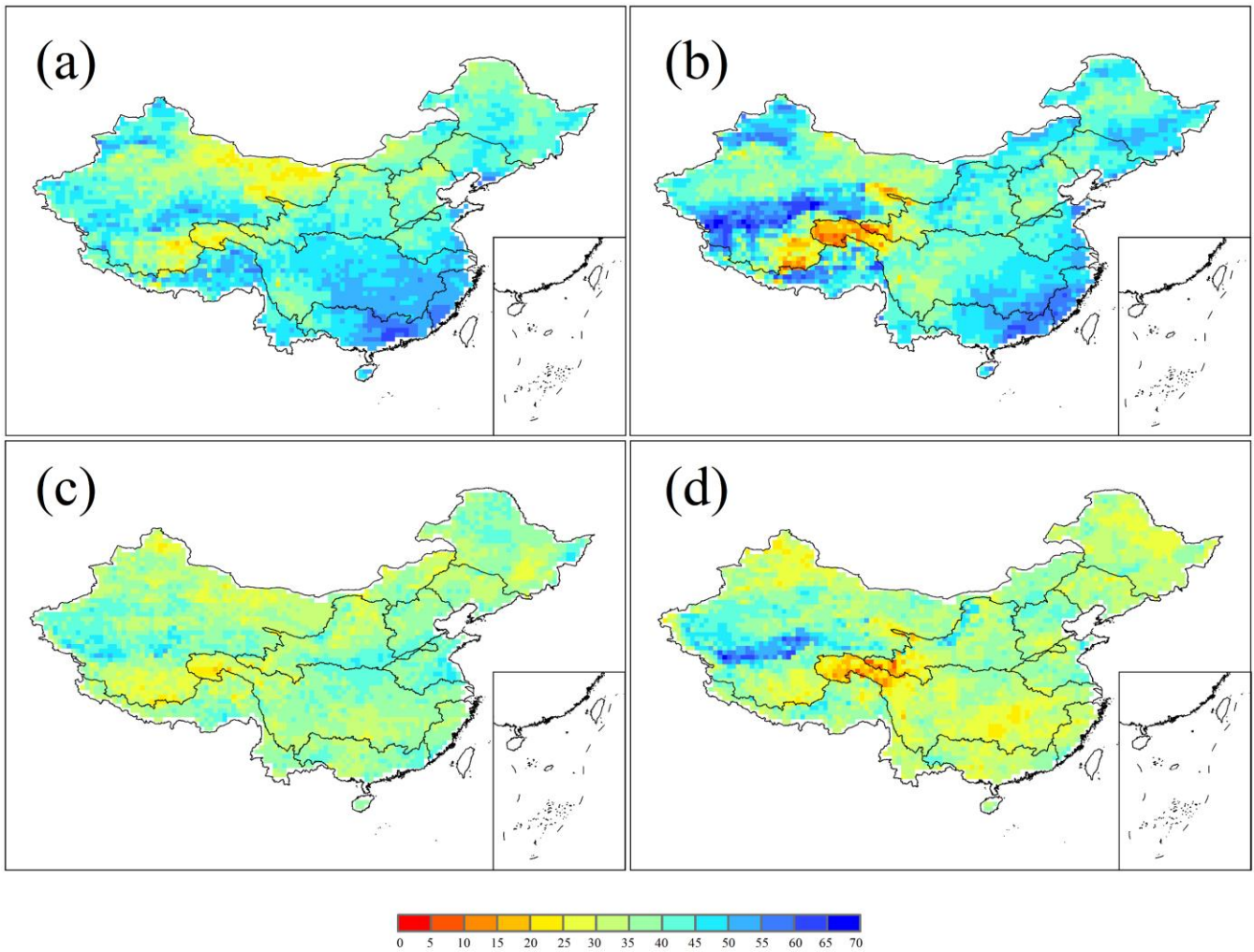


Figure 13: Ensemble numbers out of 70 ensembles showing an increase in runoff (a, b) and TEWR (c, d) change under 1.5°C (a, c) and 2.0°C warming scenarios (b, d).

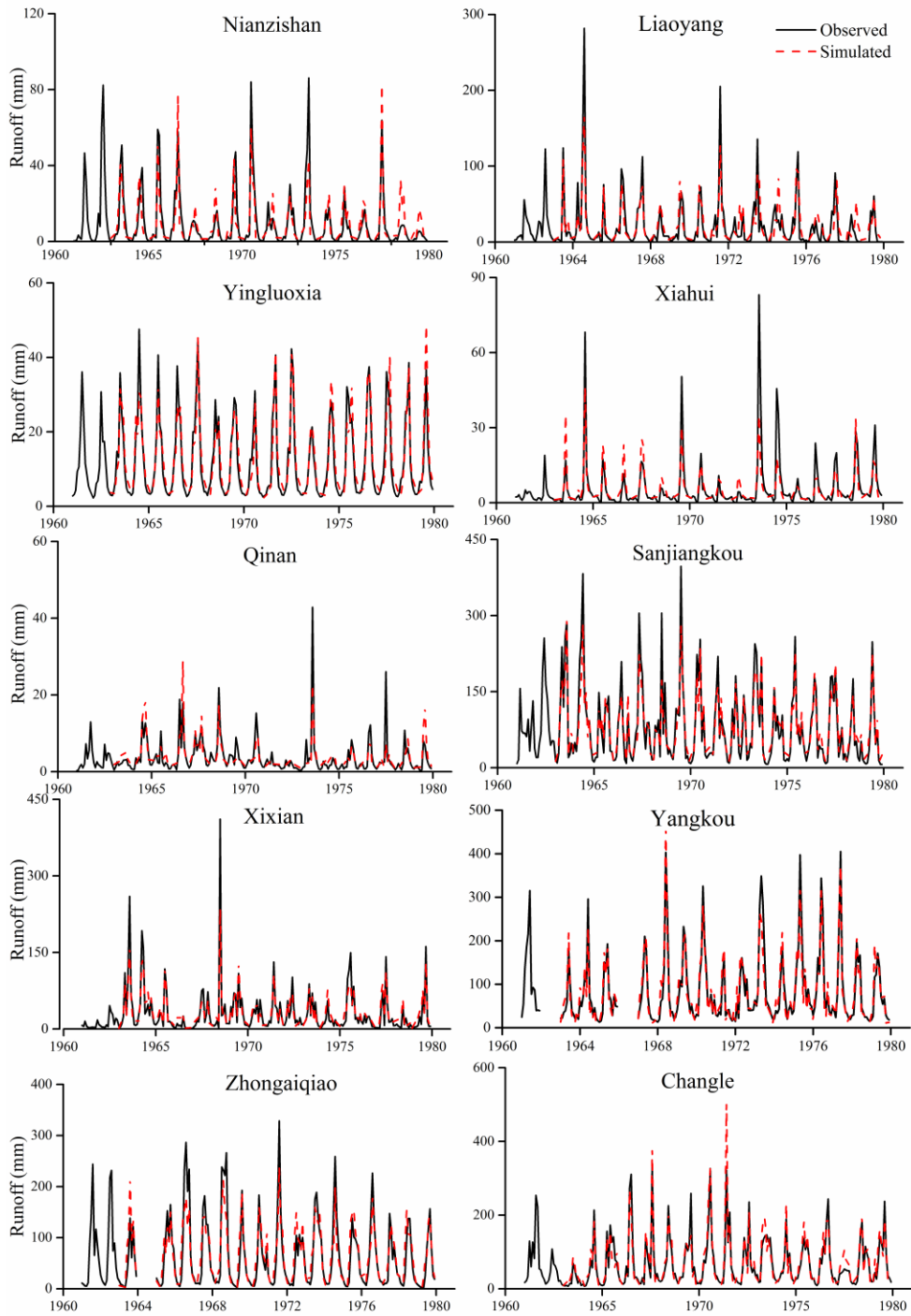


Figure A1: Observed and simulated monthly runoff during the preheating period (1961–1962), calibration period (1963–1969) and validation period (1970–1979).

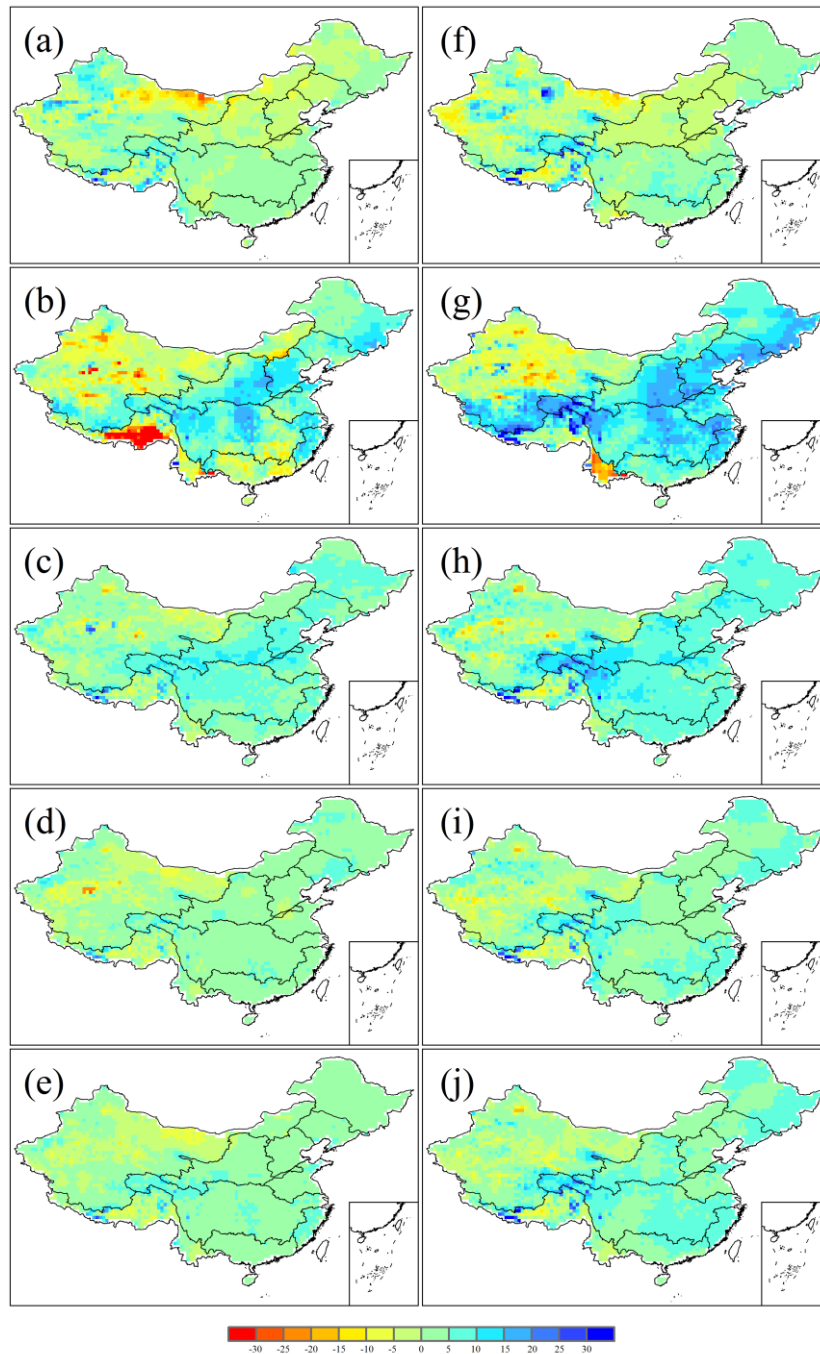


Figure A2: Median values of the projected changes in annual evapotranspiration (%) in China under the 1.5°C (a, b, c, d, e) and 2.0°C (f, g, h, i, j) warming scenarios by the ECHAM6-3-LR (a, f), MIROC5 (b, g), NorESM1-HAPPI (c, h), CAM4-2degree (d, i), all the four GCMs (e, j), relative to 2006-2015.

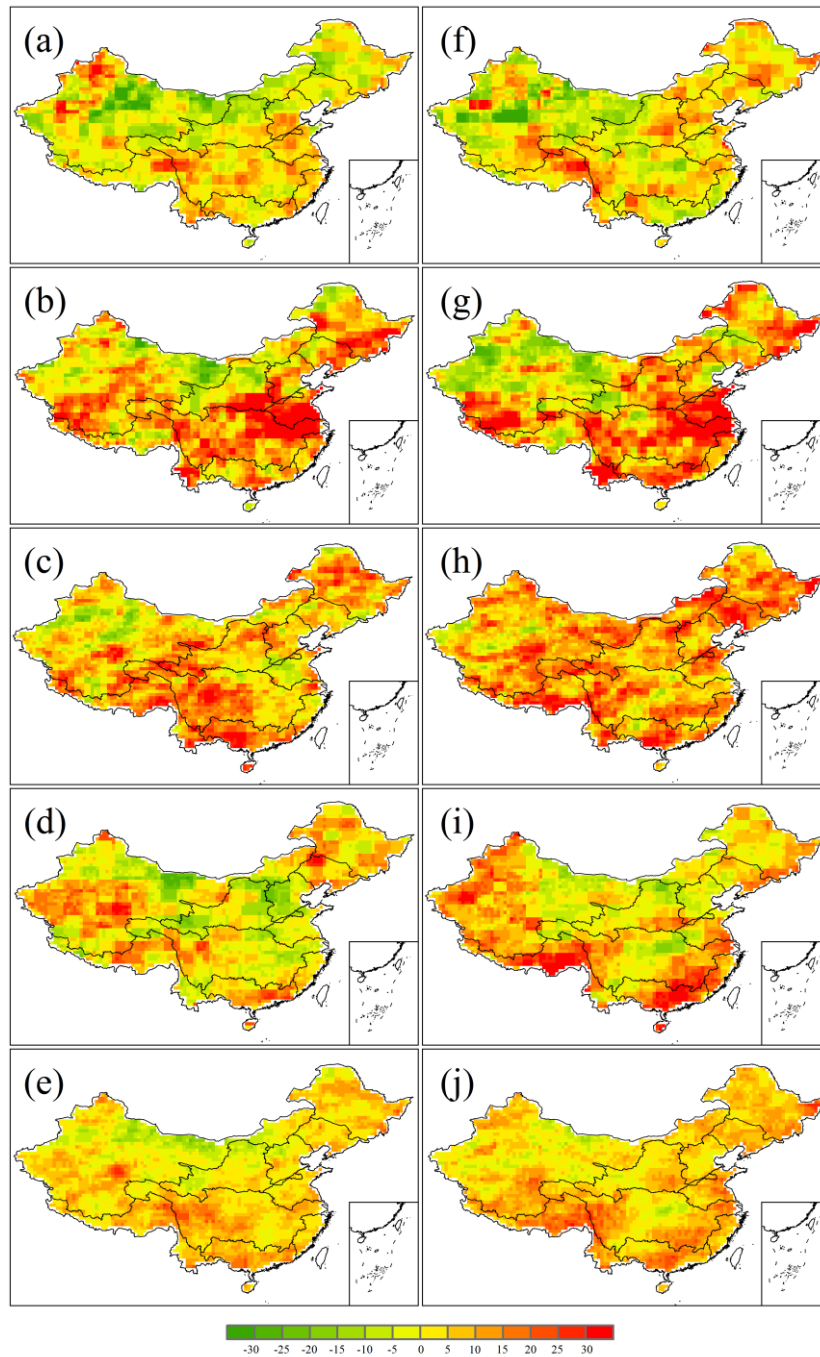


Figure A3: Median values of the changes in SD of the annual precipitation (%) in China under the 1.5°C (a, b, c, d, e) and 2.0°C (f, g, h, i, j) warming scenarios by the ECHAM6-3-LR (a, f), MIROC5 (b, g), NorESM1-HAPPI (c, h), CAM4-2degree (d, i), all the four GCMs (e, j), relative to 2006-2015.

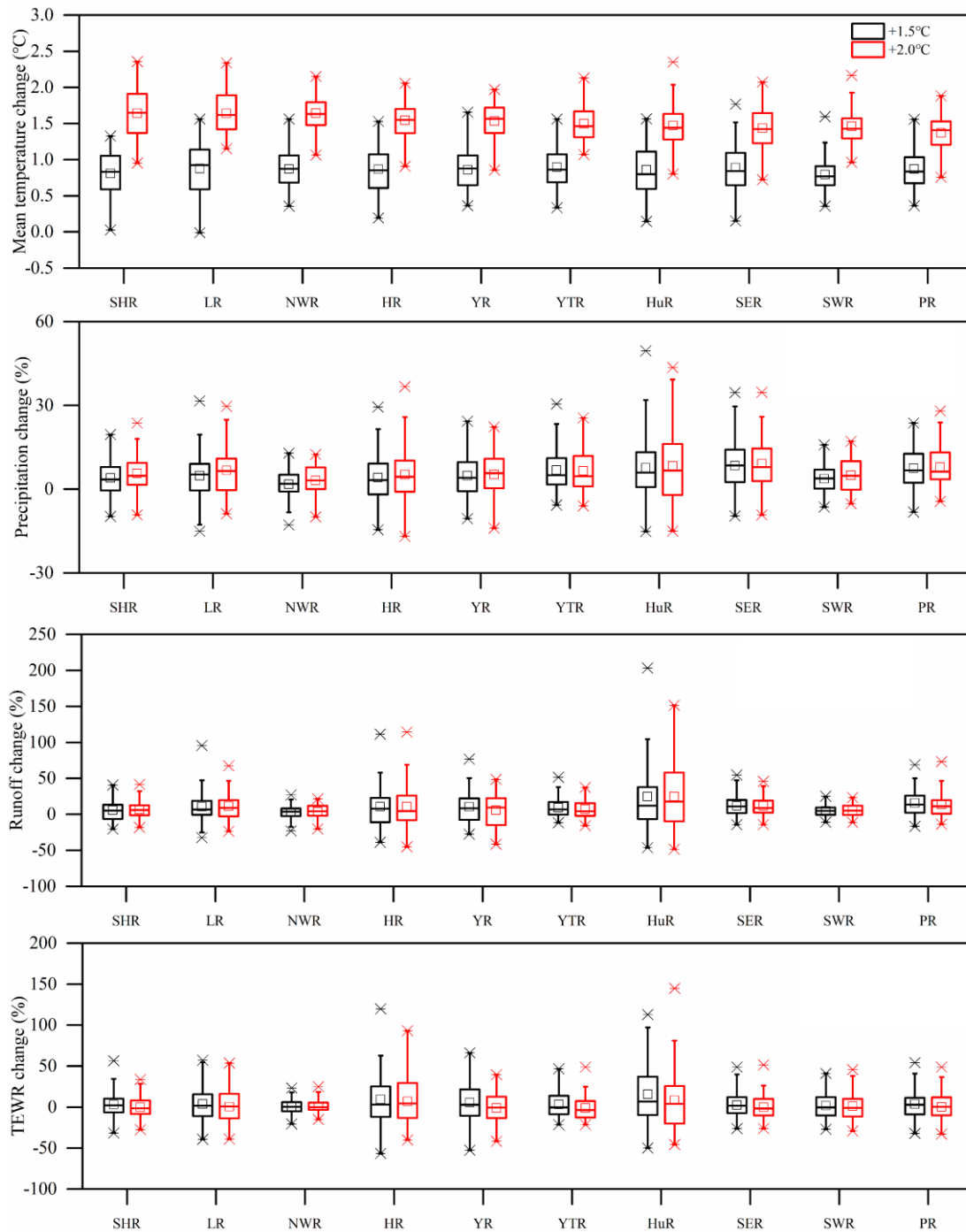


Figure A4: Box-and-whisker plots of annual mean temperature change (°C), annual precipitation change (%), annual runoff change (%), annual TEWR change (%) from all the 70 ensembles under 1.5°C and 2.0°C warming scenarios in the ten main basins across China, relative to 2006-2015.

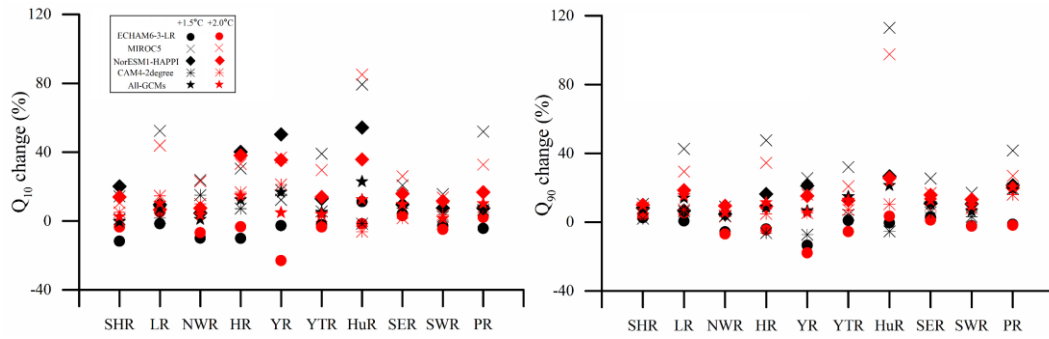


Figure A5: Changes (%) in low runoff (Q_{10}) (a) and high runoff (Q_{90}) (b) in each main basin in China in all corresponding ensembles of the four GCMs under 1.5°C and 2.0°C warming scenarios in 2106-2115, respectively, relative to 2006-2015.

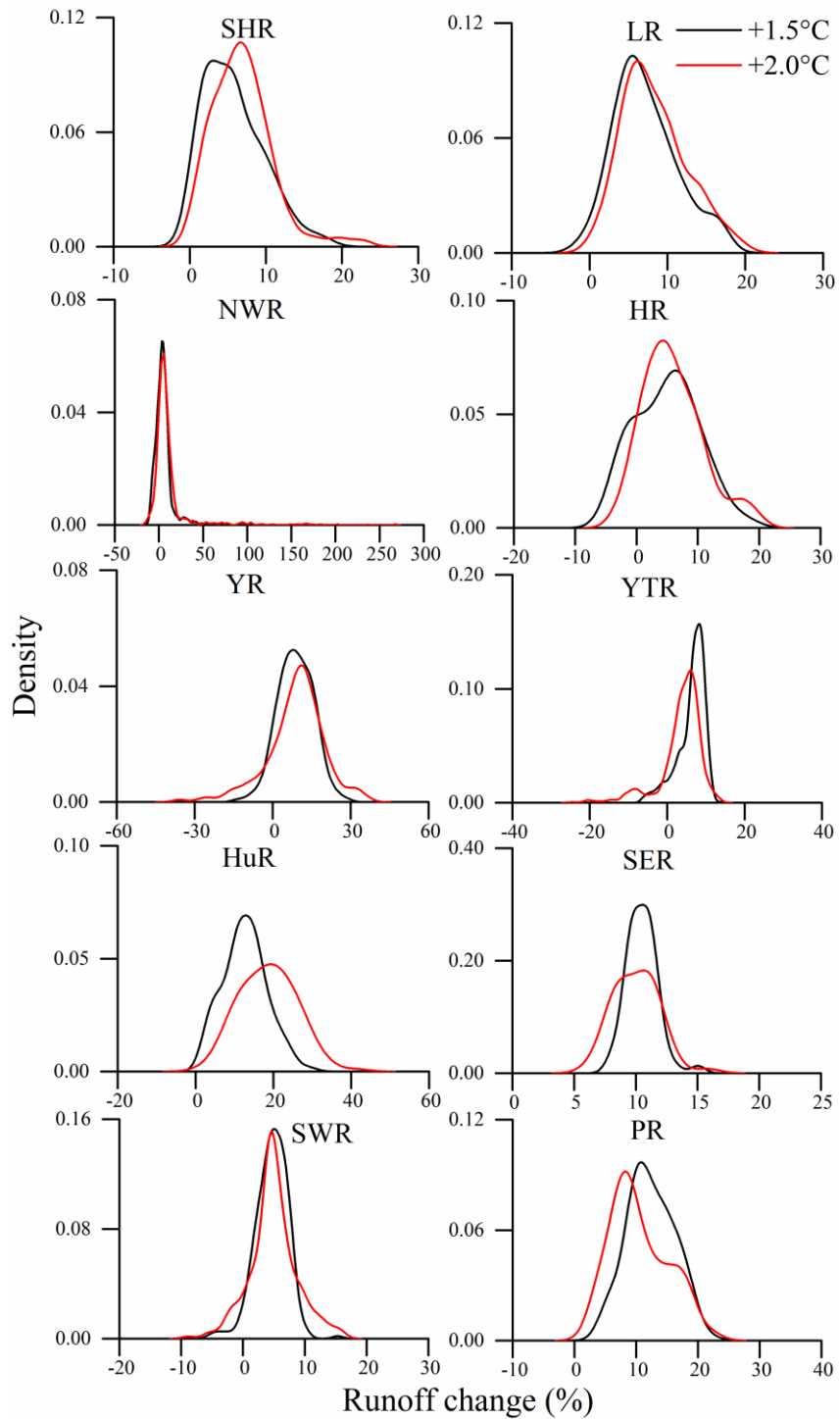


Figure A6: Probability density functions of runoff change (%) under 1.5°C and 2.0°C warming scenarios in each basin, relative to 2006-2015.

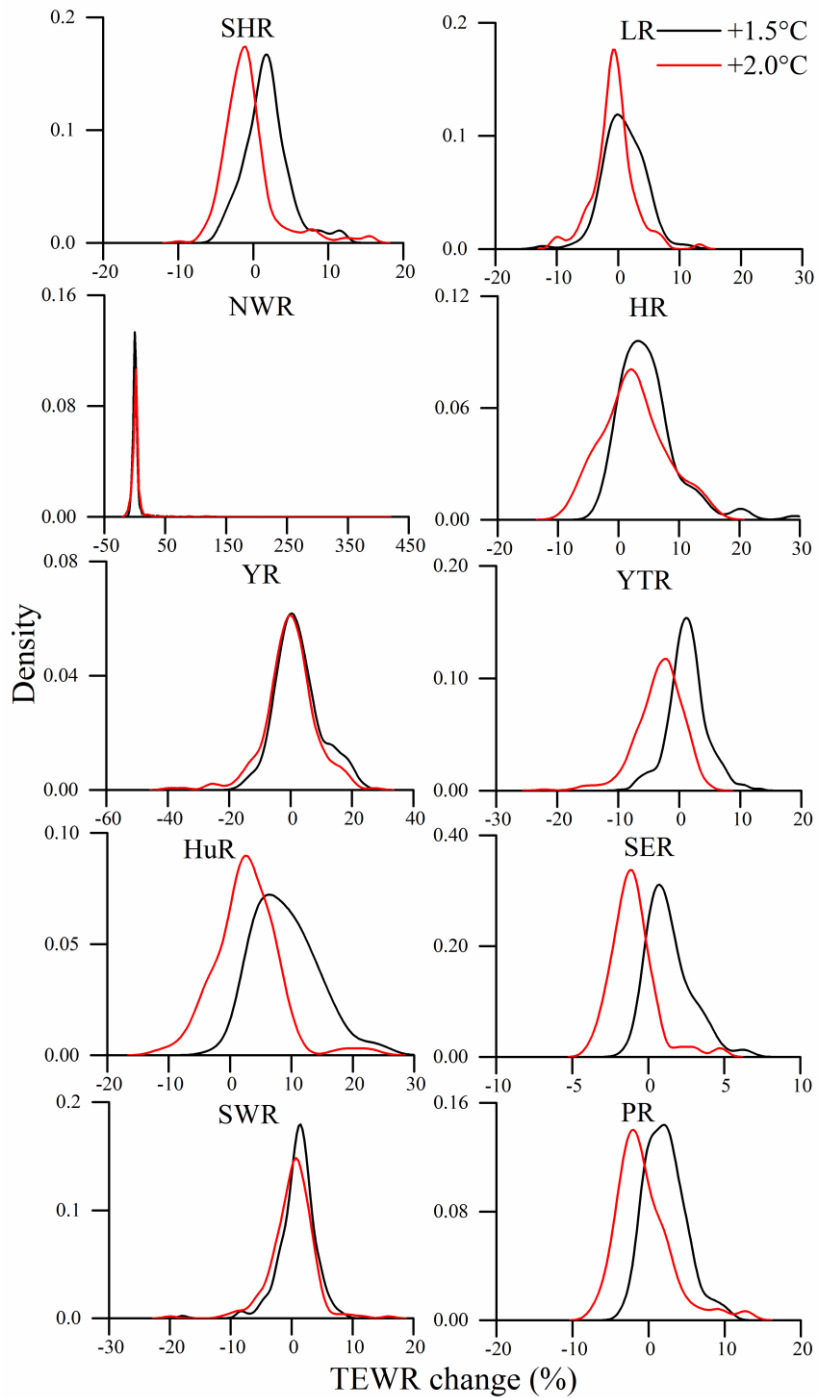


Figure A7: Probability density functions of TEWR change (%) under 1.5°C and 2.0°C warming scenarios in each basin, relative to 2006-2015.

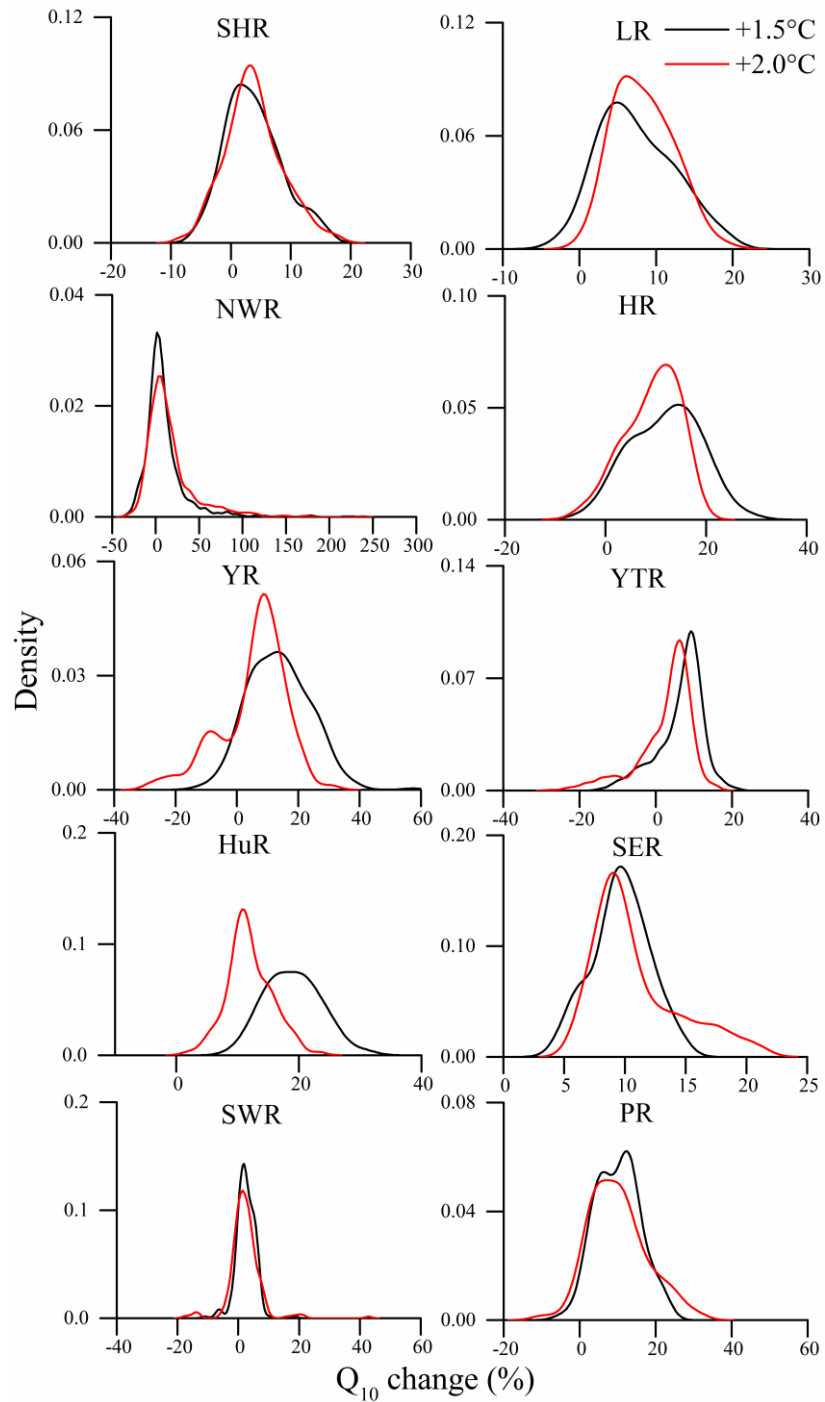


Figure A8: Probability density functions of low runoff change (%) under 1.5°C and 2.0°C warming scenarios in each basin, relative to 2006-2015.

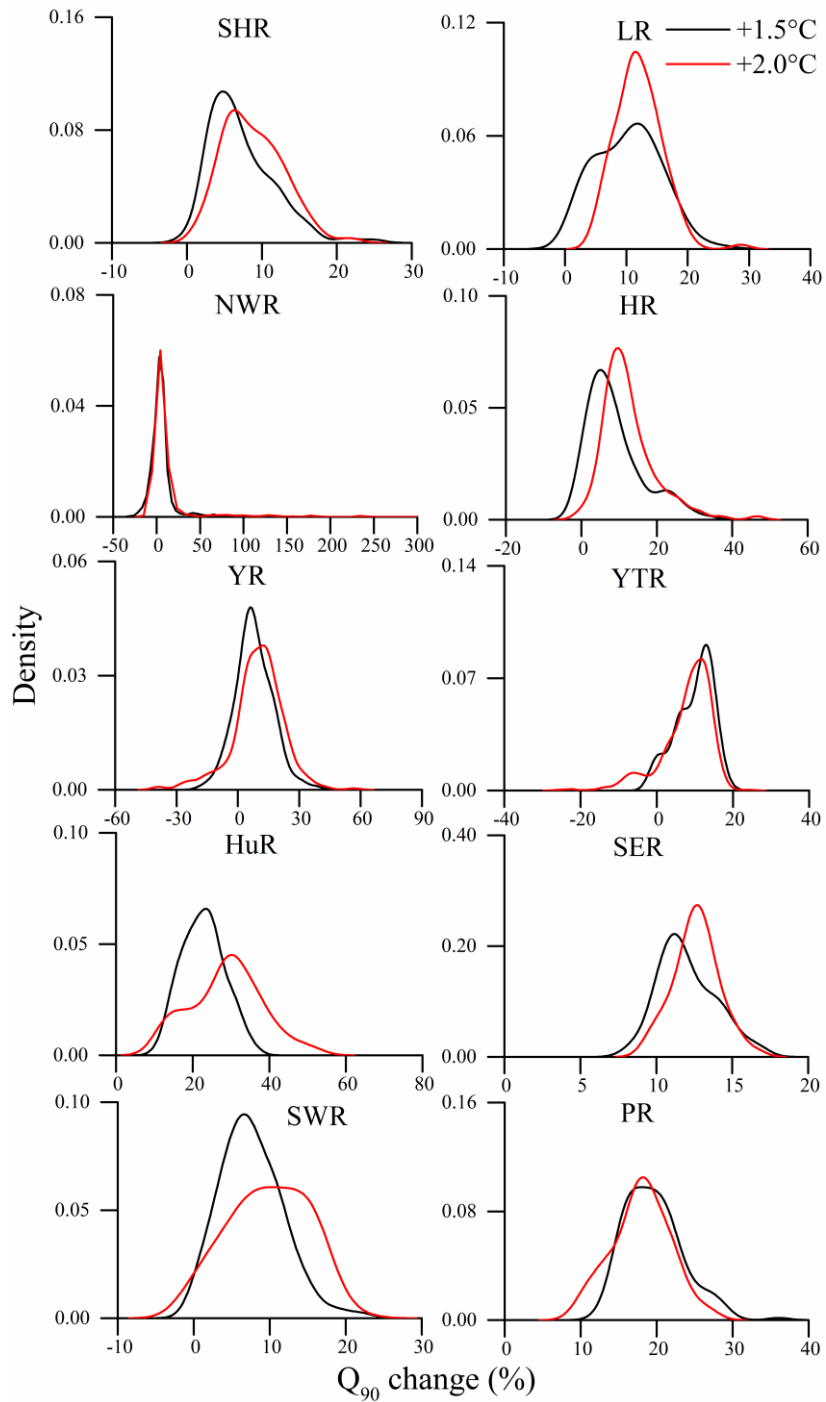


Figure A9: Probability density functions of high runoff change (%) under 1.5°C and 2.0°C warming scenarios in each basin, relative to 2006-2015.