

Analytically tractable climate-carbon cycle feedbacks under 21st century anthropogenic forcing

Steven J. Lade^{1,2,3}, Jonathan F. Donges^{1,4}, Ingo Fetzer^{1,3}, John M. Anderies⁵, Christian Beer^{3,6}, Sarah E. Cornell¹, Thomas Gasser⁷, Jon Norberg¹, Katherine Richardson⁸, Johan Rockström¹, and Will Steffen^{1,2}

¹Stockholm Resilience Centre, Stockholm University, Stockholm, Sweden

²Fenner School of Environment and Society, The Australian National University, Canberra, Australian Capital Territory, Australia

³Bolin Centre for Climate Research, Stockholm University, Stockholm, Sweden

⁴Potsdam Institute for Climate Impact Research, Potsdam, Germany

⁵School of Sustainability and School of Human Evolution and Social Change, Arizona State University, Tempe, Arizona, USA

⁶Department of Environmental Science and Analytical Chemistry (ACES), Stockholm University, Stockholm, Sweden

⁷International Institute for Applied Systems Analysis, Laxenburg, Austria

⁸Center for Macroecology, Evolution, and Climate, University of Copenhagen, Natural History Museum of Denmark, Copenhagen, Denmark

Correspondence to: Steven Lade (steven.lade@su.se)

Abstract. Changes to climate-carbon cycle feedbacks may significantly affect the Earth System's response to greenhouse gas emissions. These feedbacks are usually analysed from numerical output of complex and arguably opaque Earth System Models (ESMs). Here, we construct a stylized global climate-carbon cycle model, test its output against **complex comprehensive** ESMs, and investigate the strengths of its climate-carbon cycle feedbacks analytically. The analytical expressions we obtain aid understanding of carbon-cycle feedbacks and the operation of the carbon cycle. **We use our results to analytically study the relative strengths of different** **Specific results include that: different feedback formalisms measure fundamentally the same** climate-carbon cycle **feedbacks and how they may change in the future, as well as to compare different feedback formalisms** **processes; temperature dependence of the solubility pump, biological pump, and CO₂ solubility all contribute approximately equally to the ocean climate-carbon feedback; and concentration-carbon feedbacks may be more sensitive to future climate change than climate-carbon feedbacks.** Simple models such as that developed here also provide 'workbenches' for simple but mechanistically based explorations of Earth system processes, such as interactions and feedbacks between the Planetary Boundaries, that are currently too uncertain to be included in **complex comprehensive** ESMs.

1 Introduction

The exchanges of carbon between the atmosphere and other components of the Earth system, collectively known as the carbon cycle, currently constitute important negative (dampening) feedbacks on the effect of anthropogenic carbon emissions on climate change. Carbon sinks in the land and the ocean each currently take up about one quarter of anthropogenic carbon emissions each year (Le Quéré et al., 2016). These feedbacks are expected to weaken in the future, amplifying the effect of

anthropogenic carbon emissions on climate change (Ciais et al., 2013). The degree to which they will weaken, however, is highly uncertain, with Earth System Models predicting a wide range of land and ocean carbon uptakes even under identical atmospheric concentration or emission scenarios (Joos et al., 2013).

Here, we develop a stylised model of the global carbon cycle and its role in the climate system to explore the potential weakening of carbon cycle feedbacks on policy-relevant time scales (<100 years) up to the year 2100. Whereas **complex comprehensive** Earth System Models (ESMs) are generally used for projections of climate, models of the Earth System of low complexity are useful for improving mechanistic understanding of Earth system processes and for enabling learning (Randers et al., 2016; Raupach, 2013). Compared to **complex comprehensive** Earth System Models, our model has far fewer parameters, can be computed much more rapidly, can be more rapidly understood by both researchers and policy-makers, and is even sufficiently simple that analytical results about feedback strengths can be derived. **Compared to previous stylised models (Gregory et al., 2009; Joos et al., 1996; Meinshausen et al., 2011a, c; Gasser et al., 2017a), our model features simple mechanistic representations, as opposed to parametric fits to ESM output, of aggregated carbon uptake both on land and in the ocean.** Our stylised and mechanistically based climate-carbon cycle model also offers a workbench for investigating the influence of mechanisms that are at present too uncertain, poorly defined or computationally intensive to include in current Earth System Models. Such stylised models are valuable for exploring the uncertain, but potentially highly impactful Earth system dynamics such as interactions between climatic and social tipping elements (Lenton et al., 2008; Kriegler et al., 2009; Schellnhuber et al., 2016) and the planetary boundaries (Rockström et al., 2009; Steffen et al., 2015).

Analyses of climate-carbon cycle feedbacks conventionally distinguish four different feedbacks (Fig. 1) (Friedlingstein, 2015; Ciais et al., 2013). (i) In the land concentration-carbon feedback, higher atmospheric carbon concentration generally leads to increased carbon uptake due to the fertilisation effect, where increased CO₂ stimulates primary productivity. (ii) In the ocean concentration-carbon feedback, physical, chemical and biological processes interact to sink carbon. Atmospheric CO₂ dissolves and dissociates in the upper layer of the ocean, to be then transported deeper by physical and biological processes. The concentration-carbon feedbacks are generally negative, dampening the effects of anthropogenic emissions. (iii) In the land climate-carbon feedback, higher temperatures, along with other associated changes in climate, generally lead to decreased storage on land at the global scale, for example due to the increase in respiration rates with temperature. (iv) In the ocean climate-carbon feedback, higher temperatures generally lead to reduced carbon uptake by the ocean, for example due to decreasing solubility of CO₂. The climate-carbon feedbacks are generally positive, amplifying the effects of carbon emissions.

We begin by introducing our stylised carbon cycle model and testing its output against historical observations and future **predictions projections** of Earth System Models. Having thus established the model's performance, we introduce different formalisms used to quantify climate-carbon cycle feedbacks and describe how they can be computed both numerically and analytically from the model. We use our results to analytically study the relative strengths of different climate-carbon cycle feedbacks and how they may change in the future, as well as to compare different feedback formalisms. We conclude by speculating on how this stylised model could be used as a 'workbench' for studying a range of complex Earth system processes, especially those related to the biosphere.

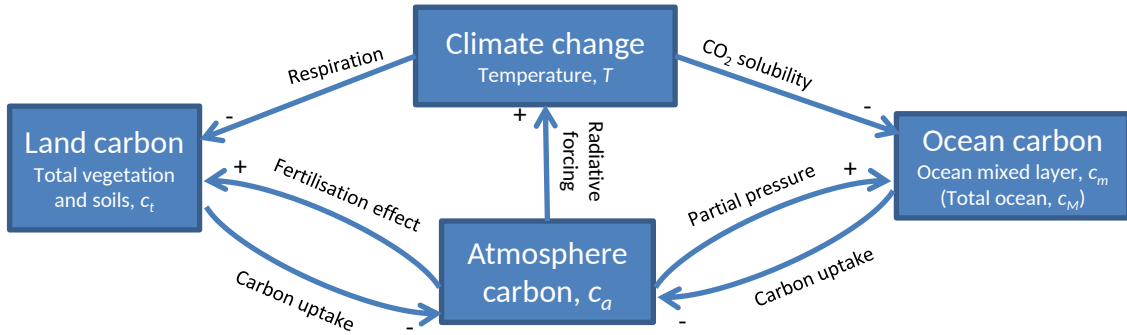


Figure 1. Climate-carbon cycle feedbacks and state variables as represented in the stylized model introduced in this paper. Carbon stored on land in vegetation and soils is aggregated into a single stock c_l . Ocean mixed layer carbon, c_m , is the only explicitly modelled ocean stock of carbon; though to estimate carbon-cycle feedbacks we also calculate total ocean carbon (Eq. (7)).

2 Model formulation

There is a well-developed literature on stylized models used for gaining a deeper understanding of Earth system dynamics and even for successfully emulating the outputs of **complex comprehensive** coupled atmosphere-ocean and carbon cycle models (Meinshausen et al., 2011a, c; Gasser et al., 2017a). Many such models are based on Budyko-Sellers (Budyko, 1969; Sellers, 1969) type energy balance models and come in two flavors: models of mathematical interest motivated by the Earth system dynamics, and models focused on capturing essential features of the Earth system to reproduce broad empirical patterns. The former tend to focus on characterizing stability (e.g. Cahalan and North, 1979), and the existence of multiple equilibria given particular feedbacks (ice cap albedo) (e.g. North, 1990; Diaz et al., 1997) or details of possible bifurcation structures Arcoya et al. (1998) in such models. Examples of the latter include studies of snowline stability (Mengel et al., 1988).

In the spirit of the energy-balance models described above, we constructed (Anderies et al., 2013; Gregory et al., 2009; Joos et al., 1996; Meinshausen et al., 2011a, c; Gasser et al., 2017a). We developed a combination of existing models and new formulations to construct a global climate-carbon cycle model with the following characteristics:

1. The model includes processes relevant to the carbon cycle and its interaction with climate on the policy-relevant time scale of the present to the year 2100. **Stylised carbon cycle models often do not, for example, include explicit representations of the solubility or biological pumps.**
2. The model produces quantitatively plausible output for carbon stocks and temperature changes.
3. All parameters have a direct biophysical or biogeochemical interpretation, although these parameters may be at an aggregated scale (for example, a parameter for the net global fertilisation effect, rather than leaf physiological parameters). We

avoid [models or model components constructed by purely parametric fits to Earth System Models](#), such as impulse response functions ([Kamiuto, 1994](#); [Gasser et al., 2017b](#); [Joos et al., 1996](#); [Harman et al., 2011](#)), to [historical data or projections of Earth System Models](#) ([Kamiuto, 1994](#); [Gasser et al., 2017b](#); [Joos et al., 1996](#); [Harman et al., 2011](#); [Gregory et al., 2009](#); [Meinshausen et al., 2011a](#)).

- 5 4. The model is sufficiently simple that calculation of the model’s feedback strengths is readily analytically tractable. This tractability may come at the expense of complexity, for example multiple terrestrial carbon compartments, or accuracy at millennial or longer time scales ([Lenton, 2000](#); [Randers et al., 2016](#)).

Building on the work of [Anderies et al. \(2013\)](#), we constructed a simple model with globally aggregated stocks of: atmospheric carbon in the form of carbon dioxide, c_a ; terrestrial carbon, including vegetation and soil carbon, c_t ; and dissolved inorganic carbon (DIC) in the ocean mixed layer, c_m . The model’s fourth state variable is global mean surface temperature relative to pre-industrial, $\Delta T = T - T_0$. Compared to [Anderies et al. \(2013\)](#), our model includes more realistic representation of terrestrial and ocean processes but without increase in model complexity, as well as time lags for climate response to CO_2 .

We now describe the dynamics of the land carbon stock, the ocean carbon stock, and atmospheric carbon and temperature in our model.

15 2.1 Land

Net primary production (NPP) is the net uptake of carbon from the atmosphere by plants through photosynthesis. NPP is expected to increase with concentration of atmospheric carbon dioxide c_a . A simple parameterisation of this so-called fertilisation effect is ‘Keeling’s formula’ for global NPP ([Bacastow et al., 1973](#); [Alexandrov et al., 2003](#)):

$$\text{NPP}(c_a) = \text{NPP}_0 \left(1 + K_C \log \frac{c_a}{c_{a0}} \right) \quad (1)$$

- 20 Throughout this article, the subscript ‘0’ denotes the value of the quantity at a pre-industrial equilibrium, and ‘log’ denotes natural logarithm. Keeling’s formula incorporates all climate change-related effects on global NPP occurring simultaneously with carbon dioxide changes, for example, precipitation and temperature effects, in addition to fertilisation effects. The curvature of the log function represents limitations to NPP such as changing carbon-use efficiency ([Körner, 2003](#)) or nutrient limitations ([Zaehle et al., 2010](#)). [Constant climate sensitivity is also a key assumption, otherwise the relative weight of climate and](#)
- 25 [CO₂ effects on NPP would change.](#)

At the same time, carbon loss from the world’s soils through respiration, R , is expected to increase at higher global mean surface temperature, ΔT . We approximate the net temperature response of global soil respiration using the Q10 formalism $R(\Delta T) = R_0 Q_R^{\Delta T/10} c_t/c_{t0}$ ([Xu and Shang, 2016](#)), where Q_R is the proportional increase in respiration for a 10 K temperature increase. We assume that pre-industrial soil respiration is balanced by pre-industrial net primary productivity, $R_0 = \text{NPP}_0$. To

30 avoid introducing multiple pools of carbon into the model, we also have to assume that global soil respiration is proportional to total land carbon (rather than soil carbon). Respiration in our model implicitly also includes other carbon-emitting processes such as wildfires or insect disturbances.

It follows that the change in global terrestrial carbon storage is

$$\frac{dc_t}{dt} = \text{NPP}_0 \left(1 + K_C \log \frac{c_a}{c_{a0}} \right) - \frac{\text{NPP}_0}{c_{t0}} Q_R^{T/10 \Delta T/10} c_t - \text{LUC}(t).$$

In this expression we have also included loss of terrestrial carbon due to land use emissions $\text{LUC}(t)$. We rearrange this expression to give

$$5 \quad \frac{dc_t}{dt} = \frac{\text{NPP}_0}{c_{t0}} Q_R^{\Delta T/10} [K(c_a, \Delta T) - c_t] - \text{LUC}(t) \quad (2)$$

where the terrestrial carbon carrying capacity is

$$K(c_a, \Delta T) = \frac{1 + K_C \log \frac{c_a}{c_{a0}}}{Q_R^{\Delta T/10}} c_{t0}. \quad (3)$$

For model simplicity, we do not explicitly model factors affecting terrestrial carbon uptake such as seasonality, species interactions, species functionality, migration, and regional variability.

10 2.2 Ocean

In the upper ocean mixed layer, mixing processes allow exchange of carbon dioxide with the atmosphere. The solubility and biological pumps then transport carbon from the mixed layer into the deep ocean. Since the residence time of deep ocean carbon is several centuries, we explicitly only model the dynamics of upper ocean carbon while the deep ocean is treated merely as an extremely large carbon reservoir. We include the effects of ocean carbon chemistry, the solubility and biological pumps, and
 15 ocean-atmosphere diffusion on upper ocean mixed layer carbon.

Ocean uptake of carbon dioxide from the atmosphere is chemically buffered by other species of dissolved inorganic carbon such as HCO_3^- and CO_3^{2-} , which are produced when dissolved CO_2 reacts with water. The reaction of CO_2 with water, producing these other species, reduces the partial pressure of CO_2 in water allowing for more ocean CO_2 uptake before equilibrium with the atmosphere is achieved. The Revelle factor, r , is defined as the the ratio of the proportional change in
 20 carbon dioxide content to the proportional change in total dissolved inorganic carbon (Sabine et al., 2004; Goodwin et al., 2007). For simplicity, we assume a constant Revelle factor, except for the temperature dependence, D_T , of the solubility of CO_2 in sea water. Therefore CO_2 diffuses between the atmosphere and ocean mixed layer at a rate proportional to

$$c_a - p(c_m, \Delta T), \quad (4)$$

where

$$25 \quad p(c_m, \Delta T) = c_{a0} \left(\frac{c_m}{c_{m0}} \right)^r \frac{1}{1 - D_T \Delta T}, \quad (5)$$

since at pre-industrial equilibrium $p(c_{m0}, 0) = c_{a0}$.

There are two main mechanisms by which carbon is transported out of the upper ocean mixed layer into the deep ocean stocks: the solubility and biological pumps. In the solubility pump, overturning circulations exchange mixed layer and deep

ocean water. We assume that the large size of the deep ocean means its carbon concentrations are negligibly changed over the 100-year time scales relevant for the model. The net transport of carbon to the lower ocean by the solubility pump can therefore be represented by

$$w_0(1 - w_T \Delta T)(c_m - c_{m0}),$$

- 5 where w_0 is the (proportional) rate at which mixed layer ocean water is exchanged with the deep ocean and w_T parameterises weakening of the overturning circulation that is expected to occur with future climate change (Collins et al., 2013).

The biological pump refers to the sinking of biomass and organic carbon produced in the upper ocean to deeper ocean layers (Volk and Hoffert, 1985). In the models on which the IPCC reports are based, a weakening of the biological pump is predicted under climate change, mostly due to a decrease in primary production, in turn due to increases in thermal stratification of ocean
10 waters (Bopp et al., 2013). We represent this climate-induced weakening in a single approximately linear factor, so that the rate of carbon transported out of the upper ocean mixed layer by the biological pump to lower deep sea layers is given by

$$B(\Delta T) = B_0(1 - B_T \Delta T).$$

As on land, we assume a pre-industrial equilibrium where the biological pump was balanced by transport of carbon back to the mixed layer by ocean circulation. We neglect deposition of organic carbon to the sea floor and the long time-scale variations
15 in the biological pump that may have contributed to glacial-interglacial cycles (Sigman and Boyle, 2000). We therefore add an additional term $B(\Delta T) - B(0)$ to the transport of carbon from the ocean mixed layer to the deep ocean. Organic carbon that does not sink to the deep ocean is rapidly respired back to forms of inorganic carbon; the ocean mixed layer stock of organic carbon is therefore small, around 3 PgC (Ciais et al., 2013), and we do not count it in the model's carbon balance.

By combining the expressions for the solubility and biological pumps with ocean-atmosphere carbon dioxide diffusion, we
20 obtain the rate of change of ocean mixed layer DIC, c_m :

$$\frac{dc_m}{dt} = \frac{Dc_{m0}}{rp(c_{m0}, 0)}(c_a - p(c_m, \Delta T)) - w_0(1 - w_T \Delta T)(c_m - c_{m0}) - B(\Delta T) + B(0), \quad (6)$$

The coefficient of the first term was chosen such that $1/D$ is the time scale on which carbon dioxide diffuses between the atmosphere and the ocean mixed layer (that is, derivative of the first term with respect to c_m , evaluated at the pre-industrial equilibrium, is D).

25 The carbon content of the deep ocean does not explicitly enter Eq. (6). To evaluate ocean carbon feedbacks, however, we require the change in total ocean carbon content c_M compared to pre-industrial conditions. We calculate this as ocean mixed layer carbon plus carbon transported to the deep ocean by the solubility and biological pumps:

$$\Delta c_M = \Delta c_m + \int_0^t [w_0(1 - w_T \Delta T)(c_m(t) - c_{m0}) + B(\Delta T) - B(0)] dt \quad (7)$$

We do not explicitly model factors such as the thickness of ocean stratification layers, spatial variation of stratification, nutri-
30 ent limitations to NPP, or changes in ocean circulation due to wind forcing, freshwater forcing or sea-ice processes (Bernardello et al., 2014).

2.3 Atmosphere

Carbon is conserved within the We define c_s to be the total carbon in our 'system' comprised by the ocean mixed layer, atmospheric and terrestrial carbon stocks., that is,

$$c_a + c_t + c_m = c_s. \quad (8)$$

- 5 The only processes that affect the total carbon in the model are human emissions of fossil carbon into the atmosphere, $e(t)$, and export of carbon into the deep ocean by the solubility and biological pumps, giving

$$c_a + c_t + c_m \frac{dc_s}{dt} = c_{a0} + c_{t0} + c_{m0} + Ee(t) - \int_0^t w_0(1 - w_T \Delta T)(c_m - c_{m0}) dt - \int_0^t (B(\Delta T) - B(0)) dt., \quad (9)$$

in which the initial value of c_s is $c_{a0} + c_{t0} + c_{m0}$. To obtain the dynamics of atmosphere carbon stocks, we therefore solve the differential equation (9) and then use the carbon balance equation (8) to find c_a .

- 10 Increasing atmospheric carbon dioxide levels c_a cause an change in global mean surface temperature, ΔT , compared to its pre-industrial level. To model the response of ΔT , we follow the formulation of Kellie-Smith and Cox (2011), which includes a logarithmic response as per the Arrhenius law and a delay of time scale τ . Physically, this time delay is primarily due to the heat capacity of the ocean.

$$\frac{dT}{dt} \frac{d\Delta T}{dt} = \frac{1}{\tau} \left(\frac{\lambda}{\log 2} \log \left(\frac{c_a}{c_{a0}} \right) - \Delta T \right). \quad (10)$$

- 15 The climate sensitivity λ specifies the increase of temperature in response to a doubling of atmospheric carbon dioxide levels. The climate sensitivity accounts for energy balance feedbacks such as from clouds and albedo. We use the transient climate sensitivity (Collins et al., 2013) as this specifies the response of the climate system over an approximately 100-year time scale (see section 3).

Table 1. Model parameters.

Name	Symbol	Value	Reference/Notes
Pre-industrial atmospheric carbon	c_{a0}	589 PgC	Ciais et al. (2013)
Pre-industrial soil and vegetation carbon	c_{t0}	1875 PgC	1325 PgC of soil organic carbon in top metre of soil (Köchy et al., 2015) plus midrange of vegetation carbon estimate by the Ciais et al. (2013).
Pre-industrial ocean mixed layer carbon	c_{m0}	900 PgC	Ciais et al. (2013)
Climate sensitivity (TCR)	λ	1.8 K	Multi-model mean transient climate response (Flato et al., 2013)
Climate lag	τ	4 yr	Calculations on ocean heat uptake, the primary cause of climate lag, indicate a response time (e -folding time) of 4 yr for time scales up to centuries, before deep ocean heat uptake dominates at millennial time scales (Gregory et al., 2015). This result is consistent with simulations that indicate that maximum warming after a CO ₂ pulse is reached after only a decade (Ricke and Caldeira, 2014) and with results from impulse response model experiments (Joos et al., 2013).
Atmosphere-ocean mixed layer CO ₂ equilibration rate	D	1 yr ⁻¹	Time scale of approximately 1 year, although highly spatially dependent (Jones et al., 2014).
Revelle (buffer) factor	r	12.5	Williams et al. (2016)
Solubility temperature effect	D_T	4.23%/K	Takahashi et al. (1993); Ciais et al. (2013, p498)
Pre-industrial biological pump	B_0	13 PgC/yr	Ciais et al. (2013)
Temperature dependence of biological pump	B_T	3.2%/K	12% decrease (Bopp et al., 2013, Fig 9b) after approximately 3.7 K climate change (Collins et al., 2013)
Solubility pump rate	w_0	0.1 yr ⁻¹	DIC flux rate from ocean mixed layer divided by DIC stock in mixed layer (Ciais et al., 2013)
Weakening of overturning circulation with climate change	w_T	10%/K	Approximate fit to values reported by Collins et al. (2013, p1095)
Terrestrial respiration temperature dependence	Q_R	1.72	Raich et al. (2002); Xu and Shang (2016). Based on soil respiration, which contributes the majority of terrestrial ecosystem respiration.
Pre-industrial NPP	NPP_0	55 PgC/yr	Wieder et al. (2015); Sitch et al. (2015)
Fertilisation effect	K_C	0.3	Estimated by substituting recent NPP \approx 60 PgC/yr (Wieder et al., 2015; Sitch et al., 2015) and recent terrestrial carbon stocks, $c_t \approx c_{t0} + 240$ (Ciais et al., 2013), into Eq. (1). Alexandrov et al. (2003) found that values between 0.3 and 0.4 are compatible with results from a process-based global NPP model.

Table 2. Model validation. Historical changes are carbon stocks in 2011 relative to stocks in 1750 (Ciais et al., 2013) and temperatures in 2012 relative to temperatures in 1880 (Hartmann et al., 2013). Predicted future changes are carbon stocks in 2100 compared to 2012 (Collins et al., 2013) and global mean surface temperatures (GMST) averaged over 2081–2100 relative to 1986–2005 (Collins et al., 2013), under the range of RCP scenarios.

	Ocean carbon changes (PgC)		Land carbon changes (PgC)		GMST change, ΔT (K)	
	IPCC AR5	Model result	IPCC AR5	Model result	IPCC AR5	Model result
Historical	155 ± 30	95	-30 ± 45	26	0.85 [0.65 to 1.06]	0.82
RCP2.6	150 [105 to 185]	174	65 [-50 to 195]	67	1.0 [0.3 to 1.7]	0.5
RCP4.5	250 [185 to 400]	243	230 [55 to 450]	135	1.8 [1.1 to 2.6]	1.2
RCP6	295 [265 to 335]	278	200 [-80 to 370]	168	2.2 [1.4 to 3.1]	1.7
RCP8.5	400 [320 to 635]	340	180 [-165 to 500]	207	3.7 [2.6 to 4.8]	2.4

3 Model parameterisation and validation

Our climate-carbon cycle model has twelve parameters, four state variables and three nontrivial initial conditions (by definition, the initial value of ΔT is 0). We choose to parameterise each process with the best available knowledge about that process, rather than try to force the model to fit historical data. This is in line with our stated model purposes of understanding and learning, rather than prediction. Parameters for the response of climate to carbon dioxide (λ , τ) and two parameters of the response of the ocean to changing temperature (B_T and w_T) were set based on the output of atmosphere-ocean global circulation models. For the climate sensitivity λ , transient climate response was used. All other parameters are based on historical observations of the global carbon cycle (Table 1).

Unless otherwise noted, we perform emissions-based model runs using harmonized historical data and future RCP scenarios on fossil fuel emissions [$E(t)e(t)$] and land use emissions [LUC(t)] (Meinshausen et al., 2011b). While the focus of our study is on future climate change, from the present day until 2100, we begin simulations in 1750 to compare our model against historical observations. Time series of the model output are displayed in Fig. 2. Model solutions were approximated in continuous time.

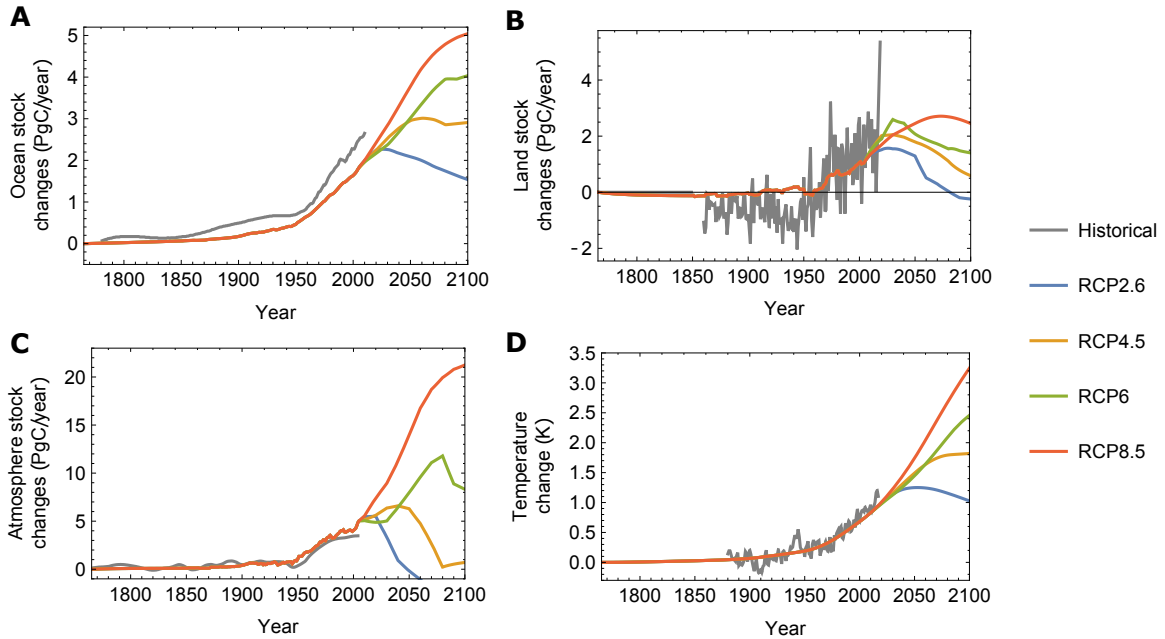


Figure 2. Model output under forcing from different RCP scenarios: (a) land carbon stock change, (b) ocean carbon stock changes, (c) atmospheric carbon stock change, and (cd d) global mean surface temperature change. Historical changes in carbon stocks are from Le Quéré et al. (2016) and historical temperature anomalies are from NOAA (2018). The historical temperature dataset of NOAA (2018), which is relative to the period 1901-2000, has been offset to match the model's average temperature anomaly over the same period.

4 Feedback analysis

Our climate-carbon cycle model is sufficiently simple that the strengths of its feedbacks can be estimated analytically. Such computations are useful since the resulting symbolic expressions can be used to identify how parameters of interest affect feedback strengths and model dynamics. In this section we introduce definitions of feedback strengths, calculate climate-carbon cycle feedbacks analytically and numerically, and estimate feedback nonlinearities.

4.1 Definitions

There are multiple measures of carbon cycle feedbacks currently in use. We here review three of the most common measures.

Consider an emission of E PgC over some time period to the atmosphere. In the absence of carbon cycle feedbacks, the atmospheric carbon content would increase by $\Delta c_a^{\text{off}} \equiv E$. With a feedback switched on, the atmospheric carbon content would actually change by Δc_a^{on} . The *feedback factor* is (Zickfeld et al., 2011)

$$F = \frac{\Delta c_a^{\text{on}}}{\Delta c_a^{\text{off}}}. \quad (11)$$

Out of the total atmospheric carbon change Δc_a^{on} , the carbon cycle feedback contributes (Hansen et al., 1984)

$$\Delta c_a^{\text{feedback}} = \Delta c_a^{\text{on}} - \Delta c_a^{\text{off}}. \quad (12)$$

Gain is the change in a feedback to atmospheric carbon content caused by changes in atmospheric carbon content:

$$g = \frac{\Delta c_a^{\text{feedback}}}{\Delta c_a^{\text{on}}}. \quad (13)$$

5 Gain and feedback factor are related by

$$F = \frac{1}{1 - g}. \quad (14)$$

An alternative formalism, introduced by Friedlingstein et al. (2006), allows feedbacks to be characterised from carbon cycle model output. Climate models are not required, except as a forcing to the carbon cycle model. The formalism relates the changes in terrestrial and marine carbon stocks to changes in global mean temperature and atmospheric carbon dioxide as

10 follows:

$$\Delta c_t = \beta_L \Delta c_a + \gamma_L \Delta T \quad (15)$$

$$\Delta c_M = \beta_O \Delta c_a + \gamma_O \Delta T. \quad (16)$$

Here the β_L and β_O feedback parameters are the land and ocean, respectively, carbon sensitivities to atmospheric carbon dioxide changes Δc_a . Likewise, γ_L and γ_O are the land and ocean, respectively, carbon sensitivities to temperature changes ΔT . Note that c_M denotes the total marine carbon stock, both mixed layer and deep ocean. The differences Δc_a , etc., are usually calculated over the duration of a simulation. To isolate the β and γ feedback parameters, simulations are conducted with biogeochemical coupling only and with radiative coupling only (Gregory et al., 2009).

In both the formalisms introduced thus far, the feedback measures are calculated by examining the changes in carbon stocks at the end point of model simulations. In contrast, Boer and Arora (2009) estimate sensitivities Γ and B of the instantaneous carbon *fluxes* from atmosphere to land and ocean:

$$\frac{dc_t}{dt} = B_L \Delta c_a + \Gamma_L \Delta T \quad (17)$$

$$\frac{dc_M}{dt} = B_O \Delta c_a + \Gamma_O \Delta T. \quad (18)$$

These feedback parameters B and Γ are usually computed for all time points during a simulation, again using biogeochemically coupled and radiatively coupled simulations.

25 The two sets of parameters (B, Γ) and (β, γ) are related by

$$\beta \Delta c_a = \int B \Delta c_a dt \quad (19)$$

$$\gamma \Delta T = \int \Gamma \Delta T dt. \quad (20)$$

Accordingly, Boer and Arora (2013) refer to B and Γ as *direct feedback parameters* and to β and γ as *time-integrated feedback parameters*.

4.2 Analytical feedback strengths based on equilibrium changes

Analytical approximations to the strengths of carbon cycle feedbacks in our model require choosing a time scale on which the feedbacks will be calculated. Numerically estimated feedback factors [Eq. (11)] and time-integrated feedback parameters [Eqs. (15-16)] are conventionally calculated using carbon stock changes over 100 years or more. Responses on the longest 5 time scales of our model are therefore most relevant if our analytical approximates are to approximate numerically calculated values. While recognising that the Earth's climate system is presently far from equilibrium, we use changes in the equilibrium state of the model to approximate model responses over long time scales.

We analytically calculate the gains associated with each of the feedback loops in Fig. 1 as follows. We calculate the sensitivity (mathematically, partial derivative) of the equilibrium value of each quantity in the feedback loop with respect to the preceding 10 quantity in the loop. We form the product of the derivatives (as per the chain rule of differentiation) to estimate the gain of that feedback loop. For example, to calculate the land climate-carbon gain we calculate the sensitivity of equilibrium temperature with respect to changes in atmospheric carbon content ($\partial T^*/\partial c_a$), multiplied by the sensitivity of equilibrium terrestrial carbon with respect to changes in temperature ($\partial c_t^*/\partial T$), multiplied by the sensitivity of equilibrium atmospheric carbon with respect to changes in terrestrial carbon ($\partial c_a^*/\partial c_t$).

$$\begin{aligned}
 15 \quad \text{Land climate-carbon equilibrium gain} \quad g_{TL}^* &\equiv \frac{\partial T^*}{\partial c_a} \frac{\partial c_t^*}{\partial T} \frac{\partial c_a^*}{\partial c_t} \\
 \text{Land concentration-carbon equilibrium gain} \quad g_L^* &\equiv \frac{\partial c_t^*}{\partial c_a} \frac{\partial c_a^*}{\partial c_t} \\
 \text{Ocean climate-carbon equilibrium gain} \quad g_{TO}^* &\equiv \frac{\partial T^*}{\partial c_a} \frac{\partial c_m^*}{\partial T} \frac{\partial c_M}{\partial c_m} \frac{\partial c_M}{\partial T} \frac{\partial c_a^*}{\partial c_M} \\
 \text{Ocean concentration-carbon equilibrium gain} \quad g_O^* &\equiv \frac{\partial c_m^*}{\partial c_a} \frac{\partial c_M}{\partial c_m} \frac{\partial c_M}{\partial c_a} \frac{\partial c_a^*}{\partial c_M}
 \end{aligned}$$

The subscript T denotes that the feedback involves temperature. Asterisks (*) denote equilibrium quantities. From these gains, 20 the feedback factors F_{TL}^* , F_L^* , F_{TO}^* and F_O^* can be calculated using Eq. (14). We label these gains and feedback factors g^* and F^* , respectively, to denote they are based on an equilibrium approximation, not directly from transient simulations as estimated by Zickfeld et al. (2011). We calculate $\frac{\partial c_m^*}{\partial c_a} \frac{\partial c_M}{\partial c_m}$ rather than simply $\frac{\partial c_M^*}{\partial c_a}$ as it is c_m that is a state variable in our model, from which we then estimate c_M .

The derivatives of c_a^* are trivial to calculate: by carbon balance, $\frac{\partial c_a^*}{\partial c_t} = \frac{\partial c_a^*}{\partial c_M} = -1$. To calculate $\frac{\partial c_m^*}{\partial T}$ we set $0 = \frac{dc_m}{dt} \equiv f(c_m^*, c_a, T)$, 25 use the chain rule to obtain $0 = \frac{\partial f}{\partial c_m^*} \frac{\partial c_m^*}{\partial T} + \frac{\partial f}{\partial T}$, and then solve for $\frac{\partial c_m^*}{\partial T}$ in terms of the partial derivatives of f . Similar procedures provide $\frac{\partial c_m^*}{\partial c_a}$ and the derivatives of T^* and c_t^* . the derivatives of c_t^* , we set $0 = \frac{dc_t}{dt}$, solve for c_t and calculate the necessary derivatives. A similar procedure provides $\frac{\partial T^*}{\partial c_a}$.

The remaining derivative is $\partial c_M/\partial c_m$ derivatives are $\frac{\partial c_M}{\partial T}$ and $\frac{\partial c_M}{\partial c_a}$. Carbon sunk into the deep ocean is substantial and cannot be neglected. Deep ocean carbon storage equilibrates on time scales of millennia or more, however, far longer than the time 30 scales of interest in this model (we therefore write $\partial c_M/\partial c_m$ not $\partial c_M^*/\partial c_m$ derivatives of c_M rather than c_M^*). We therefore cannot use the same equilibrium approach as for the other variables. Instead, we use derive approximations to Eq. (7) with the following approximations as follows. First, we neglect the temperature dependence of the biological pump and the rate of the overturning circulation, as for this derivative we are

primarily interested in the effects of changing carbon stocks, not temperatures. Second, let us assume a scenario where the trajectory of ocean mixed layer DIC c_m observe that in the SRES A2 scenario used below both $c_m(t)$ and $\Delta T(t)$ can be approximated by a linear increase from c_{m0} to c_m as linear increases, starting at $c_m = c_{m0}$ and $\Delta T = 0$ respectively, over a time interval t_{lin} . We estimate this time interval by $t_{\text{lin}} = (c_m(t_{\text{end}}) - c_{m0})/c'_m(t_{\text{end}})$ using the value c_m and gradient c'_m at the end of the simulation period. Using this approximation and

5 Eq. ,

$$\frac{\partial c_M}{\partial c_m} \approx 1 + M$$

where $M = w_0 t_{\text{lin}}/2$. The value of M will be strongly scenario-dependent We obtain

$$\Delta c_M \approx c_m - c_{m0} + w_0 \left(\frac{1}{2} - \frac{1}{3} w_T \Delta T \right) (c_m - c_{m0}) t_{\text{lin}} - \frac{1}{2} B_0 B_T \Delta T t_{\text{lin}}. \quad (21)$$

We use this equation to calculate the derivatives $\frac{\partial c_M}{\partial T}$ and $\frac{\partial c_M}{\partial c_a}$. Evaluating these derivatives will involve the derivatives $\frac{\partial c_m}{\partial T}$ and $\frac{\partial c_m}{\partial c_a}$. Since partial pressures across the air-sea interface equilibrate rapidly on the time scale of the model ($D = 1\text{yr}^{-1}$, Table 1), we assume that $c_a \approx p(c_m, \Delta T)$, rearrange for c_m and then calculate the appropriate derivatives from the resulting equation.

We analytically estimate equilibrium versions of the time-integrated feedback parameters of Friedlingstein et al. (2006) using a similar approach:

$$15 \quad \gamma_L^* = \frac{\partial c_t^*}{\partial T}$$

$$\beta_L^* = \frac{\partial c_t^*}{\partial c_a}$$

$$\gamma_O^* = \frac{\partial c_m^*}{\partial T} \frac{\partial c_M}{\partial c_m} \frac{\partial c_M}{\partial T}$$

$$\beta_O^* = \frac{\partial c_m^*}{\partial c_a} \frac{\partial c_M}{\partial c_m} \frac{\partial c_M}{\partial c_a}.$$

20 Since the ocean component of the model has multiple processes that respond to temperature, some analytical forms were too complicated for easy visual inspection (Table A1). We derived approximate analytical feedbacks by comparing the magnitudes of terms in the numerator and denominator of the feedback measures , and by expanding numerators by expanding in power series of $D_T T$ and c_a/c_{a0} .

4.3 Analytical feedback strengths based on carbon fluxes

We estimate the direct feedback parameters as follows:

$$\begin{aligned}
 \Gamma_L^* &= \left. \frac{dc_t}{dt} \right|_{c_a=c_{a0}} \frac{1}{\Delta T} \\
 B_L^* &= \left. \frac{dc_t}{dt} \right|_{\Delta T=0} \frac{1}{c_a - c_{a0}} \\
 5 \quad \Gamma_O^* &= \left. \frac{dc_M}{dt} \right|_{c_a=c_{a0}} \frac{1}{\Delta T} \\
 B_O^* &= \left. \frac{dc_M}{dt} \right|_{\Delta T=0} \frac{1}{c_a - c_{a0}}.
 \end{aligned}$$

Here dc_t/dt and dc_M/dt denote the atmosphere-land and atmosphere-ocean fluxes. The subscript $\Delta T = 0$ denotes a biogeochemically coupled (and radiatively decoupled) simulation and $c_a = c_{a0}$ denotes a radiatively coupled (and biogeochemically decoupled) simulation. We use the

- 10 The values of the feedback parameters are strongly scenario-dependent (Arora et al., 2013). To calculate the direct feedback parameters, we assume a standard CO₂-quadrupling concentration pathway in order to compare our results with Arora et al. (2013). This scenario has $c_a(t) = c_{a0}a^t$ where $a = 1.01$. In this scenario, $\frac{1}{c_a} \frac{dc_a}{dt} = \log a$ and, ignoring an initial exponential transient, $\frac{dT}{dt} = \lambda \log a / \log 2$.

- For the atmosphere-land carbon flux, the calculation is straightforward under the following assumptions. We assume that
 15 $NPP_0/c_{t0} \gg \log a$ so that c_t tracks its carrying capacity $c_t \approx K$ [Eq. (2)]. We also ignore land use change, so that $\frac{dc_t}{dt} \approx \frac{dK}{dt}$. Then we calculate $\left. \frac{dK}{dt} \right|_{c_a=c_{a0}} = \frac{\partial K}{\partial T} \frac{dT}{dt}$ and $\left. \frac{dK}{dt} \right|_{\Delta T=0} = \frac{\partial K}{\partial c_a} \frac{dc_a}{dt}$.

- While the atmosphere-ocean flux could be read off directly from the first term of Eq. (6), this form is however not particularly useful. As it involves a small difference between two large quantities, c_a and $p(c_m, \Delta T)$, the size of the difference can only be estimated from numerical results and gives no immediate insight into how it depends on parameters. Furthermore, we seek to
 20 compare our analytical results to the results presented by Arora et al. (2013), in which the feedback parameters are presented as functions of c_a or ΔT only (not c_m).

- We instead derive an approximation based on time scale separation as follows. The characteristic time scales **scale** of atmosphere-ocean diffusion, **is much faster than the** solubility pump, biological pump **and or** human emissions into the atmosphere **are** D ,
 25 w_0 , B_0/c_{m0} and $\log a$ respectively. These rates are ordered $D \gg w_0 \gg \log a, B_0/c_{m0}$. ($D \gg w_0, B_0/c_{m0}, \log a$). Since atmosphere-ocean diffusion is the fastest process, ocean mixed layer carbon content rapidly gains an equilibrium $c_m = p^{-1}(c_a, \Delta T)$ with respect to atmospheric carbon content, where $p^{-1}(c_a, \Delta T)$ is the solution to $c_a = p(c_m, \Delta T)$. Ocean and atmosphere partial pressures are kept out of
 equilibrium by the next fastest process: the solubility pump. On the time scale of our model, the atmosphere-ocean flux is therefore controlled by the solubility **pump and biological pumps**, with diffusion providing a rapid coupling between ocean mixed layer and at-
 30 mosphere. An approximation for the atmosphere-ocean flux is therefore $dc_M/dt \approx w_0(1 - w_T \Delta T)(p^{-1}(c_a, \Delta T) - c_{m0})dc_M/dt \approx$
 $w_0(1 - w_T \Delta T)(p^{-1}(c_a, \Delta T) - c_{m0}) - B_0 B_T T$, which upon substitution into the definitions of B_O^* and Γ_O^* gives the forms in Table A1. Taylor series expansions and L'Hôpital's rule were then used to derive the approximate forms in Table 3.

4.4 Numerical estimation of feedback strengths

In addition to the analytical approximations to carbon cycle feedbacks derived from our model, we also estimate feedback factors from direct numerical simulations of our model. To compare the results of our model to previous studies, we use the following scenarios. To compare our results with the time-integrated feedback parameters reported by Friedlingstein et al. (2006) and the feedback factors and gains of Zickfeld et al. (2011), we employ the SRES A2 emissions scenario used in those articles. To compare our results with the direct feedback parameters of Arora et al. (2013), we use the **doubling CO₂ concentration same** scenario used in that article **in which CO₂ concentration increases 1% per year until it quadruples (approximately 140 years)**. For each scenario, we perform **three four** simulations:

1. Fully coupled simulation.
2. Completely uncoupled simulation, giving $c_a^{\text{off}}(t) = c_{a0} + \int^t E(t)dt$ for the emissions-driven scenario and the specified concentration pathway for concentration-driven scenario.
3. Biogeochemically coupled simulation. We switch off feedbacks involving temperature response to atmospheric CO₂, by setting $\lambda = 0$. **Since our model contains no radiative forcing other than changes in CO₂, temperature $\Delta T = 0$ in this simulation.** From this simulation we estimate the carbon-concentration feedback factors via land $F_L = \Delta c_a^{\text{on}} / \Delta c_a^{\text{off}} = 1 - \Delta c_t / \Delta c_a^{\text{off}}$ and ocean $F_O = \Delta c_M^{\text{on}} / \Delta c_M^{\text{off}} = 1 - \Delta c_M / \Delta c_M^{\text{off}}$, time-integrated feedback parameters $\beta_L = \Delta c_t / \Delta c_a$ and $\beta_O = \Delta c_M / \Delta c_a$, and direct feedback parameters $B_L(t) = \frac{dc_t}{dt} / (c_a - c_{a0})$ and $B_O(t) = \frac{dc_M}{dt} / (c_a - c_{a0})$.
4. Radiatively coupled simulation. We switch off feedbacks involving the carbon cycle, by setting $K_C = 0$ and changing the c_a in Eq. (6) to c_{a0} . From this simulation we estimate the carbon-climate feedback factors $F_{TL} = 1 - \Delta c_t / \Delta c_a^{\text{off}}$ and $F_{TO} = 1 - \Delta c_M / \Delta c_M^{\text{off}}$, time-integrated feedback parameters $\gamma_L = \Delta c_t / \Delta T$ and $\gamma_O = \Delta c_M / \Delta T$ **following Arora et al. (2013)**, and direct feedback parameters $\Gamma_L(t) = \frac{dc_t}{dt} / \Delta T$ and $\Gamma_O(t) = \frac{dc_M}{dt} / \Delta T$.

4.5 Feedback nonlinearity

Zickfeld et al. (2011) found, in emissions-driven scenarios, that the fully coupled simulation sunk more terrestrial and marine carbon than the sum of the biogeochemically and radiatively coupled scenarios. They refer to this difference as the non-linearity of the feedback, with the land sink contributing 80% of the nonlinearity and the ocean sink 20%. Our analytical expressions for the feedbacks can be used to obtain an alternative measure of feedback nonlinearity.

We evaluate the nonlinearity in the ocean and land climate-carbon feedbacks by $F_{TO}^*(c_a, c_m, c_t, \Delta T) - F_{TO}^*(c_{a0}, c_{m0}, c_{t0}, \Delta T)$ and $F_{TL}^*(c_a, c_m, c_t, \Delta T) - F_{TL}^*(c_{a0}, c_{m0}, c_{t0}, \Delta T)$, respectively, where the $F^*(c_{a0}, c_{m0}, c_{t0}, \Delta T)$ are analytical approximations of feedback factors from a radiatively coupled simulation (all carbon stocks are fixed at pre-industrial levels). We evaluate the nonlinearities in the ocean and land concentration-carbon feedbacks by $F_O^*(c_a, c_m, c_t, \Delta T) - F_O^*(c_a, c_m, c_t, 0)$ and $F_L^*(c_a, c_m, c_t, \Delta T) - F_L^*(c_a, c_m, c_t, 0)$, respectively, where the $F^*(c_a, c_m, c_t, 0)$ are analytical approximations of feedback factors from a biogeochemically coupled simulation (temperature is fixed at its pre-industrial level). These expressions indicate

Table 3. Feedback analysis. Gains (g), feedback factors (F), time-integrated feedback parameters (γ and β) and direct feedback parameters (Γ and B) were calculated analytically and numerically. Analytical ocean feedbacks are approximations of the exact forms in Table A1 (see Sec. 4.2. Exact forms were used to calculate numerical values. In this table, $p \equiv p(c_m, T)$. Units of the climate-carbon integrated feedback parameters are PgC/K and concentration-carbon integrated feedback parameters are PgC/ppm. Ranges for analytical results are written in the form (value at start of simulation) to (value at end of simulation). Emissions scenarios are as indicated; land use emissions were assumed to be zero. [From the results of simulations using the SRES A2 scenario we use \$t_{\text{lin}} \approx 100\$ corresponding to a period between the years 2000 and 2100.](#)

Feedback measure	Land climate-carbon feedback	Ocean climate-carbon feedback	Land conc.-carbon feedback	Ocean conc.-carbon feedback
Gain, analytical expression	$\frac{\lambda c_{t0} \left(1 + K_C \log \frac{c_a}{c_{a0}}\right) \log Q_R}{10 c_a Q_R^{\Delta T/10} \log 2}$	$\frac{\lambda D D_T (1+M) c_m}{c_a \log 2 \left(\frac{B_0 B_T}{2} + \frac{c_m D_T w_0}{2r} + \frac{w_0 w_T (c_m - c_{m0})}{3} \right)}$	$-\frac{c_{t0} K_C}{c_a Q_R^{\Delta T/10}}$	$-\frac{(1+M) c_m}{c_a r}$
Feedback factor (numerical scenario: SRES A2) (> 1 amplifies climate change; < 1 dampens climate change)				
- estimate from analytical gain	1.81 to 1.18	1.07 to 1.03 1.01 to 1.09	0.51 to 0.81	0.59 to 0.80 0.89 to 0.84
- from simulation	1.15	1.10	0.74	0.67
- Zickfeld et al. (2011)	1.25	1.22	0.66	0.71
Time-integrated feedback parameter (numerical scenario: SRES A2) (< 0 amplifies climate change; > 0 dampens climate change)				
- analytical expression	$-\frac{c_{t0} \log Q_R}{10 Q_R^{\Delta T/10}}$	$-\frac{D(1+M) c_m D_T}{B_0 B_T} \frac{t_{\text{lin}}}{2} - \frac{c_m D_T w_0 t_{\text{lin}}}{2r} - \frac{t_{\text{lin}}}{3} w_0 w_t (c_m - c_{m0})$	$\frac{c_{t0} K_C}{c_a}$	$\frac{(1+M) c_m}{c_a r}$
- estimate from analytical form	-102 to -86	-15 to -21 -3 to -67	2.04 to 0.60 0.51	1.48 to 0.51 0.26 to 0.42
- from simulation	-74	-48	0.73	1.04
- Zickfeld et al. (2011)	-129	-32	1.12	0.86
- Friedlingstein et al. (2006)	-79 (-20 to -177)	-30 (-14 to -67)	1.35 (0.2 to 2.8)	1.13 (0.8 to 1.6)
Direct feedback parameter (numerical scenario: CO ₂ doubling) (< 0 amplifies climate change; > 0 dampens climate change)				
- analytical expression	$-\frac{c_{t0} \lambda \log Q_R \log a}{10 \Delta T \log 2}$	$-\frac{w_0 c_{m0} D_T}{r} - B_0 B_T$	$\frac{c_{t0} K_C \log a}{c_a - c_{a0}}$	$\frac{w_0 c_{m0} c_a}{r c_{a0} (c_a - c_{a0})} \frac{w_0 c_{m0} c_a^{\frac{1}{2}-1}}{r c_{a0}^{\frac{1}{2}}}$
- estimate from analytical form	Fig. A1a	Fig. A1b	Fig. A1a	Fig. A1b
- from simulation	Fig. A1a	Fig. A1b	Fig. A1a	Fig. A1b
- Arora et al. (2013)		see text		
Nonlinearity	-0.43	-0.06 -0.11	0.03	0.02 0.03

the effect of temperature and atmospheric carbon on the concentration-carbon and climate-carbon feedbacks, respectively, We used the SRES A2 scenario.

5 Results and Discussion

5.1 Model evaluation

5 Most predictions of our model are within the range of model predictions produced for the IPCC's Fifth Assessment Report (Table 2). Our model estimates around 55 PgC more historical land carbon uptake than the IPCC multi-model mean, possibly due to our simplification to a single land carbon pool. Because it omits radiative forcing due to greenhouse gases other than CO₂, our model consistently underestimates future temperature changes, although in all except the RCP8.5 scenario the projections are within the IPCC model range. The purpose of our model is not to precisely predict future climate change, but to
10 serve as an approximate, mechanistically based emulator of the carbon cycle component of Earth System Models (see Sec. 2). We conclude that the model emulates historical observations and future projections of Earth System Models with sufficient accuracy for this purpose.

5.2 Feedback analysis

Both All feedback measures calculated directly from our model simulations and measures estimated from analytical approximations match well with stylised
15 model simulations, as well as most of our analytically estimated feedback measures, are within a factor of 2 of the mean output from Earth System Models reported by Friedlingstein et al. (2006) and Zickfeld et al. (2011) [Table 3; compare also Fig. A1 with figures 4-5 of Arora et al. (2013) for direct feedback parameters]. This agreement is a remarkably good agreement considering the highly stylised nature of our model. Furthermore, all of the numerically time-integrated feedback parameters from our stylised model are within the multi-model range reported by Friedlingstein et al. (2006). This agreement
20 serves as additional validation of our model as well as validation of the approximations used to calculate analytical feedback factors.

An exception to the close agreement is the ocean concentration-carbon feedback, with analytically estimated feedback factor and time-integrated feedback parameter indicating a weaker negative feedback than the numerical estimates from our stylised model or ESMs. This mismatch is primarily due to two approximations: one in the numerical simulation
25 and one in the analytical approximation. The numerical approximation is that disconnecting climate feedbacks in the biogeochemically coupled simulation leaves less carbon available to be sunk into the ocean, placing the ocean feedback at a different point in the highly nonlinear (as parameterised by the Revelle factor) ocean carbon uptake dynamics. The analytical approximation is that Eq. (21) underestimates carbon sunk into the deep ocean.

The approximate analytical expressions for the three different feedback measures all have similar dependences on state
30 variables and parameters. All measures of the land climate-carbon feedback have dependence of the form $c_{t0} \log Q_R/Q_R^{\Delta T/10}$. The ocean climate-carbon feedbacks all have the form $w_0 D_T c_{m0}/r$ (since $1 + M \sim w_0$ and ocean mixed layer carbon $c_m \approx c_{m0}$ to within 10% over the

duration of the simulation) terms of the form $B_0 B_T$ and $w_0 D_T c_m / r$. The land concentration-carbon feedback has the form $c_{t0} K_C / c_a$ and the ocean concentration-carbon feedbacks have the form $w_0 c_m / r c_a$ (since $p(c_m, \Delta T) \approx c_a$). We conclude that for each type of carbon cycle feedback, all three feedback formalisms detect similar features of the climate-carbon system.

The analytical expressions provide rapid insight into how feedback strengths depend on state variable and parameter values that could otherwise only be studied numerically or by qualitative reasoning. The analytical forms show that increasing Revelle factor r , as is likely to occur in an increasingly acidic ocean (Sabine et al., 2004), will decrease the strengths of ocean climate-carbon and concentration-carbon feedbacks. Weakening overturning circulation, via w_0 , would also decrease the strength of the ocean carbon cycle feedbacks. On land, the parameters Q_R and K_C control the terrestrial carbon cycle feedbacks.

We can compare likely trends in feedback strengths from the analytical expressions. In the ocean for the direct feedback parameters. According to our model, the destabilising ocean climate-carbon feedback is almost constant, while the ocean concentration-carbon feedback weakens with c_m (since $c_m / p(c_m, \Delta T) \sim c_m^{1-r} c_m / c_a \sim c_m^{1-r}$). Similarly, according to our model the destabilising land climate-carbon feedback will weaken less than the stabilising concentration-carbon feedback (under CO₂ doubling, $\sim Q_R^{-\Delta T/10}$ weakens by 9% at the new temperature equilibrium while $\sim 1/c_a$ weakens by 50%). This difference between the land climate-carbon and concentration-carbon feedbacks stems from the differing curvatures of $K(c_a, \Delta T)$ as a function of ΔT (close to linear) and c_a (concave). We conclude that under continued carbon emissions, according to our model, both land and ocean feedbacks will overall become more positive.

Where multiple processes contribute in parallel to a feedback, inspection of analytical forms can indicate the relative contributions of the different processes to the feedback. In the ocean component of the model, CO₂ solubility, the biological pump, and the solubility pump are all temperature-dependent and therefore contribute to the ocean climate-carbon feedback. Terms in the numerators of the exact forms of g_{TO} and γ_O (Table A1) correspond to these three processes. Substituting parameters and typical values for state variables into these three terms show that the Remarkably, all three processes contribute temperature dependences of a similar magnitude; we therefore list all three in the approximate analytical gain and time-integrated feedback parameter in Table 3. The three terms represent temperature dependence of the biological pump, CO₂ solubility contributes most to these climate-carbon feedbacks, and the solubility pump, respectively.

25 5.3 Feedback nonlinearity

As shown in Sec. 4.5, our analytical feedback expressions enable a new way of estimating feedback nonlinearities that is not possible from direct numerical simulation. Since the sum of the four nonlinearities is negative (Table 3), we conclude that summing feedbacks found by individual decoupled simulations will overestimate the atmospheric carbon levels, that is, underestimate land and ocean sinks. This result matches the findings of Zickfeld et al. (2011) and Matthews (2007). Terrestrial feedbacks contributed 91.83% of the total nonlinearity in our model, compared to 80% reported by Zickfeld et al. (2011). Furthermore, we can distinguish the nonlinearities in the climate-carbon and concentration-carbon feedbacks. We found that the nonlinearity in the terrestrial carbon-climate feedback was almost ten four times larger than any other (Table 3). By inspecting the analytical derivation of the gains we conclude that this dominance is likely due to a combination of two three reasons: First, due to the sensitivity of temperature to carbon dioxide, $\partial T / \partial c_a = \lambda / c_a \log 2$, the carbon-climate feedbacks are much

more sensitive to c_a than the concentration-carbon feedbacks are to ΔT . Second, the nonlinearity in the land climate-carbon feedback is larger than the ocean climate-carbon feedback because its feedback factor is larger and therefore more sensitive to changes in gain (see Eq. (13)). **Third, the century time-scale of the simulation prevented ocean carbon dynamics, which generally take place on longer time scales, from being exhibited.** We conclude that care must be taken when summing results for feedbacks from decoupled simulations, especially for simulations involving land feedbacks.

6 Conclusions

Earth System Models span a wide variety of complexity. Here, we constructed a highly stylised, globally aggregated climate-carbon cycle model. Despite the model’s simplicity—just four state variables—the model emulated globally aggregated historical trends and future projections of Earth System Models. The model’s simple form allowed climate-carbon cycle feedbacks to be estimated analytically, providing mechanistic insight into these processes. For example, we showed that carbon-climate feedbacks are less sensitive than carbon-concentration feedbacks; on land, this is due to the shape of $K(c_a, \Delta T)$. The simple but accurate climate-carbon cycle model could be a starting point for model-based investigations of Earth system processes that are too poorly understood to be incorporated in more **complex comprehensive** models.

Stylized models such as ours have significant value in policy contexts. When confronted with difficult policy decisions involving long time periods and significant uncertainty, collaborative work with scientists allows policy makers to identify and clarify the impacts of various policy actions. In this context, the utility of a model is to increase stakeholders’ understanding of a system and its dynamics under various conditions (Voinov and Bousquet, 2010; Anderies, 2005). This is in stark contrast to the use of more **complex, detailed comprehensive** models to predict impacts of policies where mechanisms underlying dynamics and trade-offs are not transparent, and quick explorations with stakeholders are not practical. The utility of a stylised model is in facilitating a learning process rather than in ‘accurately’ predicting outcomes.

We foresee at least two strands of valuable future research based on the climate-carbon cycle model developed in this paper. First, our climate-carbon cycle model could be extended by including further processes relevant on different time-scales of interest for Earth system analysis. This would enable a more in-depth analytical analysis of the feedback strengths and gains relating to other aspects of Earth system dynamics, such as the Earth’s energy balance, **carbon storage in the tropics compared to extra-tropics**, albedo changes, the cryosphere, nutrient cycles, and even societal feedbacks. The task of characterizing the Anthropocene as an epoch could thus move beyond qualitative comparison of human-impact trends to an improved characterisation of the feedbacks that maintain different Earth system ‘regimes’. **The effects on feedback strengths of different functional forms, such as the fertilisation effect K_C , and how to constrain these functional forms from data could also be investigated and could yield insight into the continued divergence of ESM projections.**

Second, the model could comprise a ‘workbench’ for the systemic understanding of planetary boundary interactions and, hence, generate crucial insights into the structure of the safe operating space for humanity delineated by the planetary boundaries (Rockström et al., 2009; Steffen et al., 2015). Such extensions should focus on linking the core abiotic and biotic dimensions of the planetary boundaries framework. The present lack of well-developed model representations of the dynamics and

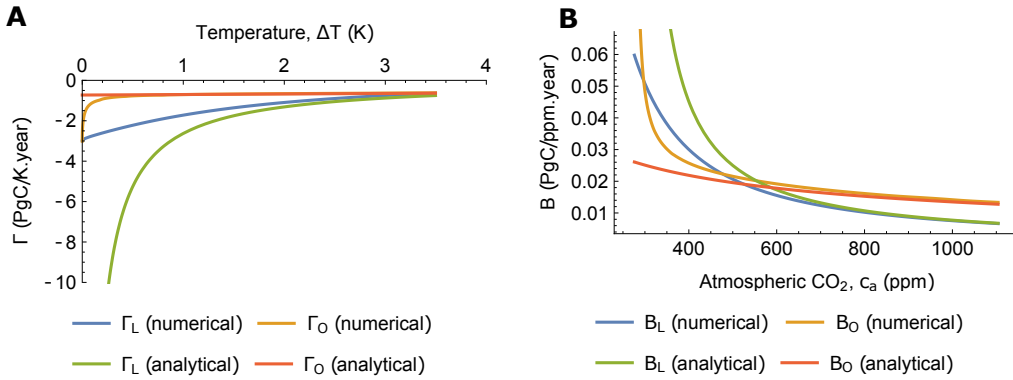


Figure A1. Direct feedback parameters, (a) concentration-carbon climate-carbon feedbacks and (b) climate-carbon concentration-carbon feedbacks.

Table A1. Exact forms for ocean feedbacks.

Feedback measure	Ocean climate-carbon feedback	Ocean concentration-carbon feedback
Gain	$\frac{\lambda(1+M)}{c_a \log 2} \frac{\frac{pc_{m0}DDT}{c_{a0}r(1-D_T\Delta T)} - B_0B_T - w_0w_T(c_m - c_{m0})}{\frac{pDc_{m0}}{c_m c_{a0}} + w(1-w_T\Delta T)}$ $+ \frac{\lambda}{c_a \log 2} \left[\frac{B_0B_T t_{lin}}{2} + \frac{t_{lin}}{3} w_0 w_t (c_m - c_{m0}) \right]$ $+ \frac{c_m D_T}{r(1-D_T\Delta T)} \left(1 + w_0 t_{lin} \left(\frac{1}{2} - \frac{w_T \Delta T}{3} \right) \right)$	$- \frac{c_{m0}D}{c_{a0}r} \frac{1+M}{\frac{pDc_{m0}}{c_m c_{a0}} + w(1-w_T\Delta T)}$ $- \frac{c_m}{c_a r} \left(1 + w_0 t_{lin} \left(\frac{1}{2} - \frac{w_T \Delta T}{3} \right) \right)$
Time-integrated feedback parameter	$- \frac{c_m D_T}{r(1-D_T\Delta T)} \left(1 + w_0 t_{lin} \left(\frac{1}{2} - \frac{w_T \Delta T}{3} \right) \right)$ $- \frac{B_0B_T t_{lin}}{2} - \frac{t_{lin}}{3} w_0 w_t (c_m - c_{m0})$	$\frac{c_{m0}D}{c_{a0}r} \frac{1+M}{\frac{pDc_{m0}}{c_m c_{a0}} + w}$ $\frac{c_m}{c_a r} \left(1 + w_0 t_{lin} \left(\frac{1}{2} - \frac{w_T \Delta T}{3} \right) \right)$
Direct feedback parameter	$\frac{w_0(1-w_T\Delta T)c_{m0} \left((1-D_T\Delta T)^{\frac{1}{r}} - 1 \right)}{\Delta T} - B_0B_T$	$\frac{w c_{m0} \left(\left(\frac{c_a}{c_{a0}} \right)^{\frac{1}{r}} - 1 \right)}{c_a - c_{a0}}$

ecosystem structure of biosphere diversity, heterogeneity and resilience, despite ongoing efforts in this direction (Purves et al., 2013; Bartlett et al., 2016; Sakschewski et al., 2016), emphasises the need for a more conceptual understanding of biosphere integrity, its vulnerability to anthropogenic perturbation, and its role for Earth system resilience.

Author contributions. SJL, JMA, SEC, JFD, IF, KR, JR and WS designed the research. SJL, JFD, IF, TG and CB constructed the model.

5 SJL analysed the model. All authors wrote the paper.

Competing interests. The authors declare that they have no conflict of interest.

Acknowledgements. The research leading to these results has received funding from the Stordalen Foundation via the Planetary Boundary Research Network (PB.net), the Earth League's EarthDoc programme, the Leibniz Association (project DOMINOES), European Research Council Synergy project Imbalance-P (grant ERC-2013-SyG-610028), Project Grant 2014-589 from the Swedish Research Council Formas, and a core grant to the Stockholm Resilience Centre by Mistra. We thank Malin Ödalen for her comments on the manuscript.

References

- Alexandrov, G., Oikawa, T., and Yamagata, Y.: Climate dependence of the CO₂ fertilization effect on terrestrial net primary production, *Tellus B*, 55, 669–675, 2003.
- Anderies, J. M.: Minimal models and agroecological policy at the regional scale: an application to salinity problems in southeastern Australia, *5 Regional Environmental Change*, 5, 1–17, 2005.
- Anderies, J. M., Carpenter, S. R., Steffen, W., and Rockström, J.: The topology of non-linear global carbon dynamics: from tipping points to planetary boundaries, *Environmental Research Letters*, 8, 044 048, 2013.
- Arcoya, D., Diaz, J. I., and Tello, L.: S-shaped bifurcation branch in a quasilinear multivalued model arising in climatology, *Journal of Differential Equations*, 150, 215–225, 1998.
- 10 Arora, V. K., Boer, G. J., Friedlingstein, P., Eby, M., Jones, C. D., Christian, J. R., Bonan, G., Bopp, L., Brovkin, V., Cadule, P., et al.: Carbon–concentration and carbon–climate feedbacks in CMIP5 Earth system models, *Journal of Climate*, 26, 5289–5314, 2013.
- Bacastow, R., Keeling, C. D., Woodwell, G., and Pecan, E.: Atmospheric carbon dioxide and radiocarbon in the natural carbon cycle. II. Changes from AD 1700 to 2070 as deduced from a geochemical model, Tech. rep., Univ. of California, San Diego, La Jolla; Brookhaven National Lab., Upton, NY (USA), 1973.
- 15 Bartlett, L. J., Newbold, T., Purves, D. W., Tittensor, D. P., and Harfoot, M. B.: Synergistic impacts of habitat loss and fragmentation on model ecosystems, *Proc. R. Soc. B*, 283, 20161 027, 2016.
- Bernardello, R., Marinov, I., Palter, J. B., Sarmiento, J. L., Galbraith, E. D., and Slater, R. D.: Response of the ocean natural carbon storage to projected twenty-first-century climate change, *Journal of Climate*, 27, 2033–2053, 2014.
- Boer, G. and Arora, V.: Temperature and concentration feedbacks in the carbon cycle, *Geophysical Research Letters*, 36, 2009.
- 20 Boer, G. and Arora, V.: Feedbacks in emission-driven and concentration-driven global carbon budgets, *Journal of Climate*, 26, 3326–3341, 2013.
- Bopp, L., Resplandy, L., Orr, J. C., Doney, S. C., Dunne, J. P., Gehlen, M., Halloran, P., Heinze, C., Ilyina, T., Seferian, R., et al.: Multiple stressors of ocean ecosystems in the 21st century: projections with CMIP5 models, *Biogeosciences*, 10, 6225–6245, 2013.
- Budyko, M. I.: The effect of solar radiation variations on the climate of the earth, *Tellus*, 21, 611–619, 1969.
- 25 Cahalan, R. F. and North, G. R.: A stability theorem for energy-balance climate models, *Journal of the Atmospheric Sciences*, 36, 1178–1188, 1979.
- Ciais, P., Sabine, C., Bala, G., Bopp, L., Brovkin, V., Canadell, J., Chhabra, A., DeFries, R., Galloway, J., Heimann, M., Jones, C., LeQuéré, C., Myneni, R., Piao, S., and Thornton, P.: Carbon and Other Biogeochemical Cycles, book section 6, p. 465–570, Cambridge University Press, Cambridge, United Kingdom and New York, NY, USA, doi:10.1017/CBO9781107415324.015, www.climatechange2013.org, 2013.
- 30 Collins, M., Knutti, R., Arblaster, J., Dufresne, J.-L., Fichet, T., Friedlingstein, P., Gao, X., Gutowski, W., Johns, T., Krinner, G., Shongwe, M., Tebaldi, C., Weaver, A., and Wehner, M.: Long-term Climate Change: Projections, Commitments and Irreversibility, book section 12, p. 1029–1136, Cambridge University Press, Cambridge, United Kingdom and New York, NY, USA, doi:10.1017/CBO9781107415324.024, www.climatechange2013.org, 2013.
- Diaz, J., Hernandez, J., and Tello, L.: On the multiplicity of equilibrium solutions to a nonlinear diffusion equation on a manifold arising in climatology, *Journal of Mathematical Analysis and Applications*, 216, 593–613, 1997.
- 35 Flato, G., Marotzke, J., Abiodun, B., Braconnot, P., Chou, S., Collins, W., Cox, P., Driouech, F., Emori, S., Eyring, V., Forest, C., Gleckler, P., Guilyardi, E., Jakob, C., Kattsov, V., Reason, C., and Rummukainen, M.: Evaluation of Climate Models, book section 9, p.

- 741–866, Cambridge University Press, Cambridge, United Kingdom and New York, NY, USA, doi:10.1017/CBO9781107415324.020, www.climatechange2013.org, 2013.
- Friedlingstein, P.: Carbon cycle feedbacks and future climate change, *Phil. Trans. R. Soc. A*, 373, 20140421, 2015.
- Friedlingstein, P., Cox, P., Betts, R., Bopp, L., Von Bloh, W., Brovkin, V., Cadule, P., Doney, S., Eby, M., Fung, I., et al.: Climate–carbon cycle feedback analysis: results from the C4MIP model intercomparison, *Journal of Climate*, 19, 3337–3353, 2006.
- 5 Gasser, T., Ciais, P., Boucher, O., Quilcaille, Y., Tortora, M., Bopp, L., and Hauglustaine, D.: The compact Earth system model OSCAR v2.2: description and first results, *Geoscientific Model Development*, 10, 271–319, doi:10.5194/gmd-10-271-2017, http://www.geosci-model-dev.net/10/271/2017/, 2017a.
- Gasser, T., Peters, G. P., Fuglestedt, J. S., Collins, W. J., Shindell, D. T., and Ciais, P.: Accounting for the climate–carbon feedback in emission metrics, *Earth System Dynamics*, 8, 235–253, 2017b.
- 10 Goodwin, P., Williams, R. G., Follows, M. J., and Dutkiewicz, S.: Ocean-atmosphere partitioning of anthropogenic carbon dioxide on centennial timescales, *Global Biogeochemical Cycles*, 21, 2007.
- Gregory, J. M., Jones, C., Cadule, P., and Friedlingstein, P.: Quantifying carbon cycle feedbacks, *Journal of Climate*, 22, 5232–5250, 2009.
- Gregory, J. M., Andrews, T., and Good, P.: The inconstancy of the transient climate response parameter under increasing CO₂, *Phil. Trans. R. Soc. A*, 373, 20140417, 2015.
- 15 Hansen, J., Lacis, A., Rind, D., Russell, G., Stone, P., Fung, I., Ruedy, R., and Lerner, J.: Climate sensitivity: Analysis of feedback mechanisms, *Climate processes and climate sensitivity*, pp. 130–163, 1984.
- Harman, I. N., Trudinger, C. M., and Raupach, M. R.: SCCM—the Simple Carbon-Climate Model: Technical Documentation, vol. 458, 2011.
- Hartmann, D., KleinTank, A., Rusticucci, M., Alexander, L., Brönnimann, S., Charabi, Y., Dentener, F., Dlugokencky, E., Easterling, D., Kaplan, A., Soden, B., Thorne, P., Wild, M., and Zhai, P.: Observations: Atmosphere and Surface, book section 2, p. 159–254, Cambridge University Press, Cambridge, United Kingdom and New York, NY, USA, doi:10.1017/CBO9781107415324.008, www.climatechange2013.org, 2013.
- 20 Jones, D. C., Ito, T., Takano, Y., and Hsu, W.-C.: Spatial and seasonal variability of the air-sea equilibration timescale of carbon dioxide, *Global Biogeochemical Cycles*, 28, 1163–1178, 2014.
- Joos, F., Bruno, M., Fink, R., Siegenthaler, U., Stocker, T. F., Le Quere, C., and Sarmiento, J. L.: An efficient and accurate representation of complex oceanic and biospheric models of anthropogenic carbon uptake, *Tellus B*, 48, 397–417, 1996.
- Joos, F., Roth, R., Fuglestedt, J., Peters, G., Enting, I., Bloh, W. v., Brovkin, V., Burke, E., Eby, M., Edwards, N., et al.: Carbon dioxide and climate impulse response functions for the computation of greenhouse gas metrics: a multi-model analysis, *Atmospheric Chemistry and Physics*, 13, 2793–2825, 2013.
- 30 Kamiuto, K.: A simple global carbon-cycle model, *Energy*, 19, 825–829, 1994.
- Kellie-Smith, O. and Cox, P. M.: Emergent dynamics of the climate–economy system in the Anthropocene, *Philosophical Transactions of the Royal Society of London A: Mathematical, Physical and Engineering Sciences*, 369, 868–886, 2011.
- Köchy, M., Hiederer, R., and Freibauer, A.: Global distribution of soil organic carbon—Part 1: Masses and frequency distributions of SOC stocks for the tropics, permafrost regions, wetlands, and the world, *Soil*, 1, 351–365, 2015.
- 35 Körner, C.: Carbon limitation in trees, *Journal of ecology*, 91, 4–17, 2003.
- Kriegler, E., Hall, J. W., Held, H., Dawson, R., and Schellnhuber, H. J.: Imprecise probability assessment of tipping points in the climate system, *Proceedings of the national Academy of Sciences*, 106, 5041–5046, 2009.

- Le Quéré, C., Andrew, R. M., Canadell, J. G., Sitch, S., Korsbakken, J. I., Peters, G. P., Manning, A. C., Boden, T. A., Tans, P. P., Houghton, R. A., et al.: Global carbon budget 2016, *Earth System Science Data*, 8, 605, 2016.
- Lenton, T. M.: Land and ocean carbon cycle feedback effects on global warming in a simple Earth system model, *Tellus B*, 52, 1159–1188, 2000.
- 5 Lenton, T. M., Held, H., Kriegler, E., Hall, J. W., Lucht, W., Rahmstorf, S., and Schellnhuber, H. J.: Tipping elements in the Earth’s climate system, *Proceedings of the national Academy of Sciences*, 105, 1786–1793, 2008.
- Matthews, H. D.: Implications of CO₂ fertilization for future climate change in a coupled climate–carbon model, *Global Change Biology*, 13, 1068–1078, 2007.
- Meinshausen, M., Raper, S. C., and Wigley, T. M.: Emulating coupled atmosphere-ocean and carbon cycle models with a simpler model, 10
MAGICC6–Part 1: Model description and calibration, *Atmospheric Chemistry and Physics*, 11, 1417–1456, 2011a.
- Meinshausen, M., Smith, S. J., Calvin, K., Daniel, J. S., Kainuma, M., Lamarque, J., Matsumoto, K., Montzka, S., Raper, S., Riahi, K., et al.: The RCP greenhouse gas concentrations and their extensions from 1765 to 2300, *Climatic change*, 109, 213, 2011b.
- Meinshausen, M., Wigley, T., and Raper, S.: Emulating atmosphere-ocean and carbon cycle models with a simpler model, MAGICC6–Part 2: Applications, *Atmospheric Chemistry and Physics*, 11, 1457–1471, 2011c.
- 15 Mengel, J., Short, D., and North, G.: Seasonal snowline instability in an energy balance model, *Climate Dynamics*, 2, 127–131, 1988.
- NOAA: Climate at a Glance: Global Time Series, Tech. rep., NOAA National Centers for Environmental information, <http://www.ncdc.noaa.gov/cag/>, 2018.
- North, G. R.: Multiple solutions in energy balance climate models, *Global and Planetary Change*, 2, 225–235, 1990.
- Purves, D., Scharlemann, J. P., Harfoot, M., Newbold, T., Tittensor, D. P., Hutton, J., and Emmott, S.: Ecosystems: time to model all life on 20
Earth, *Nature*, 493, 295–297, 2013.
- Raich, J. W., Potter, C. S., and Bhagawati, D.: Interannual variability in global soil respiration, 1980–94, *Global Change Biology*, 8, 800–812, 2002.
- Randers, J., Golüke, U., Wenstøp, F., and Wenstøp, S.: A user-friendly earth system model of low complexity: the ESCIMO system dynamics model of global warming towards 2100, *Earth System Dynamics*, 7, 831, 2016.
- 25 Raupach, M.: The exponential eigenmodes of the carbon-climate system, and their implications for ratios of responses to forcings, *Earth System Dynamics*, 4, 31–49, 2013.
- Ricke, K. L. and Caldeira, K.: Maximum warming occurs about one decade after a carbon dioxide emission, *Environmental Research Letters*, 9, 124 002, 2014.
- Rockström, J., Steffen, W., Noone, K., Persson, Å., Chapin, F. S., Lambin, E. F., Lenton, T. M., Scheffer, M., Folke, C., Schellnhuber, H. J., 30
et al.: A safe operating space for humanity, *nature*, 461, 472–475, 2009.
- Sabine, C. L., Feely, R. A., Gruber, N., Key, R. M., Lee, K., Bullister, J. L., Wanninkhof, R., Wong, C., Wallace, D. W., Tilbrook, B., et al.: The oceanic sink for anthropogenic CO₂, *science*, 305, 367–371, 2004.
- Sakschewski, B., von Bloh, W., Boit, A., Poorter, L., Peña-Claros, M., Heinke, J., Joshi, J., and Thonicke, K.: Resilience of Amazon forests emerges from plant trait diversity, *Nature Climate Change*, 2016.
- 35 Schellnhuber, H. J., Rahmstorf, S., and Winkelmann, R.: Why the right climate target was agreed in Paris, *Nature Climate Change*, 6, 649–653, 2016.
- Sellers, W. D.: A global climatic model based on the energy balance of the earth-atmosphere system, *Journal of Applied Meteorology*, 8, 392–400, 1969.

- Sigman, D. M. and Boyle, E. A.: Glacial/interglacial variations in atmospheric carbon dioxide, *Nature*, 407, 859–869, 2000.
- Sitch, S., Friedlingstein, P., Gruber, N., Jones, S., Murray-Tortarolo, G., Ahlström, A., Doney, S. C., Graven, H., Heinze, C., Huntingford, C., et al.: Recent trends and drivers of regional sources and sinks of carbon dioxide, *Biogeosciences*, 12, 653–679, 2015.
- Steffen, W., Richardson, K., Rockström, J., Cornell, S. E., Fetzer, I., Bennett, E. M., Biggs, R., Carpenter, S. R., de Vries, W., de Wit, C. A.,
5 et al.: Planetary boundaries: Guiding human development on a changing planet, *Science*, 347, 1259–1262, 2015.
- Takahashi, T., Olafsson, J., Goddard, J. G., Chipman, D. W., and Sutherland, S. C.: Seasonal variation of CO₂ and nutrients in the high-latitude surface ocean: a comparative study, *Global Biogeochemical Cycles*, 7, 843–878, 1993.
- Voinov, A. and Bousquet, F.: Modelling with stakeholders, *Environmental Modelling & Software*, 25, 1268–1281, 2010.
- Volk, T. and Hoffert, M. I.: Ocean carbon pumps: Analysis of relative strengths and efficiencies in ocean-driven atmospheric CO₂ changes,
10 The Carbon Cycle and Atmospheric CO₂: Natural Variations Archean to Present, pp. 99–110, 1985.
- Wieder, W. R., Cleveland, C. C., Smith, W. K., and Todd-Brown, K.: Future productivity and carbon storage limited by terrestrial nutrient availability, *Nature Geoscience*, 8, 441, 2015.
- Williams, R. G., Goodwin, P., Roussenov, V. M., and Bopp, L.: A framework to understand the transient climate response to emissions, *Environmental Research Letters*, 11, 015003, 2016.
- 15 Xu, M. and Shang, H.: Contribution of soil respiration to the global carbon equation, *Journal of Plant Physiology*, 203, 16–28, 2016.
- Zaehle, S., Friedlingstein, P., and Friend, A. D.: Terrestrial nitrogen feedbacks may accelerate future climate change, *Geophysical Research Letters*, 37, 2010.
- Zickfeld, K., Eby, M., Matthews, H. D., Schmittner, A., and Weaver, A. J.: Nonlinearity of carbon cycle feedbacks, *Journal of Climate*, 24, 4255–4275, 2011.