

Earth System Dynamics Discussion Response to Reviewers

Responses from Robinson et al. incorporated.

Our response is provided in courier new text

We would like to first thank the reviewers and the editor for their insightful comments that have pushed us to produce a higher quality paper. Thank you.

Reviewer 1

This article analyses feedbacks between human and natural processes in land system models. The author describe in detail four recent models of this type and then attempt to draw general conclusions.

I do not have the expertise to comment on the technical aspects of the manuscript. At a more conceptual level, the paper does not seem particularly ambitious. It is mostly descriptive in nature and not particularly analytical.

There is an important lack of integration of social science in studies of earth system sciences. Living in the Anthropocene, and trying to better understand processes of this epoch and its interactions, we should even more so define ways to connect modeling activities of social science and natural science models. This by itself is ambitious, as there are major challenges that require different disciplines collaborating with each other, scientists need to adjust their numerical models so they can communicate with each other, and we need to learn a sufficient amount of domain knowledge and perspective from each other's models to perform an integrated analysis. In the current academic incentive system this kind of collaboration is rarely rewarded.

In response the reviewer comment above, a majority of the manuscript authors responded with statements that to the best of their knowledge this is the first paper to directly address the value of modelling feedbacks between human and natural systems for representing the dynamics of the socio-ecological systems that now dominate our world. In most current modelling efforts these feedbacks are largely ignored.

Collating the presented four cases into a single narrative offers a unique opportunity to observe the challenges and approaches taken to couple models developed by specialists in disparate academic fields. These case studies illustrate successful research outcomes that can provide building blocks and guidance to model coupling in the future.

We agree with the reviewer that the manuscript illustrates the

current capability of representing feedbacks between specialized human and natural system processes, but this in itself demonstrates significant scientific advances and progress towards community building across disciplines. However, given the challenge set forth by the reviewer to be more ambitious we

- 1) Added a figure that provides a conceptual outline for the structure of coupling (Figure 1) and added a figure that illustrates different levels of coupling along a gradient of communication frequency and coordination (Figure 2). While these two figures do not cover all configurations of model structures or levels of communication frequency and types of coordination, they provide a conceptual outline that we use to describe the four examples in the paper and offer them as opportunities for other to do the same and contribute their work as comments to this manuscript or build upon and extend in subsequent manuscripts.

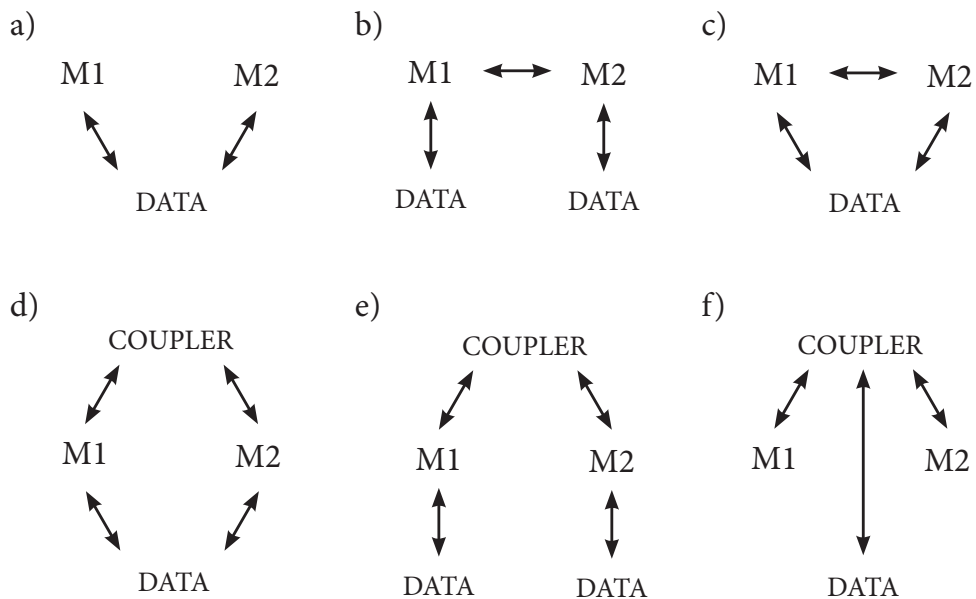


Figure 1: Approaches to model coupling. a) loose model integration via file / data exchange between model 1 (M1) and model 2 (M2); b) models share inputs and outputs but interact with independent data; c) models interact with the same data and share inputs and outputs directly with each other; d) a coupler coordinates run time and scheduling and may pass some information between models, models may also interact through manipulating data (files); e) a coupler coordinates the run time and scheduling of the individual models and passes information between models primarily use their own data, f) the coupler coordinates all interactions between models and data.

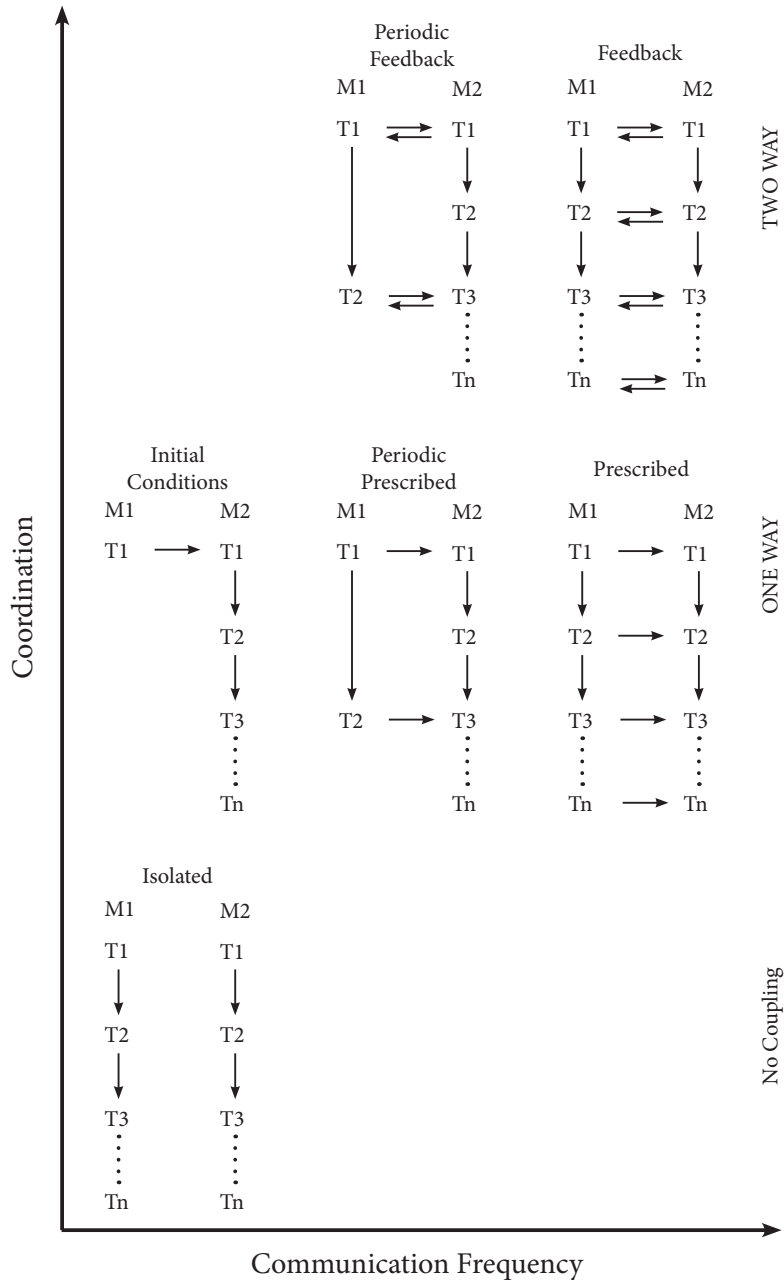


Figure 2. Conceptual outline of the frequency of model communication and coordination of interaction between models from no coupling to one-way and two-way feedback. Examples are not exhaustive but illustrate common approaches used. M1 = model 1, M2 = model 2, T1 = time step 1, Tn = time step n.

- 2) We also provided an additional subsection to the Discussion section that outlines 8 explicit lessons learned and a framework for coupling as guidance for a way forward.

As judged by the abstract, for example: the abstract is mostly a general introduction and then a vague summary of the article structure. I would like to see emphasised more clearly WHAT sorts of "lessons" are learned or "challenges" discussed rather than just that the statement THAT these things are done in the manuscript.

Agreed. The abstract could better emphasize the insights and findings of our manuscript rather than providing a summary of what resides within. We rewrote the abstract and include within our 8 lessons learned

Lesson 1. Leverage the Power of Sensitivity Analysis with Models

Lesson 2. Modelling is an Iterative Process.

Lesson 3. Ensure Consistency

Lesson 4. Reconcile Spatio-temporal Mismatch

Lesson 5. Create a Common Language

Lesson 6. Construct Homogeneous Units

Lesson 7. Make Code Open-Access

Lesson 8. Incorporating Feedback Increases Non-Linearity and Variability

We also include steps that outline a way forward for expediting the coupling of human and natural land-system models. Thank you.

The bulk of the manuscript is a detailed description of the models and some illustrative results. I'm not quite sure what role the results are meant to serve. There is no space to expand on them in detail, and they are not picked up upon in the discussion.

Our intention was to draw upon the results as illustrative of achievements that could not be made in the absence of coupling models together or our approaches to model coupling. These results provide tangible outcomes for reference in the lessons learned section. While we had mixed response among our author listing about inclusion of the results in the manuscript versus removing them, we have decided to align with the reviewer and have removed the results from the manuscript and focused more explicitly on the coupling structure, coordination, and lessons learned from the four presented experiences/examples.

In section 3.1, "Lessons learned" the discussion is actually rather general. Only one model (DEED) is actually mentioned. I would like to see more discussion of what was learnt from the models that were discussed in so much detail earlier in the manuscript.

Earlier drafts of the paper had the lessons learned after each example and we attempted this again; however, in both attempts we collectively agreed that the lessons were more useful and effective as a group in the discussion section. Therefore we left the lessons in the discussion but removed the consistency section and refocused the lessons learned to make them explicit and numbered. Each lesson also now refers back to and offers an example from one of the four models presented.

I'd also like a broader discussion of research gaps. Although combining human and natural processes is an important subject, the models discussed here still only address a subset of human processes. In section 2.3, for example, societal and cultural level processes of norm formation regarding food consumption for example are discussed. How else to describe changes in food consumption patterns? Such models probably don't exist in any form, and so can't be expected to be included in this paper, but the authors should indicate that there are still significant research gaps out there.

The reviewer addresses an important point, what are the research gaps, when integrating human and natural processes. However, coupling existing models does not necessarily mean that all processes are included for each domain. Indeed there are major elements of social systems or natural processes that are not well represented in available and existing models.

Here we focus on land use because it is a widely studied human-environment relationship that offers some examples of human-environment coupled models, which is the emphasis of this manuscript. Thus, we demonstrate how the authors have laid the groundwork for increasing the complexity in subsystem models. The case studies demonstrate how the inter-system coupling is extremely important in addition to how the inter-system coupling affects estimates and our understanding of the coupled system. Once we know the implications of coupling models, then we can start coupling different types of models, and social scientists can create models of dynamics that have not been represented before, and connect it with natural system models (e.g., models of energy or transportation systems with climate models) and visa versa.

Through the manuscript we try to emphasize that there is considerable value in coupling models of other dimensions of human systems, created by social scientists, with relevant biophysical models. We do not seek to discuss different kinds of models of human decisions and actions. Many such models already exist (e.g., see model library at www.comses.net). However, most of these models have not been coupled with models of natural systems such that that they impact and are impacted by the natural system. The main focus of this paper, which we have tried to clarify, is about what new insights can be gained when we create modeling environments that can dynamically simulate interactions and feedbacks between different components of human and natural systems.

Minor comment: page 20 line 5: which land management activities were identified?

Thank you for drawing attention to the mentioned text. We have revised the sentence to include the following land management activities: irrigation, fertilization, biomass removal.

Again. Thank you for your time and effort in providing a very helpful review.

Earth System Dynamics Discussion Response to Reviewers

Responses from Robinson et al. incorporated.

We would like to first thank the reviewers and the editor for their insightful comments that have pushed us to produce a higher quality paper. Thank you.

Referee #2

The authors present a review of 4 approaches to representing interactions between humans and the environment in land systems using coupled models. Based on the review of these approaches, the authors provide discussion and recommendations for representing human-environment interactions in land systems using coupled models. The subject of the article is interesting but work is required to restructure the manuscript, improve writing style and provide novel insights based on the review provided.

REVIEWER COMMENT

1. The 4 approaches are presented in an inconsistent way in Section 2.

a. My recommendation is that in section 2, in each case, introduce the type of model coupling you are referring to, the motivation of the original researchers for coupling the models and how they are coupled. Following this, as you have done, outline the interactions/feedbacks each model captures between human and natural systems.

A case study is useful, as you have done. I recommend following the case study with a subsection explicitly outlining the strengths and weaknesses for each of the 4 approaches. These should be summarised and combined in a table in the discussion section of the document so the reader has a clear impression of how each of the 4 approaches compare. A diagram illustrating the differences in coupling or how feedbacks are captured may be instructive.

RESPONSE

We appreciate the pressure applied on us by the reviewer to create additional diagrams illustrating the differences in

coupling or how feedbacks are captured. As mentioned in our response to Reviewer 1, we have created two conceptual figures (Figures 1 and 2) and included them in our introduction to coupling at the front of manuscript. In addition to these diagrams/figures, each of the four examples now relate back to these conceptual figures and identify how its approach relates to those figures. Furthermore, each example model provides a new figure that is a combination of the architecture/structure of the presented model and the sequence of interactions/feedbacks between the models. This new figure provides more insight into the coupling process and makes the example more transparent for the reader.

Prior to submission we attempted a lessons learned and strengths and weaknesses table with each of the four examples, which did not work well given similar outcomes from each project. We attempted this again, with similar results and therefore leave the lessons learned section within the Discussion. However, as noted in our response to Reviewer 1 the lessons have been greatly revised, explicitly numbered, and refer back to at least one of the examples provided.

REVIEWER COMMENT

b. Section 2.1 and 2.2 headings sound like case studies and therefore this should be the subsection title related to case studies. Since you are comparing 4 approaches, the main title of section 2.1, 2.2, 2.3 and 2.4 should illustrate the approach you are addressing in each section as you have done in section 2.3 and 2.4. c.

RESPONSE

Agreed. We swapped different approaches to these headings several times among model names, purposes of the models (as submitted), and others. We have amended the manuscript to describe the example as an approach AND the scientific purpose. This makes the heading lengthy, but much more informative.

While within the manuscript we illustrate different coupling approaches, we do not perform a rigorous comparison of different coupling approaches. This comparison would be best done with different instantiations of the same model(s) using the same data for it to be effective. Instead we seek to demonstrate that with coupling we can answer research questions that cannot be answered without coupling AND that these approaches couple specific process models rather than general models. The use of specific models provides a level of transparency and depth that is not typically found in more general model integration efforts and

therefore facilitates and enables new perspectives and questions to be generated in the science of coupled human-natural systems. Each of the examples illustrate the consequences of modeling feedbacks between human and natural systems at different spatial and temporal scales using different coupling architectures, frequency of communication, and level of coordination. We have clarified these scalar and architectural differences in the manuscript, but we do not seek to outline a lengthy literature review and meta-analysis of the different possible approaches to coupling models. In summary, we appreciate this point and have used it to improve the focus and clarity of the manuscript by explicitly describing the coupling architecture for each example including how the models interact with each other, data, and how they are scheduled.

REVIEWER COMMENT

The cases provided in section 2.1 and 2.2 are new models or approaches. As a review paper, I find this somewhat problematic as the idea, I would think, is to appraise pre-existing approaches rather than adding two new approaches. If there are pre-existing approaches that are consistent with those presented in section 2.1 and 2.2, then these should be reviewed. If the authors feel that the approaches they are presenting here are novel and address some of the shortcomings of the approaches in section 2.3 and 2.4, then by all means present your approaches as novel frameworks. However, if they are not, then this article does not strike me as the appropriate platform to present new work (as it is now structured).

RESPONSE

Thank you for drawing attention to some differences in the case study between sections 2.1 and 2.2 with sections 2.3 and 2.4. We face a trade-off in wanting to demonstrate some of the results to the reader to illustrate what types of results are acquired and how they may differ from results not acquired from a coupling (and different types of coupling) between human and natural systems. In response to this comment and Reviewer 1 we have removed the results from the paper and focused on the coupling initiatives more explicitly. Through this process we have aligned the four examples through the following two subsections for each example:

- 1) Model definition and description and
- 2) Feedback implementation.

In the Feedback implementation section, of each example, we link back to new conceptual Figure 1 and Figure 2 and explicitly outline the architecture of the example. The outline of architecture/structure of each example was done using the same

style, approach, and software to ensure consistency and clarity among the examples.

With respect to the reviewers point about the presentation of novel results, neither of the models presented in Section 2.1 or Section 2.2 are new and both have been published (as illustrated by the provided citations in those sections). However, all case studies presented illustrate a new approach to modeling human and natural systems. To accommodate the reviewers suggestion we have removed case study results from the paper and focused on the coupling procedure, structure, coordination, and lessons learned from the cumulative experience of the authors.

REVIEWER COMMENT

2. The article states that there is a lack of suitable frameworks to guide the building of coupled models of land systems. Given the wide-ranging expertise of the coauthors here, I would expect the article to present a new framework to tackle these issues based an assessment of the strengths and weaknesses of existing approaches. I understand that you are addressing systems that operate across multiple scales. Nonetheless I would like to see the authors make an attempt to outline a framework that can be applied across scales or at the minimum a list of best practices and core knowledge gaps that are required to be filled. A call to action, if you will. These should be explicitly outlined as they will form the main novel findings of the manuscript.

RESPONSE

We would like to thank the reviewer for pushing us on this issue of providing a framework based on the wide-range of expertise among the coauthors. We hope that the conceptual figures outlining the coupling architecture (Figure 1) and the frequency of communication and level of coordination (Figure 2) address a portion of this request. The coauthors did not find it suitable and thought it was premature at this point in our experiences in model coupling to put forward a generalized framework for others to follow, but we did come to consensus on proposing a way forward that would help expedite model coupling initiatives and ensure that the products of those initiatives are more interoperable and usable by the science community. This new content is provided in the discussion section titled "A Way Forward".

REVIEWER COMMENT

3. The writing style is very loose with statements made that are imprecise, insufficiently explained or qualified. For example, the motivation for coupling on page 5 line 16 – page 6 line 7. Page 6 line 16-17. The coupling approach enables a greater degree of transparency and

accuracy in coupled models. There are examples like this throughout the manuscript that need to be made more precise, properly qualified and backed up by citations where appropriate. In addition, many of the sentences are too long and contain multiple arguments. Better to split these into shorter sentences for clarity.

RESPONSE

Thank you for pointing out these areas of improvement. We have altered the text in these sections to be more precise in some cases and qualified in others. We have also qualified other similar statements in the paper. An example to the Reviewer's point on Page 6 line 16-17 is that we changed the text from

"The coupling approach enables a greater degree of transparency and accuracy in coupled models."

To

"Because of the greater degree of openness enabled by these technologies and their modular nature, coupled models enable a greater degree of transparency in how we represent human-natural system models. Whether their relative process richness enables a greater degree of model accuracy remains to be tested."

Furthermore, throughout the manuscript, sentences are shortened.

REVIEWER COMMENT

4. The motivation of the study (stated page 6 line 17 – page 7 line 5) is unclear to me. These are the aims are written as:

Aim 1: We present multiple approaches to coupling land-change and natural-system models to evaluate how alternative approaches to representing feedbacks add value to scientific inquiry into global change and thus generate new insights into the sustainable management of human-environment interactions.

Aim 2: Based on the current state of the science, we categorize conceptual approaches to coupling land-change models with natural-system models that differ across a range of spatial extents and coupling methods.

Aim 3: Using four case studies, we critically assess the influence of land-change processes on natural-system processes and vice versa, focusing on the implications of these feedbacks for system dynamics, the research questions that model coupling enables, and the strengths and weaknesses of the coupling approach.

Aim 4: we describe the lessons learned from the various approaches, the different types of consistency that should be maintained between coupled models as well as the feedbacks

represented between the human and natural systems.

Aim 1: I thought the focus was on the land system and land system models, not global change, which is a much broader topic. Aim 2: Okay, a useful aim but I don't think the paper achieves this. You should make a clearer distinction of the differences between the 4 approaches presented. See comment 1 and 2. Aim 3: I thought the specific aim of the paper was to investigate how human-environment interactions in the land system are captured using coupled modelling approaches.

As it is written, it comes across as quite a verbose research aim. I recommend focusing solely on how human-environment interactions in the land system are captured using coupled modelling approaches. Aim 4: See comment 1 and 2.

RESPONSE

Agreed, we became over excited in what we would achieve with this manuscript. We refined the aims to better match the content of the manuscript and convey this focus at the end of the introduction using the following text:

"We present multiple approaches to coupling land-change and natural-system models and reflect on how their representations of feedbacks add value to scientific inquiry into the dynamics of coupled human-natural systems. We highlight four example models that explicitly represent feedbacks between land-change and natural systems, but vary in their scale of application and coupling architecture. We then present the lessons learned from the modelling research teams, discuss the challenges of representing feedbacks, and then outline a way forward to expedite model coupling initiatives and their subsequent scientific advances."

REVIEWER COMMENT

Specific comments

Page 4: Avoid the use of footnotes

RESPONSE

We agree with the reviewer and typically avoid the use of footnotes in all our publications. We have included a single footnote in the submitted manuscript because we believe that the

incorporation of the definitions within the text is a distraction from the narrative of the article. The purpose of the footnote is to provide definition and clarification for those who are not used to the nomenclature used in the manuscript and specifically the differences between Earth, ecosystem, and land surface models. If it is acceptable to the journal we would appreciate the inclusion of this content as a footnote rather than integrating the definitions into the text.

Page 6 Line 20: State of the science is incorrect English

Agreed. Thank you for pointing out this error. We have deleted the identified text and edited the paragraph within which the referred text resides to clarify the intentions of the manuscript.

REVIEWER COMMENT

Page 28 Line 18-19. Please qualify this statement.

The statement referred to is as follows:

“These examples provide a level of transparency and detail in the represented processes that is not typically found in larger Integrated Assessment Models (IAMs).”

RESPONSE

Our teams' collective experiential work with and knowledge of IAMs demonstrates that the specific equations and parameters for biophysical processes are often not exposed to the model user, calibrated for specific study areas, or coupled in a way that creates a direct impact-response feedback. Instead, the biophysical processes are either 1) disconnected and act as an independent measurement routine, 2) linked as is often done in climate modelling via prescribed changes in land use and land cover change, or 3) have a simplistic representation that can be useful at very large spatial extents (e.g., globally) but do not match observations well locally.

We have replaced the text in question with the following:

The focus on specialized models offers a flexible and open approach to answering new questions about feedbacks in coupled human-natural systems, and also facilitates the identification of new types of data required to calibrate and validate the interactions and feedbacks between the two systems. Additionally, coupled modelling presents an

opportunity for increased transparency and detail in the represented processes through more explicit identification and documentation of component interactions and processes.

REVIEWER COMMENT

Page 38 and 39. The conclusion section on interdisciplinary collaboration is valuable and insightful.

RESPONSE

Thank you for this comment and more importantly thank you for your time and effort. Again, your contribution and review is appreciated and has made the manuscript stronger and hopefully more useful for future readers.

Modelling feedbacks between human and natural processes in the land system

*Derek T. Robinson¹, Alan Di Vittorio², Peter Alexander^{3,4}, Almut Arneith⁵, C. Michael Barton⁶, Daniel G. Brown⁷, Albert Kettner⁸, Carsten Lemmen⁹, Brian C. O'Neill¹⁰, Marco Janssen¹¹, Thomas A. M. Pugh^{12,13}, Sam S. Rabin⁵, Mark Rounsevell^{3,5}, James P. Syvitski¹⁴, Isaac Ullah¹⁵, Peter H. Verburg¹⁶

¹Department of Geography and Environmental Management, University of Waterloo, Waterloo, Ontario, Canada.

²Climate and Environmental Sciences Department, Lawrence Berkley National Laboratory, Berkeley, California, USA.

³School of Geosciences, University of Edinburgh, Drummond Street, Edinburgh EH8 9XP, United Kingdom.

⁴Land Economy and Environment Research, SRUC, West Mains Road, Edinburgh EH9 3JG, United Kingdom.

⁵Karlsruhe Institute of Technology, Institute of Meteorology and Climate Research – Atmospheric Environmental Research (IMK-IFU), Garmisch-Partenkirchen, Germany.

⁶School of Human Evolution & Social Change and Center for Social Dynamics and Complexity, Arizona State University, Tempe, Arizona, USA.

⁷School of Natural Resources and Environment, University of Michigan, Ann Arbor, Michigan, USA.

⁸Dartmouth Flood Observatory, ¹²Community Surface Dynamics Modeling System, Institute of Arctic and Alpine Research, University of Colorado, Boulder, Colorado, USA.

⁹Institute of Coastal Research, Helmholtz-Zentrum Geesthacht, Geesthacht, Germany.

¹⁰National Center for Atmospheric Research, Boulder, Colorado, USA.

¹¹School of Sustainability, Arizona State University, Tempe, Arizona, USA.

¹²School of Geography, Earth and Environmental Sciences, University of Birmingham, Birmingham, United Kingdom.

¹³Birmingham Institute of Forest Research, University of Birmingham, Birmingham, United Kingdom.

¹⁴Community Surface Dynamics Modeling System, University of Colorado, Boulder, Colorado, USA.

¹⁵Department of Anthropology, San Diego State University, San Diego, California, USA.

¹⁶Environmental Geography Group, Institute for Environmental Studies, VU University Amsterdam, Amsterdam, The Netherlands.

*Corresponding author email: dtrobins@uwaterloo.ca

dtrobins 2017-12-22 1:27 PM
Style Definition ... [1]
dtrobins 2017-12-22 1:27 PM
Formatted: Space Before: Auto, After: Auto
dtrobins 2017-12-22 1:27 PM
Formatted: Header distance from edge: 0", Numbering: Continuous
dtrobins 2017-12-22 1:27 PM
Formatted: Superscript
dtrobins 2017-12-22 1:27 PM
Deleted: Syvitski¹³...yvitski¹⁴, Isaac ... [2]

dtrobins 2017-12-22 1:27 PM
Deleted: Edgbaston,
dtrobins 2017-12-22 1:27 PM
Deleted: ¹³Community
dtrobins 2017-12-22 1:27 PM
Formatted: Space Before: Auto, After: Auto
dtrobins 2017-12-22 1:27 PM
Deleted: ¹⁴Department
dtrobins 2017-12-22 1:27 PM
Deleted: ¹⁵Environmental
dtrobins 2017-12-22 1:27 PM
Deleted: Page Break
dtrobins 2017-12-22 1:27 PM
Formatted: Left, None, Space Before: 0 pt, After: 0 pt, Add space between paragraphs of the same style
dtrobins 2017-12-22 1:27 PM
Formatted: Page Number, Font:Times New Roman, Not Bold

ABSTRACT

The unprecedented use of Earth's resources by humans, in combination with increasing natural variability in natural processes over the past century, is affecting evolution of the Earth system. To better understand natural processes and their potential future trajectories requires improved integration with and quantification of human processes. Similarly, to mitigate risk and facilitate socio-economic development requires a better understanding of how the natural system (e.g., climate variability and change, extreme weather events, and processes affecting soil fertility) affects human processes. Our understanding of these interactions and feedback between human and natural systems has been formalized through a variety of modelling approaches. However, a common framework and set of guidelines to model human-natural systems feedbacks are lacking. The presented research lays out a framework that includes representing model-coupling configuration in combination with the frequency of interaction and coordination of communication between coupled models. Four different approaches used to couple representations of the human and natural system are presented in relation to this framework, which vary in the processes represented and in the scale of their application. From the development and experience associated with the four models of coupled human-natural systems, the following eight lessons were identified that if taken into account by future coupled human-natural systems model developments may increase their success: 1) leverage the power of sensitivity analysis with models, 2) remember modelling is an iterative process, 3) ensure consistency, 4) reconcile spatio-temporal mismatch, 5) create a common language, 6) construct homogeneous units, 7) make code open-access, and 8) incorporate feedback increases non-linearity and variability. Following a discussion of feedbacks, a way forward to expedite model coupling and increase the longevity and interoperability of models is given, which suggests the use of a wrapper container software, a standardized applications programming interface (API), the incorporation of standard names, and adoption of reproducible workflow environments to wire the pieces together.

dtrobins 2017-12-22 1:27 PM

Formatted: Space Before: Auto, After: Auto

dtrobins 2017-12-22 1:27 PM

Deleted: the

dtrobins 2017-12-22 1:27 PM

Deleted: To capture and formalize our

dtrobins 2017-12-22 1:27 PM

Deleted: the

dtrobins 2017-12-22 1:27 PM

Deleted: are used. While integrated assessment models are widely recognized as supporting this goal and integrating representations

dtrobins 2017-12-22 1:27 PM

Deleted: the

dtrobins 2017-12-22 1:27 PM

Deleted: and natural system for global applications, an increasing diversity of models and corresponding

dtrobins 2017-12-22 1:27 PM

Deleted: have focused on

dtrobins 2017-12-22 1:27 PM

Deleted: models specializing

dtrobins 2017-12-22 1:27 PM

Deleted: specific human (e.g., decision-making) or natural (e.g., erosion) processes at multiple scales. Domain experts develop these specialized models

dtrobins 2017-12-22 1:27 PM

Deleted: a greater degree

dtrobins 2017-12-22 1:27 PM

Deleted: detail, accuracy, and transparency, with many adopting open-science norms that use new technology for model sharing, coupling, and high performance computing. We highlight examples of four

dtrobins 2017-12-22 1:27 PM

Deleted: The examples illustrate how groups of researchers have attempted to overcome the lack of suitable frameworks for coupling human and natural systems to answer questions specific to feedbacks between human

dtrobins 2017-12-22 1:27 PM

Deleted: natural systems. We draw from these examples broader lessons about system and model coupling and discuss the ... [3]

dtrobins 2017-12-22 1:27 PM

Formatted: Font:Times New Roman, Not Bold

dtrobins 2017-12-22 1:27 PM

Formatted: Font:Times

1. INTRODUCTION

Models designed to improve our understanding of human-environment interactions simulate interdependent processes that link human activities and natural processes, but usually with a focus on the human or natural system. When simulating the land system, such models tend to incorporate either detailed decision-making algorithms with simplified ecosystem responses (e.g., land-use models) or simple mechanisms to drive land-cover patterns that affect detailed environmental processes (e.g., ecosystem models). These one-sided approaches are prone to generating biased results, which can be improved by capturing the feedbacks between human and natural processes (Verburg 2006, Evans et al., 2013; Rounsevell et al., 2014). Hence, improving our understanding of the interdependent dynamics of natural systems and land change through modelling remains a key opportunity and important challenge for Earth systems research (NRC 2013).

Land use describes how humans use the land and the activities that take place at a location (e.g., agricultural or forest production), whereas land-cover change describes the transition of the physical surface cover (e.g., crop or forest cover) at a location. These distinct concepts are inextricably linked, and models sometimes conflate them or, when represented separately, fail to link them. Because of the tradition of division between human and natural sciences (Liu et al., 2007), land-change science and social science have focused on how socioeconomic drivers interact with environmental variability to affect new quantities and patterns of land use (Turner II et al. 2007) while natural science has focused on modelling natural-system responses to prescribed land-cover changes (e.g., Lawrence et al., 2012).

dtrobins 2017-12-22 1:27 PM

Formatted: Space Before: Auto, After: Auto

dtrobins 2017-12-22 1:27 PM

Deleted:

dtrobins 2017-12-22 1:27 PM

Deleted:

An important limitation of most natural system models¹ is that the impacts of human action are represented through changes in land cover that rarely involve mechanistic descriptions of the human decision processes driving them. These models are typically applied at coarse resolutions and ignore the influence of critical land management activities on natural processes and micro-to-regional climate associated with fine-resolution factors such as landscape configuration (e.g., Running and Hunt 1993; Smith et al. 2001, 2014; Robinson et al. 2009), fragmentation and edge effects (e.g., Parton et al. 1987; Lawrence et al. 2011), and horizontal energy transfers (e.g., Coops and Waring 2001). The consequences of excluding these factors on the representation of natural processes can be significant because they aggregate to affect global processes.

Conversely, efforts to model and represent changes in how land is used by humans (i.e., land-use change models, LUCMs) have been developed to understand how human processes impact the environment, but in ways that often over-simplify the representation of natural processes (Evans et al. 2013). While such models vary in their level of process detail, they usually include some representation of the economic and social [interactions](#) associated with alternative land-use types. Over the past 5-10 years, the representation of natural systems has been improved in LUCMs by systematically increasing the complexity of natural processes represented from inventory approaches to rule-based approaches (e.g., Manson 2005), statistical models (e.g., Deadman et al. 2004), dynamic linking to ecosystem models (e.g., Matthews 2006, Yadav et al. 2008, Luus et al. 2013), or coupling of integrated assessment

¹ Natural system model is used as an overarching term for Earth system, land surface, ecosystem, and more specific models of natural processes (e.g., erosion). We use the following nomenclature: a) Earth System models couple land and ocean biogeochemistry to atmospheric processes, and represent surface-atmosphere interactions, such that CO₂ respiration (and other processes) affects the atmospheric CO₂ concentration, which in turn affects vegetation growth; b) ecosystem models integrate biogeochemistry, biophysical processes (e.g., latent and sensible heat fluxes), and vegetation structure to simulate dynamic terrestrial vegetation growth (Kucharik et al. 2000); and c) land surface models represent heat and moisture fluxes between the land surface and atmosphere and can include vegetation properties using anything from simple parameters (e.g., Bonan 1996) to detailed ecosystem models.

dtrobins 2017-12-22 1:27 PM

Deleted: trade-offs

models and Earth-system models (e.g., Collins et al., 2015). Even with the impetus to better understand human-environment interactions through model coupling, land-use science and the natural sciences have historically been separate fields of scientific inquiry (Liu et al. 2007) that foster domain specific methods and research questions. Novel integrative modelling methods are being developed to create technical frameworks for, and intersecting applications between, these two communities (e.g., Hill et al. 2004, Lemmen et al. 2017, Peckham et al. 2013, Robinson et al. 2013, Collins et al. 2015, Barton et al. 2016) that offer insight and an initial benchmark for identifying methods for improvement.

The promise of greater integration between our representations of human and natural processes lies partly in the spatially distributed representations of land use, land cover, vegetation, climate, and hydrologic features. Models in land-change and natural sciences tend to contain a description of the land surface (often gridded) and, while the representations of these systems may differ in their level of detail, they are often complementary, thus facilitating a more complete representation and understanding of land-surface change through integration. The coupling of land-change and natural-system models promises a new approach to characterizing and understanding humans as a driving force for Earth-system processes through the linked understanding of land use and land cover as an integrated land system.

The potential gains from greater coupling are threefold. First, the use of many of the Earth's resources by humans alters the state and trajectory of the Earth system (Zalasiewicz et al. 2015, Waters et al. 2016, Bai et al. 2015). Second, the natural system (e.g., climate variability and change, extreme weather events, processes affecting soil fertility) also affects human processes. Therefore, interactions and feedbacks within the social and in socio-ecological systems must be better quantified (Verburg et al. 2016). Achieving substantive gains in our understanding of coupled human-natural systems requires a critical assessment of the different modelling approaches used to couple representations of human

dtrobins 2017-12-22 1:27 PM
Deleted: interaction
dtrobins 2017-12-22 1:27 PM
Deleted: remain disparate
dtrobins 2017-12-22 1:27 PM
Deleted:).

dtrobins 2017-12-22 1:27 PM
Deleted: land-use
dtrobins 2017-12-22 1:27 PM
Deleted: (land cover)
dtrobins 2017-12-22 1:27 PM
Deleted: , and therefore between social and natural system dynamics,

dtrobins 2017-12-22 1:27 PM
Deleted: unprecedented
dtrobins 2017-12-22 1:27 PM
Deleted: , which is considered unsustainable in many respects, is affecting evolution
dtrobins 2017-12-22 1:27 PM
Deleted:). Potential futures of the natural environment need to account better for human processes (
dtrobins 2017-12-22 1:27 PM
Deleted: feedback
dtrobins 2017-12-22 1:27 PM
Deleted: Third, to achieve these
dtrobins 2017-12-22 1:27 PM
Deleted: requires an
dtrobins 2017-12-22 1:27 PM
Deleted: and
dtrobins 2017-12-22 1:27 PM
Deleted: coupling

160

165

170

175

200 systems with natural systems that span from local ecological and biophysical processes (e.g., erosion, hydrology, vegetation growth) through to global processes (e.g., climate). Third, coupled models will be most useful if we can use them to test possible interventions (e.g., policies or technologies) in the human or natural system and identify feedbacks that amplify or dampen system responses, thus garnering a better understanding about how human impacts on the environment can be mitigated and how humans might anticipate and adapt to resulting changes in the natural system.

205 The coupled modelling approaches discussed here are used in other fields as well, for example in integrated assessment modelling (IAM, see Verburg et al. 2016), which combines human and natural systems and often explicitly incorporates feedbacks between the two systems. However many IAMs use relatively simple representations of individual systems in order to analyze the nature of interactions between them. In contrast, we focus on coupled modelling that combines specialized and more process-rich representations of both and therefore may lead to different conclusions. Furthermore, new technology for model sharing, model coupling, and high-performance computing make it possible to connect specialized models, which was not possible when IAMs were first conceptualized 25 years ago. Because of the greater degree of openness enabled by these technologies and their modular nature, coupled models enable a greater degree of transparency in how we represent human-natural system models. Whether their relative process richness enables a greater degree of model accuracy remains to be tested.

220 We present multiple approaches to coupling land-change and natural-system models and reflect on how their representations of feedbacks add value to scientific inquiry into the dynamics of coupled human-natural systems. We highlight four example models that explicitly represent feedbacks between land-change and natural systems, but vary in their scale of application and coupling architecture. We then present the lessons learned from the modelling research teams, discuss the challenges of

- dtrobins 2017-12-22 1:27 PM
Deleted: Through model development and integration, knowledge is synthesized, formalized in mathematics or computer code, communicated and discussed among others, and gaps in knowledge and data are id... [4]
- dtrobins 2017-12-22 1:27 PM
Deleted: in the Earth
- dtrobins 2017-12-22 1:27 PM
Deleted: that
- dtrobins 2017-12-22 1:27 PM
Deleted: help avoid the worst possib... [5]
- dtrobins 2017-12-22 1:27 PM
Deleted: Coupled modelling contrasts with
- dtrobins 2017-12-22 1:27 PM
Deleted: simplified versions of both the
- dtrobins 2017-12-22 1:27 PM
Deleted: human system and
- dtrobins 2017-12-22 1:27 PM
Deleted: It might be that coupling m... [6]
- dtrobins 2017-12-22 1:27 PM
Deleted: , and this should be tested. ... [7]
- dtrobins 2017-12-22 1:27 PM
Deleted: within the new norms of op... [8]
- dtrobins 2017-12-22 1:27 PM
Deleted:
- dtrobins 2017-12-22 1:27 PM
Deleted: Integrated Assessment Mod... [9]
- dtrobins 2017-12-22 1:27 PM
Deleted: The coupling approach
- dtrobins 2017-12-22 1:27 PM
Deleted: transparency and
- dtrobins 2017-12-22 1:27 PM
Deleted: in coupled models
- dtrobins 2017-12-22 1:27 PM
Deleted: to evaluate
- dtrobins 2017-12-22 1:27 PM
Deleted: alternative approaches to ... [10]
- dtrobins 2017-12-22 1:27 PM
Deleted: global change and thus ge... [11]
- dtrobins 2017-12-22 1:27 PM
Deleted: sustainable management o... [12]
- dtrobins 2017-12-22 1:27 PM
Deleted: , the research questions th... [13]
- dtrobins 2017-12-22 1:27 PM
Deleted: land-change and natural-s... [14]
- dtrobins 2017-12-22 1:27 PM
Deleted: various approaches, the di... [15]

295 | [representing feedbacks, and then outline a way forward to expedite model coupling initiatives and their subsequent scientific advances.](#)

dtrobins 2017-12-22 1:27 PM

Deleted: Technical approaches

dtrobins 2017-12-22 1:27 PM

Deleted: Earth-system and land-change models

dtrobins 2017-12-22 1:27 PM

Formatted: Outline numbered + Level: 2 + Numbering Style: 1, 2, 3, ... + Start at: 1 + Alignment: Left + Aligned at: 0" + Indent at: 0.25"

dtrobins 2017-12-22 1:27 PM

Deleted: 2013, Dunlap

dtrobins 2017-12-22 1:27 PM

Deleted: occurred

dtrobins 2017-12-22 1:27 PM

Deleted: This initial coupling of processes is still in use today, e.g. in the Modular Earth Submodel System (MESSy, Jöckel et al. 2005). More often, however, the term is used for

dtrobins 2017-12-22 1:27 PM

Deleted: " A typical ecological component would describe the ecosystems and biogeochemistry of the biosphere in a coupled model that also includes representati... [16]

dtrobins 2017-12-22 1:27 PM

Deleted: tight' and '

dtrobins 2017-12-22 1:27 PM

Deleted: tight is a

dtrobins 2017-12-22 1:27 PM

Deleted: with

dtrobins 2017-12-22 1:27 PM

Deleted: and loose has low coordin... [17]

dtrobins 2017-12-22 1:27 PM

Deleted: While the

dtrobins 2017-12-22 1:27 PM

Deleted: categorization between tight and

dtrobins 2017-12-22 1:27 PM

Deleted: the multidimensionality

dtrobins 2017-12-22 1:27 PM

Deleted: tightness and looseness (e.g., along

dtrobins 2017-12-22 1:27 PM

Deleted: axes

dtrobins 2017-12-22 1:27 PM

Deleted: ,

dtrobins 2017-12-22 1:27 PM

Deleted:), it is sufficient to address

dtrobins 2017-12-22 1:27 PM

Deleted: current state of the art

dtrobins 2017-12-22 1:27 PM

Deleted: coupling land-change and ... [18]

1.1 [Approaches to model coupling,](#)

300 | When two models communicate in a coordinated fashion, they form a coupled model, where the constituents are often termed components (Dunlap et al. 2013). One of the first examples of coupled models [was developed](#) in the 1970s to describe the interaction of different physical processes represented by numerical models for weather prediction (e.g. Schneider and Dickinson 1974). [Model coupling has been expanded since then to encompass](#) domain coupling, i.e., the coordinated interaction of models for different Earth-system domains or “spheres” (e.g., biosphere and atmosphere). [Recent coupling frameworks implement coupling of functional units regardless of the process versus domain dichotomy](#) (e.g. MESSy cycle 2, Jöckel et al. 2005, Kergweg and Jöckel 2012).

310 | Model coupling can be described by the strength and frequency of interaction between two software components, often placed in a continuum between ‘loose’ and ‘tight,’ where [loose coupling has low coordination and infrequent communication between two or more models and tight coupling describes](#) high coordination and frequent communication. [The simple characterization along a continuum from loose to tight](#) neglects [multidimensional nuances of different coupling configurations](#) (Figure 1), [degree of coordination, and communication frequency](#) (Figure 2). However, the terms loose and tight coupling [provide a shorthand about the ease and level of code integration, required understanding of model components, and where the responsibility for code development resides.](#)

315 |

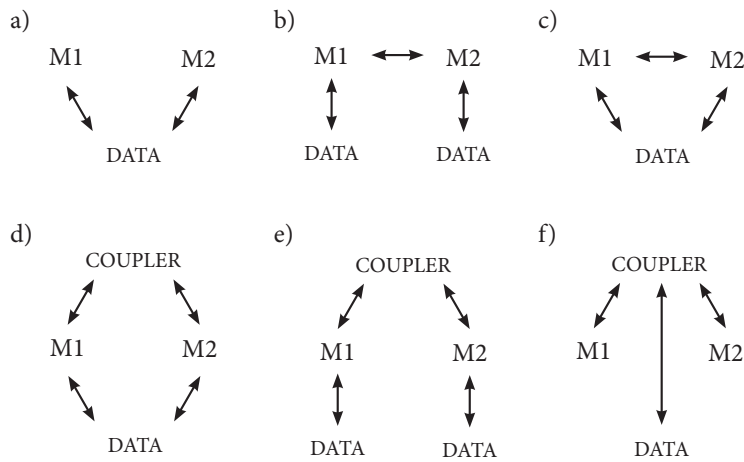


Figure 1: Approaches to model coupling. a) loose model integration via file / data exchange between model 1 (M1) and model 2 (M2); b) models share inputs and outputs but interact with independent data; c) models interact with the same data and share inputs and outputs directly with each other; d) a coupler coordinates run time and scheduling and may pass some information between models, models may also interact through manipulating data (files); e) a coupler coordinates the run time and scheduling of the individual models and passes information between models that primarily use their own data, f) the coupler coordinates all interactions between models and data.

In a strict implementation of loose coupling, communication is mostly based on the exchange of data files (Figure 1a), and coordination is the automated or manual arrangement of independently operating (and different) components and externally organized data exchange. No interaction of the developers of the components is required, and coupling can extend across different expert communities and platforms.

However, in many cases model modification is necessary to manipulate the output data generated by a model for input to another and to sequence that transaction. As we increase the frequency of communication between two models and the coordination of interaction (Figure 2) we move towards a tight coupling. In a strict implementation of tight coupling - some call this the monolithic approach - all components and their coordination is programmed within a single model; they share much of their programming code and access shared memory for communication.

dtrobins 2017-12-22 1:27 PM
Deleted: ,

dtrobins 2017-12-22 1:27 PM
Deleted: In a

dtrobins 2017-12-22 1:27 PM
Deleted: exist

dtrobins 2017-12-22 1:27 PM
Deleted: and are interdependent

dtrobins 2017-12-22 1:27 PM
Deleted: , all coordination is programmed into a monolithic model

380 Many existing instances of coupled models employ intermediate degrees of coupling. Existing
technologies that support model coupling deploy the strengths of tight and loose coupling approaches
(Syvitski et al. 2013) in ways that address inherent trade-offs between control versus openness, high
385 performance computing versus wide distribution, distributed versus concentrated expertise, and shared
versus modular independent code. Coupling frameworks or software couplers (Figure 1d-h) are typically
introduced when the simulation environment becomes multidisciplinary and requires collaborative
modeling of several scientific disciplines, such that the coupled model is too complex to be
comprehended by a single individual or research group (Voinov et al., 2010). For example, the
Community Surface Dynamics Modeling System (CSDMS, Peckham et al. 2013) promotes distributed
expertise and independent models in the domain of Earth-surface dynamics. All components are
390 required to implement basic model interfaces (BMI) as communication ports with any other components
in CSDMS (Syvitski et al. 2014). The Modular System for Shelves and Coasts (MOSSCO, Lemmen et
al. 2017) also promotes distributed expertise and independent models. Similarly, it has been suggested
that all components implement the Earth System Modeling Framework (ESMF, Hill et al. 2004)
protocol to enable interaction through a coupler (Figure 1d), but the focus is on immediate deployment
395 on high performance computing infrastructure.

The degree of coupling is important as a technical design question, as depicted in Figure 1, but also
as an important ontological question affecting how well we can represent feedbacks within and among
human and environment systems (Ellis 2015, Liu et al. 2015, Dorninger et al. 2017). Taken together,
frequency of communication and degree of coordination affect the degree to which feedbacks can be
400 represented in coupled systems and, therefore, considered in our prediction of system behaviour or
response to interventions (Figure 2). For this reason, we describe four examples of coupled
representations of human and natural systems, across a range of processes represented and scales of

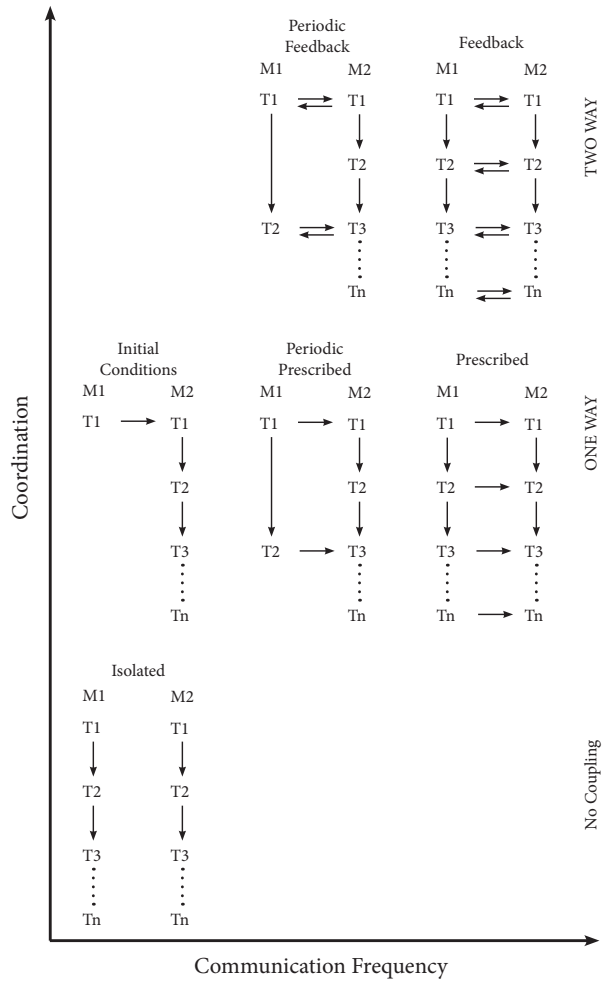
- dtrobins 2017-12-22 1:27 PM
Deleted: the current
- dtrobins 2017-12-22 1:27 PM
Deleted: have
- dtrobins 2017-12-22 1:27 PM
Deleted: , and the different existing
- dtrobins 2017-12-22 1:27 PM
Deleted: attempt to utilize
- dtrobins 2017-12-22 1:27 PM
Deleted: in different ways
- dtrobins 2017-12-22 1:27 PM
Deleted:), often with compromises
- dtrobins 2017-12-22 1:27 PM
Deleted: or
- dtrobins 2017-12-22 1:27 PM
Deleted: which would be

- dtrobins 2017-12-22 1:27 PM
Deleted: In it, all

- dtrobins 2017-12-22 1:27 PM
Deleted: ; similarly
- dtrobins 2017-12-22 1:27 PM
Deleted: is
- dtrobins 2017-12-22 1:27 PM
Deleted: ,

- dtrobins 2017-12-22 1:27 PM
Moved (insertion) [1]
- dtrobins 2017-12-22 1:27 PM
Formatted: English (US)
- dtrobins 2017-12-22 1:27 PM
Deleted: Multidisciplinary modelling and model coupling can be improved when a common language is used. For example, traditional coupling between ocean and atmosphere in Earth System Models typically use the Climate and Forecast conventions (Eaton et al.

application, and how their coupling design affects representation of feedbacks. The examples are situated at different points along the three dimensions of configuration, frequency of communication, and coordination, and illustrate how groups of researchers have attempted to overcome the lack of suitable frameworks for coupling human and natural systems and the lessons learned for future representations of feedbacks among human and natural systems.



430 Figure 2. Conceptual outline of the frequency of model communication and coordination of interaction
between models from no coupling to one-way and two-way feedback. Examples are not exhaustive but
435 illustrate common approaches used. M1 = model 1, M2 = model 2, T1 = time step 1, Tn = time step n.
Initial conditions, where one model is merely used to set the initial conditions of another; periodic
perturbations, whereby one model updates data or variables used by another periodically and
unilaterally; prescription, which is common to climate models that use a prescribed trajectory of land
cover data that do not endogenously change (e.g., citation); periodic two-way feedback, whereby two
different modelled processes may act at different temporal resolutions and feedbacks occur upon
alignment (e.g., citation); and two-way feedback where the modelled processes are dependent on the
results and behaviour of each other (e.g., citation).

440 **2. Examples of approaches to coupling**

2.1 Tight Coupling - Effects of subsistence agriculture and pastoralism on erosion

2.1.1 **Model definition** and description

445 The Mediterranean Landscape Dynamics ([MedLand](#)) project developed a computational laboratory for
high-resolution modeling of land-use/landscape interaction dynamics in Mediterranean landscapes. [This](#)
[Laboratory, the MedLand Modeling Laboratory \(MML\)](#), is designed as a [configurable and controlled](#)
experimental environment to model coupled human and natural systems (Banks et al., 2002; Miller and
Page, 2007; van der Leeuw, 2004; Verburg et al., 2016). The MML integrates an agent-based model
450 (ABM) of households practicing subsistence agriculture and/or pastoralism and [cellular automata](#)
[models of vegetation growth, soil fertility dynamics, and landscape evolution \(e.g., erosion/deposition\)](#)
[along with climate scenario data](#). The components of the MML are [connected](#) through [a coupler that](#)
[passes information between them \(Figure 3; Davis and Anderson, 2004, p. 200; Gholami et al., 2014;](#)
Sarjoughian et al., 2013; Sarjoughian, 2006; Sarjoughian et al., 2015) (See S1 1.1).

455 Villages and household actors are represented as agents in [the ABM](#), which simulates land-use
decisions and practices, mirroring the organization of known small-scale subsistence farmers (Banning,

dtrobins 2017-12-22 1:27 PM
Moved down [2]: 2011). A controlled vocabulary in these conventions assists understanding of model processes and facilitates their coupling among models or replacement in new models. With a similar goal but different approach, CSDMS introduced rules for creation of unequ... [19]

dtrobins 2017-12-22 1:27 PM
Moved down [3]: With a common... [21]

dtrobins 2017-12-22 1:27 PM
Deleted: .

dtrobins 2017-12-22 1:27 PM
Deleted: As in any communication... [22]

dtrobins 2017-12-22 1:27 PM
Formatted ... [20]

dtrobins 2017-12-22 1:27 PM
Deleted: We showcase four exampl... [23]

dtrobins 2017-12-22 1:27 PM
Deleted:

dtrobins 2017-12-22 1:27 PM
Deleted: Definition

dtrobins 2017-12-22 1:27 PM
Deleted: MedLand

dtrobins 2017-12-22 1:27 PM
Deleted: has

dtrobins 2017-12-22 1:27 PM
Deleted: The MedLand

dtrobins 2017-12-22 1:27 PM
Deleted:)

dtrobins 2017-12-22 1:27 PM
Deleted: in which

dtrobins 2017-12-22 1:27 PM
Deleted: in press

dtrobins 2017-12-22 1:27 PM
Deleted: a

dtrobins 2017-12-22 1:27 PM
Deleted: model (LEM) that simulat... [24]

dtrobins 2017-12-22 1:27 PM
Deleted: , vegetation change, and s... [25]

dtrobins 2017-12-22 1:27 PM
Deleted: are used as input to the L... [26]

dtrobins 2017-12-22 1:27 PM
Deleted: modular and are dynamic... [27]

dtrobins 2017-12-22 1:27 PM
Deleted: an interaction model to m... [28]

dtrobins 2017-12-22 1:27 PM
Deleted: an

dtrobins 2017-12-22 1:27 PM
Deleted: that

540 2010; Flannery, 1993; Kohler and van der Leeuw, 2007). These agents select land for cultivation and grazing using decision algorithms and projected returns informed by studies of subsistence farming, with emphasis on the Mediterranean and xeric landscapes (Ullah 2017).

dtrobins 2017-12-22 1:27 PM
Deleted: ,

545 The [landscape evolution model \(LEM\)](#) iteratively evolves digital terrain, soil, and vegetation on landscapes [within a watershed](#) by simulating sediment entrainment, transport, and deposition using a 3D implementation of the Unit Stream Power Erosion/Deposition (USPED) equation and the Stream Power equation (Barton et al., 2016; Mitasova et al. 2013). The LEM also tracks changes in soil depth and fertility due to cultivation and fallowing. A simple vegetation model simulates clearance for cultivation or removal by grazing and regrowth tuned to a Mediterranean 50-year succession interval based on empirical studies in the region (Bonet, 2004; Bonet and Pausas, 2007). [Climate parameters can be entered iteratively or statically, and may derive from any external climate or paleoclimate data or simulation output.](#)

2.1.2 [Feedback Implementation](#)

555 [The coupling architecture of the MML is highly structured, following a tight coupling scheme that is a hybrid of types shown in Figure 1d and 1f. In the MML, a coupler manages much of the data input and output, but it also coordinates the scheduling and exchange of data among the various subcomponent models. The coupler was constructed to query data directly and transform it for use by certain submodels, but it also directs subcomponent models to run and independently retrieve input data and produce output files. Coordination by the coupler is achieved through the use of a strict file naming system and the use of a common data format \(e.g., spatial data must be in the GRASS geographical information system \(GIS\) raster file format \(Neteler et al. 2012\) and other data in delimited text files\). Naming conventions of data files indicate data type, temporality, and data permanence \(intermediary](#)

dtrobins 2017-12-22 1:27 PM
Formatted: Font:Times New Roman

dtrobins 2017-12-22 1:27 PM
Formatted: manuscript body, Line spacing: single

dtrobins 2017-12-22 1:27 PM
Deleted: Feedbacks

dtrobins 2017-12-22 1:27 PM
Deleted: The MML provides for three general types of model coupling, which differ in the amount and frequency of feedback between sub-models during a simulation (Figure 1). The simplest and first type of coupling is very loose and indirect (Section 1.1), whereby a predefined land-use scenario is “injected” into a coupled model of land-cover and landscape evolution at the start of the simulation. There are no feedbacks between land-use and land-cover change (nor with any other natural processes; Figure 1-a). The static nature of the land cover results in simplistic linear growth of erosion and deposition (ED) over time and variability in ED is observed through the implementation of different land-use scenarios. . [\[29\]](#)

data versus final data). Two versions of the MML have been developed, one where the coupler is an independent piece of wrapping software coded in Java (in MML v1; Barton et al. 2015) and one where the coupler is integrated into the main model codebase (in python) of a reduced version of MML (in MML-Lite; Barton et al. 2015b). Subcomponent models are also either independent software scripts coded in Python (Landscape components) or in Java (ABM) in the MML v1, or are coded in a monolithic Python codebase in the MML-Lite.

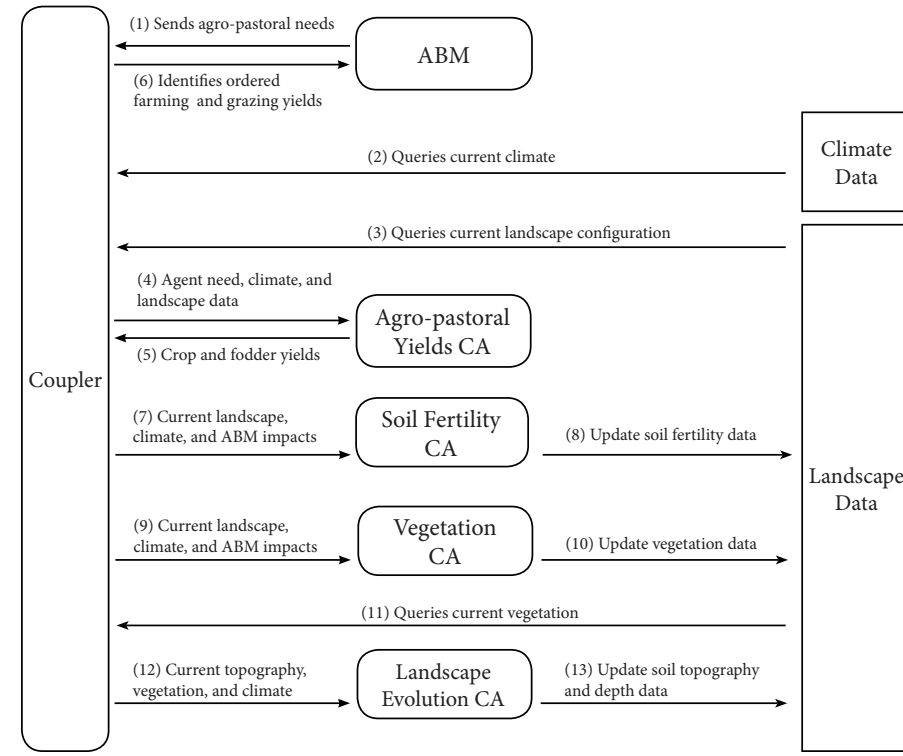


Figure 3. Structure of feedback between the components of the MedLanD Modeling Laboratory. Numbers indicate the sequence of steps in a single time-step of a coupled model run.

Unknown

Formatted: Font:Times, Bold, Italic

595 The structure and sequence of a single time-step of an MML simulation begins with the coupler initiating the ABM. The ABM determines the subsistence requirements for all households in the agent population and passes access to these data as a delimited text string back to the coupler (Figure 3(1)). The coupler then retrieves climate and landscape information and passes data file location information for subsistence requirements to the Agro-Pastoral Yields CA submodel (Figure 3(4)). The Agro-Pastoral Yields CA submodel chooses locations for the various subsistence tasks and calculates yields that are returned in the form of a spatial data layer (i.e., a GRASS GIS raster file). Yields are then passed back to
600 the ABM (Figure 3(6)) to determine the effects of subsistence choices for each household. At this time, the human system waits while several natural processes are simulated. The coupler calls the Soil Fertility CA to update soil characteristics degraded by land use (i.e., farming, grazing, or firewood gathering) and climate impacts. The coupler then calls the Vegetation CA to determine the amount of vegetation regrowth following agent land-use impacts (Figure 3(9)). Both the Soil Fertility and
605 Vegetation CAs directly write output in the form of GRASS GIS raster files that are queried by the coupler at the beginning of each time step. Lastly, the coupler calls the Landscape Evolution model, which updates the land surface based on the new configuration of vegetation and climate data for that year.

610 The new state of the natural system (i.e., altered land surface, vegetation, and soils) affects household-agent decisions and natural system processes (i.e., CA submodels) in subsequent time-steps to achieve two-way feedbacks (as in Figure 2, upper right). It's worth noting, however, that the MML currently only implements climate as a one-way prescribed coupling (Figure 2).

2.2 Loose Coupling - Effects of residential land management on carbon storage

2.2.1 [Model definition](#) and description

To quantify the effects of residential land management on ecosystem carbon, a framework was developed to couple [a human decision-making model with](#) the dynamic [global vegetation](#) model

BIOME-BGC (Robinson et al. 2013). Our model of the human system, Dynamic Ecological Exurban

620 Development (DEED) model, combines a suite of components developed to systematically incorporate additional data and complexity in the residential development landscape (Brown et al. 2004, Brown and Robinson 2006, Brown et al. 2008, Robinson and Brown 2009, Robinson et al. 2013, and Sun et al. 2014). Farmer agents own land that is bid on by Residential Developer agents. The winning Residential

625 Developer agent subdivides the [farmland](#) into one of three [residential](#) subdivision types, each with different lot density and land-cover impacts (remove all vegetation, leave existing vegetation, grow new vegetation). Residential Household agents then [locate](#) and conduct land management activities.

[BIOME-BGC](#) was used to represent deciduous broadleaf forest and turfgrass (i.e., maintained lawn) growth. It operates on a daily time step and reports outputs at daily and annual periods. Although the

630 model was not developed to [include](#) land management, it was selected because: 1) existing variables permit the representation of different types of vegetation found in exurban landscapes (Robinson 2012)

like turfgrass (Milesi et al. 2005); 2) the parameters and inputs used by the model can be altered to represent the impacts of land management that affect vegetation growth; 3) the biogeochemical cycling

in the model represents water, carbon, and nitrogen with extensive literature validating model outcomes, including parameterization for different ecosystems and species (White et al. 2000); and 4) it has been

635 applied both at high spatial resolutions (e.g., 30 m) and at local-to-global spatial extents (e.g., Coops and Waring 2001), which facilitates both the local site evaluation and the potential to scale out to regional or national levels.

dtrobins 2017-12-22 1:27 PM

Deleted: Definition

dtrobins 2017-12-22 1:27 PM

Formatted: Indent: First line: 0"

dtrobins 2017-12-22 1:27 PM

Deleted: practices

dtrobins 2017-12-22 1:27 PM

Deleted: ecosystem

dtrobins 2017-12-22 1:27 PM

Deleted: with a human decision-making model

dtrobins 2017-12-22 1:27 PM

Deleted: This coupling uses an agent-based design because it supports a conceptual model that includes different types of human agents acting in the system, their interactions, the scope of their behaviours and influence, and their attributes (Rounsevell et al. 2012), and is therefore consistent with the conception of society as a complex system.

dtrobins 2017-12-22 1:27 PM

Deleted: landscape

dtrobins 2017-12-22 1:27 PM

Deleted: residential

dtrobins 2017-12-22 1:27 PM

Deleted: choose a location for settlement

dtrobins 2017-12-22 1:27 PM

Deleted: The dynamic ecosystem model

dtrobins 2017-12-22 1:27 PM

Deleted: expose specific variables to

dtrobins 2017-12-22 1:27 PM

Deleted: growth

dtrobins 2017-12-22 1:27 PM

Deleted: behaviours

dtrobins 2017-12-22 1:27 PM

Deleted: .

dtrobins 2017-12-22 1:27 PM

Formatted: Indent: First line: 0.25"

660 2.2.2 Feedback Implementation

A loose coupling approach linking the ABM (DEED) and BIOME-BGC was used that is similar to the structure of Figure 1c, whereby information is exchanged between output and input files. However, DEED not only modifies BIOME-BGC input and output files but it also coordinates its run time (Figure 5). Through this approach, DEED is an independent model and a coupler coordinating interaction with BIOME-BGC.

665

By chaining input and output between the two models, two-way feedback is represented (Figure 2). First, land exchange, land-use change, and land management activities are conducted by agents in DEED. If agents irrigate their property then DEED modifies precipitation values in the climate files used by BIOME-BGC for that year and location. If agents fertilize then DEED alters the soil mineral nitrogen in the BIOME-BGC initial conditions/restart file. (Figure 5(1)). Then, DEED steps BIOME-BGC forward by one year (Figure 5(2)).

670

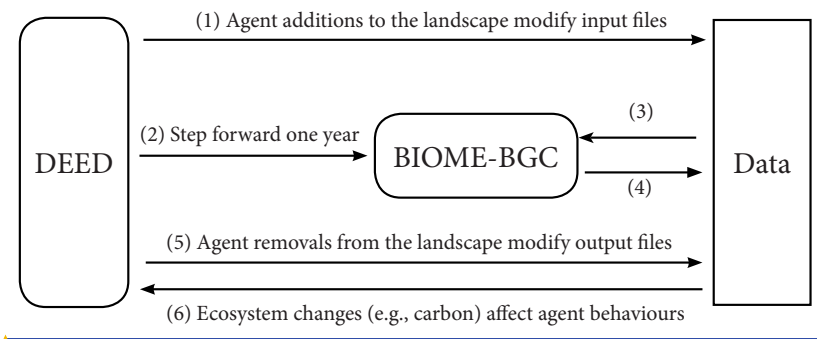


Figure 5. Structure of feedback between DEED and BIOME-BGC. Numbers indicate the sequence of steps in a single time-step of a coupled model run. (3) BIOME-BGC retrieves site characteristic and climate data as well as initial conditions for the next time step comprising biogeochemical pool values among other information. (4) results of vegetation growth and changes to biogeochemical pools are written back for manipulation by the ABM.

675

- dtrobins 2017-12-22 1:27 PM Deleted: Feedbacks
- dtrobins 2017-12-22 1:27 PM Deleted: to evaluate the range of impacts
- dtrobins 2017-12-22 1:27 PM Deleted: land-management activities may have on carbon storage. Interaction between the two models was achieved through the exchange of
- dtrobins 2017-12-22 1:27 PM Deleted: First, land exchange occurs and any land-use changes (e.g., residential development) are completed. Then, Residential Household agents conduct land management activities. When all agents complete their activities, the ABM identifies those agents that input water or nutrients to the landscape. If irrigation is applied then the ABM
- dtrobins 2017-12-22 1:27 PM Deleted: the climate input data
- dtrobins 2017-12-22 1:27 PM Deleted: the
- dtrobins 2017-12-22 1:27 PM Deleted: at that
- dtrobins 2017-12-22 1:27 PM Deleted: by changing the amount of precipitation.
- dtrobins 2017-12-22 1:27 PM Deleted: fertilizer is applied
- dtrobins 2017-12-22 1:27 PM Deleted: the ABM
- dtrobins 2017-12-22 1:27 PM Deleted: an
- dtrobins 2017-12-22 1:27 PM Deleted: file (i.e., the
- dtrobins 2017-12-22 1:27 PM Deleted:). Following these additions, the ABM modifies the schedule of BIOME-BGC and
- dtrobins 2017-12-22 1:27 PM Deleted: it
- dtrobins 2017-12-22 1:27 PM Deleted: . The outputs
- Unknown Formatted: Font:Times

710 BIOME-BGC retrieves site characteristic, climate, and initial conditions for the year (Figure 5(3)).
The products of vegetation growth from BIOME-BGC (i.e., coarse woody debris and litter) are then
715 modified by land management activities by altering the initial conditions file for the subsequent year
(Figure 5(5)). The ABM then summarizes ecosystem variables (e.g., carbon) for a given cell, residential
property, or landscape. Feedback from the ecological system on agent behaviour was explored through
changes in policies that support offset payments for increased carbon storage. An alternative feedback
could include effects on social preferences and norms for landscape design elements (e.g., xeriscaping or
720 adding tree cover) that may drive changes in land management activities and subsequent ecological
outcomes.

2.3 Loose Coupling with Coupler – Changes in food consumption and trade with land use decisions

720 2.3.1 Model definition and description

To explore the interactions among land-use decisions, food consumption and trade, land-based
emissions, and climate at a global scale, a dynamic global vegetation model (LPJ-GUESS, Smith et al.,
2014), a land use and food system model (PLUMv2, Engström et al., 2016a), and a climate emulator
(IMOGEN, Huntingford et al., 2010) were coupled (Figure 6). Key objectives were: a) to represent the
725 trade-offs and responses between agricultural intensification and expansion and the cross-scale spatial
interactions driving system dynamics (Rounsevell et al., 2014), b) to explore whether climate and CO₂-
related yield changes in a coupled system would affect projected land-cover change, and c) how these
changes might feedback to the atmosphere and climate via the carbon cycle. A detailed representation of
yield responses to inputs (fertilisers and irrigation) was used and assumptions of market equilibrium
730 were relaxed to allow exploration of the effects of shocks and short-term dynamics.

- dtrobins 2017-12-22 1:27 PM
Deleted: are then modified through removal activities. Removal of
- dtrobins 2017-12-22 1:27 PM
Deleted: is achieved
- dtrobins 2017-12-22 1:27 PM
Deleted: reducing the respective variables in
- dtrobins 2017-12-22 1:27 PM
Deleted: . After these management activities take place, the ABM framework
- dtrobins 2017-12-22 1:27 PM
Deleted: a number of
- dtrobins 2017-12-22 1:27 PM
Deleted: (e.g., total vegetation, litt... [30]
- dtrobins 2017-12-22 1:27 PM
Deleted: create social norms and
- dtrobins 2017-12-22 1:27 PM
Formatted: Font:Bold, Italic
- dtrobins 2017-12-22 1:27 PM
Formatted: Left, Line spacing: single
- dtrobins 2017-12-22 1:27 PM
Deleted: 2.
- dtrobins 2017-12-22 1:27 PM
Deleted: initialized the ABM with ... [33]
- dtrobins 2017-12-22 1:27 PM
Formatted: Font:Bold, Italic
- dtrobins 2017-12-22 1:27 PM
Deleted: management activities car... [34]
- dtrobins 2017-12-22 1:27 PM
Deleted: -trade models
- dtrobins 2017-12-22 1:27 PM
Formatted: Font:Bold, Italic
- dtrobins 2017-12-22 1:27 PM
Deleted: Case study ... [31]
- dtrobins 2017-12-22 1:27 PM
Formatted: Font:Bold, Italic
- dtrobins 2017-12-22 1:27 PM
Deleted: exurban residential landsc... [32]
- dtrobins 2017-12-22 1:27 PM
Formatted: Font:Bold, Italic
- dtrobins 2017-12-22 1:27 PM
Deleted: .
- dtrobins 2017-12-22 1:27 PM
Deleted: Definition
- dtrobins 2017-12-22 1:27 PM
Deleted: between
- dtrobins 2017-12-22 1:27 PM
Deleted: 3-i

780 The carbon, nitrogen, and water cycles, as well as vegetation [growth, composition, and competition](#) (e.g., [following land-use change](#)) were simulated at 0.5-degree spatial resolution in LPJ-GUESS. Agricultural and pastoral systems [were](#) represented as a prescribed fractional cover of area under human land use per grid cell. Four crop functional types modelled on winter wheat, spring wheat, rice, and maize were used to simulate croplands (Olin et al., 2015; Lindeskog et al., 2013; Olin et al., 2015; Pugh et al., 2015). Pastures [were](#) represented by competing C3 and C4 grass, with 50% of the above-ground biomass removed annually to represent the effects of grazing (Lindeskog et al., 2013). A general circulation model emulator, IMOGEN, [links](#) the [terrestrial and atmospheric carbon cycle](#) without the computational demands of running a full Earth System Model (Huntingford et al., 2010).

Economic and behavioural aspects for country-level decisions within the food system were modelled in PLUMv2, extending Engström et al. (2016a). The PLUMv2 model projects demand for agricultural commodities based on socio-economic scenarios (e.g. SSPs, [van Vuuren & Carter, 2014](#)), and attempts to meet these demands through country level cost minimisation, including spatially specific land use selection [among other processes such as trade and policy](#).

795 2.3.2 [Feedback Implementation](#)

[The coupling of IMOGEN, PLUMv2, and LPJ-GUESS is performed using a coupling script written in CRAN R \(R Core Team 2013\), which coordinates data, settings files, and the order of operations for the three models similar to Figure 1d. The coupling script first performs initialisation steps, which produces the required start files and spins-up all the models. As part of this process IMOGEN is spun-up first \(Figure 6\). IMOGEN provides spin-up climate for LPJ-GUESS, and then PLUMv2. Two instantiations of LPJ-GUESS are used, one for simulated land use conditions \(LPJ-GUESS-main\) and one for generating potential crop yields under a range of land uses \(LPJ-GUESS-potential\).](#)

dtrobins 2017-12-22 1:27 PM

Deleted: Figure 3. LPJ-GUESS, IMOGEN and PLUMv2 model coupling: i) diagram of main coupling interactions between these models; ii) example yield responses to fertiliser and irrigation inputs, used within PLUMv2 derived from LPJ-GUESS yield potentials at 2010, for wheat a) in England [51°N, 0°W], and b) in California [36°N, 120°W].

dtrobins 2017-12-22 1:27 PM

Deleted: and ecosystem state,

dtrobins 2017-12-22 1:27 PM

Deleted: Natural vegetation was represented using 11 Plant Functional Types (PFTs, e.g., Smith et al. 2014), whose growth was simulated by processes such as photosynthesis, respiration, and resource allocation. Competition between PFTs is based on gap dynamics (e.g. Smith et al. 2001), which captures natural succession within forests (Hickler et al., 2004; Smith et al., 2014), for example following land-use change.

dtrobins 2017-12-22 1:27 PM

Deleted: are

dtrobins 2017-12-22 1:27 PM

Deleted:), with representation of sowing, harvesting, irrigation, fertilisation, tillage, and the use of cover crops (

dtrobins 2017-12-22 1:27 PM

Deleted: are

dtrobins 2017-12-22 1:27 PM

Deleted: (GCM)

dtrobins 2017-12-22 1:27 PM

Deleted: provides feedback between

dtrobins 2017-12-22 1:27 PM

Deleted: and climate to be investigated

dtrobins 2017-12-22 1:27 PM

Formatted: Font:Times New Roman

dtrobins 2017-12-22 1:27 PM

Deleted: , production intensity (fertiliser and irrigation rates), and the levels of imports and exports. Trade barriers, agricultural subsidies, and non-economic policy behaviours at a country level (such as ... [35])

dtrobins 2017-12-22 1:27 PM

Formatted: Font:Times New Roman, English (US)

dtrobins 2017-12-22 1:27 PM

Deleted: Feedbacks

dtrobins 2017-12-22 1:27 PM

Deleted: Yield potentials on a half-degree grid were produced by LPJ-GUESS f ... [36]

890 The coupling script communicates with the IMOGEN and LPJ-GUESS at a one-year time step,
although LPJ-GUESS and IMOGEN operate on sub-daily time steps. IMOGEN is called to provide the
climate for the current run year (Figure 6(9,11)), which LPJ-GUESS-main uses (Figure 6(5)) to simulate
the vegetation dynamics with the climate from IMOGEN and the land use from PLUMv2 for the same
year (Figure 6(3,4,6)). The terrestrial carbon flux data is aggregated to provide global net ecosystem
exchange of carbon for the land area with prescribed ocean carbon uptake to IMOGEN, which estimates
895 the global CO₂ concentration and climate for the next year.

Every fifth year, the R coupler runs a second instantiation of LPJ-GUESS (LPJ-GUESS-
potential), directing it to use the ecosystem soil state of LPJ-GUESS-main (Figure 6(12,13)). The LPJ-
GUESS-potential model is used to produce potential net primary production (NPP) for pasture grass
lands and potential crop yields for 6 crop management settings (three levels of fertilisation (0, 200, 1000
900 kgN/ha) and rain fed or irrigated crops). To account for short-term land-use change legacy effects, LPJ-
GUESS-potential uses the previous 10 years of soil conditions and climate from IMOGEN. The last
five years of the LPJ-GUESS-potential pasture NPP and crop yields are averaged by the R coupler and
input to PLUMv2 (Figure 6(1)) to model land use for the next five year iteration. PLUMv2 uses these
yield potentials to simulate annual land-use management decisions, which are used (as described above)
905 in the LPJ-GUESS-main model (Figure 6(4,6)). The land uses are determined using yield potentials for
previous time periods in LPJ-GUESS-potential and therefore has been indicated as step 1 in Figure 6.

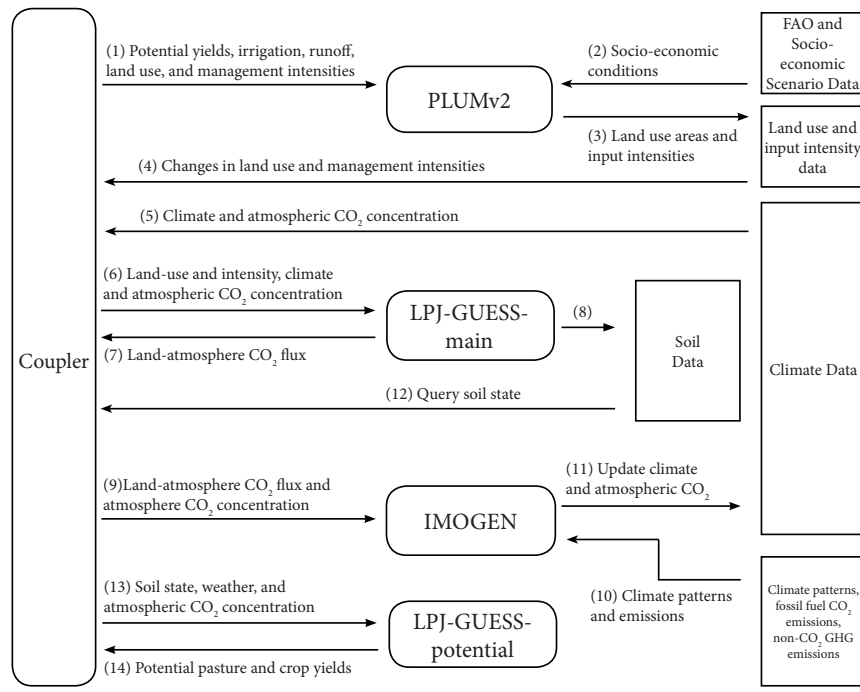


Figure 6. LPJ-GUESS, IMOGEN and PLUMv2 model coupling structure and feedback between models and data. Numbers indicate sequence of steps after initialization. (8) LPJ-GUESS-main modifies the soil state locational data.

2.4 Tight coupling via an integrated assessment coupler – Investigating the effects of changes in land use and the energy system on terrestrial and climate CO₂

2.4.1 Model definition and description

The integrated Earth System Model (iESM, v1.0; Collins et al., 2015) couples the Global Change Assessment Model (GCAM, v3.0; Wise et al., 2014) with the Community Earth System Model (CESM, v1.1.2; Hurrel et al., 2013) and the Global Land-use Model (GLM, v2; Hurtt et al., 2011) to explore feedbacks between terrestrial ecosystems (including their interactions with the climate system) and human land use and energy systems. GCAM is

dtrobins 2017-12-22 1:27 PM
Moved up [1]: 2017).
 dtrobins 2017-12-22 1:27 PM
Deleted: ... [37]
 dtrobins 2017-12-22 1:27 PM
Deleted:
 dtrobins 2017-12-22 1:27 PM
Formatted: English (US)
 dtrobins 2017-12-22 1:27 PM
Formatted: Font:Not Bold, Not Italic
 dtrobins 2017-12-22 1:27 PM
Deleted:)
 dtrobins 2017-12-22 1:27 PM
Moved down [4]: 2.4.
 dtrobins 2017-12-22 1:27 PM
Formatted: Font:Not Bold, Not Italic
 dtrobins 2017-12-22 1:27 PM
Formatted: Indent: First line: 0.25"
 dtrobins 2017-12-22 1:27 PM
Formatted: Indent: First line: 0"
 dtrobins 2017-12-22 1:27 PM
Deleted: 1 Definition and descripti... [38]
 dtrobins 2017-12-22 1:27 PM
Deleted: directly
 dtrobins 2017-12-22 1:27 PM
Deleted: two-way, synchronous
 dtrobins 2017-12-22 1:27 PM
Deleted: This coupling follows the Coupled Model Intercomparison Project phase 5 (CMIP5; Taylor et al., 2012) Land Use Harmonization protocol (LUH; Hurtt et al., 2011), with some modifications and additions (Bond-Lamberty et al., 2014; Di Vittorio et al., 2014), and incorporates GCAM and the Global Land-use Model (GLM, v2; Hurtt et al., 2011) into the CESM framework via a newly developed integrated assessment coupler (Collins et al., 2015). In the iESM, GCAM projects fossil fuel CO₂ emissions and land use every five years at the regional scale, which are passed through downscaling and land use translation algorithms for use by the atmosphere and land components of CESM. The non-CO₂ emissions are prescribed by CMIP5 data. CESM then runs for five years and the integrated assessment coupler uses the net primary productivity and heterotrophic respiration outputs to calculate average crop productivity and ecosystem carbon density scalars, which are passed back to GCAM for use in projecting the next five years of land use and emissions (Bond-Lamberty et al., 2014).

an integrated assessment model that represents both human and biogeophysical systems (Wise et al., 2014), and in the iESM the climate and carbon components of GCAM are replaced by CESM. The human components simulate global energy and agriculture markets to estimate anthropogenic emissions and land change. The energy and land components are distinct, but connected via bioenergy, nitrogen fertilizer, and (where applicable) greenhouse gas emissions markets. GLM generates annual, gridded land use from periodic, regional GCAM outputs following the Land Use Harmonization protocol (LUH; Hurtt et al., 2011), and an additional land use translator converts GLM outputs to CESM land cover types (Di Vittorio et al., 2014, P Lawrence et al., 2012).

CESM is a fully coupled Earth-system model with atmosphere, ocean, land, and sea ice components; including land and ocean biogeochemistry that exchanges carbon with the atmosphere (Hurrell et al., 2013). The standard resolution of all CESM components in fully coupled mode is nominally one degree, but the land cover is determined as fractions of half-degree grid cells and prescribed prior to a simulation (Lawrence et al., 2012). Biogeographical vegetation shifts are not included, although ecosystems do respond and contribute to changing environmental conditions. The CESM land model includes detailed hydrology and mechanistic vegetation growth for 16 Plant Functional Types (PFTs) to simulate water, carbon, and energy exchange with the atmosphere.

The iESM coupling follows the Coupled Model Intercomparison Project phase 5 (CMIP5; Taylor et al., 2012) LUH protocol (Hurtt et al., 2011), with some modifications and additions (Bond-Lamberty et al., 2014; Di Vittorio et al., 2014), to connect GCAM and GLM (Hurtt et al., 2011) directly to the CESM framework via a newly developed integrated assessment coupler (Collins et al., 2015).

2.4.2 Feedback Implementation

- dtrobins 2017-12-22 1:27 PM
Deleted: although
- dtrobins 2017-12-22 1:27 PM
Deleted: in the iESM
- dtrobins 2017-12-22 1:27 PM
Deleted: The solution for each time step is determined by balancing supply and demand for each commodity.
- dtrobins 2017-12-22 1:27 PM
Deleted: Energy and agricultural commodity markets are modelled at the level of 14 geopolitical regions, and land change is modelled within 151 land use regions. There are 27 available land types, three of which remain constant (urban, tundra, and rock/ice/desert), and 24 that can be redistributed, including 12 food and feed crops, five bioenergy crops, and seven managed and unmanaged ecosystems. Land types are distributed based on profit shares from agricultural costs, prices, and yields in competition with the value of non-agricultural land, which can change if a carbon price is applied to ecosystem carbon.
- dtrobins 2017-12-22 1:27 PM
Deleted: ,
- dtrobins 2017-12-22 1:27 PM
Deleted: In the iESM, however, land cover is determined annually from GCAM, GLM, and the land use translator and passed to the Community Land Model v4.0 (CLM; (Di Vittorio et al., 2014; Lawrence et al., 2011).
- dtrobins 2017-12-22 1:27 PM
Deleted: CLM
- dtrobins 2017-12-22 1:27 PM
Deleted: ; eight forest, three grass, three shrub, one bare soil, and one crop) in order
- dtrobins 2017-12-22 1:27 PM
Deleted: -
- dtrobins 2017-12-22 1:27 PM
Deleted: two-way, synchronous
- dtrobins 2017-12-22 1:27 PM
Deleted: of GCAM's land change model
- dtrobins 2017-12-22 1:27 PM
Deleted: CESM's ecosystem model implements feedbacks
- dtrobins 2017-12-22 1:27 PM
Moved (insertion) [4]
- dtrobins 2017-12-22 1:27 PM
Formatted: Indent: First line: 0.25"
- dtrobins 2017-12-22 1:27 PM
Deleted: generates

The outputs generated by the two-way feedback (Figure 2) between the human and natural systems represented by iESM are not available from its individual models or through one-way coupling such as in CMIP5. The iESM is a specific configuration of CESM in which the land model initiates an integrated assessment coupler every five years (Figure 7(1)). This coupler coordinates communication between the human and environmental systems by first calculating average crop productivity and ecosystem carbon density scalars from the previous five years of CESM net primary productivity and heterotrophic respiration outputs (Bond-Lamberty et al., 2014), except during the initial year when these scalars are set to unity (Figure 7(2)). The coupler then runs GCAM with these scalars to project fossil fuel CO₂ emissions and land use change for the next five years (Figure 7(3)), and then passes these outputs through downscaling algorithms to the atmosphere and land components of CESM (Figure 7(4-9)). The non-CO₂ emissions are prescribed by CMIP5 data as initial CESM input files. Land use change is annualized and downscaled by GLM (Hurtt et al., 2011) (Figure 7(4-5)). A land use translator converts these changes in cropland, pasture, and wood-harvested area into changes in CESM land cover change, which is based on plant functional types (Di Vittorio et al., 2014, Lawrence et al., 2012) (Figure 7(6-7)). The CO₂ emissions are downscaled following Lawrence et al. (2011) and passed to the atmosphere component as a data file (Figure 7(8)), and the land cover change is stored in a land surface file and passed to the land component (Figure 7(9)). The coupler then returns control to the land model and CESM runs for another five years (Figure 7(10)). This two-way feedback incorporates the effects of climate change, CO₂ fertilization, and nitrogen deposition on terrestrial ecosystems into GCAM's projections.

The key new feature is the generation of CESM-derived vegetation and soil impact scalars that are used by GCAM to adjust crop productivity and carbon at each time step. This fundamentally alters the scenario by making the land projection, and consequently the energy projection, more consistent

dtrobins 2017-12-22 1:27 PM
Deleted: the

dtrobins 2017-12-22 1:27 PM
Deleted: exercises. Within iESM, the atmosphere component and CLM receive CO₂ emissions and translated land use change from GCAM

dtrobins 2017-12-22 1:27 PM
Deleted: , and at the end of this interval CLM provides terrestrial feedbacks to GCAM that incorporate changing

dtrobins 2017-12-22 1:27 PM
Deleted: conditions (Collins et al., 2015). These feedbacks are then used by GCAM

dtrobins 2017-12-22 1:27 PM
Deleted: of

dtrobins 2017-12-22 1:27 PM
Deleted: and land use, thereby incorporating

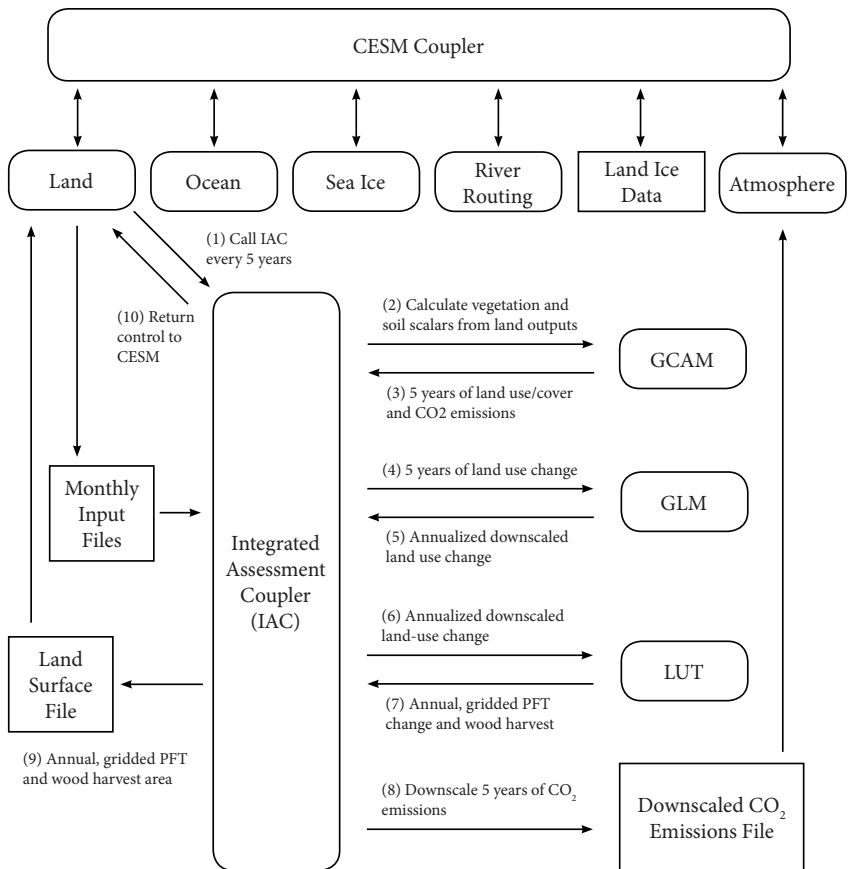
dtrobins 2017-12-22 1:27 PM
Deleted: these

dtrobins 2017-12-22 1:27 PM
Deleted: These feedbacks provide new capabilities and information not available from the individual models.

dtrobins 2017-12-22 1:27 PM
Formatted: Indent: First line: 0.5"

dtrobins 2017-12-22 1:27 PM
Deleted: from CLM data

with the climate projection. The largest technical contribution, however, is the integrated assessment coupler that enables feedbacks by running GCAM, GLM, and a new land use translator inline with CESM.



Unknown
Formatted: Font:Times

1060

Figure 7. Structure of iESM and feedback between integrated model components. An integrated assessment coupler facilitates all interactions between the Global Change Assessment Model (GCAM), the Global Land-Use Model (GLM), and the Community Earth System Model (CESM). The coupler is activated by the CESM land model every five years to calculate the average carbon and productivity scalars for the past 5 years and pass them to GCAM, then pass GCAM outputs to the atmosphere component of CESM via a downscaling algorithm and to GLM, and then pass GLM outputs to the land component via a Land Use Translator (LUT). The non-CO2 emissions are provided to CESM as an input data file.

1065

l070 These capabilities enable new insights into research questions regarding climate mitigation and adaptation strategies. For example, how may agricultural production shift due to climate change, how do different policies influence this shift, and how may this shift affect other aspects of the human-Earth system? Many recent impact studies (e.g., ISIMIP, BRACE, CIRA2.0) use climate model simulations based on emissions and land-use scenarios (Representative Concentration Pathways, RCPs) that themselves do not account for the influence of climate change on future land use. This inconsistency could affect conclusions about impacts resulting from particular RCPs.

This approach paradoxically has several strengths that are also weaknesses. The main strength of this approach is that it tightly couples two state-of-the-art global models to implement primary feedbacks between human and environmental systems under global change. Unfortunately, this configuration is not amenable to the uncertainty and policy analyses or the climate target experiments usually employed by GCAM because it takes too long to run a simulation. As a global model it provides self-consistent representation of interconnected regional and global processes, both human and environmental, but is unable to capture a fair amount of regional and local detail that influences planning and implementation of adaptation and mitigation strategies.

l085

3. DISCUSSION

The four presented examples demonstrate how specialized models of human and natural processes have been connected through alternative coupling approaches to address research questions related to the impacts of one system on another and the effects of feedbacks between human and natural systems on a

dtrobins 2017-12-22 1:27 PM
Deleted: Furthermore, it was based on the CMIP5 protocols to facilitate its development and comparison with existing coupling approaches, but these protocols do not require consistency between models, which is critical when models are coupled directly.

dtrobins 2017-12-22 1:27 PM
Deleted: - ... [39]

dtrobins 2017-12-22 1:27 PM
Deleted: examples

dtrobins 2017-12-22 1:27 PM
Deleted: here

dtrobins 2017-12-22 1:27 PM
Deleted: specific

dtrobins 2017-12-22 1:27 PM
Deleted: , developed by specialists,

dtrobins 2017-12-22 1:27 PM
Deleted: different

dtrobins 2017-12-22 1:27 PM
Deleted: for

variety of outcomes of interest (e.g., erosion, carbon storage, and emissions). The focus on specialized models offers a flexible and open approach to answering new questions about feedbacks in coupled human-natural systems, and also facilitates the identification of new types of data required to calibrate and validate the interactions and feedbacks between the two systems. Additionally, coupled modelling presents an opportunity for increased transparency and detail in the represented processes through more explicit identification and documentation of component interactions and processes.

dtrobins 2017-12-22 1:27 PM
Deleted: variables...utcomes of int... [40]

The example models are diverse in the spatial and thematic resolutions of human and natural-system processes represented. The first two examples (MML and DEED) use agent-based approaches that represent land use and land management in the human system at the household level. While the ecological impact of land management activities in DEED does not have a direct feedback on residential household decision-making, those represented in MML do. Agricultural systems, carbon markets, and policies provide mechanisms to establish this feedback and endogenize the impact-response cycle between residential land management practices of the human system and the natural system (Sun et al. 2014).

dtrobins 2017-12-22 1:27 PM
Deleted: also illustrate diversity... [41]

The second two examples are global models with different levels of coupling and complexity that represent human-natural system feedbacks at regional and global levels. In both examples, the human system has a direct effect on modelled natural-system processes (i.e., vegetation, carbon, climate), and the feedback of environmental changes on human systems is mediated by vegetation responses to changing natural and human conditions.

dtrobins 2017-12-22 1:27 PM
Deleted: gridded...lobal levels. In... [42]

These examples demonstrate how coupled system implementations extend the applicability of models to a variety of questions regarding the dynamic relationship between human and environmental systems that would otherwise be impossible to address quantitatively. Such questions include those related to direct and indirect effects of one system on another (e.g., what is the effect of the natural

dtrobins 2017-12-22 1:27 PM
Deleted: The range of applications demonstrates a move toward...hese e... [43]

system on human system?), to the resilience or sensitivity of the coupled system or its components to perturbations or scenarios (e.g., do feedbacks dampen or amplify the consequences of a perturbation?), and to identifying thresholds (e.g., what is the critical value of a variable in one system that when crossed instantiates change in the other system?), among many others.

3.1 Lessons Learned

To make progress in modeling coupled human-natural systems, the way in which some set of variables or processes affects or interacts with both systems must be specified. For example, precipitation has a known and direct effect on plant growth (e.g., forest or crop) and erosion (e.g., overland flow). The outcomes of some of these processes (e.g., yield and soil loss) have direct or indirect effects on land management choices by farmers, effects that are empirically observable at least qualitatively and, in some instances, quantitatively measured. However, the direct impacts of other perturbations, such as the introduction of new technology or governance schemes, on human and natural-system processes are not observable because they have not yet occurred. The presented case studies focus on perturbations or scenarios that are grounded in known and direct causal relationships that are more likely to be found in the natural system than the human system, partly due to the multitude of drivers affecting—and consequent difficulty in predicting—human-decision making. In these example cases, a number of lessons have been learned:

Lesson 1. Leverage the Power of Sensitivity Analysis with Models. A powerful benefit of simulation models is that they can facilitate analysis of the effects of interventions and scenarios for which there is no precedent. Models should be leveraged through computation across a full range of parameters and use of simulated data or expert- or theory-informed methods to evaluate the relative contribution of

- dtrobins 2017-12-22 1:27 PM
Deleted: quantifying
- dtrobins 2017-12-22 1:27 PM
Deleted: relative impact
- dtrobins 2017-12-22 1:27 PM
Deleted: a perturbation or scenario on each
- dtrobins 2017-12-22 1:27 PM
Deleted: outcome
- dtrobins 2017-12-22 1:27 PM
Deleted: the
- dtrobins 2017-12-22 1:27 PM
Deleted: and resilience, robustness, or sensitivity related questions (e.g., what is the capacity of one system to absorb changes in the other and over what time period?), among many others.
- dtrobins 2017-12-22 1:27 PM
Deleted: methodological and scientific
- dtrobins 2017-12-22 1:27 PM
Deleted: on understanding
- dtrobins 2017-12-22 1:27 PM
Deleted: variable
- dtrobins 2017-12-22 1:27 PM
Deleted: process of interest needs to be characterized in
- dtrobins 2017-12-22 1:27 PM
Deleted: outcome
- dtrobins 2017-12-22 1:27 PM
Deleted: a
- dtrobins 2017-12-22 1:27 PM
Deleted: effect
- dtrobins 2017-12-22 1:27 PM
Deleted: which is known
- dtrobins 2017-12-22 1:27 PM
Deleted: through qualitative unders... [44]
- dtrobins 2017-12-22 1:27 PM
Deleted: either of the
- dtrobins 2017-12-22 1:27 PM
Deleted: or
- dtrobins 2017-12-22 1:27 PM
Deleted: more difficult to identify... [45]
- dtrobins 2017-12-22 1:27 PM
Deleted: research questions that accompany
- dtrobins 2017-12-22 1:27 PM
Deleted: factors. The factors of focus
- dtrobins 2017-12-22 1:27 PM
Deleted: Nonetheless, there are sub... [46]
- dtrobins 2017-12-22 1:27 PM
Deleted: One advantage of couplin... [47]

parameter values/ranges, missing data, or processes on model outcomes. For example, to properly understand the net effect of human alteration to vegetation on long-term rates of erosion and deposition in the MML, it became clear that a more complete understanding of the sensitivity of the landscape evolution subcomponent model to vegetation was needed. This sensitivity analysis showed a very strong exponential relationship between vegetation type and both the overall amount of erosion and deposition over time and the temporal variation in erosion rates over time (Ullah, 2017). The analysis show a particular sensitivity to expanded bare land, grasslands, and shrub land-cover types. Therefore, it is clear that agent activity that leads to an increase these types of land-cover should also lead to long-term increases in erosion and deposition in the MML. . In this way, model sensitivity to parameters, data, or processes can be evaluated to support design and deployment of resources for new data collection.

Lesson 2. Modelling is an Iterative Process. The process of analyzing coupled human and natural system models often results in identification of needs to investigate key variables, data, or mechanisms. For example, through the coupling of DEED and BIOME-BGC (Section 2.2), it was realized that data on vegetation and soil carbon for residential land uses are grossly inadequate for model calibration. This realization fostered new data collection and analysis about the distribution of carbon stored in different residential land uses (Currie et al. 2016). New forms of measurement and evaluation are often needed to collect novel data and quantify variables and feedbacks linking human and natural systems. As these new data are collected and become available, new questions about model processes are inevitable (Rounsevell et al. 2012).

Lesson 3. Ensure Consistency. Modelers seeking to couple natural- and human-systems models that represent similar phenomena, like land cover, can encounter significant ontological and process consistency challenges. Models with different initial assumptions and different processes can generate different values for the same phenomenon. While model coupling ultimately can provide an impetus for

dtrobins 2017-12-22 1:27 PM
Deleted: may be

dtrobins 2017-12-22 1:27 PM
Deleted: between and relative effects of perturbations in

dtrobins 2017-12-22 1:27 PM
Deleted: versus

dtrobins 2017-12-22 1:27 PM
Deleted: Another advantage of model coupling is that gaps in process representation in models can be filled through judicious choice of parameters, use of simulated data, or expert- or theory-informed methods that enable the model to be leveraged to evaluate the relative contribution of missing data or methods to model outcomes. For example, in the absence of social network data, Agrawal et al. (2013) evaluated changes in fuelwood extraction and forest growth between different household networks ranging from adjacent neighbours to distant ties. The outcome of such efforts can be used to determine if real-world effort and resources should be deployed to capture the process empirically and provide scope of sample design. ... [48]

dtrobins 2017-12-22 1:27 PM
Formatted: Font:Not Bold

dtrobins 2017-12-22 1:27 PM
Deleted: 2

dtrobins 2017-12-22 1:27 PM
Formatted: Font:Not Bold

dtrobins 2017-12-22 1:27 PM
Formatted: Indent: First line: 0.25"

dtrobins 2017-12-22 1:27 PM
Moved down [5]: efficiency is to classify and generalize components of the model such as agent types in the human system (e.g., Brown and Robinson 2006), types of vegetation (e.g., plant functional type... [49]

dtrobins 2017-12-22 1:27 PM
Deleted: The landscape unit is not typically used to structure spatial variability in ... [50]

dtrobins 2017-12-22 1:27 PM
Deleted: [51]

dtrobins 2017-12-22 1:27 PM
Deleted: and human-systems models sometimes attempt to simulate

dtrobins 2017-12-22 1:27 PM
Deleted: coupling existing models

dtrobins 2017-12-22 1:27 PM
Deleted: challenges in order to maintain

dtrobins 2017-12-22 1:27 PM
Deleted: help to harmonize and resolve

1325 [harmonizing and resolving](#) such consistency issues, it requires decisions about which processes to represent and which to leave out to avoid duplication.

The iESM (Section 2.4) well illustrates issues of consistency in assumptions, definitions, and processes. First, ecosystem properties from [CESM](#) were translated to impacts that could be applied to GCAM “equilibrium” yields and carbon densities (Bond-Lamberty et al., 2014). Second, a major finding 1330 that is especially relevant to all land change and ecosystem models is that the inconsistencies between land use and a land cover [definitions](#) caused CESM to include only 22% of the prescribed RCP4.5 afforestation in CMIP5 (Di Vittorio et al., 2014). Additionally, it was discovered that wood harvest was conceptually different across [the three models](#) comprising iESM (GCAM, GLM, and [CESM](#)), with each model having [its own process for](#) determining how harvest is spatially distributed. Wood harvest is a 1335 good example of [different modeling groups describing the same thing, using the same language](#), but [with very different concepts and processes](#), with unintended consequences for CESM’s terrestrial carbon cycle.

[Lesson 4. Reconcile Spatio-temporal](#)

- [Mismatch](#), Many [natural system models](#)

1340

operate at [finer temporal and coarser spatial resolutions than human system models](#) (Evans et al., 2013). Often, these [discrepancies](#) cannot simply be dealt with by aggregation of the variables [because they represent](#) mismatch in [spatial and temporal dynamics that may also happen in reality](#). Human 1345

Deleted: in the coupling procedure
dtrobins 2017-12-22 1:27 PM
Deleted: CLM...ESM were transla... [52]
dtrobins 2017-12-22 1:27 PM
Moved down [6]: In contrast, oth... [56]
dtrobins 2017-12-22 1:27 PM
Deleted: The DEED example (Sect... [53]
dtrobins 2017-12-22 1:27 PM
Formatted ... [54]
dtrobins 2017-12-22 1:27 PM
Deleted: consistency. Reconciling t... [55]
dtrobins 2017-12-22 1:27 PM
Formatted ... [57]
dtrobins 2017-12-22 1:27 PM
Deleted: A third consistency issue ... [58]
dtrobins 2017-12-22 1:27 PM
Formatted ... [59]
dtrobins 2017-12-22 1:27 PM
Formatted ... [60]
dtrobins 2017-12-22 1:27 PM
Deleted: ecosystem and Earth-...at... [61]
dtrobins 2017-12-22 1:27 PM
Moved down [7]: human system ... [62]
dtrobins 2017-12-22 1:27 PM
Deleted: However, in many natural ... [63]
dtrobins 2017-12-22 1:27 PM
Moved down [8]: The former ... [64]
dtrobins 2017-12-22 1:27 PM
Formatted ... [65]
dtrobins 2017-12-22 1:27 PM
Formatted ... [66]
dtrobins 2017-12-22 1:27 PM
Moved down [9]: - ... [67]
dtrobins 2017-12-22 1:27 PM
Formatted ... [68]
dtrobins 2017-12-22 1:27 PM
Deleted: relative to the uncertainty ... [69]
dtrobins 2017-12-22 1:27 PM
Moved down [10]: Harrison et al., 2017).
dtrobins 2017-12-22 1:27 PM
Deleted: This gradient of coupled-r ... [70]
dtrobins 2017-12-22 1:27 PM
Moved down [11]: -
dtrobins 2017-12-22 1:27 PM
Moved down [16]: Where the ex... [80]
dtrobins 2017-12-22 1:27 PM
Deleted: the local model examples ... [71]
dtrobins 2017-12-22 1:27 PM
Moved down [12]: For example, ... [72]
dtrobins 2017-12-22 1:27 PM
Deleted: The actual feedback signa... [73]
dtrobins 2017-12-22 1:27 PM
Moved down [13]: For example, ... [74]
dtrobins 2017-12-22 1:27 PM
Deleted: - ... [75]
dtrobins 2017-12-22 1:27 PM
Moved down [14]: -only simulati... [76]
dtrobins 2017-12-22 1:27 PM
... [77]
dtrobins 2017-12-22 1:27 PM
... [78]
dtrobins 2017-12-22 1:27 PM
... [79]
dtrobins 2017-12-22 1:27 PM
... [81]
dtrobins 2017-12-22 1:27 PM
Formatted ... [82]
dtrobins 2017-12-22 1:27 PM
... [83]

l755 responses to environmental change may show significant time-lags or may be related to cycles of management (e.g. cropping cycles) rather than showing an immediate response. Similarly, while the ecological models are strongly place-based, coupling human and natural systems at the pixel level may not always be appropriate due to complex spatial relations in the human dimensions (e.g. distant land owners) or responses across different levels of decision making (e.g. policy responses) that are not
l760 linked to the exact place of the ecological impact. Reconciling these mismatches involves balancing detail and computational tractability within existing model structures and scheduling the frequency of communication between models.

As an example, the DEED ABM (Section 2.2) used an annual time-step to reflect the timing of land management decisions, whereas the ecosystem model BIOME-BGC represented vegetation growth and biogeochemical cycles daily. To reconcile these differences, irrigation decisions were made annually, but implemented one day a week during the growing season by modifying the daily precipitation file used by BIOME-BGC. In contrast, other management activities were implemented once annually, before (for fertilization) and after (for removals) the growing season. These limitations could have a significant effect on estimated carbon storage and have fostered additional fieldwork for further validation (e.g., Currie et al. 2016) and additional efforts to tightly couple the two models.

The iESM (Section 2.4) also reconciles similar mismatches through a 5-year time lag and specialized spatial and temporal downscaling of economic model outputs to provide inputs to the environmental model. While these approaches allow the separate models to operate synchronously, further development to better match the inherent spatio-temporal configurations between models is required to reduce errors associated with such mismatches.

l775 Lesson 5. Create a Common Language. Coupling human and natural systems brings social and natural scientists together that often have a different understanding of the meanings of commonly used

dtrobins 2017-12-22 1:27 PM
Deleted: The representation of human

dtrobins 2017-12-22 1:27 PM
Moved (insertion) [6]

dtrobins 2017-12-22 1:27 PM
Formatted: Font:Not Bold

1780 terms. Both technical and conceptual aspects of the coupling process can be improved when a common
language is used. For example, traditional coupling between the ocean and the atmosphere in Earth
System Models typically uses the Climate and Forecast conventions (Eaton et al., 2011). A controlled
vocabulary in these conventions assists understanding of model processes and facilitates their coupling
among models or replacement in new models. With a similar goal but different approach, CSDMS
1785 introduced rules for creation of unequivocal terms through their standard names system that functions as
a semantic matching mechanism for determining whether two terms refer to the same quantity with
associated predefined units. This concept is currently undergoing transition to a Geoscience Standard
Names ontology that reaches out to include social science terms (David et al. 2016), which can benefit
communication between communities (i.e., natural and social science) that may have different terms and
descriptions of similar processes (Di Vittorio et al. 2014). With a common language, data can be more
1790 easily and unambiguously communicated between components in a coupled system.

dtrobins 2017-12-22 1:27 PM
Moved (insertion) [2]

Lesson 6. Construct Homogeneous Units. Coupling models increases computational overhead and
thus requires increases in computational efficiency, both of which come with trade-offs. One approach
to improving efficiency is to classify and generalize components of the model such as agent types in the
human system (e.g., Brown and Robinson 2006), types of vegetation (e.g., plant functional types, Diaz
1795 and Cabido 1997, Smith et al. 1993, Smith et al. 1997), or landscape units. Landscape units are not
typically constructed to structure spatial variability in land use science, but are used regularly in
hydrological modelling; for example the Soil Water Assessment Tool (SWAT, Neitsch et al. 2011) uses
hydrological response units (HRUs) that have a soil profile, bedrock, and topographic characteristics
that are assumed homogeneous for the entire spatial extent of the unit. Similar concepts have been used
1800 to identify management zones or units, and our examples of DEED-BIOME-BGC (Robinson et al. 2013)
and the iESM (Collins et al., 2015) both employed this approach. However, the variability among

dtrobins 2017-12-22 1:27 PM
Moved (insertion) [3]

dtrobins 2017-12-22 1:27 PM
Moved (insertion) [5]

management activities and land-cover types can lead to a large combination of outcomes, and the delineation of these units directly contributes to uncertainty in model projections (Di Vittorio et al., 2016).

1805 *Lesson 7. Make Code Open-Access.* Many ecosystem and Earth-system models have mass, energy, or other balance equations that constrain the processes to the laws of thermodynamics and can be used to ensure that they are working correctly. For example, the ecosystem model LPJ-GUESS has a routine to ensure balance between influx, efflux, and storage of carbon. Similar checks and balances are used in human system models with respect to population change (e.g., births, deaths, immigration, and emigration) or economic trade (e.g., production, consumption, imports, and exports) at macro levels and budget or labour constraints at household or individual levels. However, in many natural-system models these balance equations are not accessible for coupling and the representation of human perturbations and modifications to the factors in balance equations are either not included or done so indirectly and make the coupling less flexible and tractable.

1815 *Lesson 8. Incorporating Feedback Increases Non-Linearity and Variability.* Specific results from the four examples are available in a number of publications associated with each example. Among the four example coupling efforts, it has been found that the incorporation of two-way feedbacks (Figure 2) between models of the human and natural system typically produces non-linear results and a greater range in model outcomes than are observed when the models are isolated or one-way prescriptions are used. For both the MML and DEED models, changes in the natural system were relatively linear when one-way human perturbations were prescribed. However, when feedbacks between the systems were incorporated then non-linear outcomes were observed and frequently a greater variation in model outcomes.

1820

dtrobins 2017-12-22 1:27 PM
Moved (insertion) [7]

dtrobins 2017-12-22 1:27 PM
Moved (insertion) [9]

1825 | 3.3 Feedback Effects

1830 | Introducing feedbacks often changes model outcomes, but it is difficult to determine if these changes are significant or realistic relative to the uncertainty in the original models and their coupling. The only way to test if the representation of a mechanism is representative of the real-world is to remove the inconsistencies so that the feedback effects can be quantified. Then, experiments that evaluate the effects of specific feedbacks can be carried out and evaluated. These experiments need to be carefully designed because the actual feedback signal can be an aggregate of expected, direct effects and additional, indirect effects. For example, average ecosystem productivity could change due to atmospheric influences (e.g., climate change, CO₂ fertilization) or to terrestrial influences associated with changing ecosystem area (e.g., spatially heterogeneous soil properties, changes in the proportion of different forest types). Regardless of the challenges, an overall benefit of quantifying feedback effects is that modellers can gain insight into processes that are typically not observed and measured. Given the difficulty in observing these effects and potential inconsistencies, efforts in coupling human and natural-system models have focused on sensitivity analysis to test their effects (e.g., Harrison et al., 2017).

1840 | Ultimately, an important goal in such analyses is to discern which of two distinct sources produce effects from including feedbacks in coupled models: 1) model implementation (both technical and conceptual), and 2) the actual feedback signal. Model implementation issues often relate to the level of consistency between the original models. For example, the need to translate changes in gridded patterns of ecosystem productivity to changes in regional average carbon density can lead to varying sensitivities across magnitudes of productivity and areal change, requiring the unrealistic sensitivities to be filtered out (Bond-Lamberty et al., 2014).

dtrobins 2017-12-22 1:27 PM
Moved (insertion) [13]

dtrobins 2017-12-22 1:27 PM
Moved (insertion) [10]

dtrobins 2017-12-22 1:27 PM
Moved (insertion) [12]

Model experiments are useful for separating the model implementation issues from the actual feedback signal. For example, iESM was used in a series of land-only simulations to (a) quantify the relationship between ecosystem productivity and carbon density, (b) implement a statistical method to remove outliers that introduce error due to extreme combinations of land cover and productivity change, and (c) develop the appropriate proxy variables for use by GCAM (Bond-Lamberty et al. 2014). To verify that this process effectively removed the model implementation effects, another series of land-only simulations was conducted using the iESM with and without terrestrial feedbacks, and with constant atmospheric conditions (i.e., year 1850 aerosols and nitrogen deposition, and repeating 15 years of climate forcing). This experiment showed that the coupling itself, without an atmospherically driven feedback signal, did not generate significant changes in GCAM outputs. The feedback signal was not zero, however, indicating that a combination of implementation effects and land heterogeneity effects was present. These combined effects were not separable due to lack of data on the required outputs, and in general they were opposite to the total feedback effects in the fully coupled iESM experiment, suggesting that the atmospherically driven feedbacks may be larger than the net feedbacks.

Depending on the mechanisms involved, feedbacks may create strong feed forward effects that lead to fast evolution of the dynamics of the system. On the contrary, responses may also lead to an attenuation of perturbations and strong stability of the dynamics. Where the exact mechanisms involved and the strength of the feedbacks are unknown, model dynamics may start deviating strongly upon small changes in variable settings, in other words, leading to strong model sensitivity to highly uncertain model parameters.

The examples including feedbacks in coupled human- natural-system models illustrate a number of challenges in designing and implementing feedback mechanisms:

dtrobins 2017-12-22 1:27 PM
Moved (insertion) [14]

dtrobins 2017-12-22 1:27 PM
Moved (insertion) [15]

dtrobins 2017-12-22 1:27 PM
Moved (insertion) [16]

• [The representation of human responses](#). The examples in the four cases above mostly relate to a coupling based on exchanging land cover and ecological-process-impact information. The human decision models translate the ecological impacts to [alter](#) decision making. For example, land-use decisions in [PLUM-LPJGUESS](#), [iESM](#), and [MedLanD](#) respond to changes in potential yields; in the [MedLanD](#) application, erosion processes [also](#) render land less suitable for use. In reality the responses of human decision-making are more complex. The relevance of the ecological indicator exchanged may be context dependent, [e.g.](#), potential yields may determine farming decisions in capital intensive farming that is near to the production frontier, but be much less important in low-input subsistence farming that is far from potential productivity. Furthermore, decision-making may not be based on the represented process or by the indicator exchanged, but rather on the human perception of the environmental change, which may be irrational and biased by other interests, such as in case of the climate debate. While the concept of environmental cognitions is well known, relatively little is known in relation to land-use change decision-making (Meyfroidt 2013). Human responses to environmental change are, therefore, a critical knowledge gap for implementing coupling mechanisms (Meyfroidt 2013b).

• Structural differences in model concepts. The [iESM](#) example illustrates how structural differences in [models](#) can hamper the coupling of models, [and how](#) careful consideration is needed [of](#) the feedback mechanism and its consequences in relation to the overall model assumptions. This is especially relevant for [coupling](#) models that assume equilibrium and those that depict instantaneous impacts or [transient situations](#). [Global](#) economic models using equilibrium assumptions, which are frequently coupled to land use and ecosystem models, and specialized land-change models (or land-change modules in IAM models) [both](#) address land use,

dtrobins 2017-12-22 1:27 PM
Formatted: Outline numbered + Level: 1
 + Numbering Style: Bullet + Aligned at: 0.25" + Indent at: 0.5"

dtrobins 2017-12-22 1:27 PM
Deleted: changed

dtrobins 2017-12-22 1:27 PM
Deleted: in the PLUM-LPJGUESS model,

dtrobins 2017-12-22 1:27 PM
Deleted: and

dtrobins 2017-12-22 1:27 PM
Deleted: MEDLAND

dtrobins 2017-12-22 1:27 PM
Deleted: i.

dtrobins 2017-12-22 1:27 PM
Deleted: :

dtrobins 2017-12-22 1:27 PM
Deleted: nicely

dtrobins 2017-12-22 1:27 PM
Deleted: model concept

dtrobins 2017-12-22 1:27 PM
Deleted: where

dtrobins 2017-12-22 1:27 PM
Deleted: on

dtrobins 2017-12-22 1:27 PM
Deleted: the

dtrobins 2017-12-22 1:27 PM
Deleted: between

dtrobins 2017-12-22 1:27 PM
Deleted: a

dtrobins 2017-12-22 1:27 PM
Deleted: situation. Both global

but often from different perspectives leading to potential differences in the meaning and interpretation of input and output variables.

- Reconciling stochastic and deterministic approaches. Another factor complicating the representation of feedback mechanisms is that some models are strongly deterministic (e.g., PLUM-LPJGUESS, GCAM-CESM (iESM), BIOME-BGC), so that the results are essentially the same for any run with the same initial parameters, while others have strong stochastic components (e.g., DEED and MedLanD). The former is common for many natural-systems models and some human-systems models (especially econometric style models). Other models have algorithms that generate stochasticity to represent uncertainty in processes. Many agent-based/individual-based models and some cellular automata fall into this category. For models with included stochasticity, using the same random number generator seed can be used, however, to capture the variance and distribution of model outcomes repeated runs with different seeds are required, which can be conceptually challenging or operationally complicated when coupled with deterministic models.

3.4 A Way Forward

The ability to dynamically simulate feedbacks between human decision-making and natural processes requires some kind of tight coupling—in the sense of frequent, two-way communication and high coordination (Figure 2) — between models designed to represent these different processes. To date, this has largely been achieved through connecting models into a single modeling environment. This is true to a large extent for all the case studies presented here. Adding new models to such systems often requires significant reprogramming and makes the expanded code base increasingly difficult to debug, verify,

dtrobins 2017-12-22 1:27 PM

Deleted: exchanged

dtrobins 2017-12-22 1:27 PM

Moved (insertion) [8]

dtrobins 2017-12-22 1:27 PM

Formatted: Font: Cambria, English (US)

dtrobins 2017-12-22 1:27 PM

Formatted: No Spacing, Indent: Left: 0.5"

!930 | and validate. Additionally, any other researcher that would like to combine fewer, more, or different components will need to reprogram multiple parts of the modeling environment to decouple one model and add another.

!935 | To expedite coupling in future modeling of the land system, we recommend a bottom up approach to modeling whereby 1) modelers with in-depth domain knowledge create relatively small, more easily verified modules (Bell et al. 2015) or model components for assembly into a larger coupling frameworks (e.g., OpenMI, ESMF, OMS, and CSDMS). Using this approach, the community may preserve and build upon existing numerical code previously developed by the many subdisciplines involved in modeling human and natural systems. These are not new ideas, but they have not yet been achievable in spite of their recognized desirability. However, a suite of technologies has reached
!940 | sufficient maturity that it may now be a practical way to create a new generation of modeling tools that can exploit these two avenues for modelling coupled human-natural systems.

!945 | New coordinating frameworks for next generation coupled modeling of human and Earth systems are being developed within a number of relevant organizations: the Community Surface Dynamics Modeling System (CSDMS), the Network for Computational Modeling in Social and Ecological Sciences (CoMSES Net), and the Analysis, Integration, and Modeling of the Earth System (AIMES) Core Project of Future Earth. These frameworks envision a set of community-developed and endorsed standards for open, platform-independent, model coupling and integration based around an interrelated set of components that build on Lessons 3, 4, 5, and 7.

- !950 |
- Start with wrapper *container* software (e.g., Docker) to encapsulate model code and needed dependencies.
 - Use a standardized API, like extension of the Basic Modeling Interface (BMI) developed by the

CSDMS, to standardize and describe various functions (e.g., Model Control, Model Information, Time, Variable Information, Variable Getters and Setters, and Model Grids) such that a calling component in the framework is provided with the needed level of control to access other component's metadata and simulated data (Hutton et al., 2014).

- Incorporate Standard Names to map variables of multiple components to each other. In the CSDMS framework the Standard Names functions as a semantic matching mechanism, a lingua franca, for determining whether two variable names refer to the same quantity with associated predefined units.
- Adopt reproducible workflow environments to wire models together, supervise their execution and manage storage of the intermediate and final results needed for subsequent analysis.

For these elements of a framework to be maintained, a community organization is required in an open-source development environment. Models meeting these community standards would then be certified in public code libraries like those maintained by CoMSES Net and CSDMS to indicate which models could be coupled with any other certified model. Certification from a community organization and buy-in from the modelling community would create an ecosystem of open, connectable models that could be integrated into reproducible computational pipelines in standard ways for coupled human and natural system models. The evolution of such an ecosystem is dependent on the commitment of organizations representing modeling science to support and maintain a set of community standards and to facilitate the education and adoption of those standards by the modelling community. An important advantage of the proposed framework is that it does not require scientists to significantly change the way they develop models or to commit to a particular language, platform, or operating system. The combination of this development flexibility with committed standards and adoption assistance would

dtrobins 2017-12-22 1:27 PM

Moved (insertion) [11]

dtrobins 2017-12-22 1:27 PM

Formatted: Left, Indent: First line: 0"

enhance the likelihood of reaching a critical mass of development that would greatly expedite not only the development of coupled human and natural system models, but also increase the rate of scientific discovery in this domain.

dtrobins 2017-12-22 1:27 PM
Formatted: Font:Times New Roman, Not Bold

dtrobins 2017-12-22 1:27 PM
Formatted: Left, Line spacing: single

4. CONCLUSIONS

Coupling human-system and natural-system models requires connecting distinct research fields, each with unique knowledge, methods, assumptions, definitions, and language. Success depends on the research team members learning enough about the other field and model to unambiguously communicate with each other, recognize strengths and weaknesses of other methods, translate assumptions and definitions, and critically evaluate other model processes and outputs. Additionally, some team members need to develop working expertise of both models and fields to facilitate implementation of an internally-consistent coupled model. Furthermore, a software engineer is often needed to address the technical challenges of coupling complex models. Ultimately, the social and conceptual challenges combine to require much more time and effort for successful completion than for similar, mono-disciplinary projects. Nonetheless, all authors noted that the greatest benefit of the coupling process was the collaborative learning process that created a group of people with working knowledge of both human- and natural-system research and expertise in how to integrate the two.

dtrobins 2017-12-22 1:27 PM
Deleted: two

dtrobins 2017-12-22 1:27 PM
Deleted: team member with training in computer science

dtrobins 2017-12-22 1:27 PM
Deleted: All

While successful coupling of human and natural-systems models requires truly interdisciplinary collaboration, we note that the playing field is not level with respect to disciplines. There are more resources and active modeling efforts in the natural sciences than in human systems science. This is unfortunate since natural scientists need to closely work with human systems scientists to understand the kinds of information needed and the kinds of information that can be provided by models of human

dtrobins 2017-12-22 1:27 PM
Deleted: Ultimately, the social and conceptual challenges combined to require much more time and effort for project completion than originally allocated.

dtrobins 2017-12-22 1:27 PM
Deleted: , hence,

dtrobins 2017-12-22 1:27 PM
Deleted: Earth

systems. Moreover, the most scientifically and socially valuable results of model coupling require that both natural-systems models and human systems models be modified and enhanced to work together. The collaborative model development that this entails involves social interactions, two-way communication, and mutual respect for domain knowledge as well as technical solutions. In this regard, there needs to be scientific, professional, and policy incentives for all members of the interdisciplinary teams needed to develop successful integrated modeling.

dtrobins 2017-12-22 1:27 PM
Deleted: Earth

dtrobins 2017-12-22 1:27 PM
Deleted: needed

These efforts highlight the difficulty and challenges associated with the process of human-environment model coupling as well as the opportunities that coupling presents for making substantive and methodological advances in science associated with human systems, natural systems, and their feedbacks with each other.

5. ACKNOWLEDGEMENTS

This research has been made possible for the authors from a variety of supporting institutions, which we thank and acknowledge in what follows. DR was supported by the Natural Sciences and Engineering Council (NSERC) of Canada as part of their Discovery Grant program. AD was supported by the U.S. Department of Energy, Office of Science, Office of Biological and Environmental Research, Climate and Environmental Sciences Division, Integrated Assessment Program, under Award Number DE-AC02-05CH11231. PA, TP, and MR were supported by the Future Earth AIMES project, CSDMS and the European Commission LUC4C project. AA, TP, SR, and MR also acknowledge LUC4C (grant no. 603542) and the Helmholtz association through its ATMO programme and its Integration and Networking fund. CMB and IU were supported by the US National Science Foundation (grants BCS-

410269, DEB-1313727, and GEO-909394), and support from Arizona State University and the Universitat de València, Spain. Many other people in Jordan, Spain, and the US contributed in various ways to the MedLanD project and we want to extend our thanks to them also. AK and JS were supported by the CSDMS project, funded by The US National Science Foundation (grant 0621695). CL was supported by the MOSSCO project funded by the German Ministry of Education and Science (BMBF) under grant agreements 03F0667A. BO contribution was based upon work supported by the National Science Foundation under Grant Number AGS-1243095. PV was supported by European Union's Seventh Framework Programme ERC Grant Agreement nr. 311819 – GLOLAND.

6. REFERENCES

- Bai, X., van der Leeuw, S., O'Brien, K., Berkhout, F., Biermann, F., Broadgate, W., Brondizio, E., Cudennec, C., Dearing, J., Duraiappah, A., Glaser, M., Steffen, W., Syvitski, JP, 2015, Plausible and Desirable Futures in the Anthropocene, *Global Environmental Change*, 39: 351–362.
- Bankes, S.C., Lempert, R., Popper, S., 2002. Making Computational Social Science Effective: Epistemology, Methodology, and Technology. *Social Science Computer Review* 20, 377–388.
- Banning, E.B., 2010. Houses, households, and changing society in the Late Neolithic and Chalcolithic of the Southern Levant. *Paleorient* 36, 46–87.
- Barton CM, Ullah II, Mayer GR, et al (2015) MedLanD Modeling Laboratory v.1. CoMSES Computational Model Library. <https://www.openabm.org/model/4609/version/1>
- Barton, C.M., Ullah, I., Heimsath, A., 2015b, How to Make a Barranco: Modeling Erosion and Land Use in Mediterranean Landscapes. *Land* 4, 578–606. doi:10.3390/land4030578
- Barton, C.M., Ullah, I.I.T., Bergin, S.M., Mitasova, H., Sarjoughian, H., 2012. Looking for the future in the past: long-term change in socioecological systems. *Ecological Modelling* 241, 42–53. doi:10.1016/j.ecolmodel.2012.02.010
- Barton, C.M., Ullah, I.I.T., Bergin, S.M., Sarjoughian, H.S., Mayer, G.R., Bernabeu-Auban, J.E., Heimsath, A.M., Acevedo, M.F., Riel-Salvatore, J.G., Arrowsmith, Jr., 2016. Experimental socioecology: Integrative science for Anthropocene landscape dynamics. *Anthropocene* 13, 34–45. doi:10.1016/j.ancene.2015.12.004
- Barton, C.M., Ullah, I.I.T., Mitasova, H., 2010. Computational modeling and Neolithic socioecological dynamics: a case study from southwest Asia. *American Antiquity* 75, 364–386.
- Bonan, G. B., 1996: A Land Surface Model (LSM Version 1.0) for Ecological, Hydrological, and Atmospheric Studies: Technical Description and User's Guide. NCAR Technical Note NCAR/TN-417+STR, doi:10.5065/D6DF6P5X.
- Bond-Lamberty, B., Calvin, K., Jones, A. D., Mao, J., Patel, P., Shi, X., Thomson, A., Thornton, P., and Zhou, Y., 2014. Coupling earth system and integrated assessment models: the problem of steady state, *Geoscientific Model Development Discuss*, 7, 1499-1524, doi: 10.5194/gmdd-7-1499-2014.
- Bonet, A., 2004. Secondary succession of semi-arid Mediterranean old-fields in south-eastern Spain: insights for conservation and restoration of degraded lands, *Journal of Arid Environments*, 56(2), 213–233, doi:10.1016/S0140-1963(03)00048-X.

dtrobins 2017-12-22 1:27 PM

Deleted:

dtrobins 2017-12-22 1:27 PM

Deleted: and

dtrobins 2017-12-22 1:27 PM

Deleted:

Agrawal, A., Brown, D.G., Rao, G., Riolo, R., Robinson, D.T., and M. Bommarito, 2013.

Interactions -

... [84]

dtrobins 2017-12-22 1:27 PM

Deleted: Agrawal, A., Brown, D.G., Rao, Robinson, D.T., and M. Bommarito, 2013.

Interactions -

... [85]

dtrobins 2017-12-22 1:27 PM

Formatted: Font:Times, German

dtrobins 2017-12-22 1:27 PM

Formatted: Font:Times

dtrobins 2017-12-22 1:27 PM

Formatted: Font:Times

dtrobins 2017-12-22 1:27 PM

Formatted: Font:Times, Not Italic

dtrobins 2017-12-22 1:27 PM

Formatted: Italian

dtrobins 2017-12-22 1:27 PM

Deleted: 2015

dtrobins 2017-12-22 1:27 PM

Formatted: Italian

dtrobins 2017-12-22 1:27 PM

Deleted: -

dtrobins 2017-12-22 1:27 PM

Deleted: -

dtrobins 2017-12-22 1:27 PM

Formatted: Italian

dtrobins 2017-12-22 1:27 PM

Formatted: Font:Not Bold

dtrobins 2017-12-22 1:27 PM

Formatted: Normal, Justified

1090 Bonet, A. and Pausas, J. G., 2007. Old Field Dynamics on the Dry Side of the Mediterranean Basin: Patterns and Processes in Semiarid Southeast Spain, *Old Fields: Dynamics and Restoration of Abandoned Farmland*, 247.

Brown, D.G., Page, S.E., Riolo, R., and W. Rand 2004. Agent-based and analytical modeling to evaluate the effectiveness of greenbelts. *Environmental Modelling and Software*, 19(12): 1097-1109.

1095 Brown, D.G., and D.T. Robinson, 2006. Effects of heterogeneity in residential preferences on an agent-based model of urban sprawl, *Ecology and Society*, 11(1): 46. [online] URL: <http://www.ecologyandsociety.org/vol11/iss1/art46/>

1100 Brown, D.G., D.T. Robinson, L. An, J.I. Nassauer, M. Zellner, W. Rand, R. Riolo, S.E. Page, B. Low, and Z. Wang, 2008, Exurbia from the bottom-up: Confronting empirical challenges to characterizing a complex system, *Geoforum*, 39:805 – 818.

Collins, W. D., Craig, A.P., Truesdale, J.E., Di Vittorio, A.V., Jones, A.D., Bond-Lamberty, B., Calvin, K.V., Edmonds, J.A., Kim, S.H., Thomson, A.M., Patel, P., Zhou, Y., Mao, J., Shi, X., Thornton, P.E., Chini, L.P., and Hurtt, G.C., 2015. The integrated Earth System Model version 1: formulation and functionality. *Geosci. Model Dev.* 8, 2203-2219, doi:10.5194/gmd-8-2203-2015.

Coops, N.C., and R.H. Waring, 2001. The use of multiscale remote sensing imagery to derive regional estimates of forest growth capacity using 3-PGS. *Remote Sensing of Environment*, 75: 324–334.

1105 Currie, W.S., Kiger, S., Nassauer, J.I., Hutchins, M., Marshall, L.L., Brown, D.G., Riolo, R.L., Robinson, D.T., and S. Hart, 2016. Human-dominated residential land in southeastern Michigan stores carbon similar to secondary forests. *Ecological Applications*, 26(5), 1421-1436.

David, C.H., Y. Gil, C. Duffy, S.D. Peckham and S.K. Venayagamoorthy (2016) An introduction to the Earth and Space Science, special issue: "Geoscience Papers of the Future", *American Geophysical Union*, 1-4, <http://dx.doi.org/10.1002/2016EA000201>

1110 Davis, P.K., Anderson, R.H., 2004. Improving the Composability of DoD Models and Simulations. *The Journal of Defense Modeling and Simulation: Applications, Methodology, Technology* 1, 5–17. doi:10.1177/154851290400100101

Deadman, P. J., Robinson, D.T., Moran, E., and E. Brondizio, 2004. Colonist household decision-making and land-use change in the Amazon Rainforest: an agent-based simulation. *Environment and Planning B: Planning and Design* (31)5: 693 – 709.

1115 Díaz, S., & Cabido, M., 1997. Plant functional types and ecosystem function in relation to global change. *Journal of vegetation science*, 463-474.

Di Vittorio, A.V, Chini, L.P., Bond-Lamberty, B., Mao, J., Shi, X., Truesdale, J., Craig, A., Calvin, K., Jones, A., Collins, W.D., Edmonds, J., Hurtt, G.C., Thornton, P., Thomson, A., 2014. From land use to land cover: Restoring the afforestation signal in a coupled integrated assessment – earth system model and the implications for CMIP5 RCP simulations, *Biogeosciences*, 11:6435-6450.

1120 Di Vittorio, A.V., Kyle, P., Collins, W.D., 2016. What are the effects of Agro-Ecological Zones and land use region boundaries on land resource projection using the Global Change Assessment Model?, *Environmental Modelling and Software*, 85:246-265.

1125 Dorninger, C., Abson, D, Fischer, J, and von Wehrden, H., 2017. [Assessing sustainable biophysical human-nature connectedness at regional scales. Environmental Research Letters](https://doi.org/10.1016/j.envresl.2017.05.001), 12(5), 055001.

Dunlap, R., Rugaber, S., and L. Mark, 2013. A feature model of coupling technologies for Earth System Models. *Computers and Geosciences*, 53, 13-20.

1130 Eaton, B., Gregory, J., Centre, H., Office, U.K.M., Drach, B., Taylor, K., Hankin, S., Caron, J., Signell, R., 2011. NetCDF Climate and Forecast (CF) Metadata Conventions, CF Conventions.

Ellis, E. C.: *Ecology in an anthropogenic biosphere*, *Ecological Monographs*, 85(3), 287–331, doi:10.1890/14-2274.1, 2015.

- dtrobins 2017-12-22 1:27 PM
Formatted: Font:Times
- dtrobins 2017-12-22 1:27 PM
Formatted: Font:Times, German
- dtrobins 2017-12-22 1:27 PM
Formatted: German
- dtrobins 2017-12-22 1:27 PM
Formatted: Font:Times, German
- dtrobins 2017-12-22 1:27 PM
Formatted: Adjust space between Latin and Asian text
- dtrobins 2017-12-22 1:27 PM
Formatted: Font:Times
- dtrobins 2017-12-22 1:27 PM
Formatted: Font:Times
- dtrobins 2017-12-22 1:27 PM
Deleted: , 2008
- dtrobins 2017-12-22 1:27 PM
Formatted: Font:Times
- dtrobins 2017-12-22 1:27 PM
Formatted: Font:Times
- dtrobins 2017-12-22 1:27 PM
Formatted: Font:Times, Pattern: Clear, Highlight
- dtrobins 2017-12-22 1:27 PM
Formatted: Font:Times
- dtrobins 2017-12-22 1:27 PM
Deleted: <http://dx.doi.org/10.1002/2016EA000201>
- dtrobins 2017-12-22 1:27 PM
Formatted: Font:Times
- dtrobins 2017-12-22 1:27 PM
Formatted: Font:12 pt
- dtrobins 2017-12-22 1:27 PM
Formatted: Font:Times
- dtrobins 2017-12-22 1:27 PM
Formatted: Italian
- dtrobins 2017-12-22 1:27 PM
Formatted: Tabs: 0.19", Left
- dtrobins 2017-12-22 1:27 PM
Deleted: Dunlap, R., 2013. Effective reuse of coupling technologies for Earth system models. PhD Dissertation, College of Computing, Georgia Institute of Technology, Atlanta, Georgia, USA. -
- dtrobins 2017-12-22 1:27 PM
Formatted: Font:Times

- Engström K, Rounsevell MDA, Murray-Rust D et al. (2016a) Applying Occam's Razor to global agricultural land use change. *Environmental Modelling & Software*, **75**, 212–229.
- Engström, K., S. Olin, M. D. A. Rounsevell, S. Brogaard, D. P. van Vuuren, P. Alexander, D. Murray-Rust, and A. Arneth (2016b), Assessing uncertainties in global cropland futures using a conditional probabilistic modelling framework, *Earth System Dynamics*, **7**, 893–915, doi:10.5194/esd-2016-7.
- Evans, T., D.T. Robinson, and M. Schmitt-Harsh, 2013. Limitations, challenges, and solutions to integrating carbon dynamics with land-use models. Brown, D.G., Robinson, D.T., French, N.H.F., and B.C. Reed (eds), in *Land use and the carbon cycle: Advances in Integrated Science, Management, and Policy*. Cambridge University Press. pp 178-208.
- Flannery, K.V., 1993. Will the real model please stand up: comments on Saidel's "Round house or square." *Journal of Mediterranean Archaeology* **6**, 109–117.
- Gholami, S., Sarjoughian, H.S., Godding, G.W., Peters, D.R., Chang, V., 2014. Developing composed simulation and optimization models using actual supply-demand network datasets, in: *Simulation Conference (WSC)*, 2014 Winter. Presented at the Simulation Conference (WSC), 2014 Winter, pp. 2510–2521. doi:10.1109/WSC.2014.7020095
- Harrison, P.A., Dunford, R., Holman, I.P. & Rounsevell, M.D.A. (2016). Climate change impact modelling needs to include cross-sectoral interactions. *Nature Climate Change*, **6**(9), 885, DOI10.1038/nclimate3039
- Hill, C., DeLuca, C., Balaji, Suarez, M., and Silva, da A., 2004. The architecture of the Earth System Modeling Framework. *Computing in Science & Engineering* **6.1** (2004): 18-28. [Doi: 10.1109/MCISE.2004.1255817](https://doi.org/10.1109/MCISE.2004.1255817)
- Hickler, T., Smith, B., Sykes, M.T., Davis, M.B., Walker, K., Sugita, S., 2004. Using a Generalized Vegetation Model to Simulate Vegetation Dynamics in Northeastern USA. *Ecology* **85**, 519–530.
- Huntingford, C., Booth, B.B.B., Sitch, S., Gedney, N., Lowe, J. a., Liddicoat, S.K., Mercado, L.M., Best, M.J., Weedon, G.P., Fisher, R. a., Lomas, M.R., Good, P., Zelazowski, P., Everitt, a. C., Spessa, a. C., Jones, C.D., 2010. IMOGEN: an intermediate complexity model to evaluate terrestrial impacts of a changing climate. *Geosci. Model Dev.* **3**, 679–687. doi:10.5194/gmd-3-679-2010
- Hurrell, J. W., Holland. M.M., Gent, P.R., Ghan, S., Kay, J.E., Kushner, P.J., Lamarque, J.-F., Large, W.G., Lawrence, D., Lindsay, K., Lipscomb, W.H., Long, M.C., Mahowald, N., Marsh, D.R., Neale, R.B., Rasch, P., Vavrus, S., Versteinstein, M., Bader, D., Collins, W.D., Hack, J.J., J. Kiehl, J., and Marshall, S., 2013. The Community Earth System Model: A Framework for Collaborative Research. *Bulletin of the American Meteorological Society* **94**, 1339-1360, doi:10.1175/BAMS-D-12-00121.1.
- Hurt, G. C., Chini, L. P., Frohking, S., Betts, R. A., Feddema, J., Fischer, G., Fisk, J. P., Hibbard, K., Houghton, R. A., Janetos, A., Jones, C. D., Kindermann, G., Kinoshita, T., Klein Goldewijk, K., Riahi, K., Shevliakova, E., Smith, S., Stehfest, E., Thomson, A., Thornton, P., Vuuren, D. P., and Wang, Y. P., 2011. Harmonization of land-use scenarios for the period 1500-2100: 600 years of global gridded annual land-use transitions, wood harvest, and resulting secondary lands, *Clim. Change*, **109**, 117-161, 10.1007/s10584-011-0153-2.
- Jöckel, P., Sander, R., Kerkweg, A., Tost, H., Lelieveld, J., 2005. Technical Note: The Modular Earth Submodel System (MESSy) - a new approach towards Earth System Modeling. *Atmos. Chem. Phys.* **5**, 433–444. doi:10.5194/acp-5-433-2005
- [Kerkweg, A., Jöckel, P.: The 1-way on-line coupled atmospheric chemistry model system MECO\(n\) Part 1: Description of the limited-area atmospheric chemistry model COSMO/MESSy, *Geoscientific Model Development*, **5**, 87–110, doi:10.5194/gmd-5- 87-2012, 2012.](#)

dtrobins 2017-12-22 1:27 PM
Formatted: Tabs: 0.19", Left

dtrobins 2017-12-22 1:27 PM
Formatted: Font:Times

dtrobins 2017-12-22 1:27 PM
Deleted: Doi:
[10.1109/MCISE.2004.1255817](https://doi.org/10.1109/MCISE.2004.1255817)

dtrobins 2017-12-22 1:27 PM
Formatted: Font:Times

dtrobins 2017-12-22 1:27 PM
Formatted: Font:Times, German

dtrobins 2017-12-22 1:27 PM
Formatted: Font:Times

- | Kohler, T.A., van der Leeuw, S.E., 2007. Historical Socionatural Systems and Models, in: The Model-
 Based Archaeology of Socionatural Systems. School for Advanced Research Press, Santa Fe, NM,
 pp. 1–12.
- 2190 Kucharik, C.L., Foley, J.A., Delire, C., Fisher, V.A., Coe, M.T., Lenters, J.D., Young-Molling, C., and
 N. Ramankutty, 2000. Testing the performance of a Dynamic Global Ecosystem Model: Water
 balance, carbon balance, and vegetation structure.
- Lawrence, D. M., Oleson, K. W., Flanner, M. G., Thornton, P. E., Swenson, S. C., Lawrence, P. J.,
 Zeng, X., Yang, Z.-L., Levis, S., Sakaguchi, K., Bonan, G. B., and Slater, A. G., 2011.
 2195 Parameterization improvements and functional and structural advances in version 4 of the
 community land model, *Journal of Advances in Modeling Earth Systems*, 3, M03001,
 10.1029/2011ms000045.
- Lawrence, P. J., Feddema, J. J., Bonan, G. B., Meehl, G. A., O'Neill, B. C., Oleson, K. W., Levis, S.,
 Lawrence, D. M., Kluzek, E., Lindsay, K., and Thornton, P. E., 2012. Simulating the
 2200 biogeochemical and biogeophysical impacts of transient land cover change and wood harvest in the
 community climate system model (ccsm4) from 1850 to 2100, *J. Clim.*, 25, 3071-3095, 10.1175/jcli-
 d-11-00256.1.
- Lemmen, C., Hofmeister, R., Klingbeil, K., Nasermoaddeli, M. H., Kerimoglu, O., Burchard, H.,
 Kösters, F., and Wirtz, K. W., 2017. Modular System for Shelves and Coasts (MOSSCO v1.0) – a
 2205 flexible and multi-component framework for coupled coastal ocean ecosystem modelling, *Geosci.*
Model Dev. Discuss. <https://doi.org/10.5194/gmd-2017-138>
- Lindeskog, M., Arneith, A., Bondeau, A., Waha, K., Seaquist, J., Olin, S., Smith, B., 2013. Implications
 of accounting for land use in simulations of ecosystem carbon cycling in Africa. *Earth Syst. Dyn.* 4,
 385–407. doi:10.5194/esd-4-385-2013
- 2210 Liu, J., Dietz, T., Carpenter, S.R., Alberti, M., Folke, C., Moran, E., Pell, A.N., Deadman, P., Kratz, T.,
 Lubchenco, J., Ostrom, E., Ouyang, Z., Provencher, W., Redman, C.L., Schneider, S.H. and Taylor,
 W.W., 2007. Complexity of coupled human and natural systems. *Science*, 317.
- | Liu, J., Mooney, H., Hull, V., Davis, S. J., Gaskell, J., Hertel, T., Lubchenco, J., Seto, K. C., Gleick, P.,
 2215 Kremen, C. and Li, S.: Systems integration for global sustainability, *Science*, 347(6225), 1258832–
1258832, doi:10.1126/science.1258832, 2015.
- Luus, N., Robinson, D.T. and P.J. Deadman, 2013 Representing ecological processes in agent-
 based models of land use and cover change. *Land Use Science*, 8(2): 175-198.
- Manson, S.M., 2005. Agent Based Modelling and Genetic Programming for Modelling Land Change in
 the Southern Yucatan Peninsular Region of Mexico. *Agri., Ecosys. and Env.*, 111: 47–62.
- 2220 Matthews, R., 2006. The People and Landscape Model (PALM): Towards full integration of human
 decision-making and biophysical simulation models. *Ecological Modelling*, 194: 329-343.
- Mayer, G.R., Sarjoughian, H.S., 2009. Composable Cellular Automata. *SIMULATION* 85, 735–749.
 doi:10.1177/0037549709106341
- 2225 Milesi, C., Running, S.W., Elvidge, C.D., Dietz, J.B., Tuttle, B.T., Nemani, R.R., 2005. Mapping and
 modelling the biogeochemical cycling of turfgrasses in the United States. *Environmental*
Management 36 (3), 426-438.
- Meyfroidt, P., 2013. Environmental Cognitions, Land Change, and Social-Ecological Feedbacks: An
 Overview. *Journal of Land Use Science*, 8(3): 341-367.
- 2230 Meyfroidt, P., 2013b. Environmental Cognitions, Land Change and Social-Ecological Feedbacks: Local
 Case Studies of Forest Transition in Vietnam. *Human Ecology* , 41 (3): 367-392. DOI :
 10.1007/s10745-012-9560-x
- Miller, J.H., Page, S.E., 2007. Complex adaptive systems: an introduction to computational models of

dtrobins 2017-12-22 1:27 PM
Formatted: German

dtrobins 2017-12-22 1:27 PM
Formatted: Font:Times, German

dtrobins 2017-12-22 1:27 PM
Formatted: Font:Times

dtrobins 2017-12-22 1:27 PM
Formatted: Font:Times

dtrobins 2017-12-22 1:27 PM
Formatted: Adjust space between Latin
and Asian text, Adjust space between
Asian text and numbers

- social life. Princeton University Press, Princeton, N.J.
- 2235 Mitasova, H., Barton, C.M., Ullah, I.I.T., Hofierka, J., Harmon, R.S., 2013. GIS-based soil erosion modeling, in: Shroder, J., Bishop, M. (Eds.), *Treatise in Geomorphology: Vol. 3 Remote Sensing and GI Science in Geomorphology*. Academic Press, San Diego, CA, pp. 228–258.
- Neitsch, S.L.; Arnold, J.G.; Kiniry, J.R.; Williams, J.R. (2011). Soil and Water Assessment Tool Theoretical Documentation Version 2009. Texas Water Resources Institute. Available electronically from <http://hdl.handle.net/1969.1/128050>.
- 2240 [Neteler, M., Bowman, M. H., Landa, M. and Metz, M.: GRASS GIS: A multi-purpose open source GIS, Environmental Modelling & Software, 31, 124–130, doi:10.1016/j.envsoft.2011.11.014, 2012.](#)
- NRC (National Research Council) 2013. *Advancing land change modeling: opportunities and research requirements*. National Academies Press, Washington, D.C., USA, pp. 146.
- 2245 Olin, S., Lindeskog, M., Pugh, T.A.M., Schurgers, G., Wårlind, D., Mishurov, M., Zaehle, S., Stocker, B.D., Smith, B., A, A., 2015. Soil carbon management in large-scale Earth system modelling: implications for crop yields and nitrogen. *Earth Syst. Dyn.* 6, 745–768. doi:10.5194/esd-6-745-2015
- Parton, W.J., D.S. Schimel, C.V. Cole, and D.S. Ojima. 1987. Analysis of factors controlling soil organic matter levels in Great Plains grasslands. *Soil Sci. Society of America Journal*, 51: 1173–1179.
- 2250 Peckham, S.D., Hutton, E.W.H., and Norris, B., 2013. A component-based approach to integrated modeling in the geosciences: The design of CSDMS. *Computers & Geosciences*, 53, 3–12. Doi: 10.1016/j.cageo.2012.04.002
- Peters, W., Jacobson, A.R., Sweeney, C., Andrews, A.E., Conway, T.J., Masarie, K., Miller, J.B., Bruhwiler, L.M.P., Petron, G., Hirsch, A.I., Worthy, D.E., van der Werf, G.R., Randerson, 2255 J.T., Wennberg, P.O., Krol, M.C., Tans, P.P., 2007. An atmospheric perspective on North American carbon dioxide exchange: CarbonTracker. *Proc. Natl. Acad. Sci.* 104, 18925–18930.
- Pugh, T.A.M., Arneth, A., Olin, S., Ahlström, A., Bayer, A.D., Goldewijk, K.K., Lindeskog, M., Schurgers, G., 2015. Simulated carbon emissions from land-use change are substantially enhanced by accounting for agricultural management. *Environ. Res. Lett.* 10, 124008. doi:10.1088/1748-9326/10/12/124008
- 2260 [R Core Team \(2013\). R: A language and environment for statistical computing. R Foundation for Statistical Computing, Vienna, Austria. http://www.R-project.org/.](#)
- Rabin, S., Alexander, P., Anthoni, P., Henry, R., Huntingford, C., Pugh, T.A.M., Rounsevell, M., and A. Arneth. 2017. Projecting optimal land-use and management strategies under population growth and 2265 climate change using a coupled ecosystem & land use model framework. Presented at the General Assembly of the European Geosciences Union, Vienna, Austria.
- Robinson, D.T., Brown, D.G., and W.S. Currie, 2009. Modelling carbon storage in highly fragmented and human dominated landscapes: linking land-cover patterns and ecosystem models. *Ecological Modelling* 220: 1325–1338.
- 2270 Robinson, D.T., 2012. Land-cover fragmentation and configuration of ownership parcels in an exurban landscape. *Urban Ecosystems*. 15: 53–69. DOI: 10.1007/s11252-011-0205-4
- Robinson, D.T., Shipeng, S., [Hutchins, M.](#), Riolo, R.L., Brown, D.G., Parker, D.C., Currie, W.S., Filatova, T., and [S. Kiger](#), 2013. Effects of land markets and land management on ecosystem function: A framework for modelling exurban land-changes. *Environmental Modelling and Software*, 45: 129–140. DOI: 10.1016/j.envsoft.2012.06.016
- 2275 Rounsevell, M., Robinson, D.T. and D. Murray-Rust, 2012. From actors to agents in socio-ecological systems models. *Philosophical Transactions of the Royal Society B* 367: 259–269.
- Rounsevell, M.D.A., Arneth, A., Alexander, P., Brown, D.G., de Noblet-Ducoudré, N., Ellis, E.,

dtrobins 2017-12-22 1:27 PM

Formatted: Font:Times

dtrobins 2017-12-22 1:27 PM

Deleted: <http://hdl.handle.net/1969.1/128050>.

dtrobins 2017-12-22 1:27 PM

Formatted: citation-link, Font:Times

Finnigan, J., Galvin, K., Grigg, N., Harman, I., Lennox, J., Magliocca, N., Parker, D., O'Neill, B.C., Verburg, P.H., Young, O., 2014. Towards decision-based global land use models for improved understanding of the Earth system. *Earth Syst. Dyn.* 5, 117–137. doi:10.5194/esd-5-117-2014

2285 Running, S.W., and R.E. Hunt, 1993. Generalization of a forest ecosystem process model for other biomes, BIOME-BGC, and an application for global-scale models. In: Ehleringer, J.R., Field, C.B. (Eds.), *Scaling Physiological Processes: Leaf to Globe*. Academic Press Inc., pp. 141-158.

Sarjoughian, H.S., 2006. Model Composability, in: *Winter Simulation Conference*, Monterey, CA 2006. Presented at the Winter Simulation Conference, Monterey, CA 2006, ACM Digital Library, pp. 149–158.

2290 Sarjoughian, H.S., Meyer, G.R., Ullah, I.I., Barton, C.M., 2015. Managing Hybrid Model Composition Complexity: Human–Environment Simulation Models, in: Yilmaz, L. (Ed.), *Concepts and Methodologies for Modeling and Simulation*, Simulation Foundations, Methods and Applications. Springer International Publishing, pp. 107–134.

2295 Sarjoughian, H., Smith, J., Godding, G., Muqsith, M., 2013. Model composability and execution across simulation, optimization, and forecast models, in: *Proceedings of the Symposium on Theory of Modeling & Simulation-DEVS Integrative M&S Symposium*. Society for Computer Simulation International, p. 30.

Schneider, S.H., Dickinson, R.E., 1974. Climate modeling. *Rev. Geophys.* 12, 447. doi:10.1029/RG012i003p00447

2300 Sitch, S., Smith, B., Prentice, I.C., Arneth, A., Bondeau, A., Cramer, W., Kaplan, J.O., Levis, S., Lucht, W., Sykes, M.T., Thonicke, K., and S. Venevsky, 2003. Evaluation of ecosystem dynamics, plant geography and terrestrial carbon cycling in the LPJ dynamic global vegetation model. *Global Change Biology*: 9, 161-185.

2305 Smith, T.M., Shugart, H.H., Woodward, F.I. and Burton, P.J., 1993. Plant functional types. In *Vegetation Dynamics & Global Change* (pp. 272-292). Springer US.

Smith, T.M., Shugart, H.H., Woodward, F.I., 1997. *Plant functional types: their relevance to ecosystem properties and global change* (Vol. 1). Cambridge University Press.

Smith, B., I. C. Prentice, and M. T. Sykes (2001), Representation of vegetation dynamics in the modelling of terrestrial ecosystems: comparing two contrasting approaches within European climate space, *Global Ecology & Biogeography*, 10, 621-637.

2310 Smith, B., Wårlind, D., Arneth, a., Hickler, T., Leadley, P., Siltberg, J., Zaehle, S., 2014. Implications of incorporating N cycling and N limitations on primary production in an individual-based dynamic vegetation model. *Biogeosciences* 11, 2027–2054. doi:10.5194/bg-11-2027-2014

2315 Soto-Berelov, M., 2011. *Vegetation Modeling of Holocene Landscapes in the Southern Levant* (doctoral dissertation). Arizona State University, Tempe, AZ.

Sun, S., Parker, D.C., Huang, Q., Filatova, T., Robinson, D.T., Riolo, R.L., Hutchins, M.D., and D.G. Brown, 2014. Market Impacts on Land Use Change: An Agent-Based Modeling Experiment. *Annals of the Association of American Geographers*, 104(3): 460-484.

2320 Syvitski, JPM, Peckham, S.P., David, O., Goodall, J.L., Delucca, C., Theurich, G. 2013. Cyberinfrastructure and Community Environmental Modeling. In: *Handbook in Environmental Fluid Dynamics*, Editor: H.J.S. Fernando, CRC Press/Taylor & Francis Group, LLC. ISBN: 978-1-4665-5601-0. Chapter 28: 399-410.

2325 Syvitski, JPM, Hutton, EWH, MD Piper, I Overeem, AJ Kettner, SD Peckham, 2014, Plug and Play Component Modeling — The CSDMS2.0 Approach. *International Environmental Modelling and Software Society (iEMSs) 7th Intl. Congress on Env. Modelling and Software*, San Diego, CA, USA, Daniel P. Ames, Nigel W.T. Quinn and Andrea E. Rizzoli (Eds.)

dtrobins 2017-12-22 1:27 PM
Formatted: Font:Times, German

dtrobins 2017-12-22 1:27 PM
Formatted: Font:Times

dtrobins 2017-12-22 1:27 PM
Formatted: Font:Times

dtrobins 2017-12-22 1:27 PM
Formatted: Font:Times

<http://www.iemss.org/society/index.php/iemss-2014-proceedings>
 Taylor, K. E., Stouffer, R. J., and Meehl, G. A., 2012. An overview of cmip5 and the experiment design, *Bulletin of the American Meteorological Society*, 93, 485-498, 10.1175/bams-d-11-00094.1.
 2330 Theobald D.M., 2005. Landscape patterns of exurban growth in the USA from 1980 to 2020. *Ecology and Society*, 10:32.
 Thornton, P.E., Calvin, K., Jones, A.D., Di Vittorio, A.V., Bond-Lamberty, B., Chini, L., Shi, X., Mao, J., Collins, W.D., Edmonds, J., Thomson, A., Truesdale, J., Craig, A., Branstetter, M.L., Hurtt, G.,
 2335 2017. Biospheric feedback effects in a synchronously coupled model of Earth and human systems, *Nature Climate Change*. Doi: 10.1038/NCLIMATE3310.
 Turner II, B.L., Lambin, E.F., and A. Reenberg, 2007. The emergence of land change science for global environmental change and sustainability. *Proc. of the Nat. Academy of Sci.*, 104(52): 20666-20671.
 Ullah, I.I.T., 2017. The Consequences of Human land-use Strategies During the PPNB-LN Transition: A Simulation Modeling Approach. Arizona State University Anthropological Research Papers.
 2340 Arizona Board of Regents, Tempe, Arizona.
 van der Leeuw, S.E., 2004. Why model? *Cybernetics and Systems: An International Journal* 35, 117-128. doi:10.1080/01969720490426803.
 van Vuuren DP, Carter TR (2014) Climate and socio-economic scenarios for climate change research and assessment: Reconciling the new with the old. *Climatic Change*, 122, 415-429.
 2345 Verburg PH. 2006. Simulating feedback in land use and land cover change models. *Landscape Ecology* 21(8): 1171-1183.
 Verburg, P.H., Dearing, J.A., Dyke, J.G., van der Leeuw, S.E., Seitzinger, S., Steffen, W., Syvitski, J.P., 2016. Methods and Approaches to Modelling the Anthropocene. *Global Environmental Change*, 39:328-340. <https://doi.org/10.1016/j.gloenvcha.2015.08.007>
 2350 Voinov, A.A., Hood, R.R., Peckham, S.D., Sherwood, C.R., and Syvitski, J.P.M., 2010. A community Approach to Earth Systems Modeling. *Eos*, 91(13), 117-124.
 Waters, CN, J Zalasiewicz, C Summerhayes, AD Barnosky, C Poirier, A Gałuszka, I Hajdas, A Cearreta, M Edgeworth, E Ellis, MA Ellis, C Jeandel, R Leinfelder, JR McNeill, DB Richter, W Steffen, J Syvitski, D Vidas, M Wagemreich, M Williams, A Zhisheng, J Grinevald, E Odada, and N Oreskes. 2016, The Anthropocene is functionally and stratigraphically distinct from the Holocene. *Science* 351(6269)
 2355 White, A.M., Thornton, P.E., Runnin, S.W., Nemani, R.R., 2000. Parameterization and sensitivity analysis of the BIOME-BGC terrestrial ecosystem model: net primary production controls. *Earth Interactions* 4 (3), 1-85.
 2360 Wise, M., Calvin, K., Kyle, P., Luckow, P., Edmonds, J., 2014. Economic and physical modeling of land use in GCAM 3.0 and an application to agricultural productivity, land, and terrestrial carbon. *Climate Change Economics* 05, 1450003, doi:10.1142/S2010007814500031.
 Yadav, V., Del Grosso, S.J., Parton, W.J., and G.P. Malanson, 2008. Adding ecosystem function to agent-based land use models. *Land Use Science* 3, 27-40.
 2365 Zalasiewicz, J, CN Waters, AD Barnosky, A Cearreta, M Edgeworth, EC Ellis, A Gałuszka, PL Gibbard, J Grinevald, I Hajdas, J Ivar do Sul, C Jeandel, R Leinfelder, JR McNeill, C Poirier, A Revkin, D de B Richter, W Steffen, C Summerhayes, JPM Syvitski, D Vidas, M Wagemreich, M Williams and AP Wolfe, 2015, Colonization of the Americas, 'Little Ice Age' climate, and bomb produced carbon: Their role in defining the Anthropocene, *The Anthropocene Review* 2(2): 117-127.
 2370

dtrobins 2017-12-22 1:27 PM
Formatted: Font:Times, Font color: Custom Color(0,0,10)

dtrobins 2017-12-22 1:27 PM
Formatted: Font:Times

dtrobins 2017-12-22 1:27 PM
Formatted: Dutch

dtrobins 2017-12-22 1:27 PM
Formatted: Font:Times

dtrobins 2017-12-22 1:27 PM
Formatted: Font:Times

dtrobins 2017-12-22 1:27 PM
Formatted: Font:Times

dtrobins 2017-12-22 1:27 PM
Formatted: Adjust space between Latin and Asian text, Adjust space between Asian text and numbers