

Interactive comment on “Earth system model simulations show different carbon cycle feedback strengths under glacial and interglacial conditions” by Markus Adloff et al.

Markus Adloff et al.

ma16749@bristol.ac.uk

Received and published: 3 July 2017

Please excuse the mistaken layout for figure 8 where one axis annotation got cut off. This will be corrected with the next version upload. For the time being, please find attached the original plot.

Interactive comment on Earth Syst. Dynam. Discuss., <https://doi.org/10.5194/esd-2017-67>, 2017.

C1

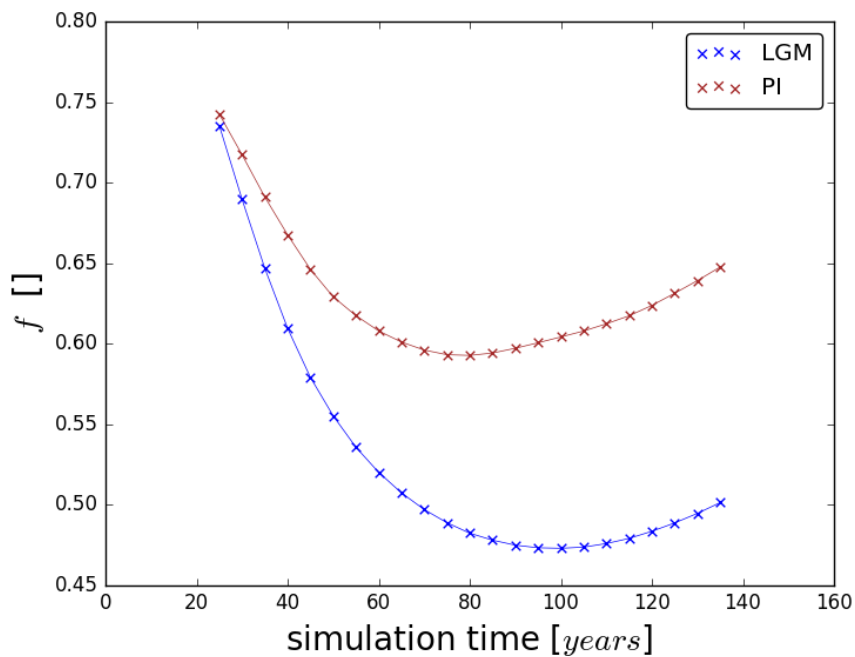


Fig. 1.

C2