

# Effects of the 2014 Major Baltic Inflow on methane and nitrous oxide dynamics in the water column of the Central Baltic Sea

Jukka-Pekka Myllykangas<sup>1</sup>, Tom Jilbert<sup>1</sup>, Gunnar Jakobs<sup>1,2</sup>, Gregor Rehder<sup>3</sup>, Jan Werner<sup>3</sup>, and Susanna Hietanen<sup>1</sup>

<sup>1</sup>Department of Environmental Sciences, University of Helsinki, P.O. Box 65, FIN-00014 University of Helsinki, Finland

<sup>2</sup>Technical University of Denmark, Frederiksborgvej 399, 4000 Roskilde, Denmark

<sup>3</sup>Leibniz Institute for Baltic Sea Research Warnemünde (IOW), Seestraße 15, D-18119 Rostock, Germany

*Correspondence to:* JP Myllykangas (jukka-pekka.myllykangas@helsinki.fi)

**Abstract.** In late 2014, a large, oxygen-rich salt water inflow entered the Baltic Sea and caused considerable changes in deep water oxygen concentrations. We studied the effects of the inflow on the concentration patterns of two greenhouse gases, methane and nitrous oxide, during the following year (2015) in the water column of the Gotland Basin. In the Eastern basin, methane which had previously accumulated in the deep waters was largely removed during the year. Here, volume-weighted mean concentration below 70 m decreased from 108 nM in March to 16.3 nM over a period of 141 days (0.65 nM d<sup>-1</sup>), predominantly due to oxidation (up to 79 %) following turbulent mixing with the oxygen-rich inflow. In contrast nitrous oxide, which was previously absent from deep waters, accumulated in deep waters due to enhanced nitrification following the inflow. Volume-weighted mean concentration of nitrous oxide below 70 m increased from 11.8 nM in March to 24.4 nM in 141 days (0.09 nM d<sup>-1</sup>). A transient extreme accumulation of nitrous oxide (877 nM) was observed in the deep waters of the Eastern Gotland Basin towards the end of 2015, when deep waters turned anoxic again, sedimentary denitrification was induced and methane was reintroduced to the bottom waters. The Western Gotland Basin gas biogeochemistry was not affected by the inflow.

## 1 Introduction

The Baltic Sea is a shallow, semi-enclosed brackish water body. It receives large fresh water inputs from the rivers along its coast, but also exchanges saline water with the North Sea through the narrow Danish straits, principally via the Darss Sill and the Drogden Sill (Fig. 1). This leads to a semi-permanent stratification between relatively fresh surface waters and denser, more saline deep waters. Although intermediate-depth water masses in the southern areas of the Baltic Sea are ventilated frequently, deep waters of the central Baltic are renewed only during Major Baltic Inflow (MBI) events, during which large amounts of saline oxygen-rich water enter the Baltic through the Danish straits over a short period of time (Schinke and Matthäus, 1998). These events require a specific sequence of weather conditions, occur exclusively in winter and have been occurring approximately once a decade in the recent past (Gräwe et al., 2015).

Due to the semi-permanent stratification, waters below the halocline of the Baltic Sea are typically anoxic (Carstensen et al., 2014) and contain large inventories of reduced compounds produced by microbial and abiotic reactions in the absence

of oxygen (Neumann et al., 1997). Many biogeochemical processes are also active in the hypoxic boundary layers close to the halocline (Yakushev et al., 2007; Dellwig et al., 2010). When oxygen is introduced by MBIs, large quantities of the previously accumulated reduced compounds in the deep waters are subsequently oxidised (Reissmann et al., 2009) and new redox fronts develop between new and old water masses (Schmale et al., 2016). As such, MBIs have a strong influence on  
5 many biogeochemical processes in the Baltic Sea.

In this study we focus on two gases that are strongly influenced by the spatial distribution of hypoxia and anoxia in the Baltic Sea: methane ( $\text{CH}_4$ ) (Schmale et al., 2012) and nitrous oxide ( $\text{N}_2\text{O}$ ) (Hietanen et al., 2012). Both are important greenhouse gases, which also have effects on atmospheric chemistry (Crutzen, 1974; Cicerone and Oremland, 1988). Ambient oxygen concentrations regulate the microbial processes involved in the production and consumption of  $\text{CH}_4$  and  $\text{N}_2\text{O}$ .  $\text{CH}_4$  is produced  
10 in sediments in vast quantities by a unique group of archaea called methanogens (Balch et al., 1979). Methanogenesis is the lowest energy-yield pathway of the anaerobic decay of organic matter, which typically occurs when all other electron acceptors have been depleted (Thauer, 1998). The primary methanogenesis pathway in marine sediments is  $\text{CO}_2$  reduction by hydrogenotrophic methanogens, while fermentative acetotrophic methanogenesis is the dominant pathway in freshwater sediments (Whiticar et al., 1986). Typically, most of the produced  $\text{CH}_4$  is consumed in anaerobic and aerobic processes in  
15 both sediments and the water column before it can escape to the atmosphere (Reeburgh, 2007; Knittel and Boetius, 2009).  $\text{N}_2\text{O}$  is produced by prokaryotes through both oxidative and reductive pathways: as a side product in nitrification (oxidation of ammonium,  $\text{NH}_4^+$ , to nitrate,  $\text{NO}_3^-$ ), and as an intermediate product in denitrification (reduction of  $\text{NO}_3^-$  to elemental nitrogen gas,  $\text{N}_2$ ) under suboxic conditions (Anderson and Levine, 1986; Goreau et al., 1980; Bakker et al., 2014). The main biological pathways of  $\text{N}_2\text{O}$  production are highly dependent on the oxygen conditions and the availability of organic matter, nitrite  
20 ( $\text{NO}_2^-$ ) and nitrate (Ward, 2013; Murray et al., 2015). In seas, nitrification has been considered the primary pathway of  $\text{N}_2\text{O}$  production (Freing et al., 2012), but recent studies have suggested that the role of incomplete denitrification in the oceanic oxygen minimum zones might have been previously underestimated (Babbin et al., 2015; Ji et al., 2015). Furthermore, it has been shown that archaeal nitrification dominates oceanic  $\text{N}_2\text{O}$  production and that this is much more sensitive to oxygen concentrations than bacterial nitrification (Löscher et al., 2012; Freing et al., 2012).  $\text{N}_2\text{O}$  is consumed exclusively under anoxic  
25 conditions during denitrification (Goreau et al., 1980; Wrage et al., 2001; Bakker et al., 2014). The highest accumulations of  $\text{N}_2\text{O}$  in marine waters are typically associated with spatial and temporal redox gradients, such as the margins of oceanic oxygen minimum zones (Naqvi et al., 2010) and dynamic systems including estuaries (Brase et al., 2017).

In the Baltic Sea, surface water concentrations of both gases typically exceed equilibrium with the sea-level atmosphere, indicating supersaturation and an efflux of  $\text{CH}_4$  and  $\text{N}_2\text{O}$  from surface waters (Bange, 2006; Gülzow et al., 2013). However, the  
30 sub-halocline profiles of the two gases differ markedly. Deep waters are typically strongly enriched in  $\text{CH}_4$  below the halocline during stagnation periods (Bange et al., 2010; Jakobs et al., 2013), while  $\text{N}_2\text{O}$  is usually absent (Brettar and Rheinheimer, 1991). Increased anthropogenic nutrient loading during the last century has been linked to the enhanced production of both gases in the Baltic Sea (Bange, 2006). In the global  $\text{CH}_4$  budget, the flux from the oceans to the atmosphere is estimated at approximately 2 % of total  $\text{CH}_4$  emissions (Judd et al., 2002; Reeburgh, 2007), but estimates as high as 10 % have also  
35 been presented (Cicerone and Oremland, 1988). Shallow coastal areas and estuaries are an important component, potentially

contributing up to 75 % of the total oceanic CH<sub>4</sub> flux (Bange et al., 1994). In the case of N<sub>2</sub>O, the oceans are a much more important source in the global atmospheric budget, contributing up to 25 % of emissions (Nevison et al., 2003). However, there are large uncertainties in the role of coastal zones and estuaries. Previous studies have reported ranges from 11 % to 60 % of the total N<sub>2</sub>O flux from the marine environment (Bange et al., 1996; Seitzinger and Kroeze, 1998). In a more recent study, Naqvi et al. (2010) report a more conservative estimate of 16-33 %, though concede that large uncertainties still exist.

In late December of 2014 a large MBI occurred, during which 198 km<sup>3</sup> of water, containing 4 Gt of salt and 2.04 × 10<sup>6</sup> t of oxygen, entered the Baltic through the Darss sill (Fig. 1). The inflow was the third largest MBI observed since 1880 (Gräwe et al., 2015; Mohrholz et al., 2015) and caused large changes in the dissolved oxygen concentrations throughout the southern and central Baltic Sea (Mohrholz et al., 2015). The inflow strongly impacted the vertical distribution of CH<sub>4</sub> in the Gotland Basin (Schmale et al., 2016), which is the largest sub-basin of the Baltic Sea. Both advective processes (displacement and dilution of old CH<sub>4</sub>-rich deep waters by the CH<sub>4</sub>-poor inflow water) and aerobic oxidation of CH<sub>4</sub> (stimulated by mixing at the contact between these water masses) contributed to a decline in [CH<sub>4</sub>] during 2015.

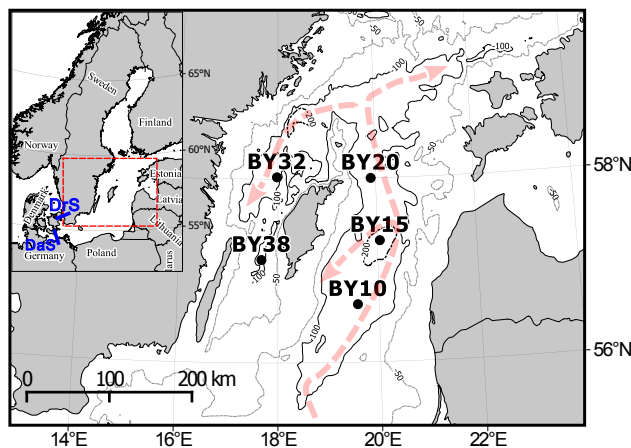
Here we present a broader investigation of the spatial and temporal evolution of both CH<sub>4</sub> and N<sub>2</sub>O concentrations following the inflow, along a transect of sites in both the Eastern and Western Gotland Basin. We discuss the roles of advection and microbial processing in the observed distributions, and the timescales of change in biogeochemical processes in response to the perturbation caused by the MBI.

## 2 Materials and Methods

Samples were collected on six cruises that took place between March and December 2015 on R/V Aranda and R/V Salme. Sampling covered the whole Gotland Basin, with three stations in the Eastern Gotland Basin (EGB): BY10, BY15 and BY20, and two stations in the western Basin (WGB): BY32 and BY38 (Fig. 1). The coordinates, sampling times and depths of all stations are listed in supplementary materials in Table S4. All five stations have been monitored for several decades for basic hydrographic parameters and have been used in numerous previous studies.

Water samples were collected with rosette water samplers with 12 Niskin bottles and salinity, temperature and oxygen data were generated with attached CTD probes (bottle sizes 1.7 and 5 L, CTD probes SeaBird SBE 19+ and SeaBird SBE 911+, for R/V Salme and R/V Aranda, respectively). Supplementary nutrient, oxygen and hydrogen sulphide (H<sub>2</sub>S) monitoring data were provided by the Finnish Environment Institute (SYKE), Swedish Meteorological and Hydrological Institute (SMHI) and Tallinn University of Technology (TTU).

Dissolved gas samples were collected in triplicate by filling 60 mL plastic syringes directly from the Niskin bottles with a 10 cm rubber tube that was flushed with sample water and from which visible bubbles were squeezed out prior to sampling. The water volume in the syringe was reduced to 30 mL, a 3-way stopcock was attached to the syringe, and 31 mL of 5.0 purity N<sub>2</sub> gas was injected via the stopcock to create a headspace. Syringes were left at 20°C for 30 minutes and then vigorously shaken for three minutes. At least 25 mL of the headspace was transferred into a dry syringe through a stopcock and then injected



**Figure 1.** Map of the study area showing the five sampling locations in the central Baltic Sea. The red arrows show the prevailing sub-halocline circulation of the central Baltic Sea, redrawn from Meier (2007). The sub-halocline circulation approximates the expected route of Major Baltic Inflows (MBIs) along the transect of study locations. The inset shows the connection of the Baltic Sea to the North Sea via the Danish Straits (DaS = Darss Sill, DrS = Drogden Sill). The numbers along the depth contours represent depth in meters.

into a pre-evacuated 12 mL gas-tight glass vial with a 4 mm butyl rubber stopper (LabCo Exetainer™ model 839W). Care was taken to always keep the syringes closed with a stopcock.

The gas samples were analysed within five months from sampling using an Agilent Technologies 7890B gas chromatograph with a flame ionization detector (FID) for CH<sub>4</sub> and an electron capture detector (ECD) for N<sub>2</sub>O, a 2.4 m Hayesep Q column with 1/8" connection, 80/100 mesh range and a 1.0 mL sample loop. Carrier gases were nitrogen and helium at 21 mL min<sup>-1</sup> flow rates, for N<sub>2</sub>O and CH<sub>4</sub> respectively. The oven temperature was 60°C, and detection temperatures for FID and ECD were 250°C and 300°C respectively. The samples were injected using a Gilson GX-271 auto sampler. Raw peak area data were converted to mole fraction (ppm) using linear calibration with standards. For CH<sub>4</sub>, a three-point calibration was used (0.46, 5 and 47 ppm), consisting of a standard gas mixture (AGA Gas AB, Lidingö, Sweden) with 5 ppm ± 2 % CH<sub>4</sub>, which was diluted 1:10 with 5.0 purity N<sub>2</sub> to create the low standard. For the high standard, a 1000 ppm ± 2 % CH<sub>4</sub> gas mixture (Air Products PLC, Surrey, United Kingdom) was diluted 1:20 with 5.0 N<sub>2</sub>. For N<sub>2</sub>O, a two-point calibration (0.10 and 1.1 ppm) was used, consisting of a standard gas mixture (AGA Gas AB, Lidingö, Sweden) with 1.1 ppm ± 5 % N<sub>2</sub>O, which was then diluted 1:10 with 5.0 N<sub>2</sub>. Standard series were analysed prior to each analysis sequence (length of sequence was 40–120 samples) and fitted linearly for each sequence separately to correct for between-series drift. Standards containing 5 ppm CH<sub>4</sub> and 1.1 ppm N<sub>2</sub>O were analysed after every 10 samples to monitor within-series drift (observed to be negligible).

Total *in situ* dissolved gas concentrations ( $C_{tot}$ ) in mol L<sup>-1</sup> were calculated from measured wet mole fraction values in the headspace gas considering the ideal gas law and Henry's Law:

$$C_{tot} = \frac{\frac{P_{HS} \times V_{HS}}{R \times T} + F \times P_{HS} \times V_{Aq}}{V_{Aq}} \quad (1)$$

where  $P_{HS}$  is the partial pressure of the gas in the headspace (atm),  $V_{HS}$  and  $V_{Aq}$  the syringe headspace and water volume respectively (L),  $R$  is the gas constant ( $0.08206 \text{ L atm K}^{-1} \text{ mol}^{-1}$ ),  $T$  the temperature during equilibration in Kelvin (293 K), and  $F$  is a salinity and temperature dependent equilibrium solubility coefficient of a given gas in  $\text{mol L}^{-1} \text{ atm}^{-1}$ , as defined in Wiesenburg and Guinasso (1979) for  $\text{CH}_4$  and in Weiss and Price (1980) for  $\text{N}_2\text{O}$  (*in situ* salinity and 293 K were used in the calculations).

The calculation can be simplified by assuming that the total pressure in the syringe during equilibration is 1 atm, from which follows that  $P_{HS} = P_{atm} \times X_{HS}$ , where  $P_{atm}$  is the true atmospheric pressure during sampling in atm. Thus, the total original concentration of dissolved gas in the fluid sample can be calculated by summing the contributions from the headspace ( $C_{HS}$ ) and the dissolved phase ( $C_{Aq}$ ):

$$C_{tot} = \underbrace{\frac{(X_{HS} \times P_{atm} \times V_{HS})}{(R \times T \times V_{aq})}}_{C_{HS}} + \underbrace{F \times X_{HS} \times P_{atm}}_{C_{Aq}} \quad (2)$$

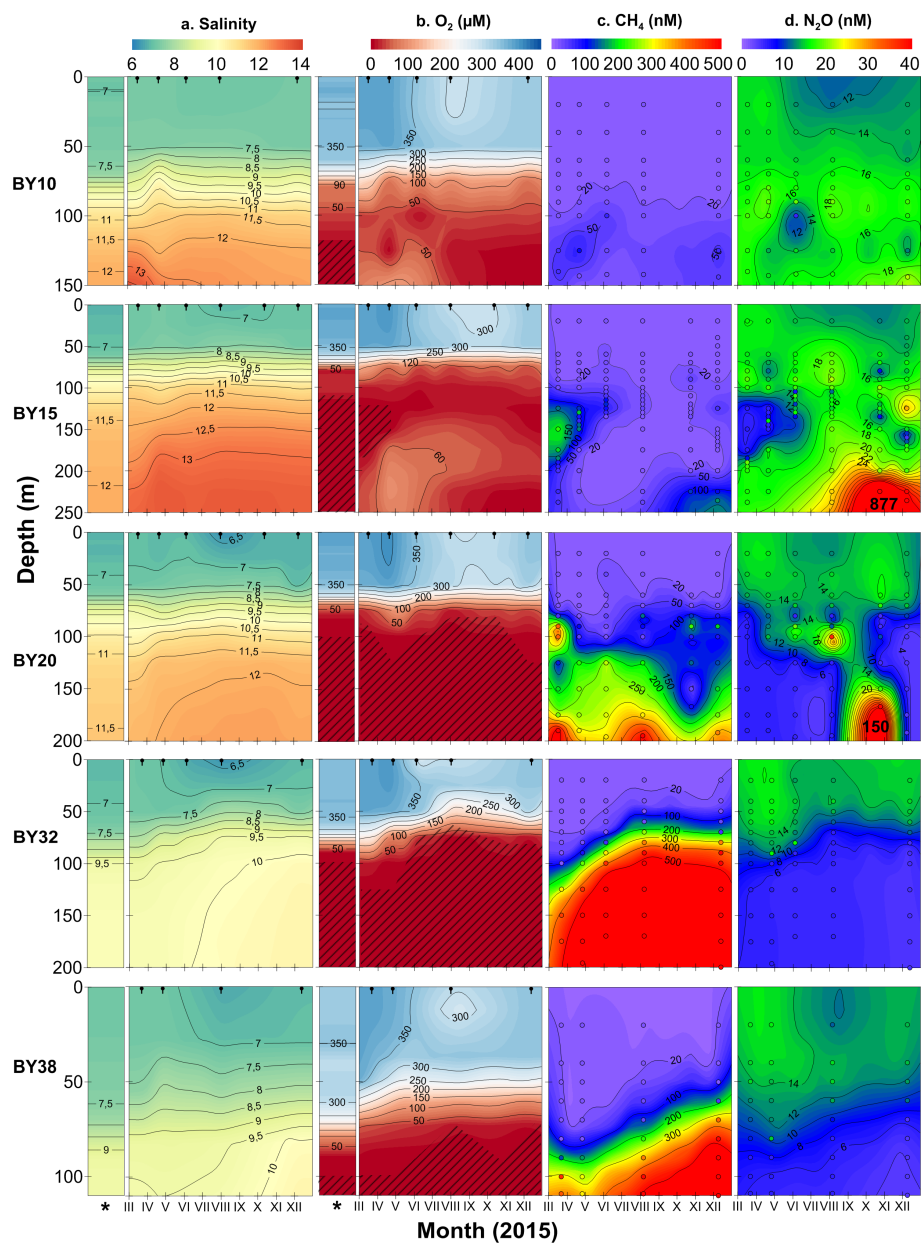
where  $X_{HS}$  is the mole fraction of the gas measured from the syringe headspace in ppmv.

Pre-evacuated Exetainers contain small amounts of air, which contaminates the gas samples, standards and blanks (Sturm et al., 2015). Because the concentration of  $\text{CH}_4$  and  $\text{N}_2\text{O}$  in air is variable, the contamination also introduced imprecision to sample data. We calculated cut-off concentrations for both gases, below which measured values were considered indistinguishable from those of blank pre-evacuated Exetainers (see supplementary material Fig. S1). The determination of the cut-off value took into account both the mean contamination of blank samples and various sources of imprecision in sample data. The cut-off concentrations are approximately equivalent to 9–19 nM and 4–6 nM for  $\text{CH}_4$  and  $\text{N}_2\text{O}$ , respectively (exact values are salinity-dependent). Precision, which includes errors introduced during transfer of gas samples between syringes and the variation in sample volumes in relation to the residual air in the Exetainers, of all reported data above the cut-off is <5 % relative standard deviation (RSD), as determined by triplicate analysis of all samples. In terms of accuracy, the residual air in the Exetainers caused an average underestimation of 0.9 % in  $\text{CH}_4$  samples (full range for all reported samples -2.6 to 11.4 %) and a 1.1 % overestimation in  $\text{N}_2\text{O}$  samples (full range -2.7 to 10.1 %). Diffusive exchange through the plastic of the syringes was found to be negligible (<1 %). The errors inherent to the method do not affect any of the main results or conclusions presented here. For a detailed description of the error and the establishment of the cut-off, we refer the reader to the supplementary information.

### 3 Results

All stations exhibited strong salinity stratification on all sampling occasions, with clear differences between the surface and bottom water salinities (Fig. 2a). The halocline was typically at 60–80 m depth. We observed a net increase in the bottom water salinities at BY15, BY20, BY32 and BY38 from March to December. Absolute bottom water salinities decreased along the expected route of the inflow (Fig. 1; Fig. 2a).

As expected, the earliest major impact of the inflow on deep water oxygen was observed at the southernmost station BY10, where oxygen was detected already in March (up to  $84 \mu\text{M}$  in the bottom water, Fig. 2b). At this site, the oxygenated zone in the



**Figure 2.** Bilinearly interpolated profiles of a) CTD salinity, b) CTD oxygen ( $\mu\text{M}$ , shading denotes presence of  $\text{H}_2\text{S}$ ), c)  $[\text{CH}_4]$  (nM) and d)  $[\text{N}_2\text{O}]$  (nM) from all sampling stations at all sampling times of the survey. The x-axis covers the period 17 March 2015 to 13 December 2015. Black notches in a) and b) indicate sampling dates, while the narrower bars marked with an asterisk represent conditions in June 2014, prior to the MBI. Circles in columns c) and d) represent gas sampling depths and times, while infill color is the non-interpolated original concentration. Note that all  $\text{CH}_4$  and  $\text{N}_2\text{O}$  data below the cut-off were set to cut-off prior to interpolation (See supplement S1 for details)

bottom water expanded upwards until June, with concentrations between 90 and 120  $\mu\text{M}$ . However,  $[\text{O}_2]$  started to decrease considerably in August and remained low thereafter, dropping to 5  $\mu\text{M}$  in December. No  $\text{H}_2\text{S}$  was detected at any time at BY10.  $[\text{CH}_4]$  remained low throughout, with the highest value of 97 nM measured in April at 125 m depth (Fig. 2c).  $[\text{N}_2\text{O}]$  was between 6 and 22 nM, with the lowest concentration found in June at 100 m depth, and the highest in December in the deepest 144 m sample (Fig. 2d).

At the deepest station, BY15, in the central EGB, oxygen was also detected in the bottom water in March, although the concentration was lower than at BY10 (50  $\mu\text{M}$ , Fig. 2b). In the early part of the year, BY15 had a completely anoxic midwater layer from 100–175 m (Fig. 2b), which contained up to 21  $\mu\text{M}$   $\text{H}_2\text{S}$  in April. The anoxic layer diminished over time, and had completely disappeared by August, as the oxic zone in the deep waters expanded vertically over this period. The highest bottom water  $[\text{O}_2]$  of 177  $\mu\text{M}$  was measured in April (Fig. 2b).  $[\text{CH}_4]$  was relatively low throughout, except for the anoxic layer, where concentrations of up to 217 nM were measured in March. By December, bottom water  $[\text{O}_2]$  had decreased to below 10  $\mu\text{M}$  and  $[\text{CH}_4]$  of up to 158 nM were measured in the bottom water. Also, slightly elevated  $[\text{CH}_4]$  and  $[\text{N}_2\text{O}]$  were detected in October and December at 90–125 m (Fig. 2c). Minimal amounts of  $\text{N}_2\text{O}$  were found within the anoxic midwater layer of BY15, but concentrations of 18–20 nM could be detected around its upper and lower boundaries (Fig. 2d). In October however, very high  $[\text{N}_2\text{O}]$  (877 nM) was measured at 225 m. The extreme concentrations had decreased by December, but still remained relatively high (41 nM at 225 m and 236 m) compared to previous months (Fig. 2d).

At the northernmost station of the EGB, BY20,  $[\text{O}_2]$  were very low or zero below 70–80 m (Fig. 2b) and  $\text{H}_2\text{S}$  was found in the bottom water on all sampling occasions, with concentrations up to 33  $\mu\text{M}$  in August. Bottom water was devoid of  $\text{N}_2\text{O}$  and  $[\text{CH}_4]$  remained high (299–525 nM) (Fig. 2c), except in October when bottom water  $[\text{CH}_4]$  decreased to 91 nM and  $[\text{N}_2\text{O}]$  increased to 151 nM (Fig. 2d). Concentrations of both gases had returned to typical values by December. In August, a transient midwater  $[\text{N}_2\text{O}]$  maximum of 36 nM was found at 100 m depth and in October and December  $[\text{CH}_4]$  of up to 230 nM were observed at 90 m depth.

In the WGB at BY32 and BY38, no oxygen was detected below the halocline at any time (Fig. 2b), and  $\text{H}_2\text{S}$  was present in all bottom water samples. Bottom water  $[\text{CH}_4]$  displayed large variation between 308 and 726 nM (Fig. 2c), and  $[\text{N}_2\text{O}]$  was consistently below the cut-off value, indicating values close to zero (Fig. 2d). At both stations, a strong shoaling of the halocline could be observed over the course of the year (Fig. 2a), with the  $\text{CH}_4$ -enriched deep water mass expanding from 125 to 80 m at BY32, and from 90 to 70 m at BY38.

## 4 Discussion

### 4.1 Spatial impacts of the MBI

Major Baltic Inflows usually progress northwards through the EGB, encircle the island of Gotland counterclockwise, and finally move southwards through the WGB (Meier, 2007; Lessin et al., 2014). However, the MBI of 2014 had not reached the WGB by the end of 2015. Although bottom water salinities increased in the WGB during 2015 (Fig. 2a), the increase was continuous throughout the year and not accompanied by changes in oxygen conditions. The changes observed in the salinity

of the WGB early in the year were therefore likely unrelated to the inflow. Based on 16 years of monitoring data (shown in the supplementary material Fig S3), the WGB experiences annual to multi-annual cycles of shoaling and deepening of the halocline, which are related to downward erosion of the halocline by winter storms (Reissmann et al., 2009). The resulting changes in salinity and oxygen conditions in the 60–100 m depth interval dictate the distribution of CH<sub>4</sub> (Jakobs et al., 2014) and N<sub>2</sub>O in the WGB. [CH<sub>4</sub>] is higher below the halocline, while [N<sub>2</sub>O] is higher above it (Fig. 2c; Fig. 2d).

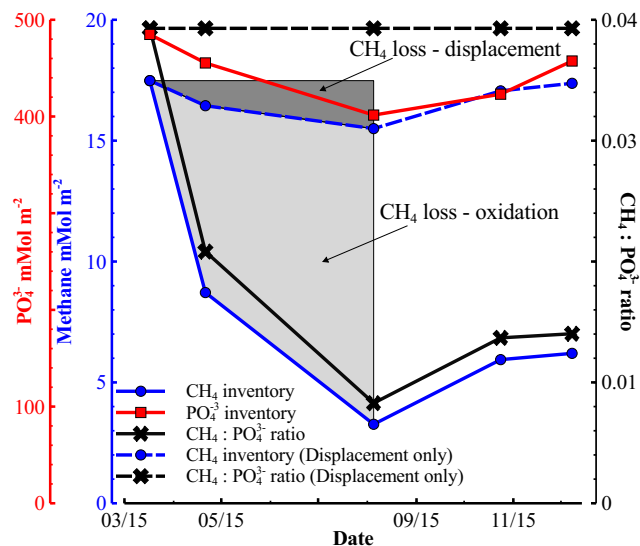
In the EGB, in contrast, large impacts of the 2014 MBI could be observed throughout 2015. Already by March, oxic water and noticeable changes in salinity were detected in the deepest part of the Eastern Gotland Basin (site BY15). These initial signals were a combination of new inflowing water and water pushed out of the Bornholm Basin ahead of the inflow (Schmale et al., 2016), as also occurred during the MBI of 2003 (Feistel et al., 2003). Over the following months, a distinct mass of saline, oxic inflow water accumulated in the EGB. At BY10 and BY15, oxygen was present below the halocline for much of 2015. However, [O<sub>2</sub>] declined again towards the end of the year (Fig. 2b). Such a decline was also observed following the 2003 MBI (Walter et al., 2006), and indicates that the capacity of MBIs to ventilate the Baltic is short-lived. Introduced oxygen is expected to be consumed simultaneously by a range of electron donors, including hydrogen sulphide (H<sub>2</sub>S), ammonium, reduced forms of manganese and iron, and CH<sub>4</sub>, which are all present in the stagnant deep waters. Both the physical effects of the inflow (displacement of water masses) and the subsequent evolution of redox conditions throughout 2015, had strong impacts on the distribution of CH<sub>4</sub> and N<sub>2</sub>O at the EGB sites (BY10, BY15 and BY20).

## 4.2 CH<sub>4</sub> dynamics in the EGB

Upon arrival of an MBI into the EGB, the former bottom water mass is typically displaced vertically upwards and northwards (Reissmann et al., 2009). This displacement of CH<sub>4</sub>-rich stagnant deep water by CH<sub>4</sub>-poor inflow water may deplete the inventory of CH<sub>4</sub> in the water column of the EGB. However, due to turbulent mixing at the contact between the inflow and older water masses (Schmale et al., 2016), oxidation of CH<sub>4</sub> may also be expected to accelerate the depletion of CH<sub>4</sub>. In 2015, we observed the gradual erosion of a mid-water [CH<sub>4</sub>] maximum between March and August, followed by a re-accumulation of CH<sub>4</sub> in both mid- and deep-water towards the end of the year (Fig. 2). To estimate the relative effects of displacement and oxidation on the CH<sub>4</sub> inventory during the studied period, we compared the CH<sub>4</sub> inventory with that of phosphate (PO<sub>4</sub><sup>3-</sup>) at BY15 (Fig. 3). Changes in deep water [PO<sub>4</sub><sup>3-</sup>] in the EGB following an MBI have been shown to be predominantly controlled by displacement (Schneider, 2011), due to the fact that a stagnant PO<sub>4</sub><sup>3-</sup>-rich bottom water mass is displaced by a PO<sub>4</sub><sup>3-</sup>-poor inflow, and comparatively little PO<sub>4</sub><sup>3-</sup> is sequestered into sediments over the following months despite the expansion of oxic conditions. The logic of the apparent slow response in the redox-sensitivity of PO<sub>4</sub><sup>3-</sup> is that PO<sub>4</sub><sup>3-</sup> sequestration requires the presence of solid-phase iron oxyhydroxides, which are not available in the open water column where the majority of the PO<sub>4</sub><sup>3-</sup> is located. Accordingly, Schneider (2011) estimated that two-thirds of the decline in deep water [PO<sub>4</sub><sup>3-</sup>] in the EGB following the MBI of 2003 could be attributed to displacement.

In the hypothetical scenario in which the decline in both CH<sub>4</sub> and PO<sub>4</sub><sup>3-</sup> inventories from March to August 2015 was controlled by displacement only, the molar ratio of PO<sub>4</sub><sup>3-</sup>:CH<sub>4</sub> would be expected to remain constant. Instead, we observe that the inventory ratio of PO<sub>4</sub><sup>3-</sup>:CH<sub>4</sub> declined rapidly during this period, implying a far stronger impact of oxidation on CH<sub>4</sub> than





**Figure 3.** Evolution of the inventories of CH<sub>4</sub> (solid blue line with dots) and PO<sub>4</sub><sup>3-</sup> (solid red line with squares) below 70 m at BY15, and the molar inventory ratio CH<sub>4</sub>:PO<sub>4</sub><sup>3-</sup> over the year 2015 (solid black line with crosses). Results from all measured depths at all sampling times were included in the integration, with the exception data from June, which was omitted due to the loss of deep water CH<sub>4</sub> samples. Pictured also is the hypothetical evolution of the CH<sub>4</sub> inventory (dashed blue line with dots) if the CH<sub>4</sub>:PO<sub>4</sub><sup>3-</sup> ratio (dashed black line with crosses) had remained constant during the year, i.e. the effect of water mass displacement was equal for CH<sub>4</sub> and PO<sub>4</sub><sup>3-</sup>. The lighter grey area represents the estimated loss of CH<sub>4</sub> due to oxidation and the darker grey represents the loss due to displacement. Note the different scales of the y-axes.

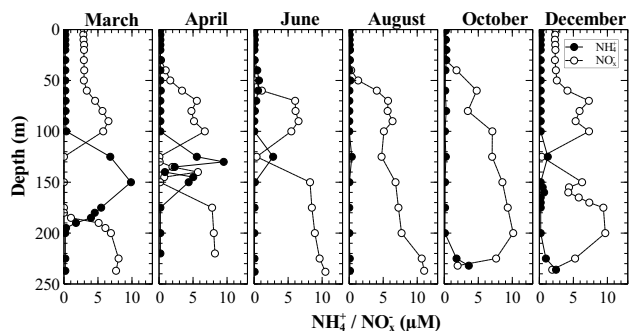
on PO<sub>4</sub><sup>3-</sup>. Indeed, the CH<sub>4</sub> inventory was depleted from ~18 to ~3 mMol m<sup>-2</sup> over this interval, while the PO<sub>4</sub><sup>3-</sup> inventory declined only slightly, from ~480 to ~400 mMol m<sup>-2</sup> (Fig. 3). These results provide strong evidence for significant aerobic oxidation of CH<sub>4</sub> in the water column as a consequence of the MBI, which concurs with a recent study in which *in situ* oxidation rates were measured (Schmale et al., 2016).

- 5 When expressed as volume-weighted averages (below 70 m), the observed decline in [CH<sub>4</sub>] over March to August 2015 was from 108 nM in March to 16.3 nM in August. This is a period of 141 days, giving a total rate of loss of 0.65 nM d<sup>-1</sup>, of which 0.51 nM d<sup>-1</sup> (79 %) is potentially due to oxidation, based on the results shown in Fig. 3. Schmale et al. (2016) reported CH<sub>4</sub> oxidation rates of up to 0.9 nM d<sup>-1</sup> and elevated cell counts for methane-oxidizing bacteria at central EGB in March 2015. Such oxidation rates are 2–10 times higher compared to stagnation conditions (Jakobs et al., 2014). The introduction
- 10 of a second, deeper redoxcline and active turbulent mixing processes clearly accelerate CH<sub>4</sub> oxidation following an MBI by enhancing the volume of water in which CH<sub>4</sub> and O<sub>2</sub> come into contact. It should be noted, however, that the Schmale et al. (2016) study focused specifically on high turbulence transition zones and thus reports localised maximum estimates of CH<sub>4</sub> oxidation rates. In contrast, our study provides a first order estimate of the bulk oxidation rate the sub-halocline water column at site BY15.

### 4.3 N<sub>2</sub>O dynamics in the EGB

Under stagnation conditions, the deep anoxic waters of the EGB are almost entirely devoid of N<sub>2</sub>O (Brettar and Rheinheimer, 1991), but the hypoxic margins are hotspots for N<sub>2</sub>O production, similar to oceanic oxygen minimum zones (Babbin et al., 2015; Löscher et al., 2012). The accumulation of N<sub>2</sub>O over time after an MBI is related to the formation of large hypoxic water masses. N<sub>2</sub>O production is highest under nearly anoxic conditions, where oxygen concentrations restrain both nitrification (too little oxygen) and denitrification (too much oxygen). Both processes produce N<sub>2</sub>O, with a higher N<sub>2</sub>O yield in oxygen stress (Goreau et al., 1980; Patureau et al., 1994; Ji et al., 2015). In addition, when nitrifying microbes become oxygen limited, they too, start to reduce NO<sub>2</sub><sup>-</sup> to N<sub>2</sub>O (Poth and Focht, 1985; Wilson et al., 2014).

For the most part, the N<sub>2</sub>O concentrations measured in the oxic waters of this study were between 10–20 nM, which is well in agreement with previous studies (Bange, 2006; Walter et al., 2006). The volume-weighted average [N<sub>2</sub>O] below 70 m depth at BY15 increased from 11.8 nM to 24.4 nM from March to August (141 d), giving a net increase rate of 0.09 nM d<sup>-1</sup>. Walter et al. (2006) reported a similar increase rate of 0.105 nM d<sup>-1</sup> from the whole water column below 70 m in the EGB, over a period of 167 days after the 2003 MBI, which they ascribed largely to nitrification. We observed a decline in [NH<sub>4</sub><sup>+</sup>] in the mid-water layer at BY15 over the period March to August 2015 (Fig. 4). The decline in [NH<sub>4</sub><sup>+</sup>] resembled the loss of CH<sub>4</sub> over the same period, and was coupled to increasing [NO<sub>2</sub><sup>-</sup>] and [NO<sub>3</sub><sup>-</sup>] (Fig. 4). These observations strongly suggest that oxidation of NH<sub>4</sub><sup>+</sup> (i.e. nitrification) following the MBI was the main pathway of N<sub>2</sub>O production during the first half of 2015.



**Figure 4.** Ammonium (NH<sub>4</sub><sup>+</sup>, filled circles, solid line) and combined nitrite-nitrate (NO<sub>x</sub><sup>-</sup>, open circles, dotted line) concentrations (μM) at BY15 over the whole sampling period.

One of the most interesting observations in this study was the extremely high [N<sub>2</sub>O] (877 nM) measured at 225 m at BY15 in October, which is to our knowledge the second highest value ever reported from the Baltic Sea (Rönner (1983) reported 1523 nM at BY38 bottom water in the WGB), and several times higher than the concentrations typically found from the Baltic (Brettar and Rheinheimer, 1991; Bange et al., 1996; Bange, 2006; Walter et al., 2006). The oxygen concentration at the depth of the extreme [N<sub>2</sub>O] in this study was below 1 μM, which is comparable to values previously observed in settings of high N<sub>2</sub>O production elsewhere in the ocean (Naqvi et al., 2010; Babbin et al., 2015). The large drop in the [NO<sub>2</sub><sup>-</sup>] and [NO<sub>3</sub><sup>-</sup>] below 200

m at BY15 from October onwards (Fig. 4) suggests that the rate of benthic denitrification increased towards the end of 2015. Simultaneously increasing  $[\text{NH}_4^+]$  indicate a slowing down of rates of nitrification and possibly enhanced DNRA (Jäntti and Hietanen, 2012). Hence, the transitional conditions between nitrification and denitrification regimes towards the end of 2015 appear to have favored an extreme, short-lived accumulation of  $\text{N}_2\text{O}$  in the deep waters of the EGB. This may be seen as a  
5 delayed, but important consequence of the MBI on nitrogen cycling in the Baltic.

#### 4.4 Processes at the northern limit of the MBI

As MBIs progress northwards, the density differences between the old and new water masses are weakened and the interactions become more complex and difficult to predict (Eilola et al., 2014). Inflowing water masses detach into intrusive layers (Baines, 2001) which may interact chaotically under turbulent flow. Site BY20 is situated near the northern margin of the EGB and  
10 represents the northernmost limit of the observable effects of the 2014 MBI. In this zone, various physical factors, e.g. turbulent mixing and shearing, internal waves, and boundary waves breaking against the sloping seabed (Reissmann et al., 2009; Eilola et al., 2014; Schmale et al., 2016) likely created a complex and temporally variable vertical zonation of redox conditions during 2015. Despite the persistence of  $\text{H}_2\text{S}$  at BY20 throughout the year, the  $\text{CH}_4$  and  $\text{N}_2\text{O}$  distributions are highly variable (Fig. 2), suggesting an impact of oxidation and reduction processes related to the inflow. For example, a large enrichment of  
15  $\text{N}_2\text{O}$  was observed in the near bottom water of BY20 in October, similar to that observed at BY15, and the  $\text{CH}_4$  and  $\text{N}_2\text{O}$  distributions generally anti-correlate as observed throughout our data from all stations. We interpret the observed patterns at BY20 as evidence for a dynamic water column at this site, with mobile interleaved layers which may carry a displaced signal of redox processes occurring further south (e.g.  $\text{CH}_4$  oxidation, nitrification).

## 5 Conclusions

20 The Major Baltic Inflow of 2014 caused considerable changes in oxygen conditions of the Eastern Gotland Basin, which had extensive effects on the  $\text{CH}_4$  and  $\text{N}_2\text{O}$  dynamics of the Basin.  $\text{CH}_4$  mostly disappeared from the eastern basin during the first half of 2015, mainly due to oxidation following turbulent mixing between old and new water masses. However,  $\text{CH}_4$  began to accumulate again by the end of the year, as deep water conditions reverted to anoxia. Enhanced  $\text{N}_2\text{O}$  production was evident throughout the Eastern Gotland Basin during 2015, attributed primarily to nitrification as a consequence of the MBI.  
25 Extreme values of  $\text{N}_2\text{O}$  near the seafloor in late 2015 were likely caused by a combination of nitrification and denitrification under transitional conditions. The northern limit of the effect of the MBI on  $\text{CH}_4$  and  $\text{N}_2\text{O}$  dynamics appears to have been the northern part of the Eastern Gotland Basin, and even here direct oxygenation of the deep waters was not observed. The Western Gotland Basin  $\text{CH}_4$  and  $\text{N}_2\text{O}$  biogeochemistry was not influenced by the inflow at any point during the study period.

*Acknowledgements.* We acknowledge the two anonymous reviewers and thank for their input. This research was funded by the Academy  
30 of Finland projects 139267, 272964 and 267112. The research leading to these results has also received funding from the European Union

Seventh Framework Programme (FP7/2007-2013) under grant agreement n° 312762. We would like to extend our thanks to SYKE, SMHI and Tallinn University of Technology for the supplementary data and for allowing us on board their cruises, and to the crews and captains of R/V Aranda and R/V Salme.

## References

- Anderson, I. C. and Levine, J. S.: Relative rates of nitric oxide and nitrous oxide production by nitrifiers, denitrifiers, and nitrate respirers., *Applied and environmental microbiology*, 51, 938–45, 1986.
- Babbin, A. R., Bianchi, D., Jayakumar, A., and Ward, B. B.: Rapid nitrous oxide cycling in the suboxic ocean, *Science*, 348, 1127–1129, doi:10.1126/science.aaa8380, 2015.
- Baines, P. G.: Mixing in flows down gentle slopes into stratified environments, *Journal of Fluid Mechanics*, 443, 237–270, doi:10.1017/S0022112001005250, 2001.
- Bakker, D. C., Bange, H. W., Gruber, N., Johannassen, T., Upstill-Goddard, R. C., Borges, A. V., Delille, B., Loscher, C. R., Naqvi, W. A., Omar, A. M., and Santana-Casiano, M.: Air-Sea Interactions of Natural Long-Lived Greenhouse Gases (CO<sub>2</sub>, N<sub>2</sub>O, CH<sub>4</sub>) in a Changing Climate, in: *Ocean-Atmosphere Interactions of Gases and Particles*, edited by Liss, P. S. and Johnson, M. T., pp. 55–112, Springer Berlin Heidelberg, Berlin, Heidelberg, doi:10.1007/978-3-642-25643-1, 2014.
- Balch, W. E., Fox, G. E., Magrum, L. J., Woese, C. R., and Wolfe, R. S.: Methanogens: reevaluation of a unique biological group., *Microbiological reviews*, 43, 260–96, 1979.
- Bange, H. W.: Nitrous oxide and methane in European coastal waters, *Estuarine, Coastal and Shelf Science*, 70, 361–374, doi:10.1016/j.ecss.2006.05.042, 2006.
- Bange, H. W., Bartell, U. H., Rapsomanikis, S., and Andreae, M. O.: Methane in the Baltic and North Seas and a reassessment of the marine emissions of methane, *Global Biogeochemical Cycles*, 8, 465–480, doi:10.1029/94GB02181, 1994.
- Bange, H. W., Rapsomanikis, S., and Andreae, M. O.: Nitrous oxide in coastal waters, *Global Biogeochemical Cycles*, 10, 197–207, doi:10.1029/95GB03834, 1996.
- Bange, H. W., Bergmann, K., Hansen, H. P., Kock, A., Koppe, R., Malien, F., and Ostrau, C.: Dissolved methane during hypoxic events at the Boknis Eck time series station (Eckernförde Bay, SW Baltic Sea), *Biogeosciences*, 7, 1279–1284, doi:10.5194/bg-7-1279-2010, 2010.
- Brase, L., Bange, H. W., Lendt, R., Sanders, T., and Dähnke, K.: High Resolution Measurements of Nitrous Oxide (N<sub>2</sub>O) in the Elbe Estuary, *Frontiers in Marine Science*, 4, 1–11, doi:10.3389/fmars.2017.00162, 2017.
- Brettar, I. and Rheinheimer, G.: Denitrification in the Central Baltic: evidence for H<sub>2</sub>S-oxidation as motor of denitrification at the oxic-anoxic interface, *Marine Ecology Progress Series*, 77, 157–169, doi:10.3354/meps077157, 1991.
- Carstensen, J., Conley, D. J., Bonsdorff, E., Gustafsson, B. G., Hietanen, S., Janas, U., Jilbert, T., Maximov, A., Norkko, A., Norkko, J., Reed, D. C., Slomp, C. P., Timmermann, K., and Voss, M.: Hypoxia in the Baltic Sea: *Biogeochemical Cycles, Benthic Fauna, and Management*, *AMBIO*, 43, 26–36, doi:10.1007/s13280-013-0474-7, 2014.
- Cicerone, R. J. and Oremland, R. S.: Biogeochemical aspects of atmospheric methane, *Global Biogeochemical Cycles*, 2, 299–327, doi:10.1029/GB002i004p00299, 1988.
- Crutzen, P. J.: Estimates of Possible Variations in Total Ozone Due to Natural Causes and Human Activities, *Ambio*, 3, 201–210, 1974.
- Dellwig, O., Leipe, T., März, C., Glockzin, M., Pollehne, F., Schnetger, B., Yakushev, E. V., Böttcher, M. E., and Brumsack, H.-J.: A new particulate Mn–Fe–P-shuttle at the redoxcline of anoxic basins, *Geochimica et Cosmochimica Acta*, 74, 7100–7115, doi:10.1016/j.gca.2010.09.017, 2010.
- Eilola, K., Almroth-Rosell, E., and Meier, H. E. M.: Impact of saltwater inflows on phosphorus cycling and eutrophication in the Baltic Sea: a 3D model study, *Tellus A*, 66, 1–17, doi:10.3402/tellusa.v66.23985, 2014.

- Feistel, R., Nausch, G., Matthäus, W., and Hagen, E.: Temporal and spatial evolution of the Baltic deep water renewal in spring 2003, *Oceanologia*, 45, 623–642, 2003.
- Freing, A., Wallace, D. W. R., and Bange, H. W.: Global oceanic production of nitrous oxide, *Philosophical Transactions of the Royal Society B: Biological Sciences*, 367, 1245–1255, doi:10.1098/rstb.2011.0360, 2012.
- 5 Goreau, T. J., Kaplan, W. A., Wofsy, S. C., Mcelroy, M. B., Valois, F. W., and Watson, S. W.: Production of nitrite and nitrous oxide by nitrifying bacteria at reduced concentrations of oxygen, *Applied and Environmental Microbiology*, 40, 526–532, 1980.
- Gräwe, U., Naumann, M., Mohrholz, V., and Burchard, H.: Anatomizing one of the largest saltwater inflows into the Baltic Sea in December 2014, *Journal of Geophysical Research: Oceans*, 120, 7676–7697, doi:10.1002/2015JC011269, 2015.
- Gülzow, W., Rehder, G., Schneider v. Deimling, J., Seifert, T., and Tóth, Z.: One year of continuous measurements constraining methane  
10 emissions from the Baltic Sea to the atmosphere using a ship of opportunity, *Biogeosciences*, 10, 81–99, doi:10.5194/bg-10-81-2013, 2013.
- Hietanen, S., Jäntti, H., Buizert, C., Jürgens, K., Labrenz, M., and Voss, M.: Hypoxia and nitrogen processing in the Baltic Sea water column, *Limnology & Oceanography*, 57, 325–337, doi:10.4319/lo.2012.57.1.0325, 2012.
- Jakobs, G., Rehder, G., Jost, G., Kießlich, K., Labrenz, M., and Schmale, O.: Comparative studies of pelagic microbial methane oxidation  
15 within the redox zones of the Gotland Deep and Landsort Deep (central Baltic Sea), *Biogeosciences*, 10, 7863–7875, doi:10.5194/bg-10-7863-2013, 2013.
- Jakobs, G., Holtermann, P., Berndmeyer, C., Rehder, G., Blumenberg, M., Jost, G., Nausch, G., and Schmale, O.: Seasonal and spatial methane dynamics in the water column of the central Baltic Sea (Gotland Sea), *Continental Shelf Research*, 91, 12–25, doi:10.1016/j.csr.2014.07.005, 2014.
- 20 Jäntti, H. and Hietanen, S.: The Effects of Hypoxia on Sediment Nitrogen Cycling in the Baltic Sea, *AMBIO*, 41, 161–169, doi:10.1007/s13280-011-0233-6, 2012.
- Ji, Q., Babbín, A. R., Jayakumar, A., Oleynik, S., and Ward, B. B.: Nitrous oxide production by nitrification and denitrification in the Eastern Tropical South Pacific oxygen minimum zone, *Geophysical Research Letters*, 42, 10,755–10,764, doi:10.1002/2015GL066853, 2015.
- Judd, A. G., Hovland, M., Dimitrov, L. I., Garcia Gil, S., and Jukes, V.: The geological methane budget at Continental Margins and its  
25 influence on climate change, *Geofluids*, 2, 109–126, doi:10.1046/j.1468-8123.2002.00027.x, 2002.
- Knittel, K. and Boetius, A.: Anaerobic oxidation of methane: progress with an unknown process., *Annual review of microbiology*, 63, 311–34, doi:10.1146/annurev.micro.61.080706.093130, 2009.
- Lessin, G., Raudsepp, U., and Stips, A.: Modelling the influence of major baltic inflows on near-bottom conditions at the entrance of the Gulf of Finland, *PLoS ONE*, 9, doi:10.1371/journal.pone.0112881, 2014.
- 30 Löscher, C. R., Kock, A., Könneke, M., LaRoche, J., Bange, H. W., and Schmitz, R. A.: Production of oceanic nitrous oxide by ammonia-oxidizing archaea, *Biogeosciences*, 9, 2419–2429, doi:10.5194/bg-9-2419-2012, 2012.
- Meier, H.: Modeling the pathways and ages of inflowing salt- and freshwater in the Baltic Sea, *Estuarine, Coastal and Shelf Science*, 74, 610–627, doi:10.1016/j.ecss.2007.05.019, 2007.
- Mohrholz, V., Naumann, M., Nausch, G., Krüger, S., and Gräwe, U.: Fresh oxygen for the Baltic Sea - An exceptional saline inflow after a  
35 decade of stagnation, *Journal of Marine Systems*, 148, 152–166, doi:10.1016/j.jmarsys.2015.03.005, 2015.
- Murray, R. H., Erler, D. V., and Eyre, B. D.: Nitrous oxide fluxes in estuarine environments: response to global change, *Global Change Biology*, 21, 3219–3245, doi:10.1111/gcb.12923, 2015.

- Naqvi, S. W. A., Bange, H. W., Farias, L., Monteiro, P. M. S., Scranton, M. I., and Zhang, J.: Marine hypoxia/anoxia as a source of CH<sub>4</sub> and N<sub>2</sub>O, *Biogeosciences*, 7, 2159–2190, doi:10.5194/bg-7-2159-2010, 2010.
- Neumann, T., Christiansen, C., Clasen, S., Emeis, K.-C., and Kunzendorf, H.: Geochemical records of salt-water inflows into the deep basins of the Baltic Sea, *Continental Shelf Research*, 17, 95–115, doi:10.1016/0278-4343(96)00023-4, 1997.
- 5 Nevison, C., Butler, J. H., and Elkins, J. W.: Global distribution of N<sub>2</sub>O and the ΔN<sub>2</sub>O-AOU yield in the subsurface ocean, *Global Biogeochemical Cycles*, 17, doi:10.1029/2003GB002068, 2003.
- Patureau, D., Davison, J., Bernet, N., and Moletta, R.: Denitrification under various aeration conditions in *Comamonas* sp., strain SGLY2, *FEMS Microbiology Ecology*, 14, 71–78, doi:10.1111/j.1574-6941.1994.tb00092.x, 1994.
- Poth, M. and Focht, D. D.: N Kinetic Analysis of N(2)O Production by *Nitrosomonas europaea*: an Examination of Nitrifier Denitrification., *Applied and environmental microbiology*, 49, 1134–41, 1985.
- 10 Reeburgh, W. S.: Oceanic methane biogeochemistry., *Chemical reviews*, 107, 486–513, doi:10.1021/cr050362v, 2007.
- Reissmann, J. H., Burchard, H., Feistel, R., Hagen, E., Lass, H. U., Mohrholz, V., Nausch, G., Umlauf, L., and Wiczorek, G.: Vertical mixing in the Baltic Sea and consequences for eutrophication - A review, *Progress in Oceanography*, 82, 47–80, doi:10.1016/j.pocean.2007.10.004, 2009.
- 15 Rönner, U.: Distribution, production and consumption of nitrous oxide in the Baltic Sea, *Geochimica et Cosmochimica Acta*, 47, 2179–2188, doi:10.1016/0016-7037(83)90041-8, 1983.
- Schinke, H. and Matthäus, W.: On the causes of major Baltic inflows - an analysis of long time series, *Continental Shelf Research*, 18, 67–97, doi:10.1016/S0278-4343(97)00071-X, 1998.
- Schmale, O., Blumenberg, M., Kießlich, K., Jakobs, G., Berndmeyer, C., Labrenz, M., Thiel, V., and Rehder, G.: Aerobic methanotrophy within the pelagic redox-zone of the Gotland Deep (central Baltic Sea), *Biogeosciences*, 9, 4969–4977, doi:10.5194/bg-9-4969-2012, 2012.
- 20 Schmale, O., Krause, S., Holtermann, P., Power Guerra, N. C., and Umlauf, L.: Dense bottom gravity currents and their impact on pelagic methanotrophy at oxic/anoxic transition zones, *Geophysical Research Letters*, 43, 5225–5232, doi:10.1002/2016GL069032, 2016.
- Schneider, B.: PO<sub>4</sub> release at the sediment surface under anoxic conditions: a contribution to the eutrophication of the Baltic Sea?, *Oceanologia*, 53, 415–429, doi:10.5697/oc.53-1-TI.415, 2011.
- 25 Seitzinger, S. P. and Kroeze, C.: Global distribution of nitrous oxide production and N inputs in freshwater and coastal marine ecosystems, *Global Biogeochemical Cycles*, 12, 93–113, doi:10.1029/97GB03657, 1998.
- Sturm, K., Keller-Lehmann, B., Werner, U., Raj Sharma, K., Grinham, A. R., and Yuan, Z.: Sampling considerations and assessment of Exetainer usage for measuring dissolved and gaseous methane and nitrous oxide in aquatic systems, *Limnology and Oceanography: Methods*, 13, 375–390, doi:10.1002/lom3.10031, 2015.
- 30 Thauer, R. K.: Biochemistry of methanogenesis: a tribute to Marjory Stephenson:1998 Marjory Stephenson Prize Lecture, *Microbiology*, 144, 2377–2406, doi:10.1099/00221287-144-9-2377, 1998.
- Walter, S., Breitenbach, U., Bange, H. W., Nausch, G., and Wallace, D. W. R.: Distribution of N<sub>2</sub>O in the Baltic Sea during transition from anoxic to oxic conditions, *Biogeosciences*, 3, 557–570, doi:10.5194/bg-3-557-2006, 2006.
- 35 Ward, B.: Nitrification, in: Reference Module in Earth Systems and Environmental Sciences, March, pp. 1–8, Elsevier, doi:10.1016/B978-0-12-409548-9.00697-7, 2013.
- Weiss, R. and Price, B.: Nitrous oxide solubility in water and seawater, *Marine Chemistry*, 8, 347–359, doi:10.1016/0304-4203(80)90024-9, 1980.

- Whiticar, M., Faber, E., and Schoell, M.: Biogenic methane formation in marine and freshwater environments: CO<sub>2</sub> reduction vs. acetate fermentation - Isotope evidence, *Geochimica et Cosmochimica Acta*, 50, 693–709, doi:10.1016/0016-7037(86)90346-7, 1986.
- Wiesenburg, D. A. and Guinasso, N. L.: Equilibrium solubilities of methane, carbon monoxide, and hydrogen in water and sea water, *Journal of Chemical & Engineering Data*, 24, 356–360, doi:10.1021/jc60083a006, 1979.
- 5 Wilson, S. T., del Valle, D. A., Segura-Noguera, M., and Karl, D. M.: A role for nitrite in the production of nitrous oxide in the lower euphotic zone of the oligotrophic North Pacific Ocean, *Deep Sea Research Part I: Oceanographic Research Papers*, 85, 47–55, doi:10.1016/j.dsr.2013.11.008, 2014.
- Wrage, N., Velthof, G., van Beusichem, M., and Oenema, O.: Role of nitrifier denitrification in the production of nitrous oxide, *Soil Biology and Biochemistry*, 33, 1723–1732, doi:10.1016/S0038-0717(01)00096-7, 2001.
- 10 Yakushev, E., Pollehne, F., Jost, G., Kuznetsov, I., Schneider, B., and Umlauf, L.: Analysis of the water column oxic/anoxic interface in the Black and Baltic seas with a numerical model, *Marine Chemistry*, 107, 388–410, doi:10.1016/j.marchem.2007.06.003, 2007.