

Supplement



Fig. S1 Regional divisions of China's population

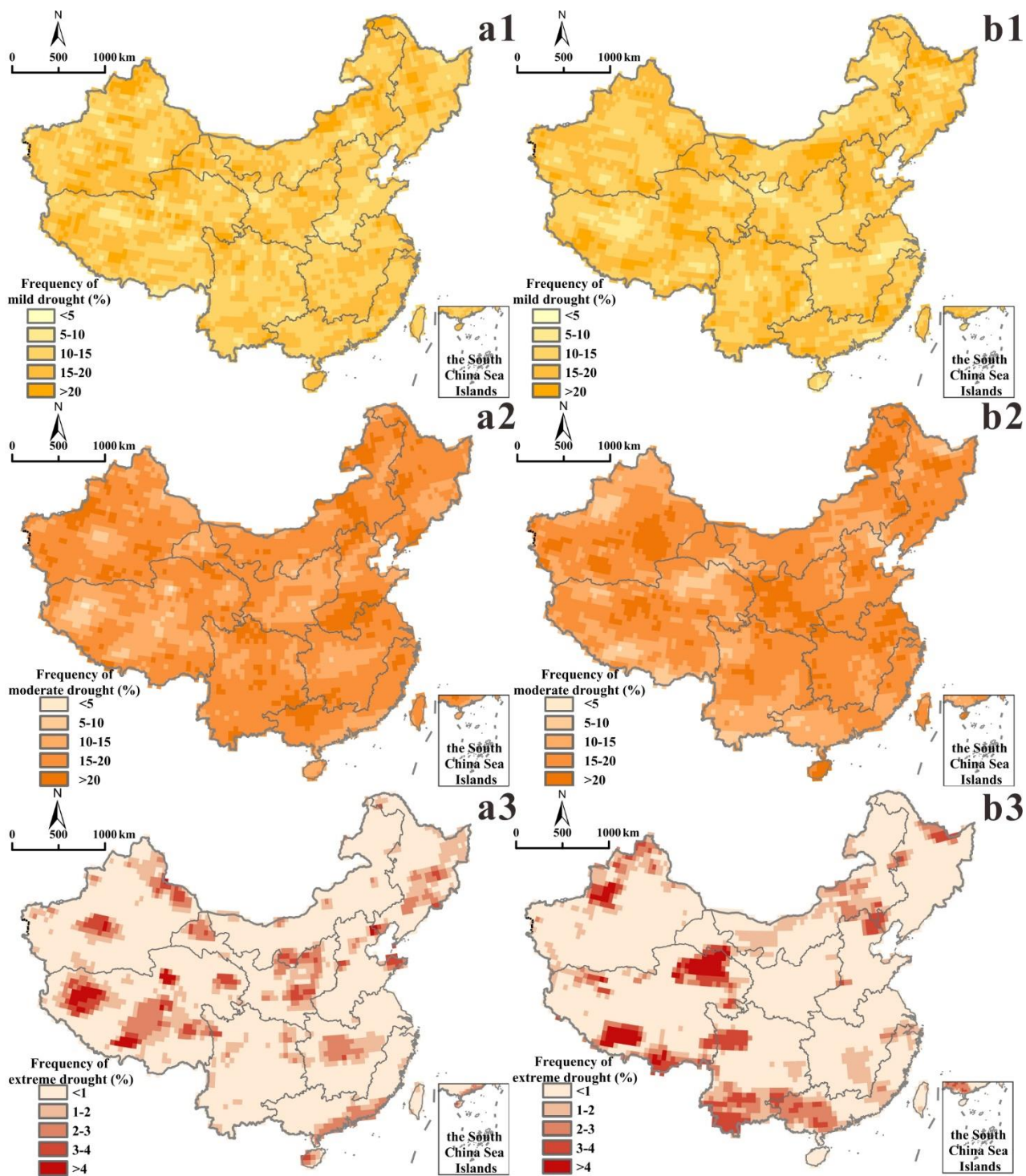


Fig. S2 Spatial distribution of drought frequency for (a) the reference period (1986-2005) and (b) 1.5°C global warming scenario. 1-3, mild droughts (1), moderate droughts (2), extreme droughts (3).

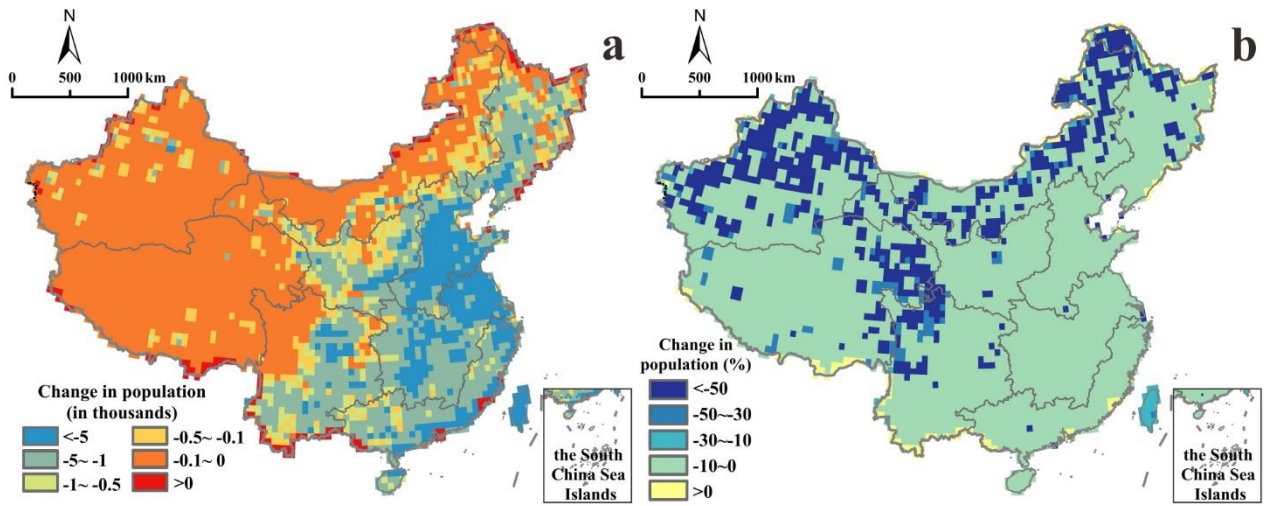


Fig. S3 Change in population, in number (a) and percentage (b), between the reference period and 1.5 °C global warming scenario.