

# Seasonality and spatial variability of dynamic precipitation controls on the Tibetan Plateau

Julia Curio<sup>1,2</sup> and Dieter Scherer<sup>1</sup>

<sup>1</sup>Chair of Climatology, Technische Universität Berlin, Berlin, Germany

5 <sup>2</sup>National Centre for Atmospheric Science, Department of Meteorology, University of Reading, Reading, UK

*Correspondence to:* J. Curio (j.curio@reading.ac.uk)

**Abstract.** The Tibetan Plateau (TP) is the origin of many large Asian rivers, which provide water resources for large regions in South and East Asia. Therefore, the water cycle on the TP and adjacent high mountain ranges, in particular the precipitation distribution and variability play an important role for the water availability for billions of people in the downstream regions of the TP.

10 The High Asia Refined analysis (HAR) is used to analyse the dynamical factors that influence the precipitation variability in the TP region, including the factors resulting in the enhancement and suppression of precipitation. Four dynamical fields that can influence precipitation are considered, the 300 hPa wind speed and wind speed two kilometres above ground, the 300 hPa vertical wind speed, and the atmospheric water transport. The study focusses on the seasonality and the spatial variability of the precipitation controls and their dominant patterns. Results show that different factors have different effects on precipitation in different regions and seasons.

15 This depends mainly on the dominant type of precipitation, convective or frontal/cyclonic precipitation. Additionally, the study reveals that the mid-latitude westerlies have a high impact on the precipitation distribution on the TP and its surroundings year-round and not only in winter.

## 1 Introduction

25 The Tibetan Plateau has been called the “world water tower” (Xu et al., 2008), and is the origin of many rivers in high Asia, which provide water for billions of people downstream in South and East Asia. The TP is located in the transition zone between the mid-latitude westerlies (Schiemann et al., 2009) and the Indian and East Asian summer monsoon systems (Webster et al., 1998). The TP shapes the hydro-climate of downstream regions by its influence on the large-scale circulation (Hahn and Manabe, 1975), caused by its large extent and height.

30 Since precipitation is a key feature of the water cycle of High Asia, it is important to analyse the factors controlling precipitation variability. Identifying which dynamic factors influence the precipitation may also help to estimate the impact of future climate change on precipitation variability.

35 Previous studies have stated that precipitation over the TP is controlled by the westerlies in winter and the Indian and East Asian summer monsoon in summer (e.g. Hren et al., 2009; Tian et al., 2007; Yang et al., 2014). This assumption is derived only from the precipitation timing, but Curio et al. (2015) and Mölg et al. (2014) already shown that the mid-latitude westerlies also have an impact on the summer precipitation.

40 There are many studies that have explored the influence of atmospheric circulation modes, e.g. the North Atlantic Oscillation, the Arctic Oscillation, and El Nino/Southern Oscillation, on the climate and precipitation in high Asia and on the monsoon systems (e.g. Bothe et al., 2009; Liu et al., 2015; Liu and Yin, 2001; Rüthrich et al., 2015). Less attention has been paid to the underlying processes controlling the precipitation variability over the TP and the surrounding

45 high mountain ranges.

The High Asia Refined analysis (HAR) (Maussion et al., 2014), which is the result of the dynamical downscaling of an operational analysis and which covers more than thirteen years at high spatial and temporal resolution, provides the opportunity for a process based analysis of the precipitation and its variability.

5 The starting point of this study is the seasonality of the precipitation over the TP and the evaluation of the factors that control the precipitation over the TP and the surrounding high mountain ranges. This focusses on the timing, location and strength of the factors that influence precipitation and its variability.

10 The main aim of this study is to describe the spatial and temporal correlation of selected dynamical variables and precipitation to reveal the underlying mechanisms through which the variables influence precipitation and therefore act as controls of precipitation variability.

We selected four variables as dynamic precipitation controls; horizontal wind speed at 300 hPa and in about two kilometres above ground, the vertical wind speed at 300 hPa, and the vertically integrated atmospheric water transport. It is known that these factors have an influence on precipitation variability, but on the basis of coarse resolution datasets it was not possible to analyse the relations spatially and temporally differentiated like it is now with the High Asia Refined analysis (HAR).

15 The different precipitation controls have effects on different spatial scales. While the horizontal and vertical wind speed at 300 hPa (WS300 and W300) are large-scale controls, the horizontal wind speed in the boundary layer (WS10) is active on the meso-scale. The atmospheric water transport (AWT) connects the large- with the meso-scale because it is effective on both scales and across large distances. We do not claim completeness for the list of precipitation controls, but assume that these four factors belong to the most important dynamic precipitation controls. It is important to keep in mind, that the precipitation controls are not independent from each other and can have combined effects on precipitation variability or neglect each other, this will not be in the focus of the current study.

In the following we will shortly introduce the selected precipitation controls and their possible impacts on precipitation variability.

20 The horizontal wind speed at the 300 hPa level has two main effects on precipitation variability. High WS300 can inhibit or cut off deep convection and thus suppress precipitation development (e.g. Findell et al., 2003; and Zhang and Atkinson, 1995). In this case only shallow convection can form which does not lead to considerable precipitation amounts. Mölg et al. (2009) showed that convective precipitation events on tropical mountain summits correspond to low horizontal wind speeds. On the other hand, higher wind speeds can have positive effects on moisture advection and orographic lifting, and can, in lower levels, enhance evaporation from the surface and therefore convection (e.g. Johansson and Chen, 2003; Roe, 2005). This process is most interesting during the warm half of the year, when surface moisture from local sources like lakes, soil moisture, the active layer of permafrost, snow and glacier melt is available. Moisture recycling plays an important role for precipitation on the TP (e.g. Araguás-Araguás et al., 1998; Trenberth, 1999), on average more than 60% of moisture needed for precipitation falling on the inner TP are provided by the TP itself (Curio et al., 2015).

25 The core of the Subtropical Westerly Jet (SWJ) occurs at the 200 hPa level. Over the Tibetan Plateau the jet reaches down to 300 hPa and still has an effect there and also in lower levels. This was shown for the HAR by Maussion et al. (2014). The strength and location of the jet influences the hydro-climate of the Tibetan Plateau and central Asia (e.g. Schiemann et al., 2009). Especially the precipitation seasonality in the north-western parts of the study region is related to the position of the jet (Schiemann et al., 2008). Garreaud (2007) pointed out that stronger than normal low level westerlies lead to more precipitation on the windward side of meridionally orientated mountain ranges (orographic precipitation), while high wind speeds at mountain tops leads to rather dry conditions because of intensified downdrafts. This process is called rain shadow effect. But he also shows this could lead to more precipitation on the lee

side because more cloud particles are advected and disturbances can overcome the topographic barrier with the help of higher wind speeds, which would lead to more frontal or cyclonic precipitation. This case already shows that it depends on many factors which influence each of the dynamic controls has on precipitation and that the of influence highly varies regarding time and space.

The influence of the vertical wind speed on precipitation depends on the direction of the vertical wind, whether it is an updraft or a downdraft (Rose et al., 2003). Updrafts have a positive impact on precipitation because they can boost or enhance convection and are a key element for orographic precipitation on the windward side of mountain ranges, while downdrafts (e.g. on the lee side of mountain ranges) and subsidence lead to inhibition of convection and cloud dispersal. The expectation is that we have mainly positive correlations of vertical wind with precipitation, high upward winds cause higher precipitation and higher downward winds cause less precipitation.

Atmospheric water transport (AWT) is not only a dynamic precipitation control because it is a product of atmospheric moisture content and wind speed (and direction). The positive effect of AWT on precipitation variability due to moisture supply is described in, for example, Barros et al., 2006; and Giovannetone et al., 2009. Therefore, we assume that there is always a positive correlation between AWT and precipitation. But high AWT does not automatically lead to precipitation development, what was for example shown by Curio et al. (2015) for the Qaidam Basin where the prevailing atmospheric subsidence inhibits convection.

The main objectives of the study are two-fold:

i. to analyse the impact of selected dynamic variables on the spatial and temporal variability of precipitation,

ii. to examine whether the different factors that control precipitation variability act in the same way in different regions and at different times,

iii. to gain a better understanding of the role of the mid-latitude westerlies and the summer monsoon systems on the precipitation distribution on the TP.

In the following section, we describe the data and methods used in this study. Section 3 present the precipitation seasonality on the TP and adjacent mountain ranges based on the HAR using a cluster analysis. Focus of the study is the period 2001-2013. Afterwards we analyse the correlations between the four selected dynamic variables and precipitation, regarding seasonality and spatial variability. A principal component analysis of this correlations is then used to detect the dominant patterns. The results and their uncertainties are discussed in section 4. In section 5, we draw conclusions from our study.

## 2 Data and methodology

### 2.1 The High Asia Refined analysis

This study is based on the High Asia Refined analysis (HAR). The HAR has been produced using the advanced research version of the Weather and Research Forecasting model (WRF-ARW, Skamarock and Klemp, 2008) version 3.3.1 to dynamically downscale the Operational Model Global Tropospheric Analyses (final analyses, FNL; data set ds083.2), a global gridded data set. The HAR dataset, its modelling, forcing, and re-initialization strategies are described in detail by Maussion et al., (2011, 2014). The HAR data set currently covers the period from October 2000 to September 2014 and will be updated continuously. The first domain of the HAR encompasses most parts of south-central Asia with a spatial resolution of 30 km and temporal resolution of 3 h (HAR30). High Asia and the Tibetan Plateau are the focus of a second nested domain with a spatial resolution of 10km and temporal resolution of 1 h

(HAR10). A map of the HAR10 domain and its location in the parent domain HAR30 are shown in Fig. 1. In this study we analyse the processes on the TP and the surrounding high mountain ranges and therefore use the HAR10 data only. The calculation of the vertically integrated atmospheric water transport can be found in Curio et al. (2015). For this study the HAR data are used on a daily basis.

The HAR data set was validated by Maussion et al. (2014) by comparison with rain-gauge observations from the National Climatic Data Center (NCDC) and the satellite derived gridded precipitation data from the Tropical Rainfall Measuring Mission (TRMM). The HAR shows a slightly positive bias in comparison with station data, 0.17 mm/day for HAR10 (0.26 mm/day for TRMM 3B43 product). The comparison with TRMM shows that HAR captures the general features of precipitation seasonality, variability, and spatial distribution. Maussion et al. (2014) found that the HAR10 precipitation averaged over the domain shows 15% more precipitation than TRMM, but these differences are assumed to be related to the well-known underestimation of snowfall and light rain by TRMM. Convective precipitation is simulated in agreement with results from literature, but one has to keep in mind that the model uses a parameterization scheme for cumulus convection. A spatial resolution of 10 km is not high enough to resolve cumulus convection. The HAR is able to reproduce orographic precipitation features as documented by Bookhagen and Burbank (2010). Maussion et al. (2014) state that these qualitative considerations cannot provide a quantitative uncertainty value. Curio et al. (2015) compared the HAR30 atmospheric water transport (AWT) with ERA-Interim. They found similar patterns; the differences being related to the different spatial resolutions and thus a better representation of the underlying topography by the HAR. In the HAR data, the blocking of AWT from the Bay of Bengal by the Himalayas is more pronounced, and the results show the importance of meridionally orientated high mountain valleys for moisture supply to the Tibetan Plateau. We have compared the 300 hPa wind of the HAR10 data set with ERA-Interim. Figure S1 (see supplementary material) shows that they are in a good agreement with each other. Due to the daily reinitialization strategy used to generate the HAR data set, the wind fields in higher levels cannot evolve far away from the forcing data as this is possible for longer model runs. The question how large the uncertainties of the HAR data and especially precipitation are and how we can estimate them, is a topic which should be investigated more in detail. Since there are no other gridded data sets with a comparable high temporal and spatial resolution, the possibilities to validate the HAR are generally limited and will be subject of future research.

## 2.2. Methodology

The selection of precipitation controls relies on well studied relations of these factors with precipitation (e.g. Back and Bretherton, 2005; Garreaud, 2007; Shinker et al., 2006) but these controls were not investigated at high spatial and temporal resolution in high mountain Asia until now.

The current study is based on the HAR10 data set for the study period 2001-2013 (all entire years available). Starting point of this study is an analysis of the precipitation seasonality on the TP using the k-means clustering method (e.g. Wilks, 1995). The percentages of monthly contribution to annual precipitation and not the precipitation amounts were used to define seven classes with different precipitation seasonality. This has the advantage that, in an area like high Asia where the differences in precipitation amounts vary strongly between regions and seasons, the regions were made comparable by this method. We conducted the cluster analysis with other numbers of classes (5-9), but the chosen number of seven classes led to the best ratio between coherent patterns and sufficient distinction between classes. This analysis follows the approach of Maussion et al. (2014) who used the clustering to detect glacier accumulation regimes on the TP. Their input data were restricted to glaciated areas only. Our current analysis expands the data base to the entire TP and surrounding regions, using all grid points of the HAR10 domain. For all further analysis daily averaged HAR data are used. Because we are only interested in

precipitation days, the data set is stratified using a daily precipitation threshold. This is done month-wise. For example, all analyses for July depend on the data basis of each July day during the period 2001-2013; these are 31\*13 days, 403 days in total. Precipitation days for a grid point are defined as days with a mean daily precipitation rate of at least 0.1 mm, which is a commonly used minimum value to define precipitation days (e.g. Polade et al., 2014; Liu et al., 2011; Bartholy et al., 2010; Frei et al., 1998). The threshold was basically used to filter out numerical artefacts and not to exclude events from the data base.

The daily precipitation rate at each grid point is calculated as the mean precipitation rate for all grid points within an area of 15\*15 grid points around the specific grid point, respectively. The time mask for precipitation days is then applied to the four variables used as precipitation controls. The number of precipitation days can vary distinctly between regions and seasons. Each of the dynamical variables is correlated with the precipitation using the Spearman rank correlation. This is done month-wise for all precipitation days in a specific month during the study period and for each grid point in the HAR10 data set. Using correlations avoids problems associated with the exact precipitation rates/amounts falling on the TP, which are hard to measure and to model exactly. The Spearman rank correlation uses the ranks of the values and not the values itself, which makes the correlations independent of the real data and more robust against outliers. This makes it easier to compare regions with very different precipitation amounts with each other and helps to reduce the effects of extreme events on the correlation results. We are aware of the fact that ranking the data leads to a slight information loss compared to the real values. We are sure that for our purpose the advantages are bigger than the disadvantages. Only correlations, which are significant at the 95% level, are plotted. The statistical significance of the correlations was tested using a two tailed test to determine the deviation from zero (Numerical Recipes, The Art of Scientific Computing, 1992). The calculation of the statistical significance is described more in detail in the supplementary material. A principal component analysis (PCA) is performed for the results of the correlations with precipitation to detect the dominant relationships.

### 3 Results

#### 3.1 Precipitation seasonality

Figure 2 shows the seven defined classes of precipitation regime, and the mean annual cycle of monthly precipitation percentage in each class. It is clearly visible that the TP and the surrounding high mountain ranges show a spatial variability regarding precipitation seasonality. A class with a precipitation maximum in summer and a minimum in winter is dominant on the central TP and south of the Himalayas in India, Nepal and Pakistan (blue, class 6). This class is the monsoonal precipitation class, because the precipitation percentage increases from June on, the onset period of the Indian summer monsoon. During July and August more than 50% of the annual precipitation is falling in this regions, while from October to May the monthly precipitation amount is below 5 % of the annual precipitation. The yellow class has a much broader and less pronounced summer precipitation maximum and the increasing and decreasing proceed with similar rates. The annual cycle of precipitation in this class is determined by the seasonal cycle of solar forcing and therefore convective activity. The green class represents a transition zone between the monsoonal and convective classes where the monsoon can have an influence but is not dominant. This means that both monsoonal precipitation and/or only solar forced convective precipitation can occur.

The naming convention does not mean that the monsoonal class precipitation is not of convective nature, but it should emphasize that the precipitation (development/variability) is influenced by the monsoon, which is associated with the advection of tropical air masses. The

monsoonal class is a subset of the convective class. The timing and strength of the precipitation maximum provides an indication for different forcing. In the monsoonal class the precipitation maximum is higher, starts during the Indian Summer Monsoon onset, and persists for a shorter time period.

5 The monsoonal class is divided into a northern and southern part by the Himalayas. The grey-blue class experiences its precipitation maximum in winter and is dominated by the influence of the mid-latitude westerlies. This class occurs mainly in the Pamir/Karakoram/western Himalayas (PKwH) region, as one coherent pattern, and additionally in the eastern part of the Tarim Basin. The precipitation maximum is much lower, but the minimum values are higher  
10 than in the classes dominated by summer precipitation, which shows that the intra-annual variability is lower, the values vary between 15% and 5%, but are never below 5% in the mean. This could lead to the assumption that the influence of the mid-latitude westerlies is more constant year-round, while the monsoon has a stronger but temporally more limited influence on precipitation on the TP.

15 The light blue class exhibits a more evenly distributed seasonality of precipitation, during spring and summer with a minimum in November. This class surrounds the grey-blue cluster, at the southern flank of the western Himalayas (western notch), in the south-eastern TP, and in the eastern Tarim Basin. It is interesting that the region in the south east of the TP, where the Brahmaputra Channel enters the TP, belongs to a different class than the surroundings, which  
20 are divided between the three convectively dominated classes, blue, yellow and green. Maybe there is stronger influence by AWT, which would make this region more similar to the surrounding of PKwH region regarding the factors controlling precipitation variability. Another possible reason could be the occurrence of extra-tropical cyclones which propagate eastward along the Himalayas and are then terrain-locked by the eastern notch of the Himalayas (Norris et al., 2015). This would lead to higher moisture supply to the region and therefore higher amounts of orographic precipitation. This kind of terrain locking of the westerly flow in winter is described in detail for the western notch of the Himalayas by Norris et al. (2015). This mechanism would explain the higher shares of winter precipitation in the region around the Brahmaputra channel and the affiliation to the same class occurring at the southern flank of  
30 western Himalayas in the western notch.

The remaining two classes, red and purple, almost only appear in the Tarim Basin. They are both characterized by a spring and early summer precipitation regime, but also show some differences. The amount of precipitation in the purple class increases sharply from March to May/June were the maximum with a value of slightly above 20% occurs. The decrease is even sharper so that in July already only 6 % of the annual precipitation occur. The annual cycle of  
35 the red class seems to be delayed relative to the purple one and the period of maximum precipitation is only one-month long. In spring the values are lower but higher in late summer and autumn, while they are almost the same during winter.

40 The high mountain ranges of the Himalayas and Kunlun and Qilian Shan exhibit a complex structure of different classes over relatively short distances and therefore exhibit no coherent patterns. This holds true also for the border area between the Karakoram and the Tarim Basin. The mountainous region of the Pamir and Karakoram are represented by only one class, which implies that this region is mainly influenced by one atmospheric forcing (mid-latitude westerlies) or that different controls have the same impact in this region. The other mountain  
45 ranges lie in regions where an interplay of different controls occur, and the temporal and spatial variability is larger on smaller scales.

## 3.2 Correlation of dynamic variables and precipitation

### 3.2.1 Horizontal wind speed

50 a) Horizontal wind speed at 300 hPa (WS300)

The correlations between WS300 and precipitation are shown in Figure 3. There are high positive correlations in winter in the PMwH region, this is the time of the year when the majority of precipitation falls in this region (e.g. Curio et al., 2015; Maussion et al., 2014). The precipitation in the PMwH region is mainly cyclonic/frontal precipitation and is associated with western disturbances (Dimri et al., 2015). There are only negative correlations in the southern and eastern parts of the TP in winter, which enlarges over spring and covers mainly the whole central and north-eastern TP and large parts of the central Himalayas with the highest negative correlations in the central TP. The reason for the negative correlations in these regions is that they are dominated by convective precipitation (e.g. Maussion et al., 2014) and higher wind speeds in winter inhibit the deep convection. This also explains why there are almost everywhere negative correlations in summer. The region of negative summer correlations covers almost the same area as the convective and monsoonal precipitation classes (Fig. 2) combined, so the impact of WS300 explains some of the precipitation classes. In spring there is a second region with positive correlations north of the TP in the Tarim Basin and the bordering Kunlun and Qilian Shan. This area is reached by the northern branch of the mid-latitude westerlies which delivers moisture for precipitation. The area around the Brahmaputra Channel exhibits slightly positive correlations, due to enhanced moisture transport by higher wind speeds. The region of high positive winter correlations exhibits no or slightly positive correlations in only a small area in summer and in some parts of the region the positive correlations are replaced by negative ones. Since there is a non negligible amount of precipitation falling in this region in summer (~ 20-40%, see cluster 0 and 5 in Fig. 2), the lag/absence of positive correlations and the occurrence of negative correlations means that a different factor controls precipitation variability and/or the same control works in a different way due to higher shares of convective precipitation, especially in the eastern parts of the Pamir Karakoram region.

#### b) Horizontal wind speed at model level 10 (WS10)

Figure 4 shows, that the correlations between WS10 and precipitation are positive in the PMwH region in winter as they are for WS300, but the region is larger, especially the region with correlations  $> 0.6$ . The reason for the positive correlations is again the enhanced moisture supply due to higher wind speeds and therefore also more orographic precipitation. The positive correlations in the Brahmaputra Channel region (and south of it) are more pronounced and the structure of the Brahmaputra Channel itself is clearly visible. The moisture supply is enhanced due to strengthened winds from the south, bringing moisture from the Indian Ocean to the Himalayas. There are high positive correlations between the WS10 and precipitation over the Tibetan Plateau in summer, while the correlations with WS300 are negative in summer. This is because of the fact that the wind speed in the boundary layer can enhance evapotranspiration from the surface (e.g. lakes; snow, glacier and permafrost melt), which leads to more moisture in the lower atmosphere available for precipitation. This correlation again emphasizes the importance of moisture recycling on the TP. In winter the correlations on the TP are mainly negative because the effect of enhanced evapotranspiration is not active due to the fact that all potential moisture sources are frozen during this time of the year. Strong negative correlations occur south of the Himalayas and in northern parts of India in summer. When the air flow from the south hits the mountain barrier parts of the flow are redirected southeast and northwest. The flow becomes divergent which forces the air above to decent, which in turn leads to unfavourable conditions for growing convection and therefore precipitation.

#### 3.2.2 Vertical wind speed

The correlations between vertical wind speed at 300 hPa (Fig. 5) and precipitation are mainly positive due to the positive effect of ascending air motion on precipitation development, as

expected, especially in summer when most of the precipitation is convective. Therefore, the positive correlations are higher in summer than in winter when almost no precipitation falls on the TP, although the mean vertical wind speeds (up- and downdrafts) are higher in winter than in summer (Fig. 6). This shows that higher values of one precipitation control alone do not necessarily lead to higher correlations and therefore more precipitation, but that usually other conditions favourable for precipitation development have to occur. This supports the interpretation that precipitation variability is mostly caused by combined effects of different precipitation controls.

The high mountain ranges of the Pamir and Karakoram show a pattern of alternating positive and negative correlations between vertical wind speed and precipitation. It was expected that the correlations between the vertical wind speed would be positive at both sides of the mountain ranges. But the negative correlations can be explained physically. If an air flow hits a mountain range, the barrier causes orographic induced flow patterns, with updrafts on the windward side and downdraft on the lee side of the mountain range. This causes the precipitation to be smaller on average on the lee side because the downdrafts suppress precipitation development. In the case of a stronger horizontal flow to the mountains there is stronger moisture advection and orographic precipitation and therefore the downdrafts on the lee side are no longer able to suppress precipitation. This leads to the simultaneous occurrence of precipitation and downdrafts which is the reason for the negative correlation patterns on the lee side of mountain ranges found in the western parts of the study region.

### 3.2.3 Atmospheric water transport (AWT)

Figure 7 shows the correlations between AWT and precipitation. The entire study region is dominated by positive correlations during the year (Fig. 7). The highest positive correlations occur in winter and early spring in the PKwH region, where the correlation coefficient exceeds 0.8 in most regions. This is the time of the year when the maximum precipitation occurs in this region (Fig. 2). The annual contribution of convective precipitation in this region is below 10% (Maussion et al., 2014), but the region exhibits orographic precipitation triggered by the advection of moist air masses with the westerly flow and westerly disturbances (Cannon et al., 2014). Therefore, higher moisture supply leads naturally to more precipitation. The positive correlations in the western parts of the study region persist during the course of the year, even if their extent and strength varies. The positive correlations extend to the TP, the whole Himalayan arc, and along the northern border of the TP (Kunlun and Qilian Shan). These seem to be the moisture supply routes along the branches of the mid-latitude westerlies.

A second centre of positive correlation which is persistent is found in the extreme southeast of TP, the region where the Brahmaputra Channel enters the TP. This region exhibits less convective precipitation on annual time scales (Maussion et al., 2014), but it is surrounded by regions with high convective precipitation rates. This explains the fact that this region belongs to a different precipitation seasonality class than its surroundings (Fig. 2). In January and February, the Himalayan arc exhibits mostly positive correlations and connects the area in the western parts of the domain with the other positive centre in the south-eastern TP around the Brahmaputra channel.

The spatial minimum of the positive correlations occurs in May, whereas the correlations are very high ( $r > 0.6$ ) in the western and south-eastern centres. In May the central TP exhibits no significant correlations which may be caused by the fact that the AWT is very low on the TP in May (Curio et al., 2015). From then on the area with positive correlations enlarges but the strength of correlation decreases.

The minimum values of the positive correlations occur in July and August. But then there are positive correlations in the central TP, but they are not as high as in the western and south-eastern parts of the domain during winter and spring. This shows that the precipitation during



this time of the year is mostly convective and that the moisture is coming from local sources, so that the advection of moist air masses is less important. In large areas of the domain the precipitation maximum occurs in July and August, ~30% of the annual precipitation fall on the central and southern TP during this time (Maussion et al., 2014).

- 5 The regions where the highest positive correlations occur are the regions where the precipitation maximum occurs during winter, matching the grey-blue precipitation seasonality class (Fig. 2). There are only a few regions and months where negative correlations occur, in the Tarim Basin during winter, and in the central Himalayas and northern India during summer.

### 3.3. Principal components

- 10 So far the spatio-temporal variability of correlation between dynamical variables and precipitation for the TP and surrounding high mountain ranges have been discussed. To detect the dominant patterns in the relationship between the different variables and precipitation and to find the time of the year a control is most efficient, we conducted a principal component analysis (PCA) for each of the correlation sets. Because the dominant modes are the main  
15 interest only the first two principal components (PCs) are analysed, which typically explain most of the variance of the data and also can explain important processes. For completeness, plots for all PCs can be found in the supplemental material of this study (Fig. S2-5). The explained variance of PC1 lies between 40% and 50% and at around 20% for PC2 for all sets of correlations. The higher PCs explain lower shares of variance, less than 10% already for PC3  
20 and only 1% for PC12.

- Figure 8 shows the scores of the first two principal components for the correlation between WS300 and precipitation and their monthly loadings. PC1 shows a pattern which looks like the winter pattern of the correlations in the western parts of the study region, the spring pattern of the northern region, and the summer pattern of the TP were combined. This is confirmed by the  
25 annual cycle of loadings for PC1. The highest positive loadings occur in winter and spring, which means that these months have the largest share of the dominant pattern. The loadings are high all year-round but highest in spring and lowest in July. This implies that this pattern is not particularly influenced by the monsoon system or if so just in the onset period. We assume that the still relatively high loading is a result of the fact that there are high solar forcing and therefore convective activity on the TP which is negatively influenced by higher wind speeds  
30 at 300 hPa. The loadings of the second PC (PC2) show a completely different annual cycle. They are strongly negative in winter and strongly positive in summer, it is just in the transition seasons that the loadings are around zero. For this pattern winter and summer play a similar role, even with opposing arithmetic signs. This is an annual cycle pattern. The first two PCs  
35 together account for ~ 60% of the total variance of the data.

- The first PC (PC1) for the correlation between WS10 and precipitation (Fig. 9a) shows a pattern dominated by the winter and early spring situation, high positive scores in the PKwH region and the region around the Brahmaputra Channel and negative scores on the central and eastern TP. The loadings (Fig. 9b) are very high (~ 0.8) from November to April. Only in July and  
40 August the loadings are slightly negative. The positive correlations during summer on the TP are not visible in PC1, they occur in PC2 which has loadings that have a direct opposing annual cycle, meaning high positive values in Summer and slightly negative in winter. The first two PCs together explain ~ 65% of the variance in the data.

- All months exhibit high loadings for PC1 of the correlation between the vertical wind speed and precipitation. Fig. 10 shows the scores and the loadings of the first two PCs for the  
45 correlation of W300 with precipitation. Summer and early autumn conditions have the largest impact, while loadings are lowest in winter, but still positive. Therefore, the high positive correlations in summer on the TP and in the lowlands south of the Himalayas are the dominant pattern, meaning that the vertical wind speed as a precipitation control is most effective during

that time of the year, but has a mostly positive impact on precipitation year-round. PC2 exhibits much lower values. The annual cycle of the loadings shows, that winter and summer both have high loadings ( $\sim 0.5$ ), but with different signs, positive in summer and negative in winter. Spring and autumn exhibit very low factor loadings and are more or less only transition periods between winter and summer. The first two PCs together explain  $\sim 70\%$  of the variance in the data.

The loadings of the first two PCs of the correlation between AWT and precipitation (Fig. 11b) exhibit a similar annual cycle as the loadings of the correlation between WS300 and precipitation. For PC1 the loadings are high (between 0.6 and 0.9) in winter, spring and autumn and low in summer ( $\sim 0.2$ ). This again emphasizes the finding that AWT is a precipitation control mainly in regions and seasons where moisture advection and frontal/cyclonic precipitation is dominant. The pattern of PC2 (Fig. 13a) is important mainly by summer months (loadings  $> 0.8$  in July and August), while the winter months exhibit negative loadings.

In summary, the annual cycle of the loadings for each of the first two PCs, show a similar annual cycle. PC1 is mostly dominated by all seasons except summer, and mainly by the winter and spring situations. Whereas PC2 is determined by summer conditions. Winter conditions also have high loadings but with negative sign, while spring and autumn only represent transition periods between these situations.

## 4 Discussion

### 4.1. General discussion of results

A main result of the current study is the high negative correlations between the 300 hPa horizontal wind speed and precipitation on the TP. This confirms the findings of Mölg et al. (2014), who showed that the flow strength at the 300 hPa level above the TP, during the onset period of the Indian Summer Monsoon, exhibits strong negative correlations with precipitation, and explains 73% of the inter-annual mass balance variability of the Zhadang glacier, located at the Nyainqentangla range in the central TP. They argue that weak flow conditions favour convective cell growth. This together with the high positive correlations, in regions and seasons where frontal/cyclonic precipitation is dominant, shows the strong influence of the Subtropical Westerly Jet (mid-latitude westerlies) not only on the western parts of the study region but also on the TP itself, which previously has mostly been described as mainly influenced by the monsoon system (Hren et al., 2009; Tian et al., 2007; Yang et al., 2014).

Previous studies have stated that the precipitation on the TP is controlled by the mid-latitude westerlies in winter and the Indian and East Asian summer monsoon in summer (e.g. Hren et al., 2009; Tian et al., 2007; Yang et al., 2014). This assumption is based only on precipitation timing, but Curio et al. (2015) and Mölg et al. (2014) have already shown that the mid-latitude westerlies also have an impact on summer precipitation. The current study highlights their findings by the detection of the negative influence of the high horizontal wind speeds on precipitation (development, variability, amount) on the TP in summer.

Spiess et al. (2015) showed that in summer, increased horizontal wind speeds at 400 hPa have a positive effect on the height of the equilibrium line altitude at glaciers in different regions on the TP, they assumed that this could be caused by a reduction of convective precipitation due to high wind speeds. Exactly this process is shown by the strong negative correlations between horizontal wind speed at 300 hPa and precipitation in summer on the TP (Fig. 3).

The identified positive correlations of the wind speed in the boundary layer with precipitation in summer on the TP agree with the findings of Back & Bretherton (2005) who detected positive correlations between near surface wind speed and precipitation only when convection can be triggered easily. Their study region was the Pacific ITCZ, but we assume that their findings are

also valid for the TP in summer, where the convective activity is high and enough moisture is available at the surface.

The fact that the positive correlation of AWT with precipitation in summer on the central TP are not as high as in the western parts of the study region in winter, means that here the convection is able to produce precipitation using the moisture from local sources, which emphasizes the importance of moisture recycling, as shown by Curio et al. (2015) using HAR data and by Chen et al. (2012), Joswiak et al. (2013) and Kurita and Yamada (2008), among others. Nevertheless, AWT still has a positive effect on precipitation, but it is not an essential control during this time of the year on the central TP.

Additionally, we calculated the vertically integrated atmospheric moisture content for the HAR and repeated the calculation of correlation for this variable. The results (Fig. S6; see supplementary material) show high positive correlations between the atmospheric moisture content and precipitation throughout the year, as expected. The correlation patterns can only explain parts of the precipitation variability on the TP. This highlights how highly effective the dynamic controls are on precipitation variability, differentiated in space and time.

#### 4.2 Sources of uncertainties

As always the uncertainty of the results mainly depends on the accuracy of the data itself, the aggregation of hourly data to daily means, and the statistical methods used to analyse the data. The HAR precipitation and other variables, e.g. wind speed and direction, and temperature, have been validated against other gridded data sets, global reanalyses and remote sensing data, and observations from weather stations by Maussion et al. (2011, 2014), as described in section 2.1.

NCDC station data were used to compare the results of the precipitation clustering approach with observations. Figure 12 shows the precipitation classes for the station data, and for the associated HAR grid points, and whether the obtained cluster regarding the mean annual cycle of monthly precipitation contribution to annual precipitation match (green dots) or not (red dots). 27 of the 65 stations (41.5%) fall in the same cluster as the nearest HAR grid point. For 38 stations (58.5%) this is not true, but most of them fall in cluster with very similar annual cycle or in cluster which are spatially very close to the cluster to which the HAR grid point belongs. This is especially the case in the mountain regions in the western, the south-eastern, and north-eastern parts of the domain where at least four different cluster occur on very small spatial scales. Table 1 shows which percentage of the stations, which all should be in one specific class regarding their associated HAR grid points, falls in which of the seven possible classes. One has to take into account that there is always a distance up to a few kilometres between the NCDC stations and the respectively associated HAR grid point. This also can cause huge differences between the elevation/altitude of stations and grid points due to the complex topography of the study region, which in turn has an effect on the precipitation distribution. Additionally, the quality of the station data is not always satisfying and the time series often show gaps, leading to a smaller data base.

We decided to use the wind speed at the 300 hPa level because the wind shear in this height more strongly suppresses deep convection than at the 200 hPa level where the core of the jet lays. Also we assumed that the results would not change overall using the wind speed in 200 hPa. To proof that, we repeated the correlation analysis between wind speed and precipitation for the wind speed at 200 hPa (Fig. S7; see supplementary material). The results are very similar. The correlations at the 300 hPa level (Fig. 3) are slightly higher because the negative effect of higher wind speeds on precipitation by cutting off deep convection is higher at this level than in 200 hPa.

We varied the  $k$  for clustering from 5 to 9 (Fig. S8; see supplementary material). We found 7 to be the optimal  $k$  for the recent study since it gave us good coherence within the classes and sufficient distinctions between them. We determined this qualitatively by looking at the plots

for the different numbers of clusters. We first conducted the cluster analysis with 5 (Fig. S8 (a)) clusters like Maussion et al. (2014). But since we included a much higher number of grid points (we analysed the entire Tibetan Plateau), the results for the areas included in both analyses look slightly different especially in the Karakoram and Tien Shan. By increasing the number of cluster to 6 (Fig. S8 (b)), one cluster that covers most parts of the northern part of the study region, northern Tibetan Plateau and Tarim Basin, breaks up in two cluster. Setting the number to 7 (Fig. S8 (c)), we get more variation in the Karakoram and Tien Shan which looks more similar to the cluster distribution achieved by Maussion et al. (2014). Using a higher number of clusters (Fig. S8 (d) and (e)) led to the occurrence of more clusters of smaller size which are not as distinct from each other as the larger ones. In general, it would be interesting to have more cluster to get a higher spatial differentiation. But by increasing the cluster number the spatial coherence decreases and therefore the interpretability also decreases. We decided to use seven clusters as a compromise between higher spatial differentiation and less spatial coherence. Since the core areas of the clusters stay stable while changing the number of clusters we assume that the clustering approach is suitable to analyse the seasonality of precipitation on the TP.

Of course using different parameterizations and higher spatial resolutions would change the precipitation values and the spatial and temporal distribution of the precipitation. But we assume that this would not change the the main results of this study since we use rank correlations which are independent of the mean values and scaling of the input variables.

Using correlations we avoid problems regarding the exact precipitation rates falling on the TP. Additionally the use of the monthly percentage of annual precipitation as input for the cluster analyses, to detect the precipitation seasonality in different regions of the TP, makes it possible to compare regions, which exhibit distinct different precipitation amounts. This is a general aspect to keep in mind, the decision to use mean daily data therefore has advantages and disadvantages. A major advantage is the possibility to analyse the processes from a climatological perspective, which can not be done on the basis of monthly data. But, it is clear that some information is lost by aggregation from hourly to daily data. To test, how sensitive the results are regarding the use of a different significance levels, we repeated the analysis with the significance level 0.01 for the correlation between wind speed in 300 hPa and precipitation (Fig. S9) and compared the results with the results gained using 0.05 as significance level (Fig. 3). The resulting patterns do not change very much. The areas with negative and positive correlations are a little bit smaller, but the changes occur where the values are already lower (at the borders of the correlation patterns). The regions with the highest correlations stay stable and even small areas of positive or negative correlations do not disappear.

The number of precipitation days on which all analysis depends is variable regarding the analysed months and regions, but we assume that the condition of at least 13 precipitation days per grid point, applied for of all days of a specific month during the study period 2001-2013, respectively, ensures a reasonable data basis. Grid points which do not match this criterion are excluded from further analysis.

Since we only look at the first two PCs, it is possible that mechanisms controlling precipitation, which appear in higher PCs, are not considered in this study. The current study is limited to dominant patterns and thereby to the first two PCs, because they together explain more than 60% of the variance of the data. Patterns with lower explained variance and transient patterns will be subject of a subsequent study.

## 5 Conclusion

Gaining a better understanding of the relationship between dynamical variables and precipitation and the underlying processes is important since precipitation is the key element of the hydrological cycle of the TP and surrounding high mountain ranges. Precipitation

variability has a large impact on the water availability in the densely populated downstream regions of India, Pakistan and south-east Asia, by directly governing river runoff by precipitation or with a time lag by snow melt.

5 This study shows that different factors influence precipitation in different regions of the TP and adjacent high mountain ranges during different times of the year and in different ways. For example, the 300 hPa wind speed has a positive effect in the western parts of the study region in winter and spring, while it has a negative effect on precipitation on the TP during summer. This clearly shows that the impact of the mid-latitude westerlies is strong, not only in winter by enhancing moisture advection for orographic and frontal precipitation in the western parts of  
10 the study region, but also by cutting of deep convection during summer on the TP and in other regions and seasons where and when precipitation is mainly convective.

The negative effect of high horizontal wind speeds on precipitation plays an important role in regions and seasons which are dominated by convective precipitation e.g. the Tibetan Plateau in summer (Maussion et al. 2014). The positive effect occurs in regions with mainly  
15 frontal/cyclonic or orographic precipitation. Precipitation benefits from enhanced moisture transport by strengthened atmospheric flow, especially when the moisture flow is lifted up by orographic forcing. This plays an important role in our study region because of the high mountain ranges surrounding the Tibetan Plateau.

Therefore, the TP and the entire study region can be partitioned by considering the dominant  
20 form of precipitation that occurs, cyclonic/frontal or convective precipitation. This enables us to more clearly determine the relevancy/importance of the monsoon system and the mid-latitude westerlies for the precipitation distribution. The classification of precipitation has been determined by cluster analysis and shows a mostly monsoonal influenced class, a convective class, and a hybrid class in between. This highlights that it is not possible to draw an exact  
25 distinction for the monsoon extent and that there will always be a relatively broad area between monsoonal influenced precipitation and solely convective dominated precipitation caused by the inter-annual variability of monsoon strength and other factors.

Perhaps it is possible to say that the precipitation on the central TP in summer is influenced by the monsoon system regarding moisture supply, however moisture recycling is also important,  
30 and the mid-latitude westerlies act as a control regarding suppression or enhancement of precipitation due to the strong negative effect of high horizontal wind speeds on the development of deep convection.

A next step will analyse the combined effects of precipitation controls, since the current study has shown that the controls are not independent of each other. We intend to use a combination  
35 of PCA of the detected dominant patterns and cluster analysis to detect control regimes, as in Forsythe et al. (2015) to obtain a climate classification for the Himalayan arc and its surroundings. These regimes can perhaps help to explain regional features of glacier mass balance, like the so-called Karakoram anomaly (e.g. Hewitt, 2005), or observed lake level changes (e.g. Liu et al., 2010; Zhang et al., 2011), which show a different behaviour compared  
40 to the surrounding regions.

### **Author contribution**

J. Curio and D. Scherer designed the study and discussed all results. J. Curio carried out the analyses and prepared the manuscript with contribution from D. Scherer.

45

### **Acknowledgements**

This work was supported by the German Federal Ministry of Education and Research (BMBF) Programme “Central Asia – Monsoon Dynamics and Geo-Ecosystems” (CAME) within the WET project (“Variability and Trends in Water Balance Components of Benchmark Drainage Basins on the Tibetan Plateau”) under the code 03G0804A and by the German Research Foundation (DFG) Priority Programme 1372, “Tibetan Plateau: Formation – Climate – Ecosystems” within the DynRG-TiP (“Dynamic Response of Glaciers on the Tibetan Plateau to Climate Change”) project under the codes SCHE 750/4-1, SCHE750/4-2, SCHE 750/4-3. We would like to thank the four anonymous referees for their thoughtful comments, critiques, and suggestions on an earlier version of this manuscript.

10

## References

- Araguás-Araguás, L. and F. K. (1998). Stable isotope composition of precipitation over southeast Asia. *Journal of Geophysical Research*, 103. Retrieved from <http://onlinelibrary.wiley.com/doi/10.1029/98JD02582/full>
- 15 Back, L. E., & Bretherton, C. S. (2005). The relationship between wind speed and precipitation in the Pacific ITCZ. *Journal of Climate*, 18(20), 4317–4328. doi:10.1175/JCLI3519.1
- Barros, A. P., Chiao, S., Lang, T. J., Burbank, D., & Putkonen, J. (2006). From weather to climate—Seasonal and interannual variability of storms and implications for erosion processes in the Himalaya. *Geological Society of America Special Papers*, 398(02), 17 – 38. doi:10.1130/2006.2398(02).
- 20 Bartholy, J., & Pongracz, R. (2010). Analysis of precipitation conditions for the Carpathian Basin based on extreme indices in the 20th century and climate simulations for 2050 and 2100. *Physics and Chemistry of the Earth*, 35(1-2), 43– 51. doi:10.1016/j.pce.2010.03.011
- Bothe, O., Fraedrich, K., & Zhu, X. (2009). The large-scale circulations and summer drought and wetness on the Tibetan plateau. *International Journal of Climatology*, 855(May 2009), n/a–n/a. doi:10.1002/joc.1946
- 25 Cannon, F., Carvalho, L. M. V., Jones, C., & Bookhagen, B. (2014). Multi-annual variations in winter westerly disturbance activity affecting the Himalaya. *Climate Dynamics*, 44(1-2), 441–455. doi:10.1007/s00382-014-2248-8
- 30 Chen, B., Xu, X.-D., Yang, S., & Zhang, W. (2012). On the origin and destination of atmospheric moisture and air mass over the Tibetan Plateau. *Theoretical and Applied Climatology*, 110(3), 423–435. doi:10.1007/s00704-012-0641-y
- Curio, J., Maussion, F., & Scherer, D. (2015). A twelve-year high-resolution climatology of atmospheric water transport over the Tibetan Plateau. *Earth System Dynamics*, 6, 109– 124. doi:10.5194/esd-6-109-2015
- 35 Dimri, A. P., Niyogi, D., Barros, A. P., Ridley, J., Mohanty, U. C., Yasunari, T., & Sikka, D. R. (2015). Western Disturbances: A review. doi:10.1002/2014RG000460
- Findell, K. L. (2003). Atmospheric controls on soil moisture-boundary layer interactions: Three-dimensional wind effects. *Journal of Geophysical Research*, 108, 1–21. doi:10.1029/2001JD001515
- 40 Forsythe, N., Blenkinsop, S., & Fowler, H. J. . (2015). Exploring objective climate classification for the Himalayan arc and adjacent regions using gridded data sources. *Earth System Dynamics*, 6(1), 311–326. doi:10.5194/esd-6-311-2015
- Frei, C., Schär, C., Lüthi, D., & Davies, H. C. (1998). Heavy precipitation processes in a warmer climate. *Geophysical Research Letters*, 25(9), 1431. doi:10.1029/98GL51099
- 45

- Garreaud, R. D. (2007). Precipitation and circulation covariability in the extratropics. *Journal of Climate*, 20(18), 4789–4797. doi:10.1175/JCLI4257.1
- Giovanettone, J. P., & Barros, A. P. (2009). Probing Regional Orographic Controls of Precipitation and Cloudiness in the Central Andes Using Satellite Data. *Journal of Hydrometeorology*, 10(1), 167–182. doi:10.1175/2008JHM973.1
- Hahn, D., & Manabe, S. (1975). The role of mountains in the south Asian monsoon circulation. *Journal of the Atmospheric Sciences*, 32, 1515-1541.
- Hewitt, K. (2005). The Karakoram anomaly? Glacier expansion and the elevation effect, Karakoram Himalaya. *Mountain Research and Development*, 25(4), 332–340, doi: 10.1659/0276-4741(2005)025[0332:TKAGEA]2.0.CO;2.
- Hren, M. T., Bookhagen, B., Blisniuk, P. M., Booth, A. L., & Chamberlain, C. P. (2009).  $\delta^{18}\text{O}$  and  $\delta\text{D}$  of streamwaters across the Himalaya and Tibetan Plateau: Implications for moisture sources and paleoelevation reconstructions. *Earth and Planetary Science Letters*, 288(1-2), 20–32. doi:10.1016/j.epsl.2009.08.041
- Johansson, B., & Chen, D. (2003). The influence of wind and topography on precipitation distribution in Sweden: Statistical analysis and modelling. *International Journal of Climatology*. doi:10.1002/joc.951
- Joswiak, D. R., Yao, T., Wu, G., Tian, L., & Xu, B. (2013). Ice-core evidence of westerly and monsoon moisture contributions in the central Tibetan Plateau. *Journal of Glaciology*, 59(213), 56–66. doi:10.3189/2013JoG12J035
- Kurita, N., & Yamada, H. (2008). The Role of Local Moisture Recycling Evaluated Using Stable Isotope Data from over the Middle of the Tibetan Plateau during the Monsoon Season. *Journal of Hydrometeorology*, 9(4), 760–775. doi:10.1175/2007JHM945.1
- Liu, B., Xu, M., & Henderson, M. (2011). Where have all the showers gone? Regional declines in light precipitation events in China, 1960-2000. *International Journal of Climatology*, 31(8), 1177–1191. doi:10.1002/joc.2144
- Liu, J., Kang, S., Gong, T., & Lu, a. (2010). Growth of a high-elevation large inland lake, associated with climate change and permafrost degradation in Tibet. *Hydrology and Earth System Sciences*, 14(3), 481–489. doi:10.5194/hess-14-481-2010
- Liu, W., Wang, L., Chen, D., Tu, K., Ruan, C., & Hu, Z. (2015). Large-scale circulation classification and its links to observed precipitation in the eastern and central Tibetan Plateau. *Climate Dynamics*, (AUGUST). doi:10.1007/s00382-015-2782-z
- Liu, X., & Yin, Z.-Y. (2001). Spatial and Temporal Variation of Summer Precipitation over the Eastern Tibetan Plateau and the North Atlantic Oscillation. *Journal of Climate*, 14(13), 2896–2909. doi:10.1175/1520-0442(2001)014<2896:SATVOS>2.0.CO;2
- Maussion, F., Scherer, D., Finkelnburg, R., Richters, J., Yang, W., & Yao, T. (2011). WRF simulation of a precipitation event over the Tibetan Plateau, China – an assessment using remote sensing and ground observations. *Hydrology and Earth System Sciences*, 15(6), 1795–1817. doi:10.5194/hess-15-1795-2011
- Maussion, F., Scherer, D., Mölg, T., Collier, E., Curio, J., & Finkelnburg, R. (2014). Precipitation Seasonality and Variability over the Tibetan Plateau as Resolved by the High Asia Reanalysis\*. *Journal of Climate*, 27(5), 1910–1927. doi:10.1175/JCLI-D-13-00282.1
- Mölg, T., & Chiang, J. (2009). Temporal precipitation variability versus altitude on a tropical high mountain: Observations and mesoscale atmospheric modelling. *Quarterly Journal of the Royal Meteorological Society*, 135, 1439–1455. doi:10.1002/qj.461
- Mölg, T., Maussion, F., & Scherer, D. (2014). Mid-latitude westerlies as a driver of glacier

- variability in monsoonal High Asia. *Nature Climate Change*, 4(1), 68–73. doi:10.1038/nclimate2055
- Polade, S. D., Pierce, D. W., Cayan, D. R., Gershunov, A., & Dettinger, M. D. (2014). The key role of dry days in changing regional climate and precipitation regimes. *Scientific Reports*, 4(4364), 8pp. doi:10.1038/srep04364
- Roe, G. H. (2005). Orographic Precipitation. *Annual Review of Earth and Planetary Sciences*, 33(1), 645–671. doi:10.1146/annurev.earth.33.092203.122541
- Rose, B. E. J., & Lin, C. A. (2003). Precipitation from vertical motion: A statistical diagnostic scheme. *International Journal of Climatology*, 23(8), 903–919. doi:10.1002/joc.919
- Rüthrich, F. (2015). Lake-Related Cloud Dynamics on the Tibetan Plateau: Spatial Patterns and Interannual Variability. *Journal of Climate*, 28, 9080–910. doi: 10.1175/JCLI-D-14-00698.1
- Schiemann, R., & Lüthi, D. (2008). The precipitation climate of Central Asia—intercomparison of observational and numerical data sources in a remote semiarid region. *International Journal of Climatology*, 28, 295–314. doi:10.1002/joc.1532
- Schiemann, R., Lüthi, D., & Schär, C. (2009). Seasonality and Interannual Variability of the Westerly Jet in the Tibetan Plateau Region\*. *Journal of Climate*, 22(11), 2940–2957. doi:10.1175/2008JCLI2625.1
- Shinker, J. J., Bartlein, P. J., & Shuman, B. (2006). Synoptic and dynamic climate controls of North American mid-continental aridity. *Quaternary Science Reviews*, 25(13-14), 1401–1417. doi:10.1016/j.quascirev.2005.12.012
- Skamarock, W., & Klemp, J. (2008). A time-split nonhydrostatic atmospheric model for weather research and forecasting applications. *Journal of Computational Physics*, 227(7), 3465–3485. doi:10.1016/j.jcp.2007.01.037
- Spieß, M., Schneider, C., & Maussion, F. (2015). MODIS-derived interannual variability of the equilibrium-line altitude across the Tibetan Plateau. *Annals of Glaciology*, 57(71), 140–154. doi:10.3189/2016AoG71A014
- Tian, L., Yao, T., MacClune, K., White, J. W. C., Schilla, a., Vaughn, B., ... Ichiyanagi, K. (2007). Stable isotopic variations in west China: A consideration of moisture sources. *Journal of Geophysical Research*, 112(D10), D10112. doi:10.1029/2006JD007718
- Trenberth, K. E. (1999). Atmospheric Moisture Recycling: Role of Advection and Local Evaporation. *Journal of Climate*, 12(5), 1368–1381. doi:10.1175/1520-0442(1999)012<1368:AMRROA>2.0.CO;2
- Webster, P., Magana, V., & Palmer, T. (1998). Monsoons: Processes, predictability, and the prospects for prediction. *Journal of Geophysical Research*, 103 (C7), 14451-14510.
- Xu, X., Lu, C., Shi, X., & Gao, S. (2008). World water tower: An atmospheric perspective. *Geophysical Research Letters*, 35, L20815, doi: 10.1029/2008GL035867.
- Yang, K., Wu, H., Qin, J., Lin, C., Tang, W., & Chen, Y. (2014). Recent climate changes over the Tibetan Plateau and their impacts on energy and water cycle: A review. *Global and Planetary Change*, 112, 79–91. doi:10.1016/j.gloplacha.2013.12.001
- Zhang, J. W., & Atkinson, B. W. (1995). Stability and wind shear effects on meso-scale cellular convection. *Boundary-Layer Meteorology*, 75(3), 263–285. doi:10.1007/BF00712697
- Zhang, G., Xie, H., Kang, S., Yi, D., & Ackley, S. F. (2011). Monitoring lake level changes on the Tibetan Plateau using ICESat altimetry data (2003-2009). *Remote Sensing of Environment*, 115(7), 1733–1742. doi:10.1016/j.rse.2011.03.005



## Tables

cluster		NCDC						
		0	1	2	3	4	5	6
HAR	0	40 %	0 %	0 %	0 %	0 %	40 %	20 %
	1	0 %	14.3 %	0 %	0 %	0 %	0 %	85.7 %
	2	0 %	50 %	0 %	0 %	25 %	25 %	0 %
	3	0 %	33.3 %	0 %	0 %	0 %	0 %	66.6 %
	4	0 %	33.3 %	0 %	0 %	0 %	33.3 %	33.3 %
	5	0 %	43 %	0 %	0 %	0 %	43 %	14 %
	6	0 %	13 %	0 %	0 %	0 %	0 %	87 %

5 Table 1. The percentage of NCDC stations falling in each of the seven possible HAR cluster. 100% would mean that all NCDC stations falls in the same cluster as the nearest HAR grid point.

10

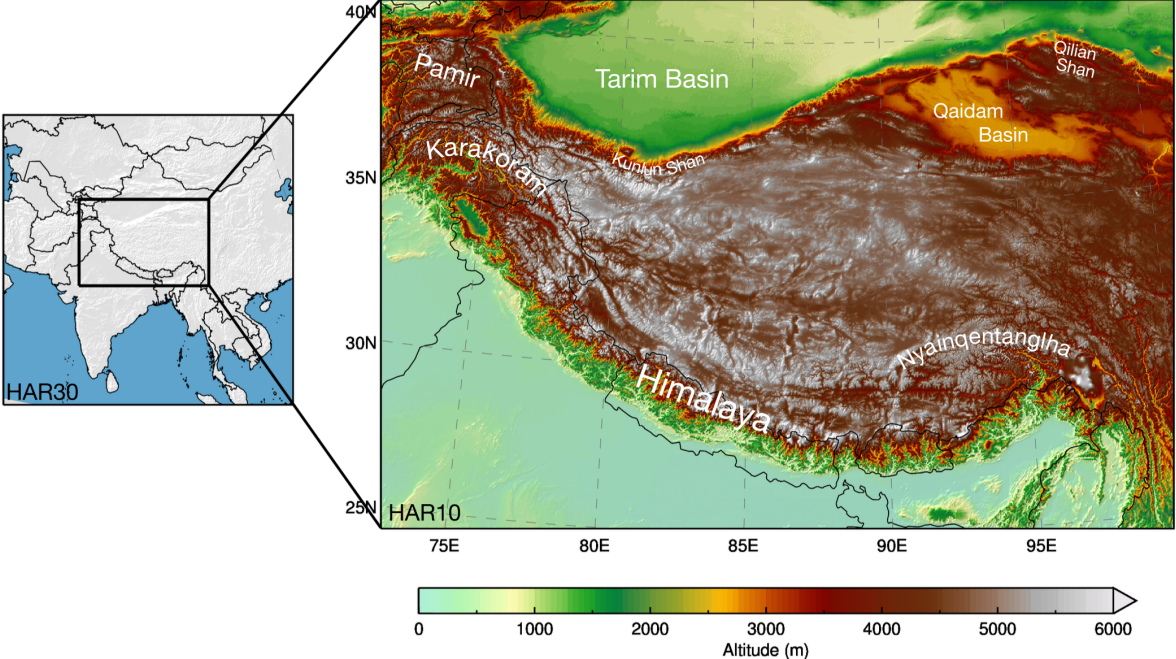
15

20

25

30

Figures



5 Figure 1: Map of the Weather and Research Forecasting (WRF) model domain HAR10 (high Asia domain) and its location nested in the larger domain HAR30 (south-central Asia domain). Geographical locations are indicated in white.

10

15

20

25

30

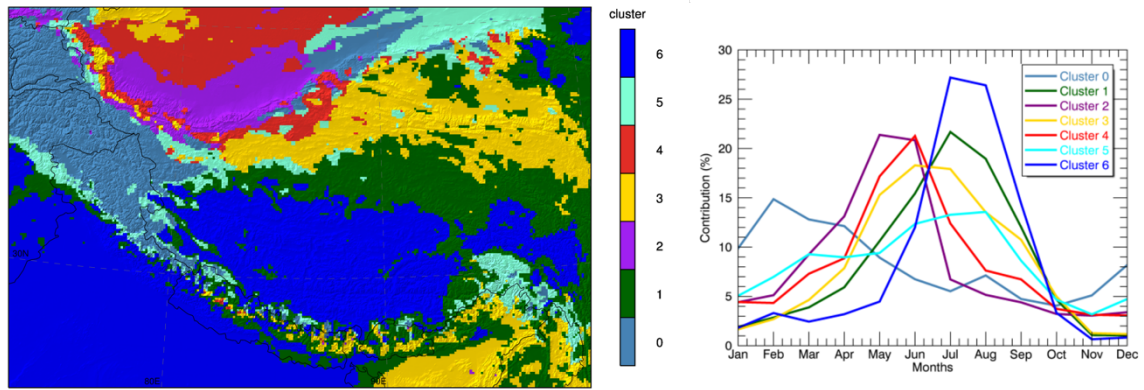


Figure 2: Precipitation cluster (left) and the mean annual cycle of percentage contribution of monthly precipitation to annual precipitation for each cluster (right).

5

10

15

20

25

30

35

40

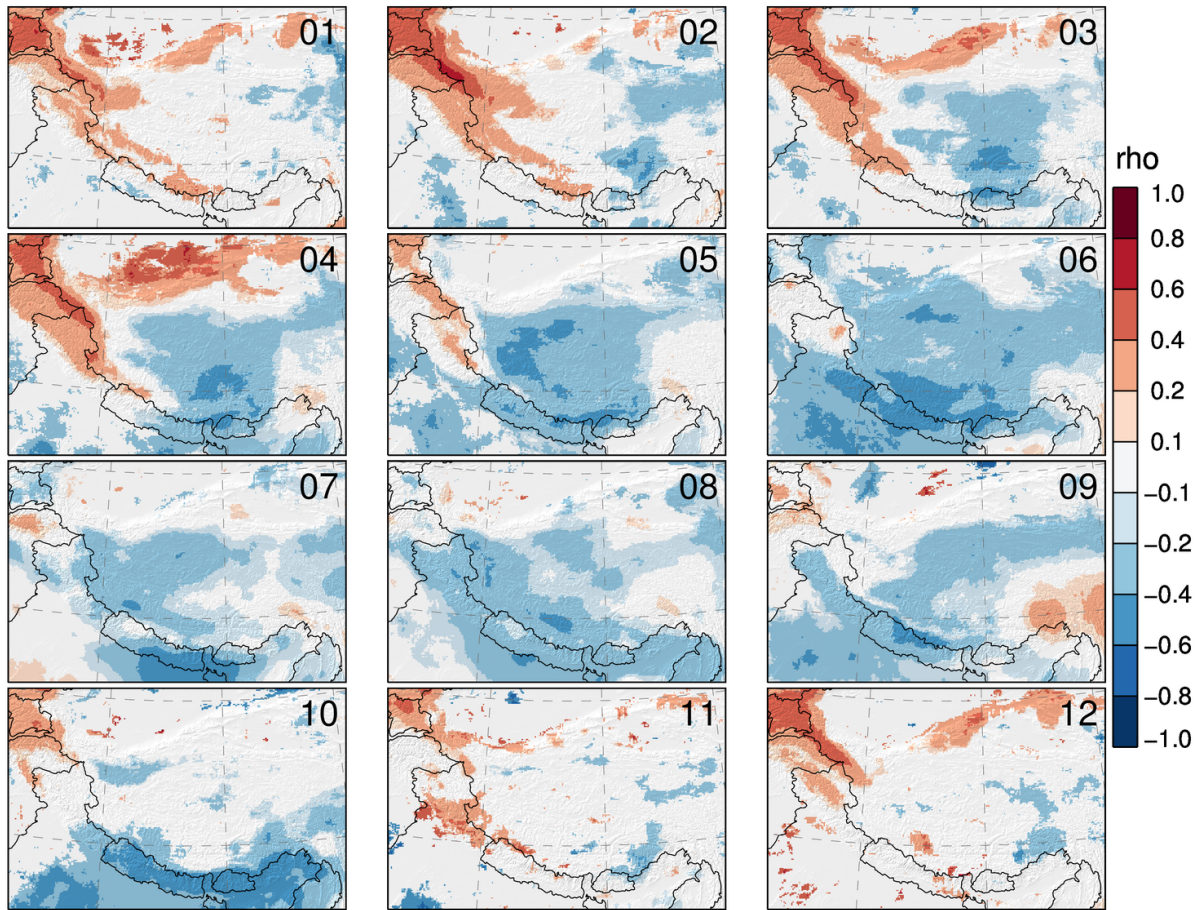


Figure 3. Coefficient of correlation ( $\rho$ ) between horizontal wind speed at 300 hPa (WS300) and precipitation for all months (01-12). Positive correlations are denoted in red, while negative correlations are denoted in blue.

5

10

15

20

25

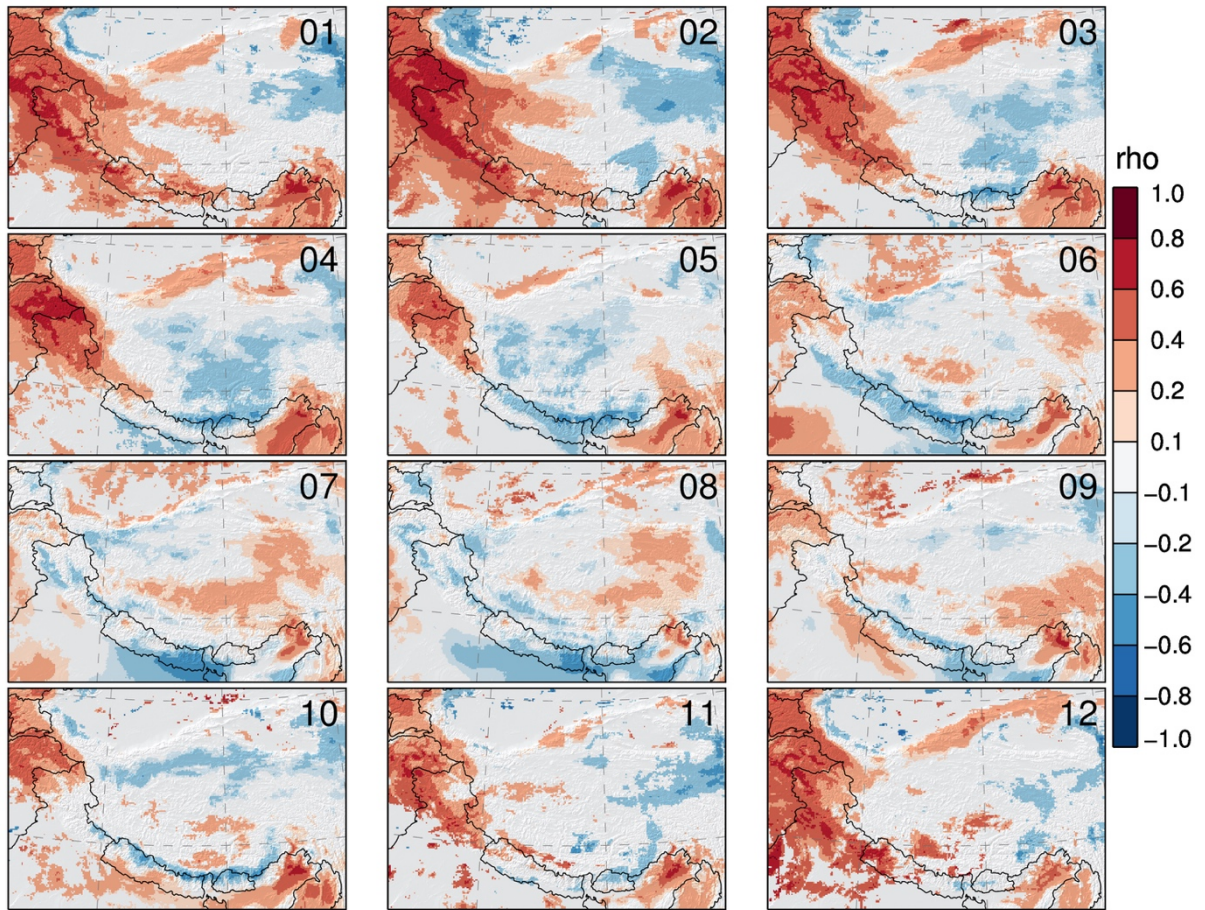


Figure 4. Coefficient of correlation ( $\rho$ ) between horizontal wind speed at model level 10 (WS10) and precipitation for all months (01-12). Positive correlations are denoted in red, while negative correlations are denoted in blue.

5

10

15

20

25

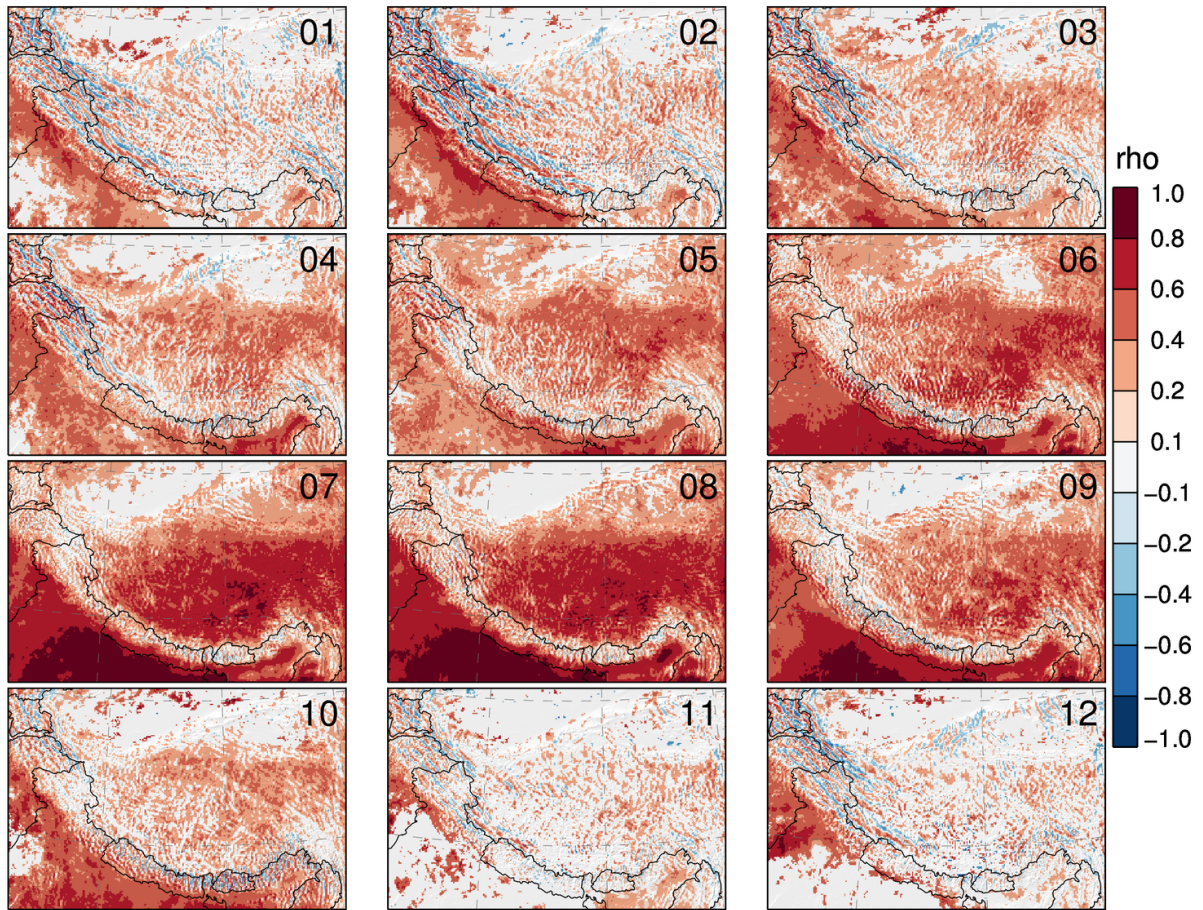


Figure 5. Coefficient of correlation ( $\rho$ ) between vertical wind speed at 300 hPa (WS300) and precipitation for all months (01-12). Positive correlations are denoted in red, while negative correlations are denoted in blue.

5

10

15

20

25

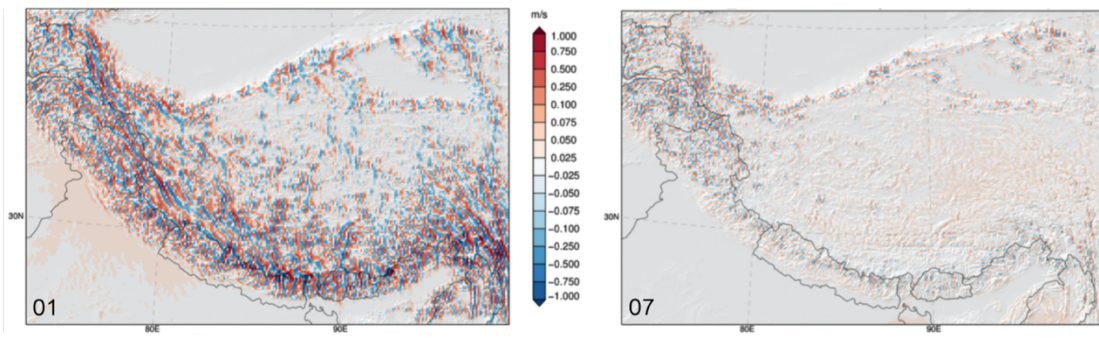


Figure 6: Mean vertical wind speed at 300 hPa for January (01) and July (07).

5

10

15

20

25

30

35

40

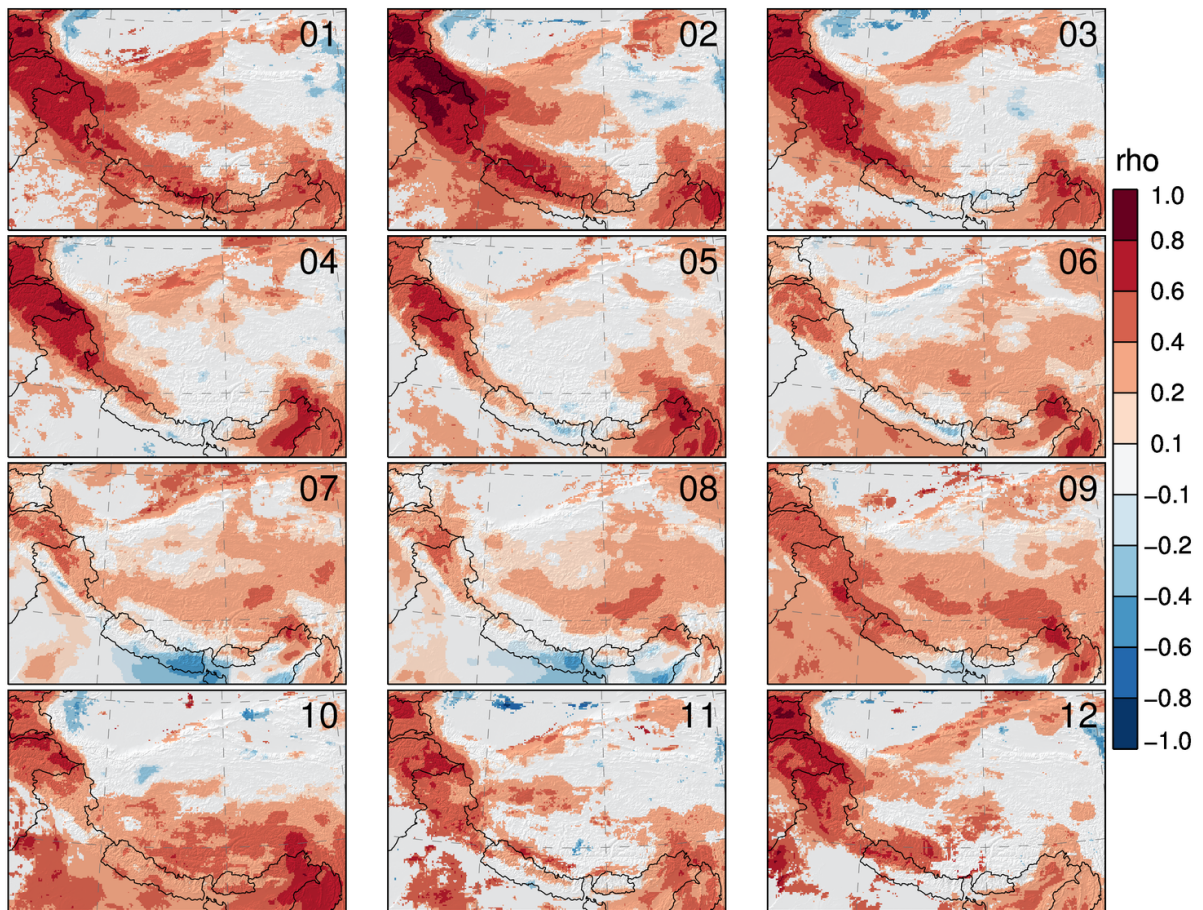


Figure 7. Coefficient of correlation ( $\rho$ ) between atmospheric water transport (AWT) and precipitation for all months (01-12). Positive correlations are denoted in red, while negative correlations are denoted in blue.

5

10

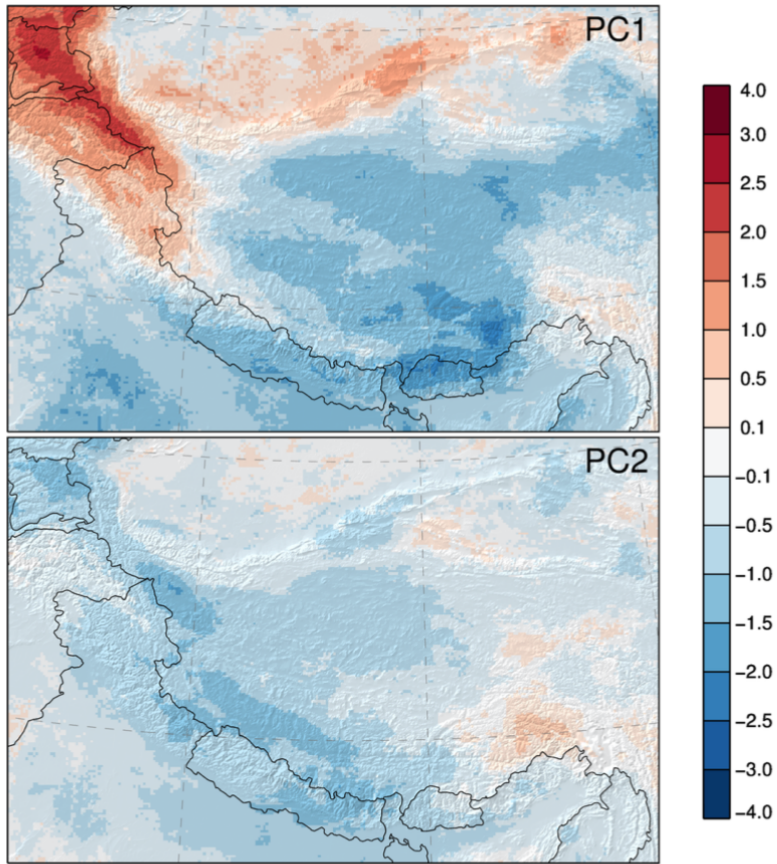
15

20

25



(a)



(b)

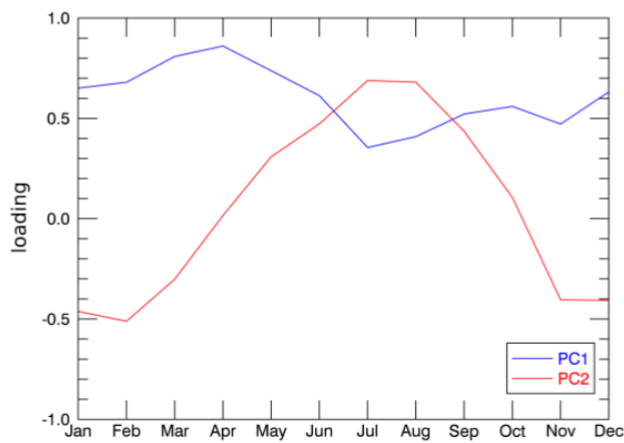


Figure 8. Scores of first two principal components PC1 and PC2 for the correlation between horizontal wind speed at 300 hPa (WS300) and precipitation (a) (positive values are denoted in red, while negative values are denoted in blue) and the monthly loadings (b) for both PCs.

5

10

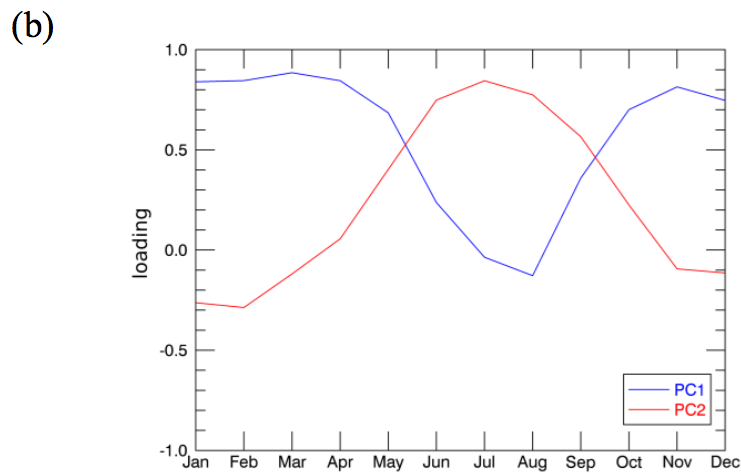
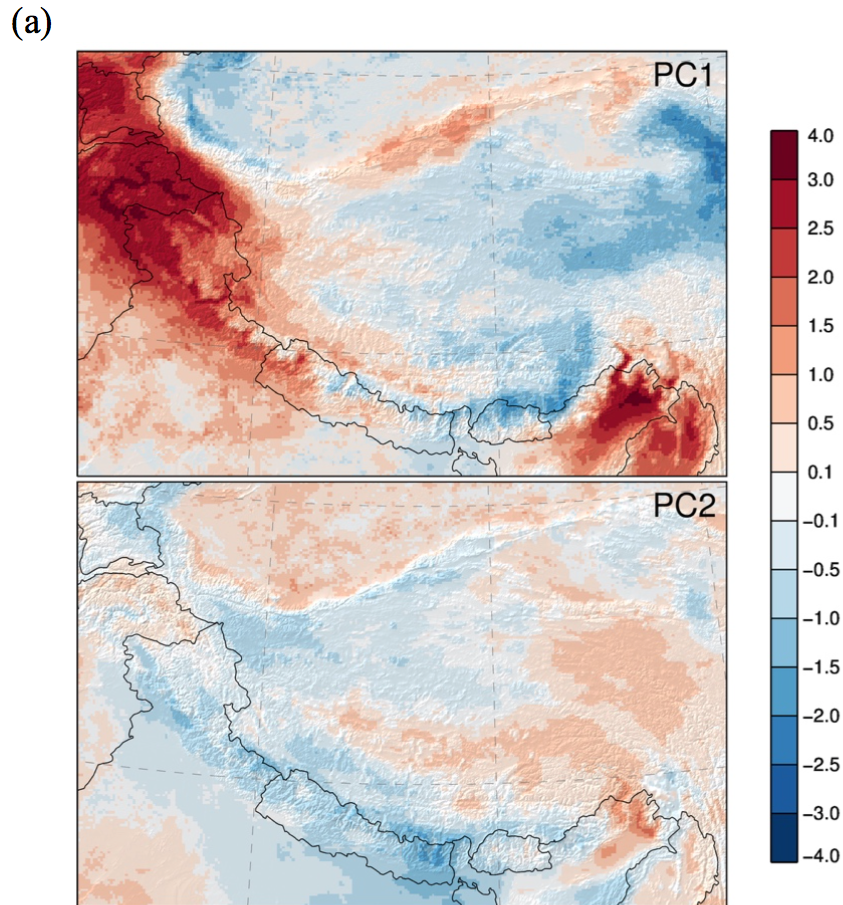
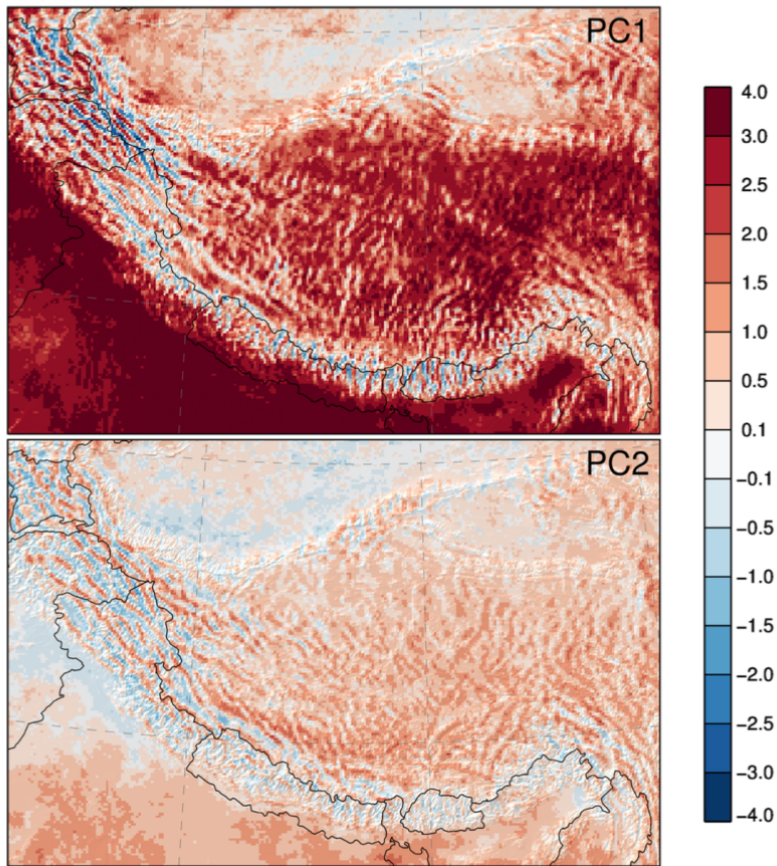


Figure 9. Scores of first two principal components PC1 and PC2 for the correlation between horizontal wind speed at model level 10 (WS10) and precipitation (a) (positive values are denoted in red, while negative values are denoted in blue) and the monthly loadings (b) for both PCs.

5

10

(a)



(b)

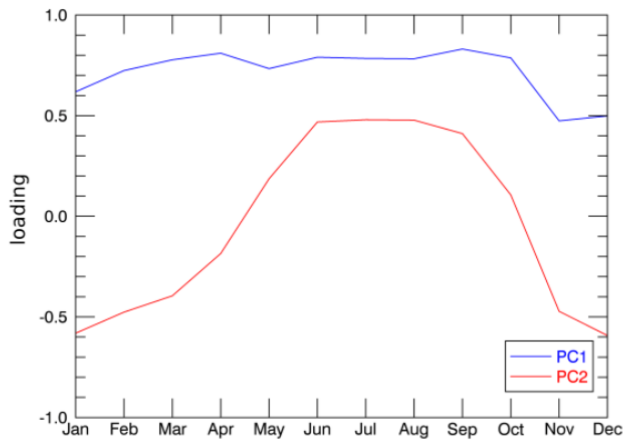


Figure 10. Scores of first two principal components PC1 and PC2 for the correlation between vertical wind speed at 300 hPa (W300) and precipitation **(a)** (positive values are denoted in red, while negative values are denoted in blue) and the monthly loadings **(b)** for both PCs.

5

10

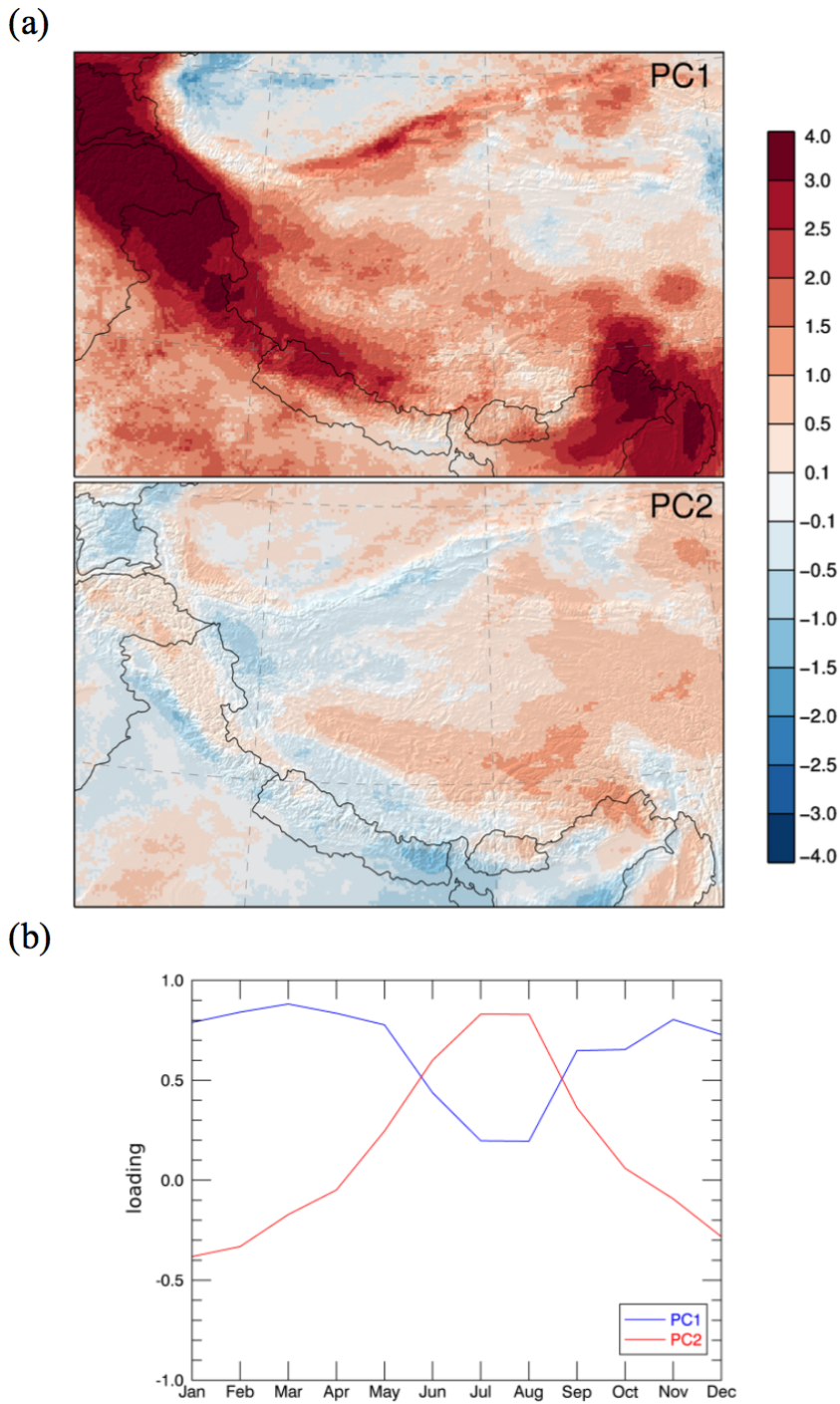


Figure 11. Scores of first two principal components PC1 and PC2 for the correlation between atmospheric water transport (AWT) and precipitation **(a)** (positive values are denoted in red, while negative values are denoted in blue) and the monthly loadings **(b)** for both PCs.

5

10

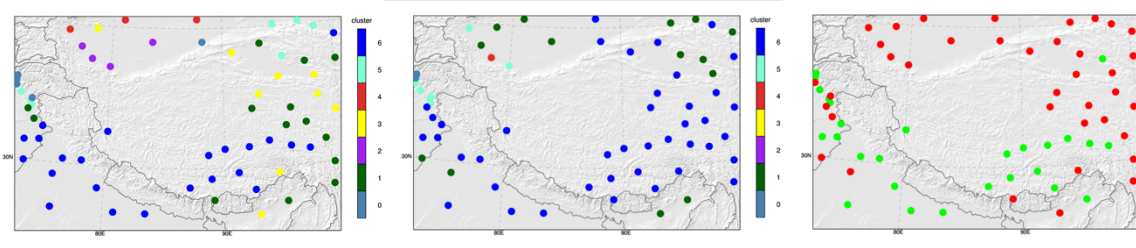


Figure 12. Map of precipitation cluster for HAR10 grid points (left) and the associated NCDC stations (middle). The map on the right shows whether the cluster match (green dots) or not (red dots).

5