

Interactive
Comment

Interactive comment on “Implications of land use change in tropical Northern Africa under global warming” by T. Brücher et al.

T. Brücher et al.

tim.bruecher@mpimet.mpg.de

Received and published: 9 November 2015

Dear Editor,

We are pleased to send you all replies and text changes we got by two anonymous reviews and A. Giannini.

Please find in the following the point to point answers to our manuscript plus the two updated figures (Fig. 4 and Fig. 6).

Best regards, Tim Brücher

Please also note the supplement to this comment:

C771

Full Screen / Esc

Printer-friendly Version

Interactive Discussion

Discussion Paper



<http://www.earth-syst-dynam-discuss.net/6/C771/2015/esdd-6-C771-2015-supplement.pdf>

Interactive comment on Earth Syst. Dynam. Discuss., 6, 1101, 2015.

ESDD

6, C771–C774, 2015

Interactive
Comment

Full Screen / Esc

Printer-friendly Version

Interactive Discussion

Discussion Paper



C772

Interactive
Comment

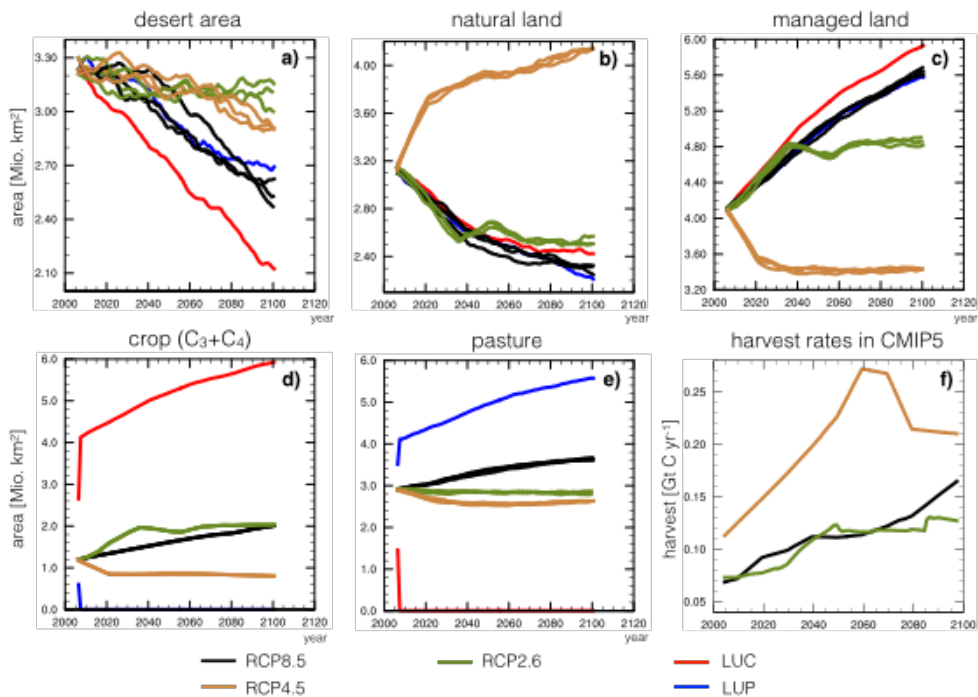


Fig. 1. new fig 4

Full Screen / Esc

Printer-friendly Version

Interactive Discussion

Discussion Paper



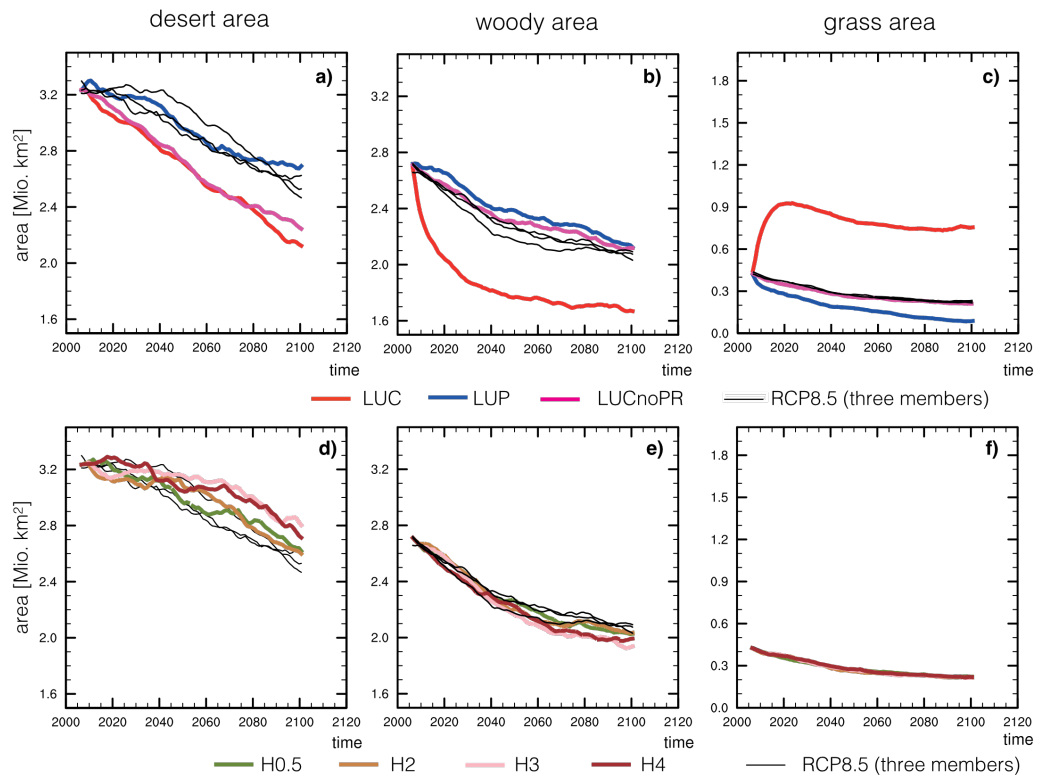


Fig. 2. new fig 6

Interactive
Comment

Full Screen / Esc

Printer-friendly Version

Interactive Discussion

Discussion Paper