

Imprints of climate forcings in global gridded temperature data

J. Mikšovský^{1,2}, E. Holtanová¹ and P. Pišoft¹

[1] {Department of Atmospheric Physics, Faculty of Mathematics and Physics, Charles University in Prague, Czech Republic}

[2] {Global Change Research Institute, Academy of Sciences of the Czech Republic, Brno, Czech Republic}

Correspondence to: J. Mikšovský (jiri.miksovsky@mff.cuni.cz)

Abstract

Monthly near-surface temperature anomalies from several gridded datasets (GISTEMP, Berkeley Earth, MLOST, HadCRUT4, 20th Century Reanalysis) were investigated and compared with regard to the presence of components attributable to external climate forcings (anthropogenic greenhouse gases, solar and volcanic activity) and to major internal climate variability modes (El Niño/Southern Oscillation, North Atlantic Oscillation, Atlantic Multidecadal Oscillation, Pacific Decadal Oscillation and variability characterized by the Trans-Polar Index). Multiple linear regression was used to separate components related to individual explanatory variables in local monthly temperatures as well as in their global means, over the 1901–2010 period. Strong correlations of temperature and anthropogenic forcing were confirmed for most of the globe, whereas only weaker and mostly statistically insignificant connections to solar activity were indicated. Imprints of volcanic forcing were found to be largely insignificant in the local temperatures, in contrast to the clear volcanic signature in their global averages. Attention was also paid to the manifestations of short-term time shifts in the responses to the forcings, and to differences in the spatial fingerprints detected from individual temperature datasets: It is shown that although the resemblance of the response patterns is usually strong, some regional contrasts appear. Noteworthy differences from the other datasets were found especially for the 20th Century Reanalysis, particularly for the components attributable to anthropogenic forcing over land, but also in the

response to volcanism and in some of the teleconnection patterns related to the internal variability modes.

1 Introduction

Temporal variability within the climate system results from a complex interaction of diverse processes, both exogenous and arising from internal climate dynamics. To identify and quantify the effects of individual climate-forming agents, two complementary approaches are typically employed (e.g. IPCC, 2013, Ch. 10): numerical simulations based on general circulation models (GCMs) and statistical techniques. While the statistical methods do not offer the physical insight provided by the GCM-based simulations, they are potentially able to capture relations omitted or distorted within GCMs due to the need for simplified representation of the relevant physical processes. A number of authors have investigated the presence of relations between climate forcings and time series of climate variables by statistical means, often involving multivariable regression analysis or related techniques. The resulting studies typically show a strong link between temperature and anthropogenic forcing (e.g. Pasini et al., 2006; Lean and Rind, 2008; Schönwiese et al., 2010; Rohde et al., 2013b; Canty et al., 2013; Chylek et al., 2014b), although linear change with time is also often used to approximate the long-term temperature evolution (e.g. Gray et al., 2013; Foster and Rahmstorf, 2011; Zhou and Tung, 2013). Imprint of solar activity is usually quite weak in the near-surface temperature series (e.g. Lockwood, 2012, and references therein) and the spatial patterns of eventual response tend to be quite complex (Lockwood, 2012; Gray et al., 2013; Hood et al., 2013; Xu and Powell, 2013). Major volcanic eruptions typically manifest by temporary cooling in the globally averaged temperature, although its magnitude differs somewhat among individual temperature datasets as well as between ocean and land (Canty et al., 2013) and the geographic fingerprint of the temperature response is far from trivial (Stenchikov et al., 2006; Driscoll et al., 2012; Gray et al., 2013).

Compared to the often pan-planetary reach of the external forcings, major manifestations of internal climate variability modes tend to be more localized, though sometimes with ample projection of weaker influences through teleconnections. Relatively well understood is the El Niño/Southern Oscillation (ENSO) system, dominating in tropical Pacific, but also affecting various aspects of weather patterns in many regions across the globe and leaving a distinct imprint in globally averaged temperature as well (e.g. Trenberth et al., 2002). The effect of

1 North Atlantic Oscillation (NAO) is prominent particularly in the areas around northern
2 Atlantic (e.g. Hurrell et al., 2003). Northern Atlantic is also the primary area of activity of
3 Atlantic Multidecadal Oscillation (AMO), with potential imprints noticeable in local
4 temperatures as well as their global means (e.g. Tung and Zhou, 2013; Zhou and Tung, 2013;
5 Rohde et al., 2013b; Muller et al., 2013; Chylek et al., 2014b; van der Werf and Dolman,
6 2014; Rypdal, 2015). A related (pseudo)oscillatory system manifests in the northern Pacific in
7 the form of Pacific Decadal Oscillation (PDO: Zhang et al., 1997), although its direct link
8 with global temperature seems to be less pronounced than AMO's (e.g. Canty et al., 2013).
9 Other potentially influential variability modes can be identified in the climate system, though
10 their exact mechanisms and effects are not always completely known. Selection and
11 preparation of explanatory variables representing individual climate-forming factors is a
12 critical part of statistical attribution analysis; more details on their choice and specific form in
13 our tests are provided in Sect. 2.1.

14 Of the descriptors of the climate system, temperature-related characteristics are arguably the
15 most intensely investigated. Over the recent years, various research groups have developed
16 and gradually evolved datasets of near-surface global gridded temperature (including
17 MLOST: Smith et al., 2008; GISTEMP: Hansen et al., 2010; HadCRUT4: Morice et al., 2012;
18 Berkeley Earth: Rohde et al., 2013a, b), which now provide more than a century of mid-to-
19 high resolution data for a substantial portion of the globe. In addition to these temperature
20 analyses, created primarily by interpolation/extrapolation techniques, reanalysis data are also
21 used to approximate past climate. Of particular interest regarding the longer-term variability
22 is the 20th Century Reanalysis (20CR: Compo et al., 2011), currently providing global
23 gridded data from mid-19th century on. While all these datasets approximate the same
24 historical evolution of the climate system and share much of their basic temporal variability
25 on pan-planetary scale (e.g. Hansen et al., 2010; Foster and Rahmstorf, 2011; Compo et al.,
26 2013; Rohde et al., 2013b), the respective temperature fields do differ to some, regionally
27 dependent, degree. In this paper, we aim to investigate and compare selected aspects of
28 spatio-temporal variability in several gridded datasets of monthly temperature, introduced in
29 Sect. 2.2, with emphasis on identification of temperature responses attributable to climate
30 forcings and major modes of internal climate variability.

31 Our methodology of attribution analysis is largely based on multiple linear regression, as
32 detailed in Sect. 3. Basic match of temporal variability between the temperature datasets is

quantified through linear correlations, with results shown in Sect. 4.1. Presence, magnitude and statistical significance of components attributable to individual explanatory variables in globally averaged temperatures are investigated in Sect. 4.2, including an analysis of potential time-delayed responses. An analysis of the geographical response patterns is then carried out in Sect. 4.3, followed by an assessment of local time-delayed responses in Sect. 4.4 and discussion of the results in Sect. 5. Only the key outcomes of our analysis are presented in the paper itself – see the Supplement for additional materials, particularly for results derived for shorter sub-periods of the time series studied.

2 Data

2.1 Explanatory variables

Although many of the statistical attribution studies pursue a similar goal and share much of their basic methodology, substantial diversity exists in the selection of the explanatory factors employed and their specific variants. Here, we used eight predictors with proven or reasonably suspected influence on climate on global or continental scale, representing effects of various external forcings and climatic oscillations (Fig. 1).

Among the external influences on the climate system, role of the greenhouse gases (GHGs) is relatively well understood (e.g. IPCC, 2013, Ch. 10). Due to their positive contribution to radiative forcing, man-made GHGs are believed responsible for much of the near-surface temperature rise during the later stages of the instrumental period. Anthropogenic influences to climate do also manifest through formation of various aerosols, including sulfates or black carbon, or by production of tropospheric ozone, although the uncertainties regarding their direct and especially indirect impacts are still profound (e.g. Skeie et al., 2011; IPCC, 2013, Ch. 10). Furthermore, due to the limited lifespan of the aerosols, their amounts are highly variable in time and space, unlike the concentrations of the relatively long-lived GHGs. From the perspective of statistical analysis, the often strong temporal correlation of GHGs and aerosol amounts is also problematic: For instance, the SO₂ emissions (a precursor of tropospheric sulfate aerosols) are strongly correlated with GHG concentrations in some regions, making it difficult for a regression mapping to distinguish between their respective effects. For these reasons, aerosol forcings were not directly considered here, and global CO₂-equivalent GHG concentration was used as the sole anthropogenic predictor, in the version provided by Meinshausen et al. (2011) (<http://www.pik-potsdam.de/~mmalte/rcps/>),

interpolated onto monthly time resolution. Note that the temperature responses obtained with this GHG-only predictor would be virtually identical to those derived for total global anthropogenic forcing, as further discussed in Sect. 5.

Global monthly series of stratospheric aerosol optical depth provided by NASA GISS at <http://data.giss.nasa.gov/modelforce/strataer/> (Sato et al., 1993) was employed as a proxy for volcanic forcing. The effects of variable solar activity were characterized through monthly values of solar irradiance, based on the reconstruction by Wang et al. (2005) and obtained from http://climexp.knmi.nl/data/itsi_wls_mon.dat. Extension of the series beyond year 2008 was done by the rescaled SORCE-TIM measurements from <http://lasp.colorado.edu/home/sorce/data/tsi-data/> (Kopp et al., 2005).

In addition to the external forcings tied to exogenous factors, temporal variability of the climate system is also shaped by various internal oscillations. Southern Oscillation index (SOI), provided by CRU at <http://www.cru.uea.ac.uk/cru/data/soi/> (Ropelewski and Jones, 1987), was used to characterize the phase of ENSO, the dominant variability mode in the tropical Pacific. North Atlantic Oscillation (NAO) was represented by its index (NAOI) by Jones et al. (1997), defined from normalized pressure difference between Reykjavik and Gibraltar (CRU: <http://www.cru.uea.ac.uk/cru/data/nao/>). A great deal of attention has recently been devoted to the effects of Atlantic Multidecadal Oscillation (AMO), a climatic mode possibly exhibiting periodicity of about 70 years (Schlesinger and Ramankutty, 1994) and typically characterized by indices derived from north Atlantic SST (e.g. Enfield et al., 2001; Canty et al., 2013). Presence of AMO-synchronized components in temperature series has been demonstrated at both global (e.g. Canty et al., 2013; Rohde et al., 2013b; Zhou and Tung, 2013; Chylek et al., 2014b) and local (e.g. Enfield et al., 2001; Tung and Zhou, 2013; Chylek et al., 2014a; Mikšovský et al., 2014) scales, although discussion still continues regarding AMO's exact nature and optimum way of its representation (Mann et al., 2014; Zanchettin et al., 2014; Lewis, 2014; Ting et al., 2014). In this analysis, AMO's phase has been characterized through a linearly detrended index (AMOI) based on the prevalent definition by Enfield et al. (2001) and downloaded from <http://www.esrl.noaa.gov/psd/data/timeseries/AMO/>. Note that a non-smoothed version of the index was used, involving both long-term and shorter-term SST variability in northern Atlantic. An AMO and ENSO-related phenomenon in the north Pacific area, Pacific Decadal Oscillation (PDO – Zhang et al., 1997), is typically characterized through a series of the first

1 principal component of north Pacific SST. Here, the variant calculated by KNMI Climate
2 Explorer at <http://climexp.knmi.nl/> from ERSST data was employed as predictor, further
3 referenced as PDOI. Lastly, to explore patterns of temperature variability in the southern
4 extra-tropical regions, Trans-Polar index (TPI) was also used as an explanatory variable. The
5 respective series, calculated as normalized pressure difference between Hobart (Tasmania)
6 and Stanley (Falkland Islands), is available from CRU at
7 <http://www.cru.uea.ac.uk/cru/data/tpi/> (Jones et al., 1999) for the 1895–2006 period. Beyond
8 the year 2006, sea-level pressure data from the 20th Century Reanalysis were used to extend
9 the CRU-supplied series.

10 Not all of the predictors here can be considered mutually independent, from neither physical
11 nor statistical perspective. In Table 1, formal similarity of the series of individual explanatory
12 variables is illustrated through values of Pearson correlation coefficient r , and degree of
13 collinearity is also quantified by variance inflation factors for each predictor. The positive
14 correlation between GHG amount and solar irradiance ($r = 0.37$ for our version of the
15 predictors, over the 1901–2010 period) stems from similarity of the long-term components of
16 these signals (lower values in the early part of the 1901–2010 period, higher towards the end);
17 their causal link over the time period studied here is unlikely though. Noteworthy links can
18 also be seen for PDO, which is considered to be partly driven by ENSO (Newman et al.,
19 2003), resulting in anticorrelation of the PDOI and SOI series ($r = -0.37$). A relation also
20 exists between PDOI and AMOI – although the connection is weak for synchronous series (r
21 $= 0.01$), distinct time-delayed correlations exist (e.g. Zhang and Delworth, 2007; Wu et al.,
22 2011). Correlation between AMOI and solar irradiance ($r = 0.16$) and volcanic aerosol optical
23 depth ($r = -0.27$) may be an indication of possible external forcing of AMO (Knudsen et al.,
24 2014); similarity between GHG and AMOI series ($r = 0.22$) may stem from use of linear
25 detrending in the calculation of AMOI (see Canty et al., 2013, for a broader discussion of the
26 related matters). Anticorrelation between volcanic aerosol optical depth and SOI ($r = -0.17$)
27 results mainly from coincidence of some of the major volcanic events with the El Niño phases
28 of ENSO. While the correlations within our set of predictors are mostly mild, there are some
29 potential implications of this shared variability, as discussed in Sect. 5.

2.2 Temperature datasets

Monthly series of near-surface temperature on a (semi)regular longitude-latitude grid from four temperature analyses and one reanalysis were studied:

- GISTEMP of NASA's Goddard Institute for Space Studies, available at <http://data.giss.nasa.gov/gistemp/> (Hansen et al., 2010). The gridded version of this dataset (employed here in the version with 1200 km smoothing) is provided on a $2\times 2^\circ$ grid, since 1880. Tests were also carried out with the GISTEMP dataset employing 250 km smoothing. However, due to higher fraction of unavailable data in the 250 km version, and just small difference between the respective temperature response patterns, the results were only included in the Supplement (Fig. S5).
- Temperature analysis of the Berkeley Earth group, obtained from <http://berkeleyearth.org/data> (Rohde et al., 2013a, b). While the dataset is primarily created for land, a variant with coverage of oceanic areas by re-interpolated HadSST3 (Kennedy et al., 2011a, b) is also provided. We used this combined dataset here; for brevity, it is referred to as BERK. The data are available in the spatial resolution of $1\times 1^\circ$, for years from 1850 on.
- Merged Land-Ocean Surface Temperature Analysis (MLOST) by NOAA, from <http://www.esrl.noaa.gov/psd/data/gridded/data.mlost.html> (Smith et al., 2008). Defined on a $5\times 5^\circ$ grid, from 1880 on.
- HadCRUT4, a combined land (CRUTEM4) and sea (HadSST3) temperature dataset by Climatic Research Unit (University of East Anglia) and Hadley Centre (UK Met Office) from <http://www.cru.uea.ac.uk/cru/data/temperature/> (Morice et al., 2012). Defined on a $5\times 5^\circ$ grid, from 1850 on.
- 20th Century Reanalysis (20CR) by NOAA ESRL PSD, obtained in version V2 from http://www.esrl.noaa.gov/psd/data/20thC_Rean/ (Compo et al., 2011). For this study, monthly means of 2m temperature in T62 Gaussian grid were used (resolution approximately 1.75° longitude x 2° latitude). Note that, unlike the above analysis-type datasets, 20CR does not utilize temperature measurements from land-based stations and recreates the temperature characteristics over continents from other types of data assimilated into the model (pressure measurements) or used as boundary condition (sea surface temperature). As a reanalysis, 20CR provides a complete coverage of the globe

and data for various pressure levels, in a sub-daily time step (although only monthly averages were analyzed here). Assessment of the usability of 20CR as a source of data for study of spatiotemporal variability of temperature is one of the focal points of this paper.

All four gridded temperature analysis datasets (GISTEMP, BERK, MLOST, HadCRUT4; hereinafter also referred to as observational datasets) are natively provided as monthly anomalies, and were analyzed as such. For 20CR temperatures, anomalies were constructed by subtracting mean annual cycle for the period 1951–1980. In addition to gridded temperatures, global temperature means (representing either land-only or fully global spatial averages) were also studied. The respective global monthly series were obtained from the web pages of the individual research groups, with the exception of 20CR, for which global average was calculated as a latitude-adjusted weighted mean from the gridded data for the full globe or for the area between 60°S and 75°N.

3 Regression analysis setup

Despite the inherently nonlinear and deterministically chaotic nature of the climate system, the interaction of external climate forcings in temperature signals can often be approximated quite well by a simple linear superposition (e.g. Shiogama et al., 2013). Even when effects of internal climatic oscillations are studied in the frame of multivariable statistical attribution analysis, nonlinearities are generally not dominant, albeit sometimes detectable (e.g. Pasini et al., 2006; Schönwiese et al., 2010; Mikšovský et al., 2014). Further considering the increased computational costs and more complicated interpretation for the nonlinear regression techniques, only multiple linear regression (MLR) was applied here to separate contributions from individual predictors, subject to a calibration procedure minimizing the sum of squared regression residuals.

Although application of MLR-based mappings is quite straightforward in itself, potential challenges await when estimating the statistical significance of the regression coefficients, particularly due to non-Gaussianity and serial correlations in the data. For construction of the confidence intervals in Sect. 4.2, bootstrapping was used. Since the basic form of bootstrap (resampling data for individual months as fully independent cases) does not account for autocorrelation structures in the data, which cannot be ignored in the monthly temperatures (e.g., lag-1-month autocorrelations in the regression residuals ranged between 0.32 and 0.61

for different versions of globally averaged temperature), moving-block bootstrap was used (e.g. Fitzenberger, 1998).

In an effort to alleviate the high computational costs of full bootstrap, an alternative approach to assessment of statistical significance was also explored: Monte Carlo-style tests designed to estimate thresholds of the regression coefficients, consistent with the null hypothesis of the absence of regressor-related component(s) in the regressand. Our experiments have shown that the effect of autocorrelation structures on the coefficient thresholds is approximated quite well by the predictor-specific expansion factors $((1+a_p a_r)/(1-a_p a_r))^{1/2}$, with a_p and a_r representing AR(1) autoregressive parameters for the predictor series and for the series of the regression residuals, respectively. This factor resembles the one occasionally employed in estimation of statistical significance of correlations between series with AR(1)-type autocorrelation structure (e.g. Bretherton et al., 1999); its use allows for a numerically inexpensive approximation of statistical significance provided that the structure of the regression residuals conforms to a AR(1) model. While such assumption is not completely valid for the temperature data (e.g. Foster and Rahmstorf, 2011), the results obtained proved to be close to those from moving-block bootstrap, with noticeable differences only appearing in the presence of the strongest residual autocorrelations. These predictor-specific inflation factors (applied to the coefficient significance thresholds derived for predictand data free of serial correlations) were therefore used for approximation of the significance of the regression coefficients in the tests involving gridded temperature data in Sects. 4.3 and 4.4.

The analysis has been carried out over the 1901–2010 period, chosen as a compromise between maximizing the length of the signals studied and limited availability and reliability of data for the earlier parts of the instrumental period. Additional results for the first (1901–1955) and second (1956–2010) half of the target period are provided in the Supplement. To facilitate comparison of the contributions from individual explanatory variables mutually and to temperature variability itself, outcomes of the regression analysis are presented in the form of temperature responses to pre-selected characteristic variations of individual predictors, illustrated in Fig. 1 and specified in its caption. To limit biases due to incompleteness of the temperature series in some locations/datasets, only results for predictands with less than 10% of missing values are shown.

4 Results

4.1 Inter-dataset correlations

Ideally, all the temperature datasets should follow the same, historical, trajectory of the climate system. In reality, differences appear among individual representatives of the climatic past, due to variations in the structure of the source data and specifics of their processing. While we obviously cannot make a comparison to a perfect embodiment of the past states of the atmosphere, the existing temperature approximations can be compared mutually, to assess which regions/periods exhibit higher degree of match (signaling lower uncertainty due to the dataset choice), and where stronger contrasts emerge. The basic structure of these differences is illustrated in Figs. 2 and S1 (in the Supplement) through pair-wise Pearson correlations (r) between monthly series of temperature anomalies from different datasets. Unsurprisingly, vast majority of locations exhibit positive correlations, for any dataset couple, but magnitude of this link varies substantially among different regions. Over continents, particularly good match is indicated for Europe and (especially eastern) North America, regions with high density of reliable observations spanning the entire target period. On the other hand, in central Africa, central South America and south-east Asia, the resemblance of temperature series is weakened. The mismatch is also more noticeable when only the first half of the analysis period (1901–1955) is considered (Fig. S1). The 1956–2010 period then shows generally higher correlations, though it should be noted that presence of stronger long-term trend in the later 20th century, largely shared by all the datasets and most locations, amplifies the values of correlations in this sub-period.

The above specified general tendencies in regional correlation patterns also hold for the relation between the analysis-type datasets and 20CR (bottom row in Fig. 2): Relatively good match of the temperature anomalies in Europe and eastern US contrasts with more profound differences in the tropical parts of Africa and much of South America. Question remains whether the disparities detected can be attributed to misrepresentation of any specific source(s) of temperature variability – an issue that is further investigated in the following sections.

4.2 Forcing imprints in global mean temperature

Much of the existing research of temperature variability and its attribution by statistical means focuses on globally averaged data. Aside from limiting the number of signals to be analyzed (and thus allowing for more detailed examination of each of them), the world-wide averaging

1 suppresses regional variations and allows factors associated with global-reaching forcings to
2 become more reliably detectable. On the other hand, effects contributing responses of
3 opposite sign in different regions (such as ENSO or NAO) may be obscured in pan-planetary
4 representation. In this section, global and global land temperature signals are investigated for
5 the presence of the imprints of individual internal and external forcing factors.

6 It has been shown on various occasions that responses in climate variables (including
7 temperature) are not necessarily perfectly synchronized with the variables representing the
8 climate forcings, and time-offset relations may manifest (e.g. Canty et al., 2013 and
9 references therein). In Fig. 3, this is illustrated via application of MLR mappings with
10 individual predictors offset by Δt ranging between -24 and $+24$ months. Results from the full
11 range of Δt are shown for all predictors, to illustrate the fact that regression analysis may
12 indicate formal links even in the absence physically meaningful dependencies (such as the
13 connections between temperature and volcanic forcing for highly negative Δt). For GHG
14 concentration, the lack of short-term variability results in near-invariance of the temperature
15 response. Some Δt -related variability is indicated for solar irradiance influence, though the
16 dependence seems largely governed by irregular fluctuations and no distinct extremum
17 appears. A delayed response is clearly noticeable in the component associated with volcanic
18 activity – a distinct, though rather flat, maximum of anticorrelation between about 5 to 10
19 months is indicated for all the analysis-type datasets. In the case of SOI, the strongest
20 response occurs for time lags between approximately 0 and 6 months. The effect of NAOI, on
21 the other hand, is generally instantaneous. The response of global temperature to AMOI and
22 PDOI also shows maximum at, or close to, $\Delta t = 0$. For TPI, the imprint in global temperature
23 series is weak regardless of the predictor's shift.

24 All four analysis-type datasets exhibit high degree of similarity of the features in the globally
25 averaged series. On the other hand, some noteworthy distinctions appear for 20CR. Most
26 notably, the volcanism response curve is similar in shape to the ones characterizing the
27 observational data, but shifted towards positive values. Furthermore, NAO response peaks at
28 $+1$ month instead of $\Delta t = 0$ and weaker-than-observed connection to GHG is indicated over
29 land. These differences can be partly ascribed to the specifics of calculation of mean
30 temperature for the observational datasets, particularly variable level of data coverage for the
31 observed data. However, different spatial response patterns are also likely responsible, as
32 shown in Sect. 4.3.

To facilitate mutual comparability of the results, and also to consider that the physical links between predictors and temperature should be the same for all datasets, a unified set of time shifts was employed for the tests in Sects. 4.2 and 4.3. Lead time of +1 month was used with the solar irradiance, as previously done by Lean and Rind (2008) or Canty et al. (2013), although very similar outcomes would have been obtained with $\Delta t = 0$, too. The time shift was set to +2 months for SOI, same as in Canty et al.'s setup, and volcanic forcing was used with $\Delta t = +7$ months (close to Lean and Rind's and Canty et al.'s shift of +6 months). The rest of the predictors entered the regression mappings without a time offset, due to just small difference compared to a setup with $\Delta t = 0$, or absence of a distinct, physically justified extremum within the analyzed range of time delays. In Fig. 4, the results of the analysis are shown in the form of temperature responses to the characteristic variations of the predictors, with their 99% confidence intervals generated by moving-block bootstrap. The regression fits of individual temperature series are also visualized in Fig. S4 in the Supplement.

Our analysis suggests the GHG-attributed rise in global temperature to be approximately 0.8°C over the 1901–2010 period, within the range usually associated with anthropogenic forcing (IPCC, 2013, Ch. 10). Over land, values between 1.05 and 1.2°C are typical in the analysis-type data, and somewhat lower for 20CR. Positive temperature responses to solar irradiance increase are indicated in the global temperatures (equivalent to roughly 0.05°C per Wm^{-2} of solar irradiance), borderline statistically significant at $\alpha = 0.01$. Global land temperatures, on the other hand, show no such warming component – a behavior previously reported by Rohde et al. (2013b) for Berkeley Earth land temperature, whereas the analysis by Canty et al. (2013) suggested minor temperature rise related to irradiance increase. Results for individual sub-periods provide an even more varied picture of the irradiance-temperature relationship (Figs. S2, S3). Small negative responses are indicated for 1901–1955, possibly due to higher correlation between the predictors characterizing GHG and solar activity ($r = 0.46$), and thus greater potential for misattribution. Positive responses then appear for 1956–2010, when the trend in solar irradiance (as well as its correlation to GHG concentration) is negligible. Warming effect of the increase of solar irradiance is therefore possible in land-only temperature averages, too, but weak and obscured when all 110 years are analyzed. In any case, imprint of solar irradiance upon globally averaged temperature seems rather minor, especially compared to the GHG influence.

1 The response of global temperature to volcanic forcing is clear, statistically significant and of
2 similar magnitude in all analysis-type datasets: drop of 0.36 to 0.44°C in global land
3 temperature is indicated for Mt. Pinatubo-sized event, slightly stronger than the values
4 reported by Canty et al. (2013). The response range is lowered to about 0.16 to 0.19°C when
5 the oceanic areas are included, close to Canty et al.'s results. As already shown in Fig. 3,
6 20CR temperature behaves in a somewhat different fashion, with smaller, statistically
7 insignificant temperature response. A look at the results for individual sub-intervals reveals
8 that this positive bias may be stemming from the relations indicated for the first half of the
9 20th century (which, however, contains just a very limited set of volcanic events, with the
10 strongest of them – Novarupta eruption of 1912 – being extratropical and thus atypical
11 regarding its world-wide effects). For the 1956–2010 period, 20CR global volcanic response
12 is more in line with the behavior of the observational datasets.

13 While our results show the well-known tendency towards higher global temperature
14 anomalies during the El Niño phases of ENSO (e.g. Trenberth et al., 2002), the respective
15 components tested close to the threshold of statistical significance at $\alpha = 0.01$. A response of
16 comparable magnitude was found for NAO, with positive link indicated between all
17 temperature signals and NAOI, though, again, at rather low levels of statistical significance in
18 most cases.

19 Conforming to several previous studies concerned with association between global
20 temperature and AMO (e.g. Rohde et al., 2013b; Zhou and Tung, 2013; Chylek et al., 2014b)
21 and using similar (i.e., linearly detrended) version of its index, our results suggest formally
22 strong link of detrended mean North Atlantic temperature and its global counterpart, distinct
23 for land-based temperatures as well. The question remains, however, of how representative
24 AMOI really is of internal variability in the climate system, as further discussed in Sect. 5.

25 The imprint of PDOI in global temperature is quite clear and, for our combination of
26 predictors, actually about as strong as SOI's. It should be considered though that SOI and
27 PDOI series are not independent and, as predictors, they partly compete for the same
28 variability component in the temperature signals. When included alone among the explanatory
29 variables (i.e., either SOI or PDOI, but not both), the respective responses are generally
30 strengthened, as is their statistical significance. Considering that SOI and PDOI are only
31 partly collinear, and that their spatial response patterns do differ (Sect. 4.3), both were
32 included as formally independent predictors in our analysis.

The final predictor considered in our setup, TPI, does not project much influence upon global temperature, though the respective component is borderline statistically significant for some of the datasets. Just as in the case of SOI, NAOI or PDOI, the relatively weak global response can be traced to the presence of mutually opposite contributions from different regions, as demonstrated in the next section.

4.3 Forcing imprints in local temperatures

Even clear and strong presence of a component associated with a particular forcing factor in globally averaged temperature does not automatically imply its universal relevance on local scale. Conversely, locally dominant factors may be marginal in global perspective. Here, we present an overview of geographic patterns of temperature response to external and internal forcing, for the set of eight predictors identical to that in the section 4.2. Only results for the datasets with mostly complete data coverage in the 1901–2010 period (GISTEMP, BERK, 20CR) are shown (Fig. 5); see the Supplement (Fig. S5) for the full set of results including MLOST and HadCRUT4.

While positive correlation between GHG concentration and temperature is typical for most regions of the world, the strength of the component formally attributed to greenhouse gases (or, more generally, to anthropogenic forcing) varies substantially, and insignificant links or even anticorrelations appear in some smaller areas. Most prominently, the oceanic region south of Greenland, known for a negative temperature trend since 1901 (e.g. IPCC 2013, Ch. 2), displays high contrast to the rest of the world. Relatively good match between the analysis-type datasets is found in most regions. However, notable differences between the gridded observations and 20CR appear in a few geographically limited locations. Aside from mild contrasts in some oceanic regions (particularly central and eastern equatorial Pacific), distinctly negative temperature responses appear over land in the eastern Mediterranean, central South America and Texas. On the other hand, warming response over northern China is overestimated in 20CR. Similar pattern of discrepancy between the observed data and 20CR has already been reported and discussed by Compo et al. (2013) in their analysis of linear trends in the temperature series for 1901–2010, with various potential explanations suggested. Generally, although long-term components (whether expressed by match with anthropogenic forcing, or by linear trends) in 20CR are characterized consistently with the analysis-type data in many regions, their representativeness cannot be assumed universally.

1 The local temperature responses to solar irradiance are arranged in a complex pattern,
2 encompassing both positive and negative links, combining in a near-neutral contribution to
3 global land average. Statistically significant responses are rarely indicated and influence of
4 solar variability therefore seems largely inconclusive at local scale (Figs. 5b, S5b).
5 Nonetheless, sign and magnitude of the links appear to be similar across individual datasets,
6 including 20CR. From the results for the oceanic areas, it is revealed that main contributions
7 to the borderline significant link between global temperature and irradiance come from
8 southern extratropical areas and northern Pacific. The response patterns shown by Lean
9 (2010), Zhou and Tung (2010) or Gray et al. (2013) do differ somewhat from our results;
10 however, direct comparison is problematic due to distinctions between time periods analyzed
11 as well detection methodology employed. The outcomes for the 1901–1955 and 1956–2010
12 sub-periods (Fig. S6) suggest some degree of stability of the response patterns, though with
13 enough differences to explain the mismatch in contributions to globally averaged land
14 temperature (Sect. 4.2). Overall, our analysis confirms that solar activity does not leave a
15 strong, unambiguous imprint in lower tropospheric temperature.

16 While the cooling effect of volcanic forcing was clearly apparent in global mean temperature,
17 its local influence is less ubiquitous (Figs. 5c, S5c). Regions with negative response do
18 slightly prevail in the observational datasets, but positive contributions are detected in several
19 areas, too. Only few locations show statistically significant response of either sign. The
20 pattern revealed bears basic resemblance to the ones shown by Lean and Rind (2008) and
21 Lean (2010), with post-eruption cooling indicated in North America and warming over
22 northern Asia. Some differences emerge, however, emphasizing the sensitivity of the forcing
23 response patterns to the analysis details such as specific choice of the predictor(s) or time
24 period considered. In the 20CR, positive responses are more numerous and stronger in
25 magnitude, pushing the global mean volcanism-attributed signal towards positive values and
26 statistical non-significance. This tendency is noticeable especially during the first half of the
27 analysis period (Fig. S6), although it should be noted again that the relative lack of global-
28 reaching volcanic events renders the results rather uncertain for the 1901–1955 period.

29 The canonical pattern of temperature response associated with SO/ENSO activity (e.g.
30 Trenberth et al., 2002; Lean and Rind, 2008; Gray et al., 2013) also emerged in our analysis,
31 including the teleconnections extending beyond the tropical Pacific region (Figs. 5d, S5d).
32 While some minor differences exist among individual datasets, the resemblance of the

1 respective patterns is high; some minor exceptions are found for 20CR over land, such as
2 weaker projection of SOI influence over eastern Africa. The effect of North Atlantic
3 Oscillation, too, is shown very clearly for its primary area of activity encompassing much of
4 Eurasia and North America (Figs. 5e, S5e). 20CR data show a generally good match with the
5 gridded observations, though minor differences emerge, such as weakened teleconnections to
6 easternmost Asia or altered links to southern Africa.

7 Unlike the multipolar geographical responses associated with SO and NAO, the regression
8 coefficients between AMOI and local temperature are predominantly positive worldwide, and
9 significant connections extend across the globe (Figs. 5f, S5f). This largely unidirectional
10 link, previously pointed out through correlation analysis by Muller et al. (2013), results in
11 much stronger AMO-correlated component in global temperature. On the other hand, it also
12 raises a question of what exactly the relation between temperatures worldwide and those in
13 northern Atlantic is (beyond the obvious fact that Atlantic SST is one of the components
14 averaged into global temperature, and thus not completely independent). While many of the
15 recent studies employed the (linearly detrended) AMO index in the role of an independent
16 explanatory variable, arguments have been made for use of different forms of the index (see
17 Canty et al., 2013 and the references therein) or questioning the nature of AMO itself (e.g.
18 Booth et al., 2012; Mann et al., 2014). In our analysis, focused rather on formal connections
19 in the data studied and mutual (in)consistency of various datasets, the issue of exact physical
20 nature and stability of AMO is not central. The imprint of AMOI is similar across individual
21 datasets; noticeable differences appear especially over central and eastern Eurasia.

22 PDO's influence pattern shows both positive and negative connections, strongest in the
23 Pacific area (e.g. Deser et al., 2010), but with some significant teleconnections extending to
24 more distant regions as well (including Africa or Scandinavia). PDO's representation by
25 20CR is relatively close to that in the analysis-type data; differences appear especially over
26 parts of Africa (Figs. 5g, S5g).

27 The relation between temperature and TPI manifests in a semi-regular pattern of alternating
28 positive and negative sectors over the southern oceans and nearby continents, though only in
29 the segments near South America and Australia do the relations test as statistically significant
30 (Figs. 5h, S5h). The 20CR-based response resembles the observational pattern in shape, but is
31 generally stronger magnitude-wise.

4.4 Delayed responses in local temperatures

The homogeneously timed predictors employed in Sect. 4.3 do provide a robust basis for an assessment of the superposition of their effects in globally averaged temperature, but overlook the possibility of geographically dependent delays. To reveal the characteristic patterns of locally specific asynchronous responses to the explanatory variables, regression analysis of local temperature was also carried out with individual predictors shifted in time by Δt ranging between -24 and $+24$ months. Figures 6 and 7 summarize the outcomes by displaying the strongest local temperature response detected, along with the corresponding Δt . Note that the statistical significance thresholds have been calculated to account for the fact that the strongest response within the -24 to $+24$ months range is used. As a result, they are generally higher (i.e., a stronger response is required to be deemed significant at the given significance level) than in the setup with fixed Δt in Sect. 4.3. Only the three datasets with least missing values – GISTEMP, BERK and 20CR – were analyzed in this case.

For the GHG amount, the results exhibit little sensitivity within our time window, and the magnitude of temperature responses is virtually identical to the $\Delta t = 0$ setup, due to the absence of short-term variations in the predictors series. Likewise, the strongest responses to solar forcing are quite similar to the ones for the pre-set delay of 1 month (Fig. 5b), while the maximum seems to be rather randomly positioned, arguably reflecting the stochastic components in the time series. For volcanism, even with the variable time delay option, still only a handful of gridpoints show significant response and the pattern of time delays associated with maximum-strength components does not show any distinct regularity.

The spatiotemporal variability of temperature response to ENSO phase is well known (e.g. Trenberth et al., 2002) and reflected in our results as well: the occurrence of the strongest temperature response leads SOI by a few months in the eastern equatorial Pacific, whereas largely concurrent variability is indicated for western Pacific. In the Indian Ocean, strongest temperature response lags by a few months behind SOI and delay of 6 to 8 months is indicated around south-east Asia as well as in northern Australia. 20CR reproduces these patterns quite well over the oceans, but noticeable differences appear for teleconnections over land, most notably in less consistently expressed links to Africa and southern part of South America.

The strongest statistically significant temperature responses to NAO are instantaneous in most areas, or delayed by 1 month (mostly over northern Atlantic). The pattern detected from the

observational datasets is reproduced quite well in 20CR, with the most notable exception again being the breakdown of transcontinental teleconnection over eastern Asia and appearance of a link to southern Africa. The reason for the temporal shift of NAO-attributed signal in 20CR global temperature (Fig. 3) therefore does not seem to be the misrepresentation of timing of the local temperature responses. Rather, it can be traced to the perturbed balance between the opposite-in-sign responses from different regions (note especially the overly negative contribution from northern Africa). Though these deviations are relatively small, they vary for different Δt , enough to alter the relatively weak globally averaged signal and bring forth a spurious delay in global response.

There is a distinct connection between the AMO index and local temperature in many regions of the world even without a time shift (Fig. 5f), but the timing of the maximum strength of this association varies distinctly within our ± 24 months testing range. Concurrence is indicated in much of northern Atlantic, delay of 2 to 5 months in the northern part of the Indian Ocean and adjacent land, and around 4 to 10 months in a large portion of western equatorial Pacific. On the other hand, in the eastern and northern part of the Pacific, temperatures at -12 to -6 months show the strongest association with AMOI, whereas delays between -5 to -1 month are typical in much of Canada and northern US. Over oceans, 20CR maintains the observation-based pattern with only minor differences. More distinctions appear over land, especially in southern Asia. Similar behavior is also indicated for PDO: Quite realistic representation of the delayed responses over oceans and areas adjacent to northern Pacific by 20CR breaks down somewhat for more remote land areas (most notably Africa), though some of the teleconnections seem maintained quite well (Scandinavia).

Finally, in the case of TPI, the results indicate concurrence of the oscillations or delay of 1 month for most locations with a statistically significant response. The pattern is reproduced quite well by 20CR, though magnitude of the temperature variations is somewhat exaggerated again.

5 Discussion and conclusions

The primary objective of our analysis was twofold. Firstly, we aimed to provide a unified outlook into the local temperature responses associated with activity of multiple climate-forming agents, exogenous and endogenous, and the way they combine in pan-planetary

1 temperature signals. While various past studies already dealt with a similar kind of statistical
2 attribution analysis, their scope was typically more focused, phenomenon- or region-wise, but
3 also regarding the temperature data source. Our second objective therefore consisted in
4 assessing the robustness of the attribution analysis results among several commonly employed
5 representations of monthly temperature throughout the 20th and early 21st century. To this
6 end, four observational temperature datasets and one reanalysis were studied through linear
7 regression, extracting components synchronized with temporal variability of eight predictors
8 representing external climate forcings and internal variability modes.

9 The basic correlation analysis in Sect. 4.1 revealed the general geographical patterns of
10 temperature (mis)match among different observational datasets. Unsurprisingly, the best
11 agreement was found for regions with the best coverage by measurements (most notably
12 Europe and eastern North America, where the Pearson correlations of monthly temperature
13 anomalies typically exceeded 0.9), leaving relatively little room for uncertainty in the gridded
14 data. Regions with sparser observations, such as interiors of Africa or South America,
15 exhibited more disparity, provided that gridded data were available at all for the given
16 location. Of even greater interest was the resemblance between analysis-type datasets and the
17 20th Century Reanalysis (20CR): Since 20CR does not directly utilize the temperature
18 measurements over land, greater deviations from ‘reality’ may be expected, especially for the
19 continental areas. While the correlation analysis indeed indicated somewhat loosened relation
20 to the analysis-type data, the match was still quite good in most regions, with the poorest
21 agreement again found in Africa and South America. Major differences between the
22 temperature anomaly series were seldom observed over oceans (the most notable exception
23 being the higher latitudes of the southern hemisphere). Since all the datasets (including 20CR)
24 employ sea surface temperature as inputs, temperatures are tied more closely to the historical
25 trajectory of the climate system and eventual contrasts can be largely ascribed to differences
26 among individual SST representations (assessed in detail by Yasunaka and Hanawa, 2011).

27 While the correlation analysis pointed out the basic patterns of differences between individual
28 datasets, the question remains how much these can affect the outcomes of the attribution
29 analysis. Match among the GHG-attributed temperature changes was generally strong in most
30 locations, but certain smaller regions were highlighted in 20CR where this trend-like
31 component diverged substantially from the analysis-type data. These local discrepancies,
32 previously pointed out by Compo et al. (2013), also somewhat decrease magnitude of the

GHG-attributed component in the global land temperature for 20CR. Furthermore, when drawing conclusions from the results presented, it is essential to consider the limitations of the statistical approach to the attribution analysis. First of all, even formally statistically significant connections are not a proof of physically meaningful relations, as the regression analysis only seeks formal similarities among the time series, unable to verify causality of the links. For the attribution of the temperature trends to GHGs, this is particularly critical. Although the significance level is generally high for the GHG-related regression coefficients, it would be such for any explanatory signal of similar structure (including a plain linear trend). While it is physically justified to associate the increase in GHGs with warming tendencies, there are other potential anthropogenic forcing factors sharing similar temporal evolution, yet intentionally omitted in our analysis. Specifically, various man-generated aerosols can contribute to local warming (e.g. black carbon) or cooling (e.g. sulfate aerosols) (e.g. Skeie et al., 2011). In many areas, the temporal progression of aerosol-related predictors closely mimics that of GHG concentration (for instance, the Pearson correlation between GHG concentration and regional SO₂ emissions is over 0.5 in most of the world and often exceeds 0.9 locally, based on the SO₂ data by Smith et al., 2011). Our GHG-based predictor should therefore be considered an approximate (and simplified) characterization of the anthropogenic forcing in general, rather than of greenhouse gasses alone. Note also that very similar values of temperature response would have been obtained for a predictor representing total global anthropogenic forcing rather than GHGs alone, due to very high temporal correlation of the respective series (exceeding 0.99 over our analysis period when using the forcing data by Meinshausen et al., 2011) and due to the fact that the responses are scaled by the end-to-end increase in the predictor series here. Naturally, this near-invariance in the given statistical setup should not be interpreted as equivalence of the respective forcings in a physical sense. A more accurate view of the issue could perhaps be gained by an analysis employing local-specific descriptors of anthropogenic activity, but the challenges attached (such as high collinearity of the anthropogenic predictors, limiting the ability of the regression mappings to distinguish among their effects) make such task less suitable for approaching by purely statistical means. General circulation models may represent a more suitable tool for capturing the related links, even though the associated uncertainties are still substantial (e.g. IPCC, 2013, Ch. 9). This also applies to the evaluation of other complex aspects of the climate system dynamics, such as effects of long-term memory or climatic feedbacks, intentionally omitted in our simplified regression-based analytical frame.

1 Of the natural forcings, the imprints of solar activity seem to be represented in quite a similar
2 manner by all the datasets studied, including 20CR. The component attributed to variations of
3 solar irradiance (involving both the 11-year cycle and longer-term variability) was quite weak,
4 in most individual regions as well as in globally averaged temperature. These results are
5 largely consistent with previous assessments of the impacts of solar activity on temperature
6 (e.g. Lockwood, 2012; Gray et al., 2013). Still, the spatial patterns of solar influence exhibit
7 some degree of temporal stability, suggesting that even though the fingerprints detected do
8 largely not test as statistically significant, they are not just an artifact of stochastic
9 components in the temperature series.

10 An interesting contrast between the results for globally averaged temperature series and for
11 their local counterparts was found in the case of the effects of volcanic activity. The well-
12 known near-surface cooling following major volcanic eruptions was clear in all versions of
13 globally averaged observed temperature, but a rather complex pattern emerged from the
14 gridded temperature data. Post-eruption warming was indicated in several regions. There
15 might be dynamical reasons for such behavior (e.g. Stenchikov et al., 2006; Driscoll et al.,
16 2012), but the structures detected were quite ambiguous, exhibiting both poor temporal
17 stability and low statistical significance (an uncertainty partly ascribable to distinctiveness of
18 individual volcanic events and their relatively brief periods of effect within the time frame of
19 our analysis). Furthermore, aliasing of volcanic and ENSO activity (with major late-20th
20 century eruptions coinciding with El Niño phases of ENSO) also needs to be considered when
21 attributing the volcanic activity, as well as the possibility of its influence on the AMO phase
22 (Knudsen et al., 2014). Interpretational pitfalls aside, there was a strong agreement between
23 the observational datasets in their representation of the volcanism-attributed spatial pattern.
24 20CR data showed tendency toward more positive temperature anomalies in several regions,
25 resulting also in a more neutral response to volcanism in the globally averaged 20CR data.

26 The temperature variability patterns related to the climate oscillations considered (SO, NAO,
27 AMO, PDO, TPI) were generally captured similarly by individual datasets. This also applies
28 to 20CR for the most part, though there seem to be some break-downs in the representation of
29 trans-continental and trans-oceanic teleconnections in the reanalysis data, most noticeable in
30 the influence of NAO over eastern Asia, AMO over northern parts of Eurasia or weakened
31 links to SO and PDO in parts of Africa. One might speculate that this distinction is rooted in
32 the specific behavior of the reanalysis engine, distorting the complex structure of atmospheric

bridges propagating the teleconnections. However, an unrealistic representation of the long-distance links by the 20CR cannot be blamed automatically: Note that the differences detected are generally more prominent in the first half of the analysis period, and less striking (though still noticeable) during the later half-period (Fig. S6). The reanalysis may thus simply struggle to recreate the observed patterns in regions where the assimilable data are rare and relatively unreliable, just as the procedures generating the analysis-type gridded data are burdened with increased errors when faced with lack of reliable inputs. Neither of these data sources can thus be considered automatically superior and increased attention to the effects of data uncertainty is needed when investigating climate variability in regions and periods with limited observations. Keeping these limitations and specifics in mind, the 20th Century Reanalysis seems to provide a satisfactory approximation of the past temperatures during the 20th and early 21st century, and thus a suitable tool for studies concerned with validity of climate simulations.

Potential pitfalls related to the attribution of temperature changes to trend-like predictors were already discussed above, but even interpretation of the components associated with faster variable explanatory factors needs to be done with caution. Some of the internal climate oscillatory modes are interconnected, and their respective indices partly collinear. Variability assigned to a certain predictor does therefore not need to originate from the respective forcing factor alone – for instance, the relationship between SO/ENSO and PDO implies that effects of the variability modes in the Pacific area cannot be entirely separated, on neither physical nor statistical level. The issue of interdependent predictors is not limited to pair-wise relationships: It has been shown that various variability modes in the climate system are intertwined in quite complex networks, with nontrivial time-delayed relations among oscillations in different regions (e.g. Wyatt et al., 2012). Intricacy of such structures becomes even more apparent when generalized links are studied, unrestricted to just the conventional variability modes (e.g. Hlinka et al., 2013, 2014a, b).

Caution is also needed when interpreting the outcomes of the tests of statistical significance. The AR(1) model of residual autocorrelations, assumed here when assessing significance of predictors' connections to the gridded temperatures, provides basic approximation of the short-term persistence. Often, such approach seems sufficient, especially over land where the residual autocorrelations generally rapidly approach zero. In other cases (particularly for tropical oceans and global averages encompassing oceanic areas), longer-term

1 autocorrelations of various shapes appear in the residuals. Their presence is indicative of
2 unaccounted-for components in the data, long-term memory and/or presence of
3 inhomogeneities, potentially infesting temperature analyses and reanalyses alike (e.g. Cowtan
4 and Way, 2014; Ferguson and Villarini, 2014). To further assess the validity of our
5 significance tests, bootstrap-based estimates of statistical significance for the gridded
6 temperature data were also implemented, using a variable-sized moving block, reflecting the
7 magnitude of residual autocorrelation (Politis and White, 2004; Bravo and Godfrey, 2012).
8 Little difference in the regression outcomes was found compared to the other test designs in
9 this paper. Artifacts of annual cycle were also often found in the residuals, traceable (at least
10 in part) to non-stationary representation of the seasonal variations (Foster and Rahmstorf,
11 2011). A treatment by inclusion of components approximating the 12-month periodicity
12 among the predictors was attempted, but resulted in no major changes to the regression
13 coefficients or their significance.

14 Another important aspect shaping the outcomes of the regression mappings is the choice of
15 the explanatory variables. Most of the predictors applied here exist in alternative variants,
16 differing in their definition or method of (re)construction. A sizable discussion could be
17 devoted to the specifics of each of them. While we did not study this issue in such a depth,
18 partial experiments were carried out to assess the degree of variability of the analysis
19 outcomes if alternative predictors were used. First, robustness of the imprints of volcanic
20 forcing was assessed, with GISS aerosol optical depth (Sato et al., 1993) substituted with
21 Crowley and Unterman's (2013) data. The resulting change to the global temperature
22 response and the corresponding spatial fingerprints proved to be minor, generally smaller than
23 uncertainties associated with the regression coefficients themselves. Use of hemisphere-
24 specific volcanic aerosol amounts instead of their global representation also induced just
25 minor changes to the respective response patterns.

26 Of the multiple definitions of the indices characterizing the climatic oscillations studied, we
27 prioritized the forms not directly involving temperature itself, to avoid explicit contribution of
28 the temperature signal to the explanatory variables. This was not a problem for NAO and TPI,
29 as their descriptors are derived from the baric characteristics. In the case of ENSO, the
30 pressure-based SOI was preferred over the SST-based NINO indices or multivariate ENSO
31 index. On the other hand, the usual forms of AMOI and PDOI are calculated from areal SSTs,
32 and thus likely interrelated with the temperature signals. For PDOI, which exhibits

1 comparatively weaker correlation with globally averaged temperatures (at least partly due to
2 the fact that PDOI is, by its definition, detrended by global sea-surface temperature), this
3 issue seems less serious. However, it is still worthwhile to see how much the outcomes
4 change from employing another version of the index. Use of the PDO index from JISAO
5 (<http://research.jisao.washington.edu/pdo/PDO.latest>) resulted in generally weaker PDO
6 imprint in global temperature (though still largely within the confidence intervals shown in
7 Fig. 4), but nonetheless very similar spatial response pattern (with the relatively strongest
8 distinction being somewhat stronger negative link over northern China). In the case of AMO,
9 the issue of predictor selection and interpretation of its effects is more critical. Our AMO
10 index of choice (linearly detrended, as per the prevalent definition by Enfield et al., 2001)
11 seems to be formally associated with rather strong component in global temperature, as well
12 as in local temperatures in various regions across the globe. While this may indeed suggest
13 existence of trans-planetary teleconnections involving AMO-related variability, there is a
14 danger in overly formalistic interpretation of the patterns detected. Firstly, several definitions
15 of AMO index exist, embodying different views of the phenomenon (see, e.g., Canty et al.,
16 2013). Use of a differently defined AMOI affects magnitude of the temperature response
17 detected, and potentially also strength of components tied to other predictors, including the
18 volcanic activity or the long-term trends (Canty et al., 2013; van der Werf and Dolman,
19 2014). Some of our tests were therefore repeated for AMOI series based on detrending the
20 north Atlantic SST by global anthropogenic forcing, proposed by Canty et al. (2013) to limit
21 the aliasing of anthropogenic long-term temperature trend and AMOI. Little impact on the
22 outcomes of the attribution analysis resulted from such change. Greater differences would
23 likely arise from application of AMOI detrended by mean sea surface temperature (Trenberth
24 and Shea, 2006) or global mean temperature (van Oldenborgh et al., 2009), although it has
25 been argued that such method of detrending removes part of the target signal (Canty et al.,
26 2013). Secondly, the associations revealed do not directly provide a conclusion to the still
27 disputed question of the existence and stability of AMO as natural oscillatory phenomenon.
28 The AMOI-related patterns have exhibited relatively strong resemblance between the first and
29 second half of the analysis period, especially over the oceanic areas. This suggests a fair
30 degree of stability of the relations between north Atlantic SST and local temperature in more
31 distant areas, but does not confirm stationarity of AMO as such. It should also be considered
32 that the 55-year-long subperiods do encompass less than one cycle of the approximately 70-
33 year-long supposed main cycle of AMO, and that the relations detected are in large part due

1 to synchronization of shorter-term variability in AMOI and temperature. Finally, attribution
2 of temperature components to AMOI may also be partly spurious due to aliasing with
3 explanatory factors omitted in our analysis setup. In particular, changes in amounts of
4 anthropogenic aerosols have been suggested as a cause for temperature variations in the
5 northern Atlantic (Booth et al., 2012), though their responsibility for the bulk of multidecadal
6 variability has been consequently disputed (Zhang et al., 2013). Possible forcing of AMO by
7 combined natural forcings (volcanic and solar) has also been shown (Knudsen et al., 2014),
8 while Ting et al. (2014) suggested AMO to be a product of natural multidecadal variability
9 and anthropogenic forcing. Altogether, the question of AMO's nature and degree of its
10 influence, both global and local, remains still open.

11 Finally, it should be accentuated once again that the issue of attribution of climate variability
12 cannot be completely resolved by statistical approach alone. Statistical solutions to this
13 multifaceted problem therefore need to be considered alongside the GCM-based simulations,
14 conceptually more universal than purely statistical approaches, yet still only partially
15 successful in completely reproducing the observed features of the climate system (IPCC 2013,
16 Ch. 9). Our results here hope to contribute to future efforts in this field: By showing the
17 character and variability of temperature components formally attributable to various forcings
18 across several datasets, their robustness (or lack thereof) was illustrated, providing a picture
19 of the respective fingerprints, as well as support guidelines for the use of the respective data
20 in validation of the climate models.

22 **Data availability**

23 Several publicly available datasets were employed in our analysis. The specific references and
24 internet links to the individual data sources are given in the text; all their authors and
25 providers have our gratitude.

27 **Acknowledgements**

28 We gratefully acknowledge the support of Czech Science Foundation (GACR), through
29 project P209/11/0956, of Ministry of Education, Youth and Sports of CR, through National
30 Sustainability Program I (NPU I), grant number LO1415, and of Charles University, through

project UNCE 204020/2012. We would also like to thank the two anonymous reviewers of the discussion version of the manuscript for their valuable comments and suggestions.

References

Booth, B. B. B., Dunstone, N. J., Halloran, P. R., Andrews, T., and Bellouin, N.: Aerosols implicated as a prime driver of twentieth-century North Atlantic climate variability, *Nature*, 484, 228-232, doi:10.1038/nature10946, 2012.

Bravo, F., and Godfrey, L. G.: Bootstrap HAC Tests for Ordinary Least Squares Regression, *Oxford B. Econ. Stat.*, 74, 903-922, doi:10.1111/j.1468-0084.2011.00671.x, 2012.

Bretherton, C. S., Widmann, M., Dymnikov, V. P., Wallace, J. M., and Blade, I.: The effective number of spatial degrees of freedom of a time-varying field, *J. Climate*, 12, 1990-2009, doi:10.1175/1520-0442(1999)012<1990:tenosd>2.0.co;2, 1999.

Canty, T., Mascioli, N. R., Smarte, M. D., and Salawitch, R. J.: An empirical model of global climate - Part 1: A critical evaluation of volcanic cooling, *Atmos. Chem. Phys.*, 13, 3997-4031, doi:10.5194/acp-13-3997-2013, 2013.

Chylek, P., Dubey, M. K., Lesins, G., Li, J. N., and Hengartner, N.: Imprint of the Atlantic multi-decadal oscillation and Pacific decadal oscillation on southwestern US climate: past, present, and future, *Clim. Dynam.*, 43, 119-129, doi:10.1007/s00382-013-1933-3, 2014a.

Chylek, P., Klett, J. D., Lesins, G., Dubey, M. K., and Hengartner, N.: The Atlantic Multidecadal Oscillation as a dominant factor of oceanic influence on climate, *Geophys. Res. Lett.*, 41, 1689-1697, doi:10.1002/2014gl059274, 2014b.

Compo, G. P., Whitaker, J. S., Sardeshmukh, P. D., Matsui, N., Allan, R. J., Yin, X., Gleason, B. E., Vose, R. S., Rutledge, G., Bessemoulin, P., Brönnimann, S., Brunet, M., Crouthamel, R. I., Grant, A. N., Groisman, P. Y., Jones, P. D., Kruk, M. C., Kruger, A. C., Marshall, G. J., Maugeri, M., Mok, H. Y., Nordli, O., Ross, T. F., Trigo, R. M., Wang, X. L., Woodruff, S. D., and Worley, S. J.: The Twentieth Century Reanalysis Project, *Q. J. Roy. Meteor. Soc.*, 137, 1-28, doi:10.1002/qj.776, 2011.

Compo, G. P., Sardeshmukh, P. D., Whitaker, J. S., Brohan, P., Jones, P. D., and McColl, C.: Independent confirmation of global land warming without the use of station temperatures, *Geophys. Res. Lett.*, 40, 3170-3174, doi:10.1002/grl.50425, 2013.

1 Cowtan, K., and Way, R. G.: Coverage bias in the HadCRUT4 temperature series and its
2 impact on recent temperature trends, *Q. J. Roy. Meteor. Soc.*, 140, 1935-1944,
3 doi:10.1002/qj.2297, 2014.

4 Crowley, T. J., and Unterman, M. B.: Technical details concerning development of a 1200
5 yr proxy index for global volcanism, *Earth Syst. Sci. Data*, 5, 187-197, doi:10.5194/essd-5-
6 187-2013, 2013.

7 Deser, C., Alexander, M. A., Xie, S. P., and Phillips, A. S.: Sea Surface Temperature
8 Variability: Patterns and Mechanisms. *Annu. Rev. Mar. Sci.*, 2, 115-143,
9 doi:10.1146/annurev-marine-120408-151453, 2010.

10 Driscoll, S., Bozzo, A., Gray, L. J., Robock, A., and Stenchikov, G.: Coupled Model
11 Intercomparison Project 5 (CMIP5) simulations of climate following volcanic eruptions, *J.*
12 *Geophys. Res.-Atmos.*, 117, D17105, doi:10.1029/2012jd017607, 2012.

13 Enfield, D. B., Mestas-Nunez, A. M., and Trimble, P. J.: The Atlantic multidecadal oscillation
14 and its relation to rainfall and river flows in the continental US, *Geophys. Res. Lett.*, 28,
15 2077-2080, doi:10.1029/2000gl012745, 2001.

16 Ferguson, C. R., and Villarini, G.: An evaluation of the statistical homogeneity of the
17 Twentieth Century Reanalysis, *Clim. Dynam.*, 42, 2841-2866, doi:10.1007/s00382-013-1996-
18 1, 2014.

19 Fitzenberger, B.: The moving blocks bootstrap and robust inference for linear least squares
20 and quantile regressions, *J. Econometrics*, 82, 235-287, doi:10.1016/s0304-4076(97)00058-4,
21 1998.

22 Foster, G., and Rahmstorf, S.: Global temperature evolution 1979-2010, *Environ. Res. Lett.*,
23 6, 044022, doi:10.1088/1748-9326/6/4/044022, 2011.

24 Gray, L. J., Scaife, A. A., Mitchell, D. M., Osprey, S., Ineson, S., Hardiman, S., Butchart, N.,
25 Knight, J., Sutton, R., and Kodera, K.: A lagged response to the 11 year solar cycle in
26 observed winter Atlantic/European weather patterns, *J. Geophys. Res.-Atmos.*, 118, 13405-
27 13420, doi:10.1002/2013jd020062, 2013.

28 Hansen, J., Ruedy, R., Sato, M., and Lo, K.: GLOBAL SURFACE TEMPERATURE
29 CHANGE, *Rev. Geophys.*, 48, RG4004, doi:10.1029/2010rg000345, 2010.

30 Hlinka, J., Hartman, D., Vejmelka, M., Runge, J., Marwan, N., Kurths, J., and Palus, M.:

1 Reliability of Inference of Directed Climate Networks Using Conditional Mutual Information,
2 Entropy, 15, 2023-2045, doi:10.3390/e15062023, 2013.

3 Hlinka, J., Hartman, D., Jajcay, N., Vejmelka, M., Donner, R., Marwan, N., Kurths, J., and
4 Palus, M.: Regional and inter-regional effects in evolving climate networks, Nonlinear Proc.
5 Geoph., 21, 451-462, doi:10.5194/npg-21-451-2014, 2014a.

6 Hlinka, J., Hartman, D., Vejmelka, M., Novotna, D., and Palus, M.: Non-linear dependence
7 and teleconnections in climate data: sources, relevance, nonstationarity, Clim. Dynam., 42,
8 1873-1886, doi:10.1007/s00382-013-1780-2, 2014b.

9 Hood, L., Schimanke, S., Spangehl, T., Bal, S., and Cubasch, U.: The Surface Climate
10 Response to 11-Yr Solar Forcing during Northern Winter: Observational Analyses and
11 Comparisons with GCM Simulations, J. Clim., 26, 7489-7506, doi:10.1175/jcli-d-12-00843.1,
12 2013.

13 Hurrell, J. W., Kushnir, Y., Ottersen, G., and Visbeck, M.: The North Atlantic Oscillation:
14 Climatic Significance and Environmental Impact. American Geophysical Union, Washington,
15 DC, 279 pp., 2003.

16 IPCC, 2013: Stocker, T. F., Quin, D., Plattner, G.-K., Tignor, M. M. B., Allen, S. K.,
17 Boschung, J., Nauels, A., Xia, Y., Bex, V., and Midgley, P. M. (eds.): IPCC, 2013: Climate
18 Change 2013: The Physical Science Basis. Contribution of Working Group I to the Fifth
19 Assessment Report of the Intergovernmental Panel on Climate Change. Cambridge University
20 Press, Cambridge, 1535 pp., 2013.

21 Jones, P. D., Jonsson, T., and Wheeler, D.: Extension to the North Atlantic Oscillation using
22 early instrumental pressure observations from Gibraltar and south-west Iceland, Int. J.
23 Climatol., 17, 1433-1450, doi:10.1002/(sici)1097-0088(19971115)17:13<1433::aid-
24 joc203>3.0.co;2-p, 1997.

25 Jones, P. D., Salinger, M. J., and Mullan, A. B.: Extratropical circulation indices in the
26 Southern Hemisphere based on station data, Int. J. Climatol., 19, 1301-1317,
27 doi:10.1002/(sici)1097-0088(199910)19:12<1301::aid-joc425>3.3.co;2-g, 1999.

28 Kennedy, J. J., Rayner, N. A., Smith, R. O., Parker, D. E., and Saunby, M.: Reassessing
29 biases and other uncertainties in sea surface temperature observations measured in situ since
30 1850: 1. Measurement and sampling uncertainties, J. Geophys. Res.-Atmos., 116, D14103,
31 doi:10.1029/2010jd015218, 2011a.

1 Kennedy, J. J., Rayner, N. A., Smith, R. O., Parker, D. E., and Saunby, M.: Reassessing
2 biases and other uncertainties in sea surface temperature observations measured in situ since
3 1850: 2. Biases and homogenization, *J. Geophys. Res.-Atmos.*, 116, D14104,
4 doi:10.1029/2010jd015220, 2011b.

5 Knudsen, M. F., Jacobsen, B. H., Seidenkrantz, M. S., and Olsen, J.: Evidence for external
6 forcing of the Atlantic Multidecadal Oscillation since termination of the Little Ice Age,
7 *Nature Communications*, 5, 8, doi:10.1038/ncomms4323, 2014.

8 Kopp, G., Lawrence, G., and Rottman, G.: The Total Irradiance Monitor (TIM): Science
9 results, *Sol. Phys.*, 230, 129-139, doi:10.1007/s11207-005-7433-9, 2005.

10 Lean, J. L.: Cycles and trends in solar irradiance and climate, *Wiley Interdisciplinary*
11 *Reviews-Climate Change*, 1, 111-122, doi:10.1002/wcc.018, 2010.

12 Lean, J. L., and Rind, D. H.: How natural and anthropogenic influences alter global and
13 regional surface temperatures: 1889 to 2006, *Geophys. Res. Lett.*, 35, L18701,
14 doi:10.1029/2008gl034864, 2008.

15 Lewis, N.: [http://judithcurry.com/2014/05/19/critique-of-manns-new-paper-characterizing-](http://judithcurry.com/2014/05/19/critique-of-manns-new-paper-characterizing-the-amo/)
16 [the-amo/](http://judithcurry.com/2014/05/19/critique-of-manns-new-paper-characterizing-the-amo/), last access: 20th December 2014.

17 Lockwood, M.: Solar Influence on Global and Regional Climates, *Surv. Geophys.*, 33, 503-
18 534, doi:10.1007/s10712-012-9181-3, 2012.

19 Mann, M. E., Steinman, B. A., and Miller, S. K.: On forced temperature changes, internal
20 variability, and the AMO, *Geophys. Res. Lett.*, 41, 3211-3219, doi:10.1002/2014gl059233,
21 2014.

22 Meinshausen, M., Smith, S. J., Calvin, K., Daniel, J. S., Kainuma, M. L. T., Lamarque, J. F.,
23 Matsumoto, K., Montzka, S. A., Raper, S. C. B., Riahi, K., Thomson, A., Velders, G. J. M.,
24 and van Vuuren, D. P. P.: The RCP greenhouse gas concentrations and their extensions from
25 1765 to 2300, *Climatic Change*, 109, 213-241, doi:10.1007/s10584-011-0156-z, 2011.

26 Mikšovský, J., Brázdil, R., Štěpánek, P., Zahradníček, P., and Pišoft, P.: Long-term variability
27 of temperature and precipitation in the Czech Lands: an attribution analysis, *Climatic Change*,
28 125, 253-264, doi:10.1007/s10584-014-1147-7, 2014.

29 Morice, C. P., Kennedy, J. J., Rayner, N. A., and Jones, P. D.: Quantifying uncertainties in
30 global and regional temperature change using an ensemble of observational estimates: The

1 HadCRUT4 data set, *J. Geophys. Res.-Atmos.*, 117, D08101, doi:10.1029/2011jd017187,
2 2012.

3 Muller, R. A., Curry, J., Groom, D., Jacobsen, R., Perlmutter, S., Rohde, R., Rosenfeld, A.,
4 Wickham, C., and Wurtele, J.: Decadal variations in the global atmospheric land
5 temperatures, *J. Geophys. Res.-Atmos.*, 118, 5280-5286, doi:10.1002/jgrd.50458, 2013.

6 Newman, M., Compo, G. P., and Alexander, M. A.: ENSO-forced variability of the Pacific
7 decadal oscillation, *J. Clim.*, 16, 3853-3857, doi:10.1175/1520-
8 0442(2003)016<3853:evotpd>2.0.co;2, 2003.

9 Pasini, A., Lore, M., and Ameli, F.: Neural network modelling for the analysis of
10 forcings/temperatures relationships at different scales in the climate system, *Ecol. Model.*,
11 191, 58-67, doi:10.1016/j.ecolmodel.2005.08.012, 2006.

12 Politis, D. N., and White, H.: Automatic Block-Length Selection for the Dependent
13 Bootstrap, *Economet. Rev.*, 23, 53-70, doi:10.1081/ETC-120028836, 2004.

14 Rohde, R., Muller, R., Jacobsen, R., Perlmutter, S., Rosenfeld, A., Wurtele, J., Curry, J.,
15 Wickham, C., and Mosher, S.: Berkeley Earth Temperature Averaging
16 Process, *Geoinformatics & Geostatistics: an Overview*, 1(2), 1-13, doi:10.4172/2327-
17 4581.1000103, 2013a.

18 Rohde, R., Muller, R. A., Jacobsen, R., Muller, E., Perlmutter, S., Rosenfeld, A., Wurtele, J.,
19 Groom, D., and Wickham, C.: A New Estimate of the Average Earth Surface Land
20 Temperature Spanning 1753 to 2011, *Geoinformatics & Geostatistics: an Overview*, 1(1), 1-7,
21 doi:10.4172/2327-4581.1000101, 2013b.

22 Ropelewski, C. F., and Jones, P. D.: An Extension of the Tahiti-Darwin Southern Oscillation
23 Index, *Mon. Weather Rev.*, 115, 2161-2165, doi:10.1175/1520-
24 0493(1987)115<2161:aeotts>2.0.co;2, 1987.

25 Rypdal, K.: Attribution in the presence of a long-memory climate response, *Earth Syst.*
26 *Dynam.*, 6, 719-730, doi:10.5194/esd-6-719-2015, 2015.

27 Sato, M., Hansen, J. E., McCormick, M. P., and Pollack, J. B.: Stratospheric aerosol optical
28 depths, 1850-1990, *J. Geophys. Res.-Atmos.*, 98, 22987-22994, doi:10.1029/93jd02553,
29 1993.

30 Schlesinger, M. E., and Ramankutty, N.: An oscillation in the global climate system of period

1 65-70 years, *Nature*, 367, 723-726, doi:10.1038/367723a0, 1994.

2 Schönwiese, C. D., Walter, A., and Brinckmann, S.: Statistical assessments of anthropogenic
3 and natural global climate forcing. An update, *Meteorol. Z.*, 19, 3-10, doi:10.1127/0941-
4 2948/2010/0421, 2010.

5 Shiogama, H., Stone, D. A., Nagashima, T., Nozawa, T., and Emori, S.: On the linear
6 additivity of climate forcing-response relationships at global and continental scales, *Int. J.*
7 *Climatol.*, 33, 2542-2550, doi:10.1002/joc.3607, 2013.

8 Skeie, R. B., Berntsen, T. K., Myhre, G., Tanaka, K., Kvalevag, M. M., and Hoyle, C. R.:
9 Anthropogenic radiative forcing time series from pre-industrial times until 2010, *Atmos.*
10 *Chem. Phys.*, 11, 11827-11857, doi:10.5194/acp-11-11827-2011, 2011.

11 Smith, S. J., van Aardenne, J., Klimont, Z., Andres, R. J., Volke, A., and Arias, S. D.:
12 Anthropogenic sulfur dioxide emissions: 1850-2005, *Atmos. Chem. Phys.*, 11, 1101-1116,
13 doi:10.5194/acp-11-1101-2011, 2011.

14 Smith, T. M., Reynolds, R. W., Peterson, T. C., and Lawrimore, J.: Improvements to NOAA's
15 historical merged land-ocean surface temperature analysis (1880-2006), *J. Clim.*, 21, 2283-
16 2296, doi:10.1175/2007jcli2100.1, 2008.

17 Stenchikov, G., Hamilton, K., Stouffer, R. J., Robock, A., Ramaswamy, V., Santer, B., and
18 Graf, H. F.: Arctic Oscillation response to volcanic eruptions in the IPCC AR4 climate
19 models, *J. Geophys. Res.-Atmos.*, 111, D07107, doi:10.1029/2005jd006286, 2006.

20 Ting, M., Kushnir, Y., and Li, C.: North Atlantic Multidecadal SST Oscillation: External
21 forcing versus internal variability, *J. Marine Syst.*, 133, 27-38,
22 doi:10.1016/j.jmarsys.2013.07.006, 2014.

23 Trenberth, K. E., Caron, J. M., Stepaniak, D. P., and Worley, S.: Evolution of El Niño-
24 Southern Oscillation and global atmospheric surface temperatures, *J. Geophys. Res.-Atmos.*,
25 107, 4065, doi:10.1029/2000jd000298, 2002.

26 Trenberth, K. E., and Shea, D. J.: Atlantic hurricanes and natural variability in 2005,
27 *Geophys. Res. Lett.*, 33, L12704, doi:10.1029/2006gl026894, 2006.

28 Tung, K. K., and Zhou, J.: Using data to attribute episodes of warming and cooling in
29 instrumental records, *P. Natl. Acad. Sci. U.S.A.*, 110, 2058-2063,
30 doi:10.1073/pnas.1212471110, 2013.

1 van der Werf, G. R., and Dolman, A. J.: Impact of the Atlantic Multidecadal Oscillation
2 (AMO) on deriving anthropogenic warming rates from the instrumental temperature record,
3 *Earth Syst. Dynam.*, 5, 375-382, doi:10.5194/esd-5-375-2014, 2014.

4 van Oldenborgh, G. J., te Raa, L. A., Dijkstra, H. A., and Philip, S. Y.: Frequency- or
5 amplitude-dependent effects of the Atlantic meridional overturning on the tropical Pacific
6 Ocean, *Ocean Sci.*, 5, 293-301, 2009.

7 Wang, Y. M., Lean, J. L., and Sheeley, N. R.: Modeling the sun's magnetic field and
8 irradiance since 1713, *Astrophys. J.*, 625, 522-538, doi:10.1086/429689, 2005.

9 Wu, S., Liu, Z. Y., Zhang, R., and Delworth, T. L.: On the observed relationship between the
10 Pacific Decadal Oscillation and the Atlantic Multi-decadal Oscillation, *J. Oceanogr.*, 67, 27-
11 35, doi:10.1007/s10872-011-0003-x, 2011.

12 Wyatt, M. G., Kravtsov, S., and Tsonis, A. A.: Atlantic Multidecadal Oscillation and
13 Northern Hemisphere's climate variability, *Clim. Dynam.*, 38, 929-949, doi:10.1007/s00382-
14 011-1071-8, 2012.

15 Xu, J., and Powell, A. M.: What happened to surface temperature with sunspot activity in the
16 past 130 years?, *Theor. Appl. Climatol.*, 111, 609-622, doi:10.1007/s00704-012-0694-y,
17 2013.

18 Yasunaka, S., and Hanawa, K.: Intercomparison of historical sea surface temperature datasets,
19 *Int. J. Climatol.*, 31, 1056-1073, doi:10.1002/joc.2104, 2011.

20 Zanchettin, D., Bothe, O., Muller, W., Bader, J., and Jungclaus, J. H.: Different flavors of the
21 Atlantic Multidecadal Variability, *Clim. Dynam.*, 42, 381-399, doi:10.1007/s00382-013-
22 1669-0, 2014.

23 Zhang, R., and Delworth, T. L.: Impact of the Atlantic Multidecadal Oscillation on North
24 Pacific climate variability, *Geophys. Res. Lett.*, 34, 6, doi:10.1029/2007gl031601, 2007.

25 Zhang, R., Delworth, T. L., Sutton, R., Hodson, D. L. R., Dixon, K. W., Held, I. M., Kushnir,
26 Y., Marshall, J., Ming, Y., Msadek, R., Robson, J., Rosati, A. J., Ting, M. F., and Vecchi, G.
27 A.: Have Aerosols Caused the Observed Atlantic Multidecadal Variability?, *J. Atmos. Sci.*,
28 70, 1135-1144, doi:10.1175/jas-d-12-0331.1, 2013.

29 Zhang, Y., Wallace, J. M., and Battisti, D. S.: ENSO-like interdecadal variability: 1900-93, *J.*
30 *Clim.*, 10, 1004-1020, doi:10.1175/1520-0442(1997)010<1004:eliv>2.0.co;2, 1997.

1 Zhou, J., and Tung, K. K.: Solar Cycles in 150 Years of Global Sea Surface Temperature
2 Data, *J. Clim.*, 23, 3234-3248, doi:10.1175/2010jcli3232.1, 2010.

3 Zhou, J., and Tung, K. K.: Deducing Multidecadal Anthropogenic Global Warming Trends
4 Using Multiple Regression Analysis, *J. Atmos. Sci.*, 70, 3-8, doi:10.1175/jas-d-12-0208.1,
5 2013.

6

	GHG	Solar	Volc.	SOI	NAOI	AMOI	PDOI	TPI
GHG		0.37	0.10	-0.07	-0.08	0.22	0.07	0.06
Solar	0.37		0.01	-0.01	0.02	0.16	0.05	-0.01
Volc.	0.11	-0.02		-0.17	0.08	-0.27	0.15	-0.01
SOI	-0.08	-0.01	-0.12		-0.01	0.00	-0.37	-0.02
NAOI	-0.08	0.02	0.06	0.00		-0.15	-0.04	-0.04
AMOI	0.22	0.16	-0.30	-0.07	-0.15		0.01	0.00
PDOI	0.07	0.05	0.19	-0.39	-0.04	0.01		0.00
TPI	0.06	-0.01	0.00	0.00	-0.04	0.00	0.00	
VIF	1.26	1.18	1.19	1.20	1.04	1.22	1.22	1.00

Table 1. Pearson correlation coefficient between series of individual predictors (Fig. 1) in the 1901–2010 period. The upper-right segment of the matrix contains values for the original concurrent series, the lower-left segment values for their time-shifted versions (as specified in Fig. 4's caption). The bottom-most row shows values of the variance inflation factor (VIF) for individual time-shifted predictors, calculated as $1/(1-R^2)$, where R^2 is the coefficient of determination obtained from regression of the given explanatory variable on the rest of the predictors. See Table S1 in the Supplement for correlations over the sub-periods 1901-1955 and 1956-2010.

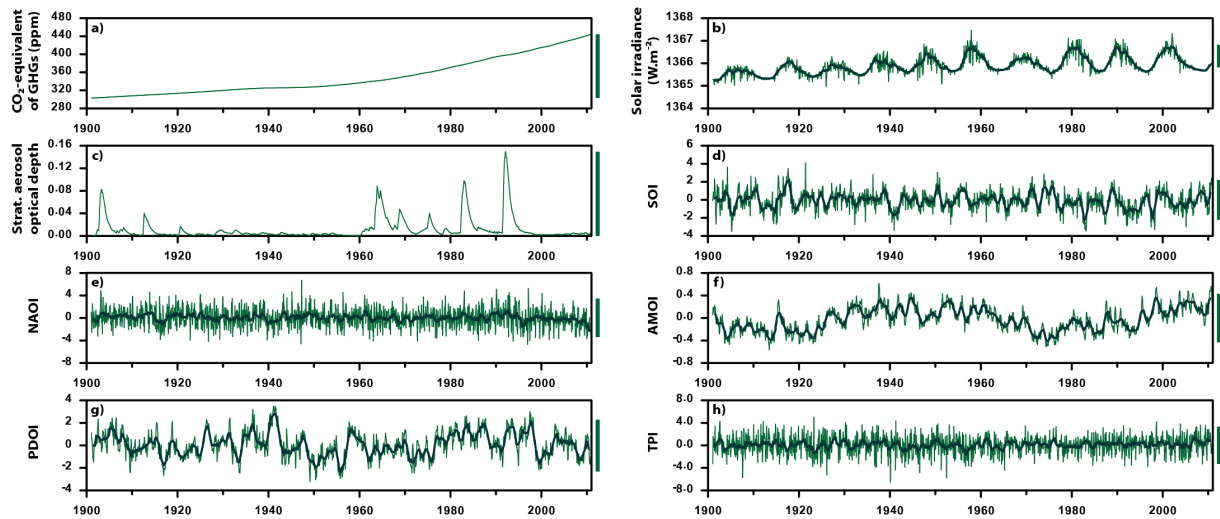


Figure 1. Time series of the explanatory variables employed in the attribution analysis. Bars to the right of individual panels illustrate the pre-selected characteristic variations of the predictors, used for calculation of the temperature responses: increase of CO₂-equivalent GHG concentration between 1901 and 2010 (+141 ppm); increase of solar irradiance by 1 Wm⁻²; Mt. Pinatubo-sized volcanic eruption (aerosol optical depth +0.15); increase of SOI, NAOI, AMOI, PDOI and TPI by four times the standard deviation of the respective time series. Thicker, darker lines represent 13-month moving average of the series.

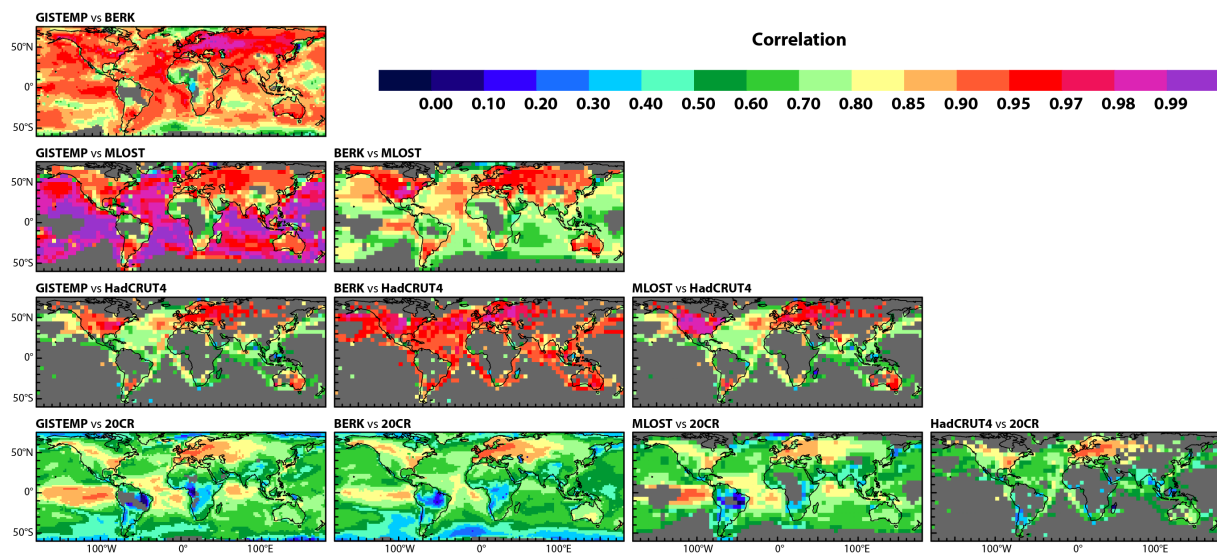


Figure 2. Pair-wise Pearson correlation coefficients between local monthly temperature anomaly series from different datasets for the 1901–2010 period. See Fig. S1 in the Supplement for correlations during the 1901–1955 and 1956–2010 sub-periods.

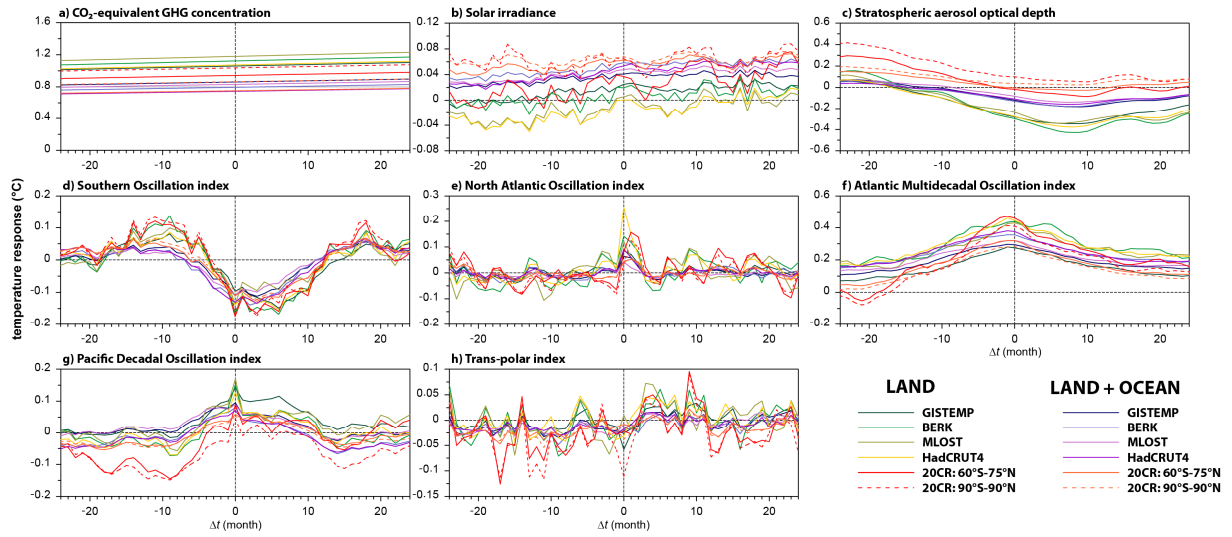


Figure 3. Temperature responses (°C) to characteristic variations of the explanatory variables (specified in Fig. 1), obtained by multiple linear regression carried out with one predictor shifted in time by Δt , while keeping the others at $\Delta t = 0$.

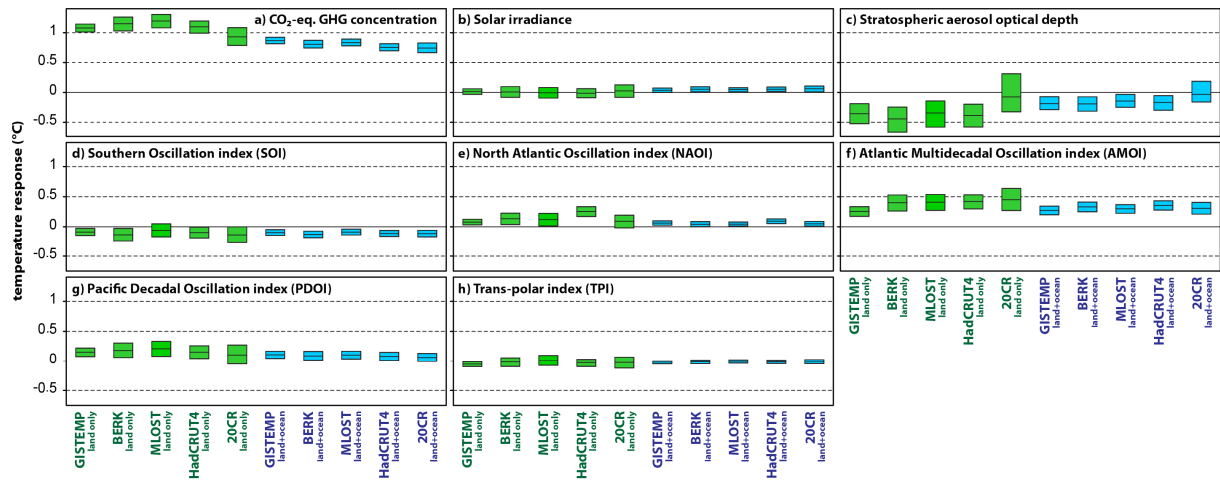


Figure 4. Regression-estimated responses (°C) of global (blue) or global land (green) monthly temperature anomalies to pre-selected characteristic variations of individual explanatory variables (specified in Fig. 1). Time shift of +1 month (predictor leading temperature) was applied for solar irradiance, +7 months for volcanic aerosol amount, +2 months for SOI. The boxes illustrate the 99% confidence intervals, calculated by moving-block bootstrap (12-month block size). The 20CR-based results are shown for the series averaged over the 60°S to 75°N area. Obtained for the 1901–2010 period; see Figs. S2 and S3 in the Supplement for results over the 1901–1955 and 1956–2010 sub-periods; Fig. S4 for visualization of individual temperature series and their regression-based fits.

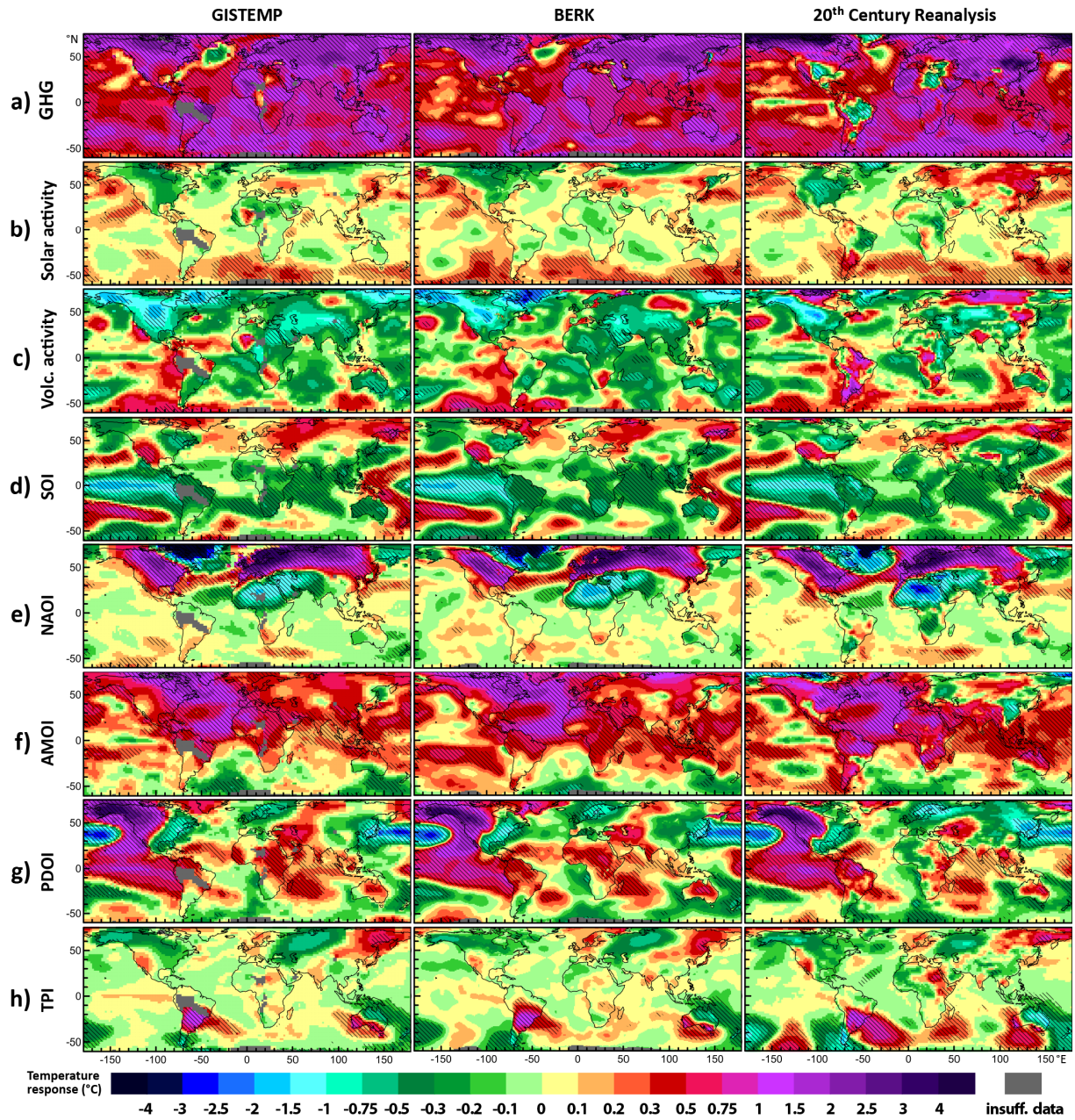


Figure 5. Geographic patterns of regression-estimated contributions to local temperature (°C) from pre-selected characteristic changes of the explanatory variables (specified in Fig. 1). Time shift of +1 month (predictor leading temperature) was applied for solar irradiance, +7 months for volcanic aerosol amount, +2 months for SOI. Areas with response statistically significant at the 99% level are highlighted by hatching. See Fig. S5 for results including the MLOST and HadCRUT4 datasets and Fig. S6 for results over the 1901–1955 and 1956–2010 sub-periods.

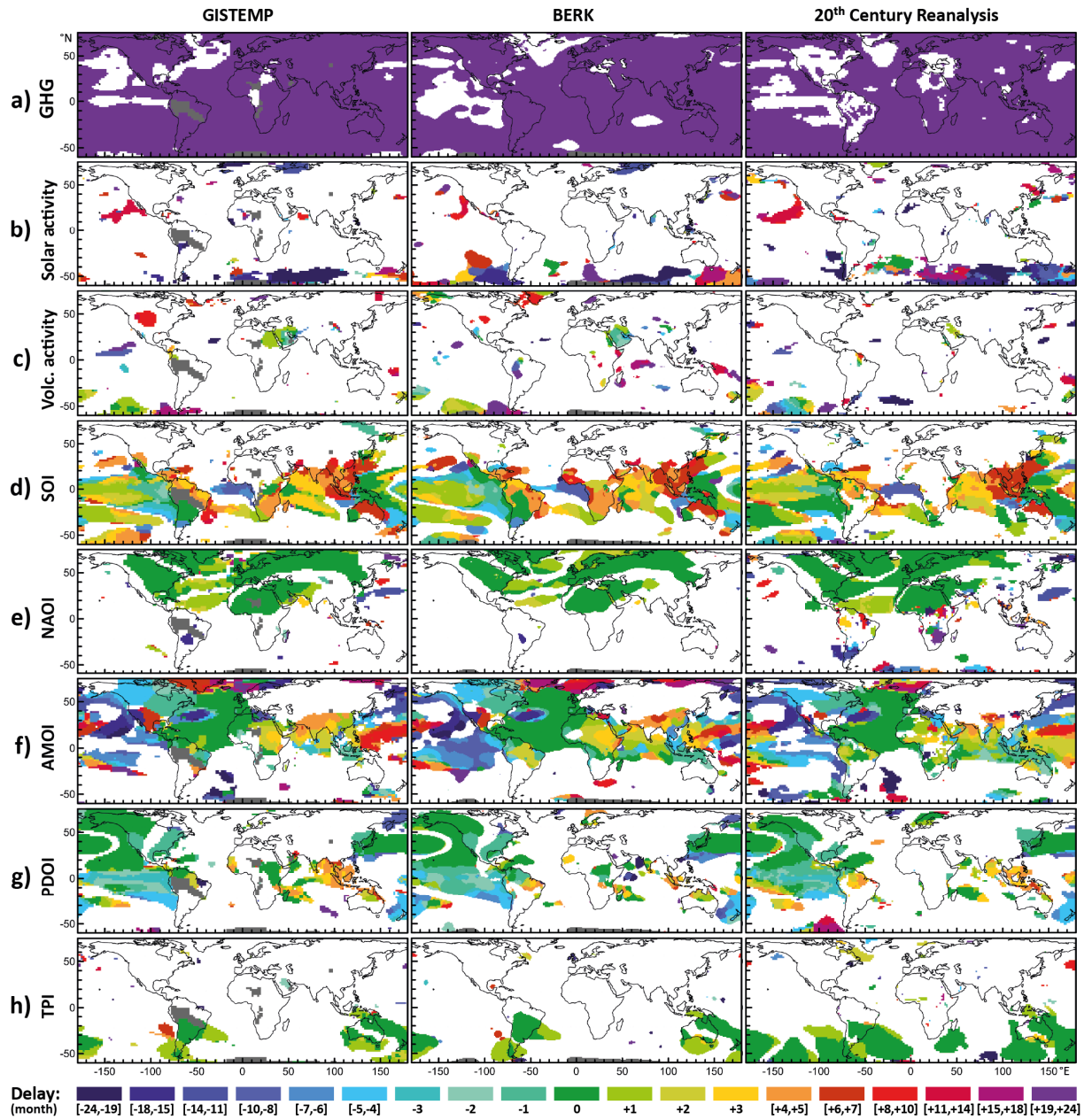


Figure 6. Geographic distribution of the predictor offset time Δt for which the strongest local temperature response was detected, within the ± 24 month range. Positive values of Δt correspond to setups with predictor leading temperature; only grid points with response statistically significant at the 99% level are shown. See Fig. 7 for the corresponding values of the temperature response.

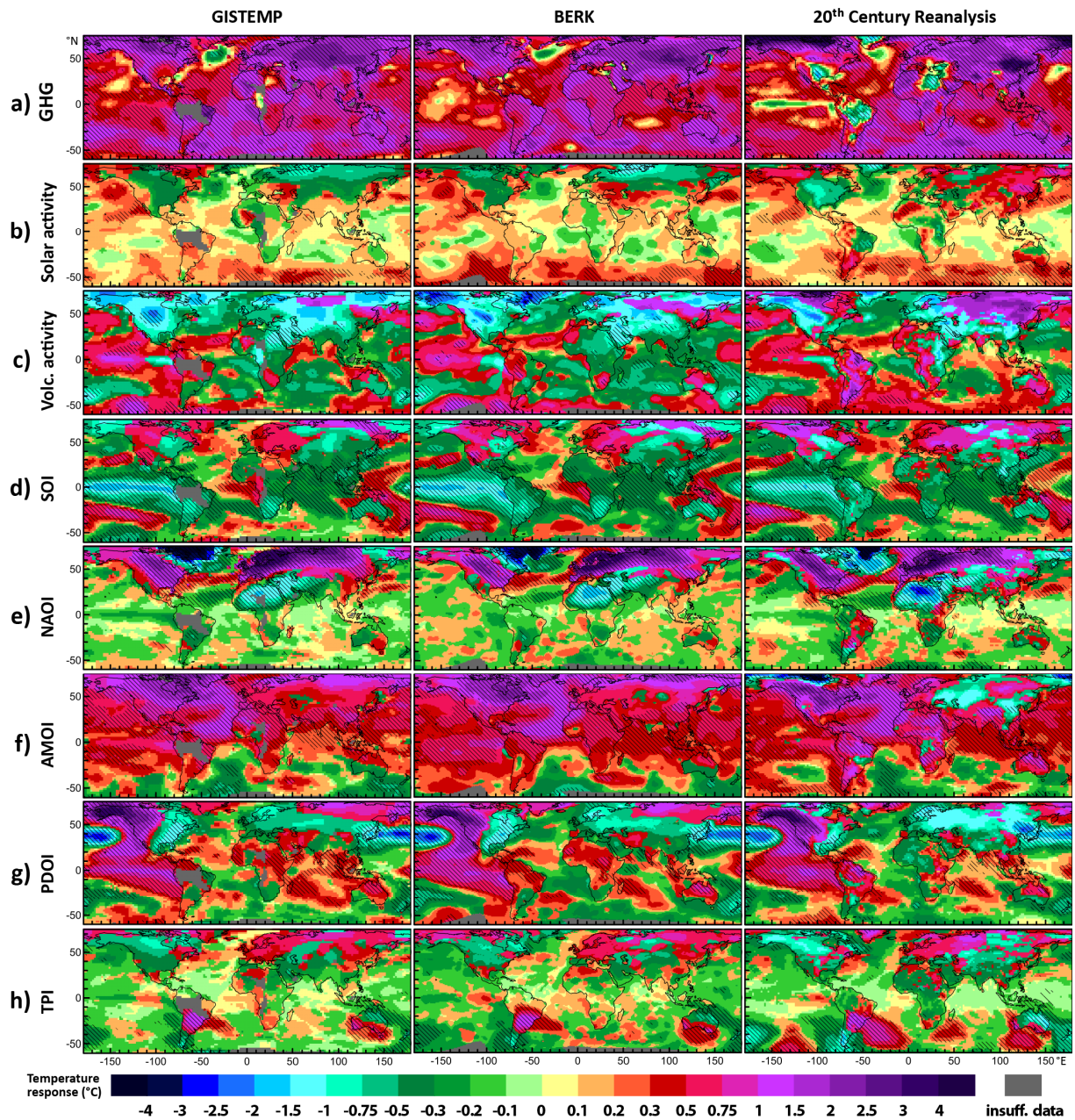


Figure 7. Geographic distribution of the strongest temperature response ($^{\circ}\text{C}$) to individual explanatory variables within the ± 24 month range of the temporal offset of the predictor. Areas with the response statistically significant at the 99% level are highlighted by hatching.