



**Implications of land use change in tropical West Africa under global warming**

T. Brücher et al.

**Implications of land use change in tropical Northern Africa under global warming**

**T. Brücher<sup>1</sup>, M. Claussen<sup>1,2</sup>, and T. Raddatz<sup>1</sup>**

<sup>1</sup>Max Planck Institute for Meteorology, Hamburg, Germany

<sup>2</sup>Centrum für Erdsystemforschung und Nachhaltigkeit (CEN), Universität Hamburg, Hamburg, Germany

Received: 29 May 2015 – Accepted: 9 June 2015 – Published: 22 June 2015

Correspondence to: T. Brücher (tim.bruecher@mpimet.mpg.de)

Published by Copernicus Publications on behalf of the European Geosciences Union.

Title Page

Abstract

Introduction

Conclusions

References

Tables

Figures



Back

Close

Full Screen / Esc

Printer-friendly Version

Interactive Discussion



## Abstract

A major link between climate and humans in Northern Africa, and the Sahel in particular, is land use and associated land cover change, mainly where subsistence farming prevails. Here we assess possible feedbacks between the type of land use and harvest intensity and climate by analyzing a series of idealized GCM experiments using the MPI-ESM. The base line for these experiments is a simulation forced by the RCP8.5 scenario which includes strong greenhouse gas emissions and anthropogenic land cover changes. The anthropogenic land cover changes in the RCP8.5 scenario include a mixture of pasture and agriculture. In subsequent simulations, we replace the entire area affected by anthropogenic land cover change in the region between the Sahara in the North and the Guinean Coast in the South (4 to 20° N) by either pasture or agriculture, respectively. In a second setup we vary the amount of harvest in case of agriculture. The RCP8.5 base line simulation reveals strong changes in mean agriculture and monsoon rainfall. In comparison with these changes, any variation of the type of land use in the study area leads to very small, mostly insignificantly small, additional differences in mean temperature and annual precipitation change in this region. Within the uncertainty of the representation of land use in current ESMs, our study suggests marginal feedback between land use changes and climate changes triggered by strong greenhouse gas emissions. Hence as a good approximation, climate change can be considered as external driver in models of land-use – conflict dynamics when seasonal or mean values are used as external driver.

## 1 Introduction

Northern Africa, and the Sahel in particular, are known to be highly vulnerable to climate change (Low, 2005; Boko et al., 2007) with regional hotspots of high national to subnational differences in vulnerability (Busby et al., 2014). Food production is sensitive to changes in climate across Northern Africa, where economies strongly depend

# ESDD

6, 1101–1128, 2015

## Implications of land use change in tropical West Africa under global warming

T. Brücher et al.

Title Page

Abstract

Introduction

Conclusions

References

Tables

Figures



Back

Close

Full Screen / Esc

Printer-friendly Version

Interactive Discussion



## Implications of land use change in tropical West Africa under global warming

T. Brücher et al.

Title Page

Abstract

Introduction

Conclusions

References

Tables

Figures



Back

Close

Full Screen / Esc

Printer-friendly Version

Interactive Discussion



on agriculture or livestock. When reduced precipitation and droughts affect water security and crop yield (Busby et al., 2014), human security for a growing population is at stake (Scheffran et al., 2012). In turn, climate in this region is affected by changes in land-surface conditions (e.g., Xue and Shukla, 1993; Claussen, 1997; Zeng et al., 1999; Taylor et al., 2002; Vamborg et al., 2011; Patricola and Cook, 2010). Koster et al. (2004) show in a multi-model study that tropical Africa is a hot-spot for a strong atmosphere-land coupling. Albeit models differ in the strength of that coupling, at least all investigated models point to the same sign of the coupling. Therefore, it is conceivable that changes in the type and intensity of anthropogenic land use and land cover change, perhaps caused by local or national conflict, will affect regional climate.

When modelling the interaction between climate change, land use and conflict, the question of feedbacks between climate change and changes in land use and conflict arises. If climate change would trigger any conflict and if this conflict would lead to major changes in land use and land cover, how strong would be the feedback of these land cover changes on climate change? If the feedback is strong, then any model that attempts to describe the nexus between climate change, land use and conflict, would have to couple climate dynamics, the dynamics of land-cover change and the dynamics of conflict. If the feedback is weak, then climate change can be considered as external driver, or external boundary condition, of land cover and conflict dynamics.

Usually climate parameters such as growing season means or monthly means of minimum and maximum temperature are used as input for statistical or offline driven impact models like crop models (e.g. Veron et al., 2015; Scheffran and BenDor, 2009; Lobell et al., 2007, 2006). This implicitly assumes, that high impact extremes on shorter scale for instance on daily scale will be managed by the farmers. Therefore we focus here on annual means of temperature and precipitation.

To study possible feedback of conflict-induced land-cover changes on climate without knowing the effect of climate change on conflict nor the effect of conflict on land-cover change, we consider a simplified set up of numerical climate simulations. We start with climate simulations of greenhouse-gas induced global warming and consistently de-

## Implications of land use change in tropical West Africa under global warming

T. Brücher et al.

Title Page

Abstract

Introduction

Conclusions

References

Tables

Figures



Back

Close

Full Screen / Esc

Printer-friendly Version

Interactive Discussion



rived anthropogenic land-cover change as defined in the RCP (radiation concentration pathway) scenarios (see below). In these scenarios, anthropogenic land-cover change includes a mixture of agriculture and pasture. By assuming that conflict in the semi-arid regions of Northern Africa often arises between farmers and herders (Scheffran et al., 2012) we consider extreme scenarios by replacing the entire area allocated to land-cover change in these regions either by agriculture or by pasture, respectively. Furthermore, we vary the degree of harvest generally by a constant factor without changing the type of land use. Please note, that for comparison reasons in all experiments the temporal course in the fraction of land allocated to land use stays the same.

Our area of interest (in the following referred as AOI) is located at the transition zone between the Sahara desert in the North and the humid Guinean Coast of West Africa in the South (4° N to 20° N; 17° W to 40° E; in the following marked by grey boxes e.g. as shown in Fig. 1).

## 2 Model and method

### 2.1 Model description

We use the Max Planck Institute – Earth System Model (MPI-ESM; Giorgetta et al., 2013), which consists of the coupled general circulations models ECHAM6 (Stevens et al., 2013) and MPIOM (Jungclaus et al., 2013) for the atmosphere and the ocean, respectively. Marine biogeochemistry is described by HAMOCC5 (Ilyina et al., 2013), and land-surface processes, by JSBACH (Reick et al., 2013; Schneck et al., 2013). JSBACH includes dynamic vegetation (Brovkin et al., 2009; Reick et al., 2013) and land use transitions (Reick et al., 2013) according to Hurtt et al. (2011).

Within JSBACH, grid boxes over land are divided in a non vegetated part (e.g. desert) and a vegetated one, the latter one is separated in managed land (shrubs and pasture) and natural vegetation (woody types plus grasses). The size of the desert area is determined by the dynamic vegetation model of JSBACH based on a function of the annual

## Implications of land use change in tropical West Africa under global warming

T. Brücher et al.

Title Page

Abstract

Introduction

Conclusions

References

Tables

Figures



Back

Close

Full Screen / Esc

Printer-friendly Version

Interactive Discussion



maximum filling of the green carbon pools, which are finally driven by atmospheric CO<sub>2</sub>, temperature, and precipitation. As the green pools represent the living tissue of the plants, the desert fraction increases, if not at least once a year the pools are filled at maximum level.

As the parametrisation of managed land for crop and pasture are different, changes in prescribed anthropogenic land cover change (ALCC) will effect the modeled land surface in JSBACH. Generally, managed land as pasture and crops is protected against fire, while natural grasses (and forest) are not. Pasture and crops use different photosynthetic pathways (Raddatz et al., 2007) and crops have a higher productivity, as they are parameterized by a higher carboxylation rate per leaf area (Kattge et al., 2009). Additionally, the properties for grazing are two times higher for pasture than for crops, which is parameterized by a higher herbivory and a higher leaf shedding over pasture land. Leaf regrowth is limited by NPP (Net Primary Productivity) for grass and pasture, while it is assumed that crops have a constant leaf regrowth after sawing. The parameters for the specific carbon content per leaf are identical. Although visible and near infrared albedo of the plants are the same for crops and pasture, the annual cycle in the albedo (combination of plant albedo and surface reflectivity) will be different for crops and pasture, because (i) both differ in their phenology, (ii) the maximum leaf area index (LAI) is higher over crops, and (iii) a higher clumpiness factor for crops is simulated to mimic e.g. access roads.

## 2.2 Experimental set up

### 2.2.1 Base line scenario and transition rules for changes in land use and land cover

Within the framework of the Coupled Model Intercomparison Project Phase 5 (CMIP5) three starting dates out of a control simulation for pre-industrial climate by MPI-ESM have been chosen as starting points for an ensemble simulation (three members) of historic climate until 2005, so called HIST. Atmospheric CO<sub>2</sub> concentration and ALCC



by the RCP8.5 scenario (Hurtt et al., 2011) to crop or pasture are summed up and natural land is only converted to crop (LUC) or pasture (LUP). Following this conversion scheme, we ensure in all experiments the same proportion of managed to natural land, which allows us to compare the results of the experiments to investigate the impact of land use. The third scenario, LUCnoPR (Land Use Crop only no Pasture Rule), helps to separate the effect of land use and an artificial effect on the dynamical vegetation by the pasture rule (see Sect. 3.2). In experiment LUCnoPR the LUC scenario is repeated, but we bypass the pasture rule. Technically, the transitions are identical to our reference simulation RCP8.5, but we implement on all pasture areas the phenology of crops. Doing this, we ensure to keep the size of managed land and the partitioning of the natural land identical to the reference simulation RCP8.5.

To investigate the effect of low and high harvest intensity on climate, we repeat the reference simulation RCP8.5 including crops and pasture, but we change the harvest rate for crops by multiplying the RCP8.5 harvest rate by a factor of 0.5 (H0.5), two (H2), three (H3), and five (H5).

By interpreting the results of all these experiments, it has to be distinguished between the fractional and the absolute size of an area (e.g. the amount of grass or woody vegetation). JSBACH separates the vegetated part and the area without soil in a grid cell. In all scenarios described above, the prescribed fractional transitions are based on the vegetated area in the grid cell. The dynamical vegetation scheme has the ability to shrink or increase the vegetated area as a response to the climate; therefore the size in terms of square meters may vary among the simulations, although the fractional partitioning within the vegetated area stays constant.

### 3 Results

The size of AOI covers some  $10.48 \times 10^6 \text{ km}^2$  (see boxes in e.g. Fig. 2). At the end of the historic simulation, i.e. in the year 2005, this area is fragmented into desert area (31 %;  $3.25 \times 10^6 \text{ km}^2$ ), natural land (30 %;  $3.15 \times 10^6 \text{ km}^2$ ), and managed land

## Implications of land use change in tropical West Africa under global warming

T. Brücher et al.

Title Page

Abstract

Introduction

Conclusions

References

Tables

Figures



Back

Close

Full Screen / Esc

Printer-friendly Version

Interactive Discussion







95 years. Harvest is assumed to double (by  $0.16 \text{ GtCyr}^{-1}$ ) due to a widening of land use area and changes in the land use practices according to Hurtt et al. (2011).

### 3.2 Crop and pasture scenarios (2006–2100)

Within AOI we switch to one type of land use. In the experiment LUC (Land Use Crop only) all pasture is converted to crop and within LUP (Land Use Pasture only) all crops are changed to pasture (Fig. 1). This transition is prescribed within the first model year of the scenarios (year 2006). As land use increases within RCP8.5, the extended area is added as crop (LUC) or pasture (LUP) only, accordingly.

Within the experiment LUC the desert area shrinks further (compared to RCP8.5), while the desert area within LUP stays close to the results of our base line scenario RCP8.5, although all simulations are forced with the same greenhouse gas scenario (Fig. 4a). These differences can be attributed to differences in the available soil water (Fig. 5). As crops are harvested, less water is used and therefore the natural vegetation will use the available soil water. This is due to the implementation of a shared water bucket for all tiles within one grid box in JSBACH. Pure pastoral land use (LUP) does not influence the available soil water and therefore the desert area in the experiment LUP is close to the one in RCP8.5 (Fig. 4a). The area consumed for pastoral land use is almost three times higher than the one for crops at the end of the historical simulation (Fig. 4d and e). Therefore the scenario LUP is closer to the reference scenario RCP8.5 than LUC, because within LUP less area is converted over the first model year.

Additionally, the partitioning in natural vegetation is shifting significantly due to two reasons. First, we implement a strong transition over the first model year to achieve one type of land use within LUC and LUP scenarios. Secondly, as the pasture rule is incorporated in our model, these extreme changes lead to an unbalanced partitioning in the natural vegetation that has to be compensated by large shifts in the compounds of the natural vegetation (for more details see Appendix A1). To circumvent this artificial effect, the experiment LUCnoPR was designed, in which no artificial changes in grass

## Implications of land use change in tropical West Africa under global warming

T. Brücher et al.

Title Page

Abstract

Introduction

Conclusions

References

Tables

Figures



Back

Close

Full Screen / Esc

Printer-friendly Version

Interactive Discussion



## Implications of land use change in tropical West Africa under global warming

T. Brücher et al.

Title Page

Abstract

Introduction

Conclusions

References

Tables

Figures



Back

Close

Full Screen / Esc

Printer-friendly Version

Interactive Discussion



or woody fraction (see Fig. 6) occur. However, the desert fraction decreases in the same manner as the LUC experiment due to the soil water differences (Fig. 4a) as managed land only consists of crops with its biophysical properties and the nature to be harvested. In comparison to LUC, LUP has opposite and smaller shifts in grass and woody vegetation, but again the pasture rule is causing these effects. As grassland is used to implement pastoral land, and pasture has almost the same water usage over time as grass, the desert fraction of LUP is not significantly different to RCP8.5.

The differences in temperature and precipitation between simulations LUC, LUC-noPR, LUP and RCP8.5 are mostly insignificant and small (Fig. 7). Only in some regions, the annual mean temperatures change less than 0.5 K and precipitation differences between RCP8.5 and LUC or LUP amount up to  $100 \text{ mm yr}^{-1}$ , which is about 5% of the annual precipitation sum in the region considered.

### 3.3 Harvest intensity (2006–2100)

In the experiments with changed harvest rates (prescribed) neither the fractional distribution of grass and woody type vegetation is directly influenced, nor the partitioning of crop and pastoral land use is changed. By increasing the rate of harvest, the annual harvest rates from RCP8.5 are taken as a reference. Still, in the course of intensified harvest experiments, the desert area is on average higher than in RCP8.5. To compensate for this desert rise the dynamical vegetation model simulates a general lower woody area, while the amount of grassland stays close to the base line scenario RCP8.5. These differences result out of the dynamical vegetation scheme within JS-BACH, as these changes are completely climate driven and not related to land use changes. There is no clear ranking visible (Fig. 6) between rate of harvest intensification and woody or desert fraction, even the low harvest experiment (H0.5) is within the range of RCP8.5 results. The decrease in desert area in the scenarios H5 and H3 is a little bit smaller than the decrease in the RCP8.5 simulations after the year 2045. However, there is little difference in the change of desert area between H5 and H3. As



desert retreat differ among models. Moreover, the greening in the different models is triggered by different processes.

The results shown here are produced with only one earth system model. So, the question arises, if the key message that there is presumably no impact of land use on climate, can be generalised, or if it is model specific. E. g. the results could be different, if the precipitation change in MPI-ESM would be stronger in West Africa.

Additionally, different vegetation models with the same complexity could yield different results. But as our MPI-ESM results are within the mainstream of the outcome off all participating CMIP5 models, we think that most of the models would turn out similar results, but to proof this proposition, a multi model, multi ensemble with the same conditions would be necessary.

Land-cover change is described in the models in a very simplified way. Many, presumably relevant, processes are not captured. Land use and especially intense land use, is known to increase desertification, as soil erosion comes into play and decreases soil quality. In our simulations, managed land is protected, and whenever a transition within the land use scheme is prescribed, we assume that the technical capabilities as well as enough nutrients in that area are available. Irrigation is not considered in our model. Therefore the productivity of managed land depends on precipitation only.

A common practice in West Africa is to enable land for agriculture by slash and burn farming to gain temporal fertilized soil. Following these techniques, the woody fraction would strongly decrease, if agriculture would expand. This is realized by JSBACH modelling an intense crop land use scenario (LUC). But also the grass fraction is increasing dramatically, so a land use change changes the landscape, what shouldn't be the case.

Our simulations point to a greening due to intense harvesting of crops and there is a substantial decline of the desert area. In principle, after the harvest of crops, natural vegetation (weeds) would again pop up at that harvested place afterwards, as long as water is available. This would not change the landscape. In general, the weeds can be interpreted as natural vegetation, but in our simulations the desert area is affected and shrinks substantially. This is due to the fact, that JSBACH is based on an equally

## Implications of land use change in tropical West Africa under global warming

T. Brücher et al.

Title Page

Abstract

Introduction

Conclusions

References

Tables

Figures



Back

Close

Full Screen / Esc

Printer-friendly Version

Interactive Discussion



## Implications of land use change in tropical West Africa under global warming

T. Brücher et al.

Title Page

Abstract

Introduction

Conclusions

References

Tables

Figures



Back

Close

Full Screen / Esc

Printer-friendly Version

Interactive Discussion



distributed approach, meaning that all vegetation is distributed homogeneously over the entire grid box, instead simulating partitions of natural and managed land next to each other, as in the real world. Further more, we use a shared water bucket for all tiles implemented. So, if one type of vegetation is harvested and water usage is reduced, there is more water available for the natural vegetation, that will be more productive and leads to shrinkage of the desert area.

To conclude, we can state that changes in land use type and intensity do not change climate significantly, even if we do not bypass the “pasture-rule” and changes in the natural vegetation are prominent. In LUP and LUC we found out, that due to the combination of a strong ALCC in one model year and the implemented pasture rule, we see artificial legacy effects within the partitioning of the natural vegetation.

With respect to the nexus of Climate, land use and conflict we state, that if climate has an impact on conflict, and conflicts may change land use, there is no closed feedback loop that links changes from land use to an impact on climate. In our case, this stands true for regional conflicts in tropical West Africa, but in case of a huge conflict (e.g. as big as the Mongol invasion, Black Death, conquest of Americas, and the Ming Dynasty), it may be expected that changes in the managed and natural vegetation (e.g. woody vegetation) would be stronger and could have an impact on climate (Pongratz et al., 2011).

### Appendix A:

#### A1 Land use change in JSBACH and the pasture rule

To establish land use in a certain grid cell, natural vegetation is partly converted to establish a pre-defined area of managed land. As land use is an Anthropogenic Land Cover Change (ALCC), the natural vegetation is forced to be changed, even if the area is not suitable for crop or pasture. For crops and pasture the conversion from natural land to managed land is different. While pasture area is only taken from grassland

## Implications of land use change in tropical West Africa under global warming

T. Brücher et al.

Title Page

Abstract

Introduction

Conclusions

References

Tables

Figures



Back

Close

Full Screen / Esc

Printer-friendly Version

Interactive Discussion



5 (“pasture rule”), crops are established on the costs of both, grass and woody type vegetation. To keep the ratio between the natural types of vegetation before and after the transition identical, crops replace to equal fractional shares of the current grid box grass and woody area (e.g.: if the natural vegetation in a given grid cell is simulated as 70 % woody and 30 % grass type, than 7 ha woody vegetation and 3 ha grassland would be used to realize 10 ha of crops.). In case of both transitions, if one component is area limited to establish land use at a prescribed, the missing part of natural land would be taken from the other type to ensure that managed land could be established.

10 Due to the “pasture rule” the history of transitions matters (Reick et al., 2013), especially if the type of land use changes. The so-called potential vegetation is a model internal partitioning of the natural vegetation, which is in accordance to the given climate simulated by MPI-ESM. After anthropogenic land use transitions, the potential vegetation may differ from the actual partitioned natural vegetation, as e.g. grass was transformed to pasture. These differences will smooth out with time, as disturbances (e.g. fire) free land to be converted to the comparatively under represented part of the potential vegetation. By extreme land-use change transitions, as we do apply in our LUC and LUP scenarios within the first model year, the potential vegetation becomes unbalanced to the natural vegetation. Huge transitions within the natural vegetation, which would reflect large changes in the landscape within a short time, are not allowed in JSBACH to counteract against large land use transitions and bring back the partitioning of natural land into equilibrium with the potential vegetation. Therefore the natural vegetation could be out of balance for several decades. To illustrate these effects, a simplified example is shown in Fig. A1 that demonstrates the interplay of the dynamical vegetation, land use, and climate. We start with a climate that favors an equally shared natural vegetation of grass and woody type (potential vegetation). We assume, 50 % of the vegetated area is used for pastoral land use. In accordance to the pasture rule pastoral land has to be established on grass type vegetation only. If these two information are combined and the potential vegetation plus the ALCC will be instantaneously transformed to the current cover fractions of the grid box, than 50 %

## Implications of land use change in tropical West Africa under global warming

T. Brücher et al.

Title Page

Abstract

Introduction

Conclusions

References

Tables

Figures



Back

Close

Full Screen / Esc

Printer-friendly Version

Interactive Discussion



of the grid box will be used for pastoral land use. The natural vegetation will shrink by 50 %, and all the grass is taken to establish pasture. So, there is only woody vegetation left after these transitions. The so-called “instantaneous transformation” and the current “modeled vegetation” are the same.

Now, by having an extreme transition from changing all pasture to crops, all managed land will be converted within one year, as it is prescribed as an anthropogenic forcing. Assuming that the climate is not significantly different to the one of the year before, the potential vegetation stays the same. Given that cropland covers 50 % of the grid box, and the potential vegetation shares an equal amount, woody and grass cover, the instantaneous transformation of the potential vegetation and the prescribed land use differs from the current partitioning of the natural vegetation, which is covered by woody type only. As JSBACH changes natural vegetation only on small steps, it will take some time to compensate this misfit. Changes in the natural vegetation due to climate variability, disturbance (e.g. fire), or climate change will alter the natural vegetation and free land will be used to bring the natural vegetation back to an equilibrium with the potential vegetation (Fig. A1).

In LUC grass gets a strong increase and the woody vegetation shrinks with time to equal out the misfit between “instantaneous transformation” and “actual cover” (Fig. 6). Because of the former land use, strong transition by converting all pasture to crops leads to this legacy effect. It is the opposite way in the LUP scenario, where woody vegetation is increasing, as crop is changed to pasture and therefore only grass type vegetation is used for land use area. So, woody vegetation, which is sort of hidden in the crop land use has to build up, after all crops are transformed to pasture.

### A2 Land use change and harvest within the CMIP5 protocol

The change of land cover is prescribed as transitions from natural to managed land or from one type of land use to another type of land use. These are taken from the harmonized land use protocol for CMIP5 (Hurtt et al., 2011), which proposes different future pathways for each RCP.

## Implications of land use change in tropical West Africa under global warming

T. Brücher et al.

Title Page

Abstract

Introduction

Conclusions

References

Tables

Figures

◀

▶

◀

▶

Back

Close

Full Screen / Esc

Printer-friendly Version

Interactive Discussion



Annual mean harvest data are also taken from the harmonized land-use protocol (Hurtt et al., 2011). These yearly values for harvest rates prescribe a certain amount of carbon that has to be taken from the above ground biomass, which is represented in JSBACH by the sum of three different carbon pools (reserve, green, and woody pool).

5 Weighted by their pool size, the harvest is taken fractionally from these three pools to harvest in total the prescribed value. If this harvest rate is higher than the available biomass, the harvest rate is reduced accordingly. By multiplying the harvest rate with a given factor, we create artificial harvest time series to mimic an intensification of land use (experiments H0.5, H2, H3, H5).

10 Both, the annual transitions and the annual harvest rates are interpolated on a daily time scale, and are used as a continuous forcing for MPI-ESM. By doing this, large discontinuities are avoided and harvest is taken continuously.

15 *Acknowledgements.* We acknowledge financial support by the Cluster of Excellence CliSAP (Integrated Climate System Analysis and Prediction, DFG EXC 177/2). We would also like to thank Traute Crüger for her fruitful comments to improve the manuscript.

The article processing charges for this open-access publication were covered by the Max Planck Society.

## References

- 20 Bathiany, S., Claussen, M., and Brovkin, V.: CO<sub>2</sub>-induced sahel greening in three CMIP5 Earth System Models, *J. Climate*, 27, 7163–7184, doi:10.1175/JCLI-D-13-00528.1, 2014. 1108
- Boko, M., Niang, I., Nyong, A., Vogel, C., Githeko, A., Medany, M., Osman-Elasha, B., Tabo, R., and Yanda, P.: *Africa*, in: *Africa*, Cambridge University Press, Cambridge, UK and New York, NY, USA, 433–467, 2007. 1102
- 25 Brovkin, V., Raddatz, T., Reick, C. H., Claussen, M., and Gayler, V.: Global biogeophysical interactions between forest and climate, *Geophys. Res. Lett.*, 36, L07405, doi:10.1029/2009GL037543, 2009. 1104



## Implications of land use change in tropical West Africa under global warming

T. Brücher et al.

Title Page

Abstract

Introduction

Conclusions

References

Tables

Figures



Back

Close

Full Screen / Esc

Printer-friendly Version

Interactive Discussion



Busby, J. W., Cook, K. H., Vizy, E. K., Smith, T. G., and Bekalo, M.: Identifying hot spots of security vulnerability associated with climate change in Africa, *Climatic Change*, 124, 717–731, doi:10.1007/s10584-014-1142-z, 2014. 1102, 1103

Claussen, M.: Modeling bio-geophysical feedback in the African and Indian monsoon region, *Clim. Dynam.*, 13, 247–257, doi:10.1007/s003820050164, 1997. 1103

Claussen, M., Scheffran, J., and Brücher, T.: Climate, land use, and conflict in Northern Africa, *Eos*, 95, doi:10.1029/2014EO021331, 2014.

Giorgetta, M. A., Jungclaus, J., Reick, C. H., Legutke, S., Bader, J., Böttinger, M., Brovkin, V., Crueger, T., Esch, M., Fieg, K., Glushak, K., Gayler, V., Haak, H., Hollweg, H.-D., Ilyina, T., Kinne, S., Kornblueh, L., Matei, D., Mauritsen, T., Mikolajewicz, U., Mueller, W., Notz, D., Pitthan, F., Raddatz, T., Rast, S., Redler, R., Roeckner, E., Schmidt, H., Schnur, R., Segschneider, J., Six, K. D., Stockhause, M., Timmreck, C., Wegner, J., Widmann, H., Wieners, K.-H., Claussen, M., Marotzke, J., and Stevens, B.: Climate and carbon cycle changes from 1850 to 2100 in MPI-ESM simulations for the Coupled Model Intercomparison Project phase 5, *J. Adv. Model. Earth Syst.*, 5, 572–597, doi:10.1002/jame.20038, 2013. 1104

Hurt, G. C., Chini, L. P., Frohling, S., Betts, R. A., Feddema, J., Fischer, G., Fisk, J. P., Hibbard, K., Houghton, R. A., Janetos, A., Jones, C. D., Kindermann, G., Kinoshita, T., Klein Goldewijk, K., Riahi, K., Shevliakova, E., Smith, S., Stehfest, E., Thomson, A., Thornton, P., van Vuuren, D. P., and Wang, Y. P.: Harmonization of land-use scenarios for the period 1500–2100: 600 years of global gridded annual land-use transitions, wood harvest, and resulting secondary lands, *Climatic Change*, 109, 117–161, doi:10.1007/s10584-011-0153-2, 2011. 1104, 1106, 1107, 1109, 1115, 1116, 1120

Ilyina, T., Six, K. D., Segschneider, J., Maier-Reimer, E., Li, H., and Núñez Riboni, I.: Global ocean biogeochemistry model HAMOCC: model architecture and performance as component of the MPI-Earth system model in different CMIP5 experimental realizations, *Journal of Advances in Modeling Earth Systems*, 5, 287–315, doi:10.1029/2012MS000178, 2013. 1104

Jungclaus, J. H., Fischer, N., Haak, H., Lohmann, K., Marotzke, J., Matei, D., Mikolajewicz, U., Notz, D., and Von Storch, J. S.: Characteristics of the ocean simulations in the Max Planck Institute Ocean Model (MPIOM) the ocean component of the MPI-Earth system model, *Journal of Advances in Modeling Earth Systems*, 5, 422–446, doi:10.1002/jame.20023, 2013. 1104

## Implications of land use change in tropical West Africa under global warming

T. Brücher et al.

Title Page

Abstract

Introduction

Conclusions

References

Tables

Figures

◀

▶

◀

▶

Back

Close

Full Screen / Esc

Printer-friendly Version

Interactive Discussion



- Kattge, J., Knorr, W., Raddatz, T., and Wirth, C.: Quantifying photosynthetic capacity and its relationship to leaf nitrogen content for global-scale terrestrial biosphere models, *Glob. Change Biol.*, 15, 976–991, doi:10.1111/j.1365-2486.2008.01744.x, 2009. 1105
- Koster, R., Dirmeyer, P., Guo, Z., and Bonan, G.: Regions of strong coupling between soil moisture and precipitation, *Science*, 305, 1138–1140, available at: <http://www.sciencemag.org/content/305/5687/1138.short>, 2004. 1103
- Lobell, D. B., Field, C. B., Cahill, K. N., and Bonfils, C.: Impacts of future climate change on California perennial crop yields: Model projections with climate and crop uncertainties, *Agr. Forest Meteorol.*, 141, 208–218, doi:10.1016/j.agrformet.2006.10.006, 2006. 1103
- Lobell, D., Cahill, K., and Field, C.: Historical effects of temperature and precipitation on California crop yields, *Climatic Change*, 81, 187–203, doi:10.1007/s10584-006-9141-3, 2007. 1103
- Low, P. S.: *Climate Change and Africa*, Cambridge University Press, Cambridge, 412 pp., 2005. 1102
- Patricola, C. M. and Cook, K. H.: Northern African climate at the end of the twenty-first century: An integrated application of regional and global climate models, *Clim. Dynam.*, 35, 193–212, doi:10.1007/s00382-009-0623-7, 2010. 1103
- Pongratz, J., Caldeira, K., Reick, C. H., and Claussen, M.: Coupled climate-carbon simulations indicate minor global effects of wars and epidemics on atmospheric CO<sub>2</sub> between AD 800 and 1850, *Holocene*, 21, 843–851, doi:10.1177/0959683610386981, 2011. 1113
- Raddatz, T. J., Reick, C. H., Knorr, W., Kattge, J., Roeckner, E., Schnur, R., Schnitzler, K. G., Wetzell, P., and Jungclaus, J.: Will the tropical land biosphere dominate the climate-carbon cycle feedback during the twenty-first century?, *Clim. Dynam.*, 29, 565–574, doi:10.1007/s00382-007-0247-8, 2007. 1105
- Reick, C. H., Raddatz, T., Brovkin, V., and Gayler, V.: Representation of natural and anthropogenic land cover change in MPI-ESM, *J. Adv. Model. Earth Syst.*, 5, 459–482, doi:10.1002/jame.20022, 2013. 1104, 1106, 1114
- Scheffran, J. and BenDor, T.: Bioenergy and land use: a spatial-agent dynamic model of energy crop production in Illinois, *Int. J. Environ. Pollut.*, 4–27, doi:10.1002/jame.20038, 2009. 1103
- Scheffran, J., Brzoska, M., Kominek, J., Link, P. M., and Schilling, J.: Climate change and violent conflict, *Science*, 336, 869–71, doi:10.1126/science.1221339, 2012. 1103, 1104

## Implications of land use change in tropical West Africa under global warming

T. Brücher et al.

Title Page

Abstract

Introduction

Conclusions

References

Tables

Figures

◀

▶

◀

▶

Back

Close

Full Screen / Esc

Printer-friendly Version

Interactive Discussion



Schneck, R., Reick, C. H., and Raddatz, T.: Land contribution to natural CO<sub>2</sub> variability on time scales of centuries, *Journal of Advances in Modeling Earth Systems*, 5, 354–365, doi:10.1002/jame.20029, 2013. 1104

Stevens, B., Giorgetta, M., Esch, M., Mauritsen, T., Crueger, T., Rast, S., Salzmann, M., Schmidt, H., Bader, J., Block, K., Brokopf, R., Fast, I., Kinne, S., Kornblueh, L., Lohmann, U., Pincus, R., Reichler, T., and Roeckner, E.: Atmospheric component of the MPI-M earth system model: ECHAM6, *Journal of Advances in Modeling Earth Systems*, 5, 146–172, doi:10.1002/jame.20015, 2013. 1104

Taylor, C. M., Lambin, E. F., Stephenne, N., Harding, R. J., and Essery, R. L. H.: The influence of land use change on climate in the Sahel, *J. Climate*, 15, 3615–3629, 2002. 1103

Vamborg, F. S. E., Brovkin, V., and Claussen, M.: The effect of a dynamic background albedo scheme on Sahel/Sahara precipitation during the mid-Holocene, *Clim. Past*, 7, 117–131, doi:10.5194/cp-7-117-2011, 2011. 1103

Veron, S., de Abelleyra, D., and Lobell, D.: Impacts of precipitation and temperature on crop yields in the Pampas, *Climatic Change*, 130, 235–245, doi:10.1007/s10584-015-1350-1, 2015. 1103

Xue, Y. and Shukla, J.: The influence of land surface properties on Sahel climate. Part I: Desertification, doi:10.1175/1520-0442(1993)006<2232%3ATIOLSP>2.0.CO%3B2, 1993. 1103

Zeng, N., Neelin, J. D., Lau, K. M., and Tucker, C. J.: Enhancement of interdecadal climate variability in the Sahel by vegetation interaction, *Science*, 286, 1537–1540, 1999. 1103

## Implications of land use change in tropical West Africa under global warming

T. Brücher et al.

Title Page

Abstract

Introduction

Conclusions

References

Tables

Figures

◀

▶

◀

▶

Back

Close

Full Screen / Esc

Printer-friendly Version

Interactive Discussion



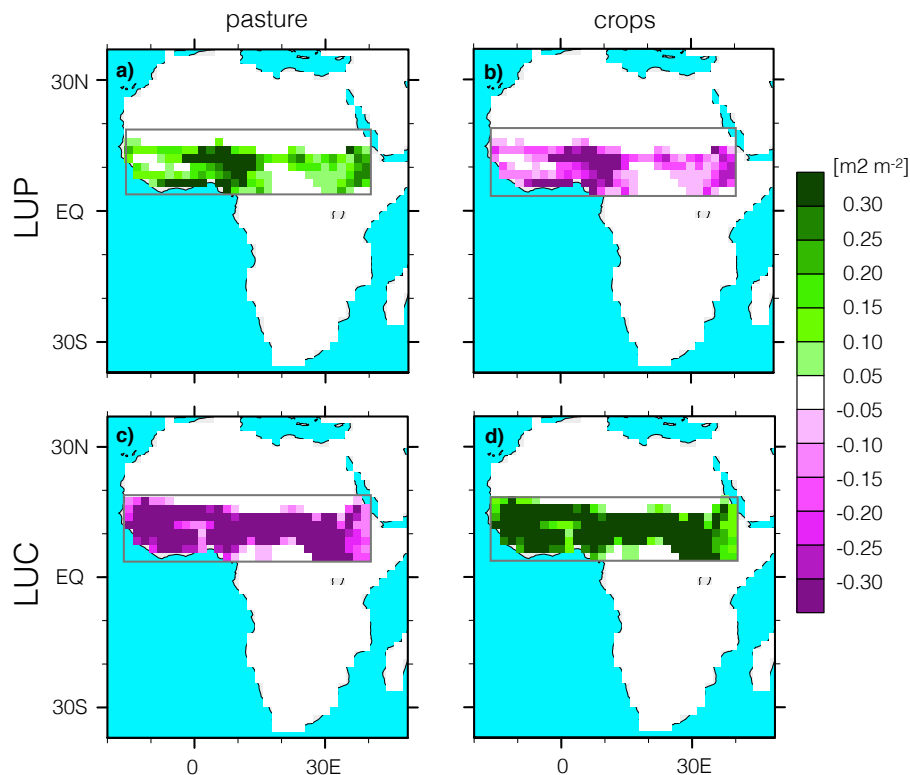
**Table 1.** List of experiments and their basic setup with respect to prescribed anthropogenic land cover change (ALCC), harvest rate, and prescribed greenhouse gas forcing.

Experiment	start	end	number of realisations	greenhouse gas forcing	ALCC in tropical West Africa	harvest rate in tropical West Africa
HIST	1850	2005	3	HIST	$H_{\text{hist}}$	$H_{\text{hist}}$
RCP8.5	2006	2100	3	RCP8.5	$H_{8.5}$	$H_{8.5}$
RCP4.5	2006	2100	3	RCP4.5	$H_{4.5}$	$H_{4.5}$
RCP2.6	2006	2100	3	RCP2.6	$H_{2.6}$	$H_{2.6}$
LUC	2006	2100	1	RCP8.5	crop only	$H_{8.5}$
LUP	2006	2100	1	RCP8.5	pasture only	$H_{8.5}$
LUCnoPR	2006	2100	1	RCP8.5	crop only, no pasture rule	$H_{8.5}$
H0.5	2006	2100	1	RCP8.5	$H_{8.5}$	$H_{8.5} \times 0.5$
H2	2006	2100	1	RCP8.5	$H_{8.5}$	$H_{8.5} \times 2$
H3	2006	2100	1	RCP8.5	$H_{8.5}$	$H_{8.5} \times 3$
H5	2006	2100	1	RCP8.5	$H_{8.5}$	$H_{8.5} \times 5$

$H_{x,y}$  means forcing used after Hurtt et al. (2011) according to RCP $_{x,y}$ .

## Implications of land use change in tropical West Africa under global warming

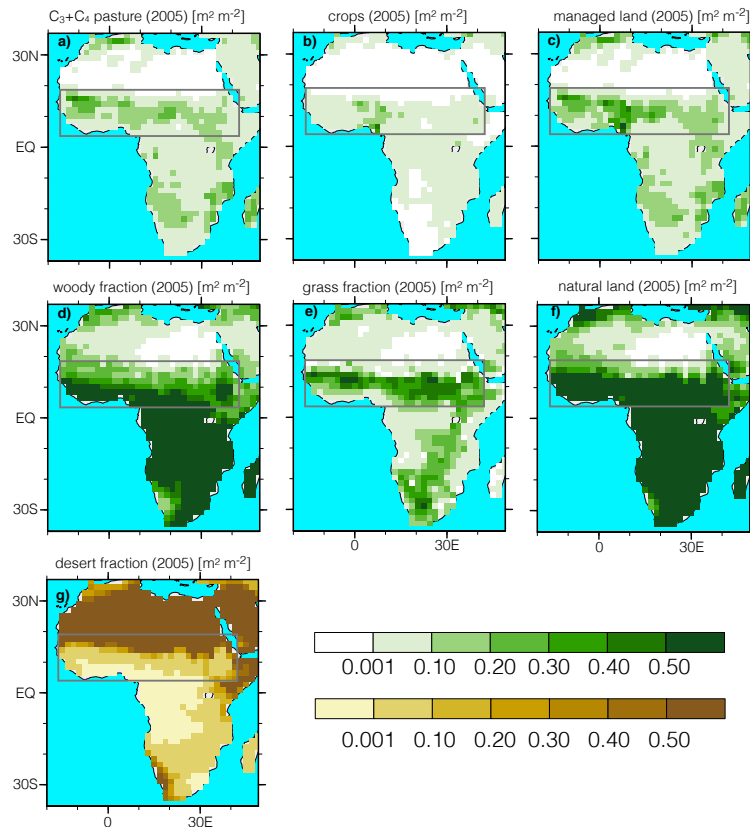
T. Brücher et al.



**Figure 1.** Spatial distribution of pasture (a) and crop (d) land use at the end of the historic simulation. The panel also shows the prescribed transitions from crop to pasture (scenario LUP; first row) and vice versa (scenario LUC, LUCnoPR; bottom row) for the first model year (2006) in the extreme land use experiments LUP, LUC, and LUCnoPR.

## Implications of land use change in tropical West Africa under global warming

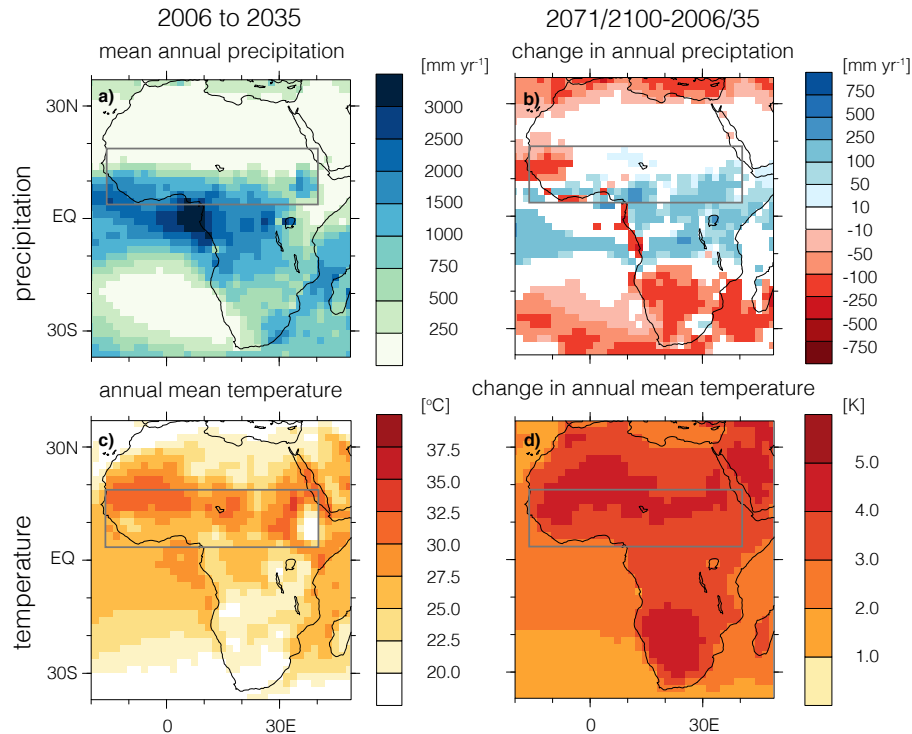
T. Brücher et al.



**Figure 2.** Ensemble mean of the cover fraction  $[\text{m}^2 \text{m}^{-2}]$  of managed land (top), natural vegetation (middle), and desert fraction (bottom) at the end of the historical simulation (year 2005) simulated by MPI-ESM. The managed land is shown for (a) pasture, (b) crops, and (c) total fraction. The natural vegetation is shown for (d) woody vegetation, (e) grass land, and (f) total separately.

## Implications of land use change in tropical West Africa under global warming

T. Brücher et al.

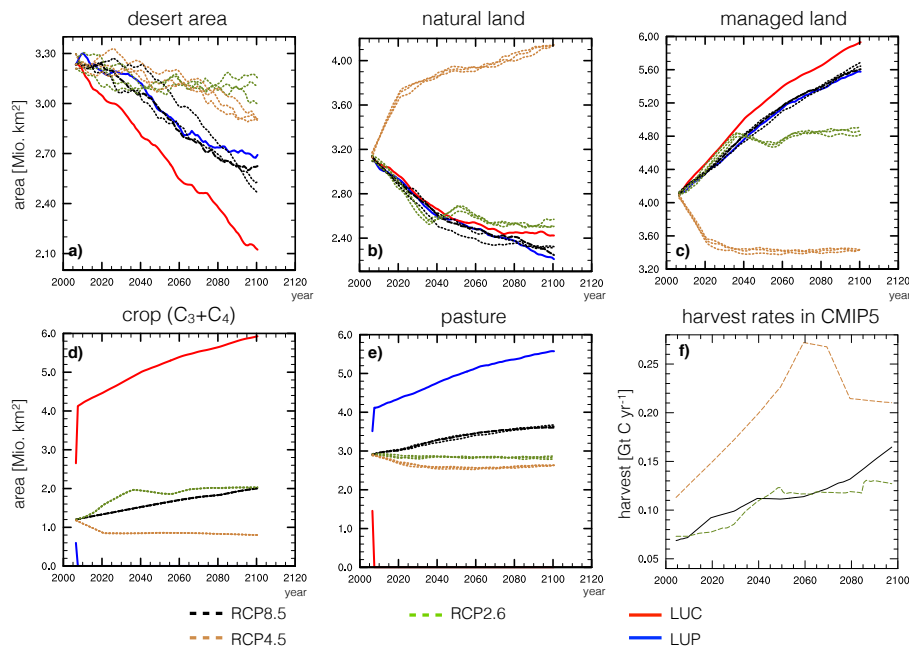


**Figure 3.** (a, c) Ensemble mean annual precipitation sum [mm] and temperature [ $^{\circ}$ C] for the first 30 years of RCP8.5 scenario (2006 to 2035) (left column) and (b, d) the difference (right column) with respect to the last 30 years of this century (2071 to 2100 minus 2006 to 2035). Only significant differences ( $t$  test, 95% significance level) are show. Both, small changes in precipitation and non significant changes are in white colour (b).

[Title Page](#)
[Abstract](#)
[Introduction](#)
[Conclusions](#)
[References](#)
[Tables](#)
[Figures](#)
[Back](#)
[Close](#)
[Full Screen / Esc](#)
[Printer-friendly Version](#)
[Interactive Discussion](#)

## Implications of land use change in tropical West Africa under global warming

T. Brücher et al.

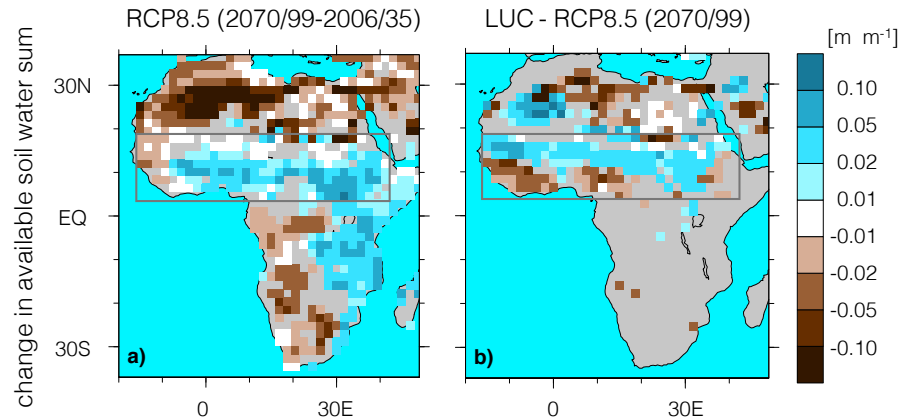


**Figure 4.** Top row: temporal course of the simulated desert area (a), natural (b), and managed (c) land within three different CMIP5 scenarios and two land use scenarios (LUC, LUP) within the next century (2006 to 2100). Bottom row: changes of anthropogenic land use within the next century is given for crops (d) and pasture (e) separately. Values are given in Mio. km<sup>2</sup>. The different harvest rates within the CMIP5 scenarios are shown in (f). Shown are integrated values only for our area of interest, where the strong land use experiments take place. The dashed and dotted black lines represent the three ensemble member of the RCP8.5 scenario, while the dashed one marks the ensemble member based on the same restart (year 2005) as the land use experiments for this study.



## Implications of land use change in tropical West Africa under global warming

T. Brücher et al.

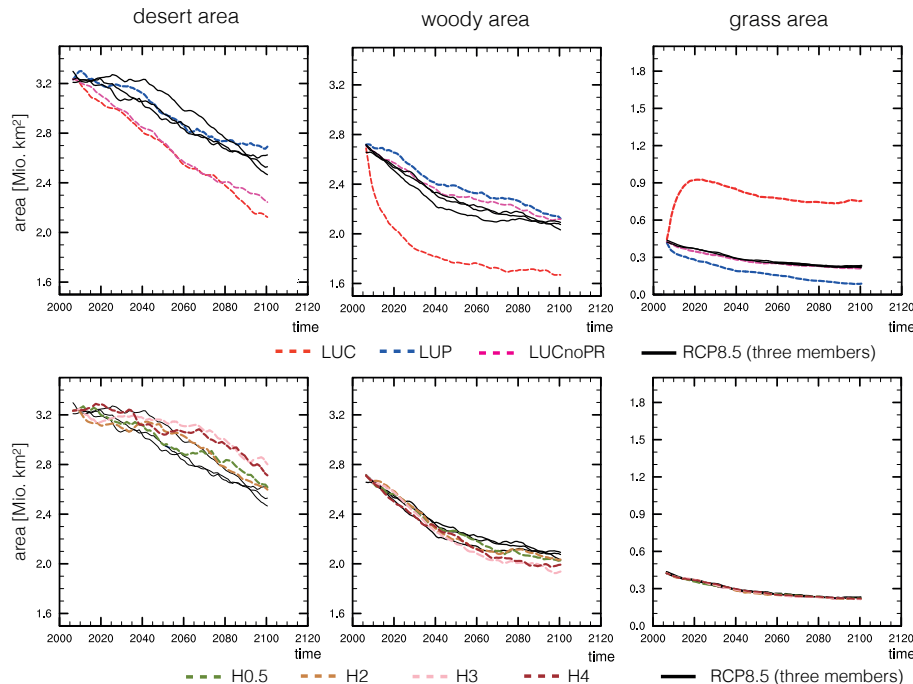


**Figure 5.** Change in the available soil water towards the end of the century (2071/2100) simulated within RCP8.5 (a) and the amplification within LUC compared to RCP8.5 (b) at the end of the simulations. Non significant differences areas are marked grey.

[Title Page](#)[Abstract](#)[Introduction](#)[Conclusions](#)[References](#)[Tables](#)[Figures](#)[◀](#)[▶](#)[◀](#)[▶](#)[Back](#)[Close](#)[Full Screen / Esc](#)[Printer-friendly Version](#)[Interactive Discussion](#)

## Implications of land use change in tropical West Africa under global warming

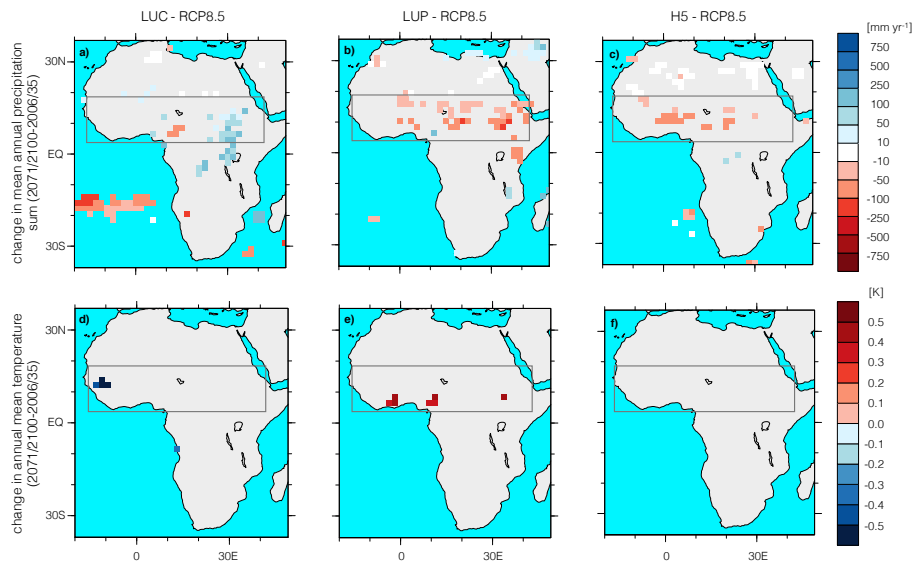
T. Brücher et al.



**Figure 6.** Temporal evolution in the desert area (**a, d**) and the natural vegetation grouped for woody type (**b, c**) and grass type (**d, e**), separately. In comparison to the results of the three ensemble member of the CMIP5 RCP8.5 scenario (black solid lines), the figures in the top row show the extreme land use scenarios in colored dashed lines, while the bottom row displays the results for different harvest rates (H0.5 to H5).

## Implications of land use change in tropical West Africa under global warming

T. Brücher et al.



**Figure 7.** Difference between the climate signal of the RCP8.5 scenario (three ensemble member mean) and the land use experiments LUC (a, c), LUP (b, e), and harvest experiment H5 (c, f). Changes in mean annual precipitation sum [mm yr<sup>-1</sup>] (a–c) and temperature [K] (d–f) are given for the last 30 years of the scenarios (2071/2100). Non significant (5 %) differences are left out.

Title Page

Abstract

Introduction

Conclusions

References

Tables

Figures

◀

▶

◀

▶

Back

Close

Full Screen / Esc

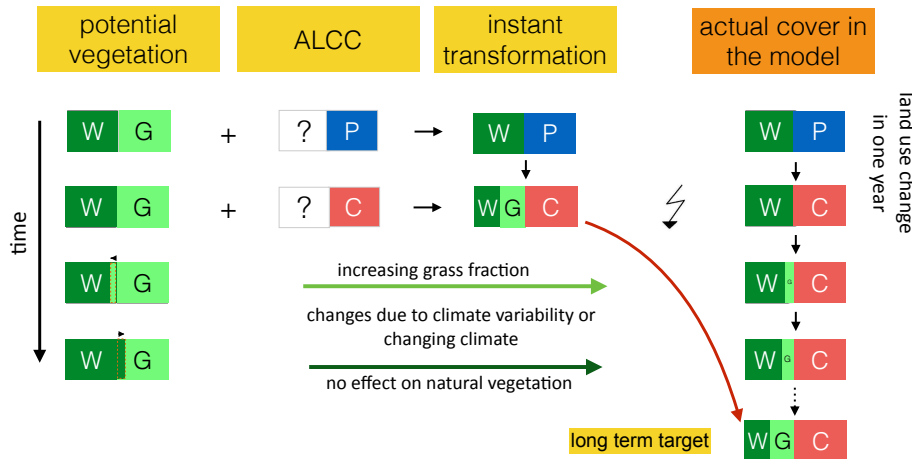
Printer-friendly Version

Interactive Discussion



## Implications of land use change in tropical West Africa under global warming

T. Brücher et al.



**Figure A1.** Diagram to illustrate the legacy effect of long term changes in natural vegetation after strong anthropogenic land use transitions. Shown are the potential vegetation (model internal) which is in equilibrium with the current climate, the prescribed transition, the instant transformation of the left two informations into a grid cell, and the actual, simulated cover (right column), which accounts for slow changes in-between two successive years within the natural vegetation.

Title Page

Abstract Introduction

Conclusions References

Tables Figures

◀ ▶

◀ ▶

Back Close

Full Screen / Esc

Printer-friendly Version

Interactive Discussion

