



Supplement of

Decomposing uncertainties in the future terrestrial carbon budget associated with emission scenario, climate projection, and ecosystem simulation using the ISI-MIP result

K. Nishina et al.

Correspondence to: K. Nishina (nishina.kazuya@nies.go.jp)

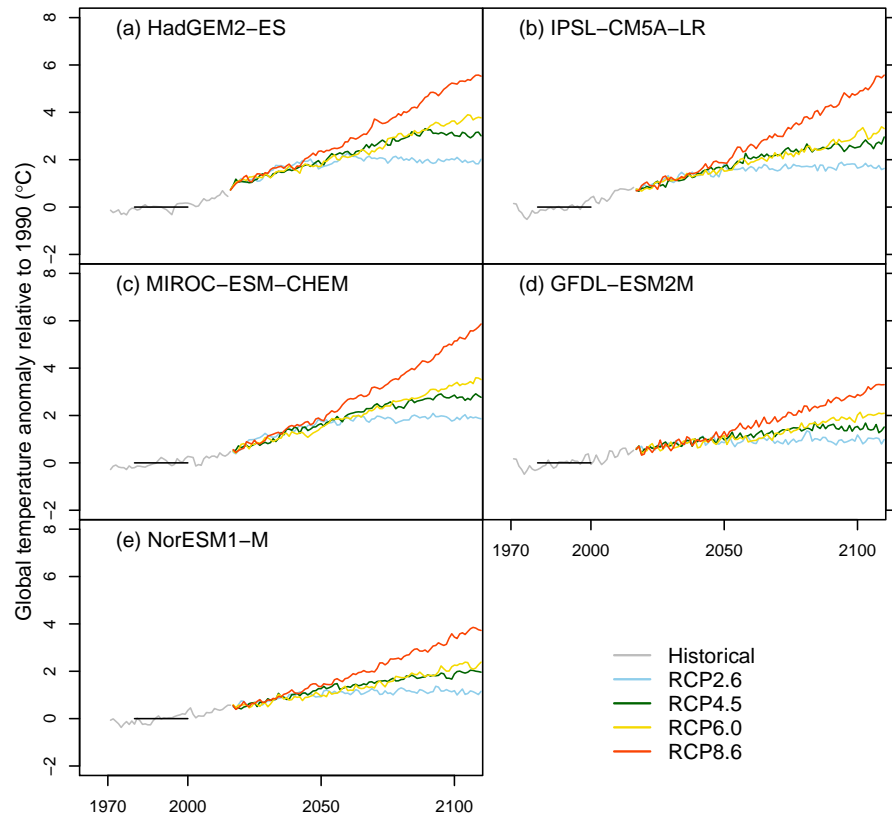


FIGURE 1S. Projected global mean temperature anomaly ΔT in each global climate model

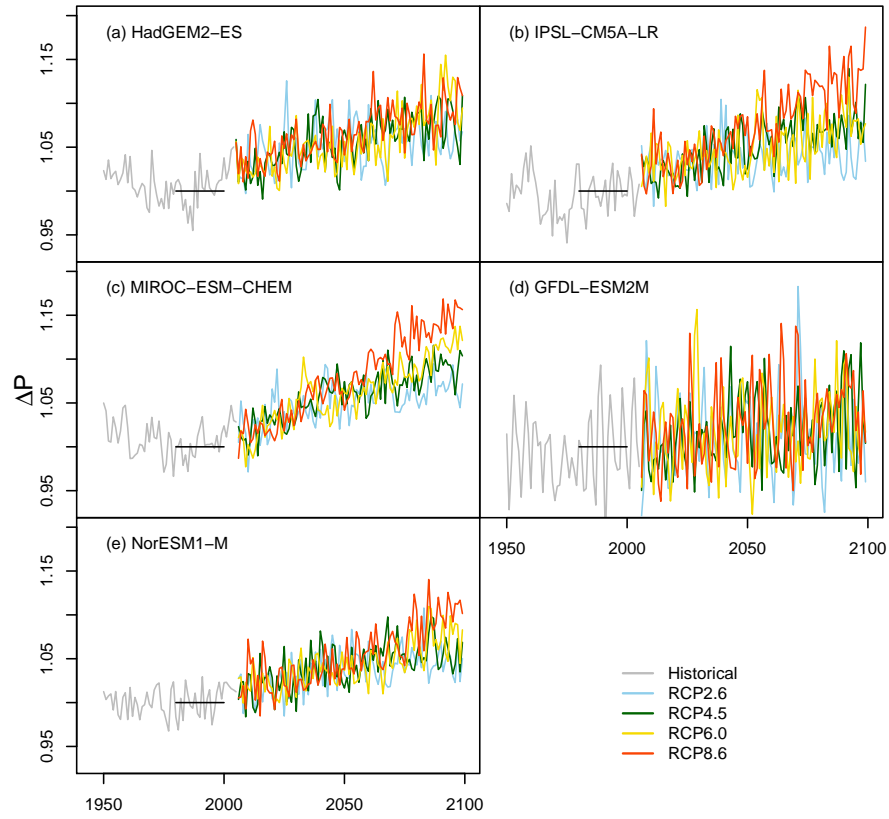


FIGURE 2S. Projected global precipitation anomaly ΔP in each global climate model

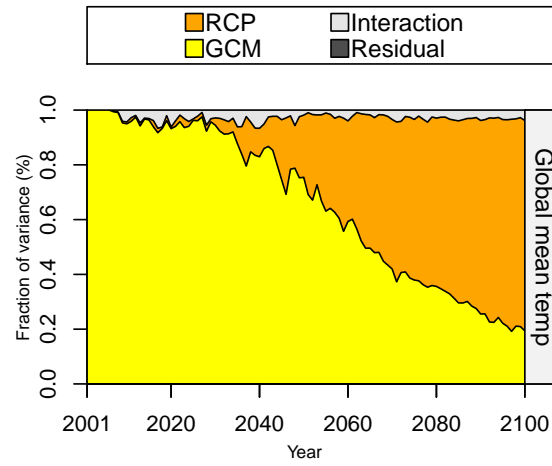


FIGURE 3S. Fraction of variance in global surface mean temperature derived from the emission scenario (RCPs), GCMs for ΔT . The variances were estimated by two-way ANOVA. The fraction in interactions includes the sum of variations of interaction term (RCP \times GCM).

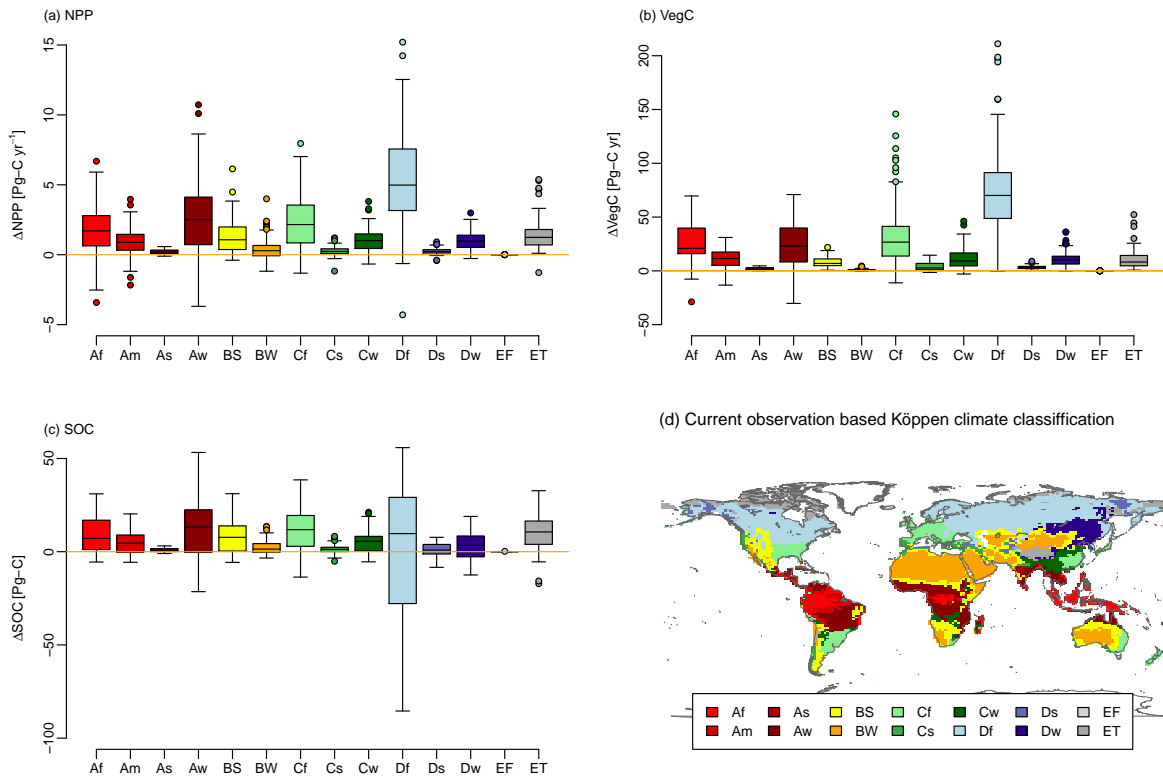


FIGURE 4S. ΔNPP (a), ΔVegC (b), ΔSOC (c) in 2099 in each climatic division.