

Projecting Antarctic ice discharge using response functions from SeaRISE ice-sheet models

Anders Levermann^{1,2}, Ricarda Winkelmann¹, Sophie Nowicki³, James L. Fastook⁴, Katja Frieler¹, Ralf Greve⁵, Hartmut H. Hellmer⁶, Maria A. Martin¹, Malte Meinshausen^{1,7}, Matthias Mengel¹, Anthony J. Payne⁸, David Pollard⁹, Tatsuru Sato⁵, Ralph Timmermann⁶, Wei Li Wang³, and Robert A. Bindshadler³

¹Earth System Analysis, Potsdam Institute for Climate Impact Research, Potsdam, Germany

²Institute of Physics, Potsdam University, Potsdam, Germany

³Code 615, NASA Goddard Space Flight Center, Greenbelt MD 20771 USA

⁴Computer Science/Quaternary Institute, University of Maine, Orono, ME 04469 USA

⁵Institute of Low Temperature Science, Hokkaido University, Sapporo 060-0819, Japan

⁶Alfred-Wegener-Institute, Bremerhaven, Germany

⁷School of Earth Sciences, The University of Melbourne, 3010 Melbourne, Australia

⁸Bristol Glaciology Centre, University of Bristol, University Road, Clifton, Bristol BS8 1SS, United Kingdom

⁹Earth and Environmental Systems Institute, Pennsylvania State University, University Park PA 16802 USA

Correspondence to: Anders Levermann
(anders.levermann@pik-potsdam.de)

Abstract. The largest uncertainty in projections of future sea-level change results from the potentially changing dynamical ice discharge from Antarctica. Basal ice-shelf melting induced by a warming ocean has been identified as a major cause for additional ice flow across the grounding line. Here we attempt to estimate the uncertainty range of future ice discharge from Antarctica by combining uncertainty in the climatic forcing, the oceanic response and the ice-model response. The uncertainty in the global mean temperature increase is obtained from historically constraint emulations with the MAGICC-6.0 model. The oceanic forcing is derived from scaling of the subsurface with the atmospheric warming from 19 comprehensive climate models of the Coupled Model Intercomparison Project, CMIP-5, and two ocean models from the EU-project Ice2Sea. The dynamic ice-sheet response is derived from linear response functions for basal ice-shelf melting for four different Antarctic drainage regions using experiments from the Sea-level Response to Ice Sheet Evolution (SeaRISE) intercomparison project with five different Antarctic ice-sheet models. The resulting uncertainty range for the historic Antarctic contribution to global sea-level rise from 1992 to 2011 agrees with the observed contribution for this period if we use the three ice-sheet models with an explicit representation of ice-shelf dynamics and account for the time-delayed warming of the oceanic subsurface compared to the surface air temperature. The median of the additional ice-loss for the 21st century is computed to 0.07 m (66%-range: 0.02 - 0.14 m; 90%-range: 0.0 - 0.23 m) of global sea-level equivalent for the low-emission RCP-2.6 scenario and 0.09 m (66%-range: 0.04 -

0.21 m; 90%-range: 0.01 - 0.37 m) for the strongest RCP-8.5. Assuming no time delay between the atmospheric warming and the oceanic subsurface these values increase to 0.09 m (66%-range: 0.04 - 0.17 m; 90%-range: 0.02 - 0.25 m) for RCP-2.6 and 0.15 m (66%-range: 0.07 - 0.28 m; 90%-range: 0.04 - 0.43 m) for RCP-8.5. All probability distributions are highly skewed towards high values. The applied ice-sheet models are coarse-resolution with limitations in the representation of grounding-line motion. Within the constraints of the applied methods, the uncertainty induced from different ice-sheet models is smaller than that induced by the external forcing to the ice-sheets.

1 Introduction

The future evolution of global mean and regional sea-level is important for coastal planning and associated adaptation measures (e.g. Hallegatte et al. (2013); Hinkel et al. (2014); Marzeion and Levermann (2014)). The Fourth Assessment Report (AR4) of the Intergovernmental Panel on Climate Change (IPCC) provided sea-level projections explicitly excluding changes in dynamic ice-discharge, i.e. additional ice flow across the grounding line, from both Greenland and Antarctica (Alley et al., 2007). These contributions might however be significant for the next century which would influence global mean (Van den Broeke et al., 2011) as well as regional sea level changes (Mitrovica et al., 2009), especially since contribution from the ice sheets are clearly relevant on longer time scales (Levermann et al., 2013). While the part of the ice-sheet directly susceptible to warming ocean waters on Greenland is limited, marine ice sheets in West Antarctica alone have the potential to elevate sea level globally by several meters (Bamber et al., 2009). Previous projections of the Antarctic ice-sheet mass-balance have used fully coupled climate-ice-sheet models (Huybrechts et al., 2011; Vizcaíno et al., 2009, e.g.). These simulations include feedbacks between the climate and the ice sheet and thereby provide very valuable information especially on multi-centennial time scale. However, on shorter, i.e. decadal to centennial, time scales the direct climatic forcing is likely to dominate the ice-sheet evolution compared to the feedbacks between ice dynamics and surrounding climate. For 21st-century projections it is thus appropriate to apply the output of comprehensive climate models as external forcing to the ice sheet, neglecting feedbacks while possibly improving on the accuracy of the forcing anomalies. Here we follow this approach.

In order to meet the relatively high standards that are set by climate models for the oceanic thermal expansion and glacier- and ice-cap models which use the full range of state-of-the-art climate projections, it is desirable to use a set of different ice-sheet models to increase the robustness in the projections of Antarctica's future sea-level contribution. While changes in basal lubrications, ice-softening from surface warming and changes in surface elevation through altered precipitation can affect dynamic ice-discharge from Antarctica, changes in basal melt underneath the ice shelves are here assumed to be the dominant driver of changes in dynamic ice loss.

Here we combine the dynamic response of five different Antarctic ice-sheet models to changes in

basal ice-shelf melt with the full uncertainty range of future climate change for each of the Representative Concentration Pathways (RCP, Moss et al. (2010); Meinshausen et al. (2011b)) using an ensemble of 600 projections with the climate emulator MAGICC-6.0 (Meinshausen et al., 2011a) which cover the range of projections of the current simulations from the Coupled Model Intercomparison Projection, CMIP-5 (Taylor et al., 2012). To this end we derive response functions for the
5 five ice-sheet models from a standardized melting experiment (M2) from the Sea-level Response to Ice Sheet Evolution (SeaRISE) intercomparison project (Bindschadler et al., 2013). This community effort gathers a broad range of structurally different ice-sheet models to perform a climate-forcing sensitivity study for both Antarctica (Nowicki et al., 2013a) and Greenland (Nowicki et al., 2013b).
10 A suite of prescribed numerical experiments on a common set of input data represents different types of climate input, namely enhanced sub-shelf melting, enhanced sliding and surface temperature increase combined with enhanced net accumulation.

The spread in the response of the participating models to these experiments originates from differences in the stress-balance approximations, the treatment of grounding line motion, the implementation of ice-shelf dynamics, the computation of the surface-mass balance, and in the computational
15 demand which sets strong limits on the spin-up procedure. Our approach allows us to identify the sensitivity of the response of coarse-resolution ice-sheet models to changes in different types of climate-related boundary conditions. An interpolation analysis of the results is performed in (Bindschadler et al., 2013) in order to provide a best-guess estimate of the future sea-level contribution
20 from the ice sheets.

Here we use linear response theory to project ice-discharge for varying basal melt scenarios. The framework of linear response theory has been used before, for example to generalize climatic response to greenhouse gas emissions (Good et al., 2011). The probabilistic procedure to obtain
25 projections of the Antarctic dynamic discharge due to basal ice-shelf melt and its uncertainty range is described in section 4 and illustrated in Fig. 1. There are clear limitations to this approach which are discussed in the conclusions section at the end. In light of these limitations which range from the use of linear response theory to missing physical process in the ice-sheet but also in the oceanic models, the results presented here need to be considered a first approach towards an estimate of Antarctica's future dynamic contribution to sea-level rise.

30 **2 Brief description of the ice-sheet and ocean models**

All ice-sheet models are described in detail by Bindschadler et al. (2013) (Tab. 2). Here we provide a brief summary referring to relevant publications from which more detailed descriptions can be obtained. All models applied are continental ice-sheet models and coarse in resolution. As a consequence these models have deficiencies in the representation of the motion of the grounding line.
35 This is documented in the MISIP and MISIP-3d intercomparison projects (Pattyn et al., 2012,

2013). Furthermore the basal-melt sensitivity experiments which were used to derive the response function (as detailed in section 3 were started from an equilibrium simulation and might thereby be biased towards a delayed response compared to the real Antarctic ice sheet which has evolved from a glacial period about 10000 years ago.

5 **AIF** The Anisotropic Ice-Flow model is a 3D ice-sheet model incorporating anisotropic ice flow and fully coupling dynamics and thermodynamics (Wang et al., 2012). It is a higher-order model with longitudinal and vertical shear stresses but currently without an explicit representation of ice shelves. The model uses the finite difference method to calculate ice-sheet geometry including isostatic bedrock adjustment, 3D distributions of shear and longitudinal strain rates, enhancement
10 factors which account for the effect of ice anisotropy, temperatures, horizontal and vertical velocities, shear and longitudinal stresses. The basal sliding is determined by Weertman 's sliding law based on a cubic power relation of the basal shear stress. As the model lacks ice shelves, the prescribed melt rates are applied to the ice-sheet perimeter grid-points whenever the bed is below sea level. The ice-sheet margin, which is equivalent to the grounding line in this model, moves freely within
15 the model grid-points and the grounding line is detected by hydrostatic equilibrium (i.e. the floating condition) without sub-grid interpolation.

Penn-State-3D The Penn State 3D ice sheet model uses a hybrid combination of the scaled Shallow Ice (SIA) and Shallow Shelf (SSA) equations for shearing and longitudinal stretching flow respectively. The location of the grounding line is determined by simple flotation, with sub-grid interpolation as in (Gladstone et al., 2010). A parameterization relating ice velocity across the grounding
20 line to local ice thickness is imposed as an internal boundary-layer condition, so that grounding-line migration is simulated reasonably well without the need for very high, i.e. of the order of 100 m, resolution (Schoof, 2007). Ocean melting below ice shelves and ice-shelf calving use simple parameterizations, along with a sub-grid parameterization at the floating-ice edge (Pollard and De-
25 conto, 2009; Pollard and DeConto, 2012). The Penn-State-3D model shows the best performance of grounding line motion within the MISMIP intercomparison compared to the other models applied here.

PISM The Parallel Ice Sheet Model (www.pism-docs.org) used here is based on version stable 0.4, which incorporates the Potsdam Parallel Ice Sheet Model (PISM-PIK) (Winkelmann et al., 2011;
30 Martin et al., 2011). Ice flow is approximated by a hybrid scheme incorporating both the SIA and SSA approximations (Bueler and Brown, 2009). An enthalpy formulation (Aschwanden et al., 2012) is used for thermodynamics, and the model employs a physical stress-boundary condition to the shelfy-stream approximation at ice fronts, in combination with a sub-grid interpolation (Albrecht et al., 2011) and a kinematic first-order calving law (Levermann et al., 2012) at ice-shelf fronts.
35 In PISM-PIK, the grounding line is not subject to any boundary conditions or flux corrections. Its position is determined from ice and bedrock topographies in each time step via the floatation criterion. The grounding line motion is thus influenced only indirectly by the velocities through the

ice thickness evolution. Since the SSA (shallow shelf approximation) velocities are computed non-locally and simultaneously for the shelf and for the sheet, a continuous solution over the grounding line without singularities is ensured and buttressing effects are accounted for. The PISM model shows good performance of the grounding line motion within the MISMIP intercomparisons only at
5 significantly higher resolution (1 km or finer) than applied here.

SICOPOLIS The SIMulation COde for POLythermal Ice Sheets is a three-dimensional, polythermal ice sheet model that was originally created by (Greve, 1995, 1997) in a version for the Greenland ice sheet, and has been developed continuously since then (Sato and Greve, 2012) (sicopolis.greweb.net). It is based on finite-difference solutions of the shallow ice approximation for
10 grounded ice (Hutter, 1983; Morland, 1984) and the shallow shelf approximation for floating ice (Morland, 1987; MacAyeal, 1989). Special attention is paid to basal temperate layers (that is, regions with a temperature at the pressure melting point), which are positioned by fulfilling a Stefan-type jump condition at the interface to the cold ice regions. Basal sliding is parameterized by a Weertman-type sliding law with sub-melt sliding (that allows for a gradual onset of sliding as the basal temperature approaches the pressure melting point (Greve, 2005)), and glacial isostasy is described by
15 the elastic lithosphere/relaxing asthenosphere (ELRA) approach (Le Meur and Huybrechts, 1996). The position and evolution of the grounding line is determined by the floating condition. Between neighbouring grounded and floating grid points, the ice thickness is interpolated linearly, and the half-integer auxiliary grid point in between (on which the horizontal velocity is defined, Arakawa C grid) is considered as either grounded or floating depending on whether the interpolated thickness
20 leads to a positive thickness above floatation or not. SICOPOLIS has not participated in the MISMIP experiments (Pattyn et al., 2012). The performance of the ice-shelf solver was tested against the analytical solution for an ice-shelf ramp (Greve and Blatter, 2009, Section 6.4) and showed very good agreement of the horizontal velocity field already at low resolution, as discussed by Sato (2012).
25 The grounding line motion of the model has however not been systematically tested yet.

UMISM The University of Maine Ice Sheet Model consists of a time-dependent finite-element solution of the coupled mass, momentum, and energy conservation equations using the SIA (Fastook, 1990, 1993; Fastook and Chapman, 1989; Fastook and Hughes, 1990; Fastook and Prentice, 1994) with a broad range of applications (for example (Fastook et al., 2012, 2011)) The 3-D temperature
30 field, on which the flow law ice hardness depends, is obtained from a 1-D finite-element solution of the energy conservation equation at each node without direct representation of horizontal heat advection. This thermodynamic calculation includes vertical diffusion and advection, but neglects horizontal movement of heat. Also included is internal heat generation produced by shear with depth and sliding at the bed. Boundary conditions consist of specified surface temperature and basal
35 geothermal gradient. If the calculated basal temperature exceeds the pressure melting point, the basal boundary condition is changed to a specified temperature, and a basal melt rate is calculated from the amount of latent heat of fusion that must be absorbed to maintain this specified temper-

ature. Conversely, if the basal temperature drops below the pressure melting point where water is already present at the bed, a similar treatment allows for the calculation of a rate of basal freezing. A map-plane solution for conservation of water at the bed, whose source is the basal melt or freeze-on rate provided by the temperature solution, allows for movement of the basal water down the hydrostatic pressure gradient (Johnson and Fastook, 2002). Areas of basal sliding can be specified if known, or determined internally by the model as regions where lubricating basal water is present, produced either by melting in the thermodynamic calculation or by movement of water beneath the ice sheet down the hydrostatic gradient. Ice shelves are not modeled explicitly in UMISM. However, a thinning rate at the grounding line produced by longitudinal stresses is calculated from a parameterization of the thinning of a floating slab (Weertman, 1957). No sub-grid grounding line interpolation is applied.

The oceanic forcing that is applied to the response functions as described in section 4 is derived from a scaling of the oceanic subsurface temperature (in four large scale oceanic basins along the Antarctic coast (fig. 2) with the global mean temperature increase under greenhouse-gas emission scenarios. To this end 19 global climate models from the Coupled climate Model Intercomparison Project, Phase 5 (CMIP-5) were used. These models typically apply an oceanic resolution of several degrees both in latitude and longitude. This results in the fact that major climate variability processes such as the ENSO phenomenon are not accurately represented. Important for the results discussed here is that these models are most likely not able to accurately represent the effects of mesoscale eddy motion. As shown for example by Hellmer et al. (2012) these might be crucial for abrupt warming events which may have significant impact on basal ice-shelf melt. This is a major limitation of the results presented here. The models used are likely missing any abrupt warming and are only able to capture large scale warming signals.

Besides the probabilistic projections we apply the ice-sheet response functions to subsurface temperature projections from two different ocean models, namely the Bremerhaven Regional Ice Ocean Simulations (BRIOS) model and the Finite-Element Southern Ocean Model (FESOM).

BRIOS is a coupled ice-ocean model which resolves the Southern Ocean south of 50°S zonally at 1.5° and meridionally at $1.5^{\circ} \times \cos\phi$. The water column is variably divided into 24 terrain-following layers. The sea-ice component is a dynamic-thermodynamic snow/ice model with heat budgets for the upper and lower surface layers (Parkinson and Washington, 1979) and a viscous-plastic rheology (Hibler III, 1979). BRIOS considers the ocean-ice shelf interaction underneath ten Antarctic ice shelves (Beckmann et al., 1999; Hellmer, 2004) with time-invariant thicknesses, assuming flux divergence and mass balance to be in dynamical equilibrium. The model has been successfully validated by the comparison with mooring and buoy observations regarding, e.g., Weddell gyre transport (Beckmann et al., 1999), sea ice thickness distribution and drift in Weddell and Amundsen seas (Timmermann et al., 2002a; Assmann et al., 2005) and sub-ice-shelf circulation (Timmermann et al., 2002b).

FESOM is a hydrostatic, primitive-equation ocean model with an unstructured grid that consists of triangles at the surface and tetrahedra in the ocean interior. It is based on the Finite Element model of the North Atlantic (Danilov et al., 2004, 2005) coupled to a dynamic-thermodynamic sea-ice model with a viscous-plastic rheology and evaluated in a global setup (Timmermann et al., 2009; 5 Sidorenko et al., 2011). An ice-shelf component with a three-equation system for the computation of temperature and salinity in the boundary layer between ice and ocean and the melt rate at the ice shelf base (Hellmer et al., 1998) has been implemented. Turbulent fluxes of heat and salt are computed with coefficients depending on the friction velocity following Holland and Jenkins (1999). The present setup uses a hybrid vertical coordinate and a global mesh with a horizontal resolution 10 between 30 and 40 km in the offshore Southern Ocean, which is refined to 10 km along the Antarctic coast, 7 km under the larger ice shelves in the Ross and Weddell Seas, and to 4 km under the small ice shelves in the Amundsen Sea.

Outside the Southern Ocean, resolution decreases to 50 km along the coasts and about 250-300 km in the vast basins of the Atlantic and Pacific Oceans, while on the other hand some of the narrow 15 straits that are important to the global thermohaline circulation (e.g., Fram- and Denmark Straits, and the region between Iceland and Scotland) are represented with high resolution (Timmermann et al., 2012). Ice shelf draft, cavity geometry, and global ocean bathymetry have been derived from the RTopo-1 dataset (Timmermann et al., 2010) and thus consider data from many of the most recent surveys of the Antarctic continental shelf.

20 3 Deriving the response functions

In order to use the sensitivity experiments carried out within the SeaRISE project (Bindschadler et al., 2013), we assume that for the 21st century the temporal evolution of the ice-discharge can be expressed as

$$S(t) = \int_0^t d\tau R(t-\tau)m(\tau) \quad (1)$$

25 where S is the sea-level contribution from ice discharge, m is the forcing represented by the basal-melt rate and R is the ice-sheet response-function. t is time starting from a period prior to the beginning of a significant forcing. The responses function R can thus be understood as the response to a delta-peak forcing with magnitude one.

$$S_\delta(t) = \int_0^t d\tau R(t-\tau)\delta(\tau) = R(t) \quad (2)$$

30 We express ice-discharge throughout the paper in units of global mean sea-level equivalent. That means that in deriving the response functions we only diagnose ice loss above flotation that is relevant for sea level. As a simple consequence the response function is unitless. The basal ice-shelf melt signal as well as the ice-discharge signal used to derive the response functions are anomalies

with respect to a baseline simulation under present-day boundary conditions (Bindschadler et al., 2013).

Linear response theory, as represented by equation (1), can only describe the response of a system up to a certain point in time; 100 years is a relatively short period for the response of an ice-sheet and the assumption of a linear response is thereby justified. During this period of validity, equation (1) is also capable of capturing rather complex responses such as irregular oscillations (compare Fig. 3), the method is not restricted to monotonous behaviour. However, equation (1) implies that multiplying the forcing by a factor will change the response by the same factor. This can only be the case as long as there are no qualitative changes in the physical response of the system. Furthermore any self-amplifying process such as the marine ice-sheet instability will not be captured accurately by equation (1) if the process dominates the response. Linear response theory can still be a valid approach in this case if the forcing dominates the response of the system. The weak forcing limitation is particularly relevant for the low emission scenario RCP-2.6. The forcing is likely to dominate the response for the relatively strong SeaRISE experiment M2 with additional homogeneous basal ice-shelf melting of 20 m/a and for the strong warming scenario RCP-8.5 which is particularly relevant for an estimate of the full range of ice-discharge projections. In this study, we project only for 100 years with a time delayed oceanic forcing of several decades (as detailed in tables 2-5) for the full coast line of Antarctica. For this particular setup, the linear response approach will provide insights on the continental response of the ice sheet.

There are a number of ways to obtain the system-specific response function R (e.g. Winkelmann and Levermann (2012)). Within the SeaRISE project the switch-on basal-melt experiments can be used conveniently since their response directly provides the time integral of the response function for each individual ice-sheet model. Assuming that over a forcing period of 100 years the different topographic basins on Antarctica from which ice is discharged respond independently, we diagnose the additional ice-flow from four basins separately (Fig. 2) and interpret them as the time integral of the response function for each separate basin. The response function for each basin is shown in Fig. 3. The aim of this study is specifically to capture differences between individual ice-sheet models which is nicely illustrated by their different response functions. To obtain R we use the response to the temporal stepwise increase in basal melt by 20m/a (denoted M2-experiment in (Bindschadler et al., 2013)). The ice-sheet response to a step forcing is equivalent to the temporal integral of the response function R with $t = 0$ being the time of the switch-on in forcing

$$S_{sf}(t) = \int_0^t d\tau R(t-\tau) \Delta m_0 \cdot \Theta(\tau) = \Delta m_0 \cdot \int_0^t d\tau R(\tau) \quad (3)$$

where $\Theta(\tau)$ is the Heavyside function which is zero for negative τ and one otherwise. We thus obtain the response function from

$$R(t) = \frac{1}{\Delta m_0} \cdot \frac{dS_{sf}}{dt}(t) \quad (4)$$

For the main results of this study we use the M2-experiment. While 20 m/a is a strong additional melting, it is within the range of potential future sub-shelf melt-rates as determined from the projected subsurface warming (see Fig. 4 and the empirical basal melt coefficients (7-16 m/a/K, section 4.3). It provides a good signal-to-noise ratio in the experiments, i.e. the response of the ice-sheet to the forcing is dominated by the forcing and not by internal oscillations or long-term numerical drift. Since a linear relation between response and forcing is assumed (equation (1)) the forcing from which the response functions are derived should be similar to the forcing applied in the projections. Basal ice-shelf melt rates of the M1-(2 m/a)- and M3-(200 m/a)- experiments are either too low or too high and consequently yield slightly different results. Please note, however, that the explicit choice of the response function is of second-order importance with respect to the uncertainty range of the sea-level projection. This can be seen when applying the response functions as obtained from the M1-experiments (see appendix). While the model- and basin-specific response functions may differ, the uncertainty range of the sea-level projections until 2100 are very similar to the range obtained from the M2-experiment. The reason for this similarity on the ranges is that most of the uncertainty arises from the uncertainty in the external forcing, while the response functions provide merely the magnitude of the continental scale response... See the appendix for more details.

The spatial distribution of the ice loss after 100 years through additional basal ice-shelf melting illustrates the different dynamics of the ice-sheet models resulting from, for example, different representations of ice dynamics, surface mass balance, basal sliding parameterizations and numerical implementation (Fig. 5). Part of the individual responses result from the different representations of the basal ice-shelf melt. In the UMISM model basal melt was applied along the entire coastline which yields a particularly strong response in East Antarctica (Fig. 3). This is likely an overestimation of the ice loss compared to models with an explicit representation of ice shelves. On the other hand, coarse resolution ice-sheet models as used here cannot capture small ice shelves as they are present especially around East Antarctica. These models thus have a tendency to underestimate the fraction of the coastal ice that is afloat and thus sensitivity to changes in ocean temperature might be also underestimated (compare for example (Martin et al., 2011) for the PISM model). While we will also provide projections using all five models, the main focus of the study are the three models with explicit representation of ice shelves (PennState-3D, PISM and SICOPOLIS).

30 **4 Probabilistic approach**

We aim to estimate the sea-level contribution from Antarctic dynamic ice discharge induced by basal ice-shelf melting driven by the global mean temperature evolution. In order to capture the climate uncertainty as well as the uncertainty in the oceanic response and the ice-sheet response, we follow a probabilistic approach that comprises four steps.

35 The schematic in Fig. 1 illustrates the procedure. At each of the four stages, represented by the

four boxes, a random selection is performed from a uniform distribution as indicated in the following. The equations for each step are provided in the Fig. 1.

- (a) For each scenario, a climate forcing, i.e. global mean temperature evolution, that is consistent with the observed climate change and the range of climate sensitivity of 2-4.5 degrees for a doubling of CO₂ is randomly selected and uniformly from an ensemble of 600 MagiCC-6.0 simulations. This selection yields a global-mean-temperature time series, T_G , from the year 1850 to the year 2100.
 - (b) Second, one of 19 CMIP-5 climate models was selected randomly to obtain the scaling coefficient and time delay between the global mean temperature surface warming, T_G , and the subsurface oceanic warming, T_O . The global mean temperature evolution from step (a) is translated into a time series of subsurface ocean temperature change by use of the corresponding scaling coefficients and the associated time delay.
 - (c) Thirdly, a basal melt sensitivity, β , was selected randomly from the observed interval, to translate the oceanic warming into additional basal ice shelf melting. The coefficient to translate the subsurface ocean temperature evolution to a sub-shelf melt rate is randomly drawn from the observation based interval 7 m/a/K (Jenkins, 1991) to 16 m/a/K (Payne et al., 2007).
 - (d) To translate the melt rate to sea-level-relevant ice-loss from the associated ice-sheet basin we randomly pick one response function as derived in section 2 (Fig. 3) and combine them with random selections of the forcing obtained from step (a)-(c).
- The procedure is repeated 50,000 times for each RCP scenario.

4.1 Global mean temperature evolution

We here use the Representative Concentration Pathways (RCPs) (Moss et al., 2010; Meinshausen et al., 2011b). The range of possible changes in global mean temperature that result from each RCP is obtained by constraining the response of the emulator model MAGICC 6.0 (Meinshausen et al., 2011a) with the observed temperature record. This procedure has been used in several studies and aims to cover the possible global climate response to specific greenhouse-gas emission pathways (e.g. Meinshausen et al. (2009)). Here we use a set of 600 time series of global mean temperature from the year 1850 to 2100 for each RCP that cover the full range of future global temperature changes as detailed in Schewe et al. (2011).

4.2 Subsurface oceanic temperatures from CMIP-5

We use the simulations of the recent Coupled Model Intercomparison (CMIP-5) and obtain a scaling relationship between the anomalies of the global mean temperature and the anomalies of the oceanic

subsurface temperature for each model. This has been carried out for the CMIP-3 experiments by Winkelmann et al. (2012) and is repeated here for the more recent climate models of CMIP-5.

Our scaling approach is based on the assumption that anomalies of the ocean temperatures resulting from global warming scale with the respective anomalies in global mean temperature. This approach may not be valid for absolute values. The assumption is consistent with the linear-response assumption underlying equation (1). We use oceanic temperatures from the subsurface at the mean depth of the ice-shelf underside in each sector (Tab. 1) to capture the conditions at the entrance of the ice-shelf cavities.

The surface warming signal needs to be transported to depth, therefore the best linear regression is found with a time delay between global mean surface air temperature and subsurface oceanic temperatures. Results are detailed in section 6.1. For the probabilistic projections the scaling coefficients are randomly drawn from the provided sets.

4.3 Empirical basal melt coefficients

We apply an empirical relation to transform ocean temperature anomalies to basal ice shelf melt anomalies. Observations suggest an interval of 7 m/a/K (Jenkins, 1991) to 16 m/a/K (Payne et al., 2007). See Holland et al. (2008) for a detailed discussion and comparison to other observations. The coefficient used for each projection are drawn randomly and uniformly from this interval. For comparison, if the temperature change would be transported undiluted into the cavity and through the turbulent mixed layer underneath the ice shelf the simple formula

$$m = \frac{\rho_O c_{pO} \gamma_T}{\rho_i L_i} \cdot \delta T_O \approx 42 \frac{m}{aK} \cdot \delta T_O \quad (5)$$

would lead to a much higher melt rate, with $\rho_O = 1028 \text{ kg/m}^3$ and $c_{pO} = 3974 \text{ J/kg/K}$ are density and heat capacity of ocean water. $\rho_i = 910 \text{ kg/m}^3$ and $L_i = 3.35 \cdot 10^5 \text{ J/kg}$ are ice density and latent heat of ice melt, $\gamma_T = 10^{-4}$ as adopted from Hellmer and Olbers (1989).

4.4 Translating melt rates to sea-level-relevant ice-loss

The response functions as derived in section 2 allow to translate the melting anomalies to changes in dynamic ice discharge from the Antarctic ice sheet. By randomly selecting a response function from the derived set we cover the uncertainty from the different model responses. The main analysis is based on the response functions from the ice sheet models with explicit ice shelf representation. This choice was made because the application of the basal ice-shelf melting signal was less well defined for the models without explicit representation of the ice-shelves. As a consequence the melting in these models was applied directly at the coast of the ice sheet in the first grounded grid cell. The area of melting was selected as the entire coast line in the case of the UMISM model and as the current shelf regions in the AIF model. These models were thus not included in the general uncertainty analysis.

5 Application of ice-sheet response functions to projections from regional ocean models

We first illustrate the direct application of the response function outside the probabilistic framework. We use melt rate projections from the high-resolution global finite-element FESOM and the regional ocean model BRIOS to derive the dynamic ice loss from the Weddel- and Ross-Sea sectors.

- 5 Regional climate-change scenarios available from simulations for these models have been presented by Hellmer et al. (2012) and Timmermann and Hellmer (2013). We utilize data from the SRES A1B scenario, which represents greenhouse gas forcing between the RCP-6.0 and RCP-8.5 and the E1-scenario of the IPCC-AR4 (Alley et al., 2007), which is comparable to RCP-2.6. Both models were forced with boundary conditions obtained from two global climate models under these
- 10 scenarios: ECHAM-5 (full lines in Fig. 6) and HadCM-3 (dashed lines in Fig. 6). Note that temperatures decline in the Ross sector for HadCM-3 simulations and the Weddell sea for ECHAM-5 driven FESOM simulations which leads to negative melt rates. Since such declining melt rates or even refreezing corresponds to a different physical process it is unlikely that the linear response functions from the SearISE experiments are applicable in such a case.
- 15 Though ocean model and scenario uncertainty are present, Fig. 6 shows that the role of the global climate model in projecting ice discharge is the dominating uncertainty as has already been discussed by Timmermann and Hellmer (2013). It therefore motivates the use of the broadest possible spectrum of climatic forcing in order to cover the high uncertainty from the choice of the global climate model.

6 Probabilistic Projections of the Antarctic sea level contribution

20 6.1 Scaling coefficients for subsurface ocean temperatures

The scaling coefficients and the time delay determined from the 19 CMIP-5 coupled climate models are detailed in Tab.2 - Tab.5. The high r^2 values support the validity of the linear regression except for the IPSL model where also the slope between the two temperature signals is very low. We explicitly keep this model in order to include the possibility that almost no warming occurs underneath

25 the ice-shelves.

Fig. 4 shows the median and the 66%- and 90% probability ranges for the oceanic subsurface temperatures, denoted the *likely* and *very likely* range by the IPCC-AR5 (IPCC, 2013), as obtained from a random selection of global mean temperature pathways combined with a randomly selected scaling coefficient and the associated time delay Δt from Tab. 2-5. Though physical reasons for

30 a time delay between the surface and the subsurface temperatures exist, we find a high correlation also without applying a time delay. As the oceanic response of the coarse-resolution climate models applied here is likely to underestimate some small-scale transport processes (i.e. Hellmer et al. (2012)), it is useful to also provide results without time delay to bracket the full range of response. The oceanic temperature time-series without time delay are provided as inlays in Fig. 4.

For comparison, Yin et al. (2011) assessed output from 19 AOGCMs under scenario A1B to determine how subsurface temperatures are projected to evolve around the ice sheets. They show decadal-mean warming of 0.4-0.7°C and 0.4-0.9°C around Antarctica (25th to 75th percentiles of ensemble, West and East respectively) between 1951-2000 and 2091-2100.

5 6.2 Projected sea-level contribution for the past (1992-2011)

Fig. 7 shows the uncertainty range of the sea-level projection as obtained from this procedure for the sea-level change between 1992 and 2011 together with the range for this quantity as obtained from observations (Shepherd et al., 2012). The bars in the upper panels show that the likely range (66% percentile) of the models with explicit ice-shelf representations (PennState3D, PISM and SICOPOLIS) are in good agreement with the observed range. The median (black dot) of each model is within the observed range. The middle panel shows that the time delay plays an important role. The likely range obtained from the models with explicit ice-shelf representation (denoted 'Shelf-models' for simplicity) is almost identical with the observed range when the time delay is accounted for (dark red) while it reaches higher than the observed range without the time delay (dark blue). While we cannot claim that the ocean models nor the ice-sheet models are capable to simulate the specific (and largely unknown) events that resulted in the sea-level contribution from Antarctica between 1992 and 2011, the observed signal corresponds well with our estimated range.

6.3 Results for the different basins and different models

Fig. 8 shows the uncertainty range of the projected contribution from the different oceanic sectors comprising uncertainty in climate and ocean circulation. While the individual time series will differ from the non-probabilistic projections with the ocean models, FESOM and BRIOS, the order of magnitude of the range of the sea-level contribution is the same. For example, FESOM yields a particularly strong response in the Weddel sector when forced with the HadCM3 model (dashed lines in Fig. 6) and BRIOS a weak response when forced with ECHAM-5. The response of the models from the downscaled global simulations covers this range. While we find the largest median response in the Amundsen-Sea sector which forces the Pine-Island-Thwaites glaciers, the contributions of all sectors are relatively similar with a scatter of the median from 0.01 to 0.03 m (Fig. 9). Note, however, that the contributions from the different regions are not independent and thus the median of the full ensemble cannot necessarily be obtained as the sum of the individual medians of the basins. The histogram of the ice-discharge contribution for the year 2100 in Fig. 9 shows the strongly skewed probability distribution.

The total ice discharge varies strongly between the different ice-sheet models (Fig. 10) as can be expected from the differences in the response functions of Fig. 3. The weakest ice-loss is projected from the SICOPOLIS model while the strongest signal is obtained from PennState-3D. As the three models with explicit representation of ice shelves (SICOPOLIS, PennState-3D, PISM) span the full

range of responses within the constraints of the applied methodology, they are the base of our further analysis. The two models without explicit ice-shelf dynamics, AIF and UMISM, however, yield responses of the same order of magnitude. The stronger response of the UMISM model is due to the fact that basal melt was applied along the entire coastline of Antarctica (Fig. 5) which is likely an overestimation of the real situation. While there is a clear dependence on the climatic scenario especially for the 90% percentile, the uncertainty between different ice-sheet models is comparable to the scenario spread. The strongest difference between models with and without explicit ice-shelf representation is observed in East Antarctica (dashed line in Fig. 8 provides the range for all models). The difference results mainly from the strong contribution of the UMISM model which assumes basal melt along the entire coastline.

6.4 Scenario dependence

The full uncertainty range including climate-, ocean- and ice-sheet-model spread shows large uncertainty increasing with time along the 21st-century projections (Fig. 11). While model uncertainty is large, there is a scenario dependence which is visible in the median and the 66% percentile but most prominent for the 90% percentile of the distribution (Tab. 6). This scenario-dependence is independent of the selection of the ice-sheet models or the inclusion of the time lag in the scaling of subsurface ocean temperatures (Fig. 12 and Tab. 6). The scenario dependence is not surprising since it is inherent in the applied procedure. It was assumed the sea-level contribution is driven by the temperature increase in the atmosphere. Any natural variability in the atmosphere, ocean or the ice sheet was not taken into account. Given this methodological constraint, the scenario dependence is relatively small on these short time scales, especially since it seems that on longer time scales the contribution from Antarctica may depend significantly on the warming level (Levermann et al., 2013, e.g.) The results are summarized in Fig. 13. All distributions are significantly skewed towards high sea-level contributions. This skewness strongly influences the median of the distributions as well as the 66%- and 90%-ranges. Consequently the median is not the value with the highest probability. The large tails makes an estimate of the 90%-range, i.e. the 'very likely' range as denoted by the IPCC-AR5 (IPCC, 2013), very uncertain.

7 Conclusion and discussions

The aim of this study is to estimate the range of the potential sea-level contribution caused by future ice-discharge from Antarctica that can be induced by ocean warming within the 21st century within the constraints of the models and the methodological approach. To this end we include the full range of climatic forcing with climate models that yield practically no warming of the Southern Ocean subsurface (e.g. IPSL) to extreme cases with more than 2 degrees of warming at the entrance of the ice-shelf cavities under the strongest warming scenario (Fig. 4).

By construction of the method using linear response theory, the uncertainty ranges comprising climatic, oceanic and ice-dynamical uncertainty show a dependence on the global climate-change scenario (Tab. 6), especially for the tails of the distribution, e.g. the 90% percentile. For the RCP-2.6 which was designed to result in a median increase in global mean temperature below 2° in most climate models, the 66%-range of ice-loss is 0.02-0.14 m with a median of 0.07 m in units of global mean sea-level rise. This range increases to 0.04-0.21 m for RCP-8.5 with a median contribution of 0.09 m. This compares to a likely range of -0.01 m to 0.16 m for the dynamic Antarctic discharge until 2100 in the latest assessment report of the IPCC (Church et al., 2013). While the entire range was derived from a number of individual studies, the upper limit was mainly based on a probabilistic approach without specific accounting for the warming induced forcing Little et al. (2013a) and Little et al. (2013b). This caused the limit to be independent of the scenario even though it was stated in the report that it is expected that the contribution will depend on the level of warming induced. It was further stated that this likely range can be exceeded by several decimeters if the marine parts of the Antarctic ice sheet become unstable.

These results are based on the three models with explicit representation of ice-shelf dynamics. The strongest difference to the 'ice-shelf models' arises in the UMISM model which applies melting along the entire coastline. For the main analysis the models with explicit ice-shelf representation were selected because of three main reasons: First, these models allowed a direct application of the central forcing, i.e. basal ice-shelf melting, without further parameterization of the effect of the basal ice shelf melting on the ice flow. Secondly, these models capture the evolution of the ice-shelf area underneath which the melting takes place and thirdly, the projected ice loss from Antarctica for the historic period of 1992 to 2011 agrees with observed contribution within the observational uncertainty.

It has to be noted that the ice-sheet models as well as the climate models used here are coarse in horizontal model resolution. At this resolution the ice-sheet models are not able to simulate the benchmark behaviour of the MISMIP intercomparison projects (Pattyn et al., 2012, 2013). Two of the models used (PennState-3D and PISM) are able to simulate the grounding line behaviour in accordance with analytic solutions or the full-Stokes solution in MISMIP when using a significantly higher resolution (around 1 km) than applied for the SeaRISE experiments (Pattyn et al., 2013; Feldmann et al., 2014). However, for continent-scale simulations, these high resolutions remain a challenge for ice-sheet models due to either the high computational costs or inadequate datasets, such as poorly known bedrock topography in the vicinity of grounding lines.

Furthermore a number of physical processes that might be relevant for Antarctica's future contribution are not included in these models. Here we name only a few, but this list is most likely not complete because modeling the effect basal topography, surface melt and interaction between the ice-sheet-shelf system with the ocean is still far from sufficient. For example, the effect of ice calving from ice shelves, but potentially even more importantly, from ice sheets into the ocean (Bassis and

Jacobs, 2013; Levermann et al., 2012; Bassis, 2011; Walter et al., 2010) is not properly represented in most models. The effect of changes in surface properties and resulting changes in basal lubrication or ice rheology are either not included or likely not sufficiently represented (Box et al., 2012; Borstad et al., 2012; Cathles et al., 2011, e.g.). Feedbacks from the ice melt to ocean circulation and the sea-ice as well as possible water intrusion and interaction with the sediment are generally not represented (Gomez et al., 2013; Muto et al., 2013; Macayeal et al., 2012; Walter et al., 2012; Gomez et al., 2010; Hattermann and Levermann, 2010; Howat et al., 2010, e.g.). While the focus of this study is the role of the uncertainty in external forcing, the resolution-based deficiencies as well as the missing physical processes in the models need to be taken into account when interpreting the results.

At the same time, it needs to be noted that the uncertainty estimates presented are limited to the 21st century. According to the 19 comprehensive climate models applied, the atmospheric warming arrives at the entrance of the ice-shelf cavities with a time delay of several decades. We apply a broad interval of coefficients to translate this time-delayed temperature increase into basal melt rates. The ice-sheet responds to the higher melt rates with an increase of the ice flux across the grounding line. In some places this increased flux leads to a thinning upstream of the grounding line that is sufficiently strong to let the grounding line retreat. The three models applied are capable of simulating and show grounding line retreat in response to the climatic forcing applied. However, the signal from the enhanced ice flux across the grounding line dominates in this study. It needs to be noted that our estimates may not cover the full contribution from consecutive, potentially self-accelerating grounding line retreat which may be significant (Favier et al., 2014; Joughin et al., 2014; Rignot et al., 2014; Mengel and Levermann, 2014).

However, the largest uncertainty in the future sea-level contribution estimated in this study arises from the uncertainty in the external forcing and here in particular from the uncertainty in the physical climate system, not in the socio-economic pathways. This may arise due to the fact that only few ice sheet models were applied compared to the large number of climate models and warming paths. Further studies are needed to assess whether large ice-sheet uncertainty arises with higher resolution ice-sheet models. The significant uncertainty in surface warming that is associated with each emission scenario (RCP) translates into a subsurface oceanic warming where additional uncertainty in magnitude and timing arises. This oceanic warming at the entrance of the ice-shelf cavities then leads to sub-shelf melting which is subject to significant uncertainty. We here applied the full interval of observed sub-shelf melting sensitivities as obtained from the observational literature. The combination of all of these uncertain processes is then applied as an external forcing to the continental ice-sheet models. While the models need to be coarse in resolution in order to be able to model the entire continent, the main uncertainty in this study arises from the uncertainty in forcing not from the ice-sheet model. Internal variability was not accounted for, neither in the atmosphere nor in the ocean or ice-sheet models. This is due to the coarse resolution of the applied models and

may significantly influence the contribution from the 21st century (Hellmer et al., 2012, e.g.).

The linear response approach sets further limits to the interpretation of our results. A significant response time of the sea-level-relevant ice-flow to basal ice-shelf melting will be multi-decadal or longer which justifies the use of a linear response function to represent the full non-linear dynamics.

5 A clear short-coming is, however, that the method is not capable of capturing self-amplification processes within the ice. As a consequence an irreversible grounding line motion will be captured only when it is forced and not if it is merely triggered by the forcing and then self-amplifies. Thus, if the ice loss due to an instability is faster than due to the external forcing, then this additional ice loss will not be captured properly by the linear response theory. It is hypothesized that this is particularly
10 relevant for weak forcing scenarios in which an instability might be triggered but the directly forced ice loss is weak. It might be less relevant for strong forcing scenarios like the RCP-8.5 when the forcing might dominate the dynamics.

Changes in the geometry of the ice-shelf cavity and salinity changes due to melt water cannot be accounted for in a systematic way here. While the three ice models with ice shelf representation
15 within the limitation of their resolution incorporate dynamic shelf evolution, the geometry changes cannot feed back to the ocean circulation in our linear response approach. The computation of the basal ice-shelf melt anomalies from the temperature anomalies is simplified as it excludes salinity changes. However, the simplification well approximates the dominating dynamics as the effect of salinity anomalies is small (Payne et al., 2007). To account for the feedbacks between ice thickness
20 and salinity changes due to melt water and the ocean circulation, interactive coupling of ice shelves models and global climate models is needed. As dynamic ice shelf models are not implemented in the CMIP-5 climate models applied, the feedbacks cannot be reliably projected within the probabilistic approach taken here. We do not account for melt patterns underneath the ice-shelves as basal melt rates are applied uniformly. While it has been shown that the melting distribution matters for the
25 ice-sheet response (Walker et al., 2008; Gagliardini et al., 2010), it is beyond the scope of this study as a dynamic ocean model is not applied. The melt coefficients applied here were derived for as as an ice shelf average and new uncertainty would be introduced with a spatially dependent melt coefficient.

As discussed above, a time lag between the oceanic temperature change and the change in global
30 mean temperature is physically reasonable and applied in our projections. However, the correlation between surface warming and subsurface temperature change improves only marginally when introducing the time lag and it is not clear whether small scale processes may accelerate the heat transport at finer resolution (Hellmer et al., 2012). It is thus worthwhile to consider the ice loss without a time lag (Fig. 11b). If the basal ice-shelf melt rates are applied immediately the 66%-range of the sea
35 level contribution increases from 0.04-0.21 m to 0.07-0.28 m for RCP-8.5. The simulations with the high-resolution finite-element ocean model FESOM and the regional ocean model BRIOS (Fig. 6) illustrate that abrupt ocean circulation changes can have strong influence on the basal melt rates

Table 1. Mean depth of ice shelves in the different regions denoted in Fig. 2 as computed from (Le Brocq et al., 2010). Oceanic temperature anomalies were averaged vertically over a 100m range around these depth.

Region	Depth [m]
Amundsen Sea	305
Ross Sea	312
Weddell Sea	420
East Antarctica	369

(Hellmer et al., 2012). The comparably coarse-resolution ocean components of the CMIP-5 global climate models are unlikely to resolve such small scale changes. Estimates on as presented here will thus be dominated by basin-scale temperature changes of the interior ocean.

The probabilistic approach applied here assumes a certain interdependence of the different uncertainties. The global climatic signal is selected independently from the oceanic scaling coefficient. However the range of scaling coefficients is derived from the correlation within the different CMIP-5 models. The ice-sheet uncertainty is again independent of the other two components. While there are other methods to combine the uncertainties, we find no clear way of judging which method is superior.

The ice-loss computed here is a response entirely to enhanced basal ice-shelf melting. There are other potential changes in the boundary conditions and dynamics of the ice-sheet such as softening through ice warming and enhanced basal sliding as well as abrupt ice-shelf disintegration (not induced by basal ice-shelf melting) which might play a significant role for future ice-discharge from Antarctica.

The method presented here can easily be applied to other ice-sheet models with improved dynamical representation as they become available. This study is merely a first step towards comprising the full range of forcing uncertainty into an estimate of the future sea-level contribution from Antarctica.

Appendix A Linear response function derived from SeaRISE M1-experiment

Fig. 14 shows the response functions as obtained from the M1 experiment with 2 m/a of additional basal ice-shelf melting. Comparison with Fig. 3 shows significant differences between the response functions obtained from the M1- and M2-experiments.

The lower panels of Fig. 14 show, however that the uncertainty range of the sea-level projection is very similar to the projections obtained with the M2-experiment (Fig. 11). This illustrates the fact that the uncertainty range is dominated by the external forcing of the ice-sheets, while the response functions provide merely the magnitude of the ice-sheet response to the forcing. For the ultimate uncertainty range it is herein not crucial whether the response function of one specific model is

Table 2. Amundsen-Sea sector: scaling coefficients and time delay Δt between increase in global mean temperature and subsurface ocean temperature anomaly.

Model	Coeff. without Δt	r^2	Δt [yr]	Coeff. with Δt	r^2
ACCESS1-0	0.17	0.86	0	0.17	0.86
ACCESS1-3	0.30	0.94	0	0.30	0.94
BNU-ESM	0.37	0.88	30	0.56	0.92
CanESM2	0.15	0.83	30	0.24	0.88
CCSM4	0.22	0.89	0	0.22	0.89
CESM1-BGC	0.19	0.92	0	0.19	0.92
CESM1-CAM5	0.12	0.92	0	0.12	0.92
CSIRO-Mk3-6-0	0.16	0.79	30	0.28	0.83
FGOALS-s2	0.24	0.90	55	0.54	0.93
GFDL-CM3	0.26	0.81	35	0.49	0.85
HadGEM2-ES	0.23	0.70	0	0.23	0.70
INMCM4	0.67	0.90	0	0.67	0.90
IPSL-CM5A-MR	0.07	0.22	90	0.44	0.45
MIROC-ESM-CHEM	0.12	0.74	5	0.13	0.75
MIROC-ESM	0.11	0.55	60	0.35	0.61
MPI-ESM-LR	0.27	0.80	5	0.29	0.82
MRI-CGCM3	0.00	0.02	85	-0.07	0.04
NorESM1-M	0.30	0.94	0	0.30	0.94
NorESM1-ME	0.31	0.89	0	0.31	0.89

different for the M1 and the M2 experiments as long as the range of responses spanned by all three models is similar. This supports the use of the probabilistic approach taken in this study.

Table 3. Weddell sector: scaling coefficients and time delay Δt between increase in global mean temperature and subsurface ocean temperature anomaly.

Model	Coeff. without Δt	r^2	Δt [yr]	Coeff. with Δt	r^2
ACCESS1-0	0.07	0.73	35	0.14	0.80
ACCESS1-3	0.07	0.73	35	0.15	0.81
BNU-ESM	0.37	0.89	0	0.37	0.89
CanESM2	0.11	0.82	55	0.31	0.91
CCSM4	0.37	0.95	20	0.49	0.96
CESM1-BGC	0.37	0.95	25	0.53	0.96
CESM1-CAM5	0.23	0.79	50	0.63	0.88
CSIRO-Mk3-6-0	0.19	0.80	55	0.60	0.90
FGOALS-s2	0.09	0.73	85	0.39	0.86
GFDL-CM3	0.11	0.55	60	0.31	0.62
HadGEM2-ES	0.31	0.92	0	0.31	0.92
INMCM4	0.26	0.83	10	0.30	0.83
IPSL-CM5A-MR	-0.02	0.00	85	-0.06	0.03
MIROC-ESM-CHEM	0.07	0.50	65	0.32	0.77
MIROC-ESM	0.03	0.27	65	0.18	0.59
MPI-ESM-LR	0.08	0.65	85	0.41	0.70
MRI-CGCM3	0.21	0.63	40	0.47	0.83
NorESM1-M	0.26	0.90	5	0.28	0.92
NorESM1-ME	0.25	0.85	50	0.64	0.92

Table 4. Ross-Sea sector: scaling coefficients and time delay Δt between increase in global mean temperature and subsurface ocean temperature anomaly.

Model	Coeff. without Δt	r^2	Δt [yr]	Coeff. with Δt	r^2
ACCESS1-0	0.18	0.77	20	0.26	0.79
ACCESS1-3	0.09	0.76	15	0.12	0.77
BNU-ESM	0.28	0.83	20	0.36	0.84
CanESM2	0.14	0.74	45	0.32	0.80
CCSM4	0.14	0.91	5	0.15	0.92
CESM1-BGC	0.14	0.90	0	0.14	0.90
CESM1-CAM5	0.16	0.85	0	0.16	0.85
CSIRO-Mk3-6-0	-0.06	0.28	0	-0.06	0.28
FGOALS-s2	0.18	0.89	60	0.45	0.93
GFDL-CM3	0.23	0.85	25	0.37	0.89
HadGEM2-ES	0.25	0.62	0	0.25	0.62
INMCM4	0.59	0.83	0	0.59	0.83
IPSL-CM5A-MR	0.02	0.04	95	0.14	0.12
MIROC-ESM-CHEM	0.23	0.85	0	0.23	0.85
MIROC-ESM	0.23	0.78	0	0.23	0.78
MPI-ESM-LR	0.16	0.70	40	0.31	0.73
MRI-CGCM3	0.08	0.04	0	0.08	0.04
NorESM1-M	0.12	0.79	0	0.12	0.79
NorESM1-ME	0.12	0.68	20	0.16	0.73

Table 5. East-Antarctic-Sea sector: scaling coefficients and time delay Δt between increase in global mean temperature and subsurface ocean temperature anomaly.

Model	Coeff. without Δt	r^2	Δt [yr]	Coeff. with Δt	r^2
ACCESS1-0	0.20	0.92	30	0.35	0.94
ACCESS1-3	0.27	0.92	0	0.27	0.92
BNU-ESM	0.35	0.92	0	0.35	0.92
CanESM2	0.21	0.96	0	0.21	0.96
CCSM4	0.13	0.96	5	0.13	0.97
CESM1-BGC	0.12	0.94	25	0.17	0.95
CESM1-CAM5	0.15	0.94	0	0.15	0.94
CSIRO-Mk3-6-0	0.22	0.93	15	0.28	0.94
FGOALS-s2	0.17	0.90	55	0.41	0.94
GFDL-CM3	0.21	0.89	35	0.39	0.93
HadGEM2-ES	0.23	0.95	0	0.23	0.95
INMCM4	0.55	0.97	0	0.55	0.97
IPSL-CM5A-MR	0.14	0.89	0	0.14	0.89
MIROC-ESM-CHEM	0.11	0.89	0	0.11	0.89
MIROC-ESM	0.09	0.85	50	0.24	0.88
MPI-ESM-LR	0.20	0.94	15	0.26	0.95
MRI-CGCM3	0.26	0.94	0	0.26	0.94
NorESM1-M	0.15	0.76	0	0.15	0.76
NorESM1-ME	0.15	0.74	60	0.49	0.85

Table 6. Projections of ice-discharge in 2100 according to Fig. 12. Numbers are in meters sea-level equivalent for the different global climate RCP-scenarios with and without time delay Δt . The models PennState-3D, PISM and SICOPOLIS have an explicit representation of ice-shelf dynamics and are denoted 'shelf models'.

Set-up	RCP	Median	17%	83%	5%	95%
'Shelf models' with Δt	2.6	0.07	0.02	0.14	0.0	0.23
	4.5	0.07	0.03	0.16	0.01	0.27
	6.0	0.07	0.03	0.17	0.01	0.28
	8.5	0.09	0.04	0.21	0.01	0.37
'Shelf models' without Δt	2.6	0.09	0.04	0.17	0.02	0.25
	4.5	0.11	0.05	0.20	0.02	0.30
	6.0	0.11	0.05	0.21	0.02	0.31
	8.5	0.15	0.07	0.28	0.04	0.43
All models with Δt	2.6	0.08	0.03	0.17	0.01	0.27
	4.5	0.09	0.03	0.20	0.01	0.33
	6.0	0.09	0.03	0.20	0.01	0.34
	8.5	0.11	0.04	0.27	0.01	0.47
All models without Δt	2.6	0.11	0.05	0.19	0.02	0.29
	4.5	0.13	0.06	0.24	0.03	0.36
	6.0	0.13	0.06	0.25	0.03	0.38
	8.5	0.18	0.08	0.34	0.04	0.54

Acknowledgements. RW and MAM were funded by the German federal ministry of education and research (BMBF grant 01LP1171A). MM was funded by the Deutsche Bundesstiftung Umwelt. RG and TS were supported by a Grant-in-Aid for Scientific Research A (No. 22244058) from the Japan Society for the Promotion of Science (JSPS). SN, RAB, and WLW were supported by the NASA Cryospheric Science program (Grants 5 281945.02.53.02.19 and 281945.02.53.02.20). KF was by the German Federal Ministry for the Environment, Nature Conservation and Nuclear Safety (11.II.093_Global_A_SIDS and LDCs). HHH, AJP and RT were supported by the ice2sea programme from the European Union 7th Framework Programme, grant no. 226375.

References

- Albrecht, T., Martin, M. A., Winkelmann, R., Haseloff, M., and Levermann, A.: Parameterization for subgrid-scale motion of ice-shelf calving fronts, *The Cryosphere*, 5, 35–44, doi:10.5194/tc-5-35-2011, 2011.
- Alley, R., Berntsen, T., Bindoff, N. L., Chen, Z., Chidthaisong, A., Friedlingstein, P., Hegerl, G., Heimann, M., Hewitson, B., Hoskins, B., Joos, F., Jouzel, J., Kattsov, V., Lohmann, U., Manning, M., Matsuno, T., Molina, M., Nicholls, N., Overpeck, J., Qin, D., Ramaswamy, V., Ren, J., Rusticucci, M., Solomon, S., Somerville, R., Stocker, T. F., Stott, P., Stouffer, R. J., Whetton, P., Wood, R. A., Wratt, D., Arblaster, J., Brasseur, G., Christensen, J. H., Denman, K., Fahey, D. W., Forster, P., Jansen, E., Jones, P. D., Knutti, R., Treut, H. L., Lemke, P., Meehl, G., Mote, P., Randall, D., Stone, D. A., Trenberth, E., Willebrand, J., and Zwiers, F.: *Climate Change 2007: The Physical Science Basis. Contribution of Working Group I to the Fourth Assessment Report of the Intergovernmental Panel on Climate Change*, Cambridge University Press, Cambridge, United Kingdom and New York, NY, USA., 2007.
- Aschwanden, A., Bueler, E., Khroulev, C., and Blatter, H.: An enthalpy formulation for glaciers and ice sheets, *Journal of Glaciology*, 58, 441–457, doi:10.3189/2012JoG11J088, <http://www.igsoc.org/journal/58/209/t11J088.html>, 2012.
- Assmann, K. M., Hellmer, H. H., and Jacobs, S. S.: Amundsen Sea ice production and transport, *J. Geophys. Res.*, 110, 311–337, 2005.
- Bamber, J. L., Riva, R. E. M., Vermeersen, B. L. A., and LeBrocq, A. M.: Reassessment of the Potential Sea-Level Rise from a Collapse of the West Antarctic Ice Sheet, *Science*, 324, 901–903, doi:10.1126/science.1169335, <http://www.sciencemag.org/cgi/content/abstract/324/5929/901>, 2009.
- Bassis, J. N.: The statistical physics of iceberg calving and the emergence of universal calving laws, *Journal of Geology*, 57, 3–16, 2011.
- Bassis, J. N. and Jacobs, S.: Diverse calving patterns linked to glacier geometry, *Nature Geoscience*, 6, 1–4, doi:10.1038/ngeo1887, <http://www.nature.com/doi/10.1038/ngeo1887>, 2013.
- Beckmann, A., Hellmer, H. H., and Timmermann, R.: A numerical model of the Weddell Sea: Large-scale circulation and water mass distribution, *Geophysical Research Letters*, 104, 23,375–23,391, 1999.
- Bindschadler, R. a., Nowicki, S., Abe-OUCHI, A., Aschwanden, A., Choi, H., Fastook, J., Granzow, G., Greve, R., Gutowski, G., Herzfeld, U., Jackson, C., Johnson, J., Khroulev, C., Levermann, A., Lipscomb, W. H., Martin, M. a., Morlighem, M., Parizek, B. R., Pollard, D., Price, S. F., Ren, D., Saito, F., Sato, T., Seddik, H., Seroussi, H., Takahashi, K., Walker, R., and Wang, W. L.: Ice-sheet model sensitivities to environmental forcing and their use in projecting future sea level (the SeaRISE project), *Journal of Glaciology*, 59, 195–224, doi:10.3189/2013JoG12J125, <http://www.igsoc.org/journal/59/214/j12J125.html>, 2013.
- Borstad, C. P., Khazendar, a., Larour, E., Morlighem, M., Rignot, E., Schodlok, M. P., and Seroussi, H.: A damage mechanics assessment of the Larsen B ice shelf prior to collapse: Toward a physically-based calving law, *Geophysical Research Letters*, 39, L18 502, doi:10.1029/2012GL053317, <http://www.agu.org/pubs/crossref/2012/2012GL053317.shtml>, 2012.
- Box, J. E., Fettweis, X., Stroeve, J. C., Tedesco, M., Hall, D. K., and Steffen, K.: Greenland ice sheet albedo feedback: thermodynamics and atmospheric drivers, *The Cryosphere*, 6, 821–839, doi:10.5194/tc-6-821-2012, <http://www.the-cryosphere.net/6/821/2012/>, 2012.
- Bueler, E. and Brown, J.: The shallow shelf approximation as a sliding law in a thermomechanically coupled

- ice sheet model, *Journal of Geophysical Research*, 114, F03 008, 2009.
- Cathles, L. M., Abbot, D. S., Bassis, J. N., and MacAyeal, D. R.: Modeling surface-roughness/solar-ablation feedback: application to small-scale surface channels and crevasses of the Greenland ice sheet, *Annals of Glaciology*, 52, 99–108, doi:10.3189/172756411799096268, <http://openurl.ingenta.com/content/xref?genre=article&issn=0260-3055&volume=52&issue=59&spage=99>, 2011.
- 5 Church, J., Clark, P., Cazenave, A., Gregory, J., Jevrejeva, S., Levermann, A., Merrifield, M., Milne, G., Nerem, R., Nunn, P., Payne, A., Pfeffer, W., Stammer, D., and Unnikrishnan, A.: Sea Level Change, in: *Climate Change 2013: The Physical Science Basis. Contribution of Working Group I to the Fifth Assessment Report of the Intergovernmental Panel on Climate Change*, Cambridge University Press, Cambridge, United Kingdom and New York, NY, USA., 2013.
- 10 Danilov, S., Kivman, G., and Schröter, J.: A finite element ocean model: principles and evaluation, *Ocean Modelling*, 6, 125–150, 2004.
- Danilov, S., Kivman, G., and Schröter, J.: Evaluation of an eddy-permitting finite-element ocean model in the North Atlantic, *Ocean Modelling*, 10, 35–49, 2005.
- 15 Fastook, J. L.: A map-plane finite-element program for ice sheet reconstruction: A steady-state calibration with Antarctica and a reconstruction of the Laurentide Ice Sheet for 18,000 BP, in: *Computer Assisted Analysis and Modeling on the IBM 3090*, edited by Brown, H. U., IBM Scientific and Technical Computing Dept., White Plains, N.Y., 1990.
- Fastook, J. L.: The finite-element method for solving conservation equations in glaciology, *Computational Science and Engineering*, 1, 55–67, 1993.
- 20 Fastook, J. L. and Chapman, J.: A map plane finite-element model: Three modeling experiments, *Journal of Glaciology*, 35, 48–52, 1989.
- Fastook, J. L. and Hughes, T. J.: Changing ice loads on the Earth's surface during the last glacial cycle, in: *Glacial Isostasy, Sea-Level and Mantle Rheology, Series C: Mathematical and Physical Sciences*, Vol. 334, edited by Sabadini, R., Lambeck, K., and Boschi, E., Kluwer Academic Publishers, Dordrecht/Boston/London, 1990.
- 25 Fastook, J. L. and Prentice, M.: A finite-element model of Antarctica: Sensitivity test for meteorological mass balance relationship, *Journal of Glaciology*, 40, 167–175, 1994.
- Fastook, J. L., Head, J. W., Forget, F., Madeleine, J.-B., and Marchant, D. R.: Evidence for Amazonian northern mid-latitude regional glacial landsystems on Mars: Glacial flow models using GCM-driven climate results and comparisons to geological observations, *Icarus*, 216, 23–39, 2011.
- 30 Fastook, J. L., Head, J. W., Marchant, D. R., Forget, F., and Madeleine, J.-B.: Early Mars Climate Near the Noachian-Hesperian Boundary: Independent Evidence for Cold Conditions from Basal Melting of the South Polar Ice Sheet (Dorsa Argentea Formation) and Implications for Valley Network Formation, *Icarus*, 219, 25–40, 2012.
- 35 Favier, L., Durand, G., Cornford, S. L., Gudmundsson, G. H., Gagliardini, O., Gillet-Chaulet, F., Zwinger, T., Payne, a. J., and Le Brocq, a. M.: Retreat of Pine Island Glacier controlled by marine ice-sheet instability, *Nature Climate Change*, 4, 117–121, doi:10.1038/nclimate2094, <http://www.nature.com/doi/10.1038/nclimate2094>, 2014.
- 40 Feldmann, J., Albrecht, T., Khroulev, C., Pattyn, F., and Levermann, a.: Resolution-dependent performance of

- grounding line motion in a shallow model compared with a full-Stokes model according to the MISMIP3d intercomparison, *Journal of Glaciology*, 60, 353–360, doi:10.3189/2014JoG13J093, <http://www.igsoc.org/journal/60/220/j13J093.html>, 2014.
- 5 Gagliardini, O., Durand, G., Zwinger, T., Hindmarsh, R. C. A., and Le Meur, E.: Coupling of ice-shelf melting and buttressing is a key process in ice-sheets dynamics, *Geophysical Research Letters*, 37, L14 501, 2010.
- Gladstone, R. M., Payne, A. J., and Cornford, S. L.: Parameterising the grounding line in flow-line ice sheet models, *The Cryosphere*, 4, 605–619, doi:10.5194/tc-4-605-2010, <http://www.the-cryosphere.net/4/605/2010/>, 2010.
- 10 Gomez, N., Mitrovica, J. X., Huybers, P., and Clark, P. U.: Sea level as a stabilizing factor for marine-ice-sheet grounding lines, *Nature Geoscience*, 3, 850–853, doi:10.1038/ngeo1012, <http://www.nature.com/doi/10.1038/ngeo1012>, 2010.
- Gomez, N., Pollard, D., and Mitrovica, J. X.: A 3-D coupled ice sheet sea level model applied to Antarctica through the last 40 ky, *Earth and Planetary Science Letters*, 384, 88–99, doi:10.1016/j.epsl.2013.09.042, <http://linkinghub.elsevier.com/retrieve/pii/S0012821X13005530>, 2013.
- 15 Good, P., Gregory, J. M., and Lowe, J. A.: A step-response simple climate model to reconstruct and interpret AOGCM projections, *Geophysical Research Letters*, 38, 1703, doi:10.1029/2010GL045208, 2011.
- Greve, R.: Thermomechanisches Verhalten polythermer Eisschilde – Theorie, Analytik, Numerik, Doctoral thesis, Department of Mechanics, Darmstadt University of Technology, Germany, *Berichte aus der Geowissenschaft*, Shaker Verlag, Aachen, Germany, 1995.
- 20 Greve, R.: Application of a polythermal three-dimensional ice sheet model to the Greenland ice sheet: Response to steady-state and transient climate scenarios, *Journal of Climate*, 10, 901–918, doi:10.1175/1520-0442(1997)010<0901:AOAPTD>2.0.CO;2, 1997.
- Greve, R.: Relation of measured basal temperatures and the spatial distribution of the geothermal heat flux for the Greenland ice sheet, *Annals of Glaciology*, 42, 424–432, doi:10.3189/172756405781812510, 2005.
- 25 Greve, R. and Blatter, H., eds.: *Dynamics of Ice Sheets and Glaciers*, Springer, 2009.
- Hallegatte, S., Green, C., Nicholls, R. J., and Corfee-Morlot, J.: Future flood losses in major coastal cities, *Nature Climate Change*, 3, 802–806, doi:10.1038/nclimate1979, <http://www.nature.com/doi/10.1038/nclimate1979>, 2013.
- Hattermann, T. and Levermann, A.: Response of Southern Ocean circulation to global warming may enhance basal ice shelf melting around Antarctica, *Climate Dynamics*, 34, doi:10.1007/s00382-009-0643-3, 2010.
- 30 Hellmer, H. H.: Impact of Antarctic ice shelf basal melting on sea ice and deep ocean properties, *Geophysical Research Letters*, 31, DOI:10.1029/2004GL019 506, 2004.
- Hellmer, H. H. and Olbers, D. J.: A Two-Dimensional Model for the Thermohaline Circulation Under an Ice Shelf, *Antarctic Science*, 1, 325–336, 1989.
- 35 Hellmer, H. H., Jacobs, S. S., and Jenkins, A.: Oceanic erosion of a floating Antarctic glacier in the Amundsen Sea, In: Jacobs SS, Weiss R (eds) *Ocean, ice and atmosphere: interactions at Antarctic Continental margin*, vol 75 of Antarctic research series. American Geophysical Union, Washington, DC, pp. 83–100, 1998.
- Hellmer, H. H., Kauker, F., Timmermann, R., Determann, J., and Rae, J.: Twenty-first-century warming of a large Antarctic ice-shelf cavity by a redirected coastal current, *Nature*, 485, 225–228, doi:10.1038/nature11064, <http://www.nature.com/doi/10.1038/nature11064>, 2012.
- 40

- Hibler III, W. D.: A dynamic-thermodynamic sea ice model, *J. Phys. Oceanogr.*, 9, 815–846, 1979.
- Hinkel, J., Lincke, D., Vafeidis, A. T., Perrette, M., Nicholls, R. J., Tol, R. S. J., Marzeion, B., Fettweis, X., Ionescu, C., and Levermann, A.: Coastal flood damage and adaptation costs under 21st century sea-level rise., *Proceedings of the National Academy of Sciences of the United States of America*, 111, 3292–7, doi: 10.1073/pnas.1222469111, <http://www.ncbi.nlm.nih.gov/pubmed/24596428>, 2014.
- Holland, D. M. and Jenkins, A.: Modeling Thermodynamic Ice-Ocean Interactions at the Base of an Ice Shelf, *Journal of Climate*, 29, 1787–1800, 1999.
- Holland, P. R., Jenkins, A., and Holland, D. M.: The Response of Ice Shelf Basal Melting to Variations in Ocean Temperature, *Journal of Climate*, 21, 2008.
- Howat, I. M., Box, J. E., Ahn, Y., Herrington, A., and McFadden, E. M.: Seasonal variability in the dynamics of marine-terminating outlet glaciers in Greenland, *Journal of Glaciology*, 56, 601–613, doi: 10.3189/002214310793146232, <http://openurl.ingenta.com/content/xref?genre=article&issn=0022-1430&volume=56&issue=198&spage=601>, 2010.
- Hutter, K.: *Theoretical Glaciology; Material Science of Ice and the Mechanics of Glaciers and Ice Sheets*, D. Reidel Publishing Company, Dordrecht, The Netherlands, 1983.
- Huybrechts, P., Goelzer, H., Janssens, I., Driesschaert, E., Fichefet, T., Goosse, H., and Loutre, M.-F.: Response of the Greenland and Antarctic Ice Sheets to Multi-Millennial Greenhouse Warming in the Earth System Model of Intermediate Complexity LOVECLIM, *Surveys in Geophysics*, 32, 397–416, 2011.
- IPCC: *Climate Change 2013: The Physical Science Basis. Contribution of Working Group I to the Fifth Assessment Report of the Intergovernmental Panel on Climate Change*, Cambridge University Press, Cambridge, United Kingdom and New York, NY, USA, 2013.
- Jenkins, A.: Ice shelf basal melting: Implications of a simple mathematical model, *Tech. Rep. FRISP Rep. 5*, 1991.
- Johnson, J. and Fastook, J. L.: Northern Hemisphere glaciation and its sensitivity to basal melt water, *Quaternary International*, 95–96, 65–74, 2002.
- Joughin, I., Smith, B. E., and Medley, B.: Marine ice sheet collapse potentially under way for the Thwaites Glacier Basin, West Antarctica., *Science (New York, N.Y.)*, 344, 735–8, doi:10.1126/science.1249055, <http://www.ncbi.nlm.nih.gov/pubmed/24821948>, 2014.
- Le Brocq, a. M., Payne, a. J., and Vieli, a.: An improved Antarctic dataset for high resolution numerical ice sheet models (ALBMAP v1), *Earth System Science Data*, 2, 247–260, doi:10.5194/essd-2-247-2010, <http://www.earth-syst-sci-data.net/2/247/2010/>, 2010.
- Le Meur, E. and Huybrechts, P.: A comparison of different ways of dealing with isostasy: examples from modelling the Antarctic ice sheet during the last glacial cycle, *Annals of Glaciology*, 23, 309–317, 1996.
- Levermann, A., Albrecht, T., Winkelmann, R., Martin, M. A., Haseloff, M., and Joughin, I.: Kinematic first-order calving law implies potential for abrupt ice-shelf retreat, *The Cryosphere*, 6, 273–286, 2012.
- Levermann, A., Clark, P. U., Marzeion, B., Milne, G. a., Pollard, D., Radic, V., and Robinson, A.: The multi-millennial sea-level commitment of global warming, *Proceedings of the National Academy of Sciences*, pp. 1–6, doi:10.1073/pnas.1219414110, <http://www.pnas.org/cgi/doi/10.1073/pnas.1219414110>, 2013.
- Little, C. M., Oppenheimer, M., and Urban, N. M.: Upper bounds on twenty-first-century Antarctic ice loss assessed using a probabilistic framework, *Nature Climate Change*, 3, 654–659, doi:10.1038/nclimate1845,

- <http://www.nature.com/doi/10.1038/nclimate1845>, 2013a.
- Little, C. M., Urban, N. M., and Oppenheimer, M.: Probabilistic framework for assessing the ice sheet contribution to sea level change., *Proceedings of the National Academy of Sciences of the United States of America*, 110, 3264–9, doi:10.1073/pnas.1214457110, <http://www.pubmedcentral.nih.gov/articlerender.fcgi?artid=3587274&tool=pmcentrez&rendertype=abstract>, 2013b.
- MacAyeal, D. R.: Large-scale ice flow over a viscous basal sediment: theory and application to ice stream B, Antarctica, *Journal of Geophysical Research*, 94, 4071–4087, 1989.
- Macayeal, D. R., Freed-brown, J., Zhang, W. W., and Amundson, J. M.: The influence of ice melange on fjord seiches, *Annals Of Glaciology*, 53, 45–49, doi:10.3189/2012/AoG60A027, 2012.
- 10 Martin, M. A., Winkelmann, R., Haseloff, M., Albrecht, T., Bueler, E., Khroulev, C., and Levermann, A.: The Potsdam Parallel Ice Sheet Model (PISM-PIK) Part 2: Dynamic equilibrium simulation of the Antarctic ice sheet, *The Cryosphere*, 5, 727–740, 2011.
- Marzeion, B. and Levermann, A.: Loss of cultural world heritage and currently inhabited places to sea-level rise, *Environmental Research Letters*, 9, 034 001, doi:10.1088/1748-9326/9/3/034001, <http://stacks.iop.org/1748-9326/9/i=3/a=034001?key=crossref.b354dee9225889ff61938a83ebed6099>, 2014.
- 15 Meinshausen, M., Meinshausen, N., Hare, W., Raper, S. C. B., Frieler, K., Knutti, R., Frame, D. J., and Allen, M. R.: Greenhouse-gas emission targets for limiting global warming to $\{2 \text{ }^\circ\text{C}\}$, *Nature*, 458, 1158–1162, 2009.
- Meinshausen, M., Raper, S. C. B., and Wigley, T. M. L.: Emulating coupled atmosphere-ocean and carbon cycle models with a simpler model, *MAGICC6 - Part 1: Model description and calibration*, *Atmospheric Chemistry and Physics*, 11, 1417–1456, <http://www.atmos-chem-phys.net/11/1417/2011/>, 2011a.
- Meinshausen, M., Smith, S., Calvin, K., Daniel, J., Kainuma, M., Lamarque, J.-F., Matsumoto, K., Montzka, S., Raper, S., Riahi, K., Thomson, A., Velders, G., and van Vuuren, D. P.: The $\{RCP\}$ greenhouse gas concentrations and their extensions from 1765 to 2300, *Climatic Change*, 109, 213–241, doi:10.1007/s10584-011-0156-z, 2011b.
- 25 Mengel, M. and Levermann, A.: Ice plug prevents irreversible discharge from East Antarctica, pp. 1–5, doi: 10.1038/NCLIMATE2226, 2014.
- Mitrovica, J. X., Gomez, N., and Clark, P. U.: The Sea-Level Fingerprint of West Antarctic Collapse, *Science*, 323, 753–, 2009.
- 30 Morland, L. W.: Thermomechanical balances of ice sheet flows, *Geophysical and Astrophysical Fluid Dynamics*, 29, 237–266, 1984.
- Morland, L. W.: Unconfined ice-shelf flow, in: *Dynamics of the West Antarctic Ice Sheet*, edited by van der Veen, C. J. and Oerlemans, J., pp. 99–116, D. Reidel Publishing Company, Dordrecht, The Netherlands, 1987.
- 35 Moss, R. H., Edmonds, J. a., Hibbard, K. a., Manning, M. R., Rose, S. K., van Vuuren, D. P., Carter, T. R., Emori, S., Kainuma, M., Kram, T., Meehl, G. a., Mitchell, J. F. B., Nakicenovic, N., Riahi, K., Smith, S. J., Stouffer, R. J., Thomson, A. M., Weyant, J. P., and Wilbanks, T. J.: The next generation of scenarios for climate change research and assessment., *Nature*, 463, 747–56, doi:10.1038/nature08823, <http://www.ncbi.nlm.nih.gov/pubmed/20148028>, 2010.
- 40 Muto, A., Anandakrishnan, S., and Alley, R. B.: Subglacial bathymetry and sediment layer distribution beneath

the Pine Island Glacier ice shelf, West Antarctica, modeled using aerogravity and autonomous underwater vehicle data, *Annals of Glaciology*, 54, 27–32, doi:10.3189/2013AoG64A110, <http://www.igsoc.org/annals/54/64/a64A110.html>, 2013.

- Nowicki, S., Bindschadler, R. a., Abe-Ouchi, A., Aschwanden, A., Bueler, E., Choi, H., Fastook, J., Granzow, G., Greve, R., Gutowski, G., Herzfeld, U., Jackson, C., Johnson, J., Khroulev, C., Larour, E., Levermann, A., Lipscomb, W. H., Martin, M. a., Morlighem, M., Parizek, B. R., Pollard, D., Price, S. F., Ren, D., Rignot, E., Saito, F., Sato, T., Seddik, H., Seroussi, H., Takahashi, K., Walker, R., and Wang, W. L.: Insights into spatial sensitivities of ice mass response to environmental change from the SeaRISE ice sheet modeling project I: Antarctica, *Journal of Geophysical Research: Earth Surface*, 118, 1002–1024, doi:10.1002/jgrf.20081, <http://doi.wiley.com/10.1002/jgrf.20076><http://doi.wiley.com/10.1002/jgrf.20081>, 2013a.
- Nowicki, S., Bindschadler, R. a., Abe-Ouchi, A., Aschwanden, A., Bueler, E., Choi, H., Fastook, J., Granzow, G., Greve, R., Gutowski, G., Herzfeld, U., Jackson, C., Johnson, J., Khroulev, C., Larour, E., Levermann, A., Lipscomb, W. H., Martin, M. a., Morlighem, M., Parizek, B. R., Pollard, D., Price, S. F., Ren, D., Rignot, E., Saito, F., Sato, T., Seddik, H., Seroussi, H., Takahashi, K., Walker, R., and Wang, W. L.: Insights into spatial sensitivities of ice mass response to environmental change from the SeaRISE ice sheet modeling project II: Greenland, *Journal of Geophysical Research: Earth Surface*, 118, 1025–1044, doi:10.1002/jgrf.20076, <http://doi.wiley.com/10.1002/jgrf.20076>, 2013b.
- Parkinson, C. L. and Washington, W. M.: A large-scale numerical model of sea ice, *J. Geophys. Res.*, 84, 311–337, 1979.
- Pattyn, F., Schoof, C., Perichon, L., Hindmarsh, R. C. a., Bueler, E., de Fleurian, B., Durand, G., Gagliardini, O., Gladstone, R., Goldberg, D., Gudmundsson, G. H., Huybrechts, P., Lee, V., Nick, F. M., Payne, a. J., Pollard, D., Rybak, O., Saito, F., and Vieli, a.: Results of the Marine Ice Sheet Model Intercomparison Project, MISMIIP, *The Cryosphere*, 6, 573–588, doi:10.5194/tc-6-573-2012, <http://www.the-cryosphere.net/6/573/2012/>, 2012.
- Pattyn, F., Perichon, L., Durand, G., Favier, L., Gagliardini, O., Hindmarsh, R. C., Zwinger, T., Albrecht, T., Cornford, S., Docquier, D., Fürst, J. J., Goldberg, D., Gudmundsson, G. H., Humbert, A., Hütten, M., Huybrechts, P., Jouvét, G., Kleiner, T., Larour, E., Martin, D., Morlighem, M., Payne, A. J., Pollard, D., Rückamp, M., Rybak, O., Seroussi, H., Thoma, M., and Wilkens, N.: Grounding-line migration in plan-view marine ice-sheet models: results of the ice2sea MISMIIP3d intercomparison, *Journal of Glaciology*, 59, 410–422, doi:10.3189/2013JoG12J129, <http://www.igsoc.org/journal/59/215/t12J129.html>, 2013.
- Payne, A. J., Holland, P. R., Shepherd, A. P., Rutt, I. C., Jenkins, A., and Joughin, I.: Numerical modeling of ocean-ice interactions under Pine Island Bay’s ice shelf, *Journal of Geophysical Research*, 112, 10019, 2007.
- Pollard, D. and Deconto, R. M.: Modelling West Antarctic ice sheet growth and collapse through the past five million years, *Nature*, 458, 329–332, 2009.
- Pollard, D. and DeConto, R. M.: A simple inverse method for the distribution of basal sliding coefficients under ice sheets, applied to Antarctica, *The Cryosphere*, 6, 953–971, doi:10.5194/tc-6-953-2012, <http://www.the-cryosphere.net/6/953/2012/>, 2012.
- Rignot, E., Mouginot, J., Morlighem, M., Seroussi, H., and Scheuchl, B.: Widespread, rapid grounding line retreat of Pine Island, Thwaites, Smith, and Kohler glaciers, West Antarctica, from 1992 to 2011, *Geophys-*

- ical Research Letters, pp. n/a–n/a, doi:10.1002/2014GL060140, <http://dx.doi.org/10.1002/2014GL060140>, 2014.
- Sato, T.: Dynamics of the Antarctic ice sheet with coupled ice shelves, Ph.D. thesis, Graduate School of Environmental Science, Hokkaido University, Sapporo, Japan, <http://tinyurl.com/GISR42>, 2012.
- 5 Sato, T. and Greve, R.: Sensitivity experiments for the Antarctic ice sheet with varied sub-ice-shelf melting rates, *Annals of Glaciology*, 53, 221–228, doi:10.3189/2012AoG60A042, <http://www.igsoc.org/annals/53/60/t60A042.html>, 2012.
- Schewe, J., Levermann, A., and Meinshausen, M.: Climate change under a scenario near 1.5°C of global warming: monsoon intensification, ocean warming and steric sea level rise, *Earth System Dynamics*, 10 2, 25–35, doi:10.5194/esd-2-25-2011, 2011.
- Schoof, C.: Ice sheet grounding line dynamics: Steady states, stability, and hysteresis, *Journal of Geophysical Research*, 112, F03S28, 2007.
- Shepherd, a., Ivins, E. R., A, G., Barletta, V. R., Bentley, M. J., Bettadpur, S., Briggs, K. H., Bromwich, D. H., Forsberg, R., Galin, N., Horwath, M., Jacobs, S., Joughin, I., King, M. a., Lenaerts, J. T. M., Li, 15 J., Ligtenberg, S. R. M., Luckman, a., Luthcke, S. B., McMillan, M., Meister, R., Milne, G., Mouginot, J., Muir, a., Nicolas, J. P., Paden, J., Payne, a. J., Pritchard, H., Rignot, E., Rott, H., Sorensen, L. S., Scambos, T. a., Scheuchl, B., Schrama, E. J. O., Smith, B., Sundal, a. V., van Angelen, J. H., van de Berg, W. J., van den Broeke, M. R., Vaughan, D. G., Velicogna, I., Wahr, J., Whitehouse, P. L., Wingham, D. J., Yi, D., Young, D., and Zwally, H. J.: A Reconciled Estimate of Ice-Sheet Mass Balance, *Science*, 338, 1183–1189, 20 20 doi:10.1126/science.1228102, <http://www.sciencemag.org/cgi/doi/10.1126/science.1228102>, 2012.
- Sidorenko, D., Wang, Q., Danilov, S., and Schröter, J.: FESOM under Coordinated Ocean-ice Reference Experiment forcing, *Ocean Dynamics*, doi:10.1007/s10236-011-0406-7, 2011.
- Taylor, K. E., Stouffer, R. J., and Meehl, G. A.: An overview of CMIP5 and the experiment design, *Bulletin of the American Meteorological Society*, 93, 485–498, doi:10, 2012.
- 25 Timmermann, R. and Hellmer, H. H.: Southern Ocean warming and increased ice shelf basal melting in the 21st and 22nd centuries based on coupled ice-ocean finite-element modelling, *Ocean Dynamics*, 63, 1011–1026, doi:10.1007/s10236-013-0642-0, 2013.
- Timmermann, R., Beckmann, A., and Hellmer, H. H.: Simulation of ice-ocean dynamics in the Weddell Sea 1: Model configuration and validation., *Journal of Geophysical Research*, 107, 2002a.
- 30 Timmermann, R., Hellmer, H. H., and Beckmann, A.: Simulations of ice-ocean dynamics in the Weddell Sea 2. Interannual variability 19851993, *Journal of Geophysical Research*, 107, 2002b.
- Timmermann, R., Danilov, S., Schröter, J., Böning, C., Sidorenko, D., and Rollenhagen, K.: Ocean circulation and sea ice distribution in a finite element global sea ice – ocean model, *Ocean Modelling*, doi:10.1016/j.ocemod.2008.10.009, 2009.
- 35 Timmermann, R., Le Brocq, A., Deen, T., Domack, E., Dutrieux, P., Galton-Fenzi, B., Hellmer, H., Humbert, A., Jansen, D., Jenkins, A., Lambrecht, A., Makinson, K., Niederjasper, F., Nitsche, F., Noest, O., Smedsrud, L., and Smith, W.: A consistent dataset of Antarctic ice sheet topography, cavity geometry, and global bathymetry., *Earth Syst. Sci. Data*, 2, 261–273, doi:10.5194/essd-2-261-2010, 2010.
- 40 Timmermann, R., Wang, Q., and Hellmer, H. H.: Ice shelf basal melting in a global finite-element sea ice – ice shelf – ocean model., *Annals of Glaciology*, (in press), 2012.

- Van den Broeke, M. R., Bamber, J., Lenaerts, J., and Rignot, E.: Ice Sheets and Sea Level: Thinking Outside the Box, *Surveys in Geophysics*, 32, 495–505, doi:10.1007/s10712-011-9137-z, <http://www.springerlink.com/index/10.1007/s10712-011-9137-z>, 2011.
- Vizcaíno, M., Mikolajewicz, U., Jungclaus, J., and Schurgers, G.: Climate modification by future ice sheet changes and consequences for ice sheet mass balance, *Climate Dynamics*, 34, 301–324, doi:10.1007/s00382-009-0591-y, <http://www.springerlink.com/index/10.1007/s00382-009-0591-y>, 2009.
- Walker, R. T., Dupont, T. K., Parizek, B. R., and Alley, R. B.: Effects of basal-melting distribution on the retreat of ice-shelf grounding lines, *Geophysical Research Letters*, 35, 2008.
- Walter, F., O’Neel, S., McNamara, D., Pfeffer, W. T., Bassis, J. N., and Fricker, H. A.: Iceberg calving during transition from grounded to floating ice: Columbia Glacier, Alaska, *Geophysical Research Letters*, 37, 1–5, doi:10.1029/2010GL043201, <http://www.agu.org/pubs/crossref/2010/2010GL043201.shtml>, 2010.
- Walter, J. I., Box, J. E., Tulaczyk, S., Brodsky, E. E., Howat, I. M., Ahn, Y., and Brown, A.: Oceanic mechanical forcing of a marine-terminating Greenland glacier, *Annals of Glaciology*, 53, 181–192, doi:10.3189/2012AoG60A083, <http://www.igsoc.org/annals/53/60/a60A083.html>, 2012.
- Wang, W., Li, J., and Zwally, H. J.: Dynamic inland propagation of thinning due to ice loss at the margins of the Greenland ice sheet, *Journal of Glaciology*, 58, 734–740, doi:10.3189/2012JoG11J187, <http://www.igsoc.org/journal/58/210/j11j187.html>, 2012.
- Weertman, J.: On the sliding of glaciers, *Journal of Glaciology*, 3, 33–38, 1957.
- Winkelmann, R. and Levermann, A.: Linear response functions to project contributions to future sea level, *Climate Dynamics*, p. submitted, 2012.
- Winkelmann, R., Martin, M. A., Haseloff, M., Albrecht, T., Bueler, E., Khroulev, C., and Levermann, A.: The Potsdam Parallel Ice Sheet Model (PISM-PIK) Part 1: Model description, *The Cryosphere*, 5, 715–726, doi:10.5194/tc-5-715-2011, 2011.
- Winkelmann, R., Levermann, a., Martin, M. a., and Frieler, K.: Snowfall increases future ice discharge from Antarctica, *The Cryosphere Discussions*, 6, submitted, doi:10.5194/tcd-6-673-2012, <http://www.the-cryosphere-discuss.net/6/673/2012/http://www.nature.com/doi/10.1038/nature11616>, 2012.
- Yin, J., Overpeck, J., Griffies, S., Hu, A., Russell, J., and Stouffer, R. J.: Different magnitudes of projected subsurface ocean warming around Greenland and Antarctica, *Nature Climate Change*, 4, 524–528, 2011.

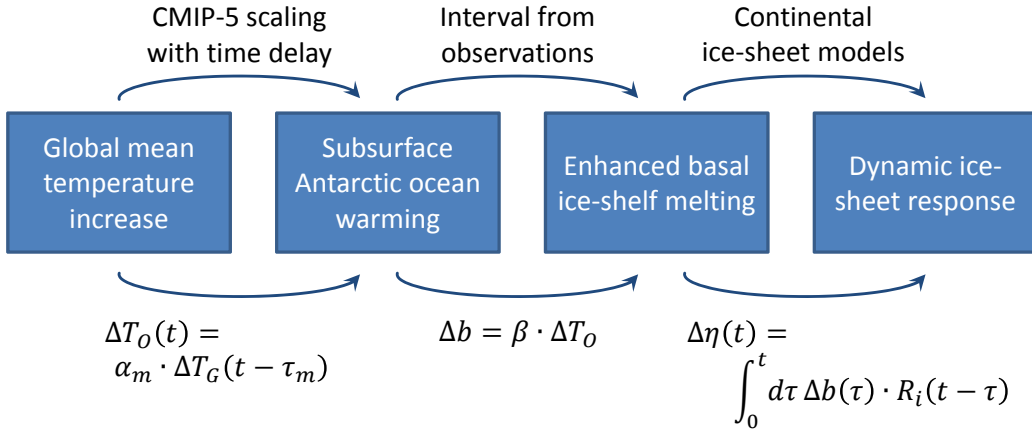


Fig. 1. Schematic of procedure for the estimate of the uncertainty of the Antarctic dynamic contribution to future sea-level change. At each stage of the procedure, represented by the four boxes, a random selection is performed from a uniform distribution as indicated in the following. This procedure was carried out 50000 times for each RCP scenario to obtain the uncertainty ranges described through-out the study. First, one time-evolution of the global mean temperature, ΔT_G was selected randomly out of an ensemble of 600 MagiCC-6.0 simulations. Second, one of 19 CMIP-5 climate models was selected randomly to obtain the scaling coefficient and time delay between the global mean temperature surface warming, T_G , and the subsurface oceanic warming, T_O . Thirdly, a basal melt sensitivity, β , was selected randomly from the observed interval, to translate the oceanic warming into additional basal ice shelf melting. Finally one of the ice-sheet models is selected randomly to use the corresponding response function to obtain an ice discharge signal which is given in sea-level equivalent. The formulas describe the corresponding signal transformation at each step.

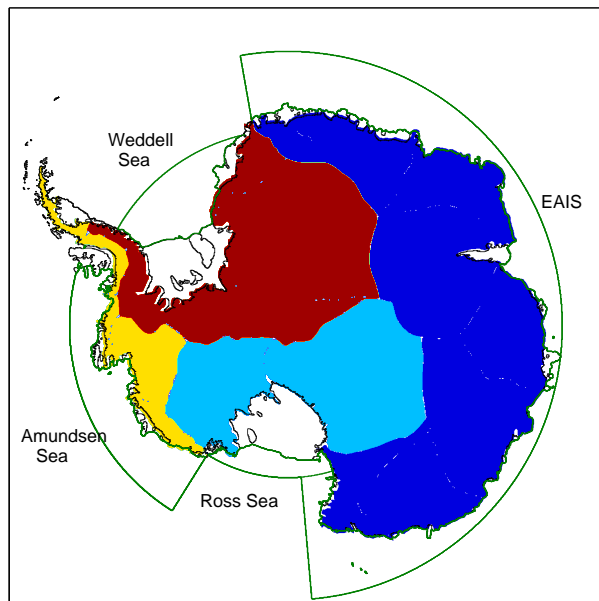


Fig. 2. The four different basins for which ice-sheet response functions are derived from the SeaRISE M2-experiments. Green lines enclose the oceanic regions over which the subsurface oceanic temperatures were averaged. Vertical averaging was carried out over a 100m depth range centered at the mean depth of the ice-shelves in the region taken from Le Brocq et al. (2010) as provided in Tab. 1.

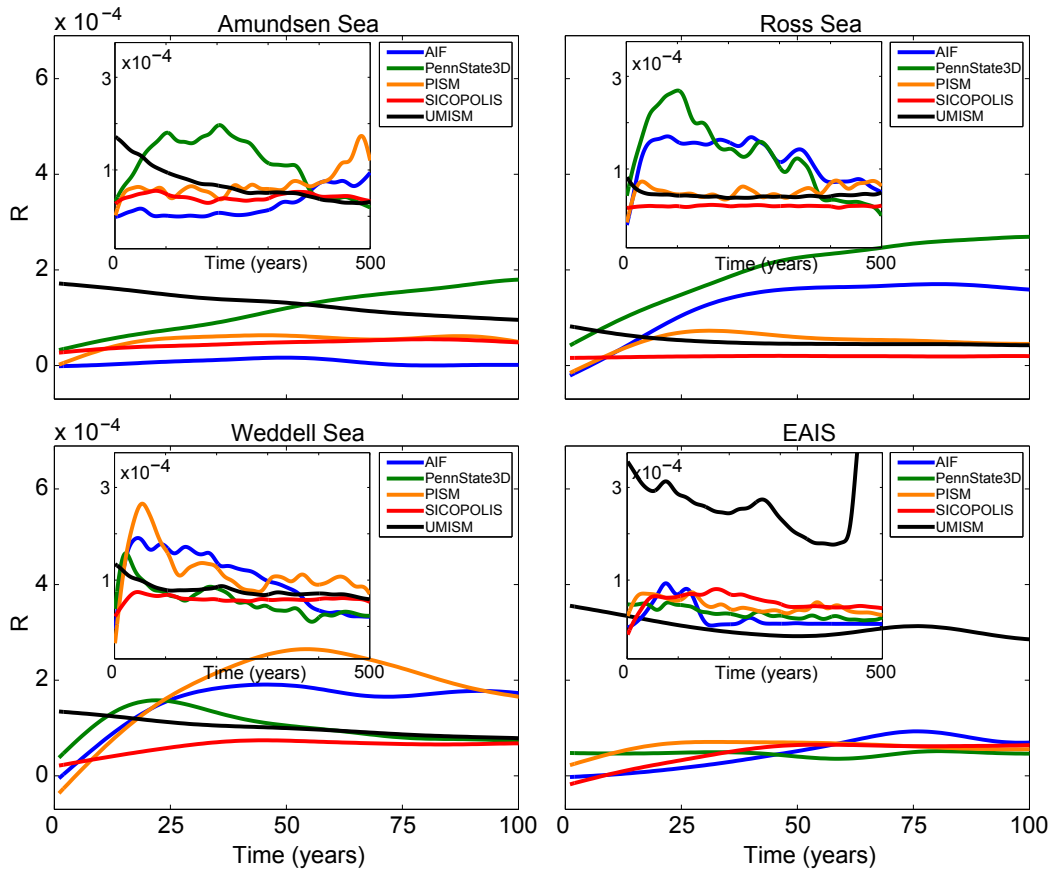


Fig. 3. Linear response functions for the five ice-sheet models of Antarctica for each region as defined by equation (4) and as obtained from the SeaRISE-M2-experiments. The projections up to the year 2100, as computed here, will be dominated by the response functions up to year 100 since this is the period of the dominant forcing. For completeness the inlay shows the response function for the full 500 years, i.e. the period of the original SeaRISE experiments. As can be seen from equation (1), the response function is dimensionless. While the response functions are different for each individual basin and model when derived from the weaker M1-experiment (figure 14), the uncertainty range for the sea-level contribution in 2100 is very similar, since it is dominated by the uncertainty in climatic forcing (compare figure 11).

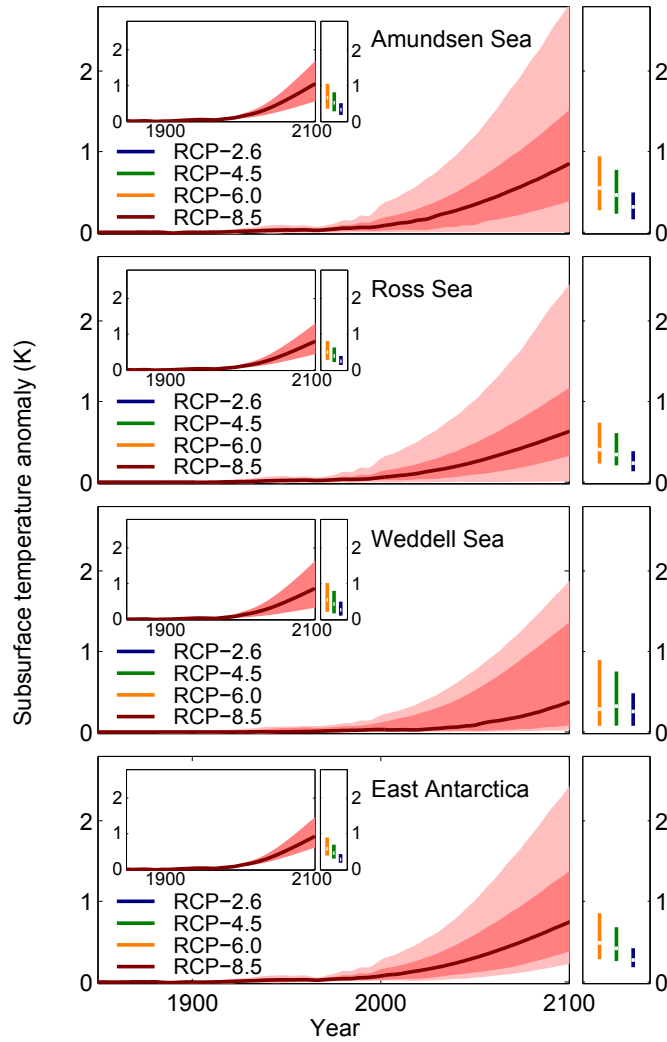


Fig. 4. Oceanic subsurface-temperature anomalies as obtained from scaling the range of global mean temperature changes under the different RCP scenarios to the oceanic subsurface outside the ice-shelf cavities. For the down-scaling the oceanic temperatures were diagnosed off-shore of the ice-shelf cavities within the four regions defined in Fig. 2 at the depth of the mean ice-shelf thickness as defined in Tab. 1. These temperature anomalies were plotted against the global mean temperature increase for each of the 19 CMIP-5 climate models used here. The best scaling was obtained when using a time delay between global mean temperature and oceanic subsurface temperature anomalies. The scaling coefficients with the respective time delay are provided in Tab. 2-5. The line corresponds to the median temperature evolution. The dark shading corresponds to the 66% percentile around the median (red line). The light shading corresponds to the 99% percentile. Inlays show the temperature anomalies without time delay.

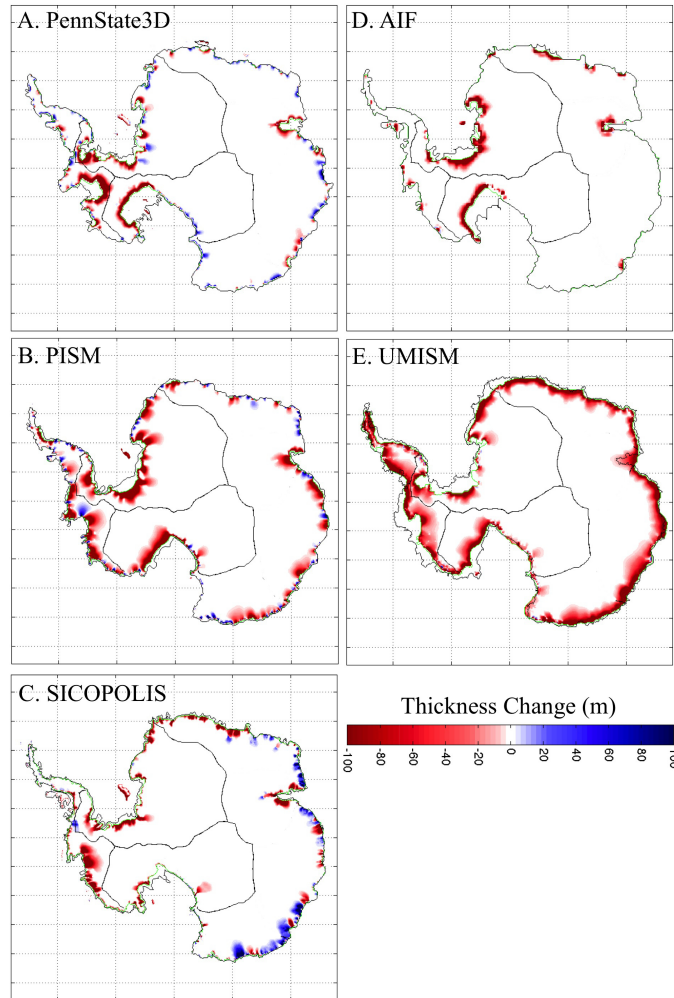


Fig. 5. Ice-thickness change after 100 years under the SeaRISE experiment with homogeneous increase in basal ice-shelf melting of 20 m/a (experiment M2 and Fig. in (Nowicki et al., 2013a)). Due to their coarse resolution some models with explicit representation of ice shelves such as the PISM model tend to underestimate the length of the coastline to which an ice shelf is attached which might lead to an underestimation of the ice loss. The UMISM model assumes basal melting along the entire coastline which is likely to result an overestimation of the effect. Black contours represent the initial grounding line which moved to the green contour during the M2-experiment after 100 years. Lines within the continent show the drainage basins as in Fig. 2

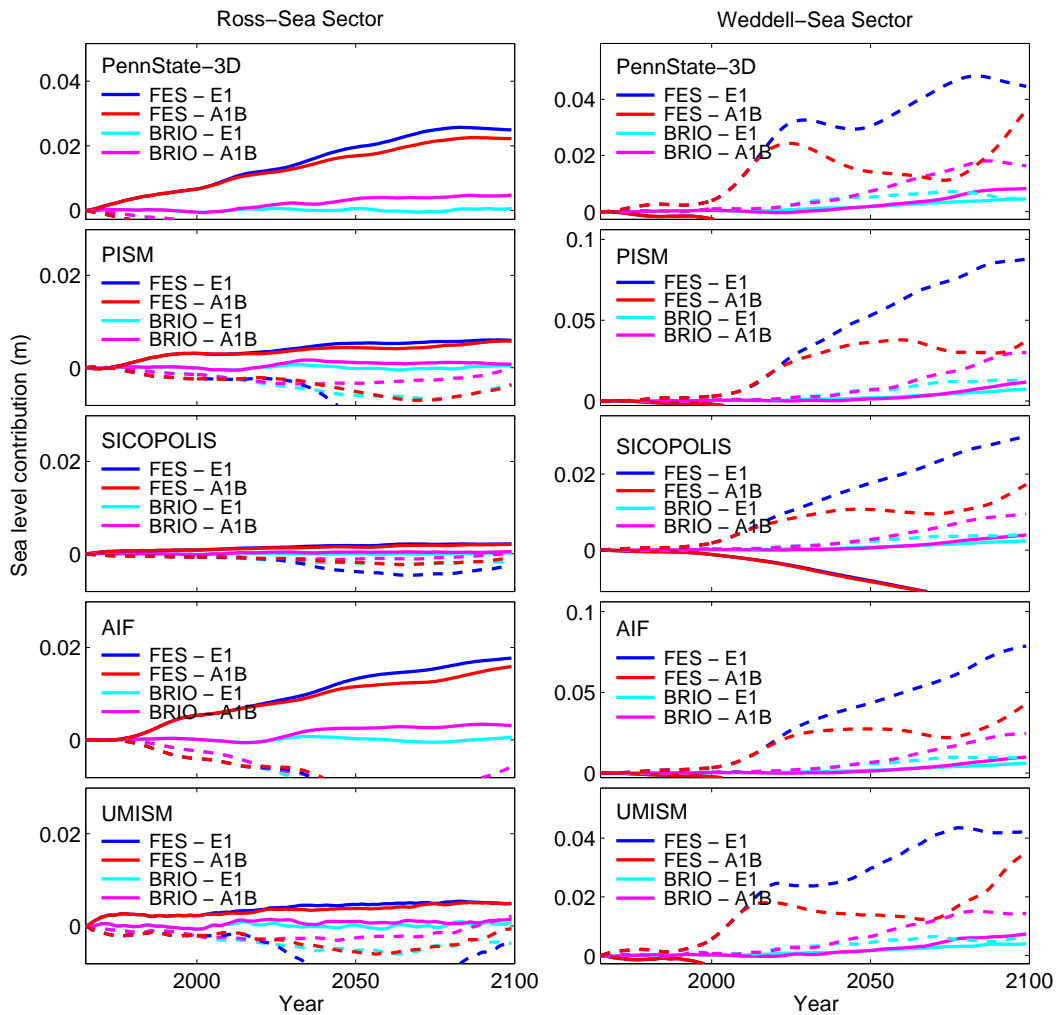


Fig. 6. Ice loss as obtained from forcing the five response functions (Fig. 3) with the basal melt rates from the high-resolution global finite-element model FESOM (FES) and the regional ocean model BRIOS (BRIO). The full lines represent simulations in which BRIOS and FESOM were forced with the global climate model ECHAM-5; dashed lines correspond to a forcing with the HadCM-3 global climate model. Results are shown for the strong climate-change scenario A1B and the relatively low-emission scenario E1. A medium basal melt sensitivity of 11.5 m/a/K was applied. The results illustrate the important role of the global climatic forcing.

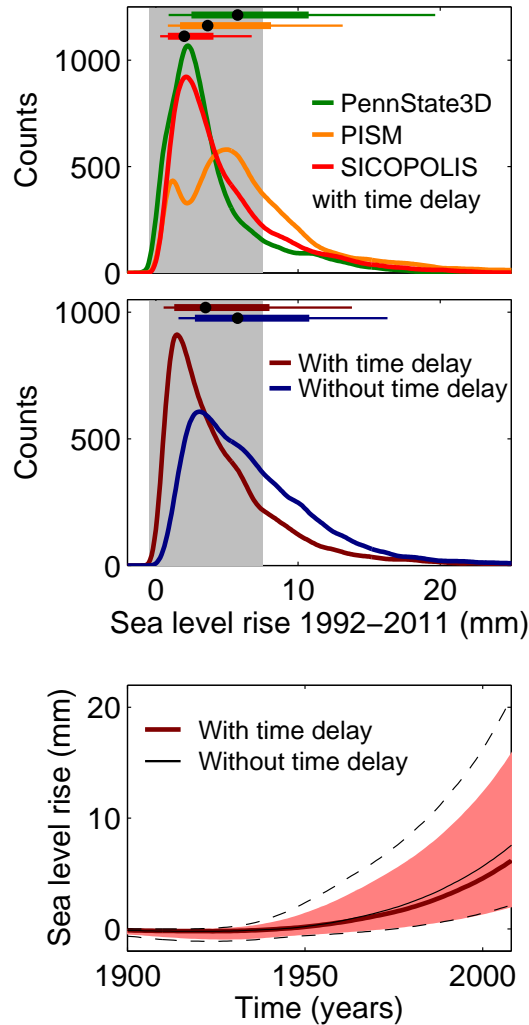


Fig. 7. Uncertainty range including climate, ocean and ice-sheet uncertainty for the projected change of the observational period 1992–2011. Upper panel: Probability distribution for the three models with explicit representation of ice-shelves (PennState-3D, PISM, SICOPOLIS). Middle panel: Probability distribution with time delay (dark red) and without (dark blue) for three the models with explicit ice-shelf representation ('shelf models'). The gray shading in the upper two panels provide the estimated range from observations following Shepherd et al. (2012). The likely range obtained with time delay is almost identical with the observed range. All distributions are highly skewed towards high sea-level contributions which strongly influences the median (black dot at the top of the panel), the 66%-range (thick horizontal line) and the 90%-range (thin horizontal line). Lower Panel: Time evolution for the hindcast projection using only the 'shelf models': With time delay, one obtains the red line as the median time series, the red shading provides the likely or 66%-range. The black line shows the median without time delay together with the likely range for this case as dashed lines.

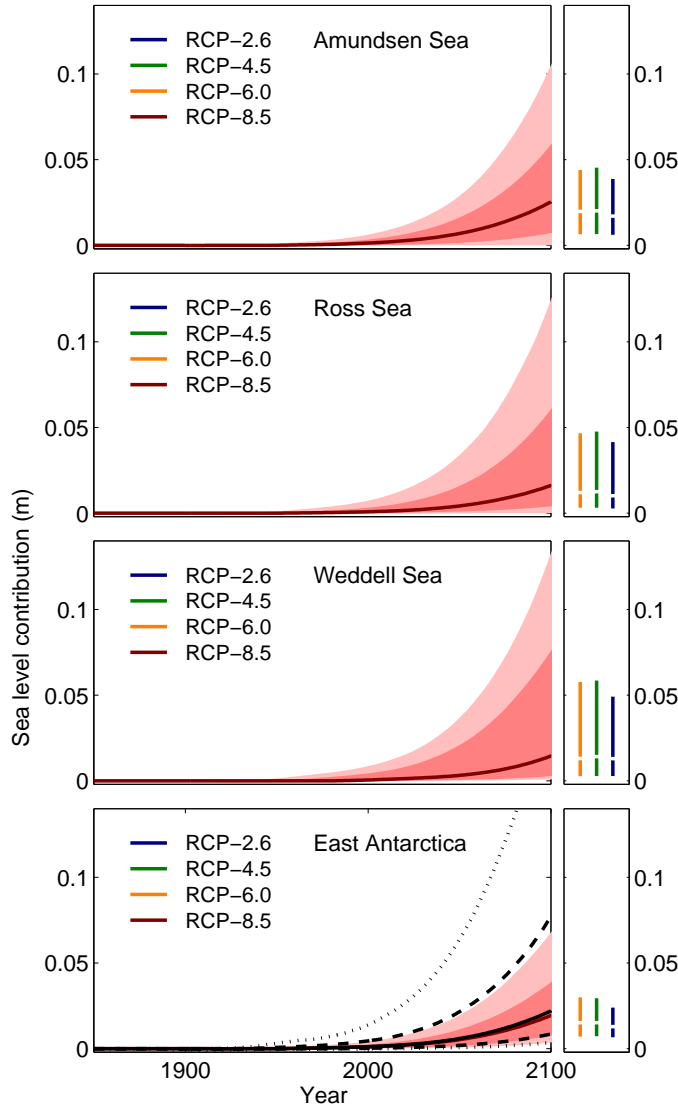


Fig. 8. Uncertainty range of contributions to global sea level from basal-melt induced ice discharge from Antarctica for the different basins. Results shown here include the three ice-sheet models with explicit representation of ice-shelf dynamics and the global climate forcing applied with a time delay as given in Tab. 2 Tab. 5. The full red curve is the median enclosed by the dark shaded 66%-range and the light shaded 99%-range of the distribution for the RCP-8.5 scenario. Colored bars at the right show the other scenarios' 66%-range intersected by the median. The full distribution is given in Fig. 9. The strongest difference between models with and without explicit representation of ice-shelves occurs in East Antarctica as exemplified in the lower panel. The dashed black line envelopes the 66%-range of all models, the full black line is the median and the dotted line the 99% percentile.

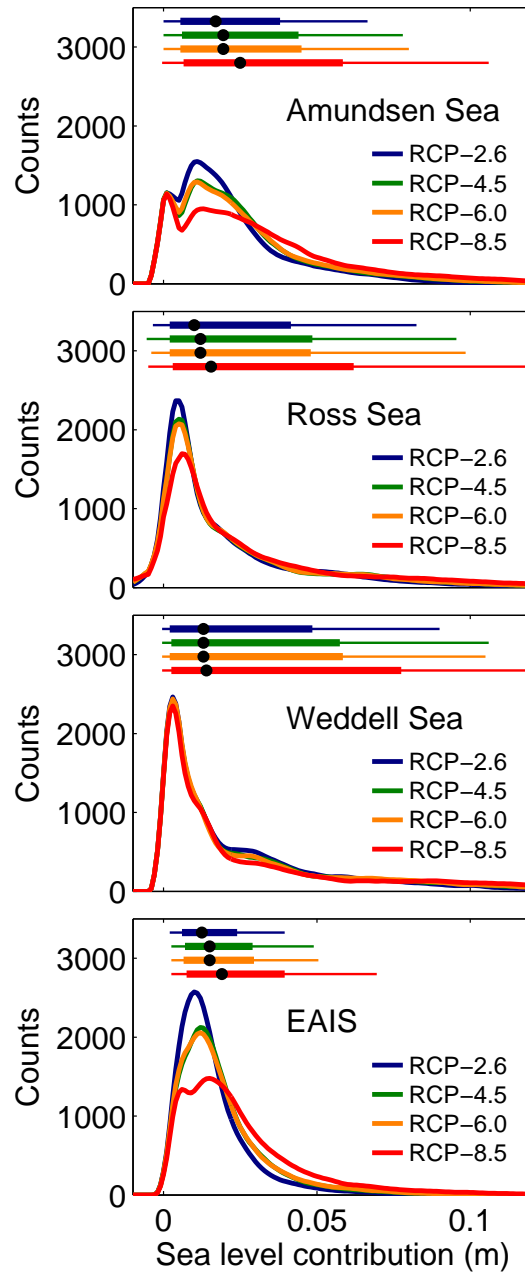


Fig. 9. Probability density function for the sea-level contribution from basal-melt-induced ice discharge for each region for the year 2100. Different colors represent the four RCP scenarios. Thick horizontal lines at the top of each panel provide the 66%-range of the distribution, the black dot is the median and the thin line the estimate of the 90%-range. Amundsen has the highest median contributions though sectors are relatively similar. Scenario dependency is strongest for the Amundsen region and East Antarctica. The distributions are highly skewed towards higher sea-level contributions. Results are shown for the models with explicit ice-shelf representation only.

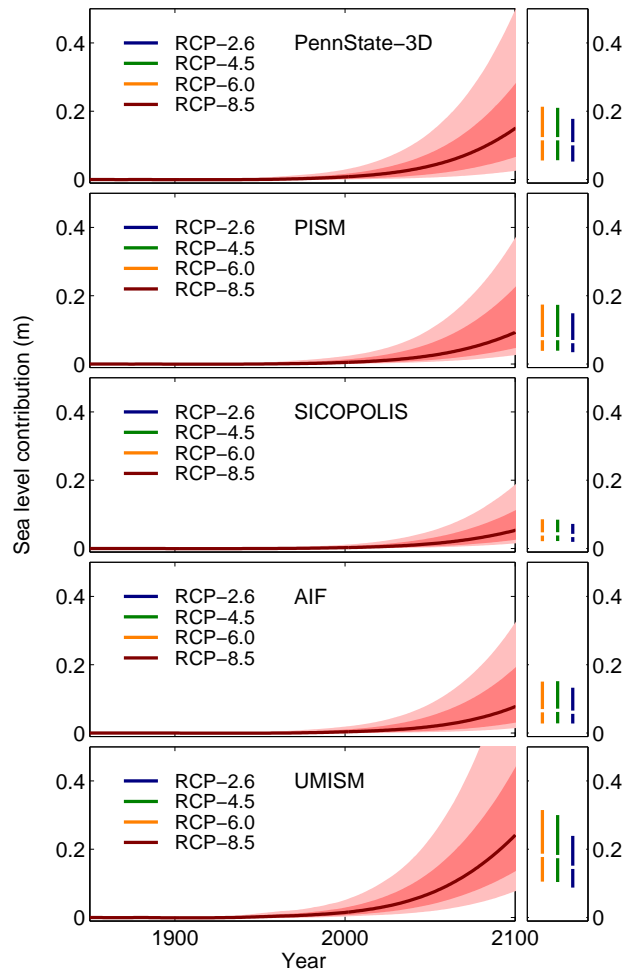


Fig. 10. Uncertainty range of contributions to global sea level from basal-melt induced ice discharge from Antarctica for the different ice-sheet models. Lines, shading and color coding as in Fig. 8. Colored bars at the right show the other scenarios' 66%-range intersected by the median.

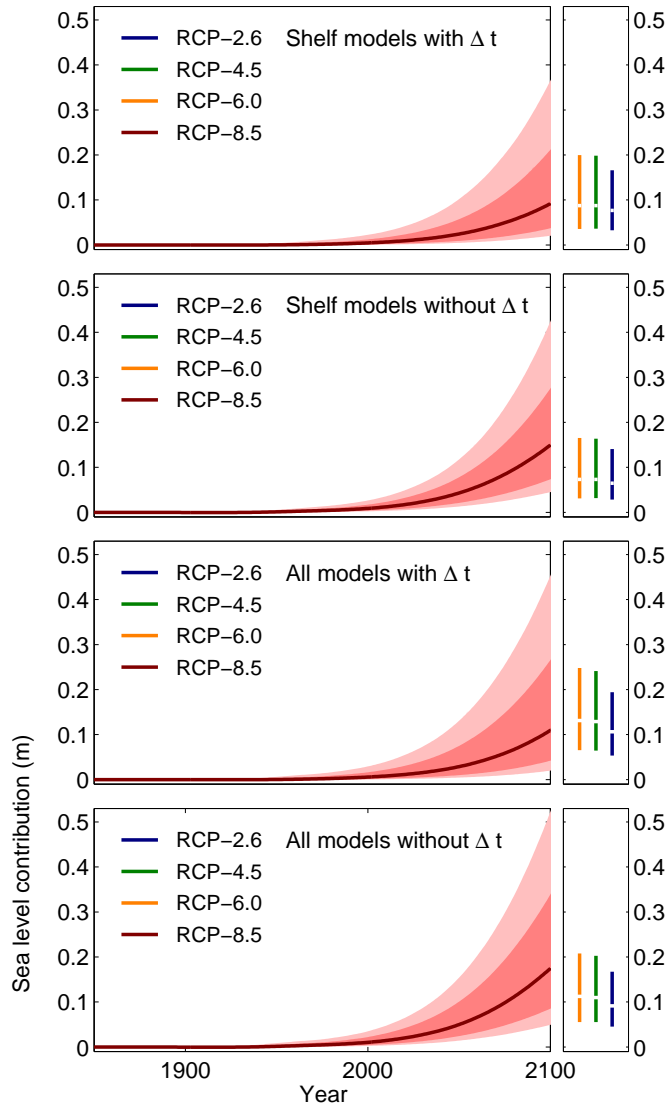


Fig. 11. Uncertainty range of contributions to global sea level from basal ice-shelf melt induced ice discharge from Antarctica including climate-, ocean- and ice-model uncertainty. Lines, shading and color coding as in Fig. 8. Estimates with and without the time delay between global mean surface air temperature and subsurface ocean temperature (Tab.2 - Tab.5) are presented. 'Shelf models' are those ice-sheet models with explicit representation of ice shelves.

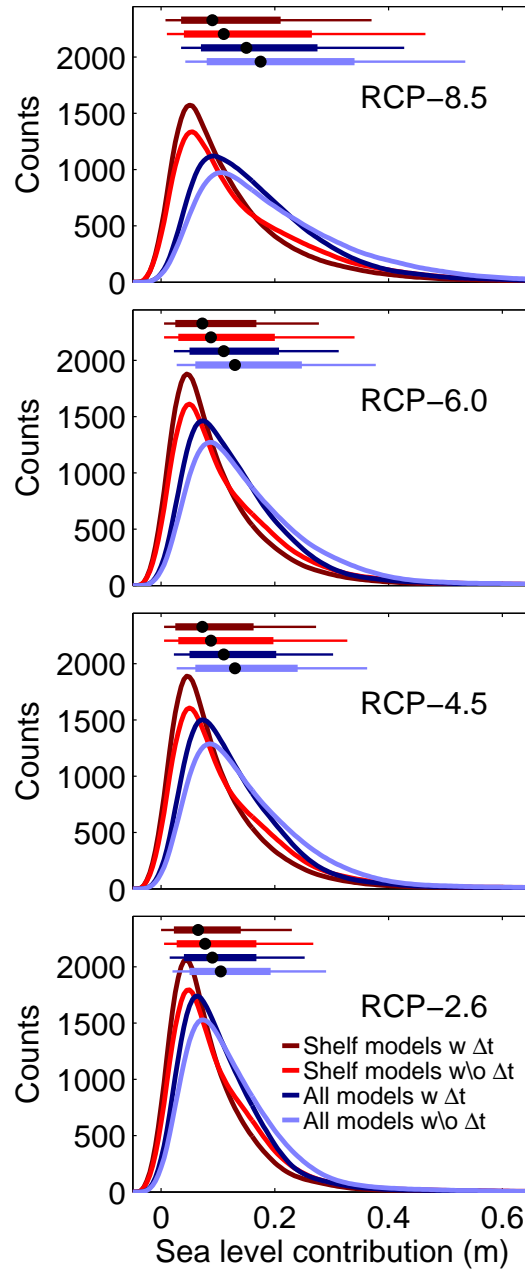


Fig. 12. Uncertainty range including climate, ocean and ice-sheet uncertainty. Different colors represent different setups for the total sea-level contribution from basal ice-shelf melt induced ice-discharge for the year 2100. Different panels provide estimates for the four RCP scenarios. Red curves in each panel show the three models with explicit representation of ice-shelves (PennState-3D, PISM, SICOPOLIS). Blue curves show all models. Dark colors represent simulations using the time delay of Tab.2 - Tab.5. Light colored lines give distributions without time lag. All distributions are highly skewed towards high sea-level contributions which strongly influences the median (black dot), the 66%-range (thick horizontal line at top) and the 90%-range (thin horizontal line at top). The scenario-dependence of each of these estimates is also visible in the number provided in Tab. 6.

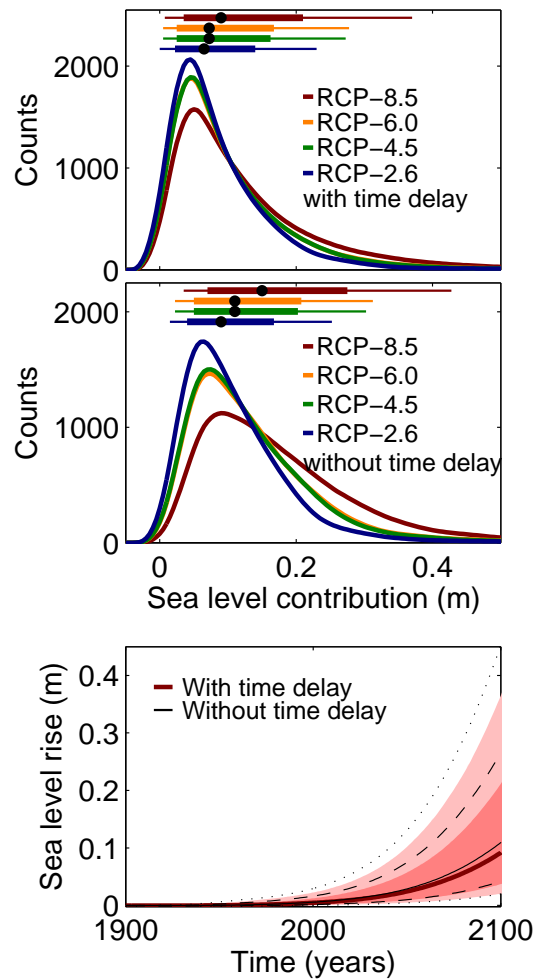


Fig. 13. Uncertainty range including climate, ocean and ice-sheet uncertainty for the year 2100. Different colors represent different scenarios using the three models including an explicit representation of ice shelves (PennState-3D, PISM, SICOPOLIS). The upper panel shows the results with time delays as listed in Tab. 2-5. The middle panel shows the results without this time delay. All distributions are highly skewed towards high sea-level contributions which strongly influences the median, the 66%-range (thick horizontal line at the top of the panel) and the 90%-range (thin horizontal line at the top of the panel). The scenario-dependence is strongest in the higher percentile of the distribution as also visible in the numbers provided in Tab. 6. The lower panel shows the corresponding time series of the median, the 66%- and the 90%-percentile of the distribution with and without time delay.

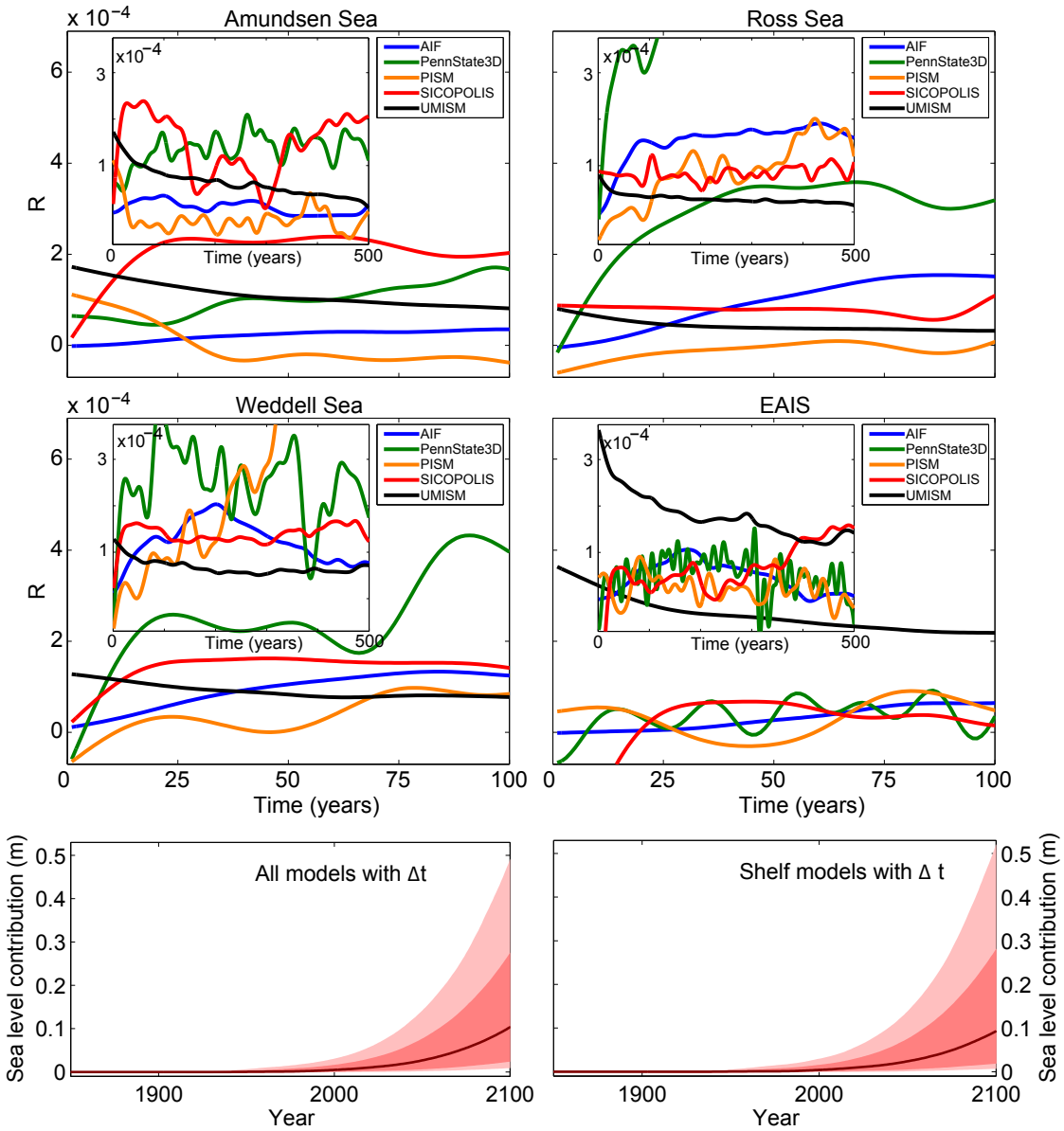


Fig. 14. Response functions as obtained from the M1-experiment of the SeaRISE intercomparison with an additional uniform basal ice-shelf melting of 2 m/a. The upper four panels correspond to figure 3. The lower two panels show the uncertainty range in sea-level projections with the M1-response-functions from above. The ranges obtained are very similar to the ranges obtained with the M2-response-functions as shown in figure 11. While the response functions are very different for the M1 experiment compared to the M2 experiment, the projected ranges of sea level rise are similar which is consistent with the fact that the uncertainty arises mainly from the uncertainty in the external forcing of the ice-sheets.