



**A new model of
Holocene peatland
net primary
production**

S. Frohling et al.

This discussion paper is/has been under review for the journal Earth System Dynamics (ESD). Please refer to the corresponding final paper in ESD if available.

A new model of Holocene peatland net primary production, decomposition, water balance, and peat accumulation

S. Frohling¹, N. T. Roulet², E. Tuittila³, J. L. Bubier⁴, A. Quillet⁵, J. Talbot¹, and P. J. H. Richard⁶

¹Institute for the Study of Earth, Oceans, and Space and Department of Earth Sciences, University of New Hampshire, Durham, NH, USA

²Department of Geography and The McGill School of Environment, McGill University, Montréal, Canada

³Department of Forest Ecology, University of Helsinki, Helsinki, Finland

⁴Environmental Studies Program, Mount Holyoke College, South Hadley MA, USA

⁵Institut des Sciences de l'Environnement and Géotop, Université du Québec à Montréal, Montréal, Canada

⁶Département de Géographie, Université de Montréal, Montréal, Canada

Received: 18 June 2010 – Accepted: 21 June 2010 – Published: 1 July 2010

Correspondence to: S. Frohling (steve.frohling@unh.edu)

Published by Copernicus Publications on behalf of the European Geosciences Union.

Title Page

Abstract

Introduction

Conclusions

References

Tables

Figures



Back

Close

Full Screen / Esc

Printer-friendly Version

Interactive Discussion

Abstract

Peatland carbon and water cycling are tightly coupled, so dynamic modeling of peat accumulation over decades to millennia should account for carbon-water feedbacks. We present initial results from a new simulation model of long-term peat accumulation, evaluated at a well-studied temperate bog in Ontario, Canada. The Holocene Peat Model (HPM) determines vegetation community composition dynamics and annual net primary productivity based on peat depth (as a proxy for nutrients and acidity) and water table depth. Annual peat (carbon) accumulation is the net balance above- and below-ground productivity and litter/peat decomposition – a function of peat hydrology (controlling depth to and degree of anoxia). Peat bulk density is simulated as a function of degree of humification, and affects the water balance through its influence on both the growth rate of the peat column and on peat hydraulic conductivity and the capacity to shed water. HPM output includes both time series of annual carbon and water fluxes, peat height, and water table depth, as well as a final peat profile that can be “cored” and compared to field observations of peat age and macrofossil composition. A stochastic 8500-yr, annual precipitation time series was constrained by a published Holocene climate reconstruction for southern Québec. HPM simulated 5.4 m of peat accumulation (310 kg C) over 8500 years, 6.5% of total NPP over the period. Vascular plant functional types accounted for 65% of total NPP over 8500 years but only 35% of the final (contemporary) peat mass. Simulated age-depth and carbon accumulation profiles were compared to a radiocarbon dated 5.8 m, c.9000-yr core. The simulated core was younger than observations at most depths, but had a similar overall trajectory; carbon accumulation rates were generally higher in the simulation and were somewhat more variable than observations. HPM results were sensitive to century-scale anomalies in precipitation, with extended drier periods (precipitation reduced ~10%) causing the peat profile to lose carbon (and height), despite relatively small changes in NPP.

A new model of Holocene peatland net primary production

S. Frohling et al.

Title Page

Abstract

Introduction

Conclusions

References

Tables

Figures

⏪

⏩

◀

▶

Back

Close

Full Screen / Esc

Printer-friendly Version

Interactive Discussion



1 Introduction

Northern peatlands contain somewhere between 250 and 600 Pg C (Gorham, 1991; Turunen et al., 2002; McGuire et al., 2009). At present they appear to take up between 40 and 80 g CO₂-C m⁻² yr⁻¹ (Roulet et al., 2007; Nilsson et al., 2008; Koehler et al., 2010), emit somewhere between 15 and 40 Tg CH₄ yr⁻¹ (Makiloff-Fletcher et al., 2004), and lose 10–20 g DOC m⁻² yr⁻¹ to downstream aquatic ecosystems (Roulet et al., 2007; Nilsson et al., 2008; Koehler et al., 2010). Peatlands have played an important role in the greenhouse gas composition in the atmosphere for most of the Holocene, leading to an estimated net cooling of ~0.5 W m⁻² (Frolking and Roulet, 2007). Paleo-ecological and biogeochemical studies have conjectured the role of peatlands in the Holocene dynamics of atmospheric CO₂ and CH₄ (Macdonald et al., 2006). Despite the possible global influence in climate over the Holocene, peatlands are just beginning to be incorporated into Holocene climate assessments. A few studies have hard-coded peatland carbon sinks into Holocene climate simulations (e.g. Wang et al., 2009; Kleinen et al., 2010) but in these assessments there are no (Wang et al., 2009) or only one-way (Kleinen et al., 2010) interactions between climate and peatland carbon accumulation. There is therefore a need to develop relatively simple yet realistic peatland growth models where the rates of ecosystem processes are a function of climate and the inherent autogenic properties of peatlands (Belyea and Baird, 2006; Dise, 2009). In the present study we develop such a model, with the intention that it could be eventually coupled to Holocene climate or earth system models to investigate the climate-carbon-methane interactions over decades to millennia.

There have been some attempts to simulate peatland development, particularly the growth of peat bogs. Most peatland modeling stems from the seminal work of Clymo (1984), and the model developed in this paper has its roots in that work. Our objective is to develop a simple, one-dimensional model of peat accumulation that explicitly includes the feedbacks among hydrology, plant communities, and peat properties, begin to evaluate how these feedbacks affect peatland development history, and

A new model of Holocene peatland net primary production

S. Frolking et al.

Title Page

Abstract

Introduction

Conclusions

References

Tables

Figures

⏪

⏩

◀

▶

Back

Close

Full Screen / Esc

Printer-friendly Version

Interactive Discussion



test if this model structure is able to simulate basic patterns of northern peatlands peat accumulation over millennia, including varying accumulation rates, and vegetation and fen-bog transitions. Longer term goals include (1) providing insight into climate domain(s) in which northern peatlands are persistent accumulating systems, (2) making projections of impacts of future climate change on northern peatland carbon and water dynamics, and (3) contributing to a methodology for incorporating peatlands as unique land surface types into earth system models (Frolking et al., 2009).

2 Background – modeling peat accumulation

Clymo (1984) developed the basic concept that underlies much of our ideas of long-term peat accumulation and the interpretation of peat core data as a record of carbon accumulation (there is a much longer history of peat core analysis as a record of paleoecology and paleoclimate). In the Clymo model, a peat profile is viewed as two-layered – an overlying acrotelm above the long-term mean low (summer) water table (Ingram, 1982) which receives plant litter (mass) inputs, and an underlying, persistently-saturated catotelm layer which receives mass inputs only from the overlying acrotelm. Each layer loses mass through decomposition. Under relatively stable climate conditions, in this model the acrotelm relatively quickly reaches a steady state, and effectively “floats” above a thickening catotelm, and so the Clymo model focuses more explicitly on the longer-term dynamics of the catotelm, which is the much larger peat/carbon reservoir in most peatlands. The change in catotelm mass (M_c) is modeled as

$$\frac{dM_c}{dt} = p_c - k_c M_c \quad (1)$$

where p_c is the annual mass transfer across the acrotelm-catotelm boundary, nominally ~10% of annual net primary productivity or NPP (Clymo, 1984), and k_c is the

A new model of Holocene peatland net primary production

S. Frolking et al.

Title Page

Abstract

Introduction

Conclusions

References

Tables

Figures

⏪

⏩

◀

▶

Back

Close

Full Screen / Esc

Printer-friendly Version

Interactive Discussion



annual fractional mass loss rate due to catotelm decomposition (α in Clymo's notation). Integrating Eq. (1) gives

$$M_c(t) = \frac{\rho_c}{k_c} \left(1 - e^{-k_c t}\right) \quad (2)$$

that has an equilibrium mass for large t of $M_c^* = \rho_c/k_c$. Inverting this equation to

$$t = -\frac{1}{k_c} \ln \left(1 - \frac{k_c M_c}{\rho_c}\right) \quad (3)$$

and using a constant value for peat bulk density to convert mass to depth, this model generates a concave depth-age profile. The model does not include any representation of vegetation, and treats water dynamics only implicitly, as the water table must rise each year at the same rate that the catotelm grows to keep a constant water table depth and acrotelm thickness (Belyea and Baird, 2006). In most applications, Eq. (3) is fit to field data – dated peat core profiles of age (t) vs. accumulated mass (M_c) – with fitting parameters ρ_c and k_c , neither of which are directly observable. Further developments with this model have included (i) allowing k_c to decrease with increasing mass loss, i.e., as $M_c(t)/(\rho_c \cdot t)$ decreases (Clymo, 1992; Clymo et al., 1998), which changes the equilibrium mass, and (ii) allowing ρ_c to vary with time, which can generate a convex, linear, or concave age-depth profile (Yu et al., 2003; Belyea and Malmer, 2004). These variations on the model in Eq. (1) also simulate only mass accumulation in the catotelm, and ignore or only implicitly include vegetation and hydrological dynamics. Operationally, all of these models are used to fit an equation to profile data to find parameter values; often several models can generate statistically equivalent fits to observed data (Clymo, 1992; Clymo et al., 1998).

Frolking et al. (2001) developed a simple bookkeeping model that tracked annual litter cohorts of two plant functional types (vascular and non-vascular) as they were buried and, through time, “moved” down the peat profile. This model showed that a plausible peat profile could be generated using observable parameters-vegetation net

**A new model of
Holocene peatland
net primary
production**

S. Frolking et al.

Title Page

Abstract

Introduction

Conclusions

References

Tables

Figures

⏪

⏩

◀

▶

Back

Close

Full Screen / Esc

Printer-friendly Version

Interactive Discussion



A new model of Holocene peatland net primary production

S. Frohling et al.

Title Page

Abstract

Introduction

Conclusions

References

Tables

Figures

⏪

⏩

◀

▶

Back

Close

Full Screen / Esc

Printer-friendly Version

Interactive Discussion

primary productivity (NPP; e.g., Wieder, 2006 and references therein), aboveground-belowground partitioning of NPP for the vascular vegetation (e.g., Rydin and Jeglum, 2006; Murphy, 2009), initial (surface) litter decomposition rates from litter bags studies (e.g., Moore et al., 2007) for each plant type, and observed bulk densities. Belowground productivity was added to litter cohorts within the prescribed rooting zone. Litter/peat decomposition rates declined linearly with mass lost as

$$k(m) = \frac{m}{m_0} k_0 \quad (4)$$

where m_0 is the initial (fresh) litter mass, m is the mass remaining in the litter/peat cohort, and k_0 is the initial (surface) decomposition rate. This is one of the functions for declining decomposition rates evaluated by Clymo (1992) and Clymo et al. (1998). When the cohort was buried below the prescribed, constant water table depth, decomposition rates were reduced by about an order of magnitude to represent slower anaerobic decomposition – this transition was prescribed to be more rapid for bog than for fen simulations. In this model, assuming a constant water table and NPP, about 90% of the initial mass was lost during the several decades required to “traverse” the acrotelm, and decomposition rates deep in the catotelm were two to three orders of magnitude lower than the initial or surface rates. Litter/peat cohort composition (i.e., the fraction of vascular vs. non-vascular mass remaining) varied down the profile and depended on k_0 values, water table depth, and above-belowground partitioning of vascular NPP. Bauer (2004) extended this model to include additional plant functional types, litter chemical fractions (soluble compounds, holocellulose, and lignin) with different decay rates, and externally imposed dynamics in water table depth and pH that changed total NPP and the relative productivity of different plant functional types. Bauer’s results showed that the interactions of vegetation properties (e.g., litter quality) and environment conditions (e.g., water table depth and pH) can have complex effects on peat accumulation rates that may be difficult to interpret from peat core data.

Carbon and water cycling in peatlands are tightly coupled. Peat water content (water table depth and degree of saturation above the water table) affects productivity and

decomposition, and the carbon balance and vegetation composition affects peat hydraulic properties and water. Hilbert et al. (2000) modeled peat accumulation at an annual time step as a dynamic interaction between accumulating peat and accumulating water, using two coupled equations

$$\begin{aligned} \frac{dh_{PD}}{dt} &= G - k_a z_{WT} - k_c (h_{PD} - z_{WT}) \\ \frac{dz_{WT}}{dt} &= \frac{dh_{PD}}{dt} - \left(\frac{1}{\theta_{max}} \right) \frac{dW}{dt} \end{aligned} \quad (5)$$

where h_{PD} is the total peat height (catotelm plus acrotelm), G is the annual plant litter input, k_a and k_c are the fractional height annual loss rates due to decomposition in the acrotelm and catotelm (equivalent to a mass loss rate for a given bulk density), respectively, z_{WT} is the water table depth (positive down from the top of the acrotelm, θ_{max} is the water content at saturation, and dW/dt is the annual water balance (precipitation plus run-on minus evapotranspiration minus run-off; $dW/dt = P + R_{on} - ET - R_{off}$). By making G and ET simple non-linear functions of z_{WT} , and R_{off} a linear function of h_{PD} , the coupled equations generated dynamical behavior and equilibrium states with deep peat and relatively deep water tables or shallower peats and shallower water tables.

This coupling of the carbon and water cycles in a peatland provides a simple representation of a dynamical link that is considered an important factor in peatland autogenesis. These feedbacks can influence the vegetation composition of the peatland which in Eq. (5) was represented by a parabolic function $G(z_{WT})$, can lead to a dynamic and variable acrotelm thickness, can affect the composition and physical properties of the litter/peat (pore size distribution, bulk density, hydraulic conductivity, and water retention), and through this can exert important controls on long-term peat accumulation (Belyea and Baird, 2006). The dominant control explored by Hilbert et al. (2000) was the site water balance (precipitation minus maximum evapotranspiration). The model included a representation of the acrotelm, a dynamic annual water balance and aggregate vegetation productivity. Hilbert et al. (2000) did not compare model results to field data, but used it as a theoretical tool to study peatlands as a dynamical system by focusing on the non-linear interactions among peat production, decomposition and

**A new model of
Holocene peatland
net primary
production**

S. Frohling et al.

Title Page

Abstract

Introduction

Conclusions

References

Tables

Figures



Back

Close

Full Screen / Esc

Printer-friendly Version

Interactive Discussion



hydrology. Recently, the dynamical approach to modelling has been extended to look at the development of patterning on peatlands through the inclusion of the regulating feedbacks of hydrology, nutrients, and plant community structure (e.g., Glaser et al., 1992; Rietkerk et al., 2004; Eppinga et al., 2008, 2009).

5 The links between vegetation productivity, litter/peat decomposition, peat properties, and hydrology generate a set of interconnected feedbacks that control the dynamics of the system (Fig. 1a) and make prediction a challenge. Here we develop a simple model that represents some of the basic ideas that have emerged as to how peatlands function – vegetation productivity and its rate controls, aboveground litter inputs as well-
10 stratified layers, root litter inputs into the upper peat profile, litter/peat decomposition and its rate controls, internal and external controls on the water balance and water table depth and vegetation and decomposition responses to this – and evaluate the consequences of the model formulation on long-term (millennial) peatland development and carbon accumulation.

15 3 Model description

The Holocene Peat Model (HPM) combines the peat decomposition model (Frolking et al., 2001) and the dynamic peat accumulation model (Hilbert et al., 2000). HPM is a one-dimensional (vertical), annual timestep model that simulates vegetation litter production, litter/peat decomposition and net peat accumulation, peat physical and hydrological properties, and the annual water balance, water table location, and un-
20 saturated zone water content (Fig. 1b). The basic model structure is still two coupled differential equations (Eq. 5 above), but HPM simulates peat carbon in addition to peat height, and includes refinements to the productivity and decomposition functions and peat hydrological properties – i.e., each term on the right-hand side of Eq. (5).

25 The vegetation sub-model in HPM is based on the idea that the controls that the peat environment exerts on peatland vegetation composition and productivity (NPP per unit ground area) can be adequately described by two factors: (1) annual water

A new model of Holocene peatland net primary production

S. Frolking et al.

Title Page

Abstract

Introduction

Conclusions

References

Tables

Figures

⏪

⏩

◀

▶

Back

Close

Full Screen / Esc

Printer-friendly Version

Interactive Discussion



table depth (z_{WT} , measured down from the surface), which can vary rapidly (annually or every timestep in HPM; e.g. Roulet et al., 2007) and have or not have a longer-term trend, and (2) total peat depth (h_{PD}) as a proxy for ombrotrophy, i.e., access to mineral nutrients, or buffering capacity against organic acidity generated by decomposition, which can only vary slowly (except for major disturbances like fire or harvest), and will generally have an increasing trend over time. In this first development of HPM, we are assuming no groundwater exchange so the chemical influence through depth is by diffusion only, but in principle advection could be added.

3.1 Carbon balance equations

In HPM, peatland vegetation is aggregated (or disaggregated, depending on your world-view) into 12 plant functional types (PFTs). The PFTs are distinguished by their productivity characteristics (relative maximum NPP, optimal peat depth and water table depth, sensitivity to non-optimal peat depth and water table depth); their rooting characteristics (belowground fraction of NPP, root density profile); and their litter tissue quality (Table 1). Seven PFTs represent the vascular plants (two of these are woody shrubs – trees will be added in a later version of HPM), and five PFTs represent the bryophytes. Vegetation composition is determined by the relative productivities of each PFT. Seedling establishment/PFT recruitment is not modeled; all PFTs are always present, though with near-zero productivity in non-optimal conditions (Fig. 2). Annual NPP is modeled as two-dimensional, asymmetric Gaussian functions (Fig. 2) for each PFT.

A new model of Holocene peatland net primary production

S. Frolking et al.

Title Page

Abstract

Introduction

Conclusions

References

Tables

Figures

⏪

⏩

◀

▶

Back

Close

Full Screen / Esc

Printer-friendly Version

Interactive Discussion



$$\text{NPP}_i = \begin{cases} \text{NPP}_{i,\max} \cdot e^{-\left[\left(\frac{z_{\text{WT}} - z_{\text{WT}}^{\text{opt}_i}}{\sigma_{i,\text{WT}}^+} \right)^2 + \left(\frac{h_{\text{PD}} - h_{\text{PD}}^{\text{opt}_i}}{\sigma_{i,\text{PD}}^+} \right)^2 \right]} & \text{if } z_{\text{WT}} \geq z_{\text{WT}}^{\text{opt}_i} \& h_{\text{PD}} \geq h_{\text{PD}}^{\text{opt}_i} \\ \text{NPP}_{i,\max} \cdot e^{-\left[\left(\frac{z_{\text{WT}} - z_{\text{WT}}^{\text{opt}_i}}{\sigma_{i,\text{WT}}^+} \right)^2 + \left(\frac{h_{\text{PD}} - h_{\text{PD}}^{\text{opt}_i}}{\sigma_{i,\text{PD}}^+} \right)^2 \right]} & \text{if } z_{\text{WT}} \geq z_{\text{WT}}^{\text{opt}_i} \& h_{\text{PD}} < h_{\text{PD}}^{\text{opt}_i} \\ \text{NPP}_{i,\max} \cdot e^{-\left[\left(\frac{z_{\text{WT}} - z_{\text{WT}}^{\text{opt}_i}}{\sigma_{i,\text{WT}}^-} \right)^2 + \left(\frac{h_{\text{PD}} - h_{\text{PD}}^{\text{opt}_i}}{\sigma_{i,\text{PD}}^+} \right)^2 \right]} & \text{if } z_{\text{WT}} < z_{\text{WT}}^{\text{opt}_i} \& h_{\text{PD}} \geq h_{\text{PD}}^{\text{opt}_i} \\ \text{NPP}_{i,\max} \cdot e^{-\left[\left(\frac{z_{\text{WT}} - z_{\text{WT}}^{\text{opt}_i}}{\sigma_{i,\text{WT}}^-} \right)^2 + \left(\frac{h_{\text{PD}} - h_{\text{PD}}^{\text{opt}_i}}{\sigma_{i,\text{PD}}^-} \right)^2 \right]} & \text{if } z_{\text{WT}} < z_{\text{WT}}^{\text{opt}_i} \& h_{\text{PD}} < h_{\text{PD}}^{\text{opt}_i} \end{cases} \quad (6)$$

where $z_{\text{WT}}^{\text{opt}_i}$ is the optimal annual water table depth and $h_{\text{PD}}^{\text{opt}_i}$ is the optimal peat depth for PFT_{*i*} productivity, and $\sigma_{i,XX}^{\pm}$ defines the width of the Gaussian curve for values of water table depth (z_{WT}) and peat depth (h_{PD}) greater (+) or less (-) than optimum values (Table 1, Fig. 2). Annual litter inputs are equal to annual NPP (i.e., PFT biomass accumulation is not modeled) with aboveground NPP forming a new annual litter cohort on the surface of the peat, and belowground NPP added to sub-surface litter cohorts proportional to root density profile and sub-surface litter cohort thickness (Frolking et al., 2001; Bauer 2004). Root density profiles follow Bauer (2004); sedge root profiles having an exponential decay and 80% of root litter input occurring in the top 0.3 m of litter/peat, and all other vascular plants have a constant root density profile to the maximum of the annual water table depth or 0.2 m. Peat depth/nutrient chemistry impact on NPP is modeled the same way as water table depth, though in reality it may have more effect on plant abundance than directly on NPP, as an ombrotrophic PFT might do fine in minerotrophic conditions, but would be out-competed by minerotrophic species, so would have low abundance and therefore low NPP per unit ground area.

Each annual litter/peat cohort is an assemblage of 12 litter types, each with different initial masses (aboveground NPP), different root litter additions, and different initial decay rates (Table 1). Litter/peat decomposes via a simple non-linear model, following

A new model of Holocene peatland net primary production

S. Frolking et al.

[Title Page](#)
[Abstract](#)
[Introduction](#)
[Conclusions](#)
[References](#)
[Tables](#)
[Figures](#)
[Back](#)
[Close](#)
[Full Screen / Esc](#)
[Printer-friendly Version](#)
[Interactive Discussion](#)


Frolking et al. (2001),

$$\frac{dM}{dt} = \frac{d(\sum_i m_i)}{dt} = \sum_i \left(l_i - k_i \left(\frac{m_i}{m_{i,0}} \right) m_i \cdot f_n \right) \quad (7)$$

where $M (= \sum_i m_i)$, the annual litter cohort mass remaining, is the sum of the individual PFT litter masses, l_i is the annual litter input for PFT_{*i*}, which in the field will include living plant shoots that are overgrown or engulfed by growing moss (e.g., Forrest and Smith 1975), k_i is the initial litter decomposition rate for PFT_{*i*}, $m_{i,0}$ is the total fresh litter input for PFT_{*i*} into the cohort, and f_n is a scalar multiplier for the effect on decomposition rate of litter/peat water content (W_i , as degree of saturation, $n = 1, 0.3 \leq f_1 \leq 1$, see Eq. (8) below) or depth below the water table ($n = 2, 0.001 \leq f_2 \leq 0.3$, see Eq. (9) below). Above the water table, in unsaturated litter/peat, this is given by

$$f_1(W_i) = 1 - c_1(W_i - W_{\text{opt}})^2 \quad (8)$$

where W_{opt} is the optimum water content for decomposition and c_1 is a parameter set so that $f_1(1) = 0.3$ (non-vegetation parameter values are listed in Table 2). In the saturated zone below the water table, the multiplier, f_2 , drops exponentially with depth below the water table ($\hat{z} = z - z_{\text{WT}}$; $\hat{z} > 0$), representing effects on decomposition rates of water residence time (end-product accumulation, extreme anoxia; Beer and Blodau, 2007; Beer et al., 2008), as

$$f_2(\hat{z}) = f_{\text{min}} + (f_1(1) - f_{\text{min}}) \cdot e^{-\hat{z}/c_2} \quad (9)$$

where c_2 is the scale length for this decline in decomposition rate below the water table, and f_{min} is the minimum decomposition multiplier (Frolking et al., 2001). HPM does not consider interactions between litter types, so the long-term decomposition rate of litter from a particular PFT depends on that PFT's $m_i/m_{i,0}$, but not on values for any other PFTs (Hoorens et al., 2010).

Loss of litter/peat structural integrity due to decomposition, coupled with accumulating mass above a decay cohort, leads to a collapse/compression of the peat (Clymo,

**A new model of
Holocene peatland
net primary
production**

S. Frolking et al.

Title Page

Abstract

Introduction

Conclusions

References

Tables

Figures

⏪

⏩

◀

▶

Back

Close

Full Screen / Esc

Printer-friendly Version

Interactive Discussion



A new model of Holocene peatland net primary production

S. Frohling et al.

Title Page

Abstract

Introduction

Conclusions

References

Tables

Figures

⏪

⏩

◀

▶

Back

Close

Full Screen / Esc

Printer-friendly Version

Interactive Discussion

1991). Peat bulk density can increase by 100% or more, pore size distribution changes markedly, causing peat hydrological properties to change as well – well-decomposed or humified peat generally has orders of magnitude lower values of hydraulic conductivity than fresh litter/peat, and a tendency to hold much more water under the same tension (e.g., Walmsey, 1977; Paavilainen and Päivänen, 1995; Lafleur et al., 2005a). This transition is generally rather abrupt, and is often associated with the acrotelm/catotelm transition in a peat profile (e.g., Rydin and Jeglum, 2006; Clymo, 1992).

In HPM, the degree of decomposition is quantitatively tracked for each annual litter/peat cohort as the fraction of initial mass remaining ($M/M_0 = \sum_i m_i \div \sum_i m_{i,0}$). Each PFT's fractional contribution to a litter/peat cohort's mass can be quantified as $m_i / (\sum_i m_i)$. The degree of decomposition factor, M/M_0 or μ , is at the center of much of the dynamics and feedbacks in HPM. It influences decomposition rates (Eq. 7). Peat bulk density for litter/peat cohort j , ρ_j , is modeled as a strongly non-linear function of μ_j (Fig. 3)

$$\rho(\mu_j) = \rho_{\min} + \Delta\rho \left(1 - 0.5 \left(1 + \operatorname{erfc} \left(\frac{c_3 \mu_j}{\sqrt{2} c_4} \right) \right) \right) \quad (10)$$

where ρ_{\min} is the minimum bulk density, $\Delta\rho$ is the difference between minimum and maximum bulk densities, erfc is the complementary error function, c_3 and c_4 are parameters that control the rate of curvature of the erfc function and the value of μ_j at which ρ_j has increased half-way from minimum to maximum. Litter/peat bulk density affects (1) vertical peat accumulation rate, and thus water table depth (see Sect. 3.2) and vegetation productivity (Eq. 6); (2) peat water content in the unsaturated zone above the water table (see Sect. 3.2) and thus water table depth and peat decomposition rates (Eq. 7); and (3) peat hydraulic conductivity and thus run-off rates, peat water balance, and water table depth (see Sect. 3.2).

3.2 Water balance equations

Annual precipitation (P , m y^{-1}) is a prescribed input variable. Evapotranspiration, ET , is calculated as a function of water table depth (Lafleur et al., 2005b; Ivanov, 1981), as

$$ET(z_{WT}) = \begin{cases} ET_o & \text{if } z_{WT} < z_1 \\ \frac{ET_o}{1+c_6c_7(z_{WT}-z_1)} & \text{if } z_1 \leq z_{WT} \leq z_2 \\ \frac{ET_o}{1+c_6} & \text{if } z_2 < z_{WT} \end{cases} \quad (11)$$

5 where ET_o is the maximum annual ET (m y^{-1}), z_1 is the annual water table depth at which annual ET begins to decline, and z_2 is the annual water table depth at which annual ET reaches its minimum, and c_6 is the parameter needed to make a continuous ET function between z_1 and z_2 . Annual runoff, R (m y^{-1}), is modeled as a function of annual water table depth and peat relative transmissivity, T , as

$$10 R(z_{WT}) = \begin{cases} R_1T(1-10z_{WT}) & \text{if } z_{WT} \leq 0 \\ R_1T & \text{if } z_{WT} > 0 \end{cases} \quad (12)$$

where the first equation generates rapid drainage for flooded peatlands (i.e., $z_{WT} < 0$), and R_1 is a base runoff rate proportional to peat depth, given by

$$R_1 = (P - ET_o + R_o)(1 + c_8h_{PD}) \quad (13)$$

15 where R_o sets the site-specific annual runoff (m y^{-1}) for mean annual water table depth and peat depth of zero, c_8 is a parameter describing the rate of increase in annual runoff with increase in total peat depth, h_{PD} . Relative transmissivity declines as the water table drops below the peat surface because the deeper, more decomposed peat has lower hydraulic conductivity. T is modeled as the ratio of the integrated hydraulic conductivity from the water table to the bottom of the peat to the integrated hydraulic conductivity for the entire profile

20

$$T(z_{WT}) = T_0 + (1 - T_0) \left(\frac{\sum_{j > j_{WT}} (\lambda_j \cdot \tilde{K}_j)}{\sum_{\text{all } j} (\lambda_j \cdot \tilde{K}_j)} \right) \quad (14)$$

where λ_j is the thickness of litter/peat cohort j , T_0 is a parameter defining the minimum value of T , and \tilde{K}_j is the hydraulic conductivity of litter/peat cohort j , a function of bulk density (Walmsey, 1977),

$$\log_{10}(\tilde{K}_j) = 2.14 - 0.043\rho_j \quad (15)$$

The degree of saturation of litter/peat cohorts above the water table is determined by two factors – the cohort bulk density (ρ_j), which relates to pore size distribution and how readily peat dewateres under matric tension (e.g., Lafleur et al., 2005a), and the distance the cohort is above the water table ($z_{WT} - z_j$, for $z_j < z_{WT}$)

$$W(z_j, z_j^*) = W_{\min} + (1 - W_{\min}) e^{-(z_{WT} - z_j)/z_j^*} \quad (16)$$

where

$$z_j^*(\rho_j) = W_{\min} + (c_9 - W_{\min}) \left(\frac{\rho_j - \rho_{\min}}{c_{10} + \rho_j - \rho_{\min}} \right) \quad (17)$$

and W_{\min} is the minimum peat water content (see Table 2). The absolute water content in the peat (for conservation of water) is the product of the degree of saturation, W , and cohort j peat porosity, Φ_j ,

$$\Phi_j = 1 - \frac{\rho_j}{\rho_{om}} \quad (18)$$

where ρ_{om} is the particle bulk density of organic matter.

At the end of each time step after the water balance and carbon balance calculations have determined total peat height, peat cohort bulk densities and thickness, and total

**A new model of
Holocene peatland
net primary
production**

S. Frohling et al.

Title Page

Abstract

Introduction

Conclusions

References

Tables

Figures

⏪

⏩

◀

▶

Back

Close

Full Screen / Esc

Printer-friendly Version

Interactive Discussion



peat water content, the water table depth is determined by iterative search by annual cohort depth. The search identifies the water table depth for which the sum of water saturating all peat below that depth – i.e., $\sum \Phi_j \cdot \lambda_j$ for all cohorts below the water table – and the water occupying pore space in the unsaturated zone water content above that depth – i.e., $\sum W_j \cdot \Phi_j \cdot \lambda_j$ for all cohorts above the water table – equals the total peat water content.

3.3 Model initialization and precipitation driver

HPM does not simulate peatland initialization explicitly. The model is initialized with a single fresh litter cohort ($h_{PD} \sim 0.01$ m) and z_{WT} is held fixed at 0.07 m. These values of z_{WT} and h_{PD} determine vegetation composition and productivity (Eq. 6), and decomposition is calculated (Eq. 7), but the model does not calculate water table dynamics until h_{PD} exceeds an initialization threshold (0.35 m) when the model initiates dynamic water balance calculations and z_{WT} becomes a free variable.

A multi-millennial HPM simulation requires an annual reconstruction of the climate/weather. Such a record does not exist, but a regional Holocene climate reconstruction at 250-year intervals has been developed from sediment, pollen and macrofossil records from the St. Lawrence lowlands and adjacent mountain areas (Muller et al., 2003b). Both the mean and confidence intervals of the Muller et al. (2003b) precipitation reconstruction were interpolated with a piecewise cubic Hermite interpolation (using Matlab function “interp1”) to annual values, and truncated to generate an 8500-year Mer Bleue precipitation history, $P_{M03}(t)$, and confidence interval, $\sigma_{M03}(t)$. To add random variability to this record, we applied an autoregressive (AR[1]) model to generate random noise with persistence

$$r(t) = \phi \cdot r(t-1) + \varepsilon \quad (19)$$

where ε is unit normal random number (and $r(1) = \varepsilon$), and ϕ (<1 for stationarity) determines the persistence. A random time series, $r(1) \dots r(8500)$, was normalized to a

A new model of Holocene peatland net primary production

S. Frohling et al.

Title Page

Abstract

Introduction

Conclusions

References

Tables

Figures

⏪

⏩

◀

▶

Back

Close

Full Screen / Esc

Printer-friendly Version

Interactive Discussion



maximum absolute value of 1, $r \times (t)$, and then a precipitation time series to drive the model, $P(t)$, was generated as

$$P(t) = P_{M03}(t) + \alpha \cdot r \times (t) \cdot \sigma_{M03}(t) \quad (20)$$

where α is the amplitude of the maximum variance relative to σ_{M03} (see Fig. 4a; $\phi = 0.99$, $\alpha = 2.5$). In 1000 random $P(t)$ series, $\sim 80\%$ of the $P(t)$ values fell within $P_{M03}(t) \pm \sigma_{M03}(t)$. We also conducted a simulation with constant precipitation over 8500 years at 0.94 m y^{-1} , the mean of $P(t)$. Mean annual temperature in the region has been relatively stable for the past 8500 years (Muller et al., 2003b), so we have not included any temperature dynamics in the simulation.

3.4 Model evaluation data

To evaluate the HPM we sampled the variance in the long-term rates of carbon accumulation in the Mer Bleue peatland: a 28 km^2 cool temperate, raised peatland located $\sim 10 \text{ km}$ east of Ottawa, Ontario (45.40° N lat., 75.50° W long., 69 m a.s.l.). Mer Bleue is a well-studied northern ombrotrophic bog (e.g., Roulet et al., 2007; Moore et al., 2002, 2007; Lafleur et al., 2003, 2005a, b; Bubier et al., 2003, 2006). The peatland formed over the past c.8400 years, beginning as a fen and transitioning to a bog around 7100-6800 calendar years BP (Roulet et al., 2007). Field measurements of contemporary carbon and water dynamics at the site include ~ 10 years of eddy covariance net ecosystem exchange and surface energy balance measurements (e.g., Roulet et al., 2007; Lafleur et al., 2005a and b); chamber net ecosystem exchange of CO_2 (NEE) measurements in representative plant communities (e.g. Bubier et al., 2003); vegetation composition and biomass measurements (e.g., Moore et al., 2002; Bubier et al., 2006; Murphy et al., 2009); litter decomposition rate studies (e.g., Moore et al., 2007); and micrometeorological, water table, and run-off measurements.

Mer Bleue is roughly oval shaped with an east-west orientation with two longitudinal lobes of fluvial sand/gravel material dissecting the western end of the bog, creating

A new model of Holocene peatland net primary production

S. Frohling et al.

Title Page

Abstract

Introduction

Conclusions

References

Tables

Figures



Back

Close

Full Screen / Esc

Printer-friendly Version

Interactive Discussion



A new model of Holocene peatland net primary production

S. Frolking et al.

Title Page

Abstract

Introduction

Conclusions

References

Tables

Figures

⏪

⏩

◀

▶

Back

Close

Full Screen / Esc

Printer-friendly Version

Interactive Discussion

three separate arms (Fraser et al., 2001). We took a peat a peat core at the 930 m mark near the central area on the northwest arm of the bog. The area has been the focus of contemporary carbon studies. The northwest arm is a slightly domed bog, with peat depths varying from 5–6 m near the centre decreasing to <0.3 m at the margins with a narrow band of beaver ponds surrounding the bog. The bog surface has a hummock-hollow microtopography. The dominant evergreen (*Chamaedaphne calyculata*, *Ledum groenlandicum*, *Kalmia angustifolia*) and deciduous (*Vaccinium myrtilloides*) shrubs with sedges (*Eriophorum vaginatum*) comprising a sparse cover and a few small trees (*Picea mariana*, *Larix laricina*, *Betula populifolia*) are present on hummocks. Hummocks and hollows are covered by *Sphagnum* mosses (*S. capillifolium*, *S. magellanicum*).

The MB930 core was 5.97 m long. The upper 1.44 m was sampled with an 0.1 m inner diameter Coûteaux sampler (Coûteaux, 1962), while the lower 4.53 m was sampled with a 1 m long, 0.075 m inner diameter Russian corer (Jowsey, 1966). C accumulation rates were established from an age-depth relationship combined with fine resolution measurements of density and C concentration in the cores.

At five depths the age was determined by radiocarbon dates (Table 3). Conventional radiocarbon dates are calibrated with CALIB 5.0 program (Stuiver and Reimer, 1993). The age for eight additional depths was determined from palynostratigraphical correlation with other radiocarbon dated pollen diagrams in the Montreal-Ottawa area (Muller et al., 2003a). In this we used BP to designate calendar date before present: present being 1950. Samples (1 cm³) of fresh peat were dried at 105 °C, weighed, and ignited at 600 °C, to determine density and organic matter content (Dean, 1974; Beaudoin, 2003). Turunen et al. (2004) analyzed the top 0.60 m for 48 cores from 24 different bogs in eastern Canada and obtained a mean of 46% and this was used in our calculations. Measurements were made every 0.02 m from 0 to 2.00 m and every 0.04 m thereafter.

Long-term net rates of carbon accumulation were calculated using a smoothed, age-depth model including all dates for the core, the estimated C concentration for each

sample, and the interpolated deposition time of each depth increment (e.g. either 0.02 or 0.04 m). The stratigraphy of the cores was described every 10 cm following the Troels-Smith (1955) nomenclature.

4 Results

HPM simulation output includes both the time series of annual net carbon and water fluxes and peat accumulation, as well as a developing peat profile. At the end of a multi-millennia simulation, the simulated peat profile can be “cored” to get simulated contemporary profiles of peat properties (depth, age, bulk density, moss and vascular plant fractions of remaining peat) that can be compared to field cores.

4.1 Model evaluation against site data at Mer Bleue Bog

After the initialization period (~25 years in this scenario), the annual water balance is calculated, the resulting water table depth is determined (conserving total water), an annual carbon balance is calculated (productivity minus decomposition), and a final water table depth is determined (again conserving water).

The simulated water table rapidly drops from the initiation value of 0.07 m to about 0.25 m once the water table is allowed to be dynamic. For most of the simulation the water table fluctuates between about 0.2 m below the peat surface during the wet periods and 0.35 m below the peat surface, dropping below 0.4 m during dry periods (Fig. 4b). The magnitude of interannual variability in z_{WT} was higher during periods of low precipitation and deeper water tables (Fig. 4b). Total NPP drops from initial rates of about $1.4 \text{ kg C m}^{-2} \text{ y}^{-1}$ to about $0.7 \text{ kg C m}^{-2} \text{ y}^{-1}$ after about 1000 years, due to the transition from minerotrophic to ombrotrophic PFT dominance, and then declines more slowly to about $0.43 \pm 0.01 \text{ kg C m}^{-2} \text{ y}^{-1}$ during the final millennium of the simulation (Fig. 4c). Decomposition also drops from initial rates of about $1.2 \text{ kg C m}^{-2} \text{ y}^{-1}$ to about $0.7 \text{ kg C m}^{-2} \text{ y}^{-1}$ after about 1000 years, and then declines more slowly to about

A new model of Holocene peatland net primary production

S. Frohling et al.

Title Page

Abstract

Introduction

Conclusions

References

Tables

Figures

⏪

⏩

◀

▶

Back

Close

Full Screen / Esc

Printer-friendly Version

Interactive Discussion



0.41±0.01 kg C m⁻² y⁻¹ during the final millennium of the simulation (Fig. 4d). Decomposition is less sensitive to wet and dry periods than NPP, but increases during periods of declining precipitation and increasing water table depth. Simulated total peat height rises to about 1.5 m in the first 1000 years, then more slowly to about 4 m after 5000 years, then irregularly rises and falls for about 1500 years before rising again more slowly to about 5.4 m at the end of the 8500 years simulation (Fig. 4e).

The observed age-depth profile in the MB930 core indicates relatively rapid peat accumulation prior to ca. 5500 BP, an interval of slow accumulation ca. 5500 BP–ca. 2500 BP, and then more rapid accumulation again during the past ~2500 years (Fig. 5a). Total simulated NPP over the 8500-year simulation was about 4800 kg C m⁻², with 6.5% of that remaining in the final peat core (310 kg C m⁻²; Table 4). Mean annual NPP was about 0.56 kg C m⁻² y⁻¹, and mean long-term peat accumulation was about 0.037 kg C m⁻² y⁻¹. Total minerotrophic PFT NPP was about 35% of the total, but accounted for only about 20% of the peat; total vascular PFT NPP was also about 65% of the total, but accounted for only about 35% of the peat (Table 4). Only the brown and *Sphagnum* moss PFTs had more than 10% of their total NPP remaining in the peat at the end of the simulation (Table 4). The mean accumulation rate over 8500 years was about 0.6 mm y⁻¹ and 35 g C m⁻² y⁻¹. The simulated peat is younger at all depths except ~2 m than observed MB930 core dates (Fig. 5a). The discrepancies between the simulated and observed profile are largest in the most recent 1000 years (~1 m of peat in the simulation, but ~0.5 m in the peat core) and in peat 3800–5600 years old (~1.1 m thick in the simulation and ~0.5 m thick in the peat core) (Fig. 5a).

The net rate of C accumulation (NRCA), estimated from the core as the carbon content per cm depth divided by the age accumulation per cm depth, ranges from ~0.01 kg C m⁻² y⁻¹ to about 0.07 kg C m⁻² y⁻¹. The observed NRCA had high and highly variable rates before 7000 BP, a small increase around 6000 BP, then a low rate 5500–3000 BP, rising to a moderate and moderately variable rate between 3000 BP and the top of the peat core (Fig. 5b). In the simulation, each annual cohort's mass at the end of the simulation is equivalent to reported NRCA values estimated

A new model of Holocene peatland net primary production

S. Frolking et al.

Title Page

Abstract

Introduction

Conclusions

References

Tables

Figures

⏪

⏩

◀

▶

Back

Close

Full Screen / Esc

Printer-friendly Version

Interactive Discussion



from dated cores, and ranged from $\sim 0.015 \text{ g C m}^{-2} \text{ y}^{-1}$ to $\sim 0.08 \text{ g C m}^{-2} \text{ y}^{-1}$ (Fig. 5b). The simulated pattern is generally similar, though with several differences. After the rise in apparent accumulation rate around 6000 BP, the simulated NRCA drops more steadily to a low value around 3000 BP, and then increases less abruptly. As in the age depth profile (Fig. 5a), the simulated carbon accumulation rate for the shallow peat is significantly larger than in the observed core. Although the final core age-depth profile shows monotonically increasing depth with age (Fig. 5a), the simulated peat height does not increase monotonically (Fig. 4e). The net ecosystem annual carbon balance (NECB) of the peatland (total NPP minus total decomposition in HPM) varies between a net uptake of about $0.2 \text{ kg C m}^2 \text{ y}^{-1}$ and a net loss of $-0.15 \text{ kg C m}^2 \text{ y}^{-1}$ (Fig. 5c). The variability is driven by precipitation variability and resulting variability in water table depth. In general, and particularly during the simulation years 5000–7000, the variability in NECB results mostly from variability in productivity (Fig. 4c), not variability in decomposition (Fig. 4d).

Since HPM calculates NPP and litter/peat decomposition by PFT, the simulated core records the composition of the remaining peat by PFT and this can be compared with the results of observed PFT remains deduced from macrofossil analysis. The macrofossil analysis indicates the deeper peat is predominantly herbaceous, overlain by a meter or so with a significant woody peat fraction, and bryophyte peat dominating the upper 2.5 m. Throughout the core a significant fraction of the peat consists of *Detritus granosus*, which constitute the partially decomposed peat matrix. The state of humification of the entire material varies throughout the core (Fig. 6c). In all four base-run simulations the older peat (or deeper core) is dominated by minerotrophic PFT peat (roughly 7000–8500 BP) and the younger peat is dominated by ombrotrophic PFT peat (Fig. 6a, b). For most of the core, lawn and hummock *Sphagnum* peat comprises more than half the total; the herbaceous fraction was greatest deep in the core, and the woody fraction averaged around 15% (Fig. 6a, d).

The simulation with constant annual precipitation for 8500 years generated a smoothly monotonic water table depth dropping from 0.20 to 0.35 m below the surface,

A new model of Holocene peatland net primary production

S. Frolking et al.

[Title Page](#)[Abstract](#)[Introduction](#)[Conclusions](#)[References](#)[Tables](#)[Figures](#)[⏪](#)[⏩](#)[◀](#)[▶](#)[Back](#)[Close](#)[Full Screen / Esc](#)[Printer-friendly Version](#)[Interactive Discussion](#)

A new model of Holocene peatland net primary production

S. Frolking et al.

Title Page

Abstract

Introduction

Conclusions

References

Tables

Figures

⏪

⏩

◀

▶

Back

Close

Full Screen / Esc

Printer-friendly Version

Interactive Discussion



Reducing ρ_{\min} from 50 to 35 kg m⁻³ ($\Delta\rho$ remained 70 kg m⁻³, so maximum bulk density was also reduced by 15 kg m⁻³) had little impact on the total peat carbon accumulation, but increased the final peat height by about 1 m (~20%) and resulted in a ~0.08 m deeper water table (SR#1 in Table 5). Shallow, relatively undecomposed peat has lower bulk density, so in this simulation each litter cohort was thicker (same mass, lower ρ), but decomposed at approximately the same rate, so took about the same time to “collapse” to higher bulk density. In HPM, the water table generally is located near this bulk density transition (unless it is an extreme precipitation year) so the mean water table was deeper with lower ρ_{\min} . In addition, runoff increases with peat height (Eq. 13), so in HPM deeper peat has higher runoff and a deeper water table, if hydraulic transmissivity can accommodate it. Despite a deeper water table, the fraction of total NPP remaining as peat increased to 7.8% due to a higher fraction of NPP by ombrotrophic PFTs that prefer a deeper water table and have lower initial decomposition rates (Table 1). Reducing $\Delta\rho$ from 70 to 50 kg m⁻³ increased the final water table depth by about 0.04 m, reduced both total NPP and the percent remaining as peat, so total peat carbon accumulation decreased by ~20%, though total peat depth by only ~5% due to decreased overall bulk density (SR#2). The reduction in peat depth was less than the reduction in peat mass because the peat column overall bulk density was decreased. Increasing $\Delta\rho$ from 70 to 90 kg m⁻³ increased total NPP and the percent remaining as peat and thus total peat mass by ~13%, but total peat height was slightly lower due to increased overall bulk density (Table 5). Parameterizing the peat collapse to start earlier and/or proceed more slowly (SR#4–6, Table 5, Fig. 3) reduced peat accumulation and the fraction of NPP remaining as peat and caused a shallower final water table. A more abrupt transition (SR#7) had little effect.

Reducing NPP for all PFTs by 25% reduced total peat mass and peat height by ~25%, and resulted in a ~0.1 m shallower water table (SR#8 in Table 5). A shallower water table would result from both lower runoff due to less peat height and a shallower transition to high bulk density, low transmissivity peat due to thinner annual cohorts. Note that total NPP was only reduced by 12.5%, in part because the peat height took

A new model of Holocene peatland net primary production

S. Frohling et al.

Title Page

Abstract

Introduction

Conclusions

References

Tables

Figures

⏪

⏩

◀

▶

Back

Close

Full Screen / Esc

Printer-friendly Version

Interactive Discussion

~1000 years longer to reach the transition to ombrotrophy and lower relative NPP (though difference in water table would also have an effect). However, the fraction remaining was also reduced from 6.5% to 5.4%, because a greater fraction of total NPP was due to relatively more decomposable minerotrophic PFTs. Increasing NPP for all PFTs by 25% had the opposite effect (SR#9). Similarly, increasing the initial decomposition rate for all PFTs by 25% decreased total peat mass and peat height (by ~10%), and resulted in a 0.07 m shallower water table (SR#11). Again, a shallower water table would result from both lower runoff potential due to less peat height and a shallower transition to high bulk density, low transmissivity peat due to thinner annual cohorts. Total NPP increased by 8%, due to a slower transition to ombrotrophy, but only 5.4% remained as peat, despite a shallower water table, due to higher initial decomposition rates. Decreasing initial decomposition rates had an opposite and slightly enhanced effect (SR#10).

The anoxia scale length parameter (c_2 , Eq. 9, Table 2) controls the decline in overall decomposition rate of submerged peat as a function of depth below the water table. Increasing the scale length value to 0.5 m resulted in a ~25% decrease in peat depth and mass after 8500 years, and 0.04 m reduction in final water table depth; decreasing the value to 0.2 m resulted in a ~10% increase in peat depth and mass after 8500 years, and no significant change in final water table depth (SR#12–13 in Table 5).

In a simulation where all vascular NPP was input at the peat surface (i.e., same total NPP, but no roots), the final peat accumulation was reduced by only a few percent (both total depth and total mass; SR#14 in Table 5), which may not be significant, given the stochastic factor in the precipitation. The water table depth in this simulation was ~0.05 m shallower than in the base runs; this was likely the result of the peat at ~0.2–0.25 m being more decomposed (higher bulk density) in this simulation (no fresh litter inputs below the surface), and thus lower transmissivity (Eq. 14) reduced runoff. This would reduce overall decomposition slightly, apparently nearly offsetting the increased overall decomposition of 100% surface litter, and minimizing the impact on total peat accumulation.

A new model of Holocene peatland net primary production

S. Frolking et al.

Title Page

Abstract

Introduction

Conclusions

References

Tables

Figures

⏪

⏩

◀

▶

Back

Close

Full Screen / Esc

Printer-friendly Version

Interactive Discussion



Since precipitation is based on a paleo-reconstruction (Muller et al., 2003b), evapotranspiration is parameterized from contemporary eddy covariance measurements (Lafleur et al., 2005b), and run-on is assumed to be negligible, the “free” variable in the simulated annual water balance is annual run-off. Three parameters control the runoff – R_0 determines the base annual run-off from $P-ET_0$ for a shallow, saturated peat; c_8 controls the linear rate of increase in run-off with peat height, and T_0 sets a minimum value for deep water table reduction in annual transmissivity relative to the rate for saturated peat (Table 2 and Eqs. 13, 14). All results were sensitive to all three parameters – in particular, varying these parameters caused the greatest variability in the percent of total NPP remaining as peat (SR#28–39 in Table 5). All run-off parameters affected the water table depth, with a clear pattern of shallower (deeper) water tables correlating with a greater (smaller) percentage of total NPP remaining a peat than in the base runs. For example, reducing c_8 from 0.2 to 0.3 caused a 0.06 m decrease in z_{WT} , and an increase in final peat height and carbon content by almost 35%, despite a 7% reduction in total simulation NPP, as $\sim 9.3\%$ of that NPP did not decompose, compared to 6.5% in the base runs.

5 Discussion

HPM simulates the long-term carbon and water dynamics of a peatland, calculating annual carbon and water balances for each year of a multi-millennium simulation. Most of these results are not possible to test directly; there are multiyear or annual carbon balance budgets for a few peatlands (e.g., Roulet et al., 2007; Nilsson et al., 2008; Koehler et al., 2010), but these are on peatlands that are at least several thousand years old, and they may not be representative of the carbon balance of those peatlands throughout their development. Contemporary C balance records of 5–10 years put clear constraints on the current system state and dynamics. However, they provide no information on how these systems behaved in the past (vegetation dynamics, carbon accumulation, disturbance/response) and little information on how these systems will

5 behave under climate/weather conditions outside the range of variability over the past 5–10 years. Contemporary carbon and vegetation dynamics measurements from a set of peatlands representing a chronosequence of stages of development (i.e. space for time substitution) within the same climatic region (e.g., Leppälä et al., 2008; Merilä et al., 2006) can provide a series of snapshots of peatland behavior through time.

Most information on past dynamics comes from peat core analyses; data include peat age, carbon content, bulk density, macrofossil identification and pollen content, and testate amoebae community composition. This information is then used to generate estimates of the dynamics of peat vegetation composition (e.g., Mauquoy et al., 2008), past climatic conditions (e.g., Mauquoy et al., 2008) and water table dynamics (e.g., Charman 2007), and long-term C accumulation rates (e.g., Turunen 2003) – all of which are usually explained inductively. HPM generates a number of variables that are comparable to these contemporary observables – final state (i.e., contemporary) peat depth and total mass or carbon content, and vertical profiles (at a resolution of 1 year or <0.01 m) of peat age, bulk density, degree of decomposition, and PFT composition. HPM results are generally consistent with long-term peat core records from Mer Bleue, i.e., about 5 meters and 300 kg peat carbon, apparently accumulating at variable rates over the past 8500 years, with deeper (older) peat dominated by minerotrophic PFTs and shallower peat dominated by ombrotrophic PFTs, though the composition of the simulated core seems to be less variable than observed in the field (Figs. 5 and 6). Bryophyte remains account for ~65% of the total peat (Table 4); Turetsky (2003) reported that bryophytes are estimated to comprise about half of the total peat, based on more than 600 archived peat cores from continental Canada cataloged by Zoltai et al. (2000). This result is also consistent with the observations of the importance of *Sphagnum* in determining shifts in periods of peatland growth (Belyea and Malmer, 2004).

25 Due to large variability in northern peatlands, very few HPM model parameters (Tables 1 and 2) are well constrained by field data. Primary productivity is highly variable between sites and in different years for *Sphagnum* mosses, true mosses, forbs, shrubs,

**A new model of
Holocene peatland
net primary
production**S. Frohling et al.

Title Page

Abstract

Introduction

Conclusions

References

Tables

Figures

⏪

⏩

◀

▶

Back

Close

Full Screen / Esc

Printer-friendly Version

Interactive Discussion



and trees (e.g., Wieder, 2006, and references therein) and for total site NPP (e.g., Rydin and Jeglum, 2006; Moore et al., 2002, and references therein). Relative NPP for the PFTs in HPM, and their sensitivities to water table depth and peat height are meant to represent general patterns common to northern peatlands (e.g., Walker, 1970; Reader and Stewart, 1972; Bernard, 1974; Forrest and Smith, 1975; Tallis, 1983; Backeus, 1990; Korhola, 1992; Rydin, 1993; Klinger and Short, 1996; Hughes and Barber, 2004; Leppälä et al., 2008; Murphy et al., 2009; Murphy, 2009 and references therein). It is important to note that model NPP for a given water table and peat depth combines both plant abundances under those conditions as well as PFT inherent productivity per unit leaf biomass, so the defined optima and tolerance along water table and peat depth gradients represent PFT ecological niches instead of wider physiological niches. For example, while ombrotrophic sedges could be relatively productive with shallow peat, they are likely to be outcompeted for space by minerotrophic species and thus are parameterized to have low NPP. This representation of relative NPP results in a simple dynamic vegetation model, but does not simulate PFT establishment and associated lags; the assumption is that at least one representative species of each PFTs is effectively present, even if with essentially zero productivity, and becomes productive when conditions (water table depth and peat depth) are suitable; common peatland plants are able to disperse well via air and water (Salonen, 1987; Talbot, 2009). The transition from minerotrophic PFTs to predominantly ombrotrophic PFTs (fen-bog transition) is parameterized to occur as the peat depth increases from roughly 1 to 2 m; this transition depth is likely dependent in a site-specific way on the surface- and groundwater hydrology and mineralogy of the watershed encompassing the peatland (Fraser et al., 2001; Comas et al., 2004; Glaser et al., 1990). Macrofossil, pollen, and radiocarbon analyses indicates that Mer Bleue transitioned from a fen to a bog circa 7100–6800 BP; in the base-run simulations the minerotrophic PFT fraction of contemporary peat drops from ~40% to ~25% over the age range of 7500–6500 BP (Fig. 6). HPM results do not seem to be very sensitive to these above- and below-ground allocation fractions (Table 5).

**A new model of
Holocene peatland
net primary
production**

S. Frolking et al.

Title Page

Abstract

Introduction

Conclusions

References

Tables

Figures

⏪

⏩

◀

▶

Back

Close

Full Screen / Esc

Printer-friendly Version

Interactive Discussion



A new model of Holocene peatland net primary production

S. Frolking et al.

Title Page

Abstract

Introduction

Conclusions

References

Tables

Figures

⏪

⏩

◀

▶

Back

Close

Full Screen / Esc

Printer-friendly Version

Interactive Discussion



Decomposition rates are generally low in boreal peatlands, and plant tissue quality contributes to this through low nutrient content and high refractory content (Moore and Basiliko, 2006; Laiho et al., 2006). In situ litter-bag decomposition studies show general patterns in initial decomposition rates among plant functional types (forbs \geq sedges > shrubs > *Sphagna* > wood) but within-PFT variability is high and PFT ranges generally overlap (e.g., Moore et al., 2007). Litter bag decomposition rates are determined by fitting mass loss data to an exponential function, $m(t) = m_0 e^{-kt}$, under the assumption that k is a constant ($dm/dt = -km$); since HPM represents litter/peat decomposition as an initial rate k_0 , that declines linearly with mass loss (i.e., $dm/dt = -(m/m_0)k_0 m$), the litter bag k -values need to be modified to k_0 values. We have modified these so that, after 5 years of decomposition they have approximately the same mass lost (see Table 1).

The anoxia scale length parameter (c_2 , Eq. 9, Table 2) controls the decline in overall decomposition rate of submerged peat as a function of depth below the water table. In situ biogeochemical studies indicate that decomposition rates in deep peat are limited by lack of solute transport (e.g., Beer and Blodau, 2007; Beer et al., 2008). In HPM this is represented as a rate multiplier that declines exponentially with distance below the simulated water table. The base run value for this scale length is 0.3 m, which is roughly the range of interannual variability (~ 0.35 to 0.70 m) in maximum growing season water table depth observed at Mer Bleue (Roulet et al., 2007). The minimum decay rate multiplier is set to 0.001 y^{-1} – this does not include reduction in decomposition rate from the initial value due to mass loss (see Eq. 7; at depth total cohort $m/m_0 < 0.1$). Simulation results were not sensitive to this minimum value. Increasing this scale length means that “full anoxia” is pushed deeper into the submerged peat; this could be caused by larger seasonal to interannual variability in the water table, or by non-negligible water (and solute) flow through the submerged peat. Increasing the scale length value to 0.5 m resulted in a $\sim 25\%$ decrease in peat depth and mass after 8500 years, and 0.04 m reduction in final water table depth; decreasing the value to 0.2 m resulted in a $\sim 10\%$ increase in peat depth and mass after 8500 years, and no

significant change in final water table depth (Table 5).

Variability in peat net carbon uptake and in the contemporary carbon density per unit time down the profile is driven in HPM by variability in precipitation that drives a variability in water table depth, providing the entry in to the interconnected carbon and water cycles represented in Fig. 1. Constant precipitation generates a smoothly varying peat core (Figs. 5b, 6b). Increasing the amplitude of precipitation variability causes high frequency variability in carbon and water variables (e.g., Fig. 7), but only when these deviations from the mean are persistent over several decades to centuries are there pronounced deviations in peat height or the carbon density or age depth profiles (Figs. 8c–e, 9c–e). Since precipitation and snowmelt inputs and runoff are highly episodic and evapotranspiration is strongly seasonal, peatland water tables are seasonally dynamic, and data are often missing or difficult to interpret in winter due to freezing conditions (e.g., Lafleur et al., 2005b; Roulet et al., 2007). HPM has an annual time step with no seasonality in water inputs or outputs, and computes a mean annual water table, and it is not clear what exactly this should be compared to. Does it represent an observed actual mean annual water table, or a mean unfrozen season water table, or neither? Should its absolute magnitude be compared to field observations, or are relative interannual variability and long-term trends more important? Charman (2007) showed that proxies for peatland water table reconstructions are most likely related to summer water deficits, which themselves are most related to summer precipitation and, to a lesser degree, summer temperature (evaporative demand). Charman (2007) suggests that low-frequency variability in annual moisture deficits (i.e., decadal or longer), leading to persistent wet or dry conditions, can cause changes in plant community composition and decay rates, which feedback, through changes in peat hydraulic properties, on peat surface wetness.

Total decomposition must be less than total NPP. In the 5 base-run simulations total decomposition averaged 93.5% of total NPP (range: 93.4%–93.7%; Table 5); total NPP had a standard deviation of 57 kg C m^{-2} (1.2% of the mean) and total decomposition 58 kg C m^{-2} (1.3% of the mean), but total peat mass had a standard deviation of

**A new model of
Holocene peatland
net primary
production**

S. Frolking et al.

Title Page

Abstract

Introduction

Conclusions

References

Tables

Figures

⏪

⏩

◀

▶

Back

Close

Full Screen / Esc

Printer-friendly Version

Interactive Discussion



only 4 kg C m^{-2} (also 1.3% of its mean), implying that NPP and decomposition co-vary. Across all simulations in Table 5, total decomposition was highly correlated with total NPP (decomposition = $1.05 \cdot \text{NPP} - 565$; $R^2 = 0.99$), and total decomposition ranged from 90.5% to 96.1% of total NPP. With total NPP $\sim 5000 \text{ kg C m}^{-2}$, a change in fractional decomposition from 94% to 93% implies 50 kg C m^{-2} less peat in the final profile, about 17% of the total, so net peat carbon accumulation is the relatively small difference of two much larger gross carbon fluxes (NPP and decomposition). On a much shorter time-scale, Bubier et al. (1998) found a strong correlation between chamber measurements of gross photosynthesis and ecosystem respiration (as CO_2) across a range of boreal Canadian peatlands from rich fen to bog.

Peatland NRCA is measured on contemporary cores, and must always be positive, as one cannot sample lost carbon in a core but only infer loss, either from the presence of charcoal or from long time intervals separated by little vertical distance. Peatland NECB is annual change in storage, and this can be positive or negative, but only can be quantified in by direct measurement during the year in question. Simulated NECB shifted from a positive to a negative carbon balance throughout the simulation; as a result, the correlation between simulated NECB and simulated NRCA was only moderate ($r^2 \sim 0.4 - 0.5$). NECB variability results mostly from variability in productivity (Fig. 4c), not variability in decomposition (Fig. 4d), consistent with contemporary field studies (e.g., Riutta et al., 2007; Laine et al., 2009). Interannual variability in NECB (Fig. 5c) is much less evident in the final peat core age-depth profile or field NRCA (Fig. 5a, b) because millennia of decomposition reduce the magnitude of variability and field sampling inevitably aggregates over a number of years, acting as a low-pass filter. Note that HPM simulates total decomposition (mass loss), but does not disaggregate this into CO_2 , CH_4 , and DOC (Roulet et al., 2007; Nilsson et al., 2008; Koehler et al., 2010). Based on the HPM simulations, we hypothesize that peatlands can have a weak negative C balance for decades or even centuries (e.g., Figs. 4e, 5c, 7c, 8c, 9c) that cannot be unambiguously determined from dating a peat core profile. These intervals do not need to have low NPP, and so the peatland may not be severely stressed.

A new model of Holocene peatland net primary production

S. Frolking et al.

[Title Page](#)[Abstract](#)[Introduction](#)[Conclusions](#)[References](#)[Tables](#)[Figures](#)[⏪](#)[⏩](#)[◀](#)[▶](#)[Back](#)[Close](#)[Full Screen / Esc](#)[Printer-friendly Version](#)[Interactive Discussion](#)

A new model of Holocene peatland net primary production

S. Frolking et al.

Title Page

Abstract

Introduction

Conclusions

References

Tables

Figures

⏪

⏩

◀

▶

Back

Close

Full Screen / Esc

Printer-friendly Version

Interactive Discussion



This first version of HPM does not yet include several factors that will be important to develop for more widespread application. Mean annual temperature exerts controls on both NPP and decomposition; we anticipate that, as with HPM sensitivity to water table depth, long-term variability and trends (e.g., Holocene Thermal Maximum, Medieval Warm Period, Little Ice Age) will play a more important role than short-term interannual variability. Temperature effects become particularly dramatic when they generate or thaw permafrost (e.g., Robinson and Moore 2000; Turetsky et al., 2002a). Trends in seasonality in temperature (e.g., related to changes in summer insolation; Jones and Yu, 2010) and growing season length may also be important. In their regional paleoclimate analysis, Muller et al. (2003b) detected a long-term trend towards more frequent cooler summers and more frequent warmer winters (i.e., decreasing seasonal contrast). Seasonal hydrological dynamics (e.g., summer droughts in years with normal annual precipitation) could have a large impact (e.g., Charman, 2007), but will be difficult to reconstruct for past millennia. Peatland disturbances, particularly fire, but more recently human impacts, are not simulated. Mer Bleue core MB930 had evidence of charcoal at about 1.8 m and 4.6 m. If these fires severely burned the peat (e.g., Zoltai et al., 1998; Robinson and Moore, 2000; Turetsky et al., 2002b), they would have a significant impact on the overall peat accumulation and age-depth profile.

Several other factors are included in a simple way that may preclude additional feedback dynamics in peatland development. For example, nutrient and mineral input and mineralization dynamics can influence system behavior (e.g., Pastor et al., 2002), but in HPM are represented only through a peat depth proxy. Vegetation dynamics are represented through the smooth functions of Eq. (6) (see Fig. 2), with no stochasticity, stress threshold response, or dispersal lags, which are likely to make any particular site more variable than the model output.

6 Conclusions

In essence, HPM is a set of dynamically linked multiple hypotheses on the complex nature of a strong coupling between peatland annual carbon and water balances (Fig. 1). The linkages in HPM are unambiguous and therefore in principle could be deductively tested (i.e., subject to falsification) if appropriate observations exist, but the conceptual framework, links and general structure is based on the inductive inferences of peatland development that shape how we think peatlands operate as a system (e.g. Charman, 2002; Rydin and Jeglum, 2006). The links between precipitation, water table, vegetation composition and productivity, decomposition, and peat hydraulic properties generate a relatively stable system overall. Variable precipitation leads to variability in simulated water table depth, which leads to variability in the carbon balance. This is most apparent in the final core mass as a function of age (Figs. 5b, 7d, 8d, 9d), which integrates the combined effects of relative productivity and total decomposition, both dependent on water table dynamics over years (productivity) to decades or centuries (decomposition). Variability in net carbon accumulation that would be measurable in a peat core (e.g., Fig. 5b), and that might have an impact on long-term carbon accumulation, results from persistent (tens to hundreds of years) precipitation deviations or trends (order of 10%) away from a long-term mean (e.g., Figs. 8 and 9). Higher frequency variability gets smoothed out in the long-term record by the “low-pass filter” of decomposition and sampling.

Acknowledgements. We thank the community of peatland researchers for interesting and helpful discussions over the past few decades, and, in particular, the NSF-sponsored PeatNET project for sponsoring a series of large and small peatland and carbon workshops over the past few years, facilitating and encouraging these discussions. SF and JT were supported by NSF grant ATM-0628399. NTR was supported by the Natural Sciences and Engineering Research Council of Canada (NSERC) and the Canadian Foundation for Climate and Atmospheric Sciences. EST was supported by the Academy of Finland through the project *Mire diversity and function – successional change during primary paludification* (code 118493). JLB was supported by NSF grant DEB-0346625 and faculty fellowships from Mount Holyoke College. AQ

A new model of Holocene peatland net primary production

S. Frohling et al.

Title Page

Abstract

Introduction

Conclusions

References

Tables

Figures

⏪

⏩

◀

▶

Back

Close

Full Screen / Esc

Printer-friendly Version

Interactive Discussion



was supported by funds from the Canadian Foundation for Climate and Atmospheric Sciences and by funds supporting the Chaire D elique at GEOTOP-UQAM (Michelle Garneau). PJHR was supported by NSERC.

References

- 5 Back eus, I.: Production and depth distribution of fine roots in a boreal open bog, *Ann. Bot. Fennici*, 27, 261–265, 1990.
- Bauer, I. E.: Modelling effects of litter quality and environment on peat accumulation over different time-scales, *J. Ecol.*, 92, 661–674, 2004.
- Beaudoin, A.: A comparison of two methods for estimating the organic content of sediments, *J. Paleolimnol.*, 29, 387–390, 2003.
- 10 Beer, J. and Blodau, C.: Transport and thermodynamics constrain belowground carbon turnover in a northern peatland, *Geochim. Cosmochim. Acta*, 71, 2989–3002, 2007.
- Beer, J., Lee, K., Whiticar, M., and Blodau, C.: Geochemical controls on anaerobic organic matter decomposition in a northern peatland, *Limnol. Oceanogr.*, 53, 1393–1407, 2008.
- 15 Belyea, L. R. and Baird, A. J.: Beyond "The limits to peat bog growth": Cross-scale feedback in peatland development, *Ecol Monogr.*, 76, 299–322, 2006.
- Belyea, L. R. and Malmer, N.: Carbon sequestration in peatland: patterns and mechanisms of response to climate change, *Global Change Biol.*, 10, 1043–1052, 2004.
- Bennett, K. D. and Fuller, J. L.: Determining the age of the mid-Holocene *Tsuga canadensis* (hemlock) decline, eastern North America. *The Holocene*, 12, 421–429, 2002.
- 20 Bernard, J. M.: Seasonal changes in standing crop and primary production in a sedge dominated wetland and an adjacent dry old-field in central Minnesota, *Ecology*, 55, 350–359, 1974.
- Bubier, J. L., Crill P. M., Moore T. R., Savage K., and Varner, R. K.: Seasonal patterns and controls on net ecosystem CO₂ exchange in a boreal peatland complex, *Global Biogeochem. Cy.*, 12, 703–714, 1998.
- 25 Bubier, J., Moore, T., and Crosby G.: Fine-scale vegetation distribution in a cool temperate bog, *Can. J. Bot.*, 84, 910–923, 2006.
- Bubier, J. L., Bhatia, G., Moore, T. R., Roulet, N. T., and Lafleur, P. M.: Spatial and temporal

A new model of Holocene peatland net primary production

S. Frohling et al.

Title Page

Abstract

Introduction

Conclusions

References

Tables

Figures



Back

Close

Full Screen / Esc

Printer-friendly Version

Interactive Discussion



A new model of Holocene peatland net primary production

S. Frolking et al.

[Title Page](#)[Abstract](#)[Introduction](#)[Conclusions](#)[References](#)[Tables](#)[Figures](#)[⏪](#)[⏩](#)[◀](#)[▶](#)[Back](#)[Close](#)[Full Screen / Esc](#)[Printer-friendly Version](#)[Interactive Discussion](#)

- variability in growing season net ecosystem CO₂ exchange at a large peatland, Ontario, Canada, *Ecosystems*, 6, 353–367, doi:10.1007/s1002-003-0125-0, 2003.
- Charman, D.: Peatlands and Environmental Change, John Wiley and Sons, Chichester, England, 301 pp., 2002.
- 5 Charman, D. J.: Summer water table deficit variability controls on peatland water-table changes: implications for Holocene palaeoclimate reconstructions, *Holocene*, 17, 217–227, 2007.
- Clymo, R. S Turunen, J., and Tolonen, K.: Carbon accumulation in peatland, *Oikos*, 81, 368–388, 1984.
- 10 Clymo, R. S.: Models of peat growth, *Suo*, 43, 127–136, 1992.
- Clymo, R. S.: Peat growth, 76–112 in *Quaternary Landscapes*, edited by: Shane, L. C. K. and Cushing, E. J., U. Minnesota Press, Minneapolis MN, 1991.
- Clymo, R. S.: The limits to peat bog growth, *Philos. Trans. Roy. Soc. B*, 303, 605–654, 1984.
- 15 Comas, X., Slater, L., and Reeve, A.: Geophysical evidence for peat basin morphology and stratigraphic controls on vegetation observed in a Northern Peatland, *J. Hydrol.*, 295, 173–184, 2004
- Coûteaux, M.: Notes sur le prélèvement et la préparation de certains sédiments. *Pollen et Spores*, 4, 317–322, 1962.
- Dean, W. E.: Determination of carbonate and organic matter in calcareous sediments and sedimentary rocks by loss on ignition. Comparison with other methods, *J. Sediment. Petrol.*, 20 44, 242–248, 1974.
- Dise, N. B.: Peatland response to global change, *Science*, 326, 810–811, 1998.
- Eppinga, M. B., de Ruiter, P. C., Wassen, M. J., and Rietkerk, M.: Nutrients and hydrology indicate the driving mechanisms of peatland surface patterning, *American Naturalist*, 173, 25 803–818, 2009.
- Eppinga, M. B., Rietkerk, M., Borren, W., Lapshina, E. D., Bleuten, W., and Wassen, M. J.: Regular surface patterning of peatlands: Confronting theory with field data, *Ecosystems*, 11, 520–536, 2008.
- Frolking, S. and Roulet, N. T.: Holocene radiative forcing impact of northern peatland carbon accumulation and methane emissions, *Global Change Biol.*, 13, 1079–1088, 2007.
- 30 Forrest, G. I. and Smith, R. A. H.: The productivity of a range of blanket bog vegetation types in the northern Pennines, *J. Ecol.*, 63, 173–202, 1975.
- Fraser, C. J. D., Roulet, N. T., and Lafleur, P. M.: Groundwater flow patterns in a large peatland,

A new model of Holocene peatland net primary production

S. Frolking et al.

Title Page

Abstract

Introduction

Conclusions

References

Tables

Figures

⏪

⏩

◀

▶

Back

Close

Full Screen / Esc

Printer-friendly Version

Interactive Discussion



J. Hydrol., 246, 142–154, 2001.

Frolking, S., Roulet, N. T., Moore, T. R., Richard, P. J. H., Lavoie, M., and Muller, S. D.: Modeling northern peatland decomposition and peat accumulation, *Ecosystems*, 4, 479–498, 2001.

Frolking, S., Roulet, N. T., and Lawrence, D.: Issues related to incorporating northern peatlands into global climate models, 19–35 in *Northern Peatlands and Carbon Cycling*, edited by: Baird, A., Belyea, L., Comas, X., Reeve, A., and Slater, L., Geophysical Monograph 184, Am. Geophys. Union, Washington DC, 2009.

Gartner, T. B. and Cardon, Z. G.: Decomposition dynamics in mixed-species leaf litter, *Oikos*, 104, 230–46, 2004.

Glaser, P. H., Janssens, J. J., and Siegel, D. I.: The response of vegetation to chemical and hydrological gradients in the Lost River Peatland, northern Minnesota, *J. Ecol.*, 78, 1021–1048, 1990.

Glaser, P. H.: Ecological development of patterned peatlands. Pages 27–43 in HE Wright, J. BA Coffin, and NE Aaseng, eds. *The patterned peatlands of Minnesota*. University of Minnesota Press, Minneapolis, 1992.

Gorham, E.: Northern peatlands: Role in the carbon budget and probable responses to global warming. *Ecol. Appl.*, 1, 182–195, 1991.

Gunnarsson, U.: Global patterns of Sphagnum productivity, *J. Bryol.*, 27, 269–279, 2005.

Hilbert, D. W., Roulet, N., and Moore, T.: Modelling and analysis of peatlands as dynamical systems, *J. Ecol.*, 88, 230–242, 2000.

Hoorens, B., Stroetenga, M., and Aerts, R.: Litter mixture interactions at the level of plant functional types are additive, *Ecosystems*, 13, 90–98, 2010.

Hughes, P. D. M. and Barber, K. E.: Contrasting pathways to ombrotrophy on three raised bogs from Ireland and Cumbria, England, *Holocene*, 14, 65–77, 2004.

Ingram, H.: Size and shape in raised mire ecosystems – a geophysical model, *Nature*, 297, 300–303, 1982.

Ivanov, K. E.: *Water Movement in Mirelands*, New York, Academic Press, 1981.

Jones, M. C. and Yu, Z.: Rapid deglacial and early Holocene expansion of peatlands in Alaska, *Proc. Nat. Acad. Sci. USA*, 107, 7347–7352, 2010.

Jowsey, P. C.: An improved peat sampler, *The New Phytologist*, 65, 245–248, 1966.

Kleinen, T., Brovkin, V., von Bloh, W., Archer, D., and Munhoven, G.: Holocene carbon cycle dynamics, *Geophys. Res. Lett.*, 37, L02705, doi:10.1029/2009GL041391, 2010.

Klinger, L. F. and Short, S. K.: Succession in the Hudson Bay Lowland, Northern Ontario,

**A new model of
Holocene peatland
net primary
production**

S. Frohling et al.

Title Page

Abstract

Introduction

Conclusions

References

Tables

Figures

◀

▶

◀

▶

Back

Close

Full Screen / Esc

Printer-friendly Version

Interactive Discussion



- Canada, *Arctic Alpine Res.*, 28, 172–183, 1996.
- Koehler, A.-K., Sottocornola, M., and Kiely, G.: How strong is the current carbon sequestration of an Atlantic blanket bog?, *Global Change Biology*, in press, 2010.
- Korhola, A.: Mire induction, ecosystem dynamics and lateral extension on raised bogs in the southern coastal area of Finland, *Fennia*, 170, 25–94, 1992.
- Lafleur, P. M., Roulet, N. T., Bubier, J. L., Moore, T. R., and Frohling, S.: Interannual variability in the peatland-atmosphere carbon dioxide exchange at an ombrotrophic bog, *Global Biogeochem. Cy.*, 17, 1036, doi:10.1029/2002GB001983, 2003.
- Lafleur, P. M., Hember, R. A., Admiral, S. W., and Roulet, N. T.: Annual and seasonal variability in evapotranspiration and water table at a shrub-covered bog in southern Ontario, Canada, *Hydrol. Proc.*, 19, 3533–3550, 2005b.
- Lafleur, P. M., Moore, T. R., Roulet, N. T., and Frohling, S.: Dependency of ecosystem respiration in a cool temperate bog on peat temperature and water table, *Ecosystems*, 8, 619–629, 2005a.
- Laiho, R.: Decomposition in peatlands: Reconciling seemingly contrasting results on the impacts of lowered water levels, *Soil Biology and Biochemistry*, 38, 2011–2024, 2006.
- Laine, A., Byrne, K. A., Kiely, G., and Tuittila, E.-S.: The short-term effect of altered water level on carbon dioxide and methane fluxes in a blanket bog, *Suo*, 65–83, 2009.
- Leppälä, M., Kukko-Oja, K., Laine, J., and Tuittila, E.-S.: Seasonal dynamics of CO₂ exchange during primary succession of boreal mires as controlled by phenology of plants, *Écoscience*, 15, 460–471, 2008.
- MacDonald, G., Beilman, D., Kremenetski, K., Sheng, Y., Smith, L., and Velichko, A.: Rapid early development of circumarctic peatlands and atmospheric CH₄ and CO₂ variations, *Science*, 314, 285–288, 2006.
- Makiloff-Fletcher, S., Tans, P. P., Bruhwiler, L. M., and Miller, J. B.: CH₄ sources estimated by atmospheric observations of CH₄ and its ¹³C/¹²C isotopic ratios: 2. Inverse modeling of CH₄ flux from geographical regions, *Global Biogeochem. Cy.*, 18, GB4005, doi:10.1029/2004GB002224, 2004.
- Mauquoy, D., Yeloff, D., van Geel, B., Charman, D. J., and Blundell, A.: Two decadal resolved records from north-west European peat bogs show rapid climate changes associated with solar variability during the mid-late Holocene, *J. Quater. Sci.*, 23, 745–763, 2008.
- McGuire, A. D., Anderson, L., Christesen, T., Dallimore, S., Guo, L., Hayes, D., Heimann, M., Lorenson, T., Macdonald, R., and Roulet, N.: Sensitivity of the carbon cycle in the Arctic to

A new model of Holocene peatland net primary production

S. Frohling et al.

Title Page

Abstract

Introduction

Conclusions

References

Tables

Figures

⏪

⏩

◀

▶

Back

Close

Full Screen / Esc

Printer-friendly Version

Interactive Discussion



climate change, *Ecol. Appl.*, 79, 523–555, 2009.

Merilä, P., Galand, P. E., Fritze, H., Tuittila, E. S., Kukko-oja, K., Laine, J., and Yrjälä, K.: Methanogen communities along a primary succession transect of mire ecosystems, *FEMS Microbiol Ecol.*, 55, 221–229, 2006.

5 Moore, T. R., Bubier, J. L., and Bledzki, L. A.: Litter decomposition in temperate peatlands: the effect of substrate and site, *Ecosystems*, 10, 949–963, 2007.

Moore, T. R., Bubier, J. L., Frohling, S., Lafleur, P., and Roulet, N. T.: Plant biomass and production and CO₂ exchange in an ombrotrophic bog, *J. Ecology*, 90, 25–36, 2002.

10 Moore, T.R. N. and Basiliko, N.: Decomposition in boreal peatlands, 125–143, in: *Boreal Peatland Ecosystems*, edited by: Wieder, R. K. and Vitt, D. H., Springer-Verlag, Berlin, 2006.

Muller, S., Richard, P. J. H., Guiot, J., Debeaulieu, J., and Fortin, D.: Postglacial climate in the St. Lawrence lowlands, southern Québec: pollen and lake-level evidence, *Palaeogeography, Palaeoclimatology, Palaeoecology*, 193, 51–72, 2003b.

15 Muller, S.D., Richard, P. J. H., and Larouche, A. C.: Holocene development of a peatland (southern Québec): a spatio-temporal reconstruction based on pachymetry, sedimentology, microfossils and macrofossils, *Holocene*, 13, 49–664, 2003a.

Murphy, M. T., McKinley, A., and Moore, T. R.: Variations in above- and below-ground vascular plant biomass and water table on a temperature ombrotrophic peatland, *Botany*, 87, 845–853, 2009.

20 Murphy, M. T.: Getting to the root of the matter: variations in vascular root biomass and production in peatlands and responses to global change, PhD Thesis, McGill University, Montréal, Canada, 2009.

25 Nilsson, M., Sagerfors, J., Buffam, I., Laudon, H., Eriksson, T., Grelle, A., Klemetsson, L., Weslien, P., and Lindroth, A.: Contemporary carbon accumulation in a boreal oligotrophic minerogenic mire – a significant sink after accounting for all C-fluxes, *Global Change Biol.*, 14, 2317–2332, 2008.

Paavilainen, E. and Päivänen, J.: *Peatland Forestry: Ecology and Principles*, Springer-Verlag, Berlin, 248 pp., 1995.

30 Pastor, J., Peckham, B., Bridgham, S., Weltzin, J., and Chen, J.: Plant community dynamics, nutrient cycling, and alternative stable equilibria in peatlands, *American Naturalist*, 160, 553–568, 2002.

Reader, R. J. and Stewart, J. M.: The relationship between net primary production and accumulation for a peatland in southeastern Manitoba, *Ecology*, 53, 1024–1037, 1972.

**A new model of
Holocene peatland
net primary
production**S. Frolking et al.

[Title Page](#)[Abstract](#)[Introduction](#)[Conclusions](#)[References](#)[Tables](#)[Figures](#)[⏪](#)[⏩](#)[◀](#)[▶](#)[Back](#)[Close](#)[Full Screen / Esc](#)[Printer-friendly Version](#)[Interactive Discussion](#)

- Rietkerk, M., Dekker, S. C., Wassen, M. J., Verkoost, A. W. M., and Bierkens, M. F. P.: a putative mechanism for bog patterning, *American Naturalist*, 163, 699–708, 2004.
- Riutta, T., Laine, J., and Tuittila, E.-S.: Sensitivity of CO₂ exchange of fen ecosystem components to water level variation, *Ecosystems*, 10, 718–733, doi:10.1007/s10021-007-9046-7, 2007.
- Robinson, S. D. and Moore, T. R.: The influence of permafrost and fire upon carbon accumulation in high boreal peatlands, Northwest Territories, Canada, *Arct. Antarct. Alp. Res.*, 32, 155–166, 2000.
- Roulet, N. T., Lafleur, P. M., Richard, P. J. H., Moore, T. R., Humphreys, E. R., and Bubier, J. L.: Contemporary carbon balance and late Holocene carbon accumulation in a northern peatland, *Global Change Biol.*, 13, 397–411, 2007.
- Rydin, H. and Jørglum, J. K.: *The Biology of Peatlands*, Oxford University Press, Oxford, England, 2006.
- Rydin, H.: Mechanism of interactions among Sphagnum species along water-level gradients, *Adv. Bryo.*, 5, 153–185, 1993.
- Salonen, V.: Relationship between the seed rain and the establishment of vegetation in two areas abandoned after peat harvesting. *Holarctic Ecology*, 10, 171–174, 1987.
- Stuiver, M. and Reimer, P. J.: Extended ¹⁴C database and revised CALIB radiocarbon calibration program, *Radiocarbon*, 35, 215–230, 1993.
- Svensson, B. M.: Competition between *Sphagnum fuscum* and *Drosera rotundifolia*: a case of ecosystem engineering?, *Oikos*, 74, 205–212, 1995.
- Talbot, J.: Drainage as a model for long term climate change effect on vegetation dynamics and carbon cycling in boreal peatlands, PhD, Geography, McGill University, 2009.
- Tallis, J. H.: Changes in wetland communities, in: *Ecosystems of the world 4A, Mires: Swamp, Bog, Fen and Moor*, edited by: Gore, A. J. P., Amsterdam, Elsevier, 311–347, 1983.
- Troels-Smith, J.: Characterization of unconsolidated sediments, *Danmarks Geologiske Undersøgelse*, ser. IV 3: 1–73, 1955.
- Turetsky, M., Wieder, K., Halsey, L., and Vitt, D.: Current disturbance and the diminishing peatland carbon sink, *Geophys. Res. Lett.*, 29, 11, doi:10.1029/2001GL014000, 2002b.
- Turetsky, M. R., Wieder, R. K., and Vitt, D. H.: Boreal peatland C fluxes under varying permafrost regimes, *Soil Biol. Biochem.*, 34, 907–912, 2002a.
- Turetsky, M. R.: The role of bryophytes in carbon and nitrogen cycling, *Bryologist*, 106, 395–409, 2003.

A new model of Holocene peatland net primary production

S. Frolking et al.

[Title Page](#)
[Abstract](#)
[Introduction](#)
[Conclusions](#)
[References](#)
[Tables](#)
[Figures](#)




[Back](#)
[Close](#)
[Full Screen / Esc](#)
[Printer-friendly Version](#)
[Interactive Discussion](#)

- Turunen, J., Roulet, N. T., Moore, T. R., and Richard, P. J. H.: Nitrogen deposition and increased carbon accumulation in ombrotrophic peatlands in eastern Canada, *Global Biogeochem. Cy.*, 18, GB3002, doi:10.1029/2003GB002154, 2004.
- 5 Turunen, J., Tomppo, E., Tolonen, K., and Reinikainen, A.: Estimating carbon accumulation rates of undrained mires in Finland – application to boreal and subarctic regions, *The Holocene*, 12, 69–80, 2002.
- Turunen, J.: Past and present carbon accumulation in undisturbed boreal and subarctic mires: a review, *Suo*, 54, 15–28, 2003.
- 10 Van Wijk, W. R.: *Physics of Plant Environment*, North-Holland Publ., Amsterdam, 382 pp., 1966.
- Walker, D.: Direction and rate in some British postglacial hydroseres, *Studies in the Vegetation History of the British Isles*, edited by: Walker, D. and West, R. G., 117–139. Cambridge University Press, 1970.
- 15 Walmsley, M. E.: Physical and chemical properties of peat, 82–129 in *Muskeg and the Northern Environment in Canada*, edited by: Radforth, N. W. and Brawner, C. O., Univ. Toronto Press, Toronto, Canada, 1977.
- Wang, Y., Roulet, N. T., Frolking, S., and Mysak, L. A.: The importance of Northern Peatlands in global carbon systems during the Holocene, *Clim. Past*, 5, 683–693, doi:10.5194/cp-5-683-2009, 2009.
- 20 Wieder, R. K.: Primary production in boreal peatlands, 145–164 in *Boreal Peatland Ecosystems*, edited by RK Wieder, DH Vitt, Springer-Verlag, Berlin, 2006.
- Yu, Z. C., Turetsky, M. R., Campbell, I. D., and Vitt, D. H.: Understanding Holocene peat accumulation pattern of continental fens in western Canada, *Canadian Journal of Botany*, 81, 267–282, 2003.
- 25 Zoltai, S. C., Morrissey, L. A., Livingston, G. P., and de Groot, W. J.: Effects of fire on carbon cycling in North American boreal peatlands, *Environ. Res.*, 6, 13–24, 1998.
- Zoltai, S. C., Siltanen, R. M., and Johnson, J. D.: A wetland database for the western boreal, subarctic, and arctic regions of Canada, Northern Forestry Centre. Information Report NOR-X-368, Natural Resources Canada, Edmonton, AB, 2000.

A new model of Holocene peatland net primary production

S. Frohling et al.

Table 1. Characteristics of plant functional types (PFTs), including productivity optimum water table depth ($z_{WT}^{opt_i}$) and peat depth ($h_{PD}^{opt_i}$). Variance (width) of the Gaussian curve representing productivity (Eq. 6; Fig. 6) can differ for water table depth and/or peat depth values less (shallower) than optimum ($\sigma_{i,WT}^-$ and $\sigma_{i,PD}^-$) and greater (deeper) than optimum ($\sigma_{i,WT}^+$ and $\sigma_{i,PD}^+$). Maximum NPP (NPP_{max}) compares each PFT at its optimum water table depth and peat depth, AG_{frac} is the aboveground fraction of total NPP, and k_0 is initial litter decomposition rate. See text for discussion.

PFT	$z_{WT}^{opt_i}$ [m]	$\sigma_{i,WT}^-$ [m]	$\sigma_{i,WT}^+$ [m]	$h_{PD}^{opt_i}$ [m]	$\sigma_{i,PD}^-$ [m]	$\sigma_{i,PD}^+$ [m]	NPP_{max}^a [kg m ⁻² y ⁻¹]	AG_{frac} [-]	k_0^b [y ⁻¹]
grass	0.4	0.4	0.4	0.01	1.0	1.0	0.85	0.5	0.32
minerotrophic forb	0.1	0.3	0.3	0.3	1.0	1.0	0.85	0.5	0.88
minerotrophic sedge	0.1	0.4	0.4	0.1	2.0	2.0	1.13	0.2	0.57
minerotrophic shrub	0.2	0.2	1.0	1.0	2.0	2.0	0.56	0.5	0.44
ombrotrophic forb	0.2	0.2	0.2	4.0	2.0	19.	0.09	0.5	0.57
ombrotrophic sedge	0.2	0.3	0.3	4.0	2.0	19.	0.19	0.2	0.32
ombrotrophic shrub	0.3	0.3	1.0	4.0	2.0	19.	0.19	0.5	0.32
brown moss	0.01	0.2	0.05	0.1	1.5	1.5	0.56	1.0	0.13
hollow <i>Sphagnum</i>	0.01	0.2	0.05	2.0	1.0	19.	0.19	1.0	0.13
lawn <i>Sphagnum</i>	0.1	0.3	0.4	2.0	1.0	19.	0.19	1.0	0.08
hummock <i>Sphagnum</i>	0.2	0.1	0.5	2.0	1.0	19.	0.19	1.0	0.06
feathermoss	0.4	0.4	0.6	4.0	6.0	19.	0.09	1.0	0.13

^a: These are the maximum NPP values for each PFT when the total NPP (sum of all PFTs; see Fig. 3b) is scaled to a maximum of 3 kg m⁻² y⁻¹. ^b: $k_0 = k(1 + 3k)$, where k is first order exponential decay rate, i.e., $m(t) = m_0 e^{-kt}$ (e.g., Moore et al., 2007), and k_0 is the value that gives similar $m(t)$ at $t \sim 5$ years (i.e., near the end of reliable values from a litter bag field decomposition study) when $m(t) = m_0 / (1 + k_0 t)$ (e.g. Frohling et al., 2002), the formulation used in HPM. E.g., if $k = 0.15 \text{ y}^{-1}$, $k_0 = 0.22 \text{ y}^{-1}$, $e^{-5k} = 0.47$; $1 / (1 + 5k_0) = 0.48$.

Title Page

Abstract

Introduction

Conclusions

References

Tables

Figures

◀

▶

◀

▶

Back

Close

Full Screen / Esc

Printer-friendly Version

Interactive Discussion



A new model of Holocene peatland net primary production

S. Frolking et al.

Title Page

Abstract

Introduction

Conclusions

References

Tables

Figures

◀

▶

◀

▶

Back

Close

Full Screen / Esc

Printer-friendly Version

Interactive Discussion

Table 2. Model parameter values for peat properties.

param.	value	units	Eq. #	
c_1	2.31	–	(8)	
W_{opt}	0.45	–	(8)	peat water content for maximum decomposition rate
c_2	0.3	m	(9)	scale length for anaerobic effect on decomposition rate
f_{min}	0.001	–	(9)	decomposition rate reduction factor at “full and persistent” anoxia
ρ_{min}	50	kg m^{-3}	(10)	minimum peat bulk density
$\Delta\rho$	70	kg m^{-3}	(10)	maximum potential increase in peat bulk density
c_3	0.2	–	(10)	μ value at which bulk density has increased halfway from min to max (Fig. 4)
c_4	0.05	–	(10)	controls steepness of bulk density transition curve (Fig. 4)
z_1	0.3	m	(11)	maximum water table depth for full ET (Lafleur et al., 2005b)
z_2	0.7	m	(11)	water table depth below which ET stops decreasing (Lafleur et al., 2005b)
c_6	0.5	–	(11)	factor for minimum annual ET at low water table (Lafleur et al., 2005b)
c_7	$(z_2 - z_1)^{-1}$	m^{-1}	(11)	
R_0	0.05	m y^{-1}	(13)	annual run-off adjustment factor
c_8	0.2	m^{-1}	(13)	increase in runoff (m y^{-1}) for each meter increase in total peat depth
T_0	0.5	–	(14)	minimum relative hydraulic transmissivity for run-off
W_{min}	0.03	–	(16, 17)	minimum litter/peat degree of saturation
c_9	0.5	–	(17)	controls litter/peat unsaturated water content function (Fig. 6)
c_{10}	20	kg m^{-3}	(17)	controls litter/peat unsaturated water content function (Fig. 6)
ρ_{om}	1300	kg m^{-3}	(18)	organic matter particle bulk density (Van Wijk, 1966)

A new model of Holocene peatland net primary production

S. Frohling et al.

[Title Page](#)
[Abstract](#)
[Introduction](#)
[Conclusions](#)
[References](#)
[Tables](#)
[Figures](#)
[⏪](#)
[⏩](#)
[◀](#)
[▶](#)
[Back](#)
[Close](#)
[Full Screen / Esc](#)
[Printer-friendly Version](#)
[Interactive Discussion](#)


Table 3. Chronological data for core MB930.

Depth (m)	Lab code	Dating method	¹⁴ C age (BP)	Calibrated age (cal. yr BP)	1σ-range (cal. yr BP)
0	–	base of living <i>Sphagnum</i>	–	0	–
0.25	–	<i>Ambrosia</i> rise ^a	–	200	–
0.39–0.40	TO–8157	AMS on TPM ^b	680±70	661	540–730
1.20	–	palynostratigraphy ^c	–	2177	–
1.79–1.81	TO–8159	AMS on TPM ^b	2990±140	3185	2782–3472
1.88–1.93	TO–8160	AMS on TPM ^b	3550±150	3845	3469–3550
2.35	–	<i>Tsuga</i> decline ^d	–	5582	–
3.00–3.01	TO–8161	AMS on TPM ^b	5730±80	6499	6313–6724
3.20	–	palynostratigraphy ^c	–	6816	–
3.70	–	palynostratigraphy ^c	–	7430	–
4.005	–	palynostratigraphy ^c	–	7627	–
4.80–4.81	TO–8163	AMS on TPM ^b	7340±170	8167	7792–8423
5.015	–	palynostratigraphy ^c	–	8400	–

^a: The onset of *Ambrosia* pollen corresponds to historical settlement in the area ca. 1750 A.D.

^b: AMS on TPM: Accelerator Mass Spectrometry on Terrestrial (non-aquatic) Plant Macrofossils (seeds, needles, buds, etc.). IsoTrace Laboratory (Toronto) did not measure the ¹³C/¹²C ratio and uses -25 for calculation of calibrated age. ^c: Age determination by pollen correlation of the MB930 pollen assemblage at the given depth, with a radiocarbon dated similar assemblage from a pollen diagram in the neighboring area. ^d: Corresponds to a widespread synchronous event in eastern North America. Compared to Bennett and Fuller (2002), we use a slightly older date because we use the beginning of the decline for correlation.

A new model of Holocene peatland net primary production

S. Frolking et al.

Table 4. Total NPP over 8500-year simulation and final peat-core carbon content by PFT, and by PFTs aggregated by trophic state and major plant form. All values are averages of 4 simulations (see Figs. 4–6).

PFT	total NPP		peat		peat % of	
	kg C m ⁻²	% of total	kg C m ⁻²	% of total	PFT NPP	total NPP
minerotrophic grass	110	2	6	2	5.4	0.13
minerotrophic forb	170	4	4	1	2.1	0.02
minerotrophic sedge	660	14	24	8	3.6	0.17
minerotrophic shrub	730	15	23	8	3.2	0.17
ombrotrophic forb	270	6	6	2	2.1	0.04
ombrotrophic sedge	580	12	29	9	5.0	0.19
ombrotrophic shrub	610	13	21	7	3.5	0.15
brown moss	0.88	0.02	0.13	0.04	15.	< 0.01
hollow <i>Sphagnum</i>	0.01	< 0.01	< 0.01	< 0.01	18.	< 0.01
lawn <i>Sphagnum</i>	620	13	66	21	11.	1.4
hummock <i>Sphagnum</i>	730	15	110	35	15.	2.3
feathermoss	340	7	25	8	7.3	0.52
all minerotrophic	1700	35	57	18	3.4	1.2
all ombrotrophic	3100	65	250	82	8.1	5.2
all vascular	3100	65	110	36	3.6	2.3
all non-vascular	1700	35	200	64	12.	4.2
TOTAL	4800	n.a.	310	n.a.	n.a.	6.5

Title Page

Abstract

Introduction

Conclusions

References

Tables

Figures

⏪

⏩

◀

▶

Back

Close

Full Screen / Esc

Printer-friendly Version

Interactive Discussion



A new model of Holocene peatland net primary production

S. Frohling et al.

Title Page

Abstract

Introduction

Conclusions

References

Tables

Figures

⏪

⏩

◀

▶

Back

Close

Full Screen / Esc

Printer-friendly Version

Interactive Discussion

Table 5. Sensitivities in 8500-year HPM simulations of final peat mass, final peat depth (h_{PD}), and water table depth (z_{WT} – mean of last 40 years of 8500 year simulation), and total vegetation productivity (NPP), and percent NPP remaining as peat at end of simulation (% peat). Results reported to 2 significant figures, except averages.

#	sensitivity run	value	peat mass (kg C m ⁻²)	h_{PD} (m)	z_{WT} (m)	NPP (kg C m ⁻²)	% peat
–	base-1 (see Figs. 7–10)	–	310	5.4	0.26	4800	6.4
–	base-2 (see Figs. 7–10)	–	310	5.4	0.27	4900	6.3
–	base-3 (see Figs. 7–10)	–	310	5.4	0.27	4700	6.5
–	base-4 (see Figs. 7–10)	–	320	5.5	0.26	4800	6.6
–	base-5 (not shown in Figs. 7–10)	–	310	5.4	0.26	4800	6.4
	<i>base – average of runs 1 – 5 ± st. dev.</i>	–	<i>311 ± 4</i>	<i>5.40 ± 0.08</i>	<i>0.262 ± 0.008</i>	<i>4818 ± 57</i>	<i>6.45 ± 0.13</i>
1	minimum bulk density (ρ_{min} , Eq. 10) [kg m ⁻³] <i>base value = 50</i>	35	320	6.4	0.34	4100	7.8
2	bulk density increase ($\Delta\rho$, Eq. 10) [kg m ⁻³] <i>base value = 70</i>	50	250	5.1	0.30	4600	5.4
3		90	350	5.2	0.24	5000	6.9
4	bulk density transition parameters (c_3, c_4 , Eq. 10)	0.3, 0.1	296	5.1	0.17	4600	5.4
5	<i>base values: $c_3 = 0.2, c_4 = 0.05$</i>	0.4, 0.2	268	4.7	0.086	4500	6.0
6		0.2, 0.1	292	5.4	0.23	4700	6.2
7		0.2, 0.025	308	5.3	0.28	5000	6.2
8	NPP multiplier (Eq. 6) <i>base value = 1.0</i>	0.75	230	4.0	0.14	4200	5.4
9		1.25	370	6.4	0.32	5200	7.2
10	k_0 multiplier (Eq. 7) <i>base value = 1.0</i>	0.75	350	6.1	0.33	4200	8.4
11		1.25	280	4.8	0.19	5200	5.4
12	anoxia scale length (c_2 , Eq. 9) [m] <i>base value = 0.3</i>	0.2	340	5.8	0.26	4400	7.6
13		0.5	230	4.0	0.22	5700	4.0
14	vascular PFT NPP belowground fraction <i>base value = 0.8 for sedge, 0.5 for others</i>	0.0	300	5.2	0.21	5200	5.8
15		0.5	310	5.4	0.27	4900	6.3
16	random precipitation amplitude (α , Eq. 20) <i>base value = 2.5</i>	1.0	320	5.6	0.26	4800	6.6
17		1.5	320	5.5	0.29	4800	6.7
18		2.0	320	5.6	0.27	4800	6.6
19		3.0	310	5.3	0.26	4800	6.4
20	random precipitation persistence (ϕ , Eq. 19) <i>base value = 0.99</i>	0.5	320	5.5	0.26	4400	7.3
21		0.7	320	5.5	0.27	5700	5.6
22		0.9	310	5.4	0.25	5200	6.1
23		0.999	320	5.6	0.25	4900	6.5
24	random precipitation persistence (ϕ , Eq. 19) <i>base value = 0.99</i>	0.9995	320	5.6	0.25	5000	6.4
25		0.9995	280	4.8	0.26	4900	5.6
26		0.9995	300	5.2	0.31	4500	6.6

A new model of Holocene peatland net primary production

S. Frohling et al.

Table 5. Continued.

#	sensitivity run	value	peat mass (kg C m ⁻²)	h_{PD} (m)	z_{WT} (m)	NPP (kg C m ⁻²)	% peat
27		0.9995	300	5.3	0.25	4800	6.3
28	annual run-off adjustment (R_0 , Eq. 13) [m y ⁻¹]	0.1	270	4.7	0.29	5200	5.2
29	<i>base value = 0.05</i>	0.1	270	4.6	0.31	5100	5.2
30		0.0	360	6.3	0.24	4700	7.7
31		0.0	350	6.2	0.24	4600	7.8
32	run-off increase with h_{PD} (c_8 , Eq. 13) [m ⁻¹]	0.3	240	4.2	0.29	5100	4.7
33	<i>base value = 0.2</i>	0.3	240	4.2	0.32	5100	4.7
34		0.1	420	7.3	0.20	4500	9.2
35		0.1	420	7.4	0.20	4500	9.5
36	min. relative hydr. transmissivity (T_0 , Eq. 14)	0.65	210	3.7	0.33	5500	3.9
37	<i>base value = 0.50</i>	0.60	230	4.1	0.31	5200	4.4
38		0.40	370	6.0	0.25	4600	8.0
39		0.35	400	7.0	0.22	4500	8.9

Title Page

Abstract

Introduction

Conclusions

References

Tables

Figures

⏪

⏩

◀

▶

Back

Close

Full Screen / Esc

Printer-friendly Version

Interactive Discussion

**A new model of
Holocene peatland
net primary
production**

S. Frolking et al.

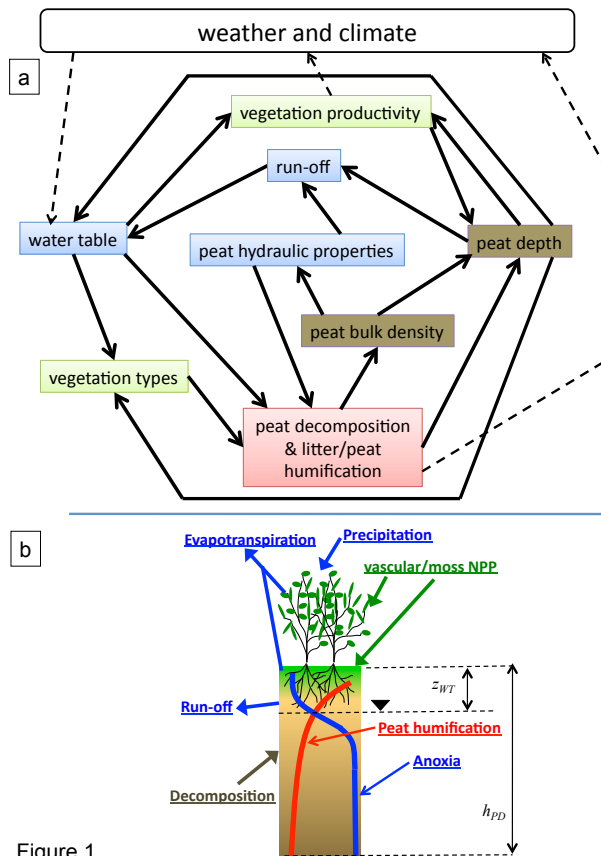


Figure 1

Fig. 1. (a) Connections between peatland carbon and water cycles and some links to the climate system; (b) schematic of HPM.

Title Page

Abstract

Introduction

Conclusions

References

Tables

Figures

◀

▶

◀

▶

Back

Close

Full Screen / Esc

Printer-friendly Version

Interactive Discussion

A new model of Holocene peatland net primary production

S. Frolking et al.

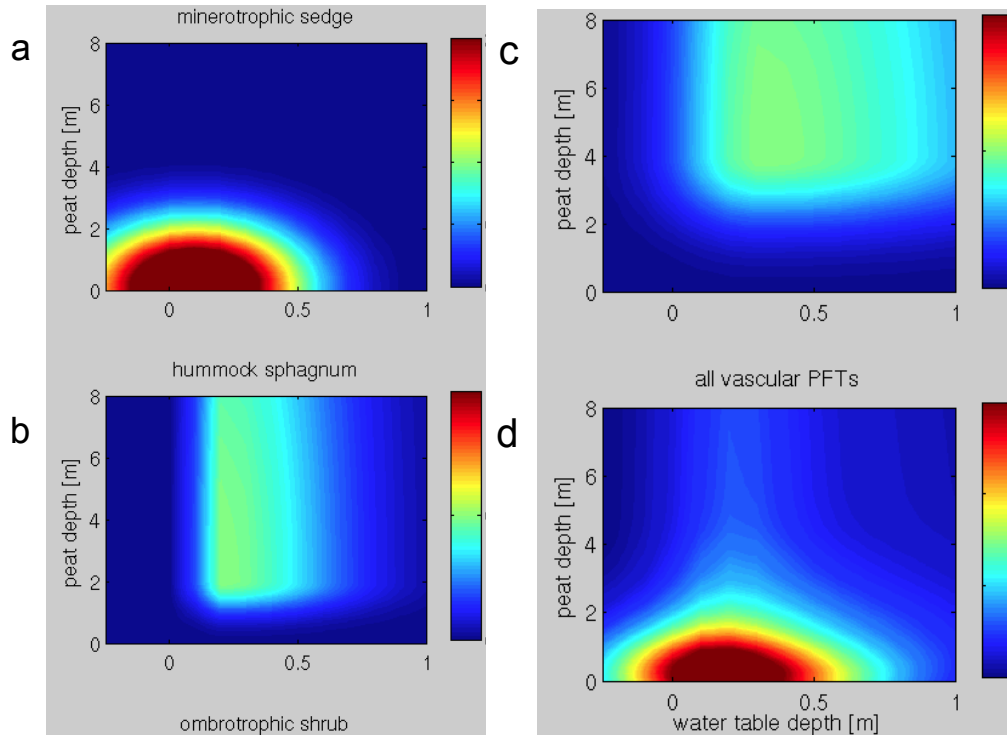


Fig. 2. Relative annual NPP as a function of water table (z_{WT} , horizontal axis) and total peat height (h_{PD} , vertical axis) as a proxy for ombrotrophy for **(a)** minerotrophic sedge PFT, **(b)** hummock Sphagnum PFT, **(c)** ombrotrophic shrub PFT, and **(d)** sum of all 12 PFTs. See Eq. (6) for the functional form and Table 1 for the parameter values for all 12 PFTs. Note that for vascular PFTs, the water table depth used is the mean of the current and past 10 years, while for bryophytes the current year water table depth is used. Color bar is linear in all panels, but represents a relative scale from low (dark blue) to high (dark red). NPP for all PFTs is scaled by a single value so that the maximum NPP in panel **(d)** equals a site-specific prescribed value. Each year the developing peatland has particular values for z_{WT} and h_{PD} , which determine NPP for each PFT. All NPP is deposited as litter (i.e., no live biomass accumulation), and vascular PFT NPP is partitioned into above and belowground fractions (see Table 1 and text for details).

[Title Page](#)
[Abstract](#)
[Introduction](#)
[Conclusions](#)
[References](#)
[Tables](#)
[Figures](#)
[⏪](#)
[⏩](#)
[◀](#)
[▶](#)
[Back](#)
[Close](#)
[Full Screen / Esc](#)
[Printer-friendly Version](#)
[Interactive Discussion](#)

**A new model of
Holocene peatland
net primary
production**

S. Frolking et al.

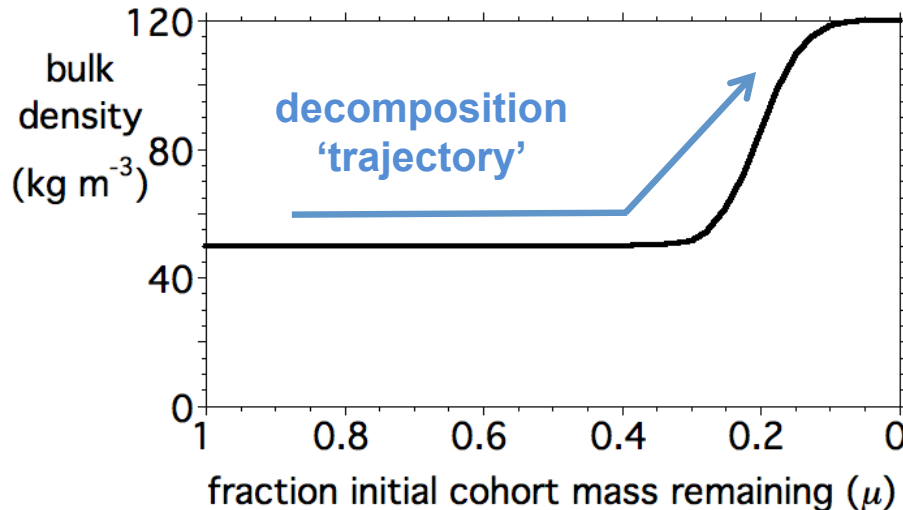


Fig. 3. Peat cohort bulk density (ρ ; Eq. 10) as a function of degree of decomposition (as fraction of initial mass inputs remaining, m/m_0). This curve uses the parameterization in Table 2, with a minimum bulk density of 50 kg m^{-3} and a maximum bulk density of 120 kg m^{-3} .

[Title Page](#)[Abstract](#)[Introduction](#)[Conclusions](#)[References](#)[Tables](#)[Figures](#)[⏪](#)[⏩](#)[◀](#)[▶](#)[Back](#)[Close](#)[Full Screen / Esc](#)[Printer-friendly Version](#)[Interactive Discussion](#)

A new model of Holocene peatland net primary production

S. Frolking et al.

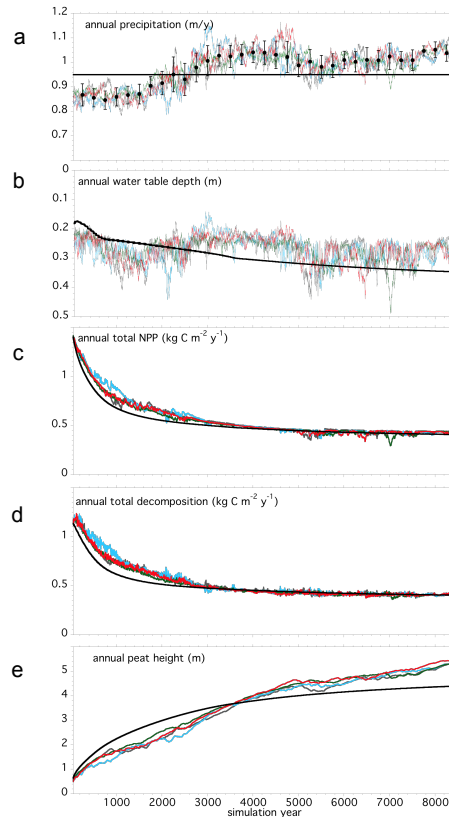


Fig. 4. (a) Four manifestations of annual precipitation (m y^{-1}) with amplitude of random variability $\alpha = 2.5$ and persistence $\varphi = 0.99$ (see Eqs. 19–20). Solid black circles are regional mean annual precipitation at 250-year intervals, bars are regional variance, as determined by Muller et al. (2003b); solid black line represents constant mean annual precipitation. (b) HPM simulated annual water table depth (m below peat surface) for 4 random precipitation drivers and constant precipitation (solid black line). (c) Simulated annual total NPP for 4 random precipitation drivers and constant precipitation (solid black line). (d) Simulated annual total decomposition for 4 random precipitation drivers and constant precipitation (solid black line). (e) Simulated annual peat height for 4 random precipitation drivers and constant precipitation (solid black line). NOTE: all panels start with simulation year 50, avoiding the peatland initialization period (see text).

[Title Page](#)
[Abstract](#)
[Introduction](#)
[Conclusions](#)
[References](#)
[Tables](#)
[Figures](#)
[◀](#)
[▶](#)
[◀](#)
[▶](#)
[Back](#)
[Close](#)
[Full Screen / Esc](#)
[Printer-friendly Version](#)
[Interactive Discussion](#)

A new model of Holocene peatland net primary production

S. Frolking et al.

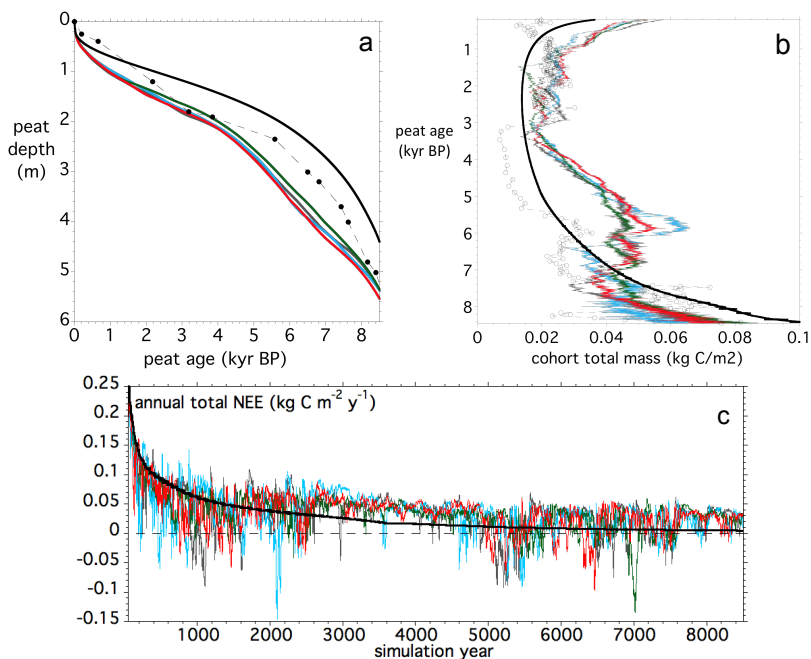


Fig. 5. (a) Simulated age-depth profile of final core (solid lines, colors correspond to those of Fig. 4), and ages determined from core MB930 (solid black circles; Table 3). (b) Simulated final core cohort carbon content (solid lines, colors correspond to those of Fig. 4), and net annual rate of carbon accumulation (NRCA) values from core MB930 (open black circles). (c) HPM simulated annual net carbon balance; this equals total annual NPP (Fig. 4c) minus total annual decomposition (Fig. 4d).

Title Page

Abstract

Introduction

Conclusions

References

Tables

Figures

◀

▶

◀

▶

Back

Close

Full Screen / Esc

Printer-friendly Version

Interactive Discussion

A new model of Holocene peatland net primary production

S. Frolking et al.

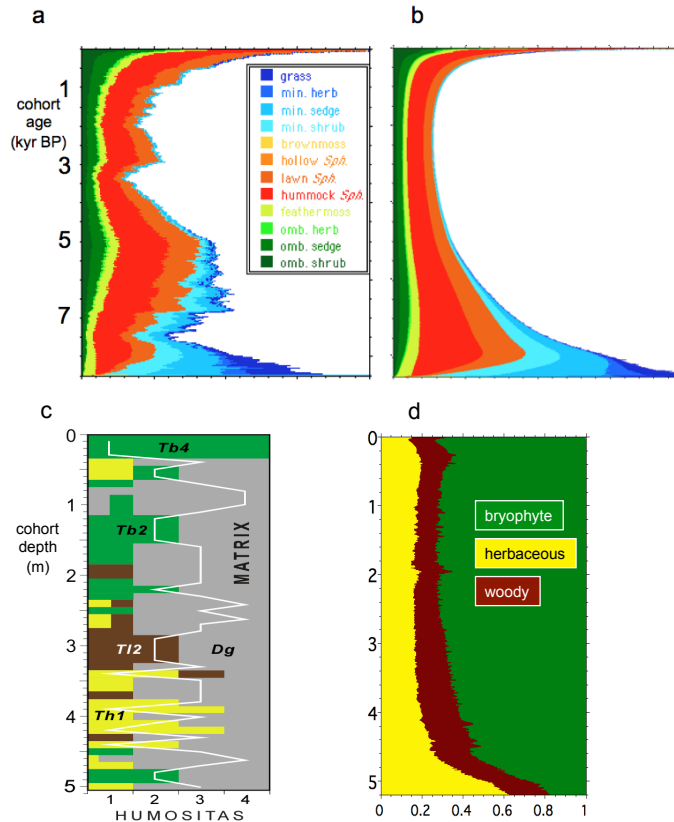


Fig. 6. Simulated final profile by age of core cohort mass, and composition by PFT for (a) one stochastic precipitation HPM simulation run (corresponding to dark gray lines in Figs. 4 and 5) and (b) constant precipitation (heavy black line in Figs. 4 and 5). (c) Observed and (d) simulated final core profile by depth of fractional composition by broad functional types – *Turfa bryophytica* or bryophyte peat (green), *Turfa herbosa* or vascular litter peat (yellow), *Turfa lignosa* or woody peat (brown), and, in the observed core only, humified, granular peat matrix (*Detritus granosus*, gray). White line in panel (c) represents degree of humification in the MB930 core on a scale of 1 (low) to 4 (high).

A new model of Holocene peatland net primary production

S. Frohling et al.

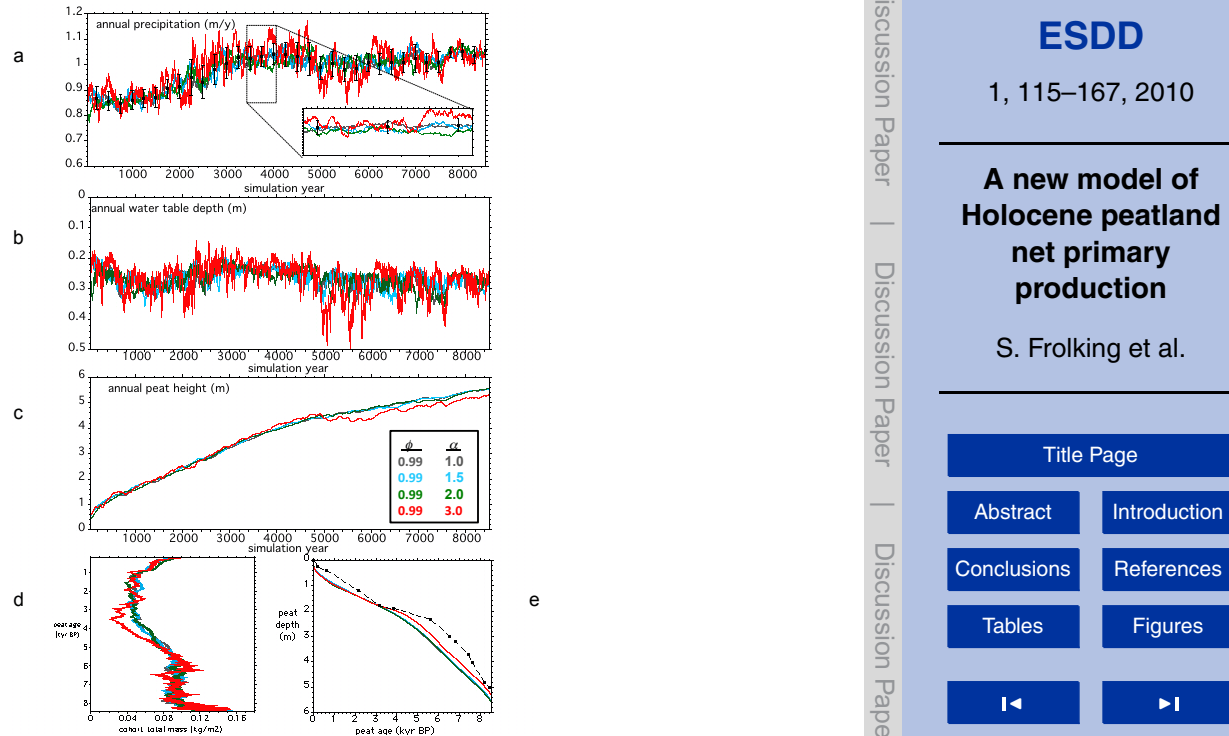


Fig. 7. HPM sensitivity to precipitation variability. **(a)** Four manifestations of annual precipitation (m y^{-1}) with amplitude of random variability α (see Eq. 20) values of 1.0 (dark gray), 1.5 (cyan), 2.0 (green), and 3.0 (red) (see text and Eq. 19) and $\phi = 0.99$. In base runs (Figs. 4–6) $\alpha = 2.5$ and $\phi = 0.99$. Solid black circles are regional mean annual precipitation at 250-year intervals, bars are regional variance, as determined by Muller et al. (2003b). Inset is zoom-in for simulation years 3450–4050, inset precipitation range $0.85\text{--}1.15 \text{ m y}^{-1}$. **(b)** Simulated annual water table depth (m below peat surface). **(c)** Simulated annual peat height. **(d)** Simulated final cohort mass. NOTE: these values are cohort mass in kg m^{-2} , not cohort carbon content, kg C m^{-2} as in Fig. 5b. **(e)** Simulated age-depth profile, and dates from core MB930. NOTE: panels (a)–(c) start with simulation year 50, avoiding the peatland initialization period (see text), and panel (d) is for peat ages 200–8450 BP, avoiding the peatland initialization period (roughly 8450–8500 BP) and the most recent 200 years, where, due to lack of time to decompose, peat cohort masses get much larger than those shown in the figure.

**A new model of
Holocene peatland
net primary
production**

S. Frolking et al.

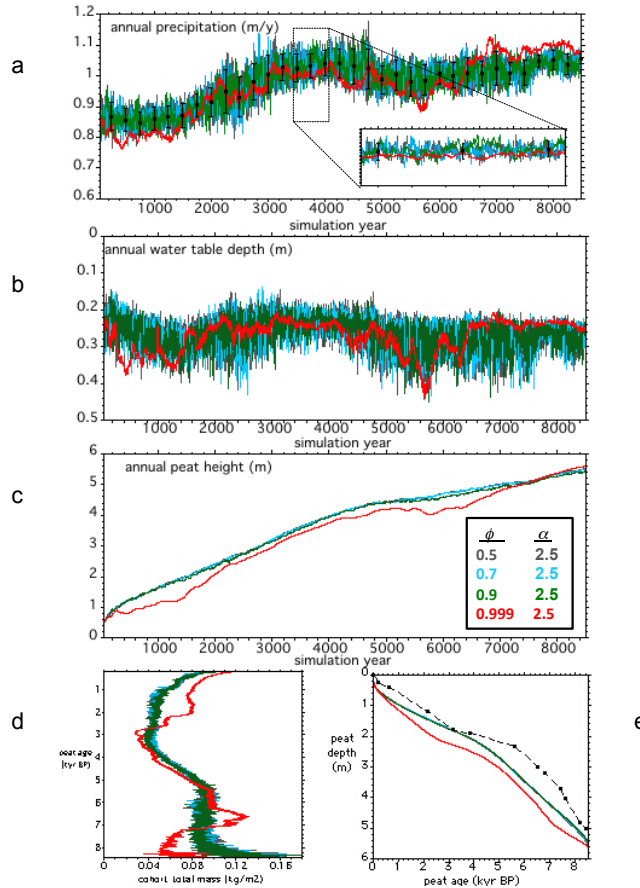


Fig. 8. Same as Fig. 7, but for simulations with $\alpha = 2.5$, and with $\phi = 0.5$ (dark gray), 0.7 (cyan), 0.9 (green), and 0.999 (red) (see text and Eqs. 19, 20). In base runs (Figs. 4–6) $\phi = 0.99$.

Title Page

Abstract Introduction

Conclusions References

Tables Figures

◀ ▶

◀ ▶

Back Close

Full Screen / Esc

Printer-friendly Version

Interactive Discussion



A new model of Holocene peatland net primary production

S. Frohling et al.

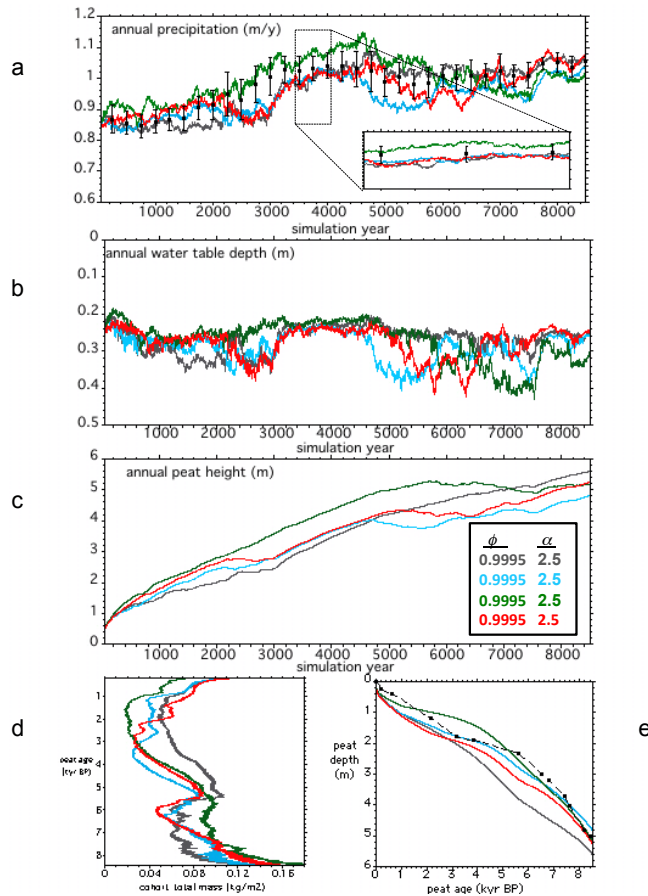


Fig. 9. Same as Fig. 7, but for four simulations with $\alpha = 2.5$ and $\phi = 0.9995$ (see text and Eqs. 19, 20). In base runs (Figs. 4–6) $\phi = 0.99$.

[Title Page](#)
[Abstract](#)
[Introduction](#)
[Conclusions](#)
[References](#)
[Tables](#)
[Figures](#)
[◀](#)
[▶](#)
[◀](#)
[▶](#)
[Back](#)
[Close](#)
[Full Screen / Esc](#)
[Printer-friendly Version](#)
[Interactive Discussion](#)