

Supplement of Earth Syst. Dynam., 8, 439–454, 2017
<https://doi.org/10.5194/esd-8-439-2017-supplement>
© Author(s) 2017. This work is distributed under
the Creative Commons Attribution 3.0 License.



Supplement of

Evapotranspiration seasonality across the Amazon Basin

Eduardo Eiji Maeda et al.

Correspondence to: Eduardo Eiji Maeda (eduardo.maeda@helsinki.fi)

The copyright of individual parts of the supplement might differ from the CC BY 3.0 License.

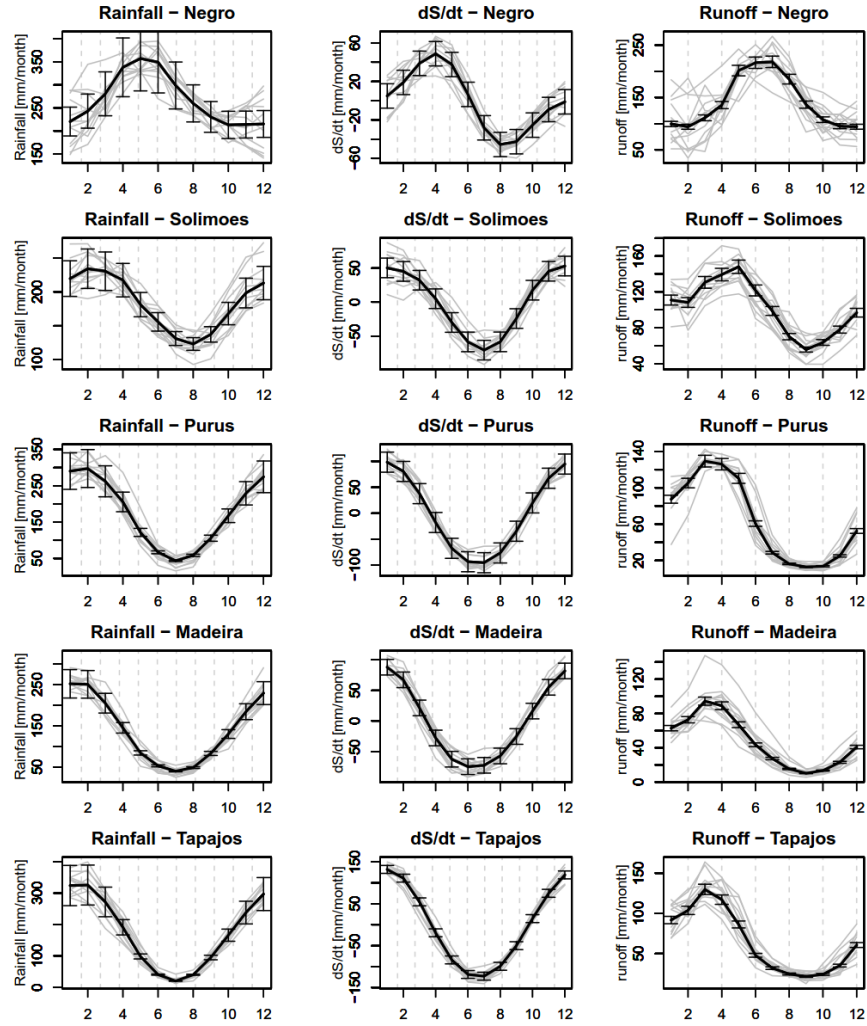


Figure S1. Seasonal variations of the water balance components: rainfall, dS/dt and runoff. Gray lines represent the values for each year from 2002-2014, and solid dark lines represent the average values for each month. Months are represented from 1 (January) to 12 (December). Vertical bars indicate the uncertainty in each of the components.

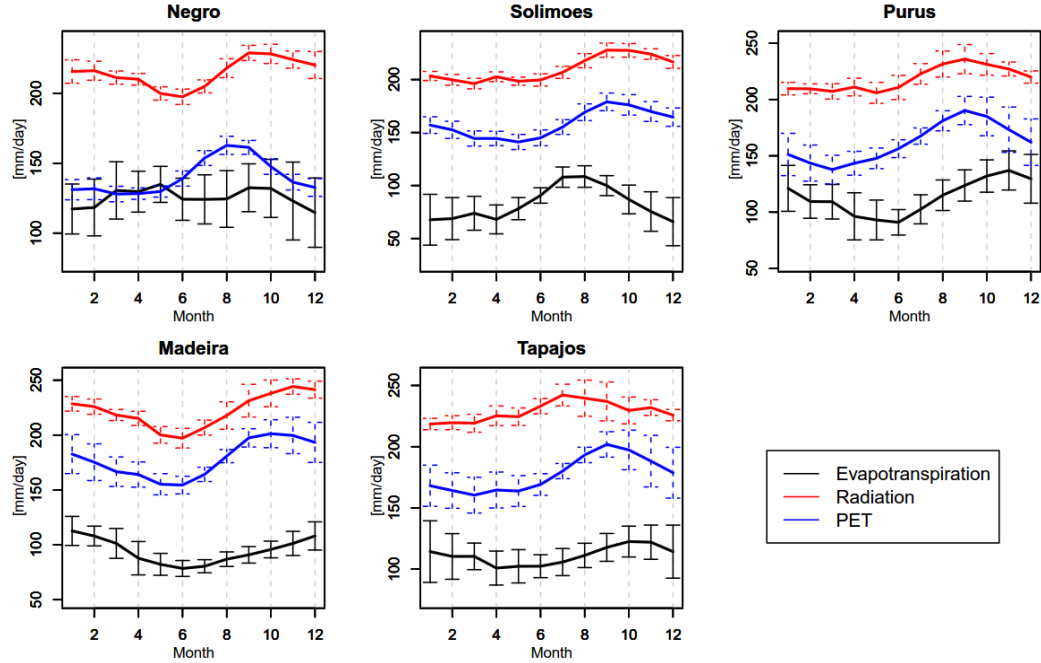


Figure S2. Seasonal ET (black line), radiation (red) and PET (blue) patterns. Vertical bars indicate the ± 1 standard deviation of monthly observations from 2001 to 2014. Radiation unit was converted from $W\ m^{-2}$ to equivalent evaporation in $mm\ month^{-1}$, by applying a conversion factor equal to the inverse of the latent heat of vaporization (Allen et al., 1998).

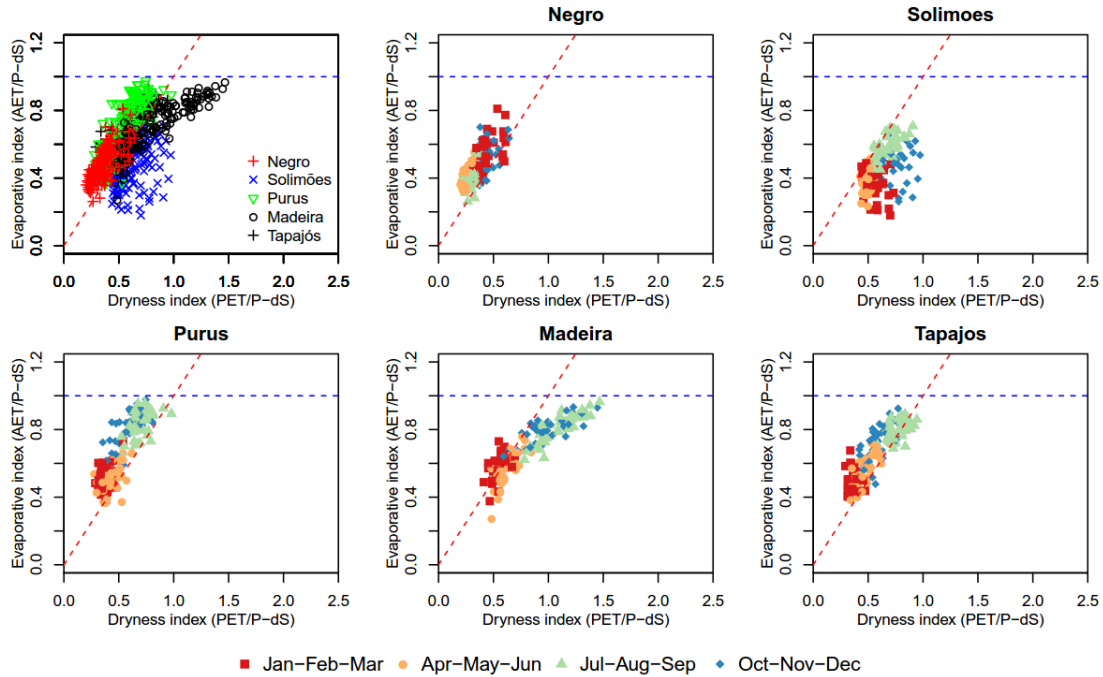


Figure S3. Modified Budyko analysis for monthly water balance values. Similar to Figure 4, but using PET data obtained from high-resolution grids of monthly climatic observations – the CRU TS3.23 (Harris et al., 2014). The red dashed line represents the energy limitation threshold, above which ET is limited by solar radiation. The blue dashed line represents the water limitation threshold.

References

Harris, I., Jones, P. D., Osborn, T. J. and Lister, D. H.: Updated high-resolution grids of monthly climatic observations - the CRU TS3.10 Dataset, *Int. J. Climatol.*, 34(3), 623–642, doi:10.1002/joc.3711, 2014.