

Supplement of Earth Syst. Dynam., 6, 435–445, 2015
<http://www.earth-syst-dynam.net/6/435/2015/>
doi:10.5194/esd-6-435-2015-supplement
© Author(s) 2015. CC Attribution 3.0 License.



Supplement of

Decomposing uncertainties in the future terrestrial carbon budget associated with emission scenarios, climate projections, and ecosystem simulations using the ISI-MIP results

K. Nishina et al.

Correspondence to: K. Nishina (nishina.kazuya@nies.go.jp)

The copyright of individual parts of the supplement might differ from the CC-BY 3.0 licence.

Table 1. Fraction of variance in global surface mean temperature derived from the emission scenario (RCPs), GCMs for ΔT . The variances were estimated by two-way ANOVA. The fraction in interactions includes the sum of variations of interaction term (RCP \times GCM).

GCM	RCP	HYBRID4	JeDi	JULES	LPJmL	ORCHIDEE	SDGVM	VISIT	Total
GFDL-ESM2M	2.6	1	1	1	1	0	1	1	6
	4.5	0	1	1	1	0	1	0	4
	6.0	1	1	1	1	0	1	0	5
	8.5	1	1	1	1	0	1	1	6
HadGEM2-ES	2.6	1	1	1	1	1	1	1	7
	4.5	1	1	1	1	0	1	1	6
	6.0	1	1	1	1	1	1	1	7
	8.5	1	1	1	1	1	1	1	7
IPSL-CM5A-LR	2.6	1	1	1	1	0	1	1	6
	4.5	1	1	1	1	0	1	0	5
	6.0	1	1	1	1	0	1	0	5
	8.5	1	1	1	1	0	1	1	6
MIROC-ESM-CHEM	2.6	1	1	1	1	0	1	1	6
	4.5	1	1	1	1	0	1	0	5
	6.0	1	1	1	1	0	1	0	5
	8.5	1	1	1	1	0	1	1	6
NorESM1-M	2.6	1	1	1	1	0	0	1	5
	4.5	1	1	1	1	0	0	0	4
	6.0	1	1	1	1	0	0	0	4
	8.5	1	1	1	1	0	0	1	5
Total		19	20	20	20	3	16	12	110

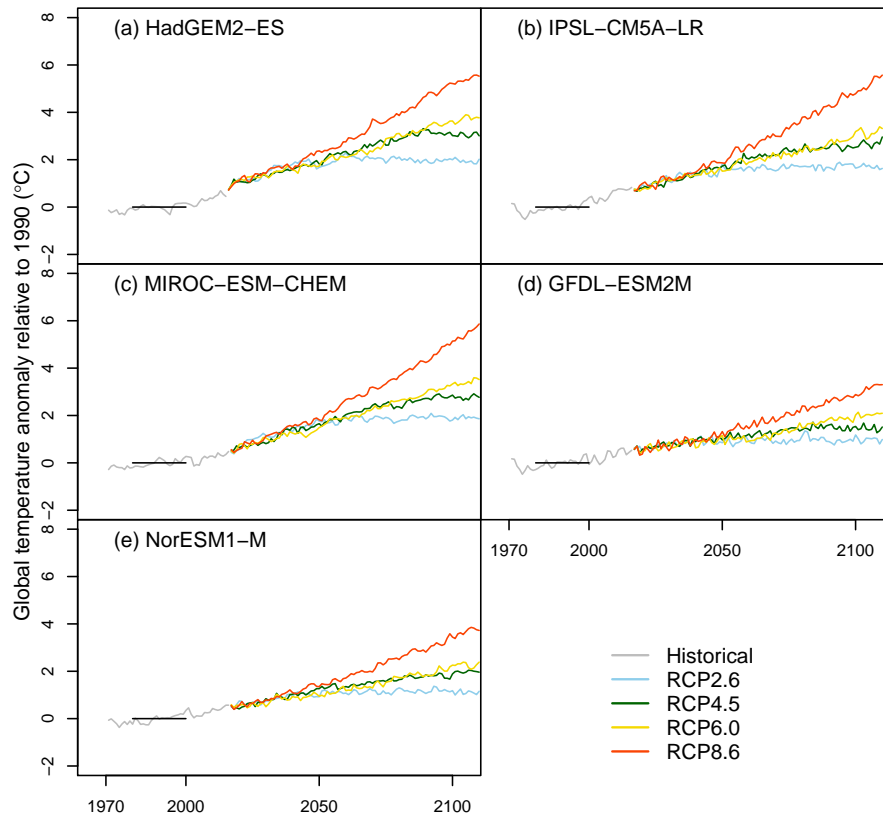


FIGURE 1S. Projected global mean temperature anomaly ΔT in each global climate model

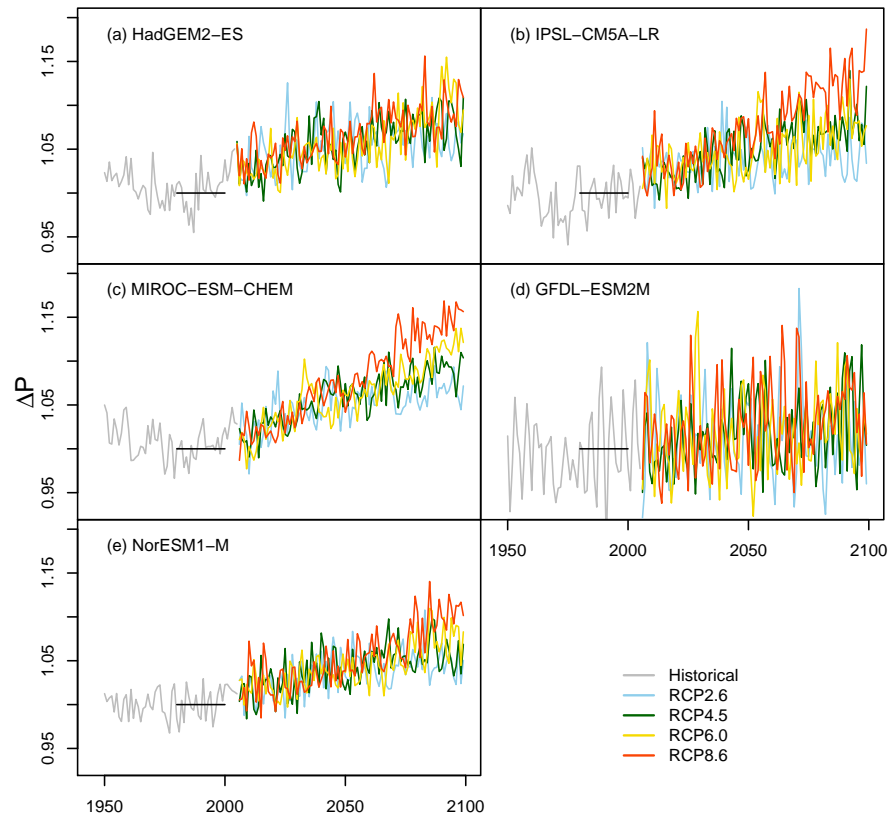


FIGURE 2S. Projected global precipitation anomaly ΔP in each global climate model

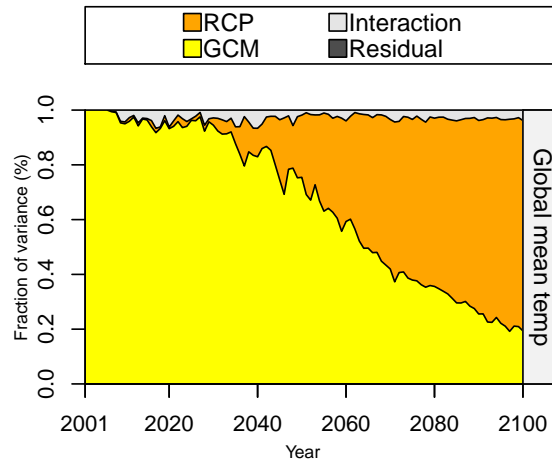


FIGURE 3S. Fraction of variance in global surface mean temperature derived from the emission scenario (RCPs), GCMs for ΔT . The variances were estimated by two-way ANOVA. The fraction in interactions includes the sum of variations of interaction term (RCP \times GCM).

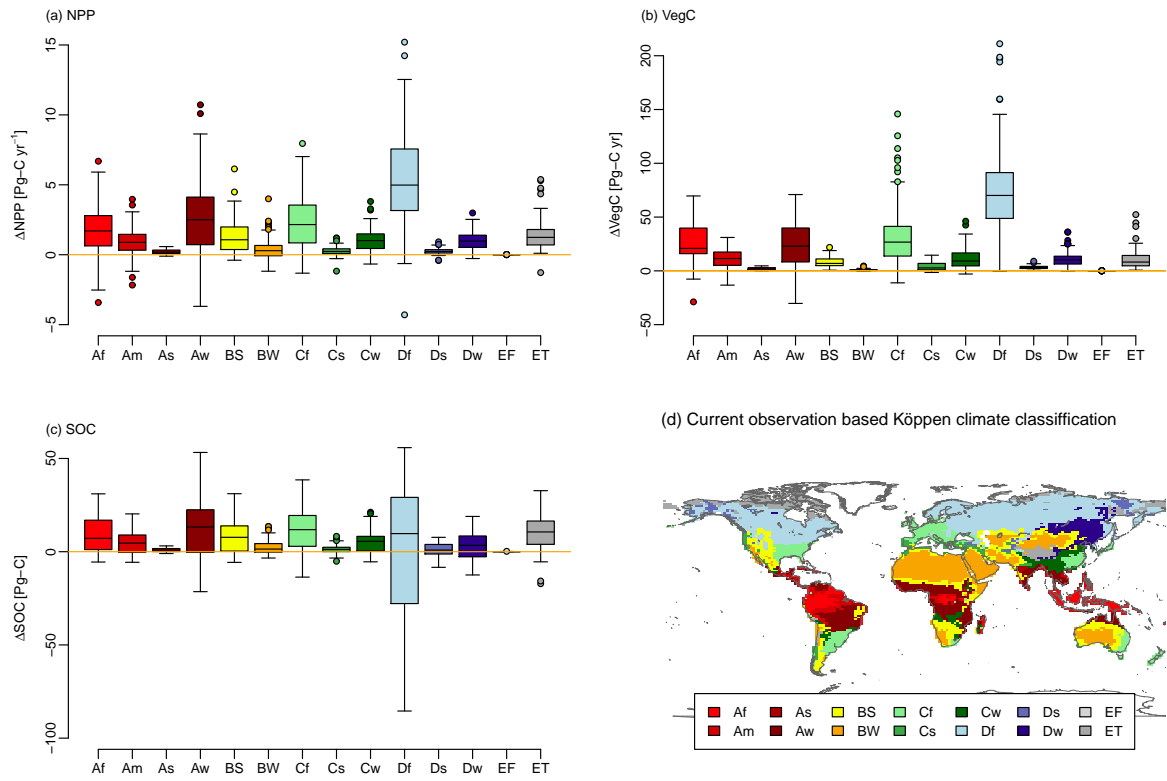


FIGURE 4S. ΔNPP (a), ΔVegC (b), ΔSOC (c) in 2090s in each climatic division.