



Are physiological and ecosystem-level tipping points caused by ocean acidification? A critical evaluation

Christopher E. Cornwall^{1,★}, Steeve Comeau^{2,★}, and Ben P. Harvey^{3,4,★}

¹School of Biological Sciences and Coastal People: Southern Skies Centre of Research Excellence, Victoria University of Wellington, Wellington, 6012, New Zealand

²Sorbonne Université, CNRS-INSU, Laboratoire d'Océanographie de Villefranche, 06230 Villefranche-sur-Mer, France

³Shimoda Marine Research Center, University of Tsukuba, Shimoda, Shizuoka, Japan

⁴Labex ICONA International CO₂ Natural Analogues Network, Shimoda, Japan

★These authors contributed equally to this work.

Correspondence: Christopher E. Cornwall (christopher.cornwall@vuw.ac.nz)

Received: 28 July 2023 – Discussion started: 4 September 2023

Revised: 11 March 2024 – Accepted: 21 March 2024 – Published: 3 June 2024

Abstract. Ocean acidification (OA) is predicted to cause profound shifts in many marine ecosystems by impairing the ability of calcareous taxa to calcify and grow and by influencing the physiology of many others. In both calcifying and non-calcifying taxa, ocean acidification could further impair the ability of marine life to regulate internal pH and thus metabolic function and/or behaviour. Identifying tipping points at which these effects will occur for different taxa due to the direct impacts of ocean acidification on organism physiology is difficult because they have not adequately been determined for most taxa nor for ecosystems at higher levels. This is due to the presence of both resistant and sensitive species within most taxa. However, calcifying taxa such as coralline algae, corals, molluscs, and sea urchins appear to be most sensitive to ocean acidification. Conversely, non-calcareous seaweeds, seagrasses, diatoms, cephalopods, and fish tend to be more resistant or even benefit from the direct effects of ocean acidification, though the effects of ocean acidification are more subtle for these taxa. While physiological tipping points of the effects of ocean acidification either do not exist or are not well defined, their direct effects on organism physiology will have flow-on indirect effects. These indirect effects will cause ecological tipping points in the future through changes in competition, herbivory, and predation. Evidence for indirect effects and ecological change is mostly taken from benthic ecosystems in warm temperate–tropical locations in situ that have elevated CO₂. Species abundances at these locations indicate a shift away from calcifying taxa and towards non-calcareous taxa at high-CO₂ concentrations. For example, lower abundance of corals and coralline algae and higher covers of non-calcareous macroalgae, often turfing species, are often found at elevated CO₂. However, there are some locations where only minor changes or no detectable changes occur. Where ecological tipping points do occur, it is usually at locations with naturally elevated mean *p*CO₂ concentrations of 500 μatm or more, which also corresponds to just under that concentration where the direct physiological impacts of ocean acidification are detectable in the most sensitive taxa in laboratory research (coralline algae and corals). Collectively, the available data support the concern that ocean acidification will most likely cause ecological change in the near future in most benthic marine ecosystems, with tipping points in some ecosystems as low as 500 μatm *p*CO₂. However, further research is required to more adequately quantify and model the extent of these impacts in order to accurately project future marine ecosystem tipping points under ocean acidification.

1 Introduction

Ocean acidification (OA) is the process of increasing absorption of atmospheric CO₂ by the surface seawaters, leading to a decrease in pH and a shift in the speciation of dissolved inorganic carbon (DIC). As a result, future seawater concentrations of HCO₃⁻, H⁺, and CO₂ will be higher, while CO₃²⁻ will be lower. These changes in seawater carbonate chemistry will have complex biological consequences, as all four parameters mentioned previously hold physiological significance for various marine taxa (Hurd et al., 2019). The direct effects of ocean acidification manifest mostly through three mechanisms: (1) negatively impacting calcification (and recruitment of calcareous organisms), (2) altering photo-physiology, and (3) affecting acid–base regulation (i.e., internal pH regulation) or the energy expended in this process. These effects are usually subtle and have relatively minor direct negative effects when compared to stressors like marine heatwaves or others that can cause rapid change from one alternative stable state into another after a tipping point is reached. A tipping point is a threshold beyond which a non-linear decline in ecosystem state (Van Nes et al., 2016; Carrier-Belleau et al., 2022) or physiological rates occurs (Scheffer, 2010). Specific definitions of tipping points define them as “causing a qualitative change significantly larger than the standard deviation of natural variability” (Armstrong McKay et al., 2022; Lenton et al., 2008). Table 1 highlights that for some taxa this can begin to occur at as little as 538 μatm pCO₂ (e.g., coralline algae), but for the majority of taxa we cannot be certain that such tipping points may be reached until ~930 μatm, though it is possible these could occur as early as 538 μatm as well (see Tables 1 and 2 which detail where these data were obtained).

While most responses to ocean acidification are linear, the cumulative impacts of these physiological changes on individual species may result in more significant ecological effects. When these effects manifest measurable physiological impacts, ecological tipping points in situ will likely occur. Comprehensive meta-analyses on the impacts of ocean acidification on biological processes and ecological outcomes support this concept (Leung et al., 2022; Kroeker et al., 2013b). However, these analyses rarely assess changes in processes at specific time points or at pCO₂ values corresponding to specific time points in the future. Instead, they usually determine whether standardized responses are different from zero. Thus, in this study, we evaluate when key responses in different taxa would differ from zero and provide pCO₂ values of when this typically occurs, if it is possible to make such statements given the variability in responses observed and the effects of other environmental drivers, differential effects over life history stages, and local adaptation. We also provide background information describing the key physiological and ecological impacts of ocean acidification and how linear physiological effects of ocean acidification at

the organism scale can cause non-linear ecological tipping points to manifest. It must be noted here with the caveat that ocean acidification will not occur in isolation, but rather its impacts will be overlaid on top of the effects of other stressors, such as marine heatwaves, which are presently changing the abundance and distribution of many species, including creating phase shifts between one ecosystem type and another (Wernberg et al., 2016). Those effects are beyond the purview of this review.

2 Direct impacts on key physiological processes

2.1 Calcification

Calcium carbonate minerals thermodynamically precipitate or dissolve relative to their saturation state (Ω), which is determined by [Ca²⁺] multiplied by [CO₃²⁻] and divided by K_{sp} , with K_{sp} being dependent on seawater temperature, salinity, and pressure (Morse and MacKenzie, 1990). Consequently, under ocean acidification, declines in [CO₃²⁻] and Ω lead to slower mineral precipitation in seawater. Marine organisms generally precipitate calcium carbonate in the form of calcite, aragonite, or high-Mg calcite. The choice of the mineral form is taxon- and/or species-specific. For a given set of conditions, calcite has higher Ω values than aragonite, while aragonite has a higher Ω value than high-Mg calcite (Andersson et al., 2008; Bathurst, 1972; Feely et al., 2004). Initial experimental work demonstrated that simulated ocean acidification reduces calcification in most taxa (Ries et al., 2009). However, there are also instances of resistant species/genera (e.g., *Porites* spp. corals) (Comeau et al., 2019; Fabricius et al., 2011) or entire taxa (e.g., Crustacea) (Kroeker et al., 2013b; Leung et al., 2022; Table 1). Thus, the initial assumption was largely that ocean acidification reduces calcification by decreasing Ω . Indeed, taxa that precipitated lower Ω minerals tended to be more strongly impacted by ocean acidification (Kroeker et al., 2013b). [CO₃²⁻] was more highly correlated than other components of seawater carbonate chemistry in experiments where the independent roles of pH, [HCO₃⁻], and/or [CO₃²⁻] were tested and teased apart independently (Comeau et al., 2013a; Schneider and Erez, 2006). However, calcification generally occurs internally (Ries, 2011). In organisms such as corals, it takes place several tissue layers deep (Allemand et al., 2004), while in coralline algae it occurs within the cell wall, one cell to several cells deep (Cornwall et al., 2017a; McCoy et al., 2023), and in molluscs it occurs in the extrapallial space, isolated by the calcifying epithelium and the periostracum (Gazeau et al., 2013). This internal location is referred to as the calcifying fluid here, as there are a multitude of names used even within a specific taxon. Notably, there are no known biological transporters of CO₃²⁻, and it remains membrane-impermeable in all organisms. Therefore, it is more likely that increases in external [H⁺] drive the observed declines in calcification rates observed in corals, a process that can

Table 1. Summary of the impacts of ocean acidification on calcification/growth, photosynthetic rates, and internal pH regulation, with tipping points from literature identified where possible. Top to bottom rows: taxa are listed from first to be negatively impacted at the top to most positively impacted at the bottom. Red cells show a significant decrease in values from zero, yellow cells show no detectable difference, green cells show a significant increase in values from zero, and grey cells indicate that there are not enough data to determine these values. Where possible, quantitative or qualitative tipping points are given in $\mu\text{atm CO}_2$, and empty cells indicate that this is not applicable. See Table 2 for further details on references used to generate tipping points.

Taxon	Calcification/growth	Photosynthetic rates	Internal pH regulation
Coralline algae	~538		~538 to 930
Corals	~572	~538 to 930	~538 to 930
Molluscs	~781		
Sea urchins	~870		
Polychaetes	~538 to 930		
Foraminifera	~538 to 930		
Coccolithophores	~538 to 930	~538 to 930	
Sponges			
Echinoderms (non-sea urchin)			~538 to 930
<i>Halimeda</i> spp.			
Bryozoans			
Crustaceans			
Seagrasses		~538 to 930	
Cephalopods	~538 to 930		
Fish	~538 to 930		
Diatoms	~538 to 930		
Non-calcareous seaweeds	~538 to 930		

be offset in some taxa by the provision of greater DIC under ocean acidification (Jokiel, 2013; Comeau et al., 2018).

To calcify, marine organisms must create conditions that favour the precipitation of calcium carbonate at the site of calcification. Most calcifying organisms actively adjust their internal chemistry to initiate the inorganic precipitation of calcium carbonate by increasing the pH and ensuring a consistent supply of essential ions required for calcification (CO_3^{2-} , HCO_3^- , Ca^{2+} , Mg^{2+}) (McCulloch et al., 2017; DeCarlo et al., 2018). This is done by actively removing protons from the site of calcification via specific cellular transporters. The inorganic carbon utilized for calcification originates from a combination of metabolic CO_2 , HCO_3^- transported to the site of calcification via cellular transporters, and ions transported via paracellular pathways (e.g., Venn et al., 2020). Additionally, marine organisms have developed specific proteins that aid in maintaining elevated cal-

cium carbonate precipitation (Marin et al., 2007; Drake et al., 2013). While the general principles of calcification are similar across many taxa, the response to ocean acidification is highly taxa- and species-specific. Here we will focus on three of the most studied calcifying taxa: corals, molluscs, and calcifying macroalgae. These three taxa are also identified as the most at risk from the effects of ocean acidification (Table 1).

Corals have received significant attention in studies related to ocean acidification. However, results regarding a potential tipping point in their response to ocean acidification are inconclusive, and the shape of the relationship (i.e., “reaction norms” in some fields) between calcification and pH (or $p\text{CO}_2$) is still a subject of debate. Early research suggested a linear response of coral growth to pH (Doney et al., 2009; Anthony et al., 2008), but some studies challenged this finding, showing non-linear relationships between calcification

Table 2. Meta-analyses or pseudo-meta-analyses that support the results of Table 1. Note that some studies are excluded here due to the merging of different taxa, the inclusion of too few studies, or assessing only specific processes in combination with ocean acidification (e.g., Rivest et al., 2017; Ramajo et al., 2016). Studies are listed chronologically and marked with an asterisk if their results are not used due to complete overlap with more recent research. Note that fish behaviour is excluded from these analyses. Meta-analyses were checked by searching “ocean acidification” AND “meta-analysis” (Web of Science) on July 2023. All non-regional assessments including photosynthesis, calcification, and internal pH are included below.

Study	Limited to specific taxa?	Year literature search conducted	Number of studies used	Taxa used to create Table 1
Leung et al. (2022)	Calcifying taxa	2020	985	All calcifying taxa except <i>Halimeda</i> spp.
Cornwall et al. (2022)	Coralline algae	2021	64	Coralline algae
Schubert et al. (2023)	<i>Halimeda</i> spp.	Unknown	31	<i>Halimeda</i> spp.
Cornwall et al. (2021)	Coralline algae, corals, bioerosion, sediments	2021	98	Coralline algae and corals
Bednaršek et al. (2021)*	Echinoderms	2018	16	None
Bednaršek et al. (2019)*	Pteropods	2017	15	None
Kornder et al. (2018)*	Corals	2016	62	None – though this study was used extensively in Cornwall et al. (2021)
Meyer and Riebesell (2015)	Coccolithophores	Unknown but 2015 or before	33	Coccolithophores (however, they often compared against 280 ppm CO ₂)
Harvey et al. (2013)	Calcifying algae, corals, crustaceans, echinoderms, molluscs, phytoplankton, fish, non-calcareous algae, seagrass	2012	107	All non-calcareous taxa except diatoms
Kroeker et al. (2013b)	Calcifying algae, corals, coccolithophores, molluscs, echinoderms, crustaceans, fish, fleshy algae, seagrasses, diatoms	2012	155	All non-calcareous taxa
Wittmann and Pörtner (2013)	Crustaceans, echinoderms, corals, fish	2012	167	Echinoderms and molluscs
Chan and Connolly (2013)*	Corals	2011	25	None
Kroeker et al. (2010)*	Calcifying algae, corals, coccolithophores, molluscs, echinoderms, crustaceans, fish, fleshy algae, seagrasses, diatoms	2010	139	None
Hendriks et al. (2010)*	Bivalves, corals, coccolithophores, phytoplankton, cyanobacteria	2010	59	None

and pH (or Ω) (e.g., Ries et al., 2009). It is, however, important to note that most of these studies had limited treatment levels and numbers of species, making it difficult to assess the shape of the ocean-acidification-to-calcification relationship and detect tipping points across entire taxa. More recent studies, using a wider range of treatments (Comeau et al., 2013b, 2014) and species (Okazaki et al., 2017), experimentally demonstrated that the response of coral calcification to $p\text{CO}_2$ is generally linear. Linear relationships have been considered the best representation of the calcification response of corals to ocean acidification in recent meta-analyses (Cornwall et al., 2021; Kornder et al., 2018). Therefore, there is no clear non-linear tipping point in the response of corals to ocean acidification, as their response is generally linear, highly species-specific, and influenced by other factors such as light, temperature, and feeding. At the reef level, linear declines in calcification occur with declines in saturation state, but the magnitude of this decrease (i.e., the slope) varies among reefs and likely depends on community composition and other drivers such as temperature. Some studies project a shift to net dissolution when Ω_A decreases below 2, a level that could be reached by the end of the century (Andersson and Gledhill, 2013; Albright et al., 2018).

Molluscs, especially commercial ones, have also been extensively studied in relation to their response to ocean acidification due to their economic importance. Because calcification and internal pH are being impacted by ocean acidification, these effects are slightly less complex than, for example, the photo-physiological effects described below. This is because it is likely that two different parameters of carbonate chemistry are driving responses of molluscs to ocean acidification ($[\text{H}^+]$ and $[\text{CO}_3^{2-}]$), whereas in photosynthetic species CO_2 and HCO_3^- additionally contribute. Thus, previous work on molluscs has often described “reaction norms”, response curves that are well-defined and repeatable responses to drivers. In the context of ocean acidification, when non-linear reaction norms occur and the threshold is within the range of carbonate chemistry predicted to occur under ocean acidification, these would also be classified as tipping points (e.g., abnormal larval percentage in Ventura et al., 2016, but not mortality). However, there is still considerable debate as to whether these reaction norms exist, even in molluscs. Previous reviews on the effects of ocean acidification on molluscs, though conducted several years ago, revealed that the response of adults and juveniles varies significantly among species and even within species (Gazeau et al., 2013; Parker et al., 2013). Similarly to corals, the response of molluscs to ocean acidification is strongly influenced by their environmental history and interactions with other environmental factors (Falkenberg et al., 2019; Thomsen and Melzner, 2010). Different mollusc species precipitate various forms of calcium carbonate, such as calcite, aragonite, or high-Mg calcite, which are known to respond differently to ocean acidification. Moreover, there is evidence suggesting that molluscs could undergo transgenerational acclima-

tion to ocean acidification, potentially mitigating the negative effects of decreasing pH (Parker et al., 2021). As a result, determining a tipping point at which mollusc calcification and growth might collapse proves to be extremely challenging. Instead, it is more likely that some species will experience a steady decrease in calcification and shell strength, while others may thrive in lower pH conditions. For example, where tipping points have been assessed, they can be far beyond the range of seawater pH values expected under ocean acidification in the coming centuries (e.g., $< \text{pH } 7$ in Lutier et al., 2022, and $\text{pH } 6.62$ in Caillon et al., 2023). The complexity of these responses makes it difficult to predict the overall impact of OA on molluscs with certainty.

Coralline algae are extremely sensitive to the effects of ocean acidification, with their calcification rates, cover in the field at natural CO_2 sites, recruitment in laboratory and in situ work, and internal pH at the site of calcification all negatively impacted by ocean acidification (Cornwall et al., 2022). Calcification rates of coralline algae are negatively affected 75 % of the time, in most instances with a linear decrease in calcification with decreasing pH. However, like in molluscs, greater resistance to ocean acidification has been demonstrated in coralline algae grown for multiple generations (six generations) under conditions simulating the effects of ocean acidification versus those from controls (Cornwall et al., 2020; Moore et al., 2021). Additionally, some species display natural tolerance to ocean acidification (Cornwall et al., 2018, 2017a). Although the physiological mechanisms via which this tolerance is achieved are relatively unexplored, there are possible links between greater upregulation of pH within the site of calcification and maintenance of calcification under ocean acidification. Irrespective of these tolerant species, it is likely coralline algae will be among the first taxa to clearly show negative impacts of ocean acidification, as on average they are universally sensitive. This will cause large flow-on effects at ecological levels (see section below on this), as they play important roles in maintaining coral reef growth and cementation (Cornwall et al., 2023) and act in many ecosystems as crucial settlement substrates for invertebrate larvae such as corals, abalone, and sea urchins (Roberts, 2001; Fabricius et al., 2017).

Declines in calcification within most taxa due to ocean acidification is expected, but determining a specific tipping point for when this decline will occur is a complex task. The complexity arises from the diverse approaches used in past research, the different atmospheric CO_2 concentrations projected under various climate change scenarios, and the lack of alignment between meta-analyses and these atmospheric CO_2 concentration scenarios. We summarize the past attempts at meta-analyses, or pseudo-meta-analyses, in Table 1. Notably, there is a significant overlap between the majority of past meta-analyses (Hendriks et al., 2010; Kroeker et al., 2013b, 2010; Harvey et al., 2013; Kornder et al., 2018) and more recent meta-analyses (Leung et al., 2022; Cornwall et al., 2021, 2022). Leung et al. (2022) offer a more de-

tailed description of the responses of various calcifying taxa to ocean acidification compared to most prior meta-analyses. However, they group all relevant studies necessary to identify tipping points into a single category (\sim pH 7.9 to 7.6). Additionally, they group physiologically different calcifying algae that are not grouped in some other recent analyses on coralline algae (and corals) and attempt to determine temporal differences in effect sizes (Cornwall et al., 2021, 2022). Furthermore, Wittmann and Pörtner (2013), although not a true meta-analysis, provide detailed and interesting breakdowns of the impacts of different pH range values on calcification rates of various animal taxa. To estimate calcification and growth rates of most taxa, we consider these two parameters largely interchangeable. This is because the ability to create new skeletal material is essential for inorganic growth and size increases. Therefore, for our estimates, we draw on all recent relevant research, including the work of Wittmann and Pörtner (2013).

Evidence strongly suggests that the calcification rates of coccolithophores, pteropods, coralline algae, *Halimeda* spp., corals, bivalves, and gastropods are likely to experience significant decreases due to ocean acidification by the end of the century under RCP8.5 emission scenarios or similar conditions (e.g., \sim pH 7.63 and $936 \mu\text{atm CO}_2$) (Leung et al., 2022; Cornwall et al., 2022). However, the evidence remains unclear for foraminifera, calcifying sponges, bryozoans, crustaceans, polychaetes, and echinoderms, as there is mixed evidence presently available (Leung et al., 2022). Specifically, coralline algal calcification rates significantly decline from present-day rates within ocean acidification scenarios that simulate RCP4.5 in 2050 and above (e.g., $538 \mu\text{atm}$), whereas corals experience similar departures around RCP8.5 projections for the year 2050 (e.g., $572 \mu\text{atm}$) (Cornwall et al., 2021). Though not equivalent, the point at which more than 50 % of studies find negative impacts on all measures of organism fitness is around 780 to $840 \mu\text{atm}$ for molluscs and echinoderms, respectively, and above $2000 \mu\text{atm}$ for crustaceans (Wittmann and Pörtner, 2013). Although not all of these measurements directly involve calcification, this highlights the difficulty in determining physiological tipping points for changes in calcification rates for specific taxa, given the available and disparate research and the range of responses observed within a taxon.

2.2 Photo-physiology

Most macroalgae and all phytoplankton species have the ability to directly take up HCO_3^- from seawater during photosynthesis, converting it into complex sugars (Raven et al., 2011, 2002a). Similarly, all marine phototrophs can passively take up CO_2 through diffusion for the same process (Raven et al., 2012), with some of them relying solely on this diffusive uptake. In corals, symbiotic dinoflagellates use DIC within the coral tissues through the same process (Raven et al., 2020). The active uptake of HCO_3^- using pumps, sym-

ports, and antiports is referred to as a CO_2 -concentrating mechanism (CCM) (Raven et al., 2011). The evolution of CCMs was believed to be a response to the low concentrations and slow diffusivity of CO_2 in seawater compared to air (Raven et al., 2002b, 2008), where \sim 90 % of seawater DIC is in the form of HCO_3^- and only about 1 % is in the form of CO_2 . Therefore, using HCO_3^- was considered to theoretically overcome DIC limitation. However, this reasoning is simplistic. This is noted in the various works by John Raven and colleagues (e.g., Raven et al., 2005; Raven and Beardall, 2014, 2016), and we summarize here. There are various types of CCMs that differ in their efficiency in natural seawater. Although seawater pH is typically around \sim 8.05, it can be higher in regions with high photosynthetic uptake of DIC and high water retention (Rivest et al., 2017). In these habitats, CO_2 concentrations would be extremely small, and species utilizing diffusive CO_2 uptake would be at a competitive disadvantage over those with CCMs (Hepburn et al., 2011). In addition to true CCMs, there are various associated external and internal carbonic anhydrase enzymes that collectively enhance the diffusive CO_2 uptake externally or convert internal CO_2 into HCO_3^- , thereby regulating internal CO_2 levels and maintaining internal pH. The efficiency and production of these enzymes can vary between species. Moreover, the creation of both CCMs and carbonic anhydrase enzymes requires energy and nutrients. As a result, possessing a CCM does not guarantee that a species is not DIC-limited in the habitats it currently occupies. Increasing CO_2 (and possibly HCO_3^-) could potentially alleviate DIC limitation in marine phototrophs that are constrained by DIC availability. However, quantifying the exact benefits that these organisms would receive is challenging because there has been no comprehensive effort to study this by subjecting multiple organisms with well-known CCMs and carbonic anhydrases to seawater conditions resembling ocean acidification. Nevertheless, it has been observed that several DIC-limited species do show an increase in their photosynthetic rates and/or growth rates in response to elevated DIC or ocean acidification (Kroeker et al., 2010; Harvey et al., 2013).

Increasing CO_2 concentrations could also lead to species with a CCM using additional CO_2 when the external CO_2 concentration is higher, thus downregulating their CCM and reducing the energetic or nutrient cost of active HCO_3^- uptake (Hepburn et al., 2011). The potential benefits of this downregulation might be minimal, but it does appear as though both marine and freshwater macroalgae at elevated CO_2 concentrations either downregulate their CCM or switch the ratio of HCO_3^- to CO_2 uptake (Cornwall et al., 2017b; Maberly et al., 2014). Another possible outcome is that higher external $[\text{CO}_2]$ levels could reduce the leakage of internal CO_2 back into seawater, saving energy and possibly nutrients. However, the specific impacts of these processes under ocean acidification are challenging to predict and likely depend on local irradiance availability and nutrient

concentrations relative to the specific species' requirements. We identified two positive tipping points (coccolithophores and seagrasses) and one negative (corals) in photosynthetic responses to elevated CO₂. The surprising lack of responses of non-calcareous seaweeds is likely due to the complexity of their CCM presence and what suite of CCMs is present. Because some species could respond positively and others not at all, the physiology of the species would need to be better understood in order to group them. However, there are positive tipping points in the growth rates of non-calcareous seaweeds. The meta-analyses that make up the majority of these findings are more than 1 decade old (Harvey et al., 2013; Kroeker et al., 2013b), and further analyses are required that separate seaweeds based on their CCM physiology rather than grouping them all together.

Photosynthetic efficiency (Fv/Fm) is observed to decline in many taxa (e.g., corals, seaweeds) under ocean acidification (Leung et al., 2022; Cornwall et al., 2022), but the significance of these decreases as stress indicators is debatable. For instance, declines in Fv/Fm of approximately 0.4 or more are typically associated with acute heat stress (e.g., Schoepf et al., 2019), whereas declines caused by simulated ocean acidification are usually on the order of 0.02. Therefore, it is possible that these declines are in response to non-stress-related increases in cellular CO₂ or decreased pH, affecting the functioning of photosystem II. While acute heat stress in corals represents a well-established tipping point (mass coral bleaching), the smaller declines in Fv/Fm associated with ocean acidification may not represent an abrupt physiological tipping point, instead suggesting a gradual decline in performance, or may represent a consequence of other physiological responses to the altered carbonate chemistry. Subsequently, further research is needed to understand the physiological and molecular mechanisms that underpin these responses in various phototrophic organisms and to determine if they indeed represent significant changes that would impact future photosynthetic species in a future high-CO₂ ocean.

Meta-analyses highlight that ocean acidification will impact the photo-physiology of marine species. However, due to the complexity of the underlying processes (as highlighted above), there is considerable variability within and between taxa and limited data on photosynthetic responses. Consequently, it becomes even more challenging to pinpoint a tipping point at which changes in photosynthetic rates would occur. On average, ocean acidification seems to have a positive impact on coccolithophore photosynthetic rates, but there is no average detectable effect in foraminifera, symbiont-bearing sponges, corals, and calcifying algae (Leung et al., 2022). However, both corals and coralline algae show declines in photosynthetic efficiency, and there is evidence of both strong positive and negative impacts on their photosynthetic rates (Leung et al., 2022; Cornwall et al., 2022). The underlying physiological mechanisms behind these negative observations require further investiga-

tion. Older meta-analyses also indicate positive effects of ocean acidification on seagrass, diatom, and non-calcareous macroalgal growth and photosynthesis, though with varied responses (see Table 1) (Harvey et al., 2013; Kroeker et al., 2013b). Tipping points at which physiological changes occur in physiologically distinct groups of macroalgae and corals cannot be presently determined, and more work is required to better define the physiological function of organisms used within ocean acidification research.

2.3 Internal pH regulation

Ocean acidification also presents significant changes for the regulation of internal pH in different tissues or fluids of many calcifying taxa. This is evident in corals (McCulloch et al., 2012; Venn et al., 2013), coralline algae (Cornwall et al., 2017a), *Halimeda* spp. (Comeau et al., 2019), echinoderms (Stumpp et al., 2012), and crustaceans (Carter et al., 2013), for example. However, some of these species show an increased ability to upregulate internal pH at sites of calcification, allowing them to maintain calcification under simulated ocean acidification conditions. As a result, relying solely on meta-analyses to predict when specific species will be impacted by ocean acidification may have limitations. That being said, meta-analyses do indicate significant impacts of OA on pH regulation in certain echinoderms and corals (Leung et al., 2022), as well as in coralline algae (Leung et al., 2022; Cornwall et al., 2022). However, the extent to which OA affects pH within different components of various taxa remains unexplored, and this could potentially explain some of the variability in responses even among non-calcifying taxa, such as many seaweeds. This is a vital controller of organism metabolism and fitness, but further research on this topic is required before tipping points can be identified. Additionally, data on internal pH within non-calcifying tissues and within non-calcifying organisms are presently limited but are also likely strongly impacted by reduced seawater pH and could be driving some reduced growth rates observed in non-calcifying taxa (Taise et al., 2023). Bednaršek et al. (2021) identify ~pH 7.6 as a tipping point whereby the internal pH of echinoderms is impacted but indicate that this was a subjective point determined by a panel of experts. In corals, linear effects are usually observed (McCulloch et al., 2012; Comeau et al., 2019), and detectable differences are likely driven by a combination of the level of biological variability and the magnitude of difference between control and lower seawater pH treatments, rather than true tipping points per se. This is similar to most responses to ocean acidification, whereby physiological tipping points identified here do not function as true ecological tipping points but rather as linear decreases. Thus, it could be expected that most physiological responses to ocean acidification would occur slowly over time in the near future.

2.4 Whole-organism tipping points

These declines in organism physiology detailed above do not necessarily indicate that ecological tipping points would occur and that ecosystem change will result from physiological tipping points being reached. Rather, they indicate when change is likely to be detectable. True tipping points due to ocean acidification will likely manifest at ecological levels long before they manifest at physiological levels. For example, multiple small effects, difficult to detect using presently existing methodologies, will likely manifest across a suite of individuals, populations, and species that inhabit any particular ecosystem. When these effects manifest at physiological levels, they will add up at ecological levels to much greater impacts that are much more easily detectable (Figs. 1, 2). This is concerning, as the vast majority of data we have on some taxa are from laboratory experimentation on individuals. Equally concerning is the issue that changes in ecological processes have likely already occurred in marine ecosystems due to ongoing ocean acidification. However, it is almost impossible to know what to attribute these events to due to the overall paucity of carbonate chemistry time series in most locations compared to time series in other parameters, such as seawater temperature and light, and due to the subtle effects of ocean acidification in some taxa. Similarly, changes in temperature and light can be observed or felt by observers, whereas changes in seawater carbonate chemistry cannot. In the following section we discuss tipping points that have manifested in ecosystems with naturally elevated $p\text{CO}_2$ compared to nearby control sites. However, we add the caveat here that many ecosystem types remain underexplored in terms of how tipping points caused by ocean acidification could manifest.

3 Tipping points at naturally high- CO_2 locations

Research on the potential effects of ocean acidification on marine organisms highlights the connection between increasing atmospheric and oceanic CO_2 levels, changes in carbonate chemistry, and their impacts on marine organisms. As highlighted previously, numerous experimental studies have documented significant impacts of future ocean acidification on diverse aspects of individual species' physiology, life history, and ecology, as well as on populations. However, when attempting to assess the impact of ocean acidification at higher levels of biological organization, such as community structure, food web dynamics, and ecosystem function, uncertainty arises. Particular difficulties arise when attempting to predict the outcomes of interactions among numerous species. Nevertheless, all these individual responses contribute to ecosystem change, so ocean acidification is anticipated to lead towards changes in the structure, composition, and functioning of marine ecosystems.

Ecosystem changes, although usually gradual, can reach tipping points where they undergo sudden and significant

shifts, leading to alterations in the structure and function of biological communities. These regime shifts are of particular concern due to the fact that the newly established habitats are primarily composed of species that have lower ecological, functional, and human value when compared to the habitats they have replaced. Examples of this include the extensive displacement of key foundation species (e.g., coral reefs and kelp forests) by simplified degraded ones like turf-algae-dominated systems (e.g., Knowlton, 1992; Moy and Christie, 2012; Wernberg et al., 2016). Ecosystem changes associated with climate change are evident today in various ecosystems and biogeographic regions, often associated with temperature. However, these changes are often complex, involving concurrent shifts in multiple environmental factors and processes. On the other hand, the direct attribution of ongoing ecosystem changes, or specific elements, to anthropogenic ocean acidification is far more difficult to establish.

Seasonal upwelling regions, such as the California coast, offer valuable insights into the contemporary impacts of altered carbonate chemistry. In these areas, nutrient-rich waters from deeper layers of the ocean, which are also characterized by high CO_2 and low pH, are transported to the surface. This process provides examples of how low-pH waters can bring about ecosystem changes by impacting early life stages of economically and ecologically important species (e.g., Pacific shellfish species) (Feely et al., 2008). Another contemporary example includes coral reefs in the equatorial upwelling system, such as those found in the Galápagos and Cocos islands, which exhibit low species diversity and limited development of carbonate reef frameworks attributed to the low pH/aragonite saturation levels in the upwelling waters of the region (Glynn, 2001; Manzello, 2010; Manzello et al., 2008). One of the issues in the attribution of ecosystem change to ocean acidification (beyond the confounding effects of other environmental factors) is associated with the difficulty in the large-scale monitoring of carbonate chemistry. However, a study examining artificial ocean alkalization on a localized scale yielded important findings (Albright et al., 2016). It showed that increasing alkalinity to pre-industrial levels resulted in an increase in net community calcification at a coral reef on One Tree Island, Great Barrier Reef. This study therefore suggests that contemporary communities are experiencing a decline in net community calcification compared to pre-industrial conditions, indicating that coral reef growth may potentially already be impaired by ocean acidification. Conversely, the addition of CO_2 to a coral reef at the same location caused declines in net community calcification rates beyond those expected to occur due to the direct impacts on coral (Albright et al., 2018). This could be due to resident coralline algae or carbonate sediments, which are high in abundance in some areas on this reef and more prone to dissolution at rates much higher than their calcification rates. While contemporary examples, such as regions of seasonal upwelling, promote our understanding of the current impacts of altered carbonate chemistry, under-

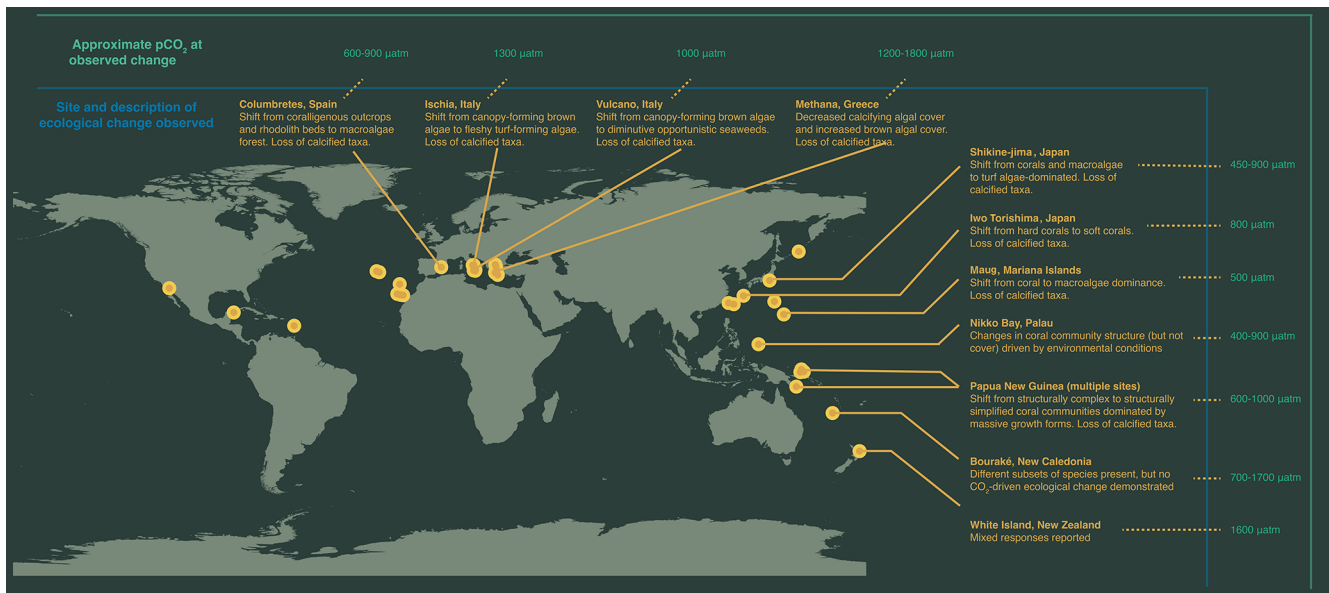


Figure 1. Map of high- CO_2 locations used to make inferences regarding impacts of OA on future marine ecosystems. Labelled are sites where patterns in ecosystem change are described: Columbretes, Spain (Linares et al., 2015); Ischia, Italy (Hall-Spencer et al., 2008; Porzio et al., 2011); Vulcano, Italy (Cornwall et al., 2017b); Methana, Greece (Baggini et al., 2014); Shikine-jima, Japan (Agostini et al., 2018); Iwo Tori-shima, Japan (Inoue et al., 2013); Maug, Mariana Islands (Enochs et al., 2015); Papua New Guinea (Fabricius et al., 2011; Comeau et al., 2022); Bouraké, New Caledonia (Maggioni et al., 2021); and Whakaari / White Island, New Zealand (Nagelkerken et al., 2016; Blain et al., 2021).

standing the potential future impacts of ocean acidification remains crucial.

Research efforts are also currently underway into the long-term effects of ocean acidification on ecosystem-level processes using natural analogues (Fig. 1). Natural analogues for ocean acidification predominantly involve a natural, localized change in carbonate chemistry conditions that mimic future ocean acidification conditions which can be compared with an adjacent region under contemporary conditions. These include CO_2 seeps, associated with volcanic CO_2 emissions, and semi-enclosed bays (e.g., semi-enclosed lagoons and mangrove estuaries), where certain ecologically significant parameters for marine life (carbonate chemistry, temperature, and oxygen) closely resemble or even surpass the projected conditions anticipated for the end of the century. Since marine communities and ecosystems are home to a wide range of species that each interact with each other, these research approaches importantly enable researchers to simultaneously examine the response of a naturally assembled community as a whole, regardless of whether they are investigating a specific population, functional group, or the community as a whole. While not exact replicas of future conditions, these natural laboratories present unique opportunities to investigate the mechanisms by which ecosystems may adapt and respond to the challenges of climate change.

In early studies utilizing CO_2 seeps (Hall-Spencer et al., 2008), the loss of vulnerable calcifying organisms and the potential benefit observed in certain non-calcified primary

producers (such as seagrass and algae) were noted. However, it was also observed that some calcifying organisms managed to survive while certain non-calcifying primary producers were being lost. This significant finding emphasized the limitations of solely considering the direct physiological impacts of ocean acidification when predicting community-level responses, highlighting the need for a comprehensive understanding of the ecological interactions within a community (Fabricius et al., 2011, 2017). Ongoing research at numerous CO_2 seeps has consistently documented shifts in habitat structure and community composition along the natural $p\text{CO}_2$ gradients. These shifts often favoured simplified systems with reduced biodiversity and less ecological complexity over larger habitat-forming species (Sunday et al., 2016; Teixidó et al., 2018). Examples include transitions from canopy-forming brown algae to turf (Ischia, Italy), hard corals to soft corals (Iwo Tori-shima, Japan), and corals and macroalgae to turf (Shikine-jima, Japan) (Inoue et al., 2013; Hall-Spencer et al., 2008; Agostini et al., 2018). Many of these shifts occurred at $p\text{CO}_2$ conditions projected by the mid-century and suggest that thresholds of tipping points may be reached in the near future. We project that, in the future, many ecosystems (but not all) will shift from states dominated by the cover of marine forests or corals to more depauperate states.

It is clearly important to distinguish whether these documented shifts in habitat structure and community composition along natural $p\text{CO}_2$ gradients are occurring through

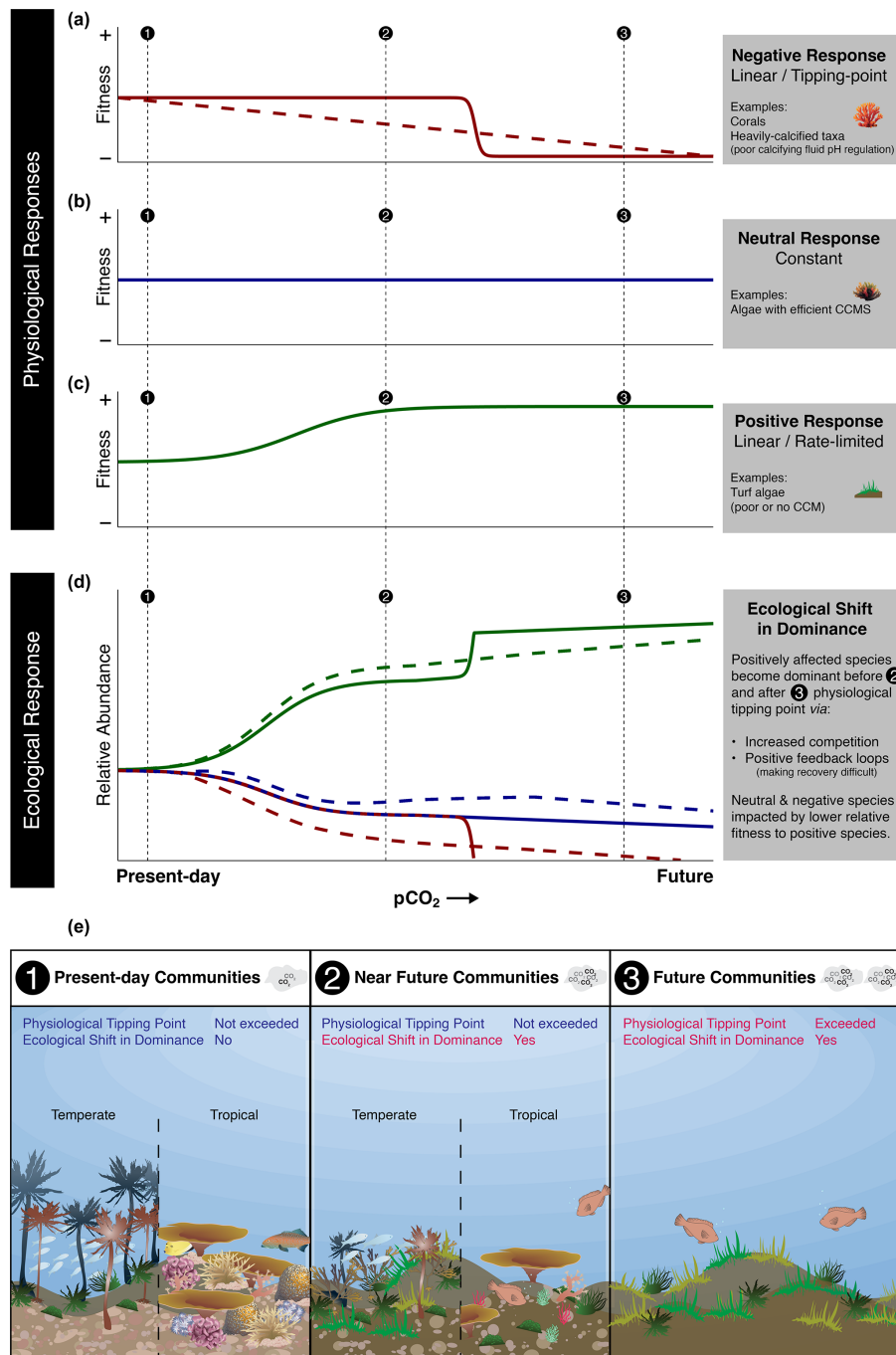


Figure 2. Conceptual diagram demonstrating the need for understanding both physiological and ecological responses when inferring the impacts of OA on future marine ecosystems. Species that have negative (a) (solid line, tipping point; dashed line, linear), neutral (b), or positive (c) physiological responses to elevated $p\text{CO}_2$ conditions in isolation may not demonstrate the same response in terms of their ecological response (d) when considered in terms of the whole community (solid line, negative response species with tipping point; dashed line, negative response species with linear response). For example, a species may physiologically have neutral responses but still show reduced relative abundance under elevated $p\text{CO}_2$ conditions due to alterations in their ecological interactions with other species. Subsequently, ecological shifts in dominance (ecological tipping points) may occur sooner than physiological thresholds are exceeded (e).

a tipping-point threshold being exceeded or representing a more gradual shift along the $p\text{CO}_2$ gradient. The general ranges of $p\text{CO}_2$ at which these community shifts are observed is shown in Fig. 1. For some locations, such as in the CO_2 seeps of Shikine-jima (Japan) and Maug Islands (Commonwealth of the Northern Mariana Islands), the abrupt change in the community is first observed at sites with only slightly elevated $p\text{CO}_2$ conditions (450–500 μatm) (Agostini et al., 2018; Enochs et al., 2015), suggesting an ecological tipping point. Moreover, positive feedback loops, hysteresis, and altered recovery mechanisms are associated with the shift in community states at Shikine-jima, further demonstrating CO_2 -driven alternative stable states (Hudson et al., 2023; Harvey et al., 2021). However, the ecosystem shifts are first observed at higher $p\text{CO}_2$ conditions in other naturally high- CO_2 analogues (Fig. 1). This does not preclude the possibility of ecological tipping points in these locations but highlights the need for additional sites to be studied that are closer to contemporary $p\text{CO}_2$ conditions in order to establish whether they represent an abrupt or gradual change in community composition.

The changes in the extent and structural complexity of biogenic habitat observed within CO_2 seeps can additionally mediate further biodiversity shifts, with the impact of ocean acidification on habitat-forming species projected to lead to lower associated species diversity (Sunday et al., 2016). Field surveys in a temperate Pacific CO_2 seep found that the ocean acidification-driven transition in habitat resulted in a reduction in the diversity of associated fish species. This loss is largely attributed to the disappearance of species that are closely associated with habitats that have undergone significant loss themselves. Moreover, it led to the selection of fish species that are more adapted to simplified ecosystems dominated by algae (Cattano et al., 2016). Similar declines in reef-associated macroinvertebrate communities and small cryptic invertebrates have also been observed in tropical CO_2 seeps (Fabricius et al., 2014; Plaisance et al., 2021).

Habitats play a crucial role in shaping the diversity of associated organisms, including macroinvertebrates and fishes; however, it is important to note that these organisms themselves also exert control over the habitats they inhabit through their grazing. In acidified conditions, it has been suggested that the top-down control exerted by some grazers may diminish, as evidenced by reductions in the diversity, abundance, and size of many marine fauna observed at CO_2 seeps (Garilli et al., 2015; Harvey et al., 2018, 2016). For example, there is a decrease in the number of sea urchin feeding halos at Mediterranean CO_2 seeps (Kroeker et al., 2013a). Top-down control in ecological systems functions as a feedback loop, where the abundance and behaviour of grazers play a crucial role in shaping the population dynamics and composition of the habitat. With any loss or reduction of grazers and their top-down control, there is a potential for significant alterations in the overall structure and functioning of an ecosystem, so diminished top-down con-

trol is likely contributing towards the simplification of coastal ecosystems.

The early-stage recruitment and trajectory of community development are important mechanisms responsible for altering shallow marine communities exposed to ocean acidification. Ocean acidification has notable effects on the composition of prokaryotic biofilm communities on both natural and artificial substrates deployed in CO_2 seeps (Kerfahi et al., 2014; Taylor et al., 2014). Similarly, studies on eukaryotic biofilm communities in these seep environments have also observed changes in community composition (Allen et al., 2021). Collectively, these findings indicate that the ecological patterns driving biofilm community responses in CO_2 seeps are characterized by a selection for distinct cohorts of organisms, where the conditions at the reference and elevated $p\text{CO}_2$ sites represent distinct niches. When examining the longer-term development of communities, the divergence of community composition over time is often influenced by changes in competitive interactions among habitat-forming organisms (Kroeker et al., 2013a, 2011). In general, dominant species tend to outcompete others during the early stages of succession, rapidly outgrowing or overgrowing them, which can result in the community being locked into a depauperate and low-complexity state.

When examining the impact of ocean acidification on ecosystem change, the interplay of physiological thresholds and ecological interactions, such as habitat provisioning, community development, and top-down control, becomes crucial. The absence or loss of certain species indicates that either their physiology and/or their ecological dynamics are unable to cope with the adverse effects of ocean acidification. For instance, even if a species has the physiological capacity to tolerate ocean acidification conditions, it may still be competitively excluded during community development, leading to its absence in elevated $p\text{CO}_2$ conditions. For example, if crucial settlement substrates such as coralline algae are absent, ocean acidification may then have large indirect negative impacts on corals, irrespective of direct effects (Fabricius et al., 2015, 2011, 2017). However, our understanding of the physiological mechanisms that drive these changes are poorly understood in most cases, and measurements of direct competition are often lacking in both in situ and laboratory research. In many natural analogues, the documented ecological shifts in the community composition often appear to be occurring at $p\text{CO}_2$ levels that are far lower than might be expected based on lethal thresholds and whole-organism tipping points in isolation. These changes occur roughly at the same $p\text{CO}_2$ where detectable physiological effects occur in laboratory experiments. We explore and demonstrate this concept in Fig. 2. This mismatch is partly because the mechanisms that determine their physiological response (e.g., photo-physiology and calcification) and ecological outcomes (e.g., competitive ability) are not necessarily always aligned, but they are associated with how the physiological and ecological responses of a species are

both important in determining their relative response within a community. For example, small changes in many species' physiology can alter ecological interactions, with larger consequences at the ecosystem level than what would be predicted from single-species laboratory experiments. Some of the next steps are therefore to further build upon establishing how universal it is that these ecological shifts are being caused through tipping points rather than gradual changes.

Individual CO₂ seeps, while analogues for specific factors like CO₂, may not fully represent the broader influences of climate change. Subsequently, in recent years, research has moved towards replicating research across multiple CO₂ seeps (to encompass multiple environmental drivers alongside ocean acidification) (Cornwall et al., 2017b; Comeau et al., 2022) and making use of other natural analogues like semi-enclosed lagoons (e.g., Palau and New Caledonia), which have provided important insights into corals that have adapted to these systems (Kurihara et al., 2021; Tanvet et al., 2023). Additionally, laboratory mesocosms largely support the findings of CO₂ seeps, but they have both advantages and disadvantages over making inferences from them compared to CO₂ seeps. They can assist with determining the underlying ecological or physiological processes that will occur under ocean acidification. However, their findings are largely dictated by the number of species included, their abundances, and the study duration. Changing one of these parameters can lead to findings that are almost completely the opposite, e.g., when additional trophic levels are included or removed from an experiment, they will alter other trophic levels (Ghedini and Connell, 2016; Ghedini et al., 2015).

4 Conclusions

Ocean acidification has complex biological consequences, affecting calcification, photo-physiology, and pH regulation in various marine taxa. These direct impacts have been quantified in more than 1000 research articles to date. However, more research is required on internal pH regulation of various taxa (see Table 1), and up-to-date meta-analyses of non-calcareous taxa (see Table 2) are also required. Quantitative projections of the tipping points at which CO₂ will have negative (or positive) impacts is also required for most taxa, where here we generally rely on semi-qualitative assessments for all taxa except corals and coralline algae. These negative and positive impacts will have flow-on effects at ecological levels. Natural analogues, like CO₂ seeps, offer insights into the long-term effects of ocean acidification on marine ecosystems. These natural laboratories show shifts in habitat structure and community composition along *p*CO₂ gradients, leading to potential biodiversity loss and ecosystem simplification. However, tipping points in ecological change are difficult to determine for most taxa due to the lack of repeatable field sites with different distinct *p*CO₂ conditions. For example, only one site presently exists for all cool tem-

perate kelp forest ecosystems, lacking the classic gradient approach that would be useful in determining tipping points. Overall, ocean acidification has complex and far-reaching effects on marine life, and predicting specific tipping points for different taxa is challenging due to the multitude of factors involved. Continued research and monitoring efforts are essential to comprehend and address the impacts of ocean acidification on marine ecosystems in the future.

Code availability. Code used to create Figs. 1 and 2 are uploaded as a Supplement.

Data availability. No data sets were used in this article.

Supplement. The supplement related to this article is available online at: <https://doi.org/10.5194/esd-15-671-2024-supplement>.

Author contributions. All authors contributed equally to all aspects of this paper, except BPH, who created all figures.

Competing interests. The contact author has declared that none of the authors has any competing interests.

Disclaimer. Publisher's note: Copernicus Publications remains neutral with regard to jurisdictional claims made in the text, published maps, institutional affiliations, or any other geographical representation in this paper. While Copernicus Publications makes every effort to include appropriate place names, the final responsibility lies with the authors.

Special issue statement. This article is part of the special issue "Tipping points in the Anthropocene". It is a result of the "Tipping Points: From Climate Crisis to Positive Transformation" international conference hosted by the Global Systems Institute (GSI) and University of Exeter (12–14 September 2022), as well as the associated creation of a Tipping Points Research Alliance by GSI and the Potsdam Institute for Climate Research, Exeter, Great Britain, 12–14 September 2022.

Acknowledgements. This work contributes towards the International CO₂ Natural Analogues (ICONA) Network. Some of the images used in Fig. 2 are courtesy of the Integration and Application Network, University of Maryland Center for Environmental Science (<https://ian.umces.edu/symbols/>, last access: 16 May 2024).

Financial support. Christopher E. Cornwall was funded by a Rutherford Discovery Fellowship from the Royal Society Te Apārangi of Aotearoa / New Zealand (grant no. VUW 1701) and

Coastal People: Southern Skies Centre of Research Excellence. Ben P. Harvey was funded by a Japan Society for the Promotion of Science (JSPS) KAKENHI Grant-in-Aid (grant no. 23H02231).

Review statement. This paper was edited by Steven Lade and reviewed by Ashley Deevsh Hemraj and one anonymous referee.

References

- Agostini, S., Harvey, B. P., Wada, S., Kon, K., Milazzo, M., Inaba, K., and Hall-Spencer, J. M.: Ocean acidification drives community shifts towards simplified non-calcified habitats in a subtropical-temperate transition zone, *Sci. Rep.*, 8, 11354, <https://doi.org/10.1038/s41598-018-29251-7>, 2018.
- Albright, R., Caldeira, L., Hosfelt, J., Kwiatkowski, L., Maclaren, J. K., Mason, B. M., Nebuchina, Y., Ninokawa, A., Pongratz, J., Rieke, K. L., Rivlin, T., Schneider, K., Sesboüé, M., Shamberger, K., Silverman, J., Wolfe, K., Zhu, K., and Caldeira, K.: Reversal of ocean acidification enhances net coral reef calcification, *Nature*, 531, 362, <https://doi.org/10.1038/nature17155>, 2016.
- Albright, R., Takeshita, Y., Koweek, D. A., Ninokawa, A., Wolfe, K., Rivlin, T., Nebuchina, Y., Young, J., and Caldeira, K.: Carbon dioxide addition to coral reef waters suppresses net community calcification, *Nature*, 555, 516–519, <https://doi.org/10.1038/nature25968>, 2018.
- Allemand, D., Ferrier-Pagés, C., Furla, P., Houlbrèque, F., Puverel, S., Reynaud, S., Tambutte, E., Tambutte, S., and Zoccola, D.: Biomineralisation in reef-building corals: from molecular mechanisms to environmental control, *C.R. Palevol.*, 3, 453–467, 2004.
- Allen, R. J., Summerfield, T. C., Harvey, B. P., Agostini, S., Rastick, S. P., Hall-Spencer, J. M., and Hoffmann, L. J.: Species turnover underpins the effect of elevated CO₂ on biofilm communities through early succession, *Climate Change Ecology*, 2, 100017, <https://doi.org/10.1016/j.ecochg.2021.100017>, 2021.
- Andersson, A. J. and Gledhill, D. K.: Ocean acidification and coral reefs: effects on breakdown, dissolution, and net ecosystem calcification, *Annu. Rev. Mar. Sci.*, 5, 1–28, 2013.
- Andersson, A. J., Mackenzie, F. T., and Bates, N. R.: Life on the margin: implications of ocean acidification on Mg-calcite, high latitude and cold-water marine calcifiers, *Mar. Ecol. Prog. Ser.*, 373, 265–273, 2008.
- Anthony, K. R. N., Kline, D. I., Diaz-Pulido, G., Dove, S., and Hoegh-Guldberg, O.: Ocean acidification causes bleaching and productivity loss in coral reef builders, *P. Natl. Acad. Sci. USA*, 105, 17442–17446, 2008.
- Armstrong McKay, D. I., Staal, A., Abrams, J. F., Winkelmann, R., Sakschewski, B., Loriani, S., Fetzer, I., Cornell, S. E., Rockström, J., and Lenton, T. M.: Exceeding 1.5 °C global warming could trigger multiple climate tipping points, *Science*, 377, eabn7950, <https://doi.org/10.1126/science.abn7950>, 2022.
- Baggini, C., Salomidi, M., Voutsinas, E., Bray, L., Krasakopoulou, E., and Hall-Spencer, J.: Seasonality affects macroalgal community response to increases in pCO₂, *PLoS ONE*, 9, e106520, <https://doi.org/10.1371/journal.pone.0106520>, 2014.
- Bathurst, R. G. (Ed.): *Carbonate Sediments and Their Diagenesis*, 1st Edn., Vol. 12, Elsevier, ISBN 9780080869230, 1972.
- Bednaršek, N., Feely, R. A., Howes, E. L., Hunt, B. P. V., Kessouri, F., León, P., Lischka, S., Maas, A. E., McLaughlin, K., Nezlin, N. P., Sutula, M., and Weisberg, S. B.: Systematic Review and Meta-Analysis Toward Synthesis of Thresholds of Ocean Acidification Impacts on Calcifying Pteropods and Interactions With Warming, *Front. Mar. Sci.*, 6, 227, <https://doi.org/10.3389/fmars.2019.00227>, 2019.
- Bednaršek, N., Calosi, P., Feely, R. A., Ambrose, R., Byrne, M., Chan, K. Y. K., Dupont, S., Padilla-Gamiño, J. L., Spicer, J. I., Kessouri, F., Roethler, M., Sutula, M., and Weisberg, S. B.: Synthesis of Thresholds of Ocean Acidification Impacts on Echinoderms, *Front. Mar. Sci.*, 8, 602601, <https://doi.org/10.3389/fmars.2021.602601>, 2021.
- Blain, C. O., Kulins, S., Radford, C. A., Sewell, M. A., and Shears, N. T.: Heterogeneity around CO₂ vents obscures the effects of ocean acidification on shallow reef communities, *ICES J. Mar. Sci.*, 78, 3162–3175, <https://doi.org/10.1093/icesjms/fsab184>, 2021.
- Caillon, C., Pernet, F., Lutier, M., and Di Poi, C.: Differential reaction norms to ocean acidification in two oyster species from contrasting habitats, *J. Exp. Biol.*, 226, jeb246432, <https://doi.org/10.1242/jeb.246432>, 2023.
- Carrier-Belleau, C., Pascal, L., Nozais, C., and Archambault, P.: Tipping points and multiple drivers in changing aquatic ecosystems: A review of experimental studies, *Limnol. Oceanogr.*, 67, S312–S330, <https://doi.org/10.1002/lno.11978>, 2022.
- Carter, H. A., Ceballos-Osuna, L., Miller, N. A., and Stillman, J. H.: Impact of ocean acidification on metabolism and energetics during early life stages of the intertidal porcelain crab *Petrolisthes cinctipes*, *J. Exp. Biol.*, 216, 1412–1422, <https://doi.org/10.1242/jeb.078162>, 2013.
- Cattano, C., Giomi, F., and Milazzo, M.: Effects of ocean acidification on embryonic respiration and development of a temperate wrasse living along a natural CO₂ gradient, *Conserv. Physiol.*, 4, cov073, <https://doi.org/10.1093/conphys/cov073>, 2016.
- Chan, N. C. S. and Connolly, S. R.: Sensitivity of coral calcification to ocean acidification: A meta-analysis, *Glob. Change Biol.*, 19, 282–290, 2013.
- Comeau, S., Carpenter, R. C., and Edmunds, P. J.: Coral reef calcifiers buffer their responses to ocean acidification using both bicarbonate and carbonate, *P. Roy. Soc. B*, 280, 20122374, <https://doi.org/10.1098/rspb.2012.2374>, 2013a.
- Comeau, S., Edmunds, P. J., Spindel, N. B., and Carpenter, R. C.: The responses of eight coral reef calcifiers to increasing partial pressure of CO₂ do not exhibit a tipping point, *Limnol. Oceanogr.*, 58, 388–398, 2013b.
- Comeau, S., Edmunds, P. J., Spindel, N. B., and Carpenter, R. C.: Fast coral reef calcifiers are more sensitive to ocean acidification in short-term laboratory incubations, *Limnol. Oceanogr.*, 59, 1081–1091, <https://doi.org/10.4319/lno.2014.59.3.1081>, 2014.
- Comeau, S., Cornwall, C. E., DeCarlo, T. M., Krieger, E., and McCulloch, M. T.: Similar controls on calcification under ocean acidification across unrelated coral reef taxa, *Glob. Change Biol.*, 24, 4857–4868, <https://doi.org/10.1111/gcb.14379>, 2018.
- Comeau, S., Cornwall, C. E., DeCarlo, T. M., Doo, S. S., Carpenter, R. C., and McCulloch, M. T.: Resistance to ocean acidification in coral reef taxa is not gained by acclimatization, *Nat. Clim. Change*, 9, 477–483, <https://doi.org/10.1038/s41558-019-0486-9>, 2019.

- Comeau, S., Cornwall, C. E., Shlesinger, T., Hoogenboom, M., Mana, R., McCulloch, M. T., and Rodolfo-Metalpa, R.: pH variability at volcanic CO₂ seeps regulates coral calcifying fluid chemistry, *Glob. Change Biol.*, 28, 2751–2763, <https://doi.org/10.1111/gcb.16093>, 2022.
- Cornwall, C. E., Comeau, S., and McCulloch, M. T.: Coralline algae elevate pH at the site of calcification under ocean acidification, *Glob. Change Biol.*, 23, 4245–4256, 2017a.
- Cornwall, C. E., Revill, A. T., Hall-Spencer, J. M., Milazzo, M., Raven, J. A., and Hurd, C. L.: Inorganic carbon physiology underpins macroalgal responses to elevated CO₂, *Sci. Rep.*, 7, 46297, <https://doi.org/10.1038/srep46297>, 2017b.
- Cornwall, C. E., Comeau, S., DeCarlo, T. M., Moore, B., D’Alexis, Q., and McCulloch, M. T.: Resistance of corals and coralline algae to ocean acidification: physiological control of calcification under natural pH variability, *P. Roy. Soc. B*, 285, doi:10.1098/rspb.2018.1168, 2018.
- Cornwall, C. E., Comeau, S., DeCarlo, T. M., Larcombe, E., Moore, B., Giltrow, K., Puerzer, F., D’Alexis, Q., and McCulloch, M. T.: A coralline alga gains tolerance to ocean acidification over multiple generations of exposure, *Nat. Clim. Change*, 10, 143–146, <https://doi.org/10.1038/s41558-019-0681-8>, 2020.
- Cornwall, C. E., Comeau, S., Kornder, N. A., Perry, C. T., van Hooidek, R., DeCarlo, T. M., Pratchett, M. S., Anderson, K. D., Browne, N., Carpenter, R., Diaz-Pulido, G., D’Olivo, J. P., Doo, S. S., Figueiredo, J., Fortunato, S. A. V., Kennedy, E., Lantz, C. A., McCulloch, M. T., González-Rivero, M., Schoepf, V., Smithers, S. G., and Lowe, R. J.: Global declines in coral reef calcium carbonate production under ocean acidification and warming, *P. Natl. Acad. Sci. USA*, 118, e2015265118, <https://doi.org/10.1073/pnas.2015265118>, 2021.
- Cornwall, C. E., Harvey, B. P., Comeau, S., Cornwall, D. L., Hall-Spencer, J. M., Peña, V., Wada, S., and Porzio, L.: Understanding coralline algal responses to ocean acidification: Meta-analysis and synthesis, *Glob. Change Biol.*, 28, 362–374, <https://doi.org/10.1111/gcb.15899>, 2022.
- Cornwall, C. E., Carlot, J., Branson, O., Courtney, T. A., Harvey, B. P., Perry, C. T., Andersson, A. J., Diaz-Pulido, G., Johnson, M. D., Kennedy, E., Krieger, E. C., Mallela, J., McCoy, S. J., Nugues, M. M., Quinter, E., Ross, C. L., Ryan, E., Saderne, V., and Comeau, S.: Crustose coralline algae can contribute more than corals to coral reef carbonate production, *Commun. Earth Environ.*, 4, 105, <https://doi.org/10.1038/s43247-023-00766-w>, 2023.
- DeCarlo, T. M., Comeau, S., Cornwall, C. E., and McCulloch, M. T.: Coral resistance to ocean acidification linked to increased calcium at the site of calcification, *P. Roy. Soc. B*, 285, 20180564, <https://doi.org/10.1098/rspb.2018.0564>, 2018.
- Doney, S. C., Fabry, V. J., Feely, R. A., and Kleypas, J. A.: Ocean acidification: the other CO₂ problem, *Annu. Rev. Mar. Sci.*, 1, 169–192, 2009.
- Drake, J. L., Mass, T., Haramaty, L., Zelzion, E., Bhat-tacharya, D., and Falkowski, P. G.: Proteomic analysis of skeletal organic matrix from the stony coral *Stylophora pistillata*, *P. Natl. Acad. Sci. USA*, 110, 3788–3793, <https://doi.org/10.1073/pnas.1301419110>, 2013.
- Enochs, I. C., Manzello, D. P., Donham, E. M., Kolodziej, G., Okano, R., Johnston, L., Young, C., Iguel, J., Edwards, C. B., Fox, M. D., Valentino, L., Johnson, S., Benavente, D., Clark, S. J., Carlton, R., Burton, T., Eynaud, Y., and Price, N. N.: Shift from coral to macroalgae dominance on a volcanically acidified reef, *Nat. Clim. Change*, 5, 1083–1088, <https://doi.org/10.1038/nclimate2758>, 2015.
- Fabricius, K., Langdon, C., Uthicke, S., Humphrey, C., Noonan, S., De’ath, G., Okazaki, R., Muehllhner, N., Glas, M. S., and Lough, J. M.: Losers and winners in coral reefs acclimatized to elevated carbon dioxide concentrations, *Nat. Clim. Change*, 1, 165–169, 2011.
- Fabricius, K. E., De’ath, G., Noonan, S., and Uthicke, S.: Ecological effects of ocean acidification and habitat complexity on reef-associated macroinvertebrate communities, *P. Roy. Soc. B*, 281, 20132479, <https://doi.org/10.1098/rspb.2013.2479>, 2014.
- Fabricius, K., Kluibenschedl, A., Harrington, L., Noonan, S., and De’Ath, G.: In situ changes of tropical crustose coralline algae along carbon dioxide gradients, *Sci. Rep.-UK*, 5, 9537, <https://doi.org/10.1038/srep09537>, 2015.
- Fabricius, K. E., Noonan, S. H. C., Abrego, D., Harrington, L., and De’ath, G.: Low recruitment due to altered settlement substrata as primary constraint for coral communities under ocean acidification, *P. Roy. Soc. B*, 284, 20171536, <https://doi.org/10.1098/rspb.2017.1536>, 2017.
- Falkenberg, L. J., Styan, C. A., and Havenhand, J. N.: Sperm motility of oysters from distinct populations differs in response to ocean acidification and freshening, *Sci. Rep.*, 9, 7970, <https://doi.org/10.1038/s41598-019-44321-0>, 2019.
- Feely, R. A., Sabine, C. L., Lee, K., Berelson, W., Kleypas, J. A., Fabry, V. J., and Millero, F. J.: Impact of anthropogenic CO₂ on the CaCO₃ system in the oceans, *Science*, 305, 362–366, 2004.
- Feely, R. A., Sabine, C. L., Hernandez-Ayon, J. M., Ianson, D., and Hales, B.: Evidence for upwelling of corrosive “acidified” water onto the coastal shelf, *Science*, 320, 1490–1492, 2008.
- Garilli, V., Rodolfo-Metalpa, R., Scuderi, D., Brusca, L., Parrinello, D., Rastrick, S. P. S., Foggo, A., Twitchett, R. J., Hall-Spencer, J. M., and Milazzo, M.: Physiological advantages of dwarfing in surviving extinctions in high-CO₂ oceans, *Nat. Clim. Change*, 5, 678–682, <https://doi.org/10.1038/nclimate2616>, 2015.
- Gazeau, F., Parker, L. M., Comeau, S., Gattuso, J.-P., O’Connor, W. A., Martin, S., Pörtner, H.-O., and Ross, P. M.: Impacts of ocean acidification on marine shelled molluscs, *Mar. Biol.*, 160, 2207–2245, <https://doi.org/10.1007/s00227-013-2219-3>, 2013.
- Ghedini, G. and Connell, S. D.: Organismal homeostasis buffers the effects of abiotic change on community dynamics, *Ecology*, 97, 2671–2679, <https://doi.org/10.1002/ecy.1488>, 2016.
- Ghedini, G., Russell, B. D., and Connell, S. D.: Trophic compensation reinforces resistance: herbivory absorbs the increasing effects of multiple disturbances, *Ecol. Lett.*, 18, 182–187, 2015.
- Glynn, P. W.: Eastern Pacific Coral Reef Ecosystems, in: *Coastal Marine Ecosystems of Latin America*, edited by: Seeliger, U. and Kjerfve, B., Springer Berlin Heidelberg, Berlin, Heidelberg, 281–305, https://doi.org/10.1007/978-3-662-04482-7_20, 2001.
- Hall-Spencer, J. M., Rodolfo-Metalpa, R., Martin, S., Ransome, E., Fine, M., Turner, S. M., Rowley, S. J., Tedesco, D., and Buia, M. C.: Volcanic carbon dioxide vents show ecosystem effects of ocean acidification, *Nature*, 454, 96–99, 2008.
- Harvey, B. P., Gwynn-Jones, D., and Moore, P. J.: Meta-analysis reveals complex marine biological responses to the interactive effects of ocean acidification and warming, *Ecol. Evol.*, 3, 1016–1030, 2013.

- Harvey, B. P., McKeown, N. J., Rastrick, S. P. S., Bertolini, C., Foggo, A., Graham, H., Hall-Spencer, J. M., Milazzo, M., Shaw, P. W., Small, D. P., and Moore, P. J.: Individual and population-level responses to ocean acidification, *Sci. Rep.*, 6, 20194, <https://doi.org/10.1038/srep20194>, 2016.
- Harvey, B. P., Agostini, S., Wada, S., Inaba, K., and Hall-Spencer, J. M.: Dissolution: The Achilles' Heel of the Triton Shell in an Acidifying Ocean, *Front. Mar. Sci.*, 5, 371, <https://doi.org/10.3389/fmars.2018.00371>, 2018.
- Harvey, B. P., Allen, R., Agostini, S., Hoffmann, L. J., Kon, K., Summerfield, T. C., Wada, S., and Hall-Spencer, J. M.: Feedback mechanisms stabilise degraded turf algal systems at a CO₂ seep site, *Commun. Biol.*, 4, 219, <https://doi.org/10.1038/s42003-021-01712-2>, 2021.
- Hendriks, I. E., Duarte, C. M., and Álvarez, M.: Vulnerability of marine biodiversity to ocean acidification: a meta-analysis, *Estuar. Coast. Shelf S.*, 86, 157–164, 2010.
- Hepburn, C. D., Pritchard, D. W., Cornwall, C. E., McLeod, R. J., Beardall, J., Raven, J. A., and Hurd, C. L.: Diversity of Carbon use strategies in a kelp forest community: implications for a high CO₂ ocean, *Glob. Change Biol.*, 17, 2488–2497, 2011.
- Hudson, C. J., Agostini, S., Wada, S., Hall-Spencer, J. M., Connell, S. D., and Harvey, B. P.: Ocean acidification increases the impact of typhoons on algal communities, *Sci. Total Environ.*, 865, 161269, <https://doi.org/10.1016/j.scitotenv.2022.161269>, 2023.
- Hurd, C. L., Beardall, J., Comeau, S., Cornwall, C. E., Havenhand, J. N., Munday, P. L., Parker, L. M., Raven, J. A., and McGraw, C. M.: Ocean acidification as a multiple driver: how interactions between changing seawater carbonate parameters affect marine life, *Mar. Freshwater Res.*, 71, 263–274, <https://doi.org/10.1071/MF19267>, 2019.
- Inoue, S., Kayanne, H., Yamamoto, S., and Kurihara, H.: Spatial community shift from hard to soft corals in acidified water, *Nat. Clim. Change*, 3, 683–687, <https://doi.org/10.1038/nclimate1855>, 2013.
- Jokiel, P. L.: Coral reef calcification: carbonate, bicarbonate and proton flux under conditions of increasing ocean acidification, *P. Roy. Soc. B*, 280, 1764, <https://doi.org/10.1098/rspb.2013.0031>, 2013.
- Kerfahi, D., Hall-Spencer, J. M., Tripathi, B. M., Milazzo, M., Lee, J., and Adams, J. M.: Shallow water marine sediment bacterial community shifts along a natural CO₂ gradient in the Mediterranean Sea off Vulcano, Italy, *Microb. Ecol.*, 67, 819–828, <https://doi.org/10.1007/s00248-014-0368-7>, 2014.
- Knowlton, N.: Thresholds and Multiple Stable States in Coral Reef Community Dynamics, *Am. Zool.*, 32, 674–682, <https://doi.org/10.1093/icb/32.6.674>, 1992.
- Kornder, N. A., Riegl, B. M., and Figueiredo, J.: Thresholds and drivers of coral calcification responses to climate change, *Glob. Change Biol.*, 24, 5084–5095, <https://doi.org/10.1111/gcb.14431>, 2018.
- Kroeker, K. J., Kordas, R. L., Crim, R. N., and Singh, G. G.: Meta-analysis reveals negative yet variable effects of ocean acidification on marine organisms, *Ecol. Lett.*, 13, 1419–1434, 2010.
- Kroeker, K. J., Micheli, F., Gambi, M. C., and Martz, T. R.: Divergent ecosystem responses within a benthic marine community to ocean acidification, *P. Natl. Acad. Sci. USA*, 108, 14515–14520, 2011.
- Kroeker, K. J., Gambi, M. C., and Micheli, F.: Community dynamics and ecosystem simplification in a high-CO₂ ocean, *P. Natl. Acad. Sci. USA*, 110, 12721–12726, 2013a.
- Kroeker, K. J., Kordas, R. L., Crim, R. N., Hendriks, I. E., Ramajo, L., Singh, G. G., Duarte, C. M., and Gattuso, J. P.: Impacts of ocean acidification on marine organisms: quantifying sensitivities and interaction with warming, *Glob. Change Biol.*, 19, 1884–1896, 2013b.
- Kurihara, H., Watanabe, A., Tsugi, A., Mimura, I., Hongo, C., Kawai, T., Reimer, J. D., Kimoto, K., Gouezo, M., and Golbuu, Y.: Potential local adaptation of corals at acidified and warmed Nikko Bay, Palau, *Sci. Rep.*, 11, 11192, <https://doi.org/10.1038/s41598-021-90614-8>, 2021.
- Lenton, T. M., Held, H., Kriegler, E., Hall, J. W., Lucht, W., Rahmstorf, S., and Schellnhuber, H. J.: Tipping elements in the Earth's climate system, *P. Natl. Acad. Sci.*, 105, 1786–1793, 2008.
- Leung, J. Y. S., Zhang, S., and Connell, S. D.: Is Ocean Acidification Really a Threat to Marine Calcifiers? A Systematic Review and Meta-Analysis of 980+ Studies Spanning Two Decades, *Small*, 18, 2107407, <https://doi.org/10.1002/sml.202107407>, 2022.
- Linares, C., Vidal, M., Canals, M., Kersting, D. K., Amblas, D., Aspillaga, E., Cebrian, E., Delgado-Huertas, A., Diaz, D., Garrabou, J., Hereu, B., Navarro, L., Teixido, N., and Ballesteros, E.: Persistent natural acidification drives major distribution shifts in marine benthic ecosystems, *P. Roy. Soc. B*, 282, 20150587, <https://doi.org/10.1098/rspb.2015.0587>, 2015.
- Lutier, M., Di Poi, C., Gazeau, F., Appolis, A., Le Luyer, J., and Pernet, F.: Revisiting tolerance to ocean acidification: Insights from a new framework combining physiological and molecular tipping points of Pacific oyster, *Glob. Change Biol.*, 28, 3333–3348, <https://doi.org/10.1111/gcb.16101>, 2022.
- Maberly, S. C., Berthelot, S. A., Stott, A. W., and Gontero, B.: Adaptation by macrophytes to inorganic carbon down river with naturally variable concentrations of CO₂, *J. Plant Physiol.*, 172, 120–127, 2014.
- Maggioni, F., Pujo-Pay, M., Aucan, J., Cerrano, C., Calcinai, B., Payri, C., Benzoni, F., Letourneur, Y., and Rodolfo-Metalpa, R.: The Bouraké semi-enclosed lagoon (New Caledonia) – a natural laboratory to study the lifelong adaptation of a coral reef ecosystem to extreme environmental conditions, *Biogeosciences*, 18, 5117–5140, <https://doi.org/10.5194/bg-18-5117-2021>, 2021.
- Manzello, D. P.: Ocean acidification hot spots: spatiotemporal dynamics of the seawater CO₂ system of eastern Pacific coral reefs, *Limnol. Oceanogr.*, 55, 239–248, 2010.
- Manzello, D. P., Kleypas, J. A., Budd, D. A., Eakin, C. M., Glynn, P. W., and Langdon, C.: Poorly cemented coral reefs of the eastern tropical Pacific: Possible insights into reef development in a high-CO₂ world, *P. Natl. Acad. Sci. USA*, 105, 10450, <https://doi.org/10.1073/pnas.0712167105>, 2008.
- Marin, F., Luquet, G., Marie, B., and Medakovic, D.: Molluscan Shell Proteins: Primary Structure, Origin, and Evolution, in: *Current Topics in Developmental Biology*, Academic Press, 209–276, [https://doi.org/10.1016/S0070-2153\(07\)80006-8](https://doi.org/10.1016/S0070-2153(07)80006-8), 2007.
- McCoy, S. J., Pueschel, C. M., Cornwall, C. E., Comeau, S., Kranz, S. A., Spindel, N. B., and Borowitzka, M. A.: Calcification in the coralline red algae: a synthesis, *Phycologia*, 62, 648–666, <https://doi.org/10.1080/00318884.2023.2285673>, 2023.

- McCulloch, M. T., Falter, J., Trotter, J., and Montagna, P.: Coral resilience to ocean acidification and global warming through pH up-regulation, *Nat. Clim. Change*, 2, 623–627, 2012.
- McCulloch, M. T., D’Olivo, J. P., Falter, J., Holcomb, M., and Trotter, J. A.: Coral calcification in a changing world and the interactive dynamics of pH and DIC upregulation, *Nat. Commun.*, 8, 15686, <https://doi.org/10.1038/ncomms15686>, 2017.
- Meyer, J. and Riebesell, U.: Reviews and Syntheses: Responses of coccolithophores to ocean acidification: a meta-analysis, *Biogeochemistry*, 12, 1671–1682, <https://doi.org/10.5194/bg-12-1671-2015>, 2015.
- Moore, B., Comeau, S., Bekaert, M., Cossais, A., Purdy, A., Lacombe, E., Puerzer, F., McCulloch, M. T., and Cornwall, C. E.: Rapid multi-generational acclimation of coralline algal reproductive structures to ocean acidification, *P. Roy. Soc. B*, 288, 20210130, <https://doi.org/10.1098/rspb.2021.0130>, 2021.
- Morse, J. W. and MacKenzie, F. T. (Eds.): *Geochemistry of Sedimentary Carbonates*, 1st Edn., Vol. 48, Elsevier, ISBN 9780444887818, 1990.
- Moy, F. E. and Christie, H.: Large-scale shift from sugar kelp (*Saccharina latissima*) to ephemeral algae along the south and west coast of Norway, *Mar. Biol. Res.*, 8, 309–321, <https://doi.org/10.1080/17451000.2011.637561>, 2012.
- Nagelkerken, I., Russell, B. D., Gillanders, B. M., and Connell, S. D.: Ocean acidification alters fish populations indirectly through habitat modification, *Nat. Clim. Change*, 6, 89–93, <https://doi.org/10.1038/nclimate2757>, 2016.
- Okazaki, R. R., Towle, E. K., van Hooidonk, R., Mor, C., Winter, R. N., Piggot, A. M., Cunning, R., Baker, A. C., Klaus, J. S., Swart, P. K., and Langdon, C.: Species-specific responses to climate change and community composition determine future calcification rates of Florida Keys reefs, *Glob. Change Biol.*, 23, 1023–1035, <https://doi.org/10.1111/gcb.13481>, 2017.
- Parker, L. M., Ross, P. M., Connor, W. A., Pörtner, H. O., Scanes, E., and Wright, J. M.: Predicting the Response of Molluscs to the Impact of Ocean Acidification, *Biology*, 2, 651–692, 2013.
- Parker, L. M., Scanes, E., O’Connor, W. A., and Ross, P. M.: Transgenerational plasticity responses of oysters to ocean acidification differ with habitat, *J. Exp. Biol.*, 224, jeb239269, <https://doi.org/10.1242/jeb.239269>, 2021.
- Plaisance, L., Mattern, K., Fabricius, K., Drovetski, S., Meyer, C., and Knowlton, N.: Effects of low pH on the coral reef cryptic invertebrate communities near CO₂ vents in Papua New Guinea, *PLOS ONE*, 16, e0258725, <https://doi.org/10.1371/journal.pone.0258725>, 2021.
- Porzio, L., Buia, M. C., and Hall-Spencer, J. M.: Effects of ocean acidification on macroalgal communities, *J. Exp. Mar. Biol. Ecol.*, 400, 278–287, 2011.
- Ramajo, L., Pérez-León, E., Hendriks, I. E., Marbà, N., Krause-Jensen, D., Sejr, M. K., Blicher, M. E., Lagos, N. A., Olsen, Y. S., and Duarte, C. M.: Food supply confers calcifiers resistance to ocean acidification, *Sci. Rep.*, 6, 19374, <https://doi.org/10.1038/srep19374>, 2016.
- Raven, J. A. and Beardall, J.: CO₂ concentrating mechanisms and environmental change, *Aquat. Bot.*, 118, 24–37, 2014.
- Raven, J. A. and Beardall, J.: The ins and outs of CO₂, *J. Exp. Bot.*, 67, 1–13, 2016.
- Raven, J. A., Johnston, A. M., Kübler, J. E., Korb, R. E., McInroy, S. G., Handley, L. L., Scrimgeour, C. M., Walker, D. I., Beardall, J., Vanderklift, M. A., Fredriksen, S., and Dunton, K. H.: Mechanistic interpretation of carbon isotope discrimination by marine macroalgae and seagrasses, *Funct. Plant Biol.*, 29, 355–378, 2002a.
- Raven, J. A., Johnston, A. M., Kübler, J. E., Korb, R., McInroy, S. G., Handley, L. L., Scrimgeour, C. M., Walker, D. I., Beardall, J., Clayton, M. N., Vanderklift, M. A., Fredriksen, S., and Dunton, K. H.: Seaweeds in cold seas: evolution and carbon acquisition, *Ann. Bot.*, 90, 525–536, 2002b.
- Raven, J. A., Ball, L. A., Beardall, J., Giordano, M., and Maberly, S. C.: Algae lacking carbon-concentrating mechanisms, *Can. J. Botany*, 83, 879–890, <https://doi.org/10.1139/b05-074>, 2005.
- Raven, J. A., Cockell, C. S., and De La Rocha, C. L.: The evolution of inorganic carbon concentrating mechanisms in photosynthesis, *Philos. T. R. Soc. B*, 363, 2641–2650, 2008.
- Raven, J. A., Giordano, M., Beardall, J., and Maberly, S. C.: Algal and aquatic plant carbon concentrating mechanisms in relation to environmental change, *Photosynth. Res.*, 109, 281–296, 2011.
- Raven, J. A., Giordano, M., Beardall, J., and Maberly, S. C.: Algal evolution in relation to atmospheric CO₂: carboxylases, carbon-concentrating mechanisms and carbon oxidation, *Philos. T. R. Soc. B*, 367, 493–507, 2012.
- Raven, J. A., Suggett, D. J., and Giordano, M.: Inorganic carbon concentrating mechanisms in free-living and symbiotic dinoflagellates and chromerids, *J. Phycol.*, 56, 1377–1397, <https://doi.org/10.1111/jpy.13050>, 2020.
- Ries, J. B.: Acid ocean cover up, *Nat. Clim. Change*, 1, 294–295, 2011.
- Ries, J. B., Cohen, A. L., and McCorkle, D. C.: Marine calcifiers exhibit mixed responses to CO₂-induced ocean acidification, *Geology*, 37, 1131–1134, 2009.
- Rivest, E. B., Comeau, S., and Cornwall, C. E.: The role of natural variability in shaping the response of coral reef organisms to climate change, *Current Climate Change Reports*, 3, 271–281, 2017.
- Roberts, R. D.: A review of settlement cues for larval abalone (*Haliotis* spp.), *J. Shell. Res.*, 20, 571–586, 2001.
- Scheffer, M.: Foreseeing tipping points, *Nature*, 467, 411–412, <https://doi.org/10.1038/467411a>, 2010.
- Schneider, K. and Erez, J.: The effect of carbonate chemistry on calcification and photosynthesis in the hermatypic coral *Acropora eurystoma*, *Limnol. Oceanogr.*, 51, 1284–1293, 2006.
- Schoepf, V., Carrion, S. A., Pfeifer, S. M., Naugle, M., Dugal, L., Bruyn, J., and McCulloch, M. T.: Stress-resistant corals may not acclimatize to ocean warming but maintain heat tolerance under cooler temperatures, *Nat. Commun.*, 10, 4031, <https://doi.org/10.1038/s41467-019-12065-0>, 2019.
- Schubert, N., Alvarez-Filip, L., and Hofmann, L. C.: Systematic review and meta-analysis of ocean acidification effects in Halimeda: Implications for algal carbonate production, *Clim. Change Ecol.*, 4, 100059, <https://doi.org/10.1016/j.ecochg.2022.100059>, 2023.
- Stumpp, M., Hu, M. Y., Melzner, F., Gutowska, M. A., Dorey, N., Himmerkus, N., Holtmann, W. C., Dupont, S. T., Thorndyke, M. C., and Bleich, M.: Acidified seawater impacts sea urchin larvae pH regulatory systems relevant for calcification, *P. Natl. Acad. Sci. USA*, 109, 18192–18197, <https://doi.org/10.1073/pnas.1209174109>, 2012.

- Sunday, J. M., Fabricius, K. E., Kroeker, K. J., Anderson, K. M., Brown, N. E., Barry, J. P., Connell, S. D., Dupont, S., Gaylord, B., Hall-Spencer, J. M., Klinger, T., Milazzo, M., Munday, P. L., Russell, B. D., Sanford, E., Thiyagarajan, V., Vaughan, M. L. H., Widdicombe, S., and Harley, C. D. G.: Ocean acidification can mediate biodiversity shifts by changing biogenic habitat, *Nat. Clim. Change*, 7, 81, <https://doi.org/10.1038/nclimate3161>, 2016.
- Taise, A., Krieger, E., Bury, S. J., and Cornwall, C. E.: Physiological responses of *Caulerpa* spp. (with different dissolved inorganic carbon physiologies) to ocean acidification, *New Zeal. J. Bot.*, 1–25, <https://doi.org/10.1080/0028825X.2023.2289432>, 2023.
- Tanvet, C., Camp, E. F., Sutton, J., Houlbrèque, F., Thouzeau, G., and Rodolfo-Metalpa, R.: Corals adapted to extreme and fluctuating seawater pH increase calcification rates and have unique symbiont communities, *Ecol. Evol.*, 13, e10099, <https://doi.org/10.1002/ece3.10099>, 2023.
- Taylor, J. D., Ellis, R., Milazzo, M., Hall-Spencer, J. M., and Cunniffe, M.: Intertidal epilithic bacteria diversity changes along a naturally occurring carbon dioxide and pH gradient, *FEMS Microbiol. Ecol.*, 89, 670–678, <https://doi.org/10.1111/1574-6941.12368>, 2014.
- Teixidó, N., Gambi, M. C., Parravacini, V., Kroeker, K., Micheli, F., Villéger, S., and Ballesteros, E.: Functional biodiversity loss along natural CO₂ gradients, *Nat. Commun.*, 9, 5149, <https://doi.org/10.1038/s41467-018-07592-1>, 2018.
- Thomsen, J. and Melzner, F.: Moderate seawater acidification does not elicit long-term metabolic depression in the blue mussel *Mytilus edulis*, *Mar. Biol.*, 157, 2667–2676, 2010.
- van Nes, E. H., Arani, B. M. S., Staal, A., van der Bolt, B., Flores, B. M., Bathiany, S., and Scheffer, M.: What Do You Mean, ‘Tipping Point’?, *Trend. Ecol. Evol.*, 31, 902–904, <https://doi.org/10.1016/j.tree.2016.09.011>, 2016.
- Venn, A. A., Tambutté, E., Holcomb, M., Laurent, J., Allemand, D., and Tambutté, S.: Impact of seawater acidification on pH at the tissue-skeleton interface and calcification in reef corals, *P. Natl. Acad. Sci. USA*, 110, 1634–1639, <https://doi.org/10.1073/pnas.1216153110>, 2013.
- Venn, A. A., Bernardet, C., Chabenat, A., Tambutté, E., and Tambutté, S.: Paracellular transport to the coral calcifying medium: effects of environmental parameters, *J. Exp. Biol.*, 223, jeb227074, <https://doi.org/10.1242/jeb.227074>, 2020.
- Ventura, A., Schulz, S., and Dupont, S.: Maintained larval growth in mussel larvae exposed to acidified under-saturated seawater, *Sci. Rep.*, 6, 23728, <https://doi.org/10.1038/srep23728>, 2016.
- Wernberg, T., Bennett, S., Babcock, R. C., de Bettignies, T., Cure, K., Depczynski, M., Dufois, F., Fromont, J., Fulton, C. J., and Hovey, R. K.: Climate-driven regime shift of a temperate marine ecosystem, *Science*, 353, 169–172, 2016.
- Wittmann, A. C. and Pörtner, H. O.: Sensitivities of extant animal taxa to ocean acidification, *Nat. Clim. Change*, 3, 995–1001, 2013.