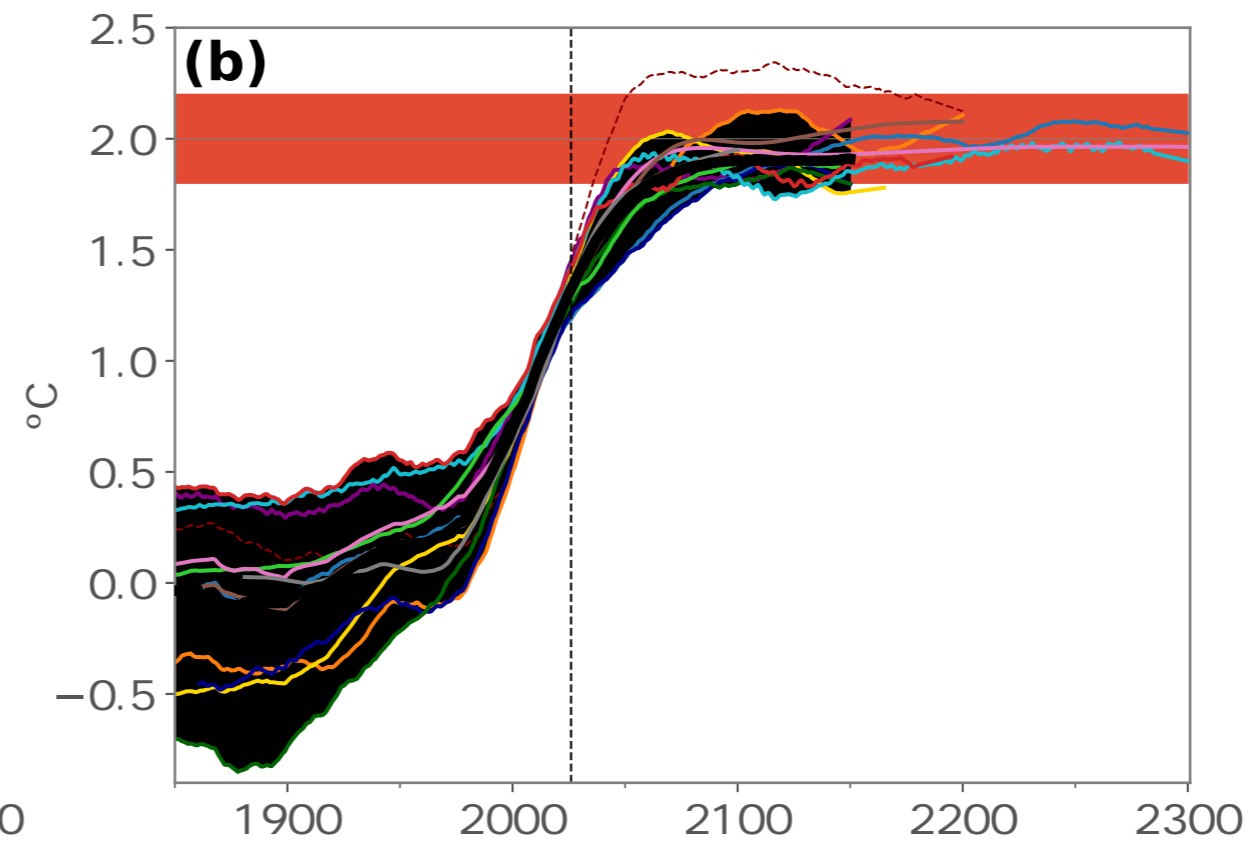
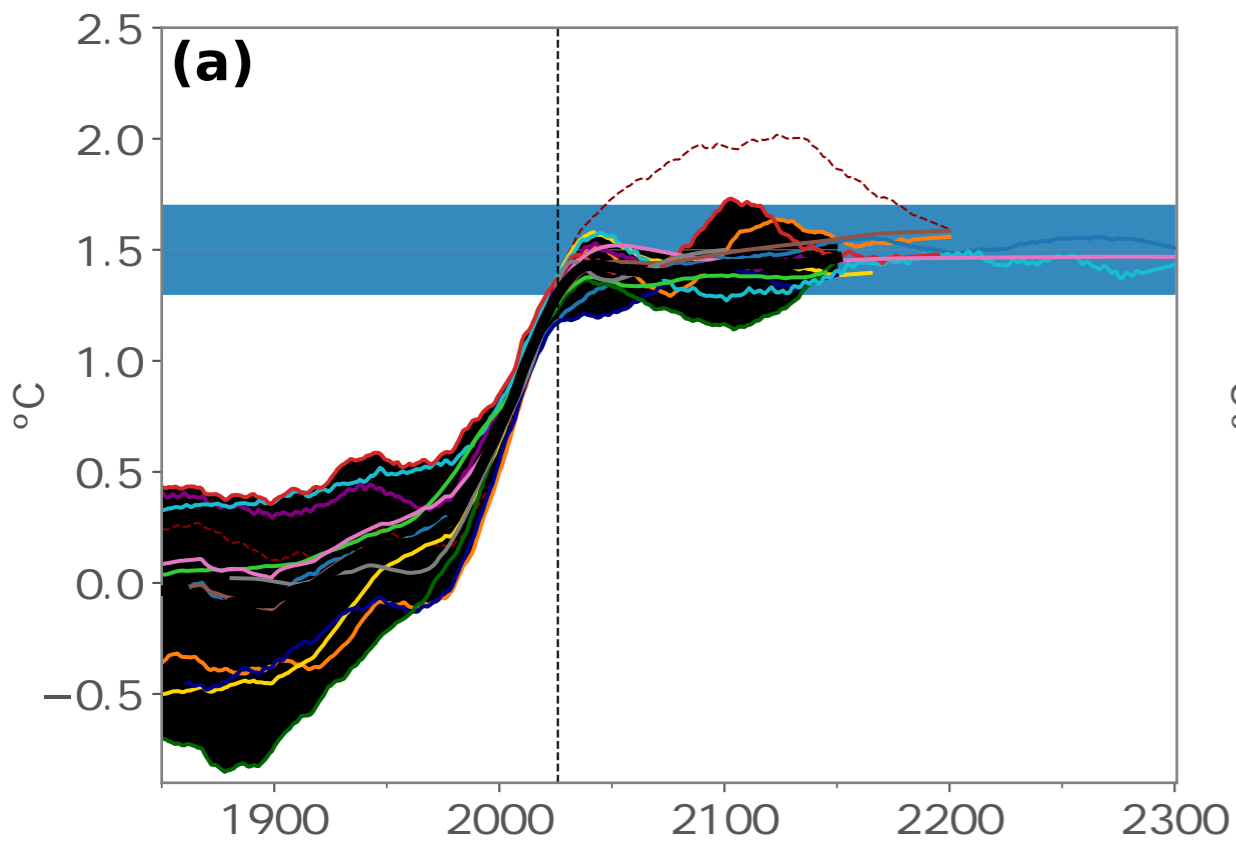


1.5°C warming level

2.0°C warming level

GSAT anomaly



- ACCESS
- CESM2
- EC-Earth
- NASA-GISS
- GFDL-ESM2M
- GFDL-ESM4
- IPSL
- MIROC
- MPI
- NorESM2
- Bern
- UVic
- HadCM3-FaIR2
- multi-model mean
- multi-model spread

CO₂-fe emissions (E_{total} - fe)

