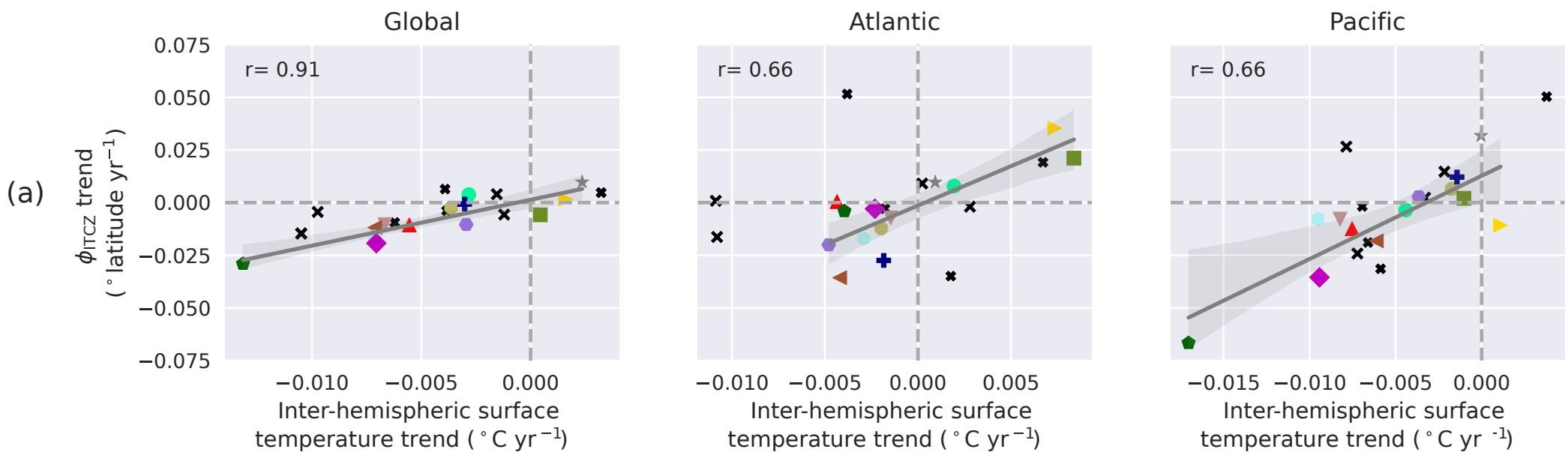
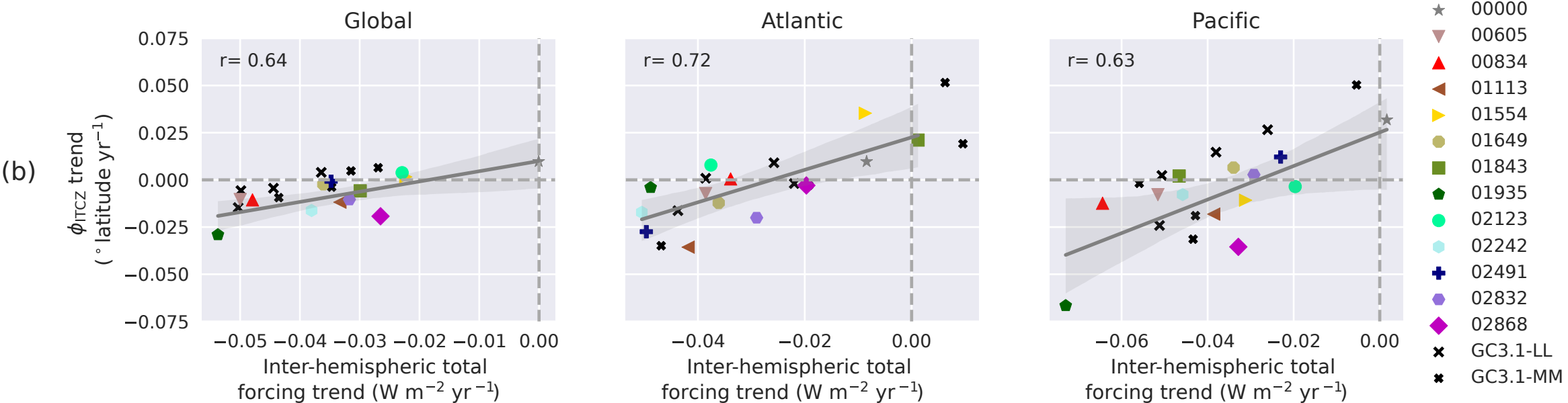


### 1950 to 1985 $\phi_{ITCZ}$ trend vs inter-hemispheric surface temperature trend



### 1950 to 1985 $\phi_{ITCZ}$ trend vs inter-hemispheric total forcing trend



### 1950 to 1985 $\phi_{ITCZ}$ trend for vs inter-hemispheric aerosol ERF

