



Supplement of

Robust increase of Indian monsoon rainfall and its variability under future warming in CMIP6 models

Anja Katzenberger et al.

Correspondence to: Anders Levermann (anders.levermann@pik-potsdam.de)

The copyright of individual parts of the supplement might differ from the article licence.

Supplement

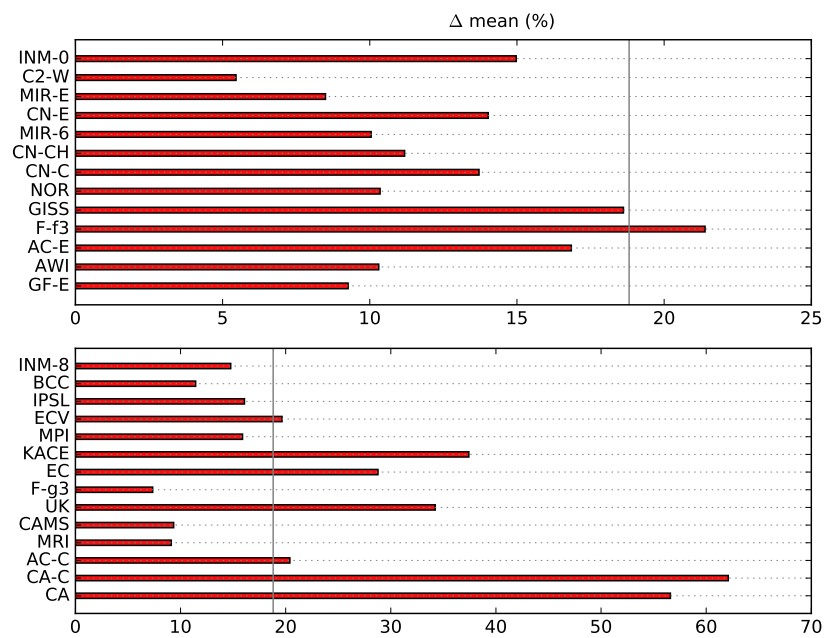


Figure S1. As in Fig. 6 but for SSP3-7.0. The mean over all models is +18.6%. Please notice the different scales in the lower panel.

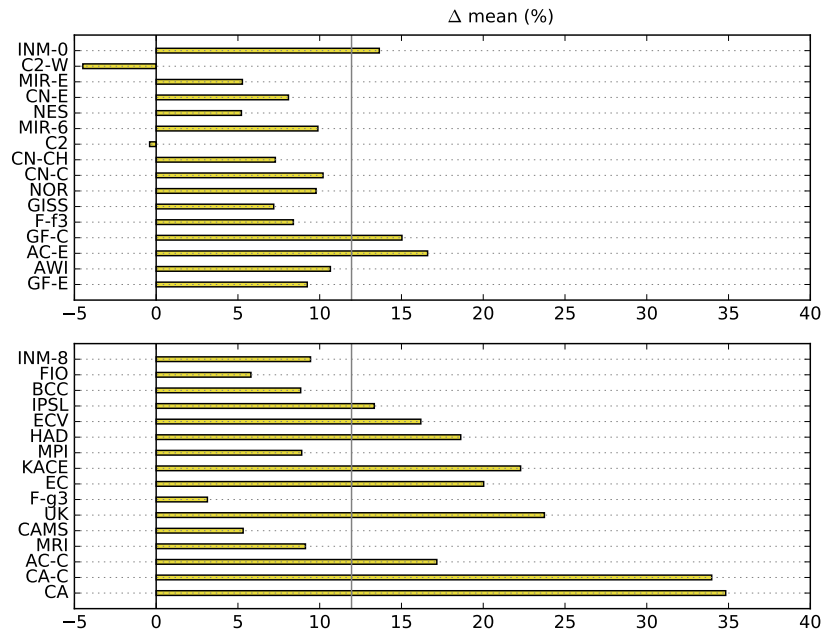


Figure S2. As in Fig. 6 but for SSP2-4.5. The mean over all models is +11.9%

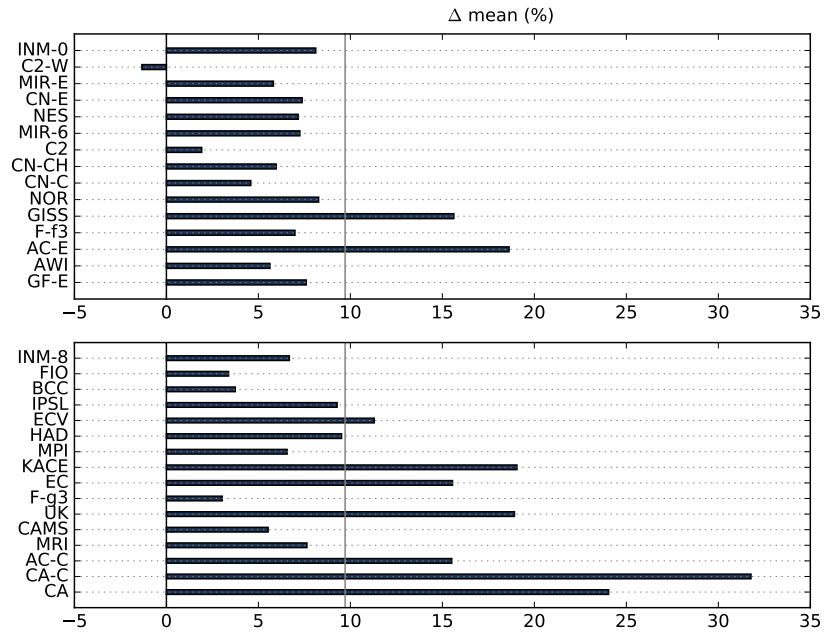


Figure S3. As in Fig. 6 but for SSP1-2.6. The mean over all models is +9.7%

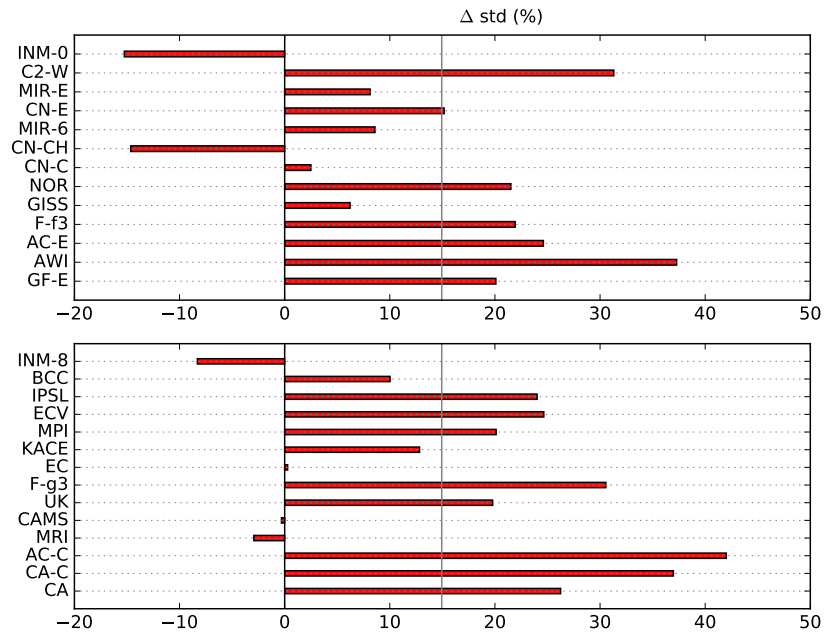


Figure S4. As in Fig. 9 but for SSP3-7.0.

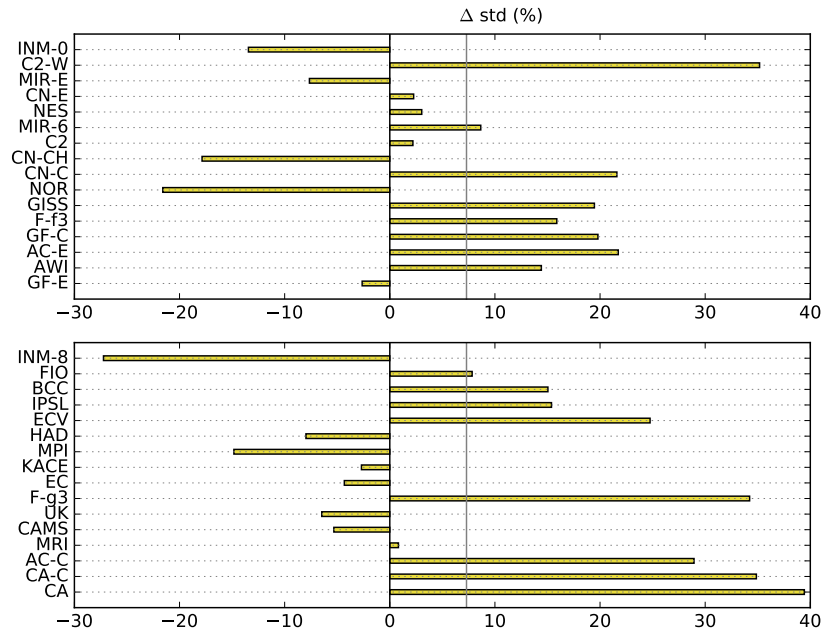


Figure S5. As in Fig. 9 but for SSP2-4.5.

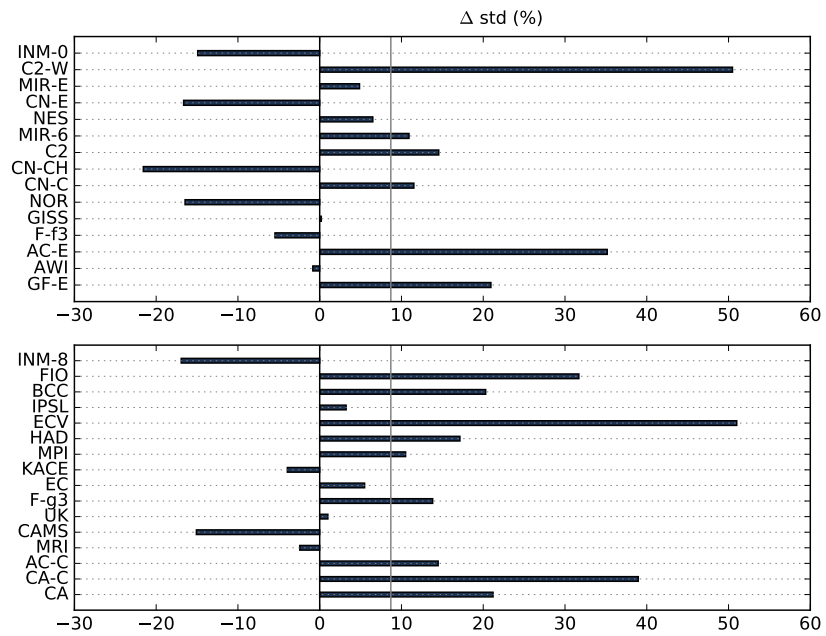


Figure S6. As in Fig. 9 but for SSP1-2.6.