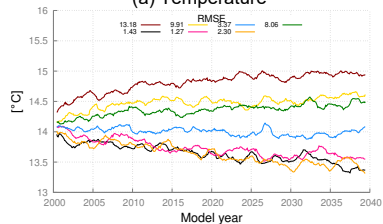
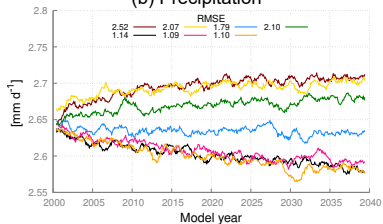


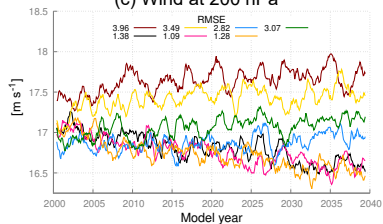
(a) Temperature



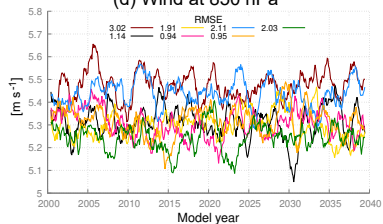
(b) Precipitation



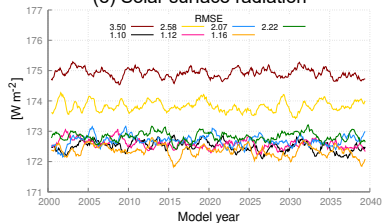
(c) Wind at 200 hPa



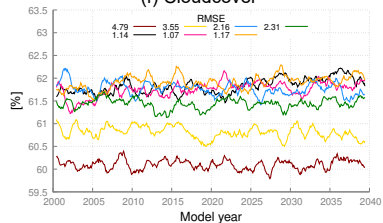
(d) Wind at 850 hPa



(e) Solar surface radiation



(f) Cloudcover



Imperfect model 1 —
 Imperfect model 3 —
 Imperfect model 4 —
 Imperfect model 5 —

Perfect model —
 Supermodel CPT —
 Supermodel synch —