



Supplement of

On the assessment of the moisture transport by the Great Plains low-level jet

Iago Algarra et al.

Correspondence to: Iago Algarra (ialgarra@uvigo.es)

The copyright of individual parts of the supplement might differ from the CC BY 4.0 License.

Captions

Figure S1: Monthly variability of the percentage of GPLLJ days.

Figure S2: Moisture sources for the 6 case-studies analysed. Green line delimits the 75th percentile of $(E - P) > 0$ values. The vectors show the wind direction and intensity for each case study at surface level ($\sim 500\text{m}$ AGL). The purple line shows the position of the moisture-labelling wall used in the WRF simulation.

Figure S3: Comparison of 11-days accumulated precipitation for WRF simulations versus CPC gauge-analysis observations throughout the same periods.

Figure S4: (a-c) $q\text{TR}$ in g kg^{-1} for the three vertical cross sections at the locations depicted with white lines in Fig. 5 for jet event of July 19, 1999 – Simulation 1. (d-f) same as (a-c) but for ϕTR in g m (kg s)^{-1} .

Figure S5: As Figure S4 but for jet event of July 23, 1983 – Simulation 2.

Figure S6: As Figure S4 but for jet event of July 28, 2002 – Simulation 4.

Figure S7: As Figure S4 but for jet event of July 14, 2016 – Simulation 5.

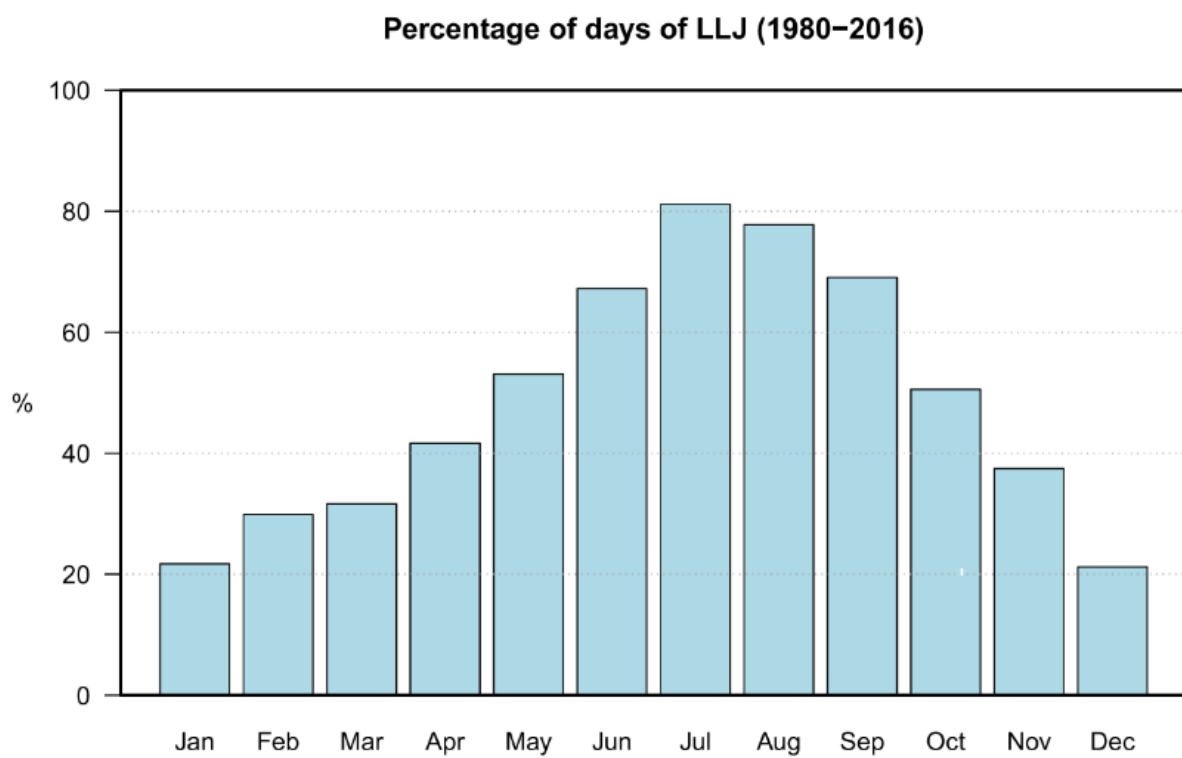


Figure S1

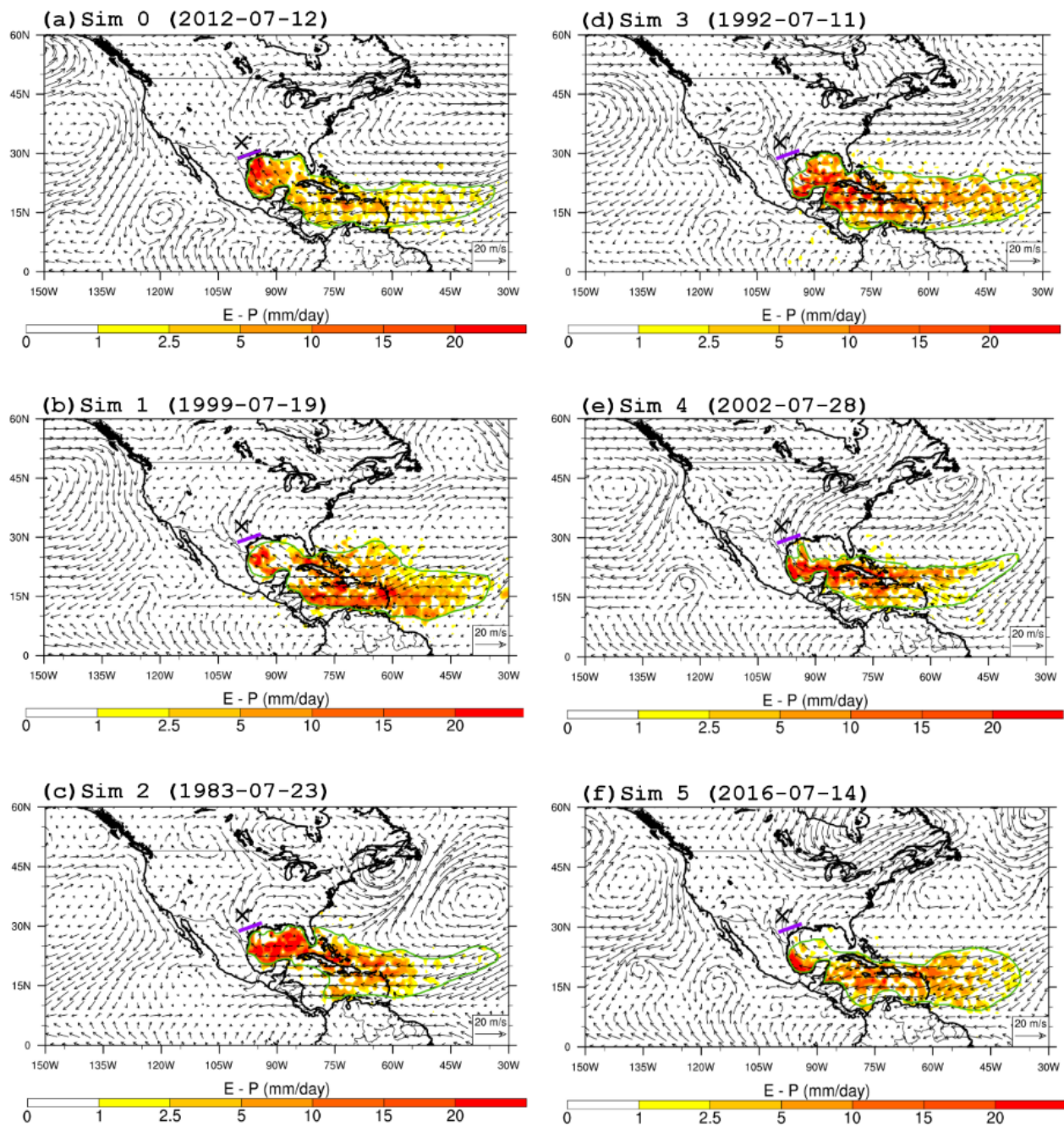


Figure S2

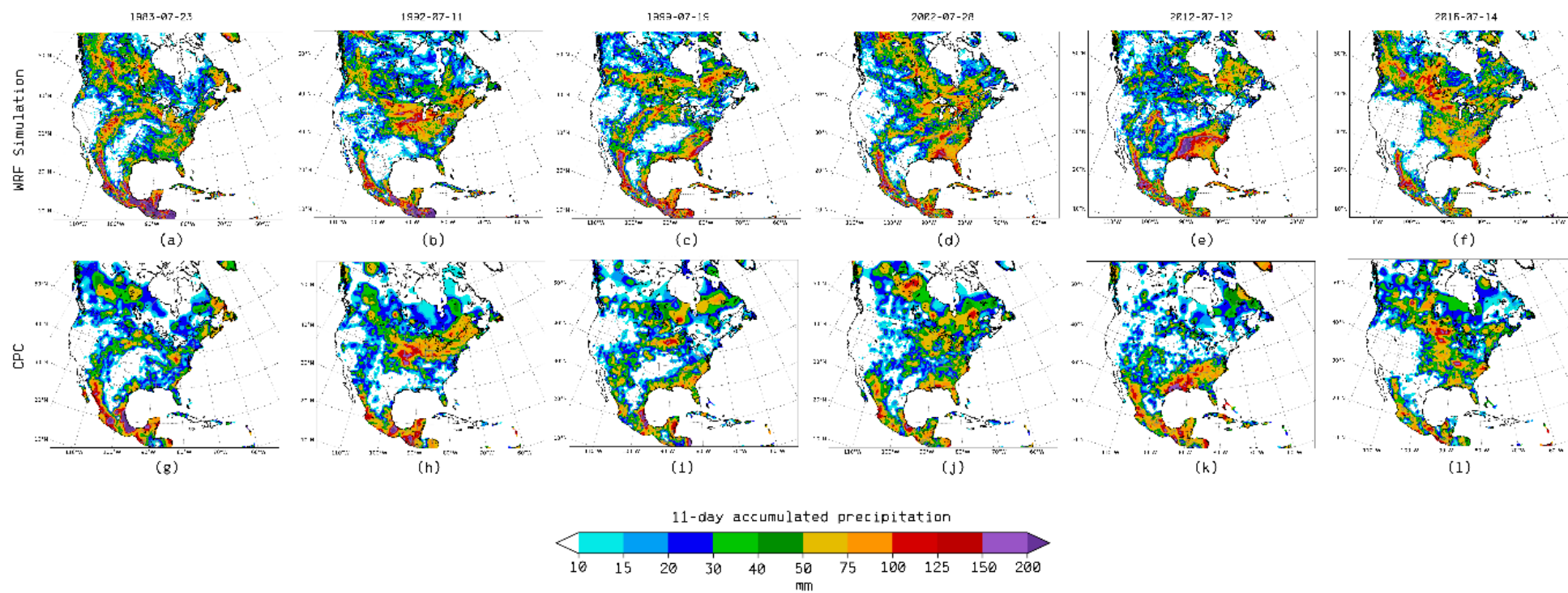


Figure S3

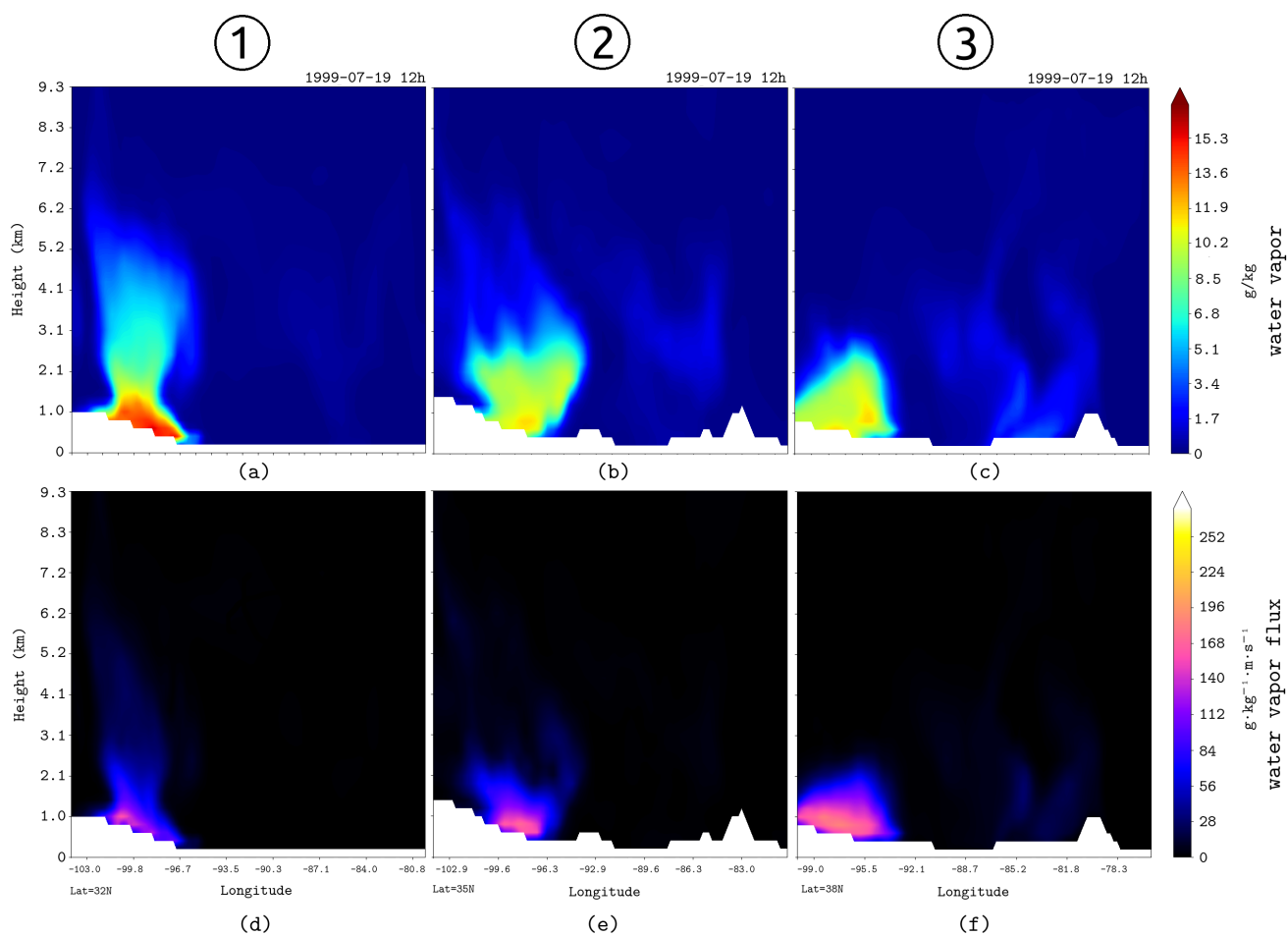


Figure S4

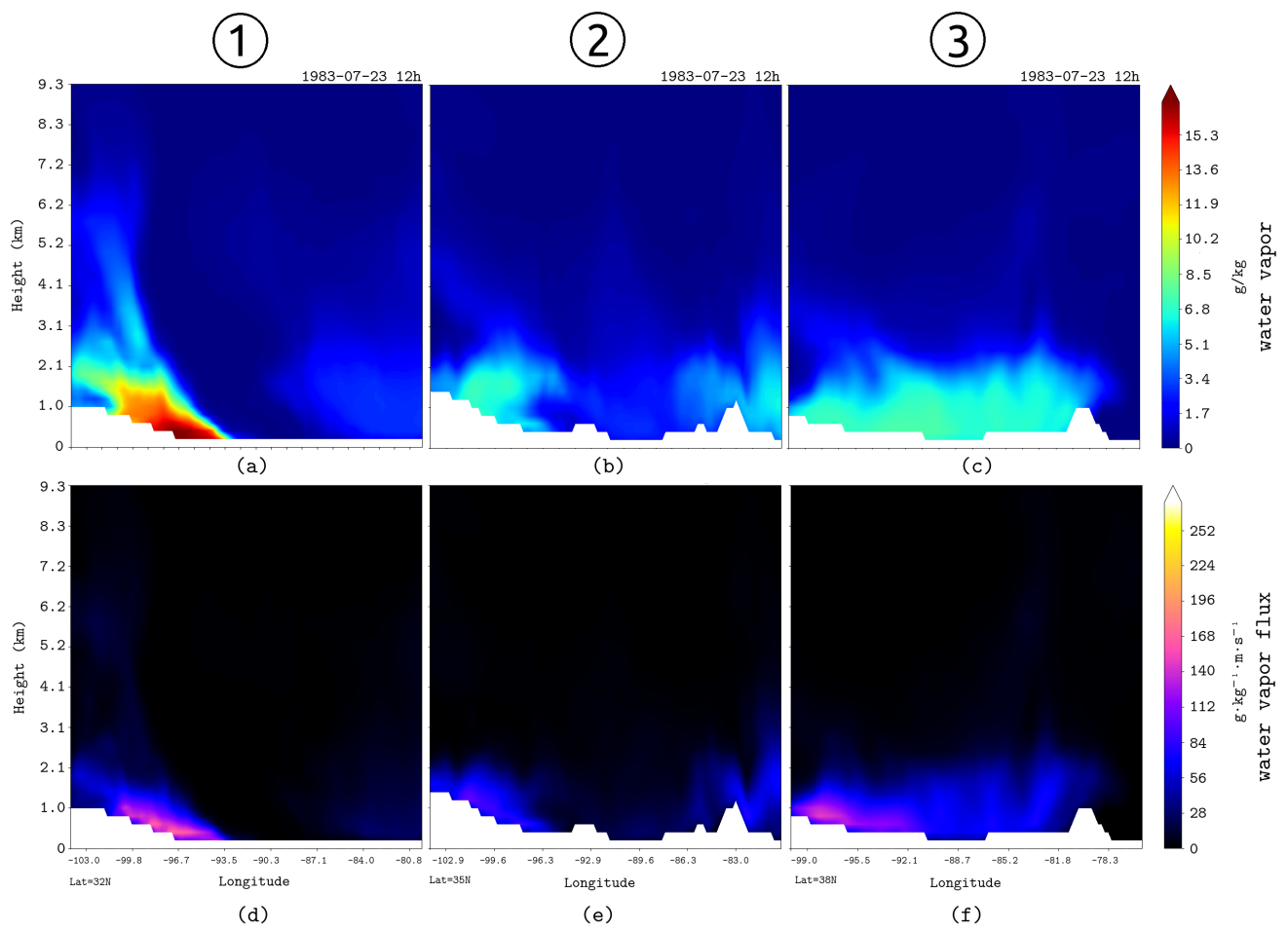


Figure S5

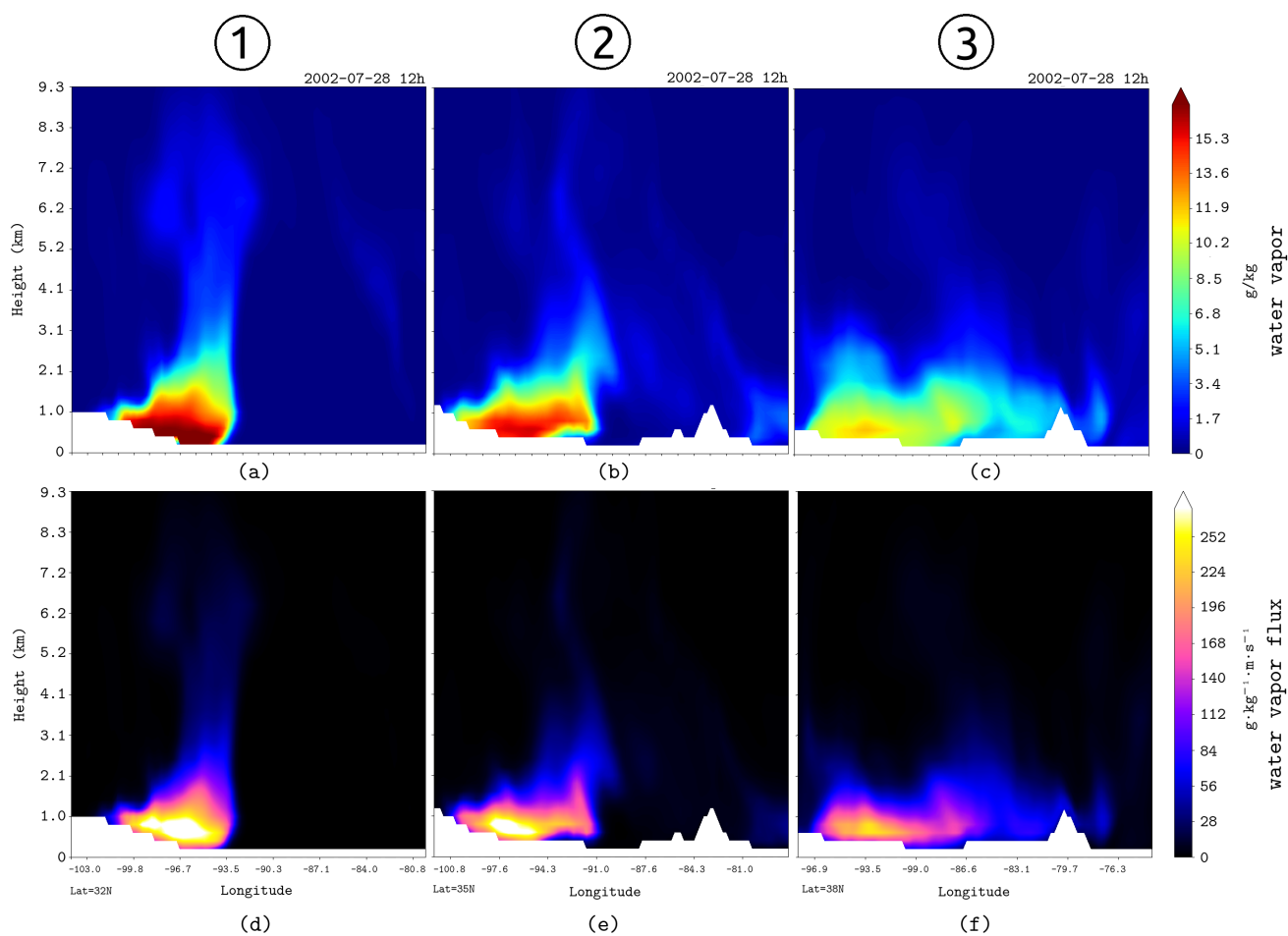


Figure S6

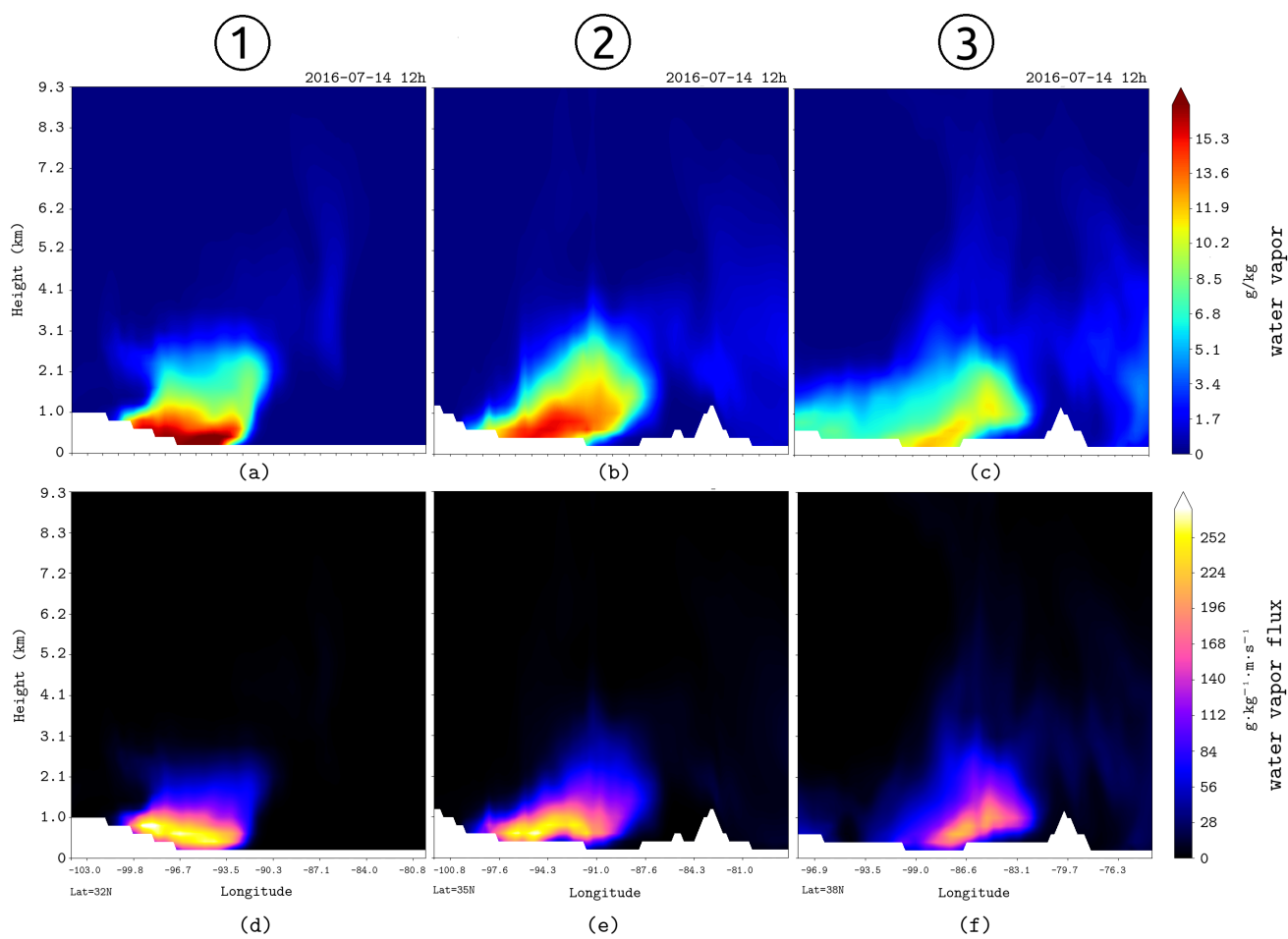


Figure S7